



HAL
open science

Spectral discretization of the time-dependent Navier-Stokes problem coupled with the heat equation

Rahma Agroum, Christine Bernardi, Jamil Satouri

► **To cite this version:**

Rahma Agroum, Christine Bernardi, Jamil Satouri. Spectral discretization of the time-dependent Navier-Stokes problem coupled with the heat equation. 2014. hal-00997632

HAL Id: hal-00997632

<https://hal.sorbonne-universite.fr/hal-00997632>

Preprint submitted on 8 Jun 2014

HAL is a multi-disciplinary open access archive for the deposit and dissemination of scientific research documents, whether they are published or not. The documents may come from teaching and research institutions in France or abroad, or from public or private research centers.

L'archive ouverte pluridisciplinaire **HAL**, est destinée au dépôt et à la diffusion de documents scientifiques de niveau recherche, publiés ou non, émanant des établissements d'enseignement et de recherche français ou étrangers, des laboratoires publics ou privés.

Spectral discretization of the time-dependent Navier–Stokes problem coupled with the heat equation

Rahma Agroum¹, Christine Bernardi², and Jamil Satouri³

Abstract

The aim of this work is to present the unsteady Navier–Stokes equations coupled with the heat equation where the viscosity depends on the temperature. We propose a discretization of these equations that combines Euler’s implicit scheme in time and spectral methods in space. We prove optimal error estimates between the continuous and discrete solutions. Some numerical experiments confirm the interest of this approach.

Résumé

On présente dans ce travail les équations de Navier-Stokes instationnaires couplées avec celle de la chaleur lorsque la viscosité dépend de la température. On utilise un schéma d’Euler implicite en temps et on discrétise le problème en espace par méthodes spectrales. On démontre des estimations d’erreur optimales entre la solution continue et la solution discrète. Quelques expériences numériques confirment l’intérêt de cette approche.

Key words: Navier-Stokes equations, heat equation, spectral method, Euler’s scheme, a priori analysis.

¹Presently at Laboratoire Jacques-Louis Lions, Université Pierre et Marie Curie, 4 place Jussieu, 75252 Paris cedex 05, France.
email-address: agroum@ann.jussieu.fr

²CNRS, UMR 7598, Laboratoire Jacques-Louis Lions, F-75005, Paris, France
Sorbonne Universités, UPMC Univ Paris 06, UMR 7598, Laboratoire Jacques-Louis Lions, F-75005, Paris, France
email-address: bernardi@ann.jussieu.fr

³IPEIT-University of Tunis, 2 rue Jawaher Lel Nahra-1089, Monfleury, Tunisia.
e-mail address: satouri@yahoo.fr

1 Introduction.

Let Ω be a connected bounded open set in \mathbb{R}^d , $d = 2$ or 3 , with a Lipschitz-continuous boundary $\partial\Omega$, and let $[0, \tilde{T}]$ denote an interval in \mathbb{R} where \tilde{T} is a positive real number. The following system models the unsteady flow of a viscous incompressible fluid, in the case where the viscosity of the fluid depends on the temperature.

$$\begin{aligned}
 \partial_t \mathbf{u}(\mathbf{x}, t) - \operatorname{div}(\nu(T(\mathbf{x}, t)) \nabla \mathbf{u}(\mathbf{x}, t)) + (\mathbf{u}(\mathbf{x}, t) \cdot \nabla) \mathbf{u}(\mathbf{x}, t) + \nabla p(\mathbf{x}, t) &= \mathbf{f}(\mathbf{x}, t) && \text{in } \Omega \times]0, \tilde{T}[, \\
 \operatorname{div} \mathbf{u}(\mathbf{x}, t) &= 0 && \text{in } \Omega \times]0, \tilde{T}[, \\
 \partial_t T(\mathbf{x}, t) - \alpha \Delta T(\mathbf{x}, t) + (\mathbf{u}(\mathbf{x}, t) \cdot \nabla) T(\mathbf{x}, t) &= g(\mathbf{x}, t) && \text{in } \Omega \times]0, \tilde{T}[, \\
 T(\mathbf{x}, t) &= T_b && \text{on } \partial\Omega \times]0, \tilde{T}[, \\
 \mathbf{u}(\mathbf{x}, t) &= \mathbf{u}_D && \text{on } \partial\Omega \times]0, \tilde{T}[, \\
 \mathbf{u}(\mathbf{x}, 0) = \mathbf{u}_0, \quad T(\mathbf{x}, 0) &= T_0 && \text{in } \Omega.
 \end{aligned} \tag{1.1}$$

The unknowns are the velocity \mathbf{u} , the pressure p , and the temperature T of the fluid, while the body data are the distributions \mathbf{f} and g , the boundary data are the Dirichlet condition \mathbf{u}_D , and the temperature on the boundary T_b , the initial data are \mathbf{u}_0 and the initial value of the temperature T_0 in Ω . The function ν is positive and bounded, while the coefficient α is a positive constant.

A similar model but for the stationary case has been analyzed in [8] and recently in [1] for a spectral discretization and also in [4] for a finite element discretization (see also [3] for a very similar coupling of the Navier-Stokes equations with a turbulence model). Another related model has been analyzed in [2]: it consists of the heat equation with a nonlinear source term describing heat production due to an exothermic chemical reaction coupled with the Darcy law.

Problem (1.1) is discretized in time by Euler's implicit scheme. We use this scheme for its simplicity, however we have decided to treat the nonlinear term in an implicit way; we combine this scheme with a spectral method in space. The numerical analysis of the nonlinear discrete problem makes use of the approach of Brezzi, Rappaz and Raviart [7], we establish a priori error estimates that turn out to be fully optimal. We conclude with some numerical experiments where the viscosity of the fluid ν is either a constant, or a function dependent of the space variable, or a function that depends on the temperature T . All of them confirm the optimality of the discretization and justify the choice of this formulation.

An outline of the paper is as follows.

- In Section 2, we recall the variational formulation of the problem and prove the existence of a solution, the uniqueness result being presented in dimension $d = 2$.
- Section 3 is devoted to the description of the time semi-discrete problem, we recall the existence of the solution. We also write the fully discrete problem.
- In Section 4, we perform the a priori error analysis of the discretization.
- Some numerical experiments are presented in Section 5.

2 Analysis of the continuous problem.

We first write down a variational formulation of problem (1.1). Next, we prove the existence of the solution. The uniqueness is only proved in dimension $d = 2$.

2.1 Variational formulation

We intend to write a variational formulation of system (1.1). We first make precise the assumptions on the function ν : It belongs to $L^\infty(\mathbb{R})$ and satisfies, for two positive constants ν_1 and ν_2 ,

$$\text{for a.e. } \theta \in \mathbb{R}, \quad \nu_1 \leq \nu(\theta) \leq \nu_2. \quad (2.1)$$

For simplicity, we work with zero boundary condition $\mathbf{u}_D = \mathbf{0}$ in order to avoid the technical results linked to the Hopf lemma, see [11, Chap. IV, Thm 2.3].

In what follows, the scalar product defined on $L^2(\Omega)$ or $L^2(\Omega)^d$ is denoted by (\cdot, \cdot) . We use the whole scale of Sobolev spaces $H^s(\Omega)$, $s \geq 0$, equipped with the norm $\|\cdot\|_{H^s(\Omega)}$ and seminorm $|\cdot|_{H^s(\Omega)}$, and their subspaces $H_0^s(\Omega)$. For each $s \geq 0$, $H^{-s}(\Omega)$ stands for the dual space of $H_0^s(\Omega)$. We also recall from [11, Chap. I, Thm 1.1] for instance the following Poincaré-Friedrichs inequality:

$$\forall \varphi \in H_0^1(\Omega), \quad \|\varphi\|_{L^2(\Omega)} \leq c|\varphi|_{H^1(\Omega)}, \quad (2.2)$$

which yields the equivalence of $\|\cdot\|_{H^1(\Omega)}$ and $|\cdot|_{H^1(\Omega)}$ on $H_0^1(\Omega)$.

For any separable Banach space E equipped with the norm $\|\cdot\|_E$, we denote by $\mathcal{C}^0(0, \tilde{T}; E)$ the space of continuous functions from $[0, \tilde{T}]$ with values in E . For each $s \geq 0$, we also introduce the space $H^s(0, \tilde{T}; E)$ in the following way: When s is an integer, it is the space of measurable functions on $]0, \tilde{T}[$ with values in E such that the mappings: $\mathbf{v} \mapsto \|\partial_t^\ell \mathbf{v}\|_E$, $0 \leq \ell \leq s$, are square-integrable on $]0, \tilde{T}[$; otherwise, it is defined by interpolation between $H^{[s]+1}(0, \tilde{T}; E)$ and $H^{[s]}(0, \tilde{T}; E)$, where $[s]$ stands for the integer part of s .

We also introduce the space

$$L_\circ^2(\Omega) = \left\{ q \in L^2(\Omega); \int_\Omega q(\mathbf{x}) \, d\mathbf{x} = 0 \right\}. \quad (2.3)$$

Assume that the data (\mathbf{f}, g, T_b) belong to

$$L^2(0, \tilde{T}; H^{-1}(\Omega)^d) \times L^2(0, \tilde{T}; H^{-1}(\Omega)) \times L^2(0, \tilde{T}; H^{\frac{1}{2}}(\partial\Omega)),$$

that the datum T_0 belongs to $H^1(\Omega)$, the datum \mathbf{u}_0 belongs to $H_0^1(\Omega)^d$ and satisfies the following compatibility condition

$$\operatorname{div} \mathbf{u}_0 = 0 \quad \text{in } \Omega. \quad (2.4)$$

The last condition is not necessary for all the results in this section. Since it is not restrictive, we prefer to assume it from now on.

We now consider the following variational formulation for problem (1.1):

Find (\mathbf{u}, p, T) in $L^2(0, \tilde{T}; H_0^1(\Omega)^d) \times L^2(0, \tilde{T}; L_\circ^2(\Omega)) \times L^2(0, \tilde{T}; H^1(\Omega))$ such that

$$\mathbf{u}(\cdot, 0) = \mathbf{u}_0 \quad \text{and} \quad T(\cdot, 0) = T_0 \quad \text{in } \Omega, \quad (2.5)$$

such that, for a.e. t , $0 \leq t \leq \tilde{T}$,

$$T(\cdot, t) = T_b(\cdot, t) \quad \text{on } \partial\Omega, \quad (2.6)$$

and such that, for a.e. t , $0 \leq t \leq \tilde{T}$,

$$\begin{aligned}
\forall \mathbf{v} \in H_0^1(\Omega)^d, \quad & \int_{\Omega} \partial_t \mathbf{u}(\mathbf{x}, t) \mathbf{v}(\mathbf{x}) \, d\mathbf{x} + \int_{\Omega} \nu(T)(\mathbf{x}, t) (\mathbf{grad} \mathbf{u})(\mathbf{x}, t) : (\mathbf{grad} \mathbf{v})(\mathbf{x}) \, d\mathbf{x} \\
& + \int_{\Omega} ((\mathbf{u} \cdot \nabla) \mathbf{u})(\mathbf{x}, t) \cdot \mathbf{v}(\mathbf{x}) \, d\mathbf{x} - \int_{\Omega} (\operatorname{div} \mathbf{v})(\mathbf{x}) p(\mathbf{x}, t) \, d\mathbf{x} = \langle \mathbf{f}, \mathbf{v} \rangle_{\Omega}, \\
\forall q \in L_{\circ}^2(\Omega), \quad & - \int_{\Omega} (\operatorname{div} \mathbf{u})(\mathbf{x}, t) q(\mathbf{x}) \, d\mathbf{x} = 0, \\
\forall S \in H_0^1(\Omega), \quad & \int_{\Omega} \partial_t T(\mathbf{x}, t) S(\mathbf{x}) \, d\mathbf{x} + \alpha \int_{\Omega} (\mathbf{grad} T)(\mathbf{x}, t) \cdot (\mathbf{grad} S)(\mathbf{x}) \, d\mathbf{x} \\
& + \int_{\Omega} ((\mathbf{u} \cdot \nabla) T)(\mathbf{x}, t) S(\mathbf{x}) \, d\mathbf{x} = \langle g, S \rangle_{\Omega},
\end{aligned} \tag{2.7}$$

where $\langle \cdot, \cdot \rangle_{\Omega}$ denotes the duality pairing between $H^{-1}(\Omega)$ and $H_0^1(\Omega)$ and also between $H^{-1}(\Omega)^d$ and $H_0^1(\Omega)^d$. The following result is an obvious consequence of the density of $\mathcal{D}(\Omega)$ in $L^2(\Omega)$ or $H_0^1(\Omega)$.

Proposition 2.1 *Problem (1.1) with $\mathbf{u}_D = 0$ and (2.5)–(2.6)–(2.7) are equivalent, in the sense that any pair (\mathbf{u}, p, T) in $L^2(0, \tilde{T}; H_0^1(\Omega)^d) \times L^2(0, \tilde{T}; L_{\circ}^2(\Omega)) \times L^2(0, \tilde{T}; H^1(\Omega))$ is a solution of system (1.1) in the distribution sense if and only if it is a solution of problem (2.5)–(2.6)–(2.7).*

The spaces $L_{\circ}^2(\Omega)$ and $H_0^1(\Omega)^d$ verify the inf-sup condition (see for instance [11, Chap. I, Cor. 2.4]): There exist a constant $\beta > 0$ such that

$$\forall q \in L_{\circ}^2(\Omega), \quad \sup_{\mathbf{v} \in H_0^1(\Omega)^d} \frac{\int_{\Omega} (\operatorname{div} \mathbf{v})(\mathbf{x}) q(\mathbf{x}) \, d\mathbf{x}}{\|\mathbf{v}\|_{H^1(\Omega)^d}} \geq \beta \|q\|_{L^2(\Omega)}. \tag{2.8}$$

We introduce the kernel

$$V(\Omega) = \{ \mathbf{v} \in H_0^1(\Omega)^d; \forall q \in L_{\circ}^2(\Omega), \int_{\Omega} (\operatorname{div} \mathbf{v})(\mathbf{x}) q(\mathbf{x}) \, d\mathbf{x} = 0 \},$$

which is a closed subspace of $H_0^1(\Omega)^d$ and coincides with

$$V(\Omega) = \{ \mathbf{v} \in H_0^1(\Omega)^d; \operatorname{div} \mathbf{v} = 0 \text{ in } \Omega \}.$$

Let \mathcal{R} denote a lifting operator, i.e., an operator from $H^{\frac{1}{2}}(\partial\Omega)$ into $H^1(\Omega)$ which is continuous from $H^{s+\frac{1}{2}}(\partial\Omega)$ into $H^{s+1}(\Omega)$ for all $s \geq 0$ (the existence of such an operator is established in [9] for instance). Since T_b belongs to $L^2(0, \tilde{T}; H^{\frac{1}{2}}(\partial\Omega))$ we denote by \overline{T}_b the function defined for a.e. t , $0 \leq t \leq \tilde{T}$, by

$$\overline{T}_b(t) = \mathcal{R}T_b(t).$$

Clearly this function belongs to $L^2(0, \tilde{T}; H^1(\Omega))$ and satisfies

$$\|\overline{T}_b\|_{L^2(0, \tilde{T}; H^1(\Omega))} \leq c_{\diamond} \|T_b\|_{L^2(0, \tilde{T}; H^{\frac{1}{2}}(\partial\Omega))} \tag{2.9}$$

where the positive constant c_{\diamond} only depends on Ω and \mathcal{R} . When setting $T^* = T - \overline{T}_b$, we observe that (\mathbf{u}, p, T^*) is a solution of the variational problem:

Find (\mathbf{u}, p, T^*) in $L^2(0, \tilde{T}; H_0^1(\Omega)^d) \times L^2(0, \tilde{T}; L_{\circ}^2(\Omega)) \times L^2(0, \tilde{T}; H_0^1(\Omega))$ such that

$$\mathbf{u}(\cdot, 0) = \mathbf{u}_0 \quad \text{and} \quad T^*(\cdot, 0) = T_0 - \overline{T}_b(\cdot, 0) \quad \text{in } \Omega, \tag{2.10}$$

and such that, for a.e. $t, 0 \leq t \leq \tilde{T}$,

$$\begin{aligned}
\forall \mathbf{v} \in H_0^1(\Omega)^d, \quad & (\partial_t \mathbf{u}, \mathbf{v}) + (\nu(T^* + \bar{T}_b) \nabla \mathbf{u}, \nabla \mathbf{v}) + ((\mathbf{u} \cdot \nabla) \mathbf{u}, \mathbf{v}) - (\operatorname{div} \mathbf{v}, p) = \langle \mathbf{f}, \mathbf{v} \rangle_\Omega, \\
\forall q \in L_0^2(\Omega), \quad & -(\operatorname{div} \mathbf{u}, q) = 0, \\
\forall S \in H_0^1(\Omega), \quad & (\partial_t T^*, S) + \alpha(\nabla T^*, \nabla S) + ((\mathbf{u} \cdot \nabla) T^*, S) \\
& = \langle g, S \rangle_\Omega - (\partial_t \bar{T}_b, S) - \alpha(\nabla \bar{T}_b, \nabla S) - ((\mathbf{u} \cdot \nabla) \bar{T}_b, S).
\end{aligned} \tag{2.11}$$

Moreover, the pair (\mathbf{u}, T^*) is a solution of the variational problem:

Find (\mathbf{u}, T^*) in $L^2(0, \tilde{T}; V(\Omega)) \times L^2(0, \tilde{T}; H_0^1(\Omega))$ satisfying (2.10) and, for a.e. $t, 0 \leq t \leq \tilde{T}$,

$$\begin{aligned}
\forall \mathbf{v} \in V(\Omega), \quad & (\partial_t \mathbf{u}, \mathbf{v}) + (\nu(T^* + \bar{T}_b) \nabla \mathbf{u}, \nabla \mathbf{v}) + ((\mathbf{u} \cdot \nabla) \mathbf{u}, \mathbf{v}) = \langle \mathbf{f}, \mathbf{v} \rangle_\Omega, \\
\forall S \in H_0^1(\Omega), \quad & (\partial_t T^*, S) + \alpha(\nabla T^*, \nabla S) + ((\mathbf{u} \cdot \nabla) T^*, S) \\
& = \langle g, S \rangle_\Omega - (\partial_t \bar{T}_b, S) - \alpha(\nabla \bar{T}_b, \nabla S) - ((\mathbf{u} \cdot \nabla) \bar{T}_b, S).
\end{aligned} \tag{2.12}$$

2.2 Existence result

Let us start with the following a priori estimate for the velocity.

Lemma 2.2 *Assume that the data \mathbf{f} belong to $L^2(0, \tilde{T}; H^{-1}(\Omega)^d)$, and that the initial velocity \mathbf{u}_0 belongs to $L^2(\Omega)^d$. Then the following a priori estimate holds for the velocity \mathbf{u} of any solution (\mathbf{u}, T^*) of problem (2.10)–(2.12) and for any $t \in]0, \tilde{T}[$:*

$$\|\mathbf{u}\|_{L^2(0,t;H^1(\Omega)^d)} \leq c (\|\mathbf{u}_0\|_{L^2(\Omega)^d} + \|\mathbf{f}\|_{L^2(0,t;H^{-1}(\Omega)^d)}), \tag{2.13}$$

with a constant c that only depends on Ω and \tilde{T} .

Proof: Taking \mathbf{v} equal to \mathbf{u} in the first equation of (2.12) and noting that $((\mathbf{u} \cdot \nabla) \mathbf{u}, \mathbf{u}) = 0$ gives

$$\frac{1}{2} \frac{d}{dt} \|\mathbf{u}\|_{L^2(\Omega)^d}^2 + \nu_1 \|\nabla \mathbf{u}\|_{L^2(\Omega)^{d \times d}}^2 \leq c \|\mathbf{f}\|_{H^{-1}(\Omega)^d} \|\mathbf{u}\|_{H^1(\Omega)^d},$$

whence

$$\frac{d}{dt} \|\mathbf{u}\|_{L^2(\Omega)^d}^2 + \nu_1 c \|\mathbf{u}\|_{H^1(\Omega)^d}^2 \leq \frac{c'}{\nu_1} \|\mathbf{f}\|_{H^{-1}(\Omega)^d}^2.$$

Integrating this equation between 0 and t yields in particular

$$\|\mathbf{u}(\cdot, t)\|_{L^2(\Omega)^d}^2 + \nu_1 c \int_0^t \|\mathbf{u}(\cdot, s)\|_{H^1(\Omega)^d}^2 ds \leq \|\mathbf{u}(\cdot, 0)\|_{L^2(\Omega)^d}^2 + \frac{c'}{\nu_1} \int_0^t \|\mathbf{f}(\cdot, s)\|_{H^{-1}(\Omega)^d}^2 ds \tag{2.14}$$

Owing to (2.10), this gives the desired estimate.

Theorem 2.3 *Assume that the data (\mathbf{f}, g, T_b) belong to $L^2(0, \tilde{T}; H^{-1}(\Omega)^d) \times L^2(0, \tilde{T}; H^{-1}(\Omega)) \times H^1(0, \tilde{T}; H^{\frac{1}{2}}(\partial\Omega))$, that the initial velocity \mathbf{u}_0 belongs to $L^2(\Omega)^d$, the initial temperature T_0 belongs to $L^2(\Omega)$ and that the initial temperature on the boundary T_b^0 belongs to $H^{\frac{1}{2}}(\partial\Omega)$. Then problem (2.5)–(2.6)–(2.7) has a solution (\mathbf{u}, p, T) in the space*

$$L^2(0, \tilde{T}; H_0^1(\Omega)^d) \times L^2(0, \tilde{T}; L_0^2(\Omega)) \times L^2(0, \tilde{T}; H^1(\Omega)).$$

Proof: 1) We recall from [11, Chap. I, Cor 2.5] that $\mathcal{D}(\Omega)^d \cap V(\Omega)$ is dense in $V(\Omega)$. Thus, there exist an increasing sequence $(\mathbb{V}_n)_n$ of finite-dimensional subspaces of $V(\Omega)$ and an increasing sequence $(\mathbb{W}_n)_n$ of finite-dimensional subspaces of $H_0^1(\Omega)$ such that $\bigcup_{n \in \mathbb{N}} (\mathbb{V}_n \times \mathbb{W}_n)$ is dense in $V(\Omega) \times H_0^1(\Omega)$.

Thus, an approximation of problem (2.12) can be written
Find (\mathbf{u}_n, T_n^*) in $L^2(0, \tilde{T}; \mathbb{V}_n) \times L^2(0, \tilde{T}; \mathbb{W}_n)$ such that

$$\begin{aligned} \forall \mathbf{v}_n \in \mathbb{V}_n, \quad & (\partial_t \mathbf{u}_n, \mathbf{v}_n) + (\nu(T_n^* + \bar{T}_b) \nabla \mathbf{u}_n, \nabla \mathbf{v}_n) + ((\mathbf{u}_n \cdot \nabla) \mathbf{u}_n, \mathbf{v}_n) = \langle \mathbf{f}, \mathbf{v}_n \rangle_\Omega, \\ \forall S_n \in \mathbb{W}_n, \quad & (\partial_t T_n^*, S_n) + \alpha(\nabla T_n^*, \nabla S_n) + ((\mathbf{u}_n \cdot \nabla) T_n^*, S_n) \\ & = \langle g, S_n \rangle_\Omega - (\partial_t \bar{T}_b, S_n) - \alpha(\nabla \bar{T}_b, \nabla S_n) - ((\mathbf{u}_n \cdot \nabla) \bar{T}_b, S_n). \end{aligned} \quad (2.15)$$

Considering existence, note that the mapping:

$$(\mathbf{w}, z) \mapsto \left(\begin{array}{l} \mathbf{f} + \operatorname{div}(\nu(z + \bar{T}_b) \nabla \mathbf{w}) - (\mathbf{w} \cdot \nabla) \mathbf{w} \\ g - \partial_t \bar{T}_b + \alpha \Delta \bar{T}_b - (\mathbf{w} \cdot \nabla) \bar{T}_b - (\mathbf{w} \cdot \nabla) z + \alpha \Delta z \end{array} \right),$$

is Lipschitz-continuous on $H^1(\Omega)^d \times H^1(\Omega)$. Therefore it follows from the Cauchy-Lipschitz theorem, see [12, Section 21], that (2.15) has a unique solution (\mathbf{u}_n, T_n^*) in $\mathcal{C}^0(0, \tilde{T}; \mathbb{V}_n) \times \mathcal{C}^0(0, \tilde{T}; \mathbb{W}_n)$. Since the norm of \mathbf{u}_n in $L^2(0, \tilde{T}; H_0^1(\Omega)^d)$ and of T_n^* in $L^2(0, \tilde{T}; H_0^1(\Omega))$ are bounded by a constant c (due to the Poincaré-Friedrichs inequality on Ω), there exists a subsequence, still denoted by $(\mathbf{u}_n, T_n^*)_n$ for simplicity, which converges to a pair (\mathbf{u}, T^*) weakly in $L^2(0, \tilde{T}; H^1(\Omega)^d) \times L^2(0, \tilde{T}; H^1(\Omega))$.

We observe that, for $m \leq n$, (\mathbf{u}_n, T_n^*) is a solution of the variational problem:

Find (\mathbf{u}_m, T_m^*) in $L^2(0, \tilde{T}; \mathbb{V}_m) \times L^2(0, \tilde{T}; \mathbb{W}_m)$ such that

$$\begin{aligned} \forall \mathbf{v}_m \in \mathbb{V}_m, \quad & (\partial_t \mathbf{u}_m, \mathbf{v}_m) + (\nu(T_m^* + \bar{T}_b) \nabla \mathbf{u}_m, \nabla \mathbf{v}_m) + ((\mathbf{u}_m \cdot \nabla) \mathbf{u}_m, \mathbf{v}_m) = \langle \mathbf{f}, \mathbf{v}_m \rangle_\Omega, \\ \forall S_m \in \mathbb{W}_m, \quad & (\partial_t T_m^*, S_m) + \alpha(\nabla T_m^*, \nabla S_m) + ((\mathbf{u}_m \cdot \nabla) T_m^*, S_m) \\ & = \langle g, S_m \rangle_\Omega - (\partial_t \bar{T}_b, S_m) - \alpha(\nabla \bar{T}_b, \nabla S_m) - ((\mathbf{u}_m \cdot \nabla) \bar{T}_b, S_m). \end{aligned} \quad (2.16)$$

We now study the convergence on n :

- The convergence of the linear terms is obvious.
- By taking S_m equal to $\partial_t T_m^*$ in (2.16), we easily derive that $\partial_t T_m^*$ is bounded in $L^2(0, \tilde{T}; L^2(\Omega))$. Due to the compactness of the imbedding of $H^1(0, \tilde{T}; L^2(\Omega)) \cap L^2(0, \tilde{T}; H^1(\Omega))$ into $L^2(0, \tilde{T}; L^2(\Omega))$, there exists another subsequence $(T_m^*)_n$ such that the sequence $(\nu(T_m^* + \bar{T}_b) \nabla \mathbf{v}_m)_n$ converges to $\nu(T^* + \bar{T}_b) \nabla \mathbf{v}_m$ a.e. in Ω . Since the norm of $(\nu(T_m^* + \bar{T}_b) \nabla \mathbf{v}_m)_n$ is bounded by $\nu_2 \|\nabla \mathbf{v}_m\|_{L^2(\Omega)^{d \times d}}$, using the Lebesgue dominated convergence theorem yields the convergence of $(\nu(T_m^* + \bar{T}_b) \nabla \mathbf{v}_m)_n$ to $\nu(T^* + \bar{T}_b) \nabla \mathbf{v}_m$ in $L^2(\Omega)^{d \times d}$.
- The convergence of the convection terms $(\mathbf{u}_n \cdot \nabla) \mathbf{u}_n$ and $(\mathbf{u}_n \cdot \nabla) T_n^*$ is more complex. So, for brevity we refer to [13, Chap. III, Lemma 3.2] for its proof (see also [10, Chap. V, Thm 1.4]).

Thus, passing to the limit on n , problem (2.16) leads to :

Find (\mathbf{u}, T^*) in $L^2(0, \tilde{T}; V(\Omega)) \times L^2(0, \tilde{T}; H_0^1(\Omega))$ such that

$$\begin{aligned} \forall \mathbf{v}_m \in \mathbb{V}_m, \quad & (\partial_t \mathbf{u}, \mathbf{v}_m) + (\nu(T^* + \bar{T}_b) \nabla \mathbf{u}, \nabla \mathbf{v}_m) + ((\mathbf{u} \cdot \nabla) \mathbf{u}, \mathbf{v}_m) = \langle \mathbf{f}, \mathbf{v}_m \rangle_\Omega, \\ \forall S_m \in \mathbb{W}_m, \quad & (\partial_t T^*, S_m) + \alpha(\nabla T^*, \nabla S_m) + ((\mathbf{u} \cdot \nabla) T^*, S_m) \\ & = \langle g, S_m \rangle_\Omega - (\partial_t \bar{T}_b, S_m) - \alpha(\nabla \bar{T}_b, \nabla S_m) - ((\mathbf{u} \cdot \nabla) \bar{T}_b, S_m), \end{aligned} \quad (2.17)$$

passing to the limit on m is now easy and by density of $\bigcup_{m \in \mathbb{N}} \mathbb{V}_m \times \mathbb{W}_m$ in $V(\Omega) \times H_0^1(\Omega)$, this yields

that the couple $(\mathbf{u}, T = T^* + \bar{T}_b)$ satisfies the second and third equation of (2.7), which gives (2.6) and (2.5).

2) By integrating the first equation of (2.12) between 0 and t , apply (2.10), and define the functional for all $\mathbf{v} \in H_0^1(\Omega)^d$:

$$\begin{aligned} L_t(\mathbf{v}) = \int_0^t & \left((\mathbf{f}(\cdot, s), \mathbf{v}) - (\nu((T^* + \bar{T}_b)(\cdot, s)) \nabla \mathbf{u}(\cdot, s), \nabla \mathbf{v}) - ((\mathbf{u}(\cdot, s) \cdot \nabla) \mathbf{u}(\cdot, s), \mathbf{v})) \right) ds \\ & - (\mathbf{u}(\cdot, t), \mathbf{v}) + (\mathbf{u}_0, \mathbf{v}). \end{aligned}$$

For all $t \in [0, \tilde{T}]$, this is a continuous linear functional on $H^1(\Omega)^d$ and, according to (2.10)–(2.12), it vanishes on $V(\Omega)$. Hence, see [11, Chap. I, Lemme 2.1], for each $t \in [0, \tilde{T}]$, there exists a function $P(t)$ in $L^2_\circ(\Omega)$ such that:

$$\forall \mathbf{v} \in H_0^1(\Omega)^d, \quad L_t(\mathbf{v}) = -(\operatorname{div} \mathbf{v}, P(t)), \quad (2.18)$$

$$\|P(t)\|_{L^2(\Omega)} \leq \sup_{\mathbf{v} \in H_0^1(\Omega)^d} \frac{L_t(\mathbf{v})}{\|\mathbf{v}\|_{H^1(\Omega)^d}}. \quad (2.19)$$

Now, differentiating (2.18) with respect to t , and setting

$$p = \partial_t P(t),$$

we obtain the first equation of (2.7) with $T = T^* + \overline{T}_b$. Thus, the variational problems (2.5)–(2.6)–(2.7) and (2.10)–(2.12) are equivalent and have a solution. It is interesting to read in [13, Chap. III, §1.5] analogous results for the Stokes problem.

Corollary 2.4 *If all the assumptions of Theorem 2.3 hold, the solution exhibited in this theorem satisfies,*

$$\begin{aligned} \|\mathbf{u}\|_{L^2(0, \tilde{T}; H^1(\Omega)^d)} + \|T\|_{L^2(0, \tilde{T}; H^1(\Omega))} &\leq c(\|T_0\|_{L^2(\Omega)} + \|T_b^0\|_{H^{\frac{1}{2}}(\partial\Omega)} + \|\mathbf{u}_0\|_{L^2(\Omega)^d}^2 + \|\mathbf{f}\|_{L^2(0, \tilde{T}; H^{-1}(\Omega)^d)}^2 \\ &\quad + \|T_b\|_{L^2(0, \tilde{T}; H^{\frac{1}{2}}(\partial\Omega))}^2 + \|g\|_{L^2(0, \tilde{T}; H^{-1}(\Omega))}). \end{aligned} \quad (2.20)$$

Proof: The estimate on \mathbf{u} being proved in Lemma 2.2, we only consider the estimate on T . We take S equal to T^* in (2.12), this gives

$$(\partial_t T^*, T^*) + \alpha(\nabla T^*, \nabla T^*) = \langle g, T^* \rangle_\Omega - (\partial_t \overline{T}_b, T^*) - \alpha(\nabla \overline{T}_b, \nabla T^*) - ((\mathbf{u} \cdot \nabla) \overline{T}_b, T^*).$$

It follows from the imbedding of $H^1(\Omega)$ into $L^4(\Omega)$ and the Cauchy-Schwarz inequality, that

$$\begin{aligned} \frac{1}{2} \frac{d}{dt} \|T^*\|_{L^2(\Omega)}^2 + \alpha c \|T^*\|_{H^1(\Omega)}^2 &\leq \|g\|_{H^{-1}(\Omega)} \|T^*\|_{H^1(\Omega)} + \|\partial_t \overline{T}_b\|_{L^2(\Omega)} \|T^*\|_{L^2(\Omega)} \\ &\quad + \alpha c \|\overline{T}_b\|_{H^1(\Omega)} \|T^*\|_{H^1(\Omega)} + c \|\mathbf{u}\|_{H^1(\Omega)^d} \|\overline{T}_b\|_{H^1(\Omega)} \|T^*\|_{H^1(\Omega)} \end{aligned}$$

thus,

$$\frac{1}{2} \frac{d}{dt} \|T^*\|_{L^2(\Omega)}^2 + \alpha c \|T^*\|_{H^1(\Omega)}^2 \leq c \left(\|g\|_{H^{-1}(\Omega)}^2 + \|\partial_t \overline{T}_b\|_{L^2(\Omega)}^2 + \|\overline{T}_b\|_{H^1(\Omega)}^2 + \frac{c'}{2} (\|\mathbf{u}\|_{H^1(\Omega)^d}^2 + \|\overline{T}_b\|_{H^1(\Omega)}^2)^2 \right)$$

Integrating between 0 and t , and by using (2.9) yields,

$$\begin{aligned} \|T^*(\cdot, t)\|_{L^2(\Omega)}^2 + \alpha c \int_0^t \|T^*(\cdot, s)\|_{H^1(\Omega)}^2 ds \\ \leq c \left(\|T^*(\cdot, 0)\|_{L^2(\Omega)}^2 + \int_0^t \|g(\cdot, s)\|_{H^{-1}(\Omega)}^2 ds + \int_0^t \|\partial_t \overline{T}_b(\cdot, s)\|_{L^2(\Omega)}^2 ds + \int_0^t \|T_b(\cdot, s)\|_{H^{\frac{1}{2}}(\partial\Omega)}^2 ds \right. \\ \left. + \frac{c'}{2} \left(\int_0^t \|\mathbf{u}(\cdot, s)\|_{H^1(\Omega)^d}^2 ds + \int_0^t \|T_b(\cdot, s)\|_{H^{\frac{1}{2}}(\partial\Omega)}^2 ds \right)^2 \right). \end{aligned}$$

Owing to (2.14) and (2.10),

$$\begin{aligned} \|T^*\|_{L^2(0, t; H^1(\Omega))} &\leq c(\|T_0\|_{L^2(\Omega)} + \|T_b^0\|_{H^{\frac{1}{2}}(\partial\Omega)} + \|\mathbf{u}_0\|_{L^2(0, t; H^{-1}(\Omega)^d)}^2 \\ &\quad + \|T_b\|_{H^1(0, t; H^{\frac{1}{2}}(\partial\Omega))}^2 + \|g\|_{L^2(0, t; H^{-1}(\Omega))}). \end{aligned}$$

Thus, the desired estimate follows from the triangle inequality.

Since the uniqueness for Navier–Stokes equations remains an open problem in dimension $d = 3$, we only consider the case of dimension $d = 2$ in the following theorem.

Theorem 2.5 *Assume that the function ν is Lipschitz-continuous, with Lipschitz constant ν^\diamond . There exist two positive constants c_\sharp^\diamond and c_b^\diamond such that*

(i) *if the data (\mathbf{f}, g, T_b) in $L^2(0, \tilde{T}; H^{-1}(\Omega)^2) \times L^2(0, \tilde{T}; H^{-1}(\Omega)) \times L^2(0, \tilde{T}; H^{\frac{1}{2}}(\partial\Omega))$, \mathbf{u}_0 in $L^2(\Omega)^2$, T_0 in $L^2(\Omega)$ and T_b^0 in $H^{\frac{1}{2}}(\partial\Omega)$ satisfy*

$$\begin{aligned} c_\sharp^\diamond (\|T_0\|_{L^2(\Omega)} + \|T_b^0\|_{H^{\frac{1}{2}}(\partial\Omega)} + \|\mathbf{u}_0\|_{L^2(\Omega)^2}^2 + \|\mathbf{f}\|_{L^2(0, \tilde{T}; H^{-1}(\Omega)^2)}^2 \\ + \|T_b\|_{L^2(0, \tilde{T}; H^{\frac{1}{2}}(\partial\Omega))}^2 + \|g\|_{L^2(0, \tilde{T}; H^{-1}(\Omega))}) < 1, \end{aligned}$$

(ii) *if problem (2.5)–(2.6)–(2.7) admits a solution (\mathbf{u}, p, T) such that \mathbf{u} belongs to $L^2(0, \tilde{T}; W^{1,q}(\Omega)^2)$ with $q > 2$, and satisfies*

$$c_b^\diamond \nu^\diamond |\mathbf{u}|_{L^2(0, \tilde{T}; W^{1,q}(\Omega)^2)} < 1, \quad (2.21)$$

then in dimension $d = 2$ this solution is unique.

Proof: We set,

$$c_1^\diamond = c(\|T_0\|_{L^2(\Omega)} + \|T_b^0\|_{H^{\frac{1}{2}}(\partial\Omega)} + \|\mathbf{u}_0\|_{L^2(\Omega)^2}^2 + \|\mathbf{f}\|_{L^2(0, \tilde{T}; H^{-1}(\Omega)^2)}^2 + \|T_b\|_{L^2(0, \tilde{T}; H^{\frac{1}{2}}(\partial\Omega))}^2 + \|g\|_{L^2(0, \tilde{T}; H^{-1}(\Omega))}).$$

where c is the constant in (2.20).

Let (\mathbf{u}_1, p_1, T_1) and (\mathbf{u}_2, p_2, T_2) be two solutions of problem (2.5)–(2.6)–(2.7) with \mathbf{u}_1 in $L^2(0, \tilde{T}; W^{1,q}(\Omega)^2)$ satisfying (2.21).

Setting for a while

$$\mathbf{u} = \mathbf{u}_1 - \mathbf{u}_2, \quad p = p_1 - p_2 \quad \text{and} \quad T = T_1 - T_2,$$

we proceed in three steps.

1) It follows from the third equation in (2.7) that, since T belongs to $H_0^1(\Omega)$,

$$\begin{aligned} \frac{1}{2} \frac{d}{dt} \|T\|_{L^2(\Omega)}^2 + \alpha \int_{\Omega} (\mathbf{grad} T)^2(\mathbf{x}, t) \, d\mathbf{x} &= - \int_{\Omega} ((\mathbf{u}_1 \cdot \nabla)T_1 - (\mathbf{u}_2 \cdot \nabla)T_2)(\mathbf{x}, t) T(\mathbf{x}, t) \, d\mathbf{x}, \\ &= - \int_{\Omega} ((\mathbf{u} \cdot \nabla)T_1)(\mathbf{x}, t) T(\mathbf{x}, t) \, d\mathbf{x}, \end{aligned}$$

whence,

$$\frac{1}{2} \frac{d}{dt} \|T\|_{L^2(\Omega)}^2 + \alpha |T(\cdot, t)|_{H^1(\Omega)}^2 \leq c_1^\diamond c_2^\diamond |\mathbf{u}(\cdot, t)|_{H^1(\Omega)^2} |T(\cdot, t)|_{H^1(\Omega)},$$

where c_2^\diamond is the square of the norm of the imbedding of $H_0^1(\Omega)$ into $L^4(\Omega)$.

By integrating between 0 and t ,

$$\alpha |T|_{L^2(0, t; H^1(\Omega))} \leq c_1^\diamond c_2^\diamond |\mathbf{u}|_{L^2(0, t; H^1(\Omega)^2)}, \quad (2.22)$$

2) Similarly, we derive from the first equation in (2.7) that

$$\begin{aligned} \int_{\Omega} \partial_t \mathbf{u}(\mathbf{x}, t) \mathbf{u}(\mathbf{x}, t) \, d\mathbf{x} + \int_{\Omega} \nu(T_2)(\mathbf{x}, t) (\mathbf{grad} \mathbf{u})^2(\mathbf{x}, t) \, d\mathbf{x} \\ = - \int_{\Omega} (\nu(T_1) - \nu(T_2))(\mathbf{x}, t) (\mathbf{grad} \mathbf{u}_1)(\mathbf{x}, t) : (\mathbf{grad} \mathbf{u})(\mathbf{x}, t) \, d\mathbf{x} \\ - \int_{\Omega} ((\mathbf{u} \cdot \nabla) \mathbf{u}_1)(\mathbf{x}, t) \cdot \mathbf{u}(\mathbf{x}, t) \, d\mathbf{x} \end{aligned}$$

Using appropriate Hölder's inequalities and the Lipschitz-continuity of ν yields

$$\begin{aligned} \frac{1}{2} \frac{d}{dt} \|\mathbf{u}\|_{L^2(\Omega)^2}^2 + \nu_1 |\mathbf{u}(\cdot, t)|_{H^1(\Omega)^2}^2 \\ \leq c_1^\diamond c_2^\diamond |\mathbf{u}(\cdot, t)|_{H^1(\Omega)^2}^2 + \nu^\diamond c_3^\diamond |\mathbf{u}_1(\cdot, t)|_{W^{1,q}(\Omega)^2} |T(\cdot, t)|_{H^1(\Omega)} |\mathbf{u}(\cdot, t)|_{H^1(\Omega)^2} \end{aligned}$$

where c_3^\diamond stands for the norm of the imbedding of $H_0^1(\Omega)$ into $L^{q^*}(\Omega)$, with $\frac{1}{q} + \frac{1}{q^*} = \frac{1}{2}$. By integrating between 0 and t and by using (2.22),

$$|\mathbf{u}|_{L^2(0,t;H^1(\Omega)^2)} \leq c_1^\diamond c_2^\diamond \nu_1^{-1} (1 + \nu^\diamond c_3^\diamond \alpha^{-1} |\mathbf{u}_1|_{L^2(0,t;W^{1,q}(\Omega)^2)}) |\mathbf{u}|_{L^2(0,t;H^1(\Omega)^2)},$$

By choosing

$$c_\#^\diamond = c_2^\diamond \nu_1^{-1} \quad \text{and} \quad c_b^\diamond = c_1^\diamond c_2^\diamond \nu_1^{-1} c_3^\diamond \alpha^{-1},$$

such that

$$c_1^\diamond c_2^\diamond \nu_1^{-1} (1 + \nu^\diamond c_3^\diamond \alpha^{-1} |\mathbf{u}_1|_{L^2(0,t;W^{1,q}(\Omega)^2)}) < 1,$$

we obtain that \mathbf{u} is zero, so that \mathbf{u}_1 and \mathbf{u}_2 are equal.

3) It then follows from (2.22) that T_1 and T_2 are equal. Finally, the function p satisfies

$$\forall \mathbf{v} \in H_0^1(\Omega)^2, \quad - \int_{\Omega} (\operatorname{div} \mathbf{v})(\mathbf{x}) p(\mathbf{x}) \, d\mathbf{x} = 0,$$

so that it is zero (see [11, Chap. I, §2] for instance). Thus p_1 and p_2 coincide. This concludes the proof.

3 The discrete problem

As already explained we propose a discretization of problem (2.5)–(2.6)–(2.7). For its a priori analysis, it is simpler to work directly on the fully discrete problem. However we prefer to split the discretization into two steps: First a semi-discretization in time, and next the full discretization.

3.1 The time semi-discrete problem.

Since we intend to work with non uniform time steps, we introduce a partition of the interval $[0, \tilde{T}]$ into subintervals $[t_{j-1}, t_j]$, $1 \leq j \leq J$, such that

$$0 = t_0 < t_1 < \dots < t_J = \tilde{T}.$$

We denote by τ_j the time step $t_j - t_{j-1}$, by τ the J -tuple (τ_1, \dots, τ_J) and by $|\tau|$ the maximum of the τ_j , $1 \leq j \leq J$.

As explained in the introduction, the time discretization of the problem relies on the use of a backward Euler's scheme, where the nonlinear terms $(\mathbf{u} \cdot \nabla) \mathbf{u}$ and $(\mathbf{u} \cdot \nabla) T$ are treated in an implicit way and for the sake of simplicity, we shall present our analysis by approximating the nonlinear term by $\nu(T^{j-1})$. Thus, for any data (\mathbf{f}, g, T_b) in $\mathcal{C}^0(0, \tilde{T}; H^{-1}(\Omega)^d) \times \mathcal{C}^0(0, \tilde{T}; H^{-1}(\Omega)) \times \mathcal{C}^0(0, \tilde{T}; H^{\frac{1}{2}}(\partial\Omega))$, T_0 in $H^1(\Omega)$ and \mathbf{u}_0 in $H_0^1(\Omega)^d$ satisfying (2.4), we consider the following scheme:

Find $(\mathbf{u}^j)_{0 \leq j \leq J}$ in $(H_0^1(\Omega)^d)^{J+1}$, $(p^j)_{1 \leq j \leq J}$ in $(L_o^2(\Omega))^J$ and $(T^j)_{0 \leq j \leq J}$ in $(H^1(\Omega))^{J+1}$ such that

$$\mathbf{u}^0 = \mathbf{u}_0 \quad \text{and} \quad T^0 = T_0 \quad \text{in } \Omega, \tag{3.1}$$

such that, for all j , $1 \leq j \leq J$

$$T^j = T_b^j \quad \text{on } \partial\Omega, \tag{3.2}$$

and, for all j , $1 \leq j \leq J$,

$$\begin{aligned}
\forall \mathbf{v} \in H_0^1(\Omega)^d, \quad & (\mathbf{u}^j, \mathbf{v}) + \tau_j(\nu(T^{j-1})\nabla\mathbf{u}^j, \nabla\mathbf{v}) + \tau_j((\mathbf{u}^j \cdot \nabla)\mathbf{u}^j, \mathbf{v}) \\
& - \tau_j(\operatorname{div} \mathbf{v}, p^j) = (\mathbf{u}^{j-1}, \mathbf{v}) + \tau_j\langle \mathbf{f}^j, \mathbf{v} \rangle_\Omega, \\
\forall q \in L_0^2(\Omega), \quad & -(\operatorname{div} \mathbf{u}^j, q) = 0, \\
\forall S \in H_0^1(\Omega), \quad & (T^j, S) + \alpha\tau_j(\nabla T^j, \nabla S) + \tau_j((\mathbf{u}^j \cdot \nabla)T^j, S) = (T^{j-1}, S) + \tau_j\langle g^j, S \rangle_\Omega,
\end{aligned} \tag{3.3}$$

where $\mathbf{f}^j = \mathbf{f}(\cdot, t_j)$, $g^j = g(\cdot, t_j)$ and $T_b^j = T_b(\cdot, t_j)$.

As for the exact problem, it is suitable to lift the boundary data T_b^j : For $0 \leq j \leq J$, we set $\overline{T}_b^j = \mathcal{R}T_b^j$, where the operator \mathcal{R} is introduced in Section 2, and we have

$$\|\overline{T}_b^j\|_{H^1(\Omega)} \leq c_\diamond \|T_b^j\|_{H^{\frac{1}{2}}(\partial\Omega)}, \tag{3.4}$$

with the same constant c_\diamond as in (2.9). Thus, when setting $T^{*j} = T^j - \overline{T}_b^j$, if (\mathbf{u}^j, p^j, T^j) is any solution of (3.1)–(3.2)–(3.3), the sequence (\mathbf{u}^j, T^{*j}) belongs to $V(\Omega)^{J+1} \times (H_0^1(\Omega)^d)^{J+1}$ and satisfies

$$\mathbf{u}^0 = \mathbf{u}_0 \quad \text{and} \quad T^{*0} = T^0 - \overline{T}_b^0 \quad \text{in } \Omega, \tag{3.5}$$

$$\begin{aligned}
\forall \mathbf{v} \in V(\Omega), \quad & (\mathbf{u}^j, \mathbf{v}) + \tau_j(\nu(T^{*j-1} + \overline{T}_b^{j-1})\nabla\mathbf{u}^j, \nabla\mathbf{v}) + \tau_j((\mathbf{u}^j \cdot \nabla)\mathbf{u}^j, \mathbf{v}) = (\mathbf{u}^{j-1}, \mathbf{v}) + \tau_j\langle \mathbf{f}^j, \mathbf{v} \rangle_\Omega, \\
\forall S \in H_0^1(\Omega), \quad & (T^{*j}, S) + \alpha\tau_j(\nabla T^{*j}, \nabla S) + \tau_j((\mathbf{u}^j \cdot \nabla)T^{*j}, S) = (T^{*j-1}, S) + \tau_j\langle g^j, S \rangle_\Omega - (\overline{T}_b^j, S) \\
& + (\overline{T}_b^{j-1}, S) - \alpha\tau_j(\nabla\overline{T}_b^j, \nabla S) - \tau_j((\mathbf{u}^j \cdot \nabla)\overline{T}_b^j, S).
\end{aligned} \tag{3.6}$$

We skip the proof of existence of (\mathbf{u}^j, T^{*j}) which is rather standard (and simpler than in Section 2). Moreover, if (\mathbf{u}^j, T^{*j}) is any solution of (3.5)–(3.6), we define the linear mapping

$$L_j(\mathbf{v}) = \langle \mathbf{f}^j, \mathbf{v} \rangle_\Omega - (\nu(T^{*j-1} + \overline{T}_b^{j-1})\nabla\mathbf{u}^j, \nabla\mathbf{v}) - ((\mathbf{u}^j \cdot \nabla)\mathbf{u}^j, \mathbf{v}) - \frac{1}{\tau_j}(\mathbf{u}^j - \mathbf{u}^{j-1}, \mathbf{v}).$$

Clearly, the mapping $\mathbf{v} \mapsto L_j(\mathbf{v})$ is a continuous linear functional on $H_0^1(\Omega)^d$ that vanishes on $V(\Omega)$. The inf-sup condition (2.8) implies that there exists an element p^j in $L_0^2(\Omega)$ such that

$$\forall \mathbf{v} \in H_0^1(\Omega)^d, \quad L_j(\mathbf{v}) = -(\operatorname{div} \mathbf{v}, p^j), \tag{3.7}$$

$$\|p^j\|_{L^2(\Omega)} \leq \sup_{\mathbf{v} \in H_0^1(\Omega)^d} \frac{L_j(\mathbf{v})}{\|\mathbf{v}\|_{H^1(\Omega)^d}}. \tag{3.8}$$

Hence $(\mathbf{u}^j, p^j, T^j = T^{*j} + \overline{T}_b^j)$ is a solution of (3.1)–(3.2)–(3.3). This enables us to state the next proposition.

Proposition 3.1 *Assume that the data (\mathbf{f}, g, T_b) belong to*

$$\mathcal{C}^0(0, \tilde{T}, H^{-1}(\Omega)^d) \times \mathcal{C}^0(0, \tilde{T}, H^{-1}(\Omega)) \times \mathcal{C}^0(0, \tilde{T}; H^{\frac{1}{2}}(\partial\Omega)),$$

that the initial velocity \mathbf{u}_0 belongs to $L^2(\Omega)^d$ and the initial temperature T_0 belongs to $H^1(\Omega)$. Then, problem (3.1)–(3.2)–(3.3) has a solution (\mathbf{u}^j, p^j, T^j) such that

$$\mathbf{u}^j \in H_0^1(\Omega)^d, \quad 1 \leq j \leq J, \quad p^j \in L_0^2(\Omega), \quad 1 \leq j \leq J, \quad \text{and} \quad T^j \in H^1(\Omega), \quad 0 \leq j \leq J.$$

Moreover the sequence of velocities $(\mathbf{u}^j)_{1 \leq j \leq J}$ satisfies for $j \geq 1$

$$\|\mathbf{u}^j\|_{H^1(\Omega)^d} \leq \|\mathbf{u}^0\|_{L^2(\Omega)^d} + \sqrt{\frac{1}{c\nu_1}} \left(\sum_{m=1}^j \tau_m \|\mathbf{f}^m\|_{H^{-1}(\Omega)^d}^2 \right)^{\frac{1}{2}}. \tag{3.9}$$

Proof: We only prove the bound (3.9). We take $\mathbf{v} = \mathbf{u}^j$ in the first equation of (3.3) and we use the relation

$$a(a-b) = \frac{1}{2}a^2 + \frac{1}{2}(a-b)^2 - \frac{1}{2}b^2, \quad (3.10)$$

we obtain

$$\begin{aligned} \frac{1}{2}(\|\mathbf{u}^j\|_{L^2(\Omega)^d}^2 - \|\mathbf{u}^{j-1}\|_{L^2(\Omega)^d}^2 + \|\mathbf{u}^j - \mathbf{u}^{j-1}\|_{L^2(\Omega)^d}^2) + c\nu_1\tau_j\|\mathbf{u}^j\|_{H^1(\Omega)^d}^2 \\ \leq \tau_j\|\mathbf{f}^j\|_{H^{-1}(\Omega)^d}\|\mathbf{u}^j\|_{H^1(\Omega)^d}, \end{aligned}$$

whence

$$\|\mathbf{u}^j\|_{L^2(\Omega)^d}^2 - \|\mathbf{u}^{j-1}\|_{L^2(\Omega)^d}^2 + \|\mathbf{u}^j - \mathbf{u}^{j-1}\|_{L^2(\Omega)^d}^2 + c\nu_1\tau_j\|\mathbf{u}^j\|_{H^1(\Omega)^d}^2 \leq \frac{\tau_j}{c\nu_1}\|\mathbf{f}^j\|_{H^{-1}(\Omega)^d}^2.$$

Summing this inequality over j , we obtain

$$\begin{aligned} \|\mathbf{u}^j\|_{L^2(\Omega)^d}^2 + \sum_{m=1}^j \|\mathbf{u}^m - \mathbf{u}^{m-1}\|_{L^2(\Omega)^d}^2 + c\nu_1 \sum_{m=1}^j \tau_m \|\mathbf{u}^m\|_{H^1(\Omega)^d}^2 \\ \leq \|\mathbf{u}^0\|_{L^2(\Omega)^d}^2 + \frac{1}{c\nu_1} \sum_{m=1}^j \tau_m \|\mathbf{f}^m\|_{H^{-1}(\Omega)^d}^2. \end{aligned}$$

This concludes the proof.

3.2 The time and space discrete problem

We are now interested in the discretization of problem (3.1)–(3.2)–(3.3) in the case where $\Omega =]-1, 1[^d$, $d = 2$ or 3 . Let N be an integer ≥ 2 , we introduce the space $\mathbb{P}_N(\Omega)$ of polynomials with d variables and degree $\leq N$ with respect to each variable and the space $\mathbb{P}_N^0(\Omega)$ of polynomials in $\mathbb{P}_N(\Omega)$ vanishing on the boundary of Ω . Relying on these definitions, we introduce the discrete spaces

$$\begin{aligned} \mathbb{X}_N = \mathbb{P}_N^0(\Omega)^d, \quad \mathbb{M}_N = \mathbb{P}_{N-2}(\Omega) \cap L^2_\circ(\Omega), \\ \mathbb{Y}_N = \mathbb{P}_N(\Omega), \quad \mathbb{Y}_N^0 = \mathbb{Y}_N \cap H_0^1(\Omega). \end{aligned}$$

The reason for the choice of the space \mathbb{M}_N is that it does not contain spurious modes, see [5, Chap V]. We introduce the space $\mathbb{P}_N(-1, 1)$ of restrictions to $[-1, 1]$ of polynomials with degree $\leq N$. Setting $\xi_0 = -1$ and $\xi_N = 1$, we consider the $N - 1$ nodes ξ_m , $1 \leq m \leq N - 1$, and the $N + 1$ weights ρ_m , $0 \leq m \leq N$, of the Gauss-Lobatto quadrature formula. We recall that the following equality holds

$$\forall \phi \in \mathbb{P}_{2N-1}(-1, 1), \quad \int_{-1}^1 \phi(\zeta) d\zeta = \sum_{i=0}^N \phi(\xi_i) \rho_i. \quad (3.11)$$

We also recall [6, Chap IV, Cor. 1.10] the following property, which is useful in what follows

$$\forall \phi_N \in \mathbb{P}_N(-1, 1), \quad \|\phi_N\|_{L^2(-1,1)}^2 \leq \sum_{i=0}^N \phi_N^2(\xi_i) \rho_i \leq 3 \|\phi_N\|_{L^2(-1,1)}^2. \quad (3.12)$$

Relying on this formula, we introduce the discrete product, defined on continuous functions u and v by

$$(u, v)_N = \begin{cases} \sum_{i=0}^N \sum_{j=0}^N u(\xi_i, \xi_j) v(\xi_i, \xi_j) \rho_i \rho_j & \text{if } d = 2, \\ \sum_{i=0}^N \sum_{j=0}^N \sum_{k=0}^N u(\xi_i, \xi_j, \xi_k) v(\xi_i, \xi_j, \xi_k) \rho_i \rho_j \rho_k & \text{if } d = 3. \end{cases}$$

It follows from (3.12) that it is a scalar product on $\mathbb{P}_N(\Omega)$. Let \mathcal{I}_N denote the Lagrange interpolation operator at the nodes of the grid

$$\Sigma_N = \begin{cases} \{(\xi_i, \xi_j); 0 \leq i, j \leq N\} & \text{if } d = 2, \\ \{(\xi_i, \xi_j, \xi_k); 0 \leq i, j, k \leq N\} & \text{if } d = 3. \end{cases}$$

with values in the space $\mathbb{P}_N(\Omega)$. Finally, let $i_N^{\partial\Omega}$ stand for the Lagrange interpolation operator at the nodes of $\Sigma_N \cap \partial\Omega$ with values in the space of traces of $\mathbb{P}_N(\Omega)$.

We now assume that the function T_b is continuous on $\partial\Omega \times [0, \tilde{T}]$ and \mathbf{f}, g are continuous on $\bar{\Omega} \times [0, \tilde{T}]$. Thus the fully discrete problem is constructed from (3.1)–(3.2)–(3.3) by using the Galerkin method combined with numerical integration. It reads

Find $(\mathbf{u}_N^j)_{0 \leq j \leq J}$ in \mathbb{X}_N^{J+1} , $(p_N^j)_{1 \leq j \leq J}$ in \mathbb{M}_N^J and $(T_N^j)_{0 \leq j \leq J}$ in \mathbb{Y}_N^{J+1} such that

$$\mathbf{u}_N^0 = \mathcal{I}_N \mathbf{u}_0 \quad \text{and} \quad T_N^0 = \mathcal{I}_N T_0 \quad \text{in } \Omega, \quad (3.13)$$

for $1 \leq j \leq J$,

$$T_N^j = i_N^{\partial\Omega} T_b^j \quad \text{on } \partial\Omega, \quad (3.14)$$

and, for $1 \leq j \leq J$,

$$\begin{aligned} \forall \mathbf{v}_N \in \mathbb{X}_N, \quad & (\mathbf{u}_N^j, \mathbf{v}_N)_N + \tau_j (\nu (T_N^{j-1}) \mathbf{grad} \mathbf{u}_N^j, \mathbf{grad} \mathbf{v}_N)_N + \tau_j ((\mathbf{u}_N^j \cdot \nabla) \mathbf{u}_N^j, \mathbf{v}_N)_N \\ & - \tau_j (\operatorname{div} \mathbf{v}_N, p_N^j)_N = (\mathbf{u}_N^{j-1}, \mathbf{v}_N)_N + \tau_j (\mathbf{f}^j, \mathbf{v}_N)_N, \\ \forall q_N \in \mathbb{M}_N, \quad & -(\operatorname{div} \mathbf{u}_N^j, q_N)_N = 0, \\ \forall S_N \in \mathbb{Y}_N^0, \quad & (T_N^j, S_N)_N + \alpha \tau_j (\mathbf{grad} T_N^j, \mathbf{grad} S_N)_N + \tau_j ((\mathbf{u}_N^j \cdot \nabla) T_N^j, S_N)_N \\ & = (T_N^{j-1}, S_N)_N + \tau_j (g^j, S_N)_N. \end{aligned} \quad (3.15)$$

The existence of a solution can be derived by similar arguments as in Section 2, however we prefer to follow the approach of [7] to obtain directly more precise results.

We recall the existence of a discrete inf-sup condition between the spaces \mathbb{X}_N and \mathbb{M}_N , see [5, Chap. V, Thm 25.7]

$$\forall q_N \in \mathbb{M}_N, \quad \sup_{\mathbf{v}_N \in \mathbb{X}_N} \frac{\int_{\Omega} (\operatorname{div} \mathbf{v}_N)(\mathbf{x}) q_N(\mathbf{x}) \, d\mathbf{x}}{\|\mathbf{v}_N\|_{H^1(\Omega)^d}} \geq c N^{-(d-1)/2} \|q_N\|_{L^2(\Omega)}. \quad (3.16)$$

As for the continuous problem, we introduce the kernel

$$V_N(\Omega) = \{\mathbf{v}_N \in \mathbb{X}_N; \forall q_N \in \mathbb{M}_N, (\operatorname{div} \mathbf{v}_N, q_N)_N = 0\}. \quad (3.17)$$

4 A priori error analysis

4.1 New formulation

For any real-valued measurable function θ on Ω , we introduce the modified Stokes operator $\mathcal{S}(\theta)$, which associates with any data \mathbf{F} in $L^2(0, \tilde{T}; H^{-1}(\Omega)^d)$ and \mathbf{u}_0 in $H_0^1(\Omega)^d$ the part \mathbf{u} of the solution (\mathbf{u}, p) of the generalized Stokes problem

Find (\mathbf{u}, p) in $L^2(0, \tilde{T}; H_0^1(\Omega)^d) \times L^2(0, \tilde{T}; L_0^2(\Omega))$ such that

$$\mathbf{u} = \mathbf{0} \quad \text{on } \partial\Omega \times]0, \tilde{T}[\quad \text{and} \quad \mathbf{u}|_{t=0} = \mathbf{u}_0 \quad \text{in } \Omega, \quad (4.1)$$

and, for a.e. t in $]0, \tilde{T}[$,

$$\begin{aligned} \forall \mathbf{v} \in H_0^1(\Omega)^d, \quad & \int_{\Omega} \partial_t \mathbf{u}(\mathbf{x}, t) \mathbf{v}(\mathbf{x}) d\mathbf{x} + \int_{\Omega} \nu(\theta) \nabla \mathbf{u}(\mathbf{x}) \nabla \mathbf{v}(\mathbf{x}) d\mathbf{x} \\ & - \int_{\Omega} (\operatorname{div} \mathbf{v})(\mathbf{x}) p(\mathbf{x}) d\mathbf{x} = \langle \mathbf{F}(\cdot, t), \mathbf{v} \rangle_{\Omega}, \quad (4.2) \\ \forall q \in L_0^2(\Omega), \quad & - \int_{\Omega} (\operatorname{div} \mathbf{u})(\mathbf{x}) q(\mathbf{x}) d\mathbf{x} = 0. \end{aligned}$$

We also consider the operator $\tilde{\mathcal{S}}(\theta)$ which associates with any data \mathbf{F} in $L^2(0, \tilde{T}; H^{-1}(\Omega)^d)$ and \mathbf{u}_0 in $H_0^1(\Omega)^d$ the part p of the solution (\mathbf{u}, p) of this same problem.

We introduce the inverse \mathcal{L} of the Laplace operator which associates with any data (G, T_b, T_0) in $L^2(0, \tilde{T}; H^{-1}(\Omega)) \times L^2(0, \tilde{T}; H^{\frac{1}{2}}(\partial\Omega)) \times H^1(\Omega)$ the solution T of the problem

Find T in $L^2(0, \tilde{T}; H^1(\Omega))$ such that

$$T = T_b \quad \text{on } \partial\Omega \times]0, \tilde{T}[\quad \text{and} \quad T|_{t=0} = T_0 \quad \text{in } \Omega, \quad (4.3)$$

and, for a.e. t in $]0, \tilde{T}[$,

$$\forall S \in H_0^1(\Omega), \quad \int_{\Omega} \partial_t T(\mathbf{x}, t) S(\mathbf{x}) d\mathbf{x} + \alpha \int_{\Omega} \nabla T(\mathbf{x}, t) \cdot \nabla S(\mathbf{x}) d\mathbf{x} = \langle G(\cdot, t), S \rangle_{\Omega} \quad (4.4)$$

Thus it is readily checked that, when setting $U = (\mathbf{u}, T)$ and with this notation, problem (2.5)–(2.6)–(2.7) can be written equivalently as

$$\mathcal{F}(U) = U - \begin{pmatrix} \mathcal{S}(T) & 0 \\ 0 & \mathcal{L} \end{pmatrix} G(U) = 0, \quad (4.5)$$

with

$$G(U) = \begin{pmatrix} (\mathcal{G}_1(U), \mathbf{u}_0) \\ (\mathcal{G}_2(U), T_b, T_0) \end{pmatrix} \quad \text{and} \quad \begin{pmatrix} \mathcal{G}_1(U) \\ \mathcal{G}_2(U) \end{pmatrix} = \begin{pmatrix} \mathbf{f} - (\mathbf{u} \cdot \nabla) \mathbf{u} \\ g - (\mathbf{u} \cdot \nabla) T \end{pmatrix}. \quad (4.6)$$

4.1.1 About the time discretization

From now on, we denote by \mathbf{u}_τ and T_τ the functions which are affine on each interval $[t_{j-1}, t_j]$ and equal to \mathbf{u}^j and T^j respectively at each time t_j , $0 \leq j \leq J$, and by p_τ the function which is piecewise constant equal to p^j on each interval $]t_{j-1}, t_j]$, $1 \leq j \leq J$. For each function \mathbf{v} continuous on $[0, \tilde{T}]$, we also introduce the functions $\pi_\tau^+ \mathbf{v}$ and $\pi_\tau^- \mathbf{v}$ which are constant, equal to $\mathbf{v}(t_j)$ and $\mathbf{v}(t_{j-1})$, respectively, on each interval $]t_{j-1}, t_j]$, $1 \leq j \leq J$.

Let $\mathcal{S}_\tau(\theta)$ denote the following semi-discrete operator: For any data \mathbf{F} in $\mathcal{C}^0(0, \tilde{T}; H^{-1}(\Omega)^d)$ and \mathbf{u}_0 in $H_0^1(\Omega)^d$, $\mathcal{S}_\tau(\theta)(\mathbf{F}, \mathbf{u}_0)$ is equal to the function \mathbf{u}_τ associated with the solution of the semi-discrete problem (\mathbf{u}^j, p^j) solutions of

Find $(\mathbf{u}^j)_{0 \leq j \leq J}$ in $(H_0^1(\Omega)^d)^{J+1}$ and $(p^j)_{1 \leq j \leq J}$ in $(L_0^2(\Omega))^J$ such that

$$\mathbf{u}^j = \mathbf{0} \quad \text{on } \partial\Omega, \quad 1 \leq j \leq J \quad \text{and} \quad \mathbf{u}^0 = \mathbf{u}_0 \quad \text{in } \Omega, \quad (4.7)$$

and, for $1 \leq j \leq J$,

$$\begin{aligned} \forall \mathbf{v} \in H_0^1(\Omega)^d, \quad & \int_{\Omega} \left(\frac{\mathbf{u}^j - \mathbf{u}^{j-1}}{\tau_j} \right) (\mathbf{x}) \mathbf{v}(\mathbf{x}) d\mathbf{x} + \int_{\Omega} \nu(\theta) \nabla \mathbf{u}^j(\mathbf{x}) \nabla \mathbf{v}(\mathbf{x}) d\mathbf{x} \\ & - \int_{\Omega} (\operatorname{div} \mathbf{v})(\mathbf{x}) p^j(\mathbf{x}) d\mathbf{x} = \langle \mathbf{F}(\cdot, t_j), \mathbf{v} \rangle_{\Omega}, \quad (4.8) \\ \forall q \in L_0^2(\Omega), \quad & - \int_{\Omega} (\operatorname{div} \mathbf{u}^j)(\mathbf{x}) q(\mathbf{x}) d\mathbf{x} = 0. \end{aligned}$$

We also consider the operator $\widetilde{\mathcal{S}}_{\tau}(\theta)$ which associates with any datum \mathbf{F} in $\mathcal{C}^0(0, \widetilde{T}; H^{-1}(\Omega)^d)$ and \mathbf{u}_0 in $H_0^1(\Omega)^d$ the part p_{τ} of the solution (\mathbf{u}^j, p^j) of this same problem.

Let finally \mathcal{L}_{τ} denote the semi-discrete operator: For any data (G, T_b, T_0) in $\mathcal{C}^0(0, \widetilde{T}; H^{-1}(\Omega)) \times \mathcal{C}^0(0, \widetilde{T}; H^{\frac{1}{2}}(\partial\Omega)) \times H^1(\Omega)$, $\mathcal{L}_{\tau}(G, T_b, T_0)$ is equal to the function T_{τ} associated with the T^j solutions of

Find $(T^j)_{0 \leq j \leq J}$ in $(H^1(\Omega))^{J+1}$ such that

$$T^j(\cdot, t) = T_b(\cdot, t_j) \quad \text{on } \partial\Omega, \quad 1 \leq j \leq J \quad \text{and} \quad T^0 = T_0 \quad \text{in } \Omega, \quad (4.9)$$

and, for $1 \leq j \leq J$,

$$\forall S \in H_0^1(\Omega), \quad \int_{\Omega} \left(\frac{T^j - T^{j-1}}{\tau_j} \right) (\mathbf{x}) S(\mathbf{x}) d\mathbf{x} + \alpha \int_{\Omega} \nabla T^j(\mathbf{x}) \cdot \nabla S(\mathbf{x}) d\mathbf{x} = \langle G(\cdot, t_j), S \rangle_{\Omega} \quad (4.10)$$

Thus, when setting $U_{\tau} = (\mathbf{u}_{\tau}, T_{\tau})$ problem (3.1)–(3.2)–(3.3) can equivalently be written

$$\mathcal{F}_{\tau}(U_{\tau}) = U_{\tau} - \begin{pmatrix} \mathcal{S}_{\tau}(\pi_{\tau}^{-} T_{\tau}) & 0 \\ 0 & \mathcal{L}_{\tau} \end{pmatrix} G(U_{\tau}) = 0, \quad (4.11)$$

where G is defined in (4.6).

Now we estimate the error on the velocity between the semi-discrete scheme (4.7)–(4.8) and the continuous problem (4.1)–(4.2). The error equation is obtained by subtracting (4.8) from (4.2) at time t_j . Thus the sequence $(\mathbf{e}_{\mathbf{u}}^j)_{0 \leq j \leq J}$, defined by $\mathbf{e}_{\mathbf{u}}^j = \mathbf{u}(\cdot, t_j) - \mathbf{u}^j$ satisfies $\mathbf{e}_{\mathbf{u}}^0 = \mathbf{0}$ and, for $1 \leq j \leq J$,

$$\begin{aligned} \forall \mathbf{v} \in H_0^1(\Omega)^d, \quad & (\mathbf{e}_{\mathbf{u}}^j, \mathbf{v}) + \tau_j (\nu(\theta) \nabla \mathbf{e}_{\mathbf{u}}^j, \nabla \mathbf{v}) - \tau_j \int_{\Omega} (\operatorname{div} \mathbf{v})(\mathbf{x}) (p(\cdot, t_j) - p^j)(\mathbf{x}) d\mathbf{x} \\ & = (\mathbf{e}_{\mathbf{u}}^{j-1}, \mathbf{v}) + \tau_j \langle \boldsymbol{\varepsilon}_{\mathbf{u}}^j, \mathbf{v} \rangle_{\Omega}, \\ \forall q \in L_0^2(\Omega), \quad & - \int_{\Omega} (\operatorname{div} \mathbf{e}_{\mathbf{u}}^j)(\mathbf{x}) q(\mathbf{x}) d\mathbf{x} = 0. \end{aligned} \quad (4.12)$$

where the consistency error $\boldsymbol{\varepsilon}_{\mathbf{u}}^j$ is given by

$$\boldsymbol{\varepsilon}_{\mathbf{u}}^j = \frac{\mathbf{u}(\cdot, t_j) - \mathbf{u}(\cdot, t_{j-1})}{\tau_j} - (\partial_t \mathbf{u})(\cdot, t_j). \quad (4.13)$$

Proposition 4.1 *Assume that the velocity \mathbf{u} of the solution (\mathbf{u}, p) of problem (4.1)–(4.2) belongs to the space $H^2(0, \widetilde{T}; H^1(\Omega)^d)$. Then, the following a priori error estimates holds for $1 \leq j \leq J$,*

$$\|\mathbf{u}(\cdot, t_j) - \mathbf{u}^j\|_{H^1(\Omega)^d} \leq \frac{1}{\sqrt{3c\nu_1}} |\tau| \|\mathbf{u}\|_{H^2(0, t_j; H^1(\Omega)^d)}, \quad (4.14)$$

$$\left(\sum_{m=1}^j \tau_m \left\| \frac{\mathbf{u}(\cdot, t_m) - \mathbf{u}^m}{\tau_m} - \frac{\mathbf{u}(\cdot, t_{m-1}) - \mathbf{u}^{m-1}}{\tau_m} \right\|_{L^2(\Omega)^d}^2 \right)^{\frac{1}{2}} \leq \frac{|\tau|}{\sqrt{3\nu_1}} \|\mathbf{u}\|_{H^2(0, t_j; H^1(\Omega)^d)}, \quad (4.15)$$

$$\left(\sum_{m=1}^j \tau_m \|p(\cdot, t_m) - p^m\|_{L^2(\Omega)} \right)^{\frac{1}{2}} \leq \frac{1}{\sqrt{3c\nu_1}} |\tau| \|\mathbf{u}\|_{H^2(0,t_j;H^1(\Omega)^d)}. \quad (4.16)$$

Proof: 1) Applying the same arguments as for of (3.9) to problem (4.12) yield

$$\|\mathbf{e}_{\mathbf{u}}^j\|_{H^1(\Omega)^d}^2 \leq \frac{1}{c\nu_1} \sum_{m=1}^j \tau_m \|\boldsymbol{\varepsilon}_{\mathbf{u}}^m\|_{H^{-1}(\Omega)^d}^2. \quad (4.17)$$

In order to estimate $\boldsymbol{\varepsilon}_{\mathbf{u}}^m$, we use Taylor's expansion:

$$\mathbf{u}(\cdot, t_j) - \mathbf{u}(\cdot, t_{j-1}) = \tau_j (\partial_t \mathbf{u})(\cdot, t_j) - \int_{t_{j-1}}^{t_j} (t - t_{j-1}) (\partial_{tt}^2 \mathbf{u})(\cdot, t) dt,$$

whence

$$\boldsymbol{\varepsilon}_{\mathbf{u}}^j = -\frac{1}{\tau_j} \int_{t_{j-1}}^{t_j} (t - t_{j-1}) (\partial_{tt}^2 \mathbf{u})(\cdot, t) dt.$$

A Cauchy-Schwarz inequality in this formula gives

$$\|\boldsymbol{\varepsilon}_{\mathbf{u}}^j\|_{L^2(\Omega)^d} \leq \frac{1}{\sqrt{3}} \tau_j^{\frac{1}{2}} \|\mathbf{u}\|_{H^2(t_{j-1}, t_j; H^1(\Omega)^d)} \quad (4.18)$$

The desired estimate is obtained by substituting this bound into (4.17).

2) By taking \mathbf{v} equal to $\mathbf{e}_{\mathbf{u}}^j - \mathbf{e}_{\mathbf{u}}^{j-1}$ in (4.12) and recalling that $\mathbf{e}_{\mathbf{u}}^0$ is zero and $(\operatorname{div} \mathbf{v}, p(\cdot, t_j) - p^j)$ vanishes on Ω , lead in particular to

$$\sum_{m=1}^j \tau_m \left\| \frac{(\mathbf{u}(\cdot, t_m) - \mathbf{u}^m) - (\mathbf{u}(\cdot, t_{m-1}) - \mathbf{u}^{m-1})}{\tau_m} \right\|_{L^2(\Omega)^d}^2 \leq \frac{1}{\nu_1} \sum_{m=1}^j \tau_m \|\boldsymbol{\varepsilon}_{\mathbf{u}}^m\|_{L^2(\Omega)^d}^2, \quad (4.19)$$

and by using (4.18) we obtain the desired result.

3) To prove the third inequality (4.16) we derive from the error equation (4.12) that

$$\forall \mathbf{v} \in H_0^1(\Omega)^d, \quad -(\operatorname{div} \mathbf{v}, p(\cdot, t_j) - p^j) = -\left(\frac{\mathbf{e}_{\mathbf{u}}^{j-1} - \mathbf{e}_{\mathbf{u}}^j}{\tau_j}, \mathbf{v} \right) - (\nu(\theta) \nabla \mathbf{e}_{\mathbf{u}}^j, \nabla \mathbf{v}) + \langle \boldsymbol{\varepsilon}_{\mathbf{u}}^j, \mathbf{v} \rangle_{\Omega}.$$

We use inf-sup condition (2.8). Then this equation implies

$$\|p(\cdot, t_j) - p^j\|_{L^2(\Omega)} \leq \left\| \frac{\mathbf{e}_{\mathbf{u}}^{j-1} - \mathbf{e}_{\mathbf{u}}^j}{\tau_j} \right\|_{L^2(\Omega)^d} + c\nu_2 \|\mathbf{e}_{\mathbf{u}}^j\|_{H^1(\Omega)^d} + \|\boldsymbol{\varepsilon}_{\mathbf{u}}^j\|_{L^2(\Omega)^d},$$

and (4.16) follows by multiplying the square of this inequality by τ_j , summing over j and using (4.19) and (4.18).

Similar but simpler arguments lead to

Proposition 4.2 *Assume that the temperature T of problem (4.3)–(4.4) belongs to the space $H^2(0, \tilde{T}; H^1(\Omega))$ and the data T_b belongs to $H^2(0, \tilde{T}; H^{\frac{1}{2}}(\partial\Omega))$. Then, the following a priori error estimates holds for $1 \leq j \leq J$,*

$$\|T(\cdot, t_j) - T^j\|_{H^1(\Omega)} \leq \frac{|\tau|}{\sqrt{3c}} \left(\|T\|_{H^2(0,t_j;H^1(\Omega))} + \|T_b\|_{H^2(0,t_j;H^{\frac{1}{2}}(\partial\Omega))} \right), \quad (4.20)$$

We end this paragraph with the basic properties of the semi-discrete operators $\mathcal{S}_\tau(\theta)$ and \mathcal{L}_τ . The operator $\mathcal{S}_\tau(\theta)$ satisfies the following three properties

(i) Stability: For any data \mathbf{F} in $\mathcal{C}^0(0, \tilde{T}; H^{-1}(\Omega)^d)$,

$$\|\mathcal{S}_\tau(\theta)(\mathbf{F}, 0)\|_{L^2(0, \tilde{T}; H^1(\Omega)^d)} \leq c \|\pi_\tau^+ \mathbf{F}\|_{L^2(0, \tilde{T}; H^{-1}(\Omega)^d)} \quad (4.21)$$

(ii) A priori error estimate: For any data F in $\mathcal{C}^0(0, \tilde{T}; H^{-1}(\Omega)^d)$

$$\|(\mathcal{S} - \mathcal{S}_\tau)(\theta)(F, \mathbf{u}_0)\|_{L^2(0, \tilde{T}; H^1(\Omega)^d)} \leq c|\tau| \|\mathcal{S}(\theta)(\mathbf{F}, \mathbf{u}_0)\|_{H^2(0, \tilde{T}; H^1(\Omega)^d)}. \quad (4.22)$$

(iii) Convergence: For any data \mathbf{F} in $\mathcal{C}^0(0, \tilde{T}; H^{-1}(\Omega)^d)$,

$$\lim_{|\tau| \rightarrow 0} \|(\mathcal{S} - \mathcal{S}_\tau)(\theta)(\mathbf{F}, 0)\|_{L^2(0, \tilde{T}; H^1(\Omega)^d)} = 0. \quad (4.23)$$

The analogous properties concerning the semi discrete operator \mathcal{L}_τ read :

(i) Stability: For any G in $\mathcal{C}^0(0, \tilde{T}; H^{-1}(\Omega))$

$$\|\mathcal{L}_\tau(G, 0, 0)\|_{L^2(0, \tilde{T}; H^1(\Omega))} \leq c \|\pi_\tau^+ G\|_{L^2(0, \tilde{T}; H^{-1}(\Omega))} \quad (4.24)$$

(ii) A priori error estimate: For any data G in $\mathcal{C}^0(0, \tilde{T}; H^{-1}(\Omega))$

$$\|(\mathcal{L} - \mathcal{L}_\tau)(G, T_b, T_0)\|_{L^2(0, \tilde{T}; H^1(\Omega))} \leq c|\tau| (\|\mathcal{L}(G, T_b, T_0)\|_{H^2(0, \tilde{T}; H^1(\Omega))} + \|T_b\|_{H^2(0, \tilde{T}; H^{\frac{1}{2}}(\partial\Omega))}) \quad (4.25)$$

(iii) Convergence: For any data G in $\mathcal{C}^0(0, \tilde{T}; H^{-1}(\Omega))$,

$$\lim_{|\tau| \rightarrow 0} \|(\mathcal{L} - \mathcal{L}_\tau)(G, 0, 0)\|_{L^2(0, \tilde{T}; H^1(\Omega))} = 0. \quad (4.26)$$

4.1.2 About the space discretization

Similarly, we denote by $\mathbf{u}_{N\tau}$ and $T_{N\tau}$ the functions which are affine on each interval $[t_{j-1}, t_j]$ and equal to \mathbf{u}_N^j and T_N^j respectively at each time t_j , $0 \leq j \leq J$, and also by $p_{N\tau}$ the function which is piecewise constant and equal to p_N^j on each interval $[t_{j-1}, t_j]$, $1 \leq j \leq J$. We also define $\mathcal{S}_{N\tau}(\theta)$ the discrete Stokes operator, i.e., the operator which associates with any data \mathbf{F} continuous on $\bar{\Omega} \times [0, \tilde{T}]$ and \mathbf{u}_0 in $H_0^1(\Omega)^d$, the part $\mathbf{u}_{N\tau}$ of the solution (\mathbf{u}_N^j, p_N^j) of the Stokes problem

Find $(\mathbf{u}_N^j)_{0 \leq j \leq J}$ in \mathbb{X}_N^{J+1} and $(p_N^j)_{1 \leq j \leq J}$ in \mathbb{M}_N^J such that

$$\mathbf{u}_N^j = \mathbf{0} \quad \text{on } \partial\Omega, \quad 1 \leq j \leq J \quad \text{and} \quad \mathbf{u}_N^0 = \mathcal{I}_N \mathbf{u}_0 \quad \text{in } \Omega, \quad (4.27)$$

and, for $1 \leq j \leq J$,

$$\forall \mathbf{v}_N \in \mathbb{X}_N, \quad \left(\frac{\mathbf{u}_N^j - \mathbf{u}_N^{j-1}}{\tau_j}, \mathbf{v}_N \right)_N + (\nu(\theta) \nabla \mathbf{u}_N^j, \nabla \mathbf{v}_N)_N - (\operatorname{div} \mathbf{v}_N, p_N^j)_N = \langle \mathbf{F}(\cdot, t_j), \mathbf{v}_N \rangle_\Omega, \quad (4.28)$$

$$\forall q_N \in \mathbb{M}_N, \quad -(\operatorname{div} \mathbf{u}_N^j, q_N)_N = 0.$$

Let finally $\mathcal{L}_{N\tau}$ denote the operator which associates with any datum G, T_b continuous on $\bar{\Omega} \times [0, \tilde{T}]$ and T_0 in $H^1(\Omega)$,

$$T_N^j = i_N^{\partial\Omega} T_b(\cdot, t_j) \quad \text{on } \partial\Omega, \quad 1 \leq j \leq J \quad \text{and} \quad T_N^0 = \mathcal{I}_N T_0 \quad \text{in } \Omega, \quad (4.29)$$

$$\forall S_N \in \mathbb{Y}_N^0, \quad \left(\frac{T_N^j - T_N^{j-1}}{\tau_j}, S_N \right)_N + \alpha (\mathbf{grad} T_N^j, \mathbf{grad} S_N)_N = \langle G(\cdot, t_j), S_N \rangle_\Omega \quad (4.30)$$

We are in position to state some properties of the operator $\mathcal{S}_{N\tau}(\theta)$, the a priori error estimate (ii) in the following properties being derived by choosing for any divergence-free polynomial \mathbf{v}_N in \mathbb{X}_{N-1} , $\mathbf{u}_N^j - \mathbf{v}_N^j$ as a function test in (4.28). Then from standard arguments in spectral methods, (see [6, Chap. V] for instance), we derive

(i) Stability: For any datum \mathbf{F} in $\mathcal{C}^0(0, \tilde{T}; H^{-1}(\Omega)^d)$,

$$\|\mathcal{S}_{N\tau}(\theta)(\mathbf{F}, 0)\|_{L^2(0, \tilde{T}; H^1(\Omega)^d)} \leq c \sum_{m=1}^j \tau_m \sup_{\mathbf{v}_N \in \mathbb{X}_N} \frac{\int_{\Omega} \mathbf{F}(\mathbf{x}, t_m) \mathbf{v}_N(\mathbf{x}, t_m) d\mathbf{x}}{\|\mathbf{v}_N\|_{H^1(\Omega)^d}}, \quad (4.31)$$

(ii) A priori error estimate: If moreover $\widetilde{\mathcal{S}}_{\tau}(\theta)(\mathbf{F}, \mathbf{u}_0)$ belongs to $L^2(0, \tilde{T}; H^{s-1}(\Omega))$ and $\mathcal{S}_{\tau}(\theta)(\mathbf{F}, \mathbf{u}_0)$ to $L^2(0, \tilde{T}; H^s(\Omega)^d)$ for a real number s , $s \geq 1$,

$$\begin{aligned} \|(\mathcal{S}_{\tau} - \mathcal{S}_{N\tau})(\theta)(\mathbf{F}, \mathbf{u}_0)\|_{L^2(0, \tilde{T}; H^1(\Omega)^d)} &\leq cN^{1-s} \left(\|\mathcal{S}_{\tau}(\theta)(\mathbf{F}, \mathbf{u}_0)\|_{L^2(0, \tilde{T}; H^s(\Omega)^d)} \right. \\ &\quad \left. + \|\widetilde{\mathcal{S}}_{\tau}(\theta)(\mathbf{F}, \mathbf{u}_0)\|_{L^2(0, \tilde{T}; H^{s-1}(\Omega))} \right). \end{aligned} \quad (4.32)$$

(iii) Convergence: For any data \mathbf{F} in $\mathcal{C}^0(0, \tilde{T}; H^{-1}(\Omega)^d)$,

$$\lim_{N \rightarrow +\infty} \|(\mathcal{S}_{\tau} - \mathcal{S}_{N\tau})(\theta)(\mathbf{F}, 0)\|_{L^2(0, \tilde{T}; H^1(\Omega)^d)} = 0. \quad (4.33)$$

The analogous properties concerning the discrete operator $\mathcal{L}_{N\tau}$ and the operator \mathcal{L}_{τ} read

(i) Stability: For any G in $\mathcal{C}^0(0, \tilde{T}; H^{-1}(\Omega))$

$$\|\mathcal{L}_{N\tau}(G, 0, 0)\|_{L^2(0, \tilde{T}; H^1(\Omega))} \leq c \sum_{m=1}^j \tau_m \sup_{S_N \in \mathbb{Y}_N^0} \frac{\int_{\Omega} G(\mathbf{x}, t_m) S_N(\mathbf{x}, t_m) d\mathbf{x}}{\|S_N\|_{H^1(\Omega)}}. \quad (4.34)$$

(ii) A priori error estimate: If moreover $\mathcal{L}_{\tau}(G, T_b, T_0)$ belongs to $L^2(0, \tilde{T}; H^s(\Omega))$, $s \geq 1$ and T_b belongs to $L^2(0, \tilde{T}; H^{\sigma}(\partial\Omega))$, for a real number σ , $\sigma > \frac{d-1}{2}$,

$$\begin{aligned} \|(\mathcal{L}_{\tau} - \mathcal{L}_{N\tau})(G, T_b, T_0)\|_{L^2(0, \tilde{T}; H^1(\Omega))} &\leq cN^{1-s} \|\mathcal{L}_{\tau}(G, T_b, T_0)\|_{L^2(0, \tilde{T}; H^s(\Omega))} \\ &\quad + N^{\frac{1}{2}-\sigma} \|T_b\|_{L^2(0, \tilde{T}; H^{\sigma}(\partial\Omega))}. \end{aligned} \quad (4.35)$$

(iii) Convergence: For any data G in $\mathcal{C}^0(0, \tilde{T}; H^{-1}(\Omega))$,

$$\lim_{N \rightarrow +\infty} \|(\mathcal{L}_{\tau} - \mathcal{L}_{N\tau})(G, 0, 0)\|_{L^2(0, \tilde{T}; H^1(\Omega))} = 0. \quad (4.36)$$

To conclude, with the notation $U_{N\tau} = (\mathbf{u}_{N\tau}, T_{N\tau})$, problem (3.13)–(3.14)–(3.15) can equivalently be written as

$$\begin{aligned} \mathcal{F}_{N\tau}(U_{N\tau}) &= U_{N\tau} - \begin{pmatrix} \mathcal{S}_{N\tau}(\pi_{\tau}^{-} T_{N\tau}) & 0 \\ 0 & \mathcal{L}_{N\tau} \end{pmatrix} \mathcal{G}_{N\tau}(U_{N\tau}) = 0, \\ \text{with } \mathcal{G}_{N\tau}(U_{N\tau}) &= \begin{pmatrix} (\mathcal{G}_{N\tau 1}, \mathbf{u}_0) \\ (\mathcal{G}_{N\tau 2}, T_b, T_0) \end{pmatrix}. \end{aligned} \quad (4.37)$$

The two components $\mathcal{G}_{N1\tau}$ and $\mathcal{G}_{N2\tau}$ are defined by

$$\begin{aligned} \forall \mathbf{v}_N \in \mathbb{X}_N, \quad \int_{\Omega} \mathcal{G}_{N\tau 1}(\mathbf{x}, t) \cdot \mathbf{v}_N(\mathbf{x}) d\mathbf{x} &= (\mathbf{f} - (\mathbf{u}_{N\tau} \cdot \nabla) \mathbf{u}_{N\tau}, \mathbf{v}_N)_N \\ \forall S_N \in \mathbb{Y}_N^0, \quad \int_{\Omega} \mathcal{G}_{N\tau 2}(\mathbf{x}, t) \cdot S_N(\mathbf{x}) d\mathbf{x} &= (g - (\mathbf{u}_{N\tau} \cdot \nabla) T_{N\tau}, S_N)_N. \end{aligned}$$

From now on, we denote by

$$\mathbb{Z} = L^2(0, \tilde{T}; H_0^1(\Omega)^d) \times L^2(0, \tilde{T}; H^1(\Omega)).$$

We also introduce the fully discrete space, i.e, the space $\mathbb{Z}_{N\tau}$ of functions which are affine on each interval $[t_{j-1}, t_j]$, $1 \leq j \leq J$, and such that their values in t_j belong to $\mathbb{X}_N \times \mathbb{Y}_N$. It is readily checked that this space is finite-dimensional and imbedded in \mathbb{Z} .

To go further, we introduce an approximation $U_{N\tau}^\diamond = (\mathbf{u}_{N\tau}^\diamond, T_{N\tau}^\diamond)$ of the solution $U = (\mathbf{u}, T)$ in $\mathbb{Z}_{N\tau}$, for $0 \leq r \leq 1$

$$\begin{aligned} \|(\mathbf{u} - \mathbf{u}_{N\tau}^\diamond)(\cdot, t)\|_{H^r(\Omega)^d} &\leq c N^{r-1} \|\mathbf{u}(\cdot, t)\|_{H^1(\Omega)^d}, \\ \|(T - T_{N\tau}^\diamond)(\cdot, t)\|_{H^r(\Omega)} &\leq c N^{r-1} \|T(\cdot, t)\|_{H^1(\Omega)}. \end{aligned} \quad (4.38)$$

The existence of such an approximation is stated in [5, Thm 7.4] (see also [6, Chap. III, Thm. 2.4 & Chap. VI, Thm. 2.5]).

Lemma 4.3 *If the data \mathbf{f} belong to $L^2(0, \tilde{T}; H^\sigma(\Omega)^d)$, $\sigma > \frac{d}{2}$, the following result holds for any $t \in]0, \tilde{T}[$*

$$\int_0^t \langle \mathcal{G}_1(\mathbf{u}_{N\tau}) - \mathcal{G}_{N\tau 1}(\mathbf{u}_{N\tau}), \mathbf{v}_N \rangle_\Omega ds \leq c (N^{-\frac{1}{2}} \|\mathbf{u}_{N\tau}\|_{L^2(0, \tilde{T}; H^1(\Omega)^d)}^2 + N^{-\sigma} \|\mathbf{f}\|_{L^2(0, \tilde{T}; H^\sigma(\Omega)^d)}) \|\mathbf{v}_N\|_{H^1(\Omega)^d}.$$

Proof: We have,

$$\langle \mathcal{G}_1(\mathbf{u}_{N\tau}) - \mathcal{G}_{N\tau 1}(\mathbf{u}_{N\tau}), \mathbf{v}_N \rangle_\Omega = (\mathbf{f} - (\mathbf{u}_{N\tau} \cdot \nabla) \mathbf{u}_{N\tau}, \mathbf{v}_N) - (\mathbf{f} - (\mathbf{u}_{N\tau} \cdot \nabla) \mathbf{u}_{N\tau}, \mathbf{v}_N)_N$$

If N' stands for the integer part of $\frac{N-1}{2}$, we introduce an approximation $\mathbf{u}_{N'}$ of $\mathbf{u}_{N\tau}$ in $\mathbb{P}_{N'}(\Omega)^d$ and we note the identity

$$((\mathbf{u}_{N'} \cdot \nabla) \mathbf{u}_{N'}, \mathbf{v}_N) = ((\mathbf{u}_{N'} \cdot \nabla) \mathbf{u}_{N'}, \mathbf{v}_N)_N$$

Inserting it, we obtain

$$\begin{aligned} \langle \mathcal{G}_1(\mathbf{u}_{N\tau}) - \mathcal{G}_{N\tau 1}(\mathbf{u}_{N\tau}), \mathbf{v}_N \rangle_\Omega &= ((\mathbf{u}_{N'} \cdot \nabla) \mathbf{u}_{N'} - (\mathbf{u}_{N\tau} \cdot \nabla) \mathbf{u}_{N\tau}, \mathbf{v}_N) \\ &\quad + ((\mathbf{u}_{N\tau} \cdot \nabla) \mathbf{u}_{N\tau} - (\mathbf{u}_{N'} \cdot \nabla) \mathbf{u}_{N'}, \mathbf{v}_N)_N \\ &\quad + ((\mathbf{f}, \mathbf{v}_N) - (\mathcal{I}_N \mathbf{f}, \mathbf{v}_N)_N). \end{aligned} \quad (4.39)$$

The reasons to evaluating the first two quantities are the same, so we only consider the first one

$$((\mathbf{u}_{N'} \cdot \nabla) \mathbf{u}_{N'} - (\mathbf{u}_{N\tau} \cdot \nabla) \mathbf{u}_{N\tau}, \mathbf{v}_N) = ((\mathbf{u}_{N'} - \mathbf{u}_{N\tau} \cdot \nabla) \mathbf{u}_{N\tau}, \mathbf{v}_N) + ((\mathbf{u}_{N'} \cdot \nabla) (\mathbf{u}_{N'} - \mathbf{u}_{N\tau}), \mathbf{v}_N)$$

we obtain

$$\begin{aligned} ((\mathbf{u}_{N'} - \mathbf{u}_{N\tau} \cdot \nabla) \mathbf{u}_{N\tau}, \mathbf{v}_N) &\leq \|(\mathbf{u}_{N\tau} - \mathbf{u}_{N'}) (\cdot, t)\|_{L^3(\Omega)^d} \|\mathbf{v}_N\|_{L^6(\Omega)^d} \|\nabla \mathbf{u}_{N\tau}(\cdot, t)\|_{L^2(\Omega)^{d \times d}} \\ &\leq \|(\mathbf{u}_{N\tau} - \mathbf{u}_{N'}) (\cdot, t)\|_{H^{\frac{1}{2}}(\Omega)^d} \|\mathbf{v}_N\|_{H^1(\Omega)^d} \|\mathbf{u}_{N\tau}(\cdot, t)\|_{H^1(\Omega)^d} \end{aligned}$$

we conclude by using (4.38) for $r = \frac{1}{2}$ and by integrating between 0 and t . To evaluating the third term in (4.39), we have for any \mathbf{f}_{N-1} in $\mathbb{P}_{N-1}(\Omega)^d$,

$$(\mathbf{f}, \mathbf{v}_N) - (\mathbf{f}, \mathbf{v}_N)_N = \int_\Omega (\mathbf{f} - \mathbf{f}_{N-1})(\mathbf{x}, t) \cdot \mathbf{v}_N(\mathbf{x}) d\mathbf{x} - (\mathbf{f} - \mathbf{f}_{N-1}, \mathbf{v}_N)_N$$

$$(\mathbf{f}, \mathbf{v}_N) - (\mathbf{f}, \mathbf{v}_N)_N \leq c (\|(\mathbf{f} - \mathcal{I}_N \mathbf{f})(\cdot, t)\|_{L^2(\Omega)^d} + \inf_{\mathbf{f}_{N-1} \in \mathbb{P}_{N-1}(\Omega)} \|(\mathbf{f} - \mathbf{f}_{N-1})(\cdot, t)\|_{L^2(\Omega)^d}) \|\mathbf{v}_N\|_{H^1(\Omega)^d}$$

By taking \mathbf{f}_{N-1} equal to $\Pi_{N-1} \mathbf{f}$, where Π_{N-1} stands for the orthogonal projection operator from $L^2(\Omega)^d$ onto $\mathbb{P}_{N-1}(\Omega)^d$ (see [6, Chap. III]), using [6, Chap. IV, Thm 2.6] and [6, Chap. III, Thm 2.4], and by integrating between 0 and t we obtain the desired result.

4.2 Some more lemmas

We denote by $\mathcal{E}(\mathbb{Z})$ the space of endomorphisms of \mathbb{Z} and we make the following assumption.

Assumption 4.4 *The solution $U = (\mathbf{u}, T)$ of problem (2.5)–(2.6)–(2.7)*

- (i) *is such that $D\mathcal{F}(U)$ is an isomorphism of \mathbb{Z} , where D stands for the differential operator with respect to U ,*
- (ii) *belongs to $H^1(0, \tilde{T}; H^\rho(\Omega)^d) \times H^1(0, \tilde{T}; H^\rho(\Omega))$, $\rho > 1$.*

Lemma 4.5 *Assume that ν is of class \mathcal{C}^2 on \mathbb{R} , with bounded derivatives, and Assumption 4.4 holds. There exists a positive integer τ_0 and N_0 such that, for all τ , $|\tau| \leq \tau_0$ and for all $N \geq N_0$, the operator $D\mathcal{F}_{N\tau}(U_{N\tau}^\circ)$ is an isomorphism of $\mathbb{Z}_{N\tau}$, and the norm of its inverse is bounded independently of τ and N .*

Proof: We write the expansion

$$\begin{aligned} D\mathcal{F}_{N\tau}(U_{N\tau}^\circ) &= D\mathcal{F}(U) - \begin{pmatrix} \mathcal{S}_{N\tau}(\pi_\tau^- T_{N\tau}^\circ) - \mathcal{S}(T) & 0 \\ 0 & \mathcal{L}_{N\tau} - \mathcal{L} \end{pmatrix} D\mathcal{G}(U) \\ &\quad - \begin{pmatrix} \mathcal{S}_{N\tau}(\pi_\tau^- T_{N\tau}^\circ) & 0 \\ 0 & \mathcal{L}_{N\tau} \end{pmatrix} (D\mathcal{G}(U_{N\tau}^\circ) - D\mathcal{G}(U)) - \begin{pmatrix} \mathcal{S}_{N\tau}(\pi_\tau^- T_{N\tau}^\circ) & 0 \\ 0 & \mathcal{L}_{N\tau} \end{pmatrix} (D\mathcal{G}_{N\tau}(U_{N\tau}^\circ) - D\mathcal{G}(U_{N\tau}^\circ)) \\ &\quad - \begin{pmatrix} D\mathcal{S}_{N\tau}(\pi_\tau^- T_{N\tau}^\circ) - D\mathcal{S}(T) & 0 \\ 0 & 0 \end{pmatrix} \mathcal{G}(U) - \begin{pmatrix} D\mathcal{S}_{N\tau}(\pi_\tau^- T_{N\tau}^\circ) & 0 \\ 0 & 0 \end{pmatrix} (\mathcal{G}(U_{N\tau}^\circ) - \mathcal{G}(U)) \\ &\quad - \begin{pmatrix} D\mathcal{S}_{N\tau}(\pi_\tau^- T_{N\tau}^\circ) & 0 \\ 0 & 0 \end{pmatrix} (\mathcal{G}_{N\tau}(U_{N\tau}^\circ) - \mathcal{G}(U_{N\tau}^\circ)) \end{aligned}$$

Due to part (i) of Assumption 4.4, we only have to check that the last six terms in the right-hand side tend to zero when $|\tau|$ and N^{-1} tend to zero in the norm of the space $\mathcal{E}(\mathbb{Z})$. Let $W_{N\tau} = (\mathbf{w}_{N\tau}, R_{N\tau})$ be any element in the unit sphere of $\mathbb{Z}_{N\tau}$.

1) We observe that

$$D\mathcal{G}(U) \cdot W_{N\tau} = \begin{pmatrix} -((\mathbf{u} \cdot \nabla)\mathbf{w}_{N\tau} + (\mathbf{w}_{N\tau} \cdot \nabla)\mathbf{u}, 0) \\ -((\mathbf{u} \cdot \nabla)R_{N\tau} + (\mathbf{w}_{N\tau} \cdot \nabla)T, 0, 0) \end{pmatrix}.$$

Since $\mathbb{Z}_{N\tau}$ is finite-dimensional, we deduce from (ii) of Assumption 4.4, that both terms $(\mathbf{u} \cdot \nabla)\mathbf{w}_{N\tau} + (\mathbf{w}_{N\tau} \cdot \nabla)\mathbf{u}$ and $(\mathbf{u} \cdot \nabla)R_{N\tau} + (\mathbf{w}_{N\tau} \cdot \nabla)T$ runs through a compact of $\mathcal{C}^0(0, \tilde{T}; H^{-1}(\Omega)^d)$ and $\mathcal{C}^0(0, \tilde{T}; H^{-1}(\Omega))$ respectively. Thus owing to the expansion $(\mathcal{S}_{N\tau} - \mathcal{S})(\theta) = (\mathcal{S}_{N\tau} - \mathcal{S}_\tau)(\theta) + (\mathcal{S}_\tau - \mathcal{S})(\theta)$ and $\mathcal{L} - \mathcal{L}_{N\tau} = (\mathcal{L} - \mathcal{L}_\tau) + (\mathcal{L}_\tau - \mathcal{L}_{N\tau})$, combining all this with with the continuity of the operator $\mathcal{S}(\theta)$, (4.38), (4.33), (4.36), (4.26) and (4.23) leads to

$$\lim_{N \rightarrow +\infty} \lim_{|\tau| \rightarrow 0} \left\| \begin{pmatrix} \mathcal{S}_{N\tau}(\pi_\tau^- T_{N\tau}^\circ) - \mathcal{S}(T) & 0 \\ 0 & \mathcal{L}_{N\tau} - \mathcal{L} \end{pmatrix} D\mathcal{G}(U) \right\|_{\mathcal{E}(\mathbb{Z})} = 0. \quad (4.40)$$

2) Due to the definition of $D\mathcal{G}$, we must now proof the convergence of the two terms

$$\begin{aligned} ((\mathbf{u} - \mathbf{u}_{N\tau}^\circ) \cdot \nabla)\mathbf{w}_{N\tau} + (\mathbf{w}_{N\tau} \cdot \nabla)(\mathbf{u} - \mathbf{u}_{N\tau}^\circ), \\ ((\mathbf{u} - \mathbf{u}_{N\tau}^\circ) \cdot \nabla)R_{N\tau} + (\mathbf{w}_{N\tau} \cdot \nabla)(T - T_{N\tau}^\circ) \end{aligned}$$

Owing to (4.38) with combining (4.31) and (4.34), we obtain

$$\lim_{N \rightarrow +\infty} \lim_{|\tau| \rightarrow 0} \left\| \begin{pmatrix} \mathcal{S}_{N\tau}(\pi_\tau^- T_{N\tau}^\circ) & 0 \\ 0 & \mathcal{L}_{N\tau} \end{pmatrix} (D\mathcal{G}(U_{N\tau}^\circ) - D\mathcal{G}(U)) \right\|_{\mathcal{E}(\mathbb{Z})} = 0. \quad (4.41)$$

3) Due the definition of $D\mathcal{G}$ and $D\mathcal{G}_{N\tau}$, we have

$$\begin{aligned} & \langle D\mathcal{G}_{N\tau}(U_{N\tau}^\diamond) - D\mathcal{G}(U_{N\tau}^\diamond), \mathbf{v}_N \rangle \cdot W_{N\tau} \\ &= \left(\begin{array}{c} \left((\mathbf{u}_{N\tau}^\diamond \cdot \nabla) \mathbf{w}_{N\tau} + (\mathbf{w}_{N\tau} \cdot \nabla) \mathbf{u}_{N\tau}^\diamond, \mathbf{v}_N \right) - \left((\mathbf{u}_{N\tau}^\diamond \cdot \nabla) \mathbf{w}_{N\tau} + (\mathbf{w}_{N\tau} \cdot \nabla) \mathbf{u}_{N\tau}^\diamond, \mathbf{v}_N \right)_N, 0 \Big) \\ \left((\mathbf{u}_{N\tau}^\diamond \cdot \nabla) R_{N\tau} + (\mathbf{w}_{N\tau} \cdot \nabla) T_{N\tau}^\diamond \right) - \left((\mathbf{u}_{N\tau}^\diamond \cdot \nabla) R_{N\tau} + (\mathbf{w}_{N\tau} \cdot \nabla) T_{N\tau}^\diamond \right)_N, 0, 0 \end{array} \right). \end{aligned}$$

Since the arguments for evaluating the two terms are similar, we only consider the first one, we set N' equal to the integer part of $\frac{N-1}{2}$, and we introduce the approximation $\mathbf{u}_{N'}$ of $\mathbf{u}_{N\tau}^\diamond$ in $\mathbb{P}_{N'}(\Omega)^d$, by the same arguments in Lemma 4.3, we deduce

$$\langle D\mathcal{G}_{N\tau}(U_{N\tau}^\diamond) - D\mathcal{G}(U_{N\tau}^\diamond), \mathbf{v}_N \rangle \cdot W_{N\tau} \leq c N^{-\frac{1}{2}} \|\mathbf{u}_{N\tau}^\diamond\|_{L^2(0, \tilde{T}; H^1(\Omega)^d)}^2 \|\mathbf{v}_N\|_{H^1(\Omega)^d}.$$

Owing to (4.31) and (4.34), thus yields

$$\lim_{N \rightarrow +\infty} \lim_{|\tau| \rightarrow 0} \left\| \begin{pmatrix} \mathcal{S}_{N\tau}(\pi_\tau^- T_{N\tau}^\diamond) & 0 \\ 0 & \mathcal{L}_{N\tau} \end{pmatrix} (D\mathcal{G}_{N\tau}(U_{N\tau}^\diamond) - D\mathcal{G}(U_{N\tau}^\diamond)) \right\|_{\mathcal{E}(\mathbb{Z})} = 0. \quad (4.42)$$

4) On the other hand, we note that, for any \mathbf{F} in $H^{-1}(\Omega)^d$,

$$\begin{aligned} (DS(T)R_{N\tau})(\mathbf{F}, \mathbf{u}_0) &= \mathcal{S}(T) \left(-\operatorname{div}(\partial_\theta \nu(T) R_{N\tau} \nabla \mathcal{S}(T)(\mathbf{F}, \mathbf{u}_0)) \right), \\ (D\mathcal{S}_{N\tau}(\pi_\tau^- T_{N\tau}^\diamond)R_{N\tau})(\mathbf{F}, \mathbf{u}_0) &= \mathcal{S}_{N\tau}(\pi_\tau^- T_{N\tau}^\diamond) \left(-\operatorname{div}(\partial_\theta \nu(T_{N\tau}^\diamond) R_{N\tau} \nabla \mathcal{S}_{N\tau}(\pi_\tau^- T_{N\tau}^\diamond)(\mathbf{F}, \mathbf{u}_0)) \right). \end{aligned} \quad (4.43)$$

By subtracting the second line from the first one, we derive

$$\begin{aligned} & ((D\mathcal{S}_{N\tau}(\pi_\tau^- T_{N\tau}^\diamond) - DS(T)) R_{N\tau})(\mathbf{F}, \mathbf{u}_0) = \\ & \quad (\mathcal{S}_{N\tau}(\pi_\tau^- T_{N\tau}^\diamond) - \mathcal{S}(T)) \left(-\operatorname{div}(\partial_\theta \nu(T) R_{N\tau} \nabla \mathcal{S}(T)(\mathbf{F}, \mathbf{u}_0)) \right) \\ & \quad - \mathcal{S}_{N\tau}(\pi_\tau^- T_{N\tau}^\diamond) \left(-\operatorname{div}(\partial_\theta \nu(T_{N\tau}^\diamond) R_{N\tau} \nabla (\mathcal{S} - \mathcal{S}_{N\tau})(\pi_\tau^- T_{N\tau}^\diamond)(\mathbf{F}, \mathbf{u}_0)) \right) \\ & \quad + \mathcal{S}_{N\tau}(\pi_\tau^- T_{N\tau}^\diamond) \left(-\operatorname{div}(\partial_\theta \nu(T_{N\tau}^\diamond) R_{N\tau} \nabla (\mathcal{S}(\pi_\tau^- T_{N\tau}^\diamond) - \mathcal{S}(T))(\mathbf{F}, \mathbf{u}_0)) \right) \\ & \quad + \mathcal{S}_{N\tau}(\pi_\tau^- T_{N\tau}^\diamond) \left(-\operatorname{div}(\partial_\theta (\nu(T_{N\tau}^\diamond) - \nu(T)) R_{N\tau} \nabla \mathcal{S}(T)(\mathbf{F}, \mathbf{u}_0)) \right). \end{aligned}$$

Denoting by $(\mathbf{F}, \mathbf{u}_0)$ the first component of $\mathcal{G}(U)$, we see that $\mathcal{S}(T)(\mathbf{F}, \mathbf{u}_0)$ is equal to \mathbf{u} , see (4.5). We deduce from the regularity assumption on \mathbf{u} , when $W_{N\tau}$ runs through unit sphere of $\mathbb{Z}_{N\tau}$ quantity $-\operatorname{div}(\partial_\theta \nu(T) R_{N\tau} \nabla \mathcal{S}(T)(\mathbf{F}, \mathbf{u}_0))$ belongs to a compact subset of $\mathcal{C}^0(0, \tilde{T}; H^{-1}(\Omega)^d)$. Thus, the convergence of the first term to zero follows from with the continuity of the operator $\mathcal{S}(\theta)$, (4.23), (4.33) and (4.38), the convergence of the second term, follows from (4.31), (4.38), (4.22) and (4.32). The convergence of the third term is deduced from (4.31) and (4.38) and of the fourth term from (4.31), the bounded derivatives of ν and (4.38). Thus, we derive

$$\lim_{|\tau| \rightarrow 0} \lim_{N \rightarrow +\infty} \left\| \begin{pmatrix} D\mathcal{S}_{N\tau}(\pi_\tau^- T_{N\tau}^\diamond) - DS(T) & 0 \\ 0 & 0 \end{pmatrix} \mathcal{G}(U) \right\|_{\mathcal{E}(\mathbb{Z})} = 0. \quad (4.44)$$

5) The convergence of the fifth term is deduced from (4.38) and the stability of $D\mathcal{S}_{N\tau}(\theta)$ and the convergence of the last term is obtained with the same arguments as for Lemma 4.3.

This concludes the proof.

Lemma 4.6 *If the function ν belongs to $W^{2,\infty}(\mathbb{R})$, with Lipschitz-continuous derivative, there exist a neighbourhood of $U_{N\tau}^\diamond$ in $\mathbb{Z}_{N\tau}$ and a positive constant c such that the following Lipschitz property holds for any \tilde{U}_N in this neighbourhood,*

$$\|D\mathcal{F}_{N\tau}(U_{N\tau}^\diamond) - D\mathcal{F}_{N\tau}(\tilde{U}_N)\|_{\mathcal{E}(\mathbb{Z}_{N\tau})} \leq c \|U_{N\tau}^\diamond - \tilde{U}_N\|_{\mathbb{Z}}, \quad (4.45)$$

where $\mathcal{E}(\mathbb{Z}_{N\tau})$ stands for the space of endomorphisms of $\mathbb{Z}_{N\tau}$.

Proof: Setting $\tilde{U}_N = (\tilde{\mathbf{u}}_N, \tilde{T}_N)$, we have

$$\begin{aligned} D\mathcal{F}_{N\tau}(U_{N\tau}^\circ) - D\mathcal{F}_{N\tau}(\tilde{U}_N) &= \begin{pmatrix} \mathcal{S}_{N\tau}(\pi_\tau^- \tilde{T}_N) - \mathcal{S}_{N\tau}(\pi_\tau^- T_{N\tau}^\circ) & 0 \\ 0 & \mathcal{L}_{N\tau} \end{pmatrix} D\mathcal{G}_{N\tau}(U_{N\tau}^\circ) \\ &\quad + \begin{pmatrix} D\mathcal{S}_{N\tau}(\pi_\tau^- \tilde{T}_N) - D\mathcal{S}_{N\tau}(T_{N\tau}^\circ) & 0 \\ 0 & 0 \end{pmatrix} \mathcal{G}_{N\tau}(U_{N\tau}^\circ) \\ &\quad + \begin{pmatrix} \mathcal{S}_{N\tau}(\pi_\tau^- \tilde{T}_N) & 0 \\ 0 & \mathcal{L}_{N\tau} \end{pmatrix} (D\mathcal{G}_{N\tau}(\tilde{U}_N) - D\mathcal{G}_{N\tau}(U_{N\tau}^\circ)) \\ &\quad + \begin{pmatrix} D\mathcal{S}_{N\tau}(\pi_\tau^- \tilde{T}_N) & 0 \\ 0 & 0 \end{pmatrix} (\mathcal{G}_{N\tau}(\tilde{U}_N) - \mathcal{G}_{N\tau}(U_{N\tau}^\circ)) \end{aligned}$$

We have to evaluate the quantities, for any $W_{N\tau} = (\mathbf{w}_{N\tau}, R_{N\tau})$ in the unit sphere of $\mathbb{Z}_{N\tau}$, since the evaluating of the last two terms follow from Lemma 4.3 and an extension of it, we only consider the first two terms. All constants c in what follows only depend on the norms $\|U_{N\tau}^\circ\|_{\mathbb{Z}}$, $\|\tilde{U}_N\|_{\mathbb{Z}}$ and $\|\nu\|_{W^{2,\infty}(\mathbb{R})}$.

1) We have

$$\begin{pmatrix} \mathcal{S}_{N\tau}(\pi_\tau^- \tilde{T}_N) - \mathcal{S}_{N\tau}(\pi_\tau^- T_{N\tau}^\circ) & 0 \\ 0 & \mathcal{L}_{N\tau} \end{pmatrix} D\mathcal{G}_{N\tau}(U_{N\tau}^\circ) W_{N\tau} = \begin{pmatrix} \mathcal{S}_{N\tau}(\pi_\tau^- T_{N\tau}^\circ) & 0 \\ 0 & \mathcal{L}_{N\tau} \end{pmatrix} \begin{pmatrix} (A_{N\tau}, 0) \\ 0 \end{pmatrix},$$

with

$$A_{N\tau} = \operatorname{div}(\nu(T_{N\tau}^\circ) - \nu(\tilde{T}_N)) \nabla \mathcal{S}_{N\tau}(\pi_\tau^- \tilde{T}_N) ((\mathbf{u}_{N\tau}^\circ \cdot \nabla) \mathbf{w}_{N\tau} + (\mathbf{w}_{N\tau} \cdot \nabla) \mathbf{u}_{N\tau}^\circ)$$

There exists a constant c only depending on the Lipschitz property of ν such that,

$$\left\| \begin{pmatrix} \mathcal{S}_{N\tau}(\pi_\tau^- \tilde{T}_N) - \mathcal{S}_{N\tau}(\pi_\tau^- T_{N\tau}^\circ) & 0 \\ 0 & 0 \end{pmatrix} D\mathcal{G}_{N\tau}(U_{N\tau}^\circ) W_{N\tau} \right\|_{\mathbb{Z}} \leq c \|T_{N\tau}^\circ - \tilde{T}_N\|_{L^2(\Omega)} \|\mathbf{w}_{N\tau}\|_{L^2(\Omega)^d}$$

2) On the other hand, combing the second part of (4.43)

$$\left\| \begin{pmatrix} D\mathcal{S}_{N\tau}(\pi_\tau^- \tilde{T}_N) - D\mathcal{S}_{N\tau}(T_{N\tau}^\circ) & 0 \\ 0 & 0 \end{pmatrix} \mathcal{G}_{N\tau}(U_{N\tau}^\circ) \right\|_{\mathbb{Z}} \leq c \|\tilde{T}_N - T_{N\tau}^\circ\|_{L^2(\Omega)} \|R_{N\tau}\|_{L^2(\Omega)}.$$

Lemma 4.7 *Assume that ν is of class \mathcal{C}^2 on \mathbb{R} and that the solution (\mathbf{u}, p, T) of problem (2.5)–(2.6)–(2.7) belong to $H^2(0, \tilde{T}; H^s(\Omega)^d) \times H^2(0, \tilde{T}; H^{s-1}(\Omega)) \times H^2(0, \tilde{T}; H^s(\Omega))$ for a real number s , $s \geq 1$, and the data (\mathbf{f}, T_b) belong to $L^2(0, \tilde{T}; H^\sigma(\Omega)^d) \times H^2(0, \tilde{T}; H^{\sigma+\frac{1}{2}}(\partial\Omega))$ for a real number σ , $\sigma > \frac{d}{2}$. Then, the following estimate is satisfied*

$$\begin{aligned} \|\mathcal{F}_{N\tau}(U_{N\tau}^\circ)\|_{\mathbb{Z}} &\leq c \left((|\tau| + N^{1-s}) (\|\mathbf{u}\|_{H^2(0, \tilde{T}; H^s(\Omega)^d)} + \|T\|_{H^2(0, \tilde{T}; H^s(\Omega))}) + N^{1-s} \|p\|_{H^2(0, \tilde{T}; H^{s-1}(\Omega))} \right) \\ &\quad + c' \left((|\tau| + N^{-\sigma}) (\|\mathbf{f}\|_{L^2(0, \tilde{T}; H^\sigma(\Omega)^d)} + \|T_b\|_{H^2(0, \tilde{T}; H^{\sigma+\frac{1}{2}}(\partial\Omega))}) \right). \end{aligned} \quad (4.46)$$

Proof: Since $\mathcal{F}(U)$ is zero, we use the triangle inequality

$$\begin{aligned} \|\mathcal{F}_{N\tau}(U_{N\tau}^\circ)\|_{\mathbb{Z}} &\leq \|U - U_{N\tau}^\circ\|_{\mathbb{Z}} + \left\| \begin{pmatrix} \mathcal{S}(T) - \mathcal{S}_{N\tau}(\pi_\tau^- T_{N\tau}^\circ) & 0 \\ 0 & \mathcal{L} - \mathcal{L}_{N\tau} \end{pmatrix} \mathcal{G}(U) \right\|_{\mathbb{Z}} \\ &\quad + \left\| \begin{pmatrix} \mathcal{S}_{N\tau}(\pi_\tau^- T_{N\tau}^\circ) & 0 \\ 0 & \mathcal{L}_{N\tau} \end{pmatrix} (\mathcal{G}(U) - \mathcal{G}(U_{N\tau}^\circ)) \right\|_{\mathbb{Z}} \\ &\quad + \left\| \begin{pmatrix} \mathcal{S}_{N\tau}(\pi_\tau^- T_{N\tau}^\circ) & 0 \\ 0 & \mathcal{L}_{N\tau} \end{pmatrix} (\mathcal{G}(U_{N\tau}^\circ) - \mathcal{G}_{N\tau}(U_{N\tau}^\circ)) \right\|_{\mathbb{Z}} \end{aligned}$$

The first term is bounded in (4.38). Evaluating the second term follows from the continuity of the operator $\mathcal{S}_{N\tau}(\theta)$, (4.38), (4.22), (4.32), (4.16), (4.25), (4.35) and (4.20) by noting that: If $(\mathbf{F}, \mathbf{u}_0)$ denotes the first component of $\mathcal{G}(U)$, $\mathcal{S}(\mathbf{F}, \mathbf{u}_0)$ is equal to \mathbf{u} and \mathbf{F} is equal to $\partial_t \mathbf{u} - \operatorname{div}(\nu(T)\nabla \mathbf{u}) + \mathbf{grad} p$. To bound the third one, we apply (4.31), (4.34) and by using triangle inequalities and estimate (4.38). Finally, proving the estimate for the fourth term is obtained from (4.31), (4.34) and by using the standard arguments for the error issued from numerical integration combined with the same arguments of the proof of Lemma 4.3.

4.3 The conclusive a priori error estimates

Owing to Lemmas 4.5 to 4.7, all the assumptions needed to apply the theorem of Brezzi, Rappaz and Raviart [7, Thm 1] (see also [11, Chap. IV, Thm 3.1]) are satisfied.

This leads to the main result of this section.

Theorem 4.8 *Let (\mathbf{u}, p, T) be a solution of problem (2.5)–(2.6)–(2.7) which satisfies Assumption 4.4 and belongs to $H^2(0, \tilde{T}; H^s(\Omega)^d) \times H^2(0, \tilde{T}; H^{s-1}(\Omega)) \times H^2(0, \tilde{T}; H^s(\Omega))$, $s > 1$. We moreover assume that the function ν is of class \mathcal{C}^2 on \mathbb{R} with bounded derivatives and that the data (\mathbf{f}, T_b) belong to $L^2(0, \tilde{T}; H^\sigma(\Omega)^d) \times H^2(0, \tilde{T}; H^{\sigma+\frac{1}{2}}(\partial\Omega))$, for a real number σ , $\sigma > \frac{d}{2}$. Then, there exist a neighbourhood of (\mathbf{u}, T) in \mathbb{Z} and positive real numbers τ_0 and N_0 such that, for all $\tau, |\tau| \leq \tau_0$ and for all $N \geq N_0$, problem (3.13)–(3.14)–(3.15) has a unique solution $(\mathbf{u}_{N\tau}, p_{N\tau}, T_{N\tau})$ in this neighbourhood. Moreover, this solution satisfies the following a priori error estimate*

$$\begin{aligned} & \|\mathbf{u} - \mathbf{u}_{N\tau}\|_{L^2(0, \tilde{T}; H^1(\Omega)^d)} + \|T - T_{N\tau}\|_{L^2(0, \tilde{T}; H^1(\Omega))} + N^{-(d-1)/2} \|p - p_{N\tau}\|_{L^2(0, \tilde{T}; L^2(\Omega))} \\ & \leq c(|\tau| + N^{1-s})c(\mathbf{u}, p, T) + c'(|\tau| + N^{-\sigma})c(\mathbf{f}, T_b). \end{aligned} \quad (4.47)$$

where the constant $c(\mathbf{u}, p, T)$ only depends on the solution (\mathbf{u}, p, T) of problem (2.5)–(2.6)–(2.7) and $c(\mathbf{f}, T_b)$ only depends on the data \mathbf{f} and T_b .

This estimate is fully optimal. Moreover Assumption 4.4 is not restrictive, it only implies the local uniqueness of the solution (\mathbf{u}, p, T) which seems likely.

5 Numerical experiments

In order to confirm these results numerically, we made several experiments by using the code MATLAB software. The numerical experiments have been performed in the two-dimensional case, on the square $\Omega =]-1, 1[^2$. The results are obtained using a $\mathbb{P}_N^0(\Omega)^d \times (\mathbb{P}_{N-2}(\Omega) \cap L^2_\circ(\Omega)) \times \mathbb{P}_N(\Omega)$ space discretisation of (\mathbf{u}, p, T) , and the backward Euler discretization with uniform time step $\tau_j = \delta t$. Finally, at each step, linear systems are obtained and solved using as preconditionners an incomplete factorization of type Cholesky associated with the preconditioned conjugate gradient method (we can also use an incomplete LU factorization associated with the Gmres method or bicgstab method).

5.1 Convergence in time

In the first case we test the convergence of our code where the Navier-Stokes equations are independent of the temperature. It means taking $\nu(T) = 1$ first and $\nu(T)(x, y) = xyt+1$, second, then comparing the two tests with the case where the problem is coupled with $\nu(T) = \sqrt{T^2 + 1} + 2$. The exact solution is given by

$$\mathbf{u}(x, y) = \begin{pmatrix} \sin((\pi + t)y) \cos((\pi + t)x) \\ -\cos((\pi + t)y) \sin((\pi + t)x) \end{pmatrix}, \quad (5.1)$$

$$p(x, y) = \sin((\pi + t)x) \cos((\pi + t)y), \quad T(x, y) = t \sin(x + y). \quad (5.2)$$

We note that this solution satisfies the condition of incompressibility. We present in the following Tables 1, 2 and 3 the convergence towards the solution (5.1)–(5.2) as a function of δt with the viscosity ν is a constant (Table 1), a function dependent of the space variable (Table 2) and a function which depends on the temperature T (Table 3). All the tests in this subsection are computed for $N = 15$ at $\tilde{T} = 0.1$.

δt	10^{-1}	5.10^{-2}	10^{-2}	5.10^{-3}
$\ \mathbf{u} - \mathbf{u}_{N\tau}\ _{L^2(\Omega)^2}$	5.7418×10^{-4}	3.1626×10^{-4}	6.7873×10^{-5}	3.4176×10^{-5}
$\ \mathbf{u} - \mathbf{u}_{N\tau}\ _{H^1(\Omega)^2}$	0.042×10^{-3}	0.023×10^{-3}	4.8310×10^{-4}	2.4293×10^{-4}
$\ p - p_{N\tau}\ _{L^2(\Omega)}$	5.010×10^{-3}	0.255×10^{-3}	0.051×10^{-3}	0.025×10^{-3}
$\ T - T_{N\tau}\ _{L^2(\Omega)}$	0.029×10^{-3}	0.016×10^{-3}	3.6463×10^{-4}	1.8486×10^{-4}

δt	10^{-3}	5.10^{-4}	10^{-4}
$\ \mathbf{u} - \mathbf{u}_{N\tau}\ _{L^2(\Omega)^2}$	6.8703×10^{-6}	3.4373×10^{-6}	8.1224×10^{-7}
$\ \mathbf{u} - \mathbf{u}_{N\tau}\ _{H^1(\Omega)^2}$	4.8781×10^{-5}	2.4405×10^{-5}	4.5312×10^{-6}
$\ p - p_{N\tau}\ _{L^2(\Omega)}$	5.0445×10^{-4}	2.5223×10^{-4}	5.0214×10^{-5}
$\ T - T_{N\tau}\ _{L^2(\Omega)}$	3.7387×10^{-5}	1.8720×10^{-5}	4.0220×10^{-6}

Table 1: Convergence to the solution (5.1)–(5.2) for $\nu(T) = 1$.

δt	10^{-1}	5.10^{-2}	10^{-2}	5.10^{-3}
$\ \mathbf{u} - \mathbf{u}_{N\tau}\ _{L^2(\Omega)^2}$	5.3973×10^{-4}	3.6949×10^{-4}	9.3931×10^{-5}	4.8388×10^{-5}
$\ \mathbf{u} - \mathbf{u}_{N\tau}\ _{H^1(\Omega)^2}$	0.026×10^{-3}	0.017×10^{-3}	4.1788×10^{-4}	2.1451×10^{-4}
$\ p - p_{N\tau}\ _{L^2(\Omega)}$	5.009×10^{-3}	0.235×10^{-3}	0.052×10^{-3}	0.026×10^{-3}
$\ T - T_{N\tau}\ _{L^2(\Omega)}$	0.029×10^{-3}	0.016×10^{-3}	3.6445×10^{-4}	1.8477×10^{-4}

δt	10^{-3}	5.10^{-4}	10^{-4}
$\ \mathbf{u} - \mathbf{u}_{N\tau}\ _{L^2(\Omega)^2}$	9.9118×10^{-6}	4.9707×10^{-6}	1.0127×10^{-6}
$\ \mathbf{u} - \mathbf{u}_{N\tau}\ _{H^1(\Omega)^2}$	4.3817×10^{-5}	2.1966×10^{-5}	5.1209×10^{-6}
$\ p - p_{N\tau}\ _{L^2(\Omega)}$	5.1951×10^{-4}	2.5988×10^{-5}	5.6759×10^{-5}
$\ T - T_{N\tau}\ _{L^2(\Omega)}$	3.7367×10^{-5}	1.8709×10^{-5}	3.7460×10^{-6}

Table 2: Convergence to the solution (5.1)–(5.2) for $\nu(T)(x, y) = xyt + 1$.

δt	10^{-1}	5.10^{-2}	10^{-2}	5.10^{-3}
$\ \mathbf{u} - \mathbf{u}_{N\tau}\ _{L^2(\Omega)^2}$	5.7488×10^{-4}	3.1659×10^{-4}	2.2987×10^{-4}	3.4208×10^{-5}
$\ \mathbf{u} - \mathbf{u}_{N\tau}\ _{H^1(\Omega)^2}$	0.056×10^{-3}	0.034×10^{-3}	2×10^{-3}	2.4320×10^{-4}
$\ p - p_{N\tau}\ _{L^2(\Omega)}$	7.540×10^{-3}	0.345×10^{-3}	0.062×10^{-3}	0.039×10^{-3}
$\ T - T_{N\tau}\ _{L^2(\Omega)}$	0.059×10^{-3}	0.056×10^{-3}	2.6598×10^{-4}	1.9655×10^{-4}

δt	10^{-3}	5.10^{-4}	10^{-4}
$\ \mathbf{u} - \mathbf{u}_{N\tau}\ _{L^2(\Omega)^2}$	6.8766×10^{-5}	3.4723×10^{-6}	1.0015×10^{-5}
$\ \mathbf{u} - \mathbf{u}_{N\tau}\ _{H^1(\Omega)^2}$	4.8835×10^{-5}	2.5093×10^{-5}	3.8159×10^{-6}
$\ p - p_{N\tau}\ _{L^2(\Omega)}$	5.1045×10^{-4}	2.5247×10^{-4}	4.5284×10^{-5}
$\ T - T_{N\tau}\ _{L^2(\Omega)}$	3.9524×10^{-5}	1.8720×10^{-5}	3.1209×10^{-6}

Table 3: Convergence to the solution (5.1)–(5.2) for $\nu(T) = \sqrt{T^2 + 1} + 2$.

In Figure 1 we use the same results as in Tables 1, 2 and 3, to present the quantities :

$$\log_{10} \|\mathbf{u} - \mathbf{u}_{N\tau}\|_{L^2(\Omega)^2}, \log_{10} \|\mathbf{u} - \mathbf{u}_{N\tau}\|_{H^1(\Omega)^2}, \log_{10} \|p - p_{N\tau}\|_{L^2(\Omega)}, \text{ and } \log_{10} \|T - T_{N\tau}\|_{L^2(\Omega)}$$

as a function of $\log_{10}(\delta t)$ for $N = 15$ at time $\tilde{T} = 0.1$.

We note that the error of the velocity, pressure and temperature estimates are very close when taking ν a constant, or a function dependent of the space variable, or a function that depends on the temperature T which shows the effectiveness of the code developed for the coupled problem.

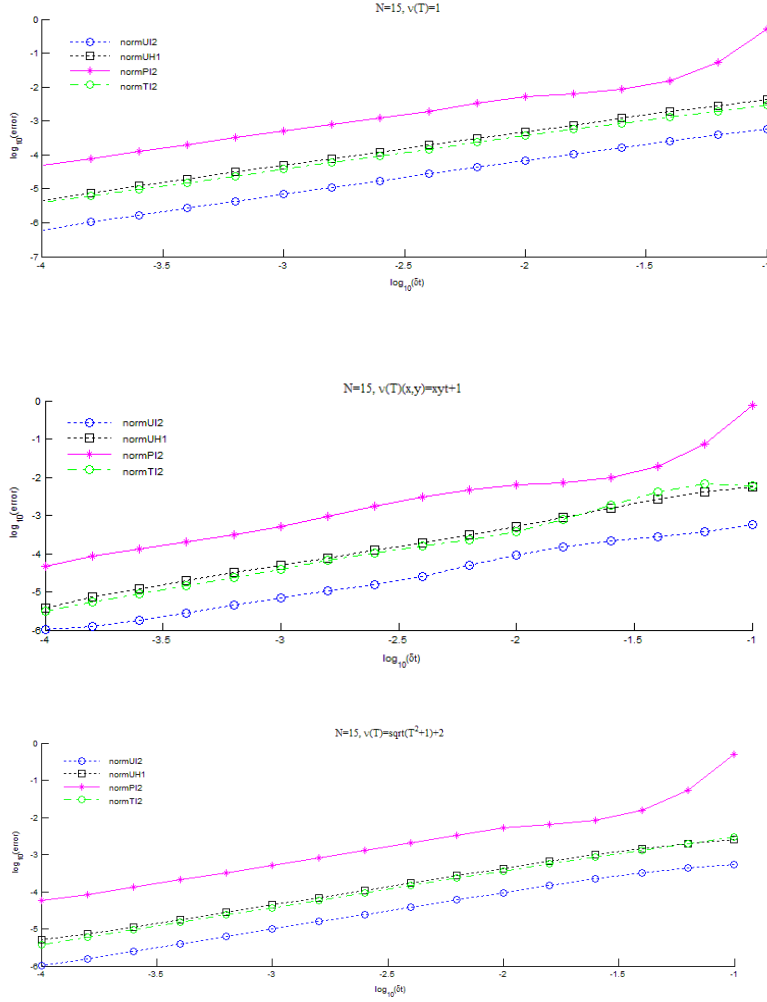


Figure 1: The errors for the solution (5.1)–(5.2)

We give in this table 4 the relative residual and the iteration number of the preconditioned conjugate gradient for the solution (5.1)–(5.2), the first is for $\nu(T) = \sqrt{T^2 + 1} + 2$ and the second for $\nu(T) = 1$.

δt	10^{-1}	10^{-2}	10^{-3}	10^{-4}
Res	1.05×10^{-9}	4.86×10^{-9}	4.078×10^{-8}	1.02×10^{-7}
iter	73	92	98	102
δt	10^{-1}	10^{-2}	10^{-3}	10^{-4}
Res	8.95×10^{-11}	2.26×10^{-10}	1.56×10^{-8}	5.35×10^{-7}
iter	82	90	95	99

Table 4: The residual and number of iterations for $\nu(T) = \sqrt{T^2 + 1} + 2$ and $\nu(T) = 1$.

5.2 Convergence in space

For the second numerical experiment we work with the solution given by

$$\mathbf{u}(x, y) = \begin{pmatrix} t(1-x^2)^{\frac{5}{2}}y(1-y^2)^{\frac{3}{2}} \\ -t(1-x^2)^{\frac{3}{2}}x(1-y^2)^{\frac{5}{2}} \end{pmatrix}, \quad (5.3)$$

$$p(x, y) = \sin(xyt), \quad T(x, y) = x^2 + y^2 + t. \quad (5.4)$$

In Figure 2 we present the quantities:

$$\log_{10} \|\mathbf{u} - \mathbf{u}_{N\tau}\|_{L^2(\Omega)^2}, \log_{10} \|\mathbf{u} - \mathbf{u}_{N\tau}\|_{H^1(\Omega)^2}, \log_{10} \|p - p_{N\tau}\|_{L^2(\Omega)},$$

$$\log_{10} \|T - T_{N\tau}\|_{L^2(\Omega)} \quad \text{and} \quad \log_{10} \|T - T_{N\tau}\|_{H^1(\Omega)}$$

as function of N , for N varying from 5 to 35 in both cases by considering $\delta t = 10^{-2}$, $\nu(T) = \frac{1}{T^2 + 1}$ at $\tilde{T} = 0.1$. In Figure 3 we present the same quantities with $\delta t = 10^{-2}$, $\nu(T) = \frac{1}{T^2 + 1}$ but at $\tilde{T} = 1$.

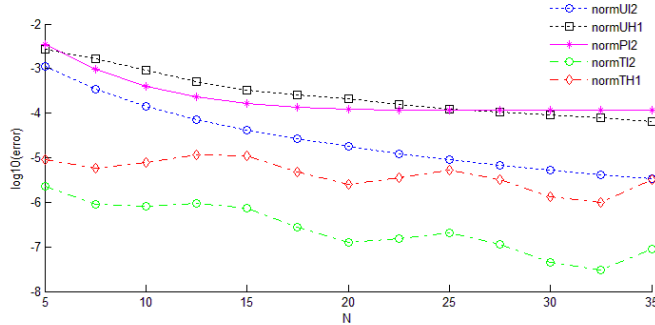


Figure 2: The estimations of error of the solution (5.3)–(5.4)

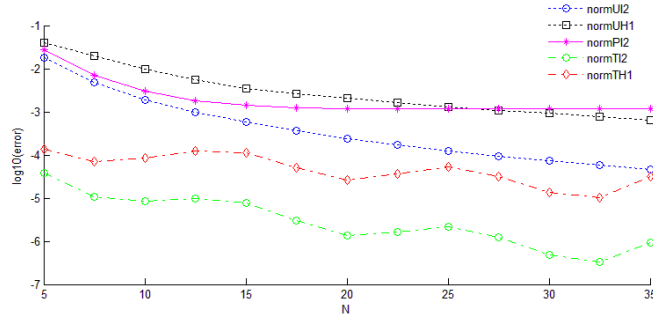


Figure 3: The estimations of error of the solution (5.3)–(5.4)

By letting N go through 5 to 40, we note that the error of norms $\|\mathbf{u} - \mathbf{u}_{N\tau}\|_{L^2(\Omega)^2}$, $\|\mathbf{u} - \mathbf{u}_{N\tau}\|_{H^1(\Omega)^2}$ and $\|p - p_{N\tau}\|_{L^2(\Omega)}$ decrease until $N = 35$ and stagnated for $N > 35$. The error norms $\|T - T_{N\tau}\|_{L^2(\Omega)}$ and $\|T - T_{N\tau}\|_{H^1(\Omega)}$ decrease but in a sinusoidale way.

5.3 A further computation

- We consider the exact solution given by

$$\mathbf{u}(x, y) = \begin{pmatrix} t(1-x^2)^{5/2}y(1-y^2)^{3/2} \\ -t(1-x^2)^{3/2}x(1-y^2)^{5/2} \end{pmatrix}, \quad (5.5)$$

$$p(x, y) = \sin(xyt), \quad T(x, y) = tx + y. \quad (5.6)$$

We present the curves of isovalues of the two components of the velocity, of the temperature and of the pressure of the exact solution in Figure 4 and of the discrete solution in Figure 5 for $\nu(T) = 10^{-5}(T+1)$ with $N = 40$, $\delta t = 10^{-3}$ at $\tilde{T} = 0.1$. We see a very high resemblance between the exact solution and the discrete solution. This shows the efficiency of our preconditionner.

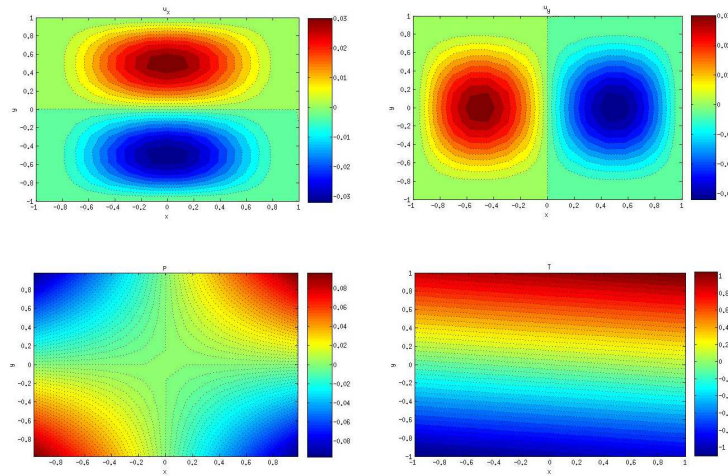


Figure 4: The isovalues of the two components of the exact velocity (on the top), of the exact temperature and of the exact pressure (on the bottom) obtained with $N = 40$.

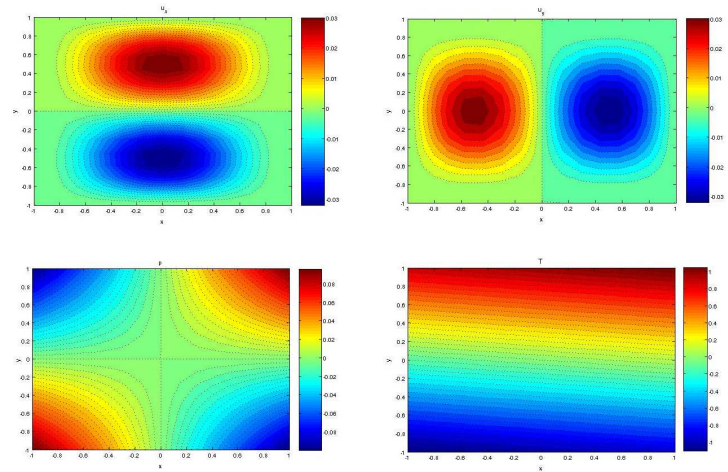


Figure 5: The isovalues of the two components of the discrete velocity (on the top), of the discrete temperature and of the discrete pressure (on the bottom) obtained with $N = 40$.

• We present now numerical experiments where $\nu(T)$ is taken equal to $T+1$ when the exact solution is unknown. We work with the data $\mathbf{f} = (f_x, f_y)$ and g given by

$$\mathbf{f}(x, y) = \begin{pmatrix} x^2 + y^2 t \\ x^2 + y^2 + t^2 \end{pmatrix}, \quad g(x, y) = \sin(xyt). \quad (5.7)$$

The boundary condition is replaced by

$$\mathbf{u} = \mathbf{h} \quad \text{on} \quad \partial\Omega, \quad (5.8)$$

the boundary temperature T_b and velocity $\mathbf{h} = (h_1, h_2)$ being given by

$$\begin{cases} h_1(x, y) = yt, & h_2(x, y) = y^2 t, & T_b(x, y) = -y + t + 1 & \text{if } x = -1, \\ h_1(x, y) = yt, & h_2(x, y) = -y^2 t, & T_b(x, y) = y + t + 1 & \text{if } x = 1, \\ h_1(x, y) = -x^2 t, & h_2(x, y) = -xt, & T_b(x, y) = -x^3 + t + 1 & \text{if } y = -1, \\ h_1(x, y) = x^2 t, & h_2(x, y) = -xt, & T_b(x, y) = x^3 + t + 1 & \text{if } y = 1, \end{cases}$$

The initial velocity and temperature are taken as

$$\mathbf{u}(t = 0) = \mathbf{0} \quad \text{and} \quad T(t = 0) = x^3 y + 1.$$

Note that the data satisfy the usual compatibility condition $\int_{\partial\Omega} \mathbf{h}(\tau) \cdot \mathbf{n}(\tau) d(\tau) = 0$. The discrete solution computed with $N = 30, \delta t = 10^{-2}$ at $\tilde{T} = 1$ is presented in Figure 6. The two components of the velocity are presented in Figure 7, the pressure and temperature in Figure 8 with $N = 25, \delta t = 5 \cdot 10^{-2}$ at $\tilde{T} = 0.1$.

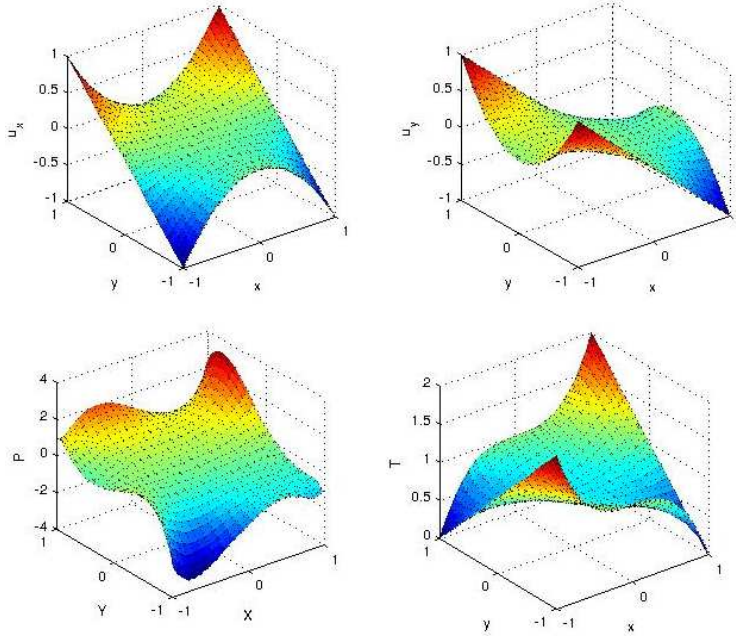


Figure 6: The discrete solution issued from (5.7)–(5.8)

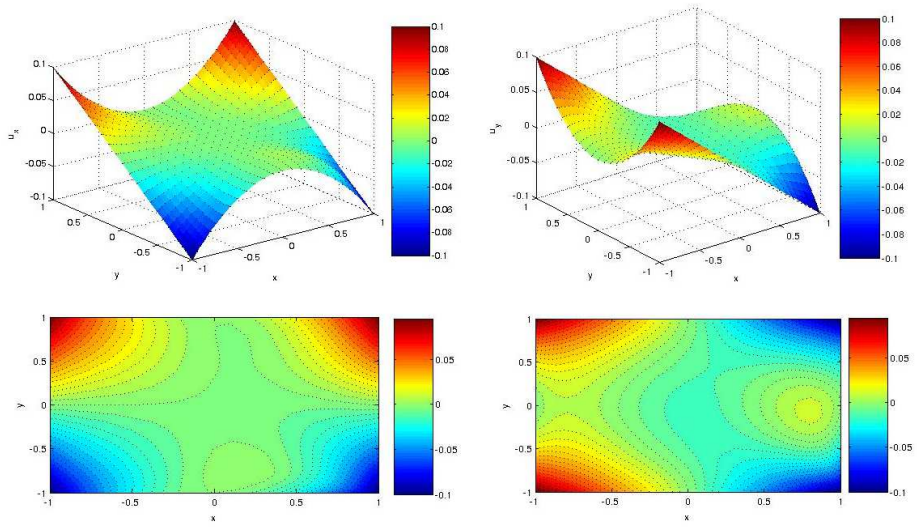


Figure 7: The values and the isovalues of the two components of the velocity issued from (5.7)–(5.8)

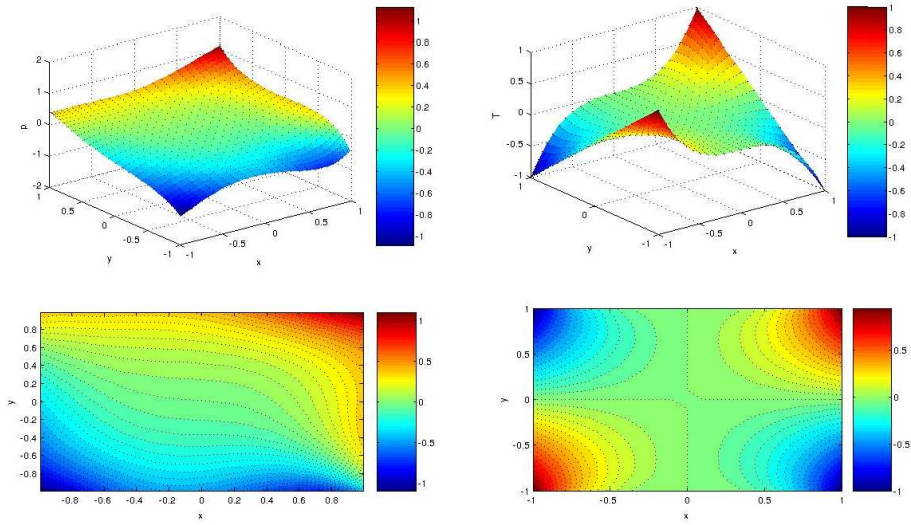


Figure 8: The values and the isovalues of the pressure and the temperature issued from (5.7)–(5.8)

All the tests of convergence confirm the theoretical estimate obtained in (4.47): the convergence in time of the backward Euler's schema is of order 1, the convergence in space is of spectral type.

References

- [1] R. Agroum, S. Aouadi, C. Bernardi, J. Satouri — Spectral discretization of the Navier–Stokes problem coupled with the heat equation, Internal Report, Laboratoire Jacques-Louis Lions (2013), submitted.
- [2] K. Allali, F. Bikany, A. Taik, V. Volpert — Numerical simulations of heat explosion with convection in porous media, preprint *arXiv:1309.2837* (2013).
- [3] C. Bernardi, T. Chacón Rebollo, F. Hecht, R. Lewandowski — Automatic insertion of a turbulence model in the finite element discretization of the Navier–Stokes equations, *Math. Models and Methods in Applied Sciences* **19** (2009), 1139–1183.
- [4] C. Bernardi, F. Coquel, P.-A. Raviart — Automatic coupling and finite element discretization of the Navier–Stokes and heat equations, Internal Report 10001, Laboratoire Jacques-Louis Lions (2010).
- [5] C. Bernardi, Y. Maday — *Spectral Methods*, in the Handbook of Numerical Analysis, Vol **V**, P.G. Ciarlet and J.-L. Lions eds., North-Holland (1997), 209–485.
- [6] C. Bernardi, Y. Maday, F. Rapetti — *Discrétisations variationnelles de problèmes aux limites elliptiques*, Collection “Mathématiques et Applications” **45**, Springer-Verlag (2004).
- [7] F. Brezzi, J. Rappaz, P.-A. Raviart — Finite dimensional approximation of nonlinear problems, Part I: Branches of nonsingular solutions, *Numer. Math.* **36** (1980), 1–25.
- [8] M. Bulíček, E. Feireisl, J. Málek — A Navier–Stokes–Fourier system for incompressible fluids with temperature dependent material coefficients, *Nonlinear Analysis: Real World Applications* **10** (2009), 992–1015.
- [9] D. Jerison, C. E. Kenig — The inhomogeneous Dirichlet problem in Lipschitz domains, *J. Funct. Anal.* **130** (1995), 161–219.
- [10] V. Girault, P.-A. Raviart — *Finite Element Approximation of the Navier–Stokes Equations*, Lecture Notes in Mathematics **749**, Springer-Verlag, Berlin (1979).
- [11] V. Girault, P.-A. Raviart — *Finite Element Methods for Navier–Stokes Equations. Theory and Algorithms*, Springer-Verlag, Berlin (1986).
- [12] M. Schatzman — *Analyse numérique*, InterEditions, Paris (1991).
- [13] R. Temam — *Navier–Stokes Equations. Theory and Numerical Analysis*, Studies in Mathematics and its Applications, Vol. 2, North-Holland Publishing Co. (1977).