



HAL
open science

The remarkable effect of the preparation procedure on the catalytic activity of CoBEA zeolites in the Fischer-Tropsch Synthesis

Karolina A. Chalupka, Sandra Casale, Ewa Zurawicz, Jacek Rynkowski,
Stanislaw Dzwigaj

► To cite this version:

Karolina A. Chalupka, Sandra Casale, Ewa Zurawicz, Jacek Rynkowski, Stanislaw Dzwigaj. The remarkable effect of the preparation procedure on the catalytic activity of CoBEA zeolites in the Fischer-Tropsch Synthesis. *Microporous and Mesoporous Materials*, 2015, 211, pp.9-18. 10.1016/j.micromeso.2015.02.024 . hal-01130202

HAL Id: hal-01130202

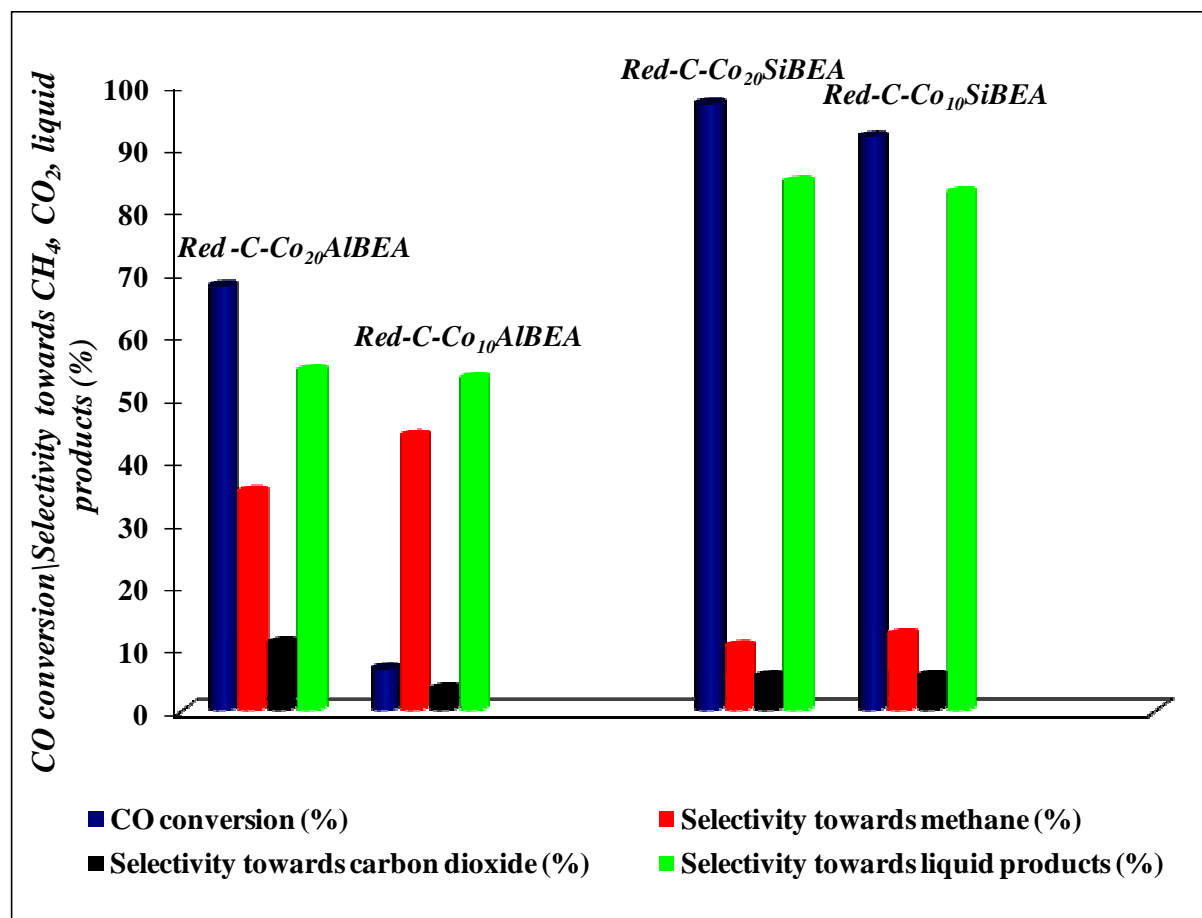
<https://hal.sorbonne-universite.fr/hal-01130202>

Submitted on 11 Mar 2015

HAL is a multi-disciplinary open access archive for the deposit and dissemination of scientific research documents, whether they are published or not. The documents may come from teaching and research institutions in France or abroad, or from public or private research centers.

L'archive ouverte pluridisciplinaire **HAL**, est destinée au dépôt et à la diffusion de documents scientifiques de niveau recherche, publiés ou non, émanant des établissements d'enseignement et de recherche français ou étrangers, des laboratoires publics ou privés.

Graphical Abstract



The remarkable effect of the preparation procedure on the catalytic activity of CoBEA zeolites in the Fischer-Tropsch Synthesis

Karolina A. Chalupka^{1,*}, Sandra Casale^{2,3}, Ewa Zurawicz¹,

Jacek Rynkowski¹, Stanislaw Dzwigaj^{2,3*}

¹Lodz University of Technology, Institute of General and Ecological Chemistry, Zeromskiego 116, 90 – 924 Lodz, Poland

²Sorbonne Universités, UPMC Univ Paris 06, UMR 7197, Laboratoire de Réactivité de Surface, F-75005, Paris, France

³CNRS, UMR 7197, Laboratoire de Réactivité de Surface, F-75005, Paris, France

Figures: 14

Tables: 4

Keywords: Co, BEA, CO, H₂, Fischer – Tropsch Synthesis

*Corresponding authors:

Karolina Chalupka, karolina.chalupka@p.lodz.pl, tel. + 48 42 631 31 34

Stanislaw Dzwigaj, stanislaw.dzwigaj@upmc.fr, tel. + 33 1 44 27 21 13

Abstract

This work deals with the investigation of the influence of the preparation procedure and Co content on the activity of CoBEA zeolite in Fischer – Tropsch synthesis. For this purpose the Co-containing zeolites were prepared by a conventional wet impregnation (Co_xAlBEA series) and a two-step postsynthesis method (Co_xSiBEA series). Calcination at 500 °C, for 3h in air and then reduction at 500 °C in flow of 95 % H_2 – 5 % Ar stream of as prepared Co_xAlBEA and Co_xSiBEA zeolites led to obtain Red-C- Co_xAlBEA and Red-C- Co_xSiBEA catalysts with different properties in Fischer – Tropsch reaction. The most active catalysts were Red-C- $\text{Co}_{10}\text{SiBEA}$ and Red-C- $\text{Co}_{20}\text{SiBEA}$ with high CO conversion of 90 – 95 % and selectivity towards liquid products of 85 % containing C_7 – C_{18} n-alkanes, isoalkanes and small amount of olefins. In the case of Red-C- Co_xAlBEA catalysts the CO conversion was of 68 % and selectivity towards liquid products of 57 %. The identified liquid products were mainly C_7 – C_{16} n-alkanes. Moreover, Red-C- Co_xSiBEA catalysts demonstrated better stability and resistance to coke formation than Red-C- Co_xAlBEA ones. It is probably related to higher dispersion of cobalt nanoparticles in Red-C- Co_xSiBEA than in Red-C- Co_xAlBEA catalysts and absence of strong Brønsted acidic sites in the former after removal of aluminium in the first step of two-step postsynthesis preparation procedure.

1. Introduction

The Fischer – Tropsch synthesis (FTS) is a process, in which saturated and unsaturated liquid hydrocarbons are produced from synthesis gas [1–3]. It is the process of great importance due to the possibility of alternative fuels production.

Cobalt and iron supported on SiO_2 , Al_2O_3 or TiO_2 are widely used as catalysts of Fischer – Tropsch synthesis [2, 4]. In the last time the zeolites are also used as the catalyst supports in FTS [4]. It was shown [2, 4] that high activity and selectivity of supported cobalt catalysts in FT reaction depend on amount of active centers present on catalysts surface as metallic cobalt nanoparticles. Very often the activity of supported cobalt catalysts depends on the metal dispersion and reduction state of Co_3O_4 phase [2, 4].

Usually, the application of supported cobalt and iron catalysts in FT synthesis leads to the formation of linear hydrocarbons and waxes. Such liquid products have high cetane number but very low octane number. To obtain hydrocarbons with higher octane number zeolites modified by cobalt was applied as potential FTS catalysts. These zeolites materials have several advantages, such as high surface area, micro – and mesoporous structure, which can improve metal dispersion and thus lead to obtain smaller size of metal nanoparticles. Additionally, their well known catalytic properties in cracking can cause a decrease of selectivity toward long–chain paraffins and an increase of selectivity towards shorter–chain of saturated and unsaturated hydrocarbons. In consequence, one can expect an increase in the octane number of liquid products of FT synthesis [2, 4–7].

As it was, recently shown [8, 9], the physicochemical properties of catalyst, such as, reducibility of supported cobalt species, a presence of mononuclear Co species and cobalt dispersion have strong impact on catalysts activity in FT synthesis. This knowledge makes easier the optimalization and design of new industrial catalysts.

Supported metal/BEA zeolite catalysts were investigated in FT reaction due to the presence of acidic sites, which can increase the activity and selectivity of catalysts in CO hydrogenation [10, 11]. The modification of BEA zeolite by dealumination followed by the introduction of transition metals can improve the activity of cobalt zeolite catalysts in Fischer-Tropsch synthesis and enable the selective production of liquid hydrocarbons.

This work is focused on the determination of physicochemical properties and catalytic performance in FT reaction of CoBEA zeolite materials prepared by conventional wet impregnation and two-step postsynthesis procedures. The activity of Red-C-Co_xAlBEA zeolite catalysts prepared from HAIBEA zeolite containing Brønsted acidic sites is compared with that of Red-C-Co_xSiBEA zeolite catalysts prepared from SiBEA zeolite that do not contain this type of acidic sites. The remarkable effect of the two-step postsynthesis procedure on the catalytic activity of CoSiBEA zeolites in the Fischer-Tropsch Synthesis has been demonstrated in this work.

2. Experimental part

2.1. Samples preparation

The series of Co_xAlBEA and Co_xSiBEA zeolites (where x = 10 and 20 Co wt %) were prepared by conventional wet impregnation and two-step postsynthesis procedure, respectively [12–14].

Tetraethylammonium BEA (TEABEA) zeolite provided by RIPP (China) was divided into two fractions. The first one was calcined (air, 15 h, 550 °C) in order to obtain an organic - free AlBEA zeolite (Si/Al = 12.5). The Co_xAlBEA zeolites were prepared by impregnation of AlBEA with an aqueous solution of Co(NO₃)₂ · 6 H₂O (pH = 2.6) under aerobic conditions [12–14]. Then the suspensions were stirred at 80 °C for 2 h until water was evaporated and

the resulting solids were dried in air at 80 °C for 24 h, calcined in air at 500 °C for 3 h and labelled C-Co_xAlBEA.

The second fraction of TEABEA was treated in a 13 mol · L⁻¹ HNO₃ aqueous solution (4 h, 80 °C) to obtain a dealuminated and organic - free SiBEA support (Si/Al = 1300) with vacant T-atom sites (where T = Al). SiBEA was then separated by centrifugation, washed with distilled water and dried overnight at 80 °C. To incorporate Co²⁺ ions in vacant T-atom sites, 2 g of SiBEA was stirred under aerobic conditions for 24 h at 25 °C in 200 mL of Co(NO₃)₂ · 6 H₂O aqueous solution (pH = 2.4 - 2.6) with different concentrations to obtain the solids with various Co content [12–14]. Then, the suspensions were stirred for 2 h at 80 °C until water was evaporated and the resulting solids were dried in air at 80 °C for 24 h and labelled as Co_xSiBEA. Then, the solids were calcined in air at 500 °C for 3 h and labelled C-Co_xSiBEA.

Before FT reaction tests, C-Co_xAlBEA and C-Co_xSiBEA were treated *in situ* under atmospheric pressure in flow of 95 % H₂ – 5 % Ar stream at 500 °C for 1 h and such obtained catalysts were labelled as Red-C-Co_xAlBEA and Red-C-Co_xSiBEA, respectively.

2.2. Methods of samples characterization

DR UV-Vis spectra were recorded under ambient atmosphere on a Cary 5000 Varian spectrometer equipped with a double integrator with polytetrafluoroethylene as reference.

Powder X – ray diffractograms were recorded on a Bruker D8 ADVANCE using Cu K_α radiation ($\lambda = 154,05$ pm) in 2 θ range of 5 - 90°.

The TPR – H₂ measurements were carried out in an automatic TPR system (AMI-1) in the temperature range of 25 – 900 °C, using H₂ stream (5 % H₂ – 95 % Ar, flow 40 mL · min⁻¹). H₂ consumption was monitored by a thermal conductivity detector (TCD).

The TPD – NH₃ measurements were carried out in a quartz reactor using gaseous ammonium. NH₃ was adsorbed on zeolite catalysts at 100 °C for 10 minutes in flowing He. Before NH₃ adsorption catalysts were dried at 500 °C in He flow for 30 minutes. The temperature programmed desorption of NH₃ was carried out in the temperature range 25 – 500 °C, after removing physisorbed ammonium from the catalyst.

Before FTIR Py adsorption/desorption experiments, the self-supported wafers were activated by calcination in static conditions at 723 K for 3 h in O₂ (~ 3.0 10⁴ Pa) and then outgassed under secondary vacuum at 573 K (10⁻³ Pa) for 1 h. These wafers were contacted at room temperature with gaseous Py (133 Pa) via a separate cell containing liquid Py. The spectra were then recorded following desorption from 423 and 573 K with a Bruker Vector 22 spectrometer (resolution 2 cm⁻¹, 128 scans). The reported spectra were obtained after subtraction of the spectrum recorded before Py adsorption.

The crystal morphology and the size of nanoparticles of Co(0) formed in C-Co_xAlBEA and C-Co_xSiBEA upon TPR – H₂ experiment were identified by TEM (JEM-100 CX II ELECTRON MICROSCOPE, JEOL).

Thermal analysis data (SETSYS 16/18, Setaram (France) and mass spectrometer ThermoStar, Balzers (Germany)) were used to define the formation of carbon deposit. The measurements were made in the range of 25 - 1000 °C in flowing air.

2.3. Catalytic tests

The FT catalytic tests were carried out in a fixed bed reactor using a gas mixture of H₂ and CO with molar ratio 2/1 and total flow of reagents 60 mL · min⁻¹. Reaction was carried out under 30 atm at 260 °C and gaseous reagents were analyzed by GC gas chromatograph (Shimadzu GC – 14) equipped with TCD detector and two columns: measuring – Carbosphere 7A and comparative – molecular sieves 7B. Parameters of GC

measurements: column's temperature – 45 °C, detector's temperature – 120 °C, detector's current – 100 mA; carried gas – He. Before FT reaction, catalysts were reduced *in situ* under atmospheric pressure in a flow of 95 % H₂ – 5 % Ar gas mixture at 500 °C for 1 h. The liquid products were analyzed by GC – MS coupled technique. Gas chromatograph (6890N Network GC) was equipped with capillary column HP – 5MS (Agilent Technology) and coupled with quadrupole mass spectrometer (5973 Network Mass Selective Detector). The liquid products in the aim of water removal, which could formed during reaction, were concentrated by SPE method on octadecyl columns C18. Before extraction each of column was preconditioned with 2 mL of n – hexane. After this process 1 mL of liquid products sample were injected on column and then it was washed with 2 mL of n – hexane. GC – MS analysis were carried out in helium flow (0.7 mL · min⁻¹) in temperature range 60 – 280 °C with linear temperature increase of 10 °C min⁻¹. The volume of analyzed sample was 1 mm³.

The quantitative analysis of CO conversion (K_{CO}) and selectivity towards CO₂ (S_{CO_2}), CH₄ (S_{CH_4}) and liquid products (S_{LP}) were calculated in the following way:

$$K_{CO} = \frac{S_{COin} - S_{COari}}{S_{COin}} * 100\%$$

$$S_{CH_4} = \frac{X_{CH_4i} * 100\%}{X_{CH_4out}} / F$$

$$X_{CH_4out} = \frac{X_{CH_4s} * K_{CO}}{100\%}$$

$$S_{CO_2} = \frac{X_{CO_2i} * 100\%}{X_{CO_2out}} / F$$

$$X_{CO_2out} = \frac{X_{CO_2s} * K_{CO}}{100\%}$$

where: K_{CO} – CO conversion

S_{COin} – the peak's surface of CO on inlet before reaction (standard)

$S_{CO_{ari}}$ – the peak's surface of CO after reaction

S_{CH_4} – selectivity towards CH_4

S_{CO_2} – selectivity towards CO_2

X_{CH_4i} – the peak's surface of CH_4 formed during reaction

X_{CO_2i} – the peak's surface of CO_2 formed during reaction

X_{CH_4out} – the teorethical peak's surface of CH_4 which could be formed during reaction in the case when all CO is converted to CH_4

X_{CO_2out} – the teorethical peak's surface of CO_2 which could be formed during reaction in the case when all CO is converted to CO_2

X_{CH_4s} – the peak's surface of CH_4 standard when only methane is analyzed

X_{CO_2s} – the peak's surface of CO_2 standard when only carbon dioxide is analyzed

F – contraction coefficient taken into account the changes of flow and differences between gaseous substrates and liquid products:

$$F = \frac{S_{Ar i}}{S_{Ar s}}$$

$S_{Ar i}$ – peak's surface of Ar (inert gas) during reaction

$S_{Ar s}$ – peak's surface of Ar on inlet before reaction (standard)

The $C_2 - C_6$ hydrocarbons were not identified during GC analysis. The selectivity towards liquid products (all formed liquid products) was calculated from following equation:

$$S_{LP} = 100 - (S_{CH_4} + S_{CO_2})$$

3. Results and discussion

3.1. The state and nature of cobalt in Co_xSiBEA and Co_xAlBEA as determined by DR UV-vis and XRD studies

In Figure 1 the DR UV – vis spectra of as prepared $\text{Co}_{20}\text{AlBEA}$, $\text{Co}_{10}\text{SiBEA}$ and CoSiBEA are presented. For both series, the bands between 515 and 455 nm are observed, which can be assigned to octahedral Co(II) species ($3d^7$ configuration) and/or cobalt oxides, in line with earlier reports on Co-containing zeolites [12 – 16].

– Figure 1 –

Similar bands were observed for Co-MFI and Co-APO-5 zeolites [12 – 14, 17 – 20]. For all studied zeolites, the band at 300 nm appears, which is related to charge transfer (CT) transition between oxygen and cobalt in pseudo-tetrahedral and/or octahedral Co(II) , in line with earlier reports [12 – 14, 21, 22].

For C- $\text{Co}_{10}\text{AlBEA}$, C- $\text{Co}_{20}\text{AlBEA}$ and $\text{Co}_{10}\text{SiBEA}$ and $\text{Co}_{20}\text{SiBEA}$ a significant difference in the DR UV-vis spectra are observed that can be related to the methods of their preparation. As shown in Fig. 2, $\text{Co}_{20}\text{SiBEA}$ prepared by two-step postsynthesis procedure exhibits three kinds of cobalt species, the isolated pseudo-tetrahedral Co(II) (band at 640 nm), octahedral Co(II) (band at 511 nm) and cobalt oxides (band at 464 nm). For $\text{Co}_{20}\text{AlBEA}$ only broad band of octahedral Co(II) and/or cobalt oxides at 460 nm are observed.

- Figure 2 –

The DR UV – vis results show that dealumination of BEA zeolite leads to better dispersion of cobalt species in $\text{Co}_{20}\text{SiBEA}$ containing different cobalt species: isolated pseudo-tetrahedral Co(II) , octahedral Co(II) and cobalt oxides. In contrast, the introduction of high amounts of cobalt into AlBEA leads to obtain Co_xAlBEA with octahedral Co(II) and cobalt oxides as shown, for example for $\text{Co}_{10}\text{AlBEA}$ in Fig. 2.

Figures 3 and 4 present XRD diffractograms of C- $\text{Co}_{10}\text{AlBEA}$ and C- $\text{Co}_{20}\text{AlBEA}$ (Fig. 3) and C- $\text{Co}_{10}\text{SiBEA}$ and C- $\text{Co}_{20}\text{SiBEA}$ (Fig. 4). For these samples the lines characteristic for BEA zeolite ($2\theta = 22.4^\circ$) and Co_3O_4 ($2\theta = 36.7; 58.6; 64.6^\circ$) are observed. The similar lines

related to the presence of Co_3O_4 were obtained by A. Martinez and G. Prieto for ITQ – 2 zeolite containing 10 Co wt % (with highest intensity for $2\theta = 36.7^\circ$) [28].

-Figure 3 –

-Figure 4 –

3.2. Nature and strength of acidic centers as determined by FTIR

To determine the nature and strength of acidic centers in both SiBEA and HAIBEA supports and, as-example, in $\text{Co}_{5.0}\text{SiBEA}$ and $\text{Co}_{5.0}\text{AlBEA}$, the FTIR spectra of adsorbed pyridine taken as probe molecules have been recorded.

The IR bands typical of pyridinium cation are observed at 1546 and 1637 cm^{-1} for HAIBEA (results not shown), indicating presence of Brønsted acidic sites. The other bands at about 1622 , 1610 , 1491 and 1455 cm^{-1} observed for HAIBEA correspond to pyridine interacting with Lewis acidic sites, in line with earlier data. Pyridinium cation (bands at 1546 and 1637 cm^{-1}) and pyridine bonded to Lewis acidic sites (bands at 1622 , 1491 and 1455 cm^{-1}) are present in the IR spectra even after outgassing of HAIBEA at 573 K , suggesting the presence of strong Brønsted and Lewis acidic sites in this zeolite. The incorporation of Co in the HAIBEA leads to decrease the amount of Brønsted acidic sites and to increase the amount of Lewis acidic sites. Moreover, the shift of the band from 1455 (for HAIBEA) to 1450 cm^{-1} (for $\text{Co}_{5.0}\text{AlBEA}$) indicates a decrease of the strength of the Lewis acidic sites in zeolite when Co is incorporated in the HAIBEA.

For SiBEA, the bands characteristic of pyridinium cation and coordinatively bonded pyridine are absent in FTIR spectrum indicating the absence of Brønsted and Lewis acidic sites. By contrast, the incorporation of cobalt in SiBEA leads to appearance of the bands at 1610 , 1491 and 1450 cm^{-1} (results not shown) suggesting the formation of new Lewis acidic sites related to the presence in this zeolite of isolated pseudo-tetrahedral Co(II) species.

3.3. The acidity of C-Co_xSiBEA and C-Co_xAlBEA as determined by TPD – NH₃ studies

The acidity of C-Co_xAlBEA and C-Co_xSiBEA was investigated by TPD of NH₃. The results of TPD – NH₃ studies are showed in the Figures 5 and 6 and Table 2.

For C-Co₁₀AlBEA and C-Co₂₀AlBEA (Fig. 5), two peaks with maximum at 220 °C and 470 - 480 °C are seen related to the presence of weak and strong acidic sites, respectively.

- Figure 5 –

For C-Co₁₀SiBEA and C-Co₂₀SiBEA (Fig.6), the desorption peaks with the maximum at 190 and 410 – 430 °C are seen which can be assigned to weak and strong acidic sites, respectively. The lower temperature of high temperature desorption peaks for C-Co₁₀SiBEA and C-Co₂₀SiBEA than for C-Co₁₀AlBEA and C-Co₂₀AlBEA is related to removal of strong acidic sites upon dealumination process in the first step of two-step postsynthesis procedure.

-Figure 6 –

The quantitative TPD – NH₃ results presented in Table 2 confirm that dealumination process leads to decrease acidity of BEA zeolite, in line with our ealier works [13, 14]. The amount of adsorbed NH₃ is more than 2 times lower for C-Co_xSiBEA (1390 μmolg⁻¹ for C-Co₁₀SiBEA and 1010 μmolg⁻¹ for C-Co₂₀SiBEA) than for C-Co_xAlBEA (2760 μmolg⁻¹ for C-Co₁₀AlBEA and 2440 μmolg⁻¹ for C-Co₂₀AlBEA). The smaller amount of adsorbed NH₃ for C-Co₂₀AlBEA than for C-Co₁₀AlBEA is probably related to much stronger pore blocking by cobalt oxides in the former than in the latter.

-Table 2 –

3.4. The reducibility of cobalt in C-Co_xSiBEA and C-Co_xAlBEA as determined by TPR – H₂

The TPR – H₂ of C-Co₁₀AlBEA and C-Co₂₀AlBEA (Fig. 7) and C-Co₁₀SiBEA and C-Co₂₀SiBEA (Fig. 8) show that for both series the reduction process is multistage.

For C-Co₁₀AlBEA and C-Co₂₀AlBEA reduction peaks are observed at the range of 130-600 °C with maximum at 130 – 160, 245 – 290 and 320 °C related to reduction of cobalt oxides. The peaks at 590 °C could be assigned to reduction of octahedral Co(II) species well dispersed in BEA structure.

- Figure 7 –

For C-Co_xSiBEA two peaks observed at about 230 - 300 °C and 410 - 415 °C (Fig. 8) could be related to reduction of Co₃O₄ to metallic cobalt Co(0). Third reduction peak with maximum at 580 °C for C-Co₁₀SiBEA and at 630 °C for C-Co₂₀SiBEA can be assigned to reduction of octahedral Co(II) species. The reduction peaks at the highest temperature, at 810 °C for C-Co₁₀SiBEA and 760 °C for C-Co₂₀SiBEA are probably related to reduction of isolated pseudo-tetrahedral Co(II) present in framework of BEA zeolite.

-Figure 8 –

It seems that the easier reduction of cobalt in C-Co_xAlBEA than in C-Co_xSiBEA is related to the presence in the former of cobalt mainly in extra-framework position as cobalt oxides and in the latter of pseudo-tetrahedral Co(II) strongly bonded to zeolite structure.

3.5. The morphology of cobalt nanoparticles as determined by TEM analysis

In the Figure 9 the TEM images of C-Co₂₀AlBEA (Fig. 9a) and C-Co₂₀SiBEA (Fig. 9b) after reduction in hydrogen flow at 900 °C are presented. They show the typical shape of BEA zeolite and small Co(0) nanoparticles.

- Figure 9 –

As it is shown in Table 1, the average nanoparticles size of Co(0) in reduced C-Co₂₀SiBEA is 14 nm and is much lower than those formed in reduced C-Co₂₀AlBEA (31 nm).

- Table 1 -

The TEM EDS analysis suggests that BEA zeolite dealumination and incorporation of Co into zeolite structure ensure very good dispersion of metal and thus creation of small Co(0) nanoparticles. It seems that the higher dispersion and smaller Co(0) nanoparticles in reduced C-Co_xSiBEA than in reduced Co_xAlBEA can lead to obtain of the better catalytic properties in Fischer – Tropsch reaction.

3.6. The catalytic activity of Red-C-Co_xSiBEA and Red-C-Co_xAlBEA in Fischer – Tropsch synthesis

The Red-C-Co_xSiBEA and Red-C-Co_xAlBEA catalysts were tested in Fischer – Tropsch synthesis. CO conversion and selectivity towards CH₄, CO₂ and liquid products were analyzed. The influence of the Co content on the activity of Red-C-Co_xSiBEA and Red-C-Co_xAlBEA in Fischer – Tropsch reaction is presented in Figure 10. The most active and selective catalyst towards liquid hydrocarbons appear Red-C-Co₁₀SiBEA and Red-C-Co₂₀SiBEA catalysts, obtained by two-step postsynthesis procedure. The CO conversion of 92 and 97 % and the selectivities towards liquid products of 83 and 84 % for Red-C-Co₁₀SiBEA and Red-C-Co₂₀SiBEA were achieved respectively.

For Red-C-Co_xAlBEA catalysts, the best activity and selectivity towards liquid products was found for Red-C-Co₂₀AlBEA catalyst (CO conversion of 68 %; selectivity towards liquid hydrocarbons of 57 %). Red-C-Co₁₀AlBEA catalyst shows much lower activity than Red-C-Co₂₀AlBEA with CO conversion of 7% and selectivity towards liquid hydrocarbons of 53 %.

Traditional used Co/Al₂O₃ catalysts (containing 15 wt % of Co [29] or 7 wt %), prepared by incipient wetness impregnation, showed CO conversion of 34.5 - 88.9 % [29,30] and selectivity towards hydrocarbons C₅₊ of 81.5 % (p = 20 Bar, T = 220 °C) [29, 30]. It shows that Red-C-Co_xSiBEA zeolite catalysts prepared by two-step postsynthesis method are much more active than usually used cobalt supported Al₂O₃ catalysts. In contrast, Red-C-Co_xAlBEA zeolite catalysts are a little less active than traditional used Co/Al₂O₃ catalysts.

- Figure 10 -

The higher activity of Red-C-Co_xSiBEA than Red-C-Co_xAlBEA catalysts in Fischer – Tropsch synthesis seems to be related to better cobalt dispersion and smaller cobalt nanoparticles size in the former than in the latter. The similar effect of Co dispersion on activity and selectivity of cobalt catalysts in Fischer – Tropsch reaction was earlier observed for Co/ITQ [2] and Co/Y [6]. The differences in selectivity towards CH₄ and higher hydrocarbons were also observed during Fischer-Tropsch synthesis carried out on Co/ZSM – 5, ZSM – 11, ZSM – 12 and ZSM – 34 zeolites [31]. The activity of these catalysts decreased in following order: ZSM-12 (12 MR) > ZSM-5 and ZSM-11 (10 MR) > ZSM-34 (8 MR) [31]. S. Bessels connected an increase of activity in Fischer-Tropsch synthesis with increasing of cobalt dispersion [31].

It is also found that the activity and selectivity of CoBEA zeolites changed with changing of the acidity of these materials. The acidity has influence on the kind of forming liquid products and on the amount and nature of carbon deposition. For the most active catalysts in FT synthesis (Red-C-Co₂₀AlBEA, Red-C-Co₁₀SiBEA and Red-C-Co₂₀SiBEA), the changes of CO conversion and selectivity towards CH₄, CO₂ and liquid products versus time are shown in the Figures 11 – 13.

After 18 h time on stream on Red-C-Co₂₀AlBEA catalyst, CO conversion decreases by 10 % (from 68 to 58 %) with slight decreases of selectivity towards liquid hydrocarbons (from 54 to 52 %) and slight increases of selectivity towards CH₄ (from 35 to 38 %) (Fig. 11).

- Figure 11 -

At the same time, on Red-C-Co₁₀SiBEA catalyst one can observe a much higher decreases in CO conversion (from 90 to 44 %) and selectivity towards liquid products (from 83 to 76 %) and increases of selectivity towards CH₄ (from 12 to 18 %) (Fig.12a). The most stable catalyst is Red-C-Co₂₀SiBEA (Fig. 12b), for which any significant changes in CO conversion and selectivity towards liquid products are observed. In this case the CO conversion remains near 90 % and selectivity towards liquid products near 85 % after 20 h of reaction. The selectivity towards CO₂ is stable and remains at the level of 5 % for all catalysts under study.

-Figure 12 -

The liquid products fraction was analyzed using GC – MS technique. Results of this analysis are presented in the Figure 13 and quantitative analysis is showed in Table 3. During FT reaction carried out on Red-C-Co_xAlBEA catalysts the main liquid products are saturated hydrocarbons (C₇ – C₁₇). The ratio of isoalkanes to n-alkanes is 0.10 for Red-C-Co₁₀AlBEA. In contrast, for Red-C-Co₂₀AlBEA only saturated hydrocarbons (n-alkanes) are observed (Fig. 13 and Table 3). On Red-C-Co_xSiBEA catalysts both saturated (n-alkanes and isoalkanes) and unsaturated (C₇ – C₁₈) hydrocarbons are identified (Figure 13). For Red-C-Co₁₀SiBEA catalyst the isoalkanes to n-alkanes ratio is 0.49 and ratio of olefins to n-alkanes is 0.16. For Red-C-Co₂₀SiBEA catalyst the isoalkanes to n-alkanes ratio is 0.28. The ratio of unsaturated hydrocarbons to n-alkanes is 0.01 for Red-C-Co₂₀SiBEA (Table 3).

The difference between identified liquid products for Red-C-Co_xAlBEA and Red-C-Co_xSiBEA catalysts seems to be caused by the presence of various acidic sites in both types of catalysts. It is believed that hydrocarbons chain propagation occurs at metallic Co

nanoparticles, located in extra-framework zeolite position and then formed hydrocarbons are transformed into lighter products, containing less n-alkanes, in line with earlier report [31].

- Figure 13 –

-Table 3 –

It is very interesting to understand what processes occur on zeolite catalysts during FT reaction and how the liquid hydrocarbons are formed. These studies are undertaken and will be subject of further publication.

The serious problem in Fischer – Tropsch synthesis is carbon deposition which blocks active sites of this reaction. We investigated amount and type of carbon deposit on both types of zeolites catalysts by TG – DTA – MS technique. The results are presented in Figure 14 and in Table 4. As it is seen the carbon deposition is higher for Red-C-Co_xAlBEA (12 – 18 %) than for Red-C-Co_xSiBEA (11 – 12 %) (Table 4). The oxidation of carbon occurs in two stages for Red-C-Co₁₀SiBEA, Red-C-Co₂₀SiBEA and Red-C-Co₂₀AlBEA catalysts. Both forms of carbon deposition are easily oxidised. The oxidation proceeds up to 500 °C (Fig. 14). In the case of Red-C-Co₂₀AlBEA catalyst (Fig. 14a) two peaks of CO₂ formation (MS profile) with maximum at 300 °C are assigned to removal of surface waxes or surface carbides forms whereas the peak with the maximum at 420 °C may be attributed to the removal of polymeric carbon, in line with earlier reports [32, 33, 34]. For Red-C-Co₂₀SiBEA catalyst (Fig. 14b) two peaks of CO₂ formation are also observed and both of them are probably related to removal of surface carbides forms or surface waxes, as suggested recently for Co/SiO₂ materials by Lee and Moodley [33,34].

-Figure 14 –

-Table 4 –

4. Conclusions

Two different Co-containing zeolite systems were obtained by two different preparation procedures, C-Co_xAlBEA by conventional wet impregnation and C-Co_xSiBEA by two-step postsynthesis method. These zeolite systems showed different physicochemical properties related to Co species being in a weak and strong interaction with zeolite supports, respectively.

Red-C-Co_xSiBEA catalysts showed a very good catalytic activity in Fischer-Tropsch synthesis. The most active and stable catalysts were Red-C-Co₁₀SiBEA and Red-C-Co₂₀SiBEA with very high CO conversion (near 90 – 95 %) and selectivity towards liquid hydrocarbons (saturated n-alkanes and isoalkanes and unsaturated hydrocarbons) near 85 %.

Moreover the amount of carbon deposition on Red-C-Co_xSiBEA catalysts (11 – 12 %) was lower than that on Red-C-Co_xAlBEA catalysts (12 – 18 %).

The higher activity of Red-C-Co_xSiBEA than Red-C-Co_xAlBEA in Fischer-Tropsch synthesis was probably related to the higher dispersion of Co(0) nanoparticles with smaller size and particular acidic properties of former in comparison with the latter one.

Acknowledgments

T. Maniecki and P. Mierczynski are acknowledged for their kindly assistance in designing and setting the equipment for catalytic tests. T. Onfroy is acknowledged for FTIR measurements.

This work was financed by National Science Center (Poland) (Grant No. N N209 762140).

References

1. T. Riedel, M. Claeys, H. Schulz, G. Schaub, S.-S. Nam, K.-W. Jun, M.-J. Choi, G. Kishan, K.-W. Lee, *Appl. Catal. A* 186 (1999) 201 – 213.
2. P. Concepcion, C. Lopez, A. Martinez, V. F. Puentes, *J. Catal.* 228 (2004) 321 – 332.
3. X. Li, J. He, M. Meng, Y. Yoneyama, N. Tsubaki, *J. Catal.* 265 (2009) 26 – 34.
4. A. N. Pour, Y. Zamani, A. Tavasoli, S. M. K. Shahri, S. A. Taheri, *Fuel* 87 (2008) 2004 – 2012.
5. A. Martinez, C. Lopez, *Appl. Catal. A* 294 (2005) 251 – 259.
6. Q. Tang, Y. Wang, Q. Zhang, H. Wan, *Catal. Commun.* 4 (2003) 253 – 258.
7. Z.-W. Liu, X. Li, K. Asami, K. Fujimoto, *Catal. Today* 104 (2005) 41 – 47.
8. C. Montes de Correa, F. Córdoba Castrillón, *J. Mol. Catal. A* 228 (2005) 267-273.
9. J. Rathousky, A. Zukal, A. Lapidus and A. Krylova, *Appl. Catal. A* 79 (1991) 167-180.
10. L. Gucci, I. Kiricsi, *Appl. Catal. A* 186 (1999) 375-394.
11. Y. Oumi, I. Jintsugawa, S. Kikuchi, S. Nawata, T. Fukushima, T. Teranishi, T. Sano, *Micropor. Mesopor. Mat.* 66 (2003) 109-116.
12. S. Dzwigaj, M. Che, *J. Phys. Chem. B* 110 (2006) 12490 – 12493.
13. J. Janas, T. Shishido, M. Che, S. Dzwigaj, *Appl. Catal. B* 89 (1 – 2) (2009) 196 – 203.
14. J. Janas, T. Machej, J. Gurgul, R.P. Socha, M. Che, S. Dzwigaj, *Appl. Catal. B* 75 (2007) 239 – 248.

15. M. Mhamdi, E. Marceau, S. Khaddar – Zine, A. Ghorbel, M. Che, Y. Ben Taarit, F. Villain, *Catal. Lett.* 98 (2004) 135-140.
16. G. Fierro, M. A. Eberhardt, M. Houalla, M. H. Hercules, W. K. Hall, *J. Phys. Chem.* 100 (1996) 8468-8477.
17. B.M. Weckhuysen, A.A. Verberckmoes, M.G. Uytterhoeven, F.E. Mabbs, D. Collison, E. de Boer, R.A. Schoonheydt, *J. Phys. Chem. B* 104 (2000) 37-42.
18. A.A. Verberckmoes, B.M. Weckhuysen, R.A. Schoonheydt, *Micropor. Mesopor. Mater.* 22 (1998) 165-178.
19. W. Fan, B.M. Weckhuysen, R.A. Schoonheydt, *Phys. Chem. Chem. Phys.* 3 (2001) 3240-3246.
20. W. Fan, R. Li, T. Dou, T. Tatsumi, B.M. Weckhuysen, *Micropor. Mesopor. Mater.* 84 (2005) 116-126.
21. S. Thomson, V. Luca, R. F. Howe, *Phys. Chem. Chem. Phys.* 1 (1999) 615-619.
22. A. Eldewik, R. F. Howe, *Micropor. Mesopor. Mater.* 48 (2001) 65-71.
23. M. A. Camblor, A. Corma, S. Valencia, *Micropor. Mesopor. Mater.* 25 (1998) 59-74.
24. C.A. Emeis, *J. Catal.* 141 (1993) 347-354.
25. G. Jacobs, T. K. Das, Y. Zhang, J. Li, G. Racoillet, B. H. Davis, *Appl. Catal. A* 233 (2002) 263-281.
26. Y. Wang, M. Noguchi, Y. Takahashi, Y. Otsuka, *Catal. Today* 68 (2001) 3-9.

27. S. J. Jong, S. Cheng, *Appl. Catal. A* 126 (1995) 51-66.
28. A. Martinez, G. Prieto, *J. Catal.* 245 (2007) 470 – 476.
29. D. Pena, A. Griboval-Constant, V. Lecocq, F. Diehl, A.Y. Khodakov, *Catal. Today* 215 (2013) 43 – 51.
30. X. Li, J. He, M. Meng, Y. Yoneyama, N. Tsubaki, *J. Catal.* 265 (2009) 26 – 34.
31. S. Bessel, *Appl. Catal. A* 126 (1995) 235-244.
32. V. Gruver, R. Young, J. Engman, H.F. Robota, *Prepr. Am. Chem. Soc., Div. Petrol. Chem.* 50 (2005) 164-166.
33. D.K. Lee, J.H. Lee, S.K. Ihm, *Appl. Catal.* 36 (1988) 199-207.
34. D.J. Moodley, J. van de Loosdrecht, A.M. Saib, M.J. Overett, A.K. Datye, J.W. Niemantsverdriet, *Appl. Catal. A* 354 (2009) 102-110.

Table 1

The average nanoparticles size for Red-C-Co₂₀AlBEA and Red-C-Co₂₀SiBEA catalysts calculated from TEM EDS data

Sample	Average crystallites size
	(nm)
Red-C-Co ₂₀ AlBEA	30.8
Red-C-Co ₂₀ SiBEA	14.3

Table 2

The quantitative analysis of TPD-NH₃ measurements

Sample	The amount of adsorbed NH ₃
	(mol g ⁻¹)
C-Co ₁₀ AlBEA	2760
C-Co ₂₀ AlBEA	2440
C-Co ₁₀ SiBEA	1390
C-Co ₂₀ SiBEA	1010

Table 3

The ratios of isoalkanes to n-alkanes and alkenes to n-alkanes calculated from GC-MS analysis data of liquid products obtained during FT reaction on various catalysts

Catalyst	iso/n-alkanes ratio	$C_nH_{2n}/n-C_nH_{2n+2}$ ratio	Reference
Red-C-Co ₁₀ SiBEA	0.49	0.16	This work
Red-C-Co ₁₀ AlBEA	0.10	0.00	This work
Red-C-Co ₂₀ SiBEA	0.28	0.01	This work
Red-C-Co ₂₀ AlBEA	0.00	0.00	This work
Co/Al ₂ O ₃	0.02	0.07	[30]

Table 4

Carbon deposit on Spent-Red-C-Co_xAlBEA and Spent-Red-C-Co_xSiBEA catalysts after Fischer – Tropsch reaction

Catalyst	Total weight loss (%)	Weight loss related to H ₂ O removal (%)	Weight loss related to carbon deposition oxidation (%)
Spent-Red-C-Co ₁₀ AlBEA	15.4	3.8	11.6 (1 step)
Spent-Red-C-Co ₁₀ SiBEA	15.8	4.9	10.8 (2 steps)
Spent-Red-C-Co ₂₀ AlBEA	21.2	3.3	17.9 (2 steps)
Spent-Red-C-Co ₂₀ SiBEA	14.4	2.1	12.4 (2 steps)

Figure captions :

Figure 1. DR UV – vis spectra of $\text{Co}_{20}\text{AlBEA}$, $\text{Co}_{10}\text{SiBEA}$ and $\text{Co}_{20}\text{SiBEA}$ recorded at room temperature and ambient atmosphere.

Figure 2. DR UV – vis spectra of $\text{C-Co}_{20}\text{AlBEA}$ and $\text{C-Co}_{20}\text{SiBEA}$ recorded at room temperature and ambient atmosphere.

Figure 3. XRD patterns of $\text{C-Co}_{10}\text{AlBEA}$ and $\text{C-Co}_{20}\text{AlBEA}$ recorded at room temperature and ambient atmosphere.

Figure 4. XRD patterns of $\text{C-Co}_{10}\text{SiBEA}$ and $\text{C-Co}_{20}\text{SiBEA}$ recorded at room temperature and ambient atmosphere.

Figure 5. TPD – NH_3 profiles of $\text{C-Co}_{10}\text{AlBEA}$ and $\text{C-Co}_{20}\text{AlBEA}$.

Figure 6. TPD – NH_3 profiles of $\text{C-Co}_{10}\text{SiBEA}$ and $\text{C-Co}_{20}\text{SiBEA}$

Figure 7. TPR – H_2 profiles of $\text{C-Co}_{10}\text{AlBEA}$ and $\text{C-Co}_{20}\text{AlBEA}$.

Figure 8. TPR – H_2 profiles of $\text{C-Co}_{10}\text{SiBEA}$ and $\text{C-Co}_{20}\text{SiBEA}$.

Figure 9. TEM images of $\text{R-C-Co}_{20}\text{AlBEA}$ (a) and $\text{R-C-Co}_{20}\text{SiBEA}$ (b).

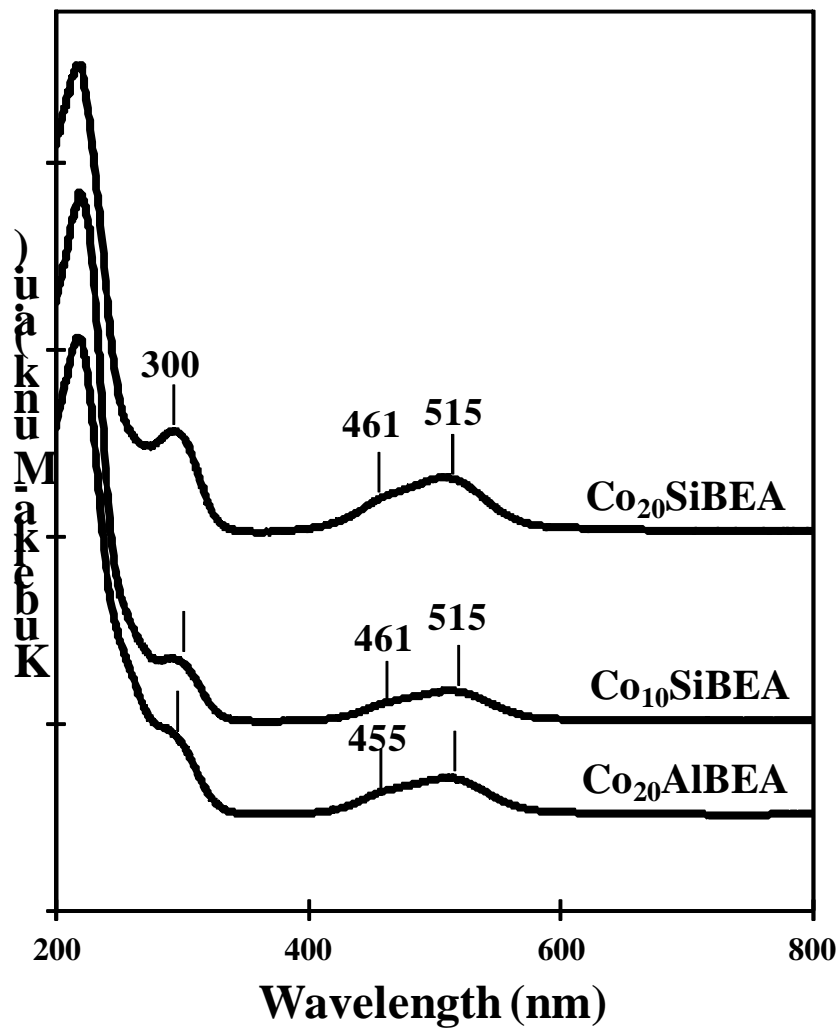
Figure 10. The conversion of CO and selectivity towards CO_2 , CH_4 and liquid hydrocarbons after 15 h of reaction at 260 °C and 30 atm on $\text{Red-C-Co}_{10}\text{AlBEA}$, $\text{Red-C-Co}_{20}\text{AlBEA}$, $\text{Red-C-Co}_{10}\text{SiBEA}$ and $\text{Red-C-Co}_{20}\text{SiBEA}$ catalysts.

Figure 11. Changes of CO conversion and selectivity towards CO_2 , CH_4 and hydrocarbons C_{2+} versus time for $\text{Red-C-Co}_{20}\text{AlBEA}$ catalyst.

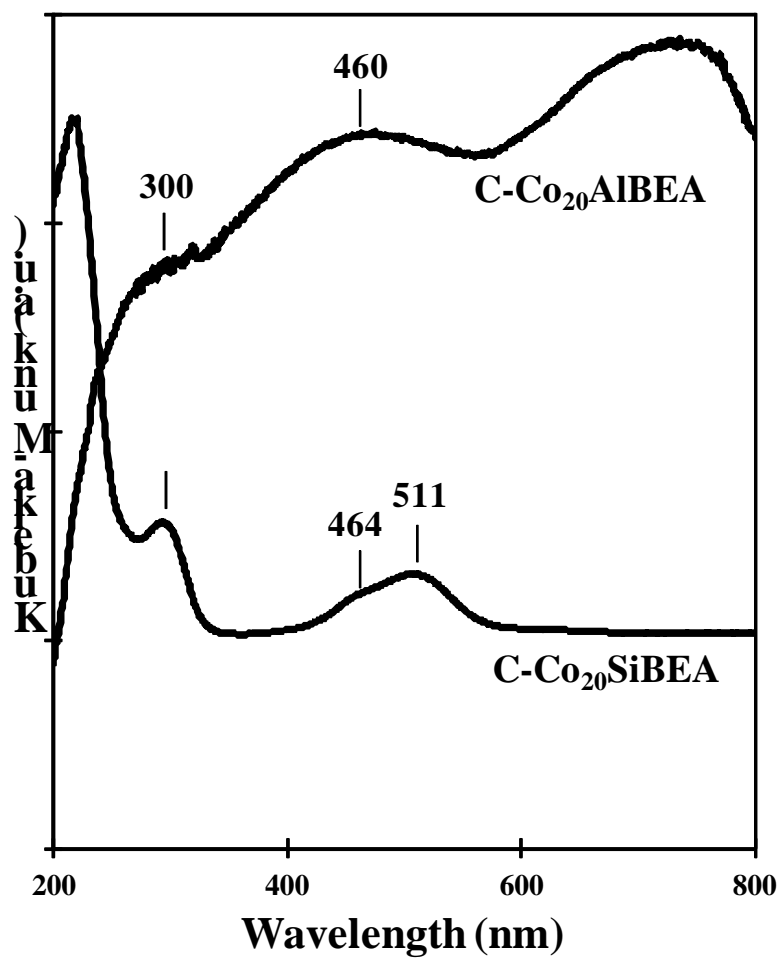
Figure 12. Changes of CO conversion and selectivity towards CO_2 , CH_4 and hydrocarbons C_{2+} versus time for $\text{Red-C-Co}_{10}\text{SiBEA}$ catalyst (a) and for $\text{Red-C-Co}_{20}\text{SiBEA}$ catalyst (b).

Figure 13. GC – MS analysis of liquid products obtained in FTS carried out on Red-C-Co₁₀AlBEA catalyst (a), Red-C-Co₁₀SiBEA catalyst (b), Red-C-Co₂₀AlBEA (c) and Red-C-Co₂₀SiBEA (d).

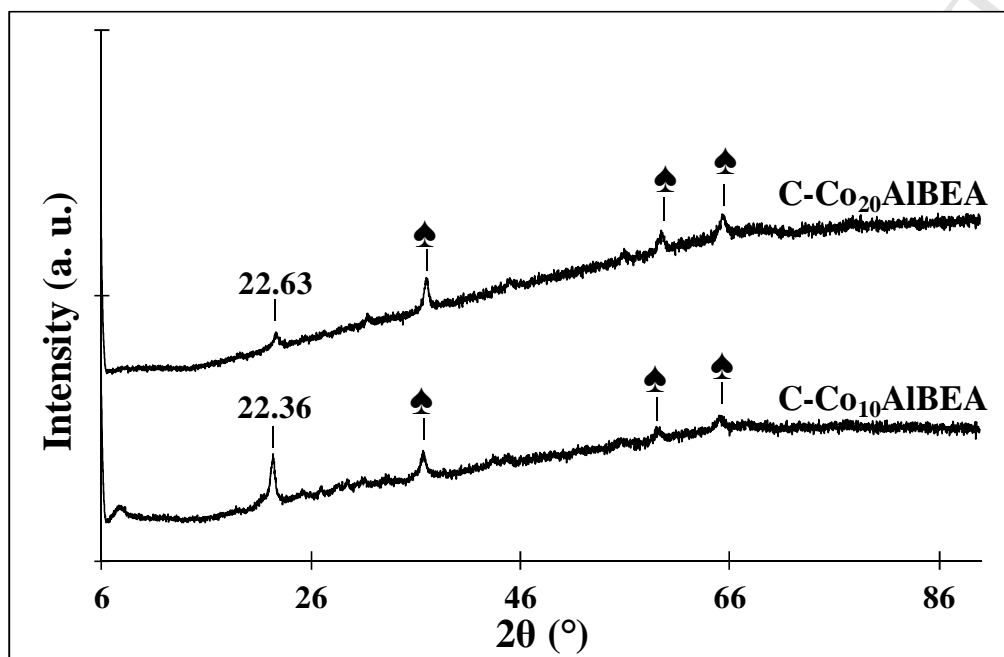
Figure 14. DTG, DTA and MS analysis of Spent-Red-C-Co₂₀AlBEA (a) and Spent-Red-C-Co₂₀SiBEA catalyst (b).



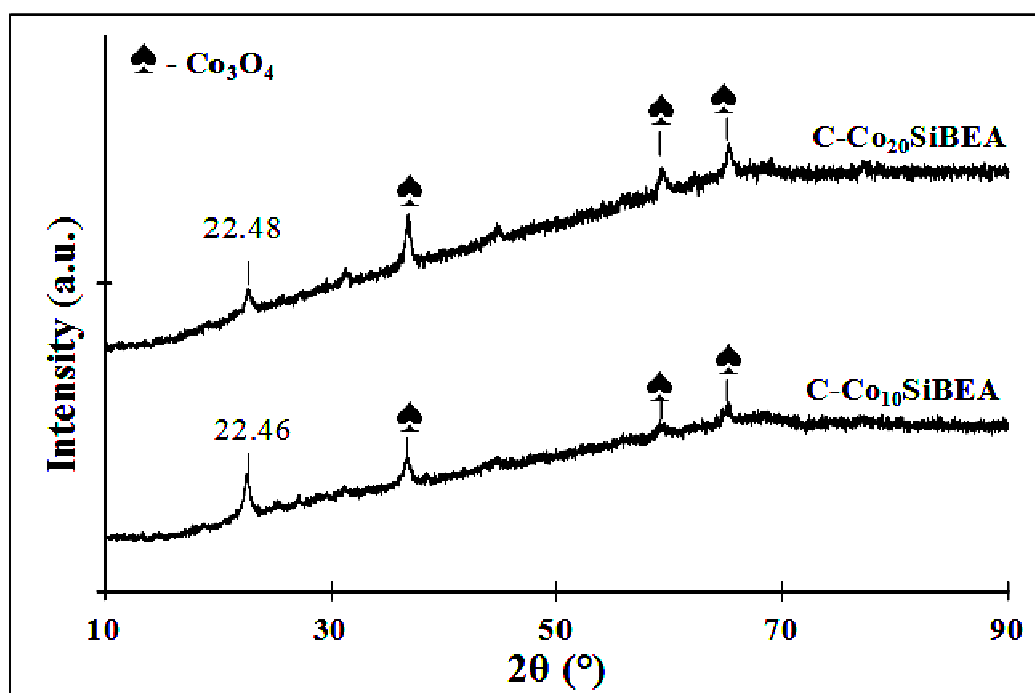
-Figure 1 -



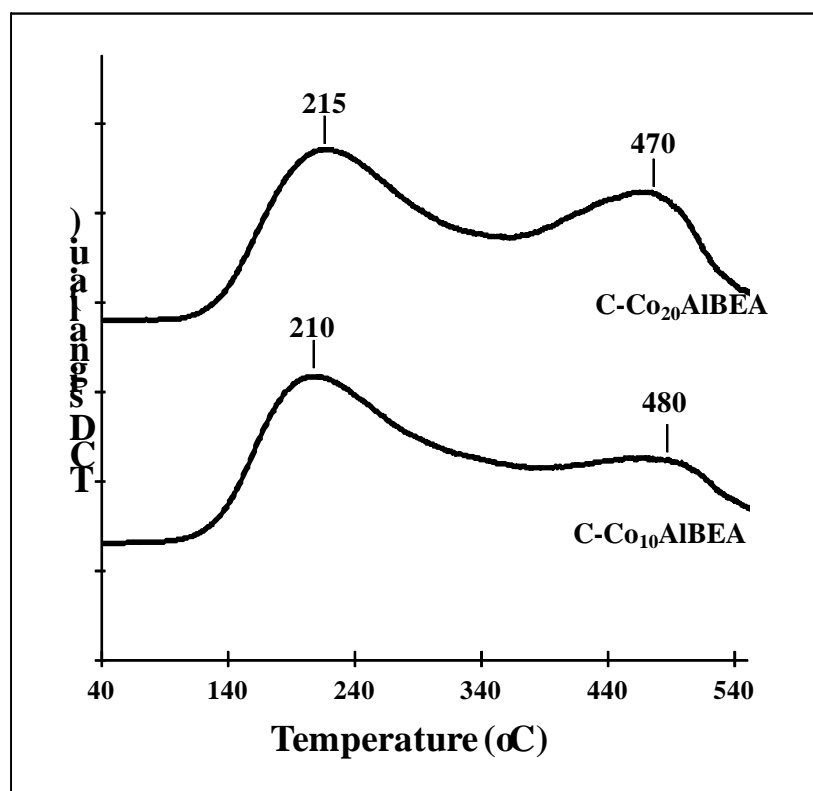
-Figure 2 -



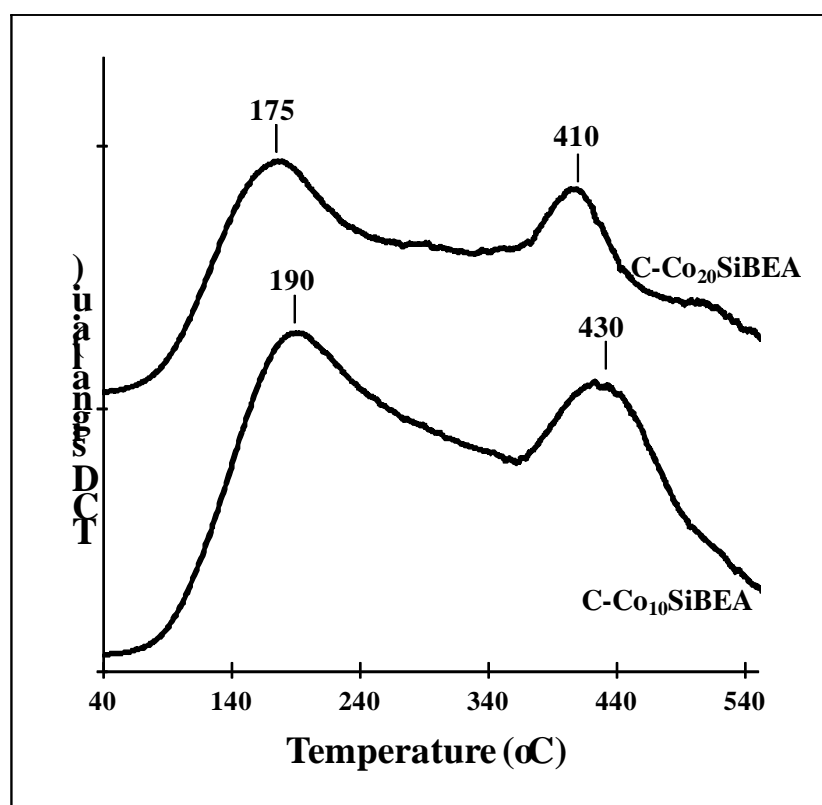
-Figure 3 -



-Figure 4 -



-Figure 5 -



-Figure 6-

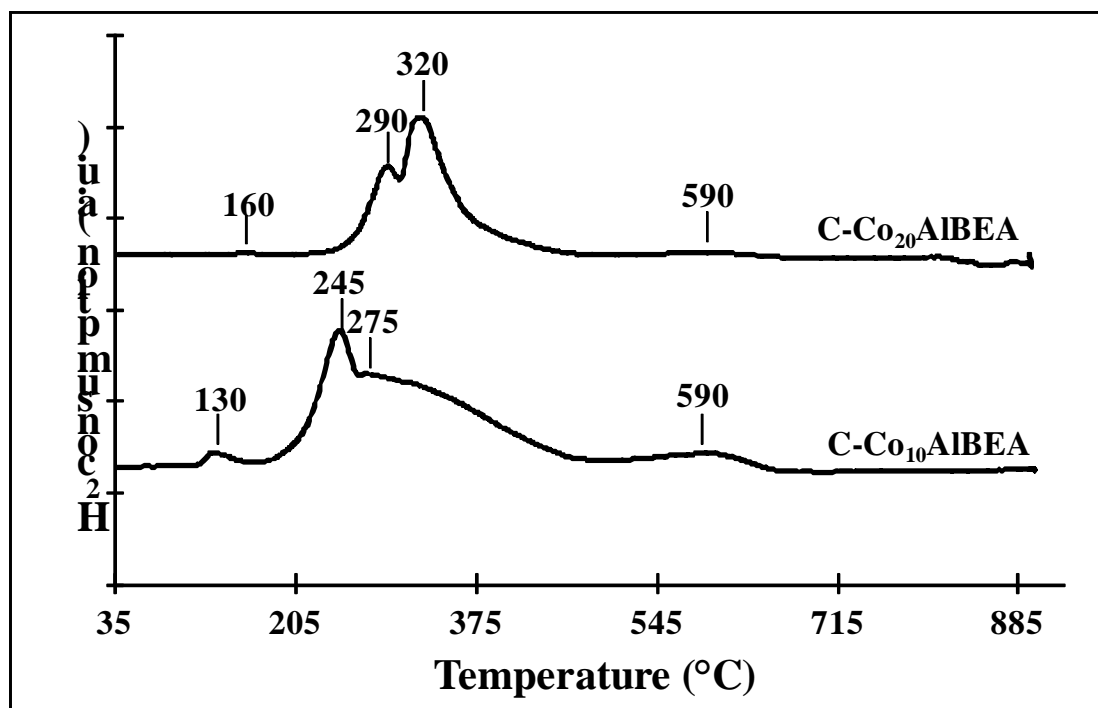
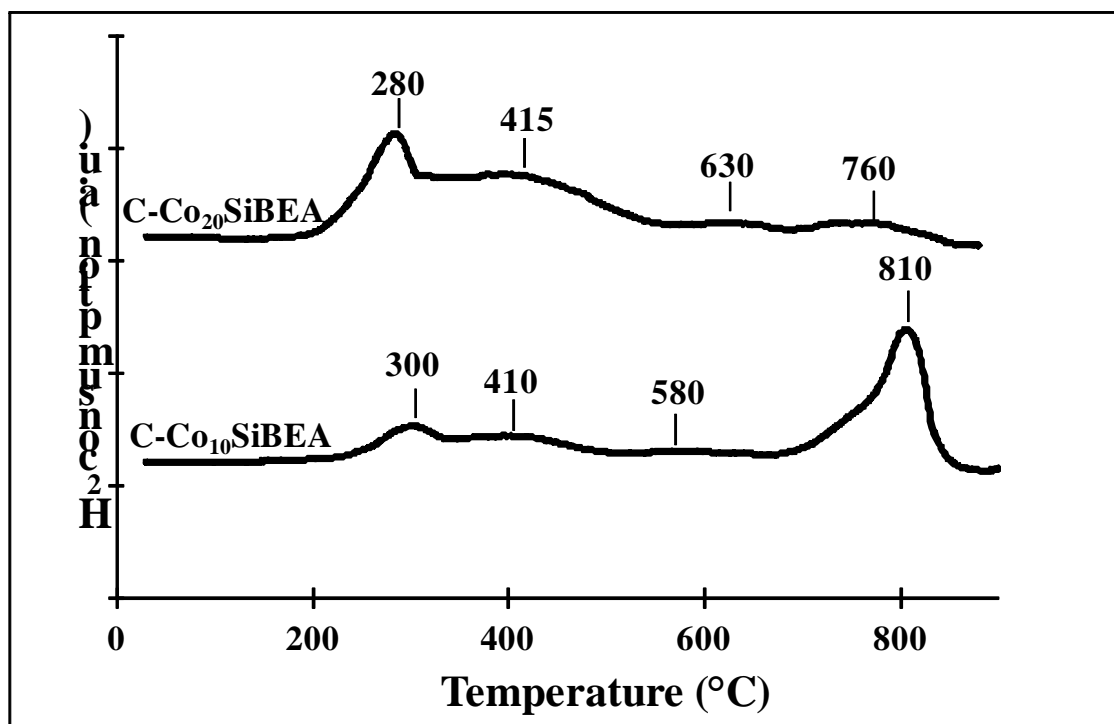


Figure 7



-Figure 8 -

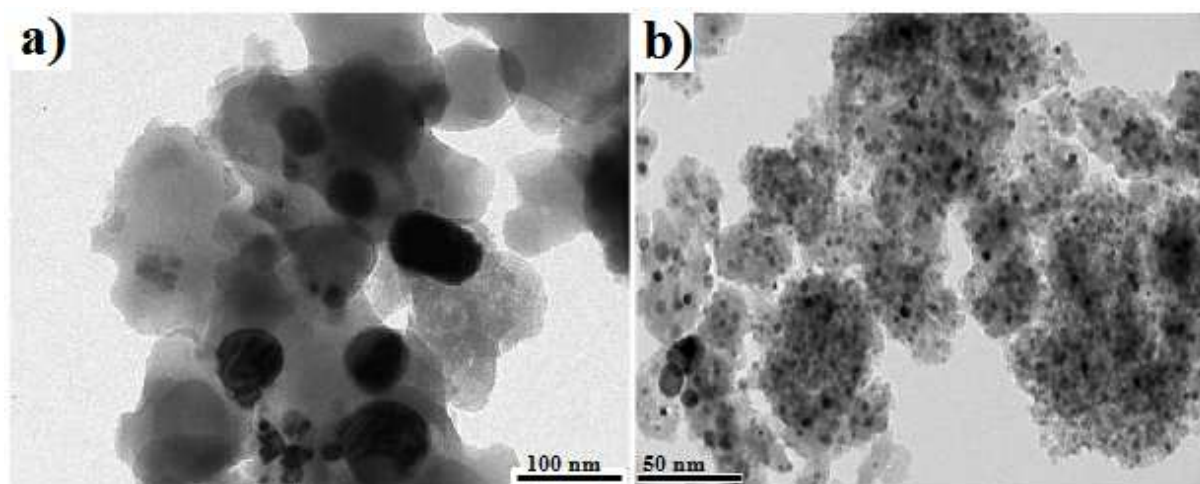
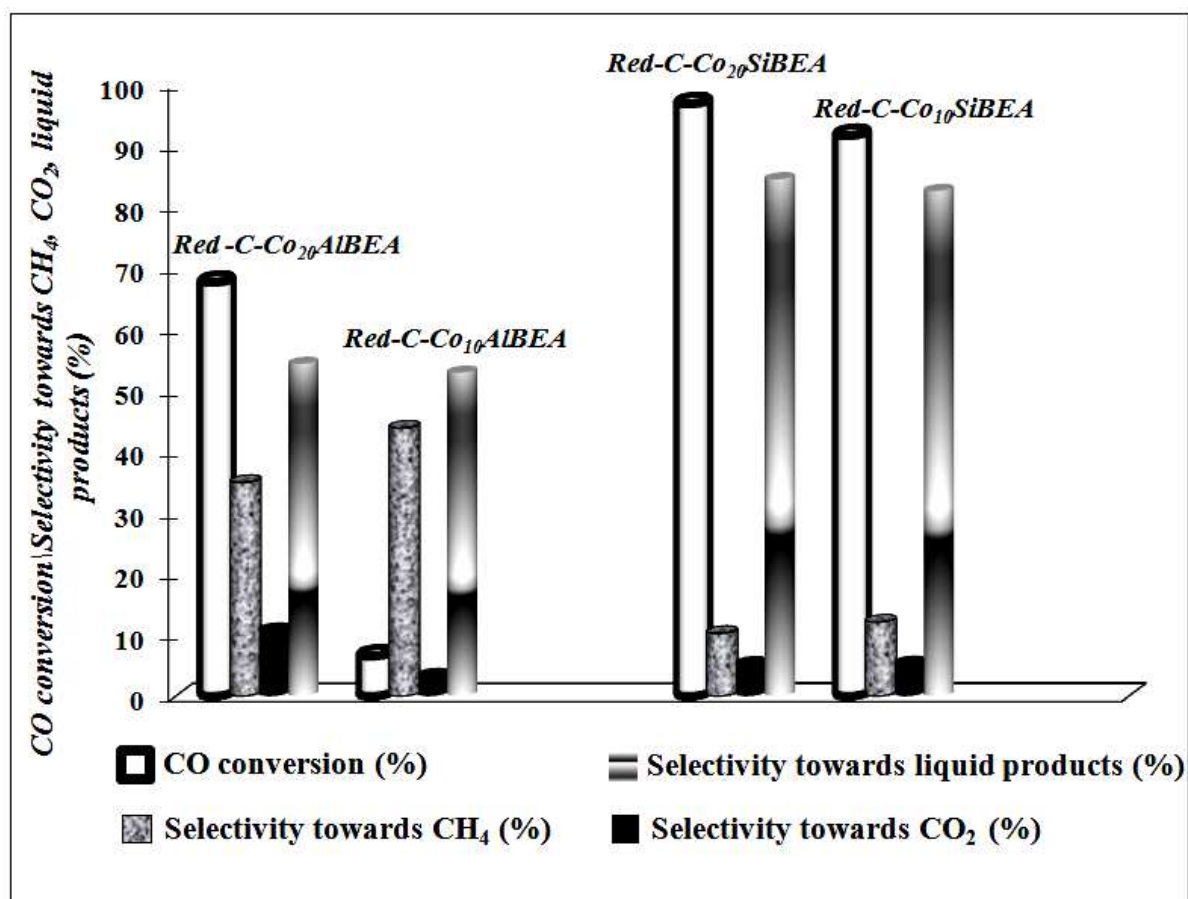
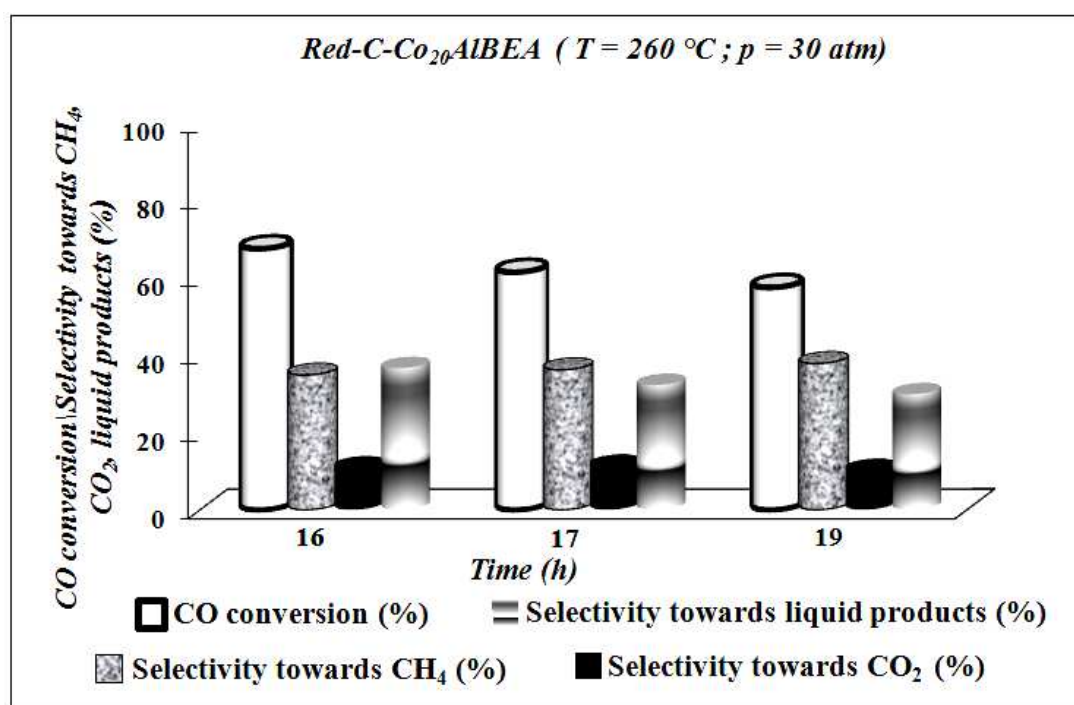


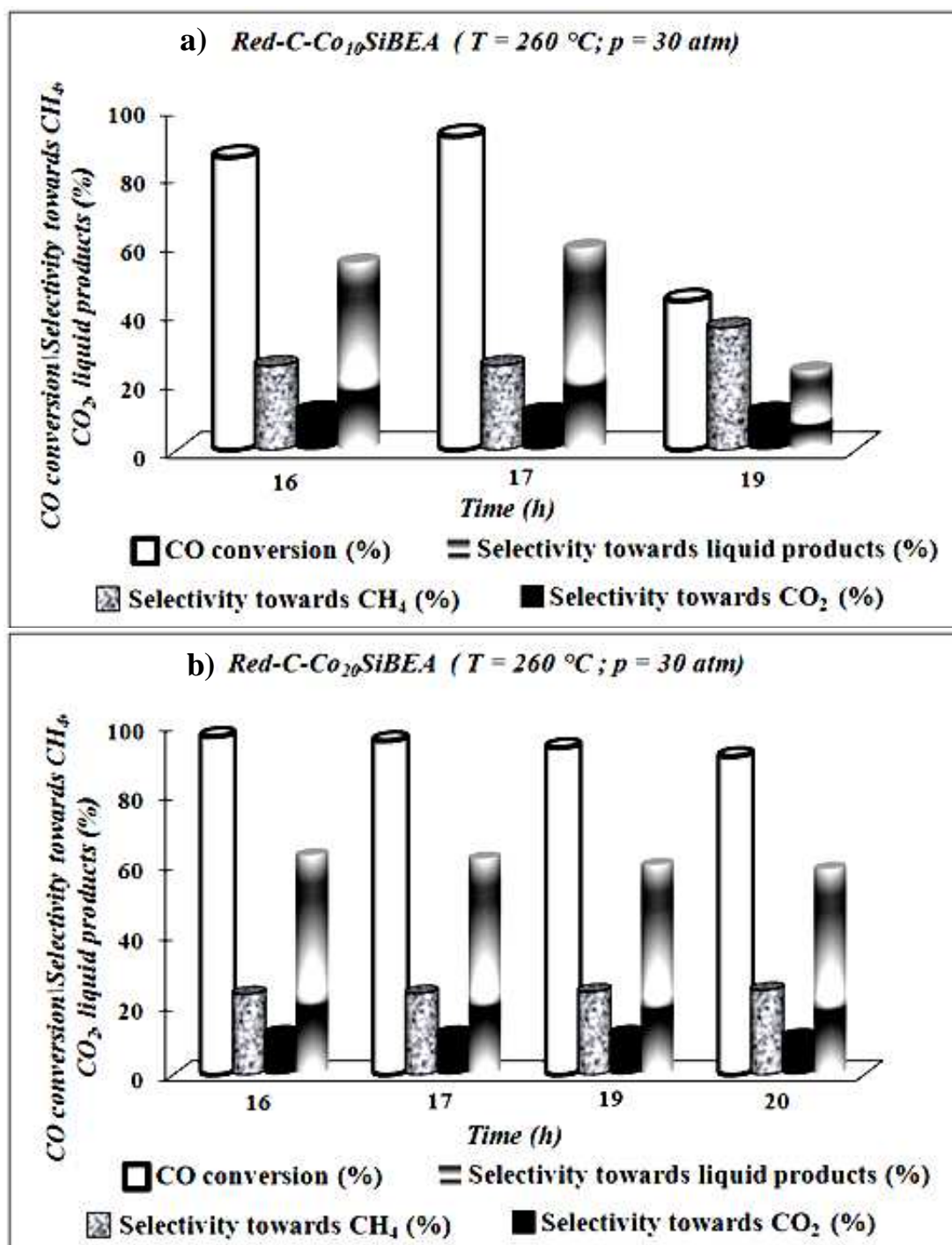
Figure 9



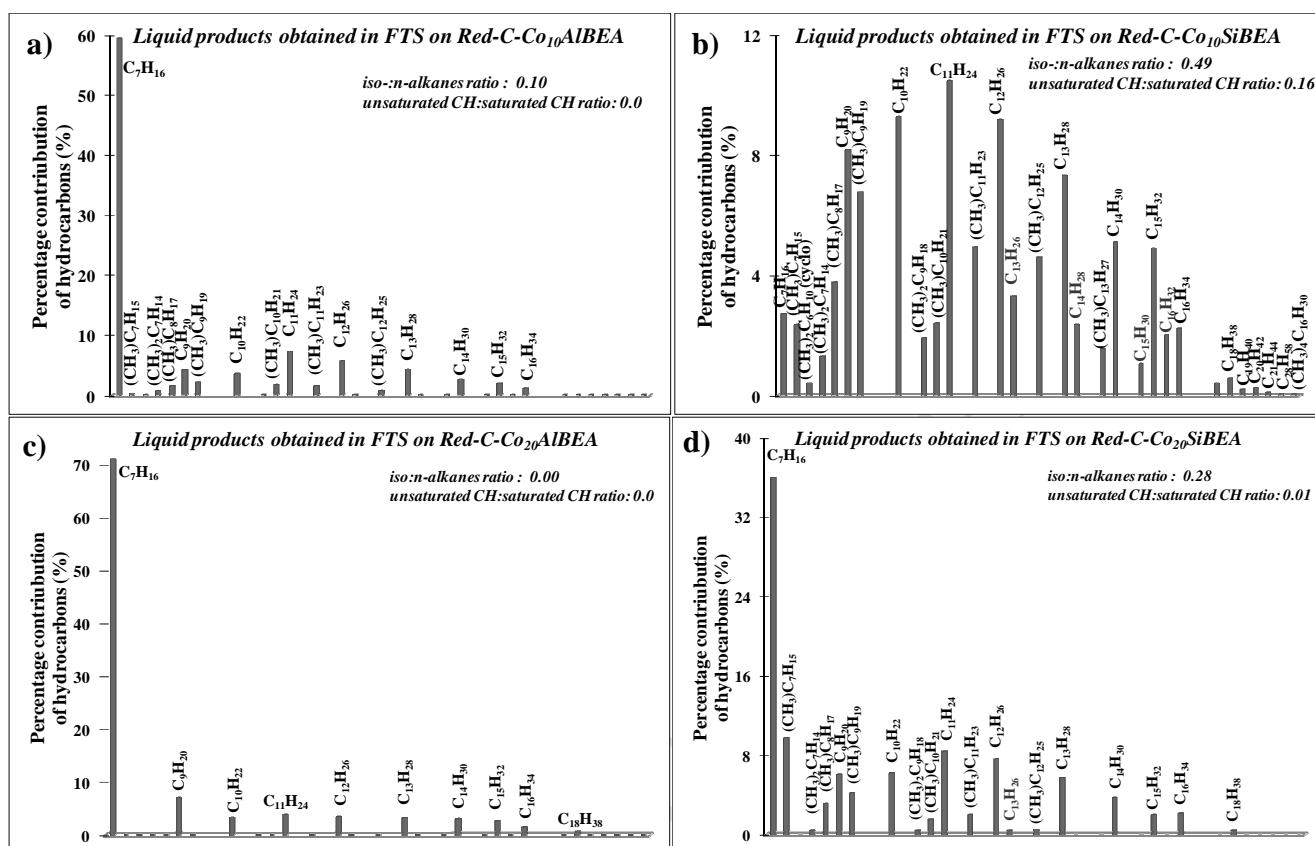
-Figure 10 -



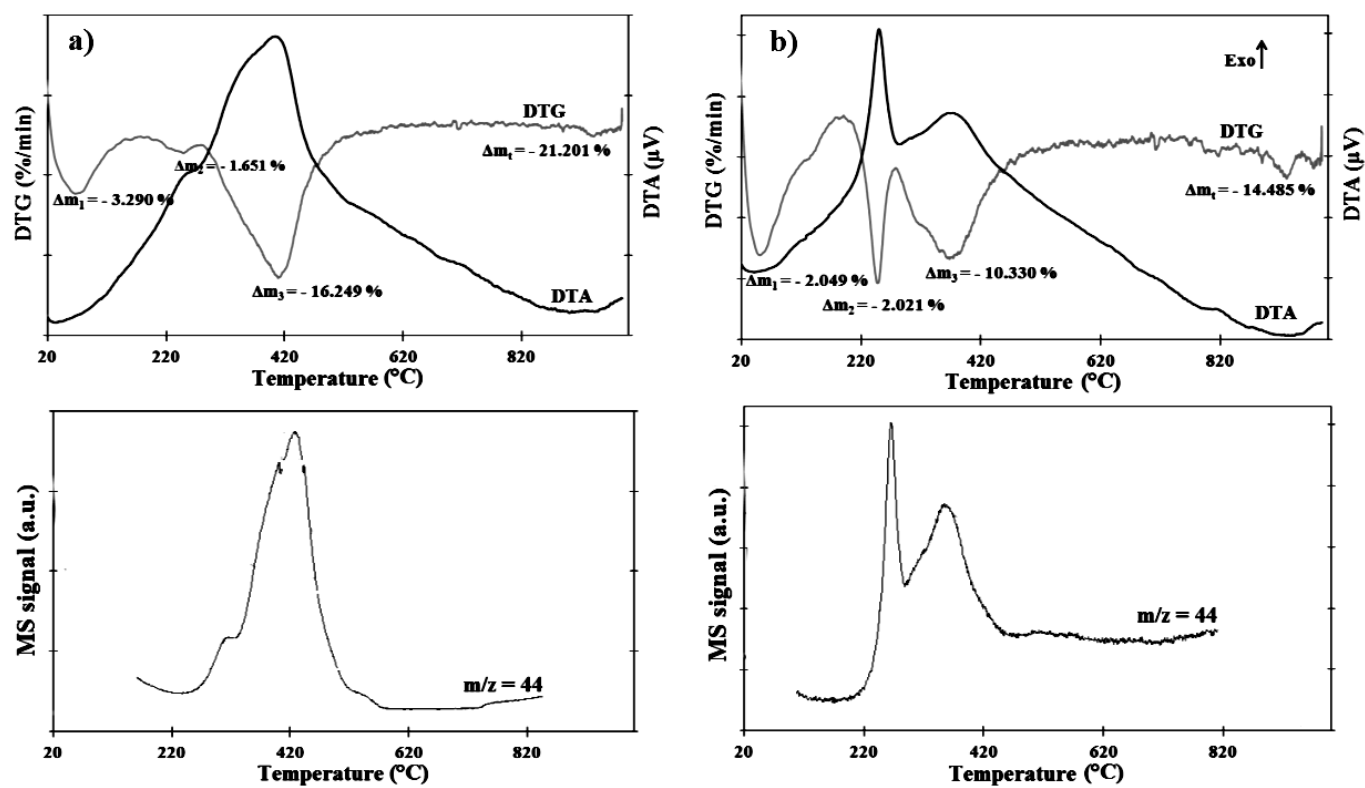
-Figure 11 -



-Figure 12 -



-Figure 13 -



-Figure 14 -

Highlights:

- The most active catalysts were Red-C-Co_xSiBEA with high CO conversion of 90 – 95 %.
- The selectivity towards liquid hydrocarbons (C₇ – C₁₈) on these catalysts was 85 %.
- Cobalt nanoparticles in Red-C-Co_xSiBEA were much better dispersed than that in Red-C-Co_xAlBEA
- The carbon deposition on Red-C-Co_xSiBEA was lower than that on Red-C-Co_xAlBEA