



HAL
open science

Pseudomonas aeruginosa serotypes in nosocomial pneumonia: prevalence and clinical outcomes

Qin Lu, Philippe Eggimann, Charles-Edouard Luyt, Michel Wolff, Michael Tamm, Bruno François, Emmanuelle Mercier, Jorge Garbino, Pierre-François Laterre, Holger Koch, et al.

► **To cite this version:**

Qin Lu, Philippe Eggimann, Charles-Edouard Luyt, Michel Wolff, Michael Tamm, et al.. Pseudomonas aeruginosa serotypes in nosocomial pneumonia: prevalence and clinical outcomes. *Critical Care*, 2015, 18 (1), pp.R17. 10.1186/cc13697 . hal-01156550

HAL Id: hal-01156550

<https://hal.sorbonne-universite.fr/hal-01156550v1>

Submitted on 27 May 2015

HAL is a multi-disciplinary open access archive for the deposit and dissemination of scientific research documents, whether they are published or not. The documents may come from teaching and research institutions in France or abroad, or from public or private research centers.

L'archive ouverte pluridisciplinaire **HAL**, est destinée au dépôt et à la diffusion de documents scientifiques de niveau recherche, publiés ou non, émanant des établissements d'enseignement et de recherche français ou étrangers, des laboratoires publics ou privés.

RESEARCH

Open Access

Pseudomonas aeruginosa serotypes in nosocomial pneumonia: prevalence and clinical outcomes

Qin Lu^{1*}, Philippe Eggimann², Charles-Edouard Luyt³, Michel Wolff⁴, Michael Tamm⁵, Bruno François⁶, Emmanuelle Mercier⁷, Jorge Garbino⁸, Pierre-François Laterre⁹, Holger Koch¹⁰, Verena Gafner¹⁰, Michael P Rudolf¹⁰, Erkan Mus¹⁰, Antonio Perez¹⁰, Hedvika Lazar¹⁰, Jean Chastre³ and Jean-Jacques Rouby¹

Abstract

Introduction: *Pseudomonas aeruginosa* frequently causes nosocomial pneumonia and is associated with poor outcome. The purpose of this study was to assess the prevalence and clinical outcome of nosocomial pneumonia caused by serotype-specific *P. aeruginosa* in critically ill patients under appropriate antimicrobial therapy management.

Methods: A retrospective, non-interventional epidemiological multicenter cohort study involving 143 patients with confirmed nosocomial pneumonia caused by *P. aeruginosa*. Patients were analyzed for a period of 30 days from time of nosocomial pneumonia onset. Fourteen patients fulfilling the same criteria from a phase IIa study conducted at the same time/centers were included in the prevalence calculations but not in the clinical outcome analysis.

Results: The prevalence of serotypes was: O6 (29%), O11 (23%), O10 (10%), O2 (9%), and O1 (8%). Serotypes with a prevalence of less than 5% were found in 13% of patients, 8% were classified as not typeable. Across all serotypes, 19% mortality, 70% clinical resolution, 11% clinical continuation, and 5% clinical recurrence were recorded. Age and higher APACHE II (Acute Physiology and Chronic Health Evaluation II) were predictive risk factors associated with probability of death and lower clinical resolution for *P. aeruginosa* nosocomial pneumonia. Mortality tends to be higher with O1 (40%) and lower with O2 (0%); clinical resolution tends to be better with O2 (82%) compared to other serotypes. Persisting pneumonia with O6 and O11 was, respectively, 8% and 21%; clinical resolution with O6 and O11 was, respectively, 75% and 57%.

Conclusions: In *P. aeruginosa* nosocomial pneumonia, the most prevalent serotypes were O6 and O11. Further studies including larger group sizes are needed to correlate clinical outcome with virulence factors of *P. aeruginosa* in patients with nosocomial pneumonia caused by various serotypes; and to compare O6 and O11, the two serotypes most frequently encountered in critically ill patients.

Introduction

Pseudomonas aeruginosa is the pathogen responsible for approximately 20% of ventilator-associated pneumonia (VAP) and is one of the most difficult pathogens to treat [1,2]. VAP caused by *P. aeruginosa* has the poorest outcome of all intensive care unit (ICU) infections. Overall mortality due to *P. aeruginosa* has been shown to be as high as 70% [3,4], and directly attributable mortality rates are approximately 40% [3,5].

Lipopolysaccharide (LPS) is an important virulence factor in *P. aeruginosa*, exerting direct endotoxic effects. The tripartite nature of LPS divides the molecule into a hydrophobic lipid A region, a central core oligosaccharide region, and a repeating polysaccharide portion referred to as O antigen or O polysaccharide [6,7]. The most complete serotyping system for *P. aeruginosa*, the International Antigenic Scheme (IATS), consists of 20 standard O serotypes [8,9]. Current epidemiology data indicate that, of these 20 serotypes, IATS-O1, serogroup 2 (IATS-O2, IATS-O5, and IATS-16), IATS-O6, and IATS-O11 are responsible for 70% of *P. aeruginosa* infections [10,11].

The relationship between the virulence of *P. aeruginosa* and different serotypes has been studied [12-14].

* Correspondence: qin.lu@psl.aphp.fr

¹Multidisciplinary Intensive Care Unit, Department of Anesthesiology and Critical Care Medicine, La Pitié-Salpêtrière Hospital, Assistance Publique Hôpitaux de Paris, UPMC Paris 6, 47-83 boulevard de l'Hôpital, Paris 75013, France

Full list of author information is available at the end of the article

Strains exhibiting exotoxin U (ExoU), one of the toxins secreted by the type III secretion system (TTSS), were frequently serotyped as O11, whereas serotype O6 strains were associated with a negative ExoU phenotype [12,15]. In an experimental model of pneumonia, serotype O11 was found to be associated with increased lung injury [15]. Moreover, it has been reported that some serotypes are able to induce high resistance of *P. aeruginosa* to antibiotics [16-18].

Little is known, however, about the prevalence of *P. aeruginosa* serotypes in nosocomial pneumonia and the correlation between serotypes and clinical outcome. The primary objective of the study was to assess the prevalence of *P. aeruginosa* serotypes in critically ill patients with nosocomial pneumonia. The secondary objective was to report clinical outcome of nosocomial pneumonia caused by different serotypes of *P. aeruginosa*.

Materials and methods

Study design and patients

This was a retrospective, multicenter, and non-interventional epidemiological cohort study conducted between 2007 and 2009 in the ICU of nine hospitals in France, Switzerland, and Belgium. Patients with confirmed hospital-acquired pneumonia (HAP) and VAP caused by *P. aeruginosa* were analyzed for a period of 30 days from the time of diagnosis of pneumonia. The following ethics committees approved the study: Basel Ethikkommission beider Basel EKBB, Geneva Commission d'Éthique du Département de Médecine, Hôpitaux Universitaires de Genève, Lausanne Commission d'Éthique de la Recherche Clinique de la Faculté de Biologie et Médecine, le Comité de Protection des Personnes, Ile de France-VI, Brussels Université Catholique de Louvain, Faculté de Médecine, Commission d'Éthique Biomédicale Hospitalo-Facultaire. Because it was a retrospective epidemiological study, no informed consent was needed. Written informed consent was obtained in only 14 patients with serotype O11 HAP or VAP when they were included in a phase IIa study [19].

Inclusion criteria

Included patients were at least 18 years old, required intensive care management with HAP and VAP, were expected to survive longer than 72 hours, and fulfilled one of the following two criteria [20]:

1. Confirmed microbiological diagnosis of HAP and VAP caused by *P. aeruginosa* isolated from lower respiratory tract specimen with significant threshold of at least 1×10^4 colony-forming units (CFU)/mL for bronchoalveolar lavage (BAL) [21] or 1×10^3 CFU/mL for protected mini-lavage (mini-BAL) [22], or below if under treatment with antibiotics,

and presence of a new or progressing pulmonary infiltrate, plus one of the following three criteria: (a) fever of greater than 38°C, (b) white blood cell count of greater than 10,000/mm³, or (c) purulent sputum Or

2. Confirmed microbiological diagnosis of HAP and VAP caused by *P. aeruginosa* isolated from endotracheal aspirate (ETA) with at least 1×10^6 CFU/mL and a modified clinical pulmonary infection score (MCPIS) of higher than 6 points [23].

Patients with nosocomial pneumonia caused by multiple bacteria were included in the study. Multiple bacteria were defined as more than one pathogen reaching significant threshold isolated from lower respiratory tract specimen.

Exclusion criteria

During the same period of time and at the same centers, a phase IIa study which included 14 patients with O11 HAP or VAP was performed [19]. To reflect the correct prevalence of O11 serotype during the observation period, these patients were included in the prevalence calculation. They were, however, excluded from the clinical outcome analysis as they were treated with a combination of standard antibiotic treatment plus an adjunctive immunotherapy [19]. Exclusion criteria were applicable to only the 14 patients who participated in the phase IIa study. They included use of any investigational drug within 30 days prior to study commencement or during the study; patients with a known complement deficiency associated with systemic lupus erythematosus, paroxysmal nocturnal hemoglobinuria, hereditary angioedema, membranoproliferative glomerulonephritis, collagen vascular disease, autoimmune hepatitis, primary biliary cirrhosis, scleroderma, or recurrent *Neisserial* infections; or patients with confirmed HIV infection. Transplant patients and/or patients treated with systemic immuno-suppressive drugs (except prednisone or prednisolone), patients with a known liver function deficiency, and neutropenic patients (absolute neutrophil count of less than 1,000 cells/ μ L) were also excluded [19].

Assessments

Serotypes of *P. aeruginosa* isolated from lower respiratory tract specimens were determined by agglutination using serotype-specific antisera (Bio-Rad, Marnes-la Coquette, France) in accordance with the instructions of the manufacturer.

Patient clinical characteristics, Acute Physiology and Chronic Health Evaluation II (APACHE II) score [24], sequential organ failure assessment (SOFA) score, MCPIS, risk factors, microbiological assessments (including serotyping) in ETA or BAL/mini-BAL, blood culture, chest radiographies,

and laboratory parameters were assessed at inclusion. Scores, laboratory parameters, chest radiographies, and body temperature were collected as frequently as possible from day 1 to day 15, at days 21 and 30, or end of study (EOS) until patient died or was lost for follow-up.

Data collected at day 30 or EOS, whichever date was earlier, included clinical outcome, scores, laboratory parameters, chest radiographies, body temperature, discharge from the ICU, and discharge from the hospital.

Clinical outcome was defined as follows:

- Continuation: clinical signs and symptoms of pneumonia present during the whole assessment period until day 30 (or EOS)
- Resolution: complete resolution of pneumonia signs and symptoms present at the time of enrollment, no new symptoms or complications attributable to the pneumonia, no recurrence of pneumonia, and alive, until day 30 (or EOS)
- Recurrence: return of all clinical signs and symptoms of HAP/VAP, including infiltrates after initial clinical resolution
- Death: assessment period until day 30 (or EOS). Actual mortality was compared with predicted mortality according to APACHE II score [24].

Microbiological outcome was defined as follows:

- Continuation: positive culture of *P. aeruginosa* in ETA or (mini)-BAL over the whole assessment period until day 30 (or EOS) associated with persisting clinical signs and symptoms of pneumonia
- Resolution: baseline isolate not present in repeated culture from original infection site
- Recurrence: isolation of *P. aeruginosa* from a culture taken after the resolution of pneumonia
- Colonization: positive culture of *P. aeruginosa* in ETA or (mini)-BAL over the whole assessment period until day 30 (or EOS) without any clinical pneumonia signs and symptoms.

Statistical analysis

Descriptive statistics were used for patient characteristics and outcome variables. Categorical variables were expressed as percentage, and continuous variables as mean \pm standard deviation or as median and 25% to 75% interquartile range according to data distribution. Clinical and microbiological outcomes were considered binary endpoints and these were analyzed by using Bayesian logistic regression models. Logistic regression was used for binary outcomes and model based *P* values, using likelihood ratio tests. Time-to-event endpoints (survival and clinical and microbiological resolution) were analyzed by using Kaplan-Meier and Cox proportional hazards regression models.

Analysis was done without adjustment for risk factors, with adjustment for different serotypes, and with adjustment for risk factors (age, APACHE II score, CPIS, SOFA score, and adequacy of antibiotic treatment). Analyses of data were performed by using R 2.10.1 and WinBUGS 1.4.3.

Results

Patient demographics and characteristics

Patients' flow chart is shown in Figure 1. Of 143 patients, 123 patients were included in the prevalence analysis and 129 in the overall clinical outcome analysis. Among 123 patients with serotype available, 114 patients had VAP (93%) and 9 had HAP (7%). Clinical and demographic data are shown in Table 1. At pneumonia onset, median length of hospital stay was 13 days, median length of ICU stay was 8 days, and median duration of mechanical ventilation was 8 days.

Prevalence of *Pseudomonas aeruginosa* serotypes

The rates of prevalence of serotypes were, respectively, O6 (29%), O11 (23%), O10 (10%), O2 (9%), and O1 (8%). The sum of all serotypes with a prevalence of less than 5% (PL5) was 13%, and 8% of all patients had a *P. aeruginosa* infection classified as not typeable (NT) (Table 2).

The prevalence of *P. aeruginosa* serotypes in French and Swiss investigator centers is shown in Figure 2. The distribution of *P. aeruginosa* serotypes by each investigator site is shown in Table 3.

Overall clinical outcome

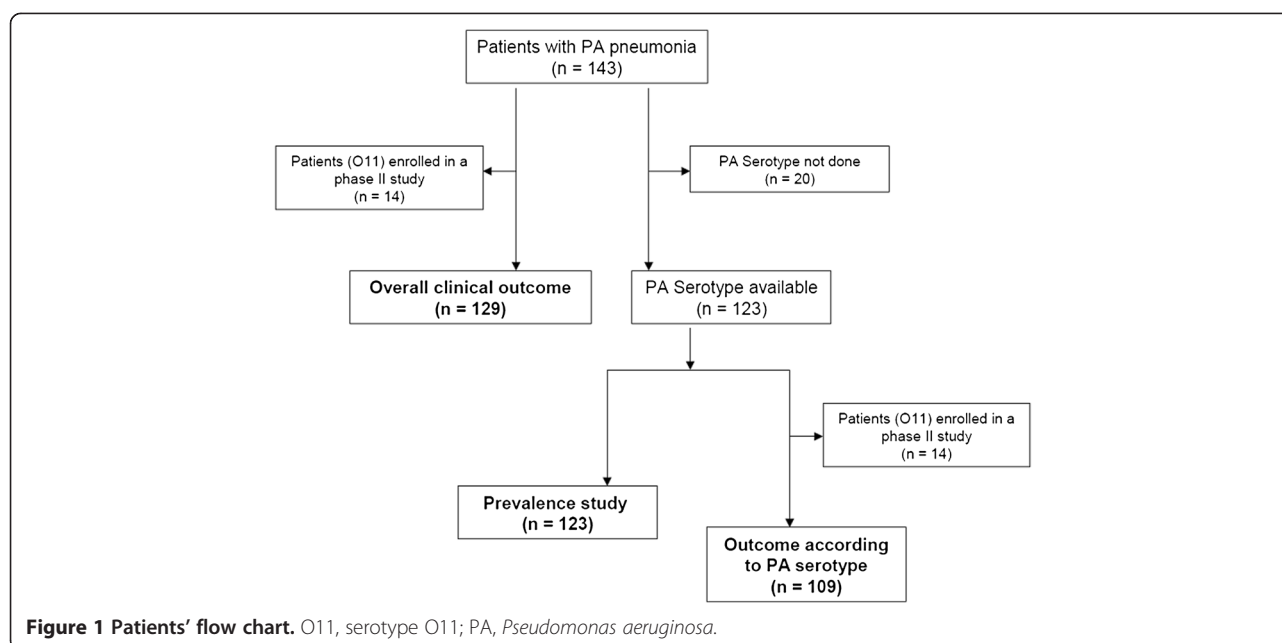
On day 30, across all serotypes, a 19% mortality, a 70% clinical resolution, an 11% clinical continuation, and a 5% clinical recurrence were recorded. Mortality was associated with age ($P = 0.012$) and high APACHE II score ($P = 0.003$). Clinical resolution was not associated with any of the risk factors—APACHE II score, CPIS score, SOFA score, adequate antibiotic treatment and age—or interaction of risk factors. Clinical continuation was associated with high APACHE II score ($P < 0.001$).

Time to death was associated with age ($P = 0.015$) and high APACHE II score ($P = 0.010$). Time to event analysis of clinical resolution was associated with high APACHE II score ($P = 0.008$).

Among 102 patients with microbiological information available, a 41% microbiological resolution, a 25% microbiological continuation, a 23% colonization, and an 11% microbiological recurrence were recorded. Time to microbiological resolution was associated with APACHE II score ($P < 0.001$) and higher MCPIS ($P < 0.007$).

Clinical outcome according to *Pseudomonas aeruginosa* serotype

Among 109 patients (Figure 1), 15% of patients had nosocomial pneumonia caused by multiple bacteria,



which were evenly distributed among the different serotype groups. An 18% mortality and a 69% clinical resolution were recorded. The highest mortality rate was observed in patients with serotype O1 infections (40%), and the lowest in patients with serotype O2 infections (0%) (Figure 3). Actual mortality and predicted mortality by APACHE II score were similar in patients infected by serotypes O1, O10, and O11, whereas actual mortality was lower than predicted mortality in patients infected by serotypes PL5, O6, NT, and O2 (Figure 3).

As shown in Figure 4, the highest clinical resolution rate was found in patients with serotype O2 (82%) and the lowest in patients with serotype O1 (40%). The serotypes O1, O10, O11, and NT had lower rates of clinical resolution (40%, 58%, 57%, and 60%) and higher rates of continuation (20%, 17%, 21%, and 30%), whereas the serotypes O6 and the PL5 group had continuation rates below 10%. The highest rates of recurrence were found in patients with serotype O1, whereas none of the 11 patients with serotype O10 and PL5 relapsed.

Table 1 Clinical characteristics of patients with nosocomial pneumonia caused by different *Pseudomonas aeruginosa* serotypes (n = 123)

Serotypes	All	O1	O2	O6	O10	O11	PL5	NT
VAP/NP, n (%)	114/123 (93)	9/10 (90)	10/11 (91)	35/36 (92)	10/12 (83)	26/28 (93)	15/16 (94)	9/10 (90)
Age, years	61 (43 to 72)	65 (56 to 74)	63 (58 to 70)	57 (39 to 67)	59 (40 to 77)	65 (42 to 78)	64 (47 to 71)	64 (59 to 72)
Male%	75	40	73	81	92	68	81	80
Antibiotics at pneumonia onset, n, %	84 (68)	5 (50)	8 (73)	28 (78)	12 (100)	13 (46)	12 (75)	6 (60)
Inappropriately treated %	11	0	0	14	8	14	6	0
MCPIS	7.0 (5.0 to 9.0)	8.0 (5.8 to 9.5)	9.0 (7 to 10)	7 (5 to 8)	6 (4 to 8)	8.5 (7 to 9.5)	7.5 (5 to 9)	6.0 (4 to 8)
APACHE II score	17 (12 to 22)	17 (11 to 29)	15 (11 to 17)	17 (11 to 23)	17 (11 to 29)	17 (14 to 20)	19 (12 to 26)	16 (12 to 19)
SOFA score	7.0 (5.0 to 10.0)	9.5 (6.5 to 15.0)	5 (4 to 7)	7 (5 to 10)	9.5 (6.5 to 15.0)	6.0 (4.5 to 8.0)	7 (6.0 to 9.0)	6.0 (4.0 to 9.2)
Hospital length of stay at inclusion, days	13 (7 to 14)	14 (8 to 45)	8 (4 to 18)	12 (7 to 25)	13 (8 to 19)	18 (8 to 34)	12 (6 to 24)	14 (8 to 25)
ICU length of stay at inclusion, days	8 (4 to 17)	11 (4 to 17)	5 (3 to 12)	7 (5 to 19)	8 (3 to 13)	9 (6 to 19)	8 (4 to 15)	9 (5 to 14)
Duration of mechanical ventilation at inclusion, days	8 (5 to 17)	10.5 (7 to 17)	5 (3 to 12)	8 (5 to 18)	9 (4 to 13)	9 (5 to 17)	8 (4 to 15)	9 (6 to 14)

Data are expressed as median and 25%-75% interquartile. Nosocomial pneumonia (NP) includes hospital-acquired pneumonia and ventilator-associated pneumonia (VAP). APACHE II, Acute Physiology and Chronic Health Evaluation II; ICU, intensive care unit; MCPIS, modified clinical pulmonary infection score; NT, not typeable; PL5, sum of all serotypes with a prevalence of less than 5%; SOFA, sequential organ failure assessment.

Table 2 *Pseudomonas aeruginosa* serotype distribution (n = 123)

Serotype	Number	Prevalence, percentage
O6	36	29.3
O11	28	22.8
O10	12	9.8
O2	11	8.9
O1	10	8.1
NT	10	8.1
O3	5	4.1
O4	3	2.4
O7	3	2.4
O9	2	1.6
O8	1	0.8
O12	1	0.8
O15	1	0.8

Serotypes with a prevalence of more than 5% are expressed in boldface. NT, not typeable.

Mean time to death across all groups with nosocomial pneumonia was 11.4 days (Table 4). Overall time to resolution was 12.1 days, the shortest being for the patients with O2 infections (10 days) and longest being for the patients with O11 infections (13.4 days) (Table 4).

Discussion

Our study shows that, of the 20 different serotypes of *P. aeruginosa*, O6 (29%) and O11 (23%) were the most prevalent serotypes, responsible for the majority of nosocomial pneumonia. Across all serotypes, clinical outcome correlates strongly to APACHE score. Mortality and clinical resolution tend to be worse in patients

infected by *P. aeruginosa* serotype O1 and better in patients infected by serotypes O2 and NT and O6.

Prevalence of *Pseudomonas aeruginosa* serotypes

While the prevalence of *P. aeruginosa* serotype varies from one hospital to another and from one country to another, O6 and O11 are often the most prevalent serotypes reported in previous studies [10,14,25-30]. It should be pointed out that the prevalence of *P. aeruginosa* serotypes reported in previous studies was obtained either from multiple infectious sites or from a single hospital or country. To the best of our knowledge, our study is the first assessing the prevalence of *P. aeruginosa* serotypes in nosocomial pneumonia from different hospitals of different countries.

Although the prevalence of serotypes is different among the countries and investigator sites (Figure 2 and Table 3), the overall rates of prevalence of the most common *P. aeruginosa* serotypes observed in patients with nosocomial pneumonia were O6 and O11. After exclusion of the largest enrollment site from the analysis, O6 and O11 remain the most prevalent serotypes, suggesting that investigator site effect does not influence interpretation of the finding. This result is comparable with those previously reported in the literature [10,15,25,26,28]. In approximately 8% of cases, the standard method failed to detect serotype because of self-agglutinating or non-agglutinating strains and the samples were classified as “not typeable”. This proportion is less than those previously reported [11,18,27].

Clinical outcome and *Pseudomonas aeruginosa* serotypes

Age and APACHE II score were found to be the predictive risk factors for nosocomial pneumonia caused by *P. aeruginosa*. This result indicates that mortality and clinical and microbiological resolutions were strongly correlated with severity of the patients at the initial phase of pneumonia [31-33].

The relationship between virulence of *P. aeruginosa* and different serotypes has been investigated in a few studies [12-14]. It has been shown that clinical strains lacking B-band O antigen increase TTSS and virulence [34]. On the other hand, it was found that strains secreting ExoU were frequently serotyped as O11 [12,15]. ExoU is one of the toxins secreted by TTSS and contributes to epithelial cell toxicity, lung injury, and sepsis in infected animals [35,36]. Exo S and Exo T disrupt the host cell actin cytoskeleton, block phagocytosis, and are associated with mortality in animal models [37]. Furthermore, TTSS is associated with persistent VAP caused by *P. aeruginosa* and poor clinical outcome [38,39]. Faure et al. reported that, among 13 *P. aeruginosa* O1 strains, 7 secreted Exo S [12]. Recently, Le Berre et al. showed that the O11 serotype, elastase production, and TTSS were associated with increased lung injury in a murine

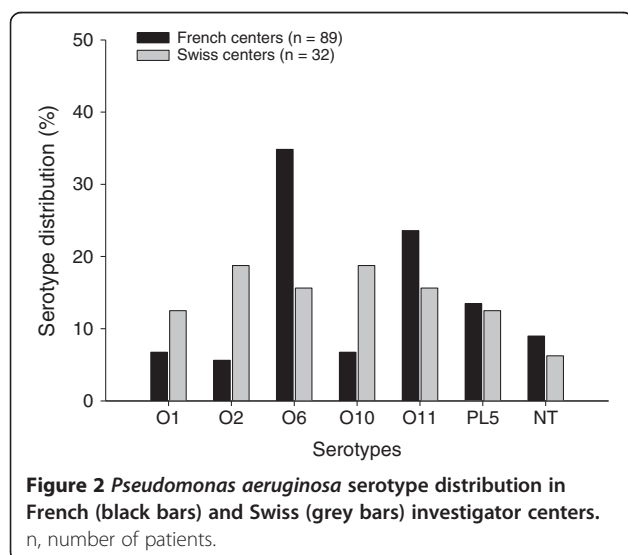


Table 3 *Pseudomonas aeruginosa* serotype distribution by each investigator site

Investigator site		O1	O2	O6	O10	O11	PL5	NT	Total
1	n	2	0	8	2	1	2	1	16
	%	12.5%	0.0%	50.0%	12.5%	6.3%	12.5%	6.3%	100%
2	n	1	0	3	2	2	3	2	13
	%	7.7%	0.0%	23.1%	15.4%	15.4%	23.1%	15.4%	100%
3	n	2	4	12	1	14	4	3	40
	%	5.0%	10.0%	30.0%	2.5%	35.0%	10.0%	7.5%	100%
4	n	0	0	3	1	3	1	2	10
	%	0.0%	0.0%	30.0%	10.0%	30.0%	10.0%	20.0%	100%
5	n	1	1	5	0	1	2	0	10
	%	10.0%	10.0%	50.0%	0.0%	10.0%	20.0%	0.0%	100%
6	n	4	5	4	1	2	2	0	18
	%	22.2%	27.8%	22.2%	5.6%	11.1%	11.1%	0.0%	100%
7	n	0	1	1	5	1	2	2	12
	%	0.0%	8.3%	8.3%	41.7%	8.3%	16.7%	16.7%	100%

Investigator sites with more than 10 patients were analyzed. Percentages of serotype are expressed in boldface. NT, not typeable; PL5, sum of all serotypes with a prevalence of less than 5%.

model of pneumonia [15]. They found that serotype O11 strains were significantly more virulent than non-typeable strains and serotype O6; O11 strains were associated with a positive (ExoU) phenotype, whereas O6 strains were associated with negative ExoU phenotype [12,15]. These results suggest that clinical outcome of patients with pneumonia caused by *P. aeruginosa* could be related to serotypes.

This article reports on the first ever study to assess the clinical outcome of nosocomial pneumonia caused

by a range of different serotypes of *P. aeruginosa* in critically ill patients under standard ICU management. Interestingly, the results show that the mortality rates for serotypes O1, O10, and O11 were in line with the expected mortality rates estimated by the severity of the patients (APACHE II score). Infections with serotypes O6, O2, and NT serotypes, however, had lower mortality than expected. There was a trend toward poorer outcome of patients with pneumonia caused by serotypes O1.

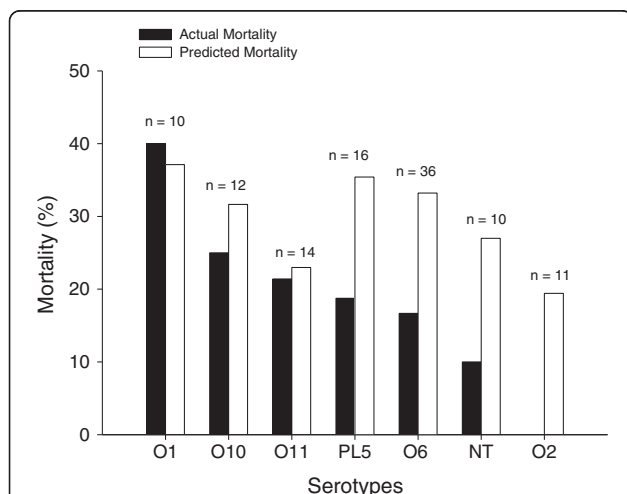


Figure 3 Percentages of predicted and actual mortality of patients with nosocomial pneumonia caused by different *Pseudomonas aeruginosa* serotypes. Black bars indicate actual mortality, and white bars indicate predicted mortality estimated according to Acute Physiology and Chronic Health Evaluation II (APACHE II) score. NT, not typeable; PL5, sum of all serotypes with a prevalence of less than 5%.

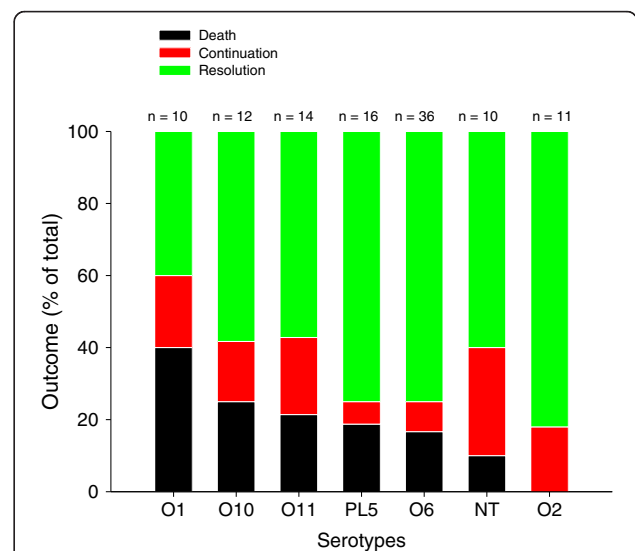


Figure 4 Proportions of death (black bars), persisting pneumonia (or continuation) (red bars), and clinical resolution (green bars) of patients with nosocomial pneumonia caused by different *Pseudomonas aeruginosa* serotypes. NT, not typeable; PL5, sum of all serotypes with a prevalence of less than 5%.

Table 4 Mean time to death and mean time to clinical resolution

Serotypes	Death/re-resolution	O1	O2	O6	O10	O11	PL5	NT
Time to death in days, mean ± SD	(n = 20)	(n = 4)	(n = 0)	(n = 6)	(n = 3)	(n = 3)	(n = 3)	(n = 1)
	11.4 ± 7.4	12.0 ± 8.1	NA	10.2 ± 7.1	16.0 ± 7.2	12.3 ± 4.2	8.3 ± 4.0	7
Time to clinical resolution in days, mean ± SD	(n = 75)	(n = 4)	(n = 10)	(n = 28)	(n = 7)	(n = 8)	(n = 12)	(n = 6)
	12.1 ± 5.9	11.0 ± 5.8	9.9 ± 4.0	11.6 ± 6.1	13.1 ± 4.3	13.4 ± 7.2	13.3 ± 5.9	10.8 ± 4.1

NT, non typeable; PL5, sum of all serotypes with a prevalence of less than 5%; SD, standard deviation.

By cross-referencing prevalence and mortality rates, one can see that, while the O6 serotype is the most prevalent (29%), it has lower levels of continuation (8%) and death (17%) and higher resolution rates (75%) than the second most prevalent serotype O11 (prevalence 23%, continuation 21%, death rate 21%, and resolution 57%). This finding could be explained by the absence of ExoU with serotype O6 and presence of ExoU with serotype O11 as previously reported [15]. Consequently, compared with O6, O11 may be a more clinically relevant target for therapy in terms of patient outcomes [19]. Further study with larger groups is required in order to draw firm conclusions.

Methodological limitations

First, the prevalence obtained from our study may not be applied globally, because of an absence of data from additional countries known for their high prevalence of pneumonia caused by *P. aeruginosa*, such as Spain, Italy, Greece, the US, Mexico, Canada, and Japan. Serotypes may also vary from hospital to hospital within a given country and within the same hospital when assessed at different times. The most prevalent serotypes obtained in our study are, however, comparable to those previously reported in the literature. Second, the potential relationship between serotypes, virulence factors, and antibiotic resistance was not studied. Patients hospitalized in the same ICU could have a *P. aeruginosa* clone with the same virulence. Moreover, *P. aeruginosa* strains with the same serotype could be different clones exhibiting different virulence. Third, interpreting the results on clinical outcome is limited due to the small size of the individual serotype groups. However, these preliminary data provide relevant information for further investigations.

Further larger clinical study combining clinical outcome with distribution of virulence factors by serotypes and identification of specific clones by pulsed-field gel electrophoresis is needed to enhance the implication of these clinical findings [40].

Conclusions

O6 and O11 are the most prevalent serotypes in nosocomial pneumonia caused by *P. aeruginosa*. Mortality tends to be worse with O1 and better with O2; clinical resolution tends to be better with O2 and O6 compared

with other serotypes, but it is difficult to draw firm conclusions given the small number of strains in each serotype group. Further large-powered multicenter study is required to assess clinical outcome of nosocomial pneumonia caused by *P. aeruginosa* serotypes, particularly O6 and O11, the two serotypes most frequently encountered in critically ill patients.

Key messages

- In *Pseudomonas aeruginosa* nosocomial pneumonia, the most prevalent serotypes are O6 and O11.
- Across all serotypes, mortality and clinical resolution of pneumonia correlate strongly to APACHE score.
- Clinical outcome tends to be worse with serotype O1 and better with O2, but a firm conclusion needs a larger group size.

Abbreviations

APACHE II: Acute Physiology and Chronic Health Evaluation II; BAL: bronchoalveolar lavage; CFU: colony-forming units; CPIS: clinical pulmonary infection score; EOS: end of study; ETA: endotracheal aspirate; ExoU: exotoxin U; HAP: hospital-acquired pneumonia; IATS: international antigenic scheme; ICU: intensive care unit; LPS: lipopolysaccharide; MCPIS: modified clinical pulmonary infection score; mini-BAL: protected mini-bronchoalveolar lavage; NT: not typeable; PL5: sum of all serotypes with a prevalence of less than 5%; SOFA: sequential organ failure assessment; TTSS: type III secretion system; VAP: ventilator-associated pneumonia.

Competing interests

PE was involved in the Kenta Biotech (Zürich-Schlieren, Switzerland) *S. aureus* project KBSA301. MW has received consulting or lecture fees (or both) from Astellas (Tokyo, Japan), Gilead (Foster City, CA, USA), Pfizer (New York, NY, USA), Novartis (Basel, Switzerland), and Cubist (Lexington, MA, USA). BF has received consulting fees from Kenta Biotech, Medimmune (Gaithersburg, MD, USA), and Sanofi (Paris, France). JG has received consulting or lecture fees (or both) from Astellas, Gilead, Pfizer, Novartis, Roche (Basel, Switzerland), Merck (Whitehouse Station, NJ, USA), and Cubist. P-FL is a consultant for Kenta Biotech, Agennix (Heidelberg, Germany), and AstraZeneca (London, UK). JC has received consulting or lecture fees (or both) from Kenta Biotech, Pfizer, Brahms (Hennigsdorf, Germany), Astellas, KaloBios (South San Francisco, CA, USA), Sanofi, Nektar-Bayer (San Francisco, CA, USA), and GlaxoSmithKline (Brentford, UK). HK, HL, EMu, and MPR were employees of Kenta Biotech and owned stocks in Kenta Biotech at the time of the study. AP is external chief medical officer for Kenta Biotech and senior consultant for Aridis Pharmaceutical for Panobacumab drug development. VG is a former employee of Kenta Biotech. QL, J-JR, C-EL, MT, and EMe declare that they have no competing interests.

Authors' contributions

Investigators QL and J-JR participated in acquisition of patient data, data analysis, and drafting and reviewing of the manuscript. PE, C-EL, JC, MW, MT, BF, EMe, JG, and P-FL participated in acquisition of patient data and reviewing of the manuscript. Kenta Biotech employees MPR and HK participated in design of the study and drafting and reviewing of the manuscript. AP, HL, and EMu participated in

design of the study, data collection, data analysis, and drafting and reviewing of the manuscript. VG participated in design of the study, data collection, data analysis, and reviewing of the manuscript. All authors read and approved the final manuscript.

Acknowledgments

The design, collection, and initial analysis of the data were funded by Kenta Biotech. The final analysis and interpretation of the data, the writing of the manuscript, and the decision to submit the manuscript for publication were carried out independently by the investigators without any financial support.

Author details

¹Multidisciplinary Intensive Care Unit, Department of Anesthesiology and Critical Care Medicine, La Pitié-Salpêtrière Hospital, Assistance Publique Hôpitaux de Paris, UPMC Paris 6, 47-83 boulevard de l'Hôpital, Paris 75013, France. ²Department of Adult Intensive Care Medicine, Centre Hospitalier Universitaire Vaudois, Rue du Bugnon 46, 1011 Lausanne, Switzerland. ³Medical Intensive Care Unit, La Pitié-Salpêtrière Hospital, Assistance Publique Hôpitaux de Paris, UPMC Paris 6, 47-83 boulevard de l'Hôpital, 75013 Paris, France. ⁴Reanimation Médicale et Infectieuse, Hôpital Bichat-Claude Bernard, 46 Rue Henri Huchard, 75018 Paris, France. ⁵Pneumonia Clinic, University Hospital Basel, Petersgraben 4, 4031 Basel, Switzerland. ⁶Intensive Care Unit, CIC-P 0801 Inserm, CHU Dupuytren, 2 avenue Martin-Luther-King, 87042 Limoges, France. ⁷Réanimation médicale, Hôpital Bretonneau, 2 Boulevard Tonnelé, 37000 Tours, France. ⁸University Hospitals of Geneva, Rue Gabrielle-Perret-Gentil 4, 1205 Geneva, Switzerland. ⁹Intensive Care Unit, St Luc University Hospital, UCL, Avenue Hippocrate 10, 1200 Woluwe-Saint-Lambert, Belgium. ¹⁰Kenta Biotech, Wagistrasse 25, CH-8952 Zürich-Schlieren, Switzerland.

Received: 19 September 2013 Accepted: 8 January 2014

Published: 15 January 2014

References

- Eggimann P, Pittet D: Infection control in the ICU. *Chest* 2001, **120**:2059–2093.
- Fujitani S, Sun HY, Yu VL, Weingarten JA: Pneumonia due to *Pseudomonas aeruginosa*: part I: epidemiology, clinical diagnosis, and source. *Chest* 2011, **139**:909–919.
- Crouch Brewer S, Wunderink RG, Jones CB, Leeper KV Jr: Ventilator-associated pneumonia due to *Pseudomonas aeruginosa*. *Chest* 1996, **109**:1019–1029.
- Fagon JY, Chastre J, Hance AJ, Montravers P, Novara A, Gibert C: Nosocomial pneumonia in ventilated patients: a cohort study evaluating attributable mortality and hospital stay. *Am J Med* 1993, **94**:281–288.
- Fagon JY, Chastre J, Domart Y, Trouillet JL, Pierre J, Darne C, Gibert C: Nosocomial pneumonia in patients receiving continuous mechanical ventilation. Prospective analysis of 52 episodes with use of a protected specimen brush and quantitative culture techniques. *Am Rev Respir Dis* 1989, **139**:877–884.
- Meitert E, Petrescu AM, Butoianu A: Serotyping of *Pseudomonas aeruginosa* strains by slide coagglutination. *Arch Roum Pathol Exp Microbiol* 1990, **49**:37–42.
- Rocchetta HL, Burrows LL, Lam JS: Genetics of O-antigen biosynthesis in *Pseudomonas aeruginosa*. *Microbiol Mol Biol Rev* 1999, **63**:523–553.
- Liu PV: Comparison of the Chinese schema and the International antigenic typing system for serotyping *Pseudomonas aeruginosa*. *J Clin Microbiol* 1987, **25**:824–826.
- Liu PV, Wang S: Three new major somatic antigens of *Pseudomonas aeruginosa*. *J Clin Microbiol* 1990, **28**:922–925.
- Eshbanati HK, Kashani PP, Ghanaatpisheh F: Frequency of *Pseudomonas aeruginosa* serotypes in burn wound infections and their resistance to antibiotics. *Burns* 2002, **28**:340–348.
- Rodriguez DS, Rizo AG, Monroy SP, Reyes T: Antimicrobial susceptibility and serotyping of *Pseudomonas aeruginosa* isolated from HIV/AIDS patients. *Rev Cubana Med Trop* 2002, **54**:142–146.
- Faure K, Shimabukuro D, Ajayi T, Allmond LR, Sawa T, Wiener-Kronish JP: O-antigen serotypes and type III secretory toxins in clinical isolates of *Pseudomonas aeruginosa*. *J Clin Microbiol* 2003, **41**:2158–2160.
- Fonseca AP, Correia P, Extremina CI, Sousa JC, Tenreiro R, Barros H: Molecular epidemiology of *Pseudomonas aeruginosa* clinical isolates from Portuguese Central Hospital. *Folia Microbiol (Praha)* 2008, **53**:540–546.
- Hostacka A, Majtan V: Serotyping and virulence factors of *Pseudomonas aeruginosa* clinical isolates. *Acta Microbiol Immunol Hung* 1997, **44**:141–146.
- Le Berre R, Nguyen S, Nowak E, Kipnis E, Pierre M, Quenee L, Ader F, Lancel S, Courcol R, Guery BP, Faure K: Relative contribution of three main virulence factors in *Pseudomonas aeruginosa* pneumonia. *Crit Care Med* 2011, **39**:2113–2120.
- Bert F, Lambert-Zechovsky N: Comparative distribution of resistance patterns and serotypes in *Pseudomonas aeruginosa* isolates from intensive care units and other wards. *J Antimicrob Chemother* 1996, **37**:809–813.
- Patzner J, Dzierzanowska D: The resistance patterns and serotypes of *Pseudomonas aeruginosa* strains isolated from children. *J Antimicrob Chemother* 1991, **28**:869–875.
- Jamasbi RJ, Proudfoot EM: Phenotypic and genotypic characteristics of clinical isolates of *Pseudomonas aeruginosa*: rate of occurrence and distribution of different serotypes, antimicrobial susceptibility profiles, and molecular typing. *Science* 2008, **39**:155–161.
- Lu Q, Roubly JJ, Laterre PF, Eggimann P, Dugard A, Giamarellos-Bourboulis EJ, Mercier E, Garbino J, Luyt CE, Chastre J, Georgescu-Kyburz V, Rudolf MP, Gafner V, Lazar H, Koch H, Perez A, Kramer SD, Tamm M: Pharmacokinetics and safety of panobacumab: specific adjunctive immunotherapy in critical patients with nosocomial *Pseudomonas aeruginosa* O11 pneumonia. *J Antimicrob Chemother* 2011, **66**:1110–1116.
- American Thoracic Society, Infectious Diseases Society of America: Guidelines for the management of adults with hospital-acquired, ventilator-associated, and healthcare-associated pneumonia. *Am J Respir Crit Care Med* 2005, **171**:388–416.
- Chastre J, Fagon JY: Ventilator-associated pneumonia. *Am J Respir Crit Care Med* 2002, **165**:867–903.
- Roubly JJ, Martin De Lassale E, Poete P, Nicolas MH, Bodin L, Jarlier V, Le Charpentier Y, Grosset J, Vias P: Nosocomial bronchopneumonia in the critically ill. Histologic and bacteriologic aspects. *Am Rev Respir Dis* 1992, **146**:1059–1066.
- Pugin J, Auckenthaler R, Mili N, Janssens JP, Lew PD, Suter PM: Diagnosis of ventilator-associated pneumonia by bacteriologic analysis of bronchoscopic and nonbronchoscopic "blind" bronchoalveolar lavage fluid. *Am Rev Respir Dis* 1991, **143**:1121–1129.
- Knaus WA, Draper EA, Wagner DP, Zimmerman JE: APACHE II: a severity of disease classification system. *Crit Care Med* 1985, **13**:818–829.
- Bert F, Bruneau B, Lambert-Zechovsky N, Branger C: Epidemiological studies of the susceptibility of *Pseudomonas aeruginosa* to antibiotics. *Pathol Biol (Paris)* 1994, **42**:491–497.
- Fonseca AP, Correia P, Sousa JC, Tenreiro R: Association patterns of *Pseudomonas aeruginosa* clinical isolates as revealed by virulence traits, antibiotic resistance, serotype and genotype. *FEMS Immunol Med Microbiol* 2007, **51**:505–516.
- Nedeljkovic NS, Kocic B, Todorovic B, Brankovic S, Antic SM: Serotyping and analysis of produced pigments kinds by *Pseudomonas aeruginosa* clinical isolates. *Vojnosanit Pregl* 2011, **68**:923–929.
- Nogueira JA: *Pseudomonas aeruginosa* - agente nosocomial. In *Faculdade de Medicina*. Porto: Universidade do Porto; 1995.
- Orsi N, Mansi A, Orsi GB, Tomao P, Foresti E, Visca P: Epidemiological characterization of human and environmental *Pseudomonas aeruginosa* strains: use of plasmid pattern analysis in addition to other typing methods. *Ann Ig* 1994, **6**:653–664.
- Vachee A, Scheffel JM, Husson MO, Izard D, Ross P, Monteil H: Tricentric study of the sensitivity of *Pseudomonas aeruginosa* serotyping to beta-lactams and aminoglycosides. *Pathol Biol (Paris)* 1997, **45**:357–362.
- Pawar M, Mehta Y, Khurana P, Chaudhary A, Kulkarni V, Trehan N: Ventilator-associated pneumonia: incidence, risk factors, outcome, and microbiology. *J Cardiothorac Vasc Anesth* 2003, **17**:22–28.
- Planquette B, Timsit JF, Misset B, Schwebel C, Azoulay E, Adrie C, Vesin A, Jamali S, Zahar JR, Allaouchiche B, Souweine B, Darmon M, Dumenil AS, Goldgrun-Toledano D, Mourvillier B, Bedos JP: *Pseudomonas Aeruginosa* ventilator-associated pneumonia: predictive factors of treatment failure. *Am J Respir Crit Care Med* 2013, **188**:69–76.
- Blot S, Kourenti D, Dimopoulos G, Martin C, Komnos A, Krueger WA, Spina G, Armaganidis A, Rello J: Prevalence, risk factors, and mortality for ventilator-associated pneumonia in middle-aged, old, and very old critically ill patients. *Crit Care Med* 2013. Epub ahead of print.
- Augustin DK, Song Y, Baek MS, Sawa Y, Singh G, Taylor B, Rubio-Mills A, Flanagan JL, Wiener-Kronish JP, Lynch SV: Presence or absence of

lipopolysaccharide O antigens affects type III secretion by *Pseudomonas aeruginosa*. *J Bacteriol* 2007, **189**:2203–2209.

35. Finck-Barbancon V, Goranson J, Zhu L, Sawa T, Wiener-Kronish JP, Fleiszig SM, Wu C, Mende-Mueller L, Frank DW: **ExoU expression by *Pseudomonas aeruginosa* correlates with acute cytotoxicity and epithelial injury.** *Mol Microbiol* 1997, **25**:547–557.
36. Kurahashi K, Kajikawa O, Sawa T, Ohara M, Gropper MA, Frank DW, Martin TR, Wiener-Kronish JP: **Pathogenesis of septic shock in *Pseudomonas aeruginosa* pneumonia.** *J Clin Invest* 1999, **104**:743–750.
37. Nicas TI, Iglewski BH: **Contribution of exoenzyme S to the virulence of *Pseudomonas aeruginosa*.** *Antibiot Chemother* 1985, **36**:40–48.
38. El Solh AA, Akinnusi ME, Wiener-Kronish JP, Lynch SV, Pineda LA, Szarpa K: **Persistent infection with *Pseudomonas aeruginosa* in ventilator-associated pneumonia.** *Am J Respir Crit Care Med* 2008, **178**:513–519.
39. Hauser AR, Cobb E, Bodi M, Mariscal D, Valles J, Engel JN, Rello J: **Type III protein secretion is associated with poor clinical outcomes in patients with ventilator-associated pneumonia caused by *Pseudomonas aeruginosa*.** *Crit Care Med* 2002, **30**:521–528.
40. Lisboa T, Waterer G, Rello J: **We should be measuring genomic bacterial load and virulence factors.** *Crit Care Med* 2010, **38**:S656–S662.

doi:10.1186/cc13697

Cite this article as: Lu et al.: *Pseudomonas aeruginosa* serotypes in nosocomial pneumonia: prevalence and clinical outcomes. *Critical Care* 2014 **18**:R17.

**Submit your next manuscript to BioMed Central
and take full advantage of:**

- Convenient online submission
- Thorough peer review
- No space constraints or color figure charges
- Immediate publication on acceptance
- Inclusion in PubMed, CAS, Scopus and Google Scholar
- Research which is freely available for redistribution

Submit your manuscript at
www.biomedcentral.com/submit

 **BioMed** Central