



HAL
open science

Titan's temporal evolution in stratospheric trace gases near the poles

Athena Coustenis, Donald E. Jennings, Richard K. Achterberg, Georgios Bampasidis, Panayotis Lavvas, Conor A. Nixon, Nicholas A. Teanby, Carrie M. Anderson, Valeria Cottini, F. Michael Flasar

► **To cite this version:**

Athena Coustenis, Donald E. Jennings, Richard K. Achterberg, Georgios Bampasidis, Panayotis Lavvas, et al.. Titan's temporal evolution in stratospheric trace gases near the poles. *Icarus*, 2015, 270, pp.409-420. 10.1016/j.icarus.2015.08.027 . hal-01198804

HAL Id: hal-01198804

<https://hal.sorbonne-universite.fr/hal-01198804>

Submitted on 14 Sep 2015

HAL is a multi-disciplinary open access archive for the deposit and dissemination of scientific research documents, whether they are published or not. The documents may come from teaching and research institutions in France or abroad, or from public or private research centers.

L'archive ouverte pluridisciplinaire **HAL**, est destinée au dépôt et à la diffusion de documents scientifiques de niveau recherche, publiés ou non, émanant des établissements d'enseignement et de recherche français ou étrangers, des laboratoires publics ou privés.

Titan's temporal evolution in stratospheric trace gases near the poles

Athena Coustenis¹, Donald E. Jennings², Richard K. Achterberg^{2,3}, Georgios Bampasidis^{1,4}, Panayiotis Lavvas⁵, Conor A. Nixon², Nicholas A. Teanby⁶, Carrie M. Anderson², Valeria Cottini^{2,3}, F. Michael Flasar²

¹Laboratoire d'Etudes Spatiales et d'Instrumentation en Astrophysique (LESIA), Observatoire de Paris, PSL-Research Univ., CNRS, Univ. Pierre et Marie Curie Paris 06, Sorbonne Univ., Univ. Paris-Diderot, Sorbonne Paris-Cité,

5, place Jules Janssen, 92195 Meudon Cedex, France; athena.coustenis@obspm.fr

²NASA Goddard Space Flight Center, Greenbelt, MD 20771, USA

³Department of Astronomy, University of Maryland, College Park, MD 20742, USA

⁴Faculty of Physics, National and Kapodistrian University of Athens, Panepistimioupolis, 15783 Zographos, Athens, Greece.

⁵GSMA, Université Reims Champagne-Ardenne, France.

⁶School of Earth Sciences, University of Bristol, Bristol BS8 1RJ, UK

Submitted to the Icarus Titan special issue: March 27, 2015

Revised version 2 : 14 August, 2015

Corresponding author:

Athena Coustenis

Athena.coustenis@obspm.fr

LESIA (Bat. 18)

Observatoire de Meudon

92195 Meudon Cedex

France

ABSTRACT

We analyze spectra acquired by the Cassini/Composite Infrared Spectrometer (CIRS) at high resolution from October 2010 until September 2014 in nadir mode. Up until mid 2012, Titan's Northern atmosphere exhibited the enriched chemical content found since the Voyager days (November 1980), with a peak around the Northern Spring Equinox (NSE) in 2009. Since then, we have observed the appearance at Titan's south pole of several trace species for the first time, such as HC_3N and C_6H_6 , observed only at high northern latitudes before equinox. We investigate here latitudes poleward of 50°S and 50°N from 2010 (after the Southern Autumnal Equinox) until 2014. For some of the most abundant and longest-lived hydrocarbons (C_2H_2 , C_2H_6 and C_3H_8) and CO_2 , the evolution in the past 4 years at a given latitude is not very significant within error bars especially until mid-2013. In more recent dates, these molecules show a trend for increase in the south. This trend is dramatically more pronounced for the other trace species, especially in 2013-2014, and at 70°S relative to 50°S . These two regions then demonstrate that they are subject to different dynamical processes in and out of the polar vortex region. For most species, we find higher abundances at 50°N compared to 50°S , with the exception of C_3H_8 , CO_2 , C_6H_6 and HC_3N , which arrive at similar mixing ratios after mid-2013. While the 70°N data show generally no change with a trend rather to a small decrease for most species within 2014, the 70°S results indicate a strong enhancement in trace stratospheric gases after 2012. The 663 cm^{-1} HC_3N and the C_6H_6 674 cm^{-1} emission bands appeared in late 2011/early 2012 in the south polar regions and have since then exhibited a dramatic increase in their abundances. At 70°S HC_3N , HCN and C_6H_6 have increased by 3 orders of magnitude over the past 3-4 years while other molecules, including C_2H_4 , C_3H_4 and C_4H_2 , have increased less sharply by 1-2 orders of magnitude). This is a strong indication of the rapid and sudden buildup of the gaseous inventory in the southern stratosphere during 2013-2014, as expected as the pole moves deeper into winter shadow. Subsidence gases that accumulate in the absence of ultraviolet sunlight, evidently increased quickly since 2012 and some of them may be responsible also for the reported haze decrease in the north and its appearance in the south at the same time.

Key words: Titan, atmosphere; Atmospheres, structure; Atmospheres, composition; Atmospheres, evolution; Satellites, composition

1. Introduction

The haze and gaseous content in Titan's atmosphere has shown some significant and rapid evolution in the past few years. Titan has moved from northern winter through Northern Spring Equinox (NSE, in mid-2009) to northern summer. The reverse is true for the southern hemisphere. The gaseous and haze content of the atmosphere has exhibited features marking these seasonal passes. First, the Cassini Imaging Science Subsystem (ISS) and Visible and Infrared Mapping Spectrometer (VIMS) reported a high altitude cloud structure and a vortex at the south pole, developing between end of 2011 and mid-2012 (de Kok et al., 2014; West et al., 2015). The middle atmosphere, the stratosphere, showed evolution in temperature and chemical composition during the Cassini mission, especially in the north up to a couple of years ago (e.g. Achterberg et al., 2011; Teanby et al., 2010; Coustenis et al., 2010; Bampasidis et al., 2012; Coustenis et al., 2013). During the recent winter (2002-2009), the northern pole remained in darkness, allowing for photochemical hazes forming in the upper atmosphere to migrate downwards and accumulate in the stratosphere, where a maximum enhancement was observed during the NSE (e.g. Bampasidis et al., 2012). In association with circulation patterns where subsidence is expected in polar vortices, the seasonal effects significantly affect the temperature and the composition at the poles (Achterberg et al., 2008a; Teanby et al., 2012 and references therein). It has been shown that a reversal of the global dynamics on Titan is compatible with the observations as early as two years after NSE in the North (Bampasidis et al., 2012; Teanby et al., 2012; Vinatier et al., 2015). Jennings et al. (2012a,b) working with spectra acquire by the Cassini Composite Infrared Spectrometer (CIRS), reported that the intensity of a haze feature, with a signature at 220 cm^{-1} , decreased in Titan's northern stratosphere by a factor of 4 over the period 2004-2012, while it appeared in the south after 2012. In more recent observations, Jennings et al. (2015) report further decrease in the north and increase in the South, with its emission centered southwards of 70°S and with a ring structure peaking at 10° from the pole. As predicted by seasonal models, when the southern hemisphere experienced the advent of winter, the gaseous and haze composition changed and the vortex and the hood began appearing as the global circulation reversed, mimicking the situation found earlier in the north. From the high altitude haze hood (West et al., 2015) the trace gases are diffusing in the vortex to lower altitudes where they form more condensate layers. By end of 2012, just three years after Southern Autumnal equinox, the signs of these seasonal effects had already become quite prominent in Titan's thermal and chemical structure (e.g. Bampasidis et al., 2012; Teanby et al., 2012; Vinatier et al., 2015).

2. Observations and analysis

In this paper we extend previous work focusing on trace gases in Titan's stratosphere with emission signatures probing essentially the 100-400 km altitude range. We have been monitoring such emissions since the beginning of the Cassini mission in the focal plane 3 (FP3) of CIRS covering the spectral range from 600 to 1100 cm^{-1} (Coustenis et al., 2007, 2010, 2013; Bampasidis et al., 2012). Focal plane 4 (FP4) is used to extract the temperature profiles from the methane emission in the band centered at 1305 cm^{-1} .

Table 1

Selections of spectra analyzed in this work (acquired in nadir mode at a spectral resolution of 0.5 cm^{-1}). The characteristics of the averages are shown for the FP3 and the FP4 and for the Southern and Northern latitudes in chronological order. The spectra correspond to the 4.4 calibration version of the CIRS database. The averages are for $60\text{-}80^\circ\text{S}$, $60\text{-}80^\circ\text{N}$, $40\text{-}50^\circ\text{S}$ and $40\text{-}50^\circ\text{N}$.

FP3 SPECTRA

Year	Month	Cassini Flyby	Latitude	Number of spectra	Airmass	Ls ($^\circ$)
<i>South</i>						
2010	Oct	(multiple)	70°S	498	1.7	15
2011	Sep	T78	70°S	34	3.5	25
2012	Jun	T84	70°S	584	1.2	36
2012	Sep	T86	50°S	777	1.3	37
2012	Sep	T86	70°S	590	1.6	37
2013	Apr	T90	45°S	745	1	44
2013	May	T91	70°S	78	1.3	45
2014	Jan	T97	70°S	553	1.1	52
2014	Feb	T98	45°S	532	1.1	53
<i>North</i>						
2012	Sep	T86	50°N	761	1.2	37
2013	Sep	T94	50°N	578	1.5	49
2014	Jan	T97	75°N	1713	1	52
2014	Feb	T98	75°N	1488	1	54
2014	Sep	T105	75°N	541	1.8	60

FP4 SPECTRA

Year	Month	Cassini Flyby	Latitude	Number of spectra	Airmass	Ls ($^\circ$)
<i>South</i>						
2010	Oct	(multiple)	70°S	1050	2.9	15
2011	Sep	T78	70°S	30	3.5	25
2012	Jun	T84	70°S	356	1.2	36
2012	Sep	T86	50°S	612	1.3	37
2012	Sep	T86	70°S	1459	1.5	37
2013	Apr	T90	45°S	745	1	44
2013	May	T91	70°S	16	1.6	45
2014	Jan	T97	70°S	1075	1.1	52
2014	Feb	T98	45°S	532	1.1	53
<i>North</i>						
2012	Sep	T86	50°N	831	1.3	37
2013	Sep	T94	50°N	431	1.4	49
2014	Jan	T97	75°N	854	1.1	52
2014	Feb	T98	75°N	1397	1.2	54
2014	Sep	T105	75°N	783	1.8	60

We present here extensive surface-intercepting (nadir) stratospheric sounding of both Titan hemispheres in recent years (since Oct. 2010 and until Sept. 2014) for latitudes higher than 40° .

We average nadir spectra available in these latitude ranges (around 50°N and 70°N and around 50°S and 70°S) covering the FP3 and FP4 600-1500 cm⁻¹ range with a resolution of 0.5 cm⁻¹ and taken during the Cassini mission flybys of the satellite (Table 1).

By including data up until September 2014, our data analysis here complements recent works cited hereabove and other investigations of the chemical and thermal composition of Titan (such as by Vinatier et al., 2015 which deals essentially with limb spectra taken at low and high CIRS spectral resolution at all latitudes including ones near the poles up to February 2012). Note that limb spectra inferences from studies such as by Teanby et al. (2012) and Vinatier et al. (2015) sound atmospheric levels at higher altitudes. The data selection criteria in Table 1 match those used by Bampasidis et al. (2012) and Coustenis et al. (2013) but are limited in this study by the CIRS coverage of the higher northern and southern latitudes. Fig. 1 shows that indeed high-latitude southern nadir CIRS spectra in high resolution and emission angles smaller than 60° (so that they can be compatible with radiative transfer calculations) became available since late 2010, whereas the same kind of data for high northern latitudes was only acquired since mid-2013. This explains the data selections analyzed in this paper as detailed in Table 1.

<insert Figure 1>

Fig. 1. Cassini/CIRS high-resolution coverage for latitudes 60-90° in the Northern and Southern hemisphere of Titan from beginning of 2010 to end of 2014 and at emission angles smaller than 60°.

At high southern latitudes, in particular near and around 70°S (in fact from 60 to 80°S), we have data from several flybys covering the 2010-2014 period. Fig. 2 shows the evolution in time of the emission observed in some of the CIRS spectral averages we have made in the 620 to 720 cm⁻¹ range, where several molecules have signatures: Q branches of C₄H₂, C₃H₄, HC₃N, CO₂, C₆H₆, and HCN are visible, as well as R-wing lines of the HCN and C₂H₂ bands. Significant changes in the emission of several of the observed species are visible at high southern latitudes of Titan within a 2.5 year period. The changes in radiance are due to changes in temperature and abundance. Later in the paper we apply radiative transfer modeling to retrieve the pure abundance variations for these molecules, however it can already be seen that HC₃N appears to emerge in the spectra as early as September 2011 and to increase rapidly, bypassing the CO₂ emission by June 2012, even when taking into account differences in band intensities, temperature and airmass effects. That means that HC₃N began actually increasing in the South before the 220 cm⁻¹ haze (Jennings et al., 2012b). Benzene (C₆H₆) also makes a first clear appearance in June 2012 and increases thereafter.

< insert Figure 2 >

Fig. 2: Evolution in the past years of the emission observed in the 600-720 cm⁻¹ spectral range in Titan's high Southern latitudes. From high left to bottom right the average latitude, number of spectra, and emission angle are included in the parentheses: 14 Oct 2010 (71°S, 498, 53°), 11 Sep 2011 (71°S, 34, 73°), 27 Jun 2012 (71°S, 584, 31°), 30 May 2013 (73°S, 78, 42°). The emission angles are almost identical for the 2010 and 2013 observations. With the exception of the 2011 spectrum, which is noisy due to the small number of spectra co-added and the high emission angle, the other spectral averages have reasonable uncertainties and sufficient S/N ratio so that the observed variations are real. However, temperature effects may also cause some bands to "appear" as decreasing.

Indeed, one of the most spectacular changes during this period of time is observed for the HC_3N emission. In Fig. 3 (upper and middle panel) we show the HC_3N observations from both the northern and southern latitudes on a common seasonal timescale. Displaying results from north and south in this way is only valid if the two hemispheres behave similarly. Although north and south are probably not perfectly symmetric (based, for example, on orbital eccentricity and the distribution of lakes (e.g. Hayes et al., 2008)), we assume that they are similar enough in the stratospheric ranges to give us an accurate view of the seasonal cycle of the gases. The two upper panels of Fig. 3 indicate that HC_3N has dramatically decreased in the north (at 50°N) since 2010, while it has made a strong appearance in the south from 2012 onwards (compare results here with inferences from previous dates reported in Bampasidis et al., 2012). As shown also in Fig. 3 (lower panel), the HC_3N abundance decrease in the north essentially affects latitudes lower than 60°N .

The method we apply here to the CIRS spectra is similar to the one described in previous papers (e.g. Coustenis et al., 2007, 2010; Bampasidis et al., 2012). The temperature is derived by the inversion of the emission recorded in the methane ν_4 band at 1305 cm^{-1} following a procedure described in Achterberg et al., (2008a, 2011) and references therein. We adopt the CH_4 vertical abundance profile measured by the Huygens GCMS instrument (Niemann et al., 2010) of 1.48% above the cold trap, as in our previous analyses, which is quite compatible with the value derived by Bézard et al. (2014) from Huygens Descent Imager/Spectral Radiometer (DISR) measurements re-analysis. The haze component was inferred by adjusting the spectral dependence (Vinatier et al., 2012) for each latitudinal bin. We then use our line-by-line monochromatic radiative transfer code ARTT (for Atmospheric Radiative Transfer for Titan) to infer the mixing ratios or upper limits for 26 species in total detected or predicted in Titan's atmosphere (in addition to the main molecules such as N_2 , H_2 , CH_4 and Ar, several hydrocarbons, nitriles and oxygen compounds, see Bampasidis et al., 2012 for details). The model includes the more recent (to our knowledge) spectroscopic parameters for the main species and their isotopologues (see full list in Coustenis et al., 2013). We apply this method to different latitudes from 40°N polewards and 40°S polewards by co-adding spectra in $60\text{-}80^\circ\text{S}$, $60\text{-}80^\circ\text{N}$, $40\text{-}50^\circ\text{S}$ and $40\text{-}50^\circ\text{N}$ bins. The mixing ratios are assumed to be vertically constant profiles above their condensation level except for the special treatment of the C_2H_2 strong emission band, which cannot be easily associated to a constant vertical profile, as well as for the uncertainties estimates, see Coustenis et al. (2010) and Bampasidis et al. (2012).

Since the model parameters for all the composition and temperature determinations are the same, we only consider the relative errors that are due to the data noise (taking into account the number of spectra and the noise equivalent spectral radiance (NESR) of the CIRS spectrometer), as well as to the calibration uncertainties, all of which error sources are usually small when a large number of spectra is averaged. The exceptions are 70°S September 2011 and May 2013 selections, where the error bars are in general larger due to the small number of averaged spectra, and other cases as pointed out hereafter.

< insert Figure 3 :
 a) upper panel
 b) middle panel
 c) lower panel >

Fig. 3. Evolution of the HC_3N emission wrt other gases with spectral signatures nearby as a function of time and latitude: a) evolution of the HC_3N band in the South (Cassini flybys: 2006-T19/T20, 2007-T38/T39, 2008-T41, 2009-T54/T55, 2010-T67, 2012-T86); b) evolution of the HC_3N 663 cm^{-1} emission band in the north with time (Cassini flybys: 2007-T24, 2008-T41-45, 2009-T51, 2010-T65/T66, 2012-T86). The small variations observed for stronger molecules like CO_2 and HCN are due to differences in temperature and/or the secant, but clearly HC_3N decreases in the north and appears in the South; c) In the north, in 2010, HC_3N is restrained only to higher latitudes ($>50^\circ\text{N}$) as seen in spectral selections from T65-T66 flybys, and it does not appear at 40°N .

3. Results

We performed radiative transfer simulations of the Titan spectra at different latitudes and seasons and compared results at different latitudes. In our simulations we use the temperature profiles derived by fitting the methane ν_4 band in FP4. The thermal structure is derived using an a priori approach described in Achterberg et al. (2008a, 2011). We fit the continuum with a simple 2-layer cloud model for the FP3 and FP4 spectral regions. We then infer the haze dependence and from the emission in the molecular bands we derive the abundances that we discuss hereafter. Details of our method are given in Coustenis et al. (2007, 2010) and Bampasidis et al. (2012).

< insert Figure 4 :
 a) upper panel, left
 b) upper panel, right
 c) middle panel, left
 d) middle panel, right
 e) lower panel, left
 f) lower panel, right >

Fig. 4. Contribution functions of methane at 1305 cm^{-1} (upper two panels for Q and R branches) from its FP4 emission and of other species with signatures in FP3 (middle and lower panels) and the evolution with time at 75°S . The emission in the methane band originates significantly from 0.3 mbar in the Q branch (a) but also from atmospheric pressure levels higher and lower in the stratosphere in the band wings (up to 10^{-3} mbar and as low as 10 mbar), especially in recent times. Depending on the epoch, the emission of several trace gases comes not only from around 10 mbar but also from higher atmospheric levels around 0.5 mbar.

Fig. 4 shows the contribution functions (CFs) calculated for the methane ν_4 band and for several other molecules at 70°S . These plots indicate the regions sounded in the CIRS spectra for

the thermal profile (4a,b) via the methane emission in FP4 and for the molecular abundances (4c-f) from their emission bands in FP3. The shape of the CFs and their evolution with time for C_2H_4 is similar to that of C_2H_6 , for CO_2 , C_3H_4 and C_3H_8 similar to that of C_4H_2 and for C_6H_6 similar to that of HCN. For the CFs of the different species and the regions probed at mid-latitudes see Bampasidis et al. (2012) and Coustenis et al. (2013).

3.1 Temperature profiles

The temperature profiles shown in Fig. 5 are for high Northern and Southern latitudes (beyond $50^\circ N$ and $50^\circ S$) at different dates. The uncertainty on these inferences is very small for the mid latitudes (about 0.1 K) at all pressure levels up to 0.01 mbar. When the uncertainty on the initial guess profile and the methane mole fraction is taken into account, the $3\text{-}\sigma$ error bar is about 1.5 K at 1 mbar and 2.5 K at 0.05 and 5 mbar for the mid-latitude profiles. For the higher northern and southern latitudes the situation is different as the uncertainty on the retrievals per se is larger. For the $70^\circ N$ profiles, the $3\text{-}\sigma$ error bar is about 2 K at the 1 mbar level and 3-4 K at 0.05 and 5 mbar (Fig. 5). For the $70^\circ S$ thermal profiles, the error bars are similar to $70^\circ N$ up to 2013 but considerably higher as the temperatures become very cold after 2014 when the calibration is more uncertain and the number of spectra averaged generally smaller : 5-7 K at lower altitudes and up to 10 K at 0.05 mbar (300 km in altitude).

We find that as the Southern hemisphere moved into winter after 2010, strong temperature variations are observed essentially in that pole. For $50^\circ N$, Fig. 5 (left panel) shows little to no variation during the past years in the lower stratosphere (up to 0.5 mbar), while the upper stratosphere has warmed up by 10 K or more. At 50° in latitude we have been at the border of the northern vortex, which is weakening in the past years so that the temperature is increasing now in the absence of active radiative emitters and with increasing sunlight.

The latitudes around $50^\circ S$ show a 15 K decrease from 2010 to 2012 and then slightly warm up again by about 8-10 K until early 2014, but are still colder than in 2010. We also note that in 2013 and 2014 the $50^\circ S$ thermal profiles are very similar throughout the stratosphere and no further indication of changes in temperature are observed. Our observations of the equatorial latitudes at the same time, indicate that - as for the $50^\circ N$ - no significant changes exist in the lower stratosphere, while a 5 K cooling is found at pressures lower than 0.5 mbar since May 2011, stabilizing after that.

The right panel in Fig. 5 clearly shows a dramatic decrease in temperature in the stratosphere (from 0.1 down to 1 mbar pressure levels) for the higher Southern latitudes, at $70^\circ S$, since 2010, whereas a smaller warming is observed in the summer-entering North only since early 2014. Thus, the warming in the North from February until September 2014 is about 6 K, whereas at about the same period of time, the South has become another 12-15 K colder in the stratosphere, totaling about a 40 K drop in temperature within 4 years since 2010. Before that time, there were no significant temporal variations in temperature reported since the beginning of the Cassini mission in that region around $50^\circ S$, whereas again prior to 2010 the mid-northern latitudes had generally shown a tendency for decreasing temperatures in the stratosphere (see Bampasidis et al., 2012). The CFs for the center and the left wing of the ν_4 CH_4 band (Figs 4a,b) at $70^\circ S$ show that the emission of methane originates significantly from 0.1 to 10 mbar in the Q branch, peaking essentially around 0.3-0.5 mbar. The wings of the band probe even higher (and also lower) atmospheric pressure levels (up to 10^{-3} mbar and as low as from around 10 mbar), especially in recent times. Thus, in January 2014 the CF peaks near 0.05 mbar and near 0.005 mbar in September 2014. This has to do with the colder temperatures and the thermal profile's

shape departing from rather constant values above 200 km until 2012 and exhibiting an increasing slope towards warmer temperatures thereabove since then.

Pre-equinox variations at 70°N and 70°S are discussed in Achterberg et al. (2011) and Teanby et al. (2012). The northern pre-equinox temperatures in general showed a complicated behavior. The upper stratosphere/lower mesosphere were cooling. The middle stratosphere (~200 km and lower) was warming at mid-latitudes; at polar latitudes the mid-stratosphere initially warmed and then started cooling again (see Achterberg et al., 2011 for details). The drop in temperature for the higher Southern latitudes found here and reported previously is matched with an enhancement in gas and haze content as will be shown hereafter.

< insert Figure 3 :

a) left
b) right >

Fig. 5. (left panel) : temperature variations at 50°S (solid lines) and 50°N (dashed lines) in Titan's stratosphere from January 2010 until February 2014; (right panel) : temperature profiles of Titan at 70°S (solid lines) and 70°N (dashed lines) with dates ranging from October 2010 to September 2014. The pressure/altitude ranges probed by these profiles vary with latitude, but are generally in the 0.1–20 mbar region. The 3- σ error bars on the temperature are plotted at 0.05, 1 and 5 mbar (see text for details). As can be seen, the stratospheric temperatures in the 0.1 to 1 mbar pressure range dropped by about 40 K near the Southern pole within the past 4 years. At the same time, the temperatures in the North had not indicated similar dramatic changes, but rather an increase in temperature is found since February 2014, as the North moves into summer. The dashed lines thus show that within about 7 months since December 2013, the North pole had warmed up by about 6 K (see text).

The temperature profiles at 70°S for the period in time from 2010 to 2012 are compatible within uncertainties with those found by Vinatier et al. (2015) from limb-viewing observations in the stratospheric region that we probe here and show again a decrease in temperature by about 10 K. Similarly, their mid-latitude southern and northern profiles, as well as the thermal profiles close to 70°N do not exhibit large variations, as also found here and with compatible trends (see Section 3.2 for more details).

3.2 The chemical composition

With the temperature defined in the stratosphere and the continuum fitted by adapting the haze, we produce spectra simulating Titan's chemical composition though the various emission bands. Examples of fits of the Titan observations obtained with our radiative transfer code ARTT are shown in Fig. 6. The full method is described in Coustenis et al., (2013, Section 3 and references therein). In order to derive the abundances, we fit the Q branches of the different molecules (and the wings separately for C₂H₂, see Coustenis et al., 2013) by minimizing the residuals in the fits we obtain through an iterative process.

The contribution functions of C₂H₂ (Fig. 4c) indicate that its emission in the 728 cm⁻¹ band at 70°S originated from around 2 mbar in 2010 (~155 km) but is currently sounding lower atmospheric levels at around 10 mbar (100 km in altitude). The C₂H₆ (Fig. 4d) as well as C₂H₄,

C_3H_8 and CO_2 emission bands, probed pressures from 0.5 to 10 mbar in earlier dates (100-200 km in altitude), while since 2014 their emission is narrowed down to levels around 10 mbar (around 100 km), but still with some emission coming from around 0.3-0.5 mbar or higher. C_4H_2 and C_3H_4 emission bands probe pressures around 10 mbar (100 km) throughout time. HCN (as well as C_6H_6) started out sounding levels around 7 mbar (110 km) but are now showing emission coming also from higher levels around 0.4 mbar (200 km) in January 2014 and 0.1 mbar (250 km) in Sept. 2014 (Fig. 4f). Finally, HC_3N (also shown in Fig. 4f) probed the stratosphere at around 10 mbar (100 km) initially and only in September 2014 its CF has shown an additional component from around 0.5 mbar (190 km).

In brief, with the exception of HCN, HC_3N and C_6H_6 , we find the emission observed in most trace gases to be originating in recent times from stratospheric levels around 10 mbar (100 km) having previously probed higher levels (from around 200 km) in some cases. The contrary is found for the two nitriles and benzene, where the levels sounded have raised from 10 mbar (100 km) up to around 0.5 mbar or higher (250-300 km).

Our results for C_2H_2 , C_2H_6 , C_3H_8 and CO_2 at mid latitudes ($50^\circ N$ and $50^\circ S$) follow up on our previous estimations of these abundances in Bampasidis et al. (2012) and Coustenis et al. (2013), to which we add here a few points from the couple past years.

< insert Figure 6 :
 a) upper panel
 b) middle panel
 c) lower panel, left
 d) lower panel, right >

Fig. 6. (upper panel) extract from CIRS FP4 in the $1250-1350\text{ cm}^{-1}$ range where we observe the emission of the methane ν_4 band in September 2014 at $75^\circ S$; (middle panel) extract of CIRS FP3 in the $620-850\text{ cm}^{-1}$ range where several emission bands are observed (HCN , C_2H_2 , C_3H_8 , C_2H_6) in April 2013 at $45^\circ S$; (lower panel) zoom in the $620-680\text{ cm}^{-1}$ range for September 2014 at $75^\circ N$ (left) and September 2012 at $75^\circ S$ (right) showing the C_4H_2 , C_3H_4 , HC_3N , CO_2 , and C_6H_6 emission bands (the vertical scale is different for the two lower zooms).

Our calculations indicate that the mixing ratios of some of the most abundant molecules in Titan's stratosphere (Fig. 7) at $50^\circ N$ do not vary very much with time from 2010 to 2014. They remain also larger than the $50^\circ S$ ones up to 2013, after which there is a trend for the latter to increase for C_2H_6 , C_3H_8 and CO_2 . Prior to that, during the 2010 to 2013 time frame, the $50^\circ N$ abundances for C_2H_2 and C_3H_8 were higher than the $50^\circ S$ by factors of about 2-3 (comparing blue and green curves on Fig. 7). Note that in 2012 we did not have CIRS high-resolution spectra for latitudes close to $50^\circ S$. The green values plotted in this figure and in Fig. 10 for September 2012 then correspond to abundances close to $60^\circ S$. This explains why for some of the molecules more affected by the seasonal changes the plotted abundances are higher than expected.

For C_2H_6 and CO_2 , the difference in abundance between $50^\circ N$ and $50^\circ S$ was 30-50% to the benefit of the North. In more recent times, however, the abundances of all these molecules have reached similar values at $50^\circ N$ and $50^\circ S$. There seems therefore to be a trend for a flat or a decreasing abundance in the northern latitudes around $50^\circ N$ and an increase in the southern abundances around $50^\circ S$ for all these molecules (in particular for C_3H_8 and CO_2). However, we have barely 3-4 points at $50^\circ N$ and $50^\circ S$ during that period of time and the uncertainties do not

allow us to make firm statements. Nevertheless, when we take into account the inferences also from the early dates of the Cassini mission in 2006 (Bampasidis et al. 2012; Coustenis et al., 2013), the trends appear strengthened.

< insert Figure 7 :
 a) upper panel, left
 b) upper panel, right
 c) lower panel, left
 d) lower panel, right >

Fig. 7. Retrieved abundances in the stratosphere of Titan for some of the most abundant molecules in Titan's atmosphere, C_2H_6 , C_2H_2 and C_3H_8 and CO_2 , from 2010 to 2014 at different high northern and southern latitudes : $50^\circ N$ (blue), $70^\circ N$ (black), $50^\circ S$ (green) and $70^\circ S$ (red). The vertical lines correspond to $3\text{-}\sigma$ uncertainties. The error bars on the 2011 and May 2013 $70^\circ S$ inferences are larger than at other times due to the poor quality of the spectral selection as explained in Section 2. Also note that the 2012 September green values are not for $50^\circ S$ but for $60^\circ S$, hence larger than adjacent values in some cases.

Moving closer to the poles, at $70^\circ S$ (red curves in Fig. 7), within the past 4 years or so, since late 2010, CO_2 does not show any significant variations within error bars, but we note that its high northern and southern latitude values are quite similar since mid-2013 after respective decrease and increase of the abundances. The other molecules (C_2H_2 , C_2H_6 and C_3H_8) were quite constant in time up to early 2014 near the poles, but since then, in the past year or so, these species show an increase in abundance at $70^\circ S$ (by factors of 2-3 with respect to the 2010 values). Comparing furthermore the $70^\circ N$ and $70^\circ S$ results within the year 2014 (when we have data for both latitudes), we find a significant positive evolution near the South pole, whereas the Northern polar regions remain rather stable or perhaps even showing a trend towards a decrease (Fig. 7). Thus, from early 2014 until September 2014, we find the $70^\circ S$ values of all of these constituents to have become similar or even higher than the $70^\circ N$.

Figure 8 shows the profiles of trace gas emission through the pole displaying the radiance at given wavelengths and its variation through the trace. The longitudinal average here is small enough that the two different sides are kept separate. Comparing the plots of the profiles at Titan's southern pole at two different dates within 2014 spanning 9 months on Fig. 8, we find that C_2H_2 , C_2H_6 , HCN and CO_2 are low in emission or about the same at the pole with respect to lower latitudes. For other species, the curves in January show a gas emission collar, as reported in 2012 for the haze 220 cm^{-1} feature (Jennings et al., 2012b; 2015) within 30° from the South pole and centered at 10° . This gas emission collar is shifted about 4 degrees from the pole, in agreement with the tilt found in Titan's atmosphere (Achterberg et al., 2008b; Jennings et al., 2015) and was still evolving rapidly during 2014 while changes can be seen from one Titan flyby to the next (as schematically represented in Fig. 8) in particular for latitudes within 30° from the South pole. In particular, tracing cyanoacetylene (HC_3N) with medium spectral resolution maps, we find its abundance to be increasing steadily since 2012 (Fig. 9). HC_3N developed the ring shape since 2012, and has been evolving rapidly since early 2014.

However, by September most of the molecules do not show any more this ring shape, and the increased abundance further away from the immediate vicinity of the pole (the so-called "sombbrero shape") is no longer present. Indeed, the secondary, less abundant, gases (like C_4H_2 and C_3H_4) have now taken on the "hood" shape that is familiar in the north (Fig. 8). Benzene (and

perhaps HC_3N) tend to exhibit a somewhat different behavior by retaining higher concentrations near the pole all the way to September 2014. This could be indicative of the fact that the material arriving at the pole and then spreading out, is not necessarily settling in a uniform pattern.

< insert Figure 8 >

Fig. 8. Trace gas emission in Titan's southern hemisphere at two different dates within 2014 : in January and September 2014 (from 97 RTI data). The relative intensities and not the absolute radiances are displayed on the figure, in order to show the trends with latitude. The profiles were scaled for each gas to facilitate comparison. Comparing the plots in September with those in January the previously observed so-called “sombbrero shape” is found to no longer be present. The secondary, less abundant, gases (HC_3N , C_4H_2 , C_3H_4 and C_6H_6) have now taken on the “hood” shape that is familiar in the north. C_6H_6 (and HC_3N) seem to be exhibiting a somewhat different behavior from the other gases because they appear to be still concentrated near the pole in September 2014, although the other secondary gases had become more broadly distributed (see text).

< insert Figure 9 >

Fig. 9. Polar orthographic projection maps of HC_3N emission at 663 cm^{-1} over Titan’s southern hemisphere from 30°S to 90°S from 2.5 cm^{-1} resolution spectra. The asymmetry seen on the plot is most probably due to differences in the emission angles.

From 2010 and until 2014, several of the molecules in Fig. 10 show differences between 50°S and 50°N with abundances larger for the north by factors of 3-6 for C_2H_4 , C_3H_4 and C_4H_2 , and by more than an order of magnitude for HCN . The values we retrieve for HC_3N and C_6H_6 , after starting with larger abundances in the north, become quite similar at these latitudes, in particular after 2012. Our calculations thus indicate for instance that already in September 2012, the HC_3N abundance was almost an order of magnitude higher in the south (3×10^{-9}) than in the north (at some 5×10^{-10}), whereas the opposite was true in 2010 (about 1×10^{-9} in the north vs 1×10^{-10} in the South). Similarly for C_6H_6 , starting with an upper limit in 2010 at 50°S which was 50 times lower than its 50°N counterpart, its abundance increases rapidly becoming similar in 2012 and even higher than the 50°N or the 70°N in later dates.

< insert Figure 10 :
 a) upper panel, left
 b) upper panel, right
 c) middle panel, left
 d) middle panel, right
 e) lower panel, left
 f) lower panel, right >

Fig. 10. As for Fig. 7 but for C_2H_4 , C_3H_4 , C_4H_2 , C_6H_6 , HCN and HC_3N . For benzene, the starting values in 2010 at high southern latitudes are 3- σ upper limits. Note that, as in Fig. 7, the 2012

September green values correspond to 60°S rather than 50°S, hence the higher than expected values for some molecules (see text). Arrows indicate upper limits.

Within error bars, as for the more abundant molecules, the trace gases shown in Fig. 10 do not exhibit any significant variations at 50°N, although after 2012 we could only derive upper limits for C₆H₆ and HC₃N. Similarly, for 50°S there is no clear indication for either an increase or decrease in the observed abundances given the uncertainties, with perhaps the exception of HC₃N and C₆H₆ which seem to increase significantly from 2010 to 2014. We note, however, that the data are scarce between 2010 and late 2012 at 50°S and 50°N (only two date points exist: April 2010 and September 2012 for 50°S and January 2010 and September 2012 for 50°N) and furthermore, for C₆H₆ the 2010 50°S and 70°S results are in fact upper limits. We also remind the reader that for September 2012, the green values – otherwise representing latitudes close to 50°S – are actually inferences for 60°S in average. Therefore, the HC₃N, C₄H₂ and C₃H₄ abundances are higher than expected and an artificial bend is created because we are at 60°S and not at 50°S latitude. This is the result of the different response to the seasonal effects as a function of latitude as discussed in Section 2 and shown in Fig. 3c.

We do not have any data at 70°N before 2014, so we do not know how the abundances of these species evolved prior to the past year. With that caveat in mind, our RT results at high Northern and Southern latitudes (at about 20° from the poles), show that the North pole is now as abundant in C₃H₄ and C₄H₂ as the South pole (Fig. 10). We note that for these two molecules the 70°S content has increased considerably from late 2010 until September 2014, by a factor of 4 for C₃H₄ and more than an order of magnitude for C₄H₂. For the other trace molecules shown in Fig. 10, the higher southern latitudes have become largely more enhanced than the North by late 2014. For C₂H₄ and HCN the mixing ratios have increased at 70°S by 1-3 orders of magnitude since September 2011, making C₂H₄ almost 4 times more abundant near the South pole of Titan in September 2014, while HCN at the same time is about 2 orders of magnitude more abundant at 70°S than at 70°N. For C₆H₆ and HC₃N the increase is even more dramatic at 70°S representing 3 orders of magnitude or more since late 2010 for HC₃N and since late 2011 for C₆H₆ (note that we only have upper limits prior to that date for these molecules) and these species are now significantly more enhanced at 70°S than at 70°N (by more than one and three orders of magnitude respectively).

Nitriles, and in particular HC₃N which may serve as a tracer for complex nitriles, have been proposed as precursors for the haze and clouds observed in Titan's atmosphere (Lavvas et al., 2011, Anderson & Samuelson 2011, Jennings et al., 2012a, Vinatier et al., 2012 and references therein) because of similar variations suggesting a common origin. As Figs. 2 and 3 already show here, the 663 cm⁻¹ HC₃N band intensity at the south pole has been essentially nil since 2006 until as recently as late 2011. Then in late 2011 and early 2012 the intensity of HC₃N suddenly became visible at latitudes higher than 50°S (Figs. 8,9), which is what is also reported by Jennings et al., (2012a,b and references therein). The advent of the HC₃N in the south came three years after equinox. By that time the haze intensity in the north had greatly decreased since the beginning of the mission and was comparable to the haze appearing in the south (Jennings et al., 2012a). As these authors reported, the increase of the emission in the south is much faster than the decrease in the north; this is similar to what we find here. We do not have data at 70°N to compare with 70°S at dates earlier than 2014, so we cannot discern if the increase in the North corresponds to a decrease in the South, nor can we infer a transition time at such high latitudes.

Our results for the molecules shown in Figs. 7 and 10 appear to be compatible with those reported by Vinatier et al. (2015) in the atmospheric regions probed here, bearing in mind that their limb data do not sound the lower parts of the stratosphere that contribute significantly in the

emission we see in the nadir data, especially for the higher northern and southern latitudes (near 70°N and 70°S). Furthermore, some of the molecules have profiles with sharp slopes and are therefore not easy to compare with our vertically constant mixing ratios here (like HCN and C₄H₂). The difference between constant-with-height and vertical profiles is all the more important in the case of strong bands like the C₂H₂ one (see Coustenis et al. 2010) and the comparison is rendered difficult there also. With all these caveats in mind and given the error bars, our findings are in general compatible with Vinatier et al.'s vertical profiles. At high northern latitudes these authors do not have data after 2011, whereas our nadir spectra are limited to 2014. At mid-northern latitudes we compare our September 2012 values with their June 2012 vertical profiles and we find compatible values within 2-3 σ for all molecules, noting that for C₂H₂, HC₃N and C₆H₆ we have slightly higher values (by about 50%). For mid-southern (close to 50°S) latitudes we find our September 2012 values to be in good agreement (1-2 σ level) with their February 2012 findings in the 0.1-6 mbar region except for C₂H₂ which we find to be two times larger. For HC₃N, we have no comparison means since their profile is only inferred above 0.01 mbar at these latitudes and they do not derive the C₆H₆ profile.

For the high southern latitudes (around 70°S), the CFs of molecules such as the nitriles, C₂H₂, C₂H₄, C₂H₆, and C₆H₆ probe atmospheric levels as high as 0.1 mbar during earlier dates investigated here (2010-2012) and lower in later times. We have taken this into account in comparing our values with the Vinatier et al. (2015) vertical profiles at 2010 75°S from high-resolution CIRS limb spectra and with the HCN and C₂H₂ February 2012 79°S vertical distributions at lower resolution. All in all, as far as we can tell, given the differences in resolution and possibly in latitude (their latitudes are closer to the South pole by about 10° in latitude), we are quite compatible at the 3- σ level for the high southern abundances in both dates, in spite of the very steep slopes observed for C₂H₄, C₃H₄, C₄H₂ and HCN in the lower levels (within a factor of 2). We find somewhat higher values for C₂H₄ and C₃H₈ in 2010. Again, with the caveats mentioned above, this is rather a good agreement between constant values and vertical distributions.

Our results are also in agreement with Moreno et al. (2014) reports from recent ALMA observations for HC₃N and HCN (Cordiner et al., 2014).

4. Discussion

Titan's south pole is rapidly evolving towards a cold stratosphere and an enhanced chemical content due to the change in seasons, similar to what is found on Earth, due to Saturn's (and hence Titan's) 26.73° obliquity. The South is now the winter pole where photons are reduced and we see an increase of species due to photolysis reduction. Adding the circulation effects provides the general trend of increased abundances towards the pole, which is modulated by the different chemical lifetimes of each species.

Indeed, insights on the relative changes between the species can be found by considering their chemical time scales, as has been shown for the North (e.g. Teanby et al., 2009). The species under consideration here can be grouped into different categories according to their chemical time scales in Titan's stratosphere, calculated based on the model by Lavvas et al. (2008). At 150 km in altitude, the longest-lived molecules are CO₂ (10¹² s), C₂H₆ and C₃H₈ (at 7-8 × 10¹⁰ s), HCN (10⁹ s) and C₂H₂ (2 × 10⁸ s). They are followed by shorter-lived species like C₃H₄ (7 × 10⁷ s), C₂H₄ and HC₃N (at about 3 × 10⁷ s), C₄H₂ (6 × 10⁶ s) and C₆H₆ (3 × 10⁶ s). At 250 km in altitude, the lifetimes are generally shorter for all the molecules, with the longest ones for CO₂ (3 × 10¹⁰ s), C₂H₆ (10¹⁰ s), C₃H₈ (7 × 10⁹ s), HCN (2 × 10⁹ s) and C₂H₂ (4 × 10⁷ s). The shorter-lived species have

lifetimes as follows: C_3H_4 (10^7 s), C_2H_4 (7×10^6 s) and HC_3N (2×10^6 s), and C_4H_2 and C_6H_6 (at about 4×10^5 s). Most of the longest-lived species (in order : CO_2 , C_2H_6 , C_3H_8 , HCN, and C_2H_2) are then also among the most abundant ones (in order: C_2H_6 , C_2H_2 , C_3H_8 , C_2H_4 and HCN) in Titan's stratosphere, with the exception of CO_2 . But CO_2 is produced from CO that is almost inert and well mixed in the atmosphere, probably horizontally as well. This could explain at least partly (because other processes like dynamics and circulation are also at play) the lack of important changes with time since 2010 or in the past year for some of these species, with the exception of HCN for which a large enhancement is observed at $70^\circ S$. From the CF plots (Fig. 4) HCN appears to be probing higher altitudes with time. So that if the HCN profile over the pole is not constant but increasing with height with a steep slope above 300 km (as suggested by Vinatier et al., 2015 from limb observations up to 2012), the retrieved abundance might reflect this but it is not the unique interpretation as the temperature is also increasing with altitude and time also.

Since the stratospheric lifetime of a species measures the time required to restore equilibrium following a sudden increase or decrease in its concentration, it is then normal that the less-abundant and more short-lived species, more dependent on photolysis, exhibit abundances increasing towards the winter southern pole, where photons are reduced, due to the minimization of the photolysis. This, along with the circulation pattern leads to the increase in the abundances observed for C_2H_4 , C_3H_4 , C_4H_2 , C_6H_6 and HC_3N . Whereas the northern latitudes have yet to show important changes at 50° and above in latitude, the south exhibits dramatic variations in the past 4 years or so. This affects also HCN, which – while stable at all other high northern or southern latitudes up to $50^\circ S$ -, shows a large increase near the southern pole.

Another way to envisage the situation is through the photolysis rates: if we neglect the circulation effects, the species that will be mostly affected by the lack of photolysis close to the south pole are those for which the photolysis has a major role in their loss rates. For C_2H_6 , C_3H_8 , and CO_2 and to a lesser degree for HCN, photolysis is less important than it is for C_4H_2 , HC_3N or C_6H_6 , hence the more dramatic changes in the South for the latter two molecules.

For a global view and interpretation of these results, photochemical models would need to add dynamics. The $50^\circ S$ and $70^\circ S$ abundances have a clearly different trend for all species. The former present a slow increase with time, while the latter demonstrate a sharp increase. These two regions demonstrate the different dynamics in and out of the vortex region. This trend is confirmed in other studies (Bampasidis et al. 2012; Vinatier et al. 2015). The sharp decrease in temperature observed already in 2012 over the South pole (Teanyby et al. 2012; Vinatier et al. 2015) is confirmed here and found to persist even more dramatically in recent years. It is linked to the enrichment of the pole in gases and condensates which cause radiative cooling, for which we show here that the progress is also quite extensive in the past two years. The reversal in the global circulation in Titan's atmosphere is confirmed by our data.

Vinatier et al. (2005), and references within, find their results to be indicative of two circulation cells co-existing causing upwelling at mid-latitudes and downwelling at both poles during 2010. These then become a single pole-to-pole cell upwelling at the north pole and downwelling at the south pole after the reversal in 2011 with the ascending branch at the north pole bringing the enriched air accumulated during the northern winter towards mid-latitudes at high altitude. We find that the ensuing south polar temperature decrease and chemical enhancement dramatically increases after 2012, especially for some species. Observations indicate that the evolution of the enhancement in atmospheric species in the South is strongly dependent on the altitude, starting at high levels and then extending deeper into the stratosphere and diffusing from the pole towards mid latitudes. We have evidence in this work that the effects are visible also at the altitudes and latitudes we probe here : at $50^\circ S$ some species like C_3H_8 , C_6H_6 and HC_3N show the enhancement with time after 2013.

Similarly to the haze and other gaseous abundance increases in the south reported previously (Jennings et al., 2012b; Teanby et al., 2012), the rather quick increase of HCN and more dramatically of HC₃N is thus probably also linked to the deepening polar shadow and the decreasing stratospheric temperatures as the season changes. As winter sets in the south, the higher chemical formation altitudes remain in perpetual sunlight while the polar shadow lower down in the stratosphere shields the gases and allows them to accumulate (Yung, 1987). The evolution observed by CIRS is consistent with this polar shadowing as pointed out by Jennings et al., (2012b). In 2012 the South pole was in darkness, possibly at high altitudes, an effect which promotes stratospheric cooling and chemical enhancement of the kind observed previously at high northern latitudes by Cassini CIRS, by *Cassini* radio occultations and by Voyager/IRIS (Achterberg et al., 2008a, 2011; Coustenis et al., 1991, 2007, 2010; Schinder et al., 2012). During winter the northern stratospheric temperatures were lower by 20-40K with respect to equatorial temperatures. Our CFs for the nitriles HCN and HC₃N are showing that the pressure levels sounded in recent years had raised from around 100 to around 250-300 km. Jennings et al., (2012a) note that the decrease in the stratospheric temperatures, as found now at the south pole, causes the nitrile condensation altitude to raise from ~90 km to ~150-170 km, consistent with the height of the HC₃N feature. We find here that the emission seen in the spectra follows this trend and therefore we continue throughout time to probe levels where the condensation occurs. At even higher altitudes (close to 300 km) and over the south pole, Cassini observations witnessed the formation and evolution of a cloud structure with composition consistent with HCN ice (de Kok et al., 2014, West et al., 2015). The cloud is localized within 10 degrees of the atmospheric tilted south pole and probably resulted from the combination of the increased nitrile abundances and low local temperatures that we find here.

In the stratosphere, as probed by CIRS nadir data, nitriles began to build-up before the onset of the 220 cm⁻¹ emission (Jennings et al., 2012b). HC₃N is present in September 2011 spectra but not in June 2011 spectra, suggesting that the nitrile increase began in late 2011, about a year before the 220 cm⁻¹ feature was first seen. This evidence, together with the observed trend for decrease in most species during winter to spring in the north (Bampasidis et al., 2012; Jennings et al., 2012a; Vinatier et al., 2015), indicates that changes in the haze and changes in the molecular abundance are probably related. Our results are consistent with the suggestion that condensed nitriles contribute to the far-infrared haze (Coustenis et al., 1999; Dello Russo & Khanna 1996; Khanna 2005; de Kok 2008, Jennings et al., 2012a).

Since we now have some recent exploitable data at 70°N, we perform a comparison with Voyager/IRIS inferences at 70°N, at a similar epoch. From vertical distributions inferred from 1980 data, we find the values at our probed regions to be about 3x10⁻⁸ for C₄H₂ and C₃H₄, 5x10⁻⁸ for HC₃N and 10⁻⁶ for HCN (Coustenis et al., 1991). These values, when compared to our 2014 ones at 70°N (black lines in Fig. 10), are quite similar for all these molecules except for HC₃N, where they are slightly higher. Given the possible uncertainties arising from important differences between the two datasets and the 4 years apart in epoch time (the exact one Titanian year time after V1 was in 2010), this indicates that our results for 70°N are quite compatible after one Titanian year in terms of chemical content and no significant inter-annual variations for these molecules at these latitudes is expected. A similar result was reported for 50°N in Coustenis et al. (2013). The differences found for the two complex hydrocarbons C₄H₂ and C₃H₄ at that latitude do not seem to be significant at 70°N.

Until the end of the Cassini mission foreseen in 2017, CIRS will continue to observe changes in the north and south. We will thus be able to continue to monitor the gaseous and haze content in the atmosphere along with the temperature changes. By allowing us to observe the atmospheric evolution in both hemispheres with better coverage for almost one-half of a Titan year, the

Cassini-Huygens mission and its predecessors are providing scientists with a unique opportunity to predict what the seasonal effects are on this complex body.

Acknowledgements

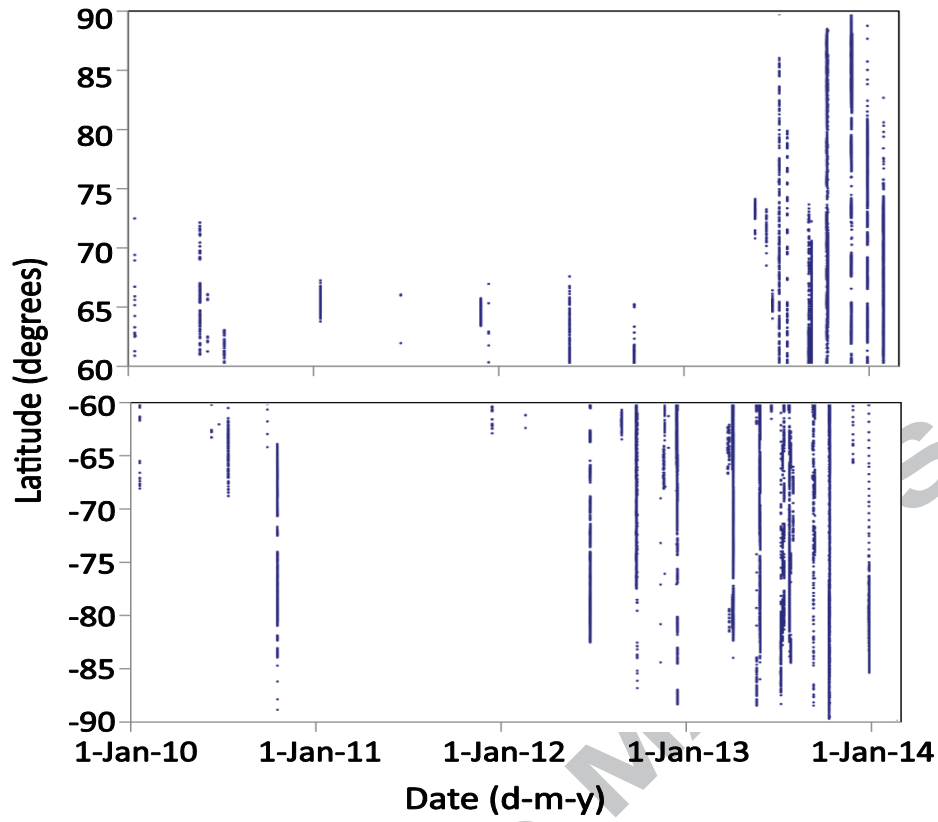
We acknowledge support from NASA's *Cassini* mission, *Cassini* Data Analysis Program and Planetary Astronomy Program. AC acknowledges financial support from the French "Agence Nationale de la Recherche" (ANR Project: "APOSTIC" #11BS56002), France. We also thank the data processing team in Meudon and especially Florence Henry, and the planning and processing team at Goddard, in particular Nicolas Gorius and Marcia Segura.

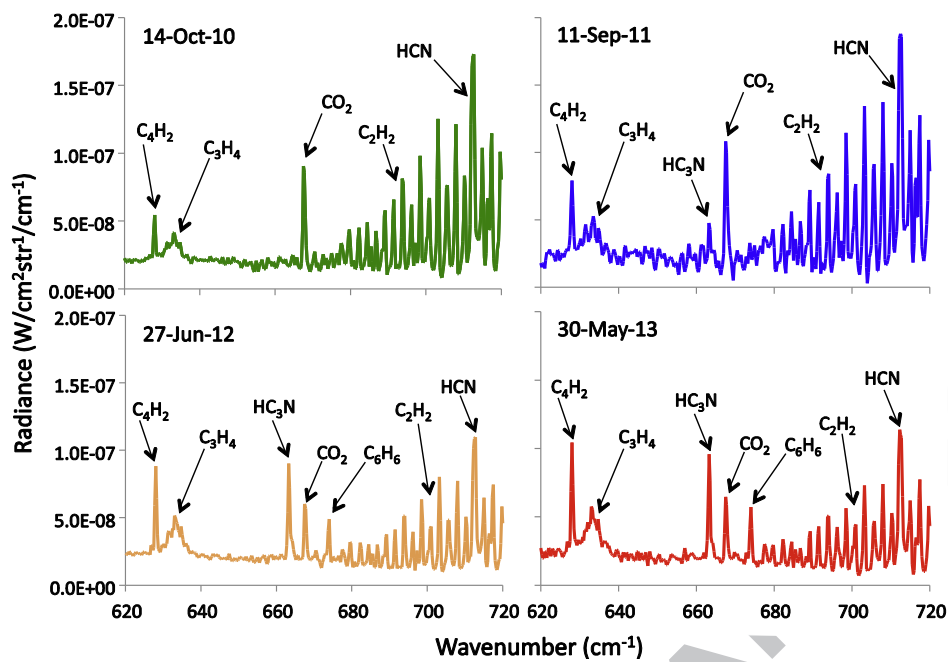
References

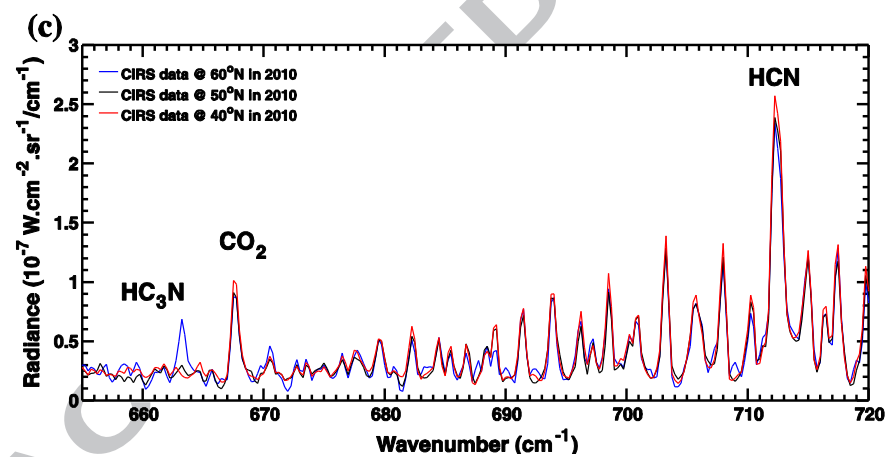
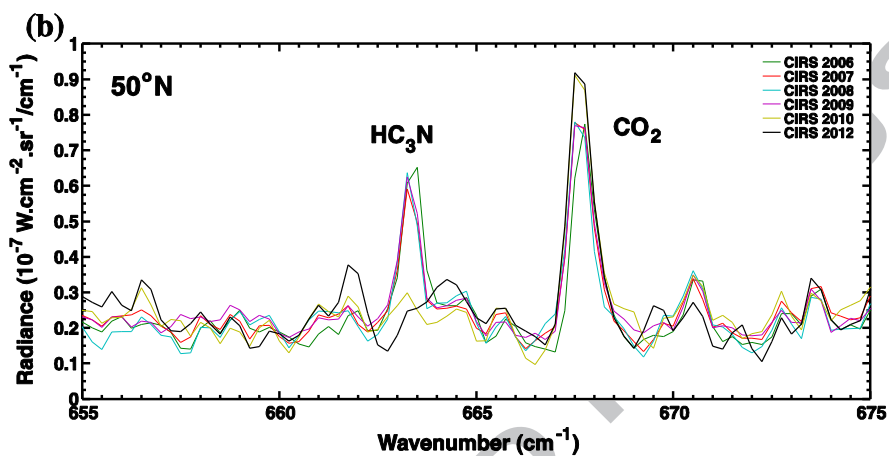
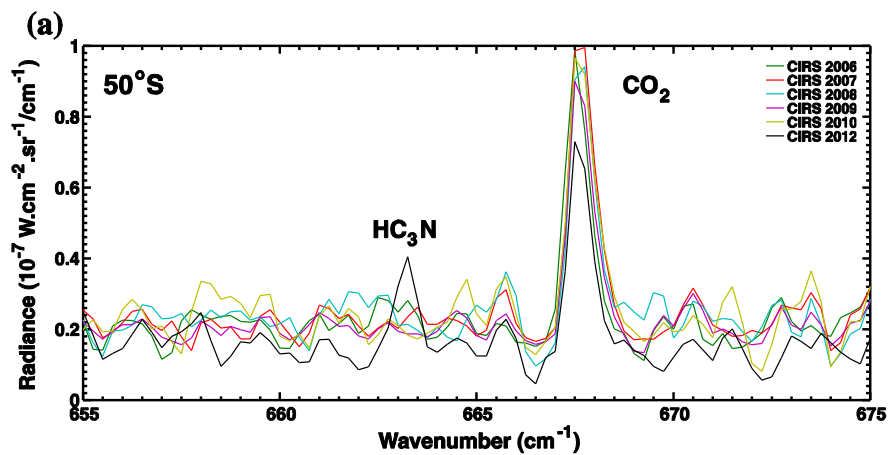
- Achterberg, R.K., Conrath, B.J., Gierasch, P.J., Flasar, F.M., Nixon, C.A., 2008a. Titan's middle-atmospheric temperatures and dynamics observed by the Cassini Composite Infrared Spectrometer. *Icarus* 194, 263-277.
- Achterberg, R.K., Conrath, B.J., Gierasch, P.J., Flasar, F.M., Nixon, C.A., 2008b. Observation of a tilt of Titan's middle-atmospheric superrotation. *Icarus* 197, 549-555.
- Achterberg, R.K., Gierasch, P.J., Conrath, B.J., Flasar, F.M., Nixon, C.A., 2011. Temporal variations of Titan's middle-atmospheric temperatures from 2004 to 2009 observed by Cassini/CIRS. *Icarus* 211, 686-698.
- Anderson, C.M., Samuelson, R.E., 2011. Titan's aerosol and stratospheric ice opacities between 18 and 500 μm : Vertical and spectral characteristics from Cassini CIRS. *Icarus* 212, 762-778.
- Bézar, B., 2014. The methane mole fraction in Titan's stratosphere from DISR measurements during the Huygens probe's descent. *Icarus* 242, 64-73.
- Bampasidis, G., Coustenis, A., Achterbergh, R. K., Vinatier, S., Lavvas, P., Nixon, C. A., Jennings, D. E., Teanby, N. A., Flasar, F. M., Carlson, R. C., Mousas, X., Preka-Papadema, P., Romani, P. N., Guardique, E. A., Stamogiorgos, S., 2012. Thermal and temperature structure variations in Titan's stratosphere during the Cassini mission. *Astroph. J.* 760, Issue 2, article id. 144, 8pp.
- Cordiner, M. A., Nixon, C. A., Teanby, N. A., Irwin, P. G. J., Serigano, J., Charnley, S. B., Milam, S. N., Mumma, M. J., Lis, D. C., Villanueva, G., Paganini, L., Kuan, Y.-J., Remijan, A. J., 2014. ALMA Measurements of the HNC and HC_3N Distributions in Titan's Atmosphere. *Astroph. J. Lett.* 795, L30, 6pp.
- Coustenis, A., Bézar, B., Gautier, D., Marten, A., Samuelson, R., 1991. Titan's Atmosphere from Voyager Infrared Observations: III. The vertical distributions of hydrocarbons and nitriles near Titan's North Pole. *Icarus* 89, 152-167.
- Coustenis, A., Schmitt, B., Khanna, R., Trotta, F., 1999. Plausible condensates in Titan's stratosphere from Voyager IR spectra. *Plan. Space Sci.* 47, 1305-1329.
- Coustenis, A., Achterberg, R.K., Conrath, B.J., Jennings, D.E., Marten, A., Gautier, D., Nixon, C.A., Flasar, F.M., Teanby, N.A., Bézar, B., Samuelson, R.E., Carlson, R.C., Lellouch, E., Bjoraker, G.L., Romani, P.N., Taylor, F.W., Irwin, P.G.J., Fouchet, T., Hubet, A., Orton, G.S., Kunde, V.G., Vinatier, S., Mondellini, J., Abbas, M.M., Courtin, R., 2007. The

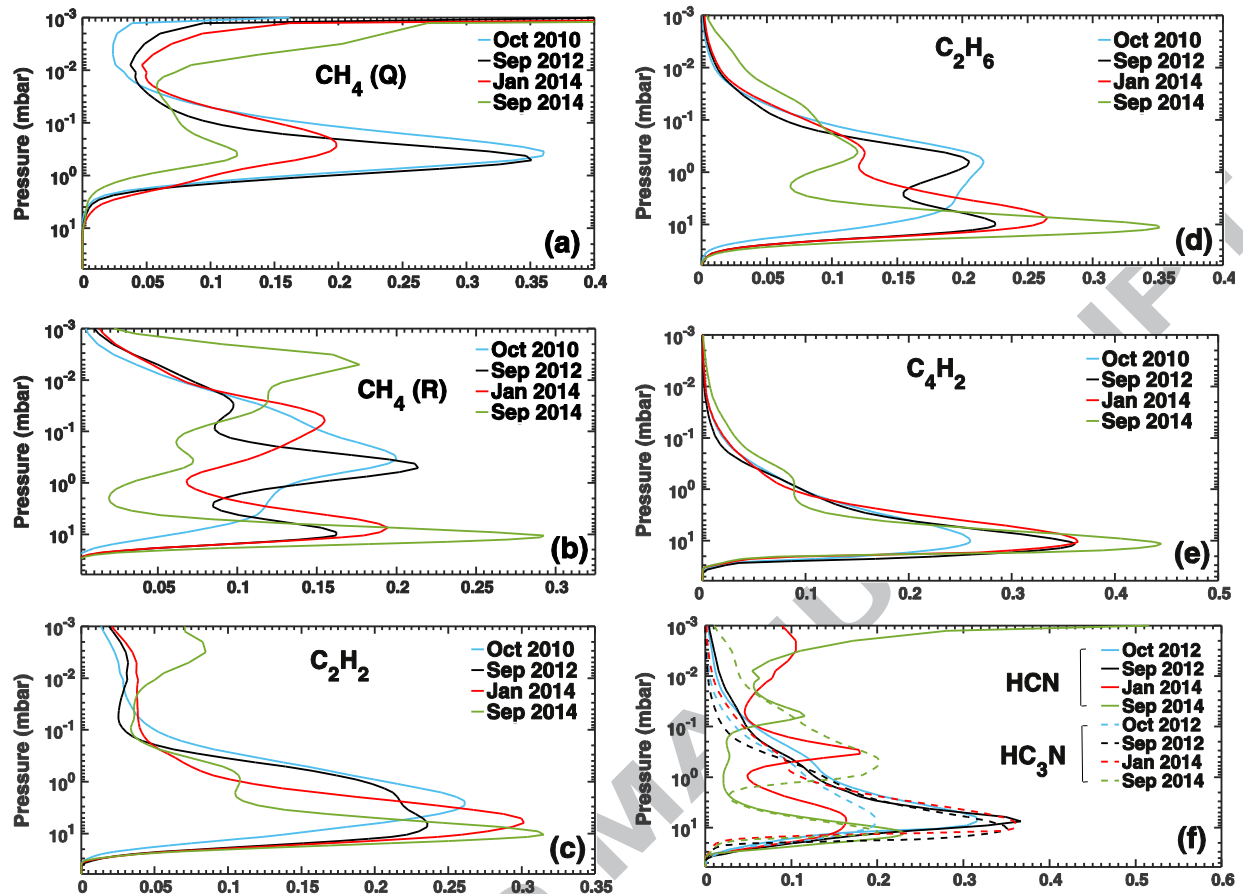
- composition of Titan's stratosphere from Glenn Cassini/CIRS mid-infrared spectra. *Icarus* 189, 35–62.
- Coustenis, A., Jennings, D. E., Nixon, C. A., Achterbergh, R. K., Lavvas, P., Vinatier, S., Teanby, N. A., Bjoraker, G. L., Carlson, R. C., Piani, L., Bampasidis, G., Flasar, F. M., Romani, P. N., 2010. Titan trace gaseous composition from CIRS at the end of the Cassini-Huygens prime mission. *Icarus* 207, 461-476. <http://dx.doi.org:0.1016/j.icarus.2009.11.027>.
- Coustenis, A., Bampasidis, G., Achterberg, R. K., et al., 2013. "Evolution of the stratospheric temperature and chemical composition over one titanian year. *Astroph. J.* 779, 177.
- de Kok, R., Irwin, P. G. J., Teanby, N. A. 2008. Condensation in Titan's stratosphere during polar winter. *Icarus* 197, 572-578.
- de Kok, R.J., Teanby, N.A., Maltagliati, L., Irwin, P.G.J., Vinatier, S., 2014. HCN ice in Titan's high-altitude southern polar cloud. *Nature* 514, 65-67.
- Dello Russo, N., Khanna, R. K., 1996. Laboratory Infrared Spectroscopic Studies of Crystalline Nitriles with Relevance to Outer Planetary Systems. *Icarus* 123, 366-395.
- Jennings, D. E., Anderson, C. M., Samuelson, R. E., Flasar, F. M., Nixon, C. A., Kunde, V. G., Achterberg, R. K., Cottini, V., de Kok, R., Coustenis, A., Vinatier, S., Calcutt, S. B., 2012a. Seasonal Disappearance of Far-infrared Haze in Titan's Stratosphere. *Astrophys. J. Lett.* 754:L3, 4pp.
- Jennings, D. E., Anderson, C. M., Samuelson, R. E., Flasar, F. M., Nixon, C. A., Bjoraker, G. L., Romani, P. N., Achterberg, R. K., Cottini, V., Hesman, B. E., Kunde, V. G., Carlson, R. C., de Kok, R., Coustenis, A., Vinatier, S., Bampasidis, G., Teanby, N. A., Calcutt, S. B., 2012b. First Observation in the South of Titan's Far-infrared 220 cm^{-1} Cloud. *Astrophys. J. Lett.* 761:L15, 4pp.
- Jennings, D., Achterberg, R. K., Cottini, V., Anderson, C. M., Flasar, F. M., Nixon, C. A., Bjoraker, G. L., Kunde, V. G., Carlson, R. C., Guandique, E., Kaelberer, M.S., Segura, M.E., de Kok, R., Coustenis, A., Vinatier, S., Bampasidis, G., Teanby, N. A., Calcutt, S. B., 2015. Evolution of the far-infrared ice cloud at Titan's South pole. *Astrophys. J. Lett.* 804:L34, 5pp.
- Hayes, A.G., Aharonson, O., Callahan, P., Elachi, C., Gim, Y., Kirk, R., Lewis, K., Lopes, R., Lorenz, R., Mitchell, K., Mitri, G., Stofan, E., Wall, S., 2008. Hydrocarbon lakes on Titan: Distribution and interaction with a porous regolith. *Geoph. Res. Let.* 35, L09204
- Khanna, R.K. 2005. Condensed species in Titan's stratosphere: Confirmation of crystalline cyanoacetylene (HC_3N) and evidence for crystalline acetylene (C_2H_2) on Titan. *Icarus* 178, 165-170.
- Lavvas, P. P., Coustenis, A., Vardavas, I. M., 2008. Coupling photochemistry with haze formation in Titan's atmosphere. Part I: Model description. *Plan. Space Sci.* 56, 27-66.
- Lavvas, P., Sander, M., Kraft, M., Imanaka, H., 2011. Surface Chemistry and Particle Shape: Processes for the Evolution of Aerosols in Titan's Atmosphere. *Astroph. J.* 728, 80, 11 pp.
- Moreno et al 2014, "ALMA observations of Titan" American Astronomical Society, DPS meeting #46, #211.19
- Niemann, H.B., Atreya, S.K., Demick, J.E., Gautier, D., Haberman, J.A., Harpold, D.N., Kasprzak, W.T., Lunine, J.I., Owen, T.C., Raulin, F., 2010. Composition of Titan's lower atmosphere and simple surface volatiles as measured by the Cassini-Huygens probe gas chromatograph mass spectrometer experiment. *J. Geophys. Res.* 115, E12.
- Schinder, P.J., Flasar, F.M., Marouf, E.A., French, R.G., McGhee, C.A., Kliore, A.J., Rappaport, N.J., Barbini, E., Fleischman, D., Anabtawi, A., 2012. The structure of Titan's atmosphere from Cassini radio occultations: Occultations from the Prime and Equinox missions. *Icarus* 221, 2, 1020-1031.

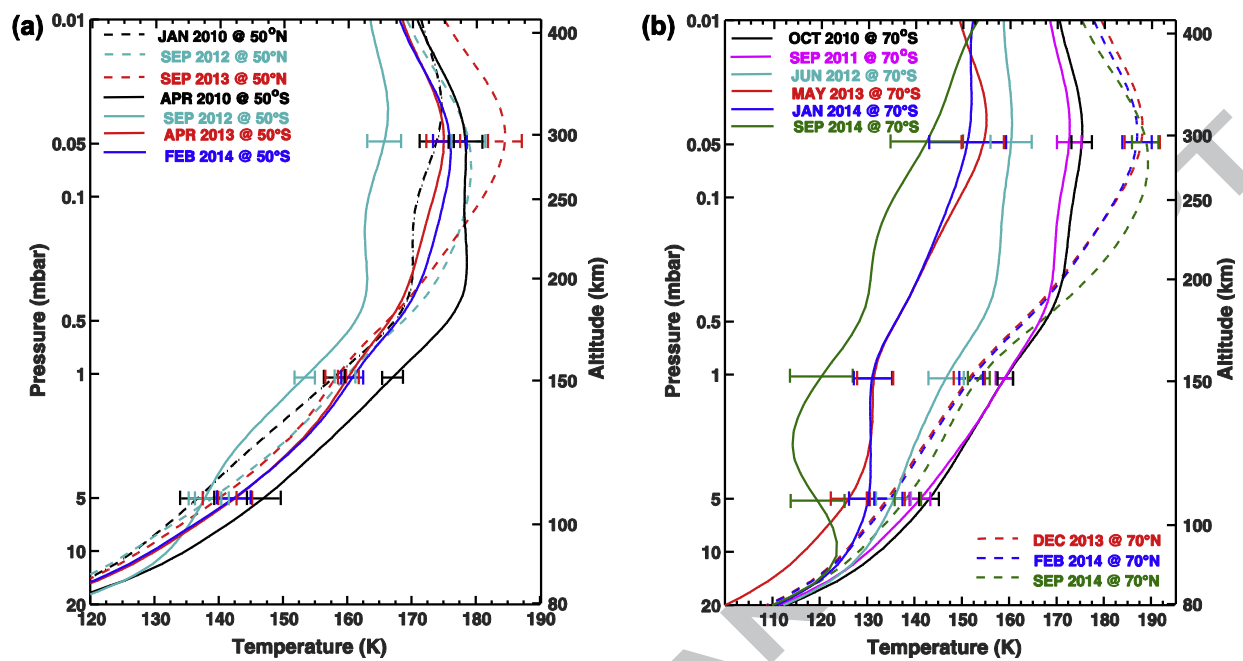
- Teanby, N.A., Irwin, P.G.J., de Kok, R., Nixon, C.A., 2009. Dynamical implications of seasonal and spatial variations in Titan's stratospheric composition. *Phil. Trans. R. Soc. A* 367, 697–711.
- Teanby N.A., Irwin, P.G.J., de Kok, R., Nixon, C.A., 2010. Seasonal Changes in Titan's Polar Trace Gas Abundance Observed by Cassini. *Astroph. J. Lett.* 724, L84-L89.
- Teanby, N. A., Irwin, P. G. J., Nixon, C. A. de Kok, R., Vinatier, S., Coustenis, A., Sefton-Nash, E., Calcutt, S. B., Flasar, F. M., 2012. Active upper-atmosphere chemistry and dynamics from polar circulation reversal on Titan. *Nature* 491, 732-735.
- Vinatier, S., Rannou, P., Anderson, C.M., Bézard, B., de Kok, R., Samuelson, R.E., 2012. Optical constants of Titan's stratospheric aerosols in the 70–1500 cm^{-1} spectral range constrained by Cassini/CIRS observations. *Icarus* 219, 5–12.
- Vinatier, S., Bézard, S., Lebonnois, S., Teanby, N.A., Achterberg, R.K., Gorius, N., Mamoutkine, A., Guandique, E., Jolly, A., Jennings, D.E., Flasar, F.M., 2015. Seasonal variations in Titan's middle atmosphere during the northern spring derived from Cassini/CIRS observations. *Icarus* 250, 95-115.
- West, R.A. et al., 2011. The evolution of Titan's detached haze layer near equinox in 2009. *Geophys. Res. Lett.* 38, L06204, 4 pp. <http://dx.doi.org/10.1029/2011GL046843>.
- West, R.A., Del Genio, A.D., Barbara, J.M., Toledo, D., Lavvas, P., Rannou, P., Turtle, E.P., Perry, J., 2015. Cassini Imaging Science Subsystem observations of Titan's south polar cloud. *Icarus* in press. <http://dx.doi.org/10.1016/j.icarus.2014.11.038>
- Yung, Y.L., 1987. An update of nitrile photochemistry on Titan. *Icarus* 72, 468.

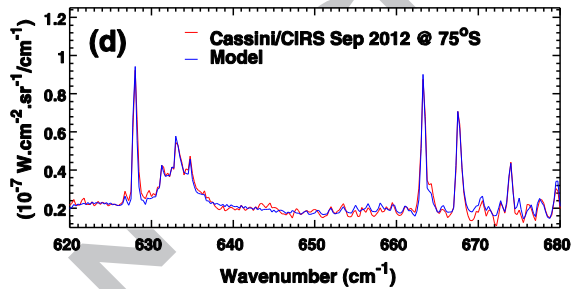
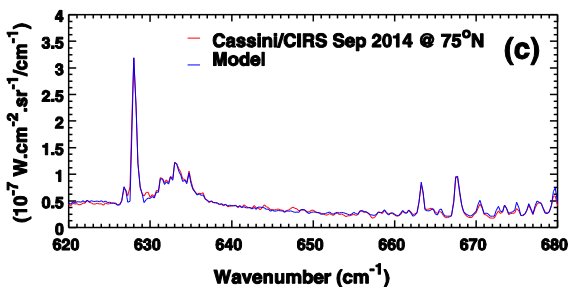
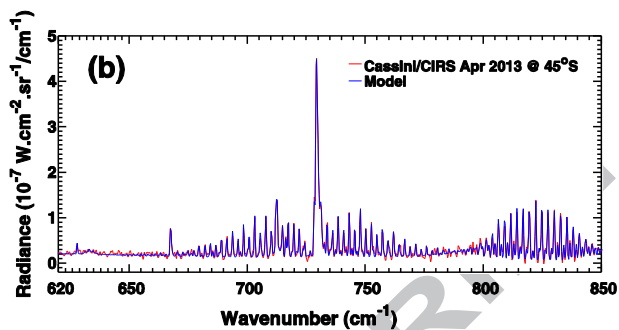
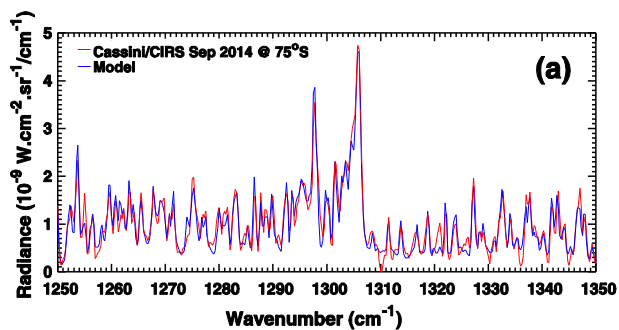


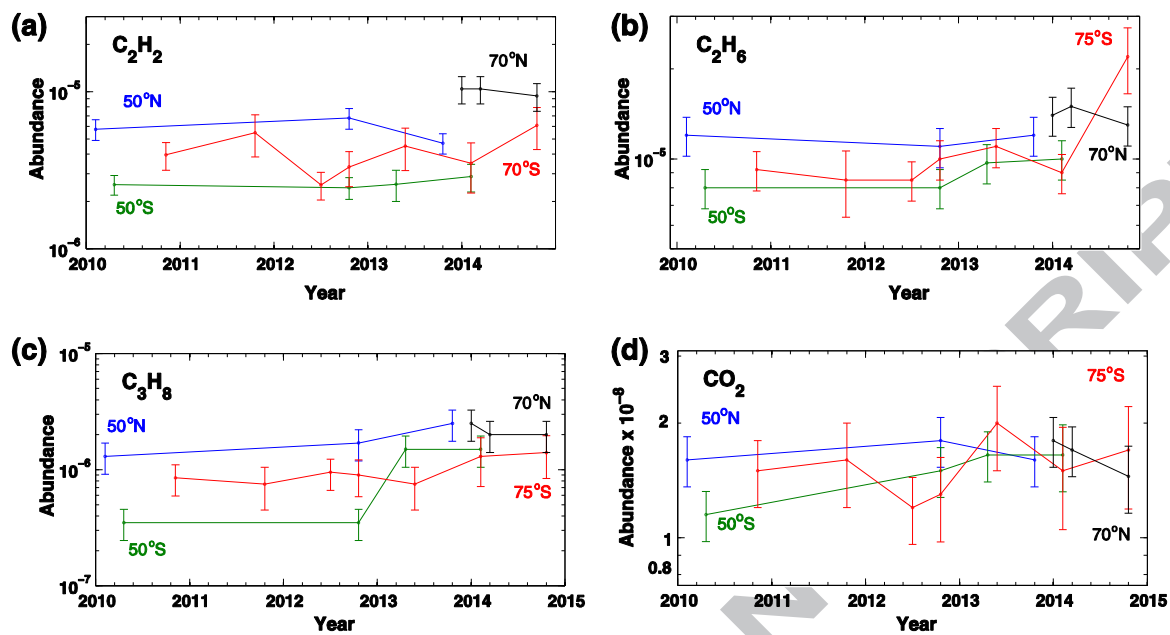


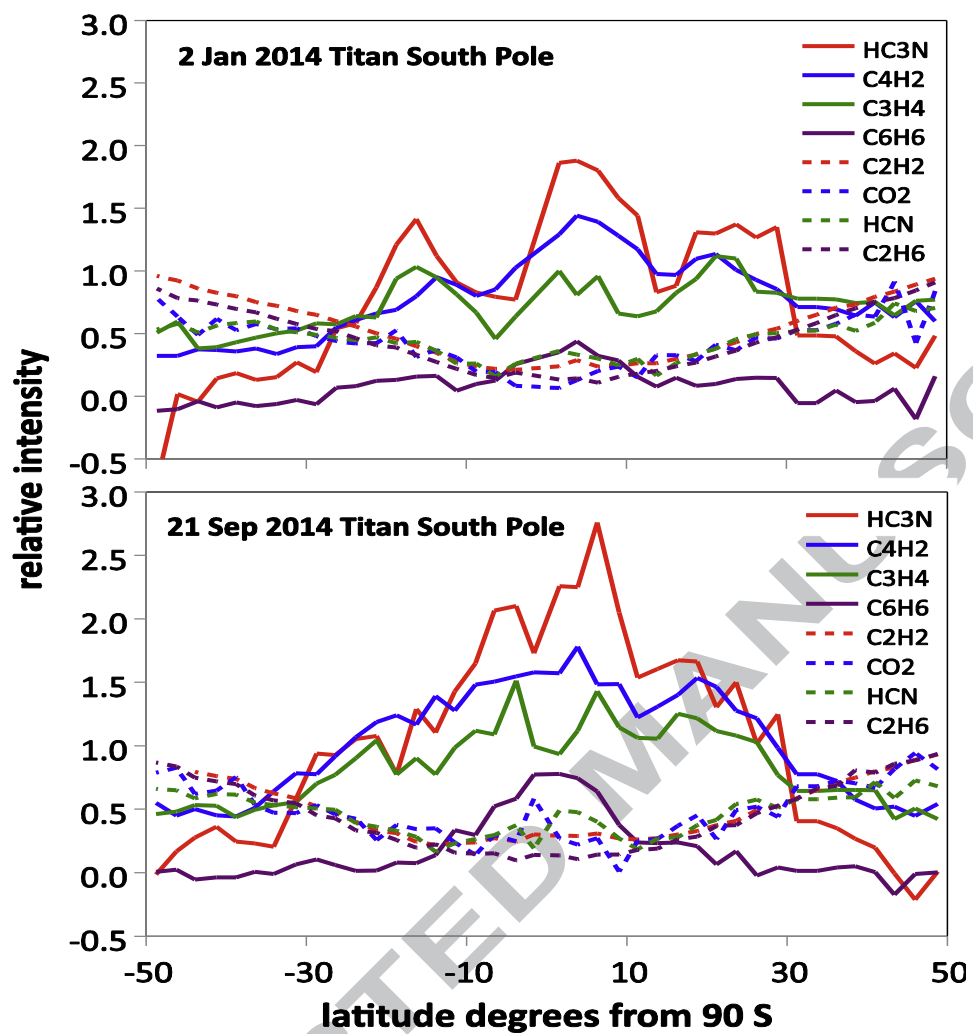


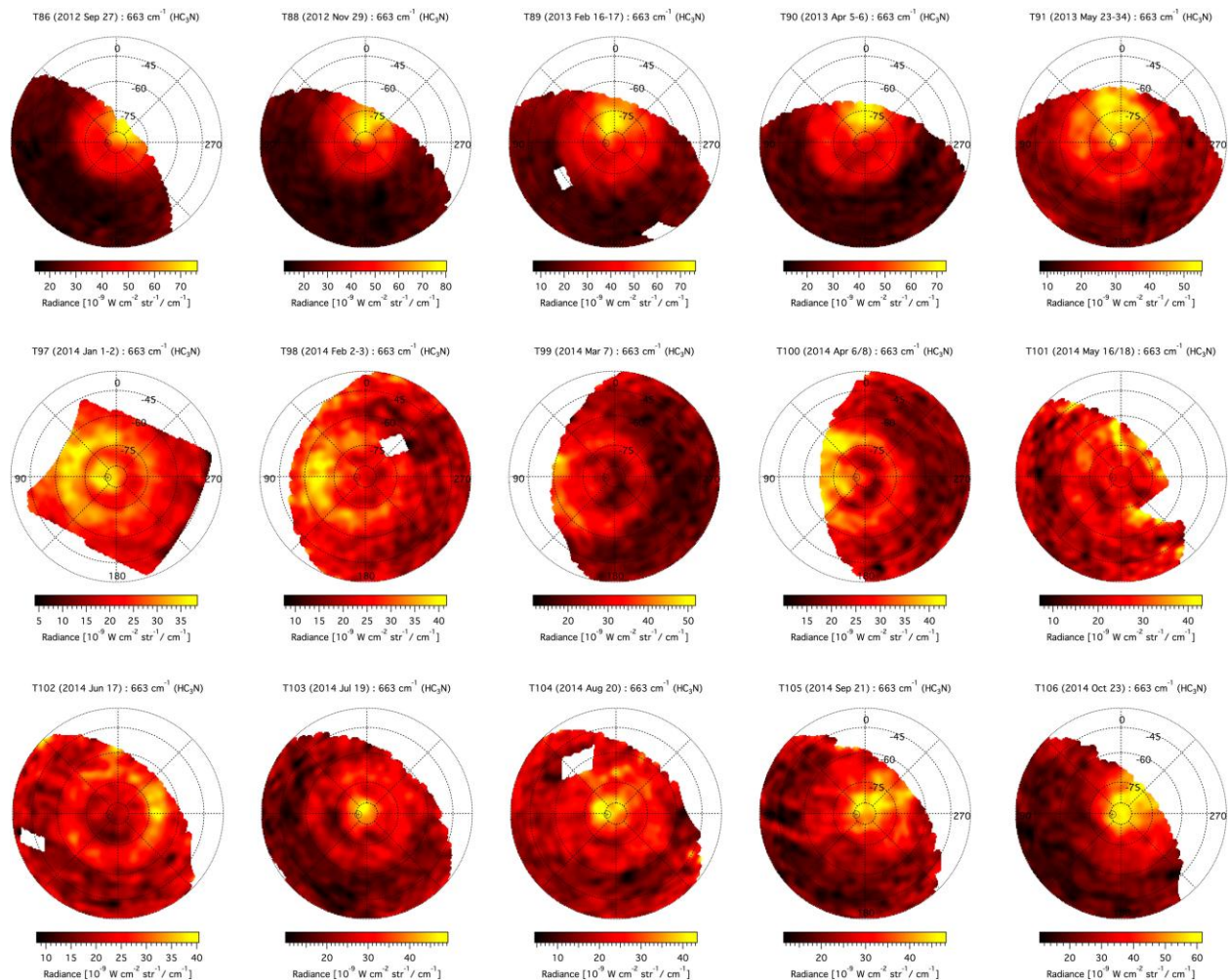


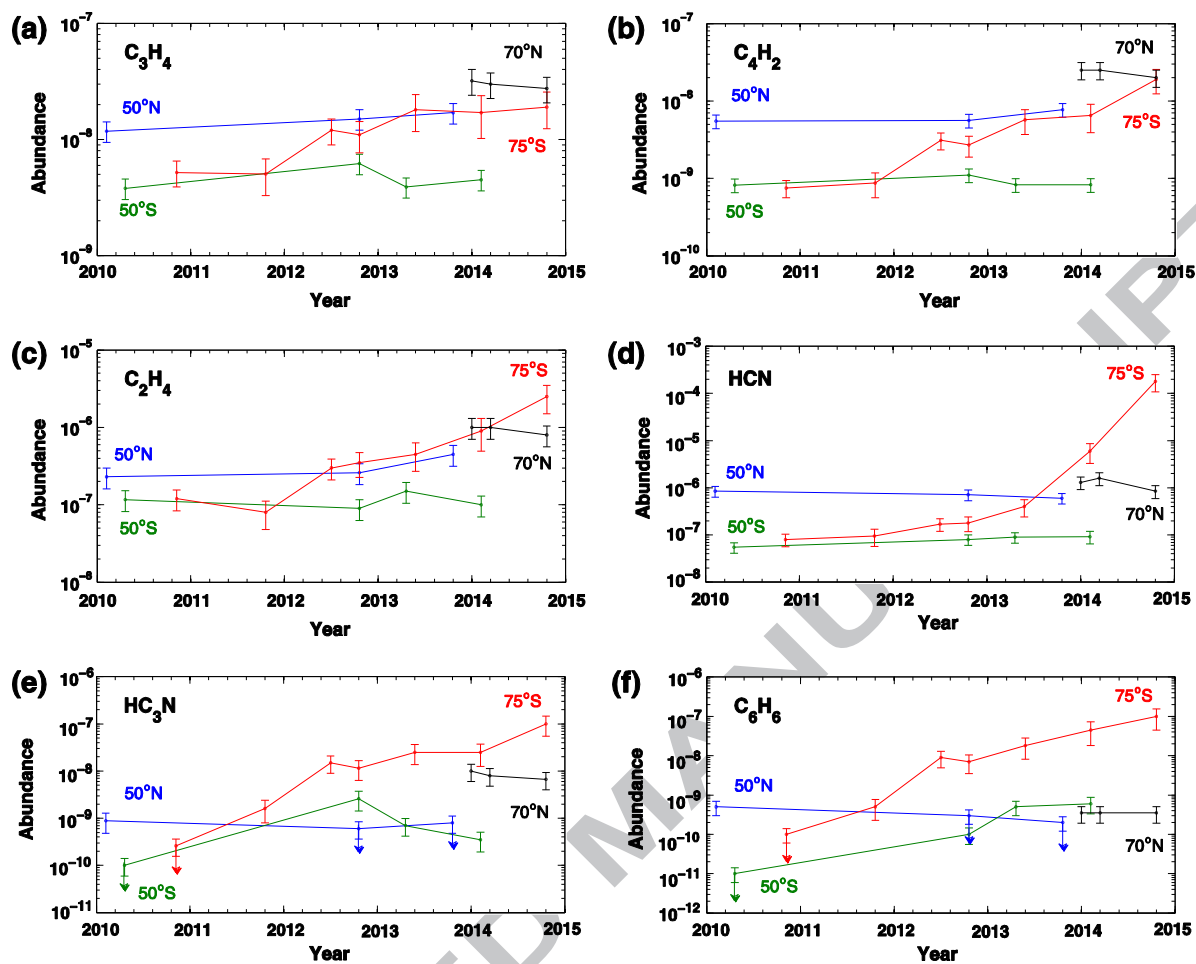












Highlights

- we infer the thermal and chemical evolution of Titan's stratosphere (2010-2014)
- we find different behavior for mid and high northern and southern latitudes
- the temperature decrease from 2010 to 2014 near the south pole reaches 40 K
- the abundances of some species have increased dramatically since 2012 at 70°S
- we bracket the time frame when the atmospheric flow reverses from S to N and N to S

ACCEPTED MANUSCRIPT