



**HAL**  
open science

## **Influence of oceanographic structures on foraging strategies: Macaroni penguins at Crozet Islands**

Cécile Bon, Alice Della Penna, Francesco d'Ovidio, John P. Y. Arnould,  
Timothée Poupart, Charles-André Bost

► **To cite this version:**

Cécile Bon, Alice Della Penna, Francesco d'Ovidio, John P. Y. Arnould, Timothée Poupart, et al..  
Influence of oceanographic structures on foraging strategies: Macaroni penguins at Crozet Islands.  
Movement Ecology, 2015, 3 (1), pp.32. 10.1186/s40462-015-0057-2 . hal-01204536

**HAL Id: hal-01204536**

**<https://hal.sorbonne-universite.fr/hal-01204536>**

Submitted on 24 Sep 2015

**HAL** is a multi-disciplinary open access archive for the deposit and dissemination of scientific research documents, whether they are published or not. The documents may come from teaching and research institutions in France or abroad, or from public or private research centers.

L'archive ouverte pluridisciplinaire **HAL**, est destinée au dépôt et à la diffusion de documents scientifiques de niveau recherche, publiés ou non, émanant des établissements d'enseignement et de recherche français ou étrangers, des laboratoires publics ou privés.



Distributed under a Creative Commons Attribution 4.0 International License



RESEARCH

Open Access



# Influence of oceanographic structures on foraging strategies: Macaroni penguins at Crozet Islands

Cecile Bon<sup>1\*</sup>, Alice Della Penna<sup>2</sup>, Francesco d'Ovidio<sup>3</sup>, John Y.P. Arnould<sup>4</sup>, Timothée Poupart<sup>1</sup> and Charles-André Bost<sup>1</sup>

## Abstract

**Background:** In the open ocean, eddies and associated structures (fronts, filaments) have strong influences on the foraging activities of top-predators through the enhancement and the distribution of marine productivity, zooplankton and fish communities. Investigating how central place foragers, such as penguins, find and use these physical structures is crucial to better understanding their at-sea distribution. In the present study, we compared the travel heading and speed of the world's most abundant penguin, the Macaroni penguin (*Eudyptes chrysolophus*), with the distribution of surface physical structures (large-scale fronts, eddies and filaments).

**Results:** The study was performed during December 2012 in the Crozet Archipelago (46.42° S; 51.86° E), South Indian Ocean. Six males at incubation stage were equipped with GPS loggers to get their trajectories. We used Eulerian and Lagrangian methods to locate large-scale fronts, mesoscale eddies (10–100 km) and part of the sub-mesoscale structures (<10 km, filaments) at the surface of the ocean. By comparing the positions of birds and these structures, we show that Macaroni penguins: i) target the sub Antarctic Front; ii) increase their foraging activity within a highly dynamic area, composed of eddy fields and filamentary structures; and iii) travel in the same direction as the predominant currents.

**Conclusions:** We show that penguins adjust their travel speed and movement during their whole trips in relation with the oceanographic structures visited. At a large scale, we hypothesize that Macaroni penguins target the sub Antarctic Front to find profitable patches of their main prey. At finer scale, Macaroni penguin may adopt a horizontal drifting behavior in strong currents, which could be a way to minimize costs of displacement.

## Background

In the open ocean, the distribution and abundance of marine organisms is related to physical processes at different spatial and temporal scales [1]. Many studies have provided evidence of strong relationships between the foraging movements of top-predators and the distribution of mesoscale (10–100 km), predictable oceanographic structures such as large fronts and eddies (e.g. [2–4]). Recently, the relationships between marine top-predators and sub-mesoscale (<10 km) features (e.g. filamentary structures) have also received growing interest and have triggered the development of new Eulerian (observations at a given time, in the “non-moving” frame

of reference of the bathymetry) and Lagrangian diagnostics (from the frame of reference of flowing water particle). Lagrangian diagnostics enable the analysis of the temporal and spatial variability of oceanographic features to identify physical structures like eddies, fronts, and part of the filament variability. Such structures have been shown to affect the distribution and growth of phytoplankton because their lateral and vertical transport properties influence the supply and retention of nutrients in the euphotic layer from deeper waters [5, 6]. Correspondingly, such aggregations of primary production can influence food web dynamics due to their profitability for all species from grazers to top predators [1, 7, 8]. Indeed, it has been shown that several top predators use eddies (e.g. [9, 10]), currents and associated filaments to forage (e.g. [8, 11]).

Relatively, few studies have focused on penguins [10, 11] despite their key role in marine food webs [12]. These

\* Correspondence: cecile.bon@cebc.cnrs.fr

<sup>1</sup>Centre d'Etudes Biologiques de Chizé, UMR 7372, CNRS - Université de La Rochelle, 79360 Villiers en Bois, France

Full list of author information is available at the end of the article

non-flying, diving predators are highly constrained in their foraging range because of their low travelling speed and high cost of transport. It might be expected, therefore, that oceanic penguins should target sub-meso and mesoscale structures during their at-sea activities to maximise their foraging efficiency [10].

Consequently, we investigated the at-sea foraging movements of the Macaroni penguin (*Eudyptes chrysolophus*) in a highly dynamic marine environment: the waters around the Crozet Archipelago in the South Indian Ocean. The Macaroni penguin is a pelagic predator, diving within the mixed layer to mean depths of 50 m (up to 163 m, [13]) to capture crustaceans and myctophid fish [14–16]. The species exhibits large flexibility in its foraging range, exploiting frontal structures or the shelf area according to the breeding requirements [17, 18]. While the world population is currently decreasing [19, 20], it is still the most abundant penguin species and the largest marine biomass consumer among seabirds [12]. The Crozet Archipelago is a breeding stronghold for the species [19].

Our aim was to identify how Macaroni penguins use oceanic structures to forage at different spatial scales, from large-scale (front) to meso- (eddies) and sub-mesoscale filamental structures [21]. We attempted to answer the following questions: i) do Macaroni penguins adjust their spatial movements with the regional circulation of currents?; and ii) how do they adjust their foraging behavior within meso- and sub-mesoscale structures? We address these questions by investigating the relationships between the spatial behavior of penguins and: i) the presence of persistent, large-scale frontal structures; ii) the

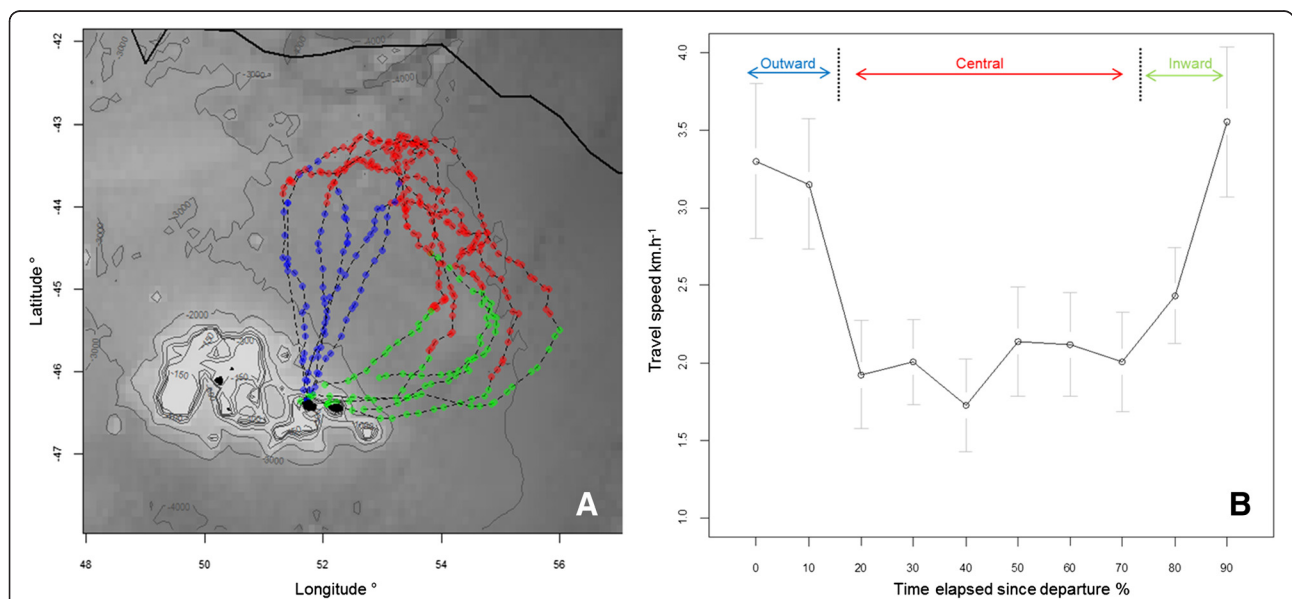
occurrence of eddies and filamentary structures; and iii) the adjustment of their travel speed with the encountered currents. We hypothesize that penguins would target these structures, reducing travel speed within eddies and filamentary structures to foraging intensively, as such behaviors should be advantageous with respect to travel costs.

### Results

After their foraging trips (18 ± 2 days), all the instrumented penguins were re-captured upon returning to their colony having increased their body mass (subsequently, all pairs successfully fledged their chicks). Data from one GPS were lost due to technical failure and thus six tracks were analyzed in the present study. Individuals performed long clockwise looping trips, heading north towards the SAF, up to 388 km in a region encompassing positive and negative eddies, before returning to the colony (Fig. 1a). The central phase of their trips were longer (435.7 ± 69.9 km; 9.66 ± 1.35 d) than the outward (280.8 ± 38.9 km; 3.80 ± 0.47 d) and inward phases (237.6 ± 72.8 km; 9.66 ± 1.35 d, Kruskal-Wallis test on duration:  $X^2 = 11.94$ ,  $df = 2$ ,  $p < 0.01$ , Table 1).

The distance travelled every 6 h was on average 15.2 ± 12.7 km. The travel speed was significantly lower within the central phase (outward: 3.57 ± 1.25 km · h<sup>-1</sup>, central: 1.93 ± 1.05 km · h<sup>-1</sup>, inward: 3.30 ± 1.30 km · h<sup>-1</sup>, Kruskal-Wallis test:  $X^2 = 103.97$ ,  $df = 2$ ,  $p < 0.0001$ , Table 1, Fig. 1b).

There was a gradient in SST encountered by penguins during their trip from ~4 °C at the colony to 8 °C at the lowest latitudes visited (~43° S, Fig. 2a). The SST was



**Fig. 1** Trips and travel speed of six incubating macaroni penguins presented on a bathymetry map around the Crozet islands. **a** The three phases defined by the variation in heading velocity are represented in distinct colours: Outward: blue, Central: red, Inward: green. Black line: sub Antarctic Front. **b** The travel speed was averaged for each 10 % of time elapsed since the departure of travel. Arrows indicate the separation of the trip in three phases

**Table 1** Main characteristics of foraging trips of six Macaroni penguins

Trip phase	Duration (j)	Travel speed (km.h <sup>-1</sup> )	Heading velocity (km.h <sup>-1</sup> )	Current speed (km h <sup>-1</sup> )	Animal direction °	Current direction °
Outward	3.8 ± 0.5	3.6 ± 1.3	3.5 ± 1.3	0.2 ± 0.2	11.4 ± 22.4	61.4 ± 97.8
Central	9.7 ± 1.4	1.9 ± 1.1	1.7 ± 0.9	0.9 ± 0.4	141.4 ± 68.8	118.1 ± 37.9
Inward	3.8 ± 1.1	3.3 ± 1.3	3.2 ± 1.3	0.3 ± 0.1	233.2 ± 45.0	246.3 ± 101.0

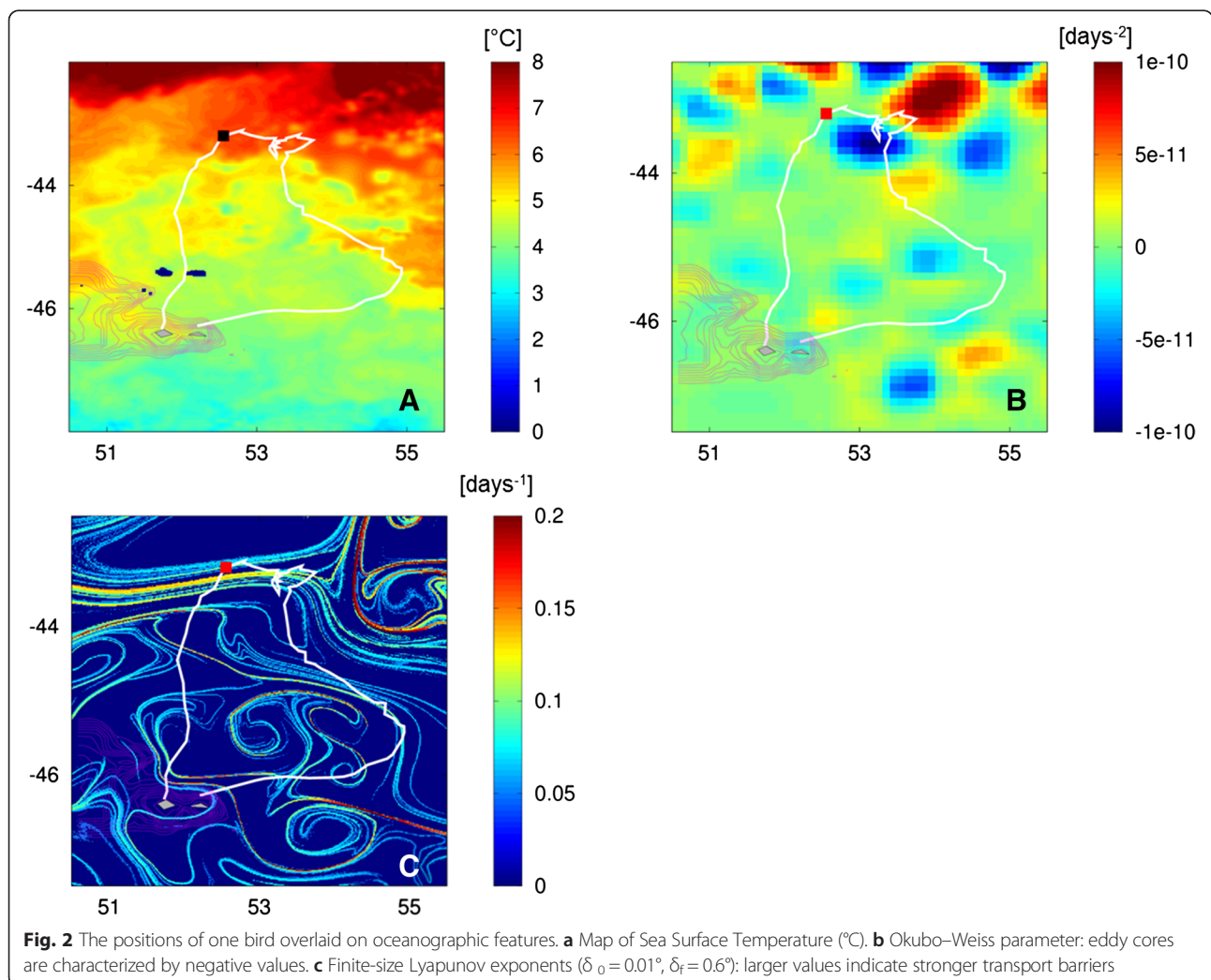
*n* number of gps localisations

highly positively correlated with the current speed. This suggests that the warmer waters encountered by penguins located at the lowest latitudes were also in the strongest currents visited (Spearman correlation test: 7068809,  $R^2 = 0.40$ ,  $p < 0.001$ ).

**Penguin and mesoscale eddies**

During the central phase of their trips, Macaroni penguins foraged at the edge of two large eddies, situated in

the vicinity of the SAF (Fig. 2b). These two eddies were located to the south of a large eddy field which was not used by the birds. Overall, 63 % of the locations associated with an eddy were within the central phase whereas 11 and 26 % were within the outward and inward phases, respectively (Table 2). This indicates that the main eddy activity was observed within the central phase where the penguins had reduced swimming speed. Indeed, the degree of association with eddies was 37 % in



**Table 2** Distribution of eddies and filaments within trips of six macaroni penguins

Trip Phase	$n_{locs}$ averaged on individuals	Eddies		Filaments	
		Distribution of eddy locations %– $n_{locs}$	Degree of association within phase %– $n_{locs}$	Distribution of filaments %– $n_{locs}$	Degree of association within phase %– $n_{locs}$
Outward	14 ± 4	11 %–15	17 %–3 ± 1	20.8 %–22	21.7 %–3.0 ± 1.0
Central	38 ± 5	63 %–87	37 %–15 ± 6	66.7 %–61	27.6 %–9.6 ± 6.0
Inward	16 ± 4	26 %–36	38 %–6 ± 3	12.5 %–10	12.5 %–2.0 ± 1.0

$n_{locs}$  number of locations. Mean ± SD Number of locations within eddies/filaments averaged within each phase for each individual

the central phase, 17 % in the outward phase and 38 % in the inward phase (Table 2).

Examination of time spent within eddies (successive locations in an eddy) indicates penguins spent more time within eddies in the central phase (43 ± 25 h, 11 cases) than in the transit phases (25 ± 10 h, 10 cases, Mann-Whitney:  $U = 81.5$ ,  $P = 0.066$ ). The retention parameter was small for eddies in the central phase (9.7 ± 15 d,  $n = 60$  locations) since 80 % of water parcels had been recirculating within the eddy for less than 8 d. In transit phases, the retention parameter of eddies was significantly higher (16 ± 15 d,  $n = 32$  locations, Mann-Whitney test:  $U = 658$ ,  $P = 0.013$ ). Finally, the three mixed models built for each phase indicated that penguins significantly slowed down when they were inside eddies in the inward phase, contrary to that observed in the two other phases (Table 3 models M1, M2, M3, Fig. 3a).

**Penguin movements and filaments**

Filaments identified by the FSLE method were present over the whole area prospected by the penguins (Fig. 2c). At the trip scale, we observed high inter-individual variation in the level of association with filaments ( $n_{locs}$  within filaments/ $n_{locs}$  total) (from 5.6 to 35.9 %). Across all trips, 66.7 % of the locations associated with filaments were located within the central phase of the foraging trip where penguins reduced travel speed (20.8 and 12.5 % in outward and inward phases, respectively, Table 2). The degree of association was significantly higher in the central

phase since 27.6 % of locations were within filaments. In the two others phases, the number of locations within filaments were significantly lower (Kruskal-Wallis test:  $X^2 = 6.976$ ,  $df = 2$ ,  $p < 0.05$ , Table 2). FSLE values of the filaments were significantly higher at the central phase (0.20 ± 0.05 d<sup>-1</sup>) than at the outward (0.15 ± 0.04 d<sup>-1</sup>) and inward (0.12 ± 0.02 d<sup>-1</sup>) phases (Kruskal-Wallis test:  $X^2 = 18.603$ ,  $df = 2$ ,  $p < 0.001$ ). Once individuals were inside the filaments, they slowed down more when FSLE values were higher (Table 3 model M4, Fig. 3b).

**Penguin movements and currents**

At the whole-trip scale, at-sea movements of individuals seem to be strongly modified by the currents encountered. Firstly, travel speed was negatively correlated with the current speed indicating that penguins decelerated when they encountered stronger currents (Table 3 model M5). Indeed, during the outward phase, the current speed was generally low and no clear relationship was observed between the penguins and direction of the current (Table 1, Fig. 4).

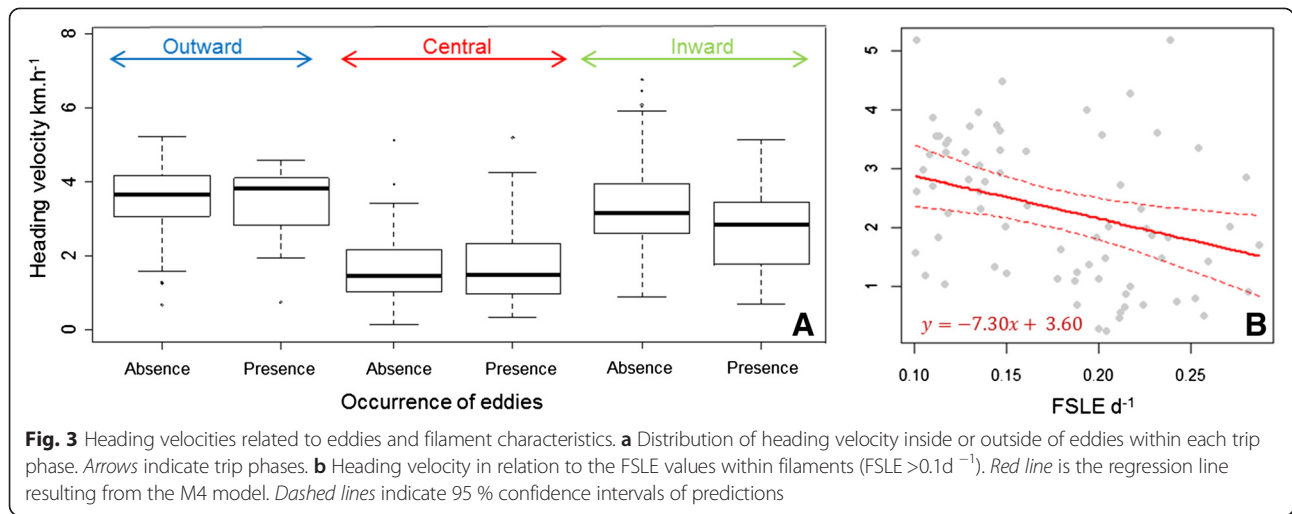
In the central phase, penguins shifted toward a south-eastern direction (141.40 ± 68.78°) with a travelling speed significantly lower than during the two other trip phases (Kruskal-Wallis test:  $X^2 = 103.9734$ ,  $df = 2$ ,  $p < 0.001$ ). At that time the currents were significantly faster than during the two other phases (Kruskal-Wallis test:  $X^2 = 169.90$ ,  $df = 2$ ,  $p < 0.001$ ), up to 1.6 km · h<sup>-1</sup>, and mainly oriented in the same direction as the penguins' headings (118.10 ± 37.86°, Fig. 4). A strong correlation between the directions

**Table 3** Influence of the occurrence of eddies, filaments and current speed on heading velocity

HV ~ OW <sub>category</sub>	Intercept	Presence of eddy	$P_{intercept}/P_{variable}$	$\Delta AIC_{Null}$
M1 – Outward phase	<b>3.57 ± 0.20</b>	-0.14 ± 0.40	<0.0001/NS	+1.87
M2 – Central phase	<b>1.62 ± 0.11</b>	0.12 ± 0.16	<0.0001/NS	+3.30
M3 – Inward phase	<b>3.43 ± 0.25</b>	<b>-0.635 ± 0.29</b>	<0.0001/< 0.05	- 2.14
HV ~ FSLE (>0.1)	Intercept	FSLE (>0.1)	$P_{intercept}/P_{variable}$	$\Delta AIC_{Null}$
M4 – Whole trip	<b>3.60 ± 0.51</b>	<b>-7.29 ± 2.78</b>	<0.001/< 0.05	- 6.40
TV ~ Current speed	Intercept	Current speed	$P_{intercept}/P_{variable}$	$\Delta AIC_{Null}$
M5 – Whole trip	<b>3.51 ± 0.19</b>	<b>-1.51 ± 0.24</b>	<0.001/<0.001	-27.38

Linear mixed models were independently built with individual bird included as a random effect ( $n = 6$ ) for each explanatory variable. Response variables are heading velocity (HV) and travel velocity (TV). The Okubo-Weiss parameter is a binary factor coding for the occurrence of eddies (0: absence, 1: presence). Current speed and FSLE are continuous variables. Only FSLE values >0.1d<sup>-1</sup> were selected to test for the influence of filaments on HV when penguins were within a filament. Significant coefficients (mean ± se) are in bold.  $P$  p.value, NS non-significant.  $\Delta AIC_{Null}$  shows the AIC deviation from AIC of the null model



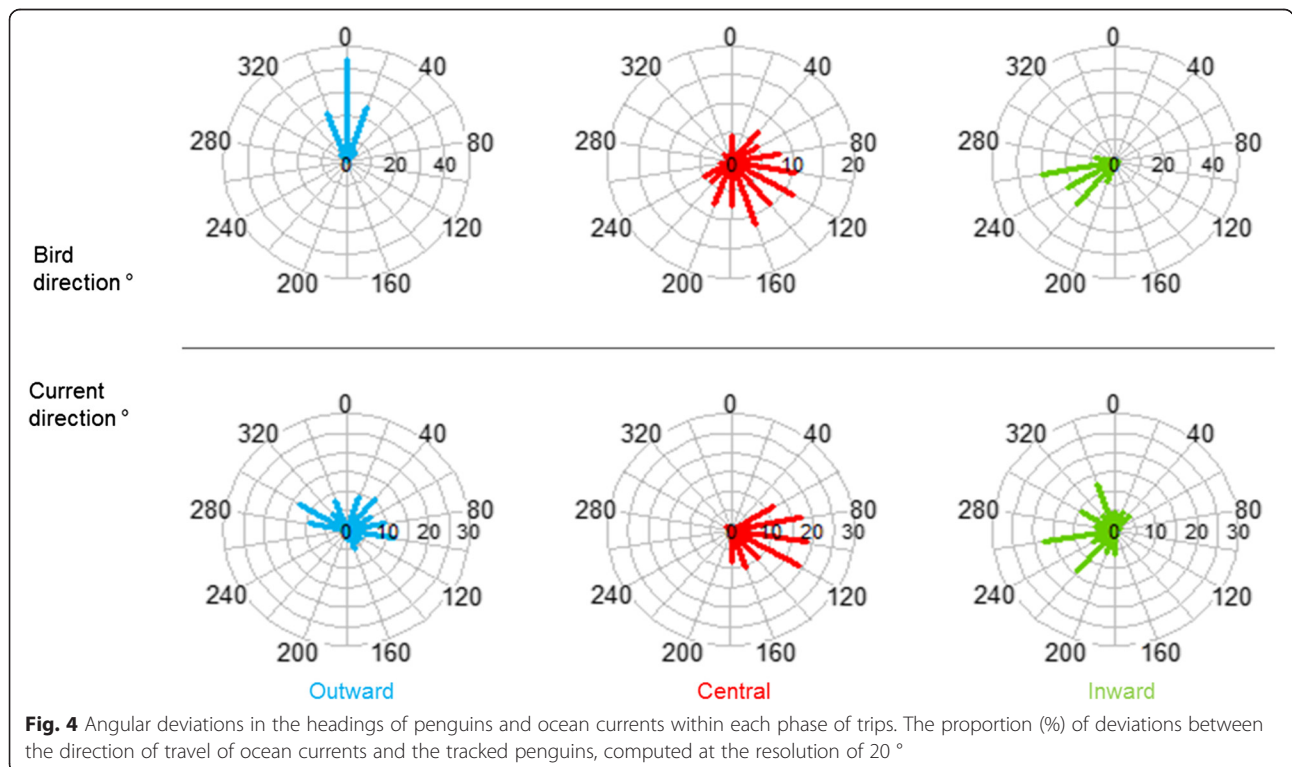


of the penguins and currents were also found (circular Pearson test: 5.78,  $R^2 = 0.40$ ,  $p < 0.001$ ). A substantial proportion (25.3 %) of heading velocities was  $< 1 \text{ km} \cdot \text{h}^{-1}$  indicating displacement close to that of the current speed suggesting a possible drifting behavior by the birds.

During the inward phase, the penguins moved quickly back to the colony and their paths were mostly orientated south-westerly (Fig. 4). The weak currents were also oriented south-westerly and positively correlated with the penguins' main direction (circular Pearson test: 4.55,  $R^2 = 0.50$ ,  $p < 0.001$ ).

### Discussion

The salient findings of this study can be summarized as follows. Firstly, tracked Macaroni penguins performed long looping trips north of Crozet towards a predictable large-scale frontal structure, the SAF. The similarity in their swimming direction strongly suggests a common use of oceanographic features. Secondly, during the central phase of their trip, the penguins slowed down and foraged inside large eddies, following a northeast flow. Overall, in accordance with our assumptions, the penguins adjusted their travel



speed and movement throughout their trips in relation to the oceanographic structures visited.

#### Use of large-scale circulation around the Crozet Archipelago

The foraging movements of Macaroni penguins toward the SAF demonstrate these diving predators use predictable, large-scale physical feature in agreement with our first assumption. This is consistent with the highest mean seabird species richness and diversity in the South Indian Ocean having been reported at the SAF [22]. This diversity and abundance is driven by the high concentration of chlorophyll-*a* and macro-zooplankton within the SAF, resulting from increased water column stability and availability of nutrients [23].

Recent *in situ* oceanographic sampling and remote sensing data [24] have shown that a predictable phytoplankton bloom occurs north of Crozet [25] each year in early September. North of Crozet, the SAF deviation creates a closed area with long residence time which allows dissolved iron from land or sediments of the Crozet plateau to fertilize the water during winter. These conditions enhance the development of the phytoplankton bloom [26, 27] which reaches a peak in late October i.e. during the period before the at-sea sojourns of incubating males tracked in our study. During this time, Macaroni penguins mainly feed on euphausiids, (primarily *Euphausia valentini* and *Thysanoessa macrura*), amphipods (*Themisto gaudichaudii*) and myctophid fish (*Krefflichthys anderssoni* spp.) [15, 16], which have been found in high concentrations within the PFZ [28-30].

#### Foraging behavior in meso- and sub-mesoscale structures

At a fine scale, individuals modified their swimming behavior when entering meso- (eddies) and sub-mesoscale (filaments) structures. In agreement with other diving predators [9, 10, 31], Macaroni penguins slowed down, suggesting they undertook more intensive foraging activity, during this phase characterized by an important eddy field. The greater relative abundance of young eddies in this phase compared to the two other phases confirms that the central phase is located in a branch of the SAF characterized by an important mixing activity [32]. Numerous studies have shown that several trophic levels of organism can aggregated within eddies [33, 34] and, through a cascading effect, many predators could benefit from this [10, 31, 35]. In addition, in this study, penguins showed no difference in heading velocity within and outside of eddies in the central phase, whereas currents were stronger and filamentary activity higher than in the other phases. We suggest that the prey field was extended at the spatial scale of the branch of the SAF and this hypothesis is coherent with the spatial structure of the annual phytoplankton bloom [36]. While it is

reasonable to assume that local variations of prey density exist at finer scale, at the sub-mesoscale, the sampled distance between locations (tens of km) was too large to detect variations in heading velocity responding to such prey distributions.

During outward and inward phases, penguins did not respond in the same way to the presence of eddies. Eddies were not visited in the outward phase since no changes of heading velocity were observed. However, a significant slow-down was shown in the inward phase within an eddy. As suggested by Cotté et al. [31], all eddies are not used and it would depend on their life-time and history. In our study, eddies in transit phases presented a retention time significantly higher than in the central phase. As eddy cores present a relatively poorly mixing environment [37], they retain nutrients and thus probably enhance biological productivity and prey aggregation. The weak currents inside the eddy cores may also explain the reduced travelling speed of individuals as they foraged inside these structures. Thus, the behavioral changes observed in the eddy during the inward phase could indicate that the eddy is profitable.

Concerning the sub-mesoscale activity, the central phase was also the area where the filamentary structure was the highest, confirming the dynamic character of the area. This is to be expected as filaments are mostly formed from eddy-eddy interactions [38]. Furthermore, once individuals were inside filaments, they slowed down more as the horizontal stirring increased. This is consistent with the trapping characteristics of these structures retaining chlorophyll and thus attracting species in the upper trophic levels [6, 39]. However, no difference was detected in swimming behavior inside and outside the filaments, in contrast to that observed with eddies. This may be due to several factors.

Firstly, crustaceans and fish are mobile in comparison to the phytoplankton patches which are transported by currents, which could induce a more dispersed spatial distribution outside the filaments. Secondly, these transport barriers are mostly located at eddy edges [37]. Thus, Macaroni penguins may have responded to the productivity associated with eddy characteristics and not to the filament properties (i.e. at a finer scale). Finally, any adjustment of movements by penguins to filament characteristics may not have been detected due to the spatial resolution of the datasets used (i.e. altimetry data at 0.33 ° and 1 week, GPS locations limited to 6 h intervals, tens of km).

#### Currents

Throughout the different phases of their foraging trips, Macaroni penguins exhibited marked shifts in their travel speed in relation to the current directions encountered. The heading velocities (HV) were generally much greater

than the fastest encountered currents ( $>0.8 \text{ km} \cdot \text{h}^{-1}$ ). However, in areas where currents were fastest, 30 % of trip segments were associated with an HV of less than  $1 \text{ km} \cdot \text{h}^{-1}$ . This indicates a travel speed close to the current speed which strongly suggests individuals were drifting horizontally.

In marine predators, surface drift behaviors have been explained as a consequence of different processes. Firstly, current speeds may be similar to the swimming ability of the studied species. This results from the current's influence on the animals' trajectories [40]. Secondly, drift behavior could occur at night in daytime foragers resting during multi-day trips [17]. Thirdly, horizontal drift behaviors could be indicative of an increase in vertical foraging activity.

Finally, the maximum swimming speed of Macaroni penguins (up to  $10 \text{ km} \cdot \text{h}^{-1}$  [41]) is high compared to the current speed. Hence, the low HV observed at the central phase of the foraging trips in the present study could correspond to an increase in diving activity resulting in passive horizontal movement (drift).

Association with the local currents could be a good way to minimize transports costs. Indeed, from the start of the breeding cycle until the creching phase, males have to endure two extended fasting periods. The first lasts  $\sim 35$  d (i.e. from the arrival of the birds at the colony until their departure after the first long incubation period) and the second occurs at the end of their first post-incubating trip until the end of brooding (i.e.  $\sim 35$  days [42, 43]). Thus, during their first post-incubation trip, males are highly energetically constrained as they have to restore their body condition and acquire enough reserves to prepare for the next fasting event. Consequently, individuals would gain significant energetic advantages by adopting behaviors that avoided swimming against currents. Our results support this hypothesis. Such behavior has been observed in other oceanic penguins (e.g. king penguins *Aptenodytes patagonicus*, Magellanic penguins *Spheniscus magellanicus*) at a time when they also need to quickly progress to favorable foraging areas [10, 44].

## Conclusions

This work confirms the high dependence of Macaroni penguins on large-scale frontal zones such as the SAF in the Crozet area, a key breeding area for the species. This is the first demonstration of such strong dependence to the SAF for the Crozet Macaroni population. In addition, our study highlighted the role of currents and eddy activity on the foraging behavior of a diving predator. In future studies, the adjustment of movement behavior to filaments should be tackled at a finer scale with a more precise overlap between predator movements and the location of frontal structures. Investigating diving success in these structures would

be also of special interest. Furthermore, analysis of whether the drift behavior is actually associated with more intensive foraging should be undertaken, potentially using 3D movement data. Finally, it would also be important to know if such behavior is exhibited during other periods where penguins are subjected to other major energetic constraints such the creche phase or pre-moulting period [45].

## Methods

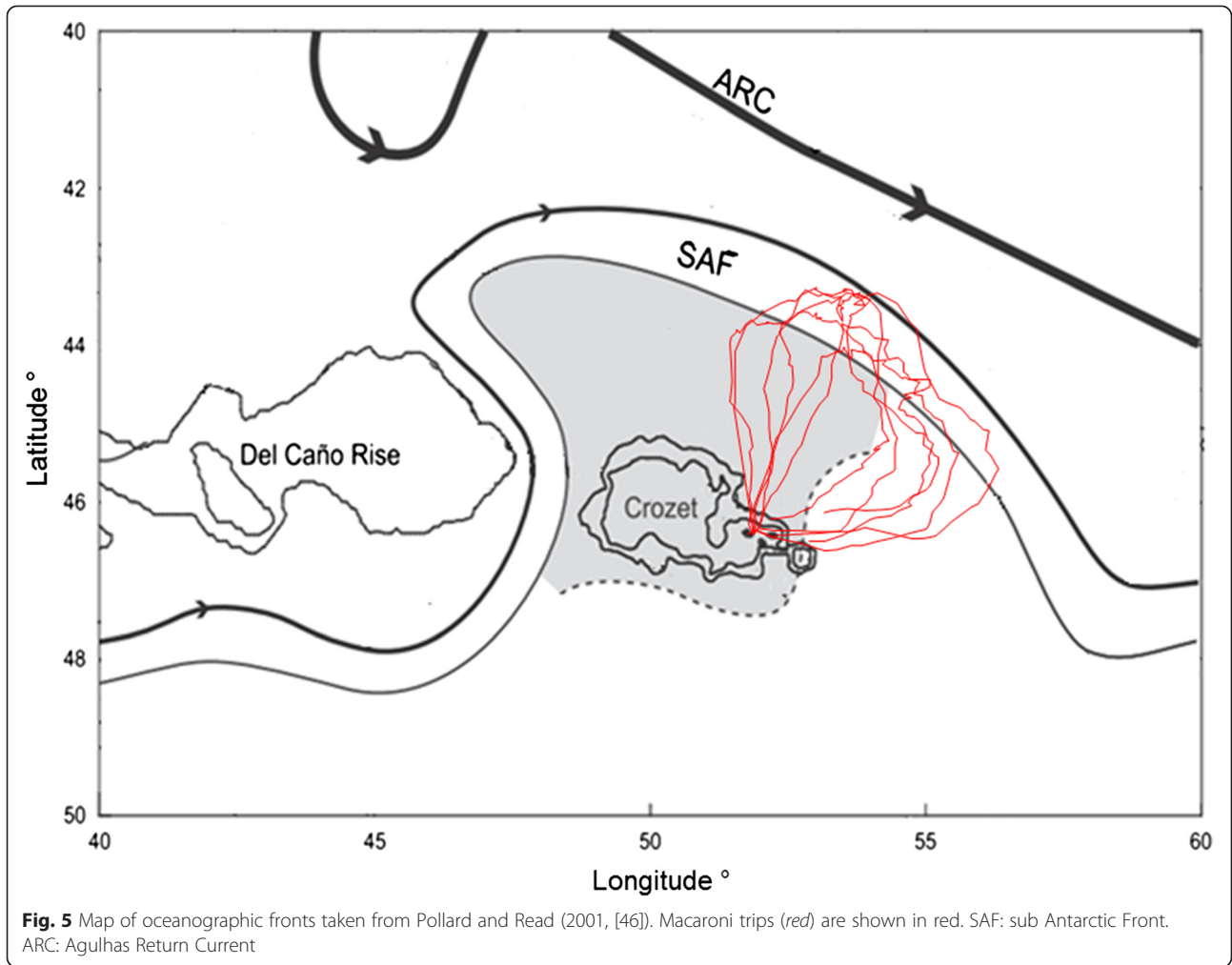
The study was carried out at the Jardin Japonais colony, Possession Island ( $46^{\circ}21' \text{ S}$ ,  $51^{\circ}43' \text{ E}$ ), Crozet Archipelago (hereafter, referred to as Crozet). The archipelago lies on the Crozet Plateau ( $45\text{--}47^{\circ} \text{ S}$ ,  $49\text{--}51^{\circ} \text{ E}$ ) (150 km of width, less than 500 m deep) and at the northern extent of the eastward flowing Antarctic Circumpolar Current (ACC) [36]. The Crozet Plateau deflects one of the current's major branches, the sub Antarctic Front (SAF), to the south of the Del Caño Rise before flowing northward under the influence of the local bathymetry. North of the plateau, it turns eastward under the influence of the Agulhas Return Current and the SubTropical Front [36]. The SAF is associated with strong eastward currents, located between  $42$  and  $43^{\circ} \text{ S}$ , whereas a weak circulation dominates between the Crozet shelf and  $44^{\circ} \text{ S}$  [25] (Fig. 5, [46]).

During the 2012 Austral summer, a total of 7 adult breeding males (incubation stage) were captured (20–21 November) before the departure for their first long trip. The penguins were instrumented with a GPS logger (Fastloc 2, Sirtrack, Havelock North, N.Z.) when leaving their colony. The devices were programmed to record location every 15 min. Each logger was attached to the lower dorsal feathers along the central mid-line, to minimize drag effects [47], with instantaneous cyanoacrylate glue (Loctite 401 Prism, Instant Adhesive, Hempstead, Hertfordshire, HP2 4RQ UK) and waterproof tape (Tesa 4651, Tesa Tape, Quickborn str 24, Hamburg 20253, Germany), and further secured by two cables ties. The duration of the instrumentation procedure lasted  $<15$  min. All the birds were recaptured upon their return to the colony and the equipment removed.

## Oceanographic data

Altimetry maps were obtained from the CNES/CLS AVISO website [48] with spatial and temporal resolutions of  $0.33^{\circ}$  and 1 week, respectively [49]. Altimetry was used to compute the velocity of horizontal currents and to identify sub- and mesoscale physical structures. The currents' velocities were compared with the velocity of penguins, called travelling velocity (TV), determined from GPS tracking, by computing the heading velocity (HV) [50], which is defined as:  $v_{(\text{heading})} = v_{(\text{tracking})} - v_{(\text{currents})}$ .





To identify sub- and mesoscale structures, we used Eulerian and Lagrangian diagnostics: the Okubo-Weiss (OW) parameter to identify eddies, the Finite Size Lyapunov Exponent (FSLE) to identify filaments, and the Retention Parameter (RP) to quantify for how long the water parcels within an eddy have been recirculating:

The Okubo-Weiss parameter OW [37, 51] is defined as:

$$W = sn^2 + ss^2 - \omega^2$$

where  $sn$  and  $ss$  are the normal and shear components of strain and  $\omega$  is the relative vorticity of the flow. The sign of this parameter locates eddies as regions with negative OW parameters (vorticity is dominant) and background as oceanic regions of small negative and positive OW parameters (strain is dominant, absence of eddies). Following Bailleul et al. [9], we used the  $W_o = 0.2\sigma_w$  ( $\sigma_w$  is the standard deviation of  $W$  in the whole domain) threshold to separate vorticity-dominated ( $W < -W_o$ , presence of eddy) regions from strain-dominated regions ( $W \geq W_o$ , absence of eddy) and the background field ( $|W| \leq W_o$ ).

The Finite Size Lyapunov Exponents (FSLE) method provides a direct measure of the amount of local stirring by mesoscale currents. It can be used to identify transport barriers along which water parcels are stretched into elongated structures (hereafter, termed filaments), typically in the region between eddies [38]. The FSLE computes the backward-in-time divergence (i.e. convergence) of particles initially in close proximity to each other and is commonly used as an indicator of frontal activity and stirring intensity [52].

It is computed as:

$$\lambda(x, t, \delta_0, \delta_f) = \frac{1}{\tau} \log \frac{\delta_f}{\delta_0}$$

Where  $\delta_0$  represents the initial separation of water parcels, and  $\tau$  the time taken for the water parcels to reach a separation  $\delta_f$ . For the present study, the parameters used for the calculation were  $\delta_f = 0.6$  degrees,  $\delta_0 = 0.01$  degrees and  $\tau$  had a maximum limit of 100 days.

Highest FSLE values are associated to formerly distant water masses, whose confluence creates a transport front [52]. Here, we used  $FSLE > 0.1 \text{ d}^{-1}$  as indicators of the presence of a transport front. FSLE ridges can represent the edges of mesoscale eddies but also the convoluted boundaries of sub-mesoscale filaments.

The Retention Parameter (RP) computes the backward trajectories of simulated water parcels from negative OW regions (i.e. eddies) and measures for how long each water parcel has been within the same OW negative patch. This quantity corresponds to the time the water has been recirculating within the eddy [37].

The SAF was identified as the  $8^\circ\text{C}$  sea surface isotherm during the period corresponding to the measured trajectories (22/11/2012–11/12/2012) [53, 54]. Sea Surface Temperature (SST) was obtained from the G1SST (Global 1-km Sea Surface Temperature) Level 4 product from GHRSSST (Group for High Resolution Sea Surface Temperature [55]). In addition, to provide context for primary production in the regions explored by the tracked penguins, we used sea-surface chlorophyll-*a* concentration data from GlobColour [56] with a daily average resolution of  $9 \text{ km}^2$ .

### Tracks analysis

A speed filter was applied on locations to delete speed data higher than  $10 \text{ km} \cdot \text{h}^{-1}$ , which is the maximum travel speed previously recorded by Macaroni penguins [41]. The temporal resolution of the oceanographic data limited us to subsample the tracks at four points per day. Therefore, we chose to keep locations closest to 04:00 h, 10:00 h, 16:00 h and 22:00 h (local time) which provided a 24 h cycle divided into  $4 \times 6 \text{ h}$  periods.

It has been shown that penguins decrease their horizontal movements when increasing their foraging activity, especially during the central phase of their trip [3, 57]. Thus, trips were split into three phases according to the smoothed relation between the heading velocity and the elapsed time relative to the departure. First, the outward phase, indicating the journey between the island and the central phase, was defined as the initial contiguous period where the smoothed heading velocities were higher than the average heading velocity during the whole trip ( $2.2 \pm 1.4 \text{ km} \cdot \text{h}^{-1}$ , Table 1). Second, the central phase was defined as the period where the heading velocities were below the mean heading velocity. Finally, the inward phase, from the central phase to the colony, corresponded to an increase of the heading velocity. In addition, as Macaroni penguins forage less at night [13, 58], we excluded from the analyses the velocities between 22:00 and 03:00 which, respectively, correspond to local dusk and dawn [59]. Directions of penguins and currents they experienced (varying from  $0$  to  $360^\circ$ ) were then computed

for each location using the Great Circle distance (*bearing* function, “geosphere” package).

The distribution of sub-mesoscale structures were investigated in two ways. Firstly, we looked at “the distribution of eddies within each trip phase” computed as  $\frac{n_{locs-eddies \text{ in trip phase}}}{n_{locs-eddies \text{ on the whole trip}}} \times 100$  for each trip phase respectively.  $n_{locs-eddies}$  indicates the number of locations within an eddy. Secondly, we looked at the “degree of association with eddies” computed as  $\frac{n_{locs-eddies}}{n_{locs \text{ in trip phase}}} \times 100$ , for each trip phase respectively. Same ratios were computed for investigating filaments distributions.

### Statistical analysis

All analyses were conducted in the R statistical environment [60]. We used circular statistics (“circular” package) to determine the average bearing of currents and animals within each phase and assess the correlations between currents and animal directions. A Mann–Whitney *U* test (“stats” package) was used to compare the behavior of penguins within and outside of eddies or filaments. Following these descriptive analyses, different linear mixed effects models (*lme* function, “nlme” package) were constructed. For all models, individuals were included as a random effect as each location within individuals was not independent. The autocorrelation of residuals was tested (*acf* function) and consequently an autoregressive term of order 1 (coAR1) was included.

The best model was selected using the Akaike criterion (AIC [61]). Firstly, to investigate the response behavior to occurrence of eddies within each trip phase, three mixed models (one by trip phase, called M1, M2, M3) were built with the heading velocity as response variable and the factor “occurrence of eddies” (explanatory binary variable: absence or presence). Secondly, another model was built to link the variation of heading speed to the occurrence of frontal structures (explanatory binary variable: absence or presence). This model (not presented) had an AIC higher than the null model and the weak number of filaments within the outward and inward phases prevented us from building one model per trip phase. Thus, we looked at the relation of heading velocity (response variable) with the FSLE values (explanatory variable) when penguins were inside filaments ( $FSLE > 0.1$ , model called M4). Finally, we tested the influence of currents (explanatory variable) on the travelling speed (response variable, model called M5). The different studied parameters are presented as Mean  $\pm$  Standard Deviation (SD) whereas coefficients of models are presented as Mean  $\pm$  SE (Standard Error). AIC deviations of tested models from the null models are shown. Results were considered significant at  $P < 0.05$ .

### Competing interests

The authors declare that they have no competing interests.

### Authors' contributions

CB analysed the trajectories, performed the statistical analysis and drafted the manuscript. AD handled the oceanographic products, created the oceanographic maps and assisted with the analyses. FO helped in obtaining oceanographic products, helped design the study and to draft the manuscript. JA provided devices, participated in discussion of the results and helped to draft the manuscript. TP participated in the field work and data processing. CAB conceived of the study, helped develop the design, coordinated the study and helped to draft the manuscript. All authors read and approved the final manuscript.

### Acknowledgements

The authors sincerely thank T. Powolny and all fieldworkers who helped with data collection. The present work was supported financially and logistically by the Institut Polaire Français Paul Emile Victor (IPEV, Program No. 394, leader C.A. Bost) and the Terres Australes et Antarctiques Françaises (TAAF) and the EU-BEST penguins project N° 07.032700/2012/634945/SUB/B2. CB's work was funded by a grant of the Région Poitou-Charentes and by the Conseil Général des Deux Sèvres. The altimeter products were produced by Ssalto/Duacs and distributed by Aviso with support from Cnes. Chlorophyll images were obtained by the GLOBCOLOR project. We are especially indebted to L.G. Halsey for improving the English and helpful comments to the manuscript.

### Author details

<sup>1</sup>Centre d'Etudes Biologiques de Chizé, UMR 7372, CNRS - Université de La Rochelle, 79360 Villiers en Bois, France. <sup>2</sup>Sorbonne Universités, UPMC Université Paris 06, UMR 7159, LOCEAN-IPSL, F-75005, Paris, France/Université Paris-Diderot/CSIRO-UTAS Quantitative Marine Science Program, IMAS, Private Bag 129, Hobart, TAS 7001, Australia. <sup>3</sup>Sorbonne Universités, UPMC Université Paris 06, UMR 7159, LOCEAN-IPSL, F-75005 Paris, France. <sup>4</sup>School of Life and Environmental Sciences, Faculty of Science, Engineering and the Built Environment, Deakin University, 221 Burwood Highway, Burwood, VIC 3125, Australia.

Received: 27 January 2015 Accepted: 6 September 2015

Published online: 21 September 2015

### References

- Hunt GJ, Mehlum F, Russell R, Irons D, Decker M, Becker P. Physical processes, prey abundance, and the foraging ecology of seabirds. In: Proceedings of the 22th International Ornithological Congress, vol. 22. Durban: Adams, NJ, Slotow RH; 1999. p. 2040–56.
- Tew Kai E, Marsac F. Influence of mesoscale eddies on spatial structuring of top predators' communities in the Mozambique Channel. *Prog Oceanogr*. 2010;86:214–23.
- Bost CA, Georges JY, Guinet C, Chérel Y, Pütz K, Charrassin JB, et al. Foraging habitat and food intake of satellite-tracked king penguins during the austral summer at Crozet Archipelago. *Mar Ecol Prog Ser*. 1997;150:21–33.
- Tynan CT. Cetacean distributions and oceanographic features near the Kerguelen Plateau. *Geophys Res Lett*. 1997;24:2793–6.
- Lévy M, Ferrari R, Franks PJS, Martin AP, Rivière P. Bringing physics to life at the submesoscale: FRONTIER. *Geophys Res Lett*. 2012;39:L14602.
- d' Ovidio F, De Monte S, Alvain S, Dandonneau Y, Lévy M. Fluid dynamical niches of phytoplankton types. *Proc Natl Acad Sci*. 2010;107:18366–70.
- Bradshaw CJ, Higgins J, Michael KJ, Wotherspoon SJ, Hindell MA. At-sea distribution of female southern elephant seals relative to variation in ocean surface properties. *ICES J Mar Sci J Cons*. 2004;61:1014–27.
- Cotté C, d' Ovidio F, Chaigneau A, Lévy M, Taupier-Letage I, Mate B, et al. Scale-dependent interactions of Mediterranean whales with marine dynamics. *Limnol Oceanogr*. 2011;56:219–32.
- Bailleul F, Cotté C, Guinet C. Mesoscale eddies as foraging area of a deep-diving predator, the southern elephant seal. *Mar Ecol Prog Ser*. 2010;408:251–64.
- Cotté C, Park Y-H, Guinet C, Bost C-A. Movements of foraging king penguins through marine mesoscale eddies. *Proc R Soc B Biol Sci*. 2007;274:2385–91.
- Lowther AD, Lydersen C, Biuw M, de Bruyn PJN, Hofmeyr GJG, Kovacs KM. Post-breeding at-sea movements of three central-place foragers in relation to submesoscale fronts in the Southern Ocean around Bouvetøya. *Antarct Sci*. 2014;26:533–44.
- Mde Brooke L. The food consumption of the world's seabirds. *Proc R Soc B Biol Sci*. 2004;271:S246–8.
- Green K, Williams R, Green MG. Foraging ecology and diving behaviour of macaroni penguins *Eudyptes chrysolophus* at Heard Island. *Mar Ornithol*. 1998;26:27–34.
- Pichegru L, Ropert-Coudert Y, Kato A, Takahashi A, Dyer BM, Ryan PG. Diving patterns of female macaroni penguins breeding on Marion Island, South Africa. *Polar Biol*. 2011;34:945–54.
- Chérel Y, Hobson KA, Guinet C, Vanpe C. Stable isotopes document seasonal changes in trophic niches and winter foraging individual specialization in diving predators from the Southern Ocean. *J Anim Ecol*. 2007;76:826–36.
- Ridoux V. The diets and dietary segregation of seabirds at the subantarctic Crozet Islands. *Oceanogr Lit Rev*. 1995;12:1128.
- Barlow KE, Croxall JP. Seasonal and interannual variation in foraging range and habitat of macaroni penguins *Eudyptes chrysolophus* at South Georgia. *Mar Ecol Prog Ser*. 2002;232:291–304.
- Thiebot J-B, Chérel Y, Trathan PN, Bost C-A. Inter-population segregation in the wintering areas of macaroni penguins. *Mar Ecol Prog Ser*. 2011;421:279–90.
- Crossin G, Trathan P, Crawford R. Macaroni Penguin (*Eudyptes chrysolophus*) and Royal Penguin (*Eudyptes schlegeli*). In: Boersma PD, Borboroglu PG, editors. *Penguins: Natural History and Conservation*. Seattle: University of Washington Press; 2013. p. 185–208.
- Reid K, Croxall JP. Environmental response of upper trophic-level predators reveals a system change in an Antarctic marine ecosystem. *Proc R Soc B Biol Sci*. 2001;268:377–84.
- Tew Kai E, Rossi V, Sudre J, Weimerskirch H, Lopez C, Hernandez-Garcia E, et al. Top marine predators track Lagrangian coherent structures. *Proc Natl Acad Sci*. 2009;106:8245–50.
- Abrams RW. Environmental determinants of pelagic seabird distribution in the African sector of the Southern Ocean. *J Biogeogr*. 1985;12:473–92.
- Venables HJ, Pollard RT, Popova EE. Physical conditions controlling the development of a regular phytoplankton bloom north of the Crozet Plateau, Southern Ocean. *Deep Sea Res Part II Top Stud Oceanogr*. 2007;54:1949–65.
- Pollard R, Sanders R, Lucas M, Statham P. The Crozet Natural Iron Bloom and Export Experiment (CROZEX). *Deep Sea Res Part II Top Stud Oceanogr*. 2007;54:1905–14.
- Sanial V, van Beek P, Lansard B, d' Ovidio F, Kestenare E, Souhaut M, et al. Study of the phytoplankton plume dynamics off the Crozet Islands (Southern Ocean): A geochemical-physical coupled approach. *J Geophys Res Oceans*. 2014;119:2227–37.
- Pollard RT, Lucas M, Read JF. Physical controls on biogeochemical zonation in the Southern Ocean. *Deep Sea Res Part II Top Stud Oceanogr*. 2002;49:3289–305.
- Planquette H, Statham PJ, Fones GR, Charette MA, Moore CM, Salter I, et al. Dissolved iron in the vicinity of the Crozet Islands, Southern Ocean. *Deep Sea Res Part II Top Stud Oceanogr*. 2007;54:1999–2019.
- Pakhomov EA, McQuaid CD. Distribution of surface zooplankton and seabirds across the Southern Ocean. *Polar Biol*. 1996;16:271–86.
- Pakhomov EA, Froneman PW. Macroplankton/micronekton dynamics in the vicinity of the Prince Edward Islands (Southern Ocean). *Mar Biol*. 1999;134:501–15.
- Koubbi P. Influence of the frontal zones on ichthyoplankton and mesopelagic fish assemblages in the Crozet Basin (Indian sector of the Southern Ocean). *Polar Biol*. 1993;13:557–64.
- Cotté C, d' Ovidio F, Dragon A-C, Guinet C, Lévy M. Flexible preference of southern elephant seals for distinct mesoscale features within the Antarctic Circumpolar Current. *Prog Oceanogr*. 2014;131:46–58.
- Kostianoy AG, Ginzburg AI, Lebedev SA, Frankignoulle M, Delille B. Fronts and mesoscale variability in the southern Indian Ocean as inferred from the TOPEX/POSEIDON and ERS-2 altimetry data. *Oceanology*. 2003;43:632–42.
- Riandey V, Champalbert G, Carlotti F, Taupier-Letage I, Thibault-Botha D. Zooplankton distribution related to the hydrodynamic features in the Algerian Basin (western Mediterranean Sea) in summer 1997. *Deep Sea Res Part Oceanogr Res Pap*. 2005;52:2029–48.
- Landry MR, Decima M, Simmons MP, Hannides CC, Daniels E. Mesozooplankton biomass and grazing responses to Cyclone Opal, a subtropical mesoscale eddy. *Deep Sea Res Part II Top Stud Oceanogr*. 2008;55:1378–88.
- De Monte S, Cotté C, d' Ovidio F, Lévy M, Le Corre M, Weimerskirch H. Frigatebird behaviour at the ocean-atmosphere interface: integrating animal behaviour with multi-satellite data. *J R Soc Interface R Soc*. 2012;9:3351–8.

36. Pollard RT, Venables HJ, Read JF, Allen JT. Large-scale circulation around the Crozet Plateau controls an annual phytoplankton bloom in the Crozet Basin. *Deep Sea Res Part II Top Stud Oceanogr.* 2007;54:1915–29.
37. d' Ovidio F, De Monte S, Penna AD, Cotté C, Guinet C. Ecological implications of eddy retention in the open ocean: a Lagrangian approach. *J Phys Math Theor.* 2013;46:254023.
38. Lapeyre G, Klein P. Impact of the small-scale elongated filaments on the oceanic vertical pump. *J Mar Res.* 2006;64:835–51.
39. Lévy M. The modulation of biological production by oceanic mesoscale turbulence. In: *Transport and Mixing in Geophysical Flows.* Berlin Heidelberg: Springer; 2008. p. 219–61.
40. Gaspar P, Georges J-Y, Fossette S, Lenoble A, Ferraroli S, Le Maho Y. Marine animal behaviour: neglecting ocean currents can lead us up the wrong track. *Proc R Soc B Biol Sci.* 2006;273:2697–702.
41. Brown CR: Traveling Speed and Foraging Range of Macaroni and Rockhopper Penguins at Marion Island (Velocidad de Movimiento y Extensión de las Áreas de Forrajeo de los Pingüinos Eudyptes chrysolophus y E. chrysocome). *J Field Ornithol* 1987:118–125.
42. Williams TD, Croxall JP. Annual variation in breeding biology of macaroni penguins, *Eudyptes chrysolophus*, at Bird Island, South Georgia. *J Zool.* 1991;223:189–202.
43. Stahl J-C, Derenne P, Jouventin P, Mougouin J-L, Teulier L, Weimerskirch H. Le cycle reproducteur des gorfous de l'archipel Crozet: *Eudyptes chrysolophus*, le gorfou macaroni et *Eudyptes chrysocome*, le gorfou sauteur. *Oiseau Rev Francaise Ornithol.* 1985;55:27–43.
44. Raya Rey A, Bost C-A, Schiavini A, Pütz K. Foraging movements of Magellanic Penguins *Spheniscus magellanicus* in the Beagle Channel, Argentina, related to tide and tidal currents. *J Ornithol.* 2010;151:933–43.
45. Green JA, Boyd IL, Woakes AJ, Warren NL, Butler PJ. Evaluating the prudence of parents: daily energy expenditure throughout the annual cycle of a free-ranging bird, the macaroni penguin *Eudyptes chrysolophus*. *J Avian Biol.* 2009;40:529–38.
46. Pollard RT, Read JF: Circulation pathways and transports of the Southern Ocean in the vicinity of the Southwest Indian Ridge. *J Geophys Res Atmospheres* 2001, 106:2881–2898
47. Bannasch R, Wilson RP, Culik B. Hydrodynamic aspects of design and attachment of a back-mounted device in penguins. *J Exp Biol.* 1994;194:83–96.
48. AVISO 2013 Ssalto/Duacs User Handbook: M(SLA) and M(ADT) Near-Real Time and Delayed-Time Products, Edition 3.4 [www.avisioceanobs.com].
49. Le Traon PY, Nadal F, Ducet N. An improved mapping method of multisatellite altimeter data. *J Atmos Ocean Technol.* 1998;15:522–34.
50. Girard C, Sudre J, Benhamou S, Roos D, Luschi P. Homing in green turtles *Chelonia mydas*: oceanic currents act as a constraint rather than as an information source. *Mar Ecol Prog Ser.* 2006;322:281–9.
51. Weiss J. The dynamics of enstrophy transfer in two-dimensional hydrodynamics. *Phys Nonlinear Phenom.* 1991;48:273–94.
52. d' Ovidio F, Fernández V, Hernández-García E, López C. Mixing structures in the Mediterranean Sea from finite-size Lyapunov exponents. *Geophys Res Lett.* 2004;31:L17203.
53. Orsi AH, Whitworth T, Nowlin WD. On the meridional extent and fronts of the Antarctic Circumpolar Current. *Deep Sea Res Part Oceanogr Res Pap.* 1995;42:641–73.
54. Park Y-H, Gamberoni L, Charriaud E. Frontal structure, water masses, and circulation in the Crozet Basin. *J Geophys Res Oceans* 1978–2012. 1993;98:12361–85.
55. Group for High Resolution Sea Surface Temperature [www.ghrsst.org]
56. GlobColour [www.globcolour.info]
57. Pütz K, Ropert-Coudert Y, Charrassin JB, Wilson RP. Foraging areas of King penguins *Aptenodytes patagonicus* breeding at Possession Island, southern Indian Ocean. *Mar Ornithol.* 1999;27:77–84.
58. Croxall JP, Briggs DR, Kato A, Naito Y, Watanuki Y, Williams TD. Diving pattern and performance in the macaroni penguin *Eudyptes chrysolophus*. *J Zool.* 1993;230:31–47.
59. Sun or Moon Rise/Set Table for One Year [http://aa.usno.navy.mil/data/docs/RS\_OneYear.php]
60. The R Foundation for Statistical Computing 2013 [www.r-project.org]
61. Burnham KP, Anderson DR. Multimodel inference understanding AIC and BIC in model selection. *Sociol Methods Res.* 2004;33:261–304.

**Submit your next manuscript to BioMed Central and take full advantage of:**

- Convenient online submission
- Thorough peer review
- No space constraints or color figure charges
- Immediate publication on acceptance
- Inclusion in PubMed, CAS, Scopus and Google Scholar
- Research which is freely available for redistribution

Submit your manuscript at  
www.biomedcentral.com/submit

