



**HAL**  
open science

## **PIK3CA mutations predict recurrence in localized microsatellite stable colon cancer**

Gilles Manceau, Laetitia Marisa, Valérie Boige, Alex Duval, Marie-Pierre Gaub, Gérard Milano, Janick Selves, Sylviane Olschwang, Valérie Jooste, Michè Le Legrain, et al.

► **To cite this version:**

Gilles Manceau, Laetitia Marisa, Valérie Boige, Alex Duval, Marie-Pierre Gaub, et al.. PIK3CA mutations predict recurrence in localized microsatellite stable colon cancer. *Cancer Medicine*, 2015, 4 (3), pp.371-382. 10.1002/cam4.370 . hal-01213515

**HAL Id: hal-01213515**

**<https://hal.sorbonne-universite.fr/hal-01213515>**

Submitted on 8 Oct 2015

**HAL** is a multi-disciplinary open access archive for the deposit and dissemination of scientific research documents, whether they are published or not. The documents may come from teaching and research institutions in France or abroad, or from public or private research centers.

L'archive ouverte pluridisciplinaire **HAL**, est destinée au dépôt et à la diffusion de documents scientifiques de niveau recherche, publiés ou non, émanant des établissements d'enseignement et de recherche français ou étrangers, des laboratoires publics ou privés.



Distributed under a Creative Commons Attribution| 4.0 International License

## ORIGINAL RESEARCH

**PIK3CA mutations predict recurrence in localized microsatellite stable colon cancer**

Gilles Manceau<sup>1,2,3\*</sup>, Laetitia Marisa<sup>4\*</sup>, Valérie Boige<sup>1,5</sup>, Alex Duval<sup>3,6</sup>, Marie-Pierre Gaub<sup>7,8</sup>, Gérard Milano<sup>9</sup>, Janick Selves<sup>10</sup>, Sylviane Olschwang<sup>11,12,13,14</sup>, Valérie Jooste<sup>15</sup>, Michèle Le Legrain<sup>7</sup>, Delphine Lecorre<sup>1</sup>, Dominique Guenot<sup>8</sup>, Marie-Christine Etienne-Grimaldi<sup>9</sup>, Sylvain Kirzin<sup>10</sup>, Laurent Martin<sup>16</sup>, Come Lepage<sup>15</sup>, Anne-Marie Bouvier<sup>15</sup> & Pierre Laurent-Puig<sup>1</sup>

<sup>1</sup>Unité Mixte de Recherche S1147, Paris Sorbonne Cité, Université Paris Descartes, INSERM, Paris, France

<sup>2</sup>Assistance Publique-Hôpitaux de Paris, Service de Chirurgie Digestive et Hépatobilio-Pancréatique, Hôpital Pitié-Salpêtrière, Paris, France

<sup>3</sup>Institut Universitaire de Cancérologie, Université Pierre et Marie Curie-Paris 6, Paris, France

<sup>4</sup>“Cartes d'Identité des Tumeurs” Program, Ligue Nationale Contre le Cancer, Paris, France

<sup>5</sup>Institut Gustave Roussy, Villejuif, France

<sup>6</sup>Unité Mixte de Recherche S938, Centre de Recherche Hôpital Saint-Antoine, INSERM, Paris, France

<sup>7</sup>Laboratoire de Biochimie et Biologie Moléculaire, Hôpitaux Universitaires de Strasbourg, Hôpital de Haute-pierre, Strasbourg, France

<sup>8</sup>EA 3430 Progression tumorale et microenvironnement. Approches translationnelles et Epidémiologie. Fédération de Médecine Translationnelle de Strasbourg, Université de Strasbourg, Strasbourg, France

<sup>9</sup>Laboratoire d'Oncopharmacologie EA 3836, Centre Antoine Lacassagne, Nice, France

<sup>10</sup>Unité Mixte de Recherche 1037, Centre de Recherche en Cancérologie de Toulouse, Université de Toulouse III, INSERM, Toulouse, France

<sup>11</sup>Unité Mixte de Recherche S910, Faculté de Médecine La Timone, INSERM, Marseille, France

<sup>12</sup>Pôle DACCORD, Hôpital La Timone, Marseille, France

<sup>13</sup>Département d'Oncologie, Hôpital Clairval, Marseille, France

<sup>14</sup>Département de Gastroentérologie, Hôpital Ambroise Paré, Marseille, France

<sup>15</sup>Registre Bourguignon des Cancers Digestifs, INSERM U866, CHU Dijon, France

<sup>16</sup>Service d'anatomie et de cytologie pathologiques, CHU Dijon, France

**Keywords**

Biomarker, colon cancer, microsatellite instability, mismatch repair, mutations, PIK3CA, prognosis

**Correspondence**

Pierre Laurent-Puig, UMR-S775 Molecular basis of response to xenobiotics, 45 Rue des Saints-Pères, 75006 Paris, France.  
Tel: 33142862081; Fax: 33142862072;  
E-mail: pierre.laurent-puig@parisdescartes.fr

**Funding Information**

This work was supported by a grant from the Ligue Nationale Contre le Cancer.

Received: 8 April 2014; Revised: 28 September 2014; Accepted: 29 September 2014

**Cancer Medicine** 2015, 4(3):371–382

doi: 10.1002/cam4.370

\*Equally contributed as first author.

**Abstract**

*PIK3CA*, which encodes the p110 $\alpha$  catalytic subunit of PI3K $\alpha$ , is one of the most frequently altered oncogenes in colon cancer (CC), but its prognostic value is still a matter of debate. Few reports have addressed the association between *PIK3CA* mutations and survival and their results are controversial. In the present study, we aimed to clarify the prognostic impact of *PIK3CA* mutations in stage I–III CC according to mismatch repair status. Fresh frozen tissue samples from two independent cohorts with a total of 826 patients who underwent curative surgical resection of CC were analyzed for microsatellite instability and screened for activating point mutations in exon 9 and 20 of *PIK3CA* by direct sequencing. Overall, 693 tumors (84%) exhibited microsatellite stability (MSS) and 113 samples (14%) harbored *PIK3CA* mutation. In the retrospective training cohort ( $n = 433$ ), patients with *PIK3CA*-mutated MSS tumors ( $n = 47$ ) experienced a significant increased 5-year relapse-free interval compared with *PIK3CA* wild-type MSS tumors ( $n = 319$ ) in univariate analysis (94% vs. 68%, Log-rank  $P = 0.0003$ ) and in multivariate analysis (HR = 0.12; 95% confidence interval, 0.029–0.48;  $P = 0.0027$ ). In the prospective validation cohort ( $n = 393$ ), the favorable prognostic impact of *PIK3CA* mutations in MSS tumors ( $n = 327$ ) was confirmed (83% vs. 67%, Log-rank  $P = 0.04$ ). Our study showed that *PIK3CA* mutations are associated with a good prognosis in patients with MSS stage I–III CC.

## Introduction

The phosphoinositide 3-kinase (PI3K)/AKT/mTOR signaling pathway is critical for cell growth, survival, and malignant transformation. It is inappropriately activated in many different cancer types [1]. Activation is often mediated by mutations occurring in *PIK3CA*, which encodes the p110 $\alpha$  catalytic subunit of a heterodimeric class IA PI3K called PI3K $\alpha$ . This gene is one of the most frequently mutated genes (16%) in colorectal cancer (CRC), after notably *TP53* (51%), *APC* (37%), and *KRAS* (36%) [2].

In the signal transduction, after ligand binding to a tyrosine kinase receptor, activated PI3K $\alpha$  phosphorylates phosphatidylinositol 4,5-bisphosphate (PIP2) at the 3'-position of the inositol ring, allowing the generation of phosphatidylinositol 3,4,5-triphosphate (PIP3). This second messenger binds and recruits the 3-phosphoinositide-dependent protein kinase-1 (PDK1), which thereafter activates AKT/PKB, a serine/threonine kinase involved in regulating many biological processes such as cell survival, growth, and metabolism [3]. There are three major mutational hotspots (at codons 542, 545, and 1047) in exons 9 and 20 of *PIK3CA*, partially encoding the helical domain and the C-terminal kinase domain of the protein, respectively [4]. Activating point mutations in these amino-acid residues elevate the enzymatic activity of PI3K and contribute to tumorigenesis through cell proliferation, decreased apoptosis and autophagy, loss of contact inhibition, induction of angiogenesis, and increased tumor invasion [5–7].

As one of the most commonly deregulated pathways in solid human cancers, targeting the PI3K/AKT/mTOR pathway could be of important therapeutic interest [8]. Indeed, a number of PI3K or dual PI3K-mTOR inhibitors have been, or will soon be, introduced into clinical trials as antitumor agents for the treatment of CRC and other malignancies [9–11]. Preclinical studies demonstrated that *PIK3CA* mutations predict response to these agents, presumably due to oncogene addiction [12–15]. However, prognosis of CRC patients harboring *PIK3CA* mutation remains unclear and results from previous studies dealing with this issue seem conflicted [16–22]. Thus, the prognostic role of *PIK3CA* as an independent predictor of recurrence and/or survival in patients with CRC remains to be determined.

The discrepancy of published results could be in part explained by the well-known molecular heterogeneity of CRC. Among the different individualized molecular subgroups, tumors with microsatellite instability (MSI) accounts for ~15% of all CRCs and are characterized by defective DNA mismatch repair and genomic instability.

The remaining 85% of microsatellite stable (MSS) CRC display chromosomal instability resulting in hyperploidy associated with allelic losses. Both groups show specific particularities in terms of natural history, tumor location, pathological features, mechanisms of carcinogenesis, and genetic mutation patterns [23].

The aim of this multicenter study was to investigate the prognostic value of *PIK3CA* mutations in nonmetastatic colon cancer (CC) according to MSI status.

## Material and Methods

### Study population

The French national “Cartes d’Identité des Tumeurs” (CIT) program involved a multicenter cohort of 782 patients with stage I–IV CRC who underwent surgery between 1987 and 2007 in seven centers. Fresh frozen primary tumor tissue samples were retrospectively collected. Clinicopathological data were extracted from the medical charts and centrally reviewed for all patients. This retrospective cohort was used as a training cohort.

For validation purpose, the prospective cohort from the population-based registry of digestive cancer in the Côte-d’Or area (Burgundy, France) previously describe elsewhere was used [24, 25]. Tumor samples from this validation patient cohort included all CC resected between 1998 and 2002 for which frozen tissue material was available and suitable for molecular analysis.

Patients with rectal cancer (located within 15 cm from the anal verge), distant metastasis or who received neoadjuvant therapy (either chemotherapy and/or radiotherapy) were excluded from analysis. Thus, only stage I–III CC according to the 7th edition of the AJCC/UICC tumor-node-metastasis (TNM) classification operated in a curative intent were further considered for evaluation [26]. *PIK3CA* status had also to be determined for each sample. This study was approved by the Institutional Review Boards of all participating centers.

### Mutation analysis

Genomic DNA was extracted from fresh frozen tissues. Exons 9 and 20 of the *PIK3CA* gene were selected for screening by direct Sanger sequencing on both strands because of the high frequency of somatic mutations known to be clustered in these regions [4]. All samples found to be mutated were PCR-amplified and sequenced in a second, independent experiment. PCR conditions for amplification and primer sequences are available upon request.

The seven most common somatic mutations of *KRAS* located within codon 12 (G12D, G12V, G12C, G12A,

G12S, and G12R) and codon 13 (G13D), as well as *BRAF* V600E mutation, were assessed by allelic discrimination using TaqMan-specific probes as previously described [27].

### Microsatellite status and CpG island methylator phenotype analysis

In the retrospective CIT cohort, MSI status was assessed according to the panel of five microsatellites approved by the consensus conference (D2S123, D5S346, D17S250, BAT25, and BAT26) [28]. In the validation cohort, MSI status was determined as previously described [29].

We used the MSP (gel-based methylation-specific PCR) method with the panel of the five markers CACNA1G, IGF2, NEUROG1, RUNX3, and SOCS1 to determine CpG island methylator phenotype (CIMP) status [30]. After DNA bisulfite treatment, two multiplex methylation-specific PCR were performed. Capillary electrophoresis on automatic sequencer (ABI 3130 Genetic analyzer; Applied Biosystems, Foster City, CA, USA) was used for fragment analysis. The methylation status of each gene was determined as detailed by Weisenberg and colleagues [29]. Methylator phenotype-positive cases (CIMP+) were defined as those with  $\geq 3$  methylated promoters and CIMP—cases as those with  $< 2$  methylated promoters.

### Statistic analysis

The distribution of patient and tumor characteristics was compared across cohorts by the Chi-squared test or the Fisher's exact test for categorical data, as appropriate, and by the Welch's *t*-test for continuous data.

Relapse-free interval (RFI) was defined as the time from CC resection to locoregional and/or distant recurrence, whichever came first. Patients alive with no evidence of disease at last follow-up and patients who died without any recurrence were censored. Overall survival (OS) was defined as the period of time between CC surgery and death. Survival curves were plotted according to the method of Kaplan and Meier and differences between survival distributions were assessed by the log-rank test. Univariate and multivariate models for survival analysis were computed using Cox proportional hazards regression. All the variables that were significant in univariate analysis were included in the multivariate model. The proportional hazards assumptions were tested to examine the appropriateness of the models.

All *P*-values were two-sided and statistical significance was assumed for  $P \leq 0.05$ . All statistical analyses were performed using the *R* statistical environment (<http://www.R-project.org>). Survival analyses were performed using the *R* package survival.

## Results

### Patient characteristics

A total of 826 samples from stage I–III CC with successful mutation analysis for *PIK3CA* were obtained from both cohorts ( $n = 433$  in the training cohort and  $n = 393$  in the validation cohort). Patients' characteristics are depicted in Table 1. Overall, 133 tumors exhibited MSI phenotype (67 [15%] in the training cohort and 66 [17%] in the validation cohort,  $P = 0.67$ ). Among MSS tumors, patients included in the validation cohort were significantly older (69 vs. 73 years,  $P = 0.00021$ ), had less advanced stage (45% vs. 35% for stage III,  $P = 0.015$ ) and were less likely to receive adjuvant chemotherapy (45% vs. 32%,  $P = 0.00071$ ), as compared with the training cohort. Among MSI tumors, patients in the validation cohort were significantly older (74 vs. 80 years,  $P = 0.0016$ ). Significant more patients had a Lynch syndrome in the training cohort (4% vs. 1%,  $P = 0.0087$ ). Only one patient, included in the validation cohort, had a familial adenomatous polyposis.

### PIK3CA mutations analysis and associations with other molecular and clinicopathological features

Among the 826 tumors suitable for *PIK3CA*, 113 (14%) tumors displayed a mutation in exon 9 and/or 20 (59 in the training cohort and 54 in the validation cohort). Most *PIK3CA* mutations were located in exon 9 with 38 tumors in the training cohort (64% of the mutated samples) and 32 tumors in the validation cohort (59% of the mutated samples). *PIK3CA* mutations in exon 20 were detected in 6% of the tumors in both cohorts. Only four tumors (three MSS tumors and one MSI tumor, all in the training cohort) harbored *PIK3CA* mutation in both exons 9 and 20, which accounted for 0.5% of all studied samples and 4% of all mutated samples (Table 2).

The determination of *KRAS* and *BRAF* mutational status could be ascertained for 817 (99%) and 780 (94%) tumors, respectively (Table 3). In the whole population, we identified *KRAS* mutation at codon 12 or 13 and V600E *BRAF* mutation in 37% and 11% of cases, respectively, with no statistical difference between the two cohorts, either globally or according to MSI status. As expected, *KRAS* and *BRAF* mutations were mutually exclusive. Concomitant *PIK3CA* and *KRAS* mutations were found in 55 tumors (7%), whereas only 11 tumors (1%) were mutated for both *PIK3CA* and *BRAF*.

We assessed the relationship between *PIK3CA* mutation and clinicopathological and molecular features in each cohort according to MSI status (Table 4). The frequency

**Table 1.** Clinical and pathological characteristics of patients according to microsatellite status in the two cohorts.

Clinical or pathological features	All cases	n (%)	Total CIT (%)	Total Dijon (%)	P value	MSS CIT (%)	MSS Dijon (%)	P value	MSI CIT (%)	MSI Dijon (%)	P value
Gender											
Female	826	361 (44)	189 (44)	172 (44)	0.97	156 (43)	130 (40)	0.49	33 (49)	42 (64)	0.13
Male		465 (56)	244 (56)	221 (56)		210 (57)	197 (60)		34 (51)	24 (36)	
Age (years) <sup>1</sup>	826	826	69 [24–96]	73 [33–95]	1.6 × 10 <sup>-6</sup>	69 [25–96]	73 [36–95]	0.00021	74 [24–92]	80 [33–91]	0.0016
Tumor location <sup>2</sup>											
Distal	826	472 (57)	249 (58)	223 (57)	0.88	234 (64)	214 (65)	0.74	15 (22)	9 (14)	0.28
Proximal		354 (43)	184 (42)	170 (43)		132 (36)	113 (35)		52 (78)	57 (86)	
TNM stage											
I	826	76 (9)	33 (8)	43 (11)	0.0052	25 (7)	35 (11)	0.015	8 (12)	8 (12)	0.23
II		431 (52)	211 (49)	220 (56)		175 (48)	176 (54)		36 (54)	44 (67)	
III		319 (39)	189 (44)	130 (33)		166 (45)	116 (35)		23 (34)	14 (21)	
Adjuvant CT											
No	823	540 (66)	257 (59)	283 (72)	0.00014	203 (55)	222 (68)	0.00071	54 (82)	61 (92)	0.12
Yes		283 (34)	175 (41)	108 (28)		163 (45)	103 (32)		12 (18)	5 (8)	
Associated syndrome											
FAP	806	1 (0)	0 (0)	1 (0)	0.0087	0 (0)	1 (0)	0.96	0 (0)	0 (0)	0.0002
Lynch syndrome		22 (3)	18 (4)	4 (1)		0 (0)	0 (0)		18 (35)	4 (6)	
None		783 (97)	395 (96)	388 (99)		362 (100)	326 (100)		33 (65)	62 (94)	

MSS, microsatellite stable; MSI, microsatellite instable; CT, chemotherapy; FAP, familial adenomatous polyposis.

<sup>1</sup>Median [range].

<sup>2</sup>Proximal colon included cecum, ascending colon, hepatic flexure, and transverse colon, and distal colon included splenic flexure, descending, and sigmoid colon.

**Table 2.** Location of *PIK3CA* mutations according to microsatellite status in the two cohorts.

<i>PIK3CA</i> mutant types	CIT cohort		Dijon cohort		CIT cohort vs. Dijon cohort	
	MSS tumors (%)	MSI tumors (%)	MSS tumors (%)	MSI tumors (%)	<i>P</i> value MSS tumors	<i>P</i> value MSI tumors
Exon 9 mutant	30 (64)	4 (33)	30 (70)	2 (18)	0.24	0.39
Exon 20 mutant	14 (30)	7 (58)	13 (30)	9 (82)		
Exon 9 and 20 mutant	3 (6)	1 (8)	0 (0)	0 (0)		

MSS, microsatellite stable; MSI, microsatellite instable.

**Table 3.** Molecular characteristics of colon cancers according to microsatellite status in the two cohorts.

Molecular features	All cases	<i>n</i> (%)	Total CIT (%)	Total Dijon (%)	<i>P</i> value	MSS CIT (%)	MSS Dijon (%)	<i>P</i> value	MSI CIT (%)	MSI Dijon (%)	<i>P</i> value
<i>PIK3CA</i> status											
Mutant	826	113 (14)	59 (14)	54 (14)	0.96	47 (13)	43 (13)	0.99	12 (18)	11 (17)	0.97
Wild-type		713 (86)	374 (86)	339 (86)		319 (87)	284 (87)		55 (82)	55 (83)	
<i>KRAS</i> status											
Mutant	817	301 (37)	164 (38)	137 (35)	0.37	147 (40)	129 (40)	0.92	17 (27)	8 (12)	0.062
Wild-type		516 (63)	263 (62)	253 (65)		216 (60)	195 (60)		47 (73)	58 (88)	
<i>BRAF</i> status											
Mutant	780	85 (11)	35 (9)	50 (13)	0.12	7 (2)	12 (4)	0.37	28 (43)	38 (58)	0.11
Wild-type		695 (89)	353 (91)	342 (87)		316 (98)	315 (96)		37 (57)	27 (42)	
CIMP status											
CIMP–	763	606 (79)	301 (81)	305 (78)	0.37	278 (90)	288 (88)	0.68	23 (37)	17 (26)	0.26
CIMP+		157 (21)	71 (19)	86 (22)		32 (10)	38 (12)		39 (63)	48 (74)	

MSS, microsatellite stable; MSI, microsatellite instable; CIMP, CpG island methylator phenotype.

of *PIK3CA* mutations was not different between MSS and MSI tumors (13% vs. 18%,  $P = 0.36$  in the training cohort and 13% vs. 17%,  $P = 0.57$  in the validation cohort). Among MSS tumors, *PIK3CA* mutations were significantly more frequently located in the proximal colon and associated with CIMP-positive tumors in the training cohort (51% vs. 34%,  $P = 0.033$  and 23% vs. 8%,  $P = 0.0063$  respectively), and significantly more frequent in female in the validation cohort (56% vs. 37%,  $P = 0.032$ ). A significant association between *PIK3CA* and *KRAS* mutations (58% vs. 37%,  $P = 0.014$ ) was found in the validation cohort. Among MSI tumors, *PIK3CA* mutations were significantly more frequent in patients with early-stage disease in the training cohort (33% vs. 7% for stage I,  $P = 0.034$ ).

### ***PIK3CA* mutation and patient survival according to microsatellite status**

We further examined the prognostic impact of *PIK3CA* mutations in nonmetastatic CC after curative resection. The median follow-up was 51 months (range, 1–192 months) in the training cohort and 61 months (range, 1–143 months) in the validation cohort. The

5-year RFI was similar in the training cohort and in the validation cohort, either globally (63% vs. 68%,  $P = 0.24$ ), and also within MSS and MSI tumors (63% vs. 66%,  $P = 0.58$  and 67% vs. 81%,  $P = 0.23$ , respectively).

Within the MSS CC subgroup of the training cohort, patients with *PIK3CA*-mutated CC experienced a significantly higher RFI than those without *PIK3CA* mutation (5-year RFI 94% vs. 68%, Log-rank  $P = 0.0003$ ; Hazard Ratio [HR] = 0.12; 95% confidence interval [CI], 0.029–0.48) on univariate analysis (Fig. 1A). This finding was confirmed in the validation cohort (5-year RFI 83% vs. 67%, Log-rank  $P = 0.04$ ; HR = 0.45; 95% CI, 0.21–0.97;  $P = 0.04$ ) (Fig. 1B). Similarly, OS was significantly higher in patients with MSS *PIK3CA*-mutated CC than those without *PIK3CA* mutation in the training cohort (5-year OS 88% vs. 75%, Log-rank  $P = 0.04$ ; HR = 0.43; 95% CI, 0.19–0.98) (Fig. 1C), and a strong tendency was also observed in the validation cohort (5-year OS 77% vs. 62%, Log-rank  $P = 0.052$ ; HR = 0.61, 95% CI, 0.37–1) (Fig. 1D). A subgroup analysis according to TNM stage (stage I–II and stage III) was also performed for RFI and OS in both cohorts (Figs. S1 and S2).

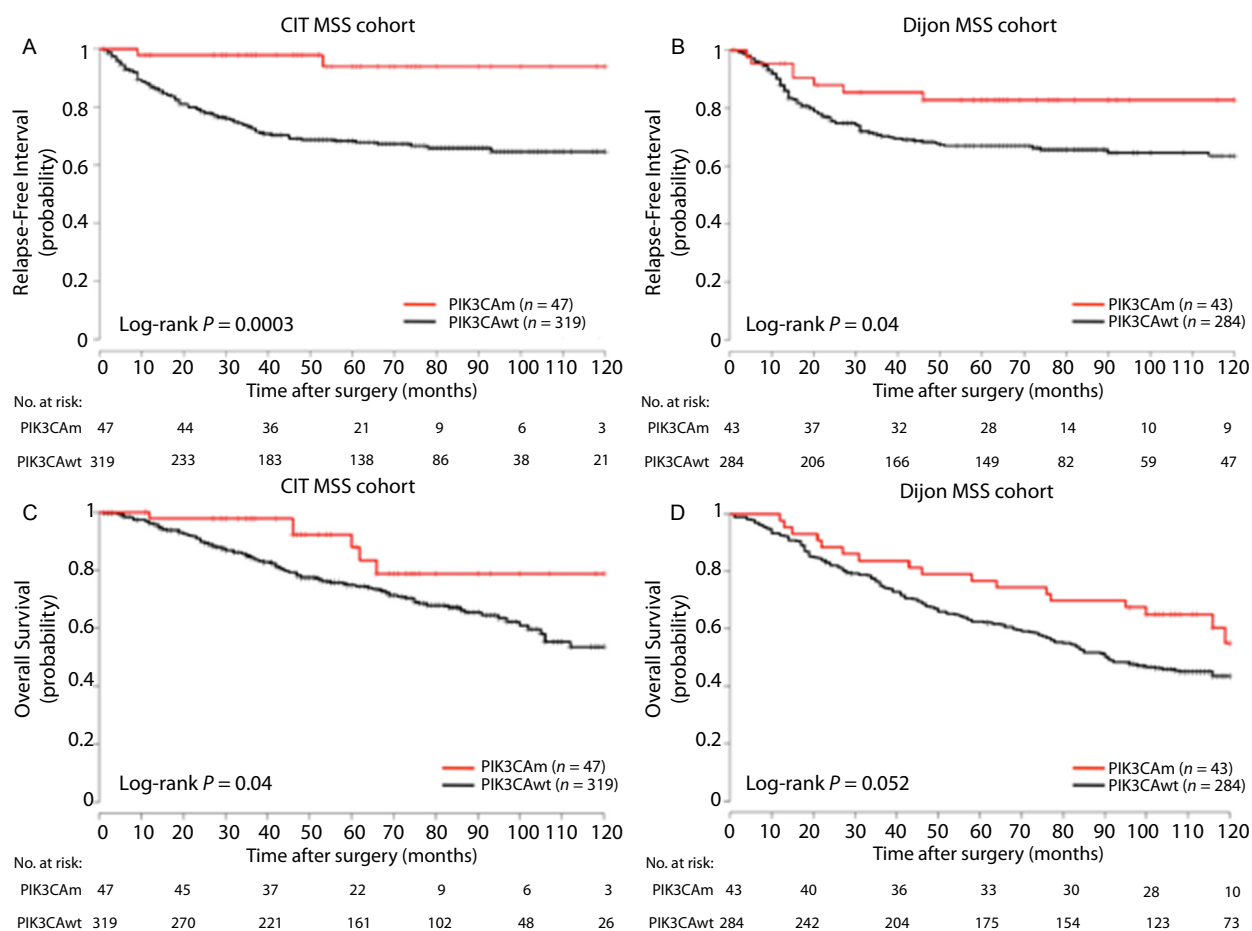
We found that the type of *PIK3CA* mutation had no differential effect on RFI (Fig. S3). Five-year RFI of

**Table 4.** Clinical, pathological, and molecular characteristics of tumors according to PIK3CA and microsatellite status in the two cohorts.

Features	MSS tumors				MSI tumors				
	CIT cohort		Dijon cohort		CIT cohort		Dijon cohort		
	PIK3CAm	PIK3CAwt	P value	PIK3CAwt	PIK3CAm	PIK3CAwt	P value	PIK3CAwt	
Gender									
Female	18 (38)	138 (43)	0.63	24 (56)	106 (37)	6 (50)	27 (49)	7 (64)	35 (64)
Male	29 (62)	181 (57)	0.62	19 (44)	178 (63)	6 (50)	28 (51)	4 (36)	20 (36)
Age (years) <sup>1</sup>	69 [25–96]	69 [37–96]	0.62	73 [49–94]	73 [36–95]	70 [32–88]	75 [24–92]	77 [67–88]	80 [33–91]
TNM stage									
I	3 (7)	22 (7)	0.54	5 (12)	30 (11)	4 (33)	4 (7)	1 (9)	7 (13)
II	26 (55)	149 (47)	0.033	28 (65)	148 (52)	4 (33)	32 (58)	8 (73)	36 (65)
III	18 (38)	148 (46)	0.65	10 (23)	106 (37)	4 (33)	19 (35)	2 (18)	12 (22)
Tumor location									
Distal	23 (49)	211 (66)	0.033	23 (53)	191 (67)	2 (17)	13 (24)	0 (0)	9 (16)
Proximal	24 (51)	108 (34)	0.65	20 (47)	93 (33)	10 (83)	42 (76)	11 (100)	46 (84)
Adjuvant CT									
No	28 (60)	175 (55)	0.65	32 (74)	190 (67)	10 (83)	44 (81)	10 (91)	51 (93)
Yes	19 (40)	144 (45)	0.36	11 (26)	92 (33)	2 (17)	10 (19)	1 (9)	4 (7)
KRAS status									
Mutant	22 (48)	125 (39)	0.36	25 (58)	104 (37)	6 (55)	11 (21)	2 (18)	6 (11)
Wild-type	24 (52)	192 (61)	0.6	18 (42)	177 (63)	4 (45)	42 (79)	9 (82)	49 (89)
BRAF status									
Mutant	1 (2)	6 (2)	0.6	1 (2)	11 (4)	3 (27)	25 (46)	6 (55)	32 (59)
Wild-type	46 (98)	270 (98)	0.0063	42 (98)	273 (96)	8 (73)	29 (54)	5 (45)	22 (41)
CIMP status									
CIMP–	33 (77)	245 (92)	0.8	37 (86)	251 (89)	5 (50)	18 (35)	3 (27)	14 (26)
CIMP+	10 (23)	22 (8)	0.014	6 (14)	32 (11)	5 (50)	34 (65)	8 (73)	40 (74)

CT, chemotherapy; m, mutated; wt, wild-type. Figures in brackets represent the percentages.

<sup>1</sup>Median [range].



**Figure 1.** Kaplan–Meier curves for relapse-free interval in the CIT cohort (A) and in the Dijon cohort (B), for overall survival in the CIT cohort (C) and in the Dijon cohort (D) according to *PIK3CA* status in microsatellite stable tumors.

patients with *PIK3CA* mutation in exon 9 or exon 20 were 94% and 93%, respectively, in the training cohort ( $P = 0.50$ ), and 79% and 92% ( $P = 0.37$ ), respectively, in the validation cohort. Notably, no recurrence occurred for the three patients in the CIT cohort whose tumor harbored concomitant *PIK3CA* exon 9 and exon 20 mutations.

We performed a multivariate analysis, adjusting for all significant prognostic variables ( $P \leq 0.05$ ) including TNM stage and *PIK3CA* mutations (Table 5). Risk of recurrence remained significantly lower in the training cohort for *PIK3CA*-mutated MSS CC patients as compared with wild-type *PIK3CA* MSS CC patients (HR = 0.12; 95% CI, 0.029–0.48;  $P = 0.0027$ ). Although not significant, a trend toward decreased recurrence risk was observed for *PIK3CA*-mutated MSS CC patients in the validation cohort (HR = 0.49; 95% CI, 0.23–1.1;  $P = 0.074$ ), and *PIK3CA* mutation variable remained with TNM stage in a backward–forward step selection to reduce the multivariate model to the only informative variables.

Within the MSI tumors, patients with *PIK3CA* mutation in the training cohort experienced a significantly decreased RFI than those without *PIK3CA* mutation on univariate analysis (5-year RFI 67% vs. 87%, Log-rank  $P = 0.043$ , HR = 3.4; 95% CI, 0.96–12;  $P = 0.058$ ) (Fig. S4A). This finding was not confirmed in the validation cohort (5-year RFI 100% vs. 80%, Log-rank  $P = 0.44$ ) (Fig. S4B).

In the two cohorts, we found that the impact of *PIK3CA* mutation was not different between patients with MSS CC who received adjuvant chemotherapy and those who had no adjuvant treatment (Fig. S5).

## Discussion

Over the past several decades, significant progress has been achieved in the treatment of CC, mostly due to improvements in surgical techniques and chemotherapeutic regimens [31, 32]. These advances have contributed to increase cancer-specific survival (CSS), but



**Table 5.** Cox proportional hazards model for RFI among microsatellite stable tumors in the two cohorts.

Variables	Univariate analysis					Multivariate analysis <sup>1</sup>			
	<i>n</i>	<i>n</i> events	HR	95% CI	<i>P</i> value	<i>n</i>	HR	95% CI	<i>P</i> value
<i>CIT cohort</i>									
TNM stage									
II	366	99	5.1	0.7–38	0.11	366	5.4	0.74–39	0.096
III	366	99	11	1.5–77	0.019		11	1.5–80	0.017
PIK3CA									
Mutated	366	99	0.12	0.029–0.48	0.0029		0.12	0.029–0.48	0.0027
Gender									
Male	366	99	1.1	0.73–1.6	0.67				
Age									
–	365	99	1	0.98–1	0.84				
Tumor location									
Proximal colon	366	99	1	0.66–1.5	0.99				
KRAS									
Mutated	363	99	1.2	0.81–1.8	0.37				
BRAF									
Mutated	323	78	1.5	0.36–6	0.6				
CIMP									
CIMP+	310	74	0.98	0.45–2.1	0.95				
<i>Dijon cohort</i>									
TNM stage									
II	327	97	2.5	0.89–6.8	0.084	327	2.5	0.89–6.8	0.084
III	327	97	4.2	1.5–12	0.0058		4.2	1.5–12	0.0058
PIK3CA									
Mutated	327	97	0.45	0.21–0.97	0.042		0.49	0.23–1.1	0.074
Gender									
Male	327	97	1.1	0.71–1.6	0.77				
Age									
–	327	97	0.99	0.98–1	0.46				
Tumor location									
Proximal colon	327	97	0.7	0.44–1.1	0.11				
KRAS									
Mutated	324	95	1.3	0.86–1.9	0.22				
BRAF									
Mutated	327	97	0.31	0.043–2.2	0.24				
CIMP									
CIMP+	326	97	0.89	0.45–1.8	0.75				

CIMP, CpG island methylator phenotype; HR, hazard ratio; CI, confidence interval; *P* value, Wald test *P* value.

<sup>1</sup>Multivariate models include significant variables (*P* < 0.05).

patient outcome is still difficult to predict. Thus, prognostic biomarkers are required to guide physicians for patient management and follow-up after CC curative resection. Currently, the most recognized prognostic factor in CRC is the AJCC/UICC TNM staging system, defined by the depth of bowel wall invasion and by the presence of metastases in lymph nodes or more distant sites. However, there remains considerable heterogeneity in outcome within the different stages of this classification [33]. Many studies assessed the potential prognostic impact of several somatic mutations including *KRAS*, *BRAF*, and *TP53* mutations after curative surgery [34–36]. So far, none of these has been identified as a

reproducible prognostic biomarker, except V600E *BRAF* mutation, which seems to be an independent biomarker of poor prognosis in MSS stage III CCs [37]. Regarding *PIK3CA* mutations, reports are scarce and results are equivocal [16–20]. None used an independent validation group to support their conclusions. Some of them included patients with stage IV disease [16, 18, 19], while others evaluated also patients with rectal cancer [16, 18, 19, 21]. In a series of 418 CRCs, Abubaker and colleagues reported that *PIK3CA* mutations were not associated with OS [16]. Day and colleagues found similar results in a series of 585 stage II–III CRC regarding disease-free survival (DFS) [21]. Nevertheless, this finding is in contradiction with other

publications showing that any *PIK3CA* mutation induced a significant decrease in survival [17, 18]. Furthermore, studies that evaluated disease outcome according to the type of *PIK3CA* mutation have led to different conclusions. Fariña Sarasqueta and colleagues found that mutations located in exon 20 conferred poorer survival in stage III patients [20]. But recently, Liao and colleagues emphasized that the prognostic impact of *PIK3CA* mutations was only restricted to the small proportion of CRCs harboring concomitant mutations in both exon 9 and 20 [19]. Finally, in a large series of 627 stage III CC, Ogino and colleagues found that *PIK3CA* mutation was neither a prognostic biomarker nor a predictive biomarker of response to adjuvant chemotherapy [22]. It should be noted that these patients have been enrolled in a randomized controlled trial and received either the Roswell Park regimen of 5-fluoro-uracil (FU)/leucovorin (LV) or the regimen of irinotecan/FU/LV. These adjuvant treatments are, however, not those recommended in case of stage III disease (i.e., a combination of FU and oxaliplatin) [38].

We found in the present study that *PIK3CA* mutations had a favorable prognostic impact in MSS stage I–III CC. This finding is based on two large homogenous groups of patients, excluding those with rectal cancer or distant metastatic disease. Indeed, prognosis and management of patients with rectal cancer differ from that of patients with CC, as neoadjuvant chemoradiotherapy and quality of surgery have a significant impact on local recurrence [39, 40]. Moreover, prognostic biomarkers and chemotherapy regimens differ greatly between localized and advanced CC. Especially, targeted therapies can be used for patients with stage IV CRC, and discussions are still ongoing as to whether *PIK3CA* mutations including those present at the exon 20 are predictive biomarkers of response to anti-EGFR monoclonal antibodies [41].

Although retrospective, our training cohort showed quite similar molecular features than those of our prospective validation cohort, either for all patients or for patients with MSS CC. The mutation rates of *PIK3CA*, *KRAS*, and *BRAF* were consistent with those reported in the literature and were obtained from frozen tumoral tissues [2]. In the literature, *PIK3CA* mutations have been reported to be significantly more frequent in women [24], in elderly patients [21], in proximal tumors [21, 24], in *KRAS*-mutated tumors, [17, 21, 24] and in MSI tumors [16]. In contrast with these reports, we did not find a consistent association between *PIK3CA* mutations and one particular clinical or molecular characteristic in our two cohorts of patients. The fact that the prognostic value of *PIK3CA* mutations was not confirmed on multivariate analysis could be explained by the clinical characteristics of the patients included in the validation cohort. The MSS tumors included in this second cohort were

associated with a spontaneous better prognosis with significantly less stage III CC and less indications for adjuvant chemotherapy. One might assume that this group was underpowered to detect a statistical difference.

Very recently, Liao and colleagues highlighted that the use of aspirin after diagnosis among patients with *PIK3CA*-mutated CRC was associated with a significant longer CCS and OS compared with patients with *PIK3CA*-wild-type CRC, with an 82% reduction in CRC deaths and a 45% reduction in deaths from all causes [42]. In this study based on two large prospective combined cohorts, the authors concluded that this gene could be used as a predictive biomarker for the prescription of aspirin therapy in adjuvant setting. Similarly, Domingo and colleagues also found in a large randomized trial comparing rofecoxib with placebo after primary CRC resection that regular use of low-dose aspirin after CRC diagnosis was associated with a reduced rate of recurrence in patients with *PIK3CA*-mutated tumors compared with *PIK3CA*-wild-type tumors (HR = 0.11; 95% CI; 0.001–0.832;  $P = 0.027$ ) [43]. But, in a series of 1487 CRC patients including 185 patients with *PIK3CA*-mutated tumors, Kothari and colleagues did not confirm the relationship between aspirin use and improved survival in patients with stage II–III disease [44]. We were not able to assess patients' survival according to *PIK3CA* status and aspirin treatment since information regarding aspirin therapy was not available in our database. However, definitive conclusion about the predictive value of *PIK3CA* mutations for aspirin treatment in nonmetastatic CRC can only be given with the results of a randomized trial.

The negative prognostic impact of *PIK3CA* mutations in MSI CC was not confirmed in the validation cohort. MSI CRCs have a significantly better prognosis with higher survival rates compared to MSS CRCs [23]. In adjuvant setting, this phenotype is associated with a halving of the risk of recurrence [45]. Therefore, for clinical practice, effective and accurate biomarkers of disease relapse after curative surgery are particularly required for patients with MSS tumors. MSI CRCs also constitute a heterogeneous group of CC, including both tumors with germline mutation of mismatch repair genes and tumors with CIMP and hypermethylation of the *MLH1* gene promoter. The two cohorts were too small to analyze the influence of *PIK3CA* mutations according to the different subgroups of MSI tumors.

As for the study of Ogino and colleagues, we found that *PIK3CA* mutations were not a predictive biomarker for response to adjuvant chemotherapy [22]. In our study, *PIK3CA* mutation was a good prognostic biomarker, either in patients with MSS CC treated with adjuvant chemotherapy or those without adjuvant treatment. The

type of adjuvant chemotherapy regimen was not recorded in our study, but it seems likely that a majority of patients received an oxaliplatin-based regimen, as recommended.

Our results seem to be in complete contrast with previous reports in CRC. Indeed, in experimental models, *PIK3CA* gain-of-function mutations have been shown to cause increased phosphorylation of AKT, aberrant activation of the PI3K/AKT/mTOR signaling pathway, and to promote oncogenic transformation. One would expect that proto-oncogene activation (or tumor suppressor gene inactivation) would clinically be associated with aggressive tumor behavior and unfavorable prognosis. However, in understanding of cancer biology, such reasoning seems too simplistic and contradicted by the well-known example of MSI phenotype in CRC [23]. Finally, the good prognostic value of *PIK3CA* mutations has been emphasized in other cancer types, such as breast cancer, endometrial cancer, ovarian clear cell carcinoma, and esophageal squamous cell carcinoma [46–49]. Notably, Kalinsky and colleagues showed in a series of 509 primary breast tumors with a median follow-up of more than 12 years that patients with *PIK3CA*-mutated tumors had a less aggressive phenotype with a significant improvement in OS and CSS [46]. Similarly, Shigaki and colleagues found in a series of 219 patients who had undergone curative resection of stage I–III esophageal squamous cell carcinoma that patients with *PIK3CA* mutations experienced significantly longer DFS, CSS, and OS than those with wild-type *PIK3CA* [49]. One possible explanation is that *PIK3CA* mutations could result in oncogene-induced senescence [46], but the biological mechanisms underlying this effect are still unclear. Finally, in CRC, Baba and colleagues reported in a series of 717 samples that phosphorylated AKT expression was significantly associated with *PIK3CA* mutations, and that patients with AKT-activated tumors had a significantly improved CSS in multivariate analysis [50]. Surprisingly in this study, the authors used the data from the Nurses' Health Study and the Health Professionals Follow-up Study, which are the same cohorts as those used in the studies of Ogino and colleagues and Liao and colleagues that led to diametrically opposite conclusions regarding the prognostic impact of *PIK3CA* mutations [17, 19].

In summary, our study suggests that *PIK3CA* mutations are associated with better outcome in patients with resected MSS stage I–III CC. Our results may have clinical implications and provide useful information for the post-operative management of patients. Those with high-risk stage II or stage III *PIK3CA*-mutated MSS CC may not require adjuvant chemotherapy. Nevertheless, the mechanisms explaining this favorable prognostic impact of *PIK3CA* mutations remain to be elucidated. We cannot

exclude that this could be the reflect of the predictive value of aspirin therapy. These results warrant confirmation in further translational studies.

## Acknowledgments

None.

## Conflict of Interest

None declared.

## References

1. Vivanco, I., and C. L. Sawyers. 2002. The phosphatidylinositol 3-Kinase AKT pathway in human cancer. *Nat. Rev. Cancer* 2:489–501.
2. Forbes, SA., N. Bindal, S. Bamford, C. Cole, C. Y. Kok, D. Beare, et al. 2011. COSMIC: mining complete cancer genomes in the catalogue of somatic mutations in cancer. *Nucleic Acids Res.* 39:D945–D950.
3. Manning, B. D., and L. C. Cantley. 2007. AKT/PKB signaling: navigating downstream. *Cell* 129:1261–1274.
4. Samuels, Y., Z. Wang, A. Bardelli, N. Silliman, J. Ptak, S. Szabo, et al. 2004. High frequency of mutations of the *PIK3CA* gene in human cancers. *Science* 304:554.
5. Samuels, Y., L.A., Diaz Jr., O. Schmidt-Kittler, J. M. Cummins, L. Delong, I. Cheong, et al. 2005. Mutant *PIK3CA* promotes cell growth and invasion of human cancer cells. *Cancer Cell* 7:561–573.
6. Ikenoue, T., F. Kanai, Y. Hikiba, T. Obata, Y. Tanaka, J. Imamura, et al. 2005. Functional analysis of *PIK3CA* gene mutations in human colorectal cancer. *Cancer Res.* 65:4562–4567.
7. Guo, X. N., A. Rajput, R. Rose, J. Hauser, A. Beko, K. Kuropatwinski, et al. 2007. Mutant *PIK3CA*-bearing colon cancer cells display increased metastasis in an orthotopic model. *Cancer Res.* 67:5851–5858.
8. Engelman, J. A. 2009. Targeting PI3K signalling in cancer: opportunities, challenges and limitations. *Nat. Rev. Cancer* 9:550–562.
9. Ihle, N., T. R. Williams, S. Chow, W. Chew, M. I. Berggren, G. Paine-Murrieta, et al. 2004. Molecular pharmacology and antitumor activity of PX-866, a novel inhibitor of phosphoinositide-3-kinase signaling. *Mol. Cancer Ther.* 3:763–772.
10. Howes, A. L., G. G. Chiang, E. S. Lang, C. B. Ho, G. Powis, K. Vuori, and R. T. Abraham. 2007. The phosphatidylinositol 3-kinase inhibitor, PX-866, is a potent inhibitor of cancer cell motility and growth in three-dimensional cultures. *Mol. Cancer Ther.* 6:2505–2514.
11. Ihle, N. T., and G. Powis. 2010. Inhibitors of phosphatidylinositol-3-kinase in cancer therapy. *Mol. Aspects Med.* 31:135–144.

12. Ihle, N., T. R. Lemos Jr, P. Wipf, A. Yacoub, C. Mitchell, D. Siwak, et al. 2009. Mutations in the phosphatidylinositol-3-kinase pathway predict for antitumor activity of the inhibitor PX-866 whereas oncogenic Ras is a dominant predictor for resistance. *Cancer Res.* 69:143–150.
13. Tanaka, H., M. Yoshida, H. Tanimura, T. Fujii, K. Sakata, Y. Tachibana, et al. 2011. The selective class I PI3K inhibitor CH5132799 targets human cancers harboring oncogenic PIK3CA mutations. *Clin. Cancer Res.* 17:3272–3281.
14. Zhang, H., G. Liu, M. Dziubinski, Z. Yang, S. P. Ethier, and G. Wu. 2008. Comprehensive analysis of oncogenic effects of PIK3CA mutations in human mammary epithelial cells. *Breast Cancer Res. Treat.* 112:217–227.
15. Serra, V., B. Markman, M. Scaltriti, P. J. Eichhorn, V. Valero, M. Guzman, et al. 2008. NVP-BEZ235, a dual PI3K/mTOR inhibitor, prevents PI3K signaling and inhibits the growth of cancer cells with activating PI3K mutations. *Cancer Res.* 68: 8022–8030.
16. Abubaker, J., P. Bavi, S. Al-Harbi, M. Ibrahim, A. K. Siraj, N. Al-Sanea, et al. 2008. Clinicopathological analysis of colorectal cancers with PIK3CA mutations in Middle Eastern population. *Oncogene* 27:3539–3545.
17. Ogino, S., K. Nosho, G. J. Kirkner, K. Shima, N. Irahara, S. Kure, et al. 2009. PIK3CA mutation is associated with poor prognosis among patients with curatively resected colon cancer. *J. Clin. Oncol.* 27:1477–1484.
18. Kato, S., S. Iida, T. Higuchi, T. Ishikawa, Y. Takagi, M. Yasuno, et al. 2007. PIK3CA mutation is predictive of poor survival in patients with colorectal cancer. *Int. J. Cancer* 121:1771–1778.
19. Liao, X., T. Morikawa, P. Lochhead, Y. Imamura, A. Kuchiba, M. Yamauchi, et al. 2012. Prognostic role of PIK3CA mutation in colorectal cancer: cohort study and literature review. *Clin. Cancer Res.* 18:2257–2268.
20. Farina Sarasqueta, A. E., C. Zeestraten, T. vanWezel, G. Van Lijnschoten, R. Van Eijk, J. W. Dekker, et al. 2011. PIK3CA kinase domain mutation identifies a subgroup of stage III colon cancer patients with poor prognosis. *Cell. Oncol. (Dordr.)* 34:523–531.
21. Day, F. L., R. N. Jorissen, L. Lipton, D. Mouradov, A. Sakthianandeswaren, M. Christie, et al. 2013. PIK3CA and PTEN gene and exon mutation-specific clinicopathologic and molecular associations in colorectal cancer. *Clin. Cancer Res.* 19:3285–3296.
22. Ogino, S., X. Liao, Y. Imamura, M. Yamauchi, N. J. McCleary, K. Ng, et al. 2013. Predictive and prognostic analysis of PIK3CA mutation in stage III colon cancer intergroup trial. *J. Natl. Cancer Inst.* 105:1789–1798.
23. Popat, S., R. Hubner, and R. S. Houlston. 2005. Systematic review of microsatellite instability and colorectal cancer prognosis. *J. Clin. Oncol.* 23:609–618.
24. Barault, L., N. Veyrie, V. Jooste, D. Lecorre, C. Chapusot, J. M. Ferraz, et al. 2008. Mutations in the RAS-MAPK, PI (3)K (phosphatidylinositol-3-OH kinase) signaling network correlate with poor survival in a population-based series of colon cancers. *Int. J. Cancer* 122:2255–2259.
25. Chauvenet, M., V. Cottet, C. Lepage, V. Jooste, J. Faivre, and A. M. Bouvier. 2011. Trends in colorectal cancer incidence: a period and birth-cohort analysis in a well-defined French population. *BMC Cancer* 11:282.
26. Edge, S. B., D. R. Byrd, C. C. Compton, A. G. Fritz, F. L. Green, and A. Trotti. 2009. Colon and rectum. Pp. 143–164 in S. Edge, D. Byrd, and C. Compton, et al., eds. *AJCC cancer staging manual*. 7th ed. Springer, New York, NY.
27. Lievre, A., J. B. Bachet, V. Boige, A. Cayre, D. Le Corre, E. Buc, et al. 2008. KRAS mutations as an independent prognostic factor in patients with advanced colorectal cancer treated with cetuximab. *J. Clin. Oncol.* 26:374–379.
28. Boland, C. R., S. N. Thibodeau, S. R. Hamilton, D. Sidransky, J. R. Eshleman, R. W. Burt, et al. 1998. A National Cancer Institute Workshop on Microsatellite Instability for cancer detection and familial predisposition: development of international criteria for the determination of microsatellite instability in colorectal cancer. *Cancer Res.* 58:5248–5257.
29. Chapusot, C., L. Martin, P. Laurent-Puig, T. Ponnelle, N. Cheynel, A. M. Bouvier, et al. 2004. What is the best way to assess microsatellite instability status in colorectal cancer? Study on a population base of 462 colorectal cancers. *Am. J. Surg. Pathol.* 28:1553–1559.
30. Weisenberger, D., J. K. D. Siegmund, M. Campan, J. Young, T. I. Long, M. A. Faasse, et al. 2006. CpG island methylator phenotype underlies sporadic microsatellite instability and is tightly associated with BRAF mutation in colorectal cancer. *Nat. Genet.* 38:787–793.
31. West, N. P., E. J. Morris, O. Rotimi, A. Cairns, P. J. Finan, and P. Quirke. 2008. Pathology grading of colon cancer surgical resection and its association with survival: a retrospective observational study. *Lancet Oncol.* 9:857–865.
32. Andre, T., C. Boni, M. Navarro, J. Taberero, T. Hickish, C. Topham, et al. 2009. Improved overall survival with oxaliplatin, fluorouracil, and leucovorin as adjuvant treatment in stage II or III colon cancer in the MOSAIC trial. *J. Clin. Oncol.* 27:3109–3116.
33. Gunderson, L., L. J. M. Jessup, D. J. Sargent, F. L. Greene, and A. K. Stewart. 2010. Revised TN categorization for colon cancer based on national survival outcomes data. *J. Clin. Oncol.* 28:264–271.
34. Andreyev, H., J. A. R. Norman, D. Cunningham, J. Oates, B. R. Dix, B. J. Iacopetta, et al. 2001. Kirsten ras mutations in patients with colorectal cancer: the 'RASCAL II' study. *Br. J. Cancer* 85:692–696.
35. Ogino, S. J., A. Meyerhardt, N. Irahara, D. Niedzwiecki, D. Hollis, L. B. Saltz, et al. 2009. KRAS mutation in stage III

- colon cancer and clinical outcome following intergroup trial CALGB 89803. *Clin. Cancer Res.* 15:7322–7329.
36. Russo, A., V. Bazan, B. Iacopetta, D. Kerr, T. Soussi, and N. Gebbia. 2005. The TP53 colorectal cancer international collaborative study on the prognostic and predictive significance of p53 mutation: influence of tumor site, type of mutation, and adjuvant treatment. *J. Clin. Oncol.* 23:7518–7528.
  37. Ogino, S., K. Shima, J. A. Meyerhardt, N. J. McCleary, K. Ng, D. Hollis, et al. 2012. Predictive and prognostic roles of BRAF mutation in stage III colon cancer: results from intergroup trial CALGB 89803. *Clin. Cancer Res.* 18:890–900.
  38. Schmoll, H., J. E. Van Cutsem, A. Stein, V. Valentini, B. Glimelius, K. Haustermans, et al. 2012. ESMO Consensus Guidelines for management of patients with colon and rectal cancer. a personalized approach to clinical decision making. *Ann. Oncol.* 23:2479–2516.
  39. Quirke, P., R. Steele, J. Monson, R. Grieve, S. Khanna, J. Couture, et al. 2009. Effect of the plane of surgery achieved on local recurrence in patients with operable rectal cancer: a prospective study using data from the MRC CR07 and NCIC-CTG CO16 randomised clinical trial. *Lancet* 373:821–828.
  40. Gerard, J., P. T. Conroy, F. Bonnetain, O. Bouche, O. Chapet, M. T. Closon-Dejardin, et al. 2006. Preoperative radiotherapy with or without concurrent fluorouracil and leucovorin in T3-4 rectal cancers: results of FFC0 9203. *J. Clin. Oncol.* 24:4620–4625.
  41. De Roock, W., B. Claes, D. Bernasconi, J. De Schutter, B. Biesmans, G. Fountzilias, et al. 2010. Effects of KRAS, BRAF, NRAS, and PIK3CA mutations on the efficacy of cetuximab plus chemotherapy in chemotherapy-refractory metastatic colorectal cancer: a retrospective consortium analysis. *Lancet Oncol.* 11:753–762.
  42. Liao, X., P. Lochhead, R. Nishihara, T. Morikawa, A. Kuchiba, M. Yamauchi, et al. 2012. Aspirin use, tumor PIK3CA mutation, and colorectal-cancer survival. *N. Engl. J. Med.* 367:1596–1606.
  43. Domingo, E., D. N. Church, O. Sieber, R. Ramamoorthy, Y. Yanagisawa, E. Johnstone, et al. 2013. Evaluation of PIK3CA mutation as a predictor of benefit from nonsteroidal anti-inflammatory drug therapy in colorectal cancer. *J. Clin. Oncol.* 31:4297–4305.
  44. Kothari, N, R. D. Kim, P. Gibbs, T. J. Yeatman, M. J. Schell, J. Desai, et al. 2014. Regular aspirin (ASA) use and survival in patients with PIK3CA-mutated metastatic colorectal cancer (CRC). *J. Clin. Oncol.* 32(Suppl. 3).
  45. Hutchins, G., K. Southward, K. Handley, L. Magill, C. Beaumont, J. Stahlschmidt, et al. 2011. Value of mismatch repair, KRAS, and BRAF mutations in predicting recurrence and benefits from chemotherapy in colorectal cancer. *J. Clin. Oncol.* 29:1261–1270.
  46. Kalinsky, K., L. M. Jacks, A. Heguy, S. Patil, M. Drobnjak, U. K. Bhanot, et al. 2009. PIK3CA mutation associates with improved outcome in breast cancer. *Clin. Cancer Res.* 15:5049–5059.
  47. Dong, Y., X. Yang, O. Wong, X. Zhang, Y. Liang, Y. Zhang, et al. 2012. PIK3CA mutations in endometrial carcinomas in Chinese women: phosphatidylinositol 3'-kinase pathway alterations might be associated with favorable prognosis. *Hum. Pathol.* 43:1197–1205.
  48. Rahman, M., K. Nakayama, M. T. Rahman, N. Nakayama, M. Ishikawa, A. Katagiri, et al. 2012. Clinicopathologic and biological analysis of PIK3CA mutation in ovarian clear cell carcinoma. *Hum. Pathol.* 43:2197–2206.
  49. Shigaki, H., Y. Baba, M. Watanabe, A. Murata, T. Ishimoto, M. Iwatsuki, et al. 2013. PIK3CA mutation is associated with a favorable prognosis among patients with curatively resected esophageal squamous cell carcinoma. *Clin. Cancer Res.* 19:2451–2459.
  50. Baba, Y., K. Noshio, K. Shima, M. Hayashi, J. A. Meyerhardt, A. T. Chan, et al. 2011. Phosphorylated AKT expression is associated with PIK3CA mutation, low stage, and favorable outcome in 717 colorectal cancers. *Cancer* 117:1399–1408.

## Supporting Information

Additional Supporting Information may be found in the online version of this article:

**Figure S1.** Kaplan-Meier curves for relapse-free interval in the CIT cohort (A) and in the Dijon cohort (B), for overall survival in the CIT cohort (C) and in the Dijon cohort (D) according to *PIK3CA* status in stage I–II microsatellite stable tumors.

**Figure S2.** Kaplan-Meier curves for relapse-free interval in the CIT cohort (A) and in the Dijon cohort (B), for overall survival in the CIT cohort (C) and in the Dijon cohort (D) according to *PIK3CA* status in stage III microsatellite stable tumors.

**Figure S3.** Kaplan-Meier curves for relapse-free interval in the CIT cohort (A) and in the Dijon cohort (B), according to *PIK3CA* exon-specific mutation in microsatellite stable tumors.

**Figure S4.** Kaplan-Meier curves for relapse-free interval in the CIT cohort (A) and in the Dijon cohort (B), according to *PIK3CA* status in microsatellite instable tumors.

**Figure S5.** Kaplan-Meier curves for relapse-free interval according to *PIK3CA* status in microsatellite stable tumors for patients operated on without adjuvant chemotherapy in the CIT cohort (A) and in the Dijon cohort (D), and for those treated with adjuvant chemotherapy in the CIT cohort (B) and in the Dijon cohort (D).