



HAL
open science

Phylogeny of Dictyoptera: Dating the Origin of Cockroaches, Praying Mantises and Termites with Molecular Data and Controlled Fossil Evidence

Frédéric Legendre, André Nel, Gavin J. Svenson, Tony Robillard, Roseli Pellens, Philippe Grandcolas

► To cite this version:

Frédéric Legendre, André Nel, Gavin J. Svenson, Tony Robillard, Roseli Pellens, et al.. Phylogeny of Dictyoptera: Dating the Origin of Cockroaches, Praying Mantises and Termites with Molecular Data and Controlled Fossil Evidence. PLoS ONE, 2015, 10 (7), pp.e0130127. 10.1371/journal.pone.0130127 . hal-01235733

HAL Id: hal-01235733

<https://hal.sorbonne-universite.fr/hal-01235733>

Submitted on 30 Nov 2015

HAL is a multi-disciplinary open access archive for the deposit and dissemination of scientific research documents, whether they are published or not. The documents may come from teaching and research institutions in France or abroad, or from public or private research centers.

L'archive ouverte pluridisciplinaire **HAL**, est destinée au dépôt et à la diffusion de documents scientifiques de niveau recherche, publiés ou non, émanant des établissements d'enseignement et de recherche français ou étrangers, des laboratoires publics ou privés.



Distributed under a Creative Commons Attribution 4.0 International License

RESEARCH ARTICLE

Phylogeny of Dictyoptera: Dating the Origin of Cockroaches, Praying Mantises and Termites with Molecular Data and Controlled Fossil Evidence

Frédéric Legendre^{1*}, André Nel¹, Gavin J. Svenson², Tony Robillard¹, Roseli Pellens¹, Philippe Grandcolas¹

1 Institut de Systématique, Evolution, Biodiversité, ISYEB—UMR 7205 MNHN, CNRS, UPMC, EPHE, Sorbonne Universités, Muséum national d'Histoire naturelle, Département Systématique et Evolution, Paris, France, **2** Department of Invertebrate Zoology, Cleveland Museum of Natural History, Cleveland, Ohio, United States of America

* legendre@mnhn.fr



OPEN ACCESS

Citation: Legendre F, Nel A, Svenson GJ, Robillard T, Pellens R, Grandcolas P (2015) Phylogeny of Dictyoptera: Dating the Origin of Cockroaches, Praying Mantises and Termites with Molecular Data and Controlled Fossil Evidence. PLoS ONE 10(7): e0130127. doi:10.1371/journal.pone.0130127

Editor: Hector Escriva, Laboratoire Arago, FRANCE

Received: March 16, 2015

Accepted: May 18, 2015

Published: July 22, 2015

Copyright: © 2015 Legendre et al. This is an open access article distributed under the terms of the [Creative Commons Attribution License](https://creativecommons.org/licenses/by/4.0/), which permits unrestricted use, distribution, and reproduction in any medium, provided the original author and source are credited.

Data Availability Statement: Molecular data are held in the public database GenBank under the Accession Numbers KP986236-KP986445.

Funding: This study was supported by Agence Nationale de la Recherche under the grant BIONEOCAL to PG (www.agence-nationale-recherche.fr) and by the US National Science Foundation under the grant DEB-1216309 to GJS (www.nsf.gov/funding). Any opinions, findings, and conclusions or recommendations expressed in this material are those of the authors and do not necessarily reflect the views of the National Science Foundation. Molecular analyses were partially funded

Abstract

Understanding the origin and diversification of organisms requires a good phylogenetic estimate of their age and diversification rates. This estimate can be difficult to obtain when samples are limited and fossil records are disputed, as in Dictyoptera. To choose among competing hypotheses of origin for dictyopteran suborders, we root a phylogenetic analysis (~800 taxa, 10 kbp) within a large selection of outgroups and calibrate datings with fossils attributed to lineages with clear synapomorphies. We find the following topology: (mantises, (other cockroaches, (Cryptocercidae, termites))). Our datings suggest that crown-Dictyoptera—and stem-mantises—would date back to the Late Carboniferous (~ 300 Mya), a result compatible with the oldest putative fossil of stem-dictyoptera. Crown-mantises, however, would be much more recent (~ 200 Mya; Triassic/Jurassic boundary). This pattern (i.e., old origin and more recent diversification) suggests a scenario of replacement in carnivory among polyneopterous insects. The most recent common ancestor of (cockroaches + termites) would date back to the Permian (~275 Mya), which contradicts the hypothesis of a Devonian origin of cockroaches. Stem-termites would date back to the Triassic/Jurassic boundary, which refutes a Triassic origin. We suggest directions in extant and extinct species sampling to sharpen this chronological framework and dictyopteran evolutionary studies.

Introduction

Understanding the origin and diversification of organisms in their environmental context requires a good estimate of their age and diversification rates. This objective is classically achieved through analyses combining morphological and environmental data, molecular

by Muséum national d'Histoire naturelle (www.mnhn.fr) under the grant "ATM – Taxonomie moléculaire: DNA barcode et gestion durable des collections" to FL. Some specimens were collected through fieldworks supported by Muséum national d'Histoire naturelle under the grant "ATM – Biodiversité actuelle et fossile. Crises, stress, restaurations et panchronisme: le message systématique" to FL.

Competing Interests: The authors have declared that no competing interests exist.

phylogenies, and the fossil record [1–3]. These analyses are, however, sometimes inconclusive, especially when the fossil record is disputed, scarce or incomplete (a limitation inherent to fossils) or when molecular phylogenies rely on limited samples [4–6]. Special attention must therefore be paid to improve character and taxon sampling in phylogenies and to evaluate the quality of the fossil record [7,8]. Despite these recommendations, obtaining additional data may be difficult even with a strong sampling effort, especially for fossils for which complete specimens in good state of preservation and phylogenetically relevant are not easily found. To address these limitations and produce a robust analysis, several research strategies designed recently include: integrating the quality of fossil record into the calibration [9,10]; basing dating methods on statistical distributions to account for uncertainties [11]; and nesting the study in a deeper group better-represented in the fossil record and including appropriate outgroups [12–14].

These problems of incomplete or controversial fossil record and molecular phylogenies with limited samples occur in different taxonomic groups. One patent example is Dictyoptera—an insect group including cockroaches, praying mantises and termites, the latter being considered recently as a suborder of Blattodea [15,16]. First, the oldest 'Dictyoptera-like' fossils would be useful to date the oldest nodes but these fossils are controversial (see below). Thus, they cannot be readily used and would instead require a re-examination with additional evidence or an independent validation through dating estimates. Second, even though well-established molecular phylogenies have been proposed for praying mantises and termites [17–19], phylogenies including the three groups together had much smaller taxonomic and molecular samples and/or did not incorporate attempts of calibration and datings [16,20]. These limitations impede our understanding of dictyopteran evolution. Yet, the study of this charismatic group of insects, which is deeply rooted in a long chronological timescale [21,22], could shed light on the evolution of a variety of important traits from social or predatory behaviors, to digestive or intracellular symbioses [17,18,23–25]. Our present study aims at understanding the origin of these three groups by overcoming previous limitations in taxon and molecular samplings and in fossil record.

Several hypotheses exist about the phylogenetic relationships of Dictyoptera or its suborders [16–20,23,25–39]. These works were not all specifically dedicated to test hypotheses of dictyopteran relationships and therefore focused on different taxonomic and character samples. Consequently, directly comparing these phylogenetic hypotheses is intractable but there is one obvious conclusion: we still lack a robust consensus about dictyopteran phylogenetic relationships. For the big picture, the most recent hypotheses converge toward the same general topology for extant species (but see [40,41]): (Mantodea, (other Blattodea, (Cryptocercidae, Isoptera))). However, no study has perfectly replicated previous independent results. In other words, inter-familial relationships are still controversial (see [27]—their Fig 1). Within cockroaches, authors not only disagree about inter-familial relationships but also about family delimitation. One can potentially postulate up to 11 extant cockroach families but we will follow here Beccaloni and Eggleton [15]. The extant families used are: Blaberidae, Blattidae, Cryptocercidae, Ectobiidae, Lamproblattidae, Nocticolidae, Corydiidae and Tryonicidae. Extinct families also exist and some might rather be stem-Dictyoptera than cockroaches. In termites, Mastotermitidae is undoubtedly sister-group to all other modern termites but disagreements persist over the relationships between Archotermopsidae, Stolotermitidae and Kalotermitidae [17,18,26,42]. As for praying mantises, the most comprehensive study to date [19] has cast serious doubts on traditional taxonomy with nearly half of the accepted families, subfamilies and tribes recovered as non-monophyletic.

Since the nineteenth century, cockroaches are thought to be very ancient because of numerous cockroach-like Palaeozoic and Mesozoic fossils (also called "roachoids"), and traditionally

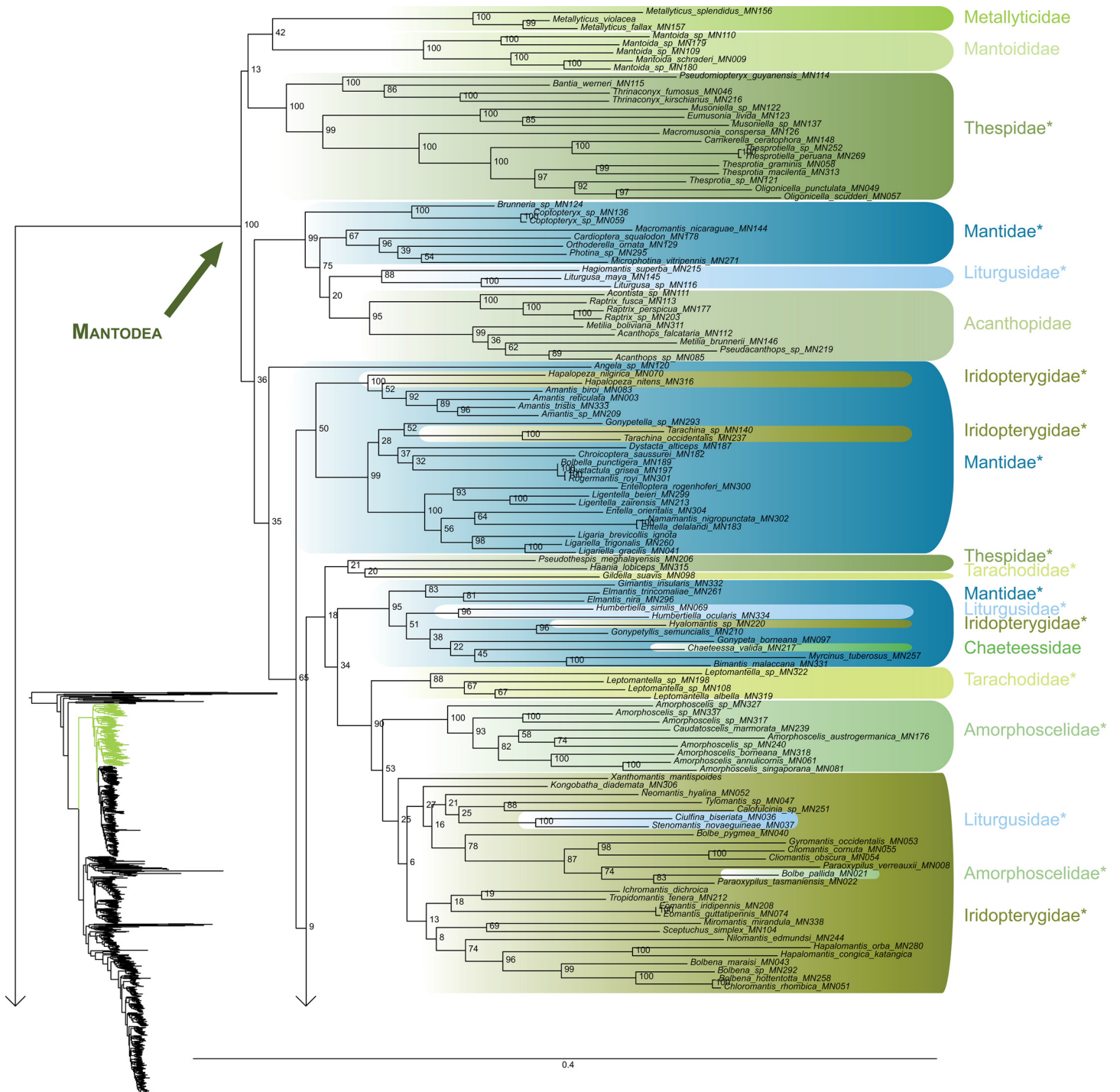


Fig 1. Result of the concatenated analysis of six molecular markers in Maximum Likelihood: mantises. Family names are labeled on the right of the clades. Bootstrap support values are displayed for each node. * = non-monophyletic families.

doi:10.1371/journal.pone.0130127.g001

conceived as ancestral to termites and praying mantises [43–48]. The best preserved female “roachoid” fossils show external ovipositors (long or short depending on the taxa), a morphological character that is never found in extant cockroaches. Moreover, other characters such as

wing venation (“roachoid” forewings are more frequently preserved than bodies and hindwings) or mouthparts are often incomplete or difficult to interpret. Hence, the systematic relationships of “roachoid” fossils remain disputed. The question, still unresolved, is whether these “roachoids” are indeed true cockroaches or rather a stem-group of Dictyoptera [23,49], even if the Dictyoptera (including these “roachoids”) seems to be monophyletic, with the Palaeozoic Paoliida as its sister group [50]. Placing these fossils requires an adequate outgroup sampling.

Mantises are understood to be much more recent than these “roachoids” according to the fossil record (i.e. Early Jurassic; [25,51,52]). The most recent phylogenetic hypotheses postulate, however, that praying mantises are sister-group to the modern cockroaches or to all other modern Dictyoptera [53]. The relatively young age of the crown group of praying mantises would thus appear contradictory with the hypothesis that all the Palaeozoic and Early Mesozoic “roachoids” could belong to the crown Blattodea. Recently, Béthoux and Wieland [54] and Béthoux et al. [55] found that some Palaeozoic fossils belonging to the family Anthracoptilidae could be stem-mantis lineages, sharing synapomorphic characters with modern praying mantises within the wings and maybe raptorial forelegs. This hypothesis would reconcile the latest molecular phylogenies with the fossil record but it has also been disputed [56–58]. Notably, a recent revision of the Anthracoptilidae [59] suggests that these fossils would belong to the Paoliida, the putative sister-group of Dictyoptera [50].

Finally, termites were always considered as a recent group according to a rich fossil record (i.e. oldest record at the Jurassic/Cretaceous transition; [60–62]). Nevertheless, a few controversial fossil nesting traces would indicate that they are at least 50 My older (i.e. Jurassic or even Late Triassic; [63–67]). Here again, these hypotheses have been criticized [68] and would need proper testing.

Because of these controversies in the fossil record and in phylogenetic hypotheses, these three clades (i.e. cockroaches, praying mantises and termites) all have incongruent dates of origins. Here, we use a supermatrix strategy (about 800 taxa and 10,000 molecular characters) combined with controlled fossil evidence (i.e. considering only fossils attributed to any lineage with clear synapomorphic characters) to overcome the aforementioned limitations. We also nest the strictly dictyopteran ingroup within a comprehensive selection of polyneopteran outgroups for which dating analyses were already published. Thus, we provide a chronological framework of dictyopteran evolution to better estimate the origin and timing of diversification of cockroaches, termites, and praying mantises.

Materials and Methods

Taxonomic and character sampling

Given that the most recent molecular phylogenies dealing with all Dictyoptera sub-orders did not sample more than 60 taxa [20,27,39,40], we urge at selecting as many taxa as possible and not subjectively selecting a few of them. Consequently, our taxonomic sample includes 300 praying mantises, 276 termites, 193 cockroaches, and 24 outgroup species, for a total sample size of 793 species. Data are primarily derived from our own works [18,19,25,69,70,71], and Inward’s works on cockroaches and termites [16,17]. We favor here a “supermatrix” rather than a “supertree” approach [72–74]. We supplemented this dataset by generating 210 cockroach sequences to improve their representativeness and with data available on GenBank, providing that at least three markers were included for each species in the analysis, to limit potential reconstruction artifacts due to missing data. For the generated sequences, we notably focused on families and subfamilies that were previously poorly sampled including: Blattidae (25 species), Pseudophyllodromiinae (10 species), Corydiidae (four species), Nocticolidae (one species), Anaplectinae (one species) and Lamproblattidae (one species). All newly generated

sequences were submitted to GenBank and their accession numbers (KP986236-KP986445) are provided in [S1 Table](#). Molecular protocols are detailed in Legendre et al. [18].

For character sampling, we selected molecular markers that were documented for at least 50% of the taxa, which includes four mitochondrial [12S rRNA (~ 380 bp), 16S rRNA (~ 480 bp), and cytochrome oxidase subunits I (~ 1280 bp) and II (~ 650 bp)—hereafter COI and COII] and two nuclear markers [18S rRNA (~ 1800 bp) and 28S rRNA (~ 2000 bp)]. The full data set includes 3674 sequence fragments from these six loci. We sampled 92.7% of the taxa for the 12S, 66.8% for the 16S, 58.6% for the COI, 89.9% for the COII, 69.4% for the 18S and 85.9% for the 28S. We sampled 41.1% of the taxa for the six markers, 11.5% for five markers, 17% for four markers and 30.4% for three markers. The intensity of data completeness within each suborder differs: 96% of praying mantises are documented for at least five markers, whereas it concerns 35% and 17% of cockroaches and termites, respectively. Details are provided in [S1 Table](#).

For outgroup comparison we used modern taxa belonging to the different polyneopteran clades (Dermaptera, Embioptera, Grylloblattodea, Mantophasmatodea, Orthoptera, Phasmatodea, and Plecoptera) and Ephemeroptera as rooting outgroups [53]. Zoraptera affinities are not clear [53] and recent works postulate that they could be the sister-lineage of Dictyoptera [75,76]. Thus, we initially included a Zoraptera species (*Zorotypus novobritannicus*) within outgroups. It was, however, removed from final analysis because, in preliminary analyses, *Z. novobritannicus* was included within Blattodea as the sister lineage of *Xestoblatta* sp.1, which was undoubtedly artifactual (likely due to contamination issues in molecular sequences; S. Cameron, pers. comm.). We therefore removed *Z. novobritannicus* from the dataset based on its behavior as a wildcard taxon in our analyses.

Alignments and phylogenetic analyses

We used the software MUSCLE 3.8 [77] to align molecular sequences. Because the sequences used here come from different studies and were thus generated with an assortment of primers, the fragments were not always congruent in coverage, which generated a few dubious alignments for some sequences in the terminal regions. We corrected these problems by refining the alignment manually. We also checked that alignments for protein-coding genes were congruent with codon reading frame using BioEdit 7.0.5.3 [78]. As described in Legendre et al. [18], 28S rRNA was partitioned into four sequences to optimize automatic alignment with MUSCLE and to limit eye-driven homology hypotheses correction. We used the software SequenceMatrix 1.7.7 [79] to concatenate the supermatrix. It resulted in a final alignment of approximately 10 kbp ([S1 Dataset](#)).

Maximum likelihood analyses were conducted using RAxML 7.2.8 [80] with a GTR + Γ model. We did not consider models mixing a proportion of invariant sites (I) with a gamma distribution shape parameter (Γ) because these two parameters are strongly correlated [81], which could bias the estimation of these parameters. We used Mrmodeltest 2.3 [82] under the Akaike Information Criterion [83,84], which selected the GTR + Γ model as the most appropriate model that does not combine I and Γ . We first run separate analyses to check for obvious artifacts or contaminations. We then performed 100 ML replicates using the rapid hill-climbing algorithm on the combined dataset and the optimal solution was selected. Suboptimal solutions were kept to run dating analyses on and to obtain confidence intervals (see below). We estimated support values based on 100 bootstrap replicates using the rapid bootstrap algorithm [85] implemented in RAxML. All analyses were performed on a HP Z800 Workstation with 17.9 GB RAM and an Intel Xeon CPU E5520, using six or seven threads.

Bayesian Inference via MrBayes was performed on both the cluster of the Paris Museum and the Cleveland Museum of Natural History analytical server, but both were hampered by memory limitations and time to complete the analyses. It was thus impossible to include such analyses in spite of calculation attempts of several months.

Fossil calibrations and molecular datings

Uncertainties about the timing of diversification in Dictyoptera are due in part to incomplete or controversial fossils. We did not use these controversial fossils but tested them with a conservative approach, wherein the possibility to infer old age estimates was kept as follows.

First, we placed a maximal age constraint at the root, which corresponds to the differentiation between Palaeoptera and Neoptera, of 470 Mya. This value corresponds to the maximum of the 95% confidence interval inferred in Rehm et al. [86] in their dating of the Arthropod tree. This is a very old limit given that the Palaeoptera/Neoptera diversification is commonly thought to have occurred around 400 Mya [87]. Using a maximal age constraint at the root is a common strategy used to avoid artifactual old age estimates of the root with the PL method [88].

Second, we used 17 fossils as minimum age constraints as calibration points (Table 1). We chose these fossils because we considered that we were able, according to their descriptions, to reliably assign them to a node in our recovered phylogeny. Fossils that could not be assigned unambiguously to a particular lineage (e.g., no accurate synapomorphy of the concerned clade in the description of the fossil) were not included [8]. In particular, fossils from extinct “roachoid” families (e.g., Mesoblattinidae, Phylloblattidae) are among those not included in our calibration points. One fossil (*Arverineura insignis*) has a peculiar situation because both its placement as stem Chaeteessidae and the position of *Chaeteessa valida* (single Chaeteessidae sampled here) in the phylogeny (see below) can be criticized. *Arverineura insignis* is only known by a forewing and its venation is nearly identical to that of *Chaeteessa valida* so that Nel and Roy [89] suggested they could be the same genus. The presence of an oblique pseudo-vein (stigma of [90]) in the mid part of the forewing or the fact that the most posterior branch of CuA is simple could be apomorphies, but the polarization of these character states remains an issue. We thus also ran additional dating estimates without *Arverineura insignis* to check if its inclusion in the analyses had an impact or not.

Molecular dating analyses were computed with r8s 1.71 [91]. As for phylogenetic reconstructions, it was impossible to compute divergence estimates in a bayesian framework due to computational limitations, a problem faced in other studies with large taxon sample (e.g., [92,93]). In addition, multiple empirical studies at different scales (e.g., [94–96]) suggest that r8s estimates usually strongly overlap with BEAST estimates [97], especially with low values of smoothing, for which much rate variation is permitted (i.e. non-clocklike data). Finally, auto-correlated models proved to have a higher statistical fit to the data than uncorrelated models [98,99].

We used ML trees with the penalized likelihood (PL) method [100] using the TN algorithm and a logarithmic penalty function. A cross validation procedure was performed to choose the optimal value of smoothing. Nevertheless, after more than a month of analysis, only three smoothing parameter values have been tested during this procedure. Therefore, we decided to follow two alternative, quicker, strategies. First, we ran two cross validation procedures with an additive penalty function (four smoothing values, λ , between 1 and 1000, and five smoothing values between 1 and 2.5 – values of $\lambda < 1$ were also tested but the analyses failed, which is a known possible issue of the algorithm with extremely low smoothing parameters [100]). In both cases, a rate smoothing parameter of 1 had the lowest chi-square value. Second, with a

Table 1. Details about the fossils used as calibrations (minimal ages) in the dating analyses.

Species	Age (Ma)	Phylogenetic position	Reference	Museum specimen number	Apomorphy	Locality and stratigraphy	Reference to a published age
<i>Gulou carpenteri</i>	315	stem Plecoptera	[134]	CNU-NX1-143	Presence of a broad MP/CuA and CuA/CuP areas in forewings, with a series of parallel simple crossveins	Qilianshan entomofauna, locality of Xiaheyuan Village (Zhongwei City, Ningxia Hui Autonomous Region, China); Tupo Formation, Pennsylvanian strata, Bashkirian	[135]
<i>Qilianiblatta namurensis</i>	315	stem Dictyoptera	[124]	GMCB 04GNX1001-1	Presence of a deeply concave CuP in forewing [50]	Qilianshan entomofauna, locality of Xiaheyuan Village (Zhongwei City, Ningxia Hui Autonomous Region, China); Tupo Formation, Pennsylvanian strata, Bashkirian	[135]
<i>Juramantophasma sinica</i>	158	stem Mantophasmatodea	[118]	NIGP 142171 (Nanjing Institute of Geology and Palaeontology, Chinese Academy of Sciences)	A third tarsomere with a sclerotized elongated dorsal process; enlarged and fan-like pretarsal arolia with a clearly visible row of dorsal setae; last tarsomere making a right angle with the others, keeping it up in the air; female gonopods (valves 3) short and claw-shaped; and egg with a circular ridge	Daohugou, Ningcheng County, Inner Mongolia, Northeast China; Jiulongshan Formation, Middle Jurassic (Callovian/Oxfordian)	[136]
<i>Mastotermes nepropadyom</i>	140	stem Mastotermitidae	[62]	PIN 4626/156 (Moscow)	Hindwing with Mastotermes-like anal field	Chernovskie Kopi, Chita Region, Chita District, left bank (stream side) of the Ingoda River; Doronino Formation, Chernovskaya transitional sequence; Upper Jurassic–Lower Cretaceous.	[137]
<i>Piniblattella vitimica</i>	130	stem Ectobiidae	[122]	PIN 1989/1639, 1646 (Moscow)	Fanlike fold in hind wings (when present) does not include the first four rami; conspicuous tergal glands (not in all but only in some Ectobiidae)	Baissa (Russia), Zaza formation; Lower Cretaceous, supposedly earliest Berriasian–Valanginian	[138]
<i>Cretaholocompsa montsecana</i>	125	stem Holocompsinae	[121]	LC-1704-IEI	No vein in medio-distal part of forewings	La Cabrera outcrop, Sierra del Montsec (Spain); Pedrera de Rubies Formation, Barremian	[139]
<i>Cratokalotermes santanensis</i>	112	stem Kalotermitidae	[140]	SMNS 66195	Crowded radial field and long cubital field (extends to near the apex of the wing)	Crato, Santana Formation (Brazil), Early Cretaceous (Aptian)	[139]
<i>Morphna paleo</i>	62	stem asian Epilamprinae	[141]	PIN 5142/12	The combination of parallel forewing margins, wide and branched Sc, fusion of M with CuA running close to R, basalmost branches of CuA running parallel to CuP and simple A	Archara-Boguchan, Far East, Russia; Tsagan Formation, Danian Paleocene	[142]

(Continued)

Table 1. (Continued)

Species	Age (Ma)	Phylogenetic position	Reference	Museum specimen number	Apomorphy	Locality and stratigraphy	Reference to a published age
<i>Arverineura insignis</i>	60	stem Chaeteessidae	[89]	MNHN-LP-R.07020 (specimen 715, Piton coll.)	Presence of an oblique pseudo-vein in the mid part of the forewing? most posterior branch of CuA simple? *	Menat (France), Menat Formation (Piton collection), Thanetian	[143]
<i>Prochaeradodis enigmaticus</i>	60	stem Choeradodinae	[89]	MNHN-LP-R-07003	Broad side lobes of the pronotum and reticulated forewing with a very wide costal area.	Menat (France), Menat Formation (Piton collection), Thanetian	[143]
<i>Nanotermes isaacae</i>	50	stem Termitidae	[144]	BSIPL Tad-262 (Lucknow, India)	Radial vein simple + reduction of M + CuA with a series of simple posterior branches	Tadkeshwar lignite mine (India: Gujarat); Cambay Formation, Ypresian	[145]
<i>Archotermopsis tornquisti</i>	41	crown Archotermopsidae	[60,61,126,146]	1133, Typ. Kat. Nr. 255	Absence of ocelloids and fontanelle, antennae with 22–27 articles, pronotum distinctly narrower than head, tarsi pentamerous (sometimes cryptically), fourth sternite with sole sternal gland, forewing scale overlapping hindwing scale, humeral margin of scale flat, imago-worker mandibles with three marginal teeth (left side) and subsidiary tooth between apical and first marginal teeth (right side)	Kaliningrad (Russian Federation); Baltic amber, middle Eocene (Lutetian)	[147]
<i>Heterotermes eocenicus</i>	41	stem Heterotermes	[148]	B-163	Wing membrane setae present, microsetulose + Imago compound eye small, not protruding beyond lateral margin of head in frontal view + Imago ocelloid small, ca. 2–3x diameter of compound eye facet	Kaliningrad (Russian Federation); Baltic amber, middle Eocene (Lutetian)	[147]
<i>Ulmeriella rubiensis</i>	28	stem Hodotermitidae	[149]	B-72	One (or two) posterior branch(es) subapical of R and well-developed	Ruby River Site 1, Montana (USA); Passamari Formation, Rupelian	[150]
<i>Dolichorhinotermes apopnus</i>	20	stem Dolichorhinotermes	[151]	AMNH Ch-50—Amber Fossil Collection, Division of Invertebrate Zoology, American Museum of Natural History	Imago with third flagellar article shorter than first flagellar article. Major soldier with labrum distinctly elongate, apex of labrum frequently extending to mandibular apex. Minor soldier with opening of frontal gland at front of head but not on conspicuous prolongation of head capsule; mandibles vestigial, with rounded margins; sides of head in dorsal aspect straight or convex	Simojovel (Mexico: Chiapas), Chiapas amber; Early Miocene	[152]

(Continued)

Table 1. (Continued)

Species	Age (Ma)	Phylogenetic position	Reference	Museum specimen number	Apomorphy	Locality and stratigraphy	Reference to a published age
Holocompsa nigra and H. abbreviata	15	stem Holocompsa	[153]	NMNH, no. 502411, Acc. 371428, Woodruff (collection reg.) 3751, Brodzinsky / Lopes-Pena Collection (H. nigra) / NMNH, no. 504367, Acc. 371428, Woodruff (collection reg.) 8813, Brodzinsky / LopesPena [Penha] Collection	Head with a two-parts very large clypeus reaching the antennal sockets, small body size, hind wings with specialized venation	Dominican amber (USNM Brodzinsky Lopez-Pena coll); Miocene, Burdigalian/Langhian	[154]
Constrictotermes electroconstrictus	15	stem Constrictotermes	[155]	AMNH DR-14-584	Head constricted, characteristic of Constrictotermes	Dominican Republic amber, specific locality not known; Miocene, Burdigalian/Langhian	[154]

* the oblique pseudo-vein in the mid part of the forewing is reduced in the Mantoididae and of different shape in Metallyticus. The most posterior branch of CuA is not simple in the Mantoididae and of different shape in Metallyticus [90,156].

doi:10.1371/journal.pone.0130127.t001

logarithmic penalty function, we performed ten dating analyses with different smoothing parameter values (1, 10, 35, 50, 80, 125, 200, 400, 900 and 2000) to check how this parameter impacts the dating estimates, especially for the deepest nodes as they are the most important for our study. We selected this intermediate range of smoothing values because it is generally with these values that cross validation scores are most optimal [88,100]. The biggest date estimate difference uncovered between different smoothing values was of 22 My for the deepest nodes, with older age estimates corresponding to lower smoothing values (S2 Table). This difference was considered as relatively low. Then, to perform the subsequent dating analyses, we chose a smoothing value of 1. This choice results from the cross validations and fits our conservative approach of hypotheses testing because smaller values of smoothing resulted in older age estimates for our data.

Note that the PL method cannot deal with very short branches (smaller than 0.0000099 for our trees; [101]). Consequently, for each tree used in dating analysis, and following the recommendation found in r8s manual, we removed these very short branches using the R package ape (command ‘drop.tip’; [102]). Taxa supported by these very short branches have been identified and reported in a tab delimited file, which was imported into R. This file and the script used afterwards are provided in Supporting Information (S1 and S2 Methods). These few branches (mean +/- SD = 9 +/- 2) were mainly terminal branches leading to species representing genera with multiple representatives, so their exclusion did not impact on generic sampling and dating estimates.

Finally, we estimated approximated 90% confidence intervals by repeating the dating procedure 100 times with 100 trees coming from our 100 ML analyses (see Alignments and phylogenetic analyses). We thus took into account potential sources of error in dating estimates due to phylogenetic uncertainty (both in tree topology and branch lengths). These confidence intervals were calculated using the R package Locfit [103] and following the procedure detailed in Lopez-Vaamonde et al. [104].

Results

Phylogenetic analyses

The most likely tree (Figs 1–8; $\ln L = -627407.49$) recovered Dictyoptera, Mantodea and Isoptera as monophyletic groups with maximal support values (i.e. bootstrap support of 100), whereas Blattodea was paraphyletic. The group (Blattodea + Isoptera) was monophyletic with a high support value (BS = 86). Our results were congruent with the most recent hypotheses about inter-order relationships. Even though our aim was not to propose a classification, we found some original intra-ordinal relationships detailed hereafter.

The early branching order of Mantodea (Figs 1–3) included a monophyletic Mantoididae with Metallyticidae (BS < 50) while Chaeteessidae was deeply nested within Amelinae. Most of the families were recovered as paraphyletic including Hymenopodidae, Mantidae, Thespiidae, Iridopterygidae, Liturgusidae, Amorphoscelidae, and Tarachodidae. Few families were monophyletic, which include Acanthopidae (BS = 95), Empusidae (BS = 99), Eremiaphilidae (BS = 100), Mantoididae (BS = 100), Metallyticidae (BS = 100) and Toxoderidae (BS = 87).

Blattodea (Figs 4 and 5) split up into two groups. One group was monophyletic (BS = 60) and included Ectobiidae and Blaberidae. The other group was paraphyletic and included Corydiidae, Nocticolidae, Blattidae, Tryonicidae, Lamproblattidae, and Cryptocercidae. In the first group, Anaplectinae—represented only by *Anaplecta* sp.—was nested within Ectobiidae, as sister taxon of several Pseudophyllodromiinae. Blaberidae was monophyletic with a high support value (BS = 93), whereas Ectobiidae was paraphyletic. In the second group, the monophyletic Nocticolidae was closely related to Latindiinae within Corydiidae, which is paraphyletic. *Lamproblatta* sp. was the sister taxa of (*Cryptocercus* spp. + Isoptera) but this relationship was not well-supported (BS = 51). The clade (*Tryonicus parvus* + *Lauraesilpha* sp.) was sister taxa to a clade comprising the Blattidae and the remaining Tryonicidae, a result weakly supported (BS < 50). The monophyly of (Blattidae + Tryonicidae) excluding *Tryonicus parvus* and *Lauraesilpha* sp. was highly supported (BS = 100), as was the sister-group relationship of Cryptocercidae with Isoptera (BS = 100).

Within termites (Figs 6–8), Mastotermitidae was sister-group to all other modern termites with maximal support value. Then, the clade (Hodotermitidae + Archotermopsidae + Stolotermitidae), which was highly supported (BS = 100), was sister-group to all the remaining termites. Kalotermitidae was monophyletic (BS = 100) and was sister-group to (Rhinotermitidae + Termitidae), a result highly supported (BS = 100). Serritermitidae (here *Serritermes serrifer* and *Glossotermes oculatus*) was monophyletic (BS = 100) and was nested within paraphyletic Rhinotermitidae.

Finally, from the global picture, we noted that internal branches within Blattodea were, with our data set, longer than those within Mantodea and Isoptera. In particular, there were two remarkable clades with long branches: one within Ectobiidae (Fig 4) and the other within (Corydiidae + Nocticolidae) (Fig 5). The first one mainly dealt with Pseudophyllodromiinae; the second one dealt with Latindiinae and Nocticolidae species.

Dating analyses

Our dating estimates are provided as a simplified chronogram in Fig 9. They suggested that stem-Dictyoptera would date back to the Middle-Late Devonian (mode = 382 Mya; range = 363–386.4 Mya). Crown-Dictyoptera would have originated around the Carboniferous/Permian boundary (mode = 300.7 Mya; range = 293.7–315.1 Mya). Crown-group diversification of praying mantises would have occurred in the Early-Middle Jurassic (mode = 191.8 Mya; range = 164.3–203.7 Mya). Stem-termites would date back to the Early

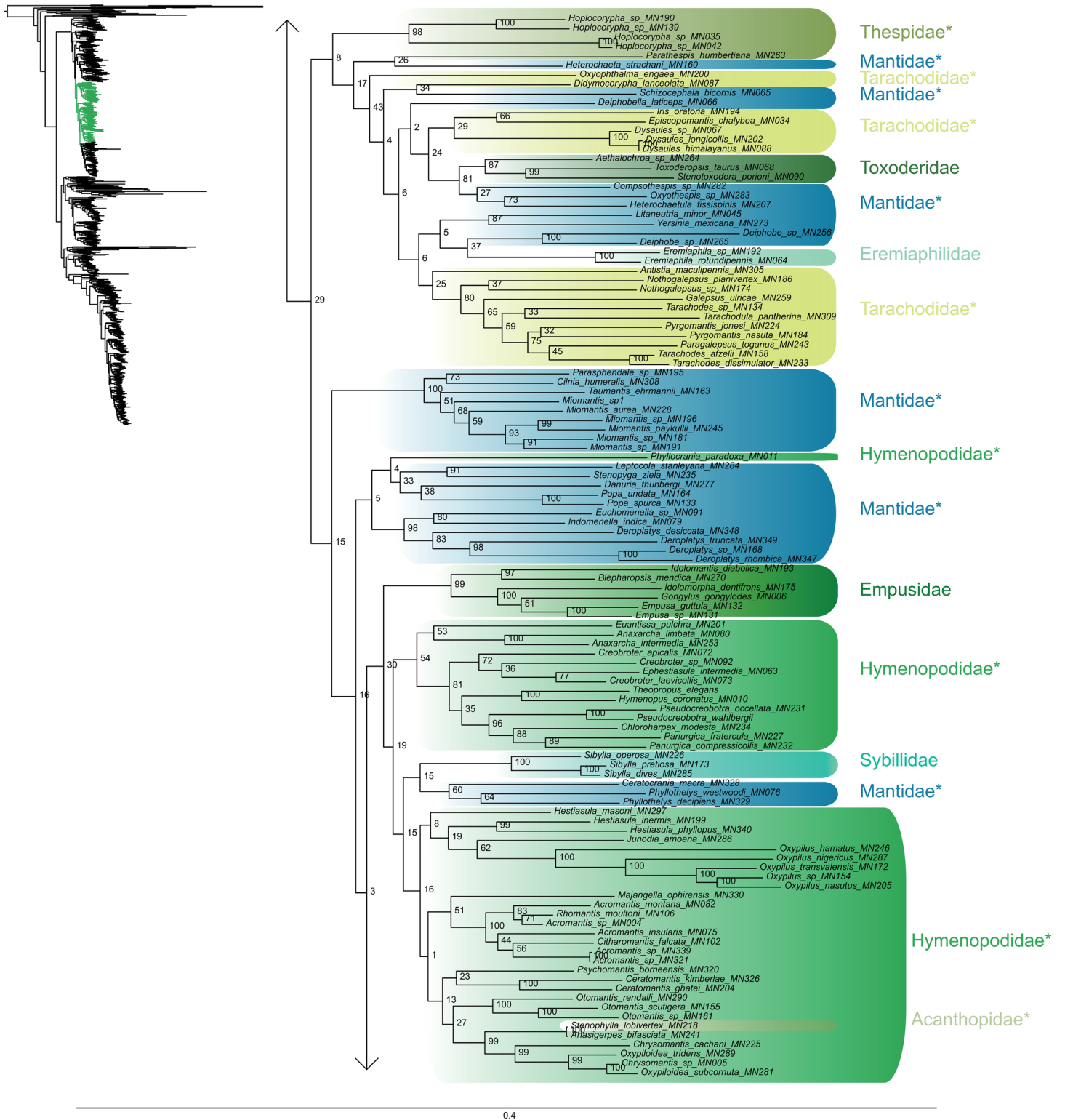


Fig 2. Result of the concatenated analysis of six molecular markers in Maximum Likelihood: mantises (continued). Legend as in Fig 1.

doi:10.1371/journal.pone.0130127.g002

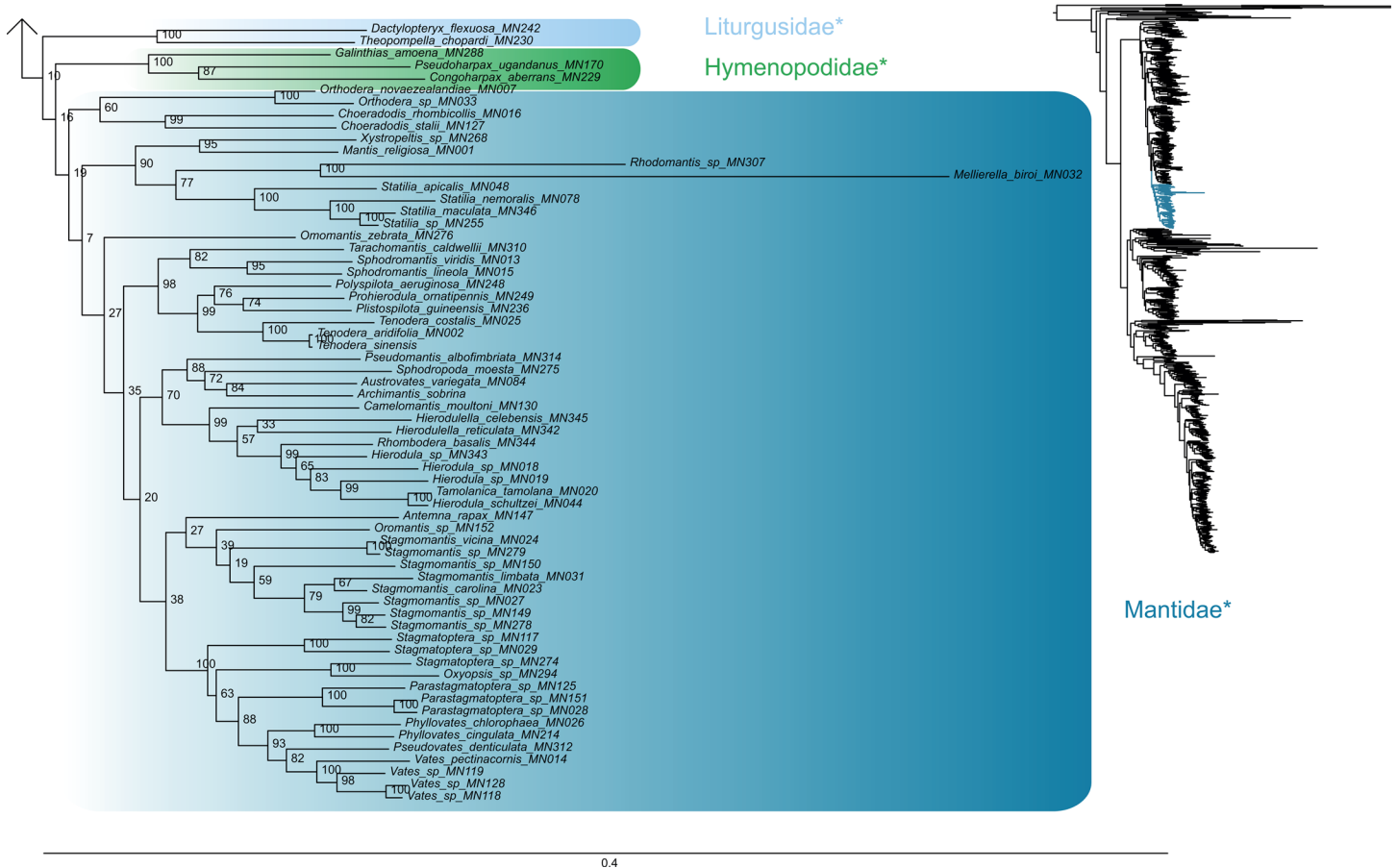


Fig 3. Result of the concatenated analysis of six molecular markers in Maximum Likelihood: mantises (continued). Legend as in Fig 1.

doi:10.1371/journal.pone.0130127.g003

Jurassic (mode = 192.2 Mya; range = 187.7–198.4 Mya). Crown termites diversification would date back to the Late Jurassic (mode = 151.3 Mya; range = 149.3–153.7 Mya). Finally, the most recent common ancestor of (Blattodea + Isoptera) would date back to the Permian (mode = 270.9 Mya; range = 263.6–283.2 Mya). Results without the fossil calibration based on *Arverineura insignis* (stem Chaeteessidae node) were very similar (dating estimates difference of 2.3 Mya at most).

Discussion

Dictyopteran phylogenetic relationships

Dictyoptera is monophyletic, which is a hypothesis supported by multiple morphological and molecular studies (e.g., [32,49,105–108]). Within Dictyoptera, intra-ordinal relationships are congruent with the most recent molecular phylogenetic studies [16,20,39] with monophyletic praying mantises and termites, and paraphyletic cockroaches. For these three groups, we face different situations from a taxonomic and character samplings point of view when compared with previous molecular studies: our praying mantis data set is mainly a subsample of Svenson and Whiting [19]; our termite data set is mainly a combination of Inward et al. [17] and Legendre et al. [18]; our cockroach data set brings several new taxa. Consequently, our phylogenetic results are more worth discussing for cockroaches and termites than for praying mantises.

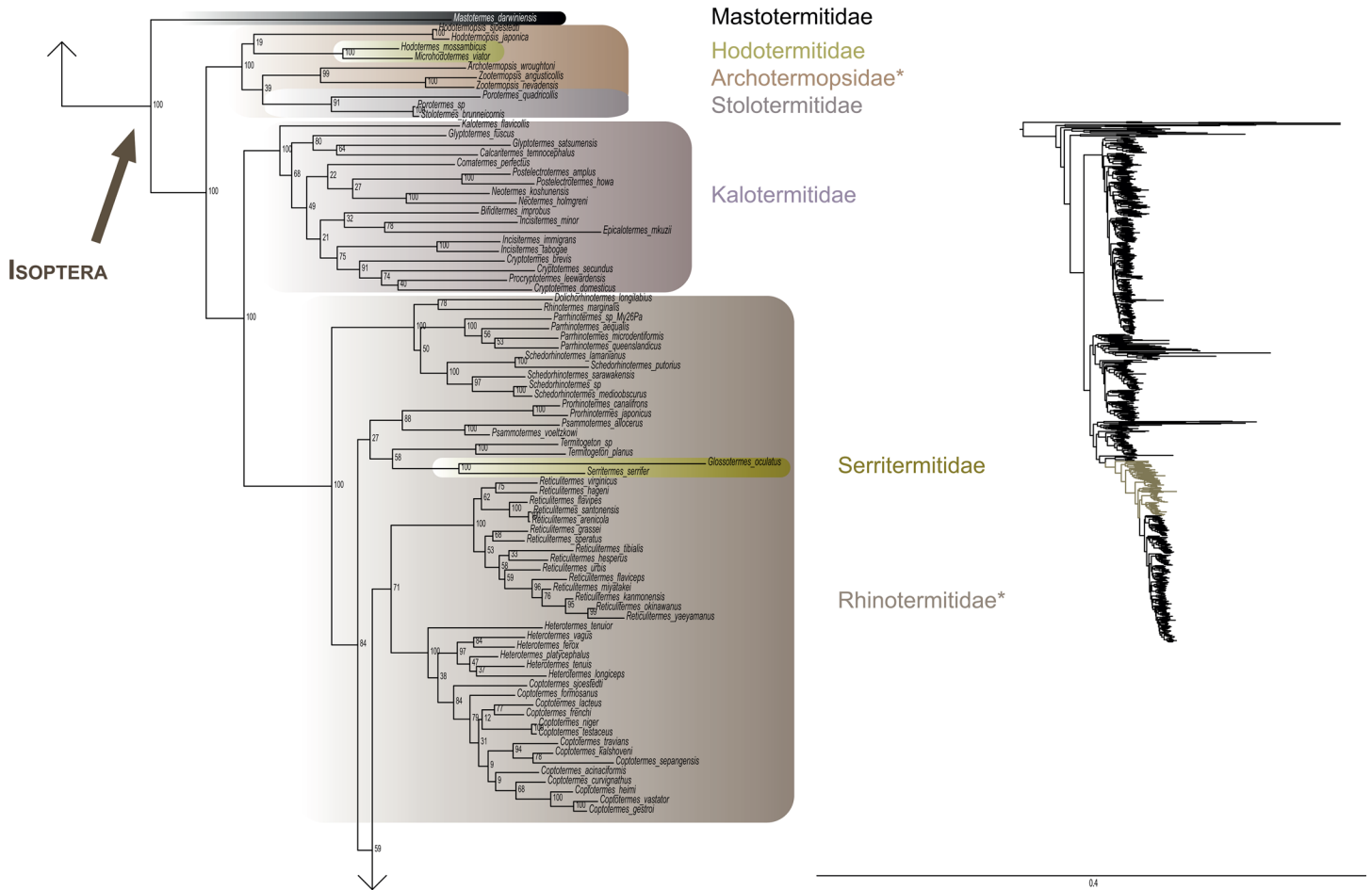


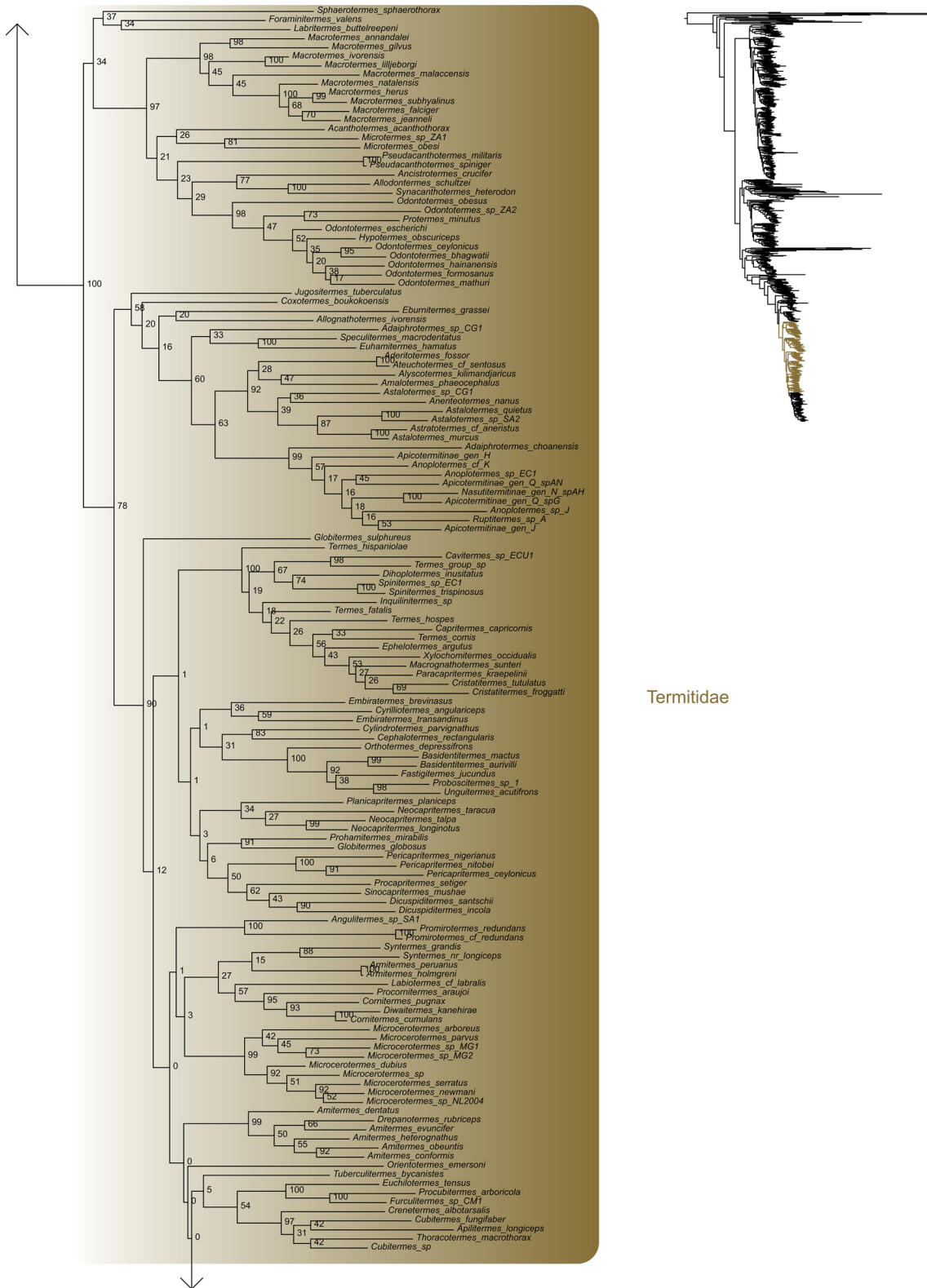
Fig 6. Result of the concatenated analysis of six molecular markers in Maximum Likelihood: termites. Legend as in Fig 1.

doi:10.1371/journal.pone.0130127.g006

used. This phenomenon should be investigated further and be considered in future phylogenetic studies of cockroaches as it might affect tree reconstruction [114–116].

Timing of diversification in Dictyoptera and fossil data

We used a conservative approach allowing old age estimates with double-checked fossils and a large phylogenetic sample to illuminate the timing of diversification of Dictyoptera and of its three sub-orders (i.e. Blattodea, Mantodea and Isoptera). This approach aimed at testing whether the presumptive old ages of each sub-order could be confirmed or refuted. We tested (1) the origin and diversification of praying mantises, with regard to recent but controversial fossil data that pushed back the origin of this group for more than 150 My [54]; (2) the origin of Blattodea, which provides a chronological framework to fit Palaeozoic and Mesozoic “roachoids” in; (3) the origin of termites, which brings substantial information about eusociality evolution.



0.4

Fig 7. Result of the concatenated analysis of six molecular markers in Maximum Likelihood: termites (continued). Legend as in Fig 1.

doi:10.1371/journal.pone.0130127.g007

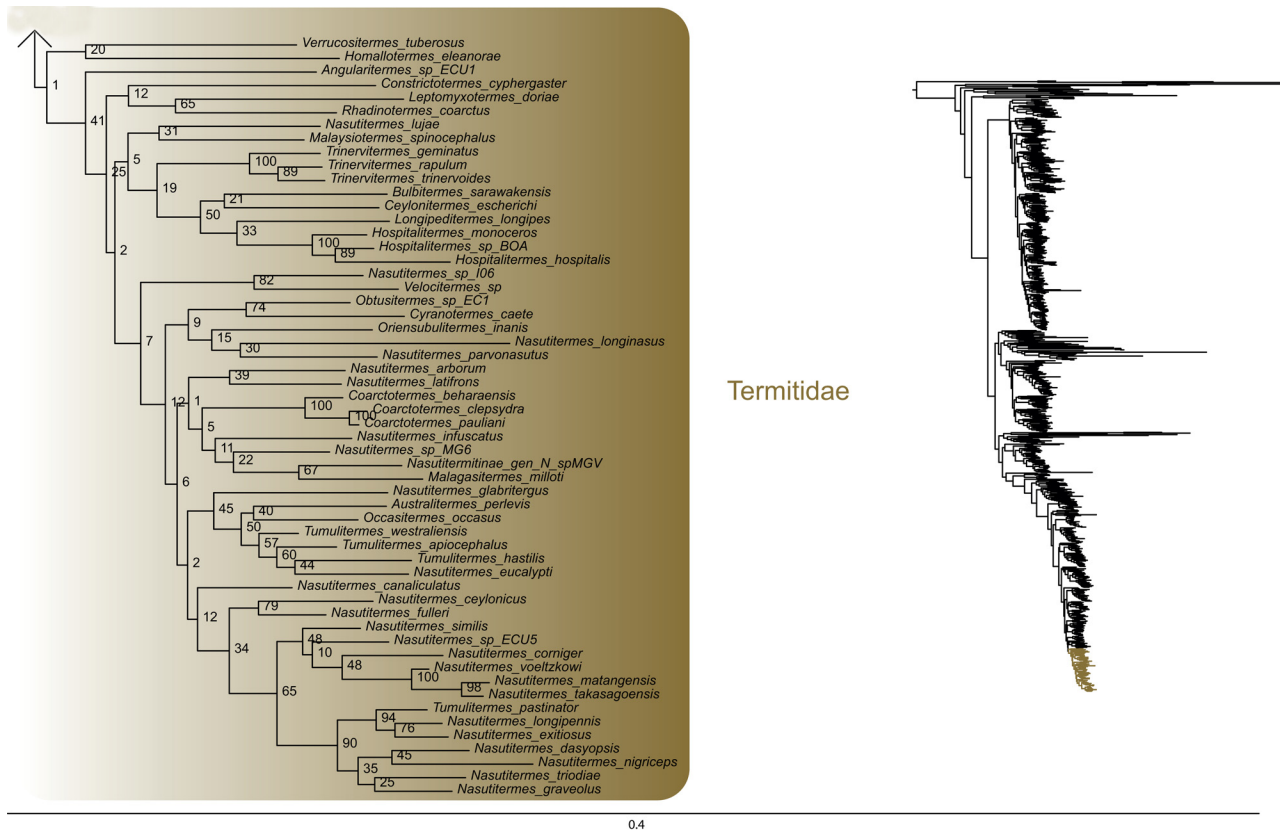


Fig 8. Result of the concatenated analysis of six molecular markers in Maximum Likelihood: termites (continued). Legend as in Fig 1.

doi:10.1371/journal.pone.0130127.g008

Timing of diversification in praying mantises and palaeoecological implications

Whereas the origins of praying mantises have been thought to be rather recent (~ 150 Mya–Grimaldi, 2003), it has been dramatically pushed back in time following recent fossil discoveries. The Late Carboniferous–Early Permian origin of crown-Dictyoptera inferred here is compatible with the Carboniferous Anthracoptilidae, the putative stem-mantodeans (~310 Mya; [54,55]). However, this compatibility does not resolve the debate concerning the interpretation of these fossils (e.g., [56–59]), in which some authors suggest that they rather belong to Hypoperlida or Eoblattidae. Moreover, our recovered estimates are significantly older than those recovered by Svenson and Whiting [19] and Misof et al. [117], where stem-mantises dated to the Triassic–Jurassic boundary (~ 200 Mya) and crown diversification occurred in the Late Jurassic (~150 Mya; [19]) or even sooner [117]. If we ignore Anthracoptilidae, the Jurassic diversification of crown-mantises recovered here is congruent with the palaeontological dating of the oldest fossil record [87].

Even though stem-mantises would date back to the Late Carboniferous, our results suggest that crown-mantis diversification would have occurred much more recently, in the Early–Middle Jurassic. This pattern of old origin and much more recent diversification is puzzling but it could be related to their major life history trait: carnivory. Before the Jurassic, there were several carnivorous lineages, including several polyneopterans. Among these lineages, Titanoptera is extinct, only known from the Triassic. Mantophasmatodea was present (and may have flourished) before the diversification of the crown-mantises [118]. Some Palaeozoic and Early

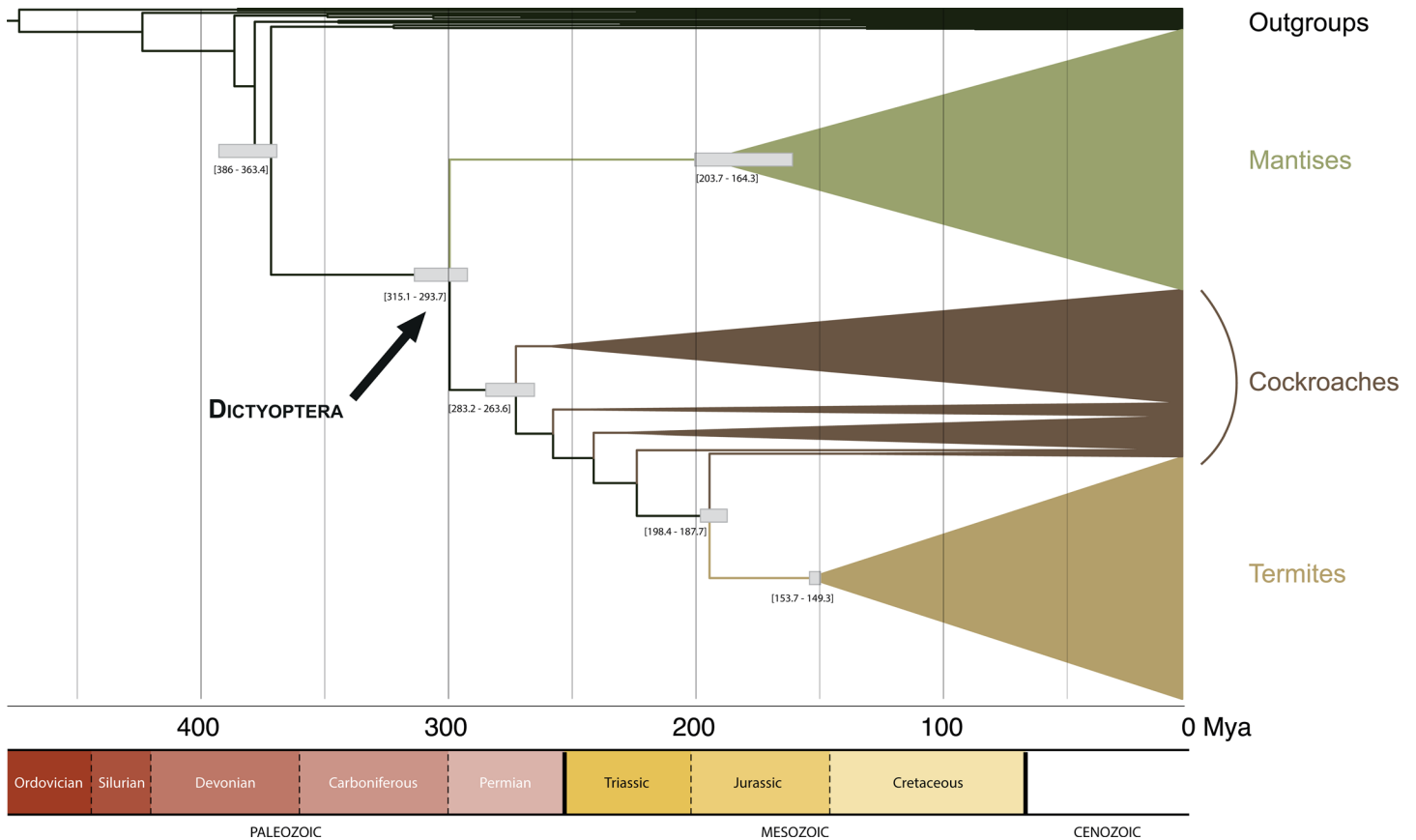


Fig 9. Simplified chronogram obtained in Penalized Likelihood dating analyses. Grey bars represent approximated 90% confidence intervals.

doi:10.1371/journal.pone.0130127.g009

Mesozoic “roachoids” (Raphidiomimoidea) were also probably carnivorous. Our dating estimates suggest that the crown-mantises would have postdated all these polyneopteran carnivores, a scenario of ‘ecological succession’ already hypothesized by Gorochov [119]. Given the controversial nature of anthracoptilids around both their taxonomic affinity and their possession of raptorial forelegs [56], we cannot confirm whether raptorial legs were already present in stem-mantis lineages or if it is a crown-mantis apomorphy that would have been a key acquisition for their diversification, after competitors had disappeared.

Cockroaches, “roachoids” and the putative sister-taxon of Dictyoptera

Numerous and diverse “roachoid” fossils, with or without any external ovipositor, are known from at least the Westphalian (~315 Mya–Carboniferous; [120]) to the Early Cretaceous periods (~130 Mya; [87]). But their taxonomy and phylogenetic affinities to extent Dictyoptera is ambiguous [23,49]. As for modern cockroaches, all of which lack external ovipositors, their oldest fossils date back to the Early Cretaceous period (~120 Mya; [87,121,122]). Modern cockroaches are hence thought to have their origin in the Jurassic [87] but previous dating estimates suggest a much broader range (see for example [21,86]).

We postulate here an origin of crown-Dictyoptera in the Late Carboniferous or Early Permian (293.7–315.1 Mya), which is older than commonly thought (e.g., ~200 Mya in [87,117]), if one does not consider the disputed “roachoids” and Anthracoptilidae that we have discussed above. This age is congruent with the presence of “blattoid” ootheca in the Late Carboniferous,

suggesting that Dictyoptera with reduced ovipositors were already present at that time, coexisting with “roachoids” with long external ovipositors [123]. This result, however, is much younger than some “roachoid” fossils and clearly invalidates the hypothesis suggesting that winged “blattoids” would date back to the Devonian [124]. We thus can reduce the chronological window associated to Dictyoptera diversification according to fossils of disputed taxonomic attribution. Nevertheless, some old “roachoid” fossils remain compatible with our dating estimates and would deserve further investigation before any conclusions are drawn about their phylogenetic affinities. Hopefully, new specimens and modern tools may help revealing new characters and assessing intra- and inter-specific variation in wing venation for more accurate interpretations [125]. They could allow assessing what are the relationships between these “roachoids” of the stem-Dictyoptera and the crown Blattodea and/or crown Mantodea.

We estimated that stem-Dictyoptera dated back to the Middle-Late Devonian (~375 Mya). This estimate is congruent with datings provided in a large-scale phylogenomic study ([86], but see [117]). It is also congruent with the hypothesis suggesting that Paoliida, a Palaeozoic insect group, would be sister-group to Dictyoptera [50].

Origin of termites and the evolution of eusociality

There is a debate around the origin of termites, which are classically thought to date back to the Late Jurassic (150–160 Mya; [26,87,126]) but Hasiotis and Dubiel [66], on the basis of putative termite nest evidence, hypothesized that they would date back, at least, to the Late Triassic (~215 Mya). Given both the pivotal role of termites in contemporary warm ecosystems and their eusocial system, this debate has important consequences on our understanding of insect evolution.

Apart from Bourguignon et al. and Misof et al. ([26,117]; 136–170 Mya, ~130–145 Mya, respectively), recent molecular studies reported a much older and wider range for crown-Isoptera than ours (140–480 Mya in [21]; 180–230 Mya in [127]), and, even though Davis et al. [21] acknowledged that their oldest estimates are artifactual, they do not deny a possible Late Triassic, or even older, origin for termites. Here, we hypothesized a stem-termite origin in the Early Jurassic (i.e. ~195 Mya) and a crown diversification in the Late Jurassic (~150 Mya). Thus, the Late Triassic termite nest ‘evidence’ (~215 Mya; [66]) is not corroborated by our analyses, which supports previous criticisms of this fossil interpretation [62,68]. The discovery of a nest-like structure in Triassic rocks, even if similar to termite nests, could have been built by other organisms. Furthermore, the age of the embedding rocks could be different from the age of the nest itself. The fossil *Stephanotermopsis rodendorfi* [128], a putative stem-termite that dates back to ~290 Mya but has never been revised since its original description, does not fit either with our dating estimates or those of Ware et al. [127] or Bourguignon et al. [26]. *Stephanotermopsis rodendorfi* possesses some Dictyoptera-like attributes (e.g., forewing with ScP anteriorly pectinate, both RA and RP branched) but it is likely not a stem-Isoptera because it lacks any of Isoptera synapomorphy (e.g., *S. rodendorfi* has a long and branched Sc, a branched RA and a well individualized RP; A. Nel, pers. obs.)

Our dating estimates put into perspective the fact that termites could have been the first extant insect lineage that has evolved eusociality [129,130]. Given the difficulties associated with fossil nests, other evidence of sociality should be looked for to refine our understanding on the origin of eusociality. Among these evidences are sterile castes but fossils of these castes are rare, and the oldest one dates back to the Early Cretaceous [131]. For reproductive individuals, which are the most abundant in the oldest fossil records, only a phylogenetic position hypothesis would allow inferring sociality. Vrřanský [132] suggested that the presence of a

basal suture in adult termite wings could also be indicative of eusociality but this morphological character is rather associated to a life in endogean habitats and not characteristic of eusociality.

Finally, given both the recent origin of termites and their crucial role as decomposers, one can wonder how warm ecosystems functioned in the Triassic or before (see for example [133]). Myriapoda, Blattodea and some Orthoptera could also have acted as decomposers, but further evidence is needed. Thus, it remains an open question and it is worth noticing that similar questions exist for scavenger and coprophagous guilds, as these guilds are mainly composed of two recent lineages: Diptera and Coleoptera since the Cenozoic.

Conclusions

We used a conservative approach allowing old age estimates with verified fossils and a large phylogenetic sample to elucidate the timing of diversification of Dictyoptera and of its three sub-orders (i.e. Blattodea, Mantodea and Isoptera). We provided age estimates that clarified the debates around the origin of each crown-dictyopteran group. Cockroaches and praying mantises appear as ancient lineages as assumed by some early authors, but the real situation is not so simple. The most ancient presumptive fossils of these groups were not necessarily correctly attributed and debates are far from over. In contrast, termites appear more recent than some authors suggested. As a whole, our approach showed that presumptive old ages were not all confirmed in spite of a conservative root calibration.

This chronological framework has three main evolutionary consequences. First, the pattern of old origin and much more recent diversification of praying mantises suggests a scenario of ecological succession in the major carnivorous lineages of polyneopterous insects. Second, the recent detritivory in termites could have complemented the more ancient detritivory of cockroaches. Third, we refine the chronological window during which termites evolved eusociality, potentially the first insect group to do so.

This new timescale for Dictyoptera provides an opportunity for directing future research both in molecular phylogenetics and in palaeontology. It would be necessary to investigate further the phylogenetic relationships of cockroaches, which seem more obscure than those of praying mantises and termites, and investigate undersampled families and surprisingly long branches. Blattidae, Corydiidae and Anaplectinae should be the first target in future phylogenetic studies. Also, it would be necessary to search for fossils of each group at some critical periods shown by the present dating where their occurrence is still disputable: praying mantises in the Permian and Triassic periods; cockroaches in the Permian; and termites in the Jurassic.

Supporting Information

S1 Dataset. Phylogenetic matrix. Alignment of the six molecular markers for the 793 species in nexus format.

(NEX)

S1 Methods. R script. Script used to remove taxa with very short branches in each tree used for dating analyses.

(R)

S2 Methods. Pruned taxa. Tab-delimited text with the list of taxa to be pruned for each tree in dating analyses.

(TXT)

S1 Table. Taxonomic sample. Table with a list of the specimens used in this study and their GenBank accession numbers for the six loci. Sequences obtained for this study are in bold.

(XLS)

S2 Table. Preliminary datings. Table with the results of the different dating estimates under different smoothing values for the five main nodes (root, crown-Dictyoptera, crown-mantises, crown-cockroaches and crown-termites).

(DOC)

Acknowledgments

Some preliminary analyses were carried out using the resources of the Computational Biology Service Unit from the Muséum national d'Histoire naturelle (MNHN, Paris). We thank Julio Pedraza for his help in this respect. Analyses were performed, in part, on the Department of Invertebrate Zoology, Cleveland Museum of Natural History analytical server. We thank Gabin Colombini, Cyrille D'Haese, and Dario Zuccon for their help in the lab. We thank Amandine Gasc for her help on using the R package ape. This contribution was presented as a talk at the Hennig XXXII meeting in Rostock (Germany) and we are grateful for the comments provided. We also thank Russell Garwood and one anonymous reviewer for their helpful comments on the manuscript.

Author Contributions

Conceived and designed the experiments: FL AN PG. Performed the experiments: FL AN GJS. Analyzed the data: FL AN GJS TR RP PG. Wrote the paper: FL AN GJS TR RP PG.

References

1. Crisp MD, Trewick SA, Cook LG. Hypothesis testing in biogeography. *Trends Ecol Evol.* 2011; 26(2): 66–72. doi: [10.1016/j.tree.2010.11.005](https://doi.org/10.1016/j.tree.2010.11.005) PMID: [21146898](https://pubmed.ncbi.nlm.nih.gov/21146898/)
2. Donoghue MJ, Moore BR. Toward an Integrative Historical Biogeography. *Integr Comp Biol.* 2003; 43(2): 261–70. doi: [10.1093/icb/43.2.261](https://doi.org/10.1093/icb/43.2.261) PMID: [21680431](https://pubmed.ncbi.nlm.nih.gov/21680431/)
3. Quental TB, Marshall CR. Diversity dynamics: molecular phylogenies need the fossil record. *Trends Ecol Evol.* 2010; 25(8): 434–41. doi: [10.1016/j.tree.2010.05.002](https://doi.org/10.1016/j.tree.2010.05.002) PMID: [20646780](https://pubmed.ncbi.nlm.nih.gov/20646780/)
4. Heads M. Dating nodes on molecular phylogenies: a critique of molecular biogeography. *Cladistics.* 2005; 21(1): 62–78.
5. Linder HP, Hardy CR, Rutschmann F. Taxon sampling effects in molecular clock dating: an example from the African Restionaceae. *Mol Phylogenet Evol.* 2005; 35(3): 569–82. PMID: [15878126](https://pubmed.ncbi.nlm.nih.gov/15878126/)
6. Pulquério MJF, Nichols RA. Dates from the molecular clock: how wrong can we be? *Trends Ecol Evol.* 2007; 22(4): 180–4. PMID: [17157408](https://pubmed.ncbi.nlm.nih.gov/17157408/)
7. Magallón S. Using fossils to break long branches in molecular dating: a comparison of relaxed clocks applied to the origin of angiosperms. *Syst Biol.* 2010; 59(4): 384–99. doi: [10.1093/sysbio/syq027](https://doi.org/10.1093/sysbio/syq027) PMID: [20538759](https://pubmed.ncbi.nlm.nih.gov/20538759/)
8. Parham JF, Donoghue PCJ, Bell CJ, Calway TD, Head JJ, Holroyd PA, et al. Best practices for justifying fossil calibrations. *Syst Biol.* 2012; 61(2): 346–59. doi: [10.1093/sysbio/syr107](https://doi.org/10.1093/sysbio/syr107) PMID: [22105867](https://pubmed.ncbi.nlm.nih.gov/22105867/)
9. Dornburg A, Beaulieu JM, Oliver JC, Near TJ. Integrating fossil preservation biases in the selection of calibrations for molecular divergence time estimation. *Syst Biol.* 2011; 60(4): 519–27. doi: [10.1093/sysbio/syr019](https://doi.org/10.1093/sysbio/syr019) PMID: [21436104](https://pubmed.ncbi.nlm.nih.gov/21436104/)
10. Marshall CR. A simple method for bracketing absolute divergence times on molecular phylogenies using multiple fossil calibration points. *Am Nat.* 2008; 171(6): 726–42. doi: [10.1086/587523](https://doi.org/10.1086/587523) PMID: [18462127](https://pubmed.ncbi.nlm.nih.gov/18462127/)
11. Ho SYW, Phillips MJ. Accounting for calibration uncertainty in phylogenetic estimation of evolutionary divergence times. *Syst Biol.* 2009; 58(3): 367–80. doi: [10.1093/sysbio/syp035](https://doi.org/10.1093/sysbio/syp035) PMID: [20525591](https://pubmed.ncbi.nlm.nih.gov/20525591/)
12. Graham SW, Olmstead RG, Barrett SCH. Rooting phylogenetic trees with distant outgroups: a case study from the commelinoid monocots. *Mol Biol Evol.* 2002; 19: 1769–81. PMID: [12270903](https://pubmed.ncbi.nlm.nih.gov/12270903/)
13. Grandcolas P, Guilbert E, Robillard T, D'Haese CA, Murielle J, Legendre F. Mapping characters on a tree with or without the outgroups. *Cladistics.* 2004; 20(6): 579–82.
14. Hedman MM. Constraints on clade ages from fossil outgroups. *Paleobiology.* 2010; 36(1): 16–31.

15. Beccaloni GW, Eggleton P. Order Blattodea Brunner von Wattenwyl, 1882. In: Zhang Z-Q, editor. Animal biodiversity: An outline of higher-level classification and survey of taxonomic richness. *Zootaxa*. 2013; 3148: 199–200.
16. Inward D, Beccaloni G, Eggleton P. Death of an order: a comprehensive molecular phylogenetic study confirms that termites are eusocial cockroaches. *Biol Lett*. 2007; 3(3): 331–5. PMID: [17412673](#)
17. Inward D, Vogler AP, Eggleton P. A comprehensive phylogenetic analysis of termites (Isoptera) illuminates key aspects of their evolutionary biology. *Mol Phylogenet Evol*. 2007; 44(3): 953–67. PMID: [17625919](#)
18. Legendre F, Whiting MF, Bordereau C, Canello EM, Evans TA, Grandcolas P. The phylogeny of termites (Dictyoptera: Isoptera) based on mitochondrial and nuclear markers: Implications for the evolution of the worker and pseudergate castes, and foraging behaviors. *Mol Phylogenet Evol*. 2008; 48(2): 615–27. doi: [10.1016/j.ympev.2008.04.017](#) PMID: [18502666](#)
19. Svenson GJ, Whiting MF. Reconstructing the origins of praying mantises (Dictyoptera, Mantodea): the roles of Gondwanan vicariance and morphological convergence. *Cladistics*. 2009; 25(5): 468–514.
20. Djernæs M, Klass K-D, Eggleton P. Identifying possible sister groups of Cryptocercidae+Isoptera: A combined molecular and morphological phylogeny of Dictyoptera. *Mol Phylogenet Evol*. 2015; in press.
21. Davis RB, Baldauf SL, Mayhew PJ. Eusociality and the success of the termites: insights from a super-tree of dictyopteran families. *J Evol Biol*. 2009; 22(8): 1750–61. doi: [10.1111/j.1420-9101.2009.01789.x](#) PMID: [19549138](#)
22. Laurentiaux D. La reproduction chez les Blattes carbonifères. Essai d'explication du panchronisme des Blattaires et classification sous-ordinale. *CR. Acad. Sci. III-Vie*. 1960; 250: 1700–2
23. Grandcolas P. The phylogeny of cockroach families: A cladistic appraisal of morpho-anatomical data. *Can J Zool*. 1996; 74(3): 508–27.
24. Grandcolas P, Deleporte P. The origin of Protistan symbionts in termites and cockroaches: a phylogenetic analysis. *Cladistics*. 1996; 12: 93–8.
25. Svenson GJ, Whiting MF. Phylogeny of Mantodea based on molecular data: evolution of a charismatic predator. *Syst Entomol*. 2004; 29(3): 359–70.
26. Bourguignon T, Lo N, Cameron SL, Šobotník J, Hayashi Y, Shigenobu S, et al. The Evolutionary History of Termites as Inferred from 66 Mitochondrial Genomes. *Mol Biol Evol*. 2015; 32(2): 406–21. doi: [10.1093/molbev/msu308](#) PMID: [25389205](#)
27. Djernæs M, Klass K-D, Picker MD, Damgaard J. Phylogeny of cockroaches (Insecta, Dictyoptera, Blattodea), with placement of aberrant taxa and exploration of out-group sampling. *Syst Entomol*. 2012; 37(1): 65–83.
28. Kambhampati S. A phylogeny of cockroaches and related insects based on DNA sequence of mitochondrial ribosomal RNA genes. *Proc Natl Acad Sci USA*. 1995; 92: 2017–20. PMID: [7534409](#)
29. Kambhampati S. Phylogenetic relationship among cockroach families inferred from mitochondrial 12S rRNA gene sequence. *Syst Entomol*. 1996; 21: 89–98.
30. Klass K-D. Die Phylogenie der Dictyoptera. Ph.D. dissertation: Universität München; Cuvillier, Göttingen; 1995.
31. Klass K-D. The external male genitalia and the phylogeny of Blattaria and Mantodea. *Bonn Zool Monogr*. 1997; 42: 1–341.
32. Klass K-D, Meier R. A phylogenetic analysis of Dictyoptera (Insecta) based on morphological characters. *Entomol Abhandlungen*. 2006; 63(1–2): 3–50.
33. Lo N, Tokuda G, Watanabe H, Rose H, Slaytor M, Maekawa K, et al. Evidence from multiple gene sequences indicates that termites evolved from wood-feeding cockroaches. *Curr Biol*. 2000; 10(13): 801–4. PMID: [10898984](#)
34. Lo N, Bandi C, Watanabe H, Nalepa CA, Beninati T. Evidence for cocladogenesis between diverse dictyopteran lineages and their intracellular endosymbionts. *Mol Biol Evol*. 2003; 20(6): 907–13. PMID: [12716997](#)
35. Maekawa K, Matsumoto T. Molecular phylogeny of cockroaches (Blattaria) based on mitochondrial COII gene sequences. *Syst Entomol*. 2000; 25(4): 511–9.
36. McKittrick FA. Evolutionary study of cockroaches. *Cornell Univ Agric Exp Stat Mem*. 1964; 389: 1–197.
37. Murienne J. Molecular data confirm family status for the Tryonicus–Lauraesilpha group (Insecta: Blattodea: Tryonicidae). *Org Divers Evol*. 2009; 9(1): 44–51.

38. Roth LM. Systematics and phylogeny of cockroaches (Dictyoptera: Blattaria). *Orient Insects*. 2003; 37(1): 1–186.
39. Ware JL, Litman J, Klass K-D, Spearman LA. Relationships among the major lineages of Dictyoptera: the effect of outgroup selection on dictyopteran tree topology. *Syst Entomol*. 2008; 33(3): 429–50.
40. Lo N, Beninati T, Stone F, Walker J, Sacchi L. Cockroaches that lack *Blattabacterium* endosymbionts: the phylogenetically divergent genus *Nocticola*. *Biol Lett*. 2007; 3: 327–30. PMID: [17376757](#)
41. Roth S, Fromm B, Gade G, Predel R. A proteomic approach for studying insect phylogeny: CAPA peptides of ancient insect taxa (Dictyoptera, Blattoptera) as a test case. *BMC Evol Biol*. 2009; 9(1): 50.
42. Cameron SL, Lo N, Bourguignon T, Svenson GJ, Evans TA. A mitochondrial genome phylogeny of termites (Blattodea: Termitoidea): Robust support for interfamilial relationships and molecular synapomorphies define major clades. *Mol Phylogenet Evol*. 2012; 65(1): 163–73. doi: [10.1016/j.ympev.2012.05.034](#) PMID: [22683563](#)
43. Cornwell PB. The cockroach. Volume 1. A laboratory insect and an industrial pest. London: Hutchinson; 1968.
44. Imms AD. Recent advances in entomology. Philadelphia, PA: P. Blackiston's Son & Co.; 1937.
45. Rau P. Cockroaches: the forerunners of termites (Orthoptera: Blattidae; Isoptera). *Entomol News*. 1941; 52(9): 256–9.
46. Roth LM. Evolution and taxonomic significance of reproduction in Blattaria. *Annu Rev Entomol*. 1970; 15: 75–96.
47. Roth L. *Sliferia*, a new ovoviviparous cockroach genus (Blattellidae) and the evolution of ovoviviparity in Blattaria (Dictyoptera). *Proc Entomol Soc Washingt*. 1989; 91(3): 441–51.
48. Tillyard RJ. Are termites descended from true cockroaches. *Nature*. 1936; 137(3468): 655.
49. Hennig W. *Insect Phylogeny*. Chichester: John Wiley & Sons; 1981.
50. Prokop J, Krzeminski W, Krzeminska E, Hörschemeyer T, Ilger J-M, Brauckmann C, et al. Late Palaeozoic Paoliida is the sister group of Dictyoptera (Insecta: Neoptera). *J Syst Palaeontol*. 2014; 12(5): 601–22.
51. Grimaldi DA. A revision of Cretaceous mantises and their relationships, including new taxa (Insecta: Dictyoptera: Mantodea). *Am Museum Novit*. 2003; 3412: 1–47.
52. Vršanský P. Origin and the early evolution of mantises. *Amba Proj*. 2002; 6(1): 1–16.
53. Trautwein MD, Wiegmann BM, Beutel R, Kjer KM, Yeates DK. Advances in insect phylogeny at the dawn of the postgenomic era. *Annu Rev Entomol*. 2012; 57: 449–68. doi: [10.1146/annurev-ento-120710-100538](#) PMID: [22149269](#)
54. Béthoux O, Wieland F. Evidence for Carboniferous origin of the order Mantodea (Insecta: Dictyoptera) gained from forewing morphology. *Zool J Linn Soc*. 2009; 156(1): 79–113.
55. Béthoux O, Beckemeyer RJ, Engel MS, Hall JD. New data on *Homocladus grandis*, a Permian stem-mantodean (Polyneoptera: Dictyoptera). *J Paleontol*. 2010; 84(4): 746–53.
56. Aristov DS, Bashkuev AS, Golubev VK, Gorochov AV, Karasev EV, Kopylov DS, et al. Fossil insects of the middle and upper Permian of European Russia. *Paleontol J*. 2013; 47(7): 641–832.
57. Gorochov AV. No evidence for Paleozoic origin of mantises (Dictyoptera: Mantina). *Zoosystematica Ross*. 2013; 22: 6–14.
58. Kukulová-Peck J, Beutel RG. Is the Carboniferous †*Adiphebia laeoana* really the “oldest beetle”? Critical reassessment and description of a new Permian beetle family. *Eur J Entomol*. 2012; 5759: 633–45.
59. Guan Z, Prokop J, Roques P, Lapeyrie J, Nel A. Revision of the enigmatic insect family Anthracoptiliidae enlightens the evolution of Palaeozoic stem-dictyopterans. *Acta Palaeontol Pol*. 2015; in press.
60. Krishna K, Grimaldi DA, Krishna V, Engel MS. Treatise on the Isoptera of the world. *Bull Am Museum Nat Hist*. 2013; 377: 1–2704.
61. Nel A, Paicheler J-C. Les Isoptera fossiles. Etat actuel des connaissances, implications paléocéologiques et paléoclimatologiques. [Insecta, Dictyoptera]. *Cah paléontologie*. 1993: 102–79.
62. Vršanský P, Aristov D. Termites (Isoptera) from the Jurassic/Cretaceous boundary: Evidence for the longevity of their earliest genera. *Eur J Entomol*. 2014; 111(1): 137–41.
63. Bordy E, Bumby A, Catuneanu O. Advanced early Jurassic termite (Insecta: Isoptera) nests: evidence from the Clarens Formation in the Tuli Basin, southern Africa. *Palaios*. 2004: 68–78.
64. Bordy EM, Bumby AJ, Catuneanu O, Eriksson PG. Possible trace fossils of putative termite origin in the Lower Jurassic (Karoo Supergroup) of South Africa and Lesotho. *S Afr J Sci*. 2009; 105(9–10): 356–62.

65. Bumby A, Bordy EM. Termite nests and associated architecture in the lower jurassic clarens formation: questions regarding their provenance. *Mesozoic Terr Ecosyst*. 2006; 5–8.
66. Hasiotis S, Dubiel RF. Termite (Insecta: Isoptera) nest ichnofossils from the upper triassic chinle formation, petrified forest national park, Arizona. *Ichnos*. 1995; 4: 119–30.
67. Tanner LH, Smith DL, Lucas SG. Trace Fossils in Eolian Facies of the Upper Triassic-Lower Jurassic Dinosaur Canyon Member, Moenave Formation, Northern Arizona. *Ichnos*. 2006; 13(1): 21–9.
68. Genise J, Bellosi E, Melchor R. Comment: Advanced early Jurassic termite (Insecta: Isoptera) nests: evidence from the Clarens Formation in the Tuli Basin, southern Africa (Bordy et al., 2004). *Palaeos*. 2005; 20(3): 303–8.
69. Legendre F, D'Haese C, Deleporte P, Pellens R, Whiting MF, Schliep K, et al. The evolution of social behaviour in Blaberid cockroaches with diverse habitats and social systems: phylogenetic analysis of behavioural sequences. *Biol J Linn Soc*. 2014; 111: 58–77.
70. Pellens R, D'Haese CA, Bellés X, Piulachs M-D, Legendre F, Wheeler WC, et al. The evolutionary transition from subsocial to eusocial behaviour in Dictyoptera: phylogenetic evidence for modification of the “shift-in-dependent-care” hypothesis with a new subsocial cockroach. *Mol Phylogenet Evol*. 2007; 43(2): 616–26. PMID: [17291786](#)
71. Yager DD, Svenson GJ. Patterns of praying mantis auditory system evolution based on morphological, molecular, neurophysiological, and behavioural data. *Biol J Linn Soc*. 2008; 94(3): 541–68.
72. De Queiroz A, Gatesy J. The supermatrix approach to systematics. *Trends Ecol Evol*. 2007; 22(1): 34–41. PMID: [17046100](#)
73. Kupczok A, Schmidt HA, von Haeseler A. Accuracy of phylogeny reconstruction methods combining overlapping gene data sets. *Algorithms Mol Biol*. 2010; 5(1): 37.
74. von Haeseler A. Do we still need supertrees? *BMC Biol*. 2012; 10: 13. doi: [10.1186/1741-7007-10-13](#) PMID: [22369571](#)
75. Ishiwata K, Sasaki G, Ogawa J, Miyata T, Su Z-H. Phylogenetic relationships among insect orders based on three nuclear protein-coding gene sequences. *Mol Phylogenet Evol*. 2011; 58(2): 169–80. doi: [10.1016/j.ympev.2010.11.001](#) PMID: [21075208](#)
76. Wang Y, Engel MS, Rafael JA, Dang K, Wu H, Wang Y, et al. A unique box in 28S rRNA is shared by the enigmatic insect order Zoraptera and Dictyoptera. *PLOS ONE*. 2013; 8(1): e53679. doi: [10.1371/journal.pone.0053679](#) PMID: [23301099](#)
77. Edgar RC. MUSCLE: multiple sequence alignment with high accuracy and high throughput. *Nucleic Acids Res*. 2004; 32(5): 1792–7. PMID: [15034147](#)
78. Hall TA. BioEdit: a user-friendly biological sequence alignment editor and analysis program for Windows 95/98/NT. *Nucleic Acids Symp Ser*. 1999; 41: 95–8.
79. Vaidya G, Lohman DJ, Meier R. SequenceMatrix: concatenation software for the fast assembly of multi-gene datasets with character set and codon information. *Cladistics*. 2011; 27: 171–80.
80. Stamatakis A. RAxML-VI-HPC: maximum likelihood-based phylogenetic analyses with thousands of taxa and mixed models. *Bioinformatics*. 2006; 22(21): 2688–90. PMID: [16928733](#)
81. Sullivan J, Swofford DL, Naylor GJP. The effect of taxon sampling on estimating rate heterogeneity parameters of maximum-likelihood models. *Mol Biol Evol*. 1999; 16: 1347–56.
82. Nylander JAA. MrModeltest v2. Program distributed by the author. Evolutionary Biology Centre, Uppsala University; 2004.
83. Akaike H. Information theory as an extension of the maximum likelihood principle. In: Petrov BN, Csaki F, editors. *Second International Symposium on Information Theory*. Akademiai Kiado, Budapest; 1973. p. 276–81.
84. Posada D, Buckley TR. Model selection and model averaging in phylogenetics: advantages of akaike information criterion and bayesian approaches over likelihood ratio tests. *Syst Biol*. 2004; 53(5): 793–808. PMID: [15545256](#)
85. Stamatakis A, Hoover P, Rougemont J. A rapid bootstrap algorithm for the RAxML Web servers. *Syst Biol*. 2008; 57(5): 758–71. doi: [10.1080/10635150802429642](#) PMID: [18853362](#)
86. Rehm P, Borner J, Meusemann K, von Reumont BM, Simon S, Hadrys H, et al. Dating the arthropod tree based on large-scale transcriptome data. *Mol Phylogenet Evol*. 2011; 61(3): 880–7. doi: [10.1016/j.ympev.2011.09.003](#) PMID: [21945788](#)
87. Grimaldi DA, Engel MS. *Evolution of the Insects*. Cambridge: Cambridge University Press; 2005.
88. Sanderson MJ, Thorne JL, Wikström N, Bremer K. Molecular evidence on plant divergence times. *Am J Bot*. 2004; 91(10): 1656–65. doi: [10.3732/ajb.91.10.1656](#) PMID: [21652315](#)

89. Nel A, Roy R. Revision of the fossil "mantid" and "ephemerid" species described by Piton from the Palaeocene of Menat (France)(Mantodea: Chaeteessidae, Mantidae; Ensifera: Tettigonoidea). *Eur J Entomol.* 1996; 93: 223–34.
90. Wieland F. The phylogenetic system of Mantodea (Insecta: Dictyoptera). *Species Phylo Evol.* 2013; 3: 3–222.
91. Sanderson MJ. r8s: inferring absolute rates of molecular evolution and divergence times in the absence of a molecular clock. *Bioinformatics.* 2003; 19(2): 301–2. PMID: [12538260](#)
92. Escudero M, Hipp A. Shifts in diversification rates and clade ages explain species richness in higher-level sedge taxa (Cyperaceae). *Am J Bot.* 2013; 100(12): 2403–11. doi: [10.3732/ajb.1300162](#) PMID: [24249788](#)
93. Pyron RA, Burbrink FT. Early origin of viviparity and multiple reversions to oviparity in squamate reptiles. *Ecol Lett.* 2014; 17(1): 13–21. doi: [10.1111/ele.12168](#) PMID: [23953272](#)
94. Li M, Tian Y, Zhao Y, Bu W. Higher level phylogeny and the first divergence time estimation of Hemiptera (Insecta: Hemiptera) based on multiple genes. *PLOS ONE.* 2012; 7(2): e32152. doi: [10.1371/journal.pone.0032152](#) PMID: [22384163](#)
95. Magallón S, Hilu KW, Quandt D. Land plant evolutionary timeline: gene effects are secondary to fossil constraints in relaxed clock estimation of age and substitution rates. *Am J Bot.* 2013; 100(3): 556–73. doi: [10.3732/ajb.1200416](#) PMID: [23445823](#)
96. Symmank L, Samain M-S, Smith JF, Pino G, Stoll A, Goetghebeur P, et al. The extraordinary journey of Peperomia subgenus Tildenia (Piperaceae): insights into diversification and colonization patterns from its cradle in Peru to the Trans-Mexican Volcanic Belt. *J Biogeogr.* 2011; 38(12): 2337–49.
97. Drummond AJ, Rambaut A. BEAST: Bayesian evolutionary analysis by sampling trees. *BMC Evol Biol.* 2007; 7: 214. PMID: [17996036](#)
98. Lepage T, Bryant D, Philippe H, Lartillot N. A general comparison of relaxed molecular clock models. *Mol Biol Evol.* 2007; 24(12): 2669–80. PMID: [17890241](#)
99. Paradis E. Molecular dating of phylogenies by likelihood methods: a comparison of models and a new information criterion. *Mol Phylogenet Evol.* 2013; 67(2): 436–44. doi: [10.1016/j.ympev.2013.02.008](#) PMID: [23454091](#)
100. Sanderson MJ. Estimating absolute rates of molecular evolution and divergence times: a penalized likelihood approach. *Mol Biol Evol.* 2002; 19(1): 101–9. PMID: [11752195](#)
101. Sanderson MJ. r8s, version 1.50 user's manual (<http://ginger.ucdavis.edu/r8s>); 2002.
102. Paradis E, Claude J, Strimmer K. APE: Analyses of Phylogenetics and Evolution in R language. *Bioinformatics.* 2004; 20(2): 289–90. PMID: [14734327](#)
103. Loader C. Local regression and likelihood. New York: Springer; 1999.
104. Lopez-Vaamonde C, Wikström N, Labandeira C, Godfray HCJ, Goodman SJ, Cook JM. Fossil-calibrated molecular phylogenies reveal that leaf-mining moths radiated millions of years after their host plants. *J Evol Biol.* 2006; 19(4): 1314–26. PMID: [16780532](#)
105. Kjer KM, Carle FL, Litman J, Ware JL. A molecular phylogeny of Hexapoda. *Arthropod Syst Phylogeny.* 2006; 64: 35–44.
106. Kristensen NP. Phylogeny of Insect orders. *Ann Rev Entomol.* 1981; 26: 135–57.
107. Terry MD, Whiting MF. Mantophasmatodea and phylogeny of the lower neopterous insects. *Cladistics.* 2005; 21: 240–57.
108. Wheeler W, Whiting MF, Wheeler QD, Carpenter JM. The phylogeny of the extant hexapod orders. *Cladistics.* 2001; 17: 113–69.
109. Grandcolas P. Systématique phylogénétique de la sous-famille des Tryonicinae (Dictyoptera, Blattaria, Blattidae). *Mémoires du Muséum Natl d'histoire Nat. Editions du Muséum;* 1997; 171: 91–124.
110. Muriene J, Pellens R, Budinoff RB, Wheeler WC, Grandcolas P. Phylogenetic analysis of the endemic New Caledonian cockroach *Lauraesilpha*. Testing competing hypotheses of diversification. *Cladistics.* 2008; 24(5): 802–12.
111. Gäde G, Grandcolas P, Kellner R. Structural data on hypertrehalosaemic neuropeptides from *Cryptocercus punctulatus* and *Therea petiveriana*: how do they fit into the phylogeny of cockroaches? *Proc R Soc London Ser B Biol Sci.* 1997; 264(1382): 763–8.
112. Grandcolas P. Phylogenetic systematics of the subfamily Polyphaginae, with the assignment of *Cryptocercus* Scudder, 1862 to this taxon (Blattaria, Blaberoidea, Polyphagidae). *Syst Entomol.* 1994; 19(2): 145–58.
113. Legendre F, Whiting MF, Grandcolas P. Phylogenetic analyses of termite post-embryonic sequences illuminate caste and developmental pathway evolution. *Evol Dev.* 2013; 15(2): 146–57. doi: [10.1111/ede.12023](#) PMID: [25098639](#)

114. Bergsten J. A review of long-branch attraction. *Cladistics*. 2005; 21(2):163–93.
115. Felsenstein J. Cases in which parsimony or compatibility methods will be positively misleading. *Syst Zool*. 1978; 27(4): 401–10.
116. Siddall ME, Whiting MF. Long-branch abstractions. *Cladistics*. 1999; 15: 9–24.
117. Misof B, Liu S, Meusemann K, Peters RS, Donath A, Mayer C et al. Phylogenomics resolves the timing and pattern of insect evolution. *Science*. 2014; 346(6210): 763–7. doi: [10.1126/science.1257570](https://doi.org/10.1126/science.1257570) PMID: [25378627](https://pubmed.ncbi.nlm.nih.gov/25378627/)
118. Huang D-Y, Nel A, Zompro O, Waller A. Mantophasmatodea now in the Jurassic. *Naturwissenschaften*. 2008; 95(10): 947–52. doi: [10.1007/s00114-008-0412-x](https://doi.org/10.1007/s00114-008-0412-x) PMID: [18545982](https://pubmed.ncbi.nlm.nih.gov/18545982/)
119. Gorochov AV. New and little known orthopteroid insects (Polyneoptera) from fossil resins: Communication 1. *Paleontol J*. 2006; 40(6): 646–54.
120. Pointon MA, Chew DM, Ovtcharova M, Sevastopulo GD, Crowley QG. New high-precision U–Pb dates from western European Carboniferous tuffs; implications for time scale calibration, the periodicity of late Carboniferous cycles and stratigraphical correlation. *J Geol Soc*. 2012; 169(6): 713–21.
121. Martínez-Delclos X. Blátidos (Insecta, Blattodea) del Cretácico inferior de España. Familias Mesoblattinidae, Blattulidae y Poliphagidae. *Bol Geol y Min*. 1993; 104: 516–38.
122. Vršanský P. Piniblattella gen. nov.—the most ancient genus of the family Blattellidae (Blattodea) from the Lower Cretaceous of Siberia. *Entomol Probl*. 1997; 28(1): 67–79.
123. Laurentiaux D. Le problème des blattes paléozoïques à ovipositeur externe. *Ann Paléontologie*. 1951; 37: 186–96.
124. Zhang Z, Schneider J, Hong Y. The most ancient roach (Blattodea): a new genus and species from the earliest Late Carboniferous (Namurian) of China, with a discussion of the phylomorphogeny of early. *J Syst Palaeontol*. 2013; 11: 27–40.
125. Garwood R, Sutton M. X-ray micro-tomography of Carboniferous stem-Dictyoptera: new insights into early insects. *Biol Lett*.; 2010: 699–702.
126. Engel MS, Grimaldi DA, Krishna K. Termites (Isoptera): their phylogeny, classification, and rise to ecological dominance. *Am Museum Novit*. 2009; 3650: 1–27.
127. Ware JL, Grimaldi DA, Engel MS. The effects of fossil placement and calibration on divergence times and rates: an example from the termites (Insecta: Isoptera). *Arthropod Struct Dev*. 2010; 39(2–3): 204–19. doi: [10.1016/j.asd.2009.11.003](https://doi.org/10.1016/j.asd.2009.11.003) PMID: [19962450](https://pubmed.ncbi.nlm.nih.gov/19962450/)
128. Laurentiaux D. Stephanotermopsis nov. gen., Protorthopère nouveau du Stéphanien d’Auvergne et problème de l’origine des Termites. *Ann. Soc. Géol. Nord*. 1966; 86: 231–8.
129. Howard KJ, Thorne BL. Eusocial Evolution in Termites and Hymenoptera. In: Bignell DE, Roisin Y, Lo N, editors. *Biology of Termites: a Modern Synthesis SE—5*. Dordrecht: Springer Netherlands; 2011. p. 97–132.
130. Moreau CS, Bell CD, Vila R, Archibald SB, Pierce NE. Phylogeny of the ants: diversification in the age of angiosperms. *Science*. 2006; 312(5770): 101–4. PMID: [16601190](https://pubmed.ncbi.nlm.nih.gov/16601190/)
131. Martínez-Delclos X, Martinell J. The oldest known record of social insects. *J Paleontol*. 1995; 69(3): 594–9.
132. Vršanský P. Cockroach as the earliest eusocial animal. *Acta Geol Sin Ed*. 2010; 84(4): 793–808.
133. Raymond A, Cutlip P, Sweet M. Rates and processes of terrestrial nutrient cycling in the Paleozoic: the world before beetles, termites, and flies. In: Allmon W, Bottjer D, editors. *Evolutionary paleoecology: the ecological context of macroevolutionary change*. New York: Columbia University Press; 2000. pp. 235–83.
134. Béthoux O, Cui Y, Kondratieff B, Stark B, Ren D. At last, a Pennsylvanian stem-stonefly (Plecoptera) discovered. *BMC Evol Biol*. 2011; 11(1): 248.
135. Lu L, Fang X, Ji S, Pang Q. A contribution to the knowledge of the Namurian in Ningxia. *Acta Geosci Sin*. 2002; 23(2; ISSU 68): 165–8.
136. Liu Y, Liu Y, Zhang H. LA-ICPMS Zircon U–Pb Dating in the Jurassic Daohugou Beds and Correlative Strata in Ningcheng of Inner Mongolia. *Acta Geol Sin—English Ed*. 2006; 80(5): 733–42.
137. Pálffy J, Smith PL, Mortensen JK. A U–Pb and 40 Ar / 39 Ar time scale for the Jurassic. 2000; 944: 923–44.
138. Vršanský P, Vishniakova VN, Rasnitsyn AP. Order Blattida Latreille, 1810. In: Rasnitsyn AP, Quicke DLJ, editors. *History of Insects*. Dordrecht: Kluwer Academic Press; 2002. p. 263–70.
139. Huang C, Hinnov L, Fischer AG, Grippo A, Herbert T. Astronomical tuning of the Aptian Stage from Italian reference sections. *Geology*. 2010; 38(10): 899–902.

140. Grimaldi DA, Engel MS, Krishna K. The species of Isoptera (Insecta) from the early cretaceous Crato formation: a revision. *Am Museum Novit.* 2008; 3626: 1–30.
141. Vršanský P, Vidliäoeka Ä, Barna P. Paleocene origin of the cockroach families Blaberidae and Corydiidae: Evidence from Amur River region of Russia. *Zootaxa.* 2013; 3635(2): 117–26.
142. Knittel U, Suzuki S, Akhmetiev MA, Sun G, Walia M, Hung C- H. 66±1 Ma single zircon U-Pb date confirms the location of the non-marine K-Pg boundary in the Amur/Heilongjiang River area, (Russia, China). *N. Jahrb Geol. Paläontol.—Abhandl.* 2013; 270(1): 1–11.
143. Wappler T, Currano ED, Wilf P, Rust J, Labandeira CC. No post-Cretaceous ecosystem depression in European forests? Rich insect-feeding damage on diverse middle Palaeocene plants, Menat, France. *Proc Biol Sci.* 2009; 276(1677): 4271–7. doi: [10.1098/rspb.2009.1255](https://doi.org/10.1098/rspb.2009.1255) PMID: [19776074](https://pubmed.ncbi.nlm.nih.gov/19776074/)
144. Engel MS, Grimaldi DA, Nascimbene PC, Singh H. The termites of Early Eocene Cambay amber, with the earliest record of the Termitidae (Isoptera). *Zookeys.* 2011; 123(148): 105–23.
145. Rust J, Singh H, Rana R. Biogeographic and evolutionary implications of a diverse paleobiota in amber from the early Eocene of India. *Proc Natl Acad Sci.* 2010; 107(43): 18360–5. doi: [10.1073/pnas.1007407107](https://doi.org/10.1073/pnas.1007407107) PMID: [20974929](https://pubmed.ncbi.nlm.nih.gov/20974929/)
146. Von Rosen K. Die Fossilen Termiten: Eine kurze Zusammenfassung der bis jetzt bekannten Funde. *Trans 2nd Int Congr Entomol.* 1913; 2: 318–35.
147. Jovane L, Sprovieri M, Coccioni R, Florindo F, Marsili A, Laskar J. Astronomical calibration of the middle Eocene Contessa Highway section. *Earth Planet Sci Lett.* 2010; 298(1–2): 77–88.
148. Engel MS. Two new termites in Baltic amber (Isoptera). *J Kansas Entomol Soc.* 2008; 81: 194–203.
149. Lewis S. A New Species of Fossil Isoptera (Hodotermitidae) from the Ruby River Basin (Oligocene) of Southwestern Montana. *Ann Entomol Soc Am.* 1973; 66: 1359–60.
150. De Man E, Van Simaëys S, Vandenberghe N, Harris WB, Wampler JM. On the nature and chronostratigraphic position of the Rupelian and Chattian stratotypes in the southern North Sea basin. *Episodes.* 2010; 33(1): 3–14.
151. Engel MS, Krishna K. New Dolichorhinotermes from Ecuador and in Mexican Amber (Isoptera: Rhinotermitidae). *Am Museum Novit.* 2007; 2811(3592): 1–8.
152. Sharaf E, BouDagher-Fadel M, Simo J, Carroll A. Biostratigraphy and strontium isotope dating of Oligocene-Miocene strata, East Java, Indonesia. *Stratigraphy.* 2005; 2(3): 239–58.
153. Gorokhov AV. New and little known orthopteroid insects (polyneoptera) from fossil resins: Communication 2. *Paleontol J.* 2007; 41(2): 156–66.
154. Iturralde-Vinent A, MacPhee R. Age and paleogeographical origin of Dominican amber. *Science.* 1996; 273(5283): 1850–2.
155. Krishna K. New fossil species of termites of the subfamily Nasutitermitinae from Dominican and Mexican amber (Isoptera, Termitidae). *Am Museum Novit.* 1996; 3176: 1–13.
156. Agudelo AAR. A new genus and species of Mantoididae (Mantodea) from the Brazilian and Venezuelan Amazon, with remarks on *Mantoida Newman, 1838*. *Zootaxa.* 2014; 3797: 194–206. doi: [10.11646/zootaxa.3797.1.14](https://doi.org/10.11646/zootaxa.3797.1.14) PMID: [24870864](https://pubmed.ncbi.nlm.nih.gov/24870864/)