



**HAL**  
open science

## Investigation at the micrometer scale of pancreatic calcifications in chronic pancreatitis by $\mu$ FTIR spectroscopy and field emission scanning electron microscopy

Jérôme Cros, Dominique Bazin, Alex Kellum, Vinciane Rebours, Michel Daudon

### ► To cite this version:

Jérôme Cros, Dominique Bazin, Alex Kellum, Vinciane Rebours, Michel Daudon. Investigation at the micrometer scale of pancreatic calcifications in chronic pancreatitis by  $\mu$ FTIR spectroscopy and field emission scanning electron microscopy. *Comptes Rendus. Chimie*, 2016, 19 (11-12), pp.1642-1655. 10.1016/j.crci.2015.06.015 . hal-01278416

**HAL Id: hal-01278416**

<https://hal.sorbonne-universite.fr/hal-01278416v1>

Submitted on 24 Feb 2016

**HAL** is a multi-disciplinary open access archive for the deposit and dissemination of scientific research documents, whether they are published or not. The documents may come from teaching and research institutions in France or abroad, or from public or private research centers.

L'archive ouverte pluridisciplinaire **HAL**, est destinée au dépôt et à la diffusion de documents scientifiques de niveau recherche, publiés ou non, émanant des établissements d'enseignement et de recherche français ou étrangers, des laboratoires publics ou privés.

## **Investigation at the micrometer scale of pancreatic calcifications in chronic pancreatitis by $\mu$ FTIR spectroscopy and Field emission scanning electron microscopy**

Jérôme Cros<sup>a,b</sup>, Dominique Bazin<sup>c,d</sup>, Alex Kellum<sup>e</sup>, Vinciane Rebours<sup>f,b</sup>, Michel Daudon<sup>h,i,j</sup>

<sup>a</sup> AP-HP, Hôpital Beaujon, Department of Pathology, Clichy F-92100, France.

<sup>b</sup> INSERM U1149 - Université Paris VII, France.

<sup>c</sup> CNRS, LCMCP-UPMC, Collège de France, 11 place M. Berthelot 75231 Paris Cedex 05, France.

<sup>d</sup> LPS, Bât 510, Université Paris XI, 91405 Orsay, France.

<sup>e</sup> Department of chemistry, Clemson University, Clemson, South Carolina, United states

<sup>f</sup> AP-HP, Hôpital Beaujon, Department of Gastroenterology, Clichy F-92100, France

<sup>h</sup> Sorbonne Universités, UPMC Université Paris 06, UMR S 702, Paris, France.

<sup>i</sup> INSERM, UMR S 1155, Paris, France.

<sup>j</sup> AP-HP, Hôpital Tenon, Service d'Explorations Fonctionnelles Multidisciplinaires, Paris, France.

### **Corresponding author:**

**Dr. J. Cros, [jerome.cros@bjn.aphp.fr](mailto:jerome.cros@bjn.aphp.fr)**

AP-HP, Hôpital Beaujon, Department of Pathology, Clichy F-92100, France

**Keywords:** hereditary pancreatitis, alcoholic chronic pancreatitis,  $\mu$ FTIR spectroscopy, field emission scanning electron microscopy

### **Abstract**

A set of pancreatic stones and surgical specimens with chronic pancreatitis from various etiologies has been investigated by  $\mu$ Fourier Transform Infra-Red spectroscopy and field emission scanning electron microscopy in order to gather information regarding their chemical composition and their structural characteristics at the mesoscopic scale. These physicochemical data were compared to the medical data of the patients. Regarding the pancreatic stones, the complete set of data underlines the presence of the three calcium carbonate polymorphs as well as a great diversity on their spatial distribution (core versus surface), a wide range of protein content and the presence of other phases in a limited number of samples. These results suggest that very different mechanisms are involved in stone formation. Major results have been also obtained on pancreas tissues. Chemical diversity exists also for ectopic calcifications. The presence of CA and its amorphous precursor (ACCP) constitutes a real challenge for clinicians, such chemical compounds being associated to biological parameters far from those related to calcium carbonate.

## 1. Introduction

As underlined by Rosenkranz and Patel [1], stones in biliary and pancreatic ducts constitute pathological calcifications [2-4] that plague hundreds of thousands of patients worldwide every year with symptoms that can be mild (pain) to life threatening (cholangitis, severe acute pancreatitis). This major public health problem has motivated several investigations at the interface between physics, chemistry and medicine in order to describe at multiscale the structural and chemical characteristics of such biological entities [4-17]. While obstruction of pancreatic ducts by gallstones is the most common cause for acute pancreatitis, calcium salt deposition within the pancreas gland is less frequent and results from various pathological conditions. The ultimate aim of the studies is to relate the stone chemistry and structural parameters to pathology in order to better understand the pathogenesis and thus delineate the process of pancreatic stone formation. Such relationship exists for other pathological calcifications such as kidney stones [18-20] and has been assessed for calcifications present in prostate [21,22], breast [23] and cartilage [24-28].

Several investigations have been performed in order to shed light on the chemistry of pancreatic calculi [4-17]. Their chemical analyses by X-ray scattering have shown that most of them contain calcium carbonate ( $\text{CaCO}_3$ ) such as calcite [29], vaterite [30] and aragonite [31]. The presence of these calcium carbonate polymorphs is due to the composition of pancreatic secretion for which the first component is a solution of bicarbonate,  $\text{Na}^+$ ,  $\text{K}^+$  and water emitted by the epithelial cells that line the pancreatic ducts. The high level of bicarbonate as well as high values of pH of this alkaline solution explain the presence of calcium carbonates [6]. Other chemical phases such as brushite [7] and Ca phosphate compounds [10] have also been identified. Finally, protein deposits also exist [8,32].

Pancreatic calcifications are mostly seen in advanced stages of chronic pancreatitis. There are many etiologies and some, such as specific forms of hereditary pancreatitis, are associated with an increased risk of pancreatic cancer. Hereditary pancreatitis represents a peculiar form of chronic pancreatitis in which several genes involved in the trypsinogen pathway have been identified [33]. Although they are usually diagnosed earlier than toxic chronic pancreatitis (alcohol related for instance), there is no specific clinical sign and fastidious sequencing of multiple genes is required when the diagnosis is suspected. *PRSSI*, *SPINK1* and *CFTR* to some extent are the most frequently mutated genes in hereditary pancreatitis [34]. *PRSSI* gene encodes the cationic trypsinogen that represents 2/3 of the total trypsinogen in the pancreatic juice. Trypsinogen is an inactive precursor of trypsin with capacities of activation and autodigestion. This autodigestion is linked to a particular proteolytic site of the protein in the R122 position. This primary proteolytic site can become resistant in case of mutations such as the most described R122H [35]. Other reported mutations (>30 described in 2012) can increase the autocatalytic conversion of trypsinogen to active trypsin explaining recurrent acute pancreatitis by intrapancreatic trypsinogen activation. The natural inhibitor of trypsinogen *SPINK1* (serine protease inhibitor Kazal type 1) is secreted by the pancreatic acinar cells and can inhibit around 20% of the intrapancreatic trypsin activity. Inactivating mutation may therefore result in trypsin overactivity-related pancreatitis. Several studies demonstrated an association between a *SPINK1* mutation (N34S) and chronic pancreatitis, although it is not yet clear how it affects *SPINK1* activity ([36] and reviewed in

[37]). For CFTR, the mechanism is slightly different. Mutations impairing this transporter function are responsible for a decrease in pancreatic juice bicarbonate concentration resulting in intracanalicular protein plugs and calcifications.

In this investigation, pancreas stones and surgical tissue specimens from patients suffering chronic pancreatitis of various etiologies were investigated in order to assess their physicochemical characteristics and compare them with the clinical data of the patients. Among the different techniques which can bring significant information on pathological calcifications [38-40], we combine  $\mu$ FTIR spectroscopy [41] and field emission scanning electron microscopy [42] to describe structural characteristics and chemical composition at the micrometer scale. This new class of structural characterization techniques clearly opens a land of opportunities for the understanding of the biochemical parameters that drives the pathogenesis of ectopic calcifications [2-4].

## 2. Materials and methods

A set of 14 pancreas stones (Tenon Hospital – Paris, France) and of 12 surgical specimens of pancreas tissue (Beaujon Hospital - Clichy, France) from patients with chronic pancreatitis were investigated.

Pancreatic stones were analyzed sequentially from the core to the surface by means of selective samples picked up under stereomicroscope. Then, the samples were mixed with potassium bromide to obtain pellets as previously described [43]. The molecular and crystalline composition was determined by infrared spectroscopy using the transmission mode on the wavelength range 2.5-25  $\mu\text{m}$  ( $4000\text{-}400\text{ cm}^{-1}$ ) with a  $4\text{ cm}^{-1}$  resolution.

Five micrometer-thick slices of the tissue samples were deposited on low-e microscope slides (MirrIR, Kevley Technologies, Tienta Sciences, Indianapolis). For tissue embedded in paraffin, the paraffin was chemically removed by xylene baths in order to improve the crystal detection under the microscope. Ethical approval was obtained by the ethical committee of Beaujon Hospital for this study. Each sample was only named by a study number, without indication of the name of the patient or potential identification data.

A Zeiss SUPRA55-VP SEM was used for the observation of microstructures. This field-emission gun microscope (FE-SEM) operates at 0.5-30 kV. High-resolution observations were obtained by 2 secondary electron detectors: an in-lens SE detector and an Everhart-Thornley SE detector. To maintain the integrity of the samples, measurements were taken at low voltage (between 0.5 and 2 kV) without the usual deposits of carbon at the surface of the sample (Fig. 1a). Energy Dispersive X-ray (EDX) spectrometry analyses were also performed. In order to perform Ca cartography, the FE-SEM operates at 12 kV.

IR microspectroscopy was also performed on an IN10MX microscope (Thermo Scientific) for recording large maps. All spectra were collected in ultrafast mode using a  $50\text{ }\mu\text{m} \times 50\text{ }\mu\text{m}$  aperture. The spectra were collected in the  $4000\text{ - }800\text{ cm}^{-1}$  mid-IR range at a resolution of  $16\text{ cm}^{-1}$  with one spectrum per pixel. Data analysis of IR spectra and chemical images was performed using OMNIC software (Thermo Scientific).

### 3. Results

In table 1 are summarized the results of stone composition as determined by infrared spectroscopy.

**Table 1**

Chemical composition of pancreatic stones as given by FTIR spectroscopy. Information regarding the associated pathology is also given when available.

Sample	Sex, age (years)	Chemical composition as given by FTIR spectroscopy
242	H	Core and surface : Calcite (99%) + traces of CA and Proteins
575	F, 26	Core : Proteins ; Surface : Calcite >> Proteins>>Aragonite Average composition : Calcite (50%), Proteins (30%), Aragonite (20%) Pathology : Inherited calcifying pancreatitis
5745	F, 71	Core : Calcite >> Aragonite >> Proteins; Surface : Aragonite >> Proteins Average composition: Aragonite (80%), Calcite (15%), Proteins (5%)
8959	H, 43	Core : Calcium palmitate >>> Proteins; Surface : Calcite >>> Proteins Average composition : Calcite (85%), Proteins (8%), Calcium palmitate (7%)
9464	H, 55	Core and surface: Calcite (99%), Proteins (1%)
16232	F, 40	Core : Calcite (100%) ; Surface : Aragonite >> Proteins and Calcite Average composition: Aragonite (67%), Proteins (13%), Calcite (8%), Triglycerides (7%), Carbatite (5%)
16568	H, 62	Core and surface : Calcite (90%), Proteins (10%)
32274	F, 37	Core : Proteins ; Surface : Calcite >> Proteins, Aragonite Average composition : Calcite (66%), Proteins (20%), Aragonite (14%) Pathology : Inherited calcifying pancreatitis
33043	H, 49	Core : Calcite >>> Proteins ; Surface : Calcite >> Aragonite >> Proteins Average composition : Calcite (70%), Aragonite (15%), Proteins (10%), Vaterite (5%) Pathology : Alcohol-related chronic pancreatitis
43580	H, 63	Core : Calcite >> Aragonite ; Surface : Calcite >> Aragonite >> Proteins >> Vaterite Average composition : Calcite (60%), Aragonite (20%), Proteins (10%), Vaterite (10%)
48440	H, 17	Core : Calcite >> Vaterite ; Surface: Calcite>>Aragonite, Proteins and Vaterite Average composition : Calcite (70%), Proteins (15%), Aragonite (10 %), Vaterite (5%)
59791	H, 41	Core and surface : Calcite >>Proteins Average composition : Calcite (90%), Proteins (10%)
59849	H, 66	Core : Calcite>> Proteins ; Surface : Calcite >>Aragonite>>Proteins Average composition : Calcite (75%), Aragonite (15%), Proteins (10%) Pathology : Alcohol-related chronic pancreatitis
67483	H, 43	Core: Calcite >> Proteins; Surface: Calcite >> Vaterite and Proteins Average composition : Calcite (85%), Proteins (10%), Vaterite (5%)

Anhydrous calcium carbonate was the main chemical species in all cases in form of one or several among the three polymorphs. Calcite was found in all stones while aragonite was identified in 8/14 samples (57.1%) and vaterite in only three calculi (21.4%). Other calcium salts were identified as minor components such as carbatite in two cases (14.3%) and calcium palmitate in one case (7.1%). The calcium phosphate content was very low ( $\leq 5\%$ ). By contrast, the protein content was very variable, ranging from about 1% up to 30%. Of note, the highest content of proteins was found in patients presenting with inherited calcifying pancreatitis. In such cases, the stone core was made of proteins while in other pathological

conditions it was made of a calcium salt. In one case, the core was predominantly made of calcium palmitate, which suggests a high content of free fatty acids in the pancreatic juice. In table 2 are gathered the available data regarding pancreatic tissue samples analyzed by infrared microspectroscopy.

**Table 2**

Physiological and clinical data of the patients and chemical composition of the corresponding tissue samples.

Samples	Age	Disease	Chemical composition of pathological deposits through FTIR Spectroscopy
Sample 1 - B0408022_P3_A	36	IPMN w/ CP	Glycated proteins
Sample 2 - B0353568_R	36	ACP	Calcite
Sample 3 - B0505143	51	CFTR+SPINK1 CP	Calcite + traces of CA and ACCP
Sample 4 - B0322978	38	Unknown	Vaterite ( $744\text{cm}^{-1}$ & $1085\text{cm}^{-1}$ )
Sample 5 - B0448146	31	PRSS1 CP	Vaterite + Calcite
Sample 6 - B0515722 (same patient as sample 3)	52	CFTR+SPINK1 CP	Calcite and trace of CA and ACCP
Sample 7 - B0298452_5C	37	Unknown	Calcite
Sample 8 - B0517376_18	50	PRSS1 CP	calcite + vaterite
Sample 9 - B0410070_11	49	Unknown	calcite + vaterite
Sample 10 - 13AG03778_03	48	Cystic fibrosis	ACCP
Sample 11 - 13AG03478_08	71	Unknown	apatite + ACCP
Sample 12 - 13AG03685_05	52	ACP	calcite + vaterite

(CP: chronic pancreatitis, ACP: Alcohol related chronic pancreatitis, IPMN: intraductal papillary and mucinous neoplasm, ACCP: amorphous carbonated calcium phosphate)

By contrast with pancreatic stones, only two polymorphs of anhydrous calcium carbonate were detected in pancreatic calcifications, i.e., calcite and vaterite. Calcium orthophosphate as apatite was identified in only one case, in association with amorphous carbonated calcium phosphate. Of note, calcium carbonate was not detected in this sample.

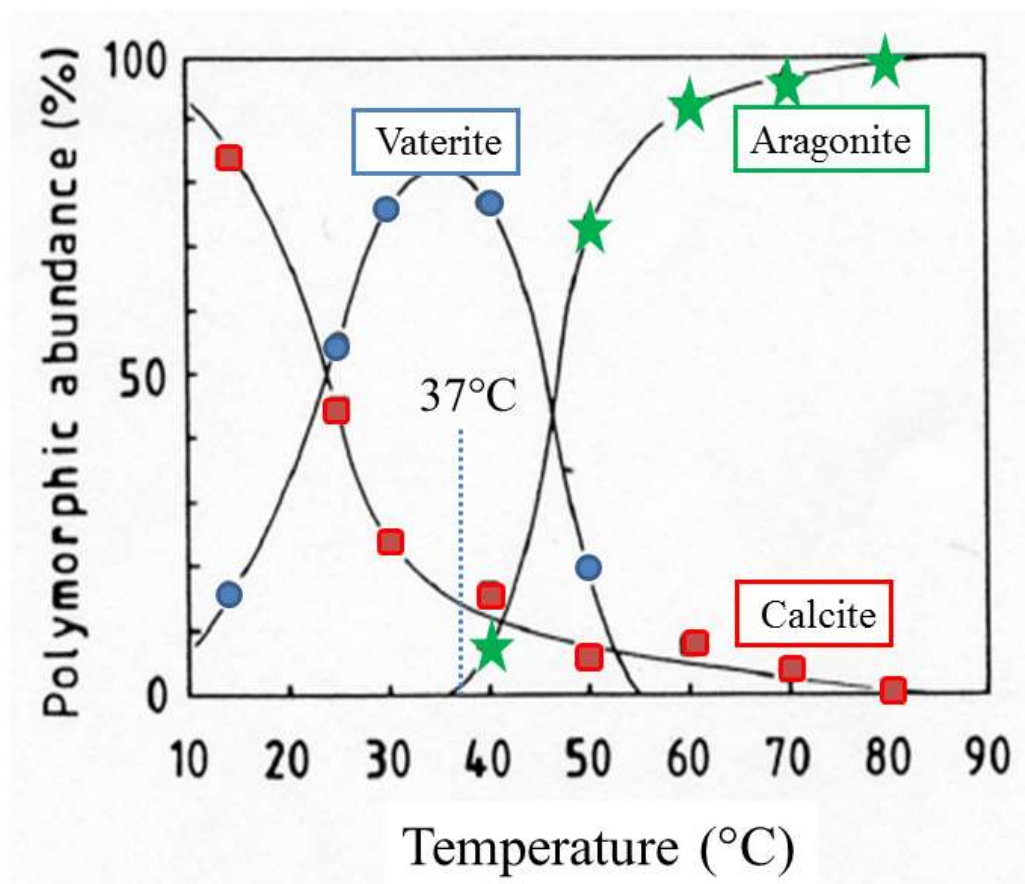
#### 4. Discussion

The pancreas acts as an exocrine gland (by producing pancreatic juice which empties into the small intestine via the main pancreatic duct) and an endocrine gland (by producing several hormones including insulin). Pancreatic secretion is an alkaline liquid, which contains a variety of enzymes. Pancreatic secretion contains bicarbonate,  $\text{Na}^+$ ,  $\text{K}^+$  and water emitted by the epithelial cells that line the pancreatic ducts. Such alkaline solution neutralizes stomach acid so that digestive enzymes work more effectively. This secretion contains also several enzymatic components such as trypsinogen, chymotrypsinogen .... In line with its chemical properties (high level of bicarbonate as well as high values of pH), pancreatic secretion leads to the formation of calcium carbonate.

$\text{CaCO}_3$  has a pivotal role in biomineralisation processes in a number of animal species and microorganisms, but it is infrequent in humans with the exception of physiological crystals in the inner ear and pathological calcifications in pancreas and gallbladder. Such biominerals are one of the most common types present in mollusc shells or pearls, egg shells, and corals

[44-46] and cyanobacteria [47]. The literature on calcium carbonate is thus quite vast [see for example ref 44-56], this system being one of the most widely studied precipitation systems. Most of the studies try to understand their functions which depend on their shape, size, abundance, position versus the biological tissue, and chemical composition. The prominent hallmark of biomineralization is the morphological control during mineral crystallization. In the case of pathological calcifications, the chemical composition as well as the crystal morphology are also two key parameters to establish a significant link with the disease [18,57-63] and has motivated this investigation by SEM and  $\mu$ FTIR spectroscopy.

Different species of calcium carbonate exist. Starting with the most stable one, we have the anhydrous species ( $\text{CaCO}_3$ ) namely calcite, aragonite, vaterite, the hydrated species ~~name~~ such as monohydrocalcite ( $\text{CaCO}_3 \cdot \text{H}_2\text{O}$ ) or Ikaite ( $\text{CaCO}_3 \cdot 6\text{H}_2\text{O}$ ) and finally the amorphous one  $\text{CaCO}_3$  which may contain water molecules [64,65]. Note that Levi-Kalisman et al. [66] have underlined that several kinds of amorphous carbonate exist, their stability depending on the presence of other compounds such as phosphates. Moreover, J. Ihli et al. [67] showed that amorphous calcium carbonate can dehydrate before crystallizing, both in solution and in air. One of the striking points of this investigation is related to the fact that the loss of the final water fraction -comprising less than 15% of the total - triggers crystallization. Finally, in the case of pathological calcification, it can be interesting to consider the publication of Ogino et al. [68], which have assessed the abundance of polymorphs as a function of temperature as illustrated in figure 1.



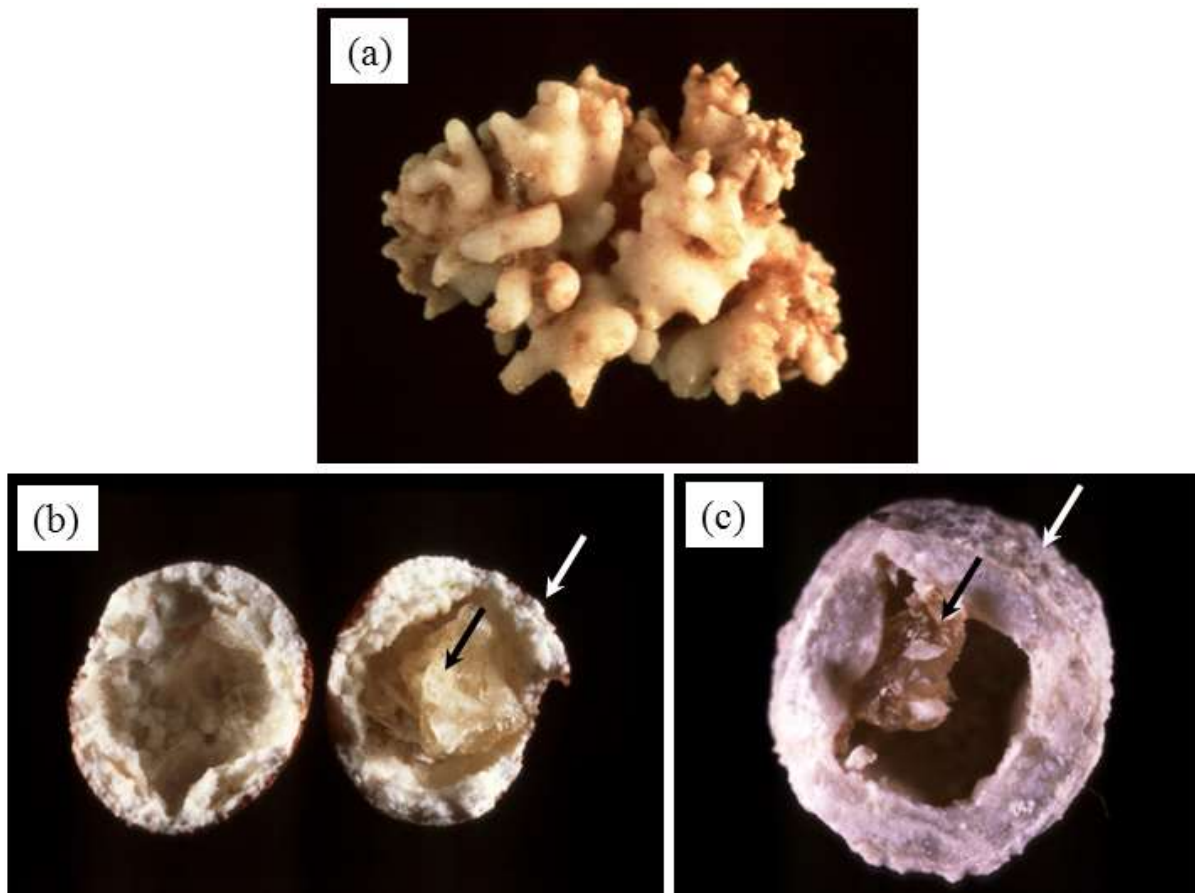
**Fig. 1.** Abundance of polymorphs as a function of temperature (adapted from Ogino et al. [60]).

The space group of the most stable species, i.e. calcite is R3c with  $a = 6,361 \text{ \AA}$  and  $\alpha = 46^\circ 6'$  [69-71]. In fact, in the crystal nucleation stage, calcite is the most stable form while aragonite becomes more stable when the crystal is large enough for the bulk lattice energy to outweigh the surface energy terms [72]. Calcite crystals display rhombohedra with a square, a morphology in line with its crystallographic structure [73]. Other possibilities (twin crystals) have been considered. Morphologies of calcite crystal can be controlled by impurities [74] such as Mg [75] or peptides [76]. In the case of aragonite, the space group is Pmcn with  $a = 4,94 \text{ \AA}$ ,  $b = 7,94 \text{ \AA}$  and  $c = 5,72 \text{ \AA}$  while for the vaterite the system is hexagonal ( $a=4.12 \text{ \AA}$ ,  $c= 8.556 \text{ \AA}$ ) [29,37]. In fact, using aberration-corrected high-resolution transmission electron microscopy, L. Kabalah-Amitai et al. [30] found that vaterite is actually composed of at least two different crystallographic structures that coexist within a pseudo-single crystal. Regarding amorphous calcium carbonate, Breýeviû and Nielsen [77] isolated ACC by freeze drying and found the powder consisting of spherical particles with diameters in the order of 50-400 nm. Note that complex carbonate calcium entities can be obtained. For example, S.S. Wang et al. [78] have obtained calcium carbonate microspheres with calcite equatorial loops and vaterite spherical cores.

#### ***4.1 Pancreatic stones***

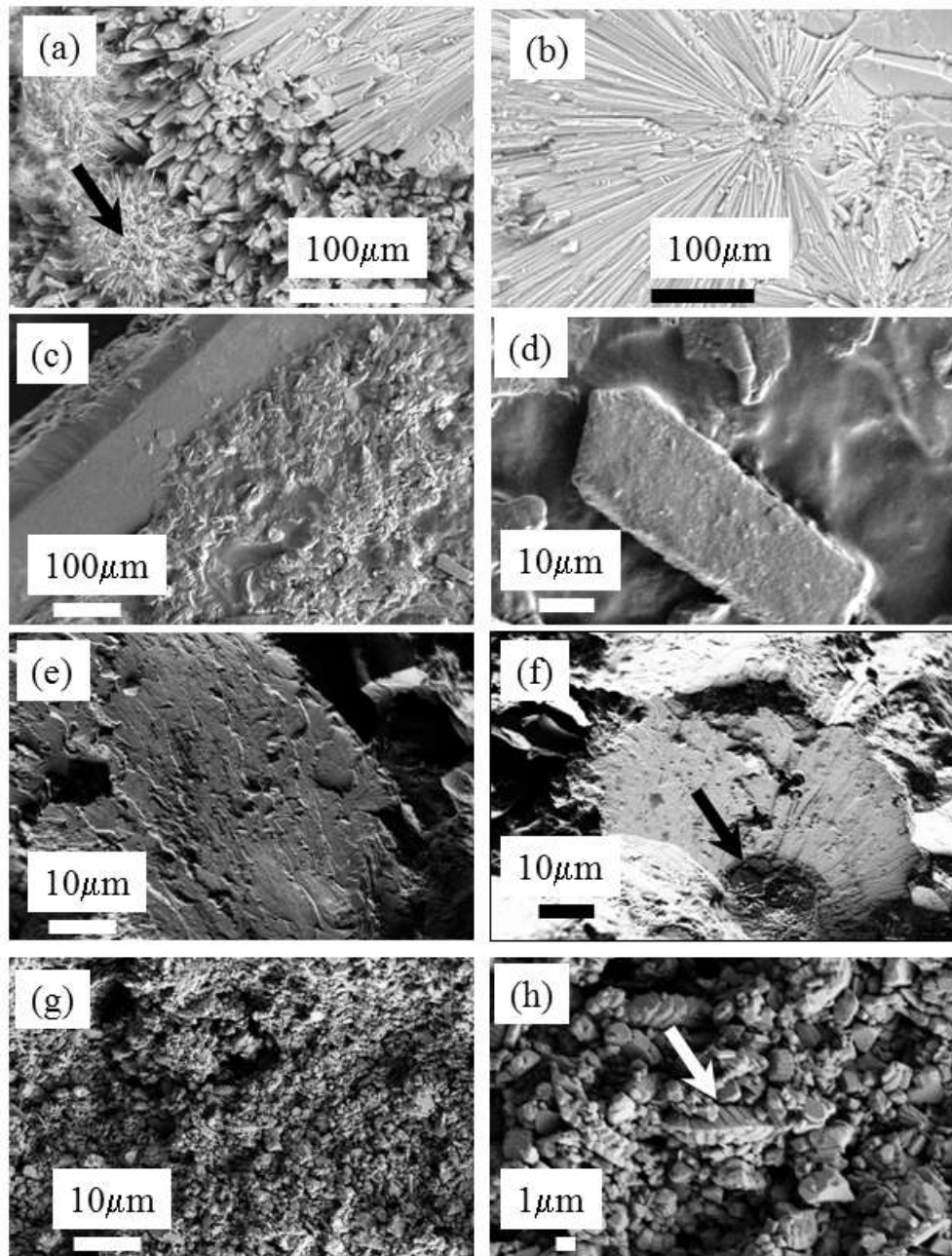
At the macroscopic scale, pancreatic stones are associated with different morphologies. On figure 2, three pancreatic stones are visualized. While the first one (Fig. 2a) is constituted to an agglomeration of rod shape entities resembling corals, the two other stones (Fig. 2b, Fig. 2c) have a rounded shape and exhibit a calcite cockle with a core of protein.





**Fig. 2.** Pancreatic calculi. At the macroscopic scale, different morphologies exist

A set of SEM micrograph of pancreatic stones at the micrometer scale shows very different structures. On fig 3a and 3b, sharp acicular entities are visible in contrast with very smooth entities that seem to be embedded in an organic film (fig.3c, 3d and 3e) or in contact with tissue or cell (fig 3f). Such organic part may be constituted by lithostathine, a protein that was initially considered as an inhibitor of calcium carbonate crystal growth in pancreas ducts where the supersaturation is common for that chemical species [79-82]. However, more recent works suggest that lithostathine could act as a non specific inhibitor similarly to other proteins such as albumin [83]. In patients suffering familial calcifying pancreatitis, mutations of the gene involved in lithostathine synthesis are responsible for tissue calcification either because of a quantitative defect in lithostathine production or, as observed in figures 2b and 2c, by production of partly or entirely inactive mutated protein able to precipitate in the pancreas, serving as a template for further calcium carbonate deposition. Such a mechanism may thus favor the formation of pancreatic stones that may obstruct the main duct and induce acute and/or chronic pancreatitis. Of note, an analog of lithostathine was also identified in the kidney tissue, where, by an adsorption process on the crystal surface, it could protect against the potential heterogeneous nucleation of weddellite on calcite crystals [84]. Finally, observations of crystallites with smooth surfaces has been already done in the case of cystine kidney stones in patients treated by alkali or/and thiol therapy [85].



**Fig. 3.** Different morphologies observed in pancreatic stones. (a) and (b) Large acicular entities with well-defined edges and faces; (c), (d), (e) Structures with smooth edges and numerous surface defaults, some have circular shape probably due to the presence of tissues or cells; (f), (g), (h) Well defined structures observed in tiny calcite crystals at the micrometer scale.

SEM observations offer an opportunity to describe the complex biochemical parameters which drive the growing mechanisms of pancreatic stones. H. Harada *et al.* [6] have noticed that crystalline calcite showed spiral and epitaxial growth along with findings of dissolution, resembling cholesterol crystals of gallstones. These authors supposed that pancreatic stones were probably formed through central core formation and layered growth of a shell. A.C. Schultz *et al.* [11] underline that a central amorphous material was observed in 30% of the pancreatic stones indicating that the protein present at the core of the pancreatic stones

constitutes a nucleus for pancreatic stones, an hypothesis already proposed by H. Sarles *et al.* [5] in patients with alcoholic pancreatitis.

Regarding a possible link between pancreatic stones and diseases, pancreatic calcifications have long been considered specific for chronic pancreatitis [86,87]. In a recent study, A. Campisi *et al.* [88] have shown that pancreatic calcifications are observed in a wide spectrum of pancreatic diseases. These authors underline the fact that certain findings (parenchymal calcifications, diffuse distribution, intraductal calcifications, parenchymal atrophy, and cystic lesions) are noted more often in chronic pancreatitis than in other pancreatic diseases harboring calcifications. Unfortunately, this investigation was based only on cardinal computed tomography and it was thus quite difficult to discuss the chemical composition of the pancreatic calcifications.

In our study, FTIR spectroscopy points out the presence of these calcium carbonate polymorphs as well as a great diversity on the spatial distribution of these three calcium carbonates in the core and at the surface of the pancreatic stones. Due to the low numbers of samples, it is quite difficult to extract a link with disease from these structural data. However, our results suggest that different mechanisms are involved in stone formation. For example, in inherited calcifying pancreatitis, the protein content of the stones was especially high and the core, by contrast to other pathological conditions, was mainly composed by protein agglomerates. In another case, the core of the stone was made of a fatty acid, crystallized as calcium salt, which appears a very uncommon condition. Unfortunately, we have no clinical data for this patient.

#### ***4.2 Surgical specimens with chronic pancreatitis***

Regarding  $\mu$ FTIR spectroscopy, since the pioneer work of T.B. Morse [89], mid-Infrared absorption bands of calcium carbonate have been extensively studied [90-97]. From a fundamental point of view, isolated planar ion  $XO_3$  displaying a trigonal symmetry have four fundamental modes of vibration; the symmetric stretching,  $\nu_1$ , the out of plane bending,  $\nu_2$ , the doubly degenerate antisymmetric stretching,  $\nu_3$ , and the doubly degenerate planar bending,  $\nu_4$ . In a crystalline solid containing more than 1 molecule per unit cell, symmetry considerations indicate that all modes may be active. Following the investigations by C.E. Weir and E.R. Lippincott [91], these four fundamental modes have been gathered in table 1 for the different polymorphs of  $CaCO_3$ .

**Table 2.** Infrared frequencies for calcite, aragonite and vaterite according to C.E. Weir and E.R. Lippincott [91].

	$\nu_1$	$\nu_2$	$\nu_3$	$\nu_4$
Calcite	1087 $cm^{-1}$ (weak)	881 $cm^{-1}$	1432 $cm^{-1}$	712 $cm^{-1}$
Aragonite	1087 $cm^{-1}$	866 $cm^{-1}$	1430&1550 $cm^{-1}$	703 & 715 $cm^{-1}$
Vaterite	1090 $cm^{-1}$	850 & 878 $cm^{-1}$	1450 $cm^{-1}$	711 & 747 $cm^{-1}$

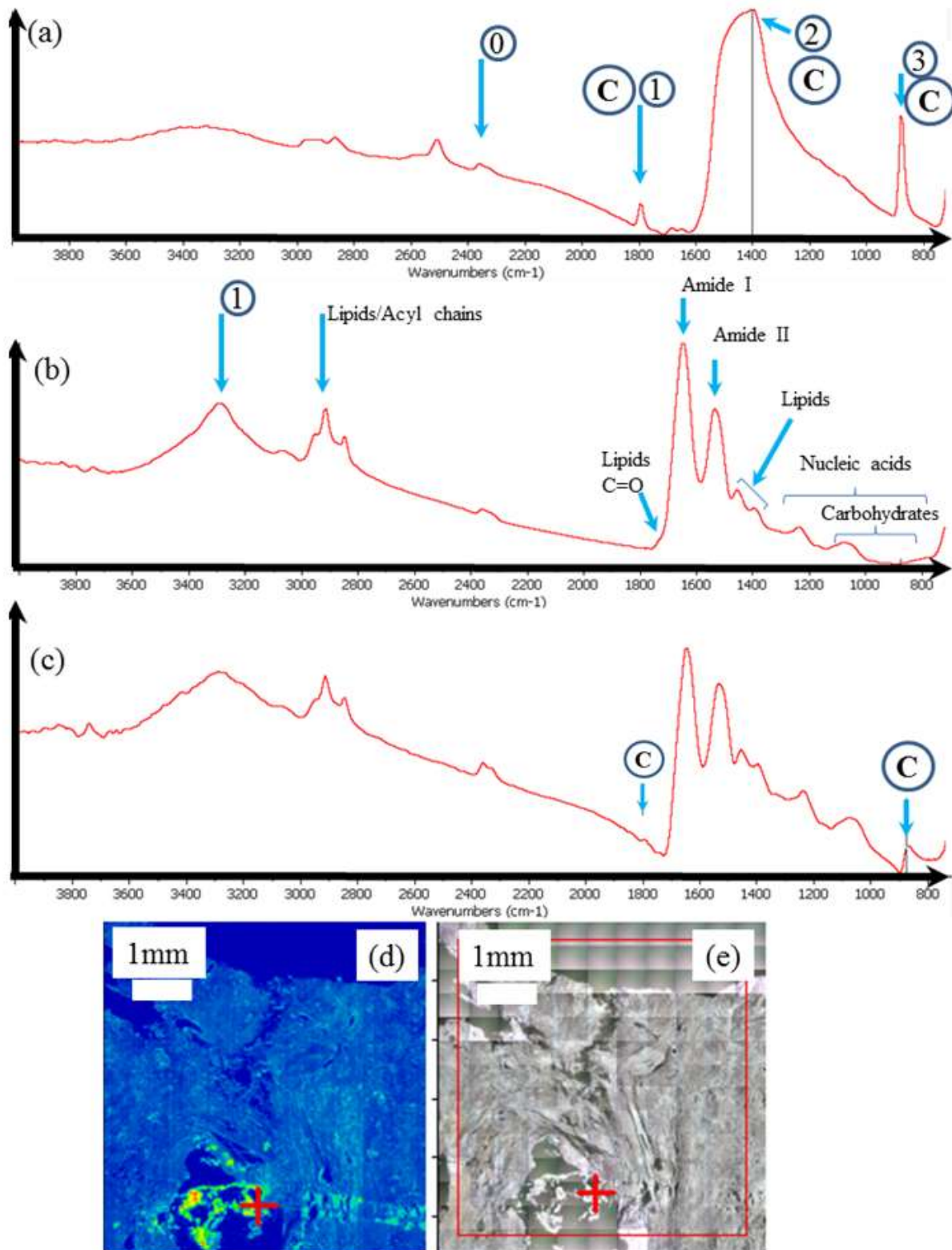
These calculated values are close to the ones measured for the different compounds. These characteristic bands of calcite are observed at  $712\text{ cm}^{-1}$  ( $\nu_4$ ; in-plane bending) and  $875\text{ cm}^{-1}$  ( $\nu_2$ : O–C–O out-of-plane bending) while the  $\nu_1$  symmetric stretching band at  $1086\text{ cm}^{-1}$  is inactive in the IR mode (active in the Raman mode) [41, 98, 99]. For aragonite (resp. vaterite), absorptions bands are respectively  $699$  &  $713$ ,  $854$  and  $1082\text{ cm}^{-1}$  (resp.  $713$  &  $744$ ,  $876$ , and  $1086\text{ cm}^{-1}$ ) [41, 91, 95]. As underlined by N.V. Vagenas et al. [96], the positions of the wavenumbers are unique for each carbonate mineral and are thus diagnostic of their mineralogy. Note that the combination band near  $1800\text{ cm}^{-1}$  ( $1799\text{ cm}^{-1}$  for calcite and  $1788\text{ cm}^{-1}$  for aragonite) is composed of contributions from combination of the  $\nu_3$  asymmetric stretch and the  $\nu_6$  and  $\nu_8$  external modes of the carbonate groups and  $\text{Ca}^{2+}$  ions [100-102].

In fig. 4, typical FTIR spectra corresponding to the calcification (4a), to the tissue (4b) or to a mixing of calcification and tissue (4c) are presented. Here, the calcification is made of calcite and we can identify quite easily its three IR absorption bands ( $1799 - 1390 - 875\text{ cm}^{-1}$ ) versus vaterite ( $1403-1085-744\text{ cm}^{-1}$ ).

In Fig. 4b, IR spectrum shows the presence of the major molecular species, amide I and II from the protein constituents of the pancreatic tissue [103-107]. The amide functional group combines the features of amines and ketones because it has both the N-H and the C=O bonds. In ketones, carbonyl compounds (those that contain the C=O functional group) are in the middle of the carbon chain while in aldehydes, this group is at the end. The most characteristic band in amines appears as a weak to medium IR broad band in the range of about  $3200 - 3600\text{ cm}^{-1}$  and is due to the N-H bond stretch. More precisely, two N-H stretch peaks may be observed, one near  $3350\text{ cm}^{-1}$  and one near  $3180\text{ cm}^{-1}$ , from asymmetric and symmetric vibrations respectively.

In biological tissues, the bands at  $1640\text{ cm}^{-1}$  and  $1546\text{ cm}^{-1}$  correspond to amide I C=O stretching mode and amide II N–H bending and C–N stretching in proteins. As underlined by L.M Miller and P. Dumas [108], the vibrational frequency of the amide I (C=O) band can be significantly affected by different hydrogen-bonding environments for  $\alpha$ -helix,  $\beta$ -sheet, turn, and unordered structures. In this case, it is possible to deconvolute the absorption bands in different contributions. Other data analysis processes are possible [109-112]. Correlation factors can be calculated in order to perform the correlation analysis. Finally, principal component analysis can also be used to extract relevant information from the spectral data set.

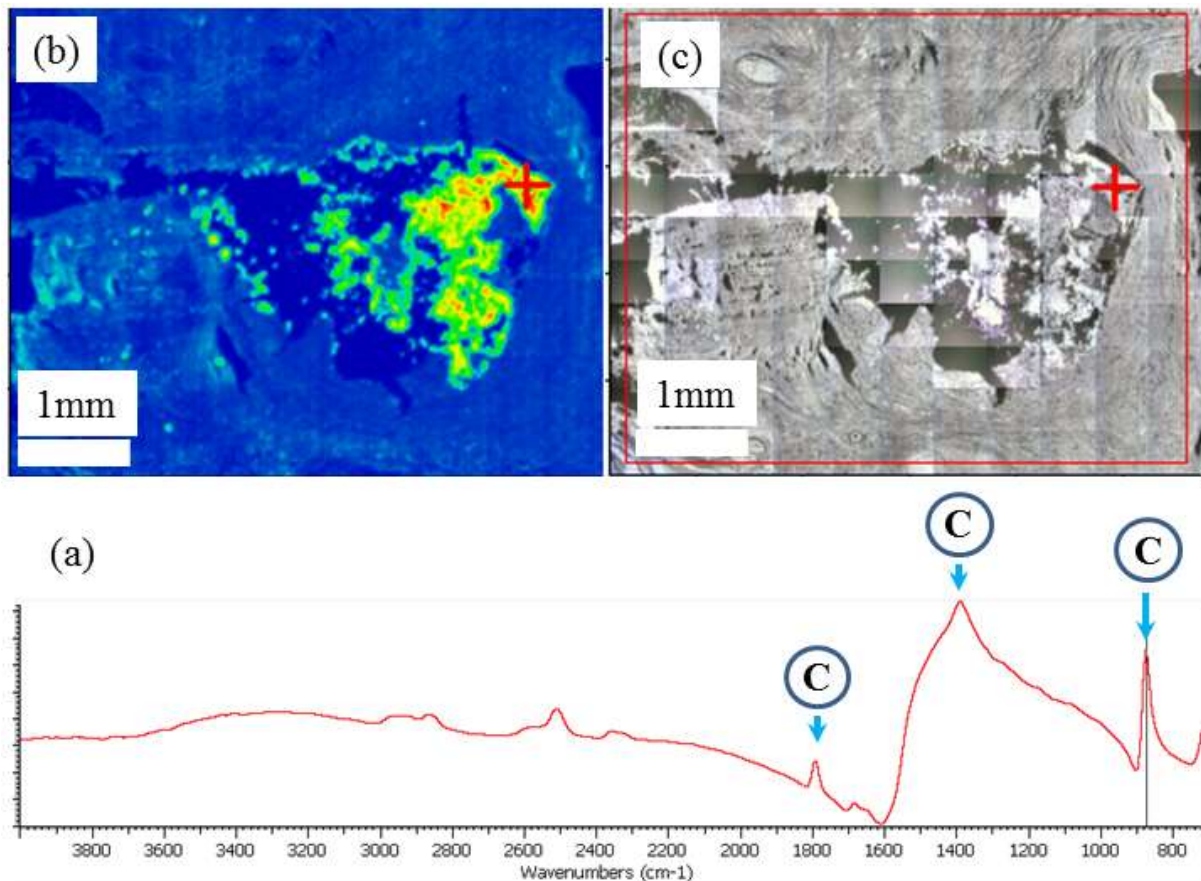
In fig 4c, both contributions coming from the tissue and the calcification are visible. It is the case when the size of the calcification is less than the size of the beam (here a few microns). Finally, from the FTIR data it is possible to obtain quite simply the spatial distribution of the different molecular species that have been identified through their IR absorption bands. In order to obtain the spatial distribution of calcite (Fig. 4d), its absorption band has been selected (in that part of the IR spectra, only contribution coming from calcite is present). For the clinician, it is possible to localize precisely the calcification in the tissue through a comparison with the optical map (Fig 4e).



**Fig. 4.** Sample 5: (a) typical IR absorption bands of calcite calcification; 0 corresponds to the residual absorption of CO<sub>2</sub> present in the room experiments while 1,2,3 are related respectively to the combination band,  $\nu_3$  and  $\nu_2$  IR absorption bands of calcite; (b) IR absorption bands of a biological tissue where the different contributions coming from have been indicated; (c) generally the IR spectrum contain contributions coming from both calcifications (here made of

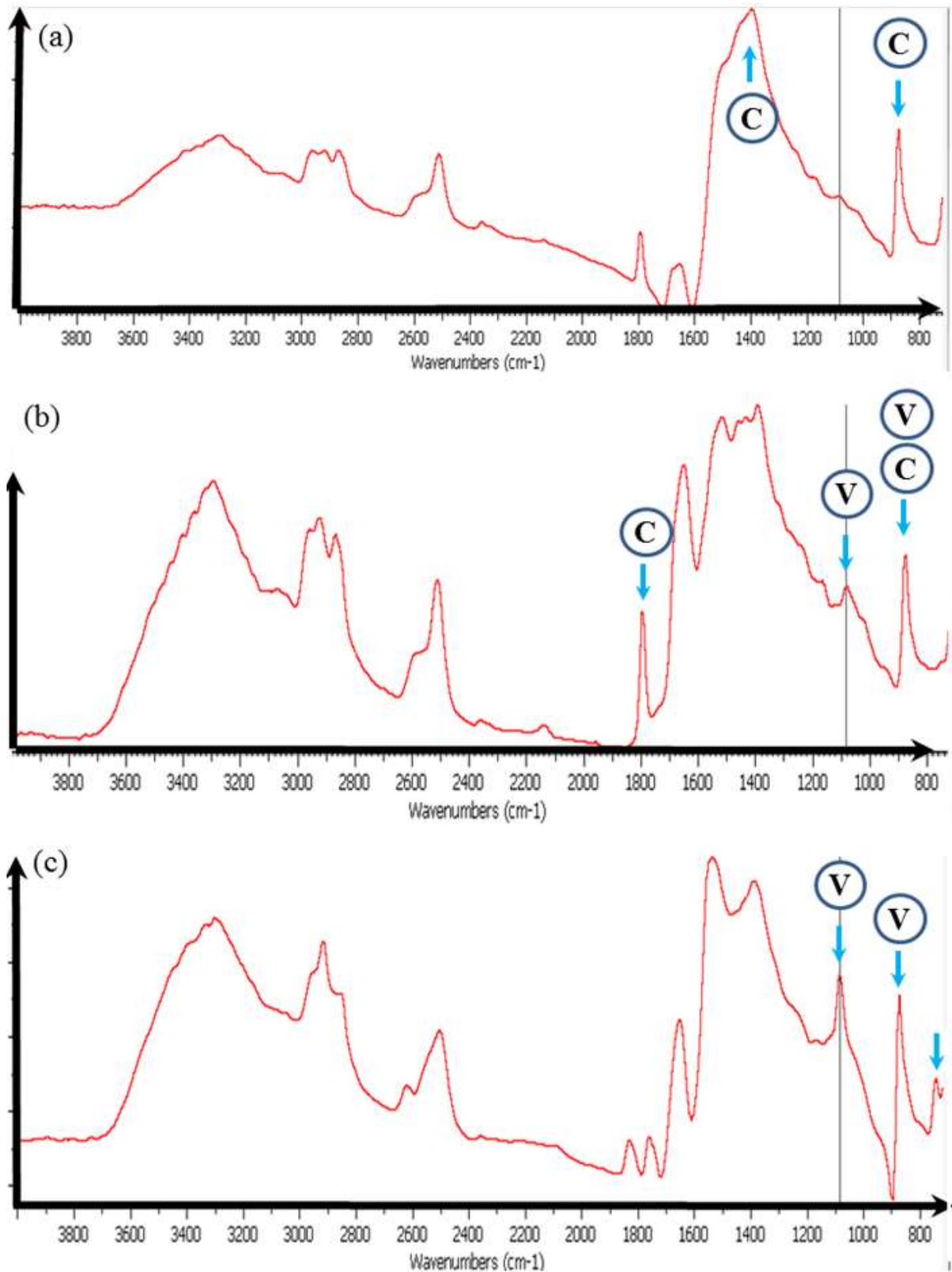
calcite) and tissues; (d) classical analysis of FTIR data consists to compare the spatial distribution of a chemical compound selected by an IR absorption band and (e) the optical photography. Of note, the red cross on (d) and (e) indicate where the IR spectrum has been collected

Even in the case of large calcification (Fig. 5), it is possible to perform such analysis. For sample 8, information regarding the localization of large calcifications (larger than 1 mm) can be obtained.

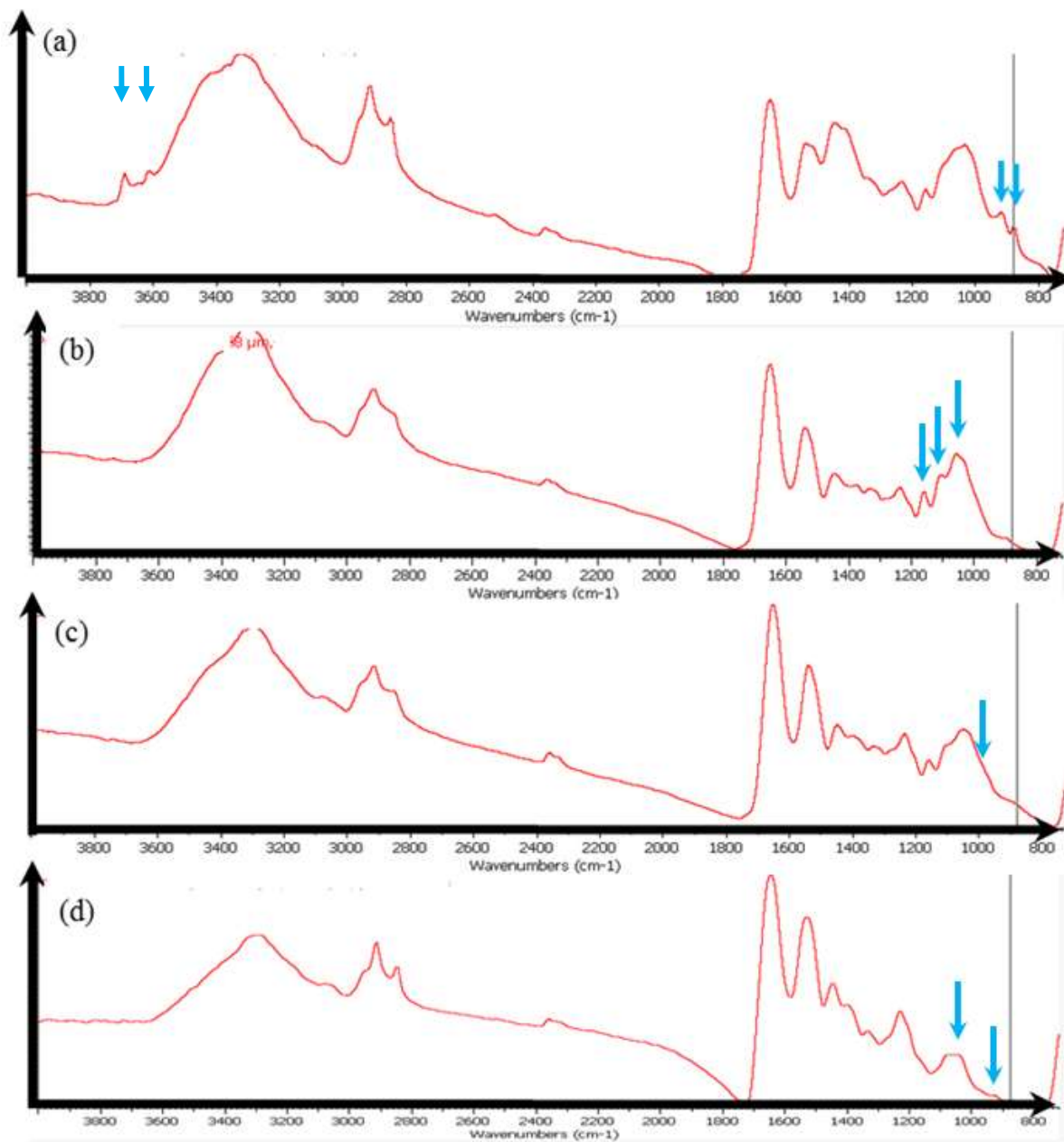


**Fig. 5.** Sample 8: (a) typical IR absorption bands of calcite calcification recorded at the level of the red cross in figure 5c; (b) Spatial repartition of calcite ectopic calcification as measured through the intensity of the IR absorption at  $875\text{cm}^{-1}$ ; (c) Optical map at the same scale.

For sample 9, which corresponds to an unidentified etiology, two calcium carbonate polymorphs have been identified. Thanks to the high sensitivity of FTIR spectroscopy, it is possible to distinguish between calcite (fig. 6a) and vaterite (fig. 6c). When the two polymorphs are present, the IR spectrum is simply a combination of the two IR spectra (fig. 6b).



**Fig. 6.** Sample 9: (a) typical IR absorption bands of calcite calcification; (b) the presence of small proportions of vaterite induced the observation of a supplementary peak at  $1085\text{ cm}^{-1}$ ; (c) typical IR absorption bands of a calcification made of vaterite.



**Fig. 7.** Sample 10: IR spectrum seems to show, in addition to proteins, the presence of silicate (a), of mucopolysaccharides (b), of mucopolysaccharides and calcium phosphate (low content) (c), of Ca phosphate apatite (d).

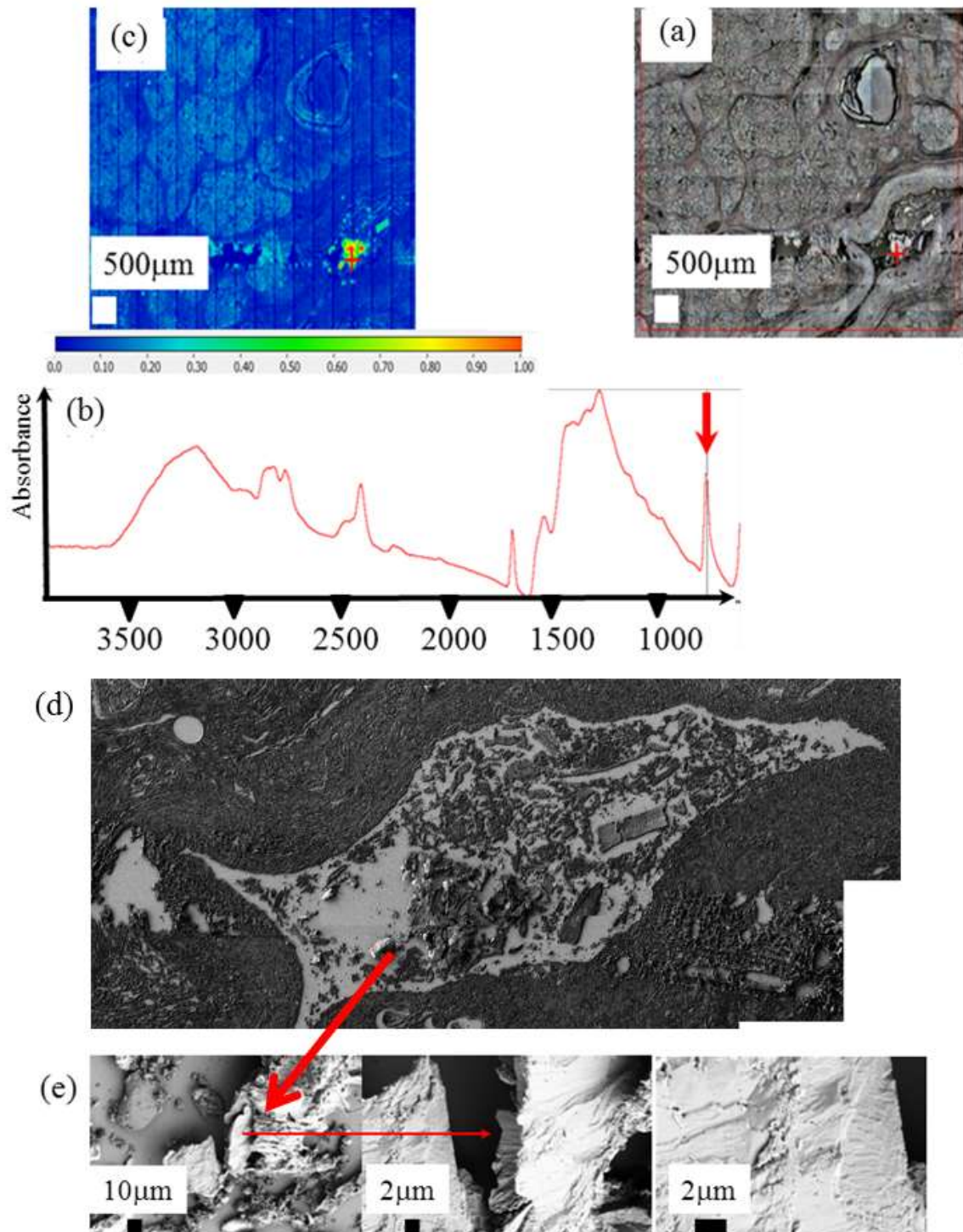
(J'ai enlevé les fleches en surnombre sur les figures c et d.

For sample 10, which corresponds to a patient with cystic fibrosis, a precise observation of the IR absorption spectra underlines (arrows) the possible presence of different chemical phases in addition to proteins such as silicate (contamination?) (Fig. 7a), mucopolysaccharides, without (Fig. 7b) and with small amounts of calcium phosphate (Fig. 7c), or Ca phosphate apatite alone (Fig. 7d).

It is also possible to gather information regarding the morphology of the ectopic calcification after its chemical identification through FTIR spectroscopy. For sample 3 coming

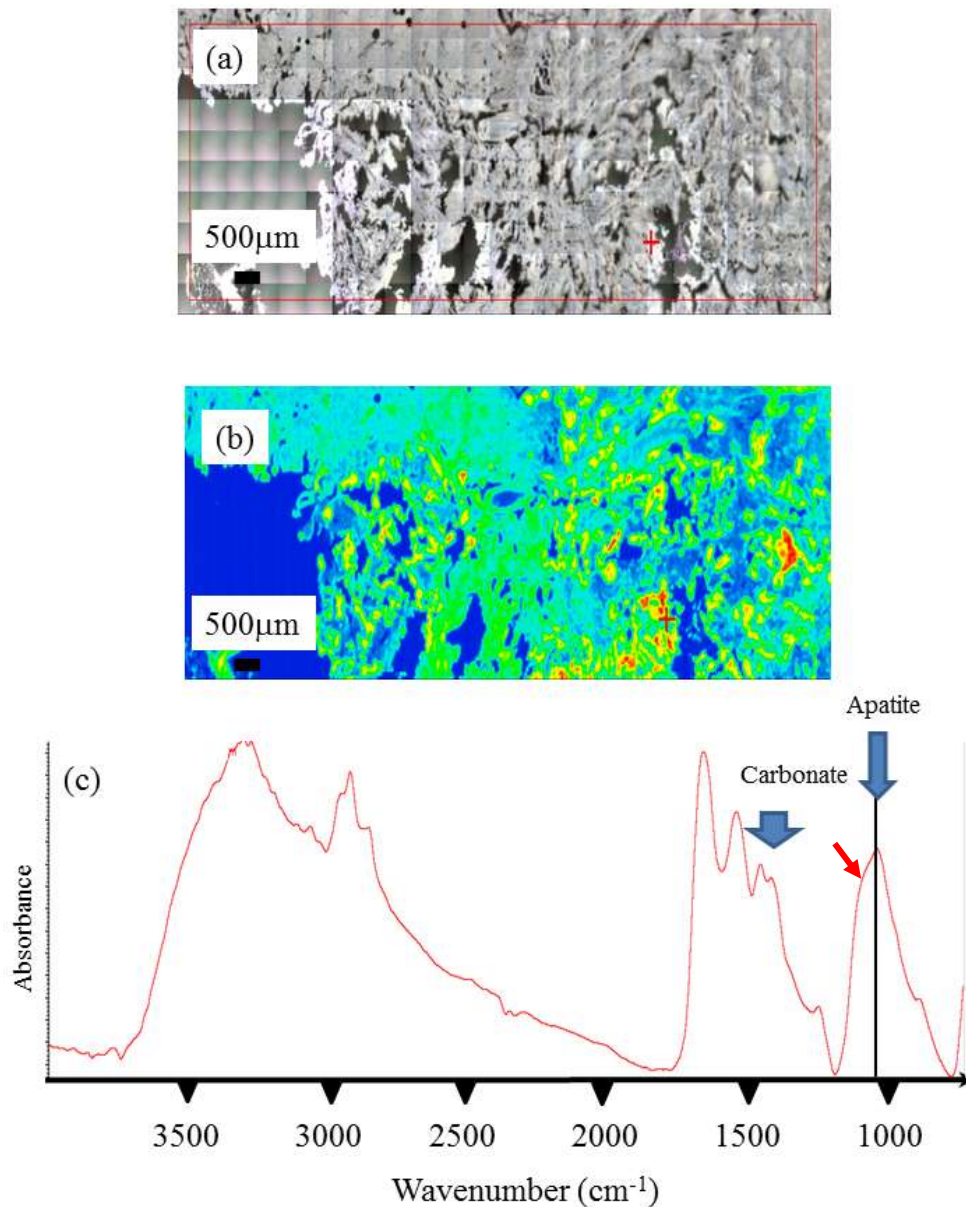


from a patient with chronic pancreatitis (Fig. 8), FE-SEM observations have been performed after the acquisition of a FTIR map on the very same sample. In that case, details at the micrometer scale can be obtained. As we can see, the faces of calcite crystallites are not well defined suggesting that we have at the micrometer scale a mixing between mineral and proteins.



**Fig 8.** Set of data collected for sample 3: (a) optical microscope observation (b) typical infra red spectrum (c) Spatial distribution of calcite corresponding to spatial distribution of the intensity of the IR absorption bands at  $875\text{ cm}^{-1}$  (d) Topology of the very sample are obtained through SEM (e) Details of the sample surface visualized at higher magnification.

Finally, in another sample of pancreatic tissue, FTIR experiments underlined the presence of ectopic calcifications made of Ca phosphate apatite. A careful examination of the IR absorption at  $1030\text{ cm}^{-1}$  indicates the presence of Ca phosphate apatite and amorphous Ca phosphate apatite. Also, this Ca phosphate apatite is carbonated as indicated by the presence of carbonate IR absorption bands.



**Fig 9.** Sample 11. (a) Optical microscope observations; (b) Spatial distribution of the apatite in the sample; (c) IR absorption spectrum pointing out the presence of microcalcifications made of highly carbonated apatite. Note the presence of ACCP through the attenuated shoulder (around  $1100\text{ cm}^{-1}$ ) of the  $\nu_3$  absorption band of apatite at  $1030\text{ cm}^{-1}$ .

Etiologies of chronic calcifying pancreatitis are numerous and may sometimes be combined. A robust tool to help define the etiology would be greatly appreciated, especially in cases of hereditary pancreatitis in which multiple genes sequencing is long and expensive. Chronic pancreatitis is often managed medically. Surgical specimens are rare resulting in a very small number of patients for a given etiology. It did not seem that one type of calcification composition was restricted to one etiology but larger groups are necessary to definitively conclude. Close relations have been observed between pancreatic calcifications and the metabolism of calcium. It was reported that chronic pancreatitis is a possible cause of hypocalcemia. By contrast, hypercalcemic states of primary hyperparathyroidism may induce pancreatic calcifications [113]. Calcium phosphate deposits were found in human pancreatic adenocarcinoma (Capan-1) cell cultures [114]. Low citrate concentration, high calcium diffusion from interstitium to pancreatic juice, local protein precipitation and other alterations in the pancreatic juice composition are possible factors involved in pancreatic calcifications [109]. We can expect differences in the chemical form, crystalline phases, accurate distribution and abundance of calcifications according to the etiology. Our results suggest that further investigations should be performed to relate more precisely pancreatic calcifications and the etiology of pancreatitis, as demonstrated for other tissues such as kidney [18-20].

## 5. Conclusion

Even if stones in biliary and pancreatic ducts constitute a major public health problem, the number of investigations based on physical techniques remains quite limited. Our investigation clearly shows that only ~~one~~ techniques such last generation FTIR and FE-SEM experimental devices offer a chemical and structural description at the mesoscopic scale and are able to bring to clinicians a significant description of pathological calcifications [2-4].

Regarding the pancreatic stones, FTIR spectroscopy and FE-SEM observations underline the presence of the three calcium carbonate polymorphs as well as a great diversity on their spatial distribution (core versus surface). These results suggest that very different mechanisms are involved in stone formation. For example, in inherited calcifying pancreatitis, the protein content of the stones was especially high and the core, by contrast to other pathological conditions, was mainly composed by protein agglomerates. In another case, the core of the stone was made of a fatty acid, crystallized as calcium salt, which appears a very uncommon condition.

Major results have been also obtained on pancreas tissues. Chemical diversity exists also for ectopic calcifications. The presence of CA and its amorphous precursor (ACCP) constitutes a real challenge for clinicians, such chemical compounds being associated to biological parameters far from those related to calcium carbonate.

Due to the limited number of samples in this investigation, it was not possible to establish a possible relationship between the calcifications' composition and the chronic pancreatitis etiology. These pathologies are rare and the small number of subjects may have masked relevant associations. However, the chemical diversity of calcium deposits (carbonate or phosphate) suggests a variety of pathologic conditions involved in pancreatic calcifications. The precise crystalline form of calcium carbonate or calcium phosphate identified in the tissue could be simply a marker of the timing of the calcification process regardless of the causing

mechanism. Works are in progress to better understand the actual relations between crystals and pathology as performed in other tissues.

#### Disclosure

All the authors declared no competing interests.

#### Acknowledgments

This work was supported by the Physics and Chemistry Institutes of CNRS and by contracts ANR-09-BLAN-0120-02, ANR-12-BS08-0022, ANR-13-JSV-10010-01, convergence UPMC CVG1205 and CORDDIM-2013-COD130042.

## References

- [1] L. Rosenkranz, S.N. Patel, *Gastrointestinal Endoscopy Clinics of North America* 22 (2012) 435.
- [2] D. Bazin, M. Daudon, Ch. Combes, Ch. Rey, *Chem. Rev.* 112 (2012) 5092.
- [3] D. Bazin, M. Daudon, *J. Phys. D: Appl. Phys.* 45 (2012) 383001.
- [4] D. Bazin, J.-Ph. Haymann, E. Letavernier, J. Rode, M. Daudon *Presse Med.* 43 (2014) 135.
- [5] H. Sarles, *Gastroenterology* 66 (1974) 604.
- [6] H. Harada, M. Takeda, J. Tanaka, H. Miki, K. Ochi, I. Kimura, *Gastroenterologia Japonica* 18 (1983) 530.
- [7] A.L. Rodgers, *Micron and Microscopica Acta* 14 (1983) 219.
- [8] E.W. Moore, H.J. Vérine, *J Lab Clin Med.* 106 (1985) 611.
- [9] A. L. Rodgers, M. Spector, *Calcif Tissue Int.* 39 (1986) 342.
- [10] A. Noda, T. Takayama, Y. Ogawa, Y. Sugimoto, T. Shibata, Y. Horiguchi S. Kameya, Y. Nakanishi, *Gastroenterol Jpn.* 21 (1986) 255.
- [11] A.C. Schultz, P.B. Moore, P.J. Geevarhese, C.S. Pitchumoni, *Digestive Diseases and Sciences* 31 (1986) 476.
- [12] C.S. Pitchumoni, K.V. Viswanathan, P.J. Gee Varghese, P.A. Banks, *Pancreas.* 2 (1987) 152.
- [13] Z.P. Jing, *Zhonghua Wai Ke Za Zhi.* 28 (1990) 421.
- [14] H. Tohda, Y. Tsuchiya, T. Kobayashi, H. Kishiro, T. Yanagisawa, *J. Electron Microsc (Tokyo)* 43 (1994) 57.
- [15] L. de Pablo-Galan, M.D. Lastra-Azpilicueta, *Revista Mexicana de Ciencias Geol.* 14 (1997) 78.
- [16] K.V. Narasimhulu, N.O. Gopal, J.L. Rao, N. Vijayalakshmi, S. Natarajan, R. Surendran, V. Mohan, *Biophysical Chemistry* 114 (2005) 137.
- [17] E.K. Choi, G.A. Lehman, *Korean J. Intern. Med.* 27 (2012) 20.
- [18] M. Daudon, C.A. Bader, P. Jungers, *Scan. Microsc.* 7 (1993) 1081.
- [19] M. Daudon, R.J. Reveillaud, *Nephrologie* 5 (1984) 195.
- [20] M. Daudon, *L'Eurobiologiste XXVII* 203 (1993) 35.
- [21] A. Dessombz, P. Méria, D. Bazin, E. Foy, S. Rouzière, R. Weil, M. Daudon *Prog Urol.* 21 (2011) 940.
- [22] A. Dessombz, P. Méria, D. Bazin, M. Daudon, *PLoS ONE* 7 (2012) e51691.
- [23] T.C. Holme, M.M. Reis, A. Thompson, A. Robertson, D. Parham, P. Hickman, P.E. Preece, *Eur Surg Oncol* 19 (1993) 250.
- [24] H.-K. Ea, Ch. Nguyen, D. Bazin, A. Bianchi, J. Guicheux, P. Reboul, M. Daudon, F. Lioté, *Arthritis & Rheumatism* 63 (2011) 10.
- [25] Ch. Nguyen, H.-K. Ea, D. Bazin, M. Daudon, F. Lioté, *Arthritis Rheum.* 62 (2010) 2829.
- [26] Ch. Nguyen, H.K. Ea, D. Thiaudière, S. Reguer, D.Hannouche, M. Daudon, F. Lioté D. Bazin, *J. Synchrotron Radiat.* 18 (2011) 475.
- [27] Ch. Nguyen, D. Bazin, M. Daudon, A. Chatron-Colliet, D. Hannouche, A. Bianchi, D. Côme, A. So, N. Busso, F. Lioté, H.-K. Ea, *Arthritis Research & Therapy* 15 (2013) R103.
- [28] H.-K. Ea, V. Chobaz, Ch. Nguyen, S. Nasi, P. van Lent, M. Daudon, A. Dessombz, D. Bazin, G. McCarthy, B. Jolles-Haeberli, A. Ives, D. Van Linthoudt, A. So, F. Lioté, N. Busso, *PLoS ONE* 8 (2013) e57352.
- [29] A.J. Skinner, J.P. Lafemina, H.J.F. Jansen, *American Mineralogist* 79 (1994) 205.
- [30] L. Kabalah-Amitai, B. Mayzel, Y. Kauffmann, A.N. Fitch, L. Bloch, P.U.P.A. Gilbert, B. Pokroy, *Science* 340 (2013) 454.

- [31] J.P.R. De Villiers, *Am. Min.* 56 (1971) 758.
- [32] L. Multigner, M. Daudon, G. Montalto, A. de Caro, J.P. Etienne, H. Sarles, *N. Engl. J. Med.* 314 (1986) 248.
- [33] N. Teich, J. Mössner, *Best Pract. Res. Clin., Gastroenterol.* 22 (2008) 115
- [34] M.H. Derikx & J.P. Drenth, *Best Pract Res Clin Gastroenterol.* 24 (2010) 251.
- [35] R. Pfützner, E. Myers, S. Applebaum-Shapiro, R. Finch, I. Ellis, J. Neoptolemos, J.A. Kant, D.C. Whitcomb, *Gut.* 50 (2002) 271.
- [36] R.H. Pfützner, M.M. Barmada, A.P. Brunskill, R. Finch, P.S. Hart, J. Neoptolemos, W.F. Furey, D.C. Whitcomb, *Gastroenterology.* 119 (2000) 615.
- [37] J.M. Chen, C. Férec, *Annu. Rev. Genomics Hum. Genet.* 10 (2009) 63.
- [38] D. Bazin, M. Daudon, P. Chevallier, S. Rouzière, E. Elkaim, D. Thiaudière, B. Fayard, E. Foy, P.A. Albouy, G. André, G. Matzen, E. Véron, *Ann. Biol. Clin.* 64 (2006) 125.
- [39] M. Daudon, D. Bazin, *J. Phys.: Conference Series* 425 (2013) 022006.
- [40] D. Bazin, M. Daudon, *Ann. Biol. Clin.* in press.
- [41] N. Quy-Dao, M. Daudon *M* (1997) *Infrared and Raman Spectra of Calculi.* Elsevier.
- [42] « Microscopie électronique à balayage et microanalyse », Ed. F. Brisset, M. Repoux, EDP Sciences, 2008.
- [43] M. Daudon, M.F. Protat, R.J. Reveillaud, *Ann. Biol. Clin.* 36 (1978)475.
- [44] Lowenstam, H. A. & Weiner, S. *On Biomineralization* (Oxford University Press, 1989).
- [45] R. Lakes, *Nature* 361 (1993) 511.
- [46] J. Xiao, Y. Zhu, J. Juan, Q. Ruan, Y. Zheng, L. Cheng, L. Wang, F. Xu, *Mod. Phys. Lett. B* 23 (2009) 3695.
- [47] K. Benzerara, F. Skouri-Panet, J. Li, C. Féraud, M. Gugger, T. Laurent, E. Couradeau, M. Ragon, J. Cosmidis, N. Menguy, I. Margaret-Oliver, R. Tavera, P. López-García, D. Moreira, *Proc. Natl. Acad. Sci. USA* 111 (2014) 10933.
- [48] K. Benzerara, T.H. Yoon, T. Tyliczszak, B. Constantz, A.M. Spormann, G.E. Brown Jr, *Geobiology* 2 (2004) 249.
- [49] K. Benzerara, N. Menguy, P. Lopez-Garcia, T.-H. Yoon, J. Kazmierczak, T. Tyliczszak, F. Guyot, G.E. Brown Jr, *PNAS* 103 (2006) 9440.
- [50] K.B. Lee, S. B. Park, Y.N. Jang, S.W.J. Lee, *J. Colloid Interface Sci.* 355 (2011) 54.
- [51] O. Cizer, C. Rodriguez-Navarro, E. Ruiz-Agudo, J. Elsen, D. Van Gemert K. Van Balen, *J. Mat. Sci.* 47 (2012) 6151.
- [52] K. Lee, W. Wagermaier, A. Masic, K.P. Kommareddy, M. Bennet, I. Manjubala, S.-W. Lee, S.B. Park, H. Cölfen, P. Fratzl, *Nat. Commun.* 3 (2012) 725.
- [53] J.H.E. Cartwright, A.G. Checa, J.D. Gale, D. Gebauer, C.I. Sainz-Díaz, *Angewandte Chemie International Edition* 51 (2012) 11960.
- [54] J. De Yoreo, *Nature Materials* 12 (2013) 284.
- [55] B. Fritz, A. Clément, G. Montes-Hernandez, C. Noguera *Cryst. Eng. Comm.* 15 (2013) 3392.
- [56] L.B. Gower, *Chem. Rev.* 108 (2008) 4551.
- [57] M. Daudon, O. Traxer, P. Jungers, D. Bazin, *AIP Conf. Proc.* 900 (2007) 26.
- [58] M. Daudon, P. Jungers, D. Bazin, *New Eng. J. Med.* 359 (2008) 100.
- [59] M. Daudon, P. Jungers, D. Bazin, *AIP Conf. Proc.* 1049 (2008) 199.
- [60] M. Daudon, D. Bazin, G. André, P. Jungers, A. Cousson, P. Chevallier, E. Véron G. Matzen, *J. Appl. Cryst.* 42 (2009) 109.
- [61] X. Carpentier, M. Daudon, O. Traxer, P. Jungers, A. Mazouyes, G. Matzen, E. Véron, D. Bazin, *Urology* 73 (2009) 968.
- [62] D. Bazin, G. André, R. Weil, G. Matzen, E. Veron, X. Carpentier, M. Daudon *Urology* 79 (2012) 786

- [63] A. Dessombz, E. Letavernier, J.-Ph. Haymann, D. Bazin, M. Daudon  
The Journal of Urology, In Press.
- [64] T. Yong-Jin Han, J. Aizenberg, Chem. Mat. 20 (2008) 1064.
- [65] Y. Politi, R.A. Metzler, M. Abrecht, B. Gilbert, F.H. Wilt, I. Sagi, L. Addadi,  
S. Weiner, P.U.P.A. Gilbert, PNAS 105 (2008) 17362.
- [66] Y. Levi-Kalisman, S. Raz, S. Weiner, L. Addadi, I. Sagi,  
Advanced Functional Mat. 12 (2002) 43.
- [67] J. Ihli, W.C. Wong, E.H. Noel, Y.-Y. Kim, A.N. Kulak, H.K. Christenson,  
M.J. Duer, F.C. Meldrum, Nat. Commun. 5 (2014) 3169.
- [68] T. Ogino, T. Suzuki, K. Sawada, Geochimica et Cosmochimica Acta, 51 (1987) 2757.
- [69] G. Behrens, L.T. Kuhn, R. Uvic, A.H. Heuer, Spectroscopy Letters 28 (1995) 983.
- [70] Le Carbonate de Chaux, J. Dedek, Librairie Universitaire Louvain, 1966.
- [71] « Etude de la cristallisation contrôlée de la calcite par voie électrochimique. Effet des ions étrangers au système calcocarbonique sur la nucléation-croissance de la calcite », H. Teghidet, PhD, UPMC, 2012.
- [72] N. H. de Leeuw, S.C. Parker, J. Phys. Chem. B 102 (1998) 2914.
- [73] Van Meerssche, M. & Feneau-Dupont, J. (1973). Introduction à la Cristallographie et à la Chimie Structurale. Louvain, Cesson : Vander.
- [74] M. Ukrainczyk, J. Kontrec, D. Kralj, J. of Colloid and Interface Science 329 (2009) 89.
- [75] E. Loste, R.M. Wilson, R. Seshadric, F.C. Meldrum,  
J. of Crystal Growth 254 (2003) 206.
- [76] D.B. DeOliveira, R.A. Laursen, J. Am. Chem. Soc. 119 (1997) 10627.
- [77] L. Breýeviu, A.E. Nielsen, J. Crystal Growth, 98 (1989) 504.
- [78] S.S. Wang, A. Picker, H. Cölfen, A.-W. Xu,  
Angewandte Chemie International Edition 52 (2013) 6317.
- [79] H. Sarles, Ann. Castroenterol Hepatol, 22 (1986) 37.
- [80] A.M. De Caro, J.J. Bonicel, P. Rouimi, D. De Caro, H. Sarles, M. Roverly,  
Eur. J. Biochem. 168 (1987) 201.
- [81] D. Giorgi, J.P. Bernard, S. Rouquier, J. Iovanna, H. Sarles, J.C. Dagorn,  
Clin. Invest. 84 (1989) 100.
- [82] M. Provencal-Cheylan, A. Mariani, J.P. Bemard, H. Sarles, P. Dupuy,  
Pancreas 4(1989) 680.
- [83] L. Patard, J.Y. Lallemand, V. Stoven, J.O.P. 4 (2003) 92.
- [84] J.M. Verdier, B. Dussol, P. Casanova, M. Daudon, P. Dupuy, P. Berthezene,  
R. Boistelle, Y. Berland, J.C. Dagorn, Eur. J. Clin. Invest. 22 (1992) 469.
- [85] D. Bazin, M. Daudon, G. André, R. Weil, E. Véron, G. Matzen,  
J. Appl. Cryst. 47 (2014) 719.
- [86] M.L. Steer, I. Waxman, S. Freedman, N Engl J Med 332 (1995) 1482.
- [87] E.V. Loftus Jr, B.A. Olivares-Pakzad, K.P. Batts, M.C. Adkins, D.H. Stephens  
M.G. Sarr, E.P. DiMagno, Gastroenterology 110 (1996) 1909.
- [88] A. Campisi, G. Brancatelli, M.-P. Vullierme, P. Levy, P. Ruzniewski, V. Vilgrain,  
Clinical Radiology 64 (2009) 903.
- [89] T.B. Morse, AstroPhys. J. 26 (1907) 225.
- [90] H.H. Adler, P.F. Kerr, Am. Mineral. 47 (1962) 700.
- [91] C.E. Weir, E.R. Lippincott, J. of Research of NBS – A 65A (1961) 173.
- [92] G. Hertzberg, Molecular spectra and molecular structure vol. II, Infrared and Raman spectra of polyatomic molecules, 7<sup>th</sup> ed., p. 178 (D. Van Nostrand Co. New York, N.Y., 1956).
- [93] D.F. Hornig, J. Chem. Phys. 16 (1948) 1063.
- [94] R.S. Halford, J. Chem. Phys. 14 (1946) 8.

- [95] S. Gunasekaran, G. Anbalagan, S. Pandi, *J. of Raman Spectroscopy* 37 (2006) 892.
- [96] N.V. Vagenas, A. Gatsouli, C.G. Kontoyannis, *Talanta* 59 (2003) 831.
- [97] D. Lou, F. Sun, L. Li, *Chin. Opt. Lett.* 05 (2007) 370.
- [98] J.A. Gadsden (1975) In: *Infrared spectra of minerals and related inorganic compounds*. Butterworths, New York
- [99] D.R. Taylor, R.S. Crowther, J.C. Cozart, P. Sharrock, J. Wu, R.D. Soloway, *Hepatology* 22 (1995) 488.
- [100] C. Wang, J. Zhao, X. Zhao, H. Bala, Z. Wang, *Powder Technol* 163 (2006) 134.9090
- [101] K.H. Hellwege, W. Lesch, M. Plihal, G. Schaack, *Z. Phys.* 232 (1970) 61.
- [102] Ph. Gillet, P. Mcmillan, J. Schott, J. Badro, A. Grzechnik, *Geochimica et Cosmochimica Acta* 60 (1996) 3471.
- [103] G. Müller, W. Wäsche, U. Bindig, K. Liebold, *Laser Physics* 9 (1999) 348.
- [104] Y.-J. Chen, Y.-D. Cheng, H.-Y Liu, P.-Y. Lin, C.-S. Wang, *Chang Gung Med. J.* 29 (2006) 518.
- [105] Z. Movasaghi, S. Rehman, I. Ur Rehman, *Applied Spectroscopy Reviews* 43 (2008) 134.
- [106] F. Le Naour, M.-P. Bralet, D. Debois, Ch. Sandt, C. Guettier, P. Dumas, A. Brunelle, O. Laprévotte, *PLoS ONE* 4(2009) e7408.
- [107] P. Bassan, A. Sachdeva, A. Kohler, C. Hughes, A. Henderson, J. Boyle, J.H. Shanks, M. Brown, N.W. Clarke, P. Gardner, *Analyst* 137 (2012) 1370.
- [108] L.M. Miller, P. Dumas, *Current Opinion in Structural Biology* 20(2010)649.
- [109] J. Kong, S. Yu, *Acta Biochimica et Biophysica Sinica* 39 (2007) 549.
- [110] A. Grunenwald, C. Keyser, A.M. Sautereau, E. Crubézy, B. Ludes, C. Drouet, *J. of Archaeological Science* 49(2014) 134.
- [111] J.R. Schoonover, R. Marx, W.R. Nichols, *Vibrational Spectroscopy* 35(2004) 239.
- [112] M. De Luca, W. Terouzi, G. Ioele, F. Kzaiber, A. Oussama, F. Oliverio, R. Tauler, G. Ragno, *Food Chemistry* 124(2011) 1113.
- [113] P. Layer P, H. Goebell, *Schweiz Med Wochenschr.* 119 (1989) 1655.
- [114] E. Hollande, J.H. Levrat di Donato, M. Fanjul, C. Palevody, M. Daumas, J. Puech, G. Ratovo, *Biol. Cell.* 69 (1990) 191.
- [115] H. Weber, W. Dummler, S. Liebe, *Z. Gastroenterol.* 31 (1993) 592.