



Microsaccades enable efficient synchrony-based coding in the retina: a simulation study

Timothée Masquelier, Geoffrey Portelli, Pierre Kornprobst

► To cite this version:

Timothée Masquelier, Geoffrey Portelli, Pierre Kornprobst. Microsaccades enable efficient synchrony-based coding in the retina: a simulation study. Scientific Reports, 2016, 6, pp.24086. 10.1038/srep24086 . hal-01301838

HAL Id: hal-01301838

<https://hal.sorbonne-universite.fr/hal-01301838>

Submitted on 13 Apr 2016

HAL is a multi-disciplinary open access archive for the deposit and dissemination of scientific research documents, whether they are published or not. The documents may come from teaching and research institutions in France or abroad, or from public or private research centers.

L'archive ouverte pluridisciplinaire **HAL**, est destinée au dépôt et à la diffusion de documents scientifiques de niveau recherche, publiés ou non, émanant des établissements d'enseignement et de recherche français ou étrangers, des laboratoires publics ou privés.



Distributed under a Creative Commons Attribution 4.0 International License

SCIENTIFIC REPORTS

OPEN

Microsaccades enable efficient synchrony-based coding in the retina: a simulation study

Timothée Masquelier^{1,2,3,†}, Geoffrey Portelli⁴ & Pierre Kornprobst⁴

Received: 01 October 2015

Accepted: 15 March 2016

Published: 11 April 2016

It is now reasonably well established that microsaccades (MS) enhance visual perception, although the underlying neuronal mechanisms are unclear. Here, using numerical simulations, we show that MSs enable efficient synchrony-based coding among the primate retinal ganglion cells (RGC). First, using a jerking contrast edge as stimulus, we demonstrate a qualitative change in the RGC responses: synchronous firing, with a precision in the 10 ms range, only occurs at high speed and high contrast. MSs appear to be sufficiently fast to be able reach the synchronous regime. Conversely, the other kinds of fixational eye movements known as tremor and drift both hardly synchronize RGCs because of a too weak amplitude and a too slow speed respectively. Then, under natural image stimulation, we find that each MS causes certain RGCs to fire synchronously, namely those whose receptive fields contain contrast edges after the MS. The emitted synchronous spike volley thus rapidly transmits the most salient edges of the stimulus, which often constitute the most crucial information. We demonstrate that the readout could be done rapidly by simple coincidence-detector neurons without knowledge of the MS landing time, and that the required connectivity could emerge spontaneously with spike timing-dependent plasticity.

Our eyes are never at rest. Even when trying to fixate, we make involuntary and unconscious eye movements. These movements, known as fixational eye movements (FEM), have three main components: tremor, drift, and microsaccades (MS)^{1–3}. Tremor is an aperiodic, wave-like motion of the eyes with a frequency of ~90 Hz. It is the smallest of all eye movements, with an amplitude of only about the diameter of a cone in the fovea. Drift is a slow and random-walk-like movement that occurs, together with the tremor, between the MSs. MSs are rapid ballistic jumps of amplitude up to 1°, which occur at irregular intervals, only once or twice per second. They carry the retinal image over dozens of photoreceptor width or more, in only 20–30 ms^{1,2}.

Some experiments suggest that MSs enhance visual perception by counteracting its fading^{1–3}, although the drift alone could be sufficient to do so^{4,5}. Furthermore, even if MSs are not voluntary, we do more of them when paying attention⁶, in particular to fine spatial details^{7,8}, or when looking at informative regions⁹, suggesting that MSs are involved in active sensing loops. This calls for an explanation at the neuronal level. The prevalent view is that MSs counteract the retinal ganglion cell (RGC) adaptation to unchanging stimuli, generating strong transient responses. Here we suggest that in addition to the increase in spiking activity, MSs may cause some RGCs to fire synchronously, and that the subset of synchronous RGCs may be a signature of the underlying visual stimulus' edges (i.e. its high spatial frequency content).

To the best of our knowledge, Greschner and colleagues are the only ones who have studied the relationship between FEM and RGC synchrony¹⁰. They found that in the turtle retina, a 5 Hz periodic movement with an amplitude of about one photoreceptor width caused the RGCs with receptive fields (RF) located along contrast edges to synchronize¹⁰. These movements, however, are quite different from MSs in primates, which, as previously stated, occur more rarely (once or twice per second), at irregular intervals, and rapidly carry the retinal image over much longer distances. In addition, the study by Greschner and colleagues did not address the problem of synchrony-based encoding of natural images.

Here, using numerical simulations, we show that the MSs, being in the proper range of speed and amplitude, are *sufficient* to synchronize a small subset of RGCs, namely those that are strongly activated by the image

¹INSERM, U968, Paris, F-75012, France. ²Sorbonne Universités, UPMC Univ Paris 06, UMR_S 968, Institut de la Vision, Paris, F-75012, France. ³CNRS, UMR_7210, Paris, F-75012, France. ⁴Biovision Team, Inria Sophia Antipolis Méditerranée, 06902, France. [†]Present address: CERCO UMR 5549, CNRS – Université de Toulouse, F-31300, France. Correspondence and requests for materials should be addressed to T.M. (email: timothee.masquelier@alum.mit.edu)

content corresponding to the MS landing location. Conversely, tremor and drift both hardly synchronize RGCs because of a too weak amplitude and a too slow speed respectively. We thus suggest a new role for MSs: to allow synchrony-based coding in the retina. This differs from earlier proposals such as time-to-first-spike coding with respect to MS landing times, or rank-order coding¹¹, which are possible in theory as the brain “knows” when it generates MSs³.

In this paper, by “synchrony” we mean the co-occurrence of spikes within a time window sufficiently narrow to contain a maximum of one spike per cell, e.g. ~10 ms. This contrasts with “rate co-modulation”, which is the cross-cell correlation of spike counts within broader time windows¹². In addition, the focus is on stimulus-driven synchrony^{13,14}: e.g. two distant RGCs with non-overlapping RFs yet displaying responses that are modulated by the same stimuli in a similar and simultaneous fashion.

Results

We used the Virtual Retina software¹⁵, which allows large-scale simulations of biologically-plausible retinas, with customizable parameters. Virtual Retina has been shown to reproduce a wide range of experimental data from salamander, cat and primate retinas¹⁵, and has been used in several theoretical studies^{16–19}. It has recently been shown to predict spikes in a mouse retina more accurately than linear-nonlinear (LN) models²⁰. The underlying model includes a non-separable spatio-temporal linear model of filtering in the Outer Plexiform Layer, a shunting feedback at the level of bipolar cells, and a spike generation process using noisy leaky integrate-and-fire neurons to model RGCs. All parameters for the different stages of the model are customizable so that the visual field can be paved with different RGC types.

Here, we modeled the foveal region of a primate retina and only included the midget cells, which represent about 95% of the foveal RGCs²¹. These cells presumably mediate high-acuity vision for static stimuli²². They feed the parvocellular layers of the lateral geniculate nucleus (LGN), which constitute the main input for the ventral stream of the visual cortex²³, involved in form representation and object recognition²⁴. Midget cells have classic center-surround RFs, and are of two main types: ON-cells which are excited by bright dots surrounded by dark regions, whereas OFF-cells are excited by dark dots surrounded by bright regions. Midget cells have strong transient (phasic) responses and weaker sustained (tonic) ones. All the model parameters are given in Table 1.

Synchronous firing needs fast jerky motions and high contrast. We first investigated the conditions under which jerk-like motions may generate synchronous firing. Let us consider the subset of RGCs that are strongly activated after one jerk, presumably due to the presence of contrast edges in their RFs. Likely, most of these cells were previously exposed to homogeneous regions before the jerk, as these are much more common than edges in ecological visual environments. With this observation in mind, we started with a simple scenario: we examined the response of a single ON-cell when, after being exposed to a bright homogeneous surface, a dark edge penetrates its OFF-surround area and stops at the border with its ON-center area, thus strongly stimulating the cell (Fig. 1a left, inset). Responses of that cell are shown in Fig. 1 for different values of penetrating speed and contrast. When varying the speed, the evoked input current peak grows monotonously with the speed (Fig. 1a left, dotted lines). Yet we observe a qualitative change in the firing behavior. At low speeds (< 10°/s), the peristimulus time histograms (PSTH, solid lines) simply reflect the input fluctuations. Conversely, at higher speeds spike times become reproducible across trials, leading to sharp peaks in the PSTH. We define the spike time dispersion as the width of the first PSTH peak, estimated by fitting the PSTH with Gaussian mixture models (see Supplementary Figure S1). This spike time dispersion is plotted as a function of speed on Fig. 1a right. At high speeds, the dispersions are much lower than the timescales of the input current fluctuations, which is, by definition, the signature of temporal encoding²⁵.

This temporal encoding phenomenon may seem counter-intuitive and deserves an explanation. When a neuron is driven by a given fluctuating input, the output spike time dispersion depends only on the noise level, and not on the timescales of the input fluctuations¹⁴. In particular, without noise, the PSTH would be made of Dirac delta functions: one each time the potential reaches the threshold. Adding noise jitters the spikes, but less so if the potential's time derivative at threshold crossing is high. This is what happens at high speed. We observe a similar qualitative change when varying contrast (Fig. 1b): temporal encoding only occurs at high contrast, and spike time dispersion decreases with contrast, as observed experimentally²⁶. In addition, it can be seen on both panels that the first spike emitted after the edge stops is the most temporally precise (i.e. the first PSTH peak is sharper than subsequent peaks). Subsequent spikes suffer from jitter accumulation, again in line with experimentation²⁷.

To summarize, high speeds and contrasts qualitatively change the firing behavior of each cell, increasing its temporal precision. This has consequences on synchronies when we consider a population of RGCs. For speeds from 10°/s and higher, all the ON-cells whose center area is tangential to the edge's final position will tend to emit a first spike synchronously after the motion stops. Subsequent spikes will be progressively desynchronized.

MSs induce synchrony – drift and tremor hardly do. Figure 1 is useful to predict what impact MSs and drift could have on RGC synchrony. Firstly, the MSs, whose speed is about 30°/s in primates²⁸, should be sufficiently rapid to synchronize some of them, namely those that are strongly stimulated after the MS landing, presumably due to the presence of a contrast edge in their RFs. In addition, Fig. 1a shows that a speed of 30°/s leads to a temporal precision which is close to the theoretical maximum (corresponding to an infinite speed). Likely, the benefit of making faster MSs does not outweigh the associated metabolic costs. Secondly, the drift, whose speed is typically below 1°/s in primates^{28,29}, is probably too slow to effectively synchronize RGCs. In the next sections, these predictions will be tested using natural images and realistic FEMs.

Finally, we investigated the effect of tremor, by animating the contrast edge in Fig. 1 with a small sinusoidal movement around its final position (data not shown). We used a frequency of 90 Hz and an amplitude of 0.5 arc-min, both in the biological ranges for tremor¹. The amplitude is thus 10-fold smaller than the radius of the RGC's

Parameter	Value	Comment
Outer Plexiform Layer		
σ_C	0.05°	Centre gaussian's sigma
τ_C	10 ms	Centre signal low pass filtering time constant.
τ_U	100 ms	Undershoot high pass filtering time constant.
w_U	0.8	Undershoot transient relative weight.
σ_S	0.15°	Surround gaussian's sigma
τ_S	4 ms	Surround signal low pass filtering time constant.
λ_{OPL}	10 Hz/Lum. unit	Overall gain of the centre-surround filter.
w_{OPL}	1	Relative weight of centre and surround signal.
Use leaky heat equation	True	Averaging by gap junctions rather than dendritic spread. Leads to a non-separable spatio-temporal filter, but somewhat more realistic.
Bipolar Cells		
$\lambda_{OPL'}$	50	Another gain applied right after λ_{OPL} , thus without biological meaning, but useful for implementation issues.
g_A^0	50 Hz	Inert leaks in membrane integration.
σ_A	0.2°	Size of the spatial neighbourhood used to estimate local contrast.
τ_A	5 ms	Size of the temporal neighbourhood used to estimate local contrast.
λ_A	0 Hz	Strength of the gain control feedback loop (no contrast gain control in primate midget cells)
Inner Plexiform Layer		
τ_G	20 ms	High pass filtering time constant.
w_G	0.7	Transient relative weight.
σ_G	0°	No additional pooling for midget cells.
v_G^0	0	Bipolar linear threshold.
λ_G	100 Hz	Slope in the linear area.
i_G^0	37 Hz	This is below the threshold current (50 Hz). Thus in the dark the threshold is reached only because of the noise (see below), which leads to a irregular Poisson-like spontaneous activity (at ~1 Hz).
Retinal Ganglion Cells (RGC)		
g_L	50 Hz	Leak conductance (thus the membrane time constant is 20 ms)
σ_v	0.1	Gaussian white noise current's normalized amplitude. Integration of this current by the RGCs leads to a Gaussian auto-correlated process with time constant $1/g_L$ and variance σ_v .
τ_{refr}	3 ms	Refractory period
Density	20 cells/°	RGC density (for each polarity). That is a mean inter-RGC interval of 0.05°

Table 1. Parameters for Virtual Retina simulations representing midget cells in the foveal region of a primate retina (see ref. 15).

center area. Moreover, the 90 Hz frequency is strongly attenuated by the retinal low-pass filtering. Hence, the resulting oscillation in the RGC's membrane potential had a tiny amplitude, only of about $1/10000^{\text{th}}$ of the difference between threshold and resting potentials. This is about 1000-fold smaller than the standard deviation of the fluctuations caused by the noise we injected in our simulations. Some experimentalists also reported slower tremor frequencies, down to 40 Hz¹, obviously less attenuated by the retinal low pass filtering. We thus repeated

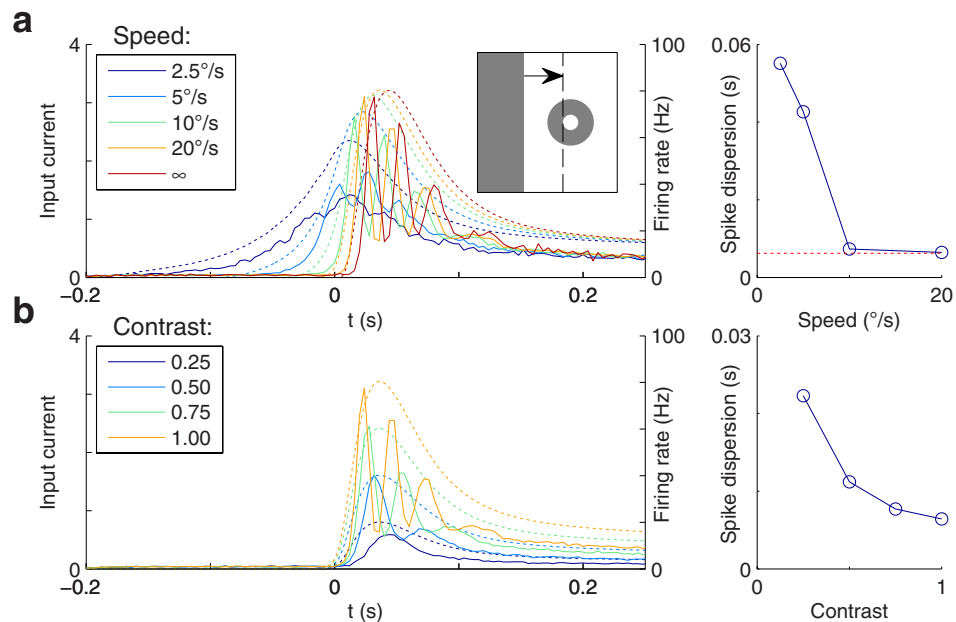


Figure 1. Effect of speed and contrast of an arriving contrast edge on spike time precision. (a-left) The inset shows the stimulation scheme: a dark edge enters the RF of an ON-center RGC and stops at the border with the center area. The main plot shows, for the different speeds of the moving edge, the RGC's input current (dotted lines; units: threshold current), and the resulting PSTH (solid lines), aligned so that the edge stops at $t = 0$ s. Infinite speed is the limit case, meaning that the edge appears directly in its final position. Notice that during the transient response, spiking is synchronous for speeds of 10°/s and above, and asynchronous for slower speeds. Conversely, the sustained response, say for $t > 0.15$ s, is always asynchronous. (a-right) Spike time dispersion as a function of speed. These dispersions are estimated by fitting the PSTHs with Gaussian mixture models (see Supplementary Figure S1). The horizontal dotted line shows the infinite-speed asymptote, which is almost reached for speeds of 10°/s and above. (b-left) The RGC's response for different contrast values (and with a speed of 20°/s) (b-right) Spike time dispersion as a function of contrast. Only strong contrasts cause precise spike times.

the same simulation with 40 Hz instead of 90 Hz, which led to a membrane potential oscillation amplitude about 10-fold larger. However, this amplitude is still 100-fold smaller than the standard deviation of the fluctuations caused by the noise (which has the same order of magnitude as the standard deviation of the fluctuations caused by the drift+MSs with natural images, according to the simulations done in the next section). We thus neglected tremor in the rest of the study. If the real amount of noise is much lower than assumed here, and if the only motion is the tremor (no drift nor MS), then it is conceivable that the tremor-induced oscillatory current gets amplified through gain control, and thus impacts the RGCs' firing. But this scenario is speculative, and not very ecological in any case.

MSs allow synchrony-based representations of natural images. Let us now consider a more ecological scenario in which we examine the effects of drifts and MSs on a population of RGCs stimulated with natural images. As we will see, after each MS landing a subset of RGCs fire a volley of nearly synchronous spikes that encodes the image corresponding to the landing location.

To generate a realistic gaze trajectory, we modeled the drift as a Brownian motion, as suggested by Rucci and colleagues^{30,31}, with a diffusion constant of 40 arcmin²/s³⁰. In addition, MS were generated at irregular intervals using the model proposed by ref. 32 (see Methods for details). The model generates about 2 MSs per second, which consist in ballistic jumps with a mean amplitude of 30 arcmin, and a duration of 25 ms (in the biological ranges²⁸). On a long timescale (>1 s) these MSs avoid persistent motions, i.e. they keep the gaze close to an intended fixation position. We used these trajectories to animate natural images, and stimulated Virtual Retina with the resulting frame sequence, at 200 frames/s. We used two layers (ON and OFF) of 80×80 RGCs, uniformly spaced on a $4^\circ \times 4^\circ$ field of view, which roughly corresponds to the primate fovea. Supplementary Video S1 illustrates the set up.

We first computed the mean cross-correlogram between all pairs of RGCs (Fig. 2). It can be seen that the drift alone hardly synchronizes the cells (small peak), while MSs do so much more reliably (ten times higher peak). This is consistent with McCamy and colleagues' observation³³: they noticed that the drift moves receptive fields slowly over a small region of space, while MSs move receptive fields faster and over larger regions. They deduced that MSs are more likely than drifts to bring very dissimilar visual stimuli into the receptive fields, and thus to generate stronger stimulation, and stronger synchronizing forces. Here we find that MSs, but not drifts, are sufficient to effectively synchronize RGCs. But this raises the following questions: in the presence of MS, which RGCs

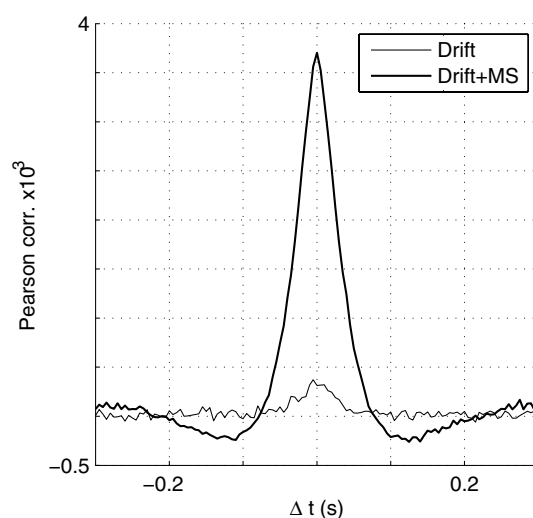


Figure 2. Spike crosscorrelograms (Pearson correlation coefficient, computed with a 5 ms time bin). MSs cause significant correlations at a short timescale (tens of ms and below), while the drift causes much weaker correlations.

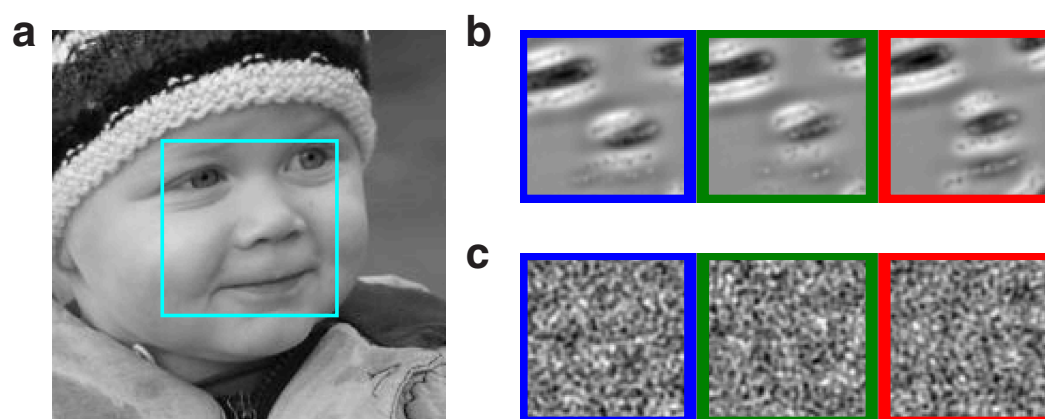


Figure 3. Synchrony-based representations. (a) Input stimulus with the $4^\circ \times 4^\circ$ field of view sampled by Virtual Retina (foveal region). (b) Reconstructions of the downstream neurons' preferred stimuli, after STDP-based learning. This is done by convolving the weight matrix with the RGC spatial filter (i.e. difference of Gaussians). For each downstream neuron, STDP assigned high weights to about 600 RGCs ("selected"), and zero weights the remaining ones. Notice that each reconstruction corresponds to a shifted version of the face's salient parts: the green (respectively blue and red) neuron represents a centered (respectively shifted downward and upward) face. (c) Without MSs the STDP-based learning fails because the RGCs are not sufficiently synchronized.

fire synchronously, and when? To answer these questions, we fed the RGC spike trains to a bio-inspired unsupervised learning algorithm³⁴. The algorithm uses downstream coincidence detector neurons, equipped with spike timing-dependent plasticity (STDP), and lateral inhibitory connections (please note that we do not claim that such neurons exist right after the primate retina, here it is just a way to investigate what large-scale retinal synchronous spike volleys could represent – we will come back to this point in the Discussion). For each downstream neuron, STDP progressively concentrates high synaptic weights on a small subset of RGCs that consistently fire together and discards the other ones. Lateral inhibition encourages the neurons to select different subsets. When this algorithm is trained with a single natural image, the final subsets correspond to the image's salient parts, with different spatial shifts (see Fig. 3a,b for an example with three downstream neurons, and a face image). It is worth mentioning that, even if MSs have small amplitudes (30 arcmin on average), they can synchronize distant RGCs, because all the RGCs receive the signal change at the same time. The same algorithm failed to learn useful representations with the drift alone (Fig. 3c), presumably because synchrony was too weak in that case (Fig. 2).

When do the RGC subsets fire synchronously? As a proxy for such events, one can examine the spikes emitted by the downstream neurons after learning, still using the same stimulus. These spikes occur shortly after the MSs

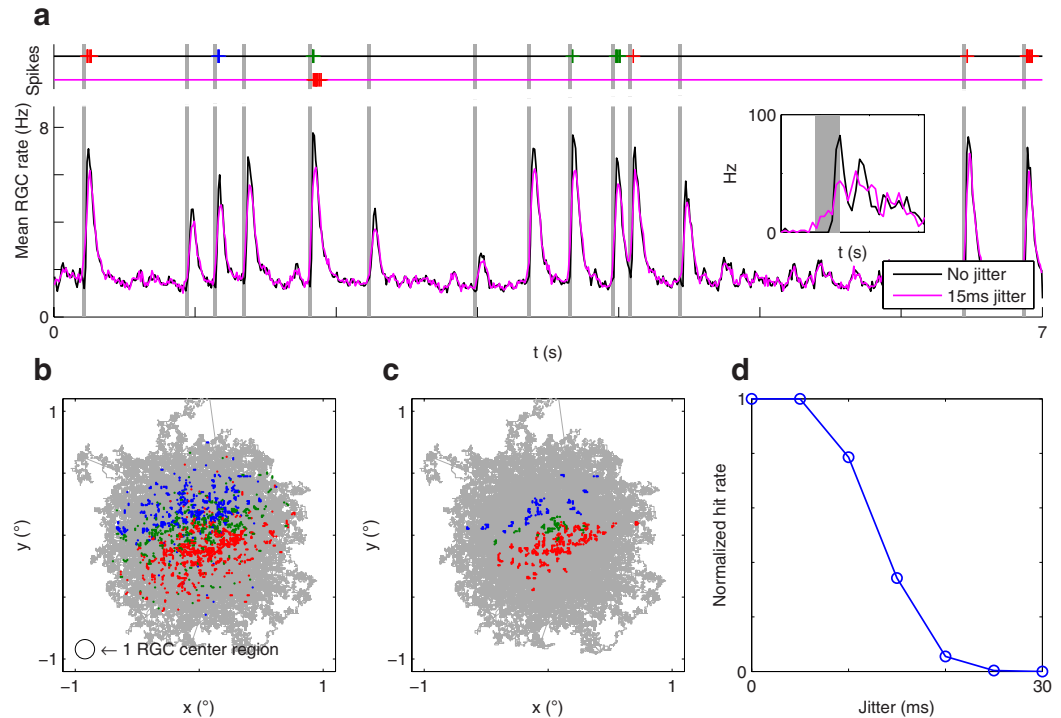


Figure 4. Synchronous spike patterns follow MSs and depend on the landing location. The stimulus is still the face of Fig. 3a. **(a)** Mean RGC firing rate as a function of time. Vertical gray bars indicate MSs. These are followed by strong transient activity. Red, green, and blue bars above indicate the times at which the 3 downstream neurons fire, with colors matching the ones in Fig. 3. Most of these spikes disappear when adding a 15 ms jitter. The inset shows the rate of a subset of ~150 ON-RGCs that receive a similar activation level after one MS (leading to 3 spikes in the 100 ms following the MS). **(b)** The gray line shows the gaze trajectory, made of drifts (random walk) and MSs (ballistic jumps). Colored dots indicate the positions where the 3 downstream neurons fired. These neurons fire after a MS, and each downstream neuron has a preferred landing zone. **(c)** A 15 ms jitter suppresses most of the downstream neurons' responses. **(d)** Number of postsynaptic spikes, relative to the case with no jitter, as a function of jitter.

(Fig. 4a). Different MSs activate different downstream neurons, depending on the landing location (Fig. 4b). As a control experiment, we checked that jittering the RGC spike times, by adding random delays drawn from a normal distribution ($\mu = 0$ ms, $\sigma = 15$ ms), which preserves the spike counts but impairs synchrony, removes most of the downstream neurons' spikes (Fig. 4a,c). With $\sigma = 30$ ms, no spike remains (Fig. 4d).

Notably, on Fig. 4a the RGC population activity following a MS does not have a series of sharp temporal peaks like in Fig. 1. This is due to an averaging effect: the population comprises cells that are differently activated by each MS, which leads to different latencies. If one restricts the analysis to RGCs that receive a similar (strong) activation level, then some sharp peaks appear (Fig. 4a inset). In other words, the strongly activated cells operate in the temporal encoding regime, which enables precise spike synchronization.

To summarize, after each MS landing a RGC subset fires synchronously with a precision of *circa* 10 ms. For a given image, the exact subset depends on the MS landing location (this implies that it also depends on the image, as we will check in the next section). Similar results can be observed with other natural images (Fig. 5). Note that the number of downstream neurons we used is arbitrary. Using more of them would lead to partitioning the landing location set more finely.

MSs allow rapid, coincidence-based, template matching. Template matching is an operation which consists of computing the similarity between a given image patch and a stored prototype. We will now demonstrate that such a similarity can be computed from the MS-induced synchronous spike volleys, because these volleys are signatures of the corresponding image contents. Here, for simplicity, we used holistic template matching.

We found that the potential of each downstream neuron shortly after the MS landing may be interpreted as the similarity between the stimulus seen from the landing location and the neuron's preferred stimulus. To give an example, we examined the responses of the green neuron shown in Figs 3 and 4. This neuron prefers MSs that land near the central position of the face image (Fig. 4b). For illustration purposes, we selected seven of such MSs, and plotted the mean PSTH for all the selected RGCs and for the remaining ones (Fig. 6a top, solid and dotted lines respectively). The plot shows that the selected RGCs tend to emit their first spikes synchronously. The time at which they do so is variable from one MS to another (~10 ms after the MS landing on average). These volleys of synchronous spikes, arriving through strong synapses, cause high peaks in the downstream neuron's potential

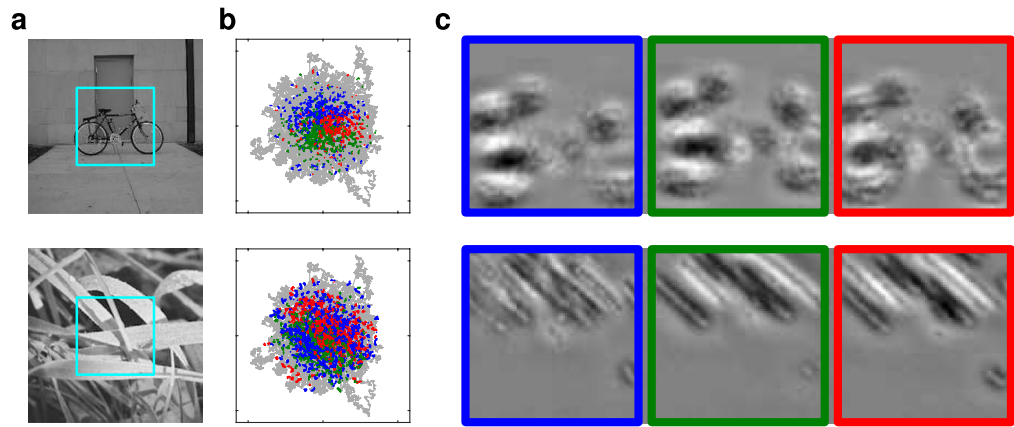


Figure 5. Examples of synchrony-based representations with other stimuli. (a) Input stimuli with the $4^\circ \times 4^\circ$ field of view sampled by Virtual Retina (foveal region). (b) Gaze trajectory. Colored dots indicate the spikes emitted by the 3 downstream neurons, after learning. (c) Reconstructions of the downstream neurons' preferred stimuli, after learning. The bike image is from the Savarese and Fei-Fei dataset⁶¹.

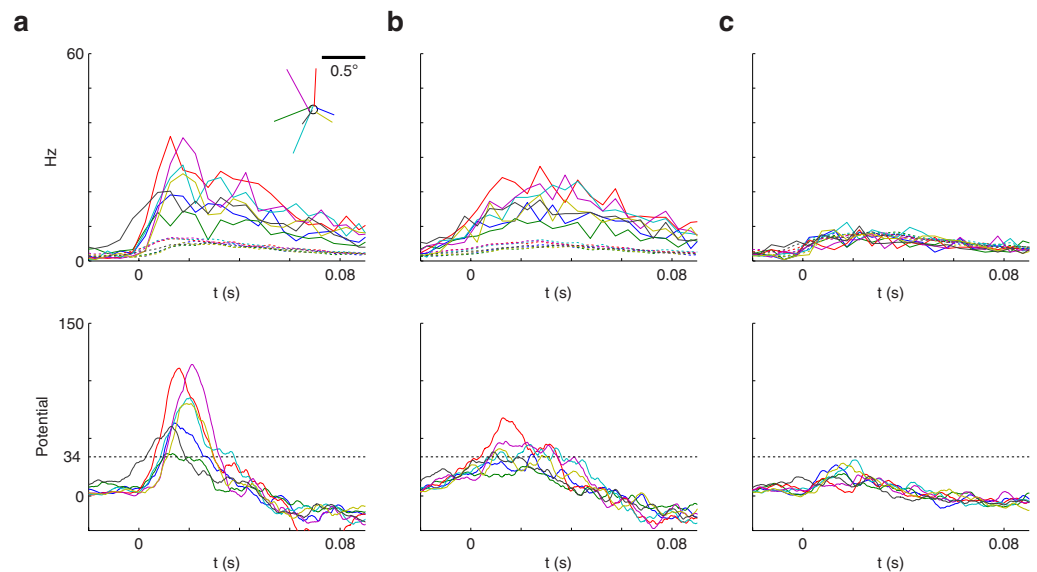


Figure 6. Rapid synchrony-based template matching. Here we focus on the second (green) downstream neuron of Fig. 3, which prefers MSs landing in the central zone of the face image (Fig. 4b). For illustration purposes, we used again the face stimulus, and examined the responses for 7 randomly selected MSs, landing near the center (see Methods for details) (a) The top plot shows the PSTH for the selected RGCs (solid lines), and for the remaining ones (dotted lines), for each MS. $t = 0$ is the MS landing time. Notice that the selected RGCs tend to start firing much earlier than the others, and somewhat synchronously (they also fire more spikes). The inset shows the MS trajectories, which land in a neighborhood of the central position (circle). The bottom plot shows the downstream neuron's unconstrained potential (ignoring the threshold). Most MSs generate a high potential peak due to nearly coincident spikes from selected RGCs. (b) With a 15 ms jitter, the selected RGCs' response onsets are more spread out, which flattens the potential peaks. (c) As in (a) but using a different stimulus (the bike image in Fig. 5a). The selected RGCs no longer fire synchronously. Resulting potential peaks are weak. The horizontal dotted line on bottom plots is a hypothetical threshold of 34, which would lead to no false alarm with the bike image, and no miss with the face image, despite strong MS-to-MS variability.

(Fig. 6a bottom), with a latency of only ~ 20 ms. The remaining RGCs tend to fire fewer spikes, do so much later and more asynchronously. Unsurprisingly, adding a 15 ms jitter spread out the first spikes, which flattened the potential peaks (Fig. 6b).

Is the subset of synchronous RGCs stimulus-specific? To answer this question, we examined the responses of the green neuron, trained with the face image, to the bike image shown in Fig. 5a. In that case, the responses of the ~ 600 selected RGCs are statistically indiscernible from that of the remaining ones (Fig. 6c): late, weak, and

asynchronous (actually, another small RGC subset corresponding to the bike's salient parts is synchronized, but it is hidden in the huge population of 12,800 RGCs). The resulting potential peaks are weak.

To summarize, the downstream coincidence detector neuron robustly discriminates between the two stimuli in just ~20 ms, despite strong MS-to-MS variability in the RGC responses that is due to different retinal images before each MS. It is worth mentioning that the response magnitude only depends on how many of the selected RGCs spike synchronously, and on the precision of this synchrony. The downstream neuron ignores the MS landing time, or if the spike volley it is integrating corresponds to the first spikes. In practice, however, the most synchronous volley is the first spike volley (as shown in Fig. 1).

Discussion

Referring to Marr's three levels of analysis³⁵, we may say that the nature of the *computation* we have considered here is that of template matching between an input image patch and a stored prototype. A possible *algorithm* to do so, then consists in convolving the image with a battery of filters, selecting the most active units, and comparing this subset with the one corresponding to the prototype. As far as the *implementation* level is concerned, the filtering is handled by the RGCs. But how is it then that downstream neurons are able to identify the most active ones? There are three possibilities: it could be by exploiting the fact that these RGCs fire more spikes (rate coding); or in the presence of MSs, that these RGCs fire earlier (relative latency, rank-order coding); or finally, that these RGCs fire more synchronously (synchrony-based coding). We argue that this last possibility has not attracted enough attention, yet it has four main advantages. (I) The readout is rapid: a decision can be made as soon as the first spikes are emitted, about 20 ms after the MS landing. (II) It only needs coincidence detector neurons, whereas decoding ranks requires other mechanisms such as shunting inhibition³⁶ or winner-take-all³⁷, for instance. (III) There is no need for a reference time: the knowledge of the MS landing time is not required. And (IV), the required connectivity can spontaneously emerge with STDP.

Note that we did not try to quantify the amount of synchrony provided by the MSs. This amount strongly depends on the MS rate, which itself depends on attention, proximity of the last saccade etc., as well as on other MS and retinal parameters, whose values are debated. Instead, we deliberately remained qualitative: from Fig. 2, it is clear that MS induce precise (10–20 ms) synchrony, whereas the drift hardly does so.

Importantly, we do not claim that the readout used here is realistic. We used a holistic $4^\circ \times 4^\circ$ template matching task to demonstrate the capacity of synchrony-based coding in the retina. Yet in the primate visual system such template matching is not done in one step from the RGCs' spike trains. Instead, the input is processed through the ventral stream where information from distant regions is progressively integrated. This raises important questions: can the MS-induced synchrony propagate across the different areas, and if so, does it really play a role in the computations? Retinal synchrony propagates at least until the LGN^{38,39}. Indeed, conduction velocities from the RGC to the LGN cells, which depend on axon diameters, are faster for signals coming from more peripheral portions of the retina⁴⁰, which exactly compensates the additional distance to be travelled, and thus provides for equal time-of-arrival at the LGN irrespective of the retinal site that is stimulated. This strongly suggests that RGC synchrony matters, at least for LGN cells. In the primary visual cortex (V1) cells presumably gain their orientation selectivity through thalamic synchrony³⁹. In particular, MS-induced synchrony may enhance spatial summation in V1^{1,41}. Under specific conditions synchrony could in principle propagate to higher order visual areas^{12,42,43}, and the prevalence of strong feedforward inhibitory circuits throughout the central nervous system suggests that synchrony codes may be widespread¹³. Yet direct evidence for it beyond V1 has been lacking. One difficulty to detect synchrony coding is that all the involved cells must be recorded at the same time (high trial-to-trial variability in the spike times with respect to the stimulus onset does not rule out synchrony coding^{14,44}). Finally, it is also conceivable that synchrony coding is used up to V1, and then converted into rate coding for further processing.

Of course retinal responses are location-dependent (i.e. not shift-invariant). This is why the downstream neurons learned shifted versions of a same stimulus (Figs 3 and 5). The issue of how shift-invariance is progressively gained along the ventral stream is out of the scope of the current paper, which focuses on the retinal code (nevertheless it has been hypothesized that a maximum operation could help⁴⁵, and this can be implemented easily with temporal codes⁴⁶). We did not address either the question of how receptive fields emerge. The learning procedure that we introduced should not be interpreted as a way to mimic how real neurons become selective to specific features. We trained the algorithm on one image at a time to extract the MS-induced synchronies obtained with that particular image. Again it is just a way to investigate what large-scale synchronous retinal spike volleys represent.

Does synchrony really impact perception, or is it an epiphenomenon? One solution to address this question is to disrupt neural synchronies, and examine the consequences on perception. This can be done by splitting a stimulus into multiple parts, and presenting these parts asynchronously. Using this approach, Greene has shown that delays in the millisecond range between successively presented dots marking the boundary of a shape can impair recognition in humans⁴⁷. In addition, it has been shown that when stimulating a rat's visual cortex with two asynchronous pulses, arriving through two different electrodes, the animal can detect and report timing differences of only 15 ms⁴⁸. Synchrony, or lack thereof, thus has perceptual consequences.

According to our first set of simulations (Fig. 1), rapidly moving stimuli create synchrony among RGCs, even without eye movements. However, static or slowly moving ones do not, and this is when MSs come in handy. MSs are able to reconcile static and slowly moving stimuli with short neuronal integration and STDP timescales, thereby enabling one-step feedforward readout, much like brain oscillations⁴⁹, and thus could enhance the perception of such stimuli.

In this paper, we focused on MSs. Yet other kinds of motions with high speed and abrupt stops, for example saccades, nystagmus, or head motions, may also synchronize RGCs. These motions, however, are typically larger and thus also serve another purpose: to bring a selected target to the fovea. Conversely, the main function of MSs could be to provide, when needed, discrete snapshots of our foveal field of view's high spatial frequency content,

using a synchrony-based code. In addition, even single RGC spatial resolution is presumably improved during MSs⁵⁰. Both phenomena probably explain why we do more MSs when paying attention to fine spatial details^{7,8}. We also speculate that less frequent and/or slower MSs in healthy aging or in certain pathologies such as amblyopia could explain some perceptual deficits, in particular with high spatial frequencies, and thus could cause lower visual acuity and vernier acuity.

Of course, further visual computations certainly occur between MSs, based on the RGCs' sustained asynchronous responses, as well as on recurrent processing. Indeed, from Fig. 4, it can be estimated that asynchronous spikes represent about 2/3 of the total number of spikes, and thus these asynchronous spikes certainly have important functions, which we did not investigate in this study. The drift certainly plays a key role here: it has been shown that it removes the predictable image correlations, and thus could enhance the departures from these predictions³⁰.

One limitation of the Virtual Retina software that we used in this study is that it does not involve any micro-saccadic suppression mechanism. In real retinas, it is known that amacrine cells (not included in Virtual Retina), which are excited by the global motion signal during saccades, inhibit the RGCs^{51,52}. It is conceivable that this also occurs during MSs. This would remove some variability by ensuring all the RGCs are in the same state when the MS stops, whatever their own history. As a result, synchrony would be even more precise. Amacrine cells may also cause the synchronized oscillatory activity⁵³ which has been observed experimentally⁵⁴. Including them in our simulations should enhance and extend the MS-induced synchronizations, which would also recruit more RGCs. This should in fact improve synchrony-based coding, providing the recruited cells are still minority. This will be investigated in future work.

As stated above, the retinal simulator (Virtual Retina) used in this study has been validated using various experimental datasets. We are thus confident that the MS-induced synchrony we showed here is not an artifact of the model but also occurs in real retinas, at least from a qualitative point of view. Nevertheless, the results presented here should be confirmed experimentally and this could prove to be challenging. Firstly, to observe the qualitative change in the firing behavior of a RGC (Fig. 1), one needs time bins in the millisecond range, and therefore hundreds, or even thousands of trials per speed and contrast condition, resulting in very long retinal recordings. Under those conditions, some non-stationary factors (e.g., bleaching of the photoreceptors in *ex-vivo* experiments, or changes in the physiological state of the living tissue) could slightly affect the RGC responses, for example by delaying the latencies with a few milliseconds and/or increasing their dispersion. This would smooth the PSTH peaks and might hide the qualitative change. Secondly, to study the impact of FEM on synchrony in a population of RGCs using the same methodology as here, one would need at least hundreds of MSs per landing zone for each stimulus, and so thousands of them in total, which means retinal recordings lasting thousands of seconds. Again, possible non-stationary factors could be an issue. Natural images pose an additional challenge. Current techniques do not allow one to exhaustively record all the RGCs in a given retinal patch, therefore some RGCs whose RFs fall on edges might be unrecorded, and we would not detect their synchronous spike volleys. An intermediate step could be to use an artificial stimulus with a repeating motif, and to gain power by averaging the responses across many cells (as opposed to many MSs), using a dense Multi-Electrode Array (MEA) such as the Active Pixel Sensor CMOS MEA consisting of 4096 electrodes spanning an active area of 2.67×2.67 mm^{55,56}.

Methods

We used the open source Virtual Retina simulator available here:

<http://www-sop.inria.fr/neuromathcomp/public/software/virtualretina/>

Our Matlab code for eye movements, and STDP-based learning has been made available on ModelDB:

<http://senselab.med.yale.edu/modeldb/showmodel.cshtml?model=188423>.

Virtual Retina. The simulator is highly configurable through a xml parameter file, and we used parameters corresponding to primate foveal midget cells (according to ref. 15), gathered in Table 1. The reader is referred to ref. 15 for further information about the model.

Fixational eye movements (drift & microsaccades). The drift was modeled as a Brownian motion, as proposed by ref. 30. In practice, the Brownian motion is approximated by a random walk. At each time step, the gaze moves in one of the four possible directions (up, down, left, right), picked randomly, by an amount:

$$dx = \sqrt{2Ddt} = 0.63 \text{ arcmin} \quad (1)$$

where $dt = 5$ ms is the time step, and D is the diffusion constant of the Brownian motion, estimated at $40 \text{ arcmin}^2/\text{s}$ in humans³⁰. The motion thus occurs on a 2D lattice with a spatial step dx .

As far as the MSs are concerned, we used a variation of the FEM model proposed by ref. 32. Briefly, the model is inspired by a phenomenology of a walk in a swamp, where the ground under a walker located at lattice site (i, j) sinks at each time step:

$$h_{ij} \rightarrow h_{ij} + 1 \quad (2)$$

while all non-occupied sites relax to the steady zero level:

$$h \rightarrow (1 - \epsilon)h \quad (3)$$

In addition, if the local h is greater than some threshold h_c , then a MS (ballistic jump) is generated, towards the site which minimizes $h + u + u_1$, where u is a quadratic potential, which encourages the walker to remain close to the central position, and u_1 encourages vertical and horizontal MSs, as opposed to oblique (Note that here, in

Parameter	Value	Comment
L	401	Grid size
ε	2.5e-05	Relaxing factor
h_c	87	Threshold for MS generation
λ	1	Potential slope parameter
χ	0.12	Oculomotor potential slope parameter

Table 2. Parameters for fixational eye movement trajectory generation using the model by Engbert *et al.* (see ref. 32).

Parameter	Value	Comment
τ^+	3 ms	LTP time constant
τ^-	3 ms	LTD time constant
a^+	2^{-8}	LTP learning rate
a^-	$-a^+$	LTD learning rate
w^{out}	$-0.0015a^+$	Homeostatic term
τ_{thr}	3 ms	Adapting threshold time constant
τ_m	20 ms	Membrane time constant
τ_s	2 ms	Excitatory synapse time constant
τ_i	5 ms	Inhibitory synapse time constant
α	2.0	Inhibition strength
T	60	Threshold

Table 3. Parameters for STDP & SRM neurons (see ref. 34).

contrast with Engbert and colleagues' model, neither h nor u influenced the drift direction, which, as stated above, was picked at random. This leads to a Brownian motion for the drift, which seems realistic, and allows to use a diffusion constant measured in humans³⁰).

This model reproduces a number of MS statistics³². However, at least with the parameters suggested in the paper, we found that it generated too small saccades (less than $10dx = 6$ arcmin), thus we had to adjust the model.

The main modification we made concerns the sinking (operation 1 above). Now, not only the ground located below the walker sinks, but also the ground located in a neighborhood of the walker. More specifically, the sinking is proportional to $e^{-\frac{d^2}{2\sigma^2}}$, where d is the distance to the walker, and $\sigma = 2$. This resulted in larger MSs, with a mean amplitude of ~ 30 arcmin, which is in the biological range²⁸.

The other parameters are given in Table 2.

STDP & coincidence detector neurons. We used the competitive STDP-based learning algorithm of ref. 34, with the parameters given in Table 3. The algorithm uses classic additive STDP, with exponential windows, and the nearest spike approximation. We used $\tau^- = \tau^+$ and $a^- = -a^+$ so as not to favor/disfavor inputs which fire more.

We added a homeostatic term⁵⁷: $w^{\text{out}} < 0$ is added to all synaptic weights at each postsynaptic spike. This penalizes neurons that fire too much. More negative values for w^{out} result in fewer selected synapses after learning.

Neurons are modeled with Gerstner's spike response model (SRM)⁵⁸. The kernel we used for the excitatory postsynaptic potential (EPSP) is based on the notion of effective signal, in the presence of a fast adapting threshold (see ref. 59). It is defined as the difference between the fast adapting threshold, with time constant τ_{thr} , and the membrane potential:

$$\text{EPSP}^{\text{Raw}}(t) = K \left(e^{-\frac{t}{\tau_m}} - e^{-\frac{t}{\tau_s}} \right) \quad (4)$$

$$\text{EPSP}^{\text{Eff}}(t) = \text{EPSP}^{\text{Raw}}(t) - \int_0^{+\infty} \frac{1}{\tau_{\text{thr}}} e^{-u/\tau_{\text{thr}}} \text{EPSP}^{\text{Raw}}(t - u) du \quad (5)$$

Constant K was chosen such that:

$$\max \text{EPSP}^{\text{Eff}} = 1 \quad (6)$$

The neurons detect spike coincidences at a timescale defined by τ_{thr} , which is presumably around 5 ms in cortex⁵⁹. We found it useful to use STDP time constants that roughly match this timescale ($\tau^+ = \tau^- = 3$ ms). We admit, however, that these timescales are faster than what most experimentalists report, at least *in vitro*.

For each natural image, we trained the neurons for 10^5 seconds (biological time), to make sure all the synaptic weights were close to 0 or 1.

Concerning the computation with the drift only (Fig. 3c), we had to lower T to get postsynaptic spikes. On Fig. 3c, $T = 40$. An exhaustive parameter search for T gave similar results (i.e., the neurons stopped firing after a while, indicating that no repeating spike pattern was found).

PSTHs. The PSTHs in Fig. 1 were computed using 10^5 trials, and a time bin of 4 ms, and fitted with Gaussian mixture models (see Supplementary Figure S1). A time bin of 10 ms was used in Fig. 4a (4 ms for the inset), and of 5 ms for Fig. 6.

Cross-correlograms. The stimulus was the face image in Fig. 3a. To save computation time, we randomly selected 5000 RGC pairs only, among the set of possible pairs (whose cardinal is $N(N-1)/2 \sim 10^8$, where $N = 80 \times 80 \times 2$ is the number of RGCs). For the drift only case, we took the spike trains obtained with drift + MSs, extracted the drift periods (from last MS onset + 300 ms to next MS onset), and concatenated these periods (another option would have been to use a pure random walk, but the problem is then that the gaze can drift forever, beyond the image boundaries).

Template matching. For Fig. 6, we randomly selected 7 MSs landing at less than 0.05° of the center (see circle on panel a's inset). Unconstrained potentials were obtained by convolving the spike trains from selected RGCs with the above-mentioned effective EPSP.

References

- Martinez-Conde, S., Macknik, S. L. & Hubel, D. H. The role of fixational eye movements in visual perception. *Nat Rev Neurosci* **5**, 229–240 (2004).
- Rolfs, M. Microsaccades: small steps on a long way. *Vision Res.* **49**, 2415–41 (2009).
- Martinez-Conde, S., Otero-Millan, J. & Macknik, S. L. The impact of microsaccades on vision: towards a unified theory of saccadic function. *Nat. Rev. Neurosci.* **14**, 83–96 (2013).
- Collewin, H. & Kowler, E. The significance of microsaccades for vision and oculomotor control. *J. Vis.* **8**(20), 1–21 (2008).
- Kowler, E. Eye movements: The past 25 years. *Vision Res.* **51**, 1457–1483 (2011).
- Engbert, R. & Kliegl, R. Microsaccades uncover the orientation of covert attention. *Vision Res.* **43**, 1035–1045 (2003).
- Ko, H.-K., Poletti, M. & Rucci, M. Microsaccades precisely relocate gaze in a high visual acuity task. *Nat. Neurosci.* **13**, 1549–1553 (2010).
- Poletti, M., Listorti, C. & Rucci, M. Microscopic eye movements compensate for nonhomogeneous vision within the fovea. *Curr. Biol.* **23**, 1691–1695 (2013).
- McCamy, M. B., Otero-Millan, J., Di Stasi, L. L., Macknik, S. L. & Martinez-Conde, S. Highly Informative Natural Scene Regions Increase Microsaccade Production during Visual Scanning. *J. Neurosci.* **34**, 2956–2966 (2014).
- Greschner, M., Bongard, M., Rujan, P. & Ammermüller, J. Retinal ganglion cell synchronization by fixational eye movements improves feature estimation. *Nat. Neurosci.* **5**, 341–7 (2002).
- VanRullen, R. & Thorpe, S. J. Rate coding versus temporal order coding: what the retinal ganglion cells tell the visual cortex. *Neural Comput* **13**, 1255–1283 (2001).
- Ratté, S., Hong, S., De Schutter, E. & Prescott, S. A. Impact of Neuronal Properties on Network Coding: Roles of Spike Initiation Dynamics and Robust Synchrony Transfer. *Neuron* **78**, 758–772 (2013).
- Bruno, R. M. Synchrony in sensation. *Curr. Opin. Neurobiol.* **21**, 701–708 (2011).
- Brette, R. Computing with neural synchrony. *PLoS Comput. Biol.* **8**, e1002561 (2012).
- Wohrer, A. & Kornprobst, P. Virtual Retina: a biological retina model and simulator, with contrast gain control. *J. Comput. Neurosci.* **26**, 219–49 (2009).
- Masmoudi, K., Antonini, M. & Kornprobst, P. Another look at the retina as an image scalar quantizer. in *Proc. 2010 IEEE Int. Symp. Circuits Syst.* 3076–3079 (IEEE, 2010). doi:10.1109/ISCAS.2010.5537983.
- Masquelier, T. Relative spike time coding and STDP-based orientation selectivity in the early visual system in natural continuous and saccadic vision: a computational model. *J. Comput. Neurosci.* **32**, 425–41 (2012).
- Basalyga, G., Montemurro, M. a & Wennekers, T. Information coding in a laminar computational model of cat primary visual cortex. *J. Comput. Neurosci.* **34**, 273–83 (2013).
- Mohammed, A., Lu, G. & Kasabov, N. Evaluating SPAN Incremental Learning for Handwritten Digit Recognition. *Neural Inf. Process* 670–677 doi: 10.1007/978-3-642-34487-9_81 (2012).
- Vance, P., Coleman, S. A., Kerr, D., Das, G. P. & McGinnity, T. M. Modelling of a retinal ganglion cell with simple spiking models. in *2015 Int. Jt. Conf. Neural Networks* 1–8 (IEEE, 2015). doi:10.1109/IJCNN.2015.7280759.
- Dacey, D. The mosaic of midget ganglion cells in the human retina. *J. Neurosci.* **3**, (1993).
- Schiller, P. H., Schiller, P. H., Logothetis, N. K. & Logothetis, N. K. The color-opponent and broad-band channels of the primate visual system. *Trends Neurosci.* **13**, 392–398 (1990).
- Merigan, W. H. & Maunsell, J. H. How parallel are the primate visual pathways? *Annu. Rev. Neurosci.* **16**, 369–402 (1993).
- Goodale, M. A. & Milner, A. D. Separate visual pathways for perception and action. *Trends Neurosci.* **15**, 20–25 (1992).
- Theunissen, F. & Miller, J. P. Temporal encoding in nervous systems: a rigorous definition. *J Comput Neurosci* **2**, 149–162 (1995).
- Berry, M. J., Warland, D. K. & Meister, M. The structure and precision of retinal spike trains. *Proc. Natl. Acad. Sci. USA* **94**, 5411–6 (1997).
- Pillow, J. W., Paninski, L., Uzzell, V. J., Simoncelli, E. P. & Chichilnisky, E. J. Prediction and decoding of retinal ganglion cell responses with a probabilistic spiking model. *J. Neurosci.* **25**, 11003–13 (2005).
- Martinez-Conde, S. & Macknik, S. L. Fixational eye movements across vertebrates: comparative dynamics, physiology, and perception. *J. Vis.* **8**(28), 1–16 (2008).
- Cherici, C., Kuang, X., Poletti, M. & Rucci, M. Precision of sustained fixation in trained and untrained observers. *J. Vis.* **12**, 31–31 (2012).
- Kuang, X., Poletti, M., Victor, J. D. & Rucci, M. Temporal encoding of spatial information during active visual fixation. *Curr. Biol.* **22**, 510–4 (2012).
- Aytekin, M., Victor, J. D. & Rucci, M. The visual input to the retina during natural head-free fixation. *J. Neurosci.* in press, 12701–12715 (2014).
- Engbert, R., Mergenthaler, K., Sinn, P. & Pikovsky, A. An integrated model of fixational eye movements and microsaccades. *Proc. Natl. Acad. Sci. USA* **108**, E765–70 (2011).
- McCamy, M. B. et al. Microsaccadic Efficacy and Contribution to Foveal and Peripheral Vision. *J. Neurosci.* **32**, 9194–9204 (2012).
- Masquelier, T., Guyonneau, R. & Thorpe, S. J. Competitive STDP-Based Spike Pattern Learning. *Neural Comput* **21**, 1259–1276 (2009).
- Marr, D. & Poggio, T. From understanding computation to understanding neural circuitry. *AI Memo* **357**, 1–22 (1976).

36. Thorpe, S., Delorme, A. & Rullen, R. Van. Spike-based strategies for rapid processing. *Neural Netw* **14**, 715–725 (2001).
37. Thorpe, S. J., Guyonneau, R., Guilbaud, N., Allegraud, J.-M. & VanRullen, R. SpikeNet: real-time visual processing with one spike per neuron. *Neurocomputing* **58–60**, 857–864 (2004).
38. Wang, H.-P., Spencer, D., Fellous, J.-M. & Sejnowski, T. J. Synchrony of thalamocortical inputs maximizes cortical reliability. *Science* **328**, 106–109 (2010).
39. Stanley, G. B. *et al.* Visual orientation and directional selectivity through thalamic synchrony. *J. Neurosci.* **32**, 9073–88 (2012).
40. Stanford, L. R. Conduction velocity variations minimize conduction time differences among retinal ganglion cell axons. *Science* (80-.). **238**, 358–60. (1987).
41. Martinez-Conde, S., Macknik, S. L. & Hubel, D. H. Microsaccadic eye movements and firing of single cells in the striate cortex of macaque monkeys. *Nat Neurosci* **3**, 251–8 (2000).
42. Kumar, A., Rotter, S. & Aertsen, A. Spiking activity propagation in neuronal networks: reconciling different perspectives on neural coding. *Nat Rev Neurosci* **11**, 615–627 (2010).
43. Moldakarimov, S., Bazhenov, M. & Sejnowski, T. J. Feedback stabilizes propagation of synchronous spiking in cortical neural networks. *Proc. Natl. Acad. Sci.* 201500643 doi: 10.1073/pnas.1500643112 (2015).
44. Masquelier, T. Neural variability, or lack thereof. *Front. Comput. Neurosci.* **7**, 1–7 (2013).
45. Riesenhuber, M. & Poggio, T. Hierarchical models of object recognition in cortex. *Nat Neurosci* **2**, 1019–1025 (1999).
46. Masquelier, T. & Thorpe, S. J. Unsupervised learning of visual features through spike timing dependent plasticity. *PLoS Comput Biol* **3**, e31 (2007).
47. Greene, E. Simultaneity in the millisecond range as a requirement for effective shape recognition. *Behav. Brain Funct.* **2**, 38 (2006).
48. Yang, Y. & Zador, A. M. Differences in sensitivity to neural timing among cortical areas. *J. Neurosci.* **32**, 15142–7 (2012).
49. Masquelier, T. Oscillations can reconcile slowly changing stimuli with short neuronal integration and STDP timescales. *Network* **25**, 85–96 (2014).
50. Donner, K. & Hemilä, S. Modelling the effect of microsaccades on retinal responses to stationary contrast patterns. *Vision Res.* **47**, 1166–77 (2007).
51. Roska, B. & Werblin, F. Rapid global shifts in natural scenes block spiking in specific ganglion cell types. *Nat. Neurosci.* **6**, 600–8 (2003).
52. Gollisch, T. & Meister, M. Eye smarter than scientists believed: neural computations in circuits of the retina. *Neuron* **65**, 150–64 (2010).
53. Kenyon, G. T. & Marshak, D. W. Gap junctions with amacrine cells provide a feedback pathway for ganglion cells within the retina. *Proc R Soc L. B Biol Sci* **265**, 919–25. (1998).
54. Neuenschwander, S. & Singer, W. Long-range synchronization of oscillatory light responses in the cat retina and lateral geniculate nucleus. *Nature* **379**, 728–732 (1996).
55. Berdondini, L. *et al.* Active pixel sensor array for high spatio-temporal resolution electrophysiological recordings from single cell to large scale neuronal networks. *Lab Chip* **9**, 2644–51 (2009).
56. Maccione, A. *et al.* Following the ontogeny of retinal waves: pan-retinal recordings of population dynamics in the neonatal mouse. *J. Physiol.* **592**, 1545–63 (2014).
57. Kempter, R., Gerstner, W. & van Hemmen, J. L. Intrinsic stabilization of output rates by spike-based Hebbian learning. *Neural Comput* **13**, 2709–2741 (2001).
58. Gerstner, W., Ritz, R. & van Hemmen, J. L. Why spikes? Hebbian learning and retrieval of time-resolved excitation patterns. *Biol Cybern* **69**, 503–515 (1993).
59. Fontaine, B., Peña, J. L. & Brette, R. Spike-Threshold Adaptation Predicted by Membrane Potential Dynamics *In Vivo*. *PLoS Comput. Biol.* **10**, e1003560 (2014).
60. Hines, M. L., Morse, T., Migliore, M., Carnevale, N. T. & Shepherd, G. M. ModelDB: A Database to Support Computational Neuroscience. *J. Comput. Neurosci.* **17**, 7–11 (2004).
61. Savarese, S. & Fei-Fei, L. 3D generic object categorization, localization and pose estimation. in *Proc. IEEE Int. Conf. Comput. Vis.* doi:10.1109/ICCV.2007.4408987. (2007).

Acknowledgements

This work was partially supported by the EC IP project FP7-ICT-2011-9 no. 600847 (RENVISION). We would like to thank A. Wohrer for having developed the Virtual Retina simulator and for the quality of his support, as well as M. Gilson and J. Huth for insightful discussions. We are thankful to T. Morse and ModelDB⁶⁰ for distributing our code.

Author Contributions

T.M., G.P. and P.K. designed research. T.M. performed research, analyzed data, and prepared all the figures. T.M., G.P. and P.K. wrote the paper.

Additional Information

Supplementary information accompanies this paper at <http://www.nature.com/srep>

Competing financial interests: The authors declare no competing financial interests.

How to cite this article: Masquelier, T. *et al.* Microsaccades enable efficient synchrony-based coding in the retina: a simulation study. *Sci. Rep.* **6**, 24086; doi: 10.1038/srep24086 (2016).



This work is licensed under a Creative Commons Attribution 4.0 International License. The images or other third party material in this article are included in the article's Creative Commons license, unless indicated otherwise in the credit line; if the material is not included under the Creative Commons license, users will need to obtain permission from the license holder to reproduce the material. To view a copy of this license, visit <http://creativecommons.org/licenses/by/4.0/>