



HAL
open science

Six homeoproteins directly activate Myod expression in the gene regulatory networks that control early myogenesis.

Frédéric Relaix, Josiane Demignon, Christine Laclef, Julien Pujol, Marc Santolini, Claire Niro, Mounia Lagha, Didier Rocancourt, Margaret Buckingham, Pascal Maire

► To cite this version:

Frédéric Relaix, Josiane Demignon, Christine Laclef, Julien Pujol, Marc Santolini, et al.. Six homeoproteins directly activate Myod expression in the gene regulatory networks that control early myogenesis.. PLoS Genetics, 2013, 9 (4), pp.e1003425. 10.1371/journal.pgen.1003425 . hal-01308854

HAL Id: hal-01308854

<https://hal.sorbonne-universite.fr/hal-01308854v1>

Submitted on 28 Apr 2016

HAL is a multi-disciplinary open access archive for the deposit and dissemination of scientific research documents, whether they are published or not. The documents may come from teaching and research institutions in France or abroad, or from public or private research centers.

L'archive ouverte pluridisciplinaire **HAL**, est destinée au dépôt et à la diffusion de documents scientifiques de niveau recherche, publiés ou non, émanant des établissements d'enseignement et de recherche français ou étrangers, des laboratoires publics ou privés.



Distributed under a Creative Commons Attribution 4.0 International License

Six Homeoproteins Directly Activate *Myod* Expression in the Gene Regulatory Networks That Control Early Myogenesis

Frédéric Relaix^{1,2,3,9*}, Josiane Demignon^{4,9}, Christine Laclef^{4,9a}, Julien Pujol⁴, Marc Santolini⁵, Claire Niro⁴, Mounia Lagha^{6,9b}, Didier Rocancourt⁶, Margaret Buckingham^{6*}, Pascal Maire^{4*}

1 UPMC Paris 06, UMR-S 787, Paris, France, **2** INSERM, Avenir Team, Pitié-Salpêtrière, Paris, France, **3** Institut de Myologie, Paris, France, **4** Institut Cochin, INSERM U1016, CNRS (UMR 8104), Université Paris Descartes, Paris, France, **5** Laboratoire de Physique Statistique, ENS, Paris, France, **6** CNRS URA 2375, Department of Developmental Biology, Pasteur Institute, Paris, France

Abstract

In mammals, several genetic pathways have been characterized that govern engagement of multipotent embryonic progenitors into the myogenic program through the control of the key myogenic regulatory gene *Myod*. Here we demonstrate the involvement of Six homeoproteins. We first targeted into a *Pax3* allele a sequence encoding a negative form of Six4 that binds DNA but cannot interact with essential Eya co-factors. The resulting embryos present hypoplastic skeletal muscles and impaired *Myod* activation in the trunk in the absence of *Myf5/Mrf4*. At the axial level, we further show that *Myod* is still expressed in compound *Six1/Six4:Pax3* but not in *Six1/Six4:Myf5* triple mutant embryos, demonstrating that *Six1/4* participates in the *Pax3-Myod* genetic pathway. *Myod* expression and head myogenesis is preserved in *Six1/Six4:Myf5* triple mutant embryos, illustrating that upstream regulators of *Myod* in different embryonic territories are distinct. We show that *Myod* regulatory regions are directly controlled by Six proteins and that, in the absence of Six1 and Six4, Six2 can compensate.

Citation: Relaix F, Demignon J, Laclef C, Pujol J, Santolini M, et al. (2013) Six Homeoproteins Directly Activate *Myod* Expression in the Gene Regulatory Networks That Control Early Myogenesis. *PLoS Genet* 9(4): e1003425. doi:10.1371/journal.pgen.1003425

Editor: Jacques Drouin, Institut de Recherches Cliniques de Montréal, Canada

Received: August 28, 2012; **Accepted:** February 14, 2013; **Published:** April 25, 2013

Copyright: © 2013 Relaix et al. This is an open-access article distributed under the terms of the Creative Commons Attribution License, which permits unrestricted use, distribution, and reproduction in any medium, provided the original author and source are credited.

Funding: The work in MB's laboratory was supported by the Pasteur Institute, the Centre National de la Recherche Scientifique (CNRS), and by grants from the Association Française contre les Myopathies (AFM) and the E.U. networks Optistem (Health FP7-2007-223098) and EuroSysTem (Health FP4-2007-200720). The work in PM's team was supported by the Institut National de la Santé et la Recherche Médicale (INSERM), by grants from the AFM, by the Association de Recherches sur le Cancer (ARC), by the Agence Nationale pour la Recherche (ANR RO5099KK and RPV09108KKA), and by the FP6 MYORES European network of excellence. This work was also supported by funding to FR from INSERM Avenir Program, Association Française contre les Myopathies (AFM), Association Institut de Myologie (AIM), Labex REVIVE, the European Union Sixth and Seventh Framework Program in the project MYORES and ENDOSTEM (grant 241440). CN was supported by a fellowship from the Fondation pour la Recherche Médicale (FRM). The contribution of the Région Ile de France to the Institut Cochin animal care facility is also acknowledged. The funders had no role in study design, data collection and analysis, decision to publish, or preparation of the manuscript.

Competing Interests: The authors have declared that no competing interests exist.

* E-mail: frelaix@gmail.com (FR); margab@pasteur.fr (MB); pascal.maire@inserm.fr (PM)

^{9a} Current address: Université Pierre et Marie Curie (Paris 6), Laboratoire de Biologie du Développement, Paris, France

^{9b} Current address: Department of Molecular and Cell Biology, University of California Berkeley, Berkeley, California, United States of America

⁹ These authors contributed equally to this work.

Introduction

The *Pax-Six-Eya-Dach* genetic network was first identified in *Drosophila* as a key transcriptional regulator of compound eye development. Within this network, the *Pax* gene, *Eyeless*, is an upstream regulator of genes for the Six transcription factor sine oculis and of its co-factor Eyes absent (*Eya*), with feedback regulation between these genes [1,2]. Vertebrate homologues are involved in eye development [3] but also in other developmental processes, suggesting that the mechanisms orchestrated by this genetic network are conserved and used for multiple types of organogenesis and tissue specification during embryonic development [4,5,6]. Indeed in *Drosophila*, *Pox meso*, *dSix4* and *Eya* are involved in somatic myogenesis [7,8,9].

During vertebrate myogenesis, Pax3 and Pax7 are important upstream regulators of myogenic progenitor cell behaviour, survival and fate, as shown by genetic manipulations in the mouse

embryo [5,10]. Skeletal muscles of the trunk and limbs are derived from progenitors present in the dorsal dermomyotome domain of the somites which segment from paraxial mesoderm and mature following an anterior/posterior gradient along the axis of the vertebrate embryo. Pax3 is expressed throughout the epithelial dermomyotome and Pax7 in its central domain that will give rise to the progenitor cells of the myotome [5]. Six1/4, together with the Six co-activators, are also present in the dermomyotome together with Eya1/2, expressed at a high level in the epaxial and hypaxial domains. These *Six* and *Eya* genes have been shown to control the myogenic progenitor cell population, particularly in the hypaxial domain, where Pax3 also plays a key role in the survival and delamination/migration of myogenic progenitors. Interactions between these genes in the myogenic context, were suggested by overexpression experiments in the chick embryo, in somite explants [11] and in cell culture [12]. Analysis of compound *Six1/4* and *Eya1/2* mutants show that these factors

Author Summary

The onset of skeletal muscle formation is controlled by complex gene regulatory networks. By manipulation of these genetic pathways in the mouse embryo, we have examined the interplay between genes encoding the transcriptional regulator Pax3; the major myogenic determination proteins Myf5, Mrf4, and Myod; as well as genes encoding homeodomain proteins Six1 and Six4. In the absence of Myf5 and Six1/4, *Myod* expression is compromised. We demonstrate that key regulatory elements of the *Myod* gene are directly targeted by Six factors, including Six2, which is unexpectedly upregulated in the absence of Six1 and Six4. This work therefore reveals new aspects of the gene regulatory networks that control myogenesis.

regulate *Pax3* in the hypaxial dermomyotome, whereas *Pax3* expression is increased in the posterior dermomyotome in the absence of Six transactivation [13,14,15]. In the head muscles, which form from anterior unsegmented paraxial mesoderm, Pax3 is not expressed in myogenic progenitors, and Pax7 only later, whereas Six1 and Eya1 co-factors are present and active [15,16,17], as well as Pitx2 which acts as an upstream regulator of craniofacial myogenesis [18].

Entry into the myogenic programme, both in the head and trunk, depends on the myogenic determination factors Myf5/Mrf4 and Myod. Another member of this family of basic-helix-loop helix transcription factors, Myogenin, intervenes at the level of myogenic differentiation [19]. During the onset of myogenesis in the mouse embryo, *Myf5* is expressed before *Myod* and in the absence of Myf5 and Mrf4 the activation of *Myod* is delayed [20]. In *Pax3;Myf5/Mrf4* double mutants, *Myod* is not activated and skeletal muscle does not form in the trunk and limbs. In the absence of Pax3, the onset of myogenesis in the epaxial somite, although perturbed [21] takes place, with *Myf5/Mrf4* activation through Wnt, and Shh signalling pathways [22], acting on an early epaxial enhancer of *Myf5*. Later activation of *Myf5* in the hypaxial somite and in myogenic progenitor cells that have migrated to the limb, depends on another enhancer element which is directly regulated by Pax3 [23] and by Six1/4 [24], illustrating the synergistic action of these upstream regulators in driving the expression of myogenic determination genes. Double mutant analyses of *Six1/4* and *Eya1/2* show a reduction in *Myod* expression [15] in the somites during embryonic development and Six binding to *Myod* regulatory elements has been shown in cultured muscle cells [25]. This, together with the absence of *Pax3* expression in the hypaxial somite observed in *Six1/4* and *Eya1/2* mutants, suggests that *Six/Eya* may intervene in the *Pax3/Myod* genetic cascade. *Six/Eya* also, unlike *Pax3*, are expressed in craniofacial myogenic progenitors [17], and play a role in the onset of differentiation, when they directly regulate the activation of *Myogenin* [26] [15], and later when they directly regulate the expression of genes coding for sarcomeric proteins [27,28].

In this paper, we use genetic tools to further investigate how *Six1/4*, with the participation of *Eya1/Eya2*, intervene in the myogenic hierarchy. By analysis of *Six/Pax* and *Six/Myf5* mutants, together with mutants in which a dominant negative form of the Six coding sequence has been targeted to an allele of *Pax3*, we show that *Six1/4* are essential regulators in the *Pax3/Myod* genetic cascade, revealed in the absence of *Myf5* at the body level. This is confirmed by the demonstration that *Myod* activation depends directly on Six binding to key enhancer sequences upstream of the

Myod gene, which controls *Myod* expression in all myogenic lineages.

Results

Pax3 and *Six1* act through a common genetic pathway

In order to investigate whether *Pax3* and *Six1* act in the same genetic pathway, we analysed *Pax3/Six1* double mutants. Comparison of *Six1^{nLacZ/nLacZ}* and *Pax3^{Sp/Sp}* mutant embryos from the same litter shows that somite defects are similar at E11.5 and E13.5 with more cell dispersion of *Six1^{nLacZ}* cells, notably hypaxially, in the *Pax3* mutant (Figure 1A–1I). The somitic phenotype of *Six1/Pax3* double mutants is similar to that of the *Pax3* mutant, but with more somite truncation at E11.5 (Figure 1J–1K), consistent with partially overlapping function of Pax3 and Six1 at this stage. At E13.5 however, the phenotype of *Pax3/Six1* double mutant embryos is clearly more pronounced than either single mutant (Figure 1F, 1I, 1L), indicating that *Pax3* and *Six1* have separate functions at later stages. We had shown already that the expression of *Eya1* and *Eya2* is maintained in *Six1^{-/-};Six4^{-/-}* mutants, and that the expression of *Eya1* is preserved in the *Pax3* mutant [15]. We now show that this is also the case for *Eya2*, which continues to be transcribed in the myogenic cells still present in somites of the *Pax3* mutant (Figure 1M, 1N, 1Q, 1U). Activation of *Eya1* and *Eya2* is therefore independent of Six1/4 and Pax3. Furthermore, we note that the expression of Myod is only detected in *Eya2* expressing cells of the somite, in the absence of Pax3 (Figure 1T, 1U, 1V), consistent with the proposed involvement of Eya co-factors acting with Six1/4, upstream of *Myod* during mouse embryogenesis [15].

Targeting of a dominant negative form of Six4 (*Six4Δ*) into the *Pax3* locus

To investigate the role of the *Pax3-Six-Eya* network *in vivo* while bypassing both functional compensation between genes in the same family, and potential problems of cell loss due to the function of Pax3 in cell survival, we adopted a dominant negative approach. We selected a Six coding sequence mutated in the Eya interaction domain, but nevertheless able to bind specifically to the Six (MEF3) binding site. Nuclear translocation of the co-activator Eya depends on the Six-Eya interaction which requires the N-terminal Six domain [29,30], however this domain is also required for DNA binding specificity [31]. We therefore used a sequence encoding an alternative splice variant of Six4, *Six4Δ* (isolated from a mouse muscle cDNA library), which is divergent in the N-terminal-region of the conserved Six binding domain (Figure 2A). The truncated Six protein encoded by *Six4Δ* is still able to bind DNA, but has lost the capacity to associate with Eya2, as shown in gel mobility shift analyses (GMSA) (Figure 2B). While full length Six4 protein synergizes with Eya2 to activate MEF3 reporter activity in transient transfection assays, *Six4Δ* is unable to synergize with Eya2, and increasing amounts of added *Six4Δ* competes with the Six4-Eya2 transcription complex, leading to decreased transcriptional activation (Figure 2C).

We targeted the *Six4Δ* sequence into an allele of *Pax3*, to evaluate the function of the Six-Eya interaction during myogenesis *in vivo*. To avoid potential problems of lethality, we used a conditional strategy (see Figure 2D–2G), similar to that previously reported [32], with an *IRESnLacZ* reporter following the *Six4Δ* sequence, to monitor expression. X-Gal staining revealed correct expression of the reporter at E10.5 when compared to embryos where an *nLacZ* reporter is targeted into an allele of *Pax3* (*Pax3^{IRESnLacZ/+}*, abbreviated *Pax3^{ILZ/+}*) (Figure 3A–3B). This was also the case after *Pax3 in situ* hybridization, compared to wild type

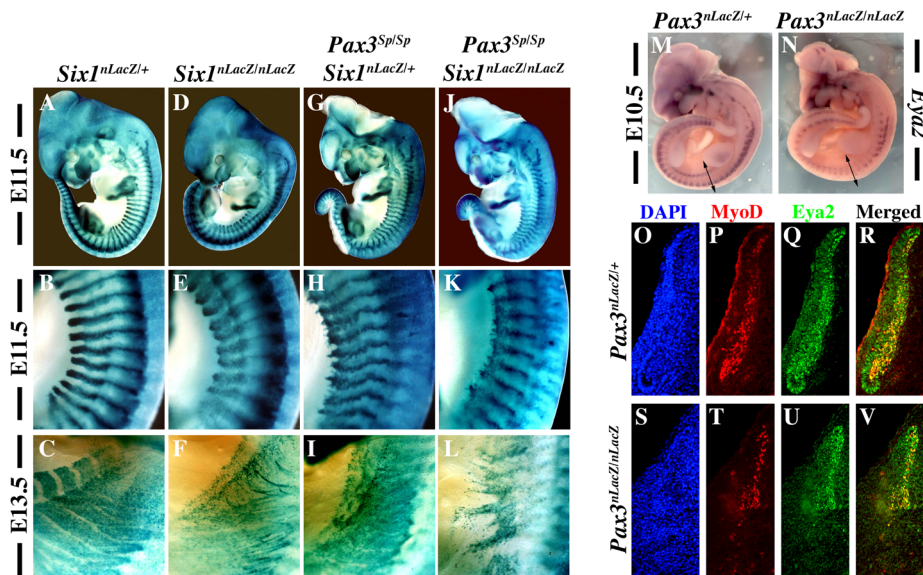


Figure 1. Genetic relationships between *Six1* and *Pax3*. X-Gal staining of *Six1^{nLacZ/+}* heterozygous embryos on a wild type background (A–C) and on a *Pax3* mutant background (*Pax3^{Sp/Sp}*) (G–I) at E11.5 (A–B, G–H) and E13.5 (C, I) shows that *Six1* expression, followed by the *nLacZ* reporter, is maintained in the absence of *Pax3*. Comparison of *Pax3^{Sp/Sp}*; *Six1^{nLacZ/+}* embryos (G–I) with *Six1^{nLacZ/nLacZ}* mutants (D–F) shows a reduction of the extent of the somite where *Six^{nLacZ}* is expressed, particularly hypaxially at E11.5 (E, H). Disorganisation and loss of hypaxial muscle fibers is observed at E13.5 (F, I) in the interlimb level. These phenotypes are more severe in *Pax3^{Sp/Sp}*; *Six1^{nLacZ/nLacZ}* double mutants (J,K), notably at E13.5 (L). B,E,H,K and C,F,I,L show enlargements in the interlimb region. M–N, Whole mount *in situ* hybridization using an *Eya2* probe on *Pax3^{nLacZ/+}* (M) and *Pax3^{nLacZ/nLacZ}* (N) embryos at E10.5 shows that *Eya2* expression is independent of *Pax3*. O–V, co-immunohistochemistry with *Eya2* (Q,R,U,V) and *Myod* (P,T,R,V) antibodies on interlimb sections of *Pax3^{nLacZ/+}* and *Pax3^{nLacZ/nLacZ}* embryos confirms continuing expression of *Eya2* in the absence of *Pax3*. Reduction of *Eya2* expression, notably in hypaxial lips of the somites, is due to dermomyotome reduction in the *Pax3* mutant. O,S, DAPI staining. doi:10.1371/journal.pgen.1003425.g001

(WT) embryos (data not shown, and see [32]). Despite robust *Six4Δ-IRESnLacZ* expression, these embryos did not present any obvious defects and indeed *Pax3^{Six4Δ-IRESnLacZ/+}* (abbreviated *Pax3^{Six4Δ/+}*) mice are viable and fertile.

We went on to test whether expression of *Six4Δ* driven by *Pax3* was able to rescue aspects of the *Pax3* mutant phenotype. X-Gal staining of *Pax3^{ILZ/ILZ}* or *Pax3^{Six4Δ/Six4Δ}* homozygote embryos at E10.5 (Figure 3C–3D) showed the same defects previously reported for *Pax3* mutant mice (dorsal neural tube, neural crest and myogenic defects). From these data, we conclude that expression of *Six4Δ* under *Pax3* regulation does not perturb normal embryonic development nor rescue *Pax3* deficiencies.

We next examined *Myod* expression in *Pax3^{Six4Δ/+}* embryos using *in situ* hybridization. These experiments did not reveal any perturbation in *Myod* transcription (Figure 3E–3F). Comparison of *Myod* transcription in *Pax3* mutant embryos and in *Pax3^{Six4Δ/Six4Δ}* homozygote embryos indicated that expression of *Six4Δ* does not prevent *Myod* expression and myogenesis when the *Myf5/Myf4* myogenic pathway is active (Figure 3G–3H). The decreased expression of *Myod* observed in *Pax3^{Six4Δ/Six4Δ}* embryos is similar to that observed in *Pax3^{ILZ/ILZ}* embryos, as a result of cell death in the absence of *Pax3* (data not shown).

Expression of *Six4Δ* *in vivo* specifically impairs the *Pax3*-mediated myogenic pathway

In order to determine if *Six-Eya* lies in the *Pax3-Myod* myogenic pathway, we crossed the *Pax3^{Six4Δ/+}* mice with *Myf5^{nLacZ/+}* (abbreviated *Myf5^{+/-}*) mice [33]. In wild type embryos, *Myod* expression is initiated around E10 in the hypaxial domain of thoracic somites [34]. However, in *Myf5* mutant embryos, *Myod* expression is delayed by about 24 h. Muscle formation is normal at later stages, indicating that *Myod* is able to rescue myotome

formation in the absence of *Myf5* after E11.5 [20]. In *Myf5^{+/-}* and *Myf5^{+/-}*; *Pax3^{Six4Δ/+}* embryos, *Myod* is activated normally and by E11.5 *Myod* expression is seen throughout the myotome (Figure 4A–4B, 4E–4F). As previously shown (Tajbakhsh et al., 1997), in *Myf5* mutant embryos (*Myf5^{-/-}*, Figure 4C, 4G) *Myod* is activated later in the muscle precursor cells which are blocked in the epaxial and hypaxial somite, and at E11.5 the hypaxial part of the myotome is partially rescued (Figure 4G, arrowheads). In contrast, in *Myf5^{-/-}*; *Pax3^{Six4Δ/+}* embryos, *Myod* expression is significantly reduced in epaxial and, notably, in hypaxial muscle precursor cells at E11.5 (Figure 4D, 4D', 4H, 4H'). This impaired *Myod* expression leads to only partial rescue of myotome development; the cells that are expressing *Myod* in the hypaxial domain, despite activation of myogenic differentiation genes, like *Myogenin*, remain restricted to this part of the somite (data not shown). At E12.5, trunk muscles still show some disorganisation in *Myf5^{-/-}* embryos, but this is more pronounced in *Myf5^{-/-}*; *Pax3^{Six4Δ/+}* embryos (Figure 5A–5D, 5A'–5D'). By E14–E14.5, myogenesis is rescued in *Myf5^{-/-}* fetuses (Figure 5G–5G', 5K–5K'). In contrast, *Myf5^{-/-}*; *Pax3^{Six4Δ/+}* fetuses display a reduction in trunk muscles (Figure 5H–5H') which is more severe than in *Myf5^{-/-}*; *Pax3^{+/-}* embryos at this stage (Figure 5L–5L'). These results indicate that *Six/Eya* intervene in the *Pax3*-dependent pathway of *Myod* activation.

Myf5 is required for *Myod* activation in the absence of *Six1* and *Six4*

We had previously shown that *Myod* expression is severely compromised in *Six1^{-/-}*/*Six4^{-/-}* double mutant embryos [13]. In these embryos, *Pax3* expression is maintained in anterior and posterior domains of the dermomyotomes, while impaired in the epaxial and hypaxial domains. Early *Myf5* expression is detectable,

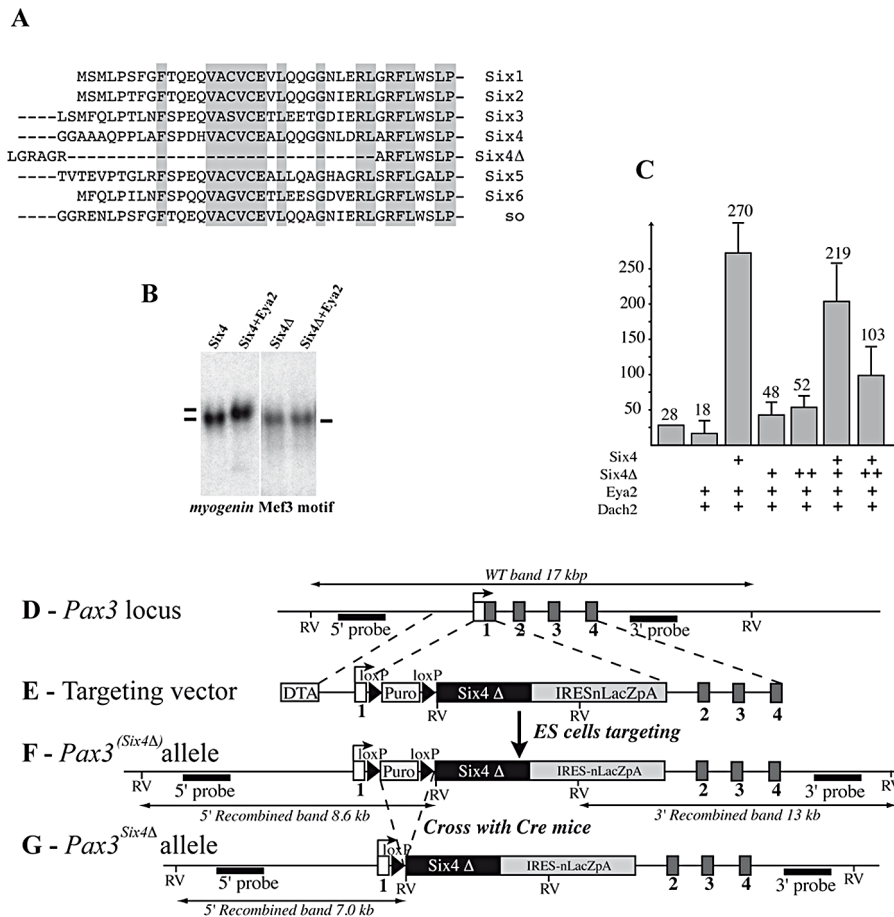


Figure 2. Targeting of a sequence encoding dominant negative Six4 into the Pax3 locus. A, Alignment of Six protein sequences shows conservation of the N-terminal-most regions of the Six-domain. This region is absent in the Six4Δ mRNA splicing variant. B, Bandshift assays show that Six4 and Six4Δ bind the MEF3 site, but that only Six4 can interact with Eya2 protein to form a larger complex. C, Transfection experiments performed in primary cultures of chick myoblasts show that Six4 and Eya2 synergistically activate transcription of a luciferase reporter driven by the multimerized MEF3 sequence. In contrast, Six4Δ and Eya2 display no functional synergy, and increasing amounts of Six4Δ compete for Six4-Eya2 transcriptional activation. Y axis, ratio between Luciferase and Renilla activities in arbitrary units. D-G, Strategy for targeting the Six4Δ coding sequence into an allele of Pax3. The probes and restriction enzymes (EcoRV: RV) are indicated, with the size of the resulting wild-type and recombined restriction fragments. The targeting construct (E) contains 2.4 kb and 4 kb of 5' and 3' genomic flanking sequences of the mouse Pax3 gene. A floxed puromycin-pA selection marker (Puro), replaces the coding sequence in exon 1 of Pax3 (D), followed by a di-cistronic cassette containing the murine Six4Δ cDNA comprising the whole coding region, followed by an IRESnLacZ cassette and by a final pA signal. The IRESnLacZ allows easy detection of Six4Δ expression [32]. A counter-selection cassette encoding the A subunit of Diphtheria Toxin (DTA) was inserted at the 5' end of the vector. After homologous recombination in embryonic stem (ES) cells, Six4Δ-IRESnLacZ expression from the Pax3^(Six4Δ-IRESnLacZ) allele is blocked by the floxed puromycin-pA cassette (F) and is therefore conditional to removal by crossing with a PGK-Cre mouse [52]. This generates the Pax3^{Six4Δ-IRESnLacZ} allele (abbreviated Pax3^{Six4Δ}) (G).

doi:10.1371/journal.pgen.1003425.g002

although decreased [13]. To test whether the remaining expression of Pax3 and/or Myf5 is responsible for the somitic activation of Myod observed in Six double mutant embryos, we examined Myf5^{-/-}:Six1^{-/-}/Six4^{-/-} and Pax3^{sp/sp}:Six1^{-/-}/Six4^{-/-} embryos. As shown in Figure 6, the expression of Myod is higher in Pax3 mutants (Pax3^{sp/sp}) compared to Six1/Six4 double mutant embryos. Myod expression is still detectable, although decreased, in Pax3^{sp/sp}:Six1^{-/-}/Six4^{-/-} embryos at E11.5. In contrast, Myod transcripts are not detectable in the somites of Myf5^{-/-}:Six1^{-/-}/Six4^{-/-} embryos at E11.5 (Figure 6H), where Myod expression persists in the branchial arches (Figure 6H). X-Gal staining of compound Myf5^{-/-}:Six1^{-/-}/Six4^{-/-} embryos at E12.5 further illustrates lack of axial myogenesis at a later stage (revealed by Myf5-LacZ and Six1-LacZ), while craniofacial musculature is still present (Figure 6L). Loss of trunk muscles is confirmed by desmin immunohistochemistry on E12.5 sections (Figure 6i–6l'). The

presence of myogenic desmin-positive cells in extra-ocular and masseter muscles (Figure 6i'–6l', Figure S1) shows that craniofacial myogenesis is not abrogated in Myf5^{-/-}:Six1^{-/-}/Six4^{-/-} embryos.

Six proteins directly activate Myod regulatory elements

Myod expression has been shown to be under the control of at least three separate DNA elements, a promoter region, a distal regulatory region (DRR), 6 kb 5' of the transcription start site [35], and a core enhancer (CE) region, located 20 kb 5' of the transcription start site (TSS) [36]. Both the CE and the DRR drive expression of a LacZ reporter to sites of myogenesis in transgenic embryos, where the CE shows a higher and more precocious activity [35,37]. A specific deletion of either enhancer by the CREloxP system indicates functional redundancy [38,39]. Both CE and DRR elements have been shown to bind Six1 and Six4

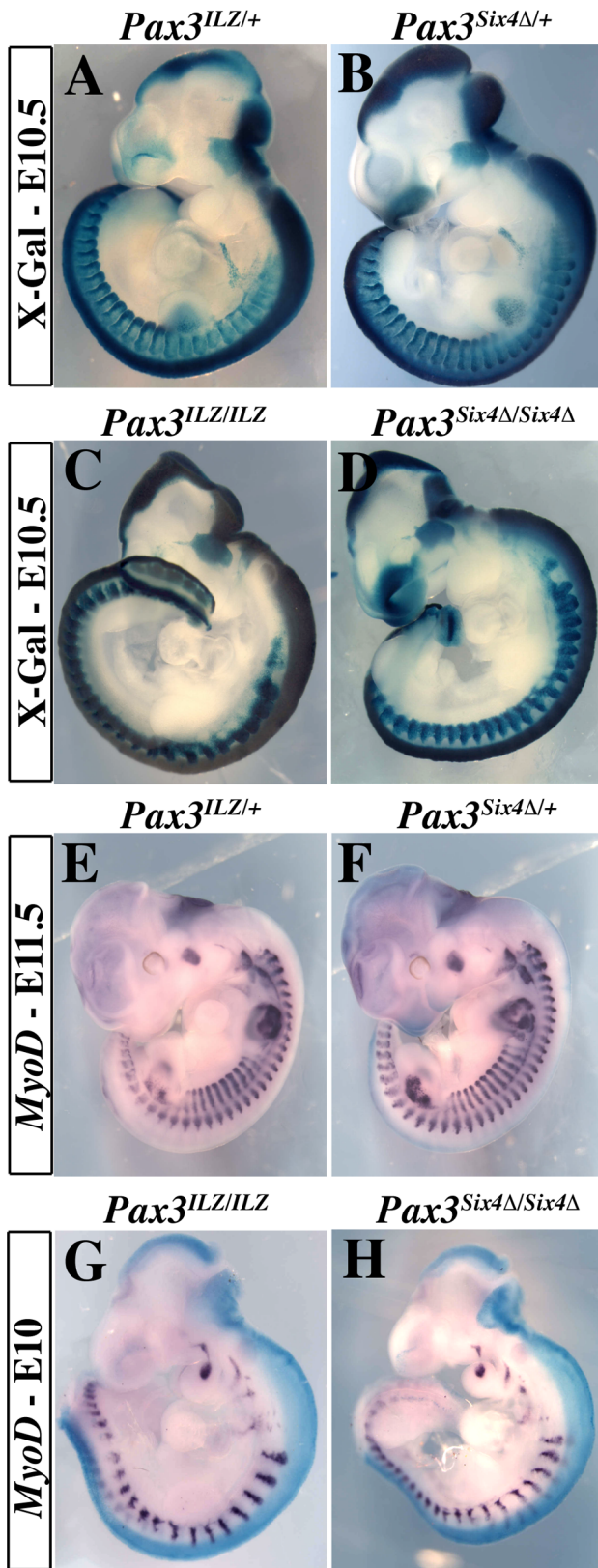


Figure 3. Expression of *Six4Δ* does not perturb normal embryonic development nor rescue *Pax3* mutant deficiencies. A–B, X-Gal staining of *Pax3*^{IRESnLacZ/+} (*Pax3*^{ILZ/+}, A) and *Pax3*^{Six4Δ/+} (B) embryos at E10.5 demonstrates correct expression of the *Six4Δ* transgene. C–D, X-Gal staining of homozygotes *Pax3*^{ILZ/ILZ} (C) and

Pax3^{Six4Δ/Six4Δ} (D) embryos at E10.5 demonstrates that the *Six4Δ* sequence does not rescue deficiencies due to the absence of *Pax3* (Exencephaly, spina bifida, lack of limb muscles, somitic defects and neural crest cell deficiencies). E–F, Whole mount *in situ* hybridization using a *Myod* probe on *Pax3*^{ILZ/+} (E) and *Pax3*^{Six4Δ/+} (F) embryos at E11.5 shows that the *Six4Δ* sequence does not overtly perturb *Myod* expression. G–H, Whole mount *in situ* hybridization using a *Myod* probe on homozygote *Pax3*^{ILZ/ILZ} (G) and *Pax3*^{Six4Δ/Six4Δ} (H) embryos at E10 shows that the onset of *Myod* expression is similar to that of a *Pax3* mutant, in the absence of *Pax3* but in the presence of a dominant negative *Six4Δ* (H). doi:10.1371/journal.pgen.1003425.g003

homeoproteins in growing and differentiating cells in the C2 muscle cell line [25]. Furthermore, both the CE and DRR are bound by Eya proteins *in vivo*, as shown by ChIP experiments on *Pax3*-GFP positive cells purified by flow cytometry from E11.5 embryos (Figure 7A and data not shown). One MEF3 element that binds Six proteins, is present in the DRR (5'TCcGGTTTC, which is conserved in the human sequence), and two in the CE (5'TaAaaTTaC, corresponding to part of the conserved box4 of the human sequence, shown to affect activity of the human enhancer in transgenic embryos [37], and 5'TCcGGTTTC, overlapping boxes 15 and 16 of the human CE sequence) (Figure 7B). These potential MEF3 sites bind Six1 and Six4 proteins, as shown in gel mobility shift experiments (Figure 7C). We next tested these sites for function in transgenic embryos. For these experiments we constructed a transgene in which the *Myod* CE sequence was inserted 5' of the –5.8 kb flanking sequence of *Myod*, 340 bp upstream of the DRR element [35] to give a *CE-MD5.8-LacZ* transgene (Figure 7D). 6 out of 10 *CE-MD5.8-LacZ* transgenic embryos show X-Gal staining similar to that of endogenous *Myod* expression at E12.5 (Figure 7E and data not shown). Mutation of the three MEF3 sites compromised transgene activity, such that only 3 out of 8 transgenic embryos carrying the mutant sequences (*mut3MEF3-CE-MD5.8-LacZ*) show any *LacZ* expression at E12.5. In two of them, very low expression is detected in myogenic territories at the thoracic and limb levels (Figure 7E, 7Fe,e',f,f'), while in the third (Figure 7E, 7Fd,d', Figure S2) most of the *LacZ* transgene expression does not overlap with endogenous *Myod* expression. Expression in head muscles is detected with all wild type transgenes in *Myod* expressing cells (Figure 7E, 7Fc',c'', Figure S2). This is not the case with mutant transgenes, where most *Myod* expressing cells at the temporalis muscle or eye level do not express the mutant transgene (Figure 7E, 7F d''–f''; d'''–f''', Figure S2). Sections of wild type and mutant embryos are shown in Figure 7F at trunk (left panels) and head (right panels) levels. Wild type *Myod* transgenes drive the expression of the *LacZ* reporter in 64 to 95% of *Myod*-positive cells, while mutant transgenes drive low expression of the *LacZ* reporter in 3 to 10% of *Myod*-positive cells. Expression is never detected in the tail somites in the posterior part of the embryo with the mutant transgene. Taken together, these experiments demonstrate a direct function of the Six binding sites in the activation of *Myod* during myogenesis in the embryo both in the trunk and head.

Six2 is expressed in myogenic territories in the embryo

To explain the discrepancies observed between *mut3MEF3-CE-MD5.8-LacZ* expression and the expression of *Myod* in *Six1/Six4* mutant embryos, we looked for other *Six* genes expressed in myogenic territories during embryogenesis [40] that could be responsible for the rescue of *Myod* expression observed in *Six1/Six4* embryos at the epaxial and craniofacial levels. *Six2* [41] and *Six5* [42,43,44] are the two other *Six* genes expressed in myogenic cells. By whole mount *in situ* hybridization, we further show that *Six2* is

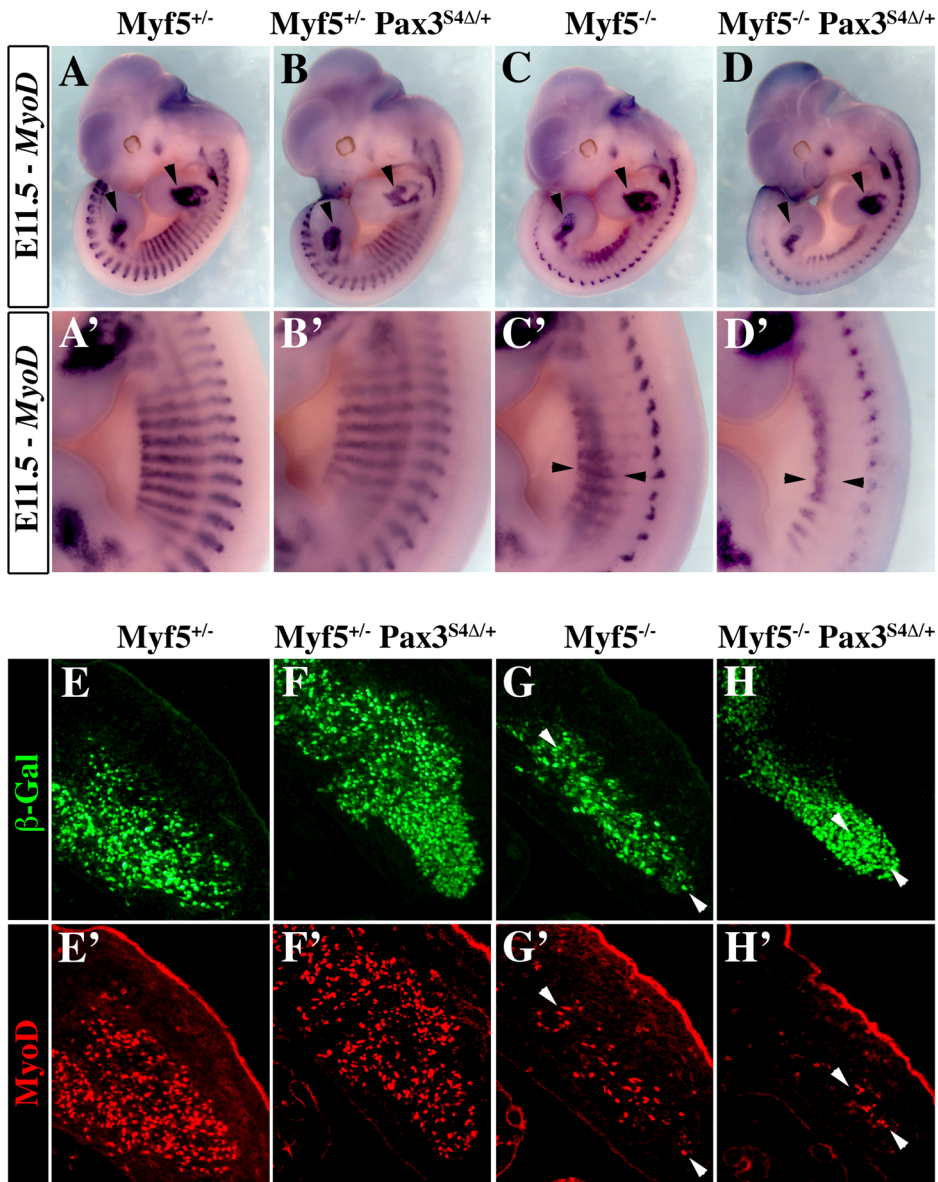


Figure 4. Six4Δ affects *Myod* expression and myogenesis in the absence of *Myf5*. A–D', Whole mount *in situ* hybridization experiments using a *Myod* probe on *Myf5*^{+/+} (A, A'), *Myf5*^{+/-}:*Pax3*^{Six4Δ/+} (B, B'), *Myf5*^{-/-} (C, C') and *Myf5*^{-/-}:*Pax3*^{Six4Δ/+} (D, D') embryos at E11.5. At this stage, in *Myf5*^{-/-} embryos (C, C'), *Myod* is activated and begins to rescue the formation of the myotome (arrowheads in C'). However, in *Myf5* deficient embryos which express *Six4Δ* under the control of *Pax3* regulatory elements, *Myf5*^{-/-}:*Pax3*^{Six4Δ/+} (D, D'), *Myod* expression is reduced, affecting the rescue of myotome formation (D', arrowheads). In contrast, in thoracic somites of *Myf5*^{+/-}:*Pax3*^{Six4Δ/+} (B, B') *Myod* expression is not altered compared to *Myf5*^{+/-} embryos (A, A'). A'–D', show enlargements in the interlimb region of A–D. E–H', co-immunohistochemistry on transverse sections of hypaxial somites from *Myf5*^{+/-} (E, E'), *Myf5*^{+/-}:*Pax3*^{Six4Δ/+} (F, F'), *Myf5*^{-/-} (G, G') and *Myf5*^{-/-}:*Pax3*^{Six4Δ/+} (H, H') embryos at E11.5 using anti-β-Galactosidase (β-Gal) (green, E–H) and anti-MyoD (red, E'–H') antibodies confirms the severe reduction of *Myod* expression in *Myf5*^{-/-}:*Pax3*^{Six4Δ/+} (H, H') embryos. Arrowheads indicate examples of cells in which the β-Gal reporter from the *Myf5*^{nLacZ} allele is expressed and which co-express *Myod*.

doi:10.1371/journal.pgen.1003425.g004

expressed in the first branchial arch of E9.5 embryos, and also in the dorsal regions of newly formed somites, where early epaxial *Myf5* is first activated (Figure 8A). Both *Six2* and *Six5* bind efficiently to the three *Myod* MEF3 elements, as determined by gel mobility shift experiments (Figure 8B). We next isolated chromatin for ChIP experiments to check if *Six2* binds *in vivo* on *Myod* regulatory elements. With wild type embryos we did not observe significant binding. However with chromatin from E12 *Six1*/*Six4* mutant embryos we observed efficient binding of *Six2* on *Myod* CE

and DRR elements, demonstrating that *Six2* can bind to *Myod* regulatory elements in the embryo (Figure 8C). We examined *Six2* protein in the masseter muscle of *Six1*^{-/-}/*Six4*^{-/-} and *Myf5*^{-/-}:*Six1*^{-/-}/*Six4*^{-/-} mutant embryos by immunocytochemistry at E12.5 and show that it co-localizes with *Myod* protein (Figure 8D). These results indicate that *Six2* is a good candidate for the activation of *Myod* expression in the absence of *Six1* and *Six4*. They also suggest that *Six2* is upregulated under these conditions (Figure 8C, 8D).

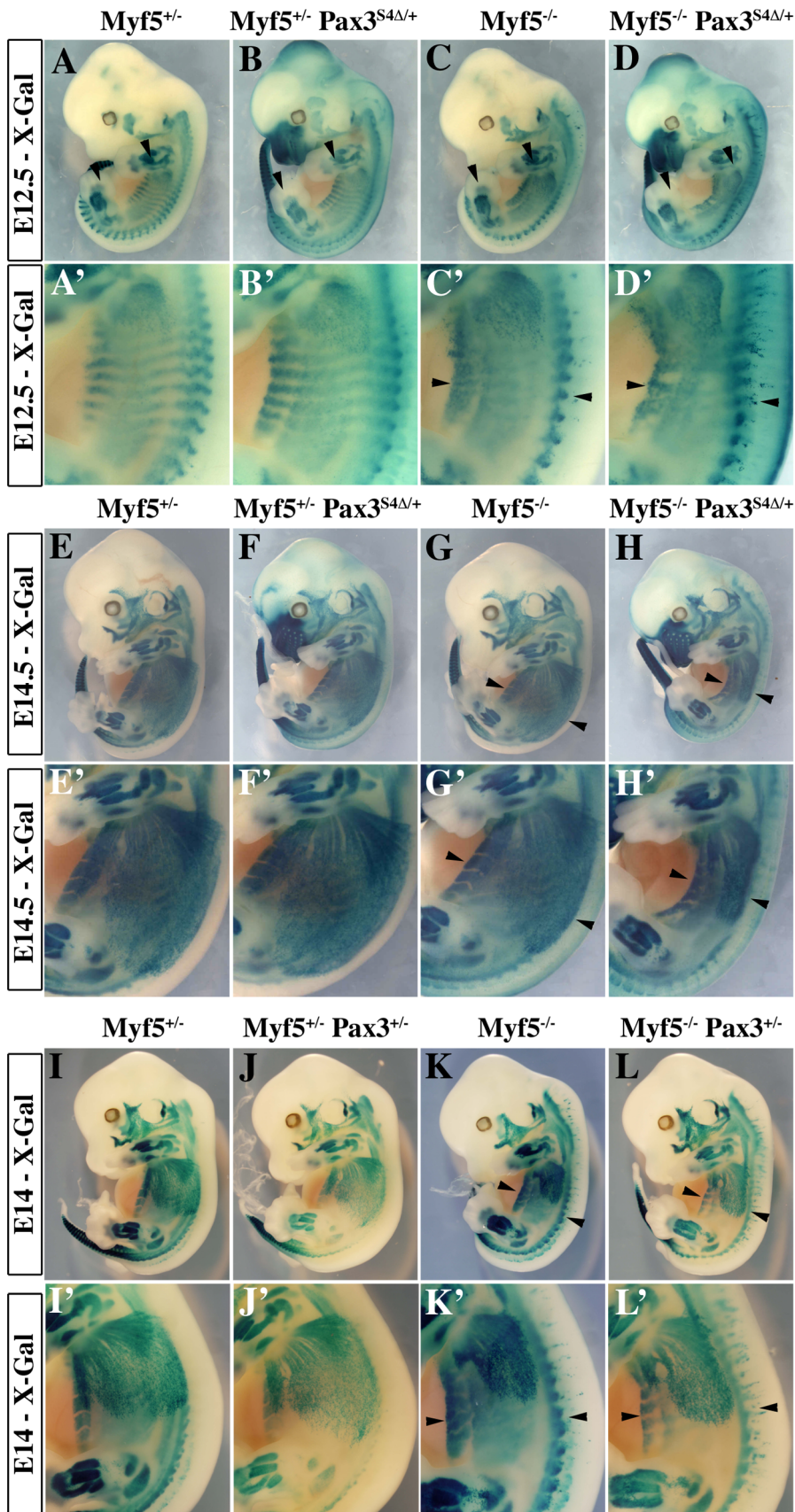


Figure 5. Impaired myogenesis in the presence of *Six4Δ*, in the absence of *Myf5*. A–L'; X-Gal staining of E12.5 (A–D'), E14.5 (E–H') or E14 (I–L') *Myf5*^{+/-} (A, A', E, E', I, I'), *Myf5*^{+/-} : *Pax3*^{*Six4Δ*/+} (B, B', F, F'), *Myf5*^{-/-} (C, C', G, G', K, K') and *Myf5*^{-/-} : *Pax3*^{*Six4Δ*/+} (D, D', H, H'), *Myf5*^{+/-} : *Pax3*^{+/-} (J, J'),

Myf5^{-/-}; *Pax3*^{+/-} (L, L') embryos demonstrates that in *Myf5* deficient embryos which express *Six4A* under the control of *Pax3* regulatory elements, the localisation of myogenic cells, marked by the *Myf5*^{nLacZ} reporter is impaired, notably in trunk muscles (H' compared with L'). A'-D', E'-H', and I'-L' are enlargements in the interlimb region of A-D, E-H and I-L respectively. doi:10.1371/journal.pgen.1003425.g005

Discussion

We show that *Six1/4* play an essential role in the *Pax3/Myod* genetic pathway that regulates the onset of myogenesis [20]. This is revealed on a *Myf5* mutant background. Since the *Myf5* mutation that we use also affects *Mrf4*, entry into the myogenic program depends entirely on the myogenic determination factor *Myod* in the absence of *Myf5/Mrf4* [45]. We illustrate with the *Six4Δ* sequence that *Eya* co-activators are required for *Six* transactivation, as previously shown [15,30]. Furthermore our results show that key enhancer sequences of the *Myod* gene are directly regulated by MEF3 sites that are required *in vivo* at all sites of myogenesis to control *Myod* expression through the recruitment of *Six1*, *Six2* and *Six4* transcription factors.

The Pax/Six/Eya pathway to tissue specification is therefore important for the formation of skeletal muscle in the mouse embryo. However this network appears to be more complex than the *Eyeless/sine oculis/Eyes absent* cascade that leads to eye formation in *Drosophila* [1,5]. As we show here for *Six1* and *Eya2*, their activation takes place in the absence of *Pax3*, whereas *Eyeless* initiates the cascade in *Drosophila*. In the mouse somite, *Pax7* is also expressed in the central domain of the dermomyotome and may compensate. However, prior to the extensive cell death seen in the hypaxial somite in the absence of *Pax3*, *Six1/4* genes are transcribed. Furthermore during craniofacial myogenesis, the *Six1* gene and genes for *Eya* co-factors are expressed [41,46] and the *polyMEF3-LacZ* reporter of *Six* transcriptional activity is high [15], in the absence of *Pax3* that is not expressed during head myogenesis [5]. In *Six1*^{-/-}/*Six4*^{-/-} or *Eya1*^{-/-}/*Eya2*^{-/-} double mutants, *Pax3* expression is compromised in the hypaxial domain

[15] indicating that *Six/Eya* can also regulate *Pax3*. Our analyses of *Six1*^{-/-} and *Pax3*^{-/-} mutants shows that they have overlapping but not identical myogenic phenotypes, confirmed by the double mutant phenotype which is more severe, particularly at later stages.

The *Six4Δ* sequence, which we targeted to an allele of *Pax3*, encodes a protein that still binds DNA, but does not bind *Eya* and is transcriptionally inactive, thus acting as a dominant-negative factor. The effectiveness of its action will depend on competition with wild type *Six* factors present in *Pax3* expressing cells. By diminishing the effects of *Six* factors (*Six2* and *Six5*, also expressed at sites of myogenesis [41] [42], as well as *Six1* and *Six4*), it serves as a probe, under conditions that are less radical than double mutants. This type of strategy, with a *Pax3*^{Pax3-En/+} mouse line had previously proved valuable for probing *Pax3* function [23]. In the absence of *Myf5/Mrf4*, when *Six4Δ* is present, down-regulation of *Myod* expression is clearly observed, under conditions in which somites are less perturbed, at E11.5–12.5. Later, the failure of skeletal muscles to develop leads to severe perturbations at sites of myogenesis in the trunk. Head musculature on the other hand appears normal, as do the forming limb muscles. In *Six1*^{-/-}/*Six4*^{-/-} double mutants, in the absence of *Myf5/Mrf4*, *Myod* is not transcribed in the trunk and limbs and myogenesis does not occur, whereas *Myod* transcripts are detectable in head muscle progenitors and muscle markers are present. These observations show that head myogenic progenitors, that are not derived from the somites, activate *Myod* and form head muscles in the absence of *Six1* and *Six4* [13]. This is in contrast to a report on zebrafish where *Six1a* was found to be essential for craniofacial myogenesis

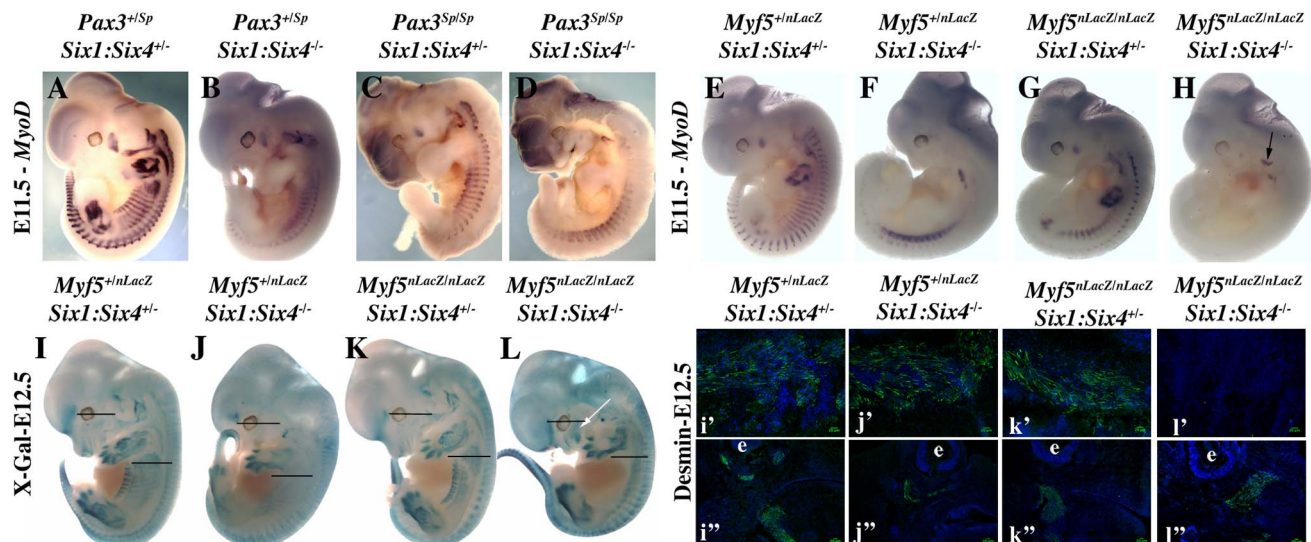


Figure 6. Axial *Myod* expression is lost in *Myf5*^{-/-};*Six1*^{-/-}/*Six4*^{-/-} embryos. A–H, Whole mount *in situ* hybridization using a *Myod* probe, I–L, X-Gal staining, and i'–l', i''–l'' immunohistochemistry on sagittal sections of I–L embryos at the interlimb somites or head level using Desmin antibodies, at E11.5 (A–H) or E12.5 (I–L) with *Pax3*^{+Sp}/*Six1*^{+/-}/*Six4*^{+/-} (A), *Pax3*^{+Sp}/*Six1*^{-/-}/*Six4*^{-/-} (B) *Pax3*^{Sp/Sp}/*Six1*^{+/-}/*Six4*^{+/-} (C), *Pax3*^{Sp/Sp}/*Six1*^{-/-}/*Six4*^{-/-} (D), *Myf5*^{+/-}/*Six1*^{+/-}/*Six4*^{+/-} (E, I), *Myf5*^{-/-}/*Six1*^{+/-}/*Six4*^{+/-} (F, J) *Myf5*^{+/-}/*Six1*^{-/-}/*Six4*^{-/-} (G, K), *Myf5*^{-/-}/*Six1*^{-/-}/*Six4*^{-/-} (H, L) embryos, showing the role of *Pax3/Six* proteins and *Myf5* acting upstream of *Myod* during trunk myogenesis. Desmin expression in E12.5 compound embryos at the axial level (i'–l') and at the head level (i''–l'') is not detected in *Myf5*^{-/-}/*Six1*^{-/-}/*Six4*^{-/-} embryos at the axial level (l') but at the head level (l''), showing that craniofacial myogenesis can take place in this compound mutant. e: eye. White arrow in L shows the presence of craniofacial muscles. doi:10.1371/journal.pgen.1003425.g006

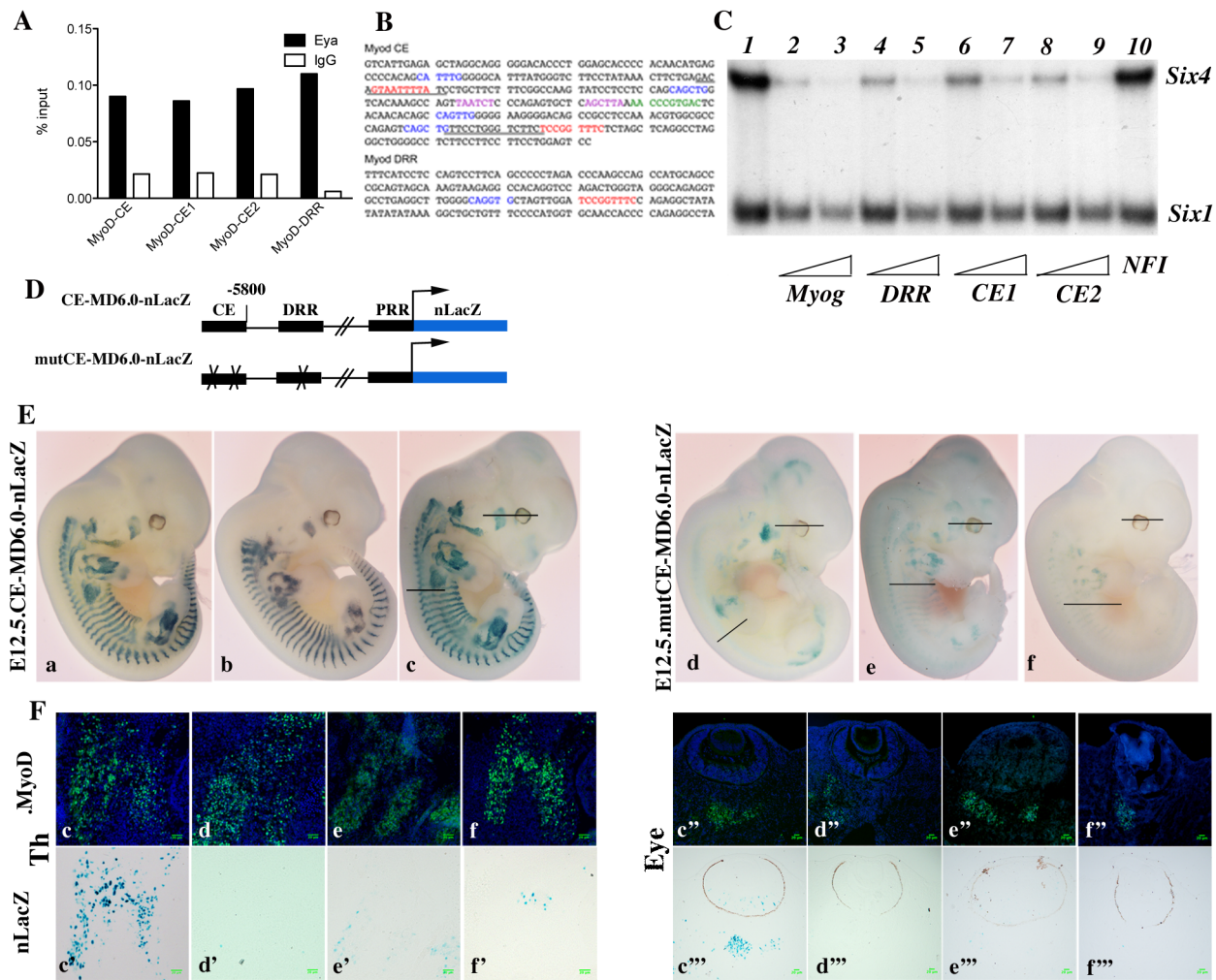


Figure 7. Six proteins are required for *Myod* expression in the mouse embryo. A- Chromatin Immunoprecipitation (ChIP) experiments performed with Eya antibodies or control IgG, on chromatin prepared from Pax3-GFP cells separated by flow cytometry from the trunk region of Pax3^{GFP/+} embryos [32] at E11.5. ChIP experiments reveal association of Eya proteins with the core enhancer (CE) and distal regulatory region (DRR) 5' of the *Myod* gene. B- Sequence of mouse *Myod* core enhancer (CE) and DRR. MEF3 sites are in red, E boxes in blue, Pitx sites in purple and Pax3 site in green. Underlined sequences correspond to the LS4 and LS15 linker-scanner mutagenesis performed on the human core enhancer [37]. C- Electromobility shift assays showing the interaction of Six1 and Six4 proteins with three distinct MEF3 DNA elements present in the regulatory regions of *Myod*. Radioactively labelled oligonucleotides with the *Myogenin* MEF3 site (Myog) were incubated with in vitro translated Six1 and Six4 proteins as a control (1). A 60 or 300 fold excess of unlabelled oligonucleotides containing the MEF3 *Myogenin* site (2,3), the MEF3 DRR site (4,5), the MEF3 CE1 site (6,7), the MEF3 CE2 site (8,9) or a 300 fold excess of unrelated *Myogenin* NFI oligonucleotides (10) were added in the reaction mix. D- Wild type and MEF3 mutant *Myod* transgenes used in the study, (not to scale). PRR, proximal regulatory region corresponding to the *Myod* promoter. E- Transient transgenic embryos with wild type or mutant *Myod* sequences at E12-E12.5. X-Gal staining of transgenic embryos with wt CE-MD6.0-nLacZ (a-c) or mut3MEF3-CE-MD6.0-nLacZ (d-f) transgenes. Six out of ten wild type transgenes expressed the *LacZ* reporter with the same expression pattern, three of them are shown. The number of transgenes inserted varied between 3 and 34 for X-Gal-positive (X-Gal+) embryos, and from 1 to 14 for X-Gal-negative (X-Gal-) embryos. Three out of eight mutant transgenic embryos expressed the *LacZ* reporter, all three are shown. The number of transgenes inserted was 23 (f), 39 (d) and 40 (e) for X-Gal+ embryos, and from 1 to 51 for X-Gal- embryos. F- Sections for one wild type (c) and for the three mutant transgenic embryos expressing the *LacZ* transgene were analysed for Myod protein by immunohistochemistry at the thoracic (Th) (c-f), and eye (c''-f'') levels to detect myogenic cells, thus revealing the % of transgene expression (X-Gal+ cells, c'-f' and c'''-f''') in the myogenic cell population (Myod-positive cells). While most Myod+ cells express the wt *Myod* transgene (c', c'''), very few are marked by expression of the mutant *Myod* transgene (d'-f', d'''-f''').

doi:10.1371/journal.pgen.1003425.g007

[16], and with reduced head myogenesis observed in compound *Six1;Eya1* mutant mice [17]. In addition to *Six1* and *Six4*, *Six2* and *Six5* genes are also transcribed in myogenic cells in the mouse embryo [41,42], and we now show that *Six2* can regulate *Myod* expression. Other transcriptional regulators, such as Pitx2, play an important upstream role in head myogenesis. Pitx2 has been shown to activate *Myod* in the trunk [47], where *Pitx2* lies genetically downstream of *Pax3*. However in the head, where *Pax3*

is not expressed at the onset of myogenesis [18], Pitx2 acts independently. In keeping with this, *Pax3/Mrf4/Myf5* triple mutants do not have defects in *Myod* activation and myogenesis in the head. However *Myod* is not activated in the trunk where skeletal muscles do not form [20]. In this context, *Six* genes do not rescue the phenotype.

Activation of *Myod* relies on two enhancer elements at 5 kb (DRR) and 20 kb (CE) upstream of the gene, as well as on the

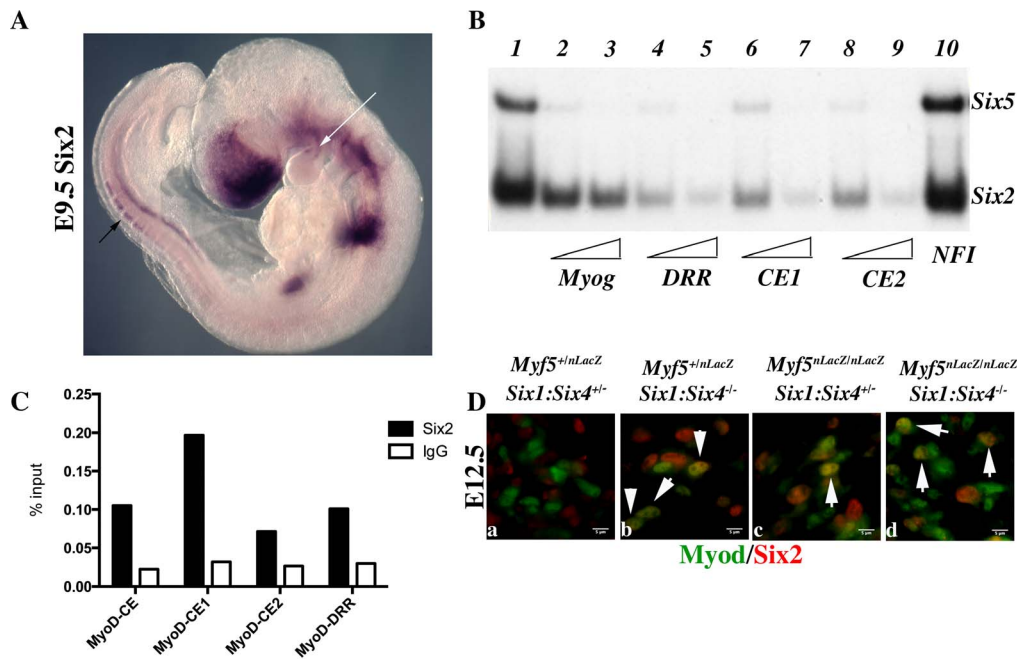


Figure 8. Six2 proteins bind *Myod* regulatory elements. Whole-mount *in situ* hybridization using a *Six2* probe on an E9.5 embryo. Note *Six2* expression in dorsal aspects of newly formed somites (black arrow), and in the center of the first branchial arch (white arrow). B- Electromobility shift assays showing the interaction of *Six2* and *Six5* proteins with three distinct MEF3 DNA elements present in the regulatory regions of *Myod*. Radioactively labelled oligonucleotides containing the *Myogenin* MEF3 site (*Myog*) were incubated with *in vitro* translated *Six2* and *Six5* proteins as a control (1). A 60 or 300 fold excess of unlabelled oligonucleotides containing the MEF3 *Myogenin* site (2,3), the MEF3 DRR site (4,5), the MEF3 CE1 site (6,7), the MEF3 CE2 site (8,9) or a 300 fold excess of unrelated *Myogenin* NFI oligonucleotides (10) were added in the reaction mix. C- Chromatin Immunoprecipitation (ChIP) experiments performed with *Six2* antibodies or control IgG, on chromatin prepared from E12 *Six1*^{-/-}*Six4*^{-/-} embryos, and showing binding of *Six2* *in vivo* on the regulatory elements of *Myod*. D- Immunocytochemistry performed with *Six2* and *Myod* antibodies on E12.5 *Myf5*^{+/-}*Six1*^{+/-}*Six4*^{+/-} (a), *Myf5*^{+/-}*Six1*^{-/-}*Six4*^{-/-} (b), *Myf5*^{-/-}*Six1*^{+/-}*Six4*^{+/-} (c), *Myf5*^{-/-}*Six1*^{-/-}*Six4*^{-/-} embryos (d) at the masseter level, demonstrating *Six2* (red) accumulation in *Myod*-positive (green) cells (white arrowheads). doi:10.1371/journal.pgen.1003425.g008

proximal promoter [35,36]. In adult myogenic cells, *Pax7* activates the promoter [48] and *Pax3/7* have been shown to bind the CE in myogenic cell cultures [49], but there are no data on such a role of *Pax3/7* in the embryo. The CE is an important regulator of embryonic *Myod* expression, but the DRR is also implicated in this activity. When the CE is deleted, delayed *Myod* expression is still observed, notably in the branchial arches and limb buds [39]. Deletion of the DRR does not abolish embryonic *Myod* expression [38], in keeping with the important role of the CE. We identify three separate DNA elements in the CE and DRR of *Myod* that are bound by *Six1* and *Six4* [25], and bound *in vivo* by *Eya*. In a transgene controlled by the proximal promoter, DRR and CE, we show expected expression of the *nLacZ* reporter at all sites of myogenesis in E12.5 embryos. When the *Six*/MEF3 binding sites are mutated, this activity is mainly lost, with low level expression at sites of myogenesis, in a few *Myod*-positive cells. These results show that *Six* transactivation is required for the function of these regulatory elements. Residual activity may be due to *Myf5* activation of *Myod* regulatory sequences, through E-boxes that are also known to play an important role [37,50]. Indeed our genetic experiments, which show that a major effect on *Myod* activation in the *Six1/4* double mutant is only seen in the absence of *Myf5*, are in keeping with this. In *Myf5/Mrf4* mutant embryos, *Pax3*-dependent rescue of CE enhancer activity is observed [39], potentially due to *Six* transactivation acting in the *Pax3/Six/Myod* pathway. In the linker scanning experiments where human *MYOD* CE elements were sequentially mutated [37], box 4 was found to be essential for expression in all skeletal muscle lineages. This

sequence contains the *Six* binding site CE1. In contrast mutation of box 16 which contains our box CE2 did not lead to loss of activity, demonstrating that CE1 is the main functional MEF3 site [37].

In our transgenic analysis, mutation of *Six*/MEF3 sites leads to loss of transgene expression in most embryos, at sites of myogenesis in the head, as well as in the trunk. This contrasts with our findings with *Six1*^{-/-}/*Six4*^{-/-} and *Myf5*^{-/-}:*Six1*^{-/-}/*Six4*^{-/-} mutants. An explanation for these discrepancies is that other *Six* proteins known to be expressed in myogenic cells compensate in some embryonic territories for the lack of *Six1* and *Six4*. We provide evidence that *Six2* may play such a role since it is expressed at myogenic sites (Figure 8A and [41]). In the *Six1*^{-/-}/*Six4*^{-/-} double mutant, *Six2* is expressed in *Myod*-positive cells and binds the *Myod* regulatory elements. We have not been able to examine *Six5* in this context due to the lack of appropriate antibodies.

We conclude that during skeletal muscle formation in the trunk the *Pax3* genetic cascade that leads to *Myod* activation functions through *Six* genes and that in the absence of *Myf5*/*Mrf4*, the *Six* transactivation complex plays a key role in the activation of myogenesis. During the onset of craniofacial myogenesis, where *Pax* transcription factors do not play a role, *Six* expression is also a key determinant for *Myod* activation (Figure 9). Our analysis of the *Pax/Six/Eya* genetic cascade in the context of myogenesis has implications for the derivation of skeletal muscle from stem cell populations [44] and also, more generally, for other examples of tissue specification and organogenesis in vertebrates that also employ this genetic network [5].

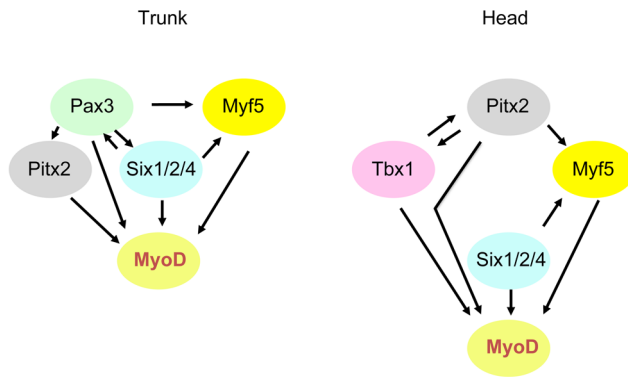


Figure 9. Schematic representation of genetic networks that activate *Myod* during myogenesis in the trunk and head. Variations in the interactions of factors in sub-domains at different developmental stages are not included here. doi:10.1371/journal.pgen.1003425.g009

Materials and Methods

Cloning, targeting vectors, and mice

Six4 and *Six4Δ* cDNAs were obtained by screening a λ gt11 library from adult mouse muscle (Clontech) [26]. The *Pax3^{Six4Δ/+}* construct is derived from a construct previously reported [32]. The *Pax3^{Six4Δ-ILZ}* allele contains 2.4 kb of 5' *Pax3* genomic region, in which the coding sequence of exon 1 is replaced by targeted sequences and 4 kb of 3' sequence containing exons 2–4. The genomic sequences surround a Floxed *Puromycin* (*Puro*) cassette followed by 2.6 kb of *Six4Δ* cDNA, then an *IRESnLacZ* cassette. In addition, a *PGK-DTA* cassette encoding the A subunit of the *Diphtheria* toxin gene (DTA) was inserted at the 5' end of the construct to allow negative selection in ES cells. The targeting vector was electroporated into CK35 ES cells [51]. ES cells were selected and screened for recombination events by Southern blot analysis using *EcoRV* (RV in Figure 2) digests and a 5'-flanking probe (Figure 2E). Targeted ES cells were recovered with a 0.5–1% frequency and injected into blastocysts to generate chimaeras. Germline transmitted alleles were identified by the classical *Splotch* (*Pax3^{Spl/+}*) heterozygote phenotype (lack of melanocyte colonization of the belly), and by PCR or by Southern blotting. *PGK-Cre* transgenic mice have previously been described [52]. *Six1^{nLacZ/+}* mice, were crossed with *Pax3^{Spl/+}* mice and X-Gal staining was performed as previously described [53]. *Six1^{-/+}/Six4^{-/+}* mice [13] were crossed with *Pax3^{Spl/+}* or *Myf5^{nLacZ/+}* mice [20].

All experiments with mice were performed according to the European Community Council Directive of 11/24/1986 (86/609/EEC) and with permission from the French Veterinary Services (permit number 75-1373) and approval by the Cochin General Animal Facility Service (accreditation number A-75-14-02). All efforts were made to minimize suffering.

X-Gal staining, immunohistochemistry, and whole-mount *in situ* hybridization

We collected mouse embryos after natural overnight matings; for staging, embryonic day (E) 0.5 corresponded to midday assuming that fertilization had taken place at 6 a.m. Genotyping was carried out by X-Gal staining in X-Gal, with 0.2% PAF for 30 minutes following 1–2 h fixation in 4% PAF, on ice. When a light blue color had developed, embryos were rinsed in PBS and post-fixed overnight in 4% PAF. Whole mount *in situ* hybridization with digoxigenin-labelled riboprobes was performed as described [20]. The *Myod* riboprobe has also been previously described [20].

Fluorescent co-immunohistochemistry was carried out according to [32], using the following antibodies: polyclonal anti- β -Gal (Molecular Probe, diluted 1:200), monoclonal anti Myod (DAKO, 1:200), monoclonal anti-Desmin (Abcam, 1/100), polyclonal anti Six2 (Proteintech, 1/200) and monoclonal anti-Myogenin (DAKO, 1:200). Secondary antibodies were coupled to Alexa 488 1/250 and 546 1/1000 (Molecular Probes).

DNA binding assays and transactivation

Gel mobility shift assays (GMSA) were performed essentially as previously described [26], with a labeled probe corresponding to the MEF3 site of the *Myogenin* promoter or *Myod* DRR and CE MEF3 elements and with Six1, Six2, Six4, Six5, Six4 Δ and Eya2 proteins produced using the TNT T7 Coupled Reticulocyte Lysate System (Promega). The DNA templates used for *in vitro* transcription of mouse *Six1*, *Six2*, *Six4*, *Six4Δ*, *Six5* and *Eya2* were cloned in the pCR3 vector (Invitrogen). Because of the high molecular weight of Six4 and Six4 Δ (about 90 kDa) we used a 3% acrylamide gel, run overnight at +4°C. To ensure that proteins were appropriately translated, parallel reactions were performed in the presence of [³⁵S]methionine, separated on SDS-PAGE gels and visualized using autoradiography. The sequences of the double stranded oligonucleotides containing MEF3 sites used for bandshift assays are: DRR: 5' AGT TGG ATC CGG TTT CCA GAG GC, CE1: 5' TGA GAC AGT AAT TTT ATC CTG CT, CE2: 5' GGT CTT CTC CGG TTT CTC TAG CT, *Myogenin* MEF3: 5'TGG GGG GGC TCA GGT TTC TGT GGC GT, *Myogenin* NFI: TAT CTC TGG GTT CAT GCC AGC AGG G. The TCAGGTTTC MEF3 sequence is underlined.

Chick primary myoblasts were grown and transfected as previously described [26], using RSV-Renilla as a control for transfection efficiency. Eya2, Six4 or Six4 Δ expression was driven by the CMV promoter-enhancer present in pCR3, with the luciferase reporter gene under the control of a multimerized MEF3 element cloned upstream of the *human Aldolase A* minimal -35 to +45 bp promoter [54]. Two days after transfection, luciferase activity was measured using standard procedures.

Generation and analysis of transient transgenic embryos

For the construction of the *CE-MD5.8-lacZ* and mutated *Mut3-CE-MD5.8-lacZ* sequences, mouse DNA was first used as a template to clone the core enhancer (CE) of *Myod* [36] with forward Apa1/Not1 5' GGG-CCC-GCG-GCC-GCT-GAG-CCC-CAC-AGC-ATT-TGG and reverse 5' GAA-TTC-CCC-CAG-CCC-TAG-GCC-TGA-GCT oligonucleotides; the MEF3 sequence is underlined. This 262 bp CE fragment was subsequently inserted into an Apa1-Pml1 site (position -5792 to -5652) of the *pMD6.8-lacZ* linearised plasmid [35], 340 bp upstream of the distal regulatory region (DRR) lying at -5310 bp from the *Myod* gene. The sequence of the *pCE-MD6.8-lacZ* reporter vector was verified by sequencing. To obtain mutated *pCE-MD6.8-lacZ*, one MEF3 site in the DRR (position -5176 to -5167) and two MEF3 sites in the CE (at position 55 and position 229) were mutated by substitution with a Hind III site (TCCGGTTTC->AAGCTTTTC), a XhoI site (GTAATTTTA->CTCGAGTTA) or a BglII site (TCCGGTTTC->TCCA-GATCT), respectively. The *pMutCE-MD6.8-lacZ* reporter vector was verified by sequencing. The plasmid was digested with Not1. Migration on an agarose gel allowed removal of plasmid sequences. Transgenic mice were generated by microinjection of the purified construct into fertilized F2 eggs from C57BL/6JxSJL mice, at a concentration of approximately 1 ng/ μ l using standard techniques. Injected eggs were reimplanted the same day or the day after the injection into outbred pseudo-pregnant foster

mothers. Transient transgenic embryos were dated taking the day of reimplantation into the pseudo-pregnant foster mothers as E0.5. Embryos were dissected in PBS, fixed in 4% paraformaldehyde for 15 minutes, rinsed 3 times in PBS and stained in X-gal solution [33] at 37°C overnight. DNA was prepared from the vitelline membrane from each embryo and analysed by PCR, using *nlacZ* primers, and *Myod* primers in the DRR and in the CE.

ChIP experiments

Pax3^{GFP/+} males were crossed with C57Bl6N females to obtain *Pax3^{GFP/+}* embryos. Somites were collected from E11.5 embryos by removing heads, neural tubes and internal organs. These samples were enzymatically digested with collagenase and dissociated cells were fixed with 1% formaldehyde at room temperature for 15 min. The GFP-positive cells were sorted by flow cytometry (BD FACs ARIA III). The gates for positive and negative GFP cells were determined using an equivalent sample isolated from wild type embryos and from *Pax3^{GFP/+}* heterozygous embryos. About 7.5×10^5 cells were collected for ChIP experiments from nine embryos. E12 *Six1^{-/-}/Six4^{-/-}* embryos were collected and enriched myogenic tissues were pooled after removing limbs, neural tube and internal organs. Dounce dissociated cells were fixed with 1% formaldehyde at room temperature for 15 min.

The chromatin immunoprecipitation procedure was performed according to the manufacturer's protocol (EZ-Magna ChIP G Kit; Merck Millipore) with antibodies recognizing all Eya proteins (Santa Cruz), Six2 protein (Proteintech), and Normal Mouse IgG provided in the EZ-Magna kit as a control. Input DNA and immunoprecipitated DNA were analyzed by quantitative-PCR (Roche, Light Cycler 480). Results were normalized with a negative control from an intergenic region without a MEF3 site (NC2). The sequences of primers were as follows:

Myod-CE1 : Fwd : 5' GGG CAT TTA TGG GTC TTC CT, Rev : 5' GCC CTA GGC CTG AGC TAG A ; *Myod-CE4* : Fwd : 5' GGG CAT TTA TGG GTC TTC CT, Rev : 5' GCT GAG CAC TCT GGG AGA TT ; *Myod-CE5* : Fwd : 5' TCA GCT GTT CCT GGG TCT TC, Rev : 5' GAC CTC TCA TGC CTG GTG TT ; *Myod-CE7* : Fwd : 5' AAC CCG TGA CTC ACA ACA CA, Rev : 5' AGC CCT AGG CCT GAG CTA GA ; *Myod-*

DRR : Fwd : 5' GCC CGC AGT AGC AAA GTA AG, Rev : 5' GCT CCC TTG GCT AGT CTT CC ; NC2 : Fwd : 5' GAG TTG GCA GGA ATC AGC TC, Rev : 5' GCC AGC AAT TTG GTT TGA AT.

Supporting Information

Figure S1 Immunohistochemistry with Desmin antibodies on sagittal sections of *Myf5^{+/-}Six1^{+/-}Six4^{+/-}* (A), *Myf5^{+/-}Six1^{-/-}Six4^{-/-}* (B), *Myf5^{-/-}Six1^{+/-}Six4^{+/-}* (C), *Myf5^{-/-}Six1^{-/-}Six4^{-/-}* (D) embryos at E12.5 at the masseter level, with DAPI staining. (PSD)

Figure S2 Transient transgenic embryos with wild type or mutant *Myod* sequences at E12-E12.5. X-Gal staining of transgenic embryos with wt *CE-MD6.0-nLacZ* (c-c'') or *mut3MEF3-CE-MD6.0-nLacZ* (d-d'', e-e'') transgenes, as presented in Figure 7E. Sections of wild type (c) and of two mutant transgenic embryos expressing the *LacZ* transgene were analysed for Myod protein by immunohistochemistry at the temporalis (c-e, c'-e') and forelimb (c''-e'', c'''-e''') levels to detect myogenic cells, thus revealing the % of transgene expression (X-Gal+cells, c'-e' and c'''-e''') in the myogenic cell population (Myod-positive cells). While most Myod+cells express the wt *Myod* transgene (c', c'''), very few are marked by expression of the mutant *Myod* transgene (d'-e', d'''-e'''). (PSD)

Acknowledgments

We thank S. Tapscott for the gift of the MD6.8-lacZ plasmid, A. Blais for sharing unpublished information, and F. Le Grand for critical reading of the manuscript. We thank Catherine Bodin for histology, Dominique Michel for technical assistance, and Francina Langa and the team of the Pasteur Institute transgenic platform.

Author Contributions

Conceived and designed the experiments: FR MB PM. Performed the experiments: FR JD CL JP MS CN ML DR PM. Analyzed the data: FR MB JD JP MS CL CN PM. Contributed reagents/materials/analysis tools: FR MB PM. Wrote the paper: FR MB PM.

References

- Gehring WJ, Ikeo K (1999) Pax 6: mastering eye morphogenesis and eye evolution. *Trends in genetics* 15: 371–377.
- Kumar JP (2010) Retinal determination the beginning of eye development. *Current topics in developmental biology* 93: 1–28.
- van Heyningen V, Williamson KA (2002) PAX6 in sensory development. *Human molecular genetics* 11: 1161–1167.
- Jemc J, Rebay I (2007) The eyes absent family of phosphotyrosine phosphatases: properties and roles in developmental regulation of transcription. *Annual review of biochemistry* 76: 513–538.
- Buckingham M, Relaix F (2007) The role of Pax genes in the development of tissues and organs: Pax3 and Pax7 regulate muscle progenitor cell functions. *Annual review of cell and developmental biology* 23: 645–673.
- Xu PX (2012) The EYA-SO/SIX complex in development and disease. *Pediatric nephrology* (Berlin, Germany).
- Duan H, Zhang C, Chen J, Sink H, Frei E, et al. (2007) A key role of Pox meso in somatic myogenesis of Drosophila. *Development* (Cambridge, England) 134: 3985–3997.
- Kirby RJ, Hamilton GM, Finnegan DJ, Johnson KJ, Jarman AP (2001) Drosophila homolog of the myotonic dystrophy-associated gene, SIX5, is required for muscle and gonad development. *Current biology* 11: 1044–1049.
- Liu YH, Jakobsen JS, Valentin G, Amarantos I, Gilmour DT, et al. (2009) A systematic analysis of Tinman function reveals Eya and JAK-STAT signaling as essential regulators of muscle development. *Developmental cell* 16: 280–291.
- Lagha M, Brunelli S, Messina G, Cumano A, Kume T, et al. (2009) Pax3:Foxc2 reciprocal repression in the somite modulates muscular versus vascular cell fate choice in multipotent progenitors. *Developmental cell* 17: 892–899.
- Heanue TA, Reshef R, Davis RJ, Mardon G, Oliver G, et al. (1999) Synergistic regulation of vertebrate muscle development by Dach2, Eya2, and Six1, homologs of genes required for Drosophila eye formation. *Genes & development* 13: 3231–3243.
- Ridgeway AG, Skerjanc IS (2001) Pax3 is essential for skeletal myogenesis and the expression of Six1 and Eya2. *The Journal of biological chemistry* 276: 19033–19039.
- Grifone R, Demignon J, Houbron C, Souil E, Niro C, et al. (2005) Six1 and Six4 homeoproteins are required for Pax3 and MRF expression during myogenesis in the mouse embryo. *Development* 132: 2235–2249.
- Brown CB, Engleka KA, Wenning J, Min Lu M, Epstein JA (2005) Identification of a hypaxial somite enhancer element regulating Pax3 expression in migrating myoblasts and characterization of hypaxial muscle Cre transgenic mice. *Genesis* (New York, NY) 41: 202–209.
- Grifone R, Demignon J, Giordani J, Niro C, Souil E, et al. (2007) Eya1 and Eya2 proteins are required for hypaxial somitic myogenesis in the mouse embryo. *Dev Biol* 302: 602–616.
- Lin CY, Chen WT, Lee HC, Yang PH, Yang HJ, et al. (2009) The transcription factor Six1a plays an essential role in the craniofacial myogenesis of zebrafish. *Developmental biology* 331: 152–166.
- Guo C, Sun Y, Zhou B, Adam RM, Li X, et al. (2011) A Tbx1-Six1/Eya1-Fgf8 genetic pathway controls mammalian cardiovascular and craniofacial morphogenesis. *The Journal of clinical investigation* 121: 1585–1595.
- Sambasivan R, Kuratani S, Tajbakhsh S (2011) An eye on the head: the development and evolution of craniofacial muscles. *Development* (Cambridge, England) 138: 2401–2415.
- Buckingham M, Vincent SD (2009) Distinct and dynamic myogenic populations in the vertebrate embryo. *Current opinion in genetics & development* 19: 444–453.

20. Tajbakhsh S, Rocancourt D, Cossu G, Buckingham M (1997) Redefining the genetic hierarchies controlling skeletal myogenesis: Pax-3 and Myf-5 act upstream of MyoD. *Cell* 89: 127–138.
21. Sato T, Rocancourt D, Marques L, Thorsteinsdottir S, Buckingham M (2010) A Pax3/Dmrt2/Myf5 regulatory cascade functions at the onset of myogenesis. *PLoS Genet* 6: e1000897. doi:10.1371/journal.pgen.1000897
22. Borello U, Berarducci B, Murphy P, Bajard L, Buffa V, et al. (2006) The Wnt/ β -catenin pathway regulates Gli-mediated Myf5 expression during somitogenesis. *Development* (Cambridge, England) 133: 3723–3732.
23. Bajard L, Relaix F, Lagha M, Rocancourt D, Daubas P, et al. (2006) A novel genetic hierarchy functions during hypaxial myogenesis: Pax3 directly activates Myf5 in muscle progenitor cells in the limb. *Genes Dev* 20: 2450–2464.
24. Giordani J, Bajard L, Demignon J, Daubas P, Buckingham M, et al. (2007) Six proteins regulate the activation of Myf5 expression in embryonic mouse limbs. *Proc Natl Acad Sci U S A* 104: 11310–11315.
25. Liu Y, Chu A, Chakroun I, Islam U, Blais A (2010) Cooperation between myogenic regulatory factors and SIX family transcription factors is important for myoblast differentiation. *Nucleic acids research* 38: 6857–6871.
26. Spitz F, Demignon J, Porteu A, Kahn A, Concordet JP, et al. (1998) Expression of myogenin during embryogenesis is controlled by Six/sine oculis homeoproteins through a conserved MEF3 binding site. *Proc Natl Acad Sci U S A* 95: 14220–14225.
27. Niro C, Demignon J, Vincent S, Liu Y, Giordani J, et al. (2010) Six1 and Six4 gene expression is necessary to activate the fast-type muscle gene program in the mouse primary myotome. *Developmental biology* 338: 168–182.
28. Richard AF, Demignon J, Sakakibara I, Pujol J, Favier M, et al. (2011) Genesis of muscle fiber-type diversity during mouse embryogenesis relies on Six1 and Six4 gene expression. *Developmental biology* 359: 303–320.
29. Pignoni F, Hu B, Zavitz KH, Xiao J, Garrity PA, et al. (1997) The eye-specific proteins So and Eya form a complex and regulate multiple steps in *Drosophila* eye development. *Cell* 91: 881–891.
30. Ohto H, Kamada S, Tago K, Tominaga SI, Ozaki H, et al. (1999) Cooperation of six and eya in activation of their target genes through nuclear translocation of Eya. *Molecular and cellular biology* 19: 6815–6824.
31. Kawakami K, Ohto H, Ikeda K, Roeder RG (1996) Structure, function and expression of a murine homeobox protein AREC3, a homologue of *Drosophila* sine oculis gene product, and implication in development. *Nucleic acids research* 24: 303–310.
32. Relaix F, Polimeni M, Rocancourt D, Ponzetto C, Schafer BW, et al. (2003) The transcriptional activator PAX3-FKHR rescues the defects of Pax3 mutant mice but induces a myogenic gain-of-function phenotype with ligand-independent activation of Met signaling in vivo. *Genes & development* 17: 2950–2965.
33. Tajbakhsh S, Bober E, Babinet C, Pournin S, Arnold H, et al. (1996) Gene targeting the myf-5 locus with nlacZ reveals expression of this myogenic factor in mature skeletal muscle fibres as well as early embryonic muscle. *Developmental dynamics* 206: 291–300.
34. Sassoon D, Lyons G, Wright WE, Lin V, Lassar A, et al. (1989) Expression of two myogenic regulatory factors myogenin and MyoD1 during mouse embryogenesis. *Nature* 341: 303–307.
35. Asakura A, Lyons GE, Tapscott SJ (1995) The regulation of MyoD gene expression: conserved elements mediate expression in embryonic axial muscle. *Developmental biology* 171: 386–398.
36. Goldhamer DJ, Brunk BP, Faerman A, King A, Shani M, et al. (1995) Embryonic activation of the myoD gene is regulated by a highly conserved distal control element. *Development* (Cambridge, England) 121: 637–649.
37. Kucharczuk KL, Love CM, Dougherty NM, Goldhamer DJ (1999) Fine-scale transgenic mapping of the MyoD core enhancer: MyoD is regulated by distinct but overlapping mechanisms in myotomal and non-myotomal muscle lineages. *Development* (Cambridge, England) 126: 1957–1965.
38. Chen JC, Ramachandran R, Goldhamer DJ (2002) Essential and redundant functions of the MyoD distal regulatory region revealed by targeted mutagenesis. *Developmental biology* 245: 213–223.
39. Chen JC, Goldhamer DJ (2004) The core enhancer is essential for proper timing of MyoD activation in limb buds and branchial arches. *Developmental biology* 265: 502–512.
40. Kawakami K, Sato S, Ozaki H, Ikeda K (2000) Six family genes—structure and function as transcription factors and their roles in development. *BioEssays* 22: 616–626.
41. Oliver G, Wehr R, Jenkins NA, Copeland NG, Cheyette BN, et al. (1995) Homeobox genes and connective tissue patterning. *Development* (Cambridge, England) 121: 693–705.
42. Klesert TR, Cho DH, Clark JI, Maylie J, Adelman J, et al. (2000) Mice deficient in Six5 develop cataracts: implications for myotonic dystrophy. *Nature genetics* 25: 105–109.
43. Yajima H, Motohashi N, Ono Y, Sato S, Ikeda K, et al. (2010) Six family genes control the proliferation and differentiation of muscle satellite cells. *Experimental cell research* 316: 2932–2944.
44. Le Grand F, Grifone R, Mourikis P, Houbroun C, Gigaud C, et al. (2012) Six1 regulates stem cell repair potential and self-renewal during skeletal muscle regeneration. *J Cell Biol* 198: 815–832.
45. Kassar-Duchossoy L, Gayraud-Morel B, Gomes D, Rocancourt D, Buckingham M, et al. (2004) Mrf4 determines skeletal muscle identity in Myf5:Myod double-mutant mice. *Nature* 431: 466–471.
46. Xu PX, Woo I, Her H, Beier DR, Maas RL (1997) Mouse Eya homologues of the *Drosophila* eyes absent gene require Pax6 for expression in lens and nasal placode. *Development* (Cambridge, England) 124: 219–231.
47. L'Honore A, Ouimette JF, Lavertu-Jolin M, Drouin J (2010) Pitx2 defines alternate pathways acting through MyoD during limb and somitic myogenesis. *Development* (Cambridge, England) 137: 3847–3856.
48. Hu P, Geles KG, Paik JH, DePinho RA, Tjian R (2008) Codependent activators direct myoblast-specific MyoD transcription. *Developmental cell* 15: 534–546.
49. Cao L, Yu Y, Bilke S, Walker RL, Mayeenuddin LH, et al. (2010) Genome-wide identification of PAX3-FKHR binding sites in rhabdomyosarcoma reveals candidate target genes important for development and cancer. *Cancer research* 70: 6497–6508.
50. Cao Y, Yao Z, Sarkar D, Lawrence M, Sanchez GJ, et al. (2010) Genome-wide MyoD binding in skeletal muscle cells: a potential for broad cellular reprogramming. *Developmental cell* 18: 662–674.
51. Kress C, Vandormael-Pournin S, Baldacci P, Cohen-Tannoudji M, Babinet C (1998) Nonpermissiveness for mouse embryonic stem (ES) cell derivation circumvented by a single backcross to 129/Sv strain: establishment of ES cell lines bearing the Omd conditional lethal mutation. *Mammalian genome* 9: 998–1001.
52. Lallemand Y, Luria V, Haffner-Krausz R, Lonai P (1998) Maternally expressed PGK-Cre transgene as a tool for early and uniform activation of the Cre site-specific recombinase. *Transgenic research* 7: 105–112.
53. Laclef C, Hamard G, Demignon J, Souil E, Houbroun C, et al. (2003) Altered myogenesis in Six1-deficient mice. *Development* 130: 2239–2252.
54. Grifone R, Laclef C, Spitz F, Lopez S, Demignon J, et al. (2004) Six1 and Eya1 expression can reprogram adult muscle from the slow-twitch phenotype into the fast-twitch phenotype. *Mol Cell Biol* 24: 6253–6267.