



HAL
open science

Evaluation of the ability of bone marrow derived cells to engraft the kidney and promote renal tubular regeneration in mice following exposure to cisplatin

Aurélien Bataille, Pierre Galichon, Morgane Wetzstein, David Legouis, Sophie Vandermeersch, Eric Rondeau, Alexandre Hertig

► To cite this version:

Aurélien Bataille, Pierre Galichon, Morgane Wetzstein, David Legouis, Sophie Vandermeersch, et al.. Evaluation of the ability of bone marrow derived cells to engraft the kidney and promote renal tubular regeneration in mice following exposure to cisplatin. *Renal Failure*, 2016, 38 (4), pp.521-529. 10.3109/0886022X.2016.1145521 . hal-01311532

HAL Id: hal-01311532

<https://hal.sorbonne-universite.fr/hal-01311532v1>

Submitted on 4 May 2016

HAL is a multi-disciplinary open access archive for the deposit and dissemination of scientific research documents, whether they are published or not. The documents may come from teaching and research institutions in France or abroad, or from public or private research centers.

L'archive ouverte pluridisciplinaire **HAL**, est destinée au dépôt et à la diffusion de documents scientifiques de niveau recherche, publiés ou non, émanant des établissements d'enseignement et de recherche français ou étrangers, des laboratoires publics ou privés.

Title

Evaluation of the ability of bone marrow derived cells to engraft the kidney and promote renal tubular regeneration in mice following exposure to cisplatin

Authors

Aurélien Bataille¹, Pierre Galichon^{1,2}, Morgane Wetzstein¹, David Legouis¹, Sophie Vandermeersch¹, Eric Rondeau^{1,2}, Alexandre Hertig^{1,2}

Affiliations

(1) Inserm UMR_S 1155, “Rare and common kidney diseases, matrix remodelling and tissue repair”, Tenon Hospital, F-75020, Paris, France

(2) Sorbonne Universités, UPMC Université Paris 6, F-75005, Paris, France

Author Data

Aurélien Bataille : aurelbataille@gmail.com, Inserm UMR_S 1155, Tenon Hospital, 4, rue de la Chine, 75020, Paris, France – Fax: +33 1 5601 6659.

Pierre Galichon : pierre.galichon@aphp.fr, Urgences Néphrologiques et Transplantation Rénale Tenon Hospital, 4 rue de la Chine, 75020, Paris, France - Fax : +33 1 5601 7968

Morgane Wetzstein : morganewetzstein@yahoo.fr, Inserm UMR_S 1155, Tenon Hospital, 4, rue de la Chine, 75020, Paris, France – Fax: +33 1 5601 6659.

David Legouis : davidlegouis@gmail.com, Inserm UMR_S 1155, Tenon Hospital, 4, rue de la Chine, 75020, Paris, France – Fax: +33 1 5601 6659.

Sophie Vandermeersch : sophie.vandermeersch@upmc.fr, Inserm UMR_S 1155, Tenon Hospital, 4, rue de la Chine, 75020, Paris, France – Fax: +33 1 5601 6659.

Eric Rondeau : eric.rondeau@aphp.fr, Urgences Néphrologiques et Transplantation Rénale Tenon Hospital, 4 rue de la Chine, 75020, Paris, France - Fax : +33 1 5601 7968

Alexandre Hertig : alexandre.hertig@aphp.fr, Urgences Néphrologiques et Transplantation Rénale Tenon Hospital, 4 rue de la Chine, 75020, Paris, France - Fax : +33 1 5601 7968

Corresponding Author:

Prof. Alexandre Hertig, MD, PhD

Urgences Néphrologiques et Transplantation Rénale

Hôpital Tenon

4 rue de la Chine, 75020, Paris, France

Tel : +33 1 5601 6695 ; Fax : +33 1 5601 7968

email : alexandre.hertig@tnn.aphp.fr

Key Words

Acute Kidney Injury; Cisplatin; Bone Marrow Cells; Bone Marrow Transplantation; Stem cells

Right Running Head Bone marrow derived cells after cisplatin

Funding

This study was funded by a grant from the Fondation de l'Avenir, Paris, France (Project ET0-570), and one from Region Ile de France (CORDDIM). AB and MW are the recipients of a fellowship “Année recherche” from the Agence Régionale de Santé (from Ile de France and Amiens, France, respectively). AH is the recipient of an Interface contract with the French National Institute for Health and Medical Research (INSERM).

Word count : Main text : 3176

Abstract

It has been suggested that bone marrow derived stem cells have the ability to engraft the kidney and improve the outcome of severe acute kidney injury in mice exposed to high doses of cisplatin, providing hope for cancer patients in whom irreversible renal damage occasionally occurs following the use of this highly effective anti-tumor drug. We tested the therapeutic potential of bone marrow derived cells injected during the acute phase (day 3 after cisplatin administration) of experimentally-induced acute kidney injury in C57Bl6/J mice, characterized by massive tubular necrosis, apoptosis, and a low proliferation capacity. We failed to show any benefit of bone marrow derived cells *versus* a regular homogenate of intact renal cells, or normal saline. Using cell tracers and flow cytometry, we demonstrated that bone marrow derived cells did indeed home to the bone marrow of the recipients but failed to settle in the kidney. Conversely, renal cells homed to injured kidneys. However, neither cell therapy protected the animals against cisplatin-induced death. We therefore question the short-term efficacy of bone marrow derived cells used to repair established injuries of the tubular epithelium.

Introduction

Platinum-based chemotherapy is widely used to treat solid cancers, such as testicular, bladder, cervical, and non-small cell lung cancers.¹ Cisplatin, the neutral cis-isomer of $(PtII(NH_3)_2Cl_2)$, was approved by the USA Food and Drug Administration in 1978, and is still widely used today. Its antitumor efficacy involves covalent binding with the purine bases of DNA (resulting in what are known as platinum-DNA adducts); this in turn activates a DNA repair process leading to apoptosis and eventually cell death¹. Platinum is extensively bound to proteins, and so few free cisplatin molecules are filtered through the glomerular barrier; in addition, the tubules do not reabsorb luminal cisplatin. Nevertheless, cisplatin may still be taken up from the basolateral side of the tubular cells by organic cation transporters (OCT).² OCT2 in particular is abundantly expressed by the S3 segment of the proximal tubules, which is located at the junction between the inner cortex and outer medulla. There, platination of DNA induces tubular cell death and may lead to acute kidney injury (AKI). Nephrotoxicity is one of the main safety issues regarding the use of cisplatin, and has led to an extensive search for less toxic analogues that retain its antitumor efficacy.

For the past decade, ischemia reperfusion injury (IRI) has been used worldwide as an experimental model of AKI. Recently, sophisticated genetically-engineered mice have been used to help to elucidate how injured tubular epithelium is repaired after IRI. It turns out that the kidney has no interstitial stem cells, and consequently the repair of its tubular epithelium depends entirely on the presence of epithelial cells that have survived the injury.³⁻⁵ It is interesting to note that unlike ischemic AKI – which has similar effects on the tubules in the outer cortex, but typically recovers in two to three weeks – cisplatin-induced AKI has a very variable prognosis, and occasionally leads to a permanent loss of kidney function.⁶ This suggests that the extent of the DNA damage that has occurred makes regeneration impossible or ineffective.

In cancer patients, kidney transplantation is hardly an option: immunosuppressors would facilitate tumor growth, and the shortage of organs for transplantation makes cancer-free patients a priority.

Repeated dialysis impairs quality of life, and survival is also compromised since many chemotherapies are contraindicated by persistent kidney failure. This makes the regeneration of native kidneys a question of life and death.

In the present study, we investigated the therapeutic interest of bone-marrow-derived stem cells (BMDC) during cisplatin-induced AKI. Our primary objective was to investigate the life-sparing benefit of BMDC injection at the acute phase of injury on the basis of three observations. First, genetically-intact, unsorted BMDC have been shown to repair genetically-induced glomerular diseases in mice by supplying the kidney with genetically intact cells,^{7,8} although this has been the subject of heated controversy.⁹ Second, in mice BMDC were also found to *prevent or reduce* cisplatin-induced AKI through a paracrine action.¹⁰⁻¹³ Third, in the clinic, stem cells are regularly harvested from cancer patients before lethal chemotherapy, to allow the repopulation of bone marrow by autologous cells and promote patient survival. We therefore reasoned that the administration of genetically-intact BMDC (i.e. in BMDC that had not been exposed to cisplatin) would be one way to regenerate the tubular epithelium following massive damage by platinum adducts. It was crucial to confirm their ability to home to the kidney and to test their efficacy during the acute phase of AKI, in order to parallel the pathology timeline observed in human patients.

Materials and Methods

Ethics Statement

Animal care and the experimental procedures were approved by an independent Ethics committee for animal experimentation (Comité National de Réflexion Éthique sur l'Expérimentation Animale, numéro 5) under the number Ce5/2012/004.

Animals

Eight-week-old female wild-type mice (C57BL/6J background, from 16 to 21 g of total body

weight) obtained from Jackson Laboratory[®] and transgenic mice ubiquitously expressing green fluorescent protein (GFP) under the control of the promoter of β -actin¹⁴ (C57BL/6-Tg (CAG-EGFP) C14-Y01-M131Osb) were maintained under standard conditions at the animal specific pathogen free facility located in the Research Building of Tenon Hospital; the mice were placed in 1284L ventilated boxes, with a 12/12 photoperiod, at a 20-24°C temperature and with 55 +/- 10% relative humidity. Food and water were available *ad libitum*. Experimentation begun 1 week after animal arrival.

Cisplatin

Cisplatin (MYLAN[®], 1 mg/ml) was further diluted in phosphate buffer saline (PBS) and administered as a single intraperitoneal injection containing a dose of cisplatin adjusted to allow for the bodyweight of the animal (doses of up to 20 mg/kg bodyweight were used to induce AKI, with an injected volume of 25 μ l/g bodyweight).

Injection of the bone-marrow-derived cells

Briefly, the source animals for BMDC (whether wild type or GFP-transgenic) were sacrificed by cervical dislocation. Femurs, tibiae, and humeri were isolated. After section of the epiphyses, a diaphyseal flush with PBS was performed. A cell suspension was obtained after passage through 35-micron filters. After ammonium lysis of the red blood cells using a lysis buffer and potassium chloride (ACK), a flow cytometric cell count was performed. Three days after the injection of cisplatin, each mouse received a retro-orbital injection of 1 million BMDC diluted in 200 μ l of sterile PBS, under isoflurane anesthesia. Using flow cytometry, we found that 51% [49; 59] of this global population were CD45 negative (Figure 1); in comparison from 2 to 5.10⁵ mesenchymal stem cells had been used to rescue mice from cisplatin induced AKI in previous studies.¹⁰⁻¹³

It should be noted that the time between the flush and the orbital injection did not exceed an hour

and a half. The BMDC were traced by detecting fluorescent GFP if the donor was GFP-transgenic, or detecting carboxyfluorescein succinimidyl ester (CFSE), after adding CFSE *ex vivo* (according to the Manufacturer's instructions) when wild-type BMDC were being used.

Two control groups were added: one was injected at the same timepoint with the same volume (200 μ l) of isotonic saline (NaCl 0.9%), and the other, injected with a homogenate of renal cells from similarly syngeneic mice that had not been exposed to cisplatin (thus genetically intact but *a priori* devoid of stem cell properties), both also under isoflurane anesthesia (Figure 2). To this end, after dermal ethanol asepsis, both kidneys were extracted, decapsulated, and stored in PBS under sterile conditions. A kidney cell suspension was obtained by passing the kidneys through a cell dissociator (04.1 Spleen protocol, gentleMACS™, Miltenyi Biotec®), and filtering with a 35-micron filter. Here too, 200 μ l of a solution containing 1 million cells was injected intravenously. The animals were syngeneic, and had not been subjected to irradiation before the injection of BMDC or renal cells.

Mice were randomly assessed by blocks of 5 animals for orbital injection of BMDC, renal cells or normal saline and the person in charge of the injection was blind from either group. Renal failure *per se* is not painful : animals presented activity slowdown and signs of dehydration but did not require analgesic support, as approved by the Ethics committee for animal experimentation. To evaluate the primary outcome, animals were daily checked for spontaneous death as a direct result of the intervention. Surviving animals were sacrificed on day 10 post AKI, for blood collection under ketamine/xylazine anesthesia, and kidney and bone marrow retrieval after cervical dislocation.

Histological analysis

For light microscopy, the renal tissue was fixed in alcohol-formalin-acetic acid, embedded in paraffin, and cut into 4- μ m sections. The slides were stained with Masson's trichrome, periodic

acid-Schiff and haematoxylin-eosin to assess tubular injury. Six random photographs were taken of each slide in non-overlapping cortical areas, at x400 magnification, using an Olympus© BX 51/DP70 microscope. The percentage of injured tubules was then scored semi-quantitatively (0: 0%, 1 < 10%, 2: 10-25%, 3: 26-75%, 4 > 76%), according to the presence of tubular dilation, the loss of the brush border, the presence of intra-luminal casts, and the loss of the epithelial border. For mice that survived for 10 days after the rescue injection of cells, a quantitative score was also used to look for subtle improvements: an 8x8 grid was superimposed over a representative picture of the renal cortex of each mouse. Fibrosis was quantified by Sirius Red staining under polarization contrast microscopy. In addition, immunohistochemistry was used to detect proliferating cells using the Ki-67 antibody from Abcam[®] (dilution 1/10,000) revealed by a rabbit secondary antibody from Histofine[®] and the DAKO[®] AEC kit, and apoptotic cells were revealed using the TUNEL (TdT-mediated X-dUTP nick end labeling) kit from Roche[®] according to the Manufacturer's instructions.

Flow-cytometer analysis

The MACSQuant[®] Analyzer (Miltenyi Biotec) was used. Flow cytometry was carried out at a distance from the sample. The kidneys were passed through a cell dissociator (04.1 Spleen protocol, gentleMACS[™], Miltenyi Biotec) and then filtered (35 microns). The bone marrow was simply filtered (35 microns). The cells were then stored at -20°C in a solution of PBS containing dimethyl sulfoxide (10%) and fetal calf serum (15%). EGFP fluorescence was searched for in the FITC channel (excitation by blue laser at 488 nm and detection through a 525/550 nm filter). Leukocytes were detected by an anti-CD45-VioBlue (Miltenyi Biotec). To note, red blood cells from EGFP transgenic mice are not expected to express EGFP.¹⁴ For each marker, one million cells in 100 µL were incubated for 30 minutes in the presence of the antibody under saturating conditions (5µL), and then washed. Analysis was performed using FlowJo analysis software (Treestar Inc., version X.0.7). The analytic strategy involved including cell populations that were within the acceptable

range of size and structure. Doublets were excluded by gating singlets after plotting the height vs the area of the forward scatter signal. Self-fluorescent events were excluded using a gating strategy on the VioGreen channel (excitation by a violet laser at 405 nm and detection through 525/550 nm filters) in order to optimize the specificity of GFP detection.¹⁵

Creatinin and urea analysis

Plasmatic creatinin and urea was measured using a Konelab automater (Thermo Fisher Scientific, Waltham, MA) with an enzymatic method (Konelab automater) and expressed in micro and millimoles per liter, respectively.

Real time PCR

RNA or genomic DNA (gDNA) were extracted from kidneys using TRI Reagent (Euromedex, Mundolsheim, France). After digestion with DNase 1, the RNA was reverse transcribed with the Maxima RT Kit (Fermentas). The quality of cDNA and gDNA was assessed by the ratio of the absorbances at 260 and 280 nm. Both were then amplified by PCR in a LightCycler 480 (Roche Diagnostics, Meylan, France) with SYBR Green (LightCycler 480 SYBR Green I Master; Roche Diagnostics) and specific primers for EGFP, IGF-1, β -glucuronidase (Gusb) and Actin b1 (Actb1) used as housekeeping genes (Table 1). EGFP primers were chosen on the basis of the Jackson Laboratory® genotyping procedure; those for Insulin Like Growth Factor-1 (IGF-1) and housekeeping genes were designed using the Universal Probe Library Roche website for operating under the following conditions: 95°C for 5 min, 45 cycles at 95°C for 20 s, 60°C for 15 s, and 72°C for 15 s (except for Actb1 PCR with gDNA: 30 s). Tissues from C57BL/6-Tg (CAG-EGFP) C14-Y01-M1310sb mice were used as positive controls.

Statistical analysis

Data are given as medians (with 25th and 75th percentiles) for the quantitative variables. Comparisons were made using a Wilcoxon test, where appropriate. Survival was studied by Kaplan-Meier curves and log-rank tests were performed to compare groups. For comparison of quantitative variables between groups, a Kruskal-Wallis test was performed. All tests were two-sided and at a 0.05 significance level. Analyses were performed using the R.2.14.1 statistical package (R Development Core Team (2011). R: A language and environment for statistical computing. R Foundation for Statistical Computing, Vienna, Austria. ISBN 3-900051-07-0, URL <http://www.R-project.org/>).

Results

Cisplatin induced a dose-dependent mortality in C57Bl/6J mice (Figure 3A). Three days after injection of the cisplatin, renal function was severely impaired (Figure 3B), due to extensive tubular necrosis (Figure 3C & 3D). Massive apoptosis was observed (Figure 3E), together with a low ability of the epithelium to proliferate (Figure 3F). A single injection of 17.5 mg/kg of cisplatin was finally chosen to test the ability of BMDC to rescue the mice at day 3 (i.e. during the acute phase of tubular injury).

Regarding the capacity of BMDC to prevent animal death after a lethal dose of cisplatin, 18/26, 13/26 and 16/25 animal died in the BMDC, renal cells and normal saline group, respectively. Survival curves show that both BMDC and renal cells failed to provide any significant benefit over saline (log-rank test $p=0.369$) (Figure 4). The kidneys of mice that survived for 10 days were all found to have similar tubular injury with some degree of regeneration (whether assessed by a semi-quantitative injury score: median value \pm SEM for BMDC 3 ± 0.5 ; renal cells: 1 ± 0.3 ; saline 1 ± 0.5 , $p=NS$; or by a quantitative injury score: mean values of $25.2\pm 8.0\%$, $8.0\pm 2.7\%$, and $9.8\pm 6.5\%$, respectively, $p=NS$) (Figure 5). No difference in renal functional parameters were found between groups (Figure 6) ($p=0.949$ for plasmatic creatinin and $p=0.368$ for plasmatic urea). No difference

in interstitial fibrosis was found between groups (Figure 5) The therapeutic groups displayed similar apoptosis (massive in each group), and similar capacities to proliferate (almost absent); no increase in IGF-1 transcripts was observed in mice injected with BMDC ($p=0.867$) (Figure 7). No major adverse event modified the experimental protocol.

Considering the absence of therapeutic effect, we reasoned that either the cells failed to home to the kidney or that cells were ineffective in rescuing AKI despite effective kidney engraftment. Cell homing was therefore assessed at day 10 among the surviving mice in blood and bone marrow, and in the kidney using flow-cytometry (Table 2). In the blood, we detected positive cytometric events both in the BDMC and the renal cells groups, where the number of positive events exceeded those of the control group in all individuals.

Regarding the bone marrow, a significantly higher proportion of positive events were detected in the BMDC group compared to the renal cells group ($p=0.006$). The renal cells group showed a number of positive events equivalent to the negative control group. This result suggests a significant engraftment of BMDC in the recipients' marrow and in contrast the absence of renal cells homing to the marrow. Analyzing the results obtained from the cell suspension of dissociated kidneys, there was a significant disparity in the results. A positive signal was observed in one individual from the control group, perhaps due to the constitutive autofluorescence of renal cells. One individual from the renal cells group showed a high proportion of positive cells (Figure 8). The overall comparison of BMDC and RC groups, however, showed a significantly higher proportion of positive events in the renal cells group compared to the BMDC group ($p = 0.012$).

These results are to be understood taking into account differences in the analysis and gating used for cytometry. Indeed, kidney cells emit significant autofluorescence which requires a specific analysis. However, we failed to detect any BMDC by either direct immunofluorescence of kidneys or by PCR amplification of the EGFP transcript, whether we used RNA or gDNA extracted from kidneys (whereas the transgene was clearly amplified using RNA and gDNA templates from transgenic

EGFP+ tissues used as positive controls).

Discussion

Our study found no survival benefit following the use of genetically intact BMDC during the acute phase of cisplatin-induced AKI in mice, even though on four occasions an independent group has reported the contrary despite using similar amounts of stem cells, appropriate controls and a similarly severe model of AKI.¹⁰⁻¹³ More precisely, mesenchymal stem cells (MSC) injected at day 1 were repeatedly found to protect mice against cisplatin-induced AKI (as opposed to hematopoietic stem cells, which had no therapeutic impact,¹¹ whether of mouse^{10, 11} or human origin – thus both bone marrow¹³ and cord blood¹² human MSC gave successful outcomes.

Our experimental design was different, though: we injected BMDC during the acute phase of the disease (day 3), which is the context that confronts physicians at the bedside when a cancer patient develops a severe AKI following platinum-based chemotherapy. The animal model of cisplatin-induced AKI does not allow us to find out whether any benefit would be seen later on as dialysis is not an option in mice. The bulk of the mice did however survive for three days after the rescue cell injection, which was long enough for us to observe a difference in renal function,¹¹ and even survival¹² in the experiments performed by Morigi and coworkers.

Apart from this difference, another difference should be pointed out. Morigi *et al.* used fluorescence technology (detection of the Y chromosome, or of a PKH-26 label) to trace stem cells and showed images of MSC localized in peritubular areas (and in a few cases inside tubules), in proportions from 0.5 to 3.4 per 10⁵ renal cells.^{10,12} We failed to see any incorporation or even homing of BMDC in injured kidneys, even though we used highly sensitive techniques (flow cytometry and qRT-PCR) as well as two different fluorescent markers (GFP and CFSE), and of course a syngeneic background between donor cells and recipients.

With respect to the question of how MSC exerted their protective effect, it was initially argued that

they might rapidly regenerate a damaged tubule through differentiation,¹¹ yet very low levels of intratubular incorporation and tubular differentiation were actually found. MSC seem to act mainly through their trophic effect, being a source of renotropic growth factors such as IGF-11.^{10,12,13} The timepoint at which stem cells are injected to repair a tissue is undoubtedly critical. Under the experimental conditions that we used, BMDC did not affect survival at all, though, and we wonder to which extent this trophic effect is clinically relevant. We do not think that the severity of the model was an issue here, since we had a mean of 40% survival in each study group, while survival was null in the control group of the studies we are referring to.

A limitation of our study is that we used unsorted BMDC, and therefore a mixture of hematopoietic cells, mesenchymal stem cells, as well as lymphoid and myeloid progenitors. Although we are not aware that any of these components has any negative effect, we cannot exclude the possibility that one lineage could have canceled out the potential benefits afforded by MSC. However this seems unlikely, because two independent teams have reported that unsorted BMDC display a protective role in the mouse model of Alport-like glomerular disease,^{7, 8} although once again, these data have given rise to controversy.⁹

In the context of organ injury, there is no evidence for the circulation of MSC in humans.¹⁶ Injection seems to be necessary to provide a protective effect. Our study questions the homing capacity of cells as we did not find BMDC tagged cells in the injured kidney. Lastly, it is noteworthy that EGFP+ renal cells were found to home in significant proportions to the injured kidneys and that this therapeutic group had the lowest histological injury scores. This finding supports the concept of kidney self-repair. Nevertheless, with respect to survival, which was our main outcome criteria, renal cells did not provide any significant protection.

In conclusion, our negative findings somewhat temper the hopes centered on cell therapy as a promising therapeutic option for cancer patients suffering from irreversible cisplatin-induced AKI. They also reinforce the concept that the epithelium itself is the major source of tubular regeneration

in the context of severe tubular injury. Will stem cells fulfill their promise for patients in whom the renal epithelial reservoir has been exhaustively damaged by a toxic drug? Clinical studies are in progress which we are justified in hoping will resolve the question (Clinical Trials NCT01275612).

Acknowledgments

The authors thank Prof. Masaru Okabe for providing the C57BL/6-Tg (CAG-EGFP) C14-Y01-M131Osb strain, Prof. Selim Aractingi and Tatiana Ledent (INSERM UMRS 938) for their help in obtaining the GFP animals, Dr Laurent Mesnard for his excellent technical skills in animal handling, and Ms Caroline Martin and her team for animal care.

Declaration of Interest

The authors report no conflicts of interest. The authors alone are responsible for the content and writing of the paper.

References

1. Kelland L. The resurgence of platinum-based cancer chemotherapy. *Nat Rev Cancer*. 2007;7(8):573-584.
2. Sánchez-González PD, López-Hernández FJ, López-Novoa JM, Morales AI. An integrative view of the pathophysiological events leading to cisplatin nephrotoxicity. *Crit Rev Toxicol*. 2011;41(10):803-821.
3. Bonventre JV, Yang L. Cellular pathophysiology of ischemic acute kidney injury. *J Clin Invest*. 2011;121(11):4210-4221.
4. Humphreys BD, Valerius MT, Kobayashi A, et al. Intrinsic epithelial cells repair the kidney after injury. *Cell Stem Cell*. 2008;2(3):284-291.
5. Humphreys BD, Czerniak S, DiRocco DP, Hasnain W, Cheema R, Bonventre JV. Repair of injured proximal tubule does not involve specialized progenitors. *Proc Natl Acad Sci USA*. 2011;108(22):9226-9231.
6. Thadhani R, Pascual M, Bonventre JV. Acute renal failure. *N Engl J Med*. 1996;334(22):1448-1460.
7. Prodromidi EI, Poulosom R, Jeffery R, et al. Bone marrow-derived cells contribute to podocyte regeneration and amelioration of renal disease in a mouse model of Alport syndrome. *Stem Cells*. 2006;24(11):2448-2455.
8. Sugimoto H, Mundel TM, Sund M, Xie L, Cosgrove D, Kalluri R. Bone-marrow-derived stem cells repair basement membrane collagen defects and reverse genetic kidney disease. *Proceedings of the National Academy of Sciences*. 2006;103(19):7321-7326.
9. Gross O, Borza D-B, Anders H-J, et al. Stem cell therapy for Alport syndrome: the hope beyond the hype. *Nephrol Dial Transplant*. 2009;24(3):731-734.
10. Imberti B, Morigi M, Tomasoni S, et al. Insulin-like growth factor-1 sustains stem cell mediated renal repair. *J Am Soc Nephrol*. 2007;18(11):2921-2928. doi:10.1681/ASN.2006121318.
11. Morigi M, Imberti B, Zoja C, et al. Mesenchymal stem cells are renotropic, helping to repair the kidney and improve function in acute renal failure. *J Am Soc Nephrol*. 2004;15(7):1794-1804.
12. Morigi M, Rota C, Montemurro T, et al. Life-sparing effect of human cord blood-mesenchymal stem cells in experimental acute kidney injury. *Stem Cells*. 2010;28(3):513-522.
13. Morigi M, Introna M, Imberti B, et al. Human bone marrow mesenchymal stem cells accelerate recovery of acute renal injury and prolong survival in mice. *Stem Cells*. 2008;26(8):2075-2082.
14. Okabe M, Ikawa M, Kominami K, Nakanishi T, Nishimune Y. Green mice' as a source of ubiquitous green cells. *FEBS letters*. 1997;407(3):313-319.
15. Legouis D, Bataille A, Hertig A, et al. Ex vivo analysis of renal proximal tubular cells. *BMC Cell Biol*. 2015;16:12.
16. Hoogduijn MJ, Verstegen MMA, Engela AU, et al. No evidence for circulating mesenchymal stem cells in patients with organ injury. *Stem Cells Dev*. 2014;23(19):2328-2335.

Figure legends

Figure 1. Flow cytometry analysis of bone-marrow, with a CD45 PerCP staining.

Analytic strategy: 1) size and structure of cells 2) inclusion of single cells comparing the height and area of the Hoechst signal (excitation by a violet laser at 405 nm and detection through a 450/50 nm filter) 3) inclusion of cells having a correct Hoechst signal (excitation by a violet laser at 405 nm and detection through a 450/50 nm filter) 4) quantitative search for CD45+ cells in the PerCP channel (excitation by a laser at 488 nm and detection through a 655-730 nm filter).

Figure 2. Experimental protocol.

To rescue mice from cisplatin-induced acute kidney injury, 10^6 BMDC were injected on day 3 post cisplatin injection. Two control groups were used: one received 10^6 renal cells and the other received the same volume of normal saline. Survival was observed over 10 days, and then any survivors were sacrificed for organ study.

Figure 3. Lethality and severity of AKI following cisplatin injection.

A. Survival curve after the injection of increasing doses of cisplatin. - B. Plasma creatinine and urea were increased three days after the injection of cisplatin (20 mg/kg). - C. Mean percentage of injured tubules and corresponding histological damage scores at day 3. - Masson's trichrome staining (D), periodic acid-Schiff staining (E), haematoxylin and eosin staining (F), showing the renal cortex of a mouse injected with saline (left) and that of a mouse injected with 20 mg/kg of cisplatin (right): tubular dilation, loss of brush border, the presence of intra-luminal casts, and loss of the epithelial border were typical features of AKI. - G. Detection of apoptotic cells using the TUNEL (TdT-mediated X-dUTP nick end labeling) assay. - H. Detection of proliferating cells (Ki-67+) by immunohistochemistry. All photographs were taken after optical microscopy at x400

magnification of the renal cortex.

Figure 4. Kaplan-Meier curve of mouse survival after cell rescue therapy.

Injection of 10^6 BMDC, 10^6 renal cells or of an equal volume of normal saline was performed 3 days after cisplatin injection. No difference in survival was found between the groups (log rank test, $p=0.369$).

Figure 5. Histology of kidneys from mice which survived for 10 days after the rescue cell injection, showing similar tubular injury with some degree of regeneration and similar interstitial fibrosis.

Figure 6. Renal functional parameters in surviving animals.

No difference in renal functional parameters were found between groups at day 10 in surviving animals ($p=0.949$ for plasmatic creatinin and $p=0.368$ for plasmatic urea).

Figure 7. IGF1 real-time PCR.

No difference was found in IGF-1 transcripts among groups in the kidneys of mice that survived for 10 days.

Figure 8. Flow cytometry analysis of renal cells homing to injured kidneys.

Analytic strategy: 1) inclusion of cell populations that were within the acceptable limits of size and structure; 2) exclusion of duplicates or aggregates by comparing the height and area of the signal; 3) self-fluorescent cells were excluded by gating non-fluorescent cells in the VioGreen channel (excitation by a violet laser at 405 nm and detection through a 525/550 filter); quantitative search for EGFP+ cells in the FITC channel (excitation by a blue laser at 488 nm and detection through a 525/550 nm filter).

TABLE 1. Primers used for qRT-PCR (mRNA strand sequences).

	forward	reverse
EGFP	AAGTTCATCTGCACCACCG	TCCTTGAAGAAGATGGTGCG
IGF-1	CTGCTTGCTCACCTTCACC	AGCCTGTGGGCTTGTGA
Gusb	CTCTGGTGGCCTTACCTGAT	CAGTTGTTGTCACCTTCACCTC
Actb1	CTAAGGCCAACCGTGAAAAG	ACCAGAGGCATACAGGGACA

TABLE 2. Detection of labeled cells in recipient surviving mice by flow cytometry. Results are expressed as medians [Q1; Q3]. (*: BMDC versus Renal Cells)

	Negative Control	BMDC	Renal Cells	p value*
Blood	0.079 % [0.067 ; 0.142]	0.33 % [0.27 ;0.42]	0.27 % [0.24 ;0.375]	0.527
Bone Marrow	0.015 % [0.015 ; 0.017]	0.049 % [0.035 ;0.057]	0.01 % [0.01 ;0.01]	0.006
Kidney	0.110 % [0.080 ; 0.200]	0.041 % [0.035 ; 0.061]	0.220 % [0.205 ;0.330]	0.012

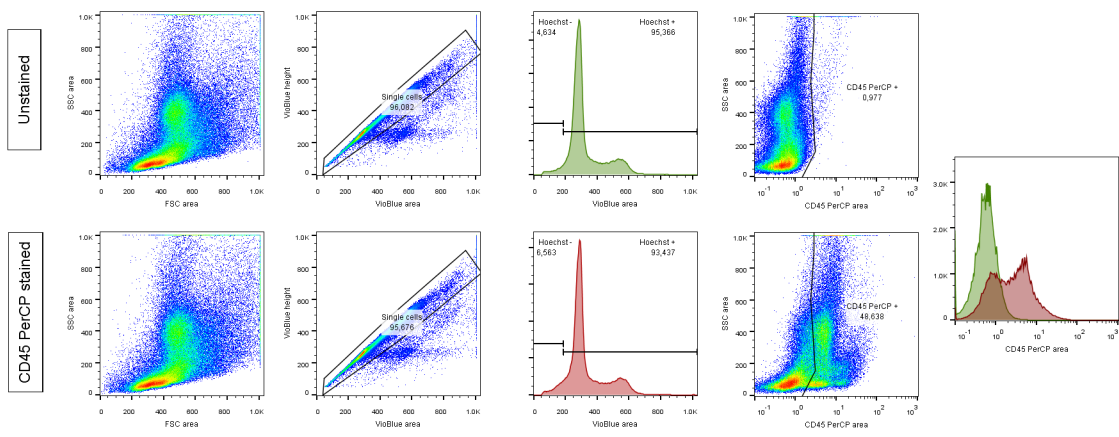


Figure 1

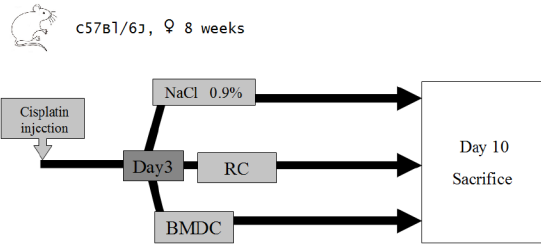


Figure 2

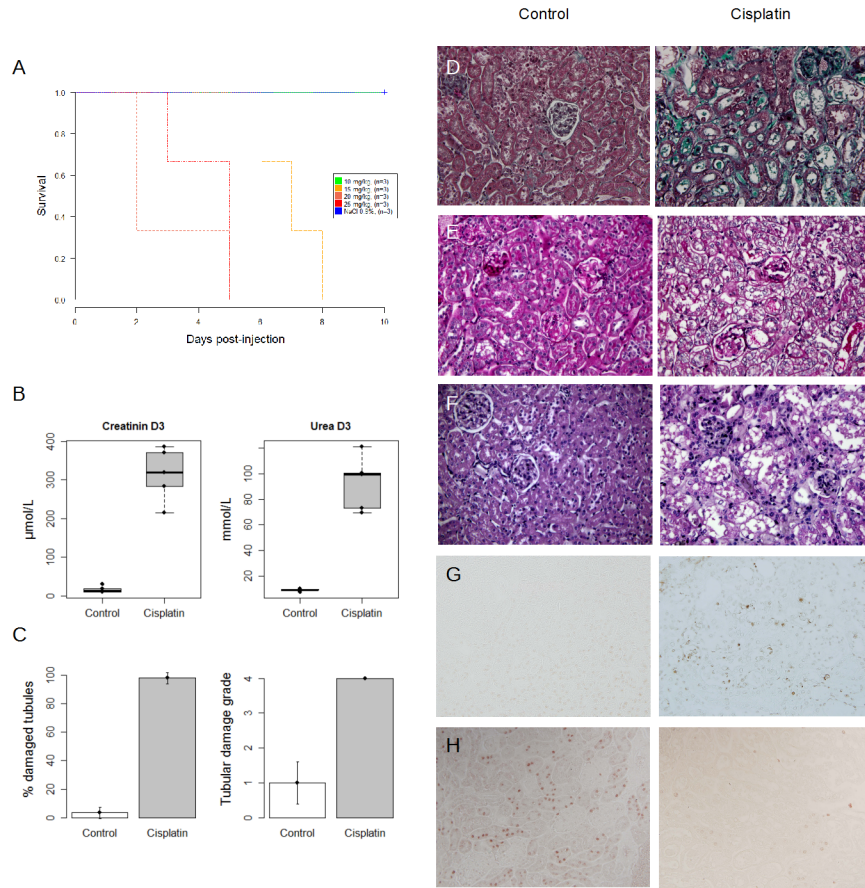


Figure 3

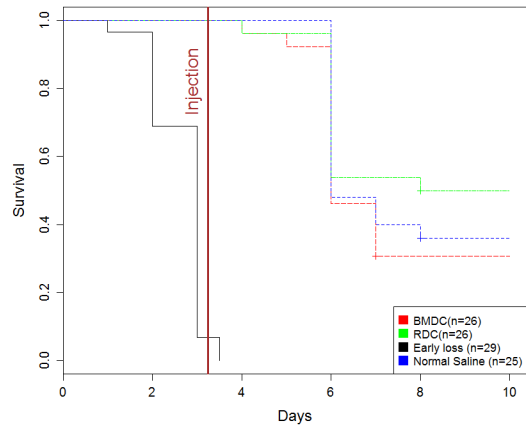


Figure 4

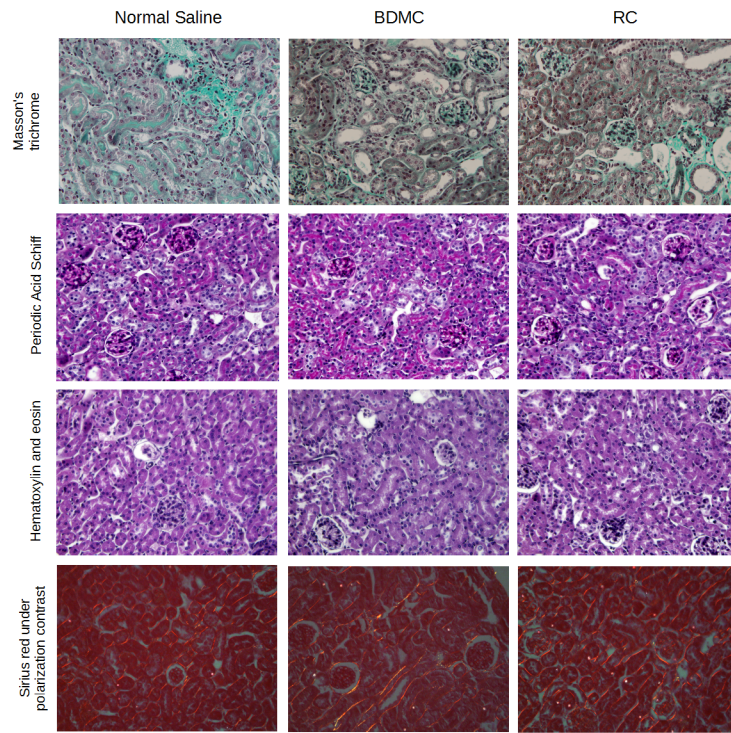
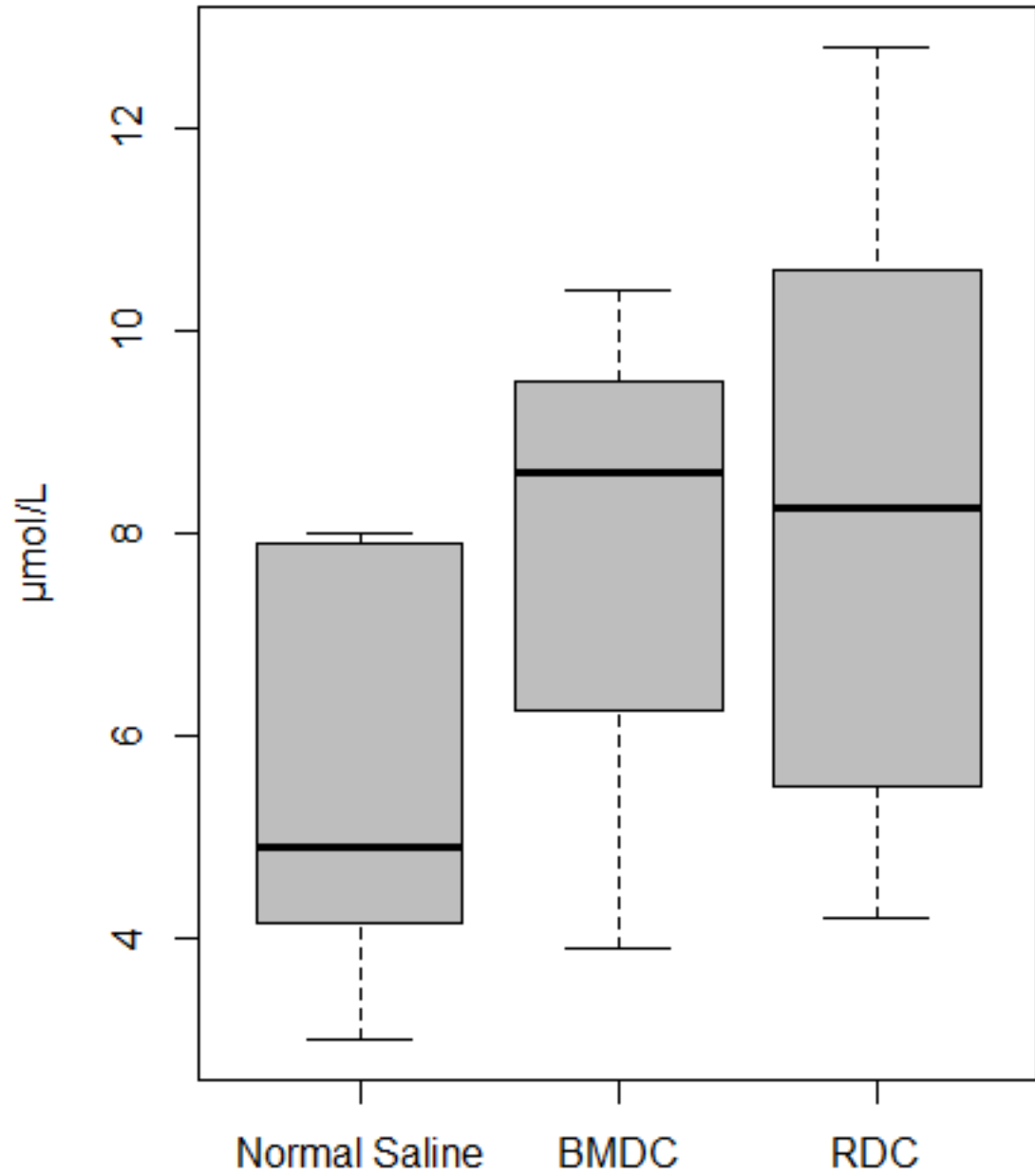


Figure 5

Creatinine D10



Urea D10

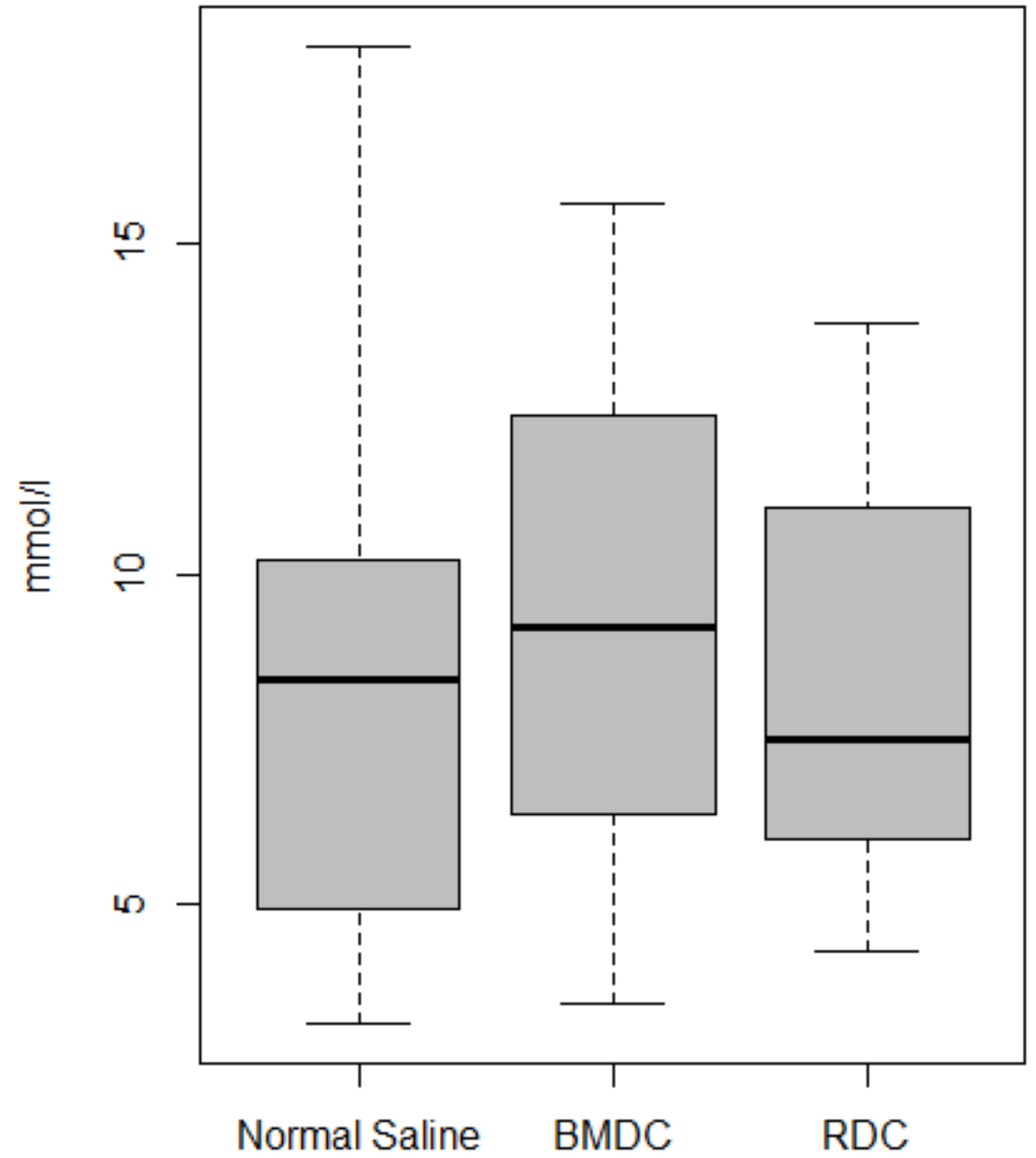


Figure 6

Relative expression of IGF-1
(% of control)

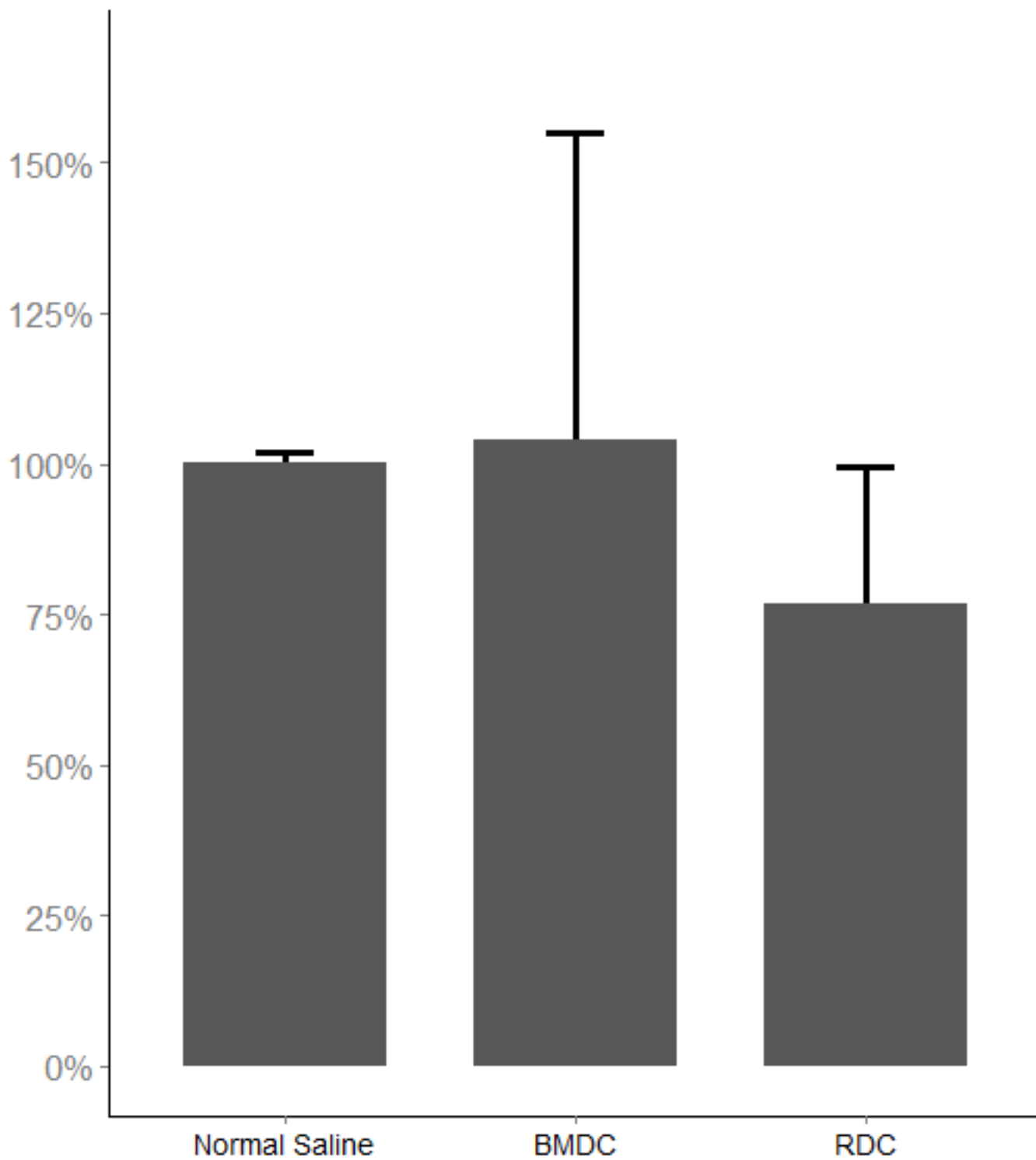
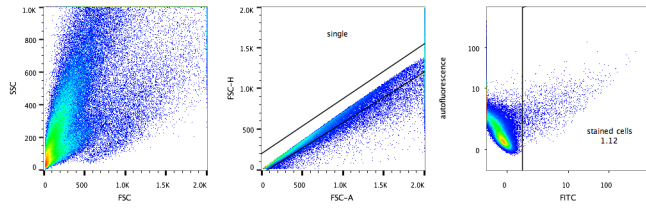


Figure 7



Figure