



HAL
open science

Strong contribution of diatom resting spores to deep-sea carbon transfer in naturally iron-fertilized waters downstream of South Georgia

M. Rembauville, C. Manno, G.A. Tarling, S. Blain, I. Salter

► **To cite this version:**

M. Rembauville, C. Manno, G.A. Tarling, S. Blain, I. Salter. Strong contribution of diatom resting spores to deep-sea carbon transfer in naturally iron-fertilized waters downstream of South Georgia. Deep Sea Research Part I: Oceanographic Research Papers, 2016, 115, pp.22-35. 10.1016/j.dsr.2016.05.002 . hal-01314534

HAL Id: hal-01314534

<https://hal.sorbonne-universite.fr/hal-01314534>

Submitted on 11 May 2016

HAL is a multi-disciplinary open access archive for the deposit and dissemination of scientific research documents, whether they are published or not. The documents may come from teaching and research institutions in France or abroad, or from public or private research centers.

L'archive ouverte pluridisciplinaire **HAL**, est destinée au dépôt et à la diffusion de documents scientifiques de niveau recherche, publiés ou non, émanant des établissements d'enseignement et de recherche français ou étrangers, des laboratoires publics ou privés.

Strong contribution of diatom resting spores to deep-sea carbon transfer in naturally iron-fertilized waters downstream of South Georgia

M. Rembauville¹, C. Manno², G.A. Tarling², S. Blain¹, and I. Salter^{1,3}

¹Sorbonne Universités, UPMC Univ Paris 06, CNRS, Laboratoire d'Océanographie Microbienne (LOMIC), Observatoire Océanologique, F-66650, Banyuls/mer, France

²British Antarctic Survey, Natural Environmental Research Council, High Cross, Madingley Road, Cambridge, CB3 0ET, UK

³Alfred-Wegener-Institute for Polar and Marine research, Bremerhaven, Germany

Corresponding author: Mathieu Rembauville (rembauville@obs-banyuls.fr)

Abstract

Biogeochemical and diatom export fluxes are presented from two bathypelagic sediment trap deployments in the Antarctic Zone of the Southern Ocean. One of the sediment traps was deployed in very productive, naturally iron-fertilized waters downstream of South Georgia (P3, 2000m) and compared to a deployment in moderately productive waters upstream of the island system (P2, 1500m). At both sites significant diatom export events occurred in spring (November) and contained mostly empty cells that were associated with low particulate organic carbon (POC) fluxes. A summer export pulse occurred one month later at P2 (end February/March) compared to P3 (end January). Diatom fluxes at P3 were one order of magnitude higher than at P2, a difference mainly attributed to the short and intense export of resting spores from *Chaetoceros Hyalochaete* and *Thalassiosira antarctica* species. Aside from these resting spores, diatom export assemblages at both sites were dominated by empty *Fragilariopsis kerguelensis* frustules. The fraction of diatoms exported as empty frustules was considerably lower at P3 (52%) than P2 (91%). This difference was related to the flux of intact diatom resting spores at P3 and may partially explain the lower Si:C export stoichiometry observed at P3 (1.1) compared to P2 (1.5). Through the enumeration of full diatom frustules and subsequent biomass calculations we estimate that diatom resting spores account for 42 % of annual POC flux in the productive waters downstream of South Georgia. At both sites the contribution of diatom vegetative stages to POC fluxes was considerably lower (<5 %). From these analyses we conclude that resting spore export contributes towards the slightly higher

bathypelagic (POC) flux at P3 ($40.6 \text{ mmol m}^{-2} \text{ y}^{-1}$) compared to P2 ($26.4 \text{ mmol m}^{-2} \text{ y}^{-1}$). We compared our sediment trap records with previously published diatom assemblage data from the mixed layer and surface sediments (3760 m) around South Georgia. The relative proportion of diatom resting spores within diatom assemblages increases as a function of depth and is explained by selective preservation of their robust frustules. Our study highlights the significance of diatom resting spore export as a carbon vector out of the mixed layer. Furthermore, the contribution of resting spores to POC flux in the bathypelagic ocean and sediments suggests they play a particularly important role in sequestering biologically fixed CO_2 over climatically relevant timescales.

Keywords

Carbon export; Southern Ocean; diatom resting spores; natural iron fertilization

1. Introduction

The Southern Ocean (SO) is generally considered as the largest high nutrient, low chlorophyll (HNLC) areas of the global ocean, where primary production is limited by iron availability (Martin, 1990; de Baar et al., 1990, 1995). Downstream of island plateaus, such as those at Kerguelen (Blain et al., 2001, 2007), Crozet (Pollard et al., 2009) and South Georgia (Whitehouse et al., 1996; Korb and Whitehouse, 2004), shelf sediments and glacial melt waters are a natural source of iron. These naturally-fertilized waters contrast strongly with surrounding HNLC conditions and display large scale phytoplankton blooms that can persist for several months (Westberry et al., 2013). In addition to the island mass effect (Blain et al., 2001), trace metal inputs into surface waters can sustain notable primary production (Moore and Abbott, 2000; Whitehouse et al., 2012) from upwelling associated with major fronts of the Antarctic Circumpolar Current (Loscher et al., 1997), atmospheric dust deposition (Meskhidze et al., 2007), sea ice melt (van der Merwe et al., 2011), glacial runoff (Hawkings et al., 2014; van der Merwe et al., 2015) and melting icebergs (Duprat et al., 2016). Primary production downstream of subantarctic island systems is typically dominated by diatoms (Smetacek et al., 2004; Quéguiner, 2013), a microphytoplankton group generally considered to promote carbon export out of the mixed layer directly by sinking (Smetacek, 1985; Boyd and Newton, 1995, 1999) or indirectly by sustaining faecal pellet-productive food webs (Smetacek et al., 2004; Manno et al., 2014).

Maiti et al. (2013) demonstrated an inverse relationship between primary production and export efficiency in the Southern Ocean, contrasting with the positive relationship between primary production and export prevailing in most of the global ocean (Laws et al., 2011). These so called high biomass, low export regimes (HBLE, Lam and Bishop, 2007; Lam et al., 2011) appear to be characterized by enhanced heterotrophic microbial activity (Obernosterer et al., 2008; Christaki et al., 2014) and intense reprocessing and fragmentation

of particulate matter by zooplankton. On the Kerguelen Plateau for example, net community production (NCP) was estimated to be $6.6 \text{ mol m}^{-2} \text{ yr}^{-1}$ (Jouandet et al., 2008), although only a small fraction of this NCP was exported out of the mixed layer (Rembauville et al., 2015b). Annual records of particulate organic carbon (POC) export fluxes derived from moored sediment traps have been published for productive, naturally-fertilized waters downstream of Crozet (Salter et al., 2012), Kerguelen (Rembauville et al., 2015a, 2015b) and South Georgia (Manno et al., 2015). Irrespective of depth (300-2000m), annual POC export from these island systems exhibits low variability and is typically $<100 \text{ mmol C m}^{-2} \text{ yr}^{-1}$. This finding contrasts with the high levels of productivity associated with these naturally fertilized systems. Identifying the dominant export vectors from such systems is therefore necessary to advance our understanding of the mechanistic relationships between production and export in the Southern Ocean.

A significant positive relationship between POC fluxes and *Eucampia antarctica* var. *antarctica* winter stages highlighted its important role as a carbon export vector from the Crozet bloom (Salter et al., 2012). Similarly, quantification of diatom and carbon fluxes from the Kerguelen bloom indicated that 60 % of annual carbon export was due to short term (<2 week) export events of *Chaetoceros*, *Hyalochaete* and *Thalassisoira antarctica* resting spores (Rembauville et al., 2015a). Moreover, Salter et al. (2012) and Rembauville et al. (2015a) observed that species-specific diatom ecology (spore formation, protection from grazing through the acquisition of a thick frustule) impacts not only the magnitude of carbon fluxes, but also the Si:C export stoichiometry over annual scales, corroborating previous suggestions (Smetacek, 1985; Smetacek et al., 2004; Salter et al., 2012; Assmy et al., 2013). Downstream of South Georgia, faecal pellets were reported to dominate (~60 %) the second POC export peak often observed in March-April (Manno et al., 2015). However, the contribution of diatoms to bathypelagic POC flux at South Georgia has yet to be addressed.

The waters downstream South Georgia exhibit a large and recurrent phytoplankton bloom (Ward et al., 2002; Borrione and Schlitzer, 2013) characterized by interannual variability in the seasonal pattern (unimodal versus bimodal chlorophyll *a* peaks, Park et al., 2010; Borrione and Schlitzer, 2013). The bloom is dominated by microplanktonic diatoms (Korb and Whitehouse, 2004) with a major contribution of *Fragilariospsis kerguelensis*, *Chaetoceros Hyalochaete*, *Pseudo-nitzschia* spp., *Eucampia antarctica* var. *antarctica* and *Corethron* (Korb et al., 2008, 2010). The productive waters downstream of South Georgia support a very large biomass of mesozooplankton (Ward et al., 2012), macrozooplankton (Atkinson et al., 2008, 2009), mesopelagic fish (Collins et al., 2012) and top predators (Boyd et al., 1994), with significant implications for the amount of POC export out of the mixed layer (Huntley et al., 1991). Upstream of South Georgia, the lack of iron limits phytoplankton growth and phytoplankton biomass is one order of magnitude lower than that is observed downstream of the island (Korb et al., 2008). Although the contribution of naked dinoflagellates to microplankton biomass is higher than in naturally-fertilized waters, the diatom species *Fragilariospsis kerguelensis*, *Pseudo-nitzschia* spp., small *Thalassionema nitzschioides* and *Chaetoceros Hyalochaete* species still dominate the microplankton assemblage (Korb et al., 2010). Korb et al. (2012) hypothesized that differences in diatom community structure upstream and downstream of South Georgia would impact the magnitude of POC export. However, these hypotheses have yet to be addressed by a detailed analysis of diatom export assemblages and elemental fluxes around South Georgia.

In the present study we report diatom and biogeochemical fluxes from two annual sediment trap deployments in varying productivity regimes upstream and downstream of South Georgia. The objectives are (i) to describe spatial and temporal patterns of diatom export assemblages, (ii) differentiate full and empty frustules to estimate the contribution of specific diatom groups to carbon fluxes and Si:C export stoichiometry and (iii) to compare

mixed layer, sediment trap and surface sediment data to describe changes in diatom assemblages as a function of depth.

2. Materials and methods

2.1. Trap deployments and chemical analyses

Bottom-tethered moorings were deployed at two sites (P2 and P3) for periods of approximately 12 months between January and November 2012. P2 was located upstream of South Georgia (55°11.99 S, 41°07.42 W), and P3 downstream (52°43.40 S, 40°08.83 W) (Fig. 1). Each sediment trap (McLane Parflux conical sediment traps, 0.5 m² surface collecting area, McLane Labs, Falmouth, MA, USA) was equipped with 12 sample cups and fitted with a plastic baffle mounted in the opening to prevent the entrance of large organisms. Prior to deployment, the sample cups were filled with a preservative seawater solution of NaCl-buffered HgCl₂. Traps were deployed at a depth of 1500 m (P2, water depth 3200 m) and 2000 m (P3, water depth 3800 m), and the sample carousel was programmed to rotate at intervals of 15 days in austral summer and 30 days in austral winter (Table 1). Sample cups for April, July, October (P2) and August (P3) were missing on recovery (unscrewed from the carousel). Prior to splitting, “swimmers” (i.e. zooplankton organisms that can enter the receiving cups while alive) were carefully removed: samples were first wet-sieved through a 1 mm nylon mesh and the remaining swimmers were hand-picked under a dissecting microscope. Large aggregates, fragments of moults and empty tests retained by the mesh were returned to the sample. Samples were split in replicate fractions using a McLane rotary sample splitter (McLane Labs, Falmouth, MA, USA). Replicate fractions were vacuum-filtered through preweighed and precalcinated (450 °C, 4 h) Whatman GF/F filters for POC analyses. Salt content was removed from the filters by a short distilled water rinse and they

were dried at 60 °C. For POC determination, filters were treated with 2N H₃PO₄ and 1N HCl to dissolve the carbonate fraction. POC was measured by combustion in an elemental analyser (CHN). For biogenic silica (BSi) analyses, replicate fractions were vacuum-filtered through 0.4 µm Nuclepore filters. Prior to BSi extraction, the material was pretreated with 10% H₂O₂ and 1N HCl to remove organic particle coatings (Mortlock and Froelich, 1989). BSi was determined by a time-series extraction experiment in a 0.5M NaOH solution at 85°C for 5 hr (DeMaster, 1981). An aliquot of each sample was taken for silicic acid analysis every hour and the BSi content was estimated from the intercept of the extraction time-series (DeMaster, 1981).

2.2. Remote sensing and derived oceanographic variables

Satellite-derived surface chlorophyll *a* concentration (MODIS Aqua, 4 km, 8-days composite, level 3 product) for the sediment trap deployment period was accessed at <http://oceancolor.gsfc.nasa.gov/cms/>. Altimetry-derived geostrophic velocities (AVISO MADT, 1/4 °, daily product) were extracted at <http://www.aviso.altimetry.fr/>. For sea surface temperature (SST) data, the NOAA 1/4 ° daily Optimum Interpolation Sea Surface Temperature (OISST) was accessed at <http://www.esrl.noaa.gov/psd/data/gridded/data.noaa.oisst.v2.html> (Reynolds et al., 2002). Time series of chlorophyll *a* concentration and SST were calculated by averaging the data in a 100 km radius centered on each sediment trap location. Averages of chlorophyll *a* concentration and geostrophic velocities were calculated for the sediment trap deployment period of January to December 2012 (Fig. 1).

2.3. Diatom enumeration, identification and biomass

Diatom enumeration and identification was performed using a biological counting technique that does not include any chemical treatment before counting (Salter et al., 2012) and thereby

allows the separate enumeration of full and empty cells (Rembauville et al., 2015a). A 1/8 aliquot of each sample was gently homogenized and 2 mL withdrawn and diluted in a final volume of 20 mL of artificial seawater (salinity = 34 PSU). A modified pipette tip with a large aperture was used to avoid breakage of larger species such as *Thalassiothrix antarctica*. The diluted sample was placed in a Sedgewick-Rafter counting chamber (Pyser-SGI S52, 1 mL volume). One quarter to one half of the chamber (depending on diatom abundance) was observed with an inverted microscope with phase contrast (Olympus IX70) at 400x magnification.

Diatoms were identified to the lowest possible taxonomic level following Hasle and Syvertsen (1997). The relatively low magnification imposed by the counting technique and presence of organic material occasionally obscuring the valve face limited species-level identification for some taxa. Consequently certain species were classified as follows: *Fragilariopsis separanda* and *Fragilariopsis rhombica* were grouped as *Fragilariopsis separanda/rhombica*; all the *Pseudo-nitzschia* species (mainly *Pseudo-nitzschia lineola* and *Pseudo-nitzschia heimii*) were grouped as *Pseudo-nitzschia* spp.; the genera *Haslea* and *Pleurosigma* were grouped as *Pleurosigma*; species of the genera *Banquisia* and *Manguinea* and *Membraneis challengerii* and *Membraneis imposter* were grouped as *Membraneis*. Unidentifiable centric species <20 µm and large centric species were denominated as Small centric (<20 µm) and Large centric (>20 µm), respectively. This arbitrary size classification was chosen to differentiate small centric species, typically attributable to the *Thalassiosira* genus, from genera such as *Azpeitia* and *Actinocyclus* comprising the large centric species. All of the whole, intact and recognizable frustules were counted (Supplementary Figure 1). For each sample, >300 cells were counted, except in sample cups #1, 2, 7 and 8 from the less productive site P2 where only ~100 cells were counted. Full and empty cells were enumerated separately (e. g. Assmy et al., 2013; Rembauville et al., 2015a). We considered cells as full

when plasts were clearly visible and intact (Supplementary Figure 1). The empty:full export ratio of a given species was defined as the ratio of empty cells to full cells following integration over the complete sediment trap record. Although broken frustules and debris were present (Supplementary Figure 1), they were not enumerated in the samples. We estimate that the relative abundance of broken frustules is <15%. Diatom export assemblages were compared between the two sites using Shannon's diversity index ($H' = \sum_{i=1}^n p_i \ln(p_i)$, where n is the total number of species and p_i the proportion of individuals of species i) and Pielou's evenness index ($J' = H'/H'_{max}$, where H'_{max} is the maximal possible value of H' , equal to $\ln(n)$). Both indexes were calculated on total (empty and full) cell numbers following integration over the complete sediment trap record.

Full diatom fluxes were converted to carbon fluxes using previously published species-specific biomass values for diatoms in the vicinity of the Kerguelen Plateau (Cornet-Barthaux et al., 2007) which were considered as a good analogue for South Georgia diatom populations. For species not listed in Cornet-Barthaux et al. (2007), 10 representative individuals of each species were measured and biovolume was calculated following Hillebrand et al. (1999). Carbon content was then calculated using the Menden-Deuer and Lessard (2000) equation for diatoms ($C = 0.288 \times V^{0.811}$). For *Chaetoceros Hyalochaete* resting spores (CRS) and *Thalassiosira antarctica* resting spores (TRS), 100 randomly selected individuals were measured. Biovolume was calculated and carbon content was estimated using the Kuwata et al., (1993) carbon:volume relationship for CRS and the Menden-Deuer and Lessard (2000) formulation for TRS. The mean carbon content (\pm standard deviation) was 240 ± 101 pgC cell⁻¹ and 1018 ± 460 pgC cell⁻¹ for CRS and TRS, respectively. The list of diatom species and the corresponding carbon content is reported in Table 3.

To describe the change in diatom assemblage with depth, we compared the annual sediment trap record from P3 with mixed layer diatom assemblage from multiple summer surveys (February 2002, 2003 and January 2005) at the P3 trap location (Korb et al., 2008) and surface sediment diatom assemblage from a core located very close to the trap ($42^{\circ}09.2'S$ – $41^{\circ}10.7'W$, 3760 m, Allen et al., 2005).

3. Results

3.1. Biogeochemical fluxes

At P2, highest surface chlorophyll *a* concentration ($1.5 \mu\text{g L}^{-1}$) was observed in February, associated with the highest SST in summer (3.5°C , Fig. 2a). Chlorophyll *a* concentration remained low in spring ($<1 \mu\text{g L}^{-1}$ from October to December) when SST increased from 0 to 2°C . At P3, SST followed the same seasonal signal but was 1°C warmer. Chlorophyll *a* concentration was close to P2 values in summer ($1.5 - 2 \mu\text{g L}^{-1}$) but was much higher in spring, reaching values $>6 \mu\text{g L}^{-1}$ in December.

POC fluxes at P2 were $<0.2 \text{ mmol m}^{-2} \text{ d}^{-1}$ throughout the year, with the highest value observed in May (Table 1, Fig. 2b). At P3, POC fluxes were highest at the beginning of the sediment trap record in January ($0.9 \text{ mmol m}^{-2} \text{ d}^{-1}$) and $<0.2 \text{ mmol m}^{-2} \text{ d}^{-1}$ for the remainder of the year. POC export integrated across the sediment trap deployment record was ~ 1.7 times greater at P3 compared to P2 (40.6 vs. 26.4 mmol m^{-2} , Table 2). At P2, the highest BSi flux of $0.6 \text{ mmol m}^{-2} \text{ d}^{-1}$ was observed in spring (November), and decreased in summer (February to March) to $0.3 \text{ mmol m}^{-2} \text{ d}^{-1}$ (Table 1, Fig. 2c). BSi fluxes were $<0.1 \text{ mmol m}^{-2} \text{ d}^{-1}$ the remaining of the year. At P3, the highest BSi flux of $0.8 \text{ mmol m}^{-2} \text{ d}^{-1}$ was concomitant with the highest POC flux at the end January. Winter values (April to September) were $<0.1 \text{ mmol m}^{-2} \text{ d}^{-1}$. Winter BSi:POC ratio was similar at P2 and P3 with low values <0.5 . The BSi:POC ratio in spring was also similar at the two sites with the highest values observed ($3.5 - 4$) in

October and November. The main difference between the two sites was in summer, when values of 1.5 – 3 were observed at P2 whereas the BSi:POC ratio remained ~1 at P3. The integrated BSi fluxes were lower at P2 than P3 (38.6 versus 45.5 mmol m⁻², Table 2) and the annual BSi:POC ratio was higher at P2 (1.5 versus 1.1).

3.2. Diatom fluxes and contribution to carbon fluxes

At P2, the total diatom flux showed two peaks: the first occurring in summer (3.5×10^6 cell m⁻² d⁻¹) and a second in the following spring (7×10^6 cell m⁻² d⁻¹, Fig. 3a). During winter total diatom fluxes were $<1 \times 10^6$ cell m⁻² d⁻¹. Diatom fluxes in spring (November) were characterized by *Fragilariopsis kerguelensis* (39 % of total cells), *Fragilariopsis separanda/rhombica* (50 %), *Thalassiosira lentiginosa* (12 %), *Pseudo-nitzschia* spp. (10 %) and *Dactyliosolen antarcticus* (2 %). Summer fluxes contained mainly *F. kerguelensis* (41 % of total cells), *Thalassionema nitzschioides* (16 %), and *Thalassiosira gracilis* (7 %, Fig. 3b-h). When integrated over the deployment period, empty diatoms constituted 91.1 % of the total diatom flux at P2 (Table 2). *F. kerguelensis* dominated (>40 %) the empty, full and total diatom export assemblage (Table 3). Almost all species were preferentially exported as empty cells (empty:full ratio >1) with the exception of *Eucampia antarctica* var. *antarctica* and *Navicula* sp. that exhibited empty:full ratios close to 1 (Table 3).

At P3, total diatom flux displayed highest values in spring (November) and summer (January). The highest flux of 6×10^7 cell m⁻² d⁻¹ observed at the end of January was one order of magnitude higher than the corresponding maxima at P2 (Fig. 4). In spring, the total cell flux of 8×10^6 cell m⁻² d⁻¹ was close to that observed at P2 during the same period. Diatom fluxes were dominated by full cells of CRS, mainly exported during one short event in mid January (3.8×10^7 cell m⁻² d⁻¹, Fig. 4b). CRS accounted for 42.7 % of the total diatom export integrated over the complete record at P3 (Table 3). Concomitant to the significant flux

of CRS in January (63 % of total cells in this sample), a noticeable export peak of *Eucampia antarctica* (3 %), *Navicula* sp. (3%) and TRS (1 %) was also observed (Fig. 4b, 4f, 4g, and 4l). However, their relative contribution to annual diatom export was much lower (<3%). Some species were observed in both spring and summer such as *F. kerguelensis*, *T. nitzschioides*, *F. separanda/rhombica*, *Pseudo-nitzschia* spp., *T. gracilis*, and *T. lentiginosa* (Fig. 4c, d, e, i, j and k). Conversely, other species were observed primarily in summer such as CRS, *E. antarctica* var. *antarctica*, *Navicula* sp. and TRS (Fig. 4b, 4f, 4g, and 4l).

At P3 approximately half (51.5 %) of the diatoms were exported as empty cells when integrated over the deployment period, lower than the corresponding value at P2 (91%). The diatom assemblage of full cells at P3 was dominated by CRS (87.9 %, Table 3). Empty cells were mostly represented by *F. kerguelensis* (55.6 %), followed by *T. nitzschioides* (15.9 %) and *F. separanda/rhombica* (5 %) (Table 3). Only CRS were exported with an empty:full ratio <1, although *E. antarctica* var. *antarctica* also showed a comparatively low empty:full ratios (1.8). *F. kerguelensis* was exported with an empty:full ratio of 10.6, a value similar to the one observed at P2 (Table 3).

At P2, diatoms comprised a minor contribution to measured POC fluxes (1.9 %, Table 2). Conversely, diatoms represented 41.7 % of measured POC fluxes at P3 with CRS alone accounting for 38.6% of POC flux integrated over the deployment period. At both sites diatom vegetative stages accounted for a low proportion of POC flux, amounting to 3.9% at P3 and 1.9% at P2 (Table 2).

3.3. Change in diatom assemblages through the water column

At P3, the mean summer mixed layer diatom assemblages (Korb et al., 2008) are dominated by *F. kerguelensis* (30 %), followed by *Pseudo-nitzschia* (20 %) and *C. Hyalochaete* vegetative stage (10 %, Fig. 5). Between the mixed layer and the sediment trap depth (2000

m) there are notable decreases in the contribution of *Pseudo-nitzschia* (20 % to 2 %), *Thalassiothrix antarctica* (10 % to 1 %) and *E. antarctica* (8 % to 2.5 %). Conversely, *F. kerguelensis* relative abundance is similar between the mixed layer and the sediment trap depth (30 %), while the contribution of *C. Hyalochaete* increases (11 % to 42 %) and is present as resting spores in the trap samples. In surface sediments (Allen et al., 2005), CRS represents 80 % of the diatom assemblage, followed by *F. kerguelensis* (10 %) and TRS (3 %).

4. Discussion

4.1. Magnitude of particle fluxes

POC export at station P3 is higher than that observed at station P2 ($40.6 \text{ mmol m}^{-2} \text{ yr}^{-1}$ vs. $26.4 \text{ mmol m}^{-2} \text{ yr}^{-1}$). The omission of flux data from sample cups lost during recovery introduces some uncertainty in equating the integrated POC fluxes to annual values. If the missing values are estimated by linear interpolation (affecting the mean value of two windowing samples to the missing sample) resulting POC export is still higher at P3 and the annual BSi:POC ratio remains similar (Table 2). The missing samples are from a period of low background flux with no notable surface chlorophyll features (Fig. 2). Consequently we decided not to include the linear interpolation of missing samples and present integrated fluxes of chemical and biological constituents as a conservative approximation of annual flux.

At P3, the sediment trap deployment location is positioned in the center of a cyclonic circulation feature originating from the northern South Georgia shelf (Meredith et al., 2003). The area downstream of South Georgia is fertilized by continuous benthic iron supply from the South Georgia shelf system, resulting in higher dissolved iron concentration when compared to the waters upstream of the island (0.3 nM versus $<0.05 \text{ nM}$ in spring, Nielsdóttir et al., 2012). This natural iron fertilization mechanism has been suggested to support the large

and recurrent phytoplankton blooms observed downstream of South Georgia (Fig. 1, Ward et al., 2002; Borrione and Schlitzer, 2013). The regional differences we report in deep-ocean POC fluxes at P2 and P3 are therefore consistent with the varying levels of chlorophyll *a* biomass observed around South Georgia resulting from differences in iron supply.

Deep-ocean POC fluxes at the productive P3 site lag the strong surface chlorophyll *a* peak ($6 \mu\text{g L}^{-1}$) by one month and exhibit no notable peaks in the time preceding surface biomass maxima. Time lags of 1-2 month between production and export have been observed previously in the Southern Ocean (Honjo et al., 2000; Buesseler et al., 2001; Rigual-Hernández et al., 2015). During a shallow sediment trap deployment (289 m) over the central Kerguelen Plateau (Rembauville et al., 2015b), CRS also dominated carbon export and was exported one month after the surface chlorophyll *a* peak, a pattern very similar to what we observe at P3 despite a much deeper sediment trap depth (2000 m). Highest BSi:POC ratio was observed in spring (September/October) at both sites. Very similar patterns in export stoichiometry have been observed in other naturally fertilized area of the Southern Ocean and were attributed to changes in the diatom community structure across the season (Rembauville et al., 2015a; Salter et al., 2012).

There are no comparable peaks in either surface biomass ($<2 \mu\text{g L}^{-1}$ throughout the year) or deep ocean POC flux at station P2 upstream of South Georgia. Despite strong differences in surface phytoplankton biomass, primarily mediated by iron supply (Nielsdóttir et al., 2012; Borrione and Schlitzer, 2013), the amount of POC reaching the deep-ocean differs by a factor of <2 between the two sites. This is consistent with a scenario of enhanced carbon remineralization downstream of South Georgia (Cavan et al., 2015; Le Moigne et al., 2016). The annual POC fluxes observed at South Georgia are remarkably similar ($<100 \text{ mmol m}^{-2} \text{ yr}^{-1}$) to those measured at other naturally iron-fertilized sites in the Southern Ocean (Salter et al., 2012; Rembauville et al., 2015b). These fluxes are also comparable to the ones recorded

during annual deployments of deep sediment traps in other non-fertilized areas of the Permanently Open Ocean Zone (POOZ, 33 mmol m⁻² y⁻¹ at 2200 m, Fischer et al., 2002; 35 mmol m⁻² y⁻¹ at 1300 m, Tesi et al., 2012; 102 mmol m⁻² y⁻¹ at 2000 m, Rigual-Hernández et al., 2015 ; 180 mmol m⁻² y⁻¹ at 1031 m, Honjo et al., 2000). The homogeneity of the deep ocean POC fluxes, despite contrasted surface primary production, highlights the inverse relationship between primary production and export efficiency in the Southern Ocean (Maiti et al., 2013).

4.2. Seasonality of diatom fluxes

The majority of studies examining diatom export fluxes in the Southern Ocean have used a micropaleontological technique, originally developed for sediment samples (Funkhouser and Evitt, 1959). To remove organic and detrital material the micropaleontological technique includes a chemical oxidation step to “clean” and isolate the diatom frustules. This treatment separates all frustules into single valves and may selectively damage and dissolve the frustules of certain species. Furthermore, the micropaleontological technique generally considers broken frustules (Schrader and Gersonde, 1978). In the present study a direct observation of samples was favoured to meet the objective of distinguishing full and empty frustules (e.g. Armand et al., 2008; Assmy et al., 2013; Rembauville et al., 2015a) in order to calculate the relative contribution of different diatom species to total POC flux. The two techniques are likely to give slightly different results (Abrantes et al., 2005; Rembauville et al., 2015a) and therefore the comparison of diatom flux data between studies must take into account these different analytical approaches.

Despite the methodological considerations described above, a comparison of diatom export fluxes from different oceanographic zones reveals quite consistent patterns. The highest total diatom flux at P2 equals 1.4×10^7 valves m⁻² d⁻¹ (frustules converted to valves with a factor 2), similar to previous findings in low productivity waters of the POOZ ($\sim 10^7$

valves $\text{m}^{-2} \text{d}^{-1}$, Abelman and Gersonde, 1991; Grigorov et al., 2014). At P3, highest total diatom flux is one order of magnitude higher with 1.2×10^8 valves $\text{m}^{-2} \text{d}^{-1}$. This flux is comparable to the 2.4×10^8 valves $\text{m}^{-2} \text{d}^{-1}$ found in a shallower (289 m) sediment trap at the central Kerguelen Plateau (station A3, Rembauville et al., 2015a), and a deep sediment trap (2000 m) also located in the POOZ (4×10^8 valves $\text{m}^{-2} \text{d}^{-1}$ Rigual-Hernández et al., 2015). Despite the high primary production levels at these naturally-fertilized sites (P3 and A3), diatom valve fluxes remain lower than those reported in the Seasonal Ice Zone (SIZ) with fluxes of $\sim 10^9$ valves $\text{m}^{-2} \text{d}^{-1}$ (Suzuki et al., 2001; Pilskaln et al., 2004). These massive diatom export fluxes in the SIZ are attributed to changes in light availability and melt waters input during sea ice retreat that favors production and export of POC by diatoms (Smith and Nelson, 1986; Annett et al., 2009; Romero and Armand, 2010). In addition to iron supply, silicic acid availability also plays an important role in diatom productivity (Mengelt et al., 2001; Poulton et al., 2007). Lower diatom fluxes of 2.5×10^7 valves $\text{m}^{-2} \text{d}^{-1}$ were observed (Salter et al., 2012) in the iron-fertilized productive waters downstream of Crozet (Polar Frontal Zone, PFZ) and may be explained by the lower silicic acid concentration and higher temperature north of the Polar Front (Pondaven et al., 2000; Whitehouse et al., 2012).

The similarity of diatom export assemblages observed in sediment traps is in stark contrast with the observed differences in surface waters assemblages. In the surface lightly silicified species (e.g. *Chaetoceros Hyalochaete*, *Pseudo-nitzschia* spp.) are dominant upstream of South Georgia, compared to more robust and highly silicified species (*Corethron pennatum*, *Thalassiothrix antarctica*, *Eucampia antarctica* var. *antarctica*) downstream (Korb et al., 2010, 2012). In the sediment traps, with the notable exception of resting spores and neritic species (*Chaetoceros Hyalochaete*, *E. antarctica* var. *antarctica* and *Navicula* sp.), the diatom species export assemblage is comparable at both sites. The slightly lower evenness at P3 (Table 2) reflects the dominant contribution of CRS to the total diatom flux. *Fragilariopsis*

kerguelensis, *Pseudo-nitzschia* spp., *Thalassiosira gracilis*, *Thalassiosira lentiginosa* and *Thalassionema nitzschioides* are abundant at both sites (Table 3). All of these species (with the exception of *Pseudo-nitzschia* spp.) are considered to have robust and highly silicified frustules. Preferential grazing pressure on lightly-silicified species in the upper ocean (e. g. Smetacek et al., 2004; Assmy et al., 2013) and mesopelagic BSi dissolution (Nelson et al., 1995; Ragueneau et al., 2000, 2006) may explain the dominance of highly-silicified species to bathypelagic diatom flux assemblages. Additionally, horizontal advection could homogenize variability in the surface signal (Siegel and Deuser, 1997; van Sebille et al., 2015). The absence of *Chaetoceros Hyalochaete* vegetative stages from the sediment trap record at both sites despite its presence in the mixed layer in summer (Korb et al., 2010, 2008) could be explained by the preferential dissolution of the weakly silicified vegetative frustules and/or conversion into resting spore below the mixed layer at P3 (Rynearson et al., 2013).

4.3 Si:C export stoichiometry

It has been suggested previously that diatom species-specific sensitivity to grazing pressure and the presence of certain life cycle stages can impact the Si:C export stoichiometry through the differential export of full or empty cells (Smetacek et al., 2004; Salter et al., 2012; Assmy et al., 2013). In the South Georgia trap samples resting spores were almost exclusively exported as full cells. Culture experiments suggest CRS are poorly grazed by copepods, and may even lower the grazing rate (Kuwata and Tsuda, 2005), potentially contributing to their export from the mixed layer as full cells. *Navicula* sp., *E. antarctica* var. *antarctica* and *Pseudo-nitzschia* spp. were exported with relatively low empty:full of <5, in good agreement with previous findings from the Kerguelen Plateau (Rembauville et al., 2015a). These species were also associated with highest POC fluxes in the PFZ in the Australian sector of the Southern Ocean (Rigual-Hernández et al., 2015), highlighting their potential role in carbon export.

With the exception of the resting spore export event at the end of summer, the dominance of empty *F. kerguelensis* in spring, autumn and winter at South Georgia and Kerguelen confirms its key role in the silicon pump (Smetacek et al., 2004; Salter et al., 2012; Assmy et al., 2013). The seasonal evolution of the BSi:POC ratio is similar at P2 and P3 (except in summer) and reflects comparable diatom community composition. However, the lower BSi:POC ratio in summer at P3 can be attributed to the sinking of carbon-rich diatom resting spores containing neutral lipids (Doucette and Fryxell, 1983; Kuwata et al., 1993). These findings support an emerging view (Salter et al., 2012; Rembauville et al. 2015a) that the flux of carbon rich resting spores/stages are of particular importance in setting the Si:C export stoichiometry characterizing naturally-fertilized island systems in the Southern Ocean.

Certain species that were preferentially exported as full cells at 289 m at Kerguelen were only found as empty cells at both P2 and P3 sites (*Thalassiothrix antarctica*, *Chaetoceros dichchaeta* and *Proboscia inermis*). These species are either very large (*T. antarctica*, *P. inermis*), or exhibit spiny setae (*C. dichchaeta*), which are thought to confer some protection from grazing (Smetacek et al., 2004). Other processes such as microbial degradation of the cellular content during sinking (Grossart and Ploug, 2001; Twining et al., 2014) might contribute to the high empty:full ratio observed for these species in deeper samples. Alternatively, the more abundant krill population at South Georgia (Atkinson et al., 2008), which is able to feed on larger phytoplankton species (Granlí et al., 1993), might explain the higher empty:full ratio observed for these species when compared to Kerguelen. These findings suggest that differences in upper trophic level ecosystem structure modulate the role a particular diatom species plays in carbon and BSi flux, limiting species-level generalizations between regions.

4.4. Resting spore formation and carbon transfer to the seafloor

Resting spores comprising bathypelagic (>1500 m) flux around South Georgia were present almost entirely as full cells and accounted for 41.7% of the annual POC flux. Similar observations were made at 289 m over the Kerguelen Plateau (Rembauville et al. 2015a). These findings suggest that their importance as a POC vector persists throughout the water column. To examine changes in the occurrence of CRS as a function of depth upstream of South Georgia we combined our sediment trap dataset with mixed layer (Korb et al., 2008) and sediment (Allen et al., 2005) assemblage data (Figure 5). We make these comparisons cautiously for several reasons: (i) mixed layer data are from January and February, averaged over three years (Korb et al., 2008), and are unlikely to represent seasonal integrals of diatom communities, (ii) surface sediments integrate over several years, averaging any inter-annual variability, and (iii) different diatom counting techniques were used. Given the considerations described above these data comparisons should be considered only as a semi-quantitative analysis of the relative importance of CRS at different depth horizons. There is a significant increase in the proportion of *Chaetoceros Hyalochaete* from the mixed layer to sediment (10 to 80%). *Chaetoceros Hyalochaete* species were only observed as vegetative stages in the mixed layer and resting spores below 1500 m. This could be due to either (i) resting spore formation had not occurred at the time of the sampling in the Korb et al. (2008, 2010) studies or (ii) resting spore formation occurs below the mixed layer (e.g. Rynearson et al., 2013). The increase in CRS through the mesopelagic and into the sediments supports a scenario whereby they become increasingly important vectors of carbon through selective preservation of their robust frustules.

Considering the significance of resting spores as a deep-ocean carbon vector upstream of South Georgia, it is of interest to assess the factors triggering spore formation. Numerous experimental studies have demonstrated the role of macronutrient and trace metal limitation for resting spore formation in diatoms in laboratory experiments (Garrison, 1981; Sanders and

Cibik, 1985; Kuwata et al., 1993; Oku and Kamatani, 1997, Sugie et al. 2010). *Chaetoceros* *Hyalochaete* vegetative stages were observed in the summer upstream and downstream of South Georgia (Korb et al., 2010, 2008), although only present in export assemblages downstream. A difference in nutrient utilization at the two sites could explain the difference level of resting spore formation. It is generally reported that nitrogen limitation is the most important factor driving resting spore formation (McQuoid and Hobson, 1996, sugie et al 2008), although these observations were only made for low latitude diatom populations where nitrate is seasonally depleted. In the Southern Ocean, and more specifically south of the Polar Front, nitrate concentration is always $>20 \mu\text{mol L}^{-1}$ in summer, even in very productive areas (Nielsdóttir et al., 2012; Whitehouse et al., 2012; Blain et al., 2015). It therefore seems unlikely that nitrate limitation can explain the regional differences in resting spore formation

Downstream of South Georgia, silicic acid drawdown over the summer ranges between $20\text{-}35 \mu\text{mol L}^{-1}$ and summer mixed layer values are $<5 \mu\text{mol L}^{-1}$ (Whitehouse et al., 2000; Nielsdóttir et al., 2012; Whitehouse et al., 2012; Borriane and Schlitzer, 2013). In contrast, upstream of South Georgia mixed layer concentrations remain at $\sim 20 \mu\text{mol L}^{-1}$ upstream (Korb et al., 2008; Nielsdóttir et al., 2012) despite substantial silicic acid utilization. The P3 site is also characterized by low dissolved iron concentration in the mixed layer in spring ($0.06 - 0.07 \text{ nmol L}^{-1}$) compared to waters below the thermocline ($0.25 - 0.43 \text{ nmol L}^{-1}$ at 1000 m) (Nielsdóttir et al., 2012) suggesting a scenario whereby a formerly iron-replete community moves into limitation. The limitation by silicic acid and iron in summer has already been observed in two other naturally-fertilized systems of the Southern Ocean where resting spore formation is an important process for the export of carbon out of the mixed layer: the Crozet Plateau (Salter et al., 2012) and the Kerguelen Plateau (Re mbauville et al., 2015a). These data suggest that iron and/or silicic acid limitation in summer might trigger

resting spore formation in high latitude diatoms species, although this hypothesis requires further investigations.

4.5 Possible limitations of the present dataset

Partitioning carbon export across diatom species vectors is dependent on carbon:volume relationships (e. g. Rynearson et al., 2013), which can exhibit variability among species (Menden-Deuer and Lessard, 2000) and life cycle stages (Kuwata et al., 1993). In the present study we tried to minimize this artifact by using species-specific relationships and where necessary distinct values for vegetative and resting stages (for *Chaetoceros Hyalochaete* and *Thalassiosira antarctica*). The variability of the biovolume among individuals of a given species and the uncertainty on the carbon:volume relationship result in a coefficient of variation for resting spore carbon content of 40 %. This certainly affects the precision of our estimates. However, it is unlikely to alter our main conclusion that *Chaetoceros Hyalochaete* resting spores contribute to a significant fraction of bathypelagic carbon fluxes downstream of South Georgia.

The calculated diatom contribution to carbon export accounts for <50 % of the measured carbon flux at P3 and only 2 % at P2. This indicates that flux vectors not quantified here contribute significantly to carbon export at both sites. Faecal pellets (Manno et al., 2015) and/or other plankton groups (e.g. radiolarians Lampitt et al., 2009) are likely to be important components of carbon flux budgets. Nevertheless, we outline that the export of diatom spores makes a significant contribution to POC export at P3. At this same site, annual POC export in 2010 was $\sim 100 \text{ mmol m}^{-2} \text{ y}^{-1}$ (Manno et al., 2015), approximately two times higher than what we report for the 2012. This highlight the need to address inter annual variability of deep ocean POC fluxes (e. g. Salter et al., 2010; Nodder et al., 2016) before robust conclusions can be drawn about a particular system.

We associate the BSi:POC ratio with diatom community composition and empty:full cell ratio based on co-occurrence patterns. An accurate partitioning of biogenic silica fluxes amongst diatom species would require knowledge of the BSi content per frustule for different species and these data are currently unavailable (Jungandreas et al., 2012). Additionally, broken frustules and debris, as well as other siliceous plankton (radiolarian, silicoflagellates) were not quantified here and certainly contribute to BSi fluxes. However, despite the technical difficulties, partitioning elemental fluxes across species vectors (e.g. Salter et al., 2014, Rembauville et al 2016) is an important endeavor for establishing the links between biological diversity and biogeochemical fluxes. However, despite the technical difficulties, partitioning elemental fluxes across species vectors (e.g. Salter et al., 2014; Rembauville et al., 2016) is an important endeavor for establishing the links between biological diversity and biogeochemical fluxes.

5. Conclusion

Diatom export fluxes over a complete seasonal cycle are now available from the three major naturally iron-fertilized Southern Ocean island systems: South Georgia (this study), Crozet (Salter et al., 2012) and Kerguelen (Rembauville et al., 2015a). Despite strong regional differences in bloom dynamics and sediment trap deployment depths (289-3160m) annual POC export is of the same order of magnitude at each site ($40\text{-}100\text{ mmol m}^{-2}\text{ d}^{-1}$). A similar mechanism of diatom resting spore formation and subsequent export to depth is observed at all three sites. In the naturally fertilized sites of South Georgia and Kerguelen, partitioning carbon fluxes across diatom species indicates that 40-60% of annual POC export beneath the mixed layer can be attributed to resting spore-driven export. Furthermore, consistent seasonal patterns of diatom export assemblages emerge from the comparison of these systems that

appear to exert significant control on Si:C export stoichiometry. Silicon-rich fluxes consisting of empty *Fragilariopsis* species (“silica sinkers”) are observed throughout the year with highest relative abundance in winter and spring. Conversely, carbon-rich fluxes are observed in summer and contain resting spores and other species exported with a high proportion of full cells such as *Eucampia antarctica* var. *antarctica*, and *Navicula* sp. (“carbon sinkers”). The selective preservation of the robust resting spore frustules as a function of depth highlights the increasing importance of resting spores as carbon vector into the bathypelagic ocean and ultimately the sediments. They may thus play a critical role in sequestering atmospheric CO₂ from these naturally iron fertilized systems over climatically relevant timescales. The exact environmental triggers for resting spore formation, and their subsequent export to depth, requires further investigation.

Acknowledgements.

We are grateful to the officers and crew of the RRS James Clark Ross for their assistance in carrying out marine operations in the Southern Ocean. We thank Sophie Fielding, Peter Enderlain and Gabriele Stowasser for helping with deployment and recovering of sediment traps. This work was supported by the Ecosystems programme at the British Antarctic Survey (Natural Environment Research Council) and the French research programme of INSU-CNRS LEFE-CYBER.

References.

- Abelmann, A., Gersonde, R., 1991. Biosiliceous particle flux in the Southern Ocean. *Mar. Chem.* 35, 503–536. doi:10.1016/S0304-4203(09)90040-8
- Abrantes, F., Gil, I., Lopes, C., Castro, M., 2005. Quantitative diatom analyses—a faster cleaning procedure. *Deep Sea Res. Part I Oceanogr. Res. Pap.* 52, 189–198. doi:10.1016/j.dsr.2004.05.012
- Allen, C.S., Pike, J., Pudsey, C.J., Leventer, A., 2005. Submillennial variations in ocean conditions during deglaciation based on diatom assemblages from the southwest Atlantic. *Paleoceanography* 20, PA2012. doi:10.1029/2004PA001055
- Annett, A.L., Carson, D.S., Crosta, X., Clarke, A., Ganeshram, R.S., 2009. Seasonal progression of diatom assemblages in surface waters of Ryder Bay, Antarctica. *Polar Biol.* 33, 13–29. doi:10.1007/s00300-009-0681-7
- Armand, L.K., Cornet-Barthaux, V., Mosseri, J., Quéguiner, B., 2008. Late summer diatom biomass and community structure on and around the naturally iron-fertilised Kerguelen Plateau in the Southern Ocean. *Deep Sea Res. Part II Top. Stud. Oceanogr.* 55, 653–676. doi:10.1016/j.dsr2.2007.12.031
- Assmy, P., Smetacek, V., Montresor, M., Klaas, C., Henjes, J., Strass, V.H., Arrieta, J.M., Bathmann, U., Berg, G.M., Breitbarth, E., Cisewski, B., Friedrichs, L., Fuchs, N., Herndl, G.J., Jansen, S., Krägfesky, S., Latasa, M., Peeken, I., Röttgers, R., Scharek, R., Schüller, S.E., Steigenberger, S., Webb, A., Wolf-Gladrow, D., 2013. Thick-shelled, grazer-protected diatoms decouple ocean carbon and silicon cycles in the iron-limited Antarctic Circumpolar Current. *Proc. Natl. Acad. Sci.* 110, 20633–20638. doi:10.1073/pnas.1309345110
- Atkinson, A., Siegel, V., Pakhomov, E.A., Jessopp, M.J., Loeb, V., 2009. A re-appraisal of the total biomass and annual production of Antarctic krill. *Deep Sea Res. Part I Oceanogr. Res. Pap.* 56, 727–740. doi:10.1016/j.dsr.2008.12.007
- Atkinson, A., Siegel, V., Pakhomov, E.A., Rothery, P., Loeb, V., Ross, R.M., Quetin, L.B., Schmidt, K., Fretwell, P., Murphy, E.J., Tarling, G.A., Fleming, A.H., 2008. Oceanic circumpolar habitats of Antarctic krill. *Mar. Ecol. Prog. Ser.* 362, 1–23. doi:10.3354/meps07498
- Blain, S., Capparos, J., Guéneuguès, A., Obernosterer, I., Oriol, L., 2015. Distributions and stoichiometry of dissolved nitrogen and phosphorus in the iron-fertilized region near Kerguelen (Southern Ocean). *Biogeosciences* 12, 623–635. doi:10.5194/bg-12-623-2015
- Blain, S., Quéguiner, B., Armand, L., Belviso, S., Bombled, B., Bopp, L., Bowie, A., Brunet, C., Brussaard, C., Carlotti, F., Christaki, U., Corbière, A., Durand, I., Ebersbach, F., Fuda, J.-L., Garcia, N., Gerringa, L., Griffiths, B., Guigue, C., Guillerm, C., Jacquet, S., Jeandel, C., Laan, P., Lefèvre, D., Lo Monaco, C., Malits, A., Mosseri, J., Obernosterer, I., Park, Y.-H., Picheral, M., Pondaven, P., Remenyi, T., Sandroni, V., Sarthou, G., Savoye, N., Scouarnec, L., Souhaut, M., Thuiller, D., Timmermans, K., Trull, T., Uitz, J., van Beek, P., Veldhuis, M., Vincent, D., Viollier, E., Vong, L., Wagener, T., 2007. Effect of natural iron fertilization on carbon sequestration in the Southern Ocean. *Nature* 446, 1070–1074. doi:10.1038/nature05700
- Blain, S., Tréguer, P., Belviso, S., Bucciarelli, E., Denis, M., Desabre, S., Fiala, M., Martin Jézéquel, V., Le Fèvre, J., Mayzaud, P., Marty, J.-C., Razouls, S., 2001. A biogeochemical study of the island mass effect in the context of the iron hypothesis: Kerguelen Islands, Southern Ocean. *Deep Sea Res. Part I Oceanogr. Res. Pap.* 48, 163–187. doi:10.1016/S0967-0637(00)00047-9
- Borrione, I., Schlitzer, R., 2013. Distribution and recurrence of phytoplankton blooms around South Georgia, Southern Ocean. *Biogeosciences* 10, 217–231. doi:10.5194/bg-10-217-2013
- Boyd, I.L., Arnborn, T.A., Fedak, M.A., 1994. Biomass and Energy Consumption of the South Georgia Population of Southern Elephant Seals, in: *Elephant Seals: Population Ecology, Behavior, and Physiology*. pp. 98–117.
- Boyd, P., Newton, P., 1995. Evidence of the potential influence of planktonic community structure on the interannual variability of particulate organic carbon flux. *Deep Sea Res. Part I Oceanogr. Res. Pap.* 42, 619–639. doi:10.1016/0967-0637(95)00017-Z

- Boyd, P.W., Newton, P.P., 1999. Does planktonic community structure determine downward particulate organic carbon flux in different oceanic provinces? *Deep Sea Res. Part I Oceanogr. Res. Pap.* 46, 63–91. doi:10.1016/S0967-0637(98)00066-1
- Buesseler, K.O., Ball, L., Andrews, J., Cochran, J.K., Hirschberg, D.J., Bacon, M.P., Flerer, A., Brzezinski, M., 2001. Upper ocean export of particulate organic carbon and biogenic silica in the Southern Ocean along 170°W. *Deep Sea Res. Part II Top. Stud. Oceanogr.* 48, 4275–4297. doi:10.1016/S0967-0645(01)00089-3
- Cavan, E.L., Le Moigne, F. a. c., Poulton, A.J., Tarling, G.A., Ward, P., Daniels, C.J., Fragoso, G., Sanders, R.J., 2015. Zooplankton fecal pellets control the attenuation of particulate organic carbon flux in the Scotia Sea, Southern Ocean. *Geophys. Res. Lett.* 2014GL062744. doi:10.1002/2014GL062744
- Christaki, U., Lefèvre, D., Georges, C., Colombet, J., Catala, P., Courties, C., Sime-Ngando, T., Blain, S., Obernosterer, I., 2014. Microbial food web dynamics during spring phytoplankton blooms in the naturally iron-fertilized Kerguelen area (Southern Ocean). *Biogeosciences* 11, 6739–6753. doi:10.5194/bg-11-6739-2014
- Collins, M.A., Stowasser, G., Fielding, S., Shreeve, R., Xavier, J.C., Venables, H.J., Enderlein, P., Cherel, Y., Van de Putte, A., 2012. Latitudinal and bathymetric patterns in the distribution and abundance of mesopelagic fish in the Scotia Sea. *Deep Sea Res. Part II Top. Stud. Oceanogr., DISCOVERY 2010: Spatial and Temporal Variability in a Dynamic Polar Ecosystem* 59–60, 189–198. doi:10.1016/j.dsr2.2011.07.003
- Cornet-Barthaux, V., Armand, L., Quéguiner, B., 2007. Biovolume and biomass estimates of key diatoms in the Southern Ocean. *Aquat. Microb. Ecol.* 48, 295–308. doi:10.3354/ame048295
- de Baar, H.J.W., Buma, A.G.J., Nolting, R.F., Cadée, G.C., Jacques, G., Tréguer, P., 1990. On iron limitation of the Southern Ocean: experimental observations in the Weddell and Scotia Seas. *Mar. Ecol. Prog. Ser.* 65, 105–122. doi:10.3354/meps065105
- de Baar, H.J.W., de Jong, J.T.M., Bakker, D.C.E., Löscher, B.M., Veth, C., Bathmann, U., Smetacek, V., 1995. Importance of iron for plankton blooms and carbon dioxide drawdown in the Southern Ocean. *Nature* 373, 412–415. doi:10.1038/373412a0
- DeMaster, D.J., 1981. The supply and accumulation of silica in the marine environment. *Geochim. Cosmochim. Acta* 45, 1715–1732. doi:10.1016/0016-7037(81)90006-5
- Doucette, G.J., Fryxell, G.A., 1983. *Thalassiosira antarctica*: vegetative and resting stage chemical composition of an ice-related marine diatom. *Mar. Biol.* 78, 1–6. doi:10.1007/BF00392964
- Duprat, L.P.A.M., Bigg, G.R., Wilton, D.J., 2016. Enhanced Southern Ocean marine productivity due to fertilization by giant icebergs. *Nat. Geosci.* 9, 219–221. doi:10.1038/ngeo2633
- Fischer, G., Gersonde, R., Wefer, G., 2002. Organic carbon, biogenic silica and diatom fluxes in the marginal winter sea-ice zone and in the Polar Front Region: interannual variations and differences in composition. *Deep Sea Res. Part II Top. Stud. Oceanogr.* 49, 1721–1745. doi:10.1016/S0967-0645(02)00009-7
- Funkhouser, J.W., Evitt, W.R., 1959. Preparation Techniques for Acid-Insoluble Microfossils. *Micropaleontology* 5, 369–375. doi:10.2307/1484431
- Garrison, D.L., 1981. Monterey Bay Phytoplankton. II. Resting Spore Cycles in Coastal Diatom Populations. *J. Plankton Res.* 3, 137–156. doi:10.1093/plankt/3.1.137
- Granlí, E., Granéli, W., Rabbani, M.M., Daugbjerg, N., Fransz, G., Roudy, J.C., Alder, V.A., 1993. The influence of copepod and krill grazing on the species composition of phytoplankton communities from the Scotia Weddell sea. *Polar Biol.* 13, 201–213. doi:10.1007/BF00238930
- Grigorov, I., Rigual-Hernandez, A.S., Honjo, S., Kemp, A.E.S., Armand, L.K., 2014. Settling fluxes of diatoms to the interior of the Antarctic circumpolar current along 170W. *Deep Sea Res. Part I Oceanogr. Res. Pap.* 93, 1–13. doi:10.1016/j.dsr.2014.07.008
- Grossart, H.-P., Ploug, H., 2001. Microbial degradation of organic carbon and nitrogen on diatom aggregates. *Limnol. Oceanogr.* 46, 267–277. doi:10.4319/lo.2001.46.2.0267
- Hasle, G.R., Syvertsen, E.E., 1997. Chapter 2 - Marine Diatoms, in: Tomas, C.R. (Ed.), *Identifying Marine Phytoplankton*. Academic Press, San Diego, pp. 5–385.
- Hawkings, J.R., Wadham, J.L., Tranter, M., Raiswell, R., Benning, L.G., Statham, P.J., Tedstone, A., Nienow, P., Lee, K., Telling, J., 2014. Ice sheets as a significant source of highly reactive nanoparticulate iron to the oceans. *Nat. Commun.* 5, 3929. doi:10.1038/ncomms4929

- Hillebrand, H., Dürselen, C.-D., Kirschtel, D., Pollinger, U., Zohary, T., 1999. Biovolume Calculation for Pelagic and Benthic Microalgae. *J. Phycol.* 35, 403–424. doi:10.1046/j.1529-8817.1999.3520403.x
- Honjo, S., Francois, R., Manganini, S., Dymond, J., Collier, R., 2000. Particle fluxes to the interior of the Southern Ocean in the Western Pacific sector along 170°W. *Deep Sea Res. Part II Top. Stud. Oceanogr.* 47, 3521–3548. doi:10.1016/S0967-0645(00)00077-1
- Huntley, M.E., Lopez, M.D., Karl, D.M., 1991. Top predators in the Southern ocean: a major leak in the biological carbon pump. *Science* 253, 64–66. doi:10.1126/science.1905841
- Jouandet, M.P., Blain, S., Metzl, N., Brunet, C., Trull, T.W., Obernosterer, I., 2008. A seasonal carbon budget for a naturally iron-fertilized bloom over the Kerguelen Plateau in the Southern Ocean. *Deep Sea Res. Part II Top. Stud. Oceanogr.* 55, 856–867. doi:10.1016/j.dsr2.2007.12.037
- Jungandreas, A., Wagner, H., Wilhelm, C., 2012. Simultaneous Measurement of the Silicon Content and Physiological Parameters by FTIR Spectroscopy in Diatoms with Siliceous Cell Walls. *Plant Cell Physiol.* 53, 2153–2162. doi:10.1093/pcp/pcs144
- Korb, R.E., Whitehouse, M., 2004. Contrasting primary production regimes around South Georgia, Southern Ocean: large blooms versus high nutrient, low chlorophyll waters. *Deep Sea Res. Part I Oceanogr. Res. Pap.* 51, 721–738. doi:10.1016/j.dsr.2004.02.006
- Korb, R.E., Whitehouse, M.J., Atkinson, A., Thorpe, S.E., 2008. Magnitude and maintenance of the phytoplankton bloom at South Georgia: a naturally iron-replete environment. *Mar. Ecol. Prog. Ser.* 368, 75–91. doi:10.3354/meps07525
- Korb, R.E., Whitehouse, M.J., Gordon, M., Ward, P., Poulton, A.J., 2010. Summer microplankton community structure across the Scotia Sea: implications for biological carbon export. *Biogeosciences* 7, 343–356. doi:10.5194/bg-7-343-2010
- Korb, R.E., Whitehouse, M.J., Ward, P., Gordon, M., Venables, H.J., Poulton, A.J., 2012. Regional and seasonal differences in microplankton biomass, productivity, and structure across the Scotia Sea: Implications for the export of biogenic carbon. *Deep Sea Res. Part II Top. Stud. Oceanogr.* 59–60, 67–77. doi:10.1016/j.dsr2.2011.06.006
- Kuwata, A., Hama, T., Takahashi, M., 1993. Ecophysiological characterization of two life forms, resting spores and resting cells, of a marine planktonic diatom. *Mar. Ecol. Prog. Ser.* 102, 245–255.
- Kuwata, A., Tsuda, A., 2005. Selection and viability after ingestion of vegetative cells, resting spores and resting cells of the marine diatom, *Chaetoceros pseudocurvisetus*, by two copepods. *J. Exp. Mar. Biol. Ecol.* 322, 143–151. doi:10.1016/j.jembe.2005.02.013
- Lampitt, R.S., Salter, I., Johns, D., 2009. Radiolaria: Major exporters of organic carbon to the deep ocean. *Glob. Biogeochem. Cycles* 23, GB1010. doi:10.1029/2008GB003221
- Lam, P.J., Bishop, J.K.B., 2007. High biomass, low export regimes in the Southern Ocean. *Deep Sea Res. Part II Top. Stud. Oceanogr.* 54, 601–638. doi:10.1016/j.dsr2.2007.01.013
- Lam, P.J., Doney, S.C., Bishop, J.K.B., 2011. The dynamic ocean biological pump: Insights from a global compilation of particulate organic carbon, CaCO₃, and opal concentration profiles from the mesopelagic. *Glob. Biogeochem. Cycles* 25, GB3009. doi:10.1029/2010GB003868
- Laws, E.A., D'Sa, E., Naik, P., 2011. Simple equations to estimate ratios of new or export production to total production from satellite-derived estimates of sea surface temperature and primary production. *Limnol. Oceanogr. Methods* 9, 593–601. doi:10.4319/lom.2011.9.593
- Le Moigne, F.A.C., Henson, S.A., Cavan, E., Georges, C., Pabortsava, K., Achterberg, E.P., Ceballos-Romero, E., Zubkov, M., Sanders, R.J., 2016. What causes the inverse relationship between primary production and export efficiency in the Southern Ocean? *Geophys. Res. Lett.* 2016GL068480. doi:10.1002/2016GL068480
- Loscher, B.M., De Baar, H.J.W., De Jong, J.T.M., Veth, C., Dehairs, F., 1997. The distribution of Fe in the antarctic circumpolar current. *Deep Sea Res. Part II Top. Stud. Oceanogr.* 44, 143–187. doi:10.1016/S0967-0645(96)00101-4
- Maiti, K., Charette, M.A., Buesseler, K.O., Kahru, M., 2013. An inverse relationship between production and export efficiency in the Southern Ocean. *Geophys. Res. Lett.* 40, 1557–1561. doi:10.1002/grl.50219

- Manno, C., Stowasser, G., Enderlein, P., Fielding, S., Tarling, G.A., 2015. The contribution of zooplankton faecal pellets to deep-carbon transport in the Scotia Sea (Southern Ocean). *Biogeosciences* 12, 1955–1965. doi:10.5194/bg-12-1955-2015
- Manno, C., Stowasser, G., Enderlein, P., Fielding, S., Tarling, G.A., 2014. The contribution of zooplankton faecal pellets to deep carbon transport in the Scotia Sea (Southern Ocean). *Biogeosciences Discuss* 11, 16105–16134. doi:10.5194/bgd-11-16105-2014
- Martin, J.H., 1990. Glacial-interglacial CO₂ change: The Iron Hypothesis. *Paleoceanography* 5, 1–13. doi:10.1029/PA005i001p00001
- McQuoid, M.R., Hobson, L.A., 1996. Diatom Resting Stages. *J. Phycol.* 32, 889–902. doi:10.1111/j.0022-3646.1996.00889.x
- Menden-Deuer, S., Lessard, E.J., 2000. Carbon to volume relationships for dinoflagellates, diatoms, and other protist plankton. *Limnol. Oceanogr.* 45, 569–579. doi:10.4319/lo.2000.45.3.0569
- Mengelt, C., Abbott, M.R., Barth, J.A., Letelier, R.M., Measures, C.I., Vink, S., 2001. Phytoplankton pigment distribution in relation to silicic acid, iron and the physical structure across the Antarctic Polar Front, 170°W, during austral summer. *Deep Sea Res. Part II Top. Stud. Oceanogr.*, US Southern Ocean JGOFS Program (AESOPS) - Part II 48, 4081–4100. doi:10.1016/S0967-0645(01)00081-9
- Meredith, M.P., Watkins, J.L., Murphy, E.J., Cunningham, N.J., Wood, A.G., Korb, R., Whitehouse, M.J., Thorpe, S.E., Vivier, F., 2003. An anticyclonic circulation above the Northwest Georgia Rise, Southern Ocean. *Geophys. Res. Lett.* 30, 2061. doi:10.1029/2003GL018039
- Meskhidze, N., Nenes, A., Chameides, W.L., Luo, C., Mahowald, N., 2007. Atlantic Southern Ocean productivity: Fertilization from above or below? *Glob. Biogeochem. Cycles* 21, GB2006. doi:10.1029/2006GB002711
- Moore, J.K., Abbott, M.R., 2000. Phytoplankton chlorophyll distributions and primary production in the Southern Ocean. *J. Geophys. Res. Oceans* 105, 28709–28722. doi:10.1029/1999JC000043
- Moore, J.K., Abbott, M.R., Richman, J.G., 1999. Location and dynamics of the Antarctic Polar Front from satellite sea surface temperature data. *J. Geophys. Res. Oceans* 104, 3059–3073. doi:10.1029/1998JC900032
- Mortlock, R.A., Froelich, P.N., 1989. A simple method for the rapid determination of biogenic opal in pelagic marine sediments. *Deep Sea Res. Part I Oceanogr. Res. Pap.* 36, 1415–1426. doi:10.1016/0198-0149(89)90092-7
- Nelson, D.M., Tréguer, P., Brzezinski, M.A., Leynaert, A., Quéguiner, B., 1995. Production and dissolution of biogenic silica in the ocean: Revised global estimates, comparison with regional data and relationship to biogenic sedimentation. *Glob. Biogeochem. Cycles* 9, 359–372. doi:10.1029/95GB01070
- Nielsdóttir, M.C., Bibby, T.S., Moore, C.M., Hinz, D.J., Sanders, R., Whitehouse, M., Korb, R., Achterberg, E.P., 2012. Seasonal and spatial dynamics of iron availability in the Scotia Sea. *Mar. Chem.* 130–131, 62–72. doi:10.1016/j.marchem.2011.12.004
- Nodder, S.D., Chiswell, S.M., Northcote, L.C., 2016. Annual cycles of deep-ocean biogeochemical export fluxes in subtropical and subantarctic waters, southwest Pacific Ocean. *J. Geophys. Res. Oceans.* doi:10.1002/2015JC011243
- Obernosterer, I., Christaki, U., Lefèvre, D., Catala, P., Van Wambeke, F., Lebaron, P., 2008. Rapid bacterial mineralization of organic carbon produced during a phytoplankton bloom induced by natural iron fertilization in the Southern Ocean. *Deep Sea Res. Part II Top. Stud. Oceanogr.* 55, 777–789. doi:10.1016/j.dsr2.2007.12.005
- Oku, O., Kamatani, A., 1997. Resting spore formation of the marine planktonic diatom *Chaetoceros anastomosans* induced by high salinity and nitrogen depletion. *Mar. Biol.* 127, 515–520. doi:10.1007/s002270050040
- Park, J., Oh, I.-S., Kim, H.-C., Yoo, S., 2010. Variability of SeaWiFs chlorophyll-a in the southwest Atlantic sector of the Southern Ocean: Strong topographic effects and weak seasonality. *Deep Sea Res. Part I Oceanogr. Res. Pap.* 57, 604–620. doi:10.1016/j.dsr.2010.01.004
- Pilskaln, C.H., Manganini, S.J., Trull, T.W., Armand, L., Howard, W., Asper, V.L., Massom, R., 2004. Geochemical particle fluxes in the Southern Indian Ocean seasonal ice zone: Prydz Bay region, East Antarctica. *Deep Sea Res. Part I Oceanogr. Res. Pap.* 51, 307–332. doi:10.1016/j.dsr.2003.10.010

- Pollard, R.T., Salter, I., Sanders, R.J., Lucas, M.I., Moore, C.M., Mills, R.A., Statham, P.J., Allen, J.T., Baker, A.R., Bakker, D.C.E., Charette, M.A., Fielding, S., Fones, G.R., French, M., Hickman, A.E., Holland, R.J., Hughes, J.A., Jickells, T.D., Lampitt, R.S., Morris, P.J., Nédélec, F.H., Nielsdóttir, M., Planquette, H., Popova, E.E., Poulton, A.J., Read, J.F., Seeyave, S., Smith, T., Stinchcombe, M., Taylor, S., Thomalla, S., Venables, H.J., Williamson, R., Zubkov, M.V., 2009. Southern Ocean deep-water carbon export enhanced by natural iron fertilization. *Nature* 457, 577–580. doi:10.1038/nature07716
- Pondaven, P., Ragueneau, O., Tréguer, P., Hauvespre, A., Dezileau, L., Reyss, J.L., 2000. Resolving the “opal paradox” in the Southern Ocean. *Nature* 405, 168–172. doi:10.1038/35012046
- Poulton, A.J., Mark Moore, C., Seeyave, S., Lucas, M.I., Fielding, S., Ward, P., 2007. Phytoplankton community composition around the Crozet Plateau, with emphasis on diatoms and Phaeocystis. *Deep Sea Res. Part II Top. Stud. Oceanogr.* 54, 2085–2105. doi:10.1016/j.dsr2.2007.06.005
- Quéguiner, B., 2013. Iron fertilization and the structure of planktonic communities in high nutrient regions of the Southern Ocean. *Deep Sea Res. Part II Top. Stud. Oceanogr.* 90, 43–54. doi:10.1016/j.dsr2.2012.07.024
- Ragueneau, O., Schultes, S., Bidle, K., Claquin, P., Moriceau, B., 2006. Si and C interactions in the world ocean: Importance of ecological processes and implications for the role of diatoms in the biological pump. *Glob. Biogeochem. Cycles* 20, GB4S02. doi:10.1029/2006GB002688
- Ragueneau, O., Tréguer, P., Leynaert, A., Anderson, R.F., Brzezinski, M.A., DeMaster, D.J., Dugdale, R.C., Dymond, J., Fischer, G., François, R., Heinze, C., Maier-Reimer, E., Martin-Jézéquel, V., Nelson, D.M., Quéguiner, B., 2000. A review of the Si cycle in the modern ocean: recent progress and missing gaps in the application of biogenic opal as a paleoproductivity proxy. *Glob. Planet. Change* 26, 317–365. doi:10.1016/S0921-8181(00)00052-7
- Rembauville, M., Blain, S., Armand, L., Quéguiner, B., Salter, I., 2015a. Export fluxes in a naturally iron-fertilized area of the Southern Ocean – Part 2: Importance of diatom resting spores and faecal pellets for export. *Biogeosciences* 12, 3171–3195. doi:10.5194/bg-12-3171-2015
- Rembauville, M., Meilland, J., Ziveri, P., Schiebel, R., Blain, S., Salter, I., 2016. Planktic foraminifer and coccolith contribution to carbonate export fluxes over the central Kerguelen Plateau. *Deep Sea Res. Part I Oceanogr. Res. Pap.* 111, 91–101. doi:10.1016/j.dsr.2016.02.017
- Rembauville, M., Salter, I., Leblond, N., Gueneugues, A., Blain, S., 2015b. Export fluxes in a naturally iron-fertilized area of the Southern Ocean – Part 1: Seasonal dynamics of particulate organic carbon export from a moored sediment trap. *Biogeosciences* 12, 3153–3170. doi:10.5194/bg-12-3153-2015
- Reynolds, R.W., Rayner, N.A., Smith, T.M., Stokes, D.C., Wang, W., 2002. An Improved In Situ and Satellite SST Analysis for Climate. *J. Clim.* 15, 1609–1625. doi:10.1175/1520-0442(2002)015<1609:AIISAS>2.0.CO;2
- Rigual-Hernández, A.S., Trull, T.W., Bray, S.G., Closset, I., Armand, L.K., 2015. Seasonal dynamics in diatom and particulate export fluxes to the deep sea in the Australian sector of the southern Antarctic Zone. *J. Mar. Syst.* 142, 62–74. doi:10.1016/j.jmarsys.2014.10.002
- Rigual-Hernández, A.S., Trull, T.W., Bray, S.G., Cortina, A., Armand, L.K., 2015. Latitudinal and temporal distributions of diatom populations in the pelagic waters of the Subantarctic and Polar Frontal zones of the Southern Ocean and their role in the biological pump. *Biogeosciences* 12, 5309–5337. doi:10.5194/bg-12-5309-2015
- Romero, O.E., Armand, L., 2010. Marine diatoms as indicators of modern changes in oceanographic conditions. In: 2nd Edition *The Diatoms: Applications for the Environmental and Earth Sciences*, Camb. Univ. Press 373–400.
- Rynearson, T.A., Richardson, K., Lampitt, R.S., Sieracki, M.E., Poulton, A.J., Lyngsgaard, M.M., Perry, M.J., 2013. Major contribution of diatom resting spores to vertical flux in the sub-polar North Atlantic. *Deep Sea Res. Part I Oceanogr. Res. Pap.* 82, 60–71. doi:10.1016/j.dsr.2013.07.013
- Salter, I., Kemp, A.E.S., Lampitt, R.S., Gledhill, M., 2010. The association between biogenic and inorganic minerals and the amino acid composition of settling particles. *Limnol. Oceanogr.* 55, 2207–2218. doi:10.4319/lo.2010.55.5.2207

- Salter, I., Kemp, A.E.S., Moore, C.M., Lampitt, R.S., Wolff, G.A., Holtvoeth, J., 2012. Diatom resting spore ecology drives enhanced carbon export from a naturally iron-fertilized bloom in the Southern Ocean. *Glob. Biogeochem. Cycles* 26, GB1014. doi:10.1029/2010GB003977
- Salter, I., Schiebel, R., Ziveri, P., Movellan, A., Lampitt, R., Wolff, G.A., 2014. Carbonate counter pump stimulated by natural iron fertilization in the Polar Frontal Zone. *Nat. Geosci.* 7, 885–889. doi:10.1038/ngeo2285
- Sanders, J.G., Cibik, S.J., 1985. Reduction of growth rate and resting spore formation in a marine diatom exposed to low levels of cadmium. *Mar. Environ. Res.* 16, 165–180. doi:10.1016/0141-1136(85)90136-9
- Schrader, H.J., Gersonde, R., 1978. Diatoms and silicofagellates. Micropaleontological counting methods and techniques: an exercise on an eight metres section of the Lower Pliocene of Capo Rosello, Sicily. *Utrecht Micropaleontol. Bull.* 129–176.
- Siegel, D.A., Deuser, W.G., 1997. Trajectories of sinking particles in the Sargasso Sea: modeling of statistical funnels above deep-ocean sediment traps. *Deep Sea Res. Part I Oceanogr. Res. Pap.* 44, 1519–1541. doi:10.1016/S0967-0637(97)00028-9
- Smetacek, V., Assmy, P., Henjes, J., 2004. The role of grazing in structuring Southern Ocean pelagic ecosystems and biogeochemical cycles. *Antarct. Sci.* 16, 541–558. doi:10.1017/S0954102004002317
- Smetacek, V.S., 1985. Role of sinking in diatom life-history cycles: ecological, evolutionary and geological significance. *Mar. Biol.* 84, 239–251. doi:10.1007/BF00392493
- Smith, W.O., Jr., Nelson, D.M., 1986. Importance of Ice Edge Phytoplankton Production in the Southern Ocean. *BioScience* 36, 251–257. doi:10.2307/1310215
- Suzuki, H., Sasaki, H., Fukuchi, M., 2001. Short-term variability in the flux of rapidly sinking particles in the Antarctic marginal ice zone. *Polar Biol.* 24, 697–705. doi:10.1007/s003000100271
- Tesi, T., Langone, L., Ravaioli, M., Giglio, F., Capotondi, L., 2012. Particulate export and lateral advection in the Antarctic Polar Front (Southern Pacific Ocean): One-year mooring deployment. *J. Mar. Syst.* 105–108, 70–81. doi:10.1016/j.jmarsys.2012.06.002
- Thorpe, S.E., Heywood, K.J., Brandon, M.A., Stevens, D.P., 2002. Variability of the southern Antarctic Circumpolar Current front north of South Georgia. *J. Mar. Syst., Physics and Biology of Ocean Fronts* 37, 87–105. doi:10.1016/S0924-7963(02)00197-5
- Twining, B.S., Nodder, S.D., King, A.L., Hutchins, D.A., LeClerc, G.R., DeBruyn, J.M., Maas, E.W., Vogt, S., Wilhelm, S.W., Boyd, P.W., 2014. Differential remineralization of major and trace elements in sinking diatoms. *Limnol. Oceanogr.* 59, 689–704. doi:10.4319/lo.2014.59.3.0689
- van der Merwe, P., Bowie, A.R., Quéroué, F., Armand, L., Blain, S., Chever, F., Davies, D., Dehairs, F., Planchon, F., Sarthou, G., Townsend, A.T., Trull, T.W., 2015. Sourcing the iron in the naturally fertilised bloom around the Kerguelen Plateau: particulate trace metal dynamics. *Biogeosciences* 12, 739–755. doi:10.5194/bg-12-739-2015
- van der Merwe, P., Lannuzel, D., Bowie, A.R., Meiners, K.M., 2011. High temporal resolution observations of spring fast ice melt and seawater iron enrichment in East Antarctica. *J. Geophys. Res. Biogeosciences* 116, G03017. doi:10.1029/2010JG001628
- van Sebille, E., Scussolini, P., Durgadoo, J.V., Peeters, F.J.C., Biastoch, A., Weijer, W., Turney, C., Paris, C.B., Zahn, R., 2015. Ocean currents generate large footprints in marine palaeoclimate proxies. *Nat. Commun.* 6, 6521. doi:10.1038/ncomms7521
- Ward, P., Atkinson, A., Venables, H.J., Tarling, G.A., Whitehouse, M.J., Fielding, S., Collins, M.A., Korb, R., Black, A., Stowasser, G., Schmidt, K., Thorpe, S.E., Enderlein, P., 2012. Food web structure and bioregions in the Scotia Sea: A seasonal synthesis. *Deep Sea Res. Part II Top. Stud. Oceanogr.* 59–60, 253–266. doi:10.1016/j.dsr2.2011.08.005
- Ward, P., Whitehouse, M., Meredith, M., Murphy, E., Shreeve, R., Korb, R., Watkins, J., Thorpe, S., Woodd-Walker, R., Brierley, A., Cunningham, N., Grant, S., Bone, D., 2002. The Southern Antarctic Circumpolar Current Front: physical and biological coupling at South Georgia. *Deep Sea Res. Part I Oceanogr. Res. Pap.* 49, 2183–2202. doi:10.1016/S0967-0637(02)00119-X
- Westberry, T.K., Behrenfeld, M.J., Milligan, A.J., Doney, S.C., 2013. Retrospective satellite ocean color analysis of purposeful and natural ocean iron fertilization. *Deep Sea Res. Part I Oceanogr. Res. Pap.* 73, 1–16. doi:10.1016/j.dsr.2012.11.010

- Whitehouse, M.J., Atkinson, A., Korb, R.E., Venables, H.J., Pond, D.W., Gordon, M., 2012. Substantial primary production in the land-remote region of the central and northern Scotia Sea. *Deep Sea Res. Part II Top. Stud. Oceanogr.*, DISCOVERY 2010: Spatial and Temporal Variability in a Dynamic Polar Ecosystem 59–60, 47–56. doi:10.1016/j.dsr2.2011.05.010
- Whitehouse, M.J., Priddle, J., Brandon, M.A., 2000. Chlorophyll/nutrient characteristics in the water masses to the north of South Georgia, Southern Ocean. *Polar Biol.* 23, 373–382. doi:10.1007/s003000050458
- Whitehouse, M.J., Priddle, J., Symon, C., 1996. Seasonal and annual change in seawater temperature, salinity, nutrient and chlorophyll a distributions around South Georgia, South Atlantic. *Deep Sea Res. Part I Oceanogr. Res. Pap.* 43, 425–443. doi:10.1016/0967-0637(96)00020-9

Accepted manuscript

Table 1: Total mass flux (TMF), particulate organic carbon (POC), biogenic silica (BSi) fluxes and BSi:POC molar ratio of material collected by sediment traps upstream (P2, 1500 m) and downstream (P3, 2000 m) of South Georgia.

Site	Cup collection period (2012)		TMF (mg m ⁻² d ⁻¹)	POC (μmol m ⁻² d ⁻¹)	BSi (μmol m ⁻² d ⁻¹)	BSi:POC (mol:mol)
	Opening	Closing				
P2	15/01	01/02	24.1	38	61	1.6
	01/02	15/02	8.3	40	25	0.6
	15/02	01/03	49.7	172	267	1.5
	01/03	01/04	60.7	101	289	2.9
	01/04	01/05			Lost	
	01/05	01/06	17.5	205	83	0.4
	01/06	01/07	13.8	84	18	0.2
	01/07	01/08			Lost	
	01/08	01/09	10.1	78	26	0.3
	01/09	01/10	9.7	97	73	0.8
	01/10	01/11			Lost	
	01/11	01/12	58.2	174	606	3.5
P3	15/01	01/02	146.0	904	765	0.8
	01/02	15/02	42.5	164	191	1.2
	15/02	01/03	22.3	73	60	0.8
	01/03	01/04	25.0	156	145	0.9
	01/04	01/05	9.5	86	20	0.2
	01/05	01/06	9.0	65	18	0.3
	01/06	01/07	8.9	46	10	0.2
	01/07	01/08	15.1	70	17	0.3
	01/08	01/09			Lost	
	01/09	01/10	17.8	110	44	0.4
	01/10	01/11	39.3	90	349	3.9
	01/11	01/12	70.3	92	344	3.7

Table 2: Annually integrated fluxes of particulate organic carbon (POC), biogenic silica (BSi) and corresponding BSi:POC molar ratio. Fraction of total empty diatoms, diversity (Shannon's H') and evenness (Pielou's J') indexes and contribution of each vector to measured carbon fluxes.

Site	Annual flux (mmol m^{-2} or g m^{-2})				BSi:POC raw (mol:mol)	Empty diatom (%)	H'	J'	Contribution to measured POC fluxes (%)	
	POC raw	POC interpolated	BSi raw	BSi interpolated					Diatom resting spores	Other diatoms
P2	26.4	35.8	38.6	55.2	1.5	91.1	1.97	0.59	0	1.9
	<i>0.32</i>	<i>0.46</i>	<i>2.59</i>	<i>3.71</i>						
P3	40.6	43.3	45.5	46.4	1.1	51.5	1.70	0.48	41.7	3.9
	<i>0.49</i>	<i>0.52</i>	<i>3.06</i>	<i>3.12</i>						

Table 3: Contribution of each diatom species/ group to the annual full, empty, and total diatom flux integrated over the entire record for each sediment trap. Values higher than 5% are highlighted in bold. Total integrated empty:full ratio. Carbon content used to calculate diatom contribution to carbon export.

Species/group	P2				P3				C content (pgC cell ⁻¹)
	Annual contribution (%)			Empty :Full	Annual contribution (%)			Empty :Full	
	Full	Empty	Total		Full	Empty	Total		
<i>Asteromphalus hookeri</i> Ehrenberg	0	0.4	0.4		0	0.3	0.2	1900 [#]	
<i>Asteromphalus hyalinus</i> Karsten	0	0.6	0.6		0	0.5	0.2	365 [#]	
<i>Asteromphalus parvulus</i> Karsten	0	0.1	0.1		0	0.1	0.1	365 [#]	
<i>Chaetoceros atlanticus</i> Cleve	0	0.9	0.8		0	0	0	217 [§]	
<i>Chaetoceros bulbosus</i> (Ehrenberg) Heiden	0	0.2	0.1		0	0	0	222 [#]	
<i>Chaetoceros dichæta</i> Ehrenberg	0	0.5	0.5		0	0.1	0	303 [§]	
<i>Chaetoceros Hyalochaete</i> (spore) group	0	0	0		87.9	0.1	42.7	0.0	240 [*]
<i>Chaetoceros peruvianus</i> Brightwell	0	0	0		0	<0.1	<0.1	356 [§]	
<i>Corethron inerme</i> Karsten	0	0.9	0.8		0	1.6	0.8	1097 [#]	
<i>Corethron pennatum</i> (Grunow) Ostenfeld	0	1.0	0.9		0	0.6	0.3	1097 [#]	
<i>Coscinodiscus</i> group	0	0	0		0	<0.1	<0.1	244 [#]	
<i>Dactyliosolen antarcticus</i> Castracane	0	1.1	1.0		0	0.4	0.2	700 [#]	
<i>Eucampia antarctica</i> var. <i>antarctica</i> (Castracane) Mangin	1.9	0.2	0.3	1.0	1.5	2.6	2.1	1.8	416 [#]
<i>Fragilariopsis kerguelensis</i> (O'Meara) Hustedt	42.4	46.0	45.7	11.2	5.6	55.6	31.4	10.6	158 [#]
<i>Fragilariopsis separanda/rhombica</i> (group)	30.7	14.2	15.6	4.7	0.2	5.0	2.6	30.3	128 [#]
<i>Guinardia cylindrus</i> (Cleve) Hasle	0	0	0		0	<0.1	<0.1	495 [#]	
<i>Membraneis</i> group	0	0.4	0.4		0	0.3	0.2	3225 [#]	
<i>Navicula</i> sp.	2.7	0.2	0.4	0.8	0.8	2.8	1.8	3.5	126 [#]
<i>Odontella weissflogi</i> (Grunow) Grunow	0	0.3	0.3		0	0.9	0.5	1939 [#]	
<i>Pleurosigma</i> group	0	0.5	0.5		0	0.8	0.4	469 [#]	
<i>Proboscia alata</i> (Brightwell) Sundström	0	0.6	0.6		0	0.1	0.1	3686 [#]	
<i>Proboscia inermis</i> (Castracane) Jordan & Ligowski	0	0.8	0.7		0	0.1	0.1	2898 [#]	
<i>Proboscia truncata</i> (Karsten) Nöthig & Ligowski	0	0	0		0	<0.1	<0.1	2898 [#]	
<i>Pseudo-nitzschia</i> spp. group	18.2	5.4	6.6	3.1	0.7	2.4	1.6	3.7	127 [#]
<i>Rhizosolenia antenata</i> f. <i>semispina</i> Sundström	0	0.4	0.4		0	0.2	0.1	1382 [#]	
<i>Rhizosolenia chunii</i> Karsten	0	0.7	0.6		0	0.1	0.1	1382 [#]	
<i>Rhizosolenia simplex</i> Karsten	0	0.4	0.3		0	0	0	1382 [#]	
<i>Rhizosolenia styliformis</i> Brightwell	0	0	0		0	0.1	0.1	1382 [#]	
<i>Thalassionema nitzschoides</i> (Grunow) Mereschkowsky	3.0	4.5	4.4	15.4	1.4	15.9	8.9	11.8	30 [#]

<i>Thalassiosira antarctica</i> (spore)	0	0	0		1.7	0.4	1.0		1018 [§]
<i>Thalassiosira gracilis</i> Karsten Hustedt	1.3	9.6	8.9	78.9	0	2.5	1.3	122.4	93 [#]
<i>Thalassiosira lentiginosa</i> (Janisch) Fryxell	0	7.9	7.2		0.1	2.0	1.1	20.0	3119 [#]
<i>Thalassiosira tumida</i> (Janisch) Hasle	0	0	0		0	0	0		379 [#]
<i>Thalassiotrix antarctica</i> Schimper	0	0.7	0.6		0	0.6	0.3		3556 [#]
Small centric (<20 µm) group	0	0.7	0.6		0.1	3.2	1.7	59.0	93 [#]
Large centric (>20 µm) group	0	0.7	0.7		0	0.4	0.2	10.4	365 [#]

[#] Species-specific biomass taken from Cornet-Barthaux et al. (2007)

[§] Individuals were measured in the sediment trap samples. Biovolume was calculated from Hillebrand et al. (1999) and carbon:volume relationship from Menden-Deuer and Lessard (2000) was applied.

^{*} Individuals were measured in the sediment trap samples. Biovolume was calculated from Hillebrand et al. (1999) and carbon:volume relationship from Kuwata et al. (1993) was applied.

Figures captions

Figure 1: Location of the South Georgia Plateau in the Atlantic sector of the Southern Ocean and location of the two sediment traps (P2, P3). Colors represent respectively the satellite-derived chlorophyll *a* concentration (MODIS) and arrows the altimetry-derived geostrophic velocities (AVISO) averaged over the sediment trap deployment period (January to December 2012). Thick arrows denote the mean fronts positions during the deployment (PF: Polar Front, SACCF: Southern ACC Front) arbitrarily defined by enhanced geostrophic velocities, (Moore et al., 1999; Thorpe et al., 2002). POOZ: Permanently Open Ocean Zone, SIZ: Seasonal ice Zone. Grey isolines are the 1000 m and 2000 m isobaths.

Figure 2: Oceanographic parameters and biogeochemical fluxes. a) Satellite-derived surface chlorophyll *a* (dots) and sea surface temperature (SST, continuous lines) averaged over an area with a 100 km radius centered on P2 (blue) and P3 (red). b) Particulate organic carbon (POC) fluxes collected by sediment traps at P2 (1500 m, blue) and P3 (2000 m, red). c) Biogenic silica (BSi) fluxes (bold lines) and BSi:POC ratio (dots). Asterisks denote missing cups.

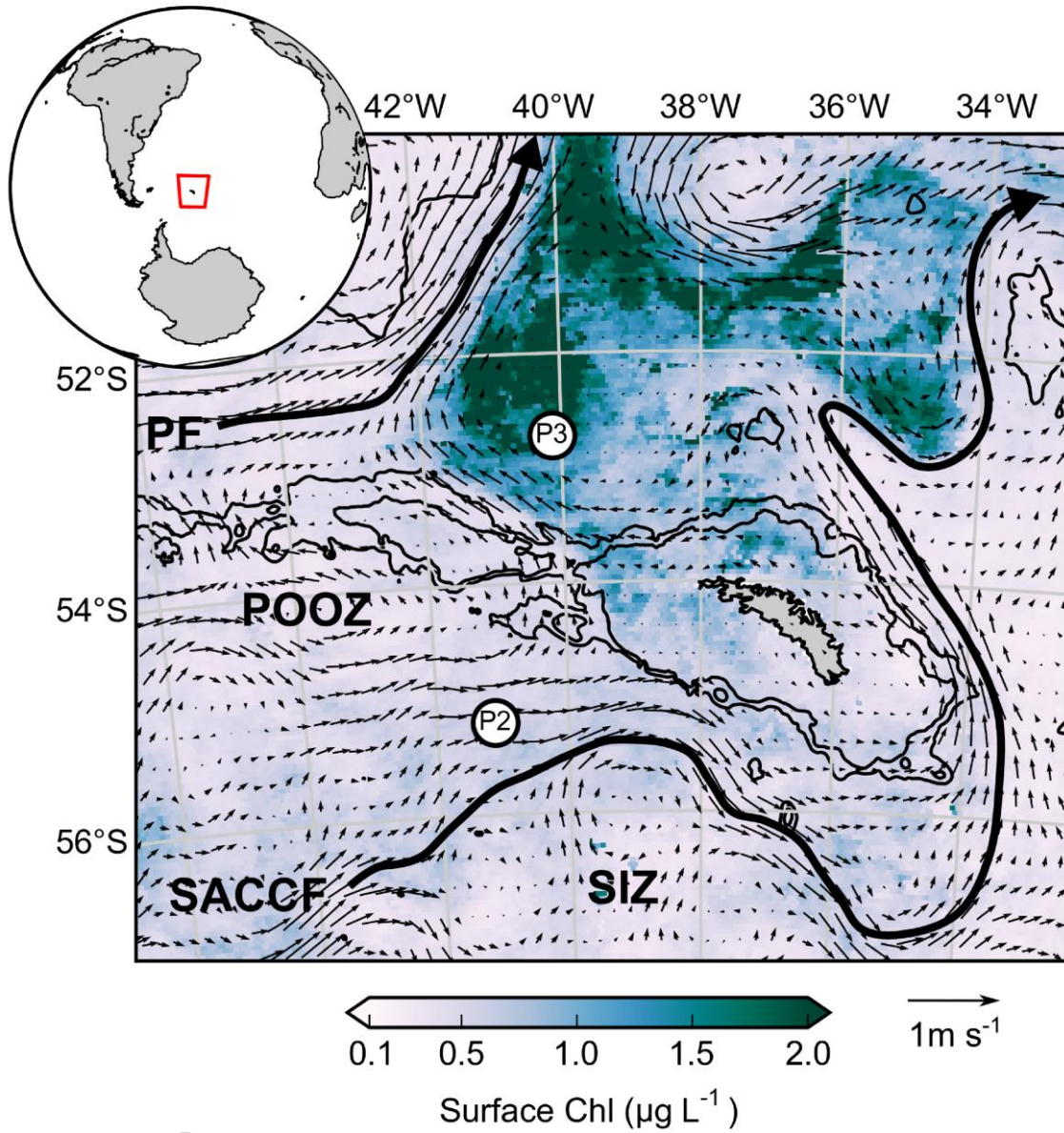
Figure 3: Diatom fluxes at P2. Empty (white bars) and full (grey bars) diatom fluxes (left axis) for a) the total diatom community and b-h) the diatom species/groups contributing to >1 % of the annual diatom flux. The relative contribution of each diatom species/group (empty + full) to the total diatom assemblage is shown as red dots (right axis). The number in brackets is the relative contribution to the total diatom flux integrated over the deployment period and includes full and empty cells. Asterisks denote missing cups.

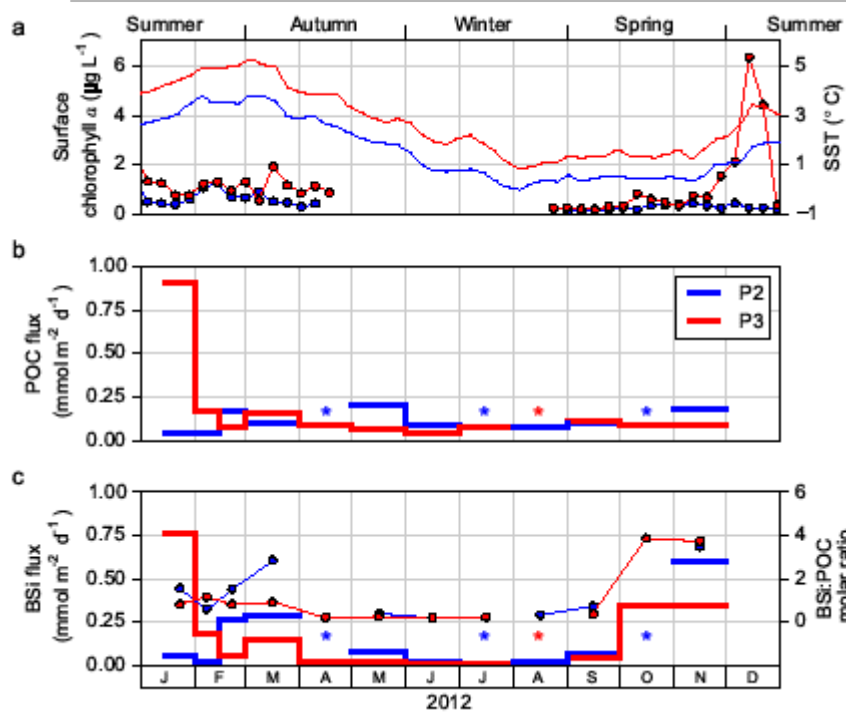
Figure 4: Diatom fluxes at P3. Empty (white bars) and full (grey bars) diatoms fluxes for a) the total diatom community and b-l) the diatom species/groups contributing to more than 1 % of the annual diatom flux. The relative contribution of each diatom species/group (empty + full) to the total diatom assemblage is shown as red dots (right axis). The number in brackets is the relative contribution to the total diatom flux integrated over the deployment period and includes full and empty cells. Asterisks denote missing cups.

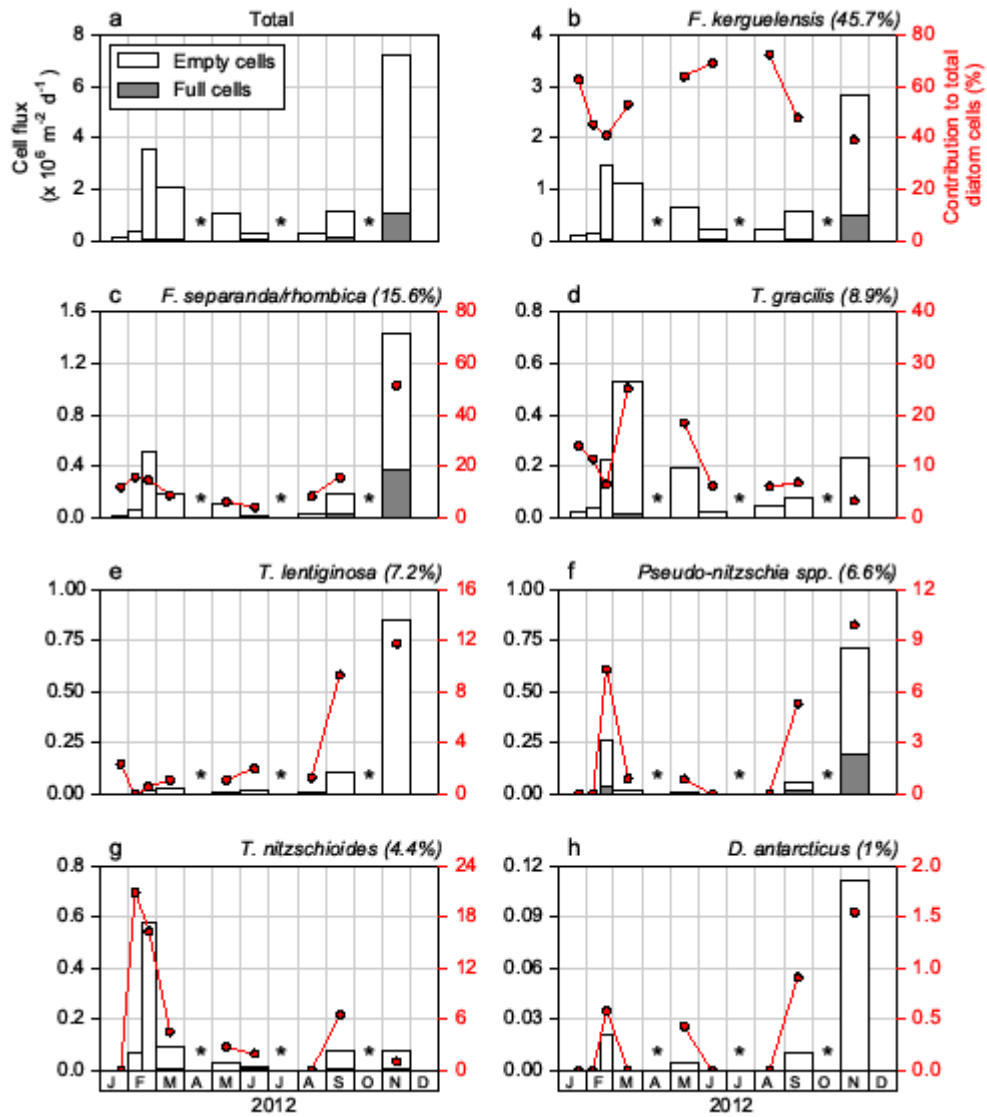
Figure 5: Evolution of diatom assemblages with depth at P3. Mixed layer data from Korb et al. (2008) are summer averages from February 2002, 2003 and January 2005. *Chaetoceros Hyalochaete* is present as vegetative stage in the mixed layer and as resting spore (CRS: *Chaetoceros Hyalochaete* resting spore) in the sediment trap and surface sediment (Allen et al., 2005) assemblages.

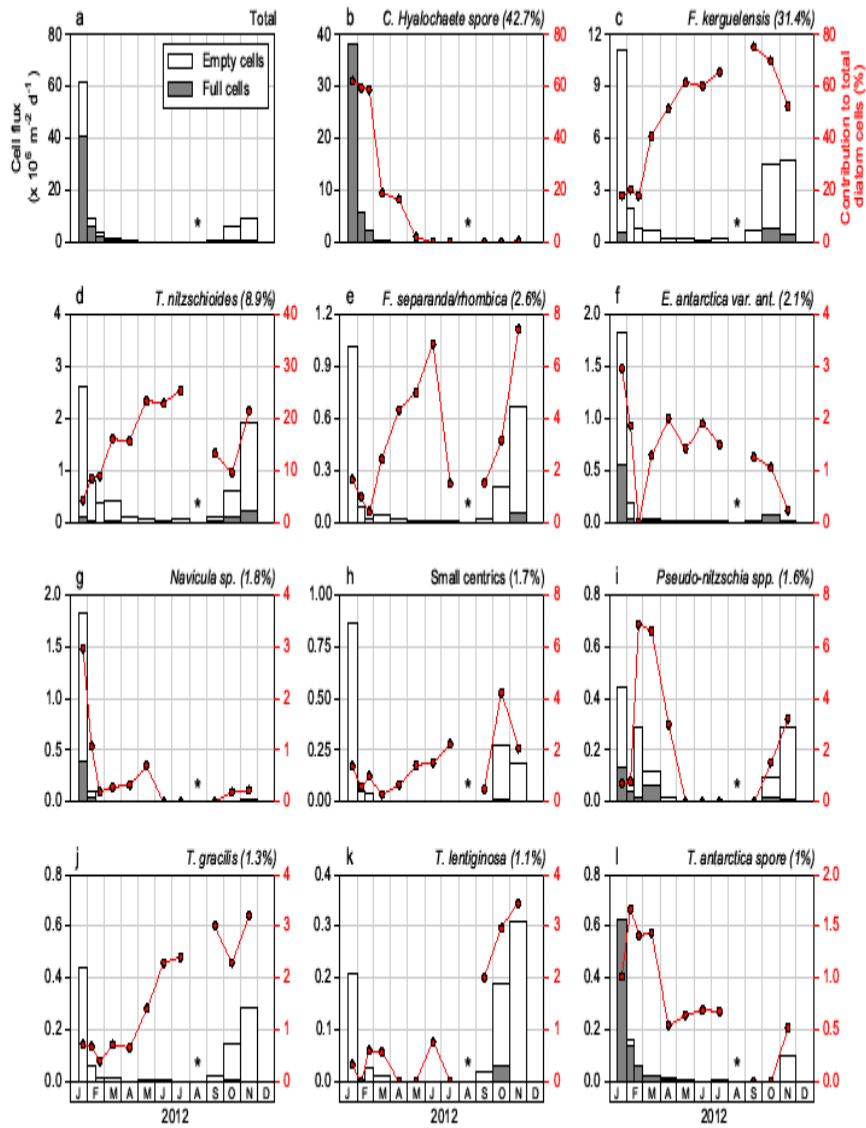
Supplementary Figure 1: Plate with light microscopy micrographs of some diatoms found in the sediment traps. Upper left panel: examples of empty cells. a) Chain of *Corethron inerme*, b) *Corethron pennatum*, c) *Membraneis*, d) *Odontella weissflogii*, e) *Fragilariopsis kerguelensis*, f) *Pseudo-nitzschia* spp., g) *Thalassionema nitzschioides*. Scale bars are 50 μ m. Upper right panel: examples of cells considered as full due to the presence of plasts. h) *Pseudo-nitzschia* spp., i) *F. kerguelensis*. Scale bar is 50 μ m. Lower left panel: examples of resting spores. j) *Chaetoceros Hyalochaete* resting spores. The multiple morphologies suggest different species at the origin of the spore. k) *Thalassiosira antarctica* resting spores. Scale bar is 10 μ m. Lower right panel: examples of particles not quantified in this study. l) Frustule debris, m) centric diatom girdle band (broken) and *Dactyliosolen antarcticus* girdle band, n)

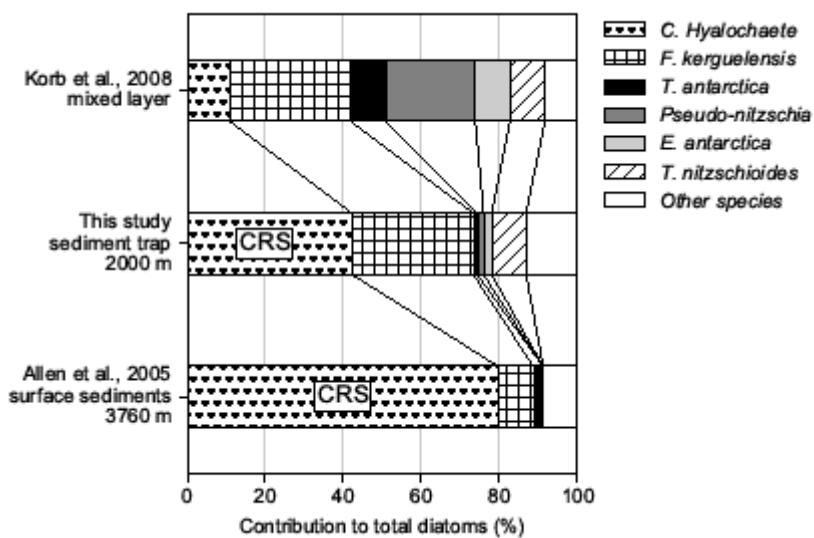
frustule debris probably belonging to *Pleurosigma*, o) Dinoflagellate theca belonging to the Dinophysiaceae family. Scale bar is 50 μm .











Highlights

- Annual POC export is 1.7 times higher in the naturally-fertilized area (P3 site)
- POC export remains low at both sites ($<50 \text{ mmol m}^{-2} \text{ yr}^{-1}$)
- Diatom resting spore drives 42% of annual POC export at P3
- BSi:POC is higher at P2 (low productivity) with higher proportion of empty cells
- Resting spores relative abundance increases from the surface ocean to the sediments