



HAL
open science

Explosive growth in African combustion emissions from 2005 to 2030

Catherine Liousse, E. Assamoi, Patrick Criqui, Claire Granier, R. Rosset

► **To cite this version:**

Catherine Liousse, E. Assamoi, Patrick Criqui, Claire Granier, R. Rosset. Explosive growth in African combustion emissions from 2005 to 2030. *Environmental Research Letters*, 2014, 9 (3), pp.035003. 10.1088/1748-9326/9/3/035003 . hal-01317163

HAL Id: hal-01317163

<https://hal.sorbonne-universite.fr/hal-01317163v1>

Submitted on 18 May 2016

HAL is a multi-disciplinary open access archive for the deposit and dissemination of scientific research documents, whether they are published or not. The documents may come from teaching and research institutions in France or abroad, or from public or private research centers.

L'archive ouverte pluridisciplinaire **HAL**, est destinée au dépôt et à la diffusion de documents scientifiques de niveau recherche, publiés ou non, émanant des établissements d'enseignement et de recherche français ou étrangers, des laboratoires publics ou privés.



Distributed under a Creative Commons Attribution 4.0 International License

Explosive growth in African combustion emissions from 2005 to 2030

This content has been downloaded from IOPscience. Please scroll down to see the full text.

2014 Environ. Res. Lett. 9 035003

(<http://iopscience.iop.org/1748-9326/9/3/035003>)

View [the table of contents for this issue](#), or go to the [journal homepage](#) for more

Download details:

IP Address: 134.157.80.213

This content was downloaded on 18/05/2016 at 09:30

Please note that [terms and conditions apply](#).

Explosive growth in African combustion emissions from 2005 to 2030

C Liousse¹, E Assamoi², P Criqui³, C Granier^{4,5,6} and R Rosset¹

¹ Laboratoire d'Aérologie, CNRS-Université de Toulouse, Toulouse, France

² Laboratoire de Physique de l'Atmosphère et de Mécanique des Fluides, Université Félix Houphouët Boigny-Cocody, Abidjan, Côte d'Ivoire

³ Economie du Développement Durable et de l'Énergie, Université Pierre Mendès France, Grenoble, France

⁴ Université Pierre et Marie Curie, CNRS/INSU, LATMOS-IPSL, Paris, France

⁵ NOAA/ESRL and CU/CIRES, Boulder, Colorado, USA

⁶ Max-Planck Institute for Meteorology, Hamburg, Germany

E-mail: lioc@aero.obs-mip.fr

Received 30 September 2013, revised 27 January 2014

Accepted for publication 29 January 2014

Published 11 March 2014

Abstract

Emissions of gases and particles from the combustion of fossil fuels and biofuels in Africa are expected to increase significantly in the near future due to the rapid growth of African cities and megacities. There is currently no regional emissions inventory that provides estimates of anthropogenic combustion for the African continent. This work provides a quantification of the evolution of African combustion emissions from 2005 to 2030, using a bottom-up method. This inventory predicts very large increases in black carbon, organic carbon, CO, NO_x, SO₂ and non-methane hydrocarbon emissions if no emission regulations are implemented. This paper discusses the effectiveness of scenarios involving certain fuels, specific to Africa in each activity sector and each region (western, eastern, northern and southern Africa), to reduce the emissions. The estimated trends in African emissions are consistent with emissions provided by global inventories, but they display a larger range of values.

African combustion emissions contributed significantly to global emissions in 2005. This contribution will increase more significantly by 2030: organic carbon emissions will for example make up 50% of the global emissions in 2030. Furthermore, we show that the magnitude of African anthropogenic emissions could be similar to African biomass burning emissions around 2030.

Keywords: anthropogenic combustion emissions, present, future scenarios, combustion aerosol, gases

Introduction

Previous studies have demonstrated the importance of emissions from biomass burning on the atmospheric composition in Africa (Goldammer 1990, Lacaux *et al* 1995, Liousse *et al* 1996, Delmas *et al* 1999, Thompson *et al* 2001, Swap

et al 2003, Haywood *et al* 2008, Liousse *et al* 2010). Recent studies provide growing evidence that emissions from anthropogenic combustion are having an increasing impact on the distribution of several chemical compounds. Nevertheless, emission regulations are still weak (Liousse and Galy-Lacaux 2010, Doumbia *et al* 2012). Observations performed during the AMMA (African Monsoon Multidisciplinary Analyses) campaign (Mari *et al* 2010, Marticorena *et al* 2010, Liousse *et al* 2010, Malavelle *et al* 2011) have shown that anthropogenic combustion emissions, mainly linked to traffic and



Content from this work may be used under the terms of the [Creative Commons Attribution 3.0 licence](https://creativecommons.org/licenses/by/3.0/). Any further distribution of this work must maintain attribution to the author(s) and the title of the work, journal citation and DOI.

the use of biofuels in western Africa, have a significant impact on urban air quality. Emissions from two-wheeled vehicles running on mixtures of smuggled gasoline from Nigeria and motor oil are also a large source of pollutants in cities of sub-Saharan Africa such as Bamako (Mali) or Cotonou (Benin). Surprisingly high particulate emissions factors for such two-wheeled vehicles were measured during AMMA (Guinot *et al* 2014) and resulted in the development of a specific emission inventory for traffic emissions Assamoi and Liousse (2010). Elevated levels of atmospheric pollutants were also observed during the POLCA program (Liousse and Galy-Lacaux 2010) in Dakar (Senegal) and Bamako: the unexpectedly high aerosol and gas concentrations due to traffic and biofuel emissions in these cities have a demonstrated impact on human health through inflammatory diseases (Doumbia *et al* 2012, Val *et al* 2013).

Only global inventories have been published so far, and these have been used for air quality and climate change modeling in Africa (Bond *et al* 2004, Streets *et al* 2004, Junker and Liousse 2008, Klimont *et al* 2009, Lamarque *et al* 2010, Granier *et al* 2011, Smith *et al* 2011, Klimont *et al* 2013). These works used detailed emissions available at the regional scale for North America, Europe and Asia, but not for Africa, for which there is a general lack of detailed anthropogenic inventories at the continental and regional scales.

Previous works have also shown that aerosol optical depths simulated with models using these inventories did not agree with satellite observations (Liousse *et al* 2010, Malavelle *et al* 2011). Moreover, discrepancies have been found between global and regional databases providing fuel consumption data, for example on for diesel fuel consumption for different countries/categories, where significant differences exist between the UNSTAT database United Nation Energy Statistics database (2004) and the Africaclean database (Zhu *et al* 2013).

African emissions are predicted to increase considerably in the future. Future projections indicate an increase in the population density of developing countries, which will be much higher in Africa than in other parts of the world. The population of Africa could represent 40% of the world's population in 2100 (UN 2007). In addition, there is an explosive increase in the urban population in Africa, which could double from 2000 to 2030 (CIESIN 2005, 2012). A rapid development of mining, oil and industrial activities is also expected across the whole continent. New megacities are expected along the Gulf of Guinea with associated increases in traffic, energy and domestic emissions (Zhu *et al* 2013).

This paper discusses the first development of an inventory of African combustion emissions, which focuses on the emissions of particles, i.e. black carbon (BC) and organic carbon (OC), and gaseous compounds, namely carbon monoxide (CO), nitrogen oxides (NO_x), sulfur dioxide (SO₂) and non-methane hydrocarbons (NMHC). The inventory provides emissions for 2005, and three scenarios are considered for the 2005–2030 period. The inventory considers emissions that are specific to Africa, such as charcoal making and emissions from two-wheeled vehicles as described in Assamoi and Liousse (2010). The methodology used to develop the inventory is discussed in section 1 including choices of fuel consumption database and emission factors (EFs). Section 2 discusses the major results of this work.

1. Methodology

Fossil fuel and biofuel emissions of the different species were calculated for Africa using a bottom-up approach, based on the method discussed in Junker and Liousse (2008), by combining fuel consumption (in kg of fuel) and emission factors (in g of species/kg of fuel). Consumptions for 25 fuel categories were derived from many databases. Twelve EFs have been chosen for each type of fuel, depending on fuel use (traffic (T)/domestic (D)/industrial (I)/power plant (PPLT)) and on three technological categories (1, basic; 2, intermediate; 3, advanced). These technological categories refer to the level of country development. Category 1 corresponds to developing countries, category 2 to semi-developed countries and category 3 to industrialized countries. The group of developed countries is composed of the members of the Organisation for Economic Co-operation and Development (OECD) in 1984. The African countries are mainly listed as semi-developed and developing countries. The distinction between such countries is based on the gross national product per capita. Finally, emissions obtained for each country were spatially distributed using population density data given by CIESIN (2005) for the year 2005 with a spatial resolution of 0.25° by 0.25°.

1.1. Fuel consumption data

1.1.1. Consumption data in 2005. Data on the consumption of fossil fuels by traffic, domestic and industrial activities were obtained from questionnaires which were sent to local authorities in each African country. About 50% of the countries responded (questionnaires were sent to 26 countries and 11 were returned). When no data were received, we used fuel consumption data from the UNSTAT database United Nation Energy Statistics database (2004). These figures are based on fuel production, import and export data provided to UNSTAT by national statistical offices. The Assamoi and Liousse (2010) inventory was used to represent the emissions from two-wheeled vehicles with mixtures of smuggled gasoline from Nigeria and motor oil. Data on fossil fuel and biofuel consumption by power plants were obtained from the International Energy Agency database (IEA 2005, www.iea.org/stats/). In west Africa, data on the consumption of fuelwood and charcoal for domestic purposes were calculated following Brocard (1996) and Liousse *et al* (1996), using an average value of the biofuel consumption per inhabitant for the 2005 population data whereas the UNSTAT database was used for the other African regions. The UNSTAT database was also used for consumption of biofuel in the traffic and industrial sectors. Note that charcoal-making emissions were calculated following Liousse *et al* (1996).

1.1.2. Consumption data in 2030. Data on the consumption of fossil fuels and biofuels in 2030, especially ratios between 2030 and 2002 fuel consumption data, were obtained from the POLES (prospective outlook on long-term energy systems) model (Criqui 2001). The POLES model is a world simulation model for the energy sector. It works on a year-by-year recursive simulation basis with a partial equilibrium framework,

together with endogenous international energy prices and lagged adjustments for supply and demand by world region. This model produces:

- detailed long-term (2030) world energy outlooks for demand, supply and price projections by region;
- CO₂ emission marginal abatement cost curves by region and emission trading systems analyses, under different market configurations and trading rules;
- technology improvement scenarios and analyses of the impact of technological progress in the context of CO₂ abatement policies.

The POLES model provides actual and forecast fuel consumption by sector for the years 2002 and 2030 for 24 countries and 14 regions. In Africa, three regions are considered: North African fuel producers, North African non-fuel producers and sub-Saharan African regions. POLES differentiates between 21 different fuel types for two main future scenarios, the 'reference' scenario (REF), and the 'carbon constraint case' scenario (CCC).

Reference scenario. The REF scenario is assumed to reflect the state of the world in a 'business and technical change as usual' perspective, only driven by fundamental economics.

*carbon constraint case (CCC and CCC**) scenarios.* The CCC scenario is defined through the introduction of carbon penalties differentiated within the main world regions and time horizons. The carbon emissions are determined so that they reflect regional differences following the implementation of the Kyoto targets for 2010, in order to achieve a global reduction of about 10 GtC (i.e. 37 Gt of CO₂) by 2030, when compared with the reference case (European Commission Directorate General for Research, 2003).

The CCC* scenario is obtained from the CCC scenario by adding African-specific regulations implemented to obtain a strong reduction of emissions resulting from incomplete combustion. These regulations target vehicles and animal waste. First, two-stroke vehicles are assumed to be replaced by more efficient four-stroke vehicles, resulting in a decrease in the EFs for CO, OC, BC and NMHC and an EF increase for CO₂ and NO_x. Second, the combustion of animal waste is assumed to be replaced by the combustion of vegetal waste, which has lower EFs for CO, OC and NMHC, but higher EFs for BC, CO₂ and NO_x. Finally, in the CCC* scenario, South Africa was ranked as a semi-developed country rather than in the sub-Saharan group and fuel consumption in South Africa was therefore expected to decrease. In the group of semi-developed countries the ratio between 2030 and 2002 fuel consumptions is lower than in the developing country group.

1.1.3. African emissions from 2005 to 2030. The consumption data for the three inventories (REF, CCC and CCC*) for the year 2030 were derived from the 2005 African data described in section 1.1.1 and from the ratios between 2030 and 2002 fuel consumption data for the different sectors given by the POLES model. Briefly, our 'country and sector specific' fuel consumptions for the year 2005 were multiplied by the corresponding 'region and sector specific' ratios given by the

POLES model. Such a combination implies a few assumptions. For example, 21 fuel types are included in POLES, while we consider 25 types in the regional dataset. For the missing fuel categories in POLES, data for similar fuel types (solid/liquid, activity, etc) were selected. The present year for POLES is 2002 against 2005 in our regional inventory. In those calculations, no evolutions were considered between the 2002 and 2005 fuel consumption data.

1.2. Emission factors

Table 1 displays the values of the EFs selected for the different species and the different combinations of fuel/sector and usage/technology categories.

BC and OC. The values of the EFs for BC and OC from motor gasoline and diesel oil were taken from developing country data of Junker and Liousse (2008). Note that traffic sector values reflect the fact that the total number of African vehicles includes a high proportion of old cars. Data on hard coal in the domestic sector, brown coal, fuelwood, vegetal waste and charcoal burning are also taken from Junker and Liousse (2008). EFs from hard coal in the industrial sector were set to 0.15 g kg⁻¹, 0.30 g kg⁻¹ and 1.1 g kg⁻¹, respectively, for developed, semi-developed and developing countries, according to recent literature (e.g. Lamarque *et al* 2010). EFs for two-wheeled vehicles are taken from Assamoi and Liousse (2010), based on both the literature and new measurements performed during the AMMA campaign in Cotonou (Guinot *et al* 2014). EFs for charcoal making and animal waste are taken from previous publications (Lacaux *et al* 1994, Brocard 1996, Liousse *et al* 1996, Venkataraman and Uma Maheswara Rao 2001, Keene *et al* 2006, Christian *et al* 2007, Habib *et al* 2008, Akagi *et al* 2011). The BC and OC EFs from coal in the power plant sector in developed countries are taken directly from Bond *et al* (2004), whereas the EFs from diesel, motor gasoline, biofuel and brown coal were estimated from our EF values in the industrial sector and the ratios of power plant to industrial sectors given in Bond *et al* (2004) (e.g. a ratio of 10 for liquid fuels, 7 for biofuel, 2.3 for brown coal). In semi-developed countries, EFs were obtained by scaling values typical for developed countries with the ratios between the semi-developed and the developed country EFs of the industrial sector. The same method was applied for developing countries.

CO, NO_x, SO₂ and NMHC. EF for CO, NO_x, SO₂ and NMHC species for developed countries were obtained from several publications. Animal waste EFs have been assumed to be similar to the EF from charcoal making for the domestic sector. This assumption has been confirmed by a literature survey Zhang *et al* (1999), Bhattacharya *et al* (2000), Venkataraman and Uma Maheswara Rao (2001), Pennise *et al* (2001), Habib *et al* (2004), Keene *et al* (2006), Christian *et al* (2007, 2010), Akagi *et al* (2011). CO, NO_x and NMHC EFs for semi-developed and developing countries have been estimated from the values used for developed countries by applying the same methodology as for BC particles. SO₂ EFs were generally kept constant between developed, semi-developed and developing countries, except for motor gasoline and diesel

Table 1. Emission factors for BC, OC, CO, NO_x, SO₂ and NMHC for motor gasoline (MO), diesel (DL), two-wheeled vehicles (TW), hard coal (CL), fuelwood (FW), charcoal making (CHM) and animal waste (AW) combustions. Key: 3, for developed countries; 2, for semi-developed countries; 1, for developing countries; T, traffic sector; D, domestic sector; I, industrial sector; PPLT, power plant sector.

Fuel/country	Sectors	BC	OC	CO	NO _x	SO ₂	NMHC
		gC/kg (dm)	gC/kg (dm)	gCO/kg (dm)	gNO ₂ /kg (dm)	gSO ₂ /kg (dm)	gNMHC/kg (dm)
MO							
1/2	T	0.15	0.73	300.00	19.50	2.36	34.00
3	T	0.03	0.07	150 ^b	9.76 ^b	0.47 ^a	17 ^a
1/2	D	0.15	0.73	116.00	9.10	2.80	16.80
3	D	0.03	0.07	58 ^b	4.55 ^b	2.80 ^a	8.41 ^a
1/2	I	0.15	0.73	116.00	9.10	2.80	16.80
3	I	0.03	0.07	58 ^b	4.55 ^b	2.80 ^a	8.41 ^a
1/2	PPLT	0.02	0.07	1.40	14.00	11.00	0.08
3	PPLT	0.003	0.007	0.70 ^e	7 ^e	11 ^e	0.04 ^e
DL							
1	T	5.00	2.50	37.00	34.40	0.72	10.85
2	T	2.00	1.00	14.80	13.76	0.29	4.34
3	T	1.00	0.50	7.40 ^b	6.88 ^b	0.14 ^a	2.17 ^a
1	D	0.35	0.25	1.20	16.50	28.50	0.65
2	D	0.09	0.07	0.31	4.30	28.50	0.17
3	D	0.07	0.05	0.24 ^a	3.30 ^a	28.50 ^a	0.13 ^a
1	I	1.00	0.75	13.32	16.65	23.40	4.00
2	I	0.28	0.21	5.80	7.25	23.40	1.74
3	I	0.20	0.15	4 ^a	5 ^a	23.40 ^a	1.20 ^a
1	PPLT	0.10	0.08	4.00	26.50	23.40	0.20
2	PPLT	0.03	0.02	1.12	7.42	23.40	0.06
3	PPLT	0.02	0.02	0.80 ^e	5.30 ^e	23.40 ^e	0.04 ^e
TW							
1/2	T	2.31	30.56	558.00	2.20	0.01	312.00
3	T	0.28	7.36	279 ^a	1.09 ^a	0.01 ^a	156 ^a
CL							
1/2	D	2.28	4.77	73.80	3.31	14.00	2.79
3	D	1.39	2.92	45 ^a	2.02 ^a	14 ^a	1.70 ^a
1	I	1.10	1.10	30.34	54.35	19.00	0.37
2	I	0.30	0.30	8.20	14.69	19.00	0.10
3	I	0.15	0.15	4.10 ^a	7.34 ^a	19 ^a	0.05 ^a
1/2	PPLT	0.08	0.08	0.61	9.79	9.50	0.04
3	PPLT	0.04	0.04	0.30 ^a	4.83 ^a	9.50 ^e	0.02 ^a
FW							
1	D	0.90	2.70	75.60	1.33	0.20	8.76
2/3	D	0.75	2.25	63 ^c	1.10 ^{a,d,c}	0.20 ^d	7.30 ^d
1	I	0.72	2.16	8.16	3.67	0.75	1.50
2/3	I	0.60	1.80	6.80 ^c	3.06 ^{a,c}	0.75 ^d	1.25 ^a
1	PPLT	0.10	0.31	9.22	5.39	0.32	0.26
2/3	PPLT	0.09	0.26	7.70 ^e	4.50 ^e	0.32 ^e	0.22 ^e
CHM							
1/2/3	D	0.51	4.76	69 ^d	0.07 ^d	0.01 ^d	12 ^d
AW							
1/2/3	D	1.00	12.50	69.00	0.07	0.01	12.00
1/2/3	I	1.00	12.50	69.00	0.07	0.01	12.00
1/2/3	PPLT	0.14	1.79	9.80	0.01	0.001	1.70

^a www.aeat.co.uk/netcen/airqual/naei/annreport/annrep96/app2_1.htm#SECT3.3.

^b www.ipcc-nggip.iges.or.jp/public/gl/guidelin/ch1ref4.pdf.

^c www.transport.govt.nz/business/multimodal/environment/vehicle/hapinz/28.php.

^d Andreae and Merlet (2001).

^e www.epa.gov/ttn/chief/ap42/ch01/index.html.

used in the traffic sectors, due to different sulfur contents in fuels in different countries.

The projected EFs for all fuels in the three scenarios REF, CCC and CCC** have been defined as follows:

- For the REF scenario, EFs are assumed equal to present values.
- For the CCC scenario, EFs in semi-developed countries are equal to present EFs in developed countries. EFs in developing countries are equal to present values of semi-developed countries.
- For the CCC* scenario, EFs are the same as in the CCC scenario, except for

- * animal waste—EFs are replaced by fuelwood/vegetal waste EFs;
- * two-wheeled vehicles are substituted by vehicles with four wheels—EF for BC, OC, CO, NO_x, SO₂ and NMHC are taken as 0.6, 3.8, 266, 4.03, 0.01 and 28.5 g/kg (dm), following <http://naei.defra.gov.uk/>.

2. Results

2.1. African emissions: a considerable increase in the absence of regulations

Figures 1(a) and (b) and table 2 display the African emissions of BC, OC, CO, NO_x, SO₂ and NMHC obtained for 2005 and for the three 2030 scenarios discussed in the previous section. A considerable increase is observed between 2005 and 2030 for BC and OC emissions. BC emissions increase by factors of about 4, 3 and 2 from 2005 to 2030 for the REF, CCC and CCC* scenarios, respectively. OC emissions increase by a factor of 3 between 2005 and 2030 for the REF and CCC scenarios and by a factor of 1.5 for the CCC* scenario. We can note that CCC scenario has an impact on reducing BC emissions whereas no impact is noticed on OC emissions. These changes in BC and OC between the REF and the CCC scenario are closely linked to the choice of EFs in the different scenarios. Predominant emissions in the BC class are related to use of diesel fuels, animal waste, fuelwood, charcoal making and coal. There is a general increase in 2030 emissions for the REF scenario for all these fuels. The mitigation options proposed in the CCC and CCC* scenarios by decreasing EF values have an important impact on BC emissions from the use of diesel and coal, which drive the total BC decrease.

OC emissions are mostly impacted by animal waste, charcoal making, fuelwood and two-wheeled vehicle fuels. As noticed in figures 1(a) and (b), the REF and CCC scenarios provide rather similar emissions, since the EFs for these fuels considered in the inventories are not changed between the two scenarios. However, the assumption of replacing two-wheeled by four-wheeled vehicles and animal waste by vegetal waste (which reduce the corresponding EFs) has a significant impact on OC emissions in the CCC* scenario. A sensitivity test has been conducted to quantify the impact of eliminating charcoal making. In this case, BC and OC emissions in the CCC* scenario would decrease by 19 and 50%, respectively. The OC

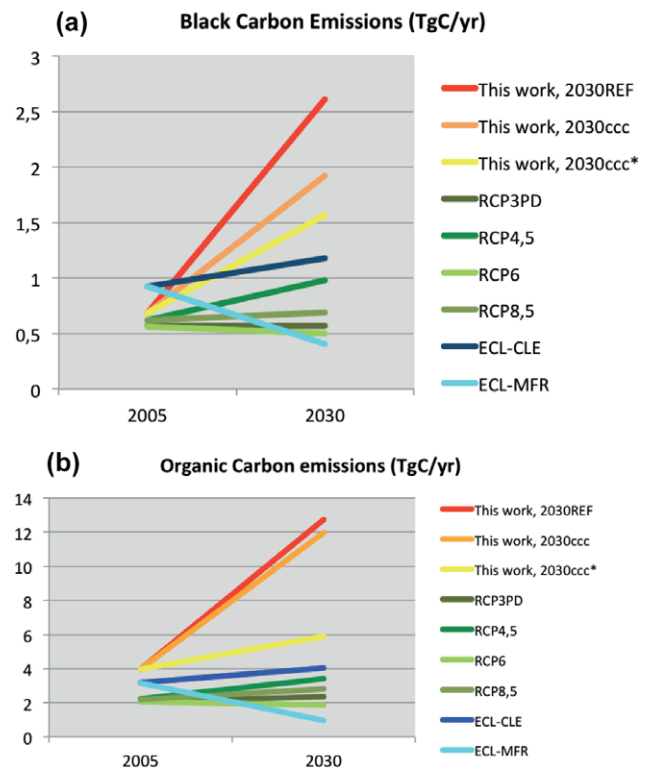


Figure 1. ((a), (b)) African anthropogenic combustion emissions of BC and OC in 2005 and 2030.

emission trend from 2005 to 2030 would then be reversed. These calculations emphasize the important role of the choice of the EFs and of type of energy source for mitigating BC and OC emissions in Africa.

The same features are observed for the emissions of the gaseous compounds (table 2). CO and NMHC emissions increase by a factor of about 3 between 2005 and 2030, while emissions of NO_x and SO₂ increase by a factor of about 6. Reductions in the CCC scenario compared with the REF scenario are negligible in the case of SO₂ emissions and of the order of 10% for CO and NMHC, as well as for OC emissions. NO_x emissions decrease by about 46%, as well as BC emissions. Decreases in the CCC* scenario compared with the REF scenario are of the order of 20, 35, 55 and 65% for CO, NMHC, SO₂ and NO_x, respectively. These variations also emphasize the important role of EF mitigation.

The evolution of the BC/OC ratio between the 2030 REF (BC/OC = 21%), the 2030 CCC (BC/OC = 16%) and the 2030 CCC* scenarios (BC/OC = 27%) have noticeable consequences. In the 2030 CCC* scenario, i.e. the ‘perfect’ scenario leading to an OC emission decrease, the relative abundance of BC in the combustion aerosol mixture would increase. Therefore, better air quality could be expected with the CCC* scenario, but the absorption properties of the new aerosol mixture could be increased due to a relative increase of BC. This needs to be quantified.

2.2. Regional features

Figure 2 shows the regional distributions of OC emissions in Africa for the two extreme scenarios, i.e. REF and CCC*.

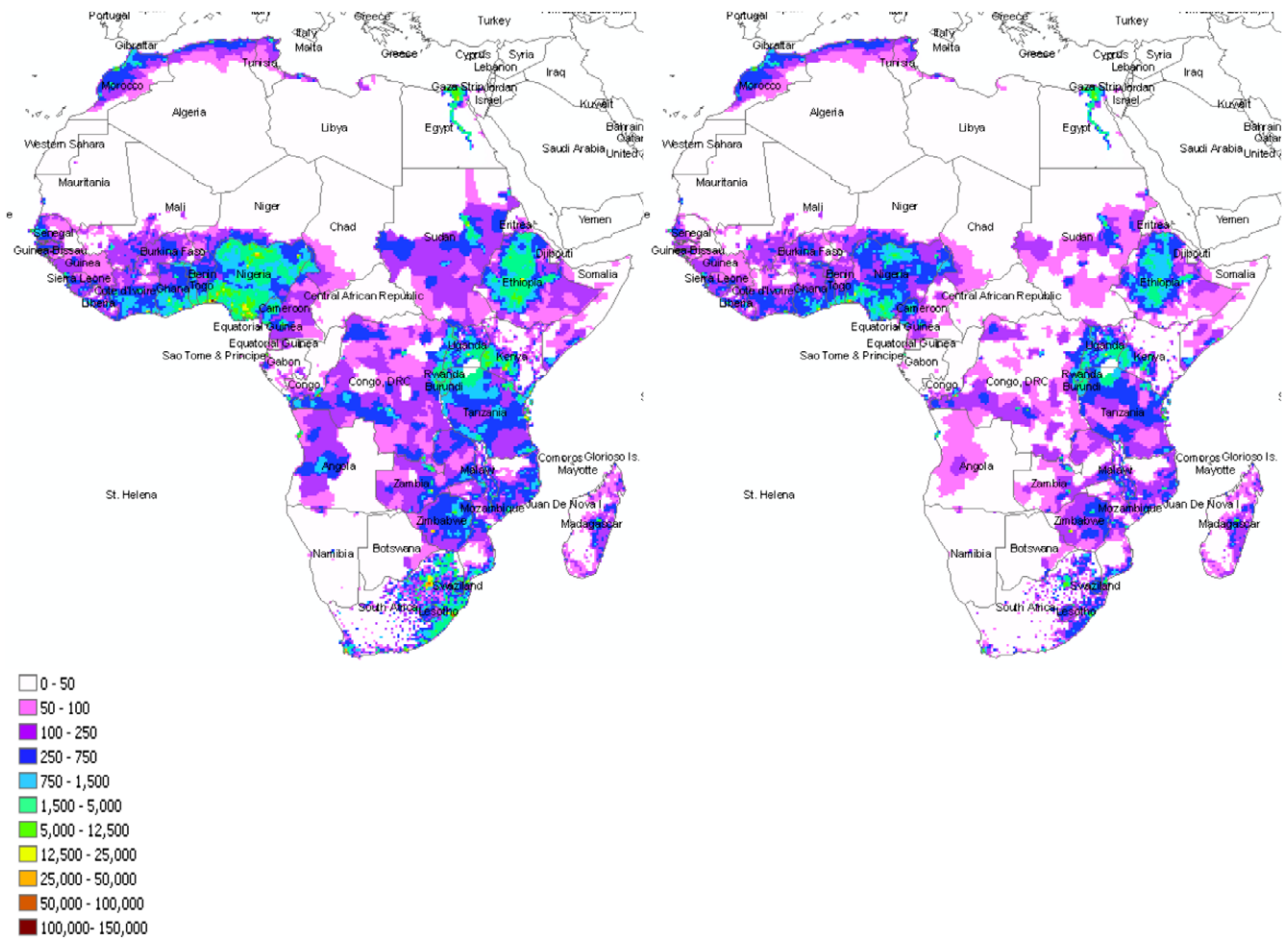


Figure 2. Spatial distribution of anthropogenic combustion emissions of OC in tons of C/year in Africa in the 2030 REF (left) and 2030 CCC* (right) scenarios.

Table 2. African anthropogenic combustion emissions of CO, NO_x, SO₂ and NMHC in 2005 and 2030. (Note: Emissions of NO_x are in TgNO₂/year.)

Tg species/year	CO 2005	CO 2030	NO _x 2005	NO _x 2030	SO ₂ 2005	SO ₂ 2030	NMHC 2005	NMHC 2030
This work, ref	58.6	189.4	5.8	32.6	4.0	26.0	8.6	29.3
This work, 2030 CCC		166.8		17.6		25.8		26.4
This work, 2030 CCC*		145.1		11.3		11.8		19.1
RCP 3PD	86.6	96.1	4.0	4.1	6.5	6.1	15.1	17.2
RCP 4.5	97.6	151.8	4.2	6.5	7.0	10.9	16.2	24.1
RCP 6	81.6	62.4	3.7	3.1	5.9	4.8	15.6	15.6
RCP 8.5	94.8	129.4	4.1	6.0	6.4	7.2	17.0	23.1
ECL–CLE	75.9	87.9	3.3	3.8	5.4	3.5	21.4	25.1
ECL–MFR		27.8		1.0		1.6		

Emissions are maximum in western Africa (45 and 39% of the total African emissions for REF and CCC* scenarios, respectively) with very high values obtained for Nigeria. In eastern Africa, emissions represent 24% and 29% of the total African emissions for REF and CCC* scenarios, respectively, with maximum values for Ethiopia and Kenya, whereas in South Africa the corresponding figures are 26% and 22%. Northern Africa contributes 5% and 9% to the total African emissions for REF and CCC* scenarios, respectively. BC, CO and NHMC emissions are also maximum in western Africa.

They present very high values in southern Africa, eastern Africa and northern Africa in the REF scenario, and in eastern Africa, southern Africa and northern Africa in the CCC* scenario. Regional distributions of NO_x and SO₂ emissions are distributions for the different countries. They are maximum in southern Africa, and also very large in western Africa, northern Africa and eastern Africa for the REF and the CCC* scenarios. As previously described, these regional variations result from the choice of the EF values, combined with regional specificities for different sectors and fuels. Western Africa has

large emissions in the domestic and traffic sectors for BC, OC, CO, NO_x and NMHC species. In southern Africa, domestic and traffic sectors are predominant for BC, OC, CO and NMHC, whereas power plant and industrial sectors provide large SO₂ and NO_x emissions. The domestic sector is important in eastern African for all species. The traffic sector dominates in northern Africa, except for SO₂, with are larger emissions from the power plant sector, and OC from the domestic sector. The importance of the emissions among the different countries provides information on how emissions could be mitigated for different species and regions. In western and eastern Africa, action on biofuels would be the most efficient way to decrease domestic emissions of BC, OC, CO and NMHC, not to mention the decrease in the use of two-wheeled vehicles. In southern Africa, action on coal would be the most efficient way to decrease industrial and power plant emissions. Regulations on the use of diesel fuels would be useful in all regions to decrease traffic emissions.

2.3. Comparison with other global inventories

A detailed comparison has been made between emissions provided by this regional inventory and African emissions provided by the most recent global inventories for the years 2005 and 2030. To our knowledge, no other regional African inventories are currently available. The comparisons discussed in this section focus only on Africa. In figures 1(a) and (b), the total BC and OC emissions from the four representative concentration pathways (RCP) scenarios (3PD, 4.5, 6 and 8.5) and from the ECLIPSE (CLE and MFR) dataset (www.eccad.sedoo.fr) are added to the emissions discussed previously.

- The RCP projections of future emissions (van Vuuren *et al* 2011a) are based on the outcomes of four independent modeling teams (NIES/AIM, IIASA/MESSAGE, PNNL/MiniCAM, and PBL/IMAGE). Each of them (RCP 3PD, van Vuuren *et al* 2007; RCP 4.5, Clarke *et al* 2007; RCP 6, Fujino *et al* 2006; RCP 8.5, Riahi *et al* 2007) applied a set of algorithms to ensure consistency with the 2000 ACCMIP historical emission inventory (Lamarque *et al* 2010).
- ECLIPSE V4a is the global emission dataset developed with the GAINS model for the period 2005–2030 by the International Institute for Applied Systems Analysis (IIASA) (Höglund-Isaksson 2012, Klimont *et al* 2013, 2014a, 2014b). The emission calculation for 2005 includes respective information on activity data, environmental legislation, production and abatement technology characteristics, etc. ECLIPSE provides two scenarios for the year 2030: (1) the baseline scenario emissions (CLE scenario) as the current legislation case (CLE) where existing legislation is implemented but there are no assumptions made as to how such legislation can develop further in the coming decades; (2) the MFR (maximum feasible reduction) scenario where best available technology is applied to all source sectors.

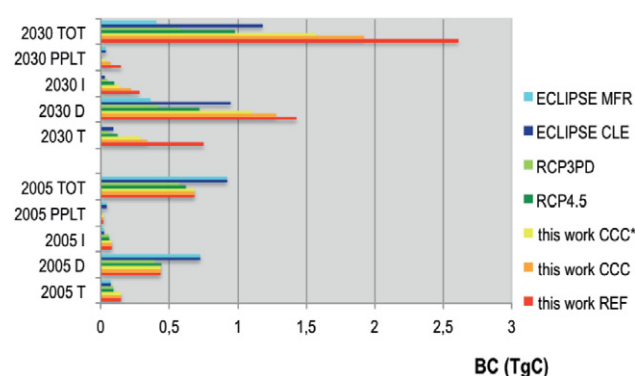


Figure 3. African anthropogenic combustion emissions of BC by sector of usage (T, traffic; D, domestic; I, industrial; PPLT, powerplant) in 2005 and 2030.

First, a comparison of available data on consumption of oil and coal fuels from 2000 to 2030 at global scale has been done between the POLES model (Criqui 2001) and RCP inventories (van Vuuren *et al* 2011b). There is a similar order of increases for the best scenarios (1.3–1.7 for coal and 1 for oil) and the worst scenarios (2.5–3 for coal and 1–2 for oil) for each database.

In 2005, POLES BC emissions shown in figure 1 are similar to those from the RCP inventories. BC emissions from the ECLIPSE dataset are 30% higher. As shown in figure 3, which displays a detailed comparison of BC emissions sector by sector, this difference is due to higher domestic BC emissions in the ECLIPSE CLE inventory. In 2030, RCPs and ECLIPSE show lower BC emissions in the future than in our scenarios. The smallest difference (25%) is obtained between the CCC* scenario and ECLIPSE CLE scenario. Domestic and traffic BC emissions are higher in our inventories than in the others.

Estimates of OC emissions disagree among the datasets in 2005. The highest value (4 TgC) is obtained in our inventory, whereas RCP shows the lowest value (2 TgC), and ECLIPSE CLE (3 TgC) lies in the middle. The difference is mainly due to the relative importance of domestic OC emissions, which are higher in our inventory than in the others. In 2030, there is a very large difference (a factor of 2–10) between our REF and CCC inventories and the rest of the estimates including the CCC* inventory. Such differences are mainly due to domestic and industrial emissions. The CCC* inventory, which assumes the replacement of all ‘dirty’ biofuels by cleaner fuels, for example, has the best agreement with the other scenarios. The slope of our CCC* scenario is roughly the same as that from the RCP 4.5 scenario.

The same differences are observed for the emissions of gaseous compounds, as shown in table 2, which gives African emissions for all the datasets considered. In 2005, our estimates for the emissions of CO, SO₂ and NMHC species are 30–50% lower than estimates from RCPs and ECLIPSE but are about 30% higher for NO_x. In 2030, our estimates are generally higher than the others, and are very close to the RCP 4.5 scenario, except for NMHC for which all estimates are similar.

This comparison shows that there are marked differences between our inventory and African emissions provided by

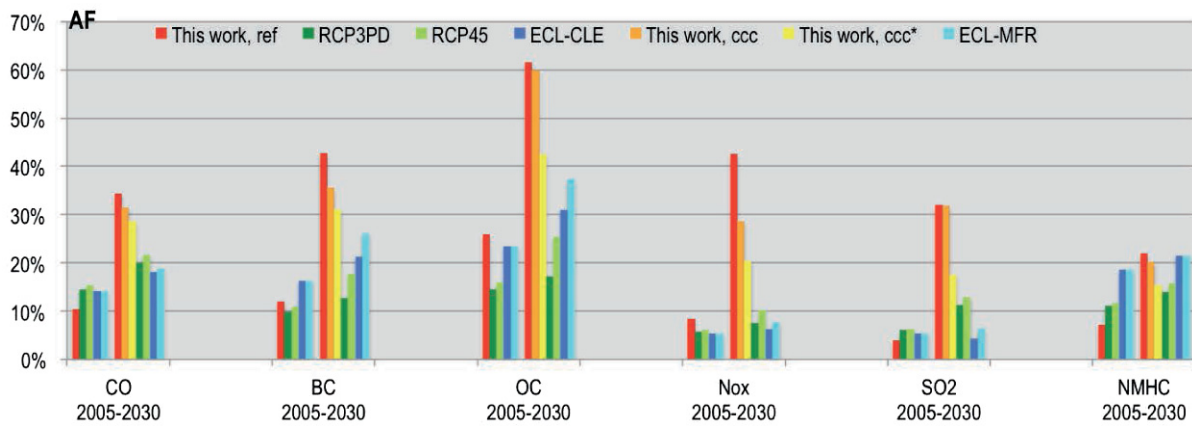


Figure 4. African relative contribution (AF) to the global total combustion emissions (GE). AF was calculated as follows: $AF = AFE/GE$ where AFE is the total of our African emission inventory and GE is combustion emissions at global scale, $GE = (GE - AFE(RCP, ECL)) + AFE$ where AFE (RCP, ECL) and GE are, respectively, the average of African combustion emissions and the average of combustion emissions at global scale in the RCP and ECL inventories.

global inventories, though the values are of the same order in some cases. Differences result from the regional specificities for Africa that we introduced in our study. Our study also demonstrates the importance of a good knowledge of the EFs: there is therefore an urgent need for accurate measurements of the EFs in each country, specifically for biofuel emissions, since only a few measurements are available for Africa.

2.4. African combustion emissions: the worldwide importance

Figure 4 shows the relative contribution of African combustion emissions to global combustion emissions, for particle and gas emissions for the years 2005 and 2030. As detailed in the legend, this contribution was estimated through a comparison between the regional emissions for Africa, and global totals from the RCPs and ECLIPSE inventories.

In 2005, the contribution from Africa to the total global emissions amounted to about 5% for SO₂ and NO_x, to 20% for OC, and of the order of 10% for CO, BC and NMHC. In 2030, the African contribution significantly increases for all species, for all the inventories. The highest increase is clearly observed for our regional African inventory. For example, in 2030, African OC will represent 54% on average of the global anthropogenic combustion emissions, and NMHC, CO, BC, NO_x and SO₂ will contribute to 20–30% of the total. The ECLIPSE MFR scenario also displays high contributions (close to our CCC* scenario) for BC (25%) and OC (37%). For NMHC, the regional and global inventories are similar. It is also important to mention that African emission contributions are sensitive to the different scenarios: the relative contribution of African OC decreases from 60% to 40% between the REF and the CCC* scenarios.

We have also compared the African anthropogenic combustion inventories with biomass burning emissions in Africa. In 2005, the biomass burning emissions for all species (Liousse *et al* 2010) were greater than the anthropogenic emissions estimated with our new regional anthropogenic inventories. However, in 2030, the estimated anthropogenic emissions are expected to equal the biomass burning estimates (e.g. biomass

burning BC emissions are 2.1 TgC in the AMMA biomass burning inventory (Liousse *et al* 2010) compared with the 2030 range of 1.6–2.6 TgC for anthropogenic combustion estimates).

3. Conclusions

We have developed an inventory of African emissions for the year 2005, and quantified the emissions in 2030 for three different scenarios. This study has shown that the 2005 African emissions made a significant contribution to the global emissions in 2005. These emissions will increase further, and could represent about 50% of the global emissions of organic carbon in 2030. A considerable increase in emissions from Africa is then expected in 2030 if no regulations are implemented. This work highlights the possible effectiveness of regulations, and their impact on future decreases in emissions and their worldwide importance. We have furthermore evaluated mitigation efforts to reduce African combustion emissions (e.g. replacement of two-wheeled vehicles, decreased in charcoal making and reduction in the burning of animal waste).

We have defined an integrative inventory taking into account both particles and gases using the same methodology. This ensures that the evaluation of the impact of emissions regulations will be consistent among the different species considered, for the specific conditions found in African regions and for different types of sources. In southern Africa, for example, the optimal way to reduce CO, OC, NMHC and BC emissions could concentrate on biofuel combustion whereas mitigation of coal combustion will mainly decrease SO₂ and NO_x emissions.

This comparison shows that there are marked differences between our inventory and African emissions provided by global inventories, with a few agreements. This work has demonstrated the urgent need to consider African anthropogenic emissions at regional scales.

African anthropogenic emissions require more detailed studies: the uncertainties in the estimates of emissions remain

large, and cannot currently be assessed due to the lack of adequate data. Measurements of emission factors and of fuel consumption are required; for example, an accurate quantification of the number of vehicles in each African country is needed. Other sources are still largely unknown, such as the emissions from flaring of waste gas from natural gas extraction in Nigerian platforms.

To conclude, more data on anthropogenic emissions in Africa will be crucial for estimating their impact on climate change and health.

References

- Akagi S K, Yokelson R J, Wiedinmyer C, Alvarado M J, Reid J S, Karl T, Crouse J D and Wennberg P O 2011 Emission factors for open and domestic biomass burning for use in atmospheric models *Atmos. Chem. Phys.* **11** 4039–72
- Andreae M O and Merlet P 2001 Emission of trace gases and aerosols from biomass burning *Global Biogeochem. Cycles* **15** 955–66
- Assamoi E M and Liousse C 2010 A new inventory for two-wheel vehicle emissions in West Africa for 2002 *Atmos. Environ.* **44** 3985–96
- Bhattacharya S C, Abdul Salam P and Sharma M 2000 Emissions from biomass energy use in some selected Asian countries *Energy* **25** 169–88
- Bond T C, Streets D G, Yarber K F, Nelson S M, Woo J H and Klimont Z 2004 A technology-based global inventory of black and organic carbon emissions from combustion *J. Geophys. Res.* **109** D14203
- Brocard D 1996 Emissions atmosphériques des combustions domestiques: étude des processus et détermination des sources à l'échelle régionale et globale en Afrique *PhD* Université Paul Sabatier, Toulouse
- CIESIN (Center for International Earth Science Information Network) 2005 SEDAC, Socioeconomic Data and Applications Center, FAO, United Nations Food and Agriculture Programme, CIAT, Centro Internacional de Agricultura Tropical, Gridded Population of the World: future estimates, GPWFE. Available from: <http://sedac.ciesin.columbia.edu/gpw/>
- CIESIN 2012 World population prospects, the 2012 revision <http://esa.un.org/unpd/index.htm>
- Christian T J, Yokelson R J, Cardenas B, Molina L T, Engling G and Hsu S-C 2010 Trace gas and particle emissions from domestic and industrial biofuel use and garbage burning in central Mexico *Atmos. Chem. Phys.* **10** 565–84
- Christian T J, Yokelson R J, Carvalho J A Jr, Griffith D W T, Alvarado E C, Santos J C, Neto T G S, Gurgel Veras C A and Hao W M 2007 The tropical forest and fire emissions experiment: trace gases emitted by smoldering logs and dung from deforestation and pasture fires in Brazil *J. Geophys. Res.* **112** D18
- Clarke L, Edmonds J, Jacoby H, Pitcher H, Reilly J and Richels R 2007 Scenarios of Greenhouse Gas Emissions and Atmospheric Concentrations (part A) and Review of Integrated Scenario Development and Application (part B), *A Report by the US Climate Change Science Program and the Subcommittee on Global Change Research*: pp 1–164
- Criqui P 2001 Prospective outlook on long-term energy systems (POLES). www.upmf-grenoble.fr/iepe
- Delmas R A et al 1999 Experiment for regional sources and sinks of oxidants (EXPRESSO): an overview: experiment for regional sources and sinks of oxidants (EXPRESSO) *J. Geophys. Res.* **104** 30609–24
- Doumbia T, Liousse C, Ndiaye A, Galy-Lacaux C, Diop B, Yoboué V, Gardrat E, Castera P and Sigha L 2012 Real time black carbon measurements in West Africa urban sites *Atmos. Environ.* **54** 529–37
- Fujino J, Nair R, Kainuma M, Masui T and Matsuoka Y 2006 Multi-gas mitigation analysis on stabilization scenarios using aim global model *Intergovernmental Panel on Climate Change* 132 pp Multi-Greenhouse Gas Mitigation and Climate Policy, issue Special Issue (3), pp 343–354
- Goldammer J G (ed) 1990 *Fire in the Tropical Biota. Ecosystem Processes and Global Challenges (Ecological Studies vol 84)* (Berlin: Springer) p 497
- Granier C et al 2011 Evolution of anthropogenic and biomass burning emissions of air pollutants at global and regional scales during the 1980–2010 period *Clim. Change* **109** 163–90
- Guinot B et al 2014 New emission factor estimates for biofuels and mobile sources *Atmos. Environ.* submitted
- Habib G, Venkataraman C, Bond T C and Schauer J J 2008 Chemical, microphysical and optical properties of primary particles from the combustion of biomass fuels *Environ. Sci. Technol.* **42** 8829–34
- Habib G, Venkataraman C, Srivastava M, Banerjee R, Stehr J W and Dickerson R R 2004 New methodology for estimating biofuel consumption for cooking: atmospheric emissions of black carbon and sulphur dioxide from India *Global Biogeochem. Cycles* **18** GB3007
- Haywood J M et al 2008 Overview of the dust and biomass-burning experiment and African monsoon multidisciplinary analysis special observing period-0 *J. Geophys. Res.* **113** D00C17
- Höglund-Isaksson L 2012 Global anthropogenic methane emissions 2005–2030: technical mitigation potentials and costs *Atmos. Chem. Phys.* **12** 9079–96
- IEA (International Energy Agency) 2005 *Energy Statistics of Non-OECD Countries* Paris. Available from: www.iea.org/stats/
- Junker C and Liousse C 2008 A global emission inventory of carbonaceous aerosol from historic records of fossil fuel and biofuel consumption for the period 1860–1997 *Atmos. Chem. Phys.* **8** 1–13
- Keene W C, Lobert J M, Crutzen P J, Maben J R, Scharffe D H, Landmann T, Hely C and Brain C 2006 Emissions of major gaseous and particulate species during experimental burns of southern African biomass *J. Geophys. Res.* **111** D04301
- Klimont Z et al 2009 Projections of SO₂, NO_x and carbonaceous aerosol emissions in Asia *Tellus* **61B** 602–17
- Klimont Z, Kupiainen K, Heyes Ch, Purohit P, Cofala J, Rafaj P and Schoepp W 2014a Global anthropogenic emissions of particulate matter, in preparation
- Klimont et al 2014b Global scenarios of air pollutants: 2000–2050, in preparation
- Klimont Z, Smith S J and Cofala J 2013 The last decade of global anthropogenic sulphur dioxide: 2000–2011 emissions *Environ. Res. Lett.* **8** 014003
- Lacaux J P, Brocard D, Lacaux C, Delams R, Brou A, Yoboué V and Koffi M 1994 Traditional charcoal making: an important source of atmospheric pollution in the African tropics *Atmos. Res.* **35** 71–6
- Lacaux J P, Brustet J M, Delmas R, Menaut J C, Abbadie L, Bonsang B, Cachier H, Baudet J, Andreae M O and Helas G 1995 Biomass burning in the tropical savannas of Ivory Coast: an overview of the field experiment fire of savannas (FOS/DECAFE 91) *J. Atmos. Chem.* **22** 195–216
- Lamarque J-F et al 2010 Historical (1850–2000) gridded anthropogenic and biomass burning emissions of reactive gases

- and aerosols: methodology and application *Atmos. Chem. Phys.* **10** 7017–39
- Liousse C and Galy-Lacaux 2010 *Pollution urbaine en Afrique de l'Ouest La Météorol.* No 71 doi:10.4267/2042/37377
- Liousse C et al 2010 Updated African biomass burning emission inventories in the frame of the AMMA-IDAF program, with an evaluation of combustion aerosols *Atmos. Chem. Phys.* **10** 7347–82
- Liousse C, Penner J E, Chuang C, Walton J J, Eddleman H and Cachier H 1996 A global three-dimensional model study of carbonaceous aerosols *J. Geophys. Res.* **101** 19411–32
- Malavelle F, Pont V, Mallet M, Solmon F, Johnson B, Leon J and Liousse C 2011 Simulation of aerosol radiative effects over West Africa during DABEX and AMMA SOP-0 *J. Geophys. Res.* **116** D18
- Mari C H et al 2010 Atmospheric composition of West Africa: highlights from the AMMA international program *Atmos. Sci. Lett.* **12** 13–8
- Marticorena B, Haywood J, Coe H, Formenti P, Liousse C, Mallet M and Pelon J 2010 Tropospheric aerosols over West Africa: highlights from the AMMA international program *Atmos. Sci. Lett.* **12** 19–23
- Pennise D M, Smith K R, Kithinji J P, Rezende M E, Raad T J, Zhang J and Fan C 2001 Emissions of greenhouse gases and other airborne pollutants from charcoal making in Kenya and Brazil *J. Geophys. Res.-Atmos.* **106** 24143–55
- Riahi K, Grübler A and Nakicenovic N 2007 Scenarios of long-term socio-economic and environmental development under climate stabilization *Technol. Forecast. Soc. Change* **74** 887–935
- Smith S J, Van Ardenne J, Klimont Z, Andres R J, Volke A and Delgado Arias S 2011 Anthropogenic sulphur dioxide emissions: 1850–2005 *Atmos. Chem. Phys.* **11** 1101–16
- Streets D G, Bond T C, Lee T and Jang C 2004 On the future of carbonaceous aerosol emissions *J. Geophys. Res.* **109** D24212
- Swap R J, Annegarn H J, Suttles J T, King M D, Platnick S, Privette J L and Scholes R J 2003 Africa burning: a thematic analysis of the Southern African regional science initiative (SAFARI 2000) *J. Geophys. Res.* **108** 8465
- Thompson A M, Witte J C, Hudson R D, Guo H, Herman J R and Fujiwara M 2001 Tropical tropospheric ozone and biomass burning *Science* **291** 2218–132
- UN (United Nations) 2004 World Population Prospects, 2004. Energy Statistics Database
- UN (United Nations) 2007 Population Division
- Val S, Liousse C, Doumbia E H T, Galy-Lacaux C, Cachier H, Marchand N, Badel A, Gardrat E, Sylvestre A and Baeza-Squiban A 2013 Physico-chemical characterization of African urban aerosols (Bamako in Mali and Dakar in Senegal) and their toxic effects in human bronchial epithelial cells: description of a worrying situation *Part. Fibre Toxicol.* **10** 10
- van Vuuren D, den Elzen M, Lucas P, Eickhout B, Strengers B, van Ruijven B, Wonink S and van Houdt R 2007 Stabilizing greenhouse gas concentrations at low levels: an assessment of reduction strategies and costs *Clim. Change* **81** 119–59
- van Vuuren D P et al 2011b The representative concentration pathways: an overview *Clim. Change* **109** 5–31
- van Vuuren D P, Edmonds J A, Kainuma M, Riahi K and Weyant J 2011a A special issue on the RCPs *Clim. Change* **109** 1–4
- Venkataraman C and Uma Maheswara Rao G 2001 Emission factors of carbon monoxide and size-resolved aerosols from biofuel combustion *Environ. Sci. Technol.* **35** 2100–7
- Zhang J, Smith K R, Uma R, Ma Y, Kishore V V N, Lata K, Khalil M A K, Rasmussen R A and Thorneloe S T 1999 Carbon monoxide from cookstoves in developing countries: 1. Emission factors *Chemosphere: Global Change Sci.* **1** 353–66
- Zhu T, Melamed M L, Parrish D, Gauss M, Gallardo Klenner L, Lawrence M, Konare A and Liousse C 2013 WMO/IGAC *Impacts of Megacities on Air Pollution and Climate, GAW Report No 205*, WMO edn, p 1–314