



HAL
open science

Natural History of Cardiac and Respiratory Involvement, Prognosis and Predictive Factors for Long-Term Survival in Adult Patients with Limb Girdle Muscular Dystrophies Type 2C and 2D

Abdallah Fayssol, Adam Ognà, Cendrine Chaffaut, Sylvie Chevret, Raquel Guimarães-Costa, France Leturcq, Karim Wahbi, Helene Prigent, Frederic Lofaso, Olivier Nardi, et al.

► To cite this version:

Abdallah Fayssol, Adam Ognà, Cendrine Chaffaut, Sylvie Chevret, Raquel Guimarães-Costa, et al.. Natural History of Cardiac and Respiratory Involvement, Prognosis and Predictive Factors for Long-Term Survival in Adult Patients with Limb Girdle Muscular Dystrophies Type 2C and 2D. PLoS ONE, 2016, 11 (4), pp.e0153095. 10.1371/journal.pone.0153095 . hal-01323875

HAL Id: hal-01323875

<https://hal.sorbonne-universite.fr/hal-01323875>

Submitted on 31 May 2016

HAL is a multi-disciplinary open access archive for the deposit and dissemination of scientific research documents, whether they are published or not. The documents may come from teaching and research institutions in France or abroad, or from public or private research centers.

L'archive ouverte pluridisciplinaire **HAL**, est destinée au dépôt et à la diffusion de documents scientifiques de niveau recherche, publiés ou non, émanant des établissements d'enseignement et de recherche français ou étrangers, des laboratoires publics ou privés.



Distributed under a Creative Commons Attribution 4.0 International License

RESEARCH ARTICLE

Natural History of Cardiac and Respiratory Involvement, Prognosis and Predictive Factors for Long-Term Survival in Adult Patients with Limb Girdle Muscular Dystrophies Type 2C and 2D

Abdallah Fayssol^{1,2,3*}, Adam Ogna^{1,2}, Cendrine Chaffaut⁴, Sylvie Chevret⁴, Raquel Guimarães-Costa³, France Leturcq⁷, Karim Wahbi⁶, Helene Prigent⁵, Frederic Lofaso⁵, Olivier Nardi¹, Bernard Clair¹, Anthony Behin³, Tanya Stojkovic³, Pascal Laforet³, David Orlikowski^{1,2}, Djillali Annane¹



OPEN ACCESS

Citation: Fayssol A, Ogna A, Chaffaut C, Chevret S, Guimarães-Costa R, Leturcq F, et al. (2016) Natural History of Cardiac and Respiratory Involvement, Prognosis and Predictive Factors for Long-Term Survival in Adult Patients with Limb Girdle Muscular Dystrophies Type 2C and 2D. *PLoS ONE* 11(4): e0153095. doi:10.1371/journal.pone.0153095

Editor: John Lynn Jefferies, Cincinnati Children's Hospital Medical Center, UNITED STATES

Received: January 28, 2016

Accepted: March 23, 2016

Published: April 27, 2016

Copyright: © 2016 Fayssol et al. This is an open access article distributed under the terms of the [Creative Commons Attribution License](https://creativecommons.org/licenses/by/4.0/), which permits unrestricted use, distribution, and reproduction in any medium, provided the original author and source are credited.

Data Availability Statement: All relevant data are within the manuscript. Original data are managed by the biostatistics department (SBIM) at Saint Louis Hospital, Paris, France.

Funding: The authors have no support or funding to report.

Competing Interests: The authors have declared that no competing interests exist.

1 Service de Réanimation médicale et unité de ventilation à domicile, centre de référence neuromusculaire GNHM, CHU Raymond Poincaré, APHP, Université de Versailles Saint Quentin en Yvelines, Garches, France, **2** Centre d'Investigation clinique et Innovation technologique CIC 14.29, INSERM, Garches, France, **3** Institut de Myologie, CHU Pitié Salpêtrière, Centre de référence neuro musculaire Paris Est, Université Pierre et Marie Curie Paris VI, Paris, France, **4** SBIM, CHU Saint Louis, APHP, Université Paris Diderot, Paris, France, **5** Service de Physiologie - Exploration fonctionnelles, CHU Raymond Poincaré, APHP, Université de Versailles saint Quentin en Yvelines, Garches, France, **6** Service de cardiologie, Hôpital Cochin, APHP, Université Paris Descartes-Sorbonne Paris Cité, Paris, France, **7** Laboratoire de biochimie et génétique moléculaire, hôpital Cochin, AP-HP, université Paris Descartes-Sorbonne Paris Cité, Paris, France

* abdallah.fayssol@aphp.fr

Abstract

Background

Type 2C and 2D limb girdle muscular dystrophies (LGMD) are a group of autosomal recessive limb girdle muscular dystrophies manifested by proximal myopathy, impaired respiratory muscle function and cardiomyopathy. The correlation and the prognostic impact of respiratory and heart impairment are poorly described. We aimed to describe the long-term cardiac and respiratory follow-up of these patients and to determine predictive factors of cardio-respiratory events and mortality in LGMD 2C and 2D.

Methods

We reviewed the charts of 34 LGMD patients, followed from 2005 to 2015, to obtain echocardiographic, respiratory function and sleep recording data. We considered respiratory events (acute respiratory failure, pulmonary sepsis, atelectasis or pneumothorax), cardiac events (acute heart failure, significant cardiac arrhythmia or conduction block, ischemic stroke) and mortality as outcomes of interest for the present analysis.

Results

A total of 21 patients had type 2C LGMD and 13 patients had type 2D. Median age was 30 years [IQR 24–38]. At baseline, median pulmonary vital capacity (VC) was 31% of predicted value [20–40]. Median maximal inspiratory pressure (MIP) was 31 cmH₂O [IQR 20.25–39.75]. Median maximal expiratory pressure (MEP) was 30 cm H₂O [20–36]. Median left ventricular ejection fraction (LVEF) was 55% [45–64] with 38% of patients with LVEF <50%. Over a median follow-up of 6 years, we observed 38% respiratory events, 14% cardiac events and 20% mortality. Among baseline characteristics, LVEF and left ventricular end diastolic diameter (LVEDD) were associated with mortality, whilst respiratory parameters (VC, MIP, MEP) and the need for home mechanical ventilation (HMV) were associated with respiratory events.

Conclusion

In our cohort of severely respiratory impaired type 2C and 2D LGMD, respiratory morbidity was high. Cardiac dysfunction was frequent in particular in LGMD 2C and had an impact on long-term mortality.

Trial Registration

ClinicalTrials.gov [NCT02501083](https://clinicaltrials.gov/ct2/show/study/NCT02501083)

Introduction

Type 2C and 2D limb girdle muscular dystrophies (LGMD) are autosomal recessive muscular dystrophies that belong to the group of sarcoglycanopathies (SG). They are characterized by mutations in the genes encoding sarcoglycans. Mutations in *gamma*-sarcoglycan (SGCC gene) [1] and *alpha*-sarcoglycan (SGCA gene) [2] are responsible for LGMD 2C and LGMD 2D respectively. Sarcoglycans belong to a group of proteins associated with dystrophin (dystrophin associated glycoprotein, DAG). The DAG complex gives structural stability to the muscle fiber, linking dystrophin with the plasma membrane of muscle cells and the extracellular matrix [3]. The loss or reduction of sarcoglycans' function results in the destabilization of the DAG complex, and may be related to development of muscular dystrophy. The related impact on respiratory function and the presence of cardiomyopathy are associated with reduced life expectancy, particularly in Duchenne muscular dystrophy (DMD) [4] where respiratory failure is a leading cause of morbidity and mortality [5]. Sleep-related breathing disorders (SRBD) have also frequently been observed in DMD and may affect disease prognosis [6,7].

Clinical presentation of LGMD is diverse but usually shows predominant proximal weakness. Cardiac involvement, ranging from electrocardiographic (ECG) abnormalities to dilated cardiomyopathy (DCM), has been reported in 17% to 50% of patients with sarcoglycanopathies (SG) [8,9]. The involvement of striated muscles may also result in an impaired respiratory muscle function [10]. Patients with 2C and 2D LGMD seem to have a greater respiratory impairment than other sarcoglycanopathies [10]. Long-term noninvasive ventilation (NIV) has resulted in improved survival for patients with muscular dystrophy [11]. However, the evolution of respiratory and heart function in muscular dystrophy patients, as well as their respective impact on prognosis, has been poorly described.

The aims of the study conducted in a group of 34 LGMD 2C and 2D patients followed-up for a maximum of 10 years were to describe the long-term follow-up of their cardiac and respiratory function, to assess the eventual association between cardiac and respiratory impairment and to establish long-term survival rate and predictive factors of cardiac and respiratory events and of mortality in 2C and 2D LGMD.

Methods

Study design

We retrospectively reviewed the charts of all LGMD 2C and 2D followed at the Home Mechanical Ventilation Unit of the Raymond Poincaré University Hospital, a tertiary neuromuscular center (Garches, France). Neuromuscular patients are seen in the unit at least yearly to monitor their respiratory function.

We included all adult patients (>18 years) with genetically confirmed 2C or 2D LGMD. These patients were addressed to the unit for assessment and management of respiratory function because of a suspected respiratory impairment. For each patient, we collected echocardiographic results, respiratory function, sleep recording and outcome data. The initial visit in the unit that includes both a respiratory and an echocardiographic assessment was considered the baseline for the present study.

The study was performed in compliance with the ethical principles formulated in the declaration of Helsinki and was approved by the *comité de protection des personnes* and the *commission nationale de l'informatique et des libertés*. The study was registered in ClinicalTrials.gov (identifier: NCT02501083).

Genetic tests

SGCA and SGCC gene analyses for mutation identification were performed using direct sequencing or multiplex quantitative fluorescent PCR (QF-PCR) of genomic DNA extracted from whole blood using standard procedures.

Cardiac function

Echocardiography was performed with a Siemens CV70 device. Echocardiographic measurements were made and interpreted according to the guidelines published by the American Society of Echocardiography [12] by two experienced cardiologists (AF and ON). Patients with LVEF <50% were considered to have left ventricular systolic dysfunction [13].

Respiratory Function and Nocturnal Sleep Recording

A pulmonary function testing system (Vmax 229, SensorMedics, Yorba Linda, California) was used to make the spirometric-static measurements of vital capacity (VC), according to standard guidelines [14]. For the measurement of maximal inspiratory pressure (MIP) at the residual volume and maximal expiratory pressure (MEP) at total lung capacity, patients breathed into a mouthpiece connected to a manometer. The maneuvers were repeated at least three times or until two identical readings were obtained. For each maneuver, the best result was kept for the study [15].

From the routinely performed daytime arterial or arterialized capillary blood gases, we recorded diurnal carbon dioxide tension (pCO₂) and bicarbonate. The results of nocturnal oximetry, performed with a Covidien Nellcor oximeter were also collected (percentage of sleep time with oxygen saturation SaO₂ <90%). We also recorded apnea hypopnea index (AHI) from the first available polysomnography after the initial visit.

Outcomes

We considered respiratory events, cardiac events and mortality as outcomes of interest for the present analysis. Cardiac events were defined as the onset of either acute heart failure syndrome (AHF), cardiac arrhythmia (atrial fibrillation, atrial flutter, ventricular tachycardia, and ventricular fibrillation), significant conduction block (atrioventricular block type II or III, sino atrial block type III) or ischemic stroke. The diagnosis of arrhythmia or conduction block was confirmed by a cardiologist (AF or ON) reviewing the original documents.

Respiratory events were defined as the onset of pulmonary sepsis, acute respiratory failure (ARF), atelectasis or pneumothorax.

For each outcome, only the first occurrence was considered. As a part of the routine follow-up, neuromuscular disease patients are contacted at least annually to plan their follow-up visit in our unit and to record vital status. During each visit, details of intercurrent hospitalizations are systematically collected in the medical charts.

Statistical Analysis

Continuous variables were described by median \pm interquartile range (IQR) and compared by Wilcoxon Rank Sum test; dichotomous or categorical variables were described by number of subjects and percentage and compared by Fisher's exact test. The associations between respiratory and cardiac continuous parameters were explored by the nonparametric Spearman's correlation coefficient. Survival curves were estimated by the Kaplan-Meier method and then compared by the log-rank test; univariable Cox models allowed to estimate the strength of association based on the hazard ratio (HR). Statistical analysis was performed using R[®] (<http://www.r-project.org/>).

Results

A total of 34 patients were included in our study: 21 (62%) had LGMD 2C and 13 (38%) had LGMD 2D.

Age ranged from 20 years to 48 years with a median age of 30 years; median age of ambulation loss was 15 years [14–21]. Baseline characteristics of the population are detailed in [Table 1](#) (percentages were calculated separately in each group of patients).

SGCA and SGCC Gene Analysis

Two SGCC mutations were found. All patients with LGMD 2C had the homozygous mutation Del525T in exon 6 except 2 patients who were carrying the homozygous mutation C283Y in exon 8. The following mutations were found in LGMD 2D patients (gene SGCA): homozygous R77C (4/14 patients, homozygous IVS1+3A> T (3/14 patients), R77C/K252Vfs*8 (2/14 patients), R98H and V75A (2 patients/14), R77C+R74W (1 patient), R98H/IVS7-1G> T (1 patient).

Respiratory and Cardiac Function

Included patients had severe restrictive respiratory defects with a median [IQR] pulmonary vital capacity (VC) of 31% [20–40] of predicted capacity. About 35% of the patients were on home mechanical ventilation at the initial visit, mostly non-invasive (3 patients ventilated by tracheostomy) ([Table 1](#)). A total of 13 out of 34 patients (38%) had left ventricular systolic dysfunction. LV dysfunction was mild (LVEF 40–50%) in 20.5% of patients, moderate (LVEF 30–40%) in 8.8% and severe (LVEF<30%) in 8.8% of patients.

Table 1. Characteristics of the study population.

	All	LGMD 2D	LGMD 2C	P value
N	34 (100%)	13 (38.23%)	21 (61.77%)	
Age (y)	30 [24; 38]	30 [25; 40]	27 [23; 37]	0.27
Male gender	20 (58.82%)	7 (53.85%)	13 (61.9%)	0.73
Age of ambulation loss (y)	15 [14; 21]	15 [14; 20.25]	15 [13; 21]	0.50
Pre-albumin (mg/dl)	0.24 [0.22; 0.33]	0.23 [0.22; 0.33]	0.25 [0.22; 0.32]	0.95
Respiratory function				
VC (ml)	1140 [850; 1820]	1110 [530; 1500]	1175 [850; 1842]	0.33
VC (% pred)	31 [20; 39.75]	28 [19; 40]	33 [23; 39]	0.62
MIP (cmH2O)	31 [20.25; 39.75]	27 [11.25; 41.5]	33.5 [21.75; 38.25]	0.81
MEP (cmH2O)	30.5 [20.25; 35.75]	30.5 [23.75; 42.75]	30.5 [19.75; 35.25]	0.77
HMV	12 (35.29%)	5 (38.46%)	7 (33.33%)	1.00
Tracheostomy	3 (8.82%)	1 (7.69%)	2 (9.52%)	1.00
Diurnal pCO2 (kPa)	5.75 [5.42; 6.27]	5.7 [5.34; 6.05]	5.75 [5.57; 6.34]	0.36
Diurnal bicarbonates (mmol/l)	26.9 [25.4; 28.6]	26.7 [25.75; 28.45]	26.9 [25.4; 28.9]	0.96
AHI	7.7 [3.5; 19]	11.4 [6.2; 15.2]	4 [4; 19]	0.88
Nocturnal SatO2<90%—(% of the recording time)	1 [0; 1.5]	1 [0; 1]	1 [1; 1.87]	0.26
Cardiac function				
LVEF (%)	55 [45; 64]	63 [57; 65]	48.5 [42.25; 58.5]	0.014
LVEDD (mm)	41.5 [37.25; 47.25]	39[38; 42]	44 [37; 49]	0.37
ACE inhibitors	13(38.24%)	2 (15.38%)	11 (52.38%)	0.06
Beta-blockers	10 (29.41%)	0 (0%)	10 (47.62%)	
Sinus rhythm	34 (100%)	13 (100%)	21 (100%)	
HR (bpm)	88.5 [80; 93.75]	92 [86.75; 94.5]	86 [76.25; 90.5]	0.13

Values are expressed ad median [interquartile range] or number (proportion).

VC: pulmonary vital capacity (% pred: percent of the predicted value)

MIP: maximal inspiratory pressure

MEP: maximal expiratory pressure

HMV: home mechanical ventilation

AHI: apnea hypopnea index

SatO2: percentage of oxygen saturation

LVEF: left ventricular ejection fraction

LVEDD: left ventricular end diastolic diameter

ACE: angiotensin-converting enzyme

HR: heart rate

doi:10.1371/journal.pone.0153095.t001

When comparing patients with 2C and 2D LGMD, we observed no differences in respiratory function, whereas LGMD 2C patients showed more severe cardiac impairment (Table 1). We found no significant association between respiratory and cardiac function at baseline (p = 0.76 for the correlation between LVEF and VC).

A follow-up evaluation of LVEF was available for 18 patients after a median time of 77.8 months [IQR 49.2–88.7] months and showed a stable cardiac function over time. On the other hand, respiratory function deteriorated during the 65.6 months [IQR 46.3–80.7] follow-up for the 24 patients for which this information was available (Fig 1).

Twelve patients started HMV during their follow-up. At the end of the follow-up period, 24 patients (70%) were treated by HMV.

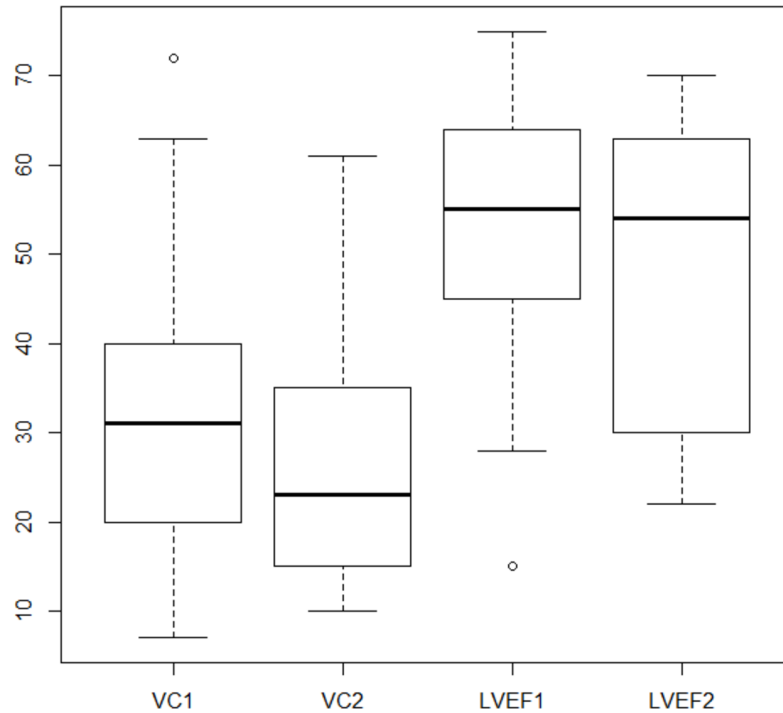


Fig 1. Evolution of respiratory vital capacity (VC) and left ventricular ejection fraction (LVEF) over the follow-up time. Follow up time was 65.6 [IQR 46.28; 80.68] months between VC1 and VC2 and 80.8 months [IQR 53.1; 89] months between LVEF1 and LVEF2. VC: pulmonary vital capacity. LVEF: left ventricular ejection fraction.

doi:10.1371/journal.pone.0153095.g001

Apnea Hypopnea Index

AHI was available only in 8 patients ranging from 1 to 38 without any differences in the 2 groups (p 0.88) (Table 1).

Long-term Outcomes and Predictors of Outcomes

Over a median follow-up of 6 years [IQR 41–96 months], we observed 13 respiratory events (38%), 5 cardiac events (15%) and 7 deaths (21%). A total of 16 patients (47%) experienced at least one of the 3 outcomes. The cumulative incidence of these outcomes during the follow up time is represented in Fig 2.

The Fig 3 shows the global survival curves of patients with LGM2D and 2C over time.

Among respiratory events, 13 patients (38%) experienced acute respiratory failure (ARF), 7 (20%) patients had pulmonary sepsis, 1 patient had atelectasis and 1 patient had pneumothorax.

Among cardiac events, 4 patients (12%) had acute heart failure (AHF) and 2 patients had ischemic stroke (6%). Respiratory parameters at baseline were significantly associated with the occurrence of respiratory events, with an OR of 0.93 (95% CI 0.87–0.99, p 0.008) for VC and an OR 6.80 (95% CI 1.4–32.4, p 0.025) for the need for HMV (Table 2). MIP and MEP were significantly associated with the occurrence of respiratory events with an OR of 0.93 (95%CI 0.87–1.00) for MIP and an OR 0.94 (95% CI 0.88–1.01) for MEP (Table 2).

The level of diurnal pCO₂ tended to be associated with the occurrence of respiratory events with an OR of 2.91 (95%CI 0.85–9.91). Diurnal bicarbonate level tended to be significantly associated with the occurrence of respiratory events with an OR of 1.41 (95% CI 0.99–2.00).

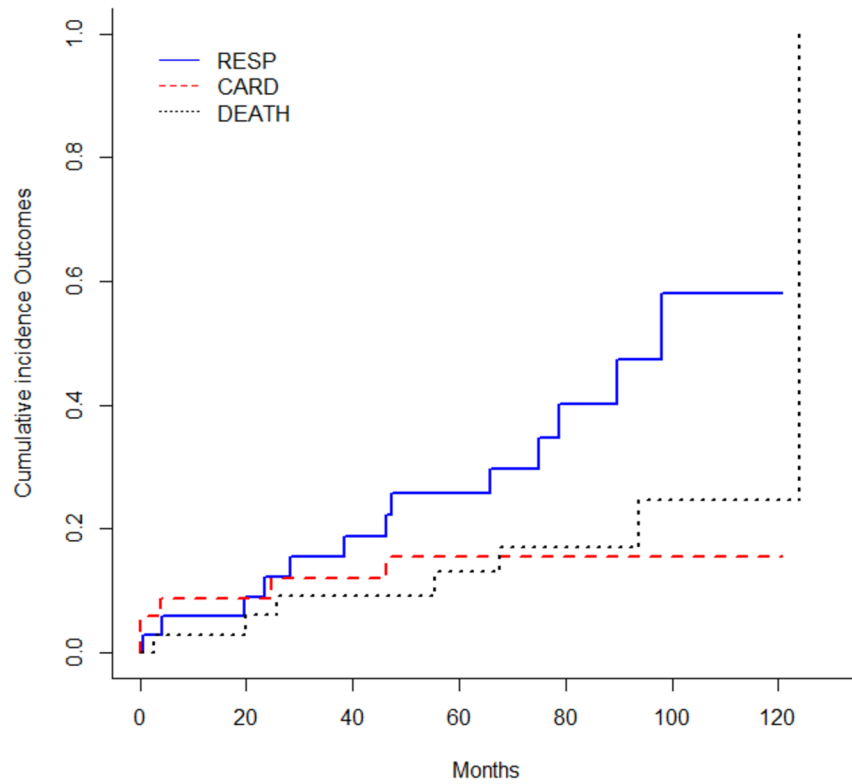


Fig 2. Cumulative incidence of the studied outcomes.

doi:10.1371/journal.pone.0153095.g002

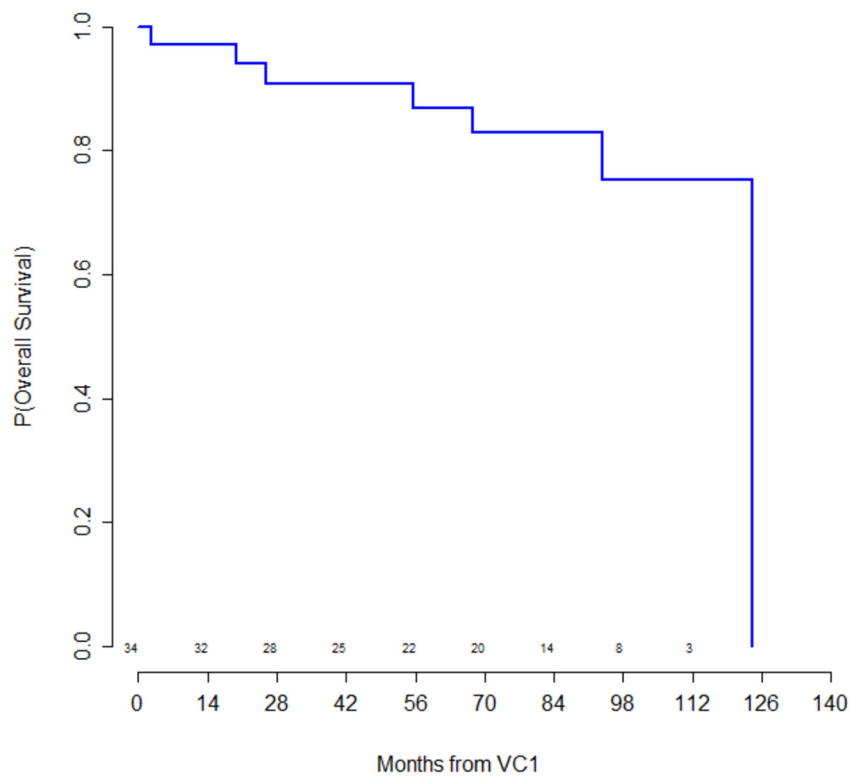


Fig 3. Global survival of the study population.

doi:10.1371/journal.pone.0153095.g003

Table 2. Factors associated with respiratory events.

Factors	No respiratory events (N = 21)	Respiratory events(N = 13)	P value
LGM 2D	33.33%	46.15%	0.49
Age (y)	25 [23; 38]	31 [30; 38]	0.17
Male gender	61.9%	53.85%	0.73
Age of ambulation loss (y)	14.5 [13.25; 20.5]	16 [14; 20.5]	0.83
Pre albumin (mg/dl)	0.24 [0.22; 0.31]	0.3 [0.22; 0.33]	0.50
Baseline VC (ml)	1630 [1125; 1985]	850 [590; 1010]	0.004
Baseline VC (%pred)	35 [26; 43]	20 [16; 28]	0.008
MIP (cmH2O)	37 [23; 40.5]	22 [14; 29.5]	0.047
MEP (cmH2O)	33 [23.5; 37.5]	25 [15; 30.5]	0.055
Diurnal pCO2 (kPa)	5.6 [4.97; 5.97]	6.2 [5.65;6.32]	0.08
Diurnal bicarbonate (mmol/l)	26.3 [25; 28.1]	28.3 [25.9; 29.6]	0.069
Nocturnal SatO2<90% (%)	1 [0; 1.25]	1 [0.25; 1.75]	0.77
HMV	19.05%	61.54%	0.025
Tracheostomy	4.76%	15.38%	0.54
LVEF (%)	55 [45; 64.25]	55[45; 64]	0.88
LVEDD (mm)	43 [38.25; 48]	40.5 [37; 45]	0.64

Values are expressed ad median [interquartile range] or number (proportion).

VC: pulmonary vital capacity

MIP: maximal inspiratory pressure

MEP: maximal expiratory pressure

SatO2: percentage of oxygen saturation

HMV: home mechanical ventilation

HR: heart rate

LVEF: left ventricular ejection fraction

LVEDD: left ventricular end diastolic diameter

doi:10.1371/journal.pone.0153095.t002

On the other hand, cardiac events were associated with LVEF at baseline (p 0.004), but not with respiratory parameters, excepted for the presence of tracheostomy (Table 3). Baseline HR did not predict the occurrence of cardiac events (Table 3).

Cardiac function at baseline with impaired LVEF (p 0.001) and left ventricular end diastolic diameter (LVEDD) were associated with mortality (p 0.05). No association was found between respiratory impairment and survival (Table 4 and Fig 4). We observed no differences in mortality between the types of sarcoglycanopathy.

Discussion

We describe the first available data on the association between cardiac and respiratory impairment in a cohort of 34 patients with 2C and 2D LGMD, followed in our reference center for a period of up to 10 years. We also described the evolution of their cardiac and respiratory function over time as well as the association between function reduction and disease prognosis.

Heart

In this study, left ventricular function was altered in 38% of patients. Patients with mutations in *gamma* sarcoglycan had more severe cardiac dysfunction than patients with *alpha* sarcoglycan mutations. This can be partially explained by the consequences of the related mutations

Table 3. Factors associated with cardiac events.

Factors	No cardiac events (n = 29)	Cardiac events (n = 5)	P value
LGM 2D	44.83%	0%	
Age (y)	30 [24; 39]	30 [23; 31]	0.53
Male gender (%)	41.38%	40%	1.00
Age of ambulation loss (y)	15 [14; 19]	18.5 [12.75; 23]	1.00
Pre-albumin (mg/dl)	0.24 [0.22; 0.33]	0.32 [0.23; 0.33]	1.00
Baseline VC (%pred)	1210 [850; 1820]	980 [690; 1358]	0.51
MIP (cmH2O)	33.5 [20.25; 40]	29.5 [24.25; 31.75]	0.52
MEP (cmH2O)	30.5 [21.25; 35.75]	26.5 [17; 37.5]	0.85
Diurnal pCO2 (kPa)	5.85 [5.5; 6.29]	5.2 [4.41; 5.82]	0.20
Diurnal bicarb (mmol/l)	26.9 [25.7; 28.6]	23.8 [21; 26.8]	0.19
Nocturnal SatO2<90% (%)	1[0; 1.37]	1[1; 5.5]	0.27
HMV	34.48%	40%	1.00
Tracheostomy	3.45%	40%	0.050
HR (bpm)	88 [80; 94]	89 [88.5; 90]	0.89
LVEF (%)	59 [48; 65]	30 [28; 40]	0.004
LVEF <55% (%)	42.86%	100%	0.04
LVEDD (mm)	40.5 [37; 45.75]	52.5 [48.25; 56.75]	0.15

Values are expressed ad median [interquartile range] or number (proportion).

VC: pulmonary vital capacity

MIP: maximal inspiratory pressure

MEP: maximal expiratory pressure

SatO2: percentage of oxygen saturation

HMV: home mechanical ventilation

HR: heart rate

LVEF: left ventricular ejection fraction

LVEDD: left ventricular end diastolic diameter

doi:10.1371/journal.pone.0153095.t003

[16]. SGCA are missense that still leads to protein synthesis, thus maintaining some sarcoglycan function, whereas mutations in SGCC are usually truncation without protein production [17]. Our results confirm the preliminary results of a previous study by our team [18], which included 19 patients with *alpha* and *gamma* sarcoglycanopathies. Left ventricular systolic dysfunction was observed in 30% of patients. Heart involvement has been previously reported in a few series of patients with sarcoglycanopathies [9,10,19]. A high prevalence of cardiac impairment (29% and 67%) has been reported in patients with respectively LGMD 2I and LGMD 2E, without correlation with age or skeletal muscle strength [20]. In a second study, cardiac involvement was reported in 63% of patients with LGMD type 2E [21]. Preclinical cardiomyopathy was present in 44% of patients with sarcoglycanopathies in an Italian study, where 2/20 patients (10%) had an initial dilated cardiomyopathy [10]. In a recent Dutch study, 17% out of the 24 assessed patients with sarcoglycanopathy showed dilated cardiomyopathy [8]. In our study, we observed a higher prevalence than the previously published studies. This may be related to the differences in disease duration as suggested from the differences in the median ages: 23 years for the Italian study, 25 years in the Dutch study and 30 years in our population. Acute ischemic stroke was found in 6% of our patients and was related to dilated cardiomyopathy. Little is known about this complication in LGMD [22]. These results highlight the need for potential preventive treatment in LGMD patients with severe heart failure.

Table 4. Factors associated with mortality.

Factors	Alive	Death	P value
LGM 2D	44.44%	14.29%	0.21
Age (y)	30 [24; 37.5]	31 [26.5; 41.5]	0.46
Male gender	55.56%	71.43%	0.67
Age of ambulation loss (y)	14.5 [13.75; 18.25]	23 [14; 23]	0.45
Pre albumin (mg/dl)	0.24 [0.22; 0.33]	0.33 [0.27; 0.37]	0.37
Baseline VC (% pred)	31 [21; 39.5]	35 [18; 40]	0.98
Baseline VC (ml)	1210[850; 1760]	1025 [842; 1718]	0.77
MIP (cmH2O)	33.5[20.75; 40.25]	29.5[14.75; 35.25]	0.36
MEP (cmH2O)	30.5 [20.5; 36.25]	30 [22.25; 32.5]	0.84
Diurnal pCO2 (kPa)	5.85 [5.5; 6.3]	5.2 [4.7; 5.8]	0.11
Diurnal bicarbonates (mmol/l)	26.9 [25.8; 28.5]	25.6 [22.6; 28.6]	0.35
Nocturnal SatO2<90% (%)	1 [0; 1]	1.25 [1; 3.6]	0.15
AHI	7.7 [2.5; 17.1]	11.5 [7.75; 15.25]	0.87
HMV	33.33%	42.86%	0.68
Tracheostomy	3.7%	28.57%	0.10
HR(bpm)	89 [80; 94]	84 [80; 89]	0.37
LVEF (%)	60 [49.25; 65]	40 [29; 45]	0.001
LVEF<55%	38.46%	100%	0.007
LVEDD(mm)	40[37; 44.5]	50 [47; 55.5]	0.055

Values are expressed ad median [interquartile range] or number (proportion).

VC: pulmonary vital capacity

MIP: maximal inspiratory pressure

MEP: maximal expiratory pressure

SatO2: percentage of oxygen saturation

HMV: home mechanical ventilation

HR: heart rate

LVEF: left ventricular ejection fraction

LVEDD: left ventricular end diastolic diameter

doi:10.1371/journal.pone.0153095.t004

Pulmonary and Sleep

The involvement of striated muscles impairment may result in reduced respiratory muscle function in patients with LGMD. Respiratory defects may be present early, particularly in LGMD 2I [23,24]. In our study all patients had a severe restrictive respiratory failure at the baseline visit, and 70% needed home mechanical ventilation at the end of the follow-up. This prevalence is remarkably higher than what described in the study by Politano *et al.* [10], in which a mild respiratory impairment was detected in 35% of patients and 12% showing severe respiratory failure. In the study by Poppe *et al.* [25], 36% of patients with LGMD 2I showed moderate respiratory impairment defined by a VC between 41% and 75%. Severe respiratory defects, defined by VC between 19% and 40%, was seen only in 8% of the patient despite a similar age profile than our population.

Major differences between the Italian and present study were the median age of the studied population, and the specificities of the recruitment centers: a cardiology department for the Italian study and a respiratory center for neuromuscular diseases in our study.

In our population, we found no association between the severity of the respiratory dysfunction and presence of cardiac defects. Not surprisingly, our study found a significant association

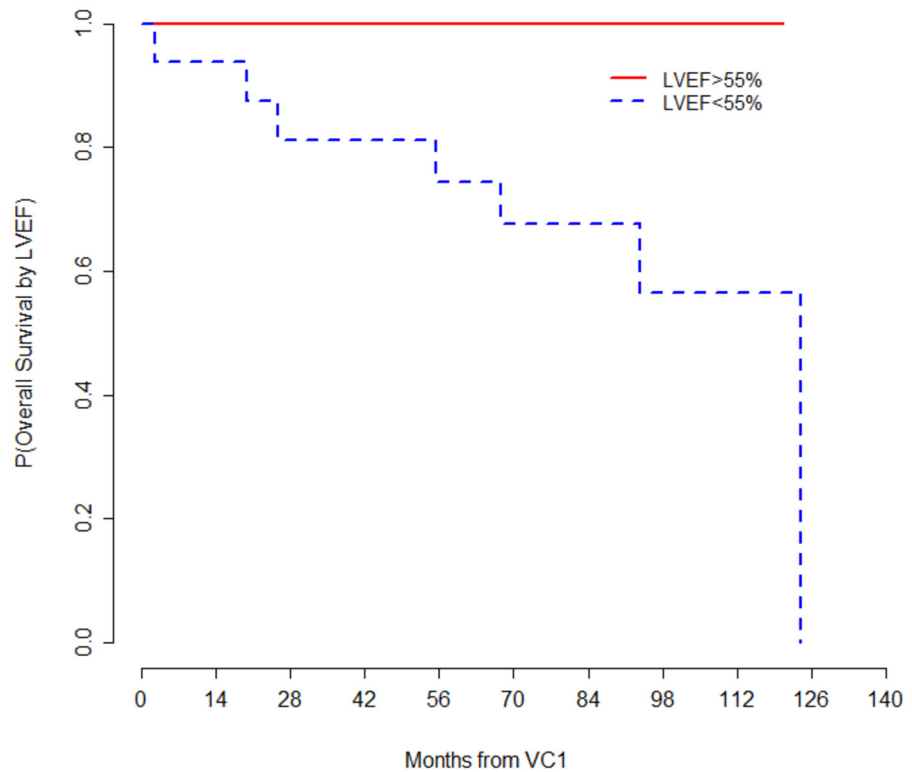


Fig 4. Mortality according to left ventricular function. Patients were divided in the two groups using the median value of LVEF (55%) as a cut-off.

doi:10.1371/journal.pone.0153095.g004

between the level of MIP, the level of MEP and the occurrence of respiratory events in LGMD. Indeed, MIP and MEP explore respiratory muscle strength. With expiratory muscle failure, patients are at risk of respiratory sepsis and failure because of the impairment of cough and respiratory airway clearance.

Neuromuscular diseases may be associated with ventilatory disturbances and sleep-related breathing disorders (SRBD) [26]. SRBD may be present early in the natural history of patients with DMD and occurred in 64% of patients in the study by Suresh *et al.* [6]. A moderate decrease of VC in patients with LGMD has been reported by Gigliotti *et al.* [27] with a good correlation between daytime pCO₂ and VC. Moreover, functional pulmonary tests may predict nocturnal hypoventilation [28,29]. In our study, we found few abnormal sleep recordings, which may be explained by the use of nocturnal noninvasive ventilation in a subset of the population. Our study found, however, a trend to a significant association between diurnal pCO₂ and respiratory events, as well as an association between VC and respiratory events. These results may suggest that respiratory and sleep evaluation should be performed systematically in LGDM. The ATS consensus statement recommends annual evaluation for sleep-disordered breathing in patients with DMD starting from the time they become wheel chair bounded and/or when clinically indicated [30]. This recommendation may be applied to 2C and 2D LGMD.

Prognosis and Mortality

Respiratory failure is a major cause of morbi-mortality in neuromuscular diseases [31] and was the main cause of death in DMD a few decades ago (up to 73% of patients in the study by Rideau *et al.*, published in 1983) [4]. Identifying prognostic factors is essential in patients with

neuromuscular disorders. However, no data exists to date for prognostic factors in 2C and 2D LGMD. A VC under 1000 ml, the presence of daytime hypercapnia and nocturnal hypoxemia have been previously described as mortality predictors in patients with Duchenne muscular dystrophy [32].

Left ventricular cardiac dysfunction has already been associated with mortality in 2I LGMD (23, 24). In our cohort, cardiac impairment was significantly associated with mortality. A LVEF <55% was associated with an increased mortality in 2C and 2D LGMD. On the other hand, respiratory defects were associated with respiratory events but not with mortality. This observation suggests that it could be possible to overcome acute respiratory failure episodes, which occurred in a relevant proportion of our patients, and thus reducing respiratory related mortality. This encouraging result could be explained by the efficacy of long-term respiratory support technics, which have already been shown to improve survival in other neuromuscular diseases [33,11,34,35]. Improved cardiology and respiratory management of neuromuscular disease patients has been associated with prolonged survival in DMD patients [36,37]. Kohler *et al.* [38] reported an 85% survival at 30 years in DMD patients. As a consequence of the improved respiratory management, cardiac failure has become the main cause of mortality in DMD. Bach *et al.* [39] reported 52% of cardiac mortality and 21% of respiratory mortality among patients with DMD. In our study, global mortality rate was 21% with half for primary cardiac causes, despite ACE inhibitors and beta-blocker regimens.

Limitations of the Study

Our study was mono-centric and retrospective and the results may be hampered by the limited sample size and the recruitment specificities of our unit. Future multi-centric studies may be helpful to better characterize the phenotype and prognosis of type 2C and 2D LGMD.

Conclusion

In our cohort of severely respiratory impaired LGMD 2C and 2D patients, we observed a 21% mortality rate. Significant respiratory events occurred in 38% of patients over a median follow-up of 6 years. Left ventricular dysfunction was observed in 38% of patients and was associated with mortality. Both cardiac failure and respiratory impairment seem to have an important prognostic impact on morbidity and mortality in LGMD 2C and 2D patients, but the evolution of these two systems seems not to be correlated. These results warrant the need for a multidisciplinary follow-up of LGMD patients, including cardiologists and pulmonologists. Based on our experience and on the presented data, we recommend a yearly respiratory function evaluation including a sleep study, as well as cardiac defects screening in order to introduce treatment for heart failure when LVEF declines.

Acknowledgments

To Henri LELEU, MD, PhD, Paris for the English relecture of the manuscript.

Author Contributions

Conceived and designed the experiments: AF AO DA. Performed the experiments: AF AO ON. Analyzed the data: CC SC AF AO DA. Contributed reagents/materials/analysis tools: AF AO RGC F. Leturcq HP AB TS PL F. Lofaso DO. Wrote the paper: AF AO RGC F. Leturcq KW BC PL DA.

References

1. Noguchi S, McNally EM, Ben Othmane K, Hagiwara Y, Mizuno Y, Yoshida M, et al. Mutations in the dystrophin-associated protein gamma-sarcoglycan in chromosome 13 muscular dystrophy. *Science*. 1995 Nov 3; 270(5237): 819–22. PMID: [7481775](#)
2. Roberds SL, Leturcq F, Allamand V, Piccolo F, Jeanpierre M, Anderson RD, et al. Missense mutations in the adhalin gene linked to autosomal recessive muscular dystrophy. *Cell*. 1994 Aug 26; 78(4):625–33. PMID: [8069911](#)
3. Sandonà D, Betto R. Sarcoglycanopathies: molecular pathogenesis and therapeutic prospects. *Expert Rev Mol Med*. 2009 Sep 28; 11:e28. doi: [10.1017/S1462399409001203](#) PMID: [19781108](#)
4. Rideau Y, Gatin G, Bach J, Gines G. Prolongation of life in Duchenne's muscular dystrophy. *Acta Neurol (Napoli)*. 1983 Apr; 5(2):118–24.
5. Nagai T. Prognostic evaluation of congestive heart failure in patients with Duchenne muscular dystrophy—retrospective study using non-invasive cardiac function tests. *Jpn Circ J*. 1989 May; 53(5):406–15. PMID: [2769928](#)
6. Suresh S, Wales P, Dakin C, Harris MA, Cooper DG. Sleep-related breathing disorder in Duchenne muscular dystrophy: disease spectrum in the paediatric population. *J Paediatr Child Health*. 2005 Sep-Oct; 41(9–10):500–3. PMID: [16150067](#)
7. Bourke SC, Gibson GJ. Sleep and breathing in neuromuscular disease. *Eur Respir J*. 2002 Jun; 19(6):1194–201. PMID: [12108875](#)
8. Schade van Westrum SM, Dekker LR, de Voogt WG, Wilde AA, Ginjaar IB, et al. Cardiac involvement in Dutch patients with sarcoglycanopathy: a cross-sectional cohort and follow-up study. *Muscle Nerve*. 2014 Dec; 50(6):909–13. doi: [10.1002/mus.24233](#) PMID: [24619517](#)
9. Fanin M, Melacini P, Boito C, Pegoraro E, Angelini C. LGMD2E patients risk developing dilated cardiomyopathy. *Neuromuscul Disord* 2003; 13:303–9. PMID: [12868499](#)
10. Politano L, Nigro V, Passamano L, Petretta V, Comi LI, Papparella S, et al. Evaluation of cardiac and respiratory involvement in sarcoglycanopathies. *Neuromuscul Disord*. 2001 Mar; 11(2):178–85. PMID: [11257475](#)
11. Simonds AK, Muntoni F, Heather S, Fielding S. Impact of nasal ventilation on survival in hypercapnic Duchenne muscular dystrophy. *Thorax*. 1998 Nov; 53(11):949–52. PMID: [10193393](#)
12. Cheitlin MD, Armstrong WF, Aurigemma GP, Beller GA, Bierman FZ, Davis JL, et al.; ACC/AHA/ASE. ACC/AHA/ASE 2003 Guideline Update for the Clinical Application of Echocardiography: summary article. A report of the American College of Cardiology/American Heart Association Task Force on Practice Guidelines (ACC/AHA/ASE Committee to Update the 1997 Guidelines for the Clinical Application of Echocardiography). *J Am Soc Echocardiogr*. 2003 Oct; 16(10):1091–110. PMID: [14566308](#)
13. McMurray JJ, Adamopoulos S, Anker SD, Auricchio A, Böhm M, Dickstein K, et al.; ESC Committee for Practice Guidelines. ESC Guidelines for the diagnosis and treatment of acute and chronic heart failure 2012: The Task Force for the Diagnosis and Treatment of Acute and Chronic Heart Failure 2012 of the European Society of Cardiology. Developed in collaboration with the Heart Failure Association (HFA) of the ESC. *Eur Heart J*. 2012 Jul; 33(14):1787–847. doi: [10.1093/eurheartj/ehs104](#) PMID: [22611136](#)
14. Miller MR, Hankinson J, Brusasco V, Burgos F, Casaburi R, Coates A, et al. Standardisation of spirometry. *Eur Respir J* 2005; 26(2):319–338. PMID: [16055882](#)
15. American Thoracic Society; European Respiratory Society. ATS/ERS statement on respiratory muscle testing. *Am J Respir Crit Care Med* 2002; 166:528–547.
16. Duggan DJ, Gorospe JR, Fanin M, Hoffman EP, Angelini C. Mutations in the sarcoglycan genes in patients with myopathy. *N Engl J Med*. 1997 Feb 27; 336(9):618–24. PMID: [9032047](#)
17. Trabelsi M, Kavian N, Daoud F, Commere V, Deburgrave N, Beugnet C, et al. Revised spectrum of mutations in sarcoglycanopathies. *Eur J Hum Genet*. 2008 Jul; 16(7):793–803. doi: [10.1038/ejhg.2008.9](#) PMID: [18285821](#)
18. Fayssoil A, Nardi O, Annane D, Orlikowski D. Left ventricular function in alpha-sarcoglycanopathy and gamma-sarcoglycanopathy. *Acta Neurol Belg*. 2014 Dec; 114(4):257–9. doi: [10.1007/s13760-013-0276-5](#) PMID: [24464767](#)
19. Calvo F, Teijeira S, Fernandez JM, Teijeiro A, Fernandez-Hojas R, Fernandez-Lopez XA, et al. Evaluation of heart involvement in gamma-sarcoglycanopathy (LGMD2C). A study of ten patients. *Neuromuscul Disord*. 2000 Dec; 10(8):560–6. PMID: [11053682](#)
20. Sveen ML, Thune JJ, Køber L, Vissing J. Cardiac involvement in patients with limb-girdle muscular dystrophy type 2 and Becker muscular dystrophy. *Arch Neurol*. 2008 Sep; 65(9):1196–201. doi: [10.1001/archneur.65.9.1196](#) PMID: [18779423](#)

21. Semplicini C, Vissing J, Dahlqvist JR, Stojkovic T, Bello L, Witting N, et al. Clinical and genetic spectrum in limb-girdle muscular dystrophy type 2E. *Neurology*. 2015 Apr 28; 84(17):1772–81. doi: [10.1212/WNL.0000000000001519](https://doi.org/10.1212/WNL.0000000000001519) PMID: [25862795](https://pubmed.ncbi.nlm.nih.gov/25862795/)
22. Chen CH, Tang SC, Su YN, Yang CC, Jeng JS. Cardioembolic stroke related to limb-girdle muscular dystrophy 1B. *BMC Res Notes*. 2013 Jan 29; 6:32. doi: [10.1186/1756-0500-6-32](https://doi.org/10.1186/1756-0500-6-32) PMID: [23360689](https://pubmed.ncbi.nlm.nih.gov/23360689/)
23. Petri H, Sveen ML, Thune JJ, Vissing C, Dahlqvist JR, Witting N, et al. Progression of cardiac involvement in patients with limb-girdle type 2 and Becker muscular dystrophies: a 9-year follow-up study. *Int J Cardiol*. 2015 Mar 1; 182:403–11. doi: [10.1016/j.ijcard.2014.12.090](https://doi.org/10.1016/j.ijcard.2014.12.090) PMID: [25596466](https://pubmed.ncbi.nlm.nih.gov/25596466/)
24. Boito CA, Melacini P, Vianello A, Prandini P, Gavassini BF, Bagattin A, et al. Clinical and molecular characterization of patients with limb-girdle muscular dystrophy type 2I. *Arch Neurol*. 2005 Dec; 62(12):1894–9. PMID: [16344347](https://pubmed.ncbi.nlm.nih.gov/16344347/)
25. Poppe M, Bourke J, Eagle M, Frosk P, Wrogemann K, Greenberg C, et al. Cardiac and respiratory failure in limb-girdle muscular dystrophy 2I. *Ann Neurol*. 2004 Nov; 56(5):738–41. PMID: [15505776](https://pubmed.ncbi.nlm.nih.gov/15505776/)
26. Toussaint M, Steens M, Soudon P. Lung function accurately predicts hypercapnia in patients with Duchenne muscular dystrophy. *Chest*. 2007 Feb; 131(2):368–75. PMID: [17296635](https://pubmed.ncbi.nlm.nih.gov/17296635/)
27. Gigliotti F, Pizzi A, Duranti R, Gorini M, Iandelli I, Scano G. Control of breathing in patients with limb girdle dystrophy: a controlled study. *Thorax*. 1995 Sep; 50(9):962–8. PMID: [8539676](https://pubmed.ncbi.nlm.nih.gov/8539676/)
28. Ragette R, Mellies U, Schwake C, Voit T, Teschler H. Patterns and predictors of sleep disordered breathing in primary myopathies. *Thorax*. 2002 Aug; 57(8):724–8. PMID: [12149535](https://pubmed.ncbi.nlm.nih.gov/12149535/)
29. Hukins CA, Hillman DR. Daytime predictors of sleep hypoventilation in Duchenne muscular dystrophy. *Am J Respir Crit Care Med*. 2000 Jan; 161(1):166–70. PMID: [10619815](https://pubmed.ncbi.nlm.nih.gov/10619815/)
30. Finder JD, Birnkrant D, Carl J, Farber HJ, Gozal D, Iannaccone ST, et al.; American Thoracic Society. Respiratory care of the patient with Duchenne muscular dystrophy: ATS consensus statement. *Am J Respir Crit Care Med*. 2004 Aug 15; 170(4):456–65. PMID: [15302625](https://pubmed.ncbi.nlm.nih.gov/15302625/)
31. Perrin C, Unterborn JN, Ambrosio CD, Hill NS. Pulmonary complications of chronic neuromuscular diseases and their management. *Muscle Nerve*. 2004 Jan; 29(1):5–27. PMID: [14694494](https://pubmed.ncbi.nlm.nih.gov/14694494/)
32. Phillips MF, Smith PE, Carroll N, Edwards RH, Calverley PM. Nocturnal oxygenation and prognosis in Duchenne muscular dystrophy. *Am J Respir Crit Care Med*. 1999 Jul; 160(1):198–202. PMID: [10390400](https://pubmed.ncbi.nlm.nih.gov/10390400/)
33. Eagle M, Baudouin SV, Chandler C, Giddings DR, Bullock R, Bushby K. Survival in Duchenne muscular dystrophy: improvements in life expectancy since 1967 and the impact of home nocturnal ventilation. *Neuromuscul Disord*. 2002 Dec; 12(10):926–9. PMID: [12467747](https://pubmed.ncbi.nlm.nih.gov/12467747/)
34. Oskoui M, Levy G, Garland CJ, Gray JM, O'Hagen J, De Vivo DC, Kaufmann P. The changing natural history of spinal muscular atrophy type 1. *Neurology*. 2007 Nov 13; 69(20):1931–6. PMID: [17998484](https://pubmed.ncbi.nlm.nih.gov/17998484/)
35. Annane D, Orlikowski D, Chevret S. Nocturnal mechanical ventilation for chronic hypoventilation in patients with neuromuscular and chest wall disorders. *Cochrane Database Syst Rev*. 2014 Dec 13; 12.
36. Calvert LD, McKeever TM, Kinnear WJ, Britton JR. Trends in survival from muscular dystrophy in England and Wales and impact on respiratory services. *Respir Med*. 2006 Jun; 100(6):1058–63. PMID: [16257521](https://pubmed.ncbi.nlm.nih.gov/16257521/)
37. Passamano L, Taglia A, Palladino A, Viggiano E, D'Ambrosio P, Scutifero M, et al. Improvement of survival in Duchenne Muscular Dystrophy: retrospective analysis of 835 patients. *Acta Myol*. 2012 Oct; 31(2):121–5. PMID: [23097603](https://pubmed.ncbi.nlm.nih.gov/23097603/)
38. Kohler M, Clarenbach CF, Bahler C, Brack T, Russi EW, Bloch KE. Disability and survival in Duchenne muscular dystrophy. *J Neurol Neurosurg Psychiatry*. 2009 Mar; 80(3):320–5. doi: [10.1136/jnnp.2007.141721](https://doi.org/10.1136/jnnp.2007.141721) PMID: [18713792](https://pubmed.ncbi.nlm.nih.gov/18713792/)
39. Bach JR, Martinez D. Duchenne muscular dystrophy: continuous noninvasive ventilator support prolongs survival. *Respir Care*. 2011 Jun; 56(6):744–50. doi: [10.4187/respcare.00831](https://doi.org/10.4187/respcare.00831) PMID: [21333078](https://pubmed.ncbi.nlm.nih.gov/21333078/)