



HAL
open science

X-ray microtomography provides first data about the feeding behaviour of an endangered lizard, the Montserrat galliwasp (*Diploglossus montisserrati*)

Corentin Bochaton, R Boistel, L Charles

► To cite this version:

Corentin Bochaton, R Boistel, L Charles. X-ray microtomography provides first data about the feeding behaviour of an endangered lizard, the Montserrat galliwasp (*Diploglossus montisserrati*). Royal Society Open Science, 2015, 2 (12), pp.150461. 10.1098/rsos.150461 . hal-01344194

HAL Id: hal-01344194

<https://hal.sorbonne-universite.fr/hal-01344194>

Submitted on 11 Jul 2016

HAL is a multi-disciplinary open access archive for the deposit and dissemination of scientific research documents, whether they are published or not. The documents may come from teaching and research institutions in France or abroad, or from public or private research centers.

L'archive ouverte pluridisciplinaire **HAL**, est destinée au dépôt et à la diffusion de documents scientifiques de niveau recherche, publiés ou non, émanant des établissements d'enseignement et de recherche français ou étrangers, des laboratoires publics ou privés.



Distributed under a Creative Commons Attribution| 4.0 International License



Cite this article: Bochaton C, Boistel R, Charles L. 2015 X-ray microtomography provides first data about the feeding behaviour of an endangered lizard, the Montserrat galliwasp (*Diploglossus montisserrati*). *R. Soc. open sci.* **2**: 150461. <http://dx.doi.org/10.1098/rsos.150461>

Received: 4 September 2015

Accepted: 20 November 2015

Subject Category:

Biology (whole organism)

Subject Areas:

behaviour/ecology/evolution

Keywords:

Anguidae, durophagy, insular fauna, predation, West Indies

Author for correspondence:

C. Bochaton

e-mail: corentin.bochaton@mnhn.fr

Electronic supplementary material is available at <http://dx.doi.org/10.1098/rsos.150461> or via <http://rsos.royalsocietypublishing.org>.

X-ray microtomography provides first data about the feeding behaviour of an endangered lizard, the Montserrat galliwasp (*Diploglossus montisserrati*)

C. Bochaton^{1,2}, R. Boistel³ and L. Charles⁴

¹Laboratoire Archéozoologie et Archéobotanique: Sociétés, Pratiques et Environnements, UMR 7209 – CNRS, MNHN, Muséum national d'Histoire naturelle, Sorbonne Universités, 55 rue Buffon, CP 56, Paris 75005, France

²Institut de Systématique, Évolution, Biodiversité, ISYEB – UMR 7205 – CNRS, MNHN, UPMC, EPHE, Muséum national d'Histoire naturelle, Sorbonne Universités, 57 rue Cuvier, CP 30, Paris 75005, France

³Institut de Paléoprimatologie, Paléontologie Humaine: Evolution et Paléoenvironnements, UMR 7262–CNRS, Université de Poitiers, UFR SFA, Bât. B35, 6 rue Michel Brunet, TSA 51106, Poitiers 86073, France

⁴Muséum d'Histoire naturelle de Bordeaux, 5 Place Bardineau, Bordeaux 33000, France

Reporting the diet of recently extinct or very rare taxa, only known by a few museum specimens, is challenging. This study uses X-ray microtomography, a non-destructive investigation method, to obtain the first data about feeding behaviours in the Montserrat galliwasp (*Diploglossus montisserrati*) by scanning one of the two specimens known to date. The scans revealed the occurrence of shell fragments of a freshwater snail (*Omalonyx matheroni*) in the digestive tract of the specimen. This data combined with morphological evidence shows the occurrence of a durophagous feeding habit and a possible tendency of association with freshwater environments. This information could be crucial to save this critically endangered lizard endemic on Montserrat island.

1. Introduction

The feeding behaviours and diet are part of the main characteristics that typify animals. They provide information about the trophic relationships between organisms in addition to their lifestyle, habitat use and life history. This is also true for

squamates, and several techniques exist to gain an understanding of their diet. For living animals, feeding behaviour can be observed in the field [1] or in captivity [2], when it cannot be directly observed, by using stomach flushing [3] or by collecting faecal samples [4]. With dead specimens, a dissection can be performed to observe the stomach contents of fresh or alcohol-preserved specimens [5]. Finally, isotopic analysis [6] and inferences based on dental morphology [7] can be done on living, dead and fossil specimens. However, which is the method to apply in the case of unique or rare museum specimens? Techniques requiring tissue sampling (isotopic analysis) or that induce damage to the specimen (dissection) should be avoided. Moreover, inferences based on anatomical data do not provide accurate information. As a consequence, obtaining data concerning the diet of extinct or nearly extinct species can be difficult even if museum specimens exist. Here, we tested the use of X-ray radiography and X-ray microtomography (XMT) to investigate stomach contents and tooth morphology of a rare museum specimen, the type specimen of the Montserrat endemic galliwasp, *Diploglossus montisserrati* Underwood, 1964. Data concerning this lizard are very rare, and since its description by Underwood in 1964 [8], it has been seen only 12 times in an area of only 1.5 ha [9]. Observers reported that the animal was terrestrial, most probably nocturnal and often found in the vicinity of streams [9,10]. Concerning its diet, Underwood [8] suggested that this galliwasp could possibly feed on young crayfish. However, this suggestion was never verified. Data concerning the ecology of this animal until now have been limited to the few observations made on living galliwasps observed roaming on the ground of moist broadleaf forest. Our results provide the first direct observations on the diet of this, according to the IUCN, critically endangered lizard [11] and could provide useful information to help to preserve this animal [10].

2. Material and methods

The scan and the scanned specimen are stored at the Museum of Comparative Zoology (Harvard, MA, USA) (MCZ R-76924). The specimen is the type and one of the two existing specimens of *D. montisserrati*. The second specimen was collected in 2005 and is stored on Montserrat Island (M. Morton 2013, personal communication) but was not available to us. The type specimen we studied was described by Underwood in 1964 and collected by J. Kingsley probably a few years before at Woodland Spring in Montserrat [8]. However, no precise location or collection date was mentioned. This specimen lacks its left lower jaw, which was removed, illustrated and described by Underwood [8]. The snout–vent length of this specimen is 180 mm, a size similar to *D. montisserrati* specimens observed in the wild.

XMT was performed according to the protocols reported in the literature [12–14]. We used a Viscom X8050-16 μ CT scanner at the Centre for Microtomography of the University of Poitiers (France). Scans were performed at 100 kV and 34/32 mA. The geometry was set to obtain an 84.2–62.9 μ m voxel size in the reconstructed three-dimensional images. The reconstruction was performed using the software IMAGEJ (<http://imagej.nih.gov>) [15] and the FDK algorithms of DIGICT v. 2.4.3 (Digisens with plug-in SnapCT, acceleration in GPU). The dataset consists of 2160 projections (720 \times 3) taken over 360° for the whole body and 900 projections for the head of the specimen. Direct volume rendering was used to visualize the sub-set of selected voxels of the prey, the skeleton and the jaw in AVIZO v. 7.1 and 6.1 (VSG, SAS, Merignac, France, <http://www.vsg3d.com>), after having used IMAGEJ to mask the anatomical structures we were not interested in.

3. Results

3.1. Tooth morphology

The tooth morphology is similar to what was described by Underwood [8]; the 10 most anterior dental positions contain pointed teeth and the teeth in the five anterior-most positions are slightly posteriorly curved. The more posterior tooth positions bear teeth that tend to become wider in lateral view and the four last teeth are wide and globular molariform teeth (figure 1d and electronic supplementary material). We observed the same global organization in the maxilla. Molariform teeth observed on *D. montisserrati* were also reported to appear across the ontogeny in the giant greater Antillean galliwasps *Diploglossus cruscus* (= *Celestus cruscus* Garman, 1887) and *Diploglossus warreni* (= *Celestus warreni* Schwartz, 1970) [16]. The diet of *C. cruscus* remains mainly unknown but *D. warreni* is an opportunistic forager consuming invertebrates and small vertebrates [17].

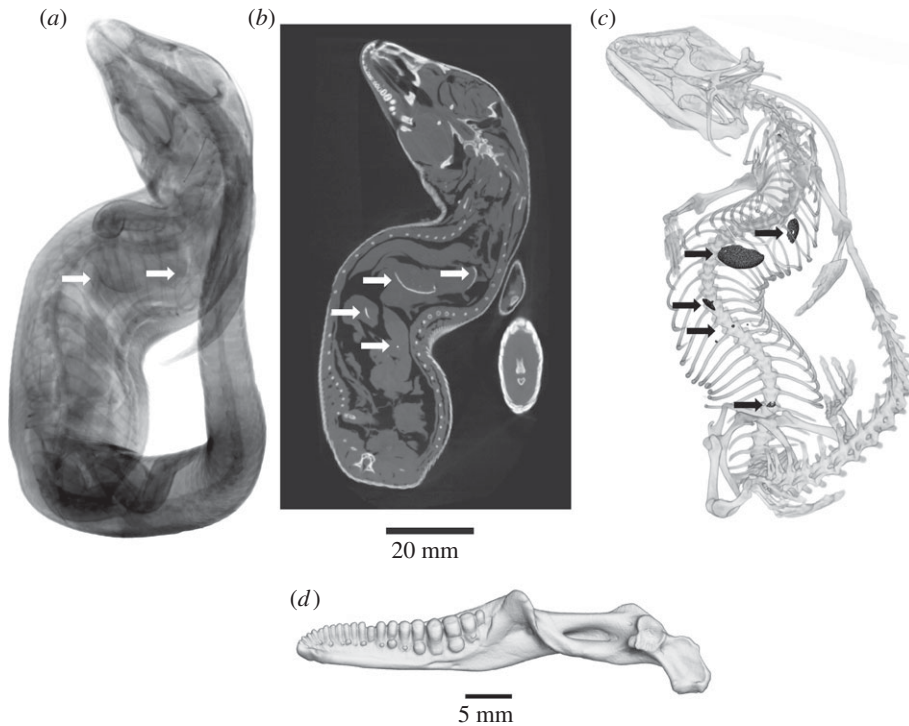


Figure 1. (a) X-ray radiography, (b) microtomogram and (c) direct volume rendering (ventral view) obtained by XMT of *D. montisserrati* (Museum of Comparative Zoology, Harvard University R-76924). The shell remains are barely visible on the radiograph (a—white arrow) but well visible on the microtomogram (c—white arrows). In volume rendering (c) all elements other than bones and stomach content were removed (with the exception of the extremities of the limbs). Shell fragments (in black) are clearly visible in the visceral cavity of the specimen. (d) Direct volume rendering of the right mandible presenting molariform teeth (lingual view).

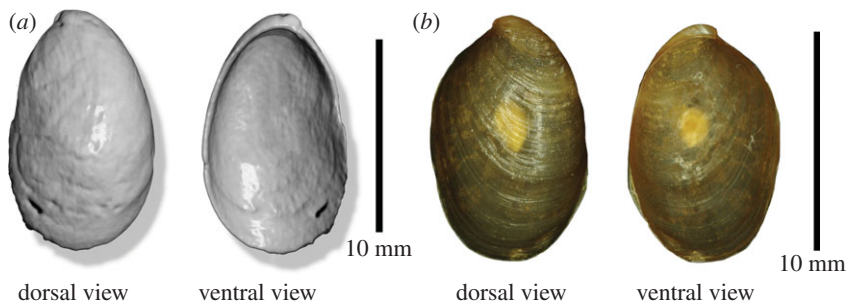


Figure 2. Comparison of the most complete shell fragment observed in the stomach of *D. montisserrati* (a) (volume rendering obtained from XMT) with an *O. matheroni* shell from Martinique (b) (Muséum d'Histoire naturelle de Bordeaux MHNbX 2015.9.1).

3.2. Stomach contents

Radiography of the specimen showed the occurrence of two large objects in the stomach, but their precise forms could not be distinguished (figure 1a). Additional investigations using tomograms and three-dimensional visualizations showed that, in addition to the objects observed with radiography, several objects presenting a similar density could be observed in the digestive tract of the specimens (figure 1). Most of them could not be identified but the larger two observed in the stomach appear to be shell remains, one of which being nearly intact. By deduction, we believe that the other smaller objects observed in the intestine were smaller, broken and partially digested fragments of shells. Digestion of shell is unsurprising for durophagous lizards and was previously recorded for *Tupinambis* [18] and chameleons [19].

The most complete shell measures 12 mm in length and was identified using comparative specimens stored in the natural history museum of Bordeaux (France) (figure 2). It presents a very short spire and a

large first whorl that suggest an attribution to the genus *Omalonyx* d'Orbigny, 1837. This genus is widely distributed in South America but only one species currently occurs in the Antilles, *Omalonyx matheroni* (Potiez & Michaud, 1835) [20]. This species is considered to have been introduced in Guadeloupe, Martinique and Dominica [21]. Historically, the occurrence of this genus in Montserrat has been reported since 1894 [22] and so was already present on the island when the MCZ *D. montisserrati* specimen was collected. Consequently, we propose an attribution of this shell to the species *O. matheroni*.

4. Discussion

The observation of a shell of *O. matheroni* in the digestive tract of *D. montisserrati* constitutes the first direct observation of the diet in this IUCN critically endangered endemic galliwasps.

The identification of this prey provides the only information about the feeding habits of *D. montisserrati*. Indeed, the members of the genus *Omalonyx* are amphibious land snails that have a distribution that is strongly limited to the vicinity of freshwater. They are observed on submerged vegetation, on the shores of lagoons, and also in moist bushes near water reservoirs [23,24]. Consequently, our observation may indicate that *D. montisserrati* might occasionally hunt near freshwater. Since *Omalonyx* does not live underwater, our observations do not indicate that *D. montisserrati* is an aquatic feeder. However, considering that *Omalonyx* was recently introduced in Montserrat, *D. montisserrati* could also feed on other freshwater species or species associated with freshwater as previously suggested by Underwood [8]. Other soft-bodied prey indiscernible using XMT may also occur in the digestive tract of the specimen and could possibly be tracked by phase-contrast imaging using synchrotron XMT. Unfortunately, magnetic resonance imaging cannot be used for our specimen because of the occurrence of metallic pins in its body [14].

The dental morphology of *D. montisserrati*, with large and globular posterior teeth on the dentary and our observation of shell fragments inside its digestive tract, confirms the association between molariform teeth and hard food, as has been observed for other lizards [16,25–27]. In West Indian Diploglossinae, such teeth were only observed in large species of which at least one (*D. warreni*) is an opportunistic forager consuming a broad range of soft (insects) and hard prey (vertebrates) but no molluscs or crustaceans [17]. In contrast, two other galliwasps, *Diploglossus millepunctatus* [28] and *Diploglossus monotropis* in captivity [10], are known to eat molluscs or crustaceans but both appear to lack molariform teeth, as was also observed in juvenile *Chamaeleolis* lizards [29]. Obviously, quantitative data concerning the diet and tooth morphology of West Indian Diploglossinae, as well as for many other lizards, are still too scant to clearly assess how these two traits are linked. However, overall, these data suggest that the occurrence of molariform teeth in insular lizards might be an adaptation allowing a broader range of prey to be taken in a limited environment [16].

To conclude, although our observation represents an isolated case and is too limited to provide detailed information on the ecology of *D. montisserrati*, it provides the only available dietary data of this endangered galliwasps species. Our results show that the particular habitat type near freshwater may be targeted in order to observe *D. montisserrati* specimens in the wild, which could allow direct observations of its feeding and foraging behaviour. This is important because only a better understanding of the ecology of this unique animal can help improve action plans and may help prevent its possible extinction in the very near future.

Data accessibility. Our scan of the type specimen of *D. montisserrati* is stored by the Museum of Comparative Zoology (Harvard, USA) and can be requested from this institution.

Authors' contributions. C.B. conceived and designed the study, drafted most of the manuscript and segmented part of the scan; R.B. performed the scans, segmented part of the scans and drafted part of the manuscript; L.C. identified the shell remains and drafted part of the manuscript. All authors critically reviewed the manuscript and gave final approval for publication.

Competing interests. We have no competing interests.

Funding. X-ray CT at the University of Poitiers was supported by grants from Région Poitou-Charentes (16-17-79-86).

Acknowledgements. The authors thank the team of CeMIM (USM 0504, Department RDDM, MNHN) for access to their three-dimensional workstation. We are also very grateful to J. P. Rosado and to the Museum of Comparative Zoology (Harvard, USA) for the loan of the type specimen of *D. montisserrati* and for allowing us to scan it. We thank R. Cornette and the USM 2700 of the Muséum national d'Histoire naturelle (Paris) for providing us with the material needed to analyse the scan. We also thank I. Ineich for his help with both administrative and scientific aspects of this work. Finally, we thank A. Herrel, H. Lauridsen and an anonymous reviewer for helping us to improve the quality of this work.

References

- Herreid II CF. 1962 Snakes as predators of bats. *Herpetologica* **17**, 271–272.
- Avery RA. 1971 Estimates of food consumption by the lizard *Lacerta vivipara* Jacquin. *J. Anim. Ecol.* **40**, 351–365. (doi:10.2307/3250)
- Mushinsky HR, Hebrard JJ, Vodopich DS. 1982 Ontogeny of water snake foraging ecology. *Ecology* **63**, 1624–1629. (doi:10.2307/1940102)
- Weatherhead PJ, Blouin-Demers G, Cavey KM. 2003 Seasonal and prey-size dietary patterns of black ratsnakes (*Elaphe obsoleta obsoleta*). *Am. Midl. Nat.* **150**, 275–281. (doi:10.1674/0003-0031(2003)150[0275:SAPDPO]2.0.CO;2)
- Duarte da Rocha CF. 1989 Diet of a tropical lizard (*Liolaemus lutzae*) of southeastern Brazil. *J. Herpetol.* **23**, 292–294. (doi:10.2307/1564451)
- Caut S, Holden M, Jower MJ, Boistel R, Ineich I. 2013 Is Bocourt's terrific skink really so terrific? Trophic myth and reality. *PLoS ONE* **8**, e78638. (doi:10.1371/journal.pone.0078638)
- Bailon S, Boistel R, Bover P, Antoni Alcover J. 2014 *Maioricalacerta rafelinensis*, gen. et sp. nov. (Squamata, Lacertidae), from the early Pliocene of Mallorca (Balearic Islands, western Mediterranean Sea). *J. Vertebr. Paleontol.* **34**, 318–326. (doi:10.1080/02724634.2013.799481)
- Underwood G. 1964 An anguid lizard from the Leeward islands. *Breviora* **200**, 1–10.
- Ogrodowczyk A, Murrain P, Martin L, Young RP. 2006 Recent observations of the Montserrat galliwasp, *Diploglossus montisserrati*. *Herpetol. Bull.* **98**, 9–11.
- Corry E, Martin L, Morton MN, Hilton GM, Young RP, Garcia G. 2010 *A species action plan for the Montserrat galliwasp Diploglossus montisserrati*. Montserrat: Department of the Environment.
- Day M. 1996 *Diploglossus montisserrati*. *IUCN Red List Threat. Species v. 20143*. See <http://www.iucnredlist.org/details/6638/0>.
- Boistel R, Herrel A, Lebrun R, Daghfous G, Tafforeau P, Losos JB, Vanhooydonck B. 2011 Shake rattle and roll: the bony labyrinth and aerial descent in squamates. *Integr. Comp. Biol.* **56**, 957–968. (doi:10.1093/icb/ocr034)
- Lauridsen H, Hansen K, Wang T, Agger P, Andersen J, Knudsen PS, Rasmussen AS, Uhrenholt L, Pedersen M. 2011 Inside out: modern imaging techniques to reveal animal anatomy. *PLoS ONE* **6**, e17879. (doi:10.1371/journal.pone.0017879)
- Zanette I et al. 2013 Looking inside marine organisms with magnetic resonance and X-ray imaging. In *Imaging marine life* (ed. EG Reynaud), pp. 122–184. Weinheim, Germany: Wiley-VCH Verlag GmbH & Co. KGaA.
- Abramoff MD, Magalhaes PJ, Ram SJ. 2004 Image processing with ImageJ. *Biophotonics Int.* **11**, 36–42.
- Estes R, Williams EE. 1984 Ontogenetic variation in the molariform teeth of lizards. *J. Vertebr. Paleontol.* **4**, 96–107. (doi:10.1080/02724634.1984.10011989)
- Inchaústegui SJ, Schwartz A, Henderson RW. 1985 Hispaniolan giant *Diploglossus* (Sauria: Anguidae): description of a new species and notes on the ecology of *D. warreni*. *Amphib. Reptil.* **6**, 195–201. (doi:10.1163/156853885X00092)
- Williams JD, Donadio OE, Re I. 1993 Notas relativas a la dieta de *Tupinambis rufescens* (Reptilia: Sauria) del noroeste Argentino. *Neotropica* **39**, 45–51.
- Chiaverano LM, Holland BS. 2014 Impact of an invasive predatory lizard on the endangered Hawaiian tree snail *Achatinella mustelina*: a threat assessment. *Endanger. Species Res.* **24**, 115–123. (doi:10.3354/esr00589)
- Tillier S. 1981 South American and Juan Fernandez succineid slugs (Pulmonata). *J. Molluscan Stud.* **47**, 125–146.
- Robinson DG, Hovestadt A, Fields A, Breure ASH. 2009 The land Mollusca of Dominica (Lesser Antilles), with notes on some enigmatic or rare species. *Zool. Meded.* **83**, 615–650.
- Ivie MA, Marske KA, Foley IA, Guerrero KA, Ivie LL. 2008 Invertebrates of the Centre Hills and Montserrat, with an emphasis on beetles. In *A biodiversity assessment of the Centre Hills, Montserrat* (ed. RP Young), pp. 56–89. Channel Islands, UK: Durrell Wildlife Conservation Trust.
- Hermann PW, Dundee DS. 1967 Notes on *Omalonyx Sterkiana* **28**, 1–6.
- Arruda JO, Thomé JW. 2011 Biological aspects of *Omalonyx convexus* (Mollusca, Gastropoda, Succineidae) from the Rio Grande do Sul State, Brazil. *Biotemas* **24**, 95–101. (doi:10.5007/2175-7925.2011v24n4p95)
- Kosma R. 2004 *The dentitions of recent and fossil scincomorphan lizards (Lacertilia, Squamata): systematics, functional morphology, paleoecology*. Hannover, Germany: University of Hannover.
- Rieppel O, Labhardt L. 1979 Mandibular mechanics in *Varanus niloticus* (Reptilia: Lacertilia). *Herpetologica* **35**, 158–163.
- Schaerlaeken V, Holanova V, Boistel R, Aerts P, Velensky P, Rehak I, Andrade DV, Herrel A. 2012 Built to bite: feeding kinematics, bite forces, and head shape of a specialized durophagous lizard, *Dracaena guianensis* (Teiidae). *J. Exp. Zool. Part Ecol. Genet. Physiol.* **317**, 371–381. (doi:10.1002/jez.1730)
- Kiester AR. 1975 Notes on the natural history of *Diploglossus millepunctatus* (Sauria: Anguidae). *Smithsonia Contrib. Zool.* **176**, 39–43.
- Herrel A, Holanova V. 2008 Cranial morphology and bite force in *Chamaeleolis* lizards: adaptations to molluscivory? *Zoology* **111**, 467–475. (doi:10.1016/j.zool.2008.01.002)