



**HAL**  
open science

## Organic signatures of fireplaces: Experimental references for archaeological interpretations

Mathieu Lejay, Marie Alexis, Katell Quénéa, Farid Sellami, François Bon

### ► To cite this version:

Mathieu Lejay, Marie Alexis, Katell Quénéa, Farid Sellami, François Bon. Organic signatures of fireplaces: Experimental references for archaeological interpretations. *Organic Geochemistry*, 2016, 99, pp.67-77. 10.1016/j.orggeochem.2016.06.002 . hal-01360334

**HAL Id: hal-01360334**

**<https://hal.sorbonne-universite.fr/hal-01360334>**

Submitted on 6 Sep 2016

**HAL** is a multi-disciplinary open access archive for the deposit and dissemination of scientific research documents, whether they are published or not. The documents may come from teaching and research institutions in France or abroad, or from public or private research centers.

L'archive ouverte pluridisciplinaire **HAL**, est destinée au dépôt et à la diffusion de documents scientifiques de niveau recherche, publiés ou non, émanant des établissements d'enseignement et de recherche français ou étrangers, des laboratoires publics ou privés.

1 Organic signatures of fireplaces: experimental references  
2 for archaeological interpretations

3 Mathieu Lejay <sup>a</sup>, Marie Alexis <sup>b\*</sup>, Katell Quénéa <sup>b</sup>, Farid Sellami <sup>a,c</sup>, François  
4 Bon <sup>a</sup>

5 <sup>a</sup> *Laboratoire TRACES, UMR 5608 CNRS, Université Toulouse Jean Jaurès,*  
6 *31058 Toulouse cedex 9, France*

7 <sup>b</sup> *Laboratoire METIS, UMR 7619 CNRS, Université Pierre et Marie Curie,*  
8 *75252 Paris cedex 5, France*

9 <sup>c</sup> *INRAP GSO, Centre archéologique du Château de Campagne, 24260*  
10 *Campagne, France*

11 \* Corresponding author at

12 Laboratoire METIS, UMR 7619 CNRS, Université Pierre et Marie Curie,  
13 Site Jussieu, Case 120, Tour 56-66, 4<sup>e</sup> étage, 75252 Paris cedex 5, France

14 Tel. +33 (0)1.44.27.50.27;

15 fax. +33 (0)1.44.27.41.64.

16 *E mail address:* marie.alexis@upmc.fr (M. Alexis)

17

18 ABSTRACT

19 The use of fire is a well-established human practice, at least from the Late  
20 Pleistocene. The variability in fuel type highlights complex practices  
21 regarding fire technology throughout this period. This contribution provides  
22 the organic signatures from fireplaces and is based on a set of experimental  
23 studies using different types of fuel, notably bone and/or wood. Soil layers  
24 affected by fire operation were compared with soils unaffected by heating  
25 and soils impregnated with unburned bone fat. The carbon content, and  
26 lipid and bulk organic matter (OM) composition were determined through

27 organic carbon measurement, gas chromatography-mass spectrometry (GC-  
28 MS), as well as TMAH-assisted pyrolysis coupled to GC-MS.

29 With the exception of the wood-fueled fireplace, an increase in organic  
30 carbon content was caused by fireplace operation. The products of  
31 triacylglycerol degradation (diacids, oxo-acids, and glycerol derivatives)  
32 reflected the contribution from animal fat affected by the oxidation process  
33 with or without thermal alteration. The branched unsaturated C<sub>9:0</sub> and C<sub>10:0</sub>  
34 acids were detected only in py(TMAH)-GC-MS of soil impregnated with bone  
35 fat that was not thermally altered. The branched diacids, ketones, lactones  
36 detected in lipid extract, and short chain acids and *n*-alkane/*n*-alkene  
37 doublets detected in py(TMAH)-GC-MS, were produced by thermal  
38 alteration of animal fat. Finally, in the fireplace fueled with wood only,  
39 phenolic compounds, benzoic acids and benzene derivatives were detected  
40 and reflected the contribution of charred and uncharred plant OM.

41 The results from lipid and bulk OM characterization permitted to advance  
42 the organic signatures obtained as an experimental reference dataset  
43 specifically for the identification of fuel type used in fireplaces.

44

#### 45 **Highlights**

46 Bone fires lead to a significant increase in soil OC content, whereas no  
47 variation was noticed for wood fire

48 Soil lipid and bulk OM distributions reflected the type of fuel used for  
49 experimental fires

50 Characterization of soil lipids and bulk OM permitted identification of  
51 byproducts of thermal alteration

52 Organic signatures from experimental fireplaces provide a reference for  
53 archaeological applications.

54

55

## **Keywords**

56 Fireplace, Prehistory, Experimental References, Organic signature, Soil

## 57 1. Introduction

58 The use of fire by hominins is a classic field of study within the prehistoric  
59 discipline history and has provided a suite of publications, debates, and  
60 controversies since the 19<sup>th</sup> century (see Roebroeks and Villa, 2011 and  
61 Sandgathe et al., 2011 for recent examples). Dating the earliest fire use has been  
62 a key question since the beginning of the discipline. Moreover, during the last few  
63 decades an increase in interest regarding the study of fire related remains has  
64 been observed, likely due to the fact that these remains represent both  
65 technologically and sociologically significant shifts. The pyrotechnology of ancient  
66 societies is most often investigated through several approaches, including  
67 anthracology (Théry-Parisot, 2001), ash studies (Canti, 2003), taphonomy (Théry-  
68 Parisot et al., 2010), ethnography (Henry and Théry-Parisot, 2014), magnetic  
69 susceptibility (Bellomo, 1993), and micromorphology (Mentzer, 2012 and  
70 references therein).

71 These studies have significantly improved our understanding of fireplace  
72 operation (e.g. type of fuel, re-use and structure management) and proposed  
73 several ethnographically-based models of utilization (e.g. specialized vs.  
74 multipurpose, expedient vs. curated). However, direct interpretation of  
75 archaeological vestiges remains difficult (Coudret et al., 1989) as archaeological  
76 data are rarely explicit. The necessity for an experimental dataset, based on the  
77 production and utilization of experimental fireplaces, thus seems apparent if we  
78 wish to construct an interpretative tool for the deciphering of the archaeological  
79 data.

80 Experimental investigations of prehistoric pyrotechnology are a well-established  
81 trend in archaeological science; the production of reference databases is regularly  
82 used to tackle taphonomic and functional questions (March et al., 2014; Mallol et  
83 al., 2013 and references therein). Unfortunately, the numerous parameters  
84 inherent in fireplace operation (e.g. type, state and quantity of fuel, type and  
85 state of underlying sediment, operator intervention or not, extinction, re-use)  
86 combined with the attempt to reconstruct different types of use (e.g. fireplace  
87 morphology and layout, different cooking methods, different types of cooked

88 products) result in complex experimental data, within which it is often difficult to  
89 isolate and characterize individual aspects (Aldeias et al. 2016). More specifically  
90 these attempts to obtain reference collections rarely took into account the  
91 thermal alteration of the organic matter (OM) in archaeological contexts.  
92 Ultimately, databases from early experiments were rarely completely published  
93 and this lack of documentation hampers our ability to move forward. We are thus  
94 faced with the necessary task of systematizing, documenting, and publishing  
95 these experimental approaches.

96 Regarding the investigation of OM in archaeological remains through chemical  
97 methods, the exploration of prehistoric fireplaces is less advanced than other  
98 domains of archaeological chemistry, the analysis of residues in pottery for  
99 example (Evershed et al., 2001; Barnard and Eerkens, 2007; Evershed, 2008;  
100 Steele, 2013; Reber et al., 2015). In these studies, the main objectives were to  
101 recognize the content and use of the containers, despite the numerous processes  
102 that might confound interpretation of the chemical data, such as complex ancient  
103 practices, taphonomic modifications, or methodological issues (e.g. Reber and  
104 Evershed, 2004; Barnard et al., 2007). Even though they provide methodological  
105 and interpretative guidelines, results obtained from pottery analysis cannot be  
106 directly transferred to fireplace studies due to the differences that are expected in  
107 the archaeological context and then in the processes of organic residue formation  
108 and preservation.

109 Concerning fireplace investigations, pioneering studies identified lipids in cave  
110 fireplaces, using gas chromatography (GC) and thin-layer chromatography  
111 (Rottländer, 1989). The latter recognized the presence of reindeer fat and horse  
112 fat via comparison with actual reference sets, but he could not determine if their  
113 presence was related to fireplace operation (e.g. fuel type) or their utilization (e.g.  
114 cooking, animal carcass processing). With the spread of GC-mass spectrometry  
115 (GC-MS) in the 1990s, studies in all aspects of archaeological chemistry  
116 multiplied (Regert, 2011) and the study of fireplaces became more frequent (e.g.  
117 March et al. 1989; March, 1995 ; Buonasera, 2005; Lucquin, 2007; Kedrowski et  
118 al., 2009). More recent researches in the field also involved isotopic investigation

119 including bulk (e.g. Heron et al., 2010) and compound specific  $\delta^{13}\text{C}$  analysis (e.g.  
120 March, 2013; Buonasera et al., 2015).

121 These studies highlighted recurrent conservation of organic compounds in hearth  
122 sediments, and attempted to associate them with their natural sources (e.g. plant  
123 or animal, terrigenous or marine) even sometimes evoking their specific origin.  
124 Moreover, recent studies (Regert, 2011; Kaal et al., 2014) mentioned and  
125 illustrated the potential interest of pyrolysis-GC-MS, possibly performed with *in*  
126 *situ* tetramethylammonium hydroxide derivatization [py(TMAH)-GC-MS], as a  
127 tool for the characterization of archaeological OM in pottery. The technique  
128 allows determination of the molecular composition of non-extractable OM, which  
129 is often the case for thermally altered fireplace residues. It therefore provides a  
130 good opportunity to document an OM fraction usually ignored in GC-MS based  
131 studies of solvent extracts.

132 This study focuses on the type of fuel used to stoke fireplaces in Late Pleistocene  
133 French open air sites. Most of the sites suffered post-depositional phenomena  
134 that frequently destroyed the upper part of fire structures, and particularly their  
135 fuel remains. As the resulting vestiges are limited mainly to mineral elements  
136 showing thermal alteration (e.g. underlying sediment and surrounding stones),  
137 their interpretation is challenging. In addition, the recurrent presence of burned  
138 bones residues (i.e. from slightly charred to completely calcinated) within the  
139 sites, but not always directly on fireplaces, raises the question of their frequent  
140 use as a common fuel by Paleolithic societies (Perlès, 1977, Villa et al., 2002).  
141 Despite experimental data ascertained the practicability of this use (Théry-  
142 Parisot, 2001 and 2002; Théry-Parisot and Costamagno, 2005; Costamagno et al.,  
143 2009), the interpretation of archaeological artefacts is still equivocal as numerous  
144 others anthropogenic and natural processes can produce burned bones (see  
145 Costamagno et al., 2009 for a review).

146 The objectives were thus to establish the geochemical signatures of fireplaces  
147 fueled with different materials and to provide a reference dataset for further  
148 interpretation of archaeological fireplaces. Experimental fireplaces were realized  
149 using wood and/or bone as fuel and compared with the soil layer unaffected by

150 human practices. The role of the thermal alteration of OM was also tested by  
151 analyzing the chemical signature of the soil layer impregnated with unburned  
152 animal fat. The chemical composition was determined through organic carbon  
153 content ( $C_{org}$ ) measurement, GC-MS analysis of the lipid extract and py(TMAH)-  
154 GC-MS of the bulk OM.

## 155 **2. Experimental**

### 156 *2.1. Study site and sampling*

157 The study was conducted on the aurignacian site of Régismont-le-Haut (ca. 30 Ky  
158 BP, southern France; Pradeau et al., 2014) where an experimental protocol has  
159 been in place since 2012. The site is at the base of a strongly eroded Miocene  
160 calcareous hill, which provides most of the colluvial and aeolian deposits forming  
161 the sediment under study. During the Late Pleistocene, these colluvial and  
162 aeolian sediments slowly infilled paleochannels carved into the underlying  
163 marlstone. This context and the relatively arid climatic conditions led to the  
164 formation of a colluvic and calcaric Regosol (IUSS Working Group WRB, 2015;  
165 *Colluviosol calcaire et carbonaté*: AFES, 2008), with few pedogenic features  
166 except those linked to the dissolution and precipitation of  $CaCO_3$ .

167 Experimental fires were set up to mimic several contexts of hypothetical  
168 archaeological operation; the main parameter that was varied was fuel type  
169 (wood and/or bone). To emulate the context of archaeological fireplaces and avoid  
170 modern agricultural induced bias, the experiment was run in realistic open air  
171 conditions on a sterile area of the excavated archaeological level, ca. 50 cm under  
172 the plow zone. All experiments and subsequent sampling occurred between  
173 August 27<sup>th</sup> and September 11<sup>th</sup>, 2012. No significant precipitation was recorded  
174 on site during this interval; the local meteorological station of Sètes recorded a  
175 mean maximal temperature of 28.6 °C in August and of 23.8 °C in September and  
176 a mean minimal temperature of 21.5 °C in August and of 17.6 °C in September.  
177 Prior to the experiment a sample of unaffected sediment was collected as a  
178 control for the natural organic content and composition in the area (*Control*).

179 Experiments involved the use of bone and/or pine wood of local origin. The former  
180 consisted of up to 15 cm fragments of steer long bones and pelvic bones (*Bos*



181 *taurus*). The wood included parasol pine (*Pinus pinea*) dry twigs, small branches  
182 and 50 cm long and up to 10 cm in diameter logs. For the first experiment, 10 kg  
183 of fragmented steer bones were deposited on the surface of the soil in order to  
184 imitate OM impregnation by way of percolation through the sediment. A sample  
185 (*Soil with bone OM*) was collected after a week. The second experiment was with  
186 a bone-fueled fireplace (*Bone fire*) in which 10 kg of fragmented steer bones were  
187 burned. It is noteworthy that a small quantity of pine wood (< 1 kg) was  
188 necessary to initiate combustion in this type of hearth (Théry-Parisot and  
189 Costamagno, 2005). It operated during 131 min. The third experiment was with a  
190 wood-fueled fireplace (*Wood fire*), in which 5 kg of dry pine wood were burned  
191 during a total operating time of 137 min. Finally, the last experimental fire  
192 involved the use of both 5 kg of pine wood and 3 kg of bone (*Wood+bone fire*), to  
193 emulate a mixed-fuel fireplace. The total operating time was of 118 min.

194 For the 4 experiments, sampling was conducted following visual distinction of  
195 layers (Fig. 1a). Sampling first concerned the altered soil (Upper sub sample,  
196 Table 1) but also the underlying and seemingly unaltered soil (Lower sub sample,  
197 Table 1). The micro-local organic content was measured to test the significance of  
198 the visual layer distinction.

199 Samples were air-dried over two days at 35 °C (Froilabo-AC120 oven). After  
200 manual removing of the most fragile coarse elements (calcitic nodules and  
201 organic macroscopic remains such as roots), samples were sieved and the > 2 mm  
202 fraction was discard. Samples were then ground with a mortar and pestle, and  
203 eventually with a Retsch-PM200 planetary ball mill (6 min, at 450 rpm), to pass  
204 a 250 µm sieve.

## 205 2.2. *C<sub>org</sub> measurement*

206 Due to the naturally high carbonate content of the sediment, acid fumigation was  
207 carried out prior to elemental analysis, following Harris et al. (2001). After  
208 weighing the samples in Ag foil capsules, they were humidified (15 µl deionized  
209 water) and placed in a desiccator under vacuum, with a beaker of HCl (12 M),  
210 during 6 h. Lastly, the sample was air-dried for 12 h at 40 °C.

211 The C<sub>org</sub> was measured on fumigated samples using an elemental analyzer (Vario  
212 PYRO cube, Elementar). To allow C<sub>org</sub> quantification, two Ag capsules of the  
213 same sample were added for a single analysis. The resulting reproducibility was  
214 assessed to be between 0.3% (instrumental) and 0.8% (methodological).

### 215 *2.3. Lipid extraction and GC-MS*

216 Samples for lipid analysis were extracted using an accelerated solvent extractor  
217 system (Dionex-ASE100). Between 5 and 7 g of sediment were placed in a 10 ml  
218 Inox cell topped with sterile glass fiber. The extraction program ran at 60 °C,  
219 with a static time of 20 min, using dichloromethane/methanol (DCM/MeOH) (2:1,  
220 v/v). The extract was concentrated using a rotary evaporator and dried under a  
221 gentle N<sub>2</sub> flow, dissolved in DCM in a 1,5 ml vial with a PTFE screw cap and  
222 stored at 4 °C until analysis (adapted from Quénéa et al., 2012)

223 Each extract was analyzed with an Agilent 6890 gas chromatograph coupled to  
224 an Agilent 5973N mass spectrometer using electron ionization at 70 eV. The GC  
225 instrument was equipped with a 30 m Restek 5 Sil MS column (i.d. 0.25 mm, film  
226 thickness 0.5 µm). The carrier gas was He, at a constant flow rate of 1 ml/min.  
227 Samples were injected splitless with the injector at 300 °C. The oven temperature  
228 was programmed from 80 °C (0.5 min) to 100 °C at 10 °C/min then to 320 °C at 4  
229 °C/min. Compound assignment was based on comparison with published data  
230 (references thereafter in the text) and the NIST mass spectral library.

231 The whole device was operated with a Gerstel multipurpose sampler (MPS) and  
232 Gerstel Maestro software. The workflow included derivatization of extracts by  
233 adding 10% (v/v) BSTFA [N,O-bis(trimethylsilyl)trifluoroacetamide] and heating  
234 at 60 °C for 10 min to obtain trimethylsilylated (TMS) derivatives.

### 235 *2.4. py(TMAH)-GC-MS*

236 Bulk OM from the upper subsample was characterized through Curie-Point  
237 pyrolysis (Pilodist) coupled to a GC (Thermo Trace – 30 m RXI 5 Sil MS capillary  
238 column, i.d. 0.25 mm, film thickness 0.5 µm with Integra guard column) and a  
239 MS (DSQ). Samples mixed with TMAH (25% w/v in MeOH) were loaded in a  
240 ferromagnetic tube and pyrolyzed for 9.9 s at 650 °C under a 1 ml/min He flow

241 (adapted from Quénéa et al., 2005). The pyrolysis products were separated in the  
242 GC system, where the temperature of the GC oven was held at 50 °C for 10 min,  
243 before an increase at 2 °C/min to 310 °C. The ion source of the mass spectrometer  
244 was at 220 °C, which was set to scan from  $m/z$  35 to 800. The total ion current  
245 (TIC) trace was recorded and products of pyrolysis identified using comparison  
246 with published data (references thereafter in the text) and the mass spectral  
247 NIST library.

### 248 **3. Results and discussion**

#### 249 *3.1. Macroscopic features and $C_{org}$ variations*

250 The *Control* displayed general features illustrative of the local soil type: a  
251 homogenous sandy loam with numerous calcitic features and few organic macro-  
252 elements (Table 1). An expected low  $C_{org}$  (0.3%) was measured and was consistent  
253 with that of the four lower subsamples ( $0.3 \pm 0.1\%$ ) collected below each  
254 experimental structures. This result validated the visual identification of fire-  
255 affected soil layers and supported the low soil variability needed to track  
256 variables influenced by the experimental parameters.

257 On the contrary, most of the experiments led to an increase in the organic  
258 content of upper subsamples (Table 1). In the *Soil with bone OM*, a 2 cm deep  
259 impregnation of the sediment was observed on the surface (Fig. 1b) and in  
260 section. During the experiment, OM (likely bone marrow) leaked from the bone  
261 fragments and was responsible for the impregnation, as well as the increase in  
262  $C_{org}$ , which reached 4.7%. The macroscopic visual aspects of the *Bone fire*  
263 consisted of an irregular shaped darkened and hardened hearth covered with  
264 carbonized to calcinated bones. Vertically, the sediment was affected by the  
265 combustion down to 4 cm depth, displaying darkening and reddening. During the  
266 operation, a significant leakage of organic fluid was observed around the  
267 structure (Fig. 1c) and was also noted vertically on the structure's periphery. The  
268 leakage resulted in a slightly lower increase of  $C_{org}$  (2.3%) than for the *Soil with*  
269 *bone OM*. The phenomenon can likely be explained by a shorter interaction time  
270 between the soil and the bone OM, as well as the combustion process that likely  
271 degraded part of the bone marrow, thereby limiting its influence on  $C_{org}$ . The

272 operation of the *Wood fire* resulted in a circular (ca. 50 cm diam.) collection of ash  
273 and charcoal overlying a reddened sediment (Fig. 1e). This reddening was 0.5 to  
274 1.5 cm deep. No significant difference was detected in the  $C_{org}$  of this reddened  
275 sediment compared with the *Control*, likely because the coarse fraction, which  
276 may have included some combustion residue, was discarded during sample  
277 collection and preparation. The results of the *Wood+bone fire* experiment were,  
278 unsurprisingly, intermediate between those from other experimental fireplaces.  
279 A superficial covering, consisting logically of a mix of wood and bone combustion  
280 residue, capped the structure (Fig. 1d). Vertically, the structure displayed a 1 to  
281 2.5 cm deep reddening, whose first 1 cm was heavily influenced by the  
282 combustion residues, leaving a darkened layer whose reddened nature was not  
283 visible to the naked eye (Table 1). Despite the  $C_{org}$  (0.9%) did not prove to be  
284 significantly higher than the  $C_{org}$  of the *Wood fire* (or *Control*), the value was  
285 intermediate between the *Wood Fire* and the *Bone fire*, what seemed coherent  
286 with the field observation of a lower input of bone OM due to 1) a lower quantity  
287 of bone used as fuel and 2) the formation of wood embers that might have  
288 prevented OM leakage into the soil by increasing the efficiency of combustion.

### 289 3.2. Local organic background

290 In accord with its low  $C_{org}$ , the *Control* did not present any detectable component  
291 from py(TMAH)-GC-MS analysis. No phenol, lignin-derived components, or long  
292 chain alkanes/alkenes and acids, traditionally seen in the pyrolysis products of  
293 natural soil OM (Hempfling and Schulten, 1990), were visible in the  
294 archaeological soil layer. Lipids detected from GC-MS were diverse, yet present  
295 in such low concentration as to render them negligible. The identification of such  
296 a diversified lipid fraction was made possible through a higher concentration of  
297 sample during preparation. The absence of a significant organic signal confirmed  
298 its suitability as a control for the experiments that followed.

### 299 3.3. Sources of organic compounds

#### 300 3.3.1. Non-diagnostic

301 The saturated *n*-acids from  $C_{6:0}$  to  $C_{18:0}$ , dominated by  $C_{16:0}$  and  $C_{18:0}$ , and  
302 monomethylated acids, were ubiquitous in both lipid extracts and

303 thermochemolysis products (Figs. 2 and 3, Tables 2 and 3). Their presence in all  
304 the samples might reflect animal, plant and microbial biomass origins.  
305 Nevertheless, the C chain distribution appeared more specific, especially the high  
306 relative proportion of short-chain fatty acids in *Soil with bone OM*, and is  
307 discussed later.

308 Due to its widespread occurrence in animal tissue (Christie, 2014) cholesterol can  
309 be considered as an indicator of an animal contribution to lipid extracts, but a  
310 fungal or even bacterial origin cannot be completely excluded (Huang and  
311 Meinschein, 1976; Volkman, 2005; Christie, 2014). These last two elements were  
312 likely the source of cholesterol [25] in the *Control* (Fig. 2a) and the *Wood fire* (Fig.  
313 2e).

314 The significant contribution of Me-C<sub>15</sub> and Me-C<sub>17</sub> acids (iso and anteiso) to the  
315 lipids and py(TMAH)-GC-MS trace of the *Soil with bone OM* (Figs. 2b and 3a ),  
316 the *Bone fire* (Figs. 2c and 3b) and the *Wood+bone fire* (Figs. 2d and 3c), might  
317 point to a fungal and bacterial OM signature (Saiz-Jimenez and De Leeuw, 1986;  
318 Dudd et al., 1998; Kanthilatha et al., 2014; Spangenberg et al., 2014). However  
319 those branched acids can also be produced by bacteria in ruminant intestines  
320 (Dudd et al., 1999; Christie, 2014) and an animal origin can not be ruled out in  
321 the context of these experiments.

322 The presence of squalene [24], a precursor of numerous sterols, might have a  
323 natural origin in the extract of the *Control* (Fig. 2a) and the *Wood fire* (Fig. 2e).  
324 However, it is also a broadly-used plasticizer, so in-situ or handling  
325 contamination could not be totally dismissed (Evershed, 1993; Heron et al.,  
326 2010).

### 327 3.3.2. *Plant OM*

328 The presence of stigmasterol [26] and sitosterol [28], both common phytosterols  
329 (Huang and Meinschein, 1976), and of taraxerone [27],  $\alpha$ -amyrone [29], and  
330 lupenone [30] in the extract of the *Control* (Fig. 2a) point to a significant  
331 contribution from plant OM (Vilegas et al., 1997; Mathe et al., 2004; Simoneit,  
332 2005; Hernández-chávez et al., 2012). The contribution of aliphatic compounds

333 with relatively long chains is commonly considered to reflect a plant-derived OM  
334 origin. In the extract of the *Control* (Fig. 2a) and *Wood fire* (Fig. 2e), the *n*-  
335 alkanes (C<sub>21</sub>, C<sub>29</sub>, C<sub>31</sub> and C<sub>33</sub>) might be attributed to an plant epicuticular wax  
336 origin (Spangenberg et al., 2014), whereas *n*-alcohols longer than C<sub>17</sub>, and  
337 saturated *n*-acids longer than C<sub>18</sub>, support the assignment of slightly altered  
338 plant derived compounds (Evershed et al., 1999; Poirier et al., 2005). Finally,  
339 phenol derivatives [4 and 8] and benzoic acids [1 and 3] in the *Wood+bone fire*  
340 (Fig. 2d) and the *Wood fire* lipids (Fig. 2e) highlight byproducts of lignin  
341 degradation (Simoneit et al., 1993; Quenea et al., 2004; Simoneit, 2005; Regert et  
342 al., 2006; Shadkami and Helleur, 2010).

343 As the phenolic and benzoic compounds were only recovered in *Wood+bone fire*  
344 and *Wood fire* (Table 4), they may be illustrative of the contribution of the wood  
345 OM used as fuel to the organic signatures of these experiments (March et al.,  
346 2014).

### 347 3.3.3. *Thermally-altered plant OM*

348 Aromatic compounds such as benzene derivatives ([5] to [10]) in the py(TMAH)-  
349 GC-MS trace of the *Wood+bone fire* (Fig. 3c) and the *Wood fire* (Fig. 3d), as well  
350 as naphthalene [10] in the extract of the *Wood fire* (Fig. 2e), reflect a high degree  
351 of OM carbonization (Simoneit et al., 1993; Knicker et al., 2005; Kaal et al., 2009;  
352 Alexis et al., 2012; De la Rosa et al., 2012). This type of compounds could also  
353 result from artefact production by Curie point pyrolysis from carbohydrates, as  
354 observed by Pastorova et al. (1994). However it is noteworthy that in the present  
355 study, the benzene and naphthalene derivatives were only detected in the  
356 experiments involving wood as dominant fuel and that the numerous furan and  
357 pyranone derivatives expected in cellulose pyrolysis were not detected (Table 4).  
358 This result suggests that they likely come from carbonized wood residues.  
359 Moreover the absence of odd C chain predominance in the alkane series in the  
360 *Wood fire* extract (Fig. 2e) could also be indicative of the thermal alteration  
361 process of wood fuel OM (Eglinton and Calvin, 1967; Wiesenberg et al., 2009; De  
362 la Rosa et al., 2012; March et al., 2014).

363 Many of these compounds were readily documented in GC-MS and py-GC-MS  
364 studies of forest fire sediments (e.g. Knicker et al., 2005). Their observation in  
365 fireplace context validates the crossing of results between these close fields of  
366 research. Finally, their association in wood fueled fires with compounds specific  
367 of uncharred wood OM (Table 4) provides a good overall signature for this type of  
368 fire operation.

#### 369 3.3.4. Bone OM

370 In the *Soil with bone OM* and the *Bone fire*, the dimethoxypropanol [1],  
371 trimethoxypropane [2], saturated and unsaturated *n*-acids, diacids, epoxy- [13],  
372 and (di)hydroxyacids ([12] and [14] to [17]) were detected from py(TMAH)-GC-MS  
373 (Figs. 3a and b). Monoacylglycerol [15, 17, 19 to 23] and diacylglycerol [31 and 32]  
374 were observed in the extract (Figs. 2b and c). These compounds likely resulted  
375 from triacylglycerol degradation (Dudd et al., 1998; Evershed et al., 2002; Van  
376 Den Berg et al., 2002). They could originate from plant (Van Den Berg et al.,  
377 2002; Maher and Bressler, 2007) or animal fats (Evershed et al., 2002; Ben  
378 Hassen-Trabelsi et al., 2014). However, the presence of *n*-acid C<sub>18:1</sub>, one of the  
379 most important *n*-acid in animal fat (Malainey et al., 1999; Nieuwenhuysen et al.,  
380 2015), points to the latter origin. Moreover, several compounds likely reflect the  
381 contribution of fat degraded by hydrolysis or oxidation. The short chain *n*-acids  
382 (C<sub>8</sub> and C<sub>9</sub>) and monomethyl branched unsaturated acids (Me-C<sub>9</sub> and Me-C<sub>10</sub>) in  
383 the py(TMAH)-GC-MS products (Figs. 3a and b), as well as the short chain  
384 diacids (C<sub>4</sub> to C<sub>11</sub>) and *n*-acid (C<sub>8</sub> and C<sub>9</sub>) in the lipid extract (Figs. 2b and c),  
385 could originate from drying and/or oxidation of unsaturated *n*-acids (Wexler,  
386 1964; Mills, 1966; Erhardt, 1998; Van Den Berg et al., 2002; Rontani and Aubert,  
387 2008).

388 These compounds were all present in the *Soil with bone OM* and occasionally  
389 present in *Bone fire* and *Wood+bone fire* (Table 4). Those results were in  
390 accordance with existing references on animal fat (e.g. Evershed et al., 2002),  
391 despite short-chain methyl branched acids have been rarely described in such  
392 context. Moreover, the functioning of the fire seems to induce an important  
393 reduction of the number of recovered diagnostic compounds.

395 In the py(TMAH)-GC-MS TIC traces of the *Bone fire* (Fig. 3b) and of the  
396 *Wood+bone fire* (Fig. 3c), the short chain *n*-alkane/*n*-alkene doublets could be  
397 related to thermal degradation processes (Almendros et al., 1988; Nawar, 1989;  
398 Simoneit, 2002; Eckmeier and Wiesenberg, 2009; Wiesenberg et al., 2009). In the  
399 extract of the same samples (Figs. 2c and d), the series of short chain  
400 monomethyl branched diacids (C<sub>4</sub> to C<sub>10</sub>), short chain *n*-alcohols (< C<sub>17</sub>), oxoacids,  
401 as well as ketones (C<sub>14</sub> to C<sub>17</sub> and C<sub>29, 31, 33</sub> and 35) and lactones [13 and 14] were  
402 also common markers of, more specifically, animal OM thermal degradation  
403 (Nawar, 1989; Evershed et al., 2002). Ketones and  $\gamma$ -lactones are frequently  
404 reported in thermally altered OM and are usually attributed to animal-fat and  
405 meat degradation by heating (Nawar, 1969; Evershed et al., 1995). In this  
406 context, the triacylglycerols and *n*-acids are both sources of the long chain  
407 ketones, whereas short chain methyl ketones are considered to be secondary  
408 products formed during more intense heating. Besides, the  $\gamma$ -lactones are formed  
409 by cyclisation of hydroxyacids following dehydration upon thermal stress (Nawar,  
410 1969). The disappearance of 10, $\omega$ -dihydroxyoctanoic acid [16], in parallel with the  
411 formation of  $\gamma$ -lactones [13 and 14] in *Bone fire* (Fig. 2c) compared with *Soil with*  
412 *bone OM* (Fig. 2b) might be illustrative of this process.

413 The *Bone fire* and *Wood+bone fire* provide a signature specific to the use of bone  
414 as fuel (Table 4). It is characterized by markers of animal fat heating, resulting  
415 from the melting and the burning of marrow initially contained in the bones. Yet,  
416 it is noteworthy that, to our knowledge, the formation of short monomethyl  
417 branched diacids (C<sub>4</sub> to C<sub>10</sub>), short chain *n*-alcohols (< C<sub>17</sub>) and oxoacids is little  
418 known in this context.

#### 419 3.4. Archaeological implications

420 In order to apply this reference dataset to archaeological contexts, the recovery of  
421 previously identified organic signatures has to be questioned. As stated by March  
422 et al. (2014), post-depositional processes may occur, namely the potential  
423 pollution through input of more recent OM and the degradation processes that  
424 likely affect the archaeological organic residues.



425 First, the pollution issue regards both natural and anthropogenic agents. Natural  
426 ones are mostly linked to sedimentary covering of archaeological site and  
427 pedogenic processes such as bioturbation and are unavoidable. Additionally, this  
428 type of pollution will most likely correspond to vegetal OM lacking thermal  
429 alteration byproducts and displaying a weak maturity allowing its recognition  
430 (March et al. 2014). Anthropogenic pollution can be related either to agricultural  
431 practices or to contamination related to archaeological excavation and sampling.  
432 As for agricultural input, markers are generally well known and easily  
433 identifiable. They may correspond to modern practices (chemical fertilized),  
434 which will not interfere with our compounds of interest, and to manuring (like  
435 coprostanol; Evershed et al., 2001). However, conjoint collection of control  
436 samples both in stratigraphy and planimetry allows definition of the local soil  
437 organic background (e.g. Heron et al., 1991).

438 Secondly, the ability of the signatures to be preserved over time is uncertain.  
439 Except from the work of March et al. (2014), this central matter has been rarely  
440 explored in the specific case of fireplaces, despite substantial documentation  
441 exists in the field of the aging of fire affected soil OM (e.g. Knicker, 2011) and  
442 organic residues in pottery (e.g. Malainey, 2007). Labile compounds such as  
443 unsaturated *n*-acids or short-chain saturated *n*-acids are unlikely to survive long  
444 period of time (Eglinton et al., 1991). In contrary, due to their relative  
445 recalcitrance, aromatic compounds originating from lignin (benzoic acids,  
446 phenols) and from charring processes (benzene and naphthalene derivatives) are  
447 expected to remain in soil at long timescale (Baldock et al., 2004; Lützow et al.,  
448 2006; Marschner et al., 2008). Lipids were also reported to present decreasing  
449 stability following the order: alkanes, alkanones, sterols, *n*-alkanoic acids  
450 (especially > C<sub>20</sub>), *n*-alkanols and *n*-alkenoic acids (Cranwell, 1981). Based on this  
451 chemical property, among previously identified signatures the best candidates for  
452 recovery after millennia are 1) ketones and *n*-alkane/*n*-alkene doublets for *Bone*  
453 *fire*, 2) saturated *n*-acids longer than C<sub>18</sub>, benzoic acids, ketones, benzene  
454 derivatives and *n*-alkane/*n*-alkene doublets for *Wood and bone fire* and 3)  
455 saturated *n*-acids longer than C<sub>18</sub>, *n*-alkanes, benzoic acids, phenolic compounds

456 and benzene derivatives for *Wood fire*, whereas no compound is expected to  
457 remain in *Soil with bone OM* (Table 4).

458 Nevertheless, the relevance of recalcitrance alone to predict the residence time of  
459 compounds has been widely discussed (Marschner et al., 2008; Bol et al., 2009;  
460 Kleber et al., 2011). Rather, the spatial inaccessibility or the organo-mineral  
461 interactions seem determinant for preservation at long timescale or in subsoil  
462 horizon (Lützow et al., 2006). More specifically, in calcareous soils like at  
463 Régismont-le-Haut, the high polyvalent cation content may induce the formation  
464 of cation bridges, leading to stabilization of organic residues (Lützow et al., 2006;  
465 Grünewald et al., 2006). However, no effect of CaCO<sub>3</sub> and pH on mineralization  
466 could be observed by Bertrand et al. (2007), questioning the significance of this  
467 stabilization mechanism. In this fireplace context, the association with charcoal  
468 might also limit the decomposition (Hernandez-Soriano et al., 2016), in this case,  
469 mainly through physical protection. Finally, as the substrate limitation can be  
470 considered as the main contributing factor of organic matter stabilization in deep  
471 soil horizons (Marschner et al., 2008), burial underwent by archaeological level  
472 could then have favored various compound preservation. For example, in  
473 prehistoric contexts, diacids were documented through GC-MS, in addition to  
474 long chain ketones and  $\gamma$ -lactones in Pincevent site fireplace sediments and  
475 heated stones (ca. 14 Ky cal. BP, Lucquin, 2007). Short chain diacids were also  
476 mentioned in the GC-MS study of sediments related to thermal fat processing in  
477 Alaska (ca. 5 Ky BP, Buonasera et al. 2015). In the same geographical context,  
478 the study of sediments from fireplaces (ca. 14 Ky cal. BP, Kedrowsky et al. 2009)  
479 illustrated the preservation of several branched *n*-acids interpreted as resulting  
480 from lipid degradation by bacteria or from ruminant fat. The recovery of  
481 compounds similar to those detected in this work, but with various intrinsic  
482 recalcitrance, could illustrate the importance of physical conditions for the record  
483 of organic signatures.

#### 484 **4. Conclusion**

485 This study provides the organic signature of different experimental fireplaces and  
486 demonstrates that they allow distinguishing if bone and/or wood were used as

487 fuel. It confirms that the thermal alteration of OM significantly modifies the  
488 initial signature of the unburned material, limiting the direct use of markers  
489 from unaltered sources to reconstruct fuel nature in archaeological fireplaces. In  
490 contrary, several byproducts of thermal degradation can serve as indicators of  
491 fuel type and, in this respect, the use of Py(TMAH)-GC-MS for the identification  
492 of non-extractable compounds proved particularly adapted. However, because of  
493 the variable organic components that constituted the organic signatures of the  
494 fireplaces, their differential preservation has to be expected. Their intrinsic  
495 recalcitrance, as well as the local environment and depositional context, might  
496 influence the recovery of the chemical signatures under investigation.  
497 Consequently, when applying this type of reference dataset to archaeological  
498 samples, which likely underwent substantial post-depositional processes, caution  
499 is needed. Nevertheless, as many identified compounds were found within non-  
500 extractable or recalcitrant OM fraction in our study, and subject to the collection  
501 of control samples, the reconstruction of archaeological interpretable signatures  
502 based on this referential dataset seems possible.

### 503 **Acknowledgements**

504 The project was supported by the *Partner University Fund*, in collaboration with  
505 the New York University (*Aurignacian Genius* project, 2011- 2014) and the  
506 funding from the French *Ministère de la Culture et de la Communication* (Service  
507 Régional d'Archéologie du Languedoc-Roussillon) and from the *Conseil*  
508 *Départemental de l'Hérault*. We thank R. Mensan for help during fieldwork, C.  
509 Anquetil and V.Vaury for technical assistance, S. Derenne and L.E. Anderson for  
510 editing. Finally, we are also grateful to editors and two anonymous reviewers for  
511 their constructive and helpful comments.

### 512 **References**

- 513 AFES (Association Française pour l'Étude des Sols), 2008. Référentiel  
514 Pédologique. Quae, Versailles, France.
- 515 Aldeias, V., Dibble, H.L., Sandgathe, D., Goldberg, P., McPherron, S.J.P., 2016.  
516 How heat alters underlying deposits and implications for archaeological fire  
517 features: A controlled experiment. *Journal of Archaeological Science* 67, 64–

- 518 79. doi:10.1016/j.jas.2016.01.016
- 519 Alexis, M., Rasse, D.P., Knicker, H., Anquetil, C., Rumpel, C., 2012. Evolution of  
520 soil organic matter after prescribed fire: A 20-year chronosequence.  
521 *Geoderma* 189-190, 98–107. doi:10.1016/j.geoderma.2012.05.003
- 522 Almendros, G., Martín, F., González-Vila, F.J., 1988. Effects of fire on humic and  
523 lipid fractions in a Dystric Xerochrept in Spain. *Geoderma* 42, 115–127.  
524 doi:10.1016/0016-7061(88)90028-6
- 525 Baldock, J.A., Masiello, C.A., Gélinas, Y., Hedges, J.I., 2004. Cycling and  
526 composition of organic matter in terrestrial and marine ecosystems. *Marine*  
527 *Chemistry* 92, 39–64. doi:10.1016/j.marchem.2004.06.016
- 528 Barnard, H., Ambrose, S.H., Beehr, D.E., Forster, M.D., Lanehart, R.E.,  
529 Malainey, M.E., Parr, R.E., Rider, M., Solazzo, C., Yohe, R.M., 2007. Mixed  
530 results of seven methods for organic residue analysis applied to one vessel  
531 with the residue of a known foodstuff. *Journal of Archaeological Science* 34,  
532 28–37. doi:10.1016/j.jas.2006.03.010
- 533 Barnard, H., Eerkens, J.W., 2007. *Theory and Practice of Archaeological Residue*  
534 *Analysis*. Archaeopress BAR Internationnal Series 1650, Oxford, UK.
- 535 Bellomo, R., 1993. A methodological approach for identifying archaeological  
536 evidence of fire resulting from human activities. *Journal of Archaeological*  
537 *Science* 20, 525–553. doi:10.1006/jasc.1993.1033
- 538 Ben Hassen-Trabelsi, A., Kraiem, T., Naoui, S., Belayouni, H., 2014. Pyrolysis of  
539 waste animal fats in a fixed-bed reactor: production and characterization of  
540 bio-oil and bio-char. *Waste Management* 34, 210–8.  
541 doi:10.1016/j.wasman.2013.09.019
- 542 Bertrand, I., Delfosse, O., Mary, B., 2007. Carbon and nitrogen mineralization in  
543 acidic, limed and calcareous agricultural soils: Apparent and actual effects.  
544 *Soil Biology and Biochemistry* 39, 276–288. doi:10.1016/j.soilbio.2006.07.016
- 545 Bol, R., Poirier, N., Balesdent, J., Gleixner, G., 2009. Molecular turnover time of  
546 soil organic matter in particle-size fractions of an arable soil. *Rapid*  
547 *Communications in Mass Spectrometry* 23, 2551–2558. doi:10.1002/rcm.4124
- 548 Buonasera, T., 2005. Fatty acid analysis of prehistoric burned rocks: a case study  
549 from central California. *Journal of Archaeological Science* 32, 957–965.  
550 doi:10.1016/j.jas.2005.01.012
- 551 Buonasera, T., Tremayne, A.H., Darwent, C.M., Eerkens, J.W., Mason, O.K.,  
552 2015. Lipid biomarkers and compound specific  $\delta^{13}\text{C}$  analysis indicate early  
553 development of a dual-economic system for the Arctic Small Tool tradition in

- 554 Northern Alaska. *Journal of Archaeological Science* 61, 129–138.  
555 doi:10.1016/j.jas.2015.05.011
- 556 Canti, M.G., 2003. Aspects of the chemical and microscopic characteristics of  
557 plant ashes found in archaeological soils. *Catena* 54, 339–361.  
558 doi:10.1016/S0341-8162(03)00127-9
- 559 Christie, W.W., 2014. Cholesterol - Structure, Occurrence, Physical Properties and  
560 Function [WWW Document]. A Lipid Primer - AOCS Lipid Library. URL  
561 <http://lipidlibrary.aocs.org/Primer/content.cfm?ItemNumber=39303>
- 562 Costamagno, S., Théry-Parisot, I., Castel, J.-C., Brugal, J.-P., 2009. Combustible  
563 ou non? Analyse multifactorielle et modèles explicatifs sur des ossements  
564 brûlés paléolithiques. In: Théry-Parisot, I., Costamagno, S., Henry, A. (Eds.),  
565 Gestion Des Combustibles Au Paléolithique et Au Mésolithique: Nouveaux  
566 Outils, Nouvelles Interprétations, Lisbon, 2006. Archaeopress BAR  
567 International Series 1914, Oxford, UK, pp. 47–60.
- 568 Coudret, P., Larrière, M., Valentin, B., 1989. Comparer les foyers: une entreprise  
569 difficile. In: Olive, M., Taborin, Y. (Eds.), *Nature et Fonction des Foyers*  
570 *Préhistorique*, Nemours, 1987. APRAIF, Nemours, France, pp. 37–45.
- 571 Cranwell, P.A., 1981. Diagenesis of free and bound lipids in terrestrial detritus  
572 deposited in a lacustrine sediment. *Organic Geochemistry* 3, 79–89.  
573 doi:10.1016/0146-6380(81)90002-4
- 574 De la Rosa, J.M., Faria, S.R., Varela, M.E., Knicker, H., González-Vila, F.J.,  
575 González-Pérez, J.A., Keizer, J., 2012. Characterization of wildfire effects on  
576 soil organic matter using analytical pyrolysis. *Geoderma* 191, 24–30.  
577 doi:10.1016/j.geoderma.2012.01.032
- 578 Dudd, S.N., Regert, M., Evershed, R.P., 1998. Assessing microbial lipid  
579 contributions during laboratory degradations of fats and oils and pure  
580 triacylglycerols absorbed in ceramic potsherds. *Organic Geochemistry* 29,  
581 1345–1354. doi:10.1016/S0146-6380(98)00093-X
- 582 Dudd, S.N., Evershed, R.P., Gibson, A.M., 1999. Evidence for varying patterns of  
583 exploitation of animal products in different prehistoric pottery traditions  
584 based on lipids preserved in surface and absorbed residues. *Journal of*  
585 *Archaeological Science* 26, 1473–1482. doi:10.1006/jasc.1998.0434
- 586 Eckmeier, E., Wiesenberg, G.L.B., 2009. Short chain n-alkanes (C<sub>16-20</sub>) in ancient  
587 soil are useful molecular markers for prehistoric biomass burning. *Journal of*  
588 *Archaeological Science* 36, 1590–1596. doi:10.1016/j.jas.2009.03.021
- 589 Eglinton, G., Calvin, M., 1967. Chemical fossils. *Scientific American* 216, 32–43.

- 590 Eglinton, G., Logan, G.A., Ambler, R.P., Boon, J.J., Perizonius, W.R.K., 1991.  
591 Molecular preservation. *Philosophical transactions of the Royal Society of*  
592 *London. Series B, Biological sciences* 333, 315–27; discussion 327–8.  
593 doi:10.1098/rstb.1991.0081
- 594 Erhardt, D., 1998. Painted based on drying-oil media. In: Dorge, V., Carey  
595 Howlett, F. (Eds.), *Painted Wood: History and Conservation*, Williamsburg,  
596 Virginia 1994. The J. Paul Getty Trust, Los Angeles, USA, pp. 17–32.
- 597 Evershed, R.P., 1993. Biomolecular archaeology and lipids. *World Archaeology*  
598 25, 74–93. doi:10.1080/00438243.1993.9980229
- 599 Evershed, R.P., 2008. Organic residue analysis in archaeology: the archaeological  
600 biomarker revolution. *Archaeometry* 50, 895–924. doi:10.1111/j.1475-  
601 4754.2008.00446.x
- 602 Evershed, R.P., Dudd, S.N., Charters, S., Mottram, H., Stott, A.W., Raven, A.,  
603 Bergen, P.F. Van, Bland, H.A., Jones, M., Bada, J., 1999. Lipids as carriers of  
604 anthropogenic signals from prehistory [and Discussion]. *Philosophical*  
605 *Transactions: Biological Sciences* 354, 19–31.
- 606 Evershed, R.P., Dudd, S.N., Copley, M.S., Berstan, R., Stott, A.W., Mottram, H.,  
607 Buckley, S. A., Crossman, Z., 2002. Chemistry of archaeological animal fats.  
608 *Accounts of Chemical Research* 35, 660–668. doi:10.1021/ar000200f
- 609 Evershed, R.P., Dudd, S.N., Lockheart, M.J., Jim, S., 2001. Lipids in archaeology.  
610 In: Brothwell, D.R., Pollard, A.M. (Eds.), *Handbook of Archaeological*  
611 *Sciences*. Wiley, Chichester, UK, pp. 331–349.
- 612 Evershed, R.P., Stott, A.W., Raven, A., Dudd, S.N., Charters, S., Leyden, A.,  
613 1995. Formation of long-chain ketones in ancient pottery vessels by pyrolysis  
614 of acyl lipids. *Tetrahedron Letters* 36, 8875–8878. doi:10.1016/0040-  
615 4039(95)01844-8
- 616 Grünewald, G., Kaiser, K., Jahn, R., Guggenberger, G., 2006. Organic matter  
617 stabilization in young calcareous soils as revealed by density fractionation  
618 and analysis of lignin-derived constituents. *Organic Geochemistry* 37, 1573–  
619 1589. doi:10.1016/j.orggeochem.2006.05.002
- 620 Harris, D., Horwáth, W.R., van Kessel, C., 2001. Acid fumigation of soils to  
621 remove carbonates prior to total organic carbon or carbon-13 isotopic  
622 analysis. *Soil Science Society of America Journal* 65, 1853.  
623 doi:10.2136/sssaj2001.1853
- 624 Hempfling, R., Schulten, H.-R., 1990. Chemical characterization of the organic  
625 matter in forest soils by Curie point pyrolysis-GC/MS and pyrolysis-field

- 626 ionization mass spectrometry. *Organic Geochemistry* 15, 131–145.  
627 doi:10.1016/0146-6380(90)90078-E
- 628 Henry, A., Théry-Parisot, I., 2014. From Evenk campfires to prehistoric hearths:  
629 charcoal analysis as a tool for identifying the use of rotten wood as fuel.  
630 *Journal of Archaeological Science* 52, 321–336. doi:10.1016/j.jas.2014.09.005
- 631 Hernández-Chávez, I., Torres-Tapia, L.W., Simá-Polanco, P., Cedillo-Rvera, R.,  
632 Moo-Puc, R., Peraza-Sánchez, S.R., 2012. Antigiardial activity of *Cupania*  
633 *dentata* bark and its constituents. *Journal of the Mexican Chemical Society*  
634 56, 105–108.
- 635 Hernandez-Soriano, M.C., Kerré, B., Goos, P., Hardy, B., Dufey, J., Smolderd, E.,  
636 2016. Long-term effect of biochar on the stabilization of recent carbon: soils  
637 with historical inputs of charcoal. *Global Change Biology Bioenergy* 8, 371-  
638 381. Doi:10.1111/gcbb.12250
- 639 Heron, C., Evershed, R.P., Goad, L.J., 1991. Effects of migration of soil lipids on  
640 organic residues associated with buried potsherds. *Journal of Archaeological*  
641 *Science* 18, 641–659. doi:10.1016/0305-4403(91)90027-M
- 642 Heron, C., Nilsen, G., Stern, B., Craig, O., Nordby, C., 2010. Application of lipid  
643 biomarker analysis to evaluate the function of “slab-lined pits” in Arctic  
644 Norway. *Journal of Archaeological Science* 37, 2188–2197.  
645 doi:10.1016/j.jas.2010.03.016
- 646 Huang, W.-Y., Meinschein, W.G., 1976. Sterols as source indicators of organic  
647 materials in sediments. *Geochimica et Cosmochimica Acta* 40, 323–330.  
648 doi:10.1016/0016-7037(76)90210-6
- 649 IUSS Working Group WRB, 2015. World reference base for soil resources 2014,  
650 update 2015. International soil classification system for naming soils and  
651 creating legends for soil maps. *World Soil Resources Reports* No. 106.  
652 doi:10.1017/S0014479706394902
- 653 Kaal, J., Lantes-Suarez, O., Martínez Cortizas, A., Prieto, B., Prieto Martínez,  
654 M.-P., 2014. How useful is pyrolysis-GC/MS for the assessment of molecular  
655 properties of organic matter in archaeological pottery matrix? An exploratory  
656 case study from North-West Spain. *Archaeometry* 56, 187–207.  
657 doi:10.1111/arcm.12057
- 658 Kaal, J., Martínez Cortizas, A., Nierop, K.G.J., 2009. Characterisation of aged  
659 charcoal using a coil probe pyrolysis-GC/MS method optimised for black  
660 carbon. *Journal of Analytical and Applied Pyrolysis* 85, 408–416.  
661 doi:10.1016/j.jaap.2008.11.007

- 662 Kanthilatha, N., Boyd, W., Dowell, A., Mann, A., Chang, N., Wohlmuth, H., Parr,  
663 J., 2014. Identification of preserved fatty acids in archaeological floor  
664 sediments from prehistoric sites at Ban Non Wat and Nong Hua Raet in  
665 northeast Thailand using gas chromatography. *Journal of Archaeological*  
666 *Science* 46, 353–362. doi:10.1016/j.jas.2014.03.033
- 667 Kedrowski, B.L., Crass, B. A., Behm, J. A., Luetke, J.C., Nichols, A. L., Moreck,  
668 A. M., Holmes, C.E., 2009. GC/MS analysis of fatty acids from ancient hearth  
669 residues at the Swan Point archaeological site. *Archaeometry* 51, 110–122.  
670 doi:10.1111/j.1475-4754.2008.00384.x
- 671 Kleber, M., Nico, P.S., Plante, A., Filley, T., Kramer, M., Swanston, C., Sollins,  
672 P., 2011. Old and stable soil organic matter is not necessarily chemically  
673 recalcitrant: Implications for modeling concepts and temperature sensitivity.  
674 *Global Change Biology* 17, 1097–1107. doi:10.1111/j.1365-2486.2010.02278.x
- 675 Knicker, H., 2011. Pyrogenic organic matter in soil: its origin and occurrence, its  
676 chemistry and survival in soil environments. *Quaternary International* 243,  
677 251–263. doi:10.1016/j.quaint.2011.02.037
- 678 Knicker, H., González-Vila, F.J., Polvillo, O., González, J. a., Almendros, G.,  
679 2005. Fire-induced transformation of C- and N- forms in different organic soil  
680 fractions from a Dystric Cambisol under a Mediterranean pine forest (*Pinus*  
681 *pinaster*). *Soil Biology and Biochemistry* 37, 701–718.  
682 doi:10.1016/j.soilbio.2004.09.008
- 683 Lucquin, A., 2007. Étude Physico-Chimique des Méthodes de Cuisson Pré- et  
684 Protohistoriques. PhD dissertation, Université Rennes 1, France.
- 685 Lützw, M. V., Kögel-Knabner, I., Ekschmitt, K., Matzner, E., Guggenberger, G.,  
686 Marschner, B., Flessa, H., 2006. Stabilization of organic matter in temperate  
687 soils: Mechanisms and their relevance under different soil conditions - A  
688 review. *European Journal of Soil Science* 57, 426–445. doi:10.1111/j.1365-  
689 2389.2006.00809.x
- 690 Maher, K.D., Bressler, D.C., 2007. Pyrolysis of triglyceride materials for the  
691 production of renewable fuels and chemicals. *Bioresource Technology* 98,  
692 2351–2368. doi:10.1016/j.biortech.2006.10.025
- 693 Malainey, M.E., 2007. Fatty acid analysis of archaeological residues: procedures  
694 and possibilities. In: Barnard, H., Eerkens, J.W. (Eds.), *Theory and Practice*  
695 *of Archaeological Residue Analysis*. Archeopress BAR Intenational Series  
696 1650, pp. 77–89.
- 697 Malainey, M.E., Przybylski, R., Sherriff, B.L., 1999. The fatty acid composition of



- 698 Native food plants and animals of Western Canada. *Journal of*  
699 *Archaeological Science* 26, 83–94. doi:10.1006/jasc.1998.0305
- 700 Mallol, C., Hernández, C.M., Cabanes, D., Machado, J., Sistiaga, A., Pérez, L.,  
701 Galván, B., 2013. Human actions performed on simple combustion  
702 structures: An experimental approach to the study of Middle Palaeolithic  
703 fire. *Quaternary International* 315, 3–15. doi:10.1016/j.quaint.2013.04.009
- 704 March, R.J., 1995. *Méthodes Physiques et Chimiques Appliquées à l'Étude des*  
705 *Structures de Combustion Préhistoriques. L'Approche par la Chimie*  
706 *Organique*. PhD dissertation, Université Paris 1, France.
- 707 March, R.J., 2013. Searching for the functions of fire structures in Eynan  
708 (Mallaha) and their formation processes: a geochemical approach. In: Bar-  
709 Yosef, O., Valla, F. (Eds.), *Natufian Foragers in the Levant. Terminal*  
710 *Pleistocene Social Changes in Western Asia. International Monographs in*  
711 *Prehistory* 19, Ann-Arbor, USA, pp. 139–145.
- 712 March, R.J., Baldessari, A., Gross, E., 1989. Determinacion de compuestos  
713 orgnicos en estructuras de combustion arqueologicas. In: Olive, M., Taborin,  
714 Y. (Eds.), *Nature et Fonction des Foyers Préhistorique*, Nemours, 1987.  
715 APRAIF, Nemours, France, pp. 47-58.
- 716 March, R.J., Lucquin, A., Joly, D., Ferreri, J.C., Muhieddine, M., 2014. Processes  
717 of formation and alteration of archaeological fire structures: complexity  
718 viewed in the light of experimental approaches. *Journal of Archaeological*  
719 *Method and Theory* 21, 1–45. doi:10.1007/s10816-012-9134-7
- 720 Marschner, B., Brodowski, S., Dreves, A., Gleixner, G., Gude, A., Grootes, P.M.,  
721 Hamer, U., Heim, A., Jandl, G., Ji, R., Kaiser, K., Kalbitz, K., Kramer, C.,  
722 Leinweber, P., Rethemeyer, J., Schäffer, A., Schmidt, M.W.I., Schwark, L.,  
723 Wiesenberg, G.L.B., 2008. How relevant is recalcitrance for the stabilization  
724 of organic matter in soils? *Journal of Plant Nutrition and Soil Science* 171,  
725 91–110. doi:10.1002/jpln.200700049
- 726 Mathe, C., Culioli, G., Archier, P., Vieillescazes, C., 2004. Characterization of  
727 archaeological frankincense by gas chromatography–mass spectrometry.  
728 *Journal of Chromatography A* 1023, 277–285.  
729 doi:10.1016/j.chroma.2003.10.016
- 730 Mentzer, S.M., 2012. Microarchaeological approaches to the identification and  
731 interpretation of combustion features in prehistoric archaeological sites.  
732 *Journal of Archaeological Method and Theory* 21, 616–668.  
733 doi:10.1007/s10816-012-9163-2

- 734 Mills, J., 1966. The gas-chromatographic examination of paint media; Part I.  
735 Fatty acid composition and identification of dried oil film. *Studies in*  
736 *Conservation* 11, 92–106.
- 737 Nawar, W.W., 1969. Thermal decomposition of lipids – a review. *Journal of*  
738 *Agricultural and Food Chemistry*. 17, 18–21.
- 739 Nawar, W.W., 1989. Thermal decomposition of lipids An Overview, in: Parliment,  
740 T.H., McGorin, R.J. and Ho, C.-T. (Eds.), *Thermal Generation of Aromas*.  
741 ACS Symposium Series, Washington DC, USA, pp. 94–104.
- 742 Nieuwenhuyse, O.P., Roffet-Salque, M., Evershed, R.P., Akkermans, P.M.M.G.,  
743 Russell, A., 2015. Tracing pottery use and the emergence of secondary  
744 product exploitation through lipid residue analysis at Late Neolithic Tell  
745 Sabi Abyad (Syria). *Journal of Archaeological Science*.  
746 doi:10.1016/j.jas.2015.10.002
- 747 Pastorova, I., Botto, R.E., Arisz, P.W., Boon, J.J., 1994. Cellulose char structure:  
748 a combined analytical Py-GC-MS, FTIR, and NMR study. *Carbohydrate*  
749 *Research* 262, 27–47.
- 750 Perlès, C., 1977. *Préhistoire du Feu*. Masson, Paris, France.
- 751 Poirier, N., Sohi, S.P., Gaunt, J.L., Mahieu, N., Randall, E.W., Powlson, D.S.,  
752 Evershed, R.P., 2005. The chemical composition of measurable soil organic  
753 matter pools. *Organic Geochemistry* 36, 1174–1189.  
754 doi:10.1016/j.orggeochem.2005.03.005
- 755 Pradeau, J., Salomon, H., Bon, F., Mensan, R., Lejay, M., 2014. Les matières  
756 colorantes sur le site aurignacien de plein air de Régismont-le-Haut ( Poilhes  
757 , Hérault ) Acquisition , transformations et utilisations. *Bulletin de la Societé*  
758 *Préhistorique Française* 111, 631–658.
- 759 Quenea, K., Derenne, S., Largeau, C., Rumpel, C., Mariotti, A., 2004. Variation in  
760 lipid relative abundance and composition among different particle size  
761 fractions of a forest soil. *Organic Geochemistry* 35, 1355–1370.  
762 doi:10.1016/j.orggeochem.2004.03.010
- 763 Quénéa, K., Derenne, S., Largeau, C., Rumpel, C., Mariotti, A., 2005.  
764 Spectroscopic and pyrolytic features and abundance of the macromolecular  
765 refractory fraction in a sandy acid forest soil (Landes de Gascogne, France).  
766 *Organic Geochemistry* 36, 349–362. doi:10.1016/j.orggeochem.2004.10.005
- 767 Quénéa, K., Mathieu, J., Derenne, S., 2012. Soil lipids from accelerated solvent  
768 extraction: Influence of temperature and solvent on extract composition.  
769 *Organic Geochemistry* 44, 45–52. doi:10.1016/j.orggeochem.2011.11.009

- 770 Reber, E.A., Baumann, T.E., Monaghan, W.G., Myers, K.N., 2015. Absorbed  
771 residue analysis of a Mississippi Plain jar from Angel Mounds (12Vg1) lipid  
772 distribution revisited. *Advances in Archaeological Practice* 3, 29–49.  
773 doi:10.7183/2326-3768.3.1.29
- 774 Reber, E.A., Evershed, R.P., 2004. Identification of maize in absorbed organic  
775 residues: A cautionary tale. *Journal of Archaeological Science* 31, 399–410.  
776 doi:10.1016/j.jas.2003.09.008
- 777 Regert, M., 2011. Analytical Strategies for discriminating archeological fatty  
778 substances from animal origin. *Mass Spectrometry Reviews* 30, 177–220.  
779 doi:10.1002/mas
- 780 Regert, M., Alexandre, V., Thomas, N., Lattuati-Derieux, A., 2006. Molecular  
781 characterisation of birch bark tar by headspace solid-phase microextraction  
782 gas chromatography-mass spectrometry: a new way for identifying  
783 archaeological glues. *Journal of Chromatography. A* 1101, 245–53.  
784 doi:10.1016/j.chroma.2005.09.070
- 785 Roebroeks, W., Villa, P., 2011. On the earliest evidence for habitual use of fire in  
786 Europe. *Proceedings of the National Academy of Sciences of the United*  
787 *States of America* 108, 5209–14. doi:10.1073/pnas.1018116108
- 788 Rontani, J.-F., Aubert, C., 2008. Hydrogen and trimethylsilyl transfers during EI  
789 mass spectral fragmentation of hydroxycarboxylic and oxocarboxylic acid  
790 trimethylsilyl derivatives. *Journal of the American Society for Mass*  
791 *Spectrometry* 19, 66–75. doi:10.1016/j.jasms.2007.10.014
- 792 Rottländer, R.C.A., 1989. Chemische untersuchungen an sedimenten der Höhle  
793 Geissenklösterle bei Blaubeuren. *Fundberichte Aus Baden-Württemberg* 14,  
794 23–32.
- 795 Saiz-Jimenez, C., De Leeuw, J.W., 1986. Chemical characterization of soil organic  
796 matter fractions by analytical pyrolysis-gas chromatography-mass  
797 spectrometry. *Journal of Analytical and Applied Pyrolysis* 9, 99–119.  
798 doi:10.1016/0165-2370(86)85002-1
- 799 Sandgathe, D.M., Dibble, H.L., Goldberg, P., McPherron, S.P., Turq, A., Niven,  
800 L., Hodgkins, J., 2011. Timing of the appearance of habitual fire use.  
801 *Proceedings of the National Academy of Sciences of the United States of*  
802 *America* 108, E298; author reply E299. doi:10.1073/pnas.1106759108
- 803 Shadkami, F., Helleur, R., 2010. Recent applications in analytical  
804 thermochemolysis. *Journal of Analytical and Applied Pyrolysis* 89, 2–16.  
805 doi:10.1016/j.jaap.2010.05.007

- 806 Simoneit, B.R.T., 2002. Biomass burning - A review of organic tracers for smoke  
807 from incomplete combustion. *Applied Geochemistry* 17, 129–162.  
808 doi:10.1016/S0883-2927(01)00061-0
- 809 Simoneit, B.R.T., 2005. A review of current applications of mass spectrometry for  
810 biomarker/molecular tracer elucidation. *Mass Spectrometry Reviews* 24,  
811 719–65. doi:10.1002/mas.20036
- 812 Simoneit, B.R.T., Rogge, W.F., Mazurek, M.A., Standley, L.J., Hildemann, L.M.,  
813 Cass, G.R., 1993. Lignin pyrolysis products, lignans, and resin acids as  
814 specific tracers of plant classes in emissions from biomass combustion.  
815 *Environmental Science and Technology* 27, 2533–2541.  
816 doi:10.1021/es00048a034
- 817 Spangenberg, J.E., Ferrer, M., Jacomet, S., Bleicher, N., Schibler, J., 2014.  
818 Molecular and isotopic characterization of lipids staining bone and antler  
819 tools in the Late Neolithic settlement, Zurich Opera Parking, Switzerland.  
820 *Organic Geochemistry* 69, 11–25. doi:10.1016/j.orggeochem.2014.01.015
- 821 Steele, V., 2013. Organic residues in archaeology: The highs and lows of recent  
822 research. In: Armitage, R.A. and Burton, J.H. (Eds.), *Archaeological*  
823 *Chemistry VIII*. ACS Symposium Series, Washington DC, USA, pp. 89–108.  
824 doi:10.1021/bk-2013-1147.ch005
- 825 Théry-Parisot, I., 2001. *Economie des Combustibles au Paléolithique*. CNRS,  
826 Paris.
- 827 Théry-Parisot, I., 2002. Fuel management (bone and wood) during the Lower  
828 Aurignacian in the Pataud Rock Shelter (Lower Palaeolithic, Les Eyzies de  
829 Tayac, Dordogne, France). Contribution of experimentation. *Journal of*  
830 *Archaeological Science* 29, 1415–1421. doi:10.1006/jasc.2001.0781
- 831 Théry-Parisot, I., Chabal, L., Costamagno, S., 2010. Taphonomie de la  
832 Combustion des Résidus Organiques et des Structures de Combustion en  
833 Contexte Archéologique. Actes de table ronde, 27-29 mai 2008, Valbonne.  
834 P@lethnologie, Toulouse, France.
- 835 Théry-Parisot, I., Costamagno, S., 2005. Propriétés combustibles des ossements :  
836 données expérimentales et réflexions archéologiques sur leur emploi dans les  
837 sites paléolithiques. *Gallia Préhistoire* 47, 235–254.  
838 doi:10.3406/galip.2005.2051
- 839 Van Den Berg, J.D.J., Van Den Berg, K.J., Boon, J.J., 2002. Identification of non-  
840 cross-linked compounds in methanolic extracts of cured and aged linseed oil-  
841 based paint films using gas chromatography-mass spectrometry. *Journal of*

- 842 Chromatography A 950, 195–211. doi:10.1016/S0021-9673(02)00049-3
- 843 Vilegas, J.H.Y., Lanças, F.M., Vilegas, W., Pozetti, G.L., 1997. Further  
844 triterpenes , steroids and furocoumarins from brazilian medicinal plants of  
845 *Dorstenia* genus ( Moraceae ). Journal of the Brazilian Chemical Society 8,  
846 529–535. doi:10.1590/S0103-50531997000500016
- 847 Villa, P., Bon, F., Castel, J.-C., 2002. Fuel, fire and fireplaces in the palaeolithic  
848 of Western Europe. The Review of Archaeology 23, pp. 33–42.
- 849 Volkman, J.K., 2005. Sterols and other triterpenoids: source specificity and  
850 evolution of biosynthetic pathways. Organic Geochemistry 36, 139–159.  
851 doi:10.1016/j.orggeochem.2004.06.013
- 852 Wexler, H., 1964. Polymerization of drying oils. Chemical Reviews 64, 591–611.  
853 doi:10.1021/cr60232a001
- 854 Wiesenberg, G.L.B., Lehdorff, E., Schwark, L., 2009. Thermal degradation of rye  
855 and maize straw: Lipid pattern changes as a function of temperature.  
856 Organic Geochemistry 40, 167–174. doi:10.1016/j.orggeochem.2008.11.004

**Table 1**

Sample description, experimental parameters and organic carbon content (C<sub>org</sub>) of upper subsamples (visually-identified as affected by the experiment) and of lower subsamples (visually unaffected by the experiment).

Name	Subsample	Description	C <sub>org</sub>
Control	-	Yellow sandy loam with frequent calcitic features (e.g. hypocoatings, nodules)	0.3 %
Soil with bone OM	Upper	Yellow to brown sandy loam with frequent calcitic features and organic fluids impregnation ; 2 cm thick	4.7 %
	Lower	Similar to control	0.2 %
Bone fire	Upper	Reddened and carbonized sandy loam with frequent calcitic features and fine carbon coatings/infillings ; 4 cm thick	2.3 %
	Lower	Similar to control	0.3 %
Wood+bone fire	Upper	Reddened and carbonized sandy loam with frequent calcitic features and fine carbon coatings/infillings ; 2.5 cm thick	0.9 %
	Lower	Similar to control	0.3 %
Wood fire	Upper	Reddened sandy loam with frequent calcitic features and rare combustion residues on surface ; 1.5 cm thick	0.2 %
	Lower	Similar to control	0.2 %

857

858

**Table 2**

Compounds in extract of the samples. The molecular weight (MW) and the main mass fragments of TMS derivatives are reported (with decreasing contributions). Compound numbers are reported in Fig. 2. The same peak number may correspond to several co-eluting compounds.

Peak #	Main fragments ( <i>m/z</i> )	MW	Name
1	179, 105, 77, 135, 194	194	Benzoic acid, TMS
2	73, 147, 205, 293	308	Glycerol, TMS
3	193, 119, 149, 91, 208	208	2-Methylbenzoic acid, TMS
4	151, 73, 210, 195, 117, 167	210	2-Phenoxy-ethanol, TMS
5	71, 89, 56, 43, 173, 143	216	Propanoic acid, 2-methyl-, 2-ethyl-3-hydroxyhexyl ester
6	43, 71, 145, 83, 161, 98	304	1,3-Diisobutyrim, TMS
7	227, 75, 143, 129	242	3-Methyldecen-1-ol, TMS
8	194, 193, 73, 209, 224	224	Vanillin, TMS
9	57, 71, 83	242	Octyl ether
	257	257	Dimethylbenzoacridine
10	195, 210, 180, 165	210	Naphthalene, 1,2,3-trimethyl-4-propenyl-, (E)-
11	195, 119, 73, 103	252	2-Acetoxy-benzoic acid (TMS)
12	88, 101, 157, 284, 239	284	Hexadecanoic acid, ethyl ester
13	85, 236, 192, 97	254	$\gamma$ -Palmitolactone
14	85, 97, 220, 264	282	$\gamma$ -Stearolactone
15	343, 73, 147, 227, 431, 371, 205	446	1-Monomyristin, TMS
16	317, 73, 215, 147	532	10, $\omega$ -Dihydroxy-octadecanoic acid, TMS
17	129, 218, 73, 147, 103, 313, 459, 403	474	2-Monopalmitin, TMS
18	369, 73, 129, 147, 55, 370, 457	472	1-Monopalmitolein, TMS
19	371, 73, 147, 459	474	1-Monopalmitin, TMS
20	103, 129, 73, 218, 147	500	2-Monoolein, TMS
21	129, 218, 147, 341, 103, 487	502	2-Monostearin, TMS
22	397, 73, 129, 147, 103	500	1-Monoolein, TMS
23	399, 73, 147, 129, 267, 487	502	1-Monostearin, TMS
24	69, 81, 137, 95, 121	410	Squalene
25	329, 129, 368, 458	458	Cholesterol, TMS
26	83, 129, 484, 394, 255	484	Stigmasterol, TMS
27	204, 300, 133, 285, 424	424	Taraxerone
28	129, 357, 396, 486, 255	486	Sitosterol, TMS
29	218, 424, 203	424	$\alpha$ -Amyrone
30	424, 205, 189, 409	424	Lupenone
31	129, 145, 313, 329, 385, 625	640	1,2-Dipalmitin, TMS
32	371, 372, 73, 385, 625	640	1,3-Dipalmitin, TMS

**Table 3**

Compounds from py(TMAH)-GC-MS analysis of bulk OM. The MW and main mass fragments of original compounds or methylated derivatives are reported (with decreasing contribution). Peak numbers are reported in Fig. 3. The same peak number may correspond to several co-eluting compounds.

Peak #	Main mass fragments ( <i>m/z</i> )	MW	Name
1	45, 75, 88, 102	120	1,3-Dimethoxy-2-propanol
2	59, 45, 89, 102	134	1,2,3-Trimethoxypropane
3	55, 41, 68, 84, 112	112	Cycloheptanone
4	41, 57, 70, 82, 98, 114, 124	142	Nonanal
5	119, 134, 91, 115	134	1,2,3,5-Tetramethylbenzene
6	119, 134, 91, 77, 65	134	1,2,4,5-Tetramethylbenzene
7	133, 148, 105, 91, 115	148	Pentamethylbenzene
8	147, 162, 91, 119, 105, 77	162	1,2,4-Trimethyl-5-(1-methylethyl)benzene
9	147, 162, 133, 91, 105	162	1,2-Diethyl-3,4-dimethylbenzene
10	147, 162, 91, 105, 119, 131	162	Hexamethylbenzene
11	101, 88	298	Heptadecanoic acid, ethyl ester
12	71, 183, 95, 294	326	8-Methoxy-9-octadecenoic acid, methyl ester
13	71, 227, 163, 81, 294	340	12,13-Epoxy-11-methoxy-9-octadecanoic acid, methyl ester
14	71, 213, 169, 294	326	10-Methoxy-8-octadecenoic acid, methyl ester
	71, 169, 227, 294	326	9-Methoxy-10-octadecenoic acid, methyl ester
15	131, 71, 241	328	4-Methoxy-octadecanoic acid, methyl ester
	83, 145, 201	302	6,10-Dihydroxyhexadecanoic acid, methyl ester
	229, 143	328	11-Methoxy-octadecanoic acid, methyl ester
16	55, 74, 155	330	9,10-Dihydroxyoctadecanoic acid, methyl ester
17	69, 201, 83, 137,	358	9,18-Dimethoxyoctadecenoic acid, methyl ester

861

862

**Table 4**

Summary of specific components in the extracts (GC-MS) and in the bulk soil OM composition [py(TMAH)-GC-MS], and possible origins. In grey, compounds with an expected long-term preservation due to their recalcitrance (according to literature, see §3.4).

	<i>Control</i>	<i>Soil with bone OM</i>	<i>Bone fire</i>	<i>Wood + bone fire</i>	<i>Wood fire</i>	Possible origin
Saturated <i>n</i> -acids > C <sub>18</sub>	X			X	X	Plant OM
<i>n</i> -Alcohols > C <sub>17</sub>	X				X	Plant OM
<i>n</i> -Alkanes	X				X	Plant OM
Phytosterols	X				X	Plant OM
Terpenes	X					Plant OM
Benzoic acids				X	X	Plant OM
Phenolic compounds					X	Plant OM
Other aromatic compounds					X	Thermal alteration of plant OM
Diacids		X	X	X		Animal fat
(di)Hydroxyacids		X				Animal fat
Monomethyl branched dicarboxylic acids < C <sub>10</sub>			X			Slight thermal alteration of animal fat
Oxoacids			X	X		Thermal alteration of animal fat
Monomethyl branched acids < Me-C <sub>12</sub>			X	X		Thermal alteration of animal fat
<i>n</i> -Alcohols < C <sub>17</sub>			X	X		Thermal alteration of animal fat
Ketones			X	X		Thermal alteration of animal fat
Lactones			X	X		Thermal alteration of animal fat
Benzene derivatives				X	X	Thermal alteration of plant OM
Monomethyl branched unsaturated C <sub>9</sub> and C <sub>10</sub> acids, high C <sub>8</sub> and C <sub>9</sub> saturated <i>n</i> -acids		X				Animal fat
Diacids		X	X			Animal fat
(di)Hydroxy-, epoxy-saturated and unsaturated acids		X	X			Animal fat
Glycerol derivatives		X	X			Animal fat
<i>n</i> -Alkane/ <i>n</i> -alkene doublets			X	X		Thermal alteration of animal fat



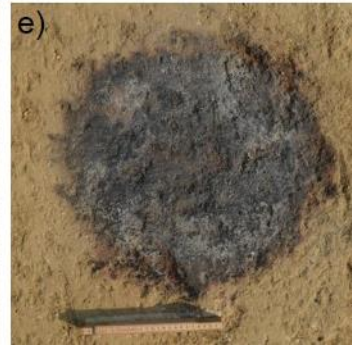
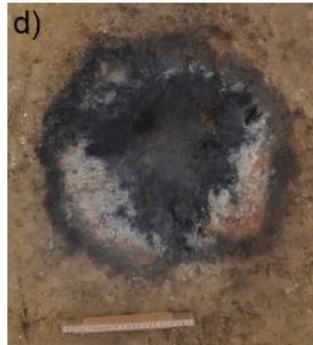
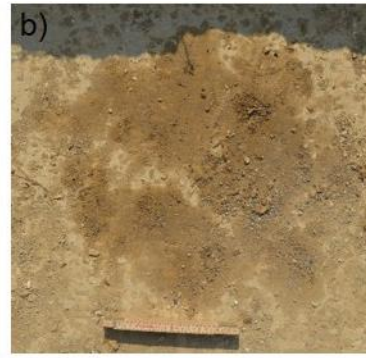
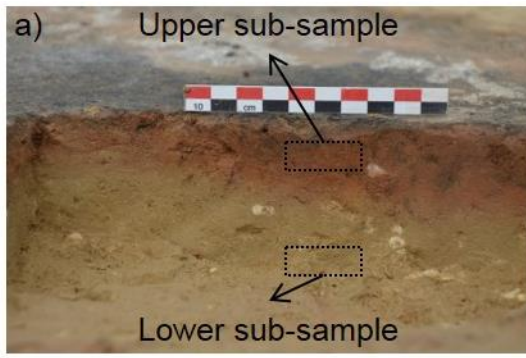
864 **List of figures:**

865 **Fig. 1.** Pictures of Regismont-le-Haut (France) experimental structures during  
866 summer 2012 experimental session; (a) section of an experimental fireplace with  
867 the localization of upper and lower subsamples, (b) *Soil with bone OM*  
868 experiment after removal of bone fragments, (c) *Bone fire* experiment after  
869 removal of combustion residues, (d) *Bone+wood fire* experiment after removal of  
870 combustion residues, (e) *Wood fire* experiment after removal of combustion  
871 residues. The scale is 10 cm long in (a), 24 cm long in (b), (c), (d) and (e).

872 **Fig. 2.** Total ion Chromatogram (TIC) of silylated extract of the (a) *Control*, (b)  
873 *Soil with bone OM*, (c) *Bone fire*, (d) *Wood+bone fire* and (e) *Wood fire*. Numbers  
874 refer to Table 2; p, plastic derivative; c, column peak. C<sub>x</sub> indicates number of  
875 carbons in the linear chain.

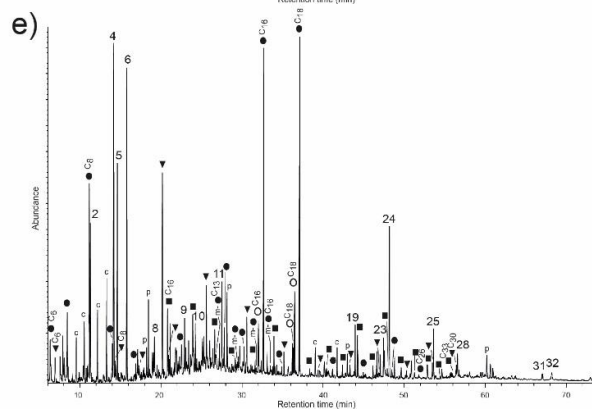
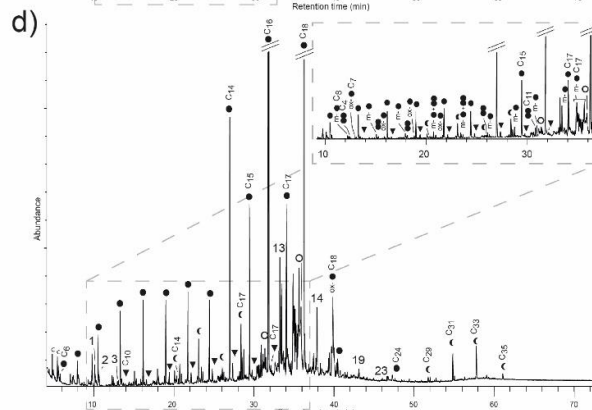
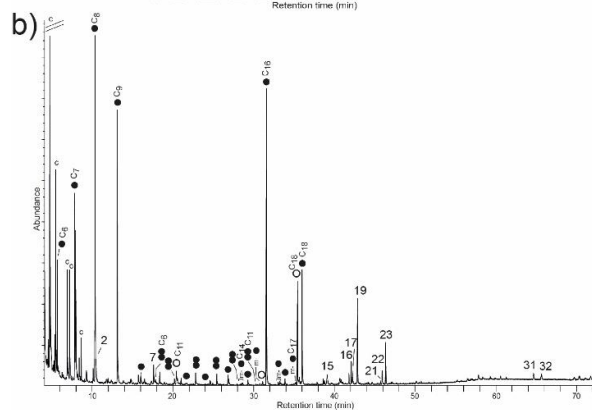
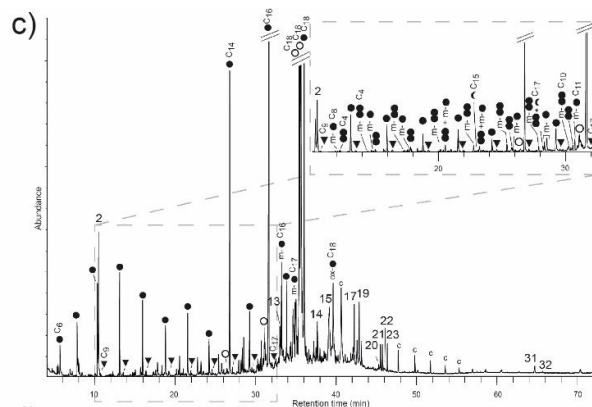
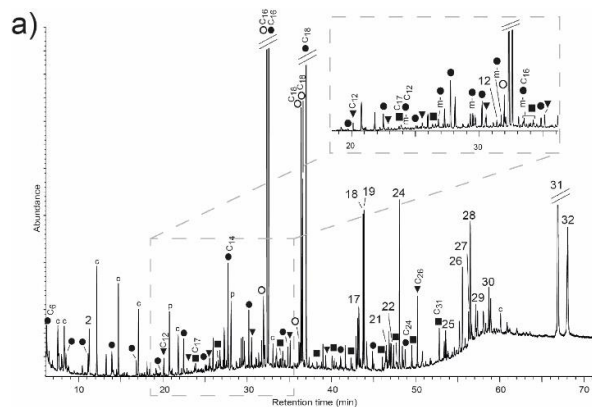
876 **Fig. 3.** TIC trace from py(TMAH)-GC-MS analysis for (a) *Soil with bone OM*, (b)  
877 *Bone fire*, (c) *Wood+bone fire* and (d) *Wood fire*. Numbers refer to Table 3. C<sub>x</sub>  
878 indicates number of carbons in the linear chain.

879



880

881



- Saturated n-acids
- Unsaturated n-acids
- Diacids
- m- Monomethyl branched
- ox- Oxo-
- ▼ n-Alcohols
- n-Alkanes
- < Ketones

882

883

