



Elevated Colonization of Microborers at a Volcanically Acidified Coral Reef

Ian C. Enochs, Derek P. Manzello, Aline Tribollet, Lauren Valentino, Graham Kolodzieff, Emily M. Donham, Mark D. Fitchett, Renee Carlton, Nichole N. Price

► To cite this version:

Ian C. Enochs, Derek P. Manzello, Aline Tribollet, Lauren Valentino, Graham Kolodzieff, et al.. Elevated Colonization of Microborers at a Volcanically Acidified Coral Reef. PLoS ONE, 2016, 11 (7), pp.e0159818. 10.1371/journal.pone.0159818. hal-01375709

HAL Id: hal-01375709

<https://hal.sorbonne-universite.fr/hal-01375709>

Submitted on 3 Oct 2016

HAL is a multi-disciplinary open access archive for the deposit and dissemination of scientific research documents, whether they are published or not. The documents may come from teaching and research institutions in France or abroad, or from public or private research centers.

L'archive ouverte pluridisciplinaire **HAL**, est destinée au dépôt et à la diffusion de documents scientifiques de niveau recherche, publiés ou non, émanant des établissements d'enseignement et de recherche français ou étrangers, des laboratoires publics ou privés.



Distributed under a Creative Commons Attribution 4.0 International License

RESEARCH ARTICLE

Elevated Colonization of Microborers at a Volcanically Acidified Coral Reef

Ian C. Enochs^{1,2*}, Derek P. Manzello², Aline Tribollet³, Lauren Valentino^{1,2}, Graham Kolodziej^{1,2}, Emily M. Donham^{4,5}, Mark D. Fitchett¹, Renee Carlton^{1,2}, Nichole N. Price⁵

1 Rosenstiel School of Marine and Atmospheric Science, University of Miami, 4600 Rickenbacker Cswy., Miami, Florida, 33149, United States of America, **2** Atlantic Oceanographic and Meteorological Laboratories (AOML), NOAA, 4301 Rickenbacker Cswy., Miami, Florida, 33149, United States of America, **3** IRD-Sorbonne Universités (Univ. Paris 6) UPMC-CNRS-MNHN, Laboratoire IPSL-LOCEAN, 32 Avenue Henri Varagnat, 93143, Bondy, France, **4** Moss Landing Marine Laboratories, 8272 Moss Landing Rd., Moss Landing, California, 95039, United States of America, **5** Bigelow Laboratory for Ocean Sciences, 60 Bigelow Dr., East Boothbay, Maine, 04544, United States of America

* ienochs@rsmas.miami.edu



OPEN ACCESS

Citation: Enochs IC, Manzello DP, Tribollet A, Valentino L, Kolodziej G, Donham EM, et al. (2016) Elevated Colonization of Microborers at a Volcanically Acidified Coral Reef. PLoS ONE 11(7): e0159818. doi:10.1371/journal.pone.0159818

Editor: Stefano Goffredo, University of Bologna, ITALY

Received: January 18, 2016

Accepted: July 9, 2016

Published: July 28, 2016

Copyright: This is an open access article, free of all copyright, and may be freely reproduced, distributed, transmitted, modified, built upon, or otherwise used by anyone for any lawful purpose. The work is made available under the [Creative Commons CC0](https://creativecommons.org/licenses/by/4.0/) public domain dedication.

Data Availability Statement: All relevant data are within the manuscript. Data presented herein are also freely available from NOAA's Coral Reef Information System (CoRIS) at (www.coris.noaa.gov). They are titled "Microborer settlement at Maug Island."

Funding: Financial support was provided by NOAA's Coral Reef Conservation and Ocean Acidification Programs.

Competing Interests: The authors have declared that no competing interests exist.

Abstract

Experiments have demonstrated that ocean acidification (OA) conditions projected to occur by the end of the century will slow the calcification of numerous coral species and accelerate the biological erosion of reef habitats (bioerosion). Microborers, which bore holes less than 100 μm diameter, are one of the most pervasive agents of bioerosion and are present throughout all calcium carbonate substrates within the reef environment. The response of diverse reef functional groups to OA is known from real-world ecosystems, but to date our understanding of the relationship between ocean pH and carbonate dissolution by microborers is limited to controlled laboratory experiments. Here we examine the settlement of microborers to pure mineral calcium carbonate substrates (calcite) along a natural pH gradient at a volcanically acidified reef at Maug, Commonwealth of the Northern Mariana Islands (CNMI). Colonization of pioneer microborers was higher in the lower pH waters near the vent field. Depth of microborer penetration was highly variable both among and within sites (4.2–195.5 μm) over the short duration of the study (3 mo.) and no clear relationship to increasing CO_2 was observed. Calculated rates of biogenic dissolution, however, were highest at the two sites closer to the vent and were not significantly different from each other. These data represent the first evidence of OA-enhancement of microboring flora colonization in newly available substrates and provide further evidence that microborers, especially bioeroding chlorophytes, respond positively to low pH. The accelerated breakdown and dissolution of reef framework structures with OA will likely lead to declines in structural complexity and integrity, as well as possible loss of essential habitat.

Introduction

Ocean acidification (OA) describes the global oceanic uptake of atmospheric carbon dioxide, resulting in more acidic waters, with a lower saturation state (Ω) of calcium carbonate [1, 2]. The negative implications of this phenomenon are especially relevant to coral reef ecosystems which rely on calcified structures to provide habitat for diverse plants and animals [3, 4]. Coral reef habitat is maintained by a balance of constructive processes (accretion) primarily due to reef-building corals, and destructive processes (erosion), mainly due to biological erosion (bioerosion) resulting from the activity of a diverse suite of flora and fauna [5, 6].

The link between OA and habitat-forming corals is well established. Elevated $p\text{CO}_2$ and reduced Ω can result in depressed calcification and growth of numerous species [7], as well as reduced fertilization success and larval settlement [8]. OA may also enhance the growth and competitive ability of fleshy macroalgae, restricting coral growth, and ultimately reducing calcification [3, 9, 10].

Hoegh-Guldberg *et al.* [11] were the first to suggest that OA may lead to the loss of reef structures and Manzello *et al.* [12] provided the first evidence suggesting that OA may accelerate bioerosion. Multiple experimental and field studies have since confirmed that OA stimulates bioerosion and abiotic carbonate dissolution, completing a two-front attack (slower calcification and faster erosion) on the production and persistence of coral reef carbonates [13–20]. Experimental evidence of OA-enhanced erosion has been restricted to taxa that employ chemical means of dissolution, rather than mechanical scraping or rasping. Clionaid sponges, which excavate complex networks and galleries from coral reef frameworks, exhibit enhanced rates of carbonate dissolution in seawater $p\text{CO}_2$ conditions projected to occur by the end of the century [14, 19, 20]. On much finer scales, microborers ($<100\ \mu\text{m}$) demonstrate a similar response to OA in experimentally manipulated seawater conditions [13, 15].

Despite their small size, these microbial bioeroding organisms (euendoliths *sensu* Golubic *et al.* [21]) occur in all carbonate substrates, making them important agents of bioerosion on coral reefs [5, 6]. This multi-phyletic community of bioeroders consists of cyanobacteria, chlorophytes, rhodophytes, and fungi [22, 23]. Initial colonization occurs rapidly, within several days of substrate exposure, after which they continue to bore into the carbonates they occupy [22, 24]. The means by which microborers dissolve the materials in which they live is poorly understood and mechanisms have been proposed ranging from the existence of extracellular organelles [25], to the direct excretion of acid [26]. Garcia-Pichel *et al.* [27] have pointed out that, in the case of photosynthetic microboring cyanobacteria, autotrophy (i.e., the removal of CO_2) would favor carbonate precipitation rather than dissolution but because of an active pumping of calcium ions across the cellular membrane, dissolution of CaCO_3 is possible at the filament apex (front of dissolution) [27]. In chlorophytes, such a mechanism has presently not been shown but undersaturation at the carbonate interface and dissolution could be accomplished similarly [27]. Further research is needed among microboring taxa as different dissolution mechanisms could respond differently to environmental changes, such as OA.

Microborer filament abundances and boring rates are highly dynamic [28], dependent on numerous environmental factors, including light and sedimentation [29], nutrients [30–32], temperature and pH [13, 15], as well as various biological factors including grazing and epilithic algal cover [28, 30]. Gross biogenic dissolution rates up to one kilogram of calcium carbonate per m^2 of reef per year have been reported from offshore sites on the Great Barrier Reef [29]. Considering the widespread occurrence of microborers in carbonate structures, both living and dead, this can add up to a large quantity of dissolved carbonate material. In some locations, this pervasiveness coupled with OA-enhanced erosion may have ramifications for carbonate budgets, contributing towards net erosional systems and the loss of reef habitat [20].

Experimental evidence of OA-enhanced microborer erosion was first presented by Tribollet *et al.* [13], who subjected coral skeletons with mature microbial euendolith communities dominated by the siphonous green alga *Ostreobium* sp. to present-day (400 ppmv) and future CO₂ conditions (750 ppmv) for a period of three months. Microborers extended 40% further into their substrate in the high CO₂ treatment, translating into a 48% higher dissolution rate. Reyes-Nivia *et al.* [15] exposed microborers occupying newly dead skeletons from two species of coral (*Porites cylindrica* and *Isopora cuneata*) to present-day and two future warming and OA scenarios. Microborers responded positively to treatments but differently within each substrate, resulting in an 89% and 45% increase in erosion for *P. cylindrica* and *I. cuneata*, respectively, under +610 μ atm and +4 deg C. This response was observed only in illuminated samples, suggesting that it was primarily due to photosynthetic microborers such as chlorophytes within the genus *Ostreobium*, which usually dominate microboring communities in living corals [33, 34]. It is therefore clear that the effect of CO₂ enrichment is variable and dependent upon complex combinations of drivers, such as environmental conditions and the density of the carbonate being infiltrated.

While these studies demonstrate a relationship between OA and increased rates of carbonate dissolution by microborers, controlled laboratory experiments often do not adequately replicate natural variability inherent in real-world systems. In addition, laboratory experiments are limited in that organisms may not be fully acclimated to treatment conditions. Furthermore, because laboratory work is confined to select taxa, it can miss the indirect effects of OA from multispecies interactions. For instance, high CO₂ may enhance epilithic algal populations [9, 10] that can, in turn, influence microborer erosion rates [30]. Grazing sea urchins may also be influenced by OA [35], which may alter erosion rates and thereby indirectly influence the contribution of microborers to coral reef carbonate budgets [36]. To address these concerns and to study the effects of OA on natural, complex multi-taxa systems, work has been conducted on mesocosms [37], as well as in present-day ecosystems which naturally experience high pCO₂.

It is interesting to note that most of the *in situ* studies on bioerosion under various pH conditions have concerned macrobioerosion of living corals while internal bioerosion (both micro and macroboring) is much more pronounced on dead skeletal materials, where coral tissues are not present to prevent the settlement of eroders [5, 23]. We are aware of only one study that has investigated the bioerosion of dead coral substrates as a function of seawater pH in the field. Silbiger *et al.* [17] deployed clean coral blocks along a 32 m transect in Kaneohe Bay for one year. Using microCT to quantify fine-scale changes in block volume (100 μ m voxels), they found that erosion due to grazers and macroborers was more correlated with small-scale differences in pH than with other environmental parameters, including depth, distance from shore, nutrients, and temperature.

Despite investigation of grazing and macrobioerosion within numerous high pCO₂ coral reef environments, we are unaware of any real-world corroboration of OA-enhanced bioerosion by microborers at reef sites experiencing projected pCO₂ levels associated with OA. Using homogeneous calcium carbonate substrates previously employed for consistent, high-accuracy, and short-term quantification of boring taxa (e.g., [24]), we examine the settlement and erosion by microbial euendoliths at a volcanically acidified reef in the Commonwealth of the Northern Mariana Islands (CNMI). This represents the first study specifically targeting the colonization of a single erosive agent, i.e. microborers, in a natural reef environment mimicking carbonate conditions projected to occur by the end of the century due to OA.

Materials and Methods

Maug Island (20°1'N, 145°13'E) is part of CNMI and is located approximately 530 km north of Saipan (Fig 1). It is made up of three closely spaced islands, which are emergent parts of a

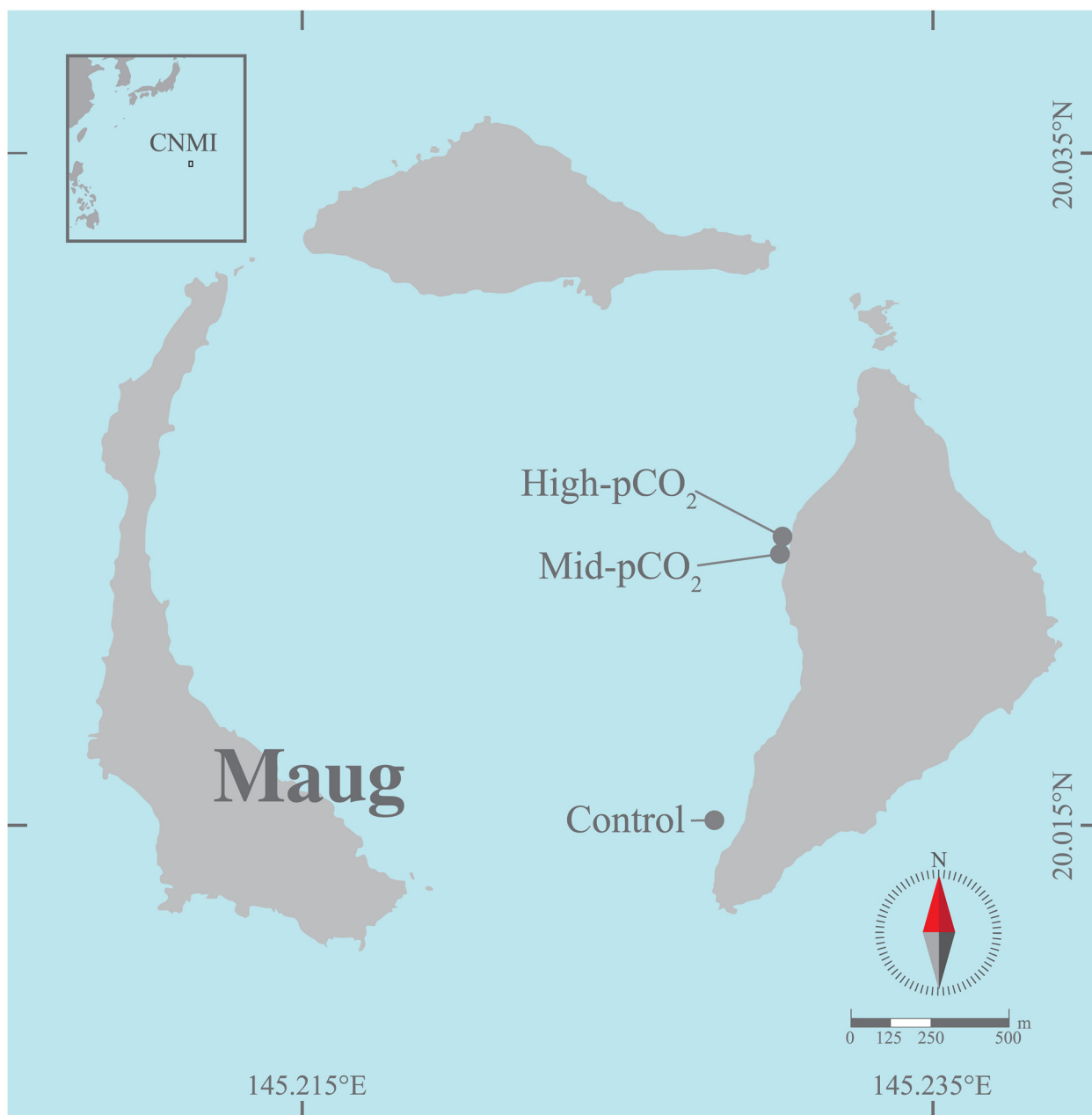


Fig 1. Map of Maug showing the locations of the High-pCO₂, Mid-pCO₂ and Control sites. CNMI, Commonwealth of the Northern Mariana Islands.

doi:10.1371/journal.pone.0159818.g001

volcanic caldera. Volcanic vents on the inner margin of the eastern most island locally elevate seawater pCO₂ and impact benthic community structure [38].

Three study sites were selected spanning a gradient of vent-altered carbonate chemistry. A high-pCO₂ site was established near the vent, though sufficiently far from the area of active bubbling so as to avoid complications with carbonate undersaturation (i.e. $\Omega < 1$) and minimize the potential influence of other chemicals of volcanic origin. A mid-pCO₂ site was established approximately 50 m to the south of the high-pCO₂ site and a control site (with ambient pCO₂) was located at the southernmost end of the island, approximately 1 km away. All sites

were of similar depth (~9 m) and were instrumented with SeaFET pH and temperature (HOBO Water Temp Pro v2, Onset) loggers during the period of May 19 to August 10, 2014 as described in Enochs *et al.* [38]. Photosynthetically active radiation (PAR) loggers (ECO-PAR, WET Labs) collected data at the high and mid-pCO₂ sites. Acoustic Doppler current profilers (ADCPs, Aquadopp, Nortek) were deployed at the high-pCO₂ and control sites. Water samples were collected every six hours over a 48-hour period (Aug. 11–13 2014) immediately above the benthos and were analyzed for dissolved inorganic carbon (DIC) and total alkalinity (TA) following Enochs *et al.* [38]. Sampling dates and the duration of this experiment were constrained by limited access to the remote research site. All work presented herein was conducted in accordance with applicable rules and regulations governing fieldwork and sample collection at the study site. Research at the study sites was approved by the CNMI Department of Fish and Wildlife and microboring algae collected during this study are not protected species.

Blocks of clean unbored crystalline calcite (~2 x 2 x 1 cm, Icelandic spar) were affixed to grey PVC plates using JB-weld quick setting epoxy on the downward facing surface of the block. Eight blocks were attached in a line to PVC bases (~20 x 40 cm) per site, positioned flush to bare substrate, and deployed from May 17 to August 11, 2014. Blocks that came loose during deployment were not included in the analysis (n = 1, 1, 2, high-pCO₂, mid-pCO₂, control, respectively). Calcite blocks were air dried upon collection and transported back to Miami for subsequent analysis. They were then gently separated from their PVC bases and soaked in a 15% diluted hydrogen peroxide solution for two hours to remove non-calcified organics [24]. Each block was immediately rinsed and dried at 60°C for 24 hours.

Measurements were taken in order to quantify the degree of colonization or the percent planar surface area of microborers. Five haphazardly-placed images (~0.014 cm² each) were captured from the upward-facing surface of each block (~2% block cover total) using a Motic BA310 light microscope at 100x magnification with the Motic Images Plus 2.0 software package. Magnification and replication were selected in order to maximize coverage while minimizing the potential for image overlap. Following capture, images were binarized to identify boreholes and subsequently their percent planar surface area was quantified using ImageJ [39]. This measurement was inclusive of boreholes both on and within the transparent surface of the block, though vacated (more clear) boreholes were likely under-represented. Values were expressed as percent coverage of each sample image. To measure depth of penetration of microborings (boreholes), spar blocks were split by fracturing along their vertical axis. Depth was measured using the same Motic microscope and software package as used with surface area measurements. Thirty depth measurements (length of surface to max filament depth) were obtained per block at haphazardly spaced points.

It was not possible to simultaneously measure the depth of penetration of a single borehole and its surface area at the block surface. Additionally, the total number of depth (30) and percent surface area measurements (5) were different. To address these issues and estimate erosion, thirty samples of percent surface area (to match borehole depth sample size) were generated per block by Monte Carlo sampling. This sampling was performed on truncated [0,100] gamma distributions [x1], which were created assuming sample mean and variance estimates of surface area were unbiased estimators of surface area covered by microborers on each block. Following, each randomly resampled percent surface area measurement was multiplied by a randomly selected depth measurement, resulting in 30 independent estimates of erosion (volume per unit surface area) for each block. Calculated standard errors of the erosion estimates therefore took into account the variability of both depth of borehole penetration and percent surface area colonized by microborers. Volumes of substrate eroded (per unit surface area) were then multiplied by the density of crystalline calcite (2.71 g cm⁻³) and then divided by the

number of days the blocks were deployed in order to calculate bioerosion rate estimates for each block ($\text{kg m}^{-2} \text{yr}^{-1}$).

Differences between sites and blocks were tested with Generalized Linear Models (GLMs). Blocks were nested within sites due to unknown, yet possible inherent characteristics within each spar block or from their orientation. For the GLM, a gamma distribution and log link function were employed, based on the distributions of the percent planar surface area and borehole depth data, as well as the resulting erosion rate estimates. Posthoc Tukey HSD tests were performed to identify pair-wise site and block differences. Post-hoc block comparisons were only conducted on blocks from a given site as blocks were nested within site treatments in the GLM model. All statistics were performed within the R Computing Environment [40].

Results

There was substantial depression of seawater pH in close proximity to the Maug CO_2 vent, with successively higher pH observed at sites further away (Fig 2, Table 1). Data in Enochs *et al.* [38] show that this significant difference was due to localized pCO_2 enrichment strongly influencing DIC despite relatively constant TA (Table 1). While other environmental variables differed among study sites (Table 1), differences were likely not of sufficient magnitude to be the dominant agents affecting community composition [38].

Qualitatively, blocks at the high- pCO_2 site were less fouled with epilithic flora than at the mid- pCO_2 and control sites, where turf algae had recruited during deployment. Microscopic analysis of spar revealed boreholes within all blocks at all sites, creating characteristic branching networks that spread laterally and did not penetrate greatly into the substrate (Fig 3). While species level identification was difficult given that spar blocks were dried, visual analysis of borehole morphology showed that microborer communities were relatively depauperate after three months of colonization and were dominated by chlorophytes commonly present in early successional stages of microboring assemblages, such as *Eugomontia* and *Phaeophila*.

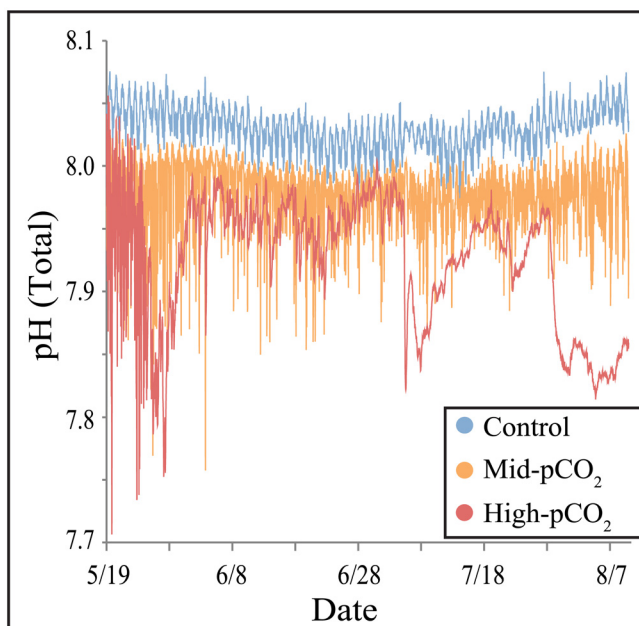


Fig 2. Seawater pH at each of the three experimental sites during the deployment of calcite blocks. Data are from Enochs *et al.* [38].

doi:10.1371/journal.pone.0159818.g002

Table 1. Environmental data from the Maug study sites. Data and methods can be found within Enochs *et al.* [38]. Long-term data taken from multi-month deployment of data loggers over the duration of the experiment. Discrete bottle samples ($n = 8$) taken every 6 hours over a two-day period. Numbers in parentheses are standard deviation for long-term data and standard error of the mean for discrete bottle samples.

Site	Long-term data				Discrete bottle samples				
	pH (Total)	Temp (°C)	PAR (mol photons m ⁻²)	Current (m s ⁻¹)	TCO ₂ (μmol kg ⁻¹)	TA (μequiv kg ⁻¹)	pH (Total)	pCO ₂ (μatm)	Ω _{Arag}
High-pCO ₂	7.94 (0.051)	30.3 (0.98)	NA	0.09 (0.037)	1992.7 (10.93)	2283.4 (1.45)	7.95 (0.019)	502.0 (29.67)	3.4 (0.11)
Mid-pCO ₂	7.98 (0.027)	30.1 (0.99)	9.5 (2.46)	NA	1964.6 (10.44)	2281.4 (1.71)	7.99 (0.016)	441.2 (21.32)	3.7 (0.10)
Control	8.04 (0.016)	30.1 (0.98)	10.9 (2.46)	0.06 (0.023)	1944.8 (2.90)	2279.4 (1.61)	8.02 (0.004)	401.3 (4.61)	3.8 (0.03)

doi:10.1371/journal.pone.0159818.t001

[28]. Characteristic traces of *Rhopalia catenata* Radtke, 1991 were dominant, resulting from the activity of *Phaeophila* (see description of traces in Wisshak *et al.* [41]). Qualitatively, differences in community composition were not discernable among sites. Some very large unidentified filaments were also observed but were very rare.

The percent planar surface area of the entire microborer community was significantly different among sites ($P < 0.001$), with cover increasing from control ($20.3\% \pm 2.35$, mean \pm SEM) to mid-pCO₂ ($30.5\% \pm 3.15$) to high-pCO₂ sites ($48.5\% \pm 3.22$, Figs 3 and 4, Table 2). There was also a significant difference among sites for the vertical penetration of microborers into the blocks (Fig 5, Table 2). However, while the depth of microborer penetration was significantly higher at the mid-pCO₂ ($36.6 \mu\text{m} \pm 2.20$) than at the high-pCO₂ site ($28.3 \mu\text{m} \pm 1.41$), the control site ($33.6 \mu\text{m} \pm 1.66$) was not significantly different than either. Microbioerosion rate, as calculated from horizontal extent and mean depth of penetration, was significantly greater at the high and mid-pCO₂ sites ($1.52 \text{ kg m}^{-2} \text{ yr}^{-1} \pm 0.087$, 1.46 ± 0.138 , respectively) compared with the control (0.83 ± 0.060), though there were no significant differences between the two vent-influenced sites (Fig 6, Table 2).

There were significant sample effects within each site for all microborer parameters (Figs 4–6, Table 2), despite the deployment of homogeneous substrates, reflecting the patchiness of microborer settlement on benthic substrates. This was especially apparent in the microboring at the mid-pCO₂ site, which exhibited a bimodal distribution among blocks (Figs 4–6). This pattern was evident in both the percent surface area colonized and depth of penetration of boreholes, translating into the calculated volume eroded as well.

Discussion

Microborer communities that colonized calcite blocks after three months of exposure in this experiment were similar to those observed in previous reef studies on dead coral skeletons, reflecting that microborers studied at Maug were typical for reef environments and were not anomalous extremophiles. For instance, chlorophytes of the genus *Phaeophila* are typically dominant in early communities of microborers in reef carbonate substrates [28, 36, 42].

Higher colonization of block surfaces (planar surface area) by microborers in elevated pCO₂ environments reported herein is consistent with previously published experiments that have shown a positive correlation between microborer community development and seawater pCO₂ [13, 15]. However, in contrast to our findings, Tribollet *et al.* [13] did not record a significant increase in the percent planar surface area of boring algae. This suggests that immature microboring communities dominated by large pioneer chlorophytes such as *Phaeophila* sp. may respond differently to OA than mature communities dominated by the chlorophyte *Ostreobium* sp. Our study is unique in that we were able to use uncolonized substrates to examine

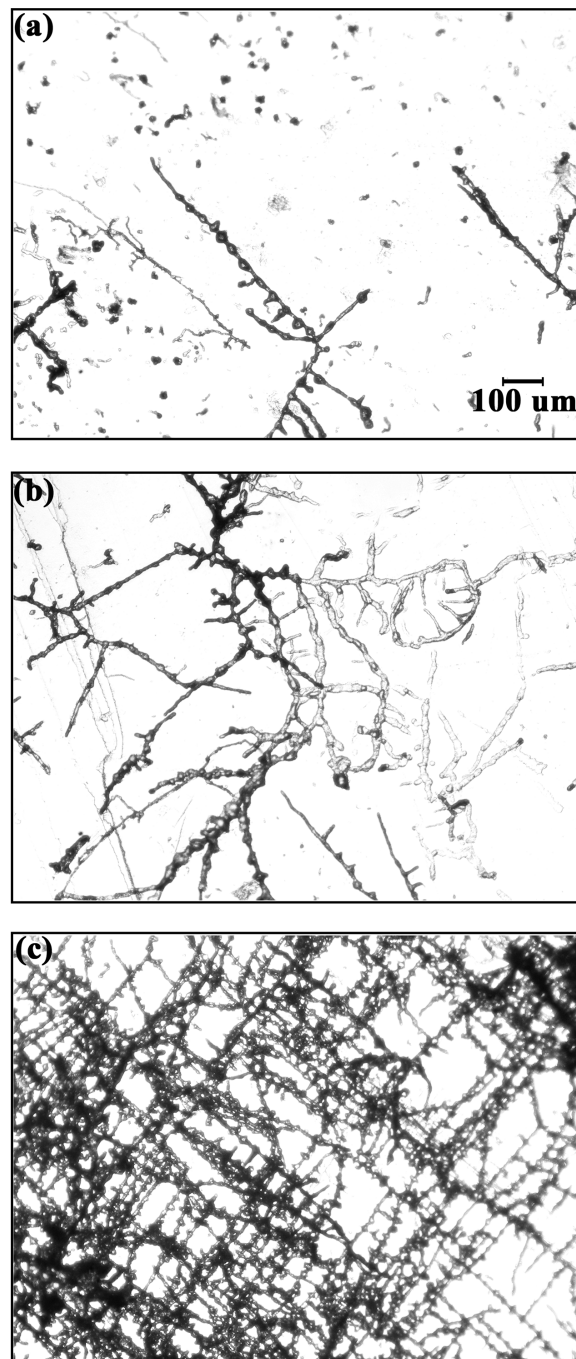


Fig 3. Top-down view of microborers within crystalline calcite at the Control (a), Mid-pCO₂ (b), and High-pCO₂ (c) sites. Scale bar in A is the same for all panels (100 μm). Images are the same size and magnification as those used for surface area analysis.

doi:10.1371/journal.pone.0159818.g003

short-term settlement, whereas previous experimental work applied acidification treatments to coral skeletons which had already been colonized by microborers (e.g., 6 mo. initial colonization, [13]). Our findings therefore pertain more closely to initial colonization, suggesting more rapid settlement following the fresh availability of carbonate, rather than expansion of

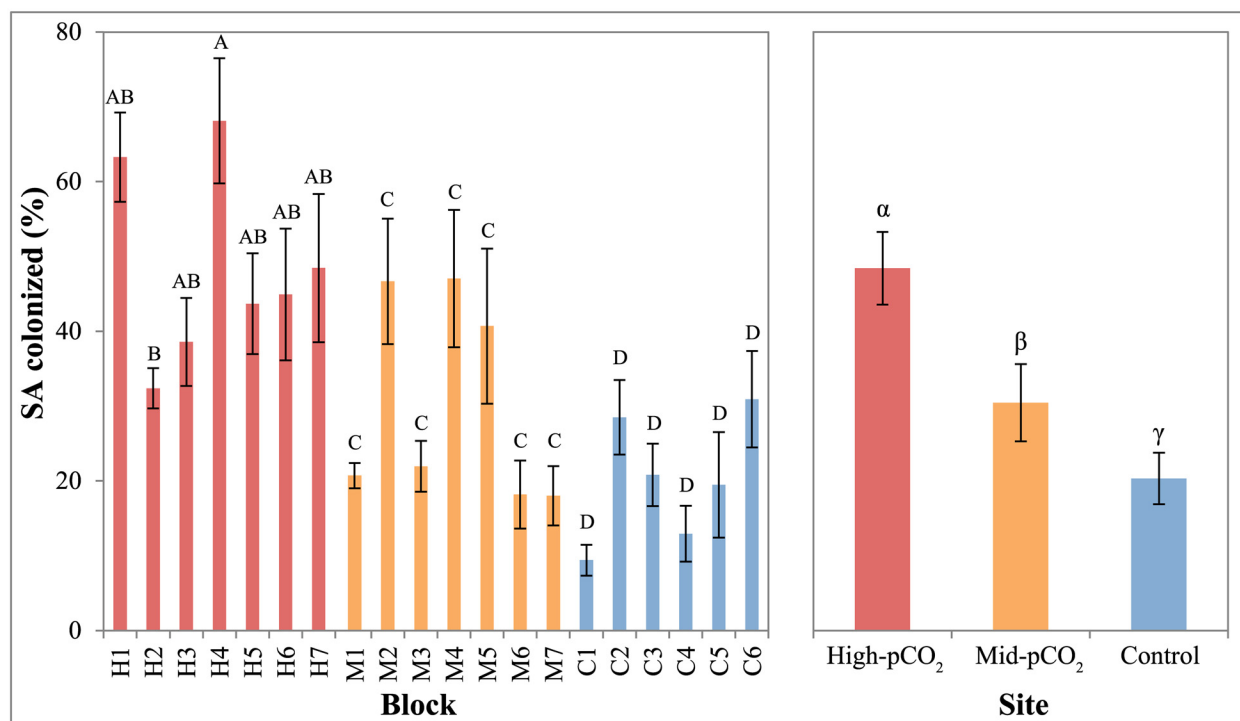


Fig 4. Mean percent surface area colonized by microborers in each block and between sites. Blocks within sites or sites that share a letter (Roman or Greek, respectively) are not significantly different ($P>0.05$). Error bars are standard error of the mean, calculated among individual measurements within each block (5 measurements per blocks, 6–7 blocks per site) and among all measurements within each site (30–35) in the left and right panels, respectively.

doi:10.1371/journal.pone.0159818.g004

established communities. In other words, surfaces were not 'saturated' by microborer communities during our investigation, allowing a clean-slate examination of differences in colonization among sites.

Tribollet *et al.* [13] and Reyes-Nivia *et al.* [15] measured higher rates of dissolution under elevated CO₂ levels. Our data support these results. While the two vent-influenced sites in our study experienced higher rates of biogenic dissolution relative to the control site, they were not

Table 2. Analysis of deviance table from GLM of microborer colonization of calcite blocks at each of the three study sites. Df, degrees of freedom; Resid. Df, Residual degrees of freedom; Resid. Dev., Residual deviance.

Factor/source	Df	Deviance	Resid. Df	Resid. Dev.	F	Pr(>F)
Surface area						
Site	2	12.11	97	32.75	29.84	<0.001
Block(Site)	17	13.02	80	19.73	3.78	<0.001
Total residuals			99	44.86		
Depth						
Site	2	7.12	597	259.26	9.48	<0.001
Block(Site)	17	13.02	580	193.91	10.24	<0.001
Total residuals			599	266.37		
Erosion						
Site	2	39.38	597	535.94	35.18	<0.001
Block(Site)	17	236.84	580	299.10	24.89	<0.001
Total residuals			599	575.32		

doi:10.1371/journal.pone.0159818.t002

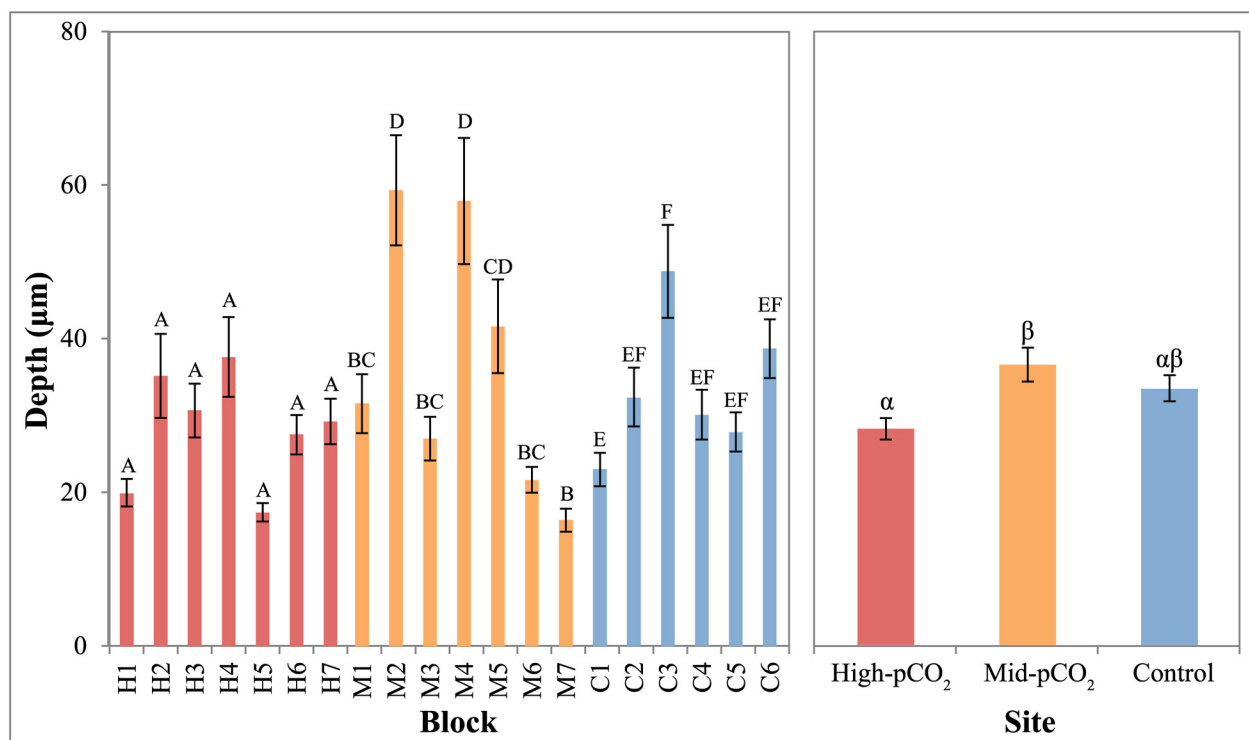


Fig 5. Mean depth of penetration of microboring filaments in each block and between sites. Blocks within sites or sites that share a letter (Roman or Greek, respectively) are not significantly different ($P > 0.05$). Error bars are standard error of the mean, calculated among individual measurements within each block (30 measurements per block, 6–7 blocks per site) and among all measurements within each site (180–210) in the left and right panels, respectively.

doi:10.1371/journal.pone.0159818.g005

significantly different from each other. The strong difference in biogenic dissolution near the vent versus the control site is striking given the moderate levels of OA stress reflected by the mean pH of the mid- and high-pCO₂ site (Table 1). Vent alteration of carbonate chemistry was variable throughout substrate deployment (Fig 2) and it is possible that exceptionally high microborer expansion/settlement occurred during periods of extreme pH depression. Further examination of the influence of temporal carbonate chemistry dynamics on microboring is necessary.

While the duration of our study (three months) was similar to previous experiments (three and two months, [13] and [15], respectively), these studies are not necessarily comparable to ours as they were conducted on more mature microboring communities inhabiting natural substrates. In our study, microborers would have had to both settle and proliferate during the duration of the experiment, rather than simply continue to erode and mature. Reyes-Nivia *et al.* [15] directly measured changes in weight, while we quantified the volume of CaCO₃ removed by microborers using a similar microscopy technique to that used by Tribollet *et al.* [13]. The higher erosion rate observed in the Tribollet *et al.* [13] study was a result of deeper penetration of the carbonate substrate, rather than lateral proliferation. Given the aerial extent of the microborers in our experiment, we can reasonably expect that this same pattern would hold true in our study, had microborers had more time to establish stable climax communities (~1–2 yrs.) [28, 43]. Instead, the depth of penetration in our colonization study was highly variable and much lower than in mature communities studied in Tribollet *et al.* [13] (10's μm vs mm).

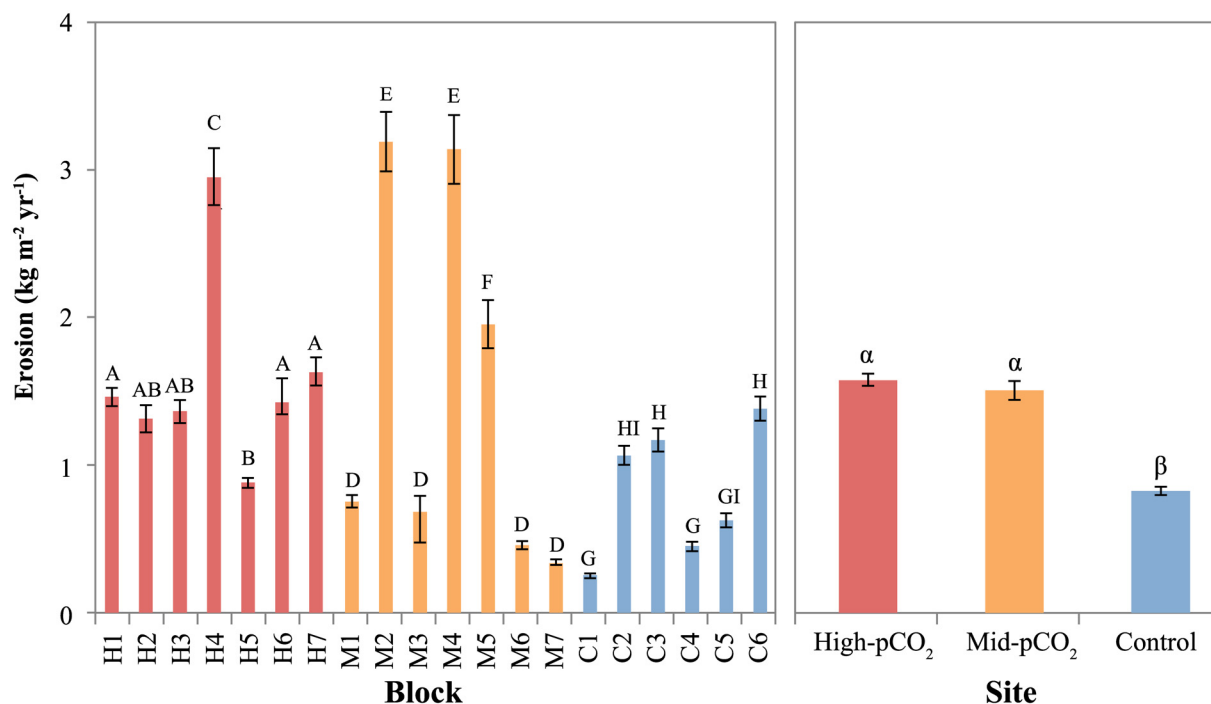


Fig 6. Mean rates of calcite erosion (mass loss) by microborers in each block and between sites. Blocks within sites or sites that share a letter (Roman or Greek, respectively) are not significantly different ($P > 0.05$). Error bars are standard error of the mean, calculated among individual estimates within each block (30 estimates per block, 6–7 blocks per site) and among all estimates within each site (180–210) in the left and right panels, respectively.

doi:10.1371/journal.pone.0159818.g006

Differences in depth of penetration among studies are likely due in part to the fact that the *Ostreobium* filaments in Tribollet *et al.* [13] are known to penetrate relatively deep into substrates (mm) as they are sciaphilic. By contrast, pioneer microborers such as *Phaeophila*, are photophilic microorganisms and usually stay within the first few hundred microns, boring parallel to the substrate surface and extending ‘rhizoidal’ appendages connecting the main algal cells to the external environment (water column) [22, 28]. We cannot rule out the possibility that the unique structure and transparency of the Icelandic spar substrate impacted an OA-related response in the depth of microborer penetration. Coral skeletons contain natural voids, pores, and fissures, which are utilized by microborers as they penetrate into the skeleton. These pathways are absent in the crystalline calcium carbonate utilized in this experiment, though higher transparency would have likely led to greater light availability within the substrate. Further, spar has a different crystalline structure (calcite) than coral skeletons (aragonite), which would yield different dissolution kinetics [44]. While some have concluded that substrate mineralogy has no influence on the rate at which they are bioeroded (e.g., clionaid sponges [45]), these differences may have nonetheless limited our ability to quantify a natural boring depth response and cannot be ignored when applying these data and trends to reef framework substrates.

While this is the first study to investigate the influence of a natural OA gradient on microborers, our findings are consistent with those that have examined correlations between macroboring intensity and seawater pH over spatial scales ranging from meters to thousands of kilometers. Silbiger *et al.* [17] demonstrated a positive relationship between seawater acidity and coral skeleton erosion resulting from grazing and macroboring across small spatial scales (≤ 32 m) on a Hawaiian reef. The use of high-resolution microCT allowed unprecedented

detection of small boring animals (e.g., polychaetes); however, the 100 μm resolution was too coarse to resolve microborer networks. Similarly, both DeCarlo *et al.* [46] and Barkley *et al.* [47] used CT to show that pH was negatively correlated with macrobioerosion in skeletons of living massive *Porites*, though the resolution of their analysis was only successful at quantifying voids greater than 1 mm diameter. Further work is therefore needed to accurately measure bioerosion by microborers along natural CO_2 gradients.

Accelerated dissolution of carbonates by microborers may act to enhance both macroboring and grazing. Reef bioerosion undergoes a successional pattern, starting with the initial settlement and penetration of microborers. This is followed by relatively small macroboring fauna, such as polychaetes, which create boreholes that are subsequently colonized by larger macroboring taxa such as bivalve mollusks [23, 48, 49]. Accelerating initial microborer colonization could result in more rapid advancement through these successional stages. Furthermore, enhanced dissolution by microbial euendoliths could weaken substrates, potentially facilitating the erosion of macroboring fauna. euendolithic algae are an important nutrient source for grazing animals such as parrotfish, and more-porous substrates weakened by microborers may be easier to break and scrape [50]. As such, higher abundances of microborers may also be correlated with greater grazing [29].

As with studies in other natural systems, it is impossible to completely eliminate covarying environmental factors that could influence settlement of microborers. Enochs *et al.* [38] measured lower light intensities closer to the Maug vent site (~13% lower, control vs. mid- pCO_2 site, Table 1). Reduced light availability can limit the depth of penetration of photosynthetic microborers into coral substrates (reviewed in [22]), alter photophysiology [51], and may reduce settlement in low light environments [52]. Light limitation could have therefore resulted in lower colonization near the vent, reducing the CO_2 -enhanced colonization signal. However, given the transparent nature of the substrates used in this study, the depth at which the experiment was carried out, and the low light requirements of photosynthetic microborers, the slight depression in light near the vent should have had a minimal impact [22, 51].

The strong relationship between macroboring intensity and water quality is well represented in the literature, where numerous endolithic fauna are suspension feeders and rely on planktonic organic matter [49, 53]. The influence of water quality on microboring communities, however, is not as well understood. Kiene [42] found no significant difference in the colonization of endolithic microborers after a five-month nitrogen and phosphorous enrichment experiment on the Great Barrier Reef. By contrast, in a 49-day experiment conducted on molluscan shell substrates in Belize, Carreiro-Silva *et al.* [31] observed significant enhancement of phototrophic microborers under elevated inorganic nutrient enrichment and increased populations of heterotrophic microborers under enriched organic matter. Other water quality parameters such as sedimentation, however, are also known to negatively influence microborer proliferation [29]. On a large scale, Maug Island exists in the remote Mariana Islands, far removed from anthropogenic nutrient enrichment and plumes of terrigenous sediments. Further work is needed to quantify nutrient and sediment concentrations at Maug, over both localized and regional scales, in order to determine the extent to which they directly influence the patterns observed in this study.

While steps have been taken to eliminate extraneous sources of variance in previous studies (e.g., herbivore exclusion, [31]) there is evidence that indirect interactions may play a role in mediating the relationship between nutrients and microborers. For instance, Chazottes *et al.* [30] found that higher nutrient environments favored the development of macroalgae and crustose coralline algae, rather than turfs, effectively limiting the removal of microborers by large grazing fishes and urchins. Turf algae, which were abundant in less nutrient-rich environments, were actively grazed upon, effectively removing microborers within the upper layers of

the carbonate substrate in their study. While food availability may have altered grazing pressure [54] at Maug, we do not expect it to have influenced patterns in microborer abundance, penetration, or dissolution measured herein. Experimental calcite blocks were still smooth after collection and there was no evidence of grazing scars, which would have removed microborers.

Enhanced total bioerosion (i.e. microboring + macroboring + grazing) may be partly responsible for the relative paucity of framework near the Maug vent. At the control site, which experienced the lowest settlement of microborers, large framework structures were abundant, including massive *Porites* corals several meters in diameter [38]. Reef framework was evident at the mid-pCO₂ site but was qualitatively less developed than the control site. No carbonate framework was present near the vent, though several coral colonies were found in the area. Part of this pattern is likely due to decreased calcification or recruitment of corals, but OA-accelerated bioerosion may also play an important role as the absence of CaCO₃ left behind from dead coral is indicative of poor preservation potential.

Enochs *et al.* [20] modeled the effects of accelerated erosion (macro and microboring) and reduced calcification on coral reefs in the Florida Keys and found that net carbonate budgets will become more negative (erosional) in increasingly acidic waters. This problem will be exacerbated by warming-induced coral bleaching and mortality [55]. While rates of external bioerosion may be relatively unaffected by coral mortality in some regions (e.g., [56]), in others, newly available bare substrates can be readily colonized by bioeroding flora and fauna, resulting in a unique succession of eroding taxa that can lead more rapidly to skeletal loss [34]. If the settlement and colonization of these newly accessible substrates by microborers is indeed accelerated by OA as we found at Maug, not only will this further tip the balance towards a net erosive state, but it will also decrease the time during which other encrusting organisms could colonize the substrate and inhibit the destructive action of erosive communities.

Further research is needed on biogenic carbonate dissolution by microborers in OA conditions, especially from natural systems where complex indirect interactions may enhance or hinder microborer community dynamics. Longer studies (3–5 yrs.) designed to specifically document the full successional progression from the initial pioneering microborer communities to the climax communities of a consortium of micro- and macroborers would be particularly instructive. Given previous experimental evidence suggesting accelerated dissolution under OA scenarios [13, 15] and increased settlement rates reported here, it is likely that microborer erosion will increase as atmospheric CO₂ continues to rise. This will be further enhanced by the greater availability of bare substrates due to warming-related coral mortality [20, 55] and elevated microborer biomass in bleached corals [57]. Coupled with accelerated macrobioerosion [14, 20, 46, 47] and reduced calcification [7], the complexity of reef habitats can be expected to continue to decrease [58].

Acknowledgments

The crews of the Super Emerald and Hi'ialakai provided field support. D. Benevente, S. Clark, J. Iguel, L. Johnson, S. Johnston, R. Okano, N. Pomeroy, and C. Young provided assistance in the field. T. Burton and J. Morris helped with analysis of carbonate blocks. The Institut de Recherche pour le Développement (IRD) supported the analysis of microboring species. Fourteen reviewers provided feedback that improved the quality and clarity of this paper.

Author Contributions

Conceived and designed the experiments: ICE DPM EMD NNP. Performed the experiments: ICE GK EMD. Analyzed the data: ICE DPM AT LV GK MDF RC NNP. Contributed reagents/

materials/analysis tools: ICE DPM AT NNP. Wrote the paper: ICE DPM AT GK EMD MDF RC NNP.

References

1. Sabine CL, Feely RA, Gruber N, Key RM, Lee K, Bullister JL, et al. The oceanic sink for anthropogenic CO₂. *Science*. 2004; 305: 367–71. doi: [10.1126/science.1097403](https://doi.org/10.1126/science.1097403) PMID: [15256665](https://pubmed.ncbi.nlm.nih.gov/15256665/)
2. Feely RA, Sabine CL, Lee K, Berelson W, Kleypas J, Fabry VJ, et al. Impact of anthropogenic CO₂ on the CaCO₃ system in the oceans. *Science*. 2004; 305: 362–6. doi: [10.1126/science.1097329](https://doi.org/10.1126/science.1097329) PMID: [15256664](https://pubmed.ncbi.nlm.nih.gov/15256664/)
3. Kleypas JA, Buddemeier RW, Archer D, Gattuso JP, Langdon C, Opdyke BN. Geochemical consequences of increased atmospheric carbon dioxide on coral reefs. *Science*. 1999; 284: 118–20. doi: [10.1126/science.284.5411.118](https://doi.org/10.1126/science.284.5411.118) PMID: [10102806](https://pubmed.ncbi.nlm.nih.gov/10102806/)
4. Pandolfi JM, Connolly SR, Marshall DJ, Cohen AL. Projecting coral reef futures under global warming and ocean acidification. *Science*. 2011; 333: 418–22. doi: [10.1126/science.1204794](https://doi.org/10.1126/science.1204794) PMID: [21778392](https://pubmed.ncbi.nlm.nih.gov/21778392/)
5. Glynn PW. Bioerosion and coral-reef growth: a dynamic balance. In: Birkeland C, editor. *Life and Death of Coral Reefs*. US: Chapman and Hall; 1997. pp. 69–98.
6. Tribollet A, Golubic S. Reef bioerosion: agents and processes. In: Dubinsky Z, Stambler N, editors. *Coral reefs: An ecosystem in transition*. New York: Springer; 2011. pp. 435–449.
7. Chan NC, Connolly SR. Sensitivity of coral calcification to ocean acidification: a meta-analysis. *Glob Change Biol*. 2013; 19: 282–90. doi: [10.1111/gcb.12011](https://doi.org/10.1111/gcb.12011)
8. Albright R, Mason B, Miller M, Langdon C. Ocean acidification compromises recruitment success of the threatened Caribbean coral *Acropora palmata*. *Proc Nat Acad Sci, USA*. 2010; 107: 20400–20404. doi: [10.1073/pnas.1007273107](https://doi.org/10.1073/pnas.1007273107)
9. Diaz-Pulido G, Gouezo M, Tilbrook B, Dove S, Anthony KR. High CO₂ enhances the competitive strength of seaweeds over corals. *Ecol Lett*. 2011; 14: 156–162. doi: [10.1111/j.1461-0248.2010.01565.x](https://doi.org/10.1111/j.1461-0248.2010.01565.x) PMID: [21155961](https://pubmed.ncbi.nlm.nih.gov/21155961/)
10. Johnson MD, Price NN, Smith JE. Contrasting effects of ocean acidification on tropical fleshy and calcareous algae. *PeerJ*. 2014; 2: e411. doi: [10.7717/peerj.411](https://doi.org/10.7717/peerj.411) PMID: [24918033](https://pubmed.ncbi.nlm.nih.gov/24918033/)
11. Hoegh-Guldberg O, Mumby PJ, Hooten AJ, Steneck RS, Greenfield P, Gomez E, et al. Coral reefs under rapid climate change and ocean acidification. *Science*. 2007; 318: 1737–42. doi: [10.1126/science.1152509](https://doi.org/10.1126/science.1152509) PMID: [18079392](https://pubmed.ncbi.nlm.nih.gov/18079392/)
12. Manzello DP, Kleypas JA, Budd DA, Eakin CM, Glynn PW, Langdon C. Poorly cemented coral reefs of the eastern tropical Pacific: possible insights into reef development in a high-CO₂ world. *Proc Nat Acad Sci, USA*. 2008; 105: 10450–10455. doi: [10.1073/pnas.0712167105](https://doi.org/10.1073/pnas.0712167105)
13. Tribollet A, Godinot C, Atkinson M, Langdon C. Effects of elevated CO₂ on dissolution of coral carbonates by microbial euendoliths. *Glob Biogeo Cycles*. 2009; 23: 1–7. doi: [10.1029/2008gb003286](https://doi.org/10.1029/2008gb003286)
14. Wisshak M, Schonberg CH, Form A, Freiwald A. Ocean acidification accelerates reef bioerosion. *PloS ONE*. 2012; 7: e45124. doi: [10.1371/journal.pone.0045124](https://doi.org/10.1371/journal.pone.0045124) PMID: [23028797](https://pubmed.ncbi.nlm.nih.gov/23028797/)
15. Reyes-Nivia C, Diaz-Pulido G, Kline D, Guldberg OH, Dove S. Ocean acidification and warming scenarios increase microbioerosion of coral skeletons. *Glob Change Biol*. 2013; 19: 1919–1929. doi: [10.1111/gcb.12158](https://doi.org/10.1111/gcb.12158)
16. Eyre BD, Andersson AJ, Cyronak T. Benthic coral reef calcium carbonate dissolution in an acidifying ocean. *Nature Clim Change*. 2014; 4: 969–976. doi: [10.1038/nclimate2380](https://doi.org/10.1038/nclimate2380)
17. Silbiger NJ, Guadayol O, Thomas FIM, Donahue MJ. Reefs shift from net accretion to net erosion along a natural environmental gradient. *Mar Ecol Prog Ser*. 2014; 515:33–44. doi: [10.3354/meps10999](https://doi.org/10.3354/meps10999)
18. Wisshak M, Schönberg CHL, Form A, Freiwald A. Sponge bioerosion accelerated by ocean acidification across species and latitudes? *Helgoland Mar Res*. 2014; 68: 253–62. doi: [10.1007/s10152-014-0385-4](https://doi.org/10.1007/s10152-014-0385-4)
19. Fang JK, Mello-Athayde MA, Schonberg CH, Kline DI, Hoegh-Guldberg O, Dove S. Sponge biomass and bioerosion rates increase under ocean warming and acidification. *Glob Change Biol*. 2013; 19: 3581–91. doi: [10.1111/gcb.12334](https://doi.org/10.1111/gcb.12334)
20. Enochs IC, Manzello DP, Carlton RD, Graham DM, Ruzicka R, Colella MA. Ocean acidification enhances the bioerosion of a common coral reef sponge: implications for the persistence of the Florida Reef Tract. *Bull Mar Sci*. 2015; 92: 271–290. doi: [10.5343/bms.2014.1045](https://doi.org/10.5343/bms.2014.1045)
21. Golubic S, Friedmann I, Schneider J. The lithobiontic ecological niche, with special reference to micro-organisms. *J Sediment Petrol*. 1981; 51: 475–8. doi: [10.1306/212F7CB6-2B24-11D7-8648000102C1865D](https://doi.org/10.1306/212F7CB6-2B24-11D7-8648000102C1865D)

22. Tribollet A. The boring microflora in modern coral reef ecosystems: a review of its roles. In: Wisshak M, Tapanila L, editors. Current developments in bioerosion. Berlin Heidelberg: Springer; 2008. pp. 67–94.
23. Tribollet A, Golubic S. Reef bioerosion: Agents and processes. In: Dubinsky Z, Stambler N, editors. Coral Reefs: An Ecosystem in Transition: Springer; 2011. pp. 435–49.
24. Kobluk DR, Risk MJ. Rate and nature of infestation of a carbonate substratum by a boring alga. J Exper Mar Biol Ecol. 1977; 27: 107–15. doi: [10.1016/0022-0981\(77\)90131-9](https://doi.org/10.1016/0022-0981(77)90131-9)
25. Alexandersson ET. Marks of unknown carbonate-decomposing organelles in cyanophyte borings. Nature. 1975; 254: 212–38. doi: [10.1038/254212b0](https://doi.org/10.1038/254212b0)
26. Schneider J, Le Campion-Alsumard T. Construction and destruction of carbonates by marine and fresh-water cyanobacteria. Europ J Phycol. 1999; 34: 417–26. doi: [10.1080/09670269910001736472](https://doi.org/10.1080/09670269910001736472)
27. Garcia-Pichel F, Ramirez-Reinat E, Gao Q. Microbial excavation of solid carbonates powered by P-type ATPase-mediated transcellular Ca²⁺ transport. Proc Nat Acad Sci, USA. 2010; 107: 21749–21754. doi: [10.1073/pnas.1011884108](https://doi.org/10.1073/pnas.1011884108)
28. Grange JS, Rybarczyk H, Tribollet A. The three steps of the carbonate biogenic dissolution process by microborers in coral reefs (New Caledonia). Environmental science and pollution research international. 2015; 22: 13625–37. doi: [10.1007/s11356-014-4069-z](https://doi.org/10.1007/s11356-014-4069-z) PMID: [25592911](https://pubmed.ncbi.nlm.nih.gov/25592911/)
29. Tribollet A, Golubic S. Cross-shelf differences in the pattern and pace of bioerosion of experimental carbonate substrates exposed for 3 years on the northern Great Barrier Reef, Australia. Coral Reefs. 2005; 24: 422–34. doi: [10.1007/S00338-005-0003-7](https://doi.org/10.1007/S00338-005-0003-7)
30. Chazottes V, Le Campion-Alsumard T, Peyrot-Clausade M, Cuet P. The effects of eutrophication-related alterations to coral reef communities on agents and rates of bioerosion (Reunion Island, Indian Ocean). Coral Reefs. 2002; 21: 375–90.
31. Carreiro-Silva M, McClanahan TR, Kiene WE. Effects of inorganic nutrients and organic matter on microbial euendolithic community composition and microbioerosion rates. Mar Ecol Prog Ser. 2009; 392: 1–15. doi: [10.3354/meps08251](https://doi.org/10.3354/meps08251)
32. Godinot C, Tribollet A, Grover R, Ferrier-Pages C. Bioerosion by euendoliths decreases in phosphate-enriched skeletons of living corals. Biogeosciences. 2012; 9: 2377–84. doi: [10.5194/Bg-9-2377-2012](https://doi.org/10.5194/Bg-9-2377-2012)
33. Odum H, Odum E. Structure and productivity of a windward coral reef community on Eniwetok Atoll. Ecol Monogr. 1955; 25: 291–320. doi: [10.2307/1943285](https://doi.org/10.2307/1943285)
34. Le Campion-Alsumard T, Golubic S, Hutchings P. Microbial endoliths in skeletons of live and dead corals: *Porites lobata* (Moorea, French Polynesia). Mar Ecol Prog Ser. 1995; 117: 149–57. doi: [10.3354/meps117149](https://doi.org/10.3354/meps117149)
35. O'Donnell MJ, Todgham AE, Sewell MA, Hammond LM, Ruggiero K, Fanguie NA, et al. Ocean acidification alters skeletogenesis and gene expression in larval sea urchins. Mar Ecol Prog Ser. 2010; 398: 157–71. doi: [10.3354/meps08346](https://doi.org/10.3354/meps08346)
36. Chazottes V, Lecampion-Alsumard T, Peyrot-Clausade M. Bioerosion rates on coral-reefs—Interactions between macroborers, microborers and grazers (Moorea, French-Polynesia). Palaeogeogr Palaeoclimatol. 1995; 113: 189–98. doi: [10.1016/0031-0182\(95\)00043-L](https://doi.org/10.1016/0031-0182(95)00043-L)
37. Jokiel PL, Rodgers KS, Kuffner IB, Andersson AJ, Cox EF, Mackenzie FT. Ocean acidification and calcifying reef organisms: a mesocosm investigation. Coral Reefs. 2008; 27: 473–83. doi: [10.1007/s00338-008-0380-9](https://doi.org/10.1007/s00338-008-0380-9)
38. Enochs I, Manzello D, Donham E, Kolodziej G, Okano R, Johnston L, et al. Shift from coral to macroalgae dominance on a volcanically acidified reef. Nature Clim Change. 2015; 5:1083–1088. doi: [10.1038/nclimate2758](https://doi.org/10.1038/nclimate2758)
39. Rasband WS. ImageJ. Bethesda, Maryland, USA: U. S. National Institutes of Health; 1997–2014.
40. R Core Team. R: A language and environment for statistical computing. R Foundation for Statistical Computing, Vienna, Austria; 2014. Available: <http://www.R-project.org/>.
41. Wisshak M, Tribollet A, Golubic S, Jakobsen J, Freiwald A (2011) Temperate bioerosion: ichnodiversity and biodiversity from intertidal to bathyal depths (Azores). Geobiology 9: 492–520. doi: [10.1111/j.1472-4669.2011.00299.x](https://doi.org/10.1111/j.1472-4669.2011.00299.x) PMID: [21992504](https://pubmed.ncbi.nlm.nih.gov/21992504/)
42. Kiene WE. Enriched nutrients and their impact on bioerosion: Results from ENCORE. Proc 8th Int Coral Reef Symp. 1997; 1: 897–902.
43. Gektidis M. Development of microbial euendolithic communities: The influence of light and time. Bull Geol Soc Denmark. 1999; 45: 147–50.
44. Morse JW, Mackenzie FT. Geochemistry of Sedimentary Carbonates. Elsevier, New York; 1990. 707 pp.

45. Neumann AC. Observation on coastal erosion in Bermuda and measurement of the boring rate of the sponge *Cliona lampa*. *Limnol Oceanogr*. 1966; 11: 92–108.
46. DeCarlo TM, Cohen AL, Barkley HC, Cobban Q, Young C, Shamberger KE, et al. Coral macrobioerosion is accelerated by ocean acidification and nutrients. *Geology*. 2014; 43: 7–10. doi: [10.1130/g36147.1](https://doi.org/10.1130/g36147.1)
47. Barkley HC, Cohen AL, Golbuu Y, Starczak VR, DeCarlo TM, Shamberger KEF. Changes in coral reef communities across a natural gradient in seawater pH. *Sci Adv*. 2015:e1500328. doi: [10.1126/sciadv.1500328](https://doi.org/10.1126/sciadv.1500328) PMID: [26601203](https://pubmed.ncbi.nlm.nih.gov/26601203/)
48. Peyrot-Clausade M, Hutchings P, Richard G. Temporal Variations of macroborers in massive *Porites lobata* on Moorea, French-Polynesia. *Coral Reefs*. 1992; 11: 161–166. doi: [10.1007/Bf00255471](https://doi.org/10.1007/Bf00255471)
49. Le Grand HM, Fabricius KE. Relationship of internal macrobioeroder densities in living massive *Porites* to turbidity and chlorophyll on the Australian Great Barrier Reef. *Coral Reefs*. 2010; 30: 97–107. doi: [10.1007/s00338-010-0670-x](https://doi.org/10.1007/s00338-010-0670-x)
50. Bruggemann JH, van Oppen MJH, Breeman AM. Foraging by the stoplight parrotfish *Sparisoma viride*. I. Food selection in different, socially determined habitats. *Mar Ecol Prog Ser*. 1994; 106: 41–55. doi: [10.3354/meps106041](https://doi.org/10.3354/meps106041)
51. Schlichter D, Kampmann H, Conrady S. Trophic potential and photoecology of endolithic algae living within coral skeletons. *Mar Ecol*. 1997; 18: 299–317. doi: [10.1111/J.1439-0485.1997.Tb00444.X](https://doi.org/10.1111/J.1439-0485.1997.Tb00444.X)
52. Tribollet A, Decherf G, Hutchings PA, Peyrot-Clausade M. Large-scale spatial variability in bioerosion of experimental coral substrates on the Great Barrier Reef (Australia): importance of microborers. *Coral Reefs*. 2002; 21: 424–432.
53. Risk MJ, MacGeachy JK. Agents of bioerosion of modern Caribbean reefs. *Rev Biol Trop*. 1978; 26:85–105.
54. Johnson MD, Carpenter RC. Ocean acidification and warming decrease calcification in the crustose coralline alga *Hydrolithon onkodes* and increase susceptibility to grazing. *J Exper Mar Biol Ecol*. 2012; 434–435: 94–101. doi: [10.1016/j.jembe.2012.08.005](https://doi.org/10.1016/j.jembe.2012.08.005)
55. Baker AC, Glynn PW, Riegl B. Climate change and coral reef bleaching: An ecological assessment of long-term impacts, recovery trends and future outlook. *Estuar Coast Shelf S*. 2008; 80: 435–471. doi: [10.1016/j.ecss.2008.09.003](https://doi.org/10.1016/j.ecss.2008.09.003)
56. Roff G, Zhao JX, Mumby PJ. Decadal-scale rates of reef erosion following El Nino related mass coral mortality. *Glob Change Biol*. 2015. doi: [10.1111/gcb.13006](https://doi.org/10.1111/gcb.13006)
57. Fine M, Loya Y. Endolithic algae: an alternative source of photoassimilates during coral bleaching. *Proc Royal Soc B*. 2002; 269: 1205–1210. doi: [10.1098/rspb.2002.1983](https://doi.org/10.1098/rspb.2002.1983)
58. Alvarez-Filip L, Dulvy NK, Gill JA, Cote IM, Watkinson AR. Flattening of Caribbean coral reefs: region-wide declines in architectural complexity. *Proc Royal Soc B*. 2009; 276: 3019–3025. doi: [10.1098/rspb.2009.0339](https://doi.org/10.1098/rspb.2009.0339)