



**HAL**  
open science

## Spermatozoon ultrastructure in two monorchiid digeneans

Yann Quilichini, Abdoulaye J.S. Bakhoun, Jean-Lou Justine, Rodney A. Bray, Cheikh T. Bâ, Bernard Marchand

► **To cite this version:**

Yann Quilichini, Abdoulaye J.S. Bakhoun, Jean-Lou Justine, Rodney A. Bray, Cheikh T. Bâ, et al.. Spermatozoon ultrastructure in two monorchiid digeneans. PeerJ, 2016, 4, pp.e2488. 10.7717/peerj.2488 . hal-01388089

**HAL Id: hal-01388089**

<https://hal.sorbonne-universite.fr/hal-01388089v1>

Submitted on 26 Oct 2016

**HAL** is a multi-disciplinary open access archive for the deposit and dissemination of scientific research documents, whether they are published or not. The documents may come from teaching and research institutions in France or abroad, or from public or private research centers.

L'archive ouverte pluridisciplinaire **HAL**, est destinée au dépôt et à la diffusion de documents scientifiques de niveau recherche, publiés ou non, émanant des établissements d'enseignement et de recherche français ou étrangers, des laboratoires publics ou privés.



Distributed under a Creative Commons Attribution 4.0 International License

# Spermatozoon ultrastructure in two monorchiid digeneans

Yann Quilichini<sup>1</sup>, Abdoulaye J.S. Bakhom<sup>1,2</sup>, Jean-Lou Justine<sup>3</sup>,  
Rodney A. Bray<sup>4</sup>, Cheikh T. Bâ<sup>2</sup> and Bernard Marchand<sup>1</sup>

<sup>1</sup>GEM - Service d'Etude et de Recherche en Microscopie Electronique (SERME), UMR 6134 –SPE, CNRS – University of Corsica, Corte, Corsica, France

<sup>2</sup>Laboratory of Evolutionary Biology, Ecology and Management of Ecosystems, University Cheikh Anta Diop of Dakar, Dakar, Senegal

<sup>3</sup>ISYEB, Institut de Systématique, Évolution, Biodiversité (UMR7205 CNRS, EPHE, MNHN, UPMC), Muséum National d'Histoire Naturelle de Paris, Sorbonne Universités, Paris, France

<sup>4</sup>Department of Life Sciences, National History Museum of London, London, United Kingdom

## ABSTRACT

Spermatological characteristics of species from two monorchiid genera, *Opisthomonorchis* and *Paramonorchoides*, have been investigated, for the first time, by means of transmission electron microscopy. The ultrastructural study reveals that the mature spermatozoon of *Opisthomonorchis dinema* and *Paramonorchoides selaris* share several characters such as the presence of two axonemes of different lengths showing the 9+“1” pattern of the Trepaxonemata, a nucleus, two mitochondria, two bundles of parallel cortical microtubules, external ornamentation of the plasma membrane, spine-like bodies, granules of glycogen and similar morphologies of the anterior and posterior extremities. The slight differences between the male gamete of *O. dinema* and *P. selaris* are the length of the first axoneme and the position of the second mitochondrion. This study also elucidates the general morphology of the spermatozoon in all monorchiid species described so far, which corresponds to a unique spermatozoon type. Other interesting finds concern the spermatological similarities between monorchiid spermatozoa and the mature spermatozoon reported in the apocreadiid *Neopocreadium chabaudi*. These similarities allow us to suggest a close phylogenetical relationship between the Monorchiidae and the Apocreadiidae, although more studies are needed, especially in the unexplored taxa.

**Subjects** Cell Biology, Parasitology, Zoology

**Keywords** Sperm, Ultrastructure, Digenea, Monorchiidae, *Opisthomonorchis*, *Paramonorchoides*, TEM

## INTRODUCTION

The description of ultrastructural characteristics of the mature spermatozoon of the Platyhelminthes, and in particular the Digenea, has recently proved to be an interesting tool for phylogenetic purposes (Justine, 1995; Levron et al., 2010; Miquel et al., 2013; Bakhom et al., 2012a; Bakhom et al., 2012b; Bakhom et al., 2015a; Bakhom et al., 2015b; Ndiaye et al., 2015a; Ndiaye et al., 2015b). The Monorchioidea comprise two families of trematodes namely, the Lissorchiidae and the Monorchiidae (Bray, 2008). Among the latter, which includes 40 valid genera (Madhavi, 2008), only two species, *Monorchis parvus* and

Submitted 28 June 2016  
Accepted 25 August 2016  
Published 20 September 2016

Corresponding author  
Yann Quilichini,  
quilichini@univ-corse.fr

Academic editor  
Tokuko Haraguchi

Additional Information and  
Declarations can be found on  
page 12

DOI 10.7717/peerj.2488

© Copyright  
2016 Quilichini et al.

Distributed under  
Creative Commons CC-BY 4.0

OPEN ACCESS

*Helicometroides atlanticus* (Levron, Ternengo & Marchand, 2004a; Diagne et al., 2015) have been explored for spermatological characteristics. Moreover, the mature spermatozoon of *M. parvus* and *H. atlanticus* exhibit some differences especially in their respective anterior extremity.

The aim of this work was to bring more spermatological descriptions from two additional genera, *Opisthomonorchis* and *Paramonorchoides*, in order to elucidate the general morphology of the spermatozoon in the Monorchiidae. In addition, the mature spermatozoon of the monorchiids was compared to those of the other digeneans with a brief comment on its phylogenetic relevance.

## MATERIALS AND METHODS

Fish were bought dead, but very fresh, at the fishmarket in Nouméa, New Caledonia. Specimens of *Opisthomonorchis dinema* Bray & Justine, 2013 were collected from the digestive tract of *Carangoides dinema* Bleeker (Perciformes, Carangidae) caught off Nouméa, New Caledonia, from the same fish specimen (MNHN JNC3224) as the paratypes of the species (Bray & Justine, 2013). Specimens of *Paramonorchoides selaris* Lakshmi & Madhavi, 2009 were collected from the digestive tract of *Selar crumenophthalmus* (Bloch, 1793) (Perciformes, Carangidae) caught off Nouméa, New Caledonia, on 10 Sept. 2009 (fish specimen MNHN JNC 3043).

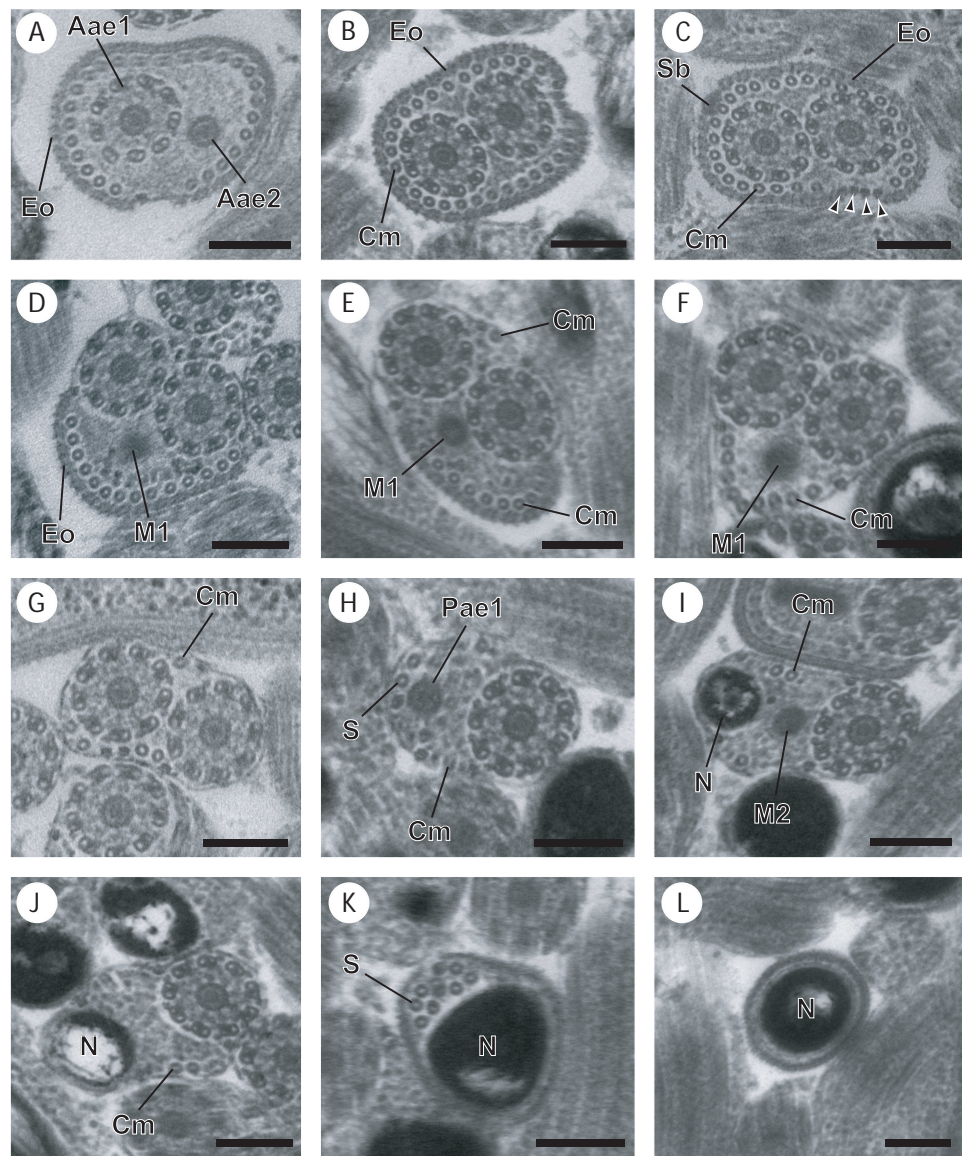
Digenean specimens were fixed in cold (4 °C) 2.5% glutaraldehyde in 0.1 M sodium cacodylate buffer at pH 7.2, rinsed in 0.1 M sodium cacodylate buffer at pH 7.2, post-fixed in cold (4 °C) 1% osmium tetroxide in the same buffer for 1 h, dehydrated in ethanol and propylene oxide series, embedded in Spurr resin and polymerized at 60 °C for 24 h. Ultrathin sections (60–90 nm) of the seminal vesicle were obtained on an ultramicrotome (Power tome PC, RMC Boeckeler®). The sections were placed on 300 and 200 mesh copper grids and stained with uranyl acetate and lead citrate according to Reynolds (1963) methodology. To locate glycogen granules, the Thiéry technique (1967) was also used in several sections placed on gold grids.

All grids were examined on a Hitachi H-7650 transmission electron microscope, operating at an accelerating voltage of 80 kV, in the “Service d’Étude et de Recherche en Microscopie Électronique” of the University of Corsica (Corte, France).

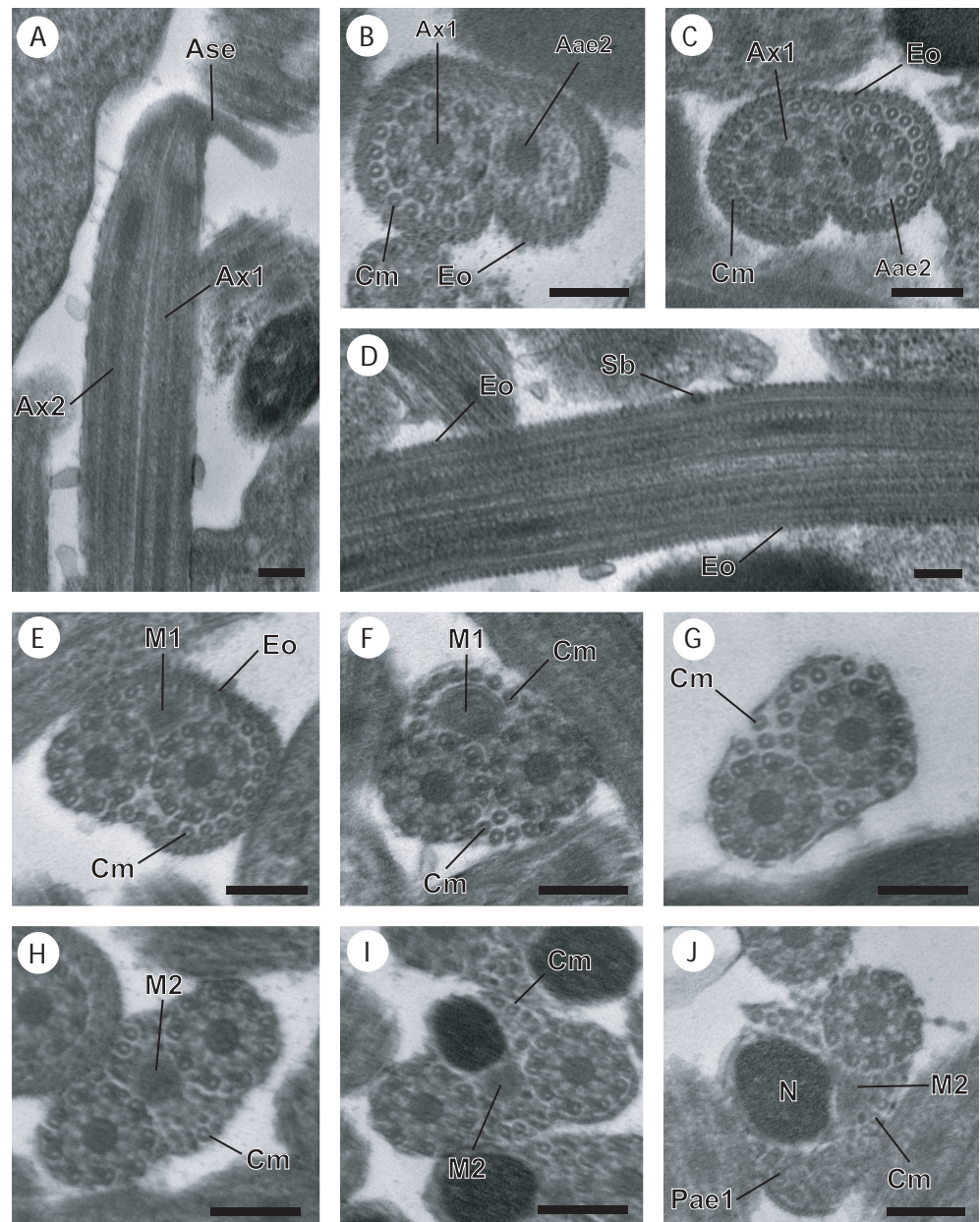
## RESULTS

The organization of the mature spermatozoon of *Opisthomonorchis dinema* and *Paramonorchoides selaris* is described after observations of cross- and longitudinal sections (Figs. 1–4). Thus, in both monorchiid species four regions, with distinctive ultrastructural characteristics, are evident, from the anterior to the posterior spermatozoon extremities. The granules of glycogen present in *O. dinema* and *P. selaris* sperm cells were detected by the cytochemical test of Thiéry (Fig. 3E for *P. selaris*).

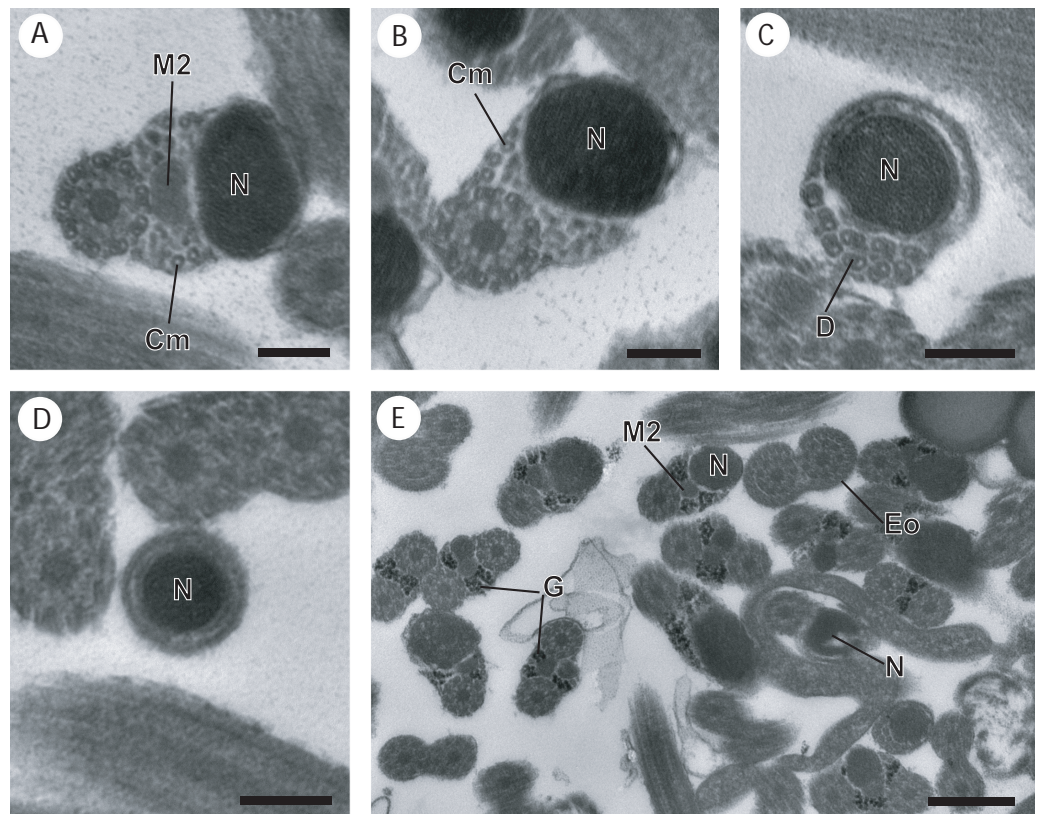
Region I, corresponding to the anterior extremity of the mature spermatozoon, is characterized by the presence of the first axoneme accompanied by the anterior extremity of the second axoneme, cortical microtubules and external ornamentation of the plasma



**Figure 1** Cross-sections of the mature spermatozoon of *Opisthomonorchis dinema* observed in TEM. (A) Region I showing the anterior extremities of the two axonemes, the external ornamentation and cortical microtubules; (B and C) middle part of the region I exhibiting (B) both formed axonemes, the external ornamentation associated with cortical microtubules, spine-like body and attachment zones (C); (D and E) posterior part of the region I characterized by the appearance of the first mitochondrion and the cortical microtubule; (F and G) region II or transitional areas showing (F) the posterior part of the first mitochondrion, the axonemes and a decreasing number of cortical microtubules from about 10 to 5; (H) anterior part of the region III characterized by the disorganization of the first axoneme; (I) middle part of the region III characterized by the appearance of the second mitochondrion and the nucleus; (J) posterior part of the region III characterized by only the nucleus, one axoneme and cortical microtubules; (K and L) region IV corresponding to the posterior spermatozoon extremity. Note the disorganization of the second axoneme (K). Scale bars: 0.2  $\mu\text{m}$ . Arrowheads indicate attachment zones. Aae1, anterior extremity of first axoneme; Aae2, anterior extremity of second axoneme; Cm, cortical microtubules; Eo, external ornamentation of the plasma membrane; M1, first mitochondrion; M2, second mitochondrion; N, nucleus; Pae1, posterior extremity of axoneme 1; S, singlet of microtubule; Sb, spine-like body.



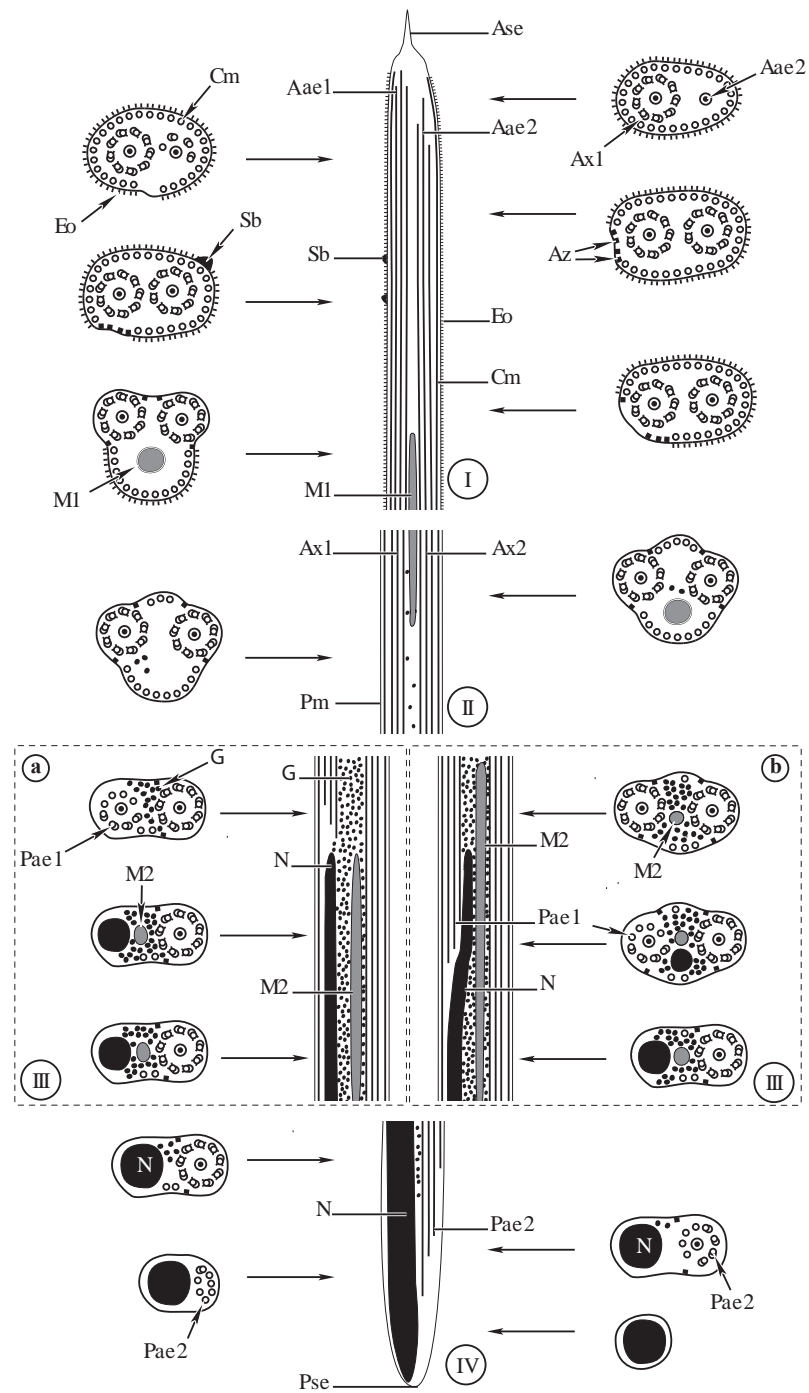
**Figure 2** Regions I–III of mature spermatozoon of *Paramonorcheides selaris* observed in TEM. (A–C) Longitudinal and cross-sections of region I corresponding to the anterior spermatozoon extremity; (D) longitudinal section in the ornamented area showing the spine-like body interrupting the external ornamentation of the plasma membrane; (E) cross-section in the posterior part of the region I characterized by the appearance of the first mitochondrion; (F and G) consecutive cross-sections in region II or transitional area showing only the axonemes, the first mitochondrion and a decrease of the cortical microtubules number; (H) anterior part of region III exhibiting the second mitochondrion; (I and J) cross-sections of middle part of region III showing the appearance of the nucleus. Note the disorganisation of the first axoneme (J). Scale bars: 0.2  $\mu\text{m}$ . Aae2, anterior extremity of second axoneme; Ase, anterior spermatozoon extremity; Ax1, first axoneme; Ax2, second axoneme; Cm, cortical microtubules; Eo, external ornamentation of the plasma membrane; M1, first mitochondrion; M2, second mitochondrion; N, nucleus; Pae1, posterior extremity of the first axoneme; Sb, spine-like body.



**Figure 3** Cross-section of regions III and IV of the mature spermatozoon of *Paramonorcheides selaris* observed in TEM. (A) Posterior part of the region III characterized by the nucleus, the second axoneme, the second mitochondrion and cortical microtubules; (B and C) region IV characterized by the nucleus, the second axoneme which disorganizes progressively, and the posterior extremity of the last cortical microtubules; (D) posterior part of region IV containing only the nucleus; (E) positive test of Thiéry for labelling of glycogen. Scale bars: 0.2  $\mu\text{m}$  (A–D), 0.5  $\mu\text{m}$  (E). Cm, cortical microtubules; D, doublets of microtubule; Eo, external ornamentation of the plasma membrane; G, granules of glycogen; M2, second mitochondrion; N, nucleus.

membrane. In *O. dinema* the anterior spermatozoon tip exhibits both anterior extremities of the axonemes, surrounded by a layer of cortical microtubules (about 26) and external ornamentation (Figs. 1A, 1B and 4I). In *P. selaris* longitudinal and cross-sections of the anterior spermatozoon tip show that it tapers to a point (Fig. 2A), and that it contains the anterior extremities of both axonemes and the cortical microtubules (about 26) (Fig. 2C) as well as exhibiting external ornamentation of the plasma membrane (Figs. 2B, 2C and Fig. 4I). In the middle part of the region I, when both axonemes are formed, spine-like bodies appear interrupting the external ornamentation of the spermatozoa of *O. dinema* and *P. selaris* (Figs. 1C, 2D and 4I). The posterior part of the region I is characterized, for each species, by the presence of external ornamentation of the plasma membrane associated with cortical microtubules and the first mitochondrion (Figs. 1D, 1E, 2E and 4I). No glycogen granule have been highlighted by the Thiéry's method in this region.

Region II corresponds to the transitional area before the nuclear region. For both *O. dinema* and *P. selaris* spermatozoa, it is characterized by the absence of external



**Figure 4** Comparative schematic reconstruction of the mature spermatozoa of *Opisthomonorchis dinema* (A) and *Paramonorchoides selaris* (B). Aae1, anterior extremity of first axoneme; Aae2, anterior extremity of second axoneme; Ase, anterior spermatozoon extremity; Ax1, first axoneme; Ax2, second axoneme; Az, attachment zone; Cm, cortical microtubules; Eo, external ornamentation of the plasma membrane; G, granules of glycogen; M1, first mitochondrion; M2, second mitochondrion; N, nucleus; Pae1, posterior extremity of the first axoneme; Pae2, posterior extremity of the second axoneme; Pm, plasma membrane; Pse, posterior spermatozoon extremity; Sb, spine-like body.

ornamentation and the presence of the axonemes and the first mitochondrion (Figs. 1F, 2F and Fig. 4II). In addition, for each monorchiid species, the posterior part of the region II contains a reduced number of cortical microtubules: about 5 in *O. dinema* (Fig. 1G) and 13 in *P. selaris* (Fig. 2G). Only few granules of glycogen are observed in this region.

Region III exhibits several ultrastructural characteristics that distinguish the mature spermatozoa of *O. dinema* (Figs. 3A and 4IIIA) from those of *P. selaris* (Figs. 3B, 4IIIB):

- In the anterior part of the region III, the spermatozoon is characterized by the disorganization of the first axoneme in *O. dinema* (Figs. 1H, 4IIIA), whereas in *P. selaris* the two axonemes and the second mitochondrion are observed (Figs. 2H, 4IIIB).
- The middle part of the region III is characterized in *O. dinema* by the presence of only one axoneme, the nucleus, few cortical microtubules and the second mitochondrion (Figs. 1I and 4IIIA). In contrast, in *P. selaris*, the second mitochondrion, the nucleus and few cortical microtubules were accompanied by the two axonemes (Figs. 2I, 4IIIB). Note that this part corresponds to the disorganization of the first axoneme in *P. selaris* (Figs. 2J and 4IIIB).
- In the posterior part of the region III, the second mitochondrion, accompanied by one axoneme, the nucleus and cortical microtubules is observed in both *O. dinema* (Figs. 1I and 4III) and in *P. selaris* (Fig. 3A, 4III).

This region is characterized, for the two species, by a high number of glycogen granules.

Region IV represents the posterior spermatozoon extremity. When the second mitochondrion disappears in both *O. dinema* and *P. selaris* mature spermatozoa, cross-sections exhibit only one axoneme, the nucleus and very few cortical microtubules (Figs. 1J, 3B and 4IV). Moreover, for each species, the second axoneme disorganizes exhibiting doublets and singlets of microtubules (Figs. 1K, 3C). Consequently, the posterior spermatozoon tips in *O. dinema* and *P. selaris* show only the nucleus (Figs. 1L, 3D and 4IV).

For the two species, only few glycogen granules have been observed in the anterior part of this region.

## DISCUSSION

The mature spermatozoon described in *Opisthomonorchis dinema* and *Paramonorchoides selaris* possesses two axonemes of the 9+“1” trepaxonematan pattern, two mitochondria, a nucleus, two bundles of parallel cortical microtubules, an external ornamentation of the plasma membrane, spine-like bodies and granules of glycogen. In addition to these ultrastructural characters, the male gamete of *O. dinema* and *P. selaris* exhibits similar anterior and posterior spermatozoon morphologies.

Within the Monorchiidae most of these spermatological characters were described previously in *Monarchus parvus* and *Helicometroides atlanticus* (Levron, Ternengo & Marchand, 2004a; Diagne et al., 2015). Thus, the characters of the mature spermatozoon, its anterior and posterior morphologies were used here in comparative studies between the different species (Table 1).



**Table 1** Comparative ultrastructural characteristics of the spermatozoon in the Monorchiidae. Ase, anterior spermatozoon extremity; Ax, axoneme; Cm, cortical microtubules; Edm, electron-dense material; Eo, external ornamentation of the plasma membrane; M, number of mitochondria; MCm, maximum number of cortical microtubules; N, nucleus; TAx, type of axoneme; TEo, type of external ornamentation according to *Quilichini et al., (2011a)*; Psc, posterior spermatozoon character; Sb, spine-like bodies; +/-, 2013, presence/absence of considered character.

| Parasites species                 | Spermatological characteristics |         |    |     |    |     |   | References |  |
|-----------------------------------|---------------------------------|---------|----|-----|----|-----|---|------------|--|
|                                   | TAx                             | Ase     | Eo | TEo | Sb | MCm | M |            | Psc  |
| <i>Helicometroides atlanticus</i> | 9+“1”                           | 2Ax+Edm | +  | 2   | –  | 35  | 2 | N          | <i>Diagne et al. (2015)</i>                    |
| <i>Monorchis parvus</i>           | 9+“1”                           | 2Ax+Eo  | +  | 1   | –  | 25  | 2 | N          | <i>Levron, Ternengo &amp; Marchand (2004a)</i> |
| <i>Opisthomonorchis dinema</i>    | 9+“1”                           | 2Ax+Eo  | +  | 1   | +  | 28  | 2 | N          | Present study                                  |
| <i>Paramonorchoides selaris</i>   | 9+“1”                           | 2Ax+Eo  | +  | 1   | +  | 26  | 2 | N          | Present study                                  |

## General organisation of the mature spermatozoon in the Monorchiidae

From the anterior part to the posterior part of the gametes, six characteristics are presented here to describe the architecture of the mature spermatozoa in Monorchiidae. Moreover, monorchiid spermatozoa are compared to those reported from the other digenean species.

### Type of axoneme

The structure of the axoneme with 9+“1” pattern of Trepaxonemata (*Ehlers, 1984*) has been observed in *O. dinema* and *P. selaris* as described previously in *M. parvus* and *H. atlanticus* (Table 1). A similar morphology of the axoneme has been reported in most digenean species (*Quilichini et al., 2011a; Foata et al., 2012; Miquel et al., 2013; Ndiaye et al., 2012; Ndiaye et al., 2015a*) with the exception of schistosomes in which the 9+“1” special pattern was described and some didymozoid species showing the 9+0 pattern (*Justine & Mattei, 1983; Justine, Jamieson & Southgate, 1993; Yang, Dong & Jiang, 2003*).

Their different length is another aspect related to axonemes. In both *O. dinema* and *P. selaris*, the posterior extremity of the axoneme 2 is longer than that of the first one. Moreover, the spermatozoon of *O. dinema* is distinguished by the first axoneme that does not reach the nuclear region, while in *P. selaris* the first axoneme is observed in the nuclear area like in *M. parvus* and *H. atlanticus* (*Levron, Ternengo & Marchand, 2004a; Diagne et al., 2015*).

### Anterior spermatozoon morphology

The anterior spermatozoon extremity of *O. dinema* and *P. selaris* contains two axonemes, cortical microtubules and external ornamentation of the plasma membrane. Within the Monorchiidae, an anterior spermatozoon extremity showing two axonemes, cortical microtubules and external ornamentation has been reported in *Monorchis parvus* (*Levron, Ternengo & Marchand, 2004a*). Whereas in the other monorchiid species studied so far, namely *H. atlanticus* (*Diagne et al., 2015*), only electron-dense material and two axonemes have been observed in the anterior spermatozoon extremity.

Mature spermatozoa showing two axonemes and external ornamentation in their anterior extremities have also been reported in spermatozoa belonging to some digenean species such as the apocreadiid *Neopocreadium chabaudi* (*Kacem et al., 2010*), the pronoccephalids *Pleurogonius truncatus* and *Cricoccephalus albus* (*Ndiaye et al., 2011*;

*Ndiaye et al., 2012*) and the mesometrids *Centroderma spinosissima* and *Wardula capitellata* (*Bakhoum et al., 2012b; Bakhoum et al., 2013*). In the two latter families, the presence of a lateral expansion is described in the anterior spermatozoon extremity of the studied species.

Other types of spermatozoa showing two axonemes in their anterior extremities have been reported in several digenean species such as the deropristid *Deropristis inflata* (*Foata, Quilichini & Marchand, 2007*), the omphalometrid *Rubenstrema exasperatum* (*Bakhoum et al., 2011*) or the pleurogenids *Pleurogenes claviger*, *Pleurogenoides medians* and *Prosotocus confusus* (*Miquel et al., 2013*).

### **External ornamentation and its location**

In all monorchiid species studied, the presence of external ornamentation associated with cortical microtubules has been observed in the anterior region of the spermatozoon as in most digenean species (*Justine & Mattei, 1982; Miquel et al., 2006; Quilichini et al., 2007; Bâ et al., 2011; Ndiaye et al., 2012; Ndiaye et al., 2015a; Ndiaye et al., 2015b; Bakhoum et al., 2015a; Bakhoum et al., 2015b*). However, the location of the external ornamentation distinguishes the spermatozoa of *O. dinema* and *P. selaris* from those of other digenean species. In fact, based on the diagram of the localization of the external ornamentation established by *Quilichini et al. (2011a)*, the mature spermatozoon of *O. dinema* and *P. selaris* presents the type 1 of external ornamentation, i.e., located in proximal part of the anterior spermatozoon region. It is also interesting to note that in both *O. dinema* and *P. selaris*, the external ornamentation is extended from centriole level to the area containing the first mitochondrion. Such disposition of the external ornamentation is also reported in the monorchiid *M. parvus* but not in *H. atlanticus* (*Table 1*). This latter species seems to exhibit type 2 external ornamentation according to the diagram of *Quilichini et al. (2011a)*.

### **Spine-like bodies**

Since their first description by *Miquel, Nourrisson & Marchand (2000)* the spine-like bodies have frequently been reported in the mature spermatozoon especially in its anterior part. In the male gamete of *O. dinema* and *P. selaris*, spine-like bodies are present in the ornamented area associated with cortical microtubules. Moreover, in both monorchiid species the morphology of the spine-like bodies follows that reported in most digenean species i.e., appearance of a small vesicle interrupting the external ornamentation of the plasma membrane (*Miquel et al., 2006; Quilichini et al., 2011b; Bakhoum et al., 2015b; Ndiaye et al., 2015a; Ndiaye et al., 2015b*).

Within the Monorchiidae, the absence of spine-like bodies was mentioned in the male gamete of *M. parvus* and *H. atlanticus* (*Levron, Ternengo & Marchand, 2004a; Diagne et al., 2015*) (*Table 1*) hence the spine-like bodies are described here, for the first time, in the mature spermatozoon of monorchiid species.

Taking into account all these aspects, the presence or absence of spine-like bodies in the Monorchiidae needs more ultrastructural investigations.

### **Number of mitochondria**

The presence of mitochondria in the mature spermatozoon is considered as a plesiomorphic character in the Digenea (*Bakhoum et al., 2014*) whereas in other groups, such as the

Eucestoda, the absence of mitochondria has been highlighted as a synapomorphy (Justine, 1991a). Besides its interest in phylogenetic relationships, the other criterion related to mitochondria is their number.

Based on many cross- and longitudinal sections, two mitochondria are evident in the mature spermatozoon of *O. dinema* and *P. selaris*. The presence of two mitochondria have also been reported in *M. parvus*, *H. atlanticus* (Table 1) and in several species belonging, for instance, to the families Acanthocolpidae (Bakhoum et al., 2015a), Apocreadiidae (Kacem et al., 2010), Deropristidae (Foata, Quilichini & Marchand, 2007) or Notocotyliidae (Ndiaye et al., 2003; Ndiaye et al., 2015b). Other digenean species possess one mitochondrion [e.g., *Carmyerius endopapillus* (Seck, Marchand & Bâ, 2008), *Wardula capitellata*; (Bakhoum et al., 2012b)] or three mitochondria [(e.g., *Anisocoelium capitellatum* (Ternengo et al., 2009), *Euryhelmis squamula* (Bakhoum et al., 2009)].

In the present study, the position of the second mitochondrion is an ultrastructural characteristic that distinguishes the mature spermatozoa of *O. dinema* from those of *P. selaris*, *H. atlanticus* and *M. parvus*. The second mitochondrion appears after the disorganization of the first axoneme in *O. dinema*, whereas in the remaining monorchiid the appearance of the second mitochondrion is noted before the posterior extremity of the first axoneme.

### **Posterior spermatozoon characters**

In Digenea the posterior spermatozoon extremity is morphologically variable and is, therefore, valuable in the establishment of spermatozoon models (Quilichini et al., 2010; Ndiaye et al., 2015b; Bakhoum et al., 2012a; Bakhoum et al., 2015a). In all monorchiid species described so far the posterior spermatozoon extremity contains a nucleus as in *O. dinema* and *P. selaris* (Table 1). This morphology of the posterior spermatozoon extremity is frequently reported in digenean (Kacem et al., 2010; Kacem et al., 2015a; Kacem et al., 2015b; Zhukova, Mordvinov & Kiseleva, 2014; Quilichini et al., 2015) and corresponds to the fasciolidean type or type 2 according to the diagram of Quilichini et al. (2010).

Other types of posterior spermatozoon extremities have been reported in digenean species. This is the case of mature spermatozoa exhibiting one axoneme as described in most microphalloid species (Bakhoum et al., 2012a; Miquel et al., 2013; Bruňanská et al., 2014) and opisthorchioid species (Quilichini et al., 2009; Foata et al., 2012; Zhukova, Mordvinov & Kiseleva, 2014). In the other hand, in the families Opecoelidae and Opistholebetidae (Miquel, Nourrisson & Marchand, 2000; Levron, Ternengo & Marchand, 2003; Levron, Ternengo & Marchand, 2004b; Quilichini et al., 2010; Quilichini et al., 2011b), there are mature spermatozoa showing only cortical microtubules in their posterior extremities.

### **Phylogenetic perspectives of ultrastructural characteristics**

The ultrastructural differences observed in the spermatozoa are phylogenetically informative in the Neodermata, particularly in the Cestoda and Monogenea (Justine, 1991b; Justine, 1998; Levron et al., 2010). In the Digenea a large amount of spermatological data accumulated over the recent years could serve as a complementary resource for understanding their phylogenetic relationships (Quilichini et al., 2010; Miquel et al., 2013; Bakhoum et al., 2015a; Diagne et al., 2015).

The phylogenetic relationships in the Monorchiidae and its systematic placement within the Digenea have been controversial. The Monorchiidae has been considered polyphyletic because of the great diversity exhibited in the morphology of its members ([Madhavi, 2008](#)). The most recent classification based on DNA sequences includes the Monorchiidae and Lissorchiidae in the superfamily Monorchioidea ([Bray, 2008](#)), which was included in the new suborder Monorchia ([Olson et al., 2003](#)).

Here, the understanding of the relationships and phylogenetic affinities in Monorchiidae are attempted with ultrastructural characteristics of the spermatozoa, although there still remain some unexplored groups. The morphology of the spermatozoa described in *O. dinema*, *P. selaris* and other monorchiid species is similar in several points to that reported in the apocreadiid *Neopocreadium chabaudi* ([Kacem et al., 2010](#)). The main similarities concern (1) the type of axoneme, (2) the morphology of both anterior and posterior spermatozoon extremities, (3) the presence of type 1 external ornamentation according to [Quilichini et al. \(2011a\)](#), (4) the two bundles of parallel cortical microtubules and (5) the presence of spine-like bodies.

Besides these similarities, it is interesting to note that the systematic position of the Apocreadiidae is unresolved. Some authors have grouped this family with the Haploporoidea and Monorchioidea ([Cribb et al., 2001](#)). Whereas other researchers suggested the removal of the Apocreadiidae from the Lepocreadioidea (see [Bray & Cribb, 2012](#)). Thus, to our knowledge no robust data are available to validate the phylogenetic position of the Apocreadiidae.

The present spermatological findings suggest, for the first time, a close relationship between the Monorchiidae and the Apocreadiidae based on ultrastructural characteristics of their mature spermatozoa. However, further studies are needed in order to support our hypothesis. Moreover, ultrastructural studies in the Lissorchiidae (probably a sister group) are also needed to test their close relationships with the Monorchiidae.

## Conclusion

The mature spermatozoa of *Opisthomonorchis dinema* and *Paramonorchoides selaris* share several ultrastructural features with those reported in *Monorchis parvus* and *Helicometroides atlanticus* ([Table 1](#)). These similarities allow us to define the type of spermatozoon in the Monorchiidae, which exhibits the following features:

- Presence of an anterior extremity showing two axonemes accompanied by cortical microtubules and external ornamentation,
- Presence of the association “external ornamentation+cortical microtubules”,
- Location of the external ornamentation corresponding to the type 1 according [Quilichini et al. \(2011a\)](#),
- Presence of two bundles of parallel cortical microtubules and two mitochondria,
- Posterior spermatozoon extremity containing only the nucleus according to [Quilichini et al. \(2010\)](#).

The model of mature spermatozoon described here for the monorchiid species is relatively similar to that reported to the apocreadiid *Neopocreadium chabaudi* ([Kacem et al., 2010](#)). These similarities allow us to suggest a close relationship between

the Monorchiidae and Apocreadiidae, although additional spermatological evidences are needed especially, from the unexplored taxa belonging to the families mentioned above and the Lissorchiidae.

The ultrastructural characteristics described in digenean and in particular, the Monorchiidae could be used as phylogenetic tools and when establishing spermatozoon models, given that they may allow the distinguishing of genera, families or superfamilies within the Digenea.

## ADDITIONAL INFORMATION AND DECLARATIONS

### Funding

A.J.S. Bakhom has a post-doctoral fellowship (No. CE/01/2014) from the “Collectivité Territoriale de Corse –Direction de l’Enseignement Supérieur et de la Recherche”. The funders had no role in study design, data collection and analysis, decision to publish, or preparation of the manuscript.

### Grant Disclosures

The following grant information was disclosed by the authors:  
Collectivité Territoriale de Corse –Direction de l’Enseignement Supérieur et de la Recherche: CE/01/2014.

### Competing Interests

Pr. Jean-Lou Justine is an Academic Editor for PeerJ.

### Author Contributions

- Yann Quilichini and Abdoulaye J.S. Bakhom conceived and designed the experiments, performed the experiments, analyzed the data, contributed reagents/materials/analysis tools, wrote the paper, prepared figures and/or tables, reviewed drafts of the paper.
- Jean-Lou Justine and Rodney A. Bray contributed reagents/materials/analysis tools, reviewed drafts of the paper.
- Cheikh T. Bâ reviewed drafts of the paper.
- Bernard Marchand conceived and designed the experiments, analyzed the data, contributed reagents/materials/analysis tools, prepared figures and/or tables, reviewed drafts of the paper.

### Data Availability

The following information was supplied regarding data availability:

The research in this article did not generate, collect or analyse any raw data or code.

## REFERENCES

- Bâ CT, Ndiaye PI, Dione A, Quilichini Y, Marchand B. 2011. Ultrastructure of the spermatozoon of *Holorchis micracanthum* (Digenea: Lepocreadiidae), an intestinal parasite of *Plectorhinchus mediterraneus* (Pisces, Teleostei) in Senegal. *Parasitology Research* **109**:1099–1106 DOI [10.1007/s00436-011-2352-1](https://doi.org/10.1007/s00436-011-2352-1).
- Bakhoun AJS, Bâ CT, Fournier-Chambrillon C, Torres J, Fournier P, Miquel J. 2009. Spermatozoon ultrastructure of *Euryhalmis squamula* (Rudolphi, 1819) (Digenea, Opisthorchioidea, Heterophyidae), an intestinal parasite of *Mustela vison* (Carnivora, Mustelidae). *Revista Ibero-latinoamericana de Parasitología* **1**:37–45.
- Bakhoun AJS, Bâ CT, Shimalov CV, Torres J, Miquel J. 2011. Spermatological characters of the digenean *Rubensrema exasperatum* (Rudolphi, 1819) (Plagiorchioidea, Omphalometridae). *Parasitology Research* **108**:1283–1293 DOI [10.1007/s00436-010-2178-2](https://doi.org/10.1007/s00436-010-2178-2).
- Bakhoun AJS, Feliu C, Bâ CT, Miquel J. 2012a. Spermiogenesis and spermatozoon of the liver fluke *Mediogonimus jourdanei* (Microphalloidea: Prosthogonimidae), a parasite of *Myodes glareolus* (Rodentia: Cricetidae). *Folia Parasitologica* **59**:32–42 DOI [10.14411/fp.2012.006](https://doi.org/10.14411/fp.2012.006).
- Bakhoun AJS, Kacem H, Neifar L, Miquel J. 2013. Ultrastructure of the spermatozoon of *Centroderma spinosissima* (Stossich, 1886) (Digenea: Mesometridae) and its phylogenetic potential. *Tissue and Cell* **45**:428–433 DOI [10.1016/j.tice.2013.07.006](https://doi.org/10.1016/j.tice.2013.07.006).
- Bakhoun AJS, Ndiaye PI, Sène A, Bâ CT, Miquel J. 2012b. Spermiogenesis and ultrastructure of the spermatozoon of *Wardula capitellata* (Digenea, Mesometridae), an intestinal parasite of the sparid teleost *Sarpa salpa* in Senegal. *Acta Parasitologica* **57**:34–45.
- Bakhoun AJS, Quilichini Y, Justine J-L, Bray RA, Bâ CT, Marchand B. 2015a. Ultrastructural study of sperm cells in Acanthocolpidae: the case of *Stephanostomum murielae* and *Stephanostomoides tenuis* (Digenea). *PeerJ* **3**:e744 DOI [10.7717/peerj.744](https://doi.org/10.7717/peerj.744).
- Bakhoun AJS, Quilichini Y, Justine J-L, Bray RA, Bâ CT, Marchand B. 2015b. *Neomultitestis aspidogastriformis* Bray and Cribb, 2003 (Digenea, Lepocreadiidae): mature spermatozoon and sperm morphologies in the Lepocreadioidea. *Cell Biology International* **39**:799–807 DOI [10.1002/cbin.10449](https://doi.org/10.1002/cbin.10449).
- Bakhoun AJS, Quilichini Y, Miquel J, Feliu C, Bâ CT, Marchand B. 2014. *Collyricloides massanae* (Digenea, Collyriclidae): spermatozoon ultrastructure and phylogenetic importance. *Parasite* **21**: Article 59 DOI [10.1051/parasite/2014061](https://doi.org/10.1051/parasite/2014061).
- Bray RA. 2008. Superfamily Monorchioidea Odhner, 1911. In: Bray RA, Gibson DI, Jones A, eds. *Keys to the Trematoda*. vol. 3. London: CAB International and The Natural History Museum, 143–144.
- Bray RA, Cribb TH. 2012. Reorganisation of the superfamily Lepocreadioidea Odhner, 1905 based on an inferred molecular phylogeny. *Systematic Parasitology* **83**:169–177 DOI [10.1007/s11230-012-9386-3](https://doi.org/10.1007/s11230-012-9386-3).

- Bray RA, Justine J-L. 2013.** Three species of opisthomonorchine monorchids (Digenea) in *Carangoides* spp. (Perciformes: Carangidae) from off New Caledonia, with a description of *Opisthomonorchis dinema* n. sp. *Systematic Parasitology* **85**:147–156 DOI [10.1007/s11230-013-9415-x](https://doi.org/10.1007/s11230-013-9415-x).
- Bruňanská M, Brázová T, Zhokhov AE, Poddubnaya LG. 2014.** Ultrastructural features of the spermatozoon and its differentiation in *Brandesia turgida* (Brandes, 1888) (Digenea, Microphalloidea, Pleurogenidae). *Parasitology Research* **113**:2483–2491 DOI [10.1007/s00436-014-3897-6](https://doi.org/10.1007/s00436-014-3897-6).
- Cribb TH, Bray RA, Littlewood DTJ, Pichelin SP, Herniou EA. 2001.** The Digenea. In: Littlewood DTJ, Bray RA, eds. *Interrelationships of the Platyhelminthes*. London: Taylor and Francis, 168–185.
- Diagne PM, Quilichini Y, Bà CT, Ndiaye PI, Dione A, Marchand B. 2015.** Ultrastructure of the spermatozoon of *Helicometroides atlanticus* (Digenea, Monorchidae), an intestinal parasite of *Parapristipoma octolineatum* (Pisces, Teleostei) in Senegal. *Tissue and Cell* **47**:198–204 DOI [10.1016/j.tice.2014.12.006](https://doi.org/10.1016/j.tice.2014.12.006).
- Ehlers U. 1984.** Phylogenetisches System der Plathelminthes. *Verhandlungen des Naturwissenschaftlichen Vereins Hamburg, NF* **27**:291–294.
- Foata J, Quilichini Y, Greani S, Marchand B. 2012.** Sperm ultrastructure of the digenean *Aphallus tubarium* (Rudolphi, 1819) Poche, 1926 (Platyhelminthes, Cryptogonimidae) intestinal parasite of *Dentex dentex* (Pisces, Teleostei). *Tissue and Cell* **44**:15–21 DOI [10.1016/j.tice.2011.10.001](https://doi.org/10.1016/j.tice.2011.10.001).
- Foata J, Quilichini Y, Marchand B. 2007.** Spermiogenesis and sperm ultrastructure of *Deropristis inflata* Molin, 1859 (Digenea, Deropristidae), a parasite of *Anguilla anguilla*. *Parasitology Research* **101**:843–852.
- Justine J-L. 1991a.** Phylogeny of parasitic Platyhelminthes—a critical study of synapomorphies proposed on the basis of the ultrastructure of spermiogenesis and spermatozoa. *Canadian Journal of Zoology* **69**:1421–1440 DOI [10.1139/z91-203](https://doi.org/10.1139/z91-203).
- Justine J-L. 1991b.** Cladistic study in the Monogenea (Platyhelminthes), based upon a parsimony analysis of spermiogenetic and spermatozoal ultrastructural characters. *International Journal for Parasitology* **21**:821–838 DOI [10.1016/0020-7519\(91\)90151-V](https://doi.org/10.1016/0020-7519(91)90151-V).
- Justine J-L. 1995.** Spermatozoal ultrastructure and phylogeny of the parasitic Platyhelminthes. *Mémoires du Muséum National d'Histoire Naturelle* **166**:37–54.
- Justine J-L. 1998.** Spermatozoa as phylogenetic characters for the Eucestoda. *Journal of Parasitology* **84**:385–408 DOI [10.2307/3284502](https://doi.org/10.2307/3284502).
- Justine J-L, Jamieson BGM, Southgate VR. 1993.** Homogeneity of sperm structure in six species of Schistosomes (Digenea, Platyhelminthes). *Annales de Parasitologie Humaine et Comparée* **68**:185–187 DOI [10.1051/parasite/1993684185](https://doi.org/10.1051/parasite/1993684185).
- Justine J-L, Mattei X. 1982.** Réinvestigation de l'ultrastructure du spermatozoïde d'*Haematoloechus* (Trematoda: Haematoloechidae). *Journal of Ultrastructure Research* **8**:322–332.

- Justine J-L, Mattei X. 1983.** A spermatozoon with two 9+0 axonemes in a parasitic flatworm, *Didymozoon* (Digenea: Didymozoidae). *Journal of Submicroscopic Cytology and Pathology* **15**:1101–1105.
- Kacem H, Bakhoum AJS, Neifar L, Miquel J. 2010.** Spermiogenesis and spermatozoon ultrastructure of the digenean *Neoapocreadium chabaudi* (Apocreadiidae), a parasite of *Balistes capricus* (Pisces, Teleostei). *Parasitology International* **59**:358–366 DOI [10.1016/j.parint.2010.04.008](https://doi.org/10.1016/j.parint.2010.04.008).
- Kacem H, Ndiaye PI, Neifar L, Torres J, Miquel J. 2015a.** Ultrastructure of the spermatozoon of the digenean *Tergestia acanthocephala* (Stossich, 1887) (Gymnophalloidea: Fellodistomidae): an intestinal parasite of *Belone belone gracilis* (Pisces: Teleostei). *Tissue and Cell* **47**:235–241 DOI [10.1016/j.tice.2015.01.008](https://doi.org/10.1016/j.tice.2015.01.008).
- Kacem H, Ndiaye PI, Neifar L, Torres J, Miquel J. 2015b.** Spermatological characters of the digenean *Lecithostaphylus retroflexus* (Molin, 1859) (Microphalloidea: Zoogonidae), a parasite of the teleost fish *Belone belone gracilis*. *Tissue and Cell* **47**:431–437.
- Levron C, Miquel J, Oros M, Scholz T. 2010.** Spermatozoa of tapeworms (Platyhelminthes, Eucestoda): advances in ultrastructural and phylogenetic studies. *Biological Reviews* **85**:523–543.
- Levron C, Ternengo S, Marchand B. 2003.** Ultrastructure of spermiogenesis and the spermatozoon of *Helicometra fasciata* (Digenea, Opecoelidae), a parasite of *Labrus merula* (Pisces, Teleostei). *Acta Parasitologica* **48**:255–264.
- Levron C, Ternengo S, Marchand B. 2004a.** Ultrastructure of spermiogenesis and the spermatozoon of *Monorchis parvus* Looss, 1902 (Digenea, Monorchiiidae), a parasite of *Diplodus annularis* (Pisces, Teleostei). *Parasitology Research* **93**:102–110 DOI [10.1007/s00436-004-1115-7](https://doi.org/10.1007/s00436-004-1115-7).
- Levron C, Ternengo S, Marchand B. 2004b.** Spermiogenesis and sperm ultrastructure of *Poracanthium furcatum* (Digenea, Opecoelidae), a parasite of *Mullus surmuletus* (Pisces, Teleostei). *Acta Parasitologica* **49**:190–200.
- Madhavi R. 2008.** Family Monorchiiidae Odhner, 1911. In: Bray RA, Gibson DI, Jones A, eds. *Keys to the Trematoda*, vol. 3. London: CAB International and The Natural History Museum, 145–175.
- Miquel J, Fournier-Chambrillon C, Fournier P, Torres J. 2006.** Spermiogenesis and spermatozoon ultrastructure of the cranial digenean *Troglorema acutum* (Leuckart, 1842). *Journal of Parasitology* **92**:441–453 DOI [10.1645/GE-743R.1](https://doi.org/10.1645/GE-743R.1).
- Miquel J, Nourrisson C, Marchand B. 2000.** Ultrastructure of spermiogenesis and the spermatozoon of *Opecoeloides furcatus* (Trematoda, Digenea, Opecoelidae), a parasite of *Mullus barbatus* (Pisces, Teleostei). *Parasitology Research* **86**:301–310 DOI [10.1007/s004360050047](https://doi.org/10.1007/s004360050047).
- Miquel J, Vilavella D, Świdorski Z, Shimalov VV, Torres J. 2013.** Spermatological characteristics of Pleurogenidae (Digenea) inferred from the ultrastructural study of *Pleurogenes claviger*, *Pleurogenoides medians* and *Prosotocus confusus*. *Parasite* **20**:1–28.



- Ndiaye PI, Bakhoum AJS, Sène A, Diagne PM, Miquel J. 2015a.** The ultrastructural characters of the mature spermatozoon of *Opechona bacillaris* (Molin, 1859) (Digenea, Lepocreadiidae) a parasite of *Scomber colias* Gmelin, 1789 (Scombridae) off the coast of Dakar (Senegal). *Acta Zoologica (Stockholm)* **96**:91–98 DOI [10.1111/azo.12054](https://doi.org/10.1111/azo.12054).
- Ndiaye PI, Miquel J, Feliu C, Marchand B. 2003.** Ultrastructure of spermiogenesis and spermatozoa of *Notocotylus neyrari* González Castro, 1945 (Digenea, Notocotylidae), intestinal parasite of *Microtus agrestis* (Rodentia: Arvicolidae) in Spain. *Invertebrate Reproduction and Development* **43**:105–115 DOI [10.1080/07924259.2003.9652529](https://doi.org/10.1080/07924259.2003.9652529).
- Ndiaye PI, Quilichini Y, Sène A, Bâ CT, Marchand B. 2011.** Ultrastructure of the spermatozoon of the digenean *Cricocephalus albus* (Kuhl & van Hasselt, 1822) Looss, 1899 (Platyhelminthes, Pronocephaloidea, Pronocephalidae), parasite of “the hawksbill sea turtle” *Eretmochelys imbricata* (Linnaeus, 1766) in Senegal. *Zoologischer Anzeiger* **250**:215–222 DOI [10.1016/j.jcz.2011.04.002](https://doi.org/10.1016/j.jcz.2011.04.002).
- Ndiaye PI, Quilichini Y, Sène A, Tkach VV, Bâ CT, Marchand B. 2012.** Ultrastructural study of the male gamete of *Pleurogonius truncatus* Prudhoe, 1944 (Platyhelminthes, Digenea, Pronocephalidae) parasite of *Eretmochelys imbricata* (Linnaeus, 1766). *Comptes Rendus Biologies* **335**:239–246 DOI [10.1016/j.crv.2012.02.004](https://doi.org/10.1016/j.crv.2012.02.004).
- Ndiaye PI, Torres J, Eira C, Shimalov VV, Miquel J. 2015b.** Ultrastructure of the spermatozoon of the trematode *Notocotylus noyeri* (Digenea: Notocotylidae), a parasite of *Microtus arvalis* (Rodentia: Cricetidae). *Folia Parasitologica* **62**: Article 001.
- Olson PD, Cribb TH, Tkach VV, Bray RA, Littlewood DTJ. 2003.** Phylogeny and classification of the Digenea (Platyhelminthes: Trematoda). *International Journal for Parasitology* **33**:733–755 DOI [10.1016/S0020-7519\(03\)00049-3](https://doi.org/10.1016/S0020-7519(03)00049-3).
- Quilichini Y, Foata J, Justine J-L, Bray RA, Marchand B. 2009.** Sperm ultrastructure of the digenean *Siphoderina elongata* (Platyhelminthes, Cryptogonimidae) intestinal parasite of *Nemipterus furcosus* (Pisces, Teleostei). *Parasitology Research* **105**:87–95 DOI [10.1007/s00436-009-1366-4](https://doi.org/10.1007/s00436-009-1366-4).
- Quilichini Y, Foata J, Justine J-L, Bray RA, Marchand B. 2010.** Ultrastructural study of the spermatozoon of *Heterolebes maculosus* (Digenea, Opistholebetidae), a parasite of the porcupinefish *Diodon hystrix* (Pisces, Teleostei). *Parasitology International* **59**:427–434 DOI [10.1016/j.parint.2010.06.002](https://doi.org/10.1016/j.parint.2010.06.002).
- Quilichini Y, Foata J, Justine J-L, Bray RA, Marchand B. 2011a.** Spermatozoon ultrastructure of *Gyliauchen* sp. (Digenea: Gyliauchenidae), an intestinal parasite of *Siganus fuscescens* (Pisces: Teleostei). *Biological Bulletin* **221**:197–205.
- Quilichini Y, Foata J, Justine J-L, Bray RA, Marchand B. 2011b.** Sperm ultrastructure of *Helicometra epinepheli* (Platyhelminthes, Digenea, Opecoelidae), parasite of *Epinephelus fasciatus* (Pisces, Teleostei). *Histology and Histopathology* **26**:1019–1028.
- Quilichini Y, Foata J, Marchand B. 2007.** Ultrastructural study of the spermatozoon of *Nicolla testiobliquum* (Digenea, Opecoelidae) parasite of brown trout *Salmo trutta* (Pisces, Teleostei). *Parasitology Research* **101**:1295–1301 DOI [10.1007/s00436-007-0636-2](https://doi.org/10.1007/s00436-007-0636-2).

- Quilichini Y, Foata J, Orsini A, Marchand B. 2007.** Spermiogenesis and spermatozoon ultrastructure of *Nicolla wisniewskii* (Digenea: Opecoelidae), an intestinal parasite of brown trout *Salmo trutta* (Pisces: Teleostei). *Journal of Parasitology* **93**:469–478 DOI [10.1645/GE-1085R.1](https://doi.org/10.1645/GE-1085R.1).
- Quilichini Y, Ndiaye PI, Sène A, Justine JL, Bray RA, Tkach VV, Bâ CT, Marchand B. 2015.** Ultrastructural characters of the spermatozoa in Digeneans of the genus *Bianium* Stunkard, 1930 (Digenea, Lepocreadiidae) parasites of fishes: a comparative study of *Bianium plicitum* and *Bianium arabicum*. *Parasitology Research* **114**:3747–3757.
- Reynolds ES. 1963.** The use of lead citrate at high pH as an electron-opaque stain in electron microscopy. *Journal of Cell Biology* **17**:208–212 DOI [10.1083/jcb.17.1.208](https://doi.org/10.1083/jcb.17.1.208).
- Seck MT, Marchand B, Bâ CT. 2008.** Spermiogenesis and sperm ultrastructure of *Carmyerius endopapillatus* (Digenea, Gastrothylacidae), a parasite of *Bos taurus* in Senegal. *Acta Parasitologica* **53**:9–18.
- Ternengo S, Quilichini Y, Katharios P, Marchand B. 2009.** Sperm ultrastructure of the gall bladder fluke *Anisocoelium capitellatum* (Digenea: Cryptogonimidae), a parasite of *Uranoscopus scaber* (Pisces: Uranoscopidae). *Parasitology Research* **104**:801–807 DOI [10.1007/s00436-008-1259-y](https://doi.org/10.1007/s00436-008-1259-y).
- Thiéry JP. 1967.** Mise en évidence des polysaccharides sur coupes fines en microscopie électronique. *Journal of Microscopy* **6**:987–1018.
- Yang M-Y, Dong H-F, Jiang M-S. 2003.** Ultrastructural observation of spermatozoa and fertilization in *Schistoma japonicum*. *Acta Tropica* **85**:63–70.
- Zhukova MV, Mordvinov VA, Kiseleva E. 2014.** Ultrastructure of spermatozoa in the seminal receptacle of the liver fluke *Opisthorchis felineus* (Rivolta, 1884). *Parasitology Research* **113**:1093–1101 DOI [10.1007/s00436-013-3746-z](https://doi.org/10.1007/s00436-013-3746-z).