



**HAL**  
open science

## **Rapid Occurrence of Chronic Kidney Disease in Patients Experiencing Reversible Acute Kidney Injury after Cardiac Surgery**

David Legouis, Pierre Galichon, Aurélien Bataille, Sylvie Chevret, Sophie Provenchère, Anne Boutten, Dimitrios Buklas, Jean-Luc Fellahi, Jean-Luc Hanouz, Alexandre Hertig

► **To cite this version:**

David Legouis, Pierre Galichon, Aurélien Bataille, Sylvie Chevret, Sophie Provenchère, et al.. Rapid Occurrence of Chronic Kidney Disease in Patients Experiencing Reversible Acute Kidney Injury after Cardiac Surgery. *Anesthesiology*, 2016, 126 (1), pp.39-46. 10.1097/ALN.0000000000001400 . hal-01398136

**HAL Id: hal-01398136**

**<https://hal.sorbonne-universite.fr/hal-01398136>**

Submitted on 16 Nov 2016

**HAL** is a multi-disciplinary open access archive for the deposit and dissemination of scientific research documents, whether they are published or not. The documents may come from teaching and research institutions in France or abroad, or from public or private research centers.

L'archive ouverte pluridisciplinaire **HAL**, est destinée au dépôt et à la diffusion de documents scientifiques de niveau recherche, publiés ou non, émanant des établissements d'enseignement et de recherche français ou étrangers, des laboratoires publics ou privés.

**RAPID OCCURRENCE OF CHRONIC KIDNEY DISEASE IN PATIENTS EXPERIENCING  
REVERSIBLE ACUTE KIDNEY INJURY AFTER CARDIAC SURGERY**

David Legouis<sup>1</sup>, MD, Pierre Galichon<sup>2,3,9</sup>, MD, PhD, Aurélien Bataille<sup>9</sup>, MD, Sylvie Chevret<sup>4</sup>, MD, PhD, Sophie Provenchère<sup>5</sup>, MD, Anne Boutten<sup>6</sup>, MD, Dimitrios Buklas<sup>7</sup>, MD, Jean-Luc Fellahi<sup>8</sup>, MD, PhD, Jean-Luc Hanouz<sup>1</sup>, MD, PhD, Alexandre Hertig<sup>2,3,9</sup>, MD, PhD

**Affiliations :**

- (1) Department of Anesthesiology and Critical Care Medicine, Pôle Réanimations Anesthésie SAMU, Caen University Hospital, F-14000 Caen, France
- (2) Department of Renal Intensive Care Unit and Kidney Transplantation, AP-HP, Tenon University Hospital, , F-75020, Paris, France
- (3) UPMC Sorbonne Université Paris 06, UMR S 1155, F-75020, Paris, France
- (4) Department of Biostatistics, AP-HP, Saint-Louis University Hospital, Paris, France
- (5) Department of Anesthesiology, APHP, Bichat Hospital, F-75018, Paris, France
- (6) Department of Biochemistry, APHP, Bichat Hospital, F-75018, Paris, France
- (7) Department of Cardiac Surgery, Caen University Hospital, F-14000 Caen, France
- (8) Department of Anesthesiology and Critical Care, Hôpital Cardiologique Louis Pradel, Hospices Civils de Lyon, Lyon, France
- (9) French National Institute of Health and Medical Research (INSERM), UMR\_S1155, Rare and common kidney diseases, matrix remodelling and repair, Tenon Hospital, F-75020, Paris, France

**No funding received**

**Running title:** *AKI and CKD following cardiopulmonary bypass*

**Disclosure:** no conflict of interest

*Address for correspondence:* Alex Hertig, UNTR Hôpital Tenon, 4 rue de la Chine, 75020 Paris, France; Fax: +33156017968, Tel: +33156016695; Email: [alexandre.hertig@aphp.fr](mailto:alexandre.hertig@aphp.fr)

## ABSTRACT

**Background** There is recent evidence to show that patients suffering from acute kidney injury (AKI) are at increased risk of developing chronic kidney disease (CKD), despite the fact that surviving tubular epithelial cells have the capacity to fully regenerate renal tubules and restore renal function within days or weeks. The aim of the study was to investigate the impact of AKI on *de novo* CKD.

**Methods** We conducted a retrospective population-based cohort study of patients initially free from CKD, who were scheduled for elective cardiac surgery with cardiopulmonary bypass, and who developed an episode of AKI from which they recovered. The study was conducted at two French university hospitals between 2005 and 2015. These individuals were matched with patients without AKI according to a propensity score for developing AKI.

**Results** Among the 4791 patients meeting our inclusion criteria, 1375 (29%) developed AKI, and 685 fully recovered. Propensity score matching was used to balance the distribution of covariates between AKI and non-AKI control patients. Matching was possible for 597 cases. During follow-up, 34(5.7%) had reached a diagnosis of CKD, as opposed to 17 (2.8%) in the control population (HR=2.3; bootstrapping 95%CI= [1.9–2.6]).

**Conclusions** Our data consolidate the recent paradigm shift, reporting AKI as a strong risk factor for the rapid development of CKD.

*Keywords (3-5): acute kidney injury; chronic kidney disease; ischemia reperfusion*

## INTRODUCTION

Ten years ago, international experts from the Acute Dialysis Quality Initiative (ADQI) and the Acute Kidney Injury Network (AKIN) proposed a unique definition of “Acute Kidney Injury” (AKI). Thus, a diagnosis of AKI requires either a 1.5-fold increase in serum creatinine within 7 days, or serum creatinine increase by more than 0.3 mg/dL (26.5  $\mu\text{mol/L}$ ) within 48 hours.<sup>1</sup> Following this consensus, two unexpected findings have been reported. First, even a mild episode of AKI was found to increase the risk of death, independent of any comorbidities.<sup>2-5</sup> Second, as evidenced by four independent studies, AKI was found to be a major risk factor for the development of a chronic kidney disease (CKD) within a matter of a few weeks.<sup>6-9</sup> Whereas the progressive decrease in the residual renal function of patients who did not fully recover from an episode of severe AKI is intuitive, this observation is less immediately obvious in the case of patients who recovered “*ad integrum*”. Nonetheless, retrospectively exploring the long-term renal prognosis of a recovering AKI, in unselected patients who were CKD-free at the time of the acute episode, Jones<sup>10</sup> and Bucaloiu<sup>11</sup> have found a 2- to 3-fold increase in the risk of developing post-AKI stage 3 CKD.

In addition, experimental data have recently highlighted molecular mechanisms at stake in myofibroblasts as well as in tubular epithelial cells, linking AKI with CKD.<sup>12-14</sup>

Regarding the studies mentioned above, some methodological issues need to be emphasized. First, patients could have been included on the basis of various pathological conditions, including the chronic conditions of multiple kidney injury.<sup>6-11</sup> Second, the recovery of AKI was not systematically verified.<sup>6-9</sup> Hence, CKD could have been present simply as a result of a sequel, and of immediate scarring. Finally, the diagnosis of CKD could have been defined by a diagnostic code and not by numerical values estimating the glomerular filtration rate (GFR).<sup>6-9</sup>

A study aiming at the consolidation of the recent knowledge that a recovering AKI may lead to CKD would ideally test a population of patients: a) at risk of AKI, b) exposed to a unique event leading to AKI, and c) in whom renal function would be estimated both before and after an episode of AKI. Incidence of AKI after cardiac surgery varies between 15 and 45%.<sup>15-19</sup> Although a pre-existing CKD is an established risk factor for AKI in this context, AKI may occur in CKD-free patients.<sup>2, 17</sup> We analyzed the renal outcome of CKD-free patients scheduled for cardiopulmonary bypass (CBP) cardiac surgery at two centers in France, who did or did not develop AKI with a recovering renal function identical ( $\pm 10\%$ ) to that before surgery.

## **MATERIAL AND METHODS**

### **Study Design**

We conducted a bicenter retrospective cohort study with a propensity score matching analysis. The study took place at two French university hospitals, within a catchment area of about 13.5 million people. Each year, both centers conduct 5% of the total cardiac surgery in France. The universal public health insurance guarantees equal access and free primary health care to all French citizens. The study was carried out in accordance with the principles outlined in the Declaration of Helsinki after approval from the institutional review board (approval number: SFAR 00010254-2016-072) at each participating center.

### **Estimated GFR**

Serum creatinine concentrations were measured using the Jaffé method. GFR values were estimated (eGFR) using the Modification of Diet in Renal Disease (MDRD) creatinine equation.<sup>20</sup> When the test was ID/MS standardized, a correction was applied to the MDRD equation.<sup>21</sup> Baseline eGFR was defined by the MDRD calculated with the serum creatinine sampled during the anesthetic consultation. The racial correction factor was not used because:

a) collecting statistics referring to racial or ethnic origin is forbidden in France and b) this correction factor only applies to African Americans.<sup>22</sup>

### **Population Study**

Patients were included if they were  $\geq 18$  years-old, free from CKD at the time of surgery (*i.e.* baseline eGFR above 60 mL/min/1.73m<sup>2</sup>), and scheduled for elective (non urgent) cardiac surgery with CBP between 2005 and 2015. We excluded patients who had a prior history of cardiac surgery and those without available serum creatinine measurements within 7 days post-surgery.

### **AKI: Exposure Status, Recovery and CKD Outcome**

For each patient we calculated the shift of serum creatinine values in the first 7 days following surgery. The AKI group was defined according to the KDIGO criteria,<sup>1</sup> by a 1.5-fold increase in baseline serum creatinine concentration within the first 7 days after surgery or by an increase greater than or equal to 0.3 mg/dL within 48 hours. This included all patients who needed renal replacement therapy during their stay. By definition, the recovering status was defined, in all patients, by an eGFR  $\geq 90\%$  the baseline and  $\geq 60$  mL/min/1.73m<sup>2</sup> between days 7 and 90 following surgery. 'Time to recovery' was the time from surgery to recovery during the period 7-90 days post-surgery. In the case of patients requiring dialysis, their recovery was manually checked by reviewing medical charts.

CKD was defined by at least two eGFR values less than or equal to 60 mL/min/1.73m<sup>2</sup> separated by an interval of at least 90 days.<sup>1</sup> Each CKD status and time was manually checked by looking at the raw data. 'Time to CKD' was defined as the period spent from time to recovery to the first occurrence of eGFR  $\leq 60$  mL/min/1.73m<sup>2</sup>. The 10<sup>th</sup> percentile time to CKD was the time during which 10% of the patients developed CKD. For AKI-free patients, we decided that time would count from the moment they had an eGFR measured during the recovery period (7-90 POD), similar to their match.

## **Data Sources**

The study was completed using 2 independent blinded databases from each hospital. Clinical research associates prospectively input all clinical data from the study into these databases. These bases were automatically updated with all serum creatinine levels measured for each patient during the study period. The rate of missing data is presented in Supplemental Digital Content 1. All the data were analyzed and anonymized in a blinded manner. As requested by law, these two databases were officially reported to the Commission nationale de l'informatique et des libertés (CNIL), the French Data Protection Authority.

## **Statistical Analyses**

Continuous variables for individuals with and without AKI were expressed as mean  $\pm$ Standard Deviation (SD) or as median 25<sup>th</sup>–75<sup>th</sup> percentile for non-normally distributed variables, or number and percentage. Unmatched data were analyzed using the Mann-Whitney or student t test. Cumulative incidence curves were calculated with Kaplan Meier methods and compared using the log-rank test. Incidence rates were calculated and compared using Poisson regression adjusted on propensity score.

A propensity score for AKI was estimated using the following covariates: age, body mass index, pre-operative eGFR, clamping time and extracorporeal circulation, logistic European System for Cardiac Operative Risk Evaluation (EuroSCORE), left ventricular ejection fraction (LVEF), type of surgery. The variables included in the propensity score model were selected among available baseline variables based on known associations between CKD and AKI<sup>23</sup> with a non-parsimonious logistic regression. This score was used to match each patient developing AKI to one control with a similar logit of the propensity score based on nearest neighbor matching without replacement using calipers of width equal to 0.2 SD.<sup>24,25</sup> An

absolute standardized difference less than 10% was considered to support the assumption of balance between groups.<sup>26</sup>

The matching was followed by a Cox regression analysis stratified for matched pairs. Survival analyses were performed until September 2015. For the CKD endpoint, each patient was censored at the end of the study period, *i.e.* at the time of the last available eGFR. We ensured that our Cox model met the proportional hazard assumption.<sup>27</sup> Because the matching process was without replacement and to assess reliability, we used bootstrapping re-sampling and presented all the results as mean values [95% confidence interval (CI)].<sup>28</sup>

Since the assumption of independence could not be verified, the drop-out subjects could be different between CKD and non-CKD patients. This informative censoring might have introduced a bias in our results, so we therefore performed an inverse probability of censoring weighted (IPCW) Cox regression in order to take such a bias into account.<sup>29</sup> Last, to assess the potential effect of unmeasured confounders, we conducted a Rosenbaum bounds sensitivity analysis.<sup>30</sup> This analysis estimates the magnitude of a hidden residual bias that would have to be present to explain the associations actually observed.

A p value of less than 0.05 was considered significant, and all p values were two tailed. Statistical analyses were performed using R software.

## **RESULTS**

### **Baseline Population**

Of the 7471 patients screened, we identified 4791 participants who met the inclusion criteria. We then excluded 2030 patients because they don't have sufficient follow up. From this cohort, 1375 (29%) developed AKI and 685 (50%) fully recovered their renal function (**Figure 1**). As expected, in the whole population study (*i.e.* before the matching of AKI patients with non-AKI patients according to the propensity score) some of the variables were



significantly different between the two groups (**Table 1**).

### **Bootstrapped Matched Cohort**

Among the 685 patients who had fully recovered from AKI whose propensity score was available, 597 were successfully matched to a control patient. None of the variables associated with AKI and used in the propensity score differed significantly between AKI and non-AKI patients after matching (**Table 1& Figure 2**). The median number of serum creatinine measurements during the follow-up period was 16 (11–28) and 11 (8–16) for the AKI and control groups respectively. The characteristics of the 61 patients who could not be matched because the propensity score could not be calculated (due to missing data) are shown in Supplemental Digital Content 2.

### **CKD Outcome in AKI and Non-AKI Patients**

In the matched cohort, 34 out of the 597 patients who fully recovered from AKI developed CKD during the follow-up period, as opposed to 17 of the control patients (**Figure 3**). The median 10<sup>th</sup> percentile time to the diagnosis of CKD in those experiencing AKI was 159 days, as opposed to 594 days in the control group. Thus, incident rates for CKD were 15.7 and 5.1/100 person years in the AKI and control groups, respectively (p=0.0007 ; **Table 2**). The matched cohort hazard ratio (HR) for the development of stage 3 CKD was significantly higher in the AKI group (HR=2.3; bootstrapping 95%CI= [1.9–2.6]). It did not differ from the HR calculated from the IPCW Cox regression (HR=2.5; 95%CI= [1.6–4.1])

### **Impact of “Threshold Effect”**

Arbitrarily using a  $\geq 25\%$  decrease in eGFR as another marker for significant deterioration of renal function, HR was still significantly increased after a transient episode of AKI (HR=2.2, 95%CI= [1.4–3.2]).

## **Impact of Severity of AKI**

Regardless of AKI severity, HR for CKD was still significantly increased after a resolving episode of AKI, respectively 2.3 [1.8–2.6] for AKI stage 1 and 11 [6-12] for AKI stages 2 and 3.

## **Sensitivity Analyses**

We used a sensitivity analysis with Rosenbaum bounds to assess the potential effect of unmeasured confounders. Rosenbaum bounds suggested a  $\gamma$  value of 1.4. This means that for any unmeasured confounder that would explain a higher rate of CKD in the AKI population, the confounder would need to produce a 40% increase in the odds of undergoing AKI.

## **DISCUSSION**

Our study demonstrates that CKD-free adult patients developing AKI following elective cardiac surgery with CBP, and then fully recovering from AKI, are at increased risk of acquired stage 3 CKD or worse when compared to a similarly exposed, AKI-free population of patients. As in several other studies published previously, this risk is high very early and CKD typically occurs within weeks post-surgery.<sup>2,7,11,31</sup> Since baseline eGFR was well balanced between AKI and AKI-free patients, this study found that risk was not dependent on baseline renal function.

In our view, these data firmly consolidate the recent paradigm shift regarding the delayed outcome of AKI, because of five methodological aspects inherent to the design of our study: 1) first, we purposely selected for study a unique and homogeneous circumstance where AKI was a risk; 2) we created and validated a propensity score for the development of AKI and this allowed us to match every AKI patient with a control, which further reduced biases (in particular, AKI and non-AKI patients had similar age, pre-operative eGFR, LVEF and EuroSCORE, and they underwent similar extracorporeal circulation and clamping times); 3)

we did not use a diagnostic code system, but used numerical values of serum creatinine and estimated values of GFR to identify AKI or CKD: thus, whether acute or chronic, any alteration of renal function was defined by objective biological values; 4) we included all stages of AKI according to the sensitive and universal KDIGO criteria; 5) most importantly, we deliberately excluded patients who had not recovered their baseline renal function and matched the patients according to their post-operative eGFR .

Previous studies have strongly suggested a link between the occurrence of AKI and the development of CKD. Amdur *et al.* reported an adjusted HR of 4 following an acute “tubular necrosis” or “renal failure” (using diagnostic codes) occurring in patients without pre-existent CKD.<sup>17</sup> Ishani *et al.* found an adjusted HR of 13 for a code of end stage renal disease (ESRD) after acute kidney injury.<sup>9</sup> Lastly, Wald *et al.*, focusing on patients admitted to an intensive care unit and developing an AKI episode requiring renal replacement therapy, reported an adjusted HR of 3.2 for the risk of developing CKD and necessitating dialysis.<sup>6</sup> It has to be noted that the risk of CKD occurs particularly early. Likewise, in 2011, based on eGFR values obtained following cardiac surgery, Ishani *et al.* noted that AKI defined by an increase of 25% to 49% in serum creatinine vs baseline in the first 7 days resulted in a HR of 4 as early as 3 months post-surgery.<sup>2</sup> In the most recently published study concerning the risk of AKI following cardiac surgery, HR for ESRD (identified by a diagnostic code) was 6.2 in patients with normal pre-operative renal function.<sup>31</sup> Phenotyping these patients will be important so as to understand the etiology of such a rapid deterioration of renal function, in particular the characterization of urine (ions, quantity and type of proteinuria, and sediment). Since it is not known that an episode of AKI impairs *heart* recovery after cardiac surgery, and since AKI-triggered CKD has been reported to be severe enough to potentially result in ESRD, we are probably looking at parenchymal, not pre-renal, renal failure.

The biological mechanism(s) by which AKI precipitates the occurrence of CKD are being extensively studied. Despite efforts to match the AKI population with controls theoretically similarly prone to develop AKI/CKD, we may not rule out the possibility that the mean renal reserve is lower in the global AKI population,<sup>32</sup> since screening of renal reserve is not routinely conducted prior to cardiac surgery. In further exploratory studies, amino-acid loading could be considered before the scheduled circumstances which put patients at risk of AKI, in order to test the hypothesis that an episode of AKI often merely reflects a nephron loss, low enough to escape detection using serum creatinine measures when patients are exposed to a hemodynamic challenge, but high enough to induce AKI according to the most recent definition. Although this possibility seems likely (because the incidence of CKD occurs rapidly), the risk of AKI-induced CKD is similarly increased in the elderly and in children, which suggests that other mechanisms are also involved.<sup>33,34</sup>

Thus, although AKI resolves functionally within days or weeks, it may yet have triggered a strong pro-fibrotic response, resulting in accelerated scarring of the kidneys. In the last five years, experimental studies have indeed documented what is now called a “maladaptive” repair. To name only a few of the mechanisms potentially at stake in mammals, it was found that even a transient episode of AKI could result in: a) an incapacity for tubular epithelial cells to resume normal production of energy;<sup>12</sup> b) a cell cycle arrest or delay;<sup>14</sup> and c) a reprogramming of myofibroblasts through the epigenetic silencing of *RASALI*, a gene encoding a potent inhibitor of cell proliferation.<sup>13</sup> The latter, however, was reported as not occurring in the ischemic model of AKI. In sum, some patients with supposedly pristine kidneys might still evolve towards CKD *because of* (not only *after*) an episode of AKI.

Interestingly, we found a high incidence of CKD stage 3 in the group without AKI. This incidence is largely superior to that seen in the general population (respectively 51000 and 5000 per million person years for *de novo* CKD<sup>35</sup>).

In the case of cardiac surgery, AKI defined using the KDIGO criteria may only reflect the renal consequences of various injuries such as extra corporeal circulation or arterial clamping. These injuries probably act as a continuum limiting the traditional definition of AKI. A study addressing the impact of extra corporeal circulation *per se* on renal outcome long-term is needed.

Our study has some limitations: 1) retrospective by nature, we may not exclude the possibility that an additional AKI occurred, or that drugs interfering with glomerular filtration were introduced during the observation period. In any case, we believe there are sufficient data in the literature to require that patients developing AKI and recovering from it, are put under close scrutiny; 2) The French law demands a “color-blind” model of data collection, which means that we did not apply the GFR-correcting factor for black patients. Nevertheless, the proportion of African-Americans in the population is small in France, and in our study, serum creatinine was assessed for each individual relative to his/her own baseline serum creatinine; 3) we censored our patients at the time of the last serum creatinine measurement available to avoid information bias caused by insufficient creatinine values (and thereby considering a patient CKD free where he is not), so the additional bias linked to informative censoring was therefore tested by IPCW Cox regression; 4) One month after the surgery, there was no scheduled patient follow-up. Thus, the number of serum creatinine measurement differs between the patients developing AKI and their control. Nevertheless the median duration of follow up was the same. In the Supplemental Digital Content 3 we present the time distribution of GFR estimation according to their AKI status. 5) for patients who required a blood transfusion in the perioperative period, the number of packed red cells was not available; 6) the existence of a residual confounding factor is not impossible because the scope of measured confounders is limited. However, to assess this risk we performed a Rosenbaum bounds sensitivity analysis, allowing us to estimate the likelihood that an

unknown confounder could explain the observed differences in CKD. A  $\gamma$  value of 1.4 between AKI and control patients, however, suggests that it is unlikely.

These findings tackle the issue of potential nephrologist follow-up after AKI even if the patient has totally recovered renal function. The value of specialist follow-up after hospitalization for an array of acute conditions is well established in terms of mortality and rehospitalization.<sup>36-38</sup> While it is estimated that 76% of patients surviving a myocardial infarction are followed by cardiologists, it is still not our routine practice to recommend that renal function of patients who fully recovered from an AKI be monitored in the following weeks or months.<sup>39</sup> For those experiencing a rapid decline in renal function, interventional studies – yet to be designed – are undoubtedly needed.

In summary, regardless of its severity, a fully recovering episode of AKI following cardiac surgery in patients without pre-existing CKD is strongly associated with a subsequent increase in the risk of *de novo* CKD. Complementary research is required to understand the biological mechanisms involved, and to invent new therapeutic approaches.

#### **ACKNOWLEDGMENTS**

Alexandre Hertig is the recipient of an Interface contract with the French National Institute of Health and Medical Research (INSERM).

**Funding sources** None

**Disclosures** None

## REFERENCES

1. Kellum JA, Lameire N, Aspelin P, Barsoum RS, Burdmann EA, Goldstein SL, et al. KDIGO Clinical Practice Guideline for Acute Kidney Injury 2012. *Kidney Int Suppl.* 2012;2:1–138.
2. Ishani A, Nelson D, Clothier B, Schult T, Nugent S, Greer N, Slinin Y, Ensrud KE. The magnitude of acute serum creatinine increase after cardiac surgery and the risk of chronic kidney disease, progression of kidney disease, and death. *Arch Intern Med.* 2011;171:226–233.
3. Swaminathan M, Shaw AD, Phillips-Bute BG, McGugan-Clark PL, Archer LE, Talbert S, Milano CA, Patel UD, Stafford-Smith M. Trends in acute renal failure associated with coronary artery bypass graft surgery in the United States. *CritCare Med.* 2007;35:2286–2291.
4. Lassnigg A, Schmid ER, Hiesmayr M, Falk C, Druml W, Bauer P, Schmidlin D. Impact of minimal increases in serum creatinine on outcome in patients after cardiothoracic surgery: Do we have to revise current definitions of acute renal failure? *Crit Care Med.* 2008;36:1129–1137.
5. Chertow GM. Acute kidney injury, mortality, length of stay, and costs in hospitalized patients. *J Am Soc Nephrol.* 2005;16:3365–3370.
6. Wald R, Quinn RR, Luo J, Li P, Scales DC, Mamdani MM, Ray JG; University of Toronto Acute Kidney Injury Research Group. Chronic dialysis and death among survivors of acute kidney injury requiring dialysis. *JAMA.* 2009;302:1179–1185.
7. Lo LJ, Go AS, Chertow GM, McCulloch CE, Fan D, Ordoñez JD, Hsu CY. Dialysis-requiring acute renal failure increases the risk of progressive chronic kidney disease. *Kidney Int.* 2009;76:893–899.
8. Hsu CY, Chertow GM, McCulloch CE, Fan D, Ordoñez JD, Go AS. Nonrecovery of kidney function and death after acute on chronic renal failure. *Clin J Am Soc Nephrol.* 2009;4:891–898.
9. Ishani A, Xue JL, Himmelfarb J, Eggers PW, Kimmel PL, Molitoris BA, Collins AJ. Acute kidney injury increases risk of ESRD among elderly. *J Am Soc Nephrol.* 2009;20:223–228.
10. Jones J, Holmen J, De Graauw J, Jovanovich A, Thornton S, Chonchol M. Association of complete recovery from acute kidney injury with incident CKD stage 3 and all-cause mortality. *Am J Kidney Dis.* 2012;60:402–408.
11. Bucaloiu ID, Kirchner HL, Norfolk ER, Hartle JE, Perkins RM. Increased risk of death and de novo chronic kidney disease following reversible acute kidney injury. *Kidney Int.* 2011;81:477–485.
12. Kang HM, Ahn SH, Choi P, Ko YA, Han SH, Chinga F, Park AS, Tao J, Sharma K, Pullman J, Bottinger EP, Goldberg IJ, Susztak K. Defective fatty acid oxidation in renal tubular epithelial cells has a key role in kidney fibrosis development. *Nat Med.* 2014;21:37–46.
13. Bechtel W, McGoohan S, Zeisberg EM, Müller GA, Kalbacher H, Salant DJ, Müller CA, Kalluri R, Zeisberg M. Methylation determines fibroblast activation and fibrogenesis in the kidney. *Nat Med.* 2010;16:544–550.
14. Yang L, Besschetnova TY, Brooks CR, Shah JV, Bonventre JV. Epithelial cell cycle arrest in G2/M mediates kidney fibrosis after injury. *Nat Med.* 2010;16:535–543.
15. Lassnigg A. Minimal changes of serum creatinine predict prognosis in patients after cardiothoracic surgery: a prospective cohort study. *J Am Soc Nephrol.* 2004;15:1597–1605.
16. Karkouti K, Wijeyesundera DN, Yau TM, Callum JL, Cheng DC, Crowther M, Dupuis

- JY, Fremes SE, Kent B, Laflamme C, Lamy A, Legare JF, Mazer CD, McCluskey SA, Rubens FD, Sawchuk C, Beattie WS. Acute kidney injury after cardiac surgery: focus on modifiable risk factors. *Circulation*. 2009;119:495–502.
17. Amdur RL, Chawla LS, Amodeo S, Kimmel PL, Palant CE. Outcomes following diagnosis of acute renal failure in U.S. veterans: focus on acute tubular necrosis. *Kidney Int*. 2009;76:1089–1097.
  18. Bastin AJ, Ostermann M, Slack AJ, Diller G-P, Finney SJ, Evans TW. Acute kidney injury after cardiac surgery according to Risk/Injury/Failure/Loss/End-stage, Acute Kidney Injury Network, and Kidney Disease: Improving Global Outcomes classifications. *J Crit Care*. 2013;28:389–396.
  19. Wijeyesundera DN, Karkouti K, Dupuis J-Y, Rao V, Chan CT, Granton JT, Beattie WS. Derivation and validation of a simplified predictive index for renal replacement therapy after cardiac surgery. *JAMA*. 2007;297:1801–1809.
  20. Levey AS, Bosch JP, Lewis JB, Greene T, Rogers N, Roth D. A more accurate method to estimate glomerular filtration rate from serum creatinine: a new prediction equation. Modification of Diet in Renal Disease Study Group. *Ann Intern Med*. 1999;130:461–470.
  21. Levey AS, Coresh J, Greene T, Stevens LA, Zhang YL, Hendriksen S, Kusek JW, Van Lente F; Chronic Kidney Disease Epidemiology Collaboration. Using standardized serum creatinine values in the modification of diet in renal disease study equation for estimating glomerular filtration rate. *Ann Intern Med*. 2006;145:247–254.
  22. Flamant M, Vidal-Petiot E, Metzger M, Haymann JP, Letavernier E, Delatour V, Karras A, Thervet E, Boffa JJ, Houillier P, Stengel B, Vrtovsni F, Froissart M; Nephro Test Study Group. Performance of GFR estimating equations in African Europeans: basis for a lower race-ethnicity factor than in African Americans. *Am J Kidney Dis*. 2013;62:182–184.
  23. Austin PC, Grootendorst P, Anderson GM. A comparison of the ability of different propensity score models to balance measured variables between treated and untreated subjects: a Monte Carlo study. *Statist Med*. 2007;26:734–753.
  24. Austin PC. Statistical criteria for selecting the optimal number of untreated subjects matched to each treated subject when using many-to-one matching on the propensity score. *Am J Epidemiol*. 2010;172:1092–1097.
  25. Austin PC, Schuster T. The performance of different propensity score methods for estimating absolute effects of treatments on survival outcomes: A simulation study. *Stat Methods Med Res* 2016 Oct; 25(5): 2214–2237 Austin PC. The relative ability of different propensity score methods to balance measured covariates between treated and untreated subjects in observational studies. *Med Decis Making*. 2009;29:661–677.
  26. Grambsch PM, Therneau TM. Proportional hazards tests and diagnostics based on weighted residuals. *Biometrika*. 1994;81:515–526.
  27. Austin PC, Small DS. The use of bootstrapping when using propensity-score matching without replacement: a simulation study. *Statist Med*. 2014;33:4306–4319.
  28. Yoshida M, Matsuyama Y, Ohashi Y; MEGA Study Group. Estimation of treatment effect adjusting for dependent censoring using the IPCW method: an application to a large primary prevention study for coronary events (MEGA study). *Clin Trials*. 2007;4:318–328.
  29. DiPrete TA, Gangl M. Assessing bias in the estimation of causal effects: Rosenbaum bounds on matching estimators and instrumental variables estimation with imperfect instruments. *Sociol Methodol*. 2004;34:271–310.
  30. Rydén L, Sartipy U, Evans M, Holzmann MJ. Acute kidney injury after coronary artery bypass grafting and long-term risk of end-stage renal disease. *Circulation*.



- 2014;130:2005–2011.
31. Mazzearella V, Gallucci MT, Tozzo C, Elli M, Chiavarelli R, Marino B, Casciani C. Renal function in patients undergoing cardiopulmonary bypass operations. *J Thorac Cardiovasc Surg.* 1992;104:1625–1627.
  32. Schmitt R, Coca S, Kanbay M, Tinetti ME, Cantley LG, Parikh CR. Recovery of kidney function after acute kidney injury in the elderly: a systematic review and meta-analysis. *Am J Kidney Dis.* 2008;52:262–271.
  33. Goldstein SL. Acute kidney injury in children and its potential consequences in adulthood. *Blood Purif.* 2012;33(1-3):131–137.
  34. Fox CS, Larson MG, Leip EP, Culleton B, Wilson PWF, Levy D. Predictors of new-onset kidney disease in a community-based population. *JAMA.* 2004;291:844–850.
  35. Sharma G, Kuo Y-F, Freeman JL, Zhang DD, Goodwin JS. Outpatient follow-up visit and 30-day emergency department visit and readmission in patients hospitalized for chronic obstructive pulmonary disease. *Arch Intern Med.* 2010;170:1664–1670.
  36. Ayanian JZ, Landrum MB, Guadagnoli E. Specialty of ambulatory care physicians and mortality among elderly patients after myocardial infarction. *N Engl J Med.* 2002;347:1678–1686.
  37. Hernandez AF, Greiner MA, Fonarow GC, Hammill BG, Heidenreich PA, Yancy CW, Peterson ED, Curtis LH. Relationship between early physician follow-up and 30-day readmission among Medicare beneficiaries hospitalized for heart failure. *JAMA.* 2010;303:1716–1722.
  38. Daugherty SL, Ho PM, Spertus JA, Jones PG, Bach RG, Krumholz HM, Peterson ED, Rumsfeld JS, Masoudi FA. Association of early follow-up after acute myocardial infarction with higher rates of medication. *Arch Intern Med.* 2008;168:485–491.

**Figure 1:** Study flow chart

**Figure 2:** Baseline covariates absolute standardized differences used in the propensity score, before and after matching process.

**Figure 3:** Kaplan Meier curve of CKD by exposure status (recovered AKI group vs. controls) among matched cohort patients.

**Table 1:** Patient characteristics of cohort, before and after matching (SdD: Standardized difference), developing or not developing AKI.

**Table 2:** Cumulative incidence risk and hazard ratios for CKD by AKI status among matched cohort (p-value computed from incidence rate ratio using Poisson regression).

7471 screened patients

2680 (did not meet inclusion criteria)

2030 (exclusion criteria)

2761

1375 patients with AKI

690 (no recovery)

685 patients with recovering AKI

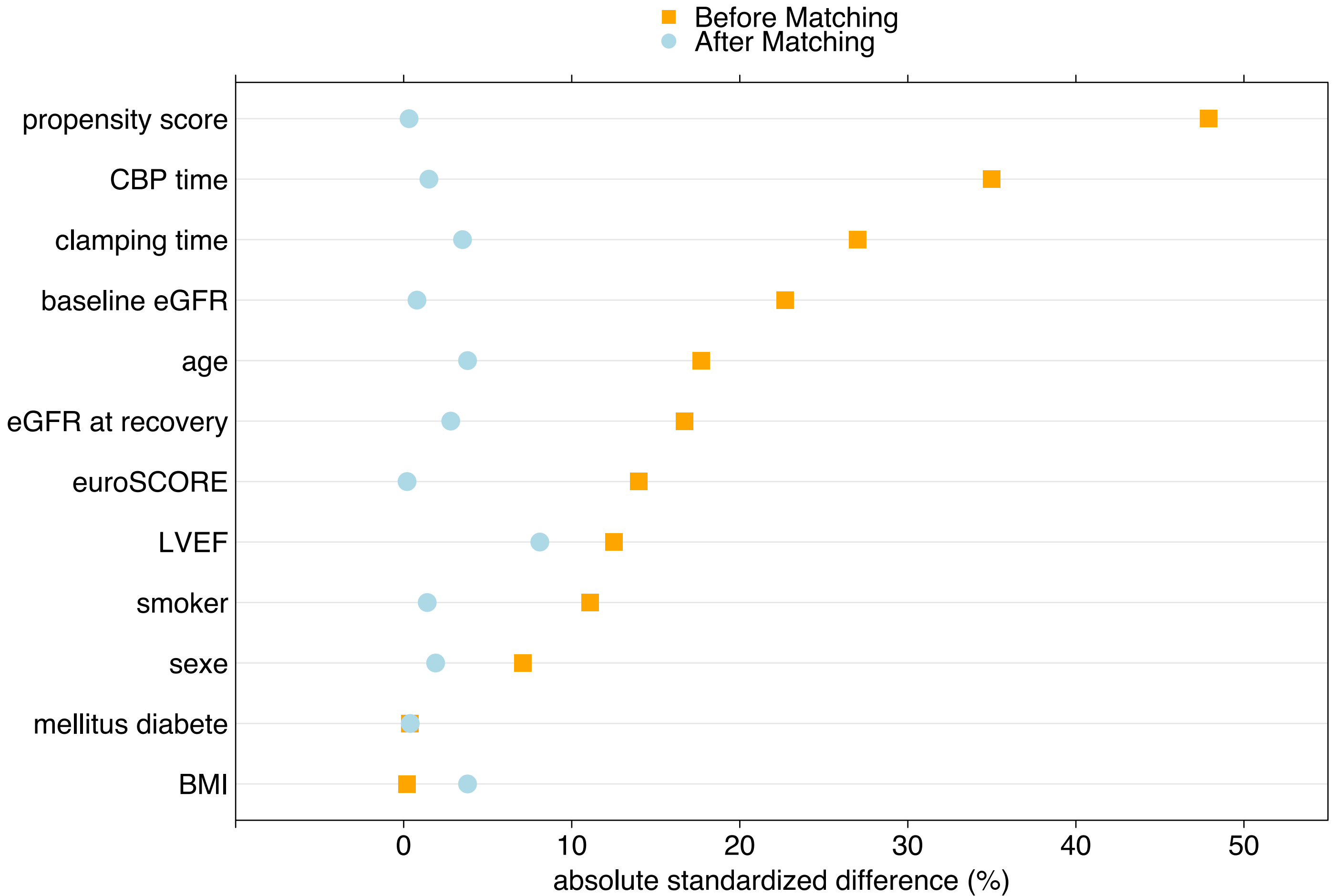
88 (no match found)

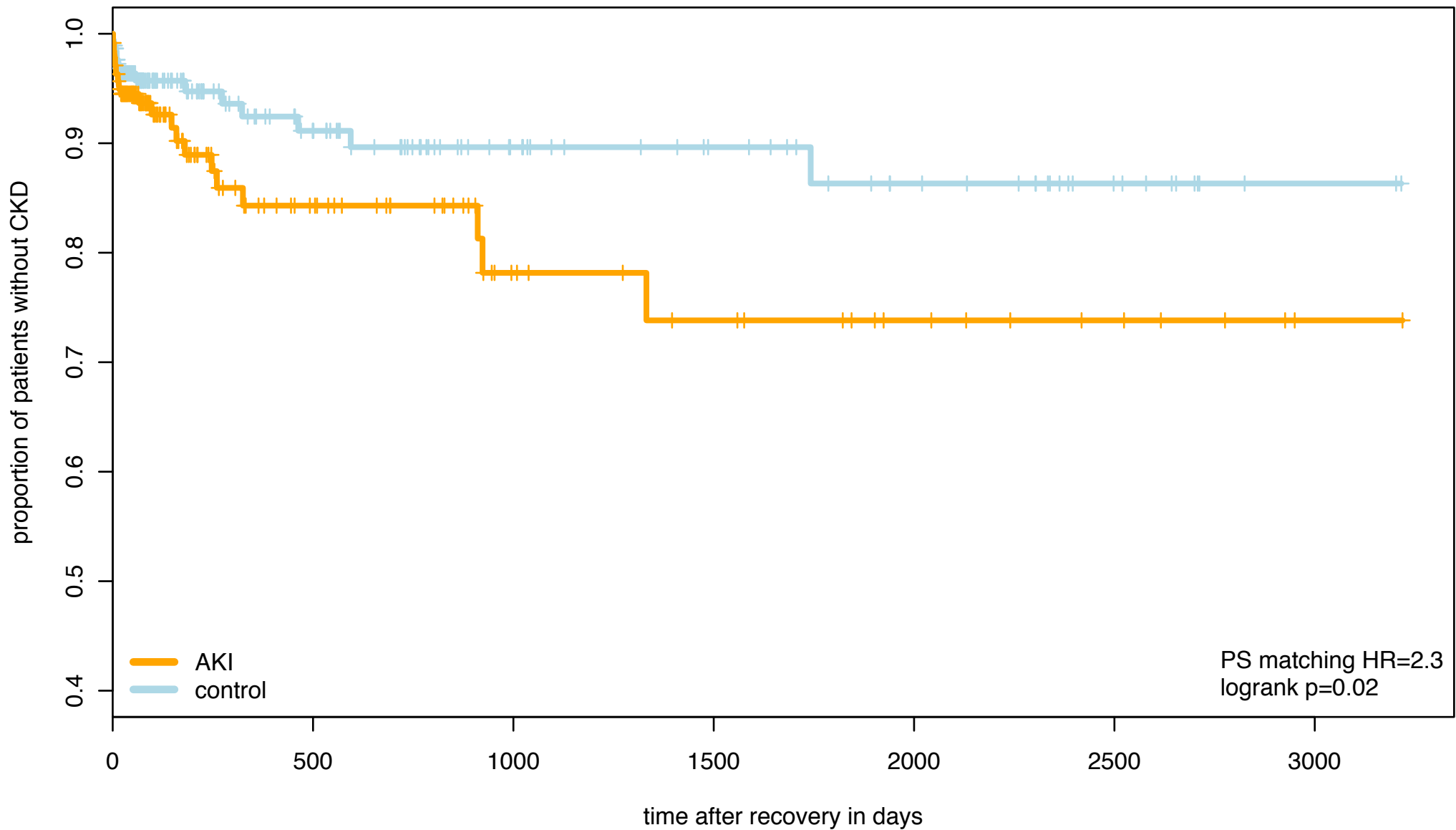
597 patients with AKI → 34 CKD

1386 patients without AKI

597 patients without AKI → 17 CKD

**1:1 matching**





**Table 1**

	Unmatched cohort				Matched cohort		
	AKI (n=1375)	CTRL (n=1385)	P value	SdD (%)	AKI (n=597)	CTRL (n=597)	Sd D (%) )
Propensity score - mean	0.38	0.30	<0.0001	47.9	0.34	0.34	0.32
Baseline eGFR (mL/min/1.73m <sup>2</sup> )- mean	79	82	<0.0001	22.7	79	79	0.79
eGFR at recovery (mL/min/1.73m <sup>2</sup> )- mean	91	95	0.0004	16.7	91	92	2.8
Age (years) - mean	66	64	<0.0001	17.7	66	66	3.8
EuroSCORE (%) - mean	4.6	3.7	0.001	14.0	4.3	4.3	0.2
BMI - mean	26.6	26.6	0.97	0.2	26.7	26.9	3.8
CBP time (min) - mean	90	71	<0.0001	35	78	79	1.5
Clamping time (min) - mean	64	54	<0.0001	27	58	59	3.5
Male - %	72	69	0.1	7.1	72	71	1.9
LVEF (%) - mean	56	57	0.007	12.5	55	56	8.1
Smoker - %	15	19	0.02	11.1	16	16	1.4
diabetes mellitus - %	24	24	0.93	0.38	25	25	0.39

**Table 2**

	No of CKD	HR for CKD Mean [95%CI]	Incidence rate
With AKI (n=597)	34	2.3 [1.9-2.6]	15.7
Without AKI (n=597)	17	1 (ref)	5.1*