



**HAL**  
open science

## **Lifestyle correlates of overweight in adults: a hierarchical approach (the SPOTLIGHT project)**

Céline Roda, Hélène Charreire, Thierry Feuillet, Joreintje D. Mackenbach, Helga Bárdos, Sofie Compernelle, Ketevan Glonti, Harry Rutter, Martin Mckee, Johannes Brug, et al.

### ► To cite this version:

Céline Roda, Hélène Charreire, Thierry Feuillet, Joreintje D. Mackenbach, Helga Bárdos, et al.. Lifestyle correlates of overweight in adults: a hierarchical approach (the SPOTLIGHT project). International Journal of Behavioral Nutrition and Physical Activity, 2016, 13, pp.114. 10.1186/s12966-016-0439-x . hal-01404161

**HAL Id: hal-01404161**

**<https://hal.sorbonne-universite.fr/hal-01404161>**

Submitted on 28 Nov 2016

**HAL** is a multi-disciplinary open access archive for the deposit and dissemination of scientific research documents, whether they are published or not. The documents may come from teaching and research institutions in France or abroad, or from public or private research centers.

L'archive ouverte pluridisciplinaire **HAL**, est destinée au dépôt et à la diffusion de documents scientifiques de niveau recherche, publiés ou non, émanant des établissements d'enseignement et de recherche français ou étrangers, des laboratoires publics ou privés.




Distributed under a Creative Commons Attribution 4.0 International License

RESEARCH

Open Access



# Lifestyle correlates of overweight in adults: a hierarchical approach (the SPOTLIGHT project)

Céline Roda<sup>1</sup>, Hélène Charreire<sup>1,2</sup>, Thierry Feuillet<sup>1</sup>, Joreintje D. Mackenbach<sup>3</sup>, Sofie Compernelle<sup>4</sup>, Ketevan Glonti<sup>5</sup>, Helga Bárdos<sup>6</sup>, Harry Rutter<sup>5</sup>, Martin McKee<sup>5</sup>, Johannes Brug<sup>3</sup>, Ilse De Bourdeaudhuij<sup>4</sup>, Jeroen Lakerveld<sup>3</sup> and Jean-Michel Oppert<sup>1,7\*</sup> 

## Abstract

**Background:** Obesity-related lifestyle behaviors usually co-exist but few studies have examined their simultaneous relation with body weight. This study aimed to identify the hierarchy of lifestyle-related behaviors associated with being overweight in adults, and to examine subgroups so identified.

**Methods:** Data were obtained from a cross-sectional survey conducted across 60 urban neighborhoods in 5 European urban regions between February and September 2014. Data on socio-demographics, physical activity, sedentary behaviors, eating habits, smoking, alcohol consumption, and sleep duration were collected by questionnaire. Participants also reported their weight and height. A recursive partitioning tree approach (CART) was applied to identify both main correlates of overweight and lifestyle subgroups.

**Results:** In 5295 adults, mean (SD) body mass index (BMI) was 25.2 (4.5) kg/m<sup>2</sup>, and 46.0 % were overweight (BMI  $\geq 25$  kg/m<sup>2</sup>). CART analysis showed that among all lifestyle-related behaviors examined, the first identified correlate was sitting time while watching television, followed by smoking status. Different combinations of lifestyle-related behaviors (prolonged daily television viewing, former smoking, short sleep, lower vegetable consumption, and lower physical activity) were associated with a higher likelihood of being overweight, revealing 10 subgroups. Members of four subgroups with overweight prevalence >50 % were mainly males, older adults, with lower education, and living in greener neighborhoods with low residential density.

**Conclusion:** Sedentary behavior while watching television was identified as the most important correlate of being overweight. Delineating the hierarchy of correlates provides a better understanding of lifestyle-related behavior combinations which may assist in targeting preventative strategies aimed at tackling obesity.

**Keywords:** CART, Eating habits, Lifestyle-related behaviors, Obesity, Physical activity, Sedentary behavior, Sleep, Smoking status, Television viewing

\* Correspondence: jean-michel.oppert@aphp.fr

<sup>1</sup>Équipe de Recherche en Épidémiologie Nutritionnelle (EREN), Université Paris 13, Centre de Recherche en Épidémiologie et Statistiques, Inserm (U1153), Inra (U1125), Cnam, COMUE Sorbonne Paris Cité, Bobigny F-93017, France

<sup>7</sup>Sorbonne Universités, Université Pierre et Marie Curie, Université Paris 06, Institute of Cardiometabolism and Nutrition, Department of Nutrition, Pitié-Salpêtrière Hospital, Assistance Publique-Hôpitaux de Paris, Paris, France  
Full list of author information is available at the end of the article

## Background

Excess body weight is determined by multiple factors acting in combination, including genetic, metabolic and behavioral factors, as well as more upstream socio-economic influences and built environment characteristics [1]. Those that are modifiable provide important potential targets for preventive interventions [2]. Diet and physical activity are recognized as the most proximal determinants of energy balance [3] but there is growing recognition of the role of sedentary behaviors (e.g., sitting time), independent of physical activity [4–7]. The influences of smoking and alcohol intake on body weight are also well documented [8–10]. More recently, a role has also been suggested for sleep duration [11–13].

The inter-relationship of these obesity-related lifestyle behaviors has stimulated interest in co-occurrence patterns [14, 15]. Several studies have used explorative data-driven methods, such as cluster analysis or latent class analysis to examine the relations between diet, physical activity, and sedentary behaviors, independently of the health outcome of interest [6, 16, 17]. Smoking status and alcohol consumption have been included in some analyses [18–20]. The variety of methodologies used make it difficult to ascertain how these factors correlate with each other and what this means for body weight and health. Additionally, previous studies have not considered contextual factors such as socio-economic characteristics and the built environment, increasingly recognized as major upstream determinants of overweight [21].

A recursive partitioning method—the classification and regression tree (CART) approach [22]—makes it possible to examine how a set of risk factors jointly influence the risk of an outcome such as overweight. This approach has previously been used to assess the risk of overweight in children [23, 24] and the risk of reduced mobility in older obese adults [25].

This study sought to identify the hierarchy of lifestyle-related behaviors associated with overweight in European adults, and to examine how subgroups identified differed by socio-demographic and built environment characteristics.

## Methods

### Study design and sampling

This study, part of the EU-funded SPOTLIGHT project [26], was conducted in five European urban regions: Ghent and suburbs (Belgium), Paris and inner suburbs (France), Budapest and suburbs (Hungary), the Randstad (a conurbation including Amsterdam, Rotterdam, the Hague and Utrecht in the Netherlands) and Greater London (United Kingdom). Sampling of neighborhoods and recruitment of participants have been described in detail elsewhere [27]. Briefly, neighborhood sampling

was based on a combination of residential density and socio-economic status (SES) data at the neighborhood level. This resulted in four pre-specified neighborhood types: low SES/low residential density, low SES/high residential density, high SES/low residential density and high SES/high residential density. In each country, three neighborhoods of each neighborhood type were randomly sampled (i.e. 12 neighborhoods per country, 60 neighborhoods in total). Subsequently, adult inhabitants ( $\geq 18$  years) were invited to participate in a survey. A total of 6037 individuals participated in the study between February and September 2014. The study was approved by the corresponding local ethics committees of participating countries and all participants in the survey provided informed consent.

### Measures

#### Body mass index

Body mass index (BMI) was calculated by dividing self-reported weight (kg) by the square of the self-reported height ( $m^2$ ). Adults were categorized as overweight if their BMI was  $\geq 25$   $kg/m^2$  [1].

#### Socio-demographic data

Socio-demographic variables included age, gender and educational level (defined as ‘lower’ [from less than primary to higher secondary education] and ‘higher’ [college or university level] to allow comparison between country-specific education systems).

#### Physical activity

Physical activity during the last 7 days was documented using questions from the long version of the validated International Physical Activity Questionnaire (IPAQ) [28]. Good reliability (Spearman correlation coefficients ranged from 0.46 to 0.96) and acceptable criterion validity (median  $\rho$  of about 0.30) have been found for this questionnaire in a 12 country study [28]. Transport-related and leisure time physical activity were estimated (in minutes per day – min/d) by multiplying the frequency (number of days in the last 7 days) and duration (average time/d).

#### Sedentary behavior

The validated Marshall questionnaire was used to collect sedentary behavior data during the last 7 days [29]. Acceptable criterion validity (Spearman correlation coefficient greater than or equal to 0.50 for watching TV, and using a computer at home during weekdays) has been demonstrated. Lowest validity coefficients were found for other leisure-time activities and transport-related sedentary behaviors during weekend days (correlation coefficients ranged from 0.15 to 0.42) [29]. Time spent (min/d) sedentary for travel, television (TV),

computer and other leisure time activities (e.g., socializing, movies but not including TV and computer use) was averaged over a week.

#### **Eating habits**

Current eating habits were assessed using common food frequency questions on consumption of fruit, vegetables, fish, sweets, fast-food, sugar-sweetened beverages, and alcohol. Response options were 'once a week or less,' '2 times a week,' '3 times a week,' '4 times a week,' '5 times a week,' '6 times a week,' '7 times a week,' 'twice a day,' and 'more than twice a day'.

#### **Smoking status**

Participants reported their smoking status: current, former or never.

#### **Sleep duration**

Participants provided information on their hours of sleep during an average night. The response options ranged from 4 to 16 h/night (in half-hour intervals).

#### **Neighborhood clusters**

Four neighborhood clusters were previously identified based on data related to food and physical activity features of the built environment collected by a Google Street View-based virtual audit performed in 59 study neighborhoods [30]. The clusters were labeled: cluster 1 ( $n = 33$ ) 'green neighborhoods with low residential density,' cluster 2 ( $n = 16$ ) 'neighborhoods supportive of active mobility,' cluster 3 ( $n = 7$ ) 'high residential density neighborhoods with food and recreational facilities,' and cluster 4 ( $n = 3$ ) 'high residential density neighborhoods with low level of aesthetics'.

#### **Data analysis**

##### **CART approach**

Recursive partitioning was used to identify the hierarchy and combinations of all lifestyle-related behaviors described in the Measures section that best differentiated overweight ( $\geq 25$  kg/m<sup>2</sup>) vs. non-overweight ( $< 25$  kg/m<sup>2</sup>) participants.

Recursive partitioning is an algorithm of the CART nonparametric statistical method [22]. This approach has been used in different research fields, such as genetic epidemiology [31], and produced greater homogeneity in subgroups than has been achieved with other approaches, such as regression models [32]. Recursive partitioning is a step-by-step process by which a decision tree is built by either splitting or not splitting each node of the tree into two daughter nodes. Each possible split among all variables present at each node is considered. The tree is constructed by the algorithm asking a sequence of hierarchical Boolean (yes/no) questions (e.g.,

is  $X_i \leq \theta_j$  ?), where  $X_i$  is a candidate variable, and  $\theta_j$  is a cut-off) generating descendant nodes [33]. The cut-off in the candidate variable that produced the maximal differentiation between individuals is retained, and used to split the sample into two subgroups (i.e. two daughter nodes). This process is repeated for each new subgroup found. Every variable is a potential candidate at each stage in growing the tree, so some variables may appear several times, using different cut-offs. The best way to split the data is determined by the Gini impurity index. This index ranges from 0 (pure node, i.e. all observations within the node assigned to a single target class—e.g., a node with a class distribution [0;1]) to 1 (impure node, i.e. mixed target classes—e.g., a node with a class distribution [0.5;0.5]). The complete tree is pruned by a sequential node-splitting process to avoid over-fitting the data; a sequence of sub-trees is generated and compared. The optimum tree is obtained using both cross-validation and cost-complexity pruning method. The cost-complexity pruning method assesses the balance between misclassification costs and complexity of the sub-tree. Additionally, each terminal node was set to require a minimum of 200 subjects.

##### **Lifestyle subgroups**

Characteristics of the subgroups identified through the CART analysis were compared. All variables included in the CART analysis were considered, in addition to socio-demographic and built environment characteristics (i.e. urban region, neighborhood type—pre-specified neighborhood type, and residential density and SES levels examined separately—and neighborhood cluster).

Chi-squared tests, and Kruskal-Wallis tests with post-hoc Bonferroni-Dunn test were used to examine differences between subgroups.

##### **Multilevel regression analyses**

Because participants were nested within neighborhoods, the likelihood of being overweight for each partitioning variable was estimated by a multilevel logistic regression model (neighborhood identifier included as a random effect) adjusted for potential confounders (gender, age, education level, and neighborhood type).

Statistical analyses were performed using R version 3.2 [34] ('R-part' package [35]), and STATA software (release 13.0; Stata Corporation, College Station, TX, USA).

## **Results**

### **Characteristics of the study population**

Results are given for 5295 individuals for whom BMI was available. The study population comprised 55.8 % females, with a mean (standard deviation-SD) age of 51.7 (16.4) years; 54 % were highly educated. Mean BMI was 25.2 (4.5) kg/m<sup>2</sup>, and 46.0 % adults were overweight.

Compared to non-overweight subjects, overweight adults were more likely to be male, older, less educated, former smokers, short sleepers, less physically active, eating less fruit and vegetables, and spending more time sitting, especially when viewing TV. The prevalence of overweight ranged from 38.3 % in Greater Paris to 53.2 % in Greater Budapest (Table 1).

### CART analysis

The final tree contained 10 nodes (i.e. 10 subgroups) and had a classification error of 35.4 %. The 6 variables that were retained as the most important for discriminating overweight status were in the following order: sedentary time while watching TV, smoking status, sleep duration, leisure time physical activity, and vegetable intake (Fig. 1).

The odds of being overweight were 61 % (41–85 %) higher for those reporting longer time watching TV ( $\geq 142$  min/d) than others.

Longer time spent watching TV ( $\geq 142$  min/d) and being a former smoker were important correlates of overweight. Current or non-smokers who spent a long time watching TV and were less physically active during leisure time were also at risk of being overweight.

Among adults watching less TV ( $< 142$  min/d) and being former smokers, those who were short sleepers ( $< 7$  h/night) were more likely to be overweight compared to long sleepers. Protective factors against being overweight among current and non-smokers included: short time watching TV, being physically active during leisure time, and eating vegetables every day.

### Lifestyle subgroups

Table 2 shows the characteristics of the subgroups identified by CART. The proportion of overweight subjects ranged from 20 % (Subgroup 1) to 65.4 % (Subgroup 10). Overall, participants from the various subgroups differed in terms of lifestyle-related behaviors as well as socio-demographic and built environment characteristics.

Subgroup 1 ( $n = 315$ , mean [SD] BMI: 22.7 [3.4] kg/m<sup>2</sup>) consisted of the youngest (40.8 [13.6] years-old), and highly educated participants (78.4 %). This subgroup reported the lowest time spent watching TV (mean [SD]: 5.2 [7.9] min/day, median: 0 min/day), the highest mean frequency of eating fruits and vegetables. The highest percentage of participants living in neighborhoods that were characterized by high SES and high residential density was observed in this subgroup, as was the lowest percentage of participants living in 'green neighborhoods with low residential density'.

In 4 subgroups (7, 8, 9, and 10), overweight prevalence was  $> 50$  %. Members lived mainly in low SES neighborhoods. Subgroup 7 grouped less physically active individuals, who ate fruits, vegetables, and fish less frequently.

Subgroup 8 members were short sleepers. The greatest percentage of individuals living in low residential neighborhoods was reported in this subgroup. Subgroup 9 included the greatest percentage of current smokers, individuals who reported long mean time watching TV (mean [SD]: 306.0 [131.3] min/day, median: 257 min/day), and high mean consumption of sugar-sweetened beverages (4.9 [5.7] times/week, median: 3.0 times/week).

Subgroup 10 ( $n = 676$ , mean [SD] BMI = 27.2 [5.0] kg/m<sup>2</sup>) included mainly males, older (59.6 [14.4] years-old) and low educated adults (64.5 %), who reported high alcohol consumption and living in 'green neighborhoods with low residential density'.

### Discussion

This study investigated the hierarchy and combination of lifestyle-related behaviors in relation to the prevalence of overweight in European adults. Prolonged sitting while watching TV, being a former smoker, short sleep, lower levels of physical activity and lower vegetable consumption were the lifestyle-behaviors that identified the subgroups with highest likelihood of being overweight. High-risk subgroups included mainly males, older and less well educated adults living in greener neighborhoods with low residential density.

Although it is well recognized that overweight and obesity are multifactorial in origin [1, 2], few studies have examined the joint relation of lifestyle-related behaviors with overweight in adults. In this study, a hierarchy of lifestyle-related behaviors in identifying subgroups at risk was established through a visual chart showing how risk factors are inter-related. The tree indicated that the most important factor was sitting while watching TV. This variable appeared several times at different levels of the tree, underlying its importance. The variable that followed was smoking status, in both tree branches, and no additional variable appeared to explain the risk for overweight in former smokers (among those with longer duration of watching TV), suggesting its very high impact. Sleep duration, leisure time physical activity and vegetable intake appeared at later stages in the tree, suggesting they would have less importance compared to sedentary behavior and smoking status. Relations between the lifestyle-related behaviors and overweight status were confirmed in multilevel regression analyses taking into account potential confounding factors. The findings also suggested nonlinear relations between lifestyle-related behaviors and overweight. Indeed, subgroups who watched TV a lot ( $> 180$  min/d) had lower odds of being overweight than subgroups who watched less TV (between 24 min/d and 142 min/d).

Although it has been suggested that a combination of several sedentary behavior variables is appropriate to capture sedentary lifestyle [36], only TV viewing was

**Table 1** Characteristics of the overall study population and according to weight status in the SPOTLIGHT study

n (%) or median (IQR)	Overall N = 5295 100 %	Non-overweight <sup>a</sup> n = 2862 54.0 %	Overweight <sup>b</sup> n = 2433 46.0 %	p <sup>†</sup>
Socio-demographic characteristics				
Gender, (n = 5246)				
Male	2316 (44.2)	1059 (37.3)	1257 (52.2)	<0.001
Female	2930 (55.8)	1780 (62.7)	1150 (47.8)	
Age (in years), (n = 5256)				
	52.0 (26.0)	47.0 (27.0)	57.0 (23.0)	<0.001
Education, (n = 5191)				
High level	2804 (54.0)	1756 (62.4)	1048 (44.1)	<0.001
Low level	2387 (46.0)	1058 (37.6)	1329 (55.9)	
BMI (kg/m <sup>2</sup> ), (n = 5295)				
	24.6 (5.5)	22.3 (2.9)	27.8 (4.2)	<0.001
Lifestyle-related behaviors				
Smoking status, (n = 5247)				
Never	3049 (58.1)	1783 (62.8)	1266 (52.6)	<0.001
Former	1464 (27.9)	637 (22.5)	827 (34.3)	
Current	734 (14.0)	418 (14.7)	316 (13.1)	
Physical activity				
Transport-related physical activity (min/d), (n = 5274)	26.0 (59.0)	27.0 (57.0)	26.0 (61.0)	0.012
Leisure-time physical activity (min/d), (n = 5274)	26.0 (44.0)	26.0 (44.0)	21.0 (47.0)	<0.001
Sedentary behaviors				
Television time (min/d), (n = 4481)	137.0 (120.0)	120.0 (120.0)	154.0 (146.0)	<0.001
Computer time (min/d), (n = 4358)	77.0 (103.0)	77.0 (98.0)	91.0 (108.0)	<0.001
Other leisure sitting time (min/d), (n = 3942)	64.0 (112.0)	69.0 (112.0)	60.0 (129.0)	0.064
Transport-related sitting time (min/d), (n = 4100)	60.0 (73.0)	60.0 (71.0)	60.0 (74.0)	<0.001
Eating habits				
Fruit intake (times per week), (n = 5198)	7.0 (3.0)	7.0 (3.0)	7.0 (3.0)	<0.001
Vegetables intake (times per week), (n = 5253)	7.0 (2.0)	7.0 (1.0)	7.0 (2.0)	<0.001
Fish intake (times per week), (n = 5187)	0.5 (1.5)	0.5 (1.5)	0.5 (1.5)	0.116
Fast-food intake (times per week), (n = 4803)	0.5 (0)	0.5 (0)	0.5 (0)	0.213
Sweets intake (times per week), (n = 5149)	3.0 (5.5)	3.0 (5.5)	3.0 (4.5)	0.004
Sugar-sweetened beverages consumption (times per week), (n = 5073)	2.0 (5.5)	2.0 (5.5)	2.0 (6.5)	0.349
Alcohol consumption (times per week), (n = 5011)	2.0 (5.5)	3.0 (5.5)	2.0 (5.5)	0.487
Sleep duration (hours/night), (n = 5269)				
	7.0 (1.5)	7.0 (1.5)	7.0 (2.0)	<0.001
Environmental factors				
Urban region, (n = 5295)				
Ghent region	1651 (31.2)	850 (29.7)	801 (32.9)	<0.001
Greater Paris	737 (13.9)	455 (15.9)	282 (11.6)	
Greater Budapest	824 (15.5)	386 (13.5)	438 (18.0)	
Randstad	1412 (26.7)	804 (28.1)	608 (25.0)	
Greater London	671 (12.7)	367 (12.8)	304 (12.5)	
Neighborhood type, (n = 5223)				
HSES/HRD	1269 (24.3)	725 (25.7)	544 (22.5)	<0.001
LSSES/HRD	1230 (23.5)	635 (22.5)	595 (24.8)	
HSES/LRD	1325 (25.4)	764 (27.1)	561 (23.5)	
LSSES/LRD	1399 (26.8)	699 (24.7)	700 (29.2)	

**Table 1** Characteristics of the overall study population and according to weight status in the SPOTLIGHT study (Continued)

Neighborhood cluster, (n = 4618)				
Green neighborhood with LRD	3022 (65.6)	1588 (63.2)	1434 (68.1)	<b>0.001</b>
Neighborhood supportive of active mobility	1150 (24.9)	648 (25.8)	502 (23.9)	
HRD neighborhood with food and recreational facilities	265 (5.7)	162 (6.4)	103 (4.9)	
HRD neighborhood with low level of aesthetics	181 (3.9)	115 (4.6)	66 (3.1)	

Abbreviations: BMI body mass index, H- high-, IQR interquartile range, L- low-, RD residential density, SD standard deviation, SES socio-economic status

<sup>a</sup>Non-overweight: BMI <25 kg/m<sup>2</sup>

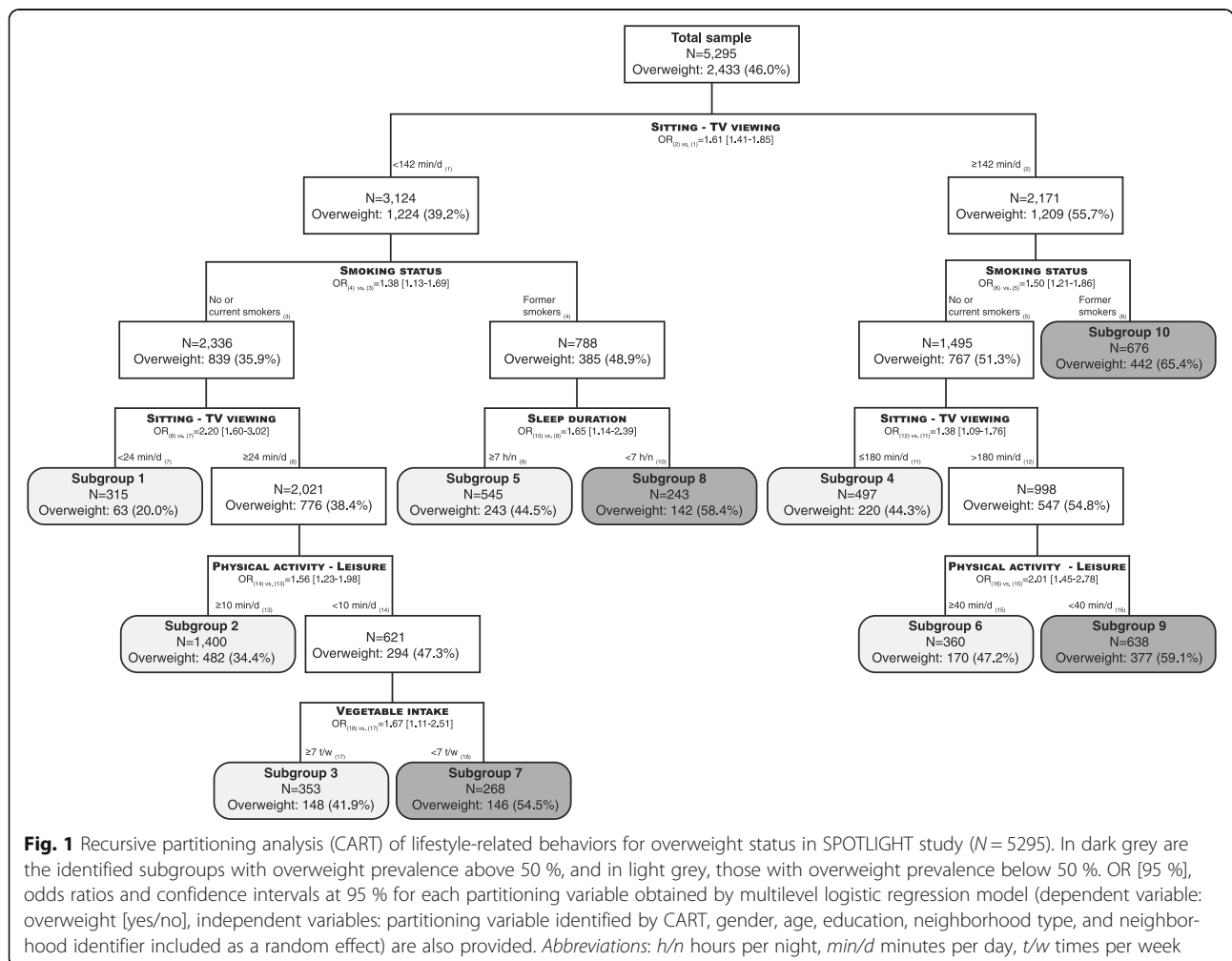
<sup>b</sup>Overweight: BMI ≥25 kg/m<sup>2</sup>

<sup>†</sup>p-value from Chi-squared or Kruskal-Wallis test comparing overweight and non-overweight subjects

Boldface indicates statistical significance

retained among several variables related to sedentary time. The greater importance of TV viewing has been previously suggested in cross-sectional studies [37–39]. Given the lack of evidence from prospective studies, the issue of bidirectional or reverse causality has been raised [40]. In the Nurses’ Health study, each 2 h/d increment in TV watching was associated with a 23 % [17–30 %] increased risk of obesity. However, the risk of developing obesity was attenuated after adjustment for baseline

BMI [5]. These findings may suggest that, even at baseline, women who watched more TV were already on a trajectory to become obese [5]. Heavier individuals at baseline could have a preference for sedentary habits due to their higher body weight. TV viewing is not only an indicator of sedentary behavior but may represent a potential surrogate of other behaviors affecting the energy balance e.g., via increased snacking behavior [7, 41].



**Table 2** Profiles of the subgroups identified by recursive partitioning analysis (CART) in the SPOTLIGHT study

<i>N</i> = 5295, <i>n</i> (%) or median (IQR)	Subgroup 1 <i>n</i> = 315 (5.9)	Subgroup 2 <i>n</i> = 1400 (26.4)	Subgroup 3 <i>n</i> = 353 (6.7)	Subgroup 4 <i>n</i> = 497 (9.4)	Subgroup 5 <i>n</i> = 545 (10.3)	Subgroup 6 <i>n</i> = 360 (6.8)	Subgroup 7 <i>n</i> = 268 (5.1)	Subgroup 8 <i>n</i> = 243 (4.6)	Subgroup 9 <i>n</i> = 638 (12.0)	Subgroup 10 <i>n</i> = 676 (12.8)	<i>p</i> <sup>†</sup>
Socio-demographic characteristics											
Gender											
Male	133 (42.5)	550 (39.5)	122 (34.8)	201 (40.5)	251 (46.5)	165 (46.3)	121 (45.3)	136 (57.1)	242 (38.7)	395 (59.2)	<0.001
Female	180 (57.5)	842 (60.5)	229 (65.2)	295 (59.5)	289 (53.5)	191 (53.7)	146 (54.7)	102 (42.9)	384 (61.3)	272 (40.8)	
Age (in years)	38.0 (20.0) <sup>a</sup>	47.0 (24.0) <sup>ab</sup>	49.0 (25.5) <sup>ac</sup>	52.0 (27.0) <sup>abd</sup>	51.5 (25.0) <sup>abe</sup>	60.5 (22.0) <sup>abc,def</sup>	45.0 (21.0) <sup>ad,efg</sup>	53.0 (24.0) <sup>ab,gh</sup>	57.0 (24.0) <sup>abc,d,ghi</sup>	63.0 (18.0) <sup>abc,d,e,g,h,i</sup>	<0.001
Education											
High level	243 (78.4)	893 (65.3)	209 (60.6)	251 (51.3)	344 (63.9)	134 (37.6)	128 (50.2)	139 (58.4)	228 (36.1)	235 (35.5)	<0.001
Low level	67 (21.6)	474 (34.7)	136 (39.4)	238 (48.7)	194 (36.1)	222 (62.4)	127 (49.8)	99 (41.6)	403 (63.9)	427 (64.5)	
Overweight	63 (20.0)	482 (34.4)	148 (41.9)	220 (44.3)	243 (44.6)	170 (47.2)	146 (54.5)	142 (58.4)	377 (59.1)	442 (65.4)	<0.001
BMI (kg/m <sup>2</sup> )	22.3 (4.0) <sup>a</sup>	23.5 (4.9) <sup>ab</sup>	24.0 (5.1) <sup>ac</sup>	24.5 (5.4) <sup>abd</sup>	24.6 (4.9) <sup>abe</sup>	24.7 (5.3) <sup>abf</sup>	25.3 (5.2) <sup>abc,ce,g</sup>	25.5 (6.0) <sup>abc,de</sup>	25.8 (6.1) <sup>abc,def,gh</sup>	26.7 (5.5) <sup>abc,de,ef,gh</sup>	<0.001
Lifestyle-related behaviors											
Tobacco smoke status											
No smoker	262 (83.4)	1 189 (85.7)	279 (79.7)	403 (81.9)	0	263 (74.7)	194 (74.3)	0	459 (73.2)	0	<0.001
Former	0	0	0	0	545 (100)	0	0	243 (100)	0	676 (100)	
Current	52 (16.6)	198 (14.3)	71 (20.3)	89 (18.1)	0	89 (25.3)	67 (25.7)	0	168 (26.8)	0	
Physical activity											
Transport-related physical activity (min/d)	26.0 (53.0) <sup>a</sup>	29.0 (52.0) <sup>b</sup>	13.0 (40.0) <sup>abc</sup>	26.0 (53.0) <sup>cd</sup>	26.0 (55.0) <sup>ce</sup>	77.0 (94.0) <sup>abc,def</sup>	9.0 (30.0) <sup>ab,de,fg</sup>	20.0 (51.0) <sup>cf,gh</sup>	19.0 (51.0) <sup>b,c,f,g,i</sup>	36.0 (93.0) <sup>b,c,e,f,g,h,i</sup>	<0.001
Leisure-time physical activity (min/d)	26.0 (40.0) <sup>a</sup>	36.0 (39.0) <sup>ab</sup>	0 (4.0) <sup>abc</sup>	26.0 (45.0) <sup>b,c,d</sup>	26.0 (42.0) <sup>b,c,e</sup>	86.0 (60.0) <sup>abc,def</sup>	0 (4.0) <sup>ab,de,fg</sup>	17.0 (53.0) <sup>b,c,f,g,h</sup>	9.0 (20.0) <sup>abc,de,ef,gh,i</sup>	26.0 (54.0) <sup>b,c,d,f,g,i</sup>	<0.001
Domain-specific sedentary behaviors											
Television time (min/d)	0 (13.0) <sup>a</sup>	94.0 (60.0) <sup>ab</sup>	90.0 (60.0) <sup>ac</sup>	167.0 (26.0) <sup>abc,d</sup>	94.0 (60.0) <sup>ade</sup>	257.0 (120.0) <sup>abc,def</sup>	94.0 (60.0) <sup>ad,fg</sup>	86.5 (64.0) <sup>ad,fh</sup>	257.0 (120.0) <sup>abc,de,ef,gh,i</sup>	219.0 (120.0) <sup>abc,de,ef,gh,i</sup>	<0.001
Computer time (min/d)	77.0 (136.5) <sup>a</sup>	91.2 (89.3) <sup>ab</sup>	60.0 (90.0) <sup>ac</sup>	77.0 (94.0) <sup>b,c,d</sup>	60.0 (81.0) <sup>ae</sup>	129.0 (14.6) <sup>abc,def</sup>	77.0 (98.0) <sup>b,c,ef,g</sup>	77.0 (73.5) <sup>b,c,ef,h</sup>	120.0 (146.0) <sup>abc,de,ef,gh</sup>	103.0 (120.0) <sup>abc,de,ef,gh</sup>	<0.001
Other leisure sitting time (min/d)	77.0 (106.0) <sup>a</sup>	69.0 (93.0) <sup>a</sup>	51.0 (90.0) <sup>abc</sup>	60.0 (129.0) <sup>cd</sup>	69.0 (94.10) <sup>c,de</sup>	94.0 (158.5) <sup>abc,def</sup>	51.0 (120.0) <sup>abc,ef</sup>	60.0 (107.0) <sup>f</sup>	63.0 (146.0) <sup>cf</sup>	60.0 (146.0) <sup>b,c,f</sup>	<0.001
Transport-related sitting time (min/d)	60.0 (76.0) <sup>a</sup>	60.0 (68.0) <sup>b</sup>	50.0 (60.0) <sup>b,c</sup>	60.0 (67.0) <sup>c</sup>	53.0 (62.0) <sup>e</sup>	77.0 (103.0) <sup>abc,de</sup>	60.0 (59.0) <sup>ef</sup>	60.0 (73.0) <sup>c</sup>	61.0 (90.0) <sup>c,d</sup>	93.8 (102.1) <sup>b,c,d,f</sup>	<0.001



**Table 2** Profiles of the subgroups identified by recursive partitioning analysis (CART) in the SPOTLIGHT study (Continued)

Eating habits											
Fruit intake (times per week)	7.0 (10.0) <sup>a</sup>	7.0 (3.0) <sup>b</sup>	7.0 (3.0) <sup>c</sup>	7.0 (3.0) <sup>b,d</sup>	7.0 (3.0) <sup>e</sup>	7.0 (3.0) <sup>f</sup>	4.0 (5.0) <sup>a,b,c,d,e,f,g</sup>	7.0 (3.0) <sup>g,h</sup>	6.0 (4.0) <sup>a,b,c,e,f,g,h,i</sup>	7.0 (3.0) <sup>g,i</sup>	<0.001
Vegetable intake (times per week)	7.0 (2.0) <sup>a</sup>	7.0 (1.0) <sup>b</sup>	7.0 (0) <sup>a,b,c</sup>	7.0 (2.0) <sup>a,c,d</sup>	7.0 (1.0) <sup>c,e</sup>	7.0 (2.0) <sup>a,b,c,e,f</sup>	5.0 (3.0) <sup>a,b,c,d,e,f,g</sup>	7.0 (2.0) <sup>c,g,h</sup>	7.0 (2.0) <sup>a,b,c,e,g,h,i</sup>	7.0 (2.0) <sup>a,b,c,g,i</sup>	<0.001
Fish intake (times per week)	0.5 (1.5) <sup>a</sup>	0.5 (1.5) <sup>b</sup>	0.5 (1.5) <sup>c</sup>	0.5 (1.5) <sup>d</sup>	0.5 (1.5) <sup>e</sup>	0.5 (1.5) <sup>f</sup>	0.5 (0) <sup>a,b,c,d,e,f,g</sup>	0.5 (1.5) <sup>g</sup>	0.5 (1.5) <sup>b,f,g</sup>	0.5 (1.5) <sup>g</sup>	<0.001
Fast-food intake (times per week)	0.5 (0)	0.5 (0) <sup>a</sup>	0.5 (0) <sup>b</sup>	0.5 (0) <sup>c</sup>	0.5 (0) <sup>d</sup>	0.5 (0)	0.5 (0) <sup>a,b,c,d</sup>	0.5 (0) <sup>e</sup>	0.5 (0)	0.5 (0) <sup>e</sup>	0.001
Sweets intake (times per week)	3.0 (5.5)	3.0 (5.5)	3.0 (6.5)	3.0 (4.5)	3.0 (4.5) <sup>a</sup>	3.0 (5.5)	3.0 (4.5)	3.0 (5.5)	3.0 (4.5) <sup>a,b</sup>	3.0 (5.5) <sup>b</sup>	0.038
Sugar-sweetened beverages consumption (times per week)	0.5 (4.5) <sup>a</sup>	2.0 (4.5) <sup>b</sup>	2.0 (6.5) <sup>c</sup>	2.0 (6.5) <sup>a,d</sup>	0.5 (3.5) <sup>c,d,e</sup>	2.0 (6.5) <sup>e</sup>	2.0 (6.5) <sup>a,e,f</sup>	2.0 (4.5) <sup>f,g</sup>	3.0 (6.5) <sup>a,b,d,e,g,h</sup>	2.0 (6.5) <sup>h</sup>	<0.001
Alcohol consumption (times per week)	2.0 (4.5) <sup>a</sup>	2.0 (4.5) <sup>b</sup>	2.0 (4.5) <sup>c</sup>	2.0 (4.5) <sup>d</sup>	4.0 (6.5) <sup>a,b,c,d,e</sup>	2.5 (5.5) <sup>d</sup>	0.5 (4.5) <sup>e,f</sup>	4.0 (6.5) <sup>a,b,c,d</sup>	2.0 (5.5) <sup>e,g</sup>	3.0 (6.5) <sup>a,b,c,d,f</sup>	<0.001
Sleep (hours/night)	7.0 (1.0) <sup>a</sup>	7.0 (1.5) <sup>b</sup>	7.0 (1.5) <sup>c</sup>	7.0 (1.5) <sup>d</sup>	7.5 (1.0) <sup>a,b,c,d,e</sup>	7.0 (2.0) <sup>e,f</sup>	7.0 (1.5) <sup>e,g</sup>	6.0 (0.5) <sup>a,b,c,d,e,f,g,h</sup>	7.0 (2.0) <sup>e,h</sup>	7.0 (2.0) <sup>e,h</sup>	<0.001
Environmental factors											
Urban region											
Ghent region	62 (19.7)	364 (26.0)	170 (48.2)	150 (30.2)	148 (27.2)	137 (38.1)	71 (26.5)	57 (23.4)	256 (40.1)	236 (34.9)	<0.001
Greater Paris	67 (21.3)	231 (16.5)	59 (16.7)	64 (12.9)	86 (15.8)	25 (6.9)	40 (14.9)	42 (17.3)	63 (9.9)	60 (8.9)	
Greater Budapest	90 (28.6)	219 (15.6)	27 (7.6)	77 (15.5)	95 (17.4)	44 (12.2)	66 (24.6)	50 (20.6)	65 (10.2)	91 (13.4)	
Randstad	62 (19.6)	393 (28.1)	70 (19.8)	137 (27.5)	153 (28.1)	115 (31.9)	66 (24.6)	62 (25.5)	162 (25.4)	192 (28.4)	
Greater London	34 (10.8)	193 (13.8)	27 (7.7)	69 (13.9)	63 (11.5)	39 (10.9)	25 (9.4)	32 (13.2)	92 (14.4)	97 (14.4)	
Neighborhood type											
HSES/HRD	92 (29.5)	378 (27.3)	86 (24.9)	109 (22.2)	127 (23.4)	86 (24.8)	47 (17.7)	54 (22.3)	142 (22.9)	148 (22.0)	<0.001
LSES/HRD	69 (22.1)	305 (22.1)	64 (18.4)	133 (27.0)	114 (21.0)	96 (27.6)	75 (28.3)	50 (20.7)	165 (26.7)	159 (23.6)	
HSES/LRD	72 (23.1)	381 (27.5)	100 (28.8)	118 (24.0)	154 (28.4)	77 (22.2)	54 (20.4)	71 (29.3)	129 (20.8)	169 (25.1)	
LSES/LRD	79 (25.3)	319 (23.1)	97 (28.0)	132 (26.8)	148 (27.2)	88 (25.4)	89 (33.6)	67 (27.7)	183 (29.6)	197 (29.3)	
Residential density neighborhood											
Low	151 (48.4)	700 (50.6)	197 (56.8)	250 (50.8)	302 (55.6)	165 (47.5)	143 (54.0)	138 (57.0)	312 (50.4)	366 (54.4)	0.054
High	161 (51.6)	683 (49.4)	150 (43.2)	242 (49.2)	241 (44.4)	182 (52.5)	122 (46.0)	104 (43.0)	307 (49.6)	307 (45.6)	
SES neighborhood											
Low	148 (47.4)	624 (45.1)	161 (46.4)	265 (53.9)	262 (48.2)	184 (53.0)	164 (61.9)	117 (48.3)	348 (56.2)	356 (52.9)	<0.001
High	164 (52.6)	759 (54.9)	186 (53.6)	227 (46.1)	281 (51.8)	163 (47.0)	101 (38.1)	125 (51.7)	271 (43.8)	317 (47.1)	
Neighborhood cluster											
Green neighb. with LRD	147 (53.1)	752 (62.1)	224 (70.2)	295 (68.6)	307 (63.7)	215 (68.5)	160 (68.7)	128 (62.5)	374 (68.4)	420 (70.1)	<0.001

**Table 2** Profiles of the subgroups identified by recursive partitioning analysis (CART) in the SPOTLIGHT study (Continued)

Neighb. supportive of active mobility	80 (28.8)	325 (26.8)	66 (20.7)	94 (21.9)	127 (26.4)	76 (24.2)	52 (22.3)	55 (26.8)	135 (24.7)	140 (23.4)
HRD neighb. with food and recreational facilities	29 (10.5)	86 (7.1)	9 (2.8)	23 (5.3)	29 (6.0)	17 (5.4)	6 (2.6)	15 (7.3)	26 (4.7)	25 (4.2)
HRD neighb. with low level of aesthetics	21 (7.6)	49 (4.0)	20 (6.3)	18 (4.2)	19 (3.9)	6 (1.9)	15 (6.4)	7 (3.4)	12 (2.2)	14 (2.3)

Abbreviations: BMI body mass index, H- high-, IQR interquartile range, L- low-, neighb. neighborhood, RD residential density, SES socio-economic status

<sup>†</sup>p-value from Chi-square test or Kruskal-Wallis

<sup>a1</sup>: refer to pairwise comparisons (p-value of Dunn's test with Bonferroni adjustment < 0.05)

Boldface indicates statistical significance

Former smokers were more likely to be overweight than both current and never smokers. These results are consistent with previous findings [10, 42–44]. Weight gain after quitting smoking has been related to the fact that nicotine acts as an appetite suppressant and quitting may be associated with increased energy intake [45, 46]. The average weight gain is about 4.5 kg, 1 year after quitting [46]. In the NHANES survey, weight gained over 10-years was significantly higher in former smokers compared to current smokers (8.4 kg vs. 3.5 kg, after adjustment for age, gender, ethnicity, education level) [44]. A recent study has estimated that smoking cessation leads to an average increase of 1.5–1.7 BMI units and that the drop in smoking may explain up to 14 % of the rise in obesity prevalence in recent decades [47]. Weight gain after smoking cessation was less pronounced when number of years since smoking cessation increased [43], and negatively associated with socio-economic status [48].

Short sleep duration was found to be associated with an increased risk of overweight. The hypothesized underlying mechanisms include thermoregulation, hunger hormone regulation changes, and/or an impact on physical activity and sedentary behaviors [49–52]. Short sleep duration was associated with other lifestyle-related behaviors, such as TV or computer use [52, 53], a correlation between time spent sleeping, physical activity and sedentary behavior was documented [54]. High leisure time physical activity and intake of vegetables were associated with lower prevalence of overweight. These behaviors—which tend to co-occur—are both well recognized as healthy lifestyle behaviors [55, 56]. Interestingly, some cut-offs found are close to thresholds previously reported and/or recommended guidelines (e.g., 2 h/d watching TV [5, 38], 7–9 h of sleep [57]). In addition, at least one variable from each component of lifestyle (physical activity, sedentary behavior, sleep duration, eating habits, and smoking status) was identified as a correlate of overweight. Moreover, subgroups at high-risk of overweight were characterized by at least one unhealthy lifestyle behavior. These findings emphasize how all components of lifestyle are important to consider and a combination of unfavorable lifestyle factors may predict overweight in adults.

Lifestyle subgroups identified by CART differed in terms of socio-demographic factors. The subgroup with the highest prevalence of overweight comprised mainly males, older adults and lower educated adults. These findings are in line with previous studies [58, 59]. Individuals with higher educational background may be more informed about the health consequences of their lifestyles and have the resources to take action, leading to healthier lifestyle behaviors [60]. The subgroups

identified also varied across urban regions: 72.2 % of French respondents were in the subgroups with lower overweight prevalence (subgroups 1–6). Looking at differences at neighborhood level, as previously documented [61], some neighborhoods seem more obesogenic than others, especially low SES and low residential density neighborhoods. Socio-spatial disparities in obesity prevalence at census-tract level have been previously documented with lower prevalence in neighborhoods with high median home values [61]. Low SES neighborhoods have been shown to have less supportive environmental conditions for active transportation [21]. Moreover, a greater percentage of ‘green neighborhoods with low residential density’ was observed in subgroups with high overweight prevalence. Greener neighborhoods with low residential density may be less supportive of active transport and more oriented towards motorized transport. Use of motorized transportation may be linked to weight gain [62]. Conversely, in high residential density neighborhoods, many destinations are easily accessed since located at shorter distance, and parking a car may be more difficult therefore encouraging active transportation (e.g., walking, cycling, public transport) [21]. Thus, adults living in neighborhoods unsupportive of physical activity and far away from destinations may be more likely to remain indoors and watch TV.

This study has several strengths: a relatively large sample size, assessment of a number of lifestyle-related variables using standardized procedures, a survey performed in different geographical areas across Europe, and the use of a nonparametric method (CART) providing a visual representation of lifestyle-related behavior inter-relationships. This study has some limitations, caution is thus needed when interpreting and generalizing the results. Due to its cross-sectional nature, temporal relations between overweight and lifestyle behaviors cannot be assessed. As data were self-reported, potential (recall) bias, and possible underestimation or overestimation of variables (e.g., weight/height [63], sedentary behaviors [29, 64], physical activity [64–66]) cannot be excluded. Although behaviors such as eating habits were not recorded in enough detail to assess the role of more detailed dietary aspects, such as macronutrient intake, many aspects of lifestyle currently thought to be associated with body weight were covered (sedentary behavior, physical activity, eating habits, alcohol consumption, smoking status, and sleep duration). The CART method is data-driven, and the misclassification error was about 35 %. In the literature, it is not uncommon to report a misclassification error around 30 % and this might be higher for health promotion-based intervention strategies [67].

## Conclusions

Low levels of TV viewing, non-smoking, high leisure time physical activity, high vegetable consumption, and longer sleep duration were identified as components of a healthy lifestyle associated with decreased risk of excess weight in adults. The results specifically point to the importance of sedentary habits as a key component to focus on when addressing the multiple factors associated with excess weight in preventive interventions.

## Abbreviations

BMI: Body mass index; CART: Classification and regression tree; SD: Standard deviation; SES: Socio-economic status; TV: Television

## Acknowledgements

The authors would like to thank all participants who took part in the SPOTLIGHT study.

## Funding

This work is part of the SPOTLIGHT project funded by the Seventh Framework Programme (CORDIS FP7) of the European Commission, HEALTH (FP7-HEALTH-2011-two-stage), Grant agreement No. 278186. The content of this article reflects only the authors' views, and the European Commission is not liable for any use that may be made of the information contained therein.

## Availability of data and material

The data is not deposited in publicly available repositories due to the rules of the SPOTLIGHT consortium. For more information, please contact Jeroen Lakerveld (je.lakerveld@vumc.nl).

## Authors' contributions

The WP3 SPOTLIGHT group (SC, IDB, JM, JB, JL, HB, KG, HR, HC and JMO) developed the questionnaire, research protocol and conducted the data collection. CR performed the data analysis and drafted the manuscript supervised by JMO. All authors read, provided feedback, and approved the final submitted version of the manuscript.

## Competing interests

The authors declare that they have no competing interests.

## Consent for publication

Not applicable.

## Ethics approval and consent to participate

The study was approved by the corresponding local ethics committees of participating countries. In Belgium, the study was approved by the ethics committee of Ghent University Hospital, in France by the Commission Nationale de l'Informatique et des Libertés, in Hungary by the Health Science Council, Scientific Research Ethic Committee, in The Netherlands by the Medical Ethics Committee of the VU University Medical Center in Amsterdam, and in the United Kingdom by The London School of Hygiene & Tropical Medicine Ethics Committee. All participants in the survey provided informed consent.

## Author details

<sup>1</sup>Équipe de Recherche en Épidémiologie Nutritionnelle (EREN), Université Paris 13, Centre de Recherche en Épidémiologie et Statistiques, Inserm (U1153), Inra (U1125), Cnam, COMUE Sorbonne Paris Cité, Bobigny F-93017, France. <sup>2</sup>Université Paris-Est, Lab-Urba, Créteil, France. <sup>3</sup>Department of Epidemiology and Biostatistics, EMGO Institute for Health and Care Research, VU University Medical Center, Amsterdam, The Netherlands. <sup>4</sup>Department of Movement and Sport Sciences, Faculty of Medicine and Health Sciences, Ghent University, Ghent, Belgium. <sup>5</sup>ECOHOST – The Centre for Health and Social Change, London School of Hygiene and Tropical Medicine, London, UK. <sup>6</sup>Department of Preventive Medicine, Faculty of Public Health, University of Debrecen, Debrecen, Hungary. <sup>7</sup>Sorbonne Universités, Université Pierre et Marie Curie, Université Paris 06, Institute of Cardiometabolism and Nutrition, Department of Nutrition, Pitié-Salpêtrière Hospital, Assistance Publique-Hôpitaux de Paris, Paris, France.

Received: 26 April 2016 Accepted: 19 October 2016

Published online: 03 November 2016

## References

- WHO. Obesity: preventing and managing the global epidemic. Geneva: WHO Technical Report Series 894; 2000. p. 252. Available at: [http://www.who.int/nutrition/publications/obesity/WHO\\_TRS\\_894/en/](http://www.who.int/nutrition/publications/obesity/WHO_TRS_894/en/). Accessed 10 Mar 2016.
- Butland B, Jebb S, Kopelman P, McPherson K, Thomas S, Mardell J et al. Foresight, Tackling Obesity: Future Choices, Project Report 2nd Edition, UK Government Office for Science: London; 2007. Available at: <http://www.foresight.gov.uk/Obesity/17.pdf>. Accessed 10 Mar 2016.
- Swinburn BA, Sacks G, Hall KD, McPherson K, Finegood DT, Moodie ML, et al. The global obesity pandemic: shaped by global drivers and local environments. *Lancet Lond Engl*. 2011;378:804–14.
- Dunton GF, Berrigan D, Ballard-Barbash R, Graubard B, Atienza AA. Joint associations of physical activity and sedentary behaviors with body mass index: results from a time use survey of US adults. *Int J Obes (Lond)*. 2009;33:1427–36.
- Hu FB, Li TY, Colditz GA, Willett WC, Manson JE. Television watching and other sedentary behaviors in relation to risk of obesity and type 2 diabetes mellitus in women. *JAMA*. 2003;289:1785–91.
- Omorou AY, Coste J, Escalon H, Vuillemin A. Patterns of physical activity and sedentary behaviour in the general population in France: cluster analysis with personal and socioeconomic correlates. *J Public Health Oxf Engl*. 2016;38:483–92.
- Thorpe AA, Owen N, Neuhaus M, Dunstan DW. Sedentary behaviors and subsequent health outcomes in adults: a systematic review of longitudinal studies, 1996–2011. *Am J Prev Med*. 2011;41:207–15.
- Audrain-McGovern J, Benowitz N. Cigarette smoking, nicotine, and body weight. *Clin Pharmacol Ther*. 2011;90:164–8.
- Traversy G, Chaput J-P. Alcohol consumption and obesity: an update. *Curr Obes Rep*. 2015;4:122–30.
- Dare S, Mackay DF, Pell JP. Relationship between smoking and obesity: a cross-sectional study of 499,504 middle-aged adults in the UK general population. *PLoS One*. 2015;10:e0123579.
- Capers PL, Fobian AD, Kaiser KA, Borah R, Allison DB. A systematic review and meta-analysis of randomized controlled trials of the impact of sleep duration on adiposity and components of energy balance. *Obes Rev Off J Int Assoc Stud Obes*. 2015;16:771–82.
- Chaput J-P, Lord C, Aubertin-Leheudre M, Dionne IJ, Khalil A, Tremblay A. Is overweight/obesity associated with short sleep duration in older women? *Aging Clin Exp Res*. 2007;19:290–4.
- Marshall NS, Glozier N, Grunstein RR. Is sleep duration related to obesity? A critical review of the epidemiological evidence. *Sleep Med Rev*. 2008;12:289–98.
- Kesse-Guyot E, Andreeva VA, Lassale C, Hercberg S, Galan P. Clustering of midlife lifestyle behaviors and subsequent cognitive function: a longitudinal study. *Am J Public Health*. 2014;104:e170–177.
- Spring B, Moller AC, Coons MJ. Multiple health behaviours: overview and implications. *J Public Health Oxf Engl*. 2012;34:i3–10.
- Charreire H, Casey R, Salze P, Kesse-Guyot E, Simon C, Chaix B, et al. Leisure-time physical activity and sedentary behavior clusters and their associations with overweight in middle-aged French adults. *Int J Obes (Lond)*. 2010;34:1293–301.
- Rovniak LS, Sallis JF, Saelens BE, Frank LD, Marshall SJ, Norman GJ, et al. Adults' physical activity patterns across life domains: cluster analysis with replication. *Health Psychol*. 2010;29:496–505.
- Chou K-L. The prevalence and clustering of four major lifestyle risk factors in Hong Kong Chinese older adults. *J Aging Health*. 2008;20:788–803.
- de Vries H, Kremers S, Smeets T, Reubsaet A. Clustering of diet, physical activity and smoking and a general willingness to change. *Psychol Health*. 2008;23:265–78.
- Martin-Diener E, Meyer J, Braun J, Tarnutzer S, Faeh D, Rohrmann S, et al. The combined effect on survival of four main behavioural risk factors for non-communicable diseases. *Prev Med*. 2014;65:148–52.
- Sallis JF, Floyd MF, Rodríguez DA, Saelens BE. Role of built environments in physical activity, obesity, and cardiovascular disease. *Circulation*. 2012;125:729–37.
- Breiman L, Friedman J, Stone CJ, Olshen RA. Classification and Regression Trees. 1 edition. New-York: Chapman and Hall/CRC; 1984.

23. Van Hulst A, Roy-Gagnon M-H, Gauvin L, Kestens Y, Henderson M, Barnett TA. Identifying risk profiles for childhood obesity using recursive partitioning based on individual, familial, and neighborhood environment factors. *Int J Behav Nutr Phys Act.* 2015;12:17.
24. Agras WS, Hammer LD, McNicholas F, Kraemer HC. Risk factors for childhood overweight: a prospective study from birth to 9.5 years. *J Pediatr.* 2004;145:20–5.
25. King AC, Salvo D, Banda JA, Ahn DK, Gill TM, Miller M, et al. An observational study identifying obese subgroups among older adults at increased risk of mobility disability: do perceptions of the neighborhood environment matter? *Int J Behav Nutr Phys Act.* 2015;12:157.
26. Lakerveld J, Brug J, Bot S, Teixeira PJ, Rutter H, Woodward E, et al. Sustainable prevention of obesity through integrated strategies: The SPOTLIGHT project's conceptual framework and design. *BMC Public Health.* 2012;12:793.
27. Lakerveld J, Ben-Rebah M, Mackenbach JD, Compennolle S, Glonti K, Bárdos H, et al. Obesity-related behaviours and BMI in five urban regions across Europe: sampling design and results from the SPOTLIGHT cross-sectional survey. *BMJ Open.* 2015;5:e008505.
28. Craig CL, Marshall AL, Sjöström M, Bauman AE, Booth ML, Ainsworth BE, et al. International physical activity questionnaire: 12-country reliability and validity. *Med Sci Sports Exerc.* 2003;35:1381–95.
29. Marshall AL, Miller YD, Burton NW, Brown WJ. Measuring total and domain-specific sitting: a study of reliability and validity. *Med Sci Sports Exerc.* 2010; 42:1094–102.
30. Feuillet T, Charreire H, Roda C, Ben-Rebah M, Mackenbach JD, Compennolle S, et al. Neighbourhood typology based on virtual audit of environmental obesogenic characteristics. *Obes Rev.* 2016;17:19–30.
31. Strobl C, Malley J, Tutz G. An introduction to recursive partitioning: rationale, application, and characteristics of classification and regression trees, bagging, and random forests. *Psychol Methods.* 2009;14:323–48.
32. Kiernan M, Kraemer HC, Winkleby MA, King AC, Taylor CB. Do logistic regression and signal detection identify different subgroups at risk? Implications for the design of tailored interventions. *Psychol Methods.* 2001;6:35–48.
33. Izenman AJ. *Modern Multivariate Statistical Techniques: Regression, Classification, and Manifold Learning.* Springer. New York: Springer; 2008.
34. R Core Team. *R: A language and environment for statistical computing.* R Foundation for Statistical Computing, Vienna, Austria. 2016. Available at: [www.R-project.org](http://www.R-project.org).
35. Therneau TM, Atkinson EJ, Foundation M. *An Introduction to Recursive Partitioning Using the RPART Routines.* 2015.
36. Santaliestra-Pasías AM, Mouratidou T, Reisch L, Pigeot I, Ahrens W, Mårild S, et al. Clustering of lifestyle behaviours and relation to body composition in European children. The IDEFICS study. *Eur J Clin Nutr.* 2015;69:811–6.
37. Cameron AJ, Welborn TA, Zimmet PZ, Dunstan DW, Owen N, Salmon J, et al. Overweight and obesity in Australia: the 1999–2000 Australian Diabetes, Obesity and Lifestyle Study (AusDiab). *Med J Aust.* 2003;178:427–32.
38. Hsueh M-C, Liao Y, Chang S-H. Are total and domain-specific sedentary time associated with overweight in older taiwanese adults? *Int J Environ Res Public Health.* 2015;12:12697–705.
39. King AC, Goldberg JH, Salmon J, Owen N, Dunstan D, Weber D, et al. Identifying subgroups of U.S. adults at risk for prolonged television viewing to inform program development. *Am J Prev Med.* 2010;38:17–26.
40. Ekelund U, Brage S, Besson H, Sharp S, Wareham NJ. Time spent being sedentary and weight gain in healthy adults: reverse or bidirectional causality? *Am J Clin Nutr.* 2008;88:612–7.
41. Bowman SA. Television-viewing characteristics of adults: correlations to eating practices and overweight and health status. *Prev Chronic Dis.* 2006;3:A38.
42. Basterra-Gortari FJ, Forga L, Bes-Rastrollo M, Toledo E, Martínez-González MA. Effect of smoking on body weight: longitudinal analysis of the SUN cohort. *Rev Esp Cardiol.* 2010;63:20–7.
43. Chen Y, Horne SL, Dosman JA. The influence of smoking cessation on body weight may be temporary. *Am J Public Health.* 1993;83:1330–2.
44. Williamson DF, Madans J, Anda RF, Kleinman JC, Giovino GA, Byers T. Smoking cessation and severity of weight gain in a national cohort. *N Engl J Med.* 1991;324:739–45.
45. Veldheer S, Yingst J, Zhu J, Foulds J. Ten-year weight gain in smokers who quit, smokers who continued smoking and never smokers in the United States, NHANES 2003–2012. *Int J Obes (Lond).* 2015;39:1727–32.
46. Aubin H-J, Rollega H, Svensson TH, Winterer G. Smoking, quitting, and psychiatric disease: a review. *Neurosci Biobehav Rev.* 2012;36:271–84.
47. Courtemanche C, Tchernis R, Ukert B. The Effect of Smoking on Obesity: Evidence from a Randomized Trial. NBER Working papers No. 21937. 2016. National Bureau of Economic Research, Inc.
48. Swan GE, Carmelli D. Characteristics associated with excessive weight gain after smoking cessation in men. *Am J Public Health.* 1995;85:73–7.
49. Patel SR, Blackwell T, Redline S, Ancoli-Israel S, Cauley JA, Hillier TA, et al. The association between sleep duration and obesity in older adults. *Int J Obes (Lond).* 2008;32:1825–34.
50. Patel SR, Hu FB. Short sleep duration and weight gain: a systematic review. *Obes.* 2008;16:643–53. Silver Spring Md.
51. Magee L, Hale L. Longitudinal associations between sleep duration and subsequent weight gain: A systematic review. *Sleep Med Rev.* 2012;16:231–41.
52. Lakerveld J, Mackenbach JD, Horvath E, Rutters F, Compennolle S, Bárdos H, et al. The relation between sleep duration and sedentary behaviours in European adults. *Obes Rev.* 2016;17:62–7.
53. Basner M, Fomberstein KM, Razavi FM, Banks S, William JH, Rosa RR, et al. American time use survey: sleep time and its relationship to waking activities. *Sleep.* 2007;30:1085–95.
54. Chastin SFM, Palarea-Albaladejo J, Dontje ML, Skelton DA. Combined effects of time spent in physical activity, sedentary behaviors and sleep on obesity and cardio-metabolic health markers: a novel compositional data analysis approach. *PLoS One.* 2015;10:e0139984.
55. WHO. *Global Strategy on Diet, Physical Activity and Health.* Geneva; 2004. Available at: [http://www.who.int/dietphysicalactivity/strategy/eb11344/strategy\\_english\\_web.pdf](http://www.who.int/dietphysicalactivity/strategy/eb11344/strategy_english_web.pdf). Accessed 10 Mar 2016.
56. Oppert J-M, Thomas F, Charles M-A, Benetos A, Basdevant A, Simon C. Leisure-time and occupational physical activity in relation to cardiovascular risk factors and eating habits in French adults. *Public Health Nutr.* 2006;9:746–54.
57. Hirshkowitz M, Whitton K, Albert SM, Alessi C, Bruni O, DonCarlos L, et al. National Sleep Foundation's sleep time duration recommendations: methodology and results summary. *Sleep Health J Natl Sleep Found.* 2015;1:40–3.
58. Kanter R, Caballero B. Global gender disparities in obesity: a review. *Adv Nutr.* 2012;3:491–8.
59. Pampel FC, Krueger PM, Denney JT. Socioeconomic disparities in health behaviors. *Annu Rev Sociol.* 2010;36:349–70.
60. Compennolle S, Oppert J-M, Mackenbach JD, Lakerveld J, Charreire H, Glonti K, et al. Mediating role of energy-balance related behaviors in the association of neighborhood socio-economic status and residential area density with BMI: The SPOTLIGHT study. *Prev Med.* 2016;86:84–91.
61. Drewnowski A, Rehm CD, Arterburn D. The geographic distribution of obesity by census tract among 59 767 insured adults in King County, WA. *Int J Obes (Lond).* 2014;38:833–9.
62. Qin L, Stolk RP, Corpeleijn E. Motorized transportation, social status, and adiposity: the China Health and Nutrition Survey. *Am J Prev Med.* 2012;43:1–10.
63. Boström G, Diderichsen F. Socioeconomic differentials in misclassification of height, weight and body mass index based on questionnaire data. *Int J Epidemiol.* 1997;26:860–6.
64. Rzewnicki R, Vanden Auweele Y, De Bourdeaudhuij I. Addressing overreporting on the International Physical Activity Questionnaire (IPAQ) telephone survey with a population sample. *Public Health Nutr.* 2003;6:299–305.
65. Shephard RJ. Limits to the measurement of habitual physical activity by questionnaires. *Br J Sports Med.* 2003;37:197–206.
66. Winckers ANE, Mackenbach JD, Compennolle S, Nicolaou M, van der Ploeg HP, De Bourdeaudhuij I, et al. Educational differences in the validity of self-reported physical activity. *BMC Public Health.* 2015;15:1299.
67. BeLue R, Francis LA, Rollins B, Colaco B. One size does not fit all: identifying risk profiles for overweight in adolescent population subsets. *J Adolesc Health.* 2009;45(5):517–24.