

Supplementary information

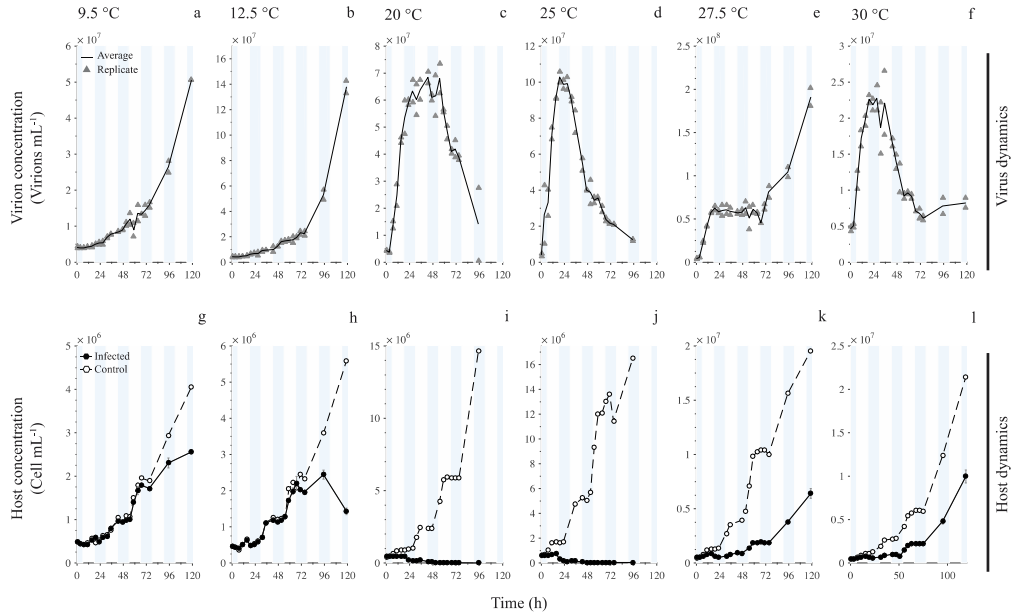


Figure 1: Close-up of the figure 4. Viral infection of *Micromonas* Mic-B by MicV-B at 9.5, 12.5, 20, 25, 27.5, and 30 °C. Dynamics of viral abundance (panels a to f, data in grey triangles and mean of two replicates in black lines), *Micromonas* abundance (panels g to l) in control (dashed lines and white circles) and infected (solid lines and black circles) cultures. Blue bars represent the light phases. Error bars were computed from triplicate samples for the infected host. Virus particles were enumerated from duplicate samples, so no error bar is shown.

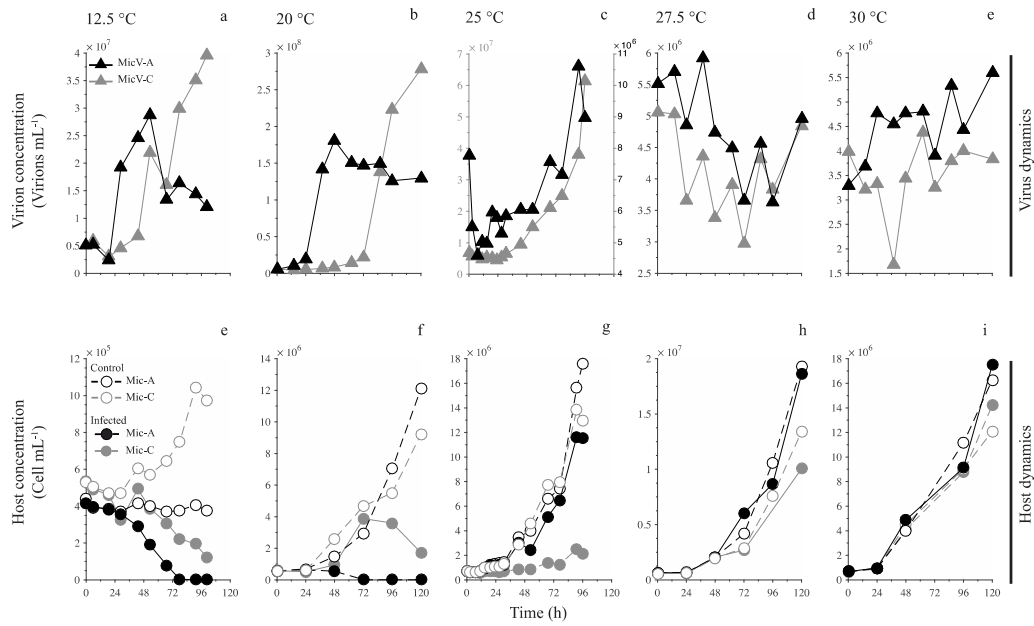


Figure 1: Close-up of the figure 6. Viral infection of *Micromonas* Mic-A by MicV-A (black symbols and lines) and *Micromonas* Mic-C by MicV-C (grey symbols and lines) at 12.5, 20, 27.5, and 30 °C. Dynamics of virus abundance (a to e) for MicV-A (black triangles) and MicV-C (grey triangles) are shown in the upper panels. Dynamics of *Micromonas* abundance (e to i) for Mic-A in control (black open circles and dashed lines) and infected cultures (black circles and solid lines) and Mic-C in control (grey open circles and dashed lines) and infected cultures (grey circles and solid lines) are shown in the bottom panels.

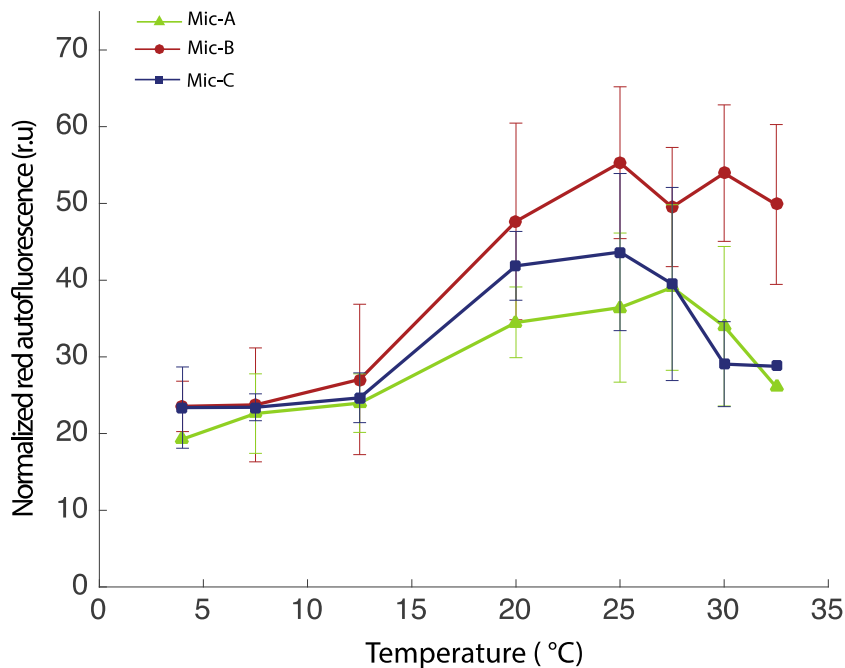


Figure 3: Chlorophyll *a* fluorescence intensity measured by flow cytometry at different temperatures for the 3 *Micromonas* hosts.

