



HAL
open science

Hydrozoan insights in animal development and evolution

Lucas Leclère, Richard R Copley, Tsuyoshi R Momose, Evelyn R Houliston

► **To cite this version:**

Lucas Leclère, Richard R Copley, Tsuyoshi R Momose, Evelyn R Houliston. Hydrozoan insights in animal development and evolution. *Current Opinion in Genetics and Development*, 2016, Developmental mechanisms, patterning and evolution, 39, pp.157-167. 10.1016/j.gde.2016.07.006 . hal-01470553

HAL Id: hal-01470553

<https://hal.sorbonne-universite.fr/hal-01470553v1>

Submitted on 17 Feb 2017

HAL is a multi-disciplinary open access archive for the deposit and dissemination of scientific research documents, whether they are published or not. The documents may come from teaching and research institutions in France or abroad, or from public or private research centers.

L'archive ouverte pluridisciplinaire **HAL**, est destinée au dépôt et à la diffusion de documents scientifiques de niveau recherche, publiés ou non, émanant des établissements d'enseignement et de recherche français ou étrangers, des laboratoires publics ou privés.

Current Opinion in Genetics and Development 2016, 39:157–167

<http://dx.doi.org/10.1016/j.gde.2016.07.006>

Hydrozoan insights in animal development and evolution

Lucas Leclère, Richard R. Copley, Tsuyoshi Momose and Evelyn Houliston

Sorbonne Universités, UPMC Univ Paris 06, CNRS, Laboratoire de Biologie du Développement de Villefranche-sur-mer (LBDV), 181 chemin du Lazaret, 06230 Villefranche-sur-mer, France.

Corresponding author: Leclère, Lucas (leclere@obs-vlfr.fr).

Abstract

The fresh water polyp *Hydra* provides textbook experimental demonstration of positional information gradients and regeneration processes. Developmental biologists are thus familiar with *Hydra*, but may not appreciate that it is a relatively simple member of the Hydrozoa, a group of mostly marine cnidarians with complex and diverse life cycles, exhibiting extensive phenotypic plasticity and regenerative capabilities. Hydrozoan species offer extensive opportunities to address many developmental mechanisms relevant across the animal kingdom. Here we review recent work from non-*Hydra* hydrozoans – hydromedusae, hydroids and siphonophores – shedding light on mechanisms of oogenesis, embryonic patterning, allorecognition, stem cell regulation and regeneration. We also highlight potential research directions in which hydrozoan diversity can illuminate the evolution of developmental processes at micro- and macro-evolutionary time scales.

Introduction

Although the relationships between non-bilaterian animals are currently somewhat controversial, the position of cnidarians as the closest relatives of bilaterians seems relatively undisputed. This has helped to establish the anthozoan cnidarian *Nematostella vectensis* as a key model for molecular studies in evolutionary aspects of developmental biology. Anthozoa is one side of the deepest split in the cnidarian lineage, the other being Medusozoa, a group united by the presence of a medusa (*i.e.* a jellyfish) stage in their life-cycle. Medusae show high morphological complexity, including features such as striated muscle and elaborate sensory structures, and in some instances even camera eyes. Medusozoa is composed of four clades: Hydrozoa, Staurozoa, Cubozoa and Scyphozoa (Figure 1a) [1•]. Hydrozoa is the biggest and most diverse of these, comprising more than 3500 species.

Detailed observation and experimentation on marine hydrozoan species fueled many discoveries and conceptual advances in the second half of the 19th century, relating notably to germ plasm theory, evolution of germ layers, and regeneration. Weismann, Haeckel, Morgan, Huxley, Driesch, the Hertwig brothers and Metchnikov all worked extensively on marine hydroids and hydromedusae. During the 20th century, studies in the freshwater polyp *Hydra* dominated hydrozoan research in cell and developmental biology, resulting in important findings related to organizer activity, morphogen gradients, pluripotent stem cells, and more recently, evolution of aging (*e.g.* [2]) and tumorigenesis (*e.g.* [3]), and interactions between animals, symbionts and microbiota (see [4]). *Hydra* is still, at the time of writing, the only hydrozoan for which a genome sequence has been published [5]. Several excellent recent reviews have covered *Hydra* research (see [4,6–12•]) and so here, we will focus on current work on other hydrozoan species to highlight their contribution and potential for understanding fundamental developmental processes and evolutionary questions. Unlike *Hydra*, some of these species allow easy experimental access to sexual reproduction and embryonic development.

In recent years, marine hydrozoan species have been used increasingly for molecular studies, notably *Clytia hemisphaerica* [13], *Hydractinia echinata* and its close American relative *Hydractinia symbiolongicarpus* [14], *Cladonema radiatum* [15] and *Podocoryna carnea* [16]. Improved molecular technologies and decreasing sequencing costs are aiding emergence of additional models such as *Turritopsis dohrnii* [17,18], *Eleutheria dichotoma* [19,20] and the siphonophore *Nanomia bijuga* [21,22•,23] (summarized in Table 1).

Phenotypic plasticity and life cycle complexity

The typical hydrozoan life cycle comprises three basic forms: the motile 'planula' larva, sessile polyps (which typically propagate to form extensive colonies by asexual reproduction), and the pelagic medusa, a sexual form usually generated by budding from a polyp (in contrast to the scyphozoan medusa, which forms by a process known as strobilation [24••]). The evolutionary plasticity of this presumably ancestral program is remarkable, as illustrated by the loss of the medusa in the lineages leading to *Hydra* and *Hydractinia*. Molecular based phylogenies imply more than 50 independent losses of the medusa and at least 2 losses of the polyp within Hydrozoa, and show that major changes in life cycles and in colonial organization have occurred over short evolutionary time-scales [25–35•] (Figure 1b-c). Hydrozoan life cycles can include sexual and asexual reproduction at almost any stage, and the transitions can occur in atypical sequences, such as the famous medusa to polyp transformation ('reverse development') of *Turritopsis dohrnii* [17]. Determining the molecular mechanisms (including epigenetic modifications and response to environmental factors), and evolutionary processes triggering morphological and life cycle plasticity are important challenges for future research [36]. The history of genes expressed preferentially in the medusa (relating for instance to striated muscle or sense organs) has started to be addressed [37,38], and the first comparisons of transcriptomes from *Podocoryna* and *Hydractinia*, related species with and without medusae respectively, have been made [39•]. A successful approach that allowed identification of cnidarian-specific genes regulating tentacle patterning in *Hydra* involved subtractive hybridization between cDNAs from morphologically distinct *Hydra* strains, followed by functional validation *via* transgenesis [40].

Additional life cycle complexity in hydrozoans arises *via* the formation in many species of complex benthic or pelagic colonies comprising connected polyps specialized for different functions (*e.g.* budding, feeding, defense). The siphonophores are pelagic colonies which have attained extreme complexity including many different polyp types, but also specialized attached medusa forms serving distinct functions (*e.g.* reproduction, swimming) [21,22•,41]. Very little is known about how the polyp and medusa components of complex colonies acquire different forms and functions during development and evolution, although the advent of molecular analysis in siphonophores is promising [22•,23]. New transcriptomic data for several polyp types in *Hydractinia* [42–44] provide many candidates for future investigations of the developmental mechanisms leading to a division of labor between polyps within a colony (see Table 1).

In some hydrozoans groups, polyp colonies of the same species in close contact can fuse or reject depending on how closely genetically related they are. This phenomenon has been successfully

dissected at the molecular level in *Hydractinia*, starting with the seminal work of von Hauenschild in the 1950s (see [45]). A long and outstanding genetic investigation, involving crosses of many related and unrelated strains [46], led to the discovery of an allorecognition complex composed of two genetic loci, *alr1* [47] and *alr2* [48]. The *Alr1* and *Alr2* proteins show huge diversity in natural populations [49••,50]. They have recently been shown to be homophilic ligands binding only to themselves [51••]. In natural populations additional genetic factors may also be involved in the allorecognition process [52].

Allorecognition regulation has important consequences for individual and colonial biology and genotype survival. Fusion between sexually generated polyps has recently been proposed as the mode of colony formation in the genus *Ectopleura* [35•]. Rejection between colonies can induce necrosis in *Hydractinia* [53]. Contact between genetically distinct colonies results in mixing of stem cells, which can lead to invasion, takeover and eventually changes in morphology. A fascinating corollary is that evolutionary selection in this context might act at the level of the stem cells, as also proposed in the colonial ascidian *Botryllus* [54].

Medusa evolution and development

Cnidarians are often represented as having a simple morphology and relatively few cell types, reflecting the situation in the common bilaterian-cnidarian ancestor. The medusa form, however, has a sophisticated organization, including specialized sensory and reproductive organs and the fast-contracting striated muscle of the bell for swimming [15,13,55] (Figure 2a), providing an opportunity to compare the developmental and evolutionary origins of these structures in cnidarians and bilaterians. Molecular studies of hydrozoan medusae sensory structures have so far focused mainly on light detection. Eyes of *Cladonema* medusae express Opsin photoproteins and Six/Pax/Eya transcription factors [15,56,57], suggesting a common origin of the molecular mechanisms of eye development and convergence of the eyes as complex structures between Hydrozoa and Bilateria.

The medusa stage itself has been the subject of historical dispute, with opposing camps regarding it as a primitive cnidarian trait lost in Anthozoa, or a derived feature of Medusozoa. From a phylogenetic perspective, recent debate has revolved around potential paraphyly of Anthozoa and the position of Staurozoa (so-called 'stalked jellyfish'). It is now widely accepted that the medusa is a derived character of Medusozoa, although the most recent phylogeny recovers monophyletic Anthozoa, as sister to Medusozoa, with Hydrozoa (rather than Staurozoa) as sister group to the other medusozoans [1•].

Gene expression data relating to medusa development is accumulating gradually (*e.g.* [58–61•]), but remains scarce compared to planula and polyp data, while gene function studies in the medusa are still largely lacking [20]. Detailed comparative anatomical, molecular and functional studies between medusae of the different medusozoan groups will be insightful for deciphering the origin(s) of the medusa form. The evolutionary origin of hydrozoan striated muscle, traditionally considered homologous between cnidarians and bilaterians [62], was addressed by Steinmetz and coworkers [63••] (Figure 2a). Genomic analyses and *in situ* hybridization approaches showed that key bilaterian striated muscle proteins, notably components of the Z-disk, are not present in *Clytia*, while most of the bilaterian striated muscle genes are either expressed broadly or in other cell types. This study thus provides compelling evidence for convergent evolution of striated muscle in hydrozoans and bilaterians.

Gametogenesis and spawning

The transparency and accessibility of many hydrozoan sexual forms makes them particularly good models for studying the widely conserved regulatory mechanisms of animal gametogenesis, and dissecting the mechanisms of oocyte maturation, spawning and fertilization (discussed in detail in [64], Figure 2b). Studies in several medusae including *Cladonema*, *Cyrtia* and *Clytia* are allowing analysis of successive regulatory steps. For technical reasons (notably access to microinjection of Morpholinos/mRNAs/indicators), the main research focus so far has been on the fully grown oocyte and spawned egg. Spawning in both males and females is triggered by light, which induces somatic cells of the gonad to secrete a small diffusible hormone that awakens the dormant gametes. Recent studies suggest that neuropeptide-related molecules participate in this process [65]. The essential downstream response of oocytes to the hormone is an immediate rise in cytoplasmic cAMP levels and PKA activation [66]. This stimulates both release of meiotic arrest and entry into the meiotic divisions and parallel activation of the Mos-MAP kinase pathway responsible for regulation of oocyte-specific processes such as polar body formation and post-meiotic cell cycle arrest [67]. MAP kinase pathway inactivation following fertilization, along with cytoplasmic Ca⁺⁺ release, is also involved in regulating polyspermy [68•]. Concerning the regulation of early steps of gametogenesis such as entry into meiosis and oocyte growth, which represent major bottlenecks in research in reproductive biology, the advent of gene editing techniques is opening the powerful possibility of combining gene function analysis and imaging using transparent hydrozoan gonads.

Body axis evolution and development

Studying axis formation in a range of cnidarians, including hydrozoans, offers an informative perspective for the understanding of body plan evolution in metazoans. It is still debated whether the oral-aboral axis of cnidarians is homologous to any of the body axes of bilaterians, but it seems very likely that localized Wnt signaling was a feature of the gastrulation pole of the last common ancestor of these major animal groups.

Each hydrozoan form, planula, polyp and medusa, is organized with respect to a principal axis of polarity termed oral-aboral (Figure 3a). For instance the planula larva has an aboral specialization of the nervous system [69], and the medusa has integrating nerve rings around the bell margin [55]. Key to establishment and maintenance of this axis is the oral pole organizer. The key molecular pathway of oral organizer activity in *Hydra* is Wnt/ β -catenin signaling [11], activated by the diffusible ligand Wnt3 and maintained at the oral tip by a complex auto-feedback loop [70]. Oral organizers have now been described at the oral pole of the planula larvae and polyp in several marine hydrozoan species [71,72], with the Wnt/ β -catenin pathway established as a key player in the regulation of the planula and polyp organizer.

In *Clytia* larvae, functional studies involving morpholino and mRNA injection into the egg have shown that axis formation is initiated by maternal mRNAs coding for the ligand Wnt3 (Figure 3a, b), and for two Frizzled family receptors [73,74] which become localized in the egg during oocyte growth and maturation [75]. During early development, Wnt3 and Fz1 together activate the Wnt/ β -catenin pathway at the oral pole, while Fz3 acts as a negative regulator at the aboral pole. In parallel, the transmembrane protein Strabismus interacts with Fz1 across neighboring cell boundaries to direct morphogenesis along the oral-aboral axis *via* a typical PCP mechanism [76••]. PCP coordinates the alignment of the ectodermal cilia to ensure unidirectional swimming, and orients cell movements participating in elongation of the developing larva (Figure 3b). Common involvement of Frizzled proteins in establishing a Wnt/ β -catenin activity gradient and PCP is likely to be an ancestral mechanisms to couple morphological and molecular polarity during development [76••]. A transcriptomic study identified potential Wnt/ β -catenin downstream targets and genes regulated by the PCP pathways [77••], providing several promising candidates for roles in organizer activity.

Analyses of Wnt pathway regulation in *Hydractinia* have focused mainly on the polyp. Wnt3 signaling *via* a TCF transcription factor induces development of oral structures [78]. Other studies in *Hydractinia* have addressed the dramatic metamorphosis that transforms the planula into the polyp,

and notably the extensive caspase dependent apoptosis at the oral pole during metamorphosis [79–82]. This apoptosis is essential for the formation of the primary polyp [83], playing a constructive role [81,84] as it does during regeneration in *Hydra* [85]. Interestingly, *Wnt5a* expressing cells at the oral pole of *Hydractinia* larvae appear to be protected from apoptosis during metamorphosis [71].

Cell type plasticity and stem cell systems in Hydrozoa

Hydrozoans characteristically exhibit a very strong ability to regenerate one or all their phenotypic forms, a capacity underpinned by extreme cell type plasticity. This includes *bone fide* transdifferentiation, as demonstrated using *Podocoryna carnea* by Schmid and collaborators, who convincingly showed transdifferentiation of striated muscle cells isolated from the medusa into several cell types including smooth muscle, sensory cells, gland cells and nematocytes (stinging cells characteristic of Cnidaria) [16].

Hydrozoan regeneration involves active stem cell systems, first characterized in *Hydra*, where three types of stem cell coexist: ectodermal epithelial stem cells, endodermal epithelial stem cells and ‘interstitial’ cells (i-cells) (see [7]) (Figure 3c). The first two basic epithelial cell types support the constant renewal of the ectodermal and endodermal epithelia. I-cells are a hydrozoan-specific type of undifferentiated multipotent stem cell that can differentiate into nerve cells, nematocytes, gland cells and also germ cells. I-cell developmental potential varies between species. Thus, in *Hydractinia echinata*, i-cells can differentiate not only into nerve cells and nematocytes, but also into epithelial cells, as demonstrated using mutants, BrdU labeling and grafting experiments [86], and confirmed using transgenic tools [87] (Figure 3c).

Progress in understanding the molecular regulation and cellular dynamics of hydrozoan stem cells was greatly accelerated by the development of transgenic lines both in *Hydractinia* [88••] and *Hydra* [89], which allowed tracking of stem cells *in vivo*, notably during regeneration [88••] (Figure 3d). Pioneering studies in *Hydra* have compared molecular signatures of different cell types by transcriptome analysis of fluorescence-tagged sorted cells from transgenic lines [90] and established proteomic methods [91••]. In *Hydractinia* a POU-domain containing transcription factor of the class 3/5 involved in regulating pluripotency has been identified [92•], of particular interest given the role of the (class 5) POU-domain factor Oct 4 in mammals. Similarly, in *Clytia*, several Sox family transcription factors (groups B, C, E and F) were found expressed either in stem-cells or differentiated cells, suggesting a regulatory role in multipotency maintenance operating widely across the animal kingdom [93]. A recent study has shown a correlation between nuclear localization

of the Hippo pathway component Yorkie and cell division in *Clytia* medusae [94], suggesting that regulation of cell proliferation by this transcriptional cofactor is conserved between Cnidaria and Bilateria.

I-cells in *Clytia* [95,96•] and *Hydractinia* [88••,92•,97,98], as in *Hydra* (e.g. [90,99]), also express orthologues of genes typically associated with germ line or stem cell function such as *Piwi*, *Nanos1*, and *Vasa*. I-cell formation during embryogenesis was addressed in *Clytia*, and appears to involve both determinant inheritance and inductive mechanisms [96•]. I-cells originate at the onset of gastrulation in a region inheriting localized *Piwi*, *Nanos1*, *Vasa* and *Pl10* mRNAs from the animal pole of the egg, evoking the ‘preformation’ mode of germ-line specification by maternal ‘germ plasm’ well known in insects and frog embryos. I-cells can also form in *Clytia* planulae in the absence of the key egg animal pole region, implying the involvement of inductive mechanisms [96•].

Conclusion

Hydrozoans have much to contribute to our understanding of basic developmental and cell biology processes and their evolution, as well as to relatively neglected areas of biological complexity such as colony level organization and asexual reproduction. Rapid technological advances mean that it is now feasible with quite modest budgets to undertake genome sequencing, large scale gene expression/transcriptomics studies, functional analyses at all life cycle stages *via* gene editing, as well as cell/molecule tracking using transgenic lines carrying diverse fluorescent reporters. With these accumulating resources, we expect in the next few years that a wide range of marine hydrozoan species will emerge as valuable experimental models.

Acknowledgements

Our recent research on hydrozoans has been funded by grants from the ANR (MEDUSEVO – ANR-13-PDOC-0016 and OOCAMP – ANR-13-BSV2-0008), Sorbonne Universités («Convergence» program and the André Picard Network), the EMBRC-Fr Infrastructure project and CNRS core funding to the LBDV. We thank Chiara Sinigaglia and Michaël Manuel for helpful comments on the manuscript.

References and recommended reading

Papers of particular interest, published within the period of review, have been highlighted as:

- of special interest
- of outstanding interest

1. Zapata F, Goetz FE, Smith SA, Howison M, Siebert S, Church SH, Sanders SM, Ames CL, McFadden CS, France SC, et al.: **Phylogenomic analyses support traditional relationships within Cnidaria.** *PLoS One* 2015, **10**:e0139068.

• This paper gathers transcriptomes from the major cnidarian groups and recovers monophyletic anthozoans and medusozoans, showing that hydrozoans are likely to be the sister group to the other medusozoans. More work remains to be done to confirm these results, in particular, richer taxon sampling of cerianthids, staurozoans, cubozoans and hydrozoans.

2. Boehm A-M, Khalturin K, Anton-Erxleben F, Hemmrich G, Klostermeier UC, Lopez-Quintero JA, Oberg H-H, Puchert M, Rosenstiel P, Wittlieb J, et al.: **FoxO is a critical regulator of stem cell maintenance in immortal *Hydra*.** *Proc Natl Acad Sci USA* 2012, **109**:19697–19702.

3. Domazet-Lošo T, Klimovich A, Anokhin B, Anton-Erxleben F, Hamm MJ, Lange C, Bosch TCG: **Naturally occurring tumours in the basal metazoan *Hydra*.** *Nat Commun* 2014, **5**:4222.

4. Bosch TCG: **Rethinking the role of immunity: lessons from *Hydra*.** *Trends Immunol* 2014, **35**:495–502.

5. Chapman JA, Kirkness EF, Simakov O, Hampson SE, Mitros T, Weinmaier T, Rattei T, Balasubramanian PG, Borman J, Busam D, et al.: **The dynamic genome of *Hydra*.** *Nature* 2010, **464**:592–596.

6. Buzgariu W, Al Haddad S, Tomczyk S, Wenger Y, Galliot B: **Multi-functionality and plasticity characterize epithelial cells in *Hydra*.** *Tissue Barriers* 2015, **3**:e1068908.

7. Hobmayer B, Jenewein M, Eder D, Eder M-K, Glasauer S, Gufler S, Hartl M, Salvenmoser W: **Stemness in *Hydra* - a current perspective.** *Int J Dev Biol* 2012, **56**:509–517.

8. Steele RE: **The *Hydra* genome: insights, puzzles and opportunities for developmental biologists.** *Int J Dev Biol* 2012, **56**:535–542.

9. David CN: **Interstitial stem cells in *Hydra*: multipotency and decision-making.** *Int J Dev Biol* 2012, **56**:489–497.

10. Nishimiya-Fujisawa C, Kobayashi S: **Germline stem cells and sex determination in *Hydra*.** *Int J Dev Biol* 2012, **56**:499–508.

11. Bode HR: **The head organizer in *Hydra*.** *Int J Dev Biol* 2012, **56**:473–478.

12. Galliot B: ***Hydra*, a fruitful model system for 270 years.** *Int J Dev Biol* 2012, **56**:411–423.

• Together with [7-11] and more than 10 other review articles: comprehensive special issue on current *Hydra* research.

13. Houliston E, Momose T, Manuel M: ***Clytia hemisphaerica*: a jellyfish cousin joins the laboratory.** *Trends Genet* 2010, **26**:159–167.
 14. Plickert G, Frank U, Müller WA: ***Hydractinia*, a pioneering model for stem cell biology and reprogramming somatic cells to pluripotency.** *Int J Dev Biol* 2012, **56**:519–534.
 15. Suga H, Schmid V, Gehring WJ: **Evolution and functional diversity of jellyfish opsins.** *Curr Biol* 2008, **18**:51–55.
 16. Schmid V, Alder H: **Isolated, mononucleated, striated muscle can undergo pluripotent transdifferentiation and form a complex regenerate.** *Cell* 1984, **38**:801–809.
 17. Schmich J, Kraus Y, De Vito D, Graziussi D, Boero F, Piraino S: **Induction of reverse development in two marine hydrozoans.** *Int J Dev Biol* 2007, **51**:45–56.
 18. Piraino S, Boero F, Aeschbach B, Schmid V: **Reversing the Life Cycle: Medusae Transforming into Polyps and Cell Transdifferentiation in *Turritopsis nutricula* (Cnidaria, Hydrozoa).** *Biol Bull* 1996, **190**:302–312.
 19. Kamm K, Schierwater B, Jakob W, Dellaporta SL, Miller DJ: **Axial patterning and diversification in the cnidaria predate the Hox system.** *Curr Biol* 2006, **16**:920–926.
 20. Jakob W, Schierwater B: **Changing hydrozoan bauplans by silencing Hox-like genes.** *PLoS One* 2007, **2**:e694.
 21. Costello JH, Colin SP, Gemmell BJ, Dabiri JO, Sutherland KR: **Multi-jet propulsion organized by clonal development in a colonial siphonophore.** *Nat Commun* 2015, **6**:8158.
 22. Siebert S, Goetz FE, Church SH, Bhattacharyya P, Zapata F, Haddock SHD, Dunn CW: **Stem cells in *Nanomia bijuga* (Siphonophora), a colonial animal with localized growth zones.** *EvoDevo* 2015, **6**:22.
- This pioneering molecular study in the siphonophore *Nanomia bijuga* identified ‘i-cell’ stem cells and examined their distribution using a combination of high quality *in situ* hybridization and cell proliferation mapping. In the complex growing *Nanomia* ‘colonies’, i-cells are concentrated within the growth zones and gametogenic regions, but not at all the identified cell proliferation sites, implying the existence of other stem cell/progenitor cell populations.
23. Siebert S, Robinson MD, Tintori SC, Goetz F, Helm RR, Smith SA, Shaner N, Haddock SHD, Dunn CW: **Differential gene expression in the siphonophore *Nanomia bijuga* (Cnidaria) assessed with multiple next-generation sequencing workflows.** *PLoS One* 2011, **6**:e22953.
 24. Fuchs B, Wang W, Graspeuntner S, Li Y, Insua S, Herbst E-M, Dirksen P, Böhm A-M, Hemmrich G, Sommer F, et al.: **Regulation of polyp-to-jellyfish transition in *Aurelia aurita*.** *Curr Biol* 2014, **24**:263–273.
- This outstanding work identified a secreted protein encoding arginine rich repeats that induces strobilation (i.e. medusa formation) in the scyphomedusa *Aurelia*. The nuclear hormone receptor RxR is also implicated, raising the possibility of similarity with other animal metamorphosis events.
25. Dunn CW, Pugh PR, Haddock SHD: **Molecular phylogenetics of the siphonophora (Cnidaria), with implications for the evolution of functional specialization.** *Syst Biol* 2005, **54**:916–935.

26. Collins AG, Schuchert P, Marques AC, Jankowski T, Medina M, Schierwater B: **Medusozoan phylogeny and character evolution clarified by new large and small subunit rDNA data and an assessment of the utility of phylogenetic mixture models.** *Syst. Biol* 2006, **55**:97–115.
 27. Dunn CW, Wagner GP: **The evolution of colony-level development in the Siphonophora (Cnidaria:Hydrozoa).** *Dev Genes Evol* 2006, **216**:743–754.
 28. Govindarajan AF, Boero F, Halanych KM: **Phylogenetic analysis with multiple markers indicates repeated loss of the adult medusa stage in Campanulariidae (Hydrozoa, Cnidaria).** *Mol Phylogenet Evol* 2006, **38**:820–834.
 29. Leclère L, Schuchert P, Manuel M: **Phylogeny of the Plumularioidea (Hydrozoa, Leptothecata): evolution of colonial organisation and life cycle.** *Zool Scr* 2007, **36**:371–394.
 30. Collins AG, Bentlage B, Lindner A, Lindsay D, Haddock SHD, Jarms G, Norenburg JL, Jankowski T, Cartwright P: **Phylogenetics of Trachylina (Cnidaria: Hydrozoa) with new insights on the evolution of some problematical taxa.** *J Mar Biol Assoc UK* 2008, **88**:1673–1685.
 31. Leclère L, Schuchert P, Cruaud C, Couloux A, Manuel M: **Molecular phylogenetics of Thecata (Hydrozoa, Cnidaria) reveals long-term maintenance of life history traits despite high frequency of recent character changes.** *Syst Biol* 2009, **58**:509–526.
 32. Cartwright P, Nawrocki AM: **Character evolution in Hydrozoa (phylum Cnidaria).** *Integr Comp Biol* 2010, **50**:456–472.
 33. Nawrocki AM, Schuchert P, Cartwright P: **Phylogenetics and evolution of Capitata (Cnidaria: Hydrozoa), and the systematics of Corynidae.** *Zool Scr* 2010, **39**:290–304.
 34. Miglietta MP, Cunningham CW: **Evolution of life cycle, colony morphology, and host specificity in the family Hydractiniidae (Hydrozoa, Cnidaria).** *Evolution* 2012, **66**:3876–3901.
 35. Nawrocki AM, Cartwright P: **A novel mode of colony formation in a hydrozoan through fusion of sexually generated individuals.** *Curr Biol* 2012, **22**:825–829.
- This phylogenetic study puts *Hydra* into evolutionary perspective within Hydrozoa. It also demonstrates that in the genus *Ectopleura*, closely related to *Hydra*, colonies are not formed through an asexual budding process, but instead by fusion of sexually generated polyps.
36. Bosch TCG, Adamska M, Augustin R, Domazet-Loso T, Foret S, Fraune S, Funayama N, Grasis J, Hamada M, Hatta M, et al.: **How do environmental factors influence life cycles and development? An experimental framework for early-diverging metazoans.** *BioEssays* 2014, **36**:1185–1194.
 37. Nawrocki AM, Cartwright P: **Expression of Wnt pathway genes in polyps and medusa-like structures of *Ectopleura larynx* (Cnidaria: Hydrozoa).** *Evol Dev* 2013, **15**:373–384.
 38. Sanders SM, Cartwright P: **Patterns of Wnt signaling in the life cycle of *Podocoryna carnea* and its implications for medusae evolution in Hydrozoa (Cnidaria).** *Evol Dev* 2015, **17**:325–336.
 39. Sanders SM, Cartwright P: **Interspecific differential expression analysis of RNA-Seq data yields insight into life cycle variation in hydractiniid hydrozoans.** *Genome Biol Evol* 2015, **7**:2417–2431.

- By comparing RNA-Seq data from related hydrozoans, one including a medusa stage in its life-cycle, and the other not, this work attempts to identify key genes involved in medusa formation. Hydrozoans present great opportunities for generating rich gene expression datasets from key life cycle stages and structures, and we expect many more such studies in the future.

40. Khalturin K, Anton-Erxleben F, Sassmann S, Wittlieb J, Hemmrich G, Bosch TCG: **A novel gene family controls species-specific morphological traits in *Hydra***. *PLoS Biol* 2008, **6**:e278.
 41. Mapstone GM: **Global diversity and review of Siphonophorae (Cnidaria: Hydrozoa)**. *PLoS One* 2014, **9**:e87737.
 42. Soza-Ried J, Hotz-Wagenblatt A, Glatting K-H, del Val C, Fellenberg K, Bode HR, Frank U, Hoheisel JD, Frohme M: **The transcriptome of the colonial marine hydroid *Hydractinia echinata***. *FEBS J* 2010, **277**:197–209.
 43. Sanders SM, Shcheglovitova M, Cartwright P: **Differential gene expression between functionally specialized polyps of the colonial hydrozoan *Hydractinia symbiolongicarpus* (Phylum Cnidaria)**. *BMC Genomics* 2014, **15**:406.
 44. Plachetzki DC, Sabrina Pankey M, Johnson BR, Ronne EJ, Kopp A, Grosberg RK: **Gene co-expression modules underlying polymorphic and monomorphic zooids in the colonial hydrozoan, *Hydractinia symbiolongicarpus***. *Integr Comp Biol* 2014, **54**:276–283.
 45. Rosengarten RD, Nicotra ML: **Model systems of invertebrate allorecognition**. *Curr Biol* 2011, **21**:R82-92.
 46. Cadavid LF, Powell AE, Nicotra ML, Moreno M, Buss LW: **An invertebrate histocompatibility complex**. *Genetics* 2004, **167**:357–365.
 47. Nicotra ML, Powell AE, Rosengarten RD, Moreno M, Grimwood J, Lakkis FG, Dellaporta SL, Buss LW: **A hypervariable invertebrate allodeterminant**. *Curr Biol* 2009, **19**:583–589.
 48. Rosa SFP, Powell AE, Rosengarten RD, Nicotra ML, Moreno MA, Grimwood J, Lakkis FG, Dellaporta SL, Buss LW: ***Hydractinia* allodeterminant alr1 resides in an immunoglobulin superfamily-like gene complex**. *Curr Biol* 2010, **20**:1122–1127.
 49. Gloria-Soria A, Moreno MA, Yund PO, Lakkis FG, Dellaporta SL, Buss LW: **Evolutionary genetics of the hydroid allodeterminant alr2**. *Mol Biol Evol* 2012, **29**:3921–3932.
- One the latest contributions to the outstanding body of work from L. Buss and collaborators to identifying and characterizing the allorecognition complex in *Hydractinia*.
50. Rosengarten RD, Moreno MA, Lakkis FG, Buss LW, Dellaporta SL: **Genetic diversity of the allodeterminant alr2 in *Hydractinia symbiolongicarpus***. *Mol Biol Evol* 2011, **28**:933–947.
 51. Karadge UB, Gosto M, Nicotra ML: **Allorecognition proteins in an invertebrate exhibit homophilic interactions**. *Curr Biol* 2015, **25**:2845–2850.

- This elegant study demonstrates that the allorecognition proteins Alr1 and Alr2 are self-ligands that bind to each other across adjacent cell membranes providing a molecular explanation for the self/non-self recognition process in *Hydractinia*.

52. Powell AE, Moreno M, Gloria-Soria A, Lakkis FG, Dellaporta SL, Buss LW: **Genetic background and allorecognition phenotype in *Hydractinia symbiolongicarpus***. *G3* 2011, **1**:499–504.
 53. Buss LW, Anderson C, Westerman E, Kritzberger C, Poudyal M, Moreno MA, Lakkis FG: **Allorecognition triggers autophagy and subsequent necrosis in the cnidarian *Hydractinia symbiolongicarpus***. *PLoS One* 2012, **7**:e48914.
 54. Laird DJ, De Tomaso AW, Weissman IL: **Stem cells are units of natural selection in a colonial ascidian**. *Cell* 2005, **123**:1351–1360.
 55. Koizumi O, Hamada S, Minobe S, Hamaguchi-Hamada K, Kurumata-Shigeto M, Nakamura M, Namikawa H: **The nerve ring in cnidarians: its presence and structure in hydrozoan medusae**. *Zoology* 2015, **118**:79–88.
 56. Suga H, Tschopp P, Graziussi DF, Stierwald M, Schmid V, Gehring WJ: **Flexibly deployed Pax genes in eye development at the early evolution of animals demonstrated by studies on a hydrozoan jellyfish**. *Proc Natl Acad Sci USA* 2010, **107**:14263–14268.
 57. Graziussi DF, Suga H, Schmid V, Gehring WJ: **The “eyes absent” (*eya*) gene in the eye-bearing hydrozoan jellyfish *Cladonema radiatum*: conservation of the retinal determination network**. *J Exp Zool B Mol Dev Evol* 2012, **318**:257–267.
 58. Chiori R, Jager M, Denker E, Wincker P, Da Silva C, Le Guyader H, Manuel M, Quéinnec E: **Are Hox genes ancestrally involved in axial patterning? Evidence from the hydrozoan *Clytia hemisphaerica* (Cnidaria)**. *PLoS One* 2009, **4**:e4231.
 59. Hroudova M, Vojta P, Strnad H, Krejčík Z, Ridl J, Paces J, Vlček C, Paces V: **Diversity, phylogeny and expression patterns of Pou and Six homeodomain transcription factors in hydrozoan jellyfish *Craspedacusta sowerbyi***. *PLoS ONE* 2012, **7**:e36420.
 60. Seipel K, Yanze N, Schmid V: **The germ line and somatic stem cell gene *Cniwi* in the jellyfish *Podocoryne carnea***. *Int J Dev Biol* 2004, **48**:1–7.
 61. Kraus JEM, Fredman D, Wang W, Khalturin K, Technau U: **Adoption of conserved developmental genes in development and origin of the medusa body plan**. *EvoDevo* 2015, **6**:23.
- There are several long standing theories of how the medusa body plan relates to the polyp form in cnidarians. Using a hydrozoan (*Clytia*) and a scyphozoan (*Aurelia*), Kraus and co-workers examine the expression patterns of key developmental genes in polyps and medusa, suggesting that the medusa bell corresponds to fused tentacle anlage and that scyphozoan and hydrozoan medusae are likely to be homologous. One can argue with the choice of genes, but given how little was known in this area, the work is a step forward.
62. Seipel K, Schmid V: **Evolution of striated muscle: jellyfish and the origin of triploblasty**. *Dev Biol* 2005, **282**:14–26.
 63. Steinmetz PRH, Kraus JEM, Larroux C, Hammel JU, Amon-Hassenzahl A, Houlston E, Wörheide G, Nickel M, Degnan BM, Technau U: **Independent evolution of striated muscles in cnidarians and bilaterians**. *Nature* 2012, **487**:231–234.

- Jellyfish striated muscles show strong structural similarity with those of bilaterians, but it turns out they have separate evolutionary histories. Molecular phylogeny studies and gene expression

analyses reported here show that the many of proteins that comprise these structures have derived from related but distinct cellular proteins already present in pre-metazoan cells.

64. Amiel A, Chang P, Momose T, Houliston E: ***Clytia hemisphaerica*: a cnidarian model for studying oogenesis**. in *Oogenesis: the universal process*. Edited by Verlhac MH, Villeneuve A, John Wiley & Sons 2010, 81-106.
65. Takeda N, Nakajima Y, Koizumi O, Fujisawa T, Takahashi T, Matsumoto M, Deguchi R: **Neuropeptides trigger oocyte maturation and subsequent spawning in the hydrozoan jellyfish *Cytaeis uchidae***. *Mol Reprod Dev* 2013, **80**:223–232.
66. Takeda N, Kyojuka K, Deguchi R: **Increase in intracellular cAMP is a prerequisite signal for initiation of physiological oocyte meiotic maturation in the hydrozoan *Cytaeis uchidae***. *Dev Biol* 2006, **298**:248–258.
67. Amiel A, Leclère L, Robert L, Chevalier S, Houliston E: **Conserved functions for Mos in eumetazoan oocyte maturation revealed by studies in a cnidarian**. *Curr Biol* 2009, **19**:305–311.
68. Arakawa M, Takeda N, Tachibana K, Deguchi R: **Polyspermy block in jellyfish eggs: collaborative controls by Ca(2+) and MAPK**. *Dev Biol* 2014, **392**:80–92.
- Elegant work using the transparent eggs of *Cytaeis uchidae* dissected the dependence of different aspects of egg physiology on MAP kinase and Ca²⁺ signaling. Both sperm attraction and sperm-egg fusion are dependent on MAP kinase activity, with the regulation of sperm attraction showing striking reversibility.
69. Piraino S, Zega G, Di Benedetto C, Leone A, Dell’Anna A, Pennati R, Carnevali DC, Schmid V, Reichert H: **Complex neural architecture in the diploblastic larva of *Clava multicornis* (Hydrozoa, Cnidaria)**. *J Comp Neurol* 2011, **519**:1931–1951.
70. Nakamura Y, Tsiairis CD, Özbek S, Holstein TW: **Autoregulatory and repressive inputs localize *Hydra Wnt3* to the head organizer**. *Proc Natl Acad Sci USA* 2011, **108**:9137–9142.
71. Stumpf M, Will B, Wittig K, Kasper J, Fischer B, Schmich J, Seipp S, Leitz T: **An organizing region in metamorphosing hydrozoan planula larvae - stimulation of axis formation in both larval and in adult tissue**. *Int J Dev Biol* 2010, **54**:795–802.
72. Mayorova T, Kosevich I, Dulin N, Savina E, Kraus Y: **Organizer regions in marine colonial hydrozoans**. *Zoology* 2015, **118**:89–101.
73. Momose T, Houliston E: **Two oppositely localised frizzled RNAs as axis determinants in a cnidarian embryo**. *PLoS Biol* 2007, **5**:e70.
74. Momose T, Derelle R, Houliston E: **A maternally localised Wnt ligand required for axial patterning in the cnidarian *Clytia hemisphaerica***. *Development* 2008, **135**:2105–2113.
75. Amiel A, Houliston E: **Three distinct RNA localization mechanisms contribute to oocyte polarity establishment in the cnidarian *Clytia hemisphaerica***. *Dev Biol* 2009, **327**:191–203.
76. Momose T, Kraus Y, Houliston E: **A conserved function for Strabismus in establishing planar cell polarity in the ciliated ectoderm during cnidarian larval development**. *Development* 2012, **139**:4374–4382.

•• This study demonstrates a highly conserved role for the transmembrane protein Strabismus in setting up the Planar Cell Polarity (PCP) required for oriented ciliogenesis and embryo elongation. Common involvement of Frizzled family proteins in PCP and Wnt/ β -catenin signaling ensures intimate coupling of morphological and molecular polarity along the developing axis, a key feature which may date back to the origins of metazoans.

77. Lapébie P, Ruggiero A, Barreau C, Chevalier S, Chang P, Dru P, Houliston E, Momose T:

Differential responses to Wnt and PCP disruption predict expression and developmental function of conserved and novel genes in a cnidarian. *PLoS Genet* 2014, **10**:e1004590.

•• A screen based on transcriptome comparisons between Wnt and PCP manipulated embryos allowed systematic prediction of gene sets expressed in oral versus aboral territories, and a set expressed in ingressing cell populations at the gastrulation pole. Many members of the expected families of developmental regulators known from bilaterians were identified, but also many taxon-specific genes, reminding us that evolution of development in cnidarians has probably not solely relied on the 'shared metazoan toolkit'.

78. Duffy DJ, Plickert G, Kuenzel T, Tilmann W, Frank U: **Wnt signaling promotes oral but suppresses aboral structures in *Hydractinia* metamorphosis and regeneration.** *Development* 2010, **137**:3057–3066.

79. Seipp S, Schmich J, Leitz T: **Apoptosis - a death-inducing mechanism tightly linked with morphogenesis in *Hydractinia echinata* (Cnidaria, Hydrozoa).** *Development* 2001, **128**:4891–4898.

80. Seipp S, Schmich J, Will B, Schetter E, Plickert G, Leitz T: **Neuronal cell death during metamorphosis of *Hydractinia echinata* (Cnidaria, Hydrozoa).** *Invertebr Neurosc* 2010, **10**:77–91.

81. Wittig K, Kasper J, Seipp S, Leitz T: **Evidence for an instructive role of apoptosis during the metamorphosis of *Hydractinia echinata* (Hydrozoa).** *Zoology* 2011, **114**:11–22.

82. Duffy DJ, Millane RC, Frank U: **A heat shock protein and Wnt signaling crosstalk during axial patterning and stem cell proliferation.** *Dev Bio.* 2012, **362**:271–281.

83. Seipp S, Wittig K, Stiening B, Böttger A, Leitz T: **Metamorphosis of *Hydractinia echinata* (Cnidaria) is caspase-dependent.** *Int J Dev Biol* 2006, **50**:63–70.

84. Duffy DJ: **Instructive reconstruction: a new role for apoptosis in pattern formation.** *BioEssays* 2012, **34**:561–564.

85. Chera S, Ghila L, Dobretz K, Wenger Y, Bauer C, Buzgariu W, Martinou J-C, Galliot B: **Apoptotic cells provide an unexpected source of Wnt3 signaling to drive *Hydra* head regeneration.** *Dev Cell* 2009, **17**:279–289.

86. Müller WA, Teo R, Frank U: **Totipotent migratory stem cells in a hydroid.** *Dev Biol* 2004, **275**:215–224.

87. Künzel T, Heiermann R, Frank U, Müller W, Tilmann W, Bause M, Nonn A, Helling M, Schwarz RS, Plickert G: **Migration and differentiation potential of stem cells in the cnidarian *Hydractinia* analysed in eGFP-transgenic animals and chimeras.** *Dev Biol* 2010, **348**:120–129.

88. Bradshaw B, Thompson K, Frank U: **Distinct mechanisms underlie oral vs aboral regeneration in the cnidarian *Hydractinia echinata***. *eLife* 2015, **4**:e05506.

•• Polyp head regeneration in *Hydractinia* involves recruitment of stem cells from distant sites and their local proliferation, while aboral polyp fragments show transitory conversion into stolon-like structures before a polyp reforms. This study is one of a series from the U. Frank and G. Plickert groups that illustrates the experimental possibilities opening up in *Hydractinia*, notably stem cell tracking using transgenic lines and RNAi-based gene knockdown.

89. Wittlieb J, Khalturin K, Lohmann JU, Anton-Erxleben F, Bosch TCG: **Transgenic *Hydra* allow in vivo tracking of individual stem cells during morphogenesis**. *Proc Natl Acad Sci USA* 2006, **103**:6208–6211.

90. Hemmrich G, Khalturin K, Boehm A-M, Puchert M, Anton-Erxleben F, Wittlieb J, Klostermeier UC, Rosenstiel P, Oberg H-H, Domazet-Lošo T, et al.: **Molecular signatures of the three stem cell lineages in *Hydra* and the emergence of stem cell function at the base of multicellularity**. *Mol Biol Evol* 2012, **29**:3267–3280.

91. Petersen HO, Höger SK, Looso M, Lengfeld T, Kuhn A, Warnken U, Nishimiya-Fujisawa C, Schnölzer M, Krüger M, Özbek S, et al.: **A comprehensive transcriptomic and proteomic analysis of *Hydra* head regeneration**. *Mol Biol Evol* 2015, **32**:1928–1947.

•• First comparative transcriptomic and proteomic analyses in a hydrozoan species suggesting a decoupled regulation between the transcriptional and translational levels during head regeneration in *Hydra*.

92. Millane RC, Kanska J, Duffy DJ, Seoighe C, Cunningham S, Plickert G, Frank U: **Induced stem cell neoplasia in a cnidarian by ectopic expression of a POU domain transcription factor**. *Development* 2011, **138**:2429–2439.

• The first functional study of an i-cell expressed gene in *Hydractinia*, the POU-domain protein Pln. Strikingly, forced Pln expression in epithelial cells induces stem cell neoplasms, while RNAi-mediated Pln downregulation promotes differentiation. It is tempting to draw parallels with the stem cell regulatory role of mammalian Oct4, although existing molecular phylogenies do not seem to position these two transcription factors as closely related within the large POU-domain family.

93. Jager M, Quéinnec E, Le Guyader H, Manuel M: **Multiple Sox genes are expressed in stem cells or in differentiating neuro-sensory cells in the hydrozoan *Clytia hemisphaerica***. *EvoDevo* 2011, **2**:12.

94. Coste A, Jager M, Chambon J-P, Manuel M: **Comparative study of Hippo pathway genes in cellular conveyor belts of a ctenophore and a cnidarian**. *EvoDevo* 2016, **7**:4.

95. Denker E, Manuel M, Leclère L, Le Guyader H, Rabet N: **Ordered progression of nematogenesis from stem cells through differentiation stages in the tentacle bulb of *Clytia hemisphaerica* (Hydrozoa, Cnidaria)**. *Dev Biol* 2008, **315**:99–113.

96. Leclère L, Jager M, Barreau C, Chang P, Le Guyader H, Manuel M, Houliston E: **Maternally localized germ plasm mRNAs and germ cell/stem cell formation in the cnidarian *Clytia***. *Dev Biol* 2012, **364**:236–248.

- The multiple fate possibilities of i-cells include germ cells, so these hydrozoan stem cells can in some ways be equated with the fate-restricted 'germ lines' of many bilaterians. This parallel was thrown into the spotlight by the discovery in *Clytia* of 'germ plasm' containing a shared set of maternal mRNAs, which appears to be inherited by i-cell precursors. How i-cell fate is specified remains to be resolved, since *Clytia* embryo fragments with or without germ plasm can develop i-cells.

97. Rebscher N, Volk C, Teo R, Plickert G: **The germ plasm component Vasa allows tracing of the interstitial stem cells in the cnidarian *Hydractinia echinata***. *Dev Dyn* 2008, **237**:1736–1745.

98. Kanska J, Frank U: **New roles for Nanos in neural cell fate determination revealed by studies in a cnidarian**. *J Cell Sci* 2013, **126**:3192–3203.

99. Juliano CE, Reich A, Liu N, Götzfried J, Zhong M, Uman S, Reenan RA, Wessel GM, Steele RE, Lin H: **PIWI proteins and PIWI-interacting RNAs function in *Hydra* somatic stem cells**. *Proc Natl Acad Sci USA* 2014, **111**:337–342.

100. Fourrage C, Swann K, Gonzalez Garcia JR, Campbell AK, Houliston E: **An endogenous green fluorescent protein-photoprotein pair in *Clytia hemisphaerica* eggs shows co-targeting to mitochondria and efficient bioluminescence energy transfer**. *Open Biol* 2014, **4**:130206.

101. Church SH, Siebert S, Bhattacharyya P, Dunn CW: **The histology of *Nanomia bijuga* (Hydrozoa: Siphonophora)**. *J Exp Zool B Mol Dev Evol* 2015, **324**:435–449.

Figure legends

Figure 1. Hydrozoan phylogeny and life cycle diversity and evolution. (a) Phylogeny of Cnidaria following [1•], with Bilateria as the outgroup. Hydrozoa is sister to the other medusozoans (Staurozoa, Scyphozoa and Cubozoa). Red, orange and blue dots indicate presence of planula, polyp or medusa stages respectively in the last common ancestor of these groups. Acquisitions of the medusa and polyp stages are indicated by orange and blue diamonds respectively. Staurozoa adult stages show a mix of polyp and medusa characters. **(b)** Phylogeny and evolution of Hydrozoa following [32]. The groups 'Filifera', 'Trachymedusae' and 'Limnomedusae' are probably not monophyletic [30, 32]. Losses of the polyp stage in the clade Trachylina are indicated by white diamonds. The planula stage was likely lost in the common ancestor of Aplanulata [35•]. It is still equivocal whether the medusa stage was lost concomitantly, or later, within this clade [35•]. Mature siphonophores are composed of specialized polyps and medusae that remain attached within the colony. **(c)** Examples of the four main life cycle types found in Hydrozoa. In all cases sexual reproduction generates planula larvae. **(i)** *Clytia hemisphaerica*; polyps develop from planulae by metamorphosis; medusae by budding from polyps. Two polyp types co-exist within the colony, specialized for medusa budding (gonozoid; left) and feeding (gastrozoid; right). Image from [13]. **(ii)** *Aglantha digitale*; the planula larva metamorphoses directly into a medusa. **(iii)** *Hydractinia echinata*; The colony contains four types of polyp (from left to right): gonozooid, gastrozooid, dactylozooid, tentaculozooid. The common part of the colony also includes protective spines. **(iv)** *Nanomia bijuga*; the larva develops into a complex polygastric colony comprising different types of medusa- (*e.g.* nectophores, propelling the colony – in blue) and polyp- (*e.g.* gastrozooid – in orange) derived structures, distributed in ordered arrays. Image in (c-i) reproduced from [13]. Images courtesy of Alexander Semenov (c-ii), Uri Frank (c-iii), Brad Gemmell (c-iv).

Figure 2. *Clytia* medusa: muscle and egg formation. (a) Medusa organization and development. **(i)** Diagram of a mature *Clytia* jellyfish; cc: circular canal, ex-u: ex-umbrella, go: Gonad, ma: manubrium, tb: tentacle bulb, te: tentacle, rc: radial canal, sub-u: sub-umbrella surface, ve: velum. **(ii)** Convergent evolution of striated muscles in Bilateria and Cnidaria [63••]. **(iii)** Subumbrellar striated muscle of a young medusa stained with phalloidin (red in iii and iv; grey in v and vi) and nuclei stained with Hoechst (blue). **(iv)** Newly budded medusa – at this stage the striated muscle layer (sm) covers most of the sub-umbrella surface and is sandwiched between an endodermal (end) and ectodermal smooth muscle (ect) layers. gp: gonad primordium, other labels as in (i). Image courtesy of Johanna Kraus [61•]. **(v)** Confocal section of a medusa bud within the gonozoid. Prominent features are the

developing manubrium (ma), striated muscles (sm) and tentacle bulbs (tb). **(vi)** Confocal section of an early medusa bud composed of ectoderm (ect), endoderm (end), and a third layer, the entocodon (ent), which generates the striated muscle of the medusa. The entocodon is a unique feature of hydrozoan medusae; homology to mesoderm has been proposed but is not widely accepted (see [62]). **(b)** *Clytia* oocyte maturation [64, 67, 75]. **(i)** Female gonad containing fully grown oocyte ready to mature (FGO). **(ii)** Fully-grown oocyte with germinal vesicle (GV) close to the cell surface on the ectoderm side (ect), opposite the contacts with endodermal cells (end). **(iii)** The same oocyte about 15 min after a light cue, undergoing germinal vesicle breakdown (GVBD). A light cue initiates the release of maturing inducing factor (MIH) by the gonad ectoderm, which unblocks the oocyte's meiotic arrest at prophase I *via* an cytoplasmic cAMP release / PKA activation, leading to activation both of MPF and of the Mos-MAPK pathway. **(iv)** Spawning of the same oocyte, about 100 min after light; involves rupture of the ectodermal epithelium just after second polar body (pb) emission. **(v)** *Clytia* egg with the heads of attracted sperm (sp) visible in the surrounding jelly. Fertilization induces MAPK inactivation and increase of intracellular calcium, shown in *Cytaeis* to prevent polyspermy [68•]. Scales bars: 100 μm , except for (a-iii): 10 μm .

Figure 3. Embryonic axis establishment and stem cell plasticity. **(a)** Schematic representation of *Wnt3* expression at five embryonic stages in *Clytia*. From left to right: fertilized egg, blastula, early gastrula, late planula, primary polyp. *Wnt3* mRNA is localized at the egg animal pole, and oral (top in all figure parts) expression is maintained at all stages. Drawings modified from [13]. **(b)** *Wnt3* Morpholino injected embryos show no oral-aboral polarity. Images reproduced from [74]. *Strabismus* Morpholino larvae show disrupted PCP and ciliogenesis. Images reproduced from [76••]. Arrowheads indicate microvilli marking sites where ciliogenesis has failed. **(c)** Schematic representation of cell lineages in *Hydra* (top) and *Hydractinia* (bottom). Epithelial cells (EC) can be generated from interstitial stem cells (i-cells) in *Hydractinia*, but not in *Hydra*. Intermediate differentiation stages are not represented [86]. **(d)** Summary of *Hydractinia* polyp head regeneration. Proliferating i-cells (blue dots) migrate towards the oral pole after bisection and participate in the formation of the new head structures. Tools routinely used in *Hydractinia* regeneration studies include stable transgenic fluorescent reporter lines and proliferation assays (BrDU). Images from [88••]. Scales bars: 100 μm , except the four right panels in (b): 5 μm .

Table 1 – Hydrozoans used for genetic/molecular studies

Clade/Species	Available techniques	Main research topics
Aplanulata		
<i>Hydra</i> spp.	<i>In situ</i> hybridization; RNAi; egg micro-injection; transgenesis; mutagenesis; proteomic; RNAseq of fluorescent-tagged sorted cells	Stem cell; regeneration; pattern formation; organizer; budding; symbiosis; sex determination; aging [2-12,40,70, 85,89-91,99]
Capitata		
<i>Cladonema radiatum</i>	<i>In situ</i> hybridization	Specification of sensory cells; eye development and regeneration [15,56,57]
<i>Eleutheria dichotoma</i>	<i>In situ</i> hybridization; RNAi	Hox genes; patterning [19,20]
Filifera		
<i>Cytaeis uchidae</i>	Manipulation of oocytes and eggs	Reproductive biology [65,66,68]
<i>Hydractinia echinata</i>	<i>In situ</i> hybridization; RNAi, Morpholino and mRNA injection; transgenesis	Polyp regeneration; stem cells; colony development [14,42,71,78–83,86–88,92,97,98]
<i>H. symbiolongicarpus</i>	<i>In situ</i> hybridization; genetics	Allorecognition; polyp polymorphism [14,39,43-53]
<i>Podocoryna carnea</i>	<i>In situ</i> hybridization; manipulation of medusa tissues	Colony development; medusa development; muscle transdifferentiation [16,17,38,60]
<i>Turritopsis dohrnii</i>	‘reverse development’	Life cycle plasticity [17,18]
Leptothecata		
<i>Clytia hemisphaerica</i>	<i>In situ</i> hybridization; Morpholino and mRNA injection; manipulation of oocytes and eggs; CRISPR and TALEN gene editing (unpublished)	Larval development; polarity establishment and maintenance; stem cells; oocytes; muscle evolution; medusa formation [13,58,61,63,64,67,73-77,93-96,100]
Siphonophorae		
<i>Nanomia bijuga</i>	<i>In situ</i> hybridization	Colony development [21-23,27,101]

Note: development of extensive transcriptome and genome resources are underway for most of these species. *In situ* hybridization technique and/or transcriptome resources have been developed for a few others species (e.g. [1,37,59]).

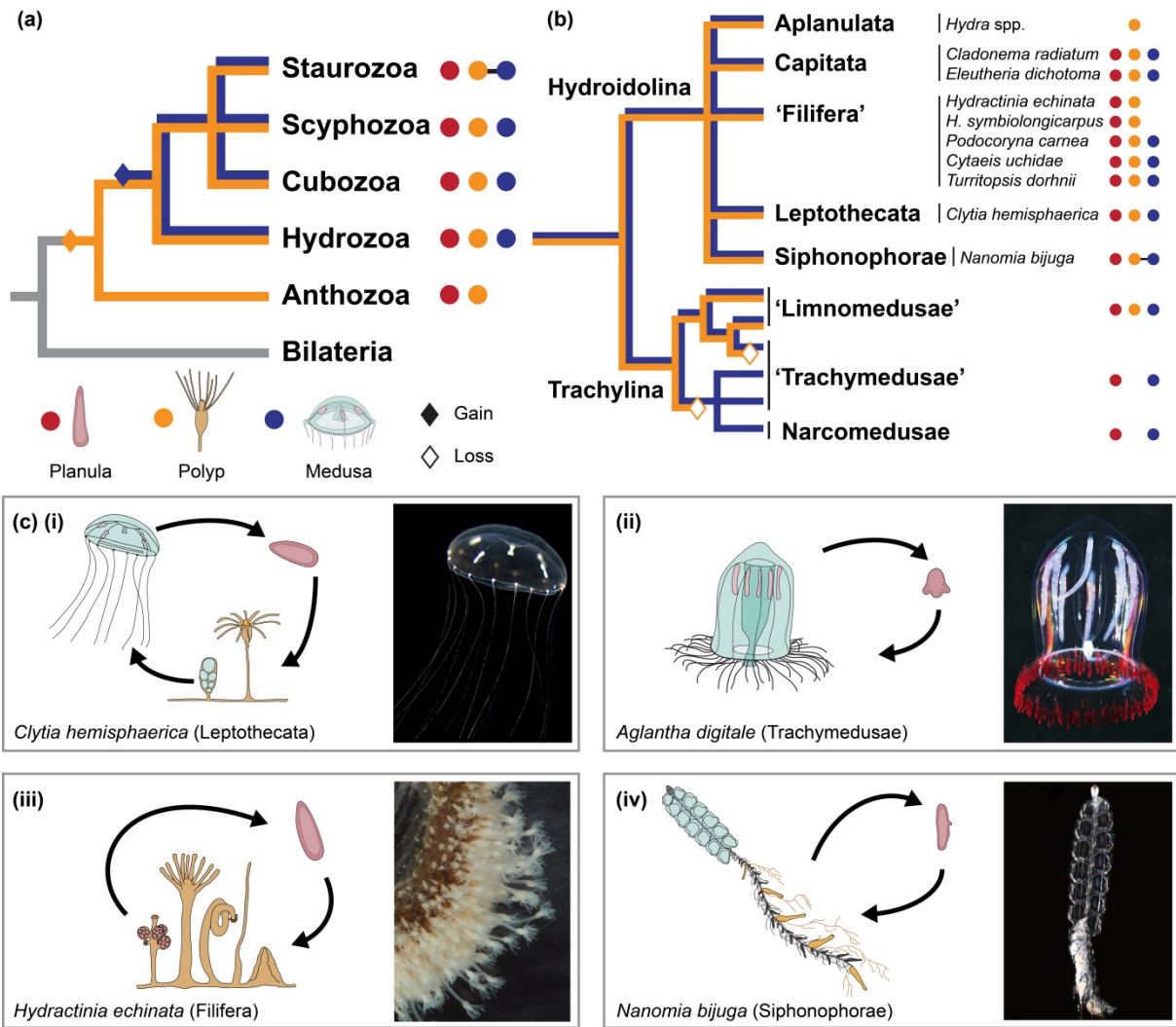


Figure 1

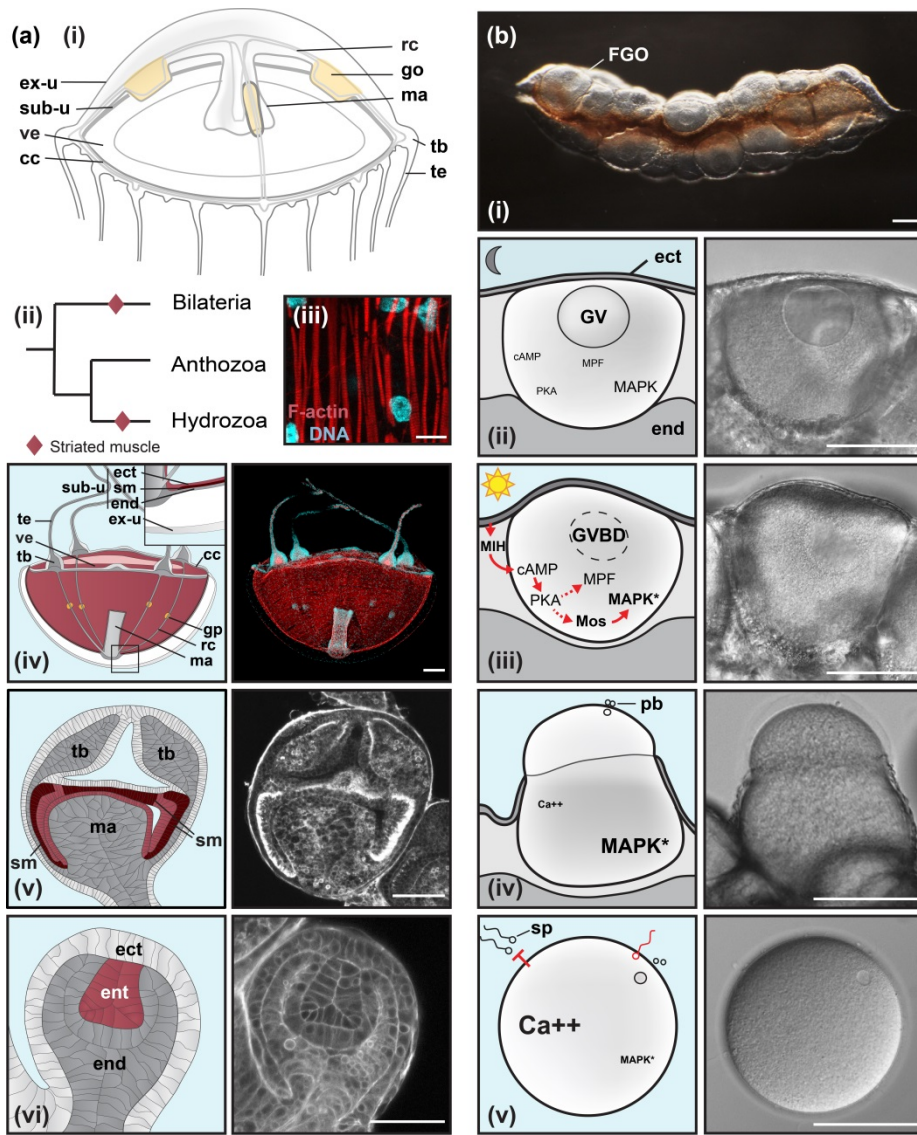


Figure 2

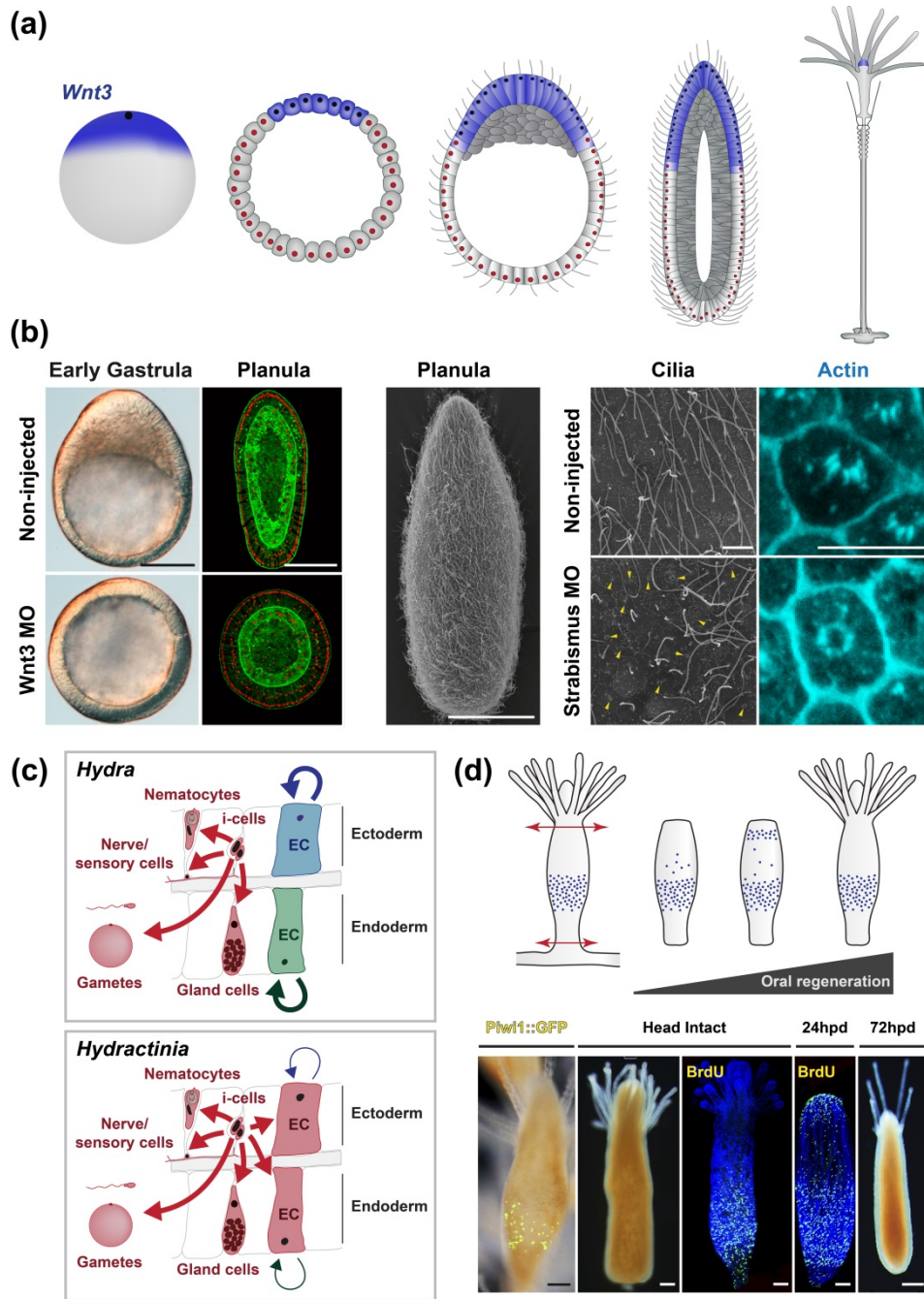


Figure 3