



HAL
open science

Bio-inspired benchmark generator for extracellular multi-unit recordings

Sirenia Lizbeth Mondragón-González, Eric Burguière

► **To cite this version:**

Sirenia Lizbeth Mondragón-González, Eric Burguière. Bio-inspired benchmark generator for extracellular multi-unit recordings. *Scientific Reports*, 2017, 7, pp.43253. 10.1038/srep43253 . hal-01480361

HAL Id: hal-01480361

<https://hal.sorbonne-universite.fr/hal-01480361v1>

Submitted on 1 Mar 2017

HAL is a multi-disciplinary open access archive for the deposit and dissemination of scientific research documents, whether they are published or not. The documents may come from teaching and research institutions in France or abroad, or from public or private research centers.

L'archive ouverte pluridisciplinaire **HAL**, est destinée au dépôt et à la diffusion de documents scientifiques de niveau recherche, publiés ou non, émanant des établissements d'enseignement et de recherche français ou étrangers, des laboratoires publics ou privés.



Distributed under a Creative Commons Attribution 4.0 International License

SCIENTIFIC REPORTS



OPEN

Bio-inspired benchmark generator for extracellular multi-unit recordings

Sirenia Lizbeth Mondragón-González & Eric Burguière

Received: 22 September 2016

Accepted: 23 January 2017

Published: 24 February 2017

The analysis of multi-unit extracellular recordings of brain activity has led to the development of numerous tools, ranging from signal processing algorithms to electronic devices and applications. Currently, the evaluation and optimisation of these tools are hampered by the lack of ground-truth databases of neural signals. These databases must be parameterisable, easy to generate and bio-inspired, i.e. containing features encountered in real electrophysiological recording sessions. Towards that end, this article introduces an original computational approach to create fully annotated and parameterised benchmark datasets, generated from the summation of three components: neural signals from compartmental models and recorded extracellular spikes, non-stationary slow oscillations, and a variety of different types of artefacts. We present three application examples. (1) We reproduced *in-vivo* extracellular hippocampal multi-unit recordings from either tetrode or polytrode designs. (2) We simulated recordings in two different experimental conditions: anaesthetised and awake subjects. (3) Last, we also conducted a series of simulations to study the impact of different level of artefacts on extracellular recordings and their influence in the frequency domain. Beyond the results presented here, such a benchmark dataset generator has many applications such as calibration, evaluation and development of both hardware and software architectures.

Electrical recording of extracellular action potentials is the “gold standard” technique widely used in electrophysiology¹, where the signals are exploited to correlate neural activity with a behavioural output and/or the electrophysiological consequences of brain lesions or drug infusion, etc. The emergence of novel methods for neural analysis together with high-throughput data acquisition technologies² provide new possibilities for the exploitation of brain activity at the single unit level, for example, giving instantaneous feedback for closed-loop interactions with brain circuits when abnormal neural signals are detected³. This approach has proven effective for several pathological conditions such as Epilepsy, Parkinson’s disease, or Essential Tremor^{4–7}. From a more fundamental perspective, novel algorithms have been recently proposed to process these large amounts of neural data, such as semi-automatic and automatic clustering techniques, to distinguish different neural sources in multi-unit extracellular recordings^{8–12}. In order to validate the performance and accuracy of these different algorithms or devices, reliable datasets, where the majority of the signal content is known, are essential. Ideally, this ground-truth reference should be a completely annotated and parameterised dataset, in which three levels of information should be modifiable and known in detail: the recording environment (e.g. density of active population of neurons or distance from neurons to recording sites), the population dynamics (e.g. firing rate, spike timing of each neuron and spike waveforms) and the noise content (e.g. background noise level contribution and number of artefacts).

There are several applications (Fig. 1) where using a parameterised dataset can be advantageous, ranging from algorithm design to development and evaluation of electronic devices. Moreover, parameterised datasets are needed to evaluate the efficiency of unsupervised classification algorithms. In recent years, several spike sorting algorithms have been proposed^{8–12}, however, it is difficult to assess their sorting efficiency since the datasets used to evaluate their performance were heterogeneous. These studies either used real recording datasets where all the events that constitute the signal were not known, or simulated datasets that did not include all the features encountered in real recording, such as slow oscillations and/or disturbance by artefacts. Therefore, one solution could be to use a fully annotated and parameterised dataset as a ground-truth reference to objectively assess the

Sorbonne Universités, UPMC Univ Paris 06, CNRS, INSERM, Institut du cerveau et de la moelle épinière (ICM), F-75013 Paris, France. Correspondence and requests for materials should be addressed to E.B. (email: eric.burguiere@gmail.com)

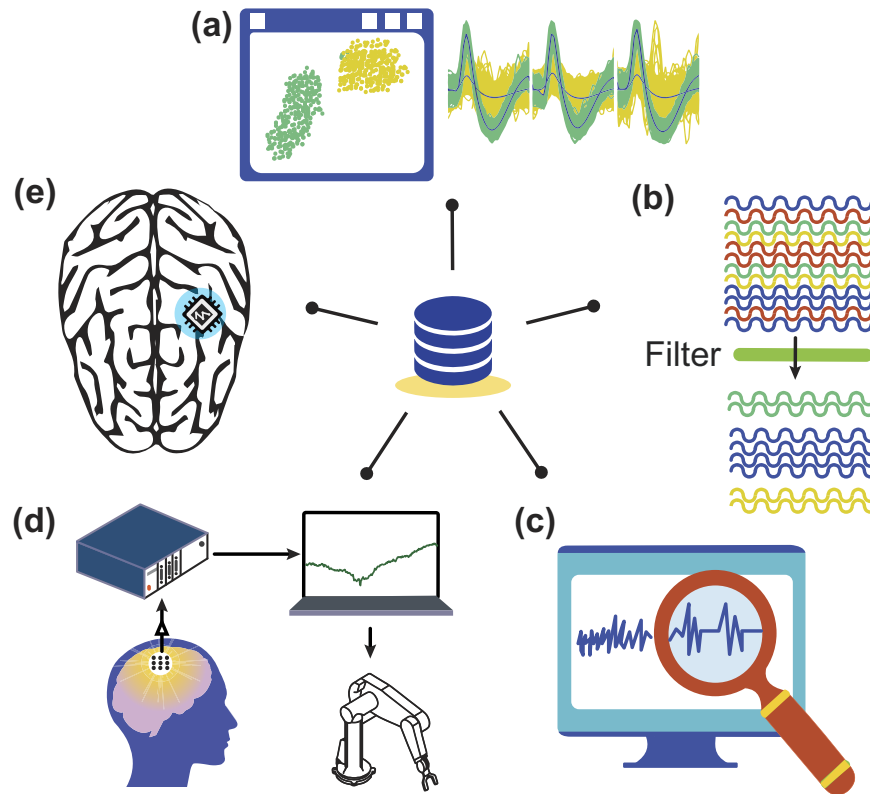


Figure 1. Examples of bio-inspired neural benchmark applications. Such benchmarks are needed in two contexts, on the one hand, in applications that involve fine signal processing usually executed on computers such as (a) neural pattern detection, (b) cluster classification algorithms and (c) signal denoising methods, and on the other hand in applications with direct exploitation of signals, usually executed on electronic devices, such as (d) brain-computer interfaces and (e) on-site decoding neural prosthetics.

performance of these different spike sorting algorithms (Fig. 1a). In the same manner, fully annotated datasets could also be used to challenge event detectors or noise reduction algorithms (Fig. 1b and c).

In addition, these benchmarks could be very useful for brain-computer interfaces and neural prosthetic devices (Fig. 1d and e). The common approach to assess the performance of such electronic devices is to use a large number of neural signal datasets that include a range of various features (e.g. different noise levels, a degree of meaningful information load, signal resolution etc.). For this purpose, parameterised datasets with independently modifiable features would allow the generation of a large variety of neural signal profiles in a controlled manner. This approach could also enable the simulation of experiments for calibration purposes instead of performing labour- and cost-intensive experiments with real subjects.

Several approaches, based either on biological or purely computational models, have been proposed¹³ to generate reliable (in terms of biological constraints), fully annotated, and flexible benchmarks. With *in-vitro* biological approaches^{14,15}, investigators have conducted simultaneous recordings to capture intracellular signals emitted by some neurons located closely to extracellular electrodes. Although this approach relies on real experimental data, the limitation is that only a few neurons could be followed by the intracellular recordings, which represent a small part of the complex signal recorded at the contiguous extracellular recording sites.

Computational approaches use either compartmental or biophysically data-driven models^{13,16–24}. The former are parameterisable but computationally too demanding when required to simulate a large number of neurons. The latter, in contrast, are computationally simpler and faster but not parameterisable given the use of signal templates.

A more recent solution is a hybrid approach, where compartmental and biophysically data-driven models are combined: while the compartmental models serve to generate the neural signal, spike template-based models, on the other hand, simulate the physiological background noise²⁵. Models based on this approach are a good compromise between complexity and bio-realism. Their great potential relies on their ability to generate a simulated signal similar to that arising from a large population of single neurons, leading to a more realistic approach. These hybrid models could be improved by adding other features found in experimental recordings such as corrupting events that could affect signal quality.

In the present study, we propose a computational procedure to generate realistic neural signals based on a hybrid model approach, in which both real and simulated signal features are combined with a relatively low computational requirement. The generated datasets are fully parameterisable and include all the original features found in real recordings such as a variety of different types of artefact and background noise. The validation stage of our procedure explores the similarity between real recordings and our model-generated signals. We show that

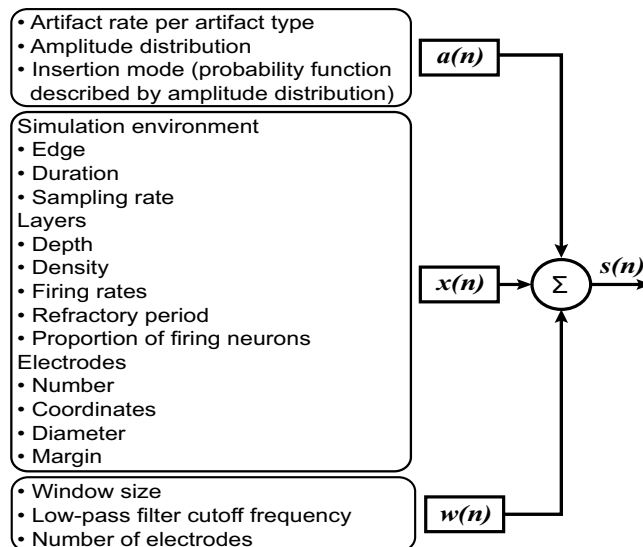


Figure 2. Configuration parameters of the benchmark dataset generator. For each computing module in the benchmark dataset generator, the user has rapid access to allow its modification through a unique file descriptor (.xml file) to easily create different datasets. The parameters are listed inside the text boxes next to each computing module.

our model is easily modifiable and generates synthetic signals similar to those obtained in distinct experimental conditions. We also illustrate the flexibility of our simulator by modelling different types of recording configuration (tetrodes and microelectrode arrays), brain tissue (such as juxtaposed layers) and experimental conditions (awake or anaesthetised animals). To validate our approach, we focus on reproducing hippocampal recording datasets that have been extensively used in previous studies^{14,26}. With our parameterisable bio-realistic procedure, we can also easily simulate different experimental conditions. As an example, we show the incidence of different levels of artefact in anaesthetised or awake animals.

Results

Creation of a three module simulator of extracellular multi-unit signals. Our work proposes a computational procedure to generate datasets that will provide neuroscientists with a ground-truth reference for algorithm and tool evaluation of single and multi-unit signal processing. In our approach, ground-truth from real and simulated signals is obtained by adding spike activity, that is, action potentials from nearby neurons and background noise from distant neurons ($x(n)$), slow oscillations (<300 Hz) from synaptic current inputs ($w(n)$) and artefacts ($a(n)$) that can be expressed as:

$$\begin{aligned} s_1(n) &= x_1(n) + w_1(n) + a_1(n) \\ &\vdots \\ s_e(n) &= x_e(n) + w_e(n) + a_e(n) \end{aligned} \quad (1)$$

In equation (1) $s_1(n)$ refers to bio-inspired simulation of electrode number 1, with n as discrete time variable and suffix e as the total number of simulated electrodes.

Figure 2 summarises the general approach and highlights the modifiable parameters in each individual computing module. The flexibility of this approach is reflected in the creation of different benchmark datasets by simply adjusting the simulation parameters.

Comparison of simulated and real extracellular hippocampal recordings. As a starting point, we created the contribution of the local spike activity to the signal. For this, we modified an existing simulation platform²⁵ designed for a single multi-electrode (i.e. tetrode) to include multiple spatially distinct recording sites. The existing simulator implements a hybrid model that combines detailed compartment models of pyramidal cells and interneurons^{18,27–31} (available via the NEURON³² project) for the closest neurons to the recording sites, coupled with spike templates for the distant neurons, all in a 3D volume of “virtual tissue” (Fig. 3a).

The initial hybrid model²⁵ that generated the spiking activity and background noise also gave the user, via a graphical interface, the option to modify various parameters to generate the datasets. These options allowed the user to select: a single electrode or a tetrode, a uniform (between a minimum and maximum firing rates) or exponential (generalised Pareto) distribution of firing rates, and a proportion of active cells inside a cubic volume. This hybrid model²⁵ was improved in our approach by including any number of recording sites with specific coordinates in a volume of “virtual tissue”. We added the possibility to simulate multiple contiguous tissue volumes (e.g. cortical layers) with individual configurations and the possibility for the user to add customised firing rate distributions by using the Distribution Fitting App in Matlab³³. These modifications gave more flexibility to the original model and enabled us to simulate different experimental scenarios. As an example, we simulated a recording

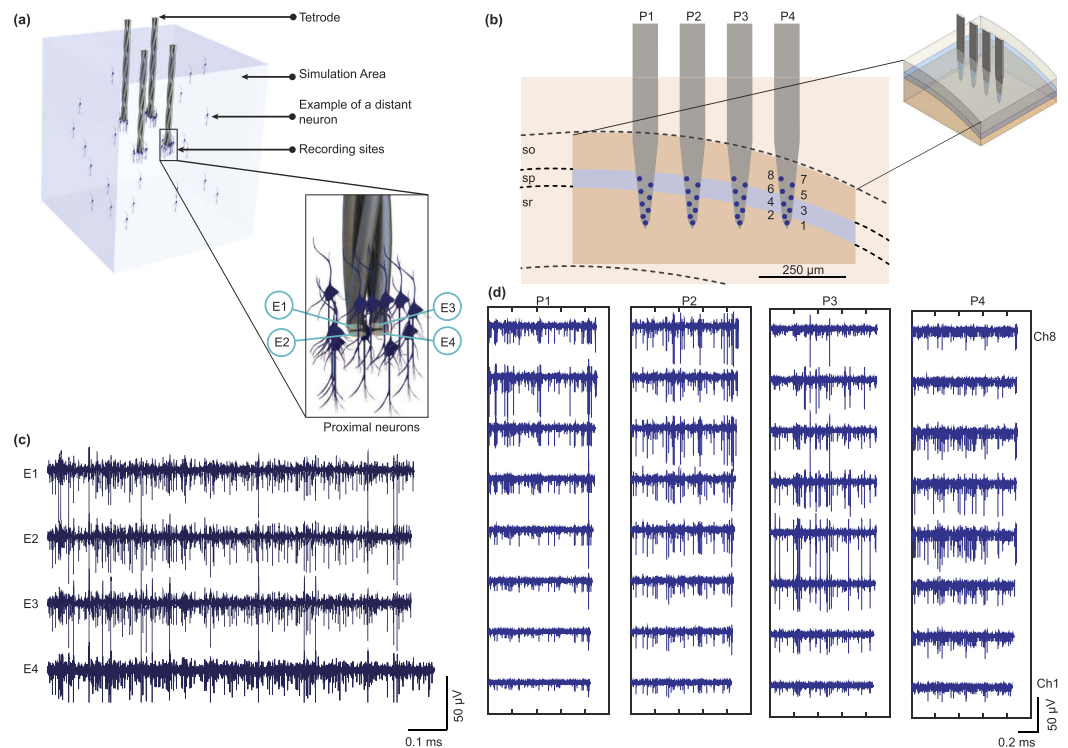


Figure 3. A data-driven model of the neural signal simulator. **(a)** The extracellular action potential simulator was modified from²⁵ to integrate several virtual recording sites (i.e. 4 tetrodes) with different configurations of hippocampal neural populations. The model computes the extracellular action potential waveforms using detailed compartment models of pyramidal cells for nearby neurons and uses action potential templates from real recordings to simulate distant neurons. The result is the contribution of close and distant neurons using the line source approximation (LSA) method⁵⁸ in a 3D virtual volume of tissue. **(b)** Modelling of a portion of virtual rat hippocampus with a 32-channel polytrode array (8 sites \times 4 shanks, dimensions follow Buszaki64 probe from NeuroNexus) superimposed across (following a stereotaxic view) the stratum radiatum (sr), stratum pyramidale (sp) and stratum oriens (so) in the CA1 region of rat hippocampus. Data for dimensions and contours of rat hippocampal regions were measured from Swanson's rat brain atlas to determine the dimensions of our volume, particularly between the atlas levels 30–35. A parasagittal view in the Figure shows atlas level 31⁵⁹ (AP = -3.70 mm relative to Bregma, ML 2–3 mm, DV 2–3 mm). **(c)** Signal samples from one extracellular virtual tetrode. **(d)** Polytrode simulation datasets over one second are shown for each virtual polytrode. The activity across channels reflects the signal location of the virtual recording sites.

Parameters	Stratum oriens	Stratum pyramidale	Stratum radiatum
Firing rate [Hz] ^{60*}	~0.6 Hz	~0.4 Hz	~0.2 Hz
Percentage of active neurons ⁴⁹	10	10	10
Layer thickness [μ m]	120	55	240
Population [neurons/mm ³] ⁴⁷	11 300	272 400	1 900

Table 1. Simulation parameters selected for the multilayer virtual volume experiment. A random distribution of point sources was set for this simulation. The refractory period was 2 ms, the sampling rate was 20 kHz. *The firing rate for each layer followed a probability distribution defined in Supplementary Fig. S3 centred around a certain firing rate.

session with a multi-electrode (polytrode) array in a virtual volume containing different neuronal populations in the hippocampus. We targeted the stratum oriens (SO), the stratum pyramidale (SP) and the stratum radiatum (SR) layers of the dorsal CA1 region of the rat hippocampus with a multi-array of 32 channels (8 channels \times 4 shanks). The design of the spatial distribution of the recording sites were inspired by the Neuronexus “Buzsaki64” probe design (Fig. 3b). The virtual probes were positioned so that the recording sites were present across the three different layers. The characteristics of the neuronal population in each layer (in terms of overall firing rate, proportion of active neurons and neuron density) were determined by following the results reported in previous studies. Details of the configuration parameters for this experimental condition are summarised in Table 1 and in the Methods section. As shown in Fig. 3c the recording sites with the largest action potentials follow the spatial curve of the middle striatum pyramidale layer.

The next feature of our model designed to ensure that simulations were close to real experimental signals was to add the contribution of non-stationary slow oscillations. In the real world an experimenter starts to work with unfiltered raw data before applying further analysis. Those slow oscillations usually refer to the low-frequency part of an extracellular voltage signal recorded inside the brain. We extracted slow oscillations (<300 Hz) from real datasets containing extracellular multichannel recordings made from the CA1 hippocampal region of rats^{14,26,34,35} (and added them linearly to the neural simulations as the non-stationary low-frequency components³⁶). Given that local field potential (LFP) <300 Hz can be contaminated by action potentials, we were aware that the extraction of low frequency components require a preceding exploration³⁷ on the original data to reveal the degree of spike contamination in LFP. In our case, we verified that the contribution of the spectral density of the mean spike waveform was negligible at low frequencies ($\lesssim 300$ Hz).

One element that is often omitted while developing realistic neural simulators is the inclusion of artefacts that contaminate real microelectrode recordings. In any extracellular data analysis, these undesired features should be considered, especially when it comes to unsupervised methods. Many algorithms of detection and artefact suppression have been previously reported, and they all require ground-truth data for evaluation and optimisation purposes. Hence, the inclusion of identified artefacts plays an important role in our neural database creation procedure.

For the artefact component of the benchmark generator, an artefact library was created by extracting artefact events from real data recordings^{26,38,39}. The library contains spike-like sharp artefacts, grooming artefacts and mastication artefacts identified from different *in-vivo* extracellular recording experiments. The library was organised as indicated in Supplementary Fig. S1. The identification was made following multiple validation criteria stages that include: a test for simultaneous cross-channel appearance within an artefact gap of $300\ \mu\text{s}$ in at least 80% of the total number of channels, a visual waveform inspection and a time-coincident comparison with simultaneous video recording (Fig. 4a and b), and a threshold crossing test for the spike-like sharp artefacts (thresholds selected are mentioned in Supplementary Table S1). Each artefact set a_n has between 22 and 32 template waveforms leading to identification and extraction of 40 mechanical shock artefact sets in 28 channels, 20 mastication artefact sequences in 32 channels, and 21 grooming artefact sequences in 28 channels.

The isolated mechanical shock artefacts are characterised by large peak-to-peak amplitudes (between $136.1064\ \mu\text{V}$ ± 62.0262 , see details in Supplementary Fig. S2 and Supplementary Table S2) and a peak frequency region around 1000–2000 Hz (Fig. 4c and Supplementary Fig. S2). These results are in line with a study that describes the characteristics of artefacts that are regularly found in *in-vivo* neural recordings⁴⁰.

The mastication artefacts are electrical alterations of the recorded brain signals that appear during chewing events. Solid food provokes strong contractions of the jaw muscles which result in large rhythmic noisy bursts. This rhythmical oral behaviour is specific to mammals⁴¹ and can be identified across channels during electrophysiological recordings (See Supplementary Fig. S3). Characteristic rhythmic noisy bursts of the detected chewing events from rat recordings presented a mean chewing rate of 6.17 bursts/s with a mean duration of 3.3 s and a mean chewing cycle duration of 162.5 ms (see Supplementary Table S3). The identified mean chewing cycle duration results are consistent with previous studies in rat⁴¹.

Grooming artefact sequences across channels were extracted from recordings in mice in a task where they were allowed to groom freely⁴². Identified grooming artefacts appear across channels with large amplitudes and a heterogeneous duration range of ~ 0.4 –28 s. The grooming events identified (phases 1 to 4) constitute a flexible grooming chain. The beginning of each phase of stereotyped movements was annotated within the artefact sequences (Fig. 4c and Supplementary Table S3).

The complete process of database generation is summarised in Fig. 5 and consists of the summing of the following three components: (1) non-stationary low frequencies, (2) annotated and parameterised action potential simulations and (3) the addition of identified artefacts.

Generation of bio-realistic hippocampal benchmark databases in different experimental conditions. To challenge the accuracy and the performance of our model, we aimed to reproduce two types of real hippocampal extracellular multi-unit recording: in awake and in anaesthetised rodents. To mimic the macroscopic population activity of hippocampal neurons used in the real recordings, we set common parameters for both experimental conditions (i.e. those related to the recording environment such as the selected array of electrodes and those related to the simulation environment such as population density) but we differentiated two input parameters for the simulator that best approximated the dynamics of neural populations in our two distinct cases: firing rate and percentage of active neurons (Table 2 summarises the parameters chosen).

Our simulations reproduced neural signals acquired from the hippocampal layer CA1 region^{14,26,34,35}. Different numbers of artefacts were assigned to the neural signals according to each experimental condition since recorded signals in anaesthetised animals tend to be less contaminated by artefacts than in freely behaving animals. For a 10 s simulation, an artefact rate of 1% of the signal was set for the awake condition and 0.1% for the anaesthetised case.

To assess the quality of our benchmark generator, we compared our simulated signals to real recordings. A time-domain examination showed that real and simulated signals had similar profiles in terms of amplitude and action potential distribution, for the two experimental conditions (Fig. 6a). We computed the averaged periodogram of the power spectrum density (PSD) estimate based on simulated and real signals of anaesthetised and awake rodents. The results confirmed that the distribution of power versus frequency components of the recorded signal in anaesthetised or awake animals were accurately reproduced by our model since no difference could be detected between real and simulated signals (Fig. 6b).

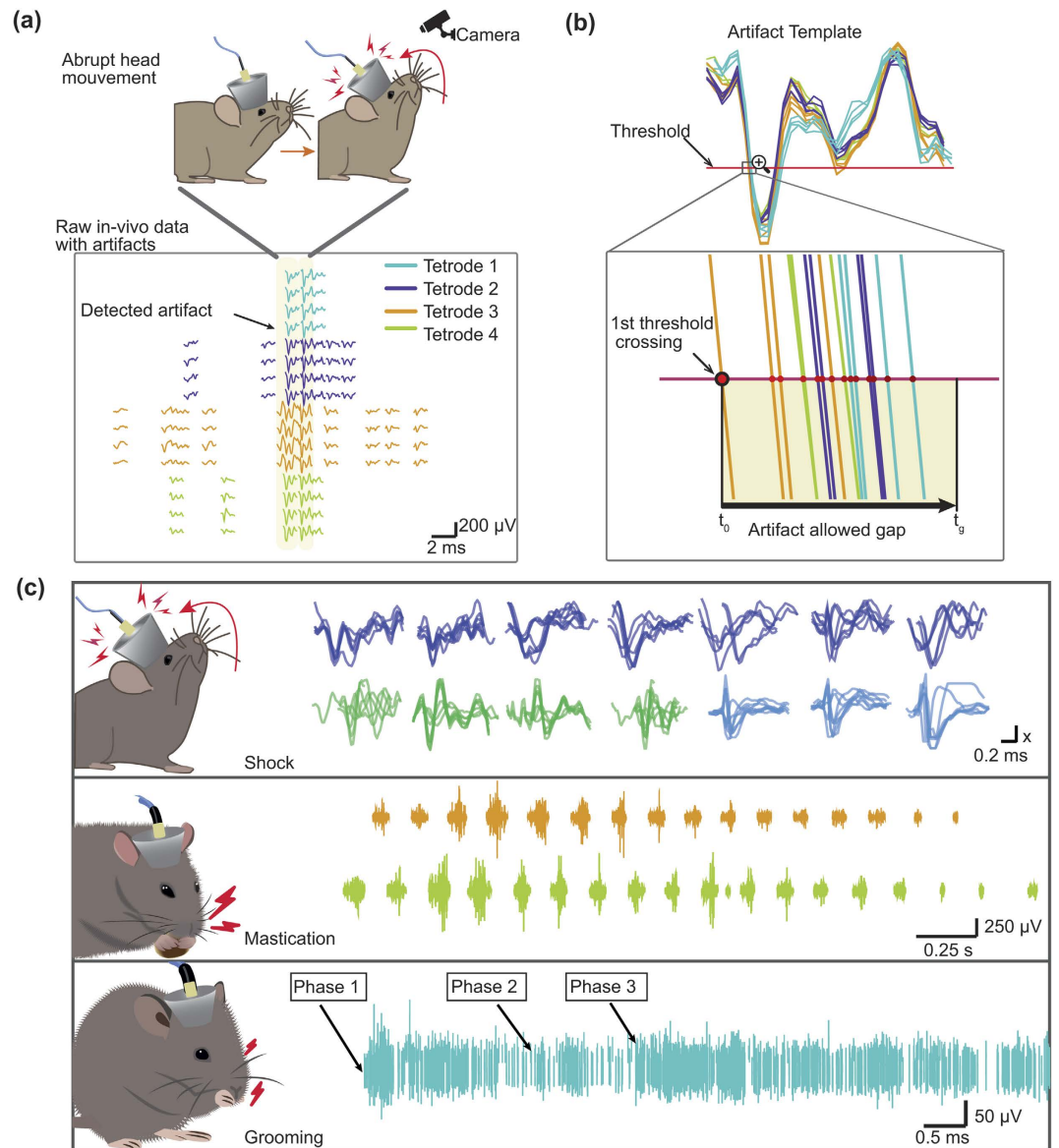


Figure 4. Artefact Library extracted from *in-vivo* real recordings. Artefact extraction is based on multiple validation criteria. (a) The artefact events were identified during unusual physical events captured by video monitoring (e.g. mechanical shock to the headstage, abrupt movement of the animal, grooming events, etc). (b) The artefacts were identified by their time-coincidence across channels ($>80\%$ of the total number of spatially distinct channels) within a width gap parameter ($300\ \mu\text{s}$) starting from the first threshold crossing. (c) The library includes spike-like noise artefacts produced mainly by electronic interference or abrupt head movement, chewing artefacts and grooming artefacts. For the head collision artefacts each set shown in the figure is a superposition of waveforms corresponding to the first channel for each of the 7 tetrodes. The x value of the vertical axis of the scale bar is $20\ \mu\text{V}$, $30\ \mu\text{V}$ and $40\ \mu\text{V}$ for the blue, green and purple waveforms respectively. Mastication artefacts follow well identified rhythmic patterns (shown in Supplementary Fig. S2). Grooming artefacts appear across channels as high level movement artefacts with variable duration (See Supplementary Table 4).

Interestingly, we could illustrate the utility of our parameterisable benchmark generator by looking at the effect at different contamination levels on electrophysiological signals. We explored the effects of application of different perturbation levels of artefacts using our annotated datasets for the two scenarios, in anaesthetised and awake subjects.

Our model predicted that the amount of artefact contamination would differentially affect the extracellular signals from anaesthetised or awake conditions. The evidence shows that, for the same level of signal contamination; the power-spectrum distribution was altered more in the anaesthetised than in the awake condition (Fig. 7). Action potentials contain a wide range of frequencies^{36,43} and the inherent higher frequencies overlap with the high frequency content of sharp artefacts which causes a growth in terms of power content in those frequency bands (as shown in Fig. 7). This phenomenon is more obvious for narrow extracellular spikes and it is easier to

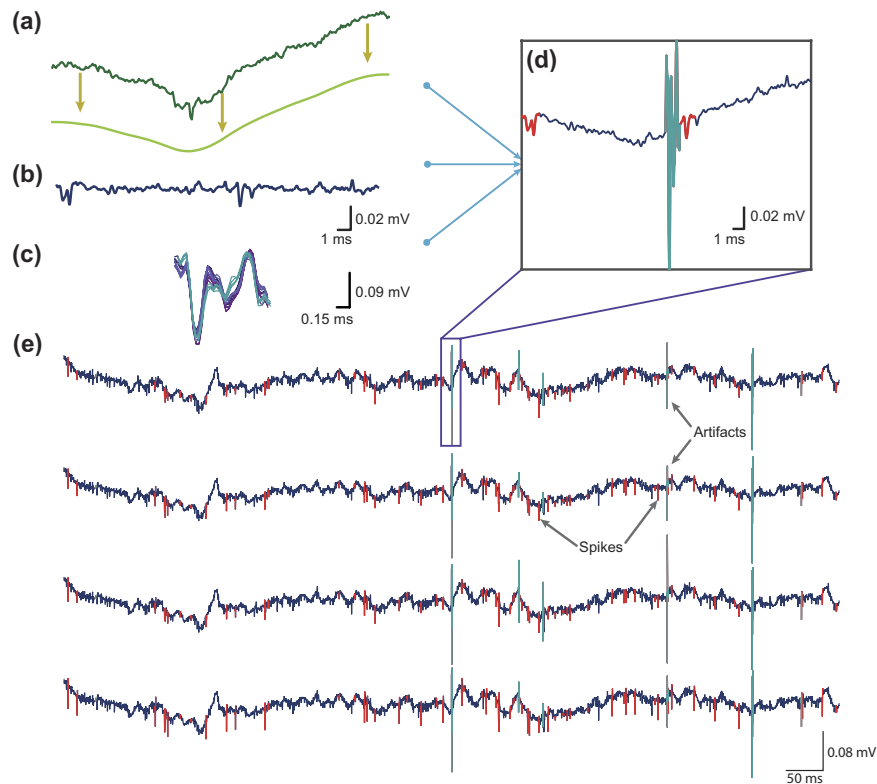


Figure 5. Generation of a ground-truth database of extracellular simulated realistic recordings. (a) Low frequencies extracted from real recordings using a Low Pass Butterworth Filter; (b) Neural data simulated from compartmental models and spike templates. (c) Annotated artefacts. (d) The addition of these three elements forms a completely parameterised benchmark. The action potentials are displayed in red and the artefacts in light blue.

Parameters	Awake	Anaesthetised
Firing rate [Hz] ^{51,61,62}	0.5–12	0.5–5
Percentage of active neurons ⁴⁹	10	4
Population [neurons/mm ³] ^{46,47}	300 000	300 000
% of artefact contamination	1	0.1

Table 2. Simulation parameters selected for both awake and anaesthetised experiments. A random distribution of point sources was set for both simulations. The refractory period was 2 ms, sampling rate was 20 kHz and the simulation duration was 10 s.

observe in contaminated recordings of anaesthetised animals, where the neural activity is lower than for the awake subject experiments.

The results confirmed that spikes and artefacts can be confused, both in amplitude and in frequency content. Thus, multiple testing that relies on other parameters should be taken into account to differentiate them, such as the extracellular spike width, wave shape and time appearance across channels.

Discussion

We are currently witnessing an exponential increase of neural data collection paradigms with massive simultaneous recordings brought forward by the progress of microfabrication techniques and integrated sensors. The collection and use of such large amounts of neural information has stimulated the development of a number of hardware and software tools. Examples are signal acquisition devices, signal processing algorithms, or software for the calibration of brain-computer interfaces. To date, despite the necessity of benchmark datasets to test these kind of applications, there are surprisingly few ground-truth datasets available, and most of these are not parameterisable. Thus, there is an urgent need of such benchmarks to assess the validity of recently developed toolboxes and algorithms aiming to analyse neural data. Evidence of this need are initiatives such as the Spike Sorting Evaluation Project⁴⁴, which aims to gather different benchmark datasets used to compare and evaluate software.

To address this issue, we developed a bio-inspired computational approach to create annotated and parameterised databases of neural signals. The innovative aspect was to combine neural signals simulated by a hybrid model with other components encountered in real recording such as artefact events and low frequency oscillations. To

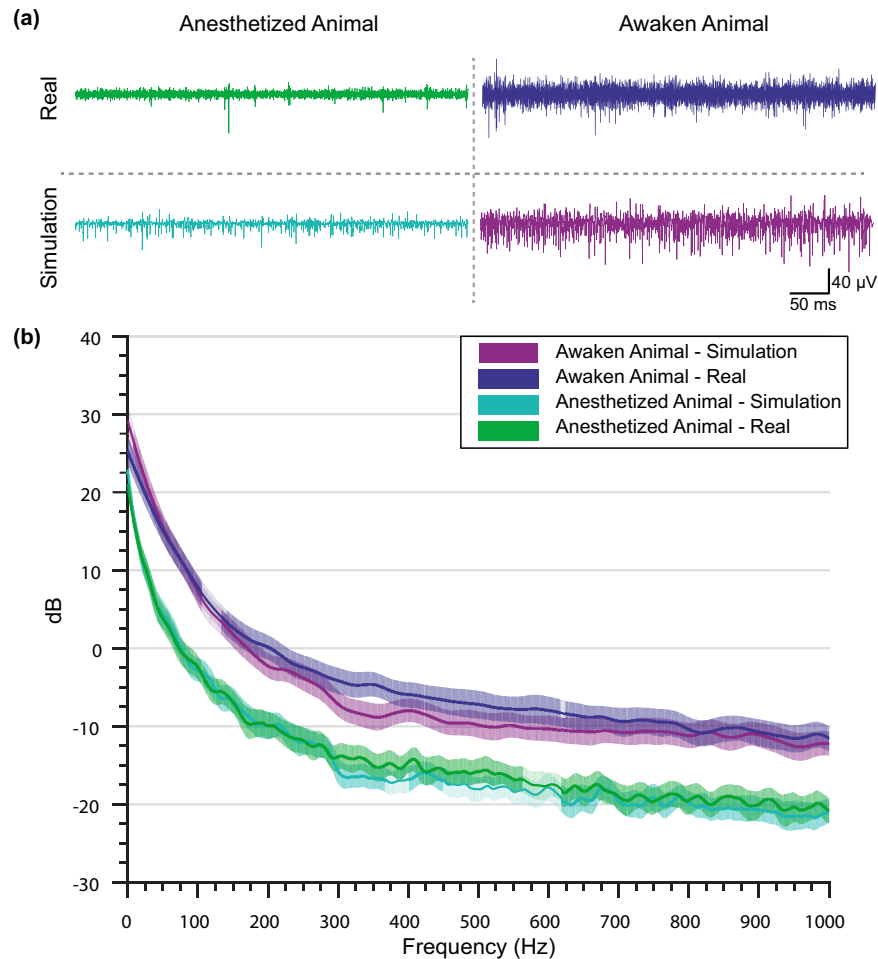


Figure 6. Inspection of simulated and real extracellular traces. (a) Qualitative comparison between real (600 Hz high-pass filtered) and simulated signals. (b) Averaged periodogram PSD estimate vs frequency for the real and simulated versions of the anaesthetised and awake versions of experiments. Low frequencies were extracted from different windows in the same recording session and linearly added to the simulated neural signals.

illustrate the flexibility of our methodology, we simulated two distinct experimental conditions; extracellular signals extracted from anaesthetised or awake rodents. We challenged our generated benchmark dataset by comparing the simulated signal with real experimental recordings.

Our results showed that the synthetic signals generated bore a close resemblance in terms of frequency properties and spike proportions to the recorded ones, and this held for our two different conditions. We showed that the addition to the simulated signal of common features encountered in real recordings (such as low frequency oscillations and artefacts) could have a significant impact on the spectral signature. Indeed, we found that the artefacts extracted tend to have a wide spectrum with dominant content at high frequencies that overlaps the neural spikes. These artefacts affect the frequency components in neural signals in different ways according to the percentage of the contamination of the signal and to the nature of the experimental setup (Figs 6 and 7).

Spectral analysis of our artefact library showed that most of the power of the signal from these events fell within the frequency range of 1000–3000 kHz. These values are similar to those shown for the power spectral density of action potential events³⁶. Taken together, these results showed that the addition of artefact events into simulated signals, an innovation of our benchmark generator, is an essential component to consider as they can drastically corrupt the frequency domain signature of spiking activity.

Additionally, we showed an application example where we simulated a polytrode array across different virtual layers of tissue. Here the aim was to demonstrate how different experimental setups could be configured independently using the same simulator and how the different generated simulations accurately captured the overall neural activity.

One application where our benchmark generator could be of great interest is for testing devices and analysis modules used in closed-loop experiments, in which a stimulus is delivered immediately after a feature of interest is detected. In this configuration, a series of devices and software analysis modules interact to form the closed-loop chain. Between the key elements of the chain, online sorting algorithms and on-chip real-time modules (e.g. Field Programmable Gate Arrays (FPGAs) and Complex Programmable logic devices (CPLDs)) are key

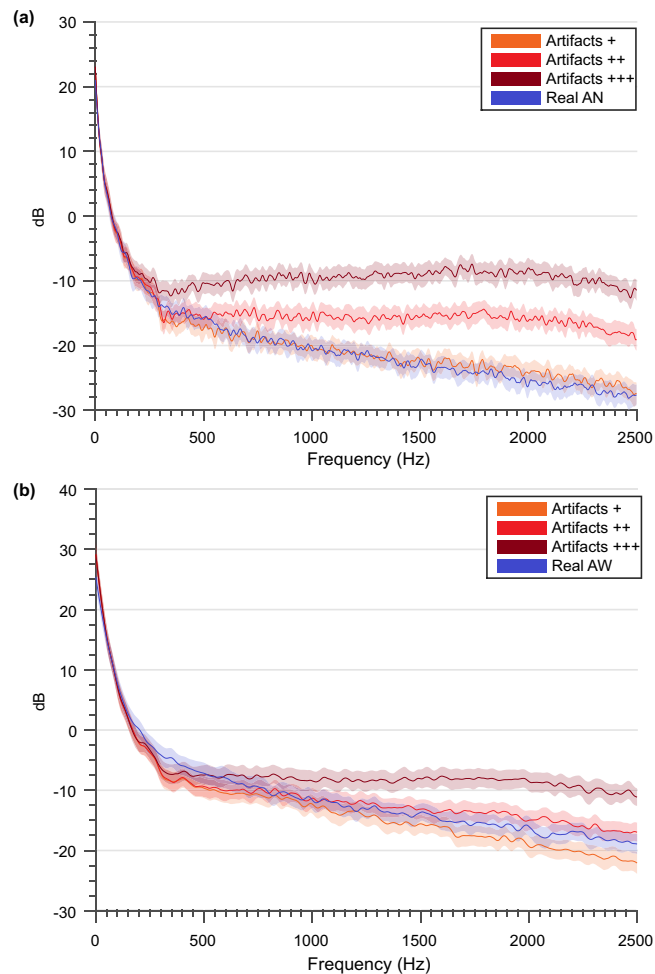


Figure 7. Averaged periodogram for simulations contaminated in different proportions. (a) Averaged periodogram PSD estimate vs frequency for the real and simulated versions of the anaesthetised paradigm. (b) Averaged periodogram PSD estimate vs frequency for the real and simulated versions of the awake paradigm. The signals (with a duration of 10 s) were contaminated with different artefact rates, starting at a contamination percentage of approximately 1% (+), subsequently 10% (++), and 57% (+++) of the signal.

elements for online analysis. To correctly evaluate and compare the performance of these systems, the use of reliable benchmark datasets, such as the ones presented here, are essential. Ideally, this should be done by generating the datasets via the simulator and streaming them directly to the acquisition systems.

The datasets generated could be useful to evaluate the performance of various tools such as denoising and pattern recognition modules or spike sorting algorithms, implemented either in hardware or software.

In the future, this fully annotated benchmark should be optimised to fit more experimental scenarios. Some parameters and features could be added or replaced depending on the experimental conditions and the cellular and physiological properties of the neural substrate chosen for simulation. For example, in our model, irregular interspike intervals reflect a random process bounded between a predefined firing-rate distribution. However, in real recordings, it is common to find some neurons that fire action potentials in a bursty mode⁴⁵. This feature could be added to the model by replacing the instantaneous firing rate with a generated probability distribution train of burst events.

One of the most challenging features to reproduce in synthetic signals is the background noise, given that there are many factors that shape it. Such disturbances can proceed from the subject itself (e.g. physiological background noise produced by the subject's activity, additive and variable sources of current from other cells that are captured by the electrodes), the recording site (e.g. dimension, neural density, whether it be a preparation or not), the electronic instrumentation and the electrodes that couple to the tissue (e.g. thermal noise, shot noise, dielectric noise), external sources (e.g. electromagnetic and electrostatic coupling between the circuitry and external devices), and from the digital conversion itself (e.g. aliasing). Although there are metrics to measure their average contribution, it is still a major challenge to replicate every source of noise. We present here a library of common artefacts found during recordings that can be used to complete the benchmark datasets.

Methods

In this section, we describe in detail the three main components of our benchmark generator.

Hybrid model for neural signal simulation. For our experiments, we fixed the parameters that define the recording environment for both setups: the simulation model was a 1.5 mm^3 cube with known randomly placed neurons with 16 recording sites and an electrode diameter of $13 \mu\text{m}$. We considered a population density of $300,000 \text{ neurons/mm}^3$ ^{46,47} for hippocampal neuronal density and a ratio of 80% pyramidal cells and 20% interneurons⁴⁸.

We set firing rate ranges based on previous studies^{49,50} for the anaesthetised and the awake cases, respectively. Firing rates of interneurons were set by multiplying pyramidal cell average firing rates by a factor of five^{51,52}, both for close and distant interneurons. The irregular interspike interval was defined by a uniform distribution bounded between a minimum and a maximum firing rate, respecting a refractory period. For both cases, anaesthetised or awake subjects, the refractory period was set at 2 ms, the sampling rate was 20 kHz and the total duration of each simulation was 10 s. The spatial distribution of the recording sites for the simulations presented here are illustrated in Supplementary Fig. S4.

Concerning our experiments, the level of artefact contamination of the signal was distinguished for the two experimental conditions, with 0.1% and 1% of the simulated signal contaminated in the anaesthetised and the awake animals, respectively. The number of artefacts for each channel recorded was defined by equation (2):

$$N_a = a_{rate} * \Delta_a \quad (2)$$

where a_{rate} is the average number of artefacts/s and Δ_a is the recording duration in seconds.

For each artefact event, a sample is added to the beginning and the end of the artefact waveform by curve fitting linear interpolation in order to smoothly add this waveform to the neural signal, this is done as follows:

$$V(t_0) = V(ts_n) + \frac{t_0 - ts_n}{t_1 - ts_n} * (V(t_1) - V(ts_n)) \quad (3)$$

where t_0 is the sample added to the beginning of the template, t_1 is the sample where the template starts, ts_n is the sample immediately preceding t_0 and $Vs(ts_n)$ corresponds to the value of that sample in μV . The set of artefacts was integrated over time following a uniform random distribution that uses the Mersenne Twister algorithm⁵³ to generate pseudo random numbers for a Uniform Distribution.

Non-stationary slow oscillations. We used a 10th order low-pass Butterworth filter applied in both the forward and reverse directions to maintain zero-phase distortion. In our design, the dataset used to extract the non-stationary slow oscillation component could be modified by the experimenter according to the nature of the signal intended to be simulated as well as the filter cut-off frequency. For our experiments, we used the real recording datasets previously reported^{14,26}, low-pass filtered with a cut-off frequency of 300 Hz. Spike contamination in this frequency band was verified according to³⁷ to have minimal effects on the extracted LFP. The resulting non-stationary extracted components were linearly added into the simulated signals.

Artefact library. To extract the artefacts and create the library, we analysed neural data recorded from several different experiments. To detect artefacts, the signal had to cross the pre-defined amplitude threshold on at least 80% of the channels simultaneously (within an artefact window of $300 \mu\text{s}$).

The head collision artefacts were recorded from mice during a behavioural task⁴². The original data consisted of seven single tetrode files recorded with a Cheetah160 Acquisition System with a total of 28 valid channels and a total recording duration of 3635.6 s. Each tetrode file is the result of a previous preprocessing analysis of the raw data, band pass filtered between 600–6000 Hz and a preset voltage threshold described in Supplementary Table S1. Individual waveforms were extracted and saved with their corresponding timestamps (Supplementary Table S1 shows the total number of detected waveforms for each tetrode file). Each waveform is $1142 \mu\text{s}$ in length with a pre-threshold period of $285 \mu\text{s}$. The data was sampled at 28 kHz and stored at 32 points per waveform with their corresponding timestamp values and 16 bit A/D resolution.

The waveforms with shapes uncharacteristic of action potentials were marked as type 3 artefacts⁴⁰ if they satisfied complementary verification methods (See Fig. 4). We created a library of 40 different sets of artefacts, where each set has between 14 and 18 artefacts recorded by the electrodes in ref. 42. In the simulation code we defined an average rate coefficient, that is, the number of artefacts/second of 1 and 10 for the anaesthetised and for the awake version of our simulations. The artefacts included present a distribution of amplitudes showed in Supplementary Fig. S2a.

To extract the grooming artefacts, the different grooming events were first identified from video recordings⁴². The different grooming phases were assigned according to a previous study⁵⁴. Identified grooming sequences were paired to the simultaneous extracellular recordings for verification of the appearance of simultaneous artefacts across channels. The different grooming phases described in ref. 54 in the syntactic behavioural chain were annotated together with the artefacts (See Supplementary Table S4) in the library.

The chewing artefacts were extracted from electrophysiological recordings in rat. In this case, the animal was moving freely in a square arena chasing solid food rewards. We explored the recordings using NeuroScope software⁵⁵ to visually identify abnormal augmented activity that stood out significantly from the background noise. We explored the data in the time-frequency domain and calculated the chewing cycle duration (1/mean chewing rate) and duration of the chewing sequence. We compared time-frequency analyses with the high-pass filtered data (300 Hz cut-off frequency) (See Supplementary Fig. S2).

Real databases. The reference neural databases for real signals were recorded from separate groups of awake and anaesthetised animals^{14,26,34,35,38}.

Case 1: Anaesthetised subjects. Real data consists of extracellular recordings in the hippocampus of anaesthetised rat^{14,34,35} with experimental procedures fully described previously^{27,35} and have been used by various laboratories as a benchmark for spike sorting algorithms. Animals (Sprague-Dawley rats) were anaesthetised with urethane (1.5 g/kg; Sigma). Extracellular electrodes were lowered into the CA1 layer of the hippocampus by monitoring for the presence of single unit activity.

Case 2: Awake subjects. The datasets include multichannel extracellular recordings from layer CA1 of the right dorsal hippocampus of Long-Evans rats during an open field task. In the task, the animal was placed on an elevated square platform and was looking actively for water rewards. Full details of the surgical and experimental procedures in awake recording were previously reported^{26,45} and are only briefly described here.

Multi-layer simulation. The overall firing rate distributions of the SO, SP and SR layers were described in a previous study⁴⁵ and reproduced here (see Supplementary Fig. S5), using the Matlab Distribution fitting tool³³ with a logistic distribution and the following mean and scale parameters:

$$\begin{aligned}\mu_{so} &= -0.470 & \sigma_{so} &= 0.278 \\ \mu_{sp} &= -0.288 & \sigma_{sp} &= 0.257 \\ \mu_{sr} &= -0.420 & \sigma_{sr} &= 0.27\end{aligned}$$

Statistical analysis. We computed the Bartlett's power spectrum density estimation (PSD) method⁵⁰ of simulated and real signals to reduce the variance introduced by the periodogram while maintaining the frequency resolution⁵⁶. The original benchmark datasets of 10 s duration were split into 10 non-overlapping 1 s length data segments. For each data segment we computed the periodogram using the discrete Fourier transform (see equation (4)), where $s_{1,1}$ is the data segment 1 from recorded signal from electrode 1).

$$\left\{ \begin{aligned} S_{1,1}(f) &= \frac{\Delta t}{N} \left| \sum_{n=0}^{N-1} s_{1,1}(n) e^{-i2\pi n \Delta t f} \right|^2 \\ \frac{-1}{2\Delta t} &< f < \frac{1}{2\Delta t} \end{aligned} \right. \quad (4)$$

We then averaged the result of the periodograms for the 10 non-overlapping data segments:

$$P_1(f) = \frac{1}{10} \sum_{l=1}^{10} S_{1,l}(f) \quad (5)$$

We finally computed the standard error of the mean by computing the segment standard deviation divided by the square root of the sample size. We performed the local fitting on the averaged result to smooth the data and used the weighted linear least squares and 2n degree polynomial method⁵⁷ with a span of 1% of the data.

Further information. Neural recording data from *in-vivo* rodents was used to assess the quality of our simulator. These datasets were available from previous studies which have been approved by the Institutional Animal Care and Use Committee of Rutgers University^{34,35}. From these studies, we used the datasets "hc1"¹⁴ and "hc2"²⁶ that have been made available to the community.

Software access. Matlab code for generation and use of datasets described here, as well as the artefact library are available at <http://bebgtteam.net/resources>. As previously described, the design is fully modifiable to simulate any specific experimental scenario that the experimenter wants to reproduce (e.g., amount of signal contaminated with artefacts, number of electrodes, distance between electrodes, etc.). To facilitate changes of the model, an XLM file and a Matlab configuration file are available where all the parameters can be rapidly modified.

References

- Scanziani, M. & Häusser, M. Electrophysiology in the age of light. *Nature* **461**, 930–939 (2009).
- Buzsáki, G. *et al.* Tools for Probing Local Circuits : High-Density Silicon Probes Combined with Optogenetics. *Neuron* doi: 10.1016/j.neuron.2015.01.028 (2015).
- Krook-Magnuson, E., Gelinás, J. N., Soltesz, I. & Buzsáki, G. Neuroelectronics and Biooptics. *JAMA Neurol.* **72**, 823 (2015).
- Krook-magnuson, E., Gelinás, J. N., Soltesz, I. & Buzsáki, G. Neuroelectronics and Biooptics: Closed-Loop Technologies in Neurological Disorders. *JAMA Neurol.* 1–7, doi: 10.1001/jamaneurol.2015.0608 (2015).
- Sun, F. T. & Morrell, M. J. *Closed-loop Neurostimulation : The Clinical Experience.* 553–563, doi: 10.1007/s13311-014-0280-3 (2014).
- Rosin, B. *et al.* Closed-loop deep brain stimulation is superior in ameliorating parkinsonism. *Neuron* **72**, 370–384 (2011).
- Brocard, F. D. *et al.* Closed-loop brain-machine-body interfaces for noninvasive rehabilitation of movement disorders. *Ann. Biomed. Eng.* **42**, 1573–1593 (2014).
- Hagen, E. *et al.* Spiking activity for evaluation of spike-sorting algorithms. **6**, 1–23 (2015).
- Friedman, A., Keselman, M. D., Gibb, L. G. & Graybiel, A. M. A multistage mathematical approach to automated clustering of high-dimensional noisy data. *Proc. Natl. Acad. Sci.* **2015**, 201503940 (2015).
- Franke, F., Quiñero, R., Hierlemann, A. & Obermayer, K. Bayes optimal template matching for spike sorting – combining fisher discriminant analysis with optimal filtering. *J. Comput. Neurosci.* **38**, 439–459 (2015).

11. Matthews, B. A. & Clements, M. A. Spike Sorting by Joint Probabilistic Modeling of Neural Spike Trains and Waveforms. **2014** (2014).
12. Quiroga, R. Q., Nadasdy, Z. & Ben-Shaul, Y. Unsupervised spike detection and sorting with wavelets and superparamagnetic clustering. *Neural Comput.* **16**, 1661–87 (2004).
13. Thorbergsson, P. T., Garwicz, M., Schouenborg, J. & Johansson, A. J. Computationally efficient simulation of extracellular recordings with multielectrode arrays. *J. Neurosci. Methods* **211**, 133–144 (2012).
14. Henze, D. A., Harris, K. D., Borhegyi, Z., Csicsvari, J., Mamiya, A., Hirase, H., Sirota, A. & Buzsáki, G. Simultaneous intracellular and extracellular recordings from hippocampus region CA1 of anesthetized rats. doi: <http://dx.doi.org/10.6080/K02Z13FP> (2009).
15. Wehr, M., Pezaris, J. S. & Sahani, M. Simultaneous paired intracellular and tetrode recordings for evaluating the performance of spike sorting algorithms. *Neurocomputing* **26–27**, 1061–1068 (1999).
16. Lewicki, M. S. Bayesian Modeling and Classification of Neural Signals. *Neural Comput.* **6**, 1005–1030 (1994).
17. Pouzat, C., Mazor, O. & Laurent, G. Using noise signature to optimize spike-sorting and to assess neuronal classification quality. *J. Neurosci. Methods* **122**, 43–57 (2002).
18. Gold, C., Henze, D. A. & Koch, C. Using extracellular action potential recordings to constrain compartmental models. *J. Comput. Neurosci.* **23**, 39–58 (2007).
19. Martinez, J., Pedreira, C., Ison, M. J. & Quian Quiroga, R. Realistic simulation of extracellular recordings. *J. Neurosci. Methods* **184**, 285–293 (2009).
20. Thorbergsson, P. T. *et al.* Spike library based simulator for extracellular single unit neuronal signals. *Conf. Proc. IEEE Eng. Med. Biol. Soc.* **2009**, 6998–7001 (2009).
21. Einevoll, G. T., Franke, F., Hagen, E., Pouzat, C. & Harris, K. D. Towards reliable spike-train recordings from thousands of neurons with multielectrodes. *Current Opinion in Neurobiology* **22**, 11–17 (2012).
22. Lindén, H. *et al.* LFPy: a tool for biophysical simulation of extracellular potentials generated by detailed model neurons. *Front. Neuroinform.* **7**, 41 (2013).
23. Lindén, H. *et al.* Modeling the spatial reach of the LFP. *Neuron* **72**, 859–872 (2011).
24. Parasuram, H. *et al.* Computational modeling of single neuron extracellular electric potentials and network local field potentials using LFPsim. *Front. Comput. Neurosci.*, doi: [0.3389/fncom.2016.00065](https://doi.org/10.3389/fncom.2016.00065) (2016).
25. Camuñas-Mesa, L. a. & Quiroga, R. Q. A detailed and fast model of extracellular recordings. *Neural Comput.* **25**, 1191–212 (2013).
26. Mizuseki, Kenji, Anton, Sirota & Pastalkova Eva, B. G. Multi-unit recordings from the rat hippocampus made during open field foraging. doi: <http://dx.doi.org/10.6080/K0Z60KZ9> (2009).
27. Gold, C., Henze, D. a, Koch, C. & Buzsáki, G. On the origin of the extracellular action potential waveform: A modeling study. *J. Neurophysiol.* **95**, 3113–3128 (2006).
28. Rudolph, M., Pelletier, J. G., Paré, D. & Destexhe, A. Characterization of synaptic conductances and integrative properties during electrically induced EEG-activated states in neocortical neurons *in vivo*. *J. Neurophysiol.* **94**, 2805–21 (2005).
29. Destexhe, A., Contreras, D., Steriade, M., Sejnowski, T. J. & Huguenard, J. R. *In vivo*, *in vitro*, and computational analysis of dendritic calcium currents in thalamic reticular neurons. *J. Neurosci.* **16**, 169–85 (1996).
30. Contreras, D., Destexhe, a. & Steriade, M. Intracellular and computational characterization of the intracortical inhibitory control of synchronized thalamic inputs *in vivo*. *J. Neurophysiol.* **78**, 335–350 (1997).
31. Huguenard, J. R. & Prince, D. A. A novel T-type current underlies prolonged Ca (2+) -dependent burst firing in GABAergic neurons of rat thalamic reticular nucleus. *J. Neurosci.* **12**, 3804–3817 (1992).
32. Hines, M. L. & Carnevale, N. T. The NEURON simulation environment. *Neural Comput.* **9**, 1179–1209 (1997).
33. The MathWorks, I. Matlab and Distribution Fitting App Release 2016a.
34. Harris, K. D., Henze, D. A., Csicsvari, J., Hirase, H. & Buzsáki, G. Accuracy of tetrode spike separation as determined by simultaneous intracellular and extracellular measurements. *J. Neurophysiol.* **84**, 401–414 (2000).
35. Henze, D. A. *et al.* Intracellular features predicted by extracellular recordings in the hippocampus *in vivo*. *J. Neurophysiol.* **84**, 390–400 (2000).
36. Fee, M. S., Mitra, P. P. & Kleinfeld, D. Variability of extracellular spike waveforms of cortical neurons. *J. Neurophysiol.* **76**, 3823–33 (1996).
37. Waldert, S., Lemon, R. N. & Kraskov, A. Influence of spiking activity on cortical local field potentials. *J. Physiol* **591**, 5291–303 (2013).
38. Mizuseki, Kenji, Anton, Sirota & Pastalkova Eva, B. G. Theta oscillations provide temporal windows for local circuit computation in the entorhinal hippocampal loop. *Neuron* **18**, 1199–1216 (2009).
39. Burguière, E., Monteiro, P., Feng, G. & Graybiel, A. M. Optogenetic Stimulation of Lateral. *Science (80-)*. **340**, 1243–1246 (2013).
40. Islam, M. K., Rastegarnia, A., Nguyen, A. T. & Yang, Z. Artifact characterization and removal for *in vivo* neural recording. *J. Neurosci. Methods* **226**, 110–123 (2014).
41. Gerstner, G. E. & Gerstein, J. B. Chewing Rate Allometry Among Mammals. *J. Mammal.* **89**, 1020–1030 (2008).
42. Burguière, E., Monteiro, P., Feng, G. & Graybiel, A. M. Optogenetic stimulation of lateral orbitofronto-striatal pathway suppresses compulsive behaviors. *Science* **340**, 1243–6 (2013).
43. Pettersen, K. H. & Einevoll, G. T. Amplitude variability and extracellular low-pass filtering of neuronal spikes. *Biophys. J.* **94**, 784–802 (2008).
44. Franke, F. *et al.* Spikesorting Evaluation. (2012).
45. Mizuseki, K., Diba, K., Pastalkova, E., Buzsáki, G. & Buzsaki, G. Hippocampal CA1 pyramidal cells form functionally distinct sublayers. *Nat. Neurosci.* **14**, 1174–1181 (2011).
46. Boss, B. D., Turlajski, K., Stanfield, B. B. & Cowan, W. M. On the numbers of neurons in fields CA1 and CA3 of the hippocampus of Sprague-Dawley and Wistar rats. *Brain Res.* **406**, 280–7 (1987).
47. Aika, Y., Ren, J. Q., Kosaka, K. & Kosaka, T. Quantitative analysis of GABA-like-immunoreactive and parvalbumin-containing neurons in the CA1 region of the rat hippocampus using a stereological method, the disector. *Exp. Brain Res.* **99**, 267–76 (1994).
48. Markram, H. *et al.* Interneurons of the neocortical inhibitory system. *Nat Rev Neurosci* **5**, 793–807 (2004).
49. Shoham, S., O'Connor, D. H. & Segev, R. How silent is the brain: Is there a 'dark matter' problem in neuroscience? *J. Comp. Physiol. A Neuroethol. Sensory, Neural, Behav. Physiol.* **192**, 777–784 (2006).
50. Bartlett, M. S. Smoothing Periodograms from Time-Series with Continuous Spectra. *Nature* **161**, 686–687 (1948).
51. Marshall, L. *et al.* Hippocampal pyramidal cell-interneuron spike transmission is frequency dependent and responsible for place modulation of interneuron discharge. *J. Neurosci.* **22**, RC197 (2002).
52. Ison, M. J. *et al.* Selectivity of pyramidal cells and interneurons in the human medial temporal lobe. *J. Neurophysiol.* **106**, 1713–21 (2011).
53. Matsumoto, M. & Nishimura, T. Mersenne twister: a 623-dimensionally equidistributed uniform pseudo-random number generator. *ACM Trans. Model. Comput. Simul.* **8**, 3–30 (1998).
54. Kalueff, A. V. *et al.* Neurobiology of rodent self-grooming and its value for translational neuroscience. *Nat. Rev. Neurosci.* **17**, 45–59 (2015).
55. Hazan, L., Zugaro, M. & Buzsáki, G. Klusters, NeuroScope, NDManager: A free software suite for neurophysiological data processing and visualization. *J. Neurosci. Methods* **155**, 207–216 (2006).
56. Kale, R. U., Ingale, P. M., Murade, R. T. & Sayyad, S. S. Comparison of Quality Power Spectrum Estimation (Bartlett, Welch, Blackman & Tukey) Methods. *Int. Journal Sci. Mod. Eng. I*, 28–31 (2013).

57. Cleveland, W. S. Robust Locally Weighted Regression and Smoothing Scatterplots. *J. Am. Stat. Assoc.* **74**, 829–836 (1979).
58. Holt, G. R. & Koch, C. Electrical interactions via the extracellular potential near cell bodies. *J. Comput. Neurosci.* **6**, 169–184 (1999).
59. Swanson, L. W. *Brain Maps: Structure of the Rat Brain.* (2004).
60. Mizuseki, K., Diba, K., Pastalkova, E. & Buzsáki, G. Hippocampal CA1 pyramidal cells form functionally distinct sublayers. *Nat Neurosci* **14**, 1174–1181 (2011).
61. Mercer, L. F., Remley, N. R. & Gilman, D. P. Effects of urethane on hippocampal unit activity in the rat. *Brain Res. Bull.* **3**, 567–70 (1978).
62. Buzsáki, G. & Mizuseki, K. The log-dynamic brain: how skewed distributions affect network operations. *Nat. Rev. Neurosci.* **15**, 264–78 (2014).

Acknowledgements

We thank Luis Alejandro Camuñas-Mesa and Rodrigo Quian Quiroga for sharing their simulator for detailed neuron models on the dedicated website <http://www2.le.ac.uk/centres/csn/software/neurocube>. We would like to thank Mizuseki K., Sirota A., Pastalkova E. György Buzsáki, Darrel A. Henze, Hajime Hirase, Zsolt Borhegyi, Jozsef Csicsvari, Akira Mamimya and Kenneth D. Harris for sharing their hc-1 and hc-2 datasets through the Collaborative Research in Computational Neuroscience (CRCNS) data sharing platform. We would like to extend our thanks to Brian Lau for scientific advice and to Christiane Schreiwies whose comments greatly improved this manuscript. The research leading to these results received funding from the programmes “Investissements d’avenir” ANR-10-IAIHU-06, from the CONACYT graduate programme fellowship and from the CARNOT institute.

Author Contributions

S.L.M.G. and E.B. designed the experiments, S.L.M.G. performed the experiments, S.L.M.G. and E.B. wrote the manuscript.

Additional Information

Supplementary information accompanies this paper at <http://www.nature.com/srep>

Competing financial interests: The authors declare no competing financial interests.

How to cite this article: Mondragón-González, S. L. and Burguière, E. Bio-inspired benchmark generator for extracellular multi-unit recordings. *Sci. Rep.* **7**, 43253; doi: 10.1038/srep43253 (2017).

Publisher's note: Springer Nature remains neutral with regard to jurisdictional claims in published maps and institutional affiliations.



This work is licensed under a Creative Commons Attribution 4.0 International License. The images or other third party material in this article are included in the article's Creative Commons license, unless indicated otherwise in the credit line; if the material is not included under the Creative Commons license, users will need to obtain permission from the license holder to reproduce the material. To view a copy of this license, visit <http://creativecommons.org/licenses/by/4.0/>

© The Author(s) 2017