



HAL
open science

B- and T-cell subpopulations in patients with severe idiopathic membranous nephropathy may predict an early response to rituximab

Michelle Rosenzweig, Eva Languille, Hanna Debiec, Joana Hygino, Karine Dahan, Tabassome Simon, David Klatzmann, Pierre Ronco

► To cite this version:

Michelle Rosenzweig, Eva Languille, Hanna Debiec, Joana Hygino, Karine Dahan, et al.. B- and T-cell subpopulations in patients with severe idiopathic membranous nephropathy may predict an early response to rituximab. *Kidney International*, 2017, pp.227-237. 10.1016/j.kint.2017.01.012 . hal-01493184

HAL Id: hal-01493184

<https://hal.sorbonne-universite.fr/hal-01493184v1>

Submitted on 23 Mar 2017

HAL is a multi-disciplinary open access archive for the deposit and dissemination of scientific research documents, whether they are published or not. The documents may come from teaching and research institutions in France or abroad, or from public or private research centers.

L'archive ouverte pluridisciplinaire **HAL**, est destinée au dépôt et à la diffusion de documents scientifiques de niveau recherche, publiés ou non, émanant des établissements d'enseignement et de recherche français ou étrangers, des laboratoires publics ou privés.

B- and T-cell subpopulations in patients with severe idiopathic membranous nephropathy may predict an early response to rituximab

Running title: Treg and rituximab in membranous nephropathy

Michelle Rosenzweig, M.D., Ph.D.^{1,2,3}, Eva Languille, M.D.^{2, 4} &, Hanna Debiec, Ph.D.^{2,4, &}, Joana Hygino, M.D.¹, Karine Dahan, M.D.⁵, Tabassome Simon, M.D., Ph.D.⁶, David Klatzmann, M.D., Ph.D.^{1,2,3#}, Pierre Ronco, M.D., Ph.D.^{2, 4, 5, #}

1. AP-HP, Hôpital Pitié-Salpêtrière, Biotherapy (CIC-BTi) and Inflammation-Immunopathology-Biotherapy Department (I2B), F-75651, Paris, France
2. Sorbonne Universités, UPMC Univ Paris 06, F-75005, Paris, France
3. INSERM, UMR_S 959, F-75005, Paris, France
4. INSERM, UMR_S 1155, F-75020, Paris, France
5. AP-HP, Hôpital Tenon, Department of Nephrology and Dialysis, Paris, France
6. AP-HP, Hôpital Saint-Antoine, Department of Clinical Pharmacology and Unité de Recherche Clinique, Paris, France

&Equal contribution

Co-senior authors

Correspondence:

Pierre Ronco, Department of Nephrology and Dialysis, Tenon hospital; 4 rue de la Chine, F-75020, Paris, France. fax number : +33 1 56 01 65 12 ; E-mail: pierre.ronco@upmc.fr

Sources of support:

The sponsor of the GEMRITUX study (NCT01508468) was Assistance Publique-Hôpitaux de Paris (Département de la Recherche Clinique et du Développement, Clinical Research and Development Department). The GEMRITUX study received legal, monitoring and administrative management support from the Assistance Publique-Hôpitaux de Paris).

This work was supported by grants to PR from the European Research Council ERC-2012-ADG_20120314 (Grant Agreement 322947) and from the 7th Framework Programme of the European Community Contract 2012-305608 (European Consortium for High-Throughput Research in Rare Kidney Diseases).

Abstract word count: 217

Text word count: 3340

Abstract

Primary membranous nephropathy (PMN) is characterized by antibodies to the podocyte but little is known about B- and T-cell populations and their response to rituximab is controversial. We compared 33 lymphocyte subpopulations and 27 cytokines/chemokines in 25 patients with severe PMN and 27 age-matched healthy controls. At baseline, patients had (i) increased percentage of naive B-cells ($p=0.03$) with decreased switched ($p=0.03$) and non-switched ($p=0.005$) memory B-cells; (ii) decreased percentage of NK cells ($p=0.04$), with an increase of the $CD56^{\text{bright}}CD16^{-/\text{lo}}$ NK subset ($p=0.002$); (iii) decreased percentage of regulatory T cells ($p<0.0001$), together with an increased plasma concentration of TNF-alpha, IL-5 and IL-2RA. We then investigated patients at 8 days, 3 and 6 months after treatment with rituximab added to supportive therapy ($n=16$) or supportive therapy alone ($n=9$) compared to baseline. After rituximab, B-cell recovery was still incomplete at 6 months, with persistent alterations of B-cell subsets, increase of Treg ($p<0.05$) and NK cell ($p=0.05$), and decrease of $CD56^{\text{bright}}CD16^{-/\text{lo}}$ NK subset ($p<0.05$) and TNF-alpha levels ($p<0.01$). The patients who clinically responded to rituximab had a lower percentage of Treg at baseline ($p=0.01$ vs non responders) and an increased percentage at day 8 ($p=0.01$). Treg remained unchanged in non responders and in patients treated with supportive therapy alone. Evaluation of Treg might be useful for predicting early response to rituximab.

Key words: membranous nephropathy, memory B-cells, regulatory T-cells, NK cells, TNF-alpha, rituximab

INTRODUCTION

Membranous nephropathy (MN) is a major cause of nephrotic syndrome in the adult. It is characterized by the accumulation of immune deposits leading to complement activation on the outer aspect of the glomerular capillary wall. About a third of the patients will undergo spontaneous remission whereas another third will reach end-stage renal failure, and the remaining third will keep various degrees of proteinuria and develop progressive renal failure.

Considerable advances have occurred in the understanding of the pathophysiology of primary MN (PMN) with the identification of three major antigens including neutral endopeptidase in the neonatal disease¹, and the phospholipase A2 receptor (PLA2R)² and thrombospondin domain 7A (THSD7A)³, in the adult disease. All three antigens are expressed on the podocyte where they serve as targets for circulating antibodies. Anti-PLA2R and anti-THSD7A antibodies are detected in about 70 to 80 % and <5 % of adult patients with PMN, respectively⁴. Anti-PLA2R antibodies have been paradigm shifting in diagnosis and patients' care because of their specificity for MN and their correlation with disease activity⁴. Although correlations have been found between anti-PLA2R antibody titers and outcome, we still cannot explain why patients will undergo spontaneous remission while others will not respond to immunosuppressive agents and develop a severe form of the disease.

At variance with antibodies, circulating lymphocyte populations have been poorly investigated in PMN. Old studies have shown an increase of the CD4⁺/CD8⁺ subset ratio in some patients with MN, with or without nephrotic syndrome⁵⁻¹². In the subset of patients with MN and nephrotic syndrome, some patients had a marked increase in the CD4⁺/CD8⁺ ratio due to a reduction in the CD8 cell subset compared to healthy subjects while others showed a ratio in the normal range⁶. It was suggested that a high CD4⁺/CD8⁺ ratio might predict clinical response to immunosuppressive treatment⁹ although this was not confirmed by later studies in patients treated with rituximab¹³. The imbalance between the CD4⁺ and CD8⁺ subsets was associated with decreased suppressor T-cell function, which seems secondary to the nephrotic state¹⁴, and with predominance of the Th2 immune response. Implication of Th2 in pathogenesis of PMN is attested by predominance of IgG4 subclass among circulating and deposited anti-PLA2R and anti-THSD7A antibodies, increased number of interleukin (IL)-10 or IL-4-secreting T-cells, and increased production of IgG4 by B-cells upon stimulation with Th2 cytokines^{2,3,11,15,16}.

Surprisingly, there are relatively few data on regulatory T-cells (Treg) in PMN although those cells are known to play a key role in auto-immune diseases¹⁷⁻¹⁹, at least in part by inhibiting

the activation of helper T-cells induced by antigen-presenting cells, and consequently B-cell activation and production of autoantibodies. Patients with a mutation in FOXP3, a transcription factor which programs the development and function of CD4⁺CD25⁺ regulatory T-cells, occasionally develop MN^{20,21}. Compared with healthy controls, the number of peripheral blood CD4⁺CD25⁺Foxp3⁺ regulatory T-cells was reduced in patients with PMN, while the amount of peripheral blood B-lymphocytes was higher, although no correlation was found with proteinuria^{12,22}. At variance with these data, Fervenza et al, found that none of the Treg subsets showed quantitative differences, the only persistent change in lymphocyte subsets being a relative increase in natural killer cells¹³.

We performed a detailed analysis of B- and T-cell populations in PMN for several reasons. First, we wanted to take advantage of the progress achieved in the characterization of lymphocyte subpopulations in an attempt to solve out the discrepancies previously observed^{12,13}. Second, our randomized controlled trial of rituximab plus supportive therapy versus supportive therapy alone made it possible to investigate whether dynamic changes in specific lymphocyte populations might predict response to rituximab in patients with severe PMN²³. Third, we hypothesized that this study could provide a rationale for using novel therapies aimed at increasing Treg such as low-dose IL-2²⁴.

RESULTS

Patients

The study enrolled 25 patients including 5 females and 20 males with a median age of 57 years (26-74). The male preponderance in the PMN population reflects the higher frequency of PMN in this gender (Table 1). Sixteen patients were enrolled in the NIAT-rituximab group, 9 in the NIAT only group. The imbalance between numbers in each group is related to the randomization process that regulated treatment assignment at the level of the country, which resulted in more patients being enrolled in the NIAT-rituximab group in the Paris area. No difference at baseline was observed between groups regarding age, gender, serum creatinine, serum albumin, proteinuria, and PLA2R-Ab titer (Table 1 and Supplementary Table 1). Among the 16 patients of the NIAT-rituximab group, 9 achieved the primary end point (partial or complete remission) at 6 months, 2 patients of the NIAT group entered spontaneous remission (Table 2).

Anti-PLA2R and anti-THSD7A antibodies at baseline

PLA2R-Abs were detected in 18 of the 25 (72%) patients, including 10 in the NIAT-rituximab group and 8 in the NIAT group (Table 2). Among the 7 PLA2R-Ab-negative patients, 3 had PLA2R-Ag detected in immune deposits; hence the rate of PLA2R-related MN was 84%. Among the 4 remaining patients, one had anti-THSD7A antibody measured by immunofluorescence assay while 3 patients most likely had PMN related to other, as yet unknown antigen(s).

B-, T-, and NK-cell subsets at baseline

While absolute and relative numbers of B cells were comparable in PMN patients and healthy donors, analysis of the B cell subsets shown by CD27 and IgD expression revealed that patients had lower percentages of switched (IgD⁻CD27⁺) and non-switched (IgD⁺CD27⁺) memory B cells ($20 \pm 2\%$ vs $27 \pm 2\%$ $p=0.03$ and $10 \pm 1\%$ vs $16 \pm 2\%$ $p=0.005$ respectively) associated with a higher percentage of naive (IgD⁺CD27⁻) B cells ($65 \pm 3\%$ vs $54 \pm 4\%$ $p=0.03$). Double negative (IgD⁻CD27⁻)^{25, 26} B cells were also expanded in patients (5.3 ± 0.6 vs 3.6 ± 0.3 , $p=0.009$) (Figure 1A). The percentage of plasmablasts and CD21⁻ B cells was unchanged compared to healthy donors (Supplementary Table 2).

Among T cell subsets, a decreased frequency of Treg among CD4⁺ T cells was observed in PMN patients compared to healthy donors ($3.2 \pm 0.2\%$ vs 4.7 ± 0.2 $p<0.0001$), (Figure 1B and supplementary Table 2) while Treg absolute numbers were comparable in both groups (Figure

1B). Markers associated with Treg differentiation, activation or function such as CD45RA, Helios, HLA-DR, CTLA-4, GITR or LAP expression were comparable in patients and healthy donors (Supplementary Figure 1 and supplementary Table 2). No correlation was found between Treg% or absolute number, and proteinuria, serum albumin or anti-PLA2R levels at baseline (data not shown). Effector memory CD4⁺ and CD8⁺ T cells were increased in patients compared to healthy donors ($10 \pm 1\%$ vs $6 \pm 1\%$ $p=0.03$ for CD4⁺T cells and $26 \pm 4\%$ vs $18 \pm 1\%$ $p=0.02$ for CD8⁺ T cells), (Supplementary Table 2).

A decreased percentage of NK cells was detected in PMN patients compared to healthy donors ($8 \pm 1\%$ vs $12 \pm 1\%$ $p=0.04$) associated with an increased percentage of CD56^{bright}CD16^{-/lo} NK cells ($10 \pm 1\%$ vs $6 \pm 1\%$ $p=0.002$), (Figure 1C and supplementary Table 2).

Immunological and clinical outcome in patients treated with NIAT-rituximab

B-cell depletion was achieved at day 8 in all treated patients (2.2 ± 0.7 CD19⁺ cells/mm³ vs 239 ± 34 at day 0, $p<0.0005$), persisted at day 90 in all patients except one (14 ± 7 CD19⁺ cells/mm³, $p<0.0001$), and CD19 count did not return to baseline level by 6 months (67 ± 20 CD19⁺ cells/mm³, $p<0.001$), (Figure 2A). These changes were mostly associated with lack of reconstitution of non-switched memory B-cells that remained very low at day 180 ($5 \pm 1\%$ at day 180 vs $12 \pm 2\%$ among CD19⁺ cells at baseline, $p=0.008$), (Figure 2B).

In the NIAT-rituximab group, 8 of the 9 patients who reached the primary end point (clinical remission) at 6 months had no detectable PLA2R-Ab at 3 months: among them, 3 patients were initially PLA2R-Ab positive and achieved antibody depletion, one patient had a 28-fold lower level of PLA2R-Ab, 4 patients had PLA2R-related MN without detectable antibody at baseline and therefore had probably entered immunological remission, one patient had THSD7A-related MN (Table 2). Conversely, 3 patients without PLA2R-Ab at month 3 had not achieved clinical remission at month 6, which is in accordance with previous observations showing that immunological remission may precede by several months clinical remission^{2,27}. In the NIAT group, spontaneous remission occurred in 2 patients with low anti-PLA2R-Ab levels at baseline and absence of detectable antibody at 6 months.

Treg percentage among CD4⁺ cells and Treg absolute numbers were weakly increased as early as day 8 (reaching statistical significance for Treg percentage), and the average increase reached $22 \pm 10\%$ and $36 \pm 15\%$, respectively, at 6 months from baseline (Figure 3A).

A progressive increase of NK-cell percentage was observed (from $8\pm 1\%$ at baseline up to $12\pm 2\%$ at day 180, $p=0.04$), (Figure 4A) contrasting with a decrease of $CD56^{\text{bright}}CD16^{\text{-lo}}$ NK cell percentage (from $12\pm 2\%$ at baseline down to $7\pm 1\%$ at day 180, $p=0.03$), (Figure 4B). No change was observed in patients treated with NIAT only (Figures 4C and 4D).

Treg cell dynamics might predict early clinical response

Because Treg response to rituximab was heterogeneous, we investigated whether it could be correlated with a different clinical response at 6 months. Responder patients were characterized by a lower percentage of Treg at baseline (responders, 2.4 ± 0.2 vs non-responders, 3.9 ± 0.4 , $p=0.01$), (Figure 3C) whereas all other cell subsets or markers explored in this study were at similar level across patient groups. A significant increase of Treg percentage among $CD4^+$ cells was observed at day 8 (3.01 ± 0.19 vs baseline, 2.57 ± 0.17 , $p=0.0015$), day 90 (2.78 ± 0.26 , $p=0.0078$) and day 180 (3.46 ± 0.38 , $p=0.046$) in responder patients treated with rituximab, whereas Treg remained unchanged in non-responder patients as well as in patients who were treated with NIAT alone (Figure 3B). Changes in Treg absolute numbers in responder patients showed parallel evolution although significance was reached at month 6 only. There was a slight but significant increase of GITR at month 6 while the other Treg markers were not affected (not shown).

We analyzed correlations between changes in Treg % or absolute numbers, and changes in proteinuria, serum albumin, anti-PLA2R-Ab, NK and CD19 levels at month 6. We found that B ($CD19^+$) cell depletion was correlated (spearman test, $p=0.04$) with an increase in Treg absolute numbers in responder patients whereas no correlation was observed in non-responders (Figure 5). There was no correlation between Treg levels and absence of PLA2R-Ab or antibody depletion at month 3.

Cytokine profile in PMN patients and outcome with NIAT-rituximab

A panel of 27 cytokines and chemokines was assayed to investigate the Th1/Th2/Th17 balance in PMN patients and healthy donors. A significant increase of IL-5, TNF- α and IL-2RA associated with a decrease of IL-17, IL-1 α , IL-7, and GM-CSF was observed in patients compared to healthy controls (Figure 6A and supplementary figures 2 and 3). Among these cytokines, we observed a significant decrease of TNF- α level under treatment from month 3 (Figure 6B), but no difference was observed between responder and non-responder patients

(not shown). The other cytokines including IL-35 were unchanged or could not be assessed at all time points.

DISCUSSION

Studies on B- and T-cell populations in patients with PMN are scarce and their results often controversial. A decrease of Treg was reported in 2 studies from China¹² and Italy²² whereas a study from the Mayo Clinic found that none of the Treg subsets showed quantitative differences¹³. Roccatello et al²² showed that in patients treated with rituximab, there was an increase in Treg at month 12, but there was no information on early time points before month 6. The present study features 4 important novelties. First, this is the first such study using detailed CD marker phenotyping of T- and B-cell subsets in the era of autoantibody classification (anti-PLA2R, anti-THSD7A) of PMN cases. Second, it presents a full profile of 26 cytokines in patients with severe PMN at baseline and after rituximab treatment, the major change being an increased level of TNF- α followed by a decrease of this cytokine under B-cell depletion. Third, this is the first study performed in a randomized controlled trial which allowed comparison of lymphocyte population outcome in patients treated with rituximab or with supportive therapy. Fourth, it first provides evidence that an early increase in Treg % and absolute values within the first 6 months after rituximab is observed in responder patients only and consequently may be an early predictor of response to rituximab.

Total B-cell numbers and percentages in PMN patients were similar to those of healthy controls. However, the frequency of naive cells was increased while that of switched and non-switched memory cells was decreased. These data are consistent with previous reports in other autoimmune diseases like SLE and Sjogren's syndrome^{28, 29}. They indicate that the B-cell compartment undergoes alterations that are apparent in the distribution of the B-cell subsets present in the circulation, which suggests that B-cell tolerance checkpoints are impaired in these autoimmune diseases²⁹. The lower rate of circulating memory B cells could be explained by over-expression of chemokines that guide them into tissues as suggested by immunochemistry studies showing B-cell infiltration in kidneys^{12,29-31}, and/or by an increased differentiation of self-reactive B cells into autoantibody producing plasmablasts under the control of T follicular helper (Tfh) cells^{29,32}. Exploration of Tfh cells in PMN would be important in future studies.

We observed an increased level of TNF- α in PMN patients followed by a decrease of this cytokine under B-cell depletion. The role of TNF- α in the pathogenesis of PMN is supported by evidence of high plasma and urinary TNF- α levels in patients with PMN³³⁻³⁵, which was shown to be associated with a polymorphism in the *TNF- α* gene in PMN patients³⁶. An increased release of TNF- α by monocytes from patients with PMN has been suggested by

Matsumoto et al³⁷ but activated B-cells could also contribute by a greater propensity to produce pro-inflammatory cytokines, particularly TNF- α . Given that the B cells reemerging after B-cell depletion are dominated by naive B cells^{38,39}, it is tempting to speculate that the cytokine normalization is related to B cell depletion as it was suggested in rheumatoid arthritis²⁶.

We also found changes in the NK subsets, with decreased percentage of NK cells associated with an increase frequency of CD56^{bright}CD16^{-/lo} NK, the later subset being considered as more immature and less cytotoxic than CD56⁺CD16⁺ NK cells. A reduction in the number of circulating NK cells has been shown in several autoimmune disease like multiple sclerosis, SLE, psoriasis and Graves' disease^{40,41}. This quantitative defect, usually paralleled by a decrease in NK cell cytotoxicity, gave rise to the hypothesis that circulating NK cells are involved in the control of the autoimmune reaction, as has been shown for regulatory T cells⁴¹.

Treg cells play a fundamental role in the development and maintenance of immunological tolerance, and in most autoimmune diseases, there is an imbalance between harmful self-specific effector T cells (Teffs) that attack normal tissues, and Tregs that normally control them^{42,43}. Our data show a significant decrease in Treg percentages in PMN patients compared to healthy controls. This is in agreement with previous studies^{12,22} and in disagreement with another one¹³ in which, however, Treg cells were not analyzed by the expression of the Foxp3 "gold standard marker". Expression of molecules associated with Treg function, i.e. GITR, CTLA-4, HLA-DR or LAP, was not affected and we did not observe an imbalance between resting and activated Tregs among total Tregs.

One of the most striking data provided by this study was the kinetics and possible predictive value of Treg cells in patients treated with rituximab. Treg percentage among CD4⁺ T-cells was significantly lower in PMN patients responding to rituximab, and strikingly increased as early as 8 days whereas Treg percentage did not change in the non responders, in whom it remained within the normal range (no significant difference with healthy donors). This is remarkably similar to what we previously observed during the treatment with rituximab of patients with mixed cryoglobulinemia vasculitis⁴⁴. Rituximab was also shown to induce Treg in several other autoimmune disorders such primary thrombocytopenic purpura, lupus nephritis, and rheumatoid arthritis⁴⁵⁻⁴⁷ as well as in allogeneic stem cell transplantation⁴⁸. and this appeared to highly correlate with clinical responses^{44,47}. These observations are important because they suggest that part of the effects of rituximab in auto-immune diseases and

allogenic settings are linked to an increase in Treg. The precise mechanism for this phenomenon is unclear but might be a consequence of B-cell deprivation as suggested by our own results showing that B (CD19⁺) depletion was correlated with an increase in Treg absolute numbers in responder patients only. B cells provide signals to T cells through antigen presentation and cytokine production. At least 2 cytokines could be involved. It has been shown that B cells expressing interferon-gamma suppress Treg-cell differentiation and promote autoimmune experimental nephritis, and that interferon-gamma specifically derived from B cells contributes to the pathogenesis of autoimmunity⁴⁹. Another potential candidate is interleukin-35 since IL-35 producing B cells are key players in the negative regulation of immunity⁵⁰. Roccatello et al²² indeed showed that IL-35 levels were increased compared to baseline values at 6 months after rituximab and that IL-35 did not increase in the patients who did not respond to rituximab. However, we could not confirm these data in the present study. We could not find a difference between patients and healthy donors at baseline, among patients during follow-up, and between responders and non-responders. An alternative mechanism could be the direct depletion of CD20^{dim}Tcells, contributing to decreased T-cell activation⁵¹ or decreased effector T-cell generation which, as a consequence would result in rising Treg percentages among CD4 T cells.

This manuscript puts the focus on B-cells, the main target of rituximab, and Treg cells for their implication in autoimmunity. Further studies should investigate at least 2 important aspects of B- and T-cell pathobiology in patients with PMN, respectively. The first one relates to PLA2R-specific B-cells, particularly memory B-cells. It is well established that switched memory B-cells play a key role in auto-immunity. Upon encounter with the target antigen, B cells differentiate into short- or long-lived, antibody secreting CD20-negative plasma cells and into CD20-positive memory B cells which can differentiate into antibody-secreting cells upon re-exposure to the priming antigen. Since the cell subset responsible for autoantibody production in PMN has not been clearly defined, a role for PLA2R-specific memory B-cells must be considered and their outcome under rituximab treatment may provide important information on these cells as a biomarker of disease activity and a predictor of relapse. A second important issue relates to T cells, including i) identification and functional studies of PLA2R-specific, effector and regulatory T-cells and ii) analysis of the T-cell repertoire. Recent studies on allelotypes associated with MN provide some clues to the nature of PLA2R-specific T-cell epitopes⁵² which make the basis for future functional studies.

This study has several limitations. First, it enrolled a relatively small number of patients due to constraints in the recruitment of patients who had to be sampled in the area of Paris to be analyzed in a short time period after sampling. Thus they represent only a third of the patients enrolled in the GEMRITUX trial. Second, the follow-up was limited to 6 months, before occurrence of full B cell reconstitution, because we wanted to give the referring physicians a chance to switch treatment in patients who had not achieved clinical remission at this timepoint, particularly in those from the NIAT group. However, we think that our study lays the ground for further studies which should enroll a greater number of patients over a period of 12 months, and include additional cell populations such as Tfh cells and relevant cytokines/chemokines.

Altogether, our results suggest that an increase of Treg percentage might be a marker of early response to rituximab, possibly prior to PLA2R-Ab decrease. They require confirmation in a prospective study. They should lead to investigate whether an increase of Treg cells is associated with spontaneous remissions of PMN. Finally, they raise the possibility that immuno-intervention aimed at increasing Treg count and functions such as low-dose IL-2²⁴ could also be beneficial in PMN.

METHODS

Study population

This study presents the results of an ancillary study to the GEMRITUX (Evaluate Rituximab Treatment for Primary Membranous Nephropathy) randomized controlled trial (NCT01508468)²³. Eligibility criteria, study treatments and monitoring, and definition of clinical and immunological remission, are given in the Supplementary appendix and detailed elsewhere²³. The GEMRITUX study was approved by an institutional review board in Paris, France (Comité de Protection des Personnes Ile-de-France XI).

Here, we aimed to characterize lymphocyte populations and cytokines/chemokines in twenty-five consecutive patients out of the 80 patients of the GEMRITUX trial; these patients were enrolled in the study because they lived in the Paris area which made it possible to perform the flow cytometry analysis within 24h after blood collection. Controls were 27 healthy donors (HD) matched for age, including blood donors and volunteers from UMR_S1155 (Hôpital Tenon, Paris, France) who consented to the study.

We then investigated the dynamic changes of lymphocyte subpopulations and cytokines/chemokines in the 25 PMN patients at baseline and 8 days, 3 and 6 months after treatment with rituximab added to supportive therapy (n=16) or with supportive therapy alone (n=9).

Anti-PLA2R and anti-THSD7A antibody measurements

Anti-PLA2R antibodies (total IgG) were assessed using the quantitative ELISA test commercialized by EuroImmune AG (Lübeck, Germany) as previously described²⁷. In brief, sera diluted to 1:100 were incubated with PLA2R already coated microplates and detected by incubation with antihuman IgG HRP conjugate. The final concentrations for each sample were calculated from the calibration curve extinction values plotted against the concentration for each calibrator. ELISA cut-off values were established according to manufacturers' protocol and the results were considered as negative for <14 RU/ml and positive for ≥ 14 RU/ml. In our laboratory, the calculated intra and inter-assay variations are <4% and <9%, respectively.

Anti-THSD7A antibodies were assessed using an immunofluorescence assay on HEK293 THSD7A-transfected cells kindly provided by Wolfgang Schlumberger (EuroImmune AG). Negativity of THSD7A was defined as absence of detectable antibodies at serum dilution of 1/10. Antibody positivity was defined as positive staining at serum dilutions of 1/10 or higher.

In THSD7A-positive patients, quantitative measurements were performed using different serum dilutions (1/10, 1/100, and 1/1000).

Detection of PLA2R and THSD7A antigen in kidney biopsies

Detection was performed as previously described⁵³. Briefly PLA2R and THSD7A were assessed in glomerular deposits by confocal microscopy with rabbit affinity purified specific anti-PLA2R antibodies or anti-THSD7A antibodies (Atlas Antibodies), followed by goat Alexa 488 conjugated anti-rabbit Fab IgG (Molecular Probes).

Flow cytometry analysis and cytokine/chemokine measurements

Blood (20ml) was sampled according to the planned protocol in lithium heparin tubes. Plasma samples were collected, aliquoted and stored at -80°C until analyzed. Flow cytometry analysis was performed according to previously published methods⁵⁴ and is described in supplementary appendix. Plasma samples were collected, aliquoted and stored at -80°C until analyzed. Quantitative determination of 26 cytokines/chemokines (GM-CSF, IFN- α 2, IFN- γ , IL-1RA, IL1a, IL1 β , IL-2, IL-4, IL-5, IL-6, IL-7, IL-9, IL-10, IL-12p40, IL-12p70, IL-13, IL-15, IL-17a, IL-35, CXCL-10, CCL-2, CCL-3, CCL-4, CCL-2, TNF- α and IL-2RA) was performed using Human Milliplex HCYTOMAG-60 kits (Millipore) in accordance with the manufacturer protocols⁵⁴.

Statistical analysis

Data are presented as mean \pm SEM or average (range). Normal distribution of each set of variables was analyzed by D'Agostino & Pearson omnibus normality test. Student's *t*-test for normally distributed data and non-parametric Mann–Whitney were used to compare variables as appropriate. Paired data before and after rituximab treatment were compared using Student's *t*-test for normally distributed data and paired Wilcoxon signed-rank test for non-parametric. Correlation tests were performed using Spearman nonparametric test. A *p* value < 0.05 was considered significant. Statistical analyses were performed using GraphPad Prism version 5.0 (GraphPad Software, San Diego, CA, USA).

DISCLOSURES

The GEMRITUX data analysis committee did not include representatives from Hoffmann-La Roche, which provided rituximab for the study. Hoffmann-La Roche was not involved in or

consulted about the GEMRITUX study design, did not review the manuscript, and did not have access to the data or provide any other support for the study.

REFERENCES

1. Debiec H, Guignon V, Mougnot B, et al. Antenatal membranous glomerulonephritis due to anti-neutral endopeptidase antibodies. *N. Engl. J. Med.* 2002;346: 2053–2060.
2. Beck LH, Fervenza FC, Beck DM, et al. Rituximab-induced depletion of anti-PLA2R autoantibodies predicts response in membranous nephropathy. *J. Am. Soc. Nephrol.* 2011;22: 1543–1550.
3. Tomas NM, Beck LH, Meyer-Schwesinger C, et al. Thrombospondin type-1 domain-containing 7A in idiopathic membranous nephropathy. *N. Engl. J. Med.* 2014;371: 2277–2287.
4. Ronco P, Debiec H. Pathophysiological advances in membranous nephropathy: time for a shift in patient's care. *Lancet Lond. Engl.* 2015;385: 1983–1992.
5. Chatenoud L, Bach MA. Abnormalities of T-cell subsets in glomerulonephritis and systemic lupus erythematosus. *Kidney Int.* 1981;20: 267–274.
6. Cagnoli L, Tabacchi P, Pasquali S, et al. T cell subset alterations in idiopathic glomerulonephritis. *Clin. Exp. Immunol.* 1982;50: 70–76.
7. Bannister KM, Drew PA, Clarkson AR, Woodroffe AJ. Immunoregulation in glomerulonephritis, Henoch--Schonlein purpura and lupus nephritis. *Clin. Exp. Immunol.* 1983;53: 384–390.
8. Rothschild E, Chatenoud L. T cell subset modulation of immunoglobulin production in IgA nephropathy and membranous glomerulonephritis. *Kidney Int.* 1984;25: 557–564.
9. Zucchelli P, Ponticelli C, Cagnoli L, et al. Prognostic value of T lymphocyte subset ratio in idiopathic membranous nephropathy. *Am. J. Nephrol.* 1988;8: 15–20.
10. Ozaki T, Tomino Y, Nakayama S, Koide H. Two-color analysis of lymphocyte subpopulations in patients with nephrotic syndrome due to membranous nephropathy. *Clin. Nephrol.* 1992;38: 75–80.
11. Kuroki A, Iyoda M, Shibata T, Sugisaki T. Th2 cytokines increase and stimulate B cells to produce IgG4 in idiopathic membranous nephropathy. *Kidney Int.* 2005;68: 302–310.
12. Wang B, Zuo K, Wu Y, et al. Correlation between B lymphocyte abnormality and disease activity in patients with idiopathic membranous nephropathy. *J. Int. Med. Res.* 2011;39: 86–95.
13. Fervenza FC, Abraham RS, Erickson SB, et al. Rituximab therapy in idiopathic membranous nephropathy: a 2-year study. *Clin. J. Am. Soc. Nephrol.* 2010;5: 2188–2198
14. Taube D, Brown Z, Williams DG. Impaired lymphocyte and suppressor cell function in minimal change nephropathy, membranous nephropathy and focal glomerulosclerosis. *Clin. Nephrol.* 1984;22: 176–182.

15. Hirayama K, Ebihara I, Yamamoto S, et al. Predominance of Type-2 Immune Response in idiopathic Membranous Nephropathy. *Nephron* 2002;91: 255–261.
16. Masutani K, Taniguchi M, Nakashima H, et al. Up-regulated interleukin-4 production by peripheral T-helper cells in idiopathic membranous nephropathy. *Nephrol. Dial. Transplant. Off. Publ. Eur. Dial. Transpl. Assoc. - Eur. Ren. Assoc.* 2004;19: 580–586.
17. Wing K, Sakaguchi S. Regulatory T cells exert checks and balances on self tolerance and autoimmunity. *Nat Immunol* 2010;11: 7–13.
18. Long SA, Buckner JH. CD4+FOXP3+ T regulatory cells in human autoimmunity: more than a numbers game. *J Immunol* 2011;187: 2061–6.
19. Grant CR, Liberal R, Mieli-Vergani G, et al. Regulatory T-cells in autoimmune diseases: challenges, controversies and--yet--unanswered questions. *Autoimmun. Rev.* 2015;14: 105–116.
20. Bacchetta R, Passerini L, Gambineri E, et al. Defective regulatory and effector T cell functions in patients with FOXP3 mutations. *J. Clin. Invest.* 2006;116: 1713–1722.
21. Ronco P, Debiec H. Pathophysiological lessons from rare associations of immunological disorders. *Pediatr. Nephrol. Berl. Ger.* 2009;24: 3–8.
22. Roccatello D, Sciascia S, Di Simone D, et al. New insights into immune mechanisms underlying response to RTX in patients with membranous nephropathy. A prospective study and a review of the literature. *Autoimmun. Rev.* 2016
23. Dahan K, Debiec H, Plaisier E, et al. Rituximab for severe membranous nephropathy. A 6-month trial with extended follow-up. *J. Am. Soc. Nephrol.* In press, 2016, doi . 10.1681/ASN.2016040449
24. Klatzmann D, Abbas AK. The promise of low-dose interleukin-2 therapy for autoimmune and inflammatory diseases. *Nat. Rev. Immunol.* 2015;15: 283–294.
25. Anolik JH, Barnard J, Cappione A, et al. Rituximab improves peripheral B cell abnormalities in human systemic lupus erythematosus. *Arthritis Rheum.* 2004;50: 3580–3590.
26. Adlowitz DG, Barnard J, Biear JN, et al. Expansion of Activated Peripheral Blood Memory B Cells in Rheumatoid Arthritis, Impact of B Cell Depletion Therapy, and Biomarkers of Response. *PLoS ONE* [Internet] 10. 2015 Available from. <http://www.ncbi.nlm.nih.gov/pmc/articles/PMC4457888/> [cited 2016 Feb 19]
27. Ruggenti P, Debiec H, Ruggiero B, et al. Anti-Phospholipase A2 Receptor Antibody Titer Predicts Post-Rituximab Outcome of Membranous Nephropathy. *J. Am. Soc. Nephrol.* 2015;26:2545-2558.
28. Rodríguez-Bayona B, Ramos-Amaya A, Pérez-Venegas JJ, et al. Decreased frequency and activated phenotype of blood CD27 IgD IgM B lymphocytes is a permanent abnormality in systemic lupus erythematosus patients. *Arthritis Res. Ther.* 2010;12: R108.
29. Szabó K, Papp G, Szántó A, et al. A comprehensive investigation on the distribution of circulating follicular T helper cells and B cell subsets in primary Sjögren's syndrome and systemic lupus erythematosus. *Clin. Exp. Immunol.* 2016;183: 76–89.
30. Hansen A, Reiter K, Ziprian T, et al. Dysregulation of chemokine receptor expression and function by B cells of patients with primary Sjögren's syndrome. *Arthritis Rheum.* 2005;52: 2109–2119.

31. Cohen CD, Calvaresi N, Armelloni S, et al. CD20-positive infiltrates in human membranous glomerulonephritis. *J. Nephrol.* 2005;18: 328–333.
32. Zhang X, Lindwall E, Gauthier C, et al. Circulating CXCR5+CD4+helper T cells in systemic lupus erythematosus patients share phenotypic properties with germinal center follicular helper T cells and promote antibody production. *Lupus* 2015;24: 909–917.
33. Suranyi MG, Guasch A, Hall BM, Myers BD. Elevated levels of tumor necrosis factor-alpha in the nephrotic syndrome in humans. *Am. J. Kidney Dis. Off. J. Natl. Kidney Found.* 1993;21: 251–259.
34. Bustos C, González E, Muley R, et al. Increase of tumour necrosis factor alpha synthesis and gene expression in peripheral blood mononuclear cells of children with idiopathic nephrotic syndrome. *Eur. J. Clin. Invest.* 1994;24: 799–805.
35. Ihm CG, Park JK, Hong SP, et al. Circulating factors in sera or peripheral blood mononuclear cells in patients with membranous nephropathy or diabetic nephropathy. *J. Korean Med. Sci.* 1997;12: 539–544.
36. Thibaudin D, Thibaudin L, Berthoux P, et al. TNFA2 and d2 alleles of the tumor necrosis factor alpha gene polymorphism are associated with onset/occurrence of idiopathic membranous nephropathy. *Kidney Int.* 2007;71: 431–437.
37. Matsumoto K. Increased release of tumor necrosis factor-alpha by monocytes from patients with glomerulonephritis. *Clin. Nephrol.* 1993;40: 148–154.
38. Roll P, Dörner T, Tony H-P. Anti-CD20 therapy in patients with rheumatoid arthritis. predictors of response and B cell subset regeneration after repeated treatment. *Arthritis Rheum.* 2008;58: 1566–1575.
39. Duddy M, Niino M, Adatia F, et al. Distinct Effector Cytokine Profiles of Memory and Naive Human B Cell Subsets and Implication in Multiple Sclerosis. *J. Immunol.* 2007;178: 6092–6099.
40. Tian Z, Gershwin ME, Zhang C. Regulatory NK cells in autoimmune disease. *J. Autoimmun.* 2012;39: 206–215.
41. Schleinitz N, Vély F, Harlé J-R, Vivier E. Natural killer cells in human autoimmune diseases. *Immunology* 2010;131: 451–458.
42. Gratz IK, Campbell DJ. Organ-specific and memory treg cells. specificity, development, function, and maintenance. *Front. Immunol.* 2014;5: 333.
43. Sakaguchi S, Miyara M, Costantino CM, Hafler DA. FOXP3+ regulatory T cells in the human immune system. *Nat Rev Immunol* 2010;10: 490–500.
44. Saadoun D, Rosenzweig M, Landau D, et al. Restoration of peripheral immune homeostasis after rituximab in mixed cryoglobulinemia vasculitis. *Blood* 2008;111: 5334–41.
45. Stasi R, Cooper N, Del Poeta G, et al. Analysis of regulatory T-cell changes in patients with idiopathic thrombocytopenic purpura receiving B cell-depleting therapy with rituximab. *Blood* 2008;112: 1147–1150.
46. Godeau B, Porcher R, Fain O, et al. Rituximab efficacy and safety in adult splenectomy candidates with chronic immune thrombocytopenic purpura. results of a prospective multicenter phase 2 study. *Blood* 2008;112: 999–1004.

47. Sfrikakis PP, Souliotis VL, Fragiadaki KG, et al. Increased expression of the FoxP3 functional marker of regulatory T cells following B cell depletion with rituximab in patients with lupus nephritis. *Clin. Immunol. Orlando Fla* 2007;123: 66–73.
48. Ratanatharathorn V, Pavletic S, Uberti JP. Clinical applications of rituximab in allogeneic stem cell transplantation: anti-tumor and immunomodulatory effects. *Cancer Treat Rev.* 2009;35:653-661.
49. Olalekan SA, Cao Y, Hamel KM, Finnegan A. B cells expressing IFN- γ suppress Treg-cell differentiation and promote autoimmune experimental arthritis. *Eur J Immunol* 2015;45:988-998.
50. Shen P, Roch T, Lampropoulou V, et al. IL-35-producing B cells are critical regulators of immunity during autoimmune and infectious diseases. *Nature* 2014;507:366-370.
51. Avivi I, Stroopinsky D, Katz T. Anti-CD20 monoclonal antibodies. beyond B-cells. *Blood Rev.* 2013;27: 217–223.
52. Zhao C et al: Risk MHC class II alleles and amino acid residues in idiopathic membranous nephropathy, *J Am Soc Nephrol* 2016; in press
53. Svobodova B, Honsova E, Ronco P, et al. Kidney biopsy is a sensitive tool for retrospective diagnosis of PLA2R-related membranous nephropathy. *Nephrol. Dial. Transplant. Off. Publ. Eur. Dial. Transpl. Assoc. - Eur. Ren. Assoc.* 2013;28: 1839–1844.
54. Rosenzweig M, Churlaud G, Mallone R, et al. Low-dose interleukin-2 fosters a dose-dependent regulatory T cell tuned milieu in T1D patients. *J. Autoimmun.* 2015;58: 48–58.

ACKNOWLEDGMENTS

We thank Alexandra Rousseau (Department of Clinical Pharmacology and Unité de Recherche Clinique (URCEST), AP-HP, Hôpital Saint Antoine, 75012 Paris, France) for precious help during the preparation of this manuscript, Emmanuel Roux for monitoring and handling the biobank at Tenon hospital, Paris (Prof. Isabelle Brocheriou); and the GEMRITUX investigators in Paris who contributed samples and cases. We are extremely grateful to Michèle Barbie, Cornelia Degbe and Nathalie Fery for their technical support.

Figures legends

Figure 1. Comparison of B-cell subsets, Treg and NK cells in PMN patients and healthy donors. Multicolor flow cytometry analysis of circulating B, T and NK subpopulations in PMN patients (n=25) and in healthy donors (n=27). (A) Subsets of gated CD19⁺ (total) B cells were identified on the basis of the expression of surface markers as follows. naïve (IgD⁺CD27⁻), switched memory (IgD⁻CD27⁺), non-switched memory (IgD⁺CD27⁺), double negative memory (IgD⁻CD27⁻) and expressed as percentage of total B cells; (B) Treg cells were gated in CD4⁺ T cells, identified as CD25^{hi}CD127^{lo/-}Foxp3⁺ cells, and expressed as percentage of total CD4⁺T cells (left) and counted cells/ μ l (right); (C) NK cells were identified as CD3⁻CD56⁺ cells gated in lymphocytes and expressed as percentage of lymphocytes; CD56^{bright}CD16^{-/lo} cells were gated in NK cells and expressed as percentage of total NK cells. Each box plot represents the median and the 25th and 75th centiles. Error bars represent the smallest and the largest values. Differences with healthy donors were compared using Student's t-test when distribution was normal or with non-parametric unpaired Mann-Whitney U test. *p<0.05; **p<0.01; ***p<0.001.

Figure 2. Changes in B cells in PMN patients treated with NIAT-rituximab. Multicolor flow cytometry analysis of circulating B cells presented for each PMN patient from NIAT-rituximab administration to the end of the follow-up. (A) Kinetics of absolute number of B cells over time from baseline (day 0, n=16), to day 8 (n=16), day 90 (n=14), and day 180 (n=14). (B) Outcome of B cell subsets after NIAT-rituximab compared to baseline (day 0 vs day 180). Levels of B cell subpopulations at day 180 were compared to baseline level using a Wilcoxon signed-rank test *p<0.05; **p<0.01; ***p<0.001.

Figure 3. Changes in Treg cells in PMN patients treated with NIAT-rituximab or NIAT only. Treg analysis was performed by flow cytometry. Tregs were gated in CD4⁺ T cells and were identified as CD25^{hi}CD127^{lo/-}Foxp3⁺ cells. A) Data represent changes in CD25^{high}CD127⁻Foxp3⁺ among CD4⁺ T cells (percentages and absolute numbers/ μ l) in all patients over time from NIAT-rituximab administration (day 0; n=16), to day 8 (n=15), day 90 (n=14) and day 180 (n=14). Data are normalized by baseline values for each patient at the different time points and are represented as fold change. B) Kinetics of Treg (percentages and absolute numbers/ μ l) in responders (n=8), non-responders (n=8) and patients treated with NIAT alone (n=9). C) Comparison of Treg levels at baseline in responder (n=8) and non-responders (n=8) with healthy donors (n=27). Paired data at baseline and during follow-up

were compared using Student's t-test for normally distributed data and paired Wilcoxon signed-rank test for non-parametric distribution * $p < 0.05$; ** $p < 0.01$; *** $p < 0.001$.

Figure 4. Changes in NK cells in PMN patients treated with NIAT-rituximab or NIAT. NK cells analysis was performed by flow cytometry. NK cells were identified as $CD3^-CD56^+$ cells gated in lymphocytes and expressed as percentage of lymphocytes, $CD56^{bright}CD16^{-/lo}$ cells were gated in NK cells and expressed as percentage of total NK cells. A) Data represent changes in NK-cell percentages over time from NIAT-rituximab administration (day 0; $n=16$) to day 8 ($n=16$), day 90 ($n=14$) and day 180 ($n=14$). B) Data represent changes in $CD56^{bright}CD16^{-/lo}$ -cell percentages over the time from NIAT-rituximab administration (day 0; $n=15$) to day 8 ($n=14$), day 90 ($n=13$) and day 180 ($n=13$). C) and D) show absence of changes for NK and $CD56^{bright}CD16^{-/lo}$ cells in patients treated with NIAT only. Paired data at baseline and during follow-up were compared using Student's t-test for normally distributed data and paired Wilcoxon signed-rank test for non-parametric distribution * $p < 0.05$; ** $p < 0.01$; *** $p < 0.001$.

Figure 5. Correlation between Treg changes and B-cell depletion in responder and non-responder patients. Linear regression representation comparing B cells depletion and Treg increase at day 180. Data are expressed as difference between baseline and day 180 values for responder ($n=7$) and non-responder patients ($n=7$).

Figure 6. Plasma level of TNF- α in PMN patients treated with NIAT-rituximab. A) Quantitative measurement of TNF- α in the plasma of patients ($n=11$) and healthy donors ($n=9$); B) TNF- α levels in patients over time from NIAT-rituximab administration (day 0; $n=8$), to day 8 ($n=7$), day 90 ($n=6$) and day 180 ($n=7$). Differences with healthy donors were compared using non-parametric unpaired Mann-Whitney U test. Paired data at baseline and during follow-up were compared using Student's t-test * $p < 0.05$; ** $p < 0.01$; *** $p < 0.001$

Table 1: Demographic, clinical and biologic characteristics of the study populations

	Patients (N=25)	Healthy Donors (N=27)
Gender (F/M)	5/20	10/17
Age	57 (26-74)	49 (25-66)
	NIAT patients (N=9)	NIAT-rituximab patients (N=16)
Protein/creatinine ratio (mg/g)	7590 (3440-11000)	6250 (3170-15900)
Serum albumin level (g/dl)	2.3 (1.5- 2.8)	1.9 (1.2- 2.9)
Serum creatinine (mg/dl)	1.21 (0.69-2.07)	1.19 (0.68-2.8)
PLA2R-Ab titer (ELISA, RU/ml)*	351.55 (20-538.5)	145.2 (31.2-2900)

Data are expressed as median and range.

* Median and IQR of PLA2R-Ab titer in all patients with PLA2R-Ab

Table 2. Immunopathological data and outcome

Patient Number	PLA2R-Ab				PLA2R-Ag Biopsy	PLA2R-related MN	Rituximab	Clinical remission	Immunological remission
	D0	D8	M3	M6					
1	67.1	NA	0	32.87	Positive	YES	YES	NO	PR
2	0	0	0	0	Negative	NO	YES	NO	-
3	2900	2486	1750	1870	Positive	YES	YES	NO	NO
4	1580	1450	120.5	160.6	Positive	YES	YES	NO	PR
5	36.1	7.5	0	0	Positive	YES	YES	NO	CR
6	216.3	126.1	0	0	Positive	YES	YES	YES	CR
7	1379	1624	49.1	30.1	Positive	YES	YES	YES	PR
8	74.1	NA	0	22.9	Positive	YES	YES	YES	PR
9	1660	1550	137.8	NA	Positive	YES	YES	NO	undetermined
10	16.9	6.9	0	0	Positive	YES	YES	NO	CR
11	31.2	50.7	0	0	Positive	YES	YES	YES	CR
12	0	0	0	0	Negative	NO	YES	NO	-
13	0	0	0	0	Positive	YES	YES	YES	-
14	0	0	0	0	Positive	YES	YES	YES	-
15	0	0	0	0	Positive	YES	YES	YES	-
16#	0	0	0	0	Negative	NO	YES	YES	CR
17	538.5	456.6	995.5	961.1	Positive	YES	NO	NO	NO
18	384.3	206.1	88.8	51.8	Positive	YES	NO	NO	PR
19	369.5	345.5	100.5	699.7	Positive	YES	NO	NO	NO
20	333.6	276.3	84.5	NA	Positive	YES	NO	NO	undetermined
21	0	0	0	0	Negative	NO	NO	NO	-
22	31.2	24.6	16.5	15.1	Positive	YES	NO	NO	PR
23	440.9	NA	278.4	68.5	Positive	YES	NO	NO	PR
24	24.2	NA	0	0	Positive	YES	NO	Yes	CR
25	20.5	18.2	28.7	0	Positive	YES	NO	Yes	CR

Patient 16 had anti-THSD7A antibodies

THSD7A-Ab titer was measured using immunofluorescence test. Titers were 1:100 at D0 and D8. Antibodies were then undetectable at M3 and M6. THSD7A antigen was detected in the subepithelial immune deposits.

Figure 1: Comparison of B-cell subsets, Treg and NK cells in PMN patients and healthy donors

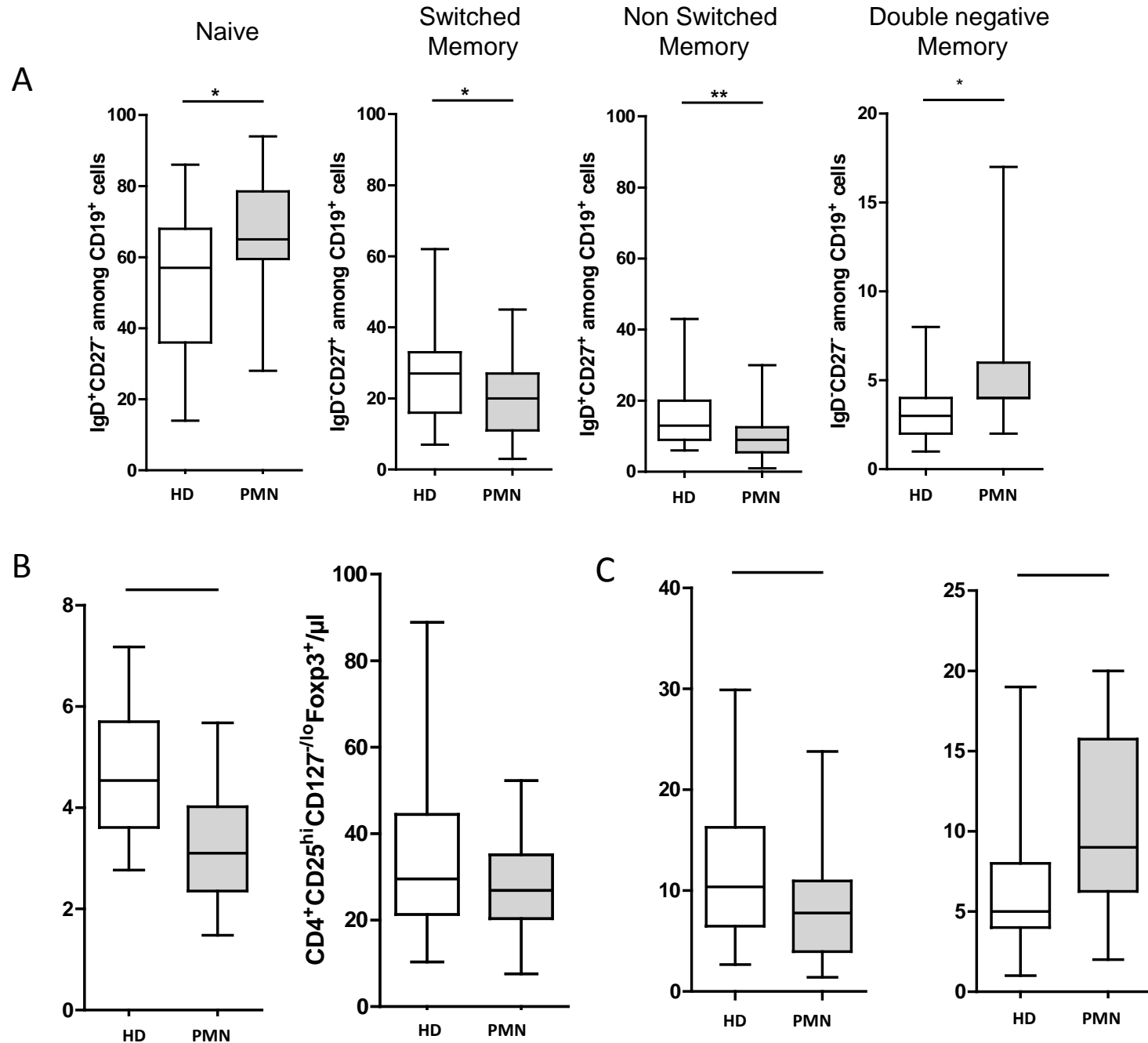
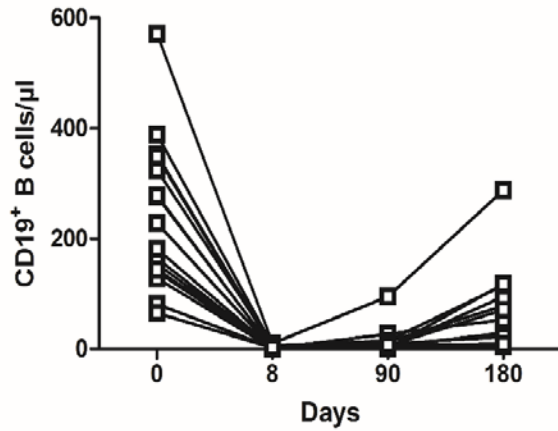


Figure 2: Outcome of B cells in PMN patients treated with NIAT-rituximab

A



B

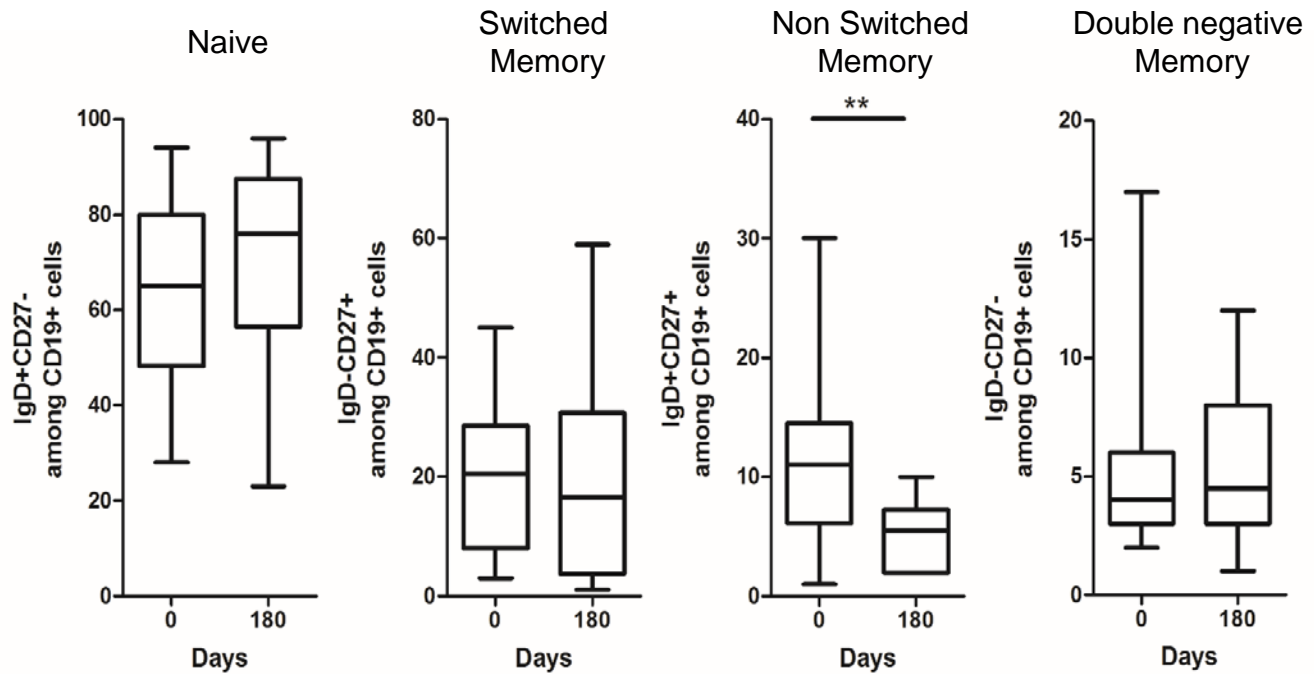


Figure 3: Changes in Treg cells in PMN patients treated with NIAT-rituximab or NIAT only

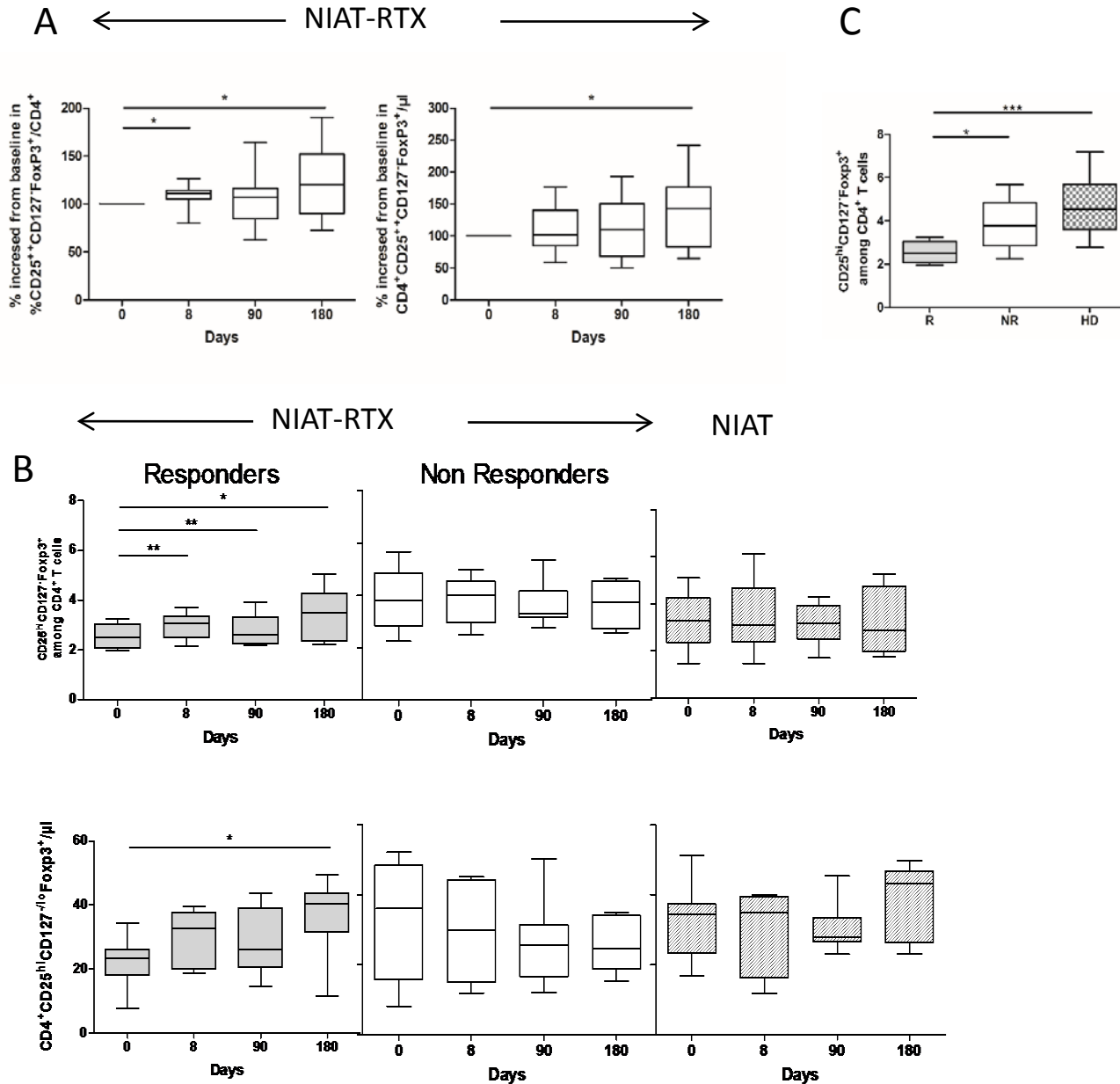


Figure 4: Changes in NK cells in IMN patients treated with NIAT-Rituximab or NIAT only

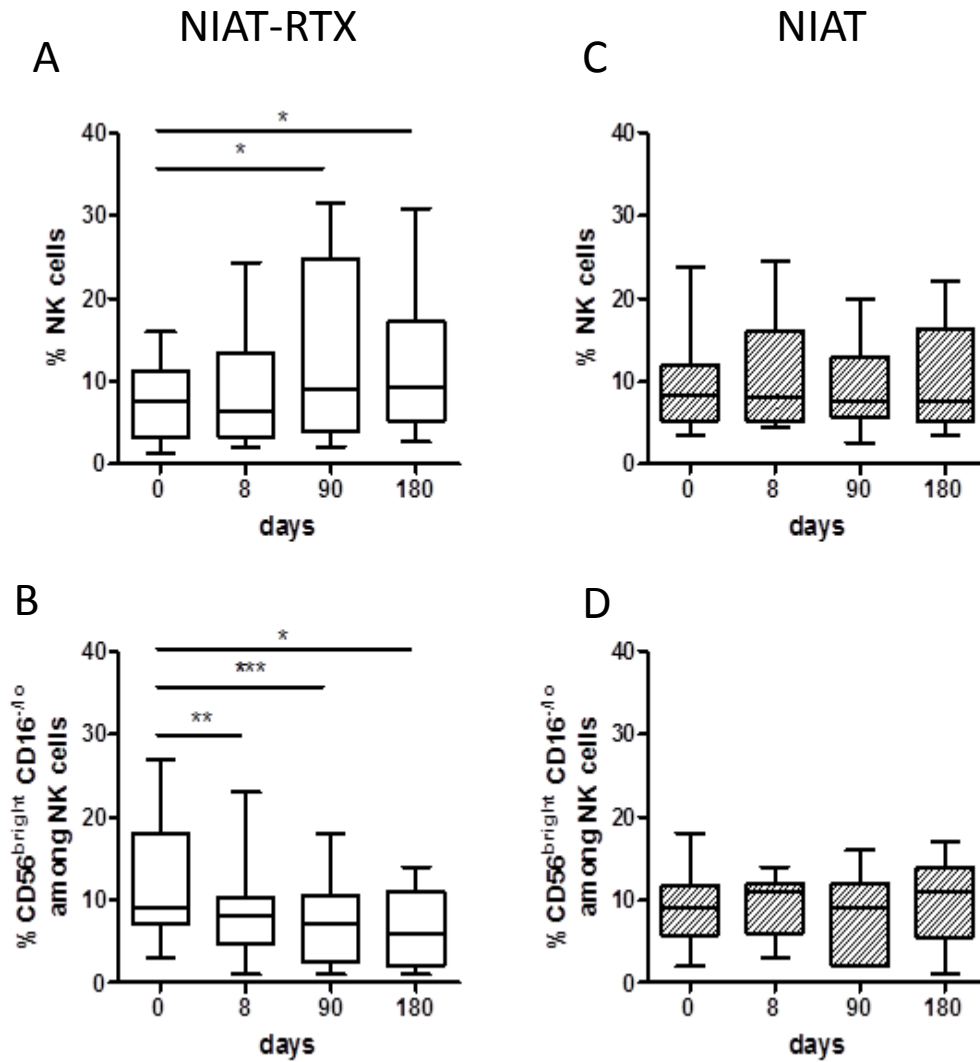


Figure 5: Correlation between Treg changes and B-cell depletion in responder and non-responder patients

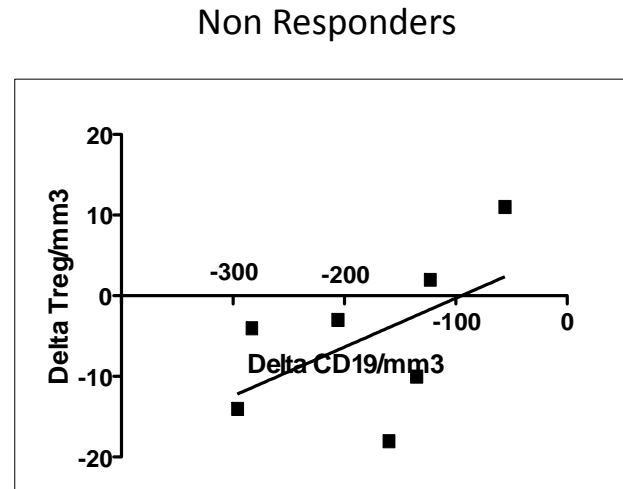
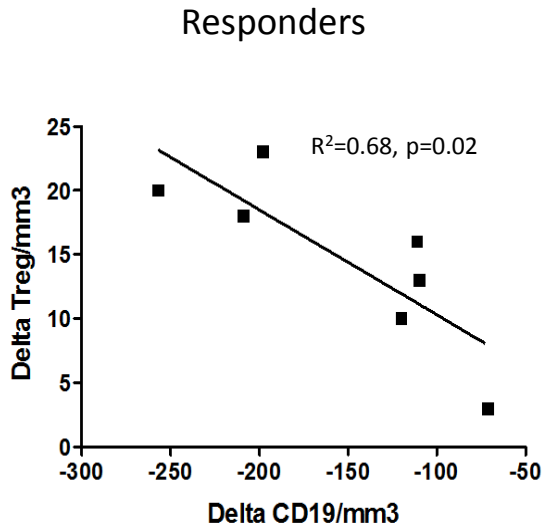


Figure 6: Plasma level of TNF- α in PMN patients treated with NIAT-rituximab

