



HAL
open science

Preclinical effects of APOE ϵ 4 on cerebrospinal fluid A β 42 concentrations

Ronald Lautner, Philip S Insel, Tobias Skillbäck, Bob Olsson, Mikael Landén, Giovanni B. Frisoni, Sanna-Kaisa Herukka, Harald Hampel, Anders Wallin, Lennart Minthon, et al.

► To cite this version:

Ronald Lautner, Philip S Insel, Tobias Skillbäck, Bob Olsson, Mikael Landén, et al.. Preclinical effects of APOE ϵ 4 on cerebrospinal fluid A β 42 concentrations. *Alzheimer's Research and Therapy*, 2017, 9, pp.87. <10.1186/s13195-017-0313-3>. <hal-01629381>

HAL Id: hal-01629381

<https://hal.sorbonne-universite.fr/hal-01629381v1>

Submitted on 6 Nov 2017

HAL is a multi-disciplinary open access archive for the deposit and dissemination of scientific research documents, whether they are published or not. The documents may come from teaching and research institutions in France or abroad, or from public or private research centers.

L'archive ouverte pluridisciplinaire HAL, est destinée au dépôt et à la diffusion de documents scientifiques de niveau recherche, publiés ou non, émanant des établissements d'enseignement et de recherche français ou étrangers, des laboratoires publics ou privés.




Distributed under a Creative Commons CC BY 4.0 - Attribution - International License

RESEARCH

Open Access



Preclinical effects of *APOE* $\epsilon 4$ on cerebrospinal fluid A β 42 concentrations

Ronald Lautner^{1,2*} , Philip S. Insel^{3,4,5}, Tobias Skillbäck^{1,2}, Bob Olsson^{1,2}, Mikael Landén^{1,6}, Giovanni B. Frisoni⁷, Sanna-Kaisa Herukka⁸, Harald Hampel⁹, Anders Wallin¹, Lennart Minthon^{3,10}, Oskar Hansson^{3,10}, Kaj Blennow^{1,2}, Niklas Mattsson^{3,11} and Henrik Zetterberg^{1,2,12}

Abstract

Background: From earlier studies it is known that the *APOE* $\epsilon 2/\epsilon 3/\epsilon 4$ polymorphism modulates the concentrations of cerebrospinal fluid (CSF) beta-amyloid_{1–42} (A β 42) in patients with cognitive decline due to Alzheimer's disease (AD), as well as in cognitively healthy controls. Here, in a large cohort consisting solely of cognitively healthy individuals, we aimed to evaluate how the effect of *APOE* on CSF A β 42 varies by age, to understand the association between *APOE* and the onset of preclinical AD.

Methods: *APOE* genotype and CSF A β 42 concentration were determined in a cohort comprising 716 cognitively healthy individuals aged 17–99 from nine different clinical research centers.

Results: CSF concentrations of A β 42 were lower in *APOE* $\epsilon 4$ carriers than in noncarriers in a gene dose-dependent manner. The effect of *APOE* $\epsilon 4$ on CSF A β 42 was age dependent. The age at which CSF A β 42 concentrations started to decrease was estimated at 50 years in *APOE* $\epsilon 4$ -negative individuals and 43 years in heterozygous *APOE* $\epsilon 4$ carriers. Homozygous *APOE* $\epsilon 4$ carriers showed a steady decline in CSF A β 42 concentrations with increasing age throughout the examined age span.

Conclusions: People possessing the *APOE* $\epsilon 4$ allele start to show a decrease in CSF A β 42 concentration almost a decade before *APOE* $\epsilon 4$ noncarriers already in early middle age. Homozygous *APOE* $\epsilon 4$ carriers might deposit A β 42 throughout the examined age span. These results suggest that there is an *APOE* $\epsilon 4$ -dependent period of early alterations in amyloid homeostasis, when amyloid slowly accumulates, that several years later, together with other downstream pathological events such as tau pathology, translates into cognitive decline.

Keywords: Alzheimer's disease, *APOE*, Cerebrospinal fluid, Beta amyloid

Background

Alzheimer's disease (AD) is a neurodegenerative disease characterized by the accumulation of extracellular beta-amyloid (A β) plaques and intracellular tau tangles [1]. AD pathology is multifactorial with both genetic and environmental risk factors, with the most prominent susceptibility gene being apolipoprotein E (*APOE*) [2]. The *APOE* gene is polymorphic, with three different alleles, of which the $\epsilon 4$ allele is associated with an increased risk, as well as a

lower age at onset, of AD. Heterozygous *APOE* $\epsilon 4$ carriers have an approximately 3-fold increase of risk compared with individuals lacking the $\epsilon 4$ allele, whereas the increase of risk is up to 12-fold in homozygous *APOE* $\epsilon 4$ carriers [3]. The underlying pathophysiological mechanisms for this strong genetic association are still unknown, but may involve direct or indirect effects on A β aggregation or clearance [4, 5].

Measurement of the 42 amino acid isoform of A β (A β 42) in the cerebrospinal fluid (CSF) is used alongside CSF total tau (T-tau) and CSF phosphorylated tau (P-tau) as a diagnostic tool for AD [6]. Decreased concentrations of CSF A β 42 are indicative of cerebral amyloid pathology during the entire course of the disease, from preclinical asymptomatic disease to mild cognitive impairment (MCI) and

* Correspondence: ronald.lautner@neuro.gu.se

¹Department of Psychiatry and Neurochemistry, Institute of Neuroscience and Physiology, Sahlgrenska Academy at the University of Gothenburg, Gothenburg, Sweden

²Clinical Neurochemistry Laboratory, Sahlgrenska University Hospital, Mölndal, Sweden

Full list of author information is available at the end of the article



dementia, and may even indicate disturbed amyloid metabolism before amyloid deposition may be visualized by amyloid PET imaging [7–9]. An association between the *APOE* genotype and CSF concentrations of A β 42 has been described previously among patients with AD and MCI, as well as in healthy controls, with the *APOE* ϵ 4 allele being associated with lower CSF A β 42 concentrations in a gene dose-dependent manner [10–15]. However, because most studies have only analyzed older people, it is not clear whether this effect is present in all age groups irrespective of preexisting amyloid pathology, especially since an earlier study showed the effect to be absent in a small cohort of younger cognitively healthy individuals [14].

Consequently, the question that arises is at what age the potential effects of *APOE* ϵ 4 on CSF A β 42 can be detected. To tackle this question, we analyzed CSF A β 42 as well as the *APOE* ϵ 4 genotype in a large cohort consisting of 716 cognitively healthy individuals from 17 to 99 years of age. Specifically, we tested how CSF A β 42 concentrations differ by age in the different *APOE* ϵ 4 carrier groups.

Methods

Cohorts

The total cohort consisted of 716 cognitively healthy individuals from nine different centers in Sweden, Finland, Germany, and Italy with age ranging from 17 to 99 years. All centers were specialized memory clinics, except one, which is a psychiatry clinic specialized in affective disorders. All subjects underwent neurological examination as well as cognitive testing to exclude cognitive impairment. One of the subcohorts contained 138 patients with bipolar disorder, whereas the rest of the participants ($n = 578$) were healthy volunteers. Most study participants (except the bipolar disorder patients, who were recruited among patients at the specialized affective disorders clinic) were recruited by advertisement or among relatives or friends of patients who were evaluated on suspicion of cognitive dysfunction.

Lumbar puncture

CSF samples were obtained by lumbar puncture in the L3/4 or L4/5 interspace, collected in polypropylene tubes, centrifuged, and stored frozen at -80 °C until analysis according to standard operating procedures [6]. The time frame during which samples were collected in each center in relation to the time of sample analysis was less than 5 years in all cohorts. Long-term stability of CSF A β 42 at -80 °C has been evaluated in several studies [16–18], all of which show that CSF A β 42 is stable at -80 °C. The majority of the biomarker analyses were performed at the Clinical Neurochemistry Laboratory at the Sahlgrenska University Hospital, Gothenburg, Sweden, but samples from Kuopio, Finland and Munich, Germany as well as from Italy were analyzed in local laboratories.

CSF analyses

CSF A β 42 concentrations were measured using a sandwich enzyme-linked immunosorbent assay (INNOTEST β -amyloid[1–42]; Fujirebio, Ghent, Belgium) designed to detect the 1st and 42nd amino acids in the A β protein as described previously [19]. A subset of the samples was analyzed using a multiplex semiautomated assay platform (xMAP Luminex AlzBio3; Fujirebio) as described previously [20]. All analyses were performed by experienced laboratory technicians who were blinded to all clinical information.

To adjust for variation in biomarker concentrations between the different laboratories, data were normalized by defining the largest center cohort as the reference group and then calculating factors between the *APOE* ϵ 4-negative individuals from each participating center and the *APOE* ϵ 4-negative individuals in the reference group. These factors were then applied to all data, hence relating biomarker concentrations in all of the different center cohorts to those in the reference group. There were no significant correlations between age and CSF A β 42 concentrations in all but one of the subcohorts (in which the effect was minor, $r^2 = -0.036$, $P = 0.037$), which points toward a lack of a primary relation between these two parameters. Note that since the center cohort that was defined as the reference group used the xMAP Luminex AlzBio3 assay, the normalized concentrations of A β 42 in this material were lower than the corresponding concentrations when using the INNOTEST β -amyloid[1–42] assay.

APOE alleles

Genotyping for *APOE* (gene map locus 19q13.2) was performed using allelic discrimination technology (TaqMan; Applied Biosystems) or equivalent techniques. Genotypes were obtained for the two single nucleotide polymorphisms that define the ϵ 2, ϵ 3, and ϵ 4 alleles.

Statistical analysis

Comparisons of biomarker concentrations between *APOE* ϵ 4 carrier groups were performed by one-way analysis of variance (ANOVA) for several independent samples. Comparisons of genotype frequencies between patients with bipolar disorder and healthy volunteers were performed using Pearson's chi-squared test. Statistical significance was defined at $P < 0.05$ and all statistical calculations were performed using SPSS version 19 (SPSS Inc., Chicago, IL, USA).

The trajectory of CSF A β 42 concentrations with respect to age in different *APOE* ϵ 4 carrier groups was modeled using restricted cubic splines and ordinary least squares regression. The Akaike Information Criterion selected the optimal model to be estimated using three spline knots. Regression models included gender and the interaction between the two-parameter spline representation of age and *APOE* ϵ 4 group and the main effects

for age and *APOE* $\epsilon 4$ group. Age at the initial decline of CSF A β 42 concentrations was taken to be the maximum A β 42 concentration prior to a monotone descent with increasing age. Confidence intervals for age at initial decline were estimated using the margins (2.5 and 97.5 percentiles) of 500 bootstrap samples.

Results

Demographic, genetic, and biochemical data

The majority of individuals in the total cohort (70.7%) lacked the *APOE* $\epsilon 4$ allele, with 26.5% being heterozygous and 2.8% being homozygous *APOE* $\epsilon 4$ carriers (Table 1). The subcohort consisting of patients with bipolar disorder had similar *APOE* $\epsilon 4$ genotype frequency ($P = 0.633$) as well as similar concentrations of CSF A β 42 ($P = 0.302$) compared to the healthy volunteers and was therefore pooled with the rest of the total cohort (data not shown). There were neither any gender differences with regards to *APOE* $\epsilon 4$ genotype frequency ($P = 0.586$) or CSF A β 42 concentrations ($P = 0.534$). Table 2 presents detailed demographic and biochemical data for all of the subcohorts included in the analysis.

CSF A β 42 concentrations in relation to *APOE* genotype

In the total cohort, CSF A β 42 concentrations were lower in *APOE* $\epsilon 4$ carriers than in noncarriers in a gene dose-dependent manner ($P < 0.001$, Table 1), which is in keeping with earlier findings [14]. However, when dividing the total cohort into tertiles according to age, the effect was present in the middle and upper tertiles among individuals aged 46 or older ($P < 0.001$, Table 1), whereas in the lower tertile, containing individuals aged 45 or younger, the difference was nonsignificant ($P = 0.203$, Table 1).

CSF A β 42 concentrations across different age groups

The estimated curves showed an initial upslope of CSF A β 42 concentrations in *APOE* $\epsilon 4$ -negative individuals and heterozygous *APOE* $\epsilon 4$ carriers followed by a steep descent (Fig. 1). A β 42 concentrations in homozygous *APOE* $\epsilon 4$ carriers, however, descended from an early age lacking the initial upslope. The age of initial descent, defined as the age at which CSF A β 42 reaches its maximum, was estimated at 50 (95% confidence interval (CI) 42–54) years for *APOE* $\epsilon 4$ -negative individuals and 43 (95% CI 17–48) years for heterozygous *APOE* $\epsilon 4$ carriers. This number could not be estimated in homozygous *APOE* $\epsilon 4$ carriers, as they lacked the initial upslope.

Discussion

We conducted a large multicenter study to assess how effects of the *APOE* $\epsilon 2/\epsilon 3/\epsilon 4$ polymorphism on CSF A β 42 concentrations vary by age in cognitively healthy individuals. The main findings were that: the *APOE* $\epsilon 4$ allele was associated with lower CSF A β 42 concentrations overall in cognitively healthy people; the effects of *APOE* $\epsilon 4$ were present in older people but not in young people; and CSF A β 42 started to decline at age 50 in people without the *APOE* $\epsilon 4$ allele, at age 43 in people carrying one *APOE* $\epsilon 4$ allele, and even earlier in people carrying two *APOE* $\epsilon 4$ alleles. Taken together, these findings show that *APOE* $\epsilon 4$ strongly modulates the effect of age on CSF A β 42 in cognitively healthy people, and points to important age-dependent effects of *APOE* $\epsilon 4$ on the development of preclinical AD.

Comparisons of CSF A β 42 and amyloid PET imaging in cognitively healthy people suggest that the first decline in CSF A β 42 does not always translate to widespread cerebral amyloid deposition [7, 8, 21]. The age at which CSF A β 42

Table 1 Demographic, genetic, and biochemical data in the total cohort as well as divided into three age tertiles

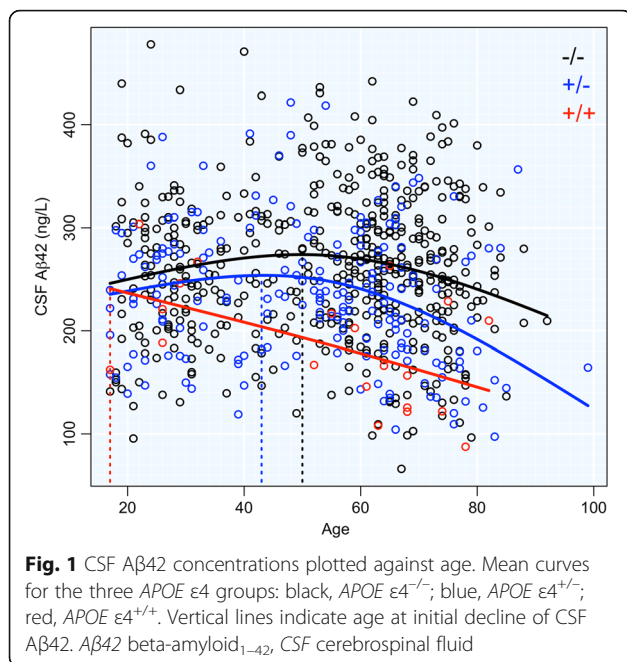
	Total cohort ($n = 716$)	≤ 45 years ($n = 237$)	46–64 years ($n = 242$)	≥ 65 years ($n = 237$)
Demographic				
Age (years), mean (range)	53.3 (17–99)	29.9 (17–45)	57.3 (46–64)	72.6 (65–99)
Male, n (%)	305 (42.6)	114 (48.1)	104 (43.0)	87 (36.7)
Female, n (%)	411 (57.4)	123 (51.9)	138 (57.0)	150 (63.3)
Genetic				
<i>APOE</i> $\epsilon 4^{-/-}$, n (%)	506 (70.7)	162 (68.4)	172 (71.1)	172 (72.6)
<i>APOE</i> $\epsilon 4^{+/-}$, n (%)	190 (26.5)	69 (29.1)	64 (26.4)	57 (24.1)
<i>APOE</i> $\epsilon 4^{+/+}$, n (%)	20 (2.8)	6 (2.5)	6 (2.5)	8 (3.4)
Biochemical: CSF A β 42 (ng/L), mean (SD)				
All genotypes	252.1 (71.0)	251.9 (67.8)	264.9 (67.7)	239.2 (75.2)
<i>APOE</i> $\epsilon 4^{-/-}$	261.2 (70.9)	257.2 (69.5)	274.5 (68.1)	251.8 (73.4)
<i>APOE</i> $\epsilon 4^{+/-}$	234.8 (65.4)	241.4 (64.0)	248.1 (58.3)	211.9 (69.7)
<i>APOE</i> $\epsilon 4^{+/+}$	185.5 (59.0)	231.3 (51.8)	167.8 (39.1)	164.4 (62.1)
P value*	<0.001	0.203	<0.001	<0.001

* P values indicate comparisons of CSF A β 42 concentrations between the *APOE* $\epsilon 4$ carrier groups (for the total cohort as well as for each of the tertiles) *APOE* apolipoprotein E, A β 42 beta-amyloid_{1–42}, CSF cerebrospinal fluid, SD standard deviation

Table 2 Demographic, genetic, and biochemical data in the individual subcohorts

	Total cohort (n = 716)	Cohort 1a (n = 138)	Cohort 1b (n = 72)	Cohort 2 (n = 81)	Cohort 3 (n = 121)	Cohort 4 (n = 39)	Cohort 5 (n = 37)	Cohort 6 (n = 48)	Cohort 7 (n = 58)	Cohort 8 (n = 24)	Cohort 9 (n = 44)	Cohort 10 (n = 54)
Location		Gothenburg, Sweden	Gothenburg, Sweden	Perugia, Italy	Stockholm, Sweden	Malmö, Sweden	Malmö, Sweden	Mölnådal, Sweden	Kuopio, Finland	Munich, Germany	Stockholm, Sweden	Mölnådal, Sweden
Type of clinic		Affective disorders clinic	Affective disorders clinic	Memory clinic	Memory clinic	Memory clinic	Memory clinic	Memory clinic	Memory clinic	Memory clinic	Memory clinic	Memory clinic
Diagnosis		Bipolar disorder	Controls	Controls	Controls	Controls	Controls	Controls	Controls	Controls	Controls	Controls
Age (years), mean (range)	53.3 (17–99)	39.4 (20–73)	37.9 (21–74)	53.0 (21–88)	68.0 (40–92)	72.4 (60–87)	62.9 (42–99)	66.6 (52–80)	65.6 (45–81)	63.0 (49–84)	60.9 (23–88)	22.0 (17–34)
Male, n (%)	305 (42.6)	55 (39.9)	27 (37.5)	22 (27.2)	36 (29.8)	15 (38.5)	16 (43.2)	22 (45.8)	30 (51.7)	15 (62.5)	19 (43.2)	48 (88.9)
Female, n (%)	411 (57.4)	83 (60.1)	45 (62.5)	59 (72.8)	85 (70.2)	24 (61.5)	21 (56.8)	26 (54.2)	28 (48.3)	9 (37.5)	25 (56.8)	6 (11.1)
APOE ε4 ^{-/-} , n (%)	506 (70.7)	93 (67.4)	49 (68.1)	65 (80.2)	88 (72.7)	29 (74.4)	25 (67.6)	32 (66.7)	40 (69.0)	19 (79.2)	31 (70.5)	35 (64.8)
APOE ε4 ^{+/-} , n (%)	190 (26.5)	41 (29.7)	20 (27.8)	14 (17.3)	32 (26.4)	10 (25.6)	10 (27.0)	15 (31.3)	16 (27.6)	5 (20.8)	11 (25.0)	16 (29.6)
APOE ε4 ^{+/+} , n (%)	20 (2.8)	4 (2.9)	3 (4.2)	2 (2.5)	1 (0.8)	0 (0.0)	2 (5.4)	1 (2.1)	2 (3.4)	0 (0.0)	2 (4.5)	3 (5.6)
CSF Aβ42 assay and concentrations measured (ng/L), mean (SD)		xMAP Luminex AlzBio3	xMAP Luminex AlzBio3	INNOTEST β-amyloid[1–42]	INNOTEST β-amyloid[1–42]	INNOTEST β-amyloid[1–42]	xMAP Luminex AlzBio3	INNOTEST β-amyloid[1–42]	INNOTEST β-amyloid[1–42]	INNOTEST β-amyloid[1–42]	INNOTEST β-amyloid[1–42]	INNOTEST β-amyloid[1–42]
All genotypes	252.1 (71.0)	257.7 (57.7)	255.1 (54.2)	260.2 (91.5)	250.8 (75.8)	260.3 (67.6)	245.4 (58.7)	250.3 (39.8)	242.2 (71.9)	247.6 (72.3)	259.0 (92.4)	232.1 (84.6)
APOE ε4 ^{-/-}	261.2 (70.9)	264.6 (57.2)	259.8 (51.7)	262.5 (93.9)	264.0 (68.2)	260.8 (66.0)	257.5 (66.2)	258.3 (36.8)	258.5 (75.0)	260.9 (72.9)	276.6 (89.1)	240.6 (93.0)
APOE ε4 ^{+/-}	234.8 (65.4)	250.5 (51.4)	245.3 (63.1)	266.4 (76.0)	219.7 (82.5)	258.9 (75.7)	220.3 (29.0)	241.7 (31.4)	205.4 (52.2)	197.0 (46.3)	230.0 (90.4)	216.0 (66.6)
APOE ε4 ^{+/+}	185.5 (59.0)	172.0 (67.9)	243.3 (21.1)	139.3 (24.6)	87.5 (N/A)	N/A	219.2 (13.4)	125.7 (N/A)	209.7 (10.0)	N/A	143.9 (31.5)	218.0 (75.1)

APOE apolipoprotein E, Aβ42 beta-amyloid, ⁻⁴²CSF cerebrospinal fluid, SD standard deviation, N/A not available



concentrations start to decrease may therefore be the starting point for preclinical pathological disturbances in amyloid homeostasis, which ultimately results in amyloid accumulation that later becomes detectable on amyloid PET imaging. The data from this study suggest that the disturbed amyloid homeostasis occurs on average from age 50 in *APOE* ε4-negative individuals, and almost a decade earlier in *APOE* ε4 heterozygous people. In *APOE* ε4 homozygous people we estimated a descent in CSF Aβ42 already from age 17, but the sparsity of data among young homozygous *APOE* ε4 carriers makes this estimate uncertain, and we can only conclude that the decline in CSF Aβ42 starts considerably earlier in homozygous *APOE* ε4 carriers compared with heterozygous *APOE* ε4 carriers or noncarriers. Importantly, previous studies provide convergent evidence that emerging amyloid pathology, defined as decreased CSF Aβ42 concentrations, or CSF Aβ42 concentrations slightly above conventional thresholds for amyloid positivity, may have deleterious effects on brain structure, brain function, and cognition [22–25]. This highlights the importance of detecting the earliest effects of *APOE* ε4 on CSF Aβ42 in order to provide very early diagnostics and potentially initiate prevention of AD.

The fact that *APOE* ε4 affected CSF Aβ42 concentrations already from 43 years of age is interesting since a previous study found that *APOE* ε4 was associated with cognitive decline only after 50 years of age [26]. We therefore suggest that there is an intermediate period of early alterations in amyloid homeostasis before cognitive decline becomes detectable [23], when amyloid accumulation slowly builds up together with downstream pathological events

(including spread of tau tangles), which ultimately translate to cognitive decline several years later.

This study has several limitations. First, we used cross-sectional data from several cohorts and several assays to measure CSF Aβ42. Although we employed normalization measures to bridge all results, the variability in cohorts and assays increases the variance of our models and estimates. Future studies are needed to verify these results in a mono-center setting, obviating the need for data normalization across cohorts. Second, the low number of *APOE* ε4 homozygous people, along with the sparsity of data in the age span between 85 and 100 years, limits our ability to model effects of *APOE* ε4 homozygosity and effects in the final part of the natural life span. Also, the lack of *APOE* ε4 homozygous people between age 35 and 50 makes it impossible to define whether there is a plateau in Aβ42 concentrations before decline or whether the concentrations drop directly from age 17 in homozygous *APOE* ε4 carriers.

Conclusions

To sum up, the results of this study suggest that the process of preclinical Aβ pathology might start in early middle age in *APOE* ε4 carriers. Hence, we hypothesize that the *APOE* ε4 allele affects CSF Aβ42 concentrations by speeding up the process of preclinical Aβ accumulation and deposition in the brain. Studies addressing the molecular mechanisms behind the association between ApoE and cerebral Aβ build-up are needed to verify this.

Abbreviations

AD: Alzheimer's disease; ANOVA: Analysis of variance; *APOE*: Apolipoprotein E; Aβ42: Beta-amyloid₁₋₄₂; CI: Confidence interval; CSF: Cerebrospinal fluid; MCI: Mild cognitive impairment; PET: Positron emission tomography; P-tau: Phosphorylated tau; T-tau: Total tau

Acknowledgements

Not applicable.

Funding

This study was supported by grants from the Swedish Research Council, the European Research Council, Frimurarestiftelsen, Stiftelsen Gamla Tjänarinnor, the Swedish Alzheimer Foundation, the Swedish Brain Foundation, the Knut and Alice Wallenberg Foundation, the Marianne and Marcus Wallenberg Foundation, and the Torsten Söderberg Foundation. HH is supported by the AXA Research Fund, the Fondation Université Pierre et Marie Curie, and the Fondation pour la Recherche sur Alzheimer, Paris, France. The research leading to these results has received funding from the program "Investissements d'avenir" ANR-10-IAIHU-06 (to HH).

Availability of data and materials

The datasets used and/or analyzed during the current study are available from the corresponding author on reasonable request.

Authors' contributions

RL, KB, NM, and HZ created the concept and design for the study. RL, BO, ML, GBF, S-KH, HH, AW, OH, KB, NM, and HZ acquired, analyzed, and interpreted data. RL, PSI, NM, and HZ drafted the manuscript. RL, PSI, and NM performed the statistical analyses. The study was supervised by NM and HZ. All authors contributed critical revision for important intellectual content and read and approved the final manuscript.

Ethics approval and consent to participate

The study received approval from regional ethical committees at the Universities of Gothenburg and Lund (Sweden), Brescia (Italy), Kuopio (Finland), and Munich (Germany) and followed the tenets of the Helsinki declaration. Written informed consent was obtained from all participants.

Consent for publication

Not applicable.

Competing interests

ML declares that, over the past 36 months, he has received lecture honoraria from Lundbeck and AstraZeneca Sweden, and served as scientific consultant for EPID Research Oy; he has no other equity ownership, profit-sharing agreements, royalties, or patents. HH declares no competing financial interests related to the present article; he serves as Senior Associate Editor for the journal *Alzheimer's & Dementia*; he has been a scientific consultant and/or speaker and/or attended scientific advisory boards of Axovant, Anavex, Eli Lilly and company, GE Healthcare, Cytos, Qynapse, Roche, Biogen Idec, Takeda-Zinfandel, Oryzon Genomics; he receives research support from the Fondation for Alzheimer Research (Paris), COLAM Initiatives (Paris), IHU-A-ICM (Paris), Pierre and Marie Curie University (Paris), Pfizer & Avid (paid to institution); and he has patents as inventor, but received no royalties. OH has acquired research support (for the institution) from Roche, GE Healthcare, Biogen, AVID Radiopharmaceuticals, Fujirebio, and Euroimmun; in the past 2 years, he has received consultancy/speaker fees (paid to the institution) from Lilly, Roche, and Fujirebio. KB has served as a consultant or on advisory boards for Alzheon, BioArctic, Biogen, Eli Lilly, Fujirebio Europe, IBL International, Pfizer, and Roche Diagnostics. HZ has served on the scientific advisory board for Roche Diagnostics, Eli Lilly and Pharmasum Therapeutics. KB and HZ are cofounders of Brain Biomarker Solutions in Gothenburg AB, a GU Ventures-based platform company at the University of Gothenburg. RL, PSI, TS, BO, GBF, S-KH, AW, LM, and NM declare that they have no competing interests.

Publisher's Note

Springer Nature remains neutral with regard to jurisdictional claims in published maps and institutional affiliations.

Author details

¹Department of Psychiatry and Neurochemistry, Institute of Neuroscience and Physiology, Sahlgrenska Academy at the University of Gothenburg, Gothenburg, Sweden. ²Clinical Neurochemistry Laboratory, Sahlgrenska University Hospital, Mölndal, Sweden. ³Clinical Memory Research Unit, Department of Clinical Sciences Malmö, Lund University, Lund, Sweden. ⁴Department of Veterans Affairs Medical Center, Center for Imaging of Neurodegenerative Diseases, San Francisco, CA, USA. ⁵Department of Radiology and Biomedical Imaging, University of California, San Francisco, CA, USA. ⁶Department of Medical Epidemiology and Biostatistics, Karolinska Institutet, Stockholm, Sweden. ⁷Istituto di Ricovero e Cura a Carattere Scientifico Centro San Giovanni di Dio Fatebenefratelli, Brescia, Italy. ⁸Department of Neurology, University of Eastern Finland, Kuopio University Hospital, Kuopio, Finland. ⁹AXA Research Fund and UPMC Chair, Sorbonne Universités, Université Pierre et Marie Curie (UPMC) Paris 06, Inserm, CNRS, Institut du cerveau et de la moelle (ICM), Département de Neurologie, Institut de la Mémoire et de la Maladie d'Alzheimer (IM2A), Hôpital Pitié-Salpêtrière, Boulevard de l'hôpital, F-75013 Paris, France. ¹⁰Memory Clinic, Skåne University Hospital, Malmö, Sweden. ¹¹Department of Neurology, Skåne University Hospital, Lund, Sweden. ¹²Department of Molecular Neuroscience, UCL Institute of Neurology, Queen Square, London WC1N 3BG, UK.

Received: 12 June 2017 Accepted: 3 October 2017

Published online: 23 October 2017

References

- Blennow K, de Leon MJ, Zetterberg H. Alzheimer's disease. *Lancet*. 2006;368:387–403.
- Corder EH, Saunders AM, Strittmatter WJ, Schmechel DE, Gaskell PC, Small GW, Roses AD, Haines JL, Pericak-Vance MA. Gene dose of apolipoprotein E type 4 allele and the risk of Alzheimer's disease in late onset families. *Science*. 1993;261:921–3.
- Holtzman DM, Herz J, Bu G. Apolipoprotein E and apolipoprotein E receptors: normal biology and roles in Alzheimer disease. *Cold Spring Harb Perspect Med*. 2012;2:a006312.
- Castellano JM, Kim J, Stewart FR, Jiang H, DeMattos RB, Patterson BW, Fagan AM, Morris JC, Mawuenyega KG, Cruchaga C, et al. Human apoE isoforms differentially regulate brain amyloid- β peptide clearance. *Sci Transl Med*. 2011;3:89ra57.
- Verghese PB, Castellano JM, Garai K, Wang Y, Jiang H, Shah A, Bu G, Frieden C, Holtzman DM. ApoE influences amyloid- β (A β) clearance despite minimal apoE/A β association in physiological conditions. *Proc Natl Acad Sci U S A*. 2013;110:E1807–16.
- Blennow K, Hampel H, Weiner M, Zetterberg H. Cerebrospinal fluid and plasma biomarkers in Alzheimer disease. *Nat Rev Neurol*. 2010;6:131–44.
- Mattsson N, Insel PS, Donohue M, Landau S, Jagust WJ, Shaw LM, Trojanowski JQ, Zetterberg H, Blennow K, Weiner MW. Independent information from cerebrospinal fluid amyloid- β and florbetapir imaging in Alzheimer's disease. *Brain*. 2015;138:772–83.
- Palmqvist S, Mattsson N, Hansson O. Cerebrospinal fluid analysis detects cerebral amyloid- β accumulation earlier than positron emission tomography. *Brain*. 2016;139:1226–36.
- Blennow K, Mattsson N, Scholl M, Hansson O, Zetterberg H. Amyloid biomarkers in Alzheimer's disease. *Trends Pharmacol Sci*. 2015;36:297–309.
- Galasko D, Chang L, Motter R, Clark CM, Kaye J, Knopman D, Thomas R, Kholodenko D, Schenk D, Lieberburg I, et al. High cerebrospinal fluid tau and low amyloid β 42 levels in the clinical diagnosis of Alzheimer disease and relation to apolipoprotein E genotype. *Arch Neurol*. 1998;55:937–45.
- Sunderland T, Mirza N, Putnam KT, Linker G, Bhupali D, Durham R, Soares H, Kimmel J, Friedman D, Bergeson J, et al. Cerebrospinal fluid β -amyloid₁₋₄₂ and tau in control subjects at risk for Alzheimer's disease: the effect of APOE ϵ 4 allele. *Biol Psychiatry*. 2004;56:670–6.
- Shaw LM, Vanderstichele H, Knapiak-Czajka M, Clark CM, Aisen PS, Petersen RC, Blennow K, Soares H, Simon A, Lewczuk P, et al. Cerebrospinal fluid biomarker signature in Alzheimer's disease neuroimaging initiative subjects. *Ann Neurol*. 2009;65:403–13.
- Vemuri P, Wiste HJ, Weigand SD, Knopman DS, Shaw LM, Trojanowski JQ, Aisen PS, Weiner M, Petersen RC, Jack Jr CR. Effect of apolipoprotein E on biomarkers of amyloid load and neuronal pathology in Alzheimer disease. *Ann Neurol*. 2010;67:308–16.
- Lautner R, Palmqvist S, Mattsson N, Andreasson U, Wallin A, Palsson E, Jakobsson J, Herukka SK, Owenius R, Olsson B, et al. Apolipoprotein E genotype and the diagnostic accuracy of cerebrospinal fluid biomarkers for Alzheimer disease. *JAMA Psychiat*. 2014;71:1183–91.
- Prince JA, Zetterberg H, Andreassen N, Marcusson J, Blennow K. APOE ϵ 4 allele is associated with reduced cerebrospinal fluid levels of A β 42. *Neurology*. 2004;62:2116–8.
- Schipke CG, Jessen F, Teipel S, Luckhaus C, Wiltfang J, Esselmann H, Frolich L, Maier W, Ruther E, Heppner FL, et al. Long-term stability of Alzheimer's disease biomarker proteins in cerebrospinal fluid. *J Alzheimers Dis*. 2011;26:255–62.
- Kuhlmann J, Andreasson U, Pannee J, Bjerke M, Portelius E, Leinenbach A, Bittner T, Korecka M, Jenkins RG, Vanderstichele H, et al. CSF A β ₁₋₄₂—an excellent but complicated Alzheimer's biomarker—a route to standardisation. *Clin Chim Acta*. 2017;467:27–33.
- Bjerke M, Portelius E, Minthon L, Wallin A, Anckarsater H, Anckarsater R, Andreassen N, Zetterberg H, Andreasson U, Blennow K. Confounding factors influencing amyloid beta concentration in cerebrospinal fluid. *Int J Alzheimers Dis*. 2010;2010:986310.
- Andreassen N, Hesse C, Davidsson P, Minthon L, Wallin A, Winblad B, Vanderstichele H, Vanmechelen E, Blennow K. Cerebrospinal fluid β -amyloid₍₁₋₄₂₎ in Alzheimer disease: differences between early- and late-onset Alzheimer disease and stability during the course of disease. *Arch Neurol*. 1999;56:673–80.
- Olsson A, Vanderstichele H, Andreassen N, De Meyer G, Wallin A, Holmberg B, Rosengren L, Vanmechelen E, Blennow K. Simultaneous measurement of β -amyloid₍₁₋₄₂₎, total tau, and phosphorylated tau (Th¹⁸¹) in cerebrospinal fluid by the xMAP technology. *Clin Chem*. 2005;51:336–45.
- Morris JC, Roe CM, Xiong C, Fagan AM, Goate AM, Holtzman DM, Mintun MA. APOE predicts amyloid-beta but not tau Alzheimer pathology in cognitively normal aging. *Ann Neurol*. 2010;67:122–31.

22. Insel PS, Mattsson N, Donohue MC, Mackin RS, Aisen PS, Jack Jr CR, Shaw LM, Trojanowski JQ, Weiner MW. The transitional association between β -amyloid pathology and regional brain atrophy. *Alzheimers Dement*. 2015;11:1171–9.
23. Insel PS, Mattsson N, Mackin RS, Scholl M, Nosheny RL, Tosun D, Donohue MC, Aisen PS, Jagust WJ, Weiner MW. Accelerating rates of cognitive decline and imaging markers associated with β -amyloid pathology. *Neurology*. 2016;86:1887–96.
24. Mattsson N, Insel PS, Nosheny R, Tosun D, Trojanowski JQ, Shaw LM, Jack Jr CR, Donohue MC, Weiner MW. Emerging β -amyloid pathology and accelerated cortical atrophy. *JAMA Neurol*. 2014;71:725–34.
25. Mattsson N, Insel PS, Donohue M, Jagust W, Sperling R, Aisen P, Weiner MW. Predicting reduction of cerebrospinal fluid β -amyloid 42 in cognitively healthy controls. *JAMA Neurol*. 2015;72:554–60.
26. Caselli RJ, Dueck AC, Osborne D, Sabbagh MN, Connor DJ, Ahern GL, Baxter LC, Rapcsak SZ, Shi J, Woodruff BK, et al. Longitudinal modeling of age-related memory decline and the APOE ϵ 4 effect. *N Engl J Med*. 2009;361:255–63.

Submit your next manuscript to BioMed Central and we will help you at every step:

- We accept pre-submission inquiries
- Our selector tool helps you to find the most relevant journal
- We provide round the clock customer support
- Convenient online submission
- Thorough peer review
- Inclusion in PubMed and all major indexing services
- Maximum visibility for your research

Submit your manuscript at
www.biomedcentral.com/submit

