



**HAL**  
open science

## Coupling a single solid-state quantum emitter to an array of resonant plasmonic antennas

Markus Pfeiffer, Paola Atkinson, Armando Rastelli, Oliver G Schmidt, Harald Giessen, Markus Lippitz, Klas Lindfors

► **To cite this version:**

Markus Pfeiffer, Paola Atkinson, Armando Rastelli, Oliver G Schmidt, Harald Giessen, et al.. Coupling a single solid-state quantum emitter to an array of resonant plasmonic antennas. *Scientific Reports*, 2018, 8, pp.3415. 10.1038/s41598-018-21664-8 . hal-01727540

**HAL Id: hal-01727540**

**<https://hal.sorbonne-universite.fr/hal-01727540>**

Submitted on 9 Mar 2018

**HAL** is a multi-disciplinary open access archive for the deposit and dissemination of scientific research documents, whether they are published or not. The documents may come from teaching and research institutions in France or abroad, or from public or private research centers.

L'archive ouverte pluridisciplinaire **HAL**, est destinée au dépôt et à la diffusion de documents scientifiques de niveau recherche, publiés ou non, émanant des établissements d'enseignement et de recherche français ou étrangers, des laboratoires publics ou privés.



Distributed under a Creative Commons Attribution 4.0 International License

# SCIENTIFIC REPORTS



OPEN

## Coupling a single solid-state quantum emitter to an array of resonant plasmonic antennas

Markus Pfeiffer<sup>1,2,3</sup>, Paola Atkinson<sup>4,5</sup>, Armando Rastelli<sup>4</sup>, Oliver G. Schmidt<sup>4</sup>, Harald Giessen<sup>3</sup>, Markus Lippitz<sup>2,3,6</sup> & Klas Lindfors<sup>1,2,3</sup>

Plasmon resonant arrays or meta-surfaces shape both the incoming optical field and the local density of states for emission processes. They provide large regions of enhanced emission from emitters and greater design flexibility than single nanoantennas. This makes them of great interest for engineering optical absorption and emission. Here we study the coupling of a single quantum emitter, a self-assembled semiconductor quantum dot, to a plasmonic meta-surface. We investigate the influence of the spectral properties of the nanoantennas and the position of the emitter in the unit cell of the structure. We observe a resonant enhancement due to emitter-array coupling in the far-field regime and find a clear difference from the interaction of an emitter with a single antenna.

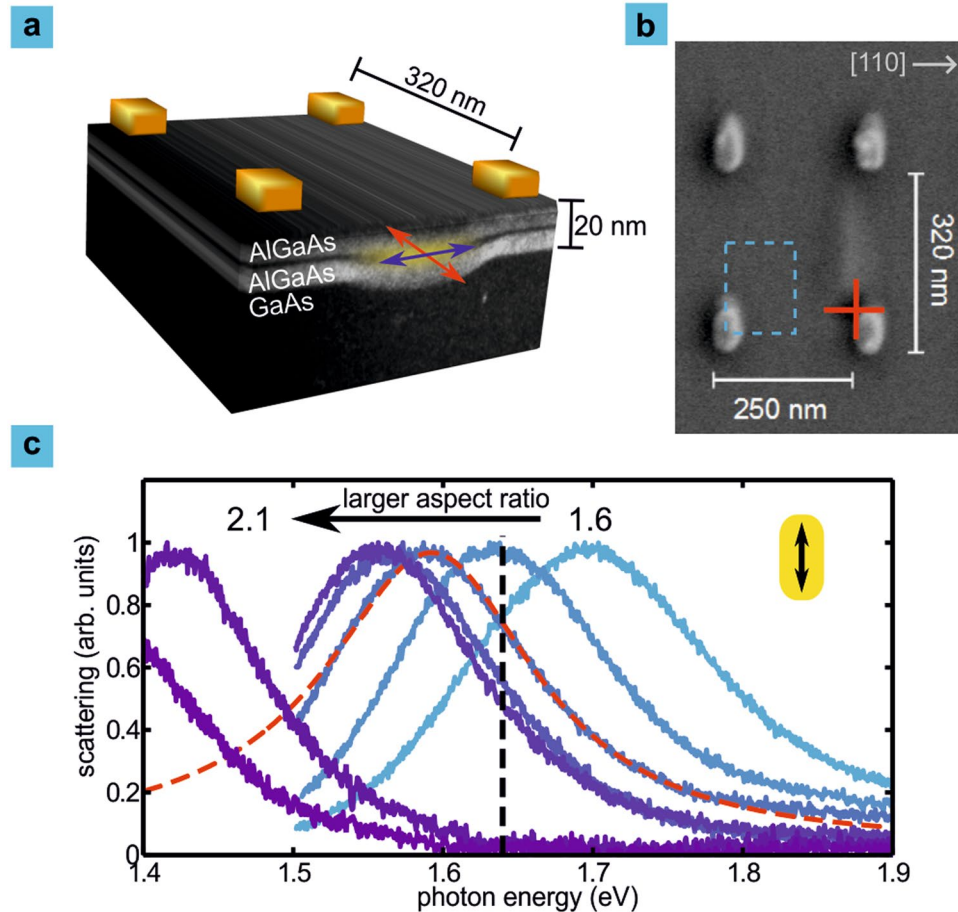
Plasmon resonant nanoparticles enable propagating light fields to be converted into localized energy and *vice versa*<sup>1,2</sup>. Due to this property they are called optical antennas. Optical antennas allow the impedance between a subwavelength light source, such as a semiconductor quantum dot (QD), and free space to be matched, resulting in increased emission<sup>3–8</sup>. Optical antennas also enable the radiation pattern to be shaped<sup>9,10</sup> and the polarization of the emission to be modified<sup>11,12</sup>, making them an interesting tool to control light-emission from single quantum emitters.

In order to significantly modify the spontaneous decay of a quantum emitter using optical antennas, the emitter has to be placed in the near-field of the plasmonic nanostructure. For quantum emitters buried in a substrate such as self-assembled semiconductor quantum dots or nitrogen-vacancy centers in a diamond crystal this requires the emitters to be placed very close to the substrate surface. This often results in degradation of the optical properties of the emitters due to surface states<sup>13,14</sup>. Additionally, the plasmonic nanostructure has to be positioned or fabricated with extremely high spatial accuracy with respect to the quantum emitter, which is often challenging<sup>15–19</sup>. A promising alternative to optical antennas to control light emission from emitters that may resolve these challenges is *optical metasurfaces*<sup>20–22</sup>. Here plasmonic antennas are arranged in arrays<sup>23–25</sup> that allow controlling the spatial distribution of the amplitude, polarization, and phase of the electromagnetic field with sub-wavelength spatial resolution<sup>26</sup>. In plasmonic nanoantenna arrays there exist large regions of enhanced emission and absorption in the unit cells of the array, so that position dependence of the coupling is less critical<sup>27,28</sup>. This could be highly desirable for plasmonic emission enhancement for organic optoelectronic devices and other thin film structures. In this study we investigate the coupling of single self-assembled semiconductor quantum dots to arrays of plasmon resonant nanoantennas. We observe modifications of the emission when the optical resonance of the array is tuned to the emission energy of the emitters, and demonstrate enhanced emission for quantum dots placed in the array outside of the near- and intermediate-zones of the plasmonic antennas.

### Results

We prepare rectangular arrays of plasmonic gold nanorod antennas with varying aspect ratio on the surface of a crystal containing near-surface GaAs quantum dots (see Fig. 1a). Each plasmonic nanoantenna array has an area

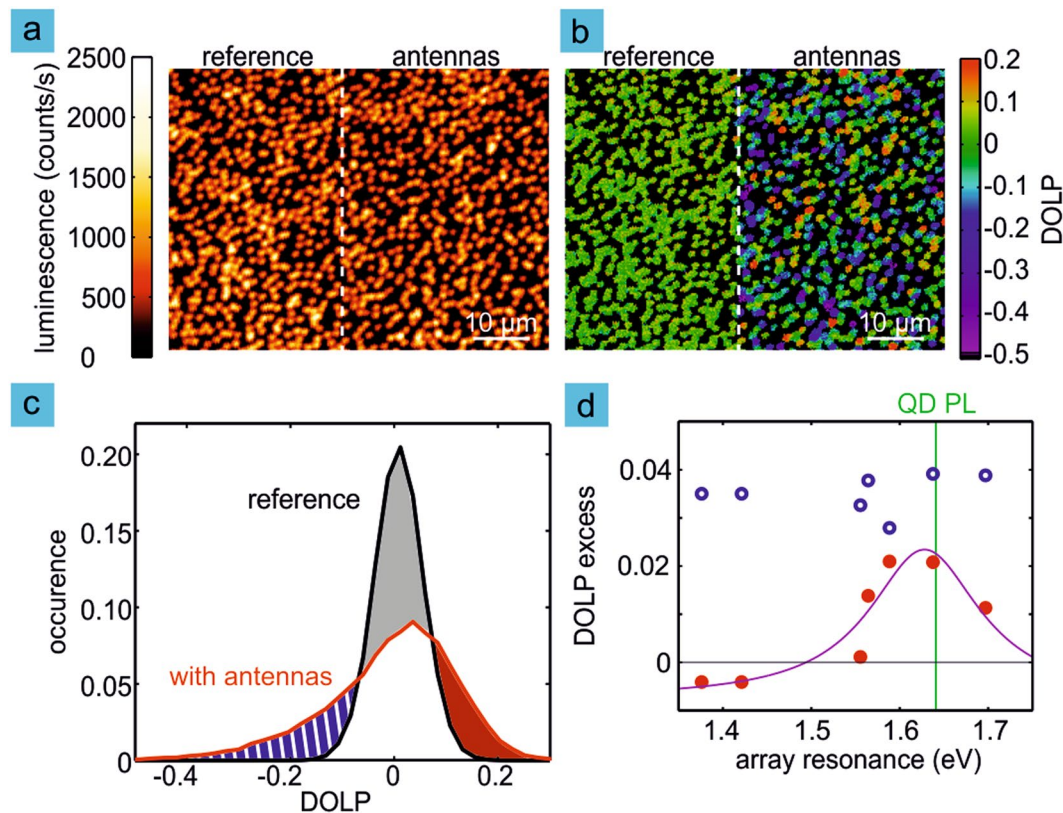
<sup>1</sup>Department of Chemistry, University of Cologne, Luxemburger Str. 116, D-50939 Köln, Germany. <sup>2</sup>Max Planck Institute for Solid State Research, Heisenbergstrasse 1, D-70569 Stuttgart, Germany. <sup>3</sup>Fourth Physics Institute and Research Center SCoPE, University of Stuttgart, Pfaffenwaldring 57, D-70550 Stuttgart, Germany. <sup>4</sup>Institute for Integrative Nanosciences, IFW Dresden, Helmholtzstrasse 20, D-01069 Dresden, Germany. <sup>5</sup>Sorbonne Universités, UPMC Univ Paris 06, CNRS, UMR 7588, Institut des Nanosciences de Paris, 4 place Jussieu, F-75252, Paris, France. <sup>6</sup>Experimental Physics III, University of Bayreuth, Universitätsstrasse 30, D-95447 Bayreuth, Germany. Correspondence and requests for materials should be addressed to M.L. (email: [markus.lippitz@uni-bayreuth.de](mailto:markus.lippitz@uni-bayreuth.de)) or K.L. (email: [klas.lindfors@uni-koeln.de](mailto:klas.lindfors@uni-koeln.de))



**Figure 1.** Excitons in GaAs quantum dots couple to plasmons in a rectangular array of gold nanorods. (a) Arrays of rectangular nanoantennas are fabricated on near-surface GaAs quantum dots. The unit cells of the arrays are centered on the antenna elements. The orientations of the dipole moments associated with the two bright neutral exciton transitions are shown with blue and red arrows. (b) A characteristic topography feature is visible above the quantum dots in scanning electron micrographs (red cross). The x-axis corresponds to the [110] crystal direction. A quarter of the unit cell is indicated by the blue dashed frame. (c) We tune the longitudinal plasmon resonance of the array (solid lines) through the quantum dot exciton transition (black dashed line) by varying the nanorod aspect ratio. The nanoantenna scattering spectra are well represented by a Lorentzian fit (dashed red line).

of  $100\ \mu\text{m} \times 100\ \mu\text{m}$ , containing approximately  $5 \times 10^3$  quantum dots. The period of the array is 250 nm in the transverse direction of the nanorod antennas and 320 nm or 330 nm in the longitudinal direction (see Fig. 1b). For the quantum dot emission energy (wavelength  $\approx 760$  nm) these subwavelength periods result in only evanescent grating orders for the [1,0] and [0,1] array directions in the air half space. The smallest plasmonic antennas have in-plane dimensions of 50 nm and 82 nm (aspect ratio 1.6). We vary the aspect ratio of the nanorods to tune the longitudinal plasmon resonance of the array from 1.7 eV to below 1.4 eV as illustrated by the dark-field scattering spectra shown in Fig. 1c. Here the incident s-polarized light has the electric field along the long axis of the antennas, so that only the longitudinal plasmon oscillation is excited. Full-field simulations using a finite-element method based solver (Comsol Multiphysics) show that this excitation is the fundamental dipolar mode. For the incident polarization along the transverse direction we observe no resonances close to the spectral position of the quantum dot emission. We finally note that the gold nanorods, and thus the arrays' [1,0] ([0,1]) directions are aligned with the [110] ([1-10]) substrate crystal directions, respectively, and thus with the transition dipoles of the quantum dots (Fig. 1a). This has the advantage that the coupling of the two independent excitonic transition dipoles to the modes of the antenna arrays can be investigated.

In photoluminescence images of quantum dot ensembles the emitted power shows only small differences between the sample area with and without optical antennas as seen in Fig. 2a. We therefore turn to polarization resolved experiments and make use of the fact that the response of the plasmonic array is strongly polarization-dependent. We consider changes in the degree of linear polarization DOLP of the quantum dot luminescence, defined as



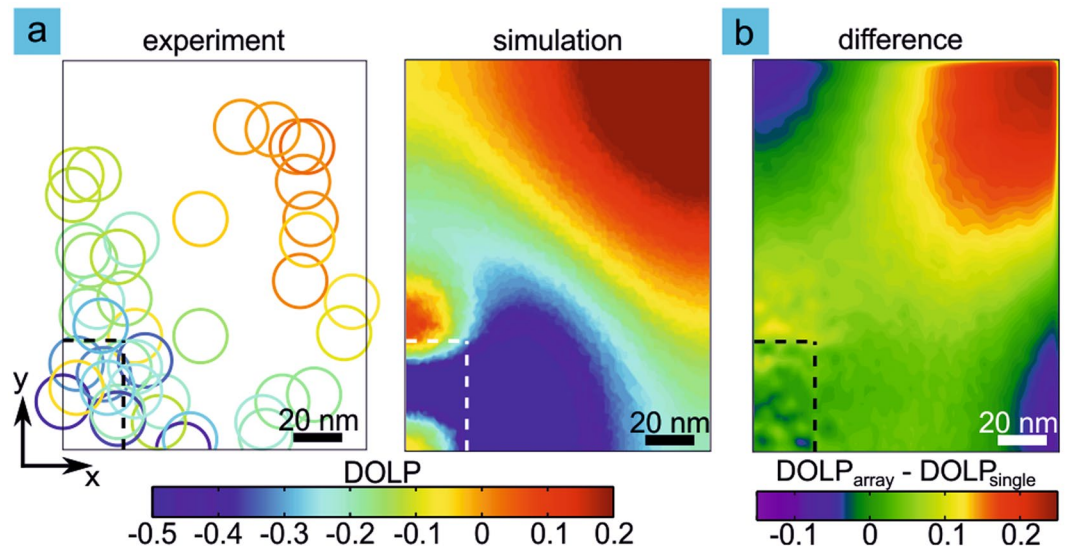
**Figure 2.** Coupling to an array of optical antennas results in modified photoluminescence. (a) The total emitted photoluminescence shows only small differences between the sample areas with and without optical antennas. (b) For the same area the degree of linear polarization (DOLP) varies significantly due to the plasmonic nanostructures. (c) The histogram of DOLP values is significantly broadened for the sample area with optical antennas (red) as compared to the reference region (black). A fraction of the reference distribution (gray shading) is shifted to negative and positive values (blue and red shading, respectively). The data in (b) and (c) is for the array with longitudinal plasmon resonance tuned to the emission of the quantum dots as evidenced by the scattering spectrum shown in Fig. 1c (black dashed line indicates the quantum dot emission). (d) We quantify the influence of the resonance position in terms of excess in the positive (red circles) or negative (blue circles) part of the DOLP histogram. The wavelength dependence of the positive excess follows a Lorentzian curve centered on the quantum dot emission while the negative excess is almost wavelength independent.

$$\text{DOLP} = \frac{s_{\text{res}} - s_{\text{nres}}}{s_{\text{res}} + s_{\text{nres}}} \quad (1)$$

Here  $s_{\text{res}}$  and  $s_{\text{nres}}$  are the measured luminescence signals for emission polarized in the longitudinal (resonant) and transverse (non-resonant) direction, respectively. For off-resonant excitation at a photon energy of 2.327 eV, quantum dots without plasmonic structures display a narrow distribution of the DOLP centered at zero. The DOLP is furthermore not influenced by possible enhancement of the excitation and only reflects modifications of the emission. Figure 2b shows the DOLP for the same region from where the intensity data ( $s_{\text{res}} + s_{\text{nres}}$ ) of Fig. 2a is acquired. We now observe significant changes in the emission due to the coupling to the plasmonic array that results in increased emission of the exciton with its transition dipole moment along the longitudinal direction.

To investigate the influence of the detuning of the plasmonic nanoantenna resonance with respect to the quantum dot emission we record photoluminescence images (integrated intensity from 1.570 eV to 1.656 eV) of the plasmonic arrays and include an area of the neighboring unpatterned region to act as reference in the images (right and left sides of 2a,b, respectively). We analyze the recorded images by first excluding pixels where the intensity is below a threshold value and which correspond to detector dark counts. We then calculate the DOLP for the remaining pixels and represent the data obtained in this way as (normalized) histograms. Figure 2c shows the data for the array that is resonant with the exciton transition. Compared to the distribution of the reference area without plasmonic nanoantennas we observe a significant change in the shape of the histogram. The coupling between the quantum dot exciton and the plasmonic mode results in quantum dots that have a DOLP differing significantly from the reference emitters that display almost no polarization anisotropy<sup>29,30</sup>.

To quantify the change in the DOLP distributions we calculate, for arrays with different resonance energies, the excess positive and negative values of the DOLP compared to a reference sample as first moments of the positive and negative parts of the DOLP distribution (see supporting information for more detailed information).



**Figure 3.** The DOLP shows a distinct distribution in the unit cell of the plasmonic nanoantenna array. Here the dashed rectangle signifies a plasmonic nanoantenna. (a) The measured DOLP (color coded circles) for the quantum dot emission (left) is negative near the antenna and along the longitudinal direction where the near- and intermediate-fields are strong. For larger separations, where far-field coupling is significant, the emission is enhanced, resulting in elevated DOLP values. Finite element simulations for the plane of the quantum dots (right) are in good agreement with the experimental data. Here we consider a quarter of the unit cell of an array of plasmonic antennas with longitudinal modes resonant to the quantum dot emission (see Fig. 1). (b) The difference in the calculated DOLP distributions for an array and a single antenna is small near the antenna and becomes significant further away. The positive DOLP in the corners of the unit cell can be clearly attributed to interactions of array elements.

Figure 2d shows the dependence of these excess values on the detuning of the nanoantenna array resonance from the quantum dot emission. We note that the excess positive values of DOLP closely follow the resonance of the plasmonic structure while the negative values are almost independent of the properties of the nanoantenna array. We next interpret these results based on simulations and position-resolved measurements of the DOLP.

**Individual quantum dots in resonant array: Position-resolved interaction.** Let us now turn to the position-dependent coupling of a single quantum dot to the plasmonic array. We use the characteristic topography feature above each quantum dot to determine the position of quantum dots with respect to the plasmonic array<sup>19</sup>. We show color-coded DOLP values for 43 quantum dots as a function of position on the left side of Fig. 3a. The colored rings represent experimental data for different quantum dot positions. As the optical properties of the self-assembled quantum dots and the optical antennas exhibit narrow ensemble distributions, the results for all structures are visualized in one plot. The radius of the ring corresponds to 11 nm, which is the worst case estimate for the accuracy with which we can determine the position (see ref.<sup>16</sup>). Here the quantum dot positions are plotted in a quadrant of the unit cell of the array. The position-resolved measurements point to the coupling mechanism: Beside the antenna we observe a suppression of emission for the resonant polarization signal of the y-dipole due to quenching together with an increase of emission for the transverse polarization (x-dipole) and therefore low values of DOLP. The small enhancement of the x-dipole is likely due to coupling to the transverse plasmon, which however is significantly detuned from the quantum dot emission. As both effects depend only weakly on the element length (longitudinal resonance) the excess negative part of the DOLP histogram is almost independent of the spectral position of the array resonance (see Fig. 2d). The positive DOLP originates from enhanced emission from quantum dots located in the corners of the unit cell furthest away from the antennas. We compare the position-resolved experimental data to simulations. The simulated data is obtained by using the Lorentz reciprocity theorem<sup>31</sup>. The theorem relates the electric fields radiated by dipoles placed at the position of the quantum dot and detector at these locations. We can in this way deduce the detected intensity of a dipole emitter as a function of its relative position to a plasmonic structure<sup>19</sup>. We obtain the DOLP by taking the two orthogonal polarizations of the quantum dot transition dipoles into account. The right plot in Fig. 3a shows the simulated DOLP distribution. We observe good agreement between the experiment and theory. More insight is gained by looking at the difference in the DOLP distribution for a single antenna and an array as shown in Fig. 3b. We find that the differences in the distributions are insignificant for near-field coupling while there are significant differences for larger separations between antenna and emitter. In the diagonal [1,1] direction at a distance more than 50 nm away from the antenna intermediate- and far-field coupling is dominant and we obtain enhanced emission of the polarization parallel to the resonant array direction of up to a factor of approximately two (data not shown here). For the intermediate-field coupling along the resonant [0,1] array direction the emission is suppressed. See also Fig. S3 in supplementary information.

## Discussion

In summary, we have studied the coupling of single semiconductor quantum dots to an array of rod-shaped plasmonic nanoantennas. We observe a polarization anisotropy of the emission that is dependent on the spectral position of the plasmon resonance with respect to the narrow-band quantum dot emission. The coupling-induced polarization change can be separated into wavelength-independent and resonant components: The former is a decrease of the emission polarized along the plasmon oscillation for quantum dots within the near- and intermediate-zones of the antenna. The latter is a resonant increase of the emission for quantum dots further away from the plasmonic rod. Using full-wave simulations we demonstrate that the resonantly enhanced emission originates from coupling of the exciton in the quantum dot to plasmons in the *array*. For a single antenna the long-range enhancement is lacking.

We show a strongly position and resonance dependent polarization anisotropy which originates from the interaction in different field regimes. Our work demonstrates a novel approach to enhance emission from self-assembled semiconductor quantum dots using plasmonics. Quenching of emission present in near-field coupling is avoided when using plasmonic nanoantenna arrays. This enables increasing the emission and controlling the polarization and radiation pattern using suitably designed nanoantenna *metasurfaces*. By making use of dielectric metasurfaces the large absorption present in plasmonic structures can be avoided<sup>20–22</sup>. Our work shows that nano-antenna arrays are an alternative to single optical antennas to enhance and control the emission of single quantum emitters with the potential of greater flexibility in design and possibly lower losses.

## Methods

**Growth of GaAs quantum dots.** The emitters are epitaxially grown using molecular beam epitaxy and are located at a depth of 21 nm inside the semiconductor crystal enabling coupling to plasmonic structures fabricated on the sample surface. The strain-free quantum dots<sup>32</sup> display neutral exciton emission with a photon energy of approximately 1.64 eV and their almost degenerate transition dipoles are aligned along the [110] and [1-10] crystal directions. The growth and optical properties have been reported in detail in refs<sup>29,30,32</sup>.

**Fabrication of plasmonic nanoantenna arrays.** The plasmonic nanoantennas are fabricated on the sample surface using electron beam lithography. We first spin coat a 200 nm thick double layer PMMA (poly-methyl methacrylate) resist where the bottom layer is more sensitive than the 50 nm thick top layer. This results in an undercut of the resist after development, assisting lift-off. The resist is exposed with 20 kV electrons and developed followed by metal deposition by thermal evaporation. Here we use a 3 nm thick chromium layer for improved adhesion followed by 30 nm gold. A lift-off process removes the excess metal. We have previously shown that the optical properties of the quantum dots are not modified in this process<sup>19</sup>.

**Optical measurements.** The photoluminescence was measured in a home-built low-temperature laser-scanning confocal microscope. The samples were cooled down to 10–15 K in a liquid helium flow-cryostat. The numerical aperture of the objective used in the experiments was 0.7 and the polarization of the incident light is set to the transverse direction of the rod-shaped antennas. A full sketch of the setup is shown in Fig. S1 of the supplementary information.

**Finite element simulations.** The simulations were carried out using a finite element solver (Comsol Multiphysics). Full details about the simulations are given in the supplementary information.

**Data availability.** The datasets generated and analysed during the current study are available from the corresponding author on reasonable request.

## References

- Mühschlegel, P., Eisler, H.-J., Martin, O. J. F., Hecht, B. & Pohl, D. W. Resonant optical antennas. *Science* **308**, 1607–1609 (2005).
- Novotny, L. & van Hulst, N. Antennas for light. *Nature Photonics* **5**, 83–90 (2011).
- Farahani, J. N., Pohl, D. W., Eisler, H.-J. & Hecht, B. Single quantum dot coupled to a scanning optical antenna: A tunable superemitter. *Phys. Rev. Lett.* **95**, 017402 (2005).
- Kühn, S., Håkanson, U., Rogobete, L. & Sandoghdar, V. Enhancement of single-molecule fluorescence using a gold nanoparticle as an optical nanoantenna. *Phys. Rev. Lett.* **97**, 017402 (2006).
- Anger, P., Bharadwaj, P. & Novotny, L. Enhancement and quenching of single-molecule fluorescence. *Phys. Rev. Lett.* **96**, 113002 (2006).
- Taminiau, T. H., Stefani, F. D., Segerink, F. B. & van Hulst, N. F. Optical antennas direct single-molecule emission. *Nature Photonics* **2**, 234 (2008).
- Li, X., Hu, C., Zhao, Z., Feng, Q. & Luo, X. Monopole probe fed by coupling gold rods. *Applied Physics B* **101**, 337–341 (2010).
- Akselrod, G. M. *et al.* Probing the mechanisms of large Purcell enhancement in plasmonic nano-antennas. *Nature Photonics* **8**, 835–840 (2014).
- Curto, A. G. *et al.* Unidirectional emission of a quantum dot coupled to a nanoantenna. *Science* **329**, 930–933 (2010).
- Dregely, D. *et al.* Imaging and steering an optical wireless nanoantenna link. *Nature Communications* **5**, 4354, <https://doi.org/10.1038/ncomms5354> (2014).
- Biagioni, P. *et al.* Near-field polarization shaping by a near-resonant plasmonic cross antenna. *Phys. Rev. B* **80**, 153409 (2009).
- Taminiau, T. H., Moerland, R. J., Segerink, F. B., Kuipers, L. & van Hulst, N. F.  $\lambda/4$  resonance of an optical monopole antenna probed by single molecule fluorescence. *Nano Letters* **7**, 28–33 (2007).
- Wang, C. F. *et al.* Optical properties of single inas quantum dots in close proximity to surfaces. *Applied Physics Letters* **85**, 3423–3425 (2004).
- Wang, J. *et al.* Coherence times of precise depth controlled NV centers in diamond. *Nanoscale* **8**, 5780–5785 (2016).
- Badolato, A. *et al.* Deterministic coupling of single quantum dots to single nanocavity modes. *Science* **308**, 1158–1161 (2005).
- Dousse, A. *et al.* Controlled light-matter coupling for a single quantum dot embedded in a pillar microcavity using far-field optical lithography. *Phys. Rev. Lett.* **101**, 267404 (2008).
- Schneider, C. *et al.* Lithographic alignment to site-controlled quantum dots for device integration. *Applied Physics Letters* **92**, 183101 (2008).

18. Thon, S. M. *et al.* Strong coupling through optical positioning of a quantum dot in a photonic crystal cavity. *Applied Physics Letters* **94**, 111115 (2009).
19. Pfeiffer, M. *et al.* Eleven nanometer alignment precision of a plasmonic nanoantenna with a self-assembled GaAs quantum dot. *Nano Letters* **14**, 197–201 (2014).
20. Kildishev, A. V., Boltasseva, A. & Shalaev, V. M. Planar Photonics with Metasurfaces. *Science* **339**, 1232009 (2013).
21. Lin, D., Fan, P., Hasman, E. & Brongersma, M. L. Dielectric gradient metasurface optical elements. *Science* **345**, 298–302 (2014).
22. Yu, N. & Capasso, F. Flat optics with designer metasurfaces. *Nature Materials* **13**, 139–150 (2014).
23. Féliđj, N. *et al.* Grating-induced plasmon mode in gold nanoparticle arrays. *Journal of Chemical Physics* **123**, 221103 (2005).
24. Liu, Z. *et al.* Plasmonic nanoantenna arrays for the visible. *Metamaterials* **2**, 45–51 (2008).
25. Yang, A. *et al.* Unidirectional lasing from template-stripped two-dimensional plasmonic crystals. *ACS Nano* **9**, 11582–11588 (2015).
26. Saito, H. & Yamamoto, N. Control of light emission by a plasmonic crystal cavity. *Nano Letters* **15**, 5764–5769 (2015).
27. Lozano, G. *et al.* Plasmonics for solid-state lighting: enhanced excitation and directional emission of highly efficient light sources. *Light: Science and Applications* **2**, e66, <https://doi.org/10.1038/lsa.2013.22> (2013).
28. Rodriguez, S. R. K. *et al.* Quantum rod emission coupled to plasmonic lattice resonances: A collective directional source of polarized light. *Applied Physics Letters* **100**, 111103 (2012).
29. Pfeiffer, M. *et al.* Enhancing the optical excitation efficiency of a single self-assembled quantum dot with a plasmonic nanoantenna. *Nano Letters* **10**, 4555–8 (2010).
30. Pfeiffer, M. *et al.* Positioning plasmonic nanostructures on single quantum emitters. *physica status solidi (b)* **249**, 678–686 (2012).
31. Carminati, R., Nieto-Vesperinas, M. & Greffet, J.-J. Reciprocity of evanescent electromagnetic waves. *J. Opt. Soc. Am. A* **15**, 706–712 (1998).
32. Atkinson, P., Zallo, E. & Schmidt, O. G. Independent wavelength and density control of uniform GaAs/AlGaAs quantum dots grown by infilling self-assembled nanoholes. *Journal of Applied Physics* **112**, 054303 (2012).

## Acknowledgements

We gratefully acknowledge funding from the DFG (research group FOR730) and the Academy of Finland (project 252421). This work was partly funded through the Institutional Strategy of the University of Cologne within the German Excellence Initiative. We furthermore would like to thank J. Weiss and the Nanostructuring Lab team of the Max Planck Institute for Solid State Research for help with sample fabrication.

## Author Contributions

M.P., K.L., M.L., and H.G. conceived the experiments, P.A. grew the quantum dots samples under supervision of A.R. and O.S., M.P. and K.L. conducted the experiments, M.P., K.L., and M.L. analyzed the results. M.P. and K.L. carried out the FEM simulations. M.P. and K.L. wrote the manuscript with input from all authors.

## Additional Information

**Supplementary information** accompanies this paper at <https://doi.org/10.1038/s41598-018-21664-8>.

**Competing Interests:** The authors declare no competing interests.

**Publisher's note:** Springer Nature remains neutral with regard to jurisdictional claims in published maps and institutional affiliations.



**Open Access** This article is licensed under a Creative Commons Attribution 4.0 International License, which permits use, sharing, adaptation, distribution and reproduction in any medium or format, as long as you give appropriate credit to the original author(s) and the source, provide a link to the Creative Commons license, and indicate if changes were made. The images or other third party material in this article are included in the article's Creative Commons license, unless indicated otherwise in a credit line to the material. If material is not included in the article's Creative Commons license and your intended use is not permitted by statutory regulation or exceeds the permitted use, you will need to obtain permission directly from the copyright holder. To view a copy of this license, visit <http://creativecommons.org/licenses/by/4.0/>.

© The Author(s) 2018