



HAL
open science

Post-transplant cyclophosphamide for graft-versus-host disease prophylaxis in HLA matched sibling or matched unrelated donor transplant for patients with acute leukemia, on behalf of ALWP-EBMT

Annalisa Ruggeri, Myriam Labopin, Andrea Bacigalupo, Boris Afanasyev, Jan J Cornelissen, Ahmet Elmaagacli, Maija Itälä-Remes, Didier Blaise, Ellen Meijer, Yener Koc, et al.

► To cite this version:

Annalisa Ruggeri, Myriam Labopin, Andrea Bacigalupo, Boris Afanasyev, Jan J Cornelissen, et al.. Post-transplant cyclophosphamide for graft-versus-host disease prophylaxis in HLA matched sibling or matched unrelated donor transplant for patients with acute leukemia, on behalf of ALWP-EBMT. Journal of Hematology and Oncology, 2018, 11, pp.40. 10.1186/s13045-018-0586-4 . hal-01762520

HAL Id: hal-01762520

<https://hal.sorbonne-universite.fr/hal-01762520>

Submitted on 10 Apr 2018

HAL is a multi-disciplinary open access archive for the deposit and dissemination of scientific research documents, whether they are published or not. The documents may come from teaching and research institutions in France or abroad, or from public or private research centers.

L'archive ouverte pluridisciplinaire **HAL**, est destinée au dépôt et à la diffusion de documents scientifiques de niveau recherche, publiés ou non, émanant des établissements d'enseignement et de recherche français ou étrangers, des laboratoires publics ou privés.




Distributed under a Creative Commons Attribution| 4.0 International License

RESEARCH

Open Access



Post-transplant cyclophosphamide for graft-versus-host disease prophylaxis in HLA matched sibling or matched unrelated donor transplant for patients with acute leukemia, on behalf of ALWP-EBMT

Annalisa Ruggeri^{1,2*} , Myriam Labopin^{1,3}, Andrea Bacigalupo⁴, Boris Afanasyev⁵, Jan J. Cornelissen⁶, Ahmet Elmaagacli⁷, Maija Itälä-Remes⁸, Didier Blaise⁹, Ellen Meijer¹⁰, Yener Koc¹¹, Noel Milpied¹², Harry C. Schouten¹³, Nicolaus Kroeger¹⁴, Mohamad Mohty^{1,3,15} and Arnon Nagler^{15,16}

Abstract

Background: Experience using post-transplant cyclophosphamide (PT-Cy) as graft-versus-host disease (GVHD) prophylaxis in allogeneic stem cell transplantation (HSCT) from matched sibling donors (MSD) or unrelated donors (UD) is limited and with controversial results. The study aim was to evaluate PT-Cy as GVHD prophylaxis post-HSCT from MSD and UD transplants. We analyzed 423 patients with acute leukemia who received PT-Cy alone or in combination with other immunosuppressive (IS) drugs as GVHD prophylaxis. Seventy-eight patients received PT-Cy alone (group 1); 204 received PT-Cy in combination with one IS drug—cyclosporine-A (CSA) or methotrexate (MTX) or mycophenolate-mofetil (MMF) (group 2), while 141 patients received PT-Cy in combination with two IS drugs—CSA + MTX or CSA + MMF (group 3). Transplants were performed from 2007 to 2015 and median follow-up was 20 months.

Results: Probability of overall survival (OS) at 2 years was 50, 52.2, and 62.4%, for the three groups, respectively, $p = 0.06$. In multivariate analysis, in comparison to PT-Cy alone, the addition of two IS drugs was associated with reduced risk of extensive cGVHD (HR 0.25, $p = 0.02$). Use of bone marrow (BM) and anti-thymocyte globulin were independently associated with reduced risk of extensive cGVHD. Prognostic factors for non-relapse mortality (NRM) were the addition of two IS drugs to PT-Cy (HR 0.35, $p = 0.04$), diagnosis of AML, disease status at transplant, and patient CMV serology. Factors associated with increased OS were the use of PT-Cy with two IS drugs (HR 0.49, $p = 0.02$), AML, and disease status at transplant.

Conclusion: For GVHD prophylaxis in MSD and UD HSCT, the addition of IS drugs to PT-Cy enhances its effect and reduces the risk of severe cGVHD, reducing mortality and improving survival.

Keywords: Hematopoietic stem cell transplantation, Post-transplantation cyclophosphamide, Stem cell source, Acute leukemia, Acute graft-versus-host disease

* Correspondence: annalisaruggeri80@hotmail.com

¹Service d'Hématologie et Thérapie Cellulaire, Hôpital Saint Antoine, AP-HP, 168 Rue du Faubourg Saint Antoine, 75012 Paris, France

²Department of Pediatric Hematology and Oncology, IRCCS Bambino Gesù Children's Hospital, Piazza SOnofrio, 4, Roma 00165, Italy

Full list of author information is available at the end of the article

Background

Graft-versus-host disease (GVHD) remains one of the main life-threatening complications after allogeneic stem cell transplantation (HSCT) [1, 2]. The standard GVHD prophylaxis strategy is mostly based on the use of calcineurin inhibitors alone or in combination with other immunosuppressive (IS) drugs [3, 4]. This results in an incidence of 25–40% of acute GVHD and 40–60% of chronic GVHD after HSCT from HLA identical sibling (MSD) or unrelated donor (UD). The incidence of GVHD also depends on the conditioning regimen as well as patients and disease-related factors [5].

With the increased use of HSCT from unmanipulated haploidentical donor, adapted GVHD prophylaxis has been proposed [6, 7]. Among those, Luznik et al. [7] pioneered the use of high-dose post-transplant cyclophosphamide (PT-Cy) in combination with other IS drugs reporting a low incidence of acute (a) and chronic (c) GVHD and low transplant-related mortality.

The feasibility of PT-Cy in the haploidentical setting has prompted its use as sole GVHD prophylaxis in recipients of HSCT from MSD or UD [8, 9]. Luznik et al. [8] reported 43 and 10% of grades II–IV and III–IV aGVHD, respectively, and 10% of cGVHD in 117 patients receiving bone marrow (BM) transplantation from MSD with myeloablative regimen. Similar results were observed in a multicenter study [9].

However, the attempts to administer PT-Cy alone, in a phase 2 trial on adult patients with hematologic malignancies undergoing HSCT with peripheral blood stem cell (PBSC) grafts from either HLA identical sibling or unrelated donors, was associated with severe aGVHD and related deaths [10].

Mielcarek et al. [11] reported the use of PT-Cy followed by cyclosporine A (CSA), started on day +5 post stem cell infusion, resulting in low incidence of severe aGVHD, but grade II–IV aGVHD and extensive cGVHD reached 77 and 30%, respectively.

More recently, the use of PT-Cy combined with other IS such as tacrolimus or mycophenolate mofetil (MMF) was shown to reduce the incidence of acute and chronic GVHD to 19 and 16%, respectively, in PBSC recipients [12].

We aimed to analyze PT-Cy alone or in combination with other IS as GVHD prophylaxis in a large cohort of patients transplanted for acute myeloid leukemia (AML) or acute lymphoblastic leukemia (ALL) and reported to the European Society for Blood and Marrow Transplantation (EBMT) Registry.

Methods

Study design

This is a retrospective registry-based analysis on behalf of the Acute Leukemia Working Party (ALWP) of the

EBMT. The EBMT is a voluntary working group of more than 550 transplant centers that are required to report all consecutive stem cell transplantations and follow-up once a year. Audits are routinely performed to determine the accuracy of the data.

Adults (age > 18 years) with AML or ALL in complete remission (CR1 or CR2) or in advanced disease at transplant, reported to Promise-EBMT, who underwent a HSCT with MSD or 10/10 HLA matched UD using PT-Cy as first allogeneic HSCT between 2007 and 2015 were analyzed.

This study was approved by the ALWP of the EBMT institutional review board and conducted in accordance with the Declaration of Helsinki and Good Clinical Practice guidelines. All patients or legal guardians provided written informed consent authorizing the use of clinical information for research purposes.

A total of 423 patients were reported from 150 transplant centers, including 78 patients receiving PT-Cy alone (group 1) and 204 patients receiving PT-Cy in combination with one IS, mainly CSA or methotrexate (MTX) or MMF (group 2), while 141 patients received PT-Cy in combination with two IS drugs—CSA + MTX or CSA + MMF (group 3).

End points and definitions

The primary end point was leukemia-free survival (LFS). Secondary end points were neutrophil engraftment, aGVHD and cGVHD, relapse incidence (RI), non-relapse mortality (NRM), GVHD-free relapse-free survival (GRFS), and overall survival (OS).

Neutrophil engraftment was defined as the first of 3 consecutive days with a neutrophil count of at least $0.5 \times 10^9/L$. Acute GVHD was graded according to the modified Seattle Glucksberg criteria [13] and cGVHD according to the revised Seattle criteria [14]. Relapse was defined as disease recurrence and appearance of blasts in the peripheral blood or BM (> 5%) after CR. NRM was defined as death from any cause other than relapse. Refined GRFS [15] was defined as survival without the following events: grade 3–4 acute GVHD, severe cGVHD, disease relapse, or death from any cause after transplantation. LFS was calculated until the date of first relapse, death from any cause, or the last follow-up for patients alive in CR.

Myeloablative conditioning (MAC) was defined as a regimen containing either total body irradiation (TBI) with a dose greater than 6 Gy, a total dose of oral busulfan (Bu) greater than 8 mg/kg, or a total dose of intravenous Bu greater than 6.4 mg/kg or melphalan at doses > 140 mg/m². In addition, regimens containing two alkylating agents were also considered as MAC. All other regimens were defined as reduced intensity conditioning (RIC).

Statistical analysis

Quantitative variables are described with median and range. Categorical variables are reported with counts and percent.

LFS and OS and GRFS were estimated by the Kaplan–Meier method. Cumulative incidence (CI) functions were used to estimate neutrophil engraftment, NRM, aGVHD, cGVHD, and RI. Competing risks were death for RI, relapse for NRM, and relapse or death for aGVHD and cGVHD. Univariate analyses were done using the log-rank test for GRFS, OS, and LFS, and Gray's test for CI. For univariate analysis, comparisons were done using chi-square tests for categorical and Mann-Whitney tests for continuous variables. Multivariate analyses were performed using the Cox proportional hazard model.

There was no interaction between the different GVHD prophylaxis strategy and donor type; therefore, they were analyzed together.

Type of GVHD prophylaxis, diagnosis, disease status, age at transplant, transplant year, donor relatedness, stem cell source, cytomegalovirus (CMV) serostatus (donor and recipient negative vs. other combination), conditioning regimen, use of in vivo T cell depletion (anti-thymocyte globulin, ATG), and center experience were included in the final model. In order to test for center effect, we introduced a random effect or frailty for each center into the model [16].

The significance level was fixed at 0.05, and p values were two-sided. Statistical analyses were performed with the SPSS 22 (SPSS Inc./IBM, Armonk, NY, USA) and R 3.2.3 (R Development Core Team, Vienna, Austria) software packages.

Results

Patient and transplant characteristics

Table 1 summarizes the main characteristics by the GVHD prophylaxis strategies. Four hundred twenty-three patients were included in this study; most patients in both groups were transplanted for AML in CR1. The median follow-up was 20 months (95% CI 17.6–22.6). Patients in group 1 were younger (median age 37 years, $p < 0.001$) and transplanted in more recent years (2014, $p < 0.001$), received more frequently grafts from a MSD (80%, $p < 0.001$) and from a CMV-positive donor (73%, $p = 0.008$). In addition, group 1 received more often RIC (56%, $p < 0.001$) and BM as source of stem cells (74%, $p < 0.001$), with no ATG (100%, $p < 0.001$). Twenty-eight centers used ATG in combination with PT-Cy used, corresponding to 143 patients. Dose of ATG was available for 87 patients. Median dose for Thymoglobulin was 5 mg/kg (range 2.5–10 mg/kg). It was 50 mg/kg for ATG-Fresenius (range 20–60 mg/kg).

Neutrophil engraftment and GVHD

Patients receiving PT-Cy alone had 90% (95%CI 80.4–95.5) of neutrophil engraftment at 60 days, whereas it was 97% (95%CI 93.1–98.7) for patients in group 2 and 96.6% (95%CI 90.2–98.1) for group 3, $p < 0.001$. The median time to engraftment was longer for patients receiving PT-Cy alone (22 days), vs. 17.5 and 15 days for patients in groups 2 and 3, respectively.

CI of day 100 grade II–IV aGVHD and 1 year cGVHD were 27.9 and 33%, respectively.

In adjusted multivariate analysis (Table 2), there was no difference in the risk of grade II–IV aGVHD (group 1 vs. group 2 HR 0.63, 95%CI 0.28–1.3, $p = 0.23$; group 1 vs. group 3 HR 1.4, 95%CI 0.65–3.14, $p = 0.38$) and grade III–IV aGVHD (group 1 vs. group 2 HR 0.52, 95%CI 0.17–1.5, $p = 0.25$; group 1 vs. group 3 HR 0.81, 95%CI 0.27–2.44, $p = 0.71$) according to the groups.

Diagnosis of ALL (HR 0.57, 95%CI 0.32–0.84, $p < 0.001$), UD (HR 1.65, 95%CI 1.1–2.6, $p = 0.02$), RIC regimen (HR 1.72, 95%CI 1.1–2.7, $p = 0.01$), and donor CMV positive (HR 1.77, 95%CI 1.1–2.8, $p = 0.01$) were independently associated with increased risk of grade II–IV aGVHD.

The type of GVHD prophylaxis did not impact the CI of cGVHD (31, 34, and 33% $p = 0.92$, respectively) (Fig. 1a). Similarly, the intensity of the GVHD prophylaxis was not associated with cGVHD (group 1 vs. group 2 HR 0.60, 95%CI 0.26–1.36, $p = 0.22$; group 1 vs. group 3 HR 0.54, 95%CI 0.22–1.23, $p = 0.13$) in the multivariate analysis (Table 2).

The use of BM (HR 0.41, 95%CI 0.28–0.48, $p = 0.01$) and the absence of ATG (HR 0.59, 95%CI 0.36–0.94, $p = 0.03$) were independently associated with a reduced risk of cGVHD.

The incidence of extensive cGVHD was higher for patients receiving PT-Cy alone (18%) or PT-Cy + 1 IS (20%) vs. 8.5% for those having PT-Cy + 2 IS (Fig. 1b). This was also confirmed in the multivariate analysis (Table 2) where in comparison to PT-Cy the addition of two IS was associated with reduced risk of extensive cGVHD (group 1 vs. group 2, HR 0.56, 95%CI 0.20–1.5, $p = 0.27$; group 1 vs. group 3, HR 0.25, 95%CI 0.07–0.84, $p = 0.02$). The use of BM vs. PBSC grafts (HR 0.21, 95%CI 0.07–0.62, $p < 0.001$) and the absence of ATG (HR 0.22, 95%CI 0.09–0.54, $p < 0.001$) were also independently associated with reduced risk of extensive cGVHD.

Relapse and NRM

At 2 years, the CI of relapse for the whole cohort was 33% with no difference according to groups (32 vs. 36 vs. 28%, $p = 0.47$) (Fig. 2a). CI of relapse was 33.9% for AML and 32.1% for ALL, $p = 0.04$, and it was 27.4, 38.5, and 47% for patients transplanted in CR1, CR2, and in advanced disease status $p < 0.01$, respectively. According

Table 1 Patient and disease characteristics

	PTCy alone (n = 78)	1 associated drug (n = 204)	2 associated drugs (n = 141)	p value
Median FU (median)	13.02 (10.13–15.9)	23.4 (20.15–26.7)	21.8 (15.42–28.12)	< 0.001
AGE at Tx, median (range) (IQR)	37.1 (18.1–73.7)(27.5–49.8)	51.3 (18.7–72.9)(37.9–60.2)	43.9 (18.1–76)(31.5–54.1)	< 0.001
Time diagnosis to Tx (months)	7.1 (2.1–81.8)(4.3–11.8)	5.3 (1.8–225.4)(3.7–10.8)	5.6 (0.4–186.9)(3.8–11.1)	0.137
Year of Tx, median (range)	2014 (2009–2015)	2013 (2008–2015)	2013 (2009–2015)	< 0.001
AML	56 (72%)	172 (84%)	103 (73%)	0.014
ALL	22 (28%)	32 (16%)	38 (27%)	
CR1	47 (60%)	135 (66%)	86 (61%)	0.366
CR2/3	8 (10%)	27 (13%)	24 (17%)	
Active disease	23 (30%)	42 (21%)	31 (22%)	
MSD	63 (81%)	114 (56%)	64 (45%)	< 0.001
UD	15 (19%)	90 (44%)	77 (54%)	
No F to M	61 (78%)	163 (82%)	106 (76%)	0.429
F to M	17 (22%)	37 (18%)	34 (24%)	
Missing	0	4	1	
KPS < 80	8 (11%)	13 (7%)	6 (4%)	0.189
KPS ≥ 80	64 (89%)	175 (93%)	130 (96%)	
Missing	6	16	5	
Pat. CMV negative	17 (23%)	68 (34%)	44 (32%)	0.218
Pat. CMV positive	57 (77%)	133 (66%)	92 (68%)	
Missing	4	3	5	
Donor CMV negative	19 (27%)	96 (48%)	55 (41%)	0.008
Donor CMV positive	51 (73%)	103 (52%)	80 (59%)	
Missing	8	5	6	
MAC	32 (44%)	96 (49%)	102 (74%)	< 0.001
RIC	41 (56%)	102 (51%)	36 (26%)	
Missing	5	6	3	
BM	58 (74%)	25 (12%)	25 (18%)	< 0.001
PB	20 (26%)	179 (88%)	116 (82%)	
No in vivo TCD	78 (100%)	130 (64%)	72 (51%)	< 0.001
In vivo TCD	0 (0%)	74 (36%)	69 (49%)	

FU follow-up, CI confidence interval, IQR interquartile range, MAC myeloablative, RIC reduced intensity conditioning regimen, PTCy post-transplant cyclophosphamide, AML acute myeloid leukemia, ALL acute lymphoblastic leukemia, Tx transplant, UD unrelated donor, MSD matched sibling donor, CR complete remission, PB peripheral blood, BM bone marrow, TCD T cell depletion, CMV cytomegalovirus, KPS Karnofsky performance status

to donor type, CI of relapse was 37.5 and 28.5% for MSD and UD, $p = 0.21$, respectively.

Overall, 2 years NRM was 18% with no difference for the three groups (19 vs. 20 vs. 14%, $p = 0.47$) (Fig. 2b). Overall, main causes of death were disease recurrence (50%), infections (17%), and GVHD (15%).

In multivariate analysis (Table 2), the type of GVHD prophylaxis was not associated with relapse, with advanced disease status accounting for an increased risk of relapse (HR 2.42, 95%CI 1.60–3.66, $p < 0.001$).

As for NRM (Table 2), the addition of two IS to the PT-Cy (group 1 vs. group 3) (HR 0.35, 95%CI 0.12–0.91, $p = 0.04$), the diagnosis of AML (HR 0.35,

95%CI 0.18–0.66, $p = 0.001$), advanced disease status at transplant (HR 2.94, 95%CI 1.65–5.29, $p < 0.001$), and patient CMV positive serology (HR 2.04, 95%CI 1.30–4.04, $p = 0.04$) were independently associated with the risk of NRM.

OS, LFS, and GRFS

OS, LFS, and GRFS at 2 years were 55, 48, and 33%, respectively. According to GVHD prophylaxis, OS was 50 vs. 52 vs. 62%, $p = 0.06$; LFS was 49% vs. 43% vs. 57%, $p = 0.08$; and GRFS was 24% vs. 28% vs. 44%, $p < 0.001$, for patients receiving PT-Cy alone or PT-Cy + 1 IS or PT-Cy + 2 IS, respectively (Figs. 1c, 2c, d).

Table 2 Multivariate analysis

	HR	95% CI	p value
OS			
PTCy alone	Reference		
PT-Cy + 1 drug	0.72	0.40–1.30	0.27
PT-Cy + 2 drugs	0.49	0.26–0.93	0.03
Age (per 10 years)	1.11	0.97–1.28	0.18
AML vs. ALL	0.60	0.39–0.91	0.02
Year of Tx	0.99	0.88–1.12	0.90
UD vs. MSD	0.95	0.66–1.36	0.77
Disease status			
CR1	Reference		
CR2/C3	1.7	1.07–2.70	0.02
Active disease	2.48	1.71–3.59	< 0.001
RIC vs. MAC	1.20	0.83–1.74	0.34
PB vs. BM	1.13	0.69–1.83	0.63
In vivo TCD	1.07	0.72–1.60	0.73
Patient positive CMV serology	1.07	0.73–1.58	0.73
Donor positive CMV serology	1.17	0.81–1.71	0.40
Center (frailty)			0.25
GRFS			
PTCy alone	Reference		
PT-Cy + 1 drug	0.72	0.45–1.16	0.18
PT-Cy + 2 drugs	0.51	0.31–0.84	0.007
Age (per 10 years)	0.96	0.87–1.07	0.48
AML vs. ALL	0.89	0.62–1.26	0.50
Year of Tx	0.97	0.88–1.08	0.60
UD vs. MSD	1.04	0.78–1.40	0.77
Disease status			
CR1	Reference		
CR2/C3	1.27	0.85–1.89	0.24
Active disease	2.18	1.61–2.95	< 0.001
RIC vs. MAC	1.32	0.98–1.77	0.07
PB vs. BM	1.30	0.87–1.94	0.20
In vivo TCD	0.83	0.60–1.16	0.27
Patient positive CMV serology	0.95	0.69–1.31	0.77
Donor positive CMV serology	1.20	0.88–1.63	0.26
Center (frailty)			0.91
LFS			
PTCy alone	Reference		
PT-Cy + 1 drug	0.97	0.57–1.63	0.90
PT-Cy + 2 drugs	0.65	0.37–1.12	0.12
Age (per 10 years)	1.09	0.97–1.23	0.17
AML vs. ALL	0.68	0.46–0.99	0.04
Year of Tx	1	0.89–1.11	0.94
UD vs. MSD	0.92	0.659–1.27	0.60

Table 2 Multivariate analysis (Continued)

	HR	95% CI	p value
Disease status			
CR1	Reference		
CR2/C3	1.64	1.07–2.51	0.02
Active disease	2.49	1.78–3.47	< 0.001
RIC vs. MAC	1.255	0.9–1.75	0.18
PB vs. BM	0.94	0.61–1.45	0.78
In vivo TCD	1.07	0.75–1.54	0.70
Patient positive CMV serology	0.98	0.69–1.39	0.93
Donor positive CMV serology	1.24	0.89–1.74	0.21
Center (frailty)			0.91
Acute GvHD II-IV			
PTCy alone	Reference		
PT-Cy + 1 drug	0.62	0.29–1.36	0.23
PT-Cy + 2 drugs	1.40	0.65–3.01	0.38
Age (per 10 years)	1.01	0.87–1.18	0.90
AML vs. ALL	0.53	0.33–0.85	0.008
Year of Tx	0.91	0.80–1.04	0.16
UD vs. MSD	1.66	1.06–2.60	0.03
Disease status			
CR1	Reference		
CR2/C3	0.62	0.32–1.19	0.15
Active disease	1.14	0.71–1.84	0.59
RIC vs. MAC	1.72	1.10–2.70	0.02
PB vs. BM	1.59	0.83–3.02	0.16
In vivo TCD	1.18	0.74–1.89	0.48
Patient positive CMV serology	0.74	0.47–1.15	0.18
Donor positive CMV serology	1.78	1.13–2.79	0.01
Center (frailty)			0.23
Chronic GvHD			
PTCy alone	Reference		
PT-Cy + 1 drug	0.60	0.27–1.37	0.23
PT-Cy + 2 drugs	0.52	0.22–1.23	0.14
Age (per 10 years)	0.90	0.76–1.05	0.18
AML vs. ALL	1.01	0.58–1.75	0.97
Year of Tx	0.97	0.82–1.14	0.69
UD vs. MSD	0.99	0.64–1.54	0.96
Disease status			
CR1	Reference		
CR2/C3	0.52	0.24–1.09	0.08
Active disease	0.84	0.47–1.48	0.54
RIC vs. MAC	1.01	0.63–1.62	0.96
PB vs. BM	2.41	1.19–4.89	0.01
In vivo TCD	0.59	0.37–0.96	0.03
Patient positive CMV serology	0.88	0.55–1.43	0.61

Table 2 Multivariate analysis (Continued)

	HR	95% CI	p value
Donor positive CMV serology	0.86	0.53–1.39	0.53
Center (frailty)			0.93
Extensive chronic GvHD			
PTCy alone	Reference		
PT-Cy + 1 drug	0.57	0.21–1.56	0.27
PT-Cy + 2 drugs	0.25	0.08–0.84	0.02
Age (per 10 years)	0.76	0.63–0.96	0.02
AML vs. ALL	1.64	0.65–4.16	0.30
Year of Tx	1	0.79–1.26	0.98
UD vs. MSD	1.26	0.68–2.33	0.47
Disease status			
CR1	Reference		
CR2/C3	0.56	0.19–1.63	0.29
Active disease	1.24	0.57–2.68	0.59
RIC vs. MAC	1.43	0.72–2.84	0.30
PB vs. BM	4.57	1.61–12.99	0.004
In vivo TCD	0.23	0.01–0.54	< 0.001
Patient positive CMV serology	0.92	0.46–1.80	0.80
Donor positive CMV serology	0.76	0.38–1.55	0.45
Center (frailty)			0.94
Relapse			
PTCy alone	Reference		
PT-Cy + 1 drug	1.12	0.59–2.13	0.73
PT-Cy + 2 drugs	0.82	0.42–1.61	0.57
Age (per 10 years)	1.03	0.89–1.19	0.69
AML vs. ALL	0.97	0.59–1.6	0.91
Year of Tx	1.03	0.90–1.18	0.64
UD vs. MSD	0.87	0.58–1.30	0.50
Disease status			
CR1	Reference		
CR2/C3	1.64	0.97–2.80	0.07
Active disease	2.42	1.60–3.66	< 0.001
RIC vs. MAC	1.18	0.78–1.77	0.44
PB vs. BM	0.83	0.50–1.38	0.47
In vivo TCD	0.89	0.57–1.39	0.61
Patient positive CMV serology	0.71	0.46–1.08	0.11
Donor positive CMV serology	1.34	0.88–2.04	0.17
Center (frailty)			0.92
NRM			
PTCy alone	Reference		
PT-Cy + 1 drug	0.69	0.27–1.73	0.42
PT-Cy + 2 drugs	0.358	0.13–0.99	0.05
Age (per 10 years)	1.195	0.96–1.48	0.11
AML vs. ALL	0.353	0.19–0.67	0.001

Table 2 Multivariate analysis (Continued)

	HR	95% CI	p value
Year of Tx	0.95	0.78–1.15	0.60
UD vs. MSD	1.022	0.58–1.81	0.94
Disease status			
CR1	Reference		
CR2/C3	1.63	0.78–3.38	0.19
Active disease	2.949	1.65–5.27	< 0.001
RIC vs. MAC	1.339	0.74–2.42	0.33
PB vs. BM	1.247	0.56–2.78	0.59
In vivo TCD	1.47	0.78–2.75	0.23
Patient positive CMV serology	2.042	1.03–4.04	0.04
Donor positive CMV serology	1.038	0.58–1.87	0.90
Center (frailty)			0.29

HR hazard ratio, CI confidence interval, aGVHD acute graft-versus-host disease, cGVHD chronic GVHD, NRM non-relapse mortality, OS overall survival, LFS leukemia-free survival, GRFS GvHD-free relapse-free survival, MAC myeloablative, RIC reduced intensity conditioning regimen, PTCy post-transplant cyclophosphamide, AML acute myeloid leukemia, ALL acute lymphoblastic leukemia, Tx transplant, UD unrelated donor, MSD matched sibling donor, CR complete remission, PB peripheral blood, BM bone marrow, TCD T cell depletion, CMV cytomegalovirus

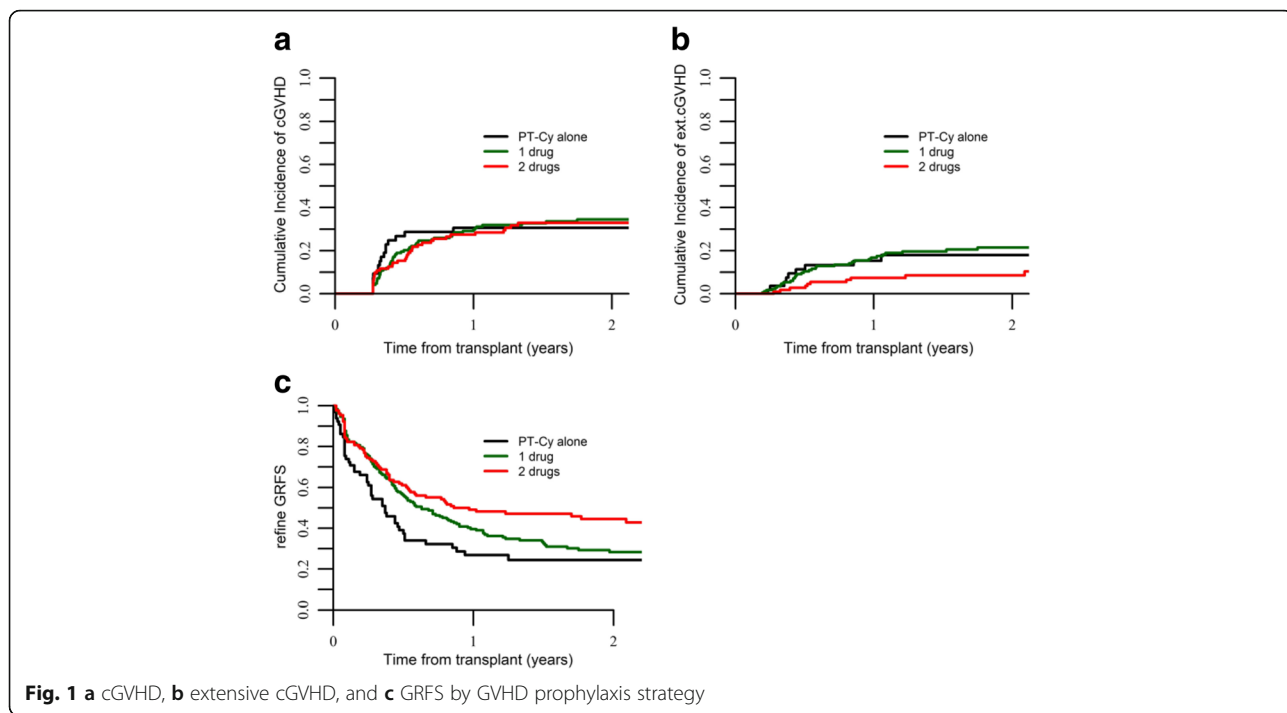
OS was 53% for patients transplanted from a MSD and 77% for those transplanted from a UD ($p = 0.56$), and it was 57 and 49% ($p = 0.40$) for AML vs. ALL, respectively.

In multivariate analysis (Table 2), factors associated with superior OS were the use of PT-Cy in combination with two IS (group 1 vs. group 3; HR 0.49, 95%CI 0.26–0.93, $p = 0.02$), diagnosis of AML (HR 0.59, 95%CI 0.39–0.90, $p = 0.001$), and disease status at transplant (CR1 vs. CR2 HR 0.58, 95%CI 0.37–0.93, $p = 0.0$; CR1 vs. advanced HR 0.40, 95%CI 0.27–0.58 $p < 0.001$). Of note, the intensity of the GVHD prophylaxis had an impact on GRFS (group 1 vs. group 3; HR 0.51, 95%CI 0.31–0.83 $p < 0.001$) (Table 2).

Discussion

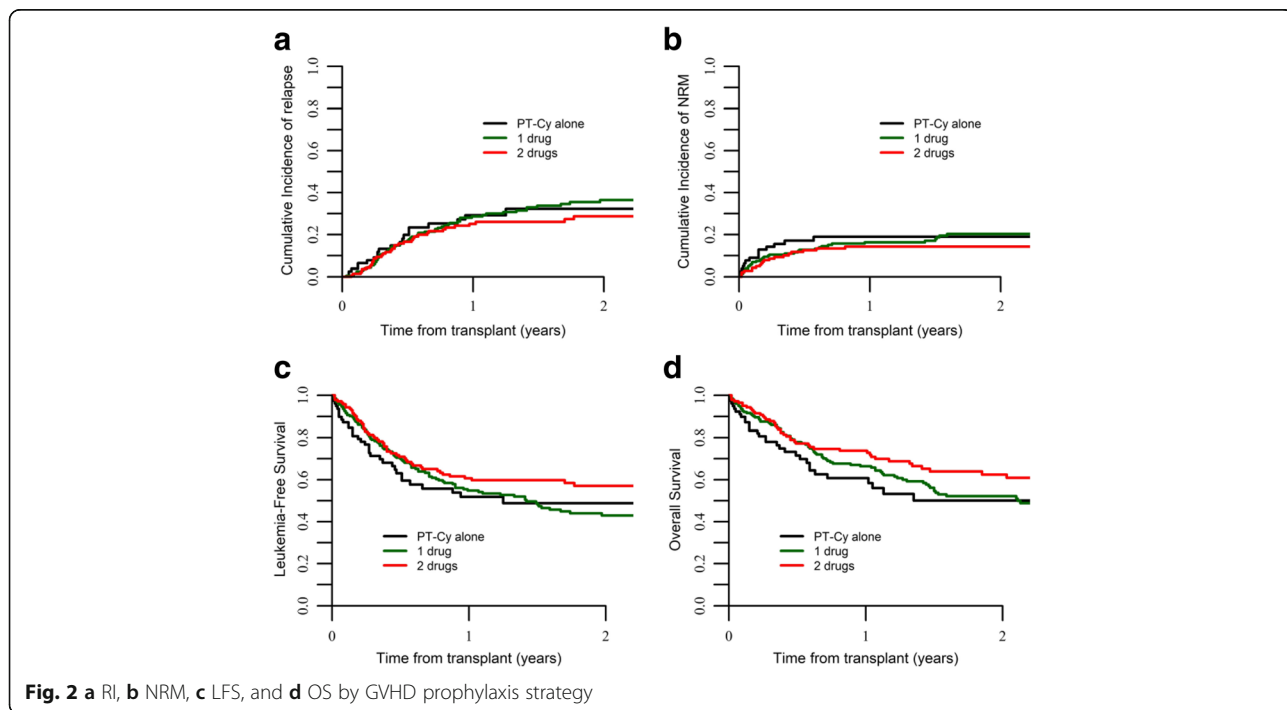
In this study, we compared the efficacy of PT-Cy GVHD prophylaxis given alone or in combination with one or two other immunosuppressive drugs in a homogenous group of adult patients with acute leukemia undergoing HSCT from MSD or 10/10 UD. We observed significant differences in the incidence of severe cGVHD and mortality in correlation with the intensity of the GVHD prophylaxis with the combination of PT-Cy plus two IS drugs (either CSA-MTX or CSA MMF), resulting in improved survival.

The biological mechanism by which PT-Cy aids in preventing GVHD after BM graft has been previously described and involves in vivo selective destruction of alloreactive T cells, induction of tolerance, and intra-thymic clonal deletion of alloreactive T lymphocytes [17].



The use of PT-Cy alone, without the use of any additional IS drugs, for GVHD prophylaxis in the setting of matched sibling donor or 10/10 HLA matched unrelated donor was initially reported by Luznik [8] and, subsequently, in a multicenter study, [18] both demonstrating the efficacy of this strategy. Importantly, in these studies,

BM was the sole stem cell source. Notably, these findings have not been demonstrated with PBSC [19, 20]. Alousi [19] recently published the results of a phase II clinical trial using PBSC and RIC regimen indicating an excess of acute and chronic GVHD and NRM and therefore recommending the use of the standard GVHD



prophylaxis in HSCT following RIC regimen in combination with PBSC grafts. The same findings determined the early closure of a different prospective phase 2 trial after four cases of severe acute GVHD, and related toxicity was reported on the first five patients enrolled [20].

Similarly, an increased risk of GVHD has been reported in haploidentical HSCT with PT-Cy with PBSC grafts [21]. One may argue that the higher number of CD3+ cells in the PBSC grafts could be in part responsible for these results. Importantly, in our study, the use of PBSC as stem cell source was significantly associated with the increased risk of cGVHD in the multivariate analysis, and the effect of the intensity of the GVHD prophylaxis remained independently associated to the risk of severe cGVHD, mortality, and survival.

In view of the high incidence of GVHD with PT-Cy as single agent, especially in PBSC recipients, it seems that PT-Cy should be combined with additional IS. Nevertheless, there is still not enough data to determine the most effective IS drug to be used in association with PT-Cy.

In an attempt to reduce the risk of severe GVHD, some authors [11] added CSA starting on day +5 after PT-Cy infusion in 43 patients with hematological diseases receiving PBSC from MSD or UD. Although a lower cumulative incidence of cGVHD and no grade III–IV aGVHD were reported, the high incidence of grade II aGVHD over 70% highlights the importance of optimization of the PT-Cy GVHD prevention regimen, in order to reduce GVHD incidence and the potential related toxicity and mortality.

In HLA identical related and unrelated grafts, the addition of MMF and tacrolimus to PT-Cy allowed satisfactory control of acute GVHD (ranging 17%, with no grade IV) resulting in very low NRM (3% at 2 years) in a previous study [22]. Currently, a clinical trial evaluating this GVHD prevention combination is ongoing in allogeneic stem cell transplantation recipients, following a MAC or RIC preparative regimen (NCT03128359). In our study, we are not able to evaluate this GVHD prophylaxis due to the unbalanced distribution of this specific drug combination in our cohort (exclusively used in UD recipients and mainly in a single center). The question of the optimal combination remains a matter of debate not just in HSCT from HLA matched siblings and unrelated donors but, also, in the haploidentical setting at least until prospective comparison study results are not available.

We are aware that in our study there may be unmeasured factors that have not been considered, and this is a limitation when conducting retrospective studies. The impact of ATG could not be studied thoroughly because of the absence of ATG in the patients receiving PT-Cy as the sole anti-GVHD prophylaxis. We cannot discard the possibility that this could have played a role in the observed increased incidence of graft failure and extensive cGVHD.

The protective effect of ATG in reducing cGVHD and improving GRFS has been recently demonstrated in a large phase clinical III trial [23] on transplantation of peripheral blood stem cells from HLA identical siblings and the myeloablative conditioning regimen. It is possible that the addition of ATG to PT-Cy may reduce GVHD incidence. However, the best timing and dose of ATG in combination with PT-Cy should be further evaluated in clinical trials.

One of the limitations of our registry-based study, including patients in all disease status, is that some disease characteristics could be confounding factors. In order to overcome this limitation, we performed a subgroup analysis in a homogenous group of patients with AML in CR1 and not receiving ATG. Despite the low number of patients, the results are consistent with those in the entire population, but the low numbers in each subgroup prevent to achieve enough statistical power. In our study for patients who received PT-Cy in combination with two other IS drugs, the benefit of adding immunosuppressive drugs to PT-Cy was observed regardless of the use of ATG (data not shown).

The idea of sparing long-term immunosuppression by using PT-Cy in patients with high-risk leukemia [24] and thus reducing relapse rates, especially in the early post-transplant period, is attractive and deserves further investigation. Importantly, in our study, the intensity of the GVHD prophylaxis did not modify the risk of relapse. This led to an advantage in OS and, importantly, in GRFS, which reflects the quality of life without long-term complications related to the GVHD.

In our cohort, disease status at HSCT remained the only factor associated with increased relapse, highlighting the importance of reducing the disease burden before HSCT. In this context, some authors [25] showed how Cy in the early post-transplant period is responsible for a selective depletion of alloreactive T cells while sparing those mediating the graft vs. leukemia (GVL). Also recently, another group [26] reported the complete abrogation of the proliferation of donor-derived natural killer (NK) cells 8 days following PT-Cy infusion in haplo-recipients, with donor NK cells expressing less mature phenotype NKG2A and CD26L and with slow reconstitution of recipient NK cells thereafter. The mechanism of NK cell reconstitution in the setting of MSD and UD with PT-Cy needs to be further evaluated.

Given our results, the use of additional immunosuppressive drugs along with PT-Cy in matched sibling or unrelated donor transplants is effective, reducing the risk of graft failure and severe chronic GVHD and improving overall survival. This strategy of GVHD prophylaxis could be an important tool for the post-transplant immunomodulation, also in the setting of mismatched unrelated donor transplants, and could represent a platform for early withdrawal of the immunosuppression enhancing the GVL in high-risk leukemic patients.

Acknowledgements

The authors thank Emmanuelle Polge from the office of the ALWP of EBMT for data collection.

Funding

No funding.

Availability of data and materials

The dataset supporting the conclusions of this article are available in the ALWP of EBMT in Paris, 184 rue Faubourg Saint Antoine.

Authors' contributions

AR, ML, AB, and AN designed the study; ML performed the statistical analysis; AR wrote the manuscript; and BA, JJC, AE, MIR, DB, EM, YK, NM, HS, NK, and MM provided cases for the study. All authors edited and approved the manuscript.

Ethics approval and consent to participate

The scientific boards of the ALWP of EBMT approved this study. All patients gave written informed consent for the use of their data.

Consent for publication

Not applicable for individual patient data. This is a pooled analysis.

Competing interests

The authors declare that they have no competing interests.

Publisher's Note

Springer Nature remains neutral with regard to jurisdictional claims in published maps and institutional affiliations.

Author details

¹Service d'Hématologie et Thérapie Cellulaire, Hôpital Saint Antoine, AP-HP, 168 Rue du Faubourg Saint Antoine, 75012 Paris, France. ²Department of Pediatric Hematology and Oncology, IRCCS Bambino Gesù Children's Hospital, Piazza SOnofrio, 4, Roma 00165, Italy. ³INSERM, UMRs 938, Paris, France. ⁴Department of Haematology, Università Cattolica del Sacro Cuore, Rome, Italy. ⁵Raisa Gorbacheva Memorial Research Institute for Paediatric Oncology, Hematology and Transplantation, St. Petersburg, Russia. ⁶Department of Hematology, Erasmus MC Cancer Institute, University Medical Center Rotterdam, Rotterdam, Netherlands. ⁷Aasklepios Klinik St. George, Lohmühlenstrasse, Hamburg, Germany. ⁸Stem Cell Transplant Unit, Turku University Hospital, Turku, Finland. ⁹Transplantation and Thérapie Cellulaire, Institut Paoli Calmettes, Marseille, France. ¹⁰Department of Hematology, University Medical Center, Amsterdam, Netherlands. ¹¹Stem Cell Transplant Unit, Medical Park Hospitals, Antalya, Turkey. ¹²CHU Bordeaux, Hôpital Haut-leveque, Pessac, France. ¹³Department of Internal Medicine, Section of Hematology, University Hospital Maastricht, Maastricht, Netherlands. ¹⁴Department of Stem cell Transplantation, University Hospital Eppendorf, Hamburg, Germany. ¹⁵Université Pierre et Marie Curie, Paris, France. ¹⁶Division of Hematology and Bone Marrow Transplantation, The Chaim Sheba Medical Center, Tel-Hashomer, Tel Aviv University (TAU), Tel Aviv, Israel.

Received: 6 February 2018 Accepted: 2 March 2018

Published online: 15 March 2018

References

- Boyiadiz M, Arora M, Klein JP, Hassebroek A, Hemmer M, Urbano-Ispizua A, Antin JH, Bolwell BJ, Cahn JY, Cairo MS, et al. Impact of chronic graft-versus-host disease on late relapse and survival on 7,489 patients after myeloablative allogeneic hematopoietic cell transplantation for leukemia. *Clin Cancer Res*. 2015;21:2020–8.
- Gooley TA, Chien JW, Pergam SA, Hingorani S, Sorrow ML, Boeckh M, Martin PJ, Sandmaier BM, Marr KA, Appelbaum FR, et al. Reduced mortality after allogeneic hematopoietic-cell transplantation. *N Engl J Med*. 2010;363:2091–101.
- Nash RA, Antin JH, Karanes C, Fay JW, Avalos BR, Yeager AM, Przepiorka D, Davies S, Petersen FB, Bartels P, et al. Phase 3 study comparing methotrexate and tacrolimus with methotrexate and cyclosporine for prophylaxis of acute graft-versus-host disease after marrow transplantation from unrelated donors. *Blood*. 2000;96:2062–8.
- Bolwell B, Sobecks R, Pohlman B, Andresen S, Rybicki L, Kuczkowski E, Kalaycio M. A prospective randomized trial comparing cyclosporine and short course methotrexate with cyclosporine and mycophenolate mofetil for GVHD prophylaxis in myeloablative allogeneic bone marrow transplantation. *Bone Marrow Transplant*. 2004;34:621–5.
- Jagasia M, Arora M, Flowers ME, Chao NJ, McCarthy PL, Cutler CS, Urbano-Ispizua A, Pavletic SZ, Haagenson MD, Zhang MJ, et al. Risk factors for acute GVHD and survival after hematopoietic cell transplantation. *Blood*. 2012;119:296–307.
- Di Bartolomeo P, Santarone S, De Angelis G, Picardi A, Cudillo L, Cerretti R, Adorno G, Angelini S, Andreani M, De Felice L, et al. Haploidentical, unmanipulated, G-CSF-primed bone marrow transplantation for patients with high-risk hematologic malignancies. *Blood*. 2013;121:849–57.
- Luznik L, O'Donnell PV, Symons HJ, Chen AR, Leffell MS, Zahurak M, Gooley TA, Piantadosi S, Kaup M, Ambinder RF, et al. HLA-haploidentical bone marrow transplantation for hematologic malignancies using nonmyeloablative conditioning and high-dose, posttransplantation cyclophosphamide. *Biol Blood Marrow Transplant*. 2008;14:641–50.
- Luznik L, Bolanos-Meade J, Zahurak M, Chen AR, Smith BD, Brodsky R, Huff CA, Borrello I, Matsui W, Powell JD, et al. High-dose cyclophosphamide as single-agent, short-course prophylaxis of graft-versus-host disease. *Blood*. 2010;115:3224–30.
- Kanakry CG, Tsai HL, Bolanos-Meade J, Smith BD, Gojo I, Kanakry JA, Kasamon YL, Gladstone DE, Matsui W, Borrello I, et al. Single-agent GVHD prophylaxis with posttransplantation cyclophosphamide after myeloablative, HLA-matched BMT for AML, ALL, and MDS. *Blood*. 2014;124:3817–27.
- Holtick U, Chemnitz JM, Shimabukuro-Vornhagen A, Theurich S, Chakupurakal G, Krause A, Fiedler A, Luznik L, Hellmich M, Wolf D, et al. OCTET-CY: a phase II study to investigate the efficacy of post-transplant cyclophosphamide as sole graft-versus-host prophylaxis after allogeneic peripheral blood stem cell transplantation. *Eur J Haematol*. 2016;96:27–35.
- Mielcarek M, Furlong T, O'Donnell PV, Storer BE, McCune JS, Storb R, Carpenter PA, Flowers ME, Appelbaum FR, Martin PJ. Posttransplantation cyclophosphamide for prevention of graft-versus-host disease after HLA-matched mobilized blood cell transplantation. *Blood*. 2016;127:1502–8.
- Moiseev IS, Pirogova OV, Alyanski AL, Babenko EV, Gindina TL, Darskaya El, Slesarchuk OA, Bondarenko SN, Afanasyev BV. Graft-versus-host disease prophylaxis in unrelated peripheral blood stem cell transplantation with post-transplantation cyclophosphamide, tacrolimus, and mycophenolate mofetil. *Biol Blood Marrow Transplant*. 2016;22:1037–42.
- Przepiorka D, Chan KW, Champlin RE, Culbert SJ, Petropoulos D, Ippoliti C, Khouri I, Huh YO, Vreisinger AB, et al. Prevention of graft-versus-host disease with anti-CD5 ricin A chain immunotoxin after CD3-depleted HLA-nonidentical marrow transplantation in pediatric leukemia patients. *Bone Marrow Transplant*. 1995;16:737–41.
- Filipovich AH, Weisdorf D, Pavletic S, Socie G, Wingard JR, Lee SJ, Martin P, Chien J, Przepiorka D, Couriel D, et al. National Institutes of Health consensus development project on criteria for clinical trials in chronic graft-versus-host disease: I. Diagnosis and staging working group report. *Biol Blood Marrow Transplant*. 2005;11:945–56.
- Ruggeri A, Labopin M, Ciceri F, Mohty M, Nagler A. Definition of GvHD-free, relapse-free survival for registry-based studies: an ALWP-EBMT analysis on patients with AML in remission. *Bone Marrow Transplant*. 2016;51:610–1.
- Hougaard P. Frailty models for survival data. *Lifetime Data Anal*. 1995;1:255–73.
- Luznik L, O'Donnell PV, Fuchs EJ. Post-transplantation cyclophosphamide for tolerance induction in HLA-haploidentical bone marrow transplantation. *Semin Oncol*. 2012;39:683–93.
- Kanakry CG, O'Donnell PV, Furlong T, de Lima MJ, Wei W, Medoet M, Mielcarek M, Champlin RE, Jones RJ, Thall PF, et al. Multi-institutional study of post-transplantation cyclophosphamide as single-agent graft-versus-host disease prophylaxis after allogeneic bone marrow transplantation using myeloablative busulfan and fludarabine conditioning. *J Clin Oncol*. 2014;32:3497–505.
- Alousi AM, Brammer JE, Saliba RM, Andersson B, Popat U, Hosing C, Jones R, Shpall EJ, Khouri I, Qazilbash M, et al. Phase II trial of graft-versus-host disease prophylaxis with post-transplantation cyclophosphamide after reduced-intensity busulfan/fludarabine conditioning for hematological malignancies. *Biol Blood Marrow Transplant*. 2015;21:906–12.
- Bradstock KF, Bilmon I, Kwan J, Micklethwaite K, Blyth E, Deren S, Bayley A, GebSKI V, Gottlieb D. Single-agent high-dose cyclophosphamide for graft-versus-host disease prophylaxis in human leukocyte antigen-matched reduced-intensity peripheral blood stem cell transplantation results in an

- unacceptably high rate of severe acute graft-versus-host disease. *Biol Blood Marrow Transplant*. 2015;21:941–4.
21. Bashey A, Zhang MJ, McCurdy SR, St Martin A, Argall T, Anasetti C, Ciurea SO, Fasan O, Gaballa S, Hamadani M, et al. Mobilized peripheral blood stem cells versus unstimulated bone marrow as a graft source for T-cell-replete haploidentical donor transplantation using post-transplant cyclophosphamide. *J Clin Oncol*. 2017;35:3002–9.
 22. Carnevale-Schianca F, Caravelli D, Gallo S, Coxa V, D'Ambrosio L, Vassallo E, Fizzotti M, Nesi F, Gioeni L, Berger M, et al. Post-transplant cyclophosphamide and tacrolimus-mycophenolate mofetil combination prevents graft-versus-host disease in allogeneic peripheral blood hematopoietic cell transplantation from HLA-matched donors. *Biol Blood Marrow Transplant*. 2017;23:459–66.
 23. Kroger N, Solano C, Bonifazi F. Antilymphocyte globulin for chronic graft-versus-host disease. *N Engl J Med*. 2016;374:1894–5.
 24. Kanakry CG, Bolanos-Meade J, Kasamon YL, Zahurak M, Durakovic N, Furlong T, Mielcarek M, Medeot M, Gojo I, Smith BD, et al. Low immunosuppressive burden after HLA-matched related or unrelated BMT using posttransplantation cyclophosphamide. *Blood*. 2017;129:1389–93.
 25. Kanakry CG, Ganguly S, Zahurak M, Bolanos-Meade J, Thoburn C, Perkins B, Fuchs EJ, Jones RJ, Hess AD, Luznik L. Aldehyde dehydrogenase expression drives human regulatory T cell resistance to posttransplantation cyclophosphamide. *Sci Transl Med*. 2013;5:211ra157.
 26. Russo A, Oliveira G, Berglund S, Greco R, Gambacorta V, Cieri N, Toffalori C, Zito L, Lorentino F, Piemontese S, et al. NK cell recovery after haploidentical HSCT with post-transplant cyclophosphamide: dynamics and clinical implications. *Blood*. 2018;131(2):247–62.

Submit your next manuscript to BioMed Central and we will help you at every step:

- We accept pre-submission inquiries
- Our selector tool helps you to find the most relevant journal
- We provide round the clock customer support
- Convenient online submission
- Thorough peer review
- Inclusion in PubMed and all major indexing services
- Maximum visibility for your research

Submit your manuscript at
www.biomedcentral.com/submit

