



**HAL**  
open science

# The Effect of Captivity on the Dynamics of Active Bacterial Communities Differs Between Two Deep-Sea Coral Species

Pierre E. Galand, Leila Chapron, Anne-Leila Meistertzheim, Erwan Peru, Franck Lartaud

► **To cite this version:**

Pierre E. Galand, Leila Chapron, Anne-Leila Meistertzheim, Erwan Peru, Franck Lartaud. The Effect of Captivity on the Dynamics of Active Bacterial Communities Differs Between Two Deep-Sea Coral Species. *Frontiers in Microbiology*, 2018, 9, pp.2565. 10.3389/fmicb.2018.02565 . hal-01913196

**HAL Id: hal-01913196**

**<https://hal.sorbonne-universite.fr/hal-01913196>**

Submitted on 6 Nov 2018

**HAL** is a multi-disciplinary open access archive for the deposit and dissemination of scientific research documents, whether they are published or not. The documents may come from teaching and research institutions in France or abroad, or from public or private research centers.

L'archive ouverte pluridisciplinaire **HAL**, est destinée au dépôt et à la diffusion de documents scientifiques de niveau recherche, publiés ou non, émanant des établissements d'enseignement et de recherche français ou étrangers, des laboratoires publics ou privés.



Distributed under a Creative Commons Attribution 4.0 International License



# The Effect of Captivity on the Dynamics of Active Bacterial Communities Differs Between Two Deep-Sea Coral Species

Pierre E. Galand<sup>1\*</sup>, Leila Chapron<sup>1</sup>, Anne-Leila Meistertzheim<sup>2</sup>, Erwan Peru<sup>1</sup> and Franck Lartaud<sup>1</sup>

<sup>1</sup> Sorbonne Université, CNRS, Laboratoire d'Ecogéochimie des Environnements Benthiques (LECOB), Observatoire Océanologique de Banyuls, Banyuls-sur-Mer, France, <sup>2</sup> Sorbonne Université, CNRS, Laboratoire d'Océanographie Microbienne (LOMIC), Banyuls-sur-Mer, France

## OPEN ACCESS

### Edited by:

David William Waite,  
University of Auckland, New Zealand

### Reviewed by:

Julie L. Meyer,  
University of Florida, United States  
Dannise V. Ruiz-Ramos,  
University of California, Merced,  
United States

### \*Correspondence:

Pierre E. Galand  
pierre.galand@obs-banyuls.fr

### Specialty section:

This article was submitted to  
Microbial Symbioses,  
a section of the journal  
Frontiers in Microbiology

**Received:** 03 August 2018

**Accepted:** 08 October 2018

**Published:** 29 October 2018

### Citation:

Galand PE, Chapron L,  
Meistertzheim A-L, Peru E and  
Lartaud F (2018) The Effect  
of Captivity on the Dynamics of Active  
Bacterial Communities Differs  
Between Two Deep-Sea Coral  
Species. *Front. Microbiol.* 9:2565.  
doi: 10.3389/fmicb.2018.02565

Microbes play a crucial role in sustaining the coral holobiont's functions and in particular under the pressure of environmental stressors. The effect of a changing environment on coral health is now a major branch of research that relies heavily on aquarium experiments. However, the effect of captivity on the coral microbiome remains poorly known. Here we show that different cold-water corals species have different microbiome responses to captivity. For both the DNA and the RNA fraction, *Madrepora oculata* bacterial communities were maintained for at least 6 months of aquarium rearing, while *Lophelia pertusa* bacteria changed within a day. Interestingly, bacteria from the genus *Endozoicomonas*, a ubiquitous symbiont of numerous marine hosts, were resilient and remained active in *M. oculata* for several months. Our results demonstrate that a good knowledge of the coral microbiome and an understanding of the ecological strategy of the holobiont is needed before designing aquarium experiments.

**Keywords:** *Lophelia pertusa*, *Madrepora oculata*, DNA/RNA, bacteria, aquaria experiment

## INTRODUCTION

Corals and microbes form together an holobiont that is built upon the complex and intricate relationship between the cnidarian host and its associated microbial community. The role of the microbiome in sustaining the coral holobiont's function is still poorly known but it certainly plays an important role for the coral nutrition and health (Bourne et al., 2016). Corals health is particularly sensitive to environmental changes. Water temperature, quality, and acidification are, among others, factors that strongly impact the corals' ecology and physiology, and that have been the focus of a number of studies. Recent works have emphasis the need to characterize the microbial communities associated to the host to better understand the impact of environmental conditions on corals (Kelly et al., 2014).

Studying the effects of environmental changes on corals often requires manipulating the corals surrounding environment. Such operations are often easier to achieve under controlled conditions in aquaria. Aquaria experiments require the maintenance of coral in captivity for acclimation during long periods. During that time, the aquarium conditions of rearing, although mimicking natural conditions, are always different from the ones found in nature. Nevertheless, captive corals can be kept alive and remain apparently healthy for long periods of time (Carlson, 1987; Borneman, 2008), including deep-sea corals that exhibit growth rates comparable to the *in situ* ones

(Orejas et al., 2011; Form and Riebesell, 2012; Lartaud et al., 2014). However, as the importance of taking into account the entire holobiont in coral studies has emerged, the question remains as whether the coral associated microbes are strongly impacted by the captivity of the host. If the microbiome is indeed impacted, results obtained in aquaria should be extrapolated to the natural coral colonies with caution. To date, the few existing comparisons between *in situ* and aquaria coral microbiomes suggest that captivity always changes the coral's bacterial communities (Kooperman et al., 2007; Schöttner et al., 2009; Pratte et al., 2015; Röthig et al., 2017). However, studies remain scarce and they often encompass a few samples only, analyzed with different protocols and gathered with diverse sampling strategies.

The importance of aquaria experiments for studying corals is critical for species that are hard to sample and monitor *in situ*. It's the case for deep-sea corals, also named cold-water corals, which are in most cases found at depths not accessible by divers. Cold-water corals provide important ecosystem services by forming deep-sea reefs that represent hot spots of biodiversity in many regions of the world (Roberts et al., 2006). Among cold-water corals, *Lophelia pertusa* and *Madrepora oculata* are the two key species found globally. They often grow in the same sites, but they can show different responses to environmental changes such as temperature variations (Naumann et al., 2014). The physiological differences may be related to their distinct reproductive strategy (Waller and Tyler, 2005), feeding or assimilation/storage efficiencies (Kiriakoulakis et al., 2005) or association to different bacterial communities (Hansson et al., 2009; Schöttner et al., 2012; Meistertzheim et al., 2016). The different communities could reflect different ecological strategies with a resilient bacterial consortium associated to *M. oculata*, which fits the strict definition of holobiont, and a more versatility microbiome for *L. pertusa*, which suggests an association that is more influenced by environmental conditions or nutritional status (Meistertzheim et al., 2016).

The goal of this study was to test if the microbiomes associated to *L. pertusa* and *M. oculata* changed under captivity. We chose these two species as models representing the contrasted cases of an "unfaithful" versus a "loyal" microbiome. We maintained the two cold-water coral species in aquaria and monitored their associated bacterial communities at different time scales ranging from 1 day to 2 years. We targeted both the 16S ribosomal RNA genes (DNA) and the 16S ribosomal RNA (RNA) to compare the entire bacterial assemblage to the active fraction of the community (Galand et al., 2015).

## MATERIALS AND METHODS

### Coral Sampling and Rearing

Corals were sampled in the Lacaze-Duthiers submarine canyon off the coast of Banyuls-sur-Mer in the northwestern Mediterranean Sea (42°32'0.72" N; 03°25'0.26" W) at ~530 m depth. Healthy looking coral fragments were randomly collected from three colonies of *M. oculata* and three colonies of *L. pertusa* growing on a small coral reef area (2,400 m<sup>2</sup>) located at the base

of the western flank of the canyon. The corals were collected sequentially using a Remotely Operated Vehicle (ROV) deployed from the R/V Minibex Vessel (COMEX SA). They were placed in separate polypropylene boxes that were closed *in situ* to maintain the ambient bottom water temperature (~13°C) during the transport to the surface, and avoid cross contamination between samples. On board, the coral fragments meant as time 0 samples were flash frozen in liquid nitrogen and the rest of the coral fragments were transferred to aerated 30 L seawater tanks maintained in the dark at 13°C.

Once in the laboratory, live corals were fixed to cement blocks using an aquatic epoxy resin and positioned in a 80 L aquarium in the dark in a thermo-regulated room that received continuous flow (>1 renewal day<sup>-1</sup>) of filtered (5 μm) Mediterranean seawater pumped from 5 m depth. To mimic deep-sea temperature stability, the aquarium sea water was maintained year-round at 13°C ±0.5°C by controlling the room temperature and by using a storage tank coupled to a chiller for regulating the incoming sea water temperature. Corals were fed three times a week with freshly hatched *Artemia salina* nauplii (1000 *A. salina* L<sup>-1</sup>) (Lartaud et al., 2013).

Coral fragments were sampled after 1, 5, 20, 60, 180, 270, and 730 days of captivity. For *L. pertusa*, we had fewer fragments and did not sample at 180 days. Coral samples were flash frozen in liquid nitrogen and then stored at -80°C. In addition, 5 L of aquarium water were sampled at time 1, 5, 20, and 60 days, and filtered on 0.22-μm pore-size polycarbonate filters (Millipore) after prefiltration through 3-μm pore-size polycarbonate filters (Millipore). Filters were stored at -80°C until nucleic acid extraction.

### DNA and RNA Extractions and Sequencing

For each sampling time, DNA and RNA was extracted from three different polyps for each species. Polyps were crushed separately using a hammer and the tissues were homogenized in tubes containing a garnet matrix using a FastPrep Instrument (MP Biomedical, Santa Ana, CA, United States). The samples were then divided into two tubes, one for RNA extraction and one for DNA extraction. RNA and DNA were extracted using, respectively, the Maxwell® simply RNA Tissues Kit LEV and the Maxwell® Blood DNA Purification Kit LEV (Promega, Madison, WI, United States) on a Maxwell 16 MDx Instrument (Promega) following the manufacturer instructions. For the water bacteria communities, DNA and RNA were extracted from filters following our standard protocol (Galand et al., 2015). Briefly, cells were lysed with freshly prepared lysozyme solution applied directly to Sterivex cartridges, and a second incubation after adding proteinase K, followed by extraction using the AllPrep DNA/RNA kit (Qiagen). DNA and RNA concentrations were measured by spectrophotometry (Nanodrop ND-1000, Thermo Fisher Scientific, Waltham, MA, United States). The RNA samples were reverse-transcribed to cDNA with random primers using the RevertAid™ H Minus First Strand cDNA Synthesis kit (Life Technologies).

For both the DNA and cDNA, the V1–V3 region of the bacterial 16S rRNA genes were amplified using bacteria specific primers 27F AGRGTTTGGATCMTGGCTCAG and 519R GTNTTACNGCGGCKGCTG with a single step and 28 cycles of PCR using the HotStarTaq Plus Master Mix Kit (Qiagen, Valencia, CA, United States). Following the PCR, all the amplicon products from the different samples were mixed in equal concentrations and purified using Agencourt Ampure beads (Agencourt Bioscience Corporation, MA, United States). Purified PCR products were used to prepare a DNA library by following the Illumina TruSeq DNA library preparation protocol. All samples were sequenced on the same Miseq Illumina sequencer run (Illumina, San Diego, CA, United States) using Miseq reagent kit V3 (Illumina) producing  $2 \times 300$ -bp long reads. PCR and sequencing were conducted in a commercial laboratory (MR DNA, Shallowater, TX, United States). All sequences were deposited in GenBank under SRA accession number SRP156494.

## Sequence Analysis

All the reads that had a mismatch with the 16S rRNA primers, contained ambiguous nucleotides (N) or were <300 bp long beyond the forward primer were removed. In addition, a stringent quality trimming criteria was applied to remove reads that had  $\geq 10\%$  of bases with Phred values <27. This procedure is recommended to ensure that when clustering at 97% or more, the influence of erroneous reads is minimized (Huse et al., 2010; Kunin et al., 2010). The sequences were then de-replicated and clustered at a 97% threshold using UCLUST (Edgar, 2010) for *de novo* operational taxonomic unit (OTU) picking. Representative sequences were classified against the SILVA v.128 database (Quast et al., 2013). Putative chimeric sequences were identified as sequences having a best Blast alignment <90% of the trimmed read length to the reference database, >90% sequence identity to the best Blast match and OTU size  $\leq 2$ . Sequence analysis were performed with the PyroTagger pipeline (Kunin and Hugenholz, 2010).

## Statistics

To compare the bacterial communities in the diversity analysis, all the samples were randomly re-sampled to match the size of the sample containing the fewest sequences ( $n = 8855$ ). Possible differences in bacterial community composition were assessed by correspondence analysis (CA) with the vegan package in R (Oksanen et al., 2013) and significant differences were tested with ANOSIM. Possible differences between DNA and RNA community composition were measured by comparing the DNA versus the RNA samples scores along the first CA axes. The linear increase in diversity was tested using ordinary least squares regression (OLS) models and the statistical significance of models described with F statistics in R. The Bray Curtis index was computed between all samples with the vegan package in R.

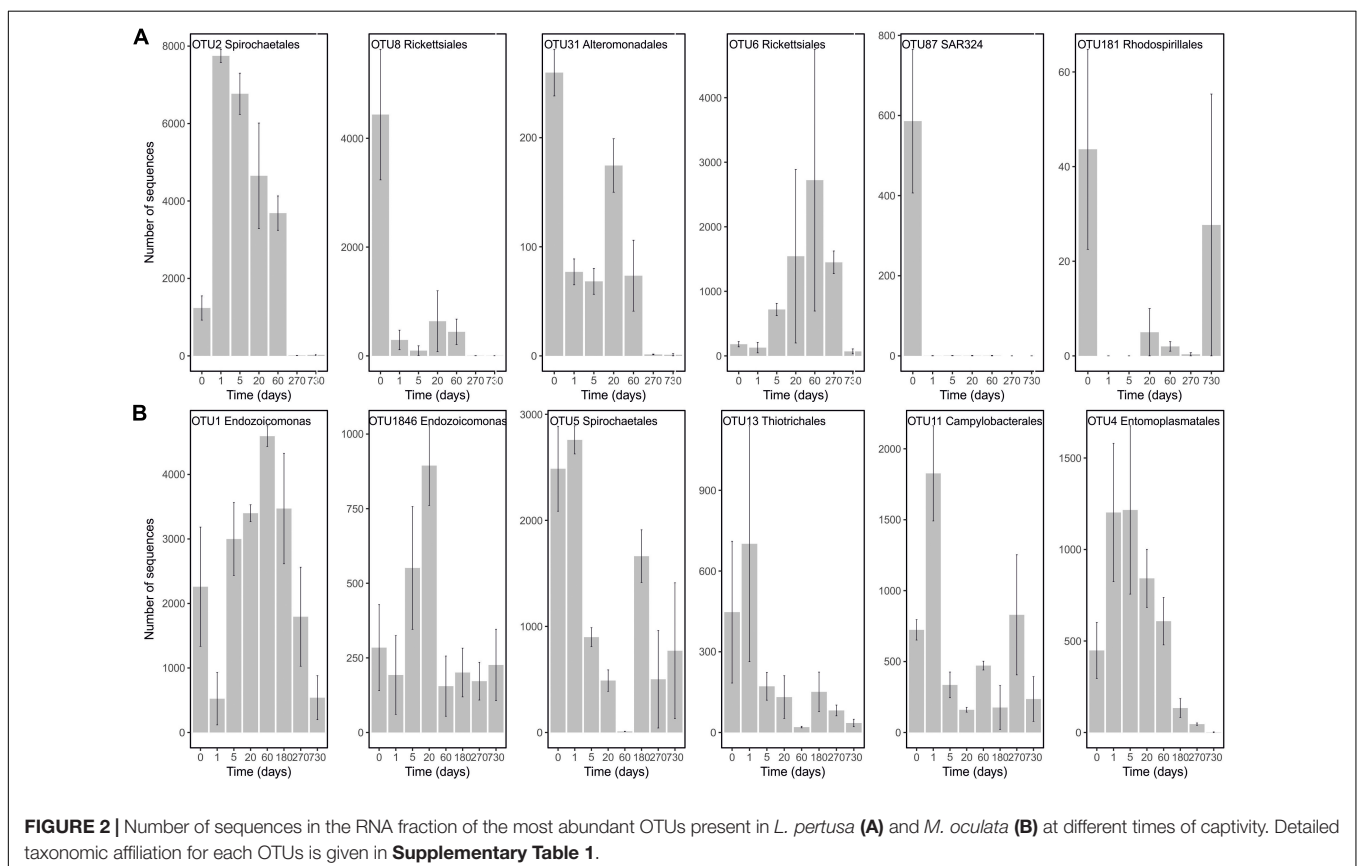
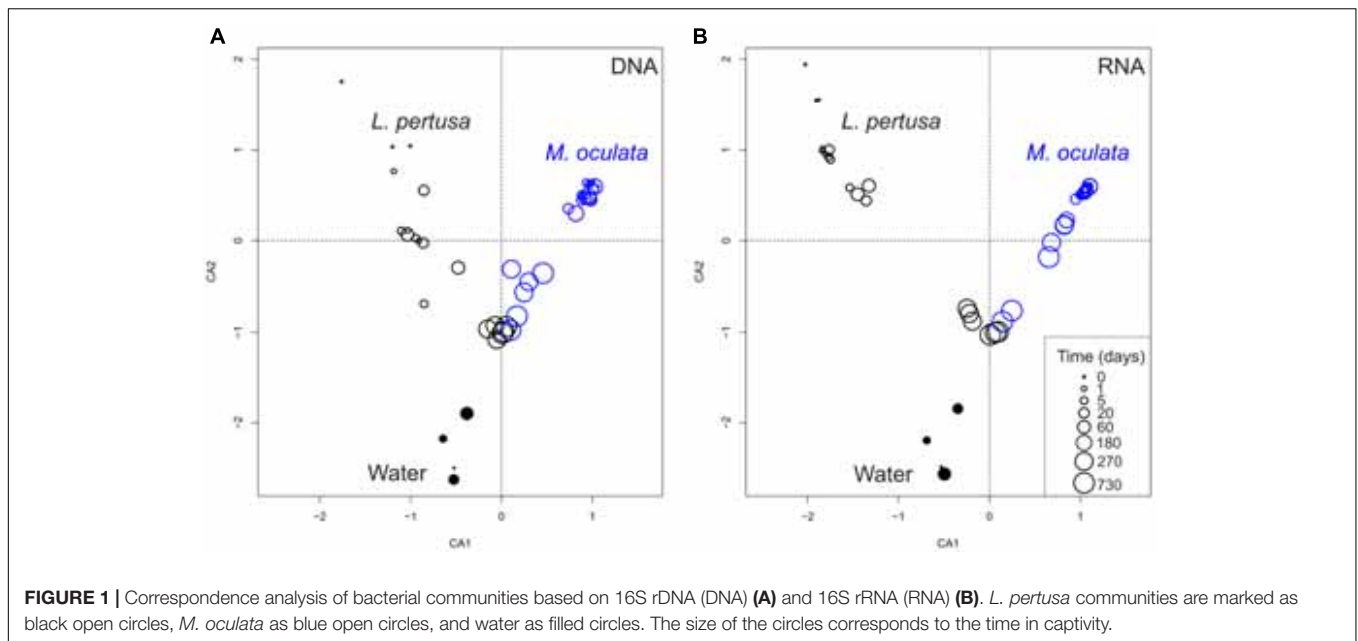
## RESULTS AND DISCUSSION

Our experiment shows that the temporal dynamics of the coral microbiome, for both the active fraction (RNA) and the

standing stock of bacteria (DNA), differed between *L. pertusa* and *M. oculata* (Figure 1). *M. oculata* maintained its associated community for the first 6 months of captivity, and the pattern was similar for both the active fraction and the standing stock. Inversely, the bacterial communities associated with *L. pertusa* changed rapidly and differences between wild and captive corals were seen already after 1 day of rearing (Figure 1). We also observed that for both the RNA and DNA fractions, *L. pertusa* and *M. oculata* had different bacterial community composition, and that the coral communities were different from the water communities (Supplementary Table 1). Interestingly, the community composition of *L. pertusa* and *M. oculata* converged with captivity time, and after 730 days there was no significant difference in community composition between the two coral species for both the DNA and RNA fractions (ANOSIM,  $R = 0.33$  and  $0.19$  and  $p = 0.1$  for the DNA and RNA fraction, respectively) (Figure 1).

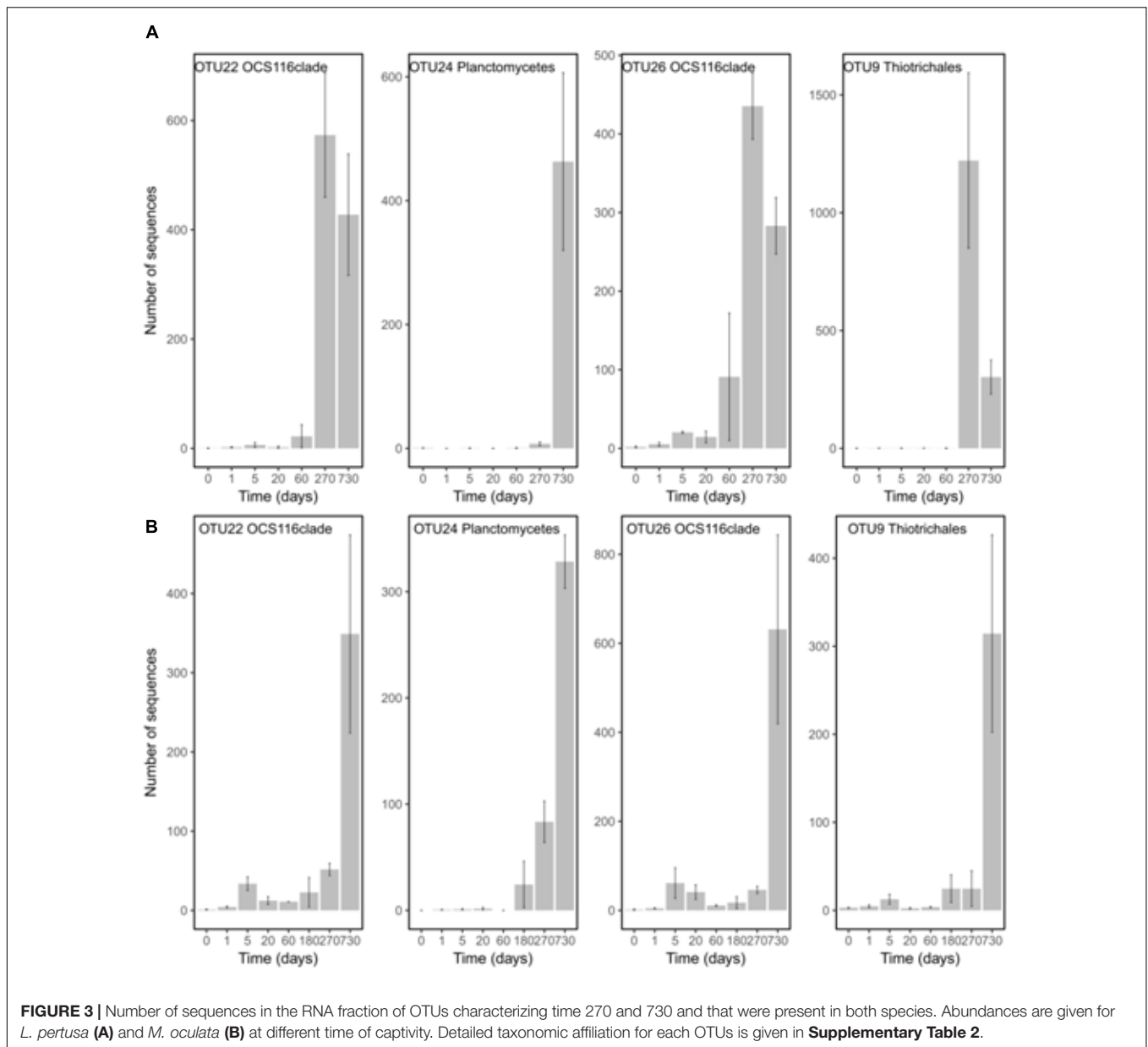
Our results cast a new light on the effect of captivity on the coral holobiont. We show that captivity can rapidly impact the associated bacterial communities of one coral species but not of the other one at a 6 months' time scale. After 1 year of captivity, however, both coral microbiomes had changed and lost their species-specific characteristics. The observation of different dynamics is interesting because captivity has been thought to always transform bacterial communities, as seen earlier for skeletal and mucus associated bacteria of *L. pertusa* (Schöttner et al., 2009) or during long term rearing of the deep-sea coral *Eguchipsammia fistula* (Röthig et al., 2017). It should, however, be noted that the differences observed in earlier studies may have been caused, in part, by sampling at different seasons (Schöttner et al., 2009), or by the use of different fixation methods (Schöttner et al., 2009). A few studies on tropical corals have also showed changes with captivity for *Siderastrea siderea* (Pratte et al., 2015), and *Fungia granulosa*, but on two samples only for the later (Kooperman et al., 2007).

In order to pinpoint the pattern lying behind the changes in community composition we further identified the main bacteria associated to both cold-water corals species (Figure 2 and Supplementary Table 1). The six most abundant species specific bacteria represented 76 and 75% of the sequences in *L. pertusa* and *M. oculata*, respectively. Our results show that different bacterial taxa had different patterns of responses at the OTU level (Figure 2). *Endozoicomonas*, a typical symbiont found in various marine hosts (Neave et al., 2016), has been shown to have a stable relationship with *M. oculata* (Meistertzheim et al., 2016). In the RNA fraction, the number of *Endozoicomonas* sequences dropped significantly after 1 day of *M. oculata* captivity, but increased again after 5 days and hold for 6 months (Figure 2). It suggests that collection and the subsequent change of environment had an immediate effect on the activity of *Endozoicomonas*. However, this bacterium seems to rapidly adapt to the conditions found in aquarium and to be able to thrive for the first 6 months of captivity. This observed resilience is in line with the recent report of persistent *Endozoicomonas* phylotypes under coral bleaching and colony mortality (Pogoreutz et al., 2018). Other *M. oculata* bacteria were not as successful and showed a sharp decline in their



relative number of RNA sequences during captivity (**Figure 2**). For *L. pertusa*, we also identified species specific bacteria that had been found earlier associated to the coral species *in situ* (**Figure 2** and **Supplementary Table 1**). Some of these bacteria showed a sharp decrease in their RNA sequence abundance, or even

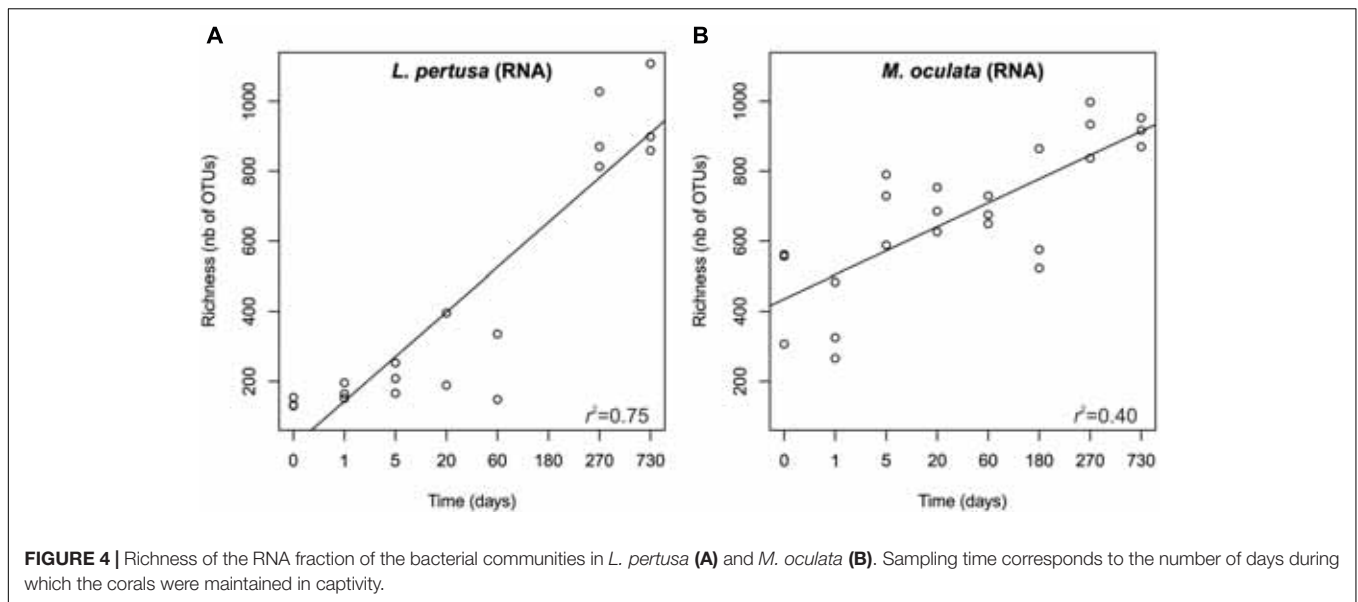
a disappearance after 1 day of captivity, while other increased in relative sequence abundance (**Figure 2**). We hypothesize that the loss of some bacterial taxa released ecological niches that were quickly occupied by other bacteria, the ones that showed an increase in sequence number. We also identified



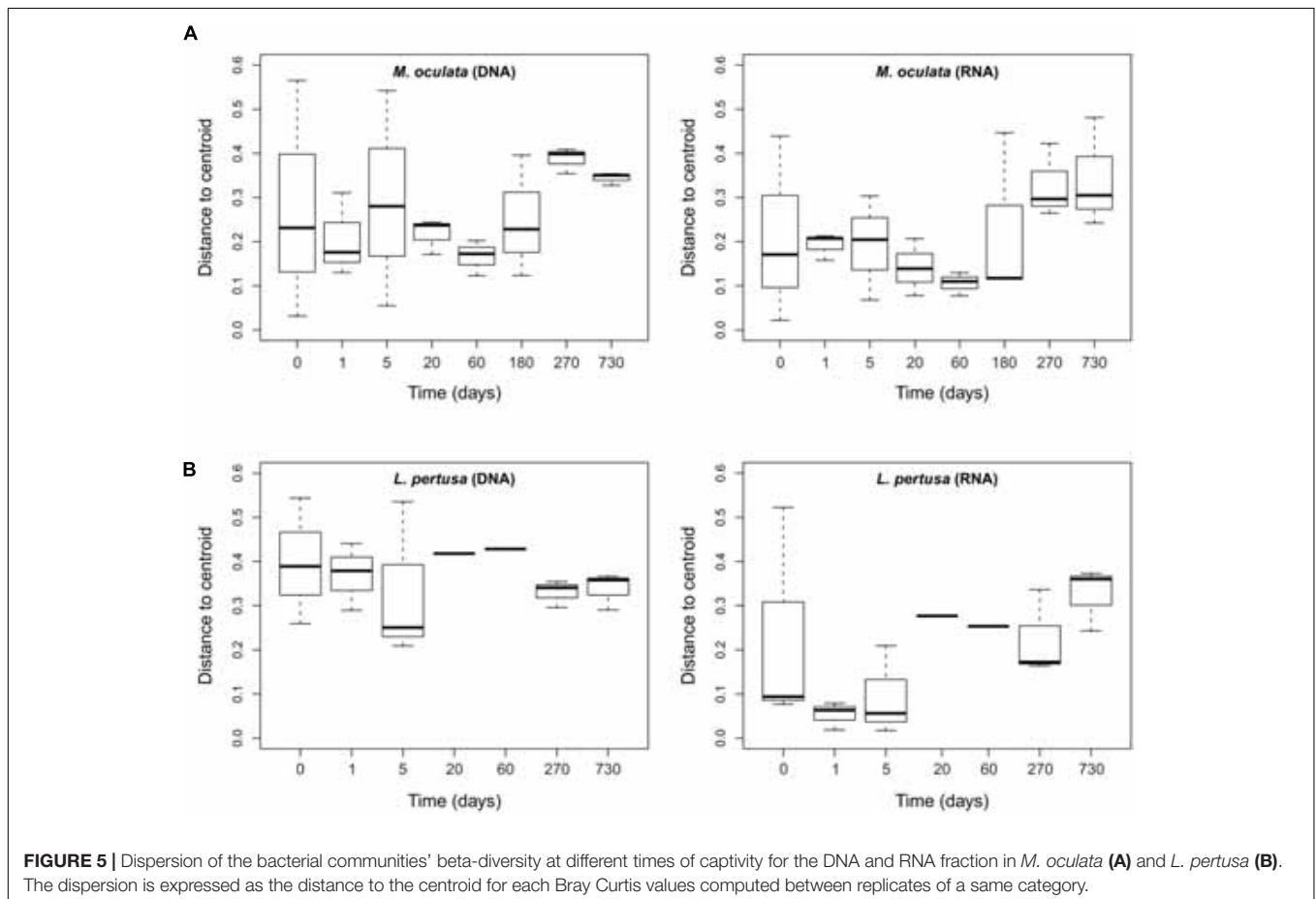
bacteria that were found only at the end of the experiment (Figure 3), and which we considered as signature for the aquaria effect on the microbiome. These bacteria had never been found earlier associated to hosts (Supplementary Table 1), and their representative sequences were similar to sequences from bacteria growing on sediment or mineral substrates in the sea. It suggests that opportunist bacteria colonized the coral surface during captivity. Our observation of a significant increase in bacterial community richness with time of captivity for *L. pertusa* and *M. oculata* ( $F = 50.25$ ,  $P < 0.001$  and  $F = 14.59$ ,  $P < 0.001$ , respectively) (Figure 4), which was observed earlier for *L. pertusa* (Schöttner et al., 2009), confirms the appearance of additional coral associated bacterial species during captivity. It shows that corals lost their ability to strongly select specific bacteria, which

in turn may reflect a poorer health status. The fact that corals held in captivity for 10 months showed similar growth rates as corals *in situ* (Lartaud et al., 2014) suggests, however, a limited impact of captivity. Captivity's effect on coral health remains to be tested exhaustively.

To further assess the effect of captivity on the corals' microbiomes we measured beta diversity between samples at each sampling time. We observed that for the RNA fraction in *L. pertusa* the beta-diversity dispersion was low early in captivity, increased after 3 weeks and remained high for the rest of the experiment (Figure 5). For *M. oculata*, the beta-diversity dispersion was stable for the first 6 months of captivity and then increased (Figure 5). Such patterns of microbial community change can theoretically be used to understand how certain



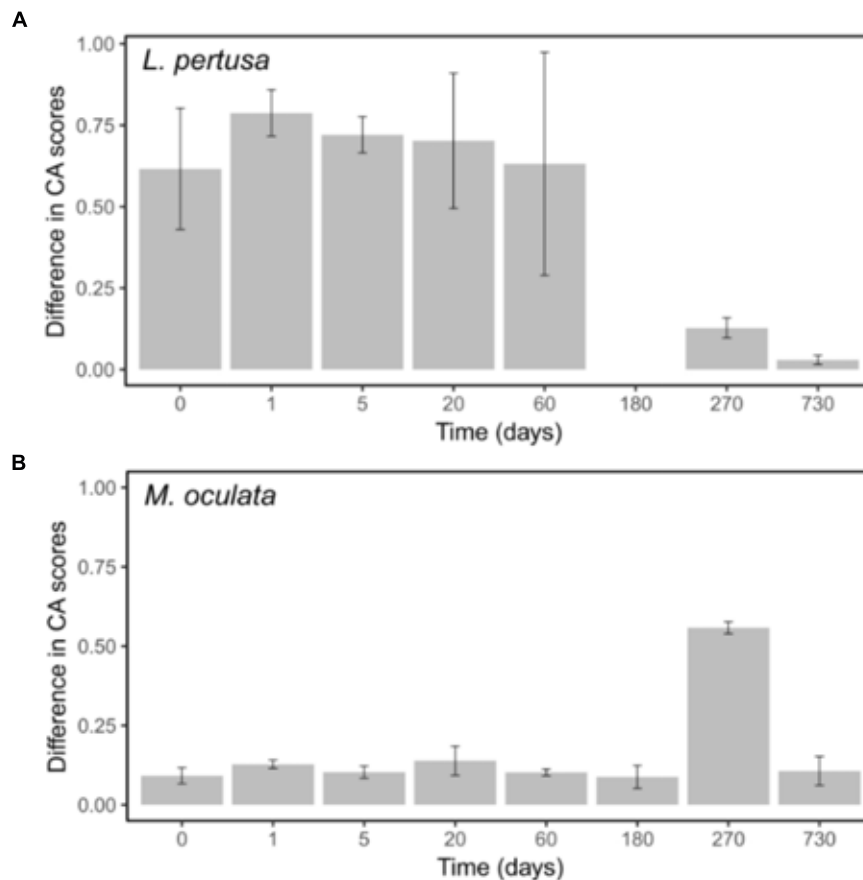
**FIGURE 4** | Richness of the RNA fraction of the bacterial communities in *L. pertusa* (A) and *M. oculata* (B). Sampling time corresponds to the number of days during which the corals were maintained in captivity.



**FIGURE 5** | Dispersion of the bacterial communities' beta-diversity at different times of captivity for the DNA and RNA fraction in *M. oculata* (A) and *L. pertusa* (B). The dispersion is expressed as the distance to the centroid for each Bray Curtis values computed between replicates of a same category.

stressors affect host associated microorganisms (Zaneveld et al., 2017). In particular, the Anna Karenina Principle (AKP) predicts that certain stressors have stochastic rather than deterministic effects on community composition (Zaneveld et al., 2017). In the

case of cold water corals, our results indicate that, if we consider capture and captivity as a stressor, the effect on *L. pertusa* was deterministic during the first week. The communities in the different polyps all changed toward a similar composition. Later,



**FIGURE 6** | Differences between DNA and RNA sample scores on the first CA axes for *L. pertusa* (A) and *M. oculata* (B). Bars represent the standard error of the mean.

the effect became stochastic with communities having different composition in the different polyps. In *M. oculata*, the stable beta diversity patterns during the first 6 months of captivity reflected the stable community composition.

The differences observed between *L. pertusa* and *M. oculata* confirm that they have species specific bacterial communities even though they share the same habitat (Hansson et al., 2009; Schöttner et al., 2012; Meistertzheim et al., 2016). The difference was hypothesized to correspond to different ecological strategies between the two species with a resilient consortium for *M. oculata* that fits the definition of holobiont, and more versatility for *L. pertusa*, which suggests an association that is more influenced by environmental conditions or nutritional status (Meistertzheim et al., 2016). Our results appear to validate that hypothesis. The difference seen between the RNA and DNA fraction for *L. pertusa* indicates that not all the bacteria that are present on the coral are active (Figure 6). It suggests the presence of opportunist bacteria, probably sticking to the coral, that are not active and thus probably without ecological relevance. Inversely, the similar DNA and RNA structure in *M. oculata* (Figure 6) may reflect a strong selection for a specific group of bacteria that is active, and the elimination of the less fit inactive organisms.

It should be noted that although the use of RNA has been shown to be a good indicator of the metabolic state for certain marine microbes (Salter et al., 2015), its use has been criticized (Blazewicz et al., 2013). However, in our study, the marked difference that we observed in DNA versus RNA communities between the *L. pertusa* and *M. oculata* (Figure 6) is a strong indication that the two species have very different types of relationship to their associated microbiome. The fact that the *M. oculata* microbiome is maintained during several months in aquaria argues for a stable relationship between the bacteria and the host. Inversely, the *L. pertusa* microbiome appears to change with changes in its surrounding environment. It remains to be shown if the plasticity of the *L. pertusa* holobiont can give competitive advantage or better fitness in a changing environment.

## CONCLUSION

We show that for some coral species, maintenance in captivity does not alter significantly the associated bacterial communities for at least 6 months. For others, the microbiome composition and activity change very quickly, as fast as within a day.



Our results also highlight that different coral species have different types of associations to bacterial communities, which can be coined as “unfaithful” versus “loyal.” It demonstrates that a good knowledge of the coral microbiome and an understanding of the ecological strategy of the holobiont is needed before designing aquarium experiments. The choice of the species to study and the duration of the experiment is crucial. Finally, we also reveal the notable resilience under aquarium conditions of the *Endozoicomonas* bacteria known as key symbionts in many marine hosts.

## AUTHOR CONTRIBUTIONS

PG and FL designed the study. PG, FL, LC, A-LM, and EP conducted the study, analyzed data, and wrote the paper.

## FUNDING

PG was supported by the Agence Nationale de la Recherche (ANR) through the project EUREKA (ANR-14-CE02-0004-01).

## REFERENCES

- Blazewicz, S. J., Barnard, R. L., Daly, R. A., and Firestone, M. K. (2013). Evaluating rRNA as an indicator of microbial activity in environmental communities: limitations and uses. *ISME J.* 7, 2061–2068. doi: 10.1038/ismej.2013.102
- Borneman, E. (2008). Introduction to the husbandry of corals in aquariums: a review. *Public Aquar. Husb. Ser.* 2, 3–14.
- Bourne, D. G., Morrow, K. M., and Webster, N. S. (2016). Insights into the coral microbiome: underpinning the health and resilience of reef ecosystems. *Annu. Rev. Microbiol.* 70, 317–340. doi: 10.1146/annurev-micro-102215-095440
- Carlson, B. A. (1987). Aquarium systems for living corals. *Int. Zoo Yearbook* 26, 1–9. doi: 10.1111/j.1748-1090.1987.tb03126.x
- Edgar, R. C. (2010). Search and clustering orders of magnitude faster than BLAST. *Bioinformatics* 26, 2460–2461. doi: 10.1093/bioinformatics/btq461
- Form, A. U., and Riebesell, U. (2012). Acclimation to ocean acidification during long-term CO<sub>2</sub> exposure in the cold-water coral *Lophelia pertusa*. *Glob. Chang. Biol.* 18, 843–853. doi: 10.1111/j.1365-2486.2011.02583.x
- Galand, P., Salter, I., and Kalenitchenko, D. (2015). Microbial productivity is associated with phylogenetic distance in surface marine waters. *Mol. Ecol.* 24, 5785–5795. doi: 10.1111/mec.13347
- Hansson, L., Agis, M., Maier, C., and Weinbauer, M. G. (2009). Community composition of bacteria associated with cold-water coral *Madrepora oculata*: within and between colony variability. *Mar. Ecol. Prog. Ser.* 397, 89–102. doi: 10.3354/meps08429
- Huse, S. M., Welch, D. M., Morrison, H. G., and Sogin, M. L. (2010). Ironing out the wrinkles in the rare biosphere through improved OTU clustering. *Environ. Microbiol.* 12, 1889–1898. doi: 10.1111/j.1462-2920.2010.02193.x
- Kelly, L. W., Williams, G. J., Barott, K. L., Carlson, C. A., Dinsdale, E. A., Edwards, R. A., et al. (2014). Local genomic adaptation of coral reef-associated microbiomes to gradients of natural variability and anthropogenic stressors. *Proc. Natl. Acad. Sci. U.S.A.* 111, 10227–10232. doi: 10.1073/pnas.1403319111
- Kiriakoulakis, K., Fisher, E., Wolff, G. A., Freiwald, A., Grehan, A., and Roberts, J. M. (2005). “Lipids and nitrogen isotopes of two deep-water corals from the North-East Atlantic: initial results and implications for their nutrition,” in *Cold-Water Corals and Ecosystems*, eds A. Freiwald and J. M. Roberts (Berlin: Springer), 715–729.
- Kooperman, N., Ben-Dov, E., Kramarsky-Winter, E., Barak, Z., and Kushmaro, A. (2007). Coral mucus-associated bacterial communities from natural and aquarium environments. *FEMS Microbiol. Lett.* 276, 106–113. doi: 10.1111/j.1574-6968.2007.00921.x

LC’s Ph.D. grant was funded by the French Ministry of Higher Education, Research and Innovation through the Doctoral School “Sciences de l’Environnement d’Île de France-ED129.” The coral sampling was conducted as part of the Chair “Biodiversity, extreme marine environment, and global change” supported by Foundation TOTAL, UPMC, and CNRS, coordination N. Le Bris.

## ACKNOWLEDGMENTS

We acknowledge the support of the Banyuls Oceanological Observatory (FR3724) through the federative axes “Marine Biotic Interactions” and the facilities of the Marine Biodiversity and Biotechnology (Bio2Mar) platform.

## SUPPLEMENTARY MATERIAL

The Supplementary Material for this article can be found online at: <https://www.frontiersin.org/articles/10.3389/fmicb.2018.02565/full#supplementary-material>

- Kunin, V., Engelbrekton, A., Ochman, H., and Hugenholtz, P. (2010). Wrinkles in the rare biosphere: pyrosequencing errors can lead to artificial inflation of diversity estimates. *Environ. Microbiol.* 12, 118–123. doi: 10.1111/j.1462-2920.2009.02051.x
- Kunin, V., and Hugenholtz, P. (2010). PyroTagger: a fast, accurate pipeline for analysis of rRNA amplicon pyrosequence data. *Open J.* 1–8.
- Lartaud, F., Pareige, S., De Rafélis, M., Feuillassier, L., Bideau, M., Peru, E., et al. (2013). A new approach for assessing cold-water coral growth in situ using fluorescent calcein staining. *Aquat. Living Resour.* 26, 187–196. doi: 10.1051/alr/2012029
- Lartaud, F., Pareige, S., De Rafélis, M., Feuillassier, L., Bideau, M., Peru, E., et al. (2014). Temporal changes in the growth of two Mediterranean cold-water coral species, in situ and in aquaria. *Deep Sea Res. II Top. Stud. Oceanogr.* 99, 64–70. doi: 10.1016/j.dsr2.2013.06.024
- Meistertzheim, A.-L., Lartaud, F., Arnaud-Haond, S., Kalenitchenko, D., Bessalam, M., Le Bris, N., et al. (2016). Patterns of bacteria-host associations suggest different ecological strategies between two reef building cold-water coral species. *Deep Sea Res. I Oceanogr. Res. Pap.* 114, 12–22. doi: 10.1016/j.dsr.2016.04.013
- Naumann, M. S., Orejas, C., and Ferrier-Pagès, C. (2014). Species-specific physiological response by the cold-water corals *Lophelia pertusa* and *Madrepora oculata* to variations within their natural temperature range. *Deep Sea Res. II Top. Stud. Oceanogr.* 99, 36–41. doi: 10.1016/j.dsr2.2013.05.025
- Neave, M. J., Apprill, A., Ferrier-Pagès, C., and Voolstra, C. R. (2016). Diversity and function of prevalent symbiotic marine bacteria in the genus *Endozoicomonas*. *Appl. Microbiol. Biotechnol.* 100, 8315–8324. doi: 10.1007/s00253-016-7777-0
- Oksanen, J., Blanchet, F. G., Kindt, R., Legendre, P., Minchin, P. R., O’hara, R., et al. (2013). *Package ‘vegan’*. *Community Ecology Package, version 2*.
- Orejas, C., Ferrier-Pagès, C., Reynaud, S., Gori, A., Beraud, E., Tsounis, G., et al. (2011). Long-term growth rates of four Mediterranean cold-water coral species maintained in aquaria. *Mar. Ecol. Prog. Ser.* 429, 57–65. doi: 10.3354/meps09104
- Pogoreutz, C., Rådecker, N., Cárdenas, A., Gärdes, A., Wild, C., and Voolstra, C. R. (2018). Dominance of *Endozoicomonas* bacteria throughout coral bleaching and mortality suggests structural inflexibility of the *Pocillopora verrucosa* microbiome. *Ecol. Evol.* 8, 2240–2252. doi: 10.1002/ece3.3830
- Pratte, Z. A., Richardson, L. L., and Mills, D. K. (2015). Microbiota shifts in the surface mucopolysaccharide layer of corals transferred from natural to aquaria settings. *J. Invertebr. Pathol.* 125, 42–44. doi: 10.1016/j.jip.2014.12.009
- Quast, C., Pruesse, E., Yilmaz, P., Gerken, J., Schweer, T., Yarza, P., et al. (2013). The SILVA ribosomal RNA gene database project: improved data processing and web-based tools. *Nucleic Acids Res.* 41, D590–D596. doi: 10.1093/nar/gks1219

- Roberts, J. M., Wheeler, A. J., and Freiwald, A. (2006). Reefs of the deep: the biology and geology of cold-water coral ecosystems. *Science* 312, 543–547. doi: 10.1126/science.1119861
- Röthig, T., Roik, A., Yum, L. K., and Voolstra, C. R. (2017). Distinct bacterial microbiomes associate with the deep-sea coral *Eguchipsammia fistula* from the Red Sea and from Aquaria Settings. *Front. Mar. Sci.* 4:259. doi: 10.3389/fmars.2017.00259
- Salter, I., Galand, P. E., Fagervold, S. K., Lebaron, P., Obernosterer, I., Oliver, M. J., et al. (2015). Seasonal dynamics of active SAR11 ecotypes in the oligotrophic Northwest Mediterranean Sea. *ISME J.* 9, 347–360. doi: 10.1038/ismej.2014.129
- Schöttner, S., Hoffmann, F., Wild, C., Rapp, H. T., Boetius, A., and Ramette, A. (2009). Inter- and intra-habitat bacterial diversity associated with cold-water corals. *ISME J.* 3, 756–759. doi: 10.1038/ismej.2009.15
- Schöttner, S., Wild, C., Hoffmann, F., Boetius, A., and Ramette, A. (2012). Spatial scales of bacterial diversity in cold-water coral reef ecosystems. *PLoS One* 7:e32093. doi: 10.1371/journal.pone.0032093
- Waller, R. G., and Tyler, P. A. (2005). The reproductive biology of two deep-water, reef-building scleractinians from the NE Atlantic Ocean. *Coral Reefs* 24, 514–522. doi: 10.1007/s00338-005-0501-7
- Zaneveld, J. R., Mcminds, R., and Thurber, R. V. (2017). Stress and stability: applying the Anna Karenina principle to animal microbiomes. *Nat. Microbiol.* 2:17121. doi: 10.1038/nmicrobiol.2017.121

**Conflict of Interest Statement:** The authors declare that the research was conducted in the absence of any commercial or financial relationships that could be construed as a potential conflict of interest.

Copyright © 2018 Galand, Chapron, Meistertzheim, Peru and Lartaud. This is an open-access article distributed under the terms of the Creative Commons Attribution License (CC BY). The use, distribution or reproduction in other forums is permitted, provided the original author(s) and the copyright owner(s) are credited and that the original publication in this journal is cited, in accordance with accepted academic practice. No use, distribution or reproduction is permitted which does not comply with these terms.