



**HAL**  
open science

## Current state of Alzheimer's fluid biomarkers

José Luis Molinuevo, Scott Ayton, Richard Batrla, Martin M Bednar, Tobias Bittner, Jeffrey Cummings, Anne M Fagan, Harald Hampel, Michelle Mielke, Alvydas Mikulskis, et al.

► **To cite this version:**

José Luis Molinuevo, Scott Ayton, Richard Batrla, Martin M Bednar, Tobias Bittner, et al.. Current state of Alzheimer's fluid biomarkers. *Acta Neuropathologica*, 2018, 136 (6), pp.821-853. 10.1007/s00401-018-1932-x . hal-01960281

**HAL Id: hal-01960281**

**<https://hal.sorbonne-universite.fr/hal-01960281v1>**

Submitted on 19 Dec 2018

**HAL** is a multi-disciplinary open access archive for the deposit and dissemination of scientific research documents, whether they are published or not. The documents may come from teaching and research institutions in France or abroad, or from public or private research centers.

L'archive ouverte pluridisciplinaire **HAL**, est destinée au dépôt et à la diffusion de documents scientifiques de niveau recherche, publiés ou non, émanant des établissements d'enseignement et de recherche français ou étrangers, des laboratoires publics ou privés.



## Current state of Alzheimer's fluid biomarkers

José Luis Molinuevo<sup>1,2</sup> · Scott Ayton<sup>3</sup> · Richard Batrla<sup>4</sup> · Martin M. Bednar<sup>5</sup> · Tobias Bittner<sup>6</sup> · Jeffrey Cummings<sup>7</sup> · Anne M. Fagan<sup>8</sup> · Harald Hampel<sup>9,10,11,12</sup> · Michelle M. Mielke<sup>13</sup> · Alvydas Mikulskis<sup>14</sup> · Sid O'Bryant<sup>15</sup> · Philip Scheltens<sup>16</sup> · Jeffrey Sevigny<sup>17</sup> · Leslie M. Shaw<sup>18</sup> · Holly D. Soares<sup>19</sup> · Gary Tong<sup>20</sup> · John Q. Trojanowski<sup>21</sup> · Henrik Zetterberg<sup>22,23,24,25</sup> · Kaj Blennow<sup>22,23</sup>

Received: 17 September 2018 / Revised: 5 November 2018 / Accepted: 7 November 2018 / Published online: 28 November 2018  
© The Author(s) 2018

### Abstract

Alzheimer's disease (AD) is a progressive neurodegenerative disease with a complex and heterogeneous pathophysiology. The number of people living with AD is predicted to increase; however, there are no disease-modifying therapies currently available and none have been successful in late-stage clinical trials. Fluid biomarkers measured in cerebrospinal fluid (CSF) or blood hold promise for enabling more effective drug development and establishing a more personalized medicine approach for AD diagnosis and treatment. Biomarkers used in drug development programmes should be qualified for a specific context of use (COU). These COUs include, but are not limited to, subject/patient selection, assessment of disease state and/or prognosis, assessment of mechanism of action, dose optimization, drug response monitoring, efficacy maximization, and toxicity/adverse reactions identification and minimization. The core AD CSF biomarkers A $\beta$ 42, t-tau, and p-tau are recognized by research guidelines for their diagnostic utility and are being considered for qualification for subject selection in clinical trials. However, there is a need to better understand their potential for other COUs, as well as identify additional fluid biomarkers reflecting other aspects of AD pathophysiology. Several novel fluid biomarkers have been proposed, but their role in AD pathology and their use as AD biomarkers have yet to be validated. In this review, we summarize some of the pathological mechanisms implicated in the sporadic AD and highlight the data for several established and novel fluid biomarkers (including BACE1, TREM2, YKL-40, IP-10, neurogranin, SNAP-25, synaptotagmin,  $\alpha$ -synuclein, TDP-43, ferritin, VILIP-1, and NF-L) associated with each mechanism. We discuss the potential COUs for each biomarker.

**Keywords** Alzheimer's disease · Amyloid · Biomarker · Blood · Cerebrospinal fluid · Tau

### Introduction

Worldwide, approximately 50 million people are living with dementia, with Alzheimer's disease (AD) comprising 60–70% of cases [391]. AD is a progressive, neurodegenerative disease characterized clinically by cognitive decline and behavioural disturbances and pathologically by the accumulation of amyloid beta (A $\beta$ ) plaques and neurofibrillary tangles formed by tau fibrils, together with degeneration of neurons and their synapses, glial activation, and neuroinflammation [37, 149, 314]. The incidence of AD increases with age, and the prevalence is growing as a result of the ageing of the population [6]. To date, no disease-modifying

therapy (DMT) has been successful [18]. This lack of success may be partly explained by AD having a complex aetiology and considerable heterogeneity in its pathophysiology, and by limitations in past clinical trial designs, which have generally enrolled participants later in the course of the disease (e.g. mild-to-moderate AD), and which did not enrich for A $\beta$ -positive individuals, resulting in substantial misclassification (i.e. inclusion of participants without A $\beta$  pathology) [12, 241, 317].

Biomarkers hold promise for enabling more effective drug development in AD and establishing a more personalized medicine approach [126, 127, 314]; they may soon become essential in staging, tracking, and providing a more quantitative categorization of the disease, as well as for documenting the effect of potential therapeutics. These points are underscored in the 2018 draft guidance documents issued by both the US Food and Drug Administration (FDA) (Early

✉ Kaj Blennow  
kaj.blennow@neuro.gu.se

Extended author information available on the last page of the article

Alzheimer's disease: developing drugs for treatment; draft guidance for industry) [96] and the European Medicines Agency's (EMA) Committee for Medicinal Products for Human Use (CHMP) (Guideline on the clinical investigation of medicines for the treatment of Alzheimer's disease) [78]. Fluid biomarkers have the potential to be easy to implement in clinical trials, and several biomarkers reflecting different pathophysiological mechanisms can be analyzed in the same sample. Furthermore, cerebrospinal fluid (CSF) or blood may provide a window for detection of some biomarkers that cannot be identified via brain imaging [125].

CSF represents a logical source for developing viable biomarkers in AD given its direct interaction with the extracellular space in the brain, thus potentially reflecting the associated pathophysiological alterations [32]. The overall safety record of lumbar puncture is strongly supported by extensive meta-analyses [76, 262]. However, fluid biomarkers are unable to reflect brain regional pathogeographies, which may be particularly important during early AD [47, 281]. Other limitations of CSF include the relative invasiveness of CSF collection by lumbar puncture, limited access and acceptability in some countries, the inability to collect samples from large populations especially if serial measures are needed, concerns over slowing for subject recruitment into clinical trials, educational gaps on the safety of lumbar puncture, development and validation of CSF assays, and clinical utility. Some of the limitations of CSF have prompted research efforts into the development and validation of diagnostic or prognostic AD biomarkers in blood [215, 216]. Indeed, the Biofluid Based Biomarkers Professional Interest Area [of the Alzheimer's Association International Society to Advance Alzheimer's Research and Treatment (ISTAART)], an international working group of leading AD scientists, has been established to scrutinize potential blood-based biomarkers and to provide standards for the collection of biofluids [128, 140, 268, 269].

The ideal fluid biomarker for AD would be reliable, reproducible, non-invasive, simple to measure, and inexpensive [360], as well as easy to implement into large populations such as clinical trials and the primary care setting. Importantly, biomarkers used in drug-development programmes should be qualified for a specific context of use (COU); these include (but are not limited to) patient/clinical trial diagnosis and subject selection, assessment of disease state and/or prognosis, assessment of mechanism of action, dose optimization, drug–response monitoring, efficacy maximization, and toxicity/adverse reaction identification and minimization [95]. For successful AD drug development, it is critical to ensure that subjects enrolled into clinical trials are those who have AD pathology and are most likely to progress along the disease continuum. Fluid biomarkers could have an important role in clinical trial subject selection (including subject enrichment or stratification) [123, 126, 127], and could be

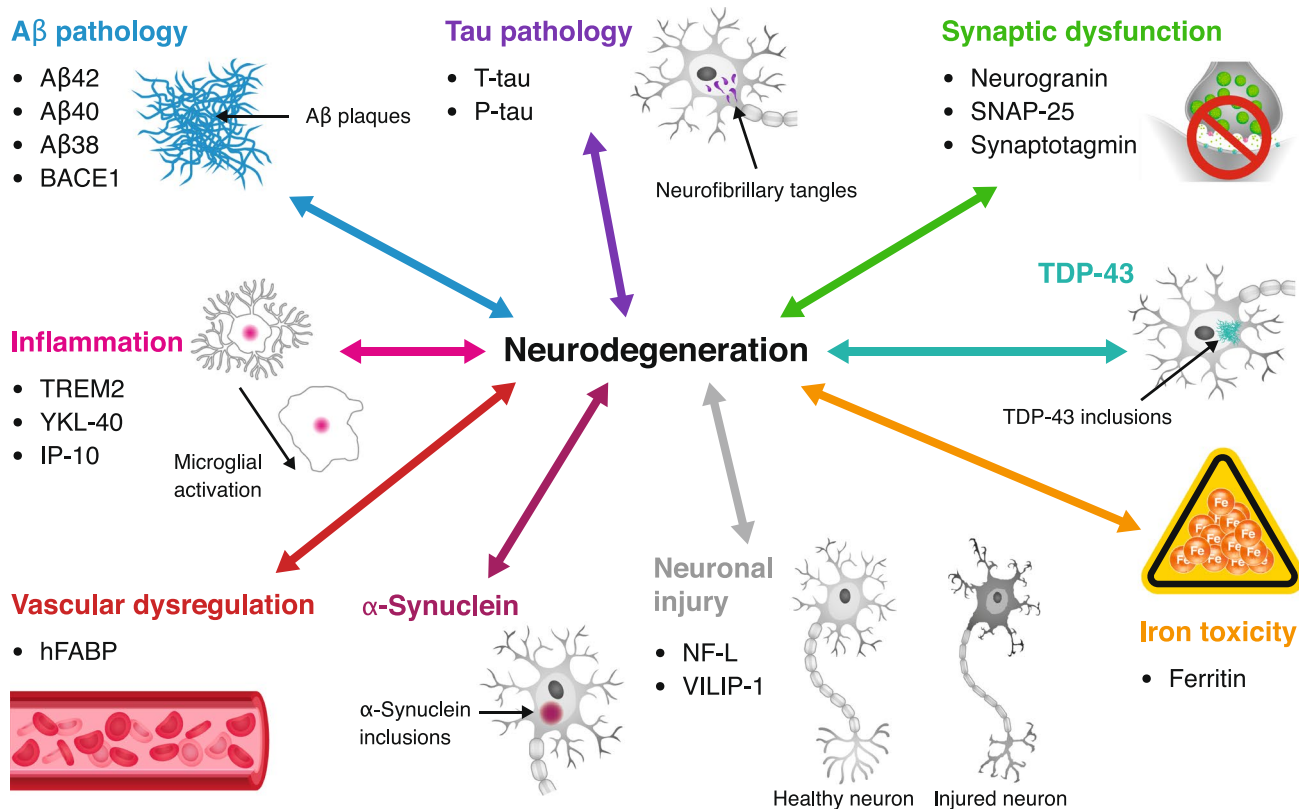
useful for measuring target engagement of the drug and the impact of the drug on the pathogenic mechanisms [184, 279]. Additionally, fluid biomarkers, especially blood biomarkers, could be used in early screening in primary care to identify potential clinical trial subjects and patients at risk of AD, thereby improving early diagnosis and enabling longitudinal tracking of various disease indicators over extended periods of time [22, 128].

Currently, three core AD CSF biomarkers are included in research guidelines for AD and are being increasingly used in clinical trials as inclusion criteria and/or outcome measures: CSF amyloid beta 42 (A $\beta$ 42), total tau (t-tau), and tau phosphorylated at threonine 181 (p-tau) [75, 214, 217, 247, 298]. These biomarkers have been validated as core CSF biomarkers of AD pathophysiology [33, 99, 122, 124]. Qualification opinions have also been published for CSF A $\beta$ 42 and t-tau by the EMA, supporting their use as patient-selection tools [153]. Although these core biomarkers are now recognized for their diagnostic utility, there is a need to identify additional fluid biomarkers for other COUs such as subject enrichment, risk stratification, prognosis, and (eventually) drug–response monitoring, and to better understand the complex heterogeneity of AD pathology [78, 96]. Several novel biomarkers have been proposed; some have been extensively investigated, but they have yet to be validated and integrated into guidelines for use in clinical practice and drug development [99, 206].

This review summarizes some of the pathological mechanisms implicated in sporadic AD (Fig. 1) and highlights several established and novel fluid biomarkers associated with each mechanism. For each biomarker, a summary of published studies, the stage of assay development (Table 1), and the potential COU (Table 2) are discussed. Most of the fluid biomarkers examined in this review are CSF biomarkers, owing to the limited number of published studies on blood-based biomarkers. It should be noted that unselected biomarker combinations (“panels”) identified through “omics” technologies are not included; this topic has been recently reviewed elsewhere [46, 219, 222, 260].

## Alzheimer's disease pathological mechanisms

Extracellular plaque deposits of A $\beta$  peptides and intraneuronal tau-containing neurofibrillary tangles (NFTs) and neuropil threads (NTs), are the defining neuropathological features of AD brains [238, 314]. A $\beta$ -plaque deposition is an insidious process that occurs over decades, well before symptoms emerge [156, 379]. Approximately one-third of people over the age of 65 years who are cognitively normal have A $\beta$ -plaque deposition equivalent to that of someone



**Fig. 1** Pathological mechanisms implicated in AD and associated fluid biomarkers. In this figure, the arrows reflect hypothetical relationships, not direct causal links between the pathological mechanisms and neurodegeneration. Only select pathological mechanisms (and associated biomarkers) of AD are represented. *Aβ38* amyloid beta 38, *Aβ40* amyloid beta 40, *Aβ42* amyloid beta 42, *AD* Alzheimer's disease, *BACE1* β-site amyloid precursor protein cleav-

ing enzyme 1, *hFABP* heart-type fatty acid-binding protein, *IP-10* interferon-γ-induced protein 10, *NF-L* neurofilament light, *P-tau* phosphorylated tau, *SNAP-25* synaptosome-associated protein 25, *TDP-43* transactive response DNA-binding protein 43, *TREM2* triggering receptor expressed on myeloid cells 2, *T-tau* total tau, *VILIP-1* visinin-like protein 1

with AD [305]; the significance of this finding is a topic of intensive evaluation.

In AD, comorbid pathology is often present and contributes to the clinical symptoms. For example, there is an increasing burden of cerebrovascular pathology as a function of age, and approximately 30% of AD patients have concomitant cerebrovascular disease [365]. In addition to plaques and tangles, more than half of AD patients also show widespread cortical Lewy bodies (LBs) and Lewy neurites formed by misfolded α-synuclein like those found in patients with Parkinson's disease dementia (PDD) or dementia with Lewy bodies (DLB) [121, 207]. Conversely, approximately 40% of DLB patients have AD pathology as determined by their CSF-biomarker profile [199]. Furthermore, up to half of AD patients harbour transactive response DNA-binding protein 43 (TDP-43) inclusions that are characteristic of frontotemporal lobar degeneration (FTLD) and sporadic amyotrophic lateral sclerosis (ALS) [7, 50, 159]. Amylin deposits, which are found in the pancreas of most patients with type 2 diabetes mellitus, have also been found

in AD (and type 2 diabetes) brains [157]. Thus, although AD is typically characterized by Aβ plaques and NFTs, most AD patients have multiple pathologies and different types of brain proteinopathies [21]. In the Center for Neurodegenerative Disease Research (CNDR) Brain Bank at the University of Pennsylvania, only 35% of 247 autopsy-confirmed AD brains examined for the presence of tau, Aβ, α-synuclein, and TDP-43 deposits had only plaques and tangles as the underlying cause of dementia, while 22% had all four of these pathologies [300]. This finding emphasizes the urgent need for biomarkers that can indicate the presence of multiple pathologies in AD patients, with the methodological attributes of being reliable, accessible, and cost-efficient.

## Aβ pathology

The “amyloid cascade hypothesis”, initially proposed in 1992 [134], but essentially embedded in the reports of the initial discovery of the partial Aβ sequence in cerebral

**Table 1** Summary of selected candidate AD fluid biomarkers

Biomarker	Stage of clinical validation	Levels in AD vs healthy controls	Stage of assay development	
			CSF	Plasma/serum
A $\beta$ 42	CSF A $\beta$ 42 is accepted as part of research criteria [75, 247] IWG-2 criteria recommend using CSF A $\beta$ 42 in combination with CSF t-tau or p-tau [75] Many studies on plasma but inconsistent results [160, 227, 271, 273, 274, 377]	Consistently decreased in CSF Inconsistent results in plasma, although recent studies have shown a decrease	Commercially available assays, including fully automated (IVDs in Europe)	Commercially available assays
A $\beta$ 40	Many studies on CSF and plasma Inconsistent results for A $\beta$ 40 alone [73, 83, 160, 243, 248, 271, 338] Consistent results for ratio of CSF A $\beta$ 42/A $\beta$ 40 [161, 202, 205, 275, 276, 294] Consistent results for ratio of plasma A $\beta$ 42/A $\beta$ 40 [31, 87, 179, 261, 273, 371, 373, 377, 383]	A $\beta$ 40 alone: inconsistent results in CSF and plasma Ratio of A $\beta$ 42/A $\beta$ 40: consistently decreased in CSF and plasma	Commercially available assays (IVDs in Europe)	Commercially available assays
A $\beta$ 38	Several studies on CSF A $\beta$ 38 alone Inconsistent results for A $\beta$ 38 alone [161, 243, 271] Very few studies on CSF A $\beta$ 42/A $\beta$ 38 [161, 259] One study on plasma A $\beta$ 38 [273]	A $\beta$ 38 alone: inconsistent results in CSF and plasma Ratio of A $\beta$ 42/A $\beta$ 38: decreased in CSF but data are limited	Commercially available assays	Commercially available assays
BACE1	Several studies on CSF Inconsistent results [79, 81, 258, 283, 311, 392, 401, 407] Very few studies on plasma [330, 393]	Inconsistent results in CSF but most studies showed increased levels/activity Increased activity in plasma but data are limited	Commercially available assays	Commercially available assays
T-tau	CSF t-tau is accepted as part of research criteria [75, 247] IWG-2 criteria recommend using CSF t-tau in combination with CSF A $\beta$ 42 [75] Several studies on plasma Consistent results [61, 68, 245, 251, 271, 404]	Consistently increased in CSF Consistently increased in plasma	Commercially available assays, including fully automated (IVDs in Europe)	Commercially available assays
P-tau	CSF p-tau is accepted as part of research criteria [75, 247] IWG-2 criteria recommend using CSF p-tau in combination with CSF A $\beta$ 42 [75] Few studies on plasma or serum Consistent results [329, 358, 395]	Consistently increased in CSF Increased in plasma and serum but data are limited	Commercially available assays, including fully automated (IVDs in Europe)	In-house assays
hFABP	Several studies on CSF Consistent results [53, 67, 119, 146, 154, 201, 271] Very few studies on plasma or serum [254, 271]	Consistently increased in CSF No change in plasma or serum but data are limited	Commercially available assays	Commercially available assays

Table 1 (continued)

Biomarker	Stage of clinical validation	Levels in AD vs healthy controls	Stage of assay development	
			CSF	Plasma/serum
TREM2	Few studies on CSF Inconsistent results [38, 107, 139, 141, 287, 344, 346] Few studies on blood [145, 255, 352]	Inconsistent results in CSF but most studies showed an increase No change in plasma levels but data are limited; increased mRNA and protein levels in blood cells but data are limited	Commercially available assays	Commercially available assays
YKL-40	Several studies on CSF Inconsistent results [2–4, 11, 23, 57, 106, 138, 176, 244, 271, 303, 347, 384] Very few studies on plasma [54, 57]	Inconsistent results in CSF but most studies showed an increase Increased in plasma but data are limited	Commercially available assays	Commercially available assays
IP-10	Few studies on CSF Inconsistent results [29, 101, 384] Very few studies on plasma or serum [102, 154]	Inconsistent results in CSF Inconsistent results in plasma or serum	Commercially available assays	Commercially available assays
Neurogranin	Many studies on CSF Inconsistent results [63, 64, 138, 175, 189, 190, 221, 242, 282, 291, 310, 347, 354, 361] Few studies on plasma [63, 110, 190, 389]	Inconsistent results in CSF but most studies showed an increase No change in plasma but studies are limited; decreased in plasma neuronally derived exosomes but data are limited	Commercially available assays	Commercially available assays
SNAP-25	Two studies on CSF [36, 347] No studies on plasma	Increased in CSF but data are limited Unknown for plasma	Commercially available assays	Commercially available assays
Synaptotagmin	One study on CSF [270] One study on plasma [110]	Increased in CSF but data are limited Decreased in plasma neuronally derived exosomes but data are limited	Commercially available assays	Commercially available assays
$\alpha$ -Synuclein	Few studies on CSF Inconsistent results [27, 170, 172, 183, 232, 339, 366] Very few studies on plasma [49, 331]	Inconsistent results in CSF but most studies showed an increase No change in plasma but data are limited	Commercially available assays	Commercially available assays
TDP-43	No studies on CSF Very few studies on plasma [97, 387]	Unknown for CSF Increased in plasma but data are limited	Commercially available assays	Commercially available assays
Ferritin	Very few studies on CSF [13–15] Very few studies on plasma [15, 112]	No change in CSF but data are limited; increased CSF levels are associated with cognitive decline but data are limited No change in plasma but data are limited; plasma levels are associated with PET A $\beta$ but data are limited	Commercially available assays	Commercially available assays
VILIP-1	Several studies on CSF Inconsistent results [17, 176, 194, 230, 257, 271, 347, 355–357] One study on plasma [355]	Inconsistent results in CSF but most studies showed an increase Increased in plasma but data are limited	Commercially available assays	Commercially available assays



**Table 1** (continued)

Biomarker	Stage of clinical validation	Levels in AD vs healthy controls	Stage of assay development	Plasma/serum
NF-L	Several studies on CSF Consistent results [4, 220, 271, 282, 288, 334, 335, 403] Few studies on plasma or serum [240, 385, 408]	Consistently increased in CSF Increased in plasma but data are limited	CSF Commercially available assays (IVDs in Europe)	Commercially available assays

*Aβ38* amyloid beta 38, *Aβ40* amyloid beta 40, *Aβ42* amyloid beta 42, *AD* Alzheimer's disease, *BACE1* β-site amyloid precursor protein cleaving enzyme 1, *CSF* cerebrospinal fluid, *hFABP* heart-type fatty acid-binding protein, *IP-10* interferon-γ-induced protein 10, *IVD* in vitro diagnostic, *IWG-2* International Working Group 2, *NF-L* neurofilament light, *P-tau* phosphorylated tau, *SNAP-25* synaptosome-associated protein 25, *TDP-43* transactive response DNA-binding protein 43, *TREM2* triggering receptor expressed on myeloid cells 2, *T-tau* total tau, *VILIP-1* visinin-like protein 1

vessels [108, 109] and the whole 4 kDa Aβ peptide in plaques [239], is supported by genetic and biochemical data, and has been the dominant model of AD pathogenesis. The model is based on the gradual deposition of fibrillar Aβ as diffuse plaques, which triggers an inflammatory response, altered ion homeostasis, oxidative stress, and altered kinase/phosphatase activity, leading to the formation of NFTs and to widespread synaptic dysfunction and neuronal loss [320]. Notably, recent experimental evidence suggests that the Aβ plaque environment can accelerate the templated spread of tau pathology [136].

Genetic data strongly implicate Aβ in AD pathogenesis [315, 390]. Whether monomeric or aggregated forms are more relevant to the neurodegenerative process remains unknown. Recent reports indicate that soluble Aβ oligomers may be more toxic than Aβ neuritic plaques [320, 321], suggesting that other forms of Aβ may be more relevant to measure. Phase 3 clinical studies of solanezumab, a monoclonal antibody (mAb) that targets monomeric Aβ, resulted in very modest slowing of clinical decline [72], whereas a Phase 1b study of aducanumab, a mAb that targets soluble and insoluble forms of aggregated Aβ, demonstrated robust plaque reduction and a slowing of clinical decline [42, 323].

## Fluid biomarkers of Aβ metabolism and aggregation

### Aβ peptides

Aβ is generated as the result of the sequential cleavage of amyloid precursor protein (APP) by β-site amyloid precursor protein cleaving enzyme 1 (BACE1) and γ-secretase [45, 394]. The cleavage position of the γ-secretase in the transmembrane domain of APP is imprecise, resulting in the production of Aβ peptides of variable length [166, 289]. Changes in some of these Aβ species have been associated with AD, as discussed below, but little is known about the changes over time in relation to clinical presentation.

### Aβ42

The 42-amino acid form of Aβ, Aβ42, is a minor component of Aβ peptides in the CSF [290] and plasma [277], but in AD brains, Aβ42 is the principal Aβ peptide in plaques [113, 155]. Decreases in CSF Aβ42 levels in AD patients were first reported by Motter et al. [256]. Several subsequent studies have consistently shown that CSF levels of Aβ42 correlate inversely with plaque load as observed in autopsies and in vivo with positron emission tomography (PET) [82, 114, 158, 343, 353]. CSF Aβ43 is also reported to decrease in AD, but it has similar diagnostic accuracy to CSF Aβ42 [39, 193] so research has focused on the latter.

CSF Aβ42, together with t-tau and p-tau, are biomarkers accepted as supportive of an AD diagnosis [75, 247]

**Table 2** Potential uses for selected candidate AD fluid biomarkers

Biomarker	Patient/clinical trial subject selection	Assessment of disease state and/or prognosis	Target engagement	Other
A $\beta$ 42	✓*	○*	○	
A $\beta$ 40	○†	○†	○	
A $\beta$ 38	○†	○†	○	
BACE1	○	○		
T-tau	✓±	○±		□ Δ
P-tau	✓±	○±		□
hFABP	○	○		
TREM2	○			
YKL-40	○	○		
IP-10	○			
Neurogranin	○	○		□ Δ
SNAP-25	○			Δ
Synaptotagmin	○			Δ
$\alpha$ -Synuclein	○			
TDP-43	○	○		
Ferritin	○	○		
VILIP-1	○	○		Δ
NF-L	○	○		□ Δ

A $\beta$ 38 amyloid beta 38, A $\beta$ 40 amyloid beta 40, A $\beta$ 42 amyloid beta 42, AD Alzheimer's disease, BACE1  $\beta$ -site amyloid precursor protein cleaving enzyme 1, hFABP heart-type fatty acid-binding protein, IP-10 interferon- $\gamma$ -induced protein 10, NF-L neurofilament light, P-tau phosphorylated tau, SNAP-25 synaptosome-associated protein 25, TDP-43 transactive response DNA-binding protein 43, TREM2 triggering receptor expressed on myeloid cells 2, T-tau total tau, VILIP-1 visinin-like protein 1

✓ Accepted (validated) use

○ Potential use, supportive data available

□ Speculative use for drug response monitoring, no supportive data available

△ Speculative use for toxicity/adverse reactions minimization, no supportive data available

\* Alone or when measured as a ratio with tau

† When measured as a ratio with A $\beta$ 42

± Alone or when measured as a ratio with A $\beta$ 42

(Table 2), and evidence suggests they may be prognostic of disease progression in both cognitively normal individuals [84, 209] and those with mild cognitive impairment (MCI) [5, 9, 91, 133]. CSF A $\beta$ 42 has the potential to discriminate AD from FTLT but shows significant overlap with other non-AD dementias [80].

The development of automated assays to measure CSF A $\beta$ 42 will reduce variability among samples and laboratories and make it easier to interpret results and implement this biomarker into routine clinical practice [295]. However, several unresolved issues remain when using CSF A $\beta$ 42 in clinical trials. First, there needs to be a better understanding of how to interpret changes in CSF A $\beta$ 42 levels in AD in response to DMTs, since this is likely to vary with the mechanism of action of the DMT and with the duration of treatment. It seems logical to measure A $\beta$ 42 to help determine target engagement of drugs designed to reduce A $\beta$  pathology [88, 208]; however, some trials have reported changes in CSF A $\beta$ 42 but no improvement in clinical endpoints [298]. Furthermore, truncated, post-translationally modified fragments of A $\beta$  (e.g. pyroglutamate A $\beta$ 42) may be more prone to pathogenic aggregation [25, 117], and consideration needs to be given to what forms of A $\beta$ 42 are being measured. In

addition, CSF A $\beta$ 42 remains relatively stable over time in patients with AD dementia and may have limited utility for monitoring disease progression in this group [34, 41, 367, 402]. Finally, CSF A $\beta$ 42 measures are influenced by pre-analytical factors such as the type of collection tube and number of freeze/thaw cycles [198, 284, 368], so it is essential to develop harmonized standard operating procedures for sample collection and handling, as established for biomarker studies in the Alzheimer's Disease Neuroimaging Initiative (ADNI) [326, 327].

There has been great interest in developing new techniques to measure A $\beta$ 42 in blood. Although most studies have failed to show an association between plasma A $\beta$ 42 alone and risk of AD or association with PET A $\beta$  [227, 271], recent studies using ultrasensitive analytical assays as well as fully automated immunoassays suggest that plasma A $\beta$  could be a useful screening biomarker. Using an ultrasensitive immunoassay technique (Simoa platform), levels of A $\beta$ 42 and the ratio of A $\beta$ 42/A $\beta$ 40 in plasma were shown to correlate with CSF levels and with A $\beta$  deposition measured by PET [160, 377], and plasma A $\beta$ 42/A $\beta$ 40 associated with risk of progression to MCI or dementia in cognitively normal individuals with subjective cognitive decline [377].



Ovod et al. used mass spectrometry to demonstrate lower levels of plasma A $\beta$ 42 and A $\beta$ 42/A $\beta$ 40 in subjects with an A $\beta$ -positive PET [273]. In addition to the use of novel technologies, plasma samples could be chemically treated to reduce degradation of A $\beta$  and improve the accuracy of plasma A $\beta$  measurements [278]. Recently, a fully automated immunoassay has been shown to detect plasma A $\beta$ 42 and A $\beta$ 40 and accurately predict A $\beta$ -positivity (using the CSF A $\beta$ 42/40 ratio as reference standard) in cognitively normal, subjective cognitive decline, MCI and AD dementia patients [274].

In summary, CSF A $\beta$ 42 is widely accepted and used as an AD biomarker, and both CSF and plasma A $\beta$ 42 continue to be intensively studied (Tables 1 and 2). CSF A $\beta$ 42 is recognized as a core biomarker for AD diagnosis and is currently being considered by the FDA for qualification for subject selection in clinical trials (Table 2). It shows great promise as a biomarker for prognosis and has the potential to be used during drug trials to help assess target engagement. Plasma A $\beta$ 42 may prove to be useful for subject/patient selection (screening) and research is ongoing. There are several commercially available assays, and for CSF A $\beta$ 42, there are in vitro diagnostic (IVD) assays in Europe and fully automated assays.

## A $\beta$ 40

A $\beta$ 40 is the predominant form of A $\beta$  peptide in the brain [322, 348, 349], CSF [290, 322], and plasma [277], but it does not appear to be as pathogenic as A $\beta$ 42 [246]. A $\beta$ 40 may have protective effects against A $\beta$  plaque formation [180] but it is the relative amount of A $\beta$ 40 to A $\beta$ 42 that may be more important than the absolute amounts of either peptide [188].

Research on CSF A $\beta$ 40 and its correlation with AD dementia has shown inconsistent results [73, 248, 338], and a meta-analysis by Olsson et al. (data from 25 AD cohorts and 24 control cohorts) found only a minor association [271]. One study demonstrated an association between PET A $\beta$  and CSF A $\beta$ 40 levels (as well as CSF A $\beta$ 38 and a combination of A $\beta$ 40 and A $\beta$ 38), although the association was stronger in individuals who were not carriers of the apolipoprotein-E (*APOE*)  $\epsilon$ 4 allele (a major genetic risk factor for AD) compared with *APOE*  $\epsilon$ 4-positive individuals [243]. CSF A $\beta$ 40 may be useful (together with other biomarkers) in assessing target engagement of drugs such as BACE1 inhibitors, which selectively decrease A $\beta$ 40 and A $\beta$ 42 [173].

Although CSF A $\beta$ 40 shows no consistent change in AD across studies, the ratio of CSF A $\beta$ 42/A $\beta$ 40 has been shown to be a better predictor of A $\beta$ -positive PET than CSF A $\beta$ 42 alone [161, 202, 205, 276], and comparable to the ratios of t-tau/A $\beta$ 42 and p-tau/A $\beta$ 42 [275, 294]. The A $\beta$ 42/A $\beta$ 40 ratio also appears to be better than CSF A $\beta$ 42 alone

at distinguishing AD from non-AD dementias [73, 161]. Assessment of the CSF A $\beta$ 42/A $\beta$ 40 ratio (together with CSF tau levels), instead of absolute levels of A $\beta$ 42, may reduce misdiagnosis of cognitively normal individuals who are low A $\beta$  producers and AD patients who are high A $\beta$  producers [388], and to correct for inter-individual differences in CSF dynamics. The use of the A $\beta$ 42/A $\beta$ 40 ratio can also help to reduce the impact of pre-analytical factors affecting A $\beta$ 42 (and A $\beta$ 40) levels [104].

Studies on plasma A $\beta$ 40 have had mixed results [160, 248], but the meta-analysis by Olsson et al. (data from 21 AD cohorts and 19 control cohorts) found no difference between AD and controls [271]. In a separate study, plasma A $\beta$ 40 did not correlate with A $\beta$ -positive PET in cognitively normal elderly individuals [83]. However, as with CSF, the ratio of A $\beta$ 42/A $\beta$ 40 in plasma may be more useful than A $\beta$ 40 alone; plasma A $\beta$ 42/A $\beta$ 40 appears to be associated with an increased risk of progression to AD dementia [373, 377], and has shown promise in detecting A $\beta$ -positivity [87, 261, 273, 274, 371, 377] and supporting the diagnosis of AD [31, 179, 383].

Overall, the data suggest that CSF or plasma A $\beta$ 40 alone has limited utility as a biomarker for AD diagnosis but could be used to confirm target engagement of certain drugs (Tables 1 and 2). The ratio of A $\beta$ 42/A $\beta$ 40 in CSF and plasma appears to be useful for subject/patient selection and may be superior to A $\beta$ 42 alone (Table 2). Additionally, fluid-based A $\beta$ 42/A $\beta$ 40 may be useful for prognosis but the data are limited. Commercial assays are available for fluid-based A $\beta$ 40 (and A $\beta$ 42), and IVD assays are available for CSF A $\beta$ 40 (and A $\beta$ 42) in Europe. Ongoing research may lead to the availability of validated assays for blood-based A $\beta$  peptides in the future.

## Shorter A $\beta$ peptides

A $\beta$  peptides shorter than 40 residues have been evaluated for potential utility as AD biomarkers. CSF A $\beta$ 38 was included in the meta-analysis by Olsson et al. (eight studies were analyzed) but there was no difference between AD patients and control subjects [271]. However, CSF A $\beta$ 38 has been found to correlate with PET A $\beta$  [243] and the ratio of CSF A $\beta$ 42/A $\beta$ 38 is better at predicting A $\beta$ -positive PET than CSF A $\beta$ 42 alone (and comparable to CSF A $\beta$ 42/A $\beta$ 40) [161]. Furthermore, CSF A $\beta$ 42/A $\beta$ 38 may be useful for differentiating between AD and DLB [259] and other non-AD dementias [161].

Another possible use for shorter A $\beta$  peptides is to demonstrate target engagement of drugs designed to affect A $\beta$  processing. For example, treatment with  $\gamma$ -secretase modulators is associated with a selective decrease in CSF A $\beta$ 42 and A $\beta$ 40 and an increase in A $\beta$ 38 and A $\beta$ 37 [272], so these

biomarkers can be used to monitor patients receiving these drugs [341].

In summary, the evidence is limited for fluid-based A $\beta$  peptides <40 residues (Table 1) but commercial assays are available for CSF A $\beta$ 38 and this biomarker has the potential to be used for subject/patient selection (in combination with A $\beta$ 42) and to help demonstrate target engagement of  $\gamma$ -secretase modulators (Table 2).

### A $\beta$ oligomers

A $\beta$  oligomers may play a key role in AD pathogenesis so the accurate detection and quantification of these species in CSF or blood could prove useful. Different technologies have been investigated and some have shown promise; examples include ELISA-based methods in CSF [143, 312, 396] and in plasma [381], single-molecule fluorescence microscopy in CSF [144], and a protein misfolding cyclic amplification assay method in CSF [308]. However, the overall findings have been inconsistent or unsatisfactory (reviewed by Schuster and Funke [318]). A number of methodological issues complicate measurement of A $\beta$  oligomers, including the fact that the oligomeric state of these proteins varies and is affected by numerous factors.

### BACE1

BACE1 has been shown to have several physiological functions in addition to APP processing [376, 394]. It is believed to be a major protease for cell surface proteolysis, contributing to ~19% of identified shed proteins [186], including neuregulin, which has important functions in myelination [94]. Therefore, monitoring of BACE1 activity may be helpful in subjects receiving investigational BACE1 inhibitors.

CSF BACE1 activity and/or protein levels have been reported to be higher in subjects with MCI compared with AD patients or controls [407], and higher in AD patients versus controls [79, 258, 401]. Furthermore, the *APOE*  $\epsilon$ 4 allele has been associated with increased CSF BACE1 activity in both AD and MCI subjects [81]. CSF BACE1 activity has also been shown to be higher in subjects with MCI who progressed to AD compared with those with stable MCI [401]. However, some studies have found no differences in BACE1 activity among AD, MCI, and control groups [283, 311], and one study found a decline in age-adjusted CSF BACE1 activity in AD patients compared with controls [392]. A recent study of elderly healthy subjects, who received chronic treatment with a BACE1 inhibitor, reported no change in CSF BACE1 levels after BACE1 inhibition, but did find strong correlations between levels of CSF BACE1 and its downstream markers including CSF A $\beta$ 42 [362].

Plasma BACE1 has also been studied and has been shown to differentiate AD patients from controls [330, 393]. In

addition, plasma BACE1 activity was found to be higher in subjects with MCI who progressed to AD compared with those with stable MCI or AD [330].

Overall, studies of BACE1 have given mixed results, and the association between BACE1 and AD remains unclear (Table 1). Recent research on BACE1 activity in plasma shows potential for subject/patient selection and prognosis (Table 2) but further studies are needed to validate the initial findings. Commercial assays are available to measure both BACE1 protein levels and BACE1 activity.

### Tau pathology

Tau is a microtubule-associated protein comprised of six human isoforms predominantly located in the axon of neurons [177]. Neuronal and/or glial inclusions of tau can be detected in several neurodegenerative diseases, or “tauopathies”, including AD [152], which may be characterized, to some extent, by their tau isoform profile [252]. The NFTs characteristic of AD are composed primarily of hyperphosphorylated tau [19, 196].

The abnormal phosphorylation of tau in AD has been hypothesized to be driven by A $\beta$  pathology [19, 177], although transgenic mice genetically engineered to develop A $\beta$  plaques do not develop tau tangles [197], except after intracerebral injections of AD brain-derived tau [136].

Hyperphosphorylation of tau has several pathogenic effects. It reduces tau’s affinity for microtubules, and increases its likelihood to aggregate and fibrillize [309]. This leads to destabilization of microtubules with subsequent axonal transport failure and neurodegeneration, which can be offset or corrected by microtubule-stabilizing drugs [24, 40, 405]. Hyperphosphorylation of tau is thought to cause its mislocalization to somatodendritic compartments, where it interacts with A $\beta$  to cause synaptotoxicity through the excessive activation of the *N*-methyl-D-aspartate (NMDA) receptors [177]. In addition, hyperphosphorylation of tau is implicated in A $\beta$ -induced cell death [200], possibly via a toxic gain of function mechanism [89].

Studies have shown that the density of neocortical NFTs has a stronger correlation than A $\beta$  plaques with ante-mortem cognitive status (reviewed by Nelson et al.) [263]. This finding, together with the involvement of tau in neurodegenerative processes, has led to increasing interest in tau as a therapeutic target for AD, with several compounds now in the early stages of clinical development [19, 60].

### Fluid biomarkers of tau pathology

#### T-tau and p-tau

CSF t-tau and p-tau (tau phosphorylated at threonine 181), together with CSF A $\beta$ 42, are considered core biomarkers to

support AD diagnosis [75, 247] (Table 2). Both CSF t-tau and p-tau differentiate AD from controls, and given that CSF p-tau levels are normal in most other dementias, this biomarker is also important for differential diagnosis [33]. In Creutzfeldt–Jakob disease (CJD), CSF t-tau levels are very high (around 20 times higher than in AD), whereas p-tau is close to normal [297, 336]. As with CSF A $\beta$ 42, CSF tau has the potential to predict disease progression in cognitively unimpaired individuals [301] and in those with MCI [91, 285]. CSF t-tau has been shown to predict more aggressive disease progression in patients with MCI due to AD or in mild-to-moderate AD [65].

Although CSF t-tau and p-tau are well-established AD biomarkers, their utility for diagnosis of AD is markedly improved when measured in combination with A $\beta$ 42 [75]. Hulstaert et al. found that the combination of CSF tau and A $\beta$ 42 was better than the individual biomarkers at discriminating AD patients from controls or subjects with other neurological disorders [148]. In the initial CSF study of the ADNI cohort, a logistic regression model combining A $\beta$ 42, t-tau, and the *APOE*  $\epsilon$ 4 allele count showed a stronger association with mild AD than A $\beta$ 42, t-tau, p-tau, or tau/A $\beta$ 42 alone [326]. Both CSF t-tau/A $\beta$ 42 and p-tau/A $\beta$ 42 ratios have been shown to outperform any of the individual biomarkers for distinguishing individuals with an A $\beta$ -positive PET [85]. In a study of the Oxford Project to Investigate Memory and Ageing (OPTIMA) cohort, CSF t-tau/A $\beta$ 40 and p-tau/A $\beta$ 42 were the best discriminators of autopsy-confirmed AD from controls [319]. The combination of CSF tau and A $\beta$ 42, in particular, p-tau/A $\beta$ 42, has also shown promise for differentiating AD from other dementias [299, 319].

The combination of tau and A $\beta$  markers has also demonstrated their utility for predicting disease progression. CSF t-tau/A $\beta$ 42 and p-tau/A $\beta$ 42 have been shown to predict cognitive decline in cognitively normal individuals [84], and the combination or ratios of tau (t-tau or p-tau) and A $\beta$ 42 have been shown to be better at predicting progression from MCI to AD than the individual biomarkers [91, 374]. Furthermore, the EMA approved CSF A $\beta$ 42/t-tau for use as an enrichment biomarker in a study of a  $\gamma$ -secretase inhibitor [77]. More recently, the synergistic interaction between CSF p-tau and A $\beta$  imaging was found to be associated with the progression from MCI to AD dementia [280].

CSF t-tau and p-tau are frequently measured in clinical trials but, as with CSF A $\beta$ 42, the relationship between clinical endpoints or therapeutic drug (interventional) response and these biomarkers is unclear [298], owing to their small longitudinal variation [34, 41] and the lack of DMTs that precludes testing their performance. Other challenges include variability in measured values due to pre-analytical and analytical factors, and the lack of consensus on cut-off values [98]. However, it is feasible that CSF tau could be

used to assess target engagement of tau-targeted drugs [174, 363].

In addition to the CSF tau biomarkers, plasma tau has also been evaluated and has shown potential for clinical utility. The meta-analysis by Olsson et al. (data from six AD cohorts and five control cohorts) found an association between plasma t-tau and AD [271]; however, no significant difference in plasma t-tau has been reported between MCI subjects and controls [61, 245, 404]. Elevated plasma t-tau is associated with lower grey matter density but the brain atrophy pattern associated with plasma t-tau is different from that of CSF t-tau [68]. Longitudinally, higher levels of plasma t-tau have been associated with greater cognitive decline and risk of MCI [245, 251]. Notably, the relationship between plasma t-tau and cognition was independent of elevated brain A $\beta$  [251]. These findings suggest that plasma t-tau could be useful as a screening tool or a prognostic marker for non-specific cognitive decline in cases where acute central nervous system (CNS) injury has been ruled out. Blood-based p-tau has also been measured in a few recent studies and found to be elevated in AD patients [329, 358, 395] and MCI subjects [329, 395] compared with controls. In addition, platelet-derived tau has been explored, and preliminary studies suggest that the ratio of high molecular weight to low molecular weight tau is higher in AD than in controls [264, 337]. However, the role of platelet-derived tau is not clear; it could either be a confounder or help to clarify the relationship between central and peripheral compartment tau measurements.

Although most tau biomarker research has focused on t-tau and p-tau, studies suggest that a variety of other tau peptides and fragments can be detected in CSF [250] and in serum [150], and some may have potential as AD biomarkers. For example, one study found that 11 (of 47) different tau phosphopeptides were upregulated in AD patients relative to controls [306], while another study found that non-phosphorylated tau also has potential as a diagnostic biomarker [204]. These initial studies may lead to further research into novel tau biomarkers, which may be especially helpful in the development of tau-directed therapies.

In summary, CSF t-tau and p-tau are widely accepted and used in AD research (Tables 1 and 2). They are recognized as core biomarkers to support the diagnosis of AD and are currently being considered for qualification by the FDA for subject selection in clinical trials (Table 2). CSF tau also shows promise as a biomarker for prognosis and target engagement. Commercial assays are available for both CSF t-tau and p-tau, including IVD assays in Europe and fully automated assays. There has been recent renewed interest in plasma t-tau, which shows potential for subject/patient selection (screening) and for prognosis (Table 2). In addition, research into other tau biomarkers (blood-based p-tau,

platelet-derived tau, tau peptides/fragments) is ongoing but is still in its early stages.

## Vascular dysregulation

Concurrent cerebrovascular disease is more common in AD than in most other neurodegenerative disorders [365] and vascular dysregulation as a contributing factor to AD has been a long-standing hypothesis for AD pathogenesis [296, 340]. The time sequence of the impact of vascular dysregulation has been debated, but recent work supports the possibility that these changes may be an early pathological event that precedes A $\beta$  pathology. The spatiotemporal changes in various neuroimaging, plasma, and CSF biomarkers from the ADNI cohort, suggest that vascular dysregulation is the earliest and strongest pathological factor associated with late-onset AD, followed by A $\beta$  deposition, glucose metabolism dysregulation, functional impairment, and grey matter atrophy [154].

Vascular dysregulation reduces oxygen and nutrient supply to the brain, causing cell damage and dysfunction of the blood–brain barrier, which lead in turn to neurotoxic effects such as oxidative stress and inflammation [69]. The hypoxic conditions are thought to increase the accumulation of A $\beta$  peptides through the activation of BACE1 and  $\gamma$ -secretase [307]. Additionally, disruption of the blood–brain barrier has been suggested to impair clearance of A $\beta$  peptides from the brain [48].

## Fluid biomarkers associated with the vascular system

### hFABP

Heart-type fatty acid-binding protein (hFABP), which has been proposed as a biomarker of myocardial infarction [1], was the CSF analyte with the highest degree of abnormalities in the spatiotemporal analysis of the ADNI cohort [154]. It was also identified as a potential AD biomarker in an independent cohort [146]. FABP showed associations with CSF A $\beta$ 42 levels but not with cognitive impairment [201]. In the meta-analysis by Olsson et al., CSF hFABP had a moderate association with AD (data from five AD and control cohorts), with a lower degree of change in AD versus controls than seen for t-tau [271]. CSF hFABP has also been shown to predict progression from MCI to AD [119], correlate with brain atrophy among individuals with low CSF A $\beta$ 42 [67], differentiate AD and DLB from Parkinson's disease (PD) and other neurological diseases [53], and correlate with cognitive impairment in a cohort of patients with different neurodegenerative diseases [53]. The source of hFABP in CSF is uncertain but it is highly expressed in

the brain where hFABP levels are second only to levels in muscle tissues (<https://www.proteinatlas.org/ENSG00000121769-FABP3/tissue>).

Serum hFABP was included in the meta-analysis by Olsson et al. and showed no association with AD (data from two AD and control cohorts) [271]; one study suggested it may be useful for differentiating between AD and DLB when measured as a ratio with CSF tau [254].

In summary, recent data for hFABP suggest that it may play a more important role in AD than previously thought (Table 1). CSF hFABP could be useful for both subject/patient selection and prognosis (Table 2) but further studies are needed to confirm these hypotheses. Commercial assays are available for CSF and serum hFABP.

## Inflammation/glia activation

Inflammation has been proposed as a contributor to AD pathogenesis [37, 44]. A $\beta$  plaques and NFTs induce an immune response in the brain, which is characterized by activated glial cells [37]. Microglia and astrocytes are the two main types of glial cells implicated in the pathogenesis of AD [37]. Microglia, the resident immune effector cells of the CNS, are important for brain homeostasis as well as immune responses [52]. Astrocytes are the most abundant type of glial cell in the CNS. They have important roles in homeostasis, synaptogenesis, signal transmission, and synaptic plasticity, and provide trophic and metabolic support to neurons [342].

The activation of glial cells serves to protect the brain; however, uncontrolled and prolonged activation can lead to detrimental effects that override the beneficial effects [37]. In this condition, glial cells lose some of their homeostatic functions and acquire a pro-inflammatory phenotype. The release of pro-inflammatory molecules, reactive oxygen species, and nitric oxide contribute to neuronal cell death. In addition, pro-inflammatory molecules increase A $\beta$  synthesis as well as tau hyperphosphorylation [37].

## Fluid biomarkers of inflammation/glia activation

### TREM2

Triggering receptor expressed on myeloid cells 2 (TREM2) is expressed by many cells of the myeloid lineage, including microglial cells in the CNS, and has several physiological functions including the regulation of myeloid cell number, phagocytosis, and inflammation [162]. TREM2 expression is upregulated in AD brains, where it may have a protective effect in the early stages, through the phagocytic clearance of A $\beta$ , but a pathogenic effect in the later stages, through activation of the inflammatory response [162]. Rare *TREM2*



gene variants have been associated with an increased risk of developing AD [59, 116, 304, 332]. *TREM2* haplodeficiency in mice and humans has been associated with increased axonal dystrophy and p-tau accumulation around A $\beta$  plaques [400].

A soluble variant, sTREM2, can be detected in CSF and has the potential to be used as a biomarker for AD. One study found that CSF sTREM2 levels were increased in autosomal dominant AD mutation carriers 5 years before expected symptom onset but after initial A $\beta$  deposition (as measured by PET) and changes in CSF A $\beta$ 42 and t-tau [344]. Some studies have found slightly higher CSF sTREM2 levels in AD [38, 141, 287, 346] and MCI groups [38] compared with controls, and in subjects with MCI due to AD compared with other AD groups (preclinical AD or AD dementia) [346]. However, one study found no difference between patients with AD or MCI and cognitively normal controls [139]. In patients with MCI, elevated CSF sTREM2 levels correlated with increased grey matter volume and reduced diffusivity, suggesting a role for TREM2 in the regulation of the neuroinflammatory response in early AD [107].

Levels of TREM2 mRNA in peripheral blood mononuclear cells and TREM2 protein expression on monocytes have been reported to be higher in patients with AD than in controls, and inversely correlated with cognitive performance [145]. In the same study, there was also a trend for upregulation of TREM2 protein on granulocytes and in plasma but this was not statistically significant [145]. Subsequent studies by other groups also found increased peripheral TREM2 mRNA expression in AD compared with controls [255, 352].

In summary, a few studies have observed increased levels of CSF sTREM2 and peripheral TREM2 expression in AD (Table 1), suggesting possible use in subject/patient selection (Table 2) but additional research is required to validate these findings. Commercial assays are available for the measurement of TREM2 protein.

### YKL-40

YKL-40 (or chitinase-3-like protein 1) is upregulated in a variety of inflammatory conditions and cancers, and may have a role in promoting inflammation and angiogenesis [211]. In AD, YKL-40 is expressed in astrocytes near A $\beta$  plaques [57] and correlates positively with tau pathology [293], suggesting a role for YKL-40 in the inflammatory response in AD and other tauopathies.

Several studies have shown that CSF YKL-40 levels are higher in AD patients compared with controls [4, 11, 23, 57, 176, 303, 384], and in the late preclinical AD stages compared with early preclinical stages [2]. The meta-analysis by Olsson et al. found that the degree of increase is modest (data from six AD cohorts and five control cohorts) compared

with the change in neuronal proteins such as t-tau and neurofilament light (NF-L) [271]. However, a recent study of the ADNI cohort found no significant difference between the AD and cognitively normal groups, although levels were higher in AD versus MCI A $\beta$ -negative (based on CSF A $\beta$ 42) subjects [347]. Longitudinally, all groups showed an increase in CSF YKL-40 over time, but the change was statistically significant only in the MCI A $\beta$ -positive group (mean follow-up was 4 years) [347]. CSF YKL-40 levels have been shown to correlate with neuroimaging parameters, including cortical thickness in AD-vulnerable areas in subjects who were A $\beta$ 42-positive (by CSF) [3] and grey matter volume in *APOE*  $\epsilon$ 4 carriers [106].

Higher levels of CSF YKL-40 and YKL-40/A $\beta$ 42 ratio have been associated with increased risk of progression from normal cognition to MCI [57]. Levels of CSF YKL-40 have been found to predict progression from MCI to AD and increase longitudinally in MCI and AD patients but not in cognitively normal individuals [176]. CSF YKL-40 has also been shown to differentiate AD from DLB, PD [384], FTLN [23], and non-AD MCI [138], although one early study found no differences among diagnostic groups [244].

Plasma YKL-40 has also been assessed as an AD biomarker, and elevated levels have been reported in patients with mild AD [57] and early AD [54] compared with controls. However, plasma YKL-40 did not demonstrate utility for predicting cognitive decline [57].

In summary, the available evidence supports a role for CSF YKL-40 as a biomarker of neuroinflammation or astrogliosis in AD and other neurodegenerative diseases (reviewed by Baldacci et al. [20]), with the potential to aid subject/patient selection and prognosis (Tables 1 and 2). Plasma YKL-40 could also be useful for subject/patient selection, but further studies are needed. Commercial assays are available.

### Other inflammatory markers

Interferon- $\gamma$ -induced protein 10 (IP-10), which has roles in angiogenesis as well as inflammation and is secreted by a variety of cells [10, 223], has been reported to be increased in the CSF of patients with MCI and mild AD but not in severe AD [101]. However, in another study, IP-10 levels were not increased in the AD group [384]. In a recent study in asymptomatic older adults, increased levels of CSF IP-10 were associated with increased levels of CSF t-tau and p-tau [29].

IP-10 was the plasma analyte with the highest degree of abnormalities in a spatiotemporal analysis of biomarkers from the ADNI cohort [154]. However, a previous study found no association between serum IP-10 and AD [102].

Overall, very few studies have investigated IP-10 in AD and the results have been mixed (Table 1). Potentially, CSF

or blood-based IP-10 could support subject/patient selection (Table 2), but further research is warranted to clarify the role of IP-10 in AD. Commercial assays are available.

Many other inflammatory markers have been investigated for their potential use as biomarkers for AD, but results have been inconsistent [142, 350]. In a meta-analysis of 40 studies on blood and 14 on CSF, AD patients had higher levels of interleukin (IL)-6, tumour necrosis factor (TNF)- $\alpha$ , IL-1 $\beta$ , transforming growth factor- $\beta$  (TGF- $\beta$ ), IL-12, and IL-18 in blood, and higher levels of TGF- $\beta$  in CSF, compared with controls [350]. In a more recent meta-analysis of 175 studies on blood, increased IL-1 $\beta$ , IL-2, IL-6, IL-18, interferon- $\gamma$ , homocysteine, high-sensitivity C reactive protein, C-X-C motif chemokine-10, epidermal growth factor, vascular cell adhesion molecule-1, TNF- $\alpha$  converting enzyme, soluble TNF receptors 1 and 2,  $\alpha$ 1-antichymotrypsin and decreased IL-1 receptor antagonist and leptin were found in patients with AD compared with controls [191]. These findings strengthen the evidence that AD is accompanied by inflammatory responses, although the effects of age and sex and the precise roles of different inflammatory mediators are still to be established. A more systematic, within- and between-subject, rigorous longitudinal evaluation may improve the utility of inflammatory markers in AD and other neurodegenerative diseases.

## Synaptic dysfunction

Synaptic dysfunction and synapse loss are early events in AD pathogenesis [167, 218, 359]. Notably, hippocampal synapse loss and impaired synaptic function were detected in 3-month-old tau transgenic mice, when pathological tau was detectable biochemically but before microscopically visible neurofibrillary tau tangles emerged [397]. The level of synaptic loss in post-mortem brains has been found to correlate with pre-mortem cognitive function in individuals with MCI or early AD [62, 313]. The synaptic pathology in AD is found throughout the neuropil, without any clear accentuation in relation to plaques [30, 235]. Importantly, the synaptic loss in AD is more severe than the neuronal loss in the same cortical region [137, 237]. A PET tracer has recently been developed that binds to synaptic vesicle glycoprotein 2A (SV2A) and can be used to quantify synaptic density in vivo; this could be used to complement existing AD imaging tools in the future [93].

Evidence suggests that NMDA receptors are central to the synaptic dysfunction observed in AD. Overstimulation of NMDA receptors triggers an excessive influx of calcium, which in turn can lead to a series of downstream events that culminate in synaptic dysfunction and apoptosis [167, 369]. A $\beta$  oligomers are thought to contribute to NMDA activation,

possibly by causing an aberrant rise in extrasynaptic glutamate levels [369].

## Fluid biomarkers of synaptic dysfunction

### Neurogranin

Neurogranin is predominantly expressed in dendritic spines and is involved in post-synaptic signalling pathways through the regulation of the calcium-binding protein calmodulin [70]. Animal models and genetic studies have linked neurogranin to cognitive function and synaptic plasticity [70]. Notably, CSF neurogranin has been proposed as a marker of synaptic degeneration [361] and, together with other synaptic proteins, holds promise to serve as a novel candidate marker for AD [218].

CSF neurogranin levels are higher in AD [63, 175, 190, 221, 242, 291, 310, 347, 354, 361] or MCI patients [291, 347] compared with controls or non-AD dementia patients [354]. Higher levels of CSF neurogranin have been reported in AD compared with MCI [138, 291], although there was no significant difference between AD and MCI A $\beta$ -positive (based on CSF A $\beta$ 42) groups in a recent study of the ADNI cohort [347]. Also in the ADNI study, CSF neurogranin levels decreased longitudinally in the AD group (mean follow-up was 4 years) but there was no significant longitudinal change in any other group [347]. Neurogranin is processed to a series of C-terminal peptides before release into the CSF [190], but the relevance of the individual peptides is unknown. However, one study that used an assay specific for C-terminally truncated neurogranin observed increased levels in MCI patients but no significant difference between AD patients and controls [64]. CSF neurogranin has been shown to predict disease progression in several studies [175, 189, 291, 354] including future cognitive impairment in cognitively normal controls [354]. In addition, CSF neurogranin levels have been found to correlate with brain atrophy but only in individuals with A $\beta$  pathology [282].

To date, no significant differences have been reported in plasma levels of neurogranin between patients with AD and controls [63, 190]. However, levels of neurogranin in neuronally derived exosomes in plasma have been found to be lower in AD patients compared with controls [110, 389], as well as in MCI subjects who progressed to AD compared with stable MCI subjects [389].

Overall, the available data indicate that CSF neurogranin (and potentially, plasma neuronally derived exosomes) could be useful as an AD biomarker for subject/patient selection and prognosis (Tables 1 and 2), although results may vary depending on the neurogranin fragment being measured (full-length vs C-terminal peptides and C-terminus intact vs truncated). Commercial assays are available.



## SNAP-25 and synaptotagmin

The exocytosis of synaptic vesicles for neurotransmitter release is a complex process, mediated by several proteins including the SNARE (soluble *N*-ethylmaleimide-sensitive factor attachment protein receptor) complex and the calcium sensor protein synaptotagmin [131]. Post-mortem studies on AD brains have shown altered levels of several synaptic proteins, including synaptosome-associated protein 25 (SNAP-25), a component of the SNARE complex [74], and synaptotagmin [236, 351].

CSF levels of SNAP-25 [36, 347] and synaptotagmin [270] have been assessed and found to be elevated in patients with AD or MCI compared with controls. In a study of the ADNI cohort, baseline CSF SNAP-25 levels were higher in AD and MCI A $\beta$ -positive (based on CSF A $\beta$ 42) groups than the cognitively normal (A $\beta$ -positive or -negative) and MCI A $\beta$ -negative groups [347]. CSF SNAP-25 levels decreased longitudinally in the AD group (mean follow-up was 4 years) but there was no significant longitudinal change in any other group [347]. No studies have been published to date on blood-based SNAP-25, but synaptotagmin levels in plasma neuronally derived exosomes have been reported to be lower in AD patients than in controls [110]. The data are limited but suggest there could be a role for the synaptic proteins, SNAP-25 and synaptotagmin, as AD biomarkers for subject/patient selection (Tables 1 and 2). Commercial assays are available for both SNAP-25 and synaptotagmin.

## $\alpha$ -Synuclein pathology

$\alpha$ -Synuclein is an abundant neuronal protein, predominantly localized in the presynaptic terminals, and involved in vesicle fusion and neurotransmitter release [181]. Aggregates of  $\alpha$ -synuclein are the main component of LBs, which are intracellular inclusions characteristic of certain neurodegenerative diseases termed  $\alpha$ -synucleinopathies [181]. Primary  $\alpha$ -synucleinopathies include PD, PDD, DLB, and multiple system atrophy [181]; however,  $\alpha$ -synuclein aggregates are also found in approximately half of sporadic AD brains [121] and Down's syndrome brains with concomitant AD pathology [213], and in almost all cases of familial AD with *PSEN 1* mutations [203].

$\alpha$ -Synuclein oligomers have been shown to have multiple toxic effects including inflammation, synaptic dysfunction, compromised cell membrane integrity, and impaired intracellular protein degradation [151, 406]. Furthermore, there is growing evidence that  $\alpha$ -synuclein may act in a prion-like manner such that misfolded  $\alpha$ -synuclein can be propagated from cell to cell [35, 118, 164, 370], even in wild-type non-transgenic mice [229]. The relationship between AD pathology and  $\alpha$ -synuclein is unclear, although studies suggest that

$\alpha$ -synuclein can act synergistically with both tau [105] and A $\beta$  [234] to promote their aggregation and accumulation.

## Fluid biomarkers of $\alpha$ -synuclein pathology

### $\alpha$ -Synuclein

Although CSF  $\alpha$ -synuclein was developed as a candidate biomarker for PD, levels of CSF  $\alpha$ -synuclein have been found to be higher in patients with MCI [183] and AD [183, 232, 339] compared with controls. However, in one study, no differences were reported between diagnostic groups except for higher levels in rapid progressors (MCI patients who developed AD during the 2-year study and had a short duration of symptoms before the study) [27]. CSF  $\alpha$ -synuclein shows a strong correlation with CSF t-tau and a weaker correlation with p-tau in AD, but a subset of patients in the ADNI cohort had a mismatch—high p-tau accompanied by low  $\alpha$ -synuclein levels—it was hypothesized that this CSF signature could represent concomitant LB pathology in AD patients [366].

CSF  $\alpha$ -synuclein has been assessed as a biomarker in PD and other neurodegenerative diseases [66, 171, 253] and is a major focus area (together with tau and A $\beta$ ) of the Parkinson's Progression Marker Initiative (PPMI) [168, 169].  $\alpha$ -Synuclein in plasma [212], and even in salivary secretions [380], has been investigated in PD.

CSF  $\alpha$ -synuclein levels have been reported to be slightly lower in PD compared with AD [253] or controls [66, 168, 169, 253]. CSF  $\alpha$ -synuclein levels were lower in DLB patients compared with AD patients in some studies [172, 253, 339], most often with a large overlap between the diagnostic groups, but the opposite was observed in one study [170]. Importantly, CSF  $\alpha$ -synuclein levels are many-fold higher in CJD than in PD [171, 253]. Commercial assays are available for total  $\alpha$ -synuclein and one has been clinically validated for the diagnosis of sporadic CJD [225].

Most currently available assays for  $\alpha$ -synuclein have been designed to measure total amounts of the protein and not LB-specific fragments, although phosphorylated  $\alpha$ -synuclein has been detected in CSF of PD patients [382]. There are reports of increased CSF concentrations of  $\alpha$ -synuclein oligomers in CSF of PD patients [132, 233, 364], and recent publications on sensitive assays that appear to detect the minute amounts of putative seeds of  $\alpha$ -synuclein oligomers in CSF [86, 325].

Plasma levels of  $\alpha$ -synuclein have been reported to be elevated in patients with PD compared with controls [195] and correlate with cognitive decline [212]. No differences in plasma have been found between AD and controls [49, 331].

In summary, although fluid-based  $\alpha$ -synuclein has promise as a diagnostic and prognostic biomarker for PD and CJD, studies in AD have been relatively limited and its

potential role as a biomarker is unknown (Table 1). Nevertheless,  $\alpha$ -synuclein may prove to be useful for identifying LB pathology among AD patients, therefore, could support subject/patient selection (Table 2).

## TDP-43 pathology

TDP-43 binds both DNA and RNA and is involved in transcription and splicing. Under pathophysiological conditions, TDP-43 accumulates in the cytoplasm and is hyperphosphorylated and/or ubiquitinated, and this is characteristic of the cytoplasmic inclusions observed in ALS and in many cases of FTLD [51, 265]. TDP-43 pathology is also detected in 20–50% of AD patients [7, 50, 159], and appears to be associated with greater brain atrophy, memory loss, and cognitive impairment [50, 163]. Studies suggest that TDP-43 pathology can be triggered by A $\beta$  peptides, and that TDP-43 contributes to neuroinflammation and may have a role in mitochondrial and neural dysfunction [50].

## Fluid biomarkers of TDP-43 pathology

### TDP-43

A few studies have reported on CSF and plasma TDP-43 in ALS and FTLD [165, 187, 345], but research has been hampered by difficulties with detecting the protein (candidate antibodies have been reviewed by Goossens et al.) [111]. Furthermore, CSF TDP-43 appears to be mainly blood-derived, although it may be possible to enrich for brain-specific fractions of TDP-43 from exosomes in CSF [90].

One study reported elevated plasma TDP-43 in a greater proportion of AD patients compared with controls [97]. Another small study found that plasma levels of disease-related TDP-43 variants were increased in the pre-MCI stage in subjects who subsequently progressed to AD dementia [387].

Overall, research to date suggests that blood-based TDP-43 may have a role as an AD biomarker for subject/patient selection and prognosis and could be more useful than CSF TDP-43 (Tables 1 and 2). Commercial assays are available.

## Iron toxicity

Iron is important for normal functioning of the brain, but when present in excess it is known to cause neurodegeneration, for example in the genetic disorders classified as neurodegeneration with brain iron accumulation (NBIA) [135]. Studies have shown elevated iron in AD [55, 226] and MCI [372] brains, which is also replicated in animal models [210]. Iron is a redox-active biometal that has been shown to bind A $\beta$  in vitro

and cause its aggregation, while releasing hydrogen peroxide [147]. Intracellular iron can influence APP processing and bind to hyperphosphorylated tau and induce its aggregation [58]. In a recent magnetic resonance imaging study, brain iron measured by quantitative susceptibility mapping was shown to be moderately elevated in people with PET-confirmed A $\beta$ , but highly predictive of cognitive decline over 6 years only in subjects with A $\beta$ , suggesting that iron accelerates the clinical manifestation of the underlying pathology [16].

## Fluid biomarkers associated with iron metabolism

### Ferritin

Ferritin is the major intracellular iron storage protein in the body and has an important role in brain iron homeostasis [333]. Inherited ferritinopathies are associated with motor and cognitive dysfunction [333], and ferritin levels are increased in AD brain tissue [58]. CSF levels of ferritin have been shown to be higher in *APOE*  $\epsilon$ 4 carriers than in non-carriers, but there was no difference in levels among subjects with AD or MCI and controls [15]. Increased CSF ferritin levels were associated with cognitive decline and predicted progression from MCI to AD, regardless of *APOE* genotype [15]. In a subsequent analysis, CSF ferritin was associated with cognitive decline in cognitively normal subjects, but the association was strongest in *APOE*  $\epsilon$ 4 carriers [14]. In the same cohort, high CSF ferritin was associated with accelerated depreciation of CSF A $\beta$ 42 in subjects with a high tau/A $\beta$ 42 ratio [13]. Plasma ferritin levels showed a modest correlation with CSF levels, but unlike CSF ferritin, there was no difference in plasma ferritin between *APOE*  $\epsilon$ 4 carriers and non-carriers [15]. In another study, plasma ferritin levels were elevated in cognitively normal subjects with A $\beta$  pathology identified by PET when adjusted for covariates (age, sex, *APOE*  $\epsilon$ 4 status, and levels of C-reactive protein), although ferritin alone had a relatively minor effect compared with the base model (derived from logistic regression of the same covariates) [112].

In summary, the data are limited but a small number of studies suggest that both CSF and plasma ferritin may be useful as AD biomarkers (Table 1). CSF ferritin may have a role as a prognostic biomarker, whereas plasma ferritin could be used for subject/patient selection (screening) to help identify preclinical AD (Table 2); however, further studies by independent groups are needed to validate the initial findings. Commercial assays are available.

## Other neuronal proteins

### VILIP-1

Visinin-like protein 1 (VILIP-1, or VLP-1) is a neuronal calcium sensor protein involved in signalling pathways related to synaptic plasticity [115]. CSF VILIP-1 was identified through mouse gene array analyses as being abundantly produced in the brain [192]. It was subsequently associated with AD and found to correlate with CSF t-tau and p-tau [194], supporting its use as a neurodegeneration marker.

CSF VILIP-1 levels have been shown to be higher in patients with AD compared with controls in several studies [194, 230, 257, 347, 355], although one study found no significant difference [176]. The meta-analysis by Olsson et al. found VILIP-1 to have a moderate association with AD (data from four AD and control cohorts) with around 50% higher levels in AD than in controls [271]. AD patients had higher levels than MCI subjects in one study [257] but no difference was noted in a later study [17]. In a recent study of the ADNI cohort, baseline CSF VILIP-1 levels were higher in A $\beta$ -positive (based on CSF A $\beta$ 42) MCI and AD subjects compared with both the A $\beta$ -negative MCI and A $\beta$ -negative cognitively normal groups [347]. No significant differences were found between any of the A $\beta$ -positive subsets of the cognitively normal, MCI, and AD groups. CSF VILIP-1 levels decreased longitudinally in the AD group (mean follow-up was 4 years) but there were no significant longitudinal changes in any other group [347]. CSF VILIP-1 may be prognostic of future cognitive decline [355], rates of cognitive decline [357], rates of brain atrophy [356], and progression from MCI to AD [176]. In addition, studies suggest that CSF VILIP-1 can diagnostically differentiate AD from other dementias [17, 230, 355].

Data on plasma VILIP-1 are limited; plasma levels were found to be higher in patients with mild AD compared with controls in one study, although the difference was more significant in CSF than in plasma [355].

Overall, the data for VILIP-1 suggest a possible role in subject/patient selection and prognosis (Tables 1 and 2) but study results have varied so further research is warranted. Commercial assays are available.

### NF-L

Neurofilaments are intermediate filaments expressed in neurons and are particularly abundant in axons [398]. They are composed of four subunits—neurofilament light (NF-L), neurofilament middle (NF-M), neurofilament heavy

(NF-H), and  $\alpha$ -internexin in the CNS, and NF-L, NF-M, NF-H, and peripherin in the peripheral nervous system [398]. Neurofilaments are essential for the radial growth of axons during development, structural support, and the transmission of electrical impulses [398]. Recent research suggests that they are also important for normal synaptic function [399]. Abnormal aggregation and other alterations of neurofilaments are evident in several neurological diseases including AD [378, 398, 399] and in the LBs of PD [316].

CSF levels of the NF-L subunit are known to be increased in several neurodegenerative diseases, supporting its role as a marker of axonal injury [231, 286, 334]. CSF NF-L levels have been shown to be higher in AD [4, 220, 288, 334, 403] and MCI patients [403] compared with controls, and correlate with cognitive impairment and short survival time in patients with dementia [335]. The meta-analysis by Olsson et al. found CSF NF-L to have a large effect size for differentiating between AD patients and controls (data from nine AD cohorts and eight control cohorts) [271]. CSF NF-L correlates with brain atrophy [282, 403], but appears not to be specific for AD since levels are elevated in other neurodegenerative diseases, likely reflecting non-specific axonal injury [28, 103, 282]. In multiple sclerosis (MS), CSF NF-L has been shown to correlate with clinical and radiological outcomes, making it potentially useful for monitoring response to therapy [182, 249, 266, 267].

Recently, there has been great interest in the potential utility of NF-L in blood as a biomarker for several neurodegenerative diseases including AD, MS, progressive supranuclear palsy (PSP), ALS, and Huntington's disease [43, 71, 228, 240, 302, 385, 408], as well as a marker of traumatic brain injury [224, 324]. In AD, plasma or serum levels of NF-L have been shown to be elevated compared with controls in presymptomatic individuals known to be carriers of AD-causing gene mutations [385] and subjects with MCI or AD [240, 408]. Furthermore, blood-based NF-L appears to correlate with poor cognition and brain atrophy [240, 385]. In MS, serum NF-L has demonstrated potential as a biomarker for monitoring response to DMTs and predicting relapse [71], and in PSP, plasma NF-L has been shown to predict disease progression [302].

Taken together, these findings indicate that both CSF and plasma NF-L are promising biomarkers, although the specific COU has not been determined given that changes are observed in various neurodegenerative diseases, not just AD (Tables 1 and 2). Potentially, CSF NF-L could be useful as a non-specific marker of axonal injury and for prognosis, and recent research gives hope that plasma NF-L could be used as a non-invasive biomarker for subject/patient selection (screening) and prognosis (Table 2). Commercial assays are available and IVD assays are available for CSF NF-L in Europe.

## Discussion

In addition to the established core CSF biomarkers, A $\beta$ 42, t-tau, and p-tau, several candidate fluid biomarkers show potential for clinical use in AD, particularly to support diagnosis (and clinical trial subject selection) and prognosis (or assessment of disease state) (Table 2). Of all the biomarkers reviewed, CSF A $\beta$ 42, t-tau, p-tau, and the ratio of tau/A $\beta$ 42 are already accepted for use as diagnostic biomarkers, while several other biomarkers hold promise for future use (Table 1). Further studies are needed for the validation and regulatory qualification of all these biomarkers. In addition, the relationship between the biomarkers and clinical presentation (i.e. cognitive measures), as well as the effects of patient variables (e.g. sex, *APOE*  $\epsilon$ 4 status) on biomarker changes need to be investigated.

It should be noted that only a selection of promising biomarkers has been included in this review, and many other candidates are being studied at present. As well as other protein/peptide markers and panels [206], non-protein analytes such as lipids [8], amino acids [56], and microRNAs [120, 328] are being explored. Advances in technologies such as mass spectrometry enable the precise measurement of analytes, helping to identify new candidate biomarkers [26] as well as supporting harmonization efforts for the core biomarkers [292].

Of all the possible biomarker COUs, there appears to be an unmet need for validated fluid biomarkers for drug development, especially for monitoring response to therapy and adverse reactions (Table 2). This is not surprising given the current absence of approved DMTs but highlights the need for fluid-based surrogate biomarkers of drug efficacy and safety. The important role of biomarkers in AD drug development has been highlighted in the FDA draft guidance for industry [96].

Further development of candidate biomarkers, as well as identification of new ones, would benefit greatly from a unified and coordinated approach [100, 124, 178, 269]. There is a need to reach a consensus on the areas that require the most focus and to implement effective strategies to advance the field. This effort requires collaboration among academia, industry, laboratory managers, and clinicians, at an international level.

An ever-increasing number of biomarkers are being researched, and studies have a considerable degree of heterogeneity (biomarker collection/methodology, disease diagnosis/stage of disease, and characterization of comorbid CNS diseases, especially neurodegenerative diseases), making it difficult to interpret results and establish how the biomarkers fit within the stages of AD pathogenesis. Publication bias may be a barrier in this step, as “negative” studies may be under-published. To fast-track data

dissemination, a centralized database would be useful to share individual patient-level biomarker data. The Coalition Against Major Diseases (CAMD), one of 12 consortia of the Critical Path Institute (C-Path), aims to include CSF biomarker data in a central repository as part of their ongoing initiative to advance regulatory drug development tools [12].

Once the data gaps are identified, studies can be designed to address the specific unmet needs. Careful planning of study design, subjects, and methodology is critical, to ensure that data gaps are appropriately addressed and that outcomes are reliable and representative of a wider population. The COU should be decided from the outset, and this will influence the subject inclusion criteria and study design. For example, studies on biomarkers for preclinical AD should enroll cognitively normal subjects with evidence of AD pathology and include longitudinal follow-ups and biomarker measurements over 5 years or more.

For studies to provide meaningful and comparable data, a concerted effort needs to be made to reduce heterogeneity in study methodologies. The development and/or update of consensus recommendations and guidelines should help in this regard, for example, by standardizing diagnostic criteria for different stages of the AD continuum, pre-analytical variables, assays, threshold values, and study designs and populations used for any given COU. The National Institute on Aging–Alzheimer’s Association (NIA–AA) is currently updating a research framework for AD, which will help to harmonize subject selection and disease staging in future studies. There have been longstanding efforts to better understand and control for pre-analytical sources of variability in CSF AD biomarkers, and consensus conferences have defined these [375]. A CSF pre-analytics consortium, sponsored by the Alzheimer’s Association is working to develop a consensus regarding remaining pre-analytical factors such as tube plastic type and other collection parameters that can be implemented into routine clinical practice. Factors that had been recognized but incompletely understood, such as the effect of tube type and CSF volume involved in transfer steps, were recently described and will help to clarify the potential impact of such factors on CSF AD biomarker measurements [386]. The International Federation of Clinical Chemistry Working Group for CSF proteins (IFCC WG-CSF) is an international joint effort to develop reference measurement procedures (RMP) and certified reference materials (CRM) with the aim of standardizing CSF biomarkers and harmonizing read-outs between assay formats [185]. To date, two Joint Committee for Traceability in Laboratory Medicine (JCTLM) -approved RMPs and three CRMs for CSF A $\beta$ 42 are available, and work on A $\beta$ 40 and tau proteins is ongoing. In parallel with the recent drive to standardize CSF pre-analytics, guidelines have also been proposed by the Biofluid Based Biomarkers Professional



Interest Area (of ISTAART) for the pre-analytical processing of blood-based AD biomarkers [268]. Furthermore, “Appropriate use criteria for CSF in clinical practice” are also being developed by the Alzheimer’s Association, which will help define the use of AD CSF biomarkers by clinicians for assessment of cognitive decline and impairment.

Although biomarkers are routinely included in drug studies for understanding target engagement and for patient enrichment, the hurdles are high for biomarker adoption to inform standard of care in daily clinical practice. Health agencies have recognized the importance of biomarkers, and both the FDA and EMA have developed pathways to accelerate biomarker qualification for clinical trials [12]. To achieve biomarker qualification, evidence is needed that the biomarker can reliably support a specified manner of interpretation and application in drug development for a specifically stated COU [12]. Therefore, the aforementioned hurdles, such as data sharing and standardization of study methods, are important to address at the earliest stages of biomarker research. Once a biomarker has been shown to be useful for a specific COU in the clinical trial setting, measures can be taken to further develop it as a companion biomarker useful to practitioners.

The ultimate goal in AD is to follow the approach developed in the more advanced research field of oncology and deliver precision medicine to all patients, in such a way that diagnosis, treatment, and prevention are “tailored” to the characteristics of the individual according to the precision medicine paradigm [46, 92, 126, 127, 129, 130]. In this context, the precision medicine strategy enables a paradigm shift from the traditional “one treatment fits all” approach in drug discovery towards biomarker-guided “tailored” therapies, i.e. targeted interventions adapted to the biological profile of the individual patient. In this regard, the US Precision Medicine Initiative (PMI) (<https://obamawhitehouse.archives.gov/precision-medicine>) and the US All of Us Research Program (<https://allofus.nih.gov/>)—formerly known as and evolved from the US PMI Cohort Program (PMI–CP)—have been inaugurated recently. As is the case in most fields of medicine, important progress in detecting, treating, and preventing AD is anticipated from the implementation of a systematic precision medicine strategy. Therefore, after more than a decade of failed therapy trials and one of the lowest success rates in drug development in medicine, the time has come to launch an international Alzheimer PMI (APMI) and associate it with the US PMI and other related worldwide initiatives [92, 126, 127, 129, 130].

**Acknowledgements** The development of this review manuscript was financially supported by Roche Diagnostics International. Medical writing was provided by Papia Das of Elements Communications Ltd and funded by Roche Diagnostics International. HH is supported by the AXA Research Fund, the “Fondation partenariale Sorbonne Université” and the “Fondation pour la Recherche sur Alzheimer”, Paris,

France. Ce travail a bénéficié d’une aide de l’Etat “Investissements d’avenir” ANR-10-IAIHU-06. The research leading to these results has received funding from the program “Investissements d’avenir” ANR-10-IAIHU-06 (Agence Nationale de la Recherche-10-IA Agence Institut Hospitalo-Universitaire-6).

## Compliance with ethical standards

**Conflict of interest** JLM is Principal Investigator of trials funded by Roche, Merck, Novartis, and Janssen and has received speaker or consultant fees from Roche, Roche Diagnostics, Biogen, Merck, Novartis, Oryzon, IBL, Axovant, Lundbeck, and Lilly. SA receives current research support from the National Health and Medical Research Council, Australia (GNT1147442, GNT1123625, GNT1124356, GNT1100441, GNT1101533, GNT1100458) and several non-profit organizations. SA is a co-inventor on biomarker patents related to ferritin. RB is a full-time employee of Roche Diagnostics International. MMB is a full-time employee of Takeda Pharmaceuticals International Co. TB is a full-time employee of Genentech, a member of the Roche Group. JC has provided consultation to Acadia, Accera, Actinogen, ADAMAS, Alkahest, Allergan, Alzheon, Avanir, Axovant, Axxome, BiOasis Technologies, Biogen, Boehringer-Ingelheim, Eisai, Genentech, Grifols, Kyowa, Lilly, Lundbeck, Merck, Nutricia, Otsuka, QR Pharma, Resverlogix, Roche, Samus, Servier, Suven, Takeda, Toyoma, and United Neuroscience companies. JC receives support from Keep Memory Alize (KMA), COBRE grant #P20GM109025; TRC-PAD #R01AG053798; DIAGNOSE CTE #U01NS093334. AMF has served as a consultant or on advisory boards for AbbVie, Araclon/Grifols, DiamiR LLC, Eli Lilly, Genentech, IBL International, and Roche Diagnostics, and has received research support from Biogen, Fujirebio, and Roche Diagnostics. HH serves as Senior Associate Editor for the Journal Alzheimer’s and Dementia; he received lecture fees from Biogen and Roche, research grants from Pfizer, Avid, and MSD Avenir (paid to the institution), travel funding from Functional Neuromodulation, Axovant, Eli Lilly and company, Takeda and Zinfandel, GE-Healthcare and Oryzon Genomics, consultancy fees from Jung Diagnostics, Cytox Ltd., Axovant, Anavex, Takeda and Zinfandel, GE Healthcare Oryzon Genomics, and Functional Neuromodulation, and participated in scientific advisory boards of Functional Neuromodulation, Axovant, Eli Lilly and company, Cytox Ltd., GE Healthcare, Takeda and Zinfandel, Oryzon Genomics and Roche Diagnostics. HH is co-inventor in the following patents as a scientific expert and has received no royalties: (1) In Vitro Multiparameter Determination Method for The Diagnosis and Early Diagnosis of Neurodegenerative Disorders Patent Number: 8916388. (2) In Vitro Procedure for Diagnosis and Early Diagnosis of Neurodegenerative Diseases Patent Number: 8298784. (3) Neurodegenerative Markers for Psychiatric Conditions Publication Number: 20120196300. (4) In Vitro Multiparameter Determination Method for The Diagnosis and Early Diagnosis of Neurodegenerative Disorders Publication Number: 20100062463. (5) In Vitro Method for The Diagnosis and Early Diagnosis of Neurodegenerative Disorders Publication Number: 20100035286. (6) In Vitro Procedure for Diagnosis and Early Diagnosis of Neurodegenerative Diseases Publication Number: 20090263822. (7) In Vitro Method for The Diagnosis of Neurodegenerative Diseases Patent Number: 7547553. (8) CSF Diagnostic In Vitro Method for Diagnosis of Dementias and Neuroinflammatory Diseases Publication Number: 20080206797. (9) In Vitro Method for The Diagnosis of Neurodegenerative Diseases Publication Number: 20080199966. (10) Neurodegenerative Markers for Psychiatric Conditions Publication Number: 20080131921. MMM served as a consultant to Eli Lilly and Lysosomal Therapeutics, Inc., and receives research support from the National Institutes of Health (R01 AG49704, P50 AG44170, U01 AG06786 RF1 AG55151), Department of Defense (W81XWH-15-1), and unrestricted research grants from Biogen, Roche, and Lundbeck. AM was an employee of Biogen

when this manuscript was started. SO has served as a consultant to Roche Diagnostics and has multiple patents on blood biomarkers related to neurodegenerative disease. He is a founder of Cx Precision Medicine and owns stock. He receives research support for the NIH (R01AG058252, R01AG051848, R01AG054073) and the opinions discussed here do not reflect those of the NIA. PS has acquired grant support (for the institution) from Danone Research, Piramal and Merck. In the past 2 years he has received consultancy/speaker fees (paid to the institution) from Lilly, GE Healthcare, Novartis, Sanofi, Probi-drug, Biogen, Roche and EIP Pharma. JS was an employee of Roche when this manuscript was started. LMS receives research support from the National Institutes of Health (U19 AG024904, P30 AG-10124 for Biomarker Core), Eli Lilly, Hoffman LaRoche, MJFox Foundation for Parkinson's Research for Biofind study and has served as consultant and/or advisory boards for Roche Diagnostics and Eli Lilly. HS is a full-time employee of AbbVie Inc. GT is a full-time employee of Lundbeck Pharmaceuticals LLC. JQT receives research support from the National Institutes of Health (P30 AG-10124-27, P01 AG-17586-18 and P50 NS-053488-11), Eli Lilly, Janssen, Biogen, and several non-profit organizations. JQT has received revenue from the sale of Avid to Eli Lilly as co-inventor on imaging related patents submitted by the University of Pennsylvania, and may accrue revenue in the future on patents submitted by the University of Pennsylvania wherein he is co-inventor. HZ has served at advisory boards for Roche Diagnostics and Eli Lilly and has received travel support from Teva. KB has served as a consultant or at advisory boards for Alzheon, BioArctic, Biogen, Eli Lilly, Fujirebio Europe, IBL International, Merck, Novartis, Pfizer, and Roche Diagnostics.

**Open Access** This article is distributed under the terms of the Creative Commons Attribution 4.0 International License (<http://creativecommons.org/licenses/by/4.0/>), which permits unrestricted use, distribution, and reproduction in any medium, provided you give appropriate credit to the original author(s) and the source, provide a link to the Creative Commons license, and indicate if changes were made.

## References

- Agnello L, Bivona G, Novo G, Scazzino C, Muratore R, Levantino P et al (2017) Heart-type fatty acid binding protein is a sensitive biomarker for early AMI detection in troponin negative patients: a pilot study. *Scand J Clin Lab Invest* 77:428–432. <https://doi.org/10.1080/00365513.2017.1335880>
- Alcolea D, Martínez-Lage P, Sánchez-Juan P, Olazáran J, Antúnez C, Izaguirre A et al (2015) Amyloid precursor protein metabolism and inflammation markers in preclinical Alzheimer disease. *Neurology* 85:626–633. <https://doi.org/10.1212/WNL.0000000000001859>
- Alcolea D, Vilaplana E, Pegueroles J, Montal V, Sánchez-Juan P, González-Suárez A et al (2015) Relationship between cortical thickness and cerebrospinal fluid YKL-40 in prodromal stages of Alzheimer's disease. *Neurobiol Aging* 36:2018–2023. <https://doi.org/10.1016/j.neurobiolaging.2015.03.001>
- Alcolea D, Vilaplana E, Suárez-Calvet M, Illán-Gala I, Blesa R, Clarimón J et al (2017) CSF sAPP $\beta$ , YKL-40, and neurofilament light in frontotemporal lobar degeneration. *Neurology* 89:178–188. <https://doi.org/10.1212/WNL.0000000000004088>
- Alexopoulos P, Werle L, Roesler J, Thierjung N, Gleixner LS, Yakushev I et al (2016) Conflicting cerebrospinal fluid biomarkers and progression to dementia due to Alzheimer's disease. *Alzheimers Res Ther* 8:51. <https://doi.org/10.1186/s13195-016-0220-z>
- Association Alzheimer's (2016) Alzheimer's disease facts and figures. *Alzheimers Dement* 12:459–509
- Amador-Ortiz C, Lin WL, Ahmed Z, Personett D, Davies P, Duara R et al (2007) TDP-43 immunoreactivity in hippocampal sclerosis and Alzheimer's disease. *Ann Neurol* 61:435–445. <https://doi.org/10.1002/ana.21154>
- Anand S, Barnes JM, Young SA, Garcia DM, Tolley HD, Kauwe JSK et al (2017) Discovery and confirmation of diagnostic serum lipid biomarkers for Alzheimer's disease using direct infusion mass spectrometry. *J Alzheimers Dis* 59:277–290. <https://doi.org/10.3233/JAD-170035>
- Andreasen N, Minthon L, Vanmechelen E, Vanderstichele H, Davidsson P, Winblad B et al (1999) Cerebrospinal fluid tau and A $\beta$ 42 as predictors of development of Alzheimer's disease in patients with mild cognitive impairment. *Neurosci Lett* 273:5–8
- Angiolillo AL, Sgadari C, Taub DD, Liao F, Farber JM, Maheshwari S et al (1995) Human interferon-inducible protein 10 is a potent inhibitor of angiogenesis in vivo. *J Exp Med* 182:155–162
- Antonell A, Mansilla A, Rami L, Lladó A, Iranzo A, Olives J et al (2014) Cerebrospinal fluid level of YKL-40 protein in preclinical and prodromal Alzheimer's disease. *J Alzheimers Dis* 42:901–908. <https://doi.org/10.3233/jad-140624>
- Arnerić SP, Batrla-Utermann R, Beckett L, Bittner T, Blennow K, Carter L et al (2017) Cerebrospinal fluid biomarkers for Alzheimer's disease: a view of the regulatory science qualification landscape from the Coalition Against Major Diseases CSF Biomarker Team. *J Alzheimers Dis* 55:19–35. <https://doi.org/10.3233/JAD-160573>
- Ayton S, Diouf I, Bush AI, Alzheimer's Disease Neuroimaging Initiative (2017) Evidence that iron accelerates Alzheimer's pathology: a CSF biomarker study. *J Neurol Neurosurg Psychiatry* 89:456–460. <https://doi.org/10.1136/jnnp-2017-316551>
- Ayton S, Faux NG, Bush AI (2017) Association of cerebrospinal fluid ferritin level with preclinical cognitive decline in APOE- $\epsilon$ 4 carriers. *JAMA Neurol* 74:122–125. <https://doi.org/10.1001/jamaneurol.2016.4406>
- Ayton S, Faux NG, Bush AI, Alzheimer's Disease Neuroimaging Initiative (2015) Ferritin levels in the cerebrospinal fluid predict Alzheimer's disease outcomes and are regulated by APOE. *Nat Commun* 6:6760. <https://doi.org/10.1038/ncomms7760>
- Ayton S, Fazlollahi A, Bourgeat P, Raniga P, Ng A, Lim YY et al (2017) Cerebral quantitative susceptibility mapping predicts amyloid-beta-related cognitive decline. *Brain* 140:2112–2119. <https://doi.org/10.1093/brain/awx137>
- Babić Leko M, Borovečki F, Dejanović N, Hof PR, Šimić G (2016) Predictive value of cerebrospinal fluid visinin-like protein-1 levels for Alzheimer's disease early detection and differential diagnosis in patients with mild cognitive impairment. *J Alzheimers Dis* 50:765–778. <https://doi.org/10.3233/jad-150705>
- Bachurin SO, Bovina EV, Ustyugov AA (2017) Drugs in clinical trials for Alzheimer's disease: the major trends. *Med Res Rev* 37:1186–1225. <https://doi.org/10.1002/med.21434>
- Bakota L, Brandt R (2016) Tau biology and tau-directed therapies for Alzheimer's disease. *Drugs* 76:301–313. <https://doi.org/10.1007/s40265-015-0529-0>
- Baldacci F, Lista S, Cavado E, Bonuccelli U, Hampel H (2017) Diagnostic function of the neuroinflammatory biomarker YKL-40 in Alzheimer's disease and other neurodegenerative diseases. *Expert Rev Proteom* 14:285–299. <https://doi.org/10.1080/14789450.2017.1304217>
- Baldacci F, Lista S, Garaci F, Bonuccelli U, Toschi N, Hampel H (2016) Biomarker-guided classification scheme of neurodegenerative diseases. *J Sport Health Sci* 5:383–387



22. Baldacci F, Lista S, O'Bryant SE, Ceravolo R, Toschi N, Hampel H et al (2018) Blood-based biomarker screening with agnostic biological definitions for an accurate diagnosis within the dimensional spectrum of neurodegenerative diseases. *Methods Mol Biol* 1750:139–155. [https://doi.org/10.1007/978-1-4939-7704-8\\_9](https://doi.org/10.1007/978-1-4939-7704-8_9)
23. Baldacci F, Toschi N, Lista S, Zetterberg H, Blennow K, Kili-mann I et al (2017) Two-level diagnostic classification using cerebrospinal fluid YKL-40 in Alzheimer's disease. *Alzheimers Dement* 13:993–1003. <https://doi.org/10.1016/j.jalz.2017.01.021>
24. Ballatore C, Brunden KR, Trojanowski JQ, Lee VM, Smith AB 3rd (2017) Non-naturally occurring small molecule microtubule-stabilizing agents: a potential tactic for CNS-directed therapies. *ACS Chem Neurosci* 8:5–7. <https://doi.org/10.1021/acscchemneu.6b00384>
25. Bayer TA, Wirths O (2014) Focusing the amyloid cascade hypothesis on N-truncated Aβ peptides as drug targets against Alzheimer's disease. *Acta Neuropathol* 127:787–801. <https://doi.org/10.1007/s00401-014-1287-x>
26. Begcevic I, Brinc D, Brown M, Martinez-Morillo E, Goldhardt O, Grimmer T et al (2018) Brain-related proteins as potential CSF biomarkers of Alzheimer's disease: a targeted mass spectrometry approach. *J Proteom* 182:12–20. <https://doi.org/10.1016/j.jprot.2018.04.027>
27. Berge G, Sando SB, Albrektsen G, Lauridsen C, Møller I, Grøntvedt GR et al (2016) Alpha-synuclein measured in cerebrospinal fluid from patients with Alzheimer's disease, mild cognitive impairment, or healthy controls: a two year follow-up study. *BMC Neurol* 16:180. <https://doi.org/10.1186/s12883-016-0706-0>
28. Bergman J, Dring A, Zetterberg H, Blennow K, Norgren N, Gilt-horpe J et al (2016) Neurofilament light in CSF and serum is a sensitive marker for axonal white matter injury in MS. *Neurol Neuroimmunol Neuroinflamm* 3:e271. <https://doi.org/10.1212/NXI.0000000000000271>
29. Bettcher BM, Johnson SC, Fitch R, Casaletto KB, Heffernan KS, Asthana S et al (2018) Cerebrospinal fluid and plasma levels of inflammation differentially relate to CNS markers of Alzheimer's disease pathology and neuronal damage. *J Alzheimers Dis* 62:385–397. <https://doi.org/10.3233/JAD-170602>
30. Blennow K, Bogdanovic N, Alafuzoff I, Ekman R, Davidsson P (1996) Synaptic pathology in Alzheimer's disease: relation to severity of dementia, but not to senile plaques, neurofibrillary tangles, or the ApoE4 allele. *J Neural Transm (Vienna)* 103:603–618. <https://doi.org/10.1007/BF01273157>
31. Blennow K, De Meyer G, Hansson O, Minthon L, Wallin A, Zetterberg H et al (2009) Evolution of Aβ42 and Aβ40 levels and Aβ42/Aβ40 ratio in plasma during progression of Alzheimer's disease: a multicenter assessment. *J Nutr Health Aging* 13:205–208
32. Blennow K, Dubois B, Fagan AM, Lewczuk P, de Leon MJ, Hampel H (2015) Clinical utility of cerebrospinal fluid biomarkers in the diagnosis of early Alzheimer's disease. *Alzheimers Dement* 11:58–69. <https://doi.org/10.1016/j.jalz.2014.02.004>
33. Blennow K, Hampel H, Weiner M, Zetterberg H (2010) Cerebrospinal fluid and plasma biomarkers in Alzheimer disease. *Nat Rev Neurol* 6:131–144. <https://doi.org/10.1038/nrneurol.2010.4>
34. Blennow K, Zetterberg H, Minthon L, Lannfelt L, Strid S, Annas P et al (2007) Longitudinal stability of CSF biomarkers in Alzheimer's disease. *Neurosci Lett* 419:18–22. <https://doi.org/10.1016/j.neulet.2007.03.064>
35. Brettschneider J, Del Tredici K, Lee VM, Trojanowski JQ (2015) Spreading of pathology in neurodegenerative diseases: a focus on human studies. *Nat Rev Neurosci* 16:109–120. <https://doi.org/10.1038/nrn3887>
36. Brinkmalm A, Brinkmalm G, Honer WG, Frölich L, Hausner L, Minthon L et al (2014) SNAP-25 is a promising novel cerebrospinal fluid biomarker for synapse degeneration in Alzheimer's disease. *Mol Neurodegener* 9:53. <https://doi.org/10.1186/1750-1326-9-53>
37. Bronzuoli MR, Iacomino A, Steardo L, Scuderi C (2016) Targeting neuroinflammation in Alzheimer's disease. *J Inflamm Res* 9:199–208. <https://doi.org/10.2147/JIR.S86958>
38. Brosseron F, Traschütz A, Widmann CN, Kummer MP, Tacik P, Santarelli F et al (2018) Characterization and clinical use of inflammatory cerebrospinal fluid protein markers in Alzheimer's disease. *Alzheimers Res Ther* 10:25. <https://doi.org/10.1186/s13195-018-0353-3>
39. Bruggink KA, Kuiperij HB, Claassen JA, Verbeek MM (2013) The diagnostic value of CSF amyloid-beta(43) in differentiation of dementia syndromes. *Curr Alzheimer Res* 10:1034–1040
40. Brunden KR, Zhang B, Carroll J, Yao Y, Potuzak JS, Hogan AM et al (2010) Epophthalon D improves microtubule density, axonal integrity, and cognition in a transgenic mouse model of tauopathy. *J Neurosci* 30:13861–13866. <https://doi.org/10.1523/jneurosci.3059-10.2010>
41. Buchhave P, Blennow K, Zetterberg H, Stomrud E, Londo E, Andreasen N, Minthon L et al (2009) Longitudinal study of CSF biomarkers in patients with Alzheimer's disease. *PLoS One* 4:e6294. <https://doi.org/10.1371/journal.pone.0006294>
42. Budd Haeberlein S, O'Gorman J, Chiao P, Bussiere T, von Rosenstiel P, Tian Y et al (2017) Clinical development of aducanumab, an anti-Aβ human monoclonal antibody being investigated for the treatment of early Alzheimer's disease. *J Prev Alzheimers Dis* 4:255–263. <https://doi.org/10.14283/jpad.2017.39>
43. Byrne LM, Rodrigues FB, Blennow K, Durr A, Leavitt BR, Roos RAC et al (2017) Neurofilament light protein in blood as a potential biomarker of neurodegeneration in Huntington's disease: a retrospective cohort analysis. *Lancet Neurol* 16:601–609. [https://doi.org/10.1016/s1474-4422\(17\)30124-2](https://doi.org/10.1016/s1474-4422(17)30124-2)
44. Calsolaro V, Edison P (2016) Neuroinflammation in Alzheimer's disease: current evidence and future directions. *Alzheimers Dement* 12:719–732. <https://doi.org/10.1016/j.jalz.2016.02.010>
45. Carroll CM, Li YM (2016) Physiological and pathological roles of the γ-secretase complex. *Brain Res Bull* 126:199–206. <https://doi.org/10.1016/j.brainresbull.2016.04.019>
46. Castrillo JI, Lista S, Hampel H, Ritchie CW (2018) Systems biology methods for Alzheimer's disease research toward molecular signatures, subtypes, and stages and precision medicine: application in cohort studies and trials. *Methods Mol Biol* 1750:31–66. [https://doi.org/10.1007/978-1-4939-7704-8\\_3](https://doi.org/10.1007/978-1-4939-7704-8_3)
47. Catafau AM, Bullich S (2017) Non-amyloid PET imaging biomarkers for neurodegeneration: focus on tau, alpha-synuclein and neuroinflammation. *Curr Alzheimer Res* 14:169–177
48. Chakraborty A, de Wit NM, van der Flier WM, de Vries HE (2017) The blood brain barrier in Alzheimer's disease. *Vascul Pharmacol* 89:12–18. <https://doi.org/10.1016/j.vph.2016.11.008>
49. Chang KA, Shin KY, Nam E, Lee YB, Moon C, Suh YH et al (2016) Plasma soluble neuregulin-1 as a diagnostic biomarker for Alzheimer's disease. *Neurochem Int* 97:1–7. <https://doi.org/10.1016/j.neuint.2016.04.012>
50. Chang XL, Tan MS, Tan L, Yu JT (2016) The role of TDP-43 in Alzheimer's disease. *Mol Neurobiol* 53:3349–3359. <https://doi.org/10.1007/s12035-015-9264-5>
51. Chen-Plotkin AS, Lee VM, Trojanowski JQ (2010) TAR DNA-binding protein 43 in neurodegenerative disease. *Nat Rev Neurol* 6:211–220. <https://doi.org/10.1038/nrneurol.2010.18>
52. Chen Z, Trapp BD (2016) Microglia and neuroprotection. *J Neurochem* 136(Suppl 1):10–17. <https://doi.org/10.1111/jnc.13062>
53. Chiasserini D, Biscetti L, Eusebi P, Salvadori N, Frattini G, Simoni S et al (2017) Differential role of CSF fatty acid binding protein 3, α-synuclein, and Alzheimer's disease core biomarkers

- in Lewy body disorders and Alzheimer's dementia. *Alzheimers Res Ther* 9:52. <https://doi.org/10.1186/s13195-017-0276-4>
54. Choi J, Lee HW, Suk K (2011) Plasma level of chitinase 3-like 1 protein increases in patients with early Alzheimer's disease. *J Neurol* 258:2181–2185. <https://doi.org/10.1007/s00415-011-6087-9>
  55. Cornett CR, Markesbery WR, Ehmann WD (1998) Imbalances of trace elements related to oxidative damage in Alzheimer's disease brain. *Neurotoxicology* 19:339–345
  56. Corso G, Cristofano A, Sapere N, la Marca G, Angiolillo A, Vitale M et al (2017) Serum amino acid profiles in normal subjects and in patients with or at risk of Alzheimer dementia. *Dement Geriatr Cogn Dis Extra* 7:143–159. <https://doi.org/10.1159/000466688>
  57. Craig-Schapiro R, Perrin RJ, Roe CM, Xiong C, Carter D, Cairns NJ et al (2010) YKL-40: a novel prognostic fluid biomarker for preclinical Alzheimer's disease. *Biol Psychiatry* 68:903–912. <https://doi.org/10.1016/j.biopsych.2010.08.025>
  58. Cristóvão JS, Santos R, Gomes CM (2016) Metals and neuronal metal binding proteins implicated in Alzheimer's disease. *Oxid Med Cell Longev* 2016:9812178. <https://doi.org/10.1155/2016/9812178>
  59. Cruchaga C, Kauwe JS, Harari O, Jin SC, Cai Y, Karch CM et al (2013) GWAS of cerebrospinal fluid tau levels identifies risk variants for Alzheimer's disease. *Neuron* 78:256–268. <https://doi.org/10.1016/j.neuron.2013.02.026>
  60. Cummings J, Lee G, Mortsdorf T, Ritter A, Zhong K (2017) Alzheimer's disease drug development pipeline: 2017. *Alzheimers Dement (N Y)* 3:367–384. <https://doi.org/10.1016/j.trci.2017.05.002>
  61. Dage JL, Wennberg AM, Airey DC, Hagen CE, Knopman DS, Machulda MM et al (2016) Levels of tau protein in plasma are associated with neurodegeneration and cognitive function in a population-based elderly cohort. *Alzheimers Dement* 12:1226–1234. <https://doi.org/10.1016/j.jalz.2016.06.001>
  62. Davidsson P, Blennow K (1998) Neurochemical dissection of synaptic pathology in Alzheimer's disease. *Int Psychogeriatr* 10:11–23
  63. De Vos A, Jacobs D, Struyfs H, Fransen E, Andersson K, Portelius E et al (2015) C-terminal neurogranin is increased in cerebrospinal fluid but unchanged in plasma in Alzheimer's disease. *Alzheimers Dement* 11:1461–1469. <https://doi.org/10.1016/j.jalz.2015.05.012>
  64. De Vos A, Struyfs H, Jacobs D, Fransen E, Klewansky T, De Roeck E et al (2016) The cerebrospinal fluid neurogranin/BACE1 ratio is a potential correlate of cognitive decline in Alzheimer's disease. *J Alzheimers Dis* 53:1523–1538. <https://doi.org/10.3233/jad-160227>
  65. Degerman Gunnarsson M, Ingelsson M, Blennow K, Basun H, Lannfelt L, Kilander L (2016) High tau levels in cerebrospinal fluid predict nursing home placement and rapid progression in Alzheimer's disease. *Alzheimers Res Ther* 8:22. <https://doi.org/10.1186/s13195-016-0191-0>
  66. Delgado-Alvarado M, Gago B, Gorostidi A, Jiménez-Urbietta H, Dacosta-Aguayo R, Navalpotro-Gómez I et al (2017) Tau/alpha-synuclein ratio and inflammatory proteins in Parkinson's disease: an exploratory study. *Mov Disord* 32:1066–1073. <https://doi.org/10.1002/mds.27001>
  67. Desikan RS, Thompson WK, Holland D, Hess CP, Brewer JB, Zetterberg H et al (2013) Heart fatty acid binding protein and A $\beta$ -associated Alzheimer's neurodegeneration. *Mol Neurodegener* 8:39. <https://doi.org/10.1186/1750-1326-8-39>
  68. Deters KD, Risacher SL, Kim S, Nho K, West JD, Blennow K et al (2017) Plasma tau association with brain atrophy in mild cognitive impairment and Alzheimer's disease. *J Alzheimers Dis* 58:1245–1254. <https://doi.org/10.3233/JAD-161114>
  69. Di Marco LY, Venneri A, Farkas E, Evans PC, Marzo A, Frangi AF (2015) Vascular dysfunction in the pathogenesis of Alzheimer's disease—a review of endothelium-mediated mechanisms and ensuing vicious circles. *Neurobiol Dis* 82:593–606. <https://doi.org/10.1016/j.nbd.2015.08.014>
  70. Díez-Guerra FJ (2010) Neurogranin, a link between calcium/calmodulin and protein kinase C signaling in synaptic plasticity. *IUBMB Life* 62:597–606. <https://doi.org/10.1002/iub.357>
  71. Disanto G, Barro C, Benkert P, Naegelin Y, Schädelin S, Giardiello A et al (2017) Serum neurofilament light: a biomarker of neuronal damage in multiple sclerosis. *Ann Neurol* 81:857–870. <https://doi.org/10.1002/ana.24954>
  72. Doody RS, Thomas RG, Farlow M, Iwatsubo T, Vellas B, Joffe S et al (2014) Phase 3 trials of solanezumab for mild-to-moderate Alzheimer's disease. *N Engl J Med* 370:311–321. <https://doi.org/10.1056/NEJMoa1312889>
  73. Dorey A, Perret-Liaudet A, Tholance Y, Fourier A, Quadrio I (2015) Cerebrospinal fluid A $\beta$ 40 improves the interpretation of A $\beta$ 42 concentration for diagnosing Alzheimer's disease. *Front Neurol* 6:247. <https://doi.org/10.3389/fneur.2015.00247>
  74. Downes EC, Robson J, Grailly E, Abdel-All Z, Xuereb J, Brayne C et al (2008) Loss of synaptophysin and synaptosomal-associated protein 25-kDa (SNAP-25) in elderly down syndrome individuals. *Neuropathol Appl Neurobiol* 34:12–22. <https://doi.org/10.1111/j.1365-2990.2007.00899.x>
  75. Dubois B, Feldman HH, Jacova C, Hampel H, Molinuevo JL, Blennow K et al (2014) Advancing research diagnostic criteria for Alzheimer's disease: the IWG-2 criteria. *Lancet Neurol* 13:614–629. [https://doi.org/10.1016/s1474-4422\(14\)70090-0](https://doi.org/10.1016/s1474-4422(14)70090-0)
  76. Engelborghs S, Niemantsverdriet E, Struyfs H, Blennow K, Brouns R, Comabella M et al (2017) Consensus guidelines for lumbar puncture in patients with neurological diseases. *Alzheimers Dement (Amst)* 8:111–126. <https://doi.org/10.1016/j.dadm.2017.04.007>
  77. European Medicines Agency, Committee for Medicinal Products for Human Use (2011) Qualification opinion of Alzheimer's disease novel methodologies/biomarkers for the use of CSF amyloid beta 1-42 and t-tau signature and/or PET-amyloid imaging (positive/negative) as biomarkers for enrichment, for use in regulatory clinical trials in mild and moderate Alzheimer's disease. [http://www.ema.europa.eu/docs/en\\_GB/document\\_library/Regulatory\\_and\\_procedural\\_guideline/2011/12/WC500118365.pdf](http://www.ema.europa.eu/docs/en_GB/document_library/Regulatory_and_procedural_guideline/2011/12/WC500118365.pdf)
  78. European Medicines Agency, Committee for Medicinal Products for Human Use (2018) Guideline on the clinical investigation of medicines for the treatment of Alzheimer's disease. [http://www.ema.europa.eu/docs/en\\_GB/document\\_library/Scientific\\_guideline/2018/02/WC500244609.pdf](http://www.ema.europa.eu/docs/en_GB/document_library/Scientific_guideline/2018/02/WC500244609.pdf)
  79. Ewers M, Cheng X, Zhong Z, Nural HF, Walsh C, Meindl T et al (2011) Increased CSF-BACE1 activity associated with decreased hippocampus volume in Alzheimer's disease. *J Alzheimers Dis* 25:373–381. <https://doi.org/10.3233/jad-2011-091153>
  80. Ewers M, Mattsson N, Minthon L, Molinuevo JL, Antonell A, Popp J et al (2015) CSF biomarkers for the differential diagnosis of Alzheimer's disease: a large-scale international multicenter study. *Alzheimers Dement* 11:1306–1315. <https://doi.org/10.1016/j.jalz.2014.12.006>
  81. Ewers M, Zhong Z, Bürger K, Wallin A, Blennow K, Teipel SJ et al (2008) Increased CSF-BACE 1 activity is associated with ApoE- $\epsilon$ 4 genotype in subjects with mild cognitive impairment and Alzheimer's disease. *Brain* 131:1252–1258. <https://doi.org/10.1093/brain/awn034>
  82. Fagan AM, Mintun MA, Mach RH, Lee SY, Dence CS, Shah AR et al (2006) Inverse relation between in vivo amyloid imaging load and cerebrospinal fluid A $\beta$ 42 in humans. *Ann Neurol* 59:512–519. <https://doi.org/10.1002/ana.20730>

83. Fagan AM, Mintun MA, Shah AR, Aldea P, Roe CM, Mach RH et al (2009) Cerebrospinal fluid tau and ptau(181) increase with cortical amyloid deposition in cognitively normal individuals: implications for future clinical trials of Alzheimer's disease. *EMBO Mol Med* 1:371–380. <https://doi.org/10.1002/emmm.200900048>
84. Fagan AM, Roe CM, Xiong C, Mintun MA, Morris JC, Holtzman DM (2007) Cerebrospinal fluid tau/ $\beta$ -amyloid(42) ratio as a predictor of cognitive decline in nondemented older adults. *Arch Neurol* 64:343–349. <https://doi.org/10.1001/archneur.64.3.noc60123>
85. Fagan AM, Shaw LM, Xiong C, Vanderstichele H, Mintun MA, Trojanowski JQ et al (2011) Comparison of analytical platforms for cerebrospinal fluid measures of  $\beta$ -amyloid 1-42, total tau, and p-tau181 for identifying Alzheimer disease amyloid plaque pathology. *Arch Neurol* 68:1137–1144. <https://doi.org/10.1001/archneurol.2011.105>
86. Fairfoul G, McGuire LI, Pal S, Ironside JW, Neumann J, Christie S et al (2016) Alpha-synuclein RT-QuIC in the CSF of patients with alpha-synucleinopathies. *Ann Clin Transl Neurol* 3:812–818. <https://doi.org/10.1002/acn3.338>
87. Fandos N, Pérez-Grijalba V, Pesini P, Olmos S, Bossa M, Villemagne VL et al (2017) Plasma amyloid  $\beta$  42/40 ratios as biomarkers for amyloid  $\beta$  cerebral deposition in cognitively normal individuals. *Alzheimers Dement (Amst)* 8:179–187. <https://doi.org/10.1016/j.dadm.2017.07.004>
88. Farlow M, Arnold SE, van Dyck CH, Aisen PS, Snider BJ, Porsteinsson AP et al (2012) Safety and biomarker effects of solanezumab in patients with Alzheimer's disease. *Alzheimers Dement* 8:261–271. <https://doi.org/10.1016/j.jalz.2011.09.224>
89. Fath T, Eidenmuller J, Brandt R (2002) Tau-mediated cytotoxicity in a pseudohyperphosphorylation model of Alzheimer's disease. *J Neurosci* 22:9733–9741
90. Feneberg E, Steinacker P, Lehnert S, Schneider A, Walther P, Thal DR et al (2014) Limited role of free TDP-43 as a diagnostic tool in neurodegenerative diseases. *Amyotroph Lateral Scler Frontotemporal Degener* 15:351–356. <https://doi.org/10.3109/21678201.2014.905606>
91. Ferreira D, Rivero-Santana A, Perestelo-Pérez L, Westman E, Wahlund LO, Sarría A et al (2014) Improving CSF biomarkers' performance for predicting progression from mild cognitive impairment to Alzheimer's disease by considering different confounding factors: a meta-analysis. *Front Aging Neurosci* 6:287. <https://doi.org/10.3389/fnagi.2014.00287>
92. Ferretti M, Lulita M, Cavedo E, Chiesa P, Schumacher Dimech A, Chadha Santuccioni A et al (2018) Sex-specific phenotypes of Alzheimer's disease: the gateway to precision neurology. *Nat Rev Neurol* 14:457–469. <https://doi.org/10.1038/s41582-018-0032-9>
93. Finnema SJ, Nabulsi NB, Eid T, Detyniecki K, Lin SF, Chen MK et al (2016) Imaging synaptic density in the living human brain. *Sci Transl Med* 8:348ra396. <https://doi.org/10.1126/scitranslmed.aaf6667>
94. Fleck D, van Bebber F, Colombo A, Galante C, Schwenk BM, Rabe L et al (2013) Dual cleavage of neuregulin 1 type III by BACE1 and ADAM17 liberates its EGF-like domain and allows paracrine signaling. *J Neurosci* 33:7856–7869. <https://doi.org/10.1523/JNEUROSCI.3372-12.2013>
95. Food and Drug Administration (2011) Guidance for industry—E16 biomarkers related to drug or biotechnology product development: context, structure, and format of qualification submissions. <https://www.fda.gov/downloads/drugs/guidancecomplianceregulatoryinformation/guidances/ucm267449.pdf>
96. Food and Drug Administration (2018) Early Alzheimer's disease: developing drugs for treatment; draft guidance for industry. <https://www.fda.gov/downloads/Drugs/GuidanceComplianceRegulatoryInformation/Guidances/UCM596728.pdf>
97. Foulds P, McAuley E, Gibbons L, Davidson Y, Pickering-Brown SM, Neary D et al (2008) TDP-43 protein in plasma may index TDP-43 brain pathology in Alzheimer's disease and frontotemporal lobar degeneration. *Acta Neuropathol* 116:141–146. <https://doi.org/10.1007/s00401-008-0389-8>
98. Fourier A, Portelius E, Zetterberg H, Blennow K, Quadrio I, Perret-Liaudet A (2015) Pre-analytical and analytical factors influencing Alzheimer's disease cerebrospinal fluid biomarker variability. *Clin Chim Acta* 449:9–15. <https://doi.org/10.1016/j.cca.2015.05.024>
99. Frank RA, Galasko D, Hampel H, Hardy J, de Leon MJ, Mehta PD et al (2003) Biological markers for therapeutic trials in Alzheimer's disease. Proceedings of the biological markers working group; NIA initiative on neuroimaging in Alzheimer's disease. *Neurobiol Aging* 24:521–536
100. Frisoni GB, Boccardi M, Barkhof F, Blennow K, Cappa S, Chiotis K et al (2017) Strategic roadmap for an early diagnosis of Alzheimer's disease based on biomarkers. *Lancet Neurol* 16:661–676. [https://doi.org/10.1016/S1474-4422\(17\)30159-X](https://doi.org/10.1016/S1474-4422(17)30159-X)
101. Galimberti D, Schoonenboom N, Scheltens P, Fenoglio C, Bouwman F, Venturelli E et al (2006) Intrathecal chemokine synthesis in mild cognitive impairment and Alzheimer disease. *Arch Neurol* 63:538–543. <https://doi.org/10.1001/archneur.63.4.538>
102. Galimberti D, Venturelli E, Fenoglio C, Lovati C, Guidi I, Scalabrini D et al (2007) IP-10 serum levels are not increased in mild cognitive impairment and Alzheimer's disease. *Eur J Neurol* 14:e3–e4. <https://doi.org/10.1111/j.1468-1331.2006.01637.x>
103. Gendron TF, C9ORF72 Neurofilament Study Group, Daugherty LM, Heckman MG, Diehl NN, Wu J et al (2017) Phosphorylated neurofilament heavy chain: a biomarker of survival for C9ORF72-associated amyotrophic lateral sclerosis. *Ann Neurol* 82:139–146. <https://doi.org/10.1002/ana.24980>
104. Gervaise-Henry C, Watfa G, Albuissou E, Kolodziej A, Dousset B, Olivier JL et al (2017) Cerebrospinal fluid A $\beta$ 42/A $\beta$ 40 as a means to limiting tube- and storage-dependent pre-analytical variability in clinical setting. *J Alzheimers Dis* 57:437–445. <https://doi.org/10.3233/jad-160865>
105. Giasson BI, Forman MS, Higuchi M, Golbe LI, Graves CL, Kotzbauer PT et al (2003) Initiation and synergistic fibrillization of tau and alpha-synuclein. *Science* 300:636–640. <https://doi.org/10.1126/science.1082324>
106. Gispert JD, Monte GC, Suárez-Calvet M, Falcon C, Tucholka A, Rojas S et al (2017) The APOE  $\epsilon$ 4 genotype modulates CSF YKL-40 levels and their structural brain correlates in the continuum of Alzheimer's disease but not those of sTREM2. *Alzheimers Dement (Amst)* 6:50–59. <https://doi.org/10.1016/j.dadm.2016.12.002>
107. Gispert JD, Suárez-Calvet M, Monté GC, Tucholka A, Falcon C, Rojas S et al (2016) Cerebrospinal fluid sTREM2 levels are associated with gray matter volume increases and reduced diffusivity in early Alzheimer's disease. *Alzheimers Dement* 12:1259–1272. <https://doi.org/10.1016/j.jalz.2016.06.005>
108. Glenner GG, Wong CW (1984) Alzheimer's disease and Down's syndrome: sharing of a unique cerebrovascular amyloid fibril protein. *Biochem Biophys Res Commun* 122:1131–1135
109. Glenner GG, Wong CW (1984) Alzheimer's disease: initial report of the purification and characterization of a novel cerebrovascular amyloid protein. *Biochem Biophys Res Commun* 120:885–890
110. Goetzl EJ, Kapogiannis D, Schwartz JB, Lobach IV, Goetzl L, Abner EL et al (2016) Decreased synaptic proteins in neuronal exosomes of frontotemporal dementia and Alzheimer's disease. *FASEB J* 30:4141–4148. <https://doi.org/10.1096/fj.201600816R>



111. Goossens J, Vanmechelen E, Trojanowski JQ, Lee VM, Van Broeckhoven C, van der Zee J et al (2015) TDP-43 as a possible biomarker for frontotemporal lobar degeneration: a systematic review of existing antibodies. *Acta Neuropathol Commun* 3:15. <https://doi.org/10.1186/s40478-015-0195-1>
112. Goozee K, Chatterjee P, James I, Shen K, Sohrabi HR, Asih PR et al (2018) Elevated plasma ferritin in elderly individuals with high neocortical amyloid-beta load. *Mol Psychiatry* 23:1807–1812. <https://doi.org/10.1038/mp.2017.146>
113. Gravina SA, Ho L, Eckman CB, Long KE, Otvos L Jr, Younkin LH et al (1995) Amyloid beta protein (A beta) in Alzheimer's disease brain. Biochemical and immunocytochemical analysis with antibodies specific for forms ending at A beta 40 or A beta 42(43). *J Biol Chem* 270:7013–7016
114. Grimmer T, Riemenschneider M, Förstl H, Henriksen G, Klunk WE, Mathis CA et al (2009) Beta amyloid in Alzheimer's disease: increased deposition in brain is reflected in reduced concentration in cerebrospinal fluid. *Biol Psychiatry* 65:927–934. <https://doi.org/10.1016/j.biopsych.2009.01.027>
115. Groblewska M, Muszynski P, Wojtulewska-Supron A, Kulczynska-Przybik A, Mroczko B (2015) The role of visinin-like protein-1 in the pathophysiology of Alzheimer's disease. *J Alzheimers Dis* 47:17–32. <https://doi.org/10.3233/jad-150060>
116. Guerreiro R, Wojtas A, Bras J, Carrasquillo M, Rogava E, Majounie E et al (2013) TREM2 variants in Alzheimer's disease. *N Engl J Med* 368:117–127. <https://doi.org/10.1056/NEJMoa1211851>
117. Gunn AP, Masters CL, Cherny RA (2010) Pyroglutamate-A $\beta$ : role in the natural history of Alzheimer's disease. *Int J Biochem Cell Biol* 42:1915–1918. <https://doi.org/10.1016/j.bioce.2010.08.015>
118. Guo JL, Lee VM (2014) Cell-to-cell transmission of pathogenic proteins in neurodegenerative diseases. *Nat Med* 20:130–138. <https://doi.org/10.1038/nm.3457>
119. Guo LH, Alexopoulos P, Perneczky R (2013) Heart-type fatty acid binding protein and vascular endothelial growth factor: cerebrospinal fluid biomarker candidates for Alzheimer's disease. *Eur Arch Psychiatry Clin Neurosci* 263:553–560. <https://doi.org/10.1007/s00406-013-0405-4>
120. Guo R, Fan G, Zhang J, Wu C, Du Y, Ye H et al (2017) A 9-microRNA signature in serum serves as a noninvasive biomarker in early diagnosis of Alzheimer's disease. *J Alzheimers Dis* 60:1365–1377. <https://doi.org/10.3233/JAD-170343>
121. Hamilton RL (2000) Lewy bodies in Alzheimer's disease: a neuropathological review of 145 cases using alpha-synuclein immunohistochemistry. *Brain Pathol* 10:378–384
122. Hampel H, Bürger K, Teipel SJ, Bokde AL, Zetterberg H, Blennow K (2008) Core candidate neurochemical and imaging biomarkers of Alzheimer's disease. *Alzheimers Dement* 4:38–48. <https://doi.org/10.1016/j.jalz.2007.08.006>
123. Hampel H, Frank R, Broich K, Teipel SJ, Katz RG, Hardy J et al (2010) Biomarkers for Alzheimer's disease: academic, industry and regulatory perspectives. *Nat Rev Drug Discov* 9:560–574. <https://doi.org/10.1038/nrd3115>
124. Hampel H, Lista S, Khachaturian ZS (2012) Development of biomarkers to chart all Alzheimer's disease stages: the royal road to cutting the therapeutic Gordian Knot. *Alzheimers Dement* 8:312–336. <https://doi.org/10.1016/j.jalz.2012.05.2116>
125. Hampel H, Lista S, Teipel SJ, Garaci F, Nisticó R, Blennow K et al (2014) Perspective on future role of biological markers in clinical therapy trials of Alzheimer's disease: a long-range point of view beyond 2020. *Biochem Pharmacol* 88:426–449. <https://doi.org/10.1016/j.bcp.2013.11.009>
126. Hampel H, O'Bryant SE, Castrillo JI, Ritchie C, Rojkova K, Broich K et al (2016) PRECISION MEDICINE—the Golden Gate for detection, treatment and prevention of Alzheimer's disease. *J Prev Alzheimers Dis* 3:243–259. <https://doi.org/10.14283/jpad.2016.112>
127. Hampel H, O'Bryant SE, Durrleman S, Younesi E, Rojkova K, Escott-Price V et al (2017) A precision medicine initiative for Alzheimer's disease: the road ahead to biomarker-guided integrative disease modeling. *Climacteric* 20:107–118. <https://doi.org/10.1080/13697137.2017.1287866>
128. Hampel H, O'Bryant SE, Molinuevo JL, Zetterberg H, Masters CL, Lista S et al (2018) Blood-based biomarkers for Alzheimer's disease: mapping the road to the clinic. *Nat Rev Neurol* 14:639–652. <https://doi.org/10.1038/s41582-018-0079-7>
129. Hampel H, Toschi N, Babiloni C, Baldacci F, Black KL, Bokde ALW et al (2018) Revolution of Alzheimer precision neurology. Passageway of systems biology and neurophysiology. *J Alzheimers Dis* 64(Suppl 1):S47–S105. <https://doi.org/10.3233/JAD-179932>
130. Hampel H, Vergallo A, Aguilar LF, Benda N, Broich K, Cuello AC et al (2018) Precision pharmacology for Alzheimer's disease. *Pharmacol Res* 130:331–365. <https://doi.org/10.1016/j.phrs.2018.02.014>
131. Han J, Pluhackova K, Böckmann RA (2017) The multifaceted role of SNARE proteins in membrane fusion. *Front Physiol* 8:5. <https://doi.org/10.3389/fphys.2017.00005>
132. Hansson O, Hall S, Ohrfelt A, Zetterberg H, Blennow K, Minthon L et al (2014) Levels of cerebrospinal fluid  $\alpha$ -synuclein oligomers are increased in Parkinson's disease with dementia and dementia with Lewy bodies compared to Alzheimer's disease. *Alzheimers Res Ther* 6:25. <https://doi.org/10.1186/alzrt255>
133. Hansson O, Zetterberg H, Buchhave P, Londo E, Blennow K, Minthon L (2006) Association between CSF biomarkers and incipient Alzheimer's disease in patients with mild cognitive impairment: a follow-up study. *Lancet Neurol* 5:228–234. [https://doi.org/10.1016/S1474-4422\(06\)70355-6](https://doi.org/10.1016/S1474-4422(06)70355-6)
134. Hardy JA, Higgins GA (1992) Alzheimer's disease: the amyloid cascade hypothesis. *Science* 256:184–185
135. Hare D, Aytun S, Bush A, Lei P (2013) A delicate balance: iron metabolism and diseases of the brain. *Front Aging Neurosci* 5:34. <https://doi.org/10.3389/fnagi.2013.00034>
136. He Z, Guo JL, McBride JD, Narasimhan S, Kim H, Changolkar L et al (2018) Amyloid- $\beta$  plaques enhance Alzheimer's brain tau-seeded pathologies by facilitating neuritic plaque tau aggregation. *Nat Med* 24:29–38. <https://doi.org/10.1038/nm.4443>
137. Heinonen O, Soininen H, Sorvari H, Kosunen O, Paljärvi L, Koivisto E et al (1995) Loss of synaptophysin-like immunoreactivity in the hippocampal formation is an early phenomenon in Alzheimer's disease. *Neuroscience* 64:375–384
138. Hellwig K, Kvartsberg H, Portelius E, Andreasson U, Oberstein TJ, Lewczuk P et al (2015) Neurogranin and YKL-40: independent markers of synaptic degeneration and neuroinflammation in Alzheimer's disease. *Alzheimers Res Ther* 7:74. <https://doi.org/10.1186/s13195-015-0161-y>
139. Henjum K, Almdahl IS, Årskog V, Minthon L, Hansson O, Fladby T et al (2016) Cerebrospinal fluid soluble TREM2 in aging and Alzheimer's disease. *Alzheimers Res Ther* 8:17. <https://doi.org/10.1186/s13195-016-0182-1>
140. Henriksen K, O'Bryant SE, Hampel H, Trojanowski JQ, Montine TJ, Jeromin A et al (2014) The future of blood-based biomarkers for Alzheimer's disease. *Alzheimers Dement* 10:115–131. <https://doi.org/10.1016/j.jalz.2013.01.013>
141. Heslegrave A, Heywood W, Paterson R, Magdalinou N, Svensson J, Johansson P et al (2016) Increased cerebrospinal fluid soluble TREM2 concentration in Alzheimer's disease. *Mol Neurodegener* 11:3. <https://doi.org/10.1186/s13024-016-0071-x>
142. Hesse R, Wahler A, Gummert P, Kirschner S, Otto M, Tumani H et al (2016) Decreased IL-8 levels in CSF and serum of AD

- patients and negative correlation of MMSE and IL-1 $\beta$ . *BMC Neurol* 16:185. <https://doi.org/10.1186/s12883-016-0707-z>
143. Hölttä M, Hansson O, Andreasson U, Hertze J, Minthon L, Nägga K et al (2013) Evaluating amyloid- $\beta$  oligomers in cerebrospinal fluid as a biomarker for Alzheimer's disease. *PLoS One* 8:e66381. <https://doi.org/10.1371/journal.pone.0066381>
  144. Horrocks MH, Lee SF, Gandhi S, Magdalino NK, Chen SW, Devine MJ et al (2016) Single-molecule imaging of individual amyloid protein aggregates in human biofluids. *ACS Chem Neurosci* 7:399–406. <https://doi.org/10.1021/acschemneuro.5b00324>
  145. Hu N, Tan MS, Yu JT, Sun L, Tan L, Wang YL et al (2014) Increased expression of TREM2 in peripheral blood of Alzheimer's disease patients. *J Alzheimers Dis* 38:497–501. <https://doi.org/10.3233/jad-130854>
  146. Hu WT, Chen-Plotkin A, Arnold SE, Grossman M, Clark CM, Shaw LM et al (2010) Novel CSF biomarkers for Alzheimer's disease and mild cognitive impairment. *Acta Neuropathol* 119:669–678. <https://doi.org/10.1007/s00401-010-0667-0>
  147. Huang X, Atwood CS, Hartshorn MA, Multhaup G, Goldstein LE, Scarpa RC et al (1999) The A beta peptide of Alzheimer's disease directly produces hydrogen peroxide through metal ion reduction. *Biochemistry* 38:7609–7616. <https://doi.org/10.1021/bi990438f>
  148. Hulstaert F, Blennow K, Ivanoiu A, Schoonderwaldt HC, Riemenschneider M, De Deyn PP et al (1999) Improved discrimination of AD patients using  $\beta$ -amyloid(1-42) and tau levels in CSF. *Neurology* 52:1555–1562
  149. Huynh RA, Mohan C (2017) Alzheimer's disease: biomarkers in the genome, blood, and cerebrospinal fluid. *Front Neurol* 8:102. <https://doi.org/10.3389/fneur.2017.00102>
  150. Inekci D, Henriksen K, Linemann T, Karsdal MA, Habib A, Bisgaard C et al (2015) Serum fragments of tau for the differential diagnosis of Alzheimer's disease. *Curr Alzheimer Res* 12:829–836
  151. Ingelsson M (2016) Alpha-synuclein oligomers—neurotoxic molecules in Parkinson's disease and other Lewy body disorders. *Front Neurosci* 10:408. <https://doi.org/10.3389/fnins.2016.00408>
  152. Irwin DJ (2016) Tauopathies as clinicopathological entities. *Parkinsonism Relat Disord* 22(Suppl 1):S29–S33. <https://doi.org/10.1016/j.parkreldis.2015.09.020>
  153. Isaac M, Vamvakas S, Abadie E, Jonsson B, Gispén C, Pani L (2011) Qualification opinion of novel methodologies in the predementia stage of Alzheimer's disease: cerebro-spinal-fluid related biomarkers for drugs affecting amyloid burden—regulatory considerations by European Medicines Agency focusing in improving benefit/risk in regulatory trials. *Eur Neuropsychopharmacol* 21:781–788. <https://doi.org/10.1016/j.euronuro.2011.08.003>
  154. Iturria-Medina Y, Sotero RC, Toussaint PJ, Mateos-Pérez JM, Evans AC, Alzheimer's Disease Neuroimaging Initiative (2016) Early role of vascular dysregulation on late-onset Alzheimer's disease based on multifactorial data-driven analysis. *Nat Commun* 7:11934. <https://doi.org/10.1038/ncomms11934>
  155. Iwatsubo T, Odaka A, Suzuki N, Mizusawa H, Nukina N, Ihara Y (1994) Visualization of A $\beta$ 42(43) and A $\beta$ 40 in senile plaques with end-specific A $\beta$  monoclonals: evidence that an initially deposited species is A $\beta$ 42(43). *Neuron* 13:45–53
  156. Jack CR Jr, Knopman DS, Jagust WJ, Petersen RC, Weiner MW, Aisen PS et al (2013) Tracking pathophysiological processes in Alzheimer's disease: an updated hypothetical model of dynamic biomarkers. *Lancet Neurol* 12:207–216. [https://doi.org/10.1016/S1474-4422\(12\)70291-0](https://doi.org/10.1016/S1474-4422(12)70291-0)
  157. Jackson K, Barisone GA, Diaz E, Jin LW, DeCarli C, Despa F (2013) Amylin deposition in the brain: a second amyloid in Alzheimer disease? *Ann Neurol* 74:517–526. <https://doi.org/10.1002/ana.23956>
  158. Jagust WJ, Landau SM, Shaw LM, Trojanowski JQ, Koeppe RA, Reiman EM et al (2009) Relationships between biomarkers in aging and dementia. *Neurology* 73:1193–1199. <https://doi.org/10.1212/WNL.0b013e3181bc010c>
  159. James BD, Wilson RS, Boyle PA, Trojanowski JQ, Bennett DA, Schneider JA (2016) TDP-43 stage, mixed pathologies, and clinical Alzheimer's-type dementia. *Brain* 139:2983–2993. <https://doi.org/10.1093/brain/aww224>
  160. Janelidze S, Stomrud E, Palmqvist S, Zetterberg H, van Westen D, Jeromin A et al (2016) Plasma  $\beta$ -amyloid in Alzheimer's disease and vascular disease. *Sci Rep* 6:26801. <https://doi.org/10.1038/srep26801>
  161. Janelidze S, Zetterberg H, Mattsson N, Palmqvist S, Vanderstichele H, Lindberg O et al (2016) CSF A $\beta$ 42/A $\beta$ 40 and A $\beta$ 42/A $\beta$ 38 ratios: better diagnostic markers of Alzheimer disease. *Ann Clin Transl Neurol* 3:154–165. <https://doi.org/10.1002/acn3.274>
  162. Jay TR, von Saucken VE, Landreth GE (2017) TREM2 in neurodegenerative diseases. *Mol Neurodegener* 12:56. <https://doi.org/10.1186/s13024-017-0197-5>
  163. Josephs KA, Whitwell JL, Knopman DS, Hu WT, Stroh DA, Baker M et al (2008) Abnormal TDP-43 immunoreactivity in AD modifies clinicopathologic and radiologic phenotype. *Neurology* 70:1850–1857. <https://doi.org/10.1212/01.wnl.0000304041.09418.b1>
  164. Jucker M, Walker LC (2013) Self-propagation of pathogenic protein aggregates in neurodegenerative diseases. *Nature* 501:45–51. <https://doi.org/10.1038/nature12481>
  165. Junttila A, Kuvaja M, Hartikainen P, Siloaho M, Helisalmei S, Moilanen V et al (2016) Cerebrospinal fluid TDP-43 in frontotemporal lobar degeneration and amyotrophic lateral sclerosis patients with and without the C9ORF72 hexanucleotide expansion. *Dement Geriatr Cogn Dis Extra* 6:142–149. <https://doi.org/10.1159/000444788>
  166. Kakuda N, Miyasaka T, Iwasaki N, Nirasawa T, Wada-Kakuda S, Takahashi-Fujigasaki J et al (2017) Distinct deposition of amyloid-beta species in brains with Alzheimer's disease pathology visualized with MALDI imaging mass spectrometry. *Acta Neuropathol Commun* 5:73. <https://doi.org/10.1186/s40478-017-0477-x>
  167. Kamat PK, Kalani A, Rai S, Swarnkar S, Tota S, Nath C et al (2016) Mechanism of oxidative stress and synapse dysfunction in the pathogenesis of Alzheimer's disease: understanding the therapeutics strategies. *Mol Neurobiol* 53:648–661. <https://doi.org/10.1007/s12035-014-9053-6>
  168. Kang JH, Irwin DJ, Chen-Plotkin AS, Siderowf A, Caspell C, Coffey CS et al (2013) Association of cerebrospinal fluid  $\beta$ -amyloid 1-42, t-tau, p-tau181, and  $\alpha$ -synuclein levels with clinical features of drug-naïve patients with early Parkinson disease. *JAMA Neurol* 70:1277–1287. <https://doi.org/10.1001/jamaneurol.2013.3861>
  169. Kang JH, Mollenhauer B, Coffey CS, Toledo JB, Weintraub D, Galasko DR et al (2016) CSF biomarkers associated with disease heterogeneity in early Parkinson's disease: the Parkinson's Progression Markers Initiative study. *Acta Neuropathol* 131:935–949. <https://doi.org/10.1007/s00401-016-1552-2>
  170. Kapaki E, Paraskevas GP, Emmanouilidou E, Vekrellis K (2013) The diagnostic value of CSF  $\alpha$ -synuclein in the differential diagnosis of dementia with Lewy bodies vs. normal subjects and patients with Alzheimer's disease. *PLoS One* 8:e81654. <https://doi.org/10.1371/journal.pone.0081654>
  171. Kasai T, Tokuda T, Ishii R, Ishigami N, Tsuboi Y, Nakagawa M et al (2014) Increased  $\alpha$ -synuclein levels in the cerebrospinal fluid of patients with Creutzfeldt-Jakob disease. *J Neurol* 261:1203–1209. <https://doi.org/10.1007/s00415-014-7334-7>
  172. Kasuga K, Tokutake T, Ishikawa A, Uchiyama T, Tokuda T, Onodera O et al (2010) Differential levels of  $\alpha$ -synuclein,

- $\beta$ -amyloid42 and tau in CSF between patients with dementia with Lewy bodies and Alzheimer's disease. *J Neurol Neurosurg Psychiatry* 81:608–610. <https://doi.org/10.1136/jnmp.2009.197483>
173. Kennedy ME, Stamford AW, Chen X, Cox K, Cumming JN, Dockendorf MF et al (2016) The BACE1 inhibitor verubecestat (MK-8931) reduces CNS  $\beta$ -amyloid in animal models and in Alzheimer's disease patients. *Sci Transl Med* 8:363ra150. <https://doi.org/10.1126/scitranslmed.aad9704>
  174. Kerchner G, Ayalon G, Blendstrup M, Brunstein F, Chandra P, Datwani A et al (2017) Targeting tau with RO7105705: Phase I results and design of a Phase II study in prodromal-to-mild AD. Abstract presented at the 10th Clinical Trials on Alzheimer's Disease (CTAD). Boston (1–4 November 2017)
  175. Kester MI, Teunissen CE, Crimmins DL, Herries EM, Ladenson JH, Scheltens P et al (2015) Neurogranin as a cerebrospinal fluid biomarker for synaptic loss in symptomatic Alzheimer disease. *JAMA Neurol* 72:1275–1280. <https://doi.org/10.1001/jamaneurol.2015.1867>
  176. Kester MI, Teunissen CE, Sutphen C, Herries EM, Ladenson JH, Xiong C et al (2015) Cerebrospinal fluid VILIP-1 and YKL-40, candidate biomarkers to diagnose, predict and monitor Alzheimer's disease in a memory clinic cohort. *Alzheimers Res Ther* 7:59. <https://doi.org/10.1186/s13195-015-0142-1>
  177. Khan SS, Bloom GS (2016) Tau: the center of a signaling nexus in Alzheimer's disease. *Front Neurosci* 10:31. <https://doi.org/10.3389/fnins.2016.00031>
  178. Kim D, Kim YS, Shin DW, Park CS, Kang JH (2016) Harnessing cerebrospinal fluid biomarkers in clinical trials for treating Alzheimer's and Parkinson's diseases: potential and challenges. *J Clin Neurol* 12:381–392. <https://doi.org/10.3988/jcn.2016.12.4.381>
  179. Kim HJ, Park KW, Kim TE, Im JY, Shin HS, Kim S et al (2015) Elevation of the plasma A $\beta$ 40/A $\beta$ 42 ratio as a diagnostic marker of sporadic early-onset Alzheimer's disease. *J Alzheimers Dis* 48:1043–1050. <https://doi.org/10.3233/JAD-143018>
  180. Kim J, Onstead L, Randle S, Price R, Smithson L, Zwizinski C et al (2007) A $\beta$ 40 inhibits amyloid deposition in vivo. *J Neurosci* 27:627–633. <https://doi.org/10.1523/jneurosci.4849-06.2007>
  181. Kim WS, Kågedal K, Halliday GM (2014) Alpha-synuclein biology in Lewy body diseases. *Alzheimers Res Ther* 6:73. <https://doi.org/10.1186/s13195-014-0073-2>
  182. Komori M, Kosa P, Stein J, Zhao V, Blake A, Cherup J et al (2017) Pharmacodynamic effects of daclizumab in the intrathecal compartment. *Ann Clin Transl Neurol* 4:478–490. <https://doi.org/10.1002/acn3.427>
  183. Korff A, Liu C, Ginghina C, Shi M, Zhang J, Initiative Alzheimer's Disease Neuroimaging (2013)  $\alpha$ -Synuclein in cerebrospinal fluid of Alzheimer's disease and mild cognitive impairment. *J Alzheimers Dis* 36:679–688. <https://doi.org/10.3233/jad-130458>
  184. Kuhle J, Nourbakhsh B, Grant D, Morant S, Barro C, Yaldizli O et al (2017) Serum neurofilament is associated with progression of brain atrophy and disability in early MS. *Neurology* 88:826–831. <https://doi.org/10.1212/wnl.0000000000003653>
  185. Kuhlmann J, Andreasson U, Pannee J, Bjerke M, Portelius E, Leinenbach A et al (2017) CSF Abeta1-42—an excellent but complicated Alzheimer's biomarker—a route to standardisation. *Clin Chim Acta* 467:27–33. <https://doi.org/10.1016/j.cca.2016.05.014>
  186. Kuhn PH, Koroniak K, Hognl S, Colombo A, Zeitschel U, Willem M et al (2012) Secretome protein enrichment identifies physiological BACE1 protease substrates in neurons. *EMBO J* 31:3157–3168. <https://doi.org/10.1038/emboj.2012.173>
  187. Kuiperij HB, Versleijen AA, Beenes M, Verwey NA, Benussi L, Paterlini A et al (2017) Tau rather than TDP-43 proteins are potential cerebrospinal fluid biomarkers for frontotemporal lobar degeneration subtypes: a pilot study. *J Alzheimers Dis* 55:585–595. <https://doi.org/10.3233/jad-160386>
  188. Kuperstein I, Broersen K, Benilova I, Rozenski J, Jonckheere W, Debulpaep M et al (2010) Neurotoxicity of Alzheimer's disease A $\beta$  peptides is induced by small changes in the A $\beta$ 42 to A $\beta$ 40 ratio. *EMBO J* 29:3408–3420. <https://doi.org/10.1038/emboj.2010.211>
  189. Kvartsberg H, Duits FH, Ingelsson M, Andreassen N, Öhrfelt A, Andersson K et al (2015) Cerebrospinal fluid levels of the synaptic protein neurogranin correlates with cognitive decline in prodromal Alzheimer's disease. *Alzheimers Dement* 11:1180–1190. <https://doi.org/10.1016/j.jalz.2014.10.009>
  190. Kvartsberg H, Portelius E, Andreasson U, Brinkmalm G, Hellwig K, Lelental N et al (2015) Characterization of the postsynaptic protein neurogranin in paired cerebrospinal fluid and plasma samples from Alzheimer's disease patients and healthy controls. *Alzheimers Res Ther* 7:40. <https://doi.org/10.1186/s13195-015-0124-3>
  191. Lai KSP, Liu CS, Rau A, Lanctot KL, Kohler CA, Pakosh M et al (2017) Peripheral inflammatory markers in Alzheimer's disease: a systematic review and meta-analysis of 175 studies. *J Neurol Neurosurg Psychiatry* 88:876–882. <https://doi.org/10.1136/jnnp-2017-316201>
  192. Laterza OF, Modur VR, Crimmins DL, Olander JV, Landt Y, Lee JM et al (2006) Identification of novel brain biomarkers. *Clin Chem* 52:1713–1721. <https://doi.org/10.1373/clinchem.2006.070912>
  193. Lauridsen C, Sando SB, Moller I, Berge G, Pomary PK, Grontvedt GR et al (2017) Cerebrospinal fluid Abeta43 is reduced in early-onset compared to late-onset Alzheimer's Disease, but has similar diagnostic accuracy to Abeta42. *Front Aging Neurosci* 9:210. <https://doi.org/10.3389/fnagi.2017.00210>
  194. Lee JM, Blennow K, Andreassen N, Laterza O, Modur V, Olander J et al (2008) The brain injury biomarker VLP-1 is increased in the cerebrospinal fluid of Alzheimer disease patients. *Clin Chem* 54:1617–1623. <https://doi.org/10.1373/clinchem.2008.104497>
  195. Lee PH, Lee G, Park HJ, Bang OY, Joo IS, Huh K (2006) The plasma alpha-synuclein levels in patients with Parkinson's disease and multiple system atrophy. *J Neural Transm (Vienna)* 113:1435–1439. <https://doi.org/10.1007/s00702-005-0427-9>
  196. Lee VM, Balin BJ, Otvos L Jr, Trojanowski JQ (1991) A68: a major subunit of paired helical filaments and derivatized forms of normal tau. *Science* 251:675–678
  197. Lee VM, Trojanowski JQ (2001) Transgenic mouse models of tauopathies: prospects for animal models of Pick's disease. *Neurology* 56:S26–S30
  198. Leitão MJ, Baldeiras I, Herukka SK, Pikkarainen M, Leinonen V, Simonsen AH et al (2015) Chasing the effects of pre-analytical confounders—a multicenter study on CSF-AD biomarkers. *Front Neurol* 6:153. <https://doi.org/10.3389/fneur.2015.00153>
  199. Lemstra AW, de Beer MH, Teunissen CE, Schreuder C, Scheltens P, van der Flier WM et al (2017) Concomitant AD pathology affects clinical manifestation and survival in dementia with Lewy bodies. *J Neurol Neurosurg Psychiatry* 88:113–118. <https://doi.org/10.1136/jnnp-2016-313775>
  200. Leschik J, Welzel A, Weissmann C, Eckert A, Brandt R (2007) Inverse and distinct modulation of tau-dependent neurodegeneration by presenilin 1 and amyloid- $\beta$  in cultured cortical neurons: evidence that tau phosphorylation is the limiting factor in amyloid- $\beta$ -induced cell death. *J Neurochem* 101:1303–1315. <https://doi.org/10.1111/j.1471-4159.2006.04435.x>
  201. Leung YY, Toledo JB, Nefedov A, Polikar R, Raghavan N, Xie SX et al (2015) Identifying amyloid pathology-related cerebrospinal fluid biomarkers for Alzheimer's disease in a multicohort



- study. *Alzheimers Dement (Amst)* 1:339–348. <https://doi.org/10.1016/j.dadm.2015.06.008>
202. Leuzy A, Chiotis K, Hasselbalch SG, Rinne JO, de Mendonça A, Otto M et al (2016) Pittsburgh compound B imaging and cerebrospinal fluid amyloid- $\beta$  in a multicentre European memory clinic study. *Brain* 139:2540–2553. <https://doi.org/10.1093/brain/aww160>
  203. Leverenz JB, Fishel MA, Peskind ER, Montine TJ, Nochlin D, Steinbart E et al (2006) Lewy body pathology in familial Alzheimer disease: evidence for disease- and mutation-specific pathologic phenotype. *Arch Neurol* 63:370–376. <https://doi.org/10.1001/archneur.63.3.370>
  204. Lewczuk P, Leleental N, Lachmann I, Holzer M, Flach K, Brandner S et al (2017) Non-phosphorylated tau as a potential biomarker of Alzheimer's disease: analytical and diagnostic characterization. *J Alzheimers Dis* 55:159–170. <https://doi.org/10.3233/JAD-160448>
  205. Lewczuk P, Matzen A, Blennow K, Parnetti L, Molinuevo JL, Eusebi P et al (2017) Cerebrospinal fluid A $\beta$ 42/40 corresponds better than A $\beta$ 42 to amyloid PET in Alzheimer's disease. *J Alzheimers Dis* 55:813–822. <https://doi.org/10.3233/jad-160722>
  206. Lewczuk P, Riederer P, O'Bryant SE, Verbeek MM, Dubois B, Visser PJ et al (2017) Cerebrospinal fluid and blood biomarkers for neurodegenerative dementias: an update of the Consensus of the Task Force on Biological Markers in Psychiatry of the World Federation of Societies of Biological Psychiatry. *World J Biol Psychiatry*. <https://doi.org/10.1080/15622975.2017.1375556>
  207. Lewis KA, Su Y, Jou O, Ritchie C, Foong C, Hynan LS et al (2010) Abnormal neurites containing C-terminally truncated alpha-synuclein are present in Alzheimer's disease without conventional Lewy body pathology. *Am J Pathol* 177:3037–3050. <https://doi.org/10.2353/ajpath.2010.100552>
  208. Leyhe T, Andreasen N, Simeoni M, Reich A, von Arnim CA, Tong X et al (2014) Modulation of beta-amyloid by a single dose of GSK933776 in patients with mild Alzheimer's disease: a phase I study. *Alzheimers Res Ther* 6:19. <https://doi.org/10.1186/alzrt249>
  209. Li G, Sokal I, Quinn JF, Leverenz JB, Brodey M, Schellenberg GD et al (2007) CSF tau/A $\beta$ 42 ratio for increased risk of mild cognitive impairment: a follow-up study. *Neurology* 69:631–639. <https://doi.org/10.1212/01.wnl.0000267428.62582.aa>
  210. Li X, Lei P, Tuo Q, Ayton S, Li QX, Moon S et al (2015) Enduring elevations of hippocampal amyloid precursor protein and iron are features of  $\beta$ -amyloid toxicity and are mediated by tau. *Neurotherapeutics* 12:862–873. <https://doi.org/10.1007/s13311-015-0378-2>
  211. Libreros S, Iragavarapu-Charyulu V (2015) YKL-40/CHI3L1 drives inflammation on the road of tumor progression. *J Leukoc Biol* 98:931–936. <https://doi.org/10.1189/jlb.3VMR0415-142R>
  212. Lin CH, Yang SY, Horng HE, Yang CC, Chieh JJ, Chen HH et al (2017) Plasma  $\alpha$ -synuclein predicts cognitive decline in Parkinson's disease. *J Neurol Neurosurg Psychiatry* 88:818–824. <https://doi.org/10.1136/jnnp-2016-314857>
  213. Lippa CF, Schmidt ML, Lee VM, Trojanowski JQ (1999) Antibodies to alpha-synuclein detect Lewy bodies in many Down's syndrome brains with Alzheimer's disease. *Ann Neurol* 45:353–357
  214. Lista S, Emanuele E (2011) Role of amyloid beta1-42 and neuroimaging biomarkers in Alzheimer's disease. *Biomark Med* 5:411–413. <https://doi.org/10.2217/bmm.11.50>
  215. Lista S, Faltraco F, Hampel H (2013) Biological and methodical challenges of blood-based proteomics in the field of neurological research. *Prog Neurobiol* 101–102:18–34. <https://doi.org/10.1016/j.pneurobio.2012.06.006>
  216. Lista S, Faltraco F, Prvulovic D, Hampel H (2013) Blood and plasma-based proteomic biomarker research in Alzheimer's disease. *Prog Neurobiol* 101–102:1–17. <https://doi.org/10.1016/j.pneurobio.2012.06.007>
  217. Lista S, Garaci FG, Ewers M, Teipel S, Zetterberg H, Blennow K et al (2014) CSF A $\beta$ 1-42 combined with neuroimaging biomarkers in the early detection, diagnosis and prediction of Alzheimer's disease. *Alzheimers Dement* 10:381–392. <https://doi.org/10.1016/j.jalz.2013.04.506>
  218. Lista S, Hampel H (2017) Synaptic degeneration and neurogranin in the pathophysiology of Alzheimer's disease. *Expert Rev Neurother* 17:47–57. <https://doi.org/10.1080/14737175.2016.1204234>
  219. Lista S, Khachaturian ZS, Rujescu D, Garaci F, Dubois B, Hampel H (2016) Application of systems theory in longitudinal studies on the origin and progression of Alzheimer's disease. *Methods Mol Biol* 1303:49–67. [https://doi.org/10.1007/978-1-4939-2627-5\\_2](https://doi.org/10.1007/978-1-4939-2627-5_2)
  220. Lista S, Toschi N, Baldacci F, Zetterberg H, Blennow K, Kili-mann I et al (2017) Diagnostic accuracy of CSF neurofilament light chain protein in the biomarker-guided classification system for Alzheimer's disease. *Neurochem Int* 108:355–360. <https://doi.org/10.1016/j.neuint.2017.05.010>
  221. Lista S, Toschi N, Baldacci F, Zetterberg H, Blennow K, Kili-mann I et al (2017) Cerebrospinal fluid neurogranin as a biomarker of neurodegenerative diseases: a cross-sectional study. *J Alzheimers Dis* 59:1327–1334. <https://doi.org/10.3233/jad-170368>
  222. Lista S, Zetterberg H, O'Bryant SE, Blennow K, Hampel H (2017) Evolving relevance of neuroproteomics in Alzheimer's disease. *Methods Mol Biol* 1598:101–115. [https://doi.org/10.1007/978-1-4939-6952-4\\_5](https://doi.org/10.1007/978-1-4939-6952-4_5)
  223. Liu M, Guo S, Hibbert JM, Jain V, Singh N, Wilson NO et al (2011) CXCL10/IP-10 in infectious diseases pathogenesis and potential therapeutic implications. *Cytokine Growth Factor Rev* 22:121–130. <https://doi.org/10.1016/j.cytogfr.2011.06.001>
  224. Ljungqvist J, Zetterberg H, Mitsis M, Blennow K, Skoglund T (2017) Serum neurofilament light protein as a marker for diffuse axonal injury: results from a case series study. *J Neurotrauma* 34:1124–1127. <https://doi.org/10.1089/neu.2016.4496>
  225. Llorens F, Kruse N, Karch A, Schmitz M, Zafar S, Gotzmann N et al (2017) Validation of  $\alpha$ -synuclein as a CSF biomarker for sporadic Creutzfeldt-Jakob disease. *Mol Neurobiol* 55:2249–2257. <https://doi.org/10.1007/s12035-017-0479-5>
  226. Loeffler DA, Connor JR, Juneau PL, Snyder BS, Kanaley L, DeMaggio AJ et al (1995) Transferrin and iron in normal, Alzheimer's disease, and Parkinson's disease brain regions. *J Neurochem* 65:710–724
  227. Lövheim H, Elgh F, Johansson A, Zetterberg H, Blennow K, Hallmans G et al (2017) Plasma concentrations of free amyloid  $\beta$  cannot predict the development of Alzheimer's disease. *Alzheimers Dement* 13:778–782. <https://doi.org/10.1016/j.jalz.2016.12.004>
  228. Lu CH, Macdonald-Wallis C, Gray E, Pearce N, Petzold A, Norgren N et al (2015) Neurofilament light chain: a prognostic biomarker in amyotrophic lateral sclerosis. *Neurology* 84:2247–2257. <https://doi.org/10.1212/WNL.0000000000001642>
  229. Luk KC, Kehm V, Carroll J, Zhang B, O'Brien P, Trojanowski JQ et al (2012) Pathological  $\alpha$ -synuclein transmission initiates Parkinson-like neurodegeneration in nontransgenic mice. *Science* 338:949–953. <https://doi.org/10.1126/science.1227157>
  230. Luo X, Hou L, Shi H, Zhong X, Zhang Y, Zheng D et al (2013) CSF levels of the neuronal injury biomarker visinin-like protein-1 in Alzheimer's disease and dementia with Lewy bodies. *J Neurochem* 127:681–690. <https://doi.org/10.1111/jnc.12331>
  231. Lycke JN, Karlsson JE, Andersen O, Rosengren LE (1998) Neurofilament protein in cerebrospinal fluid: a potential marker

- of activity in multiple sclerosis. *J Neurol Neurosurg Psychiatry* 64:402–404
232. Majbour NK, Chiasserini D, Vaikath NN, Eusebi P, Tokuda T, van de Berg W et al (2017) Increased levels of CSF total but not oligomeric or phosphorylated forms of alpha-synuclein in patients diagnosed with probable Alzheimer's disease. *Sci Rep* 7:40263. <https://doi.org/10.1038/srep40263>
  233. Majbour NK, Vaikath NN, van Dijk KD, Ardah MT, Varghese S, Vesterager LB et al (2016) Oligomeric and phosphorylated alpha-synuclein as potential CSF biomarkers for Parkinson's disease. *Mol Neurodegener* 11:7. <https://doi.org/10.1186/s13024-016-0072-9>
  234. Marsh SE, Blurton-Jones M (2012) Examining the mechanisms that link  $\beta$ -amyloid and  $\alpha$ -synuclein pathologies. *Alzheimers Res Ther* 4:11. <https://doi.org/10.1186/alzrt109>
  235. Masliah E, Hansen L, Albright T, Mallory M, Terry RD (1991) Immunoelectron microscopic study of synaptic pathology in Alzheimer's disease. *Acta Neuropathol* 81:428–433
  236. Masliah E, Mallory M, Alford M, DeTeresa R, Hansen LA, McKeel DW Jr et al (2001) Altered expression of synaptic proteins occurs early during progression of Alzheimer's disease. *Neurology* 56:127–129
  237. Masliah E, Terry RD, Alford M, DeTeresa R, Hansen LA (1991) Cortical and subcortical patterns of synaptophysin-like immunoreactivity in Alzheimer's disease. *Am J Pathol* 138:235–246
  238. Masters CL, Bateman R, Blennow K, Rowe CC, Sperling RA, Cummings JL (2015) Alzheimer's disease. *Nat Rev Dis Primers* 1:15056. <https://doi.org/10.1038/nrdp.2015.56>
  239. Masters CL, Simms G, Weinman NA, Multhaup G, McDonald BL, Beyreuther K (1985) Amyloid plaque core protein in Alzheimer disease and Down syndrome. *Proc Natl Acad Sci USA* 82:4245–4249
  240. Mattsson N, Andreasson U, Zetterberg H, Blennow K, Alzheimer's Disease Neuroimaging Initiative (2017) Association of plasma neurofilament light with neurodegeneration in patients with Alzheimer disease. *JAMA Neurol* 74:557–566. <https://doi.org/10.1001/jamaneurol.2016.6117>
  241. Mattsson N, Carrillo MC, Dean RA, Devous MD Sr, Nikolcheva T, Pesini P et al (2015) Revolutionizing Alzheimer's disease and clinical trials through biomarkers. *Alzheimers Dement (Amst)* 1:412–419. <https://doi.org/10.1016/j.dadm.2015.09.001>
  242. Mattsson N, Insel PS, Palmqvist S, Portelius E, Zetterberg H, Weiner M et al (2016) Cerebrospinal fluid tau, neurogranin, and neurofilament light in Alzheimer's disease. *EMBO Mol Med* 8:1184–1196. <https://doi.org/10.15252/emmm.201606540>
  243. Mattsson N, Insel PS, Palmqvist S, Stomrud E, van Westen D, Minthon L et al (2016) Increased amyloidogenic APP processing in APOE  $\epsilon$ 4-negative individuals with cerebral  $\beta$ -amyloidosis. *Nat Commun* 7:10918. <https://doi.org/10.1038/ncomms10918>
  244. Mattsson N, Tabatabaei S, Johansson P, Hansson O, Andreasson U, Månsson JE et al (2011) Cerebrospinal fluid microglial markers in Alzheimer's disease: elevated chitotriosidase activity but lack of diagnostic utility. *Neuromol Med* 13:151–159. <https://doi.org/10.1007/s12017-011-8147-9>
  245. Mattsson N, Zetterberg H, Janelidze S, Insel PS, Andreasson U, Stomrud E et al (2016) Plasma tau in Alzheimer disease. *Neurology* 87:1827–1835. <https://doi.org/10.1212/WNL.0000000000003246>
  246. McGowan E, Pickford F, Kim J, Onstead L, Eriksen J, Yu C et al (2005) A $\beta$ 42 is essential for parenchymal and vascular amyloid deposition in mice. *Neuron* 47:191–199. <https://doi.org/10.1016/j.neuron.2005.06.030>
  247. McKhann GM, Knopman DS, Chertkow H, Hyman BT, Jack CR Jr, Kawas CH et al (2011) The diagnosis of dementia due to Alzheimer's disease: recommendations from the National Institute on Aging-Alzheimer's Association workgroups on diagnostic guidelines for Alzheimer's disease. *Alzheimers Dement* 7:263–269. <https://doi.org/10.1016/j.jalz.2011.03.005>
  248. Mehta PD, Pirttila T, Mehta SP, Sersen EA, Aisen PS, Wisniewski HM (2000) Plasma and cerebrospinal fluid levels of amyloid beta proteins 1-40 and 1-42 in Alzheimer disease. *Arch Neurol* 57:100–105
  249. Møllergård J, Tisell A, Blystad I, Grönqvist A, Blennow K, Olsson B et al (2017) Cerebrospinal fluid levels of neurofilament and tau correlate with brain atrophy in natalizumab-treated multiple sclerosis. *Eur J Neurol* 24:112–121. <https://doi.org/10.1111/ene.13162>
  250. Meredith JE Jr, Sankaranarayanan S, Guss V, Lanzetti AJ, Berisha F, Neely RJ et al (2013) Characterization of novel CSF tau and ptau biomarkers for Alzheimer's disease. *PLoS One* 8:e76523. <https://doi.org/10.1371/journal.pone.0076523>
  251. Mielke MM, Hagen CE, Wennberg AMV, Airey DC, Savica R, Knopman DS et al (2017) Association of plasma total tau level with cognitive decline and risk of mild cognitive impairment or dementia in the Mayo Clinic Study on Aging. *JAMA Neurol* 74:1073–1080. <https://doi.org/10.1001/jamaneurol.2017.1359>
  252. Mohorko N, Bresjanac M (2008) Tau protein and human tauopathies: an overview. *Zdrav Vestn* 77:II-35-41
  253. Mollenhauer B, Cullen V, Kahn I, Krastins B, Outeiro TF, Pepivani I et al (2008) Direct quantification of CSF  $\alpha$ -synuclein by ELISA and first cross-sectional study in patients with neurodegeneration. *Exp Neurol* 213:315–325. <https://doi.org/10.1016/j.expneurol.2008.06.004>
  254. Mollenhauer B, Steinacker P, Bahn E, Bibl M, Brechlin P, Schlossmacher MG et al (2007) Serum heart-type fatty acid-binding protein and cerebrospinal fluid tau: marker candidates for dementia with Lewy bodies. *Neurodegener Dis* 4:366–375. <https://doi.org/10.1159/000105157>
  255. Mori Y, Yoshino Y, Ochi S, Yamazaki K, Kawabe K, Abe M et al (2015) TREM2 mRNA expression in leukocytes is increased in Alzheimer's disease and schizophrenia. *PLoS One* 10:e0136835. <https://doi.org/10.1371/journal.pone.0136835>
  256. Motter R, Vigo-Pelfrey C, Kholodenko D, Barbour R, Johnson-Wood K, Galasko D et al (1995) Reduction of beta-amyloid peptide42 in the cerebrospinal fluid of patients with Alzheimer's disease. *Ann Neurol* 38:643–648. <https://doi.org/10.1002/ana.410380413>
  257. Mroczko B, Groblewska M, Zboch M, Muszynski P, Zajkowska A, Borawska R et al (2015) Evaluation of visinin-like protein 1 concentrations in the cerebrospinal fluid of patients with mild cognitive impairment as a dynamic biomarker of Alzheimer's disease. *J Alzheimers Dis* 43:1031–1037. <https://doi.org/10.3233/jad-141050>
  258. Mulder SD, van der Flier WM, Verheijen JH, Mulder C, Scheltens P, Blankenstein MA et al (2010) BACE1 activity in cerebrospinal fluid and its relation to markers of AD pathology. *J Alzheimers Dis* 20:253–260. <https://doi.org/10.3233/jad-2010-1367>
  259. Mulugeta E, Londos E, Ballard C, Alves G, Zetterberg H, Blennow K et al (2011) CSF amyloid  $\beta$ 38 as a novel diagnostic marker for dementia with Lewy bodies. *J Neurol Neurosurg Psychiatry* 82:160–164. <https://doi.org/10.1136/jnnp.2009.199398>
  260. Naj AC, Schellenberg GD, Alzheimer's Disease Genetics Consortium (2017) Genomic variants, genes, and pathways of Alzheimer's disease: an overview. *Am J Med Genet B Neuropsychiatr Genet* 174:5–26. <https://doi.org/10.1002/ajmg.b.32499>
  261. Nakamura A, Kaneko N, Villemagne VL, Kato T, Doecke J, Doré V et al (2018) High performance plasma amyloid- $\beta$  biomarkers for Alzheimer's disease. *Nature* 554:249–254. <https://doi.org/10.1038/nature25456>
  262. Nath S, Koziarz A, Badhiwala JH, Alhazzani W, Jaeschke R, Sharma S et al (2017) Atraumatic versus conventional lumbar

- puncture needles: a systematic review and meta-analysis. *Lancet* 391:1197–1204. [https://doi.org/10.1016/S0140-6736\(17\)32451-0](https://doi.org/10.1016/S0140-6736(17)32451-0)
263. Nelson PT, Alafuzoff I, Bigio EH, Bouras C, Braak H, Cairns NJ et al (2012) Correlation of Alzheimer disease neuropathologic changes with cognitive status: a review of the literature. *J Neuropathol Exp Neurol* 71:362–381. <https://doi.org/10.1097/NEN.0b013e31825018f7>
  264. Neumann K, Fariñas G, Slachevsky A, Perez P, Maccioni RB (2011) Human platelets tau: a potential peripheral marker for Alzheimer's disease. *J Alzheimers Dis* 25:103–109. <https://doi.org/10.3233/JAD-2011-101641>
  265. Neumann M, Sampathu DM, Kwong LK, Truax AC, Micsenyi MC, Chou TT et al (2006) Ubiquitinated TDP-43 in frontotemporal lobar degeneration and amyotrophic lateral sclerosis. *Science* 314:130–133. <https://doi.org/10.1126/science.1134108>
  266. Novakova L, Axelsson M, Khademi M, Zetterberg H, Blennow K, Malmeström C et al (2017) Cerebrospinal fluid biomarkers as a measure of disease activity and treatment efficacy in relapsing-remitting multiple sclerosis. *J Neurochem* 141:296–304. <https://doi.org/10.1111/jnc.13881>
  267. Novakova L, Axelsson M, Khademi M, Zetterberg H, Blennow K, Malmeström C et al (2017) Cerebrospinal fluid biomarkers of inflammation and degeneration as measures of fingolimod efficacy in multiple sclerosis. *Mult Scler* 23:62–71. <https://doi.org/10.1177/1352458516639384>
  268. O'Bryant SE, Gupta V, Henriksen K, Edwards M, Jeromin A, Lista S et al (2015) Guidelines for the standardization of preanalytic variables for blood-based biomarker studies in Alzheimer's disease research. *Alzheimers Dement* 11:549–560. <https://doi.org/10.1016/j.jalz.2014.08.099>
  269. O'Bryant SE, Mielke MM, Rissman RA, Lista S, Vanderstichele H, Zetterberg H et al (2017) Blood-based biomarkers in Alzheimer disease: current state of the science and a novel collaborative paradigm for advancing from discovery to clinic. *Alzheimers Dement* 13:45–58. <https://doi.org/10.1016/j.jalz.2016.09.014>
  270. Öhrfelt A, Brinkmalm A, Dumurgier J, Brinkmalm G, Hansson O, Zetterberg H et al (2016) The pre-synaptic vesicle protein synaptotagmin is a novel biomarker for Alzheimer's disease. *Alzheimers Res Ther* 8:41. <https://doi.org/10.1186/s13195-016-0208-8>
  271. Olsson B, Lautner R, Andreasson U, Öhrfelt A, Portelius E, Bjerke M et al (2016) CSF and blood biomarkers for the diagnosis of Alzheimer's disease: a systematic review and meta-analysis. *Lancet Neurol* 15:673–684. [https://doi.org/10.1016/s1474-4422\(16\)00070-3](https://doi.org/10.1016/s1474-4422(16)00070-3)
  272. Olsson F, Schmidt S, Althoff V, Munter LM, Jin S, Rosqvist S et al (2014) Characterization of intermediate steps in amyloid beta (A $\beta$ ) production under near-native conditions. *J Biol Chem* 289:1540–1550. <https://doi.org/10.1074/jbc.M113.498246>
  273. Ovod V, Ramsey KN, Mawuenyega KG, Bollinger JG, Hicks T, Schneider T et al (2017) Amyloid  $\beta$  concentrations and stable isotope labeling kinetics of human plasma specific to central nervous system amyloidosis. *Alzheimers Dement* 13:841–849. <https://doi.org/10.1016/j.jalz.2017.06.2266>
  274. Palmqvist S, Janelidze S, Stromrud E, Zetterberg H, Karl J, Mattsson N et al (2018) Detecting brain amyloid status using fully automated plasma A $\beta$  biomarker assays. Abstract presented at the Alzheimer's Association International Conference (AAIC) 2018. Chicago (22–26 July 2018)
  275. Palmqvist S, Zetterberg H, Mattsson N, Johansson P, Alzheimer's Disease Neuroimaging Initiative, Minthon L et al (2015) Detailed comparison of amyloid PET and CSF biomarkers for identifying early Alzheimer disease. *Neurology* 85:1240–1249. <https://doi.org/10.1212/wnl.0000000000001991>
  276. Pannee J, Portelius E, Minthon L, Gobom J, Andreasson U, Zetterberg H et al (2016) Reference measurement procedure for CSF amyloid beta (A $\beta$ )1–42 and the CSF A $\beta$ 1–42/A $\beta$ 1–40 ratio—a cross-validation study against amyloid PET. *J Neurochem* 139:651–658. <https://doi.org/10.1111/jnc.13838>
  277. Pannee J, Törnqvist U, Westerlund A, Ingelsson M, Lannfelt L, Brinkmalm G et al (2014) The amyloid- $\beta$  degradation pattern in plasma—a possible tool for clinical trials in Alzheimer's disease. *Neurosci Lett* 573:7–12. <https://doi.org/10.1016/j.neulet.2014.04.041>
  278. Park JC, Han SH, Cho HJ, Byun MS, Yi D, Choe YM et al (2017) Chemically treated plasma A $\beta$  is a potential blood-based biomarker for screening cerebral amyloid deposition. *Alzheimers Res Ther* 9:20. <https://doi.org/10.1186/s13195-017-0248-8>
  279. Parnetti L, Eusebi P, Lleó A (2016) Cerebrospinal fluid biomarkers for target engagement and efficacy in clinical trials for Alzheimer's and Parkinson's diseases. *Front Neurol Neurosci* 39:117–123. <https://doi.org/10.1159/000445452>
  280. Pascoal TA, Mathotaarachchi S, Shin M, Benedet AL, Mohades S, Wang S et al (2017) Synergistic interaction between amyloid and tau predicts the progression to dementia. *Alzheimers Dement* 13:644–653. <https://doi.org/10.1016/j.jalz.2016.11.005>
  281. Pereira JB, Strandberg TO, Palmqvist S, Volpe G, van Westen D, Westman E et al (2018) Amyloid network topology characterizes the progression of Alzheimer's disease during the prodementia stages. *Cereb Cortex* 28:340–349. <https://doi.org/10.1093/cercor/rbx294>
  282. Pereira JB, Westman E, Hansson O, Alzheimer's Disease Neuroimaging Initiative (2017) Association between cerebrospinal fluid and plasma neurodegeneration biomarkers with brain atrophy in Alzheimer's disease. *Neurobiol Aging* 58:14–29. <https://doi.org/10.1016/j.neurobiolaging.2017.06.002>
  283. Perneczky R, Alexopoulos P, Alzheimer's Disease Neuroimaging Initiative (2014) Cerebrospinal fluid BACE1 activity and markers of amyloid precursor protein metabolism and axonal degeneration in Alzheimer's disease. *Alzheimers Dement* 10:S425–S429 e421. <https://doi.org/10.1016/j.jalz.2013.09.006>
  284. Perret-Liaudet A, Pelpel M, Tholance Y, Dumont B, Vanderstichele H, Zorzi W et al (2012) Risk of Alzheimer's disease biological misdiagnosis linked to cerebrospinal collection tubes. *J Alzheimers Dis* 31:13–20. <https://doi.org/10.3233/JAD-2012-120361>
  285. Petersen RC, Aisen P, Boeve BF, Geda YE, Ivnik RJ, Knopman DS et al (2013) Mild cognitive impairment due to Alzheimer disease in the community. *Ann Neurol* 74:199–208. <https://doi.org/10.1002/ana.23931>
  286. Petzold A, Keir G, Warren J, Fox N, Rossor MN (2007) A systematic review and meta-analysis of CSF neurofilament protein levels as biomarkers in dementia. *Neurodegener Dis* 4:185–194. <https://doi.org/10.1159/000101843>
  287. Piccio L, Deming Y, Del-Águila JL, Ghezzi L, Holtzman DM, Fagan AM et al (2016) Cerebrospinal fluid soluble TREM2 is higher in Alzheimer disease and associated with mutation status. *Acta Neuropathol* 131:925–933. <https://doi.org/10.1007/s00401-016-1533-5>
  288. Pijnenburg YA, Janssen JC, Schoonenboom NS, Petzold A, Mulder C, Stigbrand T et al (2007) CSF neurofilaments in frontotemporal dementia compared with early onset Alzheimer's disease and controls. *Dement Geriatr Cogn Disord* 23:225–230. <https://doi.org/10.1159/000099473>
  289. Portelius E, Price E, Brinkmalm G, Stiteler M, Olsson M, Persson R et al (2011) A novel pathway for amyloid precursor protein processing. *Neurobiol Aging* 32:1090–1098. <https://doi.org/10.1016/j.neurobiolaging.2009.06.002>
  290. Portelius E, Westman-Brinkmalm A, Zetterberg H, Blennow K (2006) Determination of  $\beta$ -amyloid peptide signatures in cerebrospinal fluid using immunoprecipitation-mass spectrometry. *J Proteome Res* 5:1010–1016. <https://doi.org/10.1021/pr050475v>



291. Portelius E, Zetterberg H, Skillback T, Tornqvist U, Andreasson U, Trojanowski JQ et al (2015) Cerebrospinal fluid neurogranin: relation to cognition and neurodegeneration in Alzheimer's disease. *Brain* 138:3373–3385. <https://doi.org/10.1093/brain/awv267>
292. Pottiez G, Yang L, Stewart T, Song N, Aro P, Galasko DR et al (2017) Mass-spectrometry-based method to quantify in parallel tau and amyloid beta 1-42 in CSF for the diagnosis of Alzheimer's disease. *J Proteome Res* 16:1228–1238. <https://doi.org/10.1021/acs.jproteome.6b00829>
293. Querol-Vilaseca M, Colom-Cadena M, Pegueroles J, San Martín-Paniello C, Clarimon J, Belbin O et al (2017) YKL-40 (Chitinase 3-like I) is expressed in a subset of astrocytes in Alzheimer's disease and other tauopathies. *J Neuroinflammation* 14:118. <https://doi.org/10.1186/s12974-017-0893-7>
294. Racine AM, Kosciak RL, Nicholas CR, Clark LR, Okonkwo OC, Oh JM et al (2016) Cerebrospinal fluid ratios with A $\beta$ 42 predict preclinical brain  $\beta$ -amyloid accumulation. *Alzheimers Dement (Amst)* 2:27–38. <https://doi.org/10.1016/j.dadm.2015.11.006>
295. Reiman EM (2017) Alzheimer disease in 2016: putting AD treatments and biomarkers to the test. *Nat Rev Neurol* 13:74–76. <https://doi.org/10.1038/nrneuro.2017.1>
296. Rhodin JA, Thomas T (2001) A vascular connection to Alzheimer's disease. *Microcirculation* 8:207–220. <https://doi.org/10.1038/sj/mn/7800086>
297. Riemenschneider M, Wagenpfeil S, Vanderstichele H, Otto M, Wiltfang J, Kretzschmar H et al (2003) Phospho-tau/total tau ratio in cerebrospinal fluid discriminates Creutzfeldt-Jakob disease from other dementias. *Mol Psychiatry* 8:343–347. <https://doi.org/10.1038/sj.mp.4001220>
298. Ritter A, Cummings J (2015) Fluid biomarkers in clinical trials of Alzheimer's disease therapeutics. *Front Neurol* 6:186. <https://doi.org/10.3389/fneur.2015.00186>
299. Rivero-Santana A, Ferreira D, Perestelo-Pérez L, Westman E, Wahlund LO, Sarría A et al (2017) Cerebrospinal fluid biomarkers for the differential diagnosis between Alzheimer's disease and frontotemporal lobar degeneration: systematic review, HSROC analysis, and confounding factors. *J Alzheimers Dis* 55:625–644. <https://doi.org/10.3233/JAD-160366>
300. Robinson J, Lee E, Xie S, Rennert L, Suh E, Bredenberg C et al (2018) Neurodegenerative disease concomitant proteinopathies are prevalent, age-related and APOE4-associated. *Brain* 141:2181–2193. <https://doi.org/10.1093/brain/awy146>
301. Roe CM, Fagan AM, Grant EA, Hassenstab J, Moulder KL, Maue Dreyfus D et al (2013) Amyloid imaging and CSF biomarkers in predicting cognitive impairment up to 7.5 years later. *Neurology* 80:1784–1791. <https://doi.org/10.1212/WNL.0b013e3182918ca6>
302. Rojas JC, Karydas A, Bang J, Tsai RM, Blennow K, Liman V et al (2016) Plasma neurofilament light chain predicts progression in progressive supranuclear palsy. *Ann Clin Transl Neurol* 3:216–225. <https://doi.org/10.1002/acn3.290>
303. Rosén C, Andersson CH, Andreasson U, Molinuevo JL, Bjerke M, Rami L et al (2014) Increased levels of chitotriosidase and YKL-40 in cerebrospinal fluid from patients with Alzheimer's disease. *Dement Geriatr Cogn Dis Extra* 4:297–304. <https://doi.org/10.1159/000362164>
304. Roussel P, Katsel P, Fam P, Tan W, Purohit DP, Haroutunian V (2015) The triggering receptor expressed on myeloid cells 2 (TREM2) is associated with enhanced inflammation, neuropathological lesions and increased risk for Alzheimer's dementia. *Alzheimers Dement* 11:1163–1170. <https://doi.org/10.1016/j.jalz.2014.10.013>
305. Rowe CC, Bourgeat P, Ellis KA, Brown B, Lim YY, Mulligan R et al (2013) Predicting Alzheimer disease with  $\beta$ -amyloid imaging: results from the Australian Imaging, Biomarkers, and Lifestyle Study of Ageing. *Ann Neurol* 74:905–913. <https://doi.org/10.1002/ana.24040>
306. Russell CL, Mitra V, Hansson K, Blennow K, Gobom J, Zetterberg H et al (2017) Comprehensive quantitative profiling of tau and phosphorylated tau peptides in cerebrospinal fluid by mass spectrometry provides new biomarker candidates. *J Alzheimers Dis* 55:303–313. <https://doi.org/10.3233/JAD-160633>
307. Salminen A, Kauppinen A, Kaarniranta K (2017) Hypoxia/ischemia activate processing of amyloid precursor protein: impact of vascular dysfunction in the pathogenesis of Alzheimer's disease. *J Neurochem* 140:536–549. <https://doi.org/10.1111/jnc.13932>
308. Salvadores N, Shahnawaz M, Scarpini E, Tagliavini F, Soto C (2014) Detection of misfolded A $\beta$  oligomers for sensitive biochemical diagnosis of Alzheimer's disease. *Cell Rep* 7:261–268. <https://doi.org/10.1016/j.celrep.2014.02.031>
309. Sanabria-Castro A, Alvarado-Echeverría I, Monge-Bonilla C (2017) Molecular pathogenesis of Alzheimer's disease: an update. *Ann Neurosci* 24:46–54. <https://doi.org/10.1159/000464422>
310. Sanfilippo C, Forlenza O, Zetterberg H, Blennow K (2016) Increased neurogranin concentrations in cerebrospinal fluid of Alzheimer's disease and in mild cognitive impairment due to AD. *J Neural Transm (Vienna)* 123:1443–1447. <https://doi.org/10.1007/s00702-016-1597-3>
311. Savage MJ, Holder DJ, Wu G, Kaplow J, Siuciak JA, Potter WZ (2015) Soluble BACE-1 activity and sA $\beta$ PP $\beta$  concentrations in Alzheimer's disease and age-matched healthy control cerebrospinal fluid from the Alzheimer's Disease Neuroimaging Initiative-1 baseline cohort. *J Alzheimers Dis* 46:431–440. <https://doi.org/10.3233/jad-142778>
312. Savage MJ, Kalinina J, Wolfe A, Tugusheva K, Korn R, Cash-Mason T et al (2014) A sensitive A $\beta$  oligomer assay discriminates Alzheimer's and aged control cerebrospinal fluid. *J Neurosci* 34:2884–2897. <https://doi.org/10.1523/JNEUROSCI.1675-13.2014>
313. Scheff SW, Price DA, Schmitt FA, Mufson EJ (2006) Hippocampal synaptic loss in early Alzheimer's disease and mild cognitive impairment. *Neurobiol Aging* 27:1372–1384. <https://doi.org/10.1016/j.neurobiolaging.2005.09.012>
314. Scheltens P, Blennow K, Breteler MM, de Strooper B, Frisoni GB, Salloway S et al (2016) Alzheimer's disease. *Lancet* 388:505–517. [https://doi.org/10.1016/s0140-6736\(15\)01124-1](https://doi.org/10.1016/s0140-6736(15)01124-1)
315. Scheuner D, Eckman C, Jensen M, Song X, Citron M, Suzuki N et al (1996) Secreted amyloid beta-protein similar to that in the senile plaques of Alzheimer's disease is increased in vivo by the presenilin 1 and 2 and APP mutations linked to familial Alzheimer's disease. *Nat Med* 2:864–870
316. Schmidt ML, Murray J, Lee VM, Hill WD, Wertkin A, Trojanowski JQ (1991) Epitope map of neurofilament protein domains in cortical and peripheral nervous system Lewy bodies. *Am J Pathol* 139:53–65
317. Schneider LS, Mangialasche F, Andreassen N, Feldman H, Giacobini E, Jones R et al (2014) Clinical trials and late-stage drug development for Alzheimer's disease: an appraisal from 1984 to 2014. *J Intern Med* 275:251–283. <https://doi.org/10.1111/joim.12191>
318. Schuster J, Funke SA (2016) Methods for the specific detection and quantitation of amyloid- $\beta$  oligomers in cerebrospinal fluid. *J Alzheimers Dis* 53:53–67. <https://doi.org/10.3233/JAD-151029>
319. Seeburger JL, Holder DJ, Combrinck M, Joachim C, Laterza O, Tanen M et al (2015) Cerebrospinal fluid biomarkers distinguish postmortem-confirmed Alzheimer's disease from other dementias and healthy controls in the OPTIMA cohort. *J Alzheimers Dis* 44:525–539. <https://doi.org/10.3233/JAD-141725>

320. Selkoe DJ, Hardy J (2016) The amyloid hypothesis of Alzheimer's disease at 25 years. *EMBO Mol Med* 8:595–608. <https://doi.org/10.15252/emmm.201606210>
321. Sengupta U, Nilson AN, Kaye R (2016) The role of amyloid- $\beta$  oligomers in toxicity, propagation, and immunotherapy. *EBio-Medicine* 6:42–49. <https://doi.org/10.1016/j.ebiom.2016.03.035>
322. Seubert P, Vigo-Pelfrey C, Esch F, Lee M, Dovey H, Davis D et al (1992) Isolation and quantification of soluble Alzheimer's  $\beta$ -peptide from biological fluids. *Nature* 359:325–327. <https://doi.org/10.1038/359325a0>
323. Sevigny J, Chiao P, Bussiere T, Weinreb PH, Williams L, Maier M et al (2016) The antibody aducanumab reduces A $\beta$  plaques in Alzheimer's disease. *Nature* 537:50–56. <https://doi.org/10.1038/nature19323>
324. Shahim P, Zetterberg H, Tegner Y, Blennow K (2017) Serum neurofilament light as a biomarker for mild traumatic brain injury in contact sports. *Neurology* 88:1788–1794. <https://doi.org/10.1212/wnl.0000000000003912>
325. Shah Nawaz M, Tokuda T, Waragai M, Mendez N, Ishii R, Trenkwalder C et al (2017) Development of a biochemical diagnosis of Parkinson disease by detection of  $\alpha$ -synuclein misfolded aggregates in cerebrospinal fluid. *JAMA Neurol* 74:163–172. <https://doi.org/10.1001/jamaneurol.2016.4547>
326. Shaw LM, Vanderstichele H, Knapik-Czajka M, Clark CM, Aisen PS, Petersen RC et al (2009) Cerebrospinal fluid biomarker signature in Alzheimer's Disease neuroimaging initiative subjects. *Ann Neurol* 65:403–413. <https://doi.org/10.1002/ana.21610>
327. Shaw LM, Vanderstichele H, Knapik-Czajka M, Figurski M, Coart E, Blennow K et al (2011) Qualification of the analytical and clinical performance of CSF biomarker analyses in ADNI. *Acta Neuropathol* 121:597–609. <https://doi.org/10.1007/s00401-011-0808-0>
328. Sheinerman KS, Toledo JB, Tsivinsky VG, Irwin D, Grossman M, Weintraub D et al (2017) Circulating brain-enriched microRNAs as novel biomarkers for detection and differentiation of neurodegenerative diseases. *Alzheimers Res Ther* 9:89. <https://doi.org/10.1186/s13195-017-0316-0>
329. Shekhar S, Kumar R, Rai N, Kumar V, Singh K, Upadhyay AD et al (2016) Estimation of tau and phosphorylated tau181 in serum of Alzheimer's disease and mild cognitive impairment patients. *PLoS One* 11:e0159099. <https://doi.org/10.1371/journal.pone.0159099>
330. Shen Y, Wang H, Sun Q, Yao H, Keegan AP, Mullan M et al (2018) Increased plasma beta-secretase 1 may predict conversion to Alzheimer's disease dementia in individuals with mild cognitive impairment. *Biol Psychiatry* 83:447–455. <https://doi.org/10.1016/j.biopsych.2017.02.007>
331. Shi M, Zabetian CP, Hancock AM, Ghingina C, Hong Z, Yeartout D et al (2010) Significance and confounders of peripheral DJ-1 and alpha-synuclein in Parkinson's disease. *Neurosci Lett* 480:78–82. <https://doi.org/10.1016/j.neulet.2010.06.009>
332. Sims R, van der Lee SJ, Naj AC, Bellenguez C, Badarinarayan N, Jakobsdottir J et al (2017) Rare coding variants in *PLCG2*, *ABI3*, and *TREM2* implicate microglial-mediated innate immunity in Alzheimer's disease. *Nat Genet* 49:1373–1384. <https://doi.org/10.1038/ng.3916>
333. Singh N, Haldar S, Tripathi AK, Horback K, Wong J, Sharma D et al (2014) Brain iron homeostasis: from molecular mechanisms to clinical significance and therapeutic opportunities. *Antioxid Redox Signal* 20:1324–1363. <https://doi.org/10.1089/ars.2012.4931>
334. Sjögren M, Blomberg M, Jonsson M, Wahlund LO, Edman A, Lind K et al (2001) Neurofilament protein in cerebrospinal fluid: a marker of white matter changes. *J Neurosci Res* 66:510–516. <https://doi.org/10.1002/jnr.1242>
335. Skillbäck T, Farahmand B, Bartlett JW, Rosén C, Mattsson N, Nägga K et al (2014) CSF neurofilament light differs in neurodegenerative diseases and predicts severity and survival. *Neurology* 83:1945–1953. <https://doi.org/10.1212/wnl.0000000000001015>
336. Skillbäck T, Rosén C, Asztely F, Mattsson N, Blennow K, Zetterberg H (2014) Diagnostic performance of cerebrospinal fluid total tau and phosphorylated tau in Creutzfeldt-Jakob disease: results from the Swedish Mortality Registry. *JAMA Neurol* 71:476–483. <https://doi.org/10.1001/jamaneurol.2013.6455>
337. Slachevsky A, Guzmán-Martínez L, Delgado C, Reyes P, Farías GA, Muñoz-Neira C et al (2017) Tau platelets correlate with regional brain atrophy in patients with Alzheimer's disease. *J Alzheimers Dis* 55:1595–1603. <https://doi.org/10.3233/JAD-160652>
338. Slaets S, Le Bastard N, Martin JJ, Slegers K, Van Broeckhoven C, De Deyn PP et al (2013) Cerebrospinal fluid A $\beta$ 1-40 improves differential dementia diagnosis in patients with intermediate p-tau181 levels. *J Alzheimers Dis* 36:759–767. <https://doi.org/10.3233/jad-130107>
339. Slaets S, Vanmechelen E, Le Bastard N, Decraemer H, Vandijck M, Martin JJ et al (2014) Increased CSF  $\alpha$ -synuclein levels in Alzheimer's disease: correlation with tau levels. *Alzheimers Dement* 10:S290–S298. <https://doi.org/10.1016/j.jalz.2013.10.004>
340. Snyder HM, Corriveau RA, Craft S, Faber JE, Greenberg SM, Knopman D et al (2015) Vascular contributions to cognitive impairment and dementia including Alzheimer's disease. *Alzheimers Dement* 11:710–717. <https://doi.org/10.1016/j.jalz.2014.10.008>
341. Soares HD, Gasior M, Toyn JH, Wang JS, Hong Q, Berisha F et al (2016) The  $\gamma$ -secretase modulator, BMS-932481, modulates A $\beta$  peptides in the plasma and cerebrospinal fluid of healthy volunteers. *J Pharmacol Exp Ther* 358:138–150. <https://doi.org/10.1124/jpet.116.232256>
342. Steardo L Jr, Bronzuoli MR, Iacomino A, Esposito G, Steardo L, Scuderi C (2015) Does neuroinflammation turn on the flame in Alzheimer's disease? Focus on astrocytes. *Front Neurosci* 9:259. <https://doi.org/10.3389/fnins.2015.00259>
343. Strozzyk D, Blennow K, White LR, Launer LJ (2003) CSF A $\beta$  42 levels correlate with amyloid-neuropathology in a population-based autopsy study. *Neurology* 60:652–656
344. Suárez-Calvet M, Araque Caballero MÁ, Kleinberger G, Bateman RJ, Fagan AM, Morris JC et al (2016) Early changes in CSF sTREM2 in dominantly inherited Alzheimer's disease occur after amyloid deposition and neuronal injury. *Sci Transl Med* 8:369ra178. <https://doi.org/10.1126/scitranslmed.aag1767>
345. Suárez-Calvet M, Dols-Icardo O, Lladó A, Sánchez-Valle R, Hernández I, Amer G et al (2014) Plasma phosphorylated TDP-43 levels are elevated in patients with frontotemporal dementia carrying a C9orf72 repeat expansion or a GRN mutation. *J Neurol Neurosurg Psychiatry* 85:684–691. <https://doi.org/10.1136/jnnp-2013-305972>
346. Suárez-Calvet M, Kleinberger G, Araque Caballero MÁ, Brendel M, Rominger A, Alcolea D et al (2016) sTREM2 cerebrospinal fluid levels are a potential biomarker for microglia activity in early-stage Alzheimer's disease and associate with neuronal injury markers. *EMBO Mol Med* 8:466–476. <https://doi.org/10.15252/emmm.201506123>
347. Sutphen CL, McCue L, Herries EM, Xiong C, Ladenson JH, Holtzman DM et al (2018) Longitudinal decreases in multiple cerebrospinal fluid biomarkers of neuronal injury in symptomatic late onset Alzheimer's disease. *Alzheimers Dement* 14:869–879. <https://doi.org/10.1016/j.jalz.2018.01.012>
348. Suzuki N, Cheung TT, Cai XD, Odaka A, Otvos L Jr, Eckman C et al (1994) An increased percentage of long amyloid beta



- protein secreted by familial amyloid beta protein precursor (beta APP717) mutants. *Science* 264:1336–1340
349. Suzuki N, Iwatsubo T, Odaka A, Ishibashi Y, Kitada C, Ihara Y (1994) High tissue content of soluble beta 1-40 is linked to cerebral amyloid angiopathy. *Am J Pathol* 145:452–460
  350. Swardfager W, Lanctôt K, Rothenburg L, Wong A, Cappell J, Herrmann N (2010) A meta-analysis of cytokines in Alzheimer's disease. *Biol Psychiatry* 68:930–941. <https://doi.org/10.1016/j.biopsych.2010.06.012>
  351. Sze CI, Bi H, Kleinschmidt-DeMasters BK, Filley CM, Martin LJ (2000) Selective regional loss of exocytotic presynaptic vesicle proteins in Alzheimer's disease brains. *J Neurol Sci* 175:81–90
  352. Tan YJ, Ng ASL, Vipin A, Lim JKW, Chander RJ, Ji F et al (2017) Higher peripheral TREM2 mRNA levels relate to cognitive deficits and hippocampal atrophy in Alzheimer's disease and amnesic mild cognitive impairment. *J Alzheimers Dis* 58:413–423. <https://doi.org/10.3233/JAD-161277>
  353. Tapiola T, Alafuzoff I, Herukka SK, Parkkinen L, Hartikainen P, Soininen H et al (2009) Cerebrospinal fluid  $\beta$ -amyloid 42 and tau proteins as biomarkers of Alzheimer-type pathologic changes in the brain. *Arch Neurol* 66:382–389. <https://doi.org/10.1001/archneurol.2008.596>
  354. Tarawneh R, D'Angelo G, Crimmins D, Herries E, Griest T, Fagan AM et al (2016) Diagnostic and prognostic utility of the synaptic marker neurogranin in Alzheimer disease. *JAMA Neurol* 73:561–571. <https://doi.org/10.1001/jamaneurol.2016.0086>
  355. Tarawneh R, D'Angelo G, Macy E, Xiong C, Carter D, Cairns NJ et al (2011) Visinin-like protein-1: diagnostic and prognostic biomarker in Alzheimer disease. *Ann Neurol* 70:274–285. <https://doi.org/10.1002/ana.22448>
  356. Tarawneh R, Head D, Allison S, Buckles V, Fagan AM, Ladenson JH (2015) Cerebrospinal fluid markers of neurodegeneration and rates of brain atrophy in early Alzheimer disease. *JAMA Neurol* 72:656–665. <https://doi.org/10.1001/jamaneurol.2015.0202>
  357. Tarawneh R, Lee JM, Ladenson JH, Morris JC, Holtzman DM (2012) CSF VILIP-1 predicts rates of cognitive decline in early Alzheimer disease. *Neurology* 78:709–719. <https://doi.org/10.1212/WNL.0b013e318248e568>
  358. Tatebe H, Kasai T, Ohmichi T, Kishi Y, Kakeya T, Waragai M et al (2017) Quantification of plasma phosphorylated tau to use as a biomarker for brain Alzheimer pathology: pilot case-control studies including patients with Alzheimer's disease and down syndrome. *Mol Neurodegener* 12:63. <https://doi.org/10.1186/s13024-017-0206-8>
  359. Terry RD, Masliah E, Salmon DP, Butters N, DeTeresa R, Hill R et al (1991) Physical basis of cognitive alterations in Alzheimer's disease: synapse loss is the major correlate of cognitive impairment. *Ann Neurol* 30:572–580. <https://doi.org/10.1002/ana.410300410>
  360. The Ronald and Nancy Reagan Research Institute of the Alzheimer's Association and the National Institute on Aging Working Group (1998) Consensus report of the working group on: "Molecular and biochemical markers of Alzheimer's disease". *Neurobiol Aging* 19:109–116
  361. Thorsell A, Bjerke M, Gobom J, Brunhage E, Vanmechelen E, Andreasen N et al (2010) Neurogranin in cerebrospinal fluid as a marker of synaptic degeneration in Alzheimer's disease. *Brain Res* 1362:13–22. <https://doi.org/10.1016/j.brainres.2010.09.073>
  362. Timmers M, Barão S, Van Broeck B, Tesseur I, Slemmon J, De Waepenaert K et al (2017) BACE1 dynamics upon inhibition with a BACE inhibitor and correlation to downstream Alzheimer's disease markers in elderly healthy participants. *J Alzheimers Dis* 56:1437–1449. <https://doi.org/10.3233/JAD-160829>
  363. Tirucherai G, Ahljanian M, Crowell J, Kolaitis G, Skudalski S, Medlock M (2016) A single ascending dose study of the tau-directed monoclonal antibody BMS-986168. Abstract presented at the 20th International Congress of Parkinson's Disease and Movement Disorders. Berlin (19–23 June 2016)
  364. Tokuda T, Qureshi MM, Ardah MT, Varghese S, Shehab SA, Kasai T et al (2010) Detection of elevated levels of  $\alpha$ -synuclein oligomers in CSF from patients with Parkinson disease. *Neurology* 75:1766–1772. <https://doi.org/10.1212/WNL.0b013e3181fd613b>
  365. Toledo JB, Arnold SE, Raible K, Brettschneider J, Xie SX, Grossman M et al (2013) Contribution of cerebrovascular disease in autopsy confirmed neurodegenerative disease cases in the National Alzheimer's Coordinating Centre. *Brain* 136:2697–2706. <https://doi.org/10.1093/brain/awt188>
  366. Toledo JB, Korff A, Shaw LM, Trojanowski JQ, Zhang J (2013) CSF alpha-synuclein improves diagnostic and prognostic performance of CSF tau and Abeta in Alzheimer's disease. *Acta Neuropathol* 126:683–697. <https://doi.org/10.1007/s00401-013-1148-z>
  367. Toledo JB, Xie SX, Trojanowski JQ, Shaw LM (2013) Longitudinal change in CSF tau and A $\beta$  biomarkers for up to 48 months in ADNI. *Acta Neuropathol* 126:659–670. <https://doi.org/10.1007/s00401-013-1151-4>
  368. Toombs J, Paterson RW, Lunn MP, Nicholas JM, Fox NC, Chapman MD et al (2013) Identification of an important potential confound in CSF AD studies: aliquot volume. *Clin Chem Lab Med* 51:2311–2317. <https://doi.org/10.1515/cclm-2013-0293>
  369. Tu S, Okamoto S, Lipton SA, Xu H (2014) Oligomeric A $\beta$ -induced synaptic dysfunction in Alzheimer's disease. *Mol Neurodegener* 9:48. <https://doi.org/10.1186/1750-1326-9-48>
  370. Tyson T, Steiner JA, Brundin P (2016) Sorting out release, uptake and processing of alpha-synuclein during prion-like spread of pathology. *J Neurochem* 139(Suppl 1):275–289. <https://doi.org/10.1111/jnc.13449>
  371. Tzen KY, Yang SY, Chen TF, Cheng TW, Horng HE, Wen HP et al (2014) Plasma A $\beta$  but not tau is related to brain PiB retention in early Alzheimer's disease. *ACS Chem Neurosci* 5:830–836. <https://doi.org/10.1021/cn500101j>
  372. van Bergen JM, Li X, Hua J, Schreiner SJ, Steininger SC, Quevenec FC et al (2016) Colocalization of cerebral iron with amyloid beta in mild cognitive impairment. *Sci Rep* 6:35514. <https://doi.org/10.1038/srep35514>
  373. van Oijen M, Hofman A, Soares HD, Koudstaal PJ, Breteler MM (2006) Plasma A $\beta$ (1-40) and A $\beta$ (1-42) and the risk of dementia: a prospective case-cohort study. *Lancet Neurol* 5:655–660. [https://doi.org/10.1016/S1474-4422\(06\)70501-4](https://doi.org/10.1016/S1474-4422(06)70501-4)
  374. van Rossum IA, Vos S, Handels R, Visser PJ (2010) Biomarkers as predictors for conversion from mild cognitive impairment to Alzheimer-type dementia: implications for trial design. *J Alzheimers Dis* 20:881–891. <https://doi.org/10.3233/JAD-2010-091606>
  375. Vanderstichele H, Bibl M, Engelborghs S, Le Bastard N, Lewczuk P, Molinuevo JL et al (2012) Standardization of preanalytical aspects of cerebrospinal fluid biomarker testing for Alzheimer's disease diagnosis: a consensus paper from the Alzheimer's Biomarkers Standardization Initiative. *Alzheimers Dement* 8:65–73. <https://doi.org/10.1016/j.jalz.2011.07.004>
  376. Vassar R, Kuhn PH, Haass C, Kennedy ME, Rajendran L, Wong PC et al (2014) Function, therapeutic potential and cell biology of BACE proteases: current status and future prospects. *J Neurochem* 130:4–28. <https://doi.org/10.1111/jnc.12715>
  377. Verberk IMW, Slot RE, Verfaillie SCJ, Heijst H, Prins ND, van Berckel BNM et al (2018) Plasma amyloid as prescreener for the earliest Alzheimer pathological changes. *Ann Neurol*. <https://doi.org/10.1002/ana.25334>
  378. Vickers JC, Riederer BM, Marugg RA, Buee-Scherrer V, Buee L, Delacourte A et al (1994) Alterations in neurofilament protein immunoreactivity in human hippocampal neurons

- related to normal aging and Alzheimer's disease. *Neuroscience* 62:1–13
379. Villemagne VL, Burnham S, Bourgeat P, Brown B, Ellis KA, Salvado O et al (2013) Amyloid  $\beta$  deposition, neurodegeneration, and cognitive decline in sporadic Alzheimer's disease: a prospective cohort study. *Lancet Neurol* 12:357–367. [https://doi.org/10.1016/S1474-4422\(13\)70044-9](https://doi.org/10.1016/S1474-4422(13)70044-9)
380. Vivacqua G, Latorre A, Suppa A, Nardi M, Pietracupa S, Mancinelli R et al (2016) Abnormal salivary total and oligomeric alpha-synuclein in Parkinson's disease. *PLoS One* 11:e0151156. <https://doi.org/10.1371/journal.pone.0151156>
381. Wang MJ, Yi S, Han JY, Park SY, Jang JW, Chun IK et al (2017) Oligomeric forms of amyloid- $\beta$  protein in plasma as a potential blood-based biomarker for Alzheimer's disease. *Alzheimers Res Ther* 9:98. <https://doi.org/10.1186/s13195-017-0324-0>
382. Wang Y, Shi M, Chung KA, Zabetian CP, Leverenz JB, Berg D et al (2012) Phosphorylated  $\alpha$ -synuclein in Parkinson's disease. *Sci Transl Med* 4:121ra120. <https://doi.org/10.1126/scitranslmed.3002566>
383. Waragai M, Yoshida M, Mizoi M, Saiki R, Kashiwagi K, Takagi K et al (2012) Increased protein-conjugated acrolein and amyloid- $\beta$ 40/42 ratio in plasma of patients with mild cognitive impairment and Alzheimer's disease. *J Alzheimers Dis* 32:33–41. <https://doi.org/10.3233/JAD-2012-120253>
384. Wennström M, Surova Y, Hall S, Nilsson C, Minthon L, Hansson O et al (2015) The inflammatory marker YKL-40 is elevated in cerebrospinal fluid from patients with Alzheimer's but not Parkinson's disease or dementia with Lewy bodies. *PLoS One* 10:e0135458. <https://doi.org/10.1371/journal.pone.0135458>
385. Weston PSJ, Poole T, Ryan NS, Nair A, Liang Y, Macpherson K et al (2017) Serum neurofilament light in familial Alzheimer disease: a marker of early neurodegeneration. *Neurology* 89(21):2167–2175
386. Willemse E, van Uffelen K, Brix B, Engelborghs S, Vanderstichele H, Teunissen C (2017) How to handle adsorption of cerebrospinal fluid amyloid  $\beta$  (1-42) in laboratory practice? Identifying problematic handlings and resolving the issue by use of the A $\beta$ 42/A $\beta$ 40 ratio. *Alzheimers Dement* 13:885–892. <https://doi.org/10.1016/j.jalz.2017.01.010>
387. Williams SM, Schulz P, Rosenberry TL, Caselli RJ, Sierks MR (2017) Blood-based oligomeric and other protein variant biomarkers to facilitate pre-symptomatic diagnosis and staging of Alzheimer's disease. *J Alzheimers Dis* 58:23–35. <https://doi.org/10.3233/jad-161116>
388. Wiltfang J, Esselmann H, Bibl M, Hüll M, Hampel H, Kessler H et al (2007) Amyloid  $\beta$  peptide ratio 42/40 but not A $\beta$ 42 correlates with phospho-tau in patients with low- and high-CSF A $\beta$ 40 load. *J Neurochem* 101:1053–1059. <https://doi.org/10.1111/j.1471-4159.2006.04404.x>
389. Winston CN, Goetzl EJ, Akers JC, Carter BS, Rockenstein EM, Galasko D et al (2016) Prediction of conversion from mild cognitive impairment to dementia with neuronally derived blood exosome protein profile. *Alzheimers Dement (Amst)* 3:63–72. <https://doi.org/10.1016/j.dadm.2016.04.001>
390. Wiseman FK, Al-Janabi T, Hardy J, Karmiloff-Smith A, Nizetic D, Tybulewicz VL et al (2015) A genetic cause of Alzheimer disease: mechanistic insights from Down syndrome. *Nat Rev Neurosci* 16:564–574. <https://doi.org/10.1038/nrn3983>
391. World Health Organization (2017) Dementia factsheet. <http://www.who.int/mediacentre/factsheets/fs362/en/>. Accessed August 2017
392. Wu G, Sankaranarayanan S, Tugusheva K, Kahana J, Seabrook G, Shi XP et al (2008) Decrease in age-adjusted cerebrospinal fluid  $\beta$ -secretase activity in Alzheimer's subjects. *Clin Biochem* 41:986–996. <https://doi.org/10.1016/j.clinbiochem.2008.04.022>
393. Wu G, Sankaranarayanan S, Wong J, Tugusheva K, Michener MS, Shi X et al (2012) Characterization of plasma  $\beta$ -secretase (BACE1) activity and soluble amyloid precursor proteins as potential biomarkers for Alzheimer's disease. *J Neurosci Res* 90:2247–2258. <https://doi.org/10.1002/jnr.23122>
394. Yan R (2017) Physiological functions of the  $\beta$ -site amyloid precursor protein cleaving enzyme 1 and 2. *Front Mol Neurosci* 10:97. <https://doi.org/10.3389/fnmol.2017.00097>
395. Yang CC, Chiu MJ, Chen TF, Chang HL, Liu BH, Yang SY (2018) Assay of plasma phosphorylated tau protein (threonine 181) and total tau protein in early-stage Alzheimer's disease. *J Alzheimers Dis* 61:1323–1332. <https://doi.org/10.3233/JAD-170810>
396. Yang T, O'Malley TT, Kanmert D, Jerecic J, Zieske LR, Zetterberg H et al (2015) A highly sensitive novel immunoassay specifically detects low levels of soluble Abeta oligomers in human cerebrospinal fluid. *Alzheimers Res Ther* 7:14. <https://doi.org/10.1186/s13195-015-0100-y>
397. Yoshiyama Y, Higuchi M, Zhang B, Huang SM, Iwata N, Saido TC et al (2007) Synapse loss and microglial activation precede tangles in a P301S tauopathy mouse model. *Neuron* 53:337–351. <https://doi.org/10.1016/j.neuron.2007.01.010>
398. Yuan A, Rao MV, Veeranna Nixon RA (2012) Neurofilaments at a glance. *J Cell Sci* 125:3257–3263. <https://doi.org/10.1242/jcs.104729>
399. Yuan A, Rao MV, Veeranna Nixon RA (2017) Neurofilaments and neurofilament proteins in health and disease. *Cold Spring Harb Perspect Biol* 9:a018309. <https://doi.org/10.1101/cshperspect.a018309>
400. Yuan P, Condello C, Keene CD, Wang Y, Bird TD, Paul SM et al (2016) TREM2 haploinsufficiency in mice and humans impairs the microglia barrier function leading to decreased amyloid compaction and severe axonal dystrophy. *Neuron* 92:252–264. <https://doi.org/10.1016/j.neuron.2016.09.016>
401. Zetterberg H, Andreasson U, Hansson O, Wu G, Sankaranarayanan S, Andersson ME et al (2008) Elevated cerebrospinal fluid BACE1 activity in incipient Alzheimer disease. *Arch Neurol* 65:1102–1107. <https://doi.org/10.1001/archneur.65.8.1102>
402. Zetterberg H, Pedersen M, Lind K, Svensson M, Rolstad S, Eckerström C et al (2007) Intra-individual stability of CSF biomarkers for Alzheimer's disease over two years. *J Alzheimers Dis* 12:255–260
403. Zetterberg H, Skillbäck T, Mattsson N, Trojanowski JQ, Portelius E, Shaw LM et al (2016) Association of cerebrospinal fluid neurofilament light concentration with Alzheimer disease progression. *JAMA Neurol* 73:60–67. <https://doi.org/10.1001/jamaneneurol.2015.3037>
404. Zetterberg H, Wilson D, Andreasson U, Minthon L, Blennow K, Randall J et al (2013) Plasma tau levels in Alzheimer's disease. *Alzheimers Res Ther* 5:9. <https://doi.org/10.1186/alzrt163>
405. Zhang B, Carroll J, Trojanowski JQ, Yao Y, Iba M, Potuzak JS et al (2012) The microtubule-stabilizing agent, epothilone D, reduces axonal dysfunction, neurotoxicity, cognitive deficits, and Alzheimer-like pathology in an interventional study with aged tau transgenic mice. *J Neurosci* 32:3601–3611. <https://doi.org/10.1523/jneurosci.4922-11.2012>
406. Zhang QS, Heng Y, Yuan YH, Chen NH (2017) Pathological  $\alpha$ -synuclein exacerbates the progression of Parkinson's disease through microglial activation. *Toxicol Lett* 265:30–37. <https://doi.org/10.1016/j.toxlet.2016.11.002>
407. Zhong Z, Ewers M, Teipel S, Bürger K, Wallin A, Blennow K et al (2007) Levels of  $\beta$ -secretase (BACE1) in cerebrospinal fluid as a predictor of risk in mild cognitive impairment. *Arch Gen Psychiatry* 64:718–726. <https://doi.org/10.1001/archpsyc.64.6.718>
408. Zhou W, Zhang J, Ye F, Xu G, Su H, Su Y et al (2017) Plasma neurofilament light chain levels in Alzheimer's disease. *Neurosci Lett* 650:60–64. <https://doi.org/10.1016/j.neulet.2017.04.027>

## Affiliations

José Luis Molinuevo<sup>1,2</sup> · Scott Ayton<sup>3</sup> · Richard Batrla<sup>4</sup> · Martin M. Bednar<sup>5</sup> · Tobias Bittner<sup>6</sup> · Jeffrey Cummings<sup>7</sup> · Anne M. Fagan<sup>8</sup> · Harald Hampel<sup>9,10,11,12</sup> · Michelle M. Mielke<sup>13</sup> · Alvydas Mikulskis<sup>14</sup> · Sid O'Bryant<sup>15</sup> · Philip Scheltens<sup>16</sup> · Jeffrey Sevigny<sup>17</sup> · Leslie M. Shaw<sup>18</sup> · Holly D. Soares<sup>19</sup> · Gary Tong<sup>20</sup> · John Q. Trojanowski<sup>21</sup> · Henrik Zetterberg<sup>22,23,24,25</sup> · Kaj Blennow<sup>22,23</sup>

<sup>1</sup> BarcelonaBeta Brain Research Center, Fundació Pasqual Maragall, Universitat Pompeu Fabra, Barcelona, Spain

<sup>2</sup> Unidad de Alzheimer y otros trastornos cognitivos, Hospital Clinic-IDIBAPS, Barcelona, Spain

<sup>3</sup> Melbourne Dementia Research Centre, Florey Institute of Neuroscience and Mental Health, University of Melbourne, Parkville, VIC, Australia

<sup>4</sup> Roche Centralised and Point of Care Solutions, Roche Diagnostics International, Rotkreuz, Switzerland

<sup>5</sup> Neuroscience Therapeutic Area Unit, Takeda Development Centre Americas Ltd, Cambridge, MA, USA

<sup>6</sup> Genentech, A Member of the Roche Group, Basel, Switzerland

<sup>7</sup> Cleveland Clinic Lou Ruvo Center for Brain Health, Las Vegas, NV, USA

<sup>8</sup> Department of Neurology, Washington University in St. Louis, St. Louis, MO, USA

<sup>9</sup> AXA Research Fund and Sorbonne University Chair, Paris, France

<sup>10</sup> Sorbonne University, GRC No 21, Alzheimer Precision Medicine (APM), AP-HP, Pitié-Salpêtrière Hospital, Paris, France

<sup>11</sup> Brain and Spine Institute (ICM), INSERM U 1127, CNRS UMR 7225, Paris, France

<sup>12</sup> Department of Neurology, Institute of Memory and Alzheimer's Disease (IM2A), Pitié-Salpêtrière Hospital, AP-HP, Paris, France

<sup>13</sup> Departments of Epidemiology and Neurology, Mayo Clinic, Rochester, MN, USA

<sup>14</sup> Biomarkers, Biogen, Cambridge, MA, USA

<sup>15</sup> Department of Pharmacology and Neuroscience; Institute for Healthy Aging, University of North Texas Health Science Center, Fort Worth, TX, USA

<sup>16</sup> Department of Neurology and Alzheimer Center, VU University Medical Center, Amsterdam, The Netherlands

<sup>17</sup> Roche Innovation Center Basel, F. Hoffmann-La Roche, Basel, Switzerland

<sup>18</sup> Department of Pathology and Laboratory Medicine, and Center for Neurodegenerative Disease Research, University of Pennsylvania, Philadelphia, PA, USA

<sup>19</sup> Clinical Development Neurology, AbbVie, North Chicago, IL, USA

<sup>20</sup> Lundbeck, Deerfield, IL, USA

<sup>21</sup> Department of Pathology and Laboratory Medicine, Center for Neurodegenerative Disease Research, Perelman School of Medicine at the University of Pennsylvania, Philadelphia, PA, USA

<sup>22</sup> Department of Psychiatry and Neurochemistry, The Sahlgrenska Academy at the University of Gothenburg, Mölndal, Sweden

<sup>23</sup> Clinical Neurochemistry Laboratory, Institute of Neuroscience and Physiology, The Sahlgrenska Academy at University of Gothenburg, Mölndal Campus, Sahlgrenska University Hospital, 431 80 Mölndal, Sweden

<sup>24</sup> Department of Molecular Neuroscience, UCL Institute of Neurology, Queen Square, London, UK

<sup>25</sup> UK Dementia Research Institute at UCL, London, UK