



**HAL**  
open science

# How Well Are Clouds Simulated over Greenland in Climate Models? Consequences for the Surface Cloud Radiative Effect over the Ice Sheet

A. Lacour, H. Chepfer, N. B Miller, M. D Shupe, V. Noel, X. Fettweis, H. Gallee, J. E Kay, R. Guzman, J. Cole

► **To cite this version:**

A. Lacour, H. Chepfer, N. B Miller, M. D Shupe, V. Noel, et al.. How Well Are Clouds Simulated over Greenland in Climate Models? Consequences for the Surface Cloud Radiative Effect over the Ice Sheet. *Journal of Climate*, 2018, 31 (22), pp.9293-9312. 10.1175/JCLI-D-18-0023.1 . hal-01993084

**HAL Id: hal-01993084**

<https://hal.sorbonne-universite.fr/hal-01993084v1>

Submitted on 24 Jan 2019

**HAL** is a multi-disciplinary open access archive for the deposit and dissemination of scientific research documents, whether they are published or not. The documents may come from teaching and research institutions in France or abroad, or from public or private research centers.

L'archive ouverte pluridisciplinaire **HAL**, est destinée au dépôt et à la diffusion de documents scientifiques de niveau recherche, publiés ou non, émanant des établissements d'enseignement et de recherche français ou étrangers, des laboratoires publics ou privés.

# How Well Are Clouds Simulated over Greenland in Climate Models? Consequences for the Surface Cloud Radiative Effect over the Ice Sheet<sup>①</sup>

A. LACOUR,<sup>a</sup> H. CHEPFER,<sup>a</sup> N. B. MILLER,<sup>b,c</sup> M. D. SHUPE,<sup>b,c</sup> V. NOEL,<sup>d</sup> X. FETTWEIS,<sup>e</sup>  
H. GALLEE,<sup>f</sup> J. E. KAY,<sup>b</sup> R. GUZMAN,<sup>g</sup> AND J. COLE<sup>h</sup>

<sup>a</sup> Sorbonne Université, Université Pierre et Marie Curie, Laboratoire de Météorologie Dynamique, Institut Pierre Simon Laplace Ecole Polytechnique, Palaiseau, France

<sup>b</sup> Cooperative Institute for Research in Environmental Sciences, University of Colorado Boulder, Boulder, Colorado

<sup>c</sup> NOAA/Earth System Research Laboratory, Boulder, Colorado

<sup>d</sup> CNRS/INSU, Laboratoire d'Aérodynamique, Toulouse, France

<sup>e</sup> Department of Geography, University of Liege, Liege, Belgium

<sup>f</sup> Laboratoire de Glaciologie et Geophysique de l'Environnement, Grenoble, France

<sup>g</sup> CNRS, Laboratoire de Météorologie Dynamique, Institut Pierre Simon Laplace Ecole Polytechnique, Palaiseau, France

<sup>h</sup> Canadian Centre for Climate Modelling and Analysis, Environment and Climate Change Canada, Victoria, British Columbia, Canada

## ABSTRACT

Using lidar and radiative flux observations from space and ground, and a lidar simulator, we evaluate clouds simulated by climate models over the Greenland ice sheet, including predicted cloud cover, cloud fraction profile, cloud opacity, and surface cloud radiative effects. The representation of clouds over Greenland is a central concern for the models because clouds impact ice sheet surface melt. We find that over Greenland, most of the models have insufficient cloud cover during summer. In addition, all models create too few nonopaque, liquid-containing clouds optically thin enough to let direct solar radiation reach the surface (−1% to −3.5% at the ground level). Some models create too few opaque clouds. In most climate models, the cloud properties biases identified over all Greenland also apply at Summit, Greenland, proving the value of the ground observatory in model evaluation. At Summit, climate models underestimate cloud radiative effect (CRE) at the surface, especially in summer. The primary driver of the summer CRE biases compared to observations is the underestimation of the cloud cover in summer (−46% to −21%), which leads to an underestimated longwave radiative warming effect ( $CRE_{LW} = -35.7$  to  $-13.6 \text{ W m}^{-2}$  compared to the ground observations) and an underestimated shortwave cooling effect ( $CRE_{SW} = +1.5$  to  $+10.5 \text{ W m}^{-2}$  compared to the ground observations). Overall, the simulated clouds do not radiatively warm the surface as much as observed.

## 1. Introduction

Currently, the Greenland ice sheet is losing mass because summer melt exceeds annual accumulation (Rignot and Kanagaratnam 2006; Tedesco 2011, 2013; Hanna et al. 2008; Krabill et al. 2004; Mernild et al. 2011; Vaughan et al. 2013). Greenland mass loss has global sea

level rise implications. Predicting future changes in Greenland ice sheet mass balance requires understanding regional atmospheric and oceanic processes, including their interactions with the ice sheet and how these interactions change with climate change.

Clouds affect the cryospheric mass budget of the Greenland ice sheet through their radiative effects and also through their impacts on precipitation (e.g., Shupe et al. 2013; Miller et al. 2015; Van Tricht et al. 2016). Yet, determining the magnitude and sign of the cloud radiative effect over Greenland is challenging as cloud radiative effects depend on cloud cover, cloud opacity and phase, cloud altitude, solar zenith angle, and surface albedo. At Summit, Greenland (3212 m above mean sea

---

① Supplemental information related to this paper is available at the Journals Online website: <https://doi.org/10.1175/JCLI-D-18-0023.s1>.

---

Corresponding author: Adrien Lacour, [adrien.lacour@lmd.polytechnique.fr](mailto:adrien.lacour@lmd.polytechnique.fr)

level), in situ measurements show that clouds radiatively warm the surface in all months of the year (Miller et al. 2015). During winter, when shortwave cloud cooling is negligible, clouds warm the surface through their emission of longwave radiation. But even during summer, cloud warming through emission of longwave radiation exceeds shortwave cloud cooling (Cawkwell and Bamber 2002; Miller et al. 2015). During summer, the presence of opaque clouds prevents direct solar radiation from reaching the surface. Indeed, the high surface albedo of the ice sheet minimizes the shortwave cloud radiative cooling effect. These opaque clouds also absorb and re-emit longwave radiation coming from the surface and the lower-tropospheric layers (Guzman et al. 2017).

In the Arctic, low-level liquid-containing clouds play a particularly important role in heating the surface and cooling the atmosphere (e.g., Shupe and Intrieri 2004). Liquid-containing clouds are common in the Arctic, occurring 30%–80% of the time, depending on location and season (Cesana et al. 2012; Cesana and Chepfer 2013; Kay et al. 2016; Morrison et al. 2012; Shupe 2011). Liquid-containing clouds occur frequently over Greenland with important impacts on radiation and surface energy budgets (e.g., Lacour et al. 2017; Shupe et al. 2013). Of particular importance, clouds can trigger surface melt over a large portion of the Greenland ice sheet (Bennartz et al. 2013; Solomon et al. 2017). Greenland surface melting increases nonlinearly with increasing temperatures because of positive feedbacks between cloud microphysics, surface melting, and surface albedo (Fettweis et al. 2013) and modulates the ice sheet mass balance (Van Tricht et al. 2016; Hofer et al. 2017).

To assess the influence of clouds on Greenland surface melt, it is crucial to document cloud cover, opacity, and vertical distribution as well as surface conditions, such as the surface temperature and surface albedo. Often reanalysis datasets such as the European Centre for Medium-Range Weather Forecasts (ECMWF) interim reanalysis (ERA-Interim, hereafter ERAI; Dee et al. 2011) and the NCEP–NCAR reanalysis (Kalnay et al. 1996) are used to map surface and atmospheric properties over Greenland and assess clouds and precipitation. Reanalysis data are produced through a sequential data assimilation scheme using observations of atmospheric thermodynamic variables (temperature, pressure, humidity) combined with information from a forecast model used to estimate the atmospheric state at each time step. In this context, it is important to realize that clouds and precipitation in reanalyses are modeled quantities and are poorly represented over Greenland (e.g., Griggs and Bamber 2008). In other words, reanalysis datasets do not provide reliable cloud and precipitation observations.

Direct observations with high spatial and temporal resolution are needed to understand cloud and precipitation processes. Thanks to enhanced observational networks put in place over the last decade, we have both in situ ground observations and satellite observations of Greenland clouds and precipitation. From the ground, the Integrated Characterization of Energy, Clouds, Atmospheric State, and Precipitation at Summit (ICE-CAPS; Shupe et al. 2013) project has collected cloud profiles, radiative fluxes, and precipitation at Summit since 2010. From space, the lidar CALIOP and radar *CloudSat* (Winker et al. 2003; Stephens et al. 2002) provide vertically resolved (30 and 500 m) and horizontally resolved (330 m and 1.7 km) cloud and precipitation properties over nearly the entire Greenland ice sheet since 2006. These active spaceborne sensors document the cloud properties and altitude with high confidence over cold and white surfaces (e.g., Van Tricht et al. 2016; Lacour et al. 2017; Morrison et al. 2018; Kay et al. 2016). Of utility to constraining cloud opacity and thus cloud impacts on radiation, lidar observations also distinguish between optically thin clouds with a visible cloud optical depth less than  $\approx 5$  and opaque clouds with optical depth greater than  $\approx 5$  (Guzman et al. 2017; Chepfer et al. 2013).

As climate models add interactive ice sheet components, the representation of cloud and precipitation processes over Greenland is becoming more critically important. Thus, here, we combine in situ and satellite observations available over the last decade to assess Greenland clouds and their radiative effects as simulated by current-generation climate models. Because the values for observed clouds depend on the instruments' properties and on the cloud detection algorithm (Stubenrauch et al. 2013), we use the well-known satellite simulator package the Cloud Feedback Model Intercomparison Project (CFMIP) Observation Simulator Package (COSP; Bodas-Salcedo et al. 2011). The simulators contained within COSP mimic the satellite observation scale and definition and thus enable a direct comparison of the modeled and observed clouds.

In this paper, we first assess cloud cover, cloud opacity, and cloud vertical distribution using the satellite records that provide data over almost the entire Greenland ice sheet (section 3a). Next, we evaluate the surface cloud radiative effects at Summit station (section 3c). Summit is unique because it is the only place where we have sufficient observations to make a robust assessment of cloud radiative effects over Greenland. As a result, it is important to assess both 1) if we can make robust links between cloud properties measured from space and cloud radiative effects at Summit and 2) if Summit is representative of the entire ice sheet for cloud biases

TABLE 1. Cloud classification based on the lidar SR and ground-echo detection (Chepfer et al. 2008; Guzman et al. 2017).

Category	Fulfilled condition
Clear sky	$0.06 < SR < 1.2$
Nonopaque cloud	$5 < SR < 80$
Opaque cloud	No ground detection or $SR < 0.01$ (COSP)

(section 3b). Finally, we discuss (section 4) the joint constraint on Greenland cloud radiative effect provided by in situ measurements at Summit and spaceborne observations from *CALIPSO*. In the end, we provide guidance on the reliability of the current observational network to assess cloud radiative effects over the entire ice sheet.

## 2. Data and methods

### a. Satellite observations

This study relies primarily on cloud observations from the lidar on the *CALIPSO* satellite. Specifically, we use the GCM-Oriented *CALIPSO* Cloud Product, version 3.0 (*CALIPSO*-GOCCP), an observational product that has been designed for climate studies and evaluation of climate models. More specifically, we use *CALIPSO*-GOCCP cloud cover maps, cloud fraction profiles (Chepfer et al. 2010), cloud phase mask (Cesana and Chepfer 2013), and cloud opacity mask (Guzman et al. 2017).

In addition to the standard variables available in *CALIPSO*-GOCCP, we built two new gridded variables specifically for the current study: the opaque cloud fraction profile and the nonopaque cloud fraction profiles. We started from the orbit files containing the instantaneous *CALIPSO* scattering ratio [SR (*CALIPSO*-SR; Chepfer et al. 2010)] profiles along the satellite orbits at a 480-m vertical resolution with a horizontal resolution of 330 m along track and 90 m cross track. Each SR profile contains the ratio between the attenuated backscatter (ATB) profile measured by the lidar and the  $ATB_{mol}$  that would be measured by the lidar if there were only gas molecules and no particles (clouds, aerosols) in the atmosphere. For each SR profile, we use different SR thresholds to label each atmospheric layer as “nonopaque cloud,” “opaque cloud,” or “clear” (Table 1). Then, an “opaque cloud fraction” (“nonopaque cloud fraction,” “clear fraction,” respectively) is computed for each vertical level in each  $2^\circ \times 2^\circ$  latitude–longitude grid box as the ratio of the number of “opaque cloud” layers encountered within this grid box over the total number of layers,

$$\text{Fraction}_{\text{cat}}(z) = \frac{\sum \text{layers, cat}(z)}{\sum \text{all layers}(z)}. \quad (1)$$

In doing this, we obtain the opaque cloud fraction profile, the nonopaque cloud fraction profile, and the clear fraction profile for each  $2^\circ \times 2^\circ$  grid box. For some profiles, the lidar laser beam is fully attenuated before reaching the ground. The portion of the atmosphere located between the surface and the altitude  $z_{\text{opaque}}$ , which corresponds to the lidar full attenuation, corresponds to the layers where no information could be retrieved by the lidar. For simplicity, following the approach by Guzman et al. (2017), we consider these layers to be in the “opaque” category because no direct solar radiation can reach these layers. Indeed, the direct solar radiation does not pass through the opaque clouds, so only diffuse shortwave radiation can reach the surface.

For the current study, we applied some specific processing to the *CALIPSO*-GOCCP dataset. In each  $2^\circ \times 2^\circ$  grid box, we adjusted the vertical profiles as a function of altitude above ground level (AGL) instead of above mean sea level, using the digital elevation model TerrainBase (National Geophysical Data Center 1995). TerrainBase does not exactly reproduce the complex Greenland topography (Arabelos et al. 2000) but since the *CALIPSO*-GOCCP data resolution is coarse ( $2^\circ \times 2^\circ \times 480$  m) the elevation error would need to be very large to affect our results (see online supplemental material Fig. S3).

Our analysis uses eight years of *CALIPSO*-GOCCP data from January 2008 to December 2015. Observations before 2008 were discarded because of the different pointing angle of the *CALIPSO* lidar at the time (Noel and Chepfer 2010), which affects cloud retrievals. The data covers all of Greenland except the area north of  $82^\circ\text{N}$  that is not sampled by the satellite. To characterize clouds near the Summit ground station in the middle of Greenland, we extract the  $2^\circ \times 2^\circ$  cells with surface elevation above 3000 m above mean sea level. This area covers roughly 100 000 km<sup>2</sup>. The *CALIPSO*-GOCCP observations above this area have been compared with the local ground observations at Summit in Lacour et al. (2017).

Lidar attenuation can prevent cloud detection. In *CALIPSO*-GOCCP, the cover of opaque clouds (no surface echo detected) is equivalent to the percentage of profiles that are fully attenuated at the surface. Based on the surface echo detection, we found that only 5% of the space lidar profiles are fully attenuated over Summit throughout the year except in July and August (see supplemental material Fig. S1). In July and August, up to 50% of the profiles are fully attenuated, probably

because of optically thick liquid-containing clouds frequent at Summit during that period (Miller et al. 2015). This attenuation occurs below 2 km AGL on average and is coincident with the presence of liquid-containing clouds (see supplemental material Fig. S2).

### b. In situ observations of CREs at Summit

We use observations of radiative fluxes and clouds from a comprehensive site at Summit. The total surface cloud radiative effect ( $CRE_{\text{tot}}$ ) is defined as the difference between the surface net flux in all sky conditions and the surface net flux in cloud-free (clear) conditions in the longwave and shortwave domains,

$$CRE_{\text{tot}}^{\text{surf}} = (F_{\text{all sky}}^{\text{net surf}} - F_{\text{clear sky}}^{\text{net surf}})_{\text{LW}} + (F_{\text{all sky}}^{\text{net surf}} - F_{\text{clear sky}}^{\text{net surf}})_{\text{SW}}, \quad (2)$$

and with the net fluxes defined as the difference between the downward and upward fluxes,

$$F_{\text{LW/SW, all sky}}^{\text{net surf}} = F_{\text{LW/SW, all sky}}^{\downarrow \text{surf}} - F_{\text{LW/SW, all sky}}^{\uparrow \text{surf}}. \quad (3)$$

At the surface, the longwave and shortwave radiative fluxes are retrieved from the ground-based observations at Summit at 30-min temporal resolution (Miller et al. 2015, 2017) between January 2011 and October 2013. Both downward and upward fluxes are collected by instruments maintained by the Swiss Federal Institute of Technology [Eidgenössische Technische Hochschule (ETH); Zurich]. The downward and upward longwave fluxes come from two Kipp and Zonen CG4 pyrgeometers, sensitive to the spectral range 4.5–40  $\mu\text{m}$ . The downward and upward shortwave fluxes come from two Kipp and Zonen CM22 pyranometers, sensitive to the spectral range 200–3600 nm. The uncertainties are  $\pm 5 \text{ W m}^{-2}$  for the longwave and shortwave fluxes (Miller et al. 2015). Clear sky fluxes are estimated using a radiative transfer model (Rapid Radiative Transfer Model; Clough et al. 2005) constrained by observations of surface temperature, surface albedo, and profiles of temperature, humidity, and ozone. The temperature and humidity profiles come from twice daily radiosonde measurements and the ozone profiles from weekly ozonesondes measurements.

From space, we examined two surface radiative flux products: CERES EBAF-surface (Kato et al. 2013) based on the CERES instrument on board MODIS and level 2B fluxes and heating rates with lidar (2B-FLXHR-lidar; Henderson et al. 2013) based on *CloudSat* and *CALIPSO* observations. However, we found significant disagreements between these datasets over Greenland. The CERES EBAF-surface product shows a negative

bias of the surface shortwave cloud radiative effect ( $CRE_{\text{SW}}$ ) relative to models all year long and the 2B-FLXHR-lidar product shows a positive bias relative to models of the surface  $CRE_{\text{SW}}$  (not shown). We concluded these products cannot currently be used to evaluate biases in models at this location. Another study would be necessary to properly understand the differences between those two datasets, which is outside the scope of this paper.

### c. Model evaluation method

The definition of a cloud differs between climate models and satellite observations and between satellite instruments (e.g., Stubenrauch et al. 2013) and between climate models. To use a consistent definition of cloud to allow a more consistent comparison between clouds simulated by climate models and observed by satellite, CFMIP has developed COSP (Bodas-Salcedo et al. 2011), which is composed of satellite simulators that mimic clouds as they would have been observed by different satellites, if they observed the atmosphere predicted by a climate model. Within COSP is a *CALIPSO* simulator (Chepfer et al. 2008; Chiriaco et al. 2006) that mimics the unique information on the cloud vertical distribution observations at a resolution of 480 m that is provided by *CALIPSO*-GOCCP. The current paper uses the following standard gridded COSP, version 1.4 (v1.4), outputs: the cloud cover, the cloud fraction profiles, and the height-intensity histograms (Chepfer et al. 2008, 2010). COSP outputs from the GCMs have been compared against observations in various regions of the globe to evaluate clouds simulated by climate models. The models present common documented biases. They tend to create too many highly reflective clouds in the tropics (Nam et al. 2012; Klein et al. 2013) but not enough in the Southern Ocean (Bodas-Salcedo et al. 2014). They also have difficulties correctly representing the cloud vertical distribution (Cesana and Chepfer 2012) and the cloud thermodynamic phase (Cesana and Chepfer 2013). Between  $-40^\circ$  and  $0^\circ\text{C}$ , the models struggle to simulate coexisting liquid and ice clouds, resulting in insufficient liquid cloud cover in the Arctic (Cesana et al. 2012; Kay et al. 2016). While many regions have been studied with the help of satellite simulators and observations, clouds over Greenland have not been studied yet. To do this comparison, we use COSP outputs from the models participating in the CFMIP, phase 2 (CFMIP-2), which was part of phase 5 of the Coupled Model Intercomparison Project (CMIP5; Taylor et al. 2012). Our study is limited to the eight models that provided COSP/lidar outputs (Table 2). The eight models provided the cloud cover and the cloud fraction profiles through the COSP/lidar

TABLE 2. CMIP5 models included in the study.

Model name	Reference	Available model outputs			Temporal resolution	Spatial resolution
		Surface all sky and clear sky radiative fluxes	Cloud cover	Histogram of SR		
CanAM4	Von Salzen et al. (2013)	Yes	Yes	Yes	Daily, monthly	64 × 128
HadGEM2-A	Martin et al. (2011)				Monthly	145 × 192
MRI-CGCM3	Yukimoto et al. (2012)					160 × 320
CAM5	Hurrell et al. (2013)				Daily, monthly	192 × 288
MIROC5	Watanabe et al. (2010)			No	Monthly	128 × 256
IPSL-CM5A-MR	Dufresne et al. (2013)					143 × 144
MPI-ESM-LR	Giorgetta et al. (2013)					96 × 192
BCC_CSM1.1(m)	Wu et al. (2014)					160 × 320

simulator. Four of these eight models also provided the height-intensity histograms (SR profiles). From these four, we computed the simulated opaque and non-opaque cloud fraction profiles, following the same method as for the observations (section 2a). Cloud opaque and nonopaque categories are classified the same way as in the satellite observations from the COSP outputs. Nevertheless, unlike *CALIPSO*-GOCCP, which looks for the surface echo to detect cloud opacity, in climate models, lidar attenuation is defined when SR < 0.01. This difference means the opaque fraction could be underestimated in the climate models by 5% (supplemental material Fig. S4). To evaluate surface CRE and surface melting, we use climate model outputs of the all sky and clear sky longwave and shortwave surface fluxes and the near-surface temperature.

### 3. Results

#### a. Model-observation comparisons over the entire Greenland ice sheet

We begin by comparing total cloud cover over Greenland in the spaceborne lidar observations with the climate models. Results are presented both for winter [December–February (DJF)], and for summer [June–August (JJA)] using maps (Figs. 1, 2) and averages over the entire Greenland ice sheet (Table 2). The mean observed total cloud cover in winter (DJF; Fig. 1a) is 56% over Greenland. In summer (JJA; Fig. 2a), the mean observed total cloud cover increases to 64%, locally reaching 80% in the central region, largely because of the frequent occurrence of liquid-containing clouds (Lacour et al. 2017). Many models underestimate cloud cover over Greenland during both winter (Fig. 1) and summer (Fig. 2); however, the spread in both the sign and the magnitude of the biases among the eight models that were evaluated is large. In winter (Figs. 1c–j), four models [MRI-CGCM3, CAM5, MIROC5, and BCC\_CSM1.1(m)] underestimate cloud cover, three

models (CanAM4, HadGEM2-A, and MPI-ESM-LR) overestimate and underestimate cloud cover depending on the area, and the last model (IPSL-CM5A-MR) overestimates cloud cover. During summer (Figs. 2c–j) most of the models have insufficient cloud cover, but some [HadGEM2-A, MPI-ESM-LR, and BCC\_CSM1.1(m)] have excessive cloud cover in the west and southwest of Greenland compared to the observations.

We next evaluate the cloud fraction profiles in the models using the spaceborne lidar observations (Fig. 3). Four models (CanAM4, HadGEM2-A, MRI-CGCM3, and CAM5; full lines in Fig. 3) have small cloud fraction profile biases (<5%) in both winter and summer. Below 2 km AGL in winter and below 4 km AGL in summer, most models underestimate the cloud fraction compared to lidar observations. Despite the diversity of cloud fraction biases identified, most models have more clouds in summer than in winter as in the observations. In the midtroposphere, the cloud fraction difference between winter and summer is consistent with observations, except for the Meteorological Research Institute (MRI) model, simulating more high clouds in winter than in summer. At low altitudes, CanAM4 and the MPI model only simulate more low clouds in winter than in summer. Overall, the comparisons suggest that models produce too much high-level cold clouds and not enough low-level clouds.

Next, we compare observed and modeled cloud opacity diagnostics. We remind the reader that because the cloud opacity diagnostics we are using are relatively new (Guzman et al. 2017), we can only analyze cloud opacity diagnostics in a small subset of climate models in which they are currently available (CanAM4, HadGEM2-A, MRI-CGCM3, and CAM5). We compare mean clear sky, opaque cloud, and nonopaque cloud fractions near the surface, at 480 m AGL, over all Greenland (Fig. 4). During winter (Figs. 4a,c), on average the near-surface clear sky fraction is above 70% in both models and observations. CanAM4 has the most underestimated near-surface clear sky fraction, but also has the biggest

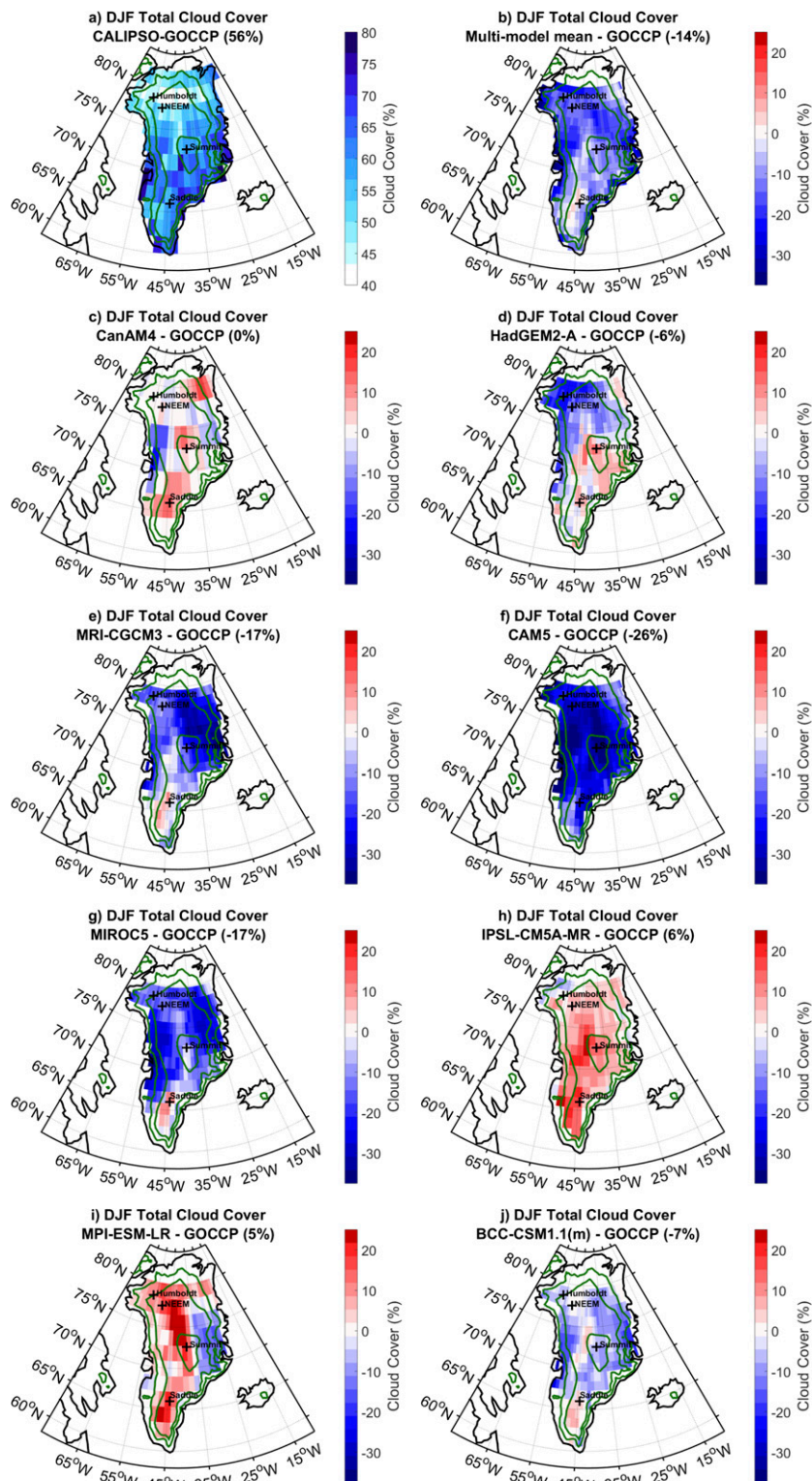


FIG. 1. Maps of mean cloud cover in winter 2008 for (a) observed, (b) multimodel mean bias, and (c)–(j) in each of the CMIP5 models. The observations are from *CALIPSO*-GOCCP. The multimodel mean is calculated from eight CMIP5 models with COSP/lidar: CanAM4, HadGEM2-A, MRI-CGCM3, CAM5, MIROC5, IPSL-CM5A-MR, MPI-ESM-LR, and BCC\_CSM1.1(m). To calculate the multimodel mean, each model is interpolated into the CAM5 grid. The green contour lines indicate the 1000-, 2000-, and 3000-m surface elevation.

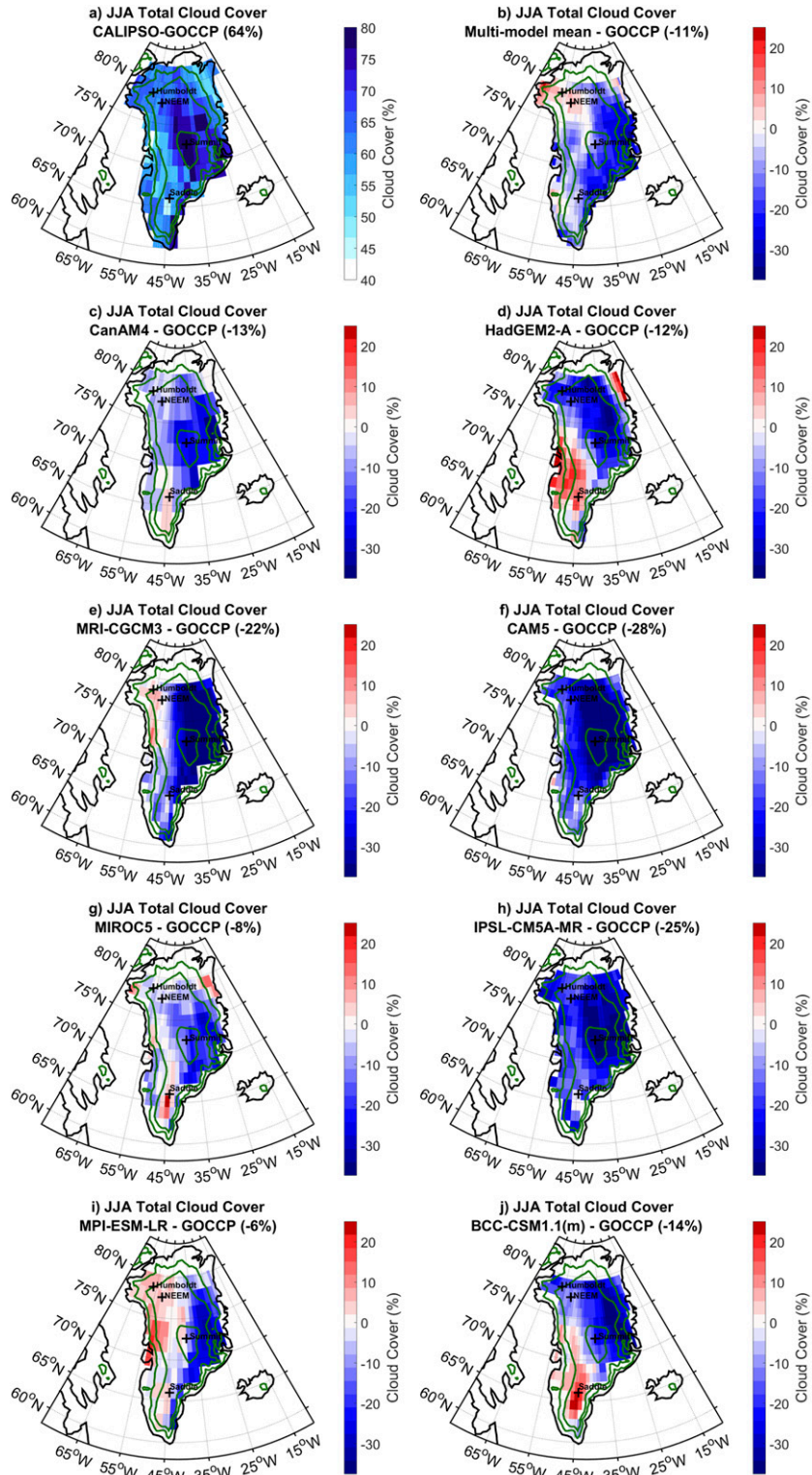


FIG. 2. As in Fig. 1, but for summer 2008.



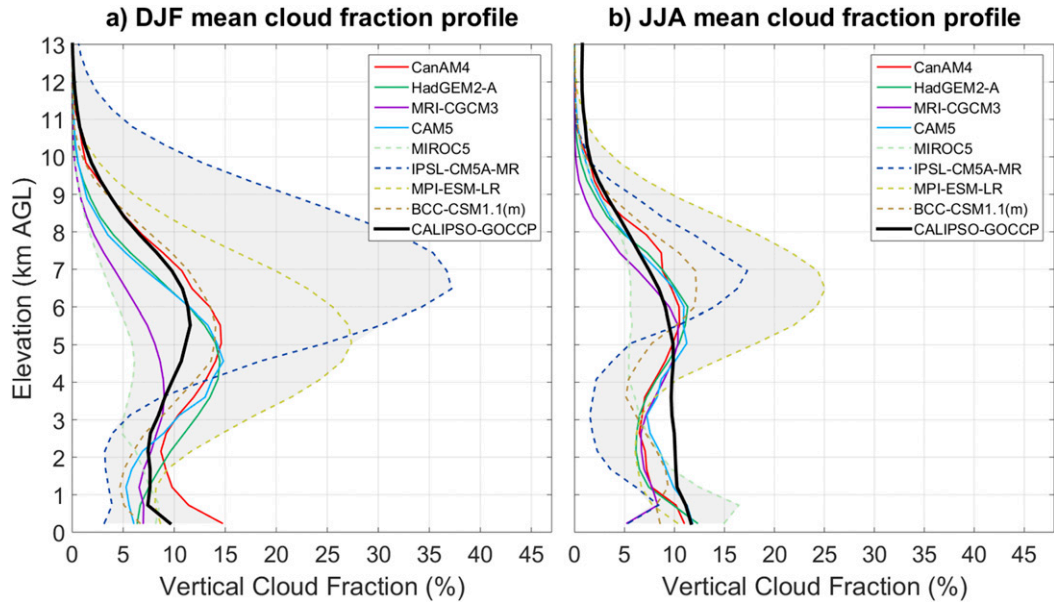


FIG. 3. Mean cloud fraction profiles over Greenland from observations and models in (a) winter 2008 and (b) summer 2008. The observations are from *CALIPSO-GOCCP*. The models means' are calculated from eight CMIP5 models with COSP/lidar: CanAM4, HadGEM2-A, MRI-CGCM3, CAM5, MIROC5, IPSL-CM5A-MR, MPI-ESM-LR, and BCC\_CSM1.1(m). The shaded area is the envelope of the models' mean profiles.

standard deviation, because of its coarse  $2.8^\circ \times 2.8^\circ$  grid and smaller sample size. In the Greenland-wide observations, the near-surface opaque fraction is larger than nonopaque cloud fraction. On average, the GCMs tend to underestimate the opaque fraction, although given the uncertainties, the opaque fraction values in CanAM4 and HadGEM2-A are closer to the observed values. Generally CAM5 produces far too few opaque clouds. In JJA (Figs. 4c,d), the cloud fraction (nonopaque and opaque) is higher than in DJF. The observed increase in near-surface opaque fraction from DJF to JJA is reproduced in each model for all of Greenland for both. In the observations, we also observe an increase in the

nonopaque fraction in summer, but this increase is generally not reproduced in the models.

After looking at the cloud fraction at the ground level, we evaluate the vertical distribution for each cloud category in *CALIPSO-GOCCP* and in climate models (Fig. 5). To have more details on how well models represent clouds, we divide the nonopaque clouds category into two new categories: those with  $SR < 30$  related to optically thinner nonopaque clouds and those with  $SR > 30$  related to optically thicker nonopaque clouds. This distinction gives more insight into the implications of the cloud opacity model biases. At low levels, both models and observations show a larger opaque fraction

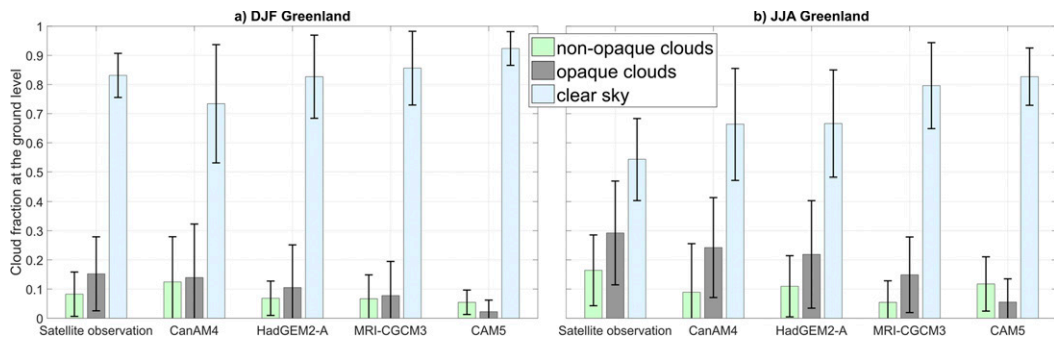


FIG. 4. Histogram of the mean opaque cloud fraction, nonopaque cloud fraction, and clear sky fraction at the first level above ground for (a) all Greenland in winter and (b) all Greenland in summer. In each plot, the sum of the three bars is 1 for the observations and 1 for each model. The error bars indicate the standard deviation. The histograms are computed by averaging the 2008  $2^\circ \times 2^\circ$  gridded monthly mean fractions at the first level above ground from the *CALIPSO-GOCCP* observations and from the simulations by four CMIP5 models + COSP/lidar.

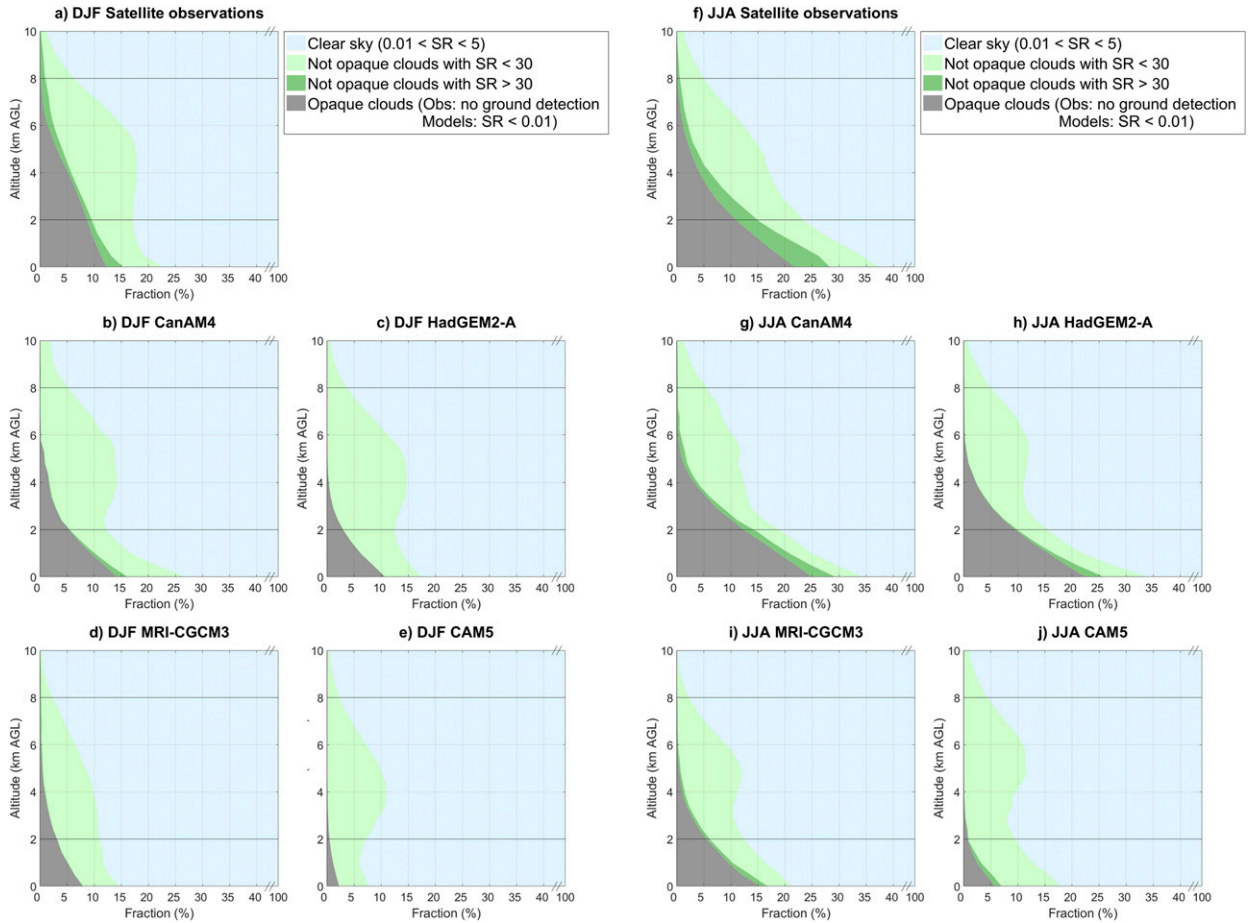


FIG. 5. Profiles of opaque cloud fraction (gray), nonopaque cloud fraction (green), and clear sky fraction (blue) over Greenland in (a)–(e) DJF 2008 and (f)–(j) JJA 2008 observed from (a), (f) *CALIPSO*-GOCCP-OPAQ and simulated by four CMIP5 models + COSP/lidar: CanAM4 in (b),(g); HadGEM2-A in (c),(h); MRI-CGCM3 in (d),(i); and CAM5 in (e),(j). The nonopaque cloud fraction (green) is split into two categories: the optically very thin clouds (light green) and the optically less thin clouds (dark green).

in summer than in winter. Most models underestimate the opaque fraction profile compared to observations, especially at high altitudes, but the model spread is quite large. The optically thinner clouds ( $SR < 30$ ) show the smallest biases. Each model creates as much thin clouds as in the observations, especially around 4 km AGL. Only one model (CanAM4) creates optically thicker nonopaque clouds ( $SR > 30$ ) in DJF. In JJA, only CanAM4 creates optically thick nonopaque clouds at all levels, while the other models create some near the ground. However, all models underestimate the thick nonopaque cloud fraction at all levels.

Finally, we evaluate cloud thermodynamic phase (liquid/ice) in the models (Fig. 6). We remind the reader that cloud phase detection for our diagnostics in both the observations and the models is based on the polarization of the lidar signal (Cesana and Chepfer 2013). As expected, liquid clouds are more often opaque than nonopaque (Figs. 6a,e,b,f). The liquid clouds are located

mostly below 2 km AGL in winter and below 4 km AGL in summer. A distinction between the optically thinner ( $SR < 30$ ) and thicker ( $SR > 30$ ) nonopaque clouds gives more information on the distribution of the ice and liquid clouds in the nonopaque cloud category (Figs. 6c,g,d,h). For nonopaque clouds, those with  $SR > 30$  are much more likely to contain liquid water in both seasons, and almost all cases with  $SR > 30$  below 2 km have liquid nonopaque clouds. The difficulty of the models to create both opaque clouds and the thicker nonopaque clouds ( $SR > 30$ ) over Greenland tends to confirm the known difficulty for the models to create liquid clouds in the Arctic (Cesana et al. 2012; Kay et al. 2016).

#### b. Limitations of model-observation comparisons over the entire Greenland ice sheet

Before going forward with the rest of the results, we want to introduce and discuss two limitations. First, the

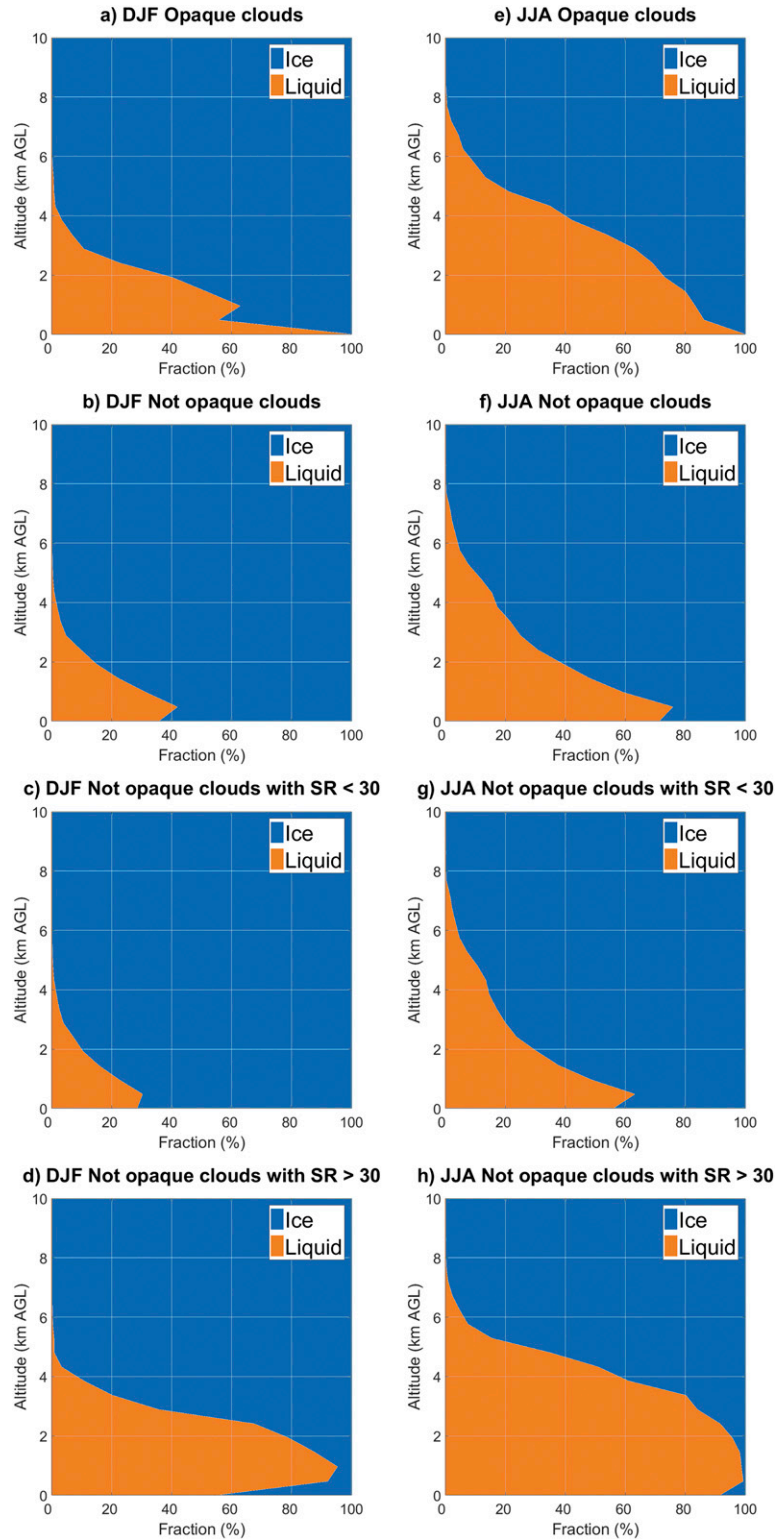


FIG. 6. Fraction of liquid and ice observed in (a),(e) opaque clouds; (b),(f) non-opaque clouds; (c),(g) the optically thinnest nonopaque clouds; and (d),(h) the optically thickest nonopaque clouds over Greenland in (left) winter and (right) summer 2008. Observations come from *CALIPSO-GOCCP* (Cesana and Chepfer 2013). For the opaque clouds category (a) and (e), only the bin above the first bin totally attenuated is considered. Only liquid and ice clouds are included, clouds with undefined phase are rejected.

evaluations shown in Figs. 1–6 were done for one year (2008) only. This limitation occurs because the climate model data that are available through CFMIP-2 are only available for one year. The second limitation is more fundamental. There are no direct observations of the surface cloud radiative effects over the entire Greenland ice sheet. As a result, it is complicated to connect the lidar-observed and lidar-simulated cloud properties directly with quantities of most interest to the climate: cloud influence on radiation and surface energy budgets. We next address each of these concerns in turn.

Starting with the first limitation—we acknowledge that using only a single year for comparisons could be a very serious limitation. In fact, the seriousness of this limitation depends on if the model biases are larger than the interannual variability. To evaluate the seriousness of this single-year limitation, we compare our single-year evaluation with a multiyear evaluation. Specifically, we compare winter and summer cloud fraction data for eight years (2008–15 for observations, 2001–08 for models) with those that were done for one year (Fig. 3). The results of this comparison Figs. 7 and 8 reveal that the interannual variability of cloud fraction profiles over Greenland is less than 5% at all levels for all models except IPSL-CM5A-MR in winter. In the observations, the cloud fractions for the year 2008 are representative of the mean cloud fraction between 2008 and 2015; they are within  $\pm 2\%$  or better at all heights. Thus, the model biases are larger than the interannual variability, at least for the models that we could assess.

Moving to the second, more fundamental limitation—we are not able to compare lidar cloud properties with direct surface radiation observations over all of Greenland. To address this observational limitation, we assess the relationship between cloud influence on surface radiation and cloud properties at the one location where both are available: Summit.

To assess if the relationships between cloud properties and radiation at Summit are relevant for the rest of the Greenland ice sheet, we compare cloud property biases over all of Greenland with those over just Summit (Tables 3 and 4). In winter, in many models, the sign of the cloud cover biases match over Greenland and Summit, but in two models (CanAM4 and HadGEM2-A) the sign of the biases differ. Compared to other models, the biases in CanAM4 and HadGEM2-A are small and can be due to regional differences in the two models. In summer, every model underestimates the cloud cover as well as the opaque and nonopaque cloud fraction. Only the cloud elevation biases are different; most of the time, the models underestimate the mean cloud altitude above Greenland and overestimate it at

Summit. The consistency of most of the cloud property biases between the Greenland average and Summit fosters the use of observations at Summit only. In the next section, we look in more detail at how the simulated cloud properties and radiative effects compare to the observations in the Summit environment only.

### *c. Evaluation of surface CRE in models using observations from Summit*

We begin with winter because the lack of shortwave radiation during winter makes it simpler to relate cloud properties to cloud radiative effects. Indeed, the total CRE is equivalent to longwave cloud radiative effect ( $CRE_{LW}$ ) during winter. The longwave flux at the surface depends mostly on cloud and atmosphere properties with cloud cover being the main property affecting  $CRE_{LW}$ . During winter, the monthly spaceborne-lidar cloud cover at Summit ranges between 40% and 80% (Fig. 9a). The corresponding monthly mean  $CRE_{LW}$  measured at Summit ranges from  $+30$  to  $+50 \text{ W m}^{-2}$  (Fig. 9b).

During winter at Summit, there are strong connections between model biases in the cloud properties (cover, opacity, altitude) and model biases in  $CRE_{LW}$ . We find models with the smallest cloud cover have the smallest  $CRE_{LW}$ . For example, CAM5 is the model with the least cloud cover, and it has a correspondingly small value of  $CRE_{LW}$ . Cloud cover bias and  $CRE_{LW}$  bias are not always so simply related to each other. In fact, HadGEM2-A and CanAM4 have cloud cover between 50% and 80% but underestimate the  $CRE_{LW}$  by  $\sim -10 \text{ W m}^{-2}$  compared to the ground observations, suggesting cloud properties influence the  $CRE_{LW}$  bias in these two models.

Having investigated winter, we next move to summer. Evaluating model CRE and connecting model cloud property biases to model CRE biases is more complex in summer because we must consider both shortwave and longwave radiation. The shortwave CRE is influenced by the surface albedo and thus is measuring the cloud cooling but relative to the surface albedo. At Summit, the observed cloud cover and observed  $CRE_{LW}$  are both larger in summer than in winter. During summer, the cloud cover ranges between 70% and 90% (Fig. 10a) and  $CRE_{LW}$  is  $60 \text{ W m}^{-2}$  (Fig. 10c).

During summer, clouds in the models do not radiatively warm the surface enough compared to the observations. In summer, this bias is larger than in winter for CanAM4 and HadGEM2-A because these two models do not reproduce the seasonal cycle of the cloud cover at Summit. In contrast, only CAM5 produces more cloud cover in summer than in winter. While CAM5 better reproduces the seasonal cycle, it still simulates too little summer cloud cover and thus underestimates the surface warming compared to observations.

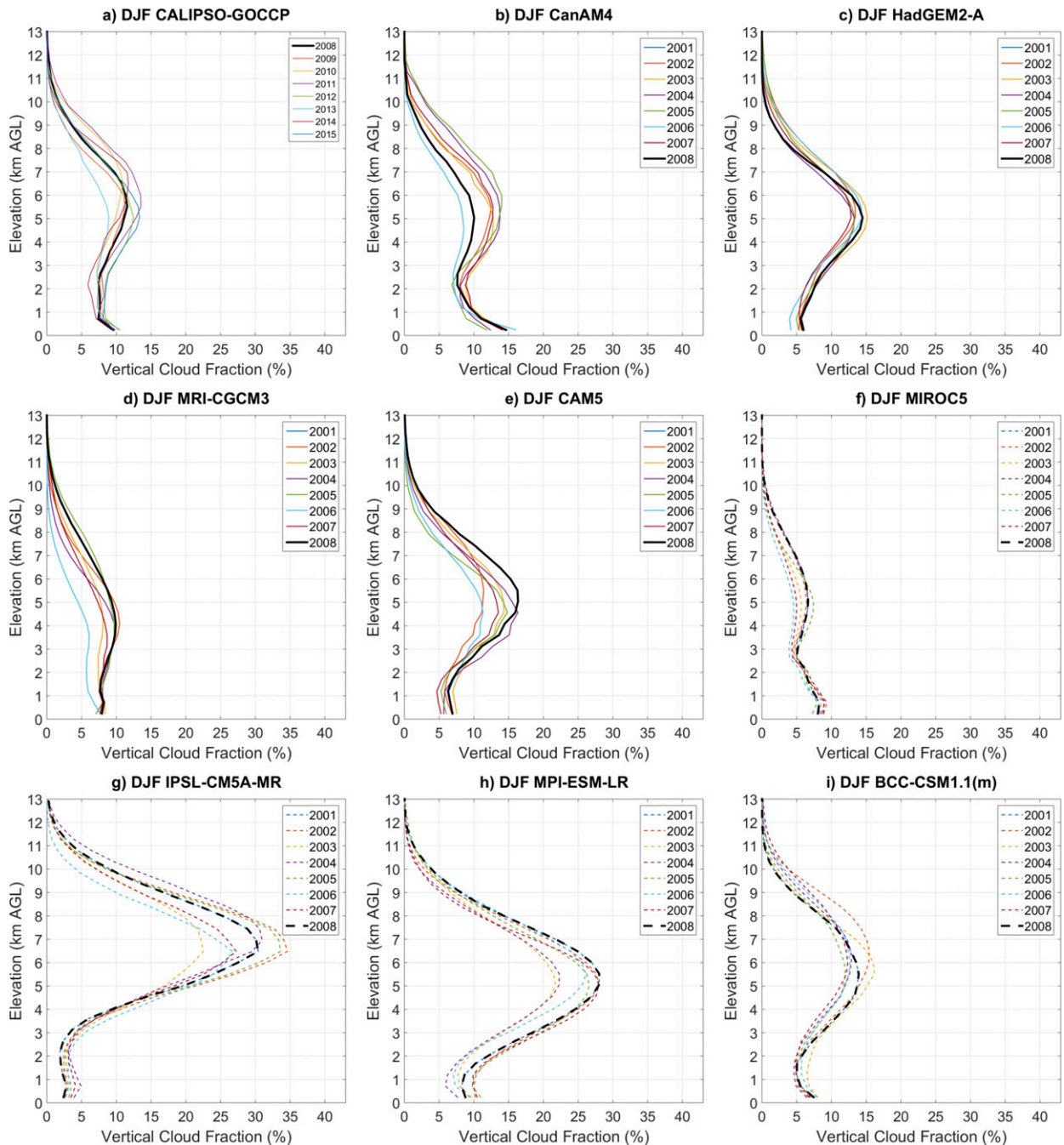


FIG. 7. Mean cloud fraction profile over Greenland calculated in DJF for (a) *CALIPSO-GOCCP* for the years 2008–15 and for (b)–(i) eight CMIP5 models for the years 2001–08.

Cloud cover biases explain most of the  $CRE_{SW}$  biases: The models with the smallest cloud cover, such as CAM5 (Fig. 10a), also produce the smallest shortwave cloud radiative cooling (Fig. 10d). While MRI-CGCM3 simulates just a bit more clouds than CAM5 in JJA (Fig. 10a), it overestimates the  $CRE_{SW}$  at the surface compared to CAM5 and to ground observations. The two models

produce distinct shortwave forcing for the same cloud cover, with average values of  $CRE_{SW, CAM5} = -3.7 \text{ W m}^{-2}$  and  $CRE_{SW, MRI-CGCM3} = -21.5 \text{ W m}^{-2}$  at Summit (Fig. 10b).

In some cases as described above, the cloud cover alone does not explain all the  $CRE_{SW}$  biases. Thus, next we look at the other factors influencing the  $CRE_{SW}$ .

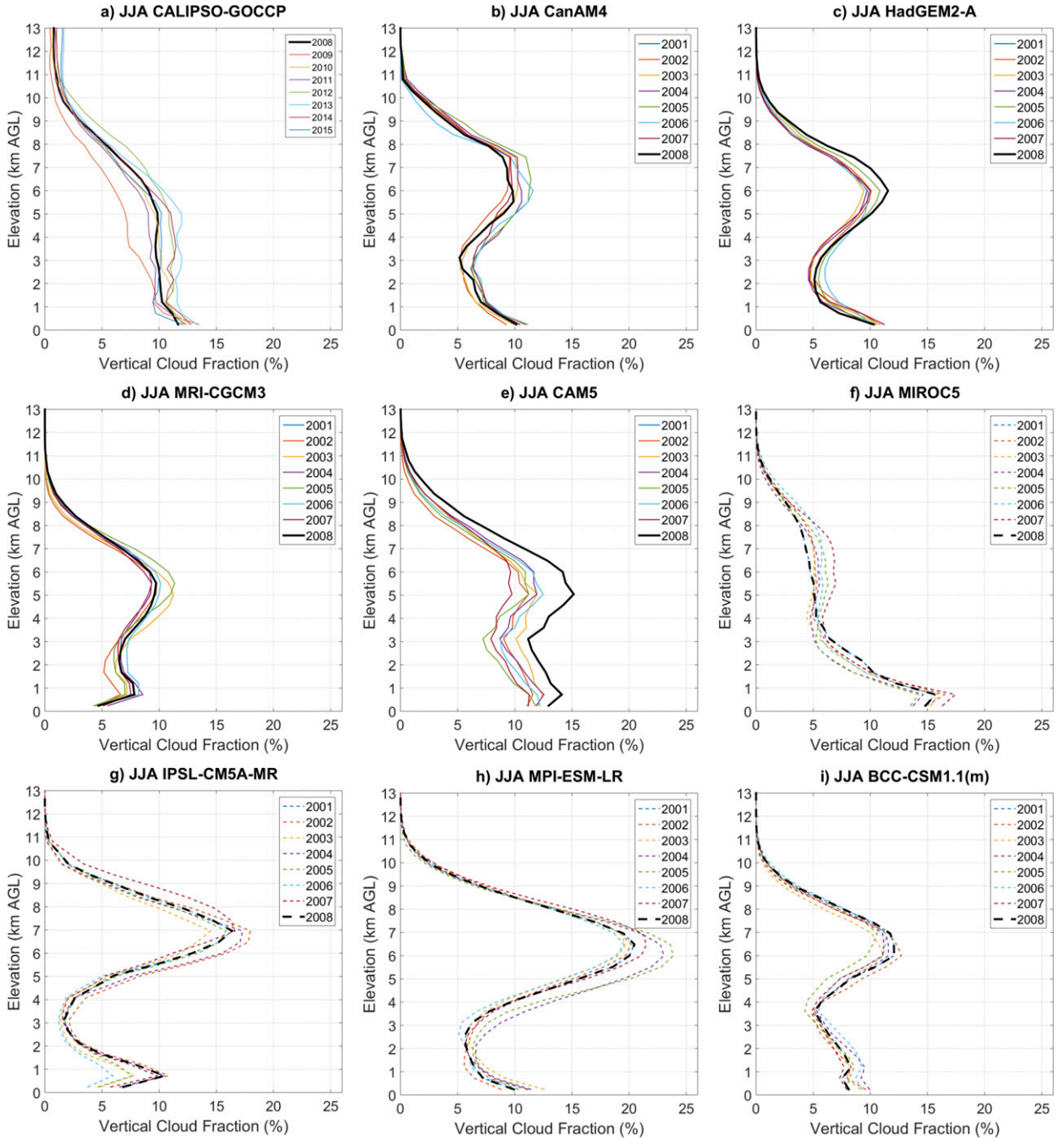


FIG. 8. As in Fig. 7, but for JJA.

Figure 11 suggests two other factors explain the difference of  $CRE_{SW}$  between CAM5 and MRI-CGCM3: 1) More downward shortwave fluxes reach the surface in CAM5 compared to MRI-CGCM3 ( $+50 \text{ W m}^{-2}$  in summer; Fig. 11c). It is likely because more opaque clouds are produced by MRI-CGCM3 compared to CAM5 (Fig. 4). 2) The surface albedos in summer are very different between the two models. In MRI-CGCM3,

the surface albedo reaches values as low as 0.73, whereas it stays above 0.8 in CAM5 (Fig. 11d). In the Summit ground observations, the average measured surface albedo is 0.86. A higher albedo leads to less shortwave radiative cooling due to the clouds, with all else constant. Thus, the very low albedo in MRI-CGCM3 helps to explain why its  $CRE_{SW}$  is so large even though the model underestimates clouds. Hereafter,

TABLE 3. Mean cloud cover, opaque and nonopaque cloud fraction, and mean cloud altitude over Greenland and Summit in winter. In the brackets, we indicate the difference between the models and the observations. The mean cloud altitude is the mean altitude of the base of every detected cloud layer.

Models	Cloud cover (%)			Opaque clouds (%)			Nonopaque clouds (%)			Mean cloud altitude (km AGL)		
	Greenland	Summit	Summit	Greenland	Summit	Summit	Greenland	Summit	Summit	Greenland	Summit	Summit
Observations	56	61	11	14	2	9	13	4.4	3.4			
CanAM4	55 (-1)	68 (7)	14 (3)	14 (0)	14 (3)	12 (12)	24 (11)	4.1 (-0.3)	4.9 (1.5)			
HadGEM2-A	51 (-6)	66 (5)	11 (0)	8 (-3)	5 (3)	7 (3)	14 (1)	3.9 (-0.6)	4.9 (1.5)			
MRI-CGCM3	40 (-16)	44 (-16)	8 (-3)	2 (-9)	2 (0)	7 (-2)	11 (-2)	3.7 (-0.8)	4.9 (1.5)			
CAM5	31 (-25)	28 (-33)	2 (-9)	0 (-7)	0 (-2)	5 (-4)	6 (-7)	3.9 (-0.5)	5.6 (2.2)			
MIROC5	40 (-16)	54 (-7)	—	—	—	—	—	3.2 (-1.2)	4 (0.6)			
IPSL-CM5A-MIR	63 (6)	73 (12)	—	—	—	—	—	6.2 (1.8)	8.1 (4.7)			
MPI-ESM-LR	61 (4)	74 (13)	—	—	—	—	—	4.6 (0.1)	6 (2.6)			
BCC_CSM1.1(m)	50 (-7)	56 (-5)	—	—	—	—	—	4.8 (0.4)	6 (2.6)			

TABLE 4. As in Table 3, but for summer.

Models	Cloud cover (%)			Opaque clouds (%)			Nonopaque clouds (%)			Mean cloud altitude (km AGL)		
	Greenland	Summit	Summit	Greenland	Summit	Summit	Greenland	Summit	Summit	Greenland	Summit	Summit
Observations	64	80	29	24	15	16	33	4.5	3.6			
CanAM4	51 (-13)	53 (-27)	24 (-5)	22 (-7)	11 (-4)	9 (-4)	12 (-8)	4.2 (-0.3)	5.2 (1.7)			
HadGEM2-A	54 (-10)	58 (-21)	22 (-7)	15 (-14)	5 (-10)	11 (-5)	14 (-5)	4.0 (-0.5)	4.6 (1.0)			
MRI-CGCM3	44 (-20)	40 (-39)	15 (-24)	6 (-16)	0 (-14)	5 (-5)	10 (-11)	3.8 (-0.8)	5.0 (1.4)			
CAM5	39 (-25)	34 (-46)	6 (-24)	—	—	—	—	3.9 (-0.6)	5.5 (1.9)			
MIROC5	56 (-8)	64 (-16)	—	—	—	—	—	3.3 (-1.2)	3.8 (0.2)			
IPSL-CM5A-MIR	39 (-25)	43 (-37)	—	—	—	—	—	5.4 (0.9)	7.3 (3.7)			
MPI-ESM-LR	58 (-6)	68 (-12)	—	—	—	—	—	5.4 (0.9)	6.6 (3.0)			
BCC_CSM1.1(m)	52 (-12)	63 (-17)	—	—	—	—	—	4.4 (-0.1)	5.3 (1.8)			

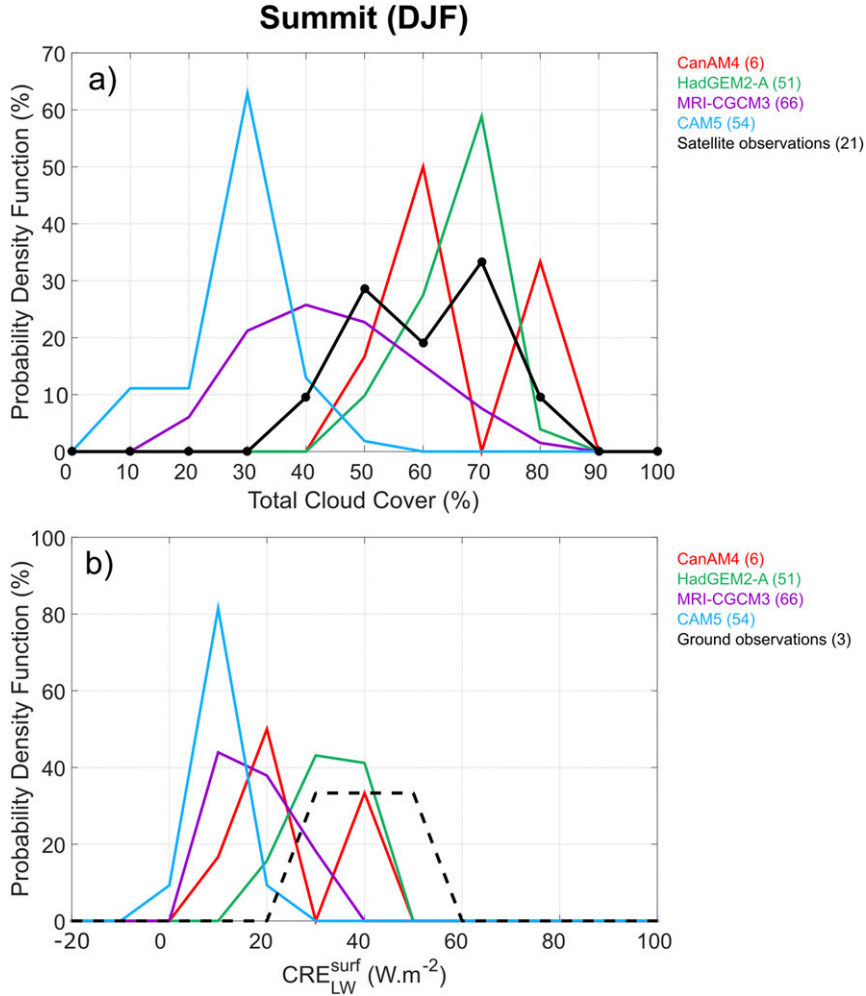


FIG. 9. Cloud cover and surface longwave radiative effect over Summit in winter. (a) PDF of the cloud cover from models and from satellite observations and (b) PDF of the surface longwave CRE from models and from ground-based observations. PDF are built from  $2^\circ \times 2^\circ$  gridbox monthly mean values for a bin size of 10% for the cloud cover and  $10 \text{ W m}^{-2}$  for  $\text{CRE}_{\text{LW}}^{\text{surf}}$ . The number of sampled grid boxes (time and grid points) used for the calculation of each PDF is given in brackets in the legend. This number depends on the model's spatial resolution; the higher the resolution is, the higher is the number of sampled grid boxes. Cloud cover for the models comes from the model + COSP/lidar.

we looked at the contribution of these last two factors on the CRE<sub>SW</sub>.

Using the surface shortwave flux outputs, we investigate how the average CRE in MRI-CGCM3 would change if the surface albedo and cloud opacity were changed (Fig. 11b). If the surface albedo in MRI-CGCM3 is increased to be similar to CAM5 (0.8 in July instead of 0.73), then  $\text{CRE}_{\text{SW, MRI-CGCM3}} = -12 \text{ W m}^{-2}$  in JJA indicating that the difference in cloud opacity between the models explains  $(-3.7) - (-12) = 8.3 \text{ W m}^{-2}$  of their difference in CRE<sub>SW</sub>. On the other hand, by theoretically decreasing the cloud opacity such that MRI-CGCM3 matches CAM5, the downward shortwave fluxes become  $400 \text{ W m}^{-2}$  in July

instead of  $350 \text{ W m}^{-2}$ , and the remaining difference in CRE<sub>SW</sub> is  $7.8 \text{ W m}^{-2}$ . Thus, cloud opacity and surface albedo both contribute about half of the CRE<sub>SW</sub> difference between CAM5 and MRI-CGCM3.

Combining the CRE<sub>LW</sub> and CRE<sub>SW</sub> components reveals that the deficit of modeled longwave radiative warming compared to the ground observations is generally not compensated by the deficit of shortwave radiative cooling (Fig. 10b). Every model included in this study underestimates the net cloud radiative surface warming in summer. For the models with the best distribution of net CRE, this underestimation arises from compensating biases in longwave and shortwave



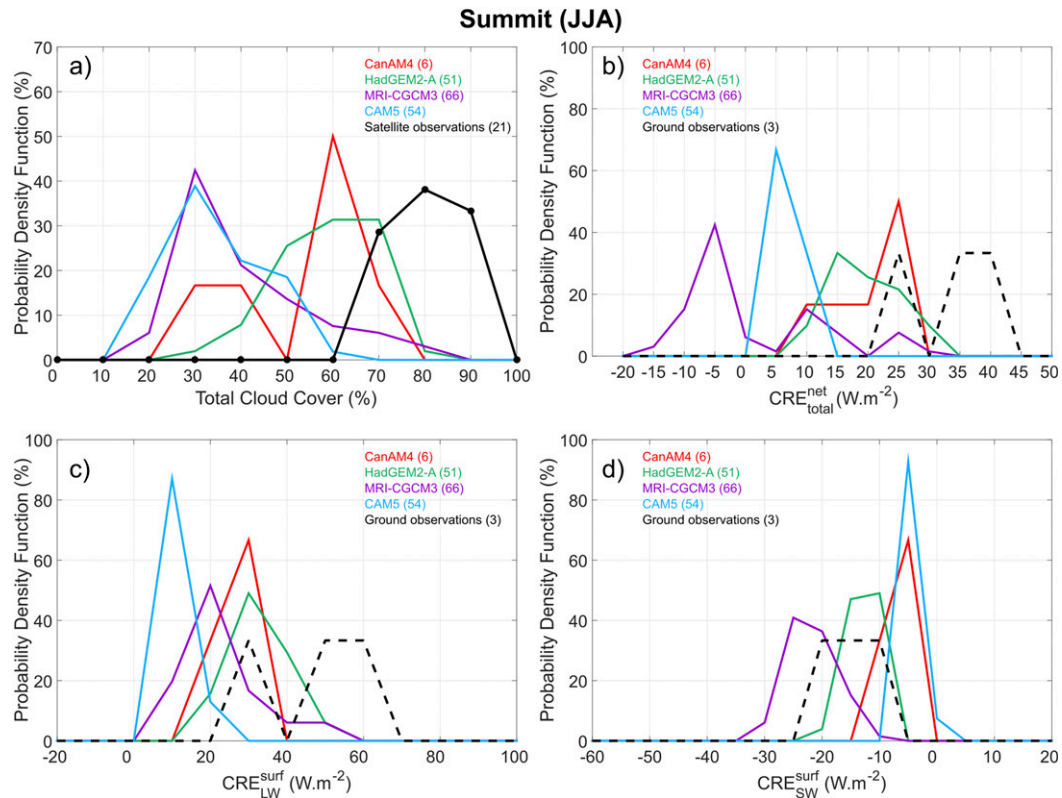


FIG. 10. PDFs of cloud cover and surface radiation over Summit in summer for (a) cloud cover, (b) net cloud radiative effect, (c) LW cloud radiative effect, and (d) SW cloud radiative effect. PDFs are built from monthly mean values in  $2^\circ \times 2^\circ$  grid boxes located in the Summit region ( $z > 3000$  m) in JJA 2008. The bin size of the PDF are values 10% for the cloud cover,  $10 W m^{-2}$  for  $CRE_{LW}^{surf}$ , and  $10 W m^{-2}$  for  $CRE_{SW}^{surf}$ . Values in the brackets of the legend indicate the number of sampled grid boxes (time and grid points) used for the calculation of each PDF. This number depends on the model’s spatial resolution; the higher the resolution is, the higher is the number of sampled grid boxes. Cloud cover for the four CMIP5 models comes from the COSP/lidar outputs.

components. In MRI-CGCM3, the clouds typically radiatively cool the surface as a result of its low surface albedo.

#### 4. Discussion

Since we only have surface radiative flux measurements over Summit, the model surface radiation can only be evaluated over the Summit area (section 3c) and not over all Greenland. On the other hand, satellite observations provide an evaluation of the cloud cover, cloud fraction profile, and cloud opacity over all of Greenland; all these cloud variables influence the surface radiation.

Greenland cannot be seen as a homogeneous ice-covered area, and Summit might not be representative of other regions. For instance, in the ablation zones at the margin of Greenland, the ice albedo is lower compared to Summit (Goelles and Bøggild 2017). Over such low-albedo surfaces, decreasing cloud cover enhances

the surface melting (Hofer et al. 2017), when at the opposite, clouds’ presence can enhance the ice sheet melt in the middle of Greenland (Bennartz et al. 2013). These examples prove the necessity of having validated satellite observations above ice-covered surfaces. In the meantime, the Summit observations can be useful to evaluate models with the largest biases observed all over Greenland, including Summit.

The evaluation of the models showed that despite some constant biases, results may vary a lot from one model to another. Along with the clouds, the parameterization of the Greenland ice sheet drives the variability of the surface albedo and thus the CRE. Yet only few general circulation models are able to represent the surface of the Greenland ice sheet (Cullather et al. 2014). In future experiments, dynamic ice sheet models will be integrated in climate models (Eyring et al. 2016). This reflects that before the fifth assessment of the IPCC, Greenland received little attention from modeling centers. Further, cold clouds are hard to

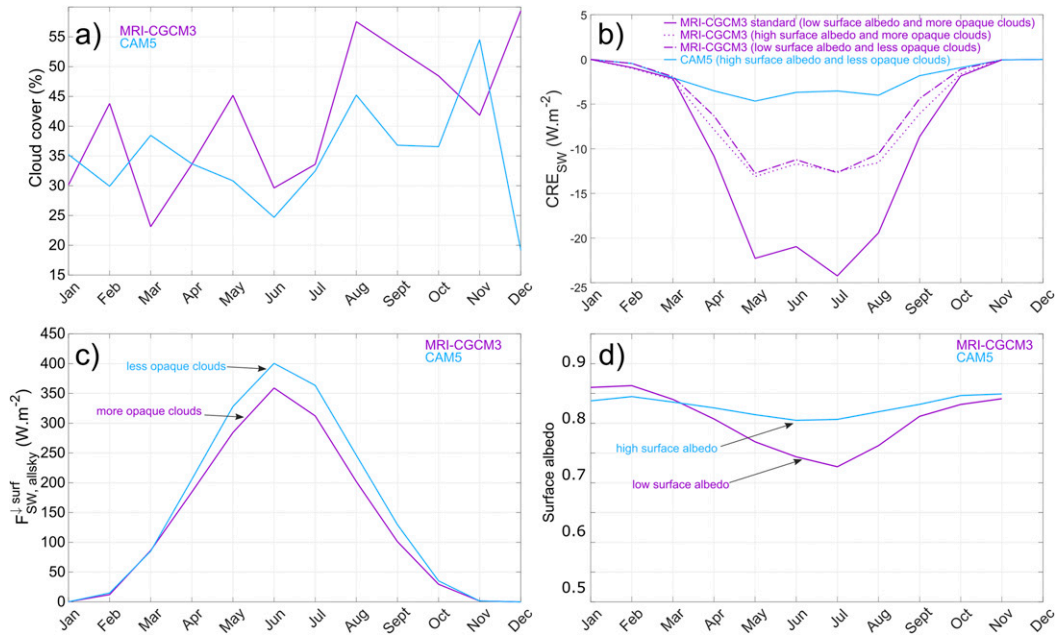


FIG. 11. Simulated annual cycle of the (a) cloud cover, (b) surface SW CRE, (c) all sky downward shortwave flux, and (d) surface albedo as simulated by two CMIP5 climate models (CAM5 and MRI-CGCM3) over the Summit region ( $z > 3000$  m) in 2008. The cloud cover is obtained from models + COSP/lidar. Solid lines are standard models and models + COSP/lidar outputs, while the dotted lines in (b) are perturbed ones.

model, and we lack observational constraint in the arctic regions.

To help constrain the models' observational simulator are powerful tools. To improve the model evaluation of the cloud properties, the last *CALIPSO*-GOCCP opaque clouds diagnostics used in this study should be added in more climate models (Guzman et al. 2017). Hence, the evaluation of the cloud properties will be improved and help to understand the interactions between the clouds and the surface fluxes and thus help to predict future changes in the Greenland ice sheet mass balance.

## 5. Conclusions

In this study, we have evaluated climate model outputs compared to *CALIPSO* and ground-based observations in Greenland.

The comparison with *CALIPSO* observations revealed that the group of climate models examined here has some spread in their representation of vertical cloud fraction, cloud cover, and cloud opacity, with some constant biases in each model. Among the four models containing the height-intensity histogram outputs, they all underestimate the nonopaque clouds with large SR ( $SR > 30$ ), and most models tend to underestimate opaque clouds observed in *CALIPSO*-GOCCP. These clouds are frequent in the observations, especially below 2 km AGL and are mostly liquid or mixed-phase clouds.

Biases in these cloud categories confirm the difficulty of the models to create liquid-containing clouds at temperatures below  $0^{\circ}C$  (Cesana et al. 2012). On the other hand, some models create too many opaque clouds, especially in summer. This may be a compensating error that reduces biases in Earth's radiative budget (Nam et al. 2012).

The comparison to Summit observations revealed that the models underestimate the CRE at the surface especially in summer. The CRE biases may be a consequence of the underestimated cloud cover in the models in summer (ranging from  $-46\%$  to  $-21\%$ ). Fewer clouds causes an underestimation of the longwave radiative warming effect ( $-35.7$  to  $-13.6 W m^{-2}$ ) and an underestimation of shortwave cooling effect ( $+1.5$  to  $+10.5 W m^{-2}$ ) even though the model albedos are lower than that measured at Summit ( $\approx 0.8$  in the models and  $\approx 0.9$  in the observations). Overall, the simulated clouds do not radiatively warm the surface as much as in the observations.

The effect this bias has on the CRE over Greenland during summer depends on the surface albedo. CanAM4 produces the most opaque clouds, but it creates them over high-albedo surfaces, while HadGEM2-A creates opaque clouds above surfaces with a low albedo ( $< 0.7$ ). Thus, for the same amount of simulated opaque clouds, the shortwave radiative cooling effect is higher in HadGEM2-A than in CanAM4.

Since the overall cloud radiative warming is underestimated in the models, we may expect an underestimation of Greenland surface melting. However, misrepresentation of clouds is not the only contributor to biases in the modeled surface melting. Previous works have shown that near-surface temperature is colder in the models than in the reanalysis independently of cloud presence (Chapman and Walsh 2007). Indeed, the surface area over Greenland with a near-surface temperature around zero is two times smaller in the models than in the reanalysis (not shown). The extent to which cloud biases impact surface temperature biases requires further study.

In this paper, we focused on the role of clouds on the surface melting, which is one side of the ice sheet mass balance; on the other side, the precipitations act as a source of mass. Precipitations are obviously connected to cloud presence so that satellites such as *CloudSat* and *CALIPSO* can contribute to the documentation of precipitating clouds. Currently, studies based on model prediction suggest that more precipitation will fall in a warmer climate (Gregory and Huybrechts 2006; Fettweis et al. 2013). In future work, spaceborne radar combined with spaceborne lidar observations will enable a full assessment of the influence of clouds on surface melt and precipitation over Greenland.

*Acknowledgments.* The authors would like to acknowledge the support of NASA, CNES, and ClimServ for access to the CALIOP data. This work was supported in part by the CNES/EECLAT project. JEK acknowledges funding support from NASA Grant 15-CCST15-0025. NBM and MDS acknowledge funding support from the U.S. National Science Foundation Grants PLR1303879 and PLR1314156. The authors thank the three anonymous reviewers who greatly helped to improve the manuscript.

## REFERENCES

- Arabelos, D., 2000: Intercomparisons of the global DTMs ETOPO5, TerrainBase and JGP95E. *Phys. Chem. Earth*, **25A**, 89–93, [https://doi.org/10.1016/S1464-1895\(00\)00015-6](https://doi.org/10.1016/S1464-1895(00)00015-6).
- Bennartz, R., and Coauthors, 2013: July 2012 Greenland melt extent enhanced by low-level liquid clouds. *Nature*, **496**, 83–86, <https://doi.org/10.1038/nature12002>.
- Bodas-Salcedo, A., and Coauthors, 2011: COSP: Satellite simulation software for model assessment. *Bull. Amer. Meteor. Soc.*, **92**, 1023–1043, <https://doi.org/10.1175/2011BAMS2856.1>.
- , and Coauthors, 2014: Origins of the solar radiation biases over the Southern Ocean in CFMIP2 models. *J. Climate*, **27**, 41–56, <https://doi.org/10.1175/JCLI-D-13-00169.1>.
- Cawkwell, F. G. L., and J. L. Bamber, 2002: The impact of cloud cover on the net radiation budget of the Greenland ice sheet. *Ann. Glaciol.*, **34**, 141–149, <https://doi.org/10.3189/172756402781817789>.
- Cesana, G., and H. Chepfer, 2012: How well do climate models simulate cloud vertical structure? A comparison between *CALIPSO*-GOCCP satellite observations and CMIP5 models. *Geophys. Res. Lett.*, **39**, L20803, <https://doi.org/10.1029/2012GL053153>.
- , and —, 2013: Evaluation of the cloud thermodynamic phase in a climate model using *CALIPSO*-GOCCP. *J. Geophys. Res. Atmos.*, **118**, 7922–7937, <https://doi.org/10.1002/jgrd.50376>.
- , J. E. Kay, H. Chepfer, J. M. English, and G. de Boer, 2012: Ubiquitous low-level liquid-containing Arctic clouds: New observations and climate model constraints from *CALIPSO*-GOCCP. *Geophys. Res. Lett.*, **39**, L20804, <https://doi.org/10.1029/2012GL053385>.
- Chapman, W. L., and J. E. Walsh, 2007: Simulations of Arctic temperature and pressure by global coupled models. *J. Climate*, **20**, 609–632, <https://doi.org/10.1175/JCLI4026.1>.
- Chepfer, H., S. Bony, D. Winker, M. Chiriaco, J.-L. Dufresne, and G. Sèze, 2008: Use of *CALIPSO* lidar observations to evaluate the cloudiness simulated by a climate model. *Geophys. Res. Lett.*, **35**, L15704, <https://doi.org/10.1029/2008GL034207>.
- , —, —, G. Cesana, J. L. Dufresne, P. Minnis, C. J. Stubenrauch, and S. Zeng, 2010: The GCM-Oriented *CALIPSO* Cloud Product (*CALIPSO*-GOCCP). *J. Geophys. Res.*, **115**, D00H16, <https://doi.org/10.1029/2009JD012251>.
- , G. Cesana, D. Winker, B. Getzewich, M. Vaughan, and Z. Liu, 2013: Comparison of two different cloud climatologies derived from CALIOP-attenuated backscattered measurements (level 1): The *CALIPSO*-ST and the *CALIPSO*-GOCCP. *J. Atmos. Oceanic Technol.*, **30**, 725–744, <https://doi.org/10.1175/JTECH-D-12-00057.1>.
- Chiriaco, M., R. Vautard, H. Chepfer, M. Haefelin, J. Dudhia, Y. Wanherdrick, Y. Morille, and A. Protat, 2006: The ability of MM5 to simulate ice clouds: Systematic comparison between simulated and measured fluxes and lidar/radar profiles at the SIRTA atmospheric observatory. *Mon. Wea. Rev.*, **134**, 897–918, <https://doi.org/10.1175/MWR3102.1>.
- Clough, S., M. Shephard, E. Mlawer, J. Delamere, M. Iacono, K. Cady-Pereira, S. Boukabara, and P. Brown, 2005: Atmospheric radiative transfer modeling: A summary of the AER codes. *J. Quant. Spectrosc. Radiat. Transfer*, **91**, 233–244, <https://doi.org/10.1016/j.jqsrt.2004.05.058>.
- Cullather, R. I., S. M. J. Nowicki, B. Zhao, and M. J. Suarez, 2014: Evaluation of the surface representation of the Greenland ice sheet in a general circulation model. *J. Climate*, **27**, 4835–4856, <https://doi.org/10.1175/JCLI-D-13-00635.1>.
- Dee, D. P., and Coauthors, 2011: The ERA-Interim reanalysis: Configuration and performance of the data assimilation system. *Quart. J. Roy. Meteor. Soc.*, **137**, 553–597, <https://doi.org/10.1002/qj.828>.
- Dufresne, J.-L., and Coauthors, 2013: Climate change projections using the IPSL-CM5 Earth system model: From CMIP3 to CMIP5. *Climate Dyn.*, **40**, 2123–2165, <https://doi.org/10.1007/s00382-012-1636-1>.
- Eyring, V., S. Bony, G. A. Meehl, C. A. Senior, B. Stevens, R. J. Stouffer, and K. E. Taylor, 2016: Overview of the Coupled Model Intercomparison Project Phase 6 (CMIP6) experimental design and organization. *Geosci. Model Dev.*, **9**, 1937–1958, <https://doi.org/10.5194/gmd-9-1937-2016>.
- Fettweis, X., E. Hanna, C. Lang, A. Belleflamme, M. Erpicum, and H. Gallée, 2013: Brief communication “Important role of the mid-tropospheric atmospheric circulation in the recent surface melt increase over the Greenland ice sheet.” *Cryosphere*, **7**, 241–248, <https://doi.org/10.5194/tc-7-241-2013>.

- Giorgetta, M. A., and Coauthors, 2013: Climate and carbon cycle changes from 1850 to 2100 in MPI-ESM simulations for the Coupled Model Intercomparison Project phase 5. *J. Adv. Model. Earth Syst.*, **5**, 572–597, <https://doi.org/10.1002/jame.20038>.
- Goelles, T., and C. E. Bøggild, 2017: Albedo reduction of ice caused by dust and black carbon accumulation: A model applied to the K-transect, west Greenland. *J. Glaciol.*, **63**, 1063–1076, <https://doi.org/10.1017/jog.2017.74>.
- Gregory, J., and P. Huybrechts, 2006: Ice-sheet contributions to future sea-level change. *Philos. Trans. Roy. Soc.*, **364A**, 1709–1732, <https://doi.org/10.1098/rsta.2006.1796>.
- Griggs, J. A., and J. L. Bamber, 2008: Assessment of cloud cover characteristics in satellite datasets and reanalysis products for Greenland. *J. Climate*, **21**, 1837–1849, <https://doi.org/10.1175/2007JCLI1570.1>.
- Guzman, R., and Coauthors, 2017: Direct atmosphere opacity observations from CALIPSO provide new constraints on cloud-radiation interactions. *J. Geophys. Res. Atmos.*, **122**, 1066–1085, <https://doi.org/10.1002/2016JD025946>.
- Hanna, E., and Coauthors, 2008: Increased runoff from melt from the Greenland ice sheet: A response to global warming. *J. Climate*, **21**, 331–341, <https://doi.org/10.1175/2007JCLI1964.1>.
- Henderson, D. S., T. L'Ecuyer, G. Stephens, P. Partain, and M. Sekiguchi, 2013: A multisensor perspective on the radiative impacts of clouds and aerosols. *J. Appl. Meteor. Climatol.*, **52**, 853–871, <https://doi.org/10.1175/JAMC-D-12-025.1>.
- Hofer, S., A. J. Tedstone, X. Fettweis, and J. L. Bamber, 2017: Decreasing cloud cover drives the recent mass loss on the Greenland ice sheet. *Sci. Adv.*, **3**, e1700584, <https://doi.org/10.1126/sciadv.1700584>.
- Hurrell, J. W., and Coauthors, 2013: The Community Earth System Model: A framework for collaborative research. *Bull. Amer. Meteor. Soc.*, **94**, 1339–1360, <https://doi.org/10.1175/BAMS-D-12-00121.1>.
- Kalnay, E., and Coauthors, 1996: The NCEP/NCAR 40-Year Reanalysis Project. *Bull. Amer. Meteor. Soc.*, **77**, 437–471, [https://doi.org/10.1175/1520-0477\(1996\)077<0437:TNYRP>2.0.CO;2](https://doi.org/10.1175/1520-0477(1996)077<0437:TNYRP>2.0.CO;2).
- Kato, S., N. G. Loeb, F. G. Rose, D. R. Doelling, D. A. Rutan, T. E. Caldwell, L. Yu, and R. A. Weller, 2013: Surface irradiances consistent with CERES-derived top-of-atmosphere shortwave and longwave irradiances. *J. Climate*, **26**, 2719–2740, <https://doi.org/10.1175/JCLI-D-12-00436.1>.
- Kay, J. E., L. Bourdages, N. B. Miller, A. Morrison, V. Yettella, H. Chepfer, and B. Eaton, 2016: Evaluating and improving cloud phase in the Community Atmosphere Model version 5 using spaceborne lidar observations. *J. Geophys. Res. Atmos.*, **121**, 4162–4176, <https://doi.org/10.1002/2015JD024699>.
- Klein, S. A., Y. Zhang, M. D. Zelinka, R. Pincus, J. Boyle, and P. J. Gleckler, 2013: Are climate model simulations of clouds improving? An evaluation using the ISCCP simulator. *J. Geophys. Res. Atmos.*, **118**, 1329–1342, <https://doi.org/10.1002/jgrd.50141>.
- Krabill, W., and Coauthors, 2004: Greenland ice sheet: Increased coastal thinning. *Geophys. Res. Lett.*, **31**, L24402, <https://doi.org/10.1029/2004GL021533>.
- Lacour, A., H. Chepfer, M. D. Shupe, N. B. Miller, V. Noel, J. Kay, D. D. Turner, and R. Guzman, 2017: Greenland clouds observed in CALIPSO-GOCCP: Comparison with ground-based summit observations. *J. Climate*, **30**, 6065–6083, <https://doi.org/10.1175/JCLI-D-16-0552.1>.
- Martin, G. M., and Coauthors, 2011: The HadGEM2 family of Met Office Unified Model climate configurations. *Geosci. Model Dev.*, **4**, 723–757, <https://doi.org/10.5194/gmd-4-723-2011>.
- Mernild, S. H., T. L. Mote, and G. E. Liston, 2011: Greenland ice sheet surface melt extent and trends: 1960–2010. *J. Glaciol.*, **57**, 621–628, <https://doi.org/10.3189/002214311797409712>.
- Miller, N. B., M. D. Shupe, C. J. Cox, V. P. Walden, D. D. Turner, and K. Steffen, 2015: Cloud radiative forcing at Summit, Greenland. *J. Climate*, **28**, 6267–6280, <https://doi.org/10.1175/JCLI-D-15-0076.1>.
- , —, —, D. Noone, P. O. G. Persson, and K. Steffen, 2017: The surface energy budget responses to radiative forcing at Summit, Greenland. *Cryosphere*, **11**, 497–516, <https://doi.org/10.5194/tc-11-497-2017>.
- Morrison, A. L., J. E. Kay, H. Chepfer, R. Guzman, and V. Yettella, 2017: Isolating the liquid cloud response to recent Arctic sea ice loss using spaceborne lidar observations. *J. Geophys. Res. Atmos.*, **123**, 473–490, <https://doi.org/10.1002/2017JD027248>.
- Morrison, H., G. de Boer, G. Feingold, J. Harrington, M. D. Shupe, and K. Sulia, 2012: Resilience of persistent Arctic mixed-phase clouds. *Nat. Geosci.*, **5**, 11–17, <https://doi.org/10.1038/ngeo1332>.
- Nam, C., S. Bony, J.-L. Dufresne, and H. Chepfer, 2012: The ‘too few, too bright’ tropical low-cloud problem in CMIP5 models. *Geophys. Res. Lett.*, **39**, L21801, <https://doi.org/10.1029/2012GL053421>.
- National Geophysical Data Center, 1995: TerrainBase, global 5 arc-minute ocean depth and land elevation from the US National Geophysical Data Center (NGDC). National Center for Atmospheric Research, accessed 1 October 2014, <http://rda.ucar.edu/datasets/ds759.2>.
- Noel, V., and H. Chepfer, 2010: A global view of horizontally oriented crystals in ice clouds from Cloud-Aerosol Lidar and Infrared Pathfinder Satellite Observation (CALIPSO). *J. Geophys. Res.*, **115**, D00H23, <https://doi.org/10.1029/2009JD012365>.
- Rignot, E., and P. Kanagaratnam, 2006: Changes in the velocity structure of the Greenland ice sheet. *Science*, **311**, 986–990, <https://doi.org/10.1126/science.1121381>.
- Shupe, M. D., 2011: Clouds at Arctic atmospheric observatories. Part II: Thermodynamic phase characteristics. *J. Appl. Meteor. Climatol.*, **50**, 645–661, <https://doi.org/10.1175/2010JAMC2468.1>.
- , and J. M. Intrieri, 2004: Cloud radiative forcing of the Arctic surface: The influence of cloud properties, surface albedo, and solar zenith angle. *J. Climate*, **17**, 616–628, [https://doi.org/10.1175/1520-0442\(2004\)017<0616:CRFOTA>2.0.CO;2](https://doi.org/10.1175/1520-0442(2004)017<0616:CRFOTA>2.0.CO;2).
- , and Coauthors, 2013: High and dry: New observations of tropospheric and cloud properties above the Greenland ice sheet. *Bull. Amer. Meteor. Soc.*, **94**, 169–186, <https://doi.org/10.1175/BAMS-D-11-00249.1>.
- Solomon, A., M. D. Shupe, and N. B. Miller, 2017: Cloud–atmospheric boundary layer–surface interactions on the Greenland ice sheet during the July 2012 extreme melt event. *J. Climate*, **30**, 3237–3252, <https://doi.org/10.1175/JCLI-D-16-0071.1>.
- Stephens, G. L., and Coauthors, 2002: The CloudSat mission and the A-Train: A new dimension to space-based observations of clouds and precipitation. *Bull. Amer. Meteor. Soc.*, **83**, 1771–1790, <https://doi.org/10.1175/BAMS-83-12-1771>.
- Stubenrauch, C. J., and Coauthors, 2013: Assessment of global cloud datasets from satellites: Project and database initiated by the GEWEX radiation Panel. *Bull. Amer. Meteor. Soc.*, **94**, 1031–1049, <https://doi.org/10.1175/BAMS-D-12-00117.1>.
- Taylor, K. E., R. J. Stouffer, and G. A. Meehl, 2012: An overview of CMIP5 and the experiment design. *Bull. Amer. Meteor. Soc.*, **93**, 485–498, <https://doi.org/10.1175/BAMS-D-11-00094.1>.

- Tedesco, M., X. Fettweis, M. R. van den Broeke, R. S. W. van de Wal, C. J. P. P. Smeets, W. J. van de Berg, M. C. Serreze, and J. E. Box, 2011: The role of albedo and accumulation in the 2010 melting record in Greenland. *Environ. Res. Lett.*, **6**, 014005, <https://doi.org/10.1088/1748-9326/6/1/014005>.
- , —, T. Mote, J. Wahr, P. Alexander, J. E. Box, and B. Wouters, 2013: Evidence and analysis of 2012 Greenland records from spaceborne observations, a regional climate model and reanalysis data. *Cryosphere*, **7**, 615–630, <https://doi.org/10.5194/tc-7-615-2013>.
- Van Tricht, K., and Coauthors, 2016: Clouds enhance Greenland ice sheet meltwater runoff. *Nat. Commun.*, **7**, 10266, <https://doi.org/10.1038/ncomms10266>.
- Vaughan, D. G., and Coauthors, 2013: Observations: Cryosphere. *Climate Change 2013: The Physical Science Basis*, T. F. Stocker et al., Eds., Cambridge University Press, 317–382, [http://www.ipcc.ch/pdf/assessment-report/ar5/wg1/WG1AR5\\_Chapter04\\_FINAL.pdf](http://www.ipcc.ch/pdf/assessment-report/ar5/wg1/WG1AR5_Chapter04_FINAL.pdf).
- Von Salzen, K., and Coauthors, 2013: The Canadian Fourth Generation Atmospheric Global Climate Model (CanAM4). Part I: Representation of physical processes. *Atmos.–Ocean*, **51**, 104–125, <https://doi.org/10.1080/07055900.2012.755610>.
- Watanabe, M., and Coauthors, 2010: Improved climate simulation by MIROC5: Mean states, variability, and climate sensitivity. *J. Climate*, **23**, 6312–6335, <https://doi.org/10.1175/2010JCLI3679.1>.
- Winker, D.M., J. R. Pelon, and M. P. McCormick, 2003: The CALIPSO mission: Spaceborne lidar for observation of aerosols and clouds. *Proc. SPIE*, **4893**, 3–5, <https://doi.org/10.1117/12.466539>.
- Wu, T., and Coauthors, 2014: An overview of BCC climate system model development and application for climate change studies. *J. Meteor. Res.*, **28**, 34–56, <https://doi.org/10.1007/s13351-014-3041-7>.
- Yukimoto, S., and Coauthors, 2012: A new global climate model of the Meteorological Research Institute: MRI-CGCM3—Model description and basic performance. *J. Meteor. Soc. Japan*, **90A**, 23–64, <https://doi.org/10.2151/jmsj.2012-A02>.