



HAL
open science

Drifting of the line-tied footpoints of CME flux-ropes

Guillaume Aulanier, Jaroslav Dudík

► **To cite this version:**

Guillaume Aulanier, Jaroslav Dudík. Drifting of the line-tied footpoints of CME flux-ropes. *Astronomy and Astrophysics - A&A*, 2019, 621, pp.A72. 10.1051/0004-6361/201834221 . hal-01994717

HAL Id: hal-01994717

<https://hal.sorbonne-universite.fr/hal-01994717>

Submitted on 25 Jan 2019

HAL is a multi-disciplinary open access archive for the deposit and dissemination of scientific research documents, whether they are published or not. The documents may come from teaching and research institutions in France or abroad, or from public or private research centers.

L'archive ouverte pluridisciplinaire **HAL**, est destinée au dépôt et à la diffusion de documents scientifiques de niveau recherche, publiés ou non, émanant des établissements d'enseignement et de recherche français ou étrangers, des laboratoires publics ou privés.

Drifting of the line-tied footpoints of CME flux-ropes

Guillaume Aulanier¹ and Jaroslav Dudík²

¹ LESIA, Observatoire de Paris, Université PSL, CNRS, Sorbonne Université, Université Paris Diderot, 5 place Jules Janssen, 92190 Meudon, France
e-mail: guillaume.aulanier@obspm.fr

² Astronomical Institute of the Czech Academy of Sciences, Fričova 298, 251 65 Ondřejov, Czech Republic
e-mail: jaroslav.dudik@asu.cas.cz

Received 11 September 2018 / Accepted 7 November 2018

ABSTRACT

Context. Bridging the gap between heliospheric and solar observations of eruptions requires the mapping of interplanetary coronal mass ejection (CME) footpoints down to the Sun's surface. But this not straightforward. Improving the understanding of the spatio-temporal evolutions of eruptive flares requires a comprehensive standard model. But the current model is only two-dimensional and cannot address the question of interplanetary CME footprints.

Aims. Existing 3D extensions to the standard model show that flux-rope footpoints are surrounded by curved-shaped quasi-separatrix layer (QSL) footprints that can be related with hook-shaped flare-ribbons. We build upon this finding and further address the joint questions of their time-evolution, and of the formation of flare loops at the ends of the flaring polarity inversion line (PIL) of the erupting bipole, which are both relevant for flare understanding in general and for interplanetary CME studies in particular.

Methods. We calculated QSLs and relevant field lines in an MHD simulation of a torus-unstable flux-rope. The evolving QSL footprints are used to define the outer edge of the flux rope at different times, and to identify and characterize new 3D reconnection geometries and sequences that occur above the ends of the flaring PIL. We also analyzed flare-ribbons as observed in the extreme ultraviolet by SDO/AIA and IRIS during two X-class flares.

Results. The flux-rope footpoints are drifting during the eruption, which is unexpected due to line-tying. This drifting is due to a series of coronal reconnections that erode the flux rope on one side and enlarge it on the other side. Other changes in the flux-rope footprint-area are due to multiple reconnections of individual field lines whose topology can evolve sequentially from arcade to flux rope and finally to flare loop. These are associated with deformations and displacements of QSL footprints, which resemble those of the studied flare ribbons.

Conclusions. Our model predicts continuous deformations and a drifting of interplanetary CME flux-rope footpoints whose areas are surrounded by equally evolving hooked-shaped flare-ribbons, as well as the formation of flare loops at the ends of flaring PILs which originate from the flux-rope itself, both of which being due to purely three-dimensional reconnection geometries. The observed evolution of flare-ribbons in two events supports the model, but more observations are required to test all its predictions.

Key words. magnetic reconnection – magnetohydrodynamics (MHD) – Sun: coronal mass ejections (CMEs) – Sun: UV radiation

1. Introduction

Solar eruptions are the most energetic manifestations of the Sun's magnetic activity (Schrijver et al. 2012; Schmieder 2018). All together their flares and coronal mass ejections (CMEs) are among the most important drivers of space weather (Schwenn 2006; Bocchialini et al. 2018). Characterizing the magnetic linkages of interplanetary ejections (ICMEs) from the heliosphere, in which they propagate, down to the lower layers of the solar atmosphere, in which they originate, is one of the key steps toward their global understanding. However these linkages are still difficult to establish. One major reason is that observations of the solar atmosphere rely on remote-sensing instruments only, whereas interplanetary observations mostly rely on in-situ measurements. Thanks to the increasing capacities of the instruments, to the recent availability of heliospheric imagers, and to the development of global numerical models, associations have been made between solar eruptions, ICMEs, and their respective largescale properties (Howard et al. 2007; Démoulin 2008; DeForest et al. 2013; Manchester et al. 2017). Nevertheless, fully bridging the gap such as for example, mapping an interplanetary CME flux-tube crossed by a spacecraft like the

upcoming Solar Orbiter down to its footpoint at the Sun's surface or to its pre-eruptive state in the corona remains a challenge.

The solar feature that is most commonly associated with ICME footprints is transient coronal holes (TCHs) also called coronal dimmings (Sterling & Hudson 1997; Thompson et al. 1998; Webb 2000). When an eruption occurs, TCHs develop at various distances from the flaring polarity-inversion line (PIL). Their intensity decreases in EUV and SXR are attributed to a coronal density decrease due to the loop expansions during the CME. Unfortunately their direct linkage to ICME flux-ropes has been shown not to be straightforward. One reason is that TCHs do not only develop around the flaring PIL, but also in nearby active regions (Kahler & Hudson 2001) and the magnetic flux summed over the whole dimmings tends to be incompatible with the axial flux of the corresponding ICME flux-rope (Mandrini et al. 2007). These may be explained by the fact that TCH areas and fluxes are largely dominated by their components located far away from the flaring PIL (Dissauer et al. 2018), and that these so-called secondary dimmings may form at the footpoints of expanding loops that are carried along with the CME, either because they reconnect with the erupting flux-rope (Gibson & Fan 2008; Cohen et al. 2010),

or because they are merely pushed from below by the eruption (Delannée et al. 2007). The so-called core (or twin) dimmings that develop close to the eruption site may thus be considered as the footpoints of the ICME (or the pre-eruptive) flux rope. But even this is not obvious as twin dimmings are not always observed (Dissauer et al. 2018), and because their dynamical nature questions their link with interplanetary flux-ropes (as raised by Kahler & Hudson 2001). Indeed twin dimmings can be very dynamic. Firstly their outer boundaries spread out to distances that can be larger than the erupting active region (Thompson et al. 1998; Liu et al. 2007). And secondly their “boundaries closer to the magnetic neutral line generally move away from it as the closed-loop X-ray arcades expand [...] the TCHs tend to disappear only by a net contraction of the boundaries” (Kahler & Hudson 2001). Therefore coronal dimmings can still not be readily used to locate the footpoints of the ICME and the pre-eruptive flux-rope.

Recent observations show that the time-evolution of twin dimmings is associated with flare ribbons (as can be seen in Liu et al. 2007; Warren et al. 2011; Cheng & Qiu 2016) and in particular at the ends of the flaring PILs, where the ribbons curve into hook shapes. The latter have been reported for many events (e.g., in Chandra et al. 2009; Aulanier et al. 2012; Schrijver et al. 2011; Dudík et al. 2014, 2016). Linking these hooked ribbons with flux ropes is impossible in the frame of the standard flare (or CSHKP) model (Carmichael 1964; Sturrock 1966; Hirayama 1974; Kopp & Pneuman 1976). The reason is that the model is two-dimensional and invariant by translation. So it describes flare ribbons in which reconnected loops are rooted as two parallel lines, which have no ending. And it describes the erupting flux-rope as a detached plasmoid, which has no footpoint. Thus one should consider three-dimensional extensions of the CSHKP flare model in which the erupting flux rope is anchored at both ends (as reviewed in Janvier et al. 2015). In this geometry the flux rope is surrounded by sharp gradients of field-line connectivities known as quasi-separatrix layers (QSLs, as defined by Priest & Démoulin 1995; Démoulin et al. 1996a). The QSL footprints have a double- J shape whose curved endings mark out the outer edges of the flux-rope footpoints (as first found by Démoulin et al. 1996b). This property is robust for various static (Titov 2007; Titov et al. 2008; Savcheva et al. 2012; Pariat & Démoulin 2012; Zhao et al. 2016) and dynamic (Janvier et al. 2013, 2016; Inoue et al. 2015; Savcheva et al. 2015, 2016) flux-rope models. When the latter were compared with observations, the curved QSL footprints were associated with the curved ends of hooks of the eruptive-flare ribbons.

So, as long as an eruptive flux-rope has not reconnected with remote loops rooted in distant active-regions or coronal holes, one could argue that the line-tying should conserve the ICME flux-rope footpoints at their original locations, which are surrounded by the hooks of flare ribbons at onset time of the eruption.

But this would ignore the possible effects of long-duration couplings between the flare dynamics and the footpoints of the CME, as implied by reports of flare loops gradually expanding into coronal dimming areas (Kahler & Hudson 2001; Cheng & Qiu 2016), and of several correlations between flare ribbons and dimmings (Dissauer et al. 2018). Such couplings which can happen at the ends of flaring PILs, have not, however, yet been addressed by the 3D extensions of the standard flare model.

Understanding the physical processes that at work at the endings of flaring PILs in general, and developing refined proxys

to follow the locations of ICME footpoints at the Sun’s surface in particular, all motivate further developments to the 3D standard model. This is the object of this paper, which reports on new analyses of an existing MHD simulation for eruptive flares (Zuccarello et al. 2015).

In Sect. 2, we briefly describe the numerical simulation, and we explain the methods used to characterize the edge of the flux rope and to identify field lines involved in pairwise reconnections. In Sect. 3, we describe the deformation and drifting of the erupting flux-rope footpoints, and we relate them with reconnection-driven QSL-footprint evolution and flare-loop formation. In Sect. 4, we analyze different types of pairwise reconnections that occur during the eruption, we identify new reconnection geometries and sequences that do not exist in the CSHKP model, and we associate them with the drifting of the flux rope and with the formation of flare loops at the ends of flaring PILs. In Sect. 5, we show the dynamics of flare ribbon hooks in two well-known X-class eruptive flares, and we relate their evolution with that of the modeled QSL footprints. Finally, in Sect. 6 we summarize our results in the frame of the development of the 3D standard flare model and of the mapping of ICME flux ropes down to the Sun’s surface.

2. Analyzing an MHD model

2.1. The line-tied MHD simulation

In this work we have used the results of one of the three-dimensional MHD simulations from Zuccarello et al. (2015).

The simulations were calculated with the visco-resistive OHM code (Aulanier et al. 2005a; Zuccarello et al. 2015) with the line-tying and zero- β approximations, following a similar methodology as in Aulanier et al. (2010).

Initial conditions were built with an asymmetric current-free bipolar magnetic field, and with uniform Alfvén speed. Non-dimensionalized units were used: the space-unit was defined as half of the distance = 2 between two photospheric flux concentrations; the time-unit t_A was defined as half the propagation time of an Alfvén wave from one polarity center to the other; and the magnetic permeability was set to $\mu = 1$.

Sub-Alfvénic narrow shearing motions and largescale converging motions were kinematically prescribed at the line-tied photospheric boundary at $z = 0$. When combined with a finite photospheric resistivity, these motions led to flux-cancellation and quasi-static flux-rope formation at the PIL (van Ballegoijen & Martens 1989). Owing to asymmetry of the system, one of the flux rope footpoints ended up being rooted near the center of the strongest polarity, while its other footpoint developed at the border of the other polarity in a relatively weak field area. In all simulations the rope eventually became torus-unstable, the photospheric drivers were then stopped, and the eruption generated a line-tied CME expansion. We refer the reader to Zuccarello et al. (2015) for further detail.

In each simulation, a long reconnecting current-sheet formed below the flux rope and produced flare loops through slip-running reconnection. A pair of largescale coronal vortices developed on the flanks of the flux rope and produced so-called imploding loops (Zuccarello et al. 2017; Dudík et al. 2017).

And as in our earlier similar models (Aulanier et al. 2012; Janvier et al. 2013, 2014) reconnection generated current-ribbons at the line-tied boundary that moved away from each other.

All simulations were eventually stopped several tens of Alfvén times after the onset of the eruption, due to the sudden

and local development of numerical instabilities in the flare current sheet.

Here we consider only Run D2. We restricted the analysis from the time of the onset of the eruption at the time $t = 165t_A$, up to the end of the simulation which occurs at $t = 244t_A$ but at which the flare is still ongoing. We have focussed our attention on a fraction of the domain that contains the flux rope ($x \in [-4; 3.5]$ and $y \in [-6; 4]$). We have also checked that our results remain valid overall in the other simulations, in which different pre-eruptive boundary drivings resulted in qualitatively-similar but quantitatively different magnetic configurations and eruption dynamics.

2.2. Characterizing the outer edges of the flux rope

Several options are possible to study the evolution of the anchorage of the erupting flux rope. Different criteria can be applied to selecting different set of individual field lines and following their time-evolution (Gibson & Fan 2008). Contrary to that, here we have used a method that relies on the identification of the edge of the erupting flux rope. This can be achieved by trial-and-error field-line plotting. But this manual method is not the most accurate, and does not allow a smooth and quantitative representation of the flux rope boundary. So instead we consider the topological approach as described in Sect. 1 which is based on QSLs across which the field-line connectivity has sharp but finite gradients.

We used the TOPOTR code (Démoulin et al. 1996a; Pariat & Démoulin 2012) to calculate the squashing degree $Q(z = 0)$ whose narrow and high- Q streaks characterize the location of the QSL footprints (Titov et al. 2002; Aulanier et al. 2005b). Accurate calculations of the squashing degree are numerically demanding, because for higher Q values, which here peak above 10^7 , integration of an increasingly large number field lines around each considered position is required. So we only make the calculation at three selected times of the simulation, i.e., at $t = 164t_A$ right before the eruption onset, at $t = 244t_A$ just before the end of simulation, and at $t = 204t_A$ at midpoint.

Double- J shaped QSLs-footprints associated with flux-ropes (see Sect. 1) are also known to be associated with narrow concentrations of electric currents (Janvier et al. 2013, 2014, 2016) and with observed flare ribbons (Janvier et al. 2014, 2016; Inoue et al. 2015; Savcheva et al. 2015, 2016). These two features, which can be respectively be readily extracted from models or from observations, can thus be used as a proxy for the locations of QSLs. Inspection of the vertical electric-currents at the line-tied boundary $j_z(z = 0)$ throughout the simulation did not show any evolution sharper than what can be seen from in the three calculated QSL snapshots. So those are sufficient to capture the overall evolution of the flux-rope footprint-area.

At each desired time, the full field-lines that constitute the edge of the flux rope are integrated from a series of footpoints chosen as follows at $z = 0$. Firstly, they are placed at the internal edge of the largest of both QSL hooks, which here is located in the relatively weaker negative polarity. And secondly, they are selected at varying space-intervals, chosen to be larger (smaller) in weaker (stronger) $B_z = 0$ so that the distances between the field lines are roughly constant at the center of the flux rope.

2.3. Identifying pairs of reconnecting field-lines

In principle it is necessary to identify which field line reconnects with a field line of particular interest to understand its changes in

connectivity and topology; for example, an arcade field line that becomes part of the flux rope as in the standard model. In other words, reconnecting field line pairs have to be found. Unfortunately, this is impossible to achieve rigorously in our simulation, which does not contain null points and separatrix surfaces, because of the two following properties of three-dimensional finite-B reconnection.

Firstly, the two reconnecting flux tubes do not simply exchange their connections as they do in 2D (and as drawn in several 3D cartoons in the literature). Instead, the two tubes break into four, and new connections are created (Priest et al. 2003). Secondly, reconnecting field lines do not change their connectivity in a cut-and-paste manner, like they do across separatrices. They continuously reconnect with a series neighboring field lines while they pass through the current sheet, so their footprints quickly slip along the QSL footprints (Aulanier et al. 2006).

Despite of these theoretical limitations, field line pairs can be identified in an approximated way. The relatively high values $10^5 < Q < \text{a few } 10^7$ along most of the length of the QSL footprints in our magnetic field configurations imply the following for a given reconnecting field line (Aulanier et al. 2006; Janvier et al. 2013). Firstly, slip-running reconnection occurs during a time-interval much lower than t_A . During this time field lines footprints move at super-Alfvénic velocities and cover a significant fraction of the total distance between their initial and final state. So field line pairs can almost be identified on short timescales. However, some additional distance is swept by the field line footprint during several t_A preceding and following slipping reconnection regime. Therefore, longer timescales have to be considered for retrieval of the final positions of field line footprints.

In the following we analyze the reconnection of individual field lines between two Alfvén times, which is a good compromise so as to cover both regimes while identifying pairs of interacting field lines.

We followed the same procedure employed (but not described) in Aulanier et al. (2012) to identify pairs of reconnecting field lines L_a and L_b . We first choose a “final” post-reconnection time $t = t_f$. Then we select a footprint F_a at $z = 0$, in the polarity of the broadest of both QSL hooks (here in the negative polarity), so that it is located in the trailing edge of the moving QSL footprint (here we used the current ribbons). Then we integrate the field line $L_a(t_f)$ from F_a , and obtain its conjugate footprint F_c . We also integrate $L_a(t_i)$ from F_a at a given “initial” pre-reconnection time $t = t_i < t_f$ (here with $t_f - t_i = 2t_A$), and check that L_a has indeed reconnected between both times, and that F_a is now located in the leading edge of the QSL footprint. If not, the footprint F_a has to be adjusted manually. Next we integrate the field line $L_b(t_i)$ from footprint F_c at $t = t_i$, and thus we obtain its conjugate footprint F_b located in the same polarity as F_a . We also integrate $L_b(t_f)$ from F_b at $t = t_f$ and we check that L_b has indeed reconnected between both times. If not, F_a has to be adjusted again. Finally, the four field lines $L_u(t_v)$ that correspond to the initial and final states of the pairwise reconnection can then be (re)integrated at both times $t = t_v$ from both fixed footprints F_u located in one same polarity (with $u = a; b$ and $v = i; f$).

We recall that, even though both field lines do exchange one of their conjugate footprints F_c during the pairwise reconnection, the nature of QSL reconnection still implies that they cannot rigorously exchange their other conjugate footprint, and that both of these conjugate footprints slip over some distance before and after this reconnection. This explain the offsets

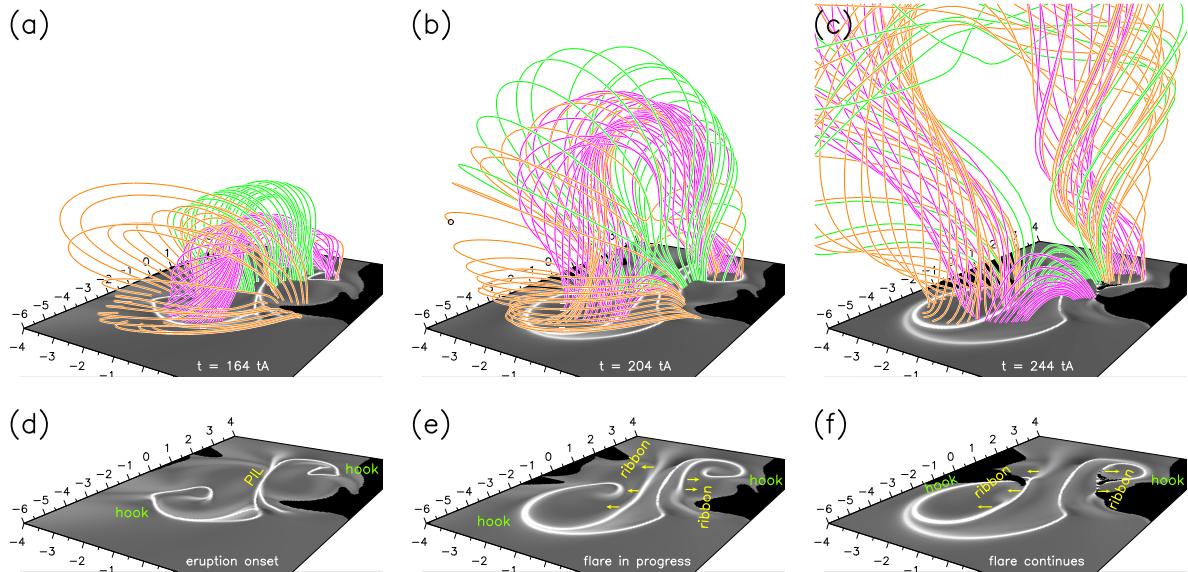


Fig. 1. Time-evolution of representative coronal field lines (*top row*) and of the double- J shaped QSL footprints (*bottom row*) during the modeled flare, from the eruption onset (*left*) up to the end of the simulation (*right*). The pink (resp. orange) field lines correspond to the external edge of the flux-rope as it is at the eruption onset (resp. at the end of the simulation). The green field lines correspond to overlaying arcades at the eruption onset. The QSL footprints are represented by the squashing degree Q , with a logarithmic grayscale color coding with gray-white standing for $\log Q = \langle 0; 4 \rangle$, and with black areas mapping the footpoints of field lines that leave the full numerical domain. The polarity inversion line (PIL) and the relevant hook and ribbon portions QSL footprints are labeled, and the displacements of the latter are indicated by arrows.

between field line footpoints which are displayed hereafter, even though TOPOTR is an accurate field line integrator. And more generally it warrants caution when analyzing (or sketching) field lines reconnecting in 3D.

3. Drifting of the flux rope

3.1. High- Q footprints of flux-rope QSLs

As obtained with earlier topological studies of flux ropes (as initiated by see Démoulin et al. 1996b, Sect. 2.2), the high- Q region in our simulation displays a double- J pattern at $z = 0$ during the modeled eruption. It is plotted in the lower panels of Fig. 1. This double- J is composed of two elongated nearly parallel, straight, ribbon-like components, and each of them is prolonged by one curved hook at its end.

As the eruption progresses, the values of squashing degrees in the double- J do not evolve significantly. High values $Q > 10^5$ are present along most of the length of the QSLs, with a peak at $Q =$ a few 10^7 in the middle of each curved hook. However their shapes do evolve noticeably. In particular the straight parts of both Js spread away from each other and from the PIL (see Figs. 1e–f). This is a result of the flare magnetic reconnection, which occurs at the hyperbolic flux tube (HFT) in the core of the coronal part of the QSL (Aulanier et al. 2012; Janvier et al. 2013; Savcheva et al. 2016). In addition, the hooks change shape. In a first phase their curvature becomes smoother and the area surrounded by the QSL footprints expands (see Figs. 1d–e). Then their expansion continues while the distance of between their end and the edge of the straight parts of the Js decreases, so the distinction between the straight part of the ribbon and its hook becomes difficult (see Figs. 1e–f).

Following the procedure as described at the end of Sect. 2.2, we plot the field lines of the outer edge of the flux rope. Time-evolution of these field lines is described and analyzed in Sect. 3.3.

3.2. QSLs unrelated to the erupting flux rope

In addition to the double- J pattern, some high- Q features that are neither related with the flux rope drifting nor to the flare reconnection are also present in the simulation. Firstly, the double- J actually has a single S-shape at the eruption onset (see Fig. 1d). This is due to the formation process of the flux rope through flux cancellation. It generates a bald-patch (BP) along the PIL (as defined in Titov et al. 1993), at which continuous reconnection gradually builds the flux rope (as described in van Ballegooijen & Martens 1989). During the flux-rope formation, the hooks correspond to the ends of a BP separatrix with $Q \rightarrow \infty$ (as in the models by Titov & Démoulin 1999; Titov et al. 2008) before it transitions into a QSL with finite- Q values (as it occurs in Aulanier et al. 2010).

Secondly, a high- Q region remains along the PIL after the flux rope lift-off has begun, between the straight, ribbon-like parts of the QSL-footprints (see Figs. 1e–f). This feature is the same BP as described above. It remains because the eruption leads to low-altitude pinching and reconnection of the BP separatrix. This reconnection leads to “splitting of the rope in two with one rope successfully being expelled and the other remaining behind” (as found and coined by Gibson & Fan 2006).

In our simulation, the X-line that forms underneath the eruptive component originates from a topological bifurcation that produces the HFT (hence the QSL) across which the flare reconnection occurs. This HFT first appears a few grid points only above the line-tied boundary. So the flux rope that is left behind from the eruption and that remains attached to the BP is an extremely low-lying structure, whose radius is only about 1% of its length. This flux rope is represented in Fig. 2a, where the vertical axis was stretched by a factor of 40 to make the rope visible.

The third feature is a pair of lower- Q regions (with $Q \simeq 10^{3-4}$) that curve away from both ends of the BP and that gradually elongate toward the edge of the closest hook. These are actually shear-driven QSL that developed long before the eruption onset. The pre-eruptive long-duration dragging of

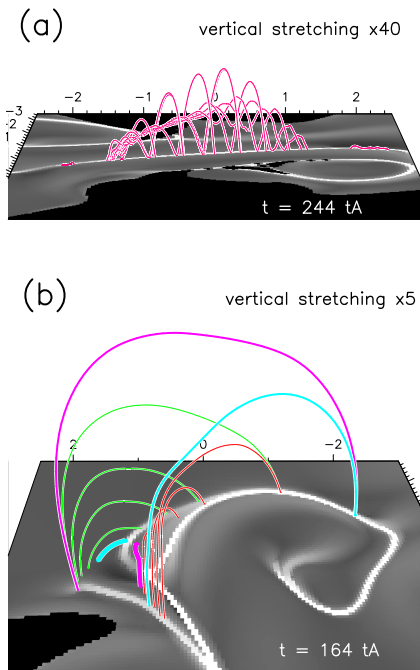


Fig. 2. Representative field-lines associated with high- Q regions unrelated with the modeled flare and eruptive flux rope. *Panel a:* separatrix field-lines rooted in a bald patch, which outline a small non-eruptive flux rope that results from the splitting of the initial flux-rope in the early phase of the eruption. *Panel b:* field lines which belong to low- Q shear-driven QSLs, which are located on the edge of the main QSLs that surround the erupting flux rope. In both panels a large vertical stretching factor was applied for a better rendering of the geometry of these relatively low-lying and flat structures.

field-lines footprints from various distances in the asymmetric bipole naturally led to develop connectivity gradients. Thus, QSLs developed between shorter sheared field-lines rooted near the PIL and longer inclined sheared field-lines that were carried from the outer edge of one polarity toward the PIL. We note that these QSLs also involves a (broad) HFT, and that low-altitude reconnection-driven footpoint-exchanges between short and long inclined field-lines also happen there during the simulation.

Typical field-lines mapping this whole QSL at the onset time of the eruption are plotted in Fig. 2b. The overall magnetic-field geometry at this fixed time illustrates how cyan field-lines can later reconnect with one another, as they can slip along the path of green and red thin field-lines and eventually change their connectivities into those of the plotted pink field-lines.

3.3. Flux rope evolution

Figure 1a shows in pink the flux-rope edge at the onset of the eruption, and Fig. 1c shows with different orange field lines the flux-rope edge at the end of the simulation. Due to the arched-shape geometry and to the coronal expansion of the flux rope, it is difficult to compare these two sets of field lines with one another. So the field lines originating from the same footpoints and keeping the same colors are plotted on all panels a–c so as the highlight their changes in connectivity as a function of time.

The field-line plots reveal that both footpoints of the flux rope have moved away from the PIL between the eruption onset time and the end of the simulation. Given the line-tying of field lines during the eruption, this is not a result of any photospheric motion. Instead Fig. 1 reveals that the flux rope displacement

comes from field line changes in connectivity, due to coronal magnetic reconnection. Indeed, all the late flux-rope edge (orange) field line (from $t = 244t_A$) were actually arcades at pre-eruptive times (at $t = 164t_A$). They were bending over the leg of the flux rope. On one side of the PIL they were rooted at the periphery of the QSL hook. On the other side they were rooted relatively close to the PIL. But during the eruption (e.g., at $t = 204t_A$), these field lines gradually slipped along the straight portions of the QSL toward the hook, in the slipping and slip-running reconnection regimes. Oppositely, the pre-eruptive flux-rope (pink) field-lines (from $t = 164t_A$) that were the closest to the PIL gradually reconnected and formed (flare) loops rooted between both straight parts of QSL footprints. The latter behavior is not specific to our model, since a conversion of long flux-rope field lines into shorter loops near a flux-rope footprint can also be seen, for example, in the Fig. 11 from Amari et al. (2003), although it was not analyzed there.

On the morphology side, the (pink) flare loops that originated from the pre-eruptive flux rope are nearly undiscernable from other (green) flare loops that resulted from reconnection between largescale overlaying arcades as in the 2D CSHKP model (and in its 3D extensions by Aulanier et al. 2012). Their main differences are that the former (pink) loops are rooted at the ends of the flaring PIL and tend to be slightly longer, while the latter (green) loops are located above the central part of the PIL and tend to be slightly shorter. Similarly, the (orange) field lines at the edge of flux rope that originated from (very) inclined pre-eruptive arcades do not look so different from the (green) flux-rope envelope field-lines that formed according to the 3D extension of the CSHKP model (Aulanier et al. 2012; Dudík et al. 2014). Both are rooted in the hooks of the QSLs. But the former (orange) edge field lines tend to be rooted in the part of the hook that is the farthest from the center of the flaring PIL, while the latter (green) envelope field lines are all rooted near the end of the hook that is closer to the center of the bipole. Interestingly, some the pre-reconnection inclined (orange) arcades are carried within one the two largescale vortices that develop at both flanks of the flux-rope (as studied in Zuccarello et al. 2017; Dudík et al. 2017). So they can account for so-called imploding loops before they reconnect into the flux rope itself.

On the connectivity side, our simulation predicts that the photospheric line-tied footpoints of erupting flux-ropes can drift away from the flare site, and that they do so because a series of coronal magnetic reconnections gradually erode the flux rope on its inner side that faces the PIL, in turn producing the end-most flare loops along the PIL, while other reconnections build the rope up on its outer side that faces away from the flaring bipole. This implies that while a CME propagates, and even in the absence of interaction with any open field-lines of the solar wind or with any long-distance active region, the CME footpoints gradually drift away from their source (active) region.

3.4. Evolving connections from fixed-footpoints swept by moving-QSLs

Here we propose a method to facilitate the understanding of the relations between field-line footprints, QSL footprints, and magnetic reconnection (as pursued in Sect. 4), and to establish a link with possible observations of these phenomena (see Sect. 5). In principle the method that relies on the slip-squashing factors as developed by Titov et al. (2009) may be used. But we focus a simpler approach that can also be used readily with EUV observations. We overlay the QSL footprints as calculated for different times, and we attribute a different color table for

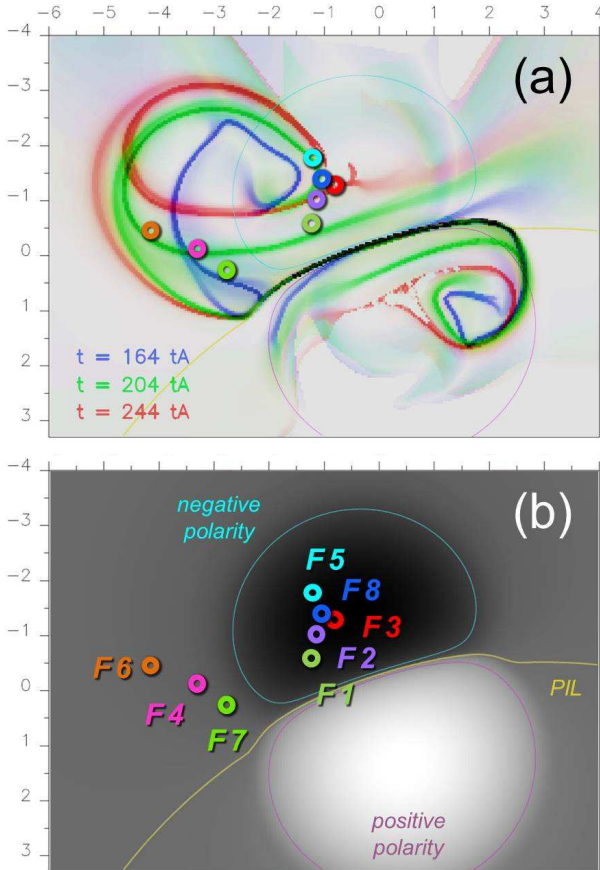


Fig. 3. *Panel a:* time-evolution of the double- J shaped QSL footprints (same as in Fig. 1) from the eruption onset up to the end of the simulation. *Panel b:* grayscale rendering of the flux distribution in the photosphere, with black-white standing for $B_z = \langle -2.4; 3 \rangle$. The polarity inversion line (PIL; $B_z = 0$) is shown in yellow in both panels. Similarly, the pink and cyan isoncontours stand for $B_z = 1$ and -1 , respectively. The colored circles and labels $F1$ – $F8$ indicate the footpoints in the negative polarity $B_z < 0$ of the field lines whose time-evolutions are plotted in Figs. 4, 5, and 6.

each time so as to distinguish them. The result is displayed in Fig. 3.

This viewing provides a quick and efficient way to observe how the ribbons move away from the PIL and thus turn largescale arcades into flare loops and flux-rope envelope field-lines, like in standard CSHKP model (as analyzed in 3D in Sect. 4.1). For example, consider the (purple) footpoint $F2$. For more than half of the simulated eruption (i.e., both at $t = 164t_A$ and $t = 204t_A$) it remains outside of the region the PIL that is bounded by the (green) ribbons, as well as of the region encircled by the (blue and green) hook. So the topology of its coronal field line is that of a simple arcade. But at the end of the simulation (at $t = 244t_A$) the footpoint is located in the area encircled by the (red) hook. So its field line now belongs to the flux rope, and it ought have reconnected in the second half the modeled eruption (i.e., after $t = 204t_A$).

This method also allows us to see where the expansion and displacement of a hook builds up the flux rope in ways that are not predicted by the 2D standard model. One can consider the (cyan) $F5$ footpoint. At the eruption onset is rooted outside the hook so its field line is an arcade. But it must have reconnected (at about $t = 204t_A$) when the (green) ribbon reached its position, and it must have turned into the flux rope by the end of

the simulation (at $t = 244t_A$) since the footpoint is now inside the expanded hook. One can also see the broader hook located in the weaker negative polarity not only drifts much more than the narrower one, but also that one of its sections (around the orange footpoint $F6$) expands and later contracts, which implies the occurrence of multiple reconnection for the same field line (see more in Sect. 4.4).

Figure 3 also highlights which parts of the ribbons gradually take over the hooks, and thus erode the flux rope on its inner side. For example considers the (pink) footpoint $F4$ in Fig. 3. At the eruption onset (at $t = 164t_A$) this footpoint is encircled by the (blue) hook. So the field line originating from it belongs to the flux rope. But later in the flare (at $t = 244t_A$) the ribbon has swept this region, thus resulting in a displacement of the hook away from the footpoint. The field line thus must have reconnected into a flare loop at some intermediate time (right after $t = 204t_A$) when the (green) ribbon reached its position (see Sect. 4.3).

These preliminary inspections also show that the evolution of both hooks can be asymmetric. And they highlight that the fate of field lines that originate from relatively close footpoints can be very different depending on whether or not they are swept by a QSL footprint, and if it is a hook or a ribbon. In the sections below, we describe how we pursue these analyses.

4. New 3D geometries for magnetic reconnection

4.1. Standard reconnection between arcades

We analyze the geometry of the reconnection which involves a pair of arcades that initially overlay the flux rope, like it occurs in 2D in the standard CSHKP flare-model. While this was also done in Aulanier et al. (2012) with a similar model, here we also investigate the long-term evolution of the same reconnected field lines.

Using Fig. 3 we selected a footpoint $F1$ so that its corresponding field line is an arcade at the eruption onset, and is a flare loop at the end of the simulation. These initial and final natures of the field line are ensured by choosing $F1$ to remain outside of the hook at all times, and have it being swept by the straight, ribbon-like portions of the QSL-footprint at some time during the simulation.

Then using the method as described in Sect. 2.3 we found the footpoint $F2$ of the (purple) field line that reconnects with the (green) one originating from $F1$, and the time at which they reconnect. And followed the time-evolution of these two field lines from the fixed footpoints $F1$ and $F2$ both located on the same side of the PIL. Both arcades are plotted in Fig. 4a at the time of the eruption onset at $t = 164t_A$. Their pre-reconnecting shapes at $t = 222t_A$, whose expansion results from the eruption of the flux rope underneath, are shown in Fig. 4c. Their post-reconnection state at $t = 224t_A$ is visible in Fig. 4d. These three panels merely show a 3D version of the CSHKP model: the arcade rooted in $F1$ turns into a flare loop; and the arcade rooted in $F2$ becomes part of the flux rope. Since this reconnection naturally builds up the flux rope envelope, it contributed to an increase in the flux-rope footpoint area, and thus in a growth of the QSL hooks.

The final state of the system is plotted in Fig. 4b. There the expected contraction at $t = 244t_A$ of the (green) flare loop originating from $F1$ that results from its slow relaxation during $20t_A$ is readily visible. But most surprising is the final state of the (purple) field line rooted in $F2$. This one did not keep expanding within the flux rope as implied in the CSHKP model. Instead it also turned into a flare loop. Further analysis as reported in Figs. 4e–f reveals that this flux-rope field-line actually

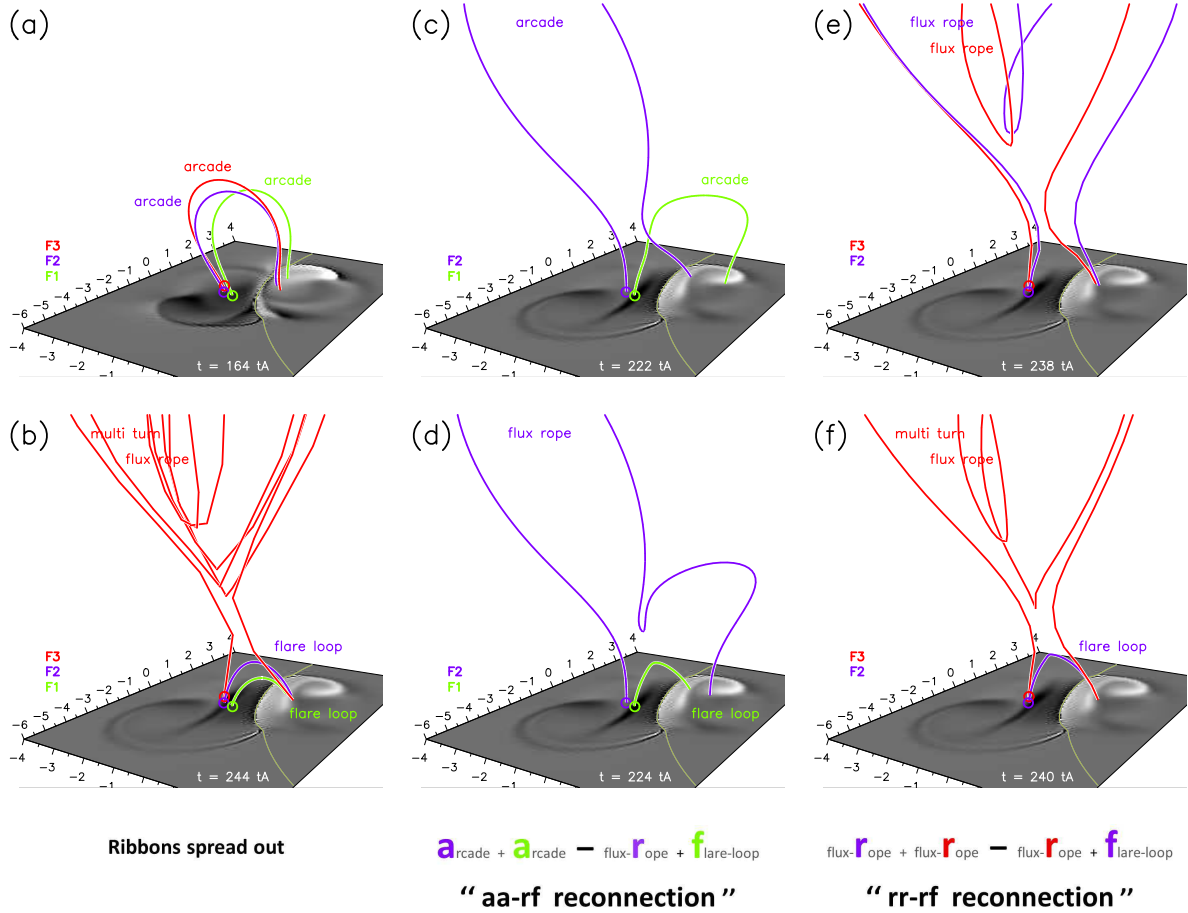


Fig. 4. Projection views of the three field lines rooted in the footpoints $F1$, $F2$ and $F3$, plotted at selected times. Each field line is labeled according to its topology at the time that it is plotted, and is colored according to that of its footpoint as plotted in Fig. 3. The bottom planes show the double- J shaped current ribbons, seen as grayscale rendering of the vertical component of the electric current J_z in the photosphere, with black-white standing for $J_z = \langle -2.4; 3.2 \rangle$. Panels *a* and *b*: field lines at the eruption onset at $t = 164t_A$ and at the end of the simulation at $t = 244t_A$. Panels *c*–*d* (resp. *e*–*f*): field lines rooted in $F2$ and $F1$ (resp. in $F2$ and $F3$) before and after they endure one “aa-rf” (resp. one “rr-rf”) reconnection episode occurring at $t = 223t_A$ (resp. at $t = 239t_A$). The bottom of the figure right indicates which part of the QSL-footpoint (i.e., flare ribbon) evolution is associated with the kinds of reconnections being represented in the *right columns*.

reconnected between $t = 238$ and $240t_A$ with another (red) flux-rope field-line rooted in the footpoint $F3$, thus forming a (red) multi-turn flux-rope and turning the (purple) field line into a flare loop. Plotting this new (red) field line at the time of the eruption onset shows that it started as a simple arcade, so it also evolved into a flux rope in a CSHKP-like reconnection (which occurred around $t = 230t_A$ and is not shown here). Plotting the (red) field line rooted in $F3$ at the time at which the simulation ends (at $t = 244t_A$) reveals that its number of turns have further increased to about five, so it must have endured multiple reconnections.

4.2. New reconnection terminologies

Here we introduce new terminologies to describe the geometries that are involved in the various types of reconnection which occur in our eruptive-flare model. We define the code-letter “*a*” for arcade field lines, the code-letter “*r*” for flux-rope field lines, and the code-letter “*f*” for the flare loops. We describe the geometries by two pairs of code-letter separated by a hyphen, with the pre (post) reconnection state on the left (right) of the hyphen. When it is required, we respect the order of the code-letters when considering fixed footpoints located in the same polarity, that is, the first (second) code-letter correspond to the

field line that is rooted in the same fixed footpoint as that of the third (fourth) code-letter.

In this way, the reconnection as shown in Figs. 4c–d that involves two arcades that turn into a flux-rope and a flare loop is a *aa-rf reconnection*. This is the standard geometry of the standard CSHKP flare model. Using the same rule, the reconnection as shown in Figs. 4e–f that involves two flux-rope field lines that reconnect into another flux-rope field line and a flare loop is a *rr-rf reconnection*.

Hereafter we pursue our analysis on the identification of reconnection geometries that result in the drifting of the flux rope, using this same new terminology. And every type of reconnection is indicated with this terminology at the bottom of the corresponding illustrations, as seen in Fig. 4.

4.3. Reconnection between inclined arcades and rope leg

Here we describe our analysis of the type of reconnection that is primarily involved in shifting flux rope footpoints away from the flaring PIL, as previously noted in Sect. 3.3. In order to visualize the flux-rope erosion on its inner side that faces the PIL, we select a footpoint $F4$ so that its corresponding field line belongs to the flux-rope at the eruption onset, and later becomes a flare loop. This is just like the reconnecting flare-loop pink field-lines

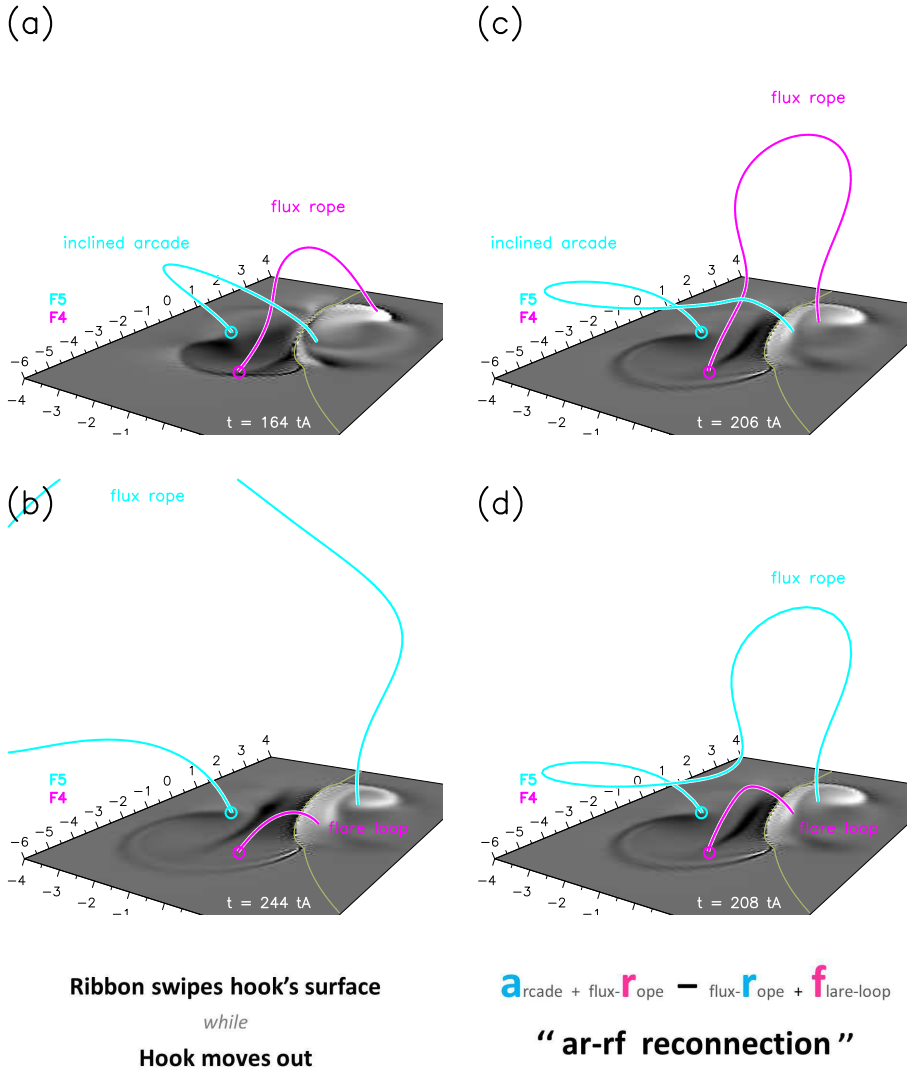


Fig. 5. Same as Fig. 4, but for the two footpoints $F4$ and $F5$. Panels *a* and *b*: field lines at the eruption onset at $t = 164t_A$ and at the end of the simulation at $t = 244t_A$. Panels *c* and *d*: both field lines before and after they endure one “aa-rc” reconnection episode occurring at $t = 207t_A$.

as plotted in Fig. 1c. These initial and final natures of the field line are ensured by choosing $F4$ to be located within the hook at $t = 164t_A$, and have it being swept by the straight parts of the QSL-footprint at some time during the simulation. The selected position for $F4$ is shown (in pink) in Fig. 3: it is on the inner side of the (blue) hook at the eruption onset, and it is swept by the (green) moving ribbon some short time after to $t = 204t_A$.

We find the footpoint $F5$ of the (cyan) field line that reconnects with the (pink) one originating from $F4$. It is located at the edge of the hook, on its side which is located away from the PIL. Figure 5a shows that, at the eruption onset, the field line rooted in $F5$ is an inclined arcade that overlies the end part of the flux rope. Figure 5c (Fig. 5d) show the pre (post) reconnecting shapes at $t = 206t_A$ ($208t_A$) of this pair of field lines. They reveal that the reconnection has transferred the inclined arcade into the flux-rope while it turned the flux-rope field-line into a flare loop. So according to Sect. 4.2 this is a *ar-rc* reconnection.

4.4. Flare loops resulting from multiple reconnections

As noted in Sect. 3.4, the leftmost part of the QSL hook as plotted Fig. 3 shows a non-monotonic drifting. It starts by a (leftward) expansion. And it is followed by a (rightward) contraction. This back and forth motion implies that individual field-lines sequentially move in-and-out of the flux rope through multiple reconnections.

Here we follow the evolution and analyze the series of reconnections of the field line which is rooted in the footpoint $F6$, chosen to be located in the area which is swept in both directions by the moving hook. Figure 6a shows that at the onset time of the eruption this (orange) field line is a very low-lying inclined arcade. We followed the same procedure as explained in Sect. 2.3 and as described above, so as to identify both footpoints $F7$ and $F8$ that are involved in the reconnections. Figure 6a shows that, before these reconnection happen, the two (green and blue) related field-lines belong to the flux rope and to the overlaying arcades, respectively.

Comparing Figs. 6a and c, one can notice that the (orange) arcade has endured a preliminary reconnection between $t = 164t_A$ and $178t_A$, before the occurrence of the first reconnection that we really study here. By linking the current-ribbons as plotted in Fig. 6 with the QSL footprints from Figs. 1 and 3, it can be seen that this preliminary reconnection involved the low-lying shear-driven QSL as described in Sect. 3.2. However this QSL is not directly related with the evolution of the eruptive flux-rope evolution. Also it is a by-product of the specific formation-process for the pre-eruptive flux-rope which we used so it may not exist in all eruptive flares. And we see here that this reconnection resulted in a relatively small change in field line connectivity for this arcade. Therefore we argue that this preliminary reconnection may not be important in general for the drifting of erupting flux ropes. It is,

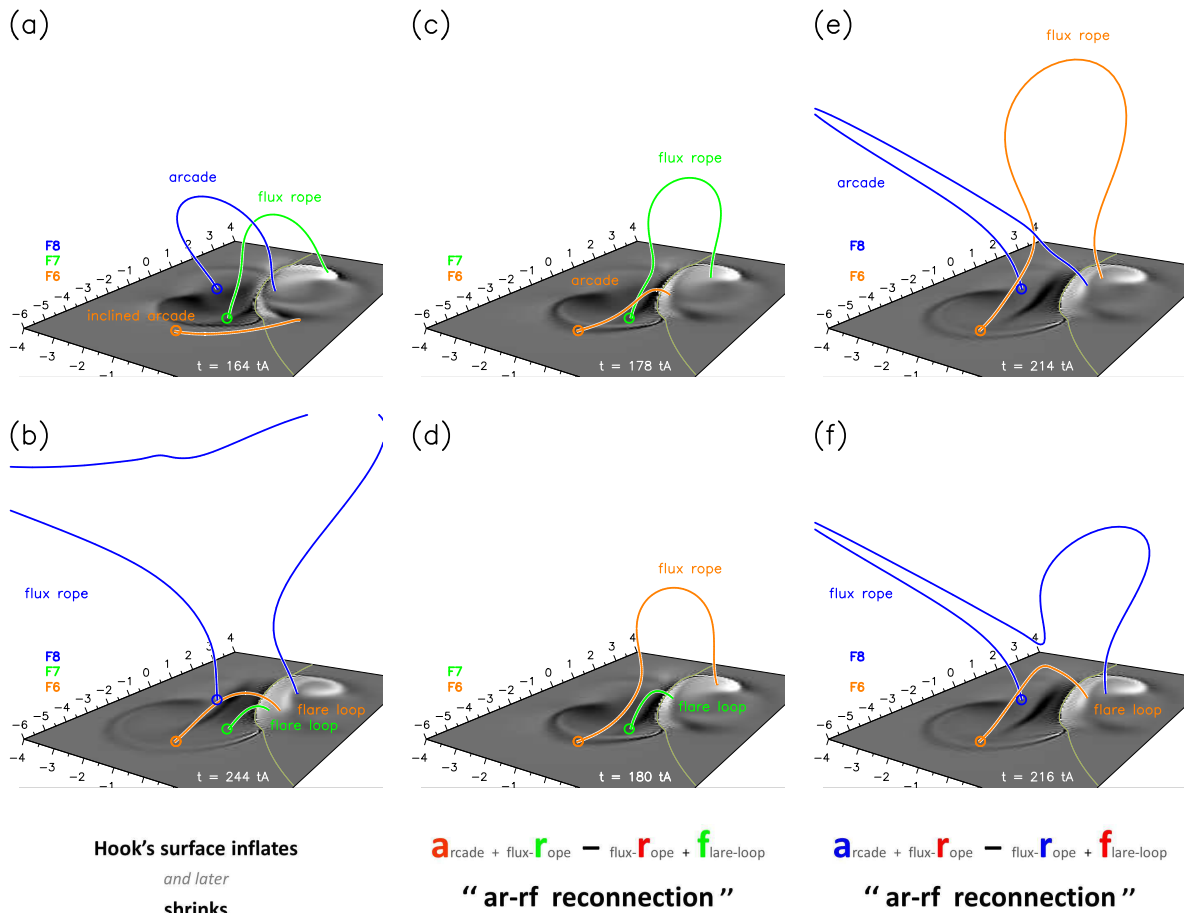


Fig. 6. Same as Fig. 4, but for the three footpoints $F6$, $F7$ and $F8$. Panels *a* and *b*: field lines at the eruption onset at $t = 164t_A$ and at the end of the simulation at $t = 244t_A$. Panels *c–d* (resp. *e–f*): field lines rooted in $F6$ and $F7$ (resp. in $F6$ and $F8$) before and after they endure two “ar–rf” reconnection episodes occurring at $t = 179t_A$ (resp. at $t = 215t_A$).

nevertheless worth mention, since it might happen in some real solar events and then explain some complex pattern in hooked flare-ribbons.

The first (important) reconnection occurs between $t = 178t_A$ and $180t_A$ (see Figs. 6c–d). There the (orange) arcade reconnects with the (green) flux-rope field-line with the exact same *ar–rf reconnection* geometry as described above and as reported in Fig. 5.

The second reconnection occurs several tens of t_A later, after the altitude of the apex of the (orange) flux-rope field-line has roughly doubled (see Figs. 6c–d). There this line reconnects with the (blue) arcade, which also expanded from the eruption onset time, as a result of the eruption pushing it from below. This second *ar–rf reconnection* turns the initially arcade-type and now rope-type (orange field line) into a flare-loop at $t = 216t_A$. This sequence of reconnections

eventually produces one (blue) expanding flux-rope field-line and two (orange and green) slowly relaxing downward-moving flare-loops (see Fig. 6b).

4.5. Discussion

The standard CSHKP flare-model in 2D only allows for reconnection between pairs of arcades that initially overlay the erupting flux rope. It produces a new twisted field-line that increases the poloidal flux of the rope, as well as a flare loop underneath the flux rope. Using our terminology as defined in Sect. 4.2 it

can be called *aa–rf reconnection*. One example of the 3D version of this reconnection occurring in our simulation is shown in Figs. 4c–d. Previously published examples can be seen in the Fig. 2 in Gibson & Fan (2008) and the Fig. 5 in Aulanier et al. (2012). It can also be inferred in many other 3D eruption models (e.g., as reviewed in Aulanier et al. 2014; Inoue 2016; Green et al. 2018), and it is usually invoked to interpret the flare loops and ribbons that are observed in the core of erupting active-regions.

In addition to the standard *aa–rf reconnection*, solar eruptions can also involve reconnections between eruptive field-lines and neighboring (or surrounding) loops. They are associated with topological features such as null-points and QSLs that are present in the corresponding potential field. As for the standard reconnection, these reconnections can happen in 2D (as modeled e.g., in Antiochos et al. 1999; Chen & Shibata 2000; Lynch & Edmondson 2013; Masson et al. 2013). On the observational side, they can account for so-called secondary flare ribbons that develop on the side of (or around) the source region of the flare (e.g., Aulanier et al. 2000; Chandra et al. 2009, 2011; Sun et al. 2013; Savcheva et al. 2016). When modeled in 3D, they can result in the jumping (not the drifting) of one of the flux-rope footpoints to a distant location (e.g., Gibson & Fan 2008; Cohen et al. 2010; Lugaz et al. 2011; Jiang et al. 2013; van Driel-Gesztelyi et al. 2014).

In this work, we have identified two new reconnection geometries and three new reconnection sequences that may occur during eruptive flares, within the erupting bipole

independently of any multi-polar topology of the largescale magnetic field. The two new geometries are:

- The *rr–rf reconnection*: there two flux-rope field-lines reconnect with each other; this generates a new multi-turn flux-rope field line and a flare loop; the latter is anchored on both sides of the central part of the flaring PIL, between the two straight portions of the QSL footprints (see Figs. 4e–f).
- The *ar–rf reconnection*: there an inclined arcade rooted within the erupting bipole reconnects with the leg of a flux-rope field line; it generates new flux-rope field line rooted far away from the PIL and a flare loop; the footprints of the latter are located near the end of the flaring-PIL, one being close to the hooked section of one *J*-shaped QSL footprint, and the other being near the end of the straight part of the other *J*-shaped QSL footprint (see e.g., Figs. 5c–d).
The three new sequences are:
 - An initial standard *aa–rf reconnection* followed by a series of *rr–rf reconnection*: all together they increase the poloidal flux (i.e., the end-to-end twist) in the outer envelope of the erupting flux-rope; so they increase the area surrounded by the QSL hook (see Fig. 4).
 - A single *ar–rf reconnection*: it leads to a field-line footpoint exchange that erodes the flux rope on one side, while it builds it up on the other side; it maintains the total axial flux along the flux rope; it shifts the QSL hook in position and therefore leads to a gradual drifting of the flux rope footprints (see Fig. 5).
 - A series of the same *ar–rf reconnections*: they initially transfer an initially low-lying arcade into the flux rope, and then to turn it into a long flare loop; they shift one part of the QSL hook back-and-forth and eventually also contribute to the drifting of the flux rope footprints (see Fig. 6).

All these reconnections involve the erupting flux-rope and result in the continuous expansion and drifting of its footprints away from the PIL. They are associated with the QSLs that separate the flux-rope from its surrounding arcades, in particular the QSL hooks, which are purely three-dimensional features. So these reconnections cannot occur in 2D, and are therefore excluded from the standard CSHKP flare model. Nevertheless they eventually produce flare loops, more specifically the ones located at both ends of the flaring PIL. So if the model can be confirmed by observations, then these reconnections will have to be regarded as an important ingredient of eruptive flares.

5. Revisiting observations of hooked flare ribbons

5.1. Two X class flares with hooked ribbons

To investigate whether the predicted drifting of erupting flux rope footprints exist in flare observations, we turn to two well-known X-class flares, the X1.4 flare of July 12, 2012 (SOL2012-07-12T16:49) and X1.6 flare of September 10, 2014 (SOL2014-09-10T17:45 [Dudík et al. 2016](#)). We note that these two flares have already successfully served to test the predictions of the 3D extensions to the standard solar flare model ([Aulanier et al. 2012](#); [Janvier et al. 2013](#)).

The July 12, 2012 flare was studied by many authors (e.g., [Zhang et al. 2013](#); [Dudík et al. 2014](#); [Cheng et al. 2014](#); [Cheng & Ding 2016](#); [Wang et al. 2016](#); [Hu et al. 2016](#)). Detailed evolution of the ribbons is given by [Dudík et al. \(2014\)](#). A context image of the flare ribbons is shown in Fig. 7a. This image shows the situation during the flare impulsive phase as observed by the 304 Å filter channel of the Atmospheric Imaging Assembly (AIA; [Lemen et al. 2012](#); [Boerner et al. 2012](#)) onboard

the Solar Dynamics Observatory (SDO; [Pesnell et al. 2012](#)). The AIA spatial resolution is 1.5'', with a pixel size of 0.6''. The 304 Å passband is dominated by two strong He II emission lines at 303.8 Å ([O'Dwyer et al. 2010](#)). Two bright ribbons, NR and PR, can be readily identified. The PR is shorter and located in the strongest magnetic flux concentration, a pair of leading, positive-polarity sunspots (see Figs. 1 and 2 in [Dudík et al. 2014](#)). The NR has an extended straight part and a well-formed hook NRH. The hook PRH of the PR extends to the neighboring active regions and is less bright than NRH.

The September 10, 2014 flare is also a well-studied event (e.g., [Cheng et al. 2015](#); [Graham & Cauzzi 2015](#); [Li & Zhang 2015](#); [Tian et al. 2015](#); [Zhao et al. 2016](#); [Dudík et al. 2016](#); [Duan et al. 2017](#); [Zhang et al. 2017](#); [Ning 2017](#); [Lee & Magara 2018](#)). The evolution of this flare from the precursor to the gradual phase is described in detail in [Dudík et al. \(2016\)](#). The flare ribbons in the impulsive phase of this flare are shown in Fig. 7b. The ribbon PR is again short, and located in the dominant (leading) positive-polarity sunspot. The conjugate negative-polarity ribbon is more extended, with a straight portion NR and an extended hook NRH. Thus, in both events, the NR and its NRH are located in the weaker-concentrated following negative polarity, similarly as in the simulation, with extended hooks NRH. It is both of these NRH that we focus on from now on.

5.2. Time-evolution of hooks

The evolution of the NRH in the July 12, 2012 event is shown in the panel c of Fig. 7. The location of the ribbon NR and its hook NRH is shown at three times, using overlay of blue, green, and red colors.

In addition, the ribbon shapes at these three times were outlined manually and are shown in panel e of Fig. 7 by dashed lines of corresponding colors.

Blue color displays the situation at the start of the impulsive phase at about 16:14 UT (see Table 1 of [Dudík et al. 2014](#)). At this time, an eruption of a hot flux rope rooted in NRH was observed in AIA 131 Å (Fig. 5 in [Dudík et al. 2014](#)). At this time, the hook NRH is relatively narrow. Approximately sixteen minutes later, at about 16:30 UT (green color), the NRH has expanded laterally, while its far end have also prolonged by more than a few 10''; its tip is then pointed out by the green arrow in Fig. 7c. We note that the outward expansion of NRH in the northeastern direction is constrained by the largescale QSL separating the active region complex from the open field (see Fig. 1 and Sect. 2.1.1 of [Dudík et al. 2014](#)). At 16:45 UT (red color), approaching the peak of the flare at 16:49 UT, the NRH continued its expansion. However, the NR, that is, the straight portion of the ribbon, moved away from the PIL, sweeping the previous location of the outer edge of NRH (see black arrows in Fig. 7c). Thus, the observations of the 2012 July 12 event clearly indicate that this NRH drifts in time. Furthermore, since the tip of the NRH at 16:14 UT was the location of an erupting S-shape flux rope (see Fig. 5 of [Dudík et al. 2014](#)), the drifting of the NRH described above indeed indicates the drifting of the footprints of an erupting flux rope.

Another clear example of a drift of flux rope footprints can be found during the September 10, 2014 flare. In Fig. 7d, we show the observations performed by the Interface Region Imaging Spectrograph (IRIS; [De Pontieu et al. 2014](#)) in its 1400 Å slit-jaw channel. The emission of the 1400 Å channel is under flare conditions dominated by the Si IV doublet, originating in transition-region conditions. The reasons for using the IRIS observations for this event, instead of

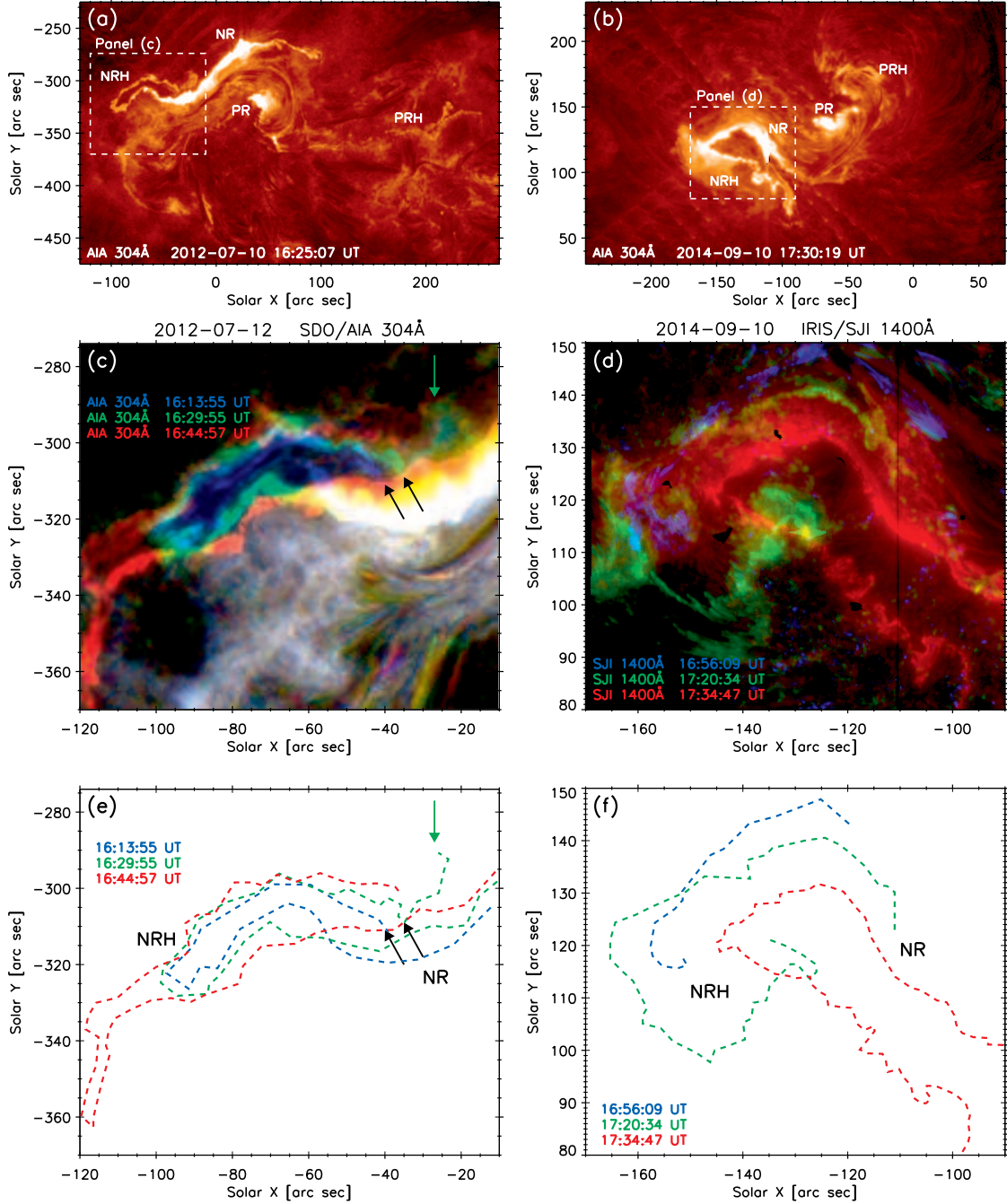


Fig. 7. Observations of flare ribbons and their hooks in two X-class flares of July 12, 2012 and September 10, 2014. *Panels a and b:* context images observed in AIA 304 Å during the impulsive phases of each flare. Positive and negative polarity ribbons are labeled PR and NR respectively, and their respective hooks are labeled PRH and NRH. *Panels c and d:* zoom-ins of the NRH at three different times, shown by blue, green, and red colors, respectively. We note that in *panel d*, the IRIS/SJI 1400 Å images are shown rather than AIA 304 Å, due to their higher spatial resolution. *Panels e and f:* manually traced-out ribbon locations (dashed colored lines) at times corresponding to panels c and d.

SDO/AIA 304 Å, are twofold. First, during the early (precursor) phase of the flare, the NRH is quite faint, and best visible in IRIS/SJI 1400 Å. Second, IRIS observations allow us to take advantage of their much higher spatial resolution, which is 0.33".

The IRIS 1400 Å observations of the NR and NRH in the 2014 September 10 flare at three different times are shown in Fig. 7d. The three different times are again shown by the blue, green, and red color. In addition, the ribbon at these three different times is traced out manually in the panel f of Fig. 7 by dashed lines of respective colors.

In the early phase of the flare, the NRH is still growing. At 16:56 UT (blue color in Fig. 7d), the NRH is not yet continuous (a feature typical of early phase of flares, see Dudík et al. 2014, 2016), and quite faint, by about two orders of magnitude compared to the impulsive phase of the flare. We thus had to enhance its intensity for better visibility. At this time, the NRH is only developing; its tip is located at about $[X, Y] = [-150'', 112'']$. However, as the flare progresses toward the impulsive phase, the NRH expands and grows significantly. At 17:20 UT (green), the NRH expanded eastward and southward, while NR, the straight part of the ribbon, have moved

toward SE, in other words the direction away from the local PIL. We note that in addition to the expansion, the NRH undergoes “squirming motions”, first noted by Dudík et al. (2016), see Sect. 2.3 and Table 1 therein. These squirming motions accompany the slipping reconnection occurring along the evolving NRH. They indicate that the ribbon passes through a given spatial position more than once. In light of our results, such squirming motions can be explained by multiple reconnections being endured by a field line starting from the same photospheric footpoint.

However, after the onset of fast eruption (at about 17:27 UT), the NRH starts to shrink and now moves in the westward direction, rather than in the southeastern one. Meanwhile, the straight part NR continues its southeastern motion away from the PIL. At 17:35 UT (red color in Fig. 7d), the NRH is much narrower, while being very bright (more than $\approx 10^4 \text{ DN s}^{-1} \text{ px}^{-1}$), with trailing bright footpoints of newly-formed flare loops. Thus, the overall evolution of the ribbon, which in this case is not constrained by a largescale QSL as in the case of the July 12, 2012 event, is in good agreement with the model-predicted evolution. In particular, the area around $[X, Y] = [-150'', 112'']$ is first outside of the NRH (at 16:56 UT, blue color), then becomes a part of the NRH (it is inside NRH at 17:20 UT; green color), and is outside of the NRH again at 17:34 UT (red color). A field line rooted in this location therefore had to undergo at least two reconnections, similar as the orange field line starting from the footpoint F6 in Figs. 3 and 6.

5.3. Discussion

Based on the results of Sect. 5.2, we conclude that these two events provide evidence in support of the drifting of flux rope footpoints. However, we note that the evolution of the ribbons alone do not elucidate the individual types of reconnection presented in Sect. 4. This would require analysis of the coronal loops anchored near ribbons (if visible), and their evolution in conjunction with the evolution of the ribbons. This is outside of the scope of this paper, and is left for future work. However, previous observational reports indicating reconnection between open and closed loops (for example, Savage et al. 2012; Zhu et al. 2016) already allow optimism in this regard.

6. Conclusions

In this paper we have jointly addressed the following questions about solar eruptions: Are the footpoints at the Sun’s surface of (I)CME flux ropes located at the same locations as those of their progenitor current-carrying magnetic fields? Do flare loops that develop at the endings of flaring PILs form in the same way as described in the CSHKP standard model?

To address these questions, we performed new analyses of an idealized MHD simulation of solar eruptions, in which the eruption is triggered by torus instability of a flux rope previously formed by flux-cancellation. We built upon earlier extensions of the standard flare model in three dimensions, in particular the fact that the footpoints of eruptive flux-ropes should be located within the hooks of flare ribbons that develop at the footprints of current-carrying QSLs. And we analyze the time-evolution of ribbons in two X-class eruptive-flares observed by SDO and IRIS.

Our results concerning the development of the standard flare model in 3D can be summarized as follows:

In spite of line-tying, the footpoints of the modeled flux-rope drift away from the flaring PIL during the eruption. This is due to a series of coronal reconnections that erode the side of the flux rope facing the PIL, and build it up on its other side facing away from the PIL.

Several reconnection geometries and sequences being involved have been identified. They are intrinsically three-dimensional so they cannot be described by the CSHKP model. New terminologies were proposed to describe these geometries. In particular the *ar-rf reconnection* involves an $[a]$ rcade and the flux- $[r]$ lope field line and produces a new flux- $[r]$ lope field line and a $[f]$ lare loop.

These reconnections all together generate a displacement and a deformation of the double- J shaped QSL footprints, in particular of their hooks within which the flux-rope is rooted.

The flare loops that form at the endings of the flaring PIL do not form by pairwise reconnections of coronal arcades as others do. Instead they are formed by *ar-rf reconnection* and are thus directly related with the flux-rope drifting.

The evolution of the hooks of flare ribbons in the two well-known X-class flares of July 12, 2012 and September 10, 2014 are qualitatively consistent with those of the drifting QSL-footprints in our model.

These flare-related behaviors can be linked to the identification of the footpoints of CME and ICME flux-ropes as follows: The drifting of the eruptive flux-rope footprints implies that (I)CME flux-ropes should not map down to the positions of the pre-eruptive flux rope. So magnetic field extrapolations and direct-imagery of the pre-eruptive current-carrying flux tube are not sufficient to identify the locations of (I)CME footpoints.

Nevertheless the relative positioning of flare ribbons with respect to those of line-tied footpoints may be used to identify the time-evolving topology of field-lines, in particular to follow the drifting footprints of (I)CMEs flux-ropes within the areas surrounded by the evolving hooks of flare ribbons.

The flare-related behaviors which we modeled may constitute new extensions to the standard flare model in three dimensions. We have provided some qualitative observational support from the spatio-temporal properties of hooked flare ribbons in two observed events. But more observations are required so as to test further all the model predictions, in particular regarding CME footpoint locations and flare-loop formation at the ends of flaring PILs.

Acknowledgements. The authors thank Miho Janvier, Juraj Lörinčák and Alena Zemanová, and for discussions. G.A. thanks the CNES and the Programme National Soleil Terre of the CNRS/INSU for financial support, as well as the Astronomical Institute of the Czech Academy of Sciences in Ondřejov for financial support and warm welcome during his visit. J.D. acknowledges financial support from the project 17-16447S of the Grant Agency of Czech Republic as well as institutional support RVO: 67985815 from the Czech Academy of Sciences. The simulation used in this work was executed on the HPC center MesoPSL which is financed by the Région Île-de-France and the project Equip@Meso of the PIA supervised by the ANR. AIA data are provided courtesy of NASA/SDO and the AIA science team. IRIS is a NASA small explorer mission developed and operated by LMSAL with mission operations executed at NASA Ames Research Center and major contributions to downlink communications funded by the Norwegian Space Center (NSC, Norway) through an ESA PRODEX contract.

References

- Amari, T., Luciani, J. F., Aly, J. J., Mikic, Z., & Linker, J. 2003, *ApJ*, 595, 1231
- Antiochos, S. K., DeVore, C. R., & Klimchuk, J. A. 1999, *ApJ*, 510, 485
- Aulanier, G., DeLuca, E. E., Antiochos, S. K., McMullen, R. A., & Golub, L. 2000, *ApJ*, 540, 1126
- Aulanier, G., Démoulin, P., & Grappin, R. 2005a, *A&A*, 430, 1067

- Aulanier, G., Pariat, E., & Démoulin, P. 2005b, *A&A*, 444, 961
- Aulanier, G., Pariat, E., Démoulin, P., & Devore, C. R. 2006, *Sol. Phys.*, 238, 347
- Aulanier, G., Török, T., Démoulin, P., & DeLuca, E. E. 2010, *ApJ*, 708, 314
- Aulanier, G., Janvier, M., & Schmieder, B. 2012, *A&A*, 543, A110
- Aulanier, G. 2014, in *Nature of Prominences and their Role in Space Weather*, eds. B. Schmieder, J.-M. Malherbe, & S. T. Wu, *IAU Symp.*, 300, 184
- Bocchialini, K., Grison, B., Menvielle, M., et al. 2018, *Sol. Phys.*, 293, 75
- Boerner, P., Edwards, C., Lemen, J., et al. 2012, *Sol. Phys.*, 275, 41
- Carmichael, H. 1964, *NASA Spec. Pub.*, 50, 451
- Chandra, R., Schmieder, B., Aulanier, G., & Malherbe, J. M. 2009, *Sol. Phys.*, 258, 53
- Chandra, R., Schmieder, B., Mandrini, C. H., et al. 2011, *Sol. Phys.*, 269, 83
- Chen, P. F., & Shibata, K. 2000, *ApJ*, 545, 524
- Cheng, X., & Ding, M. D. 2016, *ApJs*, 225, 16
- Cheng, J. X., & Qiu, J. 2016, *ApJ*, 825, 37
- Cheng, X., Ding, M. D., Zhang, J., et al. 2014, *ApJ*, 789, 93
- Cheng, X., Ding, M. D., & Fang, C. 2015, *ApJ*, 804, 82
- Cohen, O., Attrill, G. D. R., Schwadron, N. A., et al. 2010, *J. Geophys. Res. (Space Phys.)*, 115, A10104
- De Pontieu, B., Title, A. M., Lemen, J. R., et al. 2014, *Sol. Phys.*, 289, 2733
- DeForest, C. E., Howard, T. A., & McComas, D. J. 2013, *ApJ*, 769, 43
- Delannée, C., Hochedez, J.-F., & Aulanier, G. 2007, *A&A*, 465, 603
- Démoulin, P. 2008, *Ann. Geophys.*, 26, 3113
- Démoulin, P., Henoux, J. C., Priest, E. R., & Mandrini, C. H. 1996a, *A&A*, 308, 643
- Démoulin, P., Priest, E. R., & Lonie, D. P. 1996b, *J. Geophys. Res.*, 101, 7631
- Dissauer, K., Veronig, A. M., Temmer, M., Podladchikova, T., & Vanninathan, K. 2018, *ApJ*, 863, 169
- Duan, A., Jiang, C., Hu, Q., et al. 2017, *ApJ*, 842, 119
- Dudík, J., Janvier, M., Aulanier, G., et al. 2014, *ApJ*, 784, 144
- Dudík, J., Polito, V., Janvier, M., et al. 2016, *ApJ*, 823, 41
- Dudík, J., Zuccarello, F. P., Aulanier, G., Schmieder, B., & Démoulin, P. 2017, *ApJ*, 844, 54
- Gibson, S. E., & Fan, Y. 2006, *ApJ*, 637, L65
- Gibson, S. E., & Fan, Y. 2008, *J. Geophys. Res. (Space Phys.)*, 113, A09103
- Graham, D. R., & Cauzzi, G. 2015, *ApJ*, 807, L22
- Green, L. M., Török, T., Vršnak, B., Manchester, W., & Veronig, A. 2018, *Space Sci. Rev.*, 214, 46
- Hirayama, T. 1974, *Sol. Phys.*, 34, 323
- Howard, T. A., Fry, C. D., Johnston, J. C., & Webb, D. F. 2007, *ApJ*, 667, 610
- Hu, H., Liu, Y. D., Wang, R., Möstl, C., & Yang, Z. 2016, *ApJ*, 829, 97
- Inoue, S. 2016, *Prog. Earth Planet. Sci.*, 3, 19
- Inoue, S., Hayashi, K., Magara, T., Choe, G. S., & Park, Y. D. 2015, *ApJ*, 803, 73
- Janvier, M., Aulanier, G., Pariat, E., & Démoulin, P. 2013, *A&A*, 555, A77
- Janvier, M., Aulanier, G., Bommier, V., et al. 2014, *ApJ*, 788, 60
- Janvier, M., Aulanier, G., & Démoulin, P. 2015, *Sol. Phys.*, 290, 3425
- Janvier, M., Savcheva, A., Pariat, E., et al. 2016, *A&A*, 591, A141
- Jiang, C., Feng, X., Wu, S. T., & Hu, Q. 2013, *ApJ*, 771, L30
- Kahler, S. W., & Hudson, H. S. 2001, *J. Geophys. Res.*, 106, 29239
- Kopp, R. A., & Pneuman, G. W. 1976, *Sol. Phys.*, 50, 85
- Lee, H., & Magara, T. 2018, *ApJ*, 859, 132
- Lemen, J. R., Title, A. M., Akin, D. J., et al. 2012, *Sol. Phys.*, 275, 17
- Li, T., & Zhang, J. 2015, *ApJ*, 804, L8
- Liu, C., Lee, J., Yurchyshyn, V., et al. 2007, *ApJ*, 669, 1372
- Lugaz, N., Downs, C., Shibata, K., et al. 2011, *ApJ*, 738, 127
- Lynch, B. J., & Edmondson, J. K. 2013, *ApJ*, 764, 87
- Manchester, W., Kilpua, E. K. J., Liu, Y. D., et al. 2017, *Space Sci. Rev.*, 212, 1159
- Mandrini, C. H., Nakwacki, M. S., Attrill, G., et al. 2007, *Sol. Phys.*, 244, 25
- Masson, S., Antiochos, S. K., & DeVore, C. R. 2013, *ApJ*, 771, 82
- Ning, Z. 2017, *Sol. Phys.*, 292, 11
- O'Dwyer, B., Del Zanna, G., Mason, H. E., Weber, M. A., & Tripathi, D. 2010, *A&A*, 521, A21
- Pariat, E., & Démoulin, P. 2012, *A&A*, 541, A78
- Pesnell, W. D., Thompson, B. J., & Chamberlin, P. C. 2012, *Sol. Phys.*, 275, 3
- Priest, E. R., & Démoulin, P. 1995, *J. Geophys. Res.*, 100, 23443
- Priest, E. R., Hornig, G., & Pontin, D. I. 2003, *J. Geophys. Res. (Space Phys.)*, 108, 1285
- Savage, S. L., McKenzie, D. E., & Reeves, K. K. 2012, *ApJ*, 747, L40
- Savcheva, A., Pariat, E., van Ballegoijen, A., Aulanier, G., & DeLuca, E. 2012, *ApJ*, 750, 15
- Savcheva, A., Pariat, E., McKillop, S., et al. 2015, *ApJ*, 810, 96
- Savcheva, A., Pariat, E., McKillop, S., et al. 2016, *ApJ*, 817, 43
- Schmieder, B. 2018, *J. Atm. Sol.-Terr. Phys.*, 180, 46
- Schrijver, C. J., Aulanier, G., Title, A. M., Pariat, E., & Delannée, C. 2011, *ApJ*, 738, 167
- Schrijver, C. J., Beer, J., Baltensperger, U., et al. 2012, *J. Geophys. Res. (Space Phys.)*, 117, 8103
- Schwenn, R. 2006, *Liv. Rev. Sol. Phys.*, 3, 2
- Sterling, A. C., & Hudson, H. S. 1997, *ApJ*, 491, L55
- Sturrock, P. A. 1966, *Nature*, 211, 695
- Sun, X., Hoeksema, J. T., Liu, Y., et al. 2013, *ApJ*, 778, 139
- Thompson, B. J., Plunkett, S. P., Gurman, J. B., et al. 1998, *Geophys. Res. Lett.*, 25, 2465
- Tian, H., Young, P. R., Reeves, K. K., et al. 2015, *ApJ*, 811, 139
- Titov, V. S. 2007, *ApJ*, 660, 863
- Titov, V. S., & Démoulin, P. 1999, *A&A*, 351, 707
- Titov, V. S., Priest, E. R., & Démoulin, P. 1993, *A&A*, 276, 564
- Titov, V. S., Hornig, G., & Démoulin, P. 2002, *J. Geophys. Res.*, 107, A01164
- Titov, V. S., Mikic, Z., Linker, J. A., & Lionello, R. 2008, *ApJ*, 675, 1614
- Titov, V. S., Forbes, T. G., Priest, E. R., Mikić, Z., & Linker, J. A. 2009, *ApJ*, 693, 1029
- van Ballegoijen, A. A., & Martens, P. C. H. 1989, *ApJ*, 343, 971
- van Driel-Gesztelyi, L., Baker, D., Török, T., et al. 2014, *ApJ*, 788, 85
- Wang, R., Liu, Y. D., Wiegmann, T., et al. 2016, *Sol. Phys.*, 291, 1159
- Warren, H. P., O'Brien, C. M., & Sheeley, Jr., N. R. 2011, *ApJ*, 742, 92
- Webb, D. F. 2000, *J. Atmos. Sol. Terr. Phys.*, 62, 1415
- Zhang, J., Yang, S., Li, T., et al. 2013, *ApJ*, 776, 57
- Zhang, Q. M., Su, Y. N., & Ji, H. S. 2017, *A&A*, 598, A3
- Zhao, J., Gilchrist, S. A., Aulanier, G., et al. 2016, *ApJ*, 823, 62
- Zhu, C., Liu, R., Alexander, D., & McAteer, R. T. J. 2016, *ApJ*, 821, L29
- Zuccarello, F. P., Aulanier, G., & Gilchrist, S. A. 2015, *ApJ*, 814, 126
- Zuccarello, F. P., Aulanier, G., Dudík, J., et al. 2017, *ApJ*, 837, 115