



HAL
open science

Modulation of catalyst enantioselectivity through reversible assembly of supramolecular helices

Yan Li, Xavier Caumes, Matthieu Raynal, Laurent Bouteiller

► **To cite this version:**

Yan Li, Xavier Caumes, Matthieu Raynal, Laurent Bouteiller. Modulation of catalyst enantioselectivity through reversible assembly of supramolecular helices. *Chemical Communications*, 2019, 55 (15), pp.2162-2165. 10.1039/C8CC09819K . hal-02021141

HAL Id: hal-02021141

<https://hal.sorbonne-universite.fr/hal-02021141>

Submitted on 28 Feb 2019

HAL is a multi-disciplinary open access archive for the deposit and dissemination of scientific research documents, whether they are published or not. The documents may come from teaching and research institutions in France or abroad, or from public or private research centers.

L'archive ouverte pluridisciplinaire **HAL**, est destinée au dépôt et à la diffusion de documents scientifiques de niveau recherche, publiés ou non, émanant des établissements d'enseignement et de recherche français ou étrangers, des laboratoires publics ou privés.



Journal Name
COMMUNICATION

Modulation of catalyst enantioselectivity through reversible assembly of supramolecular helices.

Received 00th January 20xx,
Accepted 00th January 20xx

Yan Li,^a Xavier Caumes,^a Matthieu Raynal^{*a} and Laurent Bouteiller^a

DOI: 10.1039/x0xx00000x

www.rsc.org/

A multi-configurable catalyst, for which the degree of enantioinduction in successive reactions is varied between 6% *e.e.* and 52% *e.e.*, is achieved by supporting copper centres at the periphery of supramolecular helices. Precise characterization of the co-assemblies corroborates the relation between helices length and catalyst selectivity.

External triggers such as light, redox potential, chemical species or mechanical energy emerged as a new strategy to control chemical processes.¹ Temporal control of chemical reactions has been achieved by toggling a catalyst back and forth between its active and inactive states. This switchable capacity of the catalyst is exploited in the realm of sequential reactions, *e.g.* allowing to finely control polymerization processes² or tandem reactions.³ Much less effort has been devoted to the design of stimuli-responsive asymmetric catalysts.⁴ Predictable control of the stereochemical direction for a single catalyst is achieved by supporting intrinsically achiral centres on a chirally-switchable platform such as overcrowded alkenes,⁵ stereodynamic ligands,⁶ redox-configurable copper complexes,⁷ foldamers⁸ or polymers.⁹ Alternatively, chemical additives,¹⁰ light¹¹ and redox potential¹² were employed to improve the degree of enantioinduction,¹³ including a recent example of a rationally-designed asymmetric auto-inductive process.¹⁴ However, implementation of these elaborated catalytic systems in consecutive reactions or polymerization reactions will require a better control of their dynamic properties. Molecular catalysts for the preparation of atactic isotactic multi stereoblock copolymers are sparse¹⁵ and, in that regard, establishing the design elements for a dynamic and multi-configurable catalytic system will constitute an important advance.

In parallel, the reversible and dynamic properties of supramolecular chiral assemblies¹⁶ have been exploited in asymmetric catalysis.¹⁷ We previously demonstrated that a significant degree of enantiocontrol can be achieved by supporting metal catalytic centres at the periphery of the helical assemblies formed by benzene-1,3,5-tricarboxamide

monomers (BTA).^{9i,18} Co-assembly between an achiral BTA ligand and an enantiopure BTA co-monomer into homochiral helices allows real-time control of the enantioselectivity. The stereochemical direction and the degree of asymmetric induction of the catalytic reaction are related to the handedness and the optical purity, respectively, of the helical BTA assemblies. For further development of this new class of catalysts, it is of utmost importance to probe how the enantioselectivity is affected by the average length of the helices. Herein, we show that reversible assembly of BTA monomers into helices of different length constitutes a simple method to vary the degree of enantioinduction of a catalytic reaction (Chart 1).

The preparation of BTA helices of controlled sizes is hampered by the dynamic character of the assemblies. Moreover, hydrogen-bonded supramolecular polymers form one-dimensional assemblies whose stability are particularly sensitive to the environment.¹⁹ Anions have notably been used to reduce the chain length of urea-based supramolecular polymers without affecting their structure.²⁰ Therefore, we envisioned that the length of BTA assemblies could be modulated *in a reversible manner* by first adding an anion and then removing it, *e.g.* through a salt metathesis reaction leading to its co-precipitation with a cation (Chart 1).²¹

To implement our concept, we chose as a reference the catalytic mixture composed of an achiral BTA ligand **BTA^{pph2}** (6 mol%) an enantiopure co-monomer **BTA (*R*)-*Cha*** (6.6 mol%), [Cu(OAc)₂·H₂O] (3 mol%) and PhSiH₃ since it furnished the hydrosilylation product of 1-(4-nitrophenyl)ethanone (NPhnone) with significant enantioselectivity (54±1% *e.e.* at 293 K in toluene).⁹ⁱ A combination of spectroscopic analyses and catalytic experiments indicated that the chirality of the co-monomer controls the handedness of the helices and thus the stereochemical direction of the hydrosilylation reaction. Two preliminary experiments now confirm that the size of the BTA assemblies also affects the level of asymmetric induction (Table S1, ESI[†]): (i) in THF, BTAs are molecularly dissolved and no selectivity is observed, and (ii) when the reaction is conducted with a concentration in **BTA^{pph2}** close to its critical concentration in toluene, the selectivity is significantly decreased (19% *e.e.*). In the latter case, it is likely that at this concentration the assemblies are too short to arrange all the copper centers in a suitable chiral environment.

We next investigated the influence of TPPCI (tetraphenylphosphonium chloride) on the performance of

^a Sorbonne Université CNRS, Institut Parisien de Chimie Moléculaire, Equipe Chimie des Polymères, 4 Place Jussieu, 75005 Paris (France) e-mail: matthieu.raynal@upmc.fr.

[†] Electronic Supplementary Information (ESI) available: general procedures, Chart S1, supplementary figures (Figs. S1-S8), tables S1-S3, and procedures for catalytic experiments. See DOI: 10.1039/x0xx00000x

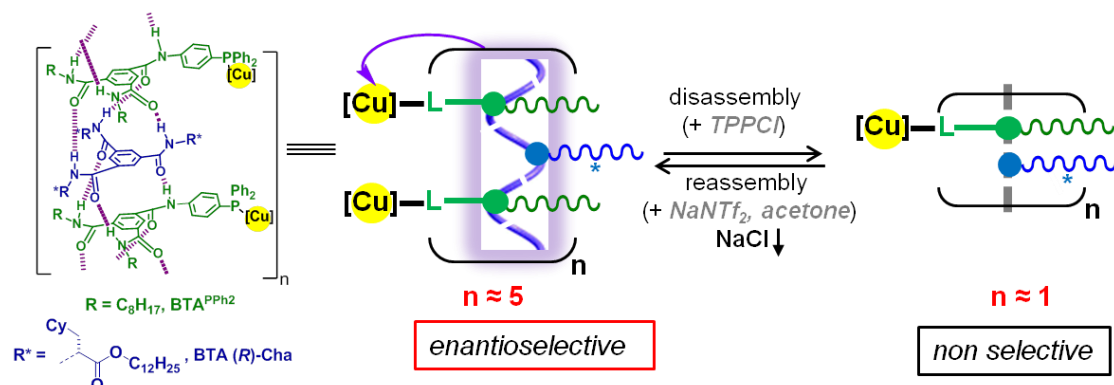


Chart 1 Schematic representation of the present concept. Supramolecular helices, formed by co-assembly between an achiral BTA ligand ($\text{BTA}^{\text{PPh}_2}$) coordinated to Cu and an enantiopure BTA co-monomer (BTA (R)-Cha), are shortened and lengthened reversibly by means of an appropriate combination of salts. This schematic representation of the co-assemblies is supported by analytical data but the coordination mode of Cu and the fraction of coordinated PPh_2 groups in the co-assemblies are not known.

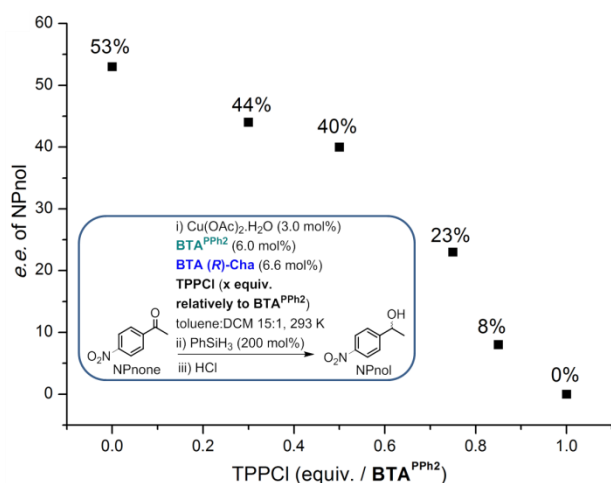


Fig. 1 Enantioselectivity as a function of the amount of TPPCL. See the precise conditions in Table S.1. Conversions (after 1h): >99% (0 and 0.3 equiv. of TPPCL), 97% (0.5 equiv.), 91% (0.75 equiv.), 75% (0.85 equiv.) and 63% (1.0 equiv.).

the catalytic system of reference (Fig. 1).²¹ The first (unanticipated) effect is the slowdown of the reaction rate: the higher the amount of TPPCL, the lower the rate (Table S1). Whilst the origin of this negative effect of chloride anions on the reaction rate has not been established for the present case, inhibition of metal-catalysed reactions by soluble halogen anions has some precedent in the literature.²² The decreased rate for the non-selective state of the supramolecular catalyst is not detrimental since good conversions can be achieved by increasing the amount of silane and the reaction time (*vide infra*). The second (anticipated) effect is a gradual decrease of the enantioselectivity as a function of the amount of chloride anions in the catalytic mixture: from 44% *e.e.* (0.3 equiv. relative to $\text{BTA}^{\text{PPh}_2}$) to 0% *e.e.* (1.0 equiv.).[‡] The fact that a high content of TPPCL relatively to $\text{BTA}^{\text{PPh}_2}$ is required to completely erase the selectivity suggests that the length of the assemblies should be shortened down to very short aggregates to be non-selective (*vide infra*). It is interesting to note that TPPCL does

not act as dual on-off selectivity switch but rather allows programmable modulation of the degree of enantioinduction (signal output) in between fully racemic, and optimal enantiomeric preference (53% *e.e.*) by simply changing the concentration of TPPCL (signal input).

The nature of the co-assemblies formed between $\text{BTA}^{\text{PPh}_2}$ and BTA (R)-Cha in toluene and their reversible assembly have been precisely characterized by means of Fourier-Transform Infrared (FT-IR), Nuclear Magnetic Resonance (NMR), Small Angle Neutron Scattering (SANS) and Circular Dichroism (CD) analyses. The “pristine” co-assemblies, *i.e.* in absence of any additives, are very long ($\text{DP}_n \approx 250$), stack with a single molecule in the cross-section and contain approximately two $\text{BTA}^{\text{PPh}_2}$ molecules for one BTA (R)-Cha (Figs. S1-S2). They form homochiral left-handed helices as deduced from CD analysis (Fig. 2b).⁹¹ The coordination of $\text{BTA}^{\text{PPh}_2}$ to copper does not significantly change the structure of the helical co-assemblies (Fig. S4). However, both SANS (Fig. S5) and FT-IR (Figs. 2a) analyses confirm that the length of the co-assemblies is drastically decreased in presence of 1.0 equiv. of TPPCL. Notably, in FT-IR, the bonded amide band is reduced whereas the free amide band is increased in presence of TPPCL (green arrows in Fig. 2a). Deconvolution of the ester C=O and amide C=O bands yields an estimation of $\text{DP}_n \approx 2$ for the average length of the co-assemblies in presence of 1.0 equiv. of TPPCL (Fig. S7). The absence of an Induced CD (ICD) signal²³ for this mixture (Fig. 2b) corroborates the fact that these objects are likely too small to adopt a helical configuration and explains the absence of selectivity for the catalytic reaction (*vide supra*).

NaNTf_2 (Tf=triflimide) was selected to trigger the metathesis reaction because of the weak coordination ability and the known chemical stability of the NTf_2 anion.²⁴ NaNTf_2 is introduced in solution in acetone as we observe a good solubility of this salt in the three-solvent mixture (toluene:DCM:acetone 15:1:1). In these conditions, reassembly

- “pristine” DP_n ≈ 250, “run 1”
- + TPPCI, DP_n ≈ 2, “run 2”
- + TPPCI + NaNTf₂, 6 < DP_n < 15, “run 3”
- + DCM + acetone, 6 < DP_n < 22, “run 3 without salts”

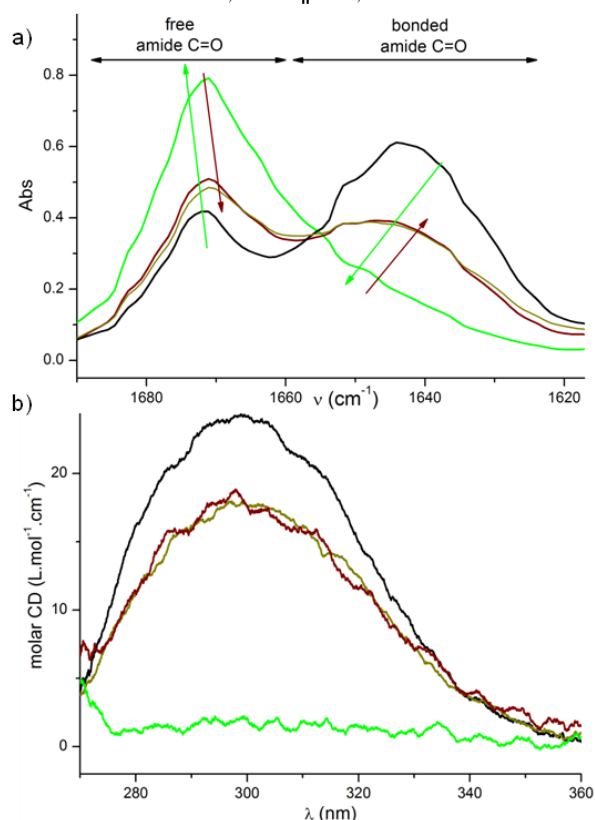


Fig. 2 Characterization of the reversible assembly of supramolecular helices. FT-IR (a) and CD (b) analyses of the co-assemblies in absence and presence of salts (293 K). The concentrations in ligand and co-monomer are close to those of catalytic experiments indicated in red. The DP_n values have been estimated by means of SANS and FT-IR analyses (Figs. S1 and S7). In the FT-IR spectra, both dimers of BTA (R)-Cha²⁵ and stack ends contribute to the free amide C=O band. The observed CD signal belongs to BTA^{Ph2} only and is thus an ICD signal²³ which reflects the chiral environment of the ligand.⁹¹ For the “pristine” co-assemblies, this signal is of comparable intensity ($\Delta\epsilon=24 \text{ L.mol}^{-1}.\text{cm}^{-1}$) to that previously observed in methylcyclohexane ($\Delta\epsilon=17 \text{ L.mol}^{-1}.\text{cm}^{-1}$) inferring the presence of homochiral left-handed helices.⁹¹

is evidenced by the increased intensity of the bonded amide band and the decreased intensity of the free amide band (wine arrows in Fig. 2a). Also, this sample exhibits a significant ICD signal (Fig. 2b) which infers that the ligand has recovered a chiral environment.

The above experiments have established the use of TPPCI (1.0 equiv., added as a solution in DCM) and NaNTf₂ (1.0 equiv., added as a solution in acetone) as a suitable combination of salts for the reversible assembly of the supramolecular helices.[§] We thus investigated whether this strategy can be used to switch the enantioselectivity of our catalytic system of reference. Sequential additions of NPhol, silane and salts (Fig. 3 top) have been performed in the following order: no salt (run 1), TPPCI (run 2), NaNTf₂ (run 3), TPPCI (run 4) and NaNTf₂ (run 5). An excess of silane has been engaged and the reaction times have been adapted so that a conversion superior or equal to 84% was achieved for each run (except for run 4, conversion=53%). The enantiomeric excess for each run was calculated from the cumulated *e.e.* obtained by chiral GC analyses of the aliquots as detailed in Table S3. As shown in

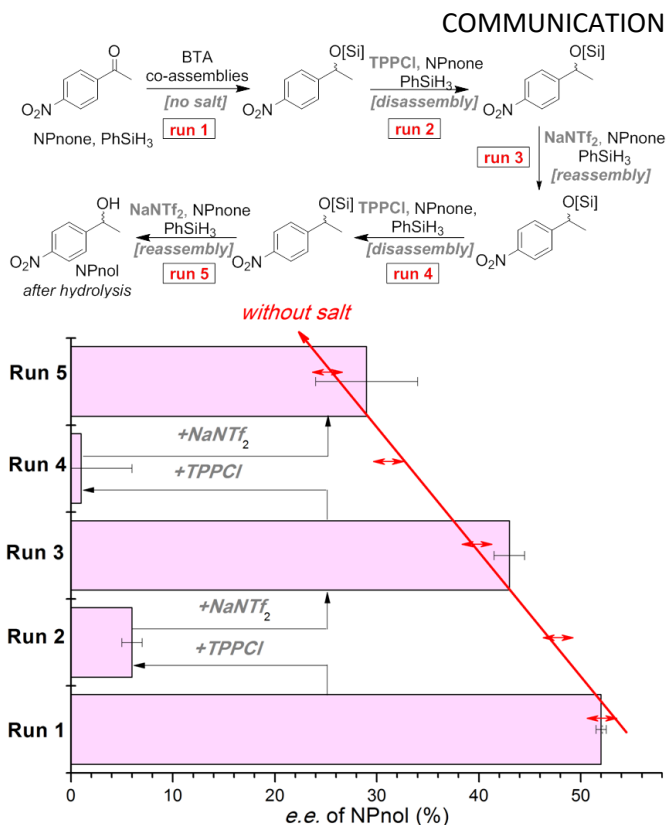


Fig. 3 Modulation of the enantioselectivity of the supramolecular catalyst involved in the hydrosilylation of several equivalents of NPhol added sequentially in the reaction mixture. **Top**: description of the run. TPPCI and NaNTf₂ are added as solutions in DCM and acetone, respectively so that the solvent nature is: toluene (run 1), toluene:DCM 15:1 (run 2), toluene:DCM:acetone 15:1:1 (run 3), toluene:DCM:acetone 15:2:1 (run 4) and toluene:DCM:acetone 15:2:2 (run 5). **Bottom**: enantioselectivity obtained for each run. Conversions: 99% (run 1), 86% (run 2), 89% (run 3), 53% (run 4) and 84% (run 5). Double arrows represent the selectivity obtained in the same solvent but in absence of salts. For the determination of the *e.e.s.* and the conversions, see Table S3.

Fig. 3, the state of the supramolecular copper catalyst is alternatively selective (29–52% *e.e.*) and poorly selective (0–6% *e.e.*). More precisely, a significant decrease of the enantioselectivity is found for the run 2 (6±1% *e.e.*) and run 4 (0±5% *e.e.*), as a result of the disassembly of the supramolecular helices supporting the catalytic centres in presence of TPPCI. The selectivities of run 3 (43±1.5% *e.e.*) and run 5 (29±5% *e.e.*) are significantly higher than those of run 2 and run 4, which corroborates the reversible assembly of the BTA helices and validates our concept.

We were intrigued by the decreased selectivity for run 3 and 5 compared to run 1 and therefore investigated its origin. After reassembly (in presence of TPPCI and NaNTf₂, run 3), the co-assemblies have DP_n in between 6 and 15 much lower than that of “pristine” co-assemblies (run 1, DP_n ≈ 250) as evidenced by FT-IR analyses (Fig. 2a). In fact, this shortening of the helices is mostly due to the presence of co-added solvents (DCM and acetone) as demonstrated by: (i) control catalytic experiments in absence of TPPCI and NaNTf₂ (double red arrows, Fig. 3) which provide roughly the same selectivity for run 3 and 5, (ii) the fact that, in toluene:DCM:acetone 15:1:1, the FT-IR, NMR and CD spectra of the co-assemblies in absence or presence of TPPCI and NaNTf₂ are similar (Figs. 2 and S7). This substantiates the efficiency of the metathesis salt reaction and infers that full reassembly is hampered by the competitive

and polar nature of the solvents employed to dissolve the salts. Interestingly, the selectivity decrease (19%) observed after a single disassembly/reassembly switch (from 52% *e.e.* for run 1 to 43% *e.e.* for run 3) correlates well with the lower intensity (25%) of the ICD signal measured for co-assemblies in presence of the salt mixture and the co-solvents (Fig. 2b). There is thus a good correlation between the average length of the assemblies, the chiral environment of the ligand and the selectivity of the reaction (Table S2). For the present catalytic system, the critical length of the supramolecular helices required to locate most of the copper centres in a chiral environment suitable for asymmetric induction is thus in the range of a ten monomers.

In conclusion, a multi-configurable catalyst is obtained by reversibly shortening and lengthening the supramolecular helices formed by assembly of BTA monomers. This can undoubtedly be extended to other families of hydrogen-bonded supramolecular polymers and organogels with the aim of tuning their macroscopic properties. Further progress in the design of such functional supramolecular assemblies is required for the implementation of more efficient smart systems in the field of switchable catalysis.

This work was supported by the French Agence Nationale de la Recherche (project ANR-13-BS07-0021 SupraCatal) and by the China Scholarship Council (CSC, PhD grant of Y.L.). Jacques Jestin (LLB, Saclay) is acknowledged for assistance with SANS experiment. Claire Troufflard and Aurélie Bernard are acknowledged for performing VT-NMR analyses.

Conflicts of interest

There are no conflicts to declare.

Notes and references

‡ To avoid any confusion with the catalytic loading (expressed in mol% of substrate), the amount of TPPCI is expressed in number of equivalent relatively to **BTA**^{PPH₂}.

§TPPNTf₂ and NaCl, the salts generated upon the metathesis reaction, are poor hydrogen competitors and poorly soluble, respectively (Table S1).

- (a) N. Kumagai and M. Shibasaki, *Catal. Sci. Technol.*, **2013**, *3*, 41; (b) V. Blanco, D. A. Leigh and V. Marcos, *Chem. Soc. Rev.*, **2015**, *44*, 5341; (c) M. Vlatković, B. S. L. Collins and B. L. Feringa, *Chem. Eur. J.*, **2016**, *22*, 17080; (d) J. Choudhury, *Tetrahedron Lett.*, **2018**, *59*, 487.
- (a) F. A. Leibfarth, K. M. Mattson, B. P. Fors, H. A. Collins and C. J. Hawker, *Angew. Chem. Int. Ed.*, **2013**, *52*, 199; (b) A. J. Teator, D. N. Lastovickova and C. W. Bielawski, *Chem. Rev.*, **2016**, *116*, 1969; (c) M. Chen, M. J. Zhong and J. A. Johnson, *Chem. Rev.*, **2016**, *116*, 10167.
- (a) K. Eichstaedt, J. Jaramillo-Garcia, D. A. Leigh, V. Marcos, S. Pisano and T. A. Singleton, *J. Am. Chem. Soc.*, **2017**, *139*, 9376; (b) S. Semwal and J. Choudhury, *Angew. Chem. Int. Ed.*, **2017**, *56*, 556.
- G. Romanazzi, L. Degennaro, P. Mastrorilli and R. Luisi, *ACS Catal.*, **2017**, *7*, 4100.
- (a) J. B. Wang and B. L. Feringa, *Science*, **2011**, *331*, 1429; (b) M. Vlatković, L. Bernardi, E. Otten and B. L. Feringa, *Chem. Commun.*, **2014**, *50*, 7773; (c) D. P. Zhao, T. M. Neubauer and B. L. Feringa, *Nat. Commun.*, **2015**, *6*, 6652; (d) M. Vlatković, J. Volaric, B. S. L. Collins, L. Bernardi and B. L. Feringa, *Org. Biomol. Chem.*, **2017**, *15*, 8285; (e) C. T. Chen, C. C. Tsai, P. K. Tsou, G. T. Huang and C. H. Yu, *Chem. Sci.*, **2017**, *8*, 524.

- G. Storch and O. Trapp, *Angew. Chem. Int. Ed.*, **2015**, *54*, 3580.
- (a) S. Mortezaei, N. R. Catarineu and J. W. Canary, *J. Am. Chem. Soc.*, **2012**, *134*, 8054; (b) S. Mortezaei, N. R. Catarineu, X. Y. Duan, C. H. Hu and J. W. Canary, *Chem. Sci.*, **2015**, *6*, 5904; (c) S. Mortezaei, N. R. Catarineu and J. W. Canary, *Tetrahedron Lett.*, **2016**, *57*, 459.
- B. A. F. Le Bailly, L. Byrne and J. Clayden, *Angew. Chem. Int. Ed.*, **2016**, *55*, 2132.
- (a) T. Yamamoto, T. Yamada, Y. Nagata and M. Sugimoto, *J. Am. Chem. Soc.*, **2010**, *132*, 7899; (b) Y. Nagata, T. Nishikawa and M. Sugimoto, *J. Am. Chem. Soc.*, **2014**, *136*, 15901; (c) Y. Nagata, T. Kuroda, K. Takagi and M. Sugimoto, *Chem. Sci.*, **2014**, *5*, 4953; (d) Y. Akai, L. Konnert, T. Yamamoto and M. Sugimoto, *Chem. Commun.*, **2015**, *51*, 7211; (e) Y. Nagata, R. Takeda and M. Sugimoto, *Chem. Commun.*, **2015**, *51*, 11182; (f) Y.-Z. Ke, Y. Nagata, T. Yamada and M. Sugimoto, *Angew. Chem. Int. Ed.*, **2015**, *54*, 9333; (g) Y. Nagata, T. Nishikawa and M. Sugimoto, *ACS Macro Lett.*, **2016**, *5*, 519; (h) Y. Yoshinaga, T. Yamamoto and M. Sugimoto, *ACS Macro Lett.*, **2017**, *6*, 705; (i) J. M. Zimbron, X. Caumes, Y. Li, C. M. Thomas, M. Raynal and L. Bouteiller, *Angew. Chem. Int. Ed.*, **2017**, *56*, 14016; (j) Y. Nagata, T. Nishikawa, M. Sugimoto, S. Sato, M. Sugiyama, L. Porcar, A. Martel, R. Inoue and N. Sato, *J. Am. Chem. Soc.*, **2018**, *140*, 2722.
- (a) M. Vaquero, L. Rovira and A. Vidal-Ferran, *Chem. Commun.*, **2016**, *52*, 11038; (b) X. C. Zhang, Y. H. Hu, C. F. Chen, Q. Fang, L. Y. Yang, Y. B. Lu, L. J. Xie, J. Wu, S. J. Li and W. J. Fang, *Chem. Sci.*, **2016**, *7*, 4594.
- Z. S. Kean, S. Akbulatov, Y. C. Tian, R. A. Widenhoefer, R. Boulatov and S. L. Craig, *Angew. Chem. Int. Ed.*, **2014**, *53*, 14508.
- Q. Y. Zhang, X. L. Cui, L. Zhang, S. Z. Luo, H. Wang and Y. J. Wu, *Angew. Chem. Int. Ed.*, **2015**, *54*, 5210.
- L. Hong, W. S. Sun, D. X. Yang, G. F. Li and R. Wang, *Chem. Rev.*, **2016**, *116*, 4006.
- G. Storch and O. Trapp, *Nature Chem.*, **2017**, *9*, 179.
- G. W. Coates and R. M. Waymouth, *Science*, **1995**, *267*, 217.
- (a) M. H. Liu, L. Zhang and T. Y. Wang, *Chem. Rev.*, **2015**, *115*, 7304; (b) E. Yashima, N. Ousaka, D. Taura, K. Shimomura, T. Ikai and K. Maeda, *Chem. Rev.*, **2016**, *116*, 13752.
- J. Jiang, G. H. Ouyang, L. Zhang and M. H. Liu, *Chem. Eur. J.*, **2017**, *23*, 9439.
- (a) M. Raynal, F. Portier, P. W. N. M. van Leeuwen and L. Bouteiller, *J. Am. Chem. Soc.*, **2013**, *135*, 17687; (b) A. Desmarchelier, X. Caumes, M. Raynal, A. Vidal-Ferran, P. W. N. M. van Leeuwen and L. Bouteiller, *J. Am. Chem. Soc.*, **2016**, *138*, 4908.
- P. Besenius, *J. Polym. Sci. Pol. Chem.*, **2017**, *55*, 34.
- T. Pinault, C. Cannizzo, B. Andrioletti, G. Ducouret, F. Lequeux and L. Bouteiller, *Langmuir*, **2009**, *25*, 8404.
- Reversible binding of chloride anions to metal centres or thiourea functions has been exploited to control the activity but not the selectivity of switchable catalysts, see: (a) H. J. Yoon, J. Kuwabara, J. H. Kim and C. A. Mirkin, *Science*, **2010**, *330*, 66; (b) G. Foli, C. S. D'Elia, M. Fochi and L. Bernardi, *RSC Adv.*, **2016**, *6*, 66490; (c) M. R. Kita and A. J. M. Miller, *Angew. Chem. Int. Ed.*, **2017**, *56*, 5498.
- (a) Q. Shen, T. Ogata and J. F. Hartwig, *J. Am. Chem. Soc.*, **2008**, *130*, 6586; (b) B. P. Fors, N. R. Davis and S. L. Buchwald, *J. Am. Chem. Soc.*, **2009**, *131*, 5766.
- S. Allenmark, *Chirality*, **2003**, *15*, 409.
- N. Mezailles, L. Ricard and F. Gagosz, *Org. Lett.*, **2005**, *7*, 4133.
- (a) A. Desmarchelier, M. Raynal, P. Brocorens, N. Vanthuyne and L. Bouteiller, *Chem. Commun.*, **2015**, *51*, 7397; (b) A. Desmarchelier et al. *Soft Matter*, **2016**, *12*, 7824; (c) X. Caumes, A. Baldi, G. Gontard, P. Brocorens, R. Lazzaroni, N. Vanthuyne, C. Troufflard, M. Raynal and L. Bouteiller, *Chem. Commun.*, **2016**, *52*, 13369.