



**HAL**  
open science

# Modelling the Effect of Mass-Draining on Prominence Eruptions

Jack M. Jenkins, Matthew Hopwood, Pascal Démoulin, Gherardo Valori,  
Guillaume Aulanier, David M. Long, Lidia van Driel-Gesztelyi

► **To cite this version:**

Jack M. Jenkins, Matthew Hopwood, Pascal Démoulin, Gherardo Valori, Guillaume Aulanier, et al..  
Modelling the Effect of Mass-Draining on Prominence Eruptions. 2019. hal-02054206

**HAL Id: hal-02054206**

**<https://hal.sorbonne-universite.fr/hal-02054206v1>**

Preprint submitted on 1 Mar 2019

**HAL** is a multi-disciplinary open access archive for the deposit and dissemination of scientific research documents, whether they are published or not. The documents may come from teaching and research institutions in France or abroad, or from public or private research centers.

L'archive ouverte pluridisciplinaire **HAL**, est destinée au dépôt et à la diffusion de documents scientifiques de niveau recherche, publiés ou non, émanant des établissements d'enseignement et de recherche français ou étrangers, des laboratoires publics ou privés.

## MODELLING THE EFFECT OF MASS-DRAINING ON PROMINENCE ERUPTIONS

JACK M. JENKINS,<sup>1</sup> MATTHEW HOPWOOD,<sup>2,3</sup> PASCAL DÉMOULIN,<sup>4</sup> GHERARDO VALORI,<sup>1</sup> GUILLAUME AULANIER,<sup>4</sup>  
DAVID M. LONG,<sup>1</sup> AND LIDIA VAN DRIEL-GESZTELYI<sup>1,4,5</sup>

<sup>1</sup>*Mullard Space Science Laboratory, University College London, Dorking, RH5 6NT, UK; jack.jenkins.16@ucl.ac.uk*

<sup>2</sup>*School of Mathematics, University of Birmingham, Birmingham B15 2TT, UK*

<sup>3</sup>*School of Mathematical Sciences, The University of Adelaide, Adelaide, SA 5005, Australia*

<sup>4</sup>*LESIA-Observatoire de Paris, CNRS, UPMC Univ Paris 06, Univ. Paris-Diderot, Meudon Cedex, France*

<sup>5</sup>*Konkoly Observatory of the Hungarian Academy of Sciences, Budapest, Hungary*

(Received January 1, 2018; Revised January 7, 2018; Accepted January 23, 2019)

Submitted to ApJ

### ABSTRACT

Quiescent solar prominences are observed to exist within the solar atmosphere for up to several solar rotations. Their eruption is commonly preceded by a slow increase in height that can last from hours to days. This increase in the prominence height is believed to be due to their host magnetic flux rope transitioning through a series of neighbouring quasi-equilibria before the main loss-of-equilibrium that drives the eruption. Recent work suggests that the removal of prominence mass from a stable, quiescent flux rope is one possible cause for this change in height. However, these conclusions are drawn from observations and are subject to interpretation. Here we present a simple model to quantify the effect of “mass-draining” during the pre-eruptive height-evolution of a solar flux rope. The flux rope is modeled as a line current suspended within a background potential magnetic field. We first show that the inclusion of mass, up to  $10^{12}$  kg, can modify the height at which the line current experiences loss-of-equilibrium by up to 14%. Next, we show that the rapid removal of mass prior to the loss-of-equilibrium can allow the height of the flux rope to increase sharply and without upper bound as it approaches its loss-of-equilibrium point. This indicates that the critical height for the loss-of-equilibrium can occur at a range of heights depending explicitly on the amount and evolution of mass within the flux rope. Finally, we demonstrate that for the same amount of drained mass, the effect on the height of the flux rope is up to two order of magnitude larger for quiescent than for active region prominences.

*Keywords:* Sun: filaments, prominences — Sun: fundamental parameters — Sun: atmosphere — Sun: magnetic fields

### 1. INTRODUCTION

Coronal mass ejections (CMEs) are complex bundles of magnetic field and material that erupt from the solar atmosphere out into the heliosphere. A key feature often measured within their interplanetary counterpart is a rotation of the magnetic field vector as spacecraft cross the magnetic structure, a property believed to be indicative of a magnetic flux rope (e.g., Burlaga 1988; Palmerio et al. 2017; James et al. 2017). In addition, the existence of a flux rope in the solar atmosphere has often been related to the formation of filament systems; elongated structures observed in absorption on the solar disk (Priest et al. 1989; Aulanier et al. 1998). Filaments are interpreted as strands of dense material suspended in the low-coronal atmosphere. Such structures are historically identified as prominences when observed above the limb, and we shall henceforth use the term prominence to

describe these structures, unless otherwise indicated. The observational signature of the on-disk counterpart, a filament, provides no immediate evidence for the suspended nature of the material above the solar surface (van Ballegooijen & Martens 1989; Martin 1998; Gibson et al. 2006; Régnier et al. 2011). Prominences have been observed for up to several solar rotations, occasionally within a coronal cavity when a prominence quasi-parallel to the equator is projected above the limb. A pre-eruptive flux rope has been suggested to exist in equilibrium for equally extended periods of time (Rust 2003; Gibson et al. 2004).

Despite being typically stable features within the solar atmosphere, the final stages of a prominence’s life are highly dynamic; the suspended plasma either drains back to the chromosphere, or is ejected into the heliosphere as the core of a CME, or some combination of both (Dere et al. 1997;

Schmahl & Hildner 1977; Régnier et al. 2011). In the eruptive case, the sudden destabilisation of these structures is also indicative of the destabilisation of the host flux rope. The exact causes for the loss-of-stability of a flux rope are understood to depend on the conditions under which the flux rope formed and the recent evolution of the surrounding magnetic field (Moore et al. 2001; Lynch et al. 2004; Török & Kliem 2005; Fan & Gibson 2007). Unfortunately, flux ropes are not directly observable in the solar atmosphere as they are magnetic in nature and instrumentation sensitive enough to accurately measure the coronal magnetic field does not yet exist (although preliminary attempts are being made, e.g., Bąk-Stęślicka et al. 2013; Fan et al. 2018). Therefore, in order to effectively study the stability criteria of flux ropes, a combination of observations (e.g., Zuccarello et al. 2014, 2016), extrapolations (e.g., James et al. 2018), and simulations (e.g., Fan 2017) are typically used (see also Cheng et al. 2017, and references therein). The simulations are often employed to study the cause of the loss-of-stability of a flux rope in the lead-up to its eruption, with the observations and extrapolations separately offering information about the pre-eruptive configuration.

Before the advent of advanced simulations, early work by van Tend & Kuperus (1978) presented a 2D analytical model in which the flux rope was approximated as a straight line current suspended at equilibrium in a background potential magnetic field. Although a simplified setup was employed, the authors qualitatively demonstrated that increasing the magnitude of the line current causes its height above the solar surface to increase. This relationship between the current and height of the line current can be represented with an equilibrium curve. In addition, they concluded that there is a point at which an increase in the strength of the line current would no longer result in a solution on the equilibrium curve. At this time, the line current was said to have experienced ‘loss-of-equilibrium’. Extensions to this model were employed to quantitatively study the balance of forces involved with prominences, and the evolution of this balance prior to an eruption (e.g., Low 1981; Démoulin & Priest 1988; Martens & Kuin 1989; Démoulin et al. 1991; Forbes & Isenberg 1991). However, authors such as Martens & Kuin (1989) and Démoulin et al. (1991) noted that the influence of the gravity term was negligible assuming “typical” values for prominence mass, and was unlikely to be able to perturb the equilibrium dominated by the magnetic pressure and tension forces.

More recently, work has been carried out to take this simple line-current approach further and formulate more complex, time-dependent magnetohydrodynamic (MHD) simulations (for a more complete review on the state of these MHD simulations, see Cheng et al. 2017, and references therein). These models contain more physically realistic initial and

boundary conditions that allow the construction, evolution, and analysis of a fully 3D flux rope. Importantly, the modern simulations have aligned with the conclusions of authors such as Martens & Kuin (1989) and Démoulin et al. (1991) that the evolution of the magnetic field in and around a flux rope is assumed to be solely responsible for its evolution in time (Démoulin 1998). Specifically, this low-beta approximation assumes that the pressure and mass of prominence plasma suspended by a flux rope is negligible in comparison with the magnetic pressure and tension forces of the flux rope and its surroundings (Titov & Démoulin 1999; Filippov 2018). Indeed, this assumption is featured frequently in three decades of modern research.

However, novel observations and hydrostatic modeling are beginning to suggest that mass may be able to influence the local and global properties of magnetic flux ropes (Low et al. 2003; Petrie et al. 2007; Seaton et al. 2011; Gunár et al. 2013; Bi et al. 2014; Reva et al. 2017; Jenkins et al. 2018). In particular, the Shafranov shift as explored in Blokland & Keppens (2011) details how varying the gravity term in their 2D magnetohydrostatic (MHS) model can cause the axis of their flux rope to decrease the height. Then, the mass-unloading theory (e.g., Low 1999; Forbes 2000; Klimchuk 2001) has been suggested as one possible cause for the eruption of prominences. In this theory, a particularly heavy prominence suddenly unloads all of its mass, reducing the gravitational force acting on the host flux rope and causing it to *spring off* into space as an eruption.

The study of the role of mass evolution within prominence eruptions has typically been isolated to a handful of observational case studies. Seaton et al. (2011) presented stereoscopic observations of a prominence erupting from an active region in which plasma was observed to unload from the prominence prior to its expansion in height. The authors concluded that in the absence of additional, contrary evidence, these observations were an example of a ‘mass-unloading’ eruption driver.

Recently, Jenkins et al. (2018) also presented stereoscopic observations of a quiescent prominence’s partial eruption in which ‘mass-draining’ was suggested to have been responsible for the accelerated expansion of the erupting magnetic flux rope. In this case the drained mass does not ultimately drive an eruption, it simply modifies the balance of forces acting on the prominence to a non-negligible degree (see also Reva et al. 2017). Their conclusion that the mass-draining accelerated the eruption was reached through a quantitative estimation based on the Lorentz force equation, specifically the ratio between the modification of the gravitational force due to the reduction in mass and the force of the background magnetic tension restricting the height-evolution of the flux rope. However, this order of magnitude estimate to the im-

portance of the mass-draining does not properly account for the equilibrium conditions of the host flux rope.

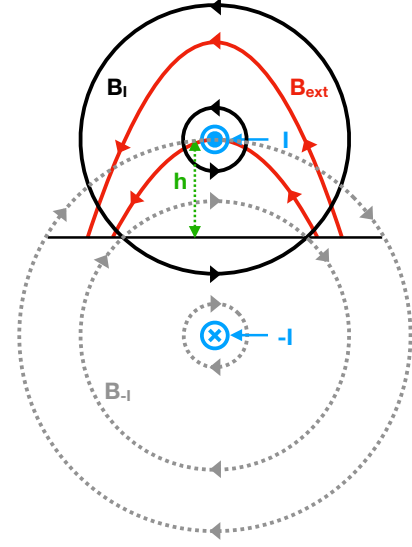
Therefore, in this manuscript, we present an extension to the model developed by [van Tend & Kuperus \(1978\)](#) that enables the study of the role of mass in the evolution of a line current in quasi-equilibrium. Specifically, we first explore how the inclusion of mass can modify the stability criteria for a line current that represents a flux rope suspending a prominence. We then explore how the removal of mass (or “draining”) from a pre-eruptive line current, can modify the global height of the line current within the solar atmosphere. The general model is described in Sections 2 and 3, and applied in Section 4 to a bipolar background potential magnetic field. In Section 5, we further constrain the model with measurements made from the observations presented by both [Seaton et al. \(2011\)](#) and [Jenkins et al. \(2018\)](#). Finally, a discussion and summary are presented in Section 6.

## 2. MODEL CONCEPT

Following the formulation outlined in [Démoulin & Aulanier \(2010\)](#), hereafter DA10, a flux rope is modeled in cartesian coordinates as a magnetic field generated by an infinitely long, straight line current  $I$  at a given height  $h$  above the photosphere. The justification for the choice of a straight line current over a curved line current lies in the assumed property of quiescent prominences being oriented largely horizontal to the surface. The majority of curvature may be assumed to be localised at the footpoints of the host magnetic flux rope that are located far from the center of the prominence. An “image” line current  $-I$  is introduced under the photosphere that runs anti-parallel to the “real” line current. Following [van Tend & Kuperus \(1978\)](#), the additional image magnetic field beneath the surface results in no modification to the vertical,  $z$ , component of the photospheric magnetic field. This “image” current acts to increase the height of the “real” line current. The straight line current is then added to a background potential magnetic field  $B_{\text{ext}}$  that acts to force the line current towards the photosphere. A cartoon representation of these different field contributions is shown in Figure 1. The total field has an inverse configuration because of the presence of a flux rope (e.g., similar to the configuration of Figure 1a within [Petrie et al. 2007](#)). The line current is then in equilibrium if the sum of forces is zero,

$$\sum f = 0 \leftrightarrow f_u = f_d \Rightarrow IB_{-I} = IB_{\text{ext}} \quad (1)$$

where  $f_u$  is the sum of the upward magnetic forces, the so-called *hoop force*,  $f_d$  is the sum of the downward magnetic forces,  $I$  ( $-I$ ) is the real (image) current,  $-B_{\text{ext}}$  is the horizontal background magnetic field component orthogonal to the current at height  $h$ , and  $B_{-I}$  is the strength of the magnetic field as a consequence of the image line current. The



**Figure 1.** Cartoon diagram of the model set-up. The inverse magnetic configuration is formed by the superposition of three fields: the external potential field  $B_{\text{ext}}$  (solid-red), and the field generated by the line current (located at  $z=h$ ) and its image (located at  $z=-h$ ), drawn with solid-black and dashed-grey lines respectively. The line current at  $z=h$  is maintained by the balance of two Lorentz forces, an upward (hoop) force due to the magnetic field generated by the image line current, and a downward force from a stabilizing external potential field  $B_{\text{ext}}$ . Model concept is identical to that presented by [van Tend & Kuperus \(1978\)](#).

image magnetic field  $B_{-I}$  is derived from Ampère’s law,

$$\oint B_{-I} \cdot dl = \mu_0 I, \quad \Rightarrow B_{-I} = \frac{\mu_0 I}{2\pi R}, \quad (2)$$

where the strength of the magnetic field  $B_{-I}$  is measured at a point in space that is at a distance/height  $R = 2h$  away from the line current, and  $\mu_0$  is the permeability of free space equal to  $4\pi \times 10^{-7}$  in MKS units.

In order to simulate the existence of a prominence within a flux rope, the [van Tend & Kuperus \(1978\)](#) model is extended to include mass that is set to exist at the same point as the line current, *i.e.*, at height  $h$ . The inclusion of mass into the system results in an additional downward force that acts to further anchor the line current. In equilibrium, Eq. (1) becomes,

$$IB_{-I} = IB_{\text{ext}} + mg, \quad (3)$$

where  $m$  is the mass of the suspended plasma per unit length and  $g$  is the acceleration due to gravity.  $g$  is taken independent of  $h$  (since  $h \ll r_\odot$ , where  $r_\odot$  is the solar radius) except where explicitly stated. All quantities in Eq. (3) are defined positive.

### 3. GENERAL EQUATIONS

#### 3.1. Equilibrium Current

Here we will establish the general form of equations that will be applied to a specific  $B_{\text{ext}}$  in the following sections. The force  $f$  on the line current, per unit length, is,

$$f = \frac{\mu_0 I^2}{4\pi h} - IB_{\text{ext}} - mg, \quad (4)$$

where  $B_{\text{ext}}$  is a function of  $h$  (as well as other parameters depending on the selected model). We set  $B_{\text{ext}} > 0$  so that the external magnetic field creates a force oppositely directed to the hoop force,  $\mu_0 I^2 / 4\pi h$ , and an equilibrium exists in the limit  $m = 0$ .

The electric current needed for equilibrium is given by solving Eq. (4) for  $I$  with  $f = 0$ ,

$$I_{\text{eq},m} = \frac{2\pi h B_{\text{ext}}}{\mu_0} \pm \sqrt{\left(\frac{2\pi h B_{\text{ext}}}{\mu_0}\right)^2 + \frac{4\pi}{\mu_0} m g h}, \quad (5)$$

where we have added the lower index  $m$  to indicate that the equilibrium current depends on the mass.

With finite mass, Eq. (5) provides two equilibria corresponding to the sign selection in front of the square root. With a negative sign selected,  $I_{\text{eq},m} < 0$ , which implies that both magnetic forces are upward and opposite to the gravity force in Eq. (4). This case has a vanishing current in the limit of a vanishing mass and it does not correspond to a force free equilibrium with a flux rope. Therefore, we consider only the second case with a positive sign in front of the square root of Eq. (5),

$$I_{\text{eq},m} = \frac{2\pi h B_{\text{ext}}}{\mu_0} + \sqrt{\left(\frac{2\pi h B_{\text{ext}}}{\mu_0}\right)^2 + \frac{4\pi}{\mu_0} m g h}, \quad (6)$$

Supposing that  $B_{\text{ext}}(0)$  is finite, then for small enough  $h$  values such that  $h \ll (\mu_0 m g / \pi B_{\text{ext}}^2)$ ,

$$I_{\text{eq},m} \approx \frac{2\pi h B_{\text{ext}}}{\mu_0} + \sqrt{\frac{4\pi}{\mu_0} m g h}. \quad (7)$$

Then,  $I_{\text{eq},m}(h)$  has a square root dependence with  $h$  when  $h$  is small enough and  $m > 0$ . This behavior changes to a linear dependence when  $m = 0$ .

With  $m = 0$ ,  $I_{\text{eq},0}(0) = 0$ , and since  $B_{\text{ext}}$  typically decreases faster than  $1/h$  for large  $h$  values,  $I_{\text{eq},0}(h) = (2\pi/\mu_0) h B_{\text{ext}}$  will tend towards zero at large heights. This implies that  $I_{\text{eq},0}(h)$  has a maximum (at least one) between small and large heights. However, if  $m > 0$ ,  $I_{\text{eq},m}(h)$  is dominated by the gravity term at large  $h$  values once  $B_{\text{ext}}$  has sufficiently decreased, then  $I_{\text{eq},m}(h) \approx \sqrt{(4\pi/\mu_0) m g h}$  is a growing function of  $h$  for constant  $g$ . At even larger  $h$  values, as  $g$  is inversely proportional to  $(r_\odot + h)^2$ , then  $I_{\text{eq},m}(h)$  will

again tend towards zero, even for large mass values. Nevertheless, for low enough  $m$  and  $h$  values,  $I_{\text{eq},m}(h)$  will still have a minimum at  $h = 0$  and large heights, and a maximum (at least one) somewhere in between. It is the response of the line current to mass within this region that we focus on during this study.

#### 3.2. Dependence of the Equilibrium current on Mass

We investigate below the effect of  $m$  on  $I_{\text{eq},m}$  keeping all other quantities fixed,

$$\frac{\partial I_{\text{eq},m}}{\partial m} = g h \left/ \sqrt{(h B_{\text{ext}})^2 + \frac{\mu_0}{\pi} m g h} \right. \geq 0. \quad (8)$$

Increasing the mass  $m$  requires that the magnitude of the current is increased so as to reach a given height (*i.e.*, to increase the hoop force).

Next, supposing  $m g h \ll (\pi/\mu_0)(h B_{\text{ext}})^2$ , a first order Taylor expansion of Eq. (6) provides,

$$I_{\text{eq},m} \approx I_{\text{eq},0} + m g / B_{\text{ext}}. \quad (9)$$

Then, the equilibrium current is comparatively increased by adding a term proportional to the mass and to  $1/B_{\text{ext}}$ . Since  $B_{\text{ext}}(h)$  is typically a decreasing function of  $h$ , this implies that  $I_{\text{eq},m}$  is increasingly separated from  $I_{\text{eq},0}$  with height.

#### 3.3. Mass-draining

Finally, we will analyse the effect of draining prominence mass on the host flux rope's equilibrium height and, possibly, its eruption. We suppose that the draining is fast enough that there is a negligible evolution, through *e.g.*, diffusion (*e.g.*, van Driel-Gesztelyi et al. 2003), of the vertical component of the photospheric field distribution. This is modelled with the image current and implies that the associated potential field,  $B_{\text{ext}}$ , is unchanged. We suppose also that this short-term evolution is done without reconnection. This implies that the magnetic flux,  $F$ , passing below the flux rope bottom (located at  $z = h - a$ , where  $a$  is the radius of the flux rope / line current) and the photosphere (at  $z = 0$ ) is conserved.

van Tend & Kuperus (1978) suggested that a line current would experience loss-of-equilibrium if the current magnitude exceeded the maximum of the  $I_{\text{eq},0}(h)$  curve, as with a classical electric circuit. DA10 (see also Démoulin et al. 1991; Lin et al. 2002) expanded on this by imposing a short-term MHD evolution with flux conservation to study the loss-of-equilibrium of a flux rope. The hybrid MHD / line current approach uses pseudo-time long-term evolution of model parameters, *e.g.*, photospheric flux density  $\phi$  or average coronal twist  $T$ , to overcome the limitations of the classical approach. The evolution of one of the model parameters in this way allows the construction of a family of constant  $F$  curves which describe the short-term evolutions. The intersection of these



curves with  $I_{eq,0}$  details how a flux rope evolves as a function of the evolving parameter.

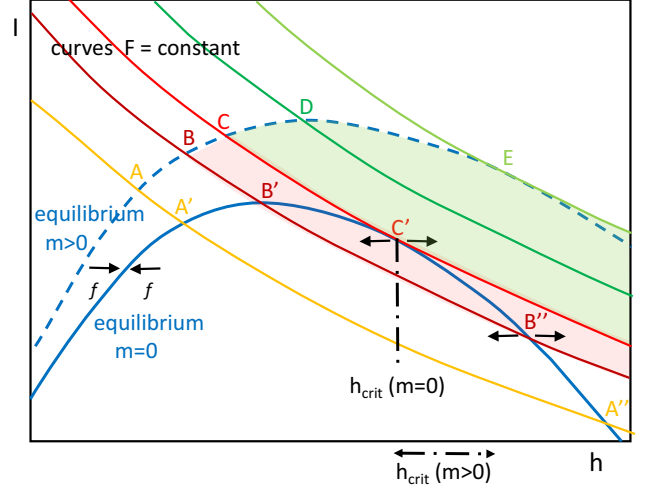
Two equilibrium curves,  $I_{eq,m}(h)$  and  $I_{eq,0}(h)$  are shown in Figure 2 together with five curves of fixed magnetic flux  $F$ , differing from each other as a result of an evolution in, *e.g.*,  $B_{ext}$ . Assuming that we start with a nearly potential coronal configuration, the prominence and its flux rope are supposed to first evolve quasi-statically along the stable equilibrium curve of  $I_{eq,m}(h)$ , with a height growing slowly with time as a result of the evolution of  $B_{ext}$ . At some point during this evolution, we have supposed that the draining of the full mass occurs fast enough to keep both  $B_{ext}$  and  $F$  unchanged, then the evolution is along the corresponding  $F = \text{constant}$  curve towards larger heights. The general form of the  $F = \text{constant}$  curve (Eq. (9) of DA10), hereafter defined as  $I_{evol}(h)$  is,

$$I_{evol}(h) = \frac{2}{L_s} \left( F + \iint_S B_{ext} dy dz \right), \quad (10)$$

where  $L_s = \frac{\mu_0 \Delta y}{\pi} (\ln(2h/a) + l_i/2)$ ,  $l_i$ , are the external inductance, and normalised internal inductance, respectively, and  $a$  is the radius of the current channel. For this set-up in which the current is focused at the edges of the current channel,  $l_i = 0$ .

The effect of draining the mass depends on the location where it occurs. If it occurs at point A of Figure 2, or a nearby one, then a stable equilibrium  $I_{eq,0}$  exists at the intersection with the  $I_{evol}$  flux curve (at point A'). Comparing the height of stable equilibrium with and without mass linked by the same  $I_{evol}$  curve, the equilibrium with mass is always at a lower height (*e.g.*,  $h_A < h_{A'}$ ) which is due to the downward gravity force compressing the  $B_{ext}$  configuration. As the draining point is shifted to larger heights, *e.g.*, at point B, the new equilibrium on  $I_{eq,0}$  curve is further away, at a larger height, from the initial one on  $I_{eq,m}$  curve. This is the case until the point C where the  $I_{evol}$  flux curve only touches the  $I_{eq,0}$  equilibrium curve tangentially. Equation (20) of DA10 demonstrates that the equilibrium is linear neutral at this tangent point C', but it is unstable with the non-linear perturbation term taken into account (graphically the  $I_{evol}$  curve is extending to the right in the region where the force  $f$  is pointing towards large  $h$  values, so away from the equilibrium curve).

After the mass-draining occurs at a point such as A, the total magnetic force will be directed upward, accelerating the flux rope towards the equilibrium curve  $I_{eq,0}$ . However, this equilibrium will be reached with a finite kinetic energy, allowing the line current to continue evolving along the  $I_{evol}$  curve. The line current will then continue on the other side of the equilibrium point with a change in sign of the total magnetic force. Finally, at some point, the motion will stop and reverse direction leading to an oscillation of the flux rope.



**Figure 2.** Schema showing the possible evolutions with mass-draining. The equilibrium curve with  $m = 0$ ,  $I_{eq,0}(h)$ , is shown with a continuous dark blue line. The equilibrium curve with mass,  $I_{eq,m}(h)$ , is above with a dashed line. The constraint of magnetic flux conservation, Eq. (12), is shown with the other colored curves representing different starting points along  $I_{eq,0}(h)$  for draining mass. If the draining mass starts between points C and E, no equilibrium can be reached without mass (region shaded in light green), while if draining is realized before point C (*e.g.*, at point A), another stable equilibrium could be reached. In the region shaded in pink, the finite kinetic energy accumulated may allow the line current to reach the unstable equilibrium without mass (such as point B''). The small black arrows indicate the direction of the total force when the line current is slightly shifted away from the equilibrium curve. The critical height(s)  $h_{crit}$  of the  $m = 0$  ( $m > 0$ ) line current is indicated with the vertical (horizontal) black-dash-dotted lines.

This scenario also envisages damped oscillations towards the  $I_{eq,0}$  curve as the extra energy is progressively radiated away by fast MHD waves. Such results have been reported in both 2D and 3D numerical simulations of prominence oscillations (*e.g.*, Schutgens & Tóth 1999; Zhou et al. 2018, respectively).

Furthermore, the  $I_{evol}$  curve can also cross the other branch of the  $I_{eq,0}$  curve past the point C', such as at points A'' and B'' in Figure 2. Since this part is unstable (see  $f$  arrows in Figure 2), there is the possibility of an eruption if the system has sufficient energy to reach this unstable part. This region is indicated qualitatively with a pink area in Figure 2. Its extension towards the side with small  $h$  values is limited by the ability of the magnetic force to decrease the kinetic energy before the unstable region, at larger  $h$  values, is reached. We will not study this aspect any further since it is expected to be an effect localised to the family of  $I_{evol}$  curves near to point C' and this would need a detailed analysis (it depends both on  $m$  and  $B_{ext}(h)$ ). We only point out that an eruption may be started, by draining mass, before the line current evolves

to the limiting curve  $I_{\text{evol}}$  that passes the first unstable point,  $C'$ , of the  $I_{\text{eq},0}$  curve.

### 3.4. Modification of the Equilibrium Height

In this subsection, we give a quantitative estimate of the ideas described with Figure 2. Specifically, we analyse the mass-draining from the equilibrium located at  $(h_m, I_m)$  with mass  $m$ , to the equilibrium located at  $(h_0, I_0)$  without mass.

The total flux passing between the bottom of the flux rope and the surface is,

$$F(h) = \frac{\mu_0 I}{2\pi} \ln\left(\frac{2h}{a}\right) - \int_0^{h-a} B_{\text{ext}}(z) dz. \quad (11)$$

Conserving flux passing below the flux rope per unit length  $\Delta y$  during the mass-draining requires that  $F(h_m) = F(h_0)$ , hence,

$$\begin{aligned} & \int_0^{h_m-a} B_{\text{ext}}(z) dz - \frac{\mu_0}{2\pi} I_m \ln(2h_m/a) \\ &= \int_0^{h_0-a} B_{\text{ext}}(z) dz - \frac{\mu_0}{2\pi} I_0 \ln(2h_0/a), \end{aligned} \quad (12)$$

where we suppose that the flux rope radius,  $a$ , is small compared to its height, and that  $a$  remains unchanged by the mass-draining to simplify the expressions as evolution in  $a$  has a low effect on the results (similar to the case  $m = 0$  in DA10 where  $a$  did not evolve). Equation (12) explicitly states that the two equilibrium are on the same  $I_{\text{evol}}(h)$  curve (Eq. (10))

We next suppose that the two equilibria  $(h_m, I_m)$  and  $(h_0, I_0)$  are close enough, so that the mass has a small effect on the force balance ( $mgh \ll (\pi/\mu_0)(hB_{\text{ext}})^2$ ). We also take the equilibrium without mass as a reference to express all terms of the Taylor development and define the variation quantities:  $\Delta h = h_0 - h_m$ ,  $\Delta I = I_0 - I_m$ . From Figure 2,  $\Delta h > 0$  and  $\Delta I < 0$ .

With a Taylor development to first order in  $\Delta h$  and  $\Delta I$  of Eq. (12), the conservation of flux imposes the relationship,

$$\frac{\Delta h}{h_0} = -\frac{\mu_0}{2\pi} \ln(2h_0/a) \frac{\Delta I}{I_0}. \quad (13)$$

The equilibrium curve without mass satisfies,

$$0 = \frac{\mu_0 I_0^2}{4\pi h_0} - I_0 B_{\text{ext}}(h_0), \quad (14)$$

and the force balance with mass  $m$  satisfies,

$$\Delta f = \frac{\mu_0 I_m^2}{4\pi h_m} - I_m B_{\text{ext}}(h_m) - mg. \quad (15)$$

With  $\Delta I$  rewritten as a function of  $\Delta h$  with the flux conserved, Eq. (13), with  $I_0 = (4\pi/\mu_0)h_0 B_{\text{ext}}(h_0)$ , the first order expansion around  $(h_0, I_0)$  of Eq. (15) is,

$$\Delta f = -mg + \Delta h \frac{4\pi}{\mu_0} B_{\text{ext}}^2 \quad (16)$$

$$\left( 1 + \frac{2\pi}{\mu_0 \ln(2h_0/a)} + \frac{\partial \ln B_{\text{ext}}(h)}{\partial \ln h} \Big|_{h=h_0} \right).$$

With  $m = 0$ , Eq. (16) describes the test of stability of the equilibrium around the point  $(h_0, I_0)$ . Next, we introduce the notations,

$$n = - \frac{\partial \ln B_{\text{ext}}(h)}{\partial \ln h} \Big|_{h=h_0}, \quad (17)$$

for the negative logarithmic derivative of the external field component, commonly referred to as the decay index (Batemann 1978; Filippov & Den 2001; Török & Kliem 2005; Zuccarello et al. 2016), and,

$$n_{\text{crit}} = 1 + \frac{2\pi}{\mu_0 \ln(2h_0/a)}, \quad (18)$$

which is Eq. (33) of DA10 (with  $n_a = 0$  since we have a fixed  $a$  value). Then, Eq. (16) is rewritten as,

$$\Delta f = -mg + \Delta h \frac{4\pi}{\mu_0} B_{\text{ext}}^2 (n_{\text{crit}} - n). \quad (19)$$

With  $m = 0$ , the equilibrium at  $(h_0, I_0)$  is stable if  $\Delta f$  is oppositely directed to the displacement  $-\Delta h$  from  $h_0$  to  $h_m$ . This is achieved for  $n < n_{\text{crit}}$ , as expected.

Supposing that the extra energy is somehow dissipated, *i.e.*,  $\Delta f = 0$ , Eq. (19) also describes the mass-draining from the equilibrium at  $(h_m, I_m)$  to the equilibrium at  $(h_0, I_0)$ . This draining implies the shift in height,

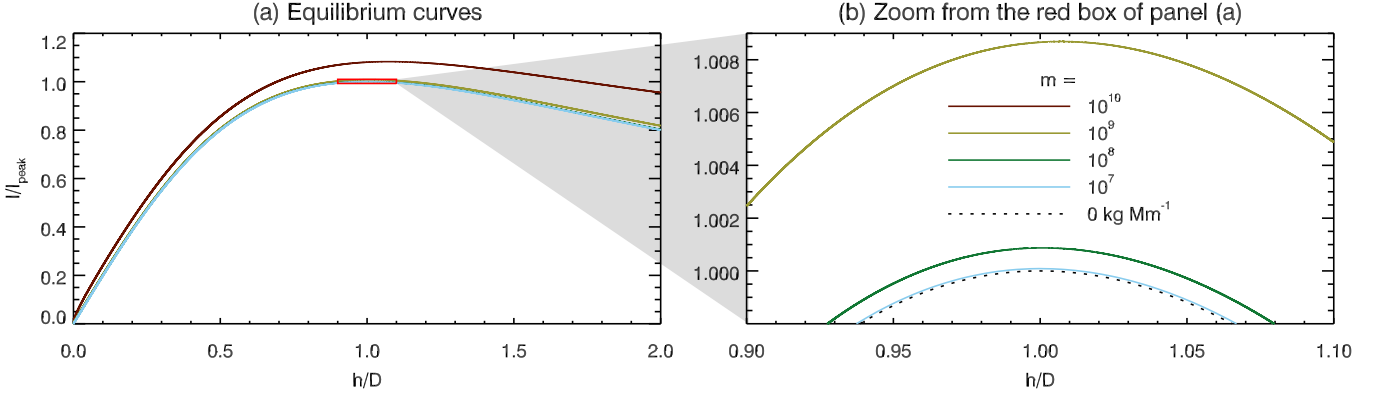
$$\Delta h = \frac{mg}{\frac{4\pi}{\mu_0} B_{\text{ext}}^2 (n_{\text{crit}} - n)}, \quad (20)$$

to the new equilibrium  $(h_0, I_0)$  which exists only for  $n < n_{\text{crit}}$ . This quantifies the graphical description of Figure 2. In particular, it shows that  $\Delta h$  is proportional to the loaded mass  $m$  and inversely proportional to distance, in terms of decay index, to the loss-of-equilibrium point ( $n = n_{\text{crit}}$ ). Finally, the strength of the external field has a strong effect on  $\Delta h$  since a factor 10 on  $B_{\text{ext}}$  decreases  $\Delta h$  by a factor 100 (this factor 10 on  $B_{\text{ext}}$  is the order of magnitude for the ratio between the field present in active and quiescent prominences for example). We conclude that the draining of a given mass  $m$  could cause the height of the prominence to increase from a tiny to a very large amount (up to the loss-of-equilibrium and resulting eruption) depending on precisely where this draining occurs along the equilibrium path and on the strength of the external field.

## 4. RESULTS

### 4.1. Bipolar Background Field

We begin by expanding on the case investigated in DA10 to explore the effect of including mass on the evolution of the



**Figure 3.** Equilibrium curves demonstrating Eq. (24), the relationship between electric current magnitude and height of the line current suspended within a bipolar background potential magnetic field generated by a 4 G mean surface field. These equilibrium curves are calculated assuming a range of prominence mass between  $10^7 - 10^{10}$  kg Mm $^{-1}$ . The dotted-black line corresponds to no mass within the system, comparable to the solid-black line in Figure 2c of Démoulin & Aulanier (2010).

line current, suspended within a bipolar background magnetic field, up to its loss-of-equilibrium. Here, the bipolar background magnetic field is supplied by two, infinitely long polarities at distance  $\pm D$  from the position of the line current (DA10),

$$B_{\text{ext}} = 2\phi D(\pi(h^2 + D^2))^{-1}, \quad (21)$$

where  $\phi$  is the magnetic flux per unit length in the invariant direction. Substituting Eqs. (21) and (2) into (4), we arrive at the condition for the system in equilibrium with  $f = 0$ ,

$$\frac{\mu_0 I^2}{4\pi h} - \frac{2\phi D I}{\pi(h^2 + D^2)} - mg = 0. \quad (22)$$

The equilibrium curve for the massless line current is,

$$\frac{I_{\text{eq},0}(h)}{I_{\text{peak}}} = \tilde{I}_{\text{eq},0}(\tilde{h}) = \frac{2\tilde{h}}{(\tilde{h}^2 + 1)}, \quad (23)$$

where  $I_{\text{eq},0}(h)$  is normalised by its maximum value,  $I_{\text{peak}} = \frac{\phi}{\pi}$ , occurring at height  $\tilde{h}_{\text{peak}} = h_{\text{peak}}/D = 1$ . Note that Equation (23) corrects a typo of DA10. For the case where a line current does contain mass,  $\tilde{I}_{\text{eq},m}(\tilde{h})$  takes the form similar to Eq. (6),

$$\tilde{I}_{\text{eq},m}(\tilde{h}) = \frac{2\pi^2 \tilde{h} D}{\mu_0 \phi} \left( B_{\text{ext}} + \sqrt{(B_{\text{ext}})^2 + \frac{\mu_0 m g}{\pi \tilde{h} D}} \right). \quad (24)$$

In Figure 3 we show a comparison between normalised equilibrium curves of line currents suspended within a “typical” quiet-Sun region of average surface field strength equal to 4 G and loaded with a range of masses. The properties of the masses used are presented in Table 1, assuming a typical quiescent prominence of dimensions: length = 100 Mm, height = 30 Mm, width = 4 Mm (Labrosse et al. 2010; Xia et al. 2012).

$N_{\text{H}}$ (Total) (cm $^{-3}$ )	Mass (Total) (kg)	Mass (Per unit length) (kg Mm $^{-1}$ )
$5 \times 10^7$	$10^9$	$10^7$
$5 \times 10^8$	$10^{10}$	$10^8$
$5 \times 10^9$	$10^{11}$	$10^9$
$5 \times 10^{10}$	$10^{12}$	$10^{10}$

**Table 1.** The properties of the masses loaded onto the line currents presented in Figure 3. It is assumed that all mass within a prominence is cool (low ionisation ratio), therefore  $N_{\text{H}}$  is the number density of neutral hydrogen assuming the range of masses within the second column (Labrosse et al. 2010).

#### 4.2. Effect of Mass on Line Current Equilibrium

Here, we impose the same flux evolution analysis, described in Section 3.3, on the equilibrium curves presented in Figure 3 to study the effect of mass on the equilibrium of the host line current.

The reference state with fluxes  $\tilde{F}_0$  and  $\phi_0$  is defined at the maximum of the  $\tilde{I}_{\text{eq},0}(\tilde{h})$  curve (DA10, and references therein),

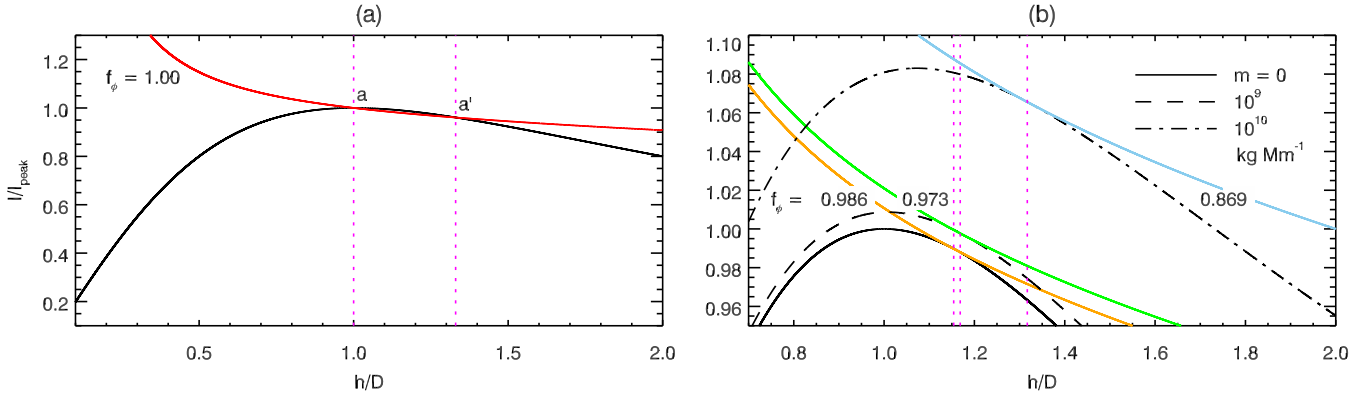
$$\tilde{F}_0 = \frac{\mu_0}{2\pi} \tilde{I}_{\text{peak}} \ln \left( \frac{2\tilde{h}_{\text{peak}}}{\tilde{a}} \right) - 2 \tan^{-1} (\tilde{h}_{\text{peak}} - \tilde{a}), \quad (25)$$

where  $\tilde{I}_{\text{peak}}$  is the maximum value of  $\tilde{I}_{\text{eq},0}(\tilde{h})$ , and  $\tilde{a}$  is the normalised radius of the line current ( $\tilde{a} = a/D = 0.1$  hereafter). We readily find  $\tilde{I}_{\text{evol}}(\tilde{h})$  from Eq. (10),

$$\tilde{I}_{\text{evol}}(\tilde{h}) = \frac{\tilde{F} + 2 \tan^{-1} (\tilde{h} - \tilde{a})}{\frac{\mu_0}{2\pi} \ln \left( \frac{2\tilde{h}}{\tilde{a}} \right)}, \quad (26)$$

where  $\tilde{F} = \tilde{F}_0 / f\phi$ .





**Figure 4.** The effect of mass on the stability of a line current suspended within a bipolar background potential field. *Panel a*; intersection of  $\tilde{I}_{\text{eq},0}(\tilde{h})$  and  $\tilde{I}_{\text{evol}}(\tilde{h})$  with  $f_\phi = 1$  indicating two equilibrium positions,  $\tilde{h} = 1, 1.33$ , as in Figure 2c of Démoulin & Aulanier (2010). *Panel b*; orange, green, and blue curves correspond to the last point-of-intersect, with  $f_\phi$  decreasing, between  $\tilde{I}_{\text{eq},m}(\tilde{h})$  and  $\tilde{I}_{\text{evol}}(\tilde{h})$ , with  $f_\phi = 0.986, 0.973$  and  $0.869$  for line currents loaded with mass equal to  $0, 10^9$ , and  $10^{10}$   $\text{kg Mm}^{-1}$ , respectively. The vertical magenta-dotted lines indicate the  $h/D$  value for this last intersection, in each case, between the two  $\tilde{I}(\tilde{h})$  curves.  $h/D$  value is seen to increase as more mass is loaded.

The intersection of  $\tilde{I}_{\text{evol}}(\tilde{h})$  and  $\tilde{I}_{\text{eq},0}(\tilde{h})$  for the case of  $f_\phi = 1$  for the massless line current is shown in Figure 4a. The orange curve in Figure 4b then corresponds to  $f_\phi = 0.986$  (1.4% reduction in  $\phi_0$ , the strength of the photospheric polarities) applied, also, to the case of a massless line current, indicating a single point of intersection between the two  $\tilde{I}(\tilde{h})$  curves, at  $h/D = 1.15$ . Any further reduction in  $f_\phi$  results in no intersection between the two  $\tilde{I}(\tilde{h})$  curves. DA10 demonstrate that such a line current experiences an ideal-MHD instability and an outward force drives the eruption of the line current.

In Figures 3 and 4b it is shown that an increase in the amount of mass loaded onto the line current results in a shift in the maximum value of  $I/I_{\text{peak}}$  and its corresponding  $h/D$  value. As with the orange curve, the green and blue curves are the last point of intersect between  $\tilde{I}_{\text{eq},m}(\tilde{h})$  and  $\tilde{I}_{\text{evol}}(\tilde{h})$  where a line current is loaded with  $10^9$  and  $10^{10}$   $\text{kg Mm}^{-1}$ , respectively. This implies that the flux of the photospheric polarity must decrease further than for the massless case in order for the mass-loaded line current to experience an ideal-MHD instability. For a line current loaded with  $10^9$  or  $10^{10}$   $\text{kg Mm}^{-1}$ , ideal-MHD instability occurs after  $\phi$  has decreased by 2.7% and 13.1%, respectively, at a height of  $h/D = 1.17, 1.32$ . Therefore, the simple model presented here appears to demonstrate that a mass-loaded line current can be significantly anchored as a result of the inclusion of mass (cf. Blokland & Keppens 2011), requiring additional current within, photospheric flux decay below, and height for the line current to experience loss-of-equilibrium.

Fan (2018) recently published the first example in which a prominence comprised of mass on the order of  $10^{12}$   $\text{kg}$  erupted in a fully MHD simulation. Interestingly, the existence of this prominence was shown to have a significantly stabilising effect on its host flux rope when compared to an

identical flux rope without prominence formation induced. Specifically, the prominence was shown to inhibit the initiation of the kink instability prior to a successful eruption. The work presented here shows that a similar conclusion can also be reached with the torus instability using significantly simplified conditions.

#### 4.3. Effect of Mass-Draining on the Pre-Eruptive Evolution of the Line Current

Blokland & Keppens (2011) showed that the inclusion of mass within their MHS model caused the center of their flux rope to be pulled downwards *i.e.*, the Shafranov shift. Further to this, we have established that the inclusion of mass within the simple model presented by van Tend & Kuperus (1978) and expanded by DA10, can result in a non-negligible modification to the equilibrium curves and implies additional stability. It is therefore reasonable to suggest that the removal of this mass from a pre-loss-of-equilibrium line current will also result in a modification to its evolution, as suggested in several observational case studies of prominences (*e.g.*, Seaton et al. 2011; Bi et al. 2014; Reva et al. 2017; Jenkins et al. 2018).

To test this hypothesis and simulate the draining of prominence mass from a flux rope, we first apply the general, first-order development described in Section 3.3, specifically Eq. (20), to the specified bipolar background magnetic field of Eq. (21). The results are presented in Figure 5 as the dashed-black lines.  $\Delta h$  is larger when  $h_m$  is closer to the loss-of-equilibrium point (*i.e.*,  $n = n_{\text{crit}}$ ). However, Eq. (20) is derived with a Taylor expansion in  $\Delta h$ , so it cannot describe large  $\Delta h$  values.

Therefore, we have used the ‘‘Chebfun’’ package (see, Driscoll et al. 2014) implemented in MATLAB to solve numerically for the intersects between  $\tilde{I}_{\text{eq},m}(\tilde{h})$ ,  $\tilde{I}_{\text{eq},0}(\tilde{h})$ , and

$\tilde{I}_{\text{evol}}(\tilde{h})$  for a range of values of  $f_\phi$ . These solutions are presented in Figure 5, plotted over the analytical solution for comparison. Although the main trend is accessible via both the analytical and numerical solutions, the numerical solution emphasises the sensitivity of the equilibrium to mass evolution when the line current is close to its loss-of-equilibrium.

### 5. IMPLICATIONS FOR OBSERVATIONS

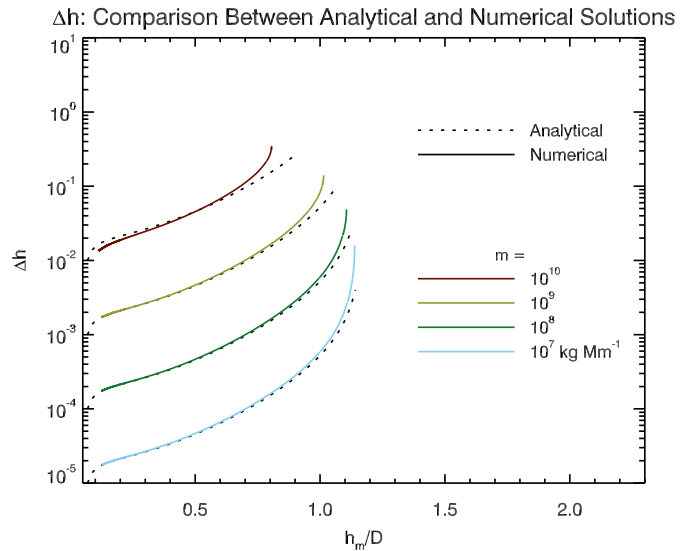
We now move to establish a basic comparison between the results of the above model and two specific observations of mass-draining. Our model shows that some of the quantities may be very sensitive to the value used in their computation, see *e.g.*, Figure 5 for large  $h_m/D$ . The model input parameters (filament dimensions, height, mass, and external field as a function of time) require indirect, often complex methods to be estimated from observations, and are subject to different types of errors. Therefore, our intention is to establish an order of magnitude indication to the importance of mass-draining in these two cases, not an exact measure. Furthermore, we find that varying the value of  $a/D$  between 0.1 and 0.5 results in modifications to the stability of the line current of only a few %. Therefore, for this comparison we maintain the assumption of a thin flux rope and fix  $a/D = 0.1$ .

We first refer to a recent case study by Jenkins et al. (2018) in which the authors used the column density estimation technique of Williams et al. (2013) and Carlyle et al. (2014) to study the draining of mass from an erupting quiet-Sun prominence. According to the authors observations, shortly prior to the prominence's eruption the total mass within the field-of-view reduced by at least  $1 \times 10^{10}$  kg, equal to 15% of the initial mass within the field-of-view. The additional properties of the erupting prominence were estimated from observations taken using the Atmospheric Imaging Assembly (AIA; Lemen et al. 2012) on board the Solar Dynamics Observatory (SDO; Pesnell et al. 2012),

$$\begin{aligned} D &= 65 \text{ Mm} \\ L_y &= 260 \text{ Mm} \\ B_{\text{Phot}} &= 4.6 \text{ G} \\ \phi &= \frac{\pi D B_{\text{Phot}}}{2} \\ \delta m &= 1 \times 10^{10} \text{ kg} \end{aligned}$$

where  $L_y$  is the length of the prominence. Specifically,  $D$  is half the width, and  $L_y$  the length, of the red-dashed box in Figure 3b of Jenkins et al. (2018). The value of  $B_{\text{Phot}}$  is the average strength of the magnetic field within the bounds of the red-dashed box in Figure 3a of Jenkins et al. (2018). The results of the application of these values to the model are shown in Figure 6.

In the application of the observations to this model we have set initial mass equal to  $9 \times 10^{10}$  kg and final mass equal to



**Figure 5.** The change in the height of a line current due to a range of mass-draining, assuming a bipolar background potential magnetic field generated by an average surface field of strength 4 G. Analytical solutions to Eq. (20) are plotted for each mass as dashed-black lines. Overplotted on these dashed lines are the solid-coloured lines representing the numerical solution. The analytical solution works well for small  $h$  and  $m$  values, but clearly deviates from the numerical solution at larger values.

$8 \times 10^{10}$  kg. According to the model, such a mass-loaded line current would need to reach a height of  $\approx 75$  Mm to lose stability,  $\approx 30$  Mm higher than the prominence top was observed; the quiet-Sun prominence was suggested to lose equilibrium, inferred by the large acceleration, after it had risen to a height of  $\approx 45$  Mm. In fact the comparison between model and observations cannot be precise because of the approximate values derived from observations and the simplicity of the model. Moreover, all of the mass present in the model exists at the height of the line current, a location representative of the axis of a flux rope. As it is commonly assumed that prominence material resides below this height, in the dips of the magnetic field of a flux rope (*e.g.*, Aulanier et al. 1998; Gunár & Mackay 2015), we expect the model height corresponding to loss-of-equilibrium to always be larger than any observed prominence height (see also, Zuccarello et al. 2016).

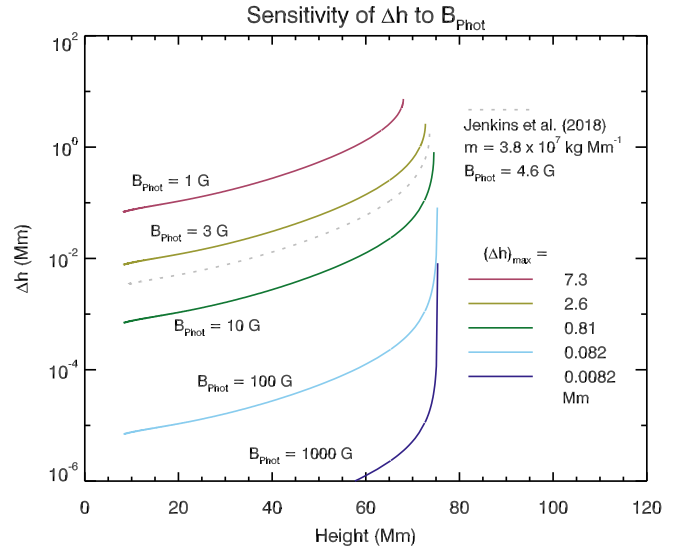
The increase in height observed by Jenkins et al. (2018) after the prominence underwent mass-draining was  $> 60$  Mm before leaving the field-of-view. The simple model described here predicts the maximum possible increase in height for the same amount of mass-draining to be up to 1.7 Mm, assuming the final state is also in equilibrium. However, it is suggested by the authors that the flux rope associated with the prominence was at a point of marginal instability when the mass-draining initiated. Indeed, we have shown that the

simple model described here predicts the largest increases in height due to mass-draining to occur as the line current approaches its loss-of-equilibrium. Hence, the large increase in the height of the observed prominence (60 Mm) shortly after the draining of mass could be interpreted as being caused by the flux rope losing equilibrium and erupting into the heliosphere due to the torus instability. The prominence observed by Jenkins et al. (2018) did successfully erupt and was later observed as a CME by multiple coronagraphs.

The mass estimates of the prominence material studied by Jenkins et al. (2018) were derived from observations captured using the Extreme Ultraviolet Imager (EUVI; Wuelser et al. 2004) on board the Solar Terrestrial Observatory Behind (STEREO; Kaiser et al. 2008) spacecraft. At the time of the observations, December 2011, EUVI was capturing high temporal resolution images in only the 195 Å passband; the other filters were at a much lower cadence. For this reason, the column density of the prominence was calculated using the so-called ‘monochromatic method’, resulting in a lower-limit estimate to the column density. Therefore, we take the derived value of total mass and mass-drained as lower-limits, and in turn all values of  $\Delta h$  to be lower-limit estimates to the increase in the height of the line current.

Next, we compare to an earlier case study, presented by Seaton et al. (2011), in which it was concluded that mass-draining from a prominence rooted within an active region was responsible for the  $\approx 35$  Mm height rise prior to the eruption of the prominence. The active region that the eruptive prominence was located in was in its decaying phase, with an average surface magnetic field strength of  $\gtrsim 100$  G according to magnetogram observations taken using the Michelson Doppler Imager (MDI; Scherrer et al. 1995) on board the Solar and Heliospheric Observatory (SOHO; Domingo et al. 1995). Our model can be used to test this conclusion by assuming the same degree of mass-draining as was observed by Jenkins et al. (2018), and modifying  $B_{\text{Phot}}$  so as to test the sensitivity of the model to a range of surface fluxes.

In the solar context, higher values of  $B_{\text{Phot}}$  are associated with smaller values of  $D$ , in turn reducing the critical height of the flux rope. Indeed, this is a commonly observed and well studied relationship between prominence height and magnetic domain (e.g., Rompolt 1990; McCauley et al. 2015; Filippov 2016, and references therein). However, in order to meaningfully vary  $D$  with  $B_{\text{Phot}}$  within this model, additional assumptions would have to be made. Therefore, to facilitate a simple comparison between the two observational case-studies and the additional range of realistic surface flux values, we opt to compare conditions for a “normalised filament”, fixing  $D$  as in Jenkins et al. (2018) and simply varying  $B_{\text{Phot}}$ .



**Figure 6.** The modification to the height of the line current assuming a draining equal to  $1 \times 10^{10}$  kg of prominence mass (Jenkins et al. 2018) at a range of photospheric magnetic field strengths. Quiet-Sun surface field strengths result in a significantly larger change in height due to mass-draining than field strengths similar to those observed in active regions.

The results, shown in Figure 6, suggest that increasing the surface magnetic flux results in a stronger background potential magnetic field, and reduces the effect that mass-draining can have on the height change  $\Delta h$ . According to the model, draining  $1 \times 10^{10}$  kg from a line current embedded within a bipolar background potential magnetic field that has a surface magnetic field strength of  $\gtrsim 100$  G would result in a very small maximum change to the height of the line current unless the configuration is very close to loss-of-equilibrium. It is therefore unlikely that the mass-draining was directly responsible for the observed  $\approx 35$  Mm increase in the height of the prominence. Nevertheless, as appears to have been the case in the prominence studied by Jenkins et al. (2018), the mass-draining may have been responsible for upsetting the equilibrium towards the non-equilibrium point.

A similar result to this has previously been reported by Reeves & Forbes (2005), in which the authors concluded the effect of mass was likely to be negligible in a system restricted by a background field stronger than 6 G. Our result is complementary to this by providing a quantitative comparison for a range of surface fluxes and masses.

## 6. DISCUSSION AND SUMMARY

The general cases described in this manuscript detail how the inclusion of realistic prominence masses and complete draining of this mass from the line current can have both stabilising and destabilising effects. Returning to Figure 2 for comparison, a line current at point A, for example, will drain

total mass and move along the constant  $F$  curve to  $A'$ , resulting in damped oscillations around A. In such a case, the line current does not experience a loss-of-equilibrium; the draining of mass has simply allowed the line current to increase in height to a new equilibrium and further evolution of other parameters would be required for a successful eruption to occur. The mass draining can also be partial and can also occur during the oscillations. Indeed, [Zhou et al. \(2018\)](#) showed that the oscillation of the prominence in their 3D MHD simulation resulted in the draining of mass from the structure due to the periodic increase in height of field lines during the oscillation. The authors also note that this causes the height of individual field lines to increase due to the reduction in the gravitational force, although this is studied locally for a few field lines.

Considering, now, a line current evolving from C to  $C'$  due to mass-draining, the line current would become unstable to an ideal-MHD instability as it reaches point  $C'$ , and experience a loss-of-equilibrium triggered by the draining of mass.

For a line current that drains a partial amount of the total mass loaded, the height of the line current will increase accordingly, as has already been discussed in Section 4.3. If this is realised at point A or B of Figure 2, the line current will not evolve all the way to point  $A'$  or  $B'$ , rather a point on the constant  $F$  curve that is in-between and dependent on the degree of draining.

Considering point D, a point that is not sampled using the methods outlined in this manuscript, then the partial draining of total mass may result in the line current either reaching a stable equilibrium again or experiencing a loss-of-equilibrium. In this case, the nature of the line current post mass-draining would depend on the degree of mass drained. Graphically, for a line current to experience loss-of-equilibrium the constant  $F$  curve cutting the mass-loaded line current equilibrium curve at point D would have to touch the mass-drained equilibrium curve tangentially or not at all. If we define  $m_{\text{drained}}$  as the amount of mass drained and  $m_{\text{min}}$  as the minimum amount of mass-draining required to destabilise a line current at point D, then if  $m_{\text{drained}} < m_{\text{min}}$  the final state of the line current would be in equilibrium. Assuming no more mass-draining occurred, the additional physical parameters of the system would be required to evolve for a successful eruption to occur. It then follows that if  $m_{\text{drained}} \geq m_{\text{min}}$  the line current would experience loss-of-equilibrium as a result of the mass-draining.

At point E the line current is already unstable to an ideal-MHD instability without any draining of mass. If mass draining was to occur at this point, the draining of total or partial mass would not contribute to the initiation of the loss-of-equilibrium but would instead contribute an additional accelerating force to the erupting flux rope.

Finally, applying specific conditions to the general case, it is shown that:

- For a line current suspended within a bipolar background field generated by a surface field of 4 G, the inclusion of typical prominence masses can increase the height that the line current experiences an ideal-MHD instability by up to 14%, indicating that the mass provides a larger anchoring effect than is typically assumed.
- The draining of the larger masses from a line current can cause a non-negligible increase in the height of the line current without upper bound, with the largest height increase observed as the line current approaches its loss-of-equilibrium.
- Using the observational measurements of [Jenkins et al. \(2018\)](#) as the input parameters, it is shown that the modification to the height of the line current due to mass-draining is as much as 1.7 Mm. This non-negligible increase in the height of the line current effectively demonstrates the ability for mass-draining to perturb the equilibrium of weak field quiescent flux ropes.
- Scaling the model for comparison with observations presented by [Seaton et al. \(2011\)](#), it is shown that draining mass from a line current suspended in a background field generated by up to kilogauss surface field results in only a negligible modification to the height of the line current.

We have discussed the role that mass plays in the *global* evolution and eruption of flux ropes, suggesting that it depends on four main parameters; the strength of the surface field generating the background potential field, how much mass is loaded into a flux rope, how much mass drains during its evolution, and when along a flux rope's equilibrium curve the mass drains. The effect of the *local* evolution of plasma within prominences is not discussed in this manuscript, *i.e.*, the mass-draining that is studied here differs from the mass-loss due to the Rayleigh-Taylor instability (RTI) that has been studied extensively in both observations and simulations (*e.g.*, [Hillier et al. 2012](#); [Xia & Keppens 2016](#); [Hillier 2018](#)). In addition, [Kaneko & Yokoyama \(2018\)](#) pointed out that, in their case, the mass-loss from the prominence due to RTI was balanced by new condensations into the prominence. A parametric study would be required in order to ascertain the effect of such local evolutions of mass on the global stability of a flux rope–prominence system.

Finally, we conclude that the role of mass within solar eruptions, particularly those involving quiescent prominences, is greater than has been historically attributed, and requires a more in-depth analysis.



The authors would like to thank the anonymous referee for their useful comments that improved the clarity of the article. We would also like to thank the members of the "Solving The Prominence Paradox" ISSI team for their discussions on this topic during their second meeting. MJM thanks the STFC for support via funding given in his PhD Studentship, and travel funds awarded by the Royal Astronomical Society. MH thanks the University of Birmingham School of Mathematics for funding given in his PhD Studentship, and the University of Adelaide for funding given in his Beacon of Enlightenment Scholarship. GV acknowledges the support of the Leverhulme Trust Research Project Grant 2014-051. GA and PD thank the Programme National Soleil Terre of the CNRS/INSU for financial support. DML received support from the European Commissions H2020 Programme under the following grant agreements; GRESt (no. 653982) and Pre-EST (no. 739500) and from the Leverhulme Trust as an Early-Career Fellow (ECF-2014-792). LvDG acknowledges funding under STFC consolidated grant number ST/N000722/1, Leverhulme Trust Research Project Grant 2014-051, and the Hungarian Research grant OTKA K-109276.

## REFERENCES

- Aulanier, G., Démoulin, P., van Driel-Gesztelyi, L., Mein, P., & Deforest, C. 1998, *A&A*, 335, 309
- Bateman, G. 1978, *MHD instabilities* (Cambridge, Mass., MIT Press, 1978. 270 p.)
- Bąk-Stęślicka, U., Gibson, S. E., Fan, Y., et al. 2013, *ApJL*, 770, L28, doi: [10.1088/2041-8205/770/2/L28](https://doi.org/10.1088/2041-8205/770/2/L28)
- Bi, Y., Jiang, Y., Yang, J., et al. 2014, *ApJ*, 790, 100, doi: [10.1088/0004-637X/790/2/100](https://doi.org/10.1088/0004-637X/790/2/100)
- Blokland, J. W. S., & Keppens, R. 2011, *A&A*, 532, A93, doi: [10.1051/0004-6361/201117013](https://doi.org/10.1051/0004-6361/201117013)
- Burlaga, L. F. 1988, *J. Geophys. Res.*, 93, 7217, doi: [10.1029/JA093iA07p07217](https://doi.org/10.1029/JA093iA07p07217)
- Carlyle, J., Williams, D. R., van Driel-Gesztelyi, L., et al. 2014, *ApJ*, 782, 87, doi: [10.1088/0004-637X/782/2/87](https://doi.org/10.1088/0004-637X/782/2/87)
- Cheng, X., Guo, Y., & Ding, M. 2017, *Science in China Earth Sciences*, 60, 1383, doi: [10.1007/s11430-017-9074-6](https://doi.org/10.1007/s11430-017-9074-6)
- Démoulin, P. 1998, in *Astronomical Society of the Pacific Conference Series*, Vol. 150, IAU Colloq. 167: New Perspectives on Solar Prominences, ed. D. F. Webb, B. Schmieder, & D. M. Rust, 78
- Démoulin, P., & Aulanier, G. 2010, *ApJ*, 718, 1388, doi: [10.1088/0004-637X/718/2/1388](https://doi.org/10.1088/0004-637X/718/2/1388)
- Démoulin, P., Ferreira, J., & Priest, E. R. 1991, *A&A*, 245, 289
- Démoulin, P., & Priest, E. R. 1988, *A&A*, 206, 336
- Dere, K. P., Brueckner, G. E., Howard, R. A., et al. 1997, *SoPh*, 175, 601, doi: [10.1023/A:1004907307376](https://doi.org/10.1023/A:1004907307376)
- Domingo, V., Fleck, B., & Poland, A. I. 1995, *SoPh*, 162, 1, doi: [10.1007/BF00733425](https://doi.org/10.1007/BF00733425)
- Driscoll, T. A., Hale, N., & Trefethen, L. N. 2014, *Chebfun Guide* (Pafnuty Publications). <http://www.chebfun.org/docs/guide/>
- Fan, Y. 2017, *ApJ*, 844, 26, doi: [10.3847/1538-4357/aa7a56](https://doi.org/10.3847/1538-4357/aa7a56)
- . 2018, *ApJ*, 862, 54, doi: [10.3847/1538-4357/aaccee](https://doi.org/10.3847/1538-4357/aaccee)
- Fan, Y., Gibson, S., & Tomczyk, S. 2018, *ArXiv e-prints*, arXiv:1808.06142. <https://arxiv.org/abs/1808.06142>
- Fan, Y., & Gibson, S. E. 2007, *ApJ*, 668, 1232, doi: [10.1086/521335](https://doi.org/10.1086/521335)
- Filippov, B. 2018, *MNRAS*, 475, 1646, doi: [10.1093/mnras/stx3277](https://doi.org/10.1093/mnras/stx3277)
- Filippov, B. P. 2016, *Geomagnetism and Aeronomy*, 56, 1, doi: [10.1134/S0016793216010059](https://doi.org/10.1134/S0016793216010059)
- Filippov, B. P., & Den, O. G. 2001, *J. Geophys. Res.*, 106, 25177, doi: [10.1029/2000JA004002](https://doi.org/10.1029/2000JA004002)
- Forbes, T. G. 2000, *J. Geophys. Res.*, 105, 23153, doi: [10.1029/2000JA000005](https://doi.org/10.1029/2000JA000005)
- Forbes, T. G., & Isenberg, P. A. 1991, *ApJ*, 373, 294, doi: [10.1086/170051](https://doi.org/10.1086/170051)
- Gibson, S. E., Fan, Y., Mandrini, C., Fisher, G., & Démoulin, P. 2004, *ApJ*, 617, 600, doi: [10.1086/425294](https://doi.org/10.1086/425294)
- Gibson, S. E., Foster, D., Burkepile, J., de Toma, G., & Stanger, A. 2006, *ApJ*, 641, 590, doi: [10.1086/500446](https://doi.org/10.1086/500446)
- Gunár, S., & Mackay, D. H. 2015, *ApJ*, 803, 64, doi: [10.1088/0004-637X/803/2/64](https://doi.org/10.1088/0004-637X/803/2/64)
- Gunár, S., Mackay, D. H., Anzer, U., & Heinzel, P. 2013, *A&A*, 551, A3, doi: [10.1051/0004-6361/201220597](https://doi.org/10.1051/0004-6361/201220597)
- Hillier, A. 2018, *Reviews of Modern Plasma Physics*, 2, 1, doi: [10.1007/s41614-017-0013-2](https://doi.org/10.1007/s41614-017-0013-2)
- Hillier, A., Isobe, H., Shibata, K., & Berger, T. 2012, *ApJ*, 756, 110, doi: [10.1088/0004-637X/756/2/110](https://doi.org/10.1088/0004-637X/756/2/110)
- James, A. W., Valori, G., Green, L. M., et al. 2018, *ApJL*, 855, L16, doi: [10.3847/2041-8213/aab15d](https://doi.org/10.3847/2041-8213/aab15d)
- James, A. W., Green, L. M., Palmerio, E., et al. 2017, *SoPh*, 292, 71, doi: [10.1007/s11207-017-1093-4](https://doi.org/10.1007/s11207-017-1093-4)
- Jenkins, J. M., Long, D. M., van Driel-Gesztelyi, L., & Carlyle, J. 2018, *SoPh*, 293, 7, doi: [10.1007/s11207-017-1224-y](https://doi.org/10.1007/s11207-017-1224-y)
- Kaiser, M. L., Kucera, T. A., Davila, J. M., et al. 2008, *SSRv*, 136, 5, doi: [10.1007/s11214-007-9277-0](https://doi.org/10.1007/s11214-007-9277-0)
- Kaneko, T., & Yokoyama, T. 2018, *ApJ*, 869, 136, doi: [10.3847/1538-4357/aace6f](https://doi.org/10.3847/1538-4357/aace6f)
- Klimchuk, J. A. 2001, *Washington DC American Geophysical Union Geophysical Monograph Series*, 125, doi: [10.1029/GM125p0143](https://doi.org/10.1029/GM125p0143)
- Labrosse, N., Heinzel, P., Vial, J. C., et al. 2010, *SSRv*, 151, 243, doi: [10.1007/s11214-010-9630-6](https://doi.org/10.1007/s11214-010-9630-6)
- Lemen, J. R., Title, A. M., Akin, D. J., et al. 2012, *SoPh*, 275, 17, doi: [10.1007/s11207-011-9776-8](https://doi.org/10.1007/s11207-011-9776-8)
- Lin, J., van Ballegoijen, A. A., & Forbes, T. G. 2002, *J. Geophys. Res. (Space Physics)*, 107, 1438, doi: [10.1029/2002JA009486](https://doi.org/10.1029/2002JA009486)
- Low, B. C. 1981, *ApJ*, 246, 538, doi: [10.1086/158954](https://doi.org/10.1086/158954)
- Low, B. C. 1999, in *American Institute of Physics Conference Series*, Vol. 471, 109–114



- Low, B. C., Fong, B., & Fan, Y. 2003, *ApJ*, 594, 1060, doi: [10.1086/377042](https://doi.org/10.1086/377042)
- Lynch, B. J., Antiochos, S. K., MacNeice, P. J., Zurbuchen, T. H., & Fisk, L. A. 2004, *ApJ*, 617, 589, doi: [10.1086/424564](https://doi.org/10.1086/424564)
- Martens, P. C. H., & Kuin, N. P. M. 1989, *SoPh*, 122, 263, doi: [10.1007/BF00912996](https://doi.org/10.1007/BF00912996)
- Martin, S. F. 1998, *SoPh*, 182, 107, doi: [10.1023/A:1005026814076](https://doi.org/10.1023/A:1005026814076)
- McCauley, P. I., Su, Y. N., Schanche, N., et al. 2015, *SoPh*, 290, 1703, doi: [10.1007/s11207-015-0699-7](https://doi.org/10.1007/s11207-015-0699-7)
- Moore, R. L., Sterling, A. C., Hudson, H. S., & Lemen, J. R. 2001, *ApJ*, 552, 833, doi: [10.1086/320559](https://doi.org/10.1086/320559)
- Palmerio, E., Kilpua, E. K. J., James, A. W., et al. 2017, *SoPh*, 292, 39, doi: [10.1007/s11207-017-1063-x](https://doi.org/10.1007/s11207-017-1063-x)
- Pesnell, W. D., Thompson, B. J., & Chamberlin, P. C. 2012, *SoPh*, 275, 3, doi: [10.1007/s11207-011-9841-3](https://doi.org/10.1007/s11207-011-9841-3)
- Petrie, G. J. D., Blokland, J. W. S., & Keppens, R. 2007, *ApJ*, 665, 830, doi: [10.1086/519276](https://doi.org/10.1086/519276)
- Priest, E. R., Hood, A. W., & Anzer, U. 1989, *ApJ*, 344, 1010, doi: [10.1086/167868](https://doi.org/10.1086/167868)
- Reeves, K. K., & Forbes, T. G. 2005, in *Coronal and Stellar Mass Ejections*, IAU Symposium Proceedings of the International Astronomical Union 226, Held 13-17 September, Beijing, edited by K. Dere, J. Wang, and Y. Yan. Cambridge: Cambridge University Press, 2005., pp.250-255, Vol. 226, 250–255
- Régnier, S., Walsh, R. W., & Alexander, C. E. 2011, *A&A*, 533, L1, doi: [10.1051/0004-6361/201117381](https://doi.org/10.1051/0004-6361/201117381)
- Reva, A. A., Kirichenko, A. S., Ulyanov, A. S., & Kuzin, S. V. 2017, *ApJ*, 851, 108, doi: [10.3847/1538-4357/aa9986](https://doi.org/10.3847/1538-4357/aa9986)
- Rompolt, B. 1990, *Hvar Observatory Bulletin*, 14, 37
- Rust, D. M. 2003, *Advances in Space Research*, 32, 1895, doi: [10.1016/S0273-1177\(03\)90623-5](https://doi.org/10.1016/S0273-1177(03)90623-5)
- Scherrer, P. H., Bogart, R. S., Bush, R. I., et al. 1995, *SoPh*, 162, 129, doi: [10.1007/BF00733429](https://doi.org/10.1007/BF00733429)
- Schmahl, E., & Hildner, E. 1977, *SoPh*, 55, 473, doi: [10.1007/BF00152588](https://doi.org/10.1007/BF00152588)
- Schutgens, N. A. J., & Tóth, G. 1999, *A&A*, 345, 1038, <https://arxiv.org/abs/astro-ph/9903128>
- Seaton, D. B., Mierla, M., Berghmans, D., Zhukov, A. N., & Dolla, L. 2011, *ApJL*, 727, L10, doi: [10.1088/2041-8205/727/1/L10](https://doi.org/10.1088/2041-8205/727/1/L10)
- Titov, V. S., & Démoulin, P. 1999, *A&A*, 351, 707
- Török, T., & Kliem, B. 2005, *ApJL*, 630, L97, doi: [10.1086/462412](https://doi.org/10.1086/462412)
- van Ballegoijen, A. A., & Martens, P. C. H. 1989, *ApJ*, 343, 971, doi: [10.1086/167766](https://doi.org/10.1086/167766)
- van Driel-Gesztelyi, L., Démoulin, P., Mandrini, C. H., Harra, L., & Klimchuk, J. A. 2003, *ApJ*, 586, 579, doi: [10.1086/367633](https://doi.org/10.1086/367633)
- van Tend, W., & Kuperus, M. 1978, *SoPh*, 59, 115, doi: [10.1007/BF00154935](https://doi.org/10.1007/BF00154935)
- Williams, D. R., Baker, D., & van Driel-Gesztelyi, L. 2013, *ApJ*, 764, 165, doi: [10.1088/0004-637X/764/2/165](https://doi.org/10.1088/0004-637X/764/2/165)
- Wueller, J.-P., Lemen, J. R., Tarbell, T. D., et al. 2004, in *Proc. SPIE, Vol. 5171, Telescopes and Instrumentation for Solar Astrophysics*, ed. S. Fineschi & M. A. Gummin, 111–122
- Xia, C., Chen, P. F., & Keppens, R. 2012, *ApJ*, 748, L26, doi: [10.1088/2041-8205/748/2/L26](https://doi.org/10.1088/2041-8205/748/2/L26)
- Xia, C., & Keppens, R. 2016, *ApJ*, 823, 22, doi: [10.3847/0004-637X/823/1/22](https://doi.org/10.3847/0004-637X/823/1/22)
- Zhou, Y.-H., Xia, C., Keppens, R., Fang, C., & Chen, P. F. 2018, *ApJ*, 856, 179, doi: [10.3847/1538-4357/aab614](https://doi.org/10.3847/1538-4357/aab614)
- Zuccarello, F. P., Aulanier, G., & Gilchrist, S. A. 2016, *ApJL*, 821, L23, doi: [10.3847/2041-8205/821/2/L23](https://doi.org/10.3847/2041-8205/821/2/L23)
- Zuccarello, F. P., Seaton, D. B., Mierla, M., et al. 2014, *ApJ*, 785, 88, doi: [10.1088/0004-637X/785/2/88](https://doi.org/10.1088/0004-637X/785/2/88)