



HAL
open science

Polyploidy spectrum: a new marker in HCC classification

Myriam Bou-Nader, Stefano Caruso, Romain Donne, Séverine Celton-Morizur, Julien Calderaro, Géraldine Gentric, Mathilde Cadoux, Antoine L'Hermitte, Christophe Klein, Thomas Guilbert, et al.

► **To cite this version:**

Myriam Bou-Nader, Stefano Caruso, Romain Donne, Séverine Celton-Morizur, Julien Calderaro, et al.. Polyploidy spectrum: a new marker in HCC classification. *Gut*, inPress, pp.gutjnl-2018-318021. 10.1136/gutjnl-2018-318021 . hal-02102441

HAL Id: hal-02102441

<https://hal.sorbonne-universite.fr/hal-02102441v1>

Submitted on 17 Apr 2019

HAL is a multi-disciplinary open access archive for the deposit and dissemination of scientific research documents, whether they are published or not. The documents may come from teaching and research institutions in France or abroad, or from public or private research centers.

L'archive ouverte pluridisciplinaire **HAL**, est destinée au dépôt et à la diffusion de documents scientifiques de niveau recherche, publiés ou non, émanant des établissements d'enseignement et de recherche français ou étrangers, des laboratoires publics ou privés.



OPEN ACCESS

ORIGINAL ARTICLE

Polyploidy spectrum: a new marker in HCC classification

Myriam Bou-Nader,¹ Stefano Caruso,² Romain Donne,¹ Séverine Celton-Morizur,¹ Julien Calderaro,^{3,4} Géraldine Gentric,^{5,6} Mathilde Cadoux,¹ Antoine L'Hermitte,⁷ Christophe Klein,⁸ Thomas Guilbert,⁹ Miguel Albuquerque,¹⁰ Gabrielle Couchy,² Valérie Paradis,¹¹ Jean-Pierre Couty,¹ Jessica Zucman-Rossi,² Chantal Desdouets¹

► Additional material is published online only. To view please visit the journal online (<http://dx.doi.org/10.1136/gutjnl-2018-318021>).

For numbered affiliations see end of article.

Correspondence to

Dr Chantal Desdouets, Team Proliferation Stress and Liver Physiopathology, Genome and Cancer, Centre de Recherche des Cordeliers, INSERM, Sorbonne Université, USPC, Université Paris Descartes, Université Paris Diderot, Paris 75006, France; chantal.desdouets@inserm.fr

RD and SC-M contributed equally.
MB-N and SC contributed equally.

Received 29 November 2018
Revised 25 February 2019
Accepted 24 March 2019

ABSTRACT

Objectives Polyploidy is a fascinating characteristic of liver parenchyma. Hepatocyte polyploidy depends on the DNA content of each nucleus (nuclear ploidy) and the number of nuclei per cell (cellular ploidy). Which role can be assigned to polyploidy during human hepatocellular carcinoma (HCC) development is still an open question. Here, we investigated whether a specific ploidy spectrum is associated with clinical and molecular features of HCC.

Design Ploidy spectra were determined on surgically resected tissues from patients with HCC as well as healthy control tissues. To define ploidy profiles, a quantitative and qualitative *in situ* imaging approach was used on paraffin tissue liver sections.

Results We first demonstrated that polyploid hepatocytes are the major components of human liver parenchyma, polyploidy being mainly cellular (binuclear hepatocytes). Across liver lobules, polyploid hepatocytes do not exhibit a specific zonation pattern. During liver tumorigenesis, cellular ploidy is drastically reduced; binuclear polyploid hepatocytes are barely present in HCC tumours. Remarkably, nuclear ploidy is specifically amplified in HCC tumours. In fact, nuclear ploidy is amplified in HCCs harbouring a low degree of differentiation and *TP53* mutations. Finally, our results demonstrated that highly polyploid tumours are associated with a poor prognosis.

Conclusions Our results underline the importance of quantification of cellular and nuclear ploidy spectra during HCC tumorigenesis.

INTRODUCTION

Polyploidy is the state in which cells contain additional sets of homologous chromosomes. In mammals, whole organism polyploidy is usually lethal; however, some tissues develop a certain degree of polyploidy.^{1–2} Polyploid cells arise through a variety of cell division errors. Defects in mitosis and cytokinesis are thought to be the most common routes, however polyploid cells can also develop as a consequence of chromosome endoreplication (absence of karyogenesis), telomere erosion and oncogene activation.^{1–3–4} Different studies have demonstrated a major role of 'diploid-polyploid conversion' during physiological processes (eg, embryogenesis, terminal differentiation) but also during pathological conditions (eg, mechanical, genotoxic or metabolic stress).^{2–5–6} Alarmingly,

Significance of this study

What is already known on this subject?

- Polyploidy, the existence of cells containing more than two homologous sets of chromosomes, is a well-known feature of mammalian hepatocytes.
- Polyploidy is defined on the basis of the DNA content of each nucleus (eg, 2n, 4n, 8n) called nuclear ploidy and on the number of nuclei per cell called cellular ploidy.
- The liver is the unique organ that modifies its ploidy content during normal homeostasis, regeneration and under damage insults.

What are the new findings?

- Binuclear polyploid hepatocytes are the major components of the polyploid fraction in normal human liver parenchyma.
- Quantification of cellular and nuclear ploidy is sufficient to distinguish between normal liver parenchyma and hepatocellular carcinoma (HCC).
- *TP53* mutation is a factor accounting for a higher percentage of mononuclear polyploid hepatocytes when compared with both *TERT* promoter and *CTNNB1* mutated HCC tumours.
- Highly polyploid HCC tumours are associated with worse prognosis.

How might it impact on clinical practice in the foreseeable future?

- Quantification of cellular and nuclear ploidy spectra could be an accurate test for HCC prognosis.

proliferating polyploid cells have been demonstrated to be genetically unstable and could facilitate tumour development.^{1,7} Accumulating evidence points to a significant contribution of polyploid intermediates in the shaping and the composition of cancer genomes. The majority of solid tumours exhibit polyploid or near polyploid karyotypes.^{8,9}

Polyploidy is a defining feature of the liver.² Polyploid hepatocytes are characterised by the number of nuclei per cell named cellular ploidy (mononuclear/binuclear hepatocytes) as well as the ploidy of each nucleus named nuclear ploidy (diploid, tetraploid,



© Author(s) (or their employer(s)) 2019. Re-use permitted under CC BY-NC. No commercial re-use. See rights and permissions. Published by BMJ.

To cite: Bou-Nader M, Caruso S, Donne R, *et al.* *Gut* Epub ahead of print: [please include Day Month Year]. doi:10.1136/gutjnl-2018-318021

octoploid nucleus). In rodents, hepatocytes are mainly tetraploid (binuclear with two diploid nuclei or mononuclear with one tetraploid nucleus) and octoploid (binuclear with two tetraploid nuclei or mononuclear with one octoploid nucleus).¹⁰ During postnatal development, a scheduled division programme characterised by cytokinesis failure results in the genesis of binuclear tetraploid hepatocytes, which subsequently play a pivotal role in liver polyploidisation.^{11,12} This physiological polyploidisation is now considered as a form of liver maturation.^{2,13} Different studies have demonstrated that hepatic polyploidy can be also modified under stress settings as metabolic overload, DNA damage and chemical-induced liver injury.^{14–16} Recently, we identified a new mechanism regulating polyploidy during liver disease, where in the setting of non-alcoholic fatty liver disease (NAFLD), nuclear ploidy is altered with the genesis of highly mononuclear polyploid hepatocytes.^{17,18} We demonstrated that this pathological polyploidisation is promoted by endoreplication cycles.^{17,18} Interestingly, endoreplication is now considered as an alternative division programme in a context of genomic stress.³ It is important to note that a long-term consequence of switching to the polyploidisation mode during liver pathological growth is still under debate. Whether or not polyploidy is a risk factor or protective against human liver cancer is largely unknown.

Hepatocellular carcinoma (HCC) is one of the most deadly cancers worldwide and has no effective treatment.¹⁹ More than 90% of HCCs in western countries develop on a cirrhotic background as a result of chronic HBV or HCV infection, high alcohol intake, haemochromatosis or NAFLD. A better understanding of the early events of liver carcinogenesis will help outline the pathogenesis of the disease, and improve diagnostic procedures and curative treatment. In this study, we aimed to determine whether polyploid spectrum could constitute a potent prognostic marker of human HCC.

RESULTS

Hepatocytes become polyploid with no specific zonation in human liver parenchyma

Polyploid hepatocytes have been extensively characterised and recent studies in mouse models have defined their implication in liver homeostasis.^{2,5,13} Data on human hepatic polyploidisation are more limited. In this study, we first investigated whether human liver polyploidy originates from the accumulation of binuclear polyploid hepatocytes and/or the accumulation of mononuclear polyploid hepatocytes. Labelling of nuclear (Hoechst) and plasma membrane (β -catenin/KL1) compartments was performed to investigate cellular ploidy (mononuclear/binuclear fraction) (figure 1A). As previously described, nuclear ploidy was determined by measuring the nucleus area.^{18,20,21} Using a specific imaging program, we assigned a colour code to each nuclei contingent (2n, purple; 4n, green; $\geq 8n$, red), allowing a better visualisation of nuclei within the liver parenchyma (figure 1B). First, we analysed the global ploidy distribution (cellular/nuclear) in normal human liver samples (n=13) (table 1). The fractions of 2n, 4n (binuclear $2 \times 2n$, mononuclear 4n) and $\geq 8n$ (binuclear $2 \times \geq 4n$, mononuclear $\geq 8n$) hepatocytes were 73.5 (± 3.12)%, 21.7 (± 2.18)% and 5.43 (± 1.48)%, respectively (figure 1C). We next assessed whether polyploid hepatocytes are preferentially mononuclear or binuclear cells. In normal liver parenchyma, 55% of polyploid hepatocytes are binuclear indicating that cellular ploidy was predominant (figure 1D). Considering the binuclear contingent, we revealed that these hepatocytes were mainly tetraploid (figure 1E). Although the mononuclear

polyploid contingent was also essentially tetraploid, we noticed a specific enrichment of octoploid fraction compared with binuclear population (figure 1E). Finally, we observed that ageing has no effect on both cellular and nuclear ploidy spectra (table 1, online supplementary figure S1).

Studies in rodents have demonstrated that there is a dynamic change in the spatial distributions of polyploid classes across the liver lobule.^{21,22} Here, we investigated whether this was also relevant in human liver parenchyma. Notably, liver zonation is reflected by the heterogeneity of hepatocytes along the porto-central axis of the liver lobules. Importantly, periportal hepatocytes do not express the same metabolic enzymes compared with pericentral hepatocytes.^{23,24} Glutamine synthetase (GS) immunostaining was performed to visualise pericentral hepatocytes (figure 1A). Porto-venous axis was arbitrary separated: centrilobular, mid-lobular and periportal regions (figure 1A). We first observed that a similar proportion of diploid hepatocytes are present in the three regions (figure 1F). Moreover, our analysis showed that neither mononuclear (4n, $\geq 8n$) (figure 1F) nor binuclear ($2 \times 2n$, $\geq 2 \times 4n$) (figure 1G) polyploid hepatocytes have specific zonal distribution in hepatic lobules. Altogether, these findings show that human liver polyploidy is mainly cellular (binuclear fraction) with no specific parenchyma zonation.

Alteration of cellular and nuclear ploidy during liver tumorigenesis

To analyse whether polyploid profile is modified during liver tumorigenesis a cohort of patients surgically treated for HCC was selected (table 2). Out of 75 tumours analysed, 86% were male and 14% were female with the main risk factors being alcohol intake (27%), HBV infection (27%), HCV infection (27%) and metabolic syndrome (16%) (table 2). Tumours were mostly large with a mean of 71 mm and with macrovascular and/or microvascular invasion (53%) (table 2). Regarding tumour differentiation, 18% were well differentiated, 66% moderately differentiated and 16% poorly differentiated (table 2). Finally, in this series of surgically resected HCC, scores of fibrosis in non-neoplastic liver tissue were 27% F0-F1, 36% F2 and 37% F4, respectively (table 2). We first focused to define whether cellular ploidy changes during liver tumorigenesis. For this purpose, we quantified binuclear polyploid hepatocytes in resected HCC livers in both non-tumorous tissue (NTT) and tumorous tissue (TT). Our results showed that binuclear polyploid fraction is drastically reduced in both NTT and HCC TT in comparison to normal liver (figure 2A). This reduction is more pronounced in TT compared with the non-tumorous surrounding tissue (figure 2A). Notably, the ratio between binuclear fractions ($2 \times 2n / 2 \times \geq 4n$) was similar between normal liver, NTT and TT (online supplementary figure S2A). We next quantified the percentage of mononuclear fractions. The percentage of mononuclear 2n, 4n and $\geq 8n$ hepatocytes was equivalent in normal liver parenchyma and non-tumorous surrounding tissue (figure 2B). In contrast, the ploidy spectrum in HCCs was altered with more mononuclear 4n and $\geq 8n$ populations (figure 2B). To complement our results, we analysed the distribution of mononuclear 2n, 4n and $\geq 8n$ hepatocytes in both tumour and non-tumour samples. We observed a clear bimodal distribution of these populations, with TT being enriched in mononuclear 4n and $\geq 8n$ populations (online supplementary figure S2B). Finally, we confirmed as observed in normal liver that there is no modification of nuclear ploidy spectra related to ageing in NTT and TT samples (online supplementary figure S1). In summary, our data

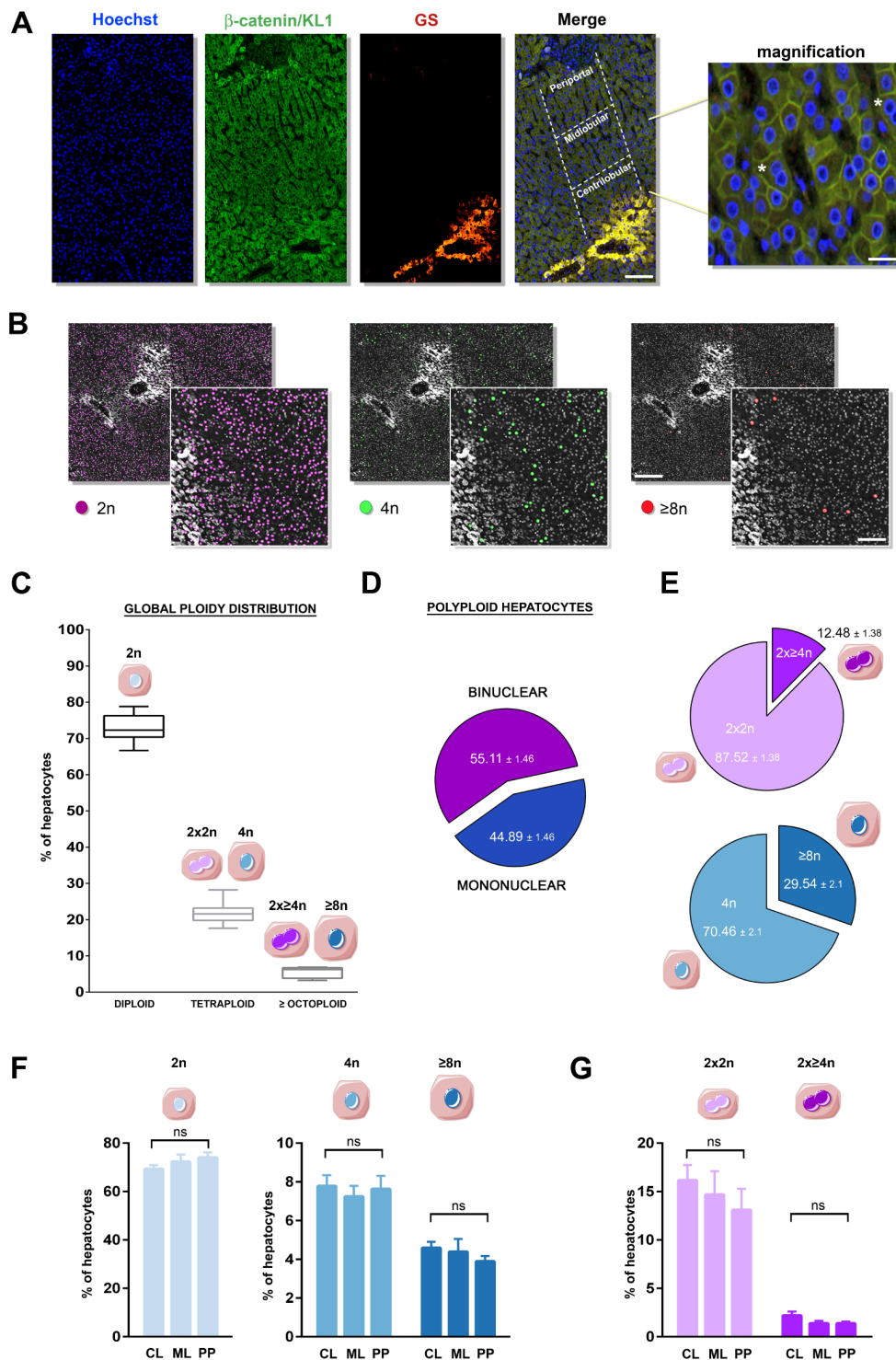


Figure 1 Cellular and nuclear ploidy: distribution and zonation in adult human liver lobule. (A) Images of human liver section immunostained with pan keratin/ β -catenin (plasma membrane labelling, green), glutamine synthetase (centrilobular zone labelling, red) and Hoechst (nucleus labelling, blue). Liver lobules were divided into three regions (periportal (PP), mid-lobular (ML), centrilobular (CL)) as indicated (merge image). Cellular and nuclear ploidy profiles were quantified in each zone (scale bar: 200 μ m). Magnification image highlights binuclear and mononuclear hepatocytes (* indicates binuclear hepatocytes) (scale bar: 40 μ m). (B) Images of a nuclear ploidy map: nuclei are artificially coloured according to their ploidy content: 2n/purple, 4n/green, $\geq 8n$ /red. Centrilobular zones appear as white staining (scale bar: 40 μ m). Higher magnification images: scale bar=150 μ m. (C) Global ploidy (cellular and nuclear) distribution in adult livers (n=13): 2n hepatocytes, 4n hepatocytes (binuclear 2x2n and mononuclear 4n), $\geq 8n$ hepatocytes (binuclear 2x $\geq 4n$ and mononuclear $\geq 8n$). (D) Distribution of binuclear (purple: binuclear 2x2n and 2x $\geq 4n$) and mononuclear (blue: mononuclear 4n and $\geq 8n$) fractions in normal human livers (n=13). (E) Binuclear polyloid fraction (light purple: 2x2n, dark blue: 2x $\geq 4n$) and nuclear ploidy content in mononuclear fraction (light blue: 4n, dark blue: $\geq 8n$) in normal human livers (n=13). (F) Quantification of diploid hepatocytes according to human liver zonation (centrilobular [CL]/mid-lobular [ML]/periportal [PP] regions). (G) Quantification of mononuclear polyloid hepatocytes (4n, $\geq 8n$) and binuclear polyloid hepatocytes (2x2n, 2x $\geq 4n$) according to human liver zonation (CL, ML, PP regions). Data were compared using Kruskal-Wallis test. GS, glutamine synthetase; ns, not significant.

Table 1 Control patients

| Variable | | Total |
|--------------------|-----------------|-----------------|
| Age (n=13) (years) | (mean, min-max) | 57 (24–86) |
| Gender | Male:female | 7 (53%):6 (46%) |

Table 2 Clinical and molecular characteristics of patients

| Variable | Total |
|---|-------------------|
| Age (n=74) (years) | |
| (mean, min-max) | 63 (27–83) |
| Gender | |
| Male:female | 64 (86%):10 (14%) |
| Aetiology (including 12 patients with ≥ 2 aetiologies) | |
| Alcohol | 20 (27%) |
| Hepatitis B | 20 (27%) |
| Hepatitis C | 20 (27%) |
| Haemochromatosis | 7 (9%) |
| Metabolic syndrome | 12 (16%) |
| Without known aetiology | 6 (8%) |
| Tumour features (n=74) | |
| Tumour size (mm) (mean, min-max) | 71 (11–190) |
| Macrovascular and/or microvascular invasion | 39 (53%) |
| Edmondson grading (n=74) | |
| Edmondson I–II | 30 (41%) |
| Edmondson III–IV | 44 (59%) |
| Differentiation WHO (n=74) | |
| Good | 13 (18%) |
| Medium | 49 (66%) |
| Weak | 12 (16%) |
| Non-tumorous liver: fibrosis according to METAVIR (n=73) | |
| F0–F1 | 20 (27%) |
| F2–F3 | 26 (36%) |
| F4 | 27 (37%) |
| G1G6 classification (n=70) | |
| G1–G3 | 28 (40%) |
| G4–G5 | 42 (60%) |
| <i>TERT</i> mutations (n=72) | |
| Mutated | 51 (71%) |
| Non-mutated | 21 (29%) |
| <i>CTNNB1</i> mutations (n=71) | |
| Mutated | 32 (45%) |
| Non-mutated | 39 (55%) |
| <i>TP53</i> mutations (n=72) | |
| Mutated | 23 (32%) |
| Non-mutated | 49 (68%) |
| <i>ALBUMIN</i> mutations (n=64) | |
| Mutated | 9 (14%) |
| Non-mutated | 55 (86%) |
| <i>AXIN1</i> mutations (n=71) | |
| Mutated | 4 (5.6%) |
| Non-mutated | 67 (94.4%) |
| <i>ARID1A</i> mutations (n=71) | |
| Mutated | 8 (11.3%) |
| Non-mutated | 63 (88.7%) |
| <i>ARID2</i> mutations (n=71) | |
| Mutated | 3 (4.2%) |
| Non-mutated | 68 (95.8%) |

support the concept that binuclear polyploid fraction is drastically reduced during human liver tumorigenesis, and, conversely, mononuclear polyploid fraction is specifically amplified in HCC tumours.

Alteration of nuclear ploidy spectrum is associated with specific histological and molecular features of HCC tumours

We looked deeper for correlations between nuclear ploidy spectrum and HCC features. First, we quantified the percentage of mononuclear polyploid hepatocytes ($4n$, $\geq 8n$) within HCC according to differentiation grade. We observed that hepatocytes were 15.2% mono $4n$ and 1.7% mono $\geq 8n$ in well-differentiated HCCs, 28.8% mono $4n$ and 3.7% mono $\geq 8n$ in moderately differentiated HCC, and 43.1% mono $4n$ and 7.8% mono $\geq 8n$ in poorly differentiated HCC (figure 3A). Thus, remarkably, amplification of nuclear ploidy is related to HCC histological grade. We performed additional analyses in order to define whether modification of nuclear ploidy spectrum could be related to aetiologies (HBV, HCV, alcohol, haemochromatosis, metabolic syndrome). We found a significant increase in mononuclear polyploid fractions ($4n$ and $\geq 8n$) in HCC related to HBV infection (online supplementary figure S3). To go further, we defined whether modification of nuclear ploidy spectrum could be related to inflammatory infiltrates. We found a trend towards reduced diploid hepatocytes fraction and an increase in mononuclear polyploid hepatocytes in HCC with immune infiltrates (figure 3B). We finally identified whether amplification of nuclear ploidy could be assigned to a specific HCC genotype. Whole-exome sequencing has been performed on each HCC.^{25 26} The major mutations in HCC are *TERT* promoter ($\approx 56\%$), *CTNNB1* ($\approx 36\%$) and *TP53* ($\approx 33\%$).^{26 27} Other mutations as *ALBUMIN*, *AXIN 1*, *ARID1A* and *ARID2*, affecting less than 15% of HCCs, contribute also to development of HCC. Table 2 recapitulates the ratio of these mutations found in our cohort (table 2). We observed that nuclear ploidy spectrum is not significantly different between HCCs mutated (M) or non-mutated (NM) for *TERT* promoter and *CTNNB1*, respectively (figure 3C) but also for *ALBUMIN*, *AXIN 1* and *ARID1A* (online supplementary figure S4). For *ARID2*, we observed a slight reduction of nuclear polyploid fraction in mutated HCC (online supplementary figure S4). Notably, HCC mutated for *TP53* had a specific ploidy spectrum with amplification of mononuclear $4n$ and $\geq 8n$ populations and in correlation a decrease in diploid fraction (figure 3C). Multivariate analysis showed that *TP53* mutation accounted for a higher percentage of mononuclear polyploid hepatocytes when compared with both *TERT* and *CTNNB1* mutated tumours (online supplementary figure S5). These results revealed a difference in the spectrum of mononuclear polyploid distribution between patients with different histopathological and molecular features, and suggest that nuclear ploidy spectrum could be a useful parameter in redefining the HCC classification.

Highly polyploid HCC tumours are associated with bad prognosis and high proliferation rate

In other tissues, it has been demonstrated that polyploid tumour cells facilitate tumour progression, with these tumours being associated with higher rate of disease recurrence.²⁸ In order to determine whether the nuclear ploidy spectrum may have a prognostic value in HCC, we used the density distribution of the proportion of mononuclear polyploid hepatocytes ($4n$, $\geq 8n$) to define two groups of tumours: poorly polyploid (% polyploid hepatocytes $< 50\%$, $n=49$) and highly polyploid (% polyploid

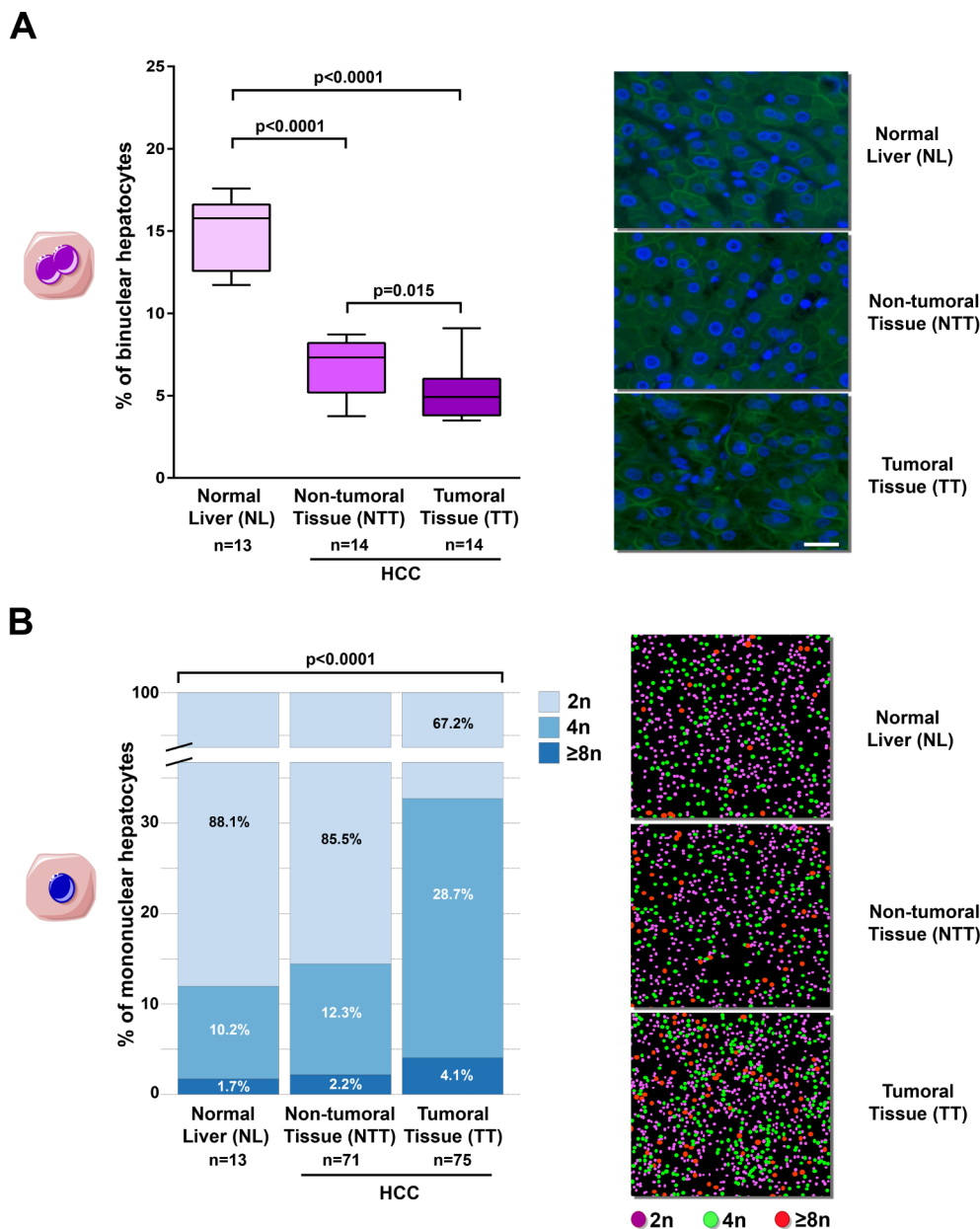


Figure 2 Cellular and nuclear ploidy spectra during human liver carcinogenesis. (A) Left panel: box plots for the percentage of binuclear hepatocytes ($2 \times 2n$ and $2 \times \geq 4n$) relative to total hepatocytes population. The bottom, central and top lines of each box represent the first quartile, median and third quartile of the distribution, respectively ($n=13$ for normal liver [NL], $n=14$ for non-tumorous tissue [NTT] and HCC tumorous tissue [TT]). Values represent the mean \pm SEM. Data were compared using Kruskal-Wallis test. Right panel: representative magnification images (scale bar: $40 \mu\text{m}$) highlight binuclear and mononuclear hepatocytes in NL, NTT and HCC TT. (B) Left panel: percentage of mononuclear $2n$, $4n$ and $\geq 8n$ hepatocytes relative to total mononuclear hepatocytes in each group (NL, NTT and TT); n corresponds to the number of patients analysed. Data were compared using multivariate analysis of variance (MANOVA). Right panel: representative higher magnification images of nuclear ploidy spectrum (NL, NTT, TT). HCC, hepatocellular carcinoma.

hepatocytes $>50\%$, $n=20$) (figure 4A,B, online supplementary figure S6A). We observed that tumours with high polyploid content were significantly associated with a reduced 2-year and 5-year disease-free survival (DFS) ($p=0.01$ and $p=0.02$, respectively) compared with poorly polyploid tumours. These findings demonstrated the closed relationship between high DNA ploidy pattern and disease relapse in human liver (figure 4C). We next analysed an association with overall specific survival (OSS). These observations revealed only a trend towards full significance, probably due to the effectiveness of our cohort (online supplementary figure S6B). Correlation between nuclear ploidy

spectrum and tumour growth rate was also determined. For this purpose, we used Spearman rank correlation to test possible relationships between the nuclear ploidy content and the expression levels of five genes related to cellular proliferation (MKI67, PCNA, CDC20, BIRC5, AURKA) which were assessed by qPCR. These genes are either global markers of proliferation (MKI67, PCNA) or identified as overexpressed in HCCs (CDC20, BIRC5, AURKA).^{27–29} Interestingly, we found a negative correlation between the diploid cell contingent and the expression of these proliferation markers (figure 5A). In contrast, the proportion of mononuclear polyploid cells ($4n$, $\geq 8n$) was positively associated

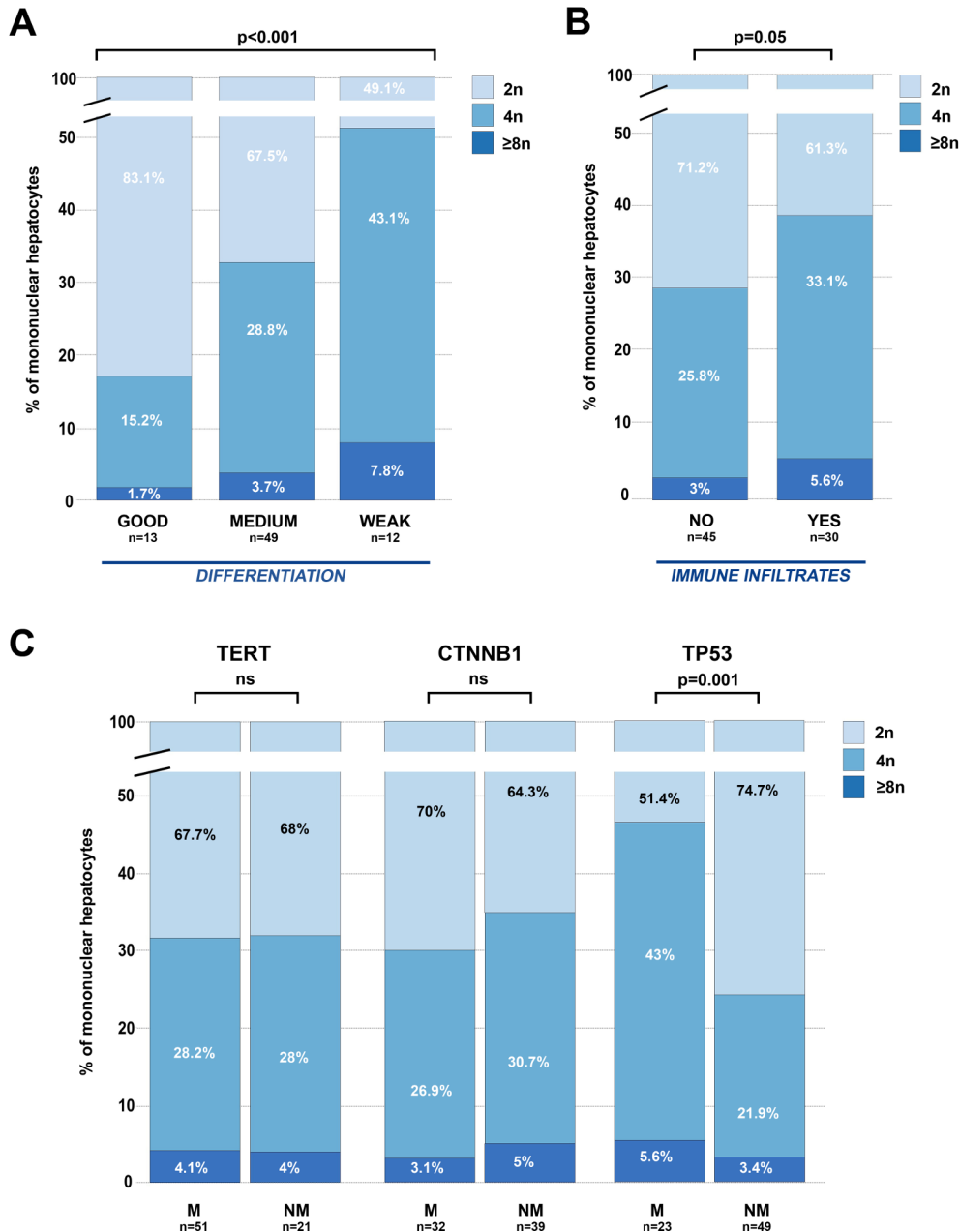


Figure 3 Alteration of nuclear ploidy spectrum related to histological and molecular features of hepatocellular carcinoma (HCC). (A, B) Comparison of the percentage of mononuclear diploid (2n), tetraploid (4n) and highly polyploid ($\geq 8n$) hepatocytes in HCC tumours according to tumour differentiation (A) (good n=13, medium n=49 and weak n=12), to the presence of inflammatory infiltrates (B) (no infiltrates n=45, infiltrates n=30). (C) Comparison of the percentage of mononuclear diploid (2n), tetraploid (4n) and highly polyploid ($\geq 8n$) hepatocytes in HCC tumours mutated (M) or non-mutated (NM) for *TERT* promoter, *CTNNB1* and *TP53*. n corresponds to the number of patients analysed. Data were compared using multivariate analysis of variance (MANOVA). ns, not significant.

with the expression of the five genes (figure 5A). Finally, in line with our previous observations demonstrating that nuclear ploidy is amplified in HCCs harbouring *TP53* mutation, we analysed whether there was a qualitative difference in the *TP53* mutations in poorly and highly polyploid tumours. Both groups showed mutations at the classical hotspot at the codon 249, characteristic of aflatoxin B1 exposure (online supplementary figure S7). Interestingly, we observed that highly polyploid tumours showed an enrichment of *TP53* mutations in the DNA-binding domain compared with poorly polyploid tumours (15/15 vs 4/7, $p=0.02$, Fisher's exact test) (online supplementary figure S7). Altogether, our results highlight a clear association between nuclear ploidy

spectrum and HCCs harbouring a low grade of differentiation, a high proliferation rate, *TP53* mutations and a poor prognosis (figure 5B). We propose that nuclear ploidy spectrum could be an additional accurate test for human HCC prognosis.

DISCUSSION

Although polyploidisation is a part of normal development in some tissues, alarmingly in others transient polyploidisation is known to occur in tumorigenesis giving rise to aneuploid cells.^{12,630} A major challenge in this field is to understand whether the genesis of polyploid cells can be beneficial or detrimental

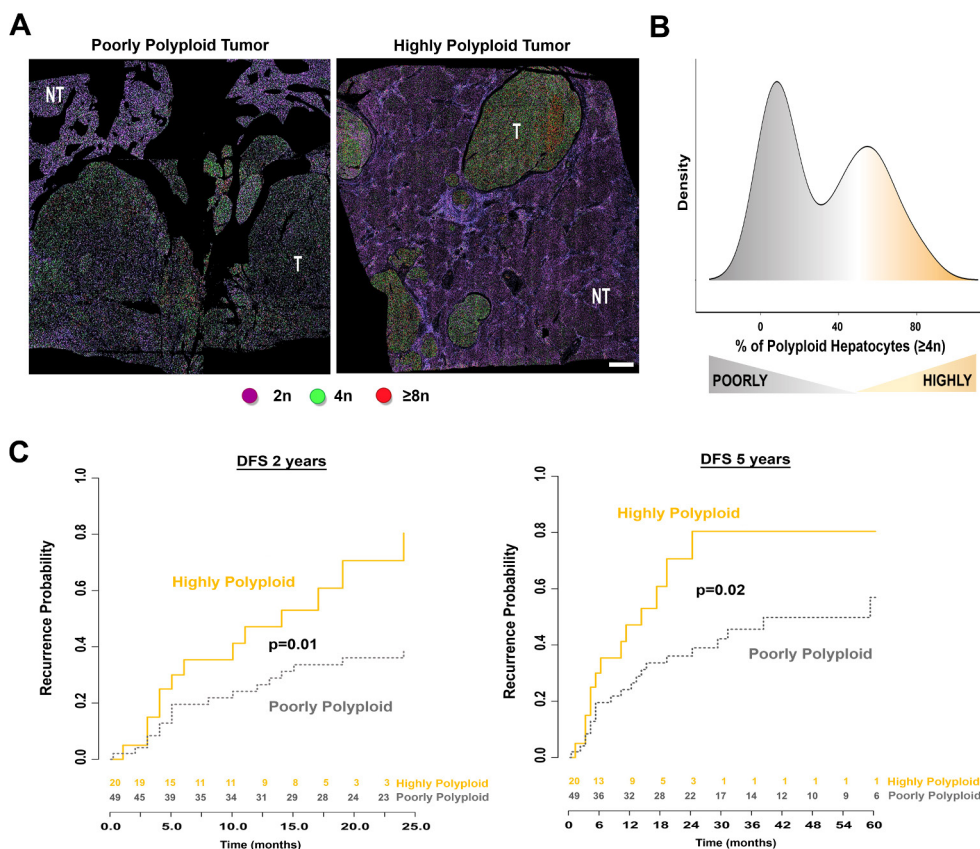


Figure 4 Patients with poorly or highly polyploid hepatocellular carcinoma (HCC) show a significant difference in disease-free survival. (A) Representative nuclear ploidy mapping of a poorly and a highly polyploid HCC (scale bar: 500 μ m). T indicates HCC tumours, NT non-tumorous surrounding tissue. Mononuclear hepatocytes are coloured according to their ploidy class: purple 2n, green 4n, red, $\geq 8n$. (B) Density plot represents the distribution of per cent of mononuclear polyploid hepatocytes ($\geq 4n$) in tumour tissue samples with the distinction of poorly polyploid HCCs (<50% of polyploid contingent) and highly polyploid HCCs (>50% of polyploid contingent). (C) Disease-free survival (DFS) probability (at 2 and 5 years) in patients with HCC tumours. Data were compared using Kaplan-Meier curves with log-rank test.

to specific tissues. Remarkably, the liver is a unique organ that modifies its ploidy content during normal homeostasis, regeneration and damage repair.^{2 5 15} We know that hepatocyte ploidy depends on the DNA content of each nucleus (nuclear ploidy) plus the number of nuclei per cell (cellular ploidy). Whether or not polyploidy is a risk factor or is protective in liver cancer is still under debate. Here, we developed an in situ imaging approach to determine whether cellular and nuclear ploidy content is altered during human liver tumorigenesis.

In agreement with previous studies,^{31–33} we first found that polyploid hepatocytes are the major components of human liver parenchyma although this population is presented in a reduced proportion compared with murine hepatic parenchyma (around 30% and 90%, respectively). In mice, it is well known that physiological hepatic polyploidisation takes place during postnatal growth when proliferating diploid hepatocytes fail to complete cytokinesis and produce binuclear tetraploid hepatocytes ($2 \times 2n$).^{10–12 34} If these hepatocytes proliferate again, they can undergo cytokinesis, leading to the genesis of mononuclear tetraploid hepatocytes (4n). This process can continue to generate octoploid and even higher polyploid hepatocytes. We observed that human polyploid hepatocytes are mainly binuclear and tetraploid ($2 \times 2n$). These data suggest that human liver parenchyma has a lower proliferation rate during postnatal growth compared with rodent liver parenchyma. Surprisingly, our results also showed that human polyploid hepatocytes have no specific parenchyma zonation. Recently, it was reported that,

in rodents, the spatial distribution of polyploid hepatocytes in the central vein (CV)-periportal vein (PV) axe correlates with metabolic zonation.^{21 22} This suggests that this specific zonation is not conserved in different mammalian species. However, further experiments are necessary to determine whether human hepatic polyploidy functions as a growth suppressor to restrict proliferation or metabolic adaptation, as it has only been demonstrated in rodent models.^{13 35}

It is important to note that, during postnatal development, hepatocytes undergo only cytokinesis failure to generate polyploid hepatocytes.^{10 12 34} Different studies have now clearly demonstrated that this specific cell cycle programme is physiologically induced to generate differentiated polyploid hepatocytes. We demonstrated that binuclear polyploid hepatocytes are barely present in human HCC strongly suggesting that cytokinesis defects are not present when malignant hepatocytes divide. The re-establishment of the cytokinesis programme is also observed in mice models, during liver regeneration after two-thirds partial hepatectomy.³⁶ Thus, at least in mice, loss of binuclearity is not necessarily associated with pathogenesis. Interestingly, recent studies reveal molecular links between cytokinesis machinery and proliferation of cancer cells.^{37 38} Thus, cytokinesis regulatory proteins such as Anillin (ANLN) and Rac GTPase activating protein 1 are commonly overexpressed in HCC.^{37 38} In this condition, malignant hepatocytes are less prone to generate binuclear polyploid hepatocytes. Interestingly and from a translational point of view, knockdown of at least

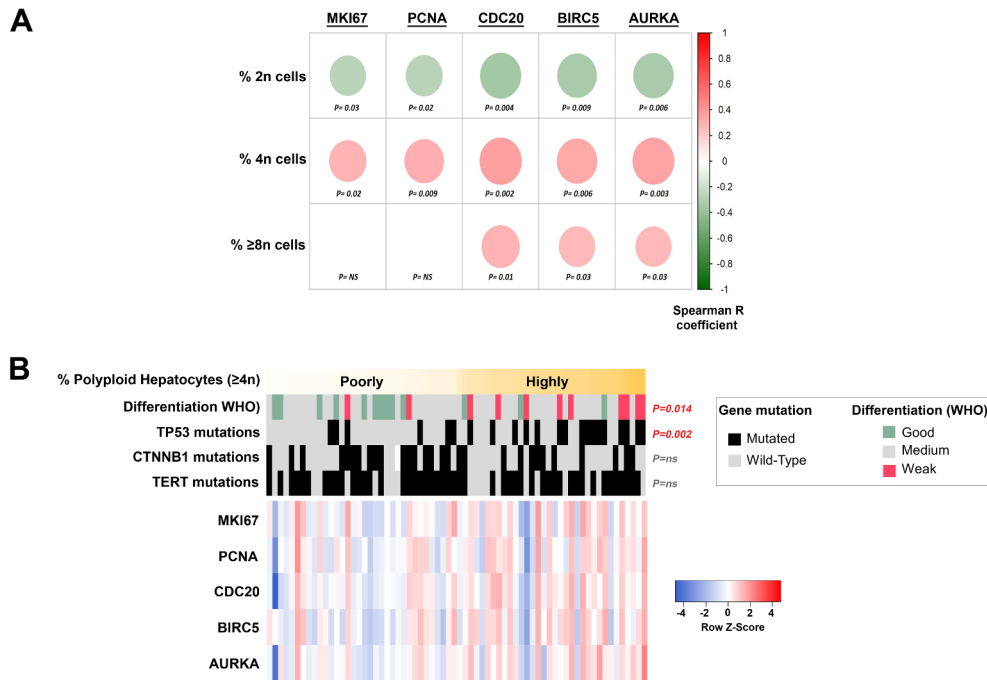


Figure 5 Highly polyploid hepatocellular carcinomas (HCC) are more proliferative than poorly polyploid HCCs. (A) Corplot showing Spearman's rank correlations between the proportion of mononuclear diploid (2n) or polyploid (4n, ≥8n) hepatocytes and the expression of five proliferation markers in 68 HCC samples. Red circles indicate significant positive correlations. Green circles indicate negative correlations. Colour intensities reflect the rho correlation coefficient. (B) Poorly and highly polyploid tumours have different histological and molecular characteristics. Figure summarising associations between the polyploid contingent of the tumour and the histological and molecular characteristics of 68 HCC samples analysed by qPCR. Samples are sorted into columns according to their proportion of polyploid cells (≥4n). Upper panel shows the associations with gene mutations and tumour differentiation grade. Statistical analysis was performed using Fisher's exact tests and χ^2 test for gene mutations and differentiation, respectively. Bottom panel represents the heat map showing colour-coded gene expression levels of five proliferation markers. Upregulated and downregulated genes are represented in shades of red and blue, respectively.

ANLN in multiple HCC murine models was shown to reduce liver tumour development.^{37,38} Thus, we suggest that reduction of cellular ploidy could be a good marker of human premalignant liver parenchyma. Future work will unravel whether cytokinesis inhibition and re-establishment of cellular ploidy could be used as a preventive therapy for patients.³⁹

Finally, one of the major findings of our study is that nuclear ploidy spectrum is a marker of HCC aggressiveness. Interestingly, previous studies have described that HCCs were predominantly diploid.⁴⁰⁻⁴² Here, for the first time to our knowledge, we compared polyploid spectrum according to histological and molecular features of HCC tumours. We first uncovered that nuclear ploidy is sufficient to distinguish between premalignant and malignant liver parenchyma. Furthermore, we demonstrated that mononuclear polyploid hepatocytes are enriched in HCCs harbouring low grade of differentiation, higher proliferation rate and poor prognosis. Interestingly, in multiple cancer models, the polyploid state presented tumour-suppressive functions; acquiring multiple sets of chromosomes functioning to buffer against gene inactivating mutations.^{30,43,44} In this line, an elegant study by Zhu and collaborators demonstrated in HCC murine models that polyploid state may be a gatekeeper of liver tumorigenesis.⁴⁵ It is important to note that polyploidy protection was studied in a *TP53* wild-type background.⁴⁵ Of note, in different cancers, direct evidence of the oncogenic nature of polyploidy was demonstrated in a background of non-functional *TP53* tumour suppressor protein.^{1,4,46} We suggested that in human liver parenchyma, polyploidisation could be a driver of HCC development at least in a *TP53* mutated context.

In summary, in this study we underline the importance of quantification of cellular and nuclear ploidy spectra during human liver tumorigenesis. We propose that the amplification of mononuclear polyploid hepatocytes might be a marker of HCC with poor prognosis. Future studies will discover whether these new insights could provide more clues for therapeutic strategies.

EXPERIMENTAL PROCEDURES

Clinical data, biological and histological parameters

We retrospectively included 75 patients who underwent surgical resection for HCC at Henri Mondor University hospitals. Exclusion criteria were R1 or R2 resection, extrahepatic metastasis at the time of surgery, preoperative antitumorous treatment, unavailable histological slides or follow-up data, equivocal histological features suggestive of combined hepatocellular-cholangiocellular carcinoma and inadequate material for histological analysis (necrosis >90%). The following clinical and biological features were systematically recorded: age, gender, liver disease aetiology (infection by HBV or HCV, alcohol intake, metabolic syndrome, hereditary haemochromatosis or undetermined), Barcelona Clinic of Liver Cancer stage, preoperative alpha-fetoprotein serum levels and follow-up (early relapse and disease-specific survival). Two pathologists specialised in liver diseases and blinded to the clinical and molecular characteristics independently reviewed all samples. Cases with disagreement were analysed using a multipipe microscope, and a consensus was reached. The following histological features were systematically assessed: tumour differentiation (according

to Edmondson-Steiner grade), fibrosis stage (assessed with the METAVIR scoring system⁴⁷), macrovascular or microvascular invasion, tumour capsule and inflammatory infiltrates. The definitions of early, small and progressed, classic and poor prognosis HCC were based on the histological criteria for HCC proposed by the International Consensus Group for Hepatocellular Neoplasia. Small and progressed HCC was defined by a distinctly nodular lesion with a diameter ≤ 2 cm and well-differentiated (G1) to moderately differentiated (G2) histological features, with malignancy recognised at first glance; no portal tracts were detectable. Poor prognosis HCC was defined as HCC case displaying recurrence within 2 years. Classic HCC was defined as non-early, non-small, non-poor prognosis HCC. For genetic features, we extracted data from our former whole-exome sequencing study and selected genes mutated (*TERT* promoter, *TP53*, *CTNNB1*, *ALBUMIN*, *AXIN1*, *ARID1A*, *ARID2*).²⁶ Control patients (n=13) underwent liver resection for benign tumours. All patients gave their written informed consent in accordance with French legislation.

Immunofluorescence

Liver sections (5 μ m) were deparaffinised and incubated in citrate buffer at 95°C for 20 min for antigen retrieval. Sections were incubated overnight at 4°C with the primary antibodies including anti- β -catenin (1:200 dilution, BD Biosciences, 610154), anti-pan keratin C11 antibody (1:200 dilution, Cell Signaling, 4545) and GS antibody (1:200 dilution, BD Biosciences, 610518). Anti-mouse or anti-rabbit IgG antibodies (1:500) conjugated with Alexa Fluor 488 or Alexa Fluor 594 (Thermo Fisher) were used as secondary antibodies. Hoechst 33342 (0.2 μ g/mL) purchased from Sigma-Aldrich was included in the final wash to counterstain nuclei. All images were collected with the slide imager NanoZoomer 2.0-HT (Hamamatsu).

Quantification of cellular and nuclear ploidy profiles in human liver sections

For nuclear ploidy, we developed a method implemented from ImageJ (Rasband, WS, ImageJ, US National Institutes of Health, Bethesda, Maryland, USA, <https://imagej.nih.gov/ij/>, 1997–2016) to infer ploidy from Hoechst staining.

Ploidy classification was based on the diameter of the hepatocyte nuclei. Nuclei were stained by Hoechst and automatically detected and their area (pixel²) was assessed as previously described.^{18 20 21} First, we extracted the area of each nucleus and fit a Gaussian mixture model to the distribution of nuclear diameters. We selected nuclei according to their nuclear circularity (≥ 0.7). Nuclei of non-epithelial cells present a lower circularity. Second, we designed thresholds to separate the different populations, located between areas of 30–60 pixel², 65–90 pixel² and 95–500 pixel² to separate the 2n, 4n and $\geq 8n$ nuclei, respectively. Nuclei with an estimated area < 30 pixel² or > 500 pixel² were excluded (neither non-hepatocytes population nor incorrect Hoechst segmentation). Each region of interest is assigned to a specific colour: 2n nuclei/purple, 4n/green and $\geq 8n$ /red. For each patient, around 500 000 nuclei were analysed.

For cellular ploidy, mononuclear and binuclear fractions were quantified on 10 random high-power fields (about 5000 cells) on scans of stained liver sections.

Quantitative RT-PCR

We assessed mRNA expression levels in 68 HCCs and five normal liver tissue samples. Total RNA from frozen surgical samples was extracted using Maxwell 16 LEV simplyRNA Tissue

Kit (Promega). Reverse transcription of 500 ng of total RNA was performed using the High-Capacity Transcription Kit (Thermo Fisher Scientific). Then, expression levels of five proliferation markers were assessed using specific TaqMan predesigned assays (Hs01032443_m1, Hs00696863_g1, Hs00415851_g1, Hs00153353_m1, Hs01582073_m1; Thermo Fisher Scientific) on Fluidigm 96 Dynamic Arrays with the BioMark Real-Time PCR System. The relative amount of RNA was calculated with the $\Delta\Delta$ CT method using 18S ribosomal RNA and the expression level of the corresponding gene in five normal liver samples.

Statistics

Statistical analysis and data visualisation were performed using R software V.3.3.2 (R Foundation for Statistical Computing, Vienna, Austria, <https://www.R-project.org>) and Bioconductor packages. Continuous variables were compared using non-parametric Mann-Whitney U test or Kruskal-Wallis test to compare two groups and more than two groups, respectively. Analysis of multivariate data was performed using a multivariate analysis of variance with semiparametric designs in order to avoid the assumptions of multivariate normality and covariance homogeneity. Correlation analysis between continuous data was performed using Spearman's rank-order correlation. Qualitative data were compared using the Fisher's exact test to compare two groups and χ^2 test to compare more than two groups. Univariate survival analysis was performed using Kaplan-Meier curves with log-rank statistics to assess the difference in 2-year and 5-year DFS and overall survival (OSS) in two groups. A p value < 0.05 was considered statistically significant.

Author affiliations

¹Team Proliferation Stress and Liver Physiopathology, Genome and Cancer, Centre de Recherche des Cordeliers, INSERM, Sorbonne Université, USPC, Université Paris Descartes, Université Paris Diderot, Paris, France

²Team Functional Genomics of Solid Tumors, Centre de Recherche des Cordeliers, INSERM, Sorbonne Université, USPC, Université Paris Descartes, Université Paris Diderot, Université Paris 13, Labex Immuno-Oncology, Équipe Labellisée Ligue Contre le Cancer, Paris, France

³INSERM U1162, Paris, France

⁴Department of Pathology, Hôpital Henri Mondor, Creteil, France

⁵Stress and Cancer Laboratory, Équipe Labelisée LNCC, Institut Curie, Paris, France

⁶INSERM U830, Paris, France

⁷Cancer Metabolism and Signaling Networks Program, Sanford Burnham Prebys Medical Discovery Institute, La Jolla, California, USA

⁸INSERM, UMRS 1138, Centre de Recherche des Cordeliers, Sorbonne Universités, Université Pierre et Marie Curie, Paris 06, Paris, France

⁹Institut Cochin, Paris, France

¹⁰Department of Pathology, Beaujon Hospital, Clichy, France

¹¹Hôpital Beaujon, Clichy, France

Acknowledgements We thank the Tumor Biobank of Henri Mondor University Hospital and the Réseau National Centre de Ressources Biologiques (CRB) Foie for contributing to the tissue collection. We also thank the facilities of Cochin Institute (Histology, Immunostaining, Laser Microdissection [HistLM], Imaging Facility of Necker Institute and Imaging Photonic [IMAG'IC]) and CHIC (Center of Histology Imaging and Cytometry) facility of the Centre de Recherche des Cordeliers. Finally, we thank Benedict E Monteiro for the English language editing of this manuscript.

Contributors MBN designed, performed and analysed the experiments, compiled the figures and wrote the manuscript. SC analysed the experiments, compiled the data with statistical analysis /designed the figures and wrote the manuscript. JC designed and analysed the experiments, and compiled the data. RD, GG, CM, LA, TG, CK, MA and GC performed experimental research. VP and JPC analysed the data and provided critical help on the manuscript. SCM analysed the data, designed the figures and provided critical help on the manuscript. JZR analysed the experiments, funded the project and provided critical help on the manuscript. CD designed and performed the experiments, analysed the data, funded the project and wrote the manuscript.

Funding This study was supported by grants from the Institut National de la Santé et de la Recherche Médicale (INSERM), the Institut National du Cancer (PRTC-2017, PLBIO 2018-140), Fondation ARC (Association de Recherche sur le Cancer), Ligue

Contre le Cancer (Comité de Paris), the Cancéropôle Ile-de-France (Emergence 2015), The Association Française pour l'Etude du Foie (AFEF-SUBV 2017), EVA-Plan Cancer INSERM HTE and the Agence Nationale de Recherche ANR (ANR-16-CE14).

Competing interests None declared.

Patient consent for publication Obtained.

Ethics approval The study was approved by the Institutional Review Board committees (CCPRB Paris Saint Louis, 1997, 2004 and 2010)

Provenance and peer review Not commissioned; externally peer reviewed.

Open access This is an open access article distributed in accordance with the Creative Commons Attribution Non Commercial (CC BY-NC 4.0) license, which permits others to distribute, remix, adapt, build upon this work non-commercially, and license their derivative works on different terms, provided the original work is properly cited, appropriate credit is given, any changes made indicated, and the use is non-commercial. See: <http://creativecommons.org/licenses/by-nc/4.0/>.

REFERENCES

- Davoli T, de Lange T. The causes and consequences of polyploidy in normal development and cancer. *Annu Rev Cell Dev Biol* 2011;27:585–610.
- Gentric G, Desdouets C. Polyploidization in liver tissue. *Am J Pathol* 2014;184:322–31.
- Fox DT, Duronio RJ. Endoreplication and polyploidy: insights into development and disease. *Development* 2013;140:3–12.
- Ganem NJ, Storchova Z, Tetraploidy PD. aneuploidy and cancer. *Curr Opin Genet Dev* 2007;17:157–62.
- Gentric G, Celton-Morizur S, Desdouets C. Polyploidy and liver proliferation. *Clin Res Hepatol Gastroenterol* 2012;36:29–34.
- Pandit SK, Westendorp B, de Bruin A. Physiological significance of polyploidization in mammalian cells. *Trends Cell Biol* 2013;23:556–66.
- Fujiwara T, Bandi M, Nitta M, et al. Cytokinesis failure generating tetraploids promotes tumorigenesis in p53-null cells. *Nature* 2005;437:1043–7.
- Jamal-Hanjani M, Wilson GA, McGranahan N, et al. Tracking the Evolution of Non-Small-Cell Lung Cancer. *N Engl J Med* 2017;376:2109–21.
- Zack TI, Schumacher SE, Carter SL, et al. Pan-cancer patterns of somatic copy number alteration. *Nat Genet* 2013;45:1134–40.
- Guidotti JE, Brégerie O, Robert A, et al. Liver cell polyploidization: a pivotal role for binuclear hepatocytes. *J Biol Chem* 2003;278:19095–101.
- Celton-Morizur S, Merlen G, Couton D, et al. The insulin/Akt pathway controls a specific cell division program that leads to generation of binucleated tetraploid liver cells in rodents. *J Clin Invest* 2009;119:1880–7.
- Margall-Ducos G, Celton-Morizur S, Couton D, et al. Liver tetraploidization is controlled by a new process of incomplete cytokinesis. *J Cell Sci* 2007;120:3633–9.
- Wilkinson PD, Delgado ER, Alencastro F, et al. The Polyploid State Restricts Hepatocyte Proliferation and Liver Regeneration in Mice. *Hepatology* 2019;69.
- Celton-Morizur S, Desdouets C. Polyploidization of liver cells. *Adv Exp Med Biol* 2010;676:123–35.
- Duncan AW. Aneuploidy, polyploidy and ploidy reversal in the liver. *Semin Cell Dev Biol* 2013;24:347–56.
- Gupta S. Hepatic polyploidy and liver growth control. *Semin Cancer Biol* 2000;10:161–71.
- Gentric G, Desdouets C. Liver polyploidy: Dr Jekyll or Mr Hide? *Oncotarget* 2015;6:8430–1.
- Gentric G, Mailliet V, Paradis V, et al. Oxidative stress promotes pathologic polyploidization in nonalcoholic fatty liver disease. *J Clin Invest* 2015;125:981–92.
- Fornier A, Llovet JM, Bruix J. Chemoembolization for intermediate HCC: is there proof of survival benefit? *J Hepatol* 2012;56:984–6.
- Miyaoka Y, Ebato K, Kato H, et al. Hypertrophy and unconventional cell division of hepatocytes underlie liver regeneration. *Current Biology* 2012;22:1166–75.
- Tanami S, Ben-Moshe S, Elkayam A, et al. Dynamic zonation of liver polyploidy. *Cell Tissue Res* 2017;368:405–10.
- Morales-Navarrete H, Segovia-Miranda F, Klukowski P, et al. A versatile pipeline for the multi-scale digital reconstruction and quantitative analysis of 3D tissue architecture. *Elife* 2015;4.
- Benhamouche S, Decaens T, Godard C, et al. Apc tumor suppressor gene is the "zonation-keeper" of mouse liver. *Dev Cell* 2006;10:759–70.
- Gebhardt R. Metabolic zonation of the liver: regulation and implications for liver function. *Pharmacol Ther* 1992;53:275–354.
- Calderaro J, Couchy G, Imbeaud S, et al. Histological subtypes of hepatocellular carcinoma are related to gene mutations and molecular tumour classification. *J Hepatol* 2017;67:727–38.
- Schulze K, Imbeaud S, Letouzé E, et al. Exome sequencing of hepatocellular carcinomas identifies new mutational signatures and potential therapeutic targets. *Nat Genet* 2015;47:505–11.
- Zucman-Rossi J, Villanueva A, Nault JC, et al. Genetic landscape and biomarkers of hepatocellular carcinoma. *Gastroenterology* 2015;149:1226–39.
- Coward J, Harding A. Size does matter: why polyploid tumor cells are critical drug targets in the war on cancer. *Front Oncol* 2014;4:123.
- Rebouissou S, La Bella T, Reikik S, et al. Proliferation markers are associated with met expression in hepatocellular carcinoma and predict tivantinib sensitivity *In Vitro*. *Clin Cancer Res* 2017;23:4364–75.
- Storchova Z, Pellman D. From polyploidy to aneuploidy, genome instability and cancer. *Nat Rev Mol Cell Biol* 2004;5:45–54.
- Kudryavtsev BN, Kudryavtseva MV, Sakuta GA, et al. Human hepatocyte polyploidization kinetics in the course of life cycle. *Virchows Arch B Cell Pathol Incl Mol Pathol* 1993;64:387–93.
- Saeter G, Lee CZ, Schwarze PE, et al. Changes in ploidy distributions in human liver carcinogenesis. *J Natl Cancer Inst* 1988;80:1480–4.
- Toyoda H, Bregerie O, Vallet A, et al. Changes to hepatocyte ploidy and binuclearity profiles during human chronic viral hepatitis. *Gut* 2005;54:297–302.
- Hsu SH, Delgado ER, Otero PA, et al. MicroRNA-122 regulates polyploidization in the murine liver. *Hepatology* 2016;64:599–615.
- Miettinen TP, Pessa HK, Caldez MJ, et al. Identification of transcriptional and metabolic programs related to mammalian cell size. *Curr Biol* 2014;24:598–608.
- Miyaoka Y, Ebato K, Kato H, et al. Hypertrophy and unconventional cell division of hepatocytes underlie liver regeneration. *Curr Biol* 2012;22:1166–75.
- Yang XM, Cao XY, He P, et al. Overexpression of Rac GTPase Activating Protein 1 contributes to proliferation of cancer cells by reducing hippo signaling to promote cytokinesis. *Gastroenterology* 2018;155:1233–1249.
- Zhang S, Nguyen LH, Zhou K, et al. Knockdown of anillin actin binding protein blocks cytokinesis in hepatocytes and reduces liver tumor development in mice without affecting regeneration. *Gastroenterology* 2018;154:1421–34.
- Desdouets C, Avila MA. Inhibiting cytokinesis in the liver: a new way to reduce tumor development. *Gastroenterology* 2018;154:1229–31.
- Anti M, Marra G, Rapaccini GL, et al. DNA ploidy pattern in human chronic liver diseases and hepatic nodular lesions. Flow cytometric analysis on echo-guided needle liver biopsy. *Cancer* 1994;73:281–8.
- Nagasue N, Kohno H, Hayashi T, et al. Lack of intratumoral heterogeneity in DNA ploidy pattern of hepatocellular carcinoma. *Gastroenterology* 1993;105:1449–54.
- Saeter G, Schwarze PE, Nesland JM, et al. Diploid nature of hepatocellular tumours developing from transplanted preneoplastic liver cells. *Br J Cancer* 1989;59:198–205.
- Davoli T, de Lange T. Telomere-driven tetraploidization occurs in human cells undergoing crisis and promotes transformation of mouse cells. *Cancer Cell* 2012;21:765–76.
- Otto SP. The evolutionary consequences of polyploidy. *Cell* 2007;131:452–62.
- Zhang S, Zhou K, Luo X, et al. The polyploid state plays a tumor-suppressive role in the liver. *Dev Cell* 2018;47:390.
- Aylon Y. p53: guardian of ploidy. *Mol Oncol* 2011;5:315–23.
- Bedossa P, Poynard T. An algorithm for the grading of activity in chronic hepatitis C. The METAVIR Cooperative Study Group. *Hepatology* 1996;24:289–93.