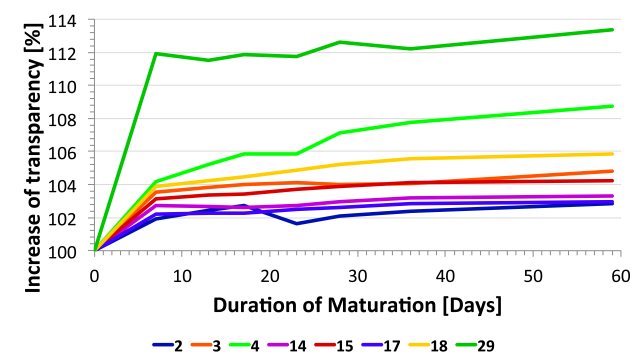
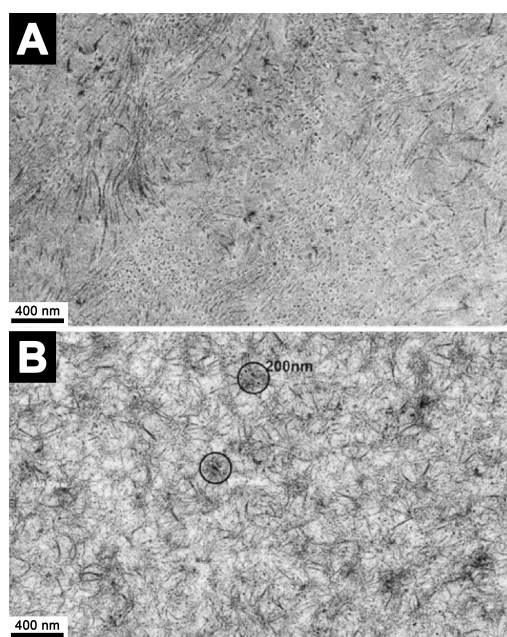


## Supplementary Information



**Figure SI-1** Changes in transmittance with time of 90 mg/mL pure collagen scaffolds made in different conditions. 100% is the transmittance of each scaffold at day 0. The specific gain in transmittance varies between 1 and 14% depending on the physicochemical condition.



**Figure SI-2.** Ultra-structural characterization by transmission electron microscopy of 90 mg/mL pure collagen scaffolds made in two different conditions: (A) Transparent matrix synthesized under condition 19. (B): opaque matrix (condition 11) with fibrils aggregated into star-like nodes of approximately 200 nm diameters.