



HAL
open science

Global invasion genetics of two parasitic copepods infecting marine bivalves

Marieke E Feis, M. Anouk Goedknecht, Isabelle Arzul, Anne Chenuil, Onno Den Boon, Leo Gottschalck, Yusuke Kondo, Susumu Ohtsuka, Lisa N S Shama, David W Thieltges, et al.

► **To cite this version:**

Marieke E Feis, M. Anouk Goedknecht, Isabelle Arzul, Anne Chenuil, Onno Den Boon, et al.. Global invasion genetics of two parasitic copepods infecting marine bivalves. *Scientific Reports*, 2019, 9, pp.12730. 10.1038/s41598-019-48928-1 . hal-02290155

HAL Id: hal-02290155

<https://hal.sorbonne-universite.fr/hal-02290155>

Submitted on 17 Sep 2019

HAL is a multi-disciplinary open access archive for the deposit and dissemination of scientific research documents, whether they are published or not. The documents may come from teaching and research institutions in France or abroad, or from public or private research centers.

L'archive ouverte pluridisciplinaire **HAL**, est destinée au dépôt et à la diffusion de documents scientifiques de niveau recherche, publiés ou non, émanant des établissements d'enseignement et de recherche français ou étrangers, des laboratoires publics ou privés.

OPEN

Global invasion genetics of two parasitic copepods infecting marine bivalves

Marieke E. Feis^{1,2,6}, M. Anouk Goedknegt^{3,7}, Isabelle Arzul⁴, Anne Chenuil⁵, Onno den Boon³, Leo Gottschalck¹, Yusuke Kondo², Susumu Ohtsuka², Lisa N. S. Shama¹, David W. Thieltsge³, K. Mathias Wegner¹ & Pieterella C. Luttikhuisen³

Invasive species, and especially invasive parasites, represent excellent models to study ecological and evolutionary mechanisms in the wild. To understand these processes, it is crucial to obtain more knowledge on the native range, invasion routes and invasion history of invasive parasites. We investigated the consecutive invasions of two parasitic copepods (*Mytilicola intestinalis* and *Mytilicola orientalis*) by combining an extensive literature survey covering the reported putative native regions and the present-day invaded regions with a global phylogeography of both species. The population genetic analyses based on partial COI sequences revealed significant population differentiation for *M. orientalis* within the native region in Japan, while introduced populations in North America and Europe could not be distinguished from the native ones. Thus, *M. orientalis*' invasion history resembles the genetic structure and recent spread of its principal host, the Pacific oyster, *Crassostrea gigas*, while *M. intestinalis* lacks population genetic structure and has an overall low genetic diversity. Therefore, the native origin of *M. intestinalis* remains unclear. With this study, we demonstrate that even highly related and biologically similar invasive species can differ in their invasion genetics. From this, we conclude that extrapolating invasion genetics dynamics from related invasive taxa may not always be possible.

Biological invasions (whether recognized or cryptic) can alter ecosystem functioning and services¹, and can have ecological and evolutionary impacts on native communities and ecosystems (e.g.^{2–5}). Invasive species can also be parasites, which may be introduced with or without their hosts. Parasite invasions can have wide-ranging effects on host-parasite interactions with strong ecological and evolutionary implications⁶. To examine the effects of invasive parasites, a detailed understanding of their origins and invasion pathways is important. To this extent, the traditional approach of using literature records can be fruitfully complemented by population genetic analyses. Phylogeographic studies of species in their putative native and invaded regions (“invasion genetics studies”)⁷ can provide more detail to clarify the origin, invasion routes, population genetic structure and genetic diversity of invasive parasites⁸. However, invasive parasites are greatly understudied in this respect, as well as with regard to their ecological and evolutionary impacts⁹.

Two exceptions are the consecutive invasions of the parasitic copepods *Mytilicola intestinalis* Steuer 1902 and *Mytilicola orientalis* Mori 1935 along the European Atlantic shores. Both of these natural experiments have been proven to be particularly useful to study their ecological consequences and coevolution with the blue mussel, *Mytilus edulis*, one of their host species. *Mytilicola intestinalis* invaded European waters first in the 1930s presumably through ship hull fouling and relaying of infected mussels (e.g.^{10–12}). Its invasion into the western European Wadden Sea was recently used as a model system to study host-parasite coevolution in the wild^{13,14}.

¹Coastal Ecology Section, Alfred Wegener Institute, Helmholtz Centre for Polar and Marine Research, Wadden Sea Station Sylt, Hafenstraße 43, 25992, List/Sylt, Germany. ²Graduate School of Integrated Science for Life, Hiroshima University, Takehara, Hiroshima, 725-0024, Japan. ³NIOZ Royal Netherlands Institute for Sea Research, Department of Coastal Systems, and Utrecht University, P.O. Box 59, 1790 AB Den Burg, Texel, the Netherlands. ⁴Ifremer, Laboratoire de Genetique et Pathologie des Mollusques Marins, Avenue Mus Loup, F-17390, La Tremblade, France. ⁵Aix Marseille Univ, Univ Avignon, CNRS, IRD, IMBE, Marseille, France. ⁶Present address: Sorbonne Université, CNRS, Station Biologique de Roscoff, Laboratoire Adaptation et Diversité en Milieu Marin, DyDIV, UMR 7144, 29688, Roscoff, France. ⁷Present address: Université de Bordeaux, UMR 5805 EPOC, Station Marine d'Arcachon, 2 Rue du Professeur Jolyet, 33120, Arcachon, France. Correspondence and requests for materials should be addressed to M.E.F. (email: marieke.feis@sb-roscoff.fr)

Cross-infections of hosts and parasites from separate invasion fronts where the parasite had invaded both locations at a similar time (i.e., similar lengths of coevolutionary time) showed that parasite invasion led to different evolutionary trajectories, with differences in the parasite's infectivity and the host's resistance and tolerance¹³. These trajectories were characterized by specific molecular interactions between host and parasite¹⁴. *Mytilicola orientalis* was co-introduced with the invasive Pacific oyster, *Crassostrea gigas*, through aquaculture transports^{15,16}, and now also infects a suite of native hosts, including blue mussels, *M. edulis*^{16–18}. Thus, the native host, *M. edulis*, is now shared between *M. intestinalis* and *M. orientalis*.

The reported invasion histories already suggest substantial differences in the mode of invasion between these two *Mytilicola* species that could, in turn, lead to dissimilarities in ecological effects and evolutionary responses in *M. edulis*. However, while the major invasion route of the principal host of *M. orientalis*, the Pacific oyster, is known^{19,20}, the invasion route of its hitchhiking parasite has yet to be validated. Similarly, the dispersal routes of *Mytilus galloprovincialis* are better known than those of its parasitic copepod *M. intestinalis*^{21,22}. To fully understand the parasites' invasion histories and their consequences for ecological and evolutionary processes, the genetic structure in the native ranges and along invasion routes of both parasite species needs to be investigated.

Mytilicola is a genus of cyclopoid copepods that have a direct life cycle involving one pelecypod host. Their free-living larval stages are short and have mainly been studied in *M. intestinalis* (e.g.^{10,23,24}). The duration of the free-living and parasitic larval stages of the other *Mytilicola* species are thought to be similar²⁵. The two free-living larval stages, nauplius and metanauplius, last 36 to 48 hours at a laboratory temperature of 18 °C²³. The next larval stage, the first copepodite, is infective and will search for a suitable host to infect. It may live for 11 to 15 days under laboratory conditions, but it is doubtful whether it lives that long in the field²³. Once *Mytilicola* has infected a host, its dispersive capacity depends on its bivalve host, which is sessile and does not move across long distances unaided. Therefore, the dispersal capacity of *Mytilicola* was considered to be limited^{12,26}.

In this study, we aimed to (1) use the available literature to reconstruct the invasion history of both parasites, and (2) test whether the reported invasion routes could be confirmed by a global phylogeography based on partial cytochrome-*c*-oxidase I (COI) sequences. We specifically wanted to verify their putative areas of origin (i.e. Mediterranean Sea Basins for *M. intestinalis* and Japanese seas for *M. orientalis*), and determine the genetic diversity and population differentiation between putative native and invaded regions for both invasive *Mytilicola* species.

Results

Literature-based invasion history. A search for “*Mytilicola intestinalis*” resulted in 72 hits on the Web of Science/Web of Knowledge (all databases) and 934 hits on Google Scholar (on 15 December 2017). A search for “*Mytilicola orientalis*” resulted in 15 hits on the Web of Science/Web of Knowledge (all databases), and 373 hits on Google Scholar (on 15 December 2017). More literature was found by snowballing (see Methods). Our literature survey led to the inclusion of 173 publications on occurrences of *M. intestinalis* (2187 data points including those of this study; reference list in Supplementary Information) and of 47 publications on occurrences of *M. orientalis* (416 data points including those of this study; reference list in Supplementary Information). The literature included peer-reviewed publications, fishery leaflets, reports, book sections and dissertations. A total of 41 publications with potentially relevant information could not be read because the full texts were not available online, neither accessible via Dutch and German national libraries, nor by attempts to contact the original authors, and thus, could not be included.

The distribution of *Mytilicola intestinalis* before the 1930s was limited to the Mediterranean Sea Basin, where the parasite was recorded from a few locations near large ports and aquaculture areas (Figs 1A, S1 and Online Resource 1). The hypothesized native region of *M. intestinalis* is, therefore, the Mediterranean Sea Basin. In the 1930s, its distribution extended to a few specific locations at the German and English coasts, from which, in the following years, the parasite spread to coasts of neighboring countries. In the late 1940s, the first sightings in the Netherlands and Ireland were reported, followed by the Atlantic coasts of France in the early 1950s. In 1951, researchers collaborated to record the invasion and potential effects of *M. intestinalis* along the Atlantic coasts of Europe, which resulted in the publication of a special issue in *Revue des Travaux de l'Office Scientifique et Technique des Pêches Maritimes* on *M. intestinalis*²⁷. Ship hull fouling was seen as the main vector of *M. intestinalis* introductions, after which further spread was aided by the relaying of mussels (i.e., from the German Wadden Sea to aquaculture areas in Zeeland, the Netherlands). It is, thus, unclear from which Mediterranean basin (or basins) *M. intestinalis* was introduced, and whether this happened repeatedly, which might lead to different expectations regarding signatures of bottlenecks and genetic diversity in the introduced region.

The distribution of *M. orientalis* in its putative native range has not been the subject of many studies, which is reflected in our literature survey (Figs 1B, S2 and Resource 2). The co-introduction of *M. orientalis* with the Pacific oyster in North America was better recorded. Where young Pacific oysters or infected stock were imported, *M. orientalis* was also found, but the parasite did not spread quickly to adjacent natural areas²⁶. In the 1970s, Pacific oysters from North America were imported into France, and, once more, *M. orientalis* was co-introduced across half the globe. In 1993, the species was also found in Ireland in imported oysters from France²⁸. There are many gaps in the distribution of *M. orientalis* in Europe, which presumably reflect the lack of studies in these areas (Supplementary Fig. S2, Online Resource 2).

New records and infection levels of *Mytilicola* spp. A total of 5604 Pacific oysters (*Crassostrea gigas*), 2658 Mediterranean mussels (*Mytilus galloprovincialis*), more than 1595 blue mussels (*Mytilus edulis*), 104 bay mussels (*Mytilus trossulus*) and 90 mussels (*Brachidontes pharaonis*) were dissected in this study. Dissections of Pacific oysters and mussels from 20 locations along Mediterranean coasts, 13 locations along Japanese coasts, 7 locations along Pacific American and Canadian coasts, and 21 locations along European Atlantic, North Sea and Baltic coasts resulted in detection of *M. intestinalis* and *M. orientalis* at 20 and 30 locations, respectively. In Japan,

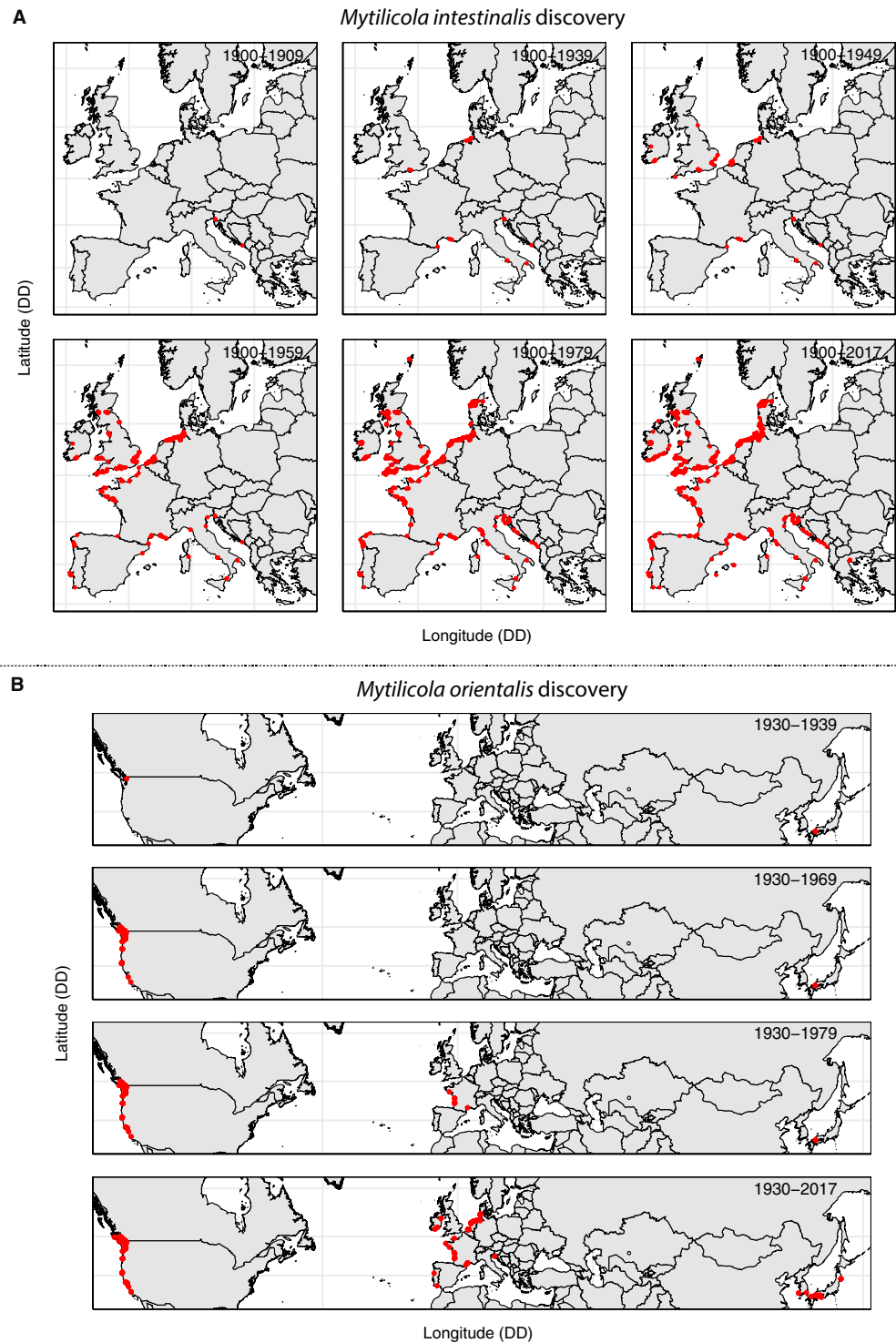


Figure 1. Temporal development of the known distributions and invasions of (A) *Mytilicola intestinalis* and (B) *Mytilicola orientalis* from time of first observation and species description (i.e., 1902 for *M. intestinalis* and 1935 for *M. orientalis*) until December 2017. Locations where *Mytilicola* spp. presence has been recorded are indicated with red dots, showing the species distribution, invasion route and spread, as well as research effort through time. For temporal development of *Mytilicola* spp. invasions decade-by-decade, including species absence records, see Supplementary Figs S1 and S2. For animated temporal development of *Mytilicola* spp. year-by-year, see the .gifs in Online Resources 1 and 2. This figure is based on data from this study and from data acquired through our literature surveys. See Supplementary Information for reference lists.

M. orientalis has only been previously recorded in Hiroshima²⁹ and Takehara³⁰, both in the Hiroshima Prefecture, and furthermore in Hiwasa, the Tokushima Prefecture³¹ – the other locations, including those outside the Seto Inland Sea are, thus, new records. Also, Tavira (Portugal) is a new location for *M. orientalis*. The Mediterranean

locations Malinska, Marjan (both Croatia) and Cassis (France) are new records for *M. intestinalis*, although Cassis is close to locations where *M. intestinalis* was already known from (i.e., Berre Lagoon and Marseille^{32,33}).

Mytilicola intestinalis was detected in *M. galloprovincialis* and *M. edulis*. *Mytilicola orientalis* was also detected in these bivalves, but also in *C. gigas* and *M. trossulus*. Prevalences of *M. intestinalis* ranged from 0 to 82.0% in the Mediterranean Sea Basins, the putative native region of *M. intestinalis*, and from 0 to 93.8% in the invaded regions (Table 1). Prevalences of *M. orientalis* ranged from 0 to 10.6% in Japan, the putative native region of *M. orientalis*, and from 0 to 73.8% in the invaded regions (Table 1).

Invasion genetics of *Mytilicola* spp. A total of 424 *M. intestinalis* and 444 *M. orientalis* were successfully sequenced, which resulted in the detection of 18 and 26 haplotypes, respectively (Tables S1 and S2) (Genbank accession No. MN334483-MN334526). The minimum spanning network of *M. intestinalis* had a star-like structure with one central, highly abundant haplotype from which several haplotypes were separated by a few mutational steps (Fig. 2A). The star-like structure of the network suggests recent demographic expansion, as is also suggested by the negative Tajima's D and Fu's F_s values which were significant for most locations (Table 2), and by the mismatch distributions (Fig. 3). Nine of the ten non-singleton haplotypes were shared between the putative native and invaded range (Figs 2A, 4 and Supplementary Table S1); only haplotype Mi16 was solely found in the invaded range (La Rochelle, Supplementary Table S1).

In contrast, the minimum spanning network of *M. orientalis* was relatively complex with two common frequent haplotypes that both showed associated derived haplotypes (Fig. 2B). With the exception of one location in Japan, all locations had one of the main haplotypes as its most frequent haplotype. A small group of related singleton haplotypes was found only in North America (light purple colored haplotypes Mo11-Mo13, Figs 2B, 3 and Supplementary Table S2). This type of network is more typically associated with stable demographics, also suggested by the non-significant Tajima's D and Fu's F_s values (Table 2), and by the mismatch distributions (Fig. 3). Only one population (Puan Klent, Germany), representing the northern invasion front of *M. orientalis* at time of collection, stood out with significant negative Tajima's D and Fu's F_s values (Table 2).

Because of the long geological history of the Mediterranean Sea Basins, its different hydrographic regimes and the short dispersive larval phase of *M. intestinalis*, we expected a high genetic diversity of *M. intestinalis* in this region and population genetic structure between the different basins. The overall level of population differentiation for *M. intestinalis* was estimated at $\Phi_{ST} = 0.01468$ ($p = 0.0108$) and $F_{ST} = 0.00848$ (n.s.), with an overall population differentiation in the Mediterranean Sea Basins of $\Phi_{ST} = 0.01531$ ($p = 0.0323$) and $F_{ST} = 0.02397$ ($p = 0.0325$), and in the invaded region of $\Phi_{ST} = 0.01081$ (n.s.) and $F_{ST} = -0.00544$ (n.s.) (Table 3).

For *M. orientalis*, we adopted the default expectation of high genetic diversity in the whole native region and genetic differentiation among populations in the absence of detailed knowledge of the distribution in the native range. Because of the many transport occurrences of Pacific oysters to North America and Europe, we did not expect to find a reduction in *M. orientalis* genetic diversity in the invaded regions. The overall level of population differentiation for *M. orientalis* was higher and estimated at $\Phi_{ST} = 0.05242$ ($p < 0.00001$) and $F_{ST} = 0.03002$ ($p < 0.00001$), with an overall population differentiation in Japan of $\Phi_{ST} = 0.10287$ ($p < 0.00001$) and $F_{ST} = 0.07019$ ($p < 0.00001$), and in the introduced region of $\Phi_{ST} = 0.02243$ ($p = 0.0303$) and $F_{ST} = 0.01005$ (n.s.) (Table 3).

The small, overall genetic differentiation in *M. intestinalis* could not be attributed to any single location or group of locations based on the pairwise population comparisons because none of the comparisons were significant after Bonferroni correction (Supplementary Tables S3, S4). The hierarchical AMOVAs did not clarify this further, as they did not detect significant groupings on any of the hierarchical levels. Including Cassis into the Western Mediterranean group led to negative Φ_{CT} values (Table 4). When grouping Cassis into the Ligurian Sea, the percentage of variation among groups was 0.38%, among populations within groups 1.24%, and within populations 98.38%, resulting in $\Phi_{CT} = 0.0038$ (n.s.), $\Phi_{SC} = 0.01247$ (n.s.) and $\Phi_{ST} = 0.0162$ ($p = 0.0480$) (Table 4). Using classical F -statistics, the percentage of variation among groups was greater at 2.07%, smaller among populations within groups at 0.84%, and similar within populations at 97.12%, resulting in $F_{CT} = 0.02069$ (n.s.), $F_{SC} = 0.00825$ (n.s.) and $F_{ST} = 0.02878$ (n.s.) (Table 4). In both hierarchical AMOVAs using mitochondrial statistic Φ and conventional F -statistic, there was no significant difference between the Gulf of Lion, the Ligurian Sea and the Adriatic Sea. Therefore, the small amount of population structure that was detected in the overall test cannot clearly be attributed to one of the Mediterranean Sea Basins, nor to one or a few individual locations.

In contrast to *M. intestinalis*, there was strong and significant genetic differentiation between locations in the native region of *M. orientalis*. Iwaya, located in the Sea of Japan, was strongly differentiated from nearly all other sampling locations along the Seto Inland Sea ($\Phi_{ST} = 0.215$ – 0.290 , Supplementary Table S5; $F_{ST} = 0.165$ – 0.216 , Supplementary Fig. S3, Supplementary Table S6). Only the pairwise population comparison between Iwaya (Fukuoka Prefecture) and Tarumi (Kagawa Prefecture) was not significant after Bonferroni correction ($\Phi_{ST} = 0.220$, $p = 0.00129 >$ Bonferroni corrected p -level of 0.000476, Supplementary Table S5). However, with conventional F -statistics, also this pairwise comparison was significantly different ($F_{ST} = 0.191$, $p = 0.00040 <$ Bonferroni corrected p -level of 0.000476, Supplementary Table S6). No genetic differentiation was detected between the locations sampled along the Seto Inland Sea, i.e., Takahara, Ondo, Niihama and Tarumi. All pairwise population comparisons between the Sea of Japan (Iwaya) and locations from the invaded regions in North America and Europe were significant after Bonferroni correction and showed strong genetic differentiation ($\Phi_{ST} = 0.228$ – 0.344 , Supplementary Table S5; $F_{ST} = 0.187$ – 0.247 , Supplementary Table S6). No significant pairwise population differences were detected between locations in the invaded regions.

We did not detect significant differences in haplotype diversity (h) between the putative native regions and the introduced regions (ANOVA, $F_{1,26} = 1.1081$, $p = 0.302$) (Fig. 5A). Haplotype diversity for *M. intestinalis* ranged from 0.131 to 0.569 in the putative native region and from 0.260 to 0.608 in the invaded region (Supplementary Table S1), while for *M. orientalis*, h ranged from 0.627 to 0.820 in its putative native region,

| Location | Country | Coordinates | Year | N _{hosts} | | Prevalence (%) | | | Mean infection intensity | | | N _{parasites} | | Collectors and Dissectors | |
|--|---------|-------------------------|------|------------------------------------|-------------|----------------|-----------|-----------|--------------------------|-----------|-----------|------------------------|------------|--------------------------------|--|
| | | | | mussel | oyster | MI mussel | MO mussel | MO oyster | MI mussel | MO mussel | MO oyster | MI | MO | | |
| Seto Inland Sea, Sea of Japan and Oyashio Current | | | | | | | | | | | | | | | |
| Iwaya, Fukuoka | JPN | 33°55'58"N, 130°41'08"E | 2015 | 15 (Mg) | 287 | 0.0 | 0.0 | 5.2 | — | — | 1.8 | — | 24 | <i>S. Hashimoto, YK, MEF</i> | |
| Ayragi, Yamaguchi | JPN | 34°0'37"N, 130°54'57"E | 2015 | 0 | 16 | — | — | 0.0 | — | — | — | — | — | <i>S. Hashimoto, YK, MEF</i> | |
| Ube harbour, Yamaguchi | JPN | 33°56'33"N, 131°14'44"E | 2015 | 0 | 150 | — | — | 0.0 | — | — | — | — | — | <i>S. Hashimoto, YK, MEF</i> | |
| Ondo-no-Seto, Hiroshima | JPN | 34°11'35"N, 132°32'05"E | 2015 | 44 (Mg) | 305 | 0.0 | 2.3 | 10.1 | — | 1.0 | 1.4 | — | 33 | <i>YK, MEF</i> | |
| Kamo River bridge, Takehara, Hiroshima | JPN | 34°19'41"N, 132°53'52"E | 2015 | 0 | 175 | — | — | 10.3 | — | — | 2.4 | — | 29 | <i>H. Uchiumi, YK, SO, MEF</i> | |
| Mukaishima, Hiroshima | JPN | 34°22'59"N, 133°10'22"E | 2015 | 0 | 26 | — | — | 0.0 | — | — | — | — | — | <i>M. Urata, MEF</i> | |
| Niihama, Ehime | JPN | 33°58'56"N, 133°17'37"E | 2015 | 0 | 265 | — | — | 10.6 | — | — | 1.8 | — | 30 | <i>S. Hashimoto, YK, MEF</i> | |
| Tarumi Bay, Kagawa | JPN | 34°22'41"N, 133°56'42"E | 2015 | 0 | 300 | — | — | 6.3 | — | — | 1.3 | — | 21 | <i>S. Hashimoto, YK, MEF</i> | |
| Hiwasa, Tokushima (location 1) | JPN | 33°43'47"N, 134°31'59"E | 2015 | 0 | 100 | — | — | 0.0 | — | — | — | — | — | <i>S. Hashimoto, YK, MEF</i> | |
| Hiwasa, Tokushima (location 2) | JPN | 33°44'33"N, 134°33'23"E | 2015 | 0 | 115 | — | — | 0.8 | — | — | 1 | — | 1 | <i>S. Hashimoto, YK, MEF</i> | |
| Ofunato, Iwate | JPN | 39°03'19"N, 141°43'27"E | 2015 | 0 | 125 | — | — | 1.6 | — | — | 1 | — | 1 | <i>YK, MEF</i> | |
| Onizawa, Iwate | JPN | 39°05'14"N, 141°48'42"E | 2015 | 0 | 76 | — | — | 1.3 | — | — | 1 | — | — | <i>YK, MEF</i> | |
| Sakihama, Iwate | JPN | 39°05'56"N, 141°51'36"E | 2015 | 0 | 100 | — | — | 1.0 | — | — | 1 | — | — | <i>YK, MEF</i> | |
| | | Region total | | 59 (Mg) | 2040 | | | | | | | | 0 | 139 | |
| Pacific coast of North America | | | | | | | | | | | | | | | |
| Belfair State Park, Hood Channel | USA | 47°25'45"N, 122°52'24"W | 2015 | 11 (Mt) | 55 | 0.0 | 0.0 | 10.9 | — | — | 5.8 | — | 22 | <i>KMW, LNSS</i> | |
| Harstine Island | USA | 47°14'58"N, 122°52'14"W | 2015 | 20 (Mt) | 20 | 0.0 | 0.0 | 5.0 | — | — | 1.0 | — | 1 | <i>KMW, LNSS</i> | |
| Grappler Inlet, Bamfield | CAN | 48°49'45"N, 125°7'40"W | 2015 | 23 (Mt) | 0 | 0.0 | 4.3 | — | — | 1.0 | — | — | 0 | <i>KMW, LNSS</i> | |
| Piper's Lagoon, Nanaimo | CAN | 49°13'34"N, 123°56'59"W | 2015 | 20 (Mt) | 64 | 0.0 | 25.0 | 29.7 | — | 1.6 | 1.6 | — | 5 | <i>KMW, LNSS</i> | |
| Fanny Bay | CAN | 49°30'23"N, 124°49'35"W | 2015 | 20 (Mt) | 0 | 0.0 | 20.0 | — | — | 2.3 | — | — | 2 | <i>KMW, LNSS</i> | |
| Morning Beach, Denman Island | CAN | 49°35'56"N, 124°49'31"W | 2015 | 0 | 49 | — | — | 14.3 | — | — | 2.3 | — | 0 | <i>KMW, LNSS</i> | |
| Manson's Landing, Cortes | CAN | 50°04'17"N, 124°58'50"W | 2015 | 10 (Mt) | 30 | 0.0 | 60 | 6.7 | — | 6.0 | 1.0 | — | 8 | <i>KMW, LNSS</i> | |
| | | Region total | | 104 (Mt) | 218 | | | | | | | | 0 | 38 | |
| Mediterranean Sea and Adriatic Sea | | | | | | | | | | | | | | | |
| Bouzigues | FRA | 43°26'51"N, 3°39'06"E | 2016 | 110 (Mg) | 58 | 20.0 | 0.0 | 1.7 | 1.3 | — | 2.0 | 30 | — | <i>PCL, MEF</i> | |
| Balaruc le Vieux | FRA | 43°27'36"N, 3°40'50"E | 2016 | 0 | 10 | — | — | 0.0 | — | — | — | — | — | <i>PCL, MEF</i> | |
| Balaruc les Bains | FRA | 43°26'23"N, 3°40'59"E | 2016 | 49 (Mg) | 10 | 16.3 | 2.0 | 0.0 | 1.0 | 1.0 | — | 1 | — | <i>PCL, MEF</i> | |
| Port des Heures Claires, Istres | FRA | 43°29'51"N, 4°59'56"E | 2016 | 235 (Mg) | 0 | 11.9 | 0.0 | — | 1.1 | — | — | 30 | — | <i>PCL, MEF</i> | |
| Plage de Rouet | FRA | 43°20'00"N, 5°10'22"E | 2016 | 50 (Mg) | 0 | 68.0 | 0.0 | — | 1.9 | — | — | 29 | — | <i>PCL, MEF</i> | |
| Cassis harbour | FRA | 43°12'53"N, 5°32'14"E | 2016 | 50 (Mg) | 0 | 82.0 | 0.0 | — | 3.0 | — | — | 30 | — | <i>PCL, MEF</i> | |
| Livorno harbour | ITA | 43°32'45"N, 10°18'14"E | 2016 | 50 (Mg) | 0 | 60.0 | 0.0 | — | 2.8 | — | — | 30 | — | <i>PCL, OB</i> | |
| Piombino | ITA | 42°57'19"N, 10°35'51"E | 2016 | 100 (Mg) | 0 | 0.0 | 0.0 | — | — | — | — | — | — | <i>PCL, OB</i> | |
| Lido di Ostia harbour | ITA | 41°44'17"N, 12°14'54"E | 2016 | 100 (Mg) | 0 | 0.0 | 0.0 | — | — | — | — | — | — | <i>PCL, OB</i> | |
| Via del Pescatori, Ostia | ITA | 41°43'08"N, 12°18'11"E | 2016 | 100 (Mg) | 0 | 0.0 | 0.0 | — | — | — | — | — | — | <i>PCL, OB</i> | |
| Trieste (subtidal) | ITA | 45.76N, 13.58 or 13.59E | 2014 | 238 (Mg) | 0 | 0 | 0.0 | — | — | — | — | — | — | <i>C. Manfrin, MEF</i> | |
| Malinska | CRO | 45°07'14"N, 14°31'13"E | 2016 | 30 (Mg) | 0 | 76.7 | 0.0 | — | 2.7 | — | — | 30 | — | <i>E. van Veenendaal, OB</i> | |
| Marjan peninsula | CRO | 43°30'54"N, 16°24'18"E | 2016 | 67 (Mg) | 0 | 44.8 | 0.0 | — | 1.9 | — | — | 29 | — | <i>E. van Veenendaal, OB</i> | |
| Mitikas | GRE | 39°00'08"N, 20°42'23"E | 2016 | 150 (Mg) | 0 | 0.0 | 0.0 | — | — | — | — | — | — | <i>O. Müller, MAG</i> | |
| Preveza | GRE | 38°57'36"N, 20°45'29"E | 2016 | 150 (Mg) | 0 | 0.0 | 0.0 | — | — | — | — | — | — | <i>O. Müller, MAG</i> | |
| Aliakmonas National Park | GRE | 40°33'07"N, 22°44'29"E | 2016 | 150 (Mg) | 0 | 0.0 | 0.0 | — | — | — | — | — | — | <i>O. Müller, MAG</i> | |
| Angelochori | GRE | 40°29'44"N, 22°48'56"E | 2016 | 150 (Mg) | 0 | 0.0 | 0.0 | — | — | — | — | — | — | <i>O. Müller, MAG</i> | |
| Nea Kallikratia | GRE | 40°18'37"N, 23°03'30"E | 2016 | 150 (Mg) | 0 | 0.0 | 0.0 | — | — | — | — | — | — | <i>O. Müller, MAG</i> | |
| Neos Marmaras | GRE | 40°05'36"N, 23°46'53"E | 2016 | 150 (Mg) | 0 | 0.0 | 0.0 | — | — | — | — | — | — | <i>O. Müller, MAG</i> | |
| Rhodes | GRE | 36°16'21"N, 27°49'29"E | 2016 | 90 (Bp) | 0 | 0.0 | 0.0 | — | — | — | — | — | — | <i>PCL</i> | |
| | | Region total | | 2079 (Mg) 90 (Bp) | 78 | | | | | | | | 209 | 0 | |
| Atlantic coast of Europe | | | | | | | | | | | | | | | |
| Tavira | PRT | 37°07'02"N, 7°37'46"W | 2014 | 289 (Mg) | 0 | 1.4 | 5.6 | — | 1.0 | 1.2 | — | — | 31 | <i>F. Batista, MEF</i> | |
| Carreço | PRT | 41°44'0"N, 8°52'23"W | 2014 | 231 (Mg) | 0 | 0 | 0.4 | — | — | 1.0 | — | — | — | <i>C. de la Vega, MEF</i> | |
| Biarritz | FRA | 43°31'55"N, 1°31'44"W | 2016 | 76 (Me) | 0 | 1.3 | 0.0 | — | 1.0 | — | — | — | — | <i>O. Müller, MAG</i> | |
| Continued | | | | | | | | | | | | | | | |

| Location | Country | Coordinates | Year | N _{hosts} | | Prevalence (%) | | | Mean infection intensity | | | N _{parasites} | | Collectors and Dissectors | |
|---------------------------------|---------|----------------------------|------|--|-------------|----------------|-----------|-----------|--------------------------|-----------|-----------|------------------------|------------|--------------------------------|--|
| | | | | mussel | oyster | MI mussel | MO mussel | MO oyster | MI mussel | MO mussel | MO oyster | MI | MO | | |
| Hossegor | FRA | 43°39'20"N, 1°26'19"W | 2016 | 100 (Me) | 0 | 0.0 | 0.0 | — | — | — | — | — | — | <i>O. Müller</i> , <i>MAG</i> | |
| Vieux Boucau | FRA | 43°47'07"N, 1°24'59"W | 2016 | 101 (Me) | 0 | 0.0 | 0.0 | — | — | — | — | — | — | <i>O. Müller</i> , <i>MAG</i> | |
| Arcachon Bay | FRA | 44°43'18"N, 1°11'19"E | 2014 | 264 (Me) | 452 | NA | NA | 4.9 | NA | NA | 1.6 | — | 31 | <i>X. de Montaudouin</i> | |
| Ronce les Bains, La Tremblade | FRA | 45°48'00"N, 1°10'00"W | 2015 | NA (Me) | 0 | 90–95 | 0.0 | — | 3.87 | — | — | 22 | — | <i>JA</i> | |
| Ré island, La Rochelle | FRA | 46°09'41"N, 1°21'52"W | 2013 | 54 (Me) | 0 | 74.1 | 9.3 | — | 2.2 | 1.0 | — | 16 | 1 | <i>M. Paar</i> , <i>MEF</i> | |
| Audierne Bay | FRA | 47°57'13"N, 4°24'54"W | 2015 | 20 (Me) | 0 | 0.0 | 0.0 | — | — | — | — | — | — | <i>JA</i> | |
| | | Region total | | 520 (Mg) > 615 (Me) | 452 | | | | | | | 38 | 63 | | |
| Wadden Sea and North Sea | | | | | | | | | | | | | | | |
| Balgzand | NLD | 52°55'50"N, 4°54'09"E | 2012 | 80 (Me) | 80 | 8.8 | 58.8 | 33.8 | 1.0 | 2.8 | 4.5 | 5 | 29 | <i>R. Nauta</i> , <i>MAG</i> | |
| De Cocksdorp, Texel | NLD | 53°08'51"N, 4°54'11"E | 2012 | 80 (Me) | 80 | 12.5 | 46.3 | 25.0 | 1.0 | 1.9 | 3.9 | 7 | 30 | <i>R. Nauta</i> , <i>MAG</i> | |
| Ameland | NLD | 53°25'54"N, 5°43'22"E | 2012 | 80 (Me) | 80 | 53.8 | 62.5 | 16.3 | 1.6 | 4.1 | 7.0 | 30 | 30 | <i>R. Nauta</i> , <i>MAG</i> | |
| Schiermonnikoog | NLD | 53°28'02"N, 6°12'34"E | 2012 | 80 (Me) | 80 | 27.5 | 73.8 | 17.5 | 1.3 | 4.8 | 9.8 | 16 | 30 | <i>R. Nauta</i> , <i>MAG</i> | |
| Horumersiel | DEU | 53°41'40"N, 8°01'55"E | 2012 | 80 (Me) | 80 | 22.5 | 41.3 | 21.3 | 1.3 | 1.9 | 9.2 | 21 | 32 | <i>R. Nauta</i> , <i>MAG</i> | |
| Norddeich | DEU | 53°40'57"N, 7°16'24"E | 2012 | 80 (Me) | 80 | 66.3 | 62.5 | 21.3 | 2.6 | 3.2 | 10.6 | 45 | 28 | <i>R. Nauta</i> , <i>MAG</i> | |
| Puan Klent, Sylt | DEU | 54°47'54"N, 8°18'11"E | 2012 | 80 (Me) | 80 | 93.8 | 60 | 17.5 | 4.0 | 2.6 | 4.6 | 30 | 25 | <i>R. Nauta</i> , <i>MAG</i> | |
| Königshafen, Sylt | DEU | 55°01'45"N, 8°26'03"E | 2012 | 80 (Me) | 80 | 78.8 | 1.3 | 0.0 | 3.2 | 1.0 | — | 23 | — | <i>R. Nauta</i> , <i>MAG</i> | |
| Helgoland (subtidal) | DEU | 54°10'31"N, 7°53'41"E | 2014 | 150 (Me) | 0 | 0.0 | 0.0 | — | — | — | — | — | — | <i>AWI divers</i> , <i>MEF</i> | |
| Helgoland | DEU | 54°10'45"N, 7°53'22"E | 2014 | 0 | 20 | — | — | 0.0 | — | — | — | — | — | <i>MEF</i> | |
| | | Region total | | 790 (Me) | 660 | | | | | | | 177 | 204 | | |
| Baltic Sea | | | | | | | | | | | | | | | |
| Kiel Bülk | DEU | 54°27'15"N, 10°11'53"E | 2014 | 75 (Me) | 0 | 0.0 | 0.0 | — | — | — | — | — | — | <i>A. Pansch</i> , <i>MEF</i> | |
| Kiel Fjord | DEU | 54°19'49"N, 10°08'59"E | 2014 | 115 (Me) | 0 | 0.0 | 0.0 | — | — | — | — | — | — | <i>A. Pansch</i> , <i>MEF</i> | |
| | | Region total | | 190 (Me) | 0 | | | | | | | 0 | 0 | | |
| | | TOTAL ALL LOCATIONS | | 2658 (Mg) > 1595 (Me) 104 (Mt) 90 (Bp) | 5604 | | | | | | | 424 | 444 | | |

Table 1. Parasitic copepods *Mytilicola intestinalis* (MI) and *Mytilicola orientalis* (MO) collected from mussels: *Mytilus galloprovincialis* (Mg), *Mytilus edulis* (Me), *Mytilus trossulus* (Mt) and *Brachidontes pharaonis* (Bp), and from oysters: Pacific oysters *Crassostrea gigas*. All hosts were collected in harbors or on natural mussel or oyster beds, which were almost all situated in intertidal areas (unless indicated). N_{host}: total number of hosts dissected; N_{parasites}: number of parasites successfully sequenced for cytochrome-*c*-oxidase 1; Collectors and dissectors: collectors are indicated in italics, dissectors by underlining. Note that no *M. intestinalis* was found in Pacific oysters in this study, therefore the column representing this host-parasite combination was omitted from the table.

Japan, (all locations with >15 individuals) and from 0.699 to 0.839 in its introduced region (Supplementary Table S2). Similarly, no significant differences were detected for nucleotide diversity (π) between the putative native region and the invaded regions (ANOVA, $F_{1,26} = 0.0284$, $p = 0.867$). Nucleotide diversity for *M. intestinalis* ranged from 0.000276 to 0.00179 in the putative native region, and from 0.000572 to 0.00267 in the introduced region (Fig. 5B, Supplementary Table S1), and *M. orientalis*' nucleotide diversity ranged from 0.00423 to 0.00550 in Japan and from 0.00366 to 0.00541 in the introduced regions (Fig. 5B, Supplementary Table S2). However, both haplotype diversity and nucleotide diversity were significantly larger for *M. orientalis* than for *M. intestinalis* (ANOVA h : $F_{1,26} = 99.2662$, $p < 0.00001$; ANOVA π : $F_{1,26} = 251.7502$, $p < 0.00001$). The interaction term in the linear models (species \times region) was not significant for haplotype diversity h or nucleotide diversity π (ANOVA h : $F_{1,26} = 0.5634$, $p = 0.460$; ANOVA π : $F_{1,26} = 1.3178$, $p = 0.261$), indicating that genetic diversity differed consistently between species.

Discussion

Our study utilized the consecutive invasions of two congeneric invasive parasites to align the invasion history derived from their reported spread in the literature with their phylogeography based on molecular markers. Based on mitochondrial haplotype diversity, we found that the native range and the invasion route of *Mytilicola orientalis* match the classical pattern of a recent invasion described in the literature, while the phylogeography of *Mytilicola intestinalis* did not match our literature-based expectations due to low mtDNA genetic diversity. While several scenarios could explain the low genetic diversity, we cannot identify the origin of the species, which potentially also makes it a cryptogenic species in the Mediterranean Sea Basins.

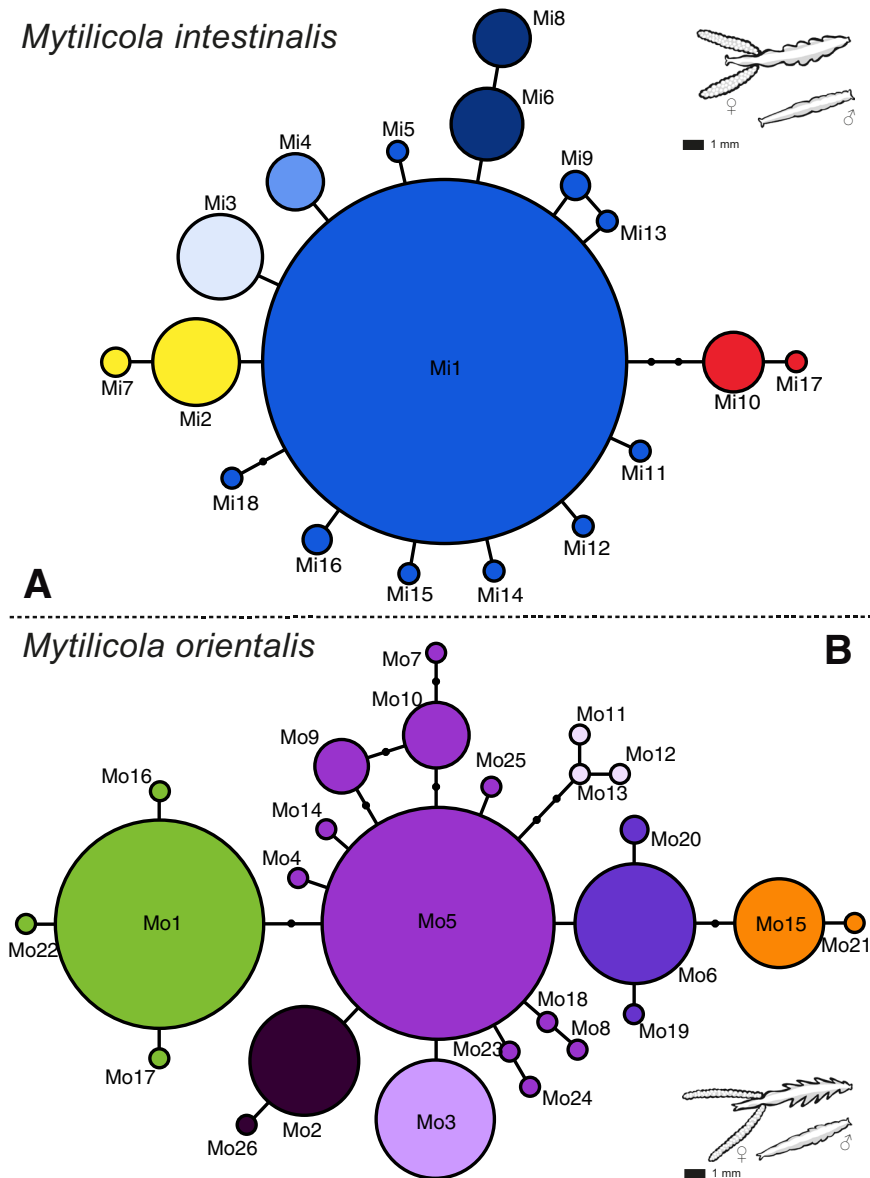


Figure 2. Minimum spanning networks for COI haplotypes (circles) in (A) *Mytilicola intestinalis* and (B) *M. orientalis*. Branch length is proportional to the number of nucleotide differences (the shortest branches represent one nucleotide difference). The black dots on the branches represent missing haplotypes. Frequency of observation is proportional to circle area. Colors represent large scale differentiation between clusters of haplotypes and correspond with the pie charts in Fig. 4. Figure 2 was drawn in Adobe Illustrator based on the Arlequin output list of OTU differences.

***M. orientalis* phylogeography supports invasion history.** Our study confirmed the coastal seas of Japan as the native region of *M. orientalis*, because of the significant population genetic structure between the Seto Inland Sea and Iwaya in the Sea of Japan, and the stronger overall population differentiation in Japan than in the invaded regions. This was expected based on the invasion history derived from our literature survey. The invasion of *M. orientalis* was extremely long-distance, crossing both the Pacific and Atlantic Ocean via aquaculture transports, followed by a relatively rapid spread through the invaded regions (Fig. 1B, Resource 2) that is still ongoing³⁴ (Feis, unpubl. data).

Pacific oysters have been imported from Japan to locations across the globe, with Miyagi Prefecture as the main overseas export area and Kumamoto and Hiroshima Prefectures including the Seto Inland Sea³⁵ contributing smaller amounts³⁵. Oyster seed is regularly transported between the regions largely homogenizing the genetic diversity and restricted gene flow has only been reported for the Nagasaki and Kumano regions³⁶. *Mytilicola orientalis* hitchhiked with oyster transports to North America¹⁶ and to Europe^{15,37,38}, and our population genetic analyses support these patterns in the native range and invaded regions: the North American and European samples could not be distinguished from the Seto Inland Sea samples from Japan, while the sample from Iwaya in the Sea of Japan was significantly different.

| Locations | Tajima's D | Fu's F _s | Locations | Tajima's D | Fu's F _s |
|---|------------|---------------------|---|------------|---------------------|
| <i>M. intestinalis</i>, putative native region | | | <i>M. orientalis</i>, putative native region | | |
| Marjan, Croatia | -1.509* | -2.312** | Iwaya, Japan | 1.24 | 3.06 |
| Malinska, Croatia | -1.507* | -2.355* | Ondo, Japan | -0.482 | -1.11 |
| Livorno, Italy | -1.871* | -3.027** | Takehara, Japan | -1.12 | -2.23 |
| Cassis, France | -0.8597 | 0.0501 | Niihama, Japan | -0.372 | -0.109 |
| Istres, France | -1.749** | -2.054 | Tarumi, Japan | -0.220 | -0.0780 |
| Rouet, France | -1.662* | -5.145*** | | | |
| Bouzigues, France | -1.889** | -4.411*** | | | |
| <i>M. intestinalis</i>, invaded region | | | <i>M. orientalis</i>, invaded region | | |
| La Rochelle, France | -0.9778 | -0.7836 | Belfair, USA | -1.12 | -2.22 |
| La Tremblade, France | -1.878** | -2.206* | Tavira, Portugal | 0.125 | 0.110 |
| Ameland, Netherlands | -1.658* | -4.526** | Arcachon, France | -0.878 | -1.15 |
| Schiermonnikoog, Netherlands | -1.349 | -1.867* | Balgzand, Netherlands | -0.230 | -0.319 |
| Norddeich, Germany | -1.638* | -3.161* | De Cocksdorp, Netherlands | -1.04 | -1.50 |
| Horumersiel, Germany | -1.159 | -1.259* | Ameland, Netherlands | 0.0919 | 0.518 |
| Puan Klent, Germany | -1.758* | -4.899*** | Schiermonnikoog, Netherlands | -0.208 | -0.266 |
| Königshafen, Germany | -0.864 | -0.8722 | Norddeich, Germany | -0.420 | -0.558 |
| | | | Horumersiel, Germany | 0.178 | 0.655 |
| | | | Puan Klent, Germany | -1.538* | -3.22* |

Table 2. Tajima's D and Fu's F_s neutrality tests for partial cytochrome-*c*-oxidase 1 sequences in *Mytilicola intestinalis* and *M. orientalis*, based on 10,000 simulations. Level of significance is indicated ($p < 0.05^*$, $p < 0.01^{**}$ and $p < 0.001^{***}$). Only samples with more than 15 individuals were included in the analyses; see column N_{parasites} in Table 1.

Within the invaded region in Europe, *M. orientalis* showed more resemblance in the MDS plots between North America and the northern Wadden Sea invasion: Belfair (representing North America) and Puan Klent (representing the northern Wadden Sea oyster invasion). This pattern represents a small mismatch with the phylogeography of the host^{19,20} and might suggest that other vectors than oyster transports contributed to *M. orientalis*' secondary spread in the Wadden Sea. For example, the wider host range of *M. orientalis* and spillover to native bivalves¹⁸ could have further sped up and modified its spread. In the Mediterranean, the distribution of *M. orientalis* is disjunctive, with presence at the Thau lagoon in France since 1979³⁹ and in the northern Adriatic⁴⁰, but an absence in between (Table 1). This patchy distribution pattern probably reflects the long-distance transports of oysters and *M. orientalis*' ongoing invasion, and furthermore demonstrates that *Mytilicola* spp. do not colonize rapidly over large distances unaided by anthropogenic factors.

In conclusion, *M. orientalis* was likely co-introduced in large numbers or via multiple introductions, based on the equally high genetic diversity in native and invaded regions. Thus, the invasion history from the native region along the reported invasion route of *M. orientalis* from our literature survey matches well with the resulting phylogeography based on COI haplotypes.

No differentiation in the putative native range of *M. intestinalis*. Based on our literature survey, the invasion of Atlantic coasts of Europe by *M. intestinalis* can be characterized by local introductions at seaports and harbor areas, and a slow natural spread afterwards. While *M. intestinalis* was thought to originate from the Mediterranean Sea Basins, our genetic data based on mtDNA could not confirm this as a source of the invasion. Even though the overall level of population genetic structure in the Mediterranean was significant, it was very low. Zooming in on this small difference, however, we did not detect a significant difference among Mediterranean Sea Basins based on hierarchical AMOVAs nor between any pairwise comparison between Mediterranean samples. The absence of clear population genetic differentiation in the Mediterranean is striking. If the Mediterranean Sea Basins were the native distribution range of *M. intestinalis*, the long geological history of the basins should have resulted in significant population structure. Although no uniform phylogeographic pattern in other marine taxa in the Mediterranean Sea Basins has been found⁴¹, for many species, the topography and oceanographic conditions of the Strait of Otranto and the Siculo-Tunisian Strait represent a break that typically causes population genetic differentiation between the Adriatic, Ionian and Ligurian Seas (e.g.^{42–44}). Likewise, genetic breaks were found near Marseille, separating the Ligurian Sea and Gulf of Lion, especially for species with lower dispersal ability^{44–46}. As the short-lived pelagic larvae of *Mytilicola* limit the potential for natural dispersal^{12,23}, population differentiation among the long-established Mediterranean populations should have been maintained. Especially, since breaks in the distribution of mussel hosts introduce additional barriers for *M. intestinalis* larval dispersal. This limited dispersive ability of *M. intestinalis* can also be observed in the literature-based invasion data (Resource 1), showing a slow spread upon invasion in the Dutch Wadden Sea and Scottish lochs.

Low mtDNA variability masks the origins of *M. intestinalis*. There are several possible explanations for the observed absence of population genetic differentiation between the Mediterranean *M. intestinalis* samples and the overall low genetic diversity compared to *M. orientalis*.

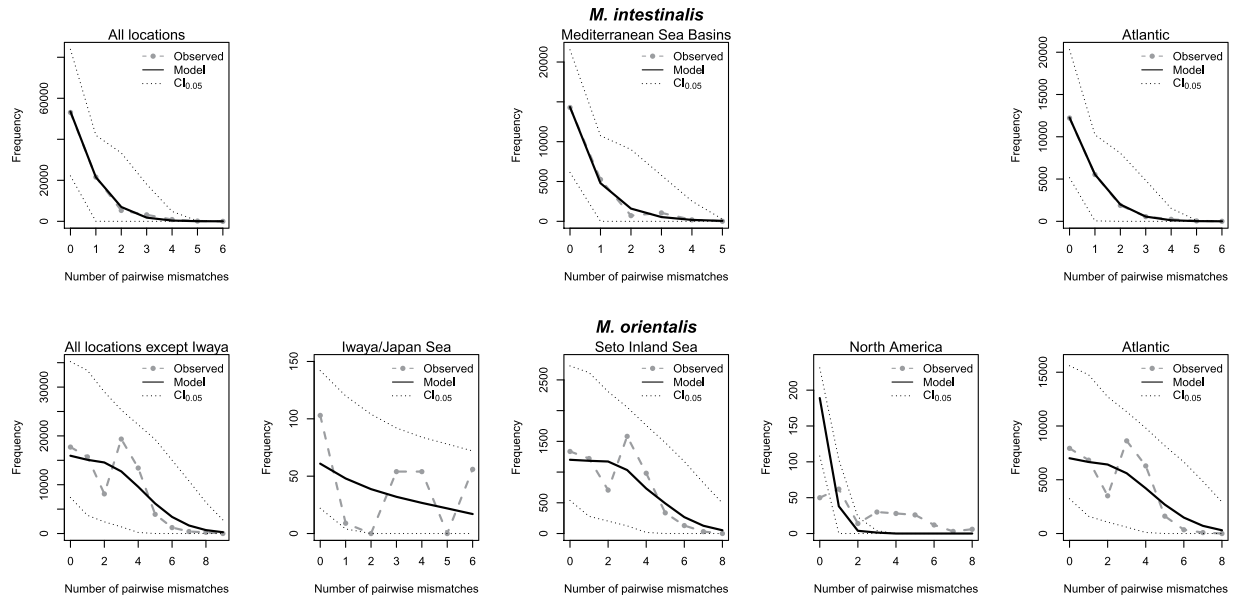


Figure 3. Mismatch distributions of *Mytilicola intestinalis* (top row) and *Mytilicola orientalis* (lower row). From left to right: mismatch distributions based on population differences (*M. intestinalis*: all locations pooled; *M. orientalis*: Iwaya separate from the rest of the locations), mismatch distributions in the putative native region and in the invaded region(s). The sharp decline in *M. intestinalis* is indicative of population expansion after a bottleneck or selective sweep; the bimodal distributions in *M. orientalis* are indicative of stable demographics.

A bottleneck in *M. intestinalis* may have occurred prior to its invasion, which would have reduced standing genetic variation^{47–50}. Such a scenario is supported by the star-like haplotype network, relatively low genetic diversity and significant negative Tajima's D statistic that indicates recent population expansion or recovery from an ancient bottleneck after which diversity slowly recovered, creating a star-like haplotype network at the start. However, such a bottleneck must have happened fairly recent to prevent the build up of genetic differentiation over extended periods of time.

Alternatively, anthropogenic shuffling of native genetic diversity might explain the lack of population genetic structure in *M. intestinalis* within the Mediterranean. Like *M. orientalis*' invasion, aquaculture transports might also be a cause here. However, the typically small size of translocated mussels ('mussel spat') contests this. The number of parasites is usually proportional to the shell length of mussels^{51,52} and very young mussels are rarely infected¹². Moreover, Mediterranean commercial mussels are usually grown in hanging cultures, which are considerably less vulnerable to parasite infections than mussels grown on the benthos. These mussels are also replaced yearly by a new parent stock, which makes it difficult for *M. intestinalis* to build up a dense population (reviewed in¹²). Nevertheless, transportation of spat between Mediterranean regions does occur and could be contributing to or have contributed in the past to the homogenization of its parasite fauna. Other human activities related to mussel dispersal are ballast water and ship hull fouling⁵³. Ship hull fouling was seen as the primary route by which *M. intestinalis* invaded the German and British coasts (e.g.²³) and explained its disjunctive distribution there (reviewed in¹²). Higher resolution of more independent genetic markers might allow for detecting differentiation. Nevertheless, while anthropogenic shuffling could explain the lack of population genetic structure in the Mediterranean and Adriatic Seas, it cannot explain the overall low genetic diversity compared to *M. orientalis*.

Finally, *M. intestinalis* may be an introduced species in the Mediterranean Sea Basins, which would explain the lack of population genetic structure and the indications for population expansion. A few hints supporting this scenario can be found in literature. *Mytilicola intestinalis* was first described in 1902 and 1903 from two important ports for shipping, Trieste and Gravosa (both Adriatic Sea)^{54,55} – around 40 years after the opening of the Suez Canal (November 1869), an event that led to the invasion of many marine species into the Mediterranean (Lessepsian migration, e.g.^{56,57}). In 1902, nearly all dissected mussels at those Adriatic sites were infected by *M. intestinalis*, with up to 50 parasites in one host^{54,55}. Prevalences and intensities that high are typically seen in mussel populations that have recently invaded – e.g., maximum intensity of up to 14 parasites in Germany¹⁰, up to 59 in the UK⁵⁸ and up to 70 in the Netherlands⁵⁹. In 1953, *M. intestinalis* could not be found in the same locations where A. Steuer initially described the species⁶⁰, and we also did not find *M. intestinalis* in > 200 mussels from Trieste (Table 1). Similarly, in Mare Piccolo, Taranto (Italy), *M. intestinalis* had been a sudden pest before 1932, but authorities successfully eradicated it⁶¹. At the same site, a prevalence of 6.7% and mean intensity 1.8 (n = 106) was found in 1953⁶² but in 1996, *M. intestinalis* was absent (n = 31)⁶³. The cases of Trieste and Taranto both may be interpreted as outbreaks upon initial invasion followed by low infestation over longer time scales, resembling the typical boom-bust dynamics of biological invasions before populations enter the comparatively stable adjustment phase⁶⁴. Moreover, Adriatic harbors that were rarely visited by large vessels had no or low *M. intestinalis* prevalences, while mussels at large ports were all heavily infested⁶⁵.

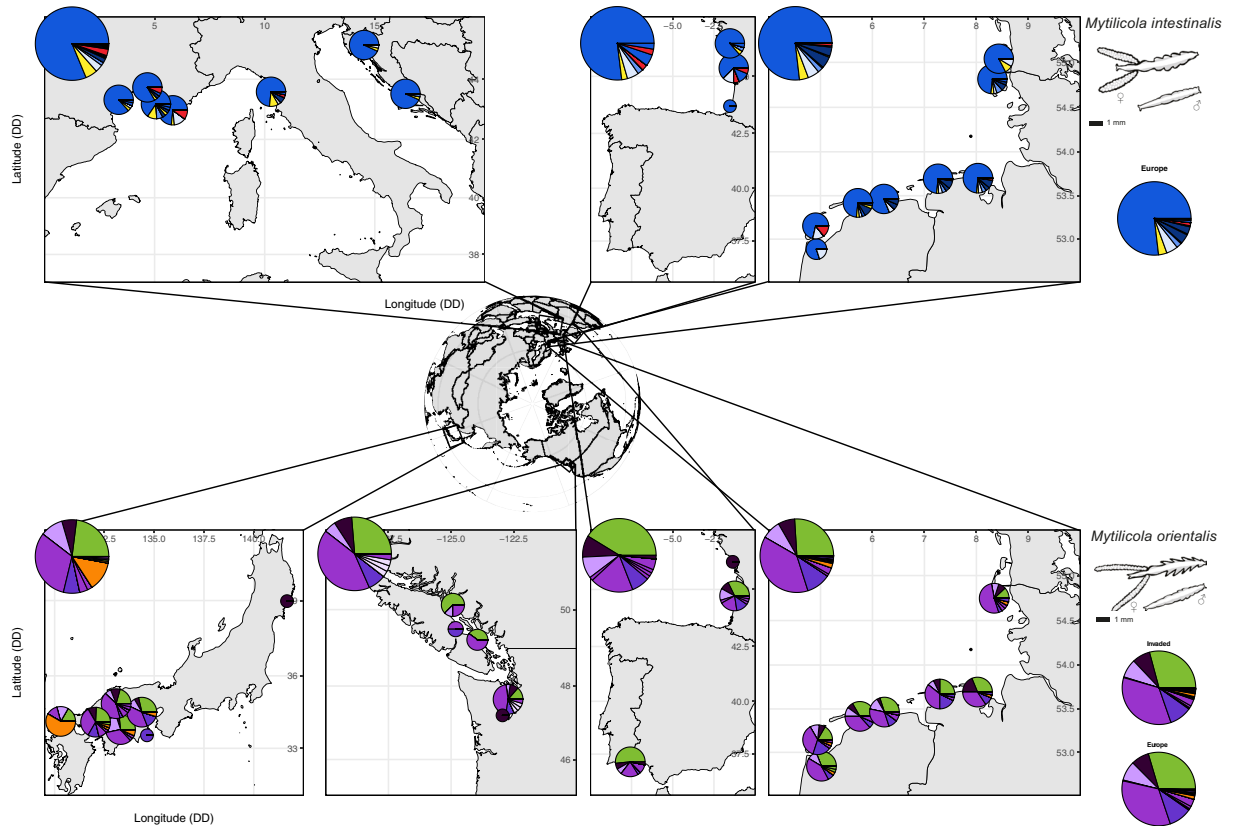


Figure 4. Maps showing pie charts of cytochrome-c-oxidase 1 (COI) haplotype frequencies in the invasive parasite species *Mytilicola intestinalis* and *Mytilicola orientalis*. Shown plotted overlaying the maps are pie charts for the different sampling locations, while the large pie charts in the corner of the maps represent the grouped frequencies for all locations in that map. On the side, the large pie charts represent the grouped frequencies for all invaded European locations for *M. intestinalis* and *M. orientalis* (“Europe”), and for all invaded locations for *M. orientalis* that includes the North American samples (“Invaded”). Note that the pie charts from the Mediterranean and Japan represent the overall frequencies of all sampled native sampling locations for *M. intestinalis* and *M. orientalis*, respectively. Pie charts are smaller for sampling locations with fewer than 15 individuals, which were not included in our analyses. Colors correspond to large scale differentiation between clusters of haplotypes in the minimum spanning networks presented in Fig. 2. Pie charts were made in R statistical environment version 3.4.3⁸³, maps were plotted with R packages rworldmap⁶⁷ and ggplot⁶⁸ and Fig. 4 was assembled in Adobe Illustrator.

Because our data may not be consistent with the idea that *M. intestinalis* is native in the Mediterranean Sea Basins, we suggest that *M. intestinalis* should be regarded as a cryptogenic species (i.e., a species whose origin cannot readily be determined with the available data, *sensu* Carlton⁶⁶). Along European Atlantic and North Sea coasts, however, *M. intestinalis* is clearly an invasive species, as there are records of times when *M. intestinalis* was not present and later invaded. The absence of such data in the Mediterranean neither proves nor disproves presence or absence of *M. intestinalis* in the Mediterranean Sea Basins before its taxonomic description. The higher prevalence around shipping ports and aquaculture areas could indicate that *M. intestinalis* is invasive, or that its distribution has been influenced by humans also in the Mediterranean. Such a scenario would also imply that its native host species may not be *Mytilus galloprovincialis*. Solving the puzzle whether *M. intestinalis* is native or is an invader in the Mediterranean would need explorative, basic parasitological work in potential native regions such as the southern and eastern Mediterranean Sea Basins, the Red Sea and potentially further, in combination with a population genetic study.

Our study shows that despite the large body of literature existing on these two common marine parasites of commercially important bivalves, hypotheses derived from literature-based invasion histories reports do not necessarily match conclusions based on population genetic demography. This indicates that some basic understanding of the invasion processes is lacking, and highlights the usefulness of population genetic studies to test anecdotal evidence of invasion histories. The native region and invasion route of *M. orientalis* were validated with the sampling and choice of marker in the current study: the native region of *M. orientalis* is Japan, and the parasite hitchhiked with its host to North America and Europe. Whether *M. orientalis* was introduced to Europe via Canada, or directly from Japan, or both, and how *M. orientalis* spread throughout Europe remains to be answered with the use of higher resolution nuclear genetic markers. In contrast, the native region of *M. intestinalis* could not be validated, because of low genetic diversity and lacking population structure within and among the

| Locations | | df | SS | VC | Φ_{ST}/F_{ST} | p-value |
|---|--------|-----|---------|----------|--------------------|----------|
| <i>Mytilicola intestinalis</i>, Φ_{ST} | | | | | | |
| All | among | 14 | 5.318 | 0.00402 | | |
| | within | 396 | 106.955 | 0.27009 | | |
| | total | 410 | 112.273 | 0.27411 | 0.01468 | 0.01075 |
| Mediterranean | among | 6 | 2.147 | 0.00381 | | |
| | within | 201 | 49.199 | 0.24477 | | |
| | total | 207 | 51.346 | 0.24858 | 0.01531 | 0.03226 |
| Introduced | among | 7 | 2.638 | 0.00324 | | |
| | within | 195 | 57.756 | 0.29618 | | |
| | total | 202 | 60.394 | 0.29942 | 0.01081 | 0.10264 |
| <i>Mytilicola intestinalis</i>, F_{ST} | | | | | | |
| All | among | 14 | 3.167 | 0.00157 | | |
| | within | 396 | 72.622 | 0.18339 | | |
| | total | 410 | 75.622 | 0.18496 | 0.00848 | 0.13436 |
| Mediterranean | among | 6 | 1.707 | 0.00404 | | |
| | within | 201 | 33.062 | 0.16449 | | |
| | total | 207 | 34.062 | 0.16853 | 0.02397 | 0.03248 |
| Introduced | among | 7 | 1.228 | -0.00110 | | |
| | within | 195 | 39.560 | 0.20287 | | |
| | total | 202 | 40.788 | 0.20177 | -0.00544 | 0.63683 |
| <i>Mytilicola orientalis</i>, Φ_{ST} | | | | | | |
| All | among | 14 | 39.374 | 0.06064 | | |
| | within | 410 | 449.440 | 1.09620 | | |
| | total | 424 | 488.814 | 1.15683 | 0.05242 | <0.00001 |
| Japan | among | 4 | 18.935 | 0.13168 | | |
| | within | 132 | 151.576 | 1.14830 | | |
| | total | 136 | 170.511 | 1.27998 | 0.10287 | <0.00001 |
| Introduced | among | 9 | 16.007 | 0.02458 | | |
| | within | 278 | 297.865 | 1.07146 | | |
| | total | 287 | 313.872 | 1.09604 | 0.02243 | 0.03030 |
| <i>Mytilicola orientalis</i>, F_{ST} | | | | | | |
| All | among | 14 | 10.084 | 0.01188 | | |
| | within | 410 | 157.436 | 0.38399 | | |
| | total | 424 | 167.520 | 0.39587 | 0.03002 | <0.00001 |
| Japan | among | 4 | 4.672 | 0.02866 | | |
| | within | 132 | 50.459 | 0.38227 | | |
| | total | 136 | 55.131 | 0.41112 | 0.07019 | <0.00001 |
| Introduced | among | 9 | 4.475 | 0.00391 | | |
| | within | 278 | 106.977 | 0.38481 | | |
| | total | 287 | 111.451 | 0.38871 | 0.01005 | 0.11604 |

Table 3. Results from analyses of molecular variance (AMOVA) on partial cytochrome-c-oxidase 1 (COI) sequences in *Mytilicola intestinalis* and *M. orientalis* with mitochondrial fixation index Φ_{ST} and with conventional F -statistics. Only samples with more than 15 individuals were included. Abbreviations: df = degrees of freedom; SS = sum of squares; VC = variance component, Φ_{ST} and F_{ST} = overall fixation index.

Mediterranean Sea basins, which may point to *M. intestinalis* being an invader in the Mediterranean Sea Basins (cryptogenic species). The invasion histories and demographics thus differ between the two *Mytilicola* species, and this may have profound impacts on their further invasion and evolutionary trajectories, as well as their competition in the invaded regions where they now co-occur.

Materials and Methods

Literature review. To describe the distribution of both invasive *Mytilicola* species through time in putative native and invaded regions, we searched the Web of Science/Web of Knowledge and Google Scholar with the keywords “*Mytilicola intestinalis*” and “*Mytilicola orientalis*”. Further publications, including grey literature, were found by checking the references of each relevant publication (i.e., “snowballing”). All publications were screened for recorded absence or presence of *Mytilicola* species per host species, and for coordinates of sampling sites. This resulted in data sets for *Mytilicola intestinalis* and for *Mytilicola orientalis* (available upon request) which were used for plotting occurrence maps with the R packages rworldmap⁶⁷ and ggplot⁶⁸. If latitude and longitude were not reported in a publication, we inferred approximate coordinates from maps so that the data could be plotted.

| | df | SS | VC | % var | p-value | Φ or F-statistic |
|--|-----|--------|----------|-------|---------|----------------------------|
| AMOVA 1: Gulf of Lion (Bouzigues, Istres, Rouet, Cassis) vs. Ligurian Sea (Livorno) vs. Adriatic Sea (Marjan, Malinska) | | | | | | |
| among groups | 2 | 0.476 | -0.00303 | -1.22 | 0.76653 | Φ _{CT} = -0.01224 |
| among populations within groups | 4 | 1.671 | 0.00583 | 2.35 | 0.04089 | Φ _{SC} = 0.02325 |
| within populations | 201 | 49.199 | 0.24477 | 98.87 | 0.04465 | Φ _{ST} = 0.01130 |
| total | 207 | 51.346 | 0.24757 | | | |
| AMOVA 1: Gulf of Lion (Bouzigues, Istres, Rouet, Cassis) vs. Ligurian Sea (Livorno) vs. Adriatic Sea (Marjan, Malinska) | | | | | | |
| among groups | 2 | 0.776 | 0.00261 | 1.54 | 0.20634 | F _{CT} = 0.01543 |
| among populations within groups | 4 | 0.931 | 0.00230 | 1.36 | 0.13525 | F _{SC} = 0.01378 |
| within populations | 201 | 33.062 | 0.16449 | 97.10 | 0.03040 | F _{ST} = 0.02899 |
| total | 207 | 34.769 | 0.16940 | | | |
| AMOVA 2: Gulf of Lion (Bouzigues, Istres, Rouet) vs. Ligurian Sea (Cassis, Livorno) vs. Adriatic Sea (Marjan, Malinska) | | | | | | |
| among groups | 2 | 0.801 | 0.00094 | 0.38 | 0.33257 | Φ _{CT} = 0.00378 |
| among populations within groups | 4 | 1.346 | 0.00309 | 1.24 | 0.14168 | Φ _{SC} = 0.01247 |
| within populations | 201 | 49.199 | 0.24477 | 98.38 | 0.04802 | Φ _{ST} = 0.011620 |
| total | 207 | 51.346 | 0.24880 | | | |
| AMOVA 2: Gulf of Lion (Bouzigues, Istres, Rouet) vs. Ligurian Sea (Cassis, Livorno) vs. Adriatic Sea (Marjan, Malinska) | | | | | | |
| among groups | 2 | 0.887 | 0.00350 | 2.07 | 0.16406 | F _{CT} = 0.02069 |
| among populations within groups | 4 | 0.821 | 0.00137 | 0.84 | 0.23287 | F _{SC} = 0.00825 |
| within populations | 201 | 33.062 | 0.16449 | 97.12 | 0.03168 | F _{ST} = 0.02878 |
| total | 207 | 34.769 | 0.16936 | | | |

Table 4. Results from hierarchical analyses of molecular variance (AMOVA) based on pairwise differences, on partial cytochrome-*c*-oxidase 1 (COI) sequences in Mediterranean *Mytilicola intestinalis* with mitochondrial Φ-statistic and conventional *F*-statistic. Only samples with more than 15 individuals were included; see column $N_{\text{parasites}}$ in Table 1. Abbreviations: df = degrees of freedom; SS = sum of squares; VC = variance component, % var = percentage of variation.

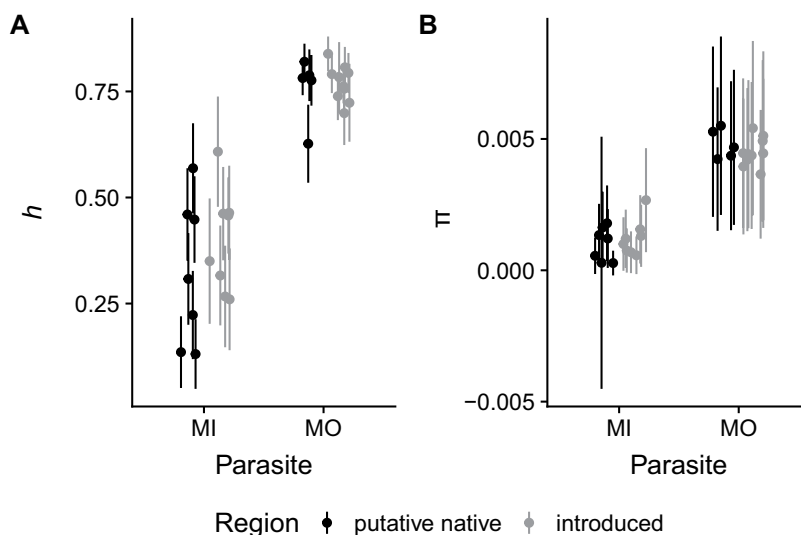


Figure 5. Haplotype diversity h and nucleotide diversity π of *Mytilicola intestinalis* (MI) and *Mytilicola orientalis* (MO). Putative native ranges are indicated in grey and invaded ranges in black. Bars represent standard deviations. Only samples with more than 15 individuals were included. See Supplementary Tables S1 and S2 for π and h values of individual locations underlying this figure.

A possible caveat in the literature survey is that *M. orientalis*' invasion in Europe has been cryptic because of difficulties with reliable species identification⁶⁹. In the literature survey, we used the identification presented by the authors, but that may be incorrect when studies are based on morphology, as the distinguishing characteristics for *M. intestinalis* and *M. orientalis* are not fully reliable⁶⁹. For instance, *M. intestinalis* has been reported from *Crassostrea gigas*^{70,71}, although it was shown not to be a suitable host for *M. intestinalis*^{72,73}; these observations are more likely to be of *M. orientalis* instead.

Sampling of host and parasite species. Different mussel species (*Mytilus edulis*, *Mytilus galloprovincialis*, *Mytilus trossulus* and *Brachidontes pharaonis*), and Pacific oysters (*Crassostrea gigas*) were collected in the

intertidal zone during low tide at 61 locations along European coasts (Mediterranean Sea Basins, Atlantic, North Sea, and Baltic Sea), along American and Canadian Pacific coasts (Puget Sound, Vancouver Island) and along Japanese coasts (Seto Inland Sea, Sea of Japan, and Oyashio Current; Table 1). Mussel species were identified based on morphology only. There are no reports of the mussel species, *B. pharaonis*, being dissected for *Mytilicola* spp. Nevertheless, we included a sample from one location because if it is present in this species, this could extend the occurrence range of the parasite. Bivalves were dissected in the laboratory under a dissecting microscope (10–30×) or with the help of a magnifying glass (10×) in order to screen for the presence of *Mytilicola* individuals. Parasites were isolated from their host and stored separately by individual host in 100% ethanol.

DNA extraction, amplification and sequencing. DNA was extracted from individual *Mytilicola* using either the QIAgen 96 DNeasy Blood & Tissue kit (Qiagen, Hilden, Germany) or the Zymo Research genomic DNA kit (the latter by Baseclear B.V., Leiden, the Netherlands). One to five *M. intestinalis* and one to eight *M. orientalis* per host were sequenced. All extractions were performed according to the protocols provided by the manufacturers. DNA concentrations were measured on a Nanodrop to confirm DNA quality and quantity. A 534 base pair (bp) fragment of the mitochondrial cytochrome-*c*-oxidase I region (COI) was amplified using the primer pair MOICOIf and MOICOIr for *M. intestinalis*⁶⁹ and a newly developed primer pair for *M. orientalis* (MoriCOI50f: 5'-TTG ATC GGG CTT AAT TGG-3' and MoriCOI50r: 5'-GAT CGG TTA ARA GCA TGG T-3'). The *M. orientalis* primers were developed in CLC Genomics Workbench 8.5.1 (CLCbio, Denmark, <https://www.qiagenbioinformatics.com/>) and were based on *M. orientalis* COI sequences from Elsner *et al.*⁷⁴.

For *M. intestinalis*, polymerase chain reaction (PCR) and Sanger sequencing using both forward and reverse primers were performed according to Goedknegt *et al.*⁶⁹ at Baseclear B.V. (Leiden, Netherlands). For *M. orientalis*, PCR was performed with HotStarTaq (Qiagen, Hilden, Germany) in 30 µl reaction volumes, adding 15 µl HotStarTaq Mastermix, 1.5 µl of each 10 µM primer, 11 µl H₂O and 1 µl of sample for each reaction. Amplification started with a heat-activation of 15 min at 95 °C, followed by 38 cycles of 95 °C for 30 s, annealing at 50 °C for 30 s and elongation at 72 °C for 60 s. The final extension step was at 72 °C for 10 min. Amplification success of all *M. orientalis* samples was checked with a QIAxcel electrophoresis system (Qiagen, Hilden, Germany). PCR purification and Sanger sequencing of *M. orientalis* samples were performed on both the forward and reverse strand at the Institute of Clinical Molecular Biology (Kiel, Germany).

Data analyses. We report parasite prevalence as the number of individual mussels or oysters infected with *M. intestinalis* or *M. orientalis* divided by the total number of mussels or oysters examined per location, and mean intensity as the mean number of *M. intestinalis* or *M. orientalis* within an infected mussel or oyster per location (*sensu* Margolis *et al.*⁷⁵). Part of the *M. orientalis* sample from Tavira (Portugal) was acquired through an anti-*Mytilicola* treatment of mussels using Dichlorvos Pestanal (DDVP, 30 mg per 1 liter of seawater)^{13,76}. Fifteen live *Mytilicola* specimens escaped the mussels during the recovery period shortly after the 4 h treatment. Prevalence and mean intensity (Table 1) for Tavira were calculated based on dissected mussels only.

Quality control of the sequences was performed in CLC Genomics Workbench 8.5.1 (for *M. orientalis*) or BioEdit 7.2.5⁷⁷ (for *M. intestinalis*), after which forward and reverse reads were assembled. We screened all chromatograms for double peaks and at least one of the forward and reverse sequences had no double peaks at any base in the sequence. Some of the North American samples failed to amplify or sequence entirely and were not considered further. COI sequences were cropped to 483 base pairs (bp) for *M. intestinalis* and to 476 bp for *M. orientalis*. Unique haplotypes were determined using DnaSP 5 (*M. orientalis*)⁷⁸ or using a custom Python 3.6 script (*M. intestinalis*) (GitHub: <https://github.com/pluttik/collarl>). Arlequin 3.5.1.2⁷⁹ was used to calculate pairwise population comparisons (10,000 permutations), population differentiation based on the mitochondrial *F*-statistic Φ_{ST} and conventional *F*-statistics F_{ST} (10,000 permutations), Analyses of MOlecular VAriance (AMOVA), molecular diversity indices, Tajima's D statistic⁸⁰ and to perform Fu's F_s tests^{81,82} for selective neutrality (10,000 simulated samples), mismatch distributions (10,000 permutations) and minimum spanning networks for both species. For neutral markers, Tajima's D and Fu's F_s can be used to detect changes in population size. Significantly negative D and F_s values can be interpreted as signatures of population expansion or, unless another independent marker has the same pattern, a past selective sweep^{81,82}. We calculated both Φ_{ST} and F_{ST} to detect any signs of possible population differentiation, as well as for easier comparison to other studies that use either or both fixation indices. In our analyses we only included locations with more than 15 *Mytilicola* individuals, with the exception of calculations for minimum spanning networks, in which all individuals were included. In addition to overall AMOVAs, we also calculated AMOVAs within putative native and introduced regions for both species, and hierarchical AMOVAs for Mediterranean *M. intestinalis* with two designs to test whether the overall population differentiation could be attributed to different regions within the Mediterranean Sea Basins. The first design tested the Gulf of Lion (Cassis, Istres, Rouet and Bouzigues) vs. the Ligurian Sea (Livorno) vs. the Adriatic Sea (Malinska and Marjan). In the second design, the location Cassis was added to the Ligurian Sea group instead of the Gulf of Lion group. This was done to account for the possibility that the location Cassis, which is east of Marseille and a known location for genetic breaks^{44–46}, belongs to the Italian group rather than to the group with more proximate locations within France. To test for differences in genetic diversity between species and regions, we fitted a linear model testing haplotype diversity (*h*) and nucleotide diversity (π) as a function of species (levels: *M. intestinalis* and *M. orientalis*), region (levels: putative native region, introduced region) and the interaction term species × region in the R statistical environment version 3.4.3⁸³.

Data Availability

Sequencing data is available on Genbank under the accession numbers MN334483–MN334508 for *M. orientalis* and MN334509–MN334526 for *M. intestinalis*.

References

- Ehrenfeld, J. G. Ecosystem consequences of biological invasions. *Annu. Rev. Ecol. Evol. Syst.* **41**, 59–80 (2010).
- Gallardo, B., Clavero, M., Sánchez, M. I. & Vilà, M. Global ecological impacts of invasive species in aquatic ecosystems. *Glob. Chang. Biol.* **22**, 151–163 (2015).
- Mooney, H. A. & Cleland, E. E. The evolutionary impact of invasive species. *Proc. Natl. Acad. Sci.* **98**, 5446–5451 (2001).
- Reaser, J. K. *et al.* Ecological and socioeconomic impacts of invasive alien species in island ecosystems. *Environ. Conserv.* **34**, 98–111 (2007).
- Suarez, A. V. & Tsutsui, N. D. The evolutionary consequences of biological invasions. *Mol. Ecol.* **17**, 351–360 (2008).
- Goedknecht, M. A. *et al.* Parasites and marine invasions: Ecological and evolutionary perspectives. *J. Sea Res.* **113**, 11–27 (2016).
- Barrett, S. C. Foundations of invasion genetics: the Baker and Stebbins legacy. *Mol. Ecol.* **24**, 1927–1941 (2015).
- Cristescu, M. E. Genetic reconstructions of invasion history. *Mol. Ecol.* **24**, 2212–2225 (2015).
- Poulin, R. Invasion ecology meets parasitology: Advances and challenges. *Int. J. Parasitol. Parasites Wildl.* **6**, 361–363 (2017).
- Caspers, H. Über Vorkommen und Metamorphose von *Mytilicola intestinalis* Steuer (Copepoda paras.) in der südlichen Nordsee. *Zool. Anz.* **126**, 161–171 (1939).
- Ellenby, C. A copepod parasite of the mussel new to the British fauna. *Nature* **159**, 645 (1947).
- Korringa, P. On the ecology and distribution of the parasitic copepod *Mytilicola intestinalis* Steuer. *Bijdr. tot Dierkd.* **38**, 47–57 (1968).
- Feis, M. E., Goedknecht, M. A., Thielges, D. W., Buschbaum, C. & Wegner, K. M. Biological invasions and host–parasite coevolution: different coevolutionary trajectories along separate parasite invasion fronts. *Zoology* **119**, 366–374 (2016).
- Feis, M. E., John, U., Lokmer, A., Luttkhuizen, P. C. & Wegner, K. M. Dual transcriptomics reveals co-evolutionary mechanisms of intestinal parasite infections in blue mussels *Mytilus edulis*. *Mol. Ecol.* **27**, 1505–1519 (2018).
- His, E. Observations relatives à l'infestation de *Crassostrea gigas* Thunberg par le copépode parasite *Mytilicola orientalis* Mori dans le Bassin d'Arcachon. *Cons. Int. Explor. mer, coquillages benthos C.M. K* **33**, 8 (1977).
- Odlaug, T. O. The effect of the copepod, *Mytilicola orientalis* upon the Olympia oyster. *Ostrea lurida*. *Trans. Am. microsc. Soc.* **65**, 311–317 (1946).
- Chew, K. K., Sparks, A. K. & Katkanský, S. C. First record of *Mytilicola orientalis* Mori in the California mussel *Mytilus californianus* Conrad. *J. Fish. Res. Bd. Can.* **21**, 205–207 (1964).
- Goedknecht, M. A. *et al.* Spillover but no spillback of two invasive parasitic copepods from invasive Pacific oysters (*Crassostrea gigas*) to native bivalve hosts. *Biol. Invasions* **19**, 365–379 (2017).
- Moehler, J., Wegner, K. M., Reise, K. & Jacobsen, S. Invasion genetics of Pacific oyster *Crassostrea gigas* shaped by aquaculture stocking practices. *J. Sea Res.* **66**, 256–262 (2011).
- Rohfritsch, A. *et al.* Population genomics shed light on the demographic and adaptive histories of European invasion in the Pacific oyster, *Crassostrea gigas*. *Evol. Appl.* **6**, 1064–1078 (2013).
- Pickett, T. & David, A. A. Global connectivity patterns of the notoriously invasive mussel, *Mytilus galloprovincialis* Lmk using archived CO1 sequence data. *BMC Res. Notes* **11**, 231 (2018).
- Śmietanka, B., Burzyński, A., Hummel, H. & Wenne, R. Glacial history of the European marine mussels *Mytilus*, inferred from distribution of mitochondrial DNA lineages. *Hered.* **113**, 250–258 (2014).
- Bolster, G. C. The biology and dispersal of *Mytilicola intestinalis* Steuer: a copepod parasite of mussels. *Fish. Investig. London* (1954).
- Pesta, O. Die Metamorphose von *Mytilicola intestinalis* Steuer. *Z. wiss. Zool.* **88**, 78–98 (1907).
- Cheng, T. C. Marine molluscs as hosts for symbioses with a review of known parasites of commercially important species. *Adv. Mar. Biol.* **5**, 728 (1967).
- Bernard, F. R. Incidence and effect of the copepod *Mytilicola orientalis* Mori in the Pacific oyster of British Columbia. *Fish. Res. Bd. Can. MS Rept.* **993**, 14 pp. (1968).
- Le Gall, J. Le Cope Rouge, *Mytilicola intestinalis* Steuer. Introduction 'Colloque du Cop Rouge'. *Rev. Trav. Off. Sci. Tech. Pêches Marit.* **17**, 5–7 (1951).
- Minchin, D., Duggan, C. B., Holmes, J. M. C. & Neiland, S. Introductions of exotic species associated with Pacific oyster transfers from France to Ireland. *Int. Counc. Explor. Sea Maric. Comm.* **F:27** (1993).
- Mori, T. *Mytilicola orientalis*, a new species of parasitic Copepoda. *Zool. Mag. Tokyo* **47**, 687–689, pls. 1–3 (1935).
- Nagasawa, K. & Nitta, M. Rediscovery of *Mytilicola orientalis* (Copepoda: Mytilicolidae) from wild Pacific oysters in *Crassostrea gigas* in Japan. *Biogeography* **16**, 49–51 (2014).
- Do, T. T. & Kajihara, T. Studies on parasitic copepod fauna and biology of *Pseudomyicola spinosus*, associated with blue mussel *Mytilus edulis* galloprovincialis in Japan. *Bull. Ocean Res. Institute, Univ. Tokyo* **23**, 1–63 (1986).
- Dollfus, R. P. Notules sur des copépodes de la faune française I–III. *Bull. la Société Zool. Fr.* **2**, 119–121 (1927).
- Korringa, P. & Lambert, L. Quelques observations sur la fréquence de *Mytilicola intestinalis* Steuer (Copepoda parasitica) dans les moules du littoral méditerranéen français. *Rev. Trav. Off. Sci. Tech. Pêches Marit.* **17**, 15–29 (1951).
- Brenner, M., Schulze, J., Fischer, J. & Wegner, K. M. First record of the parasitic copepod (*Mytilicola orientalis*) in blue mussels (*Mytilus* spp.) of the Baltic Sea. *Bioinvasion Rec.* (2019) *in press*.
- Ventilla, R. F. Recent developments in the Japanese oyster culture industry. *Adv. Mar. Biol.* **21**, 1–57 (1984).
- Kawamura, K., Miyake, T., Obata, M., Aoki, H. & Komaru, A. Population demography and genetic characteristics of the Pacific oyster *Crassostrea gigas* in Japan. *Biochem. Syst. Ecol.* **70**, 211–221 (2017).
- His, E. Observations préliminaires sur la présence de *Mytilicola orientalis* Mori (1935) chez *Crassostrea gigas* Thunberg dans le bassin d'Arcachon. *Bull. Soc. Géol. Amis du Muséum du Havre* **LXIV**, 7–8 (1977).
- His, E., Tige, G. & Rabouin, M. A. *Mytilicola orientalis* Mori: son action sur les huîtres du bassin d'Arcachon au cours de l'été et de l'automne 1977. *Cons. Int. Pour l'Exploitation la Mer* **K:14** (1978).
- Clanzig, S. Invertébrés d'introduction récente dans les lagunes méditerranéennes du Languedoc-Roussillon (France). *Bull. la Société Zool. Fr.* **114**, 151–152 (1989).
- Kovačić, I., Pavičić-Hamer, D., Pfannkuchen, M. & Usich, M. *Mytilus galloprovincialis* (Lamarck, 1819) as host of *Mytilicola orientalis* (Mori, 1935) in the northern Adriatic Sea: presence and effect. *Aquac. Int.* **25**, 211–221 (2016).
- Patarnello, T., Volckaert, F. A. M. J. & Castilho, R. Pillars of Hercules: is the Atlantic-Mediterranean transition a phylogeographical break? *Mol. Ecol.* **16**, 4426–4444 (2007).
- Borrero-Pérez, G. H., González-Wangüemert, M., Marcos, C. & Pérez-Ruzafa, A. Phylogeography of the Atlanto-Mediterranean sea cucumber *Holothuria (Holothuria) mammata*: the combined effects of historical processes and current oceanographical pattern. *Mol. Ecol.* **20**, 1964–1975 (2011).
- Ladoukakis, E. D., Saavedra, C., Magoulas, A., Zouros, E. & Mitochondrial, D. N. A. variation in a species with two mitochondrial genomes: the case of *Mytilus galloprovincialis* from the Atlantic, the Mediterranean and the Black Sea. *Mol. Ecol.* **11**, 755–769 (2002).
- Penat, G., Aurelle, D., Feral, J. P. & Chenuil, A. Planktonic larvae do not ensure gene flow in the edible sea urchin *Paracentrotus lividus*. *Mar. Ecol. Prog. Ser.* **480**, 155–170 (2013).
- Boissin, E., Egea, E., Feral, J. P. & Chenuil, A. Contrasting population genetic structures in *Amphipholis squamata*, a complex of brooding, self-reproducing sister species sharing life history traits. *Mar. Ecol. Prog. Ser.* **539**, 165–177 (2015).
- Cahill, A. E. *et al.* A multispecies approach reveals hot spots and cold spots of diversity and connectivity in invertebrate species with contrasting dispersal modes. *Mol. Ecol.* **26**, 6563–6577 (2017).

47. Johannesson, K. & André, C. Life on the margin: genetic isolation and diversity loss in a peripheral marine ecosystem, the Baltic Sea. *Mol. Ecol.* **15**, 2013–2029 (2006).
48. Galtier, N., Depaulis, F. & Barton, N. H. Detecting bottlenecks and selective sweeps from DNA sequence polymorphism. *Genetics* **155**, 981–987 (2000).
49. Bazin, E., Glémin, S. & Galtier, N. Population size does not influence mitochondrial genetic diversity in animals. *Science* **312**, 570–572 (2006).
50. Maggs, A. C. *et al.* Evaluating signatures of glacial refugia for North Atlantic benthic marine taxa. *Ecology* **89**, S108–S122 (2008).
51. Andreu, B. Dispersión de *Mytilicola intestinalis* Steuer en el mejillón cultivo a flote de la rías de Arosa y Vigo (NW de España). *Reun. Prod. Pesq.* **4**, 115–118 (1960).
52. Grainger, J. N. Notes on the biology of the copepod *Mytilicola intestinalis* Steuer. *Parasitology* **41**, 135–142 (1951).
53. Wonham, M. J. Mini-review: distribution of the Mediterranean mussel *Mytilus galloprovincialis* (Bivalvia: Mytilidae) and hybrids in the Northeast Pacific. *J. Shellfish Res.* **23**, 535–543 (2004).
54. Steuer, A. *Mytilicola intestinalis* n. gen. n. sp. aus dem Darne von *Mytilus galloprovincialis* Lam. *Zool. Anz.* **25**, 635–637 (1902).
55. Steuer, A. *Mytilicola intestinalis* n. gen. n. sp. Arb. Zool. Inst., Univ. Wien **15**, 1–46 (1905).
56. Galil, B. S. A sea under siege - alien species in the Mediterranean. *Biol. Invasions* **2**, 177–186 (2000).
57. Galil, B. S. *et al.* International arrivals: widespread bioinvasions in European Seas. *Ethol. Ecol. Evol.* **26**, 152–171 (2014).
58. Cole, H. A. & Savage, R. E. The effect of the parasitic copepod, *Mytilicola intestinalis* (Steuer) upon the condition of mussels. *Parasitology* **41**, 156–161 (1951).
59. Korringa, P. Over *Mytilicola intestinalis* (Copepoda parasitica) en enkele andere ongewenste vreemdeelingen in onze wateren. *Vakbl. Biol.* **31**, 63–74 (1951).
60. Meyer-Waarden, P. F. & Mann, H. Untersuchungen über die Bestände von *Mytilus galloprovincialis* an der italienischen Küste auf ihren Befall mit *Mytilicola intestinalis* (Copepoda parasitica). *Boll. Pesca Piscic. Idrobiol., Roma* **8**, 201–220 (1953).
61. Cerruti, A. La pesca nei mari e nelle acque interne d'Italia. *Molluschicoltura* **2**, 365–391 (1932).
62. Meyer-Waarden, P. F. & Mann, H. Investigations on the populations of *Mytilus galloprovincialis* on the coasts of Italy, with reference to their infection by *Mytilicola intestinalis*. *Boll. Pesca, Piscic. e Idrobiol.* **8**, 201–220 (1954).
63. Canestri Trotti, G., Bacarani, E. M., Giannetto, S., Giuffrida, A. & Paesanti, F. Prevalence of *Mytilicola intestinalis* (Copepoda: Mytilicolidae) and *Urustoma cyprinae* (Turbellaria: Hypotrichinidae) in marketable mussels *Mytilus galloprovincialis* in Italy. *Dis. Aquat. Organ.* **32**, 145–149 (1998).
64. Reise, K., Olenin, S. & Thielges, D. W. Are aliens threatening European aquatic coastal ecosystems? *Helgol. Mar. Res.* **60**, 77–83 (2006).
65. Hrs-Brenko, M. *Mytilicola intestinalis* Steuer as a parasite of mussels in natural beds and artificial rearing places of the Eastern Adriatic. *Acta Adriat.* **11**, 161–165 (1964).
66. Carlton, J. T. Biological invasions and cryptogenic species. *Ecology* **77**, 1653–1655 (1996).
67. South, A. rworldmap: a new R package for mapping global data. *R J.* **3**, 35–43 (2011).
68. Wickham, H. *ggplot2: Elegant Graphics for Data Analysis*. (Springer-Verlag New York, 2009).
69. Goedknecht, M. A., Thielges, D. W., van der Meer, J., Wegner, K. M. & Luttikhuis, P. C. Cryptic invasion of a parasitic copepod: compromised identification when morphologically similar invaders co-occur in invaded ecosystems. *PLoS One* **13**, e0193354 (2018).
70. Aguirre-Macedo, M. L. & Kennedy, C. R. Diversity of metazoan parasites of the introduced oyster species *Crassostrea gigas* in the Exe Estuary. *J. Mar. Biol. Ass. U.K.* **79**, 57–63 (1999).
71. Rementeria, A. *et al.* Assessment of health status of oysters (*Crassostrea gigas*) exposed to environmentally relevant concentrations of Ag and Cu in brackish waters. *J. Sea Res.* **130**, 229–238 (2017).
72. Dare, P. J. The susceptibility of seed oysters of *Ostrea edulis* L. and *Crassostrea gigas* Thunberg to natural infestation by the copepod *Mytilicola intestinalis* Steuer. *Aquaculture* **26**, 201–211 (1982).
73. Feis, M. E. Host–parasite co-evolution and co-infection of invasive parasitic *Mytilicola* copepods in blue mussel hosts. *PhD thesis* (Kiel University, 2018).
74. Elsner, N. O., Jacobsen, S., Thielges, D. W. & Reise, K. Alien parasitic copepods in mussels and oysters of the Wadden Sea. *Helgol. Mar. Res.* **65**, 299–307 (2010).
75. Margolis, L., Esch, G. W., Holmes, J. C., Kuris, A. M. & Schad, G. A. The use of ecological terms in parasitology (report of an ad hoc committee of the American Society of Parasitologists). *J. Parasitol.* **68**, 131–133 (1982).
76. Bateau, D., Le Cogutic, Y., Mailhe, E. & Grizel, H. Mussel (*Mytilus edulis*) treatment against the red copepod *Mytilicola intestinalis*. *Aquaculture* **107**, 165–169 (1992).
77. Hall, T. A. BioEdit: a user-friendly biological sequence alignment editor and analysis program for Windows 95/98/NT. *Nucl. Acids Symp. Ser.* **41**, 95–98 (1999).
78. Librado, P. & Rozas, J. DnaSP v5: A software for comprehensive analysis of DNA polymorphism data. *Bioinformatics* **25**, 1451–1452 (2009).
79. Excoffier, L. & Lischer, H. E. L. Arlequin suite ver 3.5: A new series of programs to perform population genetics analyses under Linux and Windows. *Mol. Ecol. Resour.* **10**, 564–567 (2010).
80. Tajima, F. Statistical method for testing the neutral mutation hypothesis by DNA polymorphism. *Genetics* **123**, 585–595 (1989).
81. Fu, Y.-X. Statistical tests of neutrality of mutations against population growth, hitchhiking and background selection. *Genetics* **147**, 915–925 (1997).
82. Fu, Y.-X. & Li, W.-H. Statistical tests of neutrality of mutations. *Genetics* **133**, 693–709 (1993).
83. RCore Team. R: A language and environment for statistical computing. (2017).

Acknowledgements

Financial support for this study was provided by the Special Program 1399 on host-parasite coevolution of the Deutsche Forschungsgemeinschaft (DFG) (grant number We4641/1-2) to KMW. MEF is grateful for the MARS Travel Award 2016. MAG, DWT and PCL acknowledge support from Nederlandse Organisatie voor Wetenschappelijk Onderzoek (NWO) and the German Bundesministerium für Bildung und Forschung (BMBF) (grant number 839.11.002). We thank Baseclear B.V. in Leiden for extraction, PCR and Sanger sequencing (*M. intestinalis*). We thank the Institute of Clinical Molecular Biology in Kiel for providing Sanger sequencing (*M. orientalis*) as supported in part by the DFG Cluster of Excellence “Inflammation at Interfaces” and “Future Ocean”. We thank the technicians S. Greve, S. Arndt and T. Henke for technical support. We thank Shuichiro Hashimoto, H. Uchiumi, Sadaharu Iwasaki, Hiroshi Miyake, Frederico Batista, Ole Müller, Ellen van Veenendaal and Reinier Nauta for support in the field. We thank Camille de la Vega, Benoit Lebreton, Chiara Manfrin, Martin Paar, Andreas Pansch, Makoto Urata and the divers of AWI Helgoland for providing mussels or oysters, and Xavier de Montaudouin for sending a population sample. MEF and YK thank the Kitasato University School of Marine Bioscience for hosting us and for the use of their facilities in Ofunato. KMW and LNSS thank Neville Winchester,

Zoe Cooper, Neil Borecky, Margaret Shama and the Dhillon and Thompson families for providing equipment, helping in the field and hosting us in Canada. We thank Vasilis Gerovasileiou, Dario Fiorentino, Julia Karagicheva and Eldar Rakhimberdiev for their help with understanding literature published in Greek, Italian and Russian, respectively.

Author Contributions

The study was planned and supervised by M.E.F., K.M.W. and P.C.L. Collection of samples was conducted by M.E.F., M.A.G., Y.K., S.O., D.W.T., O.B., A.C., I.A., L.N.S.S., K.M.W., P.C.L. Molecular laboratory work was performed by M.E.F., L.G., O.B., P.C.L. Literature survey was done by M.E.F. with help from M.A.G. Statistical analyses were performed by M.E.F. and P.C.L. The initial draft was written by M.E.F. with support of P.C.L. All authors reviewed the manuscript.

Additional Information

Supplementary information accompanies this paper at <https://doi.org/10.1038/s41598-019-48928-1>.

Competing Interests: The authors declare no competing interests.

Publisher's note: Springer Nature remains neutral with regard to jurisdictional claims in published maps and institutional affiliations.



Open Access This article is licensed under a Creative Commons Attribution 4.0 International License, which permits use, sharing, adaptation, distribution and reproduction in any medium or format, as long as you give appropriate credit to the original author(s) and the source, provide a link to the Creative Commons license, and indicate if changes were made. The images or other third party material in this article are included in the article's Creative Commons license, unless indicated otherwise in a credit line to the material. If material is not included in the article's Creative Commons license and your intended use is not permitted by statutory regulation or exceeds the permitted use, you will need to obtain permission directly from the copyright holder. To view a copy of this license, visit <http://creativecommons.org/licenses/by/4.0/>.

© The Author(s) 2019