



**HAL**  
open science

## **Graphiola fimbriata: the first species of Graphiolaceae (Exobasidiales, Basidiomycota) described only based on its yeast stage**

Shaghayegh Nasr, Matthias Lutz, Mohammad Ali Amoozegar, Véronique Eparvier, Didier Stien, Seyed Abolhassan Shahzadeh Fazeli, Andrey Yurkov

### ► To cite this version:

Shaghayegh Nasr, Matthias Lutz, Mohammad Ali Amoozegar, Véronique Eparvier, Didier Stien, et al.. Graphiola fimbriata: the first species of Graphiolaceae (Exobasidiales, Basidiomycota) described only based on its yeast stage. Mycological Progress, 2019, 18 (3), pp.359-368. 10.1007/s11557-018-1450-1 . hal-02342188

**HAL Id: hal-02342188**

**<https://hal.sorbonne-universite.fr/hal-02342188>**

Submitted on 31 Oct 2019

**HAL** is a multi-disciplinary open access archive for the deposit and dissemination of scientific research documents, whether they are published or not. The documents may come from teaching and research institutions in France or abroad, or from public or private research centers.

L'archive ouverte pluridisciplinaire **HAL**, est destinée au dépôt et à la diffusion de documents scientifiques de niveau recherche, publiés ou non, émanant des établissements d'enseignement et de recherche français ou étrangers, des laboratoires publics ou privés.

1 ***Graphiola fimbriata* sp. nov. is the first anamorphic species of Graphiolaceae**

2 **(Exobasidiales, Basidiomycota)**

3  
4 Shaghayegh Nasr<sup>1</sup>, Matthias Lutz<sup>2</sup>, Mohammad Ali Amoozegar<sup>1, 3</sup>, Véronique Eparvier<sup>4</sup>, Didier  
5 Stien<sup>4,5</sup>, Seyed Abolhassan Shahzadeh Fazeli<sup>1,6</sup>, Andrey Yurkov<sup>7</sup>

6  
7 <sup>1</sup>Microorganisms Bank, Iranian Biological Resource Center (IBRC), ACECR, Tehran, Iran; e-  
8 mail: [nasr@ibrc.ir](mailto:nasr@ibrc.ir); [shaghayegh2963@yahoo.com](mailto:shaghayegh2963@yahoo.com)

9  
10 <sup>2</sup>Plant Evolutionary Ecology, Institute of Evolution and Ecology, University of Tübingen, Auf  
11 der Morgenstelle 5, D-72076 Tübingen, Germany; e-mail: [matthias.lutz@uni-tuebingen.de](mailto:matthias.lutz@uni-tuebingen.de)

12  
13 <sup>3</sup>Extremophiles Laboratory, Department of Microbiology, Faculty of Biology and Center of  
14 Excellence in Phylogeny of Living Organisms, College of Science, University of Tehran,  
15 Tehran, Iran; e-mail: [amoozegar@ut.ac.ir](mailto:amoozegar@ut.ac.ir)

16 <sup>4</sup>French National Centre for Scientific Research, Institut de Chimie des Substances Naturelles,  
17 UPR 2301, Université Paris-Saclay, 1 avenue de la Terrasse, 91198 Gif-sur-Yvette, France; e-  
18 mail: [veronique.eparvier@cns.fr](mailto:veronique.eparvier@cns.fr); [didier.stien@cns.fr](mailto:didier.stien@cns.fr)

19  
20 <sup>5</sup>Sorbonne Université, CNRS, Laboratoire de Biodiversité et Biotechnologie Microbienne,  
21 USR3579, Observatoire Océanologique, 66650 Banyuls-sur-Mer, France; e-mail:  
22 [didier.stien@cns.fr](mailto:didier.stien@cns.fr)

23  
24 <sup>6</sup>Department of Molecular and Cellular Biology, Faculty of Basic Sciences and Advanced  
25 Technologies in Biology, University of Science and Culture, Tehran, Iran; e-mail:  
26 [shfazeli@yahoo.com](mailto:shfazeli@yahoo.com); [fazeli@ibrc.ir](mailto:fazeli@ibrc.ir)

27  
28 <sup>7</sup>Leibniz Institute DSMZ-German Collection of Microorganisms and Cell Cultures,  
29 Inhoffenstraße 7B, 38124 Brunswick, Germany; e-mail: [andrey.yurkov@dsmz.de](mailto:andrey.yurkov@dsmz.de)

30 **Abstract**

31 The systematic position of three yeast strains isolated from a plant cell culture, a piece of termite  
32 nest, and as a foliar endophyte of *Coffea arabica*, respectively, is evaluated using morphological,  
33 physiological, and phylogenetical analyses. In culture, all three isolates produced white, pale  
34 orange to pink colored colonies of cylindrical cells with monopolar budding and pseudohyphae.  
35 Standard phenotypic, biochemical, physiological characterization and phylogenetic analyses of  
36 the combined 26S rRNA gene (D1/D2 domains) and ITS region sequences showed the  
37 conspecificity of these isolates and suggest their placement within the Exobasidiales  
38 (Ustilaginomycotina) as a sister lineage of the sampled and sequenced *Graphiola* species. Here,  
39 we describe this species as *Graphiola fimbriata* sp. nov. MycoBank MB 825077 (holotype:  
40 PC1<sup>T</sup>; ex-type cultures: IBRC-M 30158<sup>T</sup> = CBS 13945<sup>T</sup> = DSM 104832<sup>T</sup>). This is the first  
41 anamorphic saprobic species described in the genus *Graphiola*. The description of the genus  
42 *Graphiola* is therefore emended to allow species known only from a saprobic state.

43

44 **Key words:** 1 new taxon, *Graphiola fimbriata* sp. nov., Asexual state, Morphological  
45 characterization, Phylogenetic analyses, Yeast

46

47

48

49

50

51

52

53 **INTRODUCTION**

54 Fungi with yeast and yeast-like morphology are present within all three main lineages of  
55 Basidiomycota, namely the subphyla Agaricomycotina, Pucciniomycotina, and  
56 Ustilaginomycotina (Sampaio 2004, Boekhout et al. 2011, Kurtzman & Boekhout 2017). Yeast  
57 and filamentous taxa are often intermixed as revealed by recent phylogenetic studies (Liu et al.  
58 2015a, 2015b, Wang et al. 2015a, 2015b, 2015c). With a few exceptions, a transition from  
59 filamentous to yeast stage is often associated with the change from a parasitic to saprobic life  
60 style (Begerow et al. 2017). The subphylum Ustilaginomycotina comprises a highly diverse  
61 assemblage of fungi, including teliosporic plant pathogens, non-teliosporic plant pathogens,  
62 anamorphic plant pathogens, as well as endophytic, lipophilic, saprobic, and zoophilic yeasts  
63 (Begerow et al. 2014). The orders Malasseziales, Moniliellales, and Violaceomycetales include  
64 exclusively yeast species of the genera *Malassezia*, *Moniliella*, and *Violaceomyces*, respectively  
65 (Wang et al. 2014, Albu et al. 2015), while the remaining yeasts and yeast-like fungi are  
66 scattered amongst the remaining orders of Ustilaginomycotina, with the exception of the  
67 members of Doassansiales, Tilletiales and Uleiellales for which no yeasts have been discovered  
68 so far.

69 The anamorphic saprobic members of Ustilaginomycotina have previously been classified  
70 mainly in the polyphyletic genera *Pseudozyma* and *Tilletiopsis* (Begerow et al. 2000, Sampaio  
71 2004, Kurtzman et al. 2011, 2015), and later in several monophyletic genera *Acaromyces*,  
72 *Farysizyma*, *Fereydounia*, *Jaminaea*, *Meira*, and *Sympodiomyopsis* (Sugiyama et al. 1991,  
73 Boekhout et al. 2003, Inácio et al. 2008, Sipiczki & Kajdacsi 2009, Nasr et al. 2014). Sexual and  
74 asexual morphs in Ustilaginomycotina were recently grouped together in order to unify the  
75 taxonomy of plant parasites and species known only from their yeast states (Piątek et al. 2015,

76 Wang et al. 2015a, Kijpornyongpan & Aime 2016). As the result, several monophyletic genera  
77 (*Dirkmeia*, *Golubevia*, *Kalmanozyma*, and *Robbauera*) were erected to accommodate species  
78 previously classified in the genera *Pseudozyma* and *Tilletiopsis* (Wang et al. 2015a). The current  
79 classification scheme recommends that each novel lineage not linked with a teleomorphic genus  
80 or recognized anamorphic genus should be assigned to a new genus. The subphylum  
81 Ustilaginomycotina comprises the least number of yeast and yeast-like species (71) compared to  
82 the two other subphyla of Basidiomycota (Wang et al. 2015a). However, studies that involved  
83 environmental sequencing suggest a much greater, unexplored diversity of fungi in this group  
84 (e.g., Richards et al. 2012, Nasanit et al. 2015, Dunthorn et al. 2017, Jimu et al. 2017).

85 In the course of independent studies two yeast strains have been isolated. The first culture (PC1)  
86 was isolated in the Iranian Biological Resource Center (IBRC) from a contaminated plant  
87 culture, and the second isolate (SNB-CN72) was obtained from a nest of the termite species  
88 *Nasutitermes corniger* harvested in Rémire-Montjoly, French Guiana. Phylogenetic analyses of  
89 the ITS region and the D1/D2 domains of the LSU rRNA gene placed the strains within  
90 Graphiolaceae (Exobasidiomycetes, Exobasidiales) close to plant parasites of the genus  
91 *Graphiola*, and revealed relatedness to a third yeast isolate (IBL 03150) reported by Posada et al.  
92 (2007) and deposited in the CBS yeast collection of the Westerdijk Fungal Biodiversity Institute,  
93 Utrecht, The Netherlands. Species in the plant pathogenic genus *Graphiola* are traditionally  
94 circumscribed based on their host spectrum and symptoms, and nucleotide sequence data for  
95 these fungi are rare (Wang et al. 2015a).

96 The aim of the study was to characterise the yeast-like isolates and determine their phylogenetic  
97 placement, incorporating morphological, physiological, and molecular data yet available for  
98 members of the genus *Graphiola*.

## 100 MATERIALS AND METHODS

### 101 Sample collection and isolation

102 A plant cell culture of an unidentified plant species mixed with a yeast strain was obtained from  
103 the plant bank section of the Iranian Biological Resource Center (IBRC) in 2013 (strain  
104 designation: PC1). Another strain was isolated from a piece of *Nasutitermes corniger* nest  
105 collected in Rémire-Montjoly, (Cayenne, French Guiana) in July 2011 (strain designation: SNB-  
106 CN72; Nirma et al. 2013, 2015). A third strain was obtained from the CBS yeast collection of the  
107 Westerdijk Fungal Biodiversity Institute, Utrecht, The Netherlands (original strain designation:  
108 IBL 03150). It was isolated as foliar endophyte of *Coffea Arabica* (Posada et al. 2007).  
109 Designations and GenBank accession numbers of the yeast strains used in this study are given in  
110 Table 1.

111 Cultures were maintained on YPG agar medium (0.5% yeast extract, 1% peptone, 2% glucose,  
112 2% agar, w/v) at 25 °C during experiments.

113 To expand the ITS sequence sampling for molecular phylogenetic analyses a specimen of the  
114 plant parasitic genus *Graphiola* was additionally used and newly sequenced: *Graphiola*  
115 *phoenicis* (Moug. ex Fr.) Poit. on *Phoenix reclinata* Jacq., South Africa, Kwa Zulu-Natal,  
116 Durban, Yellowwood Park, Kenneth Stainbank Nature Reserve, 14 Feb. 2012, leg. A.R. Wood  
117 883, KR-M-0042315.

118

### 119 Morphological examination

120 Colony morphology images were taken using a stereo microscope coupled with the Nikon zoom  
121 digital camera. In addition, scanning electron microscopy was performed on the isolate using a

122 VEGA3-TESCAN SEM instrument (Van Wyk & Wingfield 1994). Briefly, the cells were fixed  
123 in 3.0%, 0.1 M, pH 7.0 sodium phosphate-buffered glutaraldehyde for 3 h at room temperature,  
124 followed by 1 h fixation in 2% osmium tetroxide. The cells were dehydrated by increasing  
125 ethanol concentrations (30%, 50%, 70%, 90%, and 96%) for 30 min and two 30 min washes in  
126 100% ethanol. The standard characterization of the yeast isolates was performed according to  
127 methods described earlier (Barnett et al. 2000, Kurtzman et al. 2011). Assimilation of carbon and  
128 nitrogen sources was carried out on solid and in liquid media, respectively.

129

### 130 **DNA extraction, PCR, and sequencing**

131 Nuclear DNA was extracted by the method of Hanna & Xio (2006). For the *Graphiola phoenicis*  
132 specimen, the genomic DNA was isolated directly from the herbarium specimen. The 5'-end  
133 (D1/D2 region) of the nuclear large subunit ribosomal DNA (LSU) and the ITS 1 and ITS 2  
134 regions of the nuclear rDNA including the 5.8S rDNA (ITS) were amplified and sequenced using  
135 primer pairs NL1 (5'GCATATCAATAAGCGGAGGAAAAG-3') and NL4 (5'-  
136 GGTCCGTGTTTCAAGACGG3') (Kurtzman & Robnett 1998) and ITS1 (5'-  
137 TCCGTAGGTGAACCTGCGG-3') and ITS4 (5'-TCCTCCGCTTATTGATATGC-3') (White et  
138 al. 1990), respectively. DNA sequences determined for this study were deposited in GenBank  
139 (accession numbers are given in Figs 1 & 2 and in Table 1. Additional sequences of *Graphiola*  
140 *cylindrica* and *G. phoenicis* were obtained from GenBank and the public catalogue of the NITE  
141 Biological Resource Center collection (NBRC), Japan.

142

### 143 **Phylogenetic analyses**

144 To elucidate the phylogenetic position of the isolated strains their sequences were analysed  
145 within a LSU and a concatenated ITS + LSU dataset. Since preliminary analyses and Blast  
146 searches (Altschul et al. 1997) revealed an affinity of the stains to the order Exobasidiales (class  
147 Exobasidiomycetes), the LSU dataset was reduced to members of the Exobasidiales and some  
148 representatives of the Ustilaginomycetes were used as an outgroup. Isolates and clones, for  
149 which only ITS sequences were available, were analysed in the LSU + ITS dataset. If present in  
150 GenBank sequences of the respective type species were used. Additionally sequences of all  
151 available brachybasidiaceous species and all available sequences clustering within the  
152 Graphiolaceae including sequences from the Biological Resource Center, NITE, Japan were  
153 added.

154 GenBank accession numbers of the sequences used for both the LSU and ITS+LSU dataset  
155 (Begerow et al. 1997, 2001, 2002, Guo et al. 2001, Boekhout et al. 2003, Castlebury et al. 2005,  
156 Stoll et al. 2005, Yasuda et al. 2005, 2006, Posada et al. 2007, Tanaka et al. 2008, Piepenbring et  
157 al. 2010, 2012, Yuan et al. 2011, Jusino et al. 2015, Urbina et al. 2016) are given in Figs 1 & 2.

158 Sequence alignment was obtained independently for both the LSU dataset and the ITS and LSU  
159 part of the ITS+LSU dataset using MAFFT 7.313 (Kato & Standley 2013) using the L-INS-i  
160 option. To obtain reproducible results, manipulation of the alignments by hand as well as manual  
161 exclusion of ambiguous sites were avoided as suggested by Gatesy et al. (1993) and Giribet and  
162 Wheeler (1999), respectively. Instead, highly divergent portions of the alignments were omitted  
163 using GBlocks 0.91b (Castresana 2000) with the following options for the LSU dataset:  
164 ‘Minimum Number of Sequences for a Conserved Position’: 20, ‘Minimum Number of  
165 Sequences for a Flank Position’: 20, ‘Maximum Number of Contiguous Non-conserved  
166 Positions’: 8, ‘Minimum Length of a Block’: 5, and ‘Allowed Gap Positions’ to ‘With half’, for



167 the ITS part of the ITS+LSU dataset: 11/11/8/5/‘With half’ and for the LSU part of the ITS+LSU  
168 dataset: 12/12/8/5/‘With half’. After alignment the ITS and LSU part of the ITS+LSU dataset  
169 were concatenated. The resulting alignments [LSU dataset: new number of positions: 591 (32%  
170 of the original 1801 positions), number of variable sites: 279; ITS+LSU dataset: new number of  
171 positions: 1121 (34% of the original 3264 positions), number of variable sites: 468] were used  
172 for phylogenetic analyses using a Maximum Likelihood (ML) and a Bayesian Approach (BA)  
173 following Vasighzadeh et al. (2014).

174 For the LSU dataset trees were rooted with the ustilaginomycetous species *Urocystis ficariae* and  
175 *Ustilago hordei*, for the ITS+LSU dataset trees were rooted with the brachybasidiaceous species  
176 *Dicellomyces gloeosporus* and *Meira geulakonigii*.

177 Metabolite profiling analysis was carried out for the three yeast strains and the results are  
178 presented as supplementary data.

179

## 180 **RESULTS**

### 181 **Morphological examination**

182 Morphology of the strains IBL 03150, PC1, and SNB-CN72 showed no significant differences,  
183 results are included in the species description.

184 Metabolite profiling with UHPLC-MS was carried out for the three yeast strains and the results  
185 are provided in supplementary data. In the absence of metabolic data from closely related  
186 species, the analysis of UHPLC-MS profiles was restricted to the tree strains. We observed that  
187 the culture medium impacted more significantly on the profiles than the nature of the strain  
188 (Supplementary data). Hierarchical clustering analyses (HCA) conducted on the 3 (N) × 29 (X)

189 matrix of merged profiles showed that strains PC1 and IBL 03150 are more alike than SNB-  
190 CN72 (Supplementary data).

191

## 192 **Phylogenetic analyses**

193 The different runs of the BA that were performed and the ML analyses yielded consistent  
194 topologies. To illustrate the results the consensus trees of one run of the BA of the LSU and the  
195 concatenated ITS+LSU dataset are presented (Figs 1 & 2). Using the ustilaginomycetous species  
196 as outgroup in the LSU analysis, the clades in the phylogenetic tree were congruent to the  
197 families discussed in Begerow et al. (2014). In all analyses the sequences of the yeast isolates  
198 clustered within the Exobasidiales together with the sequence MF334501 from an uncultured  
199 fungus clone forming the sister lineage of the sampled *Graphiola* spp. of which the *G. phoenicis*  
200 cluster included several sequences of yeast isolates and uncultured fungus clones, respectively.  
201 The clade comprising *Graphiola cylindrica*, *G. geonomae*, *G. phoenicis*, and the yeast isolates  
202 received good statistical support (BA: 100%, ML: 93%). The yeast isolates branched first in the  
203 *Graphiola* clade and were placed sister to *G. cylindrica*, *G. geonomae*, and *G. phoenicis*.  
204 Combined ITS+LSU analyses (Fig. 2) revealed the same groups and relations including more  
205 sequences from *Graphiola* spp. as well as from the studied yeast isolates and uncultured fungus  
206 clones. The three strains shared identical LSU sequences and showed 5 variable positions (2  
207 substitutions and 3 indels) in the ITS region.

208

## 209 **TAXONOMY**

210 ***Graphiola* Poit., Ann. Sci. Nat. (Paris): 473 (1824) emend.** “S. Nasr, M. Lutz, D. Stien & A.  
211 Yurkov”

212 According to the current genus concept of *Graphiola* (Piepenbring et al. 2012), the genus  
213 comprises plant pathogens on palms (Arecaceae). Tubaki & Yokohama (1971) and Oberwinkler  
214 et al. (1982) obtained and studied *Graphiola phoenicis* in culture. They provided also the  
215 diagnosis of this species, including morphological and physiological properties observed in  
216 culture. Emendation of the diagnosis of the genus *Graphiola* is proposed to allow classification  
217 of asexual, known only from a saprobic state yeast species in the genus.

218 Sexual reproduction is observed in some species. Fungi are dimorphic with a filamentous sexual  
219 form parasitizing on plants and free-living saprobic yeast states. On malt extract, colonies are  
220 white, pale orange to pink in color. Budding cells are present in culture. Colonies are white, pale  
221 orange to pink in color. Ballistoconidia are not produced. Pseudohyphae may be present in  
222 cultures. Fermentation is absent. DBB reaction is positive. Urease activity is positive.

223

224 ***Graphiola fimbriata*** S. Nasr, M. Lutz, D. Stien & A. Yurkov, sp. nov. (Fig. 3)

225 MycoBank MB 825077

226 *Etymology*: Referring to the margin of the colonies.

227

228 *Description*: After three days on YPG agar at 25 °C, the cells are cylindrical, 1-2.5 × 4-8.5 µm,  
229 and occur single or in small chains. Budding is monopolar. After five days, the colony is white,  
230 convex, and the margin is filiform. Pellicles are formed on liquid media. After one week at 25 °C  
231 on MEA and Cornmeal agar, the slide culture undifferentiated pseudohyphae are formed.  
232 Fermentation is negative. The following compounds are assimilated: glucose, sucrose, maltose,  
233 trehalose, melezitose, D-xylose, raffinose, L-arabinose, D-mannitol, myo-inositol, D-ribose and  
234 arbutin; assimilation of salicin, glycerol and cellobiose is weak. No growth occurs on galactose,

235 lactose, L-rhamnose, melibiose, inulin, D-arabinose, soluble starch, ethanol, methanol, DL-  
236 lactate, succinate, citrate and n-hexadecane. Sodium nitrate, potassium nitrate, L-lysine,  
237 Ethylamine hydrochloride (variable) and cadaverine dihydrochloride (variable) are assimilated.  
238 No growth occurs on glucosamine, imidazole, creatine or creatinine. Growth in vitamin-free  
239 medium is positive. Growth at 15 °C, 25 °C, 30 °C, and 34 °C is positive but not at 4 °C, 37 °C  
240 and 40 °C. Growth occurs on YM agar supplemented with 5% (w/v) NaCl, 10 % (w/v) NaCl but  
241 not on YM agar with 16% (w/v) NaCl. Starch-like compounds are not produced. No growth  
242 occurs on media supplemented with 0.01% and 0.1% cycloheximide, and 1% acetic acid. The  
243 diazonium blue B reaction is weakly positive. Urease activity is positive.

244 Molecular characteristics: nucleotide sequences of ITS and LSU (D1/D2 domains) rDNA  
245 sequences are deposited in GenBank (Table 1.)

246 Deposits: holotype, PC1<sup>T</sup> (= IBRC-M 30158<sup>T</sup>) isolated as a contaminant of an unidentified plant  
247 culture, preserved in a metabolically inactive state at the Iranian Biological Resource Centre,  
248 Teheran (holotype), Iran. Ex-type cultures are deposited in the CBS yeast collection of the  
249 Westerdijk Fungal Biodiversity Institute, Utrecht, The Netherlands (= CBS 13945<sup>T</sup>) and in the  
250 German Collection of Microorganisms and Cell Cultures, Braunschweig, Germany (DSM  
251 104832<sup>T</sup>).

252 Strain examined: PC1<sup>T</sup>, SNB-CN72 (= DSM 104833), IBL 03150

253

## 254 **DISCUSSION**

255 Morphological and physiological characteristics of the three yeast isolates examined in this study  
256 are uniform, differences in ITS and LSU sequences are low all that suggesting assignment to a  
257 single species. Molecular phylogenetic analyses reveal the three yeast isolates within the

258 Graphiolaceae as a sister lineage of *Graphiola cylindrica*, *G. geonomae*, and *G. phoenicis*. Thus,  
259 we propose *Graphiola fimbriata* sp. nov. to accommodate the three yeast strains. On the basis of  
260 the pair-wise sequence similarities (ITS and D1/D2 regions) and subsequent phylogenetic  
261 analyses (Figs 1 & 2), the novel species differs from all other *Graphiola* species.

262 We also emend the description of the genus *Graphiola* to allow the inclusion of species known  
263 from saprobic state only (see Taxonomy section).

264 The ecology and distribution range of the novel species is unknown. All described *Graphiola*  
265 species are plant pathogens on palms (Arecaceae). We hypothesize that the novel species is  
266 probably associated with plants, as also suggested by the origin of the studied isolates and  
267 closely related culture Exobasidiomycetidae sp. AUMC 10262 (KX011608) from the palm  
268 weevil *Rhynchophorus ferrugineus* that infests palms, which is a primary host of *Graphiola*.  
269 Although the novel species is known from its asexual state, it is most likely that it has a host like  
270 all other *Graphiola* species. Widespread transcontinental transfer of plants results in a global  
271 dissemination of plant pathogens and crop pests (Bebber 2015, Hurley et al. 2016). Among them,  
272 fungal pathogens currently lead the global invasion of agriculture, despite their more restricted  
273 host range (Bebber et al. 2014, Wingfield et al. 2017). In our study, a new species of the plant  
274 pathogenic genus *Graphiola* was identified over a broad geographic range that includes the Old  
275 World (Iran and Egypt), tropical Asia and the Americas (French Guiana and USA). It is very  
276 likely that the ongoing transport of plants and pests promoted dissemination of *Graphiola*  
277 *fimbriata* between continents, localities, and habitats.

278 It cannot be precluded that *Graphiola fimbriata* represents the anamorphic stage of a palm  
279 pathogen of which no sequence data are available. Of the 12 *Graphiola* species described  
280 (Piepenbring et al. 2012) only three are represented by sequence data in GenBank. Moreover

281 species diversity seems underestimated in the genus *Graphiola*. Assuming that its host  
282 specificity developed to the same degree shown for other plant pathogens (Piątek et al. 2013,  
283 Savchenko et al. 2014, Vasighzadeh et al. 2014, Choi & Thines 2015, Scholler et al. 2016), the  
284 number of 12 *Graphiola* species on 38 palm species from 21 plant genera (Farr & Rossman n.d.,  
285 Piepenbring et al. 2012) is lower than in other known plant-parasite systems. Intensive sampling  
286 and molecular analyses were used successfully in other groups to link anamorph and teleomorph  
287 stages (Sampaio 2004, Boekhout et al. 2006, Inácio et al. 2008, Wang et al. 2015a, Kruse et al.  
288 2017, Piątek et al. 2017). However, both sexual and asexual species are yet strongly under  
289 sampled in many lineages (Liu et al. 2015a, Wang et al. 2015a, Wang et al. 2015b). Although  
290 these studies unified systematics of plant parasites and yeast taxa, the results strongly suggest  
291 that the available genetic data is insufficient to resolve anamorph-teleomorph relationships in  
292 sister lineages (e.g., Boekhout et al. 2006, Kruse et al. 2017).

293 The lack of sequence data of sexual species also complicates biodiversity assessments and new  
294 species discovery. With this study we provide the first overview on *Graphiola* diversity from  
295 sequence data available in public databases. We propose new species *Graphiola fimbriata* to  
296 accommodate yeasts from several localities and habitats. Our results show that sequences related  
297 to *Graphiola* species are rapidly accumulating in public databases as taxonomically unassigned  
298 isolates and clones. In our opinion, it is important to describe *Graphiola fimbriata* to provide a  
299 proper name for these isolates to communicate it in the future. We agree that taxonomic  
300 redundancy cannot be ruled out in the genus *Graphiola* considering a very few sequenced  
301 species. Rediscovery and description of already known species as new may happen when stable  
302 and informative morphological characters for species differentiation are limited, both in plant  
303 material and in culture. Thus, future studies should be addressed on resampling and sequencing

304 of new and already existing material in order to better understand genetic diversity and taxonomy  
305 in this group of fungi.

306 There is little known about physiological properties of dimorphic plant parasites, whereas fungi  
307 traditionally recognized as “yeasts” were intensively studied in this respect. Undersampling and  
308 the lack of genetic (including housekeeping genes) and physiological data do not allow  
309 delimitation of many genera (e.g., Wang et al. 2015a). In this study, we decided not to propose a  
310 new genus for the novel fungus, but to accommodate it in the genus *Graphiola* in order to reduce  
311 the taxonomic complexity in this group. Neither phylogenetic analyses nor the analysis of  
312 physiological data revealed a basis to distinguish the new species from other *Graphiola* species.  
313 Therefore, we modified the description of the genus *Graphiola* to include information about its  
314 asexual form considering own results and previous reports by Tubaki & Yokohama (1971) and  
315 Oberwinkler et al. (1982). Despite limited genetic data, our study identified several fungal  
316 isolates and metabarcoding clones as *Graphiola fimbriata* and *G. phoenicis* (Figs. 1 & 2). These  
317 fungi were found in Indomalayan and Neotropical realms (e.g., Takashima et al. 2012, Urbina et  
318 al. 2016), which are the regions where palms are widely distributed (Kissling et al. 2012).

### 319 **ACKNOWLEDGEMENTS**

320 This work has benefited from an “Investissement d’Avenir” grant managed by the Agence  
321 Nationale de la Recherche (CEBA, ref ANR-10-LABX-0025). The authors are grateful to C.  
322 Nirma for isolating SNB-CN72 and to R. Constantino for identification of the host termite. The  
323 authors gratefully acknowledge financial support from the Iranian Biological Resource Centre  
324 (IBRC), ACECR. Authors are grateful to Prof. M. Catherine Aime (Purdue University, USA)  
325 and Dr. Marizeth Groenewald (Westerdijk Fungal Biodiversity Institute, The Netherlands) for  
326 granting access to the strain IBL 03150.

327

328 **CONFLICTS OF INTEREST**

329

330 The authors declare that there are no conflicts of interest.

331

332 **LITERATURE CITED**

333

334 Albu S, Toome M, Aime MC (2015). *Violaceomyces palustris* gen. et sp. nov. and a new  
335 monotypic lineage, Violaceomycetales ord. nov. in Ustilaginomycetes. *Mycologia* 107:  
336 1193–1204

337 Altschul SF, Madden TL, Schäffer AA, Zhang J, Zhang Z, Miller W, Lipman DJ (1997). Gapped  
338 BLAST and PSI-BLAST: a new generation of protein database search programs. *Nucleic*  
339 *Acids Res* 25: 3389–3402

340 Barnett JA, Payne RW, Yarrow D (2000). *Yeasts: Characteristics and Identification*. 3rd edn.  
341 Cambridge University Press, Cambridge

342 Bebbert DP (2015). Range-expanding pests and pathogens in a warming world. *Annu Rev*  
343 *Phytopathol* 53: 335-356

344 Bebbert DP, Holmes T, Gurr SJ (2014). The global spread of crop pests and pathogens. *Glob Ecol*  
345 *Biogeogr* 23: 1398-1407

346 Begerow D, Bauer R, Oberwinkler F (1997). Phylogenetic studies on nuclear LSU rDNA  
347 sequences of smut fungi and related taxa. *Can J Bot* 75: 2045–2056

348 Begerow D, Bauer R, Boekhout T (2000). Phylogenetic placements of ustilaginomycetous  
349 anamorphs as deduced from nuclear LSU rDNA sequences. *Mycol Res* 104: 53–60



- 350 Begerow D, Bauer R, Oberwinkler F (2001). *Muribasidiospora*: Microstromatales or  
351 Exobasidiales? Mycol Res 105: 798–810
- 352 Begerow D, Bauer R, Oberwinkler F (2002). The Exobasidiales: An evolutionary hypothesis.  
353 Mycol Prog 1: 187–199
- 354 Begerow D, Schäfer AM, Kellner R, Yurkov A, Kemler M, Oberwinkler F, Bauer R (2014).  
355 Ustilaginomycotina. In: McLaughlin DJ, Spatafora JW (eds) The Mycota, systematics  
356 and evolution, vol. 7A. Springer, Berlin, pp 299–330
- 357 Begerow D, Kemler M, Feige A, Yurkov A (2017). Parasitism in Yeasts. In: Buzzini P,  
358 Lachance MA, Yurkov A (eds) Yeasts in Natural Ecosystems: Ecology. Springer, Cham,  
359 pp 179-210
- 360 Boekhout T, Theelen B, Houbraken J, Robert V, Scorzetti G, Gafni A, Gerson U, Sztejnberg A  
361 (2003). Novel anamorphic mite-associated fungi belonging to the Ustilaginomycetes:  
362 *Meira geulakonigii* gen. nov., sp. nov., *Meira argovae* sp. nov. and *Acaromyces ingoldii*  
363 gen. nov., sp. nov. Int J Syst Evol Microbiol 53: 1655–1664
- 364 Boekhout T, Gildemacher P, Theelen B, Müller WH, Heijne B, Lutz M (2006). Extensive  
365 colonization of apples by smut anamorphs causes a new postharvest disorder. FEMS  
366 Yeast Res 6: 63-76
- 367 Boekhout T, Fonseca Á, Sampaio JP (2011). Discussion of teleomorphic and anamorphic  
368 basidiomycetous yeasts. In: Kurtzman CP, Fell JW, Boekhout T, editors. The yeasts, a  
369 taxonomic study. 5th edn. Elsevier; Amsterdam: 2011. pp. 1339–1372.

370 Castlebury LA, Carris LM, Vánky K (2005). Phylogenetic analysis of *Tilletia* and allied genera  
371 in order Tilletiales (Ustilaginomycetes; Exobasidiomycetidae) based on large subunit  
372 nuclear rDNA sequences. *Mycologia* 97: 888–900

373 Castresana J (2000). Selection of conserved blocks from multiple alignments for their use in  
374 phylogenetic analysis. *Mol Biol Evol* 17: 540–552

375 Choi Y-J, Thines M (2015). Host jumps and radiation, not co-divergence drives diversification of  
376 obligate pathogens. A case study in downy mildews and Asteraceae. *PloS One* 10:  
377 e0133655

378 Dunthorn M, Kauserud H, Bass D, Mayor J, Mahé F (2017). Yeasts dominate soil fungal  
379 communities in three lowland Neotropical rainforests. *Environ Microbiol Rep* 9: 668-675

380 Farr DF, Rossman AY (n.d.). Fungal Databases, U.S. National Fungus Collections, ARS, USDA.  
381 Retrieved April 18, 2018, from <https://nt.ars-grin.gov/fungaldatabases/>

382 Gatesy J, DeSalle R, Wheeler W (1993). Alignment-ambiguous nucleotide sites and the  
383 exclusion of systematic data. *Mol Phylogenet Evol* 2: 152–157

384 Giribet G, Wheeler WC (1999). On gaps. *Mol Phylogenet Evol* 13: 132–143

385 Guo LD, Hyde KD, Liew EC (2001). Detection and taxonomic placement of endophytic fungi  
386 within frond tissues of *Livistona chinensis* based on rDNA sequences. *Mol Phylogenet*  
387 *Evol* 20: 1–13

388 Hanna M, Xiao W (2006). Isolation of nucleic acids. In: Xiao W (ed) *Yeast Protocols (Methods*  
389 *in Molecular Biology)*, Volume 313. Humana Press, pp. 15–20

390 Hurley BP, Garnas J, Wingfield MJ, Branco M, Richardson DM, Slippers B (2016). Increasing  
391 numbers and intercontinental spread of invasive insects on eucalypts. *Biol Invasions* 18:  
392 921-933

393 Inácio J, Landell MF, Valente P, Wang PH, Wang YT, Yang SH, Manson JS, Lachance MA,  
394 Rosa CA, Fonseca Á (2008). *Farysizyma* gen. nov., an anamorphic genus in the  
395 Ustilaginales to accommodate three novel epiphytic basidiomycetous yeast species from  
396 America, Europe and Asia. FEMS Yeast Res 8: 499–508

397 Jimu L, Kemler M, Mujuru L, Mwenje E (2017). Illumina DNA metabarcoding of *Eucalyptus*  
398 plantation soil reveals the presence of mycorrhizal and pathogenic fungi. Forestry 19: 1-8

399 Jusino MA, Lindner DL, Banik MT, Walters JR (2015). Heart rot hotel: fungal communities in  
400 red-cockaded woodpecker excavations. Fungal Ecol 14: 33–43

401 Katoh K, Standley DM (2013). MAFFT multiple sequence alignment software version 7:  
402 improvements in performance and usability. Mol Biol Evol 30: 772–780

403 Kijpornyongpan T, Aime MC (2016). Rare or rarely detected? *Ceraceosorus guamensis* sp. nov.:  
404 a second described species of Ceraceosorales and the potential for underdetection of rare  
405 lineages with common sampling techniques. Antonie van Leeuwenhoek 109: 1127-1139

406 Kissling WD, Eiserhardt WL, Baker WJ, Borchsenius F, Couvreur TL, Balslev H, Svenning JC  
407 (2012). Cenozoic imprints on the phylogenetic structure of palm species assemblages  
408 worldwide. Proc Natl Acad Sci USA 109: 7379-7384

409 Kruse J, Doehlemann G, Kemen E, Thines M (2017). Asexual and sexual morphs of  
410 *Moesziomyces* revisited. IMA Fungus 8: 117–129

411 Kurtzman CP, Boekhout T (2017). Yeasts as Distinct Life Forms of Fungi. In: Buzzini P,  
412 Lachance MA, Yurkov A (eds) Yeasts in Natural Ecosystems: Ecology. Springer, Cham,  
413 pp 1-37

414 Kurtzman CP, Fell JW, Boekhout T (2011). The yeasts, a taxonomic study, 5th edn. Elsevier  
415 Science Publication, Amsterdam

416 Kurtzman CP, Robnett CJ (1998). Identification and phylogeny of ascomycetous yeasts from  
417 analysis of nuclear large subunit (26S) ribosomal DNA partial sequences. *Antonie van*  
418 *Leeuwenhoek* 73: 331–371

419 Kurtzman CP, Mateo RQ, Kolecka A, Theelen B, Robert V, Boekhout T (2015). Advances in  
420 yeast systematics and phylogeny and their use as predictors of biotechnologically  
421 important metabolic pathways. *FEMS Yeast Res* 15: fov050

422 Liu XZ, Wang QM, Göker M, Groenewald M, Kachalkin AV, Lumbsch HT, Millanes AM,  
423 Wedin M, Yurkov AM, Boekhout T, Bai FY (2015a). Towards an integrated  
424 phylogenetic classification of the Tremellomycetes. *Stud Mycol* 81: 85–147

425 Liu XZ, Wang QM, Theelen B, Groenewald M, Bai FY, Boekhout T (2015b). Phylogeny of  
426 tremellomycetous yeasts and related dimorphic and filamentous basidiomycetes  
427 reconstructed from multiple gene sequence analyses. *Stud Mycol* 81: 1–26

428 Nasanit R, Tangwong-O-Thai A, Tantirungkij M, Limtong S (2015). The assessment of  
429 epiphytic yeast diversity in sugarcane phyllosphere in Thailand by culture-independent  
430 method. *Fungal Biol* 119: 1145–1157

431 Nasr S, Soudi MR, Shahzadeh Fazeli SA, Nguyen HDT, Lutz M, Piątek P (2014). Expanding  
432 evolutionary diversity in the Ustilaginomycotina: *Fereydouniaceae* fam. nov.  
433 and *Fereydounia* gen. nov., the first urocystidalean yeast lineage. *Mycol Prog* 13:1012

434 Nirma C, Eparvier V, Stien D (2013). Antifungal agents from *Pseudallescheria boydii* SNB-  
435 CN73 isolated from a *Nasutitermes* sp. termite. *J Nat Prod* 76: 988–991

436 Nirma C, Eparvier V, Stien D (2015). Antibacterial ilicicolinic Acids C and D and ilicicolinal  
437 from *Neonectria discophora* SNB-CN63 isolated from a termite nest. *J Nat Prod* 78: 159–  
438 162

- 439 Oberwinkler F, Bandoni RJ, Blanz P, Deml G, Kisimova-Horovitz L (1982). Graphiolales:  
440 Basidiomycetes parasitic on palms. *Pl Syst Evol* 140: 251–277
- 441 Piątek M, Lutz M, Chater AO (2013). Cryptic diversity in the *Antherospora vaillantii* complex  
442 on *Muscari* species. *IMA Fungus* 4: 5–19
- 443 Piątek M, Lutz M, Sousa FMP, Santos ARO, Félix CR, Landell MF, Gomes FCO, Rosa CA  
444 (2017). *Pattersoniomyces tillandsiae* gen. et comb. nov.: linking sexual and asexual  
445 morphs of the only known smut fungus associated with Bromeliaceae. *Org Divers Evol*  
446 17: 531-543
- 447 Piątek M, Lutz M, Yorou NS (2015). A molecular phylogenetic framework for *Anthracozygia*  
448 (Ustilaginales), including five new combinations (inter alia for the asexual *Pseudozygia*  
449 *flocculosa*), and description of *Anthracozygia grodzinskae* sp. nov. *Mycol Prog* 14: 88
- 450 Piepenbring M, Espinoza J, Saldaña L, Cáceres O (2010). New records, host plants,  
451 morphological and molecular data of Exobasidiales (Basidiomycota) from Panama. *Nova*  
452 *Hedwigia* 91: 231–242
- 453 Piepenbring M, Nold F, Trampe T, Kirschner R (2012). Revision of the genus *Graphiola*  
454 (Exobasidiales, Basidiomycota). *Nova Hedwigia* 94: 67–96
- 455 Posada F, Aime MC, Peterson SW, Rehner SA, Vega FE (2007). Inoculation of coffee plants  
456 with the fungal entomopathogen *Beauveria bassiana* (Ascomycota: Hypocreales). *Mycol*  
457 *Res* 111: 748–757
- 458 Richards TA, Jones MD, Leonard G, Bass D (2012). Marine fungi: their ecology and molecular  
459 diversity. *Ann Rev Mar Sci* 4: 495-522

460 Sampaio JP (2004). Diversity, phylogeny and classification of basidiomycetous yeasts. In:  
461 Agerer R, Blanz P, Piepenbring M (eds) *Frontiers in Basidiomycote Mycology*. IHW-  
462 Verlag, Eching, pp 49–80

463 Savchenko KG, Carris LM, Castlebury LA, Heluta VP, Wasser SP, Nevo E (2014). Revision of  
464 *Entyloma* (Entylomatales, Exobasidiomycetes) on *Eryngium*. *Mycologia* 106: 797–810

465 Scholler M, Schmidt A, Siahhan SAS, Takamatsu S, Braun U (2016). A taxonomic and  
466 phylogenetic study of the *Golovinomyces biocellatus* complex (Erysiphales, Ascomycota)  
467 using asexual state morphology and rDNA sequence data. *Mycol Prog* 15: 56

468 Sipiczki M, Kajdacs E (2009). *Jaminaea angkorensis* gen. nov., sp. nov., a novel anamorphic  
469 fungus containing an S943 nuclear small-subunit rRNA group IB intron represents a  
470 basal branch of Microstromatales. *Int J Syst Evol Microbiol* 59: 914–920

471 Stoll M, Begerow D, Oberwinkler F (2005). Molecular phylogeny of *Ustilago*, *Sporisorium*, and  
472 related taxa based on combined analyses of rDNA sequences. *Mycol Res* 109: 342–356

473 Sugiyama J, Tokuoka K, Suh SO, Hirata A, Komagata K (1991). *Sympodiomyopsis*: a new  
474 yeast-like anamorph genus with basidiomycetous nature from orchid nectar. *Antonie van*  
475 *Leeuwenhoek* 59: 95–108

476 Takashima M, Sugita T, Van BH, Nakamura M, Endoh R, Ohkuma M (2012). Taxonomic  
477 richness of yeasts in Japan within subtropical and cool temperate areas. *PLoS One* 7:  
478 e50784

479 Tanaka E, Shimizu K, Imanishi Y, Yasuda F, Tanaka C (2008). Isolation of basidiomycetous  
480 anamorphic yeast-like fungus *Meira argovae* found on Japanese bamboo. *Mycoscience*  
481 49: 329–333

482 Tubaki K, Yokoyama T (1971). Cultural aspects of *Graphiola phoenicis*. Mycopath Mycol Appl  
483 43: 49–60

484 Urbina H, Scofield DG, Cafaro M, Rosling A (2016). DNA-metabarcoding uncovers the  
485 diversity of soil-inhabiting fungi in the tropical island of Puerto Rico. Mycoscience 57:  
486 217–227

487 Van Wyk PWJ, Wingfield MJ (1994). Ultrastructure of ascus arrangement and ascospore  
488 development in *Ophiostoma seticolle*. Mycologia 86: 607–614

489 Vasighzadeh A, Zafari D, Selçuk F, Hüseyin E, Kurşat M, Lutz M, Piątek M (2014). Discovery  
490 of *Thecaphora schwarzmaniana* on *Rheum ribes* in Iran and Turkey: implications for the  
491 diversity and phylogeny of leaf smuts on rhubarbs. Mycol Prog 13: 881–892

492 Wingfield MJ, Slippers B, Wingfield BD, Barnes I (2017). The unified framework for biological  
493 invasions: a forest fungal pathogen perspective. Biol Invasions. 19: 3201-3214

494 Wang QM, Theelen B, Groenewald M, Bai FY, Boekhout T (2014). Moniliellomycetes and  
495 Malasseziomycetes, two new classes in Ustilaginomycotina. Persoonia 33: 41–47

496 Wang QM, Begerow D, Groenewald M, Liu XZ, Theelen B, Bai FY, Boekhout T (2015a).  
497 Multigene phylogeny and taxonomic revision of yeasts and related fungi in the  
498 Ustilaginomycotina. Stud Mycol 81: 55–83

499 Wang QM, Groenewald M, Takashima M, Theelen B, Han PJ, Liu XZ, Boekhout T, Bai FY  
500 (2015b). Phylogeny of yeasts and related filamentous fungi within Pucciniomycotina  
501 determined from multigene sequence analyses. Stud Mycol 81: 27–53

502 Wang QM, Yurkov AM, Göker M, Lumbsch HT, Leavitt SD, Groenewald M, Theelen B, Liu  
503 XZ, Boekhout T, Bai FY (2015c). Phylogenetic classification of yeasts and related taxa  
504 within Pucciniomycotina. Stud Mycol 81: 149–189

505 White TJ, Bruns TD, Lee S, Taylor JW (1990). Amplification and direct sequencing of fungal  
506 ribosomal RNA genes for phylogenetics. In: Innis MA, Gelfand DH, Sninsky JJ, White  
507 TJ (eds) PCR Protocols: a guide to methods and applications. Academic Press, San  
508 Diego, pp 315–322

509 Yasuda F, Yamagishi D, Akamatsu H, Izawa H, Kodama M, Otani H (2005). Fruit stain of  
510 Japanese pear caused by basidiomycetous, yeast-like fungi, *Acaromyces ingoldii* and  
511 *Meira* sp. Jpn J Phytopathol 71: 156–165

512 Yasuda F, Yamagishi D, Akamatsu H, Izawa H, Kodama M, Otani H (2006). *Meira nashicola*  
513 sp. nov., a novel basidiomycetous, anamorphic yeastlike fungus isolated from Japanese  
514 pear fruit with reddish stain. Mycoscience 47: 36–40

515 Yuan ZL, Rao LB, Chen YC, Zhang CL, Wu YG (2011). From pattern to process: species and  
516 functional diversity in fungal endophytes of *Abies beshanzuensis*. Fungal Biol 115: 197–  
517 213

518

519 **TABLES**

520 **Table 1.** Designations and GenBank accession numbers of the yeast strains used in this study.

Yeast strains	Strain designation		GenBank accession numbers	
	IBRC-M	CBS	LSU	ITS
PC1	30158 <sup>1</sup>	13945 <sup>1</sup>	KM403453	KM403454
SNB-CN72	30163	–	KP229360	KJ023736
IBL 03150	-	14052	KP308195	DQ682574

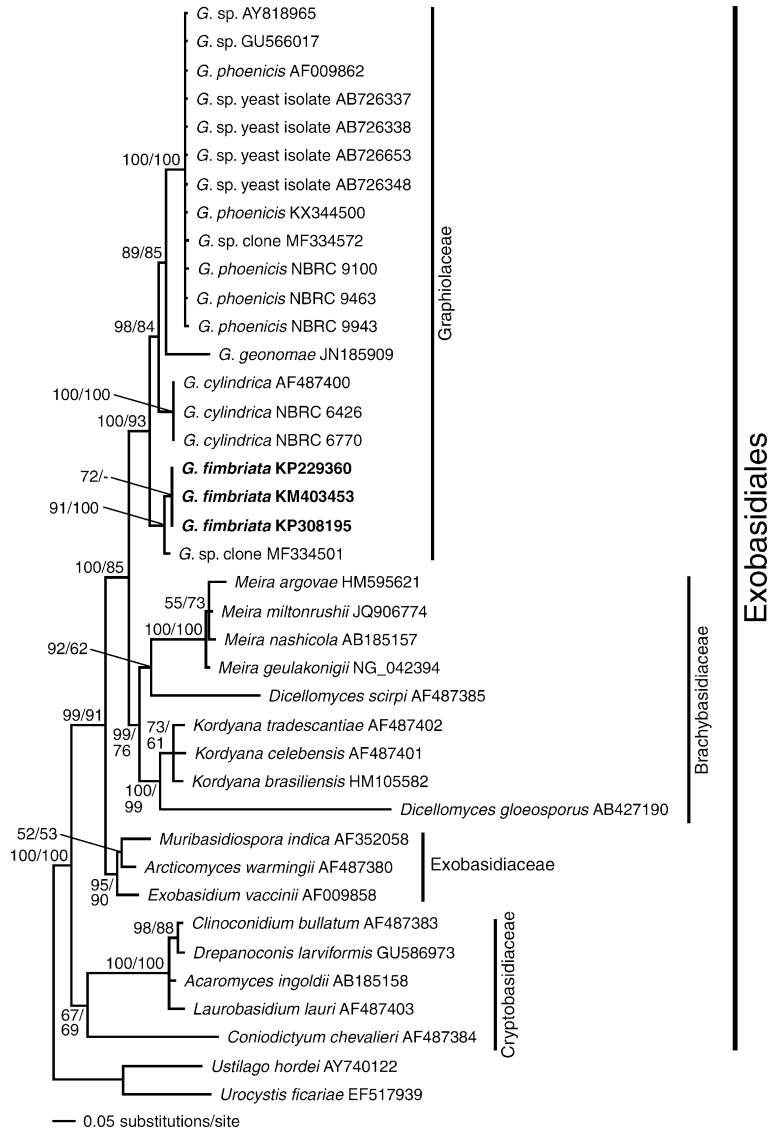
521

522



523 **FIGURE LEGENDS**

524

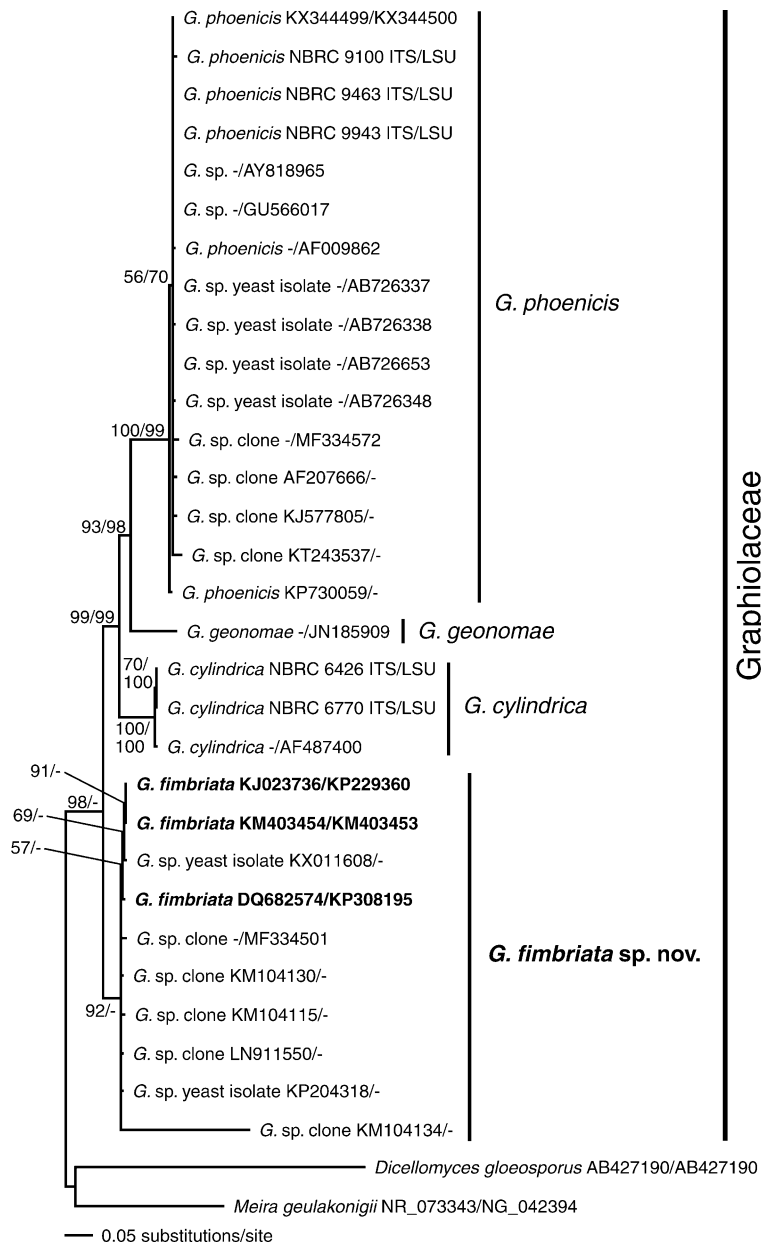


525

526 **Fig. 1.** Bayesian inference of phylogenetic relationships within the sampled Exobasidiales:  
 527 Markov chain Monte Carlo analysis of an alignment of LSU base sequences using the GTR+I+G  
 528 model of DNA substitution with gamma distributed substitution rates and estimation of invariant  
 529 sites, random starting trees, and default starting parameters of the DNA substitution model. A  
 530 50% majority-rule consensus tree is shown computed from 75 000 trees that were sampled after

531 the process had become stationary. The topology was rooted with the ustilaginomycetous species  
532 *Urocystis ficariae* and *Ustilago hordei*. Numbers on branches before slashes are estimates for a  
533 posteriori probabilities; numbers on branches after slashes are ML bootstrap support values.  
534 Branch lengths were averaged over the sampled trees. They are scaled in terms of expected  
535 numbers of nucleotide substitutions per site. The taxonomical concept applied corresponds to  
536 Begerow et al. (2014).

537



538

539 **Fig. 2.** Bayesian inference of phylogenetic relationships within the sampled Exobasidiales:

540 Markov chain Monte Carlo analysis of an alignment of ITS+LSU base sequences using the

541 GTR+I+G model of DNA substitution with gamma distributed substitution rates and estimation

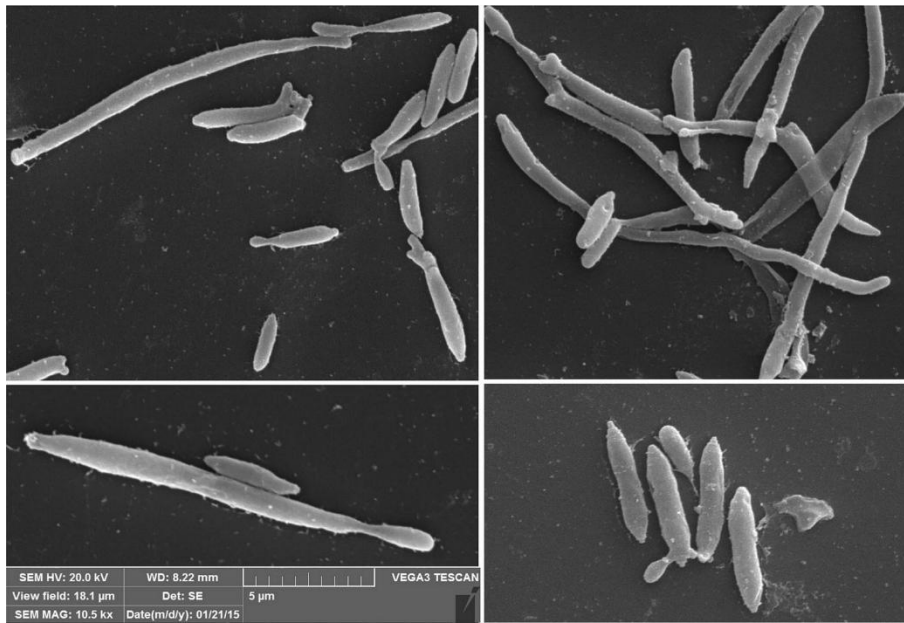
542 of invariant sites, random starting trees, and default starting parameters of the DNA substitution

543 model. A 75% majority-rule consensus tree is shown computed from 75 000 trees that were

544 sampled after the process had become stationary. The topology was rooted with the

545 cryptobasidiaceous species *Acaromyces ingoldii* and *Clinoconidium* sp. Numbers on branches  
546 before slashes are estimates for a posteriori probabilities; numbers on branches after slashes are  
547 ML bootstrap support values. Branch lengths were averaged over the sampled trees. They are  
548 scaled in terms of expected numbers of nucleotide substitutions per site. The taxonomical  
549 concept applied corresponds to Begerow et al. (2014).

550



551

552 **Fig. 3.** Scanning electron micrographs of the strain IBRC-M 30158<sup>T</sup> showing budding cells and  
553 bud scars. Scale bars: 5 μm.

554