



HAL
open science

Vulnerability to climate change of islands worldwide and its impact on the tree of life

Simon Veron, Maud Mouchet, Rafaël Govaerts, Thomas Haevermans, Roseli Pellens

► To cite this version:

Simon Veron, Maud Mouchet, Rafaël Govaerts, Thomas Haevermans, Roseli Pellens. Vulnerability to climate change of islands worldwide and its impact on the tree of life. *Scientific Reports*, 2019, 9 (1), 10.1038/s41598-019-51107-x . hal-02344486

HAL Id: hal-02344486

<https://hal.sorbonne-universite.fr/hal-02344486>

Submitted on 4 Nov 2019

HAL is a multi-disciplinary open access archive for the deposit and dissemination of scientific research documents, whether they are published or not. The documents may come from teaching and research institutions in France or abroad, or from public or private research centers.

L'archive ouverte pluridisciplinaire **HAL**, est destinée au dépôt et à la diffusion de documents scientifiques de niveau recherche, publiés ou non, émanant des établissements d'enseignement et de recherche français ou étrangers, des laboratoires publics ou privés.

OPEN

Vulnerability to climate change of islands worldwide and its impact on the tree of life

Simon Veron^{1,2}, Maud Mouchet², Rafaël Govaerts³, Thomas Haevermans¹ & Roseli Pellens¹

Island systems are among the most vulnerable to climate change, which is predicted to induce shifts in temperature, rainfall and/or sea levels. Our aim was: (i) to map the relative vulnerability of islands to each of these threats from climate change on a worldwide scale; (ii) to estimate how island vulnerability would impact phylogenetic diversity. We focused on monocotyledons, a major group of flowering plants that includes taxa of important economic value such as palms, grasses, bananas, taro. Islands that were vulnerable to climate change were found at all latitudes, e.g. in Australia, Indonesia, the Caribbean, Pacific countries, the United States, although they were more common near the equator. The loss of highly vulnerable islands would lead to relatively low absolute loss of plant phylogenetic diversity. However, these losses tended to be higher than expected by chance alone even in some highly vulnerable insular systems. This suggests the possible collapse of deep and long branches in vulnerable islands. Measuring the vulnerability of each island is a first step towards a risk analysis to identify where the impacts of climate change are the most likely and what may be their consequences on biodiversity.

It is now widely accepted by the scientific community that the Earth is undergoing drastic climate change due to increased greenhouse gas emissions¹. Changes in global climate have occurred several times throughout the Earth's history but have stretched over very long periods of time whereas currently these changes are taking place over the space of a century or less¹⁻³. This rapid change, associated with other threats resulting from human activity related to production and consumption⁴, are having a strong impact on biodiversity^{5,6}. Considered as one of the five main causes of species and populations losses⁷⁻⁹, climate change may lead to direct alterations of natural habitats, forcing species to move from their historical range, adapt to new environmental conditions, find refuge in unaltered microhabitats or may lead to species extinction^{3,10-13}. Importantly, climate change acts in synergy with other human-induced threats, such as land use intensification or biological invasion, increasing their effects.

In this context, island biodiversity requires specific attention for several reasons. Insular communities, because they are spatially segregated and have evolved in isolation, are characterized by extremely high rates of endemism^{14,15}. Although they occur on less than 5% of the Earth's terrestrial area, island plants and vertebrates have an endemic richness that may exceed that of mainland species by a factor of 9.5¹⁵. Island biota are also very prone to extinction: around 80% of past extinctions and a third of threatened terrestrial species are found on islands¹⁶. Past extinctions were probably triggered by invasive species, the naïveté of insular species, and the high range-restriction of some populations¹⁷⁻²². Although climate change might impact island biota in many different ways, it is likely that sea level rise and climate shifts will be of major importance due to their direct association with the availability of suitable habitats for terrestrial organisms. Sea level rise is expected to lead to the submergence of several islands^{2,23}. Sea level rise may also increase coastal erosion and saline water intrusion, impacting natural habitats^{24,25}. This means that elevation, area, and the complexity of shoreline inlets are of major importance regarding vulnerability to sea level rise^{26,27}. As for climate shift, it includes changes in the frequency and intensity of extreme weather events (e.g. droughts, storm surges, hurricanes), as well as altered patterns of seasonal and mid-term weather systems. This leads to the displacement of suitable climatic conditions to different altitudinal or latitudinal ranges, which implies that for some island species, suitable climates may only be found

¹Institut de Systématique, Evolution, Biodiversité (ISYEB UMR7205), Muséum national d'Histoire naturelle, CNRS, Sorbonne Université, EPHE, Université des Antilles, CP 51, 57 rue Cuvier, 75005, Paris, France. ²Centre d'Ecologie et des Sciences de la Conservation (CESCO UMR7204) MNHN, CNRS, Sorbonne Université - CP135, 43 rue Buffon, 75005, Paris, France. ³Royal Botanic Gardens, Kew, Richmond, Surrey, TW9 3AE, UK. Thomas Haevermans and Roseli Pellens jointly supervised this work. Correspondence and requests for materials should be addressed to S.V. (email: sveron@edu.mnhn.fr)

	Sea Level Rise	Shift in temperature	Shift in rainfall
<i>Shift in temperature</i>	0.69		
<i>Shift in rainfall</i>	0.67	0.71	
<i>Global vulnerability</i>	0.87	0.90	0.89

Table 1. Correlation coefficients between vulnerability scores for each threat across all islands using Pearson's correlation test. All results were significant (p -value $\leq 2.2 \times 10^{-16}$).

far beyond their limits²⁸. Island size and topographic heterogeneity will then play a central role in preserving habitats where species could survive. When suitable habitats disappear, species that are able to adapt or/and have advantageous traits, e.g. flowering times that can track temperature shifts²⁹, will probably be naturally selected under the new environmental conditions, whereas others may go extinct. Shifts in climatic conditions may then promote a cascade of local extinctions.

Despite the importance of island biota to global biodiversity, the impact of climate change on insular biodiversity has just begun to be investigated^{23,28,30–34}. The few existing studies focused only on species richness, and the lack of knowledge of other biodiversity currencies certainly limits our understanding of this impact. In fact, species richness alone does not provide information regarding certain crucial aspects for species conservation such as evolutionary history³⁵. Thus far, we do not know how climate change will impact the tree of life. Will it lead to the loss of deep and/or unique evolutionary branches, or to random pruning? Can we expect a certain tendency towards resilience, as observed on continents^{36,37}? If so, for what reasons?

To begin to understand these issues, we designed a study to estimate island relative vulnerability to climate change and assess its impacts on the monocot tree of life. Relative vulnerability allows to identify islands which may be the most threatened by climate change at a world scale. These issues are particularly important for this major group of plants, which has a worldwide distribution and high species richness and endemism on islands. Monocots also provide a wide range of products to mankind. We used the phylogenetic diversity (PD) measure from³⁸ to measure the expected PD at risk of being lost^{39,40}. PD is more than a simple assessment of the evolutionary aspect of biodiversity as it may highlight current and future benefits provided by biodiversity to people and ecosystems, i.e. option-values^{41,42}. Moreover, the loss of PD can be much higher than the loss of species richness (SR) if (i) closely related species go extinct (thus threatening not only terminal branches but also deep branches shared by a set of species), or (ii) if species on long and isolated branches disappear^{38,43,40}. Patterns of PD loss may then help identify which parts of the tree of life are the most at risk from climate change. We analysed 1,497 genera distributed across 5,565 islands from across the globe. This is also the first global scale study of this kind to integrate regional variations of climatic change as estimated by the Intergovernmental Panel on Climate Change (IPCC).

Results

Frequency and distribution of vulnerability to climate change (step 1). Over the 5,565 islands studied, the most represented category was “moderate vulnerability”, followed by low, high and very high vulnerability, respectively, for all the types of threats. In general, global vulnerability was correlated to sea level rise, shift in temperature and shift in rainfall, however, scores for these three threats had lower correlations with each other (Table 1). Islands that were most vulnerable to threats from climate change were more frequently situated at low latitudes and/or in the Southern Hemisphere, e.g. in Australia or in the Pacific Ocean, such as Kiribati and French Polynesia islands (Fig. 1). Yet, some northern islands also had high vulnerability, especially regarding shifts in rainfall (Fig. 1), for example in Norway and Sweden. In total, 54, 109, 165 and 34 islands had a very high vulnerability to sea level rise, shift in temperature, shift in rainfall, and global threat from climate change, respectively (Fig. 1; Supplementary Datasets S1 and S2).

Spatial distribution of ExpPDloss (step 2). *Absolute ExpPDloss.* Estimates of expected loss of phylogenetic diversity at a global scale (ExpPDloss) following local species extinctions indicated that the ExpPDloss per island was highest at low latitudes and in the eastern part of the world such as in Madagascar, Borneo, New Guinea, Taiwan, Sri Lanka, Sumatra but with Cuba being one of the most notable exception (Fig. 2; see Supplementary Dataset S1 for the full list of islands and their ExpPDloss). The islands whose disappearance would cause the greatest ExpPDloss when only endemic genera were included were Madagascar, Sumatra, Tasmania, New-Caledonia, Honshu, Cuba, New Guinea, and Sri Lanka, among others (Fig. 2). When corrected for sampling effort, the relative ExpPDloss values changed only slightly when considering either all genera or only endemic genera (Supplementary datasets S1 and S2).

Where is ExpPDloss significantly high? By removing the effect of richness on the ExpPDloss using null models (see methods), we found that the most significant losses were predominantly expected at low latitudes and eastern longitudes (Fig. 3). Islands with highly significant ExpPDloss were, among others: Madagascar, Borneo, New-Guinea, Tasmania, Sri Lanka, but also Cuba and Tierra del Fuego. For insular endemic genera, significant ExpPDloss was found, among others, for Madagascar, Indonesia (Sumatra, Borneo, New Guinea, Sulawesi), the West Indies (Cuba, Jamaica, Hispaniola), Honshu, Sri Lanka, and Tasmania (Fig. 3).

Would the disappearance of highly vulnerable islands have a large effect on PD? (step 3). *Loss of phylogenetic diversity per island and category of vulnerability.* We found that, on average, the ExpPDloss for each category of vulnerability was very similar across the four types of threats (Fig. 4). However, the highest values of ExpPDloss were found for islands with moderate vulnerability (Fig. 4). Notable exceptions include Cuba

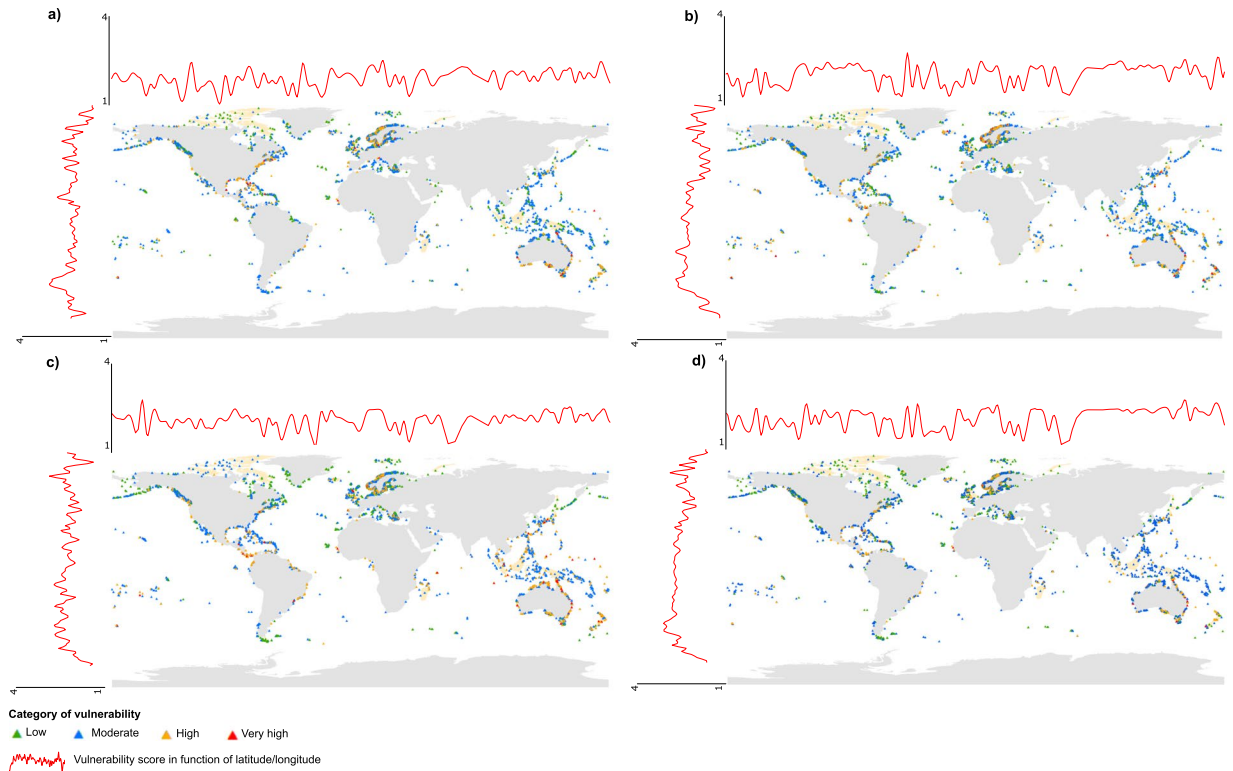


Figure 1. Worldwide distribution of the 5,565 islands with native monocot species and their classification according to four categories of vulnerability (low, moderate, high, very high) to threats related to climate change: (a) sea level rise (b) shift in temperature, (c) shift in rainfall, and (d) global vulnerability to climate change. Red lines represent the fitted levels of vulnerability scores (cubic smoothing spline) along longitudes and latitudes.

and New Guinea, which were highly vulnerable to predicted sea level rise and shifts in rainfall, respectively, and whose disappearance would cause large $\text{ExpPD}_{\text{loss}}$. Significant $\text{ExpPD}_{\text{loss}}$, i.e. higher than expected by chance ($p_{\text{value}_{\text{ind}}}$), was found for only a small proportion of islands among all categories of vulnerabilities (Fig. 5). For shifts in temperature and sea level rise, the median $p_{\text{value}_{\text{ind}}}$ was highest in the “very high vulnerability” category (Fig. 5). When considering only endemic genera, the highest $\text{ExpPD}_{\text{loss}}$ was predicted to occur mainly for islands in the “moderately vulnerable” category (Fig. 4). Moreover, only a small proportion of islands had significant $\text{ExpPD}_{\text{loss}}$ (Fig. 5) and they generally had a low or moderate vulnerability to climate change (e.g. Madagascar, large Indonesian islands).

Would the extinction of all genera on vulnerable islands cause higher $\text{ExpPD}_{\text{loss}}$ than extinctions at random? We found contrasting results depending on the threat considered. For shifts in temperature, $\text{ExpPD}_{\text{loss}}$ was higher than expected by chance only when all islands with low vulnerability were lost ($p_{\text{value}_{\text{all}}}$; Fig. 6). Regarding sea level rise and global vulnerability to climate change, $p_{\text{value}_{\text{all}}}$ were relatively high in both islands with moderate and very high vulnerability. As for the effect of a shift in rainfall, $\text{ExpPD}_{\text{loss}}$ was the most significant when highly vulnerable islands were lost. Moreover, for three out of the four threats considered, the loss of genera occurring on the most vulnerable islands would cause higher $\text{ExpPD}_{\text{loss}}$ than expected in 60% to 80% of our randomizations. Yet, we observed that $p_{\text{values}_{\text{all}}}$ were poorly congruent with the phylogenetic signal of extinction probabilities (Fig. 6).

Similar results were found when focusing only on endemic genera. $\text{ExpPD}_{\text{loss}}$ was generally greater than by chance with the loss of (i) islands with low vulnerability to shifts in temperature; (ii) islands that are highly vulnerable to shifts in rainfall; (iii) islands with either high or low vulnerability to sea level rise; and (iv) islands with moderate vulnerability to the global threats from climate change (Fig. 6).

Discussion

The present change in climate is raising many questions regarding its effect on biodiversity and the conservation measures to be taken to mitigate its impacts⁴⁴. In this study, we focused on islands to investigate the vulnerability to climate change of these segregated spatial units that strongly contribute to the world’s diversity³³. The main aims were to categorise islands worldwide according to their vulnerability to climate change and to investigate how the estimated vulnerability would impact the tree of life of monocots.

As to be expected, for the set of features considered, the highest vulnerability values were assigned to islands that were small, low, jagged, and located in areas where sea level rise, shifts in temperature and/or rainfall were predicted to be the highest. Yet, the complex interaction between island features and threat levels meant that

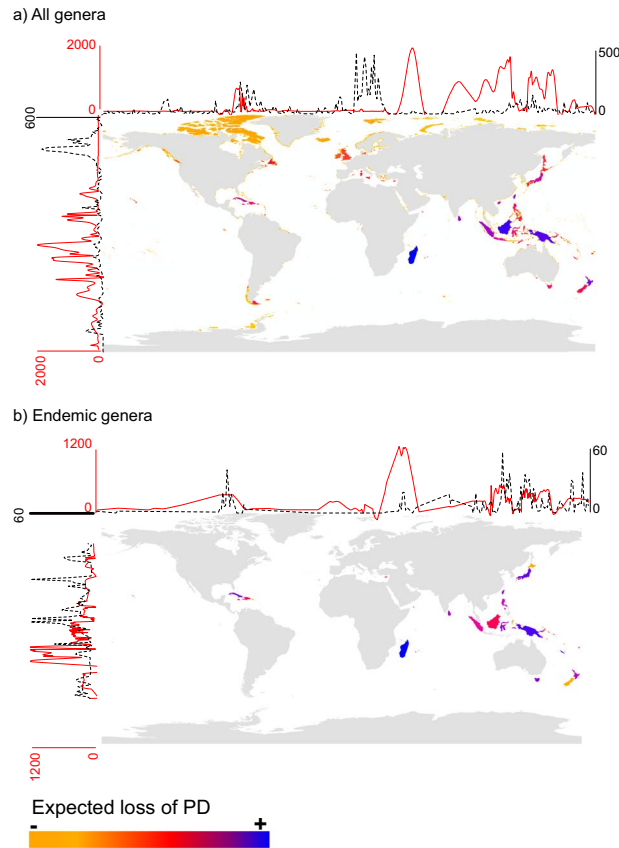


Figure 2. Distribution of the ExpPD/loss caused by the independent loss of islands when considering (a) all monocot genera ($n = 1,497$) found on islands worldwide ($n = 5,565$); (b) only monocot genera that are endemic ($n = 96$) to islands ($n = 72$). Red lines represent the fitted levels of expected diversity loss (cubic smoothing spline) along longitudes and latitudes. Black dashed lines represent the fitted of the number of islands (cubic smoothing spline) along longitudes and latitudes.

vulnerable islands were identified across the globe. In particular, low lying islands situated in the Caribbean and the Pacific were highly vulnerable to the effects of sea level rise (e.g. The Cook Islands, French Polynesia, the Marshall Islands)^{34,45}. Large predicted shifts in rainfall in North America and Scandinavian countries combined with low elevations and small areas, may explain why many islands that are vulnerable to shifts in rainfall are located in the Northern Hemisphere (although many others are found near the equator and at Southern latitudes).

By estimating the relative threat of climate change on insular biodiversity based on predictions from the IPCC, we identified islands where species may be most at risk in a context of uncertainty⁴⁵. This could then help to anticipate the effects of climate change and establish strategies to preserve biodiversity. Similar analyses could be carried out for other groups of organisms, such as eudicots, mammals^{31,34}, or to assess the risks faced by human settlements⁴⁶.

As this is the first study at this scale, some critical features could not be taken into account due to the paucity of standardized information for a large number of islands. We lacked data on the lithology of many islands which is another important factor of vulnerability to sea level rise. For instance, islands with rocky shores are likely to be more stable, whereas islands with sedimentary shores may adjust in shape, size and position over very short periods of time depending on the supply and transportation of sediments⁴⁷. As for reef islands, they might grow following shifts in sea levels (but see⁴⁸). The study of Kench *et al.*⁴⁹ illustrates this complex situation, in that 18 out of 29 coral islands affected by sea level rise had actually grown in size due to new gravel deposits during cyclonic events.

Regarding estimates of vulnerability to shifts in temperature and rainfall, there are at least three main sources of uncertainties and limitations that should be considered. The first is that the scale of global predictions may fail to account for more localised effects and, in some cases, does not allow to distinguish spatially close islands with different environmental conditions^{33,50–52}. The second is the uncertainty concerning these estimates for islands located in regions that are largely influenced by major climate drivers with very high variability, and for which even the direction of their impact under climate change is hard to predict (e.g. El Niño Southern Oscillation)^{33,53}. The third is the climatic heterogeneity within islands, which is expected to be greater in larger and more elevated islands, with important climatic differences between windward and leeward regions⁵⁴, or along altitudinal belts. This makes that a single vulnerability score may not be sufficient to capture the spatial heterogeneity of threats in large and/or mountainous islands. It must be considered, however, that part of this complexity is comprised in the vulnerability index, as area, altitude and topographic heterogeneity are integrated in the assessment of vulnerability. Our main conclusion regarding this point is that, although the vulnerability scores used here do

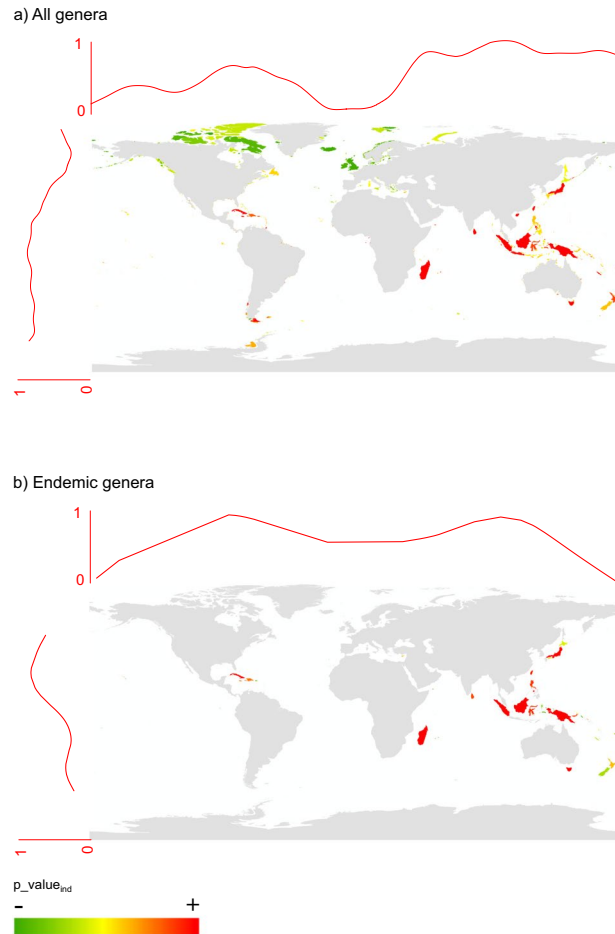


Figure 3. Spatial distribution of islands where $ExpPD_{loss}$ is higher than expected at random: (a) considering all genera; (b) considering only genera that are endemic to islands. Curves at the top and to the left of the maps represent the fitted distribution of p_values_{ind} (cubic smoothing spline) along longitudes and latitudes.

allow comparing a wide range of islands at a global scale, more research is necessary to understand the effects of climate and topographic heterogeneity on the vulnerability to climate change. As a direction, we suggest focusing on large islands where a significant proportion of the Tree of Life could be lost if some species went extinct (e.g. Madagascar, Borneo, New-Guinea, Cuba, Taiwan, Sri Lanka, Sumatra). In addition, as vulnerability assessments can be conducted at different scales, one prospect would be to define different levels of vulnerability depending on conservation objectives. In this framework, our approach could for instance correspond to “level 1” based on island typology, level “0” could refer to the vulnerability of archipelagos, “level 2” to the vulnerability of habitats etc.

In the Global Assessment Report on Biodiversity and Ecosystem Services released by the Intergovernmental Science-Policy Platform on Biodiversity and Ecosystem Services (IPBES), PD is now recognised as a key indicator of one of “Nature’s Contributions to People” (NCP 18 - maintenance of options)⁵⁵. Indeed, PD provides options for future generations and for organisms to adapt in a changing environment^{38,41,42}. The IPBES therefore highlighted that the loss of phylogenetic diversity implies irreversible losses of options to humanity⁵⁵. In this context, assessing the impacts of island vulnerability to climate change represents a first step to provide knowledge for conservation actions aiming at the reduction of irreversible losses.

The first analyses of our research show that extinctions on the most vulnerable islands would remove relatively little insular PD. Indeed, vulnerable islands generally have small size and low elevation which are factors of low species richness⁵⁶, conducting to reduced loss of PD⁴⁰. By contrast, islands that contribute the most to loss of PD were only moderately threatened by climate change. This was the case for Madagascar, Borneo, Honshu, Sri Lanka, Sumatra, New Caledonia, which all harboured high rates of endemic and evolutionary unique genera (Supplementary Method S2)¹⁵. These islands are large and environmentally diverse which fosters high richness and endemism but also offers greater opportunities for plants to track their climatic preferences^{15,57,58}.

Nonetheless, the link between $ExpPD_{loss}$ and taxon richness may hide the fact that some long and/or deep branches of the tree of life may occur on vulnerable islands. By explicitly removing this association using comparisons with null models, we found that some highly vulnerable islands – although not all of them – may lose more PD than expected by chance. This is particularly true for islands that are highly vulnerable to sea level rise and temperature shifts, which is probably due to their greater frequency at low latitudes, where some range-restricted taxa representing relatively large amounts of PD occur (Supplementary method S2). This reinforces the claim that

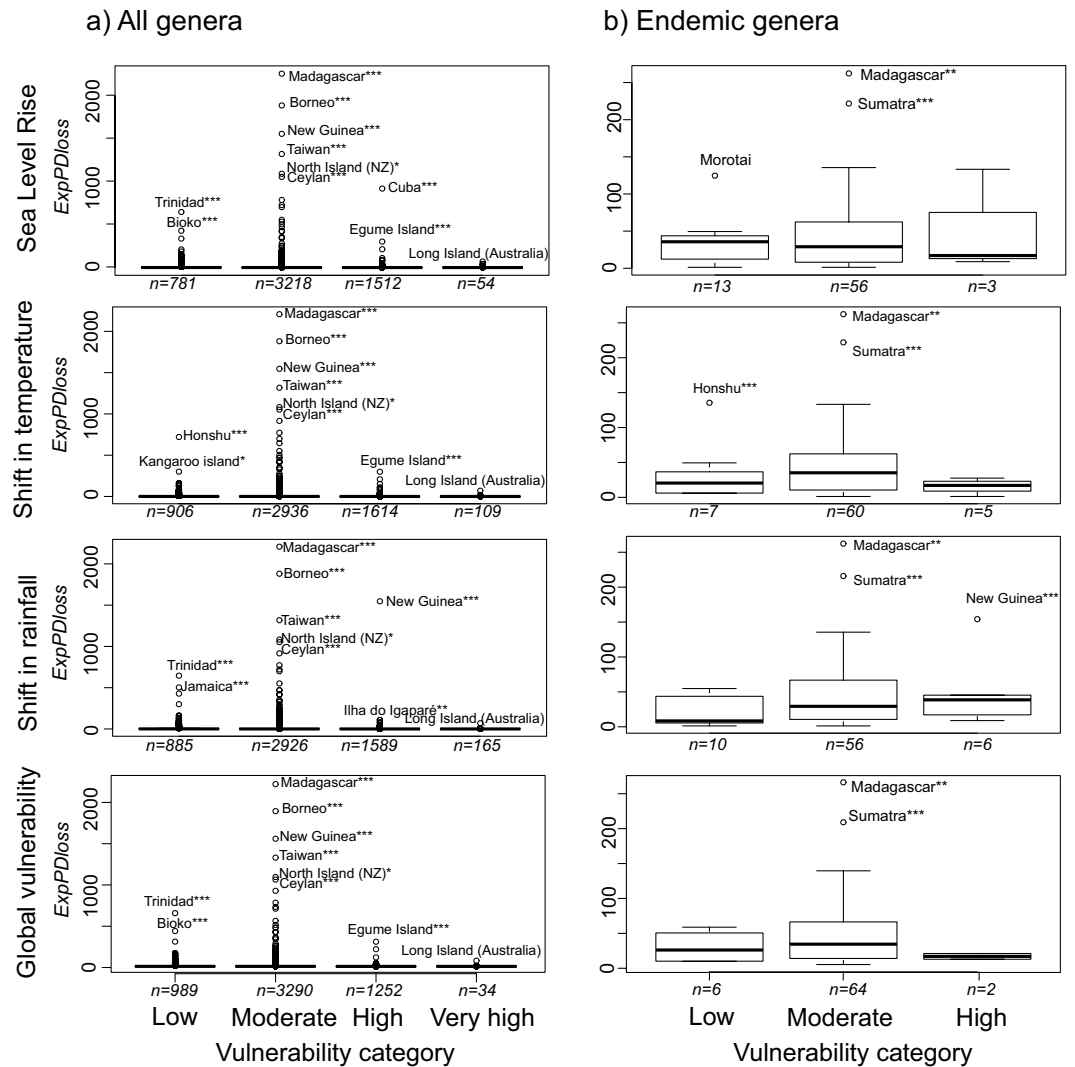


Figure 4. Expected loss of phylogenetic diversity for each vulnerability category and type of threat. * $0.95 < p_{\text{value}_{\text{ind}}} < 0.99$, ** $0.99 < p_{\text{value}_{\text{ind}}} < 0.999$, *** $0.999 < p_{\text{value}_{\text{ind}}} \leq 1$. “n” is the number of islands per category of threat.

highly vulnerable islands could be home to evolutionary distinct, rare and endangered genera and that climate change would increase their likelihood of extinction^{31,34}.

These outcomes correspond to a worst-case and island-centred scenario in which all genera on an island would become extinct, and in which the probability of extinction of a genus is proportional to the number of islands it disappears from. We acknowledge that sensitivity to climate change is highly complex and depend on many factors such as species ecological preferences and tolerances, traits (e.g. phenology), dispersal potential (e.g. among islands of an archipelago) or biotic interactions. Species-centred and trait-based approaches remain therefore essential to understand the responses of species to threats from climate change but may be more relevant at regional or local scales. Finally, we also encourage the mobilization of data hosted in natural history collections and complementary field sampling in islands where impacts of climate change are expected to be high. This would contribute to include several islands that were discarded from the present analysis due to lack of appropriate data, as for example, many islands along the entire coasts of South Asia, North Africa, in the Red Sea, or in the Maldives (only a single island of the archipelago could be included here).

The simulation of the extinction of all genera occurring on vulnerable islands showed one more facet of the consequences of climate change. If genera occurring on vulnerable islands went extinct, the monocol tree of life would be pruned to non-negligible proportions (i.e. causing higher ExpPD_{loss} than random). Several hypothesis can be evoked to explain this result. The first is that it is driven by the loss of the most evolutionarily distinct and/or range-restricted genera. Nonetheless, the different tests performed here showed that the expected loss of the most evolutionarily distinct genera and the expected loss of genus richness were rarely significant when all vulnerable islands were lost (Supplementary method S2). A second potential explanation for significant ExpPD_{loss} on vulnerable islands would be that genera are closely related^{43,40}. However, the phylogenetic signal of extinction risks was relatively low on vulnerable islands, indicating that genera threatened by the loss of the most vulnerable islands tended to be randomly distributed among the tips of the phylogeny. The rejection of these hypotheses

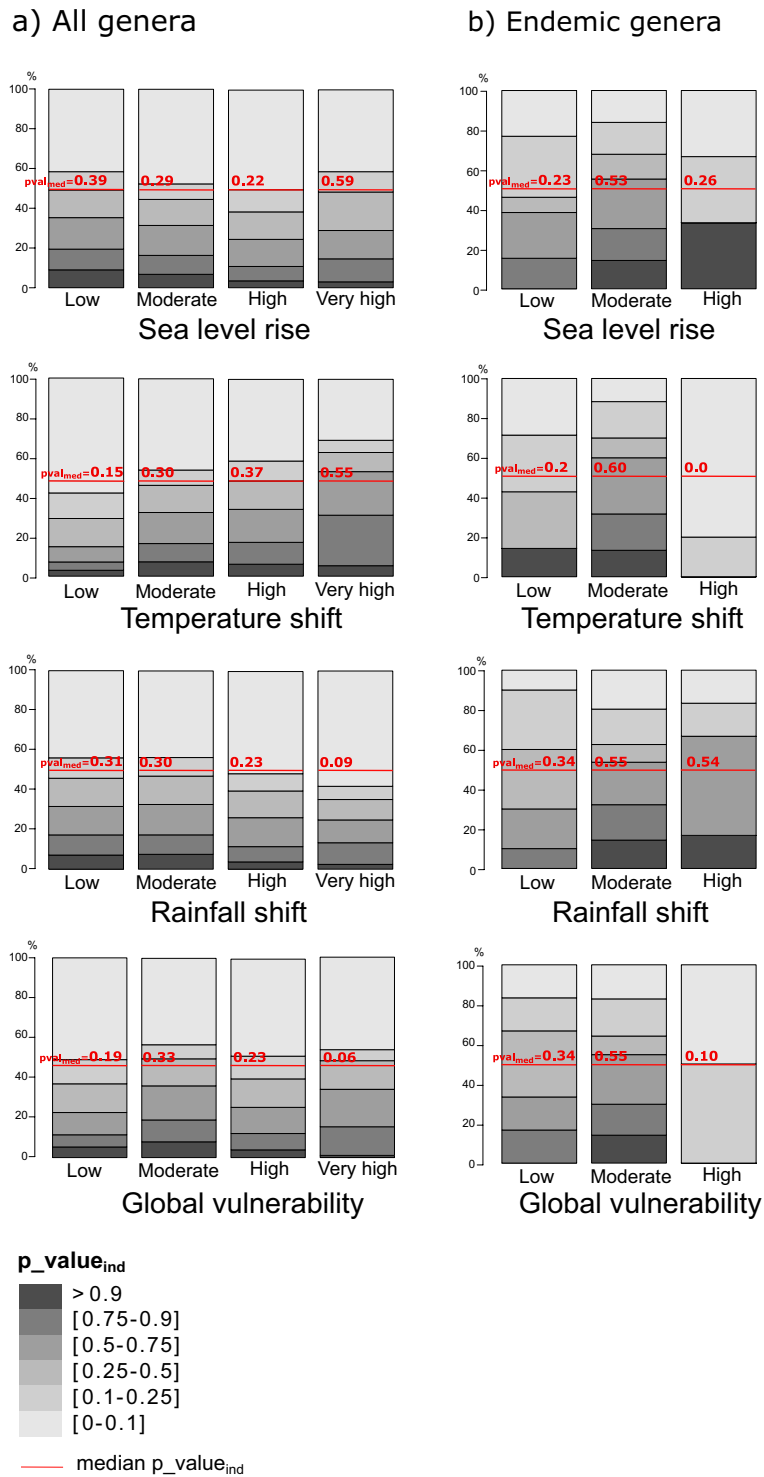


Figure 5. Distribution of $p_{value_{ind}}$ frequencies for each vulnerability category and type of threat. 50% of $p_{values_{ind}}$ are higher than the median $p_{value_{ind}}$ and 50% are lower.

leads then to consider two other possibilities. The first is that certain range-restricted genera are clustered in species-poor clades, thus threatening the corresponding deep branches, whereas many others are over-dispersed, i.e. some deep branches also support safe taxa. The second explanation is that some relatively long branches are threatened, although many other evolutionarily distinct genera are secured. These hypotheses that there is a relatively low number of deep and long branches at risk is supported by the moderate frequency of cases where $ExpPD_{loss}$ is higher than random. Overall, these findings show that, as also observed by^{36,59}, taxa that are vulnerable to climate change may be found either on long or short branches, and whereas some are over-dispersed in the phylogeny, others are clustered in particular clades.

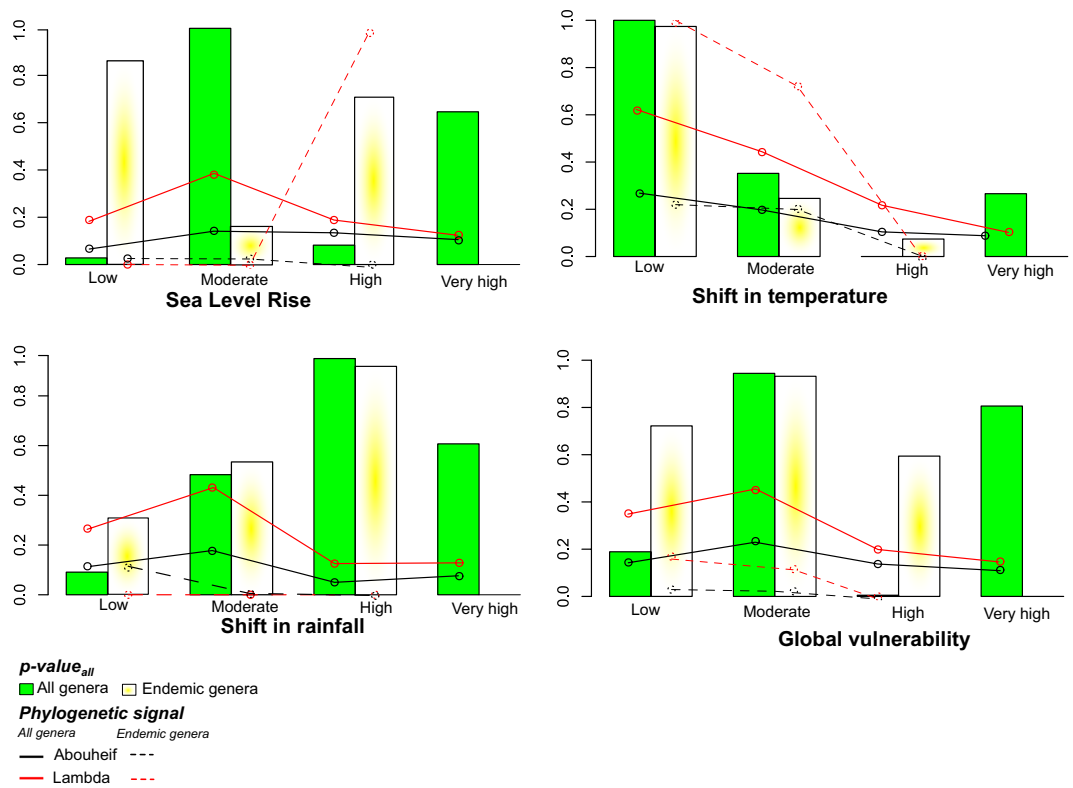


Figure 6. $P_{value_{all}}$ of the $ExpPD_{loss}$ for each vulnerability category and type of threat. Black and red curves represent the phylogenetic signal of extinction probabilities, calculated using Page's λ and Abouheif's statistical tests.

Previous studies considering the impacts of climate change on PD^{36,37,59} were conducted on a continental scale. They showed that climate change could lead to spatial homogenization of PD and that the tree of life would be, to a certain extent, resilient to this threat. In comparison, our study highlights the need to consider the specificity of island systems when devising conservation strategies. Water expanses may constitute a strong barrier against species dispersal. This implies that local extinctions, rather than shifts in the distribution range, are more likely, particularly when considering some features of insular biota such as the loss of dispersal ability, low population sizes, and narrow distribution ranges. Consequently, PD loss instead of PD homogenization is expected and insular PD is certainly more threatened than continental PD.

Conclusion and prospects. To conclude, assessing the vulnerability of islands to climate change represents a first step towards identifying where its impact on biodiversity is most likely to be seen^{27,34,45,60,61}. Importantly, by tackling the crucial challenges to predict and mitigate the effect of climate change on biodiversity, this study contributes to issues of global relevance as defined in the policies of the IPCC^{1,2} and the IPBES⁶². We found that (i) sea level rise, shifts in temperature and shifts in rainfall may not cause high absolute $ExpPD_{loss}$ at a global scale (ii) however, $ExpPD_{loss}$ on some vulnerable islands tends to be higher than if extinctions were random (iii) taxa found on vulnerable islands likely capture some deep and/or long phylogenetic branches. The expected significant loss of monocot PD on vulnerable islands is then another warning that climate change will affect human well-being^{63,64}. The results of this study can be used in two ways. First, they can serve as a guide to identify where to act in order to protect the tree of life. While we focused on monocots, other highly diverse insular groups with many endemic species, such as eudicots, would be worth investigated in order to elucidate to which extent these findings can be generalized. Our analysis of islands worldwide provides a chart indicating where to focus to avoid imminent losses. This shows the need of moving from global to local in order to monitor the status of the local populations subtending these evolutionary branches that are under threat, and study ways to avoid their extinctions. The second perspective concerns the synergistic effects of climate change with other threats impacting biodiversity⁶⁵. Even on islands not considered to be vulnerable to climate change, other factors, especially human-induced habitat losses and species invasions, may represent an immediate threat to their biodiversity^{66,67}. Future studies should consider the diversity of threats on island biodiversity, including biotic multipliers, and their interactions.

Methods

To assess the consequences of climate change on island phylogenetic diversity, we proceeded as follows:

1. We calculated the vulnerability of each island to three threats related to climate change depending on some island features
2. We estimated how much phylogenetic diversity (PD) would be lost on a global scale when an island

disappears. As the extent of the loss of PD depends on an island's genus richness, we also estimated whether these losses were significant or not, i.e. whether they were higher than by chance alone.

3. We linked island vulnerability to loss of PD. In particular, we assessed how much PD would be lost when all islands in the same vulnerability category were removed and whether these losses were significant.

The three steps were repeated for all monocot genera occurring on islands and then only for those genera that are restricted to islands, i.e., not observed on the mainland.

Data. Islands. Following previous studies^{15,56}, we defined an island as an area surrounded by water whose size is smaller than Australia and excluding islands within continents. Our island database was extracted from the Global Island Database released by the United Nations Environment Program which has information on 180,495 islands from all over the world⁶². We worked at the island but not archipelago scale.

Phylogeny and plant occurrences. We used a monocot phylogeny that is well resolved at the genus level for the vast majority of genera⁶⁸. Working at the genus level allowed us to take into account taxa united by solid shared evolutionary history, materialized by shared traits which made them successful on islands and which are therefore the object of frequent evolutionary and ecological research^{69,70}. Genera names from this phylogeny were matched with the accepted names found in the eMonocot database and used as a reference to check for the synonymy of plant occurrence names. eMonocot is built by an international consortium of botanists and aims to provide the most reliable information on monocot taxonomy and occurrence.

Plant occurrence points were downloaded from the Global Biodiversity Information Facility portal (GBIF, GBIF.org (09 February 2017) GBIF Occurrence Download <https://doi.org/10.15468/dl.kyylbs>). We selected all “basisOfRecord” occurrences comprised within the island polygon boundaries, defined in the Global Island Database (GID)⁶². We used the taxon name structure from eMonocot to account for possible synonymies in the GBIF dataset and attributed an accepted name following the synonymy list in eMonocot for each record. We excluded all marine taxa.

We then filtered out occurrences of species that are not native to island polygons using the eMonocot database which provides information on a species’ “native” or “non-native” status. To do so, we attributed a Taxonomic Databases Working Group polygon (TDWG; scale used in the eMonocot database⁷¹) to each island polygon used in our analysis⁶². All GBIF occurrences associated with a TDWG polygon and corresponding to a non-native species in the eMonocot database were excluded, which could sometimes lead to the exclusion of a genus.

However, with this method we could not identify the status of taxa with occurrences where information regarding the “native” or “non-native” status was missing in the eMonocot database. A second test was carried out for those species. For each, we delimited a polygon defined by the maximal and minimal latitudes and longitudes of their known native range. We then excluded the occurrences of species found outside their respective polygon.

Crossing data from large databases - the GBIF, eMonocot, and GID⁶² databases - we compiled 2,550,396 occurrences representing 15,901 species from 1,497 genera on 5,565 islands. Although this seems to be a small proportion of the initial sample (180,495 islands), suggesting that more sampling efforts are needed, this represents one of the largest dataset used for large scale conservation studies in islands. The use of eMonocot allowed reducing taxonomic and geo-localization errors and uncertainties, and therefore gave us more confidence in the validity of our data compared to using GBIF alone⁷². It also allowed to exclude non-native species, complete and correct a species’ area of distribution, and check for synonymies.

Step 1 - Assessing Island Vulnerability

First, we assessed the vulnerability to climate change of the 5,565 islands harbouring native monocot species, by evaluating how they will be impacted by sea level rise, shifts in temperature, and shifts in rainfall. Vulnerability is a concept used to evaluate the potential impacts of climate change on a system^{61,60}. The factors of vulnerability considered and the calculation of vulnerability scores are described below.

Factors of vulnerability. To estimate island vulnerability, we used a set of features that are expected to have a strong influence on the effects of climate change on insular biodiversity (Fig. 7)^{60,26,34}. Vulnerability to the three threats mentioned above was estimated by considering the following factors:

- **Sea Level Rise.** We estimated the vulnerability to this threat using the values of sea level rise predicted by the IPCC¹ and considering four island features: area, maximal elevation, mean elevation and circularity. The choice of these variables was based on the reasoning that a large area, high elevation, and roundness (i.e. smallest possible perimeter) increase the proportion of the island surface not affected by floods, erosion, and saltwater intrusion. This consequently reduces the possibility of sea level rise affecting the island's entire biota^{26,27}.
- **Shift in temperature.** We assessed the vulnerability to shifts in temperature by calculating the difference between predicted and current mean annual temperature and between predicted and current temperature seasonality (defined as the standard deviation of mean monthly temperatures). We also considered that the vulnerability of an island to a shift in temperature will depend on area and topographic heterogeneity. Indeed, a large and topographically heterogeneous island may comprise a wider range of climates and thus is more likely to maintain suitable climates in at least part of its territory.
- **Shift in rainfall.** We assessed the vulnerability to shifts in rainfall by calculating the difference between predicted and current values of mean annual rainfall and the difference between predicted and current rainfall seasonality. We also considered factors related to area and topography, which are related to the likelihood of maintaining suitable climates (as with the vulnerability to shifts in temperature).

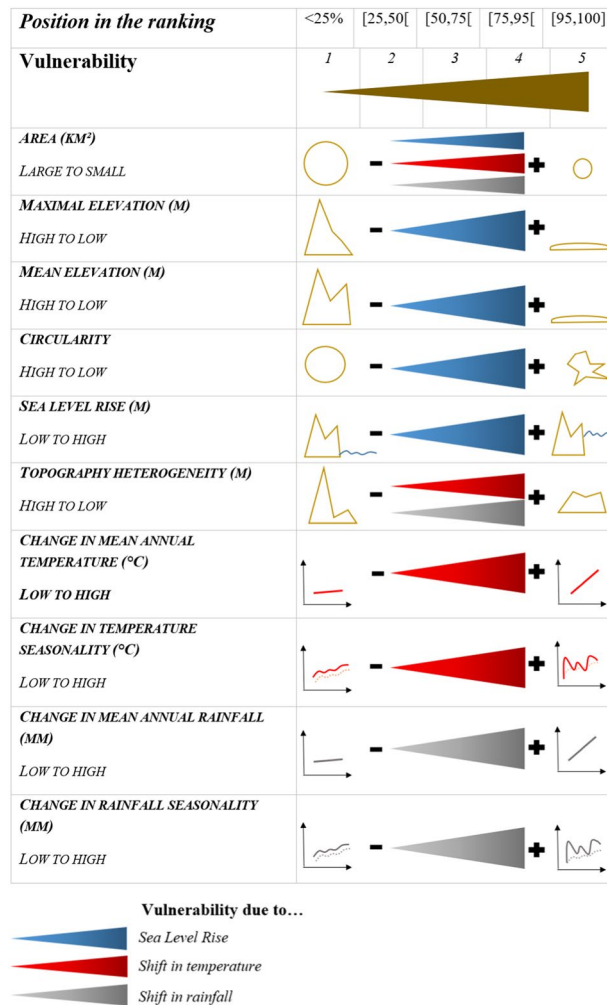


Figure 7. Vulnerability scores for each factor of vulnerability and their associated threat. For each factor, islands were ranked according to the expected influence of that factor on their vulnerability. Islands were then assigned to five classes (from low (1) to high (5)) depending on their ranking position. For example, the highest score was attributed to islands in the top 5%.

Current climatic variables were extracted from WorldClim version 2.0⁵⁰. Predicted temperature, rainfall and sea level rise values came from the IPCC¹ (provided by WorldClim version 1.4) and represent climate projections from global climate models based on four concentration pathways of representative greenhouse gases. In order to determine which scenario(s) to use, we performed a series of preliminary tests to assess the impact of each scenario on estimates of island vulnerability. Results indicated that islands were ranked similarly in their vulnerability to climate change under different scenarios. Although scenarios differed greatly in their estimates of sea level rise, temperature, and rainfall changes, they did not differ much regarding the spatial distribution of these changes (i.e. regions expected to experience the most change were roughly the same). We therefore selected the scenario that considers 2.6 Watts per square meter of cumulative emissions of human greenhouse gases. This corresponds to the most optimistic scenario, where temperature rise remains below 2 °C above pre-industrial values¹, and is the proposed target of the Paris Agreement on Climate Change.

Elevation and area data were extracted from Weigel *et al.*⁷³ and GID⁶² databases, respectively. Island circularity was estimated as the ratio between the squared perimeter and the area divided by 4π , with values ranging from 0 to 1 (a perfect circle having a value of 1).

Calculation of island vulnerability. We estimated the vulnerability of each island to each threat, i.e. sea level rise, shift in temperature and shift in rainfall. For each factor associated with a particular threat related to climate change, islands were ranked according to the expected influence of that factor on island vulnerability (Fig. 7). We then attributed a score between 1 (low rank) to 5 (high rank) to each island depending on its position in the ranking. For each threat, each island was given 4 or 5 scores (for shifts in temperature/rainfall and sea level rise respectively) (see above; Fig. 7). The vulnerability of an island to a threat is quantified as the mean of these scores.

Step 2 - Loss of Phylogenetic Diversity When Islands are Lost Independently

As a second step, we measured the amount and significance of global PD loss following the independent loss of islands, i.e. local extinction of all taxa on a given island. The aim was to identify which islands would have the greatest impact on the tree of life if they were lost.

Measuring expected PD loss per island. First, we estimated how much PD would be lost across the entire phylogeny of monocots if all genera occurring on a given island went extinct. To do so, we simulated the “loss” of an island, i.e. local extinction of all its taxa. We then estimated the probability of extinction for each genus on an island as the expected proportion of the genus’ global range lost if the island would disappear. Geographic range has been found to be one of the main predictors of species extinction risk, but presence-only data and the huge number of islands and species studied here did not allow assessing individual species range size. Yet, changes in the number of localities where a species occurs is also an essential factor of extinction risk and is used in the criteria B of the IUCN Red List threat status. In our analysis, species range was therefore measured as the number of islands a genus occurs on. This posits that each island equally contributes to a genus’ survival and, therefore probabilities of extinction are given by the proportion of native islands from which a genus disappears. Following Faith³⁹, each branch of the phylogenetic tree was weighted by the product of the extinction probabilities of all its descendants, i.e. equal to the proportion of the range lost for each genera found on the “lost” island and equal to 0 for all other genera. The branches supporting genera which had not lost any proportion of their range were considered safe (probability of extinction equal to 0). We calculated the expected loss of insular PD following the loss of a given island as the sum of weighted branch lengths^(39; Eq. 1). This measure estimates how much PD is expected to be lost on a global scale following local extinctions on a given island. It also allows us to consider the phylogenetic complementarity of extinction risks, i.e. the shared responsibility of taxa to safeguard deep branches³⁹.

$$ExpPDloss(tree, proba) = \sum_b L_b \prod_{k_b} p_{k_b} \quad (1)$$

where k_b designates the k^{th} descendant of branch b on the tree, p_{k_b} is the extinction probability of the k^{th} descendant of branch b , and L_b is the length of branch b ³⁹.

We ran this analysis for every native insular plant genera. Using this measure, the probability of extinction of a taxon was related to the number of islands it was found on independently of its potential occurrence on continents. Here, *ExpPDloss* has to be interpreted as the impact of island disappearance on monocot PD across islands but not on monocot PD worldwide (representatives of these genera may survive on continents). To complement this measure, we estimated *ExpPDloss* from a pruned tree comprising only genera that are endemic to islands, i.e. those found on a single or in several islands but not on the mainland (96 genera from 72 islands). This represents the PD at risk of irreversible loss, because these genera will not survive anywhere else if the islands where they live are lost. Finally, to correct for low sampling on some islands, we corrected *ExpPDloss* using the predicted genus richness for each island as described in Supplementary method S1.

Measuring the significance of ExpPDloss per island. As absolute *ExpPDloss* may be correlated with genus richness on an island, we tested whether loss of plant PD on each island was higher than expected by chance. To do so, we randomized genera between islands but kept the genus richness of each island and the range of each genus (i.e. the number of islands a genus is present on). For each island and randomization, we calculated the new *ExpPDloss* when that island is lost. Simulations were run 1000 times. For each island, we then calculated the frequency at which the observed *ExpPDloss* was higher than the 1000 *ExpPDloss* values calculated from simulations (p-values_{ind}; unilateral test). This procedure allowed removing the dependency of *ExpPDloss* on genus richness while retaining the structure of the data. Expected PD losses from the original data were considered highly, moderately or slightly significant when they fell into the highest 0.1%, 1% and 5% of the distribution values obtained from simulations, respectively.

To identify areas where range-restricted and/or evolutionarily distinct genera co-occur, we also estimated for each island the expected loss of species richness (*ExpSRloss*) and the expected loss of species richness in the most evolutionarily distinct species (*ExpSRloss_{ED}*⁷⁴). We calculated absolute values and their significance. Results were often similar to those of *ExpPDloss* and are described in Supplementary method S2.

Step 3 - Linking Expected PD Loss to the Vulnerability of Islands

Absolute value and significance of ExpPDloss per island in relation to island vulnerability. The third step of the analysis was to link island vulnerability (step 1) to the expected loss of PD (step 2). We first estimated the *absolute* *ExpPDloss* per island per category of vulnerability. Due to the high number of vulnerability scores we defined 4 categories of vulnerability: low ($1 \leq$ vulnerability score < 2), moderate ($2 \leq$ vulnerability score < 3), high ($3 \leq$ vulnerability score < 4) and very high vulnerability ($4 \leq$ vulnerability score ≤ 5). From this we identified the islands and the categories of vulnerability where *ExpPDloss* would be the highest.

Second, we linked the *significance* of *ExpPDloss* when islands were lost independently to the category of vulnerability they belonged to. We calculated the distribution of p-values_{ind} (i.e. the departure from the null model described above) and the median p-value_{ind} per vulnerability category. We identified in this way the categories where significant *ExpPDloss* was most frequent.

Expected loss of PD when all islands with a similar vulnerability to climate change are lost. As a second approach to link island vulnerability to loss of PD, we tested whether loss of *all* islands assigned to a

given vulnerability category would lead to higher ExpPD_{loss} than at random ($p_{\text{values}_{\text{all}}}$). This differs from the previous analyses which considered the *independent* loss of islands ($p_{\text{values}_{\text{ind}}}$).

Here we calculated extinction probabilities for each genus as the proportion of their range that would be lost if *all* islands with a similar vulnerability to climate change disappeared (in step 1 the extinction probability was measured as the proportion of a genus range lost when a *single* island disappeared). To explore this question, we defined the “range” of a genus as the number of vulnerability categories of the islands on which it occurs. For example, if a genus occurs *only* on highly vulnerable islands, its extinction probability would be 1 if all these islands were lost. The extinction probability of a genus occurring on islands from three categories (e.g. very high, high, and moderate vulnerability) would be 1/3 under a similar scenario. We then calculated the phylogenetic signal of extinction probabilities for each category of vulnerability and each type of threat using Pagel’s λ ⁷⁵ and Abouheif’s⁷⁶ statistical tests. These tests assume to reflect phylogenetic signal in a Brownian motion model of evolution and are robust when polytomies are present, which is the case here^{77,78}.

We then compared ExpPD_{loss} when all genera found on islands belonging to a given category of vulnerability were lost to ExpPD_{loss} when genera were distributed randomly among categories of vulnerability. In this randomization procedure, the number of genera per category of vulnerability and the number of categories of vulnerability a genus belonged to were retained. This procedure was run 1000 times and we calculated whether the frequency of the observed ExpPD_{loss} per vulnerability category was higher than by chance ($p_{\text{values}_{\text{all}}}$). This approach was similar to the one used in step 2 but here genera were randomized between categories of vulnerability instead of between islands as distinct units. To account for evolutionary distinctiveness and range-restriction, we also performed a similar analysis for ExpSR_{loss} and ExpSR_{loss}_{ED} (Supplementary method S2). Moreover, all analyses described above were conducted on all genera occurring on islands and then only on genera restricted to islands.

Data Availability

Data will be made available following acceptance

References

- Intergovernmental Panel on Climate Change. Climate Change 2014: Synthesis Report. Contribution of Working Groups I, II and III to the Fifth Assessment Report of the Intergovernmental Panel on Climate Change. 151 (Pachauri, R. K. & Meyer, L. A., 2014).
- IPCC, 2019: Summary for Policymakers. IPCC Special Report on the Ocean and Cryosphere in a Changing Climate (H.-O. Pörtner, D.C. Roberts, V. Masson-Delmotte, P. Zhai, M. Tignor, E. Poloczanska, K. Mintenbeck, M. Nicolai, A. Okem, J. Petzold, B. Rama, N. Weyer, In press).
- Parmesan, C. & Yohe, G. A globally coherent fingerprint of climate change impacts across natural systems. *Nature* **421**, 37–42 (2003).
- Millennium Ecosystem Assessment. Ecosystems and human well-being: synthesis (2005).
- Barnosky, A. D. *et al.* Has the Earth’s sixth mass extinction already arrived? *Nature* **471**, 51–57 (2011).
- Ceballos, G., Ehrlich, P. R. & Dirzo, R. Biological annihilation via the ongoing sixth mass extinction signaled by vertebrate population losses and declines. *Proc. Natl. Acad. Sci.* 201704949, <https://doi.org/10.1073/pnas.1704949114> (2017).
- McLaughlin, J. F., Hellmann, J. J., Boggs, C. L. & Ehrlich, P. R. Climate change hastens population extinctions. *Proc. Natl. Acad. Sci.* **99**, 6070–6074 (2002).
- Thuiller, W., Lavorel, S., Araujo, M. B., Sykes, M. T. & Prentice, I. C. Climate change threats to plant diversity in Europe. *Proc. Natl. Acad. Sci.* **102**, 8245–8250 (2005).
- Sodhi, N., Brook, B. & Bradshaw, C. Causes and consequences of species extinctions. *The Princetown guide to ecology* 514–520 (2009).
- Thomas, C. D. *et al.* Extinction risk from climate change. *Nature* **427**, 145 (2004).
- Bellard, C., Bertelsmeier, C., Leadley, P., Thuiller, W. & Courchamp, F. Impacts of climate change on the future of biodiversity: Biodiversity and climate change. *Ecol. Lett.* **15**, 365–377 (2012).
- Pecl, G. T. *et al.* Biodiversity redistribution under climate change: Impacts on ecosystems and human well-being. *Science* **355**, eaai9214 (2017).
- Dubos, N. *et al.* Disentangling the effects of spring anomalies in climate and net primary production on body size of temperate songbirds. *Ecography* **41**, 1319–1330 (2018).
- Myers, N., Mittermeier, R. A., Mittermeier, C. G., da Fonseca, G. A. B. & Kent, J. Biodiversity hotspots for conservation priorities. *Nature* **403**, 853 (2000).
- Kier, G. *et al.* A global assessment of endemism and species richness across island and mainland regions. *Proc. Natl. Acad. Sci.* **106**, 9322–9327 (2009).
- Ricketts, T. H. *et al.* Pinpointing and preventing imminent extinctions. *Proc. Natl. Acad. Sci.* **102**, 18497–18501 (2005).
- Frankham, R. Inbreeding and Extinction: Island Populations. *Conserv. Biol.* **12**, 665–675 (2008).
- Cox, J. & Lima, S. Naiveté and an aquatic–terrestrial dichotomy in the effects of introduced predators. *Trends Ecol. Evol.* **21**, 674–680 (2006).
- Wilme, L. Biogeographic Evolution of Madagascar’s Microendemic Biota. *Science* **312**, 1063–1065 (2006).
- Caujapé-Castells, J. *et al.* Conservation of oceanic island floras: Present and future global challenges. *Perspect. Plant Ecol. Evol. Syst.* **12**, 107–129 (2010).
- Wulff, A. S. *et al.* Conservation Priorities in a Biodiversity Hotspot: Analysis of Narrow Endemic Plant Species in New Caledonia. *PLoS ONE* **8**, e73371 (2013).
- Caesar, M., Grandcolas, P. & Pellens, R. Outstanding micro-endemism in New Caledonia: More than one out of ten animal species have a very restricted distribution range. *PLOS ONE* **12**, e0181437 (2017).
- Bellard, C. *et al.* Vulnerability of biodiversity hotspots to global change: Biodiversity hotspots and global change. *Glob. Ecol. Biogeogr.* **23**, 1376–1386 (2014).
- Mimura, N. Vulnerability of island countries in the South Pacific to sea level rise and climate change. *Clim. Res.* **12**, 137–143 (1999).
- Menon, S., Soberón, J., Li, X. & Peterson, A. T. Preliminary global assessment of terrestrial biodiversity consequences of sea-level rise mediated by climate change. *Biodivers. Conserv.* **19**, 1599–1609 (2010).
- Nunn, P., Kumar, L., Eliot, I. & McLean, R. Regional coastal susceptibility assessment for the Pacific Islands: Technical Report. (2015).
- Taylor, S. Impacts of climatic and oceanic processes on the threatened terrestrial vertebrates of the Pacific region. *GeoResJ* **13**, 1–8 (2017).
- Courchamp, F., Hoffmann, B. D., Russell, J. C., Leclerc, C. & Bellard, C. Climate change, sea-level rise, and conservation: keeping island biodiversity afloat. *Trends Ecol. Evol.* **29**, 127–130 (2014).

29. Willis, C. G., Ruhfel, B., Primack, R. B., Miller-Rushing, A. J. & Davis, C. C. Phylogenetic patterns of species loss in Thoreau's woods are driven by climate change. *Proc. Natl. Acad. Sci.* **105**, 17029–17033 (2008).
30. Bellard, C. *et al.* Will climate change promote future invasions? *Glob. Change Biol.* **19**, 3740–3748 (2013).
31. Bellard, C., Leclerc, C. & Courchamp, F. Impact of sea level rise on the 10 insular biodiversity hotspots: Sea level rise and insular hotspots. *Glob. Ecol. Biogeogr.* **23**, 203–212 (2014).
32. Wetzel, F. T., Beissmann, H., Penn, D. J. & Jetz, W. Vulnerability of terrestrial island vertebrates to projected sea-level rise. *Glob. Change Biol.* **19**, 2058–2070 (2013).
33. Harter, D. E. V. *et al.* Impacts of global climate change on the floras of oceanic islands – Projections, implications and current knowledge. *Perspect. Plant Ecol. Evol. Syst.* **17**, 160–183 (2015).
34. Kumar, L. & Tehrany, M. S. Climate change impacts on the threatened terrestrial vertebrates of the Pacific Islands. *Sci. Rep.* **7**, 5030 (2017).
35. Mace, G. M. Preserving the Tree of Life. *Science* **300**, 1707–1709 (2003).
36. Thuiller, W. *et al.* Consequences of climate change on the tree of life in Europe. *Nature* **470**, 531 (2011).
37. Yesson, C. & Culham, A. A phylogenetic study of Cyclamen. *BMC Evolutionary Biology* **72** (2006).
38. Faith, D. P. Conservation evaluation and phylogenetic diversity. *Biol. Conserv.* **61**, 1–10 (1992).
39. Faith, D. P. Threatened Species and the Potential Loss of Phylogenetic Diversity: Conservation Scenarios Based on Estimated Extinction Probabilities and Phylogenetic Risk Analysis. *Conserv. Biol.* **22**, 1461–1470 (2008).
40. Veron, S., Davies, T. J., Cadotte, M. W., Clergeau, P. & Pavoine, S. Predicting loss of evolutionary history: Where are we?: Predicting loss of evolutionary history. *Biol. Rev.* **92**, 271–291 (2017).
41. Forest, F. *et al.* Preserving the evolutionary potential of floras in biodiversity hotspots. *Nature* **445**, 757–760 (2007).
42. Faith, D. P. *et al.* Ecosystem services: an evolutionary perspective on the links between biodiversity and human well-being. *Curr. Opin. Environ. Sustain.* **2**, 66–74 (2010).
43. Purvis, A. Nonrandom Extinction and the Loss of Evolutionary History. *Science* **288**, 328–330 (2000).
44. Cahill, A. E. *et al.* How does climate change cause extinction? *Proc. R. Soc. B Biol. Sci.* **280**, 20121890–20121890 (2012).
45. Kumar, L., Eliot, I., Nunn, P. D., Stul, T. & McLean, R. An indicative index of physical susceptibility of small islands to coastal erosion induced by climate change: an application to the Pacific islands. *Geomat. Nat. Hazards Risk* **9**, 691–702 (2018).
46. Kumar, L. & Taylor, S. Exposure of coastal built assets in the South Pacific to climate risks. *Nat. Clim. Change* **5**, 992 (2015).
47. Andréfouët, S. *et al.* Conservation of low-islands: high priority despite sea-level rise. A comment on Courchamp. *Trends Ecol. Evol.* **30**, 1–2 (2015).
48. Perry, C. T. *et al.* Loss of coral reef growth capacity to track future increases in sea level. *Nature* **558**, 396–400 (2018).
49. Kench, P. S., Thompson, D., Ford, M. R., Ogawa, H. & McLean, R. F. Coral islands defy sea-level rise over the past century: Records from a central Pacific atoll. *Geology* **43**, 515–518 (2015).
50. Fick, S. E. & Hijmans, R. J. WorldClim 2: new 1-km spatial resolution climate surfaces for global land areas: NEW CLIMATE SURFACES FOR GLOBAL LAND AREAS. *Int. J. Climatol.* **37**, 4302–4315 (2017).
51. Fernández-Palacios, J. M. Island biogeography: Shaped by sea-level shifts. *Nature* **532**, 42–43 (2016).
52. Weigelt, P., Steinbauer, M. J., Cabral, J. S. & Kreft, H. Late Quaternary climate change shapes island biodiversity. *Nature* **532**, 99–102 (2016).
53. Cai, W. *et al.* Increasing frequency of extreme El Niño events due to greenhouse warming. *Nat. Clim. Change* **4**, 111 (2014).
54. ORSTOM. Atlas de la Nouvelle Calédonie et dépendances. 226 (Orstom, 1981).
55. Díaz, S. Summary for policymakers of the global assessment report on biodiversity and ecosystem services of the Intergovernmental Science–Policy Platform on Biodiversity and Ecosystem Services (2019).
56. Kreft, H., Jetz, W., Mutke, J., Kier, G. & Barthlott, W. Global diversity of island floras from a macroecological perspective. *Ecol. Lett.* **11**, 116–127 (2008).
57. Whittaker, R. J. & Fernández-Palacios, J. M. Island biogeography: ecology, evolution, and conservation (2007).
58. MacArthur, R. H. & Wilson, E. O. The theory of island biogeography. (Princeton, NJ: Princeton University Press, 1967).
59. González-Orozco, C. E. *et al.* Phylogenetic approaches reveal biodiversity threats under climate change. *Nat. Clim. Change* **6**, 1110–1114 (2016).
60. Yamada, K., Nunn, P., Mimura, N., Machida, S. & Yamamoto, M. Methodology for the assessment of vulnerability of South Pacific island countries to sea level rise and climate change. *J. Glob. Environ. Eng.* **1**, 101–125 (1995).
61. Intergovernmental Panel on Climate Change CZMS. Common methodology for assessing vulnerability to sea-level rise. Report of the Coastal Zone Management Subgroup, IPCC Response Strategies Working Group, Ministry of Transport, Public Work and Water Management. (1991).
62. UNEP-WCM. Global islands database. (2013).
63. Díaz, S. *et al.* The IPBES Conceptual Framework — connecting nature and people. *Curr. Opin. Environ. Sustain.* **14**, 1–16 (2015).
64. Davies, K. *et al.* Chapter 2. Nature's contributions to people and quality of life. in IPBES Regional and subregional assessment of biodiversity and ecosystem services for Asia and the Pacific (M. Karki *et al.*, 2018).
65. Brook, B., Sodhi, N. & Bradshaw, C. Synergies among extinction drivers under global change. *Trends Ecol. Evol.* **23**, 453–460 (2008).
66. Titeux, N., Henle, K., Mihoub, J.-B. & Brotons, L. Climate change distracts us from other threats to biodiversity. *Front. Ecol. Environ.* **14**, 291–291 (2016).
67. Otto, R. *et al.* Unpaid extinction debts for endemic plants and invertebrates as a legacy of habitat loss on oceanic islands. *Divers. Distrib.* **23**, 1031–1041 (2017).
68. Tang, C. Q. *et al.* Global monocol diversification: geography explains variation in species richness better than environment or biology. *Bot. J. Linn. Soc.* <https://doi.org/10.1111/boj.12497> (2016).
69. Stuessy, T. F., König, C. & Sepúlveda, P. L. Paraphyly and Endemic Genera of Oceanic Islands: Implications for Conservation¹. *Ann. Mo. Bot. Gard.* **100**, 50–78 (2014).
70. Garnock-Jones, P. Evidence-based review of the taxonomic status of New Zealand's endemic seed plant genera. *N. Z. J. Bot.* **52**, 163–212 (2014).
71. Brummitt, R., Pando, F., Hollis, S. & Brummitt, N. World geographical scheme for recording plant distributions. (2001).
72. Meyer, C., Weigelt, P. & Kreft, H. Multidimensional biases, gaps and uncertainties in global plant occurrence information. *Ecol. Lett.* **19**, 992–1006 (2016).
73. Weigelt, P., Jetz, W. & Kreft, H. Bioclimatic and physical characterization of the world's islands. *Proc. Natl. Acad. Sci.* **110**, 15307–15312 (2013).
74. Redding, D. W. & Mooers, A. Incorporating Evolutionary Measures into Conservation Prioritization. *Conserv. Biol.* **20**, 1670–1678 (2006).
75. Harvey, P. & Pagel, M. The Comparative Method in Evolutionary Biology. (1991).
76. Abouheif, E. A method for testing the assumption of phylogenetic independence in comparative data. *Evolutionary Ecology Research* **895**, 909 (1999).
77. Münkemüller, T. *et al.* How to measure and test phylogenetic signal: How to measure and test phylogenetic signal. *Methods Ecol. Evol.* **3**, 743–756 (2012).
78. Molina-Venegas, R. & Rodríguez, M. Á. Revisiting phylogenetic signal: strong or negligible impacts of polytomies and branch length information? *BMC Evol. Biol.* **17** (2017).

Acknowledgements

This work was supported by French state funds managed by the French National Research Agency within the Investissements d'Avenir program under reference ANR-11-IDEX-0004-02. We are grateful to Dan Faith for his helpful advice on an earlier version of the manuscript.

Author Contributions

R.P., T.H., M.M. and S.V. conceived the project. S.V., R.P., T.H., M.M. designed this study and wrote the article. SV, RG and TH collected data. R.P., T.H. and M.M. obtained the financial support. All authors reviewed the manuscript. R.P. and T.H. are co-senior authors.

Additional Information

Supplementary information accompanies this paper at <https://doi.org/10.1038/s41598-019-51107-x>.

Competing Interests: The authors declare no competing interests.

Publisher's note Springer Nature remains neutral with regard to jurisdictional claims in published maps and institutional affiliations.



Open Access This article is licensed under a Creative Commons Attribution 4.0 International License, which permits use, sharing, adaptation, distribution and reproduction in any medium or format, as long as you give appropriate credit to the original author(s) and the source, provide a link to the Creative Commons license, and indicate if changes were made. The images or other third party material in this article are included in the article's Creative Commons license, unless indicated otherwise in a credit line to the material. If material is not included in the article's Creative Commons license and your intended use is not permitted by statutory regulation or exceeds the permitted use, you will need to obtain permission directly from the copyright holder. To view a copy of this license, visit <http://creativecommons.org/licenses/by/4.0/>.

© The Author(s) 2019