



Cigarette smoke and electronic cigarettes differentially activate bronchial epithelial cells

Christian Herr, Konstantinos Tsitouras, Julia Niederstrasser, Christina Backes, Christoph Beisswenger, Li Dong, Loïc Guillot, Andreas Keller, Robert Bals

► To cite this version:

Christian Herr, Konstantinos Tsitouras, Julia Niederstrasser, Christina Backes, Christoph Beisswenger, et al.. Cigarette smoke and electronic cigarettes differentially activate bronchial epithelial cells. *Respiratory Research*, 2020, 21, pp.67. 10.1186/s12931-020-1317-2 . hal-02514925

HAL Id: hal-02514925

<https://hal.sorbonne-universite.fr/hal-02514925>

Submitted on 23 Mar 2020

HAL is a multi-disciplinary open access archive for the deposit and dissemination of scientific research documents, whether they are published or not. The documents may come from teaching and research institutions in France or abroad, or from public or private research centers.


L'archive ouverte pluridisciplinaire **HAL**, est destinée au dépôt et à la diffusion de documents scientifiques de niveau recherche, publiés ou non, émanant des établissements d'enseignement et de recherche français ou étrangers, des laboratoires publics ou privés.

RESEARCH

Open Access



Cigarette smoke and electronic cigarettes differentially activate bronchial epithelial cells

Christian Herr^{1*} , Konstantinos Tsitouras¹, Julia Niederstraßer¹, Christina Backes², Christoph Beisswenger¹, Li Dong³, Loïc Guillot⁴, Andreas Keller² and Robert Bals¹

Abstract

Background: The use of electronic cigarettes (ECIGs) is increasing, but the impact of ECIG-vapor on cellular processes like inflammation or host defense are less understood. The aim of the present study was to compare the acute effects of traditional cigarettes (TCIGs) and ECIG-exposure on host defense, inflammation, and cellular activation of cell lines and primary differentiated human airway epithelial cells (pHBE).

Methods: We exposed pHBEs and several cell lines to TCIG-smoke or ECIG-vapor. Epithelial host defense and barrier integrity were determined. The transcriptome of airway epithelial cells was compared by gene expression array analysis. Gene interaction networks were constructed and differential gene expression over all groups analyzed. The expression of several candidate genes was validated by qRT-PCR.

Results: Bacterial killing, barrier integrity and the expression of antimicrobial peptides were not affected by ECIG-vapor compared to control samples. In contrast, TCIGs negatively affected host defense and reduced barrier integrity in a significant way. Furthermore ECIG-exposure significantly induced IL-8 secretion from Calu-3 cells but had no effect on NCI-H292 or primary cells. The gene expression based on array analysis distinguished TCIG-exposed cells from ECIG and room air-exposed samples.

Conclusion: The transcriptome patterns of host defense and inflammatory genes are significantly distinct between ECIG-exposed and TCIG-treated cells. The overall effects of ECIGs on epithelial cells are less in comparison to TCIG, and ECIG-vapor does not affect host defense. Nevertheless, although acute exposure to ECIG-vapor induces inflammation, and the expression of S100 proteins, long term in vivo data is needed to evaluate the chronic effects of ECIG use.

Background

The contribution of exposure to cigarette smoke (CS) to the development and progression of chronic obstructive pulmonary disease (COPD), cancer, and cardiovascular diseases is widely recognized [1, 2]. Electronic cigarettes (ECIGs) are commercially available since 2004, but patents for similar devices reach back to 1965 [3, 4]. ECIGs are devices that produce a vapor by heating a liquid [3] that usually contains a mixture of glycerol, propylene-glycol, water, flavors, and different concentrations of nicotine. The flavors cover a broad range of tastes from fruit or spices, to different brands of tobacco. An intense scientific

and political discussion about the toxicity and potential harm reduction of ECIGs is ongoing.

Glycerol-propylene-glycol-water mixtures have been in use for a long time as artificial fog in aviation emergency training and entertainment business, but only a few studies about possible side effects exist before the emergence of ECIGs [5, 6]. Several studies have analyzed the effects of ECIGs on lung cells with the goal to evaluate toxic effects on cells and tissues [7]. A number of negative outcomes on different tissue culture systems (cell death, impaired repair, oxidative stress) have been reported [7–9]. In parallel, several studies compared ECIGs with TCIGs and often found decreased acute toxicity [10–16]. ECIG-vapor induced DNA-strand breaks in vitro [17] that are known to be induced by oxidative modifications of DNA by free radicals [18]. Several studies showed increased cytotoxicity and

* Correspondence: christian.herr@uks.eu

¹Department of Internal Medicine V – Pulmonology, Allergy and Critical Care Medicine, Saarland University, D-66421 Homburg, Germany
Full list of author information is available at the end of the article



© The Author(s). 2020 **Open Access** This article is distributed under the terms of the Creative Commons Attribution 4.0 International License (<http://creativecommons.org/licenses/by/4.0/>), which permits unrestricted use, distribution, and reproduction in any medium, provided you give appropriate credit to the original author(s) and the source, provide a link to the Creative Commons license, and indicate if changes were made. The Creative Commons Public Domain Dedication waiver (<http://creativecommons.org/publicdomain/zero/1.0/>) applies to the data made available in this article, unless otherwise stated.

oxidative stress of flavored ECIG-vapor in vitro and in vivo [8, 19–21]. Additionally, it has been shown that ECIG-vapor may damage the pulmonary endothelial barrier and induce pulmonary neutrophilic inflammation [22, 23]. A recent study showed differences in gene expression in differentiated bronchial epithelial cells between TCIG- and ECIG-exposed cells, with and without nicotine [24], and showed differences in gene expression signatures in various pathways like phospholipid and fatty acid triacylglycerol, which were significantly enriched after ECIG-exposure.

In the present study we aimed to compare the acute effects of ECIG-vapor and TCIG-smoke on inflammation, host defense and cellular activation of human airway epithelial cells. We used an in vitro TCIG-exposure model [25] and adopted it to the vaporization of ECIG-liquid. Although we are aware that the composition of TCIG-smoke, besides nicotine and glycerol, is highly different from ECIG-vapor, we normalized the amount of ECIG-vapor to the content of nicotine from our established TCIG-exposure model. This has not been done in previously published studies and was important for direct comparison of the effects of ECIG-vapor and TCIG-smoke exposure. We chose nicotine consumption as a normalization factor to account for the needs of smokers to meet their demands for nicotine, when switching between TCIGs and ECIGs.

Material and methods

Cell culture

The human lung adenocarcinoma cell line Calu-3 (ATCC HTB-55) was cultured in DMEM/F12 (1:1) and the human bronchial epithelial cell line NCI-H292 (ATCC CRL-1848) was cultured in RPMI medium (Life Technologies, Darmstadt, Germany) both supplemented with 10% fetal bovine serum and 1% penicillin-streptomycin (Life Technologies, Darmstadt, Germany). Primary human bronchial epithelial cells (pHBE) were isolated from large airways from samples obtained from macroscopically healthy areas of resected lung samples during surgery as described before [26]. The primary cells used within this study were from 3 different donors of Caucasian origin to account for intra-individual differences. The isolation and use of human specimen was approved by the ethics committee of the Landesärztekammer des Saarlandes. The primary cells were grown in airway epithelial cell growth medium with growth supplement (Promocell, Heidelberg, Germany) and 1% penicillin-streptomycin (Life Technologies, Darmstadt, Germany), passaged once and freeze for later use. The experiments were repeated three times, all cells were tested in regular intervals and found to be mycoplasma-free.

Air-liquid interface culture

The cells were seeded on 12-well transwell plates (Corning Inc., Kennebunk, ME, USA) at a density of $2\text{--}2.5 \times$

10^5 cells / well. All experiments were performed on plates with a pore size of $0.4 \mu\text{m}$ except for barrier analysis, where membranes with $3 \mu\text{m}$ pore size were used [26]. After reaching confluence, the medium was changed to serum-free growth medium in the lower compartment and removed in the upper compartment. For primary cells after air-lift the medium was changed to antibiotic-free DMEM/F12 (1:1), supplemented with 2% Ultrosor-G (Pall Life Science, Fribourg, Switzerland). Cell lines were used after reaching a transepithelial resistance of $> 530 \Omega/\text{cm}^2$ and primary cells after approaching more than $1000 \Omega/\text{cm}^2$.

Culture conditions of bacteria

Pseudomonas aeruginosa PAO1 (PAO1) was cultured on LB-agar plates (Roth, Karlsruhe, Germany) overnight. 5 mL LB-medium was inoculated with a single colony and cultured overnight (300 rpm, 37°C). On the next day the 25 mL fresh medium was inoculated with bacteria from the overnight culture to yield an $\text{OD}_{600} \leq 0.3$. The cells were cultured under agitation until they reached an OD_{600} of 1. For infection experiments with viable bacteria, PAO1 were diluted 1:10000 and applied in $15 \mu\text{L}$ to the apical surface of the air lifted cultures. For heat inactivation the undiluted solution was incubated for 5 min at 95°C , stored in aliquots at -20°C and used for experiments in a dilution of 1:50 (approximately 53.4×10^6 CFU/well).

Cigarette smoke exposure

Differentiated air-liquid interface (ALI) cultures were exposed to volatile cigarette smoke from TCIGs as described earlier [25, 27]. Briefly, the ALI cultures were placed inside a modular incubator chamber (Billups-Rothenberg, Del Mar, CA, USA) that was placed inside a standard cell culture incubator. The incubator chamber was connected to a small membrane pump (Laboport N86 KN.18, KNF Neuberger, Freiburg, Germany) (for detailed information see supplementary data), that produced a negative pressure to conduct the smoke from commercially available Marlboro 100 s cigarettes to the ALI cultures placed inside the incubator box in the cell culture incubator. The negative pressure was adjusted to burn 3 cigarettes in 15 min uniformly. The smoke was mixed with humidified air from the incubator and conducted to the incubator chamber containing the ALI cultures.

Electronic cigarettes

The ECIG-vapor was produced by a commercially available ECIG (steamo nova2, steamo GmbH, Leipzig, Germany). The ECIG consisted of a 3.5 mL refillable plexiglas tank and a 2.2 Ohms heating element that was operated at 2.6 Volts. The heating element was replaced after 10 uses. The cartridge was placed inside the cigarette holder of the custom-developed ECIG-device

(Suppl.Fig. 1) and connected to a slightly modified exposure setup as described above. Briefly, a small ventilator was placed on the bottom of the incubator chamber to distribute the ECIG-vapor in the chamber. Commercially available liquid (60% propylene glycol, 30% glycerol, 10% water) without flavor and with 18 mg/mL nicotine was used (Dampfdorado, St. Ingbert, Germany). The ECIG-vapor was produced in intervals of 3 s each 29 s for a total duration of 15 min, which is similar to human “vaping” behavior [28, 29]. The concentration of ECIG-vapor was adjusted by regulating the airflow through the ECIG to be equal to the amount of nicotine that is contained in 3 Marlboro 100 s cigarettes used for the TCIG-exposure. The concentration of ECIG-vapor was calculated as the difference in weight of the ECIG-cartridge before and after exposure. Given the known concentration of nicotine in the liquid the amount of nicotine was calculated and compared to the concentration of nicotine in the cigarettes.

Normalization of ECIG-vapor and TCIG-smoke

We decided to normalize both exposure procedures on the content of nicotine since this is an ingredient common to cigarettes and ECIG with well-documented addiction promoting activity and toxicity [30–33]. In our established TCIG-exposure protocol we used 3 Marlboro 100 cigarettes, burned each in 5 min. Each cigarette from this brand contains 0.8 mg nicotine; a TCIG-exposure regimen would therefore contain approximately 2.4 mg nicotine. The mean density of the ECIG-fluid was calculated as a mean of 1.111 mg/mL (1.102 mg/mL without nicotine, 1.12 mg/mL with 18 mg/mL nicotine). Therefore 1 mg ECIG-fluid contains $1.63 \cdot 10^{-2}$ mg nicotine. Based on this calculation 147 mg of the ECIG-fluid would equal approximately 2.4 mg nicotine from 3 cigarettes. We adjusted the airflow to 1 LPM (liter per minute) from the incubator and the ECIG respectively. Using a vaping-puff length of 3 s every 29 s, we typically consumed 150–160 mg ECIG-fluid over 15 min and reached the calculated amount of 2.4 mg nicotine per exposure.

Determination of barrier integrity

To analyse the epithelial barrier integrity, the translocation of dextran from the apical to the basolateral side of the cell layer was determined as described before [34]. Directly after exposures, 200 μ L of 10 mg/mL fluorescein labeled isothiocyanate–dextran (FITC-Dextran, 70 kDa, Sigma-Aldrich, Munich, Germany) in PBS or PBS containing heat inactivated *P. aeruginosa* PAO1 were applied directly on cells. 100 μ L of the basolateral solution was collected after 24 hours and the fluorescence was measured. The fluorescence intensity was calculated against a standard curve of known concentrations of FITC-Dextran.

Measurement of IL-8

We determined the IL-8 concentration in the basolateral solution of the air-liquid interface before and after exposure, by enzyme-linked immunosorbent assay (ELISA) according to the manufacturer's instructions (R&D Systems, USA, Minneapolis, MN). We used a TECAN Ultra 384 ELISA reader and the software Magellan (Tecan, Mainz, Germany).

RNA extraction and qRT-PCR

Total RNA of cells was isolated by Nucleospin RNA Kit according to manufacturer's instructions (Machery Nagel, Düren, Germany) and used for whole-genome gene expression array analysis (Illumina Expression Bead Chip, Illumina Inc., San Diego, California) or validation of the array by qRT-PCR. cDNA was synthesized with the RevertAid First strand cDNA Synthesis Kit (Thermo Scientific, Schwerte, Germany) and oligo dT₁₈-primers. The expression of the different genes was quantified by using the SensiMix™ SYBR® & Fluorescein Kit (Bioline, Luckenwalde, Germany) and the C1000 Touch™ Thermal Cycler (Bio-Rad, Munich, Germany). The specific primer sequences used in this work can be found in the supplementary part (metabion international AG, Planegg, Germany). The expression was quantified by the $\Delta\Delta$ ct-method [35].

Transcriptome analysis

Primary human bronchial epithelial cells from 3 different donors were mixed and cultured as described above. After differentiation on transwell plates, the cells were exposed to TCIG and ECIG. Twenty-four hours after exposure RNA was isolated according to the manufacturer's instructions (Nucleospin RNA Kit, Macherey Nagel, Düren, Germany). The RNA was used for expression analysis on an Illumina HumanHT-12 v4 Expression Bead Chip according to the manufacturer's instructions. The analysis was performed by the Institute of Clinical Molecular Biology (Kiel University, University Hospital Schleswig Holstein, Germany).

The raw expression matrix was quantile normalized with the R package preprocess core. We identified the 100 genes having the highest variance over all samples and generated a heatmap with the heatmap.2 package from gplots. The heatmap also provides a dendrogram showing the clustering of the samples into groups (hierarchical clustering, Euclidean distance, complete linkage). Furthermore, we computed the differentially expressed genes in the groups using the quantile normalized data from the microarray and selected all genes with signals having a limma adjusted *p*-value $p < 0.05$ after 1-way ANOVA with post-hoc *t*-test. Data with an overall standard deviation > 0.5 and a limma adjusted *p*-value $p < 0.05$ was row-normalized, log₂-transformed, and used to compile a heatmap of significantly differentially expressed genes (ratio of the mean expression values). Deregulated genes with

a limma adjusted p -value < 0.05 and a difference in gene expression > 1.3 or < 0.6 fold were selected and compared for genes commonly deregulated between the groups using a Venn diagram [36].

Gene interaction networks were constructed based on log2 transformed normalized data with a limma adjusted p -value < 0.05 and an overall standard deviation > 1.5 . The data was clustered (UPGMA, Euclidian distance) and interaction networks were drawn with the contextual network analysis software NetWalker [37].

Statistical analysis

The data with normal distribution is displayed as mean and standard-deviation and data with skew distribution is expressed as median and interquartile range. The difference between groups ($n \geq 3$) of normally distributed data was determined by parametric one-way analysis of variance (ANOVA) with a post-hoc Tukey-Kramer test or ($n < 3$) Student's t test. The chi-square test was used to test group differences of non-normally distributed data or category data. The statistical analysis was performed using GraphPad Prism software (GraphPad Software Inc., V 5.02, La Jolla, CA, USA). Results were considered statistically significant for p -values less than 0.05. The statistical analysis for the transcriptome data is described above.

Results

ECIG has no effect on host defense

TCIG smoke is known to inhibit the host defense activities of epithelial cells and is a major risk factor for respiratory tract infections [27, 34]. To determine whether ECIGs have an effect on epithelial host defense, we exposed human Calu3 cells to TCIG or the corresponding amount of ECIG-vapor and infected the cells with 1×10^3 CFU *P. aeruginosa*. The number of viable bacteria recovered from TCIG-exposed cells was significantly higher than the number of bacteria from untreated infected controls (Fig. 1 A). Samples that were exposed to ECIG-vapor did not contain considerably more viable bacteria than the infected control samples.

The epithelial barrier is an essential structural component of innate immunity. The translocation of high molecular weight dextran from the apical to the basolateral transwell compartment indicates a leaky epithelial barrier. Twenty-four hours after infection with *P. aeruginosa*, a higher concentration of FITC-dextran was detected in the basolateral compartment as compared to the non-infected groups (Fig. 1 b). The highest concentration of FITC-dextran in samples comparing the infected and non-infected groups was measured in the TCIG-exposed samples. The treatment with ECIG-vapor did not increase the translocation of FITC-dextran into the lower transwell compartment (Fig. 1 b).

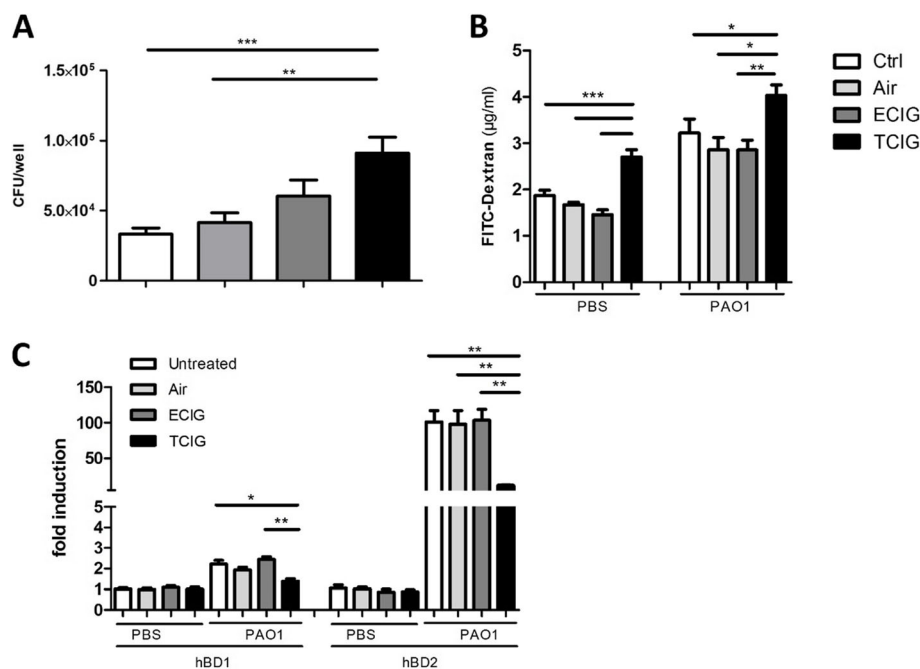


Fig. 1 TCIG-exposure and ECIG differentially inhibit host defense. Calu-3 cells on transwell plates were exposed to TCIG or ECIG and infected with PAO1. 6 h after exposure and infection the highest number of bacteria was collected from TCIG-exposed cells, while ECIG-exposure only caused a moderate increase in bacterial counts (a). The treatment with TCIG induced an increased translocation of FITC-Dextran from the apical to the basolateral compartment, which is independent of infection with PAO1 (b). The reduced host defense of TCIG-exposed samples correlated with a reduced expression of the antimicrobial peptides hBD1 and hBD2, which is induced after bacterial stimulation and not influenced by ECIG-vapor (c). $N = 6$, one-way ANOVA, Tukey-Kramer adjusted post-hoc t -test, * $p < 0.05$, ** $p < 0.01$, *** $p < 0.001$

Another important component of the innate immune system consists of antimicrobial peptides like defensins. The stimulation with *P. aeruginosa* led to a moderate induction of human beta-defensin-1 (hBD1), while the expression of human beta-defensin-2 (hBD2) was highly upregulated (Fig. 1 C). The treatment with ECIG-vapor did not change the expression of hBD1 or hBD2. In contrast TCIG-exposure significantly inhibited the expression of hBD1 and hBD2 in the infected groups (Fig. 1 c), which correlated with a higher bacterial load recovered from TCIG-exposed cells (Fig. 1 a).

ECIG-exposure induces inflammation in vitro

TCIG-exposure of epithelial cells results in the induction of inflammation. Also, in the present study, TCIG-exposure leads to increased secretion of IL-8 from human bronchial epithelial cells (Fig. 2). In the NCI-H292 cell-line, the concentration of IL-8 after TCIG-exposure was significantly higher than in the samples treated with ECIG-vapor or the untreated controls (Fig. 2 a). In Calu-3 cells grown in the air-liquid interface we observed a significant increase of IL-8 secretion 24 hours after ECIG-exposure, which was similar to the amount found after TCIG-exposure (Fig. 2 b). In differentiated human primary bronchial epithelial cells, ECIG-vapor increased the secretion of IL-8 only moderately, while the exposure with TCIG induced a significantly higher production of IL-8 as compared to the mock exposed controls (Fig. 2 c).

The gene expression pattern is distinct between TCIG and ECIG-exposed cells

To further characterize the transcriptional response of airway epithelium in response to exposure with ECIG and TCIG, we performed an array based analysis of gene transcription. We mixed equal numbers of human primary bronchial epithelial cells from three different donors and differentiated them in the air-liquid interface culture system. Twenty-four hours after exposure to TCIG, ECIG-vapor or room air (controls) RNA was extracted and used for expression analysis.

First, we analyzed the normalized array data by clustering the samples using the 100 genes with the highest variance over all samples (Fig. 3). The heatmap clearly shows a distinction into two main clusters which separates the TCIG samples from the remaining samples. The second cluster is additionally divided into two clusters corresponding to the ECIG group and the control group. This clustering suggests that the TCIG samples have a very different expression pattern compared to ECIG and control samples, whereas the ECIG and controls can also be clearly separated but show a more similar expression pattern.

From the 31,422 transcripts analyzed, 2853 genes were significantly differently expressed (DEG) with an adjusted p -value < 0.05 (limma adjusted p -value) over all groups. Out of this group 80 genes showed a standard deviation greater 0.5 and were used for constructing the heatmap of significantly deregulated genes (Fig. 4 a) and the gene interaction network (Fig. 4 b). The heatmap clearly separates the samples into two clusters. One

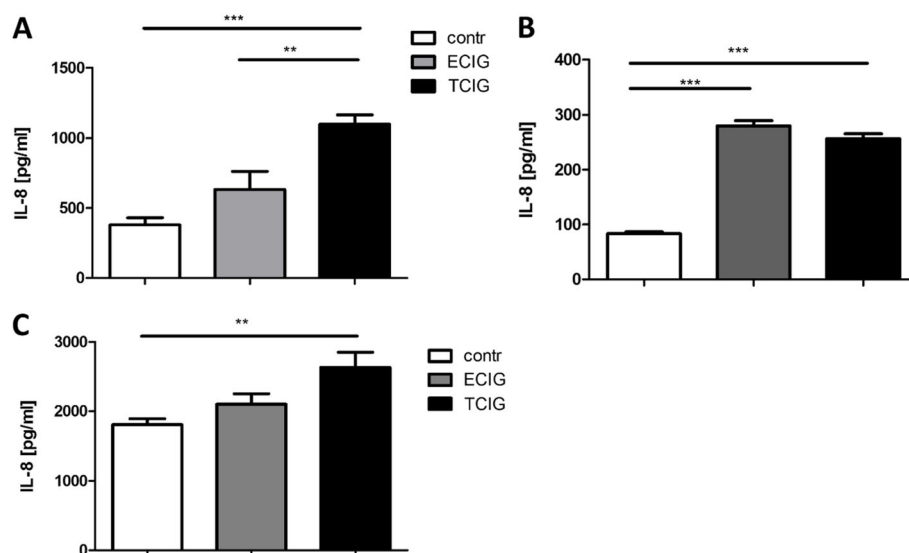


Fig. 2 TCIG-exposure leads to a significantly increased synthesis of IL-8 in NCI-H292 cells (a), Calu-3 (b), and pHBE's (c). The treatment with ECIG-vapor induced a slight increase in IL-8 production in NCI-H292 (a) and pHBE (c), but resulted in significantly increased IL-8 concentrations in Calu-3 cells (b). N = 6, one-way ANOVA, Tukey-Kramer adjusted post-hoc t-test, * $p < 0.05$, ** $p < 0.01$, *** $p < 0.001$

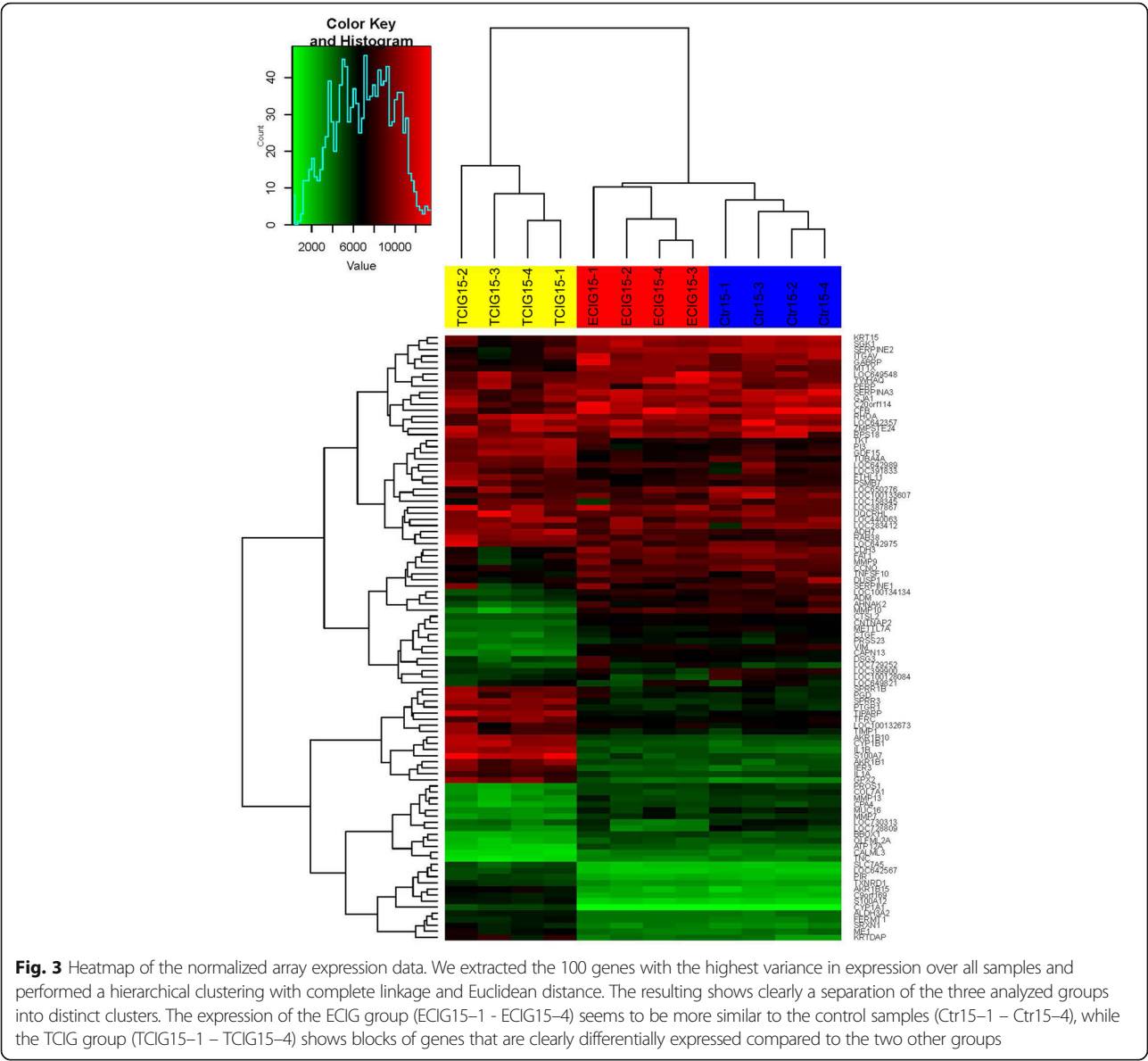


Fig. 3 Heatmap of the normalized array expression data. We extracted the 100 genes with the highest variance in expression over all samples and performed a hierarchical clustering with complete linkage and Euclidean distance. The resulting shows clearly a separation of the three analyzed groups into distinct clusters. The expression of the ECIG group (ECIG15-1 – ECIG15-4) seems to be more similar to the control samples (Ctr15-1 – Ctr15-4), while the TCIG group (TCIG15-1 – TCIG15-4) shows blocks of genes that are clearly differentially expressed compared to the two other groups

cluster contains ECIG-treated and control (Ctr) samples, while TCIG-exposed cells clearly separate from the other groups. Each cluster was used to construct gene interaction networks (Fig. 4 b) [38]. Each gene (node) is connected by edges (lines). Grey lines indicate protein-protein interactions, dark blue lines gene regulatory interactions, yellow metabolic interactions, and light blue reactome interactions. The data for this interactions were obtained by Netwalker from queries of HPRD (Human protein reference database), BIND (Biomolecular interaction database), MINT, BioGRID, IntAct, Reactome (obtained from Pathway Commons), NCI Pathway Interaction Database), KEGG, Human Metabolome Database (HMDB) and BiGG. Details about the mathematical model behind these networks are described by Komurov, et.al [37].

Among the genes upregulated by TCIG in the network, many show a REL-A and JUN dependent upregulation, which is known for pro-inflammatory stimulations like TCIG (Fig. 4 b). A number of genes were also upregulated that interact with cytochrome P450 CYP1A1, that is known to be involved in xenobiotic metabolism and the activation of aromatic hydrocarbons to carcinogens [39]. CYP1A1 showed the highest induction by TCIG compared to ECIG or Ctr-samples (28.1 fold, 31.5 fold, respectively, $p = 7.42 \cdot 10^{-7}$). Among the DEGs with a limma-adsuted p -value $p < 0.05$, the highest uniquely upregulated gene between ECIG and Ctr was CYP2A6 with a 1.37 fold increased expression (Table 1). To detect small changes, we decided to use a cutoff for analysis of 1.3 fold increase,

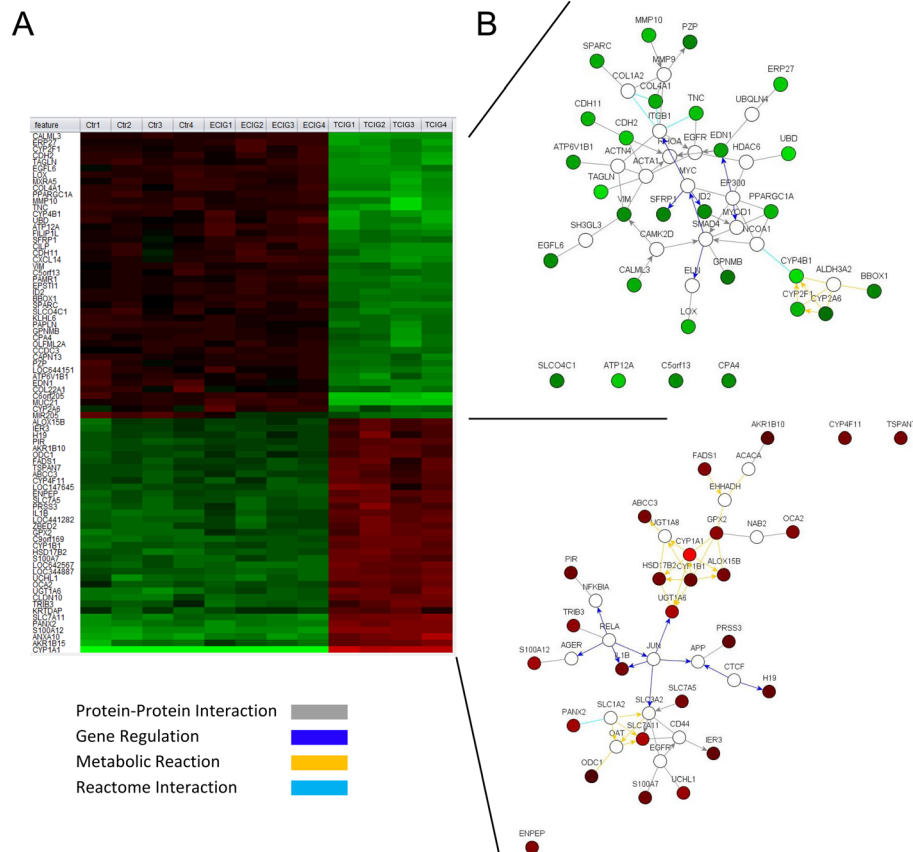


Fig. 4 Heatmap from the significantly differentially expressed genes with a $p < 0.05$ (limma adjusted p -value) and a standard deviation > 0.5 over all samples (a). After clustering gene interaction networks were generated from the two resulting gene-expression clusters (b). Coloring of the nodes was done using the mean from TCIG-exposed samples (CS). The heatmap and the interaction networks were generated using Netwalker 1.0 [37, 38]. The lines connecting the nodes represent protein-protein interactions (grey), gene regulatory interactions (dark blue), metabolic reactions (yellow), and reactome interactions (light blue)

although we are aware that this may not reflect a biologically relevant influence in acute exposure. Although significant, the most downregulated gene by ECIG compared to Ctr was an anti-sense ncRNA (ITPK1-AS1, C14orf85) with a 0.56 fold induction (Table 1). The highest significant repression was observed in the TCIG exposed samples compared to Ctr (MUC21) with a 0.29 fold increased expression (Table 1). In order to include the ECIG-exposed samples in the analysis, the cutoff for further analysis of downregulated genes was set to 0.6 fold downregulation, although these changes may be relevant in a chronic model. The compilation of induced and repressed genes into a Venn diagram [36] clearly shows that most genes are deregulated by TCIG smoke compared to ECIG and Ctr (Fig. 5). In contrast no gene is significantly deregulated by ECIG vs Ctr and ECIG vs TCIG. Only two genes, which are pseudogenes, are significantly upregulated by ECIG vs Ctr and TCIG vs Ctr (Fig. 5 a). A more detailed list of uniquely and commonly DEG is shown in the supplemental data (Supplementary Table 1).

Increased expression of redox and inflammation associated proteins induced by TCIG and ECIG

Among the 100 genes with the significantly highest gene expression variance (Fig. 3) and significantly DEGs (Fig. 4 a) several belonged to inflammation associated, tissue remodeling or antioxidant pathways respectively. Glutathione peroxidase-2 (GPX2 gene, Gpx2) is one example of such a gene, whose expression is significantly deregulated in the group comparison (ANOVA post-hoc t-test p -value, FDR adjusted: 2.3×10^{-4} ; Supplementary Table 2) and shows an almost 3x up-regulation in the TCIG samples compared to the controls and a 2.3x up-regulation compared to the ECIG samples. The difference in expression for this gene is only 1.3x for ECIG compared to the controls (see Supplementary Table 3).

We confirmed the expression of GPX2 by qRT-PCR of differentiated pHBE that were TCIG- or ECIG-exposed after different time points (Fig. 6 a). While ECIG-

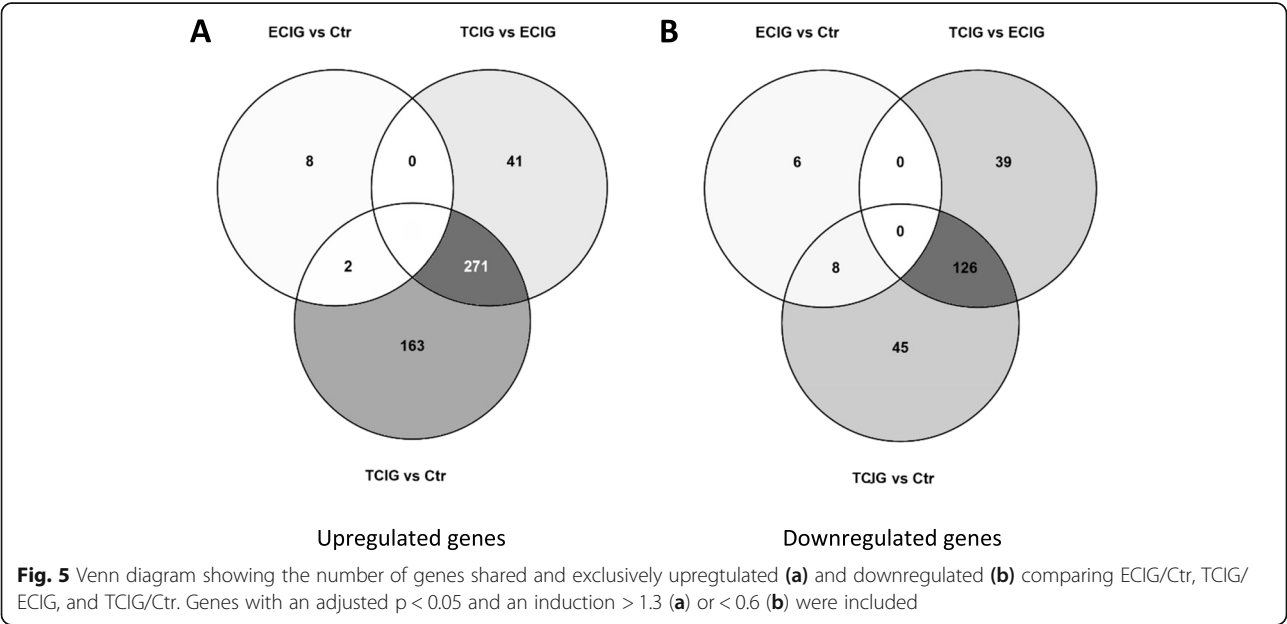
Table 1 Differentially expressed genes

Exclusively upregulated genes	Symbol
Upregulated exclusively by ECIG compared to Ctr > 1.30 (range depicted 1.37–1.31, descending order)	CYP2A6, ZNF286A, APOBEC3B, WDR57, LPCAT2, LYPD2, CYP2B7P1, SLCO2A1
Upregulated exclusively by TCIG compared to ECIG > 1.30 (range depicted 1.52–1.33, descending order)	ARHGEF16, GDF15, PRDM1, RINT1, NTHL1, CYB5R2, CYP4F12, TNFRSF10A, RGS19, EDC3, APN5, SLC35C1, OTUB2, B3GNT8, ULK3, KRT18P17, CDC37L1, MAFF, CYP4F22, EHBP1L1
Upregulated exclusively by TCIG compared to Ctr > 1.30 (range depicted 1.56–1.45, descending order)	MAOB, IGSF5, CEP55, SPRED2, CICE, FKBP4, NIT2, MTHFS, NAPG, GPD3, FEZ1, IFRD2, FOSL1, SHISA2, MVD, WDR72, AMN1, CYBASC3, GATC, IL1F5
Exclusively downregulated genes	
Downregulated exclusively by ECIG compared to Ctr < 0.60 (range depicted 0.56–0.59, increasing order)	C14orf85, NBPF8, CYP3A5, SNORA61, FLJ36131
Downregulated exclusively by TCIG compared to ECIG < 0.60 (range depicted 0.45–0.58, increasing order)	CYP2A6, SLCO2A1, HSPB3, TPM1, LYPD2, CA9, ALOX5AP, RTDR1, APCDD1, CYP4X1, C13orf30, SCARA3, MGC39900, RSPH9, MYLK, NGB, PPM1E, DNAI1, PTPRZ1, TSPAN8
Downregulated exclusively by TCIG compared to Ctr < 0.60 (range depicted 0.49–0.58 increasing order)	RYR3, DNAH12L, ODZ3, S100A3, AHNAK2, MIR221, ENC1, SMA4, TNFAIP8L1, MIR21, FLJ44342, TTC18, MEX3B, RGMA, FLJ23834, MAFB, MMP13, DNHD2, C1orf63, DCBLD1
Commonly deregulated genes	
Upregulated commonly in TCIG/ECIG and TCIG/Ctr > 1.30 (range depicted 37.5–2.50, descending order)	CYP1A1, ANXA10, S100A12,PANX2, SLC7A11, CLDN10, UGT1A6, AKR1B15, C9orf169, GPX2, UCHL1, HSD17B2, IL1B, TRIB3, SLC7A5, ZBED2, CYP1B1, ENPEP, S100A7, PRSS3
Upregulated commonly in ECIG/Ctr and TCIG/Ctr > 1.30 (range depicted 1.37–1.31, descending order)	(LOC100128899, LOC391019)
Downregulated commonly in TCIG/ECIG and TCIG/Ctr < 0.60 (range depicted 0.29–0.42, increasing order)	C6orf205, MUC21, TNC, CYP4B1, PPARGC1A, EDN1, TAGLN, LOX, CYP2F1, CALML3, ERP27, MMP10, CDH2, MXRA5, EGFL6, COL4A1, ATP12A, CDH11, UBD, CILP
Downregulated commonly in TCIG/Ctr and ECIG/Ctr < 0.60 (range depicted 0.51–0.59, increasing order)	FAM175A, MIR205, CATSPER2, GABRE, MGC16121

Only the top-20 genes are shown (where possible). For a complete listing see supplemental data

exposure only induces a slightly increased transcription after 24 hours, the expression of GPX2 is significantly up-regulated 24 hours after TCIG-exposure (Fig. 6 a). Based on the gene expression results from the array, S100A7 and S100A12 are among the 100 genes with the highest expression variance and are induced after TCIG-exposure.

S100 proteins comprise a family of calcium binding proteins involved in inflammation, host defense, and carcinogenesis [40]. Both genes are significantly deregulated (ANOVA, post-hoc t-test *p*-value FDR adjusted: 4.33*10⁻⁵ and 2.03*10⁻⁷; Supplementary Table 2) (adjusted *p*-value < 0.05) in the group comparison and upregulated in the gene interaction



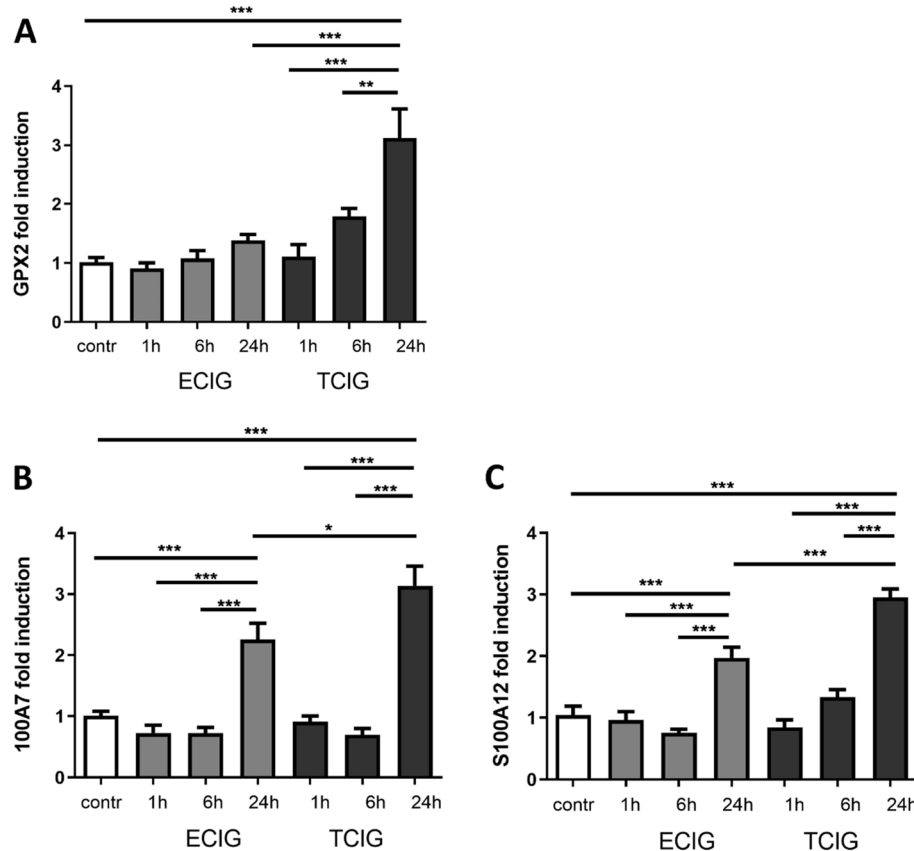


Fig. 6 Validation of selected genes differentially regulated after array analysis by qRT-PCR in differentiated pHBE at different time points after exposure. The expression of GPX2 is only slightly upregulated by ECIG after 24 h but significantly induced in a time dependent manner after TCIG-exposure (**a**). The expression of S100A7 (**b**) and S100A12 (**c**) is significantly induced 24 h after ECIG-exposure and further increased significantly by TCIG at the same time-point. N = 6, one-way ANOVA, Tukey-Kramer adjusted post-hoc t-test, * $p < 0,05$, ** $p < 0,01$, *** $p < 0,001$

analysis. Although qRT-PCR shows a significant up-regulation of both S100 proteins 24 h after ECIG-exposure (Fig. 6 b-c), the gene-expression of S100A7 (Fig. 6 B) and S100A12 (Fig. 6 C) is further significantly increased 24 hours after TCIG-exposure.

The differences observed for ECIG-exposure after 24 hours may be due to differences in normalization procedures (different housekeeping genes) or hybridization efficiencies in the qRT-PCR compared to the Illumina bead array.

Conclusion

The main finding of the present study is that ECIGs impact on the biology of airway epithelial cells with the release of inflammatory mediators but no overt reduction of antibacterial host defense. The acute toxic effect of ECIGs appeared to be less as compared to TCIG-exposure. Based on gene expression analysis, the expression patterns of TCIG-exposed cells were more different from sham exposed cells than ECIG-exposed cells.

Antimicrobial host defense is a fundamental function of epithelial tissues and comprises an active antimicrobial

activity mediated by soluble molecules [41] and the formation of barriers that separate the inside from the outside. Exposure to TCIG is known to cause a breach of epithelial host defense [27] and impair the barrier function [42]. In the present study we did not observe a change in antimicrobial activity or barrier integrity after exposure of differentiated airway epithelium to ECIG-vapor. The results from the TCIG-exposed cells are in line with previous reports that TCIG-smoke leads to a defect in host defense and disruption of the epithelial barrier in vivo and in vitro [27, 34, 43]. We showed earlier that smoking is associated with reduced concentrations of hBD2 in airway secretions of patients with community acquired pneumonia, and that exposure of differentiated pHBE to volatile TCIG-smoke leads to a decreased expression and synthesis of hBD2 after infection with bacteria and an increased inflammatory reaction [27]. A study by Pace et al. showed that the expression of hBD2 is reduced in central airways of smokers and that the expression hBD2 positively correlates with lung function in COPD [44]. Exposure of epithelial cell lines with ECIG-vapor caused a decrease of antibacterial host defense and increased biofilm formation

in [18, 45]. In a clinical study, ECIG use was associated with decreased expression of immune-related genes [46]. The application of ECIG-fluid, not vapor, to primary epithelial cells resulted in increased inflammation and susceptibility to virus infection [47].

Exposure of the lung to inhaled smoke or other noxious components is often associated with inflammation, which is involved in host defense, systemic reaction, and repair. There is a large body of data that exposure of airway epithelial cells to TCIG-exposure results in the release of a complex mixture of inflammatory mediators [42, 48–50] albeit the compound being responsible has not been identified so far. In the present study, TCIG-smoke leads to an increased synthesis and expression of pro-inflammatory mediators. In contrast, ECIG-treatment induced a lower stimulation of IL-8 synthesis or transcription of other inflammatory markers like S100A7 and S100A12. However, Calu-3 cells produced significantly elevated concentrations of IL-8 after ECIG-treatment compared to NCI-H292 or pHBE. Our results are partly in line with other studies published so far. It has been shown that the exposure of different bronchial epithelial cell lines to ECIG-vapor induced the release of IL-8 (NCI-H292-cells) [8, 51], increased IL-1 β release and reduced cell proliferation (A549 cells) [52], and impaired barrier function of BEAS-2B cells (flavoring chemicals) [51].

To get a detailed view on the differentially regulated genes after TCIG- and ECIG-exposure, we analyzed the gene expression of differentiated airway epithelium after exposure. The changes of the transcriptome of the ECIG-exposed cells was much less as compared to that of TCIG-exposed cells. Glutathione peroxidase-2 (GPX2) is one example of a gene, whose expression is significantly deregulated in the group comparison of the top 100 most differentially expressed genes after ECIG-exposure. GPX2 reduces H₂O₂ to H₂O and O₂⁻, thereby oxidizing glutathione, which is reduced by glutathione reductase, that reduces NADPH to NADP [53]. The expression of GPX2 is slightly increased by ECIG-vapor and significantly more after TCIG-treatment. In contrast to GPX2, the expression of the S100-proteins S100A7 and S100A12 was significantly upregulated 24 h after ECIG-exposure. S100 proteins comprise a family of calcium binding proteins involved in inflammation, host defense, and carcinogenesis [40, 54]. S100A7 and S100A12 belong to a group of danger-associated proteins [55], which bind to cell surface receptors like RAGE and induce inflammation [56]. Additionally, S100A12 has been shown to induce the secretion of MUC5AC from airway epithelial cells [57]. Among the genes with the highest variance in gene expression (Fig. 3) and the significantly upregulated genes (Fig. 4) in the TCIG-group we also found IL1- β , another prominent pro-inflammatory mediator. A recent study applied RNA-seq analysis of differentiated airway epithelial cells and found

similar impact of ECIG-vapor: The effects were detectable but less as compared to conventional TCIG. Various pathways such as the phospholipid and fatty acid triacylglycerol metabolisms were significantly enriched after ECIG-exposure [24]. Another study investigated the micro RNA (miRNA) response and the exposure of differentiated airway epithelial cells with ECIG-vapor resulted in the upregulation of oxidative stress genes [58]. ECIGs also modify the metabolome of epithelial cells and showing significant changes partially overlapping with the effect of TCIG [59].

Our results indicate that ECIGs impact on epithelial biology with an effect on inflammation and metabolism. As compared to the exposure with TCIG, there was less impact on host defense, inflammation and gene expression. Other studies have shown that ECIGs induce antioxidant defenses and oxidative DNA damage in primary epithelial cells [60–63]. We used two different cell lines and pHBEs to account for different reactivity to TCIG and ECIG vapor. While NCI-H292 cells retain their original mucocypidermoid characteristics with nearly diploid chromosome counts, Calu-3 cells are highly transformed adenocarcinoma cells with hypotriploid chromosome counts [64]. The finding that ECIG-vapor induced a significant release of IL-8 only from the tumor cell line Calu-3 that was comparable with TCIG-exposed cells indicates that the vapor of ECIGs may induce inflammation in certain lung tumors, while it may not be pro-inflammatory for non-transformed bronchial epithelial cells (Fig. 2). We may speculate that this finding implicates that ECIG vapor could be more pathologic for individuals with pre-existing, yet silent cancerous lesions, but yet have to investigate this in a more detailed study.

The present study and other studies have limitations. In the first instance, all in vitro experiments provide only data on short term outcomes and do not allow to make predictions about the long-term effects of ECIG use. Therefore, it is also not possible to draw conclusions about the long-term safety or harm reduction potential of ECIGs. This study focus on specific cell lines and primary cells, while other studies focus on diverse other cellular systems.

The availability of flavors as additives for ECIGs and different types of vaporizing devices is growing and not regulated, and is not addressed in the present study. It has already been shown that flavours, especially cinnamon containing liquids, induce toxicity in vitro and in vivo [8, 19]. The variability in taste and nicotine strength is one of the features of ECIGs that surely attracts many people but on the other hand makes standardisation in research more complicated. In addition, the various exposure systems vaporize at different temperatures. This will lead to a different taste but also different chemical decomposition of ingredients. The boiling point of most of the ingredients found in flavored liquids

is below 300 °C [20]. It has been shown, that the amount of formaldehyde, acetaldehyde and formalin is proportional to the output voltage of the device [65]. The devices offered currently range from 1 to 75 W (Joytech eGo AIO ECO 6–8 W, iStick Pico Melo 4 D22 1–75 W), producing temperatures of up to more than 300 °C.

The aim of the present study was to compare the impact of ECIG-vapor and TCIG on airway-epithelial cell biology. Comparing two physically different agents and trying to normalize is not straight forward. ECIGs produce a fine mist, containing the vaporized ingredients of the ECIG-fluid and trace amounts of emissions from the heating element. TCIG-smoke in contrast is a mixture of combustion-degraded ingredients from tobacco containing small particles, gas, and small amounts of humidity. Nicotine is one of the few ingredients that is common to TCIG-smoke and ECIG-vapor that is absorbed, and, what is even more important, with known toxicity and addictive properties. Normalizing on nicotine consumption therefore seems reasonable, since the user will be in need for certain amounts of nicotine, which will make the overall uptake between TCIG and ECIG comparable [66].

Only a few studies directly compare TCIG and ECIG in airway epithelial cells. One of the publications that closely reflects our setup and normalization procedures [67] used several dilutions of ECIG and TCIG and determined the concentration of nicotine after the exposure in the chambers. Their data show a significantly different gene expression pattern between ECIG- and TCIG-exposed samples when comparing conditions with similar nicotine concentration. In addition, they also showed an upregulation of many genes after TCIG-exposure, that were similar to our experiments (i.e. IL1A, IL1B, GPX2, CYP1A1, CYP1B1, S100A12). Although a slightly different setup was used [68], another publication showed that in comparison to TCIGs the vapor of ECIGs induced only minor changes in gene expression, although their smoking protocol used with ECIGs was more intense than the corresponding TCIG-exposure. In their 6 × 8 min TCIG-exposure protocol similar genes were up-regulated like in our protocol (i.e. IL1A, IL1B, GPX2, CYP1A1, CYP1B1, S100A12) [68]. Although different protocols for ECIG-exposure and different cells were used, both studies agree with our findings, that TCIG-exposure induces a transcriptomic profile, which is different from ECIG-exposed cells and that the majority of differentially expressed genes can be found in TCIG-exposed samples.

In conclusion, ECIG-vapor has an acute effect on the biology of AECs. ECIGs had no significant effects on the secretion of chemokines or antimicrobial peptides after bacterial stimulation but induced the expression of S100A7 and S100A12. While the effects of ECIGs on epithelial cells appears to be less toxic as compared to TCIGs, in vitro results do not permit to draw conclusions about the long-term safety.

Supplementary information

Supplementary information accompanies this paper at <https://doi.org/10.1186/s12931-020-1317-2>.

Additional file 1: Supplementary methods.

Additional file 2: Deregulated genes - pairwise comparisons with varinace.

Additional file 3: Goupwise comparison of gene expression.

Additional file 4: Deregulated genes - pairwise comparison raw data.

Abbreviations

ALI: Air-liquid interface; CDNA: Complementary DNA; CFU: Colony forming units; COPD: Chronic obstructive pulmonary disease; CS: Cigarette smoke; Ctr: Control; DEG: Differentially expressed gene; DMEM: Dulbecco's minimal essential medium; DNA: Desoxyribonucleic acid; ECIG: Electronic cigarette; ELISA: Ezyme linked immunosorbent assay; FITC: Fluorescein isothiocyanate; GAPDH: Glyceraldehyde 3-phosphate dehydrogenase; Gpx2: Glutathione peroxidase 2; HBD1: Human beta-defensin-1; HBD2: Human beta-defensin-2; JUN: Transcription factor, part of AP-1 Transcription factor; LB-agar: Lysogeny broth agar; LPM: Liter per minute; NcRNA: Non-coding ribonucleic acid; PBS: Phosphate buffered salined; PHBE: Primary human bronchila epithelial cells; QRT-PCR: Semiquantitative realtime polymerase chain reaction; REL-A: V-rel avian reticuloendotheliosis viral oncogene homolog A, p65 subunit of NF-kB; RNA: Ribonucleic acid; RPMI-1640: Roswell Park Memorial Insitute medium; S100A12: S100 calcium binding protein A12, Calgranulin C; S100A7: S100 calcium binding protein A7, Psoriasin; TCIG: Traditional cigarette

Acknowledgements

We thank Anja Honecker and Andreas Kamyschnikow (Saarland University) for excellent technical assistance.

Declarations

No conflicts of interest, financial or otherwise are declared by the author(s).

Authors' contributions

CH developed the ECIG-exposure system, carried out TCIG- and ECIG-exposures, ELISA, qRT-PCR, stimulated cells, reviewed the data, wrote and drafted the manuscript. KT did cell culture experiments including ELISA and qRT-PCR, and reviewed the manuscript. JN carried out TCIG- and ECIG-exposures, did cell culture experiments, performed ELISAs, and wrote the manuscript. C.Backes preformed the Gene-CHIP experiments, analyzed the transcriptomics data, and wrote the manuscript. C.Beisswenger, L.D, L.G., and A.K. designed experiments, and reviewed the manuscript. R.B designed experiments, wrote the manuscript and reviewed the data. All author read and approved the final manuscript.

Funding

Not applicable.

Availability of data and materials

All data is available upon request.

Ethics approval and consent to participate

The use of primary human cells was approved by the ethics committee of the "Landesaerztekammer des Saarlandes". Informed written consent to participate in this study has been obtained from the donors.

Consent for publication

Not applicable.

Competing interests

R.B. is editor in chief of Respiratory Research. The other authors declare, that they have no competing interests.

Author details

¹Department of Internal Medicine V – Pulmonology, Allergology and Critical Care Medicine, Saarland University, D-66421 Homburg, Germany. ²Clinical Bioinformatics, Saarland University, University Hospital, 66123 Saarbrücken,

Germany. ³Department of Clinical Laboratory, Shanghai Tongji Hospital, Tongji University School of Medicine, Shanghai 200065, China. ⁴Sorbonne Universités, UPMC Univ Paris 06, INSERM, Centre de Recherche Saint-Antoine (CRSA), 75012 Paris, France.

Received: 25 September 2019 Accepted: 10 February 2020

Published online: 12 March 2020

References

- Decramer M, Janssens W, Miravittles M. Chronic obstructive pulmonary disease. *Lancet*. 2012;379:1341–51.
- Barnes PJ. Chronic obstructive pulmonary disease. *N Engl J Med*. 2000;343:269–80.
- Hon L: Electronic atomization cigarette. Google Patents; 2013.
- Gilbert HA: Smokeless non-tobacco cigarette. Google Patents; 1965.
- Suber RL, Deskin R, Nikiforov I, Fouillet X, Coggins CR. Subchronic nose-only inhalation study of propylene glycol in Sprague-Dawley rats. *Food Chem Toxicol*. 1989;27:573–83.
- Wieslander G, Norbäck D, Lindgren T. Experimental exposure to propylene glycol mist in aviation emergency training: acute ocular and respiratory effects. *Occup Environ Med*. 2001;58:649–55.
- Hiemstra PS, Bals R. Basic science of electronic cigarettes: assessment in cell culture and in vivo models. *Respir Res*. 2016;17:127.
- Lerner CA, Sundar IK, Yao H, Gerloff J, Ossip DJ, McIntosh S, Robinson R, Rahman I. Vapors produced by electronic cigarettes and e-juices with flavorings induce toxicity, oxidative stress, and inflammatory response in lung epithelial cells and in mouse lung. *PLoS One*. 2015;10:e0116732.
- Schweitzer KS, Chen SX, Law S, Van Demark M, Poirier C, Justice MJ, Hubbard WC, Kim ES, Lai X, Wang M, et al. Endothelial disruptive proinflammatory effects of nicotine and e-cigarette vapor exposures. *Am J Physiol Lung Cell Mol Physiol*. 2015;309:L175–87.
- Farsalinos KE, Romagna G, Alliffranchini E, Ripamonti E, Bocchietto E, Todeschi S, Tsiapras D, Kyrzopoulos S, Voudris V. Comparison of the cytotoxic potential of cigarette smoke and electronic cigarette vapour extract on cultured myocardial cells. *Int J Environ Res Public Health*. 2013;10:5146–62.
- Romagna G, Alliffranchini E, Bocchietto E, Todeschi S, Esposito M, Farsalinos KE. Cytotoxicity evaluation of electronic cigarette vapor extract on cultured mammalian fibroblasts (ClearStream-LIFE): comparison with tobacco cigarette smoke extract. *Inhal Toxicol*. 2013;25:354–61.
- Moses E, Wang T, Corbett S, Jackson GR, Drizik E, Perdomo C, Kleerup E, Brooks D, O'Connor G, et al. Molecular impact of electronic cigarette aerosol exposure in human bronchial epithelium. *Toxicol Sci*. 2017;155:248–57.
- Misra M, Leverette RD, Cooper BT, Bennett MB, Brown SE. Comparative in vitro toxicity profile of electronic and tobacco cigarettes, smokeless tobacco and nicotine replacement therapy products: e-liquids, extracts and collected aerosols. *Int J Environ Res Public Health*. 2014;11:11325–47.
- Scheffler S, Dieken H, Krischenowski O, Forster C, Branscheid D, Aufderheide M. Evaluation of E-cigarette liquid vapor and mainstream cigarette smoke after direct exposure of primary human bronchial epithelial cells. *Int J Environ Res Public Health*. 2015;12:3915–25.
- Cervellati F, Muresan XM, Sticozzi C, Gambari R, Montagner G, Forman HJ, Torricelli C, Maioli E, Valacchi G. Comparative effects between electronic and cigarette smoke in human keratinocytes and epithelial lung cells. *Toxicol in Vitro*. 2014;28:999–1005.
- Husari A, Shihadeh A, Talih S, Hashem Y, El Sabban M, Zaatari G. Acute exposure to electronic and combustible cigarette aerosols: effects in an animal model and in human alveolar cells. *Nicotine Tob Res*. 2016;18:613–9.
- Yu V, Rahimy M, Korrapati A, Xuan Y, Zou AE, Krishnan AR, Tsui T, Aguilera JA, Advani S, Crotty Alexander LE, et al. Electronic cigarettes induce DNA strand breaks and cell death independently of nicotine in cell lines. *Oral Oncol*. 2016;52:58–65.
- Sussan TE, Gajghate S, Thimmulappa RK, Ma J, Kim J-H, Sudini K, Consolini N, Cormier SA, Lomnicki S, Hasan F, et al. Exposure to electronic cigarettes impairs pulmonary anti-bacterial and anti-viral defenses in a mouse model. *PLoS One*. 2015;10:e0116861.
- Behar RZ, Davis B, Wang Y, Bahl V, Lin S, Talbot P. Identification of toxicants in cinnamon-flavored electronic cigarette refill fluids. *Toxicol in Vitro*. 2013.
- Hutzler C, Paschke M, Kruschinski S, Henkler F, Hahn J, Luch A. Chemical hazards present in liquids and vapors of electronic cigarettes. *Arch Toxicol*. 2014;88:1295–308.
- Sherwood CL, Boitano S. Airway epithelial cell exposure to distinct e-cigarette liquid flavorings reveals toxicity thresholds and activation of CFTR by the chocolate flavoring 2,5-dimethylpyrazine. *Respir Res*. 2016;17:57.
- Higham A, Rattray NJW, Dewhurst JA, Trivedi DK, Fowler SJ, Goodacre R, Singh D. Electronic cigarette exposure triggers neutrophil inflammatory responses. *Respir Res*. 2016;17:56.
- Schweitzer KS, Chen SX, Law S, Van Demark MJ, Poirier C, Justice MJ, Hubbard WC, Kim ES, Lai X, Wang M, et al. Endothelial disruptive pro-inflammatory effects of nicotine and e-cigarette vapor exposures. *Am J Physiol Lung Cell Mol Physiol*. 2015;309(2):L175–87. <https://doi.org/10.1152/ajplung.00411.2014>.
- Shen Y, Wolkowicz MJ, Kotova T, Fan L, Timko MP. Transcriptome sequencing reveals e-cigarette vapor and mainstream-smoke from tobacco cigarettes activate different gene expression profiles in human bronchial epithelial cells. *Sci Rep*. 2016;6:23984.
- Beisswenger C, Platz J, Seifart C, Vogelmeier C, Bals R. Exposure of differentiated airway epithelial cells to volatile smoke in vitro. *Respiration*. 2004;71:402–9.
- Bals R, Beisswenger C, Blouquit S, Chinet T. Isolation and air-liquid interface culture of human large airway and bronchiolar epithelial cells. *J Cyst Fibros*. 2004;3(Suppl 2):49–51.
- Herr C, Beisswenger C, Hess C, Kandler K, Suttrop N, Welte T, Schroeder JM, Vogelmeier C, R Bals for the CAPNETZ Study Group. suppression of pulmonary innate host defence in smokers. *Thorax*. 2009;64:144–9.
- Fuoco FC, Buonanno G, Stabile L, Vigo P. Influential parameters on particle concentration and size distribution in the mainstream of e-cigarettes. *Environ Pollut*. 2014;184:523–9.
- Farsalinos KE, Spyrou A, Tsimopoulou K, Stefopoulos C, Romagna G, Voudris V. Nicotine absorption from electronic cigarette use: comparison between first and new-generation devices. *Sci Rep*. 2014;4:4133.
- Arntzen FI. Some psychological aspects of nicotineism. *Am J Psychol*. 1948;61:424.
- Dani JA, De Biasi M. Cellular mechanisms of nicotine addiction. *Pharmacol Biochem Behav*. 2001;70:439–46.
- Chernyavsky AI, Shchepotin IB, Galitovskiy V, Grando SA. Mechanisms of tumor-promoting activities of nicotine in lung cancer: synergistic effects of cell membrane and mitochondrial nicotinic acetylcholine receptors. *BMC Cancer*. 2015;15:152.
- Spindel ER, McEvoy CT. The role of nicotine in the effects of maternal smoking during pregnancy on lung development and childhood respiratory disease. Implications for Dangers of E-Cigarettes. *Am J Respir Crit Care Med*. 2016;193:486–94.
- Jungnickel C, Wonnemberg B, Karabiber O, Wolf A, Voss M, Wolf L, Honecker A, Kamyschnikow A, Herr C, Bals R, Beisswenger C. Cigarette smoke-induced disruption of pulmonary barrier and bacterial translocation drive tumor-associated inflammation and growth. *Am J Physiol Lung Cell Mol Physiol*. 2015;309:L605–13.
- Livak KJ, Schmittgen TD. Analysis of relative gene expression data using real-time quantitative PCR and the 2^{−(ΔΔC_T)} method. *Methods*. 2001;25:402–8.
- Oliveros JC: Venny. An interactive tool for comparing lists with Venn's diagrams. In <http://bioinfogpcnbcscs/tools/venny/index.html> 2007–2015.
- Komurov K, White MA, Ram PT. Use of data-biased random walks on graphs for the retrieval of context-specific networks from genomic data. *PLoS Comput Biol*. 2010;6.
- Komurov K, Dursun S, Erdin S, Ram PT. NetWalker: a contextual network analysis tool for functional genomics. *BMC Genomics*. 2012;13:282.
- Androutsopoulos VP, Tsatsakis AM, Spandidos DA. Cytochrome P450 CYP1A1: wider roles in cancer progression and prevention. *BMC Cancer*. 2009;9:1–17.
- McNutt NS. The S100 family of multipurpose calcium-binding proteins. *J Cutan Pathol*. 1998;25:521–9.
- Hiemstra PS, McCray PB Jr, Bals R. The innate immune function of airway epithelial cells in inflammatory lung disease. *Eur Respir J*. 2015;45:1150–62.
- Ganesan S, Comstock AT, Sajjan US. Barrier function of airway tract epithelium. *Tissue Barriers*. 2013;1:e24997.
- Voss M, Wonnemberg B, Honecker A, Kamyschnikow A, Herr C, Bischoff M, Tschernig T, Bals R, Beisswenger C. Cigarette smoke-promoted acquisition of

- bacterial pathogens in the upper respiratory tract leads to enhanced inflammation in mice. *Respir Res.* 2015;16:41.
44. Pace E, Ferraro M, Minervini M, Vitulo P, Pipitone L, Chiappara G, Siena L, Montalbano A, Johnson M, Gjomarkaj M. Beta Defensin-2 is reduced in central but not in distal Airways of Smoker COPD patients. *PLoS One.* 2012;7:e33601.
 45. Hwang JH, Lyes M, Sladewski K, Enany S, McEachern E, Mathew DP, Das S, Moshensky A, Bapat S, Pride DT, et al. Electronic cigarette inhalation alters innate immunity and airway cytokines while increasing the virulence of colonizing bacteria. *J Mol Med (Berl).* 2016;94(6):667–79.
 46. Martin EM, Clapp PW, Rebuli ME, Pawlak EA, Glista-Baker E, Benowitz NL, Fry RC, Jaspers I. E-cigarette use results in suppression of immune and inflammatory-response genes in nasal epithelial cells similar to cigarette smoke. *American journal of physiology Lung cellular and molecular physiology.* 2016;311:L135–44.
 47. Wu Q, Jiang D, Minor M, Chu HW. Electronic cigarette liquid increases inflammation and virus infection in primary human airway epithelial cells. *PLoS One.* 2014;9:e108342.
 48. Alexander LEC, Shin S, Hwang JH. Inflammatory diseases of the lung induced by conventional cigarette smoke a review. *Chest.* 2015;148:1307–22.
 49. Rastrick JM, Stevenson CS, Eltom S, Grace M, Davies M, Kilty I, Evans SM, Pasparakis M, Catley MC, Lawrence T, et al. Cigarette smoke induced airway inflammation is independent of NF-kappaB signalling. *PLoS One.* 2013;8:e54128.
 50. Heijink IH, de Bruin HG, van den Berge M, Bennink LJC, Brandenburg SM, Gosens R, van Oosterhout AJ, Postma DS. Role of aberrant WNT signalling in the airway epithelial response to cigarette smoke in chronic obstructive pulmonary disease. *Thorax.* 2013;68:709–16.
 51. Gerloff J, Sundar IK, Freter R, Sekera ER, Friedman AE, Robinson R, Pagano T, Rahman I. Inflammatory response and barrier dysfunction by different e-cigarette flavoring chemicals identified by gas chromatography-mass spectrometry in e-liquids and e-vapors on human lung epithelial cells and fibroblasts. *Appl In Vitro Toxicol.* 2017;3:28–40.
 52. Husari A, Shihadeh A, Talih S, Hashem Y, El Sabban M, Zaatari G. Acute exposure to electronic and combustible cigarette aerosols: effects in an animal model and in human alveolar cells. *Nicotine Tob Res.* 2015.
 53. Nakamura H, Masutani H, Yodoi J. Extracellular thioredoxin and thioredoxin-binding protein 2 in control of cancer. *Semin Cancer Biol.* 2006;16:444–51.
 54. Marenholz I, Lovering RC, Heizmann CW. An update of the S100 nomenclature. *Biochim Biophys Acta.* 1763;2006:1282–3.
 55. Matzinger P. The danger model: a renewed sense of self. *Science.* 2002;296:301–5.
 56. Hofmann MA, Drury S, Fu C, Qu W, Taguchi A, Lu Y, Avila C, Kambham N, Bierhaus A, Nawroth P, et al. RAGE mediates a novel proinflammatory axis: a central cell surface receptor for S100/calgranulin polypeptides. *Cell.* 1999;97:889–901.
 57. Kang JH, Hwang SM, Chung IY. S100A8, S100A9 and S100A12 activate airway epithelial cells to produce MUC5AC via extracellular signal-regulated kinase and nuclear factor- κ B pathways. *Immunology.* 2015;144:79–90.
 58. Solleti SK, Bhattacharya S, Ahmad A, Wang Q, Mereness J, Rangasamy T, Mariani TJ. MicroRNA expression profiling defines the impact of electronic cigarettes on human airway epithelial cells. *Sci Rep.* 2017;7:1081.
 59. Aug A, Altraja S, Kilk K, Porosk R, Soomets U, Altraja A. E-cigarette affects the Metabolome of primary Normal human bronchial epithelial cells. *PLoS One.* 2015;10:e0142053.
 60. Ganapathy V, Manyanga J, Brame L, McGuire D, Sadhasivam B, Floyd E, Rubenstein DA, Ramachandran I, Wagener T, Queimado L. Electronic cigarette aerosols suppress cellular antioxidant defenses and induce significant oxidative DNA damage. *PLoS One.* 2017;12:e0177780.
 61. Scheffler S, Dieken H, Krischenowski O, Aufderheide M. Cytotoxic evaluation of e-liquid aerosol using different lung-derived cell models. *Int J Environ Res Public Health.* 2015;12:12466–74.
 62. Rowell TR, Reeber SL, Lee SL, Harris RA, Nethery RC, Herring AH, Glish GL, Tarran R. Flavored e-cigarette liquids reduce proliferation and viability in the CALU3 airway epithelial cell line. *Am J Physiol Lung Cell Mol Physiol.* 2017;313:L52–l66.
 63. Taylor M, Carr T, Oke O, Jaunky T, Breheny D, Lowe F, Gaca M. E-cigarette aerosols induce lower oxidative stress in vitro when compared to tobacco smoke. *Toxicol Mech Methods.* 2016;26:465–76.
 64. Fogh J, Fogh JM, Orfeo T. One hundred and twenty-seven cultured human tumor cell lines producing tumors in nude mice. *J Natl Cancer Inst.* 1977;59:221–6.
 65. Kosmider L, Sobczak A, Fik M, Knysak J, Zaciera M, Kurek J, Goniewicz ML. Carbonyl compounds in electronic cigarette vapors: effects of nicotine solvent and battery output voltage. *Nicotine Tob Res.* 2014;16:1319–26.
 66. Benowitz NL, Jacob P 3rd, Bernert JT, Wilson M, Wang L, Allen F, Dempsey D. Carcinogen exposure during short-term switching from regular to "light" cigarettes. *Cancer Epidemiol Biomark Prev.* 2005;14:1376–83.
 67. Haswell LE, Baxter A, Banerjee A, Verrastro I, Mushonganono J, Adamson J, Thorne D, Gaca M, Minet E. Reduced biological effect of e-cigarette aerosol compared to cigarette smoke evaluated in vitro using normalized nicotine dose and RNA-seq-based toxicogenomics. *Sci Rep.* 2017;7:888.
 68. Antherieu S, Garat A, Beauval N, Soyez M, Allorge D, Garcon G, Lo-Guidice JM. Comparison of cellular and transcriptomic effects between electronic cigarette vapor and cigarette smoke in human bronchial epithelial cells. *Toxicol in Vitro.* 2017;45:417–25.

Publisher's Note

Springer Nature remains neutral with regard to jurisdictional claims in published maps and institutional affiliations.

Ready to submit your research? Choose BMC and benefit from:

- fast, convenient online submission
- thorough peer review by experienced researchers in your field
- rapid publication on acceptance
- support for research data, including large and complex data types
- gold Open Access which fosters wider collaboration and increased citations
- maximum visibility for your research: over 100M website views per year

At BMC, research is always in progress.

Learn more biomedcentral.com/submissions

