



Routine monitoring of isometric knee extension strength in patients with muscle impairments using a new portable device: cross-validation against a standard isokinetic dynamometer

Jean-Yves Hogrel, Olivier Benveniste, Damien Bachasson

► To cite this version:

Jean-Yves Hogrel, Olivier Benveniste, Damien Bachasson. Routine monitoring of isometric knee extension strength in patients with muscle impairments using a new portable device: cross-validation against a standard isokinetic dynamometer. *Physiological Measurement*, 2020, 41 (1), pp.015003. 10.1088/1361-6579/ab6b49 . hal-02530660

HAL Id: hal-02530660

<https://hal.sorbonne-universite.fr/hal-02530660>

Submitted on 3 Apr 2020

HAL is a multi-disciplinary open access archive for the deposit and dissemination of scientific research documents, whether they are published or not. The documents may come from teaching and research institutions in France or abroad, or from public or private research centers.

L'archive ouverte pluridisciplinaire **HAL**, est destinée au dépôt et à la diffusion de documents scientifiques de niveau recherche, publiés ou non, émanant des établissements d'enseignement et de recherche français ou étrangers, des laboratoires publics ou privés.

1
2
3 1 Routine monitoring of isometric knee extension strength in patients with muscle
4
5
6 2 impairments using a new portable device: cross-validation against a standard
7
8
9 3 isokinetic dynamometer

10
11 4
12
13 5 Jean-Yves Hogrel¹, Olivier Benveniste², Damien Bachasson¹
14
15 6 ¹Institute of Myology, Neuromuscular Investigation Center, Pitié-Salpêtrière University
16
17 7 Hospital, Paris, France
18
19 8 ²Department of Internal Medicine and Clinical Immunology and Inflammation-
20
21 9 Immunopathology-Biotherapy Department (I2B), Pitié-Salpêtrière University Hospital,
22
23 10 Assistance Publique-Hôpitaux de Paris, East Paris Neuromuscular Diseases Reference Center,
24
25 11 Inserm U974, Sorbonne Université, Paris 6, Paris, France
26
27
28
29
30
31

32 13 **Corresponding author**
33
34 14 Jean-Yves Hogrel
35
36 15 Institut de Myologie
37
38 16 Hôpital Universitaire Pitié-Salpêtrière
39
40 17 75651 Paris Cedex 13
41
42 18 France
43
44 19 Phone: +33 1 42 16 58 80
45
46 20 Fax: +33 1 42 16 58 81
47
48 21 E-mail: jy.hogrel@institut-myologie.org
49
50
51
52
53
54
55
56
57
58
59
60

Abstract

Objective: Muscle strength is a critical clinical hallmark in both health and disease. The current study introduces a novel portable device prototype (MyoQuad) for assessing and monitoring maximal voluntary isometric knee extension torque (MVIT). *Approach:* Fifty-six patients with inclusion body myositis were studied. Knee extension weakness is a key feature in this inflammatory muscle disease. Cross-validation with an isokinetic dynamometer (Biodex System 3 Pro) was performed. Between-day reproducibility and ability to monitor changes in muscle strength over time compared to the gold standard method as a reference, were also investigated. *Main results:* The measurement was feasible even in the weakest patients. Agreement between methods was excellent (standard error of measurement (SEM) was 3.8 Nm and intra-class correlation coefficient (ICC) was 0.973). Least significant difference (LSD) was 4.9 and 5.3 Nm for the MyoQuad and the Biodex, respectively. Measurements using the MyoQuad exhibited excellent between-day reproducibility (SEM was 2.4 Nm and ICC was 0.989 versus 2.6 Nm and 0.988 using the Biodex). Changes in MVIT at 6 and 12 months were similar between methods (timepoint \times method interaction was not significant; all $p > 0.19$); strength changes classified according to LSD at 6 and 12 months were consistent between methods ($>70\%$ consistent classification)). *Significance:* The measurement of maximal voluntary isometric knee extension torque using the MyoQuad offers a cost-effective, portable and immediate alternative for the routine measurement of maximal voluntary isometric strength of the quadriceps. The MyoQuad offers a comfort and stability that cannot be provided by standard hand-held dynamometers. These results support quantitative muscle strength assessment using fixed yet flexible dynamometry within clinical routine and multicenter trials.

1
2
3
4
5
6
7
8
9
10
11
12
13
14
15
16
17
18
19
20
21
22
23
24
25
26
27
28
29
30
31
32
33
34
35
36
37
38
39
40
41
42
43
44
45
46
47
48
49
50
51
52
53
54
55
56
57
58
59
60

Keywords: device; muscle strength dynamometer; muscle weakness; myositis; outcome
measures

List of abbreviations

MMT, manual muscle testing; HHD, hand-held dynamometry; MVIT, maximal isometric
knee extension voluntary torque; SD, standard deviation; CIM, change in mean; ICC, intra-
class correlation coefficient; SEM, standard error of measurement; LSD, least significant
change

Introduction

Muscle weakness has been demonstrated to be an independent predictor of all-cause mortality in an apparently healthy population ([Garcia-Hermoso et al., 2018](#)). Knee extension has been identified as a preferential target for detecting muscle weakness in various chronic disorders and other conditions such as aging or immobilization. Availability of a simple portable setup and methodology for assessing knee extensor strength is critical to generalize the measurement of this important clinical hallmark.

Strength assessment within clinical settings is most frequently performed using manual muscle testing (MMT) ([Hogrel et al., 2006](#)). As a semi-quantitative and operator-dependent method, MMT is poorly responsive ([Bohannon, 2005](#)). MMT may be used for rough detection of muscle weakness but not to finely quantify its severity and its evolution over time.

Quantitative measurement of muscle strength allows precise temporal monitoring of muscle strength and enables the use of Z-scores or percentage of predicted values computed from datasets and predictive equations ([Hogrel et al., 2007](#); [Harbo et al., 2012](#); [Seymour et al., 2010](#); [McKay et al., 2016](#)). Portable dynamometers have been demonstrated to be particularly relevant for quantifying muscle strength at low-cost and ease of use within daily clinical practice and multicenter research trials. Good agreement has been reported between isometric strength measurement using hand-held dynamometry (HHD) and the “gold standard” isokinetic dynamometer ([Stark et al., 2011](#)). However, evaluator strength limits the magnitude of isometric force that can be measured using HHD ([Deones et al., 1994](#)). For powerful muscle groups such as the quadriceps, belt-stabilization may be used to improve the reliability and the range of measurable muscle strength using HHD ([Bohannon et al., 2011](#); [Bohannon et al., 2012](#); [Bachasson et al., 2014](#)). However stabilized HHD is mostly achieved using home-made methods that may be imperfectly adapted, may lead to discomfort and are unlikely to be standardized for repeated testing ([Hansen et al., 2015](#)). Some approaches may also fail to

1
2
3 81 provide accurate assessment of muscle strength in the weakest patients, partly due to design
4
5 82 flaws and metrological limitations inherent in the hardware used, as typically observed in
6
7 83 patients with muscle dystrophy for instance (Servais et al., 2013).
8
9
10 84 The current manuscript introduces a novel portable device prototype (namely, the MyoQuad)
11
12 85 for the assessment and monitoring of isometric knee extension strength that may be used in
13
14 86 most clinical setups. This article is organized as follows: description of the device, evaluation
15
16 87 of the device in patients including cross-validation with the gold standard, between-day
17
18 88 reproducibility of measurements and ability to monitor changes in muscle strength over time
19
20 89 with the gold standard method as a reference.
21
22
23
24 90

25
26 91 **Methods**

27
28
29 92 **Participants**

30
31 93 The device was tested in patients with inclusion body myositis enrolled in a natural history
32
33 94 study (NCT00898989) and in a pharmacological trial (NCT02481453). The patients were
34
35 95 included according to the criteria defined by Benveniste and Hilton-Jones (2010). These
36
37 96 studies conformed to the Declaration of Helsinki and were approved by the local ethics
38
39 97 committee (CPP-Ile de France VI). All participants gave written informed consent. All tests
40
41 98 were performed between April 2013 and April 2017.
42
43
44

45 99 **Description of the device for the assessment of isometric knee extension strength**

46
47 100 The device used in the present study was a first-generation prototype. The MyoQuad was
48
49 101 specifically designed for the assessment of maximal isometric strength, even in very weak
50
51 102 individuals. It embeds a high precision load cell (Interface SML-300, Scottsdale, Arizona,
52
53 103 USA) and electronic board dedicated to signal acquisition and processing, wireless signal
54
55 104 transmission (Bluetooth), and operating-energy controls. The current prototype has a
56
57 105 measurement range from 0 to 136 kg with 10 g resolution and 50 g accuracy over the whole
58
59
60

nominal range. The load cell and the board are included in a 3D-printed case, which can be firmly and securely attached to the structure of any examination bed/table using a clamp (see Figure 1A). A dedicated software was developed allowing the visualization and analysis of the acquired strength signal. The software can be run from a phone/tablet or laptop. One extremity of the load cell is equipped with a hook on which a strap can be attached (see Figure 1B). Other interfaces may also be screwed directly onto the load cell for other applications in traction and compression. The MyoQuad device was checked for calibration using strict standardized operating procedures. A set of M3 class masses from 0.2 to 50 kg was used for calibration. The calibration was checked every week, then every month after 6 months, then every 2 months after 12 months. The metrological properties of the device were always within the requirements (50-g accuracy over the whole range of measurement). A typical calibration curve is presented in Figure 2.

Measurement protocol

Subjects were seated on a standard examination table with the hip and knee flexed to 90°. A small dense foam pillow was placed below the tested thigh (see Figure 1.A. and Figure 1.B.), so that the leg was vertical in order to avoid any effects of gravity effect, which can be detrimental for the assessment of very weak patients. The desired strap location (lower part of the strap above the medial malleolus) and the medial tibiofemoral joint space were marked on the skin. The distance between the two marks i.e. the lever arm, was carefully measured to the nearest half-centimeter using a measuring tape (Figure 2) to compute the torque as force \times lever arm, allowing direct comparison between methods (MyoQuad vs. isokinetic dynamometer). The ankle strap was then fixed and attached to the dynamometer. The height of the table was adjusted to ensure the strap was horizontal. Participants were asked to keep their hands on their thighs. The evaluator secured the patient at the thigh and shoulder levels on the tested side in order to limit compensatory movements.

1
2
3
4
5
6
7
8
9
10
11
12
13
14
15
16
17
18
19
20
21
22
23
24
25
26
27
28
29
30
31
32
33
34
35
36
37
38
39
40
41
42
43
44
45
46
47
48
49
50
51
52
53
54
55
56
57
58
59
60

Isokinetic dynamometer

Participants sat (85° hip flexion) on an ergometer (Biodex System 3 Pro, Biodex Medical, Shirley, NY, USA). The upper body was stabilized with straps across the thorax and the abdomen. Knee joint axis of rotation was aligned with the measurement axis of the system. The thigh was strapped around the mid-thigh of the leg to be tested. The knee angle was placed at 90° to cancel the effect of gravity. All measurements were performed in an isometric mode.

Assessment of maximal voluntary isometric knee extension voluntary torque (MVIT)

Patients were instructed to perform maximal effort during a static knee extension and to limit countermovement. Three maximal voluntary contractions were recorded for each dynamometer. A fourth and possibly fifth trial were performed if the value reached during the last trial was higher than the preceding ones, or if the difference between trials was greater than 10%. Strong verbal encouragements were provided to the subjects. For MyoQuad measurements, the patient was stabilized using one hand on the thigh and the other on the shoulder on the measured side. Measurements were performed on both sides. The maximal value from all trials was used for analyses.

Data analysis

Torque were expressed as absolute values and as percentage of predictive values using previous published equations (Hogrel et al., 2007).

Statistics

Data within text and tables are shown as mean ± standard deviation (SD) or mean [lower 95% confidence interval, upper 95% confidence interval]. The assumptions of normality and sphericity were confirmed using the D’Agostino K-squared and Mauchly tests, respectively. For cross-validation and between-day reproducibility, change in mean (CIM) and paired t-tests were used for detection of systematic bias. Standard error of measurement (SEM) was

used to study absolute reliability. Relative reliability was assessed using intra-class correlation coefficients (ICC_{2,1}). Regression analysis and Bland–Altman plots were also performed. Individual coefficients of correlation were computed for between-day measurements and a paired sample t-test was used to compare individual coefficients of correlation between methods. The same approach was used to compare change between methods at follow-up. In addition, a two-way ANOVA (timepoint \times method) was used to compare methods. Tukey's honest significant difference post-hoc tests were conducted when a significant main and/or interaction effect was found. Least significant difference was defined as $SEM \times 2$ and outcome at follow-up was defined as impaired, unchanged, and improved. A Fisher exact probability test was used to compare contingency tables of outcomes at follow-up. All analyses were performed in the computing environment R Version 3.2.3. Statistical significance was set at $p < 0.05$ for all tests.

Results

A total of 56 patients (age = 67 ± 9 years) with inclusion body myositis were included. Thirty-three patients were assessed for between-day reproducibility. Thirty-two of which were reassessed after 6 and 12 months. Amongst them, 29 were tested using both methods. The reason for the smaller number of patients at follow-up was time constraints or unavailability of the MyoQuad. Ultimately, a total of 287 observations using both methods were gathered. Agreement of methods are summarized in Table 1 and Figure 3. The MVIT measured using the MyoQuad was significantly lower than the MVIT measured using the Biodex. Between-day reproducibility results for both methods are displayed in Table 2 and Figure 4. No systematic bias was detected and least significant difference was 4.9 and 5.3 Nm for the MyoQuad and the Biodex, respectively. Individual coefficients of variation for between-day measurements were $5.4 \pm 7.4\%$ and $6.7 \pm 6.6\%$ using MyoQuad and the Biodex with no

1
2
3 181 significant difference between methods (mean of the differences = -1.4 Nm; 95%CI: [-3.7,
4
5 182 0.9] Nm; $p = 0.26$).
6
7
8 183 Change in MVIT at 6 and 12 months using both methods is shown in Figure 5. When
9
10 184 performed using absolute values (at baseline, 6, and 12 months), ANOVA showed significant
11
12 185 main effects of method and time (both $p < 0.01$) and no significant timepoint \times method
13
14 186 interaction ($p = 0.19$) (Figure 5.A). When performed using absolute changes at 6 and 12
15
16
17 187 months, ANOVA showed significant main effects of method and time (both $p < 0.05$) and no
18
19 188 significant timepoint \times method interaction ($p = 0.46$) (Figure 5.B). Variability in changes
20
21 189 between methods at follow-up is displayed in Table 3. A contingency table of outcomes at
22
23
24 190 follow-up is shown in Table 4.
25

26 191
27
28
29 192 **Discussion**

30
31 193 The aim of this study was to introduce a novel device for the assessment of isometric strength
32
33 194 of knee extensors, for use in most clinical environments. Agreement with the gold standard,
34
35 195 between-day reliability, and the ability of the device to monitor changes in muscle strength
36
37
38 196 over time compared to the gold standard method as a reference were investigated. Main
39
40 197 results are as follows: i) the device demonstrates excellent metrological accuracy, ii)
41
42 198 measurements obtained using the device exhibit excellent agreement with the gold standard,
43
44 199 iii) reliability of measurements obtained using the device was excellent and comparable to
45
46
47 200 results obtained using the gold standard, iii) change in strength over time was similar using
48
49 201 the device and the gold standard.
50

51
52 202 The MyoQuad device was developed in order to conveniently assess quadriceps strength
53
54 203 within routine clinical practice, including in very weak patients. This may be commonly
55
56 204 performed using HHD, which, however, presents several limitations. In very strong patients,
57
58 205 the evaluator may have difficulties in maintaining the dynamometer in a steady hold, whereas
59
60

the influence of the evaluator may be too important in the weakest patients leading to possible large relative errors. Fixed dynamometers are attractive to tackle these limitations (Mentiplay et al., 2015). However, muscle strength may be improperly or even impossible to assess if the device is improperly designed. For instance, within a recent therapeutic trial in IBM, the system was designed in a way that patients had to carry the weight of the strain gauge before strength produced could be actually measured. As a result, knee extensor strength could not be measured in 3 out of 12 (25%) patients and the consistency of the measurements in other patients was largely flawed (unpublished results). The design of the proposed device tackles these issues as the MyoQuad is directly secured on a fixed frame. HHD have been repeatedly observed to underestimate knee extension strength compared to isometric measurements using an isokinetic dynamometer (Stark et al., 2011; Martin et al., 2006). This is particularly true in stronger individuals where the evaluator may have difficulties stabilizing the measurement chain (Martin et al., 2006; Bohannon et al., 2012). The high agreement between measurements performed using the MyoQuad and the Biodex support that fixed dynamometry improves the robustness of assessments through improved comfort and stability. These data are in line with previous work reporting higher consistency of measurements using a modified procedure of stabilized HHD as compared to standard HHD (Kim et al., 2014; Hansen et al., 2015).

Our data shows a low SEM < 8.5 % Nm and high ICC > 0.98 for between-day reproducibility when using the MyoQuad. This was similar to that observed using the Biodex (SEM was < 10.0% and ICC was > 0.98). We also reported similar individual coefficients of variation for between-day measurement using the MyoQuad and the Biodex. This high reproducibility yielded similar least significant change using both methods. These data are in line with previous reports that have investigated between-day reliability using gold standard methods (Ruschel et al., 2015; Kean et al., 2010). Importantly, our data showed no significant

1
2
3 231 difference between methods for monitoring change in MVIT over time (Figure 5) and good
4
5 232 agreement when comparing changes at follow-up (Table 3). This was confirmed by consistent
6
7 233 classification of strength changes using both methods at follow-up (Table 4). To the best of
8
9
10 234 our knowledge, this is the first report that compares temporal changes in knee extensors using
11
12 235 fixed dynamometry and standard isokinetic dynamometry.
13
14 236 As this study was only performed in patients with inclusion body myositis, generalizability of
15
16 237 findings to other disorders remains to be demonstrated. However, similar findings regarding
17
18 238 the reliability of MVIT have been previously reported in various clinical fields (Nuzzo et al.,
19
20 239 2019). Volitional maneuvers such as maximal voluntary contraction embraces both peripheral
21
22
23 240 and central factors, which render its estimation variable (Millet et al., 2012). Therefore,
24
25 241 observed differences between Biodex and MyoQuad also reflect this variability. Another
26
27 242 potential source of error using the MyoQuad is the measurement of the lever arm to compute
28
29 243 torque that is circumvented when using torque meter as in standard isokinetic dynamometers
30
31 244 like the Biodex (Ruschel et al., 2015).
32
33
34
35
36
37

38 246 **Conclusions**

39
40
41 247 Measurement of maximal voluntary isometric knee extension torque using the MyoQuad
42
43 248 offers a cost-effective, portable and immediate alternative for the routine measurement of
44
45 249 maximal voluntary isometric contraction of the quadriceps by offering comfort and stability
46
47 250 that cannot be provided using hand-held dynamometry. It may be used for both baseline and
48
49 251 follow-up assessments of muscle strength and may also be used to assess other muscle groups
50
51 252 (e.g. knee flexion, shoulder abduction) using proper patient positioning and adapted
52
53 253 interfaces. Altogether, our results support the adoption of quantitative muscle strength
54
55 254 assessment using fixed yet flexible dynamometry within routine clinical practice and
56
57 255 multicenter trials.
58
59
60

256

257 **Acknowledgments**

258 We gratefully thank all the patients who participated in this study. This study was supported by
 259 the *Association Française contre les Myopathies* (AFM). The authors are grateful to Simone
 260 Birnbaum for English editing.

261

262 **ORCID iDs**

263 Jean-Yves Hogrel: <https://orcid.org/0000-0003-0045-7505>

264 Olivier Benveniste: <https://orcid.org/0000-0002-1167-5797>

265 Damien Bachasson: <https://orcid.org/0000-0001-6335-9916>

266

267 **References**

- 268 Bachasson D, Villiot-Danger E, Verges S, Hayot M, Perez T, Chambellan A and Wuyam B
 269 2014 [Maximal isometric voluntary quadriceps strength assessment in COPD] *Revue*
 270 *des Maladies Respiratoires* **31** 765-70
- 271 Benveniste O and Hilton-Jones D 2010 International Workshop on Inclusion Body Myositis
 272 held at the Institute of Myology, Paris, on 29 May 2009 *Neuromuscul Disord* **20** 414-
 273 21
- 274 Bohannon R W 2005 Manual muscle testing: does it meet the standards of an adequate
 275 screening test? *Clinical Rehabilitation* **19** 662-7
- 276 Bohannon R W, Bubela D J, Wang Y C, Magasi S R and Gershon R C 2011 Adequacy of belt-
 277 stabilized testing of knee extension strength *Journal of Strength and Conditioning*
 278 *Research* **25** 1963-7

1
2
3 279 Bohannon R W, Kindig J, Sabo G, Duni A E and Cram P 2012 Isometric knee extension force
4
5 280 measured using a handheld dynamometer with and without belt-stabilization *Physiother*
6
7 281 *Theory Pract* **28** 562-8
8
9
10 282 Deones V L, Wiley S C and Worrell T 1994 Assessment of quadriceps muscle performance by
11
12 283 a hand-held dynamometer and an isokinetic dynamometer *Journal of Orthopaedic &*
13
14 284 *Sports Physical Therapy* **20** 296-301
15
16
17 285 Garcia-Hermoso A, Cavero-Redondo I, Ramirez-Velez R, Ruiz J R, Ortega F B, Lee D-C and
18
19 286 Martinez-Vizcaino V 2018 Muscular Strength as a Predictor of All-Cause Mortality in
20
21 287 an Apparently Healthy Population: A Systematic Review and Meta-Analysis of Data
22
23 288 From Approximately 2 Million Men and Women *Arch Phys Med Rehabil* **99** 2100-13.e5
24
25
26 289 Hansen E M, McCartney C N, Sweeney R S, Palimenio M R and Grindstaff T L 2015 Hand-
27
28 290 held Dynamometer Positioning Impacts Discomfort During Quadriceps Strength
29
30 291 Testing: A Validity and Reliability Study *Int J Sports Phys Ther* **10** 62-8
31
32
33 292 Harbo T, Brincks J and Andersen H 2012 Maximal isokinetic and isometric muscle strength of
34
35 293 major muscle groups related to age, body mass, height, and sex in 178 healthy subjects
36
37 294 *European Journal of Applied Physiology* **112** 267-75
38
39
40 295 Hogrel J Y, Ollivier G and Desnuelle C 2006 [Manual and quantitative muscle testing in
41
42 296 neuromuscular disorders. How to assess the consistency of strength measurements in
43
44 297 clinical trials?] *Rev Neurol (Paris)* **162** 427-36
45
46
47 298 Hogrel J Y, Payan C A, Ollivier G, Tanant V, Attarian S, Couillandre A, Dupeyron A,
48
49 299 Lacomblez L, Doppler V, Meininger V, Tranchant C, Pouget J and Desnuelle C 2007
50
51 300 Development of a French isometric strength normative database for adults using
52
53 301 quantitative muscle testing *Archives of Physical Medicine and Rehabilitation* **88** 1289-
54
55 302 97
56
57
58
59
60

- 303 Kean C O, Birmingham T B, Garland S J, Bryant D M and Giffin J R 2010 Minimal detectable
304 change in quadriceps strength and voluntary muscle activation in patients with knee
305 osteoarthritis *Archives of Physical Medicine and Rehabilitation* **91** 1447-51
- 306 Kim W K, Kim D K, Seo K M and Kang S H 2014 Reliability and validity of isometric knee
307 extensor strength test with hand-held dynamometer depending on its fixation: a pilot
308 study *Ann Rehabil Med* **38** 84-93
- 309 Martin H J, Yule V, Syddall H E, Dennison E M, Cooper C and Aihie Sayer A 2006 Is hand-
310 held dynamometry useful for the measurement of quadriceps strength in older people?
311 A comparison with the gold standard Bodex dynamometry *Gerontology* **52** 154-9
- 312 McKay M J, Baldwin J N, Ferreira P, Simic M, Vanicek N, Hiller C E, Nightingale E J,
313 Moloney N A, Quinlan K G, Pourkazemi F, Sman A D, Nicholson L L, Mousavi S J,
314 Rose K, Raymond J, Mackey M G, Chard A, Hubscher M, Wegener C, Fong Yan A,
315 Refshauge K M, Burns J and Norms Project C 2016 1000 Norms Project: protocol of a
316 cross-sectional study cataloging human variation *Physiotherapy* **102** 50-6
- 317 Mentiplay B F, Perraton L G, Bower K J, Adair B, Pua Y H, Williams G P, McGaw R and
318 Clark R A 2015 Assessment of Lower Limb Muscle Strength and Power Using Hand-
319 Held and Fixed Dynamometry: A Reliability and Validity Study *PLoS One* **10** e0140822
- 320 Millet G Y, Bachasson D, Temesi J, Wuyam B, Feasson L, Verges S and Levy P 2012 Potential
321 interests and limits of magnetic and electrical stimulation techniques to assess
322 neuromuscular fatigue *Neuromuscul Disord* **22 Suppl 3** S181-6
- 323 Nuzzo J L, Taylor J L and Gandevia S C 2019 CORP: Measurement of upper and lower limb
324 muscle strength and voluntary activation *J Appl Physiol (1985)* **126** 513-43
- 325 Ruschel C, Hauptenthal A, Jacomel G F, Fontana Hde B, Santos D P, Scoz R D and Roesler H
326 2015 Validity and reliability of an instrumented leg-extension machine for measuring
327 isometric muscle strength of the knee extensors *Journal of Sport Rehabilitation* **24**

1
2
3
4
5
6
7
8
9
10
11
12
13
14
15
16
17
18
19
20
21
22
23
24
25
26
27
28
29
30
31
32
33
34
35
36
37
38
39
40
41
42
43
44
45
46
47
48
49
50
51
52
53
54
55
56
57
58
59
60

Servais L, Deconinck N, Moraux A, Benali M, Canal A, Van Parys F, Vereecke W,
Wittevrongel S, Mayer M, Desguerre I, Maincent K, Themar-Noel C, Quijano-Roy S,
Serari N, Voit T and Hogrel J Y 2013 Innovative methods to assess upper limb strength
and function in non-ambulant Duchenne patients *Neuromuscul Disord* **23** 139-48
Seymour J M, Spruit M A, Hopkinson N S, Natanek S A, Man W D, Jackson A, Gosker H R,
Schols A M, Moxham J, Polkey M I and Wouters E F 2010 The prevalence of
quadriiceps weakness in COPD and the relationship with disease severity *Eur Respir J*
36 81-8
Stark T, Walker B, Phillips J K, Fejer R and Beck R 2011 Hand-held dynamometry correlation
with the gold standard isokinetic dynamometry: a systematic review *PM R* **3** 472-9

Tables

Table 1. Agreement of measurements obtained using the MyoQuad and the Biodex (n = 52 participants with a total of 283 measurements).

MyoQuad (Nm)	Biodex (Nm)	CIM (Nm) [95% CI]	P value	ICC [95% CI]	SEM (Nm) [95% CI]
29.46 ± 23.12	31.14 ± 24.68	1.68 [1.06, 2.30]	< 0.001	0.973 [0.966, 0.979]	3.76 [3.47, 4.10]

CIM = change in mean; SEM = standard error of measurement; ICC = intra-class correlation coefficient.

1
2
3
4
5
6
7
8
9
10
11
12
13
14
15
16
17
18
19
20
21
22
23
24
25
26
27
28
29
30
31
32
33
34
35
36
37
38
39
40
41
42
43
44
45
46
47
48
49
50
51
52
53
54
55
56
57
58
59
60

Table 2. Test-retest reliability of maximal isometric knee extension voluntary torque using the MyoQuad and the Biodex (n = 33 participants with a total of 66 measurements).

Method	Test (Nm)	Retest (Nm)	CIM (Nm) [95% CI]	<i>p</i> value	ICC [95% CI]	SEM (Nm) [95% CI]
MyoQuad	32.20 ± 23.58	31.72 ± 22.78	-0.48 [-1.33, 0.36]	0.258	0.989 [0.982, 0.993]	2.44 [2.08, 2.94]
Biodex	33.36 ± 24.88	32.90 ± 23.98	-0.46 [-1.37, 0.46]	0.323	0.988 [0.981, 0.993]	2.64 [2.25, 3.18]

CIM = change in mean; SEM = standard error of measurement; ICC = intra-class correlation coefficient.

Table 3. Variability of changes in maximal isometric knee extension voluntary torque at follow-up using the MyoQuad and the Biodex (n = 44 participants with a total of 88 measurements).

Biodex (Nm)	MyoQuad (Nm)	CIM (Nm) [95% CI]	<i>p</i> value	ICC [95% CI]	SEM (Nm) [95% CI]
-3.15 ± 9.01	-3.17 ± 7.57	-0.02 [-1.29, 1.24]	0.971	0.756 [0.648, 0.836]	4.22 [3.68,4.96]

CIM = change in mean; ICC = intra-class correlation coefficient; SEM = standard error of measurement.

1
2
3
4
5
6
7
8
9
10
11
12
13
14
15
16
17
18
19
20
21
22
23
24
25
26
27
28
29
30
31
32
33
34
35
36
37
38
39
40
41
42
43
44
45
46
47
48
49
50
51
52
53
54
55
56
57
58
59
60

Table 4. Contingency table illustrating classified changes in strength using the MyoQuad and the Biodex.

Progression	6 months			12 months		
	MyoQuad	Biodex	% match	MyoQuad	Biodex	% match
Impaired	13/44	11/44	85%	13/44	15/44	87%
Unchanged	29/44	29/44	100%	29/44	28/44	97%
Improved	2/44	4/44	50%	2/44	1/44	50%

Least significant change determined from between-day reliability was used to classify changes in strength after 6 and 12 months.

Figure legends

Figure 1. Patient installation and device. Close-up view of the device paired with tablet computer (A); Close-up view of the device attached to table legs with round (B) or rectangular section (C); Overview of the setup with one participant and stabilization by one evaluator (D). A small pillow is inserted under the distal part of the thigh to ensure the thigh is horizontal.

Figure 2. Typical calibration curve. The dashed line represents the identity line, and the solid line indicates the linear regression line.

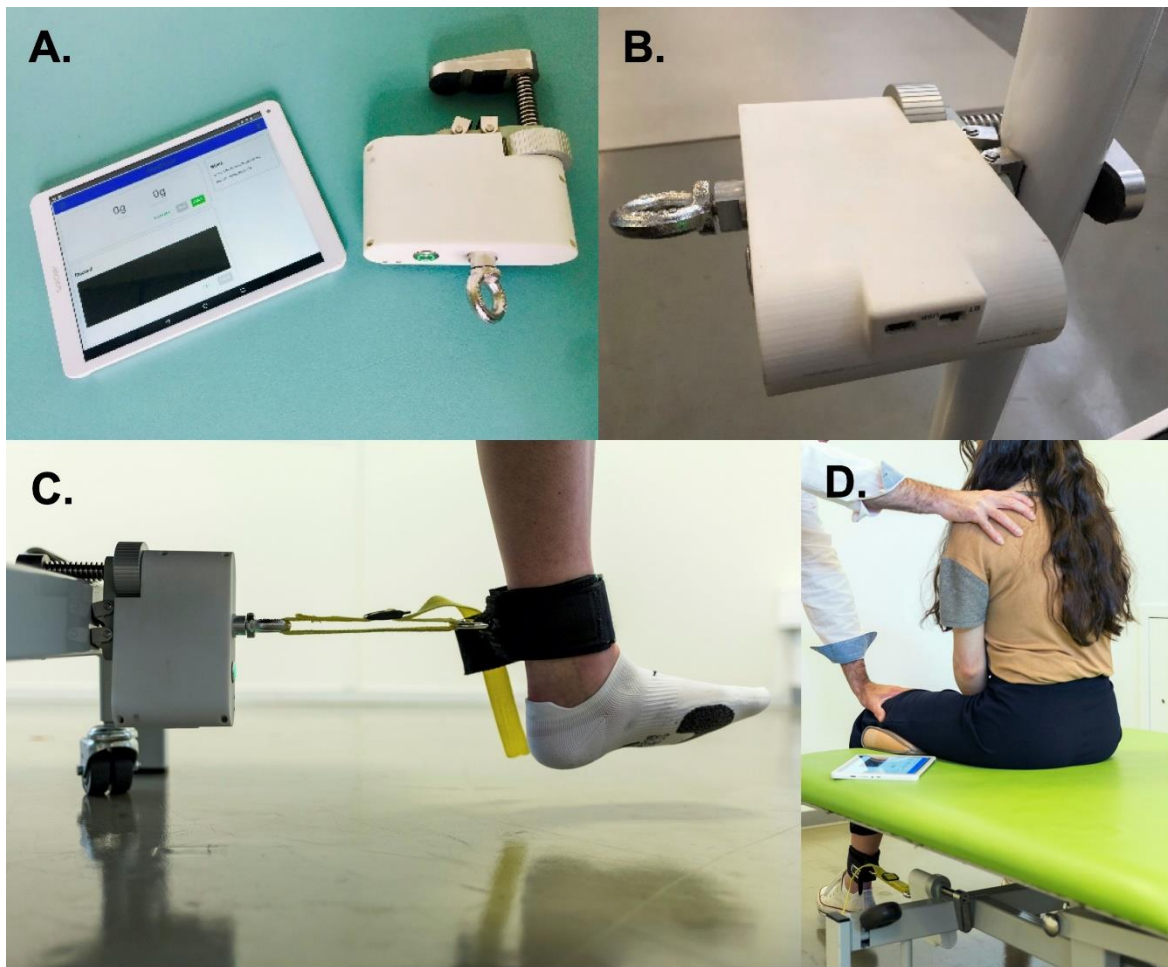
Figure 3. Agreement of measurements obtained using the MyoQuad *versus* the Biodex. Bland–Altman plots (A) and regression analysis (B) of measurements obtained using the MyoQuad and the Biodex. In A, the solid line indicates the mean difference between the measurements and dashed lines the limits of agreement. In B, the dashed line represents the identity line, and the solid line indicates the linear regression line.

Figure 4. Between-day reproducibility of measurements obtained using the MyoQuad and the Biodex. Bland–Altman plots (A, C) and regression analysis (B, D) for between-day reliability of measurements obtained using the MyoQuad and the Biodex, respectively. In A and C, the solid line indicates the mean difference between the measurements and the dashed line indicates the limit of agreements. In B and D, the dashed line represents the identity line, and the solid line indicates the linear regression line. Logarithmic scales are used for better data visualization.

1
2
3
4
5
6
7
8
9
10
11
12
13
14
15
16
17
18
19
20
21
22
23
24
25
26
27
28
29
30
31
32
33
34
35
36
37
38
39
40
41
42
43
44
45
46
47
48
49
50
51
52
53
54
55
56
57
58
59
60

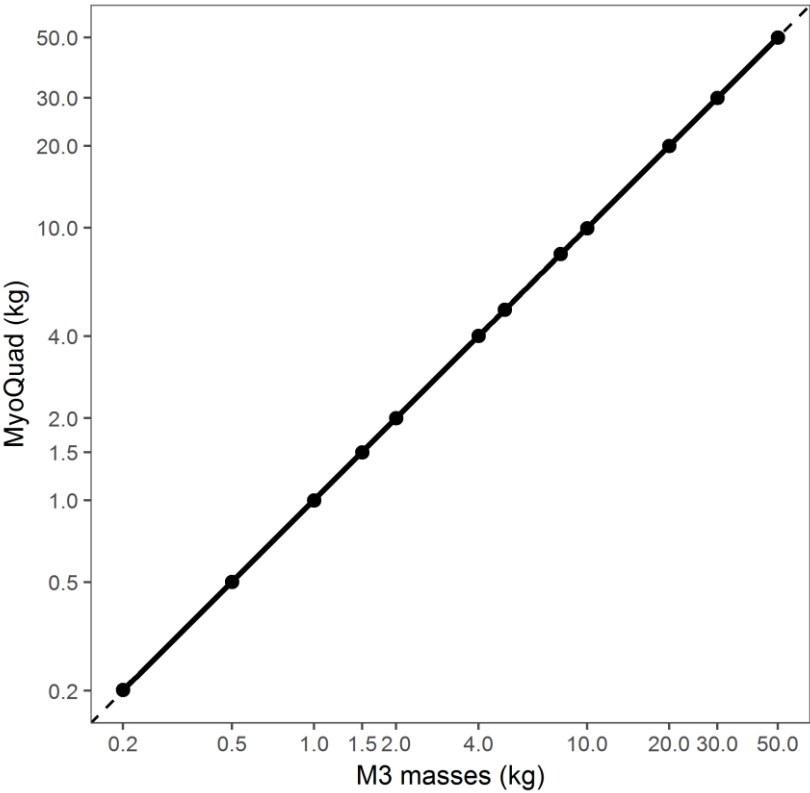
Figure 5. Change in torque over time using the MyoQuad and the Biodex. Absolute (A)
values and change (B) in knee extensor strength over time.

393 Figure 1



1
2
3
4
5
6
7
8
9
10
11
12
13
14
15
16
17
18
19
20
21
22
23
24
25
26
27
28
29
30
31
32
33
34
35
36
37
38
39
40
41
42
43
44
45
46
47
48
49
50
51
52
53
54
55
56
57
58
59
60

Figure 2



399 Figure 3

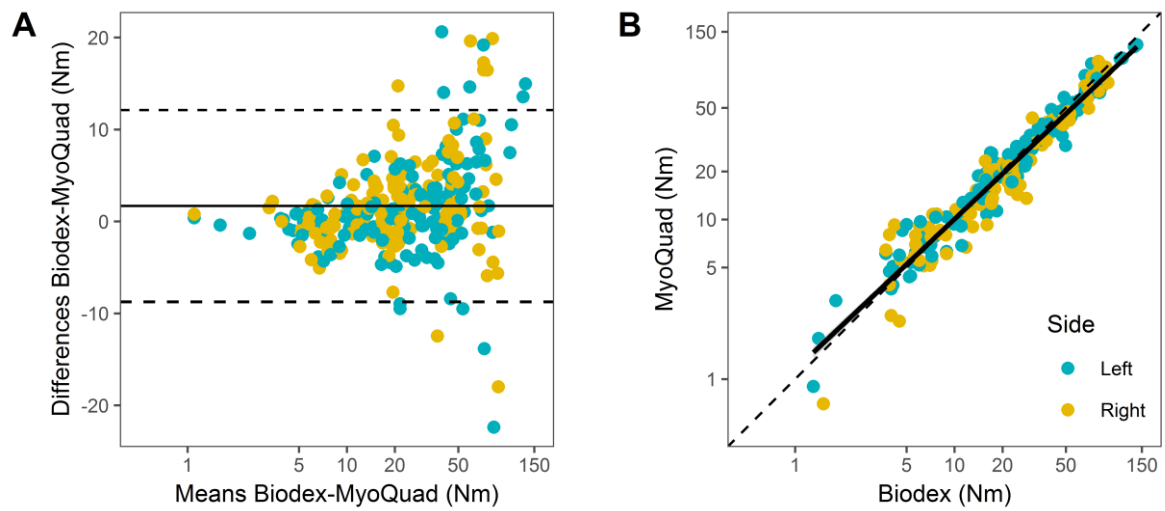
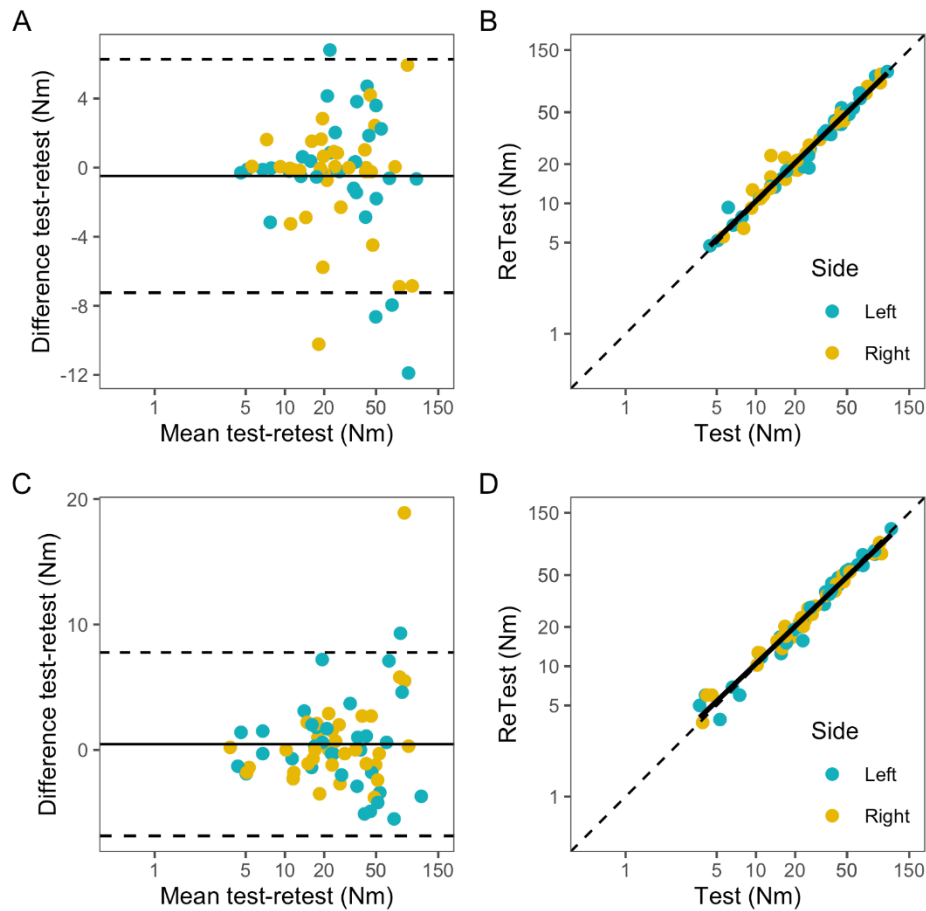


Figure 4



405 Figure 5

