



HAL
open science

Oxygen and sulfur mass-independent isotopic signatures in black crusts: the complementary negative $\Delta^{33}\text{S}$ reservoir of sulfate aerosols?

Isabelle Genot, David Au Yang, Erwan Martin, Pierre Cartigny, Erwann
Legendre, Marc de Rafélis

► To cite this version:

Isabelle Genot, David Au Yang, Erwan Martin, Pierre Cartigny, Erwann Legendre, et al.. Oxygen and sulfur mass-independent isotopic signatures in black crusts: the complementary negative $\Delta^{33}\text{S}$ reservoir of sulfate aerosols?. Atmospheric Chemistry and Physics, 2020, 20 (7), pp.4255 - 4273. 10.5194/acp-20-4255-2020 . hal-02557073

HAL Id: hal-02557073

<https://hal.sorbonne-universite.fr/hal-02557073>

Submitted on 28 Apr 2020

HAL is a multi-disciplinary open access archive for the deposit and dissemination of scientific research documents, whether they are published or not. The documents may come from teaching and research institutions in France or abroad, or from public or private research centers.

L'archive ouverte pluridisciplinaire **HAL**, est destinée au dépôt et à la diffusion de documents scientifiques de niveau recherche, publiés ou non, émanant des établissements d'enseignement et de recherche français ou étrangers, des laboratoires publics ou privés.



Distributed under a Creative Commons Attribution 4.0 International License



Oxygen and sulfur mass-independent isotopic signatures in black crusts: the complementary negative $\Delta^{33}\text{S}$ reservoir of sulfate aerosols?

Isabelle Genot^{1,2}, David Au Yang^{1,3,4}, Erwan Martin², Pierre Cartigny¹, Erwann Legendre^{2,5}, and Marc De Rafelis⁶

¹Institut de physique du globe de Paris, Université de Paris, CNRS, 75005 Paris, France

²Sorbonne Université, CNRS-INSU, Institut des Sciences de la Terre de Paris, IsteP UMR7193 Paris, France

³GEOTOP/Université du Québec à Montréal, Montréal H3C 3P8, Canada

⁴Department of Earth and Planetary Sciences, McGill University, Montréal, Canada

⁵LATMOS, UVSQ, Université Paris Saclay, Sorbonne Université, CNRS, INSU, IPSL,
11 Boulevard d'Alembert, 78280, Guyancourt, France

⁶Géosciences Environnement Toulouse (GET), Université Toulouse III – Paul Sabatier, CNRS UMR 5563,
IRD, 14 avenue Edouard Belin, 31400 Toulouse, France

Correspondence: Isabelle Genot (genot@ipgp.fr)

Received: 22 October 2019 – Discussion started: 28 October 2019

Revised: 21 February 2020 – Accepted: 4 March 2020 – Published: 9 April 2020

Abstract. To better understand the formation and the oxidation pathways leading to gypsum-forming “black crusts” and investigate their bearing on the whole atmospheric SO_2 cycle, we measured the oxygen ($\delta^{17}\text{O}$, $\delta^{18}\text{O}$, and $\Delta^{17}\text{O}$) and sulfur ($\delta^{33}\text{S}$, $\delta^{34}\text{S}$, $\delta^{36}\text{S}$, $\Delta^{33}\text{S}$, and $\Delta^{36}\text{S}$) isotopic compositions of black crust sulfates sampled on carbonate building stones along a NW–SE cross section in the Parisian basin. The $\delta^{18}\text{O}$ and $\delta^{34}\text{S}$ values, ranging between 7.5‰ and 16.7 ± 0.5 ‰ ($n = 27$, 2σ) and between -2.66 ‰ and 13.99 ± 0.20 ‰, respectively, show anthropogenic SO_2 as the main sulfur source (from $\sim 2\%$ to 81%, average $\sim 30\%$) with host-rock sulfates making the complement. This is supported by $\Delta^{17}\text{O}$ values (up to 2.6‰, on average ~ 0.86 ‰), requiring $> 60\%$ of atmospheric sulfates in black crusts. Negative $\Delta^{33}\text{S}$ and $\Delta^{36}\text{S}$ values between -0.34 ‰ and 0.00 ± 0.01 ‰ and between -0.76 ‰ and -0.22 ± 0.20 ‰, respectively, were measured in black crust sulfates, which is typical of a magnetic isotope effect that would occur during the SO_2 oxidation on the building stone, leading to ^{33}S depletion in black crust sulfates and subsequent ^{33}S enrichment in residual SO_2 . Except for a few samples, sulfate aerosols mostly have $\Delta^{33}\text{S}$ values > 0 ‰, and no processes can yet explain this enrichment, resulting in an inconsistent S budget: black crust sulfates could well represent the complementary nega-

tive $\Delta^{33}\text{S}$ reservoir of the sulfate aerosols, thus solving the atmospheric SO_2 budget.

1 Introduction

The oxidation of sulfur dioxide emitted into the atmosphere (between 100 and 110 $\text{Tg}(\text{SO}_2)\text{yr}^{-1}$; Klimont et al., 2013) can result in the formation of H_2SO_4 that forms sulfate aerosols; having light-scattering properties that alter the radiative balance of the planet. Furthermore, they also modify the microphysical properties of clouds through the number and size of cloud condensation nuclei (CCN; e.g., Weber et al., 2001). Although quantified with large uncertainties, the formation of sulfate aerosols results in an Earth surface cooling (Forster et al., 2007), with a negative radiative forcing from -0.62 to -0.21 W m^{-2} (on average ~ -0.41 W m^{-2}). Overall, sulfate aerosols are the most efficient particles that counterbalance the greenhouse effect (Stocker, 2014). Uncertainties regarding the formation of sulfate aerosols relate to the large variety of oxidants and conditions (e.g., pH), but, in view of their major impact on climate, a more accurate understanding of the formation of these particles is necessary.

Primary sulfate aerosols consist of sulfates formed during their emission into the atmosphere (e.g., sea-salt sulfates, combustion products, volcanic sulfates), which involve therefore a local origin (Holt and Kumar, 1991). Secondary sulfate aerosols are formed later in the atmosphere following various oxidation pathways (e.g., oxidation via OH, O₂ transition-metal ion (TMI), O₃, H₂O₂, and NO₂) and relate to a local or more distant sulfur source (Seinfeld and Pandis, 2016). SO₂ oxidation can occur in the gas phase (homogeneous reaction, for example, with OH), in the aqueous phase (e.g., with H₂O₂, O₃, O₂ TMI), or on a surface (heterogeneous reaction), resulting in different sizes and number of aerosol particles with distinct effects on radiative balance.

Stable isotope geochemistry is a central tool for both characterizing sulfur sources and quantifying the different oxidants. The δ notation used here is defined as

$$\delta = \left[\frac{R_{\text{sample}}}{R_{\text{standard}}} - 1 \right] \times 1000,$$

with $R = {}^{18,17}\text{O}/{}^{16}\text{O}$ for $\delta^{18}\text{O}$ and $\delta^{17}\text{O}$,

or $R = {}^{34,33,36}\text{S}/{}^{32}\text{S}$ for $\delta^{34}\text{S}$,

$\delta^{33}\text{S}$, and $\delta^{36}\text{S}$.

And isotope fractionation factors are expressed as follows:

$${}^{18/16}\alpha_{A-B} = \left({}^{18}\text{O}/{}^{16}\text{O} \right)_A / \left({}^{18}\text{O}/{}^{16}\text{O} \right)_B,$$

with A and B being two different phases.

Given that the oxidants have distinct $\delta^{18}\text{O}$ and $\Delta^{17}\text{O}$ signatures, the SO₂ oxidation pathways are commonly constrained using oxygen multi-isotope ratios ($\delta^{18}\text{O}$, $\delta^{17}\text{O}$, and $\Delta^{17}\text{O}$, defined in the following section) (Alexander et al., 2012; Bindeman et al., 2007; Jenkins and Bao, 2006; Lee and Thiemens, 2001; Savarino et al., 2000; Martin, 2018). Sulfur isotope fractionation during SO₂ oxidation by OH, O₂ TMI, H₂O₂, O₃ (Harris et al., 2012a, b, 2013a, b), and NO₂ (Au Yang et al., 2018) have been determined, so additional constraints can also be brought by S multi-isotope compositions ($\delta^{34}\text{S}$, $\delta^{33}\text{S}$, $\delta^{36}\text{S}$, $\Delta^{33}\text{S}$, and $\Delta^{36}\text{S}$). At present, however, it is difficult to reach a consistent budget for tropospheric SO₂ oxidation (chemically and isotopically). Indeed, most of rural and urban sulfate aerosols have positive $\Delta^{33}\text{S}$ values (Au Yang et al., 2019; Guo et al., 2010; Han et al., 2017; Lin et al., 2018b; Romero and Thiemens, 2003; Shaheen et al., 2014), implying either a source of SO₂ with $\Delta^{33}\text{S} > 0\text{‰}$ (which has not been identified yet as all known sources have $\Delta^{33}\text{S} \sim 0\text{‰}$; Lin et al., 2018b) or more likely processes such as SO₂ photolysis in the stratosphere (e.g., Farquhar et al., 2001), contributing to the ³³S-enriched tropospheric sulfate reservoir from initial SO₂ with $\Delta^{33}\text{S} = 0\text{‰}$, which should be balanced by a ³³S-depleted reservoir but which remains scarce (see Shaheen et al., 2014; Han et al., 2017; Lin et al., 2018a). Negative $\Delta^{33}\text{S}$ values were suggested to result specifically from combustion (Lee et al., 2002) and/or OCS

(carbonyl sulfide) photolysis (Lin et al., 2011). Still, the mass balance among positive and negative $\Delta^{33}\text{S}$ values is not consistent. As none of the most significant tropospheric SO₂ oxidation reactions can account for $\Delta^{33}\text{S}$ anomalies in sulfate aerosols (Au Yang et al., 2018; Guo et al., 2010; Han et al., 2017; Harris et al., 2013b; Lee et al., 2002; Lin et al., 2018a, b; Romero and Thiemens, 2003; Shaheen et al., 2014), this leads to the suggestion that either some reactions or SO₂ sources have been overlooked. Finally, a recent study highlights the possibility of SO₂ oxidation on mineral dust surfaces resulting in ³³S-depleted sulfate deposition in rural environments and subsequent ³³S enrichment of residual SO₂ transported to cities (Au Yang et al., 2019), but the negative $\Delta^{33}\text{S}$ values are still missing.

In this respect, black crusts potentially represent new ways to sample the atmosphere in urban regions at a relatively global scale. They are generally formed by the sulfation of the underlying carbonate substrate resulting in a gypsum layer (Camuffo, 1995) (Fig. 1). Due to their degradation effects on monuments and buildings, in particular because the molar volume of CaSO₄ is larger than that of CaCO₃, several studies investigated sources of sulfur in black crusts, using primarily the isotopic composition of sulfur ($\delta^{34}\text{S}$) and oxygen ($\delta^{18}\text{O}$) and microscopic and mineralogical aspects. Anthropogenic sulfur was found to be the major source contributing to monument degradation in several localities compared to marine or volcanic sulfate sources (Longinelli and Bartelloni, 1978; Montana et al., 2008, 2012; Torfs et al., 1997). Sulfates from the host rock, i.e., plaster, mortar, or oxidized pyrite (defined as intrinsic in the literature; Klemm and Siedel, 2002; Kloppmann et al., 2011; Kramar et al., 2011; Vallet et al., 2006), and sulfates from aquifer rising by capillarity (Kloppmann et al., 2014) were also identified as sulfur sources in black crusts. Black crusts being sometimes the host of microbial activity (Gaylarde et al., 2007; Sáiz-Jiménez, 1995; Scheerer et al., 2009; Schiavon, 2002; Tiano, 2002), other studies investigated the role of bacteria in gypsum formation through sulfate reduction and/or SO₂ oxidation (Tiano, 2002; Tiano et al., 1975). Except the work of Šrámek (1980) measuring black crust sulfates $\delta^{34}\text{S}$ that rule out the implication of micro-organisms in their formation, no further constraint has been brought so far. In this paper, we present new oxygen and sulfur isotopic composition measurements of sulfate extracted from black crusts and report significant $\Delta^{17}\text{O}$, $\Delta^{33}\text{S}$, and $\Delta^{36}\text{S}$ anomalies that help to discuss oxygen and sulfur isotopic variations both in term of source effects to elucidate their origin and in terms of fractionation processes leading to black crust formation in the Paris area.

2 Mass-dependent and independent fractionations

As with many chemical reactions, O and S isotopic compositions of SO₂ vary during their oxidation. Most reactions are

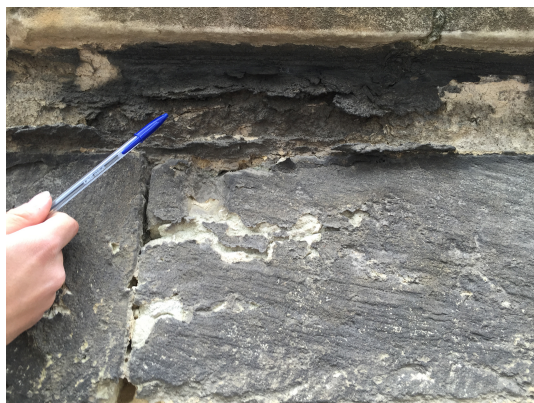


Figure 1. Thin layer of black crusts formed on a carbonate building stone on a church wall in Fécamp city.

“mass-dependent”, meaning the isotopic fractionation relies on the mass differences between the isotopes; this remains valid for most unidirectional (kinetic) and/or exchange (equilibrium) reactions. In a system with at least three isotopes, mass fractionation laws at equilibrium and high temperature can be derived from their partition function (Bigeleisen and Mayer, 1947; Dauphas and Schauble, 2016; Urey, 1947; Young et al., 2002) as follows, for instance, with oxygen isotopes and SO_2 oxidation in sulfates:

$${}^{17}\beta_{\text{SO}_4-\text{SO}_2} = \frac{\ln({}^{17/16}\alpha_{\text{SO}_4-\text{SO}_2})}{\ln({}^{18/16}\alpha_{\text{SO}_4-\text{SO}_2})} \approx \frac{\frac{1}{m_{16}} - \frac{1}{m_{17}}}{\frac{1}{m_{16}} - \frac{1}{m_{18}}} \sim 0.5305,$$

with ${}^{17}\beta_{\text{SO}_4-\text{SO}_2}$ being the mass exponent describing the relative fractionation between ${}^{17}\text{O}/{}^{16}\text{O}$ and ${}^{18}\text{O}/{}^{16}\text{O}$, m being the mass of each isotope, and ${}^{17/16}\alpha_{\text{SO}_4-\text{SO}_2}$ being the isotope fractionation factor between two phases (defined in the introduction). The same equations can be written for ${}^{33}\text{S}$ and ${}^{36}\text{S}$.

Here, we will use ${}^{17}\beta$, ${}^{33}\beta$, and ${}^{36}\beta$ values (~ 0.5305 , 0.515 and 1.889 , respectively) for the high-temperature limit, which has been shown to be applicable for a wide range of temperature phases (Dauphas and Schauble, 2016) and isotope systems (S, Fe, Mg, O, Si, etc.). Thus, the β exponent represents the slope in a δ - δ space, called the “mass-dependent fractionation line”, which is actually approximated from a curve (this simplification is not used in this paper). Deviations from the reference “mass-dependent” curve do not imply necessarily isotopic variations that are independent from the isotope masses. These deviations are quantified with the Δ parameter expressed by Eqs. (1), (2), and (3) (Farquhar and Wing, 2003; Thiemens, 1999):

$$\Delta^{17}\text{O} = \delta^{17}\text{O} - 1000 \times \left[\left(\frac{\delta^{18}\text{O}}{1000} + 1 \right)^{0.5305} - 1 \right], \quad (1)$$

$$\Delta^{33}\text{S} = \delta^{33}\text{S} - 1000 \times \left[\left(\frac{\delta^{34}\text{S}}{1000} + 1 \right)^{0.515} - 1 \right], \quad (2)$$

$$\Delta^{36}\text{S} = \delta^{36}\text{S} - 1000 \times \left[\left(\frac{\delta^{34}\text{S}}{1000} + 1 \right)^{1.889} - 1 \right]. \quad (3)$$

Small nonzero $\Delta^{17}\text{O}-\Delta^{33}\text{S}-\Delta^{36}\text{S}$ values (typically between -0.1‰ and $+0.1\text{‰}$) can result from mixing, mass-dependent processes such as Rayleigh distillation, or mass conservation effects and nonequilibrium processes (Farquhar et al., 2007a; Ono et al., 2006a), whereas large nonzero $\Delta^{17}\text{O}-\Delta^{33}\text{S}-\Delta^{36}\text{S}$ values (higher than $+0.2\text{‰}$ or lower than -0.2‰) imply mass-independent fractionation (Cabral et al., 2013; Delavault et al., 2016; Farquhar et al., 2000, 2007b, 2002; Ono et al., 2003). Oxidation reactions would then change $\delta^{17}\text{O}$ and $\delta^{18}\text{O}$ but not the $\Delta^{17}\text{O}$, which would primarily vary through mixing of O reservoirs with variable $\Delta^{17}\text{O}$. Possible mechanisms producing nonzero $\Delta^{17}\text{O}-\Delta^{33}\text{S}-\Delta^{36}\text{S}$ values recorded in sulfate aerosols are discussed in the following sections. In this paper, we investigate the different processes responsible for the $\Delta^{17}\text{O}$, $\Delta^{33}\text{S}$, and $\Delta^{36}\text{S}$ values recorded by black crust sulfates and what can be inferred in terms of black crust formation.

3 Sampling and methods

3.1 Sampling sites

To access sulfate aerosols from the Parisian region, black crusts were sampled following the prevailing winds according to a NW–SE cross section from Fécamp to Sens (Fig. 2b, c). Therefore, the studied area covers rural, urban, and industrial zones including four power plants, major highways, and the large Paris metropolis.

A total of 27 samples were collected on the external faces of churches and monuments and on walls in the streets. The substrates were generally Lutetian and Cretaceous limestone, i.e., the typical building rocks in the Parisian basin. To ensure a representative sample of sulfate aerosols, the sampling was carried out preferentially oriented to NW or, if possible, not directly exposed to traffic emissions. Moreover, to avoid sulfate contamination from soils (i.e., salts by capillary action, water from runoff), black crusts were sampled at least at a height of 1.50 m above ground level. More details about the samples are summarized in Table 1.

3.2 Methods

An X-ray diffractometer (XRD D2 phaser BRUKER, IStEP Sorbonne Université) was used to specify the mineralogical nature of each sample and therefore to demonstrate the nature of sulfur. Structural and chemical aspects were subsequently investigated using scanning electron microscopy (SEM, IStEP Sorbonne Université).

Sulfates were leached from 20 to 100 mg of black crusts and the conversion of gypsum into pure barite was performed according to the protocol developed at the Institut des Sciences de la Terre de Paris (IStEP) as described by Le Gendre

Table 1. Characteristics of black crust samples. Their name was given according to the city and the department where they are located and following the number of samples gathered at the same place (NA77-1: NA = Nangis; 77 = department; -1 = first sample collected).

Samples	Location	Orientation of sampled faces	Distance from the sea (km)	Height above the ground (m)	Exposure to traffic road
PA14-1	48°49′37.97″ N, 2°20′5.21″ E	65° N	170	1.5–2.0	Directly exposed
PA13-2	48°49′26.42″ N, 2°22′33.48″ E	150° N	170	2.0	Directly exposed
PA5-1	48°50′37.09″ N, 2°20′25.77″ E	14° N	170	1.5	Directly exposed
BR91-1	48°42′11.15″ N, 2°30′28.82″ E	107° N	190	1.5	Directly exposed
PO78-2	48°55′42.41″ N, 2°2′16.94″ E	100° N	150	1.5–2.0	Directly exposed
MLJ78-1	48°59′32.40″ N, 1°42′31.78″ E	295° N	135	1.2–1.5	Directly exposed
SM94-1	48°48′47.00″ N, 2°28′28.84″ E	0° N	175	2.0–3.5	Directly exposed
TO77-1	48°44′18.74″ N, 2°46′7.78″ E	21° N	202	1.5–2.0	Directly exposed
MV95-1	49°9′3.57″ N, 1°47′13.53″ E	343° N	110	1.5	Not directly exposed
TV27-1	49°14′8.17″ N, 1°36′27.30″ E	340° N	95	1.5–2.0	Directly exposed
BU76-2	49°35′2.94″ N, 1°21′23.79″ E	313° N	45	1.5–2.0	Directly exposed
YV76-1	49°37′1.12″ N, 0°45′16.36″ E	275° N	28	1.5–2.0	Not directly exposed
FE76-1	49°45′31.47″ N, 0°22′2.74″ E	190° N	0,5	1.5–2.0	Directly exposed
FE76-2	49°45′29.26″ N, 0°22′35.97″ E	0° N	1,1	1.5–2.0	Not directly exposed
BG76-1	49°35′30.11″ N, 0°25′39.22″ E	151° N	21	1.5	Not directly exposed
CC76-1	49°31′32.55″ N, 0°43′50.12″ E	191° N	37	<2.0	Directly exposed
JU76-1	49°25′56.69″ N, 0°49′8.42″ E	317° N	50	1.5–2.0	Directly exposed
MR27-1	49°17′40.51″ N, 0°39′52.77″ E	120° N	28	<2.0	Directly exposed
EV27-1	49°1′25.82″ N, 1°8′29.45″ E	158° N	84	2.0	Not directly exposed
NO27-1	48°46′15.78″ N, 1°11′53.81″ E	13° N	103	1.5	Not directly exposed
DR28-1	48°44′9.39″ N, 1°22′5.06″ E	233° N	115	1.5–2.0	Not directly exposed

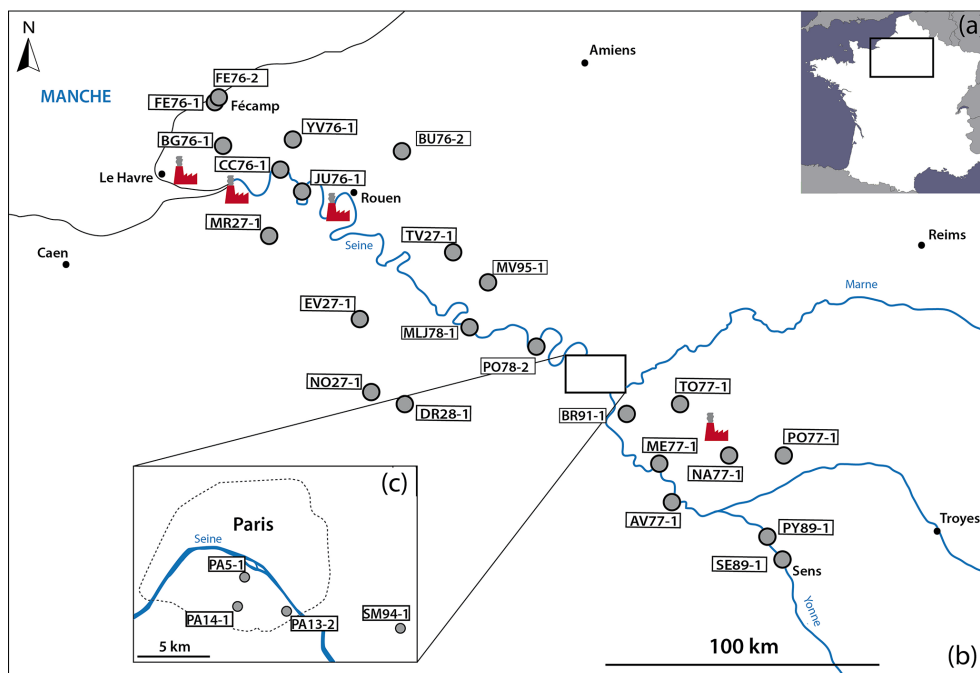


Figure 2. Maps with the sampling locations. (a) Location of the studied area in the northern Paris Basin on the map of France. (b) The NW–SE cross section from Fécamp to Sens with the 27 samples and the four power plants (in red). (c) Zoomed-in view of the samples located in the Paris area.

Table 1. Continued.

Samples	Location	Orientation of sampled faces	Distance from the sea (km)	Height above the ground (m)	Exposure to traffic road
ME77-2	48°32′20″ N, 2°39′33″ E	22° N	210	1.3	Not directly exposed
AV77-1	48°24′15″ N, 2°43′2″ E	73° N	230	1.3–2.3	Directly exposed
SE89-1	48°12′8″ N, 3°16′24″ E	263° N	270	1.7	Not directly exposed
PY89-1	48°17′16″ N, 3°12′16″ E	343° N	263	1.5–2.1	Not directly exposed
PO77-1	48°33′38″ N, 3°17′29″ E	23° N	230	1.5–2.0	Not directly exposed
NA77-1	48°33′26″ N, 3°0′25″ E	351° N	230	2.5	Not directly exposed

et al. (2017). The use of an ion-exchange resin in this protocol enables the concentration and separation of sulfates from other compounds such as nitrates that can affect the O isotopic measurements. From about 3 mg of the pure barite samples, the sulfate O isotopic ratios were measured using the laser fluorination line coupled to a Delta V IR-MS (isotope ratio mass spectrometer) at the Institut de Physique du Globe de Paris (IPGP) (Bao and Thiemens, 2000). Due to SO_2F_2

formation during BaSO_4 fluorination, which leads to incomplete O_2 extraction, measured $\delta^{18}\text{O}$ and $\delta^{17}\text{O}$ are fractionated but were corrected as deduced from the analysis of the international barite standard NBS127 ($\delta^{18}\text{O} = 8.6\text{‰}$, $\Delta^{17}\text{O} \sim 0\text{‰}$); no correction was applied to $\Delta^{17}\text{O}$, as it remained unchanged (Bao and Thiemens, 2000). For two NBS127 measurements measured each day during 5 d ($n = 10$), we obtained a mean $\delta^{18}\text{O} = -0.43 \pm 0.54$ (2σ) and a mean

$\Delta^{17}\text{O} = 0.044 \pm 0.020$ (2σ) within error of the recent value reported by Cowie and Johnston (2016). Bao (2006) reported up to 2‰ variation in the correction factor that would result from sample impurity, but, as our samples were purified with an ion-exchange resin and the mean variation of the duplicates is lower than for NBS127, we applied a correction factor of 9.03 to $\delta^{18}\text{O}$ for all analyzed samples based on the certified value of NBS127.

The remaining BaSO_4 was reduced to hydrogen sulfide (H_2S) by reaction for 2 h with a heated mixture of hydrochloric (HCl), hydroiodic (HI), and hypophosphorous (H_3PO_2) acids following the protocol described in Thode et al. (1961). H_2S was purged and precipitated as silver sulfide (Ag_2S) by passing through a silver nitrate (AgNO_3) solution. Ag_2S was then converted to SF_6 , purified (Ono et al., 2006b), and quantified before being analyzed by isotope ratio mass spectrometry (Thermo Fisher MAT-253) at McGill University. The $\delta^{34}\text{S}$ values are expressed versus V-CDT (Vienna-Canyon Diablo Troilite) assuming a $\delta^{34}\text{S}_{\text{S1}} = -0.30\text{‰}$ vs. CDT isotope composition. Our data were then expressed against CDT following the method described by Defouilloy et al. (2016). Analysis of the IAEA-S1 in the laboratory yielded the following: $\delta^{34}\text{S} = -0.30\text{‰}$, $\Delta^{33}\text{S} = 0.09\text{‰}$, and $\Delta^{36}\text{S} = -0.70\text{‰}$ vs. V-CDT. Analysis of the IAEA-S3 ($n = 8$) gave the following: $\delta^{34}\text{S} = -32.44 \pm 0.30\text{‰}$, $\Delta^{33}\text{S} = 0.069 \pm 0.023\text{‰}$, and $\Delta^{36}\text{S} = -0.970 \pm 0.277\text{‰}$ vs. V-CDT. All values are within the ranges of $\delta^{34}\text{S}$, $\Delta^{33}\text{S}$, and $\Delta^{36}\text{S}$ accepted or measured by other laboratories for these international standards (Au Yang et al., 2016; Farquhar et al., 2007b; Labidi et al., 2014; Ono et al., 2006b; Geng et al., 2019).

4 Results

4.1 Morphological and chemical aspects

After having confirmed the gypsum nature of the sample by X-ray diffraction, the structural and chemical aspects of black crusts from four different environments were investigated on the basis of SEM observations. In agreement with previous studies (Fronteau et al., 2010; Siegesmund et al., 2007), all samples display two distinct layers. An opaque layer (a few tens of micrometers thick) comprising massive and sparse gypsum crystals as well as aggregates of clay minerals and particulate matter was overlying a layer ($\sim 100\ \mu\text{m}$) composed of more crystallized acicular and rosette-like crystal gypsum (tens of micrometers, Fig. 3a). As shown in Fig. 3b, soot is present in both urban and rural encrustations being consistent with previous observations (Guo et al., 2010). Moreover, fly ash particles resulting from coal or oil combustion are present in all environments. Parisian samples (PA13-2 and PA14-1) show many fly ashes of a diameter size $< 10\ \mu\text{m}$ (primarily composed of Fe) with small gypsum crystals (few micrometers) on their surfaces (Fig. 3c). This is

consistent with the catalyzer effect of combustion particles released by diesel and gasoline vehicles, which increases the rate of SO_2 fixation as sulfate (Rodríguez-Navarro and Sebastian, 1996). Scarce fly ashes were also observed in samples from the city of Mantes-la-Jolie (northwest of Paris). The sample MR27-1 shows isolated halite crystals ($< 10\ \mu\text{m}$, Fig. 3e), which can result from marine aerosols, in agreement with its location near the sea, and numerous fly ashes (Fig. 3d), most likely from power plants and traffic roads. The dissolution of rhombohedral calcite and subsequent precipitation of gypsum crystals is also illustrated in Fig. 3f.

In summary, the presence of particulate matter and salts highlights several local or distant sources of S-bearing compounds and a prevailing anthropogenic source in the whole Parisian basin atmosphere, which may be distinguished and quantified with the isotopic composition of sulfate.

4.2 Isotopic composition of black crust sulfates

The sulfur and oxygen isotopic compositions of black crust sulfates are reported in Table 2. The $\delta^{18}\text{O}$ and $\delta^{34}\text{S}$ values cover a wide range from 7.5‰ to 16.7‰ $\pm 0.5\text{‰}$ (2σ) and from -2.66‰ to 13.99‰ $\pm 0.20\text{‰}$ (2σ), respectively, with means of $11.3 \pm 2.4\text{‰}$ and $3.78 \pm 4.79\text{‰}$, respectively. All samples have positive $\Delta^{17}\text{O}$ values, ranging from 0.08 to 2.56‰ $\pm 0.05\text{‰}$ (2σ) with an average value of 0.86‰. Furthermore, it is noteworthy that 67% of black crust samples have $\Delta^{17}\text{O} > 0.65\text{‰}$. The $\Delta^{33}\text{S}$ and $\Delta^{36}\text{S}$ values are both negative and vary between -0.34‰ and $0.00 \pm 0.01\text{‰}$ and between -0.76‰ and $-0.22 \pm 0.20\text{‰}$ (2σ), respectively. No obvious correlation exists between $\delta^{18}\text{O}$, $\Delta^{17}\text{O}$, $\delta^{34}\text{S}$, and $\Delta^{33}\text{S}$ and the distance from coastline (Fig. S1 in the Supplement).

5 Discussion

5.1 The $\delta^{34}\text{S}$ – $\delta^{18}\text{O}$ – $\Delta^{17}\text{O}$ systematics

Sulfate in black crusts may have multiple origins that could be either primary or secondary. We refer to primary sulfates here as sulfates that are not formed in the atmosphere from SO_2 oxidation. They can originate from the host rock itself where sulfur occurs both as sulfide, such as pyrite that would be subsequently dissolved and oxidized as sulfate, and as carbonate-associated sulfates (CASs), which substitute for carbonate in the lattice. Sulfates in black crusts can also have been directly emitted into the atmosphere for instance by sea spray, resulting in sea-salt sulfate aerosols, or as products of combustion by refineries, vehicle exhaust, or biomass burning; these commonly correspond to “primary sulfates” in the literature. On the contrary, secondary sulfates result from the oxidation of tropospheric S-bearing gases (mainly SO_2) and other compounds including dimethyl sulfide (DMS, $(\text{CH}_3)_2\text{S}$) by various oxidants (O_3 , H_2O_2 , OH, O_2 TMI, and NO_2). As black crusts are mainly consisted of

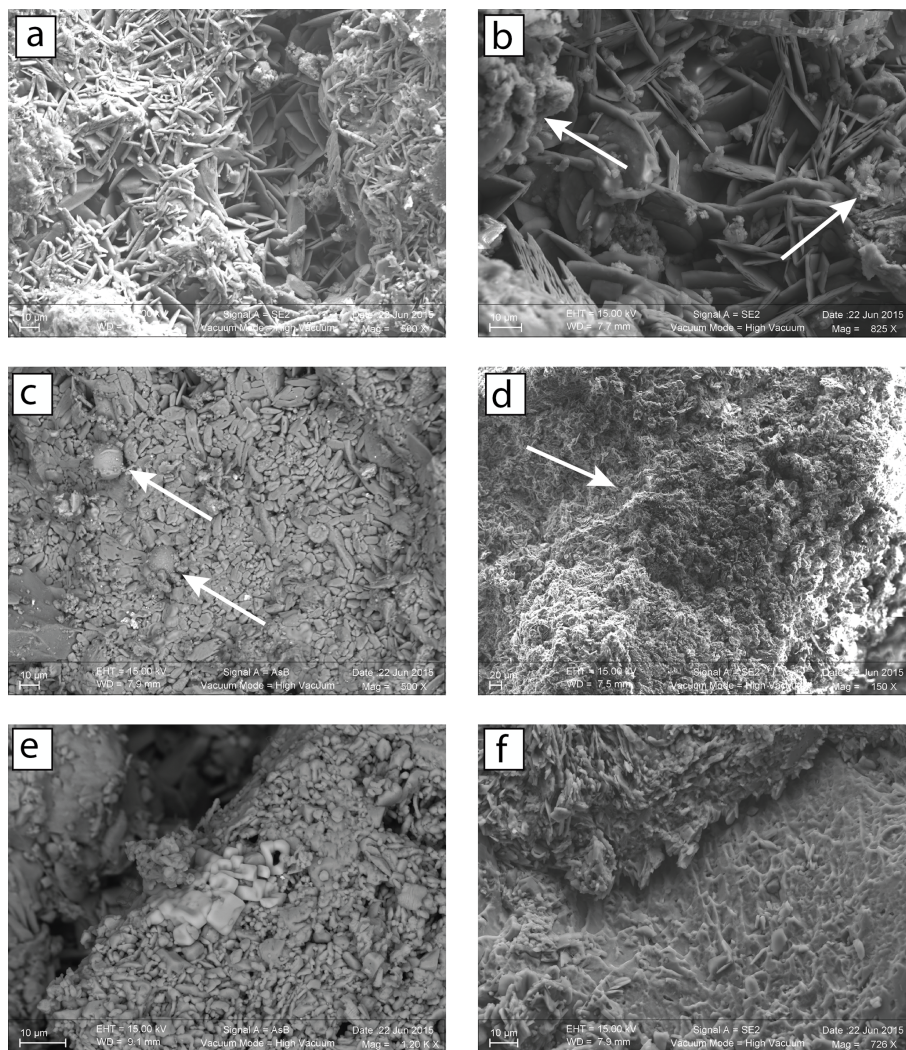


Figure 3. SEM images of black crust samples from Paris (PA14-1, PA13-2) and Montfort-sur-Risles (MR27-1). **(a)** Two distinct layers in the crust: an upper opaque one with aggregates of particulate matter and clay minerals (left and right sides of the picture) and a more crystallized one with acicular gypsum crystals perpendicular to the host substrate. **(b)** There is a presence of soot (arrow) on the two layers (PA14-1). **(c)** Fly ashes (arrow) with the formation of small gypsum crystals are on their surfaces (PA13-2). **(d)** Large amount of fly ashes (arrow and smaller not indicated) and soot is in the MR27-1 sample, originating from a rural place. **(e)** Isolated cubic crystals of halite (NaCl) in MR27-1 sample, originating from 28 km from the coastline. **(f)** Dissolution of the underlying limestone (on the bottom) and subsequently the precipitation of gypsum (on the top).

gypsum ($\text{CaSO}_4\cdot 2\text{H}_2\text{O}$), coupled $\delta^{34}\text{S}$ – $\delta^{18}\text{O}$ variations can be used to trace natural vs. anthropogenic sources of sulfates in black crusts. Constrains on the primary/secondary origins of sulfate aerosols can also be brought by $\Delta^{17}\text{O}$ values. Indeed, large positive $\Delta^{17}\text{O}$ anomalies in sulfate aerosols are inherited from their atmospheric oxidants that were produced during O_3 photochemically induced genesis. In theory, other mechanisms exist such as the magnetic isotope effect (see Sect. 5.2.2) but have not been recognized yet. Resulting from photochemical reactions, O_3 molecules possess O-MIF (oxygen mass independent fractionation) compositions with $\Delta^{17}\text{O}$ of $\sim 35\text{‰}$ (Janssen et al., 1999; Lyons, 2001; Mauersberger et al., 1999) with lower values in the troposphere of \sim

26‰ (Vicars and Savarino, 2014). Every molecule inheriting oxygen atoms from O_3 will also have positive $\Delta^{17}\text{O}$ values, including H_2O_2 with an average $\Delta^{17}\text{O}$ of $\sim 1.3\text{‰}$ (Savarino and Thiemens, 1999). OH, which isotopically exchanges with water vapor, and O_2 TMIs have mass-dependent compositions with $\Delta^{17}\text{O}$ values of ~ 0 (Dubey et al., 1997; Holt et al., 1981; Lyons, 2001) and $\sim -0.34\text{‰}$ (Barkan and Luz, 2005), respectively. Savarino et al. (2000) measured the O isotopic compositions of sulfates derived from these oxidation pathways and showed that OH and O_2 TMI oxidation channels do not result in mass-independent fractionation signatures ($\Delta^{17}\text{O} = 0\text{‰}$ and -0.09‰ , respectively), whereas O_3 and H_2O_2 radicals transfer one-quarter and one-half, re-

Table 2. $\delta^{18}\text{O}$, $\delta^{34}\text{S}$, $\Delta^{17}\text{O}$, $\Delta^{33}\text{S}$, and $\Delta^{36}\text{S}$ measurements of each sample with the distance from coastline.

(2 σ)	$\delta^{18}\text{O}$ $\pm 0.5\text{‰}$	$\Delta^{17}\text{O}$ $\pm 0.05\text{‰}$	$\delta^{34}\text{S}$ $\pm 0.20\text{‰}$	$\Delta^{33}\text{S}$ $\pm 0.01\text{‰}$	$\Delta^{36}\text{S}$ $\pm 0.20\text{‰}$	Distance from coastline (km)
PO78-2	9.7	0.27	1.34	-0.17	-0.68	150
AV77-1	9.8	1.03	2.25	-0.07	-0.33	230
PY89-1	9.8	0.84	0.46	-0.21	-0.47	263
PO77-1	12.4	2.56	-2.66	-0.07	-0.50	231
BG76-1	13.1	1.65	4.94	-0.10	-0.47	21
MV95-1	15.5	0.46	10.17	-0.04	-0.40	110
BR91-1	14.8	0.18	13.51	-0.02	-0.22	190
JU76-1	9.9	0.78	2.93	-0.01	-0.24	50
TV27-1	16.7	0.27	13.99	-0.02	-0.54	95
YV76-1	12.9	1.01	10.51	-0.04	-0.27	28
DR28-1	7.5	0.70	-2.22	-0.30	-0.34	115
FE76-1	10.3	1.35	0.95	-0.16	-0.59	0.5
NO27-1	14.2	1.64	1.78	-0.04	-0.45	103
ME77-2	10.5	1.07	-0.54	-0.21	-0.29	210
PA13-2	7.9	0.81	-0.87	-0.10	-0.58	170
MLJ78-1	15.2	0.36	8.30	0.00	-0.52	135
EV27-1	10.4	0.79	6.60	-0.05	-0.37	84
FE76-2	8.7	1.19	-1.15	-0.04	-0.76	1.1
SE89-1	10.4	0.81	3.15	-0.11	-0.41	270
BU76-2	10.3	1.43	-0.11	-0.11	-0.50	45
MR27-1	11.2	0.84	2.82	-0.15	-0.49	28
PA14-1	9.2	0.17	1.55	-0.21	-0.56	171
TO77-1	13.3	0.08	12.03	-0.02	-0.64	202
NA77-1	9.8	1.42	2.40	-0.11	-0.49	232
PA5-1	10.5	0.89	0.47	-0.34	-0.32	172
SM94-1	10.4	0.43	3.60	-0.13	-0.28	175
CC76-1	9.6	0.25	5.82	-0.07	-0.43	37

spectively, of their isotopic anomalies to the sulfate, thus resulting in mass-independent fractionation signatures ($\Delta^{17}\text{O} = 8.75\text{‰}$ and 0.65‰ , respectively) (e.g., Bao et al., 2000, 2001a, b, 2010; Jenkins and Bao, 2006; Lee et al., 2002; Lee and Thiemens, 2001; Li et al., 2013; Martin et al., 2014). Mass-dependent isotopic fractionation during SO_2 oxidation may change $\delta^{17}\text{O}$ and $\delta^{18}\text{O}$ but not the $\Delta^{17}\text{O}$ that only depends on the mixing of O reservoirs with variable $\Delta^{17}\text{O}$. The fact that most black crusts have $\Delta^{17}\text{O} > 0.6\text{‰}$ demonstrates that a significant amount of sulfates is of atmospheric origin.

Black crust sulfates analyzed in this study have O and S isotopic compositions that overlap other black crusts from Europe (Fig. 4; Longinelli and Bartelloni, 1978; Torfs et al., 1997; Kramar et al., 2011; Vallet et al., 2006) and sulfate aerosols from the USA and China (Fig. 5; Bao et al., 2001a; Jenkins and Bao, 2006; Lee and Thiemens, 2001; Li et al., 2013; Romero and Thiemens, 2003). In particular, there is a positive correlation between $\delta^{34}\text{S}$ and $\delta^{18}\text{O}$ covering a large range of variation of $\sim 17\text{‰}$ and $\sim 9\text{‰}$, respectively (Fig. 4), which can be interpreted in two ways: either a process leads to a variable enrichment or depletion of ^{18}O and ^{34}S in the crusts or it reflects a mixing between at least one depleted (in both ^{18}O and ^{34}S) and one enriched end-

member. In the following paragraphs, we discuss in detail the respective roles of several processes (e.g., partial SO_2 oxidation, mixing) that could lead to this correlation and overprint (or not) of the source signatures. As with previous studies, we will conclude that $\delta^{34}\text{S}$ – $\delta^{18}\text{O}$ – $\Delta^{17}\text{O}$ values do record a mixing between different (natural and anthropogenic) sources, but addressing the role of processes is important (a prerequisite) to assess the consistency of the $\Delta^{33}\text{S}$ anomaly origin.

5.1.1 Processes affecting O and S isotopic compositions

Firstly, gypsum precipitation would fractionate both O and S isotopes following a slope of 0.67 ± 0.02 (Fig. 4) when considering fractionation factors for $^{18}\text{O}/^{16}\text{O}$ between the dissolved sulfate and the gypsum of ~ 1.002 or 1.0036 (experimental and natural values, respectively) (Lloyd, 1968). For $^{34}\text{S}/^{32}\text{S}$, the ranges would be between 1.000 and 1.0024 (Ault and Kulp, 1959; Nielsen, 1974; Raab and Spiro, 1991; Thode et al., 1961), and a Rayleigh-type process in which black crusts represents the cumulated (precipitated) product at different residual fraction F of dissolved sulfates that are leached. However, the slope defined by the samples is steeper, ~ 1.52 ($R^2 = 0.58$), implying that the gypsum pre-

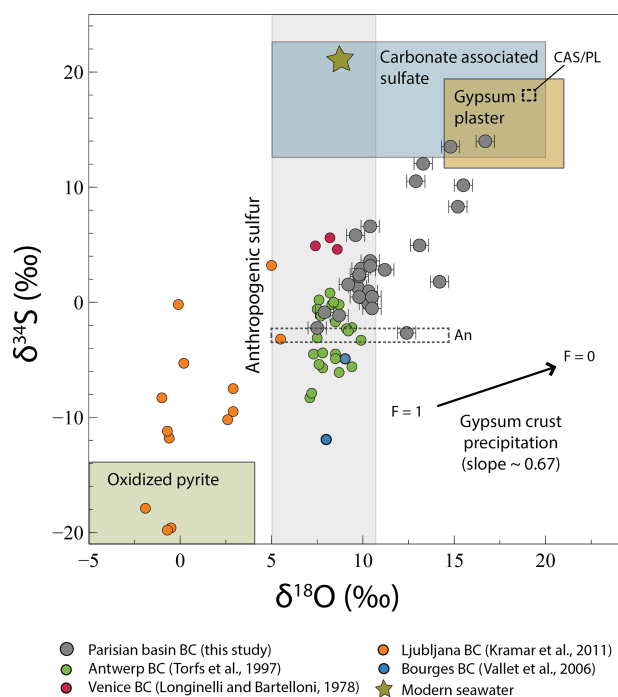


Figure 4. Evolution of $\delta^{34}\text{S}$ with $\delta^{18}\text{O}$ in black crust (BC) sulfates. Modern seawater $\delta^{18}\text{O}$ and $\delta^{34}\text{S}$ are from Markovic et al. (2016) and Rees et al. (1978), respectively. The extreme anthropogenic sulfate $\delta^{18}\text{O}$ and $\delta^{34}\text{S}$ are from Lee et al. (2002) and Faure (1986) respectively. The carbonate-associated sulfate compositions are from Rennie and Turchyn (2014) and Turchyn et al. (2009), and those of gypsum plaster come from Kloppmann et al. (2011). Isotopic compositions determining the oxidized pyrite field are from Canfield (2004) for sulfur and are calculated following a Rayleigh distillation model with an initial $\text{H}_2\text{O}\delta^{18}\text{O} = 6\text{‰}$ and a mean fractionation factor of 1.010 (Gomes and Johnston, 2017) for oxygen. The black arrow represents the fractionation induced by gypsum precipitation where $F = 1$ means that all sulfates are dissolved and $F = 0$ means that all sulfates are precipitated. The dashed fields represent the sulfur isotopic composition of the two anthropogenic (An) and CAS/plaster (CAS/PL) end-members.

precipitation is not the main mechanism driving $\delta^{34}\text{S}$ and $\delta^{18}\text{O}$ variations in black crusts. Another process that could affect $\delta^{34}\text{S}$ – $\delta^{18}\text{O}$ values is the partial oxidation of SO_2 by different oxidants (e.g., O_2 TMI, H_2O_2 , O_3 , OH). Using the fractionation factors $^{34}\alpha_{\text{SO}_4-\text{SO}_2}$ obtained experimentally at 19 °C by Harris et al. (2012a) for each oxidant ($^{34}\alpha_{\text{SO}_4-\text{SO}_2}$ (OH) = 1.0113 ± 0.0024 ; $^{34}\alpha_{\text{SO}_4-\text{SO}_2}$ (H_2O_2) = 1.0151 ± 0.0013 ; $^{34}\alpha_{\text{SO}_4-\text{SO}_2}$ (O_2 TMI) = 0.9894 ± 0.0043 ; $^{34}\alpha_{\text{SO}_4-\text{SO}_2}$ (O_3) = 1.0174 ± 0.0028) and their respective proportions from Sofen et al. (2011), usually cited in the literature for present-day atmosphere (27 % OH; 18 % O_2 TMI; 50 % H_2O_2 ; 5 % O_3), we calculated a global fractionation factor of 1.0097. It is worth noting that these values produce a $\Delta^{17}\text{O}$ of 0.66 ‰ in agreement with our mean $\Delta^{17}\text{O}$ in black crusts. Consequently, following a Rayleigh distillation model and an initial SO_2 with $\delta^{34}\text{S} = 0\text{‰}$, the cumulated sulfates represent-

ing the black crusts would increase up to $\sim 9\text{‰}$ at maximum when $< 10\%$ SO_2 is oxidized, which cannot explain the $\sim 17\text{‰}$ $\delta^{34}\text{S}$ variation, especially since 40 % oxidized SO_2 is reported (Chin et al., 2000). To generate $\delta^{34}\text{S}$ values as high as 17‰ , O_3 and H_2O_2 oxidation pathways should increase drastically (i.e., requiring the absence of an O_2 TMI pathway), predicting an increase of $\Delta^{17}\text{O}$ up to $\sim 6.5\text{‰}$, which is not consistent with $\Delta^{17}\text{O} \sim 0\text{‰}$ associated with high $\delta^{34}\text{S}$ (Fig. 5). Therefore, SO_2 partial oxidation can explain a part of the data but not the whole isotope variations. The large $\delta^{34}\text{S}$ range could also reflect temporal variation, since in Greenland ice cores $\delta^{34}\text{S}$ was $> 10\text{‰}$ before the industrial period (Patris et al., 2002), which is dominated by SO_2 from DMS (Sofen et al., 2011) and then decreased $< 4\text{‰}$ in the 1960s, which is dominated by anthropogenic SO_2 . Following this variation, black crusts on recently renovated churches should display low $\delta^{34}\text{S}$ and those renovated before the industrial period should display higher $\delta^{34}\text{S}$. However, samples ME77-2 ($\delta^{34}\text{S} = -0.54\text{‰}$) and EV27-1 ($\delta^{34}\text{S} = 6.60\text{‰}$) compared to PY89-1 ($\delta^{34}\text{S} = 0.46\text{‰}$) gathered on churches restored after World War II and in 1772, respectively, present no significant temporal variation, which might be due to higher proportions of anthropogenic SO_2 emitted recently (0.5 Tg S yr^{-1} before the industrial period and up to 69 Tg S yr^{-1} for the present day; Sofen et al., 2011, and references therein). Thus, black crusts do not seem to record temporal isotopic variation, even if samples with $\delta^{34}\text{S} = -2.66\text{‰}$ and $\delta^{34}\text{S} = 13.99\text{‰}$ should be dated to confirm this assumption. Alternatively, with well-exposed surfaces to precipitation emphasizing wash-out and subsequent reprecipitation, black crusts could rather probe “recent” SO_2 oxidation. So far, no known processes seem to affect the isotopic compositions, which rather probe the source signatures.

5.1.2 Source effects

If $\delta^{34}\text{S}$ – $\delta^{18}\text{O}$ variation reflects mixing of sources, at least two end-members are required. Determined graphically in Figs. 4 and 5, a first one would be ^{18}O – ^{34}S enriched both around 18‰ with a near-zero $\Delta^{17}\text{O}$, which in view of the sampling cross section from NW to SE and west-dominating winds could correspond to the sea-spray isotopic signature, but available data usually display $\delta^{18}\text{O}$ of $\sim 9\text{‰}$ (Markovic et al., 2016) and $\delta^{34}\text{S} \sim 21\text{‰}$ (Rees et al., 1978), ruling out the occurrence of sea-sprays. With the DMS produced by phytoplankton and oxidized in the atmosphere (1125 Tg S yr^{-1}) being higher than sea-salt emissions ($6\text{--}12\text{ Tg S yr}^{-1}$ (Alexander et al., 2005, and references therein), with $\delta^{34}\text{S}$ of 15‰ – 20‰ (Calhoun et al., 1991), sulfate aerosols deriving from DMS oxidation could rather represent this ^{18}O – ^{34}S -enriched end-member. However, the absence of a correlation between $\delta^{34}\text{S}$, $\delta^{18}\text{O}$, $\Delta^{17}\text{O}$ and the distance from coastline (Fig. S1) and near-zero $\Delta^{17}\text{O}$ for high $\delta^{34}\text{S}$ values (Fig. 5) is not consistent with a signifi-

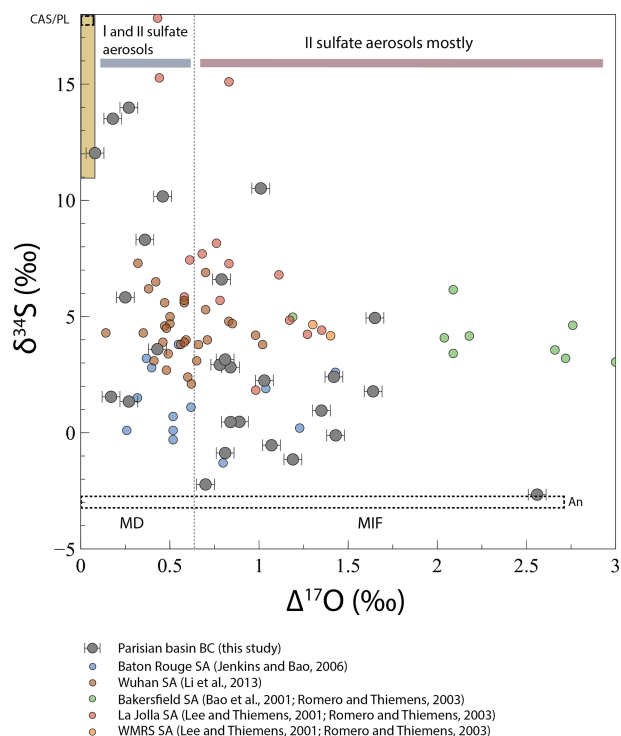


Figure 5. Evolution of $\delta^{34}\text{S}$ with $\Delta^{17}\text{O}$ in black crust (BC) sulfates and sulfate aerosols (SA). The limit between mass-dependent and mass-independent fractionation (dashed line) is defined for $\Delta^{17}\text{O} \sim 0.65\text{‰}$, where H_2O_2 will be the major oxidant, giving its O anomaly to sulfates (Savarino et al., 2000). When $\Delta^{17}\text{O} < 0.65\text{‰}$, black crust sulfates result from a mixing between primary sulfates (gypsum plaster and CAS and/or anthropogenic sulfur) and secondary sulfate aerosols, where SO_2 is oxidized by H_2O_2 ($\Delta^{17}\text{O} = 0.65\text{‰}$), OH ($\Delta^{17}\text{O} = 0\text{‰}$), or O_2 TMI ($\Delta^{17}\text{O} = -0.09\text{‰}$) mainly (gray bar). When $\Delta^{17}\text{O} > 0.65\text{‰}$, black crust sulfates represent secondary sulfate aerosols mainly, resulting from a mixing between SO_2 oxidized by O_3 ($\Delta^{17}\text{O} = 8.75\text{‰}$) and H_2O_2 (red bar). The yellow array represents gypsum plaster and CAS isotopic compositions. The dashed fields represent the sulfur isotopic composition of the two anthropogenic (An) and CAS/plaster (CAS/PL) end-members.

cant DMS contribution, mostly oxidized by O_3 (see above; Alexander et al., 2012). Despite some isolated halite crystals observed in one sample (Fig. 3e), we conclude that, overall, marine aerosols (DMS, sea-salt sulfates) do not relate to the high $\delta^{34}\text{S}$ – $\delta^{18}\text{O}$ end-member. Major-element contents (e.g., Na, Cl) have not been measured here even if they could further constrain and quantify the presence of marine aerosols. The structural analyses of black crusts emphasize dissolution of the underlying carbonate. Carbonate-associated sulfates (with S abundances varying between a few tens to thousands of parts per million (ppm; Kampschulte and Strauss, 2004, and references therein) would also be dissolved and reprecipitated in black crusts and may well represent the enriched $\delta^{34}\text{S}$ – $\delta^{18}\text{O}$ end-member with near-zero $\Delta^{17}\text{O}$. CAS analyses

from Atlantic and Pacific oceans over the last 25 Myr and in the middle Cretaceous Tethys ocean show $\delta^{34}\text{S}$ from 11 ‰ to 24 ‰, with $\delta^{18}\text{O}$ from 5 ‰ to 21 ‰ similar to barite isotopic composition (Rennie and Turchyn, 2014; Turchyn et al., 2009). Furthermore, marine sulfates typically have $\Delta^{17}\text{O}$ of ~ 0 and $> -0.2\text{‰}$ in the geological record (Bao et al., 2008). CAS would thus perfectly match this end-member. Plaster used to seal blocks of carbonate stones is made through Lutetian gypsum dehydration and could also well represent the ^{18}O – ^{34}S -rich end-member. Indeed, Kloppmann et al. (2011) measured $\delta^{34}\text{S}$ between 12.6 ‰ and 18.3 ‰ and $\delta^{18}\text{O}$ from 14.6 ‰ to 21.5 ‰ for mortars and plasters from French churches and castles. Thus, the surrounding plaster also matches this end-member, which is named CAS/PL in Figs. 4 and 5.

The depleted end-member is graphically characterized by $\delta^{34}\text{S} < -3\text{‰}$ with little constrained $\delta^{18}\text{O}$ from 5 ‰ to 15 ‰ (Fig. 4, dashed box “An”) and $\Delta^{17}\text{O}$ from $\sim 0\text{‰}$ to 2.6 ‰ (Fig. 5, dashed box An). Sulfates from dissolved and oxidized sedimentary pyrites contained in the building carbonate stone are known to have $\delta^{34}\text{S} < -12\text{‰}$ (since at least the last 500 Myr; Canfield, 2004). Despite a sulfide content that can vary between a few tens to thousands of parts per million (Thomazo et al., 2018), our sampled carbonate stones are very whitish, suggesting a low sulfide content. Even if it would certainly not affect the mass balance, we took into account pyrite oxidation, as other studies did on black crusts (Kramar et al., 2011; Vallet et al., 2006). With the S isotope fractionation factor during pyrite oxidation being negligible (between 0.996 and 1; Thurston et al., 2010, and references therein) compared to O isotopes, we modeled the $\delta^{18}\text{O}$ variation according to a Rayleigh distillation to represent the sulfide oxidation, commonly occurring via $\text{O}_2 + \text{H}_2\text{O}$ at the atmosphere–carbonate building stone interface. With an initial $\delta^{18}\text{O}$ of $\sim -6\text{‰}$ of rainwater in the Paris Basin and a mean $^{18}\alpha_{\text{water-sulfate}}$ of 1.010 (Gomes and Johnston, 2017), sulfates from pyrite oxidation would have $\delta^{18}\text{O}$ of $\sim 4\text{‰}$ and as low as -6‰ if water would be in limited amounts (i.e., residual fraction of water $F \sim 0$). Very recently, pyrite oxidation was hypothesized to occur via O_3 (Hemingway et al., 2019), which would lead to positive $\Delta^{17}\text{O}$ of sulfates with low $\delta^{34}\text{S}$, explaining the depleted end-member. However, our data are strikingly higher than for black crusts from Ljubljana (Slovenia; Kramar et al., 2011), which show $\delta^{34}\text{S}$ as low as -20‰ and $\delta^{18}\text{O}$ between -2‰ and 5 ‰ (Fig. 4) that would be typical for pyrite oxidation. Besides, there is so far no evidence for a higher oxidation flux of pyrite via O_3 than major constituents as H_2O and O_2 . This means that another source should have negative $\delta^{34}\text{S}$. Anthropogenic sulfur represents $\sim 60\%$ of the total sulfur released worldwide and includes primary sulfates as oil, coal, and biomass combustion products as well as SO_2 emission that can be oxidized into secondary sulfates. When considering coal and oil combustion, $\delta^{34}\text{S}$ can vary largely between -30‰ and 32 ‰ (e.g., Faure, 1986). More locally, a recent study reported a

narrow range from -0.57‰ to 11.33‰ for sulfur emitted by transport and industries in Paris (Au Yang et al., 2020). Lee et al. (2002) carried out vegetation and diesel combustion experiments, resulting in $\delta^{34}\text{S}$ and $\delta^{18}\text{O}$ values between 9.55‰ and 16.42‰ and between 5.5 and 10.5‰ , respectively, with $\Delta^{17}\text{O}$ of $\sim 0\text{‰}$, forming primary sulfates without mass-independent signatures. Because sulfate aerosols can be either primary or secondary with various SO_2 oxidation pathways having distinct $\delta^{18}\text{O}-\Delta^{17}\text{O}$ values and O-fractionation factors, atmospheric aerosols would result in variable $\delta^{18}\text{O}-\Delta^{17}\text{O}$ values. Therefore, the depleted end-member with $\delta^{34}\text{S} < -3\text{‰}$ and $0 < \Delta^{17}\text{O} < 0.65\text{‰}$ could be typified by primary anthropogenic sulfate aerosols, or SO_2 oxidized by OH or O_2 TMI, and/or a subtle mixing of oxidation pathways to yield near-zero $\Delta^{17}\text{O}$, whereas samples with $\Delta^{17}\text{O} > 0.65\text{‰}$ rather point to a significant anthropogenic SO_2 fraction oxidized by O_3 and H_2O_2 or by O_3 and to a lesser extent by O_2 TMI and OH, depending on the water pH (Lee and Thiemens, 2001), corresponding to secondary sulfate aerosols (named An in Figs. 4 and 5). As the distinction between primary and secondary sulfate aerosols having near-zero $\Delta^{17}\text{O}$ is not possible, we assume a mixing with only two end-members, CAS/Plaster and anthropogenic sulfur (primary and secondary). Furthermore, in view of the O isotope variability caused by the oxidation, mixing proportions were calculated based only on $\delta^{34}\text{S}$ values. We chose the end-members graphically and in agreement with the literature, i.e., a CAS/PL $\delta^{34}\text{S}$ value of 18‰ , in the range from 11‰ to 24‰ (Kloppmann et al., 2011; Rennie and Turchyn, 2014; Turchyn et al., 2009) (Fig. 4) and an An $\delta^{34}\text{S}$ value of -3‰ , similar to Montana et al. (2008) as well the closest to sulfates measured in Paris. CAS/PL proportions range from 2% to 81% with an average of $\sim 32\%$. With an extreme $\delta^{34}\text{S}$ of -10‰ for the An end-member, encompassing black crusts from Antwerp, the CAS/PL proportion averaged 49% . This highlights that host-rock sulfate is on average not the main S provider, and that black crusts record atmospheric sulfate aerosols. Excluding the most “contaminated” samples by CAS/PL and assuming that those having $\Delta^{17}\text{O} > 0.65\text{‰}$ obviously represent SO_2 oxidized by O_3 and H_2O_2 , the minimum proportion of MIF-bearing sulfates, and hence secondary sulfates, can be estimated at $\sim 63\%$, which is close to estimations by Lee and Thiemens (2001) and Sofen et al. (2011). In summary, black crusts sample significant amounts of atmospheric SO_2 and complement existing sampling such as aerosols, which allow us to address the origin of the $\Delta^{33}\text{S}$ anomaly.

5.2 Black crusts S-MIF signature

5.2.1 Processes implicated in black crust formation

$\Delta^{33}\text{S}-\Delta^{36}\text{S}$ values recorded by black crust sulfates range from -0.34‰ to $0.00 \pm 0.01\text{‰}$ for $\Delta^{33}\text{S}$ and from -0.76‰ to $-0.22 \pm 0.20\text{‰}$ (2σ) for $\Delta^{36}\text{S}$ (Table 2). These values

are quite unusual compared with anthropogenic and natural aerosols. As illustrated by Fig. 6, black crust sulfate $\Delta^{33}\text{S}$ values are all negative, and it is worth noting that this depletion occurs with near-constant $\Delta^{36}\text{S}$ values. This is somewhat distinct from most aerosols, which display almost exclusively positive $\Delta^{33}\text{S}$ values up to $\sim 0.5\text{‰}$ and both positive and negative $\Delta^{36}\text{S}$ values (Au Yang et al., 2019; Guo et al., 2010; Lin et al., 2018b; Romero and Thiemens, 2003; Shaheen et al., 2014). So far, the only negative $\Delta^{33}\text{S}$ values down to -0.6‰ were measured in sulfate aerosols from Beijing (China) during winter months (Han et al., 2017) (no $\Delta^{36}\text{S}$ values provided), and these values were assumed to result from incomplete combustion of coal. This assumption ultimately relies on the work of Lee et al. (2002), which showed that primary anthropogenic aerosols formed by high-temperature combustion (e.g., diesel) result in near-zero $\Delta^{33}\text{S}-\Delta^{36}\text{S}$ values, whereas those formed by low-temperature combustion (e.g., biomass burning) result in $\Delta^{33}\text{S}$ down to -0.2‰ and $\Delta^{36}\text{S}$ values varying between -1.9‰ and 0.2‰ (data recalculated with $^{36}\beta = 1.9$). Negative $\Delta^{36}\text{S}$ values well correlated with biomass burning proxies are also reported in East China (Lin et al., 2018b), although $\Delta^{33}\text{S}$ was $\sim 0\text{‰}$. As in many other cities, Paris has long been affected by coal and wood burning, we can hypothesize that $\Delta^{33}\text{S}-\Delta^{36}\text{S}$ variations result from high- and/or low-temperature combustion processes. Some black crust sulfates with near-zero $\Delta^{33}\text{S}-\Delta^{36}\text{S}$ values could result from high-temperature combustion, but this would not explain negative $\Delta^{33}\text{S}-\Delta^{36}\text{S}$ values. Furthermore, according to Lin et al. (2018b), low-temperature combustion would preferentially fractionate ^{36}S over ^{33}S , which should result in a steep slope in $\Delta^{33}\text{S}-\Delta^{36}\text{S}$ space. The trend defined by our black crust samples shows higher ^{33}S fractionation than ^{36}S with $\Delta^{33}\text{S}$ values lower than those obtained by available low-temperature combustion experiments ($< -0.2\text{‰}$; Lee et al., 2002) and with $\Delta^{36}\text{S}$ values in the range of aerosols. Furthermore, no $\Delta^{33}\text{S}$ evolution is observed in black crusts sampled on churches with different ages of renovation (see Sect. 5.1; ME77-2 $\Delta^{33}\text{S} = -0.21\text{‰}$; EV27-1 $\Delta^{33}\text{S} = -0.05\text{‰}$; and PY89-1 $\Delta^{33}\text{S} = -0.21\text{‰}$), whereas we would expect a $\Delta^{33}\text{S}$ increase in black crusts from -0.2‰ to 0‰ due to the reduction of sulfur emission from low-temperature replaced by high-temperature combustion processes. Therefore, available data highlight that neither high- nor low-temperature combustion processes are responsible for low $\Delta^{33}\text{S}$ measured in black crusts.

With a part of black crust sulfates being atmospheric in origin, isotopic effects during SO_2 oxidation could be responsible for $\Delta^{33}\text{S}-\Delta^{36}\text{S}$ variations. To better address this issue, we calculated the $\Delta^{33}\text{S}-\Delta^{36}\text{S}$ values of sulfates predicted by each of the main SO_2 oxidation pathways and by a mixing of them in the proportions given by Sofen et al. (2011). We used $^{33}\beta$ and $^{36}\beta$ values determined by experiments of SO_2 oxidation by O_2 TMI, H_2O_2 , O_3 , OH (Harris et al., 2013b), and values cited in Au Yang et al. (2018)

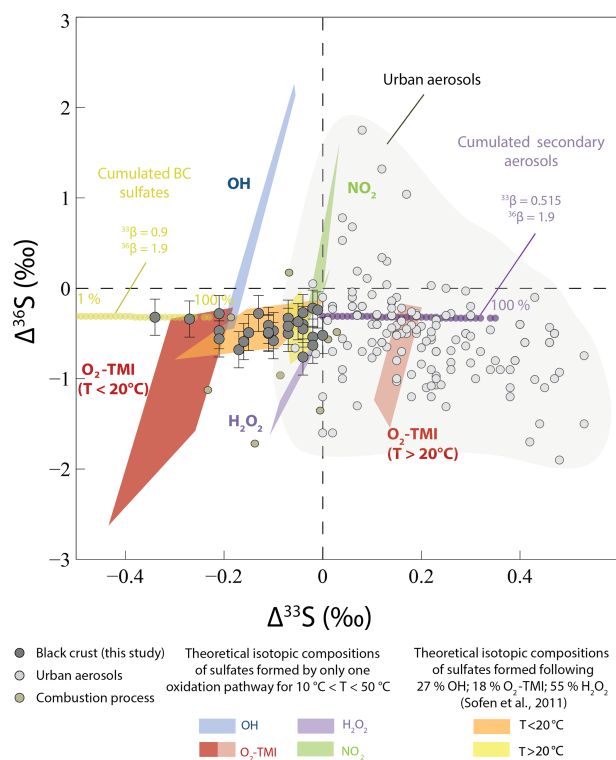


Figure 6. $\Delta^{33}\text{S}$ and $\Delta^{36}\text{S}$ of the black crust, compared to sulfates formed by different oxidation pathways and by a mixing of them in the proportions estimated by Sofen et al. (2011). We took $^{33}\beta_{\text{H}_2\text{O}_2/\text{O}_3} = 0.511$, $^{33}\beta_{\text{OH}} = 0.503$, $^{33}\beta_{\text{O}_2 \text{ TMI}} = 0.498$ (for $T < 20^\circ\text{C}$), $^{33}\beta_{\text{O}_2 \text{ TMI}} = 0.547$ (for $T > 20^\circ\text{C}$), $^{33}\beta_{\text{NO}_2} = 0.514$ and $^{36}\beta_{\text{H}_2\text{O}_2/\text{O}_3} = 1.82$, $^{36}\beta_{\text{OH}} = 1.97$, $^{36}\beta_{\text{O}_2 \text{ TMI}} = 1.98$ (for $T < 20$ and $T > 20^\circ\text{C}$), and $^{36}\beta_{\text{NO}_2} = 1.90$ (Au Yang et al., 2018; Harris et al., 2013b). As $^{33}\beta_{\text{O}_3}$ and $^{36}\beta_{\text{O}_3}$ are unknown, we modified the proportions by Sofen et al. (2011) as follows: 27 % OH, 18 % O_2 TMI, 55 % H_2O_2 , and 0 % O_3 . The urban aerosol isotopic compositions are a compilation from Au Yang et al. (2019); Guo et al. (2010); Lin et al. (2018b); Romero and Thiemens (2003); and Shaheen et al. (2014), while the combustion process reflects samples from Lee et al. (2002). Modeled $\Delta^{33}\text{S}$ – $\Delta^{36}\text{S}$ values of cumulated black crusts (BC) sulfates – formed by SO_2 wet and dry deposition with a magnetic isotope effect (MIE; ^{33}S depletion compared to initial SO_2 with constant negative $\Delta^{36}\text{S}$) and of cumulated secondary aerosols formed by SO_2 oxidation by O_3 , O_2 TMI, OH, and H_2O_2 (^{33}S enrichment compared to initial SO_2) from an initial SO_2 with $\Delta^{33}\text{S}$ – $\Delta^{36}\text{S} = 0$ ‰ – are reported with corresponding β exponents (see Sect. 5.2.2 for model explanation). Residual SO_2 and global cumulated BC plus secondary aerosol isotopic compositions were not reported for better readability. Percentages indicate the fraction of produced cumulated BC and secondary aerosols.

(see caption text). We also used NO_2 values (Au Yang et al., 2018) and T -dependent equations determined by Harris et al. (2013b) to calculate each $^{34}\alpha$ with initial sulfur dioxide $\Delta^{33}\text{S}$ and $\Delta^{36}\text{S}$ of 0‰ (Lin et al., 2018b). As mentioned earlier (Au Yang et al., 2018; Harris et al., 2013b), none of these models can account for anomalous $\Delta^{33}\text{S}$ – $\Delta^{36}\text{S}$ values

in either aerosols or in black crusts (Fig. 6). Although oxidation with O_2 TMI at $T = 50^\circ\text{C}$ could produce negative $\Delta^{33}\text{S}$ down to -0.37 ‰, which would account for the lowest $\Delta^{33}\text{S}$ observed in black crusts, this oxidation pathway would also produce larger $\Delta^{36}\text{S}$ down to -1.50 ‰ at odds with the $\Delta^{36}\text{S}$ reported in the black crust. Their potential combination cannot account for sulfate aerosol data from the literature (Au Yang et al., 2019; Guo et al., 2010; Lin et al., 2018b; Romero and Thiemens, 2003; Shaheen et al., 2014) or for the black crust as it would result in slightly negative $\Delta^{33}\text{S}$ – $\Delta^{36}\text{S}$ values that could not explain the $\Delta^{33}\text{S}$ as low as -0.34 ‰ (yellow frames in Fig. 6). Available literature data are therefore not consistent with the anomalous $\Delta^{33}\text{S}$ – $\Delta^{36}\text{S}$ values recorded in black crust sulfates.

Mass-dependent processes can also result in small $\Delta^{33}\text{S}$ – $\Delta^{36}\text{S}$ variations, depending on the magnitude of the ^{34}S fractionation (Ono et al., 2006a). As mentioned in Sect. 5.1.2, a mixing between a $^{33,34}\text{S}$ -depleted end-member (An) consisting of anthropogenic sulfur ($\delta^{34}\text{S} = -3$ ‰, $\Delta^{33}\text{S} = 0$ ‰) and a $^{33,34}\text{S}$ -enriched sulfates end-member (CAS/PL) from plaster or CAS ($\delta^{34}\text{S} = 18$ ‰, $\Delta^{33}\text{S} = 0$ ‰) would result in small $\Delta^{33}\text{S}$ values of -0.01 ‰ for 50 % mixing, which is far from the maximum measured $\Delta^{33}\text{S}$ of ~ -0.34 . Moreover, the slope between $\Delta^{33}\text{S}$ – $\Delta^{36}\text{S}$ would be about -7 , which is at odds with our observations. Therefore, we conclude that mixing cannot account for the black crust $\Delta^{33}\text{S}$ – $\Delta^{36}\text{S}$ variations.

5.2.2 A new oxidation pathway implying magnetic isotope effect

Several studies proposed that positive $\Delta^{33}\text{S}$ measured in sulfate aerosols, with $\Delta^{33}\text{S}$ up to 0.5 ‰, from, for example, East China and California could result from stratospheric fallout of SO_2 (with $\Delta^{33}\text{S}$ potentially up to 10 ‰ higher; Ono et al., 2013), which underwent UV photolysis by short-wavelength radiation (Romero and Thiemens, 2003; Lin et al., 2018a, b). This suggestion primarily relies on the similarities between $\Delta^{33}\text{S}$ – $\Delta^{36}\text{S}$ values of sulfate aerosols and laboratory experiments of SO_2 photolysis conducted at different wavelengths (Romero and Thiemens, 2003) and on the correlation between ^{35}S -specific activity and $\Delta^{33}\text{S}$ values (Lin et al., 2018b). However, these studies never addressed the absence of the complementary negative $\Delta^{33}\text{S}$ reservoir, which is required to balance the positive $\Delta^{33}\text{S}$ reservoir (see Au Yang et al., 2019). In this respect, it is worth mentioning that volcanic and stratospheric aerosols trapped in Antarctic ice cores (see Gautier et al., 2018, and references therein) show both positive $\Delta^{33}\text{S}$ (up to ~ 2 ‰) and complementary negative $\Delta^{33}\text{S}$ values (down to -1 ‰) and weighed average $\Delta^{33}\text{S} \neq 0$ ‰ explained by prior partial deposition. Stratospheric fluxes are actually too low to account for $\Delta^{33}\text{S} > 0.1$ ‰ (Lin et al., 2016; Au Yang et al., 2019). Accordingly, some other authors rather tried to explain the positive anomalies of most aerosols with “tropospheric” chemical reactions, which are

SO₂ oxidation by the main oxidant including NO₂, H₂O₂, OH, O₃, and O₂ TMI, but experimental data result in a maximum $\Delta^{33}\text{S}$ values of $\sim 0.2\text{‰}$ for all studied reactions (Au Yang et al., 2018; Harris et al., 2013b). Isotope effects associated with SO₂ oxidation by minor species, such as Criegee radicals, remains to be investigated (Au Yang et al., 2018). In summary, whatever the stratospheric vs. tropospheric origin of positive $\Delta^{33}\text{S}$ values recorded by most aerosols, there is a ³³S isotope imbalance and a missing reservoir with negative $\Delta^{33}\text{S}$ that must exist. Han et al. (2017) reported $\Delta^{33}\text{S}$ values down to -0.6‰ in sulfate aerosols from Beijing. As discussed above, the authors' suggestion calling for low-temperature combustion is little supported by available data, and clearly the very restricted location and time interval, over a month, where these anomalies occurred cannot counter-balance, both spatially and temporally, the common positive $\Delta^{33}\text{S}$ values of most aerosols; the missing reaction or reservoir requires, instead, to be ubiquitous worldwide.

In this study, black crust sulfates display negative $\Delta^{33}\text{S}$ values (from $\sim 0\text{‰}$ down to -0.34‰). These values are certainly produced by tropospheric chemical reactions. Otherwise, they would have, according to the stratospheric origin model, the same sign as those measured among aerosols. Furthermore, the chemical reactions (or reaction) involved in the formation of black crusts must be distinct compared to those leading to the formation of tropospheric aerosols. As developed thoroughly, black crusts could well represent the missing sulfur reservoir.

An additional observation is that negative $\Delta^{33}\text{S}$ values occur with near-constant $\Delta^{36}\text{S}$ (from -0.76‰ to $-0.22 \pm 0.20\text{‰}$; Fig. 6). This signature is typical of the magnetic isotope effect (MIE), which involve a radical pair, where coupling between the nuclear magnetic moment of the nucleus of odd isotopes and the electron occurs, allowing for electron spin transition from singlet to triplet (or vice versa) (Buchachenko et al., 1976). This leads to distinct half-lives between odd and even isotopes, resulting in specific odd over even isotope enrichment (or depletion). MIE has been so far reported for various reactions occurring on a surface (Buchachenko, 2001, 2000; Turro, 1983) such as sulfate thermochemical reduction (Oduro et al., 2011) or Fe reduction in magneto-tactic bacteria (Amor et al., 2016), which are the most geologically relevant. It is worth pointing out that MIE could also be responsible for positive $\Delta^{17}\text{O}$ values measured in black crusts, i.e., as opposed to the $\Delta^{17}\text{O}$ anomaly being inherited from SO₂ oxidants. However, Lee et al. (2002) also measured the O multi-isotope compositions of sulfate aerosols (i.e., from the atmosphere as opposed to reaction on a solid substrate) from Paris and obtained $\Delta^{17}\text{O} = 0.2$ and 0.8‰ for the Paris highway and in the 13th zone, respectively, which is in good agreement with our three samples collected in Paris (from 0.17‰ to 0.89‰). Thus, this is consistent with black crust formation recording mostly an atmospheric signal and no significant magnetic isotope effect on $\Delta^{17}\text{O}$.

The magnetic effect could occur on a surface such as on mineral dust suspended in the atmosphere during aerosol formation, leading to residual ³³S-depleted atmospheric SO₂ from which black crusts would subsequently form. This model would, however, predict that some sulfate aerosols subsequently formed to display negative $\Delta^{33}\text{S}$ values: such values are extremely uncommon, being primarily restricted to the Beijing winter months (Han et al., 2017). Instead, the magnetic effect could occur during black crust formation, on the carbonate building stone, leading to residual ³³S-enriched atmospheric SO₂ from which tropospheric aerosols would subsequently be formed, which is consistent with available observations. This model would, however, predict some black crust subsequently formed to display positive $\Delta^{33}\text{S}$: such values have not been found yet and this may well reflect sample bias, with our data being the first reported for such samples. Both scenarios imply nonzero $\Delta^{33}\text{S}$ values of residual atmospheric SO₂, which contrast with the data by Lin et al. (2018b) showing $\Delta^{33}\text{S}$ of $\sim 0\text{‰}$ ($n = 5$, $\Delta^{33}\text{S}$ varying from -0.04‰ to $0.01 \pm 0.01\text{‰}$). Given that, in the study of Lin et al. (2018b), SO₂ was sampled close to the third largest Chinese megacity, such nonzero $\Delta^{33}\text{S}$ values may thus be rather symptomatic of emitted (i.e., anthropogenic) SO₂ rather than residual or background (i.e., after significant black crust and aerosols formation). SO₂ in the Paris Basin still has to be measured to confirm this assumption, but, so far, this could be consistent with the interpretation that nonzero $\Delta^{33}\text{S}$ values of residual or background atmospheric SO₂ are erased by anthropogenic SO₂ having zero $\Delta^{33}\text{S}$ values (Au Yang et al., 2019) moving towards the local source(s) of anthropogenic SO₂.

In the absence of additional observations, proposing a chemical reaction, and hence a radical pair that breaks and recombines, would be very speculative, but our data clearly point towards the occurrence of a magnetic effect during the formation of black crusts, involving ubiquitous heterogeneous chemical reactions. This is supported by previous recognition of sulfur radicals such as SO_x⁻ (Herrmann, 2003) or S–S (see Babikov, 2017. But note that their $\Delta^{36}\text{S}/\Delta^{33}\text{S}$ slope is distinct from ours). Clearly, the reaction does not occur after sulfate formation such as during dissolution–precipitation mechanisms, which do not involve any radical species. As mentioned above, magneto-tactic bacteria can produce MIE when reducing Fe (Amor et al., 2016). With microbial activity being sometimes present on black crusts (Gaylarde et al., 2007; Sáiz-Jiménez, 1995; Scheerer et al., 2009; Schiavon, 2002; Tiano, 2002), the involvement of microorganisms, affecting only the sulfur isotopes as the most negative $\Delta^{33}\text{S}$, does not correspond to the most negative $\Delta^{17}\text{O}$, which represents another possibility to investigate. Another implication that can be tested in future work is that the kinetics of heterogeneous reactions leading to sulfate and black crust formation should be comparable or faster than those leading to aerosol formation. So far, Li et al. (2006) showed comparable loss of atmospheric SO₂ by heteroge-

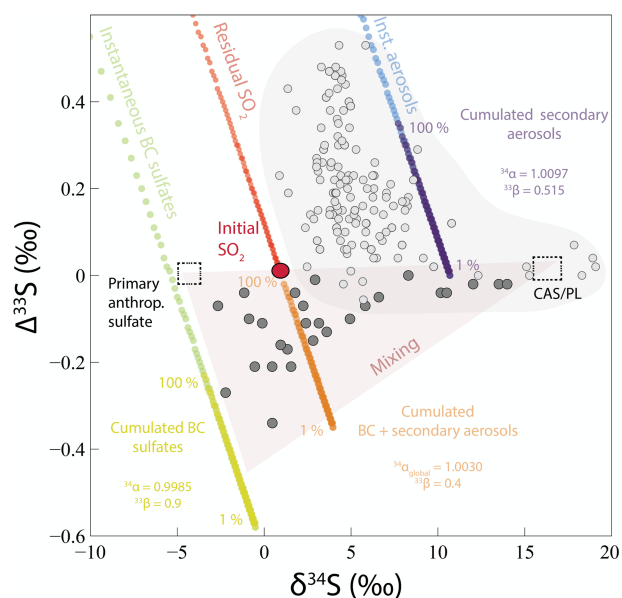


Figure 7. Modeled $\delta^{34}\text{S}$ and $\Delta^{33}\text{S}$ values of black crust (BC) sulfates (instantaneous and cumulated) formed by SO_2 wet and dry deposition with a MIE (^{33}S depletion compared to initial SO_2) and of secondary aerosols (instantaneous and cumulated) formed by SO_2 oxidation by O_3 , O_2 TMI, OH, and H_2O_2 (^{33}S enrichment compared to initial SO_2) from an initial SO_2 with $\delta^{34}\text{S} = 1\text{‰}$ and $\Delta^{33}\text{S} = 0\text{‰}$ (red point). ^{33}S enrichment of residual SO_2 and global cumulated BC plus secondary aerosol isotopic compositions are also reported. Percentages indicate the fraction of produced cumulated BC and secondary aerosols (see Sect. 5.2.2 for model explanation). Black crust sulfate isotopic compositions (dark gray points) can be explained by a mixing (red triangle) between sulfates from CAS/plaster (dashed square, $\delta^{34}\text{S} = 18\text{‰}$ and $\Delta^{33}\text{S} = 0\text{‰}$; see Sect. 5.1), primary anthropogenic sulfates (dashed square, $\delta^{34}\text{S} = -3\text{‰}$ and $\Delta^{33}\text{S} = 0\text{‰}$), and sulfates formed by wet and dry deposition of SO_2 undergoing a MIE and oxidized SO_2 forming secondary aerosols (cumulated BC sulfates and cumulated BC + secondary aerosols). Urban aerosol (light gray points) isotopic compositions are a compilation from Au Yang et al. (2019); Guo et al. (2010); Lin et al. (2018b); Romero and Thiemens (2003); and Shaheen et al. (2014).

neous oxidation on calcium carbonate substrates and by gas-phase oxidation. Our conclusions show a strong analogy with the model of Au Yang et al. (2019), who suggest that SO_2 photooxidation on mineral dust could form sulfate aerosols depleted in ^{33}S that would then be deposited. The residual SO_2 would be subsequently enriched in ^{33}S , then be oxidized by common O_3 , H_2O_2 , O_2 , or OH oxidants. Their ^{33}S -depletion mechanism was not further constrained, except that it was speculated to be photochemical in origin.

If correct, this view requires reassessing the overall S isotope fractionation during SO_2 atmospheric reaction. So far, previous studies assumed that the overall sulfur isotopic fractionation between the wet and dry deposit and oxidized SO_2

was equal to 1 (i.e., no isotope effect), but negative $\Delta^{33}\text{S}$ in black crusts is inconsistent with such an assumption.

Starting with an SO_2 $\Delta^{33}\text{S}$ value of 0‰ (Au Yang et al., 2018; Lin et al., 2018b) and forming oxidized (sampled by secondary aerosols) and wet and dry deposit (sampled by black crusts) reservoirs with $\Delta^{33}\text{S}$ values up to 0.50‰ down to -0.34‰ , respectively, mass balance implies that SO_2 dry and wet depositions and secondary sulfate aerosols represent $\sim 60\%$ and 40% , respectively. This is in good agreement with proportions obtained by Chin et al. (2000) and quoted by Harris et al. (2013b). Therefore, we conclude that MIE happening during SO_2 dry and wet depositions could be a viable mechanism responsible for ^{33}S enrichment of secondary sulfate aerosols and that black crusts could represent the ^{33}S -negative complementary reservoir.

In order to better apprehend the aerosols and black crust complementarity, we modeled the S isotopic fractionation of both black crusts and aerosols during SO_2 oxidation (Figs. 6 and 7). We assumed a Rayleigh distillation model to represent the atmosphere–building-stone interface open system. The global fractionation factor between residual SO_2 and oxidized (secondary aerosols) plus deposited (black crusts) SO_2 is defined as

$$\alpha_{\text{global}} = A \alpha_{\text{BC-SO}_2} \times B \alpha_{\text{aerosols-SO}_2},$$

with A and B being the proportions of SO_2 deposited and oxidized, being equal to 60% and 40% , respectively. This allows us to deduce the $^{33,34,36}\alpha_{\text{BC-SO}_2}$ and the associated $^{33,36}\beta$ factors. A $\delta^{34}\text{S}$ of 1‰ for the initial SO_2 was considered to obtain black crusts of at least -3‰ (see Sect. 5.1.2) and $\Delta^{33}\text{S} - \Delta^{36}\text{S} = 0\text{‰}$; $^{34}\alpha_{\text{aerosols-SO}_2}$ was taken as 1.0097 as calculated using the different oxidation channel proportions of Sofen et al. (2011). With the oxidation being mass dependent, we chose $^{33,36}\beta_{\text{aerosols-SO}_2}$ values of 0.515 and 1.9, respectively (Harris et al., 2012b). The best fit is obtained for $^{34}\alpha_{\text{BC-SO}_2} = 0.9985$, $^{33}\alpha_{\text{BC-SO}_2} = 0.9986$, and $^{36}\alpha_{\text{BC-SO}_2} = 0.9972$ with $^{33,36}\beta = 0.9$ and 1.9 , respectively. The ^{33}S enrichment in secondary sulfate aerosols is well represented by this parameterization (instantaneous and cumulated products; Figs. 6 and 7). The concomitant ^{33}S depletion in modeled cumulated deposit is also well represented. The ^{33}S isotopic fractionation occurring during the MIE is higher than the one observed in black crusts. To a first-order approximation, this model works, predicting the total cumulated products of black crusts and aerosols to have $\Delta^{33}\text{S}$ values of -0.23‰ and 0.35‰ , respectively. The match is not perfect, which does not entirely capture the black crust isotopic compositions. But remember that black crusts are produced from anthropogenic Parisian SO_2 , whereas aerosols formed in other locations possibly formed from distinct anthropogenic SO_2 $\delta^{34}\text{S}$ values. In addition, we are aware that our model strongly depends on oxidation pathways estimated by Sofen et al. (2011), which vary spatially and temporally. The main weakness is the poorly constrained estimate of intrinsic S-bearing compounds (CAS/plaster end-member) in

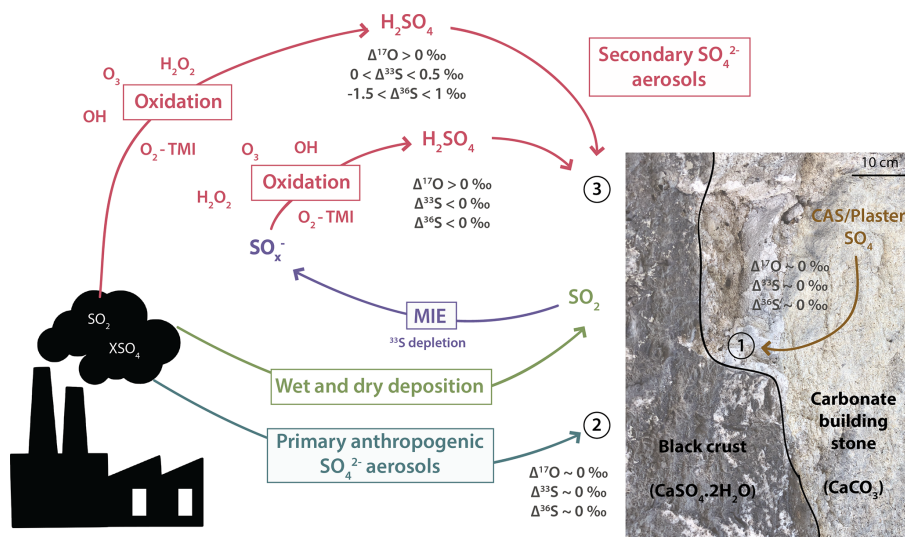


Figure 8. Scheme summarizing the sulfur sources and processes that lead to black crust formation. Sulfur dioxide releases by anthropogenic activities can either be oxidized in the atmosphere by H₂O₂, O₃, OH, O₂ TMI and formed secondary sulfate aerosols that will react with the carbonate building stone to produce ³³S-enriched black crust sulfates or be deposited, as dry and wet deposit, on the carbonate substrate where its oxidation into SO_x⁻ then sulfates through MIE will produce ³³S-depleted black crust sulfates and a ³³S-enriched residual SO₂ (source 3). Primary sulfates emitted by anthropogenic activities (source 2) or carbonate-associated sulfates and/or plaster of the host rock (source 1) are also likely sources contributing to black crust formation.

the host rock as well as sulfate aerosols (Δ³³S > 0 ‰), which dilutes the ³³S anomaly, lowering the overall black crust Δ³³S. Ultimately, black crusts result mainly from the deposition followed by oxidation of SO₂ on the building stone rather than aerosol accumulation. The δ³⁴S value of initial anthropogenic SO₂ is another poorly constrained parameter whose variability might be difficult to estimate both spatially and temporally.

In conclusion, black crusts could represent the complementary sulfur end-member to sulfate aerosols. Its fractionation factor is relatively restricted (−1.5 ‰) and is thus likely identifiable from its negative Δ³³S values. Our model is actually consistent with the assumption that the global SO₂ oxidation occurs with little fractionation (³⁴α_{global} = 1.00298) as commonly done in the literature. Finally, Fig. 8 summarizes the different sulfur sources involved in the black crusts as well as the processes leading to their formation. Black crust isotopic compositions could thus be explained by a mixing between sulfates from CAS/plaster (δ³⁴S ~ 18 ‰ and Δ³³S = 0 ‰; see Sect. 5.1 and 1 in Fig. 8), primary anthropogenic sulfates (δ³⁴S ~ −3 ‰ and Δ³³S = 0 ‰; see 2 in Fig. 8), and wet and dry deposition of SO₂ undergoing MIE during its oxidation on the building stone combined with secondary aerosols (see red triangle in Fig. 7 and process 3 in Fig. 8).

6 Conclusions

Our study shows that black crusts do preserve an atmospheric signal of SO₂ oxidation, inferred from the nonzero Δ¹⁷O. Part of the sulfate originates from the surrounding plaster and/or from the stone itself, but overall > 60 % originates from anthropogenic activities. We also discovered negative Δ³³S values with near-constant Δ³⁶S signatures, which probably reflect the magnetic isotope effect involving a new oxidation pathway. The magnetic isotope effect is supposed to occur during the deposition of SO₂ on the building stone surface (most likely carbonate), where SO₂ is oxidized to sulfate, leading to a ³³S depletion in black crust sulfates. Therefore, the resulting ³³S enrichment of residual SO₂ could account for positive Δ³³S values of sulfate aerosols observed worldwide, making black crust sulfates their complementary Δ³³S reservoir.

Data availability. All data needed to draw the conclusions in the present study are shown in Table 2 and/or the Supplement. For additional data related to this study, please contact the corresponding author (genot@ipgp.fr).

Supplement. The supplement related to this article is available online at: <https://doi.org/10.5194/acp-20-4255-2020-supplement>.

Author contributions. IG conducted oxygen isotope measurements under the supervision of EM and ELG at IPGP. DAY conducted sulfur isotope measurements at McGill University. IG and EM collected the samples. IG, PC, EM, and DAY interpreted the data. IG wrote the paper with contributions from all coauthors. EM and MR conceived the project.

Competing interests. The authors declare that they have no conflict of interest.

Acknowledgements. We thank the editor Eliza Harris, Mang Lin, and an anonymous reviewer for their insightful comments as well as Mark Thiemens for his remarks on MIE that helped improve our article. We thank David Whiteley and Rémi Leprêtre for their help during the sampling, Mattauer Genot for inspiration, Omar Boudouma for the SEM analysis, Alain Person for the XRD analysis, Boswell Wing for accessing his laboratory analyses, Hao Thi Bui for assistance during analyses performed in Montreal, and Nelly Assayag and Guillaume Landais for analyses performed at IPGP. This is IPGP contribution number 4122.

Financial support. This research has been supported by the ANR (grant no. 14-CE33-0009-02-FOFAMIFS).

Review statement. This paper was edited by Eliza Harris and reviewed by Mang Lin and one anonymous referee.

References

- Alexander, B., Park, R. J., Jacob, D. J., Li, Q., Yantosca, R. M., Savarino, J., Lee, C., and Thiemens, M.: Sulfate formation in sea-salt aerosols: Constraints from oxygen isotopes, *J. Geophys. Res.-Atmos.*, 110, <https://doi.org/10.1029/2004JD005659>, 2005.
- Alexander, B., Allman, D., Amos, H., Fairlie, T., Dachs, J., Hegg, D. A., and Sletten, R. S.: Isotopic constraints on the formation pathways of sulfate aerosol in the marine boundary layer of the subtropical northeast Atlantic Ocean, *J. Geophys. Res.-Atmos.*, 117, <https://doi.org/10.1029/2011JD016773>, 2012.
- Amor, M., Busigny, V., Louvat, P., Gélibert, A., Cartigny, P., Durand-Dubief, M., Ona-Nguema, G., Alphanéry, E., Chebbi, I., and Guyot, F.: Mass-dependent and-independent signature of Fe isotopes in magnetotactic bacteria, *Science*, 352, 705–708, 2016.
- Ault, W. U. and Kulp, J.: Isotopic geochemistry of sulphur, *Geochim. Cosmochim. Ac.*, 16, 201–235, 1959.
- Au Yang, D., Landais, G., Assayag, N., Widory, D., and Cartigny, P.: Improved analysis of micro-and nanomole-scale sulfur multi-isotope compositions by gas source isotope ratio mass spectrometry, *Rapid Commun. Mass Spectrom.*, 30, 897–907, 2016.
- Au Yang, D., Bardoux, G., Assayag, N., Laskar, C., Widory, D., and Cartigny, P.: Atmospheric SO₂ oxidation by NO₂ plays no role in the mass independent sulfur isotope fractionation of urban aerosols, *Atmos. Environ.*, 193, 109–117, 2018.
- Au Yang, D., Cartigny, P., Desboeufs, K., and Widory, D.: Seasonality in the $\Delta^{33}\text{S}$ measured in urban aerosols highlights an additional oxidation pathway for atmospheric SO₂, *Atmos. Chem. Phys.*, 19, 3779–3796, <https://doi.org/10.5194/acp-19-3779-2019>, 2019.
- Au Yang, D., Widory, D., and Cartigny, P.: Coal combustion does not produce negative $\Delta^{33}\text{S}$, *J. Geophys. Res.-Atmos.*, in preparation, 2020.
- Babikov, D.: Recombination reactions as a possible mechanism of mass-independent fractionation of sulfur isotopes in the Archean atmosphere of Earth, *P. Natl. Acad. Sci. USA*, 114, 3062–3067, 2017.
- Bao, H.: Purifying barite for oxygen isotope measurement by dissolution and reprecipitation in a chelating solution, *Anal. Chem.*, 78, 304–309, 2006.
- Bao, H. and Thiemens, M. H.: Generation of O₂ from BaSO₄ Using a CO₂⁻ Laser Fluorination System for Simultaneous Analysis of $\delta^{18}\text{O}$ and $\delta^{17}\text{O}$, *Anal. Chem.*, 72, 4029–4032, 2000.
- Bao, H., Thiemens, M. H., Farquhar, J., Campbell, D. A., Lee, C. C.-W., Heine, K., and Loope, D. B.: Anomalous ¹⁷O compositions in massive sulphate deposits on the Earth, *Nature*, 406, 176–178, 2000.
- Bao, H., Michalski, G. M., and Thiemens, M. H.: Sulfate oxygen-17 anomalies in desert varnishes, *Geochim. Cosmochim. Ac.*, 65, 2029–2036, 2001a.
- Bao, H., Thiemens, M. H., and Heine, K.: Oxygen-17 excesses of the Central Namib gypcetes: spatial distribution, *Earth Planet. Sc. Lett.*, 192, 125–135, 2001b.
- Bao, H., Lyons, J., and Zhou, C.: Triple oxygen isotope evidence for elevated CO₂ levels after a Neoproterozoic glaciation, *Nature*, 453, 504–506, 2008.
- Bao, H., Yu, S., and Tong, D. Q.: Massive volcanic SO₂ oxidation and sulphate aerosol deposition in Cenozoic North America, *Nature*, 465, 909–912, 2010.
- Barkan, E. and Luz, B.: High precision measurements of ¹⁷O/¹⁶O and ¹⁸O/¹⁶O ratios in H₂O, *Rapid Commun. Mass Spectrom.*, 19, 3737–3742, 2005.
- Bigeleisen, J. and Mayer, M. G.: Calculation of equilibrium constants for isotopic exchange reactions, *J. Chem. Phys.*, 15, 261–267, 1947.
- Bindeman, I., Eiler, J., Wing, B., and Farquhar, J.: Rare sulfur and triple oxygen isotope geochemistry of volcanogenic sulfate aerosols, *Geochim. Cosmochim. Ac.*, 71, 2326–2343, 2007.
- Buchachenko, A., Galimov, E., Ershov, V., Nikiforov, G., and Pershin, A.: Isotopic enrichment induced by magnetic-interactions in chemical-reactions, *Dokl. Akad. Nauk Sssr*, 228, 379–381, 1976.
- Buchachenko, A. L.: Recent advances in spin chemistry, *Pure Appl. Chem.*, 72, 2243–2258, 2000.
- Buchachenko, A. L.: Magnetic isotope effect: Nuclear spin control of chemical reactions, *J. Phys. Chem. A*, 105, 9995–10011, 2001.
- Cabral, R. A., Jackson, M. G., Rose-Koga, E. F., Koga, K. T., Whitehouse, M. J., Antonelli, M. A., Farquhar, J., Day, J. M., and Hauri, E. H.: Anomalous sulphur isotopes in plume lavas reveal deep mantle storage of Archaean crust, *Nature*, 496, 490–493, 2013.
- Calhoun, J. A., Bates, T. S., and Charlson, R. J.: Sulfur isotope measurements of submicrometer sulfate aerosol particles over the Pacific Ocean, *Geophys. Res. Lett.*, 18, 1877–1880, 1991.

- Camuffo, D.: Physical weathering of stones, *Sci. Total Environ.*, 167, 1–14, 1995.
- Canfield, D. E.: The evolution of the Earth surface sulfur reservoir, *Am. J. Sci.*, 304, 839–861, 2004.
- Chin, M., Rood, R. B., Lin, S. J., Müller, J. F., and Thompson, A. M.: Atmospheric sulfur cycle simulated in the global model GOCART: Model description and global properties, *J. Geophys. Res.-Atmos.*, 105, 24671–24687, 2000.
- Cowie, B. R. and Johnston, D. T.: High-precision measurement and standard calibration of triple oxygen isotopic compositions ($\delta^{18}\text{O}$, $\Delta^{17}\text{O}$) of sulfate by F2 laser fluorination, *Chem. Geol.*, 440, 50–59, 2016.
- Dauphas, N. and Schauble, E. A.: Mass fractionation laws, mass-independent effects, and isotopic anomalies, *Annu. Rev. Earth Pl. Sc.*, 44, 709–783, 2016.
- Defouilloy, C., Cartigny, P., Assayag, N., Moynier, F., and Barrat, J.-A.: High-precision sulfur isotope composition of enstatite meteorites and implications of the formation and evolution of their parent bodies, *Geochim. Cosmochim. Ac.*, 172, 393–409, 2016.
- Delavault, H., Chauvel, C., Thomassot, E., Devey, C. W., and Dazas, B.: Sulfur and lead isotopic evidence of relic Archean sediments in the Pitcairn mantle plume, *P. Natl. Acad. Sci. USA*, 113, 12952–12956, 2016.
- Dubey, M. K., Mohrschladt, R., Donahue, N. M., and Anderson, J. G.: Isotope specific kinetics of hydroxyl radical (OH) with water (H_2O): Testing models of reactivity and atmospheric fractionation, *J. Phys. Chem. A*, 101, 1494–1500, 1997.
- Farquhar, J. and Wing, B. A.: Multiple sulfur isotopes and the evolution of the atmosphere, *Earth Planet. Sc. Lett.*, 213, 1–13, 2003.
- Farquhar, J., Bao, H., and Thiemens, M.: Atmospheric influence of Earth's earliest sulfur cycle, *Science*, 289, 756–758, 2000.
- Farquhar, J., Savarino, J., Airieau, S., and Thiemens, M. H.: Observation of wavelength-sensitive mass-independent sulfur isotope effects during SO_2 photolysis: Implications for the early atmosphere, *J. Geophys. Res.-Planet.*, 106, 32829–32839, 2001.
- Farquhar, J., Wing, B., McKeegan, K., Harris, J., Cartigny, P., and Thiemens, M.: Mass-independent sulfur of inclusions in diamond and sulfur recycling on early Earth, *Science*, 298, 2369–2372, 2002.
- Farquhar, J., Johnston, D. T., and Wing, B. A.: Implications of conservation of mass effects on mass-dependent isotope fractionations: influence of network structure on sulfur isotope phase space of dissimilatory sulfate reduction, *Geochim. Cosmochim. Ac.*, 71, 5862–5875, 2007a.
- Farquhar, J., Peters, M., Johnston, D. T., Strauss, H., Masterson, A., Wiechert, U., and Kaufman, A. J.: Isotopic evidence for Mesoarchean anoxia and changing atmospheric sulphur chemistry, *Nature*, 449, 706–709, 2007b.
- Faure, G.: Isotope systematics in two-component mixtures, John Wiley and Sons, 1986.
- Forster, P., Ramaswamy, V., Artaxo, P., Bernsten, T., Betts, R., Fahey, D. W., Haywood, J., Lean, J., Lowe, D. C., and Myhre, G.: Changes in atmospheric constituents and in radiative forcing, Chapter 2, in: *Climate Change 2007, The Physical Science Basis*, 2007.
- Fronteau, G., Schneider-Thomachot, C., Chopin, E., Barbin, V., Mouze, D., and Pascal, A.: Black-crust growth and interaction with underlying limestone microfacies, Geological Society, London, Special Publications, 333, 25–34, 2010.
- Gautier, E., Savarino, J., Erbland, J., and Farquhar, J.: SO_2 Oxidation Kinetics Leave a Consistent Isotopic Imprint on Volcanic Ice Core Sulfate, *J. Geophys. Res.-Atmos.*, 123, 9801–9812, 2018.
- Gaylarde, C. C., Ortega-Morales, B. O., and Bartolo-Perez, P.: Biogenic black crusts on buildings in unpolluted environments, *Curr. Microbiol.*, 54, 162–166, 2007.
- Geng, L., Savarino, J., Caillon, N., Gautier, E., Farquhar, J., Dotti III, J., Magalhães, N., Hattori, S., Ishino, S., and Yoshida, N.: Intercomparison measurements of two ^{33}S -enriched sulfur isotope standards, *J. Anal. Atom. Spectrom.*, 34, 1263–1271, 2019.
- Gomes, M. L. and Johnston, D. T.: Oxygen and sulfur isotopes in sulfate in modern euxinic systems with implications for evaluating the extent of euxinia in ancient oceans, *Geochim. Cosmochim. Ac.*, 205, 331–359, 2017.
- Guo, Z., Li, Z., Farquhar, J., Kaufman, A. J., Wu, N., Li, C., Dickerson, R. R., and Wang, P.: Identification of sources and formation processes of atmospheric sulfate by sulfur isotope and scanning electron microscope measurements, *J. Geophys. Res.-Atmos.*, 115, <https://doi.org/10.1029/2009JD012893>, 2010.
- Han, X., Guo, Q., Strauss, H., Liu, C., Hu, J., Guo, Z., Wei, R., Peters, M., Tian, L., and Kong, J.: Multiple sulfur isotope constraints on sources and formation processes of sulfate in Beijing $\text{PM}_{2.5}$ aerosol, *Environ. Sci. Technol.*, 51, 7794–7803, 2017.
- Harris, E., Sinha, B., Foley, S., Crowley, J. N., Borrmann, S., and Hoppe, P.: Sulfur isotope fractionation during heterogeneous oxidation of SO_2 on mineral dust, *Atmos. Chem. Phys.*, 12, 4867–4884, <https://doi.org/10.5194/acp-12-4867-2012>, 2012a.
- Harris, E., Sinha, B., Hoppe, P., Crowley, J. N., Ono, S., and Foley, S.: Sulfur isotope fractionation during oxidation of sulfur dioxide: gas-phase oxidation by OH radicals and aqueous oxidation by H_2O_2 , O_3 and iron catalysis, *Atmos. Chem. Phys.*, 12, 407–423, <https://doi.org/10.5194/acp-12-407-2012>, 2012b.
- Harris, E., Sinha, B., Van Pinxteren, D., Tilgner, A., Fomba, K. W., Schneider, J., Roth, A., Gnauk, T., Fahlbusch, B., and Mertes, S.: Enhanced role of transition metal ion catalysis during in-cloud oxidation of SO_2 , *Science*, 340, 727–730, 2013a.
- Harris, E., Sinha, B. R., Hoppe, P., and Ono, S.: High-precision measurements of ^{33}S and ^{34}S fractionation during SO_2 oxidation reveal causes of seasonality in SO_2 and sulfate isotopic composition, *Environ. Sci. Technol.*, 47, 12174–12183, 2013b.
- Hemingway, J., Olson, H., v Turchyn, A., Tipper, E., and Johnston, D. T.: Interpreting triple oxygen isotope signals from geologically preserved sulfate: Insights from modern Himalayan rivers, AGU Fall Meeting, San Francisco, 597703, 2019.
- Herrmann, H.: Kinetics of aqueous phase reactions relevant for atmospheric chemistry, *Chem. Rev.*, 103, 4691–4716, 2003.
- Holt, B. and Kumar, R.: Oxygen isotope fractionation for understanding the sulphur cycle, *Stable Isotopes: Natural and Anthropogenic Sulphur in the Environment*, John Wiley & Sons, 27–41, 1991.
- Holt, B. D., Cunningham, P. T., and Kumar, R.: Oxygen isotopy of atmospheric sulfates, *Environ. Sci. Technol.*, 15, 804–808, 1981.
- Janssen, C., Guenther, J., Krankowsky, D., and Mauersberger, K.: Relative formation rates of 50O_3 and 52O_3 in ^{16}O – ^{18}O mixtures, *J. Chem. Phys.*, 111, 7179–7182, 1999.
- Jenkins, K. A. and Bao, H.: Multiple oxygen and sulfur isotope compositions of atmospheric sulfate in Baton Rouge, LA, USA, *Atmos. Environ.*, 40, 4528–4537, 2006.

- Kampschulte, A. and Strauss, H.: The sulfur isotopic evolution of Phanerozoic seawater based on the analysis of structurally substituted sulfate in carbonates, *Chem. Geol.*, 204, 255–286, 2004.
- Klemm, W. and Siedel, H.: Evaluation of the origin of sulphate compounds in building stone by sulphur isotope ratio, *Geological Society, London, Special Publications*, 205, 419–429, 2002.
- Klimont, Z., Smith, S. J., and Cofala, J.: The last decade of global anthropogenic sulfur dioxide: 2000–2011 emissions, *Environ. Res. Lett.*, 8, <https://doi.org/10.1088/1748-9326/8/1/014003>, 2013.
- Kloppmann, W., Bromblet, P., Vallet, J., Vergès-Belmin, V., Rolland, O., Guerrot, C., and Gosselin, C.: Building materials as intrinsic sources of sulphate: a hidden face of salt weathering of historical monuments investigated through multi-isotope tracing (B, O, S), *Sci. Total Environ.*, 409, 1658–1669, 2011.
- Kloppmann, W., Rolland, O., Proust, E., and Montech, A.: Soluble salt sources in medieval porous limestone sculptures: A multi-isotope (N, O, S) approach, *Sci. Total Environ.*, 470, 559–566, 2014.
- Kramar, S., Mirtič, B., Knöller, K., and Rogan-Šmuc, N.: Weathering of the black limestone of historical monuments (Ljubljana, Slovenia): Oxygen and sulfur isotope composition of sulfate salts, *Appl. Geochem.*, 26, 1632–1638, 2011.
- Labidi, J., Cartigny, P., Hamelin, C., Moreira, M., and Dosso, L.: Sulfur isotope budget (^{32}S , ^{33}S , ^{34}S and ^{36}S) in Pacific–Antarctic ridge basalts: A record of mantle source heterogeneity and hydrothermal sulfide assimilation, *Geochim. Cosmochim. Ac.*, 133, 47–67, 2014.
- Lee, C.-W., Savarino, J., Cachier, H., and Thiemens, M.: Sulfur (^{32}S , ^{33}S , ^{34}S , ^{36}S) and oxygen (^{16}O , ^{17}O , ^{18}O) isotopic ratios of primary sulfate produced from combustion processes, *Tellus B*, 54, 193–200, 2002.
- Lee, C. C. W. and Thiemens, M. H.: The $\delta^{17}\text{O}$ and $\delta^{18}\text{O}$ measurements of atmospheric sulfate from a coastal and high alpine region: A mass-independent isotopic anomaly, *J. Geophys. Res.-Atmos.*, 106, 17359–17373, 2001.
- Le Gendre, E., Martin, E., Villemant, B., Cartigny, P., and Assayag, N.: A simple and reliable anion-exchange resin method for sulfate extraction and purification suitable for multiple O- and S-isotope measurements, *Rapid Commun. Mass Spectrom.*, 31, 137–144, 2017.
- Li, L., Chen, Z. M., Zhang, Y. H., Zhu, T., Li, J. L., and Ding, J.: Kinetics and mechanism of heterogeneous oxidation of sulfur dioxide by ozone on surface of calcium carbonate, *Atmos. Chem. Phys.*, 6, 2453–2464, <https://doi.org/10.5194/acp-6-2453-2006>, 2006.
- Li, X., Bao, H., Gan, Y., Zhou, A., and Liu, Y.: Multiple oxygen and sulfur isotope compositions of secondary atmospheric sulfate in a mega-city in central China, *Atmos. Environ.*, 81, 591–599, 2013.
- Lin, Y., Sim, M. S., and Ono, S.: Multiple-sulfur isotope effects during photolysis of carbonyl sulfide, *Atmos. Chem. Phys.*, 11, 10283–10292, <https://doi.org/10.5194/acp-11-10283-2011>, 2011.
- Lin, M., Kang, S., Shaheen, R., Li, C., Hsu, S.-C., and Thiemens, M. H.: Atmospheric sulfur isotopic anomalies recorded at Mt. Everest across the Anthropocene, *P. Natl. Acad. Sci. USA*, 115, 6964–6969, 2018a.
- Lin, M., Zhang, X., Li, M., Xu, Y., Zhang, Z., Tao, J., Su, B., Liu, L., Shen, Y., and Thiemens, M. H.: Five-S-isotope evidence of two distinct mass-independent sulfur isotope effects and implications for the modern and Archean atmospheres, *P. Natl. Acad. Sci. USA*, 115, 8541–8546, 2018b.
- Lloyd, R.: Oxygen isotope behavior in the sulfate-water system, *J. Geophys. Res.*, 73, 6099–6110, 1968.
- Longinelli, A. and Bartelloni, M.: Atmospheric pollution in Venice, Italy, as indicated by isotopic analyses, *Water Air Soil Pollut.*, 10, 335–341, 1978.
- Lyons, J. R.: Transfer of mass-independent fractionation in ozone to other oxygen-containing radicals in the atmosphere, *Geophys. Res. Lett.*, 28, 3231–3234, 2001.
- Markovic, S., Paytan, A., Li, H., and Wortmann, U. G.: A revised seawater sulfate oxygen isotope record for the last 4 Myr, *Geochim. Cosmochim. Ac.*, 175, 239–251, 2016.
- Martin, E.: Volcanic plume impact on the atmosphere and climate: O- and S-isotope insight into sulfate aerosol formation, *Geosciences*, 8, 198, <https://doi.org/10.3390/geosciences8060198>, 2018.
- Martin, E., Bekki, S., Ninin, C., and Bindeman, I.: Volcanic sulfate aerosol formation in the troposphere, *J. Geophys. Res.-Atmos.*, 119, 12660–12673, 2014.
- Mauersberger, K., Erbacher, B., Krankowsky, D., Günther, J., and Nickel, R.: Ozone isotope enrichment: Isotopomer-specific rate coefficients, *Science*, 283, 370–372, 1999.
- Montana, G., Randazzo, L., Oddo, I. A., and Valenza, M.: The growth of “black crusts” on calcareous building stones in Palermo (Sicily): a first appraisal of anthropogenic and natural sulphur sources, *Environ. Geol.*, 56, 367–380, 2008.
- Montana, G., Randazzo, L., and Mazzoleni, P.: Natural and anthropogenic sources of total suspended particulate and their contribution to the formation of black crusts on building stone materials of Catania (Sicily), *Environ. Earth Sci.*, 67, 1097–1110, 2012.
- Nielsen, H.: Isotopic composition of the major contributors to atmospheric sulfur, *Tellus*, 26, 213–221, 1974.
- Oduro, H., Harms, B., Sintim, H. O., Kaufman, A. J., Cody, G., and Farquhar, J.: Evidence of magnetic isotope effects during thermochemical sulfate reduction, *P. Natl. Acad. Sci. USA*, 108, 17635–17638, 2011.
- Ono, S., Eigenbrode, J. L., Pavlov, A. A., Kharecha, P., Rumble III, D., Kasting, J. F., and Freeman, K. H.: New insights into Archean sulfur cycle from mass-independent sulfur isotope records from the Hamersley Basin, Australia, *Earth Planet. Sc. Lett.*, 213, 15–30, 2003.
- Ono, S., Wing, B., Johnston, D., Farquhar, J., and Rumble, D.: Mass-dependent fractionation of quadruple stable sulfur isotope system as a new tracer of sulfur biogeochemical cycles, *Geochim. Cosmochim. Ac.*, 70, 2238–2252, 2006a.
- Ono, S., Wing, B., Rumble, D., and Farquhar, J.: High precision analysis of all four stable isotopes of sulfur (^{32}S , ^{33}S , ^{34}S and ^{36}S) at nanomole levels using a laser fluorination isotope-ratio-monitoring gas chromatography – mass spectrometry, *Chem. Geol.*, 225, 30–39, 2006b.
- Ono, S., Whitehill, A., and Lyons, J.: Contribution of isotopologue self-shielding to sulfur mass-independent fractionation during sulfur dioxide photolysis, *J. Geophys. Res.-Atmos.*, 118, 2444–2454, 2013.
- Patris, N., Delmas, R., Legrand, M., De Angelis, M., Ferron, F. A., Stiévenard, M., and Jouzel, J.: First sulfur isotope measurements in central Greenland ice cores along the preindustrial and indus-

- trial periods, *J. Geophys. Res.-Atmos.*, 107, ACH 6-1–ACH 6-11, 2002.
- Raab, M. and Spiro, B.: Sulfur isotopic variations during seawater evaporation with fractional crystallization, *Chem. Geol.*, 86, 323–333, 1991.
- Rees, C., Jenkins, W., and Monster, J.: The sulphur isotopic composition of ocean water sulphate, *Geochim. Cosmochim. Ac.*, 42, 377–381, 1978.
- Rennie, V. C. and Turchyn, A. V.: The preservation of $\delta\text{SSO}434$ and $\delta\text{OSO}418$ in carbonate-associated sulfate during marine diagenesis: A 25 Myr test case using marine sediments, *Earth Planet. Sc. Lett.*, 395, 13–23, 2014.
- Rodriguez-Navarro, C. and Sebastian, E.: Role of particulate matter from vehicle exhaust on porous building stones (limestone) sulfation, *Sci. Total Environ.*, 187, 79–91, 1996.
- Romero, A. B. and Thiemens, M. H.: Mass-independent sulfur isotopic compositions in present-day sulfate aerosols, *J. Geophys. Res.-Atmos.*, 108, <https://doi.org/10.1029/2003JD003660>, 2003.
- Sáiz-Jiménez, C.: Deposition of anthropogenic compounds on monuments and their effect on airborne microorganisms, *Aerobiologia*, 11, 161–175, 1995.
- Savarino, J. and Thiemens, M. H.: Analytical procedure to determine both $\delta^{18}\text{O}$ and $\delta^{17}\text{O}$ of H_2O_2 in natural water and first measurements, *Atmos. Environ.*, 33, 3683–3690, 1999.
- Savarino, J., Lee, C. C., and Thiemens, M. H.: Laboratory oxygen isotopic study of sulfur (IV) oxidation: Origin of the mass-independent oxygen isotopic anomaly in atmospheric sulfates and sulfate mineral deposits on Earth, *J. Geophys. Res.-Atmos.*, 105, 29079–29088, 2000.
- Scheerer, S., Ortega-Morales, O., and Gaylarde, C.: Microbial Deterioration of Stone Monuments—An Updated Overview, *Adv. Appl. Microbiol.*, 66, 97–139, 2009.
- Schiavon, N.: Biodeterioration of calcareous and granitic building stones in urban environments, Geological Society, London, Special Publications, 205, 195–205, 2002.
- Seinfeld, J. H. and Pandis, S. N.: Atmospheric chemistry and physics: from air pollution to climate change, John Wiley & Sons, 2016.
- Shaheen, R., Abaunza, M. M., Jackson, T. L., McCabe, J., Savarino, J., and Thiemens, M. H.: Large sulfur-isotope anomaly in nonvolcanic sulfate aerosol and its implications for the Archean atmosphere, *P. Natl. Acad. Sci. USA*, 111, 11979–11983, 2014.
- Siegesmund, S., Török, A., Hüpers, A., Müller, C., and Klemm, W.: Mineralogical, geochemical and microfabric evidences of gypsum crusts: a case study from Budapest, *Environ. Geol.*, 52, 385–397, 2007.
- Sofen, E. D., Alexander, B., and Kunasek, S. A.: The impact of anthropogenic emissions on atmospheric sulfate production pathways, oxidants, and ice core $\Delta^{17}\text{O}(\text{SO}_4^{2-})$, *Atmos. Chem. Phys.*, 11, 3565–3578, <https://doi.org/10.5194/acp-11-3565-2011>, 2011.
- Šrámek, J.: Determination of the source of surface deterioration on tombstones at the Old Jewish Cemetery in Prague, *Stud. Conserv.*, 25, 47–52, 1980.
- Stocker, T.: Climate change 2013: the physical science basis: Working Group I contribution to the Fifth assessment report of the Intergovernmental Panel on Climate Change, Cambridge University Press, 2014.
- Thiemens, M. H.: Mass-independent isotope effects in planetary atmospheres and the early solar system, *Science*, 283, 341–345, 1999.
- Thode, H., Monster, J., and Dunford, H.: Sulphur isotope geochemistry, *Geochim. Cosmochim. Ac.*, 25, 159–174, 1961.
- Thomazo, C., Brayard, A., Elmeknassi, S., Vennin, E., Olivier, N., Caravaca, G., Escarguel, G., Fara, E., Bylund, K., and Jenks, J.: Multiple sulfur isotope signals associated with the late Smithian event and the Smithian/Spathian boundary, *Earth-Sci. Rev.*, 195, 96–113, <https://doi.org/10.1016/j.earscirev.2018.06.019>, 2018.
- Thurston, R. S., Mandernack, K. W., and Shanks III, W. C.: Laboratory chalcopyrite oxidation by *Acidithiobacillus ferrooxidans*: oxygen and sulfur isotope fractionation, *Chem. Geol.*, 269, 252–261, 2010.
- Tiano, P.: Biodegradation of cultural heritage: decay mechanisms and control methods, in: Seminar article, New University of Lisbon, Department of Conservation and Restoration, 7–12, 2002.
- Tiano, P., Bianchi, R., Gargani, G., and Vannucci, S.: Research on the presence of sulphurcycle bacteria in the stone of some historical buildings in Florence, *Plant Soil*, 43, 211–217, 1975.
- Torfs, K. M., Van Grieken, R. E., and Buzek, F.: Use of stable isotope measurements to evaluate the origin of sulfur in gypsum layers on limestone buildings, *Environ. Sci. Technol.*, 31, 2650–2655, 1997.
- Turchyn, A. V., Schrag, D. P., Coccioni, R., and Montanari, A.: Stable isotope analysis of the Cretaceous sulfur cycle, *Earth Planet. Sc. Lett.*, 285, 115–123, 2009.
- Turro, N. J.: Influence of nuclear spin on chemical reactions: magnetic isotope and magnetic field effects (a review), *P. Natl. Acad. Sci. USA*, 80, 609–621, 1983.
- Urey, H. C.: The thermodynamic properties of isotopic substances, *J. Chem. Soc.*, 562–581, <https://doi.org/10.1039/JR9470000562>, 1947.
- Vallet, J.-M., Gosselin, C., Bromblet, P., Rolland, O., Vergès-Belmin, V., and Kloppmann, W.: Origin of salts in stone monument degradation using sulphur and oxygen isotopes: First results of the Bourges cathedral (France), *J. Geochem. Explor.*, 88, 358–362, 2006.
- Vicars, W. C. and Savarino, J.: Quantitative constraints on the ^{17}O -excess ($\Delta^{17}\text{O}$) signature of surface ozone: Ambient measurements from 50° N to 50° S using the nitrite-coated filter technique, *Geochim. Cosmochim. Ac.*, 135, 270–287, 2014.
- Weber, R., Chen, G., Davis, D., Mauldin III, R., Tanner, D., Eisele, F., Clarke, A., Thornton, D., and Bandy, A.: Measurements of enhanced H_2SO_4 and 3–4 nm particles near a frontal cloud during the First Aerosol Characterization Experiment (ACE 1), *J. Geophys. Res.-Atmos.*, 106, 24107–24117, 2001.
- Young, E. D., Galy, A., and Nagahara, H.: Kinetic and equilibrium mass-dependent isotope fractionation laws in nature and their geochemical and cosmochemical significance, *Geochim. Cosmochim. Ac.*, 66, 1095–1104, 2002.