



HAL
open science

Comparing focal plane wavefront control techniques: Numerical simulations and laboratory experiments

A. Potier, P. Baudoz, R. Galicher, G. Singh, A. Boccaletti

► **To cite this version:**

A. Potier, P. Baudoz, R. Galicher, G. Singh, A. Boccaletti. Comparing focal plane wavefront control techniques: Numerical simulations and laboratory experiments. *Astronomy and Astrophysics - A&A*, 2020, 635, pp.A192. 10.1051/0004-6361/201937015 . hal-02565268

HAL Id: hal-02565268

<https://hal.sorbonne-universite.fr/hal-02565268v1>

Submitted on 6 May 2020

HAL is a multi-disciplinary open access archive for the deposit and dissemination of scientific research documents, whether they are published or not. The documents may come from teaching and research institutions in France or abroad, or from public or private research centers.

L'archive ouverte pluridisciplinaire **HAL**, est destinée au dépôt et à la diffusion de documents scientifiques de niveau recherche, publiés ou non, émanant des établissements d'enseignement et de recherche français ou étrangers, des laboratoires publics ou privés.

Comparing focal plane wavefront control techniques: Numerical simulations and laboratory experiments

A. Potier, P. Baudoz, R. Galicher, G. Singh, and A. Boccaletti

LESIA, Observatoire de Paris, Université PSL, CNRS, Sorbonne Université, Université de Paris, 5 Place Jules Janssen, 92195 Meudon, France
e-mail: axel.potier@obspm.fr

Received 29 October 2019 / Accepted 4 March 2020

ABSTRACT

Context. Fewer than 1% of all exoplanets detected to date have been characterized on the basis of spectroscopic observations of their atmosphere. Unlike indirect methods, high-contrast imaging offers access to atmospheric signatures by separating the light of a faint off-axis source from that of its parent star. Forthcoming space facilities, such as WFIRST/LUVOIR/HabEX, are expected to use coronagraphic instruments capable of imaging and spectroscopy in order to understand the physical properties of remote worlds. The primary technological challenge that drives the design of these instruments involves the precision control of wavefront phase and amplitude errors. To suppress the stellar intensity to acceptable levels, it is necessary to reduce phase aberrations to less than several picometers across the pupil of the telescope.

Aims. Several focal plane wavefront sensing and control techniques have been proposed and demonstrated in laboratory to achieve the required accuracy. However, these techniques have never been tested and compared under the same laboratory conditions. This paper compares two of these techniques in a closed loop in visible light: the pair-wise (PW) associated with electric field conjugation (EFC) and self-coherent camera (SCC).

Methods. We first ran numerical simulations to optimize PW wavefront sensing and to predict the performance of a coronagraphic instrument with PW associated to EFC wavefront control, assuming modeling errors for both PW and EFC. Then we implemented the techniques on a laboratory testbed. We introduced known aberrations into the system and compared the wavefront sensing using both PW and SCC. The speckle intensity in the coronagraphic image was then minimized using PW+EFC and SCC independently.

Results. We demonstrate that both techniques – SCC, based on spatial modulation of the speckle intensity using an empirical model of the instrument, and PW, based on temporal modulation using a synthetic model – can estimate the wavefront errors with the same precision. We also demonstrate that both SCC and PW+EFC can generate a dark hole in space-like conditions in a few iterations. Both techniques reach the current limitation of our laboratory bench and provide coronagraphic contrast levels of $\sim 5 \times 10^{-9}$ in a narrow spectral band ($< 0.25\%$ bandwidth).

Conclusions. Our results indicate that both techniques are mature enough to be implemented in future space telescopes equipped with deformable mirrors for high-contrast imaging of exoplanets.

Key words. instrumentation: adaptive optics – instrumentation: high angular resolution – planets and satellites: detection – planets and satellites: atmospheres

1. Introduction

By 2020, more than 4000 exoplanets have already been discovered, mainly using indirect detection techniques like transit or radial velocity. A few exoplanet atmospheres were probed using transit, high resolution spectroscopy, interferometry, and imaging. The transit method is used for planets that orbit at less than ~ 1 astronomical unit (AU) from their star (von Essen et al. 2019; Espinoza et al. 2019). High-resolution spectroscopy of non-transiting planets (Snellen et al. 2010; Alonso-Floriano et al. 2019) and interferometry (GRAVITY Collaboration 2020) currently focus on known exoplanets but without the ability to identify them. Imaging techniques to discover and spectrally characterize exoplanets in the outer part of the system have been devised (Macintosh et al. 2014; Beuzit et al. 2019; Konopacky et al. 2013) and are planned for implementation in future space missions (Debes et al. 2019).

Imaging remains, nonetheless, challenging because exoplanets are 10^4 – 10^{10} times fainter than their stars in visible and infrared light and they are separated from their star by a fraction

of an arcsecond. The high-contrast imaging (HCI) community uses coronagraphs to attenuate the starlight and large telescopes equipped with adaptive optics (AO) systems to reach the required angular resolution. These technologies have been implemented on the current instruments such as the Spectro-Polarimetric High-contrast Exoplanet REsearch (SPHERE, Beuzit et al. 2019) at the very large telescope and the Gemini Planet Imager (GPI, Macintosh et al. 2014) at the Gemini South observatory. These instruments are capable of discovering warm and young self-luminous exoplanets orbiting relatively far from their stars (β Pictoris b being one of the closest at 8 AU, Lagrange et al. 2010) but they cannot detect fainter (mature or smaller) planets closer to their stars because of instrumental limitations. Indeed, current AO systems minimize the phase aberrations measured in the wavefront sensing channel but leave non-common path aberrations (NCPAs) in the science channel. Because of NCPAs, part of the stellar light goes through the coronagraphic imaging channel and induces stellar speckles on the science detector. In a similar manner, space-based telescopes are affected by slowly evolving aberrations which also create

speckles in the science image (Racine et al. 1999; Guyon 2004; Martinez et al. 2012). In order to detect fainter exoplanets, such aberrations must be minimized to a level of a few picometers rms over the pupil.

Thus, an active minimization of the stellar speckle intensity in the coronagraphic image is mandatory for the new generation of HCI instruments. The active control involves a focal plane wavefront sensor (FP WFS) that measures the aberrations from the science image and a controller that drives deformable mirrors (DMs). Such a strategy will be used for the coronagraphic instrument on-board WFIRST (Mennesson et al. 2018).

The FP WFS can use spatial modulations of the speckle intensity as performed by the self coherent camera (SCC, Baudoz et al. 2006; Mazoyer et al. 2013; Delorme et al. 2016) or the asymmetric pupil Fourier wavefront sensor (Pope et al. 2014). Other techniques use temporal modulations of the speckle intensity, either in a small aberration regime like Pair-Wise probing (PW, Bordé & Traub 2006; Give'On et al. 2007a) or in a high aberration regime such as COFFEE (Sauvage et al. 2012; Paul et al. 2013; Herscovici-Schiller et al. 2018a). Once the wavefront is measured, a wavefront controller (WFC) is needed to drive DMs. Several techniques have been proposed to find the optimal DM shape for a given estimated wavefront. The Energy Minimization algorithm minimizes the total energy of the speckle field in the region of interest called the Dark Hole (DH) where the exoplanets are searched (Malbet et al. 1995; Bordé & Traub 2006). The Electric Field Conjugation technique (EFC) derives a DM setting required to achieve a desired electric field in the focal plane (Give'On et al. 2007a). The performance of these techniques can be improved using regularization terms to account for example for the obstructed apertures or the use of two DMs (Pueyo et al. 2009; Mazoyer et al. 2018) or in the case of large aberrations (Herscovici-Schiller et al. 2018b). All these techniques (WFS and WFC) have been developed and tested independently in laboratories in different environmental conditions (Mazoyer et al. 2019). However, to our knowledge, none of them have been compared on the same testbed in a closed loop so far.

This paper compares the combination of PW and EFC with the SCC on the *très haute dynamique* (THD2) bench at the Paris Observatory. In Sect. 2, we detail the theory behind PW and SCC WFS techniques and we also study the implementation and the robustness of PW. In Sect. 4, two ways of controlling the wavefront aberrations are described: SCC and EFC. As both PW and EFC require an optical model of the instrument, a robustness study of the speckle minimization by PW+EFC is carried out. In Sect. 5, we present the THD2 bench, followed by the implementation of the combination PW+EFC, on one hand, and the SCC, on the other hand, in the laboratory. We measure and compare the wavefront aberrations and the contrast levels reached using each technique. We conclude the study in Sect. 6 with a discussion of the results obtained on the THD2 testbed, along with a listing of the pros and cons of the two techniques: SCC and PW+EFC.

2. Wavefront sensors

This section describes the principle behind the two FP WFSs studied in this paper: the SCC and the PW. Both techniques measure the electric field in the science coronagraphic detector plane in a small aberration regime.

2.1. Model of light propagation

We model the light propagation inside a coronagraphic instrument. We call E_S the star electric field on the science detector.

We express this field as a function of α and β , the log-amplitude and phase aberrations in the pupil plane upstream of the coronagraphic mask:

$$E_S = C[A e^{\alpha+i\beta} e^{i\phi}], \quad (1)$$

where A is the electric field in the pupil plane free from aberrations and, ϕ is the phase introduced by a DM settled in the pupil plane upstream of the coronagraphic mask. C is the coronagraph linear operator that transforms the complex electric field from the pupil plane to the focal plane (science detector). Assuming a non-resolved star, the stellar light goes through the entrance pupil and is diffracted by a focal plane stellar coronagraph. The residual starlight is stopped by a Lyot-stop in the following conjugate pupil plane. Therefore, assuming Fourier optics, C can be written as:

$$\begin{aligned} C(E) &= \mathcal{F} \left[\mathcal{F}^{-1} [M \times \mathcal{F}(E)] \times L \right] \\ &= [M \times \mathcal{F}(E)] * \mathcal{F}(L), \end{aligned} \quad (2)$$

where \mathcal{F} denotes the Fourier transform (FT) operator, M represents the focal plane mask (FPM), and L is the classical binary Lyot stop. In the presence of aberrations, part of the stellar light goes through the system and reaches the science detector where stellar speckles are induced as a result. In case of small aberrations and small deformations of the DM, we can write the Taylor expansion of Eq. (1) as:

$$E_S = C \left[A e^{\alpha+i\beta} \right] + iC [A\phi] = E_{S_0} + E_{DM}. \quad (3)$$

The field E_{S_0} is associated to the stellar speckles that are in the science image downstream the coronagraph because of the unknown upstream aberrations α and β . The field E_{DM} is associated to the star speckles that can be induced thanks to the DM to compensate for E_{S_0} and therefore, to minimize E_S or its modulus. Before the minimization, one needs to measure the electric field E_{S_0} . As the detector measures the intensity in visible and near-infrared light, we can only access the squared modulus of E_{S_0} in the science image. To retrieve the field from its modulus, FP WFSs such as the SCC (Sect. 2.2) or the PW (Sect. 2.3) modulate, respectively, the speckle intensity $|E_{S_0}|^2$ either spatially or temporally.

2.2. The self-coherent camera

The SCC estimates the focal plane field from a spatial modulation of the speckle intensity. A small pinhole set next to the classical Lyot stop selects part of the starlight rejected by the FPM to create a reference channel (Galicher et al. 2010; Mazoyer et al. 2013). The residual starlight that propagates through this channel can interfere with the starlight that goes through the Lyot stop. The two fields recombine on the detector resulting in E_{SCC} ,

$$E_{SCC}(\vec{\eta}) = E_{S_0}(\vec{\eta}) + E_R(\vec{\eta}) \exp \left(\frac{-2i\pi \vec{\eta} \cdot \vec{\xi}}{\lambda} \right), \quad (4)$$

where E_R is the field induced by the light passing through the reference channel. E_{S_0} is defined by Eq. (1), considering $\phi = 0$ because no DM phase is added in the beginning. The vectors $\vec{\eta}$ and $\vec{\xi}$ describe the focal plane coordinates and the distance between the classical Lyot stop and the SCC reference pinhole in the Lyot stop plane, respectively. In monochromatic light at

wavelength λ , the total intensity on the detector when using SCC can be written as:

$$I(\vec{\eta}) = |E_{S_0}(\vec{\eta})|^2 + |E_R(\vec{\eta})|^2 + 2\Re \left[E_{S_0}(\vec{\eta}) E_R^*(\vec{\eta}) \exp \left(\frac{2i\pi \vec{\eta} \cdot \vec{\xi}}{\lambda} \right) \right]. \quad (5)$$

The first term is the speckle intensity that can be measured without SCC. The second term is the SCC reference channel intensity. The last term is the spatial modulation of E_{S_0} by the reference field E_R . Once an intensity image I is recorded, its numerical inverse FT can be calculated as:

$$\begin{aligned} \mathcal{F}^{-1}[I](\vec{u}) &= \mathcal{F}^{-1} \left[|E_{S_0}|^2 + |E_R|^2 \right] * \delta(\vec{u}) \\ &+ \mathcal{F}^{-1} \left[E_{S_0} E_R^* \right] * \delta \left(\vec{u} + \frac{\vec{\xi}}{\lambda} \right) \\ &+ \mathcal{F}^{-1} \left[E_{S_0}^* E_R \right] * \delta \left(\vec{u} - \frac{\vec{\xi}}{\lambda} \right), \end{aligned} \quad (6)$$

where δ is the Dirac function and $\mathcal{F}^{-1}[I](\vec{u})$ is the inverse FT of function I at the pupil plane position \vec{u} . This FT is composed of three peaks which do not overlap if the separation $\vec{\xi}$ between the classical Lyot stop and the SCC reference pinhole is large enough. In such a case, one can isolate the lateral peak centered on $\vec{u} = -\vec{\xi}/\lambda$ and call it $\mathcal{F}^{-1}[I_{\text{shifted}}]$ ¹ such that,

$$\mathcal{F}^{-1}[I_{\text{shifted}}] * \delta \left(\vec{u} + \frac{\vec{\xi}}{\lambda} \right) = \mathcal{F}^{-1} \left[E_{S_0} E_R^* \right] * \delta \left(\vec{u} + \frac{\vec{\xi}}{\lambda} \right). \quad (7)$$

After centering the extracted peak, a second numerical FT results in

$$I_{\text{shifted}} = E_{S_0} E_R^*. \quad (8)$$

Thus, by applying two numerical Fourier transforms on the recorded image I , the electric field E_{S_0} of the stellar speckles present in the science image can be estimated (Mazoyer et al. 2014a).

2.3. Pair-wise probing

PW probing uses temporal modulations of the speckle intensity to retrieve E_{S_0} (Give' on et al. 2007b). Similar to phase diversity (Gonsalves 1982), several intensity images are recorded after introducing known aberrations called probes in the optical path. These probes can be created in the pupil plane by applying known shapes on the DM. Assuming a small probe phase ϕ_m in Eq. (3), the intensity recorded by the science detector can be written as:

$$I_m = |E_{S_0} + iC[A\phi_m]|^2. \quad (9)$$

For each probe phase ϕ_m , a pair of images I_m^+ and I_m^- are recorded corresponding to probes $\pm\phi_m$. Then the difference between these images is calculated:

$$I_m^+ - I_m^- = 4(\Re(E_{S_0})\Re(iC[A\phi_m]) + \Im(E_{S_0})\Im(iC[A\phi_m])), \quad (10)$$

where $\Re(E_{S_0})$ and $\Im(E_{S_0})$, respectively, represent the real and imaginary parts of the complex electric field E_{S_0} . Considering k

¹ Any one of the lateral peaks can be selected because the two peaks are simply complex conjugates.

probes, Eq. (10) can also be written for each pixel of the science image with coordinates (i, j) as:

$$\begin{bmatrix} I_1^+ - I_1^- \\ \vdots \\ I_k^+ - I_k^- \end{bmatrix}_{(i,j)} = 4 \begin{bmatrix} \Re(iC[A\phi_1]) & \Im(iC[A\phi_1]) \\ \vdots & \vdots \\ \Re(iC[A\phi_k]) & \Im(iC[A\phi_k]) \end{bmatrix}_{(i,j)} \begin{bmatrix} \Re(E_{S_0}) \\ \Im(E_{S_0}) \end{bmatrix}_{(i,j)}. \quad (11)$$

In order to fully retrieve E_{S_0} at pixel (i, j) , at least two of the k probes, called ϕ_m and ϕ_n , must obey

$$\Re(iC[A\phi_m])\Im(iC[A\phi_n]) - \Re(iC[A\phi_n])\Im(iC[A\phi_m]) \neq 0. \quad (12)$$

This condition imposes that at least two of the probes induce different electric fields E_{DM} at a particular location (i, j) . The values of n and m can vary from one pixel to the other.

For all pixels for which Eq. (12) is true, Eq. (11) can be inverted to estimate the real and imaginary parts of the electric field E_{S_0} :

$$\begin{bmatrix} \Re(E_{S_0}) \\ \Im(E_{S_0}) \end{bmatrix}_{(i,j)} = \frac{1}{4} \begin{bmatrix} \Re(iC[A\phi_1]) & \Im(iC[A\phi_1]) \\ \vdots & \vdots \\ \Re(iC[A\phi_k]) & \Im(iC[A\phi_k]) \end{bmatrix}_{(i,j)}^\dagger \begin{bmatrix} I_1^+ - I_1^- \\ \vdots \\ I_k^+ - I_k^- \end{bmatrix}_{(i,j)}, \quad (13)$$

where \mathbf{X}^\dagger is the pseudo inverse of matrix \mathbf{X} calculated by the singular value decomposition (SVD) method. To conclude, PW can be implemented as follows: (1) We choose the k probes to be applied on the DM; (2) We record the images I_m^+ and I_m^- on the science detector adding the probes $\pm\phi_m$ on the DM; (3) We use a numerical model of the instrument to estimate the electric field $E_{DM} = iC[A\phi_m]$ added on each pixel of the science image for each probe ϕ_m ; (4) We apply Eq. (13) to estimate E_{S_0} at the desired pixels using the recorded images I_m^+ and I_m^- .

A trade-off is required while choosing the number k . On the one hand, a large number k of probes will ensure that Eq. (12) is true for all pixels of interest. On the other hand, this number should be minimized to prevent the astrophysical data being contaminated by the probes during the science acquisition. For estimating the speckle field E_{S_0} from Eq. (12), it is clear that at least two probes corresponding to 4 images are needed. The choice of the probes, ϕ_m , is therefore a key element for PW. In Sect. 3.2, we consider the case where two and three actuators are used as probes. We then study the robustness of PW versus a model error in Sect. 3.3.

3. Numerical simulation of pair-wise probing

3.1. Assumptions of numerical simulations

The study in the following sections is based on the numerical simulations of the light propagation on the THD2 bench. Here, we briefly define a few simulation parameters (more detail in Sect. 5.1): a four-quadrant phase mask coronagraph (FQPM, Rouan et al. 2000) as a FPM, a science detector of 400×400 pixels with 7.55 pixels per resolution element, the position of the 28×28 actuators with respect to the pupil (see Fig. 1), and the influence function associated with each of the actuators (Mazoyer et al. 2014b). We introduce a random phase aberration β with a power spectral density (PSD) proportional to the

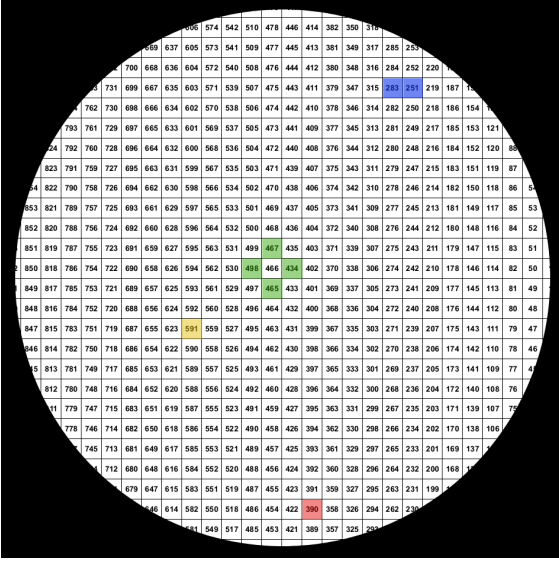


Fig. 1. Position of DM actuators with respect to the pupil on the THD2 bench. The colored actuators correspond to different PW probes tested in Sects. 3.2 and 3.3. The association of actuator 466 (at DM center) with one of the actuators in green brings on a small error on the estimation of E_{S_0} . The association of actuator 466 with the yellow actuator brings an average error. On the contrary, associating actuator 466 with the red actuator provides a bad estimation of E_{S_0} (see Sect. 3.2). The blue actuators are used in Sect. 3.3 to study the robustness of PW in case of errors on the numerical model.

inverse of the spatial frequency to the power 3. Its standard deviation inside the pupil is 20 nm. We also consider 8% rms error for the amplitude aberrations α with a PSD proportional to the inverse of the square of the spatial frequency.

Matthews et al. (2017) and Give'on et al. (2011) proposed to use *sinc* functions as probes in the pupil plane to modulate the speckle intensity with a spatially uniform electric field in rectangular regions of the science image. We choose to use single actuator bumps because the phase induced when moving several actuators close to each other with a Boston Micromachine DM can be non-linear with respect to the voltages because of the mechanical constrains. The influence function of each actuator is well constrained for the DM on THD2 (Mazoyer et al. 2014b).

The choice of the bump amplitude is a trade-off. If it is too low, the signal from the difference $I_m^+ - I_m^-$ stays below the noise level. If it is too high, the Taylor expansion of Eq. (3) is no longer valid. We choose a peak-to-valley amplitude of 40 nm in numerical simulation. We do not account for photon or detector noise.

3.2. Probe choice: actuator bumps

3.2.1. Two pairs of probes

We set actuator 466 as the first probe. This actuator is at the center of the DM and also close to the center of the pupil. We then search for the second actuator that optimizes the PW estimation in the case of two probes ($k = 2$). We independently use each actuator located in the pupil as a second probe to estimate the electric field E_{S_0} defined in Eq. (13).

To evaluate the quality of each estimation \hat{E}_{S_0} , we first determine the true field, E_{S_0} , that is known in the numerical simulations and computed from Eq. (1) by equating $\phi = 0$. We calculate the standard deviation σ_0 of E_{S_0} inside the DH of size $28 \lambda/D \times 28 \lambda/D$ centered on the optical axis. For each estimation \hat{E}_{S_0} , we calculate the root mean square error (RMSE) which

is the average of $\sqrt{(\hat{E}_{S_0} - E_{S_0})^2}$ over the DH accounting only for pixels for which the difference $|\hat{E}_{S_0} - E_{S_0}|$ is smaller than three times σ_0 . This metric measures the accuracy of the estimation and checks if the estimation makes sense (smaller than $3\sigma_0$). It is plotted in Fig. 2 as a grey dashed line.

We use a second metric that is the ratio of the number of mis-estimated pixels, that is, for which the estimation error is larger than, $3\sigma_0$, to the number of pixels inside the DH. It is plotted in blue line in Fig. 2. This metric measures the detector surface where the electric field is not adequately estimated.

These two metrics provide very similar results. As expected, the number of pixels where Eq. (12) is valid and the accuracy of the estimation of E_S are strongly correlated. We notice that the accuracy of the estimation is better when the second actuator comes closer to the first one (index 466) and is worse when it rolls away. We find that the best estimation according to both metrics is obtained for the actuator 498 that is one of the four closest neighbor of actuator 466 (see in Fig. 1). In this case, the number of mis-estimated pixels is 0.16%.

Figure 3 shows the imaginary part of the electric field E_S on the left, and its PW estimation using a pair of actuators (466 and 498) in the center. The images are of size $28 \lambda/D \times 28 \lambda/D$. The difference between the two images multiplied by 10 is shown on the right of Fig. 3. The electric field is well estimated everywhere in the field of view except on the edge of the DH and close to the FQPM transitions. For the latter, Eq. (12) is not valid because the light propagation model foresees a good extinction for the pixels along the FQPM transition whatever the pupil plane electric field is.

We used a third metric to verify the results obtained with the first two metrics. For a given pair of actuator-probes, we study the inverse of the singular values of the pseudo inverse matrix in Eq. (13) at each pixel of the science detector. A high value indicates that the noise is enhanced and the estimation is not accurate. For a given DH, creating maps of these values is a practical tool to choose a pair of actuators. As an example, we show on the right of Fig. 4, the maps for three different pairs of actuators whose positions are shown in the first two columns.

In these maps, the brighter are the pixels, the higher are the values and the poorer is the estimation of E_{S_0} . If two actuators are close to each other, the inverse problem is well-posed in all the field of view except near the FQPM transitions and close to the edge of the DH. When the distance between actuators increases, the problem becomes ill-posed and periodic patterns of pixels where the estimation is inaccurate appear. The distribution of these pixels is important for a good estimation. For example, in an average case (yellow cross in Fig. 2 and middle row in Fig. 4) for which the RMSE and the ratio of mis-estimated pixels are low, the periodicity of misestimated pixels prevents the generation of a DH with a strong attenuation of the stellar speckles.

Therefore, the RMSE and the misestimated pixels ratio metrics alone are not accurate enough to determine a good probe combination. Using the map of the maximum of the inverse of the singular values appears to be an efficient complementary tool. In a future work, we will optimize this map to account for the distribution of the detector and photon noise that are not simulated here.

3.2.2. Three probes

We performed the same study using three probes instead of two. We tested all the triplets that included actuator 466. The best triplet slightly improves the estimation with respect to the case

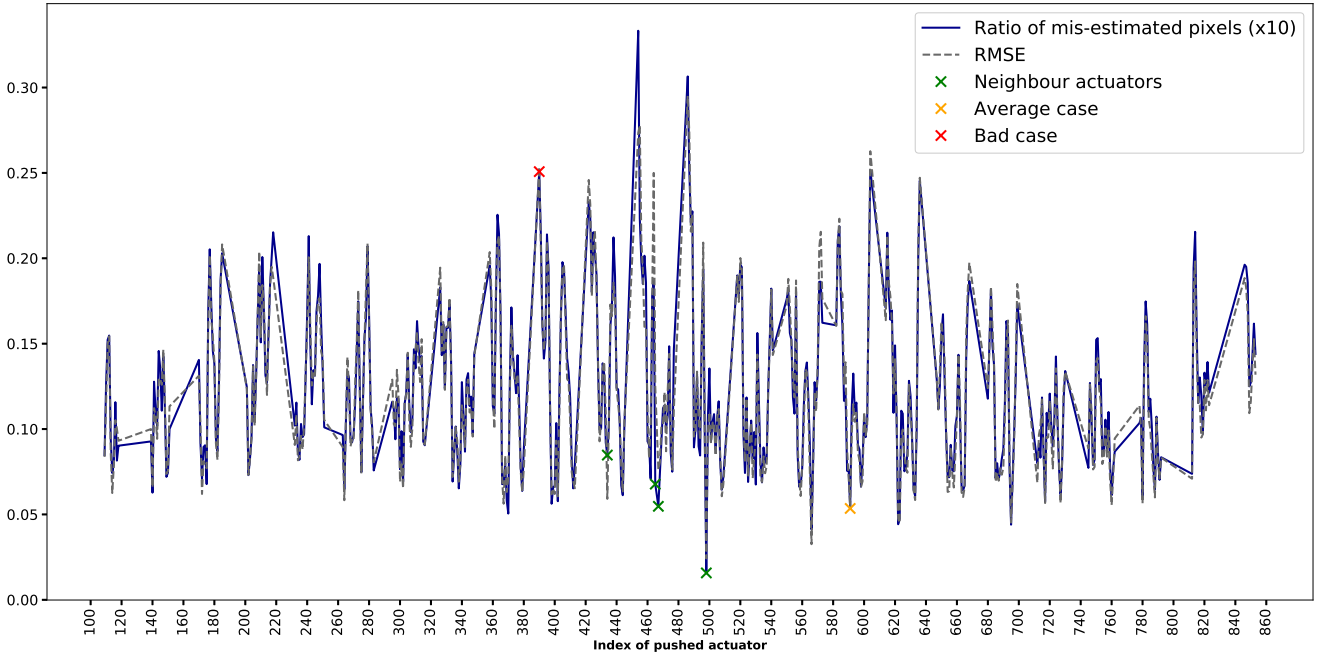


Fig. 2. Comparing the focal plane electric field with its PW estimate in the root mean square error metric (in dashed line in grey). The RMSE was calculated on the pixels where the difference between the true electric field and its focal plane estimate does not exceed three times the standard deviation of the true electric field. The pixels above this value are called “mis-estimated pixels”. The ratio between the mis-estimated pixels and the total number of pixels in the DH area is multiplied by 10 and then plotted in blue. For the PW process, the first probe used is the actuator 466. The second probe is the bump of the actuator whose index is indicated in the x axis. The position of all these actuators are presented in Fig. 1. The green crosses represent the ratio of mis-estimated pixels when the actuator 466 is associated with its four closest neighbors. The red cross represents a poor case when the actuator 466 is combined with the actuator 390. The actuator 591 is randomly chosen to illustrate an average result (yellow cross).

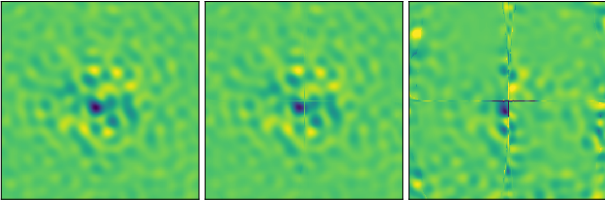


Fig. 3. Imaginary part of the true electric field (*left*). Imaginary part of the estimated electric field with 466 and 498 actuators bumps as probes (*center*). Ten times the difference between the two images (*right*). The intensity scale is the same for all the images.

with two probes mainly at large angular separations in the final image. As already mentioned, one can increase the number of probes to obtain a better estimation of E_{S_0} . However, during an actual observation, the choice between two or more probes will be driven by the time allocated for the speckle minimization versus the astrophysical observation.

3.3. Robustness study

In Sect. 3.2, we assumed no error on the model of the instrument. This is not realistic because the thermal fluctuations and the changing mechanical flexures will always limit the precision of our knowledge on the state of the instrument. We note that the impact of model errors has been studied by Matthews et al. (2017) in the context of ground-based telescopes for *sinc* probes and for an apodized Lyot coronagraph. Here, we determine the impact of model errors assuming actuator probes and a perfect FQPM coronagraph in the space-like conditions (no atmospheric turbulence). We study three different cases: error on the influence

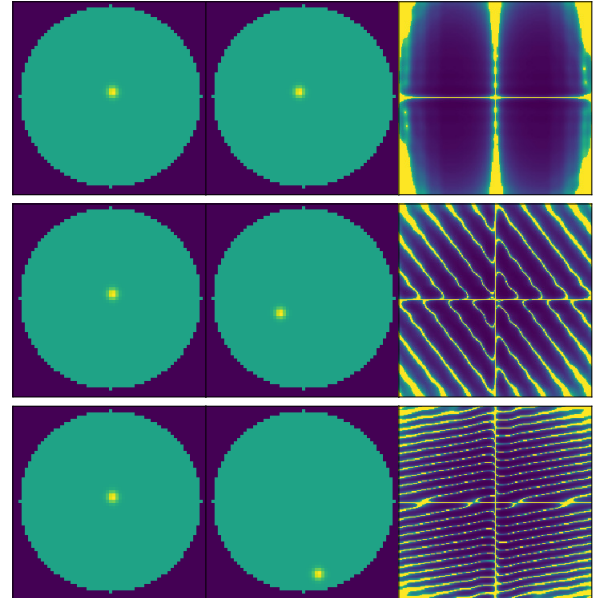


Fig. 4. *Top*: positions of the 466 and 498 index actuators and their associated inverse eigenvalues (best case). *Center*: position of the 466 and 591 index actuators and their associated inverse eigenvalues (average case). *Bottom*: position of the 466 and 390 index actuators and their associated inverse eigenvalues (bad case). In the third column, the highest of the inverse eigenvalues do not exceed the same threshold and appear bright.

function of the DM actuator, translation, and rotation of the DM relative to the pupil. For each case, we measure the RMSE for three DH sizes discarding all pixels of the DH above $3\sigma_0$ as

explained in the previous section. The sizes of these DHs are $28 \lambda/D \times 28 \lambda/D$, $14 \lambda/D \times 14 \lambda/D$ and $7 \lambda/D \times 7 \lambda/D$. Under the assumptions described in Sect. 3.1, we first calculate the true electric field E_{S_0} followed by simulating the PW technique using actuators 466 and 498 as probes.

3.3.1. Influence function

In this section, we study the impact of an error on the model of the influence function. First we simulate images I_m^\pm by considering the influence function of the actuators to be a Gaussian function with full width half maximum (FWHM) equals to 1.2 times the pitch (the distance between two sequential actuators). When this FWHM is used in the model, Eq. (13) provides the best estimation of \hat{E}_{S_0} . When we use a Gaussian function with a FWHM in the model of the instrument that differs from the one used to simulate the images I_m^\pm , the pseudo inverse matrix of Eq. (13) deviates from the best solution. We test several FWHM and, for each of them, we plot the RMSE metric on the left of Fig. 5. For the three DH sizes, the RMSE (error on the estimation) remains below 20% as long as the error on the FWHM of the influence function stays below 25%. The knowledge of the influence function is therefore important for an accurate estimation of the electric field. To model the DM on the THD2 bench in the rest of the paper except in Sect. 4.3, we use the non-Gaussian function measured by Mazoyer et al. (2014b).

3.3.2. Actuator positions

In this section, we study the impact of a model error on the DM position. As previously, we acquire images, I_m^\pm , by fixing a certain position of the DM. This is referred to as the ‘‘true DM’’. We then consider that the modeled DM array is translated relative to the true DM in the horizontal direction in Fig. 1. We calculate the estimated field, \hat{E}_{S_0} , and the corresponding RMSE for each simulated error and for the three considered DHs. The central plot in Fig. 5 shows the RMSE results. A translation of the modeled DM relative to the true one has more impact on the PW estimation when the DH is larger. It means that the estimation of E_{S_0} is worst in the regions far from the optical axis. This is logical since the errors in the pupil plane are larger for higher spatial frequencies than for the lower spatial frequencies when the estimated aberrations in the pupil plane are translated relative to the true ones (α and β). For instance, a translation error of one pitch implies a 20% error in the $7 \lambda/D \times 7 \lambda/D$ region around the center, whereas it reaches 60% in the largest DH ($28 \lambda/D \times 28 \lambda/D$). The more uncertainties there are on the positions of the actuators, the narrower the region of correction.

We now consider that the modeled DM is not translated relative to the true one but is rotated around the pupil center. We calculate the estimated field and the RMSE for each rotation error. Results are plotted in blue on the right of Fig. 5. As for the translation error, the larger the DH the more sensitive the PW is to the rotation error. For example, the RMSE is 10% for the largest DH ($28 \lambda/D \times 28 \lambda/D$) and 5% for the smallest one. Actuator 498 is at about two actuators from the pupil center such that a rotation of 10° corresponds to a translation of 0.35 pitch. From the translation error plot (center plot of Fig. 5), a 0.35 pitch translation error gives a RMSE of $\sim 10\%$ for the largest DH and $\sim 5\%$ for the smallest one. We therefore expect the PW estimation to be more sensitive to an error on the angular position of the DM if the actuator-probes are further away from the center of the pupil. We confirm this statement by executing the same study for a pair of actuator-probes closer to the edge of the pupil: actuators 283

and 251. The results plotted in red on the right of Fig. 5 confirm the following statement: the closer the pair of actuator-probes is to the center of the pupil, the more robust is the PW with respect to a rotational error.

4. Wavefront control

Once the electric field E_{S_0} is estimated, DMs are controlled to minimize the stellar speckle intensity inside a DH. In this section, we present two wavefront control techniques (SCC and EFC) assuming small aberrations (α and β) and a single DM placed in the pupil plane. Both techniques use an iterative process and a control matrix.

4.1. SCC and EFC common strategy

Classical AO systems measure and minimize the phase aberrations β in the pupil plane. In the context of HCI, this strategy is not optimal because the amplitude aberrations α also induce stellar speckles in the science image. Moreover, DMs cannot control all the high spatial frequencies because of the limited number of actuators. Therefore, even if there are no amplitude aberrations, one DM cannot completely null the phase β . That is why Malbet et al. (1995) proposed to minimize the stellar speckle intensity inside a DH in the science image instead of the phase in a pupil plane. This has two main advantages. The field induced by both amplitude and phase aberrations can be minimized. And a stronger attenuation can be reached using the frequency-folding phenomenon and by decreasing the size of the DH (Bord e & Traub 2006; Give’On et al. 2006).

We assume a single DM placed in the pupil plane and we consider that the focal plane field $E_{DM} = iC[A\phi]$ induced on the science detector is a linear combination of the DM actuator voltages \bar{a} :

$$E_{DM} = \mathbf{G} \bar{a}, \quad (14)$$

where \mathbf{G} is the linear transformation matrix between \bar{a} and E_{DM} .

For the purposes of minimizing the speckle intensity, we search for the DM voltages that minimize the electric field $E_S = E_{S_0} + E_{DM}$ of Eq. (3) inside the DH. In other terms, we minimize the following least mean squared criteria inside the DH:

$$d^2 = \|E_{S_0} + \mathbf{G} \bar{a}\|^2. \quad (15)$$

Several methods exist to solve this equation. We use a truncated SVD to invert the matrix \mathbf{G} and obtain the control matrix \mathbf{G}^\dagger . Indeed, the SVD is an easy-to-compute method to invert matrices and to minimize least-mean squared criteria. However, the problem is always ill-conditioned, which leads the derived solution \bar{a} to be highly sensitive to any error in the computation of \mathbf{G} and E_{S_0} . Hence, we chose to regularize the SVD of \mathbf{G} by truncating the lowest singular values to decrease the condition number and to ensure a more stable solution. Therefore, if we separate and concatenate the real and imaginary parts, one solution of Eq. (15) can be written as:

$$\bar{a} = -g[\Re(\mathbf{G}) \frown \Im(\mathbf{G})]^\dagger [\Re(E_{S_0}) \frown \Im(E_{S_0})], \quad (16)$$

where \frown represents the concatenation. The field E_{S_0} is the one estimated by the FPWFSs such as the SCC or PW. Because of the linearization of Eq. (3), we work in closed loop minimizing d in several iterations. The gain g ensures the loop convergence.

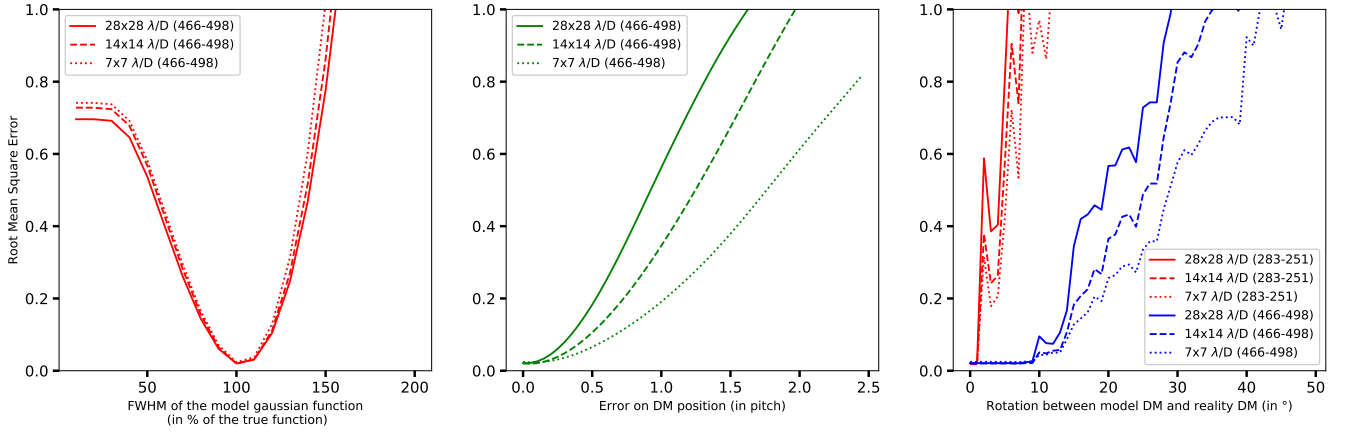


Fig. 5. RMS error for three sizes of DH as a function of model errors. *Left:* influence function size error. *Center:* DM translation error. *Right:* DM rotation error for two different combinations of probes.

4.2. Control matrices implementation

The main difficulty of the WFC strategy is to determine the matrix \mathbf{G} . In the case of SCC (Sect. 4.2.1), we use an empirical matrix recorded prior to closing the correction loop. For the EFC (Sect. 4.2.2), we use an analytical model of the instrument to calculate a synthetic matrix.

4.2.1. Self-coherent camera

The SCC technique does both focal plane wavefront sensing (Sect. 2.2) as well as WFC in closed loop. Mazoyer et al. (2014a) showed that minimizing I_{shifted} of Eq. (8) is the same as minimizing E_{S_0} inside the DH when the reference field E_R is nonzero over the DH. This is the case in the configuration we test in Sect. 5. Therefore, we can replace E_{S_0} by I_{shifted} in Eq. (16).

In the literature, the SCC interaction matrix \mathbf{G} is an empirical matrix measured before applying the correction by recording SCC images while known sine and cosine patterns are applied on the DM (Poyneer & Véran 2005). For the p th sine/cosine function, $I_{\text{shifted in DH},p}$ is estimated from Eq. (8). Calling N the number of sine/cosine functions, the interaction matrix D gathers all the measurements

$$D = \begin{bmatrix} I_{\text{shifted in DH},1} \\ \vdots \\ I_{\text{shifted in DH},N} \end{bmatrix}. \quad (17)$$

The \mathbf{G} matrix can then be obtained using

$$\mathbf{G} = D S, \quad (18)$$

where S is the linear map between the DM actuator voltages \bar{a} and the sine/cosine basis.

4.2.2. Electric field conjugation

The second WFC that we study is the EFC described in Give'On et al. (2007a), also called speckle field nulling in Bordé & Traub (2006). Unlike SCC, EFC is based on the model of the instrument. We take into account the same model which was used for the PW (Sect. 2.3) to calculate the electric field E_{DM} induced by each actuator of the DM inside the DH. We decided to use the actuator basis (Boyer et al. 1990) and note that a sine/cosine basis can also be implemented. We then calculated

all the simulated fields to build the synthetic matrix \mathbf{G} . We can eventually use the synthetic matrix and the electric field E_{S_0} measured by PW (Eq. (3)) to derive the DM voltages from Eq. (16) to minimize the stellar speckle intensity inside the DH region.

The efficiency of EFC as well as PW is strongly correlated to the level of inaccuracy within the model. One can mitigate the impact of the inaccuracies truncating the SVDs. The PW SVD is needed in Eq. (13) for the wavefront sensing. In case of no truncation, the field E_{S_0} is accurately estimated everywhere in the DH except at certain specific positions (bright areas in Fig. 4) that can induce bright speckles and lead to instabilities of the correction loop. If too many values are eliminated, the estimation of E_{S_0} is biased and the minimization is not effective. The EFC SVD is needed in Eq. (16) for the WFC. If no truncation is used then the noise and the estimation errors induce inaccurate motion of the DM actuators. This will also lead to the instabilities of the correction loop. If too many values are truncated then the loop becomes stable but almost no modes are compensated by the DM leading to no improvement in the speckle intensity minimization. In this work, we empirically chose the values of both PW and EFC truncations to obtain the best performance without diverging in numerical simulations.

4.3. Robustness study of the PW+EFC closed loop

This section presents the impact of model errors on the performance of the PW+EFC correction loop. We consider the same errors as for PW in Sect. 3.3: influence function size, translation and rotation of the DM. We use the assumptions of Sect. 3.1 except for the amplitude aberrations. Here they are assumed to be at 10% rms error and their PSD distribution is almost flat so that we may approach the testbed environment of the THD2. The two probes for the PW technique are considered to be the bumps of the actuators 466 and 498. We fix the loop gain at $g = 0.5$. We simulate 578 actuators in the pupil to calculate the matrix \mathbf{G} and we select 550 modes after the EFC SVD. As we study the correction of both amplitude and phase aberrations by a single DM, the correction is done within a half DH spreading from $2\lambda/D$ to $13\lambda/D$ on the horizontal axis and $-13\lambda/D$ to $13\lambda/D$ on the vertical axis. After the tenth iteration, the contrast level C is computed as the 1σ azimuthal standard deviation of the intensity in the coronagraphic science image divided by the maximum of the non-coronagraphic point spread function (PSF).

The results are shown in Fig. 6. In each plot, the full line is the performance with no model error. Model errors can strongly

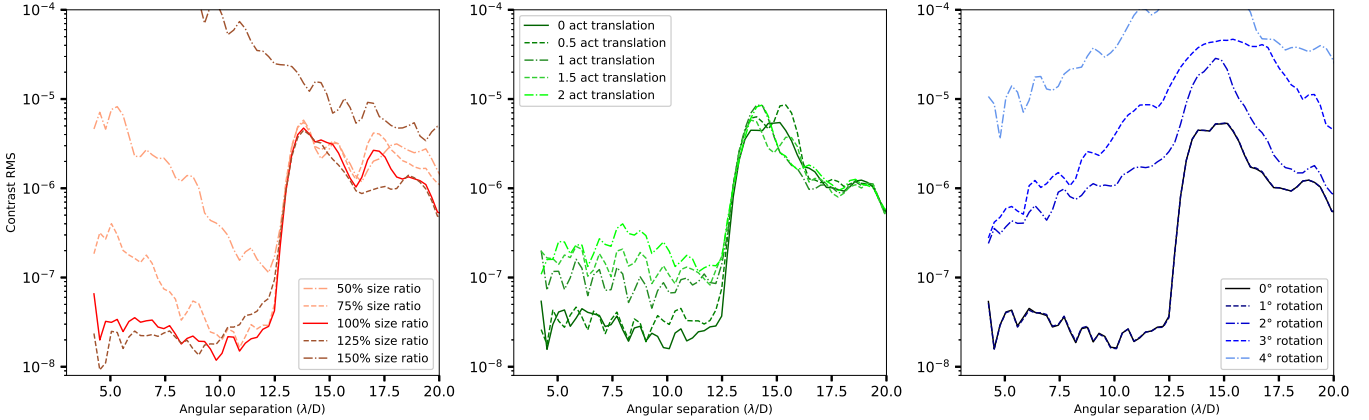


Fig. 6. RMS contrast as a function of the angular separation for different cases of model errors when implementing PW+EFC. Model errors simulated are the size of the influence function (*left*), a lateral translation of the DM (*center*), and a rotation of the DM (*right*).

impact both the WFS (Sect. 3.3) and the WFC. In order to reach a 10^{-7} contrast level, the size of the influence function has to be known with less than 25% error, the translation of the modeled DM relative to the true one should be less than 0.5 pitch and the orientation of the modeled DM should be better than 1° .

5. Lab performances: wavefront sensing and control on the THD2 bench

5.1. Bench description

We compared the two wavefront sensing and control techniques described above on a HCI testbed developed at LESIA (Observatoire de Paris). The optical testbed, called THD2 for *trés haute dynamique*, is located in an ISO7 pressurized clean room. It is described in detail in Baudoz et al. (2018a) and its layout is shown in Fig. 7. In this paper, we used the following components:

- An optical single mode fiber providing a monochromatic light source of wavelength 783.25 nm with a bandwidth less than 2 nm. The focal length of the first off-axis parabola (500 mm) flattens the Gaussian output of the fiber over the pupil diameter. The resulting amplitude aberration allows to reach a contrast level below 10^{-7} at $1 \lambda/D$.
- An entrance pupil of 8.23 mm diameter.
- 32×32 Boston-Micromachine (DM3) settled in pupil plane 2.
- A FQPM located at the focal plane 3 in Fig. 7.
- A Lyot-stop of 8 mm diameter in the pupil plane 3 (corresponding to a Lyot filtering of 97.2%). In this Lyot plane, a small pinhole with a diameter of 0.4 mm is located at 14.1 mm from the center of the Lyot stop and can be opened or closed to allow the use of the SCC. The ratio between the pinhole and the Lyot stop gives the first zero of the reference field at a radius of $24 \lambda/D$. Thus, the SCC could theoretically correct a DH with a diameter up to $48 \lambda/D$.
- Part of the light stopped by the Lyot-stop is reflected towards a Low Order Wavefront Sensor detector in the focal plane 4. This channel is used to stabilize the image of an on-axis star at the center of the FQPM thanks to the tip-tilt mirror placed before the first pupil plane (Singh et al. 2014).
- A sCMOS camera recording images in the focal plane 5.

The exact level of the phase induced by DM3 was not well known because there is no absolute WFS on the THD2 bench. To calibrate DM3, which is located in the pupil plane, we apply

a cosine pattern with a small amplitude. This creates two copies of the PSF in the coronagraphic focal plane. By measuring the intensity of the copies with respect to the non coronagraphic PSF intensity, we infer the amplitude of the cosine optical path difference (OPD) that was introduced by the DM. We then obtain the conversion factor from voltages to OPD.

The DM also has a non-linear response for each actuator that we numerically linearized using a quadratic function. Finally, neighbor actuators are coupled. However, for small displacements (less than 100 nm), the relative accuracy on the actuator displacement is better than 10%, which is not a limitation since we operate in closed loop.

5.2. Wavefront sensors comparison

The PW technique is sensitive to the model errors, especially to the DM position with respect to the pupil (Sect. 3.3). We took advantage of the previous implementation of the SCC on the THD2 bench to figure out the position of each actuators with respect to the pupil. We estimated that the actuators' positions with respect to the pupil are known with an accuracy of better than a 0.2 pitch. The use of SCC for this measurement is not mandatory. It could be replaced by another WFS or pupil imaging.

We first used SCC and PW to retrieve a 1.65 ± 0.05 nm cosine pattern that is applied to DM3. The SCC phase estimation is showed on the left of Fig. 8.

We then independently use PW using three probes: actuators numbered 309, 495, and 659 (Fig. 1) with an amplitude of 33 ± 3 nm. The electric field E_{S_0} is derived from Eq. (13). Finally, we use the inverse model of the instrument to get back to the pupil plane with a minor loss of information due to FQPM filtering (Mazoyer et al. 2013; Herscovici-Schiller et al. 2018a). The PW phase estimation is shown on the center of Fig. 8. The right panel gives the difference between the SCC estimation and 0.90 times the PW estimation. The coefficient 0.90 was chosen to minimize the residuals. The location and orientation in the pupil plane of the cosine function are consistent for both methods. The 10% difference in phase amplitude might comes from the conversion from voltages to OPD that was calibrated during an accuracy of 10%. This effect can easily be compensated with the correction by choosing a gain g smaller than 1 in Eq. (16).

We then used SCC and PW to retrieve a F -shape phase map induced by the poked actuators (six in total) with an amplitude of 33 nm on DM3. The estimated phase map (first row) and

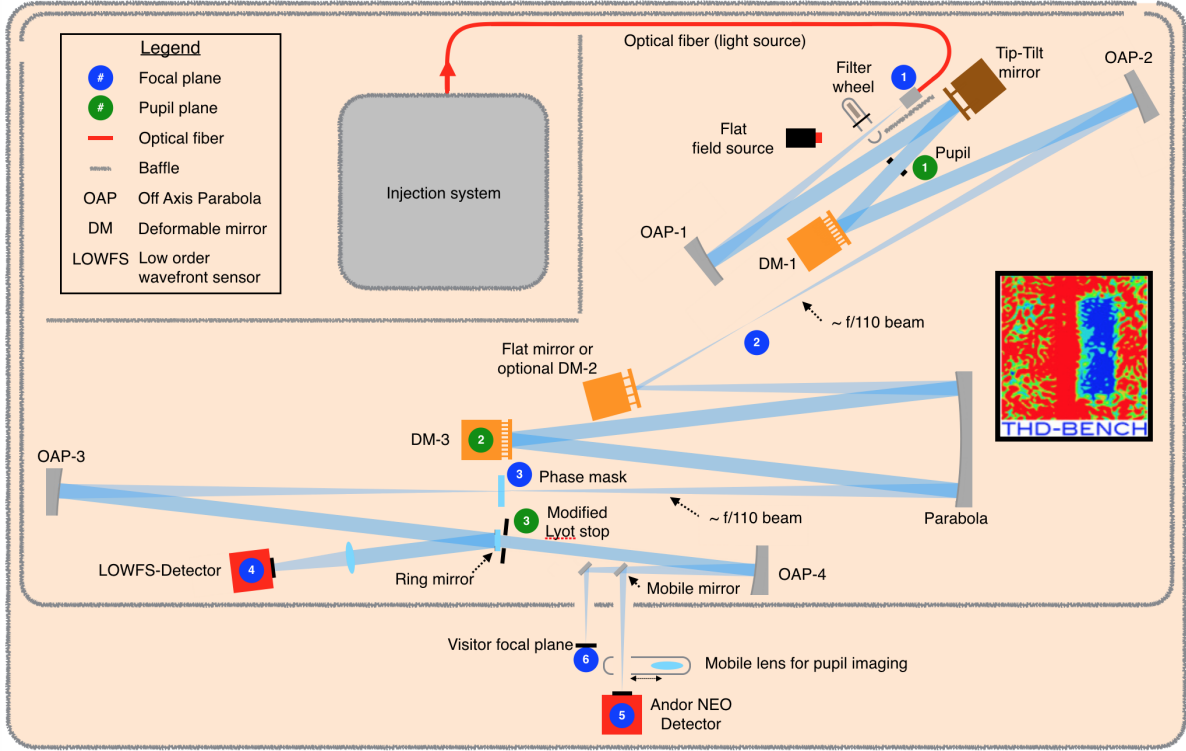


Fig. 7. Layout of the THD2 bench presenting different optical components.

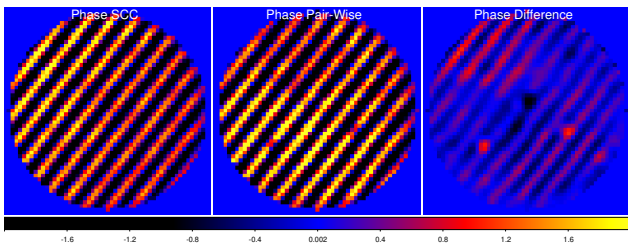


Fig. 8. *Left*: SCC estimation (in nm) of an estimated 1.65 nm cosine. *Center*: PW estimation (in nm) of the same 1.65 nm cosine. *Right*: difference between the SCC estimation and 0.90 times the EFC estimation.

amplitude (second row) are shown in Fig. 9 for SCC (left) and PW (center). The dark vertical and horizontal structures that are aligned with the poked actuators are the artifacts produced by the FQM transitions which diffract light outside of the Lyot stop. We proved in a laboratory setting that this is not a limitation for efficient correction (Mazoyer et al. 2013) inside a DH because we do not need to back propagate the phase and amplitude aberrations in the pupil plane. Here, we do the back propagation only for the purposes of presentation. We find that SCC and PW provide very similar phase estimation. The difference between the estimation of SCC and 0.93 times the estimation of PW is shown on the right of the figure. The coefficient 0.93 was again chosen to minimize the energy of the difference. As previously, the coefficient might come from the voltage-to-nanometer accuracy. The F -shape pattern is also detected in the amplitude images. This is because both SCC and PW measure the second order in the Taylor expansion of $e^{i\phi}$ with ϕ the phase induced by the DM. For a 33 nm phase aberration at 783.25 nm, we expect an amplitude aberration of $\phi^2/2 \approx 3.5\%$. Converted to OPD unit at 785.25 nm, we find an amplitude error of 4.4 nm. In the SCC and PW amplitude estimation, we measure an amplitude error of 4.2 nm rms

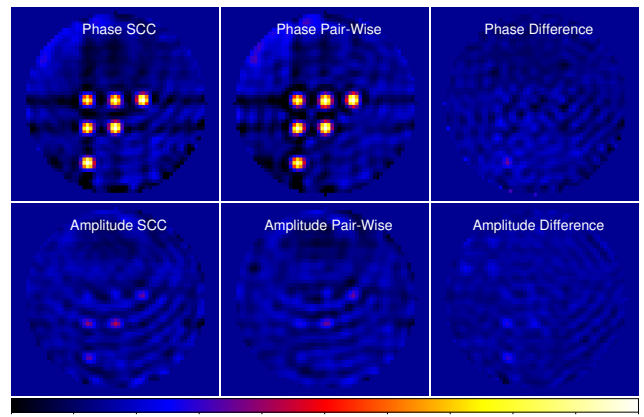


Fig. 9. *Left*: SCC estimation (in nm) of the 33 nm F -shape for both phase and amplitude aberrations. *Center*: PW estimation (in nm) of the 33 nm F -shape. *Right*: difference between the SCC estimation and 0.93 times the EFC estimation.

for PW and 6.5 nm rms for SCC, which is consistent with what was expected.

5.3. Wavefront control comparison

We finally tested the correction loop considering both SCC and PW+EFC independently. In both cases, we started from the same DM voltages implying that the same initial phase and amplitude aberrations were considered prior to testing. The initial image corresponds to a coronagraphic image where the phase was pre-corrected with SCC to reach a contrast level of $\approx 10^{-6}$ (Fig. 10, left). As a first experiment, we used the PW technique to estimate the field as explained in Sect. 5.2 and EFC with 550 modes to create a half DH from $2\lambda/D$ to $13\lambda/D$ in one

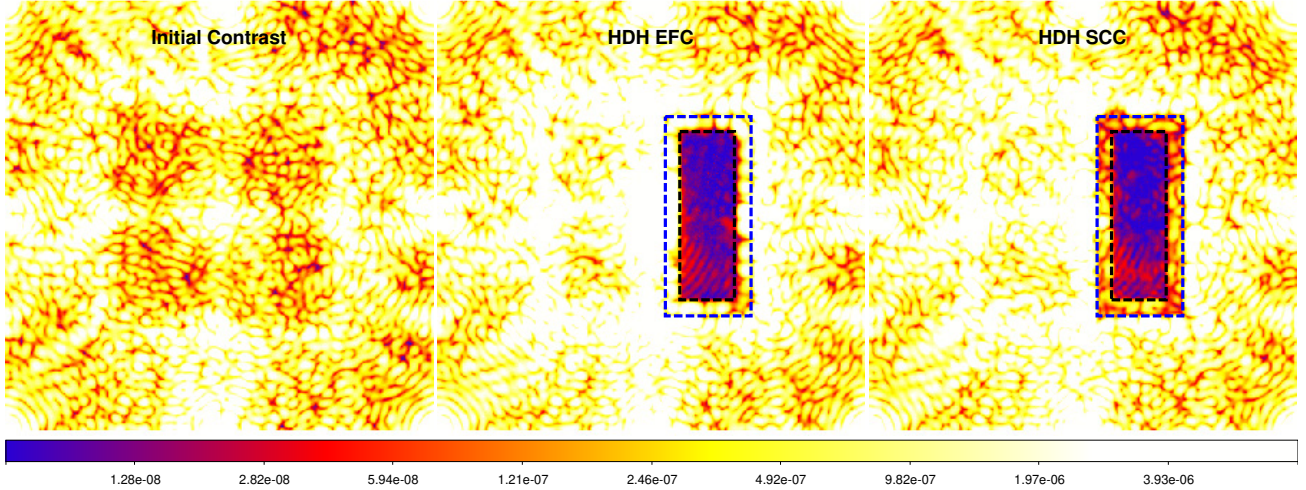


Fig. 10. *Left panel:* initial raw contrast. *Center panel:* raw Half DH contrast correction done with the EFC. *Right panel:* raw Half DH contrast correction done with the SCC. The blue rectangle corresponds to the region $2\text{--}13 \lambda/D$ and $-13\text{--}13 \lambda/D$ half DH. After ten iterations, the DH size is decreased to a size of $4 \times 11 \lambda/D$ and $-11 \times 11 \lambda/D$ shown here in the inner black rectangle.

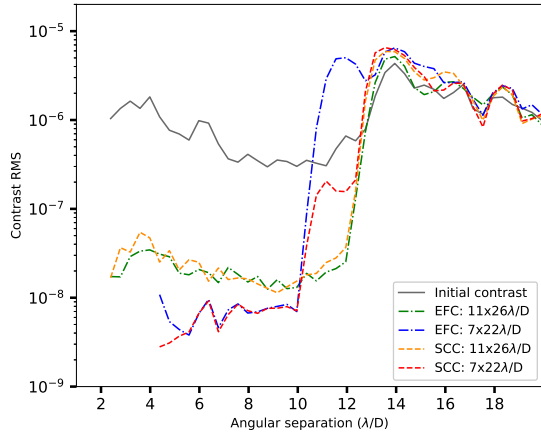


Fig. 11. Comparison of 1σ contrast inside a half DH versus the angular separation obtained when implementing PW+EFC and the SCC on the THD2 bench.

direction and from $-13 \lambda/D$ to $13 \lambda/D$ in the other direction. After ten iterations, we calculate the 1σ contrast C inside the half DH as defined in Sect. 4.3. We plot C against the function of the angular separation as a green dash-dot line in Fig. 11. The contrast remains between 10^{-8} and 3×10^{-8} in the range $2\text{--}12 \lambda/D$. This result is in very good agreement with the numerical simulation obtained with no model error (full lines in Fig. 6). We conclude that our model of the THD2 bench is capable of providing a correction at a $<10^{-8}$ contrast level accuracy. The same closed loop algorithm was also implemented with only two probes (466 and 498), which led to the same contrast level but it proved to be less stable with time. A complete study of EFC stability is in progress and out of the scope of the current paper.

Starting from the last iteration of the first experiment, the correction area was reduced by $2 \lambda/D$ on each side to get a smaller half DH of size $7 \lambda/D \times 22 \lambda/D$. The correction reached a limit after ten iterations without diverging. The resulting image is presented in the center of Fig. 10 and the corresponding contrast is plotted in Fig. 11 as a blue dash-dot line. The contrast reaches a level of 7.5×10^{-9} at 11σ inside the DH. Consequently, we improved the contrast level by a factor of about 2 by decreasing the size of the DH. A pattern visible inside the DH (series of

rings) seems to originate from a ghost reflection induced by the FQPM. These artifacts cannot be corrected because the light is not coherent with the central source and it sets a 8×10^{-9} contrast limit in the lower part of the DH. In the top part, we measure an averaged 11σ contrast level of 4×10^{-9} .

On the same day, we used SCC starting from the same aberrations as assumed for the PW probing test (left image of Fig. 10). The only difference in the settings is the presence of the SCC reference pinhole in the Lyot stop plane. An interaction matrix was recorded by applying sine/cosine functions on the DM3. We first minimize the speckle intensity inside the same region of the DH ($11 \lambda/D \times 26 \lambda/D$) as performed for the PW+EFC. After 10 iterations, we stop the loop. We close the reference channel and, we record the coronagraphic image. We then open the reference channel, change the DH size to $7 \lambda/D \times 22 \lambda/D$ and, apply the SCC correction for 10 iterations. The resulting coronagraphic image is presented on the right of Fig. 10. The contrast levels for the two DH sizes are plotted in Fig. 11 in orange (larger DH) and red dashed lines. The detection of the ghost and the contrast level in all parts of the images are very similar to the ones obtained with the PW+EFC. Both the PW+EFC and the SCC techniques enable a similar minimization of the speckle intensity at a contrast level of $\sim 5 \times 10^{-9}$.

6. Discussion

This paper presents the first laboratory comparison of the two WFS/WFC algorithms: one which uses a spatial modulation of the speckle intensity (SCC) and the other based on the temporal modulation (PW+EFC). We list the pros and cons of both techniques in this section.

6.1. Performance of WFS/WFC on THD2

The SCC has already been demonstrated on the THD2 bench (Baudoz et al. 2018b), where the contrast levels down to 10^{-8} in the region $-12 \lambda/D \times 12 \lambda/D$ in a full DH are obtained by controlling two DMs (DM3 in the pupil plane and DM1 situated at 26.9 cm from the pupil plane in a collimated beam). In this paper, we used only DM3 and reached similar performance (Sect. 5.3). However, we had to focus on half of the field of view because we used a single DM instead of two.

Apart from the optical ghost probably induced by the FQPM, there are several other sources that prevent reaching the contrast level below 5×10^{-9} on THD2. First, the basic correction algorithm used for both EFC and SCC may drive the contrast level to a local minimum. Other minimization techniques based on the regularization terms (Pueyo et al. 2009; Mazoyer et al. 2018; Herscovici-Schiller et al. 2018b) may be required to improve the minimization of the speckle intensity. This study is currently in progress in the laboratory. Moreover, the electronics of the DM3 that use a 14-bit ADC also limit the contrast above 5×10^{-9} . It will be upgraded to 16-bit ADC in the coming months. In addition, the testbed is not under vacuum, so the internal turbulence may arise from thermal and mechanical variations. In that case, the SCC algorithm using a single image per loop would present an advantage over the PW+EFC, which is slower because it requires at least four images at each iteration.

6.2. Temporal versus spatial modulation

In this section, we discuss the advantages and drawbacks of the two techniques implemented on the THD2 testbed, applied in space-like conditions and using only one DM for correction.

There is no significant difference in the contrast performance. Both techniques reach the current limits of the THD2 bench. Each iteration of the SCC technique requires a single image so the correction is faster than for the PW+EFC which need at least five images (four for the PW estimation and one for the astrophysical purpose). To sample the spatial fringes, the SCC however requires about three times more pixels on the science detector than the PW+EFC. When combined with the number of images per iteration, SCC spreads the light over less pixels though: three times more pixels per image but five times less images per iteration. However, Bordé & Traub (2006), Give'On et al. (2007a) proposed solutions to reduce the number of images for the PW+EFC. The SCC reference beam adds a flat distribution of light that cannot mimic a planet signal. The downside is that it adds photon noise. It may thus be required to adjust the diameter of the reference channel during the observation so that the reference flux is always below the speckle level. The reference flux can also be used a posteriori for coherence differential imaging because it spatially modulates the stellar speckles that remains after WFC (Baudoz et al. 2012). We can imagine that the probe images of the PW technique can also be used for the coherence differential imaging.

Up until now, the SCC has used an empirical interaction matrix that has to be recorded before the correction loop is closed. The matrix can be impacted by the detection noise and, above all, it requires telescope time (at least the instrument time if the matrix is recorded using the internal source). This strategy is not optimal if the matrix needs to be updated regularly to account for the changes in the instrument configuration. On the contrary, PW+EFC use a numerical model of the instrument so that several synthetic interaction matrices can be calculated before the observations for numerous instrument configurations. These matrices are, however, very sensitive to model errors. In both cases (empirical and synthetic matrix), the matrices can be useless if one parameter of the instrument suddenly changes. That is why, a semi-empirical solution may be required: regular recording of a few data to modify the synthetic or empirical matrix. Our team is currently investigating such solutions.

The PW+EFC combination can easily be implemented in any coronagraphic instrument that includes a DM. On the con-

trary, the SCC requires optics large enough to allow the light of the reference pinhole to propagate from the Lyot stop plane to the final detector. This condition is not a strong drawback for future instruments but it prevents the implementation of the SCC on most of the current instruments which were not designed with such a flexibility.

The current versions of the SCC and the PW+EFC which are implemented on the THD2 bench use a basic truncated SVD to calculate the control matrix. More advanced solutions adding regulation terms for example may help to improve the stability and the performance of both techniques.

7. Conclusion

This paper described and compared two high-contrast imaging techniques. Both techniques retrieve the electric field associated to the stellar speckle in the science image and control DMs to minimize the speckle intensity. One of the techniques, called the self-coherent camera (SCC), uses spatial modulations of the speckle intensity and an empirical model of the instrument. The other, pair-wise probing associated with electric field conjugation (PW+EFC), is based on temporal modulations and a synthetic model.

We first provided a mathematical description of these techniques. Then we used numerical simulations to demonstrate that PW is more efficient if the two actuators used as probes are close to each other. In simulations, we also studied the robustness of PW as well as PW+EFC when model errors, such as the knowledge on the DM position and influence function, are taken into account. We finally demonstrated and compared the two techniques in laboratory on the THD2 bench. We tested the SCC and PW under the same phase and amplitude aberrations to show that both techniques were capable of measuring the aberrations with a subnanometer accuracy. We compared PW+EFC and SCC abilities to generate a dark hole in space-like conditions in a few iterations. Both techniques converge to a contrast of $\sim 5 \times 10^{-9}$ between $2\lambda/D$ and $12\lambda/D$ and are mainly limited by an optical ghost. In this paper, both techniques were studied and compared in monochromatic light. It can also be done in broadband using hardware or software upgrades for both SCC (Delorme et al. 2016) and PW+EFC (Seo et al. 2017).

We discussed the advantages and drawbacks of each technique. In terms of wavefront sensing and control, both techniques provide similar performance down to 5×10^{-9} contrast levels. One of the advantage of the SCC is that it enables coherence differential imaging that can improve, a posteriori, the contrast achieved after the active minimization of the speckle field. It is, however, more complicated to implement it on the existing instruments than the PW+EFC. Our main conclusion is that the two techniques are mature enough to be implemented in future space telescopes equipped with DMs for high-contrast imaging. Future studies are planned to include testing these techniques in more realistic configurations with obstructed pupils and broadband imaging using several DMs in cascade.

Acknowledgements. The authors thank the Centre National d'études Spatiales (CNES) which co-funds Axel Potier PhD work. We particularly thank Jean-Michel Le Duigou for his support and Johan Mazoyer for his comments. AP also thank the le-de-France region, and its programm DIM-ACAV+ for being the second co-funder of its PhD work. GS would like to acknowledge the funding received from the European Union's Horizon 2020 research and innovation programme under the Marie Skłodowska-Curie Grant agreement No. 798909. This work was carried out as part of IRIS Origines et Conditions d'Apparition de la Vie funded by Idex with reference ANR-10-IDEX-0001-02 PSL*.

References

- Alonso-Floriano, F. J., Sánchez-López, A., Snellen, I. A. G., et al. 2019, *A&A*, **621**, A74
- Baudoz, P., Boccaletti, A., Baudrand, J., & Rouan, D. 2006, in *IAU Colloq. 200: Direct Imaging of Exoplanets: Science & Techniques*, eds. C. Aime, & F. Vakili (Cambridge, UK: Cambridge University Press), 553
- Baudoz, P., Mazoyer, J., Mas, M., Galicher, R., & Rousset, G. 2012, in *Ground-based and Airborne Instrumentation for Astronomy IV*, Proc. SPIE, 8446, 84468C
- Baudoz, P., Galicher, R., Patru, F., Dupuis, O., & Thijs, S. 2018a, *AO4ELT 2017 Conference Proceeding* [arXiv:1801.06600]
- Baudoz, P., Galicher, R., Potier, A., et al. 2018b, in *Advances in Optical and Mechanical Technologies for Telescopes and Instrumentation III*, SPIE Conf. Ser., 10706, 107062O
- Beuzit, J. L., Vigan, A., Mouillet, D., et al. 2019, *A&A*, **631**, A155
- Bordé, P. J., & Traub, W. A. 2006, *ApJ*, **638**, 488
- Boyer, C., Michau, V., & Rousset, G. 1990, in *Adaptive Optics and Optical Structures*, eds. R. K. Tyson, & J. Schulte In den Baeumen, *Proc. SPIE*, **1271**, 63
- Debes, J., Bailey, V., Kasdin, J., et al. 2019, *AAS/Division for Extreme Solar Systems Abstracts*, **51**, 330.19
- Delorme, J. R., Galicher, R., Baudoz, P., et al. 2016, *A&A*, **588**, A136
- Espinoza, N., Rackham, B. V., Jordán, A., et al. 2019, *MNRAS*, **482**, 2065
- Galicher, R., Baudoz, P., Rousset, G., Totems, J., & Mas, M. 2010, *A&A*, **509**, A31
- Give'On, A., Kasdin, N. J., Vanderbei, R. J., & Avitzour, Y. 2006, *J. Opt. Soc. Am. A*, **23**, 1063
- Give'On, A., Belikov, R., Shaklan, S., & Kasdin, J. 2007a, *Opt. Exp.*, **15**, 12338
- Give'On, A., Kern, B., Shaklan, S., Moody, D. C., & Pueyo, L. 2007b, in *Society of Photo-Optical Instrumentation Engineers (SPIE) Conference Series*, SPIE Conf. Ser., 6691, 66910A
- Give'on, A., Kern, B. D., & Shaklan, S. 2011, in *Techniques and Instrumentation for Detection of Exoplanets V*, Proc. SPIE, 8151, 815110
- Gonsalves, R. A. 1982, *Opt. Eng.*, **21**, 829
- GRAVITY Collaboration (Nowak, M., et al.) 2020, *A&A*, **633**, A110
- Guyon, O. 2004, *ApJ*, **615**, 562
- Herscovici-Schiller, O., Mugnier, L. M., Baudoz, P., et al. 2018a, *A&A*, **614**, A142
- Herscovici-Schiller, O., Mugnier, L. M., Baudoz, P., et al. 2018b, in *Adaptive Optics Systems VI*, SPIE Conf. Ser., 10703, 1070329
- Konopacky, Q. M., Barman, T. S., Macintosh, B. A., & Marois, C. 2013, *Science*, **339**, 1398
- Lagrange, A.-M., Bonnefoy, M., Chauvin, G., et al. 2010, *Science*, **329**, 57
- Macintosh, B., Graham, J. R., Ingraham, P., et al. 2014, *Proc. Natl. Acad. Sci.*, **111**, 12661
- Malbet, F., Yu, J. W., & Shao, M. 1995, *PASP*, **107**, 386
- Martinez, P., Loose, C., Aller Carpentier, E., & Kasper, M. 2012, *A&A*, **541**, A136
- Matthews, C. T., Crepp, J. R., Vasisht, G., & Cady, E. 2017, *J. Astron. Telesc. Instrum. Syst.*, **3**, 045001
- Mazoyer, J., Baudoz, P., Galicher, R., Mas, M., & Rousset, G. 2013, *A&A*, **557**, A9
- Mazoyer, J., Baudoz, P., Galicher, R., & Rousset, G. 2014a, *A&A*, **564**, L1
- Mazoyer, J., Galicher, R., Baudoz, P., et al. 2014b, in *Adaptive Optics Systems IV*, Proc. SPIE, 9148, 914846
- Mazoyer, J., Pueyo, L., N'Diaye, M., et al. 2018, *AJ*, **155**, 8
- Mazoyer, J., Baudoz, P., Belikov, R., et al. 2019, *BAAS*, **51**, 101
- Mennesson, B., Debes, J., Douglas, E., et al. 2018, in *Society of Photo-Optical Instrumentation Engineers (SPIE) Conference Series*, Proc. SPIE, 10698, 106982I
- Paul, B., Mugnier, L. M., Sauvage, J.-F., Ferrari, M., & Dohlen, K. 2013, *Opt. Exp.*, **21**, 31751
- Pope, B., Cvetojevic, N., Cheetham, A., et al. 2014, *MNRAS*, **440**, 125
- Poyneer, L. A., & Véran, J.-P. 2005, *J. Opt. Soc. Am. A*, **22**, 1515
- Pueyo, L., Kay, J., Kasdin, N. J., et al. 2009, *Appl. Opt.*, **48**, 6296
- Racine, R., Walker, G. A. H., Nadeau, D., Doyon, R., & Marois, C. 1999, *PASP*, **111**, 587
- Rouan, D., Riaud, P., Boccaletti, A., Clénet, Y., & Labeyrie, A. 2000, *PASP*, **112**, 1479
- Sauvage, J.-F., Mugnier, L., Paul, B., & Villicroze, R. 2012, *Opt. Lett.*, **37**, 4808
- Seo, B. J., Cady, E., Gordon, B., et al. 2017, in *Society of Photo-Optical Instrumentation Engineers (SPIE) Conference Series*, Proc. SPIE, 10400, 104000F
- Singh, G., Martinache, F., Baudoz, P., et al. 2014, *PASP*, **126**, 586
- Snellen, I. A. G., de Kok, R. J., de Mooij, E. J. W., & Albrecht, S. 2010, *Nature*, **465**, 1049
- von Essen, C., Mallonn, M., Welbanks, L., et al. 2019, *A&A*, **622**, A71