



HAL
open science

A probabilistic analysis of the Fermi paradox in terms of the Drake formula: the role of the L factor

N. Prantzos

► **To cite this version:**

N. Prantzos. A probabilistic analysis of the Fermi paradox in terms of the Drake formula: the role of the L factor. Monthly Notices of the Royal Astronomical Society, 2020, 493 (3), pp.3464 - 3472. 10.1093/mnras/staa512 . hal-02879151

HAL Id: hal-02879151

<https://hal.sorbonne-universite.fr/hal-02879151>

Submitted on 23 Jun 2020

HAL is a multi-disciplinary open access archive for the deposit and dissemination of scientific research documents, whether they are published or not. The documents may come from teaching and research institutions in France or abroad, or from public or private research centers.

L'archive ouverte pluridisciplinaire **HAL**, est destinée au dépôt et à la diffusion de documents scientifiques de niveau recherche, publiés ou non, émanant des établissements d'enseignement et de recherche français ou étrangers, des laboratoires publics ou privés.

A probabilistic analysis of the *Fermi* paradox in terms of the Drake formula: the role of the L factor

N. Prantzos[★]

Institut d'Astrophysique de Paris and Sorbonne Université, 98bis Bd Arago, F-75014 Paris, France

Accepted 2020 February 18. Received 2020 February 17; in original form 2020 January 17

ABSTRACT

In evaluating the number of technological civilizations N in the Galaxy through the Drake formula, emphasis is mostly put on the astrophysical and biotechnological factors describing the emergence of a civilization and much less on its the lifetime, which is intimately related to its demise. It is argued here that this factor is in fact the most important regarding the practical implications of the Drake formula, because it determines the maximal extent of the ‘sphere of influence’ of any technological civilization. The *Fermi* paradox is studied in the terms of a simplified version of the Drake formula, through Monte Carlo simulations of N civilizations expanding in the Galaxy during their space faring lifetime L . In the framework of that scheme, the probability of ‘direct contact’ is determined as the fraction of the Galactic volume occupied collectively by the ‘spheres of influence’ of N civilizations. The results of the analysis are used to determine regions in the parameter space where the *Fermi* paradox holds. It is argued that in a large region of the diagram the corresponding parameters suggest rather a ‘weak’ *Fermi* paradox. Future research may reveal whether a ‘strong’ paradox holds in some part of the parameter space. Finally, it is argued that the value of N is not bound by $N = 1$ from below, contrary to what is usually assumed, but it may have a statistical interpretation.

Key words: extraterrestrial intelligence – Galaxy: disc.

1 INTRODUCTION

Most of the effort in establishing the chances for the existence of life elsewhere in the universe has been put on evaluating the various astronomical and biological factors that may lead to the emergence of life on the surface of terrestrial-type exoplanets around other stars in the Milky Way. Twenty five years after the discovery of the first exoplanet, we have now started to have sufficient data to allow us to think that such objects are relatively common in the Galaxy (Petigura et al. 2018). However, we have not yet any evidence about the existence of other lifeforms, even at the microscopic level, elsewhere in the Universe.

Metrodorus, disciple of Epicurus, seems to have been the first to formulate the main argument for the existence of life forms and intelligent beings beyond Earth, in the third century BC: ‘to consider the Earth as the only populated world in infinite space is as absurd as to assert that in an entire field sown with millet only one grain will grow’. The idea of an infinite space, populated by an infinite number of atoms and their combinations, was a key ingredient of the atomistic philosophy of Leucippus, Democritus, and Epicurus (Furley 1987).

Today, proponents of extraterrestrial intelligence (ETI) invoke essentially the same argument, although the concept of infinity is not used any more (because it is difficult to handle and it may lead to paradoxes, e.g. in an infinite universe, everything, including ourselves, could exist in an infinite number of copies). But the number of stars in our Galaxy, ~ 100 billion, is considered by some – mostly astronomers – to be large enough as to make Metrodorus’ argument applicable to the Milky Way. Others, however – evolutionary biologists, in particular – are not impressed by that number and remain skeptical concerning ETI (e.g. Simpson 1964; Mayr 1992).

In the past 60 yr or so, the debate on ETI was largely shaped by the ‘Drake equation’ and the ‘*Fermi* paradox’. The former – which should rather be called ‘Drake formula’ – was proposed by Frank Drake (1961) and became ever since the key quantitative tool to evaluate the probabilities for radio-communication with extraterrestrial intelligence (CETI). The latter – also known as ‘*Fermi*’s question’ – was formulated a decade earlier by Enrico Fermi, but it remained virtually unknown until 1975, when it was independently re-discovered twice (Hart 1975; Viewing 1975). In a concise form (‘*where are they?*’), it opposes a healthy skepticism to the optimistic views on ETI: if there are many of them, why do not we see any evidence of their presence on Earth or in its neighbourhood? (see Cirkovic 2018 for a recent comprehensive overview of the subject).

[★] E-mail: prantzos@iap.fr

It is not known what kind of calculations – if any – Fermi did to evaluate the chances of the Earth being visited by extraterrestrial civilizations, during a lunch-time discussion with colleagues at Los Alamos in 1950 (see Jones 1985, for an account of that discussion). Several attempts have been made to quantify Fermi’s question through numerical simulations, based on various assumptions (Newman & Sagan 1981; Jones 1981; Fogg 1987; Landis 1998; Bjørk 2007; Hair & Hedman 2013; Zackrisson et al. 2015; Carroll-Nellenback et al. 2019). These studies reached different conclusions on the paradoxicality of Fermi’s question, both from the quantitative and the qualitative point of view, e.g. the time-scales required for colonization of the Galaxy (Webb 2015; Ashworth 2014); however, none of those works makes explicit use of the Drake formula.

In this work, a new framework is introduced for the study of Fermi’s question, using a simplified form of Drake’s formula (Section 2) to evaluate the number N of technological civilizations. In this framework, the possibility of $N < 1$ is explored and is given a statistical interpretation (Section 3). It is argued that, in the steady-state situation expressed by Drake’s formula, the lifetime L plays a key role for the study of Fermi’s question, because the volume of the ‘sphere of influence’ of communicating civilizations (either through direct contact or through ELM signals) depends on L^3 for an isotropic expansion. This dependence is illustrated by Monte Carlo simulations performed for various values of the relevant parameters N , L , and v (the typical speed of the expansion front of the civilizations), in a disc galaxy with the dimensions of the Milky Way (Section 4). The main result is that the probability of contact can be defined as the fraction of the Galactic volume occupied by the common volume of the spheres of influence of the ensemble of galactic civilizations. This original presentation allows one to display in terms of the Drake formula and in a compact form, the three physical explanations mostly discussed as solutions to the *Fermi* paradox: civilizations are rare, too short-lived, or unable to expand at sufficiently high speed in the Galaxy (Section 5).

2 A FRESH LOOK AT DRAKE’S FORMULA

On the occasion of a now famous meeting – the first one on the Search for Extraterrestrial Intelligence (SETI) – that he organized in Green Bank, Virginia, Drake tried to evaluate the number of radio-communicating civilizations in our Galaxy (Drake 1961). In its original formulation, the Drake equation reads

$$N = R_* f_p n_e f_l f_i f_t L \quad (1)$$

where R_* is the rate of star formation (SF) in the Galaxy (i.e. number of stars formed per unit time), f_p is the fraction of stars with planetary systems, n_e is the average number of planets around each star, f_l is the fraction of planets where life developed, f_i is the fraction of planets where intelligent life developed, and f_t is the fraction of planets with technological civilizations. Obviously, N and L are intimately connected: if N is the number of radio-communicating civilizations – as in the original formulation by Drake – then L is the average duration of the radio-communication phase of such civilizations (and not their total lifetime, as sometimes incorrectly stated). On the other hand, if N is meant to be the number of technological or space-faring civilizations, then L represents the duration of the corresponding phase (see Prantzos 2013, for additional comments on the Drake formula).

The Drake formula obviously corresponds to the equilibrium solution of an equation similar to the equation of radioactivity for

the decay rate D of a number N of radioactive nuclei: $D = dN/dt = -N/L$, where L is the lifetime of those nuclei. In the steady state, where the production rate P is equal to the decay rate D , one has $N = P L$. In a similar vein, the product of all the terms of the Drake formula, except L , can be interpreted as the production rate P of technological (radio-communicating or space-faring) civilizations in the Galaxy.¹

On the basis of this analogy, it was suggested (Prantzos 2013) that the practical implications of the Drake formula would be more clearly evaluated if its original seven terms were condensed to only three. The aim was twofold: (1) to illustrate quantitatively some implications of the number N for SETI and CETI, and (2) to use exactly the same framework for a quantitative assessment of the *Fermi* paradox. The Drake equation is now written as

$$N = R_{\text{ASTRO}} f_{\text{BIOTEC}} L \quad (2)$$

where

$$R_{\text{ASTRO}} = R_* f_p n_e \quad (3)$$

represents the production rate of habitable planets, and

$$f_{\text{BIOTEC}} = f_l f_i f_t \quad (4)$$

represents the product of all chemical, biological, and sociological factors leading to the development of a technological civilization.

Obviously, while the product $R_{\text{ASTRO}} f_{\text{BIOTEC}}$ represents the ‘production term’ of technological civilizations, the lifetime L represents the ‘destruction term’ in the steady-state situation described by the Drake formula.

From the three terms of the modified Drake equation (equation 2), R_{ASTRO} is the only one reasonably well studied at present and expected to be well constrained in the foreseeable future. The first of its terms, R_* , is already constrained by observations in the Milky Way to be 4 stars yr^{-1} . The present-day SF rate is $1.9 M_{\odot} \text{ yr}^{-1}$ (Chomiuk & Povich 2011) and there are 2 stars per M_{\odot} in a normal stellar initial mass function (IMF) like the one of Kroupa (2002). However, its average past value was probably higher by a factor of 2, and we shall adopt the value of $4 M_{\odot} \text{ yr}^{-1}$ which corresponds to an average star production rate of $\langle R \rangle \sim 8 \text{ stars yr}^{-1}$; this average SF rate reproduces well the stellar mass of $4 \times 10^{10} M_{\odot}$ or the $\sim 10^{11}$ stars of the Milky Way if assumed to hold for the age of the Galaxy $A \sim 10 \text{ Gy}$.

We shall assume that only 10 per cent of those stars are appropriate for harbouring habitable planets, because their mass has to be smaller than $1.1 M_{\odot}$, i.e. they have to be sufficiently long-lived (with main-sequence lifetimes larger than $\sim 4 \text{ Gy}$ as to provide enough time for the development of intelligence and technology) and larger than $0.7 M_{\odot}$, to possess circumstellar habitable zones outside the tidally locked region (Selsis 2007). This leaves aside the most numerous class of stars, namely the low-mass red dwarfs: their intense and time-varying activity (e.g. Paudel et al. 2019, and references therein) and the limitations on their circumstellar habitable zone (Haqq-Misra, Kopparapu & Wolf 2018; Schwieterman et al. 2019) largely balance the effect of their larger number with respect to solar-type stars. In any case, considering them would increase the planet numbers by factor of 10–20 but this would change little the conclusions, given the extremely large uncertainties of the other factors of the Drake equation, as illustrated in a recent analysis (Wandel & Gale 2019).

¹The same formula is obtained within a different framework, the Little’s law (Little 1961), well known in probability theory and statistics.

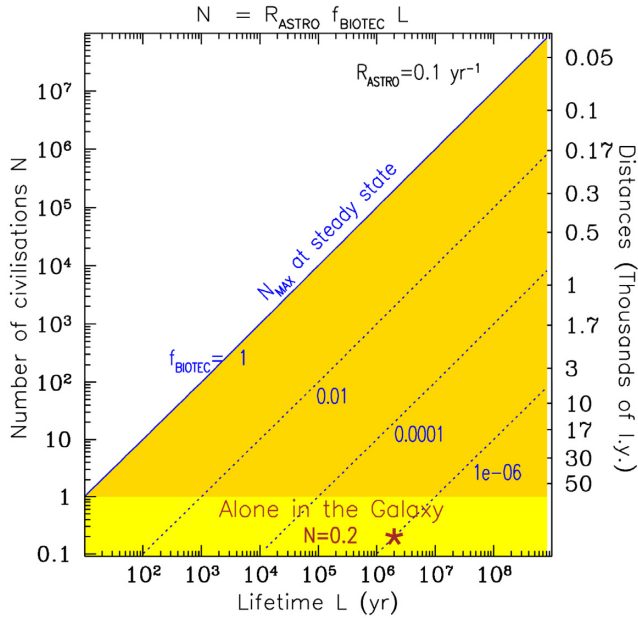


Figure 1. Number of civilizations N versus their average lifetime L , assuming $R_{\text{ASTRO}} = 0.1 \text{ yr}^{-1}$. Straight lines correspond to biotechnological factors $f_{\text{BIOTEC}} = 1$ (solid), 10^{-2} , 10^{-4} , and 10^{-6} (dotted). Typical distances D (in light-years l.y.) between civilizations for each N are obtained from the discussion of Section 2 and are indicated on the right-hand axis. The bottom (yellow shaded) region corresponds to $N < 1$. The statistical significance of that region (illustrated by the point $N = 0.2$) is discussed in Section 3.

A recent analysis of the *Kepler* DR25 and *Gaia* DR2 data (Hsu et al. 2019) finds that the statistics currently available on extra-solar planets around solar-type (FGK) stars point to 20 per cent of the surveyed stars possessing planets with sizes 1–1.75 Earth radii and orbital periods of 237–500 d. This fraction may be considered to describe the product $f_p n_e$ in the Drake equation. It is, admittedly, a rather optimistic estimate, its only merit being that it imposes a plausible upper limit on the fraction of such solar-type stars. Combined with the aforementioned formation rate of 0.7–1.1 M_{\odot} stars, it leads to $R_{\text{ASTRO}} \sim 0.1$ habitable planet per year, which is adopted in this study. Even if the value is revised by a factor of a few (most probably downwards) by future assessments, the results presented here could be easily scaled accordingly.

The term f_{BIOTEC} is not constrained from below. It has a maximum value of $f_{\text{BIOTEC, MAX}} = 1$ (corresponding to $f_i = f_i = f_i = 1$), which is rather implausibly optimistic but constitutes a useful upper limit. Because of that, the number of N technological civilizations at steady state is bound from above by the value $N_{\text{MAX}} = R_{\text{ASTRO}} L = 0.1 L$ (with L expressed in yr) in the Drake formula.

The re-formulated Drake equation (equation 2) appears in a graphical form, in Fig. 1, after fixing $R_{\text{ASTRO}} = 0.1 \text{ yr}^{-1}$ and plotting N as a function of L . A slightly different form of this diagram (f_{BIOTEC} versus L) appeared in Prantzos (2013), but this one is more straightforward and illustrates the situation in a clearer way. In this log–log diagram, values of N versus L for a given f_{BIOTEC} are represented by straight quasi-diagonal lines. Taking into account that $f_{\text{BIOTEC}} \leq 1$, the solid line at $f_{\text{BIOTEC}} = 1$ bounds N from above, i.e. there are no civilizations on the upper left part of the diagram in the steady-state situation. Same values of N are obtained for different combinations of f_{BIOTEC} and L , but we argue that the dependence on L is more important regarding its implications.

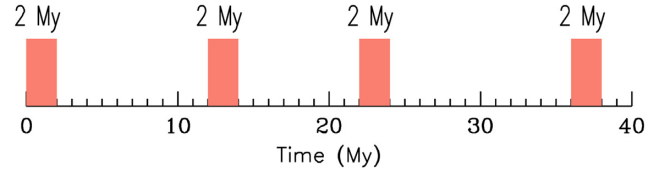


Figure 2. Statistical interpretation of the case $N = 0.2$, illustrated in the bottom panel of Fig. 1. L/N is the typical timescale of appearance of civilizations of lifetime L in the Galaxy.

On the right-hand axis of the figure appear, on a different scale, the typical distances between such civilizations. Indeed, as noted in Prantzos (2013), the Drake formula was meant to evaluate the chances of establishing radio communication with ETI in the Galaxy, but in fact it says very little on the probability of contacting them: number N alone is totally insufficient to evaluate that probability. From the point of view of interstellar communication or direct contact it is a completely different matter to have 10 civilizations inside the whole Galaxy or inside a globular cluster. For that purpose, one more step has to be taken, to connect the lifetime L to the typical distances between such civilizations, in order to account for the finite speed of electromagnetic (ELM) signals (or transport); those distances depend on N and on the dimensions of the system, in this case the Milky Way.

To evaluate typical distances between Galactic civilizations it may be assumed that, to a first approximation, the Galactic disc is described by a cylinder of radius $R_G = 12 \text{ kpc}$ ($\sim 40\,000 \text{ l.y.}$) and height $h_G = 1 \text{ kpc}$ ($\sim 3\,260 \text{ l.y.}$), where the N civilizations of the Drake formula are distributed uniformly.² By equating the volume of the Galactic cylinder $V_G = \pi R_G^2 h_G$ with the sum of N volumes of spheres of average radius r occupied by each civilization, one obtains the average distance between two civilizations as

$$D = 2r = 2 \left(\frac{3h_G R_G^2}{4N} \right)^{1/3} \quad (D < h_G) \quad (5)$$

In the case of a small number of civilizations (say $N < 1000$) it turns out that $D > h_G$ and the appropriate expression is then

$$D = 2r = 2R_G / \sqrt{N} \quad (D > h_G) \quad (6)$$

It is interesting to notice that even for a hundred thousand civilizations, typical distances are of several hundred l.y., making contact – either by radio signals or space probes – difficult.

Notice that in the simplified picture presented here, it is assumed that all civilizations have similar values of L , that is, the dispersion ΔL is $\Delta L \ll L$. This need not be the case. Statistical treatments, considering $\Delta L \sim L$, and canonical distributions have been studied (Maccone 2010; Glade, Ballet & Bastien 2012). However, in any case, the unknown mean value of L plays a more important role than the equally unknown form of its distribution.

3 LONELY HEARTS IN THE GALAXY?

The region below the line $N = 1$ is not necessarily void. It corresponds to values of $N < 1$ which are considered impossible, since our own civilization exists. However, such values may have

²A better approximation would be to consider the exponential profile of the stellar disc of the Milky Way, but the conclusions depend little on such assumptions (factors of order unity) and much more on the unknown factors of the Drake formula.

a physical – albeit probabilistic – meaning, as illustrated in Fig. 2: they may represent the fraction f of the time span T between the appearance of two successive civilizations that is occupied by the typical lifetime L : $f = L/T$. In Fig. 2, this is illustrated by assuming arbitrarily that $L = 2$ My and $T = 10$ My. Four civilizations appear within 40 Myr, and last for 2 My each. Their summed lifetime is 8 My, that is, they exist for $8/40 = 0.2$ of that time span. For an external observer, the probability of finding a technological civilization anytime in the Galaxy is then 0.2 and this number may be considered as the *number* N of civilizations of lifetime L in the Galaxy at a given moment assuming steady state.

The case $N < 1$ is rather depressing. A technological civilization may emerge in the Galaxy and live thousands or millions of years, being alone during its whole existence and separated from both its predecessors and its successors by huge time gaps. It is possible that thousands of technological civilizations, much more advanced than ours, blossomed in the Galaxy and reigned for thousands or millions of years. During that time, they may have explored a large fraction of their neighbourhood, seeking for civilizations still alive or gone long ago, through artefacts and other traces. And they ultimately disappeared, unable to find others, unaware that others have preceded them and forever unknown to those who succeeded them – especially if they did not venture far away from their solar systems. Each one of them was found to be ‘alone in space’ – at least in the space covered by the Milky Way – but not ‘alone in time’, since others may have preceded and succeeded them. Our own civilization may be such a ‘lonely heart’ in the Milky Way: not ‘the first’, not ‘the only one’, but simply alone.

The implications of that situation would be obvious for any sufficiently advanced civilization: only a systematic research by unmanned probes or manned spaceships could provide in the long run evidence for or against the existence of other lifeforms (see e.g. Crawford 2018, and references therein, for a recent overview). Indeed, many technological civilizations may be unwilling or unable to communicate with others or to explore their outer space, or they may simply be extinct by now, in a still life-bearing planet.

4 EXPANSION IN THE GALAXY AND THE FERMI PARADOX

A simple method to evaluate the conditions under which the *Fermi* paradox holds in the framework of the Drake formula was suggested in Prantzos (2013): the paradox is assumed to hold when the N civilizations, expanding in the Galaxy at a fraction β of the speed of light c , are able to cover collectively within their ‘spheres of influence’ the whole volume of the Galaxy during their lifetime L .

The adopted scheme for galaxy colonization is known as the ‘coral model’ and was suggested in J. Benett and S. Shostak in 2007 (latest edition Bennet & Shostak 2017) and further developed (including a statistical description) in Maccone (2010). It assumes that once a civilization masters the techniques of interstellar travel, it starts a thorough colonization/exploration of its neighbourhood for its whole lifetime L . Colonization proceeds in a directed way, i.e. it concerns only stars harbouring nearby habitable planets, which are detected before the launching of the spaceships. Ships are sent to new stars not from the mother planet but from the colonized planets in the colonization front and they are launched after some time interval Dt following colony foundation. This gives enough time to the colonizers to install on the new planet and prepare the

next colonizing mission. Notice that v is the effective velocity of the colonization front and not the velocity of the interstellar ships, which has to be larger than v (to compensate for the time required for installation and preparation of new missions, but also for the fact that the new missions would not always head ‘outwards’ but also ‘sideways’ for a full exploration of the neighbourhood). Notice also that the lifetime L corresponds to a single civilization and includes all its offspring colonies; in other terms, the colonies do not count as different civilizations, since they do not originate in an independent way.

Fig. 3 provides illustrations of this scheme, through several Monte Carlo simulations for various combinations of the values of the involved parameters. It is assumed that N civilizations emerge at random places in the Milky way disc³ and at random times during the last period of duration L . In other terms, at any time a flat distribution of ages is obtained. The spatial distribution of N takes into account the stellar surface density profile of the Galactic disc ($\propto \exp(-R/3 \text{ kpc})$), i.e. their surface density is larger in the inner disc. After their emergence as a technological species, civilizations are assumed to start expanding in the Galaxy filling progressively around them spheres of radius $r = vt$ and volume $V = 4/3\pi r^3$, where t is their current age ($0 < t < L$); for $r > h_G$, the volume is $V = \pi h_G r^2$, i.e. once the height of the galactic disc is reached, civilizations expand radially in the plane of the disc and no more vertically to it.

The parameters $N = 2, 10, 100$, and 1000 are adopted from the bottom to the top of Fig. 3, while $L = 10^4, 10^5, 10^6, 10^7$ and 5×10^7 y are used from left to right. The value of expansion speed v (in units of light speed c) appear in each panel. It is emphasized that this value is the one of the expansion of the ‘colonization front’ and not the one of the spaceships, which should be necessarily higher. For that reason, the value $v/c = 0.1$ is rather an optimistic upper limit and is used here only for illustration purposes. In the various schemes studied so far for Galactic colonization, speeds v/c between 0.1 and 10^{-5} have been considered (see Table 1 in Fogg 1987 for an early compilation) and we use here values within that range. Smaller values would obviously require larger values for N and/or L in order to compensate and result in colonization of the Galaxy within L .

The six panels with the same value of $v/c = 0.001$, i.e. panel D with $(N, L) = (2, 10^7)$, panel I $(10, 10^7)$, panel N $(100, 10^7)$, panel S $(1000, 10^7)$, panel R $(1000, 10^6)$, and panel Q $(1000, 10^5)$, illustrate the importance of factor L : increasing number N by a factor of 100 (from 10 to 1000, going from I to S), while keeping L the same – that is, by increasing the factor f_{BIOTEC} by 100 – obviously increases proportionally the fraction of the Galactic volume⁴ covered collectively by the N civilizations by that same factor. But an increase of L by a factor of 100 for the same N (i.e. going from panels Q to S) increases that fraction by a much larger factor ($\sim 10^4$). This is the reason why from the various factors of the Drake equation, L is the most important numerically. For sufficiently large L , around 10^7 y, even a ‘small’ number of civilizations ($N \sim 100$) expanding at ‘modest’ speeds – of the order of 1 l.y. per thousand years – can collectively occupy a large fraction of the Galaxy.

³A simulation along those lines was recently performed in Grimaldi et al. (2018) to explore probabilities of SETI through radio-signal research.

⁴It should be emphasized that the term ‘explored galactic volume’ means ‘explored stars within that volume’.

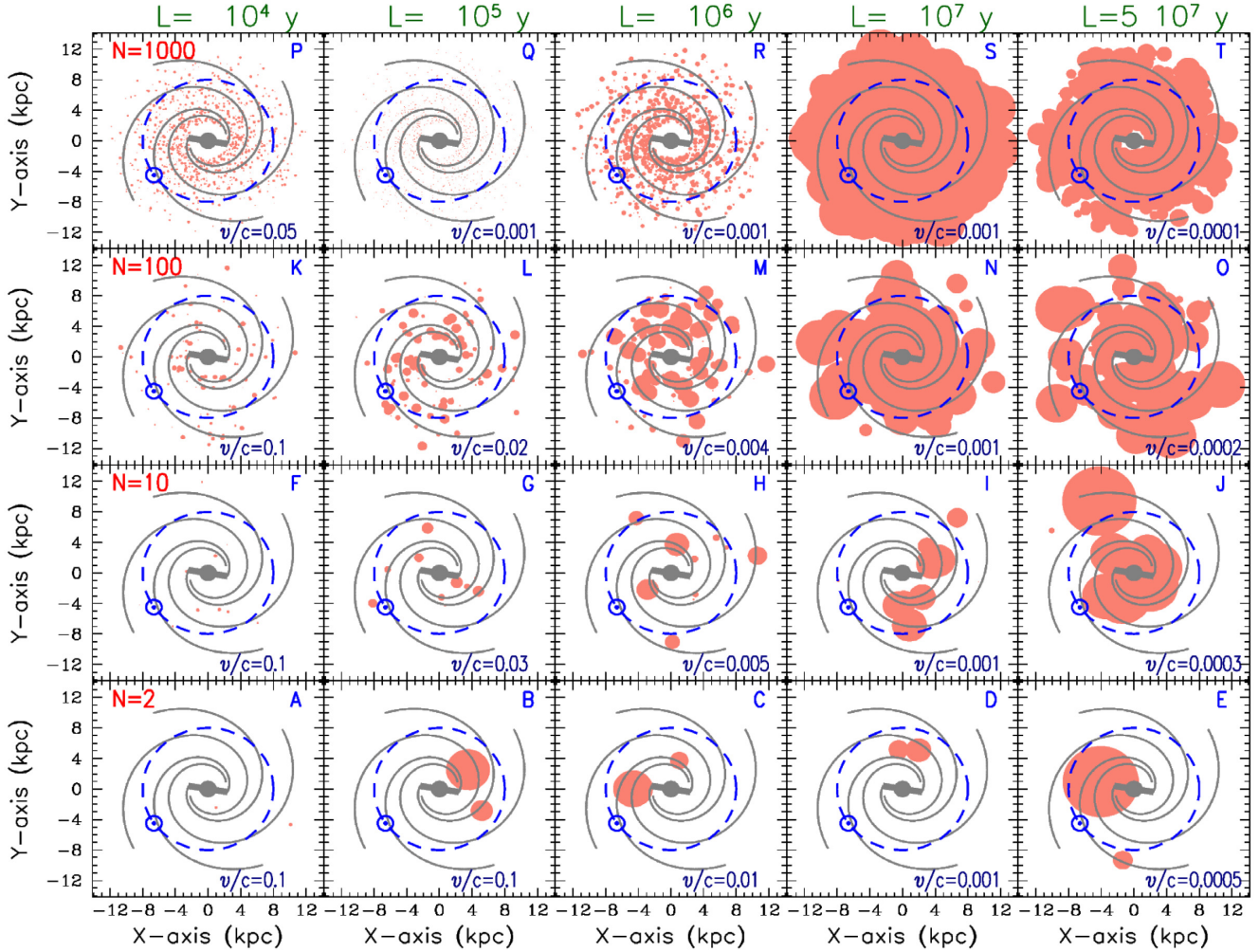


Figure 3. Monte Carlo simulations of N civilizations of lifetime L in steady state, appearing in the Galaxy at random places and times and expanding spherically during time $t < L$ at speed v/c (where c is the speed of light), for various values of N ($= 2, 10, 100,$ and 1000 from bottom to top) and L ($= 10^4, 10^5, 10^6, 10^7$ and 5×10^7 y, from left to right). The values of v/c are given in the bottom left of each panel. The Sun is located by the blue symbol at 8 kpc from the Galactic centre and the solar circle is indicated by the blue dashed curve. The four-arm spiral pattern and the bar of the Galaxy are (approximately) indicated by grey curves. The size of the filled circles indicates the projected area of the ‘sphere of influence’ of each civilization covered during its age $t < L$ at speed v/c .

This scheme reproduces also naturally situations that have been already described in completely different contexts in order to explain the *Fermi* paradox. Ostriker & Turner (1986) argued that, even if advanced technological civilizations are common, they are unlikely to fully occupy the Galaxy, because at some point of their expansion, their mutual interactions could reduce the pace of colonization, leaving some portions of the Galaxy unoccupied for periods of the order of L . They base their arguments on a mathematical analysis drawing from the ideas of theoretical ecology and they suggest that the Earth may be found in such an unoccupied region, thus providing another explanation of the *Fermi* paradox. Landis (1998) performed simulations based on percolation theory to simulate the expansion of civilizations throughout the Galaxy. Depending on the adopted parameters of his model, he found that large unoccupied regions may be found within colonized volumes, thus explaining the *Fermi* paradox. Recently, Carroll-Nellenback et al. (2019) adopted a multiparameter scheme – taking also into account the natural motion of stars within the Galaxy – to show that clusters of continuously occupied systems, as well as quasi-void regions could co-exist in the Milky way.

All the aforementioned works and many others (see e.g. the introduction in Carroll-Nellenback et al. 2019) adopt several extraneous parameters, beyond the factors of the Drake formula, and those parameters play a crucial role in the final outcome of the corresponding studies. We think that for the first time a framework using explicitly and exclusively the parameters of the Drake formula is adopted; the addition of one more parameter, the speed of the expansion front, is mandatory in order to place the discussion in the context of the Milky Way taking into account its size.

5 A QUANTITATIVE CRITERION FOR FERMI’S PARADOX

Our scheme provides a quantitative answer to Fermi’s question in terms of probabilities: assuming that there are at present N civilizations in the Galaxy, appearing randomly in space and time and exploring their neighbourhood for time L at speed v , the probability that our Solar system is ‘currently’ (i.e. in the last L) within at least one of their ‘volumes of influence’ V_i can be defined as the fraction F of the Galactic volume V_G occupied by the

ensemble of those volumes:

$$F(N, L, v) = \frac{\sum_{i=1}^N V_i}{V_G} \quad (7)$$

For large N , the sum tends to $N\langle V \rangle$, where the average volume is

$$\begin{aligned} \langle V \rangle &= \frac{1}{L} \int_0^L V(L) dL \\ &= \frac{1}{L} \frac{4\pi}{3} \int_0^L (vt)^3 dt = \frac{\pi}{3} (vL)^3 \quad \text{for } (vL < h_G) \\ &= \frac{1}{L} \pi h_G \int_0^L (vt)^2 dt = \frac{\pi h_G}{3} (vL)^2 \quad \text{for } (vL > h_G) \end{aligned} \quad (8)$$

This leads to

$$\begin{aligned} F(N, L, v) &= \frac{N \langle V \rangle}{V_G} \\ &= \frac{1}{3} \frac{N (vL)^3}{h_G R_G^2} \quad \text{for } (vL < h_G) \\ &= \frac{1}{3} \frac{N (vL)^2}{R_G^2} \quad \text{for } (vL > h_G) \end{aligned} \quad (9)$$

In fact, the dependence of the probability on L is even stronger than it appears from equation (9), because N is not an independent variable, it depends on L according to equation (2) where the independent factor is f_{BIOTECH} rather than N . Replacing N in equation (9) through its expression of equation (2) leads to a dependence of the probability on L^3 or L^4 :

$$\begin{aligned} F(f_{\text{BIOTECH}}, L, v) &= \frac{1}{3} \frac{R_{\text{ASTRO}} f_{\text{BIOTECH}} L (vL)^3}{h_G R_G^2} \quad (vL < h_G) \\ &= \frac{1}{3} \frac{R_{\text{ASTRO}} f_{\text{BIOTECH}} L (vL)^2}{R_G^2} \quad (vL > h_G) \end{aligned} \quad (10)$$

Thus, although f_{BIOTECH} and L enter the Drake formula linearly, the latter has a much greater impact on the *Fermi* paradox than the former: a variation in f_{BIOTECH} by four orders of magnitude can be compensated by a variation of L by a factor of 10. Despite that, we shall keep our subsequent discussion in terms of the (N, L) variables, which are more intuitive.

An illustration of our quantitative evaluation for the case $v/c = 0.001$ is provided in Fig. 4 for $R_{\text{ASTRO}} = 0.1 \text{ yr}^{-1}$. The solid line at $f_{\text{BIOTECH}} = 1$ bounds N from above, i.e. there are no civilizations on the upper left part of the diagram in the steady-state situation. The yellow shaded region to the right corresponds to $F \geq 1$, indicating full coverage of the Galaxy and even overlapping spheres of influence.⁵ This region indicates the parameter space whereas Fermi's question does not admit a physical answer: *they should be here but we don't see them, so where are they?* However, the values required for the various parameters are rather high. If space-faring technology is trivially developed in the Galaxy ($f_{\text{BIOTECH}} \sim 1$), 10^5 civilizations should co-exist (upper right part) each one expanding for more a million years at one thousandth of the speed of light in order to fully cover the Galactic volume and thus render the observed absence of contact with them truly problematic. The situation would be equally problematic in the case of rare technology ($f_{\text{BIOTECH}} \sim 10^{-6}$), requiring a dozen civilizations to expand at the same speed but for about 10^8 yr (lower right part).

⁵No attempt is made here to evaluate the impact of overlapping spheres of influence on the outcome of the calculation, i.e. would the contact between civilizations stop the expansion of one of them (or both) or, on the contrary, would it accelerate that expansion?

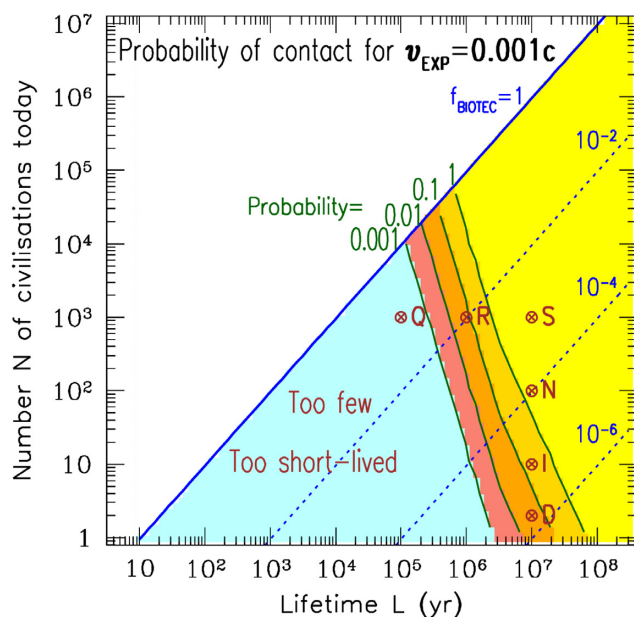


Figure 4. Results of a systematic investigation of the N versus L plane for $v/c = 0.001$, assuming a formation rate of habitable planets $R_{\text{ASTRO}} = 0.1 \text{ yr}^{-1}$ in the Milky Way. Blue diagonal lines indicate the number N as function of L and correspond to $f_{\text{BIOTECH}} = 1$ (maximum value, solid line), 10^{-2} , 10^{-4} , and 10^{-6} (dotted blue lines). The probability of the N civilizations covering the Galactic volume with their «spheres of influence» is colour coded. Probabilities of 10^{-3} , 10^{-2} , 10^{-1} , and 1 are indicated by the green thin curves. In the yellow region to the right of the figure, the probability is ≥ 1 . To its left, the probability of contact decreases with L^{-3} , to become negligible in the cyan-shaded region. The six models of Fig. 3 which adopt $v/c = 0.001$ appear with the corresponding letters (see the text).

Regions to the left of the yellow region correspond to progressively lower probabilities, as indicated by the three solid green curves at $F = 1, 10^{-1}, 10^{-2}$, and 10^{-3} , where civilizations are too few or too short-lived to collectively colonize the whole Galaxy. The importance of the factor L is clearly seen: a reduction of L by a factor of 10 decreases the probability of covering the Galactic volume by a factor of 100–1000, making contact rapidly improbable. On the other hand, a decrease of f_{BIOTECH} by a factor of 100 can be easily compensated by an increase of L by a factor of 5–7, as can be seen in the case of each of the green probability curves. In the cyan-shaded region to the left of the curve $F = 10^{-3}$ the probability is practically zero. Fermi's question can be easily understood in physical terms in that region, without invoking any 'sociological' reasons (e.g. unwillingness to explore or contact us, cosmic 'zoo' etc.)

Each of the lettered points in Fig. 4 indicate the corresponding models in Fig. 3, which adopt $v/c = 0.001$. Again, as discussed before, the role of L is clearly and quantitatively illustrated: the probability P decreases by a factor of 10^4 when L decreases by 100 (going from models S to Q, for the same $N = 1000$), but it decreases more slowly, by a factor 100 when N decreases also by 100 (going from S to D, for the same $L = 10^7$).

Simulations for different values of v/c , from 0.9 to 0.0001, are summarized in Fig. 5: the shaded area to the right of each curve, identified by the corresponding v/c , is the region of $F \geq 1$ where the criterion for having a '*Fermi* paradox' is satisfied. It is essentially a simple 'geometrical' criterion which can be expressed as

$$\begin{aligned} N (vL)^3 &\geq 3 h_G R_G^2 \quad \text{for } (vL < h_G) \\ N (vL)^2 &\geq 3 R_G^2 \quad \text{for } (vL > h_G) \end{aligned} \quad (11)$$

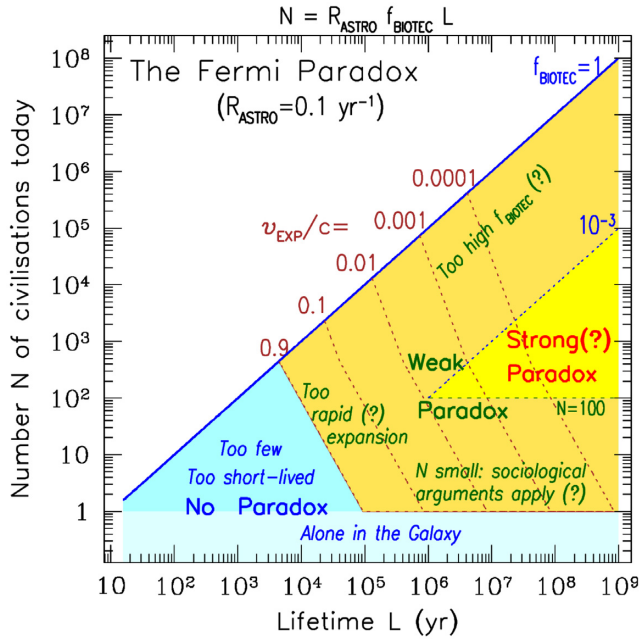


Figure 5. The *Fermi* paradox presented in the N versus L plane, in terms of the Drake formula and for $R_{\text{ASTRO}} = 0.1 \text{ yr}^{-1}$ in the Milky Way. It is assumed that the colonization front expands with average speed $v/c = 0.9, 0.1, 0.01, 0.001,$ and 0.0001 , as indicated by the dotted curves. The *Fermi* paradox holds to the right-hand part of each speed curve, i.e. the probability of a collective colonization of the Galaxy by N civilizations is $= 1$ in that region. In the region in the bottom left part, the *Fermi*'s question can be understood in physical terms, since the probability of collective occupation of the Galaxy is practically zero ('No paradox'). To its right, probabilities are formally high, but conditions are rather too 'optimal' in some cases (thus a 'Weak paradox'). It remains to be seen whether there are regions of the parameter space where conditions are 'reasonable', allowing one to qualify *Fermi*'s question as a 'Strong paradox' (see the text).

for the case of the 'coral model' adopted here. To the left of each curve, the probability of contact rapidly decreases [the inequalities of equation (11) are inversed] and there is no *Fermi* paradox for the corresponding value of v/c (as in Fig. 4). The case of $v/c = 0.9$ is shown only for illustration purposes, as it is improbable that civilizations may expand at such high speed (and even at $v/c = 0.1$), because the spaceships should travel even faster than that.

In Prantzos (2013), it is argued that if N is 'small' (arbitrarily taken to be $N < 100$) the dozens of various 'sociological' hypothesis put forward to explain *Fermi*'s paradox (see Webb 2015) may really constitute an answer for the absence of extraterrestrials on Earth. In that case, one may consider that *Fermi*'s question does not constitute a true paradox. Also, it may be that expansion of the 'exploration front' at speeds $v/c > 0.01$ is too rapid for any technology, since the actual speed of the spaceships should be even larger.

Furthermore, the 'biotechnological' factor f_{BIOTEC} must certainly be lower than its maximal possible value of 1. For illustration purposes, we have put the value $f_{\text{BIOTEC}} = 10^{-3}$ in Fig. 5, but the actual value may turn out to be much smaller. Future observations may reveal the presence of life elsewhere (Kopparapu, Wolf & Meadows 2019) probing thus the value of f_i , the first of the three factors of the term f_{BIOTEC} in equation (4). On the other hand, evolutionary biologists argue for values of the intelligence factor f_i much lower than 1 (see Lineweaver 2009, and references therein), in which case the region of the 'strong paradox' would shrink much more.

For all those reasons, it is argued that in a fairly large region of the diagram (orange shadowed in Fig. 5) *Fermi*'s question constitutes only a 'weak paradox'. It remains to be seen whether there are regions to the right of the diagram where *Fermi*'s question can be considered as really meaningful ('strong paradox'), i.e. : *if there are so many, live so long and expand at not an unreasonable speed, why aren't they here?*

From Fig. 5 it appears that, for 'realistic' expansion speeds ($v/c < 0.01$) and independently of their number, civilizations should live more than $L \sim 1 \text{ My}$ in order to fully cover the Galaxy collectively during their lifetime. Background extinction rates of species on Earth suggest lifespans of the order of 1 My for mammals or 11 My for invertebrates (Lawton & May 1995), shrinking even further the 'strong paradox' region from the right-hand part in Fig. 5. However, it is unknown at present whether such considerations could apply to extraterrestrial and/or technologically advanced species.

In any case, the adopted scheme allows one to assess *Fermi*'s question in the phase space of quantifiable – albeit unknown – parameters ($f_{\text{BIOTEC}}, L,$ and v), accounting also for the astrophysical setting i.e. the size of the Galaxy. But this 'quantification' obviously cannot help with other important issues related to the *Fermi* paradox, e.g. 'to assert the presence of extraterrestrials on Earth in the recent or distant past, what kind of tracers should we seek for?' (see e.g. Schmidt & Frank 2019, and references therein). The lack of a convincing answer to that question obviously limits the utility of Fig. 5.

6 SUMMARY

In this work, the *Fermi* paradox is analysed in terms of a simplified version of the Drake formula – originally suggested in Prantzos (2013) – and the role of the civilization lifetime L is emphasized. Several novelties are introduced in the discussion.

(a) The condensed form of Drake's formula ($N = R_{\text{ASTRO}} f_{\text{BIOTEC}} L$) is presented graphically in the plane N versus L , assuming that the 'astronomical' factor R_{ASTRO} can be determined from present-day and forthcoming observations; based on current understanding, $R_{\text{ASTRO}} = 0.1 \text{ yr}^{-1}$ is adopted throughout this work. The plane is covered by the different values assumed for the 'biotechnological' factor f_{BIOTEC} and N is bound from above by the value $N = 0.1 L$ (where L is expressed in yr), since $f_{\text{BIOTEC, Max}} = 1$.

(b) The possibility of $N < 1$ is explored and for the first time a statistical interpretation is suggested: it corresponds to the case where the typical lifetime L of a civilization is smaller than the typical time-scale T of the emergence of two successive civilizations in the Galaxy, i.e. $N = L/T$. With this interpretation, the Drake formula covers the case of civilizations being 'alone in space' (within the Milky Way), but not 'alone in time'.

(c) It is argued that, in the steady-state situation expressed by Drake's formula, the lifetime L plays a key role, even larger than f_{BIOTEC} , despite the fact that both factors enter the formula in a linear way. The reason is that the volume of the 'sphere of influence' of communicating civilizations (either through direct contact or through ELM signals) depends on L^3 for an isotropic expansion, at least in the framework of the 'coral model' for Galactic colonization adopted here.

(d) This dependence is illustrated by Monte Carlo simulations performed for various values of the parameters $N, L,$ and v (the typical speed of the expansion front of the civilizations), in a disc galaxy with the dimensions of the Milky Way.

(e) A quantitative criterion is proposed to evaluate the chances of contact: the probability of contact is the fraction of the Galactic volume occupied by N ‘volumes of influence’ during the last period of duration L . Equations (9) and (10) reveal the strong influence of the factor L on the discussion of the *Fermi* paradox.

(f) This criterion allows one to define in the plane N versus L regions where the probability of contact is high or low, for a given assumed value of the expansion speed v (Fig. 4). For sufficiently large values of N and L , a probability is $P \geq 1$ may be obtained, indicating that Fermi’s question calls for answer: *if they are so numerous and expand for so long and sufficiently rapidly, then why are they not here?* The case $P > 1$ implies overlapping of some volumes of influence. No attempt is made here to interpret the implications of such overlapping, i.e. of the contact between civilizations.

(g) On the basis of the above, a criterion quantifying the *Fermi* paradox is proposed (equation 11) relating the two variables of the Drake formula (N and L) to the size of the Galaxy through the expansion speed v .

(h) This original presentation allows one to display quantitatively in a single figure (Fig. 5) and in a compact form, the three physical explanations mostly discussed as solutions to the *Fermi* paradox (see Webb 2015, and references therein): rare civilizations (low N), too short-lived (low L , making them unable to arrive here, even if they are numerous and/or expand rapidly), or unable to expand at sufficiently high speed (low v).

(i) It is argued that in a large region of the diagram the corresponding parameters suggest rather a ‘weak’ *Fermi* paradox. Future research may reveal whether a ‘strong’ paradox holds in some part of the parameter space. In any case, it appears that for ‘realistic’ expansion speeds ($v/c < 0.01$) civilizations should expand for more than ~ 1 My in order to fully cover the Galaxy in their lifetime.

It should be emphasized that the quantitative results obtained here depend on three key assumptions:

(a) *The number N of Galactic civilizations is obtained by the Drake formula and reflects a steady state:* in principle, a different framework may be conceived, in which the ‘production rate’ of civilizations is not connected to the birth rate of habitable planets or does not correspond to a steady state: for instance, they may appear in ‘waves’ in time and/or in space following some ‘special’ event, e.g. the passage of a spiral wave or some other perturbation. Such considerations would make the analysis considerably – and unnecessarily, at this stage – more complex.

(b) *Civilizations appear randomly in the Galactic volume:* [the MC simulations of Fig. 3 take into account the radial stellar density profile, but the analytical criteria of equation (11) do not]; the situation would be obviously different if, for some reason, some Galactic places are systematically favoured.

(c) *The expansion front expands as in the ‘coral model’* and its radius increases as $r_{\text{exp}} \propto L$, leading to a strong dependence of the ‘volume of influence’ on L ($V_{\text{exp}} \propto L^3$). In other models, like the diffusion model adopted in e.g. Newman & Sagan (1981), the radius increases as $r_{\text{exp}} \propto \sqrt{DL}$ – where D is the diffusion coefficient – and the dependence on L is weaker ($V_{\text{exp}} \propto L^{3/2}$). Although it is trivial to calculate such models in the adopted framework [replacing the appropriate quantities in equations (8)–(11)], it is hard – and certainly not intuitive – to decide about the values of the diffusion coefficient D and even about the physical meaning of such models.

For several decades, the Drake formula played an important role in the search for extraterrestrial life, providing a framework

to formulate our current understanding about a very complex phenomenon such as the development of life and intelligence in the astrophysical setting of the Milky Way (Prantzos 2000). In this study, we show that it can also be used to constrain quantitatively the ‘physical’ answers to Fermi’s question. Forthcoming developments in various fields related to astrobiology, space sciences, communication theory, big data analysis, etc. are expected to enrich further our understanding of this topic (e.g. Cabrol 2016, and references therein).

ACKNOWLEDGEMENTS

I am grateful to my colleague Gary Mamon at IAP for invaluable help with the graphics of this work (and many others).

REFERENCES

- Ashworth S., 2014, *J. Brit. Interplanet. Soc.*, 67, 224
 Bennet J., Shostak S., 2017, *Life in the Universe*. 4th edn., Monograph, Pearson, London, England
 Björk R., 2007, *Int. J. Astrobiol.*, 6, 89
 Cabrol N. A., 2016, *Astrobiology*, 16, 661
 Carroll-Nellenback J., Frank A., Wright J., Scharf C., 2019, *AJ*, 158, 117
 Chomiuk L., Povich M. S., 2011, *AJ*, 142, 197
 Cirkovic M., 2018, *The Great Silence: the science and philosophy of Fermi’s paradox*. Oxford University Press, Oxford, p. 432
 Crawford I. A., 2018, in *Handbook of Exoplanets*. Springer International Publishing, p. 167
 Drake F. D., 1961, *Phys. Today*, 14, 40
 Fogg M. J., 1987, *Icarus*, 69, 370
 Furley D., 1987, *The Greek Cosmologists: Vol. 1: The Formation of the Atomic Theory and its Earliest Critics*. Cambridge University Press, Cambridge
 Glade N., Ballet P., Bastien O., 2012, *Int. J. Astrobiol.*, 11, 103
 Grimaldi C., Marcy G. W., Tellis N. K., Drake F., 2018, *PASP*, 130, 054101
 Hair T. W., Hedman A. D., 2013, *Int. J. Astrobiol.*, 12, 45
 Haqq-Misra J., Kopparapu R. K., Wolf E. T., 2018, *Int. J. Astrobiol.*, 17, 77
 Hart M. H., 1975, *Quart. J. Roy. Astron. Soc.*, 16, 128
 Hsu D. C., Ford E. B., Ragozzine D., Ashby K., 2019, *AJ*, 158, 109
 Jones E. M., 1981, *Icarus*, 46, 328
 Jones E. M., 1985, Technical Report, Where is Everybody? An Account of Fermi’s Question
 Kopparapu R. K., Wolf E. T., Meadows V. S., 2019, preprint ([arXiv:1911.04441](https://arxiv.org/abs/1911.04441))
 Kroupa P., 2002, *Science*, 295, 82
 Landis G. A., 1998, *J. Brit. Interplanet. Soc.*, 51, 163
 Lawton J., May R., 1995, *Extinction Rates*. Monograph. Oxford University Press, Oxford
 Liitle J. D. C., 1961, *Oper. Res.*, 9, 383
 Lineweaver C. H., 2009, *Geochim. Cosmochim. Acta Suppl.*, 73, A769
 Maccone C., 2010, *J. Brit. Interplanet. Soc.*, 63, 222
 Mayr E., 1992, *Naturwissenschaft. Rund.*, 45, 264
 Newman W. I., Sagan C., 1981, *Icarus*, 46, 293
 Ostriker J. P., Turner E. L., 1986, *J. Brit. Interplanet. Soc.*, 39, 141
 Paudel R. R., Gizis J. E., Mullan D. J., Schmidt S. J., Burgasser A. J., Williams P. K. G., Youngblood A., Stassun K. G., 2019, *MNRAS*, 486, 1438
 Petigura E. A. et al., 2018, *AJ*, 155, 89
 Prantzos N., 2000, *Our Cosmic Future: Humanity’s fate in the Universe*. Monograph. Cambridge University Press, Cambridge, UK, 286
 Prantzos N., 2013, *Int. J. Astrobiol.*, 12, 246
 Schmidt G. A., Frank A., 2019, *Int. J. Astrobiol.*, 18, 142
 Schwieterman E. W., Reinhard C. T., Olson S. L., Harman C. E., Lyons T. W., 2019, *ApJ*, 878, 19
 Selsis F., 2007, in *Lectures in Astrobiology*. Springer-Verlag, Berlin, Heidelberg, p. 199

Simpson G. G., 1964, *Science*, 143, 769

Viewing D., 1975, *J. Brit. Interplanet. Soc.*, 28, 735

Wandel A., Gale J., 2019, preprint ([arXiv:1907.11098](https://arxiv.org/abs/1907.11098))

Webb S., 2015, *If the Universe is Teeming with Aliens...Where is Everybody?* Springer International, Switzerland

Zackrisson E., Calissendorff P., Asadi S., Nyholm A., 2015, *ApJ*, 810, 23

This paper has been typeset from a $\text{\TeX}/\text{\LaTeX}$ file prepared by the author.