



**HAL**  
open science

## **The Public Health Burden of Cardiomyopathies: Insights from a Nationwide Inpatient Study**

Simon Lannou, Nicolas Mansencal, Cécile Couchoud, Mathilde Lassalle,  
Olivier Dubourg, Bénédicte Stengel, Christian Jacquelinet, Philippe Charron

► **To cite this version:**

Simon Lannou, Nicolas Mansencal, Cécile Couchoud, Mathilde Lassalle, Olivier Dubourg, et al.. The Public Health Burden of Cardiomyopathies: Insights from a Nationwide Inpatient Study. *Journal of Clinical Medicine*, 2020, 9 (4), pp.920. 10.3390/jcm9040920 . hal-02883447

**HAL Id: hal-02883447**

**<https://hal.sorbonne-universite.fr/hal-02883447>**

Submitted on 29 Jun 2020

**HAL** is a multi-disciplinary open access archive for the deposit and dissemination of scientific research documents, whether they are published or not. The documents may come from teaching and research institutions in France or abroad, or from public or private research centers.

L'archive ouverte pluridisciplinaire **HAL**, est destinée au dépôt et à la diffusion de documents scientifiques de niveau recherche, publiés ou non, émanant des établissements d'enseignement et de recherche français ou étrangers, des laboratoires publics ou privés.

## *The public health burden of cardiomyopathies: insights from a nationwide inpatient study*

**Authors:** Simon Lannou,<sup>1</sup> Nicolas Mansencal,<sup>1,2</sup> Cécile Couchoud,<sup>3</sup> Mathilde Lassalle,<sup>3</sup> Olivier Dubourg,<sup>1,2</sup> Benedicte Stengel,<sup>2</sup> Christian Jacquelinet,<sup>2,3</sup> Philippe Charron<sup>1,4,5\*</sup>

### **Affiliations:**

1. APHP, Service de Cardiologie, Centre de référence des maladies cardiaques héréditaires ou rares, Hôpital Ambroise Paré, Boulogne Billancourt, France; simonlannou@gmail.com (S.L.); nicolas.mansencal@aphp.fr (N.M.) olivier.dubourg@aphp.fr (O.D.); philippe.charron@aphp.fr (P.C.)
2. CESP Centre for Research in Epidemiology and Population Health, Inserm UMRS 1018, Univ Versailles-Saint Quentin, Univ Paris-Saclay, Univ Paris Sud, Villejuif, France; benedicte.stengel@inserm.fr (B.S.); christian.jacquelinet@biomedecine.fr (C.J)
3. Agence de la Biomédecine, Saint-Denis la Plaine, France; cecile.couchoud@biomedecine.fr (C.C.); mathilde.lassalle@biomedecine.fr (M.L.)
4. APHP, Département de Génétique, Centre de référence des maladies cardiaques héréditaires ou rares, Hôpital Pitié-Salpêtrière, Paris, France
5. Sorbonne Université, INSERM, UMR\_S 1166 and ICAN Institute for Cardiometabolism and Nutrition, Paris, France

\* Correspondence: philippe.charron@aphp.fr ; phone: +33 1 42 16 13 47.

**Abstract:** Cardiomyopathies are responsible for heart failure and sudden cardiac death, but epidemiological data are scarce and the public health burden may be underestimated. We studied aggregating data from all public or private hospitals in France. Patients were categorized from relevant ICD-10 codes into dilated, hypertrophic, restrictive or other cardiomyopathies (DCM, HCM, RCM or OCM, respectively). Between 2008 and 2015, a total of 326,461 distinct patients had cardiomyopathy-related hospitalizations. The hospital-based prevalence of cardiomyopathy was 809 per million inhabitants (PMI) per year, including 428 PMI for DCM, 101 PMI for HCM, 26 PMI for RCM and 253 PMI for OCM. Patients with cardiomyopathies accounted for 51% of all heart transplants, 33% of defibrillator implantations, 38% of mechanical circulatory supports and 11.3% of hospitalizations for heart failure. In patients less than 40 years of age, these figures were 71%, 51%, 63% and 23% respectively. Over 2008-2015 and considering all cardiomyopathies, there was a significant increase for heart transplant (average annual percentage change, AAPC: +3.86%,  $p=0.0015$ ) and for defibrillator implantation (AAPC: +6.98%,  $p<0.0001$ ), and a significant decrease of in-hospital mortality (AAPC: -4.7%,  $p=0.0002$ ). This nationwide study shows that cardiomyopathies constitute an important cause of hospitalization, with increasing invasive therapeutic procedures and decreasing mortality.

**Keywords:** cardiomyopathy; epidemiology; prevalence; heart transplant; defibrillator, hospitalization.

---

---

## **1. Introduction**

Cardiomyopathies are defined as myocardial diseases with abnormal structure and function in the absence of coronary disease, hypertension, valvular heart disease or congenital malformation sufficient to explain them [1-4]. Cardiomyopathies are usually divided into four main subtypes [1]: dilated cardiomyopathy (DCM) [5], restrictive cardiomyopathy (RCM) [6], hypertrophic cardiomyopathy (HCM) [7], arrhythmogenic right ventricular cardiomyopathy (ARVC) [8] and other non-classified subtypes.

These diseases are considered to be significant causes of heart failure and sudden cardiac death, at least in the young [4,9-10]. However, epidemiological data are scarce, which makes it difficult to identify the burden of these diseases in public health and thus to identify priorities for action at the national or international level. The rare data mainly assess the prevalence of some cardiomyopathy subtypes, or cardiomyopathies and myocarditis, in the general population [10-12] or among the causes of death [10,13] or sudden cardiac death in the young [14,15]. Previous studies observed a prevalence of 1/500 for HCM [11] and ~1/2500 for DCM [12] in the general population, but these could be underestimates [13]. A European prospective registry was recently conducted on the various cardiomyopathies [16], but this EURObservational Research Programme (EORP) project was restricted to selected centers and so was unable to estimate population prevalence.

The goal of the present study was to assess the public health burden of cardiomyopathies in terms of hospitalizations, therapeutic procedures and their trend over time through a nationwide study. Our hypothesis is that cardiomyopathies account for an underestimated part of cardiovascular morbidity, notably through hospitalizations for acute events or for invasive therapeutic procedures.

## **2. Materials and Methods**

### *2.1. National inpatient database*

The Diagnosis Related Groups (DRG) national database compiled by the Technical Agency for Information on Hospitalization (ATIH) in France aggregates data from all public and private hospitals supplying the “Program of Medicalization of the Information Systems” (PMSI) and DRG payment system [17].

Confidential and anonymous data were retrieved via the ATIH server from 2008 to 2015. For each hospitalization, a standardized discharge summary (SDS) is produced, containing a “main diagnosis”, “connected diagnosis” (on the grounds of the stay), “associated diagnoses” and medical procedures performed during hospitalization. Diagnoses are encoded using the International Classification of Diseases version 10 (ICD-10), whereas procedures are encoded using a specific nomenclature referred to as “Classification Commune des Actes Médicaux” (CCAM).

### *2.2. Population*

All patients hospitalized at least once in France during the study period were included. All hospitalization modalities were considered (day hospital, conventional hospitalization, intensive care unit). To focus on the epidemiological burden of cardiomyopathy, we restricted our study to inpatient major cardiovascular events and procedures reasonably related to a cardiomyopathy, including: clinical events (such as heart failure) and invasive therapeutic procedures (such as defibrillator implantation), but we excluded other reasons such as acute coronary syndrome.

### *2.3. Diagnostic codes and longitudinal derivation rules*

We combined the relevant ICD-10 codes available for cardiomyopathies to categorize patients into the following 4 subgroups: DCM, HCM, RCM and other cardiomyopathies (OCM, including ARVC and other non-classified subtypes that do not have a dedicated disease code) (Table S1).

To avoid bias related to encoding, to have more specific populations and in order to minimize the risk of misclassification into cardiomyopathies, we used a cautious and conservative approach by making a restrictive choice for some ICD-10 or SDS native codes, excluding patients with another cause/code of heart disease across the study period (possibly due to comorbidity, but also to inappropriate or wrong coding) and refined our groups of cardiomyopathies. Since about 50% of patients labelled as “DCM disease code” were also reported with an “ischemic heart disease code”, we decided to remove from DCM all patients with ischemic heart disease coding (I20 to I25 codes) in order to have a more specific DCM group. Similarly, we decided to remove from the “HCM group” all patients (about 20%) with the following coexisting disease codes: aortic stenosis, hypertensive heart disease, arterial hypertension (I350, I352, I060, I062, I110, I119 codes).

Each clinical event driving the hospitalization (such as heart failure) was coded as the main diagnosis or an associated diagnosis for the hospitalization ([Table S1](#)). Every patient with the association of a “cardiomyopathy” code and a clinical event code (such as heart failure) was counted as a (heart failure) clinical event. Each medical procedure (diagnostic or therapeutic) performed during hospitalization has a CCAM code assigned to the associated hospitalization (such as cardiac transplantation). CCAM codes are detailed in [Table S2](#).

We also used the CRISTAL national registry, the dedicated registry for all transplantations in France, including heart transplant (HTx) [18], as an external control to validate the methodology we used for PMSI diagnostic code derivation rules. For each heart transplant performed in France between 2008 and 2015, we studied in CRISTAL the etiology underlying HTx and then compared heart transplants over the same period in the two databases (DRG/PMSI and CRISTAL).

#### *2.4. Statistical analyses*

The analysis of the DRG/PMSI data was performed with the SAS Guide V7.1 computer software by accessing the ATIH server. The annual inpatient prevalence of cardiomyopathy diagnosis, or cardiovascular event, was defined as the proportion of mainland France inhabitants with at least one hospitalization with a code of “cardiomyopathy” in a given year and expressed per million inhabitants (PMI) per year. Population estimates by age and gender were provided by the French office for national statistics (INSEE) as of December 31 for each year (Table S3). Only one hospitalization per patient per year was considered. To assess trends over time in inpatient prevalence of cardiomyopathies, we provide the percentage change between 2008 and 2015 and the average annual percentage changes (AAPC) with their 95% confidence interval computed using the Poisson regression in the Joinpoint regression program (version 4.5) [19]. A p-value <0.05 was considered statistically significant.

### **3. Results**

#### *3.1. Inpatient prevalence and trend of cardiomyopathies*

Out of 97.3 million hospitalizations in France between 2008 and 2015, a total of 326,441 distinct patients experienced at least one cardiomyopathy-related hospitalization (Figure S1). These patients had a mean age of 71 years and were predominantly males (62%). Over 2008-2015, the annual inpatient prevalence (DRG-mean annual prevalence) of overall cardiomyopathy was  $809.5 \pm 29.1$  (mean $\pm$ sd) per million inhabitants (PMI). With regards to cardiomyopathy subtypes (Table 1), the prevalence was mainly driven by patients with DCM (428.4 PMI, 53% of all patients), followed by the OCM group (253.4. PMI, 31%), HCM group (100.8 PMI, 12%), and RCM group (25.9 PMI, 3%). The total inpatient prevalence of cardiomyopathies did not change significantly between 2008 and 2015 (844 PMI in 2008 and 847 PMI in 2015, average annual percentage changes or AAPC: +0.2%, [95% CI:-0.16;0.57],

p>0.05), with an increase of DCM and RCM but a decrease of HCM and OCM. The increase was particularly high for RCM (+ 48% between 2008 and 2015, 21.9 PMI to 32.4 PMI). The numbers standardized for age and sex are provided in [Table S3](#).



**Table 1.** Inpatient prevalence of patients (PMI) with cardiomyopathies in France over the period 2008-2015.

CM	2008	2009	2010	2011	2012	2013	2014	2015	m±sd	PC%	AAPC	IC95%	P-Value	%Men	Age (m)	%CM
DCM	419.9	414.5	409.1	408.5	421	435.1	446.1	472.8	428.4±23.6	+13%	1.58	[0.88;2.3]	0,0000	65%	70	53%
OCM	276.6	261.3	242.6	240.3	255.4	260.3	251.1	239.6	253.4±9.3	-13%	-1.1	[-2.77;0.59]	NS	57%	69	31%
HCM	124.7	109.8	101.5	95.4	89.3	89.8	93.8	101.7	100.8±7.4	-18%	-2.8	[-4.39;-1.19]	0.0007	60%	70	12%
RCM	21.9	23.3	22.7	22.2	25.8	28.4	30.9	32.4	26±4.1	+48%	5.9	[3.84;8]	0,0000	56%	74	3%
All CM	844.0	809.9	777.1	767.5	792.7	814.4	822.9	847.5	809.5±27.6	0%	0.2	[-0.16;0.57]	NS	62%	71	100%

CM: cardiomyopathy; DCM: dilated cardiomyopathy; OCM: other cardiomyopathy; HCM: hypertrophic cardiomyopathy; RCM: restrictive cardiomyopathy; All CM: all cardiomyopathies; m ± sd: mean and standard deviation of DRG-AP per million inhabitants (PMI) over the 2008-2015 period; PC%: Percent change between 2008 and 2015; AAPC: average annual percentage change on the overall period with its 95% Confidence Interval, p: p-value of having AAPC different from 0; NS: non-significant; %Men: mean of annual percentages of male with specific CM ; Age(m): mean Age; %CM: mean of annual ratios of patients with specific CM among all CM on the 2008-2015 period.

### *3.2. Cardiomyopathy-related cardiovascular events and invasive procedures*

From 2008 to 2015, a total of 233,872 distinct patients were hospitalized at least once for a cardiovascular event or a therapeutic procedure directly related to the cardiomyopathy (Figure S1). The most common non-fatal event was heart failure, followed by stroke, arrhythmia, pulmonary embolism, and endocarditis. The most common invasive procedure was the implantation of a pacemaker, then a cardiac defibrillator and heart transplant. A total of 44,585 patients died in hospital with a related diagnosis of a cardiomyopathy.

Temporal variations of the prevalence of patients who underwent at least one clinical event or an invasive procedure over the study period are detailed in Tables 2 and 3, as well as in Figure 1 by event or procedure and by cardiomyopathy subtype. Over 2008-2015 and considering all cardiomyopathy subtypes together, there was a non-significant increase in the prevalence of inpatients heart failure (average annual percentage change or AAPC: +0.94%, [95% CI:-0.7;2.6],  $p>0.05$ ), a significant increase for heart transplant (AAPC:+3.86%, [2.13;5.61],  $p=0.0015$ ), for defibrillator implantation (AAPC: +6.98%, [3.68;10.38],  $p<0.0001$ ) and a significant decrease of in-hospital mortality (AAPC: -4.7%, [-7.09;-2.26],  $p=0.0002$ ). Additional results, including the comparison of heart transplants in the CRISTAL database, are mentioned in Text S1.

**Table 2.** Temporal variations of inpatient prevalence of events (per million inhabitants), by type of event and cardiomyopathy, over the period 2008-2015.

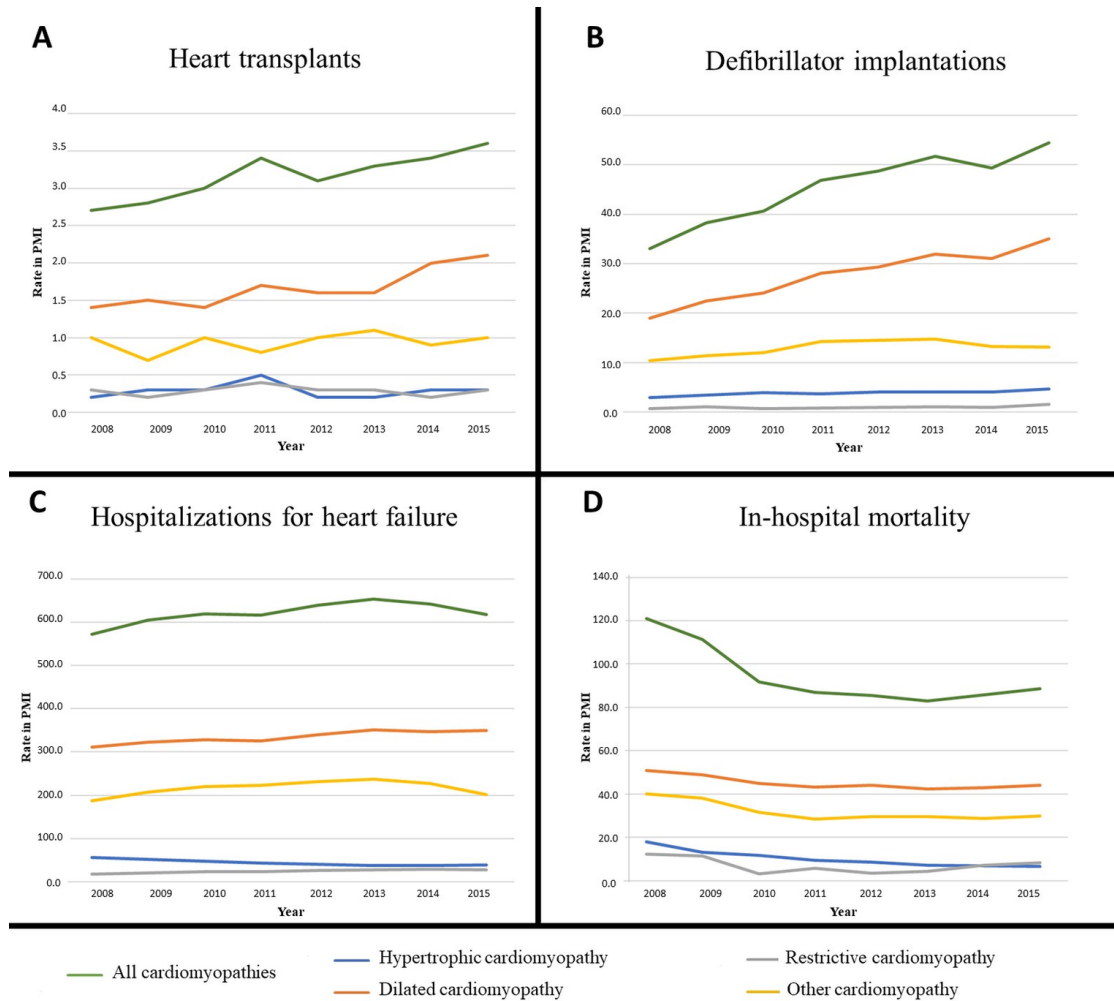
EVENT	CM	2008	2009	2010	2011	2012	2013	2014	2015	m±sd	PC %	AAPC %	CI95%	P-Value
Heart Failure	HCM	56.2	52.5	47.1	42.7	40.1	37.5	38.1	39.4	44.2±7	-30%	-4.94	[-6.17;-3.7]	<0.0001
	DCM	310.9	323.4	328.4	326	339.5	351.3	347.3	349.6	334.6±14.6	12%	1.71	[1.11;2.31]	0.0004
	RCM	17.2	21.1	23	23.3	26.2	27.8	29.5	27.1	24.4±4	58%	6.82	[3.84;9.89]	0.0013
	OCM	187.2	207.9	220.5	223.5	231.8	237	227	201.7	217.1±16.8	8%	0.65	[-2.15;3.54]	NS
	All CM	571.9	605.5	619.5	616.4	638.5	654.1	642.5	618.3	620.8±25.5	8%	0.94	[-0.7;2.6]	NS
Stroke	HCM	4.8	4.6	4.6	4.2	4.1	4.5	4.9	4.3	4.5±0.3	-10%	-0.65	[-3.09;1.86]	NS
	DCM	17.8	20.2	21.7	21.9	25	24.1	24.5	24.5	22.5±2.5	38%	4.25	[1.53;7.05]	0.0021
	RCM	1.4	1.6	1.8	1.9	2.1	1.9	2.5	2.5	2±0.4	79%	8.11	[5.31;10.99]	0.0003
	OCM	21.7	23.4	21	20.7	21.9	22.3	22.4	19.4	21.6±1.2	-11%	-0.91	[-3.02;1.25]	NS
	All	45.7	49.9	49.1	48.7	53.1	52.8	54.4	50.7	50.6±2.8	11%	1.76	[0.24;3.3]	0.0299
Pulmonary Embolism	HCM	3.3	2.9	2.8	2.8	2.6	2.3	2.6	2.5	2.7±0.3	-24%	-3.68	[-5.92;-1.4]	0.0078
	DCM	12.7	13.4	13.6	12.9	13.3	13.3	13.5	13.4	13.3±0.3	6%	0.45	[-0.39;1.3]	NS
	RCM	0.8	1.1	1.2	1.2	1	1.2	1.3	1	1.1±0.2	25%	2.67	[-3.09;8.77]	NS
	OCM	11.1	11.6	11.7	10.9	9.9	10.5	10.1	9.8	10.7±0.7	-12%	-2.34	[-3.84;-0.81]	0.0098
	All	27.9	29	29.2	27.8	26.8	27.3	27.5	26.8	27.8±0.9	-4%	-0.93	[-1.85;0]	0.0496
Endocarditis	HCM	0.5	0.6	0.7	0.6	0.7	0.7	0.8	0.7	0.7±0.1	40%	4.81	[1.15;8.6]	0.0178
	DCM	3	3.2	3.8	3.8	3.6	4.7	4.2	3.6	3.7±0.5	20%	3.91	[-0.51;8.52]	NS
	RCM	0.2	0.3	0.3	0.4	0.4	0.4	0.3	0.4	0.3±0.1	100%	7.04	[-0.61;15.28]	NS
	OCM	2.4	2.8	3.6	4	4.8	4.5	4.3	4.2	3.8±0.8	75%	8.01	[5.13;10.97]	<0.0001
	All	6.3	7	8.3	8.8	9.6	10.4	9.7	8.9	8.6±1.4	41%	4.71	[1.68;7.83]	0.0021
Cardiac Arrest	HCM	3.1	3	3.3	2.7	2.7	2.7	2.5	2.5	2.8±0.3	-19%	-3.53	[-5.48;-1.54]	0.005
	DCM	9.1	12.1	11.8	10.2	12	12.9	12.9	13.5	11.8±1.5	48%	4.27	[0.74;7.92]	0.025
	RCM	0.8	1	1.2	0.9	1.2	1.4	1.7	1.4	1.2±0.3	75%	9.11	[3.34;15.2]	0.0078
	OCM	7.4	8.8	9.3	10	11	11	11.1	11.6	10±1.4	57%	5.82	[2.99;8.73]	0.0000
	All	20.3	25	25.7	23.8	26.9	27.9	28.1	28.9	25.8±2.8	42%	4.16	[1.76;6.63]	0.0053
In-Hospital Death	HCM	18	13.1	11.7	9.4	8.5	7.1	7	6.5	10.2±3.9	-64%	-13.42	[-17.63;-9]	<0.0001
	DCM	50.8	48.8	45	43.2	44	42.3	43	44	45.1±3	-13%	-2.26	[-3.87;-0.63]	0.0069
	RCM	12.3	11.4	3.3	5.7	3.5	4.2	7.1	8.4	7±3.5	-32%	-10.05	[-32.58;20.01]	NS
	OCM	40	38	31.7	28.4	29.5	29.5	28.7	29.8	32±4.5	-26%	-4.52	[-7.06;-1.92]	0.0007
	All	121	111.3	91.7	86.8	85.6	83.1	85.8	88.7	94.3±14	-27%	-4.7	[-7.09;-2.26]	0.0002

Legend: similar to table 1.

**Table 3.** Temporal variations of inpatient prevalence of invasive procedure (per million inhabitants), by type of procedure and cardiomyopathy, over the period 2008-2015.

Procedure	CM	2008	2009	2010	2011	2012	2013	2014	2015	m±sd	PC%	AAPC	CI95%	P-Value
Pacemaker	HCM	6.3	6.1	5.3	5.7	5	4.9	5.4	5.5	5.5±0.5	-13%	-1.6	[-6.3;3.33]	NS
	DCM	31.3	31.8	30.7	27.8	27.6	26.8	25.8	25.9	28.5±2.4	-17%	-3.26	[-4.25;-2.26]	0.0002
	RCM	1.9	2.2	2.2	2.1	2.5	2.4	2.6	2.6	2.3±0.3	37%	4.21	[2.2;6.27]	0.0021
	OCM	18.1	18.1	19.1	18.2	18	18.2	17.8	14.7	17.8±1.3	-19%	-2,00	[-4.4;0.47]	NS
	All	57.6	58.2	57.3	53.8	53.1	52.3	51.6	48.8	54.1±3.3	-15%	-2.41	[-3.07;-1.75]	0.0001
Implantable Cardioverter Defibrillator	HCM	2.9	3.4	3.9	3.7	4	4	4.1	4.7	3.8±0.5	62%	5.47	[2.97;8.02]	0.0016
	DCM	19	22.5	24.1	28.1	29.3	31.9	31	35.1	27.6±5.4	85%	8.6	[5.01;12.31]	<0.0001
	RCM	0.7	1	0.7	0.8	0.9	1.1	0.9	1.6	1±0.3	129%	8.35	[0.4;16.92]	0.042
	OCM	10.4	11.4	12	14.2	14.5	14.7	13.2	13.1	12.9±1.6	26%	3.27	[0.25;6.38]	0.0334
	All	33.1	38.3	40.7	46.9	48.7	51.7	49.3	54.5	45.4±7.3	65%	6.98	[3.68;10.38]	<0.0001
Heart Transplant	HCM	0.2	0.3	0.3	0.5	0.2	0.2	0.3	0.3	0.3±0.1	50%	0.84	[-11.27;14.61]	NS
	DCM	1.4	1.5	1.4	1.7	1.6	1.6	2	2.1	1.7±0.3	50%	5.65	[2.69;8.7]	0.0032
	RCM	0.3	0.2	0.3	0.4	0.3	0.3	0.2	0.3	0.3±0.1	0%	-0.34	[-9.34;9.55]	NS
	OCM	1	0.7	1	0.8	1	1.1	0.9	1	0.9±0.1	0%	2.12	[-3.5;8.08]	NS
	All	2.7	2.8	3	3.4	3.1	3.3	3.4	3.6	3.2±0.3	33%	3.86	[2.13;5.61]	0.0015
Circulatory Assistance	HCM	0	0	0	0	0	0.1	0	0.1	0±0	-	-	-	-
	DCM	0.2	0.2	0.3	0.4	0.4	0.5	0.9	0.6	0.4±0.2	200%	22.06	[13.18;31.63]	0.0007
	RCM	0	0	0	0	0	0	0	0	-	-	-	-	-
	OCM	0.1	0.1	0.1	0.2	0.3	0.3	0.5	0.4	0.3±0.2	300%	-	-	-
	All	1.2	0.9	1.2	1.5	2	2.3	2.6	3.2	1.9±0.8	167%	18.71	[12.42;25.36]	0.0002

Legend: similar to table 1.



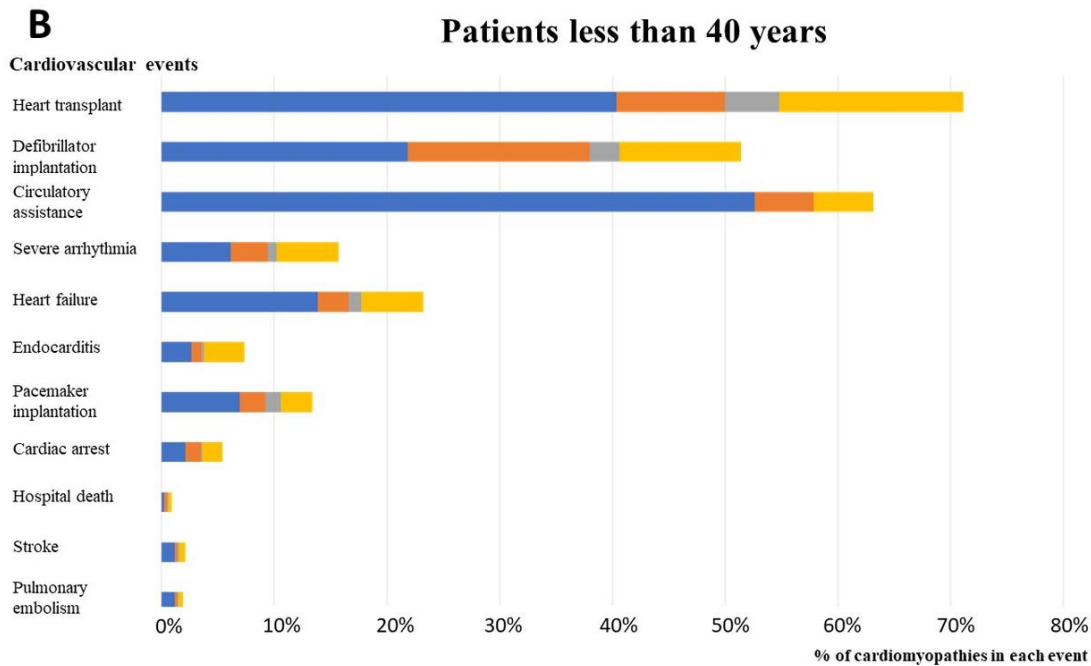
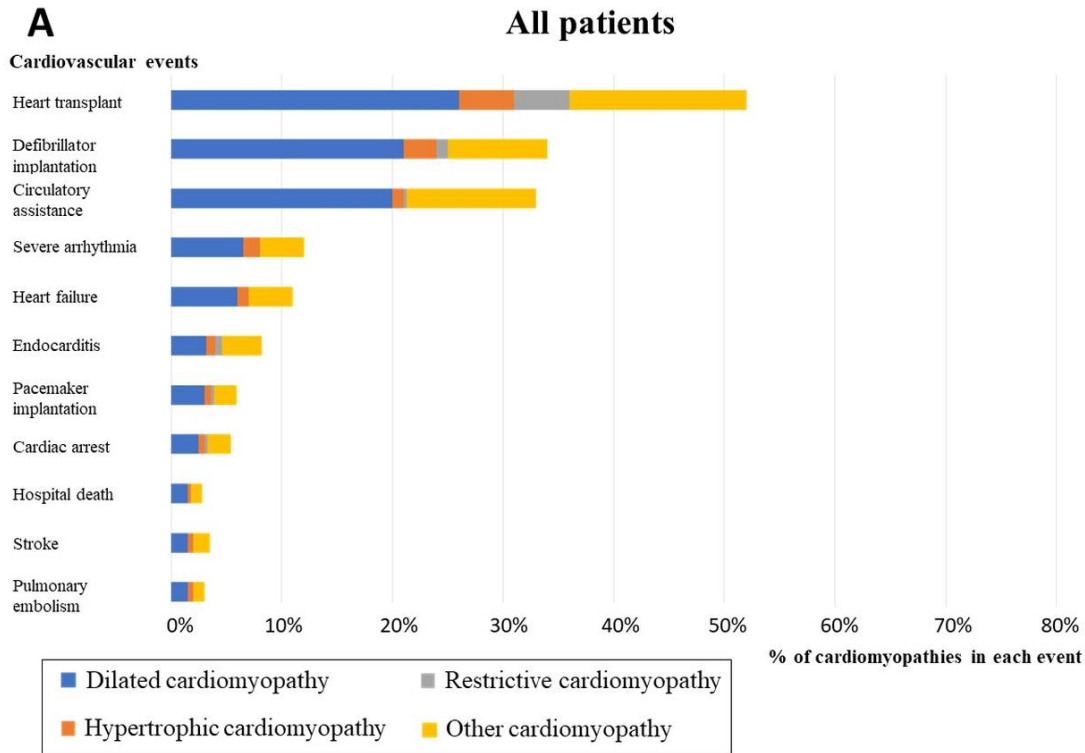
**Figure 1.** Temporal variations of inpatient prevalence of cardiomyopathy patients with at least one clinical event or procedure from 2008 to 2015:

**A.** Heart transplants; **B.** Defibrillator implantations; **C.** Heart failure; **D.** In-hospital mortality. PMI: per million inhabitants.

### *3.3. Proportion of cardiomyopathies among all cardiovascular hospitalizations*

We observed that cardiomyopathies accounted for a significant proportion of hospitalizations related either to invasive cardiac therapeutics or to major cardiovascular events (MACE) (Figure 2). When considering all procedures or MACE in France in 2015, whatever the underlying cardiac disease and including coronary artery diseases, we observed that cardiomyopathies (all subtypes considered together) accounted for 51% of all heart transplants, 33% of defibrillator implantations, 38 % of mechanical circulatory assistance, 7% of pacemaker implantations, 11.3% of heart failure, 13% of severe ventricular arrhythmias and finally found as a comorbidity in 8% of infectious endocarditis cases, 5% of cardiac arrests, 4% of strokes, and 3% of pulmonary embolisms and in-hospital deaths. For all these cardiovascular events, DCM was the most prevalent contributing cardiomyopathy subtype (Figure 2A).

Moreover, when considering only the patients less than 40 years of age (Figure 2B), cardiomyopathies account for 71% of all heart transplants, 51% of ICD implantations, 63% of circulatory assistance, 13% of pacemaker implantations, 23% of heart failure, 16% of severe arrhythmias, 7% of infectious endocarditis cases, 5% of cardiac arrests, 2% of strokes, 2% of pulmonary embolisms, and 1% of in-hospital deaths. For all these cardiovascular events, DCM was the most prevalent contributing cardiomyopathy subtype.



**Figure 2.** Proportion of patients with cardiomyopathies among all patients hospitalized for at least one major cardiovascular event or invasive therapeutic procedure in 2015. **A.** Proportions in the total population. **B.** Proportion in the subgroup of patients less than 40 years of age. Cardiac arrest: includes codes for sudden death, cardiac arrest and aborted cardiac arrest.

## 4. Discussion

This study is one of the few studies conducted on the epidemiology of cardiomyopathies and the first detailed study of a nationwide health burden of cardiomyopathies in terms of cardiovascular hospitalizations and invasive therapeutic procedures.

The first result from this exhaustive national study is that, overall, all subtypes of cardiomyopathies combined, cardiomyopathies constitute an important part of cardiovascular hospitalizations and invasive therapeutic procedures. Cardiomyopathies constitute 51% of all cardiac transplants, ahead of ischemic heart disease, which is consistent with several national heart transplantation registries [20-22] indicating that cardiomyopathies, especially dilated cardiomyopathy, have now exceeded coronary artery disease as the major indication, possibly in relation to the better management and prognosis of myocardial infarction. Interestingly, we were also able to show that cardiomyopathies constitute a third of defibrillator implantations and a third of circulatory assistances, which was not previously reported and further emphasizes the global health burden of these diseases. Cardiomyopathies also account for a significant proportion of hospitalizations for heart failure (11%), similar to a figure reported in the US [23], and a significant proportion of severe ventricular arrhythmias (13%). Moreover, the proportions were even larger when considering only the patients under 40 years of age (cardiomyopathies account for 71% of all heart transplants, 51% of all ICD implantations, 63% of circulatory support and 23% of heart failure). Overall, all subtypes of cardiomyopathies combined and all patients considered, whatever their age, the prevalence of hospitalizations for distinct patients with a cardiomyopathy was estimated to be 847 per million inhabitants in 2015 (55,000 independent patients each year in France), which is more than the prevalence observed for several severe diseases such as pulmonary hypertension



[24]. Moreover, we observed over the study period (from 2008 to 2015) a significant trend towards further recent increase in the prevalence per million inhabitants of hospitalizations for cardiomyopathy in relation to heart transplant (+33%) or defibrillator implantation (+66%). The explanations might be related to more proactive therapeutic indications, due to extended recommendations [25]. At the same time, we observed a reduction of in-hospital mortality (-27.3%) that might be related to the increase of therapeutic procedures.

When considering the respective weights of cardiomyopathy subtypes, patients with DCM were predominant in terms of hospital-based prevalence over the study period (mean annual prevalence rate 428 PMI/year, 53% of all cardiomyopathy hospitalizations) with a prevalence that increased significantly from 2008 to 2015 (+13%), although median age was stable or decreased (71 years in 2008 versus 69 years in 2015). Patients with DCM were particularly predominant in hospitalizations for heart transplant (52%), defibrillator implantation (60%) and heart failure (53%). Patients with HCM represent only 12% of all cardiomyopathy hospitalizations, although the estimated prevalence of the disease in the general population is about 1/500, as compared to 1/2500 for DCM, suggesting that major cardiovascular complications are less frequent in HCM patients and require less frequent invasive therapeutics, or that the true prevalence of DCM is underestimated as suggested by some authors [26]. Furthermore, the mean age of 71 years for patients hospitalized for cardiomyopathies highlights that most of youngest patients with cardiomyopathies do not require hospitalization. Finally, we observed that RCM account for only 3% of all cardiomyopathy hospitalizations, in agreement with the very low prevalence of the disease in the general population [6]. However, the inpatient prevalence of RCM significantly increased over the study period (+48%), which may reflect the recent evolving knowledge about this cardiomyopathy, especially regarding transthyretin amyloid cardiomyopathy [27], and the increasing detection of these diseases through improved awareness in the medical community.

Altogether, our results show that cardiomyopathies constitute an important part of hospitalizations for invasive therapeutic procedures and major cardiovascular events. The total burden is even greater in the restricted population of patients less than 40 years of age. This proportion was not well recognized until now. Therefore, our findings may have important consequences for public health action programs. There is a definite interest in launching specific action plans for cardiomyopathies in order to improve early diagnosis, therapeutics and prevention of event recurrence [4]. The better identification of these patients is especially important in the context of recent progress in prognosis stratification [28-30] along with the development of recent innovative therapeutics based on new small molecules or gene-editing approaches [31]. Our results suggest that we should focus especially on patients with dilated cardiomyopathy, who are the leading reason for hospitalizations, heart transplants and defibrillator implantations. Our results also suggest we should focus on patients under 40 years of age, especially to improve early diagnosis through dedicated family screening, since most (at least 40%) cardiomyopathies are familial and of genetic origin [16]. Another way to improve health care is to promote dedicated multidisciplinary centers of expertise on cardiomyopathies, at national or international level, because various specific skills are required for appropriate management of these diseases.

Finally, our results may help improve diagnostic coding systems for hospitalizations at an international level. First, some patients have multiple disease diagnostic ICD-10 codes, such as dilated cardiomyopathy and ischemic heart disease, or hypertrophic cardiomyopathy and hypertensive heart disease, which may be related to comorbidities, but may also be due to misclassification or inappropriate understanding of disease definitions [32]. We decided to use a cautious and conservative approach by making a restrictive choice, excluding patients with another cause/code of heart disease. Future work may benefit from a clarification of disease definitions in the next ICD-11 or by making a clear distinction between the leading

diagnostic code and a comorbidity. Second, precise diagnostic ICD-10 codes are missing for some cardiomyopathy subtypes, such as arrhythmogenic right ventricular cardiomyopathy, Takotsubo cardiomyopathy or left ventricular non-compaction. The current diagnostic code entitled “other cardiomyopathy” may include these cardiomyopathies, but may also include other unclear phenotypes. Therefore, to promote refined diagnostic codes for cardiomyopathies, either with new codes (such as proposed by ORPHA) [33] or by clarifying the definition of diseases (avoiding misclassification), would allow an even more comprehensive understanding of the health burden related to cardiomyopathies.

A major strength of the study is the use of a nationwide inpatient database including detailed diagnoses and procedures from all hospitalizations whether in the public or private sector, which enabled us to assess prevalence and trends for any type of cardiomyopathies. We also used a conservative approach about disease diagnostic codes by excluding cardiomyopathy patients with another cause/comorbidity/code of heart disease (for example, all patients with dilated cardiomyopathy *and* ischemic heart disease were classified by us as ischemic heart disease and excluded) in order to minimize the risk of misclassification and increase the specificity of the cardiomyopathy diagnosis. Therefore, we may have underestimated the true figures of patients with a cardiomyopathy. Our approach, consistent with Public health objectives [34], must be read as conditionally to the derivation rules we used to control coding bias, and is a first attempt to build standardized inpatient prevalence of cardiomyopathies using the French DRG data. Interestingly, we were able to compare our results regarding heart transplantation with those from the national CRISTAL transplantation database [18] and found consistent results, although there were some minor differences that might be related to coding differences or to our derivation rules. The validity of our derivation rules remains to be evaluated but interestingly a meta-analysis of the validity of heart failure

codes in administrative databases observed that the overall performance was good with excellent specificity but suboptimal sensitivity [35].

The study was focused on inpatient prevalence of cardiomyopathies, so we did not estimate the overall prevalence in the general population nor the total mortality rate (which should include out-hospital mortality) of patients with a cardiomyopathy. The temporal variation in number of deaths should therefore be read with caution but may indeed be the expression of better management and outcomes of cardiomyopathies. The total prevalence of patients who have cardiomyopathies (including those who are not hospitalized) is expected to be more important, and analyzing only inpatient data may skew the prevalence of cardiomyopathies towards subtypes that account for more hospitalizations such as DCM.

Finally, the mean age of patients is relatively high but meaningful since only inpatients were considered (therefore with more advanced stage of the disease) and not outpatients. It might also be explained by more prolonged life durations in cardiomyopathy patients than usually thought and/or late occurrence of the disease in some cardiomyopathy subtypes, as recently suggested [16].

## **5. Conclusions**

This work provides innovative data on the epidemiology of cardiomyopathies at a national level through the use of exhaustive data from medico-economic databases. We show that cardiomyopathies constitute an important part of hospitalizations and invasive therapeutic procedures. The percentages were even greater in patients less than 40 years of age. These results may help to establish public health action programs in order to promote optimal management of these patients, especially through a better screening of these relatively frequent hereditary diseases, and further development of innovative therapeutics. Our results

also highlight the need for improvement of diagnostic coding systems in hospitalizations internationally.

**Supplementary Materials:** Text S1. Additional results; Table S1. ICD-10 code classification used for cardiomyopathies and for clinical events; Table S2. Codes used in France for procedures during hospitalization: CCAM or “Classification Commune des Actes Médicaux”; Table S3. Inpatient prevalence of patients with cardiomyopathies per sex and per age classes; Figure S1. Flow chart of distinct patients who experienced at least one cardiomyopathy-related hospitalization from 2008 to 2015 in France.

**Author Contributions:** Conceptualization, N.M., B.S., C.J. and P.C.; Methodology, S.L., N.M., B.S., C.J. and P.C.; Validation, N.M., C.J. and P.C.; Formal Analysis, S.L., C.C., M.L., C.J.; Investigation, X.X.; Resources, C.J.; Data Curation, S.L., C.C., M.L., C.J.; Writing – Original Draft Preparation, S.L., N.M., and P.C.; Writing – Review & Editing, S.L., N.M., C.C., M.L., O.D., B.S., C.J. and P.C.; Visualization, P.C.; Supervision, N.M., B.S., C.J. and P.C.; Project Administration, P.C. and C.J. All authors approved the final version of the paper.

**Funding:** This research received no external funding. Philippe Charron is supported by ICAN Institute for Cardiometabolism and Nutrition, Paris, France and by PROMEX charitable foundation.

**Conflicts of Interest:** The authors declare no conflict of interest in relation to the reported research results. Other authors declare no competing interests. The funders had no role in the design, execution, interpretation, or writing of the study.

## References

1. Elliott P, Andersson B, Arbustini E, et al. Classification of the cardiomyopathies: a position statement from the European Society of Cardiology Working Group on myocardial and pericardial diseases. *Eur Heart J* **2008**;29:270-6.
2. Maron BJ, Towbin JA, Thiene G, et al Contemporary definitions and classification of the cardiomyopathies: an American Heart Association Scientific Statement from the Council on Clinical Cardiology, Heart Failure and Transplantation Committee. *Circulation* **2006**;113:1807-6.
3. Pinto YM, Elliott PM, Arbustini E, et al. Proposal for a revised definition of dilated cardiomyopathy, hypokinetic non-dilated cardiomyopathy, and its implications for clinical practice: a position statement of the ESC working group on myocardial and pericardial diseases. *Eur Heart J*. **2016**;37:1850-8.
4. Miles C, Fanton Z, Tome M, Behr ER. Inherited cardiomyopathies. *BMJ* **2019**;365:11570.
5. Weintraub RG, Semsarian C, Macdonald P. Dilated cardiomyopathy. *Lancet* **2017**;390:400-4.
6. Mogensen J, Arbustini E. Restrictive cardiomyopathy: *Curr Opin Cardiol* **2009**;24:214-20.
7. Veselka J, Anavekar NS, Charron P. Hypertrophic obstructive cardiomyopathy. *Lancet* **2017**;389:1253-67.
8. Corrado D, Link MS, Calkins H. Arrhythmogenic right ventricular cardiomyopathy. Jarcho JA. *N Engl J Med* **2017**;376:61-72.
9. McKenna WJ, Maron BJ, Thiene G. Classification, epidemiology, and global burden of cardiomyopathies. *Circ Res* **2017**;121:722-30.
10. Roth GA, Johnson C, Abajobir A et al. Global, Regional, and National Burden of Cardiovascular Diseases for 10 Causes, 1990 to 2015. *J Am Coll Cardiol* **2017**;70:1-25.
11. Maron BJ, Gardin JM, Flack JM, Gidding SS, Kurosaki TT, Bild DE. Prevalence of hypertrophic cardiomyopathy in a general population of young adults: echocardiographic analysis of 4111 subjects in the CARDIA Study. *Circulation* **1995**;92:785-9.
12. Codd MB, Sugrue DD, Gersh BJ, Melton LJ. Epidemiology of idiopathic dilated and hypertrophic cardiomyopathy. A population-based study in Olmsted County, Minnesota, 1975-1984. *Circulation* **1989**;80:564-72.
13. Lorenzini M, Anastasiou Z, O'Mahony C, et al. Mortality Among Referral Patients With Hypertrophic Cardiomyopathy vs the General European Population. *JAMA Cardiol*. **2019** Nov 27. [Epub ahead of print]

14. Bagnall RD, Weintraub RG, Ingles J, et al. A Prospective study of sudden cardiac death among children and young adults. *N Engl J Med* **2016**;374:2441-52.
15. Maron BJ, Doerer JJ, Haas TS, Tierney DM, Mueller FO. Sudden deaths in young competitive athletes: analysis of 1866 deaths in the United States, 1980-2006. *Circulation* **2009**;119:1085-92.
16. Charron P, Elliott PM, Gimeno JR, et al. The Cardiomyopathy Registry of the EURObservational Research Programme of the European Society of Cardiology: baseline data and contemporary management of adult patients with cardiomyopathies. *Eur Heart J* **2018**;39:1784-93.
17. Scheller-Kreinsen D, Quentin W, Busse R. DRG-Based Hospital Payment Systems and Technological Innovation in 12 European Countries. *Value Health* **2011**;14:1166-72.
18. Strang WN, Tuppin P, Atinault A, Jacquelinet C. The French organ transplant data system. *Stud Health Technol Inform* **2005**;116:77-82.
19. Kim HJ, Fay MP, Feuer EJ, Midthune DN. Permutation tests for joinpoint regression with applications to cancer rates. *Stat Med* **2000**;19:335-51.
20. Cantrelle C, Legeai C, Latouche A, et al. Access to Heart Transplantation: A proper analysis of the competing risks of death and transplantation is required to optimize graft allocation. *Transplant Direct* **2017**;3:e198.
21. Thekkudan J, Rogers CA, Thomas HL, van der Meulen JHP, Bonser RS, Banner NR. Trends in adult heart transplantation: a national survey from the United Kingdom Cardiothoracic Transplant Audit 1995–2007. *Eur J Cardiothorac Surg* **2010**;37:80-6. doi: 10.1016/j.ejcts.2009.06.054.
22. Khatiwala JR, Everly MJ. An update on cardiac transplantation in the United States based on an analysis of the UNOS Registry. *Clin Transpl* **2015**;31:27-34.
23. Shore S, Grau-Sepulveda MV, Bhatt DL, et al. Characteristics, treatments, and outcomes of hospitalized heart failure patients stratified by etiologies of cardiomyopathy. *JACC Heart Failure* **2015**;3:906-16.
24. Kirson NY, Birnbaum HG, Ivanova JI, Waldman T, Joish V, Williamson T. Prevalence of pulmonary arterial hypertension and chronic thromboembolic pulmonary hypertension in the United States. *Curr Med Res Opin* **2011**;27:1763-8.
25. Priori SG, Blomström-Lundqvist C, Mazzanti A, et al. 2015 ESC Guidelines for the management of patients with ventricular arrhythmias and the prevention of sudden cardiac death: The Task Force for the Management of Patients with Ventricular Arrhythmias and the Prevention of Sudden Cardiac Death of the European Society of Cardiology. *Eur Heart J* **2015**;36:2793-867.

26. Hershberger RE, Hedges DJ, Morales A. Dilated cardiomyopathy: the complexity of a diverse genetic architecture. *Nat Rev Cardiol* **2013**;10:531-47.
27. González-López E, Gallego-Delgado M, Guzzo-Merello G, et al. Wild-type transthyretin amyloidosis as a cause of heart failure with preserved ejection fraction. *Eur Heart J* **2015**;36:2585-94.
28. O'Mahony C, Jichi F, Pavlou M, et al. A novel clinical risk prediction model for sudden cardiac death in hypertrophic cardiomyopathy (HCM Risk-SCD). *Eur Heart J* **2014**;35:2010-20.
29. Cadrin-Tourigny J, Bosman LP, Nozza A, et al. A new prediction model for ventricular arrhythmias in arrhythmogenic right ventricular cardiomyopathy. *Eur Heart J* **2019**;40:1850-8.
30. Norrish G, Ding T, Field E, et al. Development of a Novel Risk Prediction Model for Sudden Cardiac Death in Childhood Hypertrophic Cardiomyopathy (HCM Risk-Kids). *JAMA Cardiol.* **2019** Aug 14. doi: 10.1001/jamacardio.2019.2861. [Epub ahead of print]
31. Repetti GG, Toepfer CN, Seidman JG, Seidman CE. Novel therapies for prevention and early treatment of cardiomyopathies. *Circ Res* **2019**;124:1536-50.
32. Magnusson P, Palm A, Branden E, Mörner S. Misclassification of hypertrophic cardiomyopathy: validation of diagnostic codes. *Clin Epidemiol* **2017**;9:403-10.
33. Aymé S, Bellet B, Rath A. Rare diseases in ICD11: making rare diseases visible in health information systems through appropriate coding. *Orphanet J Rare Dis* **2015**;10:35.
34. Tuppin P, Rudant J, Constantinou P, et al. Value of a national administrative database to guide public decisions: from the Système national d'information inter-régimes de l'Assurance Maladie (SNIIRAM) to the Système national des données de santé (SNDS) in France. *Rev Epidemiol Sante Publique* **2017**;65 Suppl 4:S149-S167.
35. McCormick N, Lacaille D, Bhole V, Avina-Zubieta JA. Validity of Heart Failure Diagnoses in Administrative Databases: A Systematic Review and Meta-Analysis. *PLoS ONE* **2014**;9(8): e104519.