



HAL
open science

Innate Immune Signaling and Proteolytic Pathways in the Resolution or Exacerbation of SARS-CoV-2 in Covid-19: Key Therapeutic Targets?

Jean-Michel Sallenave, Loïc Guillot

► **To cite this version:**

Jean-Michel Sallenave, Loïc Guillot. Innate Immune Signaling and Proteolytic Pathways in the Resolution or Exacerbation of SARS-CoV-2 in Covid-19: Key Therapeutic Targets?. *Frontiers in Immunology*, 2020, 11, pp.1229. 10.3389/fimmu.2020.01229 . hal-02898083

HAL Id: hal-02898083

<https://hal.sorbonne-universite.fr/hal-02898083v1>

Submitted on 13 Jul 2020

HAL is a multi-disciplinary open access archive for the deposit and dissemination of scientific research documents, whether they are published or not. The documents may come from teaching and research institutions in France or abroad, or from public or private research centers.

L'archive ouverte pluridisciplinaire **HAL**, est destinée au dépôt et à la diffusion de documents scientifiques de niveau recherche, publiés ou non, émanant des établissements d'enseignement et de recherche français ou étrangers, des laboratoires publics ou privés.



Innate Immune Signaling and Proteolytic Pathways in the Resolution or Exacerbation of SARS-CoV-2 in Covid-19: Key Therapeutic Targets?

Jean-Michel Sallenave^{1*} and Loïc Guillot²

¹ INSERM UMR1152, Laboratoire d'Excellence Inflamex, Faculté de Médecine, Hôpital Bichat, Université de Paris, Paris, France, ² Sorbonne Université, INSERM UMR S 938, Centre de Recherche Saint-Antoine (CRSA), Paris, France

OPEN ACCESS

Edited by:

Gennady Bocharov,
Institute of Numerical Mathematics
(RAS), Russia

Reviewed by:

François J. M. A. Meurens,
Agroalimentaire et de l'alimentation de
Nantes-Atlantique, France
Simon H. Bridge,
Northumbria University,
United Kingdom

*Correspondence:

Jean-Michel Sallenave
jean-michel.sallenave@inserm.fr

Specialty section:

This article was submitted to
Viral Immunology,
a section of the journal
Frontiers in Immunology

Received: 10 April 2020

Accepted: 15 May 2020

Published: 28 May 2020

Citation:

Sallenave J-M and Guillot L (2020)
Innate Immune Signaling and
Proteolytic Pathways in the Resolution
or Exacerbation of SARS-CoV-2 in
Covid-19: Key Therapeutic Targets?
Front. Immunol. 11:1229.
doi: 10.3389/fimmu.2020.01229

COVID-19 is caused by the Severe Acute Respiratory Syndrome (SARS) coronavirus (Cov)-2, an enveloped virus with a positive-polarity, single-stranded RNA genome. The initial outbreak of the pandemic began in December 2019, and it is affecting the human health of the global community. In common with previous pandemics (Influenza H1N1 and SARS-CoV) and the epidemics of Middle east respiratory syndrome (MERS)-CoV, CoVs target bronchial and alveolar epithelial cells. Virus protein ligands (e.g., haemagglutinin or trimeric spike glycoprotein for Influenza and CoV, respectively) interact with cellular receptors, such as (depending on the virus) either sialic acids, Dipeptidyl peptidase 4 (DPP4), or angiotensin-converting enzyme 2 (ACE2). Host proteases, e.g., cathepsins, furin, or members of the type II transmembrane serine proteases (TTSP) family, such as Transmembrane protease serine 2 (TMPRSS2), are involved in virus entry by proteolytically activating virus ligands. Also involved are Toll Like Receptor (TLR) family members, which upregulate anti-viral and pro-inflammatory mediators [interleukin (IL)-6 and IL-8 and type I and type III Interferons among others], through the activation of Nuclear Factor (NF)-κB. When these events (virus cellular entry and innate immune responses) are uncontrolled, a deleterious systemic response is sometimes encountered in infected patients, leading to the well-described “cytokine storm” and an ensuing multiple organ failure promoted by a downregulation of dendritic cell, macrophage, and T-cell function. We aim to describe how the lung and systemic host innate immune responses affect survival either positively, through downregulating initial viral load, or negatively, by triggering uncontrolled inflammation. An emphasis will be put on host cellular signaling pathways and proteases involved with a view on tackling these therapeutically.

Keywords: COVID-19, SARS-CoV-2, coronavirus, protease, lung innate immunity

INTRODUCTION

COVID-19 is a respiratory disease whose aetiologic agent is a novel beta coronavirus (CoV) called Severe Acute Respiratory Syndrome (SARS)-CoV-2/2019-nCov. The initial outbreak of the pandemic began in December 2019, and it is currently affecting the health and safety of the global community. Indeed, on May 12, 2020, 4.5 million worldwide cases were confirmed (probably

a significant under-estimation given the number of untested asymptomatic subjects), with a death toll exceeding 286,000. Before the SARS-CoV-2 outbreak, two related highly pathogenic CoVs viruses, Middle east respiratory syndrome (MERS)-CoV (1) and SARS-CoV (2), provoked catastrophic epidemics and pandemics, respectively. Unfortunately, no drugs nor vaccines have currently been approved to prevent or treat these viral episodes. The first anatomical/histological reports from the lungs of severely SARS-CoV-2-affected patients experiencing acute respiratory disease syndrome (ARDS) revealed excessive inflammatory activation and destruction of the bronchial and alveolar epithelium, features already observed during the first SARS pandemics in 2003 (3, 4). Indeed, in the latter pandemic, lung alveolar epithelial cells were identified as the most likely site of virus replication, and it was suggested that alveolar macrophages may be responsible for the dissemination of viruses within the lungs (3). In accordance, initial histological analyses of lung biopsies from patients positive for SARS-CoV-2 have shown exfoliation of the bronchial epithelium, which may induce altered mucociliary clearance and affect host immune responses (5).

Indeed, there is no doubt that the latter are involved in modulating disease onset and progression. For example, early studies report that, similarly with what was observed with SARS-CoV, lymphopenia [sometimes equivalent or more severe than that observed in human immunodeficiency virus (HIV) infection] is often observed in severely affected patients progressing to ARDS. Despite, or maybe correlated with this, aberrant non-effective innate immune host responses seem associated with severe lung disease during SARS (6–12).

The following sections will give an overview of the molecular and cellular mechanisms underpinning SARS-CoV virus infections and how lung and systemic host innate immune responses affect survival either positively, through downregulating the initial viral load, or negatively, by triggering uncontrolled inflammation. A particular emphasis will be put on the description of the host cellular signaling pathways and proteases involved with a view on tackling these therapeutically.

MECHANISMS OF ENTRY OF CORONAVIRUSES INTO TARGET EPITHELIAL CELLS (SEE FIGURE 1A)

CoVs are enveloped viruses with a positive-polarity, single-stranded RNA genome encoding four structural proteins: the transmembrane trimeric spike glycoprotein (S, composed of two subunits S1 and S2), envelop (E), matrix (M), and nucleocapsid (N) (13).

The entry of CoV viruses into host epithelial cells is mediated by the interaction between the viral envelope S protein homotrimers and the cell surface receptors. Following proteolytic cleavage of the CoV S protein (“priming”), the S1 ecto-domain recognizes a membrane receptor [angiotensin-converting enzyme 2 (ACE2) for SARS-Cov and SARS-Cov-2 as well as Dipeptidyl peptidase 4 (DPP4) for MERS-Cov], whereas the S2 C-terminal domain is involved in cell fusion and viral entry (14–16). This mechanism of action is very similar to that

used by *Influenza*, except that the latter use sialic acids as the cognate receptor for its hemagglutinin (HA) ligand. Importantly, many viruses (*Influenza*, MERS, CoV, and Paramyxoviruses such as Hendra and Nipah viruses) use similar host proteolytic enzymes for cleaving their ligands (HA and S), namely, mostly lysosomal (Cathepsins B, L), furin, or trypsin-like proteases (17, 18). Indeed, it is believed that it is the cellular source of these proteases that may determine the infectivity spectrum of these viruses, with the lung and the gastro-intestinal tract being high producers (19, 20).

Although a variety of these proteases have been studied and shown to be involved to varying degrees in virus activation, including neutrophil elastase (21), proteases of the type II transmembrane serine proteases (TTSP) family [HAT, Transmembrane protease, serine (TMPRSS)2, and TMPRSS4] have recently been demonstrated to be particularly important, albeit probably at different stages of the virus cell cycle (19, 20, 22, 23). In particular, recent research on SARS-Cov-2 has focused on TMPRSS2 and has shown it to be important (although mostly using cell lines infected with pseudotyped virus particles bearing SARS-Cov-2 S protein) for virus entry (24, 25). In that context, it has also been demonstrated that the serine protease inhibitor camostat (see also below section on Therapeutic targets and Conclusion) was protective (24, 25). In contrast, DPP4 which is necessary for the entry of MERS-CoV (26, 27) is not involved in SARS-Cov-2 entry (24). Unlike other SARS-CoVs, the S protein of SARS-CoV-2 has a furin cleavage site at the boundary between the S1 and S2 subunits, which is processed during biogenesis and which may explain CoV-2 high infectivity (28). Although mechanistic studies are obviously still in their infancy, it is very likely that SARS-CoV and SARS-CoV-2 target mainly respiratory epithelial cells with similar mechanisms. Indeed, as indicated above, initial work has shown that ACE2 is the S receptor for both SARS-CoV (29) and SARS-CoV-2 viruses (24, 28, 30), and structural studies using cryo-electron microscopy suggest a binding of two S protein trimer to an ACE2 dimer (28, 30).

Whether this is strictly dependent on ACE2/protease expression is debatable since ACE2 is present in other tissues in humans [such as the intestine, kidney, and testis (31)]. Indeed, “seasonal” low pathogenic CoVs (e.g., CoV-229E, CoV-OC43) infect mostly upper airways, whereas pathogenic CoVs (SARS-CoV/SARS-CoV-2 and MERS) have a tropism for the distal lung and can cause severe pneumonia and ARDS (32), as currently demonstrated again in the present pandemic. Indeed, potentially explaining this is the fact that seasonal coronaviruses do not use ACE2 as a receptor. *In vitro*, primary nasal and tracheobronchial

Abbreviations: CoV, Coronavirus; SARS, Severe Acute Respiratory Syndrome; MERS, Middle east respiratory syndrome; ARDS, acute respiratory disease syndrome; HIV, human immunodeficiency virus; S, Spike; E, envelop; M, matrix; N, nucleocapsid; HA, hemagglutinin; ACE2, angiotensin-converting enzyme 2; DPP4, Dipeptidyl peptidase 4; TTSP, type II transmembrane serine proteases; TMPRSS, Transmembrane protease serine; NF-kB, Nuclear Factor; IL, interleukin; KO, knock-out; ATI, alveolar type I epithelial cell; ATII, alveolar type II epithelial cell; PRR, pattern recognition receptors; PAMPs, pathogen-associated molecular patterns; TLR, Toll-Like Receptors; IFN, interferon; Mac, macrophages; DCs, dendritic cells; PBMC, peripheral blood mononuclear cells; CCL2, C-C Motif Chemokine Ligand 2; C, ciliated; B, basal; G, glandular; CC, club cells; M, mucus; AM, alveolar macrophage; BCG, Bacille Calmette-Guerin.

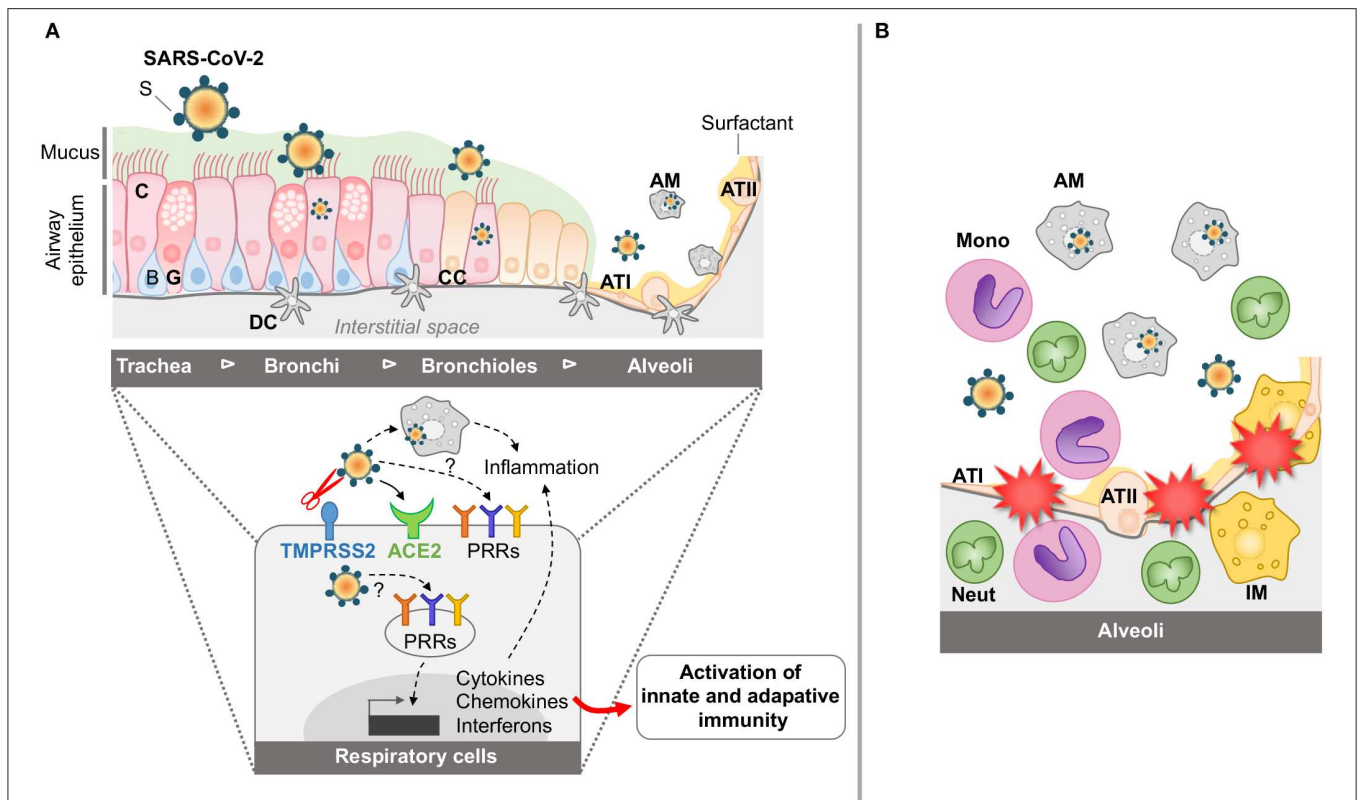


FIGURE 1 | Schematic representation of airway and lung infection by SARS-CoV-2 at early time points **(A)** and during SARS **(B)**. **(A)** The airway epithelium is composed of various cell types including ciliated (C), basal (B), glandular (G), and club cells (CC). It is covered by mucus (M) involved in the mucociliary clearance. Distal to the lung, the alveoli include alveolar type I (ATI) and type II (ATII) cells coated with surfactant (S). The airways are also protected by the resident alveolar macrophages (AM) and dendritic cells (DC). Through the action of host proteases, including the TSP Transmembrane protease, serine 2 (TMPRSS2), and the interaction of SARS-CoV-2 with its cellular receptor angiotensin-converting enzyme 2 (ACE2), SARS-CoV-2 can enter and replicate into airway epithelial cells and AM. Also, interaction of the SARS-CoV-2 with the PRRs is instrumental in inducing cytokine, chemokine, and interferon responses for the establishment of innate and adaptive immune responses. **(B)** During SARS, innate immune responses are exacerbated in the alveolar space, with accumulation of activated monocytes (mono), activated macrophages (AM), interstitial macrophages (IM), and neutrophils (neut), leading to dysregulated inflammation, disruption of the alveolar-capillary membrane and tissue damage.

epithelial cells as well as the Calu-3 bronchial cell line were shown to express ACE2 (the latter not colocalizing with cilia), and their infection with SARS-CoV was shown to be highly cytotoxic (33, 34). In the distal lung, as hinted above, primary alveolar type II epithelial (ATII) cells are also permissive to SARS-CoV infection (35, 36). SARS-CoV-2 has also been shown to infect various respiratory epithelial cell lines including A549 (alveolar origin), BEAS2-B (bronchial origin), Calu-3 cells, as well as primary human bronchial epithelial cells (24). Besides the lung, ACE2 is also highly expressed in the intestine (37), and gastrointestinal symptoms have been recorded with COVID-19 (38). It was shown that SARS-CoV-2 is able to infect enterocytes as well as intestinal organoids and induces a viral response characterized by the expression of mediators related to type I and III IFN (39).

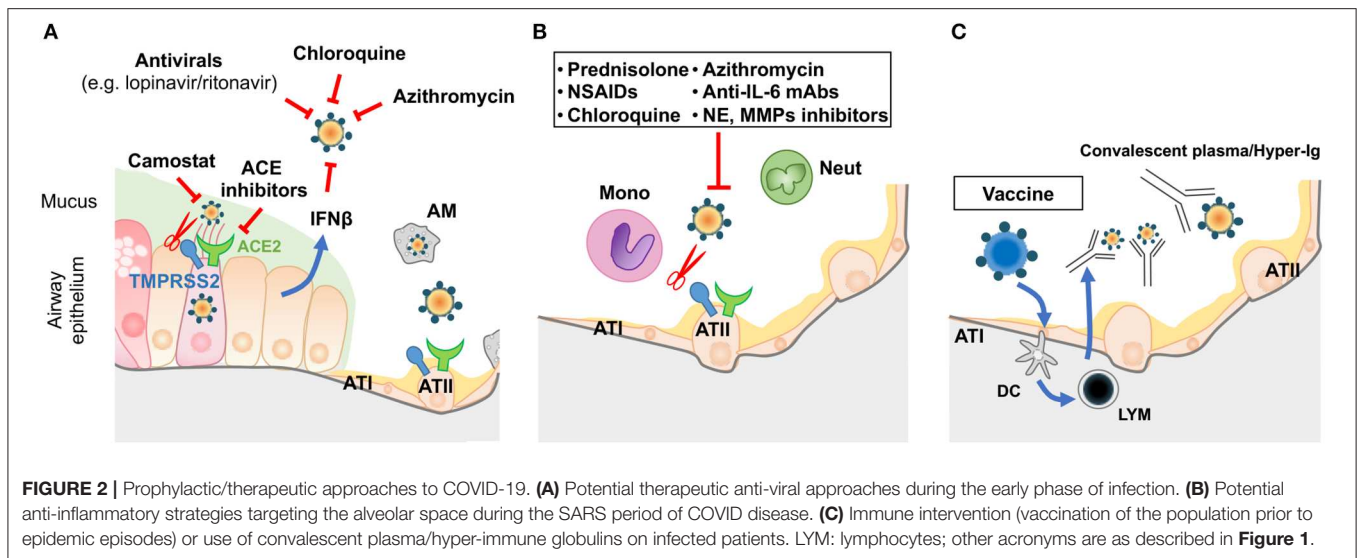
Even if SARS-CoV-2 is thought to originate from bats, the intermediate host between bats and humans is still unknown. SARS-CoV was previously shown to infect various wild and domestic animals, including cats, ferrets and pigs (40–42).

Similarly, recent work reveals that domestic animals, including ferrets and cats, are permissive to SARS-CoV-2 infection. In contrast, the virus replicates poorly in pigs, ducks, chickens, and dogs (43).

Given the described importance of host proteases in mediating infectivity of a number of viruses, it is no surprise that, upon virus infection, murine knock-out (KO) for some of these molecules has shown some protection. For example, TMPRSS2-KO mice were protected from pulmonary disease and death following H1N1 and H7N9 *Influenza* infection, but not from that of the influenza H3N2 subtype, demonstrating some specificity and showing also that other TSP proteases [such as DESC1 (TMPRSS11E) and MSPL (TMPRSS13)] or other factors may be important (44–47).

Similarly, TMPRSS2 KO mice showed reduced body weight and viral loads compared to WT mice in animals infected with SARS-CoV (48).

Also, it was demonstrated that over-expression of the human DPP4 in mice promoted MERS-CoV infection, causing lethal



disease (49), and that TMPRSS2 was instrumental in that context (48).

ACTIVATION/MODULATION OF HOST SIGNALING PATHWAYS (SEE FIGURE 1A)

Epithelial Cells

The control of viral infection requires an optimal and innate coordinated host antiviral immunity. This response is activated by various sensors, including pattern recognition receptors (PRR), which recognize pathogen-associated molecular patterns (PAMPs). Although for many viruses, viral RNA is a PAMP classically detected by different sensors, including Toll-Like Receptors (TLR)3 (which senses double stranded (ds)RNA), TLR7 and TLR8 [which sense single stranded (ss)RNA], RIG-I (which senses short dsRNA and ssRNA specific motifs), and MDA-5 (which senses long dsRNA) (50), the sensors potentially recognizing SARS-CoV genomic material are still elusive. In addition, although, as mentioned above, distal peripheral lung alveolar epithelial cells seem to harbor SARS-CoV infection *in vivo*, and although respiratory epithelial cells are known to express TLR3, TLR7, and TLR8 (51, 52) and initiate innate immunity in the lung (53), the study of these cells in anti-CoV responses has been hampered by their general poor permissibility to the virus *in vitro* (except for intestinal Caco-2 and HEK293 kidney epithelial cells) (54). In that respect, although the specific PRR involved was not identified, the M protein of SARS-CoV was indeed shown to induce interferon (IFN)- β in a TLR-related-TRAF3-independent mechanism in HEK293 cells (55). Regarding the lung, the differentiated Calu-3 cell line [when cultured at the air-liquid interface (ALI)] is the model of choice: in that set-up, SARS-CoV infection triggered an inflammatory response characterized by increased production of interleukin (IL)-6, IL-8, gamma interferon (IFN- γ), inducible protein 10 (IP-10), and activation of the transcription factor NF- κ B (56). However, the kinetics of this response was extremely slow, and

importantly, type I IFN, an important mediator of anti-viral responses, was undetected.

Also, another study involving A549 cells demonstrated that the trimeric spike S glycoprotein and virus-like particles were able to modestly upregulate CCL2, an important monocytic chemokine (57).

In addition to lung epithelial cells cultured at ALI, precision-cut lung slices could also be an interesting tool to study SARS-CoV2-cells interactions (58), as demonstrated in Influenza infections with human (59) or animal-derived material (60).

As mentioned above, TTSPs can activate virus-ligands (HA and S protein), but they are also able to modulate cell signaling pathways. For example, recombinant HAT is able to activate mucin gene expression in NCI-H292 lung epithelial cells (61). Relatedly, we have shown both *in vitro* in epithelial cells and in a murine model that *Influenza H3N2* is able to upregulate mucin expression and that this is dependent on human (or mouse) HAT upregulation and TACE activity (62). Interestingly, Haga et al. have shown that inhibiting TACE prevents SARS-CoV cellular entry (63). Strengthening the signaling potential of the receptors, Iwata-Yoshikawa et al. demonstrated *in vivo* that poly IC (TLR3 ligand) induces the expression of a variety of pro-inflammatory mediators (CCL2, KC, and IL-1) through the expression of TMPRSS2 (48).

In addition, although unclear as whether it is beneficial or detrimental to the host cell, SARS-CoV have been shown to activate host stress response, apoptosis, and autophagy (13). These are also various pathways that may also need to be evaluated therapeutically in the context of the current pandemic. Relatedly, we have shown that chloroquine, which also inhibits the autophagic cellular flux by decreasing autophagosome-lysosome fusion, can inhibit Influenza-mediated CCL5 production (64).

Importantly, after having established a foothold in the epithelial compartment, SARS-CoV can disrupt the epithelial polarity, thereby getting access to the parenchyma tissue: for

example, it has been shown that the virus membrane protein E binds to PALS1 (Protein Associated With Lin Seven 1), a junction protein involved in epithelial polarity, and modifies its cellular distribution at the surface of HEK-293 cells (65).

Myeloid Cells and Myeloid-Epithelial Cells Interaction

Myeloid cells, e.g., alveolar and interstitial macrophages or dendritic cells (DCs), elicit different immune responses toward influenza viruses, according to their subtypes (66). It is thus predictable that specificities may also exist with respect to SARS-CoV-2 infections. Indeed, although studies are scant, these cells have generally been shown to be poorly permissive to SARS-CoV replication (54, 67, 68).

However, a few studies have shown that myeloid cells can respond to SARS-CoV infection. Indeed, Dosch et al. showed that the S protein could, through TLR2, trigger NF- κ B activation and inflammatory responses in peripheral blood mononuclear cells (PBMC) (69). Also, in common with epithelial cells, it was shown that PBMCS and DCs infected with SARS-CoV produced cytokines and chemokines such as and C-C Motif Chemokine Ligand (CCL)-2 and/or C-X-C Motif Chemokine Ligand (CXCL)-10/RANTES/Tumor Necrosis Factor (TNF)/IL-8/IL-6, but, importantly, not IFN- β (67, 68). By contrast, a study performed mostly on THP-1 macrophages suggest that MERS S protein suppresses macrophages pro-inflammatory responses through DPP4-induction of IRAK-M and PPAR γ (70).

Furthermore, in an interesting “2-way” system involving differentiated SARS-permissive lung Calu-3 cells and monocyte-derived Macs and DCs, it was shown that mediators produced by Calu-3 cells activate cytokine production by macrophages (IL-1 β , G-CSF, MIP-1, and TNF- α) and DCs (IL-12p40, MIP-1, IFN- γ , IL-6, IL-8, and MCP-1) but that some of these Calu-3 derived mediators (in particular IL-6 and IL-8) compromised the ability of DCs and Macs to activate naïve T cells and phagocytosis (4, 56). This echoes data obtained from patients suggesting that SARS may in fact be partly caused by a “paralysis” of the adaptive immune system, characterized by a diminished number of immune cell types including T lymphocytes, DCs and Macs (4).

From Murine Models to Human Genetics

Demonstrating that SARS-CoV can induce TLR-dependent host responses *in vivo*, *Tlr4*, *Tlr3*, and *Tram* KO mice were shown to be more susceptible to mouse-adapted SARS-CoV, albeit without exhibiting extra mortality (71). In comparison, mice deficient for the signaling molecule *Trif* were highly susceptible to CoV infections, exhibited diminished lung function, aberrant inflammatory responses, and importantly, higher mortality (71).

In addition, a mouse genetic study revealed that the TLR adaptor protein *Ticam2* was a susceptibility gene to SARS-CoV (72); mice KO for *Ticam2* (72), but also *MyD88* (73), another TLR adaptor protein, were highly susceptible to a mouse-adapted SARS-CoV lung infection. Since polymorphisms of TLRs and *MyD88* have been associated in humans with heightened sensitivity to a variety of pathogens (74), these studies, in addition to demonstrating the role of TLR pathways in the

SARS-CoV infection, suggested a human genetic predisposition to SARS-CoV, and this could explain the variability of severity in patients with COVID-19 disease. Forthcoming human genetic studies from international collaborative efforts (<https://www.covid19hg.org>) could reveal genetic variants associated with SARS-CoV2 susceptibility, as in the gene encoding ACE2 as recently suggested (75). Indeed, *ACE2* genetic variants may be associated with a modulated ACE2 protein expression, the SARS-CoV-2 receptor, which may explain in part patients' susceptibility to infection. Genes associated with TLR pathways also represent good candidates, as demonstrated in other respiratory viral infection (e.g., influenza) where *TLR3* variants (76) were shown to modulate its virulence.

Maladaptive Activation of Innate Immune Responses (see Figure 1B)

As already mentioned above, aberrant maladaptive innate immune host responses, including “cytokine storm” events, have been associated with severe lung disease and the development of ARDS during SARS and the COVID-19 current episode. Mechanistically, these events usually occur at a late stage of the disease, and several mechanisms have been proposed. In particular, a murine study has shown that a prolonged (albeit delayed, as demonstrated also *in vitro*, see above) type I IFN signaling was instrumental in triggering over-exuberant innate inflammatory monocytes–macrophages immune responses and an impaired virus-specific T-cell response (77).

In complement to the mechanism proposed above, increased lung inflammatory protease (neutrophil elastase and metalloprotease) activity has been demonstrated in ARDS (78, 79), with a concomitant imbalance between protease and protease inhibitors activity (80). In addition, although not yet measured, to our knowledge, in SARS murine models, we and others have shown increased protease-mediated lung damage in mice infected with *Influenza* (81–83). Additionally, in a MERS-CoV murine model, it was shown that excessive complement activation was partly responsible for exacerbated lung inflammation (84).

Lastly, “cytokines storm” may also results from SOCS (suppressors of cytokine signaling) inhibition (85). Indeed, upon Influenza infection, SOCS1 and SOCS3 were shown to reduce type I IFN antiviral responses in human bronchial epithelial cells (86). Also, SOCS4-deficient mice exhibited heightened sensitivity to Influenza infection (87). Studies about SOCS involvement during coronavirus infections are currently lacking and should therefore bring new interesting information.

POTENTIAL THERAPEUTIC TARGETS AND CONCLUSION (SEE FIGURE 2)

On May 12, 2020, using the term “COVID,” an unbiased search of already registered trials on <https://clinicaltrials.gov/> retrieved 1,409 hits, and, when refined with “double blind/placebo,” 119 hits were found. Although the number of trials that are ongoing or “under recruitment” is expectedly very high, the range of molecules tested is relatively narrow and aimed at

targeting mainly antivirals. These include remdesivir (21 hits), lopinavir/ritonavir (also used in AIDS), as well as interferons (46 hits). Also falling in that category are trials testing molecules aiming to block viral entry at the cellular surface by targeting ACE-inhibitors (32 hits) or the membrane proteases of the TTSP family (see above) using camostat mesilate (5 hits). Repurposing of non-antiviral drugs may offer new promising options, such as with Ivermectin—an FDA-approved anti-parasitic drug widely available and recently shown to inhibit SARS-CoV-2 *in vitro* (88).

Because the virus load is not necessarily correlated with symptoms deterioration in SARS (the latter being often caused by worsening of inflammation at day 7–10 post onset of clinical signs), it follows that anti-inflammatory drugs could/should be prescribed during that stage of the disease (8).

In that context, “classical” anti-inflammatory drugs are indeed currently being tested against COVID-19 [e.g., methylprednisolone, budesonide, hydrocortisone, azithromycin, and non-steroidal anti-inflammatory drugs (NSAIDs)]. In addition, more specific agents are also being investigated, targeting either IL- β (anakinra, 13 hits), IL-6 signaling (Siltuximab/3 hits, Tocilizumab/42 hits, Sarilumab/13 hits), or CD24 (CD24Fc) with the main objective to modulate the “cytokine storm.”

However, chloroquine/hydroxychloroquine has, so far, undoubtedly taken the lion’s share (178 hits), and it has attracted a lot of media attention. In that respect, the results from an initial pan-European endeavor (“Discovery”), now conducted largely in France because of enrollment difficulties, are eagerly awaited. This drug has a “mixed” mode of action. Indeed, it acts as an anti-viral (presumably through inhibition of lysosomal enzymes requiring an acidic pH and of activation of endolysosomes, see above section “Mechanisms of entry”) and as an anti-inflammatory molecule, and it has notably been used in inflammatory rheumatic diseases (89). Despite a relative safe profile, having been administered to millions of people over the years, worries have nevertheless arisen about cardiac issues in many individuals with severe Covid-19, and this will have to be properly assessed (90).

Regardless, the ultimate prize in the fight against COVID-19 (or further SARS-CoV infections) undoubtedly lies with the future generation of effective vaccines and the development of neutralizing antibodies (91, 92).

Unfortunately, coronavirus vaccines in general have attracted less attention compared to the effort dedicated to vaccines against other potential pandemic viruses such as Influenza. For example, from 2012 onwards, few SARS-CoV vaccines reached phase 1 clinical trials for lack of interest from the pharmaceutical

industry when it became evident that the virus was not making a “comeback” after its initial appearance. However, although probably too late for affecting the current “first wave” of SARS-CoV-2 pandemic, many pharmaceutical companies and research laboratories are now working on a plethora of vaccine formulations [for a review, see (91) and <https://clinicaltrials.gov>, the latter reporting so far 83 clinical trials on vaccines].

Indeed, in pre-clinical studies, the determination of cryo-EM structures of the SARS-CoV-2 S ectodomain trimer is providing a blueprint for the design of vaccines and inhibitors of viral entry (28). In this context, promising results show that murine polyclonal antibodies against S protein of SARS-CoV are able to elicit polyclonal antibody responses, preventing SARS-CoV-2 entry into cells, and thus indicating that cross-neutralizing antibodies targeting conserved S epitopes can be elicited upon vaccination (28).

In addition to testing the best SARS-CoV-2 specific epitopes from the most suitable proteins (S, N, etc.) and way of administration (best vectors, etc.), it is important to select the best animal models. Although convincing murine studies are still pending, as indicated above in the section “Mechanisms of entry...”, studies in other animals investigated the virus susceptibility of chickens, ducks, dogs, pigs, cats, and ferrets, with the latter two being the most permissive (43). Further up in the phylogenetic scale, a recent study reported that an inactivated vaccine candidate for SARS-CoV-2 was protective in macaques (93).

Finally, large epidemiological studies have demonstrated that Bacille Calmette-Guerin (BCG) can heterologously protect against virus infections [e.g., yellow fever virus (94), probably by tapping on trained immunity mechanisms (95, 96)]. Using such adjuvant-mediated strategies against SARS-CoV viruses may therefore be an exciting avenue worthwhile pursuing (97–99).

AUTHOR CONTRIBUTIONS

All authors listed have made a substantial, direct and intellectual contribution to the work, and approved it for publication.

ACKNOWLEDGMENTS

LG and J-MS received grants from the Faculté de Médecine Sorbonne Université (AAP COVID19 and Université de Paris (Fonds d’urgence SARS-CoV-2 et COVID-19), respectively. This manuscript has been released as a pre-print at OSF (100).

REFERENCES

- Chafekar A, Fielding BC. MERS-CoV: understanding the latest human coronavirus threat. *Viruses*. (2018) 10:93. doi: 10.20944/preprints201711.0198.v2
- Peiris JS, Yuen KY, Osterhaus AD, Stohr K. The severe acute respiratory syndrome. *N Engl J Med*. (2003) 349:2431–41. doi: 10.1056/NEJMra032498
- Nicholls JM, Poon LL, Lee KC, Ng WF, Lai ST, Leung CY, et al. Lung pathology of fatal severe acute respiratory syndrome. *Lancet*. (2003) 361:1773–8. doi: 10.1016/S0140-6736(03)13413-7
- Gu J, Gong E, Zhang B, Zheng J, Gao Z, Zhong Y, et al. Multiple organ infection and the pathogenesis of SARS. *J Exp Med*. (2005) 202:415–24. doi: 10.1084/jem.20050828
- Yao XH, Li TY, He ZC, Ping YF, Liu HW, Yu SC, et al. [A pathological report of three COVID-19 cases by minimally invasive autopsies]. *Zhonghua Bing Li Xue Za Zhi*. (2020) 49:411–17. doi: 10.3760/cma.j.cn112151-20200312-00193

6. Chen G, Wu D, Guo W, Cao Y, Huang D, Wang H, et al. Clinical and immunologic features in severe and moderate Coronavirus Disease 2019. *J Clin Invest.* (2020) 130:2620–9. doi: 10.1172/JCI137244
7. Giamarellos-Bourboulis EJ, Netea MG, Rovina N, Akinosoglou K, Antoniadou A, Antonakos N, et al. Complex immune dysregulation in COVID-19 patients with severe respiratory failure. *Cell Host Microbe.* (2020) doi: 10.1016/j.chom.2020.04.009. [Epub ahead of print].
8. Huang C, Wang Y, Li X, Ren L, Zhao J, Hu Y, et al. Clinical features of patients infected with 2019 novel coronavirus in Wuhan, China. *Lancet.* (2020) 395:497–506. doi: 10.1016/S0140-6736(20)30183-5
9. Lescure FX, Bouadma L, Nguyen D, Parisey M, Wicky PH, Behillil S, et al. Clinical and virological data of the first cases of COVID-19 in Europe: a case series. *Lancet Infect Dis.* (2020) 20:697–706. doi: 10.1016/S1473-3099(20)30200-0
10. Thevarajan I, Nguyen TH. O., Koutsakos M, Druce J, Caly L, van de Sandt CE, et al. Breadth of concomitant immune responses prior to patient recovery: a case report of non-severe COVID-19. *Nat. Med.* (2020) 26:453–5. doi: 10.1038/s41591-020-0819-2
11. Wu C, Chen X, Cai Y, Xia J, Zhou X, Xu S, et al. Risk factors associated with acute respiratory distress syndrome and death in patients with Coronavirus Disease 2019 pneumonia in Wuhan, China. *JAMA Intern Med.* (2020). doi: 10.1001/jamainternmed.2020.0994. [Epub ahead of print].
12. Zheng HY, Zhang M, Yang CX, Zhang N, Wang XC, Yang XP, et al. Elevated exhaustion levels and reduced functional diversity of T cells in peripheral blood may predict severe progression in COVID-19 patients. *Cell Mol Immunol.* (2020) 17:541–3. doi: 10.1038/s41423-020-0401-3
13. Fung TS, Liu DX. Human coronavirus: host-pathogen interaction. *Annu Rev Microbiol.* (2019) 73:529–57. doi: 10.1146/annurev-micro-020518-115759
14. Millet JK, Whittaker GR. Host cell proteases: critical determinants of coronavirus tropism and pathogenesis. *Virus Res.* (2015) 202:120–34. doi: 10.1016/j.virusres.2014.11.021
15. Tortorici MA, Veelsler D. Structural insights into coronavirus entry. *Adv Virus Res.* (2019) 105:93–116. doi: 10.1016/bs.aivir.2019.08.002
16. Coutard B, Valle C, de Lamballerie X, Canard B, Seidah NG, Decroly E. The spike glycoprotein of the new coronavirus 2019-nCoV contains a furin-like cleavage site absent in CoV of the same clade. *Antiviral Res.* (2020) 176:104742. doi: 10.1016/j.antiviral.2020.104742
17. Bugge TH, Antalis TM, Wu Q. Type II transmembrane serine proteases. *J Biol Chem.* (2009) 284:23177–81. doi: 10.1074/jbc.R109.021006
18. Choi SY, Bertram S, Glowacka I, Park YW, Pohlmann S. Type II transmembrane serine proteases in cancer and viral infections. *Trends Mol Med.* (2009) 15:303–12. doi: 10.1016/j.molmed.2009.05.003
19. Bottcher-Friebertshausen E, Klenk HD, Garten W. Activation of influenza viruses by proteases from host cells and bacteria in the human airway epithelium. *Pathog Dis.* (2013) 69:87–100. doi: 10.1111/2049-632X.12053
20. Garten W, Braden C, Arendt A, Peitsch C, Baron J, Lu Y, et al. Influenza virus activating host proteases: identification, localization and inhibitors as potential therapeutics. *Eur J Cell Biol.* (2015) 94:375–83. doi: 10.1016/j.ejcb.2015.05.013
21. Matsuyama S, Ujike M, Morikawa S, Tashiro M, Taguchi F. Protease-mediated enhancement of severe acute respiratory syndrome coronavirus infection. *Proc Natl Acad Sci USA.* (2005) 102:12543–7. doi: 10.1073/pnas.0503203102
22. Bottcher E, Matrosovich T, Beyerle M, Klenk HD, Garten W, Matrosovich M. Proteolytic activation of influenza viruses by serine proteases TMPRSS2 and HAT from human airway epithelium. *J Virol.* (2006) 80:9896–8. doi: 10.1128/JVI.01118-06
23. Bertram S, Glowacka I, Muller MA, Lavender H, Gnirss K, Nehlmeier I, et al. Cleavage and activation of the severe acute respiratory syndrome coronavirus spike protein by human airway trypsin-like protease. *J Virol.* (2011) 85:13363–72. doi: 10.1128/JVI.05300-11
24. Hoffmann M, Kleine-Weber H, Schroeder S, Kruger N, Herrler T, Erichsen S, et al. SARS-CoV-2 cell entry depends on ACE2 and TMPRSS2 and is blocked by a clinically proven protease inhibitor. *Cell.* (2020) 181:271–80.e8. doi: 10.1016/j.cell.2020.02.052
25. Matsuyama S, Nao N, Shirato K, Kawase M, Saito S, Takayama I, et al. Enhanced isolation of SARS-CoV-2 by TMPRSS2-expressing cells. *Proc Natl Acad Sci USA.* (2020) 117:7001–3. doi: 10.1073/pnas.2002589117
26. Lu G, Hu Y, Wang Q, Qi J, Gao F, Li Y, et al. Molecular basis of binding between novel human coronavirus MERS-CoV and its receptor CD26. *Nature.* (2013) 500:227–31. doi: 10.1038/nature12328
27. Raj VS, Mou H, Smits SL, Dekkers DH, Muller MA, Dijkman R, et al. Dipeptidyl peptidase 4 is a functional receptor for the emerging human coronavirus-EMC. *Nature.* (2013) 495:251–4. doi: 10.1038/nature12005
28. Walls AC, Park YJ, Tortorici MA, Wall A, McGuire AT, Veelsler D. Structure, function, and antigenicity of the SARS-CoV-2 spike glycoprotein. *Cell.* (2020) 181:281–92.e6. doi: 10.1016/j.cell.2020.02.058
29. Kuba K, Imai Y, Rao S, Gao H, Guo F, Guan B, et al. A crucial role of angiotensin converting enzyme 2 (ACE2) in SARS coronavirus-induced lung injury. *Nat Med.* (2005) 11:875–9. doi: 10.1038/nm1267
30. Yan R, Zhang Y, Li Y, Xia L, Guo Y, Zhou Q. Structural basis for the recognition of the SARS-CoV-2 by full-length human ACE2. *Science.* (2020) 367:1444–8. doi: 10.1126/science.abb2762
31. Hamming I, Timens W, Bulthuis ML, Lely AT, Navis G, van Goor H. Tissue distribution of ACE2 protein, the functional receptor for SARS coronavirus. A first step in understanding SARS pathogenesis. *J Pathol.* (2004) 203:631–7. doi: 10.1002/path.1570
32. Channappanavar R, Perlman S. Pathogenic human coronavirus infections: causes and consequences of cytokine storm and immunopathology. *Semin Immunopathol.* (2017) 39:529–39. doi: 10.1007/s00281-017-0629-x
33. Sims AC, Baric RS, Yount B, Burkett SE, Collins PL, Pickles RJ. Severe acute respiratory syndrome coronavirus infection of human ciliated airway epithelia: role of ciliated cells in viral spread in the conducting airways of the lungs. *J Virol.* (2005) 79:15511–24. doi: 10.1128/JVI.79.24.15511-15524.2005
34. Sims AC, Burkett SE, Yount B, Pickles RJ. SARS-CoV replication and pathogenesis in an *in vitro* model of the human conducting airway epithelium. *Virus Res.* (2008) 133:33–44. doi: 10.1016/j.virusres.2007.03.013
35. Mossel EC, Wang J, Jeffers S, Edeen KE, Wang S, Cosgrove GP, et al. SARS-CoV replicates in primary human alveolar type II cell cultures but not in type I-like cells. *Virology.* (2008) 372:127–35. doi: 10.1016/j.virology.2007.09.045
36. Qian Z, Travanty EA, Oko L, Edeen K, Berglund A, Wang J, et al. Innate immune response of human alveolar type II cells infected with severe acute respiratory syndrome-coronavirus. *Am J Respir Cell Mol Biol.* (2013) 48:742–8. doi: 10.1165/rcmb.2012-0339OC
37. Harmer D, Gilbert M, Borman R, Clark KL. Quantitative mRNA expression profiling of ACE 2, a novel homologue of angiotensin converting enzyme. *FEBS Lett.* (2002) 532:107–10. doi: 10.1016/S0014-5793(02)03640-2
38. Gu J, Han B, Wang J. COVID-19: gastrointestinal manifestations and potential fecal-oral transmission. *Gastroenterology.* (2020) 158:1518–9. doi: 10.1053/j.gastro.2020.02.054
39. Lamers MM, Beumer J, van der Vaart J, Knoops K, Puschhof J, Breugem TI, et al. SARS-CoV-2 productively infects human gut enterocytes. *Science.* (2020). doi: 10.1126/science.abc1669. [Epub ahead of print].
40. Guan Y, Zheng BJ, He YQ, Liu XL, Zhuang ZX, Cheung CL, et al. Isolation and characterization of viruses related to the SARS coronavirus from animals in southern China. *Science.* (2003) 302:276–8. doi: 10.1126/science.1087139
41. Martina BE, Haagmans BL, Kuiken T, Fouchier RA, Rimmelzwaan GF, Van Amerongen G, et al. Virology: SARS virus infection of cats and ferrets. *Nature.* (2003) 425:915. doi: 10.1038/425915a
42. Chen W, Yan M, Yang L, Ding B, He B, Wang Y, et al. SARS-associated coronavirus transmitted from human to pig. *Emerg Infect Dis.* (2005) 11:446–8. doi: 10.3201/eid1103.040824
43. Shi J, Wen Z, Zhong G, Yang H, Wang C, Huang B, et al. Susceptibility of ferrets, cats, dogs, and other domesticated animals to SARS-coronavirus 2. *Science.* (2020). doi: 10.1126/science.abb7015. [Epub ahead of print].
44. Hatesuer B, Bertram S, Mehnert N, Bahgat MM, Nelson PS, Pohlmann S, et al. Tmprss2 is essential for influenza H1N1 virus pathogenesis in mice. *PLoS Pathog.* (2013) 9:e1003774. doi: 10.1371/journal.ppat.1003774
45. Sakai K, Ami Y, Tahara M, Kubota T, Anraku M, Abe M, et al. The host protease TMPRSS2 plays a major role in *in vivo* replication of emerging H7N9 and seasonal influenza viruses. *J Virol.* (2014) 88:5608–16. doi: 10.1128/JVI.03677-13

46. Tarnow C, Engels G, Arendt A, Schwalm F, Sediri H, Preuss A, et al. TMPRSS2 is a host factor that is essential for pneumotropism and pathogenicity of H7N9 influenza A virus in mice. *J Virol.* (2014) 88:4744–51. doi: 10.1128/JVI.03799-13
47. Zmora P, Blazejewska P, Moldenhauer AS, Welsch K, Nehlmeier I, Wu Q, et al. DESC1 and MSPL activate influenza A viruses and emerging coronaviruses for host cell entry. *J Virol.* (2014) 88:12087–97. doi: 10.1128/JVI.01427-14
48. Iwata-Yoshikawa N, Okamura T, Shimizu Y, Hasegawa H, Takeda M, Nagata, N. TMPRSS2 contributes to virus spread and immunopathology in the airways of murine models after coronavirus infection. *J Virol.* (2019) 93:e01815-18. doi: 10.1128/JVI.01815-18
49. Li K, Wohlford-Lenane CL, Channappanavar R, Park JE, Earnest JT, Bair TB, et al. Mouse-adapted MERS coronavirus causes lethal lung disease in human DPP4 knockin mice. *Proc Natl Acad Sci USA.* (2017) 114:E3119–28. doi: 10.1073/pnas.1619109114
50. Chow KT, Gale MJr, Loo YM. RIG-I and Other RNA Sensors in antiviral immunity. *Annu Rev Immunol.* (2018) 36:667–94. doi: 10.1146/annurev-immunol-042617-053309
51. Guillot L, Le Goffic R, Bloch S, Escriou N, Akira S, Chignard M, et al. Involvement of toll-like receptor 3 in the immune response of lung epithelial cells to double-stranded RNA and influenza A virus. *J Biol Chem.* (2005) 280:5571–80. doi: 10.1074/jbc.M410592200
52. Ioannidis I, Ye F, McNally B, Willette M, Flano E. Toll-like receptor expression and induction of type I and type III interferons in primary airway epithelial cells. *J Virol.* (2013) 87:3261–70. doi: 10.1128/JVI.01956-12
53. Whitsett JA, Alenghat T. Respiratory epithelial cells orchestrate pulmonary innate immunity. *Nat Immunol.* (2015) 16:27–35. doi: 10.1038/ni.3045
54. Frieman M, Heise M, Baric R. SARS coronavirus and innate immunity. *Virus Res.* (2008) 133:101–12. doi: 10.1016/j.virusres.2007.03.015
55. Wang Y, Liu L. The membrane protein of severe acute respiratory syndrome coronavirus functions as a novel cytosolic pathogen-associated molecular pattern to promote beta interferon induction via a toll-like-receptor-related TRAF3-independent mechanism. *MBio.* (2016) 7:e01872–15. doi: 10.1128/mBio.01872-15
56. Yoshikawa T, Hill T, Li K, Peters CJ, Tseng CT. Severe acute respiratory syndrome (SARS) coronavirus-induced lung epithelial cytokines exacerbate SARS pathogenesis by modulating intrinsic functions of monocyte-derived macrophages and dendritic cells. *J Virol.* (2009) 83:3039–48. doi: 10.1128/JVI.01792-08
57. Chen IY, Chang SC, Wu HY, Yu TC, Wei WC, Lin S, et al. Upregulation of the chemokine (C-C motif) ligand 2 via a severe acute respiratory syndrome coronavirus spike-ACE2 signaling pathway. *J Virol.* (2010) 84:7703–12. doi: 10.1128/JVI.02560-09
58. Alsafadi HN, Uhl FE, Pineda RH, Bailey KE, Rojas M, Wagner DE, et al. Applications and approaches for 3D precision-cut lung slices: disease modeling and drug discovery. *Am J Respir Cell Mol Biol.* (2020). doi: 10.1165/rcmb.2019-0276TR. [Epub ahead of print].
59. Wu W, Booth JL, Duggan ES, Wu S, Patel KB, Coggeshall KM, et al. Innate immune response to H3N2 and H1N1 influenza virus infection in a human lung organ culture model. *Virology.* (2010) 396:178–88. doi: 10.1016/j.viro.2009.10.016
60. Delgado-Ortega M, Melo S, Punyadarsaniya D, Rame C, Olivier M, Soubieux D, et al. Innate immune response to a H3N2 subtype swine influenza virus in newborn porcine trachea cells, alveolar macrophages, and precision-cut lung slices. *Vet Res.* (2014) 45:42. doi: 10.1186/1297-9716-45-42
61. Chokki M, Yamamura S, Eguchi H, Masegi T, Horiuchi H, Tanabe H, et al. Human airway trypsin-like protease increases mucin gene expression in airway epithelial cells. *Am J Respir Cell Mol Biol.* (2004) 30:470–8. doi: 10.1165/rcmb.2003-0199OC
62. Barbier D, Garcia-Verdugo I, Pothlichet J, Khazen R, Descamps D, Rousseau K, et al. Influenza A induces the major secreted airway mucin MUC5AC in a protease-EG, FR-extracellular regulated kinase-Sp1-dependent pathway. *Am J Respir Cell Mol Biol.* (2012) 47:149–57. doi: 10.1165/rcmb.2011-0405OC
63. Haga S, Nagata N, Okamura T, Yamamoto N, Sata T, Yamamoto N, et al. TACE antagonists blocking ACE2 shedding caused by the spike protein of SARS-CoV are candidate antiviral compounds. *Antiviral Res.* (2010) 85:551–5. doi: 10.1016/j.antiviral.2009.12.001
64. Villeret B, Dieu A, Straube M, Solhonne B, Miklavc P, Hamadi S, et al. Silver nanoparticles impair retinoic acid-inducible gene i-mediated mitochondrial antiviral immunity by blocking the autophagic flux in lung epithelial cells. *ACS Nano.* (2018) 12:1188–202. doi: 10.1021/acsnano.7b06934
65. Teoh KT, Siu YL, Chan WL, Schluter MA, Liu CJ, Peiris JS, et al. The SARS coronavirus E protein interacts with PALS1 and alters tight junction formation and epithelial morphogenesis. *Mol Biol Cell.* (2010) 21:3838–52. doi: 10.1091/mbc.e10-04-0338
66. Duan M, Hibbs ML, Chen W. The contributions of lung macrophage and monocyte heterogeneity to influenza pathogenesis. *Immunol Cell Biol.* (2017) 95:225–35. doi: 10.1038/icb.2016.97
67. Cheung CY, Poon LL, Ng IH, Luk W, Sia SF, Wu MH, et al. Cytokine responses in severe acute respiratory syndrome coronavirus-infected macrophages *in vitro*: possible relevance to pathogenesis. *J Virol.* (2005) 79:7819–26. doi: 10.1128/JVI.79.12.7819-7826.2005
68. Law HK, Cheung CY, Ng HY, Sia SF, Chan YO, Luk W, et al. Chemokine up-regulation in SARS-coronavirus-infected, monocyte-derived human dendritic cells. *Blood.* (2005) 106:2366–74. doi: 10.1182/blood-2004-10-4166
69. Dosch SF, Mahajan SD, Collins AR. SARS coronavirus spike protein-induced innate immune response occurs via activation of the NF-kappaB pathway in human monocyte macrophages *in vitro*. *Virus Res.* (2009) 142:19–27. doi: 10.1016/j.virusres.2009.01.005
70. Al-Qahtani AA, Lyroni K, Aznaourova M, Tseliou M, Al-Anazi MR, Al-Ahdal MN, et al. Middle east respiratory syndrome corona virus spike glycoprotein suppresses macrophage responses via DPP4-mediated induction of IRAK-M and PPARgamma. *Oncotarget.* (2017) 8:9053–66. doi: 10.18632/oncotarget.14754
71. Totura AL, Whitmore A, Agnihothram S, Schafer A, Katze MG, Heise MT, et al. Toll-like receptor 3 signaling via TRIF contributes to a protective innate immune response to severe acute respiratory syndrome coronavirus infection. *MBio.* (2015) 6:e00638–15. doi: 10.1128/mBio.00638-15
72. Gralinski LE, Menachery VD, Morgan AP, Totura AL, Beall A, Kocher J, et al. Allelic variation in the toll-like receptor adaptor protein Ticam2 contributes to SARS-coronavirus pathogenesis in mice. *G3.* (2017) 7:1653–63. doi: 10.1534/g3.117.041434
73. Sheahan T, Morrison TE, Funkhouser W, Uematsu S, Akira S, Baric RS, et al. MyD88 is required for protection from lethal infection with a mouse-adapted SARS-CoV. *PLoS Pathog.* (2008) 4:e1000240. doi: 10.1371/journal.ppat.1000240
74. Cook DN, Pisetsky DS, Schwartz DA. Toll-like receptors in the pathogenesis of human disease. *Nat Immunol.* (2004) 5:975–9. doi: 10.1038/ni1116
75. Cao Y, Li L, Feng Z, Wan S, Huang P, Sun X, et al. Comparative genetic analysis of the novel coronavirus (2019-nCoV/SARS-CoV-2) receptor ACE2 in different populations. *Cell Discov.* (2020) 6:11. doi: 10.1038/s41421-020-0147-1
76. Lim HK, Huang SXL, Chen J, Kerner G, Gilliaux O, Bastard P, et al. Severe influenza pneumonitis in children with inherited TLR3 deficiency. *J Exp Med.* (2019) 216:2038–56. doi: 10.1084/jem.20181621
77. Channappanavar R, Fehr AR, Vijay R, Mack M, Zhao J, Meyerholz DK, et al. Dysregulated type I interferon and inflammatory monocyte-macrophage responses cause lethal pneumonia in SARS-CoV-infected mice. *Cell Host Microbe.* (2016) 19:181–93. doi: 10.1016/j.chom.2016.01.007
78. Lee CT, Fein AM, Lippmann M, Holtzman H, Kimbel P, Weinbaum G. Elastolytic activity in pulmonary lavage fluid from patients with adult respiratory-distress syndrome. *N Engl J Med.* (1981) 304:192–6. doi: 10.1056/NEJM198101223040402
79. Aschner Y, Zeman RL, Yamashita CM, Downey GP. Matrix metalloproteinases and protein tyrosine kinases: potential novel targets in acute lung injury and ARDS. *Chest.* (2014) 146:1081–91. doi: 10.1378/chest.14-0397
80. Sallenne JM, Donnelly SC, Grant IS, Robertson C, Gaudie J, Haslett C. Secretory leukocyte proteinase inhibitor is preferentially increased in patients with acute respiratory distress syndrome. *Eur Respir J.* (1999) 13:1029–36. doi: 10.1183/09031936.99.13510299
81. Kido H, Okumura Y, Takahashi E, Pan HY, Wang S, Yao D, et al. Role of host cellular proteases in the pathogenesis of influenza and influenza-induced multiple organ failure. *Biochim Biophys Acta.* (2012) 1824:186–94. doi: 10.1016/j.bbapap.2011.07.001

82. Talmi-Frank D, Altboum Z, Solomonov I, Udi Y, Jaitin DA, Klepfish M, et al. Extracellular matrix proteolysis by MT1-MMP contributes to influenza-related tissue damage and mortality. *Cell Host Microbe*. (2016) 20:458–70. doi: 10.1016/j.chom.2016.09.005
83. Villeret B, Solhonne B, Straube M, Lemaire F, Cazes A, Garcia-Verdugo I, et al. Influenza a virus pre-infection exacerbates *Pseudomonas aeruginosa*-mediated lung damage through increased MMP-9 expression, decreased elafin production and tissue resilience. *Front Immunol*. (2020) 11:117. doi: 10.3389/fimmu.2020.00117
84. Jiang Y, Zhao G, Song N, Li P, Chen Y, Guo Y, et al. Blockade of the C5a-C5aR axis alleviates lung damage in hDPP4-transgenic mice infected with MERS-CoV. *Emerg Microbes Infect*. (2018) 7:77. doi: 10.1038/s41426-018-0063-8
85. Delgado-Ortega M, Marc D, Dupont J, Trapp S, Berri M, Meurens F, et al. SOCS proteins in infectious diseases of mammals. *Vet Immunol Immunopathol*. (2013) 151:1–19. doi: 10.1016/j.vetimm.2012.11.008
86. Pothlichet J, Chignard M, Si-Tahar, M. Cutting edge: innate immune response triggered by influenza A virus is negatively regulated by SOCS1 and SOCS3 through a RIG-I/IFNAR1-dependent pathway. *J Immunol*. (2008) 180:2034–8. doi: 10.4049/jimmunol.180.4.2034
87. Kedzierski L, Linossi EM, Kolesnik TB, Day EB, Bird NL, Kile BT, et al. Suppressor of cytokine signaling 4 (SOCS4) protects against severe cytokine storm and enhances viral clearance during influenza infection. *PLoS Pathog*. (2014) 10:e1004134. doi: 10.1371/journal.ppat.1004134
88. Caly L, Druce JD, Catton MG, Jans DA, Wagstaff KM. The FDA-approved Drug Ivermectin inhibits the replication of SARS-CoV-2 *in vitro*. *Antiviral Res*. (2020) 178:104787. doi: 10.1016/j.antiviral.2020.104787
89. Schrezenmeier E, Dorner T. Mechanisms of action of hydroxychloroquine and chloroquine: implications for rheumatology. *Nat Rev Rheumatol*. (2020) 16:155–66. doi: 10.1038/s41584-020-0372-x
90. Mercurio NJ, Yen CF, Shim DJ, Maher TR, McCoy CM, Zimetbaum PJ, et al. Risk of QT interval prolongation associated with use of hydroxychloroquine with or without concomitant azithromycin among hospitalized patients testing positive for Coronavirus Disease 2019 (COVID-19). *JAMA Cardiol*. (2020). doi: 10.1001/jamacardio.2020.1834. [Epub ahead of print].
91. Amanat F, Krammer F. SARS-CoV-2 vaccines: status report. *Immunity*. (2020) 52:583–9. doi: 10.1016/j.immuni.2020.03.007
92. Jiang S, Hillyer C, Du, L. Neutralizing antibodies against SARS-CoV-2 and other human coronaviruses. *Trends Immunol*. (2020) 41:355–9. doi: 10.1016/j.it.2020.03.007
93. Gao Q, Bao L, Mao H, Wang L, Xu K, Yang M, et al. Rapid development of an inactivated vaccine candidate for SARS-CoV-2. *Science*. (2020) eabc1932. doi: 10.1126/science.abc1932. [Epub ahead of print].
94. Arts RJW, Moorlag S, Novakovic B, Li Y, Wang SY, Oosting M, et al. BCG vaccination protects against experimental viral infection in humans through the induction of cytokines associated with trained immunity. *Cell Host Microbe*. (2018) 23:89–100 e105. doi: 10.1016/j.chom.2017.12.010
95. Netea MG, Joosten LAB. Trained immunity and local innate immune memory in the lung. *Cell*. (2018) 175:1463–5. doi: 10.1016/j.cell.2018.11.007
96. Yao Y, Jeyanathan M, Haddadi S, Barra NG, Vaseghi-Shanjani M, Damjanovic D, et al. Induction of autonomous memory alveolar macrophages requires t cell help and is critical to trained immunity. *Cell*. (2018) 175:1634–50 e1617. doi: 10.1016/j.cell.2018.09.042
97. Iwata-Yoshikawa N, Uda A, Suzuki T, Tsunetsugu-Yokota Y, Sato Y, Morikawa S, et al. Effects of toll-like receptor stimulation on eosinophilic infiltration in lungs of BALB/c mice immunized with UV-inactivated severe acute respiratory syndrome-related coronavirus vaccine. *J Virol*. (2014) 88:8597–614. doi: 10.1128/JVI.00983-14
98. Covián C, Retamal-Díaz A, Bueno SM, Kalergis AM. Could BCG vaccination induce protective trained immunity for SARS-CoV-2? *Front Immunol*. (2020) 11:970. doi: 10.3389/fimmu.2020.00970
99. Xing Z, Afkhami S, Bavananthasivam J, Fritz DK, D'Agostino MR, Vaseghi-Shanjani M, et al. Innate immune memory of tissue-resident macrophages and trained innate immunity: re-vamping vaccine concept and strategies. *J Leukoc Biol*. (2020). doi: 10.1002/JLB.4MR0220-446R. [Epub ahead of print].
100. Sallenave JM, Guillot L. Host signaling and proteolytic pathways in the resolution or the exacerbation of coronavirus (CoV-2) infection in COVID-19 disease: what therapeutic targets? (2020) doi: 10.31219/osf.io/rtfmx

Conflict of Interest: The authors declare that the research was conducted in the absence of any commercial or financial relationships that could be construed as a potential conflict of interest.

Copyright © 2020 Sallenave and Guillot. This is an open-access article distributed under the terms of the Creative Commons Attribution License (CC BY). The use, distribution or reproduction in other forums is permitted, provided the original author(s) and the copyright owner(s) are credited and that the original publication in this journal is cited, in accordance with accepted academic practice. No use, distribution or reproduction is permitted which does not comply with these terms.