



**HAL**  
open science

## Impact of lockdown on COVID-19 epidemic in Île-de-France and possible exit strategies

Laura Di Domenico, Giulia Pullano, Chiara E Sabbatini, Pierre-Yves Boëlle,  
Vittoria Colizza

► **To cite this version:**

Laura Di Domenico, Giulia Pullano, Chiara E Sabbatini, Pierre-Yves Boëlle, Vittoria Colizza. Impact of lockdown on COVID-19 epidemic in Île-de-France and possible exit strategies. *BMC Medicine*, 2020, 18 (1), pp.240. 10.1186/s12916-020-01698-4 . hal-02932156

**HAL Id: hal-02932156**

<https://hal.sorbonne-universite.fr/hal-02932156v1>

Submitted on 7 Sep 2020

**HAL** is a multi-disciplinary open access archive for the deposit and dissemination of scientific research documents, whether they are published or not. The documents may come from teaching and research institutions in France or abroad, or from public or private research centers.

L'archive ouverte pluridisciplinaire **HAL**, est destinée au dépôt et à la diffusion de documents scientifiques de niveau recherche, publiés ou non, émanant des établissements d'enseignement et de recherche français ou étrangers, des laboratoires publics ou privés.

RESEARCH ARTICLE

Open Access

# Impact of lockdown on COVID-19 epidemic in Île-de-France and possible exit strategies



Laura Di Domenico<sup>1</sup>, Giulia Pullano<sup>1,2</sup>, Chiara E. Sabbatini<sup>1</sup>, Pierre-Yves Boëlle<sup>1</sup> and Vittoria Colizza<sup>1\*</sup>

## Abstract

**Background:** More than half of the global population is under strict forms of social distancing. Estimating the expected impact of lockdown and exit strategies is critical to inform decision makers on the management of the COVID-19 health crisis.

**Methods:** We use a stochastic age-structured transmission model integrating data on age profile and social contacts in Île-de-France to (i) assess the epidemic in the region, (ii) evaluate the impact of lockdown, and (iii) propose possible exit strategies and estimate their effectiveness. The model is calibrated to hospital admission data before lockdown. Interventions are modeled by reconstructing the associated changes in the contact matrices and informed by mobility reductions during lockdown evaluated from mobile phone data. Different types and durations of social distancing are simulated, including progressive and targeted strategies, with large-scale testing.

**Results:** We estimate the reproductive number at 3.18 [3.09, 3.24] (95% confidence interval) prior to lockdown and at 0.68 [0.66, 0.69] during lockdown, thanks to an 81% reduction of the average number of contacts. Model predictions capture the disease dynamics during lockdown, showing the epidemic curve reaching ICU system capacity, largely strengthened during the emergency, and slowly decreasing. Results suggest that physical contacts outside households were largely avoided during lockdown. Lifting the lockdown with no exit strategy would lead to a second wave overwhelming the healthcare system, if conditions return to normal. Extensive case finding and isolation are required for social distancing strategies to gradually relax lockdown constraints.

**Conclusions:** As France experiences the first wave of COVID-19 pandemic in lockdown, intensive forms of social distancing are required in the upcoming months due to the currently low population immunity. Extensive case finding and isolation would allow the partial release of the socio-economic pressure caused by extreme measures, while avoiding healthcare demand exceeding capacity. Response planning needs to urgently prioritize the logistics and capacity for these interventions.

**Keywords:** COVID-19, Mathematical modeling, Lockdown, Exit strategies, Non-pharmaceutical interventions, Social distancing, Reproductive number

## Background

More than half of the global population is under strict forms of social distancing [1, 2], with more than 90 countries in lockdown to fight against COVID-19 pandemic. France implemented the lockdown from March

17 to May 11, 2020 [3]. The aim of this measure is to drastically increase the so-called social distance between individuals to break the chains of transmission and reduce COVID-19 spread. It is an unprecedented measure that was previously implemented only in Italy, Spain, and Austria [2], following the example of China [4], to curb the dramatic increase of hospitalizations and admissions to ICU approaching saturation of the healthcare system.

\* Correspondence: [vittoria.colizza@inserm.fr](mailto:vittoria.colizza@inserm.fr)

<sup>1</sup>INSERM, Sorbonne Université, Pierre Louis Institute of Epidemiology and Public Health, Paris, France

Full list of author information is available at the end of the article



© The Author(s). 2020 **Open Access** This article is licensed under a Creative Commons Attribution 4.0 International License, which permits use, sharing, adaptation, distribution and reproduction in any medium or format, as long as you give appropriate credit to the original author(s) and the source, provide a link to the Creative Commons licence, and indicate if changes were made. The images or other third party material in this article are included in the article's Creative Commons licence, unless indicated otherwise in a credit line to the material. If material is not included in the article's Creative Commons licence and your intended use is not permitted by statutory regulation or exceeds the permitted use, you will need to obtain permission directly from the copyright holder. To view a copy of this licence, visit <http://creativecommons.org/licenses/by/4.0/>. The Creative Commons Public Domain Dedication waiver (<http://creativecommons.org/publicdomain/zero/1.0/>) applies to the data made available in this article, unless otherwise stated in a credit line to the data.

The implementation of extreme measures of social distancing, including mobility restrictions, banning of mass gatherings, closure of schools and work activities, isolation, and quarantine, helped control the first wave of COVID-19 pandemic in China [4–8]. Such exceptional coverage and intensive degree of intervention coupled with strict enforcement may be key to the resulting outcome. How this will play out in Europe is still uncertain [9, 10]. Most importantly, how to relax such stringent constraints on social life and economy while controlling the health crisis remains under investigation [11–13].

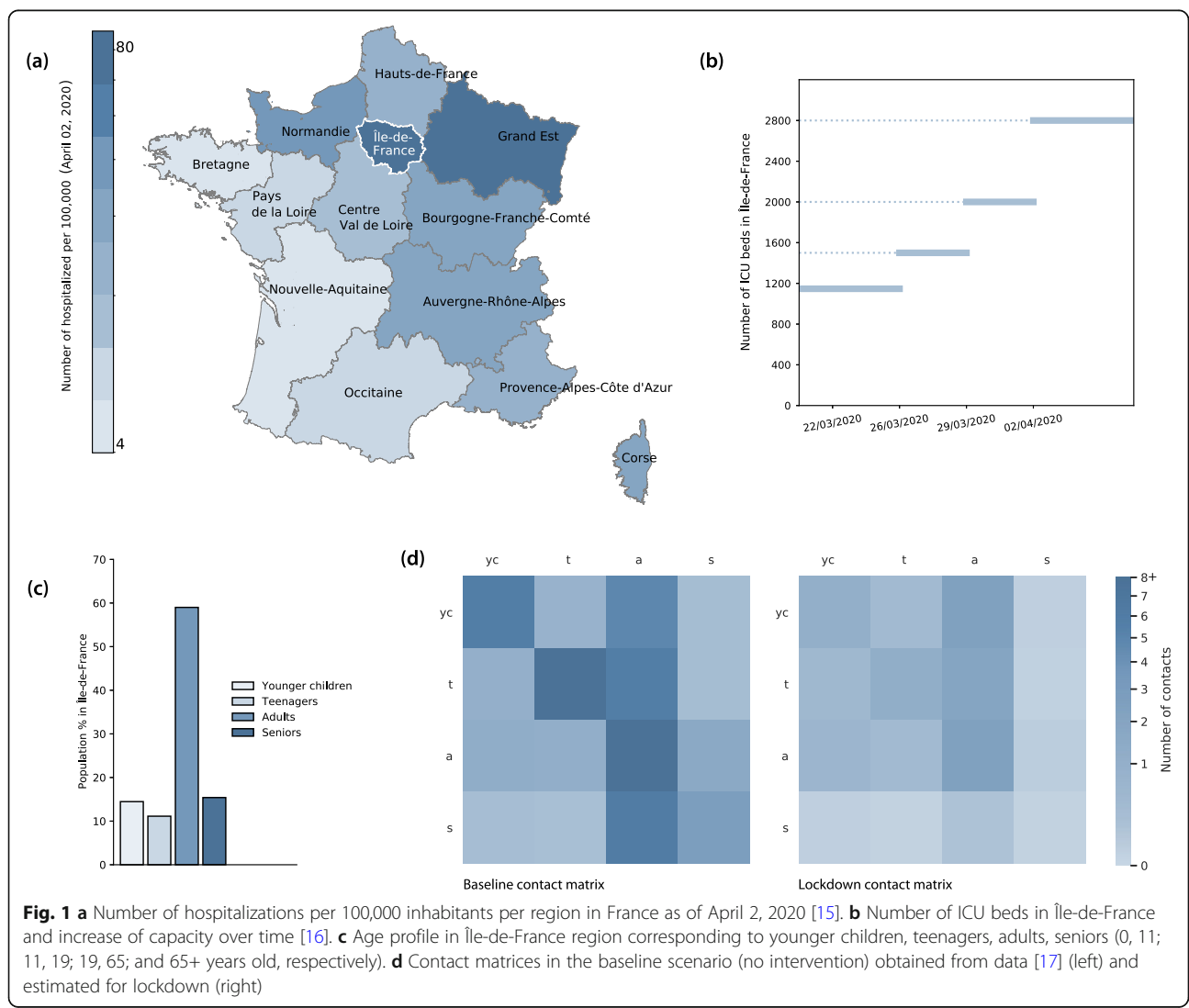
Here we use an age-structured mathematical model to (i) assess the current COVID-19 pandemic situation in France, (ii) evaluate the impact of the lockdown implemented nationwide on March 17, 2020, and (iii) estimate the effectiveness of possible exit strategies. The model is applied to the region of Île-de-France (heavily affected by the epidemic); it is data-driven and calibrated on hospital admission data for the region prior to lockdown.

Different types and durations of social distancing interventions are explored, including a progressive lifting of the lockdown targeted on specific classes of individuals (e.g., allowing a larger portion of the population to go to work, while protecting the elderly) and large-scale testing for case finding and isolation. The aim is to identify possible strategies to reduce the public health impact following the lifting of the lockdown.

The original version of this study was made available as a preprint in mid-April, 1 month before the exit from lockdown. This revised version updates the comparison and validation of model projections, once data became available, while maintaining the context of the beginning of lockdown.

**Methods**

We consider a stochastic discrete age-structured epidemic model based on demographic and age profile data [14] of the region of Île-de-France (Fig. 1).



**Fig. 1** **a** Number of hospitalizations per 100,000 inhabitants per region in France as of April 2, 2020 [15]. **b** Number of ICU beds in Île-de-France and increase of capacity over time [16]. **c** Age profile in Île-de-France region corresponding to younger children, teenagers, adults, seniors (0, 11; 11, 19; 19, 65; and 65+ years old, respectively). **d** Contact matrices in the baseline scenario (no intervention) obtained from data [17] (left) and estimated for lockdown (right)

**Mixing**

Four age classes are considered: 0-10; 11-18; 19-64; and 65+ years old, called in the following younger children (*yc*), adolescents or teenagers (*t*), adults (*a*), and seniors (*s*), respectively. We use social contact matrices measured in France in 2012 through a social contact survey [17]. The matrices represent the mixing in the baseline scenario (no interventions) between individuals in these four age groups (Fig. 1), depending on the type of activity and place where the contacts occur (household, school, workplace, transport, leisure, other). Intervention measures are modeled through modifications of the contact matrices (see below).

**Compartmental model and transmission**

Transmission dynamics follows a compartmental scheme specific for COVID-19 (Fig. 2), where individuals are divided into susceptible, exposed, infectious, hospitalized, in ICU, recovered, and deceased. The infectious phase is divided into two steps: a prodromic phase ( $I_p$ ) occurring before the end of the incubation period, followed by a phase where individuals may remain either asymptomatic ( $I_a$ ) or develop symptoms. In the latter case, we distinguish between different degrees of severity of symptoms, ranging from paucisymptomatic ( $I_{ps}$ ), to infectious individuals with mild ( $I_{ms}$ ) or severe ( $I_{ss}$ ) symptoms, according to data from Italian COVID-19 epidemic [18] and estimates from individual-case data from China and other countries [19]. We explore two values of the probability of being asymptomatic, namely  $p_a = 20\%$  and  $50\%$ , in line with available estimates [20–22]. Individuals in the prodromic phase and asymptomatic and paucisymptomatic individuals have a smaller transmission rate with respect to individuals with moderate or severe symptoms, as reported by contact tracing investigations [23] and estimated in Ref. [8]. Current evidence from household studies, contact tracing investigations, and modeling works suggest that children are as likely to be infected by COVID-19 as adults, but more

likely to become either asymptomatic or paucisymptomatic [22, 24–26]. This may explain the very small percentage (< 5%) of children in COVID-19 confirmed cases worldwide [27]. Here we assume that children in both classes (younger children and adolescents) are equally susceptible as adults, following Ref. [24], and that they become either asymptomatic or paucisymptomatic only. Different relative susceptibility or infectivity of children compared to adults is tested for sensitivity analysis.

The compartmental model includes hospitalization and admission to ICU for severe cases. ICU admission rates, hospital case fatality, and lengths of stay after admission are informed from French hospital data for patient trajectories in Île-de-France region (SIVIC database maintained by the Agence du Numérique en Santé and Santé Publique France [28, 29]) (see also Additional file 1). ICU beds' occupation is the indicator used to evaluate the capacity of the region to face the surge of patients requiring intensive care. Since we do not use hospital beds' occupation for this evaluation, we neglect the time spent in the hospital after exiting intensive care.

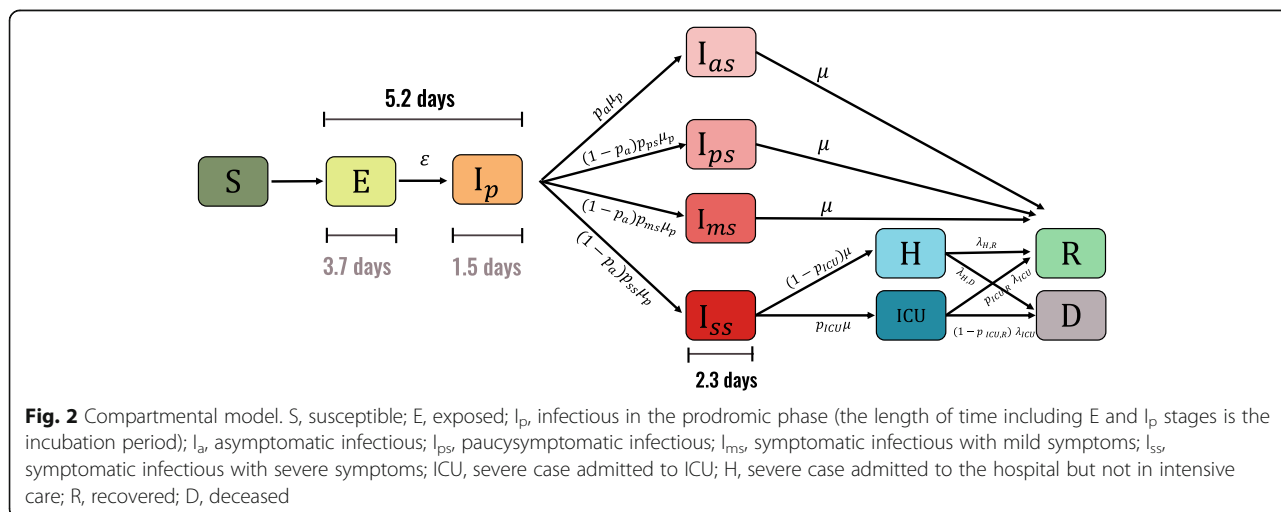
Parameters, values, and sources used to define the compartmental model are listed in Table S1 of the Additional file 1 [8, 18, 19, 21, 28, 30–35].

**Change of behavior due to severe illness**

We assume that infectious individuals with severe symptoms reduce of 75% their number of contacts because of the illness they experience, as observed during 2009 H1N1 pandemic [36]. Higher reductions are tested as possible interventions of self-isolation (see below).

**Social distancing interventions**

We implement social distancing interventions by reconstructing the associated changes of the contact matrices, accounting for a reduction of the number of contacts engaged in specific settings. More precisely:



- *School closure*: the contact matrix for school is removed. We consider that 5% of adults may stay at home to take care of children while schools are closed (not applied with telework or lockdown).
- *Telework performed by a given % of individuals*: contacts at work and on transports are reduced to account for the % of workers not going to work anymore. In France, telework is performed daily by 6% of the active adult population [37]. Here we consider three values: 25%, 50% (as declared by participants of a crowdsourced system monitoring COVID-19-associated behaviors in France [38]), and 70%. The 70% reduction is considered during lockdown, informed by the reduction of mobility documented during the first weeks of lockdown, and resulting from the analysis of mobile phone data in the region [39]. The percentages associated to telework more generally include all individuals not going to their place of work (because they work remotely, they stopped working due to restrictions, or other conditions). Household contacts are increased proportionally to each adult staying at home based on statistics comparing weekend vs. weekday contacts [17] and proportion of adults working during the weekend [40].
- *Senior isolation*: contacts established by seniors are reduced by a given % to model a marked social distancing targeting only the age class at higher risk of complications. We consider 75% and 90%.
- *Banning of social events and closure of all non-essential activities*: Contacts established during leisure and other activities are completely or partially (50%) removed.
- *Case isolation*: in a scenario with large-scale and rapid testing availability, we consider that 25%, 50%, or 75% of all infectious individuals (also including asymptomatic) reduce promptly their contacts by 90% throughout their illness as they self-isolate. This simulates the outcome of aggressive contact-tracing and isolation [31, 41]. To account for a delay in tracing, testing, and self-isolation, we consider that infected individuals in their prodromic stage maintain their contacts as in the no-intervention scenario.

Combinations of the above social distancing interventions simulate the lockdown and alternative less strict options as exit strategies (Table 1). Physical contacts during lockdown are removed to account for the adoption of physical distancing; an alternative version of the matrix maintaining physical contacts during lockdown is tested for sensitivity. We explore possible progressive exit of specific categories of individuals from lockdown (e.g., gradually reopening some businesses while still requiring a high rate of telework where possible), while

maintaining strict social distancing for those at higher risk of complications (e.g., protecting seniors through isolation), as well as increasing testing capacities over time. Results without physical contacts in the exit strategies are tested for sensitivity analysis.

Intervention scenarios are based on the nationwide implementation of the lockdown in France from March 17, 2020, up to May 11. Timelines of explored scenarios are illustrated in Fig. 3. Different durations of the lockdown (till the end of April, end of May) are also considered for sensitivity.

### Calibration and validation

The model is calibrated on hospital data [28] specifying the number of COVID-19-positive hospital admissions in Île-de-France prior to lockdown. We use a maximum likelihood approach to fit the transmission rate per contact and the starting date of the simulation considering data in the interval March 1–23, 2020 (Additional file 1). Hospital admissions in the interval March 17–23 were included as still not affected by lockdown, due to the delay between date of infection and date of hospitalization (~1 week). Parameters estimating the hospital trajectories of COVID-19 patients are based on data up to April 5.

We also retrospectively fit the epidemic trajectory during the lockdown phase, once data became available, to estimate the deviation from our assumptions (Additional file 1).

The simulated incidence of clinical cases (mild and severe symptoms) is compared to the regional incidence of COVID-19 cases estimated by the syndromic and virological surveillance system [29, 42] (see also Additional file 1) from week 12 (March 16 to 22, 2020). Validation is performed a posteriori on the epidemic trajectories of hospital admissions, ICU admissions, and ICU beds' occupation, during the full lockdown period, once data became available.

### Evaluation

Each intervention of social distancing is compared to the no-intervention scenario in terms of final attack rate, peak time, peak incidence, and ICU beds' demand in the region. The total number of ICU beds in Île-de-France has progressively increased over time up to a capacity of 2800 ICU beds [43] in an effort to sustain the first wave and respond to the emergency (Fig. 1). Passed the first wave, we consider an ICU capacity restored at 1500 beds in the months following the emergency [44], as the emergency response is not sustainable in the long term. This capacity corresponds to a 25% increase compared to standard pre-COVID-19 size (1147 beds), assuming that a certain level of preparedness is kept in the upcoming months to face the possible evolution of the pandemic.

**Table 1** Combinations of social distancing interventions. Telework under intensive measures refers to the ensemble of individuals who remain at home (including teleworkers, but also those who do not work anymore because of the lockdown, to care for children, or other conditions)

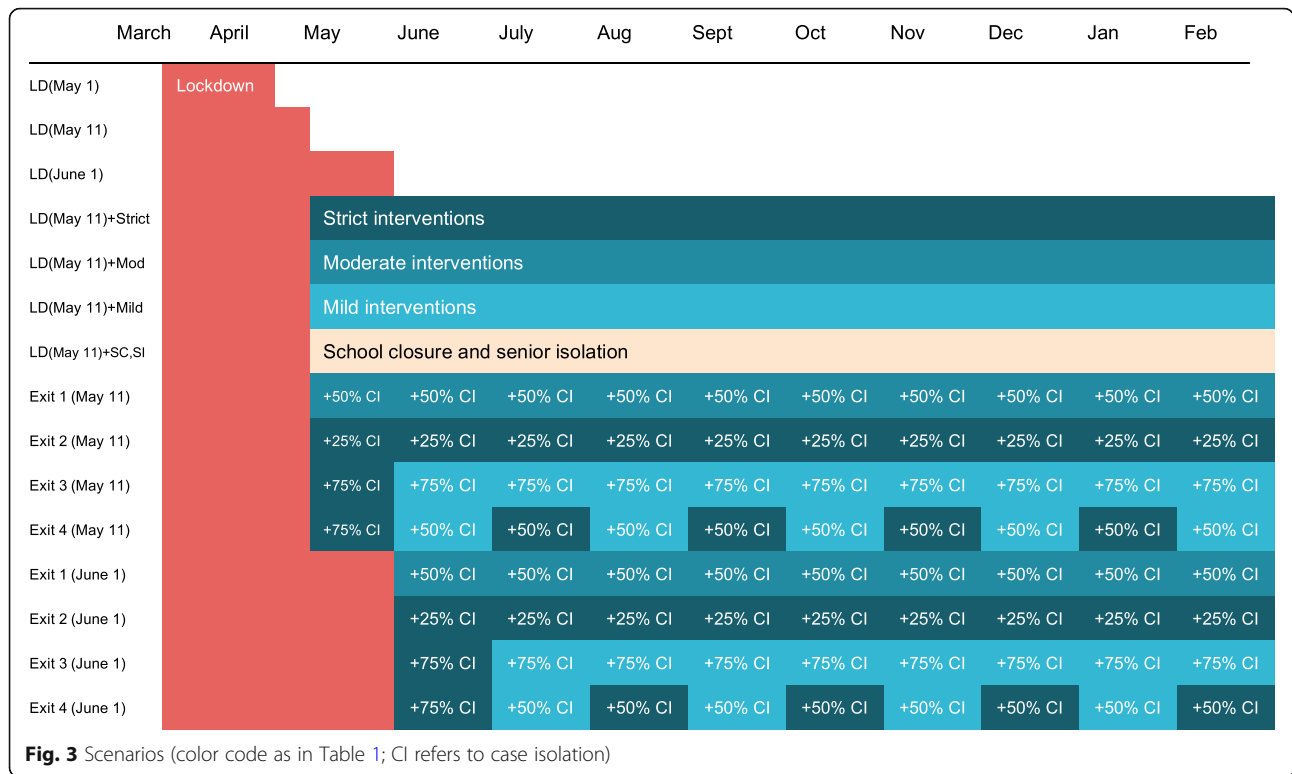
		<b>School closure</b>	<b>Telework</b> (individuals not going to work)	<b>Senior isolation</b>	<b>Closure non-essential activities</b>	<b>Case isolation</b>
<i>Lockdown</i>		Yes; 100% contacts of children on transports removed	70% <sup>39</sup>	Yes, with 90% contact reduction	Yes, 100% closure	No
<i>Set of strict interventions</i>		Yes; 100% contacts of children on transports removed	50% <sup>38</sup>	Yes, with 75% contact reduction	Yes, 100% closure	No
<i>Set of moderate interventions</i>		Yes; 50% contacts of children on transports removed	50% <sup>38</sup>	Yes, with 75% contact reduction	Yes, 50% closure	No
<i>Set of mild interventions</i>		Yes; contacts of children on transports are not removed	25%	Yes, with 75% contact reduction	No	No
<i>School closure and senior isolation</i>		Yes; contacts of children on transports are not removed	As in baseline	Yes, with 75% contact reduction	No	No
<i>Lockdown + case isolation</i>		Yes; 100% contacts of children on transports removed	70% <sup>39</sup>	Yes, with 90% contact reduction	Yes, 100% closure	Yes, for 50%, 75% of cases
<i>Set of strict interventions + case isolation</i>		Yes; 100% contacts of children on transports removed	50% <sup>38</sup>	Yes, with 75% contact reduction	Yes, 100% closure	Yes, for 25%, 50%, 75% of cases
<i>Set of moderate interventions + case isolation</i>		Yes; 50% contacts of children on transports removed	50% <sup>38</sup>	Yes, with 75% contact reduction	Yes, 50% closure	Yes, for 50% of cases
<i>Set of mild interventions + case isolation</i>		Yes; contacts of children on transports are not removed	25%	Yes, with 75% contact reduction	No	Yes, for 50%, 75% of cases

For each scenario, we perform 250 stochastic runs; median curves are displayed together with the associated 95% probability ranges.

**Sensitivity analysis**

Results reported in the main paper refer to  $p_a = 0.2$ ; those for  $p_a = 0.5$  are shown in the Additional file 1. We compare the lockdown based on our reconstructed matrix with (i) a less stringent lockdown under the reduction of contacts measured in the UK [45], (ii) a more stringent lockdown under the reduction of contacts measured in

China [46], (iii) a fit of the model during the lockdown phase, (iv) an additional version of our reconstructed matrix where physical contacts are kept. Exit strategies *Exit 1–4* are also examined with a lockdown lifted at the beginning of May, or of June, and assuming that physical contacts are avoided in the upcoming months. In addition, we test different relative susceptibility and infectivity of children compared to adults. We did not consider scenarios assuming that infectiousness is constant across asymptomatic and symptomatic individuals, as in contrast with available evidence [8, 23].

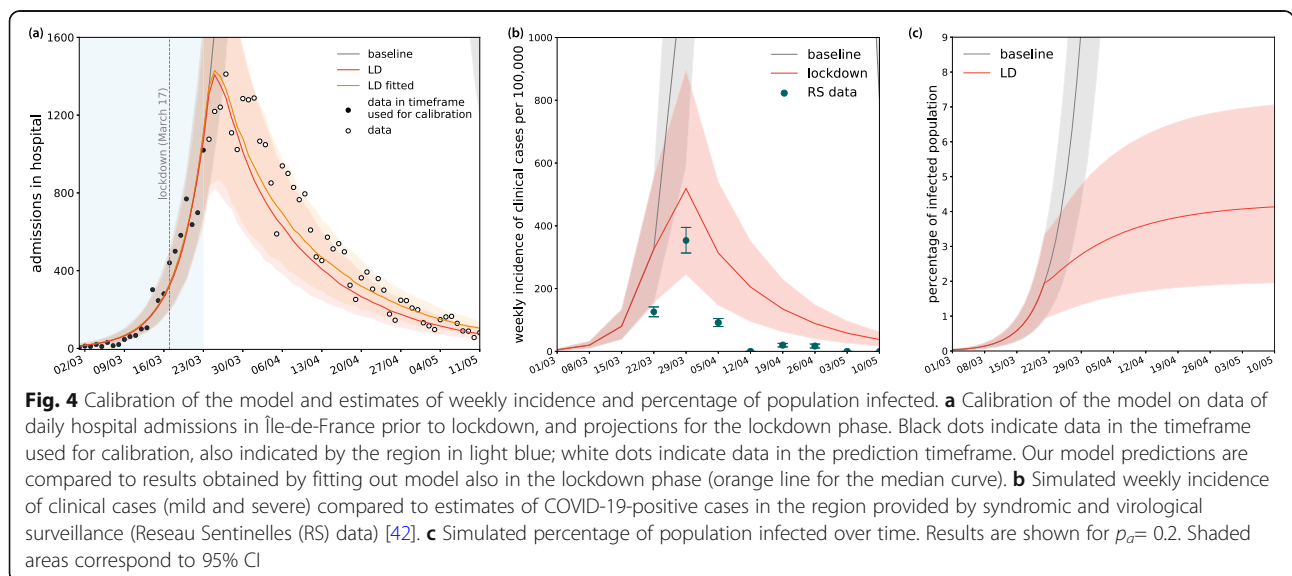


**Results**

**Reproduction number, start of the epidemic, population infected**

The reproductive number for our model is estimated to be  $R_0 = 3.18$  [3.09, 3.24] (95% confidence interval), computed with the next-generation approach [47] based on the transmission rate estimated from hospital admissions in Île-de-France prior to lockdown (Fig. 4).

Reported hospitalizations are consistent with an epidemic seeded in the region at the end of January 2020. The percentage of population in Île-de-France predicted to be infected on May 11 ranges from 2 to 13% considering both values of the probability of being asymptomatic (Fig. 4, and Additional file 1 for the higher asymptomatic rate scenario). Overall infection fatality ratio is estimated to range from 0.7 to 1.2%.



**Lockdown followed by combination of interventions of different degrees of intensity**

The changes in contact matrices reconstructed to simulate the social distancing measures implemented during lockdown reduce the number of contacts by 81% compared to baseline mixing patterns (Fig. 1). This allows a substantial reduction of the reproductive number well below 1 ( $R_{LD} = 0.68 [0.66, 0.69]$ ). Under these conditions, the predicted incidence of clinical cases slows down and reduces during lockdown, following the tendency reported by syndromic and virological surveillance (Fig. 4). The overestimation of clinical cases is explained with a consultation rate estimated to be around 35% in the reported period, as documented from crowdsourced data [38] (Fig. S3 in Appendix file 1). Fitting the model to the epidemic trajectory during the lockdown phase would require a correction of 5% increase in the transmissibility per contact (Fig. 4 and Additional file 1).

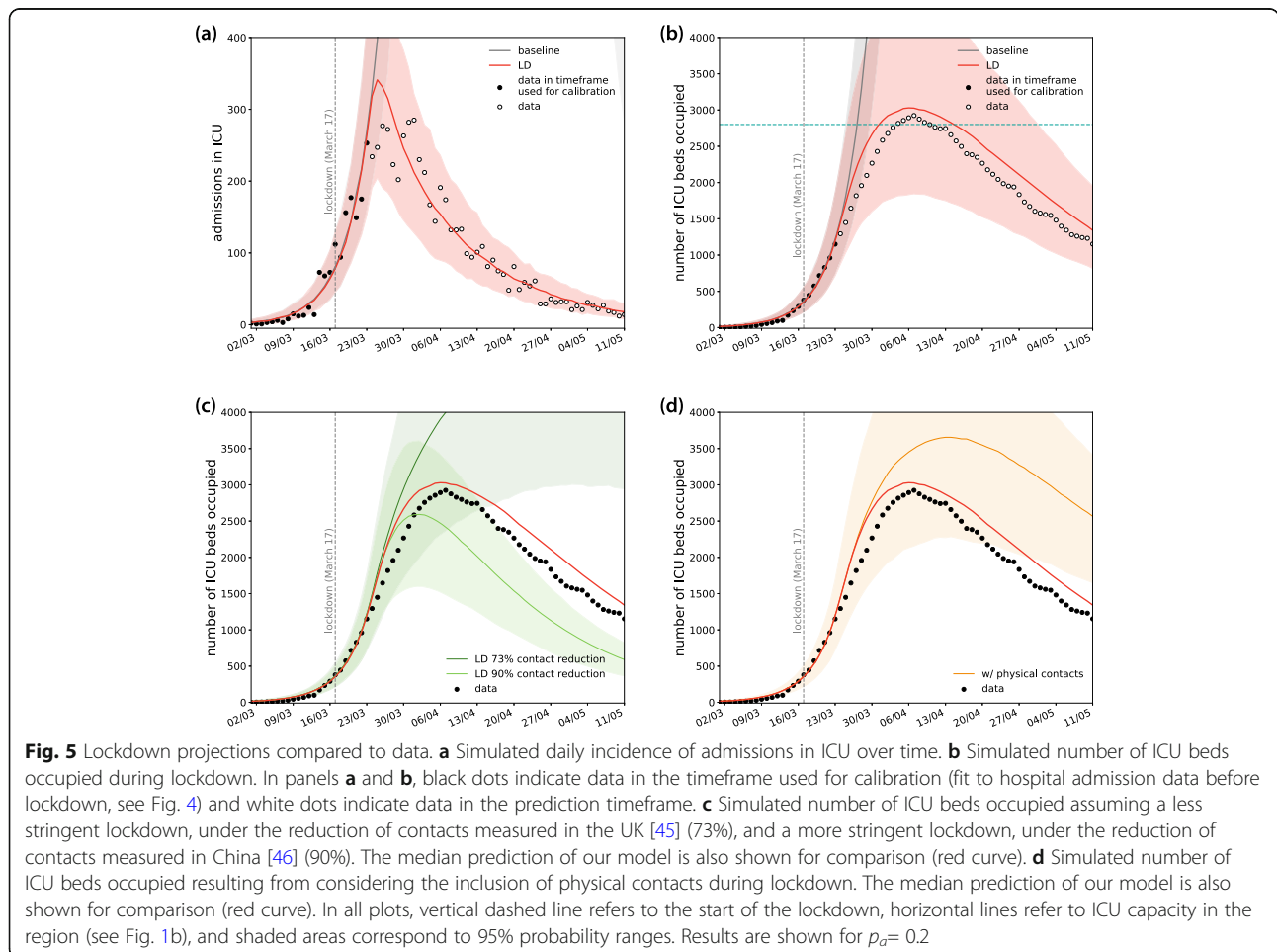
The predicted number of ICU beds occupied saturates towards the strengthened capacity in the region, before slowly decelerating and reducing over time. Predictions are consistent with observations (Fig. 5). The median

ICU demand slightly overestimates the data, as our model does not account for the transfer of patients in intensive care to less affected regions.

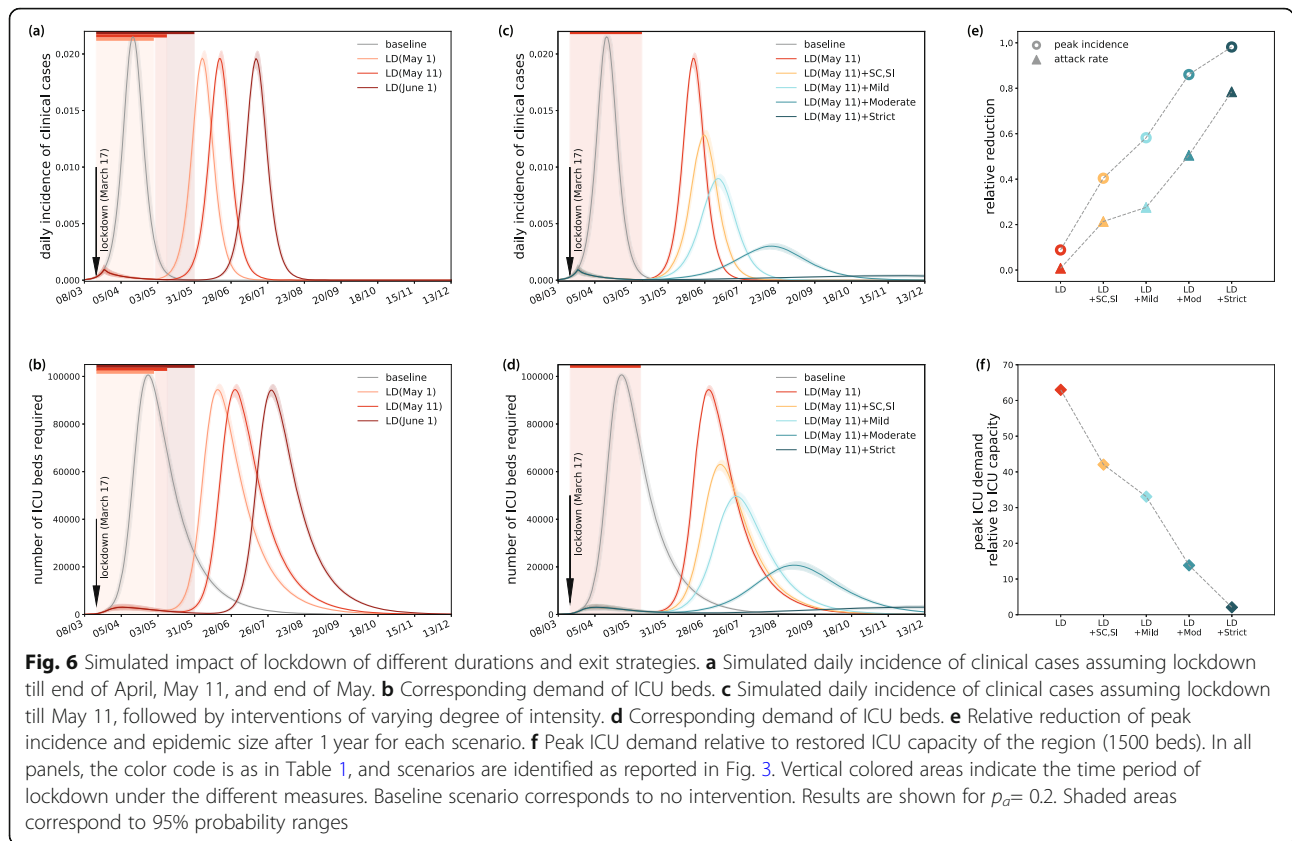
Model projections indicate that by May 11 the region would experience 516 [363, 682] new clinical cases per day (corresponding to 1170 [808, 1534] new infections) and 75 [49, 107] new admissions in hospitals as shown in Fig. 4 (of which 18 [10, 30] in ICUs), with an ICU system occupied at 48 [31, 68]% of currently strengthened capacity (Fig. 5).

Assuming a 90% decrease during lockdown predicts faster decrease in bed occupation (Fig. 5). With a less stringent reduction (73%),  $R_{LD}$  is just below 1, and the trend of occupied beds in ICUs is predicted to continue to increase up to end of April. None of these situations is consistent with the data. Considering physical contacts during lockdown would lead to a higher occupancy of ICU beds than observed.

Lifting the lockdown with no exit strategy, and going back to normal conditions, leads to a delay of the peak compared to the no-intervention scenario (delay of about the duration of the lockdown) with minimal effect on peak incidence (Fig. 6). The peak number of ICU







beds required is estimated to be more than 60 times the restored regional capacity if no strategy is implemented after lockdown.

Combined interventions of different degrees of intensity implemented indefinitely after lifting the lockdown in May substantially delay and mitigate the epidemic (Fig. 6). School closure coupled with senior isolation, and mild interventions reduce the peak incidence by approximately half (40%, 58% respectively). Interventions of moderate intensity or higher (i.e., schools are closed, 50% of active individuals work remotely, and at least 50% of non-essential activities are closed; seniors remain in isolation) suppress the peak with more than 80% reduction gaining significant delay compared to the no-exit strategy. Despite the strong mitigation of these scenarios, the peak demand on the healthcare system is predicted however to exceed capacity by a large amount if interventions are at most of moderate intensity (15 to 40 times higher than capacity) (Fig. 6). Strict intervention would still require twice the restored capacity of the system during the second wave.

### Social distancing measures with case isolation

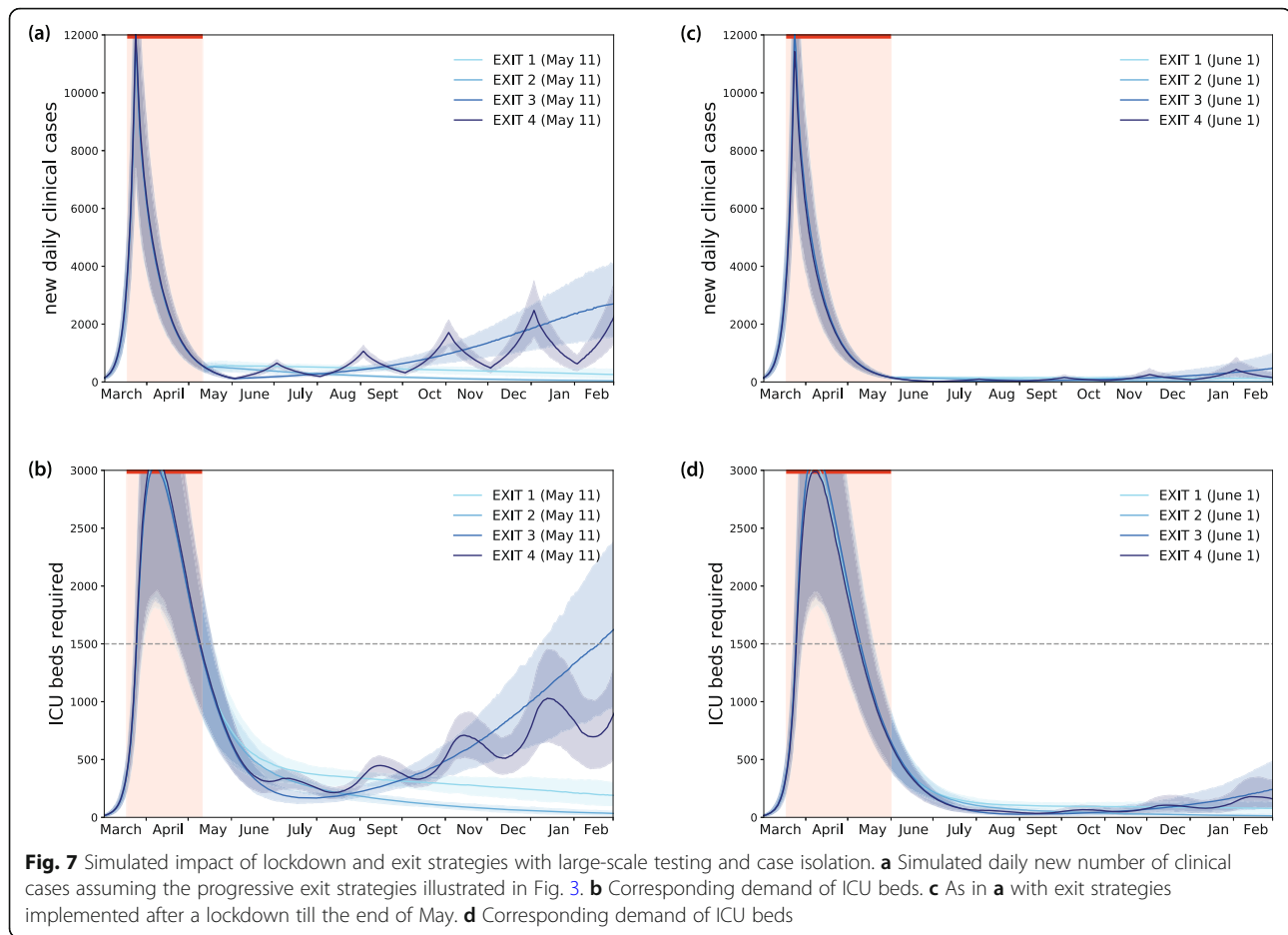
Implementing aggressive case finding and isolation together with social distancing allow the release of the lockdown in May, engaging the ICU services below their

maximum capacity throughout the epidemic (Fig. 7). On the medium- to long-term, different intensity of social distancing interventions can be maintained, depending on the testing and isolation capacity, for example, strict interventions if only 25% of cases are promptly identified and isolated (*Exit 2*), or moderate interventions if such capacity is increased (50% case isolation, *Exit 1*). These two scenarios predict the occupation of more than 500 beds in ICU up to the month of June. Lifting the lockdown at the beginning of May would maintain ICU occupation over this level for the entire summer (Additional file 1). Delaying till early June would achieve a stronger suppression of the epidemic.

Further relaxing social distancing constraints (e.g., allowing a larger proportion of individuals to go to work and the full reopening of activities) would be possible by progressively going through decreasing levels of intensity of interventions (from lockdown to strict interventions to mild interventions afterwards) while maintaining highly efficient tracing (*Exit 3*). Alternatively, strict and mild interventions can be rotated every month if case isolation capacity is less efficient (*Exit 4*).

All these scenarios foresee, however, that schools are closed, and seniors remain isolated.

All exit strategies would be able to maintain the epidemic under control in the upcoming months if a larger



proportion of infected individuals are asymptomatic. This is due to the smaller fraction of individuals in the population with severe symptoms requiring hospitalization (Additional file 1). If younger children and adolescents are less susceptible than older age classes, transmissions would mainly occur from infectious adults and seniors. A higher transmission rate, with respect to the equal susceptibility scenario, is thus required to reproduce the epidemic trajectory prior to lockdown. This is due to the fact that younger age classes have a large number of contacts, but these contacts become less important in the disease spread if individuals are less susceptible to contract the infection. In the scenario analyses, the reduced susceptibility assumption would lead on average to a higher flux of hospital admissions, as older age classes are the ones with higher probability of being hospitalized. Exit strategies however exist that would maintain the epidemic under control (Additional file 1). Also, changes in the risk of transmission from younger children would lead to similar results. If individuals continue to avoid all physical contacts in the next months, all exit strategies considered here foresee the suppression of the epidemic in the region (Additional file 1).

## Discussion

We use a stochastic age-structured epidemic transmission model calibrated on hospital admission data in Île-de-France to evaluate the impact of lockdown and exit strategies in controlling COVID-19 epidemic in the region. Our estimate of the reproductive number prior to lockdown is in line with estimates for the epidemic growth in Europe prior to the implementation of interventions [9, 10], with results from a meta-analysis of the literature [12, 45], and with concurrent studies in France [35, 48]. We predict it decreased significantly during lockdown with a 95% probability range well below 1. Under these conditions, the occupancy of the ICU system reaches a plateau before clearly showing a decreasing tendency after several weeks of lockdown, as also observed in other countries [18]. As of May 11, the model predicts a 48% of ICU occupancy, with less than 30 new admissions to ICUs per day.

Lifting lockdown with no exit strategy in place, i.e., going back to pre-lockdown conditions, would inevitably lead to large rebound effects, as the immunity of the population is estimated to be still very low (from 2 to 13% considering both values of probability of being asymptomatic explored),

in agreement with other estimates [9, 35]. Prolonged interventions of moderate to high intensity could additionally delay the epidemic peak by at least 2 months compared to the no-exit strategy and reduce its peak incidence by more than 80%, but would not avoid exceeding ICU capacity (peak demand of 2–15 times the restored ICU capacity of the region). Even with a 100% increase of ICU capacity to face the second peak, strict interventions would be required for the next full year.

Control of the epidemic without overwhelming the healthcare system requires coupling social distancing measures with aggressive testing to promptly identify infectious individuals and isolate them. Response capacity is critical to lift the lockdown, so that the timeline of these interventions should be carefully planned based on achieved preparedness. We consider different levels of testing capacity starting from the month of May or June. If case isolation is performed on average 1.5 day after infection and is efficient (90% reduction of contacts), we find that identifying at least 50% of all new cases would be required to rapidly reduce the burden on the healthcare system while exiting lockdown. Lower tracing capacity starting May would need to be coupled with more vigorous social distancing to keep the epidemic under control. To release constraints on the population while building capacity, a longer lockdown till June would aid releasing the pressure on the healthcare system. Also, it would be ideal to perform contact tracing and testing while the epidemic is at low activity levels. The benefit of these measures would go beyond the epidemic mitigation and extend to revising and optimizing protocols to improve case finding and isolation—compared to the first phase of the epidemic—under more controlled conditions (reduced mixing of the population).

Fast, efficient, and large-scale contact tracing [31] is one essential component allowing the partial release of social distancing constraints in the upcoming months. This would require digital technologies that are currently being investigated in Europe [49] following the examples of COVID-19 response of countries in Asia [50]. Logistical constraints need to be envisioned, including large-scale and rapid diagnostic capacity, large-scale adoption of the contact tracing technology by the population [51], uptake of recommendations, and coordination across countries to allow contact tracing across borders [49].

The set of mild or moderate interventions considered here still impose limitations. We tested strategies allowing a larger proportion of the population to go back to work, also to partially release the huge economic pressure that lockdown generated. Global economic uncertainty is at a record high [52], due to the fear of COVID-19 pandemic spread, income losses, and globally stalled economies because of exceptional interventions freezing production. As a side effect, lockdown has likely created a forced

opportunity to re-organize certain professional activities to make telework possible and efficient at larger scale than previously foreseen. Prior to lockdown, a small fraction of Europeans practiced telework [37]. If this change of paradigm is maintained beyond emergency response, it would be extremely valuable in the medium- to long-term to aid the control of the epidemic below healthcare system saturation. Rotation of individuals working from home (e.g., every week, or every 2 weeks) can be envisioned to maintain the required social distancing levels in the community while ensuring real-life connections.

Here we consider unchanged intervention measures regarding children and seniors across all scenarios. Schools are assumed to remain closed, though reopening of certain school levels is possible under different protocols of attendance [44]. Seniors are considered to maintain a reduction of contacts through hygienic measures and physical distance, as they are especially vulnerable against COVID-19. Planning for the upcoming months under these conditions should include logistics to facilitate daily routines of the elderly beyond this phase of emergency, e.g., improving delivery of grocery and medicines, facilitating remote access to healthcare, providing learning programs for the use of technologies to stay connected, and other initiatives. Reopening of the schools in the fall/winter should be explored in the following months once the impact of these interventions will be further assessed [44].

ICU capacity underwent a large increase in the last weeks to face the rapid surge of patients in critical conditions [16]. Capacities have been stretched in the most affected regions, and patients have also been transferred to other regions for adequate care. Exiting the current emergency, we envision that ICU capacity will be restored to lower levels for the upcoming months. If a second emergency were to occur, the system would need to be strengthened again to higher limits.

Our findings are based on the mechanistically reconstructed changes in the contact matrices that aim to reproduce the implemented social distancing measures, as done in previous works [7, 12]. While reconstructing changes in the contact matrices remains arbitrary, available elements support our estimates. First, not being fitted to the lockdown period, our contact matrices reconstructed from social contact data lead to model projections in line with observations across several indicators. The fit to the epidemic trajectory, retrospectively performed once data became available, shows that a correction of only 5% in the transmissibility per contact is needed to better describe the epidemic compared to our mechanistically reconstructed matrices. This indicates that the assumptions behind the reconstruction of the matrix, affecting each age bracket in a different way, are able to capture the dynamics of the epidemic during

lockdown. Such finding can improve the parameterization of similar models based on contact matrices for the study of COVID-19 epidemic in other regions or countries. At the same time, it also suggests that physical contacts were successfully avoided during lockdown, in compliance with the recommendations of health authorities. Second, our predicted reduction of 81% of the average number of contacts during lockdown is lower than the one measured in China in the cities of Wuhan (86%) and Shanghai (89%) [46]. Stricter measures were implemented in China during lockdown compared to Europe, including for example complete suspension of public transport, ban of cars from roads except for the essential services, barring residents from leaving the apartment in certain areas or limiting it to one household member few days per week, performing health checks door to door to identify and isolate ill individuals. These measures are expected therefore to have a more substantial effect on reducing the number of contacts per individual compared to social distancing measures implemented in many European countries. Indeed, under conditions measured in China, the ICU system is predicted by our model to receive less patients and clear them more rapidly than what we currently see in the data. Third, our prediction for contact reduction is close to, but larger than the empirically estimated 73% reduction of a recent social contact survey conducted in the UK during the lockdown phase [45]. Implementation of social distancing however differs in the two countries. For example, in the UK, parks remain open, no self-declaration to circulate is needed, and displacements are not restricted on distance. Assuming the conditions measured in the UK, the model predicts a first peak exceeding ICU capacity. Collecting contact data in France during lockdown, as done in the UK, would allow a better measurement of the mixing patterns altered by social distancing to be compared with our synthetically reconstructed lockdown matrix. Possible changes in population adherence over time, and consequential strengthening of measures by authorities, need however to be taken into account.

Our study is affected by limitations. We did not include explicitly the effect of using masks. Evidence on seasonal coronaviruses indicates that surgical masks may reduce onward transmission [53]. Masks are largely adopted or enforced in Asia, while they just became a recommended or compulsory protection in certain areas in Europe and the USA, mainly as a precautionary measure [54]. If effective, their widespread use may help decrease the risk of transmission in the community. As more epidemiological evidence accrues, this effect can be taken into account and help further alleviate control measures. We did not consider seasonal behavior in viral transmission [11, 13], because of current lack of evidence. In our simulated epidemics, multiple peaks are observed because of the

implementation of social distancing interventions able to reduce the reproductive number below 1. If seasonal forcing is to be expected, the interplay with seasonality should be carefully considered in the planning of the short- and long-term control strategies [11]. Exit strategies are based on matrices including both physical and non-physical contacts. We saw that excluding physical contacts substantially contributed to the reduction of the reproductive number during lockdown. At this stage, however, large uncertainty exists on recommendations and protocols imposed by authorities to phase out lockdown. Moreover, our scenarios plan out for several months, and recommendations as well as population adoption may strongly change over this long time period. Findings reported in the main text therefore correspond to a conservative choice. If physical contacts are avoided for several months, the epidemic would go locally extinct. Treatment of COVID-19 patients improved over time, as documented by lower probabilities for requiring intensive care and shorter durations in ICU (Additional file 1). These data became available at the time of revision and were not included in the analysis. The more efficient management of COVID-19 patients is expected to reduce the burden in the upcoming months.

We tested two values for the probability of being asymptomatic, as there still exists large uncertainty [20–23]. Few studies investigated the clinical progression of symptoms over time until viral clearance. Additional household studies now launched in Europe will help providing a better understanding of the presence of asymptomatic cases and their contribution to transmission. Evidence so far seems to indicate that this fraction may be low [23]; therefore, we presented in the main paper results for  $p_a = 0.2$ . Estimates of age-specific severity and case fatality rates are still rapidly evolving and often vary across countries due to different surveillance systems and testing protocols in place. Here we used estimates of age-specific severity informed from a model-based analysis on individual-level data from China and other countries [19]. Rates describing the hospitalization duration and outcome of a patient were based on French data [28]. Infection fatality ratios estimated by our model are consistent with estimates provided in Ref. [19]. We do not consider here data on comorbidities that will alter hospitalization and fatality rates. Large-scale testing in France will allow us to robustly estimate age-specific hospitalization rates to better inform the model.

Concurrently to our work, other studies became available that assessed the epidemic in France [35, 48]. All studies independently produced similar estimates characterizing the epidemic and the effectiveness of lockdown, providing a consensus of evaluations despite modeling discrepancies (e.g., equal transmissibility across asymptomatic and symptomatic infectious individuals in Ref. [35], or 90% reduction in transmissibility of asymptomatic cases in

Ref. [48], compared to our 45% reduction informed by prior modeling work [8]). However, each focused on different aspects, specifically to evaluate the impact of lockdown and estimate population immunity [35], or to estimate the total number of averted ICU admissions and deaths due to lockdown [48], whereas no study proposed exit strategies and their evaluation while on lockdown.

Our results are based on data from Île-de-France, currently one of the most affected regions by the COVID-19 epidemic in the country, and not directly applicable to other regions. Few differences in the results due to variations of age profile across regions are to be expected [55]. The most relevant changes will however result from the different epidemic phase experienced by each region at the moment of nationwide application of the lockdown. Overall, findings on exit strategies remain valid, but more specific interventions, differentially targeting the regions, may be envisioned.

## Conclusions

France, as many other countries in the world, implemented a nationwide lockdown to curb the dramatic increase in the number of patients in critical conditions. Assessing the impact of lockdown and identifying the optimal strategies to manage the health crisis beyond lockdown is of critical importance. Substantial social distancing will be needed in the upcoming months due to the currently low population immunity. Given the features of COVID-19 pandemic, extensive case finding and isolation following lockdown are required to progressively lower the intensity of current interventions and avoid that the healthcare system exceeds saturation. Response planning needs to urgently prioritize the logistics and capacity for these interventions.

## Supplementary information

**Supplementary information** accompanies this paper at <https://doi.org/10.1186/s12916-020-01698-4>.

**Additional file 1.** Supplementary material composed of supplementary results, Tables S1 and S2, and Figures S1-S10.

## Acknowledgements

We thank Chiara Poletto, Fabrice Carrat, Cecile Souty, Niel Hens, Pietro Coletti, Lander Willem, Nicola Scarpa, Guillaume Beraud, Juliette Paireau, and Sante publique France for useful discussions.

## Authors' contributions

VC conceived and designed the study. LDD, CES, and PYB collected and analyzed the data. LDD and GP performed the simulations and numerical analysis. LDD, GP, CES, PYB, and VC interpreted the results. VC drafted the article. All authors contributed to the writing of the final version of the article. All authors read and approved the final manuscript.

## Funding

ANR projects DATAREDEX (ANR-19-CE46-0008-03), EVALCOVID-19 (ANR-20-COVI-0007), and SPHINX (ANR-17-CE36-0008-05); EU H2020 grants MOOD (H2020-874850) and RECOVER (H2020-101003589); REACTing COVID-19

modeling grant; and INSERM-INRIA partnership for research on public health and data science.

## Availability of data and materials

All data is available at cited sources.

## Ethics approval and consent to participate

Not applicable.

## Consent for publication

The funders had no role in the study design, data collection, data analysis, data interpretation, writing of the manuscript, and decision to submit. The corresponding author had full access to all the data in the study and had final responsibility for the decision to submit for publication.

## Competing interests

We declare no competing interests.

## Author details

<sup>1</sup>INSERM, Sorbonne Université, Pierre Louis Institute of Epidemiology and Public Health, Paris, France. <sup>2</sup>Sociology and Economics of Networks and Services lab at Orange Experience Design Lab (SENSE/XDLab) Chatillion, Paris, France.

Received: 28 April 2020 Accepted: 6 July 2020

Published online: 30 July 2020

## References

1. Coronavirus: près de la moitié du monde en confinement, l'épidémie s'étend. *AFP.com*. <https://www.afp.com/fr/infos/334/coronavirus-pres-de-la-moitie-du-monde-en-confinement-lepidemie-setend-doc-1q87923>. Accessed 28 Mar 2020.
2. Epicentre. COVID-19 Epi Dashboard. <https://reports.msf.net/public/covid19/>. Accessed 5 Apr 2020.
3. Info Coronavirus COVID-19 - Stratégie de déconfinement. *Gouvernement.fr*. <https://www.gouvernement.fr/info-coronavirus/strategie-de-deconfinement>. Accessed 4 May 2020.
4. WHO. Report of the WHO-China Joint Mission on Coronavirus Disease 2019 (COVID-19). <https://www.who.int/docs/default-source/coronaviruse/who-china-joint-mission-on-covid-19-final-report.pdf>. Accessed 18 Mar 2020.
5. Kraemer MUG, Yang C-H, Gutierrez B, et al. The effect of human mobility and control measures on the COVID-19 epidemic in China. *Science*. 2020; 368:493–7.
6. Lai S, Ruktanonchai NW, Zhou L, et al. Effect of non-pharmaceutical interventions to contain COVID-19 in China. *Nature*. 2020;1–5.
7. Prem K, Liu Y, Russell TW, et al. The effect of control strategies to reduce social mixing on outcomes of the COVID-19 epidemic in Wuhan, China: a modelling study. *Lancet Public Health*. 2020; published online March 25. [https://doi.org/10.1016/S2468-2667\(20\)30073-6](https://doi.org/10.1016/S2468-2667(20)30073-6).
8. Li R, Pei S, Chen B, et al. Substantial undocumented infection facilitates the rapid dissemination of novel coronavirus (SARS-CoV2). *Science*. 2020; published online March 16. <https://doi.org/10.1126/science.abb3221>.
9. Flaxman S, Mishra S, Gandy A, et al. Estimating the effects of non-pharmaceutical interventions on COVID-19 in Europe. *Nature*. 2020; published online June 8. <https://doi.org/10.1038/s41586-020-2405-7>.
10. Covid-19: Global summary. *epiforecasts.io*. <https://epiforecasts.io/covid/posts/global/>. Accessed 1 Apr 2020.
11. Kissler SM, Tedijanto C, Lipsitch M, Grad Y. Social distancing strategies for curbing the COVID-19 epidemic; 2020; published online March 24. <https://doi.org/10.1101/2020.03.22.20041079>.
12. Davies NG, Kucharski AJ, Eggo RM, et al. Effects of non-pharmaceutical interventions on COVID-19 cases, deaths, and demand for hospital services in the UK: a modelling study. *Lancet Public Health*. 2020;5(7):e375–85.
13. Ferguson NM, Laydon D, Nedjati-Gilani G, et al. Impact of non-pharmaceutical interventions (NPIs) to reduce COVID-19 mortality and healthcare demand. <https://www.imperial.ac.uk/media/imperial-college/medicine/sph/ide/gida-fellowships/Imperial-College-COVID19-NPI-modelling-16-03-2020.pdf>. Accessed 22 Mar 2020.
14. Population légale de Île-de-France. *INSEE.fr*. <https://www.insee.fr/fr/statistiques/4270719>. Accessed 22 Mar 2020.

15. Covid-19: point épidémiologique du 2 avril 2020. [santepubliquefrance.fr. https://www.santepubliquefrance.fr/maladies-et-traumatismes/maladies-et-infections-respiratoires/infection-a-coronavirus/documents/bulletin-national/covid-19-point-epidemiologique-du-2-avril-2020](https://www.santepubliquefrance.fr/maladies-et-traumatismes/maladies-et-infections-respiratoires/infection-a-coronavirus/documents/bulletin-national/covid-19-point-epidemiologique-du-2-avril-2020). Accessed 3 Apr 2020.
16. Les Echos. Les hôpitaux d'Ile-de-France veulent évacuer des malades du coronavirus vers d'autres régions. Echos. 2020; published online March 27. <https://www.lesechos.fr/economie-france/social/les-hopitaux-dile-de-france-veulent-evacuer-des-malades-du-coronavirus-vers-dautres-regions-1189550>. Accessed 27 Mar 2020.
17. Béraud G, Kazmierczak S, Beutels P, et al. The French connection: the first large population-based contact survey in France relevant for the spread of infectious diseases. *PLoS One*. 2015;10:e0133203.
18. Coronavirus | EpiCentro, Istituto Superiore di Sanità (ISS). <https://www.epicentro.iss.it/coronavirus/>. Accessed 22 Mar 2020.
19. Verity R, Okell LC, Dorigatti I, et al. Estimates of the severity of coronavirus disease 2019: a model-based analysis. *Lancet Infect Dis*. 2020;20(6):669–77.
20. Nishiura H, Kobayashi T, Miyama T, et al. Estimation of the asymptomatic ratio of novel coronavirus infections (COVID-19). *Int J Infect Dis*. 2020;94:154–5.
21. Mizumoto K, Kagaya K, Zarebski A, Chowell G. Estimating the asymptomatic proportion of coronavirus disease 2019 (COVID-19) cases on board the Diamond Princess cruise ship, Yokohama, Japan, 2020. *Eurosurveillance*. 2020;25:2000180.
22. Bi Q, Wu Y, Mei S, et al. Epidemiology and transmission of COVID-19 in 391 cases and 1286 of their close contacts in Shenzhen, China: a retrospective cohort study. *Lancet Infect Dis*. 2020; published online April 27. [https://doi.org/10.1016/S1473-3099\(20\)30287-5](https://doi.org/10.1016/S1473-3099(20)30287-5).
23. Luo L, Liu D, Liao X, et al. Modes of contact and risk of transmission in COVID-19 among close contacts. *medRxiv*. <https://www.medrxiv.org/content/10.1101/2020.03.24.20042606v1.full.pdf>. Accessed 1 Apr 2020.
24. Davies NG, Klepac P, Liu Y, et al. Age-dependent effects in the transmission and control of COVID-19 epidemics; 2020; published online March 27. <https://doi.org/10.1101/2020.03.24.20043018>. Version 1 Accessed 27 Mar 2020.
25. Zimmermann P, Curtis N. Coronavirus infections in children including COVID-19: an overview of the epidemiology, clinical features, diagnosis, treatment and prevention options in children. *Pediatr Infect Dis J*. 2020;39:355–68.
26. Cai J, Xu J, Lin D, et al. A case series of children with 2019 novel coronavirus infection: clinical and epidemiological features. *Clin Infect Dis*. <https://doi.org/10.1093/cid/ciaa198>.
27. Ludvigsson JF. Systematic review of COVID-19 in children shows milder cases and a better prognosis than adults. *Acta Paediatr*. <https://doi.org/10.1111/apa.15270>.
28. Données hospitalières relatives à l'épidémie de COVID-19 - data.gouv.fr. /fr/datasets/donnees-hospitalieres-relatives-a-lepidemie-de-covid-19/. Accessed 25 May 2020.
29. Di Domenico L, Pullano G, Sabbatini CE, Boëlle P-Y, Colizza V. Data for Ile-de-France. Google Docs. [https://docs.google.com/spreadsheets/d/17Q5BLjw2N6b5uf8T2E3leTui91tAyqOvKhymvPDyhHK/edit?usp=sharing&usp=embed\\_facebook](https://docs.google.com/spreadsheets/d/17Q5BLjw2N6b5uf8T2E3leTui91tAyqOvKhymvPDyhHK/edit?usp=sharing&usp=embed_facebook). Accessed 13 May 2020.
30. Lauer SA, Grantz KH, Bi Q, et al. The incubation period of 2019-nCoV from publicly reported confirmed cases: estimation and application. <https://www.medrxiv.org/content/10.1101/2020.02.02.20020016v1.full.pdf>. Accessed 22 Mar 2020.
31. Ferretti L, Wyman C, Kendall M, et al. Quantifying SARS-CoV-2 transmission suggests epidemic control with digital contact tracing. *Science*. 2020; published online March 31. <https://doi.org/10.1126/science.abb6936>.
32. Svensson A. A note on generation times in epidemic models. *Math Biosci*. 2007;208:300–11.
33. Chinese Center for Disease Control and Prevention. <http://www.chinacdc.cn/en/>. Accessed 20 Mar 2020.
34. Cereda D, Tirani M, Rovida F, et al. The early phase of the COVID-19 outbreak in Lombardy, Italy. *ArXiv200309320 Q-Bio*. 2020; published online March 20. <http://arxiv.org/abs/2003.09320>. Accessed 22 Mar 2020.
35. Salje H, Kiem CT, Lefrancq N, et al. Estimating the burden of SARS-CoV-2 in France. *Science*. 2020; published online May 13. <https://doi.org/10.1126/science.abc3517>.
36. Van Kerckhove K, Hens N, Edmunds WJ, Eames KTD. The impact of illness on social networks: implications for transmission and control of influenza. *Am J Epidemiol*. 2013;178:1655–62.
37. Employed persons working from home as a percentage of the total employment, by sex, age and professional status (%). Eurostat. [http://appsso.eurostat.ec.europa.eu/nui/show.do?dataset=lfsa\\_ehomp](http://appsso.eurostat.ec.europa.eu/nui/show.do?dataset=lfsa_ehomp). Accessed 22 Mar 2020.
38. Devenez acteur de la surveillance du Covid19. *Covidnet.fr*. <https://covidnet.fr/>. Accessed 1 Apr 2020.
39. Pullano G, Valdano E, Scarpa N, Rubrichi S, Colizza V. Population mobility reductions during COVID-19 epidemic in France under lockdown. 2020; published online June 1. <http://medrxiv.org/lookup/doi/10.1101/2020.05.29.20097097>. Accessed 1 June 2020.
40. Durée et organisation du temps de travail. INSEE.fr. <https://www.insee.fr/fr/statistiques/3303396?sommaire=3353488>. Accessed 10 Apr 2020.
41. Martín-Calvo D, Aleta A, Pentland A, Moreno Y, Moro E. Effectiveness of social distancing strategies for protecting a community with a pandemic with a data-driven contact network based on census and real-world mobility data. *Complex. Dig*. 2020; published online March 25. <https://comdig.unam.mx/2020/03/25/effectiveness-of-social-distancing-strategies-for-protecting-a-community-from-a-pandemic-with-a-data-driven-contact-network-based-on-census-and-real-world-mobility-data/>. Accessed 13 Apr 2020.
42. Réseau Sentinelles. French GPs Sentinelles network. <https://websenti.u707.jussieu.fr/sentiweb/?lang=en>. Accessed 5 Apr 2020.
43. 300 lits de réanimation supplémentaires en Ile-de-France, le tour de force. *leparisien.fr*. 2020; published online April 2. <http://www.leparisien.fr/info-paris-ile-de-france-oise/coronavirus-300-lits-de-reanimation-supplementaires-en-ile-de-france-un-tour-de-force-02-04-2020-8293173.php>. Accessed 4 May 2020.
44. Di Domenico L, Pullano G, Sabbatini CE, Boëlle P-Y, Colizza V. Expected impact of reopening schools after lockdown on COVID-19 epidemic in Ile-de-France. *medRxiv*; <https://www.medrxiv.org/content/10.1101/2020.05.08.20095521v1.full.pdf>. Accessed 12 May 2020.
45. Jarvis CI, Van Zandvoort K, Gimma A, et al. Quantifying the impact of physical distance measures on the transmission of COVID-19 in the UK. *BMC Med*. 2020;18:124.
46. Zhang J, Litvinova M, Liang Y, Wang Y, Wang W, Zhao S, et al. Changes in contact patterns shape the dynamics of the COVID-19 outbreak in China. *Science*. 2020;368(6498):1481–6.
47. Diekmann O, Heesterbeek J a. P, Metz J a. J. On the definition and the computation of the basic reproduction ratio R0 in models for infectious diseases in heterogeneous populations. *J Math Biol* 1990; 28: 365–382.
48. Roux J, Massonnaud C, Crépey P. COVID-19: One-month impact of the French lockdown on the epidemic burden. *medRxiv*. 2020; published online April 27. <http://medrxiv.org/lookup/doi/10.1101/2020.04.22.20075705>. Accessed 6 May 2020.
49. European Commission. Commission recommendations (EU) 2020/518 of 8 April 2020. <https://eur-lex.europa.eu/legal-content/EN/TEXT/HTML/?uri=CELEX:32020H0518&from=EN>. Accessed 10 Apr 2020.
50. Help speed up contact tracing with TraceTogether. *Gov.sg*. <http://www.gov.sg/article/help-speed-up-contact-tracing-with-tracetgether>. Accessed 21 Mar 2020.
51. Les participants à CovidNet.fr seraient largement disposés à adopter une application permettant d'informer anonymement les personnes ayant été en contact avec un cas à la sortie du confinement. *Covidnet.fr*. [https://www.covidnet.fr/fr/news/2020/4/10/2020s15\\_COVID\\_19\\_FR/](https://www.covidnet.fr/fr/news/2020/4/10/2020s15_COVID_19_FR/). Accessed 10 Apr 2020.
52. Global uncertainty related to coronavirus at record high. *IMF Blog*. <https://blogs.imf.org/2020/04/04/global-uncertainty-related-to-coronavirus-at-record-high/>. Accessed 4 Apr 2020.
53. Leung NHL, Chu DKW, Shiu EYC, et al. Respiratory virus shedding in exhaled breath and efficacy of face masks. *Nat Med*. 2020;26(5):676–80.
54. Lewis D. Is the coronavirus airborne? Experts can't agree. *Nature*. 2020;580:175.
55. Di Domenico L, Pullano G, Pullano G, Hens N, Colizza V. Expected impact of school closure and telework to mitigate COVID-19 epidemic in France. [https://www.epicx-lab.com/uploads/9/6/9/4/9694133/inserm\\_covid-19-school-closure-french-regions\\_20200313.pdf](https://www.epicx-lab.com/uploads/9/6/9/4/9694133/inserm_covid-19-school-closure-french-regions_20200313.pdf). Accessed 14 Mar 2020.

## Publisher's Note

Springer Nature remains neutral with regard to jurisdictional claims in published maps and institutional affiliations.