



HAL
open science

Structure–function relation of the developing calyx of Held synapse in vivo

Martijn C Sierksma, Johan A Slotman, Adriaan B Houtsmuller, J. Gerard G. Borst

► **To cite this version:**

Martijn C Sierksma, Johan A Slotman, Adriaan B Houtsmuller, J. Gerard G. Borst. Structure–function relation of the developing calyx of Held synapse in vivo. *The Journal of Physiology*, 2020, 00, 10.1113/JP279976 . hal-02934811

HAL Id: hal-02934811

<https://hal.sorbonne-universite.fr/hal-02934811v1>

Submitted on 9 Sep 2020

HAL is a multi-disciplinary open access archive for the deposit and dissemination of scientific research documents, whether they are published or not. The documents may come from teaching and research institutions in France or abroad, or from public or private research centers.

L'archive ouverte pluridisciplinaire **HAL**, est destinée au dépôt et à la diffusion de documents scientifiques de niveau recherche, publiés ou non, émanant des établissements d'enseignement et de recherche français ou étrangers, des laboratoires publics ou privés.

Structure–function relation of the developing calyx of Held synapse *in vivo*

Martijn C. Sierksma^{1,2} , Johan A. Slotman³, Adriaan B. Houtsmuller³ and J. Gerard G. Borst¹ 

¹Department of Neuroscience, Erasmus MC, University Medical Centre Rotterdam, Rotterdam, 3000 CA, The Netherlands

²Sorbonne Université, Inserm, CNRS, Institut de la Vision, 17 Rue Moreau, Paris, F-75012, France

³Department of Pathology–Optical Imaging Centre, Erasmus MC, University Medical Centre Rotterdam, Rotterdam, 3000 CA, The Netherlands

Edited by: Ian Forsythe & Katalin Toth

Linked articles: This article is highlighted in a Perspectives article by Tawfik & Wang. To read this article, visit <https://doi.org/10.1113/JP280560>.

Key points

- During development the giant, auditory calyx of Held forms a one-to-one connection with a principal neuron of the medial nucleus of the trapezoid body.
- While anatomical studies described that most of the target cells are temporarily contacted by multiple calyces, multi-calyceal innervation was only sporadically observed in *in vivo* recordings, suggesting a structure–function discrepancy.
- We correlated synaptic strength of inputs, identified in *in vivo* recordings, with *post hoc* labelling of the recorded neuron and synaptic terminals containing vesicular glutamate transporters (VGluT).
- During development only one input increased to the level of the calyx of Held synapse, and its strength correlated with the large VGluT cluster contacting the postsynaptic soma.
- As neither competing strong inputs nor multiple large VGluT clusters on a single cell were observed, our findings did not indicate a structure–function discrepancy.

Abstract In adult rodents, a principal neuron in the medial nucleus of the trapezoid (MNTB) is generally contacted by a single, giant axosomatic terminal called the calyx of Held. How this one-on-one relation is established is still unknown, but anatomical evidence suggests that during development principal neurons are innervated by multiple calyces, which may indicate calyceal competition. However, *in vivo* electrophysiological recordings from principal neurons indicated that only a single strong synaptic connection forms per cell. To test whether a mismatch exists between synaptic strength and terminal size, we compared the strength of synaptic inputs with the morphology of the synaptic terminals. *In vivo* whole-cell recordings of the MNTB neurons from newborn Wistar rats of either sex were made while stimulating their afferent axons, allowing

Martijn C. Sierksma is a postdoctoral associate of the Department of Neuroscience at Erasmus MC Rotterdam. He received his PhD from Erasmus University Rotterdam in 2018 for his work on neural activity during the formation of the calyx of Held synapse under the supervision of Prof. J. G. G. Borst. His postdoctoral work with Dr X. Nicol at the Vision Institute in Paris has focused on developmental interactions between neighbouring retinal ganglion cells that inform the development of the retinogeniculate projection. He is currently working on synapse development within the superior olivary complex that enable sound localization.



This article was first published as a preprint. Sierksma MC, Slotman JA, Houtsmuller AB, Borst JGG. 2020. Structure-function relation of the developing calyx of Held synapse *in vivo*. bioRxiv. <https://doi.org/10.1101/2020.01.07.893685>

us to identify multiple inputs. The strength of the strongest input increased to calyceal levels in a few days across cells, while the strength of the second strongest input was stable. The recorded cells were subsequently immunolabelled for vesicular glutamate transporters (VGluT) to reveal axosomatic terminals with structured-illumination microscopy. Synaptic strength of the strongest input was correlated with the contact area of the largest VGluT cluster at the soma ($r = 0.8$), and no indication of a mismatch between structure and strength was observed. Together, our data agree with a developmental scheme in which one input strengthens and becomes the calyx of Held, but not with multi-calyceal competition.

(Received 13 April 2020; accepted after revision 7 July 2020; first published online 22 July 2020)

Corresponding author J. Gerard G. Borst: Department of Neuroscience, Erasmus MC, University Medical Centre Rotterdam, 3000 CA, Rotterdam, The Netherlands. Email: g.borst@erasmusmc.nl

Introduction

Synapses are specialized structures that allow presynaptic signals to be transmitted to the postsynaptic side. Most central synapses use neurotransmitters for signalling, and these chemical synapses come in a large variety of sizes and shapes. While most synapses have a diameter of about 1 μm and are formed on a dendrite, some synapses can be $>10 \mu\text{m}$, and encompass >100 release sites (Walmsley *et al.* 1998; Atwood & Karunanithi, 2002; Rollenhagen & Lübke, 2006). These large synapses have facilitated the study of the biophysical properties of synapses. A prime example is the calyx of Held synapse in the auditory brainstem. The presynaptic calyx spans $\sim 20 \mu\text{m}$, large enough to be accessible for patch-clamp electrophysiology (Forsythe, 1994; Borst *et al.* 1995) and to allow simultaneous recording of the calyx and its postsynaptic target (Borst *et al.* 1995), a glycinergic neuron in the medial nucleus of the trapezoid body (MNTB). Owing to the presence of hundreds of active zones (Sätzler *et al.* 2002; Taschenberger *et al.* 2002; Dondzillo *et al.* 2010), the calyx of Held can rapidly trigger postsynaptic action potentials (APs), thus functioning as a fast, high-fidelity, inverting relay in the auditory brainstem (Borst & Soria van Hoeve, 2012).

During its development, the calyx of Held synapse grows from an axon of a globular bushy cell (GBC) that initially forms small boutons. In rodents these contacts already appear before birth (Kandler & Friauf, 1993; Hoffpauir *et al.* 2006, 2010; Rodríguez-Contreras *et al.* 2008; Holcomb *et al.* 2013). Although the innervation initially is highly divergent, eventually a GBC will give rise to only one or a few calyces, and most adult principal neurons are innervated by a single calyx of Held (Held, 1893; Morest, 1968; Kuwabara *et al.* 1991; Kandler & Friauf, 1993; Rodríguez-Contreras *et al.* 2006). The developmental mechanisms that ensure the transition to the one-on-one innervation are largely unclear (Yu & Goodrich, 2014). This transition happens between the second and the fifth postnatal day (P2–5). At P5 the strength of one input overshadows the other ones (Chuhma & Ohmori, 1998; Hoffpauir *et al.* 2006, 2010;

Sierksma *et al.* 2016), and one of the terminals has expanded over the soma of the neuron (Hoffpauir *et al.* 2006; Holcomb *et al.* 2013). From these studies it was suggested that half of the MNTB neurons are contacted by multiple calyces at this age range (Hoffpauir *et al.* 2010; Holcomb *et al.* 2013; Milinkeviciute *et al.* 2019), in agreement with observations from mouse slice recordings (Bergsman *et al.* 2004; Hoffpauir *et al.* 2010; Xiao *et al.* 2013). Note that multi-calyceal innervation is defined here as an MNTB neuron that is innervated by more than one calyx of Held, and not as an MNTB neuron that is innervated by multiple calycigenic axons.

The developmental changes that underlie the formation of the calyx of Held synapse may involve activity-dependent processes. In newborn, pre-hearing rodents, spontaneous activity, arising in the cochlea (Tritsch *et al.* 2010), propagates across the developing auditory brainstem (Sonntag *et al.* 2009; Tritsch *et al.* 2010; Crins *et al.* 2011; Sierksma *et al.* 2016). The correlated, bursting activity of presynaptic terminals (Sierksma & Borst, 2017) causes NMDA receptor-dependent plateau-like depolarizations in the postsynaptic cell (Taschenberger & von Gersdorff, 2000; Futai *et al.* 2001; Sierksma *et al.* 2016) and bursting activity (Tritsch *et al.* 2010; Crins *et al.* 2011; Clause *et al.* 2014) which may induce synaptic plasticity. The presence of multiple calyces contacting the same target neuron would suggest that the formation of a one-to-one connection involves some form of competition during which one calyx rapidly expands and increases in strength, whereas the other contacts retract and decrease in strength. However, in the rat, *in vivo* physiological evidence for calyceal competition was observed in only a very few cases (Sierksma *et al.* 2016).

These findings may indicate a discrepancy between terminal size and synaptic strength. To test this possibility, one needs to correlate synaptic structures with synaptic strength. Serial sectioning of tissue combined with EM offers the possibility of fully reconstructing every synapse in a restricted volume (Denk & Horstmann, 2004; Hoffpauir *et al.* 2006; Holcomb *et al.* 2013), and allows the reconstruction of entire calyces (Sätzler *et al.* 2002;

Holcomb *et al.* 2013; Qiu *et al.* 2015). However, it does not offer a direct estimate of synaptic strength. Whereas slice electrophysiology has the advantage of allowing simultaneous recordings of pre- and postsynaptic structures (Borst *et al.* 1995; Rodríguez-Contreras *et al.* 2008), there is uncertainty associated with possible cutting of inputs during slice preparation. Immunolabelling of vesicular glutamate transporters (VGluT) localizes synapses in the MNTB (Rodríguez-Contreras *et al.* 2006, 2008; Soria Van Hoeve & Borst, 2010; Milinkeviciute *et al.* 2019). Parvalbumin may identify calyces, but not at the youngest ages (Lohmann & Friauf, 1996, but see Felmy & Schneggenburger, 2004), and its presence does not indicate whether the calyx is release-competent. As Piccolo, an active zone protein (Südhof, 2012; Gundelfinger *et al.* 2016), is present in young calyces (Dondzillo *et al.* 2010), the combination of VGluT and Piccolo may indicate synaptic connectivity in the MNTB. How VGluT relates to synaptic strength is still unclear.

Here, we combined VGluT immunolabelling with *in vivo* whole-cell recordings during which we recorded the inputs that are regularly active (Lorteije *et al.* 2009; Sierksma *et al.* 2016). We applied electrical stimulation of the afferent axons to further identify the developing inputs. The recorded cells were subsequently immunolabelled for VGluT and Piccolo, allowing a direct comparison between synapse strength and structure for the developing calyx of Held synapse.

Methods

Ethical approval

All procedures conformed to the European Directive 2010/63/EU and were approved by the local animal ethics committee (EDC, project no. 115-14-11). Timed-pregnant Wistar rats (WU) were purchased from Charles River (Sulzfeld, Germany) and housed within the Erasmus animal facility (EDC). The day of birth or finding the litter was taken as postnatal day (P)0. The dams had *ad libitum* access to food and water, and additional bedding and shelter material was provided for nest building. Wistar pups (P2–8) of undetermined sex were taken from the nest on the day of the experiment. The authors understand the ethical principles under which the journal operates and confirm that their work complies with the animal ethics checklist provided by the editorial board.

Surgery

The pup was anaesthetized with isoflurane administered together with medical oxygen. Anaesthesia depth was checked by the paw pinch prior to the surgery. We used a ventral approach to gain access to the auditory brainstem, as described previously (Rodríguez-Contreras *et al.*

2008; Sierksma *et al.* 2016). After recording, the animal was deeply anaesthetized and perfused with 6–10 ml of cold saline (0.9% NaCl, w/v), followed by 8–10 ml of 4% paraformaldehyde (w/v) dissolved in 0.12 M phosphate buffer (PB, pH 7.2–7.4).

In vivo electrophysiology

First, we searched for bursting activity with a glass electrode to find the presumed location of the MNTB. When bursting activity was found, the search pipette was retracted and a bipolar stimulation electrode (Micro-Probes for Life Science, PI2ST30.1H10, Gaithersburg, MD, USA) was placed contralateral from the recorded MNTB, straddling the trapezoid body, as described by Crins *et al.* (2011). Successful placement was assessed by measuring the stimulation current threshold and the presence of a field potential.

Whole-cell recordings with biocytin (2 mg/ml) in the pipette solution were made from principal cells; to be confident that the recording was obtained from the same neuron as the one that was recovered with immunolabelling, we made whole-cell recordings from a single principal neuron per animal. Whenever a glia cell or non-principal cell was encountered, the pipette was retracted and a new pipette was used. Membrane potentials were compensated prior to the recordings for a liquid junction potential of -11 mV. Drift in membrane potential was <5 mV and remained uncorrected. Recordings were made with a MultiClamp 700B (Molecular Devices, San Jose, CA, USA) in current-clamp mode, with bridge balance set in the range of 20–70 M Ω and pipette capacitance compensation ~ 4 –6 pF. Signals were low-pass filtered with a four-pole Bessel filter at 10 kHz and digitized by a DigiData 1440A (Molecular Devices) at 25 kHz. Acquisition was done with Clampex 10.2 (Molecular Devices) running on a Windows XP computer.

Stimulation intensities were manually adjusted during the experiments. First, we quickly assessed at which stimulation levels new excitatory postsynaptic potentials (EPSPs) were recruited, and at which polarity most inputs could be discerned. Then, stimulation intensity was lowered to the activation threshold of the first input, and step-wise increased over time. In some experiments the stimulation intensity was also stepwise reduced, and then the data were pooled. For every stimulation strength, >30 sweeps were collected at 2 Hz. Stimulation current was typically below 0.4 mA to prevent damage to the axons; at high stimulation currents (0.3 mA or higher) antidromic APs with latencies <1 ms were often elicited in the principal neuron. This could still happen even though we used bipolar stimulation electrodes, placed on the contralateral side from the recorded neuron. Preferably, the stimulation electrode would be placed at the

midline, where all calycigenic axons converge ventrally. However, to avoid direct postsynaptic activation we placed the stimulation electrode more laterally. This location may have led to preferential activation of the axon bundles that run ventrally from the other MNTB (Kandler & Friauf, 1993).

Labelling calyces by *in vivo* whole-calyx recordings or electroporation was performed as described previously (Sierksma & Borst, 2017).

Antibodies

The following primary antibodies were used: rabbit polyclonal anti-Piccolo (Synaptic Systems, Göttingen, Germany, cat. no. 142 003, RRID: AB_2160182; 1:1000), guinea-pig polyclonal anti-vesicular glutamate transporter 1 (Millipore, Burlington, MA, USA, AB5905, RRID: AB_2301751; 1:3000) and 2 (Millipore, AB2251, RRID: AB_1587626; 1:3000). Secondary antibodies Alexa Fluor 488 against rabbit and Alexa Fluor 645 against guinea pig were obtained from Jackson ImmunoResearch (Ely, UK, 1:200 or 1:400). Streptavidin-Alexa Fluor 594 conjugate (1:200) was obtained from Thermo Fisher Scientific (Waltham, MA, USA). Throughout, VGluT labelling refers to both VGluT1 and VGluT2.

Immunolabelling procedure

Immunolabelling procedure was based on the free-floating method. After perfusion the brain was carefully removed from the skull, and post-fixed overnight at 4°C. Then, it was left overnight in 10% (w/v) sucrose in 0.1 M PB, embedded in 10% (w/v) gelatin and 10% (w/v) sucrose, and again fixed overnight at 4°C in 30% (w/v) sucrose and 10% (w/v) formaldehyde. The brain was cryoprotected with 30% (w/v) sucrose solution in 0.1 M PB for >24 h at 4°C. Coronal slices (40 µm) were made on a freezing microtome, and were collected in 0.1 M PB. The sections were heated for 3 h to 80°C in 10 mM sodium citrate (pH 6 at room temperature; RT), washed four times for 10 min with 0.9% (w/v) NaCl in 0.05 M PB (phosphate-buffered saline; PBS). Then, the sections were pre-absorbed for 1 h at RT with 10% (v/v) normal horse serum and 10% (v/v) Triton X-100 in PBS followed by 36–48 h incubation under gentle agitation at 4°C with primary antibody solution containing 2% (v/v) normal horse serum, 0.4% (v/v) Triton X-100 and the primary antibodies. The slices were washed four times for 10 min in PBS at RT, and incubated for 2 h under gentle agitation at RT in the secondary antibody solution containing 2% (v/v) normal horse serum, 0.4% (v/v) Triton X-100, and the secondary antibodies. For the biocytin-filled cells, the streptavidin conjugate was also added at this step. The slices were washed once for 10 min at RT with PBS, and incubated for 10 min RT

in 0.3 µM 4',6-diamidino-2-phenylindole (DAPI) (D3571, Thermo Fisher Scientific) in 0.1 M PB. Sections were then washed three times at RT with 0.1 M PB, mounted on glass coverslips with gelatin-chrome alum, air-dried, and closed with Mowiol mounting solution containing 10% (w/v) Mowiol 4–88, 25% (v/v) glycerol in 0.1 M Tris-buffer (pH 8.5). Sections were kept at 4°C in the dark until further use.

Confocal and structured illumination imaging

Confocal imaging was performed with a Zeiss LSM 700 microscope equipped with a plan-apochromat ×20, 0.75 NA and a ×63, 1.4 NA objective, and photomultiplier tube detectors, or on a Zeiss Elyra PS1 microscope (Carl Zeiss Microscopy, Jena, Germany), which is described below. Confocal images were acquired with optimized settings for laser power, detector gains and pin hole diameters. Large (2048 × 2048 pixels), high-resolution images were acquired with a pixel size of 0.041 µm laterally and 0.110 µm radially to facilitate the comparison with structured-illumination microscopy (SIM) images. Low-resolution tile images were acquired with a pixel size of 0.274 µm.

Structured-illumination imaging was done on a Zeiss Elyra PS1 system equipped with 488, 561 and 642 nm, 100 mW diode lasers; fluorescence was acquired with a Zeiss plan-apochromat ×63, 1.4 NA objective and an Andor iXon DU 885 EMCCD camera (Andor Technology Ltd, Belfast, Northern Ireland, 1002 × 1004 pixels). Gratings were presented at five phases and five rotations for every depth. Sampling interval was 110 nm axially and the reconstructed super-resolution image has a pixel size of 41 nm. The fluorophore signals were acquired sequentially. Reconstructions were made with built-in algorithms using ZEN 2012 SP1 black (v8.1.3.484).

Electrophysiological analysis

Excitatory postsynaptic potentials (EPSPs) were detected as described previously (Sierksma *et al.* 2016) using an EPSP minimal rate of rise (>0.7 V/s) and an EPSP onset based on the third derivative. EPSPs that were present between 1 and 8 ms post-stimulation were categorized as 'evoked' EPSPs. We grouped the evoked EPSPs based on stimulus strength, latency and rate of rise. We assumed that with increasing stimulation intensities previously recruited inputs would still be activated. For consecutive stimulus intensities Welch's *t* was calculated for the EPSP latency and the rate of rise, and both *t* values were added together. When the summed *t* value was above 6 and the increase of the response rate of rise was >20%, we considered the evoked EPSPs to differ from each other. We visually checked whether this difference was due to a new input or just a shift in activation probability of

a previously activated input. For a new input, its EPSP rate of rise was calculated by subtracting the EPSP rates of rise of previously identified inputs when they were of similar latencies (± 0.5 ms). For four recordings we found EPSPs with longer latencies (Fig. 1C), and for these recordings Welch's *t* test was calculated but restricted to a latency domain defined by the experimenter. For the example in Figure 1C this was 1–3 ms. Lastly, the EPSP rate of rise of an input was checked against the distribution

of spontaneously occurring EPSP rates of rise, and the defined input was only accepted if spontaneous EPSPs with similar rates of rise were recorded.

In addition to the inputs identified by stimulation, we identified inputs from the spontaneous EPSPs. By comparing the distribution of EPSP rates of rise of all detected EPSPs in a recording with the evoked EPSPs, we could sometimes identify additional strong inputs (8 strong inputs in 8 cells). Within the spontaneous EPSPs,

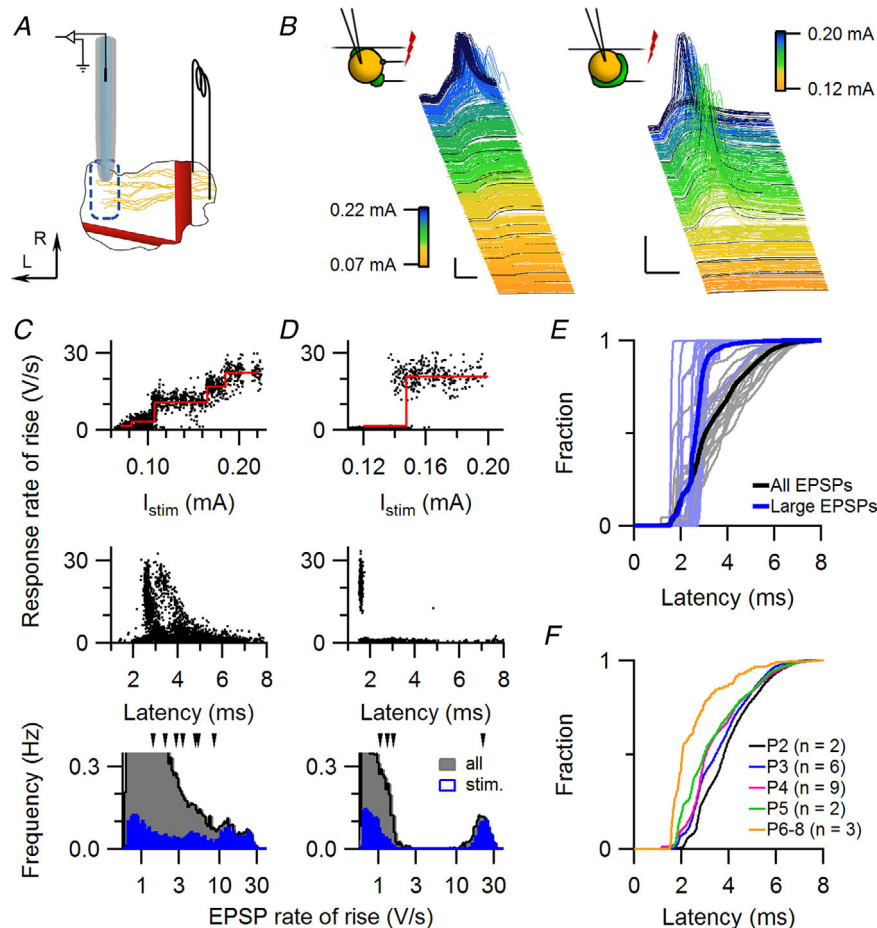


Figure 1. Responses to current stimulation of developing calycigenic axons

A, schematic drawing of the experimental approach. A bipolar stimulation electrode straddling the trapezoid body was positioned contralaterally from the recorded MNTB, and whole-cell recordings were made from principal cells of the MNTB. The basilar artery (rostrocaudal, thick red line) and the anterior-inferior cerebellar artery (mediolateral, red line) served as landmarks. Arrows indicate lateral (L) and rostral (R) directions. B, waterfall plots of two whole-cell recordings, sorted on stimulation intensity (colour-coded as indicated in calibration bars). In the P4 example (left) a gradual increase in the evoked EPSP was observed, suggesting the recruitment of multiple inputs, while in the P6 example (right) a single, large EPSP was observed, which elicited a postsynaptic AP. Schematic drawing depicts the assumed synaptic innervation. Scale bars indicate 25 mV and 2 ms. C, identification of synaptic inputs. Rates of rise of evoked EPSPs vs. stimulation intensity (top) or EPSP latency (middle) for the P4 example shown in B. The bottom graph shows the histograms of the rates of rise of evoked and spontaneous EPSPs. Arrowheads above the graph indicate the rates of rise of identified inputs. Data points in the top graph were horizontally scattered by $<50 \mu\text{A}$ for visualization purposes. D, as C, except for the P6 example shown in B. E, cumulative distribution of latencies of all evoked EPSPs (black) and of large EPSPs (>10 V/s, blue). Individual cells are shown in light blue and grey. Large EPSPs have a shorter latency than most other EPSPs. F, the average cumulative distribution of the evoked EPSP latencies grouped by age suggests a developmental increase in propagation speed.

many had a small size (0.7–2 V/s), and these inputs were therefore hard to distinguish individually. If small EPSPs were not evoked, we visually selected peaks from the distribution of the EPSP rate of rise (Fig. 1C and D) to define these smaller inputs, and added them to the dataset to acknowledge their existence. However, the inputs with small EPSPs were hard to demarcate and therefore likely underestimated.

Based on the EPSP size analysis, we identified on average 5.6 inputs per cell. For comparison, prior to synaptic elimination 5–12 axons contact a principal neuron in EM studies of the mouse MNTB (Hoffpauir *et al.* 2006). Another measure for how well we can identify all inputs can be obtained by comparing spontaneous and evoked inputs. In 8 out of 22 cells we were unable to activate the strongest input that was observed among the spontaneous activity, indicating that on the order of one in three inputs (8 out of 22 strongest inputs) were not electrically stimulated. Spontaneous activity partially negated this problem, but may have introduced a bias towards the most active and stronger inputs (see also below). To what extent synaptic inputs of the principal neuron are active in every spontaneous activity burst is unknown, but anecdotal evidence showed extensive co-occurrence of two distinct, large inputs during spontaneous bursts (Sierksma *et al.* 2016).

We tested whether the strong inputs could be further subdivided based on the presence of inter-event intervals that were shorter than the refractory period or the silent period within minibursts (Sierksma *et al.* 2016), but this did not lead to the identification of additional connections. Altogether, we believe that our combined analysis of spontaneous and evoked responses identified most synaptic inputs, except for some smaller inputs.

Image analysis

Analysis of 3D-SIM image stacks was done in ImageJ (NIH, Bethesda, MD, USA) using the FIJI framework (Schindelin *et al.* 2012; Schneider *et al.* 2012), making use of two custom-made 3D segmentation ImageJ plugins (available at: <https://github.com/ErasmusOIC/FloodFill3D>, https://github.com/ErasmusOIC/Sphere_Floodfill). In brief, we first segmented the cell body using the biocytin signal with the Sphere.Floodfill plugin. The biocytin signal was scanned with a 400 nm (10 pixels)-radius sphere. If 40% of the sphere contained intensity values above threshold, its centre was assigned to the cell body. To segment the VGluT signal in 3D, we used the FloodFill3D plugin, which scans all 26 neighbouring pixels and assigns them to the VGluT structure if they are above an intensity threshold determined using the IsoData-method of ImageJ. To account for the width of the synaptic cleft, the cell body was enlarged by dilatation. The amount of

dilatation (range 160–760 nm) was determined for each cell by maximizing the fraction of the dilated cell body covered by the VGluT structures. Where needed, axonal biocytin signals were manually removed from the cell body. The fraction of the surface area of the cell body that was covered by the VGluT clusters was calculated.

All images were pseudo-coloured and contrasted in ImageJ. Colour gamma enhancement was performed with Adobe Photoshop 19.1.0. We noticed that the peak intensities of Piccolo and VGluT did not seem to overlap in SIM images. From line profiles it became clear that Piccolo labelling did overlap with VGluT at lower intensities, but not at the highest VGluT intensities.

Statistics

No blinding was applied to the analysis. Linear regression analyses against pup age were performed for the developmental effects. When the developmental effect was significant, the slope of the fit is reported; when not, the average is reported, and subsequently the *F*-statistic with the degrees of freedom, and the *P*-value are reported. Subsequent testing on the same data was Bonferroni-corrected, and is reported as ‘corrected *P*’. Correlations are reported as Pearson’s *r* or Spearman’s ρ after rank transformation. To compare prespike-associated strong inputs with the other strong inputs, we performed Welch’s *t* test for the EPSP amplitude and latency. EPSP rate of rise and synaptic efficacy to trigger postsynaptic firing (P_{AP}) were correlated with age. Age correction was performed by adding age as an explanatory variable to the regression analysis. P_{AP} was judged to have non-normally distributed residuals and therefore the regression analysis was done on the ranks. The *F*-statistic of the regression and the effect of prespike variable within this regression are reported. Sigmoid and linear fits were performed with Igor Pro 6.37 (WaveMetrics Inc., Lake Oswego, OR, USA). To correlate the competition index with relative coverage we used Spearman’s ρ . *P*-values <0.05 were considered significant.

Results

Postsynaptic responses of *in vivo* stimulated fibres

We made *in vivo* whole-cell recordings from principal neurons in the rat MNTB around the time the calyx of Held synapse forms. A bipolar stimulation electrode was placed contralaterally from the recording site to distinguish inputs based on their threshold for axonal action potential generation (see Methods; Fig. 1A). Above a threshold of $83 \pm 19 \mu\text{A}$ (mean \pm SD, $n = 30$ animals, range: 65–140 μA) a field potential could be evoked in the MNTB. In a total of 22 MNTB cells, EPSPs could be evoked,

and with increasing current stimulation we typically observed either the presence of a large, all-or-none, calyceal-like input, or more graded increases in EPSP size (Fig. 1B). In both cases the evoked responses often could reach AP threshold ($n = 16$ of 22 cells). To identify the different inputs, we looked for discontinuities in the rates of rise and/or the latency of the evoked responses following an increase in stimulus intensity, as detailed in the Methods; these discontinuities were interpreted as the recruitment of a new input. A comparison of the rates of rise of the evoked EPSPs with those of the spontaneously occurring EPSPs was used as a further check on the accuracy of the identified inputs (Fig. 1C and D). In 8 out of the 22 cells we were unable to observe the largest spontaneous EPSPs following the electrical stimulation, suggesting that we failed to activate the strongest input for these cells. EPSP subpopulations were found with typical latencies of 1–3 and 4–8 ms (Fig. 1E), as described in slice studies (Banks & Smith, 1992; Hoffpauir *et al.* 2006; Marrs & Spirou, 2012). The large EPSPs always belonged to the subpopulation with 1–3 ms delays (Fig. 1E). On average the EPSP latencies became smaller during the first postnatal week (Fig. 1F). In addition to early myelination (Rozeik & Von Keyserlingk, 1987; Hamano *et al.* 1996), an increase in axon diameter (Sinclair *et al.* 2017) and/or ion channel densities (Körber *et al.* 2014; Kolson *et al.* 2016) may have contributed to this decrease in latency (Kolson *et al.* 2016). This latency will continue to decrease beyond the period investigated here (Leão *et al.* 2005; Kim *et al.* 2013; Ford *et al.* 2015; Sinclair *et al.* 2017). The different subpopulations may reflect different developmental stages among the calycigenic axons.

Within this developmental period the principal neuron passes through a stage of exuberant synaptic connectivity (Holcomb *et al.* 2013). In addition to the 22 cells in which we recorded both evoked and spontaneous EPSPs, we recorded in 10 cells only the spontaneous activity. In total, we identified 180 putative inputs in 32 cells, 5.6 ± 1.6 per cell (mean \pm SD). The distribution of input rate of rise was skewed to the right (Fig. 2A). By sorting all inputs on their mean rate of rise, a discontinuity was observed at about 10 V/s (Fig. 2A and B), which we used as a threshold to distinguish between weak and strong EPSPs. To have a measure of synaptic competition, we calculated the competition index, defined as the ratio of the rates of rise of the second strongest and the strongest input (Fig. 2C). The competition index ranges from 1 to 0, where 1 indicates an equal rate of rise of the two strongest inputs, while if the competition index approaches 0, the strongest input has outcompeted the second strongest input in strength. The competition index decreased during development ($-0.07 \pm 0.02/\text{day}$, $n = 32$ cells, $F_{1,30} = 11$, $p = 0.002$). This decrease can signify both an increase of the rate of rise of the strongest input and a reduction for the second strongest input. We therefore plotted the two against each

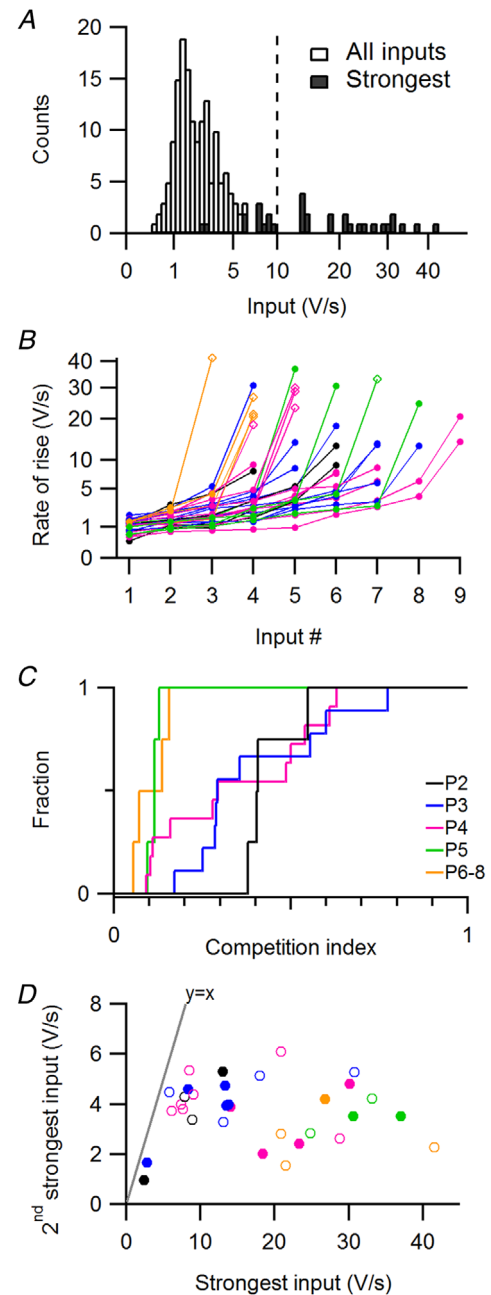


Figure 2. Synaptic competition in MNTB follows the expansion of the strongest input without changing the second strongest input

A, histogram of the average rate of rise for all inputs (open) and the strongest inputs (filled). Line indicates the threshold for 'strong inputs'. B, for every cell the inputs are incrementally sorted by their average EPSP rate of rise. Diamonds indicate the inputs associated with a prespike. Colours indicate the ages as in C. Note the root scale of the ordinate. C, cumulative distributions of the competition index, i.e. the ratio of the rates of rise of the second strongest to the strongest input. D, the rate of rise of the second strongest input against the strongest. Markers correspond to individual principal cells. Filled markers indicate that both inputs were identified based on spontaneous activity. The identity line is shown. Colours indicate age as in C. Statistical tests: for C, $F_{1,30} = 14$, $n = 32$ cells, $P = 0.002$; for D, $F_{1,30} = 0.01$, $n = 32$ cells, $P = 0.93$.

other (Fig. 2D). The rate of rise of the strongest input clearly increased during development (4.2 ± 1.1 V/s/day, $F_{1,30} = 14$, corrected $p = 0.001$), while the rate of rise of the second strongest did not change (3.7 ± 0.2 V/s, $F_{1,30} = 2.1$, corrected $p = 0.3$). This was not related to a difference between evoked and spontaneous inputs, because inputs, whether evoked or identified within spontaneous activity, had similar rates of rise for both the strongest (stim.: 19 ± 10 V/s, $n = 14$ cells; spont.: 16 ± 12 V/s, $n = 18$ cells) and the second strongest input (stim.: 3.6 ± 1.2 V/s, $n = 14$; spont.: 3.7 ± 1.2 V/s, $n = 18$). In contrast to what may have been expected for competing inputs, the developmental increase in strength of the strongest input did not coincide with a decrease in the second strongest input.

Strong inputs and prespikes

The effects of electrical stimulation of the calyx of Held synapse have been extensively studied in slices (Borst & Soria van Hoeve, 2012), but equivalent *in vivo* recordings have not yet been reported. In nine cells we could activate an input associated with an EPSP >10 V/s that could easily be distinguished from the other EPSPs. These inputs could be activated with a threshold current of 0.24 ± 0.09 mA (mean \pm SD; $n = 9$ inputs in 9 cells, range 0.12–0.40 mA), although the reliability of activation with current above threshold varied between pups ($83 \pm 12\%$ of the stimulations, mean \pm SEM; range 59–100%). The average latency of the input's EPSP was 2.1 ± 0.3 ms (mean \pm SD, $n = 9$ inputs in 9 cells, range 1.6–2.5 ms) with little jitter between trials (SD/mean: $2.3 \pm 0.9\%$, $n = 9$ inputs, range 1.0–3.8%). The AP travel time became less variable with development ($n = 9$ inputs in 9 cells, jitter *vs.* age, $r = -0.75$, $-0.7 \pm 0.2\%/day$, $F_{1,7} = 9.0$, $P = 0.02$). In addition, a decrease in latency ($r = -0.7$, -0.18 ± 0.07 ms/day, $F_{1,7} = 5.6$, $P = 0.05$) suggested a developmental increase in conduction speed. Assuming an axonal length of 1 mm, a synaptic delay of 0.5 ms, and neglecting the time it takes to evoke an AP, this translates into a conduction speed of 0.5 ± 0.1 m/s for P2–3, 0.6 ± 0.1 m/s for P4–5, and 0.8 ± 0.2 m/s for P6–7, which is comparable to the demyelinated calyceal axon (Kim *et al.* 2013). These conduction speeds are only crude estimates and are likely underestimated as we positioned the stimulation electrode as contralaterally as was permitted by the cranial window to be able to separate the stimulus artefact from the responses, and the globular bushy axons may have a curved trajectory towards their target cells. These developmental changes will contribute towards the precise timing of the calyx of Held in adult, hearing animals.

The calyx of Held can typically be identified in postsynaptic recordings by the presence of a prespike, a small deflection preceding the large EPSPs (Forsythe, 1994; Borst *et al.* 1995; Lorteije *et al.* 2009). Prespikes can

already be detected in the first postnatal week (Crins *et al.* 2011; Sierksma *et al.* 2016). We therefore inspected every strong input to determine whether a prespike was present (Fig. 3A). In four of four cells $>P5$, six of ten cells of P4–5, and in none of six P2–3 cells, large EPSPs were preceded by a prespike (Fig. 3B). Hence, the presence of the prespike before a large EPSP was more likely at older ages ($r = 0.6$); a fit with a logistic function yielded a mid-point of 4.1 ± 0.4 days postnatally (mean \pm SD) and a steepness of 0.7 ± 0.4 days, suggesting that within 2 days most strong inputs will become associated with a prespike. The prespike can be considered to be a sensitive indicator of the currents that flow across the release face. As a consequence, this developmental switch may be explained by an increase in these currents. The size of these currents depends on apposition area (Hoffpauir *et al.* 2006; Holcomb *et al.* 2013), time course of the calyceal AP, which accelerates considerably during early development

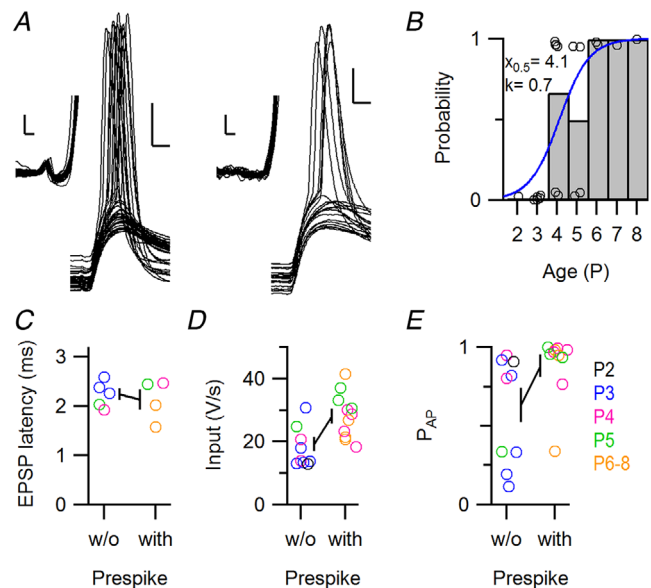


Figure 3. Comparison of strong inputs with and without prespikes

A, large EPSPs of a strong input with (left; P6) and of a strong input without (right; P5) a prespike. EPSPs were aligned on their onset. The insets show the same traces with their V_m offsets subtracted. Scale bars indicate 10 mV and 1 ms, and scale bars in the inset indicate 0.5 mV and 0.2 ms. B, developmental changes in the presence of a prespike preceding a large EPSP. Circles indicate cells where a large EPSP was recorded. Bars represent age average. Blue line represents the fit of the logistic function with the values reported in the graph. C–E, comparison of EPSP latency, average EPSP rate of rise and probability of eliciting postsynaptic APs (P_{AP}) for strong inputs with or without a prespike. In C only evoked large EPSPs were analysed. Circles indicate individual cells. Line represents the average and SEM. Statistical tests: for B, $F_{2,17} = 5.2$, $n = 20$ cells, $P = 0.02$; for C, Welch's $t_5 = 0.4$, $n = 4$ vs. 5 cells, $P = 0.67$; for D, $F_{2,17} = 5.3$, $n = 20$ cells, slope for prespike $t = 1.15$, $P = 0.27$; for E, $F_{2,17} = 5.4$, $n = 20$ cells, slope for prespike $t = 2.59$, $P = 0.02$.

(Taschenberger & von Gersdorff, 2000; Sierksma & Borst, 2017), isochronicity of the presynaptic currents, and the subcellular distribution of presynaptic ion channels. In addition, the coupling depends on synaptic cleft resistivity and postsynaptic admittance (Savtchenko, 2007). Indeed, the presence of a prespike-associated input was negatively correlated with the postsynaptic membrane resistance ($\rho = -0.83$, $F_{2,17} = 25.8$, effect of membrane resistance: $t = 4.9$, $P = 0.00012$). The rapid change in most of these properties during this period should underlie the emergence of the prespike.

As we observed strong inputs with and without prespike, we asked whether their properties were different. For the inputs that were electrically stimulated, the strong inputs with and without a prespike had a latency of 2.1 ± 0.4 ms and 2.2 ± 0.3 ms, respectively (Fig. 3C, $n = 4$ and 5 inputs in 4 and 5 cells, respectively; $t_7 = 0.5$, $r = -0.2$, $P = 0.7$). For the EPSP rate of rise, amplitude and the efficacy to trigger a postsynaptic AP (P_{AP}), we included the strong inputs that were identified in the spontaneous activity. The EPSP rate of rise was 28 ± 2 V/s versus 19 ± 2 V/s (Fig. 3D, age correction, $n = 20$ inputs in 20 cells, $F_{2,17} = 5.3$, effect of prespike, 5 ± 4 V/s, $t_{17} = 1.2$, $P = 0.3$) and had a coefficient of variation in the range of 7–38%. EPSP amplitude, which did not significantly correlate with age ($r = 0.2$), was 19.6 ± 1.1 mV versus 15.6 ± 1.5 mV ($n = 10$ and 10 inputs in 10 and 10 cells; $t_{18} = 2.1$, $r = 0.45$, $P = 0.06$). As these EPSPs typically triggered an AP ($75 \pm 31\%$, mean \pm SD; range 11–100%), their amplitudes are underestimated. The fraction of EPSPs that triggered a postsynaptic AP was 0.88 ± 0.22 versus 0.63 ± 0.34 (Fig. 3E, $n = 20$ inputs in 20 cells, rank-transform and age correction, $F_{2,17} = 5.4$, effect of prespike: 7 ± 3 , $t_{17} = 2.6$, $P = 0.02$). This difference in efficacy could not be explained by a difference in the resting membrane potential ($\rho = 0.19$). Overall, prespike-associated inputs triggered postsynaptic activity more effectively. Still, some inputs that did not generate a detectable prespike were comparable to the calyceal inputs in strength and efficacy, as we observed before (Sierksma *et al.* 2016). Do these strong inputs without prespikes correspond to calyx of Held synapses? To answer this question, we looked at the synaptic structure of the recorded cells.

The active zone protein Piccolo in the neonatal auditory brainstem

The dramatic developmental change in the glutamatergic innervation of MNTB neurons can be visualized by VGluT immunolabelling (Rodríguez-Contreras *et al.* 2008). However, VGluT does not mark release sites or postsynaptic densities. Whereas some postsynaptic density proteins appear delayed compared to VGluT labelling (Soria Van Hove & Borst, 2010), Piccolo, an active

zone protein, was recently shown to be already present in P9 calyces (Dondzillo *et al.* 2010). We tested whether Piccolo could be used to visualize the release face of terminals within the first neonatal week. Already at P3–4, Piccolo-labelling was found throughout the superior olivary complex (SOC) in most auditory nuclei ($n = 8$ rats; Fig. 4A). Although the staining was not particularly strong in the MNTB, it clearly co-labelled large perisomatic structures containing VGluT (Fig. 4B). As early as P2, the Piccolo labelling could delineate an edge of the larger VGluT clusters (Fig. 4C, $n = 2$ of 5 P2 animals). Piccolo puncta were also found outside the somatic regions of the MNTB, and a Piccolo punctum was occasionally found within the soma of a principal cell (Fig. 4C). Generally, when imaged with confocal microscopy, the Piccolo edges appeared to be composed of individual spots, which were close to the diffraction limit (Fig. 4C and D). We turned to structured-illumination microscopy (Gustafsson, 2005), which revealed that the Piccolo clusters were indeed composed of multiple spots (Fig. 4D). These spots were also found in biocytin-filled calyces, indicating that Piccolo can be present in the active zones of the calyx of Held at P5 ($n = 11$ of 12 calyces; Fig. 4E). Piccolo thus identifies the release face of synapses and thereby facilitates the identification of the target neuron in the case of axosomatic VGluT clusters (Fig. 4C and D). However, dendritic synapses could not be reliably identified without labelling the postsynaptic neuron.

Structure–function correlation within and across cells

From the 32 recorded cells, we recovered 20 cells with immunolabelling for VGluT (1 P2, 7 P3, 8 P4, 2 P5, 1 P6, 1 P7). For these cells we segmented the soma and the VGluT clusters surrounding the soma using a new, semi-automatic procedure (see Methods, Fig. 5A). This segmentation takes into account that a VGluT cluster may have multiple contact points with the soma by clustering connected voxels. A VGluT cluster is thus defined as a contiguous structure of VGluT-positive voxels and VGluT clusters, by definition, were not in contact with each other. The total somatic surface was $620 \pm 230 \mu\text{m}^2$ (mean \pm SD, $n = 20$), which is comparable to earlier estimates (Sommer *et al.* 1993; Hoffpauir *et al.* 2006). We observed that multiple VGluT clusters contacted the postsynaptic cell, of which most had a postsynaptic contact area $< 3 \mu\text{m}^2$ (Fig. 5B and C). The total postsynaptic area that was covered by VGluT ranged from 2.4 to $76.5 \mu\text{m}^2$. As calyces can cover $> 50\%$ of the soma (Sätzler *et al.* 2002; Hoffpauir *et al.* 2006), our segmentation of VGluT thus may give us only a lower-bound approximation of its size. For each cell we identified the largest and second largest VGluT cluster. The contact area of the largest cluster on the postsynaptic cell ranged from 0.4 to $59.7 \mu\text{m}^2$ ($13 \pm 16 \mu\text{m}^2$,

mean \pm SD). For the second largest cluster it ranged from 0.3 to 10.0 μm^2 ($2.4 \pm 2.8 \mu\text{m}^2$, mean \pm SD). For three cells the Piccolo labelling failed. For nine cells we could see clear Piccolo labelling coinciding with the largest VGluT cluster directed towards the biocytin-filled cell. For eight cells VGluT clusters surrounding the biocytin-labelled soma did not show clear Piccolo labelling, but Piccolo coincided with VGluT in the surrounding tissue. The signal-to-noise ratio of the reconstruction did not allow a more in-depth analysis of the Piccolo clusters.

If the size of the VGluT cluster is a useful estimate of the size of the terminal, then it should predict the presence and amplitude of a prespike in our *in vivo* recordings. The size of the VGluT cluster was moderately correlated with the presence of a prespike ($\rho = 0.63$). The largest VGluT cluster was $28 \pm 19 \mu\text{m}^2$ (mean \pm SD) for the five cells in which we recorded a prespike. This was significantly larger than in the 15 cells without a prespike ($8 \pm 11 \mu\text{m}^2$, mean \pm SD, $t_{18} = 3.3$, $P = 0.004$). Next, we compared the prespike peak-to-peak amplitude with the size of the largest VGluT cluster. We excluded one of the recordings, in which the prespikes had an amplitude of 15 mV. In this

recording a small patch of calyceal membrane may have been present within the electrode tip (Forsythe, 1994). As the calyx was not stained for biocytin, the membrane of the calyx was apparently not damaged by the pipette. For the remaining prespikes the average amplitudes were 0.11, 0.26, 0.30 and 0.37 mV, which corresponded to values of 19.2, 23.1, 25.6 and 59.7 μm^2 for the largest VGluT cluster ($r = 0.8$). Because of the small number of observations, this correlation did not reach significance ($F_{1,2} = 3$, $P = 0.2$). Also, we observed VGluT clusters with similar contact area among the cells from which we did not record a prespike. Altogether, the size of the largest VGluT cluster may indicate the presence of a large terminal, but it is unlikely to reveal the entire contact area made by the terminal.

As synaptic strength depends more on glutamate release than on terminal size, the observed VGluT cluster may still be a good approximation of synaptic strength. We therefore compared synaptic strength with the contact area of VGluT clusters (Fig. 5D). The size of the strongest input was correlated to the size of the largest VGluT cluster (log-transform, $r = 0.8$, $F_{1,18} = 26$, $P = 7 \times 10^{-5}$). The structure–strength relation could be approximated

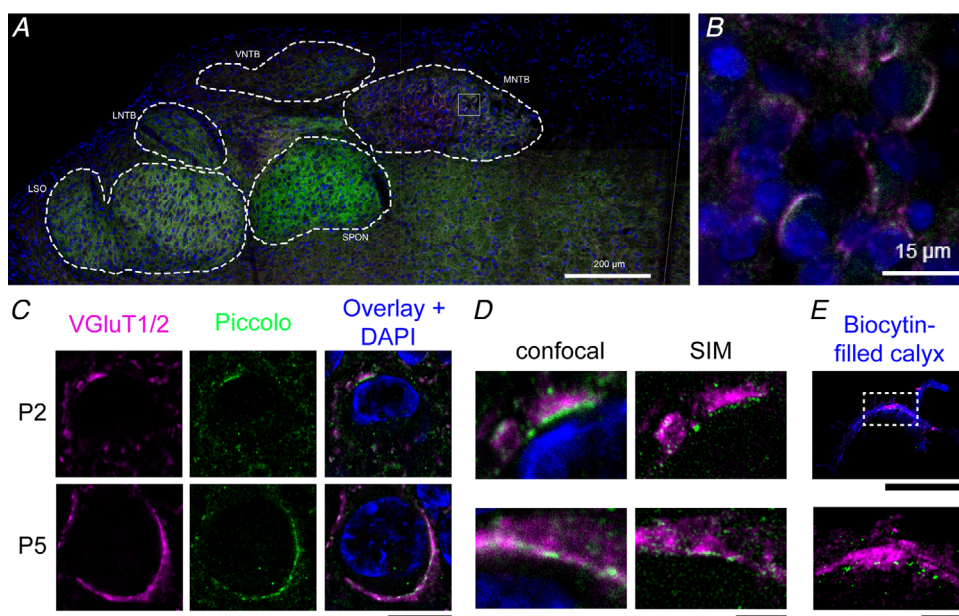


Figure 4. Developmental expression of Piccolo in the MNTB

A, fluorescence labelling of Piccolo (green), VGluT (magenta) and DAPI (blue) in the SOC of a P4 rat. Midline is indicated with a white line. Auditory nuclei are delineated with dashed lines. B, higher magnification of the grey box in A showing principal cells of the MNTB with large perisomatic clusters of VGluT and Piccolo. C, a P2 and P5 principal cell with fluorescence labelling of VGluT, Piccolo and VGluT + Piccolo + DAPI with confocal microscopy. D, comparison of confocal microscopy and SIM of perisomatic clusters of Piccolo and VGluT of the P2 principal cell shown in C (top), and of the P5 principal cell shown in C (bottom). E, SIM image of a P5 biocytin-filled calyx (top, blue) with VGluT and Piccolo, revealing active zone-like structures in the Piccolo labelling (bottom). Non-calyceal labelling was masked. Scale bars indicate 200 μm in A, 15 μm in B, 10 μm in C, 2 μm in D, and 1 μm in E. Images in C and D were background-subtracted. LSO, lateral superior olive; MNTB, medial nucleus of the trapezoid body; P, postnatal; SIM, structured-illumination microscopy; SOC, superior olivary complex; SPON, superior periolivary nucleus; VGluT, vesicular glutamate transporter 1 and 2; VNTB, ventral nucleus of the trapezoid body.

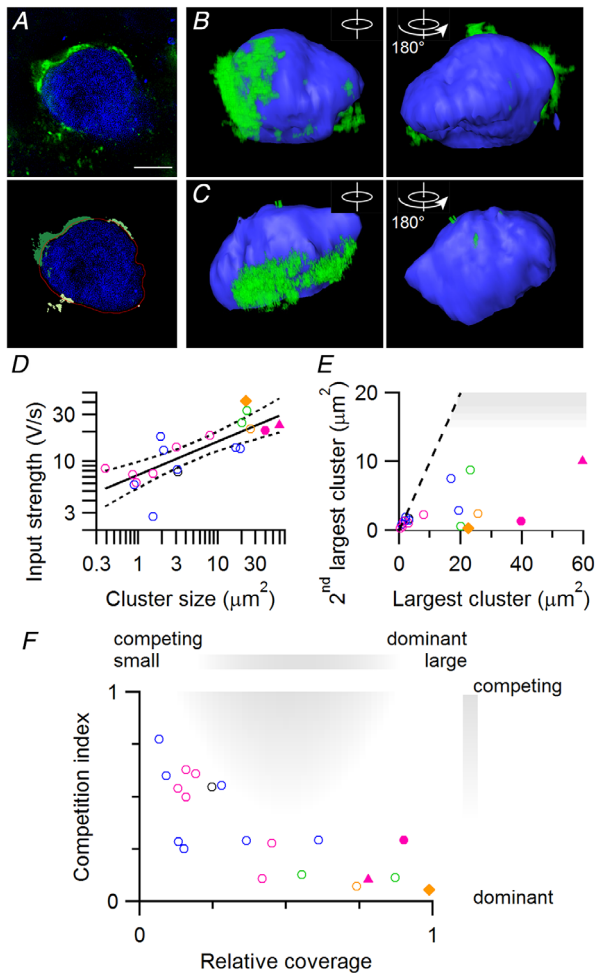


Figure 5. Contact area of perisomatic VGluT clusters correlates with synaptic strength *in vivo*

A, example of segmentation of VGluT clusters around the soma. The image before (top) and after segmentation (below). Blue: biocytin; green: VGluT labelling. In the bottom image different VGluT clusters are depicted by different shades of green. Red line indicates contour of the cell after dilatation. For this cell 1 input was associated with a prespike. B and C, 3D reconstructions of somata (blue) with VGluT clusters (green). Dendrites were manually removed. Right image is the same soma after 180 degrees rotation. Postsynaptic cell in B did not have a prespike-associated input. The VGluT cluster in C was manually separated from a nearby cluster that terminated on another cell. D, relation between input strength of strongest input and contact area of the largest VGluT cluster for each cell. Line indicates linear fit of log-transformed variables. Dotted line indicates 95% confidence intervals. E, relation between area of largest and second largest VGluT cluster. Shaded area: possibly multi-calycal innervation. F, competition index against relative coverage. Competition index equals the second strongest input relative to the strongest input. Relative coverage equals the contact area of the largest VGluT cluster relative to the total area contacted by VGluT clusters. Shaded area indicates region where data points with multi-calycal competition are expected to appear. Colours in D–G indicate age as in previous figures. Triangle indicates the data point that corresponds to the cell shown in A. Filled circle and diamond indicate data points corresponding to the cells shown in B and C, respectively. Statistical tests: for D, $F_{1,18} = 26$, $n = 20$ cells, $P = 7 \times 10^{-5}$; for F, $F_{2,17} = 10$, $n = 20$ cells, $P = 0.0012$.

by EPSP (V/s) = $\beta \text{ area}^\alpha$ with $\beta = 6.8 \pm 0.9 \text{ V/s}/\mu\text{m}^{2\alpha}$ and $\alpha = 0.35 \pm 0.06$. Thus, the input strength was correlated with the cube root of VGluT area. For the older pups (2 P5, 1 P6 and 1 P7 cell) the structure–function relation was underestimated; three of four synapses were stronger than expected from their apposition area. This may indicate that there is a developmental change in the structure–function relation or that the total vesicle-loaded contact of giant synapses is underestimated as the largest VGluT cluster may be only a small part of the synapse.

Calyces that innervate a multi-calycal principal cell are filled with synaptic vesicles (Holcomb *et al.* 2013), and would thus be expected to be observed with VGluT labelling. The different calyces were observed to each occupy a contiguous area, sometimes at opposite sides of the target neuron (Holcomb *et al.* 2013). This type of multi-calycal innervation was not observed here (Fig. 5B, C and E). As we cannot be sure whether individual VGluT clusters are independent inputs or belong to the same synapse, we cannot use the second largest VGluT clusters to relate to the physiology. Indeed, the size of the second largest VGluT cluster was not correlated with the size of the second strongest input ($r = -0.1$, $F_{1,18} = 0.3$, $P = 0.6$). Nonetheless, for multi-calycal innervation we would have expected to observe two large VGluT clusters of comparable contact area (Fig. 5E). No pair of VGluT clusters was unambiguously identified as such.

As we cannot conclusively assign a VGluT cluster to individual inputs, it may still be that the second calyx contacted the cell via multiple clusters. We therefore quantified how the largest VGluT cluster relates to all the other clusters that contact the soma of the same target neuron as the contact ratio of the contact area of the largest VGluT cluster to the total somatic surface contacted by VGluT. When the contact ratio approaches 100%, the largest VGluT cluster is the only cluster that contacts the soma of the target neuron, and values <100% indicate the presence of additional VGluT clusters which may or may not belong to the same terminal. The contact ratio ranged from 9–98% ($41 \pm 30\%$, mean \pm SD) and was negatively correlated to the competition index (Fig. 5F, $F_{2,17} = 10$, $P = 0.0012$, age correction, $\rho = -0.7$). With these two measures, the competition index and the contact ratio, we could have identified multi-calycal competition as (i) two terminals that cover about an equal size of the soma, i.e. a contact ratio of ~ 0.5 , and (ii) two inputs of similar strength, giving a competition index close to 1 (shaded area in Fig. 5F). Such combinations were not observed. We thus conclude that we did not find strong evidence in support of multi-calycal competition. In addition, there were no large discrepancies between the structure and function of the developing calyx of Held synapse. This suggests that in the developing rat MNTB a large VGluT cluster likely indicates the presence of a strong input that is clearly stronger than the other inputs of its target neuron.

Discussion

In this study we combined *in vivo* electrophysiology with immunolabelling of the developing calyx of Held synapse. With afferent stimulation we identified multiple inputs for each principal neuron. Increasing stimulation levels showed either a graded increase or a sudden, large jump in the rate of rise of the response. The strongest inputs across cells showed a shorter latency. The strongest inputs were typically at least twice as strong as the other inputs. This divergence increased during development with little change in the strength of the second strongest input. We found that in the first postnatal week Piccolo is already present within perisomatic VGluT clusters, which are putative calyceal terminals. The contact surface of the largest VGluT cluster correlated with the strength of the strongest input *in vivo*. Furthermore, the relative coverage of the largest VGluT cluster correlated with the relative strength of the strongest to the second strongest input. Overall, VGluT-positive structures correlated with synaptic strength *in vivo*. The association of a strong input with a prespike became more likely during development. Prespike-associated inputs were more effective in triggering postsynaptic activity, but some inputs without a prespike had similar properties.

Calyceal competition during development?

The prevalence of multiple calyces on a principal MNTB neuron is a subject of debate. On the one hand, multiple strong inputs have been observed in slice recordings (Bergsman *et al.* 2004; Hoffpauir *et al.* 2006, 2010), and structural evidence for the presence of multiple large terminals on rodent MNTB neurons has also been obtained (Wimmer *et al.* 2004; Hoffpauir *et al.* 2006; Holcomb *et al.* 2013; Matho, 2013; Milinkeviciute *et al.* 2019). Although only a minority (up to 10%) of neurons are persistently innervated by multiple calyces (Holcomb *et al.* 2013; Matho, 2013; Milinkeviciute *et al.* 2019), as many as half of the principal neurons are putatively contacted by multiple large terminals during development (Holcomb *et al.* 2013). On the other hand, to our knowledge not a single conclusive example of multi-calyceal innervation has been reported for *in vivo* studies of the adult MNTB. Multi-calyceal innervation could have been observed as inputs associated with prespikes that do not obey the (relative) refractory period. Neither our *in vivo* recordings nor our VGluT labelling revealed multi-calyceal innervation in this study. Multi-calyceal competition would be expected to involve an input strength that is within a similar range. This was observed in our earlier study where 3 out of 132 cells had two strong inputs that could be separated based on the presence or absence of a prespike and that defied the refractory period (Sierksma *et al.* 2016). However, we

cannot exclude that one of these inputs was dendritic. Even if we grant that these three cells demonstrate multi-calyceal competition, we identify, from our earlier (3/132 cells) and the current (0/32 cells) experiments, <10% of rat principal neurons with multi-calyceal innervation during development. These values are comparable to the 1% reported in a pre-hearing mouse study (Kronander *et al.* 2019) and to our earlier study in P9 rats, in which 1 of 86 cells showed two large, perisomatic VGluT clusters (Rodríguez-Contreras *et al.* 2006). Even though we cannot exclude having missed calyces due to low VGluT expression, we conclude that multi-calyceal competition is unlikely to significantly contribute to the development of the rat calyx of Held synapse.

The presence of competition has been evaluated by the (relative) contact surface (Holcomb *et al.* 2013) or by the (relative) strength of the inputs (Hoffpauir *et al.* 2010; Sierksma *et al.* 2016). Here, we compared a structural and a functional measure for competition, and generally observed a good match between the two. Although immunolabelling did not allow the unambiguous identification of different inputs based on the VGluT clusters, we did observe a clear match between VGluT relative coverage and the competition index, indicating a link between the physiological and morphological development of the MNTB synapses. In addition, it may point to a possible period of competition prior to calyx formation as we only observed inputs with competing strength at P2–3, when the relative coverage of the largest VGluT cluster was still low and only a few calyces have already formed (Morest, 1968; Kandler & Friauf, 1993; Rodríguez-Contreras *et al.* 2008).

For two other giant, mono-innervating synapses, the neuromuscular junction (NMJ) and the cerebellar climbing fibre-Purkinje cell (CF-PC) synapse, different types of competition have been described. In the case of NMJ, before mono-innervation is established, one input becomes >4-fold stronger than the other ones by both an increase of the strongest and a decrease in the strength of the other inputs (Colman *et al.* 1997). As NMJ inputs compete for a small patch of the muscle membrane (Sanes & Lichtman, 1999; Darabid *et al.* 2014), the expansion of one NMJ necessarily involves the shrinkage of another, as reflected in the opposing changes in strength. In contrast, CFs compete at the soma for access to the apical dendrite (Watanabe & Kano, 2011). A fourfold strengthening of the strongest input was observed during development (Hashimoto & Kano, 2003) while other inputs remained constant (Bosman *et al.* 2008). Subsequently, one of the immature CFs is allowed to translocate to the apical dendrite (Hashimoto *et al.* 2009; Watanabe & Kano, 2011), ending the competition (Carrillo *et al.* 2013). Our observations seem to reflect a CF-PC-like competition. We observed that the strongest input became >4 times stronger than the other inputs between P3–5 without a

substantial change for the second strongest. This may indicate that they do not compete for overlapping synaptic domains (Holcomb *et al.* 2013). In addition, the strongest input already reached this relative strength while its coverage still seemed to be low, suggesting that the increase in strength precedes and instructs the expansion (Hoffpauir *et al.* 2010). In contrast, the combination of a large VGluT cluster with a high competition index was not observed, suggesting that somatic expansion and/or VGluT filling of the terminal (Rodríguez-Contreras *et al.* 2008) represents a relatively late maturation stage.

An important role for exuberant connectivity seems to be to provide sufficient candidate precursors to ensure that each principal neuron will eventually end up being innervated by a calyx of Held from a globular bushy cell that innervates only a limited number of other principal neurons. As the molecular mechanisms underlying this process are gradually being elucidated (Hsieh *et al.* 2010; Nakamura & Cramer, 2011; Ehmann *et al.* 2013; Michalski *et al.* 2013; Xiao *et al.* 2013; Körber *et al.* 2014; Yu & Goodrich, 2014; Nothwang *et al.* 2015; Willaredt *et al.* 2015; Dimitrov *et al.* 2016; Radulovic *et al.* 2020), to what extent postsynaptic activity plays a role in this selection process is still unclear. Without concurrent activity of other inputs, non-calyceal inputs are unable to evoke postsynaptic APs, as they elicit postsynaptic firing almost exclusively by EPSP summation (Sierksma *et al.* 2016; this study). Synaptic activity causes some calcium influx at the principal neuron through NMDA receptors, calcium-permeable AMPA receptors (Bollmann *et al.* 1998; Lujan *et al.* 2019) and acid-sensing ion channels (Lujan *et al.* 2019), and a substantial calcium influx when the postsynaptic action potential opens the voltage-gated calcium channels (Bollmann *et al.* 1998). After hearing onset the NMDA receptors are down-regulated (Taschenberger & von Gersdorff, 2000; Futai *et al.* 2001; Joshi & Wang, 2002; Steinert *et al.* 2010) and calcium buffering proteins up-regulated in the MNTB (Lohmann & Friauf, 1996; Felmy & Schneggenburger, 2004; Kolson *et al.* 2016), possibly limiting the impact of postsynaptic calcium signals to instruct activity-dependent synapse development to a brief period during development. In the fruit fly postsynaptic activity stimulates the release of bone morphogenetic protein (BMP) homologue, which promotes active zone development and NMJ growth (Berke *et al.* 2013, 2019). Mice with conditionally deleted BMP receptor 1 and 2 show deficits in transmitter release and smaller calyces (Xiao *et al.* 2013) in addition to a persistence of axonal branches with calyces and increased multi-calyceal innervation (Kronander *et al.* 2019). Similarly, calyces fail to form when synaptic transmission is impaired by genetic deletion of dynamins (Fan *et al.* 2016). These phenotypes may reflect a need for postsynaptic activity in calyx development.

Following calyx formation, most non-calyceal inputs are gradually pruned over a prolonged period (Morest, 1968; Kandler & Friauf, 1993; Rodríguez-Contreras *et al.* 2008), whereas some may persist (Guinan & Li, 1990; Hamann *et al.* 2003). This pruning phase may be mediated by microglia (Milinkeviciute *et al.* 2019).

Structure–function relation for the developing calyx of Held synapse

The presence of a prespike indicates the innervation by a giant terminal (Forsythe, 1994). In this study four cells with a prespike-associated input had a large VGluT cluster and one cell did not. Possibly in the latter case the terminal was larger than revealed by VGluT labelling (Rodríguez-Contreras *et al.* 2008). Conversely, four cells were observed where the presence of a large VGluT cluster did not match with a prespike-associated input. In these cases we may have missed small prespikes due to the capacitive filtering by the soma, and the prespikes may have been detectable in voltage-clamp recordings. There are also a number of other biological factors that influence the prespike amplitude (see Results), but experimental observations on the relation between presynaptic AP and the prespike have so far been qualitative (Forsythe, 1994; Borst *et al.* 1995; Wang *et al.* 2017). Whereas the presence of a clear prespike seems to be good evidence for the presence of a giant somatic terminal, experimental and computational studies on the prespike (Savtchenko, 2007) based on exact morphology (Spirou *et al.* 2008) are needed to allow a more precise estimate for the minimal conditions under which a calyx generates a prespike.

From our structure–function analyses we found that VGluT labelling closely follows the strength of the strongest input. This VGluT cluster represents the total pool of glutamatergic vesicles in the calyx of Held (Rodríguez-Contreras *et al.* 2008). This pool likely covers multiple active zones (Sätzler *et al.* 2002; Taschenberger *et al.* 2002; Hoffpauir *et al.* 2006; Dondzillo *et al.* 2010), which we observed with the Piccolo labelling. The relation between the size of this pool and synaptic strength is complex, depending on among others quantal size, release probability and number of release sites (Atwood & Karunanithi, 2002; Schneggenburger & Forsythe, 2006; Borst & Soria van Hoeve, 2012). We found a cube root relation between VGluT contact surface and EPSP rate of rise, suggesting that the increase in vesicle pool is relatively ineffective in increasing synaptic strength. An important factor may have been that EPSC–EPSP relation saturates for large EPSCs (Lorteije *et al.* 2009; Sierksma *et al.* 2016), which would lead to a sublinear relation between quantal content and EPSP size. During early development quantal size is stable (Chuhma & Ohmori, 1998; Taschenberger & von Gersdorff, 2000) or may slightly decrease (Rusu

& Borst, 2011), while the active zones and postsynaptic densities become more numerous and segregate into smaller clusters (Taschenberger *et al.* 2002; Hoffpauir *et al.* 2006; Soria Van Hove & Borst, 2010). Other possible factors include changes in release probability, homeostatic plasticity of postsynaptic excitability (Hoffpauir *et al.* 2010; Rusu & Borst, 2011; Sierksma *et al.* 2016) or a contribution of dendritic inputs (Rodríguez-Contreras *et al.* 2008; Holcomb *et al.* 2013).

For the study of the relationship between structure and function, the calyx of Held synapse has the advantage of an axosomatic, (putative) one-to-one innervation facilitating the identification of the strongest input *in vivo* with the largest cluster *ex vivo*. An even more direct relationship might be possible following simultaneous electrophysiology and calcium imaging *in vivo* (Winnubst *et al.* 2015). Subsequent reconstruction of the synapses after *in vivo* imaging (Liang *et al.* 2018) would allow a structure–function description for multiple synapses of a single cell. Such studies may further define the relationship between morphological and functional properties of the precursors of the calyx of Held. Finally, longitudinal imaging might reveal some of the dynamics associated with the formation of the calyx of Held and the interactions with surrounding axons (Rodríguez-Contreras *et al.* 2008).

References

- Atwood HL & Karunanithi S (2002). Diversification of synaptic strength: presynaptic elements. *Nat Rev Neurosci* **3**, 497–516.
- Banks MI & Smith PH (1992). Intracellular recordings from neurobiotin-labeled cells in brain slices of the rat medial nucleus of the trapezoid body. *J Neurosci* **12**, 2819–2837.
- Bergsman JB, De Camilli P & McCormick DA (2004). Multiple large inputs to principal cells in the mouse medial nucleus of the trapezoid body. *J Neurophysiol* **92**, 545–552.
- Berke B, Le L & Keshishian H (2019). Target-dependent retrograde signaling mediates synaptic plasticity at the *Drosophila* neuromuscular junction. *Dev Neurobiol* **79**, 895–912.
- Berke B, Wittnam J, McNeill E, Van Vactor DL & Keshishian H (2013). Retrograde BMP signaling at the synapse: A permissive signal for synapse maturation and activity-dependent plasticity. *J Neurosci* **33**, 17937–17950.
- Bollmann JH, Helmchen F, Borst JGG & Sakmann B (1998). Postsynaptic Ca²⁺ influx mediated by three different pathways during synaptic transmission at a calyx-type synapse. *J Neurosci* **18**, 10409–10419.
- Borst JGG, Helmchen F & Sakmann B (1995). Pre- and postsynaptic whole-cell recordings in the medial nucleus of the trapezoid body of the rat. *J Physiol* **489**, 825–840.
- Borst JGG & Soria van Hove J (2012). The calyx of Held synapse: from model synapse to auditory relay. *Annu Rev Physiol* **74**, 199–224.
- Bosman LWJ, Takechi H, Hartmann J, Eilers J & Konnerth A (2008). Homosynaptic long-term synaptic potentiation of the “winner” climbing fiber synapse in developing Purkinje cells. *J Neurosci* **28**, 798–807.
- Carrillo J, Nishiyama N & Nishiyama H (2013). Dendritic translocation establishes the winner in cerebellar climbing fiber synapse elimination. *J Neurosci* **33**, 7641–7653.
- Chuhma N & Ohmori H (1998). Postnatal development of phase-locked high-fidelity synaptic transmission in the medial nucleus of the trapezoid body of the rat. *J Neurosci* **18**, 512–520.
- Clause A, Kim G, Sonntag M, Weisz CJC, Vetter DE, RübSamen R & Kandler K (2014). The precise temporal pattern of prehearing spontaneous activity is necessary for tonotopic map refinement. *Neuron* **82**, 822–835.
- Colman H, Nabekura J & Lichtman JW (1997). Alterations in synaptic strength preceding axon withdrawal. *Science* **275**, 356–361.
- Crins TTH, Rusu SI, Rodríguez-Contreras A & Borst JGG (2011). Developmental changes in short-term plasticity at the rat calyx of Held synapse. *J Neurosci* **31**, 11706–11717.
- Darabid H, Perez-Gonzalez AP & Robitaille R (2014). Neuromuscular synaptogenesis: coordinating partners with multiple functions. *Nat Rev Neurosci* **15**, 703–718.
- Denk W & Horstmann H (2004). Serial block-face scanning electron microscopy to reconstruct three-dimensional tissue nanostructure. *PLoS Biol* **2**, e329.
- Dimitrov D, Takagi H, Guillaud L, Saitoh N, Eguchi K & Takahashi T (2016). Reconstitution of giant mammalian synapses in culture for molecular functional and imaging studies. *J Neurosci* **36**, 3600–3610.
- Dondzillo A, Sätzler K, Horstmann H, Altmann WD, Gundelfinger ED & Kuner T (2010). Targeted three-dimensional immunohistochemistry reveals localization of presynaptic proteins Bassoon and Piccolo in the rat calyx of Held before and after the onset of hearing. *J Comp Neurol* **518**, 1008–1029.
- Ehmann H, Hartwich H, Salzig C, Hartmann N, Clément-Ziza M, Ushakov K, Avraham KB, Bininda-Emonds ORP, Hartmann AK, Lang P, Friauf E & Nothwang HG (2013). Time-dependent gene expression analysis of the developing superior olivary complex. *J Biol Chem* **288**, 25865–25879.
- Fan F, Funk L & Lou X (2016). Dynamin 1- and 3-mediated endocytosis is essential for the development of a large central synapse *in vivo*. *J Neurosci* **36**, 6097–6115.
- Felmy F & Schneggenburger R (2004). Developmental expression of the Ca²⁺-binding proteins calretinin and parvalbumin at the calyx of Held of rats and mice. *Eur J Neurosci* **20**, 1473–1482.
- Ford MC, Alexandrova O, Cossell L, Stange-Marten A, Sinclair J, Kopp-Scheinpflug C, Pecka M, Attwell D & Grothe B (2015). Tuning of Ranvier node and internode properties in myelinated axons to adjust action potential timing. *Nat Commun* **6**, 8073.
- Forsythe ID (1994). Direct patch recording from identified presynaptic terminals mediating glutamatergic EPSCs in the rat CNS, *in vitro*. *J Physiol* **479**, 381–387.

- Futai K, Okada M, Matsuyama K & Takahashi T (2001). High-fidelity transmission acquired via a developmental decrease in NMDA receptor expression at an auditory synapse. *J Neurosci* **21**, 3342–3349.
- Guinan JJ Jr & Li RY-S (1990). Signal processing in brainstem auditory neurons which receive giant endings (calyces of Held) in the medial nucleus of the trapezoid body of the cat. *Hear Res* **49**, 321–334.
- Gundelfinger ED, Reissner C & Garner CC (2016). Role of Bassoon and Piccolo in assembly and molecular organization of the active zone. *Frontiers in Synaptic Neuroscience* **7**, 19.
- Gustafsson MGL (2005). Nonlinear structured-illumination microscopy: Wide-field fluorescence imaging with theoretically unlimited resolution. *Proc Natl Acad Sci U S A* **102**, 13081–13086.
- Hamann M, Billups B & Forsythe ID (2003). Non-calyceal excitatory inputs mediate low fidelity synaptic transmission in rat auditory brainstem slices. *Eur J Neurosci* **18**, 2899–2902.
- Hamano K, Iwasaki N, Takeya T & Takita H (1996). A quantitative analysis of rat central nervous system myelination using the immunohistochemical method for MBP. *Dev Brain Res* **93**, 18–22.
- Hashimoto K, Ichikawa R, Kitamura K, Watanabe M & Kano M (2009). Translocation of a “winner” climbing fiber to the Purkinje cell dendrite and subsequent elimination of “losers” from the soma in developing cerebellum. *Neuron* **63**, 106–118.
- Hashimoto K & Kano M (2003). Functional differentiation of multiple climbing fiber inputs during synapse elimination in the developing cerebellum. *Neuron* **38**, 785–796.
- Held H (1893). Die centrale Gehörleitung. *Arch Anat Physiol Anat Abtei*, 201–248.
- Hoffpauir BK, Grimes JL, Mathers PH & Spirou GA (2006). Synaptogenesis of the calyx of Held: rapid onset of function and one-to-one morphological innervation. *J Neurosci* **26**, 5511–5523.
- Hoffpauir BK, Kolson DR, Mathers PH & Spirou GA (2010). Maturation of synaptic partners: functional phenotype and synaptic organization tuned in synchrony. *J Physiol* **588**, 4365–4385.
- Holcomb PS, Hoffpauir BK, Hoyson MC, Jackson DR, Deerinck TJ, Marrs GS, Dehoff M, Wu J, Ellisman MH & Spirou GA (2013). Synaptic inputs compete during rapid formation of the calyx of Held: a new model system for neural development. *J Neurosci* **33**, 12954–12969.
- Hsieh CY, Nakamura PA, Luk SO, Miko IJ, Henkemeyer M & Cramer KS (2010). Ephrin-B reverse signaling is required for formation of strictly contralateral auditory brainstem pathways. *J Neurosci* **30**, 9840–9849.
- Joshi I & Wang L-Y (2002). Developmental profiles of glutamate receptors and synaptic transmission at a single synapse in the mouse auditory brainstem. *J Physiol* **540**, 861–873.
- Kandler K & Friauf E (1993). Pre- and postnatal development of efferent connections of the cochlear nucleus in the rat. *J Comp Neurol* **328**, 161–184.
- Kim JH, Renden R & von Gersdorff H (2013). Dysmyelination of auditory afferent axons increases the jitter of action potential timing during high-frequency firing. *J Neurosci* **33**, 9402–9407.
- Kolson DR, Wan J, Wu J, Dehoff M, Brandebura AN, Qian J, Mathers PH & Spirou GA (2016). Temporal patterns of gene expression during calyx of Held development. *Dev Neurobiol* **76**, 166–189.
- Körber C, Dondzillo A, Eisenhardt G, Herrmannsdörfer F, Wafzig O & Kuner T (2014). Gene expression profile during functional maturation of a central mammalian synapse. *Eur J Neurosci* **40**, 2867–2877.
- Kronander E, Clark C & Schneggenburger R (2019). Role of BMP signaling for the formation of auditory brainstem nuclei and large auditory relay synapses. *Dev Neurobiol* **79**, 155–174.
- Kuwabara N, DiCaprio RA & Zook JM (1991). Afferents to the medial nucleus of the trapezoid body and their collateral projections. *J Comp Neurol* **314**, 684–706.
- Leão RM, Kushmerick C, Pinaud R, Renden R, Li G-L, Taschenberger H, Spirou G, Levinson SR & von Gersdorff H (2005). Presynaptic Na⁺ channels: locus, development, and recovery from inactivation at a high-fidelity synapse. *J Neurosci* **25**, 3724–3738.
- Liang L, Fratzl A, Goldey G, Ramesh RN, Sugden AU, Morgan JL, Chen C & Andermann ML (2018). A fine-scale functional logic to convergence from retina to thalamus. *Cell* **173**, 1343–1355.e24.
- Lohmann C & Friauf E (1996). Distribution of the calcium-binding proteins parvalbumin and calretinin in the auditory brainstem of adult and developing rats. *J Comp Neurol* **367**, 90–109.
- Lorteije JAM, Rusu SI, Kushmerick C & Borst JGG (2009). Reliability and precision of the mouse calyx of Held synapse. *J Neurosci* **29**, 13770–13784.
- Lujan B, Dagostin A & von Gersdorff H (2019). Presynaptic diversity revealed by Ca²⁺-permeable AMPA receptors at the calyx of Held synapse. *J Neurosci* **39**, 2981–2994.
- Marrs GS & Spirou GA (2012). Embryonic assembly of auditory circuits: spiral ganglion and brainstem. *J Physiol* **590**, 2391–2408.
- Matho KSH, & (2013). Chapter 5. Structural analysis of connectivity in the adult and developing median nucleus of the trapezoid body. *Structure and dynamism in a central neural circuit in adulthood and postnatal development*. Paris: Sorbonne Université. Bibliothèque de Sorbonne Université. Bibliothèque Biologie-Chimie-Physique Recherche, **1**, 116–145. <https://www.theses.fr/2013PA066409>.
- Michalski N, Babai N, Renier N, Perkel DJ, Chédotal A & Schneggenburger R (2013). Robo3-driven axon midline crossing conditions functional maturation of a large commissural synapse. *Neuron* **78**, 855–868.
- Milinkeviciute G, Henningfield CM, Muniak MA, Chokr SM, Green KN & Cramer KS (2019). Microglia regulate pruning of specialized synapses in the auditory brainstem. *Frontiers in Neural Circuits* **13**, 55.

- Morest DK (1968). The growth of synaptic endings in the mammalian brain: a study of the calyces of the trapezoid body. *Zeitschrift für Anatomie und Entwicklungsgeschichte* **127**, 201–220.
- Nakamura PA & Cramer KS (2011). Formation and maturation of the calyx of Held. *Hear Res* **276**, 70–78.
- Nothwang HG, Ebbers L, Schlüter T & Willaredt MA (2015). The emerging framework of mammalian auditory hindbrain development. *Cell Tissue Res* **361**, 33–48.
- Qiu X, Zhu Q & Sun J (2015). Quantitative analysis of vesicle recycling at the calyx of Held synapse. *Proc Natl Acad Sci U S A* **112**, 4779–4784.
- Radulovic T, Dong W, Goral RO, Thomas CI, Veeraraghavan P, Montesinos MS, Guerrero-Given D, Goff K, Lübbert M, Kamasawa N, Ohtsuka T & Young SM Jr (2020). Presynaptic development is controlled by the core active zone proteins CAST/ELKS. *J Physiol* **598**, 2431–2452.
- Rodríguez-Contreras A, de Lange RPJ, Lucassen PJ & Borst JGG (2006). Branching of calyceal afferents during postnatal development in the rat auditory brainstem. *J Comp Neurol* **496**, 214–228.
- Rodríguez-Contreras A, van Hoeve JS, Habets RLP, Locher H & Borst JGG (2008). Dynamic development of the calyx of Held synapse. *Proc Natl Acad Sci U S A* **105**, 5603–5608.
- Rollenhagen A & Lübke JHR (2006). The morphology of excitatory central synapses: from structure to function. *Cell Tissue Res* **326**, 221–237.
- Rozeik C & Von Keyserlingk D (1987). The sequence of myelination in the brainstem of the rat monitored by myelin basic protein immunohistochemistry. *Dev Brain Res* **35**, 183–190.
- Rusu SI & Borst JGG (2011). Developmental changes in intrinsic excitability of principal neurons in the rat medial nucleus of the trapezoid body. *Dev Neurobiol* **71**, 284–295.
- Sanes JR & Lichtman JW (1999). Development of the vertebrate neuromuscular junction. *Annu Rev Neurosci* **22**, 389–442.
- Sätzler K, Söhl LF, Bollmann JH, Borst JGG, Frotscher M, Sakmann B & Lübke JHR (2002). Three-dimensional reconstruction of a calyx of Held and its postsynaptic principal neuron in the medial nucleus of the trapezoid body. *J Neurosci* **22**, 10567–10579.
- Savtchenko LP (2007). Bilateral processing in chemical synapses with electrical ‘ephaptic’ feedback: a theoretical model. *Math Biosci* **207**, 113–137.
- Schindelin J, Arganda-Carreras I, Frise E, Kaynig V, Longair M, Pietzsch T, Preibisch S, Rueden C, Saalfeld S, Schmid B, Tinevez JY, White DJ, Hartenstein V, Eliceiri K, Tomancak P & Cardona A (2012). Fiji: an open-source platform for biological-image analysis. *Nat Methods* **9**, 676–682.
- Schneggenburger R & Forsythe ID (2006). The calyx of Held. *Cell Tissue Res* **326**, 311–337.
- Schneider CA, Rasband WS & Eliceiri KW (2012). NIH Image to ImageJ: 25 years of image analysis. *Nat Methods* **9**, 671–675.
- Sierksma MC & Borst JGG (2017). Resistance to action potential depression of a rat axon terminal in vivo. *Proc Natl Acad Sci U S A* **114**, 4249–4254.
- Sierksma MC, Tedja MS & Borst JGG (2016). *In vivo* matching of postsynaptic excitability with spontaneous synaptic inputs during formation of the rat calyx of Held synapse. *J Physiol* **595**, 207–231.
- Sinclair JL, Fischl MJ, Alexandrova O, Heß M, Grothe B, Leibold C & Kopp-Scheinflug C (2017). Sound-evoked activity influences myelination of brainstem axons in the trapezoid body. *J Neurosci* **37**, 8239–8255.
- Sommer I, Lingenhöhl K & Friauf E (1993). Principal cells of the rat medial nucleus of the trapezoid body: an intracellular in vivo study of their physiology and morphology. *Exp Brain Res* **95**, 223–239.
- Sonntag M, Englitz B, Kopp-Scheinflug C & Rübsamen R (2009). Early postnatal development of spontaneous and acoustically evoked discharge activity of principal cells of the medial nucleus of the trapezoid body: an *in vivo* study in mice. *J Neurosci* **29**, 9510–9520.
- Soria Van Hoeve J & Borst JGG (2010). Delayed appearance of the scaffolding proteins PSD-95 and Homer-1 at the developing rat calyx of Held synapse. *J Comp Neurol* **518**, 4581–4590.
- Spirou GA, Chirila FV, von Gersdorff H & Manis PB (2008). Heterogeneous Ca²⁺ influx along the adult calyx of Held: a structural and computational study. *Neuroscience* **154**, 171–185.
- Steinert JR, Postlethwaite M, Jordan MD, Chernova T, Robinson SW & Forsythe ID (2010). NMDAR-mediated EPSCs are maintained and accelerate in time course during maturation of mouse and rat auditory brainstem *in vitro*. *J Physiol* **588**, 447–463.
- Südhof TC (2012). The presynaptic active zone. *Neuron* **75**, 11–25.
- Taschenberger H, Leão RM, Rowland KC, Spirou GA & von Gersdorff H (2002). Optimizing synaptic architecture and efficiency for high-frequency transmission. *Neuron* **36**, 1127–1143.
- Taschenberger H & von Gersdorff H (2000). Fine-tuning an auditory synapse for speed and fidelity: developmental changes in presynaptic waveform, EPSC kinetics, and synaptic plasticity. *J Neurosci* **20**, 9162–9173.
- Tritsch NX, Rodríguez-Contreras A, Crins TTH, Wang HC, Borst JGG & Bergles DE (2010). Calcium action potentials in hair cells pattern auditory neuron activity before hearing onset. *Nat Neurosci* **13**, 1050–1052.
- Walmsley B, Alvarez FJ & Fyffe REW (1998). Diversity of structure and function at mammalian central synapses. *Trends Neurosci* **21**, 81–88.
- Wang T, van Woerden GM, Elgersma Y & Borst JGG (2017). Enhanced transmission at the calyx of Held synapse in a mouse model for Angelman syndrome. *Front Cell Neurosci* **11**, 418.
- Watanabe M & Kano M (2011). Climbing fiber synapse elimination in cerebellar Purkinje cells. *Eur J Neurosci* **34**, 1697–1710.
- Willaredt MA, Schlüter T & Nothwang HG (2015). The gene regulatory networks underlying formation of the auditory hindbrain. *Cell Mol Life Sci* **72**, 519–535.

- Wimmer VC, Nevian T & Kuner T (2004). Targeted *in vivo* expression of proteins in the calyx of Held. *Pflügers Arch* **449**, 319–333.
- Winnubst J, Cheyne JE, Niculescu D & Lohmann C (2015). Spontaneous activity drives local synaptic plasticity *in vivo*. *Neuron* **87**, 399–410.
- Xiao L, Michalski N, Kronander E, Gjoni E, Genoud C, Knott G & Schneggenburger R (2013). BMP signaling specifies the development of a large and fast CNS synapse. *Nat Neurosci* **16**, 856–864.
- Yu WM & Goodrich LV (2014). Morphological and physiological development of auditory synapses. *Hear Res* **311**, 3–16.

Additional information

Data availability statement

The data that support the findings of this study are available from the corresponding author upon reasonable request.

Competing interests

The authors declare no competing financial interests.

Author contributions

J.G.G.B. and M.C.S. designed experiments. M.C.S. performed *in vivo* electrophysiology and imaging experiments, and analysed the electrophysiology and the images. J.A.S. performed imaging experiments and imaging analysis. A.B.H., J.A.S. and J.G.G.B. designed imaging analysis. M.C.S. drafted the manuscript. J.A.S., A.B.H. and J.G.G.B. revised it critically for important intellectual

content. All authors approved the final version of the manuscript and agree to be accountable for all aspects of the work in ensuring that questions related to the accuracy or integrity of any part of the work are appropriately investigated and resolved. All persons designated as authors qualify for authorship, and all those who qualify for authorship are listed.

Funding

This work was financially supported by the Earth and Life Sciences- Dutch Research Council (NWO, no. 823.02.006, ‘Development of a Giant Synapse’).

Acknowledgements

We are very grateful for the help of Elize Haasdijk and Celina Glimmerveen, who performed immunolabelling. We thank Marcel van der Heijden, Peter Bremen and Aaron Wong for advice on the analyses.

Keywords

auditory development, *in vivo* electrophysiology, synaptic transmission

Supporting information

Additional supporting information may be found online in the Supporting Information section at the end of the article.

Statistical Summary Document.