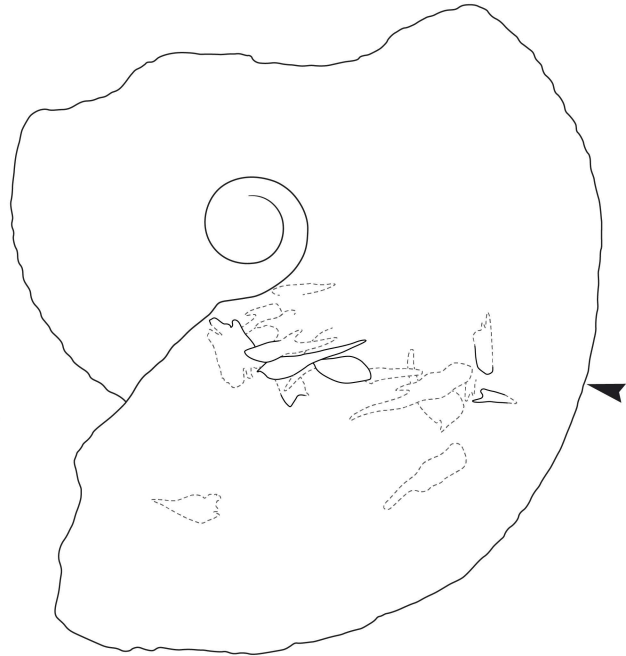
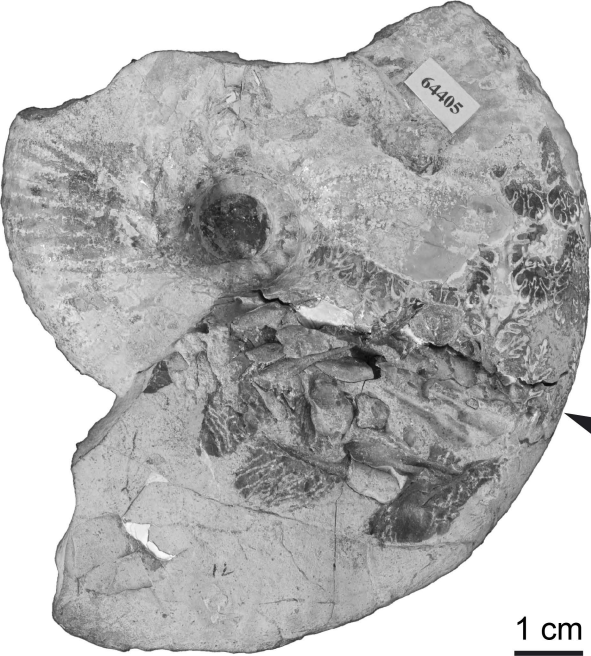
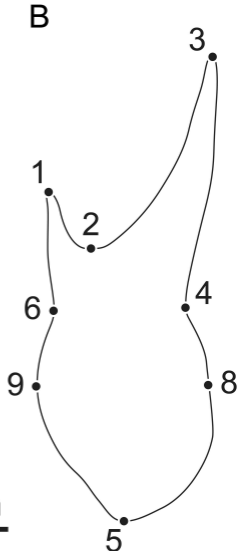
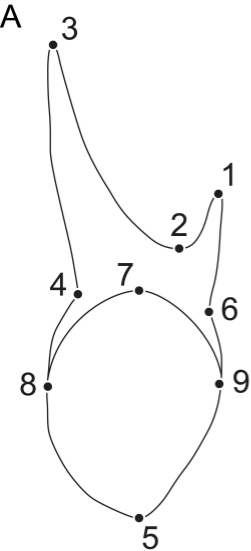


A

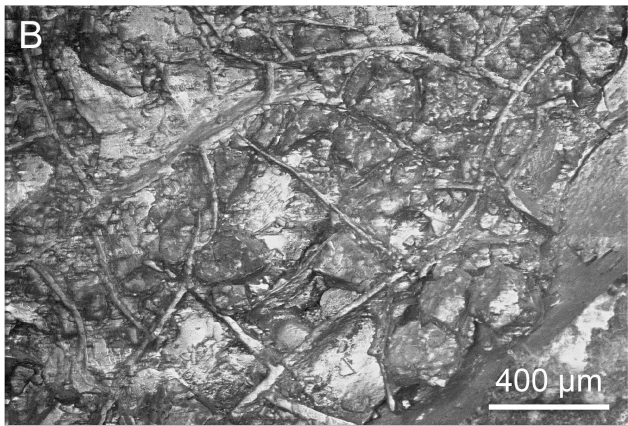
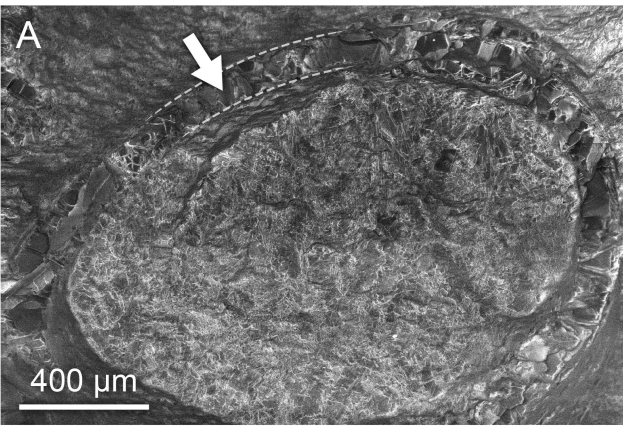
| Stage | U.S. Western Interior Ammonite Zones | Hooks |
|-------------------------|--------------------------------------|-------|
| Maastrichtian | upper | |
| | <i>Hoploscaphites nebrascensis</i> | * |
| | <i>Hoploscaphites nicolletii</i> | * |
| | <i>Hoploscaphites birkelundae</i> | |
| | lower | |
| | <i>Baculites clinolobatus</i> | |
| | <i>Baculites grandis</i> | |
| | <i>Baculites baculus</i> | |
| Campanian | upper | |
| | <i>Baculites eliasi</i> | |
| | <i>Baculites jenseni</i> | * |
| | <i>Baculites reesidei</i> | * |
| | <i>Baculites cuneatus</i> | |
| | <i>Baculites compressus</i> | |
| | <i>Didymoceras cheyennense</i> | |
| | <i>Exiteloceras jenneyi</i> | |
| | <i>Didymoceras stevensoni</i> | |
| | <i>Didymoceras nebrascense</i> | * |
| <i>Baculites scotti</i> | * | |

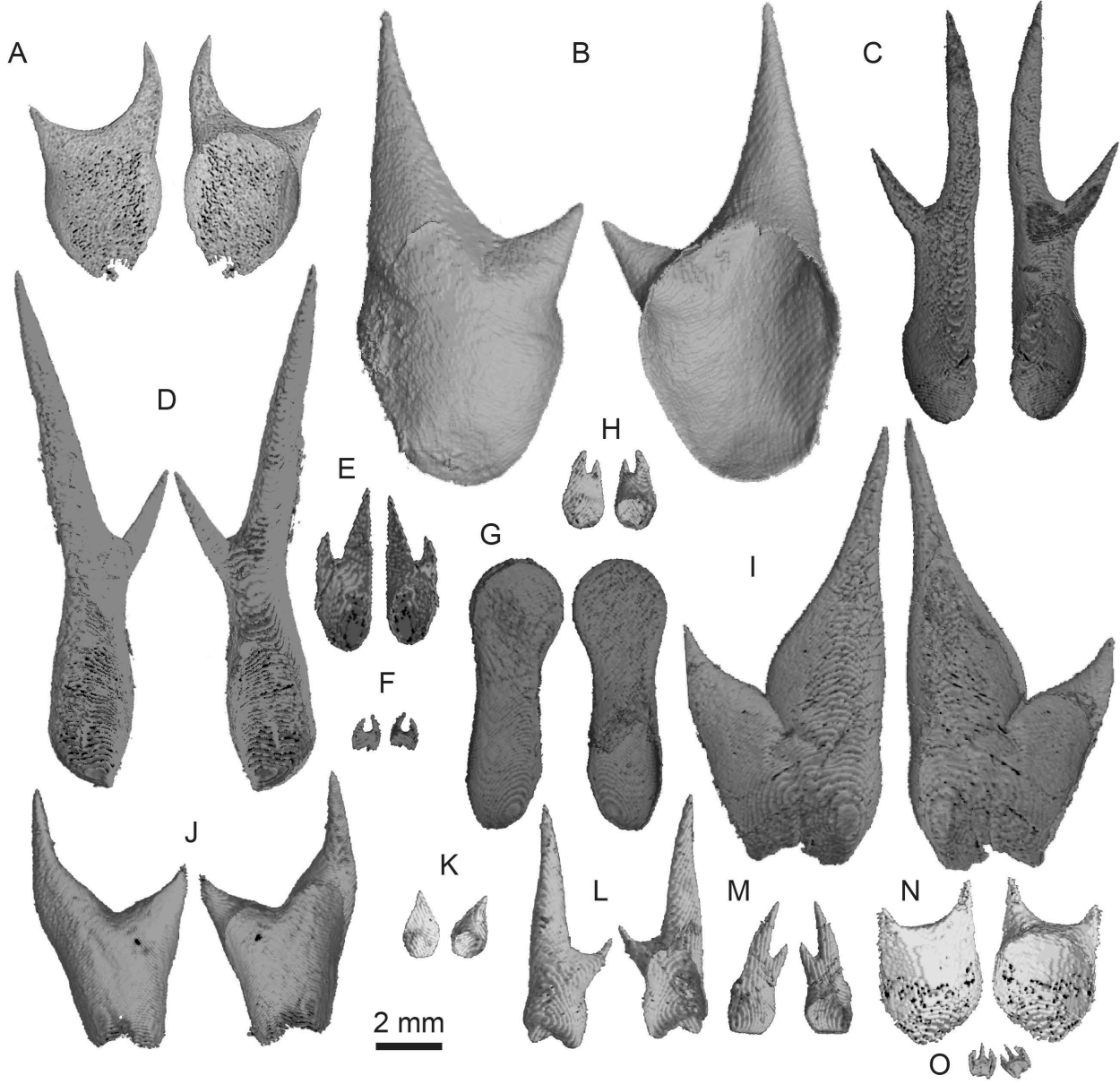


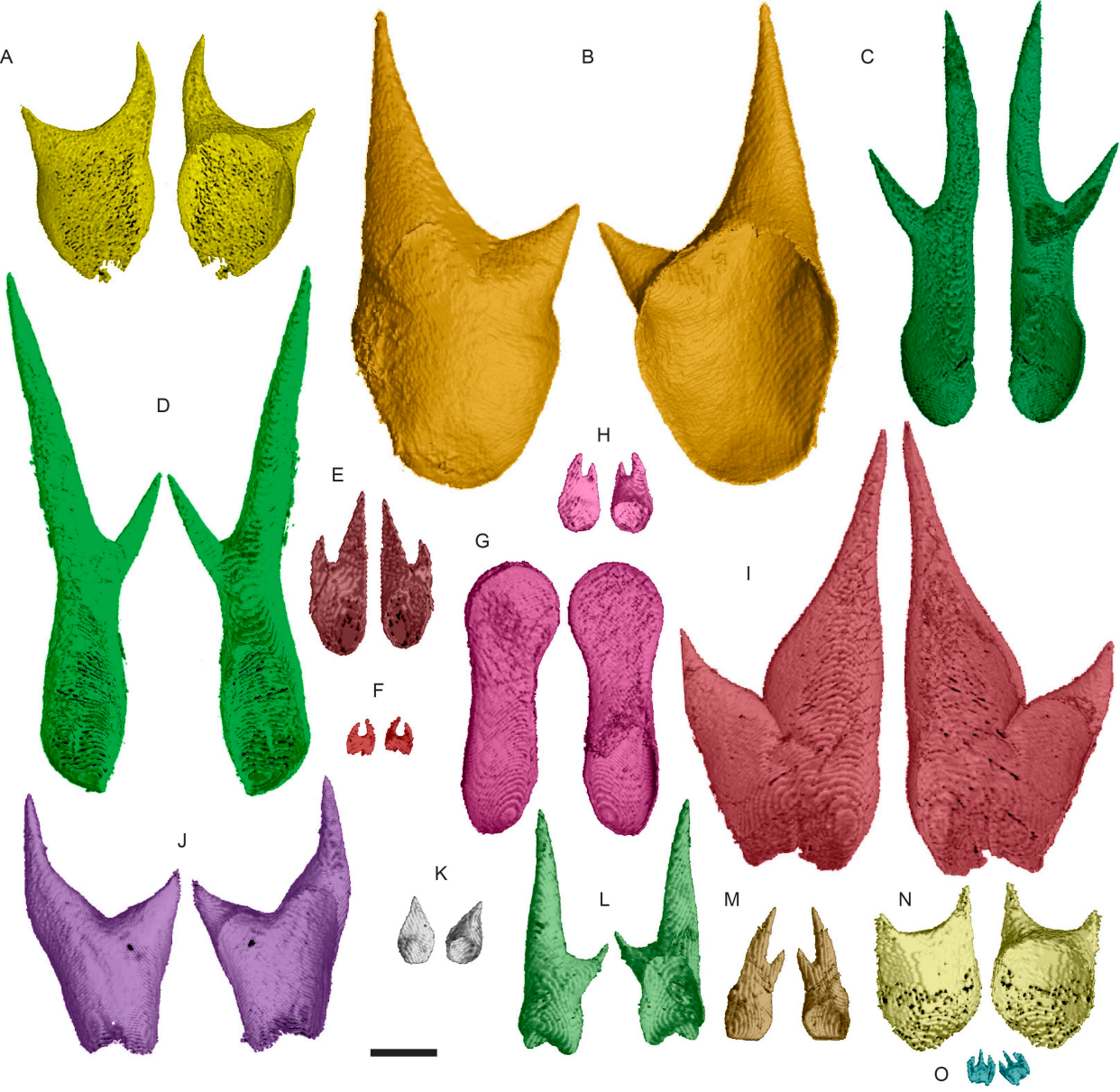


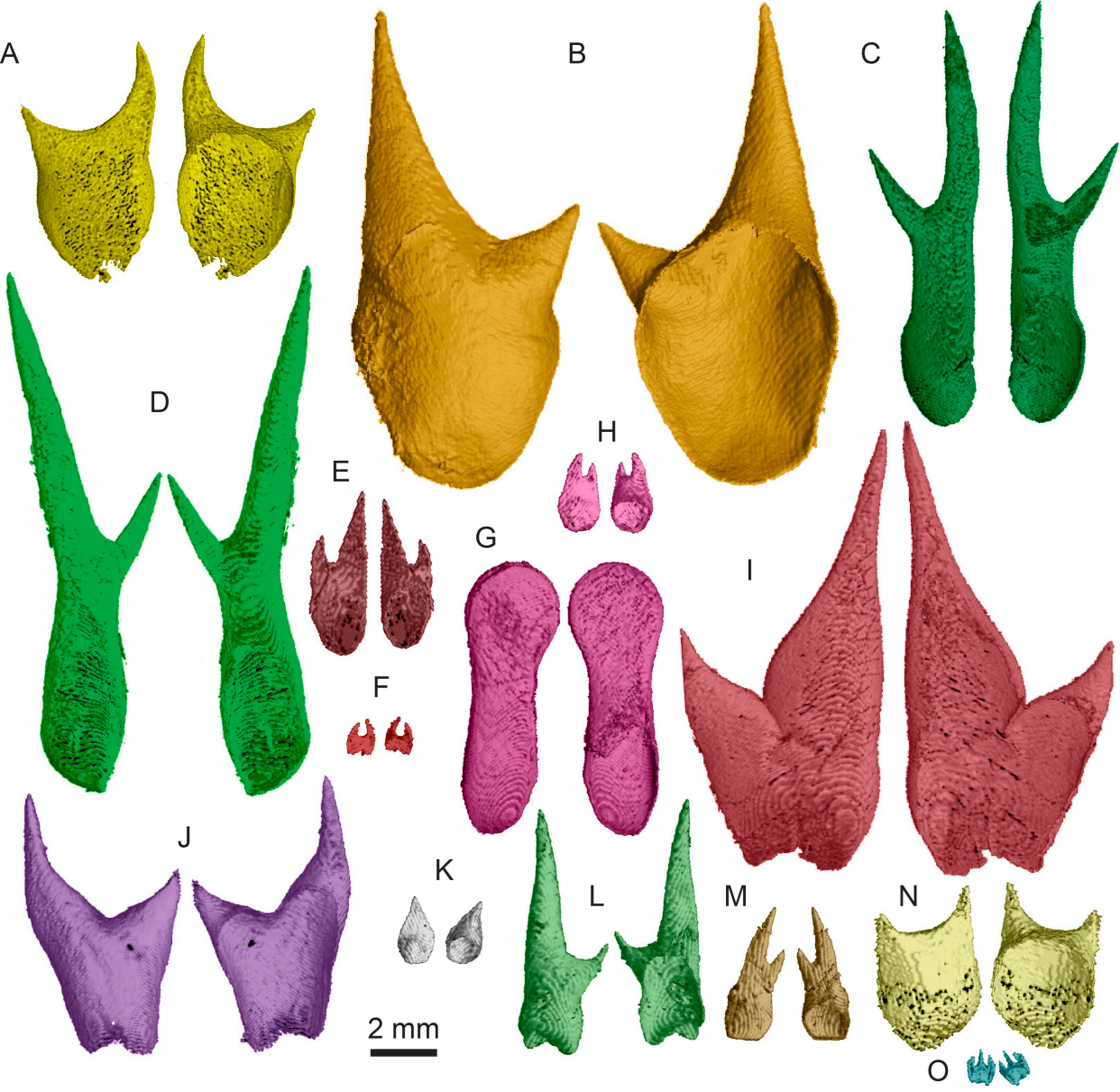


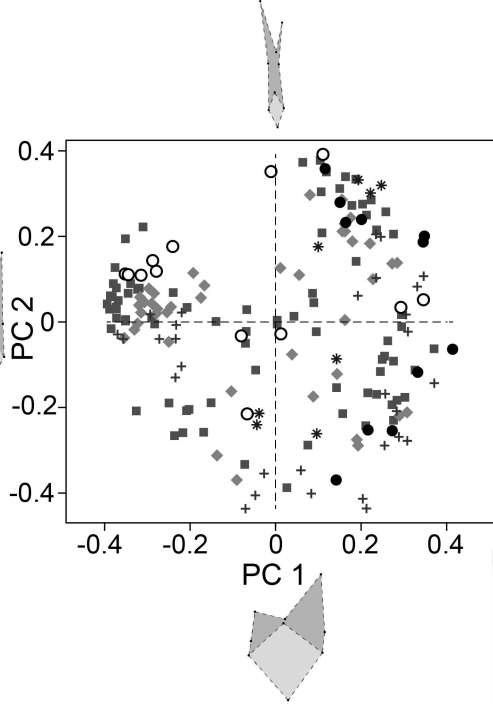
2 mm











- AMNH66350
- + AMNH66434
- ◆ AMNH66433
- * AMNH66351
- AMNH64490
- AMNH64405

