



Anemonefish, a model for Eco-Evo-Devo

Natacha Roux, Pauline Salis, Shu-Hua Lee, Laurence Besseau, Vincent Laudet

► To cite this version:

Natacha Roux, Pauline Salis, Shu-Hua Lee, Laurence Besseau, Vincent Laudet. Anemonefish, a model for Eco-Evo-Devo. *EvoDevo*, 2020, 11 (1), 10.1186/s13227-020-00166-7 . hal-02975505

HAL Id: hal-02975505

<https://hal.sorbonne-universite.fr/hal-02975505>

Submitted on 22 Oct 2020

HAL is a multi-disciplinary open access archive for the deposit and dissemination of scientific research documents, whether they are published or not. The documents may come from teaching and research institutions in France or abroad, or from public or private research centers.


L'archive ouverte pluridisciplinaire **HAL**, est destinée au dépôt et à la diffusion de documents scientifiques de niveau recherche, publiés ou non, émanant des établissements d'enseignement et de recherche français ou étrangers, des laboratoires publics ou privés.

REVIEW

Open Access



Anemonefish, a model for Eco-Evo-Devo

Natacha Roux^{1†}, Pauline Salis^{1†}, Shu-Hua Lee², Laurence Besseau¹ and Vincent Laudet^{2,3*} 

Abstract

Anemonefish, are a group of about 30 species of damselfish (Pomacentridae) that have long aroused the interest of coral reef fish ecologists. Combining a series of original biological traits and practical features in their breeding that are described in this paper, anemonefish are now emerging as an experimental system of interest for developmental biology, ecology and evolutionary sciences. They are small sized and relatively easy to breed in specific husbandries, unlike the large-sized marine fish used for aquaculture. Because they live in highly structured social groups in sea anemones, anemonefish allow addressing a series of relevant scientific questions such as the social control of growth and sex change, the mechanisms controlling symbiosis, the establishment and variation of complex color patterns, and the regulation of aging. Combined with the use of behavioral experiments, that can be performed in the lab or directly in the wild, as well as functional genetics and genomics, anemonefish provide an attractive experimental system for Eco-Evo-Devo.

Keywords: Anemonefish, *Amphiprion*, Eco-evo-devo

Natural habitat and life cycle

Anemonefish are protandrous hermaphrodites that belong to the Pomacentridae family, known as damselfish. Within the 300 species of this family, the 30 species of anemonefish are clustered into two genera: *Amphiprion* and *Premnas*, the latter including a single species [1, 2]. The phylogeny of anemonefish is well resolved with mtDNA and nuclear markers, and more recently with complete genome sequences [3, 4].

Living in social groups and in symbiosis with 10 distantly related sea anemone species, anemonefish are found from the Indian Ocean to the western Pacific Ocean with a high concentration of species in the Indo-Malay archipelago [5, 6]. Within their host sea anemone, anemonefish form a colony, which consists of a breeding pair and a variable number of juveniles of smaller size [7]. The breeding pair is composed of a dominant female and a sub-dominant male, which both defend the colony.

Every two to 3 weeks, the breeding pair lays between 100 and 500 eggs on the substrate near their host anemone, and provide parental care to the eggs [8]. Parental care consists of fanning the eggs using their pectoral and caudal fins, to increase oxygenation, and removing dead or weakened eggs and particles using their mouth [9]. Most of the parental care are provided by the male [10, 11] but in some species female may participate actively [9, 12]. The sexually immature individuals don't participate in brood care. They are ranked by order of size and gain access to reproduction only when one member of the breeding pair dies. The social dynamics have mostly been studied in *A. ocellaris* and more studies are needed to fully understand the variation that can occur in other species. After an embryonic development of seven to 10 days (depending on the water temperature and the species), hatching occurs and larvae disperse into the ocean for 10–15 days, which corresponds to one of the shortest oceanic larval duration in coral reef fish (Fig. 1). At the end of this pelagic phase, larvae transform via metamorphosis into small juveniles that will locate a reef and actively look for a host sea anemone using their sensory abilities combining visual, chemical and acoustic cues [13]. During the metamorphosis, larvae lose their

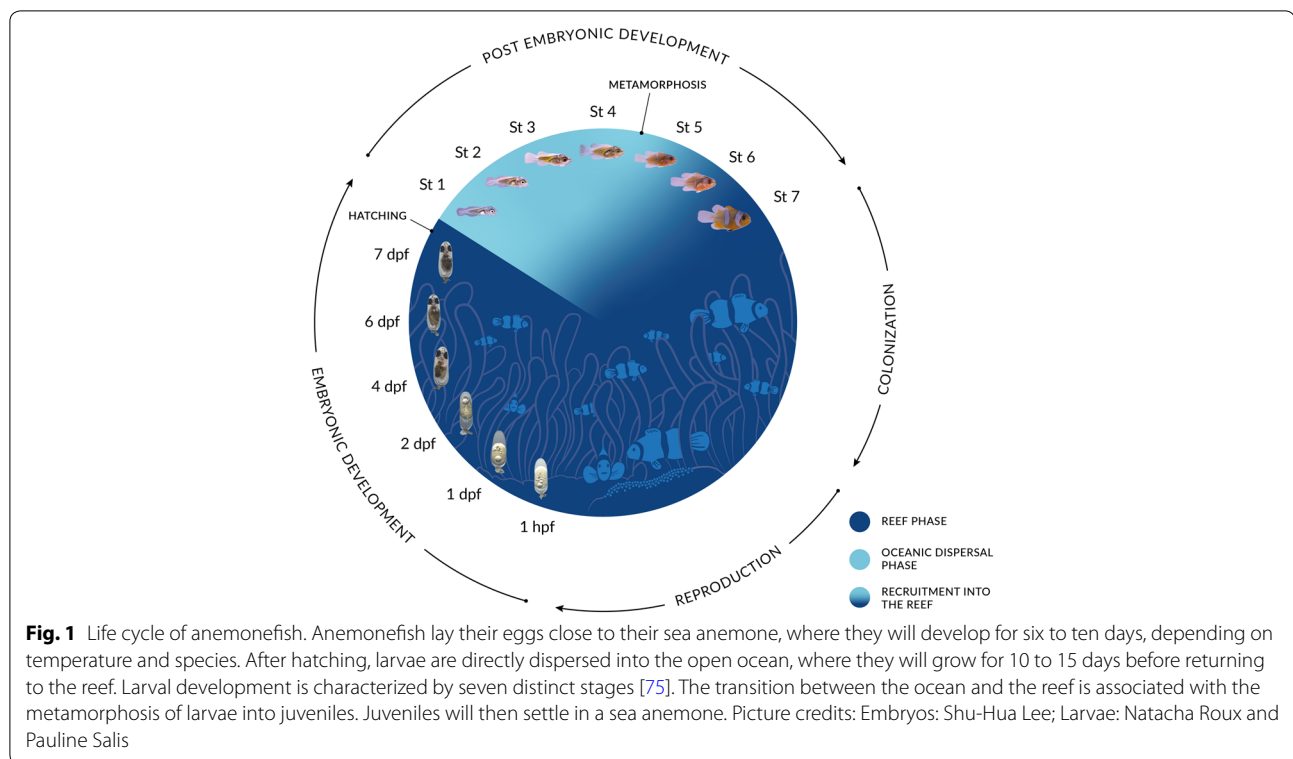
*Correspondence: VINCENT.LAUDET@OIST.JP

[†]Natacha Roux and Pauline Salis equal first authors

² Lab of Marine Eco-Evo-Devo, Marine Research Station, Institute of Cellular and Organismic Biology, Academia Sinica, Taipei, Taiwan
Full list of author information is available at the end of the article



© The Author(s) 2020. This article is licensed under a Creative Commons Attribution 4.0 International License, which permits use, sharing, adaptation, distribution and reproduction in any medium or format, as long as you give appropriate credit to the original author(s) and the source, provide a link to the Creative Commons licence, and indicate if changes were made. The images or other third party material in this article are included in the article's Creative Commons licence, unless indicated otherwise in a credit line to the material. If material is not included in the article's Creative Commons licence and your intended use is not permitted by statutory regulation or exceeds the permitted use, you will need to obtain permission directly from the copyright holder. To view a copy of this licence, visit <http://creativecommons.org/licenses/by/4.0/>. The Creative Commons Public Domain Dedication waiver (<http://creativecommons.org/publicdomain/zero/1.0/>) applies to the data made available in this article, unless otherwise stated in a credit line to the data.



larval characteristics (light pigmentation, elongated body shape) and start to resemble miniature adult individuals, with an ovoid body shape and an adult pigmentation pattern which consists in most species of white bars on a bright yellow, red or brown/black background (Fig. 1). Of note, little is known concerning how new recruits are socially accepted in a new colony during recruitment.

Field collection and lab culture

One of the advantages of working on anemonefish is that post-metamorphosed juveniles and adults can easily be spotted in the field thanks to the symbiosis with sea anemones. Compared to most marine fish, they never leave the immediate vicinity of their habitat (the sea anemone) and are thus particularly suited for individual long-term monitoring. Scuba diving and hand nets are the two major tools required to observe and collect anemonefish in the wild. It is thus easy to take pictures, collect mucus, clip fins (for genetic analysis), tag individuals, conduct behavioral study, and collect embryos, etc. All of these sampling techniques can be done without removing the animal from its natural environment, which is important to consider as these species undergo significant fishing pressure due to the aquarium trade [14]. In contrast to adults, collecting wild anemonefish larvae represents a major difficulty. To our knowledge, usual techniques used to collect fish larvae such as crest

nets, light traps and even plankton nets very rarely succeeded to catch larvae, which are mostly described from laboratory raised fish [15]. It is possible to collect eggs spawned by adults close to their sea anemone host but finding larvae in the wild is like looking for a needle in a haystack and still represents a major challenge.

As they are one of the first coral reef fish to be reared in aquaria, anemonefish are very well suited for laboratory rearing and experiments. Breeding pairs can be held without sea anemones in 60L tanks filled with artificial or natural filtered seawater (Fig. 2a). To successfully rear anemonefish, it is critical to pay attention to water parameters, such as temperature, salinity and pH (between 8 and 8.5), and to photoperiod [10, 16, 17]. Other parameters such as nutrients (NH₃, NO₂, NO₃-) and food fatty acid contents are also required for breeding pairs health, quality of clutch and larval survival rates [18, 19]. A terracotta pot can be placed in the aquarium as a support for anemonefish clutches (Fig. 2b). The night of hatching, the pot with the clutch is transferred into an independent larval rearing tank before light extinction (Fig. 2c). Larvae are fed with living preys (rotifers, nauplii of *Artemia* sp, and the green algae *Nannochloropsis occulta*) until the completion of metamorphosis and then artificial food is given. It is important to perform daily water changes to remove dead individuals, food waste

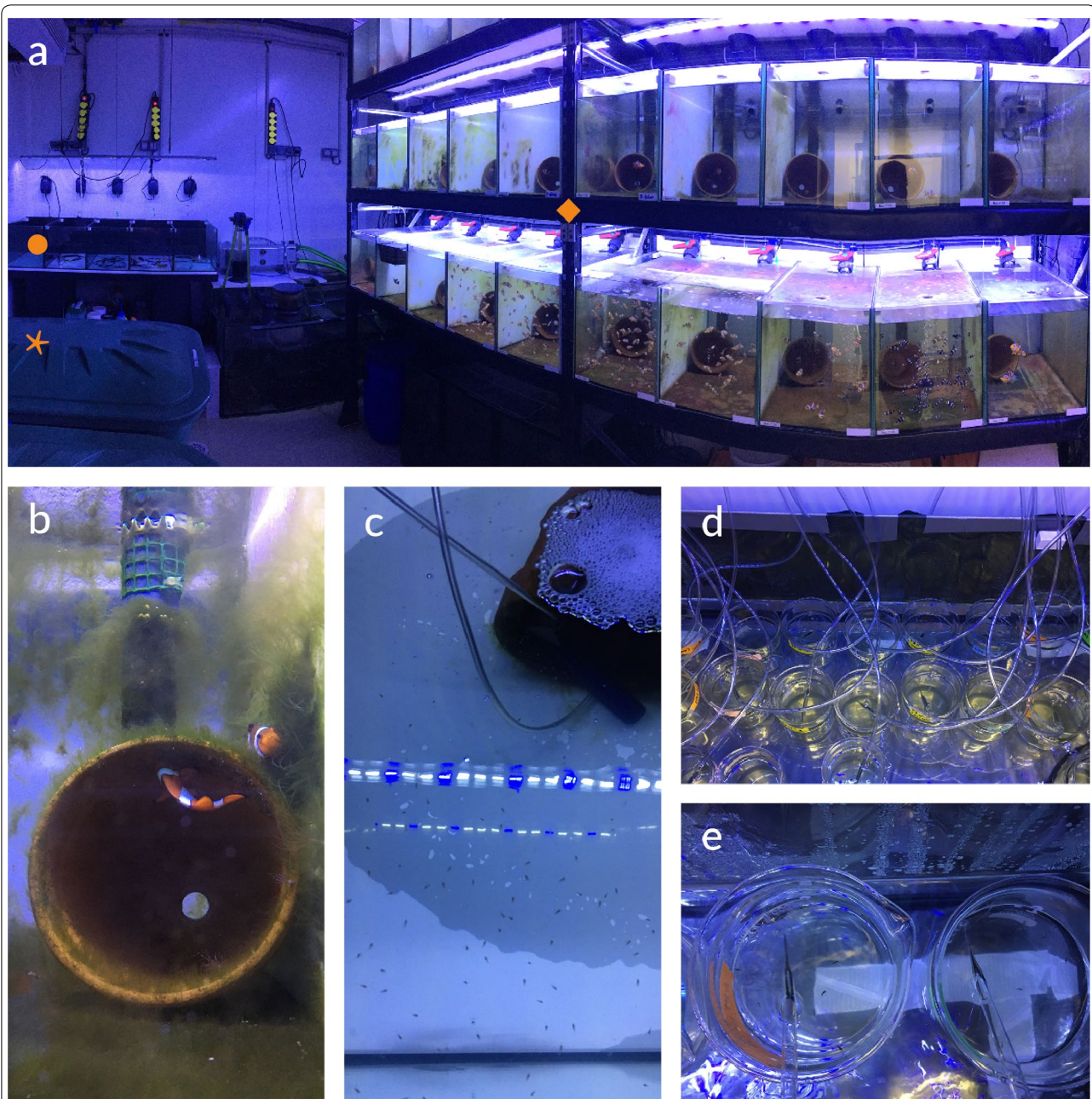


Fig. 2 Anemonefish rearing. **a** Picture of the rearing structure of anemonefish in the marine station of Banyuls-sur-mer, with breeding pair tanks and juvenile tanks on the right-hand side (orange square), larval rearing tanks on the left-hand side in the background (orange dot), and artificial seawater reserve tanks on the left (orange star). **b** Close up of an *A. ocellaris* breeding pair and their terracotta pot. **c** close up of larval rearing tank. **d**, **e** Close up of low volume rearing in beakers

and feces to ensure the stability of the seawater (Roux et al., unpublished data).

For experimental purposes such as developmental monitoring or pharmacological treatments, small groups of anemonefish larvae can be reared in low volume (500 ml). In such cases, rearing volume might be

an issue for treatments lasting several days when the compound is either rare and/or expensive. The low volume rearing protocol consists of an independent system in which 5–10 larvae are introduced in 500 ml glass beakers placed in a warm water bath (same temperature as breeding pair tank) (Fig. 2d). The rearing condition (seawater, photoperiod, food, water changes)

remains the same as in a 60L tank (Roux et al., unpublished data).

Major interests and research questions

Symbiotic relationship

All anemonefish species have evolved the ability to live in close association with sea anemones that belong to 3 distantly related families (*Thalassianthidae*, *Actinidae*, *Stichodactylidae*) [6]. Studied since the end of the nineteenth century [20], this symbiosis has fascinated scientists for two main reasons. First, anemonefish are protected by their host against predation, by swimming within the tentacles of the anemone, whose discharge of nematocysts can kill other fish. Second, there is a complex species-specificity of this mutualistic relationship between fish and the 10 possible sea anemone hosts, which is probably related to the toxicity levels of the hosts [21]. Recent data have shown that the giant sea anemones that host anemonefish form three independent distantly related groups and that their taxonomy is still unclear [22, 23]. This allows to conclude that, in contrast to anemonefish for which the symbiosis has been established once [4], on the sea anemone side the symbiosis has evolved independently at least three times.

Studies investigating the anemonefish symbiosis have brought new insights into (i) the genetic and biochemical mechanisms developed by anemonefish to avoid the stinging of the sea anemone nematocysts, (ii) the variable host specificity displayed by the different species, and (iii) the changes occurring on the mucus microbiota of the two animals during the initiation of the symbiosis [24–29]. It has been shown that this symbiotic interaction has been critical for the evolutionary radiation of anemonefish [3, 4]. In contrast, the diversification of giant sea anemones predates the symbiosis [22, 23]. The taxonomy of the sea anemones is far from settled and will be important to better understand this complex relationship.

Life span

The lifespan of fish spans more than two orders of magnitude, from a few weeks in gobies and a few months in annual killifish to 9 years for the damselfish *Chromis chromis*, and up to several centuries in the Greenland shark [30–33]. The lifespan of *A. percula* has been estimated to be about 30 years [34]. Sahm and collaborators (2019) performed a survey of anemonefish lifespan data in the wild and in captivity, in which they identified at least two additional species (*A. ocellaris* and *A. melanopus*) with a lifespan of over 20 years [35]. Because this lifespan is longer than other teleost fish of the same size, anemonefish could become an experimental model for long-lived vertebrates [34]. For example, recently,

anemonefish have been used to understand the genetic architecture underlying differences in lifespan [35]. Taking advantages of the transcriptome of 5 anemonefish species, Sahm et al. (2019) identified genes that underwent accelerated molecular evolution in association with the evolution of a long lifespan [35].

Social control of size hierarchy

Within each colony of anemonefish, there is a dominant female, the largest fish, a sub-dominant male, second largest fish, and smaller sexually immature individuals ranked by size [7]. The size hierarchy represents a queue to attain dominant status and reproduction; individuals only ascend in rank when a higher ranked individual disappears, and the smallest fish in the group is always the youngest recruit. Anemonefish could provide an experimental system for understanding the ultimate and proximate causes of size hierarchy. Moreover, very little is known concerning how new recruits are socially accepted in a new colony during recruitment. The role of hormones in eliciting the dominant and subordinate specific features in behavior or pigmentation and how environmental changes might influence these hierarchies are promising research avenues that can be addressed using this model in which the female is the dominant sex.

Sex change

The plasticity of sex is frequent in teleosts and is made possible by an extraordinary plasticity of gonadal development and sexual expression [36, 37]. An illustration of this plasticity is successive hermaphroditism, presented in at least 27 families, including that of Pomacentridae. The factors triggering sex changes in teleosts may be size dependent or socially mediated [38]. However, the internal mechanisms underlying sex changes remain poorly understood. Given their social organization, their small size and their easy maintenance in aquaria, anemonefish could be relevant models for studying sex change.

Anemonefish are monogamous protandrous (male to female transition) hermaphrodites whose phenotypic sex status is socially controlled within the colony. The removal of the dominant female triggers the sex inversion of the functional male, which in turn induces the differentiation of the biggest immature juvenile into a mature male to form a new breeding pair [39]. In anemonefish, it is easy to experimentally induce sex change, both in the lab and in the wild by simply removing the dominant female. Following the dominant male during its transition to female allows for a better insight into the molecular and physiological mechanisms governing sex change [39–44].

(See figure on next page.)

Fig. 3 Anemonefish color pattern diversity. **a–e** Pictures of adult anemonefish classified according to their color patterns. **a** No vertical bar, **b** One vertical bar on the head, **c** Two vertical bars, **d** Three vertical bars, **e** Fishes having polymorphic bar patterns [47]. **f, g** Pictures of wild *Amphiprion percula* adults showing a melanization polymorphism depending on the sea anemones species they have been recruited to, either *Heteractis magnifica* (**f**) or *Stichodactyla gigantea* (**g**)

Color pattern evolution

Whereas most previous investigations of teleost pigment pattern formation focused on the horizontal stripe patterns of the zebrafish (*Danio rerio*), anemonefish offer an alternative case study in which different mechanisms controlling vertical bar patterns are at play and can be deciphered [45, 46]. The 30 anemonefish species display a simple color pattern made of 0 to 3 white bars, containing iridophores, visible on a darker body background (red, orange or black) (Fig. 3a–e). Anemonefish acquire their adult color pattern during post-embryonic development and white bars appear in a stereotypic manner from the anterior to the posterior part of the body [47].

Recently, the occurrence of these bars has been mapped on the anemonefish phylogeny to reconstruct the ancestral states in terms of white bar presence/absence [47]. Through this analysis, it has been shown that the diversification of the anemonefish color pattern results from successive caudal to rostral losses of bars during evolution. The juveniles of some species have supplementary bars that later disappear in a caudo-rostral sequence. The reduction of bar number during the ontogeny matches the sequence of bar loss across evolution [46, 47]. In zebrafish, color pattern composed of periodic stripes forms through a reaction–diffusion system (Turing model), whereby stripe numbers depend on the size of the fish (review in [45]). In anemonefish, the developmental mechanism at the origin of the formation of the white bars differs, as the number of bars does not depend on the size of the fish [46, 47]. Moreover, in anemonefish, new bars do not form when the distance between two existing ones increases but are added following an ordered anterior-to-posterior pattern. Thus, a Turing-like model cannot solely explain the appearance and/or disappearance of bars during anemonefish ontogeny. This suggests that in anemonefish the temporal and spatial control of bars is influenced by specific patterning mechanisms that remain to be analyzed.

In zebrafish, it has been shown that cell–cell communication between the various types of pigment cells is instrumental in controlling pattern formation [45]. Whether similar mechanisms operate in the context of the antero-posterior color patterning in anemonefish is unclear. It has also been shown that the adult pigmentation pattern of zebrafish is controlled by thyroid hormones [48, 49]. As these hormones are known to control coral reef fish metamorphosis [50], it will be interesting to compare the

gene regulatory programmes controlled by this hormone in the various pigment cells in zebrafish and anemonefish and to study how they may be implicated in color pattern diversification. Sex change does not lead to a profound modification of the pigmentation pattern in anemonefish, as described for example in Labrids [51]. However, in some species, minor changes in pigmentation have been observed in relation to the sexual status of individuals [12, 52].

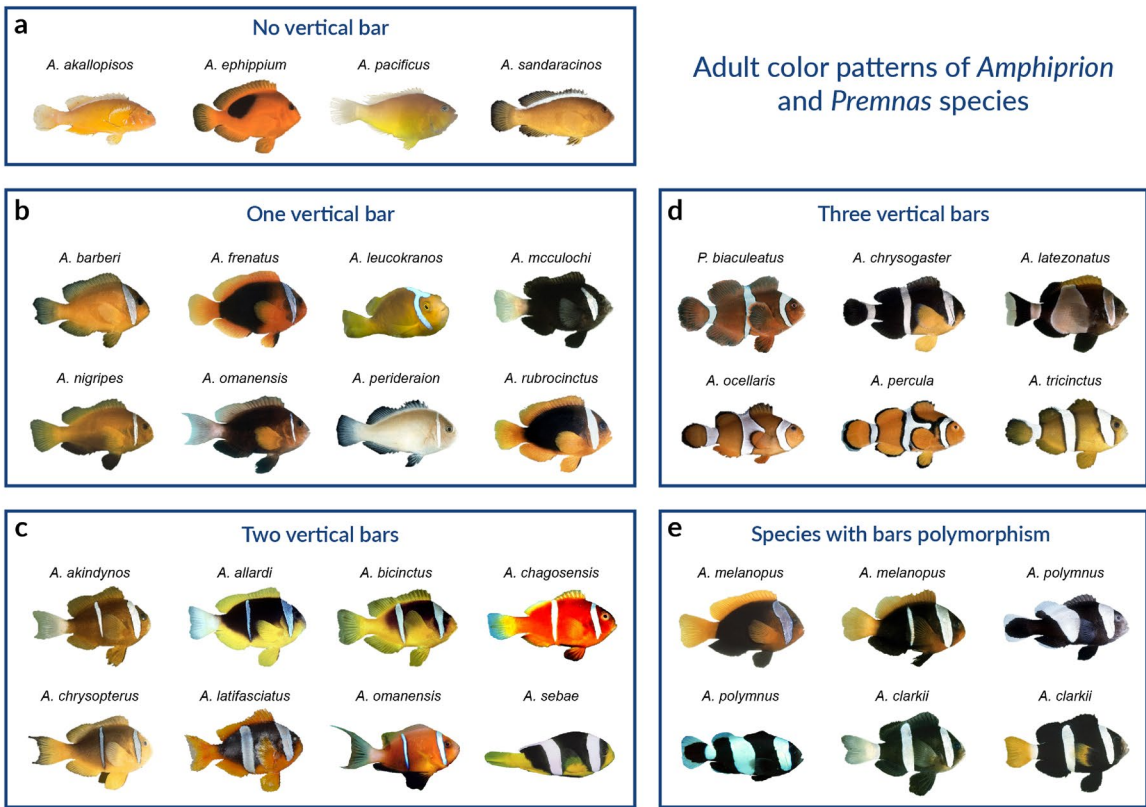
Phenotypic plasticity and genetic assimilation

One major question in Evo/Devo is whether phenotypic differences between related species may originate from genetic assimilation of preexisting phenotypic plasticity [53]. It has been observed that several anemonefish species (*A. clarkii*, *A. percula*, etc.) can adapt their body color to the species of sea anemone in which they live and that some isolated populations present naturally one of these alternative morphs (Fig. 3f, g) [54]. These cases provide very nice examples to study how environmental variations produce alternative phenotypes, and how these phenotypes may be fixed in some populations or species.

Analysis of complex behavior

Sound production is widespread in vertebrate taxa and may be involved in evolutionary processes such as speciation, as demonstrated in insects, fish, anurans and birds [55]. In teleost fish, the ability to emit sound has been developed independently in more than 100 families [56]. Several lines of evidence suggest that sound communication in anemonefish is important for controlling social hierarchies [57, 58]. The genetic pathways controlling sound production and hearing, as well as the neural pathway controlling the processing of acoustic information and its effect on social relationships can therefore be analyzed in anemonefish.

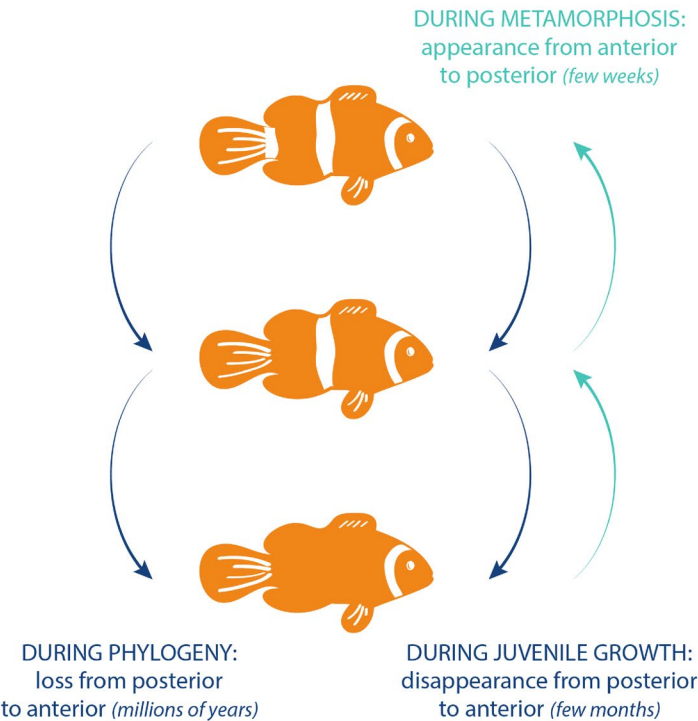
Juvenile and adult anemonefish exhibit complex stereotyped behaviors associated with the social hierarchy as well as egg protection and sea anemone caring. Despite the importance of this behavioral complexity from an evolutionary ecological point of view, the development of neural structures and networks underlying such behaviors has been poorly studied at the cellular and molecular levels. Anemonefish would allow investigating the link between internal actors such as neurotransmitters,



Melanization polymorphism
in *Amphiprion percula*



h Evolution and development of white bars



hormones, and behavioral responses. As their radiation is well understood, *Amphiprion* and *premna* species also allow addressing the evolutionary origins of these complex behaviors.

Experimental approaches

Long term field experiments and monitoring

Anemonefish inhabit the same sea anemone during most of their lives: it is, therefore, possible to follow the same individual or the same anemonefish colony over time, at several month intervals, in the wild. It is also possible to make transplantation experiments, in which individuals are removed from one colony and introduced to a new one [59]. It is, therefore, possible to conduct long term studies monitoring the recruitment, changes in colony constitution and social organization, and sex transitions over several years [60, 61].

In Papua New Guinea, several teams from Australia, France, USA and Saudi-Arabia have teamed up to better understand the recruitment process in *A. percula*. Planes et al., [62] used microsatellites to fingerprint all breeding adults (125 fish) present on the isolated Kimbe island, in which 270 sea anemones have been precisely located [62]. Since the fish show strong fidelity to their sea anemone, they can be found at the same place after several months, except in the relatively rare case of mortality. Then, every two years, this team traveled to Kimbe to collect new recruits in the various sea anemone and determine who are their parents. Since all breeding pairs present in Kimbe were fingerprinted, they observed that 50% of new recruits are coming from outside the island, 8–10 km away. This demonstrated that *A. percula* larvae can effectively travel over long distances. Such a unique data set, accumulated over 10 years, also enabled to compare the survival of local recruits (e.g. whose parents come from Kimbe) vs. outsiders and to show the absence of trans-generational fidelity to sea anemone species [63, 64]. Because long term genealogical trees can now be constructed, this unique Kimbe dataset offers a great perspective to investigate the heritability of specific traits such as body size, pigmentation traits, etc.

Behavioral experiments

Anemonefish offers a variety of behavior that can be studied both in the lab and in the field. First, it is easy in the lab to study the olfactory or visual perception of anemonefish larvae. The small size of larvae and the early development of their sensory abilities enable to follow the ontogeny of visual and olfactory perception and how it is used to locate sea anemone in the wild [65, 66]. Preliminary tests conducted by our group on swimming behavior also revealed that anemonefish larvae are suitable for

digital time-lapse video recording. Such methods will facilitate detailed and well-replicated behavioral studies. Anemonefish may also allow conducting high-quality video recording for behavioral analysis in the wild as they remain in a small area.

Pharmacological treatments of larvae

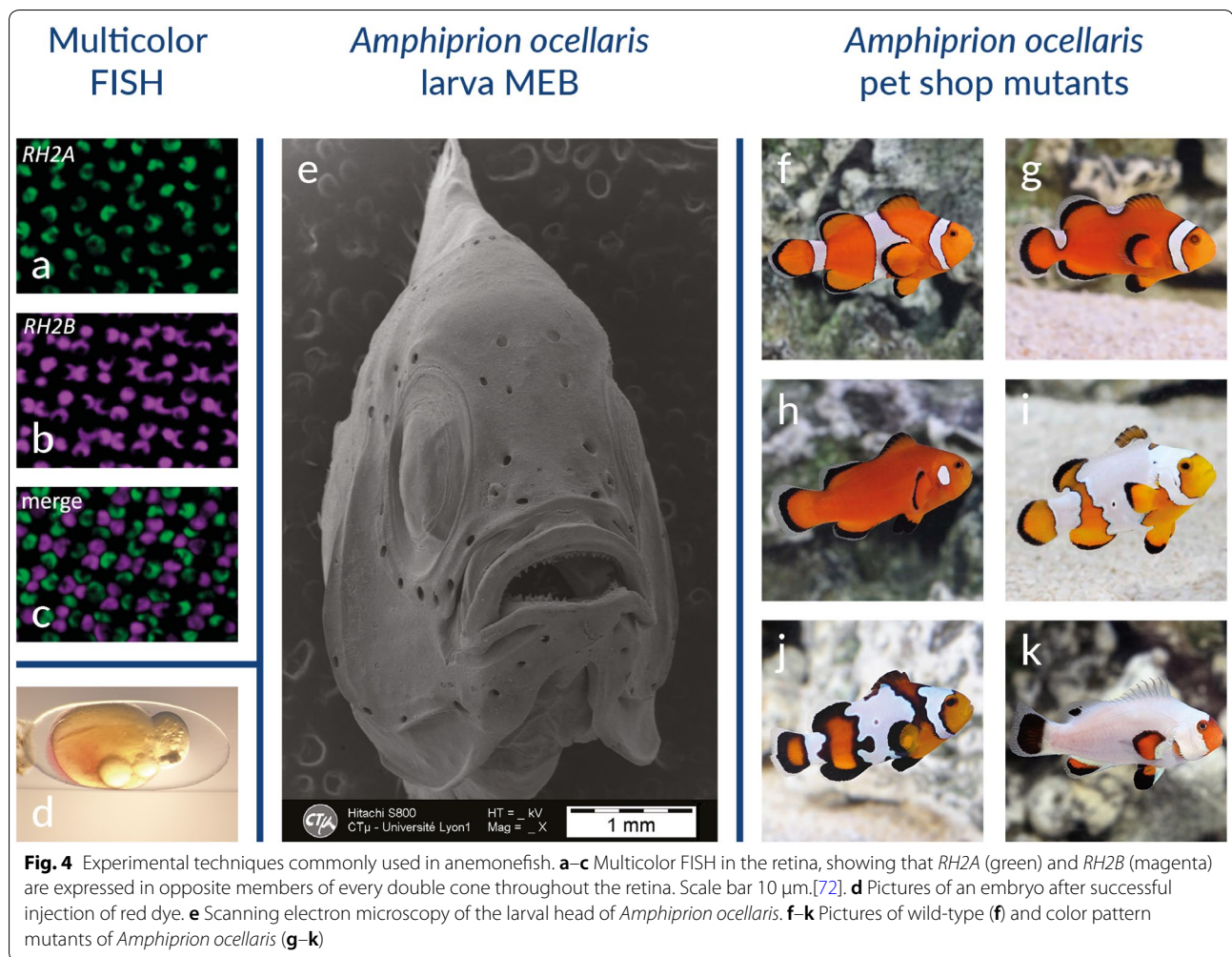
Functional studies are possible thanks to a method that allows to raise larvae and juveniles in a small volume (500 ml) (Roux et al., unpublished data). Pending the development of functional genetic methods, it is possible to use pharmacological approaches, using well-characterized drugs to alter specific biological pathways. One interesting asset here is the relative proximity of anemonefish with established fish models such as zebrafish and medaka, in which extensive chemical screens have been performed [67]. For example, our group has used TAE684, an inhibitor of tyrosine kinase receptors, *Ltk* and *Alk*, known to decrease iridophore number in zebrafish [68], to show that white bars in *A. ocellaris* are indeed formed by iridophores and allowed to obtain *A. ocellaris* juveniles devoid of white bars [47, 69].

In situ hybridization and multicolor fluorescence in situ hybridization (FISH)

To follow the patterns of gene expression, in situ hybridization has been developed in anemonefish embryos [70] as well as other tissues such as gonads [71] and skin [69]. Those protocols are adapted from those established in zebrafish, taking into account the fact that anemonefish are marine species, therefore introducing additional washing steps to avoid salt precipitation. Multicolor fluorescence in situ hybridization (FISH) has enabled the simultaneous visualization and quantification of the expression of different opsin gene transcripts in the eyes of the Great Barrier Reef anemonefish *A. akindynos* (Fig. 4a–c) [72]. This has allowed the authors to reveal visual specializations and to understand the increase of chromatic contrast in this species, which may play an important role in detecting conspecifics.

Scanning and transmission electron microscopy

New protocols for scanning and transmission electron microscopy have been specifically developed for marine fish to preserve tissue integrity and avoid osmotic issues due to salinity [73]. Such protocols have been successfully used to study the development of anemonefish organs such as teeth and sensory organs using scanning electron microscopy (Fig. 4e) [74, 75] and to determine the morphology of pigment cells in anemonefish skin using transmission electron microscopy [69].



Pet shop mutants

Anemonefish are very popular in the aquarium trade and, not astonishingly, fancy mutants have been developed for trade purpose. Pet shops offer many color pattern mutants (Fig. 4f–k). As in other cases (e.g. zebrafish, zebrafinch) those mutants can be very useful scientifically as they allow addressing the developmental mechanisms at the origin of pigmentation pattern [45, 76]. Identifying the genes that underlie such deficient pigmentation pattern using Genome-Wide Association Studies (GWAS) will provide answers to fundamental questions such as how the border between the white, orange and black pigment cells is formed.

Wild anemonefish populations are also providing a large reservoir of pigmentation variants, from small variations in white bars shape to more extreme variants passing through the melanization plasticity described above. To our knowledge, there is up to now no general description of the extent of these variations.

Natural hybrids

Hybridization is increasingly recognized as an important evolutionary process, especially in the emergence of evolutionary radiations, and this has also been shown to be important in anemonefish [77]. In that respect, it is important to mention that hybridization occurs frequently in the wild. Two species, *A. leucakranos* and *A. thiellei*, are in fact hybrids. The case of *A. leucakranos*, a hybrid between *A. chrysopterus* female and *A. sandaracinos* males, has been investigated to understand the evolutionary consequences of hybridization [78].

Limitations

As with all experimental system, anemonefish have limitations. Perhaps the most obvious is the lack of established approaches for genetic manipulation. Several labs are now trying to develop gene editing using CRISPR/CAS9. No protocol has been published detailing how to inject anemonefish eggs, however, injection trials have been successful in our team with a survival rate of ca. 90%

Table 1 Genomes and transcriptomes available for Amphiprion species research (NA Not available)

Species	Type of sequence	NCBI BioProject identifier	DOI-Reference
<i>Amphiprion ocellaris</i>	Genome	PRJNA407816	10.1093/gigascience/gix137 [81]
<i>Amphiprion ocellaris</i>	Genome	PRJNA515163	10.1093/gbe/evz042 [4]
<i>Amphiprion ocellaris</i>	Transcriptome male and female	PRJNA374650	NA
<i>Amphiprion ocellaris</i>	White and orange skins transcriptome	PRJNA482393	10.1111/pcmr.12766 [69]
<i>Amphiprion ocellaris</i>	Post Embryonic Developmental transcriptome	NA	10.1186/s12915-018-0559-7 [47]
<i>Amphiprion percula</i>	Genome	PRJNA436093	10.1111/1755-0998.12939 [82]
<i>Amphiprion percula</i>	Transcriptome of the brain	PRJEB27750	NA
<i>Amphiprion bicinctus</i>	Genome	PRJNA515163	10.1093/gbe/evz042 [4]
<i>Amphiprion bicinctus</i>	Transcriptome of brain and gonade of female, male and sex-changing individuals	PRJNA261388	10.1038/srep35461 [39]
<i>Amphiprion clarkii</i>	Transcriptome of the brain	PRJEB27750	NA
<i>Amphiprion frenatus</i>	Genome	PRJNA433458	10.1111/1755-0998.12772 [83]
<i>Amphiprion melanopus</i>	Genome	PRJNA515163	10.1093/gbe/evz042 [4]
<i>Amphiprion melanopus</i>	Transcriptome of gill	PRJNA398732	10.1186/s13742-016-0124-7 [84]
<i>Amphiprion polymnus</i>	Genome	PRJNA515163	10.1093/gbe/evz042 [4]
<i>Amphiprion sebae</i>	Genome	PRJNA515163	10.1093/gbe/evz042 [4]
<i>Amphiprion sebae</i>	Transcriptome of the brain of <i>Amphiprion Sebae</i> maturing stage	PRJNA285007	NA
<i>Amphiprion akallopisos</i>	Genome	PRJNA515163	10.1093/gbe/evz042 [4]
<i>Amphiprion nigripes</i>	Genome	PRJNA515163	10.1093/gbe/evz042 [4]
<i>Amphiprion perideraion</i>	Genome	PRJNA515163	10.1093/gbe/evz042 [4]
<i>Premnas biaculeatus</i>	Genome	PRJNA515163	10.1093/gbe/evz042 [4]

(illustrated on Fig. 4d). However, it must be made clear that the generation time of 9–18 months (depending on the species) impose some practical constraints on functional genetics approaches [79, 80]. The ability to generate F0 mosaic mutants should allow testing the functional importance of given genes in specific processes directly. Another limitation is that larvae are still very difficult to capture in the wild, making post-embryonic development in the wild inaccessible until the time of recruitment.

Research community and resources

The anemonefish community, which has its origins in the ecology community, has been constantly growing and diversifying over the last 10 years as these fish have gained interest as experimental models. There are more than 10 research groups currently using anemonefish as a model for Evo/Devo or Eco/Evo/Devo, and most of these groups have established strong links with the ecology communities that study these fish in the field. This merging of communities, between ecology and evolutionary developmental biology, is extremely fruitful and will allow asking increasingly relevant questions and performing more integrated studies.

Every year, a “anemonefish day meeting” is organized by laboratories located in France, Japan, Switzerland, and Belgium that work on anemonefish.

The genomes of 11 *Amphiprion* and *Premnas* species have been sequenced (Table 1) and are available in the NCBI's reference sequence database. Moreover, transcriptomes of 6 *Amphiprion* species have also been sequenced (Table 1). Most anemonefish species and their color pattern mutants are directly provided by pet shops. However, no standard strains are maintained and shared yet between the anemonefish research lab community. Moreover, a website providing information on the features, geographic distribution and images of each species is available (<https://amphiprionology.wordpress.com>). A community portal should be completed in the coming months, which will include protocols, pictures of adult and developing fish, organization of international meetings, and a community forum.

Acknowledgements

We would like to express our deepest appreciation to Serge Planes and David Lecchini from the CRILOBE lab that have been instrumental in our interest in coral reef fish and in particular anemonefish as model systems and have been tremendously helpful to develop our research. We are also thankful to Timothy Ravasi, David Lecchini and Marleen Klann who carefully read this manuscript and helped us to improve it. We would like to thank the Aquariological service of the “Observatoire océanologique de Banyuls sur mer” who take care of the anemonefish husbandry and rearing of our group.

Authors' contributions

All authors read and approved the final manuscript. Roux, Salis and Lee took the pictures of developing larvae and embryos showed on the Figs. 1 and 3.

Funding

The research conducted by our group are funded by the « Agence Nationale de la Recherche » under the following projects: MANINI ANR19-CE34-0006-02 and SENSOANR19-CE14-0010-02.

Availability of data and materials

Not applicable.

Ethics approval and consent to participate

Not applicable.

Consent for publication

Not applicable.

Competing of interests

The authors declare that they have no competing interests.

Author details

¹ Sorbonne Université, CNRS, UMR « Biologie Intégrative Des Organismes Marins », BIOM, 1, 66650 Banyuls-sur-Mer, France. ² Lab of Marine Eco-Evo-Devo, Marine Research Station, Institute of Cellular and Organic Biology, Academia Sinica, Taipei, Taiwan. ³ Marine Eco-Evo-Devo Unit, Okinawa Institute of Science and Technology, 1919-1 Tancha, Onna son, Okinawa 904-0495, Japan.

Received: 3 June 2020 Accepted: 18 September 2020

Published online: 07 October 2020

References

- Colleye O, Iwata E, Parmentier E. Clownfishes. In: Frédéric B, Parmentier E, editors. *Biology of damselfishes*. Boca Raton: CRC Press; 2016. p. 246–66.
- Feeney WE, Brooker RM. Anemonefishes. *Curr Biol*. 2017;27:R6–R8.
- Litsios G, Sims CA, Wüest RO, et al. Mutualism with sea anemones triggered the adaptive radiation of clownfishes. *BMC Evol Biol*. 2012;12:1.
- Marcionetti A, Rossier V, Roux N, et al. Insights into the genomics of clownfish adaptive radiation: genetic basis of the mutualism with sea anemones. *Genome Biol Evol*. 2019;11:869–82.
- Elliott JK, Mariscal RN. Coexistence of nine anemonefish species: differential host and habitat utilization, size and recruitment. *Mar Biol*. 2001;138:23–36.
- Fautin DG, Allen GR. *Anemonefishes and their host sea anemones: a guide for aquarists and divers*. Perth: Western Australian Museum; 1997.
- Buston P. Social hierarchies: size and growth modification in clownfish. *Nature*. 2003;424:145–6.
- Buston PM, Elith J. Determinants of reproductive success in dominant pairs of clownfish: a boosted regression tree analysis: determinants of reproductive success. *J Anim Ecol*. 2011;80:528–38.
- Green BS, McCormick MI. O2 replenishment to fish nests: males adjust brood care to ambient conditions and brood development. *Behav Ecol*. 2005;16:389–97.
- Madhu K, Madhu R, Krishnan L, et al. Spawning and larval rearing of *Amphiprion ocellaris* under captive condition. *Mar Fish Inf Serv Tech Ext Ser*. 2006;188:1–5.
- Ghosh S, Kumar TTA, Balasubramanian T. Determining the level of parental care relating fanning behavior of five species of clownfishes in captivity. *Indian J Geo-Mar Sci*. 2012;41:430–41.
- Moyer T, Bell LJ. Reproductive behavior of the Anemonefish *Amphiprion clarkii* at Miyake-Jima, Japan. *Jpn J Ichthyol*. 1976;23:23–32.
- Barth P, Berenshtein I, Besson M, et al. From the ocean to a reef habitat: how do the larvae of coral reef fishes find their way home. *Vie Milieu-Life Environ*. 2015;95:91–100.
- Militz TA, Foale S. The “Nemo Effect”: perception and reality of finding nemo's impact on marine aquarium fisheries. *Fish Fish*. 2017;18:596–606.
- Leis JM, Carson-Ewart B. *The larvae of indo-pacific coastal fishes: an identification guide to marine fish larvae*. Leiden: Fauna Malesiana; 2000.
- Avella MA, Olivotto I, Gioacchini G, Maradonna F, Carnevali O. The role of fatty acids enrichments in the larviculture of false percula clownfish *Amphiprion ocellaris*. *Aquaculture*. 2007;273:87–95.
- DeAngelis RS, Rhodes JS. Sex Differences in Steroid Hormones and Parental Effort across the Breeding Cycle in *Amphiprion ocellaris*. *Copeia*. 2016;104:586–93.
- Callan CK. Assessment of the flame angelfish (*Centropyge loriculus*) as a model species in studies on egg and larval quality in marine fishes. 2007. <https://digitalcommons.library.umaine.edu/etd/126/>. Accessed 5 Oct 2017.
- Edwards TM, Miller HD, Guillette LJ. Water quality influences reproduction in female mosquitofish (*Gambusia holbrooki*) from eight florida springs. *Environ Health Perspect*. 2005;114:69–75.
- Collingwood C. Note on the existence of gigantic sea-anemones in the China sea, containing within them quasi-parasitic fish. *Ann Mag Nat Hist*. 1868;4(31):33.
- Nedosyko AM, Young JE, Edwards JW, et al. Searching for a toxic key to unlock the mystery of anemonefish and anemone symbiosis. *PLoS ONE*. 2014;9:e98449.
- Nguyen HTT, Dang BT, Glenner H, et al. Cophylogenetic analysis of the relationship between anemonefish *Amphiprion* (Perciformes: Pomacentridae) and their symbiotic host anemones (Anthozoa: Actiniaria). *Mar Biol Res*. 2020;16:117–33.
- Titus BM, Benedict C, Laroche R, et al. Phylogenetic relationships among the clownfish-hosting sea anemones. *Mol Phylogenet Evol*. 2019;139:106526.
- Abdullah NS, Saad S. Rapid detection of N-Acetylneuraminic acid from false clownfish using HPLC-FLD for symbiosis to host sea anemone. *Asian J Appl Sci*. 2015;3:858–93.
- Balamurugan J, Kumar TTA, Kannan R, et al. Acclimation behaviour and biochemical changes during anemonefish (*Amphiprion sebae*) and sea anemone (*Stichodactyla haddoni*) symbiosis. *Symbiosis*. 2014;64:127–38.
- Mebs D. Chemical biology of the mutualistic relationships of sea anemones with fish and crustaceans. *Toxicon*. 2009;54:1071–4.
- Pratte ZA, Patin NV, McWhirt ME, et al. Association with a sea anemone alters the skin microbiome of clownfish. *Coral Reefs*. 2018;37:1119–25.
- Roux N, Lami R, Salis P, et al. Sea anemone and clownfish microbiota diversity and variation during the initial steps of symbiosis. *Sci Rep*. 2019;9:19491.
- Murata M, Miyagawa-Koshima K, Nakanishi K. Characterization of compounds that induce symbiosis between sea anemone and anemone fish. *Science*. 1986;234:585–7.
- Depczynski M, Bellwood DR. Shortest recorded vertebrate lifespan found in a coral reef fish. *Curr Biol*. 2005;15:R288–R289289.
- Vrtilek M, Žák J, Poláček M, et al. Longitudinal demographic study of wild populations of African annual killifish. *Sci Rep*. 2018;8:4774.
- Nielsen J, Hedeholm R, Heinemeier J, et al. Eye lens radiocarbon reveals centuries of longevity in Greenland shark (*Somniosus microcephalus*). *Science*. 2016;353:702–4.
- Dulčić J, Kraljević M. Age, growth and mortality of damselfish (Chromis chromis L) in the eastern middle Adriatic. *Fish Res*. 1995;22:255–64.
- Buston PM, García MB. An extraordinary life span estimate for the clown anemonefish *Amphiprion percula*. *J Fish Biol*. 2007;70:1710–9.
- Sahm A, Almada-Pagán P, Bens M, et al. Analysis of the coding sequences of clownfish reveals molecular convergence in the evolution of lifespan. *BMC Evol Biol*. 2019;19:89.
- Liu H, Todd EV, Lokman PM, et al. Sexual plasticity: a fishy tale. *Mol Reprod Dev*. 2017;84:171–94.
- Ortega-Recalde O, Goikoetxea A, Hore TA, et al. The Genetics and Epigenetics of Sex Change in Fish. *Annu Rev Anim Biosci*. 2020;8:47–69.
- Todd EV, Liu H, Muncaster S, et al. Bending Genders: The Biology of Natural Sex Change in Fish. *Sex Dev*. 2016;10:223–41.
- Casas L, Saborido-Rey F, Ryu T, et al. Sex change in clownfish: molecular insights from transcriptome analysis. *Sci Rep*. 2016;6:35461.
- An KW, Lee J, Choi CY. Expression of three gonadotropin subunits and gonadotropin receptor mRNA during male-to-female sex change in the cinnamon clownfish, *Amphiprion melanopus*. *Comp Biochem Physiol A Mol Integr Physiol*. 2010;156:407–15.
- Dodd LD, Nowak E, Lange D, et al. Active feminization of the preoptic area occurs independently of the gonads in *Amphiprion ocellaris*. *Horm Behav*. 2019;112:65–766.
- Kim D-H, Brunt J, Austin B. Microbial diversity of intestinal contents and mucus in rainbow trout (*Oncorhynchus mykiss*). *J Appl Microbiol*. 2007;102:1654–64.

43. Zhang Y, Zhang H, Wang J, et al. Molecular characterization and expression patterns of glucocorticoid receptor (GR) genes in protandrous hermaphroditic yellowtail clownfish *Amphiprion clarkii*. *Gene*. 2020;745:144651.
44. Miura S, Kobayashi Y, Bhandari RK, et al. Estrogen favors the differentiation of ovarian tissues in the ambisexual gonads of anemonefish *Amphiprion clarkii*. *J Exp Zool Part Ecol Genet Physiol*. 2013;319:560–8.
45. Patterson LB, Parichy DM. Zebrafish Pigment Pattern Formation: Insights into the Development and Evolution of Adult Form. *Annu Rev Genet*. 2019. <https://doi.org/10.1146/annurev-genet-112618-043741> **Epub ahead of print 11 September 2019.**
46. Salis P, Lorin T, Laudet V, et al. Magic traits in magic fish: understanding color pattern evolution using reef fish. *Trends Genet*. 2019;35:265–78.
47. Salis P, Roux N, Soulat O, et al. Ontogenetic and phylogenetic simplification during white stripe evolution in clownfishes. *BMC Biol*. 2018;16:90.
48. McMenamin SK, Bain EJ, McCann AE, et al. Thyroid hormone-dependent adult pigment cell lineage and pattern in zebrafish. *Science*. 2014;345:1358–61.
49. Saunders LM, Mishra AK, Aman AJ, et al. Thyroid hormone regulates distinct paths to maturation in pigment cell lineages. *eLife*. 2019;8:e45181.
50. Holzer G, Besson M, Lambert A, et al. Fish larval recruitment to reefs is a thyroid hormone-mediated metamorphosis sensitive to the pesticide chlorpyrifos. *eLife*. 2017;6:1–22.
51. Hodge JR, Santini F, Wainwright PC. Colour dimorphism in labrid fishes as an adaptation to life on coral reefs. *Proc R Soc B Biol Sci*. 2020;287:20200167.
52. Hattori A, Yanagisawa Y. Life-history pathways in relation to gonadal sex differentiation in the anemonefish, *Amphiprion clarkii*, in temperate waters of Japan. *Environ Biol Fishes*. 1991;31:139–55.
53. Gilbert SF, Bosch TCG, Ledón-Rettig C. Eco-Evo-Devo: developmental symbiosis and developmental plasticity as evolutionary agents. *Nat Rev Genet*. 2015;16:611–22.
54. Militz TA, McCormick MI, Schoeman DS, et al. Frequency and distribution of melanistic morphs in coexisting population of nine clownfish species in Papua New Guinea. *Mar Biol*. 2016;163:200.
55. Wilkins MR, Seddon N, Safran RJ. Evolutionary divergence in acoustic signals: causes and consequences. *Trends Ecol Evol*. 2013;28:156–66.
56. Ladich F, Winkler H. Acoustic communication in terrestrial and aquatic vertebrates. *J Exp Biol*. 2017;220:2306–17.
57. Colley O, Vandewalle P, Lanterbecq D, et al. Interspecific variation of calls in clownfishes: degree of similarity in closely related species. *BMC Evol Biol*. 2011;11:365.
58. Parmentier E, Colley O, Fine ML, et al. Sound production in the clownfish *Amphiprion clarkii*. *Science*. 2007;316:1006–1006.
59. Rueger T, Barbasch TA, Wong MYL, et al. Reproductive control via the threat of eviction in the clown anemonefish. *Proc R Soc B Biol Sci*. 2018;285:20181295.
60. Frisch AJ, Rizzari JR, Munkres KP, et al. Anemonefish depletion reduces survival, growth, reproduction and fishery productivity of mutualistic anemone–anemonefish colonies. *Coral Reefs*. 2016;35:375–86.
61. Hirose Y. Patterns of pair formation in protandrous anemonefishes, *Amphiprion clarkii*, *A. frenatus* and *A. perideraion*, on coral reefs of Okinawa, Japan. *Environ Biol Fishes*. 1995;43:153–61.
62. Planes S, Jones GP, Thorrold SR. Larval dispersal connects fish populations in a network of marine protected areas. *Proc Natl Acad Sci*. 2009;106:5693–7.
63. Salles OC, Maynard JA, Joannides M, et al. Coral reef fish populations can persist without immigration. *Proc R Soc B Biol Sci*. 2015;282:20151311.
64. Salles OC, Pujol B, Maynard JA, et al. First genealogy for a wild marine fish population reveals multigenerational philopatry. *Proc Natl Acad Sci*. 2016;113:13245–50.
65. Dixon DL, Jones GP, Munday PL, et al. Experimental evaluation of imprinting and the role innate preference plays in habitat selection in a coral reef fish. *Oecologia*. 2014;174:99–107.
66. Scott A, Dixon DL. Reef fishes can recognize bleached habitat during settlement: sea anemone bleaching alters anemonefish host selection. *Proc R Soc B Biol Sci*. 2016;283:20152694.
67. MacRae CA, Peterson RT. Zebrafish as tools for drug discovery. *Nat Rev Drug Discov*. 2015;14:721–31.
68. Fadeev A, Krauss J, Singh AP, et al. Zebrafish Leucocyte tyrosine kinase controls iridophore establishment, proliferation and survival. *Pigment Cell Melanoma Res*. 2016;29:284–96.
69. Salis P, Lorin T, Lewis V, et al. Developmental and comparative transcriptomic identification of iridophore contribution to white barring in clownfish. *Pigment Cell Melanoma Res*. 2019;32:391–402.
70. Ghosh J, Wilson RW, Kudoh T. Normal development of the tomato clownfish *Amphiprion frenatus*: live imaging and *in situ* hybridization analyses of mesodermal and neurectodermal development. *J Fish Biol*. 2009;75:2287–98.
71. Kobayashi Y, Horiguchi R, Miura S, et al. Sex- and tissue-specific expression of P450 aromatase (cyp19a1a) in the yellowtail clownfish, *Amphiprion clarkii*. *Comp Biochem Physiol A Mol Integr Physiol*. 2010;155:237–44.
72. Stieb SM, de Busserolles F, Carleton KL, et al. A detailed investigation of the visual system and visual ecology of the Barrier Reef anemonefish *Amphiprion akindynos*. *Sci Rep*. 2019;9:1–14.
73. Besseau L, Bruslé-Sicard S. Plasticity of gonad development in hermaphroditic sparids: ovotestis ontogeny in a protandric species *Lithognathus mormyrus*. *Environ Biol Fishes*. 1995;43:255–67.
74. Arvedlund M, Munday PL, Takemura A. The morphology and ultrastructure of the peripheral olfactory organ in newly metamorphosed coral-dwelling gobies, *Paragobiodon xanthosomus* Bleeker (Gobiidae, Teleostei). *Tissue Cell*. 2007;39:335–42.
75. Roux N, Salis P, Lambert A, et al. Staging and normal table of postembryonic development of the clownfish (*Amphiprion ocellaris*). *Dev Dyn*. 2019;248:545–68.
76. Toews DPL, Hofmeister NR, Taylor SA. The evolution and genetics of carotenoid processing in animals. *Trends Genet*. 2017;33:171–82.
77. Litsios G, Salamin N. Hybridisation and diversification in the adaptive radiation of clownfishes. *BMC Evol Biol*. 2014;14:245.
78. Gainsford A, Jones GP, Gardner MG, et al. Characterisation and cross-amplification of 42 microsatellite markers in two *Amphiprion* species (Pomacentridae) and a natural hybrid anemonefish to inform genetic structure within a hybrid zone. *Mol Biol Rep*. 2020;47:1521–5.
79. Madhu R, Madhu K, Rethesh T. Life history pathways in false clown *Amphiprion ocellaris* Cuvier, 1830: a journey from egg to adult under captive condition. *J Mar Biol Assoc India*. 2012;54:77–90.
80. Olivetto I, Clownfish GB. *Clownfish*. In: Calado R, Olivetto I, Oliver MP, et al., editors. Marine ornamental species aquaculture. Hoboken: Wiley; 2017. p. 177–199.
81. Tan MH, Austin CM, Hammer MP, et al. Finding Nemo: hybrid assembly with Oxford Nanopore and Illumina reads greatly improves the clownfish (*Amphiprion ocellaris*) genome assembly. *GigaScience*. 2018;7(3):1–6.
82. Lehmann R, Lightfoot DJ, Schunter C, et al. Finding Nemo's Genes: A chromosome-scale reference assembly of the genome of the orange clownfish *Amphiprion percula*. *Mol Ecol Resour*. 2019;19:570–85.
83. Marcionetti A, Rossier V, Bertrand JAM, et al. First draft genome of an iconic clownfish species (*Amphiprion frenatus*). *Mol Ecol Resour*. 2018;18:1092–101.
84. Sun Y, Huang Y, Li X, et al. Fish-T1K (Transcriptomes of 1000 Fishes) Project: large-scale transcriptome data for fish evolution studies. *GigaScience*. 2016;5:18.

Publisher's Note

Springer Nature remains neutral with regard to jurisdictional claims in published maps and institutional affiliations.