



HAL
open science

Assessment of prognostic implication of a panel of oncogenes in bladder cancer and identification of a 3-gene signature associated with recurrence and progression risk in non-muscle-invasive bladder cancer

Constance Le Goux, Sophie Vacher, Anne Schnitzler, Nicolas Barry Delongchamps, Marc Zerbib, Michael Peyromaure, Mathilde Sibony, Yves Allory, Ivan Bieche, Diane Damotte, et al.

► To cite this version:

Constance Le Goux, Sophie Vacher, Anne Schnitzler, Nicolas Barry Delongchamps, Marc Zerbib, et al.. Assessment of prognostic implication of a panel of oncogenes in bladder cancer and identification of a 3-gene signature associated with recurrence and progression risk in non-muscle-invasive bladder cancer. *Scientific Reports*, 2020, 10 (1), pp.16641. 10.1038/s41598-020-73642-8. hal-02986867

HAL Id: hal-02986867

<https://hal.sorbonne-universite.fr/hal-02986867>

Submitted on 3 Nov 2020

HAL is a multi-disciplinary open access archive for the deposit and dissemination of scientific research documents, whether they are published or not. The documents may come from teaching and research institutions in France or abroad, or from public or private research centers.

L'archive ouverte pluridisciplinaire **HAL**, est destinée au dépôt et à la diffusion de documents scientifiques de niveau recherche, publiés ou non, émanant des établissements d'enseignement et de recherche français ou étrangers, des laboratoires publics ou privés.



OPEN

Assessment of prognostic implication of a panel of oncogenes in bladder cancer and identification of a 3-gene signature associated with recurrence and progression risk in non-muscle-invasive bladder cancer

Constance Le Goux^{1,2,✉}, Sophie Vacher¹, Anne Schnitzler¹, Nicolas Barry Delongchamps³, Marc Zerbib³, Michael Peyromaure³, Mathilde Sibony⁴, Yves Allory⁵, Ivan Bieche^{1,6}, Diane Damotte^{4,7} & Geraldine Pignot⁸

This study evaluated the prognostic value of a panel of 29 oncogenes derived from the analysis of The Cancer Genome Atlas (TCGA data) or from the recent literature on bladder tumors on a well-characterized series of muscle-invasive bladder cancer (MIBC) and non-MIBC (NMIBC) samples and tried to identify molecular prognostic markers. Mutations of *HRAS*, *FGFR3*, *PIK3CA* and *TERT* were found in 2.9%, 27.2%, 14.9% and 76.7% of tumor samples, respectively. Concerning NMIBC, on multivariate analysis, *RXRA* and *FGFR3* levels were associated with recurrence-free survival (RFS) ($p=0.0022$ and $p=0.0069$) and *RXRA* level was associated with progression to muscle-invasive disease ($p=0.0068$). We identified a 3-gene molecular signature associated with NMIBC prognosis. *FGFR3* overexpression was associated with reduced response to Bacillus Calmette–Guerin treatment ($p=0.037$). As regards MIBC, on multivariate analysis, *ERCC2* overexpression was associated with RFS ($p=0.0011$) and *E2F3* and *EGFR* overexpression were associated with overall survival ($p=0.014$ and $p=0.035$). RT-PCR findings were confirmed by IHC for *FGFR3*. Genomic alterations in MIBC revealed in TCGA data also concern NMIBC and seem to be associated with prognosis in terms of recurrence and progression. Correcting these alterations by targeted therapies seems a promising pharmacological approach.

Abbreviations

BCG	Bacillus Calmette–Guerin
cDNA	Complementary deoxyribonucleic acid
IHC	Immunohistochemistry
NMIBC	Non-muscle-invasive bladder cancer

¹Pharmacogenomics Unit, Department of Genetic, Curie Institute, Paris, France. ²Department of Urology, Bichat Hospital, Paris Sud University, 78 rue du Général Leclerc, 94270 Le Kremlin-Bicêtre, France. ³Department of Urology, Cochin Hospital, Paris Descartes University, Paris, France. ⁴Department of Pathology, Cochin Hospital, Paris Descartes University, Paris, France. ⁵Department of Pathology, Curie Institute, Paris, France. ⁶Inserm U1016, Cochin Institute, University Paris Descartes, Paris, France. ⁷Cancer, Immune Control, and Escape, INSERM U1138, Cordeliers Research Center, Paris, France. ⁸Department of Surgical Oncology, Institut Paoli-Calmettes, Marseille, France. ✉email: constance.legoux@gmail.com

MIBC	Muscle-invasive bladder cancer
mRNA	Messenger ribonucleic acid
OS	Overall survival
PFS	Progression-free survival
RFS	Recurrence-free survival
RT-PCR	Reverse-transcriptase polymerase chain reaction
TCGA	The Cancer Genome Atlas
TNM	Tumor-node metastasis

With 430,000 cases diagnosed worldwide, bladder cancer is responsible for 150,000 deaths a year. In France, 11,000 new cases of bladder cancer are diagnosed each year. About 70% of newly diagnosed cases are non-muscle-invasive bladder cancer (NMIBC). These cases have a 60% recurrence rate, and 10% evolve to muscle-invasive tumors. Muscle-invasive bladder cancer (MIBC) represents 30% of cases at diagnosis. Survival greatly differs between NMIBC and MIBC.

Contrary to what was previously thought, focal and recurrent gene amplifications are common in urothelial bladder carcinomas. Recently, genome analysis revealed new genomic alterations that could be used as markers in clinical oncology. Analysis of The Cancer Genome Atlas (TCGA) data revealed 27 amplified regions¹. Integrated analysis of the various genetic alterations described in TCGA revealed three main deregulated signaling pathways in bladder tumors and potential therapeutic targets. Deregulations affecting the cell cycle were found in 93% of cases, those affecting histone pathway in 89% of cases, those affecting the PI3K/AKT/mammalian target of rapamycin (mTOR) pathway in 72% of cases, and those involved in chromatin remodeling in 64% of cases¹. However, there are few comparative data in the literature regarding these alterations in NMIBC, probably because of the constraints associated with the sampling procedures inherent in NMIBC.

We aimed to identify genes whose abnormalities are related to prognosis, especially NMIBC prognosis. We studied a panel of 29 oncogenes derived from the analysis of TCGA data or from the recent literature on bladder tumors^{1–7} on a well-characterized series of NMIBC and MIBC samples and tried to identify molecular prognostic markers.

Results

DNA mutations. NMIBC and MIBC samples showed mutation in *HRAS* in 4.5% (2/44) and 1.7% (1/59) of cases, respectively; in *FGFR3* in 50.0% (22/44) and 10.2% (6/59) of cases, respectively; in *PIK3CA* in 16.7% (10/60) and 13.5% (9/67) of cases, respectively; and in *TERT* in 79.5% (35/44) and 74.6% (44/59) of cases, respectively (Table 1 and Supplementary Data 1). DNA mutations were not associated with prognosis in terms of recurrence or progression of NMIBC or in terms of RFS or OS of MIBC (data not shown).

Gene expression. For most genes except *PRKCI*, *FBXW7*, *E2F3*, *SOX4*, *YWHAZ*, *GDI2*, *FRS2*, *ERCC2* and *BCL2L1*, the expression profile differed between MIBC and NMIBC samples (Supplementary Data 2).

In NMIBC samples, 24/29 (82.8%) genes were significantly deregulated as compared with normal bladder tissue ($p < 0.05$) (Supplementary Data 2); 4 genes showed significant differences in expression by stage (pTa versus pT1), 4 by grade (low versus high) and 5 by stage and grade (*TACC3*, *FBXW7*, *SOX4*, *YWHAZ*, *Ki67*) (Supplementary Data 3).

In MIBC samples, 25/29 genes (86.2%) were significantly deregulated as compared with normal bladder tissue ($p < 0.05$) (Supplementary Data 2).

Association between gene expression and prognosis of NMIBC. On univariate analysis, only the expression of *RXRA*, *FGFR3* and *CCNE1* was associated with RFS ($p = 0.0017$, $p = 0.043$ and $p = 0.039$, respectively) and PFS ($p = 0.0043$, $p = 0.022$ and $p = 0.022$, respectively) (Supplementary Data 4, 5, and 6).

Correlation between *PPARG* and *RXRA* mRNA expressions were strong ($p < 0.0000001$, Spearman's test); however, *PPARG* was not associated with prognosis.

Multivariate analyses included covariates associated with RFS or PFS showing significance at $p < 0.05$ on univariate analysis (i.e., history of NMIBC; *RXRA*, *FGFR3* and *CCNE1* status for recurrence and stage, grade, Cis and *RXRA*, *FGFR3* and *CCNE1* status for progression to muscle-invasive tumor). On multivariate analysis, history of NMIBC and *RXRA* and *FGFR3* status remained associated with RFS ($p = 0.0045$, $p = 0.0022$ and $p = 0.0069$, respectively) and only *RXRA* status with PFS ($p = 0.0068$) (Table 2).

We performed unsupervised hierarchical clustering analyses of 61 NMIBC samples with the 3 genes previously found in NMIBC samples (*RXRA*, *FGFR3*, and *CCNE1*) and found 4 major clusters composed of 15 (Group A), 15 (Group B), 16 (Group C) and 15 (Group D) samples with various mRNA levels of these 3 genes (Fig. 1A,B). The 4 cluster groups significantly differed in terms of PFS (log rank $p = 0.010$): Kaplan–Meier survival curves showed poor outcome associated with group B and better with group D (Fig. 1C). Multivariate analyses including covariates associated with RFS and PFS with significance at $p < 0.05$ on univariate analysis and including the 3-gene signature retained history of NMIBC and the 3-gene signature as independent prognostic factors for RFS ($p = 0.017$ and $p = 0.04$, respectively) and the 3-gene signature as independent prognostic factor for PFS ($p = 0.047$) (Table 3). Clinical and histological characteristics of the four groups are presented in Supplemental Data 7. The four groups differed in sex, stage, grade and mutational status of *FGFR3*.

Response to Bacillus Calmette–Guerin (BCG) therapy. In total, 21/28 (75%) patients with BCG therapy showed recurrent NMIBC or progression to invasive tumor during follow-up, including 15/28 (53.6%) over

	No recurrence		Recurrence		Muscle-invasive progression	
	n (%)	n (%)	n (%)	p*	n (%)	p**
Total population	61 (100)	19 (31.1)	32 (52.5)		10 (16.4)	
Age (years)						
≥60	45 (73.8)	13 (68.4)	22 (68.8)	0.98	10 (100.0)	0.0095
<60	16 (26.2)	6 (31.6)	10 (31.2)		0 (0.0)	
Sex						
Male	54 (88.5)	17 (89.5)	28 (88.9)	0.81	9 (90.0)	0.70
Female	7 (11.5)	2 (10.5)	4 (11.1)		1 (10.0)	
Smoking status						
Non-smoker	27 (44.3)	6 (31.6)	16 (50.0)	0.20	5 (50.0)	0.96
Smoker	34 (55.7)	13 (68.4)	16 (50.0)		5 (50.0)	
History of NMIBC						
No	34 (55.7)	16 (84.2)	14 (43.7)	0.0045	4 (40.0)	0.45
Yes	27 (44.3)	3 (15.8)	18 (56.3)		6 (60.0)	
Cis associated						
No	58 (95.1)	19 (100.0)	31 (96.9)	0.79	8 (80.0)	0.015
Yes	3 (4.9)	0 (0.0)	1 (3.1)		2 (20.0)	
Grade						
Low	25 (41.0)	10 (52.6)	14 (43.8)	0.48	1 (10.0)	0.029
High	36 (59.0)	9 (47.4)	18 (56.2)		9 (90.0)	
Tumor stage						
Ta	39 (63.9)	13 (68.4)	23 (71.9)	0.79	3 (30.0)	0.015
T1	22 (36.1)	6 (31.6)	9 (28.1)		7 (70.0)	
HRAS mutation^ε						
No	42 (95.5)	13 (92.9)	21 (95.5)	0.68	8 (100.0)	0.80
Yes	2 (4.5)	1 (7.1)	1 (4.5)		0 (0.0)	
FGFR3 mutation^ε						
No	22 (50.0)	7 (50.0)	11 (50.0)	1.00	4 (50.0)	1.00
Yes	22 (50.0)	7 (50.0)	11 (50.0)		4 (50.0)	
PIK3CA mutation^{εε}						
No	50 (83.3)	13 (72.2)	28 (87.5)	0.18	9 (90.0)	0.53
Yes	10 (16.7)	5 (27.8)	4 (12.5)		1 (10.0)	
TERT mutation^ε						
No	9 (20.5)	4 (28.6)	4 (18.2)	0.46	1 (12.5)	0.54
Yes	35 (79.5)	10 (71.4)	18 (81.8)		7 (87.5)	
		Recurrence-free survival		Overall survival		
	n (%)	n (%) ^a	p*	n (%) ^b	p*	
Total population	67 (100)	46 (68.7)		40 (59.7)		
Age (years)						
≥60	49 (73.1)	39 (79.6)	0.001	34 (69.4)	0.008	
<60	18 (26.9)	7 (38.9)		6 (33.3)		
Sex						
Male	53 (79.1)	34 (64.2)	0.16	32 (60.4)	0.83	
Female	14 (20.9)	12 (85.7)		8 (57.1)		
Smoking status						
Non-smoker	15 (22.4)	13 (86.7)	0.09	12 (80.0)	0.07	
Smoker	52 (77.6)	33 (63.5)		28 (53.8)		
History of NMIBC						
No	40 (59.7)	31 (77.5)	0.06	25 (62.5)	0.57	
Yes	27 (40.3)	15 (55.6)		15 (55.6)		
Tumor stage						
T2	25 (37.3)	17 (68.0)	0.93	10 (40.0)	0.01	
≥T3	42 (62.7)	29 (69.0)		30 (71.4)		
N status						
N-	42 (62.7)	25 (59.5)	0.06	19 (45.2)	0.002	
N+	25 (37.3)	21 (84.0)		21 (84.0)		
Continued						

	Recurrence-free survival			Overall survival	
	n (%)	n (%) ^a	<i>p</i> [*]	n (%) ^b	<i>p</i> [*]
HRAS mutation^ε					
No	58 (98.3)	38 (97.4)	0.48	30 (96.8)	0.43
Yes	1 (1.7)	1 (2.6)		1 (3.2)	
FGFR3 mutation^ε					
No	53 (89.8)	35 (89.7)	0.97	28 (90.3)	0.92
Yes	6 (10.2)	4 (10.3)		3 (9.7)	
PIK3CA mutation^{εε}					
No	59 (88.1)	41 (89.1)	0.69	35 (87.5)	0.86
Yes	9 (13.5)	5 (10.9)		5 (12.5)	
TERT mutation^ε					
No	15 (25.4)	8 (20.5)	0.23	7 (22.6)	0.60
Yes	44 (74.6)	31 (79.5)		24 (77.4)	

Table 1. Clinical and pathological characteristics of patients (a) 61 patients with non-muscle-invasive bladder cancer (NMIBC). (b) 67 patients with muscle-invasive bladder cancer (MIBC). *Chi-square test (*Recurrence versus No recurrence*); **chi-square test (*Muscle-invasive progression versus the others*). ^εInformation available for 44 patients; ^{εε} Information available for 60 patients. ^aFirst recurrence (local or metastatic); ^b Death; *chi-square test. ^εInformation available for 59 patients; ^{εε} Information available for 67 patients. Bold values are statistically significant ($p < 0.05$).

Prognostic factor	Recurrence-free survival		
	Adjusted HR	95% CI	<i>p</i> [*]
History of NMIBC	2.63	[1.35–5.13]	0.0045
RXRA overexpression	0.34	[0.17–0.68]	0.0022
FGFR3 overexpression	0.39	[0.20–0.77]	0.0069
CCNE1 overexpression	1.53	[0.81–2.89]	0.19
Prognostic factor	Progression-free survival		
	Adjusted HR	95% CI	<i>p</i> [*]
T1 stage	5.93	[0.68–51.34]	0.11
Cis associated	1.52	[0.26–9.08]	0.64
High grade	1.10	[0.06–18.76]	0.95
RXRA overexpression	0.06	[0.01–0.47]	0.0068
FGFR3 overexpression	0.12	[0.01–1.00]	0.05
CCNE1 overexpression	5.53	[0.97–31.39]	0.053

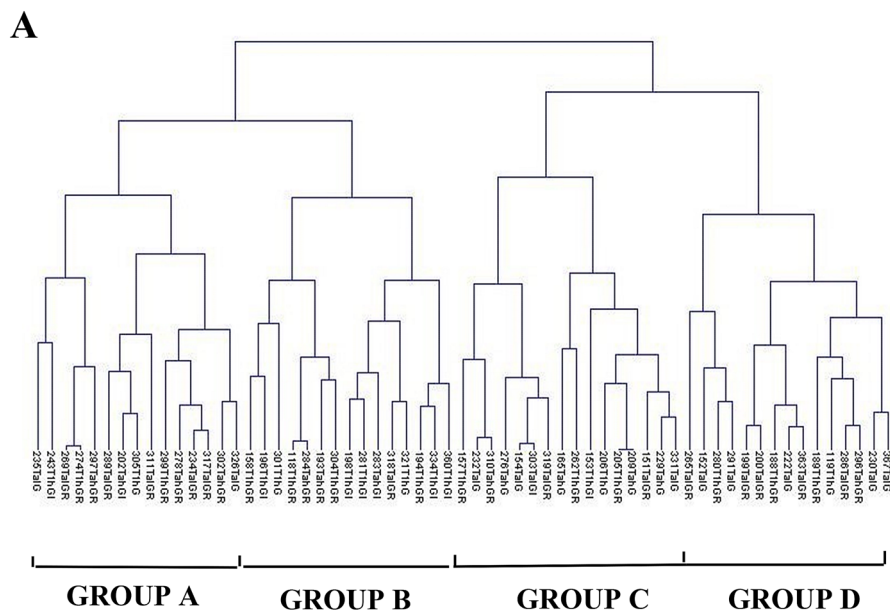
Table 2. Multivariate analysis of prognostic factors involved in recurrence-free survival and progression-free survival in non-muscle-invasive bladder cancer. *HR* hazard ratio, *95% CI* 95% confidence interval. *Cox model. Bold values are statistically significant ($p < 0.05$).

the first 2 years. Among the 29 investigated genes, only low expression of *FGFR3* was significantly associated with good response to BCG therapy (no or late recurrence) ($p = 0.037$) (Table 4).

Association between mRNA expression and survival with MIBC. On univariate analysis, RFS and OS prognosis was poor with high expression of *EGFR* ($p = 0.045$ and $p = 0.010$, respectively) (Supplemental Data 8); RFS prognosis was poor with high expression of *ERCC2* ($p = 0.025$) (Supplemental Data 9); and OS prognosis was poor with low expression of *E2F3* ($p = 0.030$) (Supplemental Data 10).

Multivariate analyses included covariates associated with RFS or OS showing significance at $p < 0.05$ on univariate analysis (i.e. lymph node status and *ERCC2* and *EGFR* status for RFS, and stage, lymph node status and *E2F3* and *EGFR* status for OS). Lymph node status and *ERCC2* status remained associated with RFS ($p = 0.000014$ and $p = 0.0011$) and lymph node status and *E2F3* and *EGFR* level status with OS ($p = 0.00016$, $p = 0.014$ and $p = 0.035$, respectively) (Table 5).

Protein expression. We chose to assess protein expression of the 2 genes having a significant prognostic impact in NMIBC. The expression of RXRA was nuclear in NMIBC whereas exclusively cytoplasmic in MIBC (Supplemental Data 11). For FGFR3, expression was nuclear in both NMIBC and MIBC. The distribution of the protein expression for NMIBC and MIBC is shown in Supplemental Data 12. There was a statistically significant



B

GENES	Group A (n=15)	Group B (n=15)	Group C (n=16)	Group D (n=15)	p
<i>RXRA</i> mRNA value (range)	1.93 [0.41-3.34]	2.12 [0.79-3.89]	2.56 [1.53-9.23]	3.73 [2.46-5.82]	<0.0001
Overexpression*, n (%)	5 (33.3)	9 (60.0)	11 (68.8)	15 (100.0)	
<i>FGFR3</i> mRNA value (range)	58.41 [2.49-109.73]	27.94 [3.91-72.13]	116.94 [81.32-524.30]	72.44 [20.95-223.10]	<0.0001
Overexpression*, n (%)	10 (66.7)	9 (60.0)	16 (100.0)	13 (86.7)	
<i>CCNE1</i> mRNA value (range)	6.06 [2.87-9.34]	7.76 [4.37-16.65]	5.05 [2.45-27.69]	2.16 [0.99-3.58]	<0.0001
Overexpression*, n (%)	0 (0.0)	4 (26.7)	3 (18.8)	0 (0.0)	

*optimal cut-off: 2 for *RXRA*, 25 for *FGFR3*, 10 for *CCNE1*

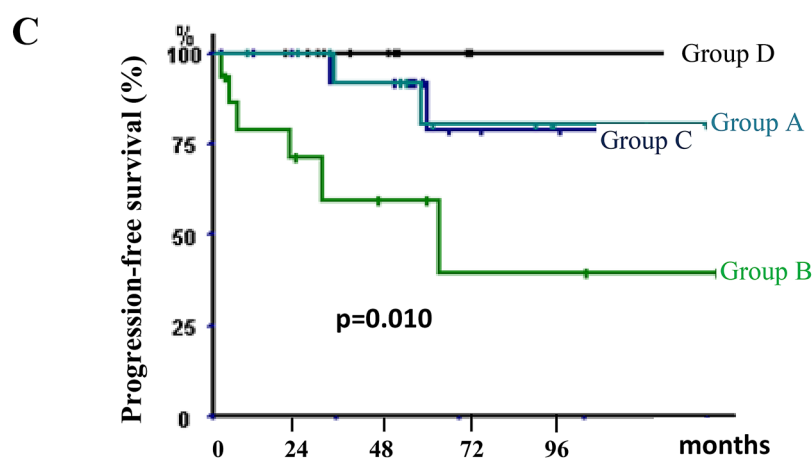


Figure 1. Supervised classification analysis of the 61 NMIBC tumor samples with the 3-gene signature comprising *RXRA*, *FGFR3* and *CCNE1*. (A) dendrogram of four tumor groups obtained by hierarchical cluster with the 3-gene signature. (B) mRNA median value [range] and overexpression rates of *FGFR3*, *RXRA* and *CCNE1* in the four tumor groups. *p* value calculated by Kruskal Wallis H-test. For each gene, mRNA values \geq optimal cut-off were considered to represent overexpression and \leq optimal cut-off, underexpression. (C) Kaplan–Meier curves comparing progression-free survival for tumor groups. *p* value calculated by log rank test.

Prognostic factor	Recurrence-free survival		
	Adjusted HR	95% CI	p *
History of NMIBC	2.16	[1.15–4.08]	0.017
3-gene signature (group B vs. AC vs. D)			0.04
Group D	1.00		
Groups A and C	1.70	[1.02–2.84]	
Group B	2.90	[1.05–8.04]	
Prognostic factor	Progression-free survival		
	Adjusted HR	95% CI	p *
T1 stage	2.36	[0.43–12.79]	0.23
High Grade	2.26	[0.20–25.29]	0.51
Cis associated	2.29	[0.41–12.88]	0.35
3-gene signature (group B vs. AC vs. D)			0.047
Group D	1.00		
Groups A and C	3.50	[1.01–12.09]	
Group B	12.27	[1.03–146.14]	

Table 3. Multivariate analysis of prognostic factors involved in recurrence-free survival and progression-free survival in non-muscle-invasive bladder cancer including the 3-gene signature. *HR* hazard ratio, *95% CI* 95% confidence interval. *Cox model. Bold values are statistically significant ($p < 0.05$).

GENES	Response ^a n = 13	No response ^b n = 15	p value**
PVRL4	122.90 [63.41–262.88]*	137.25 [33.37–638.75]*	0.53
MDM4	0.88 [0.50–1.24]	0.98 [0.71–1.63]	0.066
NFE2L2	1.87 [1.06–2.90]	1.59 [0.60–4.13]	0.77
PPARG	14.15 [5.91–18.73]	12.51 [2.26–17.67]	0.17
PIK3CA	1.81 [0.33–9.81]	0.62 [0.37–1.31]	0.39
PRKCI	4.07 [0.00–6.96]	3.71 [0.80–11.16]	0.7
FGFR3	27.94 [9.09–104.57]	73.47 [5.25–143.15]	0.037
TACC3	4.98 [1.36–9.32]	3.86 [1.39–12.08]	0.39
FBXW7	0.88 [0.60–1.26]	1.03 [0.64–1.74]	0.44
PAIP1	0.79 [0.63–1.96]	0.85 [0.10–1.09]	0.98
E2F3	2.13 [1.36–2.74]	2.17 [0.81–4.14]	0.73
SOX4	6.39 [3.53–11.76]	6.40 [1.91–12.88]	0.34
EGFR	1.34 [0.45–3.08]	0.92 [0.33–2.67]	0.35
ZNF703	1.09 [0.42–2.18]	1.27 [0.08–3.44]	0.39
PABPC1	2.21 [0.99–4.16]	2.02 [1.38–3.54]	0.27
YWHAZ	1.36 [1.14–3.69]	1.37 [0.68–2.48]	0.61
MYC	0.85 [0.60–1.82]	0.74 [0.30–2.36]	0.56
RXRA	2.04 [1.59–5.79]	1.96 [1.16–4.81]	0.98
GDI2	2.43 [1.50–3.19]	2.12 [0.92–3.10]	0.10
Ki67	8.21 [37.92–72.23]	29.36 [1.80–63.41]	0.27
CCND1	3.40 [0.43–17.88]	2.76 [1.27–10.71]	0.45
HRAS	1.29 [0.77–1.91]	1.30 [0.63–6.00]	0.60
ERBB3	20.49 [11.83–38.13]	19.20 [7.06–43.90]	0.98
MDM2	1.93 [1.17–3.67]	2.06 [0.94–6.08]	0.50
FRS2	0.65 [0.52–0.93]	0.71 [0.48–1.22]	0.24
ERBB2	7.91 [5.15–45.03]	6.43 [2.88–12.50]	0.20
CCNE1	3.78 [2.02–9.72]	3.78 [1.08–27.69]	0.85
ERCC2	1.48 [1.28–2.57]	1.78 [0.80–2.69]	0.45
BCL2L1	1.46 [0.76–1.72]	1.42 [0.75–2.35]	0.98

Table 4. mRNA levels of studied genes in the population who received Bacillus Calmette–Guerin (BCG) therapy and association with response. ^aNo recurrence or late recurrence (≥ 24 months). ^bBCG-refractory or early recurrence (< 24 months). *Median mRNA value [range]. **Kruskall Wallis H test. Bold value is statistically significant ($p < 0.05$).

Prognostic factor	Recurrence-free survival		
	HR	95% CI	p *
N + status	4.97	[2.41–10.26]	0.000014
ERCC2 overexpression	2.21	[1.20–4.08]	0.0011
EGFR overexpression	2.01	[0.97–4.15]	0.061
Prognostic factor	Overall survival		
	HR	95% CI	p *
T3–T4 stage	1.35	[0.61–3.00]	0.46
N + status	4.12	[1.98–8.58]	0.00016
E2F3 underexpression	2.98	[1.25–7.09]	0.014
EGFR overexpression	2.25	[0.61–3.00]	0.035

Table 5. Multivariate analysis of prognostic factors involved in recurrence-free survival and overall survival in muscle-invasive bladder cancer. *HR* hazard ratio, *95% CI* 95% confidence interval. *Cox model. Bold values are statistically significant ($p < 0.05$).

mRNA levels	Protein score				p value**
	0+	1+	2+	3+	
RXRA	1.91 [0.68–2.83]*	1.88 [0.31–5.79]*	1.59 [0.11–9.15]*	3.09 [1.16–5.92]*	0.13
FGFR3	10.40 [0.01–118.70]	61.05 [7.18–143.15]	94.63 [41.84–524.30]	72.13 [58.00–79.54]	<0.0001
CCNE1	9.91 [6.35–13.48]	3.26 [1.64–12.94]	4.85 [0.59–58.55]	4.33 [0.52–17.30]	0.68

Table 6. mRNA level and protein score for RXRA, FGFR3 and CCNE1. *Median mRNA value [range]. **Kruskall-Wallis H-Test. Bold value is statistically significant ($p < 0.05$).

association between mRNA and protein expression for FGFR3 ($p < 0.0001$) but not for RXRA (Table 6). Protein expression was not associated with prognosis in terms of recurrence or progression of NMIBC (data not shown).

Discussion

The analysis of TCGA data for bladder tumors has allowed identifying new oncogenes potentially involved in bladder carcinogenesis because they have activating mutations or focal amplifications. The integrated analysis of the different genetic alterations described in the TCGA has revealed deregulated signaling pathways in bladder tumors and potential preferred therapeutic targets^{1,8}. We mainly relied on TCGA data because this study was the gold standard at the time of our study. We aimed to validate some of these TCGA data on a fair-matched cohort of NMIBC and MIBC cases focusing on survival data. Within these 2 populations, the rates of recurrence and/or progression were comparable to those observed typically: half of NMIBC cases show relapse and 35% of pT1 cases progress to muscle-invasive disease. Likewise, more than half of MIBC cases (all stages combined) recur after surgery. In MIBC, we found the same results as in the TCGA data with already known prognostic markers (e.g., *EGFR*). Regarding NMIBC, we found genes of interest such as *FGFR3* but also *RXRA* and *CCNE1*. On multivariate analysis, *RXRA* was associated with RFS but also with PFS. The 3-gene signature highlighted four distinct prognostic groups and was significantly associated with RFS and PFS.

Two studies showed that the transcription factor *RXRA* regulates the expression of *PPARG* and that activating mutation of *RXRA* hyperactivate *PPARG* and could be responsible for nearly 20% of bladder cancer cases^{9,10}. These data suggest that *PPARG*, a key gene in bladder cancer development, could be targeted. In this regard, it is noted that association between *PPARG* and *RXRA* mRNA expressions were strong ($p < 0.0000001$ with Spearman's test). Amplified / overexpressed mutated *RXRA*-*PPARG* would modulate the tumor microenvironment and lead to resistance to immunotherapy. Inactivation of *PPARG* or *RXRA* would increase sensitivity to immunotherapy¹¹. At this time, to our knowledge, there are no clinical trials involving therapies targeting *RXRA* or *PPARG*.

Ward et al. studied the mutations of a panel of 23 genes on a cohort of 956 bladder tumors (NMIBC and MIBC) including *TERT* (promoter), *FGFR3*, *PIK3CA*, *ERCC2*, *ERBB2*, *HRAS*, *RXRA*, *KRAS*, *FBXW7*, *ERBB3*, *BRAF* and *NRAS*¹². *FGFR3* and *HRAS* mutations were of better prognosis ($p = 0.006$ and $p = 0.04$, respectively) and mutations of *RXRA* were significantly associated with a higher risk of recurrence ($p < 0.05$). In our study, we did not find any link between DNA mutations and prognosis. In our cohort, only *RXRA* overexpression was associated with a higher risk of recurrence.

Telomerase Reverse Transcriptase Gene (*TERT*) promoter mutations are recognized as one of the most frequent genetic events across all stages in bladder cancer. Mutations in the core promoter region of *TERT* cause telomerase reactivation in 60–80% of urothelial bladder tumors¹³. The *TERT* C228T mutation has been shown to be significantly associated with the prognosis of bladder cancer, particularly with bladder recurrence in NMIBC¹⁴, whereas *TERT* C250 mutation appears to be an independent predictive marker of response to BCG treatment¹⁵. However, in our series, neither C228T nor C250 mutation was associated with prognosis of NMIBC or response to BCG-therapy. Rachakonda et al. showed that the association of mutations with patient survival

and disease recurrence may be regulated by a common polymorphism rs2853669 acting as a modifier of the effect of the mutations¹⁶.

In urothelial carcinomas, the frequency of *FGFR3* mutations varies greatly depending on the type of tumors analyzed¹⁷. Indeed, the frequency of mutations seems high in pTa and low-grade tumors (about 70%) and much lower in pT1 (30%) or pT2–pT4 and high-grade tumors^{1,4}. In our series, the expression of *FGFR3* was stably associated with NMIBC stage, with more frequent overexpression in pTa tumors. mRNA overexpression but not mutations or protein expression were also associated with favorable prognosis. In the literature, immunohistochemical data show protein overexpression also related to good prognosis¹⁸. In our series, there was a good correlation between mRNA expression and DNA mutation. We have few clinical trial data on targeted anti-*FGFR3* therapies in NMIBC. Some MIBC cases also show mutations in *FGFR3* (12%) or *FGFR3/TACC3* translocations (5%)¹⁹, which suggests a benefit of targeted anti-*FGFR3* therapy in these patients. Necchi et al. did not find a prognostic value of *FGFR3* expression in MIBC as compared with NMIBC²⁰.

We investigated the response to BCG therapy. Expression of *FGFR3* has been found a BCG response marker, which corroborates the data in mice from Langle et al.²¹. Indeed, in the Langle et al. study, the responder group showed low expression of *FGFR3*, which we also found. Because *FGFR3* is "druggable", anti-*FGFR3* treatments could be combined with BCG therapy to improve the response to treatment. Some studies suggest the addition of such treatments to potentiate the effect of BCG^{22,23}, including a phase II trial evaluating dovitinib in BCG-refractory patients with *FGFR3* mutated or not²⁴.

FGFR3 is not the only gene with marked overexpression in NMIBC compared to MIBC. Several genes also appear to be involved in the early stage of bladder carcinogenesis, such as *RXRA*, *PPARG* and *PVRL4*. It is noteworthy that *PVRL4* encodes the nectin-4 adhesion receptor, a new prognostic biomarker and a therapeutic target in various carcinomas. Anti-nectin-4 antibody–drug–conjugate (ADC) seems to have great potential as a therapeutic agent for metastatic urothelial carcinoma²⁵. In our series, *PVRL4* was also strongly expressed in NMIBC suggesting that the evaluation of anti-nectin-4 ADC in earlier steps of the disease through clinical trials could be of interest.

CCNE1 expression is increased in many cancers. As in our study, Rothman et al. showed increased expression of *CCNE1* associated with high grade bladder tumors²⁶, which is consistent with its role in cell proliferation. Similarly, in our series, high expression of *CCNE1* was associated with poor prognosis in NMIBC.

It is noteworthy that mRNA expression is not always correlated with protein expression, especially for *RXRA* and *CCNE1*. Moreover, the protein expression profile appears to be different between NMIBC and MIBC, underlying that NMIBC and MIBC should be considered as two distinct disease entities with different prognostic markers and different putative therapeutic targets.

As regards MIBC, the most attractive gene seems to be *EGFR* because of its prognostic and theragnostic interest. In our study, *EGFR* seemed a prognostic factor for RFS and OS. In the TCGA data, a subgroup of tissue representing poor prognosis, called "basal-like", showed abnormal expression of the *EGFR* pathway^{18,26}. The study by Rebouissou et al. suggests that this well-selected group would be a good candidate for anti-*EGFR* treatment, provided that patients do not have mutations in the RAS pathway that would limit the response to treatment²⁷. More recently, anti-*EGFR* targeted therapies have been evaluated in urothelial carcinomas in a trial demonstrating the benefit of cetuximab combined with paclitaxel as second-line treatment for metastatic bladder cancer²⁸.

ERCC2 is involved in DNA repair. It has recently been studied, in the MIBC as a biomarker of response to neo-adjuvant chemotherapy²⁹. Some studies suggest that missense mutations of *ERCC2* increased cisplatin sensitivity^{30–32}. A target population that could benefit the most from this treatment could be identified.

E2F3, which was significantly associated with OS in MIBC in our study, belongs to the neuronal subtype^{8,33} that is characterized by the expression of both neuroendocrine and neuronal genes reflecting a proliferative state.

Taking into account the prognostic impact and the predictive value of these two genes, *ERCC2* and *E2F3* expression levels may probably allow to guide the indication of chemotherapy in neoadjuvant or metastatic setting.

The strengths of our study lie in the robustness of the material, which is a well-defined cohort of both NMIBC and MIBC with strong clinical follow-up. However, there are some weaknesses notably its retrospective design and incomplete analysis of DNA mutations and protein expression levels since only focusing on target genes.

In conclusion, regarding the prognosis of NMIBC, predicting the risk of progression is difficult and the identification of markers is particularly interesting. Our results on *RXRA* and *FGFR3* and the 3-gene signature, if they are confirmed, could allow for adapting the management by intensifying the surveillance and/or proposing early cystectomy in patients with abnormal expression associated with poor prognosis. It may be an interesting approach to include other omics platforms like metabolomics, proteomics, lipidomics to validate the three genes for prognosis.

Methods

Patients and samples. We analyzed 128 urothelial carcinoma samples from patients who had undergone transurethral bladder resection or radical cystectomy in our hospital between 2002 and 2007. Specimens of normal bladder tissue from 21 patients undergoing surgery unrelated to bladder tumors (transurethral resection of the prostate or prostatic adenectomy) were used as normal bladder tissue. All patients gave their signed informed consent. This study received approval from an institutional review board (the Research Ethics Committee of Paris Descartes University) and was conducted according to the principles outlined in the Declaration of Helsinki.

Immediately after surgery, tumor samples were frozen in liquid nitrogen and stored at $-80\text{ }^{\circ}\text{C}$ (for RNA extraction) and fixed in formaldehyde. Each tumor was reviewed by 2 pathologists (DD and MS) who were

blinded to clinical outcomes. Tumors were re-staged according to the 2009 American Joint Committee on TNM classification of bladder tumors and graded according to the 2004 World Health Organization grading scheme^{34,35}.

Complete clinical, histological and survival data were available for these 128 patients (107 men and 21 women; median age 70 years [range: 31–91]). Pathological staging revealed NMIBC in 61 (25 low-grade pTa, 14 high-grade pTa, 22 high-grade pT1) and high-grade MIBC in 67. For NMIBC patients, the median follow-up was 58 months (range: 3–158 months; mean follow-up, 64 months). For MIBC patients, the median follow-up was 12 months (range: 1–152 months; mean follow-up: 31 months). Clinical, histological and survival characteristics are presented in Table 1.

Gene selection. Recent findings from the genome-wide analysis of TCGA data highlighted new oncogenes potentially involved in bladder carcinogenesis because of activating mutations [*PIK3CA* (20%), *ERCC2* (12%), *FGFR3* (12%), *ERBB3* (11%), *FBXW7* (10%), *RXRA* (9%), *NFE2L2* (8%), *FRS2* (8%)] or recurrent amplifications [*YWHAZ* (22%), *E2F3* (20%), *SOX4* (20%), *PVRL4* (19%), *PPARG* (17%), *PABPC1* (17%), *MYC* (13%), *CCNE1* (12%), *BCL2L1* (11%), *EGFR* (11%), *CCND1* (10%), *ZNF703* (10%), *GDI2* (10%), *MDM2* (9%), *PIK3CA* (8%)] or overexpression [*PVRL4* (26%), *PABPC1* (26%), *YWHAZ* (26%), *SOX4* (25%), *E2F3* (24%), *GDI2* (21%), *BCL2L1* (21%), *PAIP1* (19%), *EGFR* (18%), *FRS2* (18%), *ZNF703* (18%), *CCNE1* (17%), *PRKCI* (14%), *PIK3CA* (13.5%), *ERBB3* (12%), *PPARG* (12%), *CCND1* (11%), *ERBB2* (10%), *MDM2* (9%), *ERCC2* (8.7%)]¹. In addition to TCGA data, recent articles have highlighted previously unknown genetic alterations in bladder cancer. *MDM4* was described as a prognostic marker of recurrence in NMIBC⁵. *TACC3* and *FGFR3* can form a fusion gene, described in some cancers^{1,4,6}. In addition, the role of the RAS family has been extensively studied in oncology. *HRAS* is mutated in 5% of bladder cancers. Analysis of cell lines of bladder cancer cases revealed that this population could be treated with anti-MEK and -mTOR therapy⁷. In the same way, the *MYC* proto-oncogene is potentially "drugable"; it has been found a prognostic factor of NMIBC recurrence².

Finally, we selected 29 genes (Supplemental Data 13) for analysis. We chose one endogenous RNA control gene to RT-PCR analysis, namely *TBP* (GenBank accession No. NM_003194), which encodes the TATA box-binding protein.

DNA mutation analysis. We analyzed *HRAS*, *FGFR3*, *PIK3CA* and *TERT* which have well-described mutational spots (codons 12–13 and 61 for *HRAS*; exon 7 (codons 248–249) and exon 10 (codons 372–373–375–382) for *FGFR3*; exons 9 and 20 for *PIK3CA*; C228T and C250T mutations for *TERT*). The assessment involved a screening with high-resolution melt (HRM) analysis followed by Sanger sequencing of samples with a mutated profile on HRM to validate the HRM data and to determine the nomenclature of mutations found.

Real-time quantitative RT-PCR. The theoretical basis, primers and PCR consumables, RNA extraction, cDNA synthesis, and PCR reaction conditions have been previously described in detail³⁶. Each sample was normalized to *TBP* level. *Ntarget* values for samples were normalized such that the median of the 21 normal-bladder *Ntarget* values was 1. For each investigated gene, mRNA values ≥ 3 were considered to represent overexpression and ≤ 0.33 under-expression. We previously used the same cut-off value for altered tumor gene expression³⁶. We also used the optimal cut-off calculated by the area under the receiver operating characteristic curve for prognostic studies.

Analysis of protein expression. Representative blocks of paraffin-embedded tumor samples were available. For each tumor, 2 observers, including at least 1 expert pathologist, selected the tumor block. The area of interest was defined as the one with the highest stage and grade tumor area. A table is then arranged to guide the reading of the Tissu-Micro-Array (TMA). The removal of the tissue in the area of interest is done using a trocar of the Tissu-Micro-Arrayer machine (Alphelys) and is placed on a blank paraffin block according to the plane defined beforehand on paper. Positive control tissues are also deposited and will be used when reading the TMA. Finally, the spots are fixed by depositing the block thus made on a hot plate (37–40° C). Briefly, serial 3- μ m tissue sections were made using a paraffin microtome (Microtome Micron AM 360) and then were deparaffinized, rehydrated and pretreated in appropriate buffer for antigen retrieval by using a Leica automat. Tissue slides were then incubated at 48 °C with a primary antibody, anti-RXRA (ab191176, Abcam) or anti-FGFR3 (sc-13121, Santa Cruz); (both 1:100), then appropriate secondary antibodies.

We used a semi-quantitative analysis of protein expression with the following scores: 0 (no positive cells), 1+ (few positive cells), 2+ (numerous positive cells) and 3+ (a lot of positive cells). All quantification was performed with blinding to patient status by an expert pathologist (DD).

Statistical analysis. The clinicopathological features of NMIBC and MIBC cases were tested for their association with tumor recurrence and survival by using chi-square test for categorical variables. The associations between clinical and histological variables and mRNA levels were tested by the non-parametric Mann–Whitney U and Kruskal–Wallis H tests. Unsupervised hierarchical cluster analyses involved use of the WARD algorithm to identify homogenous tumor groups in terms of molecular data. Survival curves were derived by the Kaplan–Meier method, with the log-rank test used to compare survival between groups. Cox proportional-hazards regression was used to estimate hazard ratios (HRs) and their 95% confidence intervals (95% CIs) for covariates associated with RFS, PFS or OS showing significance at $p < 0.05$ on univariate analysis. Differences between two populations were considered statistically significant at confidence levels $> 95\%$ ($p < 0.05$).

Data availability

Materials and data are available.

Received: 11 November 2019; Accepted: 17 September 2020

Published online: 06 October 2020

References

1. Cancer Genome Atlas Research Network. Comprehensive molecular characterization of urothelial bladder carcinoma. *Nature* **507**, 315–322 (2014).
2. Massari, F. *et al.* Prognostic value of beta-tubulin-3 and c-Myc in muscle invasive urothelial carcinoma of the bladder. *PLoS ONE* **10**, e0127908 (2015).
3. Fu, Y.-P. *et al.* The 19q12 bladder cancer GWAS signal: association with cyclin E function and aggressive disease. *Cancer Res.* **74**, 5808–5818 (2014).
4. Pignot, G., le Goux, C. & Bieche, I. Recent advances in bladder urothelial carcinogenesis. *Bull. Cancer (Paris)* **102**, 1020–1035 (2015).
5. Salvi, S. *et al.* Copy number analysis of 24 oncogenes: MDM4 identified as a putative marker for low recurrence risk in non muscle invasive bladder cancer. *Int. J. Mol. Sci.* **15**, 12458–12468 (2014).
6. Williams, S. V., Hurst, C. D. & Knowles, M. A. Oncogenic FGFR3 gene fusions in bladder cancer. *Hum. Mol. Genet.* **22**, 795–803 (2013).
7. Kiessling, M. K. *et al.* Mutant HRAS as novel target for MEK and mTOR inhibitors. *Oncotarget* **6**, 42183–42196 (2015).
8. Robertson, A. G. *et al.* Comprehensive molecular characterization of muscle-invasive bladder cancer. *Cell* **171**, 540–556.e25 (2017).
9. Halstead, A. M. *et al.* Bladder-cancer-associated mutations in RXRA activate peroxisome proliferator-activated receptors to drive urothelial proliferation. *eLife* **6**, e30862 (2017).
10. Goldstein, J. T. *et al.* Genomic activation of PPAR γ reveals a candidate therapeutic axis in bladder cancer. *Cancer Res.* **77**, 6987–6998 (2017).
11. Korpál, M. *et al.* Evasion of immunosurveillance by genomic alterations of PPAR γ /RXRa in bladder cancer. *Nat. Commun.* **8**, 1–14 (2017).
12. Ward, D. G. *et al.* Targeted deep sequencing of urothelial bladder cancers and associated urinary DNA: a 23-gene panel with utility for non-invasive diagnosis and risk stratification. *BJU Int.* <https://doi.org/10.1111/bju.14808> (2019).
13. Günes, C. *et al.* Implications of TERT promoter mutations and telomerase activity in urothelial carcinogenesis. *Nat. Rev. Urol.* **15**, 386–393 (2018).
14. Hayashi, Y. *et al.* TERT C228T mutation in non-malignant bladder urothelium is associated with intravesical recurrence for patients with non-muscle invasive bladder cancer. *Mol. Oncol.* <https://doi.org/10.1002/1878-0261.12746> (2020).
15. Batista, R. *et al.* TERT promoter mutation as a potential predictive biomarker in BCG-treated bladder cancer patients. *Int. J. Mol. Sci.* **21**, 947 (2020).
16. Rachakonda, P. S. *et al.* TERT promoter mutations in bladder cancer affect patient survival and disease recurrence through modification by a common polymorphism. *Proc. Natl. Acad. Sci.* **110**, 17426–17431 (2013).
17. Knowles, M. A. Role of FGFR3 in urothelial cell carcinoma: biomarker and potential therapeutic target. *World J. Urol.* **25**, 581–593 (2007).
18. Poyet, C. *et al.* Positive fibroblast growth factor receptor 3 immunoreactivity is associated with low-grade non-invasive urothelial bladder cancer. *Oncol. Lett.* **10**, 2753–2760 (2015).
19. Cancer Genome Atlas Research Network. Comprehensive molecular profiling of lung adenocarcinoma. *Nature* **511**, 543–550 (2014).
20. Necchi, A. *et al.* Prognostic effect of FGFR mutations or gene fusions in patients with metastatic urothelial carcinoma receiving first-line platinum-based chemotherapy: results from a large, single-institution cohort. *Eur. Urol. Focus* **5**, 853–856 (2019).
21. Langle, Y. V. *et al.* FGFR3 down-regulation is involved in bacillus Calmette–Guérin induced bladder tumor growth inhibition. *J. Urol.* **195**, 188–197 (2016).
22. Vanderveer, A. J. *et al.* Systemic immunotherapy of non-muscle invasive mouse bladder cancer with avelumab, an anti-PD-L1 immune checkpoint inhibitor. *Cancer Immunol. Res.* <https://doi.org/10.1158/2326-6066.CIR-15-0176> (2016).
23. Donin, N. M. *et al.* Immunotherapy in the treatment of urothelial carcinoma. *J. Urol.* <https://doi.org/10.1016/j.juro.2016.02.3005> (2016).
24. Hahn, N. M. *et al.* A phase II trial of dovitinib in BCG-unresponsive urothelial carcinoma with FGFR3 mutations or overexpression: hoosier cancer research network trial HCRN 12-157. *Clin. Cancer Res. Off. J. Am. Assoc. Cancer Res.* **23**, 3003–3011 (2017).
25. Rosenberg, J. *et al.* EV-101: a phase I study of single-agent enfortumab vedotin in patients with nectin-4-positive solid tumors, including metastatic urothelial carcinoma. *J. Clin. Oncol.* **38**, 1041–1049 (2020).
26. Rothman, N. *et al.* A multi-stage genome-wide association study of bladder cancer identifies multiple susceptibility loci. *Nat. Genet.* **42**, 978–984 (2010).
27. Rebouissou, S. *et al.* EGFR as a potential therapeutic target for a subset of muscle-invasive bladder cancers presenting a basal-like phenotype. *Sci. Transl. Med.* **6**, 244ra91 (2014).
28. Wong, Y.-N. *et al.* Phase II trial of cetuximab with or without paclitaxel in patients with advanced urothelial tract carcinoma. *J. Clin. Oncol. Off. J. Am. Soc. Clin. Oncol.* **30**, 3545–3551 (2012).
29. Liu, D. *et al.* Clinical validation of chemotherapy response biomarker ERCC2 in muscle-invasive urothelial bladder carcinoma. *JAMA Oncol.* **2**, 1094–1096 (2016).
30. Tse, J., Ghandour, R., Singla, N. & Lotan, Y. Molecular predictors of complete response following neoadjuvant chemotherapy in urothelial carcinoma of the bladder and upper tracts. *Int. J. Mol. Sci.* **20**, 793 (2019).
31. Li, Q. *et al.* ERCC2 helicase domain mutations confer nucleotide excision repair deficiency and drive cisplatin sensitivity in muscle-invasive bladder cancer. *Clin. Cancer Res. Off. J. Am. Assoc. Cancer Res.* **25**, 977–988 (2019).
32. Pietzak, E. J. *et al.* Genomic differences between ‘primary’ and ‘secondary’ muscle-invasive bladder cancer as a basis for disparate outcomes to cisplatin-based neoadjuvant chemotherapy. *Eur. Urol.* **75**, 231–239 (2019).
33. Sjö Dahl, G., Eriksson, P., Liedberg, F. & Höglund, M. Molecular classification of urothelial carcinoma: global mRNA classification versus tumour-cell phenotype classification. *J. Pathol.* **242**, 113–125 (2017).
34. Sobin, L., Gospodarowicz, M. & Wittekind, C. TNM classification of malignant tumors. In *UICC International Union Against Cancer* 262–5 (2006).
35. Molinié, V. Classification of bladder tumors in 2006. *Prog. Urol. FMC* **16**, 7–10 (2006).
36. Pignot, G. *et al.* Large-scale real-time reverse transcription-PCR approach of angiogenic pathways in human transitional cell carcinoma of the bladder: identification of VEGFA as a major independent prognostic marker. *Eur. Urol.* **56**, 678–688 (2009).

Author contributions

L.G.C. (data collection, statistical analysis, manuscript writing), S.V., S.A., B.D.N., Z.M., P.M., S.M., A.Y. (data collection), B.I., D.D., P.G. (data collection, manuscript reviewing).

Competing interests

The authors declare no competing interests.

Additional information

Supplementary information is available for this paper at <https://doi.org/10.1038/s41598-020-73642-8>.

Correspondence and requests for materials should be addressed to C.L.G.

Reprints and permissions information is available at www.nature.com/reprints.

Publisher's note Springer Nature remains neutral with regard to jurisdictional claims in published maps and institutional affiliations.



Open Access This article is licensed under a Creative Commons Attribution 4.0 International License, which permits use, sharing, adaptation, distribution and reproduction in any medium or format, as long as you give appropriate credit to the original author(s) and the source, provide a link to the Creative Commons licence, and indicate if changes were made. The images or other third party material in this article are included in the article's Creative Commons licence, unless indicated otherwise in a credit line to the material. If material is not included in the article's Creative Commons licence and your intended use is not permitted by statutory regulation or exceeds the permitted use, you will need to obtain permission directly from the copyright holder. To view a copy of this licence, visit <http://creativecommons.org/licenses/by/4.0/>.

© The Author(s) 2020